
**Heart of America
Carnival Glass Association, INC.**

FEBRUARY 1986

NEWSLETTER

First Class Mail
U. S. Postage
PAID
Kansas City, Mo.
Permit No. 4352

**PLEASE SEND ALL CHECKS TO:
GLEN FORTNEY, SECRETARY**

NEW ADDRESS

**ALL MATERIAL FOR THE BULLETIN
SEND TO BULLETIN SECRETARY:**

**MARGE MILLER
7619 N. W. WESTSIDE DRIVE
KANSAS CITY, MISSOURI 64152**



Heart of America
Carnival Glass
Association Inc.

Membership June to May
\$20.00 Per Couple or Single

Published the 15th
of each month

PRESIDENT	Robert Grissom 7900 Crescent Raytown, MO 64138 (816) 356-5320
VICE-PRESIDENT	Nadine Paulsen 700 Purdon Olathe, KS 66061 (913) 782-1313
TREASURER	Karen Engel 35292 Oak View Drive Brownsville, OR 97327 (503) 466-5989
SECRETARY	Glen Fortney P. O. Box 303 Buckner, MO 64016
BULLETIN SECRETARY	Marge Miller 7619 N. W. Westside Drive Kansas City, MO 64152 (816) 741-4635

All monetary figures quoted are in U. S. dollars.
Please make checks for dues payable to H.O.A.C.G.A.
and send them to the secretary as listed above.

**** DO NOT SEND TO THE BULLETIN SECRETARY ****

H.O.A.C.G.A. JANUARY MONTHLY MEETING

At 2:00 P.M. on January 26, 1986, President Robert Grissom called the meeting to order. The Minutes of the December Meeting were read by Secretary Glen Fortney. They were approved as read. The Treasurer's Report was read by President Grissom and filed for audit.

President Grissom reported on the Souvenir which John Britt had called him about, reporting that they had been made and are ready for us.

There was discussion on the matter of changing the term of Officers from a year to two year terms. They would also be put on a rotation system. Two would change the first time then three the next. This would make it easier to find officers each year plus it would help the new ones having some one with experience staying on each year. It will be brought up before the members at the next Annual Business Meeting.

After a break for refreshments, provided by Berniece Bell, whom we thank very much, a program on New and Reproduced Carnival was presented by Dorothy Taylor. With a nice display and a very interesting program I am sure everyone had a very enjoyable and educational afternoon.

February 23 will be the next monthly meeting. The program will be on Pastel Glass so everyone bring some pastel pieces with you at this meeting.

With no further business the meeting was adjourned.

Your Secretary,
Glen Fortney

**NOTICE!!
FROM THE EDITOR**

Twice in the past two months, two members have sent data for the bulletin SPECIAL DELIVERY. We live on a lake and have our mail boxes at the street. These items were not delivered to my door but put in the box with our other mail. I made inquiry with a postal employee and she said a mail box away from the house is considered RURAL ROUTE and SPECIAL DELIVERY is treated as any regular mail. So, save your money and just get the data to me by the 25th of each month. Thanks.

EDUCATIONAL TUMBLER SERIES

By John & Lucile Britt

CONE & TIE - A SUPER STAR IN ANY COLLECTION

For being such a plain tumbler the "Cone & Tie" stands out in any collection. Perhaps one of the reasons for this is the outstanding color and iridescence. It contains a beautiful Tiffany like blue luster over the purple base color. Iridescence has been applied to both surfaces. "Cone & Tie" is a little taller than most other carnival glass tumblers. The base is concave and contains a whirling star type figure. It has been factory ground to provide for a smooth setting surface.

"Cone & Tie" is a very rare tumbler, much more difficult to find than the "Chatelaine". While some seem to think this is a Northwood tumbler, I lean to Imperial as the maker. I have no informative literature to prove my belief, but its close similarity to "Chatelaine" in its features lead me to believe that they were made by the same glass company. These elegant "Cone & Tie" tumblers have been reported only in the purple color. I have heard rumors of examples in marigold, but none have ever proved to be correct. To the best of my knowledge, no water pitcher in this pattern has ever been reported.

In closing, this has to be one of the great tumblers and one of the most sought after in the carnival glass field. It represents our 97th issue in this series. Next month we will cover one of the enameled type tumblers - the very rare "Enameled Windflower".



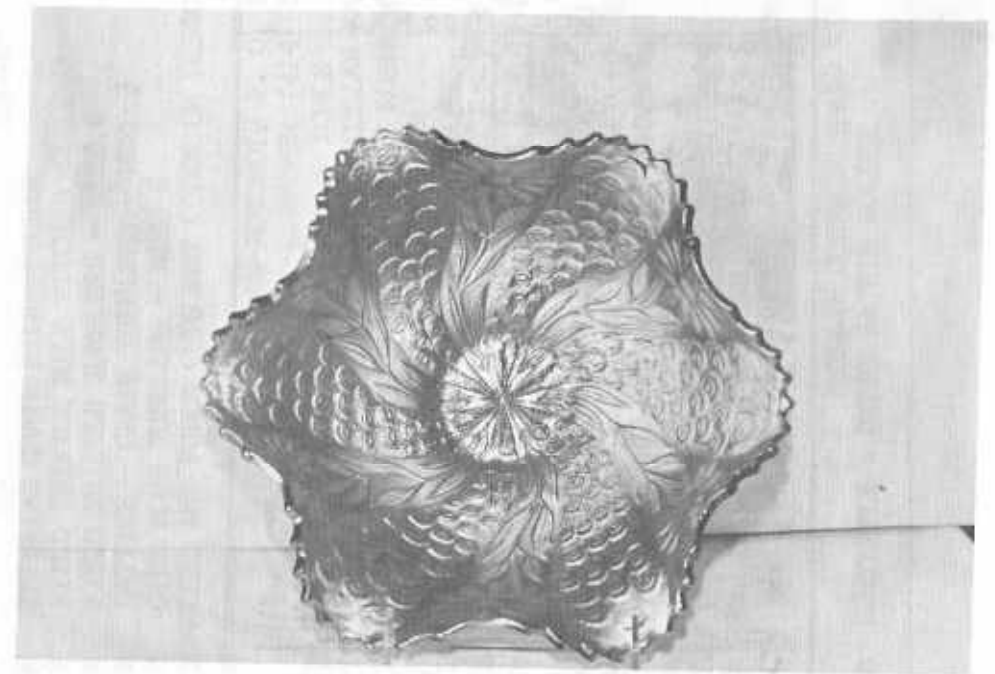
PICTORIAL PATTERN PARADE

BY John & Lucile Britt

PEACOCK TAIL & DAISY BOWL

The "Peacock Tail & Daisy" is truly one of the rarest patterns that is found in Carnival Glass Bowls. We have seen only two of these in all of our travels. Surely there must be others out there, but I have not seen or heard of them. This bowl is even more rare than are the "Rose Tree", "Dragons Tongues" and "Little Daisies" Bowls. Perhaps the "Fenton's Fern" Bowl would be a little more rare than this one. I know of only one of them. "Peacock Tail & Daisy" is not listed in any of the Hartung Books. You can find it shown in Presznick Book - Plate 155.

In addition to being rare, the "Peacock Tail & Daisy" Bowl is most beautiful and very desirable. This particular bowl was loaned to us several years ago in order to take the above picture. Frank Fenton had it at the A.C.G.A. Convention that he attended as their guest speaker. It is in the amethyst color. We have studied and checked this pattern thoroughly with prominent collectors and authorities and all have agreed that it was made by Westmorland.



Lucile and I have two other Westmorland bowls - "Carolina Dogwood" in peach opalescent and "Daisy Wreath" in blue opal with the milky blue base glass that are exact ringers to this "Peacock Tail & Daisy" bowl as to the way in which they were made. No doubt they were shaped by the same tool.

I could write on and on about this pretty pattern, but I will close after making one more point. Notice the close similarity of the swirling type feature of this bowl to that of Fenton's "Ribbon Tie" Bowls (sometimes called Comet). See Hand's Book 2 - Page 171 or Heacock's "Fenton Glass - The First Twenty-Five Years" on Page 50 for a nice picture of the "Ribbon Tie or Comet" Bowl. Could it have been that Westmorland had used Fenton's "Ribbon Tie" to make a similar, but more fancy pattern to compete with Fenton's "Ribbon Tie" pattern? This is only a guess, but I certainly would not rule out the possibility. Remember, competition was very keen in those days too and glass companies were highly competitive to get their share of the business. Anyway, you can consider yourself lucky if you are ever able to find one of these rare bowls.



AIR CAPITAL CARNIVAL GLASS CLUB

January 12, 1986

We had a beautiful day for our January meeting. It had been so cold and icy most of December that we were glad to be able to get out. There were eleven members present.

The warm weather made us ready to start planning for some trips out of town to see some collections. This is a highlight of some of our summer activities. We have been so fortunate to have been invited to see some fabulous collections over the years.

Of course we are planning for our October Convention and want all of you to be with us then. It will be at the Sheraton Inn, 5500 West Kellogg, again this year.

We have heard of some real nice auctions to be held this spring and summer so are all anxious to get the brochures.

Mr. and Mrs. Cromer brought a nice piece of aqua opal for us to look at for the educational portion of our meeting. Also Frank Spangler gave a report on some reproductions that are floating around and for us to beware of.

Some of us are planning on going to the Texas Clubs February Meeting and are looking forward to seeing our Texas members and friends.

Donald E. Kime
Secretary

True grit

No man knows his true character until he has run out of gas, purchased something on the installment plan and raised an adolescent.

— Marcelene Cox

A WHITE CHRISTMAS

For some reason unknown in our part of the country everyone thinks its not really Christmas unless we have a snow to call it a "White Christmas". One hears the song over and over so we almost feel its a necessity to see the snow coming down. Sometimes it does and sometimes it doesn't. Since Old Santa seems to fly through the air anyway it does not appear that its as important as we are led to believe - for what ever reason it does seem nicer with the snow.

We often wonder how the ones in the warmer sections ever celebrate with palm trees, flowers and sandy beaches. Two years ago we did have about 85 degrees and neighbors were picnicking right on their porch. We thought it must be July 4th and before we knew it - Christmas went by - a most unusual experience not to be forgotten.

Our 1985 Christmas certainly was white in two ways. The weather was cold - nearly zero with ice under 3-4 inch snow. We were plain glad to have not outside activity planned so spent the day stuffing ourselves on lots of foods. Another old tradition one indulges in as an excuse to devour more cookies, candies, etc. than one would dare at any other time.

The other "White Christmas" we enjoyed was the White N Dandelion Water Set we found a few days before Christmas. Santa Claus came a bit early with that and we didn't ask for another thing.

We watched the old year go and decided it had been a good one in so many ways. Several great pieces of Carnival came out in 1985. After so many years we think nothing can be left to surface, yet it does every year so wonder what is to show up in 1986. You can be sure something is out there, so happy hunting - and a happy year to all.

Grace and Byron Rinehart
Charleston, W. Virginia



TAMPA BAY CARNIVAL GLASS CLUB

The Tampa Bay Carnival Glass Club opened the 1986 season January 19th Meeting at the home of Ruth and Sal Devito in Dunedin. The turn-out was the best in several months. The traditional luncheon buffet was followed by the business meeting. The annual election of officers resulted in returning to office:

Arthur Smith, President
Shirley Pfaff Conyers, Secretary
Dorothy L. Smith, Treasurer.

Ruby Pitt was elected Vice-President.

Art announced that all indicators pointed to a well attended Jamboree. Art borrowed an idea from the San Diego County Carnival Glass Club and led a discussion on "My first experience buying a piece of carnival glass with a cost of \$100 or more." This provided an interesting discussion.

Arthur Smith

CAN YOU HELP?

Dear Marge:

We recently purchased a Peacock at Fountain Water Pitcher in a color that may be black amethyst. Like Holly Bowls and Plates that are commonly called black amethyst, a slight amount of purple can be seen through the base under only the brightest of light. One collector we talked to about this piece wondered if it was dark purple. Are these the same color by different names or is there a difference? We could not find anything on this subject in our back issues of the bulletin. Perhaps someone has an accepted definition and would let us know.

John and Carolyn Mikkonen
RR 1, Box 474F
Shakopee, MN 55379
(612) 445-6098 9

"AUCTION"

Auction Dates: March 7, 8, and 9th.
Location: Glen La Rue Auction Service, Sweet Springs, Missouri
(Located 60 miles East of K.C. on I-70)
Time of Sale: 9:00 A.M. each day
Accommodations: Motels and Restaurants in the area.

There will be complimentary coffee and donuts on Friday morning.

On each of the 3 days a quality hand-made collectible quilt will be given away by a drawing for those having a bid number.

For further information and complete sale bill, contact:

Joan Westerfeld
P. O. Box 3361
Kansas City, Kansas 66103
Phone: 913-381-6244

Approximately 100 pieces of Carnival Glass includes:

Farmyard Bowl, candy-ribbon edge zippered heartback, amethyst
Peter Rabbit Bowl, marigold
Northwood Dandelion, 7 Piece Waterset, amethyst
3 Fruits, aqua opal footed bowl
Blackberry Hat Shaped RED
Ski-Stor, 7 Piece Berry Set, peach opal

Other desirable carnival in various colors, patterns, and shapes.



*Hope your
Valentine's
Day
was a nice
one!
Marge*



CARNIVAL GLASS AUCTION

Don and Glenda Weaver will be selling their Carnival Glass collection at Public Auction on Saturday, March 15th at the Lawrence, Kansas, at the Holiday Inn.

The Weavers have been collecting for several years and have an outstanding collection of over 300 pieces including a Square Farmyard, Christmas Compote, over 40 Advertising Pieces, some good pastels, and lots more.

A color catalog with a complete listing is available from (John) Woody Auction Company, Box 618, Douglass, Kansas 67039. Phone: 316-746-2694.

REMINDER FROM MARGE, THE EDITOR

ALL ARTICLES AND ADS DUE BY THE
25TH DAY OF THE PREVIOUS MONTH BEFORE PUBLICATION

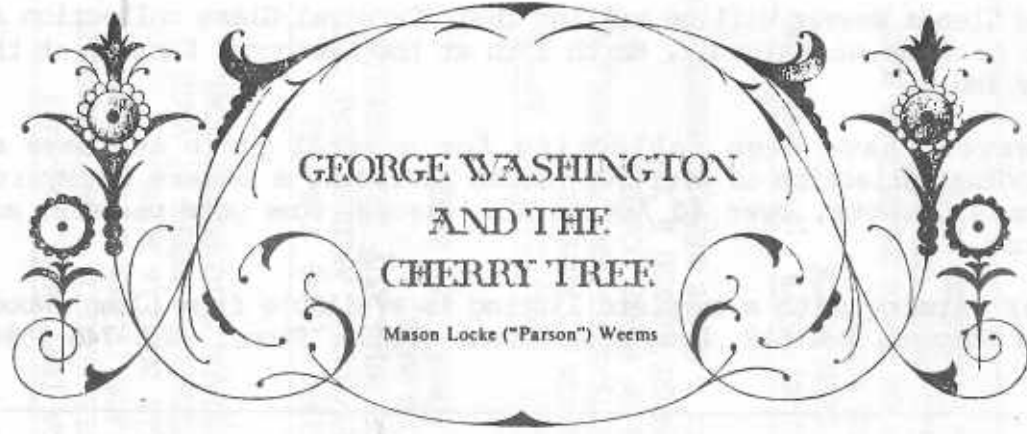
ARTICLES AND ADS ARE DUE FEBRUARY 25TH FOR THE MARCH ISSUE

ANOTHER NOTE

A member wrote about printing more educational articles. I will print any educational article I receive but some of the regulars have not sent articles lately. These articles help to make a newsletter good. So come on members - sit down and send me some articles! A good newsletter is what the members contribute to it.

Marge Miller

Marge Miller



The following anecdote is a case in point. It is too valuable to be lost, and too true to be doubted, for it was communicated to me by the same excellent lady to whom I am indebted for the last.

"When George," said she, "was about six years old, he was made the wealthy master of a hatchet of which, like most little boys, he was immoderately fond, and was constantly going about chopping everything that came in his way. One day, in the garden, where he often amused himself hacking his mother's pea-sticks, he unluckily tried the edge of his hatchet on the body of a beautiful young English cherry tree, which he barked so terribly, that I don't believe the tree ever got the better of it. The next morning the old gentleman, finding out what had befallen his tree, which, by the by, was a great favorite, came into the house and with much warmth asked for the mischievous author, declaring at the same time that he would not have taken five guineas for his tree. Nobody could tell him anything about it. Presently George and his hatchet made their appearance. 'George,' said his father, 'do you know who killed that beautiful little cherry tree yonder in the garden?' This was a tough question; and George staggered under it for a moment, but quickly recovered himself; and looking at his father, with the sweet face of youth brightened with the inexpressible charm of all-conquering truth, he bravely cried out, 'I can't tell a lie, Pa. You know I can't tell a lie. I did cut it with my hatchet.'—'Run to my arms, you dearest boy,' cried his father in transports, 'run to my arms; glad am I, George, that you killed my tree; for you have paid me for it a thousand fold. Such an act of heroism in my son is more worth than a thousand trees, though blossomed with silver, and their fruits of purest gold.' "

From The Life of George Washington

**** CARNIVAL GLASS FOR SALE ****

COOLEY MILLER, 7619 NW WESTSIDE DRIVE, KANSAS CITY, MO 64152 (816) 741-4635	
M EI	GOOD LUCK BOWL 110
M EI	APPLE BLOSSOM TWIG FLAT BOWL 70
A EI	TROUT AND FLY BOWL 310
M EI	ACORN BOWL 30
B	SILVERY IRID HORSES HEAD SM BOWL 110
P.O.	FISH SEALE, BOWL TURNED UP EDGE 30
RAY HITCHCOCK, RR 1, BOX 301, WINTERSET, IA 50273 (515) 462-2074	
R	VINTAGE NUT DISH FLAKE ON GRAPE 325
M	STIPPLED RAYS 7" PLATE SUPER 30
A	N G&C SM RUFFLED BERRY 2 N'S ON BOTTOM 30
PO	FISHNET RUFFLED LILY 40
AQUA	ESTATE CREAMER & SUGAR 150
CLIFFORD DECKER, BOX 209, RD 1, WHITNEY POINT, NY 13862 (607) 692-3762	
R	ACORN BOWL 385
P	STRAWBERRY HAND GRIP PLATE 95
G	G&C HATPIN HOLDER 165
E.B.	PEACOCK AT THE FOUNTAIN PITCHER 325
AQUA	ROSE SHOW BOWL 650
MASON LOCKE ("PARSON") WEEMS, 1000 N. 10TH ST., WASHINGTON, D.C. 20004	
W EI	FINECUT & ROSES CANDY DISH 50
CHIP	ON FOOT 40
B EI	LOTUS AND GRAPE BOWL 55
G	SILVERY IRR CIRCLE SCROLL BOWL 240
A	MLSB. CHERRY VARIANT TUMBLER 240
RAY HITCHCOCK, RR 1, BOX 301, WINTERSET, IA 50273 (515) 462-2074	
M	PANHER MASTER BERRY UNUSUAL 125
B	DRAGON & LOTUS BOWL ROUND 35
M	FEATHER STITCH BOWL 35
A	VINTAGE SMALL LILY 40
M	WATER LILY & CAITAILS BON BON 25
CLIFFORD DECKER, BOX 209, RD 1, WHITNEY POINT, NY 13862 (607) 692-3762	
A	IRIS COMPOTE 60
M	LION BOWL 110
A	LOGANBERRY WATER CARAFFE 225
W	ROSE SHOW BOWL 215
B	ORANGE TREE BREAKFAST SET 115

LEE BRYANT, ROUTE #1, BOX 109, DECATUR, INDIANA 46733
Send Large SASE for our Annual Sale List of Medium Priced Carnival Pieces.



FEBRUAR

1986



** CARNIVAL GLASS FOR SALE **

KENNETH GOTHARDT, 2418 SHALER ST., ALLENTOWN, PA. 18103 - (605) 797-6340					
M EI	PINEAPPLE 6 3/4" BOWL	32	M EI	SCALE BAND 7" DOME PLATE	32
A EI	STIPPLED RAYS BON BON	27	SM EI	SWIRL 7 1/2" VASE	12
M EI	FENTON - 3 SIDES TURNED UP	30	M EI	FENTON BLACKBERRY SPRAY 6" HAT SHAPE	23
M EI	IMPERIAL GRAPE 8 3/4" FRUIT BOWL		M EI	QUESTION MARKS BON BON DUGAN	27
M EI	NUMBER FOUR IMPERIAL 6 1/2" BOWL	12	M EI	TIGER LILY TUMBLER	20

HARM WESTERHUIS, R.R. 1, BOX 49, PLATTE, SOUTH DAKOTA 57369

PHONE: (605) 337-3631					
CLM	NORTHWOOD FLUTE WATER PITCHER	175	P	NO. 370 COMPOTE	50
PO	SWIRL VASE (PINCHED IN)	25	P	CIRCLE SCROLL WHIMSEY VASE (RARE) HAT SHAPED	70
W	ORANGE TREE OPEN SUGAR	50	P	VINTAGE 6" BOWL	40
M	BUTTERFLY & BERRY LARGE BERRY BOWL	50	M	RAMBLER ROSE 7 PC. WATERSET	275
SM	MILLERSEBURG ACANTHUS BOWL	65	M	GRAPE ARBOR 6 PC. WATERSET	325

TOM & SHARON MORDINI, 36 N. MERNITZ AVE., FREEFORD, ILLINOIS 61032

PHONE: (815) 235-4407					
PO	STARFISH COMPOTE	65	G	FINE CUT & ROSES ROSEBOWL	150
PO	SINGLE FLOWER PLATE, CRIMPED EDGE	80	M	PEACOCK & DAHLIA 8" PLATE	225
A	G & C COLOGNE BOTTLE	190	M	SPRINGTIME TUMBLER (3) EACH	80
W	ORANGE TREE PLATE	125	B	NIPPON BOWL - BASKETWEAVE BACK	180
B	GOOD LUCK BOWL, STIPPLED	285	P	PIE CRUST EDGE	
	PIE CRUST EDGE		P	FERN BRAND CHOC. FLAT PLATE (N)	210

EDWARD L. HENDERSON, 1111 N. COLLEGE, STUTTGART, ARKANSAS 72160

PHONE: (501) 673-8757 - AFTER 5 P.M.					
LM	"FASHION IMPERIAL" 8 1/2" BOWL	15	M	FENTON "PEACOCK & GRAPE" INT.	15
LM	"SMOOTH RAYS" 9" BOWL	20		"BEADED BERRY" EXT. 7 1/2" BOWL (CHIP BOTTOM OF BASE)	
A	"CORINTH" 8" BOWL	30	M	"FASHION IMPERIAL" COMPOTE (CHIP RIM)	7
M	"ROCCO" DOME-BASED - EACH	15	A	"STRETCH GLASS" 9 1/2" PLATE	20
M	5" BOWLS - 3	10	A	"PERSIAN MEDALLION" 5" DISH	15
M	"DAISY & FERN" 7" NAPPY	10			
A	"PERSIAN MEDALLION" 5" DISH CRACKS	10			

** CARNIVAL GLASS FOR SALE **

GEO. LOESCHER, 2420 PARK AVE., BELOIT, WI 53511 (608) 362-3104					
M EI	WISHBONE 3 FTD BOWL	35	M EI	FLUTE TOOTHPICK MINT	45
PO EI	SCALES ROUND BOWL BASE MILKY	135	A EI	PEA AT URN ICE CREAM 10" BOWL MILLERSBURG	225
PO EI	CORINTH BOWL ALMOST PLATE	45	R EI	SUGAR BOWL IMPERIAL JEWELS	80
PO EI	THUMPRINT COMPOTE	35	P EI	FASHION WATER PITCHER	750
W EI	SINGING BIRD MUG	225			
AO EI	G&C CRACKER JAR-LID REPAIRED	3500			

DARLENE YOHE, P.O. BOX 343, STUTTGART, AR (501) 673-3437

P EI	G&C DRESSER TRAY	175	P GI	G&C PIN TRAY FLAKE UNDER BASE	70
P EI	SPRINGTIME COVERED BUTTER SM. CHIP UNDER BASE	170	M EI	PEACOCK AT FOUNTAIN FTD ORANGE BOWL	175
M EI	PEACOCK AT FOUNTAIN 4 PC TABLE SET, TINY 1" LINE CREAMER	280	M EI	LION BOWL TINY POINT ROUGH	80
M EI	ORANGE TREE MUG	20	M EI	ORANGE TREE LADIES GOBLET	20
M EI	PEACOCK AT FOUNTAIN TUMBLERS EA	30	M EI	PANTHER LG BERRY BOWL	150

MARTY SCHOETTLER, BOX 188, RD-3, SEWELL, NJ 08080 (609) 589-4325

PO EI	HONEYCOMB ROSEBOWL NICE	160	PO EI	PULLED LOOP VASE 10" TALL	35
M EI	BEADED CABLE CANDY DISH	30	M EI	PEACOCK & URN 9" RUF. BOWL	45
M EI	PERSIAN MEDALLION STEMMED COMPOTE	45	B EI	BLACKBERRY MINIATURE COMPOTE	45
AM EI	SHELL LG BERRY BOWL NICE	40	B EI	CARNIVAL HOLLY 9" BOWL C.R. EDGE	50
AM EI	HOLLY WHIRL VARIENT BOWL BEAUTY, MLBG, RADIUM	55	AM EI	PEACOCK AT FOUNTAIN PUNCH BASE	45

WILMA & PAUL THURSTON, 2360 N. OLD S.R. 9, COLUMBUS, IN 47203 (812) 546-5724

CLM	FROSTED BLOCK 6" BOWL	20	M	DOUBLE SCROLL CANDLESTICKS PAIR	35
AMB	1983 HOACGA FAVOR MUG	7.50	M	PREMIUM CANDLESTICKS PAIR	50
CB	1982 HOACGA FAVOR MUG	7.50	M	TREE BARK PITCHER	40
LM	FLORAL & OPTIC 6" BOWL	12	A	1984 HOACGA FAVOR MUG	7.50

** CARNIVAL GLASS FOR SALE **

BURNAY TALLEY, 1814 SLATE, N.W., ALBUQUERQUE, NM 87104 (505) 242-1261	
G ACORN BURR TUMBLER	65
B TEN MUMS TUMBLER	95
W PEACOCK AT FOUNTAIN TUMBLER (N)	175
B GOOD LUCK BOWL, PIE CRUST EDGE	250
EB PEACOCK AT FOUNTAIN TUMBLER	75
ICE AQUA-BLUE CORN VASE	
SECOND REPORT IN THIS COLOR	
250	P CHATELAINE TUMBLER
95	B BLUEBERRY TUMBLER
250	G GOOD LUCK BOWL, PIE CRUST EDGE
150	M GOOD LUCK BOWL, PIE CRUST EDGE
1350	

MARY ANN MORIARTY, 806 CENTRAL AVENUE, BEDFORD, IOWA 50833
PHONE: (712) 523-3469

G LEAF & BEADS FTD. BOWL	35	PO SIX PETALS BOWL	30
M COIN SPOT COMPOTE (CLEAR STEM & FOOT	35	M STORK & RUSHES MUG	22
M 474 PUNCH CUP	20	A STORK & RUSHES PUNCH CUP	18
CL FROSTED BLOCK FLUTED BOWL (MADE IN U.S.A.)		SMALL DIAMOND RING BOWL	32.50
			20

ALAIINE M. PENNETTI, 23 NANCY LAND, FT. MYERS BCH., FLORIDA 33931
PHONE: (813) 463-3918

G TEN MUMS BOWL	75	A LOUISA ROSE BOWL	40
P VINTAGE PUNCH CUPS (2) BOTH	35	B ORANGE TREE HATPIN HOLDER (CHIP ON FOOT)	105
P BUTTERFLY & TOP OF MORN HATPINS - BOTH	45	B ORANGE TREE CREAMER	50
M HOBSTAR BAND TUMBLER	35	P GRAPE & CABLE STEMMED ICE CREAM	45
P STRAWBERRY PLATE (N)	60	P PEACOCK AT FOUNTAIN SPOONER SMALL NICK	60

RAY GODFREY, 519 S. 10TH ST., LEAVENWORTH, KS 66048 (913) 651-3575

G EI 10" FLEUR DE LIS BOWL	175	A EI 9" CAPTIVE ROSE BOWL	42
P EI 8 1/2" NIPPON BOWL	60	M EI 8 3/4" WEEPING CHERRY BOWL	40
A EI 8 3/4" BLACKBERRY WREATH BOWL	75	B EI 8 3/4" LEAF CHAIN BOWL	45
G EI 8 1/4" BEADS BOWN (N)	60	M EI 7 3/4" HATTIE BOWL	35
PO EI 7 3/4" SIX PETALS BOWL	55	SM GI 8 1/2" DIAMOND RING BOWL	35

** CARNIVAL GLASS FOR SALE **

HUBERT F. SHELTON, RT 1, MUNFORDVILLE, KY (502) 528-5893

M BUTTERFLY & BERRY 9 1/2" VASE	30	M BUTTERFLY & BERRY TUMBLERS (5)	20
CB BUTTERFLY & BERRY TUMBLER	40	R BRIGHT RED STRETCH GLASS COMPOTE 6" IMPERIAL	100
IB 9" PLATES STRETCH GLASS OR IMP JEWELS EA	12.50	M 10" PYREX INSULATOR SCARCE	65
M WIDE PANNELL SUGAR/CREAMER PR	20	M WIDE PANNELL 6 1/2" COVERED COMPOTE GOOD COLOR	12
CB O.T. ORCHARD TUMBLER A JEWELL			
M O.T. FOOTED TUMBLERS 6 PERFECT EA	33		

DICK WEATHERBEE, 847 STAFFORD ST., ROCHESTER, MA 01542 (617) 892-4420

B LEAF & BEADS 3 FTD ROSEBOWL	110	M EMBOSSED SCROLL 5 1/2" COMPOTE	24
G N TREE TRUNK 8" SQUATTY VASE	28	P ORIENTAL POPPY TUMBLERS (6 MATCHING EACH \$60 ALL	295
M DIAMOND & RIB 10" VASE BEAUTY	18	P GRAPE DELIGHT 6 FTD ROSEBOWL	75
AMY APRIL SHOWERS/PEACOCK TAILS INSIDE 10 1/2" VASE	28	M WREATH OF ROSES TRICORNER WHIMSEY	27
P N DIAMOND POINT 10 1/2" VASE	30	P RIPPLE 8 1/2" VASE 4 1/2" FLARED OPENING SUPER	28

WILLIAM COLES, RT 1, BOX 273B, HICKORY, KY, 42051 (502) 674-5916

M EI G&C W/THUMBPRINT MASTER BERRY BOWL N	65	G EI MSBG HOLLY 8 1/2" BOWL	45
A EI RIBBON TIE 9" FLUTED BOWL	40	M EI G&C SHERBERT N	20
IG GI STRETCH HAT SHAPE	20	M EI WINDFLOWER 1 HANDLE NAPPY HAS TINY FLAKE UNDER BASE	25
MB EI FIELDFLOWER WATER PITCHER	120	M EI FENTON PEACOCK/URN COMPOTE	38
CLFAR EI FROSTED BLOCK 9" PLATE	32		

DAVID M. DEEM, 902 E. WALNUT AVENUE, BURBANK, CA. 91501

M LIONS BOWL 7" RUFFLED, NICE	85	A WISHBONE PLATE 8 1/2" FTD	315
M STRAWBERRY PLATE 9" SUPER IRID.	65	G RUFFLES & RINGS EXT. (NICE ONE)	115
M HOLLY PLATE 9 1/4" PASTEL IRID.	65	G LEAF CHAIN PLATE 9" GOOD COLOR	280
		M DRAGON & STRAWBERRY BOWL FTD., SUPERIOR IRID & COLOR	

** CARNIVAL GLASS FOR SALE **

DON DONOVAN, RR 1 SELKIRK, ONTARIO CANADA, NOA IPO (416) 776-2453
 PO EI ROUND UP RUFFLED BOWL 200 PO EI APPLE BLOSSOM & TWIGS RUFFLED 9" 175
 MAR EI FENTONS SAILBOATS 6" PLATE 240 PLATE (PLAIN EXT. SMOOTH)
 AMY EI INVERTED STRAWBERRY TUMBLER 195 W EI HOLLY BOWL (6 RUFFLE) 100
 AO GI FRUITS & FLOWERS BONBON PASTEL 200 B EI BUTTERFLY & BERRY 8" VASE 65
 MAR EI ORANGE TREE & SCROLL TUMBLER 65 PO EI 6 PETALS TRICORNERED BOWL 65
 SAPPHIRE BLUE EI FINE RIB VASE 10" (FENTON) 100

DON MAYS, RT 2, BOX 178, EARLYSVILLE, VA 22936 (804) 973-3941
 M EI IMPERIAL GRAPE WATER CARAFE 65 G EI GRAPE/GOthic ARCHES SUGAR LID 15
 AQUA EI BLACKBERRY SPRAY HAT 45 M EI FLUTE FUNCH CUP (OLD IMPERIAL
 IB EI KNIGHT TEMPLAR MUG 900 CROSS MARK) 17
 M EI KITTENS DISH 2 SIDES TURNED UP 90 M EI G&C POWDER JAR BASE 15
 G EI G&C POWDER JAR BASE 20

EVA BACKER, 12 SHERWOOD ROAD, WEST HARTFORD, CT 06117 (203) 233-3761 AFTER 6
 G BLACKBERRY WREATH 10.5" MLBG SUPER 90 M SAILBOATS 6" RUFFLED 35
 A N ROSETTE BOWL SCROLL 3 FTD 60 M ORANGE TREE POWDER JAR COMPLETE 58
 CB G&C 2 HANDLED BON BON STIPPLED 65 M WREATH OF ROSES ROSEBOWL 35
 M HOLLY SPRIG 7.5" MLBG 35 M BLACKBERRY WREATH 8 3/4" 60
 M HOLLY WHIRL NEAR CUT EXTERIOR M PEACOCK & GRAPE BEARDED BERRY EXT 50
 6 RUFFLE 9.5" 65

JOHN & CAROLYN MIKKONEN, RR 1, BOX 474F, SHAKOPEE, MN 55379 (612) 445-6098
 G WINDMILL TUMBLER, HELIO 40 M POPPY SHOW PLATE 350
 AQ STORK & RUSHES TUMBLER AQUA 225 A THISTLE PLATE 1100
 MMG CAROLINA DOGWOOD BOWL 375 G OPEN ROSE PLATE SM CHIP ON ROSE 65
 CB ENAMELED CHERRY TUMBLER 15 M IMPERIAL GRAPE GOBLET EA 30
 IG COLONIAL CANDLESTICKS, PR 50 W DOUBLE STEM ROSE PLATE 150

** CARNIVAL GLASS FOR SALE **

SHERMAN KELL, 919 THOMASVILLE ROAD, HOUSTON, MISSOURI 65483
 PHONE: (417) 967-4414
 HA EI COSMOS & CANE ADVERTISING 185 P EI WINDMILL TUMBLER 75
 TUMBLER (RARE) P EI BEADED SHELL TUMBLERS - EACH 65
 IB EI GRAPE ARBOR TUMBLER, 125 OR HAVE 5 FOR \$300
 HAS GROUND BASE B EI FENTON THISTLE LARGE, OVAL 165
 A EI GRAPE & CABLE BREAKFAST 65 FOOTED BOWL
 CREAMER G EI BEADED CABLE ROSE BOWL 85
 P EI MILLERSBURG, LETTERED, 550 G EI IMPERIAL NU-ART HOMESTEAD 325
 RUFFLED, "COURTHOUSE" BOWL PLATE, NO SHOW CHIP ON EDGE
 PEACH EI FOUR FLOWER VT INTERIOR SODA GOLD EXTERIOR, 9" COLLAR BASE BOWL 50

JOELLEN ROTONDI, BOX 401, BUTLER, WISCONSIN 53007
 PHONE: (414) 354-8254 (EVENINGS)
 VAS STRAWBERRY BON BON, SCARCE 115 G FLUTE 17' MID-SIZED FUNERAL 65
 AO DAISY & DRAPE VASE, 375 VASE (N)
 PASTEL IRIDESCENCE IB FRUITS & FLOWERS STEMMED 395
 CLM GRAPE DELIGHT ROSE BOWL, 60 BON BON
 PERFECT FEET
 GUARANTEED RETURN PRIVILEGE.

RICK KOJIS, 11916 W. LAKEFIELD DRIVE, WEST ALLIS, WISCONSIN 53227
 PHONE: (414) 327-0321 AFTER 5 PM
 RED WIDE PANEL SHERBERT 45 W HOLLY PLATE 85
 PO FISHNET EPERGNE 160 G MSBG. FLEUR DE LIS CANDY 210
 PO FILE & FAN COMPOTE 45 RIBBON EDGE COLLAR BASE BOWL
 M HORSESHOE TUMBLER, SCARCE 150 SUPER RADIUM
 M ORANGE TREE FUNCH BOWL BASE 30 M BUTTERFLY & BERRY PITCHER 25
 BLUE OPAL DAISY WREATH BOWL, 85 CRACKED, ETCHED "H.M. 1914"
 LARGE CHIP ON COLLAR BASE, W FANCIFUL SHALLOW, RUFFLED
 SUPER COLOR BOWL, SUPER 110

** CARNIVAL GLASS FOR SALE **

WES & BETTY STRAIN, 832 CARSON ROAD, FERGUSON, MO 63135 (314) 524-5608

M GI	G&C FTD PLATE	75	W EI	COSMOS AND CANE SAUCE	60
M EI	DIAMOND LACE SM BERRY DISH	20	M EI	FLUTE SM BERRY DISH	20
M EI	WATERLILY & CATTAIL SMALL BERRY DISH	15	M EI	STORK & RUSHES SM BERRY DISH	30
M EI	OVAL & ROUND SMALL BERRY DISH (SCARCE)	25	M EI	SAILBOAT SM BERRY DISH	25
			M EI	CHERRY CHAIN SM BERRY DISH	25
			M GI	VINTAGE SMALL BERRY DISH	20

CHARLES PERRY, 8641 LAKESHORE DRIVE, SOUTHAVEN, MS 38671 (601) 342-1694

W	HEARTS & FLOWERS RUFFLED BOWL	100
	FROSTY, SUPER IRID. N	225
	A	FRUITS & FLOWERS 7.5" PLATE N
	IB	HEARTS & FLOWERS RUFFLED BOWL

LLOYD WARD, P.O. BOX 787, EULESS, TX 76039 (817) 540-0081

M	BOUQUET WATER SET 4 TUMBLERS	450	AO	BUSHEL BASKET N BUTTERSOOTCH	385
AO	HEARTS & FLOWERS COMPOTE	375	W	ACORN BURRS PUNCH SET 12 CUPS N	2850
W	DAHLIA 5 PC BERRY SET (FROSTY)	650	W	PERSIAN GARDEN 5 PC ICE CREAM SET (FROSTY)	525
W	PEACOCK AT THE URN 7 PC ICE CREAM SET N (FROSTY)	1250	P	FISHERMANS MUG, CHOICE COLOR	90
CB	ORANGE TREE PUNCH SET 4 CUPS	495	G	GODDESS OF ATHENA EPERGNE RARE	1250

LARRY KEIG, BOX 601, FAYETTE, IA 52142

PHONE: (319) 425-4467 EVENINGS OR WEEKENDS (319) 425-5244 DAYS (IF NECESSARY)

M EI	PERSIAN GARDEN 7" PLATE	45	M GI	BIRDS & CHERRIES COMPOTE	30
M EI	ORANGE TREE JELLY COMPOTE (GREAT COLOR & IRID.)	25	M EI	BLACKBERRY/BASKETWEAVE (N) COMPOTE	40
A EI	STRAWBERRY 9" PLATE	80	A GI	SCALES (WESTMORELAND)	22.50
PO GI	COINT DOT 9" BOWL	85		6.5" PLATE	
M	WIDE PANEL SALT	25			

SASE FOR LIST OF SIXTY (60) NICE ITEMS IN A VARIETY OF COLORS & PATTERNS.

** CARNIVAL GLASS FOR SALE **

GEORGE WEBB, #4-102 W. 18, VANCOUVER, B.C. V5Y2A5 (604) 875-6858

IB EI	NIPPON P.C.E. BOWL	175	A EI	VICTORIAN BOWL	195
B GI	STAG & HOLLY 10 1/2" BOWL, I.C.SHAPE, OUTER RIM NICK, SILVER & GOLD IRID.	130	M EI	LOTUS & GRAPE BOWL	45
A EI	IMPERIAL GRAPE TUMBLERS -EACH (HAVE 5)	35	A EI	CHRYSANTHEMUM BOWL	85
			B EI	MIRRORED LOTUS BON BON	55
G EI	M.SBG. GRAPE WREATH SAUCE P.H. FLAKE	45	M EI	PRIMROSE 9" BOWL RUFFLED, SATINY	85
			M EI	HEAVY GRAPE 9" BOWL	40

DICK HATSCHER, BOX 261, WALNUT HILL ROAD, BETHEL, CT. 06801

PHONE: (203) 743-1468

M	ORANGE TREE LOVING CUPS	125	M	WAFFLE BLOCK PUNCH BOWL & BASE	65
P A	MANY FRUITS PUNCH TOP PLUS 6 CUPS - NO BASE	285	P A	G/C BREAKFAST OPEN SUGAR	48
G	G/C CANDLELAMP	425	B	NORTHWOODS ROUND BUSHEL BASKET	58
W	ORIENTAL POPPLY WATER PITCHER	895	IG	(N) PEACOCK PLATE	165
RED	P/C AT URN COMPOTE (RARE) NO HARM 1/4" - 3/8" SILVER SIDE OF BASE	495	W	G/C PUNCH BASE, SMALL SIZE	48

J. RICHARD BRANDT, 1313 CHURCH STREET, LITITZ, PA. 17543

PHONE: (717) 626-7393 AFTER 6PM

M	STREAM OF HEARTS COMPOTE	55	M	SUNFLOWER BOWL	30
G	GRAPE & CABLE BOWL	40	M	DRAPERY ROSE BOWL (RARE COLOR)	330
M	THISTLE BOWL	35	G	WISHBONE BOWL	60
P	TIGER LILY TUMBLER	50	M	SODA GOLD, 3 PC. CONSOLE SET	45
A	RASPBERRY TUMBLER (ALMOST HOREHOUND)	45	W	FLORAL & GRAPE PITCHER	260

** CARNIVAL GLASS FOR SALE **

AL RETTKE, 14226 E. 143RD LANE, BURNSVILLE, MN 55337 PHONE: (612) 432-7489

DM	SINGING BIRDS DOME FTD SHERBERT				
	RARE, ONLY 2 KNOWN	250	AO	BEADED CABLE ROSEBOWL SUPER	285
IB	G&C POWDER JAR BOTTOM N	75	DM	MSBG PEACOCK & URN CRE 8.5" BOWL	85
A	ACORN BURRS BUTTER BOTTOM	25	DM	IMPERIAL FLUTE DOME FTD MUG	35
EB	SINGING BIRDS MUG	95	B	SINGING BIRDS MUG	65
G	SINGING BIRDS MUG	150	P	SINGING BIRDS MUG	70

MARY WELCH, 213 ALEXANDER, SCOTIA, NY 12301 (518) 393-7748

A	G&C PUNCH CUPS N 6 EA	20	P	NIPPON BOWL PIE CRUST RIM BASKETWEAVE	
LA	G&C PUNCH CUPS N 3 EA	19		BACK BLUE IRR (BEAUTY)	75
A	BEADED CABLE ROSEBOWL	65	P	IMPERIAL GRAPE WATER BOTTLE NICE	125
PO	STIPPLE PETALS DOME FTD BOWL	55			

SEND 2 STAMPS FOR LIST OF 350 ITEMS FOR SALE

MARY HERRN, 520 S. BERRY, MORGANFIELD, KY 42437 (502) 389-3121

M	EI	MSBG 9" HOLLY WHIRL FLUTED BOWL	30	G	EI	HELIOR WINDMILL PITCHER	65
M	EI	WATERLILY & CATTAILS TUMBLER	15	M	EI	BASE FOR TWINS FRUIT BOWL	18
P	EI	G&C N PUNCH BASE TOP 4.5" WIDE SM. MFG. BRUISE	25	M	EI	DOUBLE SCROLL LG OVAL BOWL	35
W	EI	FROSTY PEACOCK/FOUNTAIN TUMBLER		M	EI	MATCHING 8.5" CANDLESTICKS	15
		3/8" BASE CHIP	18			ONE GOOD ONE DAMAGED BOTH	18
M	EI	VINTAGE COO'D POWDER TOP - A SHADE DARKER THAN BASE				RUFFLED PLATE	18

TED & SHIRLEY SHEIBLEY, 304A HILLCREST DRIVE, NEW CUMBERLAND, PA 17070

PHONE: (717) 938-6417

A	STIPPLED RAYS LG TRI-CORNERED BOWL	30	M	PEACOCK & GRAPES COLLAR BASE BOWL	35
P	GRAPE DELIGHT ROSE BOWL	65	M	LITTLE BARREL	50
M	HORSEHEADS JACK IN THE PULPIT SHAPE FTD BOWL	70	G	STRAWBERRY 9" PLATE	100
M	WREATH OF ROSES PUNCH BOWL & BASE	150	A	PEACOCK AT URN FLUTED BOWL FENTON	100
	SEND LARGE SASE FOR LIST		M	LION BOWL	120
			M	SODA GOLD 7 PC WATER SET	225

** CARNIVAL GLASS WANTED **

BILL MCNAMARA, 2 FIRST AVENUE, SANDGATE, BRISBANE, AUSTRALIA, 4017
PHONE: (07) 269-1640

M	IMPERIAL GRAPE MILK PITCHER		M	FIELD FLOWER CREAMER	
M	FIELD THISTLE MILK PITCHER		M	IMPERIAL GRAPE TUMBLER - NEED 3	
M	FIELD THISTLE TUMBLERS - NEED 6		M	TIGER LILY TUMBLERS - NEED 3	
M	LATTICE - GRAPE TUMBLERS - NEED 3		M	OPEN ROSE PITCHER	
M	OPEN ROSE TUMBLERS - NEED 6				

TUMBLERS AND PUNCH CUPS ANY COLOR OR DESIGN

JOELLEN ROTONDI, P. O. BOX 401, BUTLER, WIS. 53007
PHONE: (414) 354-8254 (EVENINGS)

IB	ANY PLATES OR PIECRUST EDGED BOWLS	
IB	THREE FRUITS BOWL, FOOTED OR COLLAR BASE	
IB	DAISY & PLUME, OR LEAF & BEADS ROSEBOWLS	
IB	PEACOCK AT THE FOUNTAIN COMPOTE	
IG	ANY PLATES, ROSEBOWLS, OR COMPOTES	

MIKE BEVILL, 2804 NINA DRIVE, PICAYUNE, MISSISSIPPI 39466
PHONE: (601) 799-1928

M	WIDE PANEL EPERGNE SIDE LILY	
A	BUTTERFLY & BERRY BUTTER DISH AND COVERED SUGAR	
A,G,V,R,	IGO, GO STRAWBERRY 2-HANDLE BON BON	
ANY	PASTEL COLOR BOBECHES	
ANY	COLOR DAMAGED WATER PITCHERS	
R, AO, IB, IG	DAMAGED PIECES	
CB, IG, IB	MEMPHIS PIECES (WILL CONSIDER DAMAGED PIECES)	

B BUTTERFLY & BERRY HATPIN HOLDER
PHYLLIS JOHNSON, 3620 WILLMARTH ROAD, STOCKTON, CA 95205

** CARNIVAL GLASS WANTED **

LARRY KEIG, BOX 601, FAYETTE, IA 52142
PHONE: (319) 425-4467 EVENINGS OR WEEKENDS

P LID FOR DUGAN'S VINTAGE POWDER JAR
G LID FOR INVERTED STRAWBERRY POWDER JAR
G PULLEP LOOP 11" OR 12" VASE
G BUD VASE WHIMSEY VASE (SEE HAND ENCYCLOPEDIA)
P BUD VASE WHIMSEY VASE (SEE HAND ENCYCLOPEDIA)
P BOWL FOR IMPERIAL GRAPE PUNCH BOWL
P BOWL FOR ACORN BURRS PUNCH BOWL
AMB BOWL FOR IMPERIAL GRAPE PUNCH BOWL
ANY IRIDESCENT (CARNIVAL) BUTTONS
ANY BOWLS, PLATES, ETC. WITH IOWA TOWN NAMES STENCILED ON THEM

HUBERT F. SHELTON, RT 1, MUNFORDVILLE, KY (502) 528-5893

M GRAPEVINE LATTICE PITCHER
CB 1 FLORAL & GRAPE TUMBLER
CB PEACOCK AT FOUNTAIN 7 PIECE WATER SET N
M BUTTERFLY & BERRY PITCHER
CB BUTTERFLY & BERRY PITCHER GOOD COLOR IMPERFECT
M FOOTED O.T. WATER PITCHER

A.C. DICKEY, 144 CHANDLER ST., VACAVILLE, CA 95688

G BUTTERFLY & BERRY WATER PITCHER P SPRINGTIME TUMBLERS NEED 4
IG DANDELION N TUMBLER G FEATHER AND HEART TUMBLER
IG WISTERIA N TUMBLER G STRAWBERRY SCROLL TUMBLER
G MARILYN TUMBLER W BLACKBERRY BLOCK TUMBLER

EVA BACKER, 12 SHERWOOD ROAD, WEST HARTFORD, CT 06117 (203) 233-3761 AFTER 6
IG PEACOCK AT FOUNTAIN PUNCH BOWL ONLY A MEMPHIS PUNCH BOWL TOP ONLY
IB GRAPE & CABLE POWDER JAR LID ONLY

** CARNIVAL GLASS WANTED **

J. RICHARD BRANDT, 1313 CHURCH STREET, LITITZ, PA. 17543
PHONE: (717) 626-7393 AFTER 6 PM EST

W.G.A. 6" WATER LILY BOWL
AO GRAPE AND CABLE POWDER JAR LID

WILLIAM COLES, R #1, BOX 273 B, HICKORY, KY 42051 (502) 674-5916
P EI GRAPE & CABLE SWEETMEAT LID B EI PEACOCK AT FOUNTAIN TUMBLER (1)
M EI FIELD FLOWER TUMBLER (1) NORTHWOOD
M EI GRAPE & CABLE SAUCE DISHES M EI ORANGE TREE PUNCH BASE
WITH BASKETWEAVE EXT. (4) DARK COLORS EI HEARTS & FLOWERS BOWLS

ED BINSTOCK, P.O. BOX 351, PRESQUE ISLE, MAINE 04769 (207) 764-3612
IB ROSE SHOW BOWL AMY ROSE SHOW BOWL
IB PLAID BOWL AMY PANIHER MASTER BERRY BOWL
BLUE PLAID BOWL WHITE PANIHER MASTER BERRY BOWL
BLUE PEACH PITCHER WHITE PEACOCKS ON FENCE BOWL
DARK DANDELION (N) PITCHER DARK MANY STARS BOWL

RICK KOJIS, 11916 W. LAKEFIELD DRIVE, WEST ALLIS, WISCONSIN 53227
PHONE: (414) 327-0321 AFTER 5 PM

IB PEACOCK AT THE FOUNTAIN CREAMER P IMPERIAL GRAPE PUNCH BOWL BASE ONLY
A.O. CORN VASE IB OR IG DANDELION KNIGHTS TEMPLER MUG

TED & SHIRLEY SHEIBLEY, 304A HILLCREST DRIVE, NEW CUMBERLAND, PA 17070
PHONE: (717) 938-6417
ANY COLOR STRAWBERRY STIPPLED PLATES

DAVID M. DEEM, 902 E. WALNUT AVE., BURBANK, CA 91501 (818) 843-4530
ANY ROSE SHOW OR POPPY SHOW PLATES ANY GOOD LUCK PLATES

** CARNIVAL GLASS WANTED **

LLOYD WARD, P.O. BOX 787, EULESS, TX 76039 (817) 540-0081
W MANY FRUITS PUNCH BOWL BASE
G G&C PUNCH BOWL & BASE ANY SIZE
B G&C MASTER PUNCH BOWL TOP
R ROSES & RUFFLES LAMP SHADE
B G&C STIPPLED HUMIDOR BOTTOM
G MEMPHIS FRUIT BOWL OR PUNCH BOWL TOP
B WREATH OF ROSES PUNCH BOWL BASE
W MEMPHIS FRUIT BOWL OR PUNCH BOWL TOP
P G&C STIPPLED HUMIDOR LID
ANY COLOR WISHBONE OR WIDE PANEL EPERGNES
COMP.

ANY COLOR WISHBONE OR WIDE PANEL EPERGNES PARTS - ODD LILLIES, ODD BASES

WES & BETTY STRAIN, 832 CARSON RD., FERGUSON, MO 63135 (314) 524-5608
AMETHYST STOPPER FOR GOLDEN HARVEST DECANTER
WHITE BASE FOR MANY FRUITS PUNCH BOWL
BLUE BASE FOR CHERRY CHAIN N BUTTER DISH

GEORGE BOND, 1406 N. FERNCREK AVE., ORLANDO, FL 32803 (305) 894-0327 AFTER 5
MMG DRAPERY LIGHT SHADES WITH EI TOP TO BOTTOM (NEED 2)

SHERMAN KELL, 919 THOMASVILLE ROAD, HOUSTON, MISSOURI 65483
PHONE: (417) 967-4414
G EI SPRING TIME BUTTER LID OR WILL, SELL BASE
G EI MULTI FRUITS PUNCH CUPS
M EI PEACOCK AT THE FOUNTAIN PUNCH CUPS - NEED 5

JOHN & CAROLYN MIKKONEN, RR 1, BOX 474F, SHAKOPEE, MN 55379 (612) 445-6098
ANY UNUSUAL COLOR HOLLY PLATES
MMG, VAS, SUPER RED, P.O., OPALESCENT OR UNUSUAL, COLOR HOLLY BOWLS

H.O.A.C.G.A. SOUVENIR BELL

In 1985, it was decided to make a series of 4 Souvenir Bells. Each different bell would feature a portrait of a Famous Maker of Carnival Glass. The beautiful Circle Scroll Pattern would be used as the basic pattern on each of the bells. The bells would also include the Fenton logo.

The first bell, 1985 Souvenir, has a portrait of Harry Northwood. The bell is Ruby Red Carnival. VERY FEW ARE STILL AVAILABLE.

The second bell, 1986 Souvenir, has a portrait of Frank L. Fenton, the principal founder of the Fenton Art Glass Company. This bell is made in the beautiful Lime Green Opalescent with a Marigold overspray. This bell is made in a limited quantity, approximately 350.

The 1987 bell will feature John Fenton, founder of Millersburg Glass Company. The 1988 bell will be of a prominent person of the Imperial Glass Company.

It is our belief that this series of souvenir bells will make a beautiful and collectible set of Carnival Glass Bells while honoring those responsible for the making of our favorite glass. We hope you will enjoy this series of bells.

The 1985 or 1986 Bells are \$35.00 each, plus \$2.50 shipping. *John E. Britt*

CHECKS PAYABLE: H.O.A.C.G.A.

MAIL ORDER TO: John Britt
3048 Tamarak Drive
Manhattan, Kansas 66502



I wish to order _____ 1985 Souvenir Bells at \$35 plus \$2.50 shipping.

I wish to order _____ 1986 Souvenir Bells at \$35 plus \$2.50 shipping.

NAME: _____

ADDRESS: _____

CITY, STATE, ZIP: _____

APPLICATION FOR MEMBERSHIP

=====

THE HEART OF AMERICA CARNIVAL GLASS ASSOCIATION, INC.

=====

DATE _____

NAME _____

SPOUSE _____

ADDRESS _____

CITY _____ STATE _____

ZIP CODE _____ TELEPHONE _____

RECOMMENDED BY _____

Do you want your name in the directory? YES _____ NO _____

DUES ARE \$20 U.S. PER YEAR (JUNE THROUGH MAY)

SEND DUES TO: H.O.A.C.G.A.
 GLEN FORTNEY, SECRETARY
 P. O. BOX 303
 BUCKNER, MO 64016

=====

A FEW OF THE BENEFITS OUR CLUB OFFERS:

The ONLY MONTHLY PUBLICATION on just Carnival Glass Collecting, keeping you informed of new discoveries and all of the current events. Members only may advertise, FREE OF CHARGE!!!

An exclusive PATTERN NOTEBOOK with yearly special inserts (ALL inserts are still available)

ANNUAL SOUVENIR AND CONVENTION WITH SOME OF THE GREATEST PEOPLE YOU CAN HOPE TO MEET!!!

<<<< JOIN TODAY >>>>