
**Heart of America
Carnival Glass Association, INC.**

**APRIL
1986** **NEWSLETTER**

First Class Mail
U. S. Postage
PAID
Kansas City, Mo.
Permit No. 4352

**PLEASE SEND ALL CHECKS TO:
GLEN FORTNEY, SECRETARY**

NEW ADDRESS

**ALL MATERIAL FOR THE BULLETIN
SEND TO BULLETIN SECRETARY:**

**MARGE MILLER
7619 N. W. WESTSIDE DRIVE
KANSAS CITY, MISSOURI 64152**



Heart of America
Carnival Glass
Association Inc.

Membership June to May
\$20.00 Per Couple or Single

Published the 15th
of each month

MARCH HOACGA MONTHLY MEETING 1986

At 2:00 P.M. March 23, 1986, President Robert Grissom called the March meeting to order. Secretary Glen Fortney read the minutes of the last meeting and they were approved as read. The Treasurer's Report was not received in time for a reading.

President Grissom welcomed Past Vice-President Michael Basey to the meeting and also Florence Cunningham. Florence will be in charge of the judging of Room Displays at the Convention in April. So, be sure to register your display and also list it as to what category it will be entered in. There are five different categories you can enter it in, and it must be marked as to which one.

President Grissom reviewed the Convention Plans and Mentioned that there are 120 Rooms blocked off for the Convention and they will be assigned by the Motel Management on a first-come first-serve basis, as you check in.

John Britt had the souvenir, the Display Award, and the Whimseys at the meeting for viewing. They were very nice and I'm sure everyone will be very pleased with them.

Viola Shikles will be in charge of the Hospitality Room and she asked that anyone that could help to get in touch with her. Also, be sure to bring a cake or homemade cookies so she will be sure to have enough treats for all.

Diane Treff is still contacting people for officers for the next year. If you have never served, and you would like to help the Club, feel free to call her and let her know in what capacity you might be able to serve. Call some of the past officers and let them explain the position to you.

The program, as you know, was on Green Carnival, and there was a very nice display of glass. We want to thank everyone for bringing their glass and John Britt for presenting it and explaining each piece and its maker. Also, highlighting on which colors in each pattern is the harder to come by. This is always one thing a collector can use help with.

The next meeting will be at 2:00 P.M. on Friday, April 25, at the Holi-Dome, Lenexa, Kansas, in the Presidents Room. Looking forward to seeing you all there. Glen Fortney, Secretary

PRESIDENT

Robert Grissom
7900 Crescent
Raytown, MO 64138
(816) 356-5320

VICE-PRESIDENT

Nadine Paulsen
700 Purdom
Olathe, KS 66061
(913) 782-1313

TREASURER

Karen Engel
35292 Oak View Drive
Brownsville, OR 97327
(503) 466-5989

SECRETARY

Glen Fortney
P. O. Box 303
Buckner, MO 64016

BULLETIN SECRETARY

Marge Miller
7619 N. W. Westside Drive
Kansas City, MO 64152
(816) 741-4635

All monetary figures quoted are in U. S. dollars.
Please make checks for dues payable to H.O.A.C.G.A.
and send them to the secretary as listed above.

**** DO NOT SEND TO THE BULLETIN SECRETARY ****

DETOUR - DETOUR

As most of you have experienced in your travels, there is usually a familiar DETOUR sign somewhere along the way. For those of you coming to the Convention and traveling West on I-435 around Kansas City, you will find that the Northbound Exit to I-35 from I-435 is NOT OPEN. The convention Motel, Holiday Inn, is only 1 mile north of this Exit at I-35 and 95th Street.

The Detour from I-435 to the Holiday Inn is:

1. Exit from I-435 at U.S. 69 Highway (Exit 22B) North.
2. Go North on U.S. 69 for approximately 1 mile and Exit at 95th Street.
3. Turn left (West) on 95th St. & go approximately 2 miles to Holiday Inn.

This is the best route for the Wife. This detour route takes you by the Oak Park Shopping Mall, so before you arrive at the Motel, your Wife has already located a place to shop.

SYMPATHY

We were much saddened to learn Bernice Allen of Hopewell, Virginia, has passed away after a lengthy illness. We shall always remember her and her husband being at several conventions. She lost him a few years ago but she still came to some of the conventions with her sisters. We have missed her in the later years and are deeply grieved to have her go.

We recall visiting their home and how gracious they were to us. They had lovely Carnival and we will always treasure that visit as something special.

Bernice leaves four sisters and five brothers who will miss her. We want them to know she has many Carnival friends who will be remembering Bernice and the happy times we all had being together.

Grace & Byron Rinehart
Charleston, West Virginia

EDUCATIONAL TUMBLER SERIES

by John and Lucile Britt

SINGING BIRDS — A POPULAR NORTHWOOD PATTERN

"Singing Birds" Tumblers are usually found in green, purple and marigold. For some reason, Harry Northwood chose not to make these water sets in white, ice blue or ice green, even though his "Singing Birds" mugs were produced in those three pastel colors, as well as, in aqua opalescent. Pastel "Singing Birds" mugs are very difficult to find, however, and demand a high price. Besides the three vivid colors, I have seen a few tumblers in olive green and pastel marigold. I have also owned several tumblers in the true amber color. It is possible that they might also exist in the smokey lavender color as we have had Dandelion Tumblers in that color.

The shape of the "Singing Birds" Tumbler is like those of Springtime, Oriental Poppy, Dandelion, Greek Key and Wishbone. All six of these Northwood pattern tumblers contain a background of eight panels and all contain the twenty-four point star on the bottom of their base. The great majority of these tumblers will be found with the famous underlined "N" in a circle which is located on the inside of the bottom.

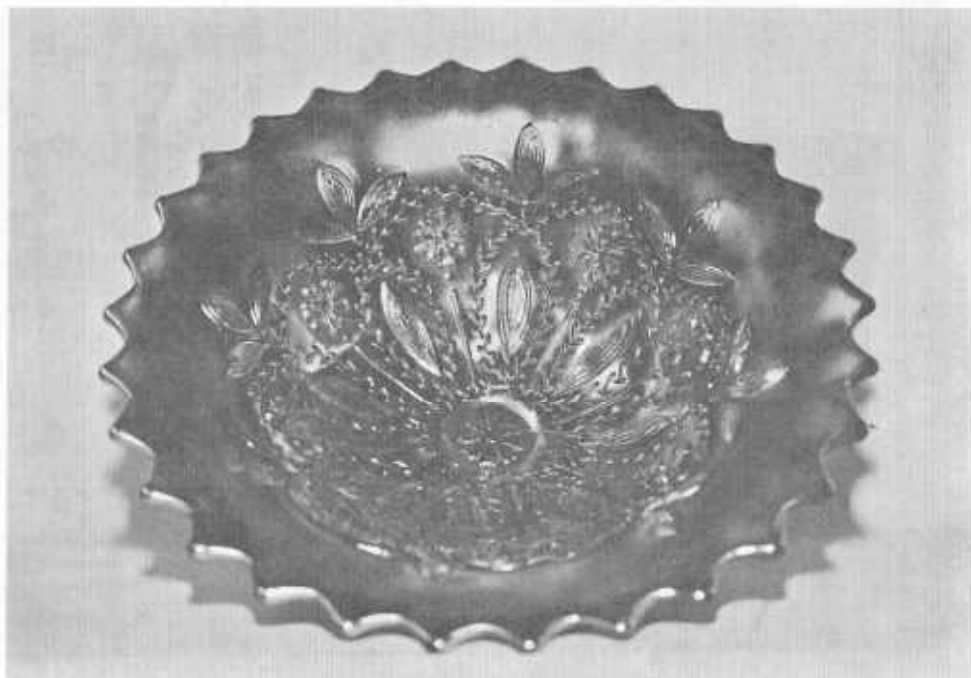


"Singing Birds" Tumblers were reproduced by Summit Glass in purple, blue and ice green. They look and feel much different than the old tumblers and are rather easy to identify. The new Summit Tumblers are not signed, while the old Northwood tumblers contain the "N" signature. The new examples in pastel green are very pretty, but they are certainly not old and, of course, do not contain the "N" in their base.

This is the 99th edition in this tumbler series. Next month we will feature the beautiful "Strawberry Scroll" Tumbler.

NORTHWOOD'S LOVELY FOOTED BOWL

The "Northwood's Lovely" pattern is found in Hartung Book 10 - Page 101. This is only the second one of these bowls that we have found in our years of collecting Carnival Glass. The reverse side of this pattern contains the "Leaf and Beads" pattern. It has the three twig like feet that is found on "Leaf & Beads" Rose Bowls. The color is in deep purple with super iridescence. I consider this piece as rare, beautiful, and very desirable.



PICTORIAL PATTERN PARADE

by John & Lucile Britt

BULLS EYE AND LOOP VASE

Last summer while attending the American Carnival Glass Convention at Elkhart, Indiana, we were invited out to see the beautiful collection belonging to Everett Henry.

I noticed in this collection a very pretty and unusual vase in a pattern that I had never seen before. He told me that the pattern was called "Bulls Eye & Loop". It can be found in Presznick Book 2 - Plate 34. You will not find it listed in any of the Hartung Books.

The vase is in the amethyst color, very attractive and has to be a rare pattern. The color and iridescence looks like a Millersburg piece to me, but of course this would certainly be only a guess. Anyway, I am quite sure that it was made in America.



RARITIES AND SELDOM SEEN
by Ivan and Betty Mitchell

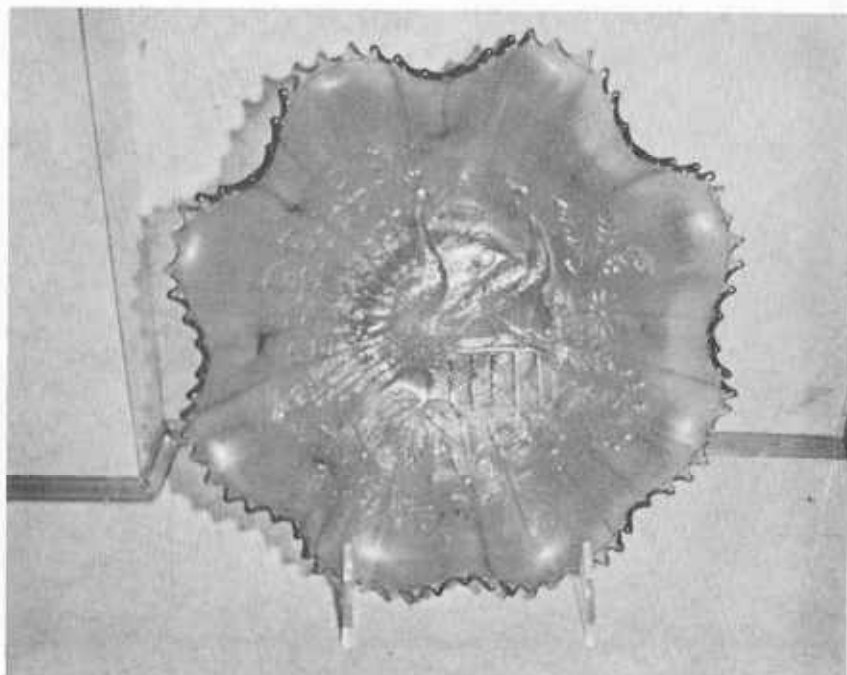
EMERALD GREEN "PEACOCKS ON THE FENCE"

This bowl is brilliantly colored and is one of the color patterns that stands out near the top.

This bowl was made in many colors, and in my opinion, is the most beautiful pattern in carnival glass. This color is almost pastel but not light enough to classify in the pastel category.

I know of less than 6 of the emerald green bowls. It is a full 9" in diameter. The peacocks are a dark gold color, almost bronze.

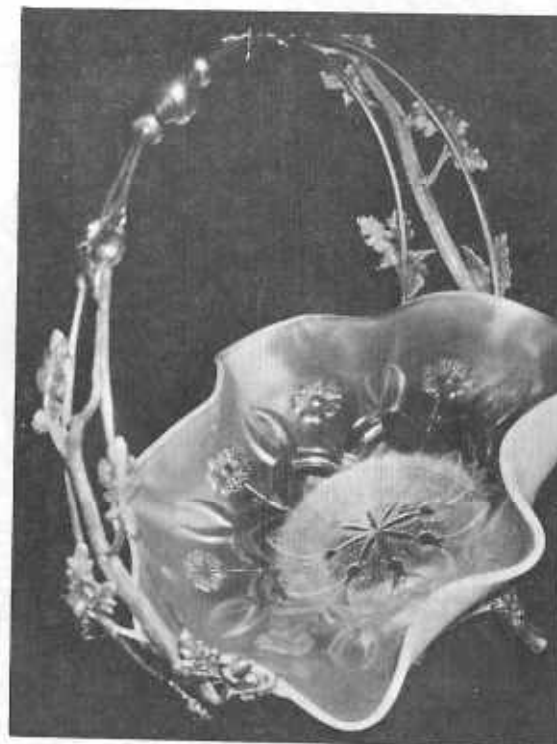
This pattern is sometimes called "Northwood Peacocks". I have never seen another color like this except this bowl. It will sell in the ball park of \$500.00. It has the Northwood fine rib pattern on the exterior and is collar based.



WISHBONE & SPADES BRIDE BASKET
By: George Webb (Vancouver, B.C.)

I wish to share with your readers this beautiful and unusual piece of Carnival Glass which I have picked up recently here in Vancouver.

It is the Wishbone & Spade pattern and is in a Peach Opalescent color, with the opal running about 1 1/2" around the bowl. The center 6" of the bowl has no color whatsoever, just clear glass, so this really adds to giving the bowl an unusual and distinctive look. Two sides of the Bowl have been pulled straight up and then in, to give it the Bride Basket shape. The bowl is supposedly in its original Silver Plate Frame, and the two pieces do fit together perfectly. The Frame in itself, is very beautiful standing approximately 13" and being over 12" wide. The handle shows incredible detail with oak branches growing up from the base, covered with leaves and acorns. The feet are styled with thistles, and the base is covered with fan-like flowers, and trailing vines.



I believe these Carnival Glass Brides Baskets to be not all that common, and can remember seeing just a handful in the past few years. In fact, I think that they were "Heavy Grape" and "Peach and Pear" ones.

I found my Basket at an Antique Mall Show early the second day it was on. The dealers who I bought it from had only had it a few days and basically knew that it was kind of a good piece of glass.

They were fairly hesitant about selling it, but we finally struck a deal, and I was able to bring it home.

I would be quite interested to find out how many bowls were given this same treatment and sold as Bride's Baskets.

Thank you.



CARNIVAL DISCOVERIES

by Lawrence Hartnell

Research in glass brings out new discoveries almost every day, and a tremendous amount of new discoveries have been made in the last 10 years. The most important aspect of the new discoveries is that we now know who made a lot of patterns that we could only guess about before.

As a dealer in all kinds of glass, I am always buying books for research and when an old catalog is reprinted for the benefit of the collectors of any type of glass, I usually end up with a copy in my research library.

A few months ago, I sent for a catalog reprint of the Jenkins Glass Co. of Kokomo, Indiana. This reprint of the wares of the D. C. Jenkins Glass Co. was published by the NATIONAL GREENTOWN GLASS ASSOCIATION in 1984, and shows mainly tableware, tumblers, goblets, stemware, lantern globes, display jars, pickle jars, mixing bowls, sundae dishes, and auto headlights.

This catalog, thought to be about 1920, shows a few items known to have been produced in the 1920's in CARNIVAL GLASS. These are the GOLDEN FLOWERS Vase and the STORK Vase. This catalog proves that they were made by D. C. JENKINS GLASS COMPANY. See Vases #312 and #313 in center of page.

The Greentown Glass Association has granted permission for reproduction of the page showing these vases, and a copy is shown here. Unfortunately, the background is black and does not show much detail on our equipment. But, enough can be seen to definitely show that they are the Carnival Glass Vases.

It was only a few years ago that evidence appeared to show that Jenkins made Carnival Glass, and it appears that they made more than anyone thought.

WHO MADE THE CARNIVAL GLASS GONE WITH THE WIND LAMPS?

To those of us who have Helen Greguire's book CARNIVAL IN LIGHTS, the questions still remain - who made the Carnival Glass Gone with the Wind Lamps?

There are four listed in the books, the ROSES & RUFFLES, the REGAL IRIS, the SUNKEN HOLLYHOCK, and the ROSEY HYACINTH. Greguire states that 2 of the lamps are fitted with the SUCCESS DRAFT BURNER. These are the Regal Iris, and the Roses & Ruffles lamps.

A recent catalog reprint circulated among the oil lamp collectors shows these lamps, and states that all of the large Gone With the Wind type lamps are now fitted with the Success Draft Burner. This lamp catalog reprint shows the production of the Pittsburgh Lamp, Brass & Glass Company.

In Bill Heacock's magazine, Glass Collector #3, for Summer 1982, it is reported that the lamps known as the Roses & Ruffles pattern and the Regal Iris are shown in an advertising reprint for May of 1902. The catalog reprint that I have of the Pittsburgh Lamp, Brass & Glass Company offers the Roses and Ruffles Lamp in Red and Crystal Iridescent, but only offers the Regal Iris in Red and Frosted, so we must assume that the Regal Iris Lamp was iridized at a later production time. Unfortunately, the catalog is not dated.

Bill Edward's Price Guide indicated that Consolidated Glass made the Roses & Ruffles Lamp. Research indicates that Dithridge & Co. of Pittsburgh, the Kopp Glass Co. of Pittsburgh, and Consolidated Lamp & Glass of Corapolis, all merged to form the Pittsburgh Lamp Brass & Glass Company in 1900. The Roses and Ruffles pattern was made by Dithridge & Company prior to 1900 in different shapes and colors.

Even though Bill Heacock mentioned in his article that the lamps are known in Carnival Glass, it appears that the information has not circulated to any great extent. Most advanced collectors at a recent convention in Chicago did not know of this attribution.

Lawrence Hartnell

DEVOTION OR OBSESSION?

One evening in February - which was about a month ago - we received a phone call from a dealer friend of ours. We have known this couple for several years now and when they get an item they think we might like to see, they give us a call. A piece of Carnival Glass was mentioned that immediately piqued our interest. So - to paraphrase Grace Rinehart - off we went.

We set out to traverse about 70 miles in a pea-soup fog. Needless to say, it took at least twice as long as usual to go that far. Visibility was so poor and we were not equipped with fog lamps.

On reaching our destination we found the glass to be just what the doctor ordered, and at appealing prices too. We not only bought the piece we went to look at, which is a Drapery Rose Bowl in Ice Blue; we also brought home a Marigold Mikado Compote, a Green Ruffled Rays & Ribbons Bowl, and a 5 1/2" flat Elks Plate by Joe St. Clair (1871).

Some folks might call us crazy for venturing out in such weather, but we consider the rewards well worthwhile as we arrived home again safely with glass and bodies still in one piece.

C. R. & Wilma Mitchell
Beaver Springs, PA

"NOTE FROM THE EDITOR"

We appreciate and enjoy news from other clubs. However, we cannot always print the items in their entirety. When you send news items from your club, please make them brief but to the point.

Thank you,
Marjorie Miller

AIR CAPITAL CARNIVAL GLASS CLUB

March 9, 1986

Nine members braved the Kansas march winds for their meeting at Haysville, Kansas.

Plans are being made for our summer trips to see other collections. We are all very excited that our first one will be to Booker, Texas, May 10 and 11. We are all looking forward to this trip as it had to be cancelled last year.

Each member present at the meeting picked their favorite two patterns of Carnival. At our next meeting one or two people will give the educational portion of the meeting on these patterns. This should be very interesting and I think we can all learn a great deal from this type of program. This also gives us an incentive to attend all of the meetings so we will not miss out on any of these programs.

We are planning our convention for October. Winnie Brim has again volunteered to be our banquet chairman.

Again, we would like to invite anyone who wishes, write an educational or interesting carnival glass story to be printed in the Air Capital Club Newsletter. The more people who participate in any clubs news, makes a better newsletter.

Donald E. Kime
Secretary



NEWS FROM TEXAS

The Texas Carnival Glass Club met at the Airport Hilton Hotel in Houston on February 22nd to celebrate the Seventh Anniversary of the club. During the day, rooms were open for show and sale of glass. In the evening, members and guests enjoyed an Open House in the home of L. L. and Jane Dinkins. A beautiful collection of Carnival glass was admired and delicious refreshments enjoyed.

On Saturday morning, many members visited the local flea markets but returned to the hotel in time for the Auction preview. At 2:00 o'clock, Tom Burns auctioned approximately 130 pieces of glass. During the Auction, snacks, cookies and coffee were provided for the bidders.

Saturday evening, a Western Style Buffet Dinner was attended by 65 people. Following dinner, a short Business Meeting was presided over by President Arlen Merritt. He welcomed guests from Kentucky, Kansas, Louisiana, Texas, and introduced several new members. Charter members were recognized, with L. L. and Jane Dinkins and Bob and Jane Brown commended for seven years perfect attendance.

Following the Business Meeting, an interesting program and slide show was presented by John and Lucile Britt.

The weekend concluded on Sunday morning with an Open House in the home of Cecil and Floyd Whitley, which is always a treat.

A special thanks to the Planning Committee and all who helped make this a special occasion.

Jane Brown, Secretary

A FEW AUCTION PRICES

M	Wild Rose Syrup Pitcher	500
PO	Pods & Posies Small Plate	75
W	Constellation Compote	100
M	Zipper Loop Lamp (collar damage)	325
G	Holly Plate	300
IB	Fine Cut & Roses Rose Bowl	270
AO	Leaf & Beads Rose Bowl	225
R	Fine Rib Vase	180
M	Loganberry Vase	125
M	Imperial Grape 6 Piece Wine Set	150
VAS	O Dragon & Lotus Ruffled Bowl	150
P	Beaded Cable Rose Bowl (Rib Int)	80

NEWS FROM SAN DIEGO COLLECTORS

March 16 brought 46 members and guests together for our Quarterly Carnival "get together". We really did have it all together! Something like \$15,000 in sparkling Millersburg Glass covered five 8 foot tables and YES, Dee Sponsler talked about "every last piece" just the way Don Moore does for his presentations. After all, that is the reason for attending a meeting. Even if there are several pieces of the same pattern on display, each one is individual in appearance. The comparison study in this way, relates for new collectors, especially, just how many different shapes and rim treatments, as well as, iridescence to be on the alert for. "Iridescence is the Essence," our motto, was eminently evidenced Sunday in Satin and Radium finish. Millersburg accomplished that in the finest manner.

We are quite proud of our 52 member roster. Any referrals from the Heart of America Group will be greatly appreciated and we encourage all of you out there in Carnival Land to submit articles for our Newsletter. It is published six times a year. Mr. John Resnik will present our program at the June 15th meeting. He is an authority on advertising pieces and we look forward to learning from him just "how to shop" for such specialties. June will bring this young Carnival Club to its first anniversary. The first meeting was attended by 26. Already we have doubled in number. It is an accomplishment beyond our wildest dreams. However, potential is still out there. We meet them at auctions and observe them admiring "our glass" in shops. Hopefully, with time, we can gain another 26 into our fold. Our dream continues.

Submitted by the President of this growing local organization:
Diane Fry



THE TAMPA BAY CARNIVAL GLASS CLUB

The Tampa Bay Carnival Glass Club celebrated it's recent "Lose Your Heart To Carnival Glass" Jamboree at the regular meeting March 16. Twenty members enjoyed the special party trays of roast beef, fried chicken and assorted salads. A large cake inscribed "Lose Your Heart to Carnival Glass," topped off the small banquet.

Art Smith gave a detailed report on the Jamboree noting that visitors from twenty-three states and Canada participated. The show was not only an artistic success but also a financial success.

Shirley Pfaff Conyers read the minutes of the last meeting. Dorothy Smith read the Treasurer's Report and noted that the Club now has 111 members representing 64 families. The Club was officially formed April 13, 1980, with seven present.

Following the business meeting, a "show and tell" featured the Glass of June and Jesse Stamper, Joseph and Blanche Williams, and Dorothy and Arthur Smith.

The next meeting will be held with Dorothy and Art Smith in Lakeland, April 20. On April 14, Art Smith will give a talk on Carnival Glass to the "Glassaholics", a large Glass Collectors Club in Central Florida.

Arthur I. Smith

REMINDER FROM MARGE, THE EDITOR

ALL ARTICLES AND ADS DUE BY THE
25TH DAY OF THE PREVIOUS MONTH BEFORE PUBLICATION

CANADIAN CARNIVAL GLASS ASSOCIATION CONVENTION

The Canadian Carnival Glass Association Convention will be held in Alliston, Ontario, on October 2-4, 1986. Alliston is 45 miles north of Toronto.

The Auction is Friday night this year, instead of Sunday. The Show and Sale Room will be open on Saturday, just like last year. We have a large collection for the Auction this year, possibly the largest Carnival Glass Auction ever held in Canada. There will be between 400 and 500 items comprising over 300 lots.

A few items scheduled for the auction are: Red Plume Panels Vase, White Bushel Basket, Peach Opal Nautilus Whimsey, Peach Opal Honeycomb Rosebowl, Marigold Imperial Grape Punch Set, Marigold Stork and Rushes Punch Set, Black Carnival Bowl, Celeste Blue Candlesticks, Marigold Rustic Funeral Vase, White Hearts & Flowers Compote, White Constellation Compote, White Drapery Rosebowl, Marigold Butterfly & Tulip Bowl, Amethyst Rosalind Bowl, Ice Blue Peacock on the Fence Plate, Aqua Opal Beaded Cable Rosebowl, and assorted plates.

More information to come in the next newsletter.

Lawrence Hartnell
Box 352
Collingwood
Ontario, Canada L9Y 3Z7

"NEW CARNIVAL GLASS AUCTION PRICE GUIDE 1985 - 1986"

This book contains prices from the Auction Years 1984 and 1985, over 3,000 entries. Single copy price \$8.00 U.S. postage paid - \$1.00 extra overseas delivery. Order from:

Tom and Sharon Mordini
36 North Mernitz Avenue
Freeport, Illinois 61032

**** CARNIVAL GLASS FOR SALE ****

SHERMAN KELL, 919 THOMASVILLE ROAD, HOUSTON, MISSOURI 65483		
PHONE: (417) 967-4414		
CB EI ACORN BOWL 7"	50	G EI HEAVY GRAPE 8" PLATE 75
P EI SCALES 6" PLATE (SUPER)	55	B GI PINECONE 6" PLATE 40
M EI IMPERIAL GRAPE 6 1/2" PLATE	65	M EI BIG BASKETWEAVE BASKET (REAL FROSTY)
W EI FANCIFUL BOWL	110	
M EI HORSE MEDALLION 7" BOWL	60	M EI G & C DRESSER TRAY 100
M EI PEACOCK AT URN COMPOTE FENTON	45	
CHARLOTTE TWEDDELL, 4908 DARNTON LN., LOUISVILLE, KY 40216 (502) 447-1670		
BO EI SCALES BOWL OPAL EDGE & COLLAR	300	B EI FENTON THISTLE BANANA BOAT SM. 150
IB EI FINE CUT & ROSES ROSE BOWL	200	B EI TEN MUMS TUMBLER 75
W EI PERSIAN GARDEN 6 3/4" PLATE	125	M EI APPLE TREE TUMBLER 35
LEE BRYANT, RT #1, BOX 109, DECATUR, IN 46733, (219) 639-3415		
FO SINGLE FLOWER 8 1/2" BOWL	40	M WILD STRAWBERRY 10" BOWL, RUFFLED PLAIN BACK 65
FO DOGWOOD SPRAY DOME FTD. COMPOTE	45	P ACORN 7 1/4" FOLDED BOWL 38
A BUTTERFLIES 2 HANDLE BONBON FENTON	45	B ACORN 6 1/2" ICE CREAM SHAPE BOWL 33
G LEAF & BEADS ROSE BOWL PLAIN INTERIOR (GOOD FEET)	55	G HOLLY PANNELLED BONBON FOOTED SIGNED N 50

SEND LARGE SASE FOR LIST OF MIDYEAR SALE ITEMS, OVER 100 PIECES OF MEDIUM PRICE CARNIVAL IN LARGE NUMBER OF PATTERNS.

GLENN & LAVELLE CAMP, 1117 CLEVELAND, MISSOULA, MT 59801 (406) 542-0264
WE HAVE ABOUT 200 PIECES OF OLD CARNIVAL GLASS THAT WE WOULD LIKE TO SELL.
WE WILL SELL THE ENTIRE COLLECTION OR A FEW PIECES AT A TIME. ANYONE COMING THROUGH MISSOULA, MONTANA COULD CALL 542-0264 & WE WOULD BE GLAD TO SHOW IT.

** CARNIVAL GLASS FOR SALE **

	VALMER CROSS, PRATTSVILLE, NY 12468 (607) 588-6698	
PM	VINEYARD TUMBLER	10 M SHIP & STARS 8" PLATE
M	FASHIONS - WATER SET	275 M DUTCH TWINS ASHTRAY
M	G&C PUNCH CUPS	10 WINDMILL 8" PLATE
M	2 HANDLED URN	30 M WIDE PANEL 8" PLATE
G	N RAYS 5" BOWL	15 M GOLDEN FLOWERS VASE

	J. BEAUDRY, 109 5TH AVE., BOISBRIAND P. QUEBEC, CANADA J9G-1Y8	
M	EI GRAPE ARBOR BOWL, FTD	90 M EI GARLAND ROSE BOWL FJM
M	EI ROSE SHOW BOWL	120 P ROSE SHOW BOWL
M	EI BROOKLYN BRIDGE	270 M EI FLUTE & CANE MILK PITCHER
W	ORANGE TREE WATER PITCHER FTD USUAL IRRID.	300 M EI DIAMOND RING BOWL 9 1/2" TEAL NIPPON BOWL 8 1/2"

	TOM & SHARON MORDINI, 36 N. MERNITZ AVE., FREEPORT, IL 61032 (815) 235-4407	
AQUA	FINE RIB VASE	70 P DRAPERY ROSE BOWL
VAS	ORANGE TREE MUG	125 B DOUBLE LOOP SUGAR
M	RASPBERRY TUMBLERS 2 EA	35 G SINGING BIRDS TUMBLER
P	SINGING BIRDS MUG	65 M HANGING CHERRIES BUTTER DISH
M	HOLLY PLATE	90 P LUSTRE ROSE DEEP BOWL LARGE

	ED BINSTOCK, P.O. BOX 351, PRESQUE ISLE, MAINE 04769 (207) 764-3612	
PO	HOLLY & BERRY ODDLY SHAPED 10 SIDED BOWL	65 B PEACH TUMBLER (HAVE 2)
M	WREATHED CHERRY 5 PC OVAL BOWL SET	160 M SINGING BIRDS MUG
M	BUTTERFLY & BERRY CREAMER	55 G STIPPLED RAYS N LG BOWL
M	PEACOCK & GRAPE IC SHAPE BOWL	45 P MEMPHIS PUNCH CUP (HAVE 2)

** CARNIVAL GLASS FOR SALE **

	DICK WETHERBEE, 847 STAFFORD ST., ROCHDALE, MA 01542 (617) 892-4420	
AO	EI ROSE SHOW 8 1/2" FLUTED BOWL	450 M EI THREE FRUITS STIPPLED BOWL
IB	EI NIPPON 8 1/2" PCE BOWL	185 G EI IRIS 5 1/2" COMFOTE 7"
AO	EI DRAPERY ROSEBOWL MINOR BASE REPAIR	165 B EI PERSIAN MEDALLION 9" BOWL
PO	EI BEADED PANELS 5" TRI-SHAPED COMFOTE	65 P EI FLOWERS & BEADS 7" TRI-SHAPED FLAT PLATE
G	EI WREATH OF ROSES 2 HLD BONBON PEDESTAL	48 M EI WEEPING CHERRIES/WESTERN DAISY BACK BOWL RARE

	AL RETTKE, 14226 E. 143RD LANE, BURNSVILLE, MN 55337 PHONE: (612) 432-7489	
IG	PEACOCK & FOUNTAIN COMFOTE PROF. BASE CHIP REPAIR	160 G SINGING BIRDS COVERED BUTTER DISH
DM	SINGING BIRDS DOME-FTD SHERBERT RARE, 2 KNOWN	215 W WISHBONE FTD BOWL SUPER IRID
IB	G&C POWDER JAR BOTTOM	75 P WISHBONE FTD BOWL NICE
DM	PEACOCK & URN RUFFLED 10 1/2" NORTHWOOD BOWL SUPERS	300 G WISHBONE FTD BOWL RAINBOW IRID DM WISHBONE FTD BOWL BEST I'VE SEEN

	MARY WELCH, 213 ALEXANDER, SCOTIA, NY 12301 (518) 393-7748	
AMB	LOGANBERRY VASE OLD	180 M G&C RUFFLED DISH BSKIWVE BACK N
DM	PEACOCK AT FOUNTAIN TUMBLER	30 7 1/2" LEAF IN CENTER
P	ORIENTAL POPPY TUMBLERS N 6 EACH	40 M STAR MEDALLION MILK PITCHER
M	SPLIT DIAMOND CREAMER	21 M WINDMILL MILK PITCHER

SEND 2 STAMPS FOR LIST OF 350 ITEMS FOR SALE

	MARY HERREN, 520 S. BERRY, MORGANFIELD, KY 42437 (502) 389-3121	
M	EI POINSETTA MILK PITCHER	80 A EI G&C SWEETMEAT TOP SUPER
A	EI G&C BASE FOR ABOVE, LG CHIP	10

** CARNIVAL GLASS FOR SALE **

PO	BURNEY TALLEY, 1814 SLATE, N.W., ALBUQUERQUE, NM 87104 (505) 242-1261	
	M FISHERMANS MUG LIGHT	225
	BOWL RIBBON CANDY EDGE	475
M	M BO-PEEP MUG - LIGHT	125
M	M OCTAGON WATER GOBLET	30
M	M 474 WATER GOBLET 3 EA	75
W	RUSTIC FUNERAL VASE 19" X 7 1/2"	400
	MOUTH - BEAUTY	325

	LOU SWAFFORD, E.S.R., BOX 70B, WARSAW, MO 65355 (816) 438-6613	
CB	EI WREATH OF ROSES PUNCH CUP	30
P	EI G&C FLAT PLATE BSKTWE EXT 9"	100
SM	EI PARLOR PANELS VASE 8" FLARE TOP 6 1/2"D	150
G	EI IMP. OPEN ROSE PLATE 9"	70
DM	EI CATHEDRAL CHALICE (CURVED STAR) STOPPER HAS INSIDE BRUISE	50
		200

	JOHN & LUCILE BRITT, 3048 TAMARAK DRIVE, MANHATTAN, KS 66502 (913) 539-1933	
PO	SOUTACHE BOWL SUPER PIECE	65
M	ROBIN MUG UNUSUAL SMOKE BASE	75
M	FRUIT SALAD PUNCH CUP (OPAL RIM & TOP OF HANDLE	35
M	BUTTON & OPTIC WINE (OLD IMP. "IRON CROSS" MARK)	55
A	DOUBLE STEM ROSE RUFFLED BOWL (UNUSUAL & RARE SHAPE)	65

	JAMES & JUDY KEY, RT 1, BOX 153B, MARIANNA, AR 7;2360 (501) 295-6770	
CB	EI HORSE MEDALLION 7" BOWL	85
P	EI G&C TUMBLER	25
M	EI PANTHER 5" BOWL	35
M	EI G&C FTD ORANGE BOWL PERSIAN MEDALLION INT.	25
		85

** CARNIVAL GLASS FOR SALE **

TED & SHIRLEY SHEIBLEY, 304A HILLCREST DRIVE, NEW CUMBERLAND, PA 17070
PHONE: (717) 938-6417

CLM	1911 SHRINERS CHAMPAGNE	60	M	RASPBERRY 7 PC WATER SET	325
M	WREATH OF ROSES (VINTAGE INT. PUNCH BOWL & BASE	155	M	PEACOCK & GRAPES FTD PLATE	160
P	G&C 7 PC BERRY SET	210	M	PEACOCK AT URN ICE CREAM SHAPE BOWL	60
M	ORANGE TREE HAT PIN HOLDER	145	P	STRAWBERRY PIE CRUST EDGE BOWL	60
P	IMPERIAL GRAPE 9" RUFFLED PLATE	65	P	G&C TUMBLERS EA	30

DARLENE YOHE, P.O. BOX 343, STUTTGART, AR (501) 673-3437

G	BUTTERFLY & BERRY MASTER BERRY, BUTTERFLY INT.	50	G	LOUISA ROSEBOWL	40
A	MAPLE LEAF TUMBLER	120	M	GARLAND ROSEBOWL	140
A	SUNFLOWER PIN TRAY FLAKE ON PETAL	40	M	PANTHER LG BERRY BOWL	165
P	SPRINGTIME BUTTER, SM FLAKE UNDER BASE	75	M	PEACOCK AT FOUNTAIN FTD. ORANGE BOWL	165
P	G&C HATPIN HOLDER	165	M	PEACOCK AT FOUNTAIN 4 PC TABLE SET, TINY 1" LINE IN CREAMER	280
		175			

	WILMA & PAUL THURSTON, 2360 N. OLD S.R. 9, COLUMBUS, IN 47203 (812) 546-5724				
DM	EI BULLSEYE & BEADS 11" VASE	30	M	HATTIE 9" BOWL	35
M	EI OVAL & ROUND RUFFLED 9" BOWL	25	M	IMP. GRAPE 10" BOWL	30
M	EI PREMIUM CANDLESTICKS PR.	50	M	RIPPLE 9 1/2" BOWL	20
CLM	FROSTED BLOCK 6" BOWL	20	M	DIAMOND RING 9" BOWL	30
LM	LUSTRE ROSE 11" IN 3 FTD DEEP BOWL	20	M	BIG BASKETWEAVE HANDLED BASKET LITTLE WEAR IN BOTTOM	35

	DELOURIS CRAFT, 702 BRADLEY DR., BLOOMINGTON, IL 61701 (309) 662-3610				
M	PEACOCK & URN N ICE CREAM BOWL, MINOR WEAR	195	W	HEARTS & FLOWERS COMPOTE	98
M	VASE 8" CONE SHAPE 2 HANDLES	30	M	WATERLILY & CAITAIL 6" PLATE 2 SIDES UP, DARK	45
M	RUBIGOLD		W	G&C N MASTER ICE CREAM BOWL	248
M	IMPERIAL GRAPE DECANTER & 4 WINES. STOPPER END CHIPPED (ALL)				110

** CARNIVAL GLASS FOR SALE **

RAY HITCHCOCK, RR 1, BOX 301, WINTERSET, IA 50273 (515) 462-2074
 MWG FLORAL & OPTIC ROSEBOWL/FERNEY 225 R PERSIAN MEDALLION BONBON 450
 VAS BLACKBERRY JP HAT SHAPE 65 A FERN BRAND CHOCOLATE HG PLATE 190
 RB FEATHERSTITCH BOWL HALF BLUE 150 M JOHN H. BRAND OPEN EDGE HAT 40
 HALF RED, RIM CHIP M PANTHER MASTER BERRY (SQUARISH) 130
 G LEAF & BEADS TRI-CORNER CANDY 35 M TWINS FRUIT BOWL - BASE 75
 DISH R VINTAGE NUT DISH (NICE) 300

CLIFFORD DECKER, BOX 209, RD 1, WHITNEY POINT, NY 13862 (607) 692-3762

M SPITTON WHIMSEY IMP GRAPE 350 M LION BOWL 90
 M PIE CRUST EDGE GOODLUCK BOWL 80 B EMBROIDERED MUMS BOWL NICE 105
 M N PIE CRUST EDGE PEACOCKS BOWL 110

TODD SANDE, 850 SPRING RD., APT. 111, FAIRBAULT, MN 55021 (507) 334-8882
 AQUA PULLED LOOP 10" VASE 50 W HOLLY 10" PLATE 145
 P G&C N 6" PLATE 65 B PERSIAN MEDALLION BONBON 60
 P WREATHED CHERRY BANANA BOAT 125 B CHERRY CHAIN BOWL WITH ORANGE
 M STORK & RUSHES MUG 30 TREE EXT. 75
 B 10" RUSTIC VASE RECESSED 48 B 6" ACORN BOWL CANDY RIBBON EDGE 60
 BOTTOM

JOSEPH MELLO, 535 FISH ROAD, TIVERTON, RI 02878

PO EI SINGLE FLOWER BOWL 35 M EI ACANTHUS PLATE 10" 165
 PO EI COIN SPOT COMPOTE NICE 50 M EI OPEN ROSE PLATE 9" 45
 PO EI CAROLINE CANDY DISH RIBBON EDGE 45 M EI FLORAL & GRAPE PITCHER 125
 PO EI STARFISH COMPOTE 55 M EI FENTON OPEN LACE BASKET 1 SIDE
 M EI GRAPE & GOTHIC ARCHES BERRY UP 1 SIDE DOWN 18
 BOWLS HAVE 3 EA 18 M EI ORANGE TREE PUNCH BOWL TOP 85

JOHN & CAROLYN MIKKONEN, RR 1, BOX 474F, SHAKOPEE, MN 55379 (612) 445-6098

IB GRAPE ARBOR TUMBLER 140 W DOUBLE STEM ROSE PLATE DOME FID 140
 A THISTLE PLATE 1150 M ORANGE TREE MUG 25
 AQ STORK & RUSHES TUMBLER 195 R LATE WATER LILY TUMBLER 12
 M LATTICE & DAISY TUMBLER 20 M VINTAGE FERNEY (DM) 40
 M GRACEFUL 45 M IMPERIAL GRAPE GOBLETS EA 25

** CARNIVAL GLASS WANTED **

JOSEPH MELLO, 535 FISH ROAD, TIVERTON, RI 02878

M MANY FRUITS P. CUPS (5) M IMPERIAL GRAPE P. CUPS (4)
 P IMPERIAL GRAPE P. CUPS (2) A ACORN BURR PUNCH BOWL BASE
 DM FASHION PUNCH BOWL TOP W PERSIAN GARDEN BASE TO FRUIT BOWLS (2)
 M ACORN BURR PUNCH BOWL TOP A ACORN BURR CREAMER TO TABLE SET

JOELLEN ROTONDI, P. O. BOX 401, BUTLER, WIS. 53007

PHONE: (414) 354-8254 (EVENINGS)

IB ANY PLATES OR PIECRUST EDGED BOWLS
 IB THREE FRUITS BOWL, FOOTED OR COLLAR BASE
 IB DAISY & PLUME, OR LEAF & BEADS ROSEBOWLS
 IB PEACOCK AT THE FOUNTAIN COMPOTE
 IG ANY PLATES, ROSEBOWLS, OR COMPOTES

THELMA HARMON, RT 7, NORTH VERNON, IN 47265 (812) 346-5861

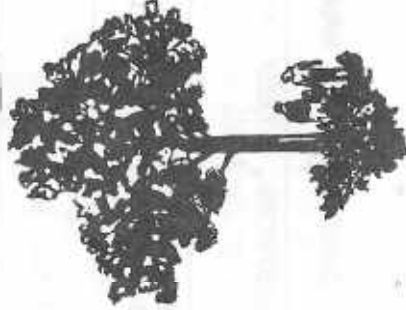
G, CB, W, M, CORINTH JACK IN THE PULPIT VASES

TED A. PERRY, 9243 FAUNTILERROY WAY S.W., SEATTLE, WA 98136 (206) 932-1787

ANY CARNIVAL GLASS AUTO BUD VASES

RAY HITCHCOCK, RR 1, BOX 301, WINTERSET, IA 50273 (515) 462-2074

G PUNCH BASE - FASHION ANY ODD RARE HOLLY BOWLS - PLATES



** CARNIVAL GLASS WANTED **

MARY WELCH, 213, ALEXANDER, SCOTIA, NY 12302 (518) 393-7748
ICE BLUE LID TO PEACOCK AT FOUNTAIN SUGAR BOWL

SHERMAN KELL, 919 THOMASVILLE RD, HOUSTON, MO 65483 (417) 967-4414
G PEACOCK AT URN NORTHWOOD ICE CREAM BOWLS OR ANY COLOR SMALL EXCEPT W, IB, P

TOM & SHARON MORDINI, 36 N. MERNITZ AVE, FREEPORT, IL 61032
MARIGOLD BOTTOM TO BROKEN ARCHES PUNCH BOWL

ED BINSTOCK, P.O. BOX 351, PRESQUE ISLE, ME 04769 (207) 764-3612
IB ROSE SHOW BOWL
W PEACOCKS N BOWL
G POPPY SHOW BOWL
G PEACOCKS N PLATE
AMY WINDMILL PITCHER

TED & SHIRLEY SHEIBLEY, 304A HILLCREST DRIVE, NEW CUMBERLAND, PA 17070
PHONE: (717) 938-6417

B LION BOWL
AO ROSE SHOW BOWL
AO POPPY SHOW BOWL

ANY COLOR STRAWBERRY STIPPLED PLATES
RED BLACKBERRY TWO ROW OPEN EDGE BASKET

CLIFFORD DECKER, RD #1, BOX 209, WHITNEY POINT, NY 13862 (607) 692-3762
G & D.M. HEARTS & FLOWERS BOWLS

H.O.A.C.G.A. SOUVENIR BELL

In 1985, it was decided to make a series of 4 Souvenir Bells. Each different bell would feature a portrait of a Famous Maker of Carnival Glass. The beautiful Circle Scroll Pattern would be used as the basic pattern on each of the bells. The bells would also include the Fenton logo.

The first bell, 1985 Souvenir, has a portrait of Harry Northwood. The bell is Ruby Red Carnival. VERY FEW ARE STILL AVAILABLE.

The second bell, 1986 Souvenir, has a portrait of Frank L. Fenton, the principal founder of the Fenton Art Glass Company. This bell is made in the beautiful Lime Green Opalescent with a Marigold overspray. This bell is made in a limited quantity, approximately 350.

The 1987 bell will feature John Fenton, founder of Millersburg Glass Company. The 1988 bell will be of a prominent person of the Imperial Glass Company.

It is our belief that this series of souvenir bells will make a beautiful and collectible set of Carnival Glass Bells while honoring those responsible for the making of our favorite glass. We hope you will enjoy this series of bells.

The 1985 or 1986 Bells are \$35.00 each, plus \$2.50 shipping. *John E. Britt*

CHECKS PAYABLE: H.O.A.C.G.A.

MAIL ORDER TO: John Britt
3048 Tamarak Drive
Manhattan, Kansas 66502



I wish to order _____ 1985 Souvenir Bells at \$35 plus \$2.50 shipping.

I wish to order _____ 1986 Souvenir Bells at \$35 plus \$2.50 shipping.

NAME: _____

ADDRESS: _____

CITY, STATE, ZIP: _____

APPLICATION FOR MEMBERSHIP

=====

THE HEART OF AMERICA CARNIVAL GLASS ASSOCIATION, INC.

=====

DATE _____

NAME _____

SPOUSE _____

ADDRESS _____

CITY _____ STATE _____

ZIP CODE _____ TELEPHONE _____

RECOMMENDED BY _____

Do you want your name in the directory? YES _____ NO _____

DUES ARE \$20 U.S. PER YEAR (JUNE THROUGH MAY)

SEND DUES TO: H.O.A.C.G.A.
 GLEN FORTNEY, SECRETARY
 P. O. BOX 303
 BUCKNER, MO 64016

=====

A FEW OF THE BENEFITS OUR CLUB OFFERS:

The ONLY MONTHLY PUBLICATION on just Carnival Glass Collecting, keeping you informed of new discoveries and all of the current events. Members only may advertise, FREE OF CHARGE!!!

An exclusive PATTERN NOTEBOOK with yearly special inserts- (ALL inserts are still available)

ANNUAL SOUVENIR AND CONVENTION WITH SOME OF THE GREATEST PEOPLE YOU CAN HOPE TO MEET!!!

<<<< JOIN TODAY >>>>