

---

---

**Heart of America  
Carnival Glass Association, INC**

---

---

---

---

**MAY 1986**

---

---

**NEWSLETTER**

First Class Mail  
U. S. Postage  
PAID  
Kansas City, Mo.  
Permit No. 4352

"NOTICE"

"NEW" Bulletin

Secretary:

---

---

**PLEASE SEND ALL CHECKS TO:  
GLEN FORTNEY, SECRETARY**

---

---

---

---

**ALL MATERIAL FOR THE BULLETIN  
SEND TO BULLETIN SECRETARY:**

**MICHAEL BASEY  
4315 ADAMS  
KANSAS CITY, KANSAS 66103**

---

---



Heart of America  
Carnival Glass  
Association Inc.

MINUTES OF THE ANNUAL MEETING FOR APRIL 1986

At 2:00 P. M., April 25, 1986, President Robert Grisson called the Annual Business Meeting to order.

Minutes of the 1985 Annual Meeting were read by the Secretary Glen Fortney and approved as read. Treasurer Karen Engel read the Treasurer's Report which was as follows:

Beginning Balance As Of June 1, 1985	#23,305.10
Total Receipts	18,109.81
Total Dispersements	24,695.31
Balance As of March 31, 1986	19,109.81
	=====

No questions were asked so it was approved to be filed for audit.

A proposed change of the BYLAWS were read by President Grisson to Amend SECTION 2 of ARTICLE V - OFFICERS, QUALIFICATIONS, ELECTION AND TERM OF OFFICE to read as follows:

Section 2: Qualifications, Election, and Term of Office

Each officer shall also serve on the Board of Directors.

At the Annual Meeting the Members shall elect, from the Membership, persons to serve as Officers of the Corporation. Officers of the Corporation shall hold office for two (2) terms, on a staggered basis, commencing with the 1986 Annual Meeting.

The Vice-President, Treasurer, and Bulletin Secretary shall be elected to a two (2) year term, to expire in 1988 when their successors are chosen and qualified.

At the 1986 Annual Meeting, the President and Secretary shall be elected to a one year term, to expire in 1987 when their successors are chosen and qualified to serve a two (2) year term.

Membership June to May  
\$20.00 Per Couple or Single

Published the 15th  
of each month

**PRESIDENT**

Robert Grisson  
7900 Crescent  
Raytown, MO 64138  
(816) 356-5320

**VICE-PRESIDENT**

Nadine Paulsen  
700 Purdom  
Olathe, KS 66061  
(913) 782-1313

**TREASURER**

Karen Engel  
35292 Oak View Drive  
Brownsville, OR 97327  
(503) 466-5989

**SECRETARY**

Glen Fortney  
P. O. Box 303  
Buckner, MO 64016

**BULLETIN SECRETARY**

Marge Miller  
7619 N. W. Westside Drive  
Kansas City, MO 64152  
(816) 741-4635

All monetary figures quoted are in U. S. dollars.  
Please make checks for dues payable to H.O.A.C.G.A.  
and send them to the secretary as listed above.

**\*\* DO NOT SEND TO THE BULLETIN SECRETARY \*\***

Should a vacancy in any office occur as a result of an officer being elected at an Annual Meeting to another office in the Corporation, then the Members shall, by election at the same time, fill the vacated office with a member to serve for the remainder of the unexpired term of that office and/or until a successor is chosen and qualified."

A motion was made and seconded, and after discussion, a vote by hands was taken and carried.

The President called upon the Chairman of the Nominating Committee for candidate nominees for the New Board of Directors. Those presented were as follows:

President.....	Robert Grissom & Cooley Miller
Vice-President.....	Nadine Paulsen & Marge Loftus
Treasurer.....	Bernice Bell
Secretary.....	Glen Fortney
Bulletin Secretary.....	Michael Basey

After a vote by secret ballot the New Board is as follows:

President.....	Robert Grissom
Vice-President.....	Nadine Paulsen
Treasurer.....	Bernice Bell
Secretary.....	Glen Fortney
Bulletin Secretary.....	Michael Basey

While votes were being counted, President Grissom called upon members of other clubs present for announcements and upcoming data on their Conventions.

The only discussion on the 1987 H.O.A.C.G.A. Convention was in regard to the Notebook Insets (Small Plates) and the Souvenir Bell #3 featuring John Fenton, Founder of Millersberg Glass. No color was discussed.

With no more business, the meeting was adjourned.

Club Secretary,  
Glen Fortney

EDUCATIONAL TUMBLER SERIES

by John and Lucile Britt

THE STRAWBERRY SCROLL TUMBLER

The "Strawberry Scroll" pattern was made by the Fenton Art Glass Company of Williamstown, West Virginia, and was produced only in the water set. The tumbler is super in every way and is highly sought after by collectors today. It is not as rare as the "Lily of the Valley" tumbler, but they are certainly not easy to find either. The "Strawberry Scroll" and "Lily of the Valley" tumblers were made very much alike, therefore I refer to them as the sister tumblers. Both of these patterns carry a band near the center of the tumbler that contains a scroll pattern and is bordered with a cable on the upper and lower edge of the band. The "Strawberry Scroll" features strawberries as their chief motif, while the "Lily of the Valley" uses flowers by that name. The base on both these tumblers are smooth and patternless. They are usually found in the marigold and blue colors. Mr. Richard Owens, in his fine tumbler book, reports one in green. In all my travels, I have never seen one that color. A green example would certainly be a great rarity in the carnival glass field. An article on the "Lily of the Valley" tumbler appeared in the August 1981 HOACGA bulletin.



The "Strawberry Scroll" water pitcher is made quite similar to that of the "Blueberry", but its curves and bulges are more pronounced than are those on the "Blueberry" pitcher. The very unusual and beautiful shape of the "Strawberry Scroll" water pitcher does a lot for the popularity of this pattern. We are certainly happy and proud to use this very fine Fenton pattern to mark our 100th edition in this series on carnival glass tumblers. Next month we will feature the "Cut Cosmos" tumbler.

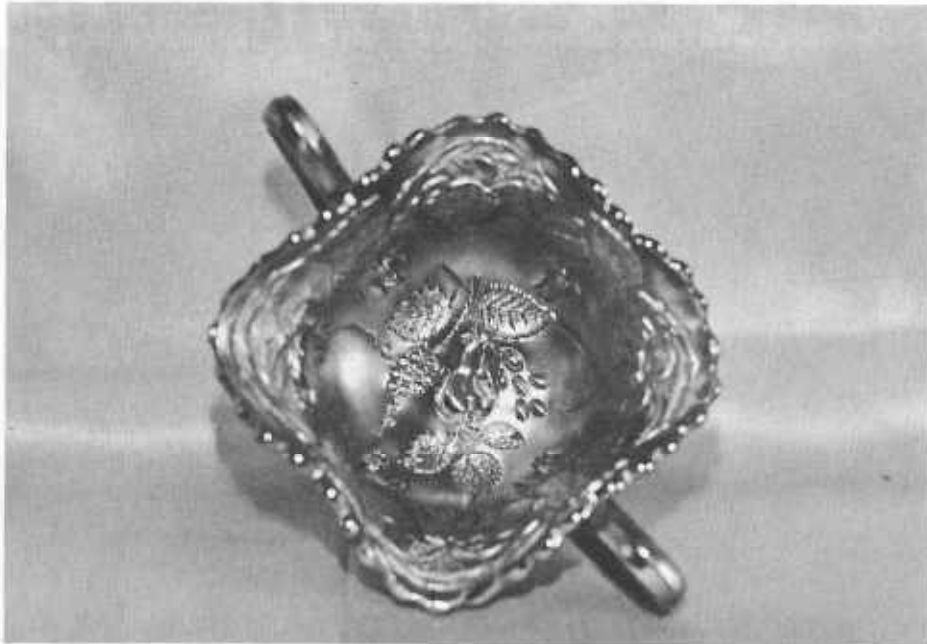
---

**PICTORIAL PATTERN PARADE**

by John & Lucile Britt

**ROSES & FRUIT FOOTED BON BON IN BLUE**

The accompanying two photos show the Rare Millersburg "Roses & Fruit" Footed Bon Bon in Cobalt Blue.



Bill Edwards reports that this is only the second one of these that he has ever seen or heard of in the blue color. This one is in a good deep blue with outstanding iridescence. He states that the other blue example of this bon bon is in the McKinley museum in the State of Ohio. The "Roses & Fruit" bon bon is rare in any color, being seen most often in amethyst. The blue color adds a little extra appeal and value to any Millersburg piece.

---



**FROM THE EDITOR**

This past year has been quite an experience for me. I appreciate the educational articles sent me to be put in the Newsletter. Without your help, an interesting Newsletter cannot be published. Also, thanks for the notes of encouragement and praise.

I chose not to run again but know Michael Basey will do a good job. Please support him and our club.

Sincerely,  
Marjorie Miller

RARITIES AND SELDOM SEEN

By Ivan & Betty Mitchell

BOWL - LIGHT GREEN FRUITS AND FLOWERS - NORTHWOOD

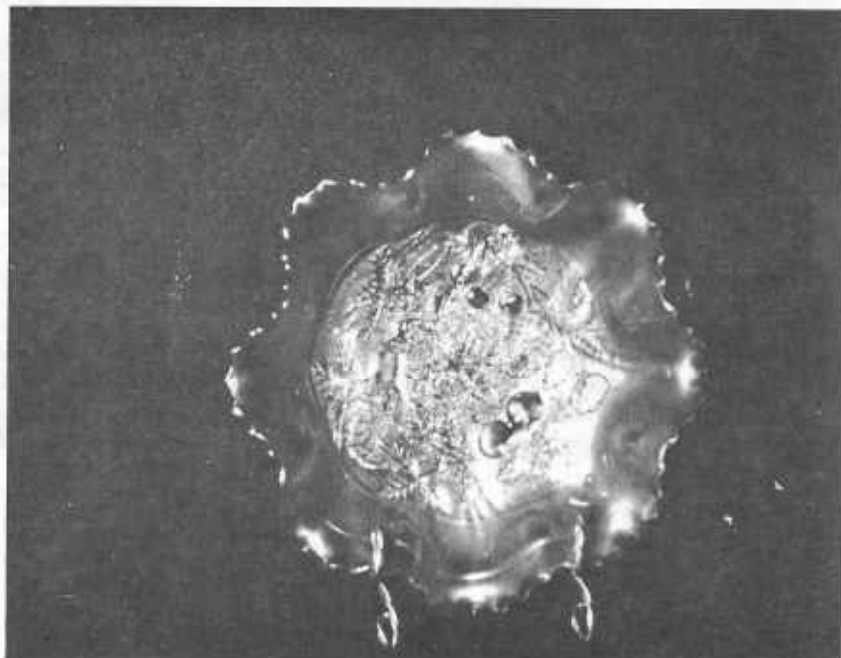
This green bowl has a very unusual color; too dark for Ice Green, too dark for Mint Green, but too light for Vivid Green. You would have to see it to appreciate it.

However, it is a very beautiful "Fruits and Flowers" bowl. It is 9" wide and has spatula feet. Fruits and Flowers is a first cousin to 3 Fruits, the difference being that on 3 Fruits there is a clump of 3 cherries in center and fewer flowers. On the Fruit and Flowers there are not cherries in center (interior) and usually the 3 Fruits has a collar base and no spatula feet - and the clump of cherries in the bottom of bowl.

This is a mistake a lot of collectors make in defining this pattern, and I hope this will be of some help to some collectors.

If anyone has a bowl like this one, will you please let me know? I have never seen another like it.

This will bring a price of some \$400 to \$450.



CARNIVAL GLASS OBSESSION

By Ed Binstock

Perhaps you might want to print the following account in a future bulletin just to show fellow members of HOACGA that not everyone is obsessed with Carnival Glass and that other activities do occupy our time.

Earlier this springtime, our twins - kittens, that is, Amy and Blue made a double loop into our rustic farmyard chasing what I thought to be a robin or some other singing bird (fortunately we had the hen covered and the nesting swans in our pond are too ornery to mess with). Expecting to see feathers flying, I grabbed my plaid coat and hatty (it was still early in the morning glory and the lacy dew drops were a bit frosty) and tore out of our homestead's country kitchen like a buzz saw - so fast it made our horses' heads turn.

Well, it seems that a one-eyed Elk had become trapped in our rather boggy bayou (near our north woods). Hearing the commotion, milady and her poppy showed up (he's in his Gay Nineties and visiting from Memphis), puzzle and question marks all over their faces, barely able to compose themselves. Apparently the stag had been driven to wisteria by a panther or perhaps a horehound and had run through our blackberry bramble picking up thistles and acorn burrs.

I approached cautiously, my stomach in French knots and butterflies, brandishing my tomahawk and African shield, but the going was slow (due to my broken arches received on duty with the soldiers and sailors when the stream of hearts overflowed its banks near the Indiana Statehouse). By this time, the early morning cosmos of many stars had given way to the rising sun and a ranger, Officer Dugan, badge number 474 on his LBJ hat, comes along zig zag fashion down our garden path on his pony, Daisy, trampling our little flowers on the way.

Well, we're no fans of his when we spot his mug; ice blue eyes and little beads of perspiration. It had been his holiday and I guess he thought he was being called out on a whimsey. Frankly, we were afraid to even let out a bo peep. We just hoped he would use his tranquilizer dart, get a bulls eye and leave. But instead, showing plenty of moxie and with our wishbone of good luck, the ranger took some grape cable from our grape arbor (we grow multifruits and flowers here on the farm), swirled it around the critter in a superb drape and amazingly the captive rose. It was the pitcher of perfection!

Our lovely daughter, Marilyn, arrived like a tornado, carrying a bushel basket of three fruits, but I'm not lion, the forester in a graceful Victorian gesture, passes up the peach and pears and just forks one golden grape into his mouth like some big fish would gulp down a fly. With that, the heavy web of tension crackled and snapped. A wide panel truck showed up and began dragon the elk to the Palm Beach Zoo, where I hear they're at a real premium.

The great one-eyed elk roundup now over, we five hearts were proud as strutting peacocks and I was tempted to nippon the old corn bottle (but settled for a hot cup of rococo and a plate of fine ribs). The experience had taught us a lesson however, we were under no illusions, failure is an orphan but success has ten mums.

P.S. Later, Ranger Dugan sent our Marilyn a bouquet and a box of Fern Brand Chocolates and they're stepping out tonight. Double dutch of course!

---

---

#### ROSEBOWL - NOTEBOOK FILLER

The second part of the Notebook section on Rosebowls is now available. One Hundred (100) different patterns are identified and pictured in this section. If you have not ordered the second part of the Rosebowl section, you may do so by sending \$4.00 plus \$1.00 postage to the Secretary, Glen Fortney, P.O. Box 303, Buckner, MO. 64016.

Your notebook should now contain a section on Punch Bowls, Mugs, Table Sets, Water Sets (3 sections) and Rosebowls (2 sections).

The next category will be on small plates (6 or 7 in.). So if you have any and want to share these with the other members, please contact the writer.

Again, I want to thank all of you that supplied pattern information and photographs of Rosebowls. Without your help this would not have been possible. A listing of those who helped is included with the first Rosebowl section.

It is hoped that this information will add to your Carnival Glass knowledge and will be beneficial as your reference to Rosebowls.

Bob Grissom, 7900 Crescent, Raytown, MO 64138.

#### APRIL AUCTION

We could hardly wait for Tom Burns Auction April 4-5. Our first outing after the long stay home winter. We left early and stopped by Sugar Creek Bakery - then to our Amish restaurant for a late breakfast. Then on to Canton to visit briefly with relatives. After that, on to the Holiday Inn for the Auction - Cleveland, Ohio.

Almost at once, so many of the regular Carnival people came in to sign up for motel rooms. The Carnival was exceptionally good colors and very little damages. We think it a real good sale - over 140 bidding members. Room was crowded and many standing. As expected, the blue N Master punch set brought highest at \$3500. A lovely green Ivy Town Pump at \$2100. Prices held up good throughout the entire sale and feel sure Tom and the Noonans were pleased.

We really enjoyed getting out again and so good to see friends. So many states were represented.

We visited at Maple Heights before coming home and now look forward to May 30-31 when an auction is scheduled at New Philadelphia. We shall hope to be there.

Grace & Byron Rinehart, Ches. W. VA

---

---

#### AIR CAPITAL CARNIVAL GLASS CLUB

April 13, 1986

Francis Elder is home recuperating from surgery. Wilma Elder also is home from the hospital. Our Vice President, Steve Guthrie was hospitalized and is now home.

All of us are so excited about our upcoming trip to Booker, Texas in May. As of this writing 17 of our members are planning to attend this meeting.

Wilma Elder gave the program and what an interesting program. For those who will be attending the HOACGA convention, you will get to hear her story of how she began collecting carnival glass.

Mr. & Mrs. Cromer brought a nice little 6 inch Peacock at The Urn plate for us to look at. You could certainly tell it was one of her favorite patterns and as she talked about it we could see the gleam in her eyes. She told of where they purchased it and how proud of it she was. It is one hard to come by and we all enjoyed hearing about it.

We are looking forward to seeing all of you at the HOACGA convention.

Donald E. Kime  
Secretary

---

---

#### THE TAMPA BAY CARNIVAL GLASS CLUB

The Tampa Bay Carnival Glass Club held its regular monthly meeting April 20th at the home of Dorothy and Art Smith in Lakeland. Fourteen members and guests enjoyed a buffet prior to the business meeting. Shirley Pfaff Conyers read the minutes of the last meeting and Dorothy Smith reported on the treasury. Art Smith announced that the Huntly Inn has been sold and is closed for extensive remodeling. All the fixtures and furniture was sold at auction and when the Inn reopens, it will be entirely new. With these facilities available, the club voted to hold its Sixth Annual Lose Your Heart To Carnival Glass Jamboree on February 12, 13 and 14 in 1987.

Art gave a program on carnival glass April 14 at the meeting of the Mid-Florida Glassaholics Club and reviewed some of the highlights at the Sunday meeting in addition to presenting a program on the Edges of Carnival Glass, showing the various ways the glassmakers finished off the edges of their glassware.

Stella Smith and Louise Miller, from Lakeland, joined the club after attending the meeting as the guests of Barbara Berry.

Arthur I. Smith

#### TRIBUTE TO BERNICE ALLEN

Feeling that many HOACGA members knew Bernice Allen or "Bumma" as she was often known by her friends, I felt they would want to know that she died in March. Some of you knew of her bad health of the past three years.

Bumma was one of the earlier Carnival enthusiasts and had been an avid collector with her husband, Al, since the 60's. After his death about ten years ago, she continued to collect and attended conventions regularly. She made two trips to Australia visiting with collectors there.

Bumma will be missed by her many friends and those of us who were influenced by her knowledge and enthusiasm to get involved with Carnival glass will think of her often as we continue our hobby of collecting. Her interest in both the glass and the people who love it was about the last thing she gave up.

Sincerely,  
Dolores L. Fenn

---

---

#### "NOTE TO THE EDITOR"

Featured in this issue is the one hundredth in the Educational Tumbler Series written by John and Lucile Britt. They have been most generous in sharing their knowledge of and accurate information about not only tumblers but also other interesting and noteworthy items. Many of us, beginning collectors when they began writing rather prolifically, have been inspired to learn and to become more discriminating in building our collections by what they (and others) have written.

Perhaps even more remarkable is their willingness to answer questions collectors have. When I have contacted them, I have especially appreciated the thoroughness in which they have responded. They are precise and accurate in their answers. I have also enjoyed the programs they have presented at conventions.

I'm sure all members will want to join me in thanking them for their work in our behalf.

Sincerely,  
Larry Keig

NEWSLETTER RESPONSE

Responding to Don & Marie Martin's article in the March Newsletter, we advise owning an ice blue peacock bowl having a narrow band of opal as illustrated. Our piece has an extremely high sheen but DOES NOT have any of the rainbow coloring characteristic of carnival glass. We have other pieces of blue opal none of which have anything like the sheen on the peacock bowl. We wonder if it is possible to have a colorless spray.

Ivan & Betty Mitchell's comments on the poppy show plate also have special interest for us. We have one in a very deep blue which we display with a light behind and it never fails to thrill all who view.

Whilst writing I should report on Al Rettke's article of some considerable time back when he discussed the Aqua/opal, peacock at the fountain, master ice cream bowl. We were lucky enough to acquire one of these many, many years ago from a shop in Adelaide suburb for the princely sum of Aust. \$30. After Al's first comment, one was reported in the newsletter as having been sold at auction for US \$3000.

The HOACGA newsletter is always "Grabbed" as soon as it hits the letter box and read avidly. Should any of your members be visiting Adelaide we'd love to see them and make them welcome in our home as well as introducing them to the collectors here.

Good hunting to all,  
Jack & Yvonne Dennis.

ON THE LOOKOUT

Was interested in Lawrence Hartnell's article in last bulletin. I was especially interested in the Stork Vase and its maker. Why? Because I have the Stork Vase Lamp in the pale marigold. I would be interested to hear if anyone else might have one.

It is electric and the metal base has the same design as around bottom of vase, so it looks like it was made especially to go together. Would like to hear if there are anymore.

Norma Wagner, 302 Main, Bagley, IA 50026

"NOTICE"

All material for the Bulletin send to "NEW" Bulletin Secretary:

Michael Basey  
4315 Adams  
Kansas City, Kansas 66103

\*\* CARNIVAL GLASS FOR SALE \*\*

MARY ANN MORIARTY, 806 CENTRAL AVE., BEDFORD, IA 50833 (712) 523-3469			
DM EI COIN SPOT COMPOTE	35	G EI LEAF & BEADS FTD BOWL	35
M EI 474 PUNCH CUP	20	M EI STORK & RUSHES MUG	22
B EI PEACOCK TAIL HAT WHIMSEY	28	B EI PEACOCK TAIL CANDY BOWL	18
SMOKE EI DIAMOND RING BOWL	32.50	CLM FROSTED BLOCK FLUTED BOWL	20
WILLIAM COLES, RT #1, BOX 273B, HICKORY, KY, 42051 (502) 674-5916			
M HOLLY FLUTED BOWL	40	M PEACOCK AT URN COMPOTE	35
M PEACOCK/URN FENTON 8 FLUTED BOWL	50	G MLSBG HOLLY 8" BOWL	50
M FLORAL & GRAPE HAT JIP STYLE	20	M DOUBLE DUTCH FTD BOWL	35
M G&C THUMPRINT MASTER BERRY SUPER	50	M STAR & FILE 6" FLAT PLATE	25
M G&C SHERBERT N	20	M SCROLL EMBOSSED SM COMPOTE SUPER	35





## \*\* CARNIVAL GLASS FOR SALE \*\*

BURNEY TALLEY, 1814 SLATE, N.W., ALBUQUERQUE, NM 87104 (505) 242-1261

PO DRAGON & LOTUS COLLAR BASED 550  
 BOWL LT MARIGOLD M NU-ART CHRYSANTHEMUM PLATE 575  
 M TROUT & FLY RUFFLED BOWL 475 M WISHBONE CHOP PLATE 75  
 M FLUTE & CANE MILK PITCHER 325 M HEAVY IRIS TUMBLER GOOD COLOR 125  
 G OCTAGON WINE DECANTER NO STOPPER 125 G PINEONE PLATE 6" 135  
 VERY RARE COLOR SMOKE WINDMILL MILK PITCHER 50

LYDIA CAUDLE, RT 1, BOX 87, STATE ROAD, N.C. 28676 (919) 874-2519

EI BLUE HORSES HEAD 7 1/2" BOWL 79 EI FTD LG SIZE LITTLE FISHES BOWL 115  
 EI PO LG SIZE SKI-STAR BOWL 85 EI LG FTD STAG & HOLLY BOWL 90  
 EI BLUE PERSIAN MEDALLION COMPOTE 65 EL M. HARVEST FLOWER TUMBLER 90  
 GI M. PEACOCK AT FIN. PITCHER 145 EI WHITE HEARTS & FLOWERS COMPOTE 90  
 EI M. G&C 7 PC WATER SET 275 EI BLUE GRAPE & GOTHIC ARCHES WATER SET 479

MARTY SCHOETTLER, BOX 188, R.D. 3, SEWELL, N.J. 08080 (609) 589-4325

LT A EI 3 FRUITS PLATE PLAIN BACK 80 A EI QUESTION MARKS BONBON 40  
 LT A EI DUGAN CHERRIES FTD BOWL 60 A EI PANSY BOWL, STIPPLED 40  
 A EI WISHBONE FTD BOWL RUFFLED 90 A EI G&C PIN TRAY, N.H. ROUGH EDGE 150  
 PO EI LEAF RAYS NAPPY 40 A EI LEAF RAYS NAPPY UNUSUAL SHAPE 30  
 W EI LEAF RAYS NAPPY 55 W GI ORANGE TREE 9" I C BOWL 75

ED HENDERSON, 1111 N. COLLEGE, STUTTGART, AR 72160 (501) 673-8757 AFTER 7 PM

LM FASHION IMP 8 1/2" BOWL 15 A STRETCH GLASS 9 1/2" PLATE 15  
 LM SMOOTH RAYS 9" DIAMETER BOWL 10 A PERSIAN MEDALLION 5" BOWL 7  
 A PERSIAN MEDALLION 5" BOWL 15 M RIPPLE 10" VASE 15  
 P IMP GRAPE DECANTER NO STOPPER 60 M 5 1/2" ASH TRAY NO PATTERN 5  
 M ROOOO 5" DOME-BASE BOWL 7 M FENTON PEACOCK & GRAPE 7.5" BOWL 10

## \*\* CARNIVAL GLASS FOR SALE \*\*

HAROLD WAGNER, 5951 FREDERICKSBURG ROAD, WOOSTER, OH 44691  
 PHONE: (216) 264-3703 ATER 5 PM

PO FAN SAUCE BOAT 65 M G&C WATER SET 5 PC 220  
 M BUTTERFLY & BERRY TUMBLER 20 M MLSBG CHERRY TUMBLER GROUND BASE 100  
 G MLSBG PEACOCK 10" FLUTED BOWL 225 B KITTENS SPOONER 275  
 M MLSBG FEATHER & HEART PITCHER 365 A MLSBG COURTHOUSE BOWL (SLIVER 225  
 A MLSBG POPPY COMPOTE 465 ON EDGE  
 M LI ORIENTAL POPPY PITCHER 195

ELDON BICKSLER, 285 AKRON ROAD, WADSWORTH, OH 44281 (216) 336-2203 6-9 PM

M EI G&C FOOTED PLATE 50 A EI G&C FOOTED PLATE 70  
 G EI LOTUS POINSETTA FLUTED 10" BOWL FOOTED P EI LOTUS POINSETTA FRUIT BOWL 95  
 P EI STRAWBERRY PLATE 75 BLACK BACK 8 1/2" UNUSUAL 65  
 B EI BEADED SHELL MUG 80 P EI BEADED SHELL MUG 60  
 M EI IMP GRAPE 6 1/2" PLATE 135 B EI N PEACH TUMBLER 120  
 20 A EI MARILYN TUMBLER

DICK HATSCHER, BOX 261, WALNUT HILL ROAD, BETHEL, CT 06801

M P N PEACOCKS PLATE 175 M GRAPE ARBOR PITCHER 150  
 P HEART & VINE PLATE 9" RARE 175 P CORINTH PLATE 8" SCARCE 50  
 OT ORCHARD WATER PITCHER 6 TUMBLERS B SINGING BIRD MUG STIPPLED 150  
 IMPERFECTION ON PITCHER BASE 445 G DRAGON LOTUS BOWL 48  
 W N PEACOCKS BOWL 150 SMOKE 3" ROW IMP VASE CRACKED RARE 48  
 SEND SASE FOR LIST ON HOAGA SOUVENIRS

DAVID DEEM, 902 E. WALNUT AVE., BURBANK, CA 91501 (818) 845-4530

M HOLLY PLATE 65 M DRAGON & STRAWBERRY FTD BOWL 285  
 M PEACOCK AT URN PLATE FENTON NICE 170

## \*\* CARNIVAL GLASS FOR SALE \*\*

VALMER CROSS, FRATISVILLE, NY 12468 (607) 588-6698

A G&C N SPOONER CHIP ON BASE 40 M VINTAGE BANDED MUG 25  
 M WINDFLOWER BOWL 20 M BLOSSOM & SPEARS 8" PLATE 12  
 M IRIS & HERRINGBONE VASE 10 M GOLDEN WEDDING BOTTLE 5  
 M URN 2 HANDLED VASE 30 M IRIS & HERRINGBONE WINE 15  
 M BLOSSOM & BAND 5" BOWL 15 G COIN DOT BOWL 6 1/4" 20

ED & JUDY KASPER, 2567 LOOMIS DR., SAN JOSE, CA 95121 (408) 224-4349 AFTER 6PM

ME EI POODLE POWDER JAR 10 M EI WINDMILL BOWL 40  
 IG EI COIN DOT BOWL 45 M FI BOUQUET & LATTICE CUP & SAUCER 7.50  
 A GI COIN DOT BOWL 40 P FI COIN DOT BOWL 35  
 M EI COIN DOT BOWL CRIMPED EDGE 40 M GI CRACKLE PLATE 4  
 M EI BUD VASE (2) EA 20 TEAL PI COIN DOT BOWL 30

HUBERT SHELTON, RT 1, MUNFORDVILLE, KY 42765 (502) 528-5893

CB BUTTERFLY/BERRY TUMBLER MINT 40 R RED STRETCH GLASS 6" COMPOTE 100  
 M 10" PYREX OLD INSULATOR, SCARCE 65 M BUTTERFLY/BERRY TUMBLERS 4 EA 20  
 P G&C WATER PITCHER NO HARM SLIVER ON HIGH POINT OF THUMBPRINT 175 M HOBNAIL SODA-GOLD SPITTOON, MINT 35  
 M BUTTERFLY/BERRY VASE 9 1/2" 30 M G&C PUNCH CUPS N 6 OR WILL BUY YOUR BOWL AT REASONABLE PRICE EA 20  
 IB STRETCH GLASS 9" PLATES 5 EA 12.50 M IMP. GRAPE PITCHER, BEAUTIFUL 60

BEVERLY HAWK, 100 COLONIAL LANE, LIMA, OH 45805 (419) 991-7107

M EI MLBRG. PIPE HUMIDOR 3200 M EI BROOKLYN BRIDGE BOWL 300  
 G EI ACORN BURR CREAM PITCHER 75 G EI TORNADO VASE 175  
 A EI G&C CARD TRAY 50

DON DONOVAN, RR 1, SELKIRK, ONTARIO, CANADA NOA 1P0 (416) 776-2453

AO EI ROSE SHOW BOWL/ PASTEL TINY NICK ON ROSE AND RIM P.H. 360  
 DM EI ZIPPER LOOP LAMP/8 3/4" TALL, 5 1/4" BASE 400

## \*\* CARNIVAL GLASS WANTED \*\*

YVAN BEAUDRY, 109 - 5TH AVE, BOISBRIAND, QUE J7G 1Y8 (514) 437-4585

IG MEMPHIS PUNCH CUPS NEED 4

A B FORGET ME NOTS TANKARD PITCHER \$144 IN HOACGA BOOK

AO IG FINECUT ROSES ROSE BOWLS GOOD FEET ONLY

MAXINE TWEED, 44646 N. CEDAR AVE., LANCASTER, CA 93534

EI GREEN IMPERIAL PANSY NAPPY PO SMALL BOWLS OR PLATES  
 EI RIBBON TIE BOWL - GREEN OR MARIGOLD FLAT EI DARK BEADED SHELL MUG  
 EI HOLLY & BERRIES PLATE I C SHAPE EI GREEN G&C BOWL

DAVID DEEM, 902 E. WALNUT AVE., BURBANK, CA 91501 (818) 845-4530

B/P ROSE SHOW OR POPPY SHOW PLATES M/B GOOD LUCK PLATE

ED BINSTOCK, P.O. BOX 351, PRESQUE ISLE, ME 04769 (207) 764-3612

P WINDMILL PITCHER G POPPY SHOW BOWL  
 P PANTHER MASTER BERRY BOWL W PEACOCKS ON FENCE BOWL  
 P BEADED SHELL PITCHER B ORANGE TREE FTD BUTTER  
 P HOBNAIL PITCHER SLIGHT DAWGAGE P FARMYARD BOWL SLIGHT DAMAGE OK  
 B POINSETTA & LATTICE BOWL DARK MANY STARS BOWL

HUBERT SHELTON, RT 1, MUNFORDVILLE, KY 42765 (502) 528-5893

CB PEACOCK AT FOUNPAIN N WATER PITCHER CB BUTTERFLY/BERRY WATER PITCHER  
 M OR CB ORANGE TREE TUMBLERS FTD M ORANGE TREE FOOTED SPOONER  
 P/AM/CB G&C SUGAR AND SPOONER M FLUTE WATER PITCHER

MARY ANN MORIARTY, 806 CENTRAL AVE., BEDFORD, IA 50833 (712) 523-3469

M ORANGE TREE PUNCH BOWL OR WILL SELL BASE  
 A GRAPE AND CABLE SWEET MEAT LID

## \*\* CARNIVAL GLASS WANTED \*\*

TED SHEIBLEY, 304A HILLCREST DR., NEW CUMBERLAND, PA 17070 (717) 938-6417  
 G TOWN PUMP IVY  
 B PANTHER MASTER BERRY BOWL  
 M SPRINGTIME SUGAR LID  
 ANY COLOR ROSE SHOW & POPPY SHOW BOWLS AND PLATES  
 IB HEARTS & FLOWERS BOWL & PLATE  
 IB/IG PEACOCK AT THE URN MASTER I C BOWLS  
 G ROSE SHOW BOWL

JOELLEN ROTONDI, P. O. BOX 401, BUTLER, WIS. 53007  
 PHONE: (414) 354-8254 (EVENINGS)

IB ANY PLATES OR PIECRUST EDGED BOWLS  
 IB THREE FRUITS BOWL, FOOTED OR COLLAR BASE  
 IB DAISY & FILME, OR LEAF & BEADS ROSEBOWLS  
 IB PEACOCK AT THE FOUNTAIN COMPOTE  
 IG ANY PLATES, ROSEBOWLS, OR COMPOTES

TOM & SHARON MORDINI, 36 N. MERNITZ AVE., FREEPORT, IL 61032 (815) 235-4407  
 M BASE TO BROKEN ARCHES PUNCH SET

WILLIAM COLES, RT #1, BOX 273B, HICKORY, KY 42051 (502) 674-5916  
 P GRAPE AND CABLE SWEETWEAT LID  
 DARK HEARTS & FLOWERS COMPOTES OR BOWLS  
 M EMBROIDERED MUMS BOWL

JACK & YVONNE DENNIS, 12 LAGUNTA AVENUE, EDWARDSTOWN, SOUTH AUSTRALIA, 5039  
 W COSMOS & CANE PITCHER

## "NOTICE"

All material for the Bulletin send to "NEW" Bulletin  
 Secretary:

Michael Basey  
 4315 Adams  
 Kansas City, Kansas 66103

## H.O.A.C.G.A. SOUVENIR BELL

In 1985, it was decided to make a series of 4 Souvenir Bells. Each different bell would feature a portrait of a Famous Maker of Carnival Glass. The beautiful Circle Scroll Pattern would be used as the basic pattern on each of the bells. The bells would also include the Fenton logo.

The first bell, 1985 Souvenir, has a portrait of Harry Northwood. The bell is Ruby Red Carnival. VERY FEW ARE STILL AVAILABLE.

The second bell, 1986 Souvenir, has a portrait of Frank L. Fenton, the principal founder of the Fenton Art Glass Company. This bell is made in the beautiful Lime Green Opalescent with a Marigold overspray. This bell is made in a limited quantity, approximately 350.

The 1987 bell will feature John Fenton, founder of Millersburg Glass Company. The 1988 bell will be of a prominent person of the Imperial Glass Company.

It is our belief that this series of souvenir bells will make a beautiful and collectible set of Carnival Glass Bells while honoring those responsible for the making of our favorite glass. We hope you will enjoy this series of bells.

The 1985 or 1986 Bells are \$35.00 each, plus \$2.50 shipping. *John E. Britt*

CHECKS PAYABLE: H.O.A.C.G.A.

MAIL ORDER TO: John Britt  
 3048 Tamarak Drive  
 Manhattan, Kansas 66502



I wish to order \_\_\_\_\_ 1985 Souvenir Bells at \$35 plus \$2.50 shipping.

I wish to order \_\_\_\_\_ 1986 Souvenir Bells at \$35 plus \$2.50 shipping.

NAME: \_\_\_\_\_

ADDRESS: \_\_\_\_\_

CITY, STATE, ZIP: \_\_\_\_\_

APPLICATION FOR MEMBERSHIP

=====

THE HEART OF AMERICA CARNIVAL GLASS ASSOCIATION, INC.

=====

DATE \_\_\_\_\_

NAME \_\_\_\_\_

SPOUSE \_\_\_\_\_

ADDRESS \_\_\_\_\_

CITY \_\_\_\_\_ STATE \_\_\_\_\_

ZIP CODE \_\_\_\_\_ TELEPHONE \_\_\_\_\_

RECOMMENDED BY \_\_\_\_\_

Do you want your name in the directory?      YES \_\_\_\_\_ NO \_\_\_\_\_

DUES ARE \$20 U.S. PER YEAR (JUNE THROUGH MAY)

SEND DUES TO:      H.O.A.C.G.A.  
                            GLEN FORTNEY, SECRETARY  
                            P. O. BOX 303  
                            BUCKNER, MO 64016

=====

A FEW OF THE BENEFITS OUR CLUB OFFERS:

The ONLY MONTHLY PUBLICATION on just Carnival Glass Collecting, keeping you informed of new discoveries and all of the current events. Members only may advertise, FREE OF CHARGE!!!

An exclusive PATTERN NOTEBOOK with yearly special inserts (ALL inserts are still available)

ANNUAL SOUVENIR AND CONVENTION WITH SOME OF THE GREATEST PEOPLE YOU CAN HOPE TO MEET!!!

<<<< JOIN TODAY >>>>