

---

Heart of America  
Carnival Glass Association, INC.

---

J U N E 1986

# Father's Day



First Class Mail  
U. S. Postage  
PAID  
Kansas City, Mo.  
Permit No. 4352

Send all checks to:  
BERNICE BELL, TREASURER

All material for the bulletin  
send to Bulletin Secretary:

Michael J. Basey  
4315 Adams  
Kansas City, Kansas 66103





Heart of America  
Carnival Glass  
Association Inc.

---

Membership June to May  
\$20.00 Per Couple or Single

---

Published the 15th  
of each month

PRESIDENT

Robert Grissom  
7900 Crescent  
Raytown, Mo. 64138  
(816) 356-5320

VICE-PRESIDENT

Nadine Paulsen  
700 Purdom  
Olathe, Ks. 66061  
(913) 782-1313

TREASURER

Bernice Bell  
13620 E. 41st. St.  
Independence, Mo. 64055

SECRETARY

Glen Fortney  
P. O. Box 303  
Buckner, Mo. 64016

BULLETIN SECRETARY

Michael J. Basey  
4315 Adams  
Kansas City, Ks. 66103

All monetary figures quoted are in U.S. dollars.  
Please make checks for dues payable to H.O.A.C.G.A.  
and send them to the Treasurer, as listed above.

\*\* DO NOT SEND TO THE BULLETIN SECRETARY\*\*

MEET YOUR NEW BULLETIN SECRETARY

For those of you who don't know me, my name is Michael Basey, a past Vice-President of HOACGA, and now I will be serving as your Bulletin Secretary for the next couple of years.

Just wanted to take this opportunity to thank Marge Miller for the fine job she did as Bulletin Secretary during the last year. Marge, we really appreciate your efforts and want to thank you for a job well done! Also, thanks again Marge, for all the help during the transition.

I started collecting Carnival Glass about eight years ago, specializing in Northwood Baskets and Beaded Cable rosebowl, but have recently become interested in Dragon and Lotus, Ripple vases, and good dark green Fenton Carnival.

As I am just starting out on this "venture", I ask from everyone, your understanding and patience during this transition, and also ask for any articles or newsworthy items any of you might like to put into the Bulletin. I am planning some changes for the Bulletin, as you will see in later issues. Some of these changes are in this issue, such as different types of articles. There will be more later.

I really look forward to hearing from many of you in the future!!!

HAPPY CARNIVAL HUNTING !!!

Michael J. Basey  
Bulletin Secretary, H.O.A.C.G.A.  
4315 Adams  
Kansas City, Kansas 66103  
1-913-432-2460

ALL HOACGA MEMBERS, PLEASE TAKE NOTICE OF THE FOLLOWING INFORMATION:

---

Effective immediately, please send all monies, for dues, renewals, new memberships, notebooks and fillers, DIRECTLY to the HOACGA Treasurer, Bernice Bell; whose address you will find on the inside cover of the Bulletin. Do not send monies to the Secretary.

All monies for Souvenirs is to be sent to John Britt, Souvenir Chairman.

All material for the Bulletin is to be send to the new Bulletin Secretary, Michael J. Basey, 4315 Adams, Kansas City, Kansas 66103.

WE GREATLY APPRECIATE YOUR COOPERATION IN THIS MATTER!

Please send all Convention news, dates, and information to the Bulletin Secretary, to the address listed above.



MINUTES OF THE HOACGA MONTHLY MEETING IN MAY

The May 25, 1986 monthly meeting of the Heart of America Carnival Glass Association was called to order by Vice-President Nadine Paulsen at 2:00 P.M., at the Raytown City Hall, Raytown, Missouri. Vice-President Nadine Paulsen presided at the meeting due to the absence of our President, Robert Grissom.

Secretary Glen Fortney read the minutes of the Annual meeting in April and the minutes were approved as read.

No Treasurers' Report was available.

Vice-President Paulsen welcomed all members present for attending the meeting and thanked those who made our Convention such a success. We especially thank Eleanor and Charlie Mochel for the fine job they did this year.

With no further business, the meeting was adjourned for refreshments.

After refreshments, Mr. Charles Mochel gave a fine presentation on Millersburg Rose Column Vases. The vases were in marigold, green, and amethyst. Thanks for the fine presentation, Charlie.

The next meeting will be at 2:00 P.M., June 22, 1986, at the Raytown City Hall.....EVERYONE PLAN TO ATTEND!!!!

Glen Fortney,  
Secretary,  
H.O.A.C.G.A.

The following puzzle was submitted by Roland Kuhn for your enjoyment. There will be a puzzle every month, with the answers in the following months' Bulletin, along with a new puzzle.

FIND THE  
CARNIVAL

|   |   |   |   |   |   |   |   |   |   |   |   |
|---|---|---|---|---|---|---|---|---|---|---|---|
| B | U | T | T | E | R | F | L | Y | H | N | C |
| R | L | A | I | L | H | A | D | L | A | O | H |
| O | H | A | G | R | A | P | E | L | T | I | A |
| U | E | O | C | I | L | M | A | O | T | H | T |
| N | R | F | W | K | S | T | E | H | I | S | E |
| D | A | I | S | Y | B | N | L | A | E | A | L |
| U | N | H | T | A | O | E | T | U | L | F | A |
| P | L | R | O | B | I | N | R | O | C | A | I |
| S | G | R | H | E | R | O | N | R | N | L | N |
| A | F | S | G | R | A | P | K | N | Y | R | E |
| L | I | A | N | B | O | H | L | A | E | M | S |
| W | N | N | O | I | T | C | E | F | R | E | P |

- |               |                |
|---------------|----------------|
| 1. ACORN      | 11. FAN        |
| 2. BLACKBERRY | 12. GRAPE      |
| 3. BUTTERFLY  | 13. HATTIE     |
| 4. CHATELAINE | 14. HERON      |
| 5. DAHLIA     | 15. HOLLY      |
| 6. DAISY      | 16. HOBNAIL    |
| 7. ELK        | 17. PERFECTION |
| 8. FLUTE      | 18. ROBIN      |
| 9. FERN       | 19. ROUND UP   |
| 10. FASHION   | 20. WISHBONE   |

GLASS EGGS?

While at a flea market awhile back, Don and I found a Carnival Glass Egg. I looked through all our books and can't find anything about it. Do you think this was made at the end of the day when the glass maker was experimenting?

The colors in it are absolutely beautiful. It reminds you of a nesting egg but I don't think being so delicate, it could have been used for that. I'd appreciate any information on this you could give us.

Sincerely,

Don and Kay Kemp



## CONVENTION NEWS

The following is an excerpt from the Air Capital Carnival Glass newsletter, submitted by Donald Kime, Secretary.

For those who did not attend the Heart of America Convention, you missed out on a real nice Convention. This year they had several different forms of activities to keep everyone busy and still enough free time to visit all the rooms and attend all of the activities they had available. There were 59 room displays this year and probably the most creative and best put together that I have seen at any Convention so far. Perhaps some of the incentive was the nice little spitoon that was given to everyone who set up a display. It certainly was a nice gift for the effort placed in putting together the displays. Some of the programs that were presented were as follows: An ice cream and cake meeting where some of the old timers got up and gave a little speech on how they began their collecting, a program given by John Resnick on advertising pieces and a program given by John Muehlbauer. These folks all brought glass all the way from California and had very impressive programs. I think probably we all learned a little from these programs. If some of the folks knew about some of the information it was a good refresher course for everyone. Our very own Wilma Elder put on a talk at the old timers portion and she did a super job of presenting it. We may just call on her to have more programs at our meetings.

Some of the programs mentioned in the above article are included in this Bulletin.

### HOACGA Convention Auctin prices, courtesy of Jim & Ione Jander

|     |                                   |       |
|-----|-----------------------------------|-------|
| LGO | Rose Show Plate                   | 2,100 |
| A   | Millersburg Zig-Zag bowl          | 190   |
| IB  | Grape Arbor water set             | 1,450 |
| AO  | Three Fruits plate                | 1,300 |
| B   | God and Home water set            | 1,850 |
| M   | Hobstar and Feather punch set     | 1,550 |
| AO  | Grape & Cable pie crust edge bowl | 900   |
| R   | Plaid bowl                        | 1,550 |
| M   | Butterfly & Berry hatpin holder   | 1,150 |
| IB  | Hearts and Flowers compote        | 500   |
| R   | Persian Medallion bowl            | 1,000 |
| R   | Dragon and Lotus bowl             | 1,000 |

|   |                                     |       |
|---|-------------------------------------|-------|
| P | Twig vase                           | 240   |
| P | Butterfly and Tulip square bowl     | 1,500 |
| W | Three Fruits bowl                   | 450   |
| R | Peacock and Urn compote             | 1,000 |
| W | Peacock and Urn ice cream bowl      | 530   |
| B | Stippled Peacock on the Fence plate | 725   |

\*\*\*\*\*

The following were the Judges for the Room Displays at the Heart of America Convention, and also a listing of the Room Display winners, in their appropriate categories:

### JUDGES

Marie Mc Gee  
Harold Fortney  
Emma Tilton  
Mike Basey  
John Resnik

### SAME PATTERN

John Muehlbauer  
Chris Reynolds

### SAME MAKER

Marie Mc Gee  
Jerry Stoner

### RARITY

John and Lucile Britt  
Elvis Randall

### SAME COLOR

Jane Brown  
Robert & Rosa  
Grissom

### THEME DESIGN

George & Mavis Loescher  
Roland Kuhn & Donald Kime

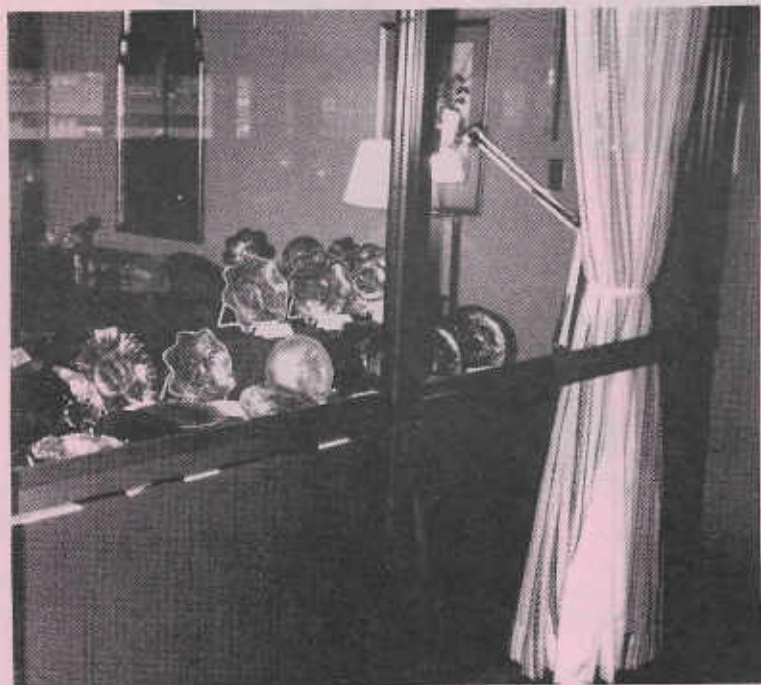


Some of our friends at the Convention: Vice-President Nadine Paulsen and husband Barney, Bulletin Secretary Marge Miller and husband Cooley, above. Below is Jerry & Jacqueline Stoner



More friends at the Convention: Beverly Osborn, Helen James, and Marie Mc Gee, above. Below, Joan Westerfeld and party.

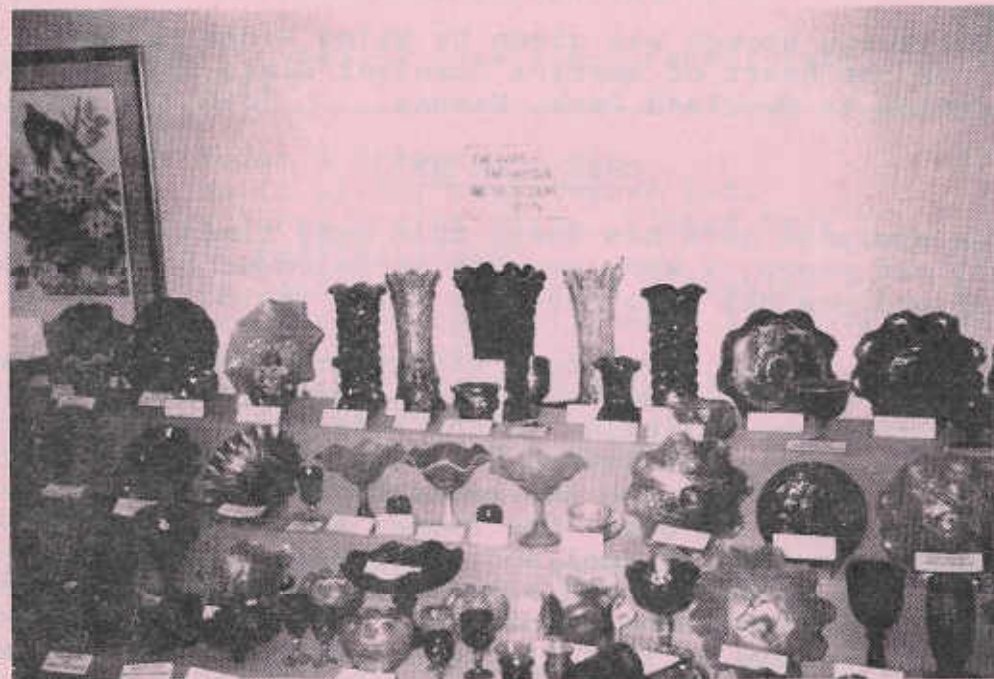




SAME PATTERN  
Chris Reynolds



SAME MAKER  
Marie Mc Gee



RARITIES - John & Lucile Britt, above  
SAME COLOR - Robert & Rosa Grissom, below



The following speech was given by Wilma Elder on April 25, 1986, at the Heart of America Carnival Glass Association Convention in Overland Park, Kansas

#### DAYS GONE BY

I know everyone here has heard this many times, "This is a real old piece, I know because it belonged to my Grandmother and she has been dead for fifty years."

This little Dahlia berry bowl was my Grandmothers'. She gave it to me when I was a child in the late twenties. About every Sunday, we all piled in the Model T and off to Grandmas' for dinner. This was always a boring time for a four-year old and listening to the adults talk about the relatives who were not there that day. One summer Sunday at Grandmas' Grandpa had a load of real soft sand hauled in. It was fun to play in. I went in and asked Grandma if she had something I could make sand molds with. She reached up in the cupboard and gave me this little Dahlia bowl and it was perfect. I played with it until time to return home. I wiped it out good and took it back to her. Grandma said take it home. I was really happy.

This old black glass, as we called it, was always in our home. When we had lots of people there or threshers, I would always ask my mother if I could drink out of the old black glass. She would say yes but don't break it, my Aunt Em, gave it to me. I now have ten old black glasses and a pitcher. We call them Orange Tree Orchard. The old black glass from home is easy to identify; it has two bubbles on the edge giving it an identity of its own. We also had this acorn candy dish, which was a Christmas present to my mother from her mother-in-law, the first Christmas she married my dad, 1919.

In about 1950, we traveled to Woodward, Oklahoma; to visit my cousin there. I knew one of the girls there got the large Dahlia bowl Grandma had. Their home had been destroyed in the tornado. The bowl went with it. Another cousin there gave me this Garden Path bowl that had survived the

tornado in Woodward and was salvaged as they cleaned up the town. I still didn't give any of the pieces really serious thought. It was nice of her to give this to me. I took it and planted a flower in it.

Time went on. In about 1963, Nadine Woody, John Woody's mother who was and still is the Librarian in Douglass, set up a display of Carnival Glass and asked other people in town to bring pieces they might have in their home. She had a lot of Carnival Glass brought in. I went up to see it and much to my surprise, I had some Carnival. She told us how people were collecting this. I went home, dumped the flower out of my bowl. I took the bowl, the old black glass, and acorn candy dish and my little dahlia up to her. She told me they had names and it felt real good that I had some Carnival Glass.

Sometime after this, we went with a couple of friends to Beaumont, Kansas to eat at the old hotel there. After we ate, we walked across to an antique shop a lady had in her home. She had three pieces of Carnival. I asked about buying it. She wanted to trade it if I had something she wanted. We had an old ice cream table and four chairs we had inherited. I told her I would trade her that for the three pieces of Carnival. She agreed. They were a Vintage Rose bowl, a Lousia Rose bowl, and a Ski Star bowl. In the conversation I would out she and my mother had gone to school together east of Rock, Kansas. The next week, I loaded up the table and chairs, two kids, and my mother and dad in our station wagon. We got a free tank of gas with a tune-up. I was in good shape and headed east to become a Carnival Glass collector. I got the three pieces and all was happy. I started home with the pieces and had a real sick feeling. Was this really Carnival Glass? I took them up to Nadine. She named them and I really felt good. I was on my way to becoming a Carnival Glass Collector.

My husband collects antique tractors and threshers. We went to visit some friends who were in the antique tractor business. She had some Carnival Glass. I told her I was starting to collect Carnival Glass. She said that was good because when you go to the Antique Tractor shows. lots of times they have a flea market there and you can pick up a piece or two and since your husband is spending money on his hobby, he



can't fuss at you for buying Carnival Glass. That sounded good to me.

John Woody had some real nice sales in Douglas and we were able to get some pieces. Really a big percent of our good Carnival Glass came from John Woody Sales. We feel good buying from John and Laveta.

We have two children, Dick and Julie. Dick likes Carnival Glass. He and his wife, Diane; are buying some. Julie likes our Carnival Glass but doesn't want to clutter up her home with. The three of us were discussing the pieces we have. I told them I hoped we could pass it on to them. Dick got excited. He wanted our Whiskey Set and on and on. Julie said she only wanted one piece, the most valuable piece of all. I asked her what she considered the most valuable piece that we have. She replied, the little dahlia bowl your Grandmother gave to you to play in the sand with. I think she is right. This is my most valuable piece of Carnival Glass.

\*\*\*\*\*

LETTERS FROM OUR MEMBERS

May I say how much I have enjoyed my 1985 Souvenir Bell. It was delightful and I have had many nice comments about it.

May I also compliment you and the Association for the very attractive and professional picture of the 1986 and 1985 Souvenir Bells.

It was beautifully done!!!

Yours sincerely,

Alan Ballash  
Edmonton, Alberta, Canada

CAN ANYONE PLEASE HELP?

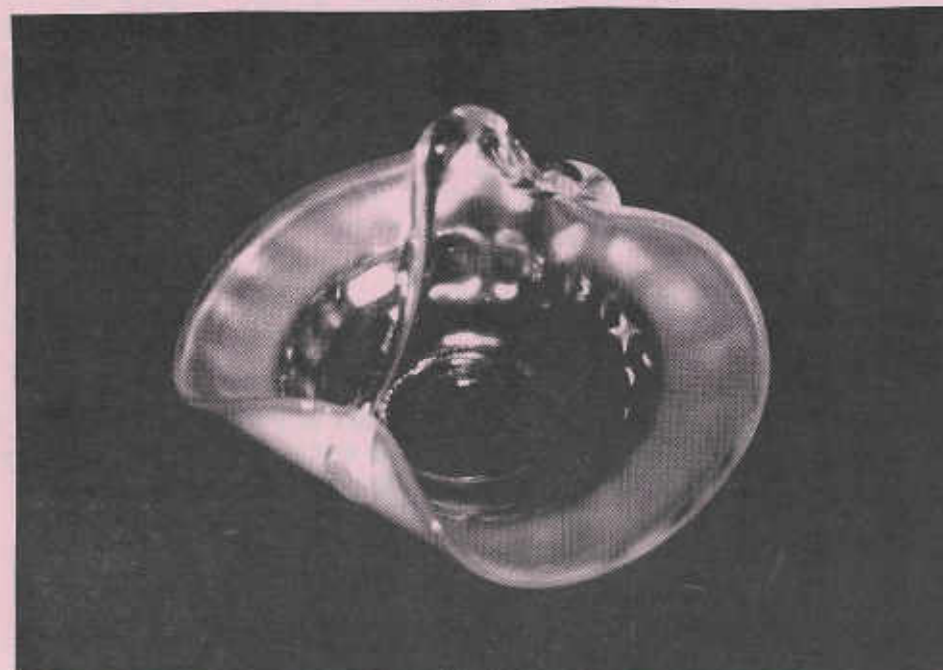
Dear Mr. Basey:

I'm enclosing a picture of a Peach Opalescent basket I recently purchased. It has a clear glass handle (applied). It measures 4 3/4" in height and is 6" wide. I am curious as to whether there have been any others like this, as I've been through all our books and can't seem to locate anything about it, which is why I'm turning to you. If possible, I'd like to know how scarce it is and about what it's value would be. There are so many knowledgeable people in the Carnival field, that I hoped by sending you this photo, I'd find out all about it. THANKS!!!

P.S. We simply love our H.O.A.C.G.A. Newsletter. We look forward to it every month. It is the best publication we get!!!!

Yours truly,

Lawrence & Therese Ashley  
Golden Bell Antiques  
Route #3  
Potsdam, New York 13676  
(315) 265-2423



The Following is a presentation given by John D Resnik at the H.O.A.C.G.A. Convention, 1986:

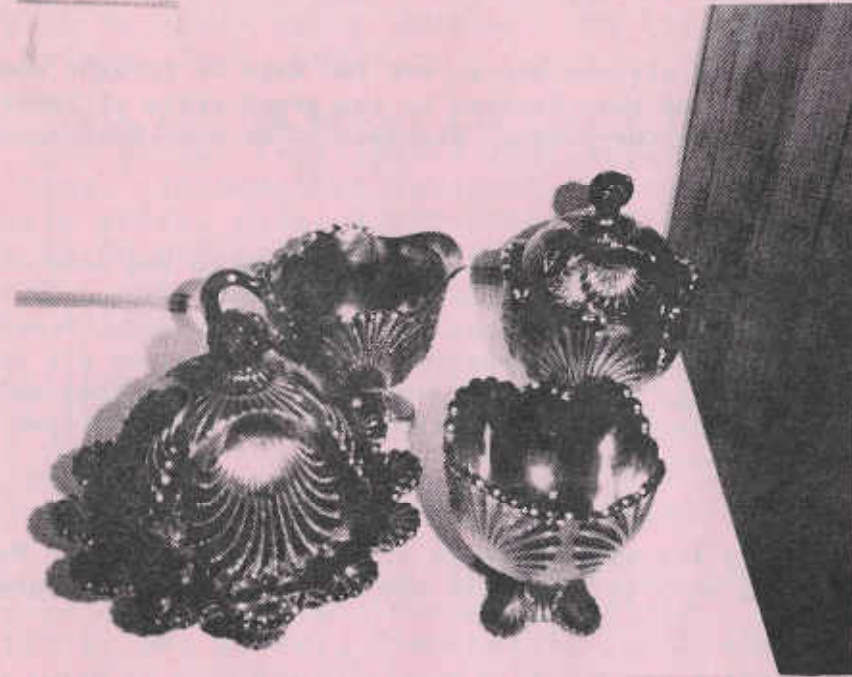
CARNIVAL--ADVERTISING

| <u>PATTERN</u>   | <u>BOWL</u> | <u>PLATE</u> | <u>MAKER</u> | <u>HAND GRIP</u> |
|--|-------------|--------------|--------------|------------------|
| Ballard Merced, Cal  | X           | X            | N            |                  |
| The Great House of Isaac Benesch & Sons<br>Pottsville, Pa. Wilkes- Barre, Pa.                    |             |              |              |                  |
| Baltimore, Md. Annapolis, Md.  | X           |              | F            |                  |
| Braziers Candies   | X           | X            | F            | X                |
| We Use Broecker's Flour  | X           | X            | N            |                  |
| Campbell & Beesley Spring Opening 1911   | X           |              | M            | X                |
| Compliments of The Central Shoe Store<br>Collinsville and St. Louis Ave's<br>East St. Louis, Ill | X           | X            | F            | X                |
| Davidson's Society Chocolates  | X           | X            | N            | X                |
| Greetings Dorsey and Funkenstein Fine Furniture  | X           | X            | F            | X                |
| Dreibus Parfait Sweets   | X           | X            | N            | X                |
| E.A. Hudson Furniture Co. 711--Travis St.  | X           | X            | N            | X                |
| Eagle Furniture Co. 282-284 South Main St.   | X           | X            | N            | X                |
| Exchange Bank Glendive, Mont.  | X           | X            | F            | X                |
| Fern Brand Chocolates  | X           | X            | N            | X                |
| Geo, W Getts, Pianos Grand Forks, N. Dak.  | X           | X            | F            | X                |
| Gevurtz Bros. Furniture & Clothing<br>Union Ave & East Burnside St.                              | X           | X            | F            | X                |
| Greengard Furniture  | X           | X            | M            |                  |
| Jockey Club  | X           | X            | N            | X                |
| Norris N. Smith Real Estate and Insurance Rome, Ga.  | X           | X            | F            | X                |
| Ogden Furniture and Carpet Co. Ogden, Utah   | X           | X            | F            | X                |
| Season's Greetings Eat Paradise Sodas  |             | X            | F            |                  |
| Rood's Chocolates Pueblo   |             | X            | F            |                  |
| Sterling Furniture Co. 1049 Market St.<br>San Francisco, Cal                                     | X           | X            | F            | X                |
| Utah Liquor Co. Lewis 66 Rye Phones 478<br>223 S Main St.  | X           | X            | F            | X                |
| Fenton's Daisy, Plain  | X           | X            | F            |                  |

John gave us permission to use this article in our newsletter. It gives us the pattern, either plate or bowl, maker and if made in a hand grip shape. Thanks for taking the time to research all of this for us John.

\*\*\*\*\*

RARIETIES and SELDOM SEEN  
By Ivan & Betty Mitchell



PURPLE FOUR PIECE (6 pieces Counting lids)  
BEADED SHELL TABLE SET--Dugan

I have seen some 2 or 3 of these sets and every one I have viewed has been a little short on iridescence, however this set has more than most.

I have seen very few of these sets in this color and I would class it as being very scarce and seldom seen.

One piece of this pattern is extremely rare, (the White Beaded Shell Mug,) sold recently for \$1,250.00. Our table set will not compare to this in any way or form.

This is a very desirable set and will sell in the ball park of \$600.00 to \$700.00 and will take a lot of driving and looking, unless you are lucky enough to find it at auction.

AIR CAPITAL CARNIVAL GLASS CLUB

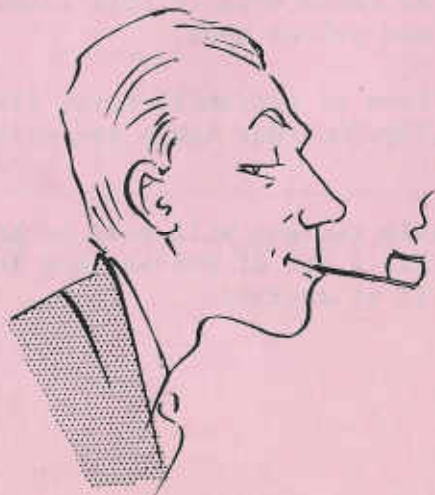
May 10 and 11th finally arrived and it was two days we thought would never get here. You see we had been invited to the great state of Texas where Alnora and Dan Sell were our hosts. Eighteen of us from Kansas made the trip to Booker, Texas.

We were treated royal while there and we were taken to see some of the finest antique cars, tractors and much more. We were treated to a super barbeque supper with all the trimmings on Saturday evening. Sunday morning we were again taken to see more beautiful cars and tractors all in working order. We all saw things we had never seen nor even knew they made in the way of cars, trucks, tractors, steam engines and many other types of tools etc. We got to see some nice Carnival Glass to.

It was a special trip for us and one we will remember forever. We has such a good turn out and want to thank all who made the effort to make the trip.

Our next meeting will be in Douglass, Kansas at the home of Wilma and Francis Elder, June 8, 1986

Donald E. Kime  
Secretary



LETTER OF THANKS FROM ROLAND KUHN & DONALD KIME

I would like to thank the Convention Committee and especially the judges for selecting our display as one of the "first place" winners in the category of "Theme and Artistic Ability".

We were pleased to see so many beautiful displays this year at the Convention. I think it truly adds to the Convention for so many to participate.

Donald Kime  
Roland Kuhn

\* \* \* \* \*

This is a picture of one of the First Place Winners in Theme Design Roland Kuhn and Donald Kime, Haysville, Ks.

Their theme was "The Goose That Layed the Golden Egg" The "Golden Egg" was a super rare (N) Vaseline Basket.



The following is a presentation given by Mr. John Muehlbauer at the H.O.A.C.G.A. Convention, 1986:

### COMMENTS ON COLOR

#### BASE GLASS COLORS

MARIGOLD - Generally accepted as being a sprayed-on color over clear glass; sometimes impossible to tell because of light refraction; look through the edge of the color.

AMBER - In true amber, the base glass itself is colored; as far as I'm concerned, it was all made by Imperial; the Northwood pieces I've seen, that some think of as amber, are tricks of light refraction.

PURPLE/AMETHYST - I combine the two because I feel that manufacturers did not intend to make these two color variations as distinct, separate colors; when it looks like a grape lollipop, it's purple, when it leans towards the rust, or amber, or brownish side of purple, it's amethyst: who cares?

LAVENDER - The dictionary describes it a "pale purple;" I list it right after purple as a statement that it's just another color variation of the same theme; Harry Northwood or one of the Fenton brothers never said, "dump the purple, we're going to make a run of lavender", it's a gorgeous color, however.

FIERY AMETHYST - Give me a break!

SMOKY - Again, an exclusive Imperial planned color; the rare Northwood pieces that I've seen in this color, and some of them couldn't be called anything else but smoky, are the result of poor quality control, and lean towards the lavender side, they bring big money however.

AQUA - Would have been a pastel, but it was always made at the end of a shift and Harry, Frank and John didn't want to pay overtime for the white edge.

RED - The remark attributed to Mrs. Hartung describes it best, "If you're not sure it's red, it isn't."

CLAMBROTH - Give me a break number two! If you're a seller, it's clambroth; if you a buyer (or objective) it's poor marigold.

BLUE - How many variations there are; I'll cover most of the odd-balls in the PASTEL section; not much to say about cobalt blue; John hated it, Harry liked purple better, Frank didn't.

GREEN - Why didn't Northwood make more?

#### PASTELS

Yum! Who wouldn't like to have a warehouse full of this stuff?

ICE BLUE/ICE GREEN/WHITE - The classics; when you hear the term pastel carnival, these three come to mind first; obviously the colors are more popular now (as in expensive) than when originally made, there's so little of it, in comparison to the vivid colors.

AQUA-OPAL - Number one on my hit parade; has variations from ice-green or vaseline opal to ice-blue opal; with few exceptions, I feel they're all reflections of lax quality control on the same theme; I don't get too excited when someone calls me and tells me of a fantastically rare piece of ice-blue opal; I pay attention, however; when the call is about ice-green opal, there's some knockouts around.

PASTEL MARIGOLD - Bit of a toughie; most of the pieces that I've seen that I would describe as pastel marigold, have a decidedly yellowish cast; and soft iridescence, oft times stretchy; another variation on a pale marigold, has soft pine and blue iridescence, either way, it's rare, usually Northwood, and fantastically beautiful.

VASELINE - Generally accepted definition is that it's ice-green that flows under a black light; true vaseline has a noticeable yellow-green mix (chartreuse).

BLUE VARIATIONS - Ice-blue needs no further comment; teal blue and celeste blue - even sitting here looking at a piece of each, it's tough to describe differently; celeste is like a

deep ice-blue, usually with a stretch finish, usually Fenton or Dugan; teal has either a grayish or a very slight greenish cast to it in comparison, I suspect because of a combination of the base glass color and the iridescence; the term teal blue is usually used in conjunction with a Northwood piece.

#### OTHERS

If it's not a vivid color or a pastel, what is it? Right! It's other.

PEACH - Why this name, I'll never understand: to me it's marigold opalescent, it's finally achieved a bit of notoriety, but it'll never be AO. Fenton peaches are so scarce, I've heard it said that Don Moore thinks they were experimental.

MMG - Marigold-on-Milkglass, or as Frank Fenton notes, it should be Marigold-on-Moonstone; whatever, it usually is on a cloudy, milky base, if it's Fenton, on a more solid, true milkglass base if it's Westmoreland, highly sought after either way, especially the Fenton pieces.

BLUE MILKGLASS - This describes the brother (blue for boys, peach for girls) companion to MMG, mostly a Westmoreland product (Daisy Wreath and Carolina Dogwood) and rarely in Fenton (Vintage, Lotus and Grape, Autumn Acorn, Peacock and Urn); recently this Fenton color has been identified as Persian Blue and it's selling at big bucks.

MARIGOLD ON CUSTARD - Not to be confused at all with MMG, the base is a true custard glass; one of my five most favorite pieces is a Rose Show plate in this fantastic color variation; the other piece that comes to mind is the almost as rare Prayer Rug Bon-Bon.

#### RARE COLORS BY MANUFACTURER/PATTERN

I'm sure all of you reading this could add to this section from your knowledge. Here's just a few of my own personal observations. This subject is endless.

BLUE IMPERIAL - I've only heard of Blue Imperial pieces. I've never seen any that I can remember.

GREEN IMPERIAL - Very few deep Green Imperial pieces cross my mind; Helios yes, dark green, no; I have a dark green Imperial Grape water carafe that was Bill Carroll's and the Homestead plates are a good rich green, what else?

WHITE/GREEN EMBROIDERED MUMS - I know there's at least one white plate, but I know of no white eight-ruffled bowls of green anything in E. Mums (Hearts and Flowers yes, E. Mums, no).

AQUA OPAL DANDELION MUGS - How come one of the rarest colors, is the most common color by far of Dandelion mugs?

#### IRIDESCENCE

Spell it with one "R" and two "C's". It's what Carnival is all about.

EVENESS - When the iridescence covers the predominant surface of the piece evenly; there isn't a lack of the same color or iridescence from one quadrant to another on a plate or bowl, of one side to another on a punch bowl; inside to outside variation is okay, like concentric or target rings; the inside of a punch bowl, water pitcher, tumbler or vase is no big deal.

ELECTRIC BLUE - Jumps out at you; kinda like red in that if you have to ask if it's electric blue iridescence, it isn't; can be on both blue and purple base glass.

TIFFANY IRIDESCENCE - That wonderful combination bright gold, mixed abundantly with blues, greens and some purples; shows up a lot on Dugan pieces like Double Stemmed Rose and Dogwood Sprays; it's very hard to keep from touching, it looks like a piece of homemade taffy tastes.

SATIN FINISH - Soft as opposed to bright; usually associated with Millersburg although lots of Harry's pieces have it.

by John & Lucile Britt

BUTTERSCOTH/PASTEL - In vogue as a way of describing Aqua-Opal; Butterscotch is reserved for the AO pieces with a significant marigold overlay. pastel refers to the lack of marigold and soft combination of pink and blue.

IMPERIALS PURPLE - I couldn't have a section on iridescence without mentioning this; if you haven't seen one of Imperials fantastic purple you haven't seen purple yet; makes you want to bite the grapes.

SILVERY - Lots of times mixed up with a metallic looking gold color; most of Imperial's Helios has it; most red has it (that's why I don't have many read pieces); not generally popular; Bill Carroll, God love him, was one of the few collectors I've known who liked it.

\*\*\*\*\*

President Grissom received the following letter from Becky Huff, Sales Representative of the Holiday Inn, Lenexa:

Dear Mr. Grissom:

It was a real pleasure for the Lenexa Holiday Inn to have you hold your Carnival Glass Convention here. The hotel was so pretty with the glass displays in so many rooms.

Your group was really great to work with, and many of the staff said they really enjoyed having you here.

Hope you will think of us again next year,

Sincerely,

Becky Huff,  
Sales Representative  
Holiday Inn, Kansas City-Lenexa



CUT COSMOS - - A VERY FINE TUMBLER

Not much information has ever been found about the "Cut-Cosmos" tumbler. One of the things that we are sure of is that these tumblers are very hard to find. They have been reported only in the marigold color and no water pitcher in this pattern has ever been recorded. The pattern is of the intaglio type with the cosmos flowers pressed sharply into the tumbler rather than being raised from the surface. The background consists of six arched panels and the bottom of the base contains a twenty-five rayed star figure. I have never been quite sure as to the maker of this pattern. Some think that it was produced by Millersburg. They could be right, but I have not found any information that would prove that to be correct. Regardless of who made it, this pretty marigold tumbler is considered very desirable and is highly sought after by tumbler collectors everywhere. This is #101 in this Carnival Glass tumbler series. Next month, we will feature the very popular "Field Flower" tumbler.



NORTHWOOD'S NEAR-CUT TUMBLER IN PURPLE

This extremely rare "Northwood's Near-Cut" tumbler in purple was recently discovered in the state of Ohio. While a marigold example of this pattern is considered very rare, this is the only "Northwood's Near-Cut" tumbler that has ever been reported in purple. In addition to being in purple color, this particular tumbler is unusual in that it contains the letter "T" alongside the underlined "N" in a circle. Both letters appear on the inside bottom of the base. While I have seen letters such as "H" or "E" used along with the "N" in non-iridized Northwood painted tumblers, this is the first piece I have ever seen in Carnival Glass that contained an additional letter that was used with the "N". It is also interesting to us that this tumbler was originally purchased, many years ago; not far from the old Northwood factory site in Wheeling, West Virginia. I consider this tumbler as being one of the most rare of the Carnival Glass tumblers.



The "Four Flowers" rose bowl is very unusual in this Dugan-Diamond pattern. This exact rose bowl is shown in color in the Rose Bowl section of the H.O.A.C.G.A. notebook. It is #98. To the best of my knowledge, this is the only rose bowl that has ever been reported in this pattern. It was found by Tom and Sharon Mordini of Freeport, Illinois. The reverse pattern used in this case is called "Soda Gold". The "Soda Gold" pattern was also used with another Dugan-Diamond rose bowl pattern called "Garden Path Variet". The "Garden Path Variet" rose bowl is also shown in the notebook rose bowl section of the H.O.A.C.G.A. notebook.

I Might add that the "Four Flowers" pattern is sometimes called "Pods and Posies", but Mrs. Hartung used the name "Four Flowers" for this pattern, so we are inclined to go along with that name.

JOHN & LUCILE BRITT

Pictorial Pattern Parade

FROM THE PRESIDENT

At the H.O.A.C.G.A. Convention in April, talks about their early collecting experiences were given by some long-time Carnival Collectors. One of these early collectors, Emma Tilton; said that during her early collecting, chips, flakes, dings, chigger bites, nicks, etc. were not considered as being detrimental. She stated that everyone considered that Carnival Glass was Old Glass, and you could expect some defects due to its' age and having been used and handled so much. Emma further commented that she still doesn't understand why collectors are being so picky about these defects.

I believe that Emma has a valid point. Why are we so concerned about such minor defects? We must realize this glass has been around on someone's shelf, table, dresser, cupboard, or cabinet for about 70 years now. It was not purchased as expensive Gift Ware, i.e., Cut Glass or Art Glass, to be palced and exhibited in the China Cabinet, as we do today.

Obviously, some pieces were intended to be decorative. It sure would have been difficult to eat biscuits and gravy out of a Rose Show or Poppy Show plate. But most of the Carnival pieces were functional items for the house and therefore were constantly being subjected to damage.

After you watch some collectors try to find every minute flaw, even to the defects at the time of manufacture, you would get the impression that they consider it a disgrace to own a piece of Carnival with any defect.

Maybe we are becoming so picky about the defects in the glass that we are starting to be our own worst enemy of our hobby.

I am sure that other collectors have an opinion, pro or con, about the chips, cracks, flakes, dings manufacturing defects, chigger bites, nicks, etc. so, send your opinion to the Bulletin Secretary. Let's find out what others think about this subject.

Robert Grissom, President  
Heart of America Carnival Glass Assoc.

TAMPA BAY CARNIVAL GLASS CLUB

The Tampa Bay Carnival Glass Club met May 18th at the home of Maria and Nick Vafiadis in Tarpon Springs. Following tradition a delicious buffet was enjoyed prior to the meeting. Shirley Pfaff Conyers read the minutes of the last meeting and Dorothy Smith gave the treasurer's report. The Sixth Annual Lose Your Heart To Carnival Glass Jamboree will be held February 12, 13 and 14, 1987 at the newly owned and completely renovated Huntly Inn in Lakeland.

During the show and tell program Alan Winslow displayed a unique Dragon and Lotus bowl. Art Smith showed a few of the pieces he and Dorothy recently purchased from a Memphis, TN collection which included 125 pieces of old carnival. Among the pieces the Smiths brought along were an Amy, 10½" Wishbone and Spades Chop plate, a White Beaded Cable Rose Bowl, a Green Rosette domed bowl, a White Double Stem Rose bowl, a Marigold Garden Path Vt bowl, a Blue N Peach tumbler, a Smoke Soda Gold Tumbler and a Green N Singing Birds Tumbler. Art also mentioned the collection included a N Grape and Cable Punch Bowl in P, a Blue Cherry and Blossoms Water Set, a Dugan Wreath Cherry Creamer and Sugar in P, along with an excellent assortment of plates and bowls.

The next meeting will be a picnic September 21 at Forth Howard Park on the Gulf of Mexico.

Arthur Smith

\*\*\*\*\*

New England Carnival Glass Club Fourth Annual Convention  
and Sixth Birthday Celebration

For a Fun-tastic weekend, it's the New England Carnival Glass Convention and Birthday celebration September 12, 13 and 14 at the Quality Inn, Chicopee, Massachusetts.

We are very excited to have as our banquet speaker Helen Greguire, noted authority of Carnival lighting. Rare and unusual table lamps, shades and hanging fixtures will be

continued....



displayed and discussed. Autographed copies of her book "Carnival in Lights" will be available.

The can't-be-beat motel package plan includes two nights' lodging, Saturday and Sunday full breakfast and Saturday night banquet. \$71.26 per person double, \$107.19 per person single. All taxes and gratuities. There are a limited number of rooms guaranteed at this rate, on a first-come first-serve basis. Cut-off date is August 22. Rooms will be at a premium due to the Brimfield Fleamarkets and the Eastern States Fair. Book early directly with the motel. Quality Inn, 296 Burnett Rd., Chicopee, Mass. 01020. Telephone 1-413-592-7751. Be sure to mention the New England Carnival Glass Club, and your choice of menu.

Show and sale Saturday 10:00 A.M. to 4:00 P.M. Guests are welcome to bring glass to sell. Tables are \$15.00 prepaid. Tablecloths included.

Tom Burns will be kicking off the Convention with an outstanding auction, Friday night. Time to be announced.

As an added bonus, the Brimfield Flea markets will be in "full swing". A never ending treasure hunt. There is also a heavy concentration of antique shops and tourist attractions in the immediate area.

"Happy Birthday Six-Year Old" Come party with your New England friends.

For more information:

Eva Backer  
12 Sherwood Rd.  
West Hartford, Connecticut 06117  
PHONE: 1-203-233-3761



#### NEWS FROM THE TEXAS CARNIVAL GLASS CLUB

Members of the Texas Carnival Glass Club started gathering at the Stratford House Inn in New Braunfels, Texas, on Friday, May 16. After an afternoon of visiting, 30 members went to a German restaurant for dinner.

On Saturday morning, the Club met at the New Braunfels Country Club where Mike and Shirley McCoy had arranged for a room for the business meeting, which was presided over by President Arlen Merritt.

A report of the HOACGA Convention was given with everyone reporting a most enjoyable time. Eighteen members from the Texas Club attended.

Doyle Green was appointed Program Chairman to arrange programs for the upcoming meetings.

The Show and Tell segment of the meeting was on small plates. Several interesting examples were shown and discussed.

After the business meeting adjourned, a delicious buffet lunch was enjoyed, followed by an Open House in the home of Mike and Shirley McCoy. Their collection of Carnival Glass was displayed in a setting of beautiful antique furniture. A cake, decorated in the Nesting Swan motif, was served with coffee and cold drinks.

The next meeting will be held in Waco, Texas on August 17th.

Jane Brown, Secretary

#### IN MEMORY OF RALPH PASTORELLI

The Empire State Carnival Club mourns the death of one of its most dedicated members, Ralph Pastorelli of Utica, New York, who passed away on May 10, 1986 at the young age of 48. Ralph was also a member of HOACGA and always awaited his Bulletin. To his wife Diane and his family, our deepest sympathies.

Dale Burnett, President;  
Empire State Carnival Club

## SOUTHERN CALIFORNIA CARNIVAL CLUB NEWS

We convened for buffet lunch at noon on May 18 at the Villa Sweden, Huntington Beach, California.

President Charles Adams then opened the business meeting. Vice-President Camille Lemieux conducted drawings for door and raffle prizes.

Election of officers for the coming year took place by ballot. Club members voted to elect Valerie Light, President, Don Clark, Vice-President, and serving another year as Secretary-Treasurer is Erma Shaputis. Best Wishes to the new officers were extended.

Thanks to Charles for his faithful service to the Club over the past two years and to Camille for arranging our nice programs during this past year. He and Ferne have graciously hosted meetings on more than one occasion, providing lovely table decorations.

NOW! THE HIGHLIGHT OF THE DAY! MR. DONALD MOORE rose to the occasion with dazzling descriptions of his famous rarities, such as: ONE OF A KIND, Ameth. Fleur de Lis rosebowl, Marigold Aztec pitcher, I.B. Three Fruits plate, P. Opal Orange Tree plate, Ameth. Dragon and Berry bowl, etc.

Don is still in a recuperative mode after his drastic fall two months ago, but coming along very nicely. Opening of the busy carnival season has helped tremendously. He wore his shoulder support prior to program presentation. Once he got involved with his glass, the sparkle in his eye looked for all the world like the iridescence he delights in. We all know he is at his best when sharing his knowledge, so in his usual RARE form, lyrical prose in profusion emanated from this wonderful man for as long as was required to eloquently term the Color, Shape, Pattern and Availability of three dozen fabulous pieces of extremely collectable Carnival. Every piece in Don's display receives its just dues and we loved every minute of it!

Don and Connie fit hand-in-glove into situation carnival. It is such pleasure to be with them. Thank you for always being so helpful with your information and allowing us all the pleasure of your company.

continued.....

San Diego Co. Club looks forward to our September meeting when Don will speak to us on "The Basics of Color and Shape".

Diane Fry, San Diego

\*\*\*\*\*

## MID-ATLANTIC JAMBOREE

Mid-Atlantic Carnival Glass Jamboree

October 10, 11, 12, 1986

Ramada Inn

901 Dual Highway

Hagerstown, Maryland

Featuring a two-day Tom Burns Auction

For more information contact: Mr. R. L. Stonebracker

1303 Allison Dr., Rockville, Maryland 20851



OLD CARNIVAL GLASS LIBRARY

THE SHAPE OF THINGS IN CARNIVAL GLASS, !!) PAGES 200 items in full color - \$9.95. Don Moore, 2101 Shoreline Drive, Apt. 452, Alameda, California 94501.

CARNIVAL GLASS SERIES - by Marion T. Hartung. Each book has 100 different patterns. 10 books in the series. Books 1, 2 and 3 - \$3 ea. Books 4 thru 10 - \$3.50 ea. 1931-82 price guide - \$5 PP. Northwood Pattern Glass - clear, colored, custard and carnival - \$9.95, plus .50 Postage. Order from Ione Henshaw, 903 East 6th Ave., Emporia, Ks. 66801.

CARNIVAL IN LIGHIS - A full color book on Carnival Lighting, including Gone With The Wind Lamps, Candle Lamps and Shales price guide included - \$11.95 plus Postage. Helen Greguire, 103 Trimer Road, Hiltion, N.Y. 14468

CARNIVAL GLASS TUMBLERS - Author Richard Owens. Order from Don Brown, Wallace-Homestead Book Company, 1912 Grand Ave., Des Moines, Iowa 50303.

IMPERIAL CARNIVAL GLASS - THE EARLY YEARS - \$9.95 Price guide 5th Edition - \$3.95. THE STANDARD ENCYCLOPEDIA OF CARNIVAL GLASS - 650 different full color patterns photographed, 223 page hardbound illustrates and evaluated Dugan, Fenton, Imperial, Millersburg, Northwood, Minor American, English Carnival, and more - \$24.95. NORTHWOOD, KING OF CARNIVAL GLASS \$9.95. Bill Edwards, Author, Collectors Books, Paducah, Kentucky \$1.00 postage. DO NOT SEND ORDERS TO BILL EDWARDS

CARNIVAL GLASS WORLDWIDE - By M. Quinton-Baxendale. 200 Colour Photographs \*Pattern Name Index \* Exclusive Research \* Clubs Worldwide Listed \* Order from: CARNIVALIA PUBLICATIONS, P. O. Box 1, LOSTWITHIEL, CORNWALL, L22 0YZ, ENGLAND US \$13.50 (surface mail) US \$15.00 (airmail) Payment with order please, by International Cueque or Money Order.

THE WORLD OF ENAMELED CARNIVAL GLASS TUMBLERS - Author/Photographer, Cecil Whitley. Ten pages (60 Tumblers) in full color. \$10.00 including shipping. Call or write Cecil Whitley, 104 Cheshire Lane, Houston, Texas 77018 (713) 681-0807

"CARNIVAL GLASS - An Introduction to the Iridescent Pressed Glass Grandma Had on Her Sideboard", Angela Hallam's 52 page fully illustrated paperback is NOW AVAILABLE IN THE U.S. for only \$2.95 PPD. Nancy Johnson, The Library, P. O. Box 37, Des Moines, Iowa 50301.

CARNIVAL GLASS AUCTION REPORT FOR 1984 & 1985 - A listing of over 3200 prices from 1984 & 1985 auctions. Listed by Hartung name. Information includes description, shape, color, sale price, date, auctioneers and sellers name. Price is \$8.00 postpaid. Overseas delivery add \$1.00. Order from: Tom & Sharon Mordini, 36 N. Mernitz Ave., Freeport, Illinois 61032

HOACGA PATTERN NOTEBOOK Get the complete COLOR Reference including the 1985 insert on the first half of rosebowl for only \$18.00 plus \$4.00 postage. 1985 insert only is \$4.00 plus \$1.00 postage. Order them from the Treasurer (address is inside front cover). MEMBERSHIP REQUIRED TO ORDER THESE.

CARNIVAL GLASS by Ray Notley, Shires Album #104. ISBN 0 85263 637. Price is only \$3.95 including postage. Send to 7 Hills Books, 519 W. 3rd Street, Cincinnati, Ohio 45202

OTHER REFERENCE MATERIAL

"Encore by Dorothy" Books 1 and 2. A series of books on new reproduced Carnival Glass, giving information on the patterns and colors that are being reproduced. Price for each book is \$7.70 postpaid. Be sure to state which book you want. Dorothy Taylor, Box 11734, Kansas City, Missouri 64138.

"CARNIVAL GLASS" educational brochure with color photographs. Available to interested collectors or dealers who wish to better describe to and inform the public about our glass. Free of charge from the American Carnival Glass Assoc. Contact Ruth Schinestuhl, P. O. Box 694, Absecon, N.J. 08201

\*\*\*\* CARNIVAL GLASS FOR SALE \*\*\*\*

Harold R. Wagner, 5951 Fredericksburg Road, Wooster, Ohio 44691  
Phone: (216) 264-3703 after 5 p.m.

|      |   |        |
|------|---|--------|
| M    | Grape & Cable Water Set 5 piece         | 220.00 |
| M LI | Oriental Poppy Pitcher                  | 195.00 |
| PO   | Fan Sauce Boat                          | 65.00  |
| M    | Butterfly & Berry Tumbler               | 20.00  |
| M    | Mlsbg. Cherry Tumbler, ground base      | 100.00 |
| G    | Mlsbg. Peacock 10" fluted bowl          | 225.00 |
| B    | Kittens Spooner, minor roughness        | 195.00 |
| M    | Mlsbg. Featner & Heart Pitcher          | 365.00 |
| A    | Mlsbg. Courthouse Bowl (sliver on edge) | 225.00 |
| A    | Mlsbg. Poppy Compote                    | 465.00 |

\*\*\*\*\*

Burney Talley, 1814 Slate N.W., Albuquerque, N.M. 87104  
Phone: (505) 242-1261

|       |  |          |
|-------|--|----------|
| R     | Horse Head medallion nut bowl, rare,                                       | 1,250.00 |
| AMB   | Stag & Holly lg. I-C shape bowl, scarce                                    | 650.00   |
| G     | Pinecone 6½" plate, scarce   | 130.00   |
| G     | Venetian Giant Rosebowl, very rare,<br>very sm. chip on design-hard to see | 650.00   |
| G     | Helios Octagon Wine Decanter, no stopper                                   | 75.00    |
| W     | Garden Path Vt. lg. ruffled bowl, super irid.                              | 200.00   |
| PO    | Pulled Loop Vase, scarce   | 50.00    |
| W     | Rustic Funeral Vase, super color   | 450.00   |
| SMOKE | Windmill Milk Pitcher, scarce  | 135.00   |
| AMB   | Open Rose Plate  | 175.00   |

\*\*\*\*\*

Richard Cinclair, 3605 South Echo Trail, Plano, Texas 75023  
Phone: (214) 596 0014

|   |   |        |
|---|---|--------|
| M | EI Fashion Pitcher and one tumbler, super color | 140.00 |
|---|---|--------|

\*\*\*\*\*CARNIVAL GLASS FOR SALE\*\*\*\*\*

Art Smith, 4535 Holder Ct., Lakeland, FL 33803  
(813-644-4058)

|      |   |          |
|------|---|----------|
| A EI | N Grape and Cable 8½" Bowl                    | \$75.00  |
| M EI | Holly Bowl Pie Crust Edge                     | \$40.00  |
| M EI | Persian Medallion 6½" Plate                   | \$50.00  |
| W EI | Grape Delight Rose Bowl (minor chip one foot) | \$55.00  |
| A EI | Grape and Cable Bon Bon                       | \$50.00  |
| G EI | Fine Cut and Roses Rose Bowl                  | \$150.00 |
| M EI | Horse Medallion Rose Bowl                     | \$125.00 |
| G    | F Butterfly Bon Bon                           | \$65.00  |
| A    | N Basketweave Compote                         | \$40.00  |
| M EI | Wishbone Bowl 8½"                             | \$55.00  |

SASE for list of 100 plus pieces

\*\*\*\*\*

Mary Herren, 520 S. Berry, Morganfield, Ky. 42437  
Phone: 502-389-3121

|    |   |       |
|----|---|-------|
| P  | EI (N) Three Fruits bowl 10" X 4½" super  | 60.00 |
| A  | EI (N) Rossette ftd. bowl                 | 37.00 |
| AQ | EI 9½" Thin Rib Vase, mint                | 28.00 |
| P  | GI Grape & Cable Punch Base               | 25.00 |
| M  | EI Flute Toothpick, mint                  | 30.00 |
| M  | EI Waterlily & Cattails berry bowls, 2@   | 7.00  |
| M  | EI Swirl Candleholder                     | 7.00  |
| M  | EI Imperial Grape 6" bowl                 | 7.00  |
| M  | EI Bambi Powder                           | 10.00 |
| M  | EI Crackle Car Vase, sm N.H. crack at top | 5.00  |

\*\*\*\*\*

Ray Hitchcock, RR 1, Box 301, Winterset, Iowa 50273  
PHONE: 515-462-2074

|    |   |        |
|----|---|--------|
| R  | Stippled Rays bowl, nice                | 295.00 |
| R  | Vintage Nut dish, tiny grape chip, nice | 250.00 |
| IG | (N) Bushel Basket, round                | 195.00 |
| IB | (N) Peacock at the Fountain punch cup   | 90.00  |
| W  | (N) Oriental Poppy tumbler              | 60.00  |

continued

\*\*\*\*\* GLASS FOR SALE \*\*\*\*\*

|    |   |        |
|----|---|--------|
| A  | (N) Fern Brand Chocolate H.G.plate, super | 180.00 |
| A  | Hanging Cherries 7½" plate                | 250.00 |
| B  | Pine Cone plate                           | 55.00  |
| PO | Rays bowl                                 | 40.00  |
| B  | Large Stag & Holly I.C. shape bowl        | 160.00 |

\*\*\*\*\*

Ted Sheibley, 304A Hillcrest Drive, New Cumberland, Pa. 17070  
PHONE: 717-938-6417

|     |  |        |
|-----|--|--------|
| B   | Peacock at the Fountain berry bls, 40    | 35.00  |
| P   | Acorn Burrs punch cups 50, will seperate | 35.00  |
| AO  | Beaded Cable rose bowl                   | 240.00 |
| AO  | Three Fruits spatula footed bowl         | 500.00 |
| M   | Kittens six-sided dish                   | 100.00 |
| G   | Singing Birds 7 piece water set          | 540.00 |
| G   | Trout & Fly I.C. shape bowl              | 360.00 |
| A   | Fluffy Peacock 7 piece water set         | 925.00 |
| R   | Acorn deep bowl                          | 480.00 |
| CLM | 1910 Shriner's champagne glass           | 60.00  |

Send large SASE for list

\*\*\*\*\*

Dick Hatscher, Box 261, Walnut Hill Road, Bethel, Ct. 06801  
PHONE: 1-203-743-1468

|        |  |        |
|--------|--|--------|
| M      | EI 7 pc Butterfly & Berry berry set          | 95.00  |
| PO EI  | Acorn Bowl                                   | 165.00 |
| PO EI  | Honeycomb Rose bowl                          | 165.00 |
| MMG EI | Carolina Dogwood                             | 265.00 |
| PO EI  | Ski-Star Handgrip plate                      | 175.00 |
| P EI   | Rose Show plate, nick on one petal           | 195.00 |
| P EI   | Hand painted water pitcher ruffled top, flrs | 165.00 |
| W EI   | (N) 7 pc Peacock at Urn ice cream set        | 995.00 |
| IB EI  | Hearts and Flowers bowl                      | 265.00 |
| IB EI  | (N) Peacock at Urn Master ice cream bowl     | 595.00 |

\*\*\*\*\*

\*\*\*\*\* GLASS FOR SALE \*\*\*\*\*

Ed & Sharon Binstock, PO Box 351, Presque Isle, Maine 04769  
PHONE: 207-764-3612

|     |  |        |
|-----|--|--------|
| B   | Peach Tumbler                              | 70.00  |
| PO  | Holly & Berry oddly shaped 10 sided bowl   | 60.00  |
| M   | Wreathed Cherry 5 pc oval bowl set         | 150.00 |
| M   | Peacock & Grape I.C. shaped bowl           | 37.00  |
| M   | Panelled Dandelion Tumbler                 | 37.00  |
| P   | Memphis Punch Cup                          | 27.00  |
| M   | Orange Tree Mug                            | 25.00  |
| M   | Feathered Serpent round CR edge bowl       | 35.00  |
| PO  | Persian Garden 11" IC shape bowl SUPER     | 900.00 |
| VAS | Butterfly & Tulip round deep bowl, unusual | 450.00 |

\*\*\*\*\*

Bob Slaughter, Rt. 2, Box 568, Graham, N.C. 27253  
PHONE: 919 376-9552

|       |  |        |
|-------|--|--------|
| A EI  | Wishbone epergne base                        | 100.00 |
| M EI  | Twins fruit bowl stand                       | 15.00  |
| M EI  | Daisy and Cane compote, unlisted             | 35.00  |
| B EI  | Double Loop stemmed open sugar               | 50.00  |
| IG EI | Wide Panel (Imperial) goblet                 | 20.00  |
| A GI  | Diamond Points (N) 9" vase, silvery          | 20.00  |
| A EI  | Stippled Rays (N) 8½" flat bowl              | 45.00  |
| B EI  | Feather Stitch 9" ruffled flat bowl          | 55.00  |
| G EI  | (Helios) Open Rose 8" ruffled flat bowl mint | 30.00  |
| M EI  | Vintage compote, clear stem                  | 35.00  |

\*\*\*\*\*

Joan & Warren Place, R.D. #2, Box 100, Mehoopany, Pa. 18629  
PHONE: 717 833 5222

|    |                                 |        |
|----|---------------------------------|--------|
| M  | Grape and Cable Water Pitcher   | 140.00 |
| G  | Acorn Burrs 5" bowl             | 50.00  |
| M  | Good Luck Bowl, pie-crust edge  | 115.00 |
| CM | Frosted Block Plate, USA        | 50.00  |
| P  | Three Fruits Plate              | 110.00 |
| M  | Persian Medallion Hair Receiver | 70.00  |
| LM | Three Fruits bowl, stippled     | 35.00  |
| CM | Nesting Swan bowl               | 210.00 |
| B  | Strawberry bon bon              | 50.00  |
| W  | Grapevine Lattice (Dugan)       | 110.00 |

\*\*\*\*\* GLASS FOR SALE \*\*\*\*\*

Tom & Sharon Mordini, 36 N. Mernitz Ave., Freeport, Ill. 61032  
PHONE: 815 235 4407

|     |   |        |
|-----|---|--------|
| M   | Octagon Wine decanter & one wine          | 85.00  |
| M   | Imperial Grape wines 5@                   | 15.00  |
| P   | Acorn Burrs 5 pc water set                | 650.00 |
| IB  | Grape Arbor Tumbler (N)                   | 150.00 |
| M   | Woodlands Vase, extremely rare            | 150.00 |
| P   | Memphis punch cups @                      | 30.00  |
| W   | Poppy Show plate, lite irid.              | 300.00 |
| PO  | Four Flowers plate 6"                     | 120.00 |
| AQ  | Orange Tree small mug, sm flake on handle | 115.00 |
| VAS | Orange Tree small mug                     | 95.00  |

\*\*\*\*\*

Darlene Yohe, P.O. Box 343, Stuttgart, Ark. 72160  
PHONE: 501 673 3437

|   |  |        |
|---|--|--------|
| W | Grape Arbor tumbler                            | 95.00  |
| A | Maple Leaf tumbler                             | 40.00  |
| M | Orange Tree ladies goblet                      | 22.00  |
| A | Springtime cov. butter, tiny flke under base   | 175.00 |
| M | Garland Rose bowl                              | 40.00  |
| P | Leaf and Beads rose bowl                       | 65.00  |
| P | Beaded Cable rose bowl                         | 60.00  |
| M | Orange Tree mug                                | 20.00  |
| M | Peacock at Fountain footed orange bowl         | 160.00 |
| G | Butterfly & Berry master berry, butterfly int. | 115.00 |

\*\*\*\*\*

Alaine M. Pennetti, 23 Nancy Lane, Ft. Myers Beach, Fla. 33931  
PHONE: 813 463 3918

|   |                                       |        |
|---|---------------------------------------|--------|
| G | Wreath of Roses punch bowl base       | 50.00  |
| M | Diamond Checkerboard Butter Dish      | 60.00  |
| B | Blackberry Mini-compote, twisted stem | 90.00  |
| B | Peacock and Urn plates 2@             | 170.00 |
| G | Flute sherbert (N)                    | 35.00  |
| P | Peacock at the Fountain punch cup (N) | 30.00  |
| B | Grape & Cable cup - stippled (N)      | 35.00  |
| M | Fashion punch bowl base               | 40.00  |
| M | Imperial Grape fluted bowls 2@        | 25.00  |
| M | Octagon Water Set 7 piece EI          | 235.00 |

\*\*\*\*\* GLASS FOR SALE \*\*\*\*\*

Bruce or Darcy Hill, 943 SE 13th Ave., Forest Lake, Mn. 55025  
PHONE: 612 464 3684

|     |    |   |        |
|-----|----|---|--------|
| W   | EI | Dahlia Sugar & Creamer - pair               | 275.00 |
| G   | GI | Three Fruits plate, basketweave ext.        | 70.00  |
| M   | EI | Stippled Three Fruits plate, ribbed back    | 85.00  |
| RAB | EI | Sailboats ruffled sauce                     | 285.00 |
| A   | EI | Pannelled Dandelion Pitcher & 1 tumbler     | 525.00 |
| B   | EI | Peacock at the Fountain pitcher & 1 tumbler | 420.00 |
| P   | EI | Acorn Burrs Punch set 8 piece               | 775.00 |
| A   | EI | Butterfly & Fern Pitcher & 4 tumblers       | 650.00 |
| P   | EI | Singing Birds Pitcher & 5 tumblers          | 750.00 |
| M   | EI | Luster Rose Pitcher & 5 tumblers            | 250.00 |

\*\*\*\*\*

Dick Wetherbee, 847 Stafford St., Rochdale, Ma. 01542  
PHONE: 617 892 4420

|    |    |   |        |
|----|----|---|--------|
| G  | EI | Singing Birds 7pc water set, fantastic color  | 695.00 |
| M  | EI | Tree of Life 5" rose bowl, pretty             | 22.00  |
| PO | EI | Stippled Petals 9 3/4" X 5" banana shape      | 110.00 |
| B  | EI | Orange Tree punch bowl base, beautiful        | 45.00  |
| P  | EI | Hobnail & Rib 10 1/2" vase, brilliant         | 42.00  |
| IG | EI | Pastel swan salt, a nice one                  | 25.00  |
| B  | EI | Peacock at Urn 8 3/4" bowl, a beauty          | 110.00 |
| A  | EI | Autumn Acorns 8 1/2" bowl                     | 45.00  |
| M  | EI | Tree Trunk 10 1/2" vase, vivid pastel         | 22.00  |
| A0 | EI | Rose Show 8 1/2" bowl, lots of opal-beautiful | 450.00 |

\*\*\*\*\*

Gil Corriveau, Box 5, Sturbridge, Ma. 01566  
PHONE: 617 347 3304 days, 617 347 9930 nights, post. & ins. ext.

|    |                                   |        |
|----|-----------------------------------|--------|
| P  | Millersburg Diamond water pitcher | 200.00 |
| G  | Millersburg Diamond water pitcher | 200.00 |
| B  | Lions bowl, super color           | 275.00 |
| M  | Vinyard water set 5 pieces        | 125.00 |
| G  | Imperial Grape punch set 8 pieces | 250.00 |
| M  | Three Fruits plate                | 60.00  |
| G  | Fine Cut and Roses rose bowl      | 150.00 |
| P  | Millersburg Diamond tumblers each | 35.00  |
| G  | Millersburg Diamond tumblers each | 35.00  |
| PO | Raindrops bowl                    | 55.00  |

\*\*\*\*\* GLASS FOR SALE \*\*\*\*\*

Joseph Mello, 535 Fish Road, Tiverton, RI 02878  
PHONE: 1-401-624-2174

|   |    |  |        |
|---|----|--|--------|
| M | EI | Acanthus plate 10" rare                        | 150.00 |
| M | EI | Floral & Grape water pitcher                   | 100.00 |
| M | EI | Orange Tree punch bowl top                     | 75.00  |
| M | EI | Grape & Gothic Arches berry bowls, 3 all for   | 40.00  |
| M | EI | Floral & Grape tumblers, flks on bases all for | 50.00  |
| M | EI | Imperial wines, not rayed on base 2@           | 25.00  |
| M | EI | Imperial wines, rayed base, only one           | 25.00  |
| M | EI | Fenton open-edge lace basket 1 side up 1 down  | 18.00  |
| G | EI | Butterfly & Fern tumbler, ground base, nice    | 40.00  |

\*\*\*\*\*

Hubert F. Shelton, Rt. 1, Box 290, Munfordville, Ky. 42765  
PHONE: 502-528-5893

|   |  |   |        |
|---|--|---|--------|
| A |  | Grape & Cable Butter Dish (N) mint          | 195.00 |
| M |  | 6 Grape & Cable punch cups (N) each         | 20.00  |
| W |  | Block & File 8" stippled bowl               | 25.00  |
| A |  | Grape & Cable 5" ice creamstemmed (N) mint  | 45.00  |
| M |  | Grape & Cable 5" ice cream stenned (N) mint | 45.00  |
| M |  | Vinyard 7 piece water set                   | 250.00 |
| A |  | Acorn Burrs tumbler (N) mint                | 55.00  |
| M |  | Crackle 7 piece water set, very beautiful   | 80.00  |
| G |  | Raspberry tumbler (N)                       | 40.00  |
| M |  | Lustre Rose fernery (footed)                | 35.00  |

\*\*\*\*\*

Jackie Tyler, Box 647, Baldwin, Wisconsin 54002  
PHONE: 715-684-2397

|    |    |  |        |
|----|----|--|--------|
| EB | EI | Fruits & Flowers spade-footed bowl         | 150.00 |
| EB | EI | Good Luck stippled bowl                    | 275.00 |
| P  | EI | Good Luck plate, very sm rim nick, pinhead | 160.00 |
| M  | GI | Lid for Cosmos & Cane sugar bowl           | 25.00  |

\*\*\*\*\*

\*\*\*\*\* GLASS FOR SALE \*\*\*\*\*

Burney Talley, 1814 Slate, N.W., Albuquerque, N.M. 87104  
PHONE: 505-242-1261

|       |  |  |          |
|-------|--|--|----------|
| AMBER |  | Stag & Holly large IC shape ftd. bowl RARE   | 650.00   |
| AQUA  |  | Stag & Holly large ruffled ftd bowl RARE<br>(Marigold Overlay)                         | 650.00   |
| AMBER |  | Open Rose Plate, scarce  | 175.00   |
| R     |  | Horse Head Medallion nut bowl good red RARE  | 1,250.00 |
| G     |  | Pinecone 6½" plate, scarce   | 135.00   |
|       |  | Venetian Giant Rose Bowl-sm nick on design   | 650.00   |
| P     |  | Poppy Show vase, bronze irid..rare color   | 650.00   |
| SB    |  | SAPPHIRE BLUE (dark ice-blue) ribbed funeral<br>vase 15½" X 5" mouth, rare color-super | 250.00   |
| A     |  | Diving Dolphins ftd. bowl, Scroll Emb. int.  | 185.00   |
| IB    |  | Corn Vase, aqua tint RARE  | 1,250.00 |

Send SASE for list

\*\*\*\*\*

Wesley and Betty Strain, 832 Carson Rd., Ferguson, Mo. 63135  
PHONE: 1-314-524-5608

|   |    |  |        |
|---|----|--|--------|
| B | EI | Footed Orange Tree large bowl          | 100.00 |
| M | EI | Pinecone I.C. shape bowl               | 30.00  |
| A | EI | Four Flowers large deep bowl           | 50.00  |
| B | EI | Drapery Variient vase (rare, unlisted) | 90.00  |
| M | EI | Twins Fruit bowl and base              | 50.00  |
| G | EI | (N) Fine Rib vase 7" X 5"              | 40.00  |
| M | EI | (N) Drapery vase                       | 40.00  |
| G | EI | Raspberry Compote, square shape (chip) | 25.00  |
| M | EI | Panther small bowl                     | 45.00  |
| P | GI | Grape Delight rose bowl                | 45.00  |

\*\*\*\*\*

Lee Bryant, RR. #1, Box 109, Decatur, Indiana 46733  
PHONE: 1-219-639-3415

|   |  |   |        |
|---|--|---|--------|
| M |  | Bouquet 7 piece water set (perfect match) | 300.00 |
| M |  | Peacock at the Fountain 7 piece Berry Set | 225.00 |
| M |  | Waffle Block Basket                       | 30.00  |
| G |  | Imperial Star of David bowl               | 60.00  |
| M |  | Stag & Holly 11" ball footed bowl         | 75.00  |

\*\*\*\*\*

\*\*\*\*\* GLASS FOR SALE \*\*\*\*\*

John D. Resnik, 4290 Jackson Ave., Culver City, Calif. 90232  
PHONE: 1-213-839-1588

|      |                                    |        |
|------|------------------------------------|--------|
| AQUA | Coin Spot 9" plate                 | 295.00 |
| AQUA | Panther 5" ftd. sauce              | 325.00 |
| AQUA | Leaf Chain 8" I.C. bowl            | 165.00 |
| AQUA | Two Flowers 11" ruffled, ftd. bowl | 325.00 |
| AQUA | Stag & Holly 11" IC ftd. bowl      | 565.00 |
| AQUA | Two Flowers 5" IC ftd. sauce       | 155.00 |
| AQUA | Thin Rib 8" vase                   | 95.00  |
| AQUA | Peacock & Dahlia 7½" ruffled bowl  | 165.00 |
| AQUA | Rowboat                            | 335.00 |
| B    | Grape & Cable centerpiece bowl     | 625.00 |

\*\*\*\*\*

Edward W. Sypulski, 315 Neal Avenue, Dayton, Ohio 45405  
PHONE: 1-513-222-3214

|     |                                     |       |
|-----|-------------------------------------|-------|
| DM  | EI Old Imperial Grape plate         | 48.00 |
| DM  | EI Old Imperial Sandwich tray       | 35.00 |
| M   | EI Windflower gravy boat            | 35.00 |
| CLM | EI Frosted Block rose bowl          | 50.00 |
| A   | LI Hearts and Vine bowl             | 25.00 |
| A   | LI Flowers & Frame dome-footed bowl | 25.00 |
| A   | EI Birds & Cherries bon bon         | 40.00 |
| B   | EI Leaf Chain bowl                  | 48.00 |
| M   | EI Garland rose bowl                | 25.00 |
| PO  | EI Ski Star large master berry bowl | 75.00 |

\*\*\*\*\*

Harm Westerhuis, RR #1, Box 49, Platte, So. Dakota 57369  
PHONE: 1-605-337-3631

|       |                                    |       |
|-------|------------------------------------|-------|
| M     | Peach and Pear banana bowl         | 60.00 |
| PM    | Narrow ribbed light shades, 3 each | 25.00 |
| W     | Frosted Block rose bowl USA        | 50.00 |
| SMOKE | Acanthus bowl                      | 55.00 |
| G     | Flute sugar                        | 35.00 |
| M     | Pansy sugar                        | 25.00 |
| W     | Orange Tree sugar                  | 50.00 |
| G     | Vintage 6" bowl                    | 45.00 |
| M     | Cornucopia vases, pair, each       | 25.00 |
| M     | Peacock & Urn 8" I.C. shape bowl   | 70.00 |

\*\*\*\*\* GLASS FOR SALE \*\*\*\*\*

Marty Schoettler, Box 188, R.D. 3, Sewell, New Jersey 08080  
PHONE: 1-609-589-4325 after 6:00 P.M., EDT

|     |  |          |
|-----|--|----------|
| PO  | EI Scales 9" IC BOWL (little wear on face)     | 50.00    |
| VAS | EI Peacock Banana boat, Mlsbg, chipped on base | 1,100.00 |
| VAS | EI Peacock at Urn ruffled bowl, Fenton, super  | 275.00   |
| VAS | EI Cherry Chain 10" IC bowl, beauty            | 225.00   |
| M   | EI Kittens Toothpick Holder                    | 125.00   |
| A   | EI Strawberry 9" bowl                          | 55.00    |
| A   | EI Strawberry Plate                            | 140.00   |
| A   | EI Three Fruits Plate                          | 130.00   |
| B   | EI Poppy Relish Dish, Cobalt Blue              | 55.00    |
| B   | EI Little Flowers small berry bowl             | 30.00    |

\*\*\*\*\*





\*\*\*\*\* GLASS WANTED \*\*\*\*\*

Helen Greguire, 103 Trimmer Road, Hilton, N.Y. 14468  
PHONE: 1-716-392-2704

---

W Base for Many Fruits punch bowl, either shape  
also 8 cups  
B Bowl for Many Fruits punch set, also 8 cups  
R Ball shade for the Regal Iris Gone with the Wind Lamp  
R Ball shade for the Roses & Ruffles Gone with the  
Wind Lamp  
\*\*ANY\*\* Red Gone with the Wind Lamp shades

\*\*\*\*\*

Charles Propst, 1005 Park Ln., Osceola, Ia. 50213  
PHONE: 1-515-342-2697

---

P Beaded Shell pitcher or water set  
G Lustre Rose water set

\*\*\*\*\*

Hubert F. Shelton, Rt. 1, Box 290, Munfordville, Ky. 42765  
PHONE: 1-502-528-5893

---

M Imperial Grape Water Pitcher  
CB Peacock at the Fountain Water Pitcher  
P Grape & Cable tumblers (N), need 3, good gold overtones

\*\*\*\*\*

Joseph Mello, 535 Fish Road, Tiverton, RI 02878  
PHONE: 1-401-624-2174

---

A Acorn Burrs punch bowl base  
M Many Fruits punch cups, need 5  
P Imperial Grape punch cups, need 2  
M Imperial Grape punch cups, need 3  
M Acorn Burrs punch bowl top

\*\*\*\*\* GLASS WANTED \*\*\*\*\*

Bob Slaughter, Rt. 2, Box 568, Graham, N.C. 27253  
PHONE: 1-919-376-9552

---

PEARL Lacy Dewdrop cover for compote or sell compote  
DM Stopper for Octagon decanter or sell decanter  
DM Bottom for Wreathed Cherry Butter Dish  
M Bottom for Singing Birds Butter Dish  
A Lily for Wishbone epergne or sell base

\*\*\*\*\*

Ed & Sharon Binstock, P. O. Box 351, Presque Isle, Maine 04769  
PHONE: 1-207-764-3612

---

G & P Poppy Show Bowls  
B & P Rose Show ruffled bowls  
P Windmill Pitcher  
W Peacocks on the Fence bowl  
P Panther Master Berry bowl  
P Beaded Shell Pitcher  
P Hobnail pitcher (small damage OK)  
B God & Home pitcher (small damage OK)

\*\*\*\*\*

Dick Hatscher, Box 261, Walnut Hill Road, Bethel, Ct. 06801  
PHONE: 1-203-743-1468

---

HEARTS AND FLOWERS, ANYTHING, ANY COLOR  
P Many Fruits punch bowl base  
P Memphis punch base  
G Wreath of Roses punch base  
P Wreath of Roses punch bowl top  
M Peacock at the Fountain punch bowl base  
P Peacock at the Fountain butter lid  
P Singing Birds butter lid

\*\*\*\*\*

Ted Sheibley, 304A Hillcrest Drive, New Cumberland, Pa. 17070  
PHONE: 1-717-938-6417

---

G Peacocks bowl

\*\*\*\*\* GLASS WANTED \*\*\*\*\*

Ray Hitchcock, RR 1, Box 301, Winterset, Iowa 50273  
PHONE: 1-515-462-2074

---

P Stopper for Grape & Cable Whiskey Decanter  
(or will sell decanter)  
ANY RARE COLOR HOLLY PLATES OR BOWLS

\*\*\*\*\*

Gladys Vandyke, Box 88, Ellsinore, Missouri 63937  
PHONE: 1-314-322-5277

---

P Grape & Cable punch cups, need 1 to 6  
DM Broken Arches punch cups, need 1 to 5  
DM Ten Mums tumbler, need 1  
DM Fluffy Peacock tumblers, need 2

\*\*\*\*\*

Lorraine M. Pickup, 531 Holiday Avenue, Hazelwood, Mo. 63042

---

G Springtime, sugar lid ONLY  
A Maple Leaf, sugar lid ONLY  
M Leaf Tiers, sugar lid ONLY

\*\*\*\*\*

Edward W. Sypulski, 315 Neal Avenue, Dayton, Ohio 45405  
PHONE: 1-513-222-3214

---

W EI (N) Peach Sugar  
W EI (N) Peach Butter Dish  
B EI Footed Orange Tree Sugar

\*\*\*\*\*

Wesley & Betty Strain, 832 Carson Road, Ferguson, Mo. 63135  
PHONE: 1-314-524-5608

---

W Lid for Grape & Cable Cookie Jar  
A Stopper for Golden Harvest Decanter  
R Large Panther bowl

\*\*\*\*\*

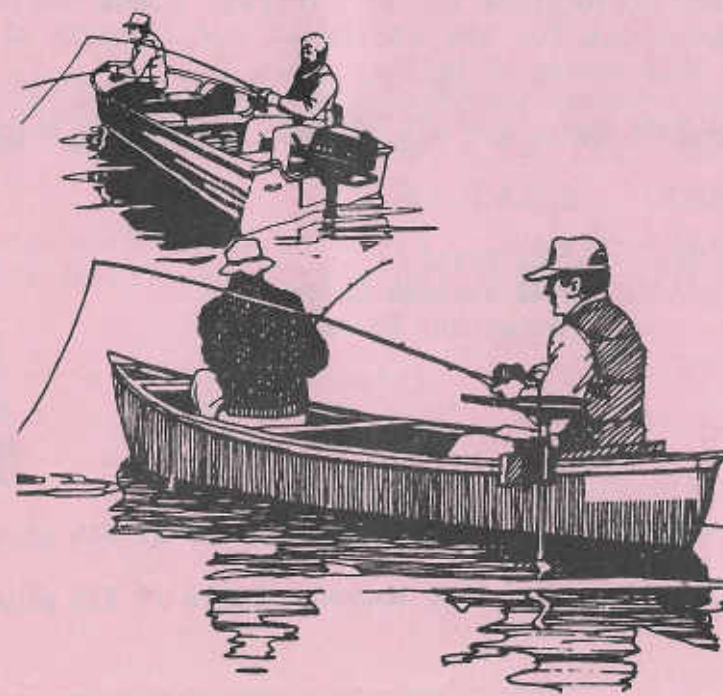
\*\*\*\*\* GLASS WANTED \*\*\*\*\*

John D. Resnik, 4290 Jackson Ave., Culver City, Calif. 90232  
PHONE: 1-213-839-1588

---

W Peacock & Urn 6" ice-cream bowl  
A "Greengard Furniture" 6" adv. bowl or plate  
A "Exchange Bank" 6" adv. plate  
ANY INFORMATION CONCERNING C.G. ADVERTISING PIECES, IE.  
PLACE OF ORGIN, ADDRESS OF COMPANY, CURRENT STATUS OF  
COMPANY, ETC. PREVIOUSLY PUBLISHED ARTICLES CONCERNING  
SAME ALSO APPRECIATED.

\*\*\*\*\*



## H.O.A.C.G.A. SOUVENIR BELL

In 1985, it was decided to make a series of 4 Souvenir Bells. Each different bell would feature a portrait of a Famous Maker of Carnival Glass. The beautiful Circle Scroll Pattern would be used as the basic pattern on each of the bells. The bells would also include the Fenton logo.

The first bell, 1985 Souvenir, has a portrait of Harry Northwood. The bell is Ruby Red Carnival. VERY FEW ARE STILL AVAILABLE.

The second bell, 1986 Souvenir, has a portrait of Frank L. Fenton, the principal founder of the Fenton Art Glass Company. This bell is made in the beautiful Lime Green Opalescent with a Marigold overspray. This bell is made in a limited quantity, approximately 350.

The 1987 bell will feature John Fenton, founder of Millersburg Glass Company. The 1988 bell will be of a prominent person of the Imperial Glass Company.

It is our belief that this series of souvenir bells will make a beautiful and collectible set of Carnival Glass Bells while honoring those responsible for the making of our favorite glass. We hope you will enjoy this series of bells.

The 1985 or 1986 Bells are \$35.00 each, plus \$2.50 shipping. *John E. Britt*

CHECKS PAYABLE: H.O.A.C.G.A.

MAIL ORDER TO: John Britt  
3048 Tamarak Drive  
Manhattan, Kansas 66502



I wish to order \_\_\_\_\_ 1985 Souvenir Bells at \$35 plus \$2.50 shipping.

I wish to order \_\_\_\_\_ 1986 Souvenir Bells at \$35 plus \$2.50 shipping.

NAME: \_\_\_\_\_

ADDRESS: \_\_\_\_\_

CITY, STATE, ZIP: \_\_\_\_\_

## APPLICATION FOR MEMBERSHIP

=====

THE HEART OF AMERICA CARNIVAL GLASS ASSOCIATION, INC.

=====

DATE \_\_\_\_\_

NAME \_\_\_\_\_

SPOUSE \_\_\_\_\_

ADDRESS \_\_\_\_\_

CITY \_\_\_\_\_ STATE \_\_\_\_\_

ZIP CODE \_\_\_\_\_ TELEPHONE \_\_\_\_\_

RECOMMENDED BY \_\_\_\_\_

Do you want your name in the directory? YES \_\_\_\_\_ NO \_\_\_\_\_

DUES ARE \$20 U.S. PER YEAR (JUNE THROUGH MAY)

SEND DUES TO: H.O.A.C.G.A.  
Bernice Bell, Treasurer  
13620 E. 41st. St., Independence, Missouri 64055

### A FEW OF THE BENEFITS OUR CLUB OFFERS:

The ONLY MONTHLY PUBLICATION on just Carnival Glass Collecting, keeping you informed of new discoveries and all of the current events. Members only may advertise, FREE OF CHARGE!!!

An exclusive PATTERN NOTEBOOK with yearly special inserts (ALL inserts are still available)

ANNUAL SOUVENIR AND CONVENTION WITH SOME OF THE GREATEST PEOPLE YOU CAN HOPE TO MEET!!!

<<<< JOIN TODAY >>>>