

# HOACGA

Heart Of America Carnival Glass Assoc. INC.



OCTOBER 1986

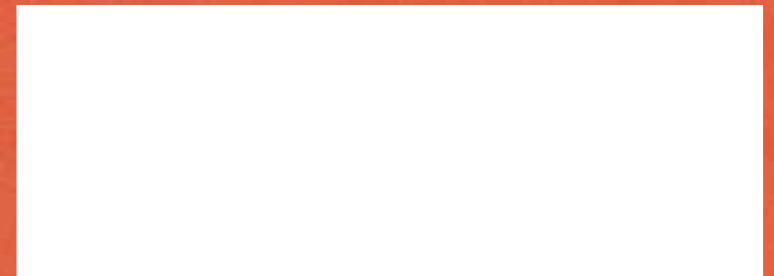
S	M	T	W	T	F	S
			1	2	3	4
5	6	7	8	9	10	11
12	13	14	15	16	17	18
19	20	21	22	23	24	25
26	27	28	29	30	31	

First Class Mail  
U. S. Postage  
PAID  
Kansas City, Mo.  
Permit No. 4352

Simon says:  
HAVE A HAPPY HALLOWEEN!

RETURN ADDRESS

Michael J. Basey  
4315 Adams  
Kansas City, Kansas 66103





## Heart of America Carnival Glass Association, INC.

Membership June to May  
\$20.00 Per Couple or Single

Published the 15th  
of each month

PRESIDENT	Robert Grissom 7900 Crescent Raytown, Missouri 64138 1-816-356-5320
VICE-PRESIDENT	Nadine Paulsen 700 Purdom Olathe, Kansas 66061 1-913-782-1313
TREASURER	Berniece Bell 13620 E. 41st. Street Independence, Missouri 64055 1-816-252-3506
SECRETARY	Glen Fortney Post Office Box 303 Buckner, Missouri 64016 1-816-249-5208
BULLETIN SECRETARY	Michael Basey 4315 Adams Kansas City, Kansas 66103 1-913-432-2460

All monetary figures quoted are U.S. dollars. Please make checks for dues payable to H.O.A.C.G.A. and send them to the Treasurer, at the above address.

\*\* DO NOT SEND TO THE BULLETIN SECRETARY \*\*

### MINUTES OF THE MONTHLY H.O.A.C.G.A. MEETING IN SEPTEMBER

The September 1986 monthly meeting of the Heart of America Carnival Glass Association opened at 12:30 P.M. September 28, 1986 with the Annual Picnic at the home of Davis and Viola Shikles in Independence, Missouri.

We were so pleased to have such a fine turn-out this year. We were pleased to see the Circo's, the McKeown's, Joan Westerfeld, Juanita Gummig and also Cooley and Marge Miller. The weather really cooperated this time and the food was just great. I'm sure everyone had a great time. We again sincerely thank Davis and Viola Shikles for having us at their home for the Annual Picnic. They really did a fine job of hosting us.

The monthly meeting was called to order at 2:00 P.M. September 28, 1986 by President Robert Grissom.

Secretary Glen Fortney read the minutes of the last monthly meeting and they were approved as read.

Treasurer Berniece Bell gave the Treasurers' Report and it was approved as read and placed on file for audit.

President Grissom reported on some of the problems we have encountered in the Bulletin mailings. If anyone doesn't receive their Bulletin, please call the Bulletin Secretary.

President Grissom also reported that we had applied for and had been denied a Missouri Tax Exempt number from the State of Missouri.

With no further business, the meeting was adjourned at which time we all enjoyed viewing and discussing the beautiful glass brought to the meeting by the members for the "Show and Tell" Program. Among the pieces shown were an Aqua Opal Diamond Points vase, Amethyst Dragon and Lotus, a beautiful blue Lions bowl, an Ice-Green Peacocks plate, a Peach Opal Coinspot compote, and a nice White Orange Tree master footed berry bowl. We again thank all the members who brought glass for the Program, as it adds so much to our monthly meetings.

The next meeting will be October 26, 1986, at 2:00 P.M., at the Raytown City Hall. The Program will be on Marigold and Amber Glass, Colors for Halloween. Hope to see all of you then.

Glen Fortney  
Secretary,  
HEART OF AMERICA CARNIVAL GLASS ASSOCIATION

We wish to welcome the following new members to the Heart of America Carnival Glass Association:

James & Jo Ann Stonek, Omaha, Nebraska  
W. Scott Carlson, Minneapolis, Minnesota  
Walter & Fay Back, Applecross, West Australia  
William & Doris Ament, Greenfield, Massachusetts  
Donald L. Clark, Westminster, Colorado

We welcome these people to our Club and wish them much success in their search for Carnival Glass.

\*\*\*\*\*

FROM THE EDITOR.....

Just thought I would remind everyone that October is NATIONAL CARNIVAL GLASS MONTH.

This is the time of year when we proudly display our beautiful Carnival Glass in banks, offices, antique malls & centers, etc. to promote interest in our wonderful hobby.

I would like ANYONE who has a display this year to send me a note along with a picture of your display. I'll be most happy to put them in upcoming Bulletins so we can all enjoy them.

Have a great October displaying your glass!

Michael J. Basey  
Bulletin Secretary  
HEART OF AMERICA CARNIVAL GLASS ASSOCIATION

\*\*\*\*\*

George & Regina McGrew, Jr. have advised me of the following change of address. Anyone corresponding with them, please make note of the following NEW address:

George & Regina McGrew, Jr.  
R.R. #1, Box 127  
Linwood, Kansas 66052  
1-913-723-3734

## SMALL PLATES - NOTEBOOK SECTION

The next section of the Heart of America Carnival Glass Association notebook will be on small plates (6" to 8"). Several members have already sent information about patterns, colors, and maker. If you have some small plates and would help with information for this section, I would appreciate receiving a photograph of each of your plates along with information about each plate.

All of the small plates, i.e. ruffled, handgrip, etc., will be included. The more information available, the better the information will be in the notebook.

Please send your photos and other information to me.

Bob Grissom, President  
HEART OF AMERICA CARNIVAL GLASS ASSOC.  
7900 Crescent  
Raytown, Missouri 64138

\*\*\*\*\*

LETTERS FROM OUR MEMBERS.....

Dear Michael:

Just a note to tell you how very much we enjoy the fine job you are doing on the H.O.A.C.G.A. Newsletter.

The pictures are clear and distinct. The excellent quality of the Newsletter indicates that you are surely putting in a great deal of time and effort to get this result.

Congratulations on your good work.

HAPPY CARNIVAL GLASS HUNTING

Sylvia and Alex Borris

\*\*\*\*\*

IMPORTANT MESSAGE FROM THE PRESIDENT CONCERNING BULLETIN MAILINGS

In the past, whenever the Bulletin Secretary and/or Secretary changed, it required the transfer of membership information from one person to the next. In several instances, this was an annual change. Until the new person became familiar with the details of their duties, some problems would arise.

In order to remove some of these yearly problems, be able to maintain the membership information more accurately, and reduce the amount of work required, the Board decided to have the membership information maintained by a Computer Service.

In the process of transferring and maintaining this information, some names and membership renewals were inadvertently omitted from the records resulting in some members not receiving their monthly Bulletin. We apologize for any inconvenience this has caused. Your patience and courtesy in notifying us of these mistakes and omissions are appreciated. Once these omissions are corrected, it will be much easier to maintain the membership list and it will not require transferring this information from one individual to another each year.

If you notice any mistakes in your mailing address, please notify the Bulletin Secretary. This membership list will also be used to print the Membership Roster, so please include your telephone number with any correspondence with the Club (also include your Area Code).

Some problems have been experienced with the Postal Delivery Service with regards to a few members not receiving their Bulletin even though we know they had been mailed. If you do not receive yours, please call the Bulletin Secretary.

Robert Grissom  
President,  
HEART OF AMERICA CARNIVAL GLASS ASSOCIATION

\*\*\*\*\*

EDUCATIONAL TUMBLER SERIES

By John & Lucile Britt



RAMBLER ROSE TUMBLERS IN PURPLE, MARIGOLD AND BLUE

"Rambler Rose" tumblers are slightly smaller than most of the standard table size tumblers. They are quite pretty and have a collar base that is smooth on the underside. They can be found in marigold, blue and purple. You will find that the purple is more hard to come by. One writer reports that these tumblers were made in green, but I have never seen one in that color. This does not imply that they were not made in green, but in all of our travels we have never seen or heard of one.

The old "Rambler Rose" tumblers were made by Dugan at Indiana, Pennsylvania. For many years most people considered this to be a Fenton pattern. When we started collecting tumblers in the early 1970's, we were told that this was a Fenton pattern. Sometime later however, shards were found of the "Rambler Rose" pattern at the old Dugan-Diamond dump site. This knowledge, along with the fact that Wright, who had purchased many of the old Dugan-Diamond molds, had some of the "Rambler Rose" tumblers reproduced in custard glass, proved that this was without a doubt a Dugan pattern. Other Dugan tumblers that were reproduced in custard were Harvest Flower and Floral & Grape. Many of these were painted, using several colors, and are indeed very pretty, but are definately not old. Unfortunately, the Northwood (N) in a circle was added to these tumblers. After many complaints by sincere collectors,

(Rambler Rose tumblers continued)

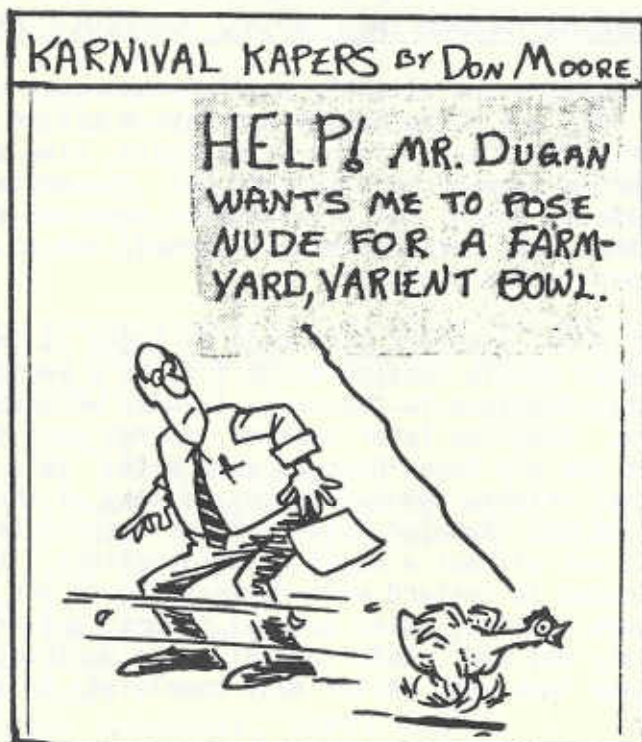
the so-called wobbly "W" or winged N was used. Keep in mind that the custard tumblers with these marks are definitely not old. Custard mugs in the Beaded-Shell and Fisherman patterns were also reproduced from old Dugan molds. They also contain these fraudulent marks. These mugs in custard containing the N in a circle or the "winged N" are not old nor are they Northwood.

"Rambler Rose" carnival glass tumblers were reproduced sometime later than the custard examples mentioned above. They were made by Westmoreland for Wright and contain the "W" in a circle. To the best of my knowledge, the new "Rambler Rose" tumblers were made only in purple. They are very easy to tell from the old "Rambler Rose" tumblers. The new "Rambler Rose" tumblers were iridised on the bottom of the base. None of the old "Rambler Rose" tumblers were ever iridised on the bottom of the base.

This is #105 in this tumbler series. Next month we will feature a U. S. Glass pattern that is known as "Cosmos & Cane".

JOHN AND LUCILE BRITT

\*\*\*\*\*



PICTORIAL PATTERN PARADE

By John & Lucile Britt



THE "SMALL THUMBPRINT" MUG

The little mug that is shown above is the first one of these that we have ever seen. It was not included in our mug series which was written for the I.C.G.A. Pump new bulletin. We purchased this mug and researched it after that particular series was completed. A souvenir creamer in the "Small Thumbprint" pattern is described and sketched in Hartung book 7 - - page 82. We wrote an article in the January 1979 H.O.A.C.G.A. Bulletin about our little sugar and creamer in this pattern. We thought perhaps you might be interested in reading about the little mug in this scarce pattern. I might add that this is called "Tiny Thumbprint" by William Heacock in his fine book "Custard Glass from A to Z". The custard pieces were made by the Tarentum Glass Co. of Tarentum, Pennsylvania. I am not sure whether the carnival glass pieces were made by Tarentum or whether they were made by a company that had purchased or borrowed the molds from Tarentum.

This "Little Thumbprint" mug is in good rich marigold with very nice iridescence. It is similar in size to the Estate mug, standing only 3 inches high with a top opening of 2 3/4 inches. There is a 24 point star figure pressed into the underside of the base. A band of tiny sunken elipses circles the mug near the base. "Souvenir of St. Johns, Mich." is stenciled on one side of the mug. The handle is of clear pressed glass. While we

(Small Thumbprint mug continued)

have not seen another mug in this pattern, I am sure that there are a number of others out there somewhere. It is quite possible that they can be found using the names of other towns or cities. Souvenir glass was very popular around the turn of the century and extended on into the carnival glass era. Ruby stain and custard glass were used more often than carnival glass for that purpose, however. In fact, ruby stain glass was extremely popular in its use as souvenir pieces. We think this "Small Thumbprint" mug is a very nice piece of carnival Glass. You might want to look for one of these while out on your next carnival glass hunting trip.

JOHN AND LUCILE BRITT

\*\*\*\*\*



PICTORIAL PATTERN PARADE

By John & Lucile Britt



FROG - - COVERED DISH

The "Frog" covered dish is sketched and described in Hartung book 8 - page 108. The one shown here is in pastel green. I have also seen them in mari-gold and pastel blue. The frog's eyes are a part of the mold and are painted black. This one is just a little under 4 inches tall at the highest point and measures 5½ inches in length. This little fellow looks quite realistic especially in the pastel green color. It would make a very attractive piece for those of you who like and collect animal pieces. In our opinion, it would make a very nice addition to any collection.

I have done considerable research as to the maker of the "Frog" two-piece covered dish with only a few positive answers. If I had to make a guess as to the maker of this piece, it would be the Co-Operative Flint Glass Co. of Beaver Falls, Pennsylvania. Rose Presnick, in her book #4 - plate 135 shows one of these frogs that she calls "Mr. Frog". The size appears to be the same size as this one. She states that it contains an "I over an H" trademark. We can find no trademark of any kind on the one shown here. We have found material in the book "Colored Glassware of the Depression Era 2" by Hazel Marie Weatherman on page 50 stating that this company did make a frog, as well as other animals. The picture shown was from an old ad by the Co-Operative Flint Glass Company that was taken from a trade journal report in 1930. It clearly shows a frog that looks exactly like the one we feature

(Frog - Covered dish continued)

here. It states that the "Frog" was made in all colors, but does not mention iridescence. We know for sure however, that some Co-Operative Flint Glass Company patterns can be found with iridescence. We have in our collection an "Ivy-in-Snow" goblet and a "Co-op Royal" wine in marigold. Both of these are Co-Operative Flint Glass patterns.

JOHN AND LUCILE BRITT

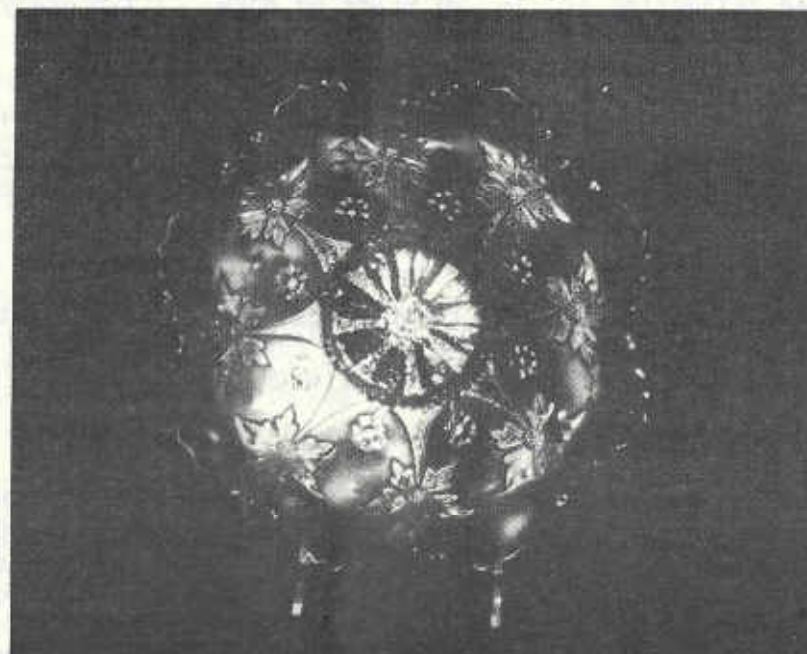
\*\*\*\*\*

The following prices were realized at the September 7, 1986 Woody Auction held in Emporia, Kansas. We thank Bob and Rose Grissom for providing these for us.

P Raindrops bowl	100.00	G Panelled Dandelion wtr. set	500.00
G Apple Blossom bowl	15.00	A Dragon & Lotus bowl	60.00
A Peacock Tail bowl	10.00	A Peacock at Fountain wtr set	450.00
A Oriental Poppy water set	600.00	M Kittens bowl	80.00
B Cherry Circle bon bon	30.00	M Grape & Lotus bon bon	30.00
B Dragon & Lotus bowl	35.00	A Ribbon Tie bowl	35.00
PO Dugans Cherry bowl	80.00	M Dragon & Lotus bowl	35.00
M Vintage nut bowl	25.00	M Stag & Holly bowl	110.00
G Garland rosebowl	30.00	M Imperial Grape water set	70.00
W Grape Arbor water set	1,000.00	A Captive Rose bowl	20.00
G Persian Medallion bowl	30.00	B Mikado compote	150.00
AO Rose Show bowl	325.00	M Mikado compote	90.00
A Dragon & Lotus bowl	50.00	G Nesting Swan bowl	190.00
M Holly bowl	20.00	B Dragon & Lotus bowl	80.00
P Acorn Burrs water set	550.00	G Grape & Cable butterdish	175.00
P Town Pump	450.00	B Captive Rose bowl	40.00
A Grape & Cable water set	300.00	B Poppy Show plate, flake	250.00
B Holly bowl	25.00	B Rose Show plate, flake	425.00
A Dandelion mug	90.00	M 474 water set	100.00
M Two Flowers bowl	40.00	B Butterfly bon bon	40.00
G Dandelion mug	190.00	G Grape & Cable pin tray	210.00
A Holly bowl	25.00	G Grape & Cable powder jar	40.00
G Grape & Cable dresser tray	100.00	B Good Luck bowl	80.00
G Open Rose plate	25.00	G Good Luck bowl	220.00
M Grape & Cable shot glass	140.00	M Heart & Vine bowl	40.00
W Hearts & Flowers compote	90.00	M Stag & Holly bowl	50.00
A Wishbone ftd. bowl	90.00	M Kittens cup & saucer	210.00
M Good Luck bowl	75.00	G Captive Rose bowl	35.00

\*\*\*\*\*

RARITIES AND SELDOM SEEN  
By Ivan & Betty Mitchell



RED LITTLE FLOWERS BOWL 10" (FENTON)

It seems that every auction one goes to, red pieces have raised in price (faster than any other color), an exception might be aqua opal.

Anyhow, the above piece has certainly held its' own both in and out of auctions.

This is a ten-inch bowl and the red is unsurpassible. It is RED-RED and an excellent piece both in iridescence and also when held to the light. I have seen a lot of red pieces, but none better than this one.

This piece was once thought to be Millersburg, but of course; it is now known to be Fenton. To the best of my knowledge Millersburg made no red. The colors known in this pattern are blue, green, marigold, vaseline, aqua, amber, amethyst and red. They also made a beautiful chop plate in marigold of which there are only 4 known.

This piece will sell in the \$1,400.00 to \$1,600.00 bracket or possibly higher. All in all, one of the most beautiful pieces in red.

The following article was submitted to me by Dick and Elaine Petersen of Clarkfield, Minnesota, in response to my request to hear from collectors who had been collecting 10, 15, 20 years or more. I sincerely thank the Petersen's for sending this to me and encourage ALL OF YOU to share your early days of Carnival Glass collecting with all of us.

August 22, 1963 Any significance to this date except its' being 23 years ago? Probably to some, this was before you began collecting Carnival Glass. To us it was the date we made our first major purchase of Carnival Glass - a purple Grape and Cable water pitcher and 5 tumblers for \$15.00.

Our neighbors, Earl and Beulah Lindquist had began getting interested in what turned out to be Carnival Glass when Earl brought home a couple of marigold bowls from his bachelor uncles, with eggs in them.

We each had children about the same age, so ventured forth on a picnic outing one Sunday to Spicer, Minnesota - location of Saulsbury's who picked thousands of pieces of Carnival Glass from eastern Canada. The picnic area beach was adjacent to Guy's Antique Shop. Out of curiosity, Earl and I wandered into the retail part of Saulsbury's. As we browsed around, we in our curiosity found ourselves in the "Dealers Showroom" part of the business. Talk about Carnival Glass! Warehouse shelf bins were full of Carnival Glass. Memory suggests that much of what was in front was punch bowl after punch bowl. A marigold Open Edged Basketweave dish for \$5.00 was our budget stretcher.

#### THEN CAME AUGUST 22

Looking back, I almost have the feeling I was following in Rose Presnick's footsteps. I had gone over near Dawson to help my father-in-law thresh. I was returning to Clarkfield via Boyd (of recent publicity because of the Englishman who had access to billions to help the distressed farmers of that community).

I stopped in Boyd at a cream-egg buying business where the woman operating the business was beginning to pick up some antiques locally to stock her antique business. There on the summer cool Jungers oil burner set the water set. She had purchased it the preceeding Monday evening in a nearby town for \$9.00. The sixth tumbler? A family member kept it as a keepsake but had to put the rest of the set on the auction in order that they could realize as much as possible from the sale.

Elaine was next door having coffee with Beulah when I came and told her what I had seen. Shortly Earl came home from plastering. Since it was Wednesday, the stores were open in the evening in Boyd so Earl and I went over to

(The Petersen's early days of collecting continued)

look at the set. In response to my "What do you think?" Earl replied "If you don't buy it I will."

Need one say more except I knew our bank account was mighty low on the 22nd but fortunately payday was the 23rd. Thus began 23 years of Carnival Glass collecting. One thing that has kept our interest at highest levels these 23 years has been our Carnival collector neighbors as well as the fact that in our Western Minnesota community of a little over 1,000 there subsequently developed 5 collections totaling in number maybe three times the number of people.

One of the side effects which has added its' element to our collecting has been the information explosion about Carnival Glass. Remember we began when Presnick and Hartung had just began with their books. How we looked forward to each new Hartung book as it came out! The August 1965 Woman's Day with its' 8 color pages of Carnival Glass was a local sell-out. Needless to say "a picture is worth 10,000 words." We continue to look forward to the arrival of Carnival news through the association newsletters, auction brochures, and publications.. We have attended area, regional, and national Carnival Glass get-to-gethers as our teaching careers have permitted.

As we have progressed along this 23 year happening, a good percentage of the pieces in our collection have unique historys as to how they became part of our collection, thus increasing the reluctancy to part with them. The blue Beaded Shell mug from my step-mother, which she had received for cleaning back in the 1930's, the peach opalescent Ski Star handled basket - our first purchase by mail auction, the peach opalescent Honeycomb rosebowl purchased at a Lincolnland get together, and the purple Beaded Cable rosebowl given us by a local lady.

Early on we developed a dual direction - peach opalescent Carnival and blue opalescent pieces in the same pattern and shape as Carnival pieces. We have about 50 peach opalescent pieces with the above mentioned handled Ski Star basket the jewel. A blue opal Mary Ann vase and (N) Singing Birds mug high-light that part of our collection. Remaining to complete our collection is the base to a blue opalescent Fishnet epergne. We have had the lily for years, recently acquiring another. The complete epergne is well known in peach opalescent Carnival Glass but to our knowledge, only the lily in blue opalescent. Many things thought not to exist have surfaced in our 23 years of Carnival Glass collecting. Anyone know of the existance of such a base and/or an opalescent Fishnet epergne in any color for that matter?

DICK AND ELAINE PETERSEN  
CLARKFIELD, MINNESOTA

\*\*\*\*\*



NEWS OF THE SAN DIEGO COUNTY CARNIVAL GLASS COLLECTORS CLUB

September 21, another milestone was reached as 64 members and guests met for lunch at La Jolla Village Inn, La Jolla, Ca. Thirteen people attended this meeting for their first time.

From 10:00 to nearly 4:00 P.M., Fourteen 8' tables full of glass were admired, thoroughly discussed, and of course, bought and sold. Among those, an ice green Memphis fruit bowl with stand changed owners.

Don Moore honored us with his superb presentation of "The Basics of Color & Shape". Explicitly detailing each of the base glass color spectrum, even into the minute differences among varying degrees of blue, we were captivated by his humor and descriptive emphasis concerning some 40 selections from his vast collection of rarities. His display was an awesome sight!

The Shupert family provided video taping of the entire program. The tapes will be available for purchase. You may contact Al, Kay or Rusti Shupert for information. 4074 Vista Calaveras, Oceanside, California 92056.

Brisk sales for Don's latest book, "A COLLECTION OF WRITINGS AS ORIGINALLY PUBLISHED IN H.O.A.C.G.A. NEWSLETTER" were observed.

Everyone should add this book to their Carnival Glass library of information.

We heartily thank Don & Connie for joining us and look forward to their next visit.

The carnival door prize, a donation from Angie Cash, went to Carol Smith, a new member from Bellflower, Ca. She was thrilled with the lovely cobalt Windflower bowl.

Paul Lines received a blue stretch Imperial goblet in the raffle.

A nominating committee of three was designated to form a slate of officers to be elected at our next meeting on December 7.

Respectfully submitted,  
Diane Fry, President

\*\*\*\*\*

NEWS FROM THE AIR CAPITAL CARNIVAL GLASS CLUB

We had the good fortune this month of traveling to Kansas City, Kansas to have our meeting in the home of Herb and Sadie Treff.

We rose early Sunday morning and headed for Kansas City where we were met by the Treff's and other members of the Club. We had a covered dish noon meal and later had our meeting. We thank the Treff's for having us.

The Convention plans are nearly complete at this time. Tom Burns promises us to have a fine Auction and we hope all of you can come and help us celebrate our 5th Anniversary. Bring your friends, as you do not have to be a member to join in all of the activities.

I would like to thank all of the other Clubs for representing us so well in their coverage of our upcoming Convention. We certainly were pleased with the articles you placed in your Newsletters. Thanks again for all of your help.

Donald E. Kime  
Secretary,  
AIR CAPITAL CARNIVAL GLASS CLUB

\*\*\*\*\*

AIR CAPITAL CARNIVAL GLASS CONVENTION October 17, 18 & 19, 1986

Friday October 17: 8:00 A.M. - 2:00 P.M. Registration  
2:00 P.M. Educational Program

Saturday October 18: 9:00 A.M. Tom Burns Auction  
6:00 P.M. Banquet  
Featured speaker, Roland Kuhn

Sunday, October 19: 7:00 A.M. - 8:00 A.M. Free Breakfast

EVERYBODY PLAN TO ATTEND!!!!!!

\*\*\*\*\*

TUMBLERS

ANY ONE

- |              |               |             |
|--------------|---------------|-------------|
| TUMBLERLLORD | 1. ACORN BURR | 12. GRAPE   |
| FILEUBMRLBLI | 2. BLUE BERRY | 13. UNSHOD  |
| SLENAPORIENA | 3. BOUQUET    | 14. MILADY  |
| RYSICHYUUEOM | 4. BUTTERFLY  | 15. PEACH   |
| NDBAUCLBQTIO | 5. CHATELAINE | 16. PANELS  |
| DAHLIAFNRULN | 6. CHERRY     | 17. QUILL   |
| BLUEBERRYLED | 7. DAHLIA     | 18. REX     |
| EINTRPEORFDT | 8. DANDELINE  | 19. ROBIN   |
| PMSAOSTCRXNB | 9. DIAMOND    | 20. ROLL    |
| AUHHBBTAEEAR | 10. FILE      | 21. RIBS    |
| RFOCIURHLDY  | 11. FLUTE     | 22. TUMBLER |
| GEDXNRBFBURR |               |             |

ANSWERS TO LAST MONTHS QUIZ.

- |               |              |                |
|---------------|--------------|----------------|
| W SUNFLOWER R | 1. STAR      | 10. TORNADO    |
| H SIFRATSE E  | 2. IRIS      | 11. TULIP      |
| E WHEATFWGW   | 3. ROLL      | 12. TWINS      |
| N IRISUOTA O  | 4. ROSE      | 13. VINTAGE    |
| O STARLDHTL   | 5. SCROLL    | 14. WHEAT      |
| B TWHFIAINF   | 6. STARFISH  | 15. WILDFLOWER |
| H EIDUPNSID   | 7. SUNFLOWER | 16. WISTERIA   |
| S RNESORTVL   | 8. TEXAS     | 17. WISHBONE   |
| I IS SCROLL I | 9. THISTLE   | 18. WINDFLOWER |
| W ASAXETEX W  |              |                |

NEW REFERENCE BOOK ON CARNIVAL GLASS !!!

NEW CARNIVAL GLASS BOOK

A collection of the writings of

**DON MOORE**

(as published originally in the Heart of America Newsletter)

175 PAGES - 225 BLACK & WHITE PHOTOS

PRICE 12.50 (1 POSTAGE U.S. & CANADA - 2 OVERSEAS)

**ORDER DIRECT**

DONALD E. MOORE  
2101 SHORELINE #462  
ALAMEDA, CA. 94501

Just received a copy of this new book and believe me, it is great! It contains ALL of the articles Don Moore has written for the Heart of America Carnival Glass Association Newsletters. I'm sure all of you will enjoy it.

Michael J. Basey  
Bulletin Secretary  
HEART OF AMERICA CARNIVAL GLASS ASSOC.

\*\*\*\*\*

POLICY FOR ADVERTISING IN THE H.O.A.C.G.A. BULLETIN

1. All advertisements, announcements, letters or any other item to be printed, must be received by the Bulletin Secretary no later than the first (1st) day of the month, to insure being published in that month's Bulletin.
2. Member families may advertise ten (10) 'For Sale' and ten (10) 'Want Ads' per month F R E E of charge.
3. Only old Carnival Glass items or H.O.A.C.G.A. Souvenirs will be published.
4. Damage or manufacturing flaws should be noted.
5. All 'For Sale' items must be priced; no bid items will be published.
6. A 5-day return privilege, at buyers' expense; providing it is not as advertised.
7. All postage and insurance is extra, to be paid by buyer.
8. All ads must be legible, or they will not be printed.
9. The H.O.A.C.G.A. does not accept responsibility for accuracy of any ads.

FOR ACCURACY OF DESCRIPTION, THE FOLLOWING COLOR KEY IS RECOMMENDED:

A--Amethyst	HA--Honey Amber	P--Purple
AMB--Amber	IB--Ice-Blue	PRL--Pearl/Pastel/Milk Glass
AO--Aqua Opalescent	IG--Ice-Green	PM--Pastel Marigold
B--Blue	IGO--Ice-Green Opal.	PO--Peach Opalescent
BO--Blue Opal or Blue Opaque	LAV--Lavender	R--Red
CLM--Clammoth	M--Marigold	RA--Amberina
EB--Electric Blue	MMG-Marigold on Milk Glass	SM--Smokey
G--Green		VAS--Vaseline

NOTE: If you wish to describe a piece as light or dark, use the body of the ad.

PLEASE USE THE FOLLOWING:

EI-Excellent Iridescence, GI-Good Iridescence, LI-Light Iridescence

EXAMPLES:

AO	EI	Good Luck plate, one point broken & repaired	375.00
M	LI	Peacock at the Fountain 7pc wtr. set, pitcher has flake	225.00
MMG	GI	Peacock and Grape bowl	360.00
A	GI	Wishbone tumbler, heat check, light amethyst	47.50

It would be greatly appreciated by everyone, if you would use these codes, as suggested.

THANKS!!!!!! THE EDITOR

\*\*\*\*\* CARNIVAL GLASS FOR SALE \*\*\*\*\*

Bob Slaughter, Rt. 2, Box 568, Graham, North Carolina 27253  
PHONE: 1-919-376-9552 after 7:00 P.M.

M	EI	Peacock at the Fountain (N) master berry bowl	50.00
G	EI	Wishbone/Ruffles & Rings 8" ruffled ftd. bowl	75.00
A	EI	Wishbone 8½" ruffled ftd. bowl, satin	65.00
P	EI	Scroll Embossed 7½" beautifully ruffled bowl	45.00
M	EI	Three Fruits 8½" stippled ruffled bowl	45.00
IB	EI	Colonial design 9" tall covered candy	50.00
PINK		Pastel Swan, excellent irid. 2 each	25.00
A	EI	Grape & Cable butterdish	175.00
M	GI	Ribon mug, stippled	25.00
G	EI	Grape & Cable haptin holder, chigger bites on ft.	115.00

\*\*\*\*\*

Mrs. Lydia Caudle, Rt. 1, Box 87, State Road, N.C. 28676  
PHONE: 1-919-874-2519

W	EI	Beaded Cable (N) rosebowl	600.00
M	EI	(N) Bushel Basket round	60.00
	GI	Orchid tint (N) Bushel Basket round	85.00
G	EI	(N) Grape & Cable large ftd. orange bowl	195.00
B	EI	Stag & Holly large 11" footed bowl	225.00
M	EI	Little Fishes large footed berry bowl	115.00
G	EI	Millersburg Nesting Swan bowl	195.00
M	EI	Harvest Flower tumblers, 4 each	90.00
A	EI	Horsehead footed bowl	110.00
B	EI	Grape & Gothic Arches water set	449.00

\*\*\*\*\*

Delouris Craft, 702 Bradley Drive, Bloomington, Illinois 61701  
PHONE: 1-309-662-3610

W	EI	Grape & Cable (N) master ice cream bowl, 2 flutes smoothed, few pinpoints, extra frosty & pretty	195.00
M	GI	Holly ruffled hat type dish	18.00
M	GI	Rose Show bowl, chip on a petal	95.00
P	EI	Hearts & Flowers ruffled bowl, chip on side of collar, scarce & pretty	175.00
M	EI	Two Flowers ruffled ball ftd bowl	35.00
M	EI	Wreath of Roses rosebowl, sm. n/h flke	30.00
P	EI	Beaded Bullseye vase, beautiful	60.00
W	EI	Hearts & Flowers compote, very nice	98.00

\*\*\*\*\* CARNIVAL GLASS FOR SALE \*\*\*\*\*

J. Richard Brandt, 1313 Church St., Lititz, Pennsylvania 17543  
PHONE: 1-717-626-7393 after 6:00 P.M. EST.

A	EI Butterfly & Berry tumbler	325.00
W	EI Floral & Grape tumbler	70.00
W	EI Cosmos & Cane tumbler	210.00
A	GI Butterfly & Berry nut bowl	460.00
G	EI Poppy Show plate, 2 small chips	450.00
AO	GI Good Luck bowl, 2 small chips	225.00
G	GI Springtime tumbler	100.00
M	EI Fashion rosebowl	65.00
W	GI Holly bowl	90.00
W	GI Acorn bowl	180.00

\*\*\*\*\*

Burney Talley, 1814 Slate, N.W., Albuquerque, New Mexico 87104  
PHONE: 1-505-242-1261

DM	Poinsettia milk pitcher SUPER	95.00
M	Heavy Iris tumbler, very nice	65.00
P	Imperial Paperweight RARE, has all of Imperials' logos on it	750.00
P	Three Fruits plate, basketweave exterior	130.00
P	(N) Peacocks plate, very flat	375.00
PO	Peacock & Grape 8 ruffled collar base bowl	575.00
SM	Smoke-Blue pastel Peacock & Grape 8 ruffled bowl super pastel and RARE	575.00
AMB	Stag & Holly large ball ftd. ice cream shape bowl, SCARCE	600.00
B	Peacock & Dahlia ice cream shape bowl, SCARCE	125.00
B	Elks Bell - Atlantic City 1911 RARE	1,250.00

\*\*\*\*\*

Bev Franzen, 18550 Echo Way, Gladstone, Oregon 97027  
PHONE: 1-503-655-9223

IB	EI Hearts & Flowers bowl, nice	230.00
M	EI Peacock at the Fountain punch bowl base	30.00
M	EI Stork ABC plate	45.00
M	EI Fruit & Flowers bon bon, nice	30.00
G	EI Heavy Grape 6" plate	50.00
M	EI Singing Birds mug, nice	50.00
A	EI Cherry footed 8 1/2" bowl	50.00
B	EI Butterflies bon bon	45.00
PO	EI Four Flowers 7" plate	95.00
AQ	EI Fenton's Basket 2 row open edge	55.00

\*\*\*\*\* CARNIVAL GLASS FOR SALE \*\*\*\*\*

John D. Resnik, 4290 Jackson Ave., Culver City, Calif. 90230  
PHONE: 1-213-839-1588

M	Good Luck pie crust edge bowl	110.00
AQ	Leaf Chain ice cream shaped bowl	125.00
AQ	Two Flowers 11" ruffled bowl	295.00
AQ	Fenton Open Edge Basket	75.00
M	Stag & Holly 9" ftd. deep bowl SUPER	135.00
M	Leaf Chain 7" plate	75.00
R	10" Imperial console bowl	75.00
A	Grape & Cable Sweetmeat	195.00
A	"Campbell & Beasley" H/G plate, small area in center where irid. did not stick	250.00
M	Grape & Cable dresser tray	150.00

\*\*\*\*\*

Larry Keig, 301 Union Street, Fayette, Iowa 52142  
PHONE: 1-319-425-4467

M	Birds & Cherries compote	35.00
B	Cherry Circles large bon bon	65.00
M	Leaf Chain/Horse Chestnuts 7" bowl	20.00
B	Cherry Chain small ruffled bowl	30.00
M	Pond Lily bon bon	20.00
A	Corinth banana shaped dish	65.00
M	Fashion rosebowl RARE	95.00
M	Lattice & Points hat	25.00
M	Blackberry Wreath small ruffled bowl	27.50
M	Orange Tree footed sauce	22.50

\*\*\*\*\*

William Brown, 370 South Monroe, Blissfield, MI 49228  
PHONE: 1-313-381-5219

W	EI Orange Tree 9" ruffled bowl	95.00
G	EI Mlsbg. Rosalind 10" bowl	200.00
P	EI Mlsbg. Fleur de Lis 10" tight ruffled bowl	300.00
P	GI Grape & Cable plate (N)	75.00
P	EI Wishbone footed plate (N)	275.00
G	EI Mikado compote, exceptional color & irid. (small heat check)	375.00
B	EI Butterflies bon bon	60.00
G	EI Heavy Grape plate 7"	55.00
M	EI Thistle & Thorn nut bowl (English)	55.00
P	GI Peacock & Grape bowl	25.00

\*\*\*\*\* CARNIVAL GLASS FOR SALE \*\*\*\*\*

Roy & Beverly Johnson, 631 E. Morgan Ave., Milwaukee, Wis. 53207  
PHONE: 1-414-481-6137 after 4:00 P.M.

IG	GI	Peacocks plate	300.00
B	EI	Butterfly & Berry covered sugar	150.00
G	EI	Acorn Burrs two-handled spooner	75.00
M	EI	Covered Hen	100.00
G	EI	Butterflies two-handled bon bon	65.00
W	EI	Orange Tree 9" bowl, super frosty	100.00
A	EI	Holly & Berry gravy boat, almost black	65.00
A	EI	Fleur de Lis 9" bowl	145.00
G	EI	Primrose ice cream shaped bowl	100.00
EB	EI	Good Luck ruffled bowl (missing tooth)	50.00

\*\*\*\*\*

Joe P. Merrifield, 10018 N.E. Alton, Portland, Oregon 97220  
PHONE: 1-503-253-8276

M		Hobstar Band tumbler	45.00
M		Hobstar Band variant tumbler	45.00
A		Raspberry tumbler	35.00
A		Oriental Poppy tumbler	35.00
M		Pony bowls, 2 each	60.00
M		Cathedral creamer	35.00
M		Pineapple creamer	30.00
M		Wine & Roses stemmed wine, 3 each	35.00
G		Grape & Cable spooner, thumbprint damage	50.00
R		H.O.A.C.G.A. Good Luck pitcher & 6 tumblers	150.00

\*\*\*\*\*

Ed & Sharon Binstock, P. O. Box 351, Presque Isle, Maine 04769  
PHONE: 1-207-764-3612

W		Hearts & Flowers ruffled bowl, frosty NICE	167.50
M		Orange Tree rosebowl, small flake on 1 foot	77.50
P		Grape Leaves (N) ruffled bowl, scarce	55.00
G		Louisa rosebowl, mint, good feet	60.00
M		Wreathed Cherry 5 piece oval bowl set	127.50
B		Vintage 7½" berry bowl	45.00
P		Pansy ruffled bowl	40.00
PO		Holly & Berry odd shaped 10 sided bowl	45.00
P		Scroll Embossed round bowl	40.00
G		Singing Birds tumbler, nice color	35.00

\*\*\*\*\* CARNIVAL GLASS FOR SALE \*\*\*\*\*

A. C. Dickey, 144 Chandler St., Vacaville, California 95688  
PHONE: 1-707-448-9386

M		Vintage 9" ruffled bowl	35.00
M		Floral & Grape variant water pitcher	95.00
M		Cosmos Variant 9½" ruffled bowl	40.00
W		Waffle Block 8½" bowl	55.00
G		Open Rose 9" footed bowl	55.00
M		Peacock Tail 9" pie crust edge bowl	25.00
M		Leaf Tiers berry set, 4 piece	60.00
P		Oriental Poppy tumblers, 6 each	47.00
B		Peach tumbler	95.00
A		Fluffy Bird tumblers, 2 each	90.00

\*\*\*\*\*

Charles Wiltshire, 4603 22nd Ave., Kenosha, Wisconsin 53140  
PHONE: 1-414-654-5249

A		Broken Arches punch bowl and base SUPER	500.00
W		Holly plate	175.00
M		Orange Tree plate SUPER	100.00
SM		Premium candlesticks, pair	75.00
G		Sunflower bowl	40.00
PO		Cherries 3 ftd. bowl, 2 sides up, flk on 1 ft.	150.00
A		Strawberry bowl (N)	100.00
G		Peacock Tail hat advertising General Furniture 1910	50.00
M		Pony bowl	60.00
M		Split Diamond creamer	30.00

\*\*\*\*\*

Harm Westerhuis, R.R. #1, Box 49, Platte, South Dakota 57369  
PHONE: 1-605-337-3631

M		Grape & Cable banana bowl	140.00
M		Fashion punch bowl base	30.00
M		Fashion fruit bowl top	40.00
M		Millersburg Hanging Cherries spooner	45.00
M		Orange Tree punch bowl top (no base) & 8 cups	125.00
M		Imperial Grape water pitcher	90.00
M		Butterfly & Berry large berry bowl	50.00
M		Pansy sugar bowl	25.00
M		Cornucopia vases, pair	50.00

\*\*\*\*\* CARNIVAL GLASS FOR SALE \*\*\*\*\*

Ted Sheibley, 304A Hillcrest Drive, New Cumberland, Pa. 17070  
PHONE: 1-717-938-6417

A	Melon Rib spittoon (Heisey)	300.00
P	Loganberry vase	360.00
G	Acorn Burrs creamer	80.00
M	Grape & Cable powder jar	55.00
M	Rose Show variant bowl	365.00
AO	Bushel Basket (N) round, repair on inside at base of handle	35.00
P	Beaded Cable footed candy dish	50.00
M	Lions bowl	110.00
P	Singing Birds 7 piece water set	600.00
M	Singing Birds 7 piece water set	560.00

\*\*\*\*\*

William Coles, Rt. #1, Box 273B, Hickory, Kentucky 42051  
PHONE: 1-502-674-5916

M	Double Dutch 9" footed bowl	35.00
B	Holly 8½" bowl, ice cream shaped	50.00
M	Butterfly & Berry spooner	55.00
IG	Fenton's Basket, 2 row open edge (small)	50.00
IG	Fenton's Basket, 2 row open edge (large)	40.00
A	Fenton's Butterflies bon bon card tray shape	45.00
P	Bushel Basket, round (N)	65.00
AQ	Blackberry Spray hat, square top	40.00
M	Octagon goblet	30.00
IB	Oriental Poppy tumbler, cracked across base	12.00

\*\*\*\*\*

Joseph Mello, 535 Fish Road, Tiverton, Rhode Island 02878  
PHONE: 1-401-624-2174

W	Persian Garden fruit bowl top, BEAUTIFUL	75.00
M	Floral & Grape water pitcher	95.00
M	Imperial Grape water pitcher, dark color, nice	65.00
M	Daisy & Plume three footed candy dish	25.00
B	Orange Tree punch cups, chips on base, each	5.00
M	Orange Tree punch bowl top	75.00
M	Grape & Gothic Arches berry bowls, 3 each	15.00
M	Peacock at the Fountain tumbler	30.00

\*\*\*\*\* CARNIVAL GLASS FOR SALE \*\*\*\*\*

Lou Swafford, E.S.R. Box 70B, Warsaw, Missouri 65355  
PHONE: 1-816-438-6613

G	EI Stag & Holly 8" ftd. bowl, hard to find	150.00
P	EI Grape & Cable banana boat, flk. ext. top edge	160.00
B	EI Grape & Cable spatula footed 8" bowl	75.00
G	EI Bullseye & Leaves 8½" bowl	45.00
P	EI Strawberry 9" flat plate, basketweave ext.	110.00
G	EI Heart & Vine 9" bowl, Bearded Berry ext. MINT	60.00
P	EI Grape & Cable punch base, bronze irid.	60.00
B	EI Dragon & Lotus spatula footed 7 3/4" bowl	70.00
PO	EI Hand-painted int. sm. flowers ext. 9" bowl	65.00
M	GI Curved Star butter dish, odd shape, 2 chips under side of lid	90.00

\*\*\*\*\*

Don Donovan, R.R. #1, Selkirk, Ontario, Canada NOA 1P0  
PHONE: 1-416-776-2453

W	Hearts & Flowers bowl, 8 ruffled, pretty	200.00
M	Sailboats plate	230.00
BO	Fenton Blackberry Open Edge vase whimsy 9" tall, bottom base-stress line, VERY RARE Blue Opal	1,200.00
A	Inverted Strawberry tumbler	165.00
W	Beaded Cable rosebowl	550.00
M	Heavy Grape punch bowl & base, dark color	325.00
M	Zipper Loop lamp 8½" tall	400.00
IG	Bushel Basket, round	200.00
R	Open Edge hat, 6 ruffled	195.00
PO	Round-Up bowl, candy ribbon edge	150.00

\*\*\*\*\*

John C. Munden, 2289 So. Military Hwy., Chesapeake, Va. 23320  
PHONE: 1-804-545-1463

PO	Vineyard water pitcher, tiny base nick, lovely	650.00
M	Orange Tree punch bowl top only (or will buy base)	75.00

\*\*\*\*\*

\*\*\*\*\* CARNIVAL GLASS FOR SALE \*\*\*\*\*

Bobby & Shirley Hill, Rt. 8, Box 413, Reidsville, N.C. 27320  
PHONE: 1-919-342-3096 after 5:30 P.M.

M	Three Fruits plate	60.00
P	Grape & Cable plate	90.00
W	Orange Tree bowl	75.00
M	Windflower 9" low bowl	22.00
M	Millersburg Cherry 10" bowl ice cream shape	75.00
G	Holly bowl, candy ribbon edge	50.00
P	Buttermilk Goblet	40.00
M	Cosmos Variient bowl	25.00
P	Acorn Burrs punch cups, 4 each	25.00
M	Golden Harvest decanter with stopper, stopper has been ground on bottom	65.00

\*\*\*\*\*

Sterling Butz, 221 N. Adams St., Allentown, Pennsylvania 18104  
PHONE: 1-215-398-2875

M	EI "474" milk pitcher	100.00
G	EI Holly Whirl gravy boat	200.00
G	EI Blackberry Wreath compote	225.00
IB	EI Grape & Cable banana boat	425.00
M	EI Cherry & Cable 4 piece table set	850.00
R	EI Fashion punch cup	300.00
B	EI Ten Mums 7 pc. water set, 1 tumbler crack	1,400.00
M	EI Grape & Cable boudoir lamp	800.00
A	EI Greek Key 5 piece water set	1,200.00
	EI (Light Tan) Goddess of Athena Epergne	1,000.00

\*\*\*\*\*

John R. Harris, 4312 E. Grant, Fresno, California 93702  
PHONE: 1-209-251-7896

W	Orange Tree punch bowl base (or will buy top for \$125.00)	125.00
---	---	--------

\*\*\*\*\*

\*\*\*\*\* CARNIVAL GLASS FOR SALE \*\*\*\*\*

John Mikkonen, 8673 McGuire Ct., Shakopee, Minn. 55379  
PHONE: 1-612-445-6098

R	Holly Jack in the Pulpit hat, SUPER	375.00
IG	Open Edge Basket, mid-size, SUPER	150.00
PO	Acorn 7" bowl, good color and opal	140.00
M	Stag & Holly large bowl, very flat	125.00
B	Fan Tail bowl, SUPER	100.00
PO	Cherries large bowl, Dugan, heavy opal	240.00
G	Millersburg Blackberry Wreath 10" bowl, SUPER	175.00
IG	Hearts & Flowers pie crust edge bowl, good color, but 5 rim chips, so only	200.00
M	Wishbone 10" bowl, good color	65.00
W	Peach tumbler	125.00

\*\*\*\*\*

Glen Fortney, Box 303, Buckner, Missouri 64016  
PHONE: 1-816-249-5208

M	GI Holly compotes 6 each	25.00
M	EI Lattice & Grape tumblers, 6; all for	130.00
M	EI Panther berry bowl, straight sides	35.00
M	EI Lattice & Daisy tumblers, 4 each	25.00
A	EI Grape & Cable tumblers, 3 perfect 1 with base chip \$15.00	27.00
P	EI Heavy Iris tumbler	45.00
PO	EI Petal & Fan sauce	35.00
PO	EI Ski Star sauce	35.00
B	EI Peacock at the Fountain tumblers, 3 each	27.50
M	EI Fentons Peacock & Urn ruffled bowl	65.00

\*\*\*\*\*

Harold L. Fortney, 910 Penn Apt. 1008, Kansas City, Mo. 64105  
PHONE: 1-816-474-2054

G	EI Wreath of Roses compote, excellent color	45.00
G	EI Peacock Tail compote	45.00
M	EI Pony bowl, satin	50.00

\*\*\*\*\*

\*\*\*\*\* CARNIVAL GLASS FOR SALE \*\*\*\*\*

Barbara Nelson, R.F.D. 4, Box 155, Laconia, N.H. 03246  
 PHONE: 1-603-293-7246

G	EI Singing Birds pitcher & 2 tumblers (N) SUPER	300.00
G	EI Grape & Cable hatpin holder, tiny nick on leaf	125.00
M	EI Grape & Cable hatpin holder, mold lines on top	125.00
P	EI Fanciful plate, 8½", flat, tiny scratches on some points	100.00
B	EI Holly plate, 9½", red & green irid. SUPER	250.00
P	EI Fishscales & Beads plate 7 3/4" SUPER, SCARCE	150.00
W	EI Grapevine Lattice plate, 6½" SUPER	95.00
G	EI Blackberry mini compote	75.00
P	EI Cherry plate, 6", crimped edge, Dugan	150.00
B	GI Grape & Gothic Arches tumblers, have 3, all show slight wear from use, ALL FOR	40.00

\*\*\*\*\*

Michael J. Basey, 4315 Adams, Kansas City, Kansas 66103  
 PHONE: 1-913-432-2460 after 6:00 P.M.

M	EI Good Luck bowl, basketweave exterior	120.00
B	EI Orange Tree powder jar, usual minor roughness on inside rim, no harm	70.00
PO	EI Ski Star large bowl	100.00
M	EI Soda Gold candlesticks, the pair	45.00
PO	EI Swirl vase	45.00
PO	EI Leaf Rays nappy, small flake on base, no harm	22.00
M	EI Orange Tree mugs, each	20.00
IB	EI Drapery candy dish, heat check inside, feet are perfect (N)	120.00

\*\*\*\*\*

Mary C. Kesterson, 320 Mesa Rd., Willow Park, Texas 76086  
 PHONE: 1-817-441-8410

M	EI Brooklyn Bridge	345.00
LV	EI Stag & Holly 9" ftd. bowl	85.00
M	EI Hearts & Flowers compote, SUPER IRID.	145.00
G	EI Grape & Cable 9" plate, basketweave exterior	95.00
W	EI Apple Blossom Twig 9" plate	125.00
IG	EI Open Edge hat shape, 7"	85.00
W	EI Hearts & Flowers compote	135.00
CB	EI Rose Show plate	350.00
IB	EI Nippon 9" bowl	165.00
AO	EI Leaf & Beads rosebowl, SUPER PASTEL	235.00

\*\*\*\*\* CARNIVAL GLASS WANTED \*\*\*\*\*

Ed & Sharon Binstock, P. O. Box 351, Presque Isle, Maine 04769  
 PHONE: 1-207-764-3612

IB	Peacocks (N) plate
P	Poppy Show bowl
G	Poppy Show bowl, plate
P	Panther master berry bowl
B	Plaid bowl
G	Wishbone collar base bowl
B	Wishbone footed bowl
W	Wishbone collar base bowl
P	Wishbone tumbler
G	Springtime tumbler

\*\*\*\*\*

Judith Miller, 3920 Harlequin Terrace, Freemont, Calif. 94536  
 PHONE: 1-415-796-1098 evenings

B,P,A Vintage epergne

\*\*\*\*\*

Joseph Mello, 535 Fish Road, Tiverton, Rhode Island 02878  
 PHONE: 1-401-624-2174

P	Imperial Grape punch cups, need 2
M	Acorn Burrs punch top
P	Acorn Burrs punch bowl base
M	(N) Bushel basket, eight sided
W	(N) Bushel basket, round
A	Holly bowl, Fenton, 8" to 10"

\*\*\*\*\*

Ted Sheibley, 304A Hillcrest Drive, New Cumberland, Pa. 17070  
 PHONE: 1-717-938-6417

G,IG	Peacocks on the Fence bowls
	ANY COLOR Peacock & Urn (N) master ice cream bowls
B	Peacock at the Fountain tumblers
M	Apple Tree pitcher and tumblers

\*\*\*\*\*



\*\*\*\*\* CARNIVAL GLASS WANTED \*\*\*\*\*

Don Donovan, R.R. #1 Selkirk, Ontario, Canada NOA 1PO  
PHONE: 1-416-776-2453

P Stopper for Diamond & Sunburst decanter, or will sell  
decanter

\*\*\*\*\*  
Daryl Strohm, 8904 E. 29th St., Kansas City, Missouri 64129  
PHONE: 1-816-252-8137

A LID ONLY for Stutting Peacocks sugar bowl  
Any GOOD COLOR & IRID. Red pieces

\*\*\*\*\*  
John Mikkonen, 8673 McGuire Ct., Shakopee, Minn. 55379  
PHONE: 1-612-445-6098

ANY unusual Holly Plates, bowls, compotes or sherberts  
Green, Ice-Blue, Ice-Green or Vaseline Hearts & Flowers  
plate

MMG Grape Arbor tumbler

\*\*\*\*\*  
Mr. & Mrs. Patrick Kroll, 3714 W. Wrightwood, Chicago, Ill. 6064  
PHONE: 1-312-384-8475

G Grape & Cable with thumbprints small berry dishes, 3  
ANY Carnival Glass gas and electric lamp shades  
ANY books or written articles on Carnival Glass shades  
except Greguies books.  
"Colors in Carnival Glass" Sherman Hand, all 4 volumes  
"A Guide to New Carnival Glass" Jack Lawton Webb  
"The Cambridge Glass Book" Harold & Judy Bennett  
"Cambridge Ohio Glass in Color, Book 1", Mary, Lyle,  
and Lynn Walker

\*\*\*\*\*  
Harold L. Fortney, 910 Penn, Apt. 1008, Kansas City, Mo. 64105  
PHONE: 1-816-474-2054

A,W Two Flowers 7" - 11" bowls  
ANY good Amber Imperial pieces, ANY pattern

\*\*\*\*\* CARNIVAL GLASS WANTED \*\*\*\*\*

Louis Carpick, R.R. #3, Box 274, Center Rd., Dudley, Mass. 01570  
PHONE: 1-617-943-4223

IB Open Edge hat  
W Open Edge hat

\*\*\*\*\*  
Larry Keig, 301 Union Street, Fayette, Iowa 52142  
PHONE: 1-319-425-4467

G Inverted Strawberry powder jar lid  
P Vintage (Dugan) powder jar, lid only  
B Vintage (Fenton) epergne, lily only  
P,G Bud vase whimsey (See Hand Encyclopedia p.p 142-143)  
P Vintage (Dugan) dome-footed bowl  
ANY Patterns or shapes with Iowa town names enameled on them

\*\*\*\*\*  
John D. Resnik, 4290 Jackson Ave., Culver City, Calif. 90230  
PHONE: 1-213-839-1588

M Wide Panel epergne side lily  
P Strawberry epergne  
ANY COLOR 1910 Detroit Elk plate  
A "Sterling Furniture Co." plate  
A "Central Shoe Store" plate  
A "Gervurtz Furniture Co." plate  
A "Braziers Candies" plate

\*\*\*\*\*  
John C. Munden, 2289 So. Military Hwy., Chesapeake, Va. 23320  
PHONE: 1-804-545-1463

P Broken Arches punch cups  
P Many Fruits punch cups  
DM Flute punch base only & cups (Imperial)  
P S Repeat toothpick or compote  
DM Flute butter dish base only  
DM Many Fruits punch cups  
DM Grape & Cable butter base only  
P Peacock at the Fountain punch bowl set  
P Acanthus large bowl  
P Thunderbird large bowl

\*\*\*\*\* CARNIVAL GLASS WANTED \*\*\*\*\*

Bob Slaughter, Rt. 2, Box 568, Graham, North Carolina 27253  
PHONE: 1-919-376-9552 after 7:00 P.M.

- P EI Tiger Lily tumblers, need 6
- P EI Imperial Grape tumblers, need 2
- A EI Panelled Dandelion tumblers, need 6
- A EI Oriental Poppy tumblers, need 6
- G EI Singing Birds tumblers, need 6
- EB EI Peacock at the Fountain tumblers, need 6
- M EI Octagon stopper for decanter
- PEARL Luster Rose tumblers, need 6 (milk glass opal with clear iridescence)
- PEARL Lid for Lacy Dewdrop compote

\*\*\*\*\*

Donna & Orio Alessio, 1504 Queen St., Cornwall Ontario, Canada  
PHONE: 1-613-938-1627 K6J-1R4

- M Butterfly & Berry pitcher
- M Butterfly & Berry sugar lid
- M Butterfly & Berry butterdish with lid
- M Orange Tree with scales tumblers, need 6

\*\*\*\*\*

Dennis B. Keck, 126 Cherry St., Punxsutawney, Pennsylvania 15767  
PHONE: 1-814-938-3472

- M Grape & Cable master punch base, good color
- IG Wishbone epergne lily
- G Wishbone epergne base
- B Memphis punch top
- B Many Fruits punch top
- G Millersburg Cherries powder jar base
- G Acorn Burrs butter lid
- M Grape & Cable whiskey decanter bottom
- B Grape & Cable sweetmeat lid
- M Circled Scroll butter base, good color

\*\*\*\*\*

H.O.A.C.G.A. SOUVENIR BELL

In 1985, it was decided to make a series of 4 Souvenir Bells. Each different bell would feature a portrait of a Famous Maker of Carnival Glass. The beautiful Circle Scroll Pattern would be used as the basic pattern on each of the bells. The bells would also include the Fenton logo.

The first bell, 1985 Souvenir, has a portrait of Harry Northwood. The bell is Ruby Red Carnival. VERY FEW ARE STILL AVAILABLE.

The second bell, 1986 Souvenir, has a portrait of Frank L. Fenton, the principal founder of the Fenton Art Glass Company. This bell is made in the beautiful Lime Green Opalescent with a Marigold overspray. This bell is made in a limited quantity, approximately 350.

The 1987 bell will feature John Fenton, founder of Millersburg Glass Company. The 1988 bell will be of a prominent person of the Imperial Glass Company.

It is our belief that this series of souvenir bells will make a beautiful and collectible set of Carnival Glass Bells while honoring those responsible for the making of our favorite glass. We hope you will enjoy this series of bells.

The 1985 or 1986 Bells are \$35.00 each, plus \$2.50 shipping. *John E. Britt*

CHECKS PAYABLE: H.O.A.C.G.A.

MAIL ORDER TO: John Britt  
3048 Tamarak Drive  
Manhattan, Kansas 66502



I wish to order \_\_\_\_\_ 1985 Souvenir Bells at \$35 plus \$2.50 shipping.

I wish to order \_\_\_\_\_ 1986 Souvenir Bells at \$35 plus \$2.50 shipping.

NAME: \_\_\_\_\_

ADDRESS: \_\_\_\_\_

CITY, STATE, ZIP: \_\_\_\_\_

A P P L I C A T I O N   F O R   M E M B E R S H I P

THE HEART OF AMERICA CARNIVAL GLASS ASSOCIATION, INC.

DATE \_\_\_\_\_

NAME \_\_\_\_\_

SPOUSE \_\_\_\_\_

ADDRESS \_\_\_\_\_

CITY \_\_\_\_\_ STATE \_\_\_\_\_

ZIP CODE \_\_\_\_\_ TELEPHONE \_\_\_\_\_

RECOMMENDED BY \_\_\_\_\_

DUES ARE \$20.00 PER YEAR (June through May)

SEND DUES TO:    H.O.A.C.G.A.  
                    Berneice Bell, Treasurer  
                    13620 E. 41st. Street  
                    Independence, Missouri 64055

A FEW OF THE BENEFITS OUR CLUB OFFERS:

The ONLY MONTHLY PUBLICATION on just Carnival Glass collecting, keeping you informed of new discoveries and all of the current events. Members only may advertise, FREE OF CHARGE!!

An exclusive PATTERN NOTEBOOK with yearly special inserts.  
(ALL inserts are still available)

ANNUAL SOUVENIR AND CONVENTION WITH SOME OF THE GREATEST PEOPLE YOU COULD HOPE TO MEET!!

\*\*\*\*\* JOIN TODAY \*\*\*\*\*