

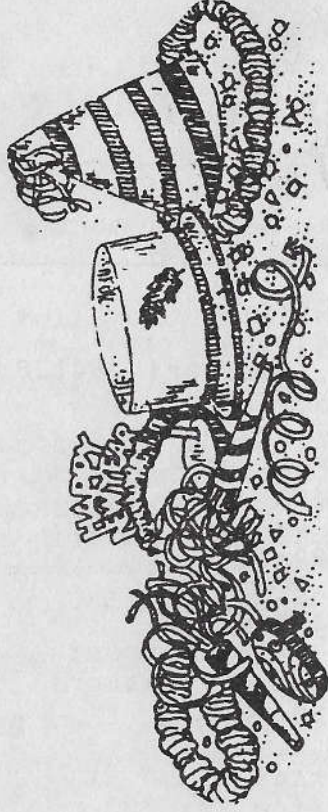


# Heart Of America Carnival Glass Assoc.

First Class Mail  
U. S. Postage  
PAID  
Kansas City, Mo.  
Permit No. 4352

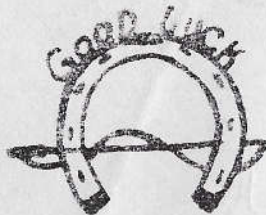
RETURN ADDRESS

Michael J. Basey  
Bulletin Secretary  
H.O.A.C.G.A.  
4315 Adams  
Kansas City, Kansas 66103



**JANUARY  
1987**

**HAPPY NEW YEAR!**



**Heart of America  
Carnival Glass Association, INC**

Membership June to May  
\$20.00 Per Couple or Single

Published the 15th  
of each month

PRESIDENT	Robert Grissom 7900 Crescent Raytown, Missouri 64138 1-816-356-5320
VICE-PRESIDENT	Nadine Paulsen 700 Purdom Olathe, Kansas 66061 1-913-782-1313
TREASURER	Berniece Bell 13620 E. 41st. Street Independence, Missouri 64055 1-816-252-3506
SECRETARY	Glen Fortney Post Office Box 303 Buckner, Missouri 64016 1-816-249-5208
BULLETIN SECRETARY	Michael Basey 4315 Adams Kansas City, Kansas 66103 1-913-432-2460

All monetary figures quoted are U.S. dollars. Please make checks for dues payable to H.O.A.C.G.A. and send them to the Treasurer, at the above address.

\*\* DO NOT SEND TO THE BULLETIN SECRETARY \*\*

## From the editor

I hope that everyone had a wonderful Christmas and will have a very Happy New Year! Now that the Holidays are over, it is time to get back to work on the Bulletin. First off, by trying to get the December Bulletin out early.

When I was putting the Carnival Glass Library together, I inadvertently forgot to list a new book put out by one of our members. It is a book by

Ruth Miller Clark on Carnival Glass Buttons:

"A Carnival Of Iridescent Luster Buttons" By Ruth M. Clark. 147 pages include research material, index, and over 850 drawings of old iridescent luster (Carnival Glass) button designs. All types from human figures to geometrics. Price \$10.00 U.S. (plus postage \$1.00 in U.S., Canada, and surface overseas. Overseas air \$4.00) Order from Ruth M. Clark, 2723 Canyon Oaks Ct., Temple, Texas 76502.

I hope that during the coming year I can make some more changes in the Bulletin. I will need everyones' help and I am open to all ideas. I would like to hear from those members who have found that "special find", have a favorite color, their best bargain. I would like to hear from some of you out there on what was your best find in 1986. Share it with us.

I also would like anyone who has the dates of upcoming Conventions and Auctions to send them to me so I can publish them in the Bulletin. If any of you go to an auction this coming year, could you please send me the price list from the auction and I will share this information with you all. I believe this is something a lot of members would like to see.

As I said before, I need your help. I wish you all the best Carnival Glass hunting in 1987!

Michael J. Basey  
Bulletin Secretary  
H.O.A.C.G.A.

Our next monthly meeting will be on January 25, 1987, at 2:00 P.M., at the Raytown City Hall. Everyone please plan to attend. Hope to see you all then.

1987 ROSTER INFORMATION

A new membership Roster is being planned for 1987. In order to help make this as accurate as possible, the following information is needed:

1. Check the address label on your Bulletin for correctness.
2. Check if a label "Your Telephone Number Needed For Roster" appears on the front of this Bulletin.
3. If you do not want your name and/or telephone number listed in the Roster.

If your address needs correcting, your telephone number is needed or you do not want to be included in the Roster, please notify the Secretary, Glen Fortney, P. O. Box 303, Buckner, Missouri 64016 by February 1, 1987, so he can update his information.

WE THANK YOU VERY MUCH!

=====  
We wish to welcome the following new members to the Heart of America Carnival Glass Association:

Joseph & Geraldine Neal, Yodkinville, North Carolina  
Samuel & Blance McGill, Broad Brook, Connecticut  
Terry Norwood, Muscatine, Iowa  
James & Ardonna Bucher, Imperial, California  
Howard & Constance Lambert, Middletown, New Jersey  
Wayne & Toni Shard, Colemon, Michigan  
Gaylord & Myrtle Christy, Medina, Ohio  
Joe & Shirley Williams, Prairie City, Iowa  
R. William & Dorothy Stewart, Stanfield, North Carolina  
Richard & Janice Covault, Charles City, Iowa

We welcome these people to our Club and wish them much success in their search for Carnival Glass!

MESSAGE FROM YOUR H.O.A.C.G.A. SECRETARY

How time passes by.....Less than two years ago, we asked all of you to help us clean out Davis Shikles garage so he could have room to work and enjoy his retirement. We want to thank you for not only doing just that, but you caused us to reprint the cover for the H.O.A.C.G.A. Notebook. We have already sold about half of the re-issue, plus we are currently in the process of reprinting some of the sections of the inserts.

Also we are moving several of the past years' Souvenirs. We wish to thank all of you for helping us clean up the surplus of these. I'm sure there are several of the new members who have not as yet had the opportunity of checking into these to see just what we have available. I think the Bell Series is one of the nicest of them all. Not only for their beauty, but for the recognition of the makers of the glass that we all appreciate so much and allowing us a wonderful hobby. I feel that this will be one of the most sought-after items in the near future, of any of the Souvenirs that we have put together. I'm sure that with all the new members we have signed up the past year, that we will be out of the 1985 Bell very soon. I hope no one gets caught short.

I also want to thank all of you for the cooperation you have given me the past two years. I'm sure that the computer is going to be a tremendous help in keeping the membership straight and also mailing the monthly Bulletin and also solving many of the problems of the Roster printing. I'm sure the majority of you have been marking your applications to list your name in the next Roster. Let me be the first to say that the next Roster will list every member as you appear on the mailing label, unless you wish it otherwise. Your telephone number will also be listed. All of you will be notified in the Bulletin ahead of time. List me in the next Roster with or without my phone number or do not list me at all. Any past notices will not be used at all.

The Board is working hard already on plans for another great Convention. We hope you all will help us in any way you can. If you have any ideas, please forward them on to us and we will consider any suggestions you have. We can always use new ideas. I hope you all are as excited about it as we are. Wish us luck.

Thanks again for a great year and hope to see you all soon!

Your Secretary,  
Glen Fortney,  
HEART OF AMERICA CARNIVAL GLASS ASSOC.

=====

4

5

LETTERS FROM OUR MEMBERS.....

Dear Mr. Fortney:

Thank you so much for so kindly sending me the H.O.A.C.G.A. Notebook inserts. They are extremely interesting and well done and I am now building up a great encyclopedia of Carnival Glass this way. You are all to be congratulated.

I am enclosing herewith the \$11.00 for the inserts. That is the \$8.00 for the two inserts for 1985 and 1986, plus the \$2.50 postage, making it \$10.50. Anyway, have sent the \$11.00 to include cost of envelope, in two \$5.00 notes and 1 \$1.00 note. Hope these reach you safe and sound.

I would also like to thank you for another wonderful Newsletter, the November issue just arrived today. I really do enjoy Don Moore's Carnival Cameos and John & Lucile Britt's Pictorial Pattern Parade.

I also have Don Moore's new book, and am very pleased with it. I feel it is worth every cent and is going to be a great seller.

Thank you again for everything and keep up the good work with H.O.A.C.G.A. Happy hunting and lots of nice Carnival Glass "finds". Kindest regards from a U.K. Carnival collector.

Angela Hallam  
England

=====

+ CARLTON SCHLEEDE PASSES +

We were deeply saddened to have the call on November 23, 1986 saying Carlton Schleede had passed away.

He was former President of the American Carnival Glass Association from 1974 to 1978. He will be missed by his many Carnival friends. We extend heartfelt sympathy to wife Rose and the family.

"The depth of your loss cannot be measured. Only shared by those who deeply care."

Byron and Grace Rinehart  
Charleston, West Virginia

=====



ORANGE TREE ORCHARD TUMBLERS

The "Orange Tree Orchard" tumblers are sometimes referred to as "Orange Tree and Cable". The large majority of collectors however, use the name "Orange Tree Orchard". These tumblers come in marigold, blue and white. There are also a few that exist in a beautiful light lavender color. These are said to be white tumblers that have been placed in an ultra-violet light box or have been setting in direct sunlight for a long period of time. Never the less, these lavender tumblers are beautiful and add a lot of color to any tumbler collection.

Some writers have stated that the "Orange Tree Orchard" tumblers were made in green and amethyst. I very much doubt this, but of course, I would not rule it out. If indeed they should exist in these two colors they would be extremely rare. For certain, in all of our travels, we have never seen any in amethyst or green. "Orange Tree Orchard" tumblers have a cable that encircles the tumbler just above the featured orange tree pattern. A stylized rail fence design is placed between each of the six orange trees. The water pitcher in this pattern is of the bulbous shape.

(Educational Tumbler Series continued)

This pattern was made by the Fenton Art Glass Company of Williamstown, West Virginia.



ORANGE TREE VARIENT TUMBLERS

We find that many collectors get the two Orange Tree tumblers that are featured in this issue confused with one another. This pattern is also known as "Orange Tree and Scroll". The "Orange Tree Varient" tumblers are somewhat taller and narrower than are the "Orange Tree Orchard" examples. The tumblers in this pattern have a scroll type of stylized "S" shaped figures above and below the six orange trees that encircles the tumbler. No cable is used on this pattern, but it does have a wavy row of raised beads or dots that is just below the base of the orange trees and above the bottom scroll. "Orange Tree Varient" tumblers were made in blue and marigold. It has been said by some writers that these tumblers exist in white, amethyst and green. I am not going to state that they do not exist in those colors, but until I have definite proof that they do exist, I am going to be somewhat doubtful about "Orange Tree Varient" tumblers having been made in white, green or amethyst. If anyone knows of or has seen one in those colors, please let me know.

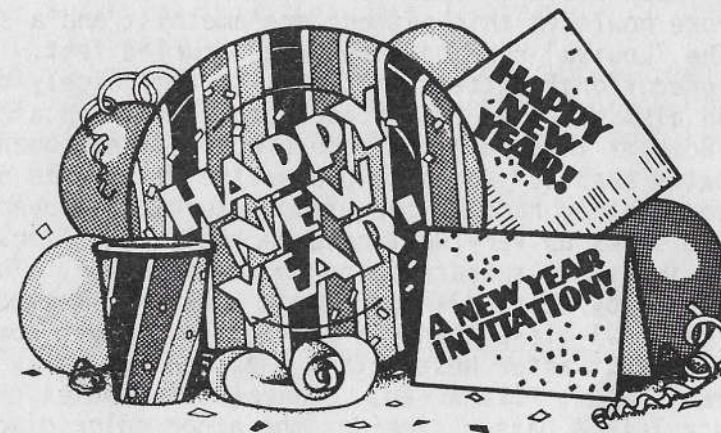
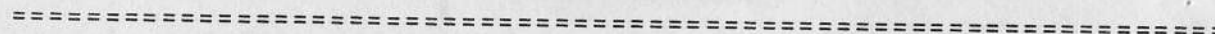
While the "Orange Tree Orchard" water pitcher is of the bulbous type, the "Orange Tree Varient" is in the tall tankard shape.

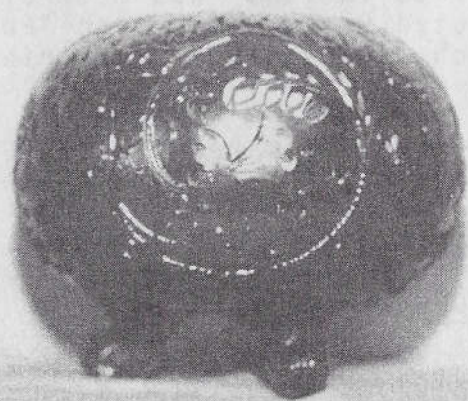
(Educational Tumbler Series continued)

These tankards are very beautiful indeed. Both the tumblers and pitchers are much harder to find in this pattern than they are in the "Orange Tree Orchard". Like the "Orange Tree Orchard" pattern, the "Orange Tree Varient" was made by Fenton. Fenton also produced the "Footed Orange Tree" and "Footed Orange Tree Varient" patterns which were shown and described in the May 1979 Heart of America Bulletin.

These two Orange Tree patterns make up our 108th entry into this Series on carnival glass tumblers. Next month, we will bring you the "Flute No. 3" pattern, which was made by the Imperial Glass Corporation of Bellaire, Ohio.

JOHN & LUCILE BRITT

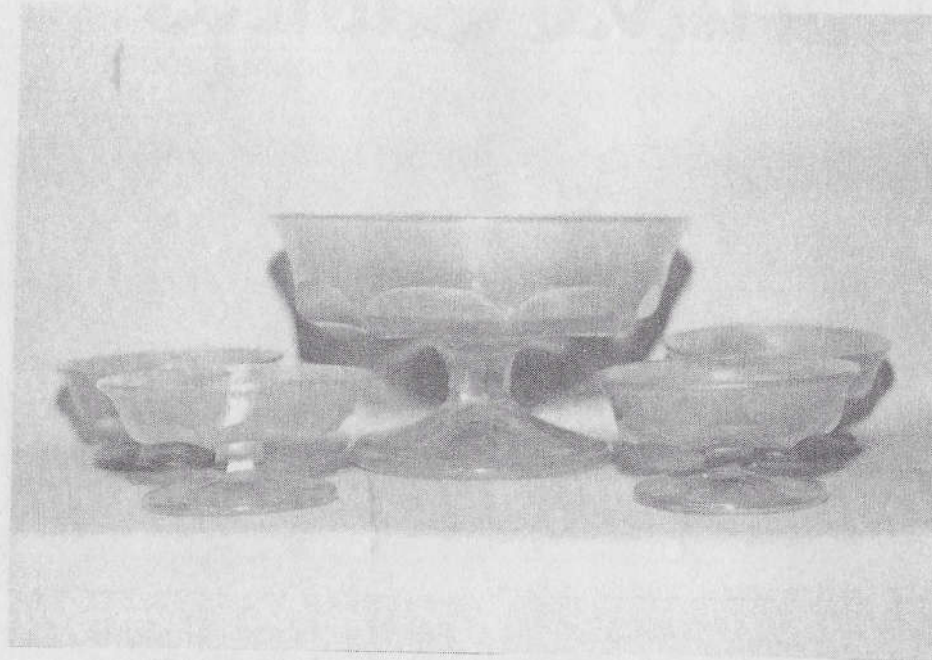




LOUISA ROSE BOWL IN AMBER

The "Louisa" rose bowl is not difficult to find in some colors, but we thought the one shown above in amber is rather unusual. The colors most often seen in rose bowls in this pattern are amethyst and a sort of aqua green color. The "Louisa" rose bowl sets on 3 curled feet. It is a pretty and a well-designed floral pattern that fits in very nicely on rose bowls. This pattern can also be found in a footed candy dish and a rarely seen footed plate. Both of these are the same piece that has been flared out into the designated shapes. On these pieces the pattern is on the underside making the pattern rather hard to see without turning it over. On the rose bowls the pattern shows up very well because the pretty floral design is on the outside with the plain surface being on the interior. These "Louisa" rose bowls were made by Westmorland. We now know that Westmorland made considerable more carnival glass than was previously thought some years back. Some of the most sought after Westmorland patterns are Daisy Wreath, Carolina Dogwood, Fruit Salad, File & Fan, Orange Peel, Scales, Hobstar & Fruit and Peacock Tail & Daisy. Besides the amber color discussed here, some of our favorite carnival glass colors that were used by Westmorland are peach opal, marigold over milk glass, moonstone, blue opal and a sort of milky blue moonstone type base color. All of the colors that were produced by Westmorland are nice, but these are some of our favorites.

JOHN & LUCILE BRITT



NORTHWOOD FLUTE SALT SET IN VASELINE

The "Northwood Flute" set comes with the master & 6 little individual salt dippers. This set could also have been used for mints or nuts of various kinds such as almonds, cashews etc. The set shown above is in the true vaseline color. We show it here with only 4 of the individual dippers, but we do have the complete set of 6. We also have the smaller pieces in this pattern in marigold, russet and celeste blue. In all probability they were made in other colors as well. We have also seen the complete set in celeste blue with painted decoration. All of the pieces that we have seen contain the underlined "N" in a circle trade mark. On the master container, this trade mark is on the underside of the base while it was used on the inside of the small pieces. The master has a base diameter of  $3\frac{1}{2}$ ". It is just slightly under  $3\frac{1}{2}$ " tall with a top opening of  $5\frac{1}{2}$ ". The small individual pieces are  $1\frac{1}{2}$ " tall with a base of  $1\frac{1}{4}$ " wide. The top opening of the smaller pieces is  $3\frac{1}{4}$ ". It is only seldom that one of these sets ever show up that is for sale. Even with the plain flute or wide panel type pattern these pieces are very desirable and collectible. Part of the popularity is no doubt due to the tiny size and the very pretty colors used in this pattern.

JOHN AND LUCILE BRITT

# Carnival Cameos

BY DONALD MOORE

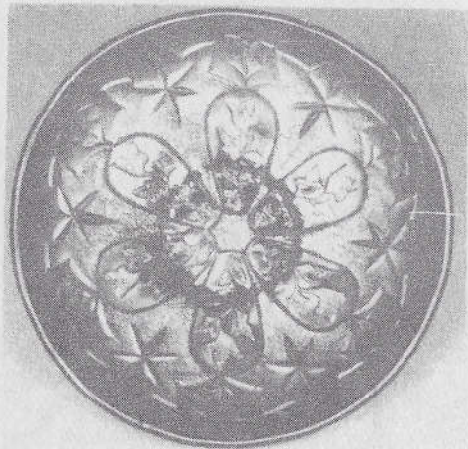


PHOTO #1 - 5 3/4" SAUCE

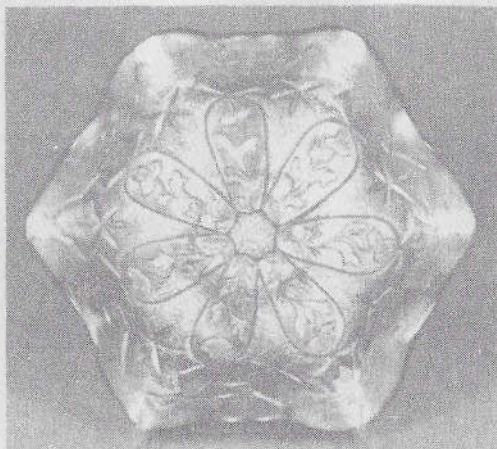


PHOTO #2 - 7 1/2" SIZE

## L I T T L E   S T A R S

This elusive Millersburg pattern is often confused with the same Company's Many Stars and has not received the attention it deserves. It has long been known that this pattern was made in three different sizes which, in itself, is quite unusual. I had no sooner finished this Cameo on these three different sizes than I received a call from Tom Mordini in Illinois. He had just found two amethyst sauces making an unprecedented fourth size. Carnival history in the making. These 5 3/4" sauces are the first that have turned up. One of them is shown in Photo #1. Tom was nice enough to let me work out a 48 month easy payment plan.

The 7 1/2" bowl shown in Photo #2 is the size usually seen. It is found in amethyst, marigold and green, but two blue ones are also confirmed. These pieces are nearly always ruffled, but two green ones are known in the ice cream bowl shape. They are both in the Marie McGee, Millersburg collection in Fresno, California. The picture of the sauce in Photo #1 was taken at a later date and is a bit out of proportion. It looks nearly as large as the 7 1/2" piece in Photo #2. Note, however, that it is from quite a different mold as it has only six of the oval loops compared with seven on the larger piece.

(Little Stars continued)

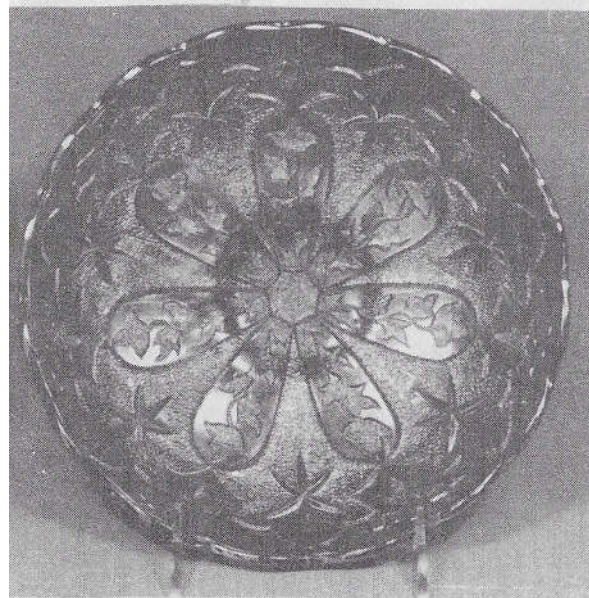


PHOTO #3 - 9" SIZE BOWL

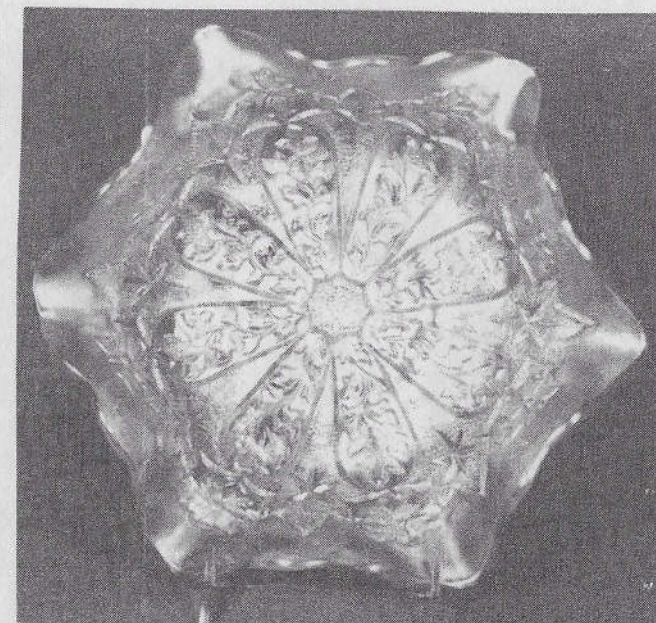


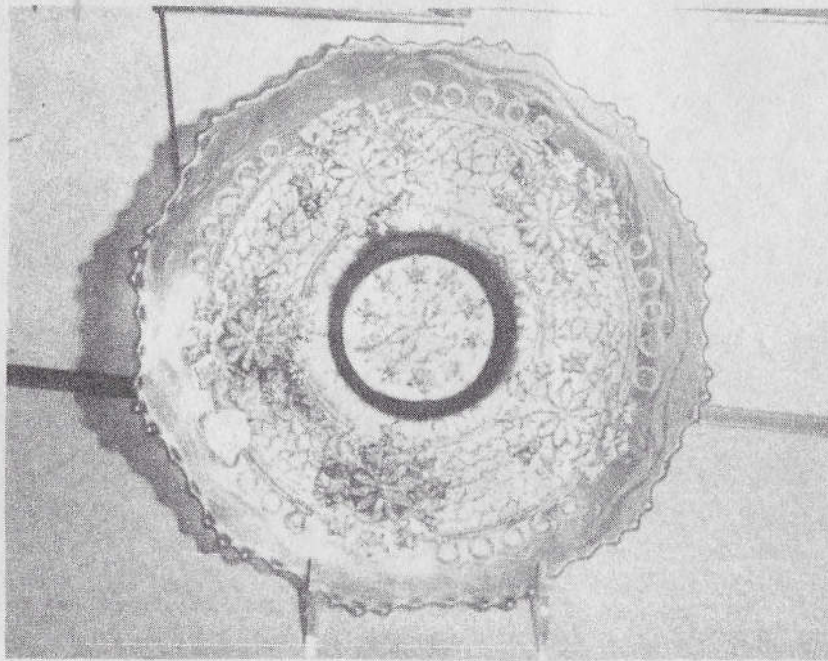
PHOTO #4 - 10" SIZE BOWL

The two larger bowls shown in Photos #3 and #4 are very rare. Many collectors are unaware of their existence. The 3 or 4 that I can confirm in the 9" size are all ice cream bowl shape with radium iridescence. Only green and marigold are known.

Only three of the 10" bowls are confirmed---one green, one marigold and one amethyst. All are ruffled and with satin iridescence. These two larger size sell so seldom that there is no price precedence to follow. I suppose the \$600.00 to \$650.00 range would be a respectable guess. The color would make no real difference in view of their rarity. The 10" bowl is more rare but it is not quite as graceful as the 9" piece, so I expect they would sell in much the same price range. The standard 7 1/2" bowl is not too difficult to find for around \$100.00. The blue ones in this size would, of course, bring very much more.

DON MOORE

RARITIES AND SELDOM SEEN  
By Ivan & Betty Mitchell



GREEN "LEAF CHAIN" PLATE - FENTON

This plate is not too difficult to find ordinarily, except for one outstanding thing. This piece is green, has the usual leaf chain, has the Bearded Berry on the exterior, however; this is where the similarity ends. This piece is gold embossed! The embossed part is on the pattern ONLY!

I have never seen another one, although there may be. I will just call it seldom seen.

Leaf Chain comes in a number of colors including red in the bowl. I have never seen the plate in red.

If my memory serves me right, this is known in one piece of aqua-opalescent.

This pattern was made in bon bons, bowls and plates. These are seen occasionally at auctions, but not the "gold embossed".

NEWS FROM THE AIR CAPITAL CARNIVAL GLASS CLUB

December was our big meeting where the election of officers took place and we had our big Christmas dinner. We had 14 members attending this time. Some of our regulars were out with the flu and we missed them.

The officers for the 1987 year are as follows: President, Frank Spangler, Vice-President, Walter Adrian, Secretary, Donald Kime, Treasurer, Roland Kuhn, and Wilma Elder Historian.

We were especially happy to see 4 members who had traveled quite a distance to attend the meeting. We are always so happy when the out-of-town folks get to come to our meetings.

Winnie Brim just had to bring a couple of nice pieces of Carnival Glass she had just purchased. A beautiful ice-green Three Fruits dome-footed bowl and a Persian Medallion 6" plate. Not only were they beautiful, but were purchased for a bargain price.

Our next meeting will be in Douglass, Kansas at the home of Wilma and Francis Elder.

Donald E. Kime,  
Secretary,  
AIR CAPITAL CARNIVAL GLASS CLUB

=====

N MARK BEING USED IN REVERSE

According to an article in The Daze, Inc., the N in reverse has been put on a two-piece reamer.

No details as to who made it was published. Did state it was in cobalt blue. Anyone with information on this reamer, please notify The American Carnival Glass Association, P. O. Box 273, Gnadenuhnten, Ohio 44629.

The N mark is the property of the American Carnival Glass Assoc. This is to help protect all of you from the use of this mark on new or reproduced glass. We need the help of all of you to keep control of this mark.

Emma Tilton, President,  
AMERICAN CARNIVAL GLASS ASSOCIATION



NEWS FROM SAN DIEGO

The San Diego Collectors group met for their Christmas Party and quarterly meeting on December 7, at La Jolla Village Inn for lunch and a program of Green & White carnival glass. 12 Members provided some 100 pieces of many patterns and an in-depth discussion on such as a white Many Fruits punch set, white Peacocks plates, green Singing Birds pitcher and Stag & Holly green bowl.

Rusti Shupert presented an historical report on the Christmas Compote. A purple compote was on display and colored pictures of both marigold and purple were distributed.

Camille Lemieux won a marigold Sailboats wine as door prize. 13 raffle prizes were awarded; two of them carnival.

Michael Sponsler is quite an effective "auctioneer of the West". Our first attempt at a consignment was tremendously successful and it was decided to stage another this next year. 23 selections of very pretty carnival were quickly bid and made their way to new homes. Much good fun was had by all.

66 attended this meeting (5 were too ill to attend). Our membership stands at 75 now.

A report on a somewhat improved condition for Charles Adams was given. He has been in Veterans Hospital in Los Angeles for the past 3 weeks. Treatment is being administered for bone marrow cancer and leukemia. We trust he will be stable enough to return to his home before long.

The slate of officers presented by the Nominating Committee was elected to a term of two years. Diane Fry, President, Dee Sponsler, Vice-President, Kathy Harris, Secretary, Gail Westphall, Treasurer, Kim Landry, Editor, and Rusti Shupert graciously volunteered to be Historian once again.

Tom Sprain will present our March 15 meeting with a program topic of: "Contrasts in Carnival Collecting." Tom uses graphic charts to illustrate his objectives and we will gain a new slant on our favorite hobby.

Respectfully submitted:  
Diane Fry,  
President

=====

"I KNEW IT WOULD HAPPEN"  
By Dave D. Ackerman

It would just be a matter of time and one would show up some place. However, it was fun having the only known one of a kind for as long as I did.

It was on the second of April in 1983 that I purchased, at an area auction, a marigold Detroit Elks 1910 ruffled 7½" bowl. At the time I had no idea of the scarcity of this bowl. One expects marigold pieces to be more plentiful than other colors. The only information I could find concerning it were two vague statements in my Carnival Glass books. One author said that he had never seen a marigold one. The other author said that there may be a marigold one. Bill Edwards only listed the green and blue ones at that time. Both the American Carnival Glass Association and the Heart of America Association printed articles on the find and no one came forward to say that another one was known, so we assumed it might really be one of a kind. At least that was my hope. Edwards now lists it at \$1,000.00.

So I basked in the one of a kind thoughts, but deep down, I really expected one to show up some place, some time. I toyed with the idea that it might have been an experimental piece that did not find favor with the makers so no more were made.

Now, after three years, eight months and twelve days, my dream would come to an end. I read in my copy of the December 8th Auction Exchange of an auction near Rockford, Michigan (north of Grand Rapids) to be held on December 14th, which listed a 1910 Detroit marigold Elks bowl!

I don't usually attend auctions 143 miles from home, but I wanted to see the bowl first hand, hoping it would be a round one instead of the ruffled bowl like mine.

When Scott and I arrived at the auction site, we immediately sought out the prize! There it was, exactly like mine. Because Bill Edwards has it listed in his latest price guide at \$1,000.00, I knew there would be many bidders when it came up. There surely were, including yours truly. This auction, by the way, was a complete Carnival auction, rare in Michigan, but also contained a few new pieces, including about a dozen Hansen items.

The bidding was fast and heated right up to the final bid. It was the second item, being surpassed only by the Millersburg Flowering Vine compote by only \$25.00. It sold for \$1,025.00 to a collector and dealer from Sparta, Michigan. I'm glad that since both Elk bowls were found in Michigan, that they will also remain in Michigan.

(I KNEW IT WOULD HAPPEN CONTINUED)

For years, I have had to share my aqua opalescent Poppy Show plate with another and now I will share the Elks bowl with another collector. When will a third one show up for either one? Perhaps sooner than one might think. That's what makes Carnival Glass collecting so intriguing a hobby. You can always expect the unexpected!

Something else of interest also happened at this auction. There were about 250 bidding items to be sold. Not only were the pieces numbered but they were placed in a circle with the same number on white paper table cloths for easy identification. As each item was auctioned off, they were returned to their numbered spot to be picked up by the new owner when they were ready to leave.

Many of the items were not only misnamed but attributed to the wrong maker. For example, Acanthus was called Tulip Swirl, maker unknown. The first piece that we noticed misnamed was called a basketweave hat. It was really the Persian Garden base to the two piece fruit bowl. Scott had remembered seeing a Persian Garden bowl on another table but didn't realize at the time that it was the real top. I called the auctioneer over to inform him of the wrong name and shape of the base. I don't think he believed me at first about its' being a base, but when Scott brought the bowl over and placed it on the base, I think almost everyone who saw it were convinced the two pieces went together. Separately, the two would probably not have brought more than \$75.00, but together it sold for \$270.00.

The auction was really quite successful for a Michigan Carnival Glass auction. The bidding audience was small but consisted of many knowledgeable Carnival collectors plus some not so knowledgeable, but none the less Carnival interested people.

The following items brought the highest prices:

- \$1,050.00 - Purple Flowering Vine compote - Millersburg
- \$1,025.00 - Marigold Detroit 1910 Elks ruffled bowl
- \$ 400.00 - Green Trout & Fly ruffled bowl
- \$ 375.00 - Ice-Blue Three Fruits footed bowl
- \$ 285.00 - Marigold Butterfly & Tulip footed bowl
- \$ 270.00 - Purple Persian Garden 2 piece fruit bowl & base
- \$ 225.00 - Cobalt Blue Good Luck bowl
- \$ 185.00 - Green Nesting Swan bowl
- \$ 180.00 - Red Blackberry hat
- \$ 180.00 - Purple Raspberry water pitcher
- \$ 175.00 - Aqua Opalescent Drapery rosebowl
- \$ 175.00 - Peach Opal Nautilus

(I KNEW IT WOULD HAPPEN, CONTINUED)

Since I expect to dispose of part of my collection in the spring, I have greatly slowed down in buying. The only piece I bought at the above auction was the marigold Butterfly & Tulip bowl. I had always wanted one of that pattern.

I guess the moral of this story is don't be too sure that your one of a kind Carnival piece will always remain one of a kind. Somewhere lurking around the flea market, antique shop or auction block, without warning, there it will be!

DAVE D. ACKERMAN

=====

CAN ANYONE HELP IDENTIFY THIS?

Dear Michael:

I recently picked up a piece of Carnival and can find no information about it.

The pattern is Octagon and it looks like a compote. It is 5" tall and 4½" wide at the top. The base is just like the Octagon vase with 4 small hobstars on it. The color is a nice marigold right to the base.

If anyone out there has any information on this, I would appreciate them writing to you in the Bulletin.

The new look of the Bulletin is just great, keep up the good work!

THANKS  
PAUL BERUBE  
TIVERTON, RHODE ISLAND

=====

JANUARY 1987 QUIZ

- |                         |                  |               |
|-------------------------|------------------|---------------|
| A Y A R N U S K R O T S | 1. APRIL SHOWERS | 11. HOLLY     |
| S P I R A L D A B C L T | 2. ARCHED PANELS | 12. KANGAROO  |
| E I R D E F A N G E H R | 3. BASKET        | 13. PIGEON    |
| E G H I J K E G N L M E | 4. BEADS         | 14. ROSE      |
| B E T N L O B A S K E T | 5. BROOKLYN      | 15. SPIRAL    |
| E O N P R S P R O S E C | 6. BUMBLEBEES    | 16. STARBURST |
| L N I S T D H O L L Y H | 7. BARBER BOTTLE | 17. SUNRAY    |
| B A R B E R B O T T L E | 8. CORINTH       | 18. STORK     |
| M U O H T A E H W Y A D | 9. CONCORD       | 19. STRETCHED |
| U B C O N C O R D E M U | 10. EMU          | 20. WHEAT     |
| B R O O K L Y N C D R E |                  |               |
| A F G T S R U B R A T S |                  |               |

OLD CARNIVAL GLASS LIBRARY

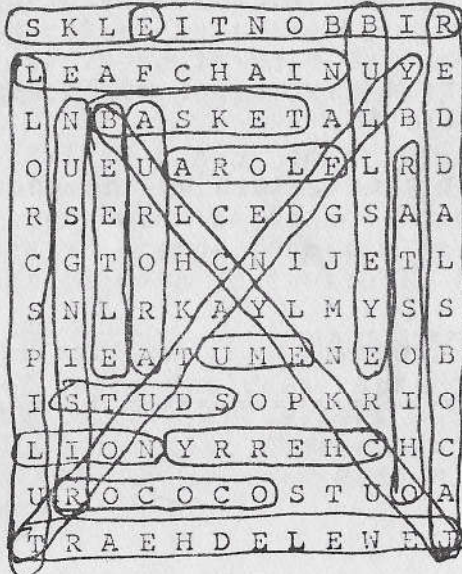
THE SHAPE OF THINGS IN CARNIVAL GLASS - 110 pages, 200 items in full color - \$9.95. Don Moore, 2101 Shoreline Drive, Apt. 462, Alameda, California 94501

CARNIVAL GLASS SERIES - By Marion T. Hartung. Each book has 100 Different patterns. Books 1 & 2 - \$3.00 each. Books 4, 5, 6, 8, 9 and 10 - \$3.50 each. (Books 3 & 7 are out of print)  
NORTHWOOD PATTERN GLASS - CLEAR, COLORED, CUSTARD & CARNIVAL \$9.95, plus \$ .50 postage. Order from Ione Henshaw, 903 E. 6th Avenue, Emporia, Kansas 66801

CARNIVAL IN LIGHTS - A full color book on Carnival Lighting, including Gone-With-The-Wind Lamps, Candle Lamps and Shades. Price Guide included - \$11.95 plus postage. Helen Greguire, 103 Trimer Road, Hilton, New York 14468

IMPERIAL CARNIVAL GLASS - THE EARLY YEARS - \$9.95 Price Guide 5th Edition - \$3.95. THE STANDARD ENCYCLOPEDIA OF CARNIVAL GLASS - 650 different full color patterns photographed, 223 page hardbound illustrates and evaluates Dugan, Fenton, Imperial, Millersburg, Northwood, Minor American, English Carnival, and more - \$24.95. NORTHWOOD, KING OF CARNIVAL GLASS - \$9.95 Bill Edwards, Author. Order from Collectors Books, Paducah, Kentucky \$1.00 postage. DO NOT SEND ORDERS TO BILL EDWARDS

DECEMBER 1986 ANSWERS



- |                   |                   |
|-------------------|-------------------|
| 1. AURORA         | 11. JEWELD HEART  |
| 2. BULLS EYE      | 12. LION          |
| 3. BASKET         | 13. LEAF CHAIN    |
| 4. BEETLE         | 14. OHIO STAR     |
| 5. CHERRY         | 15. RISING SUN    |
| 6. ELKS           | 16. ROCOCO        |
| 7. EMU            | 17. RIBBON TIE    |
| 8. FLORA          | 18. STUDS         |
| 9. JOCKEY CLUB    | 19. TROUT AND FLY |
| 10. JACOBS LADDER | 20. TULIP SCROLL  |

CARNIVAL GLASS WORLDWIDE - By M. Quinton-Baxendale. 200 Colour photographs \*Pattern name index\*\*Exclusive Research\*\*Clubs Worldwide listed\*\*Order from: CARNIVALIA PUBLICATIONS, P. O. Box 1, LOSTWITHIEL, CORNWALL, L22 0YZ, ENGLAND US \$13.50 (surface mail) US \$15.00 (airmail) Payment with order please, by International Cueque or Money Order.

THE WORLD OF ENAMELED CARNIVAL GLASS TUMBLERS - Author/Photographer, Cecil Whitley. Ten pages (60 tumblers) in full color. \$10.00 including shipping. Call or write Cecil Whitley, 104 Cheshire Lane, Houston, Texas 77018 PHONE: 1-713-681-0807

CARNIVAL GLASS - By Ray Notley, Shires Album #104. ISBN 0 85263 637. Price is only \$3.95 including postage. Send to 7 Hills Books, 519 W. 3rd. Street, Cincinnati, Ohio 45202

"CARNIVAL GLASS - AN INTRODUCTION TO THE IRIDESCENT PRESSED GLASS GRANDMA HAD ON HER SIDEBOARD" Angela Hallam's 52 page fully illustrated paperback is NOW AVAILABLE IN THE U.S. for only \$2.95 PPD. Nancy Johnson, The Library, P. O. Box 37, Des Moines, Iowa 50301

THE H.O.A.C.G.A. PATTERN NOTEBOOK Get the complete COLOR Reference including the 1986 insert on the last half of rosebowl for only \$23.00 plus \$4.00 postage. 1986 insert only is \$4.00 plus \$1.00 postage. Order them from the Treasurer (address is inside front cover). MEMBERSHIP IN H.O.A.C.G.A. IS REQUIRED TO ORDER THESE.

A NEW CARNIVAL GLASS REFERENCE BOOK WRITTEN BY DON MOORE This book is a collection of the writings of Don Moore, as published originally in the Heart of America Carnival Glass Association Newsletters. 175 pages, 225 black and white photos. Price is \$12.50 (\$1.00 postage U.S. & Canada, \$2.00 overseas) Order direct from: Don Moore, 2101 Shoreline #462, Alameda, California 94501

OTHER REFERENCE MATERIAL

"Encore by Dorothy" Books 1 and 2. A series of books on new reproduced Carnival Glass, giving information on the patterns and colors that are being reproduced. Price for each book is \$7.70 postpaid. Be sure to state which book you want. Dorothy Taylor, Box 11734, Kansas City, Missouri 64138

"CARNIVAL GLASS" educational brochure with color photographs. Available to interested collectors or dealers who wish to better describe to and inform the public about our glass. Free of charge from the American Carnival Glass Assoc. Contact Ruth Schinestuhl, P. O. Box 694, Absecon, N.J. 08201

"A Carnival of Iridescent Luster Buttons" by Ruth M. Clark, 147 pages includes research material, index, and over 850 drawings of old iridescent buttons. Price \$10.00 U.S. (plus postage \$1.00 in U.S., Canada, and surface overseas. Overseas air is \$4.00) Order from Ruth M. Clark, 2723 Canyon Oaks Ct., Temple, Texas 76502.

\*\*\*\*\* CARNIVAL GLASS FOR SALE \*\*\*\*\*

Marty Schoettler, Box 188, R.D. #3, Sewell, New Jersey 08080  
PHONE: 1-609-589-4325

M	EI Long Thumbprints sugar & creamer, both for	40.00
M	EI Three Fruits 12 sides plate	100.00
A	EI Three Fruits 12 sided plate	100.00
G	EI Three Fruits 12 sides plate (some wear on fruit)	90.00
M	EI Carnival Holly ice cream shaped bowl	35.00
M	EI Fashion water pitcher and one (1) tumbler	150.00
M	EI Basketweave Hat adv. Brand Furniture	40.00
A	EI Grape & Cable covered compote, small chip inside lid	350.00
A	EI Singing Birds sugar bowl, sm. chip inside lid	80.00
A	EI Springtime spooner, super color and irid.	90.00

\*\*\*\*\*

Vaunda & Swede Tilberg, Box 596, Baxter Springs, Kansas 66713  
PHONE: 1-316-848-3654 (Will be back in town Jan. 22, 1987)

M	EI Wide Rib vase (balloon bottom)	55.00
AMB	EI Pineapple pitcher (small)	60.00
A	EI Three Fruits footed bowl	75.00
AO	EI Leaf & Beads rosebowl	250.00
M	EI Leaf & Beads rosebowl	65.00
A	EI Three Fruits bowl (stippled)	125.00
CB	EI Three Fruits bon bon	85.00
G	EI Louisa rosebowl	65.00
AO	EI Carolina Dogwood bowl	350.00
M	EI Butterfly & Tulip footed bowl	350.00

\*\*\*\*\*

LaVern White, 405 1st. St., Grafton, Iowa 50440  
PHONE: 1-515-748-2923 after 6:00 P.M. please

AO	EI Hearts & Flowers compote	325.00
B	EI Mikado compote, good color	250.00
M	EI Ten Mums tumblers, 3 each	25.00
M	EI Wreath of Roses punch cup	17.50
M	EI 474 punch cup	15.00
G	EI Nesting Swan bowl	235.00
A	EI Peacock at the Fountain punch bowl base	40.00
M	EI Luster Rose 7 piece water set	225.00
M	EI Kittens cup & saucer, nice	160.00
B	EI Little Fishes footed bowl	165.00

\*\*\*\*\* CARNIVAL GLASS FOR SALE \*\*\*\*\*

Mrs. Lydia Caudle, Rt. 1, Box 87, State Road, N. C. 28676  
PHONE: 1-919-874-2519

B	EI Rustic funeral vase 19" tall	165.00
EB	EI Two Flowers bon bon on stem	89.00
G	EI Grape & Cable large footed orange bowl	195.00
G	EI Heavy Grape light green 11" chop plate, unusual color	250.00
M	GI Butterfly & Berry creamer	49.00
P	EI Three Fruits plate, has bluish tint	95.00
M	EI Harvest Flower tumbler	90.00
M	EI (N) Basket, round	60.00
M	EI Wild Strawberry handgrip plate	65.00
W	EI (N) Peach berry set, 6 small, 1 large	349.00

\*\*\*\*\*

David M. Deem, 902 E. Walnut Ave., Burbank, California 91501  
PHONE: 1-818-845-4530

M	Peacock & Urn plate (Fenton)	170.00
B	Hearts and Flowers compote, real nice	155.00
B	Captive Rose 9" plate, OUTSTANDING IRIDESCENCE	175.00
P	Good Luck bowl, electric blue irid. (N)	185.00
R/A	Blackberry Spray bon bon, SUPER, PRETTY	165.00
IG	Peacocks plate 9" ribbed ext. gorgeous	325.00
B	Round-Up 9" flat plate, outstanding	325.00
P	Wishbone 8½" flat plate (N)	295.00

\*\*\*\*\*

Roy & Beverly Johnson, 631 E. Morgan Ave., Milwaukee, Wisc. 53207  
PHONEL 1-414-481-6137 after 4:00 P.M.

P	EI Imperial Grape decanter, stopper chipped	100.00
A	EI Holly Sprig tri-cornered nappy, mint	65.00
IG	EI Peacocks 9" plate, mint	275.00
IB	EI Acorn Burrs 2 handled spooner, mint	30.00
B	EI Peacocks compote, mint, (teal blue)	65.00
G	EI 2 handled Acorn Burrs, mint	75.00
G	EI 2 handled Butterflies bon bon, mint	65.00
B	EI Orange Tree stemmed compote, mint (teal blue)	25.00
IB	EI Concave Diamonds tumbler with coaster, mint	50.00
B	EI Wine & Roses wine glass, mint	45.00

\*\*\*\*\* CARNIVAL GLASS FOR SALE \*\*\*\*\*

Darlene Yohe, P. O. Box 343, Stuttgart, Arkansas 72160  
PHONE: 1-501-673-3437

W	EI Bushel Basket, 8 sides	125.00
M	EI Forget-Me-Not tankard water pitcher	
	H.O.A.C.G.A. Pattern Notebook #144	225.00
P	EI Grape & Cable covered butter, 2 tiny base nicks	130.00
G	EI Butterfly & Berry large footed bowl	110.00
W	EI Grape Arbor tumbler	90.00
M	EI Garland rosebowl	35.00
M	EI Orange Tree mug	20.00
G	EI Flute butter lid	45.00
P	GI Beaded Cable rosebowl	65.00
B	EI Leaf & Beads rosebowl	75.00

\*\*\*\*\*

Gil Corriveau, Box 5, Sturbridge, Massachusetts 01566  
PHONE: DAYS 1-617-347-3304, NIGHTS 1-617-347-9930

M	EI Peacock & Urn large ice cream bowl	150.00
P	EI Millersburg Diamonds water pitcher	175.00
M	EI Acorn Burrs 8 piece punch set	500.00
W	EI Daisy & Drape vase	160.00
W	EI Carnival Holly plate	120.00
G	EI Millersburg Diamonds water pitcher	175.00
M	EI Good Luck pie crust edge stippled bowl	135.00
IG	EI Grape & Cable punch cups, have 6, the set for	500.00
P	EI Grape & Cable water pitcher	225.00
M	EI Stag & Holly giant rosebowl	150.00

\*\*\*\*\*

Rita Jones, 606 Blue Bonnet, Orange, Texas 77630  
PHONE: 1-409-883-0623

A	GI Grape & Cable shot glasses, have 2, each	150.00
AO	GI Leaf & Beads candy dish, Fancy interior	450.00
R	GI Fenton Two-Row Open Edge basket, 1 side up and one down	245.00
M	GI Horses' Head rosebowl	90.00
B	GI Two Flowers rosebowl	140.00
B	GI Windflower 9" plate	140.00
M	GI Lion 7" bowl	80.00
M	GI Butterfly & Tulip 12" bowl, 2 sides up	325.00
B	GI Stag & Holly 10½" footed bowl	250.00
B	GI Butterfly & Berry 9" vase	70.00

\*\*\*\*\* CARNIVAL GLASS FOR SALE \*\*\*\*\*

F. Poppel, 14 Oak Brook Lane, Merrick, New York 11566

P	Grape & Cable Pin Tray, abrasion on 1 scallop	75.00
G	Little Barrel	75.00
P	Nu Art Chrysanthemum plate, rich color	550.00
R	Fentons Open Edge hat, two sides up	150.00
G	Cambridge Inverted Strawberry 6 3/4" bowl, marked "Near Cut"	60.00
P	Grape & Cable saucer, VERY RARE	150.00
B	Maple Leaf Butter dish	85.00
M	Zipper Loop lamp 8 1/2" high, electrified through font, oval cut at base for wire	250.00
M	474 punch bowl base	35.00

\*\*\*\*\*

Nelson R. King, Rt. 1, Noel, Missouri 64854

PHONE: 1-417-475-3559

PB	EI (Pastel Blue) Tall Tankard (N) & 6 tumblers	1,850.00
A	EI Grape & Cable 7 piece water set	575.00
A	EI Diamond Lace 7 piece water set	475.00
A	EI Maple Leaf 7 piece water set, factory flaws, inside base scratches & also bean size bump	525.00
A	EI Butterfly & Fern 7 piece water set	525.00
G	EI Inverted Feather biscuit jar, small chip inside lid	425.00
A	EI Grape & Cable hatpin holder	265.00
W	EI Grape tall tankard and 4 tumblers	1,400.00
R	EI Peacock & Grape 7" bowl	975.00
PO	EI Round-Up bowl	375.00

\*\*\*\*\*

Lee Bryant, Rt. #1, Box 109, Decatur, Indiana 46733

PHONE: 1-219-639-3415

P	Strutting Peacock Creamer & lid, flake on bottom of lid.	20.00
B	Butterfly & Berry 9 1/2" bowl, butterfly int.	90.00
A	Fleur De Lis 10" collar base folded bowl, satin in center to radium to outer edge.	255.00
A0	Hearts & Flowers compote with butterscotch overlay tiny base tick 1/16" long.	270.00

Annual "For Sale" list available, 100 items, medium prices, several plates. Send large SASE with 1 stamp.

\*\*\*\*\* CARNIVAL GLASS FOR SALE \*\*\*\*\*

Hubert F. Shelton, Rt. #1, Box 290, Munfordville, Ky. 42765

PHONE: 1-502-528-5893

M	EI Grape & Cable (N) sherbert	30.00
P	EI Strawberry Spray bon bon	25.00
CB	EI Orange Tree footed tumbler, no harm flake on back edge of foot	25.00
P	GI Grape & Cable (N) tumbler	30.00
M	EI Apple Tree tumbler	30.00
M	GI Rambler Rose tumbler	25.00
M	GI Waterlily & Cattails tumbler	25.00
M	EI Raspberry Wreath hat shape, basketweave ext. tiny chip on 1 flame	20.00
M	EI Wishbone 3 footed 8 1/2" bowl (N)	50.00
P	EI Grape & Cable (N) 7 piece water set, small flake on 1 thumbprint, hard to find.	350.00

\*\*\*\*\*

Bob Slaughter, Rt. 2, Box 568, Graham, North Carolina 27253

PHONE: 1-919-376-9552 after 7:00 P.M. E.S.T.

AMB	EI Corinth 8" vase, nice	20.00
PO	EI Corinth Jack-in-the-Pulpit vase, white opalescent with marigold overlay.	40.00
HA	EI Rococo 5 1/2" vase	50.00
A	GI Diamond Points (N) 9" vase, nice inside, silvery out.	10.00
IG	LI (N) Fine Rib 3 3/4" X 18" vases, have 2, each	20.00
M	EI Beauty Bud vase 8" with twig feet, mint	15.00
M	EI Circle Scroll vase whimsy 8" RARE	75.00
M	EI Twins fruit bowl base, nice	10.00
B	EI Peacock at the Fountain tumblers, cobalt, 2 ea.	40.00
M	EI Sailboats plate whimsy, 4 sides up	35.00

\*\*\*\*\*

Virgil St. John, St. John Antiques, P. O. Box 400

Le Grand, Iowa 50142

PHONE: 1-515-479-2952

R	H.O.A.C.G.A. Whimsy water pitcher (1974) and 6 tumblers (whimsy one of 15 made, each one different)	175.00
---	---	--------

\*\*\*\*\*

\*\*\*\*\* CARNIVAL GLASS FOR SALE \*\*\*\*\*

Sam & Anne Swierc, 520 East Ave., Dover, De. 19901  
 PHONE: 1-302-736-6635

G	Grape & Cable dresser set, matched set, repaired powder jar lid	1,500.00
M	EI Strawberry plate (N)	115.00
G	EI Good Luck plate	475.00
B	Peacock at Urn (N) 5" ice cream bowl	75.00
G	EI Peacock at Urn ruffled bowl, Millersburg	300.00
R	EI Open Edge baskets, jack in pulpit, amberine, have two, each	200.00
B	EI Grape & Cable orange bowl, Persian Medallion interior	275.00
AQ	EI Tiger Lily tumblers, RARE COLOR! each	225.00
A	EI Grape & Cable hatpin holder, chip on foot	135.00
AO	EI Hearts & Flowers compote, pastel irid, almost entirely opal	350.00

\*\*\*\*\*

Eva Backer, 12 Sherwood Rd., West Hartford, Connecticut 06117  
 PHONE: 1-203-233-3761 10:00 A.M. to 1:00 P.M. & after 6:30 P.M.

G	Cosmos low bowl or plate	65.00
M	Beaded Shell sugar	65.00
W	Holly bowl	95.00
W	Constellation compote	95.00
M	Imperial Grape handled basket	165.00
AMB	Pansy oval pickle	35.00
M	Amaryllis compote, scarce	110.00
M	Grape & Cable, Persian Medallion int. orange bowl	85.00
M	Peacock Tail Variet compote, Millersburg	55.00
M	Beaded Cable rosebowl	65.00

\*\*\*\*\*

Singleton Bailey, P. O. Box 95, Loris, South Carolina 29569  
 PHONE: 1-803-756-7495

M	EI Oriental Poppy 7 piece water set	495.00
M	EI Butterfly & Berry 6 piece water set, one tumbler has a nick.	310.00

\*\*\*\*\*

\*\*\*\*\* CARNIVAL GLASS FOR SALE \*\*\*\*\*

Ed & Sharon Binstock, P. O. Box 351, Presque Isle, Maine 04769  
 PHONE: 1-207-764-3612

A	Butterfly & Berry small round berry bowl, SCARCE COLOR!	95.00
B	Dragon & Lotus ice cream shaped bowl	52.50
V	Butterfly & Tulip round deep bowl, RARE COLOR!	385.00
P	Grape & Cable (N) footed plate	91.00
P	Grape Leaves (N) ruffled bowl	45.00
P	Grape Delight footed nutbowl	45.00
M	Butterfly & Berry master berry bowl, very dark	55.00
B	Two Flowers 9" round footed bowl	52.50
PM	Good Luck bowl, tiny flake back of 1 point	47.50
M	Butterfly & Berry creamer	45.00

\*\*\*\*\*

Sterling Butz, 221 N. Adams St., Allentown, Pennsylvania 18104  
 PHONE: 1-215-398-2875

M	EI Daisy Block Rowboat	300.00
B	EI Kittens vase	215.00
G	EI Bushel Basket, 6 sided	150.00
A	EI Fishnet epergne	240.00
IB	EI Wisteria tumbler (N)	600.00
P	EI Diamond Lace 5 piece water set	240.00
A	EI Inverted Coin Dot pitcher	500.00
G	EI Leaf & Little Flowers compote	400.00
M	EI Zig Zag 10" bowl	240.00
A	EI Drapery rosebowl (light amethyst)	300.00

\*\*\*\*\*

Larry & Wanda Riley, 108 Ashland Ave., Paducah, Ky. 42003  
 PHONE: 1-502-898-3582

M	EI Shell 7 3/4" X 2 1/2" bowl	25.00
M	EI Daisy & Plume (N) stemmed rosebowl	40.00
M	EI Diamond Point Columns 7 piece berry set	35.00
G	EI Pansy 9" X 6" oval pickle dish (Helios)	22.00
M	EI Fruit Lustre tumblers, Hartung Bk 3, page 84, have 6, ALL for	30.00
M	EI Orange Peel punch cups, 2 each	10.00
M	GI Lattice & Grape tumblers, 2 each	15.00

\*\*\*\*\* CARNIVAL GLASS FOR SALE \*\*\*\*\*

Bruce & Darcy Hill, 943 SE 13th Ave., Forest Lake, Mn. 55025  
PHONE: 1-612-464-3684

AO	EI Good Luck bowl, small hard to find flake off one point	700.00
IB	EI Embroidered Mums ruffled bowl	650.00
W	EI Corn vase	275.00
IB	EI Peacock at the Fountain water pitcher with one tumbler	1,800.00
IG	EI Hearts & Flowers ruffled bowl	575.00
PO	EI Flowers & Frames tri-cornered bowl	150.00
G	EI Millersburg Many Stars ice cream shaped bowl	480.00
P	EI Three Fruits stippled plate, looks green, SUPER	600.00
R	EI Stag & Holly spatula ftd. bowl, BEAUTIFUL	1,250.00
PM	EI Nippon plate	350.00

\*\*\*\*\*

Roy Craver, P. O. Box 8015, Allandale, Florida 32023  
PHONE: 1-904-427-9380

W	EI Persian Garden small plate	75.00
W	Persian Garden small plate, not much irid.	50.00
G	GI Heavy Grape 8" plate	28.00
G	Vintage 7½" plate, not much irid.	25.00
B	EI Butterfly & Berry master berry bowl	75.00
M	EI Wine & Roses pitcher, 2 base chips	40.00
SM	EI Diamond Ring 5 piece berry set	40.00
M	EI Grape & Cable stippled banana boat, very tiny flake on bottom of one foot.	90.00
G	GI Heavy Grape chop plate, some wear	50.00
G	Leaf Chain 9" plate, not much irid.	50.00

\*\*\*\*\*

J. Richard Brandt, 1313 Church St., Lititz, Pennsylvania 17543  
PHONE: 1-717-626-7393 after 6:00 p.m.

A	GI Vineyard 5 piece water set	290.00
G	LI Springtime tumbler	60.00
A	GI Vintage compote	30.00
M	EI Grape & Cable 8" handgrip plate	50.00
A	EI Tiger Lily tumbler	50.00
G	EI Grape & Cable tumbler	38.00
M	EI Drapery rosebowl	325.00
G	GI Inverted Strawberry 7" bowl	22.00
M	EI Sunflower bowl	28.00
PO	EI Six Petals bowl	18.00

\*\*\*\*\* CARNIVAL GLASS FOR SALE \*\*\*\*\*

William Coles, Rt. #1, Box 273B, Hickory, Kentucky 42051  
PHONE: 1-502-674-5916

M	EI Grape & Cable tumblers (N), nice set of 6, the set for	135.00
G	EI Millersburg Blackberry Wreath 9" ruffled bowl, radium	55.00
M	EI Cherry Circles large round bon bon	35.00
V	EI Fentons Basket, open edge, marigold overlay small size	45.00
M	EI Rose Spray compote, goblet shape	28.00
M	EI Wreathed Cherry large oval bowl, PASTEL	85.00
AQ	EI Coin Dot (not stippled) 8½" ice cream shape bowl	55.00
B	EI Blackberry Spray 6 ruffled hat, SUPER	40.00
M	EI Blackberry Spray 6 ruffled hat, SUPER	35.00
CLM	EI Fieldflower water pitcher, small open bubble on base	85.00

\*\*\*\*\*

Jack K. Workman, 1432 Sycamore Lane, Wooster, Ohio 44691  
PHONE: 1-216-263-1282

M	EI Pine Cone plate, very flat	40.00
M	EI Lion round bowl, Horse Chestnut ext.	100.00
M	EI Floral & Grape tumbler, dark	25.00
M	EI Golden Harvest stopper for wine decanter	25.00
A	EI Grape & Cable base for small size punch bowl	40.00
IB	EI Hearts & Flowers ruffled bowl	360.00
G	EI Mlsbg. Strawberry Wreath tri-cornered bowl	250.00
M	EI Mlsbg. 7" square Strawberry Wreath bowl radium	150.00
M	EI Mlsbg. Country Kitchen butter dish, pin head nick on inside rim	325.00
M	EI Mlsbg. Diamond tumblers, very dark	35.00

\*\*\*\*\*

Carlos A. Maffiolini, Balcarce 1043 3º 1, (1064) Buenos Aires, ARGENTINI

M	GI Rising Sun butter dish & lid, tiny chip on bottom	600.00
M	GI Rising Sun water set, 7 piece	3,500.00
B	GI Grand Thistle 7 piece water set	2,000.00
B	LI Tiger Lily 7 piece water set	2,500.00
A	EI Beetle Ashtray	400.00
	2 Advertising ashtrays from Christalerias Rigolleau (Argentina) M & B (resembles C & R) each	200.00



\*\*\*\*\* CARNIVAL GLASS FOR SALE \*\*\*\*\*

Burney Talley, 1814 Slate, N.W., Albuquerque, N.M. 87104  
PHONE: 1-505-242-1261

SM	Imperial's Grape basket, RARE & SUPER	125.00
P	(N) Grape 5 piece punch set, small size	595.00
P	Trout & Fly 6 ruffled bowl, super radium	395.00
P	Imperial's Paperweight, RARE!	750.00
DM	Poinsettia milk pitcher, SUPER	95.00
DM	Cane & Daisy Cut large square vase, super dark color and irid. RARE	125.00
M	Fisherman's mug	195.00
M	474 Goblets large water size, RARE, 3 at \$50.00 each or all for	145.00
P	Town Pump, SUPER COLOR	650.00
DM	Fashion rosebowl	85.00

\*\*\*\*\*

Mary Welch, 213 Alexander, Scotia, New York 12302  
PHONE: 1-518-393-7748

B	Peacock at the Fountain, Dugan, 2 each	40.00
B	(N) Bushel Basket, round	90.00
IG	Florentine candlestick (1 only)	25.00
M	Horse Medallion ftd. Jack in Pulpit bowl	70.00
M	Carnival Hobstar creamer	20.00
P	Wide Flute small 2 handled open sugar	40.00
M	Rococo dome footed bowl	15.00
M	Imperial Grape wines, star in bottom, 3 each	25.00
	Send 2 stamps for list 300 pieces for sale	

\*\*\*\*\*

Steve Davis, 3331 Warpath Rd., Macon, Georgia 31201  
PHONE: 1-912-741-4252

M	EI Panther 3 footed sauce dish	25.00
M	EI Chrysanthemum 11" ice cream shaped bowl	65.00
M	LI Apple Tree water pitcher	100.00
P	EI Acorn Burrs 1 large bowl & 2 small sauces	150.00
P	EI Grapevine Lattice tumbler	35.00
A	GI Vintage epergne	125.00
P	EI Peacock at the Fountain spooner, SUPER	75.00
P	EI Flute creamer	75.00
P	EI Flute toothpick (creamer & toothpick both 125)	65.00
P	EI Grape & Cable tumblers 5 ea. \$35.00, all for	160.00
	SASE FOR LIST OF OTHER CARNIVAL FOR SALE	

\*\*\*\*\* CARNIVAL GLASS FOR SALE \*\*\*\*\*

John & Lucile Britt, 3048 Tamarak Drive, Manhattan, Ks. 66502  
PHONE: 1-913-539-1933

P	Imperial Grape punch cup, SUPER DARK PURPLE	45.00
A	Multi-Fruits & Flowers punch cup	47.50
M	Star & File punch cup, RARE IN A CUP	35.00
G	"474" punch cup, unusual aqua-green, BEAUTIFUL	45.00
M	Horses Heads rosebowl	100.00
W	Fanciful flat plate - not ruffled	135.00
IB	(N) Peacock & Urn 5½" ice cream, very nice	225.00
SM	Fashion tumbler, scarce and nice	65.00
M	File tumbler, very nice	150.00
G	Millersburg Cherries tumbler, flared top, RARE	135.00

\*\*\*\*\*

Ray Hitchcock, R.R. 1, Box 301, Winterset, Iowa 50273  
PHONE: 1-515-462-2074

M	(N) Good Luck plate	250.00
B	Heart & Vine plate	250.00
B	Orange Tree plate	135.00
B	Round-Up plate	225.00
BCMGO	#270 compote, color: blue custard milk glass opal	90.00
A	Hanging Cherries plate 7½"	200.00
P	(N) Good Luck plate, point smooth, hard to see	175.00
M	Crab Claw pitcher, cracked	35.00
A	Millersburg Diamonds pitcher, cracked	25.00
M	Panther 7 piece ruffled berry set	275.00

\*\*\*\*\*

Gene & Ruth Clark, 1010 S.E. 5th St., Forest Lake, Mn. 55025  
PHONE: 1-612-464-4851

W	EI Dahlia table set	900.00
W	EI Round-Up ruffled plate	180.00
IB	EI Nippon pie crust edge bowl	180.00
IG	EI Corn vase	170.00
LAV	EI Trout & Fly candy ribbon edge bowl	675.00
P	EI Hearts & Flowers ruffled bowl	200.00
P	EI Hearts & Flowers plate	600.00
P	EI Grape & Cable sweetmeat, small chip under base	140.00
B	EI Orange Tree loving cup, small chip on base	75.00
M	EI Stag & Holly large ball ftd. ruffled bowl	130.00

\*\*\*\*\* CARNIVAL GLASS FOR SALE \*\*\*\*\*

Mary C. Kesterson, 3020 Mesa Rd., Willow Park, Texas 76086  
PHONE: 1-817-441-8410

M	EI Little Stars 7" bowl	70.00
IB	EI Grape Arbor tumbler	115.00
M	EI Persian Medallion hair receiver	55.00
P	EI Hesting Swan bowl, radium SUPER	265.00
IG	EI Peacocks plate	325.00
W	EI Peacock & Urn master ice cream bowl 11"	585.00
M	EI Peacocks bowl, pie crust edge	225.00
M	EI Rose Show plate, SUPER IRID.	395.00
G	EI Singing Birds tumblers, have 4	120.00
CB	EI Two Flowers rosebowl, footed	135.00

\*\*\*\*\*

Delouris Craft, 702 Bradley Drive, Bloomington, Ill. 61701  
PHONE: 1-309-662-3610

M	Peacocks on the Fence bowl (N)	120.00
M	Rose Show bowl, small chip on a petal	90.00
M	Peacock & Urn (Fenton) bowl	65.00
A	Peacock & Urn (Fenton) bowl	125.00
PB	Open-Edge basketweave round shallow bowl	65.00
PO	Four Flowers small plate, very pretty but has 1" stress line exterior, so	40.00
IG	Peacocks on the Fence plate	350.00
P	Peacocks on the Fence plate	375.00
A	Imperial Grape pitcher & 2 tumblers	300.00
G	Mlsbg. Peacock Whimsey Proof, Variet 5½" sauces, ONLY 2 KNOWN! radium \$375.00 each or both for	700.00

\*\*\*\*\*

Paul Berube, 11 Doris Avenue, Tiverton, Rhode Island 02878  
PHONE: 1-401-625-5303

M	EI Primrose Panels 5½" shade	25.00
W	EI Frosted NuArt 4½" shades, have 2, each	20.00
M	EI Tree of Life pitcher	45.00
B	EI Dragon & Lotus 9" bowl	45.00
M	EI Heavy Grape handled nappy	28.00
M	EI Strawberry bon bon	15.00
P	EI Scarab hatpin	24.00
P	EI Bumble Bees hatpin, have 2, each	24.00
P	EI Cattails hatpin, have 2, each	20.00
G	EI Rare Grape & Cable stippled, ribbon edged, banana boat, cracked; great shelf piece	30.00

\*\*\*\*\* CARNIVAL GLASS WANTED \*\*\*\*\*

John & Lucile Britt, 3048 Tamarak Drive, Manhattan, Ks. 66502  
PHONE: 1-913-539-1933

A	Lid to Millersburg Pipe Humidor
B	Tornado vase
G	Corn Bottle
AO	8 sided (N) Bushel Basket
G	Square Trout & Fly or Big Fish
M	Millersburg Strawberry compote
IG	Hearts & Flowers bowl or plate
B	Hearts & Flowers bowl or plate
M	Heron mug
SM	Little Barrel

\*\*\*\*\*

Singleton Bailey, P. O. Box 95, Loris, South Carolina 29569  
PHONE: 1-803-756-7495

B	Millersburg Peacock pieces
	Millersburg Peacock & Urn chop plate
	Millersburg Two-Eyed Elk bowl
	Millersburg Courthouse bowl
V	Millersburg tri-shaped Peacock bowl
	Tri-cornered Trout & Fly bowl
G	Square Trout & Fly bowl
	Millersburg Peacock & Urn compote
	ANY COLOR radium Big Fish bowls
	Millersburg tri-shaped Nesting Swan

\*\*\*\*\*

JoEllen Rotondi, P. O. Box 401, Butler, Wisconsin 53007  
PHONE: 1-414-354-8254

IB	ANY ICE-BLUE PLATES OR RARE PIE-CRUST EDGE BOWLS
EB	Any Northwood stippled plates
W,PO	Persian Garden chop plate
PRL	Any Northwood iridized custard bowls
ANY	Hearts & Flowers plates and bowls with <u>PLAIN</u> or <u>BASKETWEAVE</u> exterior
ANY	(N) Peacocks plates and bowls, <u>BASKETWEAVE</u> exterior only

\*\*\*\*\*

\*\*\*\*\* CARNIVAL GLASS WANTED \*\*\*\*\*

Bruce & Darcy Hill, 943 SE 13th Ave., Forest Lake, Mn. 55025  
PHONE: 1-612-464-3684

---

EB,AO ANY COLOR Peacock at the Fountain punch sets or parts  
Peacock at the Urn large ice cream bowl  
Ice-Green, Ice-Blue, Green Rose Show plates or bowls  
or any unusual color.  
Ice-Green, Ice-Blue, Green Poppy Show plates or bowls  
or any unusual color.

\*\*\*\*\*

Roy Craver, P. O. Box 8015, Allandale, Florida 32023  
PHONE: 1-904-427-9380

---

W (N) Peach butter bottom  
B Stippled Grape & Cable humidor bottom  
P Memphis punch top  
W Wide Panel center lily  
B Grape & Cable medium size punch top  
M Grape & Cable butter bottom  
P Hobstar butter bottom  
M Millersburg Cherry butter bottom  
P Stork & Rushes tumblers  
M Multi-Fruits & Flowers punch cups (6) medium color

\*\*\*\*\*

Ed & Sharon Binstock, P. O. Box 351, Presque Isle, Maine 04769  
PHONE: 1-207-764-3612

---

G Wishbone pie crust edge bowl, collar base  
B Wishbone ruffled bowl, collar base  
P Wishbone tumbler  
G Springtime tumbler  
P Poppy Show bowl  
B Rose Show bowl  
G Peacocks (N) plate, very dark only  
G Peacocks (N) pie crust edge bowl  
IB Peacocks (N) pie crust edge bowl  
M Poinsettia & Lattice bowl

\*\*\*\*\*

Ray Hitchcock, R.R. 1, Box 301, Winterset, Iowa 50273  
PHONE: 1-515-462-2074

---

PO Holly bowl

\*\*\*\*\* CARNIVAL GLASS WANTED \*\*\*\*\*

Steve Davis, 3331 Warpath Rd., Macon, Georgia 31201  
PHONE: 1-912-741-4252

---

M,P,G Poppy Show bowl/plate  
M,P,G Rose Show bowl/plate  
M Oriental Poppy water pitcher  
M Double Star tumbler  
P Imperial Grape water pitcher  
I WOULD LIKE THE ABOVE WITH ABSOLUTELY EXCELLENT  
IRIDESCENCE AND IN MINT CONDITION

\*\*\*\*\*

Lawrence Hartnell, Box 352, Collingwood, Ontario, Canada L9Y 3Z7

---

M Daisy & Lattice water pitcher  
M Octagon wine glasses, need 6  
M Fashion punch cups, need 7  
B Orange Tree base for punch bowl

\*\*\*\*\*

Stanley Williams, 7711 N.W. 69th Terr., Kansas City, Mo. 64152  
PHONE: 1-816-587-7357

---

B Fenton Painted Cherry & Blossoms tumblers  
A Lid for Grape & Cable covered compote

\*\*\*\*\*

William Coles, Rt. #1, Box 273B, Hickory, Kentucky 42051  
PHONE: 1-502-674-5916

---

P Grape & Cable sweetmeat bottom  
B,P Hearts and Flowers compotes  
M Embroidered Mums bowl  
M Hearts and Flowers bowl  
\*\*ANY\*\* Color 6 or 8 sided Bushel Baskets  
M Orange Tree punch base  
M Trout & Fly bowl

\*\*\*\*\*

Harold L. Fortney, 910 Penn, Apt. 1008, Kansas City, Mo. 64105  
PHONE: 1-816-474-2054

---

ANY Two Flowers 5" to 5½" ball footed or collar based bowls  
ANY COLOR WANTED, ESPECIALLY WHITE OR RED

Gil Corriveau, Box 5, Sturbridge, Massachusetts 01566  
PHONE: DAYS 1-617-347-3304, NIGHTS 1-617-347-9930

- P Grape & Cable sweetmeat top
- M Peacock at the Fountain butter bottom
- M Peacock at the Fountain punch top
- M Grape & Cable butter bottom
- P Grape & Cable perfume stopper
- B Grape & Gothic Arches sugar bottom
- M Grape & Cable punch top

\*\*\*\*\*

Maxine Twedt, 44646 Cedar Avenue, Lancaster, Calif. 93534  
PHONE: 1-805-942-6837

- IB, IG, M Acorn Burrs punch cups
- IB, IG Fenton Open Edge baskets

\*\*\*\*\*

Marty Schoettler, Box 188, R.D. #3, Sewell, New Jersey 08080  
PHONE: 1-609-589-4325

- IG Peacock & Urn small ice cream bowls (N)
- G Peacock & Urn small ice cream bowl, Millersburg
- A Peacock small ice cream bowl, Millersburg, no bee, radium

\*\*\*\*\*

Norm Archer, R.R. #1, Harrod, Ohio 45850  
PHONE: 1-419-648-2231

- G Acorn Burrs punch bowl
- A Wreath of Roses punch cups, Vintage interior
- B Wreath of Roses punch cups, Persian Medallion interior
- A Many Fruits punch base
- M Forget-Me-Not tumblers
- M Wreath of Roses punch bowl
- M 474 punch bowl
- M 474 tumblers

\*\*\*\*\*

H.O.A.C.G.A. SOUVENIR BELL

In 1985, it was decided to make a series of 4 Souvenir Bells. Each different bell would feature a portrait of a Famous Maker of Carnival Glass. The beautiful Circle Scroll Pattern would be used as the basic pattern on ~~EA~~ each of the bells. The bells would also include the Fenton logo.

The first bell, 1985 Souvenir, has a portrait of Harry Northwood. The bell is Ruby Red Carnival. VERY FEW ARE STILL AVAILABLE.

The second bell, 1986 Souvenir, has a portrait of Frank L. Fenton, the principal founder of the Fenton Art Glass Company. This bell is made in the beautiful Lime Green Opalescent with a Marigold overspray. This bell is made in a limited quantity, approximately 350.

The 1987 bell will feature John Fenton, founder of Millersburg Glass Company. The 1988 bell will be of a prominent person of the Imperial Glass Company.

It is our belief that this series of souvenir bells will make a beautiful and collectible set of Carnival Glass Bells while honoring those responsible for the making of our favorite glass. We hope you will enjoy this series of bells.

The 1985 or 1986 Bells are \$35.00 each, plus \$2.50 shipping. *John E. Britt*

CHECKS PAYABLE: H.O.A.C.G.A.

MAIL ORDER TO: John Britt  
3048 Tamarak Drive  
Manhattan, Kansas 66502



I wish to order \_\_\_\_\_ 1985 Souvenir Bells at \$35 plus \$2.50 shipping.

I wish to order \_\_\_\_\_ 1986 Souvenir Bells at \$35 plus \$2.50 shipping.

NAME: \_\_\_\_\_

ADDRESS: \_\_\_\_\_

CITY, STATE, ZIP: \_\_\_\_\_

A P P L I C A T I O N   F O R   M E M B E R S H I P

---

THE HEART OF AMERICA CARNIVAL GLASS ASSOCIATION, INC.

---

DATE \_\_\_\_\_

NAME \_\_\_\_\_

SPOUSE \_\_\_\_\_

ADDRESS \_\_\_\_\_

CITY \_\_\_\_\_ STATE \_\_\_\_\_

ZIP CODE \_\_\_\_\_ TELEPHONE \_\_\_\_\_

RECOMMENDED BY \_\_\_\_\_

DUES ARE \$20.00 PER YEAR (June through May)

SEND DUES TO:    H.O.A.C.G.A.  
                      Berneice Bell, Treasurer  
                      13620 E. 41st. Street  
                      Independence, Missouri 64055

---

---

A FEW OF THE BENEFITS OUR CLUB OFFERS:

The ONLY MONTHLY PUBLICATION on just Carnival Glass collecting, keeping you informed of new discoveries and all of the current events. Members only may advertise, FREE OF CHARGE!!

An exclusive PATTERN NOTEBOOK with yearly special inserts. (ALL inserts are still available)

ANNUAL SOUVENIR AND CONVENTION WITH SOME OF THE GREATEST PEOPLE YOU COULD HOPE TO MEET!!

\*\*\*\*\* J O I N    T O D A Y    \*\*\*\*\*