

MARCH 87

# HOACGA

Heart Of America Carnival Glass Assoc. INC.

RETURN ADDRESS

Michael J. Basey  
Bulletin Secretary  
H.O.A.C.G.A.  
4315 Adams  
Kansas City, Kansas 66103

First Class Mail  
U S. Postage  
PAID  
Kansas City, Mo.  
Permit No. 4352



## St. Pat's Day



NEW ADDRESS FOR  
OUR TREASURER  
SEE INSIDE



# Heart of America Carnival Glass Association, INC.

Membership June to May  
\$20.00 Per Couple or Single

Published the 15th  
of each month

## PRESIDENT

Robert Grissom  
7900 Crescent  
Raytown, Missouri 64138  
1-816-356-5320

## VICE-PRESIDENT

Nadine Paulsen  
700 Purdom  
Olathe, Kansas 66061  
1-913-782-1313

## TREASURER

Berneice Bell  
1305 W. Wight  
Nevada, Missouri 64772

## SECRETARY

Glen Fortney  
Post Office Box 303  
Buckner, Missouri 64016  
1-816-249-5208

## BULLETIN SECRETARY

Michael Basey  
4315 Adams  
Kansas City, Kansas 66103  
1-913-432-2460

All monetary figures quoted are U.S. dollars. Please make checks for dues payable to H.O.A.C.G.A. and send them to the Treasurer, at the above address.

\*\* DO NOT SEND TO THE BULLETIN SECRETARY \*\*

## MINUTES OF THE MONTHLY H.O.A.C.G.A. MEETING IN FEBRUARY

At 2:00 P.M., February 22, 1987, President Robert Grissom called the monthly meeting to order. Secretary Glen Fortney read the minutes of the last meeting and they were approved as read. Treasurer Berneice Bell gave the Treasurers' Report and it was approved as read and placed on file for audit. Mrs. Bell will be transferring the accounts to Nevada, Missouri, as she and Wilbur will be moving there this month.

President Grissom welcomed back Mr. and Mrs. Williams of Prairie City, Iowa to the meeting. Also with us were the Strohms' and also Jean Lineback and her husband.

As Convention time draws near, President Grissom reported that two of the Offices in the Club will be up for election this year. The Offices are President and Secretary. Wilbur Bell will be in charge of Nominations for Officers. If anyone is interested in running for President or Secretary, please contact Mr. Bell. These terms are for two years.

President Grissom thanked Mrs. Cunningham for providing the refreshments for the meeting.

President Grissom reported on the St. Louis Auction on February 21, stating there was a lot of good glass sold. Among those sold were a green Peacock & Urn ice cream bowl for \$1,000.00 and a large red Two Flowers bowl that sold for \$2,700.00.

Our Program for the March meeting will be Green Carnival Glass, so everyone plan to bring some green Carnival with you next month.

We ask everyone planning to attend the Convention to please pre-register if you can, in order to lessen the work load of the Secretary and Treasurer at the Convention. If you can't pre-register, please come anyway, as we want everyone to attend. We're really looking for a good attendance at this years' Convention.

There was discussion concerning the video taping of the seminars at the Convention. A motion was made and seconded and passed, that we sell the video tapes for \$20.00.

Nadine Paulsen will be in charge of the Hospitality Room. If anyone would like to volunteer to help, please contact her.

President Grissom showed and discussed some of the pieces of glass he purchased at the St. Louis auction and also some of the glass brought to the meeting by local members.

February minutes continued

The meeting was adjourned for a short time for us to enjoy the delicious refreshments provided by Mrs. Cunningham.

After refreshments, President Grissom gave the Program on pieces of glass with heart patterns. He showed many beautiful pieces including a Peach Opal Petal and Fan bowl with the Jewelled Heart exterior, a marigold Stream of Hearts compote, and many Hearts and Flowers compotes in many beautiful colors. All of us appreciate so much the glass brought to the meeting. We thank everybody!

The next meeting will be March 22, 1987 at 2:00 P.M., at the Raytown City Hall. Hope to see you all then!

Glen Fortney  
Secretary  
H.O.A.C.G.A.

=====

We wish to welcome the following new members to the Heart of America Carnival Glass Association:

David L. Sharp, Dayton, Ohio  
Dan & Peggy Mohne, Bixby, Oklahoma  
Richard & Roberta Conley, Silver Springs, Maryland  
Donald & Bette Farrell, Sr., Granite City, Illinois  
Ruby Pitt, St. Petersburg, Florida  
Forrest & Dorothy Urbatsch, Manley, Iowa  
Randy & Carolyn Eskew, Greenfield, South Carolina  
M. C. Mason Jr. & Lucy H. Mason, Richmond, Virginia  
Loren & Darline White, San Francisco, California  
Buster & La Verna De Witt, Nampa, Idaho

We welcome these people to our Club and wish them much success in their search for Carnival Glass!

=====



H.O.A.C.G.A. CONVENTION AUCTION UPDATE

The Auction will include a variety of colors, shapes, and patterns in an effort to offer something for all collectors.

For example, an extremely rare MILLERSBURG HONEYCOMB & HOBSTAR VASE will be sold for the FIRST TIME at auction. This one-of-a-kind vase in amethyst, was recently secured from the Cambridge Museum in Cambridge, Ohio, where initially it was thought to be Cambridge glass. Its' first journey out of Ohio should prove to be interesting!

Some other pieces of glass to be sold at the H.O.A.C.G.A. Convention Auction are:

Blue Opal Hearts & Flowers compote  
Celeste Blue Rose Show Variet bowl  
Blue Opal Rustic vase  
Aqua Opal Diamond Points vase  
Amethyst Morning Glory tumbler  
Green Morning Glory tumbler

There will be many other desirable tumblers, and a broad variety of water sets, reflecting the current trend, which is to collect complete sets.

The April H.O.A.C.G.A. Newsletter will continue with some surprise pieces of glass, and you will soon have a brochure of all glass to be sold.

Joan Westerfeld

=====



Dear Michael:

## Letters

Just a note to say "We the Road-runner Club" of New Mexico, (all five of us) I am taking the privilege of speaking for all us us, certainly do enjoy and appreciate the great job you are doing with the "Bulletin". Keep up the good work. Thanks a million.

Norene and Tony Duran  
Ocate, New Mexico



The above picture shows the beautiful lamp shade made by Mr. & Mrs. Magan of Owensboro, Kentucky. This lamp shade was made from the broken pieces of the Green Opalescent Hobnail Spittoon Room Display Awards from last years' Convention. Mr. and Mrs. Magan made this fine lamp shade and have donated it to H.O.A.C.G.A. to be auctioned off at this years' Convention. The Board of Directors would like to sincerely thank the Magans' for creating this gorgeous lamp and for the many hours of work they put into it. We wish all of you could see this picture in color, as the lamp is absolutely BEAUTIFUL!

THE BOARD OF DIRECTORS

## R A R I T Y   R E P O R T

I think I have found something extremely rare and being an Imperial collector, I am more than extremely thrilled. I have an amber Nu-Art Chrysanthemum plate, signed Nu-Art, with gorgeous rose colored iridescence. Does anyone else have one of these or know of one?

Also may I state Jo Ellen Rotondi found this and was gracious enough to tell me about it. I also have purchased an aqua Cherry Circles bon bon. How many of these are out there? The bon bon has lovely iridescence. Of course, it is needless to say I paid full price for these. I don't find many bargains, but I am more than grateful that you people out there call me and give me a chance to purchase these lovely rare items.

THANK YOU!  
Norene Duran  
Ocate, New Mexico

## LETTERS FROM OUR MEMBERS.....

Dear Michael:

We appreciate all the time that you, the Britts, Don Moore, and all the others who contribute to make the H.O.A.C.G.A. Bulletin very interesting. We enjoy reading how people got started collecting Carnival Glass.

We just purchased a blue Fantail bowl that is ruffled and quite low. Are most Fantail bowls like this or shaped more like most Butterfly & Berry bowls with a distinct squarish corner? My brother has an ice cream shaped Fantail bowl. Is this a common shape? We would like some opinions.

THANKS!  
Don & Barb Chamberlain  
Box 64  
Winthrop, Iowa 50682

Dear Michael,

I wrote a letter last June about the HOACGA members who had been so kind, generous, and patient with me. The past six months have been so busy that I could never seem to find the time to sit down, edit, and try to condense my letter. Now that I am home recuperating from surgery, I can indulge myself in contacting old friends (my phone bill may put me back in the hospital), labors of love such as this letter, and mailing my tax return by January 31. I may get back a few extra dollars that I can spend on Carnival Glass.

I have just recently become a member of the HOACGA, but thanks to several veteran members, I have been able to enjoy club benefits as I waited for a new membership year to begin.

Gloria Nelson (VA) invited me into her home to see her beautiful glass collection after I had heard about "the local collector" in her uncle's antique shop. She generously shared information with me, mailing me copies of any resource material she had such as articles on reproductions and books I could purchase. Gloria did not stop at that - noticing how much I enjoyed the newsletter, she copied it and mailed it to me each month until I could join the club and receive my own copy.

Delouris Craft (IL) took the time and effort to research a particular piece of glass and describe other reference sources for Carnival Glass. She answered endless questions about patterns and colors, carefully describing amber to satisfy my curiosity. Delouris even sent me clip-pings of sources for my "Avocado" Depression Glass that had belonged to my Mother. I had called her to inquire about an item for sale, which had been sold; yet her kindness and patience seemed limitless and her devotion to our wonderful glass very evident.

Glen Fortney very patiently responded (several times) when I tried to join the club - in February - for the last three months - on a pro-rated basis. I believe I was also asking to receive the HOACGA Pattern Notebook since I would be a member. Poor Glen -- he patiently took the time to explain club policy and encourage me to apply the check I had sent toward a full membership for the upcoming year and use the balance toward the notebook. Everything worked out just as he predicted and I still received my Pattern Notebook with the original cover (First Edition).

I have been enjoying the HOACGA tremendously. The June Bulletin arrived recently and you are to be congratulated on a job well done. I enjoyed PICTORIAL PATTERN PARADE and I hope there will be more articles like COMMENTS ON COLOR and DAYS GONE BY. As a novice collector, I find these extremely interesting as well as educational. The best news in the Bulletin (for me) was the announcement about the Mid-Atlantic Carnival Glass Jamboree -- I am ecstatic. Through this notice I discovered the Nation's Capital Carnival Glass Club that is meeting only miles from my home. I have contacted Lee Stonebraker, President, who was very friendly and encouraging. I look forward to meeting the other club members and attending the jamboree with my fiance.

Since I wrote that letter in June, I have met many Carnival Glass collectors who have continued to reinforce the kindness, generosity, and patience that I originally encountered - including the members of the NCCGC. Of course I met our local celebrity, Ward Russell, his charming wife, Evelyn and lovely daughter, Jan through the NCCGC. When we attended the jamboree, Gene and I were delighted to meet many more glass enthusiasts who were just as kind and friendly. Among these were the famous (or is it infamous) auctioneer, Tom Burns, who is not only great at what he does, but makes what he does exciting and fun; also Wanda and Bob Chipman who have let Gene and I tag along to auctions and then coach us on how to act when we got there. They will even stand in the rain with you all day long waiting for the Carnival Glass to be auctioned. Now, is that kindness and patience or what?

This week I had a visit from a neighbor, an enthusiastic glass collector and prospective HOACGA member and his delightful wife. Knowing how much I enjoy Carnival Glass, they brought me a lovely "Beaded Bullseye" vase filled with flowers. These folks really know how to bring cheer to a shut-in. Thanks again to Richard and Roberta Conley for this kind and thoughtful gesture.

I look forward to collecting more glass -- and to meeting more collectors. Gene has become quite interested; we are looking forward to the Keystone Convention in May. Who knows, we may even get to Kansas someday.

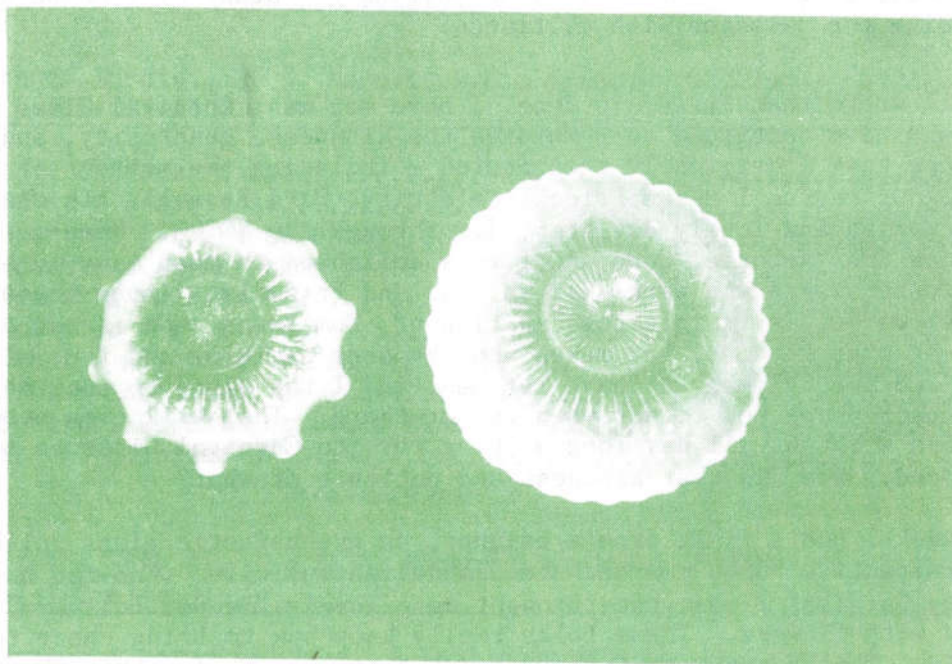
Ruby Lewis  
Rockville, MD

CAN ANYONE IDENTIFY THESE BOWLS?

I'm fairly new to Carnival Glass collecting and recently picked up two peach opal bowls at an auction that I am having difficulty identifying. Enclosed are pictures of both bowls.

The smaller bowl is 7" in diameter and the larger is 9". Perhaps someone in the Association will be able to identify it for me, and would appreciate your including my request and picture in the Bulletin.

Caroll Hoogerhyde  
29727 Lincoln Road  
Bay Village, Ohio 44140

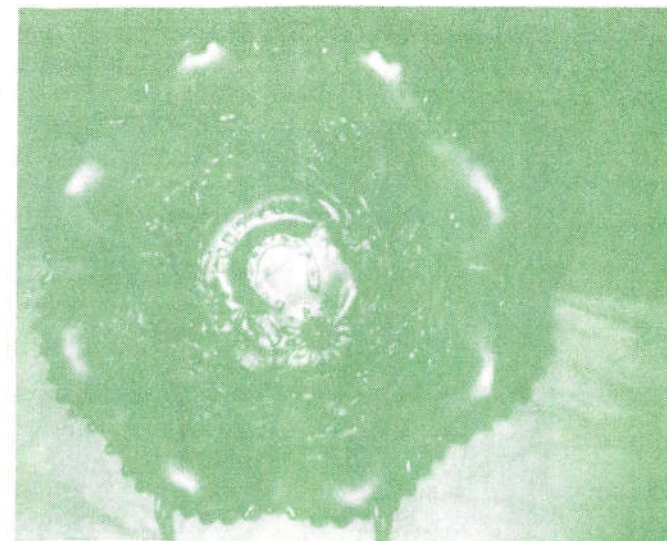


=====

CARNIVAL GLASS AUCTION PRICE REPORT FOR 1986

A listing of over 3,000 prices from 1986 auctions, listed by Hartung name. Information includes description, shape, color, sale price, date of auction, auctioneers and sellers name. This year's report will include a section on pastels. When ordering, please specify 1986 report. The 1984-85 price report is still available. Either report may be ordered for \$8.00 postpaid. Overseas delivery add \$1.00. ORDER DIRECT FROM: TOM & SHARON MORDINI, 36 N. MERNITZ AVE., FREEPORT, ILLINOIS 61032

FABULOUS RARITY SURFACES



NORTHWOOD GOOD LUCK BOWL IN COBALT BLUE OPAL. SLAG

To start out, this is truly a super rarity. From all the information I have gathered from leading authorities, this is the only known Northwood item in this color and texture. Just the color alone is not known in Northwood. Also with this odd slaggish base, makes it more interesting. It has super color and iridescence. When viewed, it has the opalescence on the edge, the dark color and iridescence covers the rest. When viewed into the light, the opalescence goes down into the bowl. You can see the opalescence on the leaves and Good Luck, when displayed; the slag part is down on the collar base. When a black light is on it, it has a greenish glow and has dark stripes across the base; very unusual. When viewed in certain light it is really strange looking. Photos when taken make it hard to photograph the opalescence. When viewed, it is fantastic.

When I first told of this super rarity, it surprised the knowledgable people in Carnival. They never heard or saw one before, or anything in Northwood. They think it was made by accident or an experimental item. This is what makes Carnival Glass so much fun & interesting. I could write on and on but to sum it all up, this is one super piece of glass.

ELVIS RANDELL

EDUCATIONAL TUMBLER SERIES

By John & Lucile Britt



BOUQUET TUMBLERS

The "Bouquet" pattern was made by the Fenton Art Glass Company of Williamstown, West Virginia. The tumblers are of the standard size standing four inches high. The floral design is quaint and has a certain charm about it. There are three of the flower panels around the surface of the tumbler. Each panel contains a bouquet of six daisy-like flowers and four leaves. Between each of these floral panels is another smaller panel of tiny over-lapping scales, a filler-type design used often by Fenton artists. Above these panels and about 3/4 inch from the top is a cable that encircles the tumbler. This cable is much like that used on the "Orange Tree Orchard" tumbler.

While the "Bouquet" tumblers are not easy to find, they are certainly not rare. The only colors that we have seen in this pattern are marigold and blue. "Bouquet" tumblers and pitchers are listed by one author in white, but I can not verify that. I have viewed many tumbler collections, both large and small, and I have never seen a "Bouquet" tumbler in that color. If they do exist in white, and I am not saying they don't, they

(Educational Tumbler Series continued)

would be extremely rare.

The "Bouquet" water pitcher is of the bulbous type and contains the same general design found on the tumblers. The set is very pretty and would add charm to any collection. This marks our 110th entry into this series. Next month we will feature the "Grapevine Lattice" tumblers.

JOHN & LUCILE BRITT

=====



PICTORIAL PATTERN PARADE

By John & Lucile Britt



GREEK KEY PIE-CRUST EDGE BOWL IN ELECTRIC BLUE

"Greek Key" is a Northwood pattern that was made in bowls, plates and water sets. It is featured here in a pie-crust edge bowl in electric blue. This is a very rare color in the "Greek Key" pattern. The pie-crust edge adds to its beauty and desirability. This is the first one of these bowls that we have ever had the opportunity to purchase in this shape and color.

The bowl has the ribbed exterior. Sometimes you will find this pattern containing the basketweave exterior. Both of these exterior patterns, that we find used with the "Greek Key", can also be found on other Northwood patterns such as Hearts & Flowers, Grape & Cable, Good Luck, Nippon, Three Fruits, Strawberry and Peacocks on the Fence, just to name a few that come to mind. The "Greek Key" plate is also very rare in cobalt blue. One of these plates in blue sold for \$1,100.00 at the Archer auction at St. Louis in November of 1985.

JOHN AND LUCILE BRITT

PICTORIAL PATTERN PARADE

By John & Lucile Britt



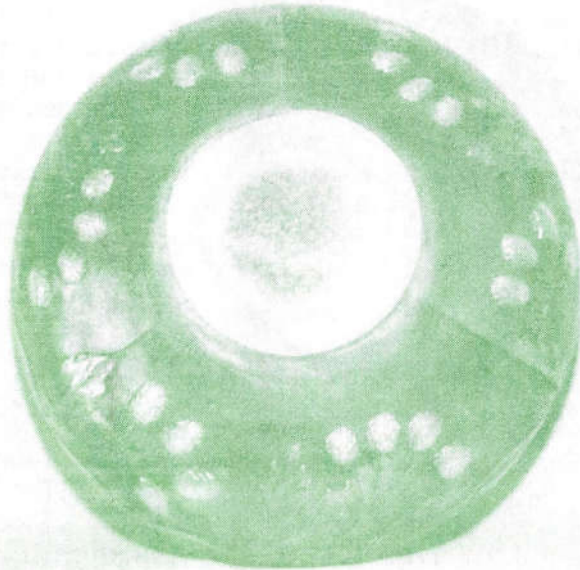
(Photo #1, interior of Moonstone Orange Tree Bowl)

ORANGE TREE BOWL WITH MOONSTONE BASE

This "Orange Tree" ice cream shaped bowl, which carries a lot of opalescence and exceptionally good dark marigold overlay, has the unusual and rare moonstone base glass. In Photo #2, we show the back side of the bowl which carries the "Bearded Berry" pattern, one of which was often used by Fenton as a reverse pattern. Notice the true moonstone in the collar base.

With the moonstone type of glass you can see through the collar base, while on the milk glass you can not. True milk glass is entirely opaque. You most often see the milk glass used on Westmorland pieces such as "Daisy Wreath" and "Carolina Dogwood".





(Photo #2, exterior of Moonstone Orange Tree Bowl)

Westmorland did make some pieces with the moonstone base, however. We have one of these bowls in the "Carolina Dogwood" pattern which was made with this moonstone type of glass. It is not nearly as white or opaque as are the pieces with the true milk glass base. This particular bowl is not iridised on the back side and you can see the moonstone type of glass all the way to the top of the bowl. We purchased this Westmorland piece at the Wallick auction in 1983.

JOHN & LUCILE BRITT

I have wanted to write something on centerpiece bowls for some-time, but have never decided exactly how to define this shape. I'm not sure I have a good handle on it now. Must it be footed? Can it be ruffled or must it be ice cream bowl shape? How big must it be? Can a 9" bowl be a centerpiece bowl?

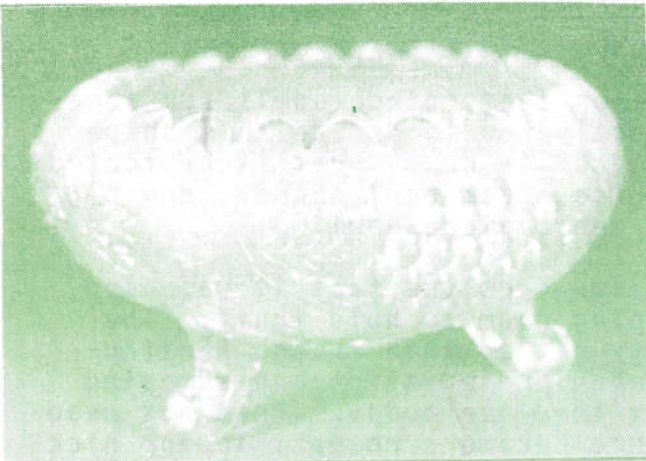
I suppose this bowl takes its' name from the fact it was used in the center of the old oak dining room to hold fruit. The fruit was often the waxed variety rather than fresh, particularly during the winter months when preservation and shipping methods were a far cry from what they are today. When not used for fruit this centerpiece fixture became a receptacle for nick-knacks and was often the family filing system for important papers. I grew up in Iowa with a large ruffled marigold Stag & Holly as our centerpiece headquarters. My parents had received it as a wedding present. My sister ended up with it and guards it zealously when I am around.

Well, this still doesn't give us the characteristics that make up a centerpiece bowl. It is my opinion it must be footed and at least 9½" to 10" in diameter.

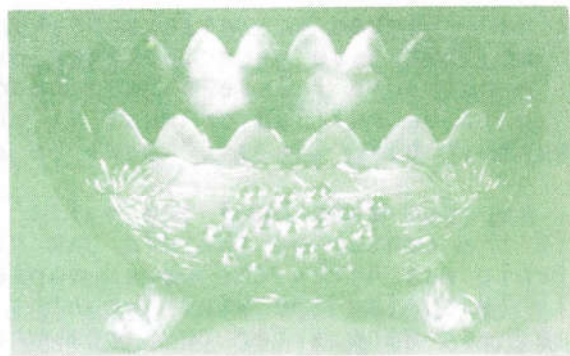


PHOTO #1 STAG & HOLLY

The 8½" to 9" spatula footed Stag & Holly cannot be called a centerpiece bowl but the large ball footed piece in the same pattern as shown in Photo #1 is definitely such a piece. It can be ruffled or ice cream bowl shape & may be deep or relatively shallow. Except for these few general requirements, it would appear to me that the purpose for which it was used is really more important than the shape.



#2 Grape & Cable (points in)



#3 Grape & Cable (points up)

In fact, the most famous centerpiece bowl of all & the one we think of first is the Grape & Cable piece with the points turned in as shown in Photo #2. It might be argued that it should be called a giant footed rose bowl as it does have those characteristics. Nevertheless it was designed for use in the center of the table and a centerpiece bowl it is. The same piece with the points straight up as shown in Photo #3 is still a centerpiece bowl though the shapes are dramatically different.



PHOTO #4 PANTHER



PHOTO #5 BUTTERFLY & BERRY

Now and then pieces that were designed for other purposes will be shaped and flattened into a centerpiece bowl. The Panther bowl shown on the previous page in Photo #4 is a good example. This piece was flattened from the standard master berry bowl. Only two of these are known in blue and perhaps a dozen or so in marigold. The same shaping was applied to the amethyst Butterfly & Berry master berry bowl to make it into the centerpiece bowl shown on the previous page in Photo #5. This is the only one I've seen. It came out of the famous Wishard auction in 1977.

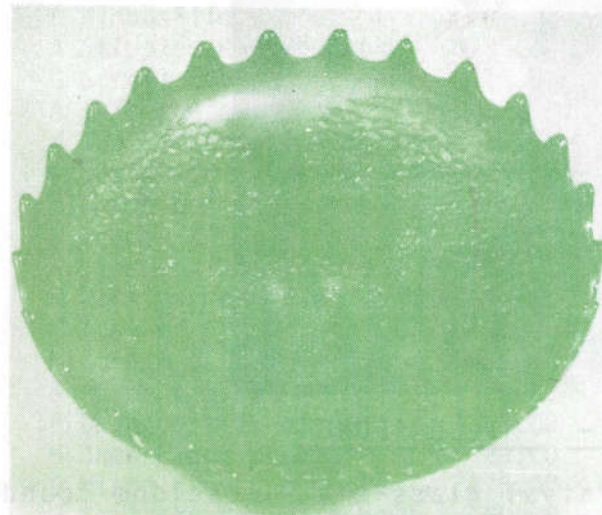


PHOTO #6 ORANGE TREE

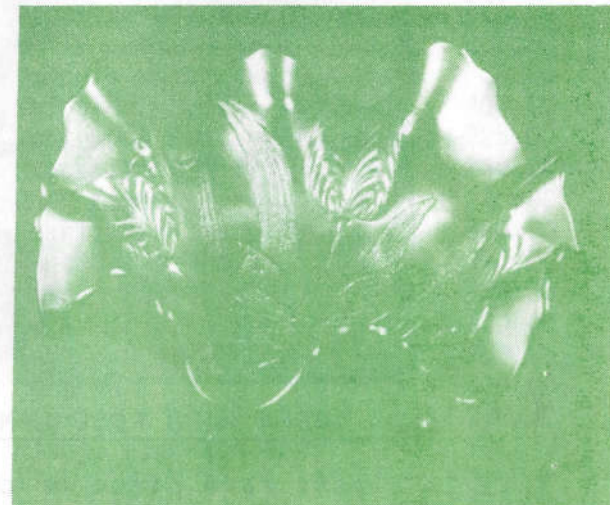


PHOTO #7 BUTTERFLY & TULIP

Still another dramatic example of altering a standard shape into a centerpiece bowl is shown in Photo #6. This piece has been rounded & flattened from the Orange Tree orange bowl into this outstanding 12" piece that would grace the center of any table-oak or otherwise. I can verify only three of these pieces, one blue, one green and one marigold.

The purple Butterfly & Tulip bowl in Photo #7 is so deeply ruffled that it would be impractical to try to use it for a berry bowl. I expect it was intended to be a catch-all centerpiece bowl. Other large footed bowls that I feel can be thrown into this centerpiece category are Two Flowers, Chrysanthemum, Water Lily and even the Dragon's Tongue.

Well, that's about it. While I probably haven't answered all of your questions, hopefully I have focused your attention for a moment on this elusive Carnival shape.

RARITIES AND SELDOM-SEEN

By Ivan & Betty Mitchell



GREEN WILD ROSE LAMP - - MILLERSBURG

This is a very rare piece of carnival glass that is seldom found in an antique shop. We found this one down in Arkansas.

Some of these have three medallions of ladies believed to have been wives of the major stock holders of the Company. These medallions were placed at the bottom of the lamp. This one does not have this feature and if it did, it would add several dollars of worth for the lamp.

It is green and the color only comes up from the bottom about half way. It is about 13" tall, 6½" base in diameter. The font is clear glass and I believe this is the medium size.

These are very hard to come by and the only others I have seen were at auction. It is a beautiful piece and it is worth about \$800.00.

The following prices were realized at the February 20-21, 1987 Woody Auction held in St. Louis, Missouri. We thank Bob and Rosa Grissom for providing us with these prices

M Trout & Fly bowl	225.00	G Mlsbg. Mayan 8" bowl	75.00
G Ragged Robin 9" bowl	135.00	A Petals plate	30.00
G Fenton Butterfly bonbon	45.00	PO Four Flowers 6½" plate	75.00
M Poinsettia milk pitcher	40.00	A Fenton Thistle ftd. dish	180.00
G Nesting Swan bowl	175.00	P Northwood Bushel Basket	90.00
A G & C 9" plate	70.00	A Captive Rose 9" bowl	40.00
M Double Dutch ftd. bowl	55.00	P (N) Near-Cut goblet	170.00
A Ribbon-Tie 9" bowl	45.00	G Greek Key 8½" bowl	125.00
A Stippled Rays bonbon	35.00	R Holly & Berry hat	200.00
G Scroll Embossed compote	15.00	IB Memphis punch cup	35.00
A Iris compote	30.00	R Stippled Rays 6½" bowl	400.00
M Two Flowers 6" ftd. sauce	35.00	AO Northwood Peacock 8½" bowl	725.00
B Leaf Swirl compote	35.00	R Blackberry Spray hat	240.00
M Grape Delight nut bowl	25.00	R Open Edge hat	210.00
M Dragon & Lotus bowl	25.00	IB Hearts & Flowers bowl	300.00
A Blossomtime compote	80.00	PO Fanciful 9" bowl	210.00
M Persian Medallion compote	30.00	A Garden Mums plate	120.00
M Panther 6" ftd. sauce	40.00	P Farmyard bowl, square	2,300.00
M Stream of Hearts compote	35.00	P Ivy Town pump	600.00
B Acorn bowl 6½"	25.00	IG Corn vase	300.00
P Octagon milk pitcher	200.00	A Zig-Zag 9" bowl	240.00
M Snow-Fancy creamer	20.00	A Mlsbg. Big Fish bowl	700.00
G Mlsbg. Poppy compote	275.00	M Mlsbg. Many Stars 10" bowl	300.00
PO Soutache dome-ftd bowl	80.00	IG Frog covered dish	500.00
G Pond Lily bonbon	40.00	M Heart & Horseshoe 9" bowl	925.00
B Little Fishes ftd. bowl	110.00	M Harvest Poppy compote	170.00
PO Raindrops bowl	50.00	R Fine Rib vase	160.00
M Leaf Chain 7½" plate	40.00	B Milady tumbler	35.00
M Persian Garden 6½" plate	70.00	P Heavy Iris tumbler	35.00
B Mikado compote	295.00	G Mlsbg. Tracery bonbon	600.00
M Good Luck plate	95.00	M Kitten toothpick	85.00
M Mlsbg. Ohio Star compote	525.00	M Plaid 8½" bowl	120.00
P Victorian 11" bowl	150.00	PO Bells & Beads low bowl	45.00
G Scotch Thistle compote	40.00	A Beaded Bullseye vase	30.00
B Holly bowl	45.00	B Bouquet tumbler	30.00
R Two Flowers large bowl	2,700.00	W Northwood Peach tumbler	100.00
A Imp. Grape 6½" plate	65.00	M Open Rose ftd. fernery	40.00
G (N) Fern 6½" compote	55.00	A Sunflower bowl	55.00
M Buttermilk goblet	15.00	M Mlsbg. Diamond tumbler	45.00
M Coral 8½" bowl	85.00	G Singing Birds tumbler	45.00
SM Three-In-One 7" plate	65.00	M Grape Arbor tumbler	30.00

\*\*\*\*\* AUCTION CALENDAR \*\*\*\*\*

As many of you know, Don & Connie Moore are having an auction this spring.

The auction is scheduled for March 13 and 14, 1987 at the Holiday Inn/ Coliseum, Richfield, Ohio. Tom Burns will conduct this sale consisting of 320 lots. Below is a partial listing of glass to be sold. START MAKING YOUR PLANS TO ATTEND!

- |           |                                     |                                       |
|-----------|-------------------------------------|---------------------------------------|
| W         | Grape & Cable centerpiece bowl      | R Panther small berry dish            |
| A         | Mlsbg. Deep Grape compote           | M Inverted Strawberry wtr. set        |
| P         | (N) Peacock & Urn chop plate        | Persian Blue Vintage, Autumn          |
| M         | Mlsbg. Peacock & Urn chop plate     | Acorn & Lotus & Grape bowls           |
| M         | Grape & Cable fernery               | M Tornado Variant vase                |
| G,M,B     | Peter Rabbit bowls                  | IB G & C large ftd. orange bowl       |
| A         | Butterfly & Berry centerpiece       | A Mlsbg Poppy compote                 |
| IG,IB,W,B | Wishbone bowls                      | R Holly bowl                          |
| M         | Leaf Tiers pitcher                  | G Springtime table set                |
| B         | Memphis 2 piece fruit bowl          | IG Strawberry bowl                    |
| MMG       | Dragon & Lotus bowl                 | AO Leaf & Beads rosebowl and nut bowl |
| M         | Zipper Stitch cordial set           | G Mlsbg. Tracery square bon bon       |
| IB        | Grape & Cable master ice cream bowl | CL (N) Bushel Basket                  |
| LGO       | Dragon & Lotus                      | IG Grape & Cable banana bowl          |
| B,G       | Detroit Elk Bowls                   | G Hobstar & Feather giant rosebowl    |
| B         | Horses Heads 7" plate               |                                       |
| CEL. BLUE | Fenton G & C Bowl                   |                                       |

February 21, 1987....St. Louis, Missouri; Harley Hotel. This sale will feature nearly 1,000 pieces of Carnival Glass, collected over a 25 year period. Everett Henry is the owner of the huge collection, which contains a large variety of patterns.

March 21, 1987....Lenexa, Kansas; Holiday Inn. A Carnival Glass Auction that includes the collection of Charles Adams of Los Angeles. This is a large collection which contains lots of advertising pieces and other choice Carnival.

March 28, 1987....Blue Springs, Missouri; the American Legion Building. Auctioning the collection of Mr. and Mrs. Joe Jack Smith; a surprising variety of antiques. There will be Art Glass, Cut Glass, RSP, CARNIVAL, Primitives, Pattern Glass, Prints and Paintings, Lamps and more.

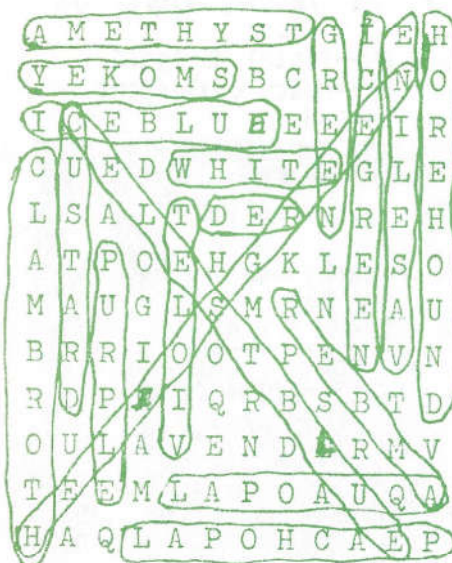
For information on any of the above auctions, call or write today. If you are considering an auction, we would welcome the opportunity to talk with you regarding our complete auction services.

WOODY AUCTION COMPANY, Box 618, Douglass, Kansas 67039  
PHONE: 1-316-746-2694 or 746-2036

Quiz

- |                         |                  |                 |
|-------------------------|------------------|-----------------|
| A B L A R D E H T H C D | 1. AMARYLLIS     | 11. ELKS        |
| M P C N O I S U L L I R | 2. APRIL SHOWERS | 12. EMU         |
| A D R N E T T I K A R A | 3. BALLOONS      | 13. FAN         |
| R J F I L E M U M E O G | 4. BASKET        | 14. FILE        |
| Y A B A L L O O N S B O | 5. BLOCK         | 15. GRAPE ARBOR |
| L C L F G S N I J K R N | 6. CATHEDRAL     | 16. ILLUSION    |
| L O O M N D H O P N A F | 7. CORINTH       | 17. INCA        |
| I B C R P R S O F A E L | 8. DIAMOND POINT | 18. JACOBAN     |
| S E K O I N C A W T P Y | 9. DRA ON FLY    | 19. KITTEN      |
| W A I A B N S K L E A C | 10. ESTATE       | 20. LEAF        |
| D N E S T A T E F G R H |                  |                 |
| T E K S A B J H K L G S |                  |                 |

CARNIVAL COLORS



- |                 |                |
|-----------------|----------------|
| 1. AMETHYST     | 11. ICE GREEN  |
| 2. AQUA OPAL    | 12. LAVENDER   |
| 3. AMBER        | 13. MARIGOLD   |
| 4. CELEST BLUE  | 14. PURPLE     |
| 5. CLAMBROTH    | 15. PEACH OPAL |
| 6. CUSTARD      | 16. RED        |
| 7. GREEN        | 17. SMOKEY     |
| 8. HELIOS GREEN | 18. VASELINE   |
| 9. HOREHOUND    | 19. VIOLET     |
| 10. ICE BLUE    | 20. WHITE      |

Not everyone is perfect. The last months puzzle sure proved it for me. I do not know how but I really messed things up. I will either do better or give up on putting the puzzle in each month.

POLICY FOR ADVERTISING IN THE H.O.A.C.G.A. BULLETIN

1. All advertisements, announcements, letters or any other item to be printed, must be received by the Bulletin Secretary no later than the first (1st) day of the month, to insure being published in that month's Bulletin.
2. Member families may advertise ten (10) 'For Sale' and ten (10) 'Want Ads' per month F R E E of charge.
3. Only old Carnival Glass items or H.O.A.C.G.A. Souvenirs will be published.
4. Damage or manufacturing flaws should be noted.
5. All 'For Sale' items must be priced; no bid items will be published.
6. A 5-day return privilege, at buyers' expense; providing it is not as advertised.
7. All postage and insurance is extra, to be paid by buyer.
8. All ads must be legible, or they will not be printed.
9. The H.O.A.C.G.A. does not accept responsibility for accuracy of any ads.

FOR ACCURACY OF DESCRIPTION, THE FOLLOWING COLOR KEY IS RECOMMENDED:

A--Amethyst	HA--Honey Amber	P--Purple
AMB--Amber	IB--Ice-Blue	PRL--Pearl/Pastel/Milk Glass
AO--Aqua Opalescent	IG--Ice-Green	PM--Pastel Marigold
B--Blue	IGO--Ice-Green Opal.	PO--Peach Opalescent
BO--Blue Opal or Blue Opaque	LAV--Lavender	R--Red
CLM--Clammoth	M--Marigold	RA--Amberina
EB--Electric Blue	MMG--Marigold on Milk Glass	SM--Smokey
G--Green		VAS--Vaseline

NOTE: If you wish to describe a piece as light or dark, use the body of the ad.

P L E A S E U S E T H E F O L L O W I N G :

EI-Excellent Iridescence, GI-Good Iridescence, LI-Light Iridescence

EXAMPLES:

AO	EI	Good Luck plate, one point broken & repaired	375.00
M	LI	Peacock at the Fountain 7pc wtr. set, pitcher has flake	225.00
MMG	GI	Peacock and Grape bowl	360.00
A	GI	Wishbone tumbler, heat check, light amethyst	47.50

It would be greatly appreciated by everyone, if you would use these codes, as suggested.

THANKS!!!!!! THE EDITOR

24

\*\*\*\*\* CARNIVAL GLASS FOR SALE \*\*\*\*\*

Burney Talley, 1814 Slate NW, Albuquerque, New Mexico 87104  
PHONE: 1-505-242-1261

VAS	Fenton Open Edge basket.....	45.00
R	Acorn ruffled bowl.....	550.00
AO	Dandelion mug, NICE.....	550.00
B	Dandelion mug, SUPER.....	575.00
M	Fishermans mug.....	200.00
P	Fishermans mug.....	75.00
P	Three Fruits plate, basketweave back.....	100.00
AQ	Peacock & Dahlia bowl.....	125.00
B	Strawberry Scroll pitcher, SUPER!!.....	2,000.00
M	Rose Show Varient plate.....	550.00

\*\*\*\*\*

Delouris Craft, 702 Bradley Drive, Bloomington, Illinois 61701  
PHONE: 1-309-662-3610

CLEAR	Holly plate, flaw; collar base mold line.....	98.00
CB	Blackberry miniature compote.....	60.00
G	Beaded Cable (N) dish, rib interior, scarce shape in this....	67.00
A	Pinecone plate, small flakes side of collar base.....	48.00

\*\*\*\*\*

Charles Perry, 8641 Lakeshore Drive, Southaven, Mississippi 38671  
PHONE: 1-601-342-1694

G	EI Millersburg Strawberry Wreath compote, radium.....	250.00
A	EI Millersburg Strawberry Wreath compote, radium.....	150.00

\*\*\*\*\*

Jack K. Workman, 1432 Sycamore Lane, Wooster, Ohio 44691  
PHONE: 1-216-263-1282

G	EI Rays & Ribbons large ruffled bowl, radium.....	60.00
G	EI Primrose large ruffled bowl, radium.....	150.00
A	EI Seaweed large ruffled bowl, NICE.....	225.00
M	EI Holly Whirl large ruffled bowl, back pattern, radium.....	55.00
M	EI Hanging Cherry butterdish, deep marigold.....	150.00
R	EI Two Row Open Edge basket, square.....	235.00
G	EI (N) Strawberry plate, basketweave exterior.....	125.00
M	EI Rose Show ruffled bowl.....	200.00
PO	EI Honeycomb rosebowl, VERY NICE.....	210.00
PO	EI Framed Flowers tri-cornered bowl.....	60.00

25

\*\*\*\*\* CARNIVAL GLASS FOR SALE \*\*\*\*\*

Ray Hitchcock, R.R. #1, Box 301, Winterset, Iowa 50273  
PHONE: 1-515-462-2074

M	Panther berry bowls, round, each.....	25.00
B	(N) Bushel Basket, round.....	90.00
PO	Estate sugar, souvenir Humbolt, Neb.....	50.00
B	Butterfly & Berry sugar, ft. damage, good lid.....	30.00
M	Butterfly & Berry spooner.....	55.00
B	Grape & Cable centerpiece bowl, RARE COLOR.....	295.00
M	Good Luck plate, nice.....	235.00
M	Hobstar & Feather punch cups, each.....	15.00
IG	(N) Grape & Cable centerpiece bowl RARE COLOR.....	700.00
B	Round-Up flat plate.....	225.00

\*\*\*\*\*

Norene Duran, Box 109, Ocate, New Mexico 87734  
PHONE: 1-505-666-2237

AO	EI Rose Show bowl, pastel, SUPER.....	600.00
B	EI Rose Show bowl.....	475.00
AO	EI Good Luck bowl, butterscotch, looks gold, SUPER.....	900.00
AO	Embroidered Mums bowl, gold irid. heavy opal.....	1,500.00
W	EI Hearts & Flowers ruffled bowl.....	225.00
A	EI Courthouse ice cream shape bowl, radium.....	500.00
AMB	EI Stag & Holly 11" ice cream shape footed bowl.....	450.00
M	EI Coral plate, very RARE.....	800.00
EB	EI Rose Show plate.....	550.00
	EI Moonstone Grape & Cable ice cream shape bowl, Fenton.....	450.00

\*\*\*\*\*

David M. Deem, 902 E. Walnut Ave., Burbank, California 91501  
PHONE: 1-818-845-4530

IG	Grape & Cable footed plate 9".....	1,000.00
B	Peacock & Urn 9" plate.....	245.00
A	Peacocks & Grape 9" footed plate.....	255.00
M	Dragon & Strawberry footed bowl.....	245.00
P	Wishbone 8 3/4" footed plate.....	235.00
M	Peacock & Urn plate.....	125.00
B	Round-Up flat plate.....	235.00
M	Peacock & Grapes collar based plate.....	260.00
B	Lotus & Grape 9" plate, RARE.....	700.00
M	Rose Show plate.....	400.00

ALL ITEMS LISTED ARE OF SUPERIOR COLOR AND IRID.

\*\*\*\*\* CARNIVAL GLASS FOR SALE \*\*\*\*\*

Vaunda & Swede Tilberg, Box 596, Baxter Springs, Kansas 66713  
PHONE: 1-316-848-3654

AMB	EI Field Flower pitcher.....	350.00
G	EI Cherry spooner.....	65.00
M	EI Leaf Chain small bowl.....	50.00
M	EI Summer Days vase.....	45.00
A	EI Wishbone footed bowl.....	95.00
B	EI Fernery bowl.....	65.00
M	EI Waterlily & Cattails tumblers, have 2, each.....	35.00
G	EI (N) Rays bon bon.....	30.00
B	EI Open Edge Basket.....	40.00
M	EI Field Flower tumbler.....	40.00

\*\*\*\*\*

Valmer Cross, Sr., Johnson Hollow Road, Prattville, New York 12468  
PHONE: 1-607-588-6698

M	Peach & Pear banana boat.....	60.00
M	Oval Star & Fan rosebowl.....	45.00
M	Urn vase.....	30.00
M	Kitten 4 1/2" plate.....	110.00
M	Butterfly & Berry vase.....	50.00
M	Louisa salt & pepper, no lids.....	6.00
G	(N) Rays 5" bowl.....	20.00
M	Dutch Twins ashtray.....	35.00
G	Persian Medallion 5" bowl.....	25.00
M	Vintage Banded mug.....	25.00

\*\*\*\*\*

Joseph Mello, 535 Fish Road, Tiverton, Rhode Island 02878  
PHONE: 1-401-624-2174

PO	EI Beaded Panels compote.....	55.00
PO	EI Coin Spot compote.....	45.00
M	EI Imperial Grape punch set, 5 cups.....	165.00
M	EI 474 punch cups, have 4, each.....	17.00
A	EI Grape & Cable butter top only.....	75.00
A	EI Dahlia butter base, chip on inside rim where cover fits on.....	45.00
M	EI Floral & Grape water pitcher and 4 tumblers.....	145.00
W	EI Wishbone epergne base, no lily; 1/2" crack on base.....	25.00
A	EI Fruits & Flowers 10" bowl.....	60.00

\*\*\*\*\* CARNIVAL GLASS FOR SALE \*\*\*\*\*

Donna Baker, 3110 S.W. Nye, Pendleton, Oregon 97801  
PHONE: 1-503-276-2749

M	EI (N) Springtime butter top only, good color.....	70.00
M	EI Waffle Block punch base only, good color.....	50.00
M	EI "474" punch base only, SUPER DARK COLOR.....	50.00
M	EI Twins 2 piece fruit bowl, crack in base, does not show with bowl in place, sacrifice.....	30.00
M	EI Snow Fancy 4" saucers, have 2, each.....	30.00
G	EI (N) Lustre Flute sugar bowl.....	50.00
G	PI (N) Lustre Flute whimsey (flared out sugar bowl).....	30.00
M	FI Pansy creamer.....	20.00
M	GI Fashion punch cups, have 3, each.....	20.00
M	FI Many Fruits punch cups, have 5, each.....	20.00

\*\*\*\*\*

Sam & Anne Swierc, 520 East Ave., Dover, Delaware 19901  
PHONE: 1-302-736-6635

B	EI Panelled Dandelion water pitcher.....	450.00
B	EI Peacocks at the Fountain water pitcher.....	350.00
G	EI Three Fruits bowl, dome based, Vintage & Basketweave ext.....	75.00
G	EI Fine Cut & Roses rosebowl.....	125.00
G	EI Wreath of Roses 2 handled candy dish.....	50.00
A	EI Sweetmeat bottom.....	40.00
W	Three Fruits bowl, dome based, Vintage & Basketweave ext.....	175.00
M	EI Blackberry Wreath bowl, Millersburg, satin finish.....	75.00
B	EI Good Luck bowl, rib ext., FANTASTIC IRIDESCENCE.....	300.00

SEND SASE FOR COMPLETE LIST OF 175 PIECES FOR SALE

\*\*\*\*\*

Roy & Bev Johnson, 631 E. Morgan Ave., Milwaukee, Wisconsin 53207  
PHONE: 1-414-481-6137 after 4:00 P.M.

A	EI Grape & Cable dresser tray.....	180.00
A	EI Grape & Cable powder jar.....	95.00
A	EI Grape & Cable cologne, bottom of stopper chipped.....	125.00
A	EI Grape & Cable perfume, plain stopper, not irid.....	150.00
A	EI Grape & Cable hatpin holder.....	150.00
A	EI Grape & Cable pin tray, small chip on bottom.....	85.00
A	EI Grape & Cable Sweetmeat.....	160.00

ALL OF THE ABOVE FOR \$900.00

\*\*\*\*\* CARNIVAL GLASS FOR SALE \*\*\*\*\*

Mary Herren, 520 S. Berry, Morganfield, Kentucky 42437  
PHONE: 1-502-389-3121

LM	EI Millersburg Fleur de Lis 10" bowl, jewelers' bead, small bursted edge bubble.....	100.00
M	EI Poinsettia milk pitcher, OUTSTANDING!.....	70.00
VAS	EI Windmill bowl, marigold irid.....	60.00
IB	EI Wide Panel 4" dish, 2½" deep, circle mark.....	20.00
M	EI Peach & Pear banana bowl, small base flake underneath.....	45.00
M	EI Waterlily & Cattails small berry bowls, both.....	20.00
M	EI Twins fruit bowl base.....	10.00
G	GI Shell & Jewel sugar & creamer with tops.....	50.00

\*\*\*\*\*

James & Judy Key, Rt. #1, Box 153B, Marianna, Arkansas 72360  
PHONE: 1-501-295-6770

P	EI Wild Strawberry 10" ruffled bowl, basketweave back.....	115.00
B	EI Orange Tree breakfast set, creamer & sugar.....	75.00
M	EI Blocks & Arches pitcher.....	100.00
G	EI Millersburg Hanging Cherries butterdish.....	245.00
P	EI Fruit & Flowers 5½" ruffled bowl, basketweave back.....	30.00
P	EI Vintage 5½" ruffled bowl.....	25.00
G	EI Heart & Vine 8½" bowl, candy ribbon edge.....	85.00
M	EI Kittens 2 sides up dish.....	90.00
M	EI Kittens 4 sided bowl.....	95.00
M	EI Sailboat wine.....	30.00

\*\*\*\*\*

Mr. & Mrs. A. O. Cromer, 1150 North Topeka Avenue, Wichita, Kansas 67214  
PHONE: 1-316-262-1775

M	EI Kittens cup and saucer.....	240.00
A	GI Beaded Shell mug.....	75.00
A	EI 2 Stemmed rosebowls, the pair for.....	135.00
M	Peacock on the Fence pie crust edge bowl.....	160.00
B	Atlantic City Elk bowl, 1911.....	225.00
B	Peacock at the Fountain 7 piece water set.....	525.00
BA	Black Amethyst 2 Grecian Urn vases, VERY RARE, the pair.....	250.00
M	Jack-In-The-Pulpit Swirl vase, very pretty.....	55.00
R	Stippled Rays bowl.....	375.00
BA	Black Amethyst Six Petals ruffled bowl, BEAUTIFUL!.....	85.00

\*\*\*\*\* CARNIVAL GLASS FOR SALE \*\*\*\*\*

Earl W. Lindquist, 513 9th Ave., Clarkfield, Minnesota 56223  
PHONE: 1-612-669-7361

DM	EI	Fashion punch bowl and base.....	95.00
M	EI	Pony bowl.....	55.00
AO	EI	Leaf & Beads rosebowl.....	235.00
M	GI	Horse Heads bowl, jack-in-the-pulpit shaped, small seperation in mold on base.....	40.00
W	EI	Pond Lily two-handled bon bon SUPER.....	145.00
PO	EI	Stippled Petals dome footed bowl 8", enamelled flowers inside.....	75.00
DM	EI	Leaf & Beads rosebowl with interior pattern.....	75.00
G	EI	Three Fruits 8 3/4" footed bowl, SUPER.....	65.00
M	EI	Peacock at the Fountain orange bowl.....	165.00
P	EI	Tiny Twig vase, tri-cornered top 4 1/2" tall, all irid. inside.....	275.00
DM	EI	(N) Grape & Cable centerpiece bowl, points straight up.....	145.00

\*\*\*\*\*

Bruce & Darcy Hill, 943 SE 13th Ave., Forest Lake, Minnesota 55025  
PHONE: 1-612-464-3684

VAS	EI	Stag & Holly large ruffled bowl.....	475.00
B	GI	Holly plate.....	130.00
EB	EI	Fruits & Flowers bon bon.....	60.00
M	EI	Holly plate.....	110.00
M	EI	Greek Key plate.....	450.00
B	EI	Peacocks bowl.....	315.00
W	EI	Persian Garden 7 1/2" plate.....	180.00
M	EI	Pinecone 6" plate.....	45.00
B	EI	Three Fruits stippled pie crust edge bowl.....	175.00
B	EI	Peacock & Urn ice cream shape bowl.....	85.00

\*\*\*\*\*

Ed & Sharon Binstock, P. O. Box 351, Presque Isle, Maine 04769  
PHONE: 1-207-764-3612

IG		Rose Show bowl, 2 repaired chips on edge, nice color, irid.....	145.00
G		Leaf & Beads candy dish/whimsey, Rays interior.....	95.00
M		Butterfly & Berry creamer.....	36.00
M		Whirling Leaves ruffled bowl.....	60.00
M		Pony bowl.....	50.00
G		Singing Birds small berry bowls, have 3, each.....	30.00
P		Grape Delight ftd. nutbowl, couple of pinheads on feet.....	36.00
B		Dragon & Lotus ice cream shape bowl.....	46.00
P		Grape Leaves (N) ruffled bowl.....	40.00
AQ		Coin Dot ruffled bowl.....	37.00

\*\*\*\*\* CARNIVAL GLASS FOR SALE \*\*\*\*\*

Paul Berube, 11 Doris Ave., Tiverton, Rhode Island 02878  
PHONE: 1-401-625-5303

P	EI	Imperial Grape water carafe, NICE COLOR.....	115.00
P	EI	Grape & Cable (N) two-handled nappy.....	45.00
B	EI	Leaf Chain 7 1/2" plate, GORGEOUS COLOR.....	125.00
B	EI	Dragon & Lotus 8-crimped 9" bowl.....	38.00
PO	EI	Stippled Flower 7 1/2" bowl, dark color.....	35.00
PO	EI	Honeycomb rosebowl.....	175.00
G	EI	Fenton Stippled Rays 11" bowl, nice color.....	35.00
B	EI	Beaded Stork & Rushes tumblers, GORGEOUS COLOR, each.....	35.00
P	EI	Fishermans mug.....	55.00
P	EI	Grape & Cable (N) punch cups, have 4, each.....	20.00

\*\*\*\*\*

Ted Sheibley, 304A Hillcrest Drive, New Cumberland, Pennsylvania 17070  
PHONE: 1-717-938-6417

M	EI	Panther master berry bowl.....	125.00
M	EI	Imperial Grape wine bottle with stopper.....	60.00
B	EI	Birds & Cherries bon bon.....	55.00
B	EI	Orange Tree sauce, footed.....	35.00
M	EI	Kittens cereal bowl.....	135.00
P	EI	Grape & Cable powder jar.....	85.00
W	EI	Peacock on the Fence plate, plain exterior.....	300.00
M	EI	Apple Tree tumbler.....	30.00
B	EI	Blueberry tumbler.....	80.00
IB	EI	Peacock at the Fountain master berry bowl.....	475.00

\*\*\*\*\*

Marie Martin, P. O. Box 12262, St. Petersburg, Florida 33733  
PHONE: 1-813-323-3609

M	EI	Peacock & Grape plate, BEAUTIFUL.....	250.00
M	EI	Brooklyn Bridge bowl.....	275.00
M	EI	Field Thistle plate, VERY RARE.....	475.00
P	EI	Millersburg Tulip compote, VERY RARE.....	600.00
M	EI	Good Luck bowl, pie crust edge.....	150.00
W	EI	Fanciful plate.....	265.00
AQ	GI	Peacock & Dahlia bowl.....	150.00
P	EI	Town Pump, A BEAUTY.....	550.00
W	EI	Persian Garden plate.....	115.00
B	GI	Pinecone plate.....	85.00



\*\*\*\*\* CARNIVAL GLASS FOR SALE \*\*\*\*\*

Roy Craver, P. O. Box 8015, Allandale, Florida 32023  
PHONE: 1-904-427-9380

P	Three Fruits stippled plate.....	125.00
B	English Covered Hen.....	65.00
M	Sailboat Wines, have 3, each.....	22.00
G	Fruits & Flowers 9½" bowl.....	70.00
G	Birds & Cherries bon bon.....	60.00
M	Stork & Rushes tumblers, have 4, each.....	20.00
M	Blackberry Block tumblers, have 2, each.....	25.00
W	Dahlia creamer with gold decor.....	100.00
P	Homestead plate, small chip on edge.....	275.00
P	Stork & Rushes pitcher.....	400.00

\*\*\*\*\*

Tom & Sharon Mordini, 36 N. Mernitz Ave., Freeport, Illinois 61032  
PHONE: 1-815-235-4407

W	EI Leaf & Beads rosebowl.....	875.00
W	EI Daisy & Drape vase.....	125.00
AO	EI Hearts & Flowers compote.....	375.00
AMB	EI Homestead Nu-Art chop plate.....	750.00
B	EI Peacocks ruffled bowl.....	325.00
W	EI Round-Up flat plate.....	375.00
G	EI Trout & Fly candy ribbon edge bowl.....	425.00
M	EI Zipper Loop lamp, 6½" tall.....	500.00
M	EI Sectors Department Store plate.....	275.00
M	EI Scroll Embossed 9" plate.....	95.00

\*\*\*\*\*

William Coles, Rt. #1, Box 273B, Hickory, Kentucky 42051  
PHONE: 1-502-674-5916

M	EI Dragon & Lotus 8½" bowl, 3 in 1 edge SUPER.....	45.00
M	GI Peacock & Dahlia 7" bowl, plain exterior.....	50.00
B	EI Peacock at the Fountain tumbler.....	35.00
B	EI Vintage Grape bowl 9 3/4" wide X 2" tall, ice cream shaped bowl SUPER.....	70.00
P	EI Leaf & Beads rosebowl, VERY DARK.....	75.00
M	EI Grape & Cable stippled bon bon.....	40.00
B	EI Mirrored Lotus 7" bowl.....	65.00
M	EI Apple Blossom Twig 8½" low ruffled bowl.....	55.00
VAS	GI Grape & Cable 7½" bowl, very small chip on edge.....	45.00
A	EI Millersburg Peacock Tail Variient compote.....	75.00

\*\*\*\*\* CARNIVAL GLASS FOR SALE \*\*\*\*\*

Mary C. Kesterson, 3020 Mesa Road, Willow Park, Texas 76086  
PHONE: 1-817-441-8410

P	EI Hearts & Flowers ruffled bowl.....	250.00
W	EI Grape & Cable banana boat.....	250.00
IG	EI (N) Corn vase.....	225.00
P	EI Grape & Cable cookie jar SUPER.....	250.00
P	EI Dandelion mug.....	215.00
IB	EI Grape Arbor tumbler.....	95.00
W	EI Rose Show plate, SUPER IRIDESCENCE.....	450.00
AO	EI Hearts & Flowers compote.....	385.00
IB	EI Hearts & Flowers ruffled bowl.....	295.00
R	EI Dragon & Lotus ruffled bowl SUPER RED.....	785.00

\*\*\*\*\*

Don & Barb Chamberlain, Box 64, Winthrop, Iowa 50682  
PHONE: 1-319-935-3925

M	Fine Cut Flowers compote, separation at mold line on base, not a crack.....	38.00
A	Dragon & Lotus ice cream shaped bowl.....	50.00
M	Smooth Rays 9" plate.....	25.00
M	Carnival Holly goblet (compote).....	30.00
M	Wishbone 8" footed bowl.....	35.00
M	Lattice & Daisy tumbler.....	18.00
M	Stork & Rushes tumbler, lattice.....	12.00
M	Waterlily & Cattails tumbler, radium.....	25.00
B	Enameled Chrysanthemum with Prism Band tumbler.....	40.00
M	Grapevine Lattice tumbler.....	35.00

\*\*\*\*\*

Bette Farrell, 1620 Venice St., Granite City, Illinois 62040  
PHONE: 1-618-931-4333

M	AI Interior Poinsettia tumbler.....	300.00
M	GI Lions six ruffle bowl.....	90.00
M	Grape & Cable tumblers, have 6, each.....	35.00
W	EI Peacock at the Fountain compote.....	1,000.00
M	GI Butterfly & Berry pitcher & 5 tumblers, or will split.....	350.00
B	EI Apple Blossom & Twigs ruffled plate.....	225.00
M	GI Imperial Grape pitcher.....	70.00
P	EI Grape Delight rosebowl, tiny nick on one foot.....	60.00
A	EI Three Fruits 12-sided plate.....	95.00
M	GI Grape & Cable spooner.....	40.00

\*\*\*\*\* CARNIVAL GLASS FOR SALE \*\*\*\*\*

Michael J. Basey, 4315 Adams, Kansas City, Kansas 66103  
PHONE: 1-913-432-2460 after 6:00 P.M.

- A EI Beaded Cable rosebowl.....85.00
- M EI Ripple vase 12".....32.00
- SM EI Ripple vase 8".....46.00
- G EI Ripple vase 12", small chip on rim, Helios.....38.00
- P EI Ripple vase 10".....40.00
- G EI Ripple funeral vase 20".....200.00
- PO EI Swirl vase 10".....55.00
- B EI (N) Bushel Basket, round.....115.00
- PO EI Raindrops bowl.....75.00
- PO EI Ski Star large bowl.....90.00

\*\*\*\*\*

Harold L. Fortney, 910 Penn Apt. 1008, Kansas City, Missouri 64105  
PHONE: 1-816-474-2054 after 6:00 P.M.

- W EI Garden Path Variant 6½" plate RARE.....325.00
- M EI Golden Grapes rosebowl, VERY NICE.....35.00

\*\*\*\*\*

*Handwritten initials*

EDITORS NOTE:

I WOULD LIKE SOME RESPONSE ON WHAT YOU THINK ABOUT  
THE NEW WAY THE GLASS FOR SALE ARE DONE. THANK YOU  
FOR ALL OF YOUR HELP IN THIS MATTER.

YOUR EDITOR

MICHAEL J. BASEY

*Handwritten initials*

NEW ADDRESS	NEW ADDRESS
Berneice Bell-Treasurer	
1305 W. Wight	
Nevada, Missouri 64772	

\*\*\*\*\* CARNIVAL GLASS WANTED \*\*\*\*\*

Norene Duran, Box 109, Ocate, New Mexico 87734  
PHONE: 1-505-666-2237

- IB Rose Show plate
- IB Poppy Show plate
- G Peacocks on the Fence plate
- ANY Ice Blue punch set
- PO Fruit Salad punch base only
- M Fruit Salad punch base only
- M Orange Peel punch base only
- R Peacock & Urn bowl
- R Ribbon Tie bowl
- IG Rose Show plate or bowl

\*\*\*\*\*

Singleton Bailey, P. O. Box 95, Loris, South Carolina 29569  
PHONE: 1-803-756-7495

- M Big Fish bowl, square and ice cream shape
- G Big Fish bowl
- A,M Millersburg Peacock & Urn compotes
- ANY Blue Millersburg Peacock pieces
- Millersburg 9" Peacock & Urn Mystery bowls
- Tri-cornered Trout & Fly
- Tri-cornered Millersburg Peacock bowls
- VAS Big Fish
- Big Fish banana boat shape

\*\*\*\*\*

Joan Westerfeld, Post Office Box 3361, Kansas City, Kansas 66103

- IB Concave Diamonds pitcher
- M Imperial Grape pitcher with excellent color
- G Imperial Grape tumblers
- CB Grape & Gothic Arches pitcher
- CB Orange Tree punch bowl base

\*\*\*\*\*

Stan & Donna Williams, 7711 N.W. 69th Terr., Kansas City, Missouri 64152  
PHONE: 1-816-587-7357

- A Lid for Grape & Cable Sweetmeat 5½" diameter

\*\*\*\*\* CARNIVAL GLASS WANTED \*\*\*\*\*

Albert M. Rodenhouse, 220 Seaview Court, Apt. 411, Marco Island, Fla. 33937

- M Fentonia Fruit tumbler
- M Checkerboard tumbler
- W Flute & Cane tumbler
- G Frolicking Bear tumbler
- IG Grape & Cable tankard tumbler
- G Hobnail tumbler
- B Jewelled Heart tumbler
- A Jewelled Heart tumbler
- M Palm Beach tumbler
- B Rising Sun tumbler

\*\*\*\*\*

Ray Hitchcock, R.R. #1, Box 301, Winterset, Iowa 50273  
PHONE: 1-515-462-2074

- M Memphis punch top (or will sell base)

\*\*\*\*\*

Mr. & Mrs. Patrick Kroll, 3714 W. Wrightwood, Chicago, Illinois 60647  
PHONE: 1-312-384-8475

Would like any of the following Carnival Glass lamp shades in any color, either gas or electric:

- Daisy Chain
- Mayflower
- Starlyte
- Thistle
- Pearl Lady
- Imperial Grape
- Ribbon & Bows
- Astral
- Imperial Daisy
- ANY hand-painted marigolds

\*\*\*\*\*

Joe Corrothers, 3260 Butz Road, Maumee, Ohio 43537  
PHONE: 1-419-865-9014

- AO Peacock at the Fountain punch bowl top and cups
  - M Multi-Fruits & Flowers punch base only
  - P Hobstar & Feather punch base only
- ENTIRE COLLECTIONS, ANY SIZE

\*\*\*\*\* CARNIVAL GLASS WANTED \*\*\*\*\*

Norm Archer, R.R. #1, Harrod, Ohio 45850  
PHONE: 1-419-648-2231

- M "474" punch bowl
  - M Wreath of Roses punch bowl
  - A Many Fruits punch cups
  - M Scale Band pitcher
  - M Fashion punch bowl or will sell or trade base and 6 cups
  - M Wine & Roses wine goblets
  - G Acorn Burrs punch bowl
  - M Grapevine & Lattice pitcher
  - M "474" tumblers
- ABOVE PIECES NEED NOT BE PERFECT

\*\*\*\*\*

Ed & Sharon Binstock, P. O. Box 351, Presque Isle, Maine 04769  
PHONE: 1-207-764-3612

- G Peacocks (N) plate, very dark only
- IB Peacocks pie crust edge bowl
- B Poinsettia & Lattice bowl
- LAV Hearts & Flowers pie crust edge bowl
- G Wishbone pie crust edge bowl
- B Wishbone ruffled collar base bowl
- P Wishbone tumbler
- G Springtime tumbler
- P Greek Key tumbler
- G Poppy Show bowl/plate

\*\*\*\*\*

Bruce & Darcy Hill, 943 SE 13th Ave., Forest Lake, Minnesota 55025  
PHONE: 1-612-464-3684

- W Peacock at the Fountain punch set
- IB Peacock at the Fountain punch set
- IG Wishbone bowl
- IB Peacocks bowl
- Embroidered Mums & Hearts & Flowers bowls & plates in purple, marigold, blue and ice-blue
- IB Grape & Cable plate and bowl

\*\*\*\*\*

Jim Helm, 109 Pine St., Ancaster, Ontario Canada L9G 2T8  
PHONE: 1-416-648-1062

- M Fruit Salad punch base only

\*\*\*\*\* CARNIVAL GLASS WANTED \*\*\*\*\*

JoEllen Rotondi, P. O. Box 401, Butler, Wisconsin 53007  
PHONE: 1-414-354-8254

- IB ANY ICE-BLUE PLATES OR RARE PIECRUST BOWLS
- EB Any Northwood stippled plates
- W,PO Persian Garden chop plate
- PRL Any Northwood iridized custard bowls
- ANY Hearts & Flowers plates and bowls with PLAIN or BASKETWEAVE exterior
- ANY (N) Peacocks plates and bowls, BASKETWEAVE exterior only

\*\*\*\*\*

Michael J. Basey, 4315 Adams, Kansas City, Kansas 66103  
PHONE: 1-913-432-2460 after 6:00 P.M.

1978 and 1979 H.O.A.C.G.A. table favor mugs  
Back issues of the Bulletin from the beginning of the Club  
Newsletter until 1981

\*\*\*\*\*

Ted Sheibley, 304A Hillcrest Drive, New Cumberland, Pennsylvania 17070  
PHONE: 1-717-938-6417

- G Wreath of Roses punch bowl or will sell base
- M Hanging Cherries butterdish

\*\*\*\*\*

## Happy Birthday



*President  
Robert Grissom*

### THE H.O.A.C.G.A. 1987 SOUVENIR BELL

In 1985, H.O.A.C.G.A started a series of Souvenir Carnival Glass Bells to honor those responsible for the making of our favorite glass. Mr. Frank Fenton is working with us to obtain a photograph and permission to use the picture on the bells. The series of Souvenir Bells would not be possible without his very able assistance. We believe this will prove to be a very unique souvenir series honoring the manufacturing Pioneers of Carnival Glass.

Circle Scroll is used as the pattern on the bell and was designed by John Britt and Frank Fenton. The bells are made by the Fenton Glass Company and they contain the Fenton logo.

Harry Northwood's portrait was on the first bell, made in 1985 in Ruby Red. The second bell honors Frank L. Fenton (founder of The Fenton Art Glass Co.) and was made in Green Opalescent glass.

This year's souvenir bell will honor John Fenton, founder of Millersburg Glass Co. The color will be Cobalt Blue. As you know, any pieces of Millersburg glass in Cobalt Blue is hard to find.

Next year, the Souvenir Bell will honor the founder of Imperial Glass Company.

We are proud of this fine series and believe that it will add to your Carnival collection while honoring these Carnival Glass Pioneers.

\*\*\*\*\*

SEND SOUVENIR ORDER TO:

H.O.A.C.G.A.  
John Britt  
3048 Tamarak Drive  
Manhattan, Kansas 66502

I would like to order \_\_\_\_\_ 1987 souvenir bells at \$35.00 each. If still available, I would like to order \_\_\_\_\_ 1986 souvenir bells at \$35.00 each. I have included \$2.50 per bell ordered for postage and handling. (If picking up at Convention, the \$2.50 is not necessary.)

NAME \_\_\_\_\_

ADDRESS \_\_\_\_\_

CITY \_\_\_\_\_

STATE \_\_\_\_\_ ZIP \_\_\_\_\_

I will pick up bells at Convention. YES \_\_\_\_\_ NO \_\_\_\_\_

A P P L I C A T I O N   F O R   M E M B E R S H I P

THE HEART OF AMERICA CARNIVAL GLASS ASSOCIATION, INC.

DATE \_\_\_\_\_

NAME \_\_\_\_\_

SPOUSE \_\_\_\_\_

ADDRESS \_\_\_\_\_

CITY \_\_\_\_\_ STATE \_\_\_\_\_

ZIP CODE \_\_\_\_\_ TELEPHONE \_\_\_\_\_

RECOMMENDED BY \_\_\_\_\_

DUES ARE \$20.00 PER YEAR (June through May)

SEND DUES TO:      H.O.A.C.G.A.  
                            Berneice Bell-Treasurer  
                            1305 W. Wight  
                            Nevada, Missouri 64772

A FEW OF THE BENEFITS OUR CLUB OFFERS:

The ONLY MONTHLY PUBLICATION on just Carnival Glass collecting, keeping you informed of new discoveries and all of the current events. Members only may advertise, FREE OF CHARGE!!

An exclusive PATTERN NOTEBOOK with yearly special inserts.  
(ALL inserts are still available)

ANNUAL SOUVENIR AND CONVENTION WITH SOME OF THE GREATEST PEOPLE YOU COULD HOPE TO MEET!!

\*\*\*\*\* JOIN TODAY \*\*\*\*\*