

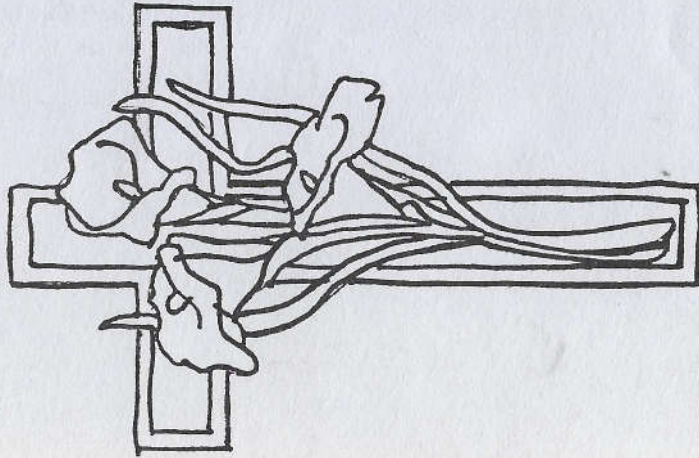
RETURN ADDRESS

Michael J. Basey
Bulletin Secretary
H.O.A.C.G.A.
4315 Adams
Kansas City, Kansas 66103

HOACGA

Heart Of America Carnival Glass Assoc. INC.

APRIL -87



Easter

First Class Mail
U. S. Postage
PAID
Kansas City, Mo.
Permit No. 4352



Published the 15th
of each month

PRESIDENT Robert Grissom
7900 Crescent
Raytown, Missouri 64138
1-816-356-5320

VICE-PRESIDENT Nadine Paulsen
700 Purdom
Olathe, Kansas 66061
1-913-782-1313

TREASURER Berneice Bell
1305 W. Wight
Nevada, Missouri 64772

SECRETARY Glen Fortney
Post Office Box 303
Buckner, Missouri 64016
1-816-249-5208

BULLETIN SECRETARY Michael Basey
4315 Adams
Kansas City, Kansas 66103
1-913-432-2460

All monetary figures quoted are U.S. dollars. Please make checks for dues payable to H.O.A.C.G.A. and send them to the Treasurer, at the above address.

** DO NOT SEND TO THE BULLETIN SECRETARY **

MINUTES OF THE MONTHLY H.O.A.C.G.A MEETING IN MARCH

At 2:00 P.M. March 22, 1987, President Robert Grissom called the monthly meeting to order. Secretary Glen Fortney read the minutes of the last meeting and they were approved as read. Due to the absence of Mrs. Bell, no Treasurers' Report was given.

President Grissom welcomed Jack and Mary Adams of La Crosse, Wisconsin, and also John & Lucile Britt to the meeting. Also with us were Cooley and Marge Miller and also Davis and Vi Shikles.

If you haven't pre-registered for the Convention, please do so if you can, as this will greatly reduce the work load of the Secretary and the Treasurer.

Nadine Paulsen will be in charge of the Hospitality Room and she will be calling some of the local ladies about bringing something for the Thursday night Special Hospitality Room.

If anyone has any information concerning dates of upcoming Conventions, please forward them to Mike Basey, our Bulletin Secretary.

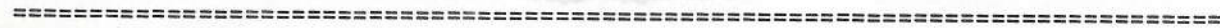
John Britt showed us this years' Souvenir Bells, Room Display Awards, the white Table Favor Mugs for the Banquet and the whimsys made by Fenton for this years' Convention.

The meeting was adjourned for a short time to enjoy the delicious refreshments provided by Jack and Bev McKeown.

After refreshments, John Britt showed and discussed the many beautiful pieces of green Carnival Glass brought to the meeting. Among pieces shown were a Millersburg Peacock bowl, Rose Show, Pine Cone plate, Vintage fern dish, (N) Bushel Basket, Orange Tree loving cup, Iris compote, Orange Tree bowl, Little Stars bowl, Dragon & Lotus bowl, Orange Tree compote, Peacocks on the Fence bowl, and many other beautiful pieces of green Carnival. We thank John & Lucile Britt for their descriptions and comments about the glass.

Our next meeting will be the Annual Meeting at the Holiday Inn in Lenexa, Kansas at 2:00 P.M. May 1, 1987. Hope to see everybody at the Convention!

Glen Fortney,
Secretary
HEART OF AMERICA CARNIVAL GLASS ASSOCIATION



FROM THE EDITOR.....

As the Convention dates coincide with my cut-off date for the NEWSLETTER, I would appreciate it very much if everyone who is sending in material for the NEWSLETTER could forward your "Want", "For Sale", articles and newsworthy items to me as soon as possible, so I can complete work on the NEWSLETTER as early as possible, so as not to interfere with the Convention.

I would also like to remind all of the people who are giving seminars at the Convention to please furnish me with a summary of your Program in order that I can publish it in the NEWSletter and share it with everyone.

Don't forget to have your Room Display ready for the Convention. Be sure to choose which category you want your Display judged under so that when you sign in at the Convention, you can tell them which category you are in.

Hope to see you all in a couple of weeks.

Michael J. Basey
Bulletin Secretary
HEART OF AMERICA CARNIVAL GLASS ASSOC.

When overseas Members are renewing their memberships, please remit in U. S. dollars.

Also, please renew early in order that you don't miss an issue of the NEWSLETTER.



Dear Michael:

Letters

You all do a great job on the H.O.A.C.G.A. It gets better all the time. Wish we lived close enough to attend the meetings. Maybe one of these days we will make the Convention.

We really appreciate all the hard work and time you spend making the H.O.A.C.G.A. such an informative bulletin on Carnival Glass.

Charlotte Tweddell
Louisville, Kentucky



Dear Michael:

Stan and I won't be able to make the Convention this year as we are doing a show at Centerville, Michigan the same weekend. We will miss seeing everyone.

Our latest find is the Nautilus vase (whimsey) in marigold. Edwards lists it as rare in his book. It is the only one we have seen. We are wondering if there are very many around.

Hope to see all of you at one of the other Conventions.

Hazel Kastei
Ottawa Lake, Michigan



Letters from our Members.....

Dear Mike:

Recently in our travels to antique shows and shops we have run across some pieces which we are wondering about.

We picked up a piece of red stretch and on the bottom there is a ground out place--about the size of a golf ball (not that deep, of course) and then on the rim it is inscribed LCT and a number.

The LCT would lead a buyer to believe that this is a piece of Tiffany Glass. We don't really think this is an expensive piece of Tiffany.

We have seen this same effect on pieces of other glass. For instance, last weekend in Lansing, Michigan an exhibitor had a piece with different engraving, but the same ground out area and she had it labeled as "Stueben" glass.

It looks to us like someone is grinding out the manufacturers mark and leading people to believe this glass is something it isn't. We could be wrong. Sure hope so as we have a very large red-stretch-iridized hat marked LCT on the bottom!!!

Can you, or any members of H.O.A.C.G.A. help us out on this? Would appreciate a reply.

Norm and Barb Archer
Harrod, Ohio



IMPORTANT MEMBERSHIP DUES INFORMATION

The Heart of America Carnival Glass Association membership year is June 1 through May 31 of each year.

The yearly cost of printing and mailing the monthly Bulletin is approximately the same as the annual dues so therefore, the Bulletin Secretary is always concerned about the number of Bulletins he has printed each month.

It helps the Secretary very much with his planning if your membership is renewed before the new year starts. You can help very much by renewing your membership prior to May 31.

The foreign (overseas) membership dues have been increased from \$20.00 to \$36.00 per year. This increase is necessary because of the cost of mailing the Bulletin. The mailing cost alone is about \$20.00 per year. (The Canadian membership dues remain the same.)

Robert Grissom
President,
HEART OF AMERICA CARNIVAL GLASS ASSOC.

***** CARNIVAL GLASS AUCTION REPORT 1986 *****

A listing of over 3,000 prices from 1986 auctions, listed by Hartung name. Information includes description, shape, color, sale price, date of auction, auctioneers and sellers name.

This years' report will include a section pastels.

When ordering, please specify 1986 report. The 1984-85 price report is still available. Either report may be ordered for \$8.00 postpaid. Overseas delivery add \$1.00.

ORDER DIRECT FROM: TOM AND SHARON MORDINI
36 N. MERNITZ AVE.
FREEPORT, ILLINOIS 61032

1987 HEART OF AMERICA CARNIVAL GLASS CONVENTION

Wednesday, April 29

3:00 P.M. to 5:00 P.M. Early Registration
Party Deck - Second Floor

Thursday, April 30

9:00 A.M. to 12:00 A.M. Registration and souvenir pick-up
Party Deck - Second Floor

1:00 P.M. to 2:30 P.M. Registration
Party Deck - Second Floor

3:00 P.M. Robert Grissom - "Table Sets"
Presidents Room

7:00 P.M. Marie McGee - "Millersburg Glass"
Presidents Room

8:30 P.M. Hospitality Room - Cookies and Coffee
Galley A - Main Floor

Friday, May 1

8:00 A.M. to 9:30 A.M. Registration and souvenir pick-up
Party Deck - Second Floor

10:00 A.M. John Britt - "Miniature Pieces"
Presidents Room

2:00 P.M. Annual Business Meeting - Election of Officers
Presidents Room

3:00 P.M. to 5:00 P.M. Room Display Judging - All room displays
should be viewable for judging during these
hours.

3:00 P.M. to 4:30 P.M. Late Registration and souvenir pick-up
Party Deck - Second Floor
Hospitality Room, Galley A - Main Floor

7:00 P.M. "Tribute to Carnival by the Early Collector"
and Desert Bar, All-you-can-eat; pie, cake,
coffee and tea \$4.00 per person.
Auction of lamp donated by Mr. & Mrs. Magan

Saturday, May 2

7:00 A.M. View glass to be auctioned - Grand Ballroom
Joan Westerfeld Collection

8:00 to 9:00 A.M. Registration
Party Deck - Second Floor

Saturday, May 2

9:30 A.M. to 3:00 P.M. Auction - Joan Westerfeld Collection
Glen LaRue, Auctioneer

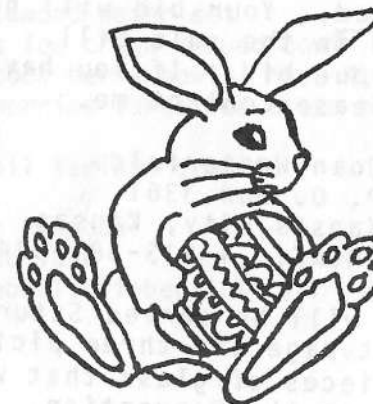
6:30 P.M. Banquet (Stuffed Pork Chop) - \$15.00
Mr. Don Moore Speaker
Grand Ballroom
Room Display winners recognized.
Auction of souvenir whimsys.

Sunday, May 3

7:00 to 9:30 A.M. Breakfast for members - FREE
Non-Members - \$5.00
(Children are considered non-members)

SPECIAL NOTE:

Don Moore's Banquet Speech and the seminars by Marie McGee, John Britt and Bob Grissom will be video taped. These tapes will be maintained by H.O.A.C.G.A. and will be made available to other Carnival Glass organizations at a nominal charge.



H.O.A.C.G.A. CONVENTION AUCTION

I am pleased to have the opportunity to sell part of my Carnival collection at the 1987 H.O.A.C.G.A. Convention on Saturday, May 2, 1987. I have tried to select items for the Auction so there will be something of interest for every collector.

Listed below are just a few of the items included in the Auction. You will soon receive the Auction sale bill.

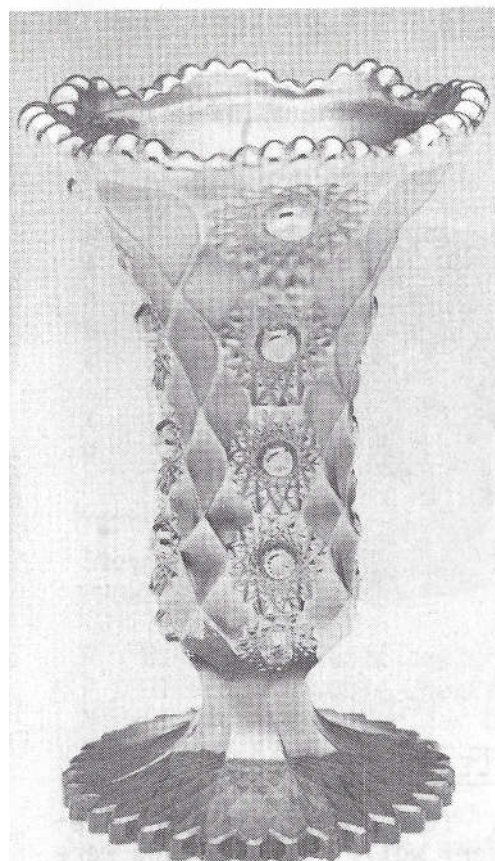
- Tiger Lily water set - Aqua-Blue
(Another set was advertised in the
January 1987 H.O.A.C.G.A. Bulletin,
page 31)
- Inverted Strawberry Celery - Cobalt Blue
(Only one known in Cobalt)
- Peacock at the Fountain Compote - Ice-Blue
- Milady water set - Cobalt Blue
- Dahlia pitcher and 4 tumblers - White
- Dragon & Lotus bowl - Red
- Chatelaine tumbler - Amethyst
- Grape & Cable candle lamps (Pair) - Green
- Three Fruits bowl - Aqua Opal
- Peach table set - White
- Holly plates - Amethyst and White
- Flute 10" vase - Green (N)
(Unlisted shape)

Write-in-bids will be accepted with a 10% deposit. There will be no charge for postage and insurance to ship the glass. No telephone bids accepted. Your bid will not be executed unless the item is as stated in the sale bill. You will be notified as to the result of your bid. If you have any questions regarding the glass, please contact me.

Joan Westerfeld
P. O. Box 3361
Kansas City, Kansas 66103
PHONE: 1-913-381-6244

Coffee and doughnuts will be served Saturday, prior to the Auction. On the next page are three pictures of just a few of the many beautiful pieces of glass that will be in the 1987 H.O.A.C.G.A. Auction at the Convention.

JOAN WESTERFELD



MILLERSBURG HONEYCOMB & HOBSTAR
VASE, ONLY ONE KNOWN; AMETHYST

INVERTED STRAWBERRY CELERY
IN COBALT BLUE, ONLY ONE KNOWN



TIGER LILY 7 PIECE WATER SET
AQUA



EDUCATIONAL TUMBLER SERIES

By John & Lucile Britt



GRAPEVINE LATTICE TUMBLERS

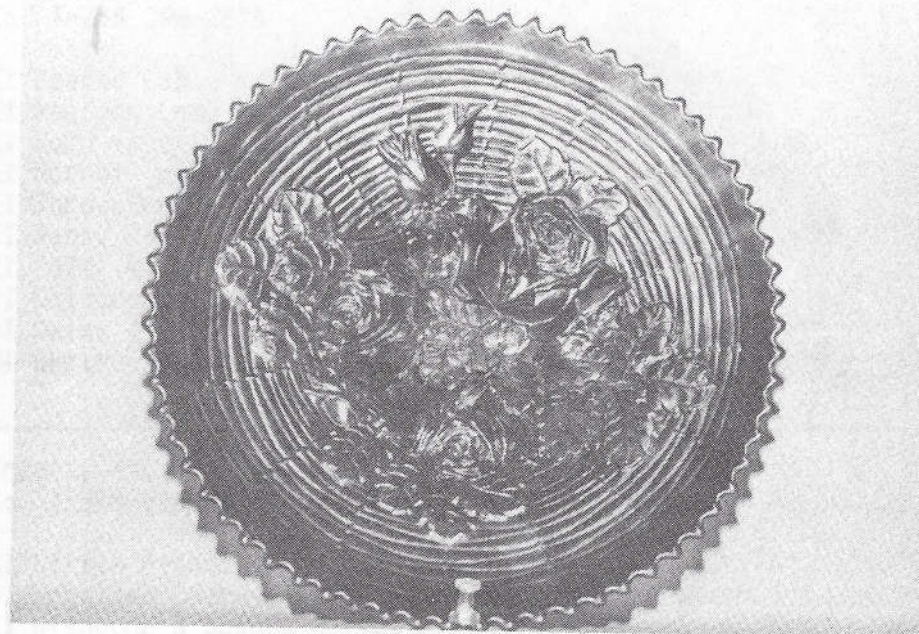
"Grapevine Lattice" is a Dugan-Diamond pattern. It is rather simple in design. The above picture shows the simplicity very well. The tumblers were made in marigold, amethyst, purple, white and a few in blue. The blue tumblers in this pattern are quite rare. It took us years to find our blue "Grapevine Lattice" tumbler. Actually, Dugan did not make any great quantity of blue carnival glass. For example, there are hundreds and hundreds of purple Fisherman mugs, but we know of only three in blue. While the ratio of the Beaded Shell tumblers and mugs are not quite to that extent, there are many more found in purple than there are in blue. The white tumbler is usually in a very good frosty white with excellent iridescence. The water pitchers are of the tall tankard type and are quite hard to find, especially in blue or white.

This is one of the Dugan patterns where the old molds were purchased by Wright. The water set was reproduced by Westmorland. In this pattern they were not marked. They were reproduced only in purple. The new tumblers are very pretty, but they have that new look and are iridised on the bottom of the base. Old Dugan-Diamond "Grapevine Lattice" tumblers are not iridised on the bottom, so even the beginning collector should have no difficulty of telling the difference.

This is article #111 in this series. Next month we will feature the "S-Repeat" tumbler.

PICTORIAL PATTERN PARADE

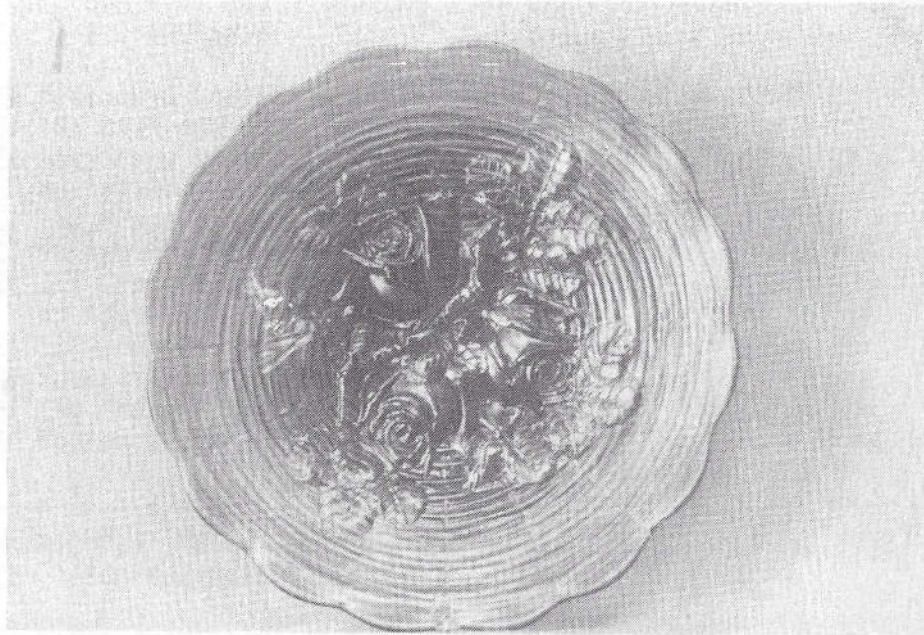
By John & Lucile Britt



THE ROSE SHOW VARIENT PLATE

The "Rose Show Variant" plate, that is shown above, is quite unusual in that it appears to be green when viewing it from the top. In fact, when we first saw it, we thought it was a green plate. When we turned it over however, we found it to have a deep blue base color. It is not iridised on the back side, so the deep blue color shows up very well. It is a most beautiful plate with outstanding green iridescence.

There are a number of differences between this "Rose Show Variant" pattern and the "Rose Show" plate that is shown in picture #2. We will try to point out some of these differences in this article. In the first place, you will find that the "Rose Show Variant" pieces are harder to find. Secondly, the variant is smaller than the regular "Rose Show" pieces. The "Rose Show Variant" plate is 9 inches wide while the "Rose Show" plate, illustrated in picture #2 is 9½ inches in diameter. This one-half inch difference doesn't seem like much, but when the two plates are set side by side, the difference in size is very noticable. The variant has the serrated or fluted edge, sometimes called saw tooth edge, that is found so often on Northwood plates and bowls such as those seen on the "Northwood Peacocks" pattern. The reverse side contains the "Thin Ribs" pattern that Northwood used very often on bowls and plates such as Northwood Peacocks, Good Luck, Three Fruits etc.



ROSE SHOW PLATE IN EMERALD GREEN

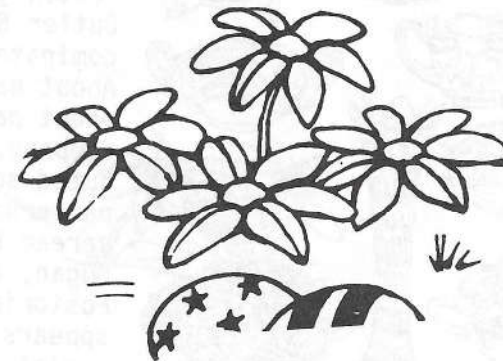
Picture #2 shows the "Rose Show" plate in emerald green. This is a rare color in this pattern. Notice the scalloped edge used on this piece instead of the fluted edge found on the variant. The "Rose Show Variant" has the ribs on the exterior and a very pretty reeded basketweave on the interior, which was used as a background for the three fancy rose blossoms, buds and leaves design. The "Rose Show" pattern also uses this reeded basketweave but on both surfaces. The collar base on the variant is smooth, but upon feeling the bottom of the base on the "Rose Show", you will discover a deep depression under each of the three large rose blossoms. These depressions extends the flowers upward making the design in much higher relief than on the "Rose Show Variant". Upon close inspection of these two plates, the beautiful floral design is essentially the same. Of course, with the protrusion of the flowers upwards in the center, it tends to give the "Rose Show" plate a more showey and glamorous design.

Now regarding the colors. I have seen the "Rose Show Variant" pieces only in marigold and blue. Perhaps other colors could exist, but we have not seen them. They are very beautiful and also desirable. It is quite possible that you could find a sleeper in this pattern. The "Rose Show" was made in a wide variety of colors. So many, in fact, that we fear we might miss one or two in this listing. The marigold over a milk glass base, lime green opalescent and vaseline are colors that are very rare. Aqua opal bowls are

very beautiful and they are considered quite scarce. A plate in this color would be extremely rare, however. I have seen bowls in aqua and a sort of horehound amber-like color. The ice-blue, ice-green and white pastels, along with the vivid colors of marigold, blue, purple, amethyst and green, round out the colors in this pattern. These "Rose Show" bowls and plates are fantastic pieces of carnival glass and highly sought after in any color.

Now to the maker of these outstanding pieces. It is well established that Northwood made the "Rose Show Variant". There is some doubt with the "Rose Show" pattern, however. There are many opinions as to who made this one. We believe that Northwood made it. Northwood is well-known for his pastels and electric blue. This pattern certainly has its' full share of these colors. Upon inspection of these pieces, it would be very difficult to find a place to put his famous "N" in a circle trademark. It is our opinion that Northwood made the "Rose Show Variant" first. Then he could have gotten the idea or perhaps he got it from someone else, on how to improve on the already beautiful "Rose Show Variant". If by chance we are right, and on the basis of the pieces you see in existence today, it must have been an improvement. For sure, it was a big winner. We hope that this will help the beginning collector in distinguishing the difference between these two super patterns.

JOHN AND LUCILE BRITT



BON-BONS - - A NEGLECTED SHAPE

By Don Moore

Bon-Bons were made in some forty different patterns and in many different colors. Even so, they receive little attention. I can recall no previous article on the subject.

As the first order of business, we must determine if the two-handled stemmed pieces are really bon-bons or compotes. These include Fruits & Flowers, Roses & Fruit, Floral & Wheat, Fruit Basket and Puzzle. Note the 1913 Butler Bros. catalog simply refers to the Floral & Wheat piece as a "Double Handled Footed Bowl". I do not feel these pieces can be called true bon-bons but prefer to think of them as handled compotes. For purposes of this article, I have included only collar base bon-bons.

These pieces were designed as serving dishes for candy, especially bon-bons and hence took on that name. From the beginning of the Carnival period, they were called just that and were offered for sale in the early Butler Bros. catalog by that name. The Fenton assortment shown here from a 1912 Butler Bros. catalog shows several Cherry Circles pieces. Note their reference to the open-end bon-bon as an "oval handled bon-bon". We have sometimes called it the "card tray" type. They refer to the more standard shape as a "square bon-bon". I find it interesting that they call the larger size piece a "7 1/4" deep handled bowl". We have also referred to it as a bon-bon.

"WONDER" GLASSWARE ASSORTMENT—Iridescent.

For variety of splendid values this is unequalled.



C1620—Practical pieces, golden and royal blue colors. 1/2 doz. each:

11 in. vase.	4 1/2 in. rose bowl.	7 1/4 in. deep handled bowl.
6 1/2 " hatpin holder	9 " salad bowl.	Oval handled bonbon.
8 " loving cup.	9 1/2 " cake plate.	8 in. grape dish.
6 " footed compot.	Open sugar.	6 " footed nut bowl.
Cord. puff box.	Creamer.	Square bonbon.
	7 1/2 doz. tierce. — lbs.	

IRIDESCENT DOUBLE HANDLED FOOTED BOWL.



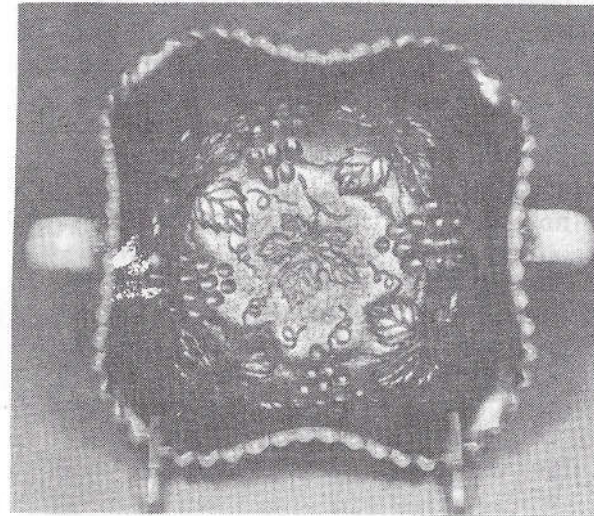
C1131—4x5 1/4. rich golden tint, heavy relief floral and wheat sprays, conventional embossing inside. 1 doz. pkg. Doz. 92c

1913 Butler Bros. Catalog

Doz. 85c

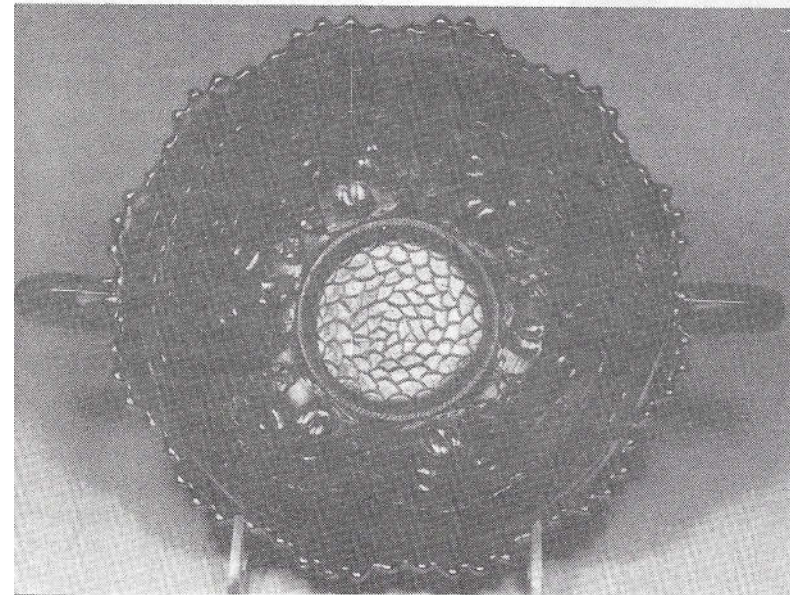
THE TOP TEN

I will not list all the known patterns in this shape, but will list instead the ten that I consider the most rare. They are listed in order of rarity. I'm sure your list would be different, but that's what makes a "ball game" and affords us endless hours of pleasant but usually unproductive discussion.



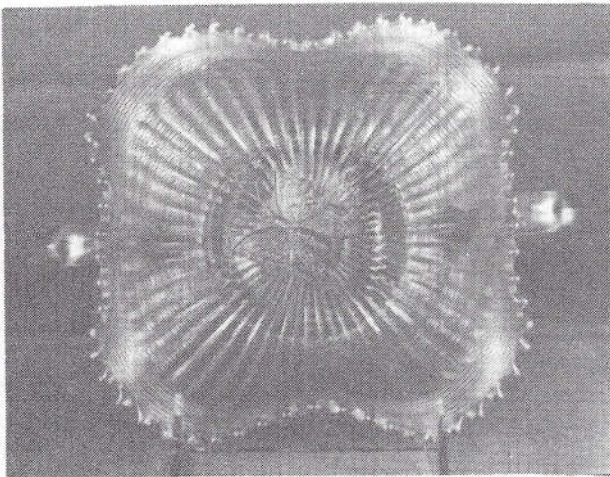
#1 - PEACH OPAL GRAPE & CABLE

#1 GRAPE & CABLE (Northwood) In peach opal, aqua opal or iridized milk glass. These are equally rare. The peach opal shown in Photo #1 is the only one known in this color. It is unsigned. Since Northwood is credited with little or no peach opal, it could be this piece was made by Dugan after they took over the old Northwood plant at Indiana, Pa. Current value around \$1,750.00.



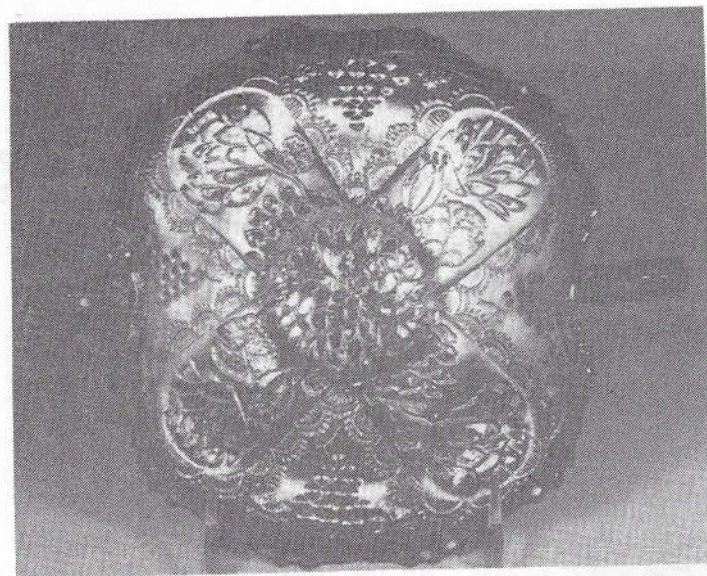
#2 - RED CHERRY CIRCLES

#2 CHERRY CIRCLES (Fenton) The bon-bon shown in Photo #2 in red is the same piece that is shown in the 1912 Butler Bros. catalog assortment in blue and marigold. I feel it must be given this number two ranking in view of the price it brings when offered for sale. One sold for \$1,700.00 at the Bradford auction in April, 1985. It comes in many different colors, but only the red one can be considered rare.



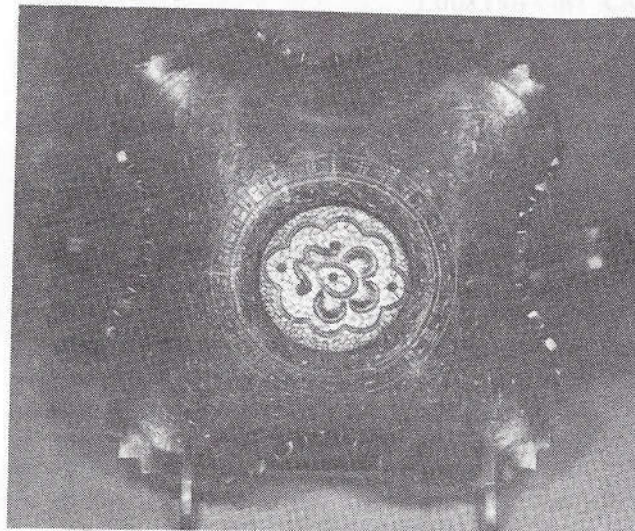
#3 BUTTERFLY (Northwood) Ice-Blue
Only 2 or 3 are known in this color. Unlike the usual bon-bon in this pattern, those in ice-blue have a threaded back. While one of these has not sold in recent years, I would place the value at some \$1,200.00 in view of the current demand for pastels. While it is not rare in the other colors in which it is found, now and then one of these will also turn up with the threaded back. This increases its' value substantially.

#3 - ICE-BLUE BUTTERFLY



#4 LOTUS & GRAPE (Fenton) Red
This piece is seldom found in red. One was offered recently at private sale for \$1,800.00. This seems excessive to me. The piece shown in Photo #4 is the open-end type which makes it a bit more unusual. This is the shape that was called an "oval handled bon-bon" in the Butler Bros. catalog. This piece comes in many different colors, but only in red can it be considered rare.

#4 - RED LOTUS & GRAPE



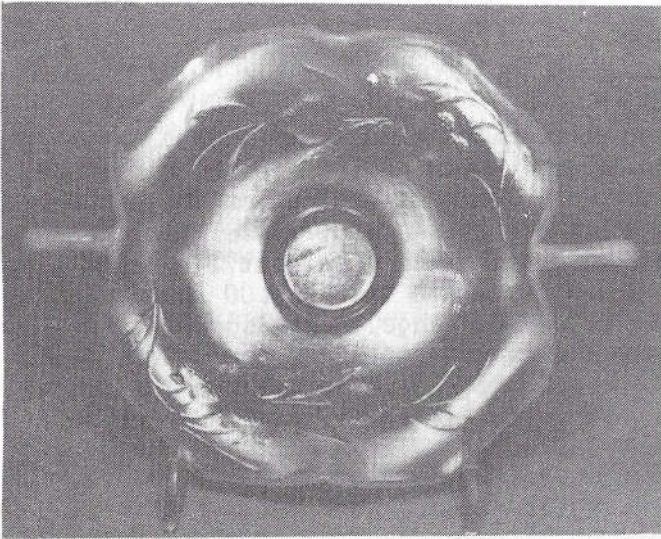
#5 PERSIAN MEDALLION (Fenton) In Celeste Blue. Anything in this color is rare. I can confirm only two of these bon-bons in this color. This piece has not sold at auction, but I expect it might sell in the \$750.00 to a \$1,000.00 range. It also comes in a wide range of other colors including red. The red is usually on the brick red side rather than a good cherry red.

#5 - CELESTE BLUE PERSIAN MEDALLION

#6 NIGHT STARS (Millersburg) in vaseline. To my knowledge, only one is known in this color. It is the open-ended card tray shape. It sold for \$1,800.00 at the Sperling auction in April of 1982 when Millersburg was "king of the hill". My first reaction was to rank it number two, ahead of the two red pieces and the one in celeste blue and ice-blue. Edwards prices it at \$900.00 in his latest price guide. Millersburg is in a bit of a slump at the moment while red and the pastels are hot. This was also made in green and amethyst. They too are rare but not in the same category as vaseline. I don't recall seeing this piece in marigold.

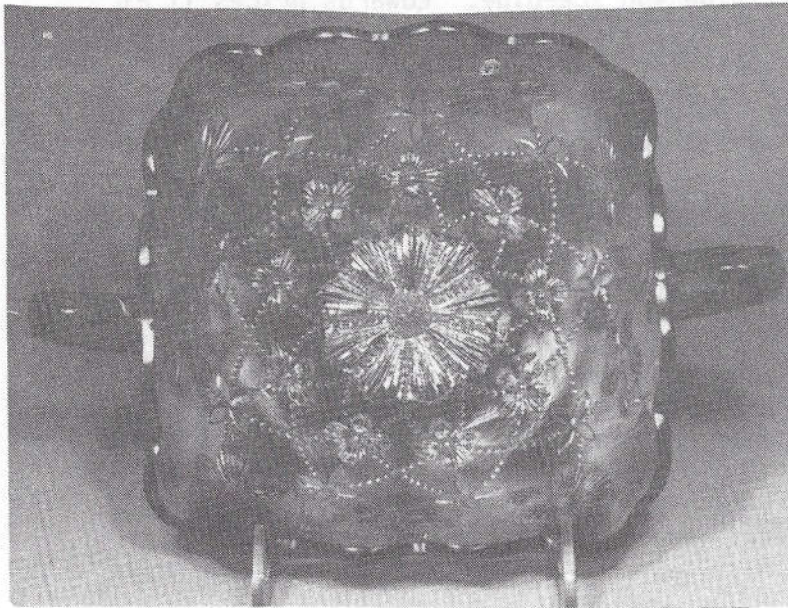
#7 LOTUS LAND (Northwood) in amethyst. Very few of these are known. I have seen only the one owned by Diane and Dean Fry of San Diego. It is a beautiful piece and very rare in my opinion. It has had little attention and is listed in one price guide at \$75.00 and at \$80.00 in the other. I feel it is worth very much more.

#8 POND LILY (Fenton) in ice-green. Only one is known in this color. It turned up in Australia. It has got to be very rare but those who have seen it say the color and iridescence are not good. This piece is often seen in the card tray shape as is the case with the one in ice-green. White, marigold and blue are the colors usually seen. In these colors it will sell for a modest \$50.00 to \$75.00.



#9 STRAWBERRY (Fenton) In lime green opal and red. This piece is very common in marigold and not too hard to find in blue, vaseline or amethyst. The lime green opal shown in Photo #6 is more rare in my opinion than the same piece in red. The one shown here is unusually flat and has heavy opal. I cannot find where one has sold at auction, but feel it should go in the \$650.00 range.

PHOTO #6 - LIME GREEN OPAL STRAWBERRY



#10 TRACERY (Millersburg) In green or amethyst. This large bon-bon is seldom seen and it is a shame to have to put it in this number ten spot. In view of the tough competition, however, there seems no choice. The example shown in Photo #7 is an unusual square shape as it is more often seen in an oval shape. Even in a depressed Millersburg market, this piece should sell for from \$600.00 to \$700.00 in either color. I can't confirm this piece in marigold.

PHOTO #7 - GREEN TRACERY



PHOTO #8 - GREEN HOLLY SPRIG

Honorable mention must be made of a few patterns which didn't make the top ten. Fenton's iridized custard Prayer Rug and Northwoods' version of Wreath of Roses (sometimes called Basket of Roses) are rare and handsome pieces. Even the more available Millersburg Holly Sprig (Photo #8) is a beautiful piece of glass, particularly in the card tray shape.

Well, that's about it---a well deserved "day in the sun" for bon-bons. I don't know about you, but I'm going to have about a half pound of the chocolate variety and call it a day!

DON MOORE



THE MOORE AUCTION

Just thinking about some of Don and Connie Moore's lovely carnival being offered for sale on March 13 and 14th helped to cheer our winter days. We left early on the 13th and never felt a bit threatened by it being on a Friday. A prettier March day one could never expect. As usual we like to stop three or four times so finally arrived at the Motel, Richfield, Ohio about 2 P.M.

Right away we saw several Carnival friends and some nearby relatives came by to visit too. Tom and his loyal helpers already had the carnival set up, looking its' best and almost asking for new owners. The sale began at 7:30 with about 120 bidding numbers for Friday night. The Bullards of California came and took home some of the rarest items sold. Highest items sold Friday were the (N) Grape & Cable large ice-blue ice cream shaped bowl at \$2,050.00 and the unusual shaped Tornado vase at \$1,025.00. The blue Memphis fruit bowl (2 piece) went for \$2,300.00. Everything sold just great and beyond previous prices known.

We were up early again and had a shock to look out at 5:30 A.M. to see snow falling. It never stopped and by noon there was 5 to 6 inches. The weather no doubt kept several local persons from returning. Also many persons were having to leave early for home. So feel last 75 pieces had less buyers. The sale had gone well all morning with the lovely Millersburg marigold Peacock & Urn chop plate going for \$2,800.00. Somehow did not notice who took that treasure home. There were several write-in bids too. It was a very good auction and when we left at 12:30 approximately it had grossed about \$85,000.00. The only thing we got was the blue Kitten piece.

For many miles after leaving for home, it was a nightmare of travel. One lane of traffic on most of the interstate. Truthfully I expected a pile up of cars most any second. However the drivers all managed to keep their cars under control and by New Philadelphia we could see bare ground and dry roads. I will say I was never so glad to see bare ground in my life. The sun actually came out and it was 62 degrees at Marietta, Ohio by 4:00 P.M.

We were home at 6:30 and did enjoy seeing so many there. The Vinnings came from Georgia, the Helms from Canada, Hunters and Cox's from Indiana. Joe Corrothers, George Loescher, Leonards, Levickas. Oh so many and we surely wonder about their trips home. Many had carnival in the rooms too, but our time went so fast we hardly got to say hello or even look like we would have wished to do. Anyway, winter is leaving and a new year is here on Carnival. It is off to a very good start too.

Grace & Byron Rinehart
Charleston, West Virginia

The following prices were realized at the Don & Connie Moore Burns Auction held on March 13 and 14, 1987, at Richfield, Ohio

M Grape & Cable fernery	950.00	G 1910 Detroit Elk bowl	475.00
M G & C large open compote	325.00	B Kittens banana dish	325.00
W G & C centerpiece bowl	600.00	M Kittens cup & saucer	250.00
P G & C shot glass	150.00	A Rosalind 9" bowl	135.00
G Good Luck p.c.e. bowl	525.00	A Rosalind 10" bowl	200.00
P Imp. Grape water set	750.00	A Poppy round compote	1,000.00
P Open Rose rosebowl	325.00	G Nesting Swan bowl	225.00
P Lustre Rose fruit bowl	400.00	M Mlsbg. Holly Sprig sauce	175.00
IB Peacock/Urn I/C bowl	750.00	M Mlsbg. Peacock/Urn chop plate	2,800.00
M Peacock/Urn I/C bowl	225.00	A Seaweed bowl	400.00
P (N) Dandelion water set	900.00	M Trout & Fly bowl	300.00
IB Hearts & Flowers bowl	275.00	A Big Fish bowl	725.00
M Tornado Variant vase	1,025.00	G Mlsbg. Peacock shotgun dish	425.00
M Tornado large size vase	300.00	G Tracery square bon bon	900.00
P Tornado small size vase	275.00	G Orange Tree powder jar	375.00
B Daisy & Drape vase	450.00	G Corn bottle, each	275.00
IG Corn vase	400.00	AO (N) Bushel Basket	300.00
IG (N) Tree Trunk vase	220.00	B (N) Bushel Basket 8 sided	205.00
IG Leaf Column vase	275.00	AO Leaf & Beads rosebowl	295.00
B Horses Heads plate	500.00	W Cosmos & Cane compote	850.00
P Poinsettia ftd. bowl	300.00	M Zipper Stitch cordial set	1,800.00
IG Wishbone ftd. bowl	1,850.00	M Rising Sun pitcher	400.00
IB Wishbone ftd. bowl	950.00	M Rising Sun tumbler	350.00
W Wishbone ftd. bowl	425.00	M Omnibus tumbler	925.00
W Two Flowers lge. bowl	325.00	B Pine Cone 7½" plate	205.00
B Memphis fruit bowl	2,300.00	PO Persian Garden 6" plate	300.00
B Peter Rabbit bowl	1,100.00	P Singing Birds water set	525.00
G Peter Rabbit bowl	1,300.00	IG Strawberry bowl	825.00
M Peter Rabbit bowl	1,000.00	P Diamond Lace pitcher	200.00
AO Three Fruits bowl	375.00	M Lions plate	650.00
G Springtime table set	1,600.00	B Ten Mums crimped bowl	140.00
G Dragon & Strawberry bowl	450.00	P Dugan Heavy Grape lgr. bowl	400.00
M Dragon & Strawberry bowl	180.00	AMB Pine Cone 7½" plate	400.00
PO Dragon & Lotus bowl	750.00	B Curved Star rosebowl	450.00
R Holly compote	425.00	M Inv. Strawberry water set	1,500.00
R Holly bowl	650.00	A Mlsbg. Deep Grape compote	1,000.00
R Panther sauce	600.00	G Feather & Heart pitcher	400.00
R Stippled Rays dish	375.00	B Fenton Peacock/Urn plate	275.00
AQ Orange Tree mug	230.00	A Leaf & Little Flowers compote	300.00
M Bo Peep mug	275.00	G Orange Tree round bowl	250.00

The following prices were realized at the February Burns Auctions held in Florida and Houston. We thank Roland Kuhn and Donald Kime for providing us with these prices.

R Fenton Holly hat	155.00	G Dragon & Lotus ftd. bowl	45.00
M Covered Hen	75.00	G Imp. Grape 7" plate	30.00
G Dragon & Lotus bowl	50.00	B Orange Tree punch cup	27.50
A Dragon & Lotus bowl	45.00	M Grape & Cable ftd. plate	75.00
M Poppy Show plate	425.00	M White Oak tumbler (chip)	55.00
B Holly plate	80.00	M Dandelion tumbler	35.00
M Strawberry plate (N)	50.00	G Raspberry tumbler	70.00
A Captive Rose plate	200.00	P Greek Key tumbler	65.00
A Good Luck plate	190.00	M Heavy Iris tumbler	30.00
A Good Luck bowl	100.00	M Harvest Flower tumbler	75.00
G Good Luck bowl	160.00	M Jewelled Heart tumbler	55.00
M Good Luck bowl	195.00	G Double Star tumbler	40.00
A Peacock & Grape bowl	50.00	P Mlsbg. Diamond tumbler	55.00
W Hearts & Flowers bowl	200.00	M Bouquet tumbler	20.00
EB Embroidered Mums bowl	260.00	P Fieldflower tumbler	55.00
M Grape Leaves bowl	50.00	M Fieldflower tumbler	40.00
B Plaid bowl	165.00	M Mlsbg. Marilyn tumbler	150.00
V Leaf Chain bowl	90.00	M Robin mug	35.00
B Lions bowl	180.00	G Embossed Scroll goblet	65.00
M Lions bowl	80.00	M Imp. Pansy dresser tray	35.00
B Iris compote	180.00	M 6½" Persian Med. plate	27.50
A Pony bowl	110.00	M Fenton Holly plate	85.00
A Primrose bowl	75.00	M Kittens banana boat	125.00
AO Three Fruits ftd. bowl	350.00	W Fenton G & C ftd. bowl	70.00
M Sailboat goblet	55.00	A Feathered Serpent sauce	22.50
G Sailboat goblet	300.00	M Nippon ruffled bowl	45.00
G Orange Tree goblet	200.00	M Little Barrel	75.00
AQ Orange Tree goblet	110.00	W Three Diamonds vase	150.00
P Grape & Cable shot glass	205.00	B Carnival Holly hat	25.00
G Fine Cut & Roses roseb.	125.00	A Wishbone ftd. bowl	65.00
P Oriental Poppy tumbler	25.00	A April Showers vase	55.00
A Birds & Cherries compote	45.00	W Leaf Rays nappy	47.50
PO Estate creamer	50.00	M Diamond & Sunburst wine	25.00
G Imperial Grape wine glass	30.00	M Octagon wines	42.50



The following prices were realized at the March 21, 1987 Woody Auction held in Lenexa, Kansas.

A Blackberry compote	12.50	G 7" Vintage plate	45.00
B Vintage epergne	95.00	W 6" Persian Garden plate	95.00
R Open Edge hat	200.00	A Wishbone & Spades 5" bowl	40.00
A Mlsbg. Diamond pitcher	100.00	G Rosalind bowl	130.00
A Pansy bowl	45.00	R Orange Tree mut	290.00
A Victorian bowl	70.00	G Beaded Cable rosebowl	55.00
G Wreath of Roses compote	20.00	R Fine Rib vase	210.00
AO Good Luck PCE bowl	1,900.00	G Captive Rose plate	150.00
B Good Luck stippled bowl	150.00	M (N) Peacock stippled plate	300.00
M Good Luck bowl	100.00	M Acanthus plate	110.00
M Mlsbg. Rays bowl	40.00	M Double Dutch bowl	25.00
P Three Fruits bowl	50.00	M Heavy Iris pitcher	120.00
P Diamond Lace bowl	80.00	B Orange Tree mug	25.00
M Butterfly & Berry set	150.00	W Garden Path Variet bowl	50.00
M Stag & Holly IC bowl	70.00	M Plaid bowl	40.00
W Persian Garden IC bowl	175.00	G Rose compote	20.00
A Little Fishes bowl	180.00	W Apple Tree pitcher, 1 tumbler	275.00
M Lotus & Grape nappy	40.00	G Banded Drape pitcher	450.00
B Mlsbg. Berheimer bowl	500.00	G Good Luck bowl	240.00
A Mlsbg. Courthouse	375.00	M Imperial Grape water set	150.00
A 1910 Detroit Elk bowl	170.00	G Mlsbg. Holly Whirl bowl	60.00
M Mlsbg. Nesting Swan	95.00	M Poinsettia pitcher	45.00
B Stag & Holly IC bowl	150.00	V Leaf Chain bowl	110.00
G Good Luck plate	375.00	TB Pony Head bowl	275.00
G Three Fruits bowl	60.00	M Pony Head bowl	50.00
M Kittens toothpick	80.00	A Pony Head bowl	110.00
P Good Luck plate	170.00	SM Rococo compote	20.00
M Stream of Hearts compote	70.00	SM Diamond Ring bowl	12.50
B Holly bowl	40.00	SM Hattie bowl	25.00
W Hearts & Flowers compote	225.00	SM Corn bottle	200.00
AO Hearts & Flowers compote	350.00	B Poinsettia & Lotus bowl	100.00
CB Peacocks on Fence plate	800.00	G Thistle bowl	35.00
B Thistle banana boat	170.00	B Dragon & Lotus	35.00
M Etched table lamp	250.00	M Persian Medallion bon bon	25.00
A Louisa rosebowl	60.00	R 6" Vintage bowl, chipped	60.00
PO Nautilus	125.00	G Whirling Leaves bowl	50.00
PO Vineyard pitcher	800.00	M Panther fruit bowl	110.00
P Fanciful plate	50.00	B Heart & Vine bowl	45.00
A Grape & Cable plate	110.00	M Mikado compote	95.00
W Corn vase	250.00	G Imperial Grape punch bowl	75.00

ONE MAN'S TRASH

The Convention was in full swing when I entered the hall. Display tables lined the perimeter of the room and people from Canada to California, Florida to Maine, were oogling the avidly sought after Carnival Glass.

For those not familiar with this very popular collectible, it's an iridescent pressed glass made primarily in the United States during the early 1900's. It was handmade in tremendous quantities by such companies as Fenton Art Glass, Imperial Glass Co., Dugan-Diamond Glass and the Northwood Glass Co. Other companies, such as Millersburg Glass and United States Glass, made lesser amounts, but their wares are nonetheless desirable.

Carnival Glass can be found in a myriad of colors, shapes and sizes. Prices range from a few dollars (under \$50.00) for the more common items, to thousands of dollars for the most desirable items - the rarities and pastel shades. Currently, the great demand seems to be for the colors known to collectors as ice-blue, ice-green, white, aqua opalescent and red.

After a collecting mania that has spanned more than 25 years, one might assume that the supply...especially that of the rare pieces...would be exhausted. While private collections do house the bulk of the glass known to exist, pieces are still finding their way onto the market from private homes. This warm, sunny September day was to be one of those occasions.

Carnival Glass collectors, like the treasures they pursue, come in a wide variety of shapes and sizes (and degrees of knowledge.) In any group, one can single out the advanced collector, the true expert. He's well-mannered, pleasant and unobtrusive, but always eager to share his knowledge and experience with others. The novice is recognized as a little shy, awe-struck, and filled with an endless number of questions. It's a moment of joy when the novice and the true expert get together.

Then there's the other variety...like Jacques. He's the guy who preems. He'll straighten his lapels, run his hand over his hair where the Grecian formula hasn't quite covered the gray; pull himself up to his full 5'9" and give a confident answer to any question whether he knows the answer or not. He loves to play one-upsmen at every gathering of collectors. (Whatever John Doe found, Jacques found one that's "mint", has better iridescence, is smaller - or larger, rarer, and always CHEAPER!)

Into this setting, a young woman from the local community ventured in hope of finding a buyer for what she described as "a nice, green punch bowl with grapes on it."

The first person she approached was a long-time collector who thanked her politely, but said he was interested only in the top rarities. He wished her luck and suggested one or two other collectors who might be interested in buying. Jacques, not one to miss out on a possible coup, overheard the conversation and stepped boldly in front of the departing woman.

"Did I hear you say you had a green punch bowl to sell?" he asked with a slight leer in his smile.

"Yes. It's in my car. Would you care to see it?" she offered.

"First...does it have any marks on it...like letters?"

"Yes, I think so," she replied enthusiastically. "There's an I..." Jacques cut her off.

"G", he said. "IG...that's the trademark of Imperial Glass Co. It's not old,; it's a repro. Nobody here would want it. We collect only the old stuff."

The woman was stunned. "But it belonged to my grandmother," she protested.

Jacques laughed. He'd heard that one before. "Somebody probably gave it to her for Christmas ten years ago," he said snidely. "If you're lucky, you might get \$75.00 for it...if you can find a buyer, that is!"

He turned on his heel, walked smugly away, leaving the woman crest fallen.

Just as she was about to walk out of the hall, a petite blond with an engaging smile, shyly introduced herself. "Hi! I'm Meg. I couldn't help overhearing. May I see the punch bowl? I'm sort of new at this; I'm still learning, but I never pass up the chance to buy Carnival Glass if I can afford it."

A short time later, Meg returned to the hall carrying a huge box and a grin to match. She carries the carton to the far end of the hall and proceeded to unpack the contents.

Suddenly, it seemed as if the weight of the room shifted as a mass of humanity converged on the corner where Meg proudly displayed her newly purchased green punch bowl. Murmurs increased to buzz; buzz became commotion. I watched as Jacques blanched and shoved his way back through the crowd to the emptiness of the deserted display area. Through the alley that Jacques had just plowed, I could see what was causing all the excitement. I moved in to get a closer look.

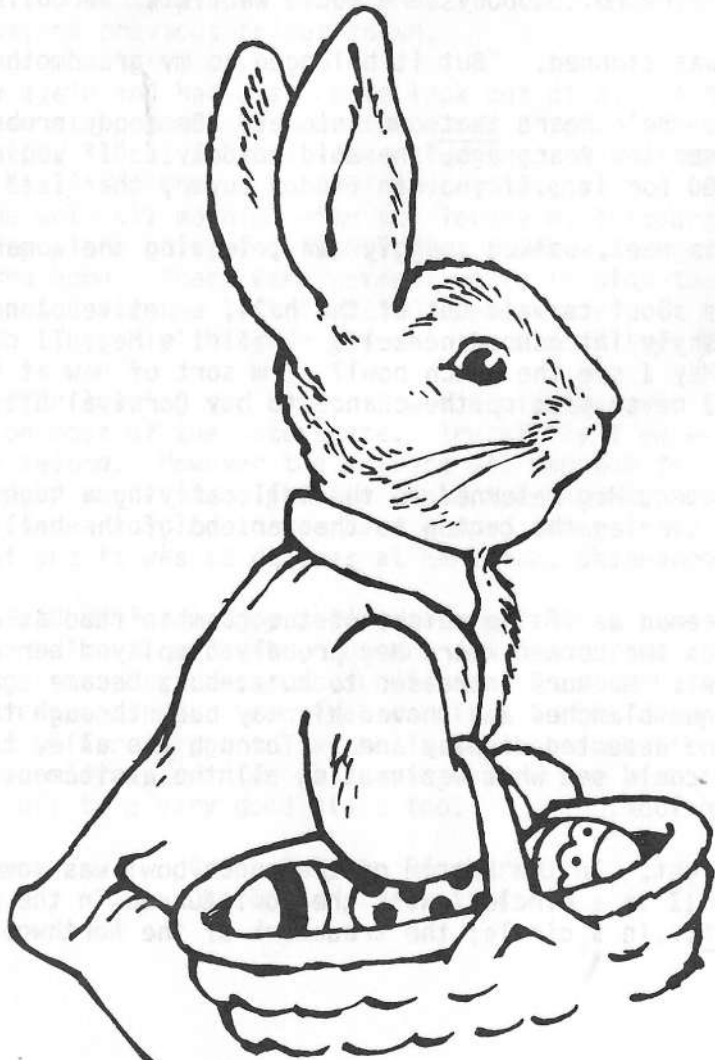
The lady was right. In the bottom of the punch bowl was something that looked like an IZ in a circle. With the bowl turned in the proper direction, it read N...in a circle; the trademark of the Northwood Glass Co.

ca. 1920.

The bowl and stand measured about 15" high and nearly 18" across. This banquet sized beauty was indeed... "an ice-green punch bowl with grapes on it."

Epilogue: The last I heard, the advanced collector had offered Meg several thousand dollars for her treasure, and Jacque was buying a case of Grecian formula.

PATRICIA W. CALL
STRATHAM, NEW HAMPSHIRE



"LOOKING" AT CARNIVAL GLASS

I seem to remember that back in the early 1920's my mother had our kitchen cupboard practically filled with this glass that cost pennies-a-piece then. And it must have been Imperial's Grape pattern in marigold, because there cups and saucers, plates of various sizes, tumblers and all the rest. I know for sure that these were our every-day dishes. We ate and drank from them and that was the extent of my looking. My little brother, God rest his soul, pulled the top of the cupboard down one morning and made short shrift of about half of that glass.

Now, sixty some years later I am looking at this glass again. Not through the eyes of a child, but those of an awe-struck collector of some five or six years experience. It was almost like an afterthought that Wilma and I started what is now, in our opinion, a pretty fair collection.

We were sitting at the kitchen table one morning in 1982 and I was looking at our TWO pieces of Carnival Glass - one old and one repro and both Imperial. It was then that I mentioned and we so decided to start collecting Carnival glass. But ONLY marigold. Soon our eyes were making us aware of vivids and pastels too. We thank our lucky stars for this awakening.

Here I am going to take the liberty and express my viewpoint on "looking" too critically at the condition of our pride and joy. Many nitpickers fail to realize that some Carnival is eighty years old and was not in mint condition from new. They also fail to realize that some day someone else will pick their collection apart for the tiniest flaw. Nuff said on that.

One other thought before I pack it in. Wouldn't it be nice if our Carnival colleagues would wear their name tags at all shows and sales, Conventions, and auctions. Then no one would need to ask "Who are you?" or "What is your name?" and none would be embarrassed.

Thank you for listening (reading) and GOOD HUNTING!!!

Charles R. Mitchell
Beaver Springs, Pennsylvania



Although the Texas Carnival Glass Clubs' Eighth Anniversary weekend didn't start until Friday, February 27, members and guests started arriving at the Airport-Hilton Hotel in Houston the day before. Lucile and John Britt, Don Kime, and Charles and Annabelle Vaughn, all of the Air Capital Club arrived early for an extra day of activities. Friday was spent visiting local shops and viewing glass for sale in the rooms. Also some guests visited the Whitley home to see their collection.

That evening Bill and Rosalinda Lozado hosted an Open House. Delicious refreshments were enjoyed while everyone admired their large and beautiful collection of Carnival Glass. After returning to the Hotel the Hospitality Room was open for visiting and snacking. Saturday morning everyone assembled early to preview the auction glass which Tom Burns set up in the Atrium area. Cold drinks, coffee and homemade treats furnished by the members were available before and during the Auction, which began at 12:00 noon. At the conclusion of the Auction, bidding numbers were used for a drawing for \$100.00 which was won by Joe and Dorothy Baur. At 7:00 P.M. sixty-five (65) members and guests gathered for a Texas Style dinner of barbecued brisket and chicken and all the trimmings. After dinner, a short business meeting was conducted by President Arlen Merritt. New officers for the next two years were introduced. They are President Doyle Green, Vice President Bob Etheridge, and Bulletin Editor Al Richmond.

Numerous door prizes of Texas Gift Packs were awarded.

A Texas cowboy doll, made by Annabelle Vaughn was auctioned by Tom Burns. All over the minimum bid of \$65.00 was given to the Club. The doll sold to Howard Fletcher for \$115.00. Cecil Whitley proclaimed John and Lucile Britt as Honorary Texans. She presented John with a western hat and Lucile a bandana collar.

Following the Business Meeting, John Muehlbauer of California presented an entertaining and educational program on "Colors of Carnival". After the program the Hospitality Room was open and also rooms with glass for sale. On Sunday morning a drawing was held for a free nights lodging at the Hotel. Mike Bevel was the lucky winner.

Many thanks were expressed to Ruby and Don Staley and the Whitleys for making the arrangements for our fun-filled weekend.

Jane Brown
Secretary
TEXAS CARNIVAL GLASS CLUB

February 15 brought 36 members together for a nice luncheon and program using Hearts & Flowers and red glass for a Valentine theme. Ribbing versus plain backs on bowls and compotes in Hearts & Flowers pattern was discussed.

A door prize and several raffles were awarded. Table centerpieces made by Helen Quелlette, our hostess for this meeting, were of silk flowers with clever nosegays of Valentine candies distributed among the blossoms. A very nice touch and well received by lucky winners.

In memory of recent losses of carnival friends, Erma Shaputis, Charles Adams and Warren Hoster, the Club sent a contribution to a marine research foundation.

These three active and contributing members will be significantly missed in months to come by those who knew them well.

Interruption of personal friendships is enough sadness, but the combined knowledge and experience of these three carnival collectors is lost forever.

Memories are made in that sharing.

Diane Fry
San Diego

=====

ROSE BOWLS ON DISPLAY

On March 17, I presented a program covering 55 rose bowls, old and some new in all colors and patterns.

The Depression Glass Club of San Diego enjoyed learning more about Carnival collecting and I am invited once a year to share information with them.

It always brings a crowd and this time was no exception. 65 people were quite attentive and full of questions.

It is sheer pleasure to discuss our hobby with interested groups other than Carnival collectors and I urge each of you to make some time for this type of exposure. It is a perfect way of enticing others into this captivating mania called carnival "Pursuit".

Diane Fry,
President
San Diego Carnival Glass Club

Replete with a visiting Leprechaun to usher in St. Patrick's Day, our March 15 luncheon meeting was attended by 57 members and guests. Valarie Light pleasantly surprised us all as she "bounced" in, "dressed to the nines" in shocking green pointed cap, long tails, knickers, white stockings and black buckle shoes--the Wee-one Herself.

Kim Landry and Wanda Kelso brought their Millersburg collections for display. It was a virtual "Peacocks Parade" everyone enjoyed.

Our Show and Tell illustrated differences in the old and new Sunflower pin tray.

It was decided during the business meeting to send a Memorial contribution for Erma Shaputis and Charles Adams to San Diego State University Marine Research Foundation. We lost these two devoted carnival members in December and January. Their friendship & dedication is sadly missed by all of us.

Tom Sprain was our guest speaker. He read letters exchanged by two early carnival collectors before names for the glass had been established. Their astonishment when prices rose to \$2.00 for a choice piece of carnival was amusingly revealed. These letters were dated in the 1940's. Tom used color-charts to illustrate some terminology used by all of us in our methods of collecting. He also touched on tumbler collecting--old versus new.

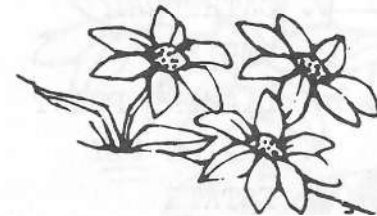
INTRODUCTION of his NEW CARNIVAL GLASS DESCRIPTION and PRICE GUIDE, 1987 EDITION was a sell-out of all copies brought to the meeting. He took orders for several more copies. This is the most complete itemized Price Guide to date for carnival collectors, so far as shapes, color, and size listings are concerned. Copies may be ordered direct: Tom Sprain, 613 Cordelia Circle, Vacaville, California 95688. Telephone: 1-707-448-2737. The price is \$20.00 postage included.

It was a great pleasure having Mable & Tom with us and we wish him tremendous sales success for this very finely detailed guide. The carnival glass door prize was won by Kathy Harris and raffles were awarded to Charles Hof and Shirley Timms. Out next meeting on June 14 will offer a program on water sets to be presented by Margarete Werdal, one of our Charter members and a very knowledgeable collector. We enjoy visitors any time you can attend our meetings.

Respectfully submitted:
Diane Fry, President

- APRIL 30, MAY 1 - 3 HEART OF AMERICA CARNIVAL GLASS ASSOCIATION CONVENTION, Holiday Inn, Lenexa, Kansas, 12601 West 95th Street, Lenexa, Kansas 66215
- MAY 14 - 16, 1987 KEYSTONE CARNIVAL GLASS CLUB CONVENTION at Penn Harris Motel, Camp Hill, Pennsylvania, Ruth Chronister, 633 Greenvalley Road, York, Pennsylvania 17403
- JUNE 4 - 7, 1987 LINCOLN LAND CONVENTION at Midway Motor Lodge-Airport, 5105 S. Howell, Milwaukee, Wisconsin 53207
- JULY 8 - 11, 1987 A.C.G.A. CONVENTION at Sherton - Canadiaigua Inn, Finger Lakes, 770 S. Main St., Canadiaigua, New York 14424, President Emma Tilton, Box 273, Gnadenhutten, Ohio 44629
- JULY 29 AUGUST 1, 1987 I.C.G.A. CONVENTION at Holiday Inn St. Louis West, I-270 at St. Charles Rock Road, Bridgetown, Missouri 63044
- AUGUST 6 - 9, 1987 PACIFIC NORTHWEST CARNIVAL GLASS CONVENTION Holiday Inn, Eugene, Oregon, Karen Engle, President, 35292 Oak View Dr., Brownsville, Oregon 97327
- OCTOBER 16 - 17, 1987 AIR CAPITAL CARNIVAL GLASS CLUB CONVENTION at the Sheraton Airport Inn, Wichita, Kansas

=====



KANSAS MEMBERS

R I E D E L A B G R E B L I T
 I D F G H I S T E G M A N Z E
 C R O M E R E L M N S K O P I
 H S O D T U M A E O P C D C R
 A D Z W D N A I R D A O E F H
 R S I H D S J I J M N C K L T
 D N M M N E O P A R G A N L U
 S R M S T U N H B I L L E R G
 O U E W E Y G Z R A E V D B C
 N B R I M N R D I Y R E A F G
 H I M J I K E L T E M N F W O
 R P A N K S D U T S W Y F O Z
 B A N C U D L S E A F G E O H
 I U J K H L E H U B B A R D M
 C L N O N W N H G U A V T Y P

1. ADRIAN
2. BASEY
3. BILLER
4. BRIM
5. BRITT
6. BURNS
7. CROMER
8. CUNNINGHAM
9. DODDS
10. ELDER
11. FADEN
12. GUTHRIE
13. HUBBARD
14. JAMES
15. KIME
16. KUHN
17. LACOCK
18. PAUL
19. POE
20. RICHARDSON
21. RIEDEL
22. ROWDEN
23. SPANGLER
24. TILBERG
25. TREFF
26. VAUGHN
27. WESTERVELT
28. STEGMAN
29. WOODY
30. ZIMMERMAN

MARCH QUIZ

A B L A R D E H T A C D
 M P C N O I S U L L I R
 A D R N E T T I K A A A
 R J F I L E M U M E O G
 Y A B A L L O O N S E O
 L C L F G S N I J K R N
 L C O M N D H O P W A E
 I B C R P R S O F A E L
 S E K O I N C A W T P Y
 W A I A B N S K L E A C
 D N E S T A T E F G R H
 T E K S A B J H K L G S

1. AMARYLLIS
2. APRIL SHOWERS
3. BALLOONS
4. BASKET
5. BLOCK
6. CATHEDRAL
7. CORINTH
8. DIAMOND POINT
9. DRA ON FLY
10. ESTATE
11. ELKS
12. EMU
13. FAN
14. FILE
15. GRAPE ARBOR
16. ILLUSION
17. INCA
18. JACOBAN
19. KITTEN
20. LEAF

***** CARNIVAL GLASS FOR SALE *****

Sterling Butz, 221 N. Adams St., Allentown, Pennsylvania 18104
 PHONE: 1-215-398-2875

W	EI Beaded Cable rosebowl	400.00
R	EI Peacock Lamp (no cloth shade)	500.00
G	EI Corn vase	275.00
A	EI Hobnail rosebowl (hard to find flaw on 1 hob)	200.00
AO	EI Three Fruits collar base bowl	550.00
P	EI Pansy bowl	35.00
M	EI "474" milk pitcher	65.00
M	EI Octagon goblet	25.00
AO	EI Daisy & Drape vase	250.00
G	EI Lustre Rose centerpiece bowl	40.00

Lee Bryant, Rt. #1, Box 109, Decatur, Indiana 46733
 PHONE: 1-219-639-3415

M	GI Little Fishes 10" footed bowl	105.00
M	GI Wreathed Cherry large oval bowl, dark color	65.00
PO	EI Wishbone & Spades 5" folded bowl	55.00
IB	GI Fine Cut & Roses candy dish, good feet	150.00
G	EI Leaf Chain 9" plate	110.00
A	EI Daisy & Plume candy dish (Blackberry interior)	75.00
CLM	GI Orange Tree 9" plate	90.00
M	GI Nippon 9" bowl, Basketweave	65.00
B	GI Peacock & Urn (Fenton) 9" bowl	110.00
CLM	GI Star Medallion 9½" plate	25.00

Sam & Anne Swierc, 520 East Ave., Dover, Delaware 19901
 PHONE: 1-302-736-6635

AQ	EI Acorn 7½" bowl, Fenton	70.00
MMG	EI Smooth Rays 8½" bowl, entire piece has deep marigold irid.	140.00
W	Persian Garden 5" bowl	60.00
M	EI Good Luck bowl, pie crust edge, Rib ext., deep color	125.00
G	EI Millersburg Peacock & Urn, BEAUTIFUL	300.00
B	GI Horseheads nut bowl	140.00
G	EI Dragon & Lotus spatula footed bowl, SUPER DEEP IRID.	90.00
B	EI Heart & Vine candy ribbon edge bowl	125.00
G	Hanging Cherries creamer, Millersburg	95.00

SEND S.A.S.E. LARGE SIZE FOR LIST OF OTHER PIECES FOR SALE

***** CARNIVAL GLASS FOR SALE *****

Hubert F. Shelton, Rt. 1, Box 290, Munfordville, Kentucky 42765
PHONE: 1-502-528-5893

CB	EI Peacock & Grape 8½" bowl, Bearded Berry ext. MINT	50.00
M	EI (N) Wishbone bowl, BEAUTIFUL PASTEL	75.00
M	EI Raspberry Wreath hat shape, basketweave ext., tiny chip on one flame	25.00
M	EI (N) Grape & Cable sherbert (stemmed ice cream)	30.00
P	EI Strawberry Spray bon bon	25.00
P	EI (N) Grape & Cable 7 piece water set, pitcher has small flake on edge of 1 thumbprint	325.00
R	EI 18 Panel Flute open compote, 6 1/8" Imperial Jewells	100.00
M	GI Waterlily & Cattails tumbler	22.00
P	GI (N) Grape & Cable tumbler	28.00
CB	EI Footed Orange Tree, no harm flake on back edge of foot	25.00

Jo Ann Mitchell, 6584 Williams Hwy., Grants Pass, Oregon 97527
PHONE: 1-503-862-2635

M	EI Lotus & Grape plate RARE (damage on one flute)	200.00
CB	EI Painted Apple Blossom tumbler	125.00
M	EI Thistle Fenton ice cream shaped bowl	38.00
B	EI (N) Basket	95.00
M	EI Pine Cone 6½" plate	40.00

Burney Talley, 1814 Slate, N.W., Albuquerque, New Mexico 87104
PHONE: 1-505-242-1261

R	H.O.A.C.G.A. Water Set	125.00
M	Wishbone Chop Plate, good color and scarce item	500.00
DM	Poinsettia milk pitcher, SUPER	95.00
M	Flute & Cane milk pitcher	125.00
A	Trout & Fly 6 ruffle bowl, very flat & super radium	425.00
P	Beaded Shell tumbler	65.00
W	Dahlia water pitcher & 1 tumbler, SUPER NICE SET	700.00
W	Peacock at the Fountain tumbler, SUPER	185.00
IG	Bushel Basket, round, NICE	295.00
PO	Peacock & Grape 8 ruffled bowl, collar base, FANTASTIC	575.00

***** CARNIVAL GLASS FOR SALE *****

Dave Sharp, 2271 Catalpa Dr., Dayton, Ohio 45406
PHONE: 1-513-276-5897

G	EI Hanging Cherries 10" ice cream bowl	185.00
A	EI Wishbone footed bowl	85.00
B	EI Iris compote	150.00
A	EI Fanciful ruffled plate	160.00
A	EI Persian Medallion large compote	150.00
G	EI Good Luck bowl	180.00
W	EI Hearts & Flowers compote	75.00
B	EI (N) Wildrose rosebowl	160.00
A	EI Butterfly & Fern tumblers, have 3, each	36.00
P	EI Lustre Rose tumbler	32.00

Steve Davis, 3331 Warpath Rd., Macon, Georgia 31201
PHONE: 1-912-741-4252

P	EI Grape & Cable powder jar bottom	27.50
P	GI Grape & Cable breakfast creamer	50.00
M	EI Vintage powder jar bottom	25.00
G	EI (N) Stippled Rays compote	25.00
P	EI Flute creamer	50.00
M	EI Grape & Cable punch cups, have 6. \$100 for all, or each	20.00
B	EI Peacock at the Fountain tumblers, each	30.00
M	EI Basketweave handled basket	35.00
G	EI (N) Singing Birds tumblers, have 2, no harm base nicks, each	20.00
M	EI Question Mark 2 handled nappy	25.00

Lydia & Ernest Caudle, Rt. 1, Box 292, State Road, North Carolina 28676
PHONE: 1-919-874-2519

EB	EI Poppy Pickle dish	69.00
B	EI Grape & Gothic Arches 7 piece water set	425.00
P	EI Imperial Grape 7 piece water set	450.00
P	EI Peacock at the Fountain creamer	85.00
P	EI Imperial Grape water carafe	105.00
EB	EI Good Luck bowl, with purple background	175.00
G	EI Sunflower footed bowl	45.00
A	EI Pony Head bowl	115.00
EB	EI Two Flower 2 handled on stem bon bon	69.00
P	EI Fine Cut & Roses rosebowl, MINT	85.00

***** CARNIVAL GLASS FOR SALE *****

Dick Hatscher, Box 261, Walnut Hill Rd., Bethel, Connecticut 06801
PHONE: 1-203-743-1468

M	EI Stag & Holly 9½" three footed plate	295.00
M	GI Many Stars 10" bowl	295.00
M	EI Fashion 7 piece water set	148.00
M	EI Flute & Cane punch cup, SCARCE	35.00
R	EI Grape & Cable bowl, SUPER	425.00
G	EI Wide Panel epergne	395.00
P	EI Small Season's Greetings Paradise Soda plate	168.00
B	EI Cherry Chain 6" plate	58.00
PO	EI Large Ski Star bowl	68.00
W	EI Pair of Heavy Shells, SCARCE, the pair	245.00

Donna Baker, 3110 S.W. Nye Ave., Pendleton, Oregon 97801
PHONE: 1-503-276-2749

B	EI (N) Bushel Basket, round	100.00
M	GI Butterfly & Berry pitcher	200.00
G	GI (N) Grape & Cable tumbler	70.00
A	GI (N) Grape & Cable tumbler	55.00
IG	EI (N) Corn vase (upper part frosty)	200.00
G	EI Peacock at the Fountain tumbler (base chip, ground)	100.00
G	EI (N) Grape & Cable 10" bowl, Basketweave exterior	80.00
B	EI (N) Grape & Cable banana boat (stippled, banded)	250.00
P	EI (N) Three Fruits plate, Basketweave back	100.00
B	EI (N) Peacock at the Fountain tumbler (2 pin heads on base)	50.00

SASE for list of other pieces

Georgia Martin, 324 Maylawn Ave., Wadsworth, Ohio 44281
PHONE: 1-216-337-7383

R	EI H.O.A.C.G.A. water set	145.00
R	EI 6 H.O.A.C.G.A. tumblers	35.00
R	EI H.O.A.C.G.A. Whiskey Decanter and 7 glasses	225.00
R	EI H.O.A.C.G.A. Loving Cups	45.00
IB	EI Corn vase H.O.A.C.G.A.	45.00
IG	EI H.O.A.C.G.A. Hatpin holder	45.00
DM	Imperial Grape water set, GOOD COLOR	120.00
DM	Banana bowl, good feet	125.00
DM	Panther 7 piece fluted berry set, feet good	275.00
DM	Grape & Cable (N) with thumbprint berry set	300.00

***** CARNIVAL GLASS FOR SALE *****

Nelson R. King, Rt. #1, Noel, Missouri 64854
PHONE: 1-417-475-3559, let phone ring 9 times

PB	EI (Pastel blue) Oriental Poppy water set. Oriental Poppy pattern is impressed in the blue in iridescent gold. All tumblers but 2 have an iridescent gold band around the top. Panelled pitcher is 14" tall and its' base is 5 3/4" in diameter. Very few have ever seen this set and many so called "experts" are confused by this very beautiful set	2,500.00
A	EI Grape & Cable 7 piece berry set	475.00
AMB	EI Basketweave Bushel Basket	450.00
A	EI Elk Head 6" plate dated 1910	850.00
G	EI Inverted Feather biscuit jar, small chip on lid	350.00
B	EI Hen on Nest Grape & Cable	450.00
A	EI Swan on Nest Grape & Cable	475.00
G	EI Trout & Fly bowl	500.00
B	EI Grape & Cable large ftd. bowl, Persian Medallion int.	475.00

Mr. and Mrs. J. C. Barker, Route 3, Box 163-BB, Savannah, Missouri 64485
PHONE: 1-816-662-2265

50 pieces of Carnival Glass for sale, excellent condition & iridescence.
Send S.A.S.E. for list

Jack K. Workman, 1432 Sycamore Lane, Wooster, Ohio 44691
PHONE: 1-216-263-1282

M	EI Mlsbg. 7 piece Diamond water set	350.00
M	EI Mlsbg. Many Stars ice cream shaped bowl	425.00
M	EI Mlsbg. small Peacock berry bowls, have 4, each	85.00
G	EI Mlsbg. Hanging Cherries large ice cream bowl	135.00
G	EI Mlsbg. Mayan bowl	60.00
G	EI Mlsbg. Peacock Tail Variant compote	80.00
M	EI Garland rosebowl	40.00
M	EI Persian Medallion rosebowl	50.00
A	EI Large size Tornado vase	235.00
A	EI Beaded Cable rosebowl, ribbed interior	65.00

***** CARNIVAL GLASS FOR SALE *****

Bruce & Darcy Hill, 943 SE 13th Ave., Forest Lake, Minnesota 55025
PHONE: 1-612-464-3684

M	EI Peacock at the Fountain butterdish	115.00
M	EI Grape & Cable tankard water pitcher, roughness on base	250.00
M	EI Lions bowl, ice cream shape	150.00
P	EI Good Luck ruffled bowl SUPER	175.00
B	EI (N) Bushel Basket	70.00
B	EI Grape & Cable stippled plate SUPER & VERY FLAT	490.00
G	EI Dragon & Lotus candy ribbon edge bowl	70.00
IB	EI Hearts & Flowers pie crust edge bowl	475.00
AO	EI Fruits & Flowers bon bon	390.00
AO	EI Three Fruits plate	1,250.00

J. Richard Brandt, 1313 Church St., Lititz, Pennsylvania 17543
PHONE: 1-717-626-7393 after 6:00 P.M.

G	LI Springtime tumbler	60.00
A	EI Tiger Lily tumbler	50.00
W	EI Grape & Cable 7 piece punch set, small size	1,700.00
M	EI Drapery rosebowl	325.00
G	EI Marilyn tumbler	500.00
M	GI Two Row Open Edge basket	18.00
A	LI Butterfly & Berry nut bowl	425.00
W	EI Floral & Grape pitcher	270.00
M	EI Sunflower bowl	28.00
M	EI Grape & Cable handgrip plate	50.00

Ted Sheibley, 304A Hillcrest Drive, New Cumberland, Pennsylvania 17070
PHONE: 1-717-938-6417

M	EI Hanging Cherries creamer	45.00
M	EI Hanging Cherries sugar with lid	85.00
M	EI Peacocks on the Fence stippled plate	325.00
M	EI Acorn Burrs table set complete	450.00
M	EI Peacock at the Fountain punch bowl and base	325.00
P	EI Grape & Cable perfume with stopper	550.00
B	EI Panther master berry bowl	425.00
G	EI Panther master berry bowl	650.00
A	EI Detroit 1910 Elks bowl	450.00
A	EI Wreath of Roses 6 piece punch set	500.00

***** CARNIVAL GLASS FOR SALE *****

Ken Osbon, 34931 S.E. Dodge Pk. Blvd., Gresham, Oregon 97080
PHONE: 1-503-663-4433

RO	(Red Opal) Blackberry hat	475.00
R	Panther ruffled sauce--really flat	525.00
R	Stippled Rays ice cream shaped bowl	325.00
AO	Dandelion mug	600.00
G	Fern compote	95.00
M	Orange Tree mug	32.00
M	Stork ABC plate	75.00
R	Little Flowers rosebowl (1 chip & 1 toe broken)	475.00
AO	Drapery rosebowl	225.00
AO	Hearts & Flowers compote	425.00

Ray Hitchcock, R.R. Box 301, Winterset, Iowa 50273
PHONE: 1-515-462-2074

B	EI Orange Tree loving cup	170.00
A	EI Ten Mums tight candy ribbon edge bowl	75.00
RA	EI Persian Medallion bon bon, VERY PRETTY	250.00
A	EI Persian Medallion tri cornered 6" plate	70.00
M	EI Blackberry Wreath tight candy ribbon edge square bowl dark	125.00
G	EI Blackberry Wreath 3 in 1 ruffle 10" bowl	75.00
PM	EI Holly plate	85.00
B	EI Horse Heads footed bowl	70.00
B	EI Mirrored Lotus bowl	60.00
B	EI Grape & Cable centerpiece bowl	200.00

Vaunda & Swede Tilberg, Box 596, Baxter Springs, Kansas 66713
PHONE: 1-316-848-3654

B	EI Blackberry Spray hat (jack in pulpit)	50.00
P	EI Millersburg Rays small bowl	60.00
P	EI Leaf Rays nappy	40.00
P	EI Bells & Beads bowl	65.00
W	EI Grapevine plate	75.00
M	EI Bullseye & Beads vase, fluted top	30.00
G	EI Long Thumbprint vase	40.00
A	EI Sunflower footed bowl	70.00
M	EI Panther small footed bowl	65.00
A	EI Dragon & Lotus footed bowl	65.00

***** CARNIVAL GLASS FOR SALE *****

Bob Slaughter, Route 2, Box 568, Graham, North Carolina 27253
PHONE: 1-919-376-9552 after 7:00 P.M. E.S.T.

R	EI Imperial Jewels console or large rosebowl, 5 3/4" opening, irid. inside only	75.00
M	EI Fentons Peacock at the Urn goblet, RARE	65.00
M	EI Butterfly & Berry creamer & sugar with lid, MINT	90.00
A	EI Fentons Butterflies two handled bon bon	47.50
LAV	EI Blackberry Bramble compote	37.50
A	EI Two Flowers spatula footed 7 1/2" bowl	50.00
A	EI (N) Peacock at the Fountain tumblers, have 5, each	35.00
CL	EI Shrine Champagne 1911 Rochester, N.Y.	75.00
G	EI Heavy Grape 8" plate	50.00
M	EI Horse Heads 7 1/2" plate	135.00

Mary C. Kesterson, 3020 Mesa Rd., Willow Park, Texas 76086
PHONE: 1-817-441-8410

W	EI White Beaded Shell mug, SUPER AND RARE	1,125.00
M	EI Brooklyn Bridge bowl	175.00
P	EI Grape & Cable cologne bottle, 2 each	150.00
W	EI Singing Birds mug	650.00
AO	EI Drapery rosebowl, pastel SUPER - SUPER	425.00
PM	EI (N) Peacocks bowl, pie crust edge, pink irid.	225.00
R	EI 5" Persian Medallion ice cream shape sauce, RARE	325.00
IB	EI Nippon bowl, pie crust edge	140.00
PM	EI Poppy Show bowl, 8 ruffles	250.00
P	EI Embroidered Mums bowl, 8 ruffles, SUPER IRID.	250.00

James & Judy Key, Rt. 1, Box 153B, Marianna, Arkansas 72360
PHONE: 1-501-295-6770

W	GI Peacock & Urn ruffled bowl	125.00
M	EI Three Fruits stippled 9" plate	125.00
P	EI Strawberry 9" plate, basketweave exterior	100.00
PO	EI Honeycomb rosebowl	180.00
M	EI Kittens cup & saucer	190.00
M	EI Butterfly & Berry 6" vase	35.00
P	EI Butterfly (N) bon bon, rib back	180.00
M	GI Kittens two sides up bowl	75.00
P	EI Three Fruits 9" plate, basketweave exterior	100.00
A	EI Vintage 6" ruffled bowl	15.00

***** CARNIVAL GLASS FOR SALE *****

Singleton Bailey, P. O. Box 95, Loris, South Carolina 29569
PHONE: 1-803-756-7495

A	Big Fish ice cream shape bowl	695.00
A	Big Fish candy ribbon edge bowl	595.00
A	Millersburg Peacock Mystery bowl (six ruffle)	195.00
G	Big Fish ice cream shape bowl	595.00
M	Cosmos Variet bowl	25.00
MMG	Daisy Wreath bowl	75.00
B	Carnival Holly 6 ruffle bowl	35.00
M	Waterlily footed sauce	15.00
G	Carnival Holly bowl 6 ruffle	35.00
A	Fenton Grape & Cable footed plate	45.00

Charles Wiltshire, 4603 22nd Ave., Kenosha, Wisconsin 53140
PHONE: 1-414-654-5249

W	EI Grape Arbor tumblers, have 3, tiny nick on base of one	250.00
---	---	--------

Pat Call, 34 Lovell Road, Stratham, New Hampshire 03885

Send S.A.S.E. for current list of Carnival Glass for sale

Harm Westerhuis, R.R. #1, Box 49, Platte, South Dakota 57369
PHONE: 1-605-337-3631

M	EI Maple Leaf 4 piece table set	245.00
M	EI Maple Leaf 7 piece ice cream set	125.00
M	EI Maple Leaf 7 piece water set	250.00
B	EI Painted Cherry Blossom & Cherries 7 piece water set SUPER	225.00
W	EI Peacock at the Fountain spooner	95.00
M	EI 6 Swirl tumblers, set	60.00
M	EI Plaid 9" bowl	50.00
B	EI Grape Delight rosebowl	65.00

***** CARNIVAL GLASS FOR SALE *****

Bette Farrell, 1620 Venice Street, Granite City, Illinois 62040
PHONE: 1-618-931-4333

M	GI Interior Poinsettia tumbler	250.00
M	EI Lions six ruffle bowl	80.00
M	EI Grape & Cable tumblers, have 6, each	30.00
W	GI Peacock at the Fountain compote	750.00
B	EI Apple Blossom & Twigs ruffled plate	200.00
M	GI Imperial Grape pitcher	60.00
A	EI Three Fruits 12 sided plate	90.00
B	EI Lattice & Grape tumbler	30.00
G	EI Peacock & Grape 8½" ice cream shape bowl	65.00
W	EI Poppy Show plate, FANTASTIC COLOR	450.00

Ed Buschini, Rt. 2, Box 2786, Zillah, Washington 98953
PHONE: 1-509-829-5854

P	EI Peacock at the Fountain 7 piece water set	595.00
P	EI Grape & Cable sweetmeat	195.00
P	EI Raspberry milk pitcher	175.00
P	EI Millersburg Nesting Swan ruffled bowl	250.00
M	EI Cannonball Vt. pitcher, RARE	240.00
M	EI Frosted Block (USA) square bowl	40.00
PO	GI Flowers & Beads 6 sided plate	95.00
PO	GI Flowers & Frames handgrip bowl	25.00
AMB	EI Stag & Holly large ball footed bowl	425.00

Ed & Sharon Binstock, P. O. Box 351, Presque Isle, Maine 04769
PHONE: 1-207-764-3612

G	Singing Birds tumbler	30.00
P	Grape & Cable footed plate	95.00
G	Leaf & Beads whimsey	90.00
B	Butterfly & Fern tumbler	48.00
AQ	Louisa nut bowl, chips	25.00
G	Louisa rosebowl	46.00
P	Grape & Cable footed bowl	35.00
M	Butterfly & Berry master berry bowl	50.00
P	Double Stem Rose footed bowl	44.00
W	Double Stem Rose bowl	75.00

***** CARNIVAL GLASS WANTED *****

Dave Sharp, 2271 Catalpa Dr., Dayton, Ohio 45406
PHONE: 1-513-276-5897

W	Orange Tree punch base
	Harvest Poppy compotes
P	Strawberry epergne lily
IG	Grape & Cable medium punch base
P	Hearts & Flowers compote
M	Leaf & Little Flowers compote

Dick Hatscher, Box 261, Walnut Hill Rd., Bethel, Connecticut 06801
PHONE: 1-203-743-1468

Hearts & Flowers ANYTHING
Rose or Poppy Show ANYTHING
ANYTHING nice in Carnival Glass

J. C. McPherson, Jr., 3125 Ramsgate Rd., Augusta, Georgia 30909

Fine Cut Rings jam jar with lid
Moxie Bottle
Owl Bottle
African Shield jar with metal lid
Oxford mustard pot with lid
American Apothecary jar with lid
Lovebirds perfume bottle with stopper

Stanley & Beverly Schnepf, R.R. #1, North Manchester, Indiana 46962
PHONE: 1-219-774-3634

B Double Loop open sugar

Jo Ann Mitchell, 6584 Williams Hwy., Grants Pass, Oregon 97527
PHONE: 1-503-862-2635

IG EI Nippon pie crust edge bowl

44

45

***** CARNIVAL GLASS WANTED *****

Mrs. W. M. McGarrah, P. O. Box 256, Cane Spring, Arkansas 72718

- A Bottom to Fashion powder jar
- A Panelled Dandelion water pitcher
- A Bottom to Grape & Cable butter dish
- A Bottom to Grape & Cable cracker jar

Charlotte Tweddell, 4908 Darnton Ln., Louisville, Kentucky 40216
PHONE: 1-502-447-1670

- M,PO Fenton Holly bowl
- M,W Fine Cut & Roses rosebowl
- G Acorn Burrs creamer

Ted Sheibley, 304A Hillcrest Drive, New Cumberland, Pennsylvania 17070
PHONE: 1-717-938-6417

- G Peacocks on the Fence bowl
- IB Peacocks on the Fence bowl
- IB Peacock at the Fountain berry bowls

J. Richard Brandt, 1313 Church St., Lititz, Pennsylvania 17543
PHONE: 1-717-626-7393 after 6:00 P.M.

- A Grape & Cable perfume stopper
- A0 Lid for Grape & Cable powder jar
- G Drapery rosebowl

Bruce & Darcy Hill, 943 SE 13th Ave., Forest Lake, Minnesota 55025
PHONE: 1-612-464-3684

- Peacock at the Fountain punch set in Ice-Blue, White, Green or Aqua Opal
- IG Wishbone footed bowl
- Millersburg Mystery bowl in ice cream shape with radium finish

***** CARNIVAL GLASS WANTED *****

Singleton Bailey, P. O. Box 95, Loris, South Carolina 29569
PHONE: 1-803-756-7495

- M,G Millersburg Peacock master ice cream bowl
- M,A Millersburg Peacock compote
- M Big Fish bowl, ice cream shape and square
- V Big Fish bowls
- M,A Millersburg Peacock & Urn chop plates
- M,A Millersburg Peacock Shotgun bowls
- ANY whimsey shape Big Fish, Trout & Fly or Millersburg Peacock pieces
- B Millersburg Peacock & Urn bowls
- ANY radium Big Fish bowls

Harm Westerhuis, R.R. #1, Box 49, Platte, South Dakota 57369
PHONE: 1-605-337-3631

- G EI Wreath of Roses with Persian Medallion interior punch bowl top

Ed & Sharon Binstock, P. O. Box 351, Presque Isle, Maine 04769
PHONE: 1-207-764-3612

- M Poinsettia & Lattice bowl
- B Poinsettia & Lattice bowl
- G (N) Peacocks plate
- IB (N) Peacocks pie crust edge bowl
- G Wishbone pie crust edge bowl
- B Wishbone collar base ruffled bowl
- P Wishbone tumbler
- G Springtime tumbler
- LAV Hearts & Flowers pie crust edge bowl
- G Poppy Show bowl

Michael J. Basey, 4315 Adams, Kansas City, Kansas 66103
PHONE: 1-913-432-2460 after 6:00 P.M.

1978 and 1979 H.O.A.C.G.A. table favor mugs
Back issues of the Bulletin from the beginning of the Club
Newsletter until 1981

***** CARNIVAL GLASS WANTED *****

Mr. and Mrs. Patrick Kroll, 3714 W. Wrightwood, Chicago, Illinois 60647
PHONE: 1-312-384-8475 (Not a dealer)

Any of the following Carnival Glass light shades in any color,
gas or electric:

Daisy Chain
Mayflower
Starlyte
Thistle
Pearl Lady
Imperial Grape
Astral
Ribbon & Bows
Imperial Daisy
ANY hand-painted marigolds

