

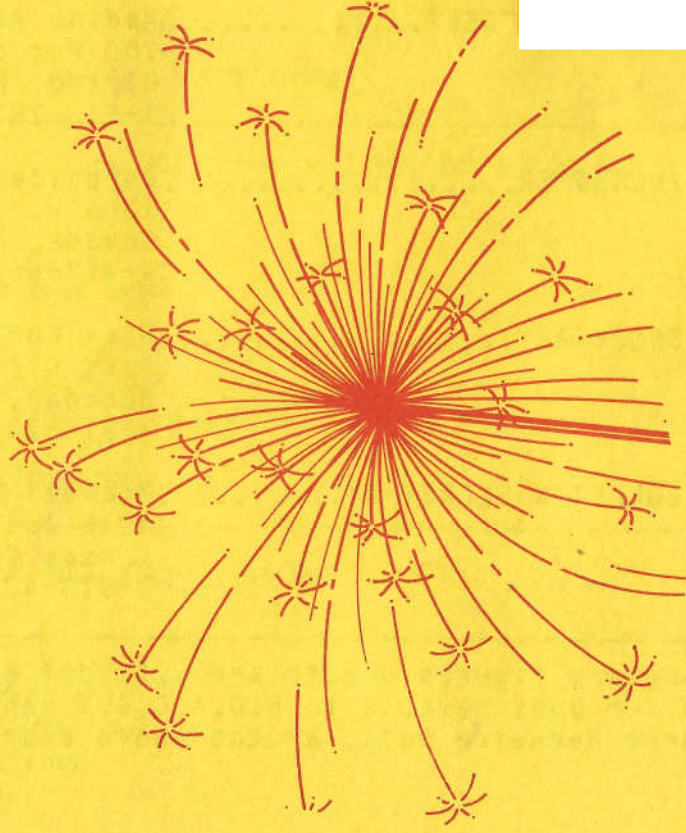
HOACCGA

Heart Of America Carnival Glass Assoc. Inc.

RETURN ADDRESS

Michael J. Basey
Bulletin Secretary
H.O.A.C.G.A.
4315 Adams
Kansas City, Kansas 66103

4th of July - 87



First Class Mail
U.S. Postage
PAID
Kansas City, Mo.
Permit No. 4352





Heart Of America Carnival Glass Assoc.

Membership June to May, per couple or single
DUES: \$20.00 U.S. & CANADA
\$35.00 FOREIGN

Published the 15th
of each month

- PRESIDENT.....Robert Grissom
7900 Crescent
Raytown, Missouri 64138
1-816-356-5320
- VICE-PRESIDENT.....Nadine Paulsen
700 Purdom
Olathe, Kansas 66061
1-913-782-1313
- TREASURER.....Berneice Bell
1305 W. Wight
Nevada, Missouri 64772
1-417-667-4866
- SECRETARY.....Glen Fortney
Post Office Box 303
Buckner, Missouri 64016
1-816-249-5208
- BULLETIN SECRETARY.....Michael Basey
4315 Adams
Kansas City, Kansas 66103
1-913-432-2460

All monetary figures quoted are U.S. dollars. Please make checks for dues payable to H.O.A.C.G.A. and send them to the Treasurer Berneice Bell, at the above address.

MINUTES OF THE H.O.A.C.G.A. MONTHLY MEETING IN JUNE

At 2:00 P.M. June 28, 1987, President Robert Grissom called the monthly meeting of the Heart of America Carnival Glass Association to order. Due to the absence of the Secretary, no minutes were read. Treasurer Berneice Bell read the Treasurers Report and it was placed on file for audit. This Report was for the end of the fiscal year, May 31, 1987.

While quantities last, we have some back issues of the Bulletin for sale at \$1.50 each. If you are interested, please contact the Bulletin Secretary, Michael J. Basey.

President Grissom welcomed George and Rose Rydings of Excelsior Springs, Missouri to our meeting. We were most happy to see them and hope to see them again next month.

The Board of Directors is trying to make an effort to get all the local members to the meetings. We always have programs on glass and encourage all local members to attend every monthly meeting possible. We would like to have your thoughts as to how we can get all the local people back to the meetings.

President Grissom made a suggestion that we possibly have a meeting in February with the Wichita group and possibly one in October in the Des Moines, Iowa area. The Des Moines meeting would be an over-night meeting.

The meeting was adjourned for a short time for all of us to enjoy the cookies and coffee provided by President Grissom.

After refreshments, we all enjoyed the beautiful marigold Carnival Glass. We thank each and every member for bringing glass for the Program and making it such a success!

The next meeting will be July 26, 1987 at 2:00 P.M., at the Raytown City Hall. The Program for July will be on Millersburg Carnival Glass. Hope to see everyone there!

Michael J. Basey
Secretary Pro-Tem

=====

SOUVENIR PORTRAIT BELLS

The H.O.A.C.G.A. Commemorative Souvenir Bell Series honoring companies who made the original Carnival Glass, now consists of three different bells. It is believed this series will be a nice addition to any collection while also recognizing those pioneers who made our Carnival Glass. These men were responsible for the ideas and production of the glass we enjoy collecting today.

The first bell in the Series, made in 1985; commemorates the Northwood Glass Company. This bell is Ruby Red and has a portrait of Harry Northwood. 400 of these were made and only less than 10 are still available.

The second bell, made in 1986; commemorates the Fenton Art Glass Company. It was made in Ice Green Opalescent and has a portrait of Frank L. Fenton, founder of the Fenton Glass Company. 400 of these were made.

The third bell, made in 1987; commemorates the Millersburg Glass Company. The color is Cobalt Blue, which is a rare color for Millersburg glass, and has a portrait of John L. Fenton, founder of the Millersburg Glass Company. Only 300 of these were made.

All of these bells utilize the Circle Scroll pattern, are dated, and contain the Fenton logo.

The 1988 bell will honor the Imperial Glass Company with a portrait of its' founder. The Fenton Art Glass Company is the only company still in the business of making glass.

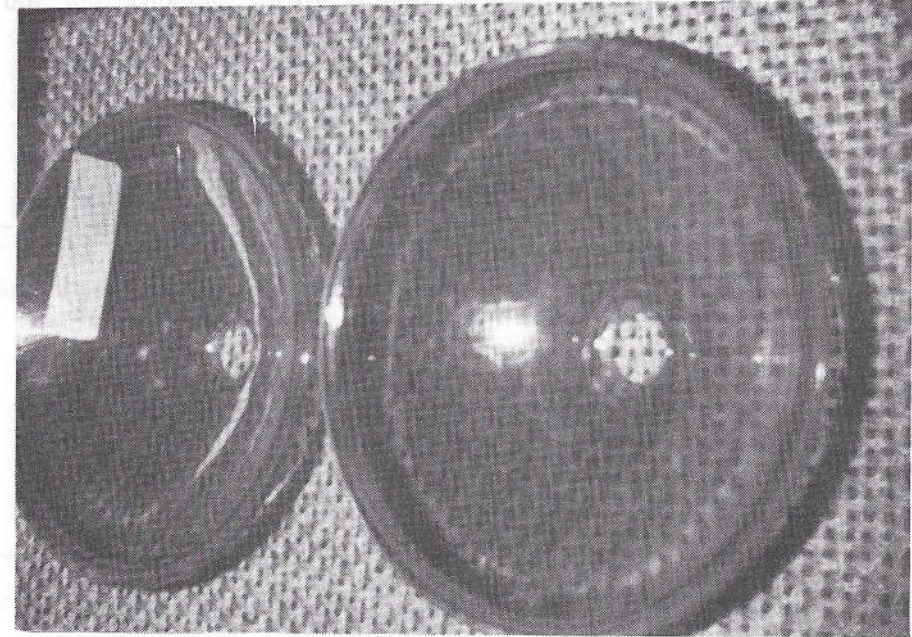
If you have not ordered your Souvenir Bells, they may be ordered from John Britt, 3048 Tamarak Drive, Manhattan, Kansas 66502. The cost is \$35.00 plus \$2.50 postage for each bell.

Robert L. Grissom,
President,
HEART OF AMERICA CARNIVAL GLASS ASSOC.

LETTERS FROM OUR MEMBERS.....

While at a flea market, Don found a set of Carnival Glass head light reflectors from an antique car. Enclosed is a photo of them. Please let me know if you or anyone else knows anything about them. THANKS

Kay and Don Kemp



=====

SMALL PLATES SECTION H.O.A.C.G.A. PATTERN NOTEBOOK

The first section (48 patterns) of the Small Plates section of the H.O.A.C.G.A. Pattern Notebook is now available. This section contains colored photographs and identifies 48 different Small Plate patterns, by maker and colors.

The cost is \$4.00 plus \$1.00 for postage. Please send your order to the Treasurer Berniece Bell, 1305 W. Wight, Nevada, Missouri 64772.

The second and final section will be published in 1988.

=====

MORE LETTERS FROM OUR MEMBERS.....

Dear Michael:

First, I would like to tell you what a nice job I think you have been doing as Bulletin Secretary.

I am enclosing a photo of a white carnival vase which I have had for several years and I would like to know if anyone knows the pattern and value of this piece. THANK YOU VERY MUCH.

Leslie Martin
Flat River, Missouri 63601



(Vase is 9½" tall, 5" diameter top.
Has 4½" base, Pebble design,
6 piece mold.

We received the following lovely letter from a most lovely lady, Norene Duran.....THANKS NORENE!

Dear Michael:

I would like to take this time and opportunity to thank each and every person who works so hard on the "Bulletin" and to also thank each person that put in so much time and effort to make the Heart of America Carnival Glass Convention such a wonderful success. For me, it was an experience I'll always treasure. I'd also like to thank the judges of this years Convention for awarding me as one of the first place winners in the "All One Maker" category. What a wonderful thrill for me and for my husband Tony.

I'd also like to publicly thank the people who helped me. First of all, Tony; who helped me load and unload and set up my display. Then, I had so much help from Tom and JoEllen Rotondi. They drove all over Milwaukee to find me a lavender sheet to cover my table and drove to a nearby city to find my Imperial Crown, and to another city to get my signs made. Then, in addition to all that, JoEllen made the gorgeous pillow on which the crown sat.

Then I still had more help. Steve Davis flew in from Macon, Georgia to bring his purple Heavy Grape punch set, which he solemnly swore he would not sell me; but he did trade it to me. Then there was Don and Connie Moore who, as usual; were their gracious selves and loaned me their purple Chatelaine pitcher. (There I wasn't so lucky. No way would Don part with the Chatelaine) However, Buck Walraven of Michigan did find me one so I do now have one. Also, the pretty little flower ornament hanging on the front of my table was made by Connie Moore and given to me. At home it hangs in my front window and it's lovely there.

And last but not least, thanks to my brother Burney Talley for lending me his purple Diamond & Sunburst wine set and the purple Imperial Paper Weight, which somehow I just can't remember to take them back to him, so he finally decided to let me pay for them.

After reading this over, I realize I probably wouldn't have even got in the running without so much help, so thanks to each of you. I love you all.

Also a big thanks to Don and Connie Moore for the wonderful display of rare glass. The speech was great Don! Tony is at M. G. M. trying out for the new John Wayne part right now. Sure hope he gets it. Anything would be better than ranching, the way cattle prices are at present.

TONY & NORENE DURAN

P.S. Also thanks to all of the wonderful people who admired and complimented us on our display.

We received the following letter in response to JoEllen and Tom Rotondis' recent article concerning Hearts & Flowers pieces with the Northwood trademark:

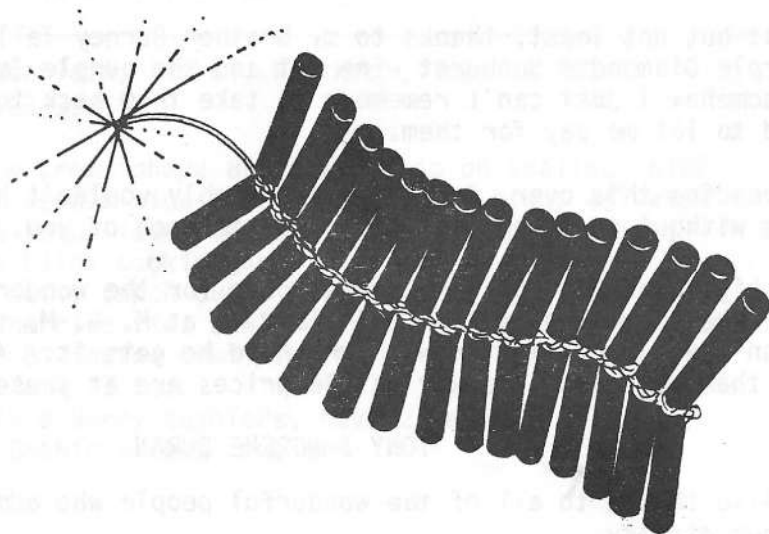
Dear Michael:

In reference to the Rotondis' article about the Hearts & Flowers carnival pattern in the recent issues, we decided to check a plate we have had for several years. After reading of so many responses they had and no (N) mark, and his question "Does anyone have one or has seen one?"

After moving several pieces to check on color etc. we almost wondered if it was going to be worth it. In the first place, it is a lovely purple base color and pretty iridescence, almost a deep blue to look at it. To our surprise, it does have a plain (N). The pattern on the back is the ribbed pattern. After checking over and over for any damage, we didn't find any. We know we didn't used to notice little pin heads etc. as seems the custom nowadays.

Anyway, thought this might help on the survey being done. We surely are grateful to all these nice people who take time to do research. Every H.O.A.C.G.A. issue we learn something.

Sincerely,
BYRON & GRACE RINEHART
CHARLESTON, WEST VIRGINIA



EDUCATIONAL TUMBLER SERIES

By John & Lucile Britt



PHOTO #1, THE "OMNOBUS" TUMBLER, FRONT SIDE

We are showing two pictures of this seldom seen pattern in order for you to see both sides of the tumbler. It is an intaglio or imitation cut glass type pattern. The "Omnobus" tumbler, sometimes called "Quebec", is not described or shown in any of the carnival glass books, to the best of our knowledge. The pattern however, is found in "U.S. Glass from A to Z" by William Heacock and Fred Bickenhouser. It is a previously unlisted pattern in which William Heacock has named "Omnobus". See page 168 in the above mentioned "U.S. Glass" book for details on this pattern. Here we find a descriptive reprint from an old U.S. Glass catalog that shows this pattern in a number of pieces.

It is really not surprising to me that we find pieces of these U.S. Glass patterns in other countries, especially Mexico and South American countries. We know that the U.S. Glass Company sent export catalogs to those countries with a considerable amount of descriptive literature printed in Spanish. I know of no other iridised pieces in this pattern, but I suspect that they do exist and will likely show up sometime in the future.

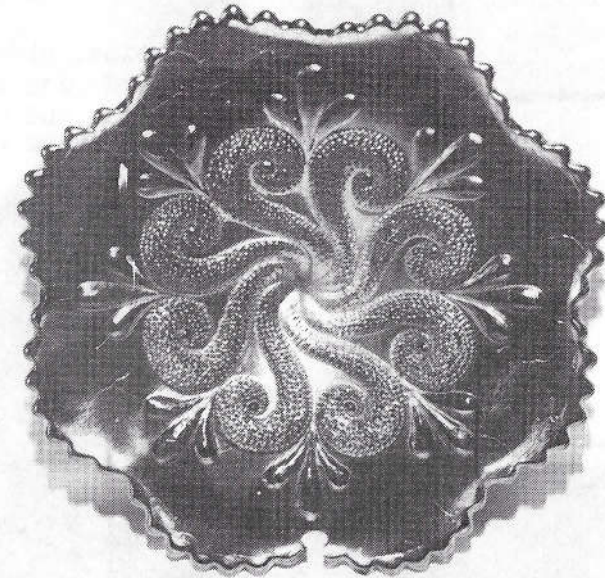


PHOTO #2, THE OMNOBUS" TUMBLER, BACK SIDE

Only five of these "Omnobus" tumblers have ever been reported in carnival glass as far as we know. The first two were discovered in Canada. Later three examples came to the United States from Argentina. The tumblers that have been seen are all in a good marigold color. I consider them as rare and they would make a fine addition to any carnival glass collection.

The descriptive material that is printed here on the "Omnobus" tumbler is article #114 in this series. Next month we will cover the "Imperial Flute" tumbler.

JOHN & LUCILE BRITT



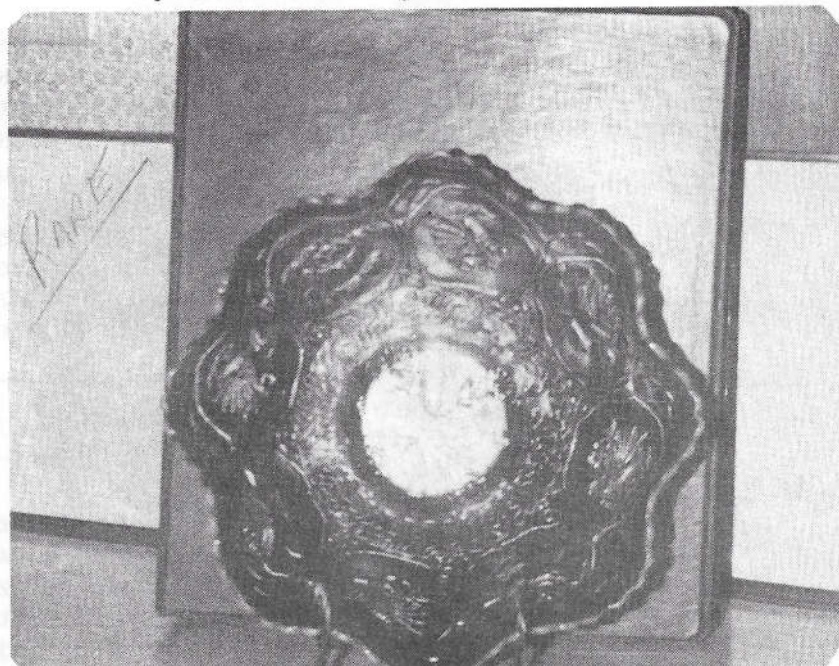
QUESTION MARKS PLATE

The "Question Marks" is a Dugan-Diamond pattern. This little dome footed plate, that is shown above, is very unusual in that it contains three different patterns. As you can see from the photo, the top pattern is "Question Marks". The reverse pattern is called "Georgia Belle" which is a very pretty pattern that is made up of peaches and leaves. The third pattern is on the outside of the dome foot and is known as the "Puzzle" pattern. This little plate is seven inches wide and 1 3/4 inches high. They have been reported in purple, white, marigold and peach opalescent. These plates are usually very flat with excellent color and iridescence. Edwards lists these footed plates as rare. Hartung does not list the "Question Marks" in a plate, so evidently she had never seen one. I have seen the "Question Marks" bon bons and compotes quite frequently, but it is only seldom that you will come across a plate in this pattern. The bon bons and compote pieces in this pattern usually do not feature the three different patterns, however.

In conclusion, the little "Question Marks" plate is a very beautiful and desirable piece of carnival glass and I am sure that any collector would be very proud to have one of these in their collection.

JOHN & LUCILE BRITT

RARITIES AND SELDOM-SEEN
By Ivan & Betty Mitchell



AQUA OPAL DRAGON & LOTUS BOWL - FENTON

The Fenton Art Glass Company made a small amount of Aqua Opal glass as compared to the Northwood Company. The opalescence usually does not extend as far from the edge as the Northwood opalescence.

Never the less, Fenton made some very beautiful aqua opal. Most of the opalescence on this bowl is around the edge, the balance of the bowl being "nutmeg".

I have compared our bowl with others and find the same colors on every one and have found most of them with no more opalescence than ours has.

This bowl is about 9" in diameter and is worth about \$700.00.

We gave about \$500.00 for ours some 3 or 4 years ago, so they have increased greatly in price.

WHAT'S RARE OUT THERE

by
JoEllen & Tom Rotondi

What's rare out there? And should you really care? The answer to this latter question is, yes, you should definitely care about what's rare in old carnival glass. By rare, we mean any item that is in short supply, relative to the total amount of glass available in the marketplace. We believe that all prudent collectors, including beginners, should include at least a few rarities in their collection. Why? If for no other reason, than simply to help preserve and increase the value of your collection. Experience with glass and other lines of collectibles has shown that, over the long term and especially during periods of inflation, demand and prices tend to rise significantly for desirable items that are also limited in supply.

Unfortunately, there seems to be a growing belief that most rarities in carnival glass are already high priced and cemented into collections, thereby making them unavailable to the majority of collectors. This is just not the case. Most carnival collectors will still have ample opportunity to find reasonably priced rare glass, even at flea markets or swap meets. The trick is to recognize the rarity when you see it.

To identify "what's rare out there", you need to learn all you can about carnival glass patterns and their incidences. Often, you must go beyond the information contained in the standard reference books. When you attend an auction, antique show, or convention, don't just admire the glass on display. Observe it. Examine the details. Talk with fellow collectors and dealers. Take notes, if necessary, but keep a permanent record of what you see and hear. Specialize your interests. It won't be long before you have built up a store of knowledge that will enable you to distinguish the rare from the commonplace.

As a guideline for identifying types of carnival rarities, we have listed a few categories with examples that may be of interest to you. These examples are extracted from empirical data we have accumulated over the years regarding Northwood glass, and are not intended to be all-inclusive in nature.

BY INTERIOR PATTERN: Regardless of shape or color, certain carnival glass patterns were originally produced only in very limited quantities, resulting in their relative scarcity today. One Northwood example is the Embroidered Mums pattern. If we exclude the most commonly found items in this pattern, which are blue and amethyst/purple bowls, everything else in it is rare.

(continued)

BY STIPPLING: Several Northwood interior patterns come with both a stippled and non-stippled background on bowls or plates. Some examples include Good Luck, Grape & Cable, Grape & Cable Variet, Peacocks, Peacock at the Urn, Strawberry, and Three Fruits. In general, the stippled pieces are more scarce than the non-stippled ones. Depending on the pattern, certain colors of stippled pieces are also more rare than others. For example, stippled Peacocks bowls in purple and green are much rarer than those in marigold and blue.

BY REVERSE PATTERN: Many Northwood bowls and plates are found with a plain or basketweave reverse pattern. These two exteriors may be either common or rare, depending on their corresponding interior pattern. For example, the plain exterior is very rare in Hearts & Flowers and Embroidered Mums, especially in plates. Likewise, the basketweave exterior is quite difficult to find in the Hearts & Flowers and Peacocks patterns.

BY COLOR: Certain odd colors are very rare in Northwood, such as iridized custard (pearl), ice blue opalescent, sapphire blue, smoke, olive green, and a true lavender. Of the more well known colors, ice blue, ice green, and aqua opalescent comprise the three rarest color categories, when viewed in terms of total available Northwood carnival glass.

BY COLOR WITHIN PATTERN: Several primary Northwood patterns are quite rare in certain colors. Some lesser known examples of rarities in otherwise commonly found colors are: Greek Key plate in purple; Nippon bowl in green; Poppy Show bowl in green; Strawberry bowl and plate in blue; Wishbone epergne and footed plate in green.

BY SHAPE: Within any given Northwood pattern, if plates and/or piecrust bowls exist, they are typically rarer than ruffled bowls. One possible exception to this generalization involves pastel colored Nippon bowls, which seem to be more prevalent with piecrust edges than with ruffled ones. Also, when Northwood designed the same shaped bowls with both a fluted and a plain (non-fluted) edge, as they did with Peacocks collar based ruffled bowls and Three Fruits spatula footed bowls, they apparently produced much less of the plain edged varieties.

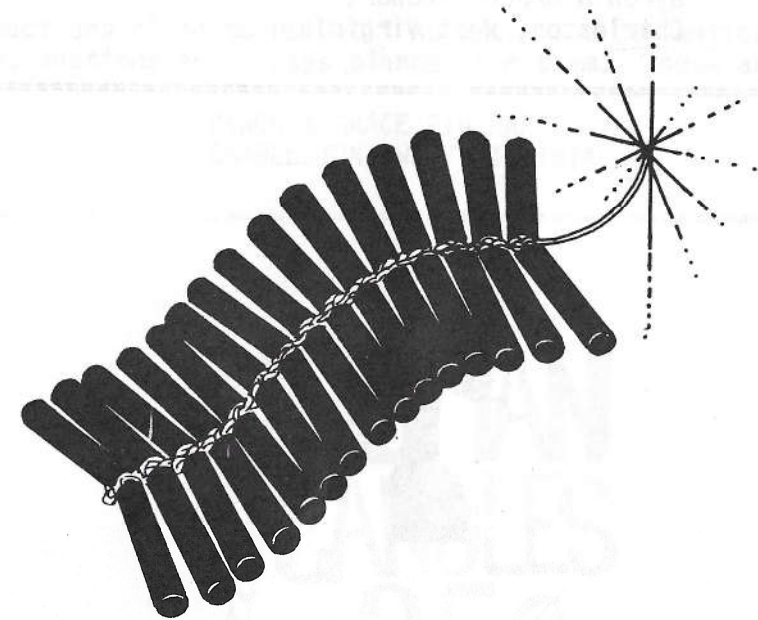
BY CONDITION: Even if some items in a carnival glass pattern are readily available in the marketplace, they may be quite scarce in excellent condition. By condition, we mean the color, quality, iridescence, and overall appearance of a piece. As an illustration, the only ice green item produced in large quantities by Northwood was the Peacocks plate. These plates are not particularly hard to find in average condition; however, a plate in

(continued)

excellent condition (e.g., with good dark ice green color, super multi-color iridescence, and no chips or dye streaks) is rather scarce, and will often command a premium price when found.

In conclusion, there are carnival glass rarities out there waiting to be discovered, if you know what to look for. The nice part is that some of these items may be overlooked by other potential buyers who have failed to recognize their scarcity and value. If, however, you should happen to find an ice blue Peacocks stippled plate with basketweave exterior and a plain outer edge, be sure to call us first.

JoEllen & Tom Rotondi



GOOD - BYE

The sad news came in May 25, 1987 about Delbert Hunter passing away quite suddenly the day before. The Hunters have been such a part of our carnival world since the beginning.

It surely hurts to give up these good friends and Mr. Hunter was a special person. He and wife Jerry always were so faithful to Conventions and to auctions. Their lovely display of carnival "Down on the Farm" won top awards at each Club Convention. We do feel the loss deeply and know the whole carnival group will miss him too.

Our deepest sympathy to Jerry and daughter. The address is:

Jerry Hunter
R.R. #2
Rochester, Indiana 46975

"The depth of your loss cannot be measured, only shared by those who deeply care."

Byron & Grace Rinehart
Charleston, West Virginia

=====



NEW CLUB FORMS IN SACRAMENTO

Let me share with you the exciting news of a new carnival glass club which recently has been formed in the Sacramento area of northern California. Local members have been getting together informally now for several years, but now it's (un)official! This new organization has officially been named "The Club." An acceptable alternative name of "A Club" has been also approved. The alternative was chosen so that when the cry for assemblage of "Let's have A Club meeting!" is proclaimed, we are correct in all matters important (or not).

Now for the rules:

1. There are no rules
2. There are no officers
3. There are no dues
4. There are no By-Laws (or does Rule #1 cover this?)
5. Meetings will be held at the home, or homes, of one, or several, of the members.
6. Items to be discussed at meetings:
 - a. Carnival glass
 - b. People involved with carnival glass
 - c. Other items
7. Members attending meetings must bring at least one piece of show-and-tell glass (but they don't have to).
8. Meetings will be held when someone wants to.
9. All of the members (or just some of them) will be told of an impending meeting, unless it's a toll call. In that case, it is the un-notified member's responsibility to find out about the meeting.

Think of the possibilities! No hassling over raising the dues to cover postage. No congressional junkets to the souvenir maker's plant. No one angry over not getting a window room at convention. No complaints over how bad the food was and how much it costs. No troubles funding people to be officers. Perhaps our rules should be considered for other clubs?

This last year our new club has been most successful. We've had numerous meetings. We usually meet at my house or Helen and Leland Bell's, have instant (decaf) coffee, talk carnival for an hour or two, wait for Leland to finish the chores and then adjourn to the Gourmet China restaurant in Rocklin (a suburb of Roseville, a suburb of Citrus Heights, a suburb of Sacramento, home of the Kings) for chicken cashew, Kung Pao chicken, fortune cookies and tea (Bob has two beers).

New club in Sacramento continued)

Charter members of The Club (or A Club) include the Bells, the Schneiders, Ruth Moore, the Masseys, the Aldridges, the Beilbys, the Griffiths, Marion Mabry and myself. Charter memberships will be available as long as we have The (A) Club. Please call or write one of the officers (see Rule #2) or just show up (see Rule #9).

JOHN MUEHLBAUER

=====

NEW BOOKS ON CARNIVAL GLASS

ROBE'S CARNIVAL GLASS MAIL AUCTION CATALOGS

Published every other month. Each catalog offers approximately 200 pieces of Carnival Glass, thoroughly described, with satisfaction guaranteed. 6 issues for \$15.00 including postage. Order from Robe, 201 W. Coventry Ct. #119, Glandale, Wisconsin 53217

A CARNIVAL OF IRIDESCENT LUSTER BUTTONS by Ruth M. Clark

147 pages include researched introduction, more than 850 drawings of old Carnival Glass buttons, indexed. Price is \$10.00 U.S. (plus \$1.00 postage in U.S., Canada, and surface overseas. Overseas air mail postage is \$4.00) Order direct from Ruth M. Clark, 2723 Canyon Oaks Ct., Temple, Texas 76502.

CARNIVAL GLASS AUCTION PRICE REPORT FOR 1986 A listing of over 3,000 prices from 1986 auctions. Listed by Hartung name. Information includes description, shape, color, sale price, date of auction, auctioneers and sellers name. This years report will include a section on pastels. When ordering, please specify 1986 report. The 1984-85 price report is still available. Either report may be ordered for \$8.00 postpaid. Overseas delivery add \$1.00. Order direct from Tom & Sharon Mordini, 36 N. Mernitz Ave., Freeport, Illinois 61032.

A NEW CARNIVAL GLASS REFERENCE BOOK WRITTEN BY DON MOORE

This book is a collection of the writings of Don Moore, as published originally in the Heart of America Carnival Glass Association Newsletters. 175 pages, 225 black and white photos. Price is \$12.50 (\$1.00 postage U.S. & Canada, \$2.00 overseas) Order direct from: Don Moore, 2101 Shoreline #462, Alameda, California 94501

THE NEW ENGLAND CARNIVAL GLASS ASSOCIATION CONVENTION

TIME: Sept. 11, 12, and 13, 1987
PLACE: Quality Inn, Chicopee, Mass. (Exit 6 MA Turnpike)
THEME: "Rainbows from the past"

2:00 P.M. 9-11-87 Hospitality Room Opens
7:00 P.M. Welcome dinner and Banquet followed by Guest speakers, John & Lucile Britt

10:00 A.M. 9-12-87 Show and Sale open for viewing and purchasing. Hospitality room to be open all day.

6:30 P.M. Tom Burns Auction, with preview previous.

8:00 9-13-87 Breakfast, special announcements.

This time coincides with Brimfield timing. For added information, please call or write:

Betty E. Palmer
71 Lyman Street
So. Hadley, Ma. 01075
PHONE: 1-413-536-4319 evenings

=====

NEWS FROM THE AIR CAPITAL CARNIVAL GLASS CLUB

We had a very nice meeting this time at the Charles and Anna Belle Vaughn home in Baldwin City, Kansas. Our attendance was not too good but we enjoyed all of the good food and companionship.

Several of our out-of-town folks were able to attend and we are always pleased when they can come and be with us.

Mr. and Mrs. Poe brought some very nice pieces to show us and for us to help identify. Charles and Anna Belle Vaughn had just bought some pieces the day before the meeting and we all enjoyed seeing those pieces also.

We have four new members who have joined our Club in the past month and we welcome them to our Club. We hope they can attend some of our meetings and participate in our Club activities.

Donald E. Kime
President

TAMPA BAY CARNIVAL CLUB NEWS

Our May 17th meeting was held at the new home of Nick and Maria Vafladis in Palm Harbor, Florida. The invocation was given by Naomi Calkins. Seven members were in attendance and we all enjoyed a delicious buffet luncheon. Maria's honey baked ham was the best I have ever tasted. Thanks Maria and Nick for a lovely meeting place.

Our Secretary-Treasurer's report was presented by me; due to the illness of our friend, Shirley Conyers. I have talked to Shirley and Tiny several times and she is feeling a little better, but still recuperating slowly. We miss you Shirley and Tiny.

Alan and Libby Winslow were also absent due to illness. We hope they are feeling better.

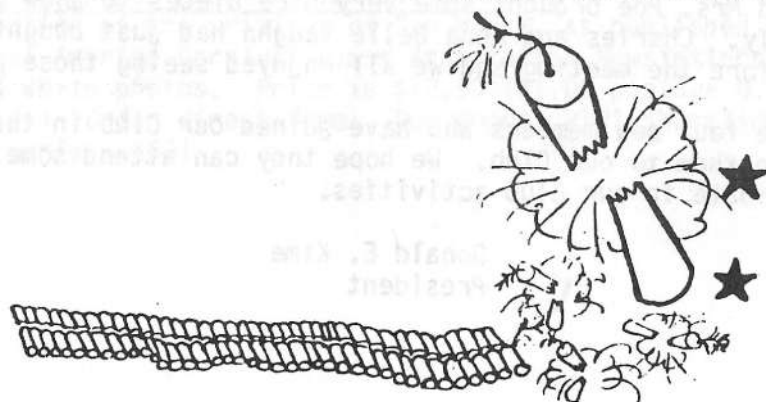
Ruth DeVito, our Charter President, is recuperating nicely. I hope she is able to return to our meetings in the fall.

Our 1988 Mini Jamboree was the topic of conversation at the meeting. All letters and proposals were taken into consideration. Maria Vafladis was asked to seek information for accommodations around Clearwater. She accomplished the task quickly. Tentative reservations for our functions were made at the Ramada Inn, U.S. 19, Clearwater for February 12, 13, and 14, 1988. All other details will be completed in the fall.

Our Club meetings were adjourned until September or October. I will notify you of the next meeting.

Have a happy summer traveling, visiting and looking for Carnival glass. See you all at the A.C.G.A. Convention. HAVE FUN!

Ruby E. Pitt
President



Tom Burns' announcement of Dick and Jewel Bennetts' carnival coming up for sale on June 19 and 20, had us making plans to go. We met the Bennetts several years ago and knew they had a sizeable carnival collection. Jewel loved the little Kittens pieces, as we always have.

Leaving early Friday to look around Sugar Creek and Millersburg with the Heeleys, then back to New Philadelphia to talk with the Grahams, who had spent the winter in Florida.

A good crowd gathered by preview time. Lots of interest in the rare Lotus Land bon bon. The Frys from California have the only other one known and they came to the auction to get the one listed. It sold for \$1,100.00, so they have two now. Several out-of-state people came and believe about 65 bidding numbers. Tom and fellow back-up auctioneer Bill Richards sold over 200 pieces Friday night. We did get a little Kittens piece. All the Kittens seemed to sell pretty good. A blue cereal bowl at \$270.00.

We had to leave Saturday morning for some other events back at our hometown so missed the sale on Saturday. We heard it went along O.K. but do not know gross. A pretty red Vintage bowl went for \$1,350.00. Several write-in bids too.

No more auctions close to us until August. The Conventions loom ahead, so of course, auctions are always planned for them. These are busy days.

BYRON & GRACE RINEHART
CHARLESTON, WEST VIRGINIA



SAN DIEGO COUNTY CARNIVAL CLUB NEWS

The Second Anniversary of the San Diego Club was celebrated on June 14 at our quarterly luncheon meeting with 62 members and guests attending. The door prize was a 1987 Fenton version of the Swirl Hobnail rosebowl in blue carnival awarded to Angie Cash. Two carnival raffle prizes were awarded to Ardonna Bucher and Carol Smith. Six non-carnival raffles went to Margaret Halbert, Jack & Gerry Brown, Don Clark and Michael Sponsler. Lee Brackensiek won a special Fathers Day drawing.

Our program was presented by Margarete Werdal. Club members provided a magnificent display of 79 water sets in 38 different patterns, and YES, Every One was thoroughly discussed. Such an assemblage of glass as this creates great comparison study.

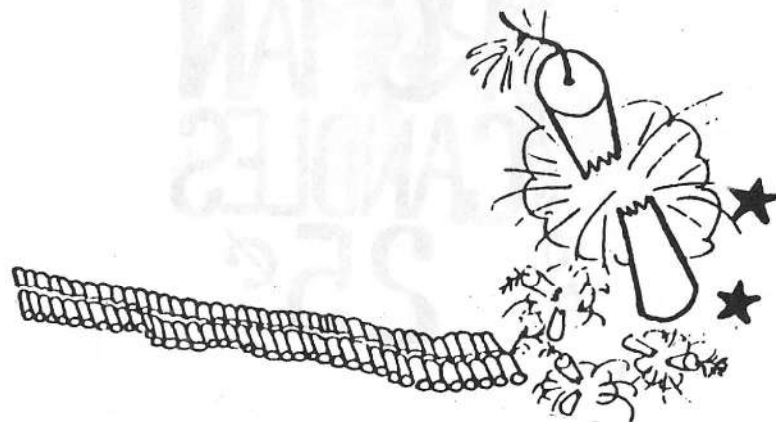
Club meetings with this group are on a par with convention seminars. I am gratified with the eager participation from all members.

Three new members joined our ranks at this meeting and we would be honored further to accept memberships from anyone in carnival circles across the country.

September 20, Marie McGee, eminent Millersburg collector from Fresno, California will be with us to present another of her fine programs in the effervescent style we know and admire.

We look forward to a fine time of sharing and would enjoy any of you as visitors if you should be in the area.

Respectfully submitted:
Diane Fry, President



Dennis Keck, 126 Cherry St., Punxsutawney, Pennsylvania 15767
PHONE: 1-814-938-3472 or 7426

M	(N) Drapery rosebowl, VERY SCARCE	295.00
G	Pinecone 6 1/2" plate, SCARCE COLOR	125.00
P	Grape & Cable large covered compote, SUPER COLOR	295.00
P	Grape & Cable covered Sweetmeat, SUPER COLOR, small flat flake under lid rim	145.00
M	(N) Raspberry tumbler, nice color	27.00
M	(N) Peacock at the Fountain tumbler, medium color	27.00
M	Grape & Lattice tumbler, nice	22.00
P	Flute #2 tumbler, SUPER COLOR & RARE, minor base bruise	65.00
W	Target 9" vase, frosty with excellent iridescence	55.00
SM	Star Medallion milk pitcher, nice	75.00

Lawrence E. Ashley, Rt. 3, Potsdam, New York 13676
PHONE: 1-315-265-2425 ALL ITEMS ARE MINT WITH EXCELLENT IRIDESCENCE

A	Hearts & Flowers ruffled bowl with Basketweave exterior	250.00
A	Grape Arbor 7 piece water set	695.00
*	*Butterscotch (N) Bushel Basket	325.00
B	Grape & Gothic Arches creamer	75.00

Barbara Barker, Rt. 3, Box 163-BB, Savannah, Missouri 64485

40 pieces of Carnival Glass for sale. Excellent iridescence.
Send SASE for current list.

Ted Sheibley, 304A Hillcrest Drive, New Cumberland, Pennsylvania 17070
PHONE: 1-717-938-6417

G	GI Diamond Lace berry bowl	20.00
IB	EI Grape & Cable 9" stippled bowl, piecrust edge	1,200.00
G	EI Fine Cut & Roses rosebowl	110.00
B	EI Singing Birds mug	75.00
P	EI Many Fruits 8 piece punch set	725.00
IB	EI Wishbone footed bowl	1,000.00
M	EI Peacocks on the Fence stippled piecrust edge bowl	120.00
P	EI Loganberry vase	360.00
R	EI Two Row Open Edge basket, two sides up	250.00
M	EI Stag & Holly spatula footed bowl	75.00

SEND LARGE SASE FOR LIST

***** CARNIVAL GLASS FOR SALE *****

Burney Talley, 1814 Slate NW, Albuquerque, New Mexico 87104
PHONE: 1-505-242-1261

M	"474" goblet	100.00
M	Holly plate	65.00
M	Beauty Bud Vases, the pair	40.00
M	Flute & Cane milk pitcher, RARE	95.00
P	Town Pump, CHOICE COLOR	600.00
B	Elks Bell - 1911 Atlantic City	1,100.00
AMB	Stag & Holly large ice cream shape, ball ftd. SCARCE COLOR	250.00
G	Rose Columns vase, SCARCE	875.00
G	Good Luck piecrust edge bowl, Basketweave exterior	235.00
AQ	Orange Tree mug, standard size, VERY NICE	215.00

Richard Cinclair, 3605 S. Echo Trail, Plano, Texas 75023
PHONE: 1-214-596-0014

B	EI Persian Medallion 5" bowl	30.00
A	EI Fine Cut & Roses candy dish	40.00
G	EI Daisy & Plume footed rosebowl	65.00
G	EI Peacock & Grape footed bowl	45.00
A	EI Peacocks bowl, small flake, GORGEOUS COLOR	150.00
A	EI Grape & Cable bobby pin cup	150.00
G	EI Beaded Cable rosebowl	115.00
A	EI Star of David & Bows bowl	45.00
A	EI Nesting Swan	225.00

Charles Perry, 8641 Lakeshore Drive, Southaven, Mississippi 38671
PHONE: 1-601-342-1694

M	Butterfly & Berry table set - complete	175.00
M	Diamond Lace 6 piece berry set	80.00
W	Wreathed Cherry master berry bowl, red cherries, frosty	185.00
A	Grape & Cable whimsy compote (N) good color	75.00
M	Mikado compote	80.00
M	Orange Tree 5 pc. water set, small flake on pitcher foot, pitcher has super color	295.00
M	Carnival Hobstar butter, creamer, spooner	100.00
A	Grape & Cable covered compote, no lid, fine color	85.00
M	"474" milk pitcher	95.00
SM	Imperial Grape 10" handled basket NICE	70.00

***** CARNIVAL GLASS FOR SALE *****

Ray Hitchcock, R.R. #1, Box 301, Winterset, Iowa 50273
PHONE: 1-515-462-2074

B	Grape & Cable centerpiece bowl	175.00
M	"474" tumblers, have 4, each	30.00
P	Puzzle bon bon, OUTSTANDING	75.00
M	Blackberry Wreath large square candy ribbon edge bowl	100.00
G	Blackberry Wreath 11" candy ribbon edge bowl	60.00
R	Vintage nut dish (small chip)	175.00
V-RA	Persian Medallion bon bon (base shows vaseline, balance RA - SUPER)	175.00
W	Garden Path Variet 6" plate	250.00
B	Orange Tree plate	135.00
B	Captive Rose plate	165.00

SEND SASE FOR 100 PIECE LIST

Ed & Judy Kasper, 2567 Loomis Drive, San Jose, California 95121
PHONE: 1-408-224-4349 after 6:00 P.M. California time

G	EI Dragon & Lotus, footed & ruffled 8"	90.00
A	GI Coin Dot bowl, candy ribbon edge	40.00
M	EI Windflower bowl, collar base, ruffled, 8½"	35.00
G	EI Lotus & Grape bowl, spatula footed	75.00
A	EI Dragon & Lotus, footed & ruffled 8"	75.00
M	EI Dragon & Lotus, ice cream shaped, 8½"	50.00
V	EI Open Edge hat	75.00
M	EI Wreathed Cherry master berry	90.00
M	EI Coin Dot bowl, candy ribbon edge (tight)	40.00
M	PI Horses Head bowl, ruffled, 7"	55.00

Mr. & Mrs. Ernest Caudle, Rt. 1, Box 292, State Road, North Carolina 28676
PHONE: 1-919-874-2519

PO	GI Ski Star large berry bowl	69.00
P	GI Peacock at the Fountain punch bowl base	39.00
B	GI (N) Round Basket	65.00
EB	GI Fruits & Flowers bon bon	49.00
EB	GI (N) Poppy pickle dish	49.00
A	GI Pony Head bowl	99.00
A	GI Peacock at the Fountain creamer	69.00
B	GI Hen on Nest, English, OLD	49.00
M	EI Grape & Cable butterdish top	45.00
M	EI Hand Grip Wild Strawberry plate	49.00

Bev Franzen, 18550 Echo Way, Gladstone, Oregon 97027
PHONE: 1-503-655-9223

M	EI Singing Birds mug	45.00
G	FI Acanthus bowl	20.00
SM	EI Diamond Ring bowl	20.00
G	EI Wreath of Roses compote	40.00
M	EI Fruit & Flowers bon bon	30.00
G	EI Leaf & Beads rosebowl	50.00
M	EI Tree Bark pitcher and 6 tumblers	30.00
G	FI Heavy Grape 8" plate	20.00
W	EI Basket, 8 sided, flake on rim	35.00
VAS	EI Grape & Cable bowl, flake on collar base	30.00

Lee Bryant, Rt. #1, Box 109, Decatur, Indiana 46733
PHONE: 1-219-639-3415

P	Peacock & Urn 8½" ruffled bowl, Millersburg, radium	300.00
M	Stag & Holly giant rosebowl	275.00
M	Fashion giant rosebowl	75.00
PO	Double Stem Rose ruffled bowl	75.00
P	Petals compote	60.00
G	Grape & Cable/Persian Medallion int. large fruit bowl, FENTON	325.00
M	Star Medallion milk pitcher	30.00
G	Daisy & Plume with Blackberry int. candy dish	65.00
P	Autumn Acorn 8" ruffled bowl	40.00
B	Holly 7½" ruffled bowl	42.50

Diane Haire, 10209 E. Ave. S-8, Littlerock, California 93543
PHONE: 1-805-944-1964

M	EI Acorn Burrs punch set, top, base & 6 cups	425.00
G	EI Panelled Dandelion pitcher & 1 tumbler	475.00

John Gibney, 3423 First Avenue S.W., Cedar Rapids, Iowa 52405
PHONE: 1-319-396-7900

P	EI Acorn Burrs punch bowl, base & 9 cups	975.00
P	EI Peacock at the Fountain covered butter dish	175.00
P	EI Orange Tree breakfast set	100.00
G	EI Inverted Feather cracker jar	160.00

Sterling Butz, 221 N. Adams St., Allentown, Pennsylvania 18104
PHONE: 1-215-398-2875

P	EI Diamond Lace water glass	40.00
M	EI Grape & Cable fernery	900.00
A	EI Greek Key 5 piece water set	925.00
G	EI Holly Whirl 1 handled nappy	60.00
A	EI Marilyn 7 piece water set	1,150.00
M	EI Stag & Holly spatula footed bowl	40.00
B	EI Grape & Gothic Arches 7 piece water set	575.00
M	EI Wild Rose Syrup jar	500.00
M	EI Swirl Hobnail spittoon	450.00
A	EI Swirl Hobnail spittoon	500.00

Garth L. Irby, 3415 Leola, St. Louis, Missouri 63139
PHONE: 1-314-781-1535 after 6:00 P.M.

P	Wreathed Cherry spooner	60.00
M	File spooner	50.00
A	Amaryllis compote	125.00
P	Flute toothpick holder	60.00
P	Imperial Grape water pitcher	300.00
AQ	Holly hat	45.00
VAS	Holly hat	55.00

David L. Sharp, 2271 Catalpa Dr., Dayton, Ohio 45406
PHONE: 1-513-276-5897

B	EI Embroidered Mums bowl	225.00
B	EI Grape & Gothic Arches sugar	85.00
A	EI Butterfly & Berry 10" bowl	175.00
PO	EI Ski Star tri cornered bowl	90.00
M	EI Pretty Panels tumbler (N)	60.00
M	EI Star of David & Bows bowl	45.00
A	EI Oriental Poppy tumbler	50.00
G	EI Blackberry Open Edge hat	85.00
M	EI Grape & Cable hat shape	40.00
PO	EI Beaded Panel tri-cornered compote	85.00

***** CARNIVAL GLASS FOR SALE *****

Nelson R. King, Rt. #1, Noel, Missouri 64854
 PHONE: 1-417-475-3559, let phone ring 9 to 12 times, please

B	EI Stork in the Rushes water set	1,050.00
EB	EI Grape & Cable stippled 9" plate	850.00
PG*	EI *Pastel green Strawberry 9½" stippled plate	750.00
B	EI Peacocks on the Fence 9" plate, heavy dark blue	700.00
A	EI Embossed Scroll 9" plate	350.00
B	EI Apple Blossom & Twig 9" plate	350.00
B	EI Imperial Grape ruffled plate	275.00
PO	EI 2 handled bon bon	475.00
W	EI Vining Twigs small bowl	90.00
G	EI Four Flowers 9" plate	750.00

James & Judy Key, Rt. 1, Box 153B, Marianna, Arkansas 72360
 PHONE: 1-501-295-6770

AQ	EI Holly hat	60.00
M	EI Kittens spooner	125.00
G	EI Sailboats ruffled bowl	50.00
G	EI Millersburg Hanging Cherries butter dish	225.00
B	EI Fenton Open Edge basket	45.00
M	EI Fenton Open Edge basket	25.00
M	EI Pony bowl	55.00
W	GI Fenton Peacock & Urn ruffled bowl	125.00
G	EI Millersburg Cosmos 6" bowl	55.00
G	EI Fenton Butterfly bon bon, Horlacher on base	80.00

Norene Duran, Box 107, Ocate, New Mexico 87734
 PHONE: 1-505-666-2237

PO	EI Persian Garden berry set, all pieces ruffled, SUPER	600.00
M	EI Hearts & Flowers ruffled bowl, DARK & SUPER	375.00
M	EI Diamond & Sunburst wine set, 8 pieces	375.00
P	EI Heavy Grape square bowl, SCARCE	550.00
P	EI Rose Show bowl	475.00
P	EI Butterfly & Tulip square shallow bowl	1,650.00
G	EI Multi-Fruits & Flowers punch set (5 cups)	1,750.00
G	EI Panelled Dandelion water set, 7 piece, SUPER	650.00
IG	EI Hearts & Flowers compote, RARE	800.00
BO	Scales ice cream shape bowl	275.00

SEND SASE FOR LIST OF SALE GLASS

***** CARNIVAL GLASS FOR SALE *****

John Muehlbauer, 7051 La Costa Lane, Citrus Heights, California 95621

SEND SASE FOR LIST OF CARNIVAL GLASS FOR SALE

Mary C. Kesterson, 3020 Mesa Rd., Willow Park, Texas 76086
 PHONE: 1-817-441-8410

M	EI Lion bowl, 7" ice cream shape, dark marigold	95.00
M	EI Hearts & Flowers compote, NICE	135.00
M	EI Hearts & Flowers bowl, ruffled	325.00
IG	EI (N) Peacocks plate	410.00
P	EI (N) Peacocks plate	450.00
M	EI Rose Show plate, SUPER	450.00
R	GI Orange Tree bowl, flat, 8 ruffled	895.00
M	EI (N) Peacocks bowl, ruffled	225.00
PO	EI Persian Garden plate, 6", SUPER NICE	285.00
AO	EI Hearts & Flowers compote, pastel	395.00

Ed & Sharon Binstock, P. O. Box 351, Presque Isle, Maine 04769
 PHONE: 1-207-764-3612

P	Mikado compote, SCARCE COLOR	270.00
G	Three Fruits plate	185.00
M	Nesting Swan bowl	142.00
G	Wishbone footed bowl	62.00
AQ	Louisa nutbowl, 2 chips	25.00
G	Grape & Cable (N) ruffled bowl	70.00
M	Three Fruits stippled bowl	43.00
M	Whirling Leaves ruffled bowl	45.00
G	Whirling Leaves ruffled bowl	70.00
M	Butterfly & Berry creamer	43.00

Larry & Wanda Riley, 108 Ashland Ave., Paducah, Kentucky 42003
 PHONE: 1-502-898-3582

PO	EI Raindrops ruffled bowl	80.00
M	EI Wreath of Roses punch cup, Persian Medallion interior	15.00
M	EI Lattice & Grape tumblers, have two, one light one dark	15.00 20.00

***** CARNIVAL GLASS FOR SALE *****

Steve Davis, 3331 Warpath Rd., Macon, Georgia 31201
PHONE: 1-912-741-4252

M	Grape & Cable cookie jar	225.00
M	Waterlily & Cattails water pitcher & 1 tumbler, SCARCE	450.00
M	Fashion 8 piece punch set	185.00
G	Grape & Cable large open compote	375.00
B	Fenton Peacock & Urn ruffled bowl, SUPER	125.00
B	Round-Up flat plate	275.00
P	Vineyard pitcher & 1 tumbler	425.00
P	Tiger Lily pitcher, gold hilites	350.00
W	Wide Panel epergne lillies - have 2, each	85.00
M	Star Medallion milk pitcher	45.00

SASE FOR LIST OF CARNIVAL FOR SALE, LAY-A-WAY OK (60 days)

Harm Westerhuis, R.R. #1, Box 49, Platte, South Dakota 57369
PHONE: 1-605-337-3631

M	Golden Flowers (2) vases or jars, each	35.00
M	Grape & Cable spatula footed plate	45.00
M	Butterfly & Berry berry bowl	47.50
M	Pansy one handled nappy	20.00
PO	Stippled Flower bowl	50.00
B	Vintage fernery, have 2, each	47.00
G	Vintage bowl 6"	40.00
P	Three Fruits plate	100.00
P	Three Fruits plate, stippled	135.00
M	Three Fruits plate, stippled	120.00

Don & Barb Chamberlain, Box 64, Winthrop, Iowa 50682
PHONE: 1-319-935-3925

B	Holly ice cream shape 8½" bowl, chip on scallop, NICE	15.00
W	Imperial Jewels Wide Panels compote 5" high, 4½" wide	60.00
A	Dragon & Lotus ice cream shape flat 8" bowl	50.00
M	Illinois Daisy cookie jar	50.00
G	Grape & Cable punch cups, have 6, each	30.00
M	Dugans Cherries ftd. bowl, chip under leg, may be clambroth	18.00
M	Wishbone 8" footed bowl	38.00
A	Peacock Tail 7½" bowl	38.00
B	Butterfly & Berry tumblers, have 2, each	35.00
M	Grape & Gothic Arches tumbler	20.00

***** CARNIVAL GLASS FOR SALE *****

Dick Wetherbee, 847 Stafford St., Rochdale, Massachusetts 01542
PHONE: 1-617-892-4420

PO	EI Dugans Indented Interior Swirl 6" vase, UNUSUAL	75.00
P	EI (N) Fruits & Flowers 10" master berry & 1 sauce dish	110.00
B	EI Peacock & Grape 8½" bowl, 8 flutes, SUPER	65.00
M	EI Pansy Spray 9" ruffled bowl, A BEAUTY!	27.00
P	EI (N) Grape & Cable 10" 3 ftd. fluted centerpiece bowl	285.00
G	EI Captive Rose 8" bowl, candy ribbon edge	57.00
PO	EI Caroline/Smooth Rays interior 9" fluted bowl PRETTY	52.00
P	EI Dugans Cherries/Cherry Wreath 9" 3 ftd. bowl, SUPER	70.00
M	EI Panther master berry & 5 matching sauce dishes, the set	245.00
CLM	EI Star Medallion milk pitcher, GREAT IRIDESCENCE	30.00

SEND SASE FOR OVER 100 piece list

Roy & Bev Johnson, 631 E. Morgan Ave., Milwaukee, Wisconsin 53207
PHONE: 1-414-481-6137 after 4:00 P.M.

13 different small size Fenton Two Row Open Edge Baskets. All are mint. Most are ruffled, a few have jack-in-the-pulpit edges. Colors: Red, Ice-Blue, Ice-Green, Aqua, White, Lavender, Vaseline, Blue, Amethyst, Green, Amber, Black Amethyst & Marigold. Will sell collection for \$1,150.00, no single sales.

Dick Wetherbee, 847 Stafford St., Rochdale, Massachusetts 01542
PHONE: 1-617-892-4420

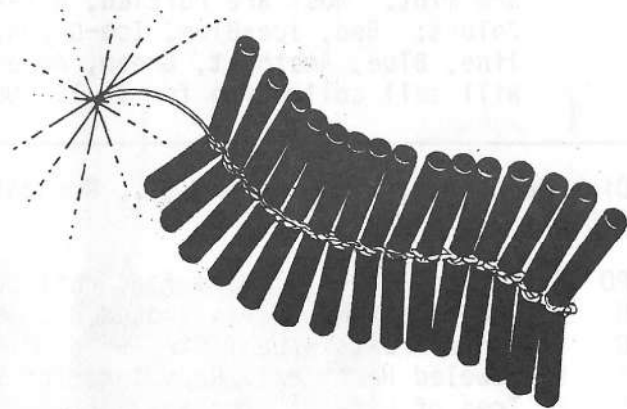
PO	EI Single Flower 9" dome ftd. ruffled bowl, VERY PRETTY	45.00
B	EI Grape Delight 6" six footed nut bowl, NICE & PERFECT	95.00
G	EI Three Fruits w/Leaf Ctr. 9" dome ftd. bowl, hard color to find	45.00
P	EI Jeweled Heart ext./Rays interior 6" ruffled dish PRETTY	40.00
M	EI Tree of Life 5½" rosebowl, NICE COLOR	25.00
P	EI Stippled Petals 9" dome ftd. bowl, VERY PRETTY	60.00
PO	GI Stippled Single Flower 7½" handgrip plate	45.00
SM	EI Diamond Ring 9½" bowl, GREAT IRIDESCENCE	24.00
P	EI Wishbone/Rings & Ruffles 8½" three ftd. bowl, A NICE ONE	78.00
G	EI (N) Leaf & Beads/Fine Ribbs int. 3 ftd. nut bowl, SUPER	42.00

*NOTE: Due to lateness of arrival last month, Mr. Wetherbee's ad did not appear, so we are printing both ads in this issue.

***** CARNIVAL GLASS FOR SALE *****

Bob Slaughter, Rt. 2, Box 568, Graham, North Carolina 27253
PHONE: 1-919-376-9552 after 7:00 P.M.

M	EI Northern Star card tray	20.00
AO	EI Imperial Grape tumblers, 3, each	45.00
M	LI (Or HA) Scale Band 6 piece water set	165.00
DM	EI (N) Three Fruits plate	50.00
IB	EI Cartwheel compote with crackle int.	25.00
W	EI (N) Fine Cut & Roses with Fancy interior footed candy dish (foot may be pro smoothed)	50.00
PO	EI Question Mark handled bon bon, radium, some tiny scratches on face), pretty	25.00
B	EI Illusion bon bon	45.00
M	EI Millersburg Cherries ice cream shaped bowl, SCARCE SIZE	45.00
PO	EI Ski Star dome based handgrip shallow bowl or plate	65.00



***** CARNIVAL GLASS WANTED *****

Dennis B. Keck, 126 Cherry St., Punxsutawney, Pennsylvania 15767
PHONE: 1-814-938-3472 or 938-7426

W	Peacock at the Fountain punch base
IG,IB	Grape & Cable punch base (mid size)
G	Wishbone epergne base
P	Grape & Cable whiskey stopper
G	(N) Drapery rosebowl
M	Acorn Burrs punch top or sell base
G	Acorn Burrs butter lid or sell base
G	Peacock at the Fountain spooner
M	Grape & Cable whiskey decanter, have stopper
P	Memphis punch bowl or sell base

Gloria Pfeiffer, 219 Delamaine Dr., Rochester, New York 14621
PHONE: 1-716-266-1273 after 6:00 P.M.

M	Field Flower water pitcher
M	Orange Tree footed sugar bowl and cover
M	Dahlia sugar bowl and cover
G	Lustre Rose creamer or spooner

Stephen D. Grubb, Rt. 1, Box 405, Tabor City, North Carolina 28463
PHONE: 1-919-653-3327 after 6:00 P.M.

M	Bouquet water pitcher
M	Orange Tree punch bowl base and six (6) punch cups
M	Imperial Grape punch cups - four (4)

Alan & Lorraine Pickup, 531 Holiday Avenue, Hazelwood, Missouri 63042
PHONE: 1-314-895-3430

M	Leaf Tiers spooner
M	Leaf Tiers butter dish
B	Orange Tree butter BOTTOM ONLY
G	Springtime sugar LID ONLY
M	Grape & Cable powder jar LID ONLY

***** CARNIVAL GLASS WANTED *****

Ted Sheibley, 304A Hillcrest Drive, New Cumberland, Pennsylvania 17070
PHONE: 1-717-938-6417

M Orange Tree powder jar LID
P Peacock at the Fountain sugar base
G Peacocks on the Fence bowl
B Elks bell

Richard Cinclair, 3605 S. Echo Trail, Plano, Texas 75023
PHONE: 1-214-596-0014

B Kittens saucer
R Waterlily sauce
R Stag & Holly

Ray Hitchcock, R.R. #1, Box 301, Winterset, Iowa 50273
PHONE: 1-515-462-2074

DM Shell plate
ANY RARE HOLLY BOWLS, PLATES

Maxine Twedt, 44646 Cedar Ave., Lancaster, California 93534
PHONE: 1-805-942-6890

G Dragon & Lotus bowl, ICE CREAM SHAPE ONLY
P Holly bowl, ICE CREAM SHAPE ONLY
M Nippon bowl
M Raspberry milk pitcher
IG Acorn Burrs punch cups

Bev Franzen, 18550 Echo Way, Gladstone, Oregon 97027
PHONE: 1-503-655-9223

ANY Geo. Getts Advertising piece

Larry & Wanda Riley, 108 Ashland Ave., Paducah, Kentucky 42003
PHONE: 1-502-898-3582

B Floral & Grape tumblers, need 4
M Peacock at the Fountain small berry bowls, need 2

***** CARNIVAL GLASS WANTED *****

Lee Bryant, Rt. #1, Box 109, Decatur, Indiana 46733
PHONE: 1-219-639-3415

Plaid bowls any color but marigold (even consider damaged, if describe condition)

ANY millersburg pieces with slight damage on collar base or outer edge in radium finish. Write with description.

G Acorn Burrs master berry bowl, round

Norene Duran, Box 107, Ocate, New Mexico 87734
PHONE: 1-505-666-2237

SM/P Imperial pieces
IG/IB Rose Show plates and bowls
G* *Dark green Poppy Show plates and bowls
G* *Dark green Peacocks bowls and plates
ANY Good red pieces, except baskets or compotes
SM (N) Bushel Basket
G Town Pump
IB Peacocks plate
IG Peacocks bowl, ruffled or piecrust edge

Ed & Sharon Binstock, P. O. Box 351, Presque Isle, Maine 04769
PHONE: 1-207-764-3612

G Peacocks plate
G Wishbone piecrust edge bowl
G Springtime tumbler
P Wishbone tumbler
G Poppy Show bowl, damage O.K.
LAV Hearts & Flowers piecrust edge bowl
B Poinsettia & Lattice bowl
M Poinsettia & Lattice bowl

Steve Davis, 3331 Warpath Rd., Macon, Georgia 31201
PHONE: 1-912-741-4252

M Poppy Show bowl, dark only
M Rose Show bowl, dark only
G Poppy Show, Rose Show bowls
P Oriental Poppy pitcher
M Double Star tumbler

THIS MONTHS QUIZ.

P A T C D E F R E H T N A P W
 E F A N T A I L D I K L M I N
 A O P R I S L L O R C S N N T
 C D V W A R C D O E G D H W I
 O K A L M N P O W R F N S H T
 C V C E W A C N G L D I E E F
 K H A Z T E C I O K L L M E N
 O P N R S S T W D O V A W L E
 R A T D E E W A E S M S B L L
 E C H D E R F M H I K O L E T
 H M U N O P R S O T U R W H S
 T A S L I A N B O H A C D S I
 A C E H V I N T A G E F H L H
 E D F I K L P R T V B I K M T
 F R U S T I C S D R O C N O C

- | | |
|-------------------------|-------------------------|
| 1. ACANTHUS | 11. PEACOCK |
| 2. AZTEC | 12. PINWHEEL |
| 3. CONCORD | 13. ROSALIND |
| 4. DOGWOOD | 14. RUSTIC |
| 5. FANTAIL | 15. SCROLL |
| 6. FEATHER | 16. SEAWEED |
| 7. HOBNAIL | 17. SHELL |
| 8. HOMESTEAD | 18. THISTLE |
| 9. MOONPRINT | 19. VINTAGE |
| 10. PANTHER | 20. WINDFLOWER |

THE SHAPE OF THINGS

W A P B C D R E C U A S
 H A I E F G H I S L M E
 I N T U M B L E R A D N
 M P C E G O B L E T V I
 S R H S E T T S N U P W
 E S E V E S L B O W L S
 Y U R K W A E Y O H A R
 A G S B L C D T P C T E
 E A H D I L M O S N E T
 B R E M A E R C U R T
 R O S E B O W L T P V U
 C U P W A C D Y R R E B

- | | |
|-------------|---------------|
| 1. BASKET | 11. PUNCH |
| 2. BERRY | 12. ROSE BOWL |
| 3. BOWLS | 13. SAUCER |
| 4. BUTTER | 14. SPOONER |
| 5. CORDIALS | 15. SUGAR |
| 6. CREAMER | 16. TUMBLER |
| 7. CUP | 17. WATER SET |
| 8. GOBLET | 18. WHIMSEY |
| 9. PITCHER | 19. WINE |
| 10. PLATE | 20. VASE |