

HOACGA

Heart Of America Carnival Glass Assoc. Inc.

RETURN ADDRESS

Michael J. Basey
Bulletin Secretary
H.O.A.C.G.A.
4315 Adams
Kansas City, Kansas 66103

November	1987					
S	T	F	S			
1	2	3	4	5	6	7
8	9	10	11	12	13	14
15	16	17	18	19	20	21
22	23	24	25	26	27	28
29	30					

THANKSGIVING

First Class Mail
U.S. Postage
PAID
Kansas City, Mo.
Permit No. 4352





Heart Of America Carnival Glass Assoc.

Membership June to May, per couple or single
DUES: \$20.00 U.S. & CANADA
\$35.00 FOREIGN

Published the 15th
of each month

- PRESIDENT.....Robert Grissom
7900 Crescent
Raytown, Missouri 64138
1-816-356-5320
- VICE-PRESIDENT.....Nadine Paulsen
700 Purdom
Olathe, Kansas 66061
1-913-782-1313
- TREASURER.....Berneice Bell
1305 W. Wight
Nevada, Missouri 64772
1-417-667-4866
- SECRETARY.....Glen Fortney
Post Office Box 303
Buckner, Missouri 64016
1-816-249-5208
- BULLETIN SECRETARY.....Michael Basey
4315 Adams
Kansas City, Kansas 66103
1-913-432-2460

All monetary figures quoted are U.S. dollars. Please make checks for dues payable to H.O.A.C.G.A. and send them to the Treasurer Berneice Bell, at the above address.

MINUTES OF THE H.O.A.C.G.A. MONTHLY MEETING FOR OCTOBER

At 2:00 P.M. November 1, 1987 President Robert Grissom called the monthly meeting of the Heart of America Carnival Glass Association to order. Secretary Glen Fortney read the minutes of the last meeting and they were approved as read. Treasurer Berniece Bell gave the Treasurers Report and it was approved and placed on file for audit.

President Grissom welcomed Daryl and Norma Strohm, Mr. and Mrs. Williams of North Kansas City, Berniece Bell's sister-in-law Thelma Black, and Don LaCock from Topeka, to our meeting.

President Grissom reported on the upcoming meeting on November 14 and 15 in Des Moines, Iowa. Mr. Ray Hitchcock will be giving a program on plates. There will also be an Antique Show in Des Moines that weekend. If anyone would like further information, please contact one of the Club Officers.

There was also discussion as to the reprinting the Hartung Carnival Glass Books. The Board of Directors will investigate this matter and pass all information on to you.

President Grissom thanked all those people who displayed carnival glass during the month of October at the Bingham-Waggoner Historical Home in Independence. The display was very beautiful and well received by all who saw it.

With no further business, the meeting was adjourned for a short time for coffee.

We then had a great Program on Marigold Carnival Glass. Some very beautiful and scarce pieces of Marigold were shown and discussed. We really thank everyone for bringing their glass to share with us.

Remember, our next meeting will be in Des Moines, Iowa on November 14 and 15 at the Adventureland Inn. Everyone plan to attend.

Glen Fortney
Secretary
H.O.A.C.G.A.

CARNIVAL GLASS DISPLAY

In celebration of National Carnival Glass Month, several area members of the Heart of America Carnival Glass Association displayed Carnival Glass at the historic Bingham-Waggoner Estate in Independence, Missouri.

They displayed approximately 250 pieces of Carnival Glass in each of the 10 basic colors. There were at least 150 patterns represented. On weekends, between noon and 4:00 P.M. H.O.A.C.G.A. members were available to answer any questions about our beautiful Carnival Glass.

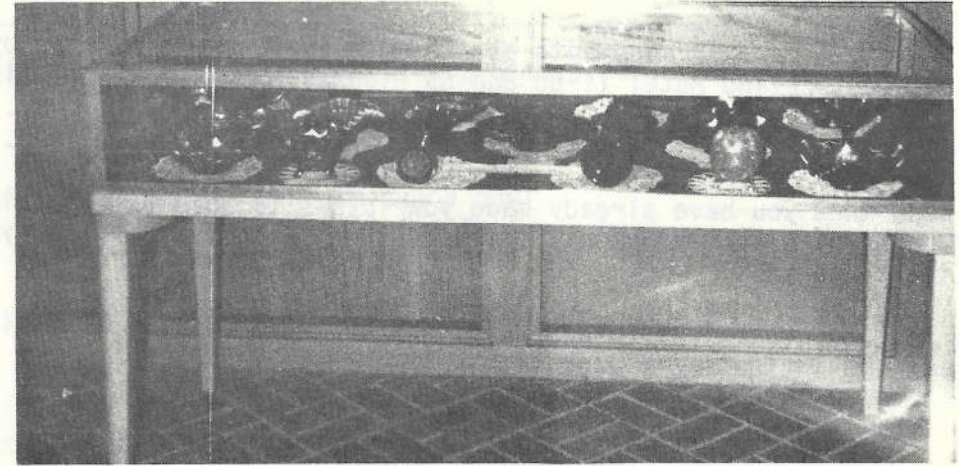
We would like to thank the following H.O.A.C.G.A. members for sharing their glass for the display: Michael Basey, Wilbur & Berniece Bell, Bill & Ruth Cunningham, Glen & Jackie Fortney, Harold Fortney, Bob & Rosa Grissom, Jerry & Norma Cole, Ralph & Florence Mullins, Charles & Eleanor Mochal, Barney & Nadine Paulsen, Davis & Viola Shikles, and Daryl & Norma Strohm.



CARNIVAL GLASS DISPLAY

We are happy to report that our Vice-President Nadine Paulsen and Marie and Bob Schlager of Olathe, Kansas had a carnival glass display at the Olathe Public Library. Approximately 35 pieces were shown.

Below are two photos of their display.



H.O.A.C.G.A. NOVEMBER MEETING

The November H.O.A.C.G.A. meeting will be held at the Adventureland Inn in Des Moines, Iowa on November 14 and 15. A separate notice and schedule was previously sent to those members in the Omaha, Lincoln, Des Moines and Sioux City areas.

Mr. Ray Hitchcock will be showing and talking about plates. Ray has a very nice plate collection which he will be sharing with us on Saturday evening after dinner. Anyone attending is also asked to bring some of your favorite plates to also share.

If you have not made arrangements at the Motel yet, you can do so by calling the Adventureland Motel (I-80 and 65 Highway) at 1-515-265-7321.

The Collectors Extravaganza will be the same weekend in Des Moines.

So we hope that you have already made your plans to join us for this weekend of Carnival Glass enjoyment. If you haven't made your plans, you still have time to do so.

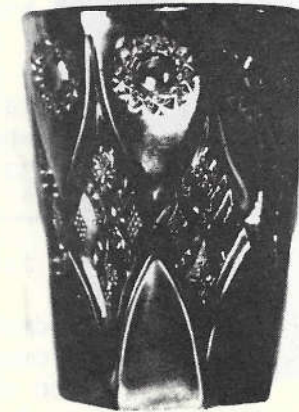
If you have any questions, please call any of the H.O.A.C.G.A. Officers listed on the inside front page.

ROBERT GRISSOM
PRESIDENT
H.O.A.C.G.A.



PICTORIAL PATTERN PARADE

By John & Lucile Britt



NORTHWOOD'S NEAR-CUT TUMBLER IN PURPLE

We have been asked by a number of collectors and dealers to list the rare tumblers so they would be able to recognize them when seen at antique shows, flea markets, antique shops etc. From time to time we will cover some of these tumblers that are very rare or at least very rare in certain colors. Photo #1 shows the "Northwood's Near-Cut" pattern in purple. While this tumbler is certainly rare in marigold, it is extremely rare in purple. We have seen only one of these and no others have ever been reported in dark. We know of only five or six in the marigold color. These tumblers contain the Northwood underlined "N" in a circle trademark on the inside bottom of the base. This pattern is called "Stretched Diamonds & Hobstars" by Richard Owens in his fine carnival glass tumbler book, but the pattern was earlier named "Northwood's Near-Cut" by Hartung, so we are inclined to use the earlier listed name for this pattern. The diamonds are stretched out somewhat more on the tumbler than they are on the goblet and the hobstars are much larger on the goblet which might make this pattern somewhat harder to recognize on the tumbler for many collectors. The goblet is shown in Hartung book 3 - page 47.

Pictorial Pattern Parade continued...

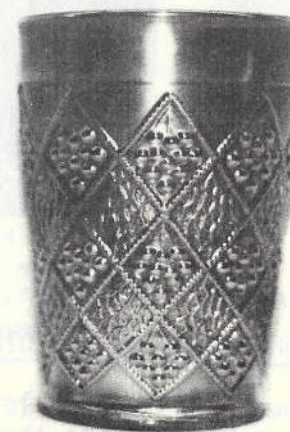


NORTHWOOD'S WATERLILY & CATTAILS TUMBLER IN BLUE

The blue "Waterlily & Cattails" tumbler in photo #2 is another extremely rare Northwood tumbler. Only two of these have been seen in this color by the writers and we have heard of no others. I might add that we have seen only two of these tumblers in the purple color. They are also considered very rare in that color. It is interesting to note that the marigold "Waterlily & Cattails" tumblers are very plentiful and were made by both Northwood and Fenton. A third marigold distinctively different tumbler in this pattern is known which possibly could be a Dugan example. This has not been verified, but it does seem quite likely. The Northwood version tumblers of this pattern contains the famous Northwood trademark. The Fenton example has a basketweave type design at the bottom of the tumbler. While they come from three different molds, only the Northwood examples have been found in the dark colors. It is also interesting to note that while the marigold tumblers are very common, the water pitchers in this pattern are rarely found in marigold.

Pictorial Pattern Parade continued...

One water pitcher is known to exist in blue and it has exceptional color and iridescence. Due to the fact that there are so many marigold tumblers in comparison to the pitchers in this pattern, there must have been some kind of a promotional sales campaign put on that gave away these marigold tumblers as premiums. Very good pictures of these tumblers and also the water pitchers can be seen in "Fenton Glass--the first Twenty Five Years" by William Heacock on page 30.



FENTONIA FRUIT TUMBLER IN MARIGOLD

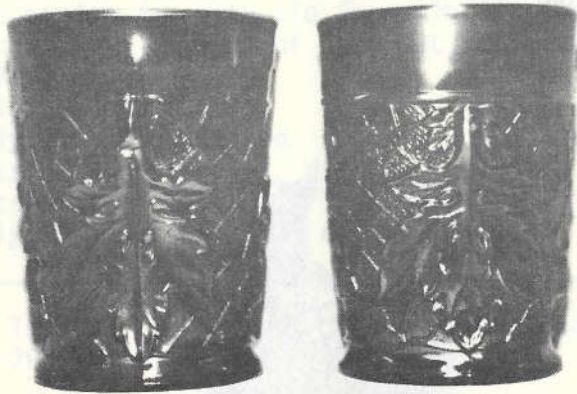
The marigold "Fentonia Fruit" tumbler shown in photo #3 is the only marigold tumbler known in this pattern. We purchased it from the late Mrs. Hartung many years ago. This exact tumbler is sketched and described in Hartung book 7 - page 96. We know of about ten of these in the blue color and consider them as rare, but the one marigold example should be considered as extremely rare. We consider them very desirable and highly sought after in either color.

These three tumblers shown are three of the most rare tumblers in the carnival glass field. We hope to cover other tumblers in this same class at a later date in this column.

JOHN & LUCILE BRITT

EDUCATIONAL TUMBLER SERIES

By John & Lucile Britt



MAPLE LEAF TUMBLERS FROM TWO DIFFERENT MOLDS

"Maple Leaf" tumblers are shown above on the left with the wavy line at the top while the one on the right contains the straight line. This straight line example is called the "Maple Leaf Variet" by tumbler collectors today. Both these tumblers carry the rayed star design on the underside of the base. You will find that the wavy line tumblers are seen most often. Another variant in this pattern has been reported with a plain base that contains no star type design whatsoever. These smooth or plain base "Maple Leaf" tumblers seem to be quite rare. We have seen only a few of them in our travels and this is one that the tumbler collector should be looking for.

The "Maple Leaf" tumbler contains three large prominently raised leaves that are evenly spaced around the tumbler and has a background of the raised stippled "Tree of Life" type design. This stippled "Tree of Life" type pattern is the same that is used on the reverse side of such Dugan-Diamond patterns as Garden Path, Garden Path Variet and some Four Flowers bowls and plates. (Not the Four Flowers Variet.) The colors most often seen in tumblers are deep purple, amethyst and marigold in various shades. Blue tumblers in this pattern are not nearly as common and only a very few lavender examples have ever been reported. The lavender tumblers are considered rare and hard to find.

Maple Leaf tumblers continued...

Tumblers in this pattern were reproduced by Westmorland for Wright. Wright had purchased many of the old Dugan-Diamond molds and this is one of the patterns that he chose to have reproduced for him. These are easy to tell from the old examples, however. All of the new tumblers in this pattern that we have seen, which were made for Wright, contain the "W" in a circle. Hansen also iridised a few of these tumblers. They are signed Robert Hansen and will contain a pontil mark on the base. These Hansen tumblers are quite scarce and are very collectable today. Crider also iridised some of these from clear blanks. They are signed Terry Crider and they also contain the pontil mark. These are desirable tumblers and are in no way made to fool the collector.

The old "Maple Leaf" carnival glass tumblers are now considered to have been made by Dugan-Diamond instead of Northwood as was previously thought. In addition to the water set, this pattern was also made in table sets and berry sets.

This "Maple Leaf" tumbler article is the 118th entry into this educational tumbler series. Next month we will show and describe the Majestic pattern tumbler.

JOHN & LUCILE BRITT



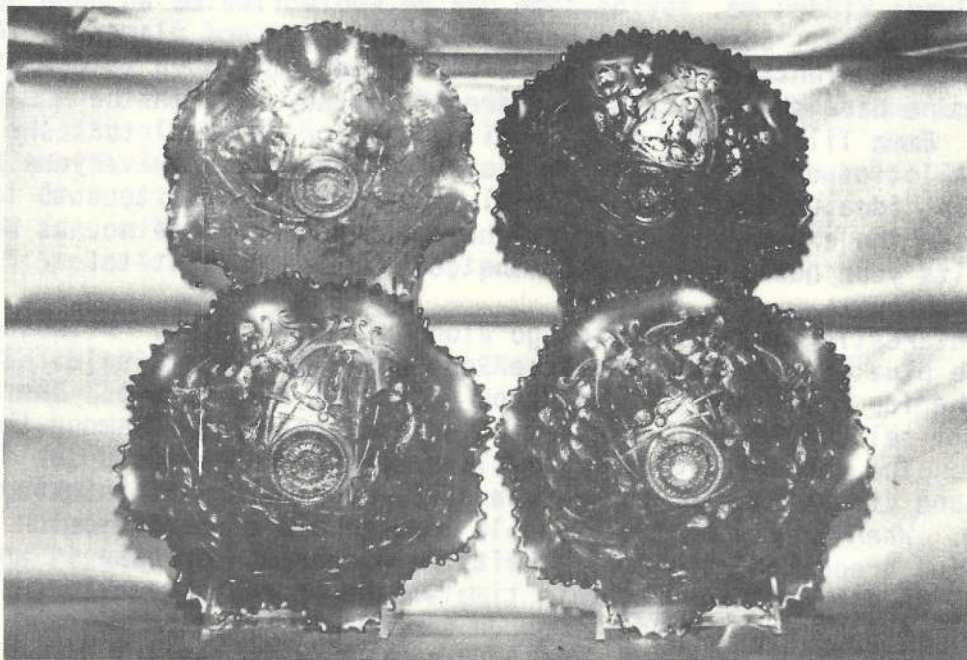
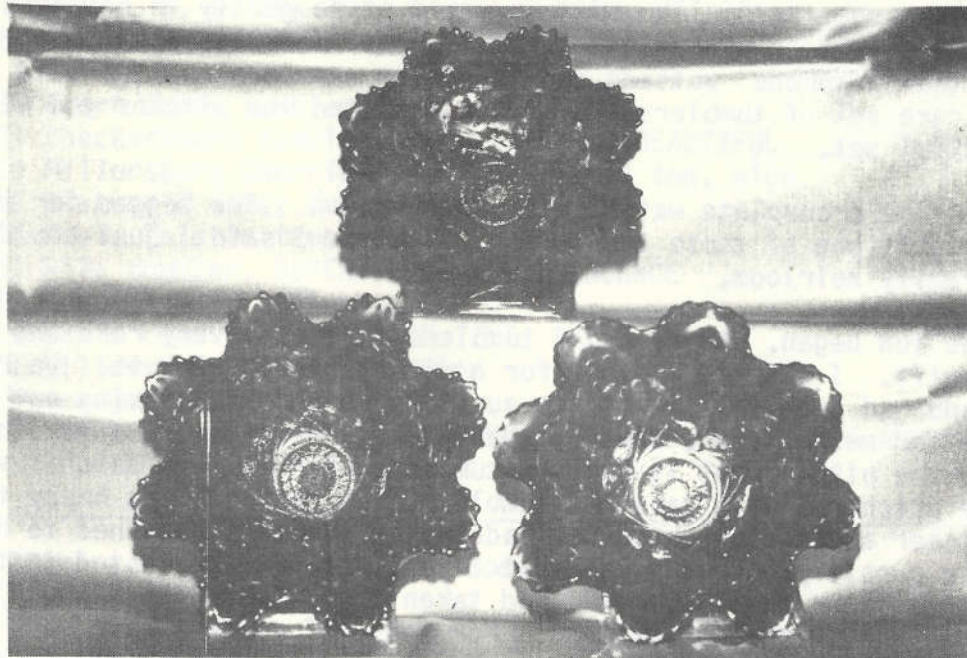
"THE WISHBONE STORY"

BY ROLAND KUHN

It all began in about the year 1969. I had just started collecting a glass everyone called Carnival Glass. I did not know the patterns, the different colors or really much about the glass. I did know I liked it and had bought a few pieces here and there at auctions. I had been to Mrs. Hartung's one time and was in such a daze at what I saw it really did not soak in what I really was looking at. I had never saw so many pieces at one time and the colors and patterns really did not register at that time.

My folks and I went to Kansas City to visit some cousins of dads. They lived in Lee's Summit, Missouri. I suppose they were in their late 70's at the time. Somewhere along the evenings conversation came up the subject about me collecting Carnival Glass. Of course, no one knew what I was talking about, but as I was trying to describe what it looked like one of the cousins went to her cabinet in the kitchen. Way on the top shelf of the kitchen cabinet, she reached for an old shoe box. As she moved it around one could hear glass banging against glass. That sound where we all sort of cringe at now when we hear it. She opened the box and there, unwrapped, loose in the show box, were 6 water glasses. Perhaps the most beautiful 6 water glasses I had ever seen in my life. As I inspected them with care, I knew they were carnival. I could not imagine what the pattern could be, but I knew I wanted them so bad that I could hardly stand it. The cousin went on to explain when they moved from the farm to town, the pitcher had been dropped on the driveway and broken. She also explained how she had loved to drink out of that old black glass when she was a small girl on the farm. I asked her if she would sell it to me. Oh no, she said, when I am gone I will see that you get it. Well, we all know that usually does not work out. We went back to Kansas City where we were staying with other relatives that evening. I could not sleep thinking of those glasses I had seen. The next morning the phone rang and the voice on the other end said, we talked it over last night after you left and decided maybe we should just give you those water glasses now if you can come out this morning and pick them up. Well needless to say, there was no speed limit that day on the road to Lee's Summit.

On the way back home we went through Emporia, Kansas. I told the folks, perhaps we would just stop and I would call Mrs. Hartung to see if she could tell me the pattern. I called her and tried to explain what I saw and what it looked like to me. I said it has a flower like an orchid, sort of a heart around the flower etc. Well, Mrs. Hartung could not figure out by my description, what I might have. She said please come by the house and let me see what you have. I will always think the minute she heard the word orchid she probably could not believe what she was hearing and wanted to see them for herself. We went to the house and when I showed her one of



The Wishbone Story continued...

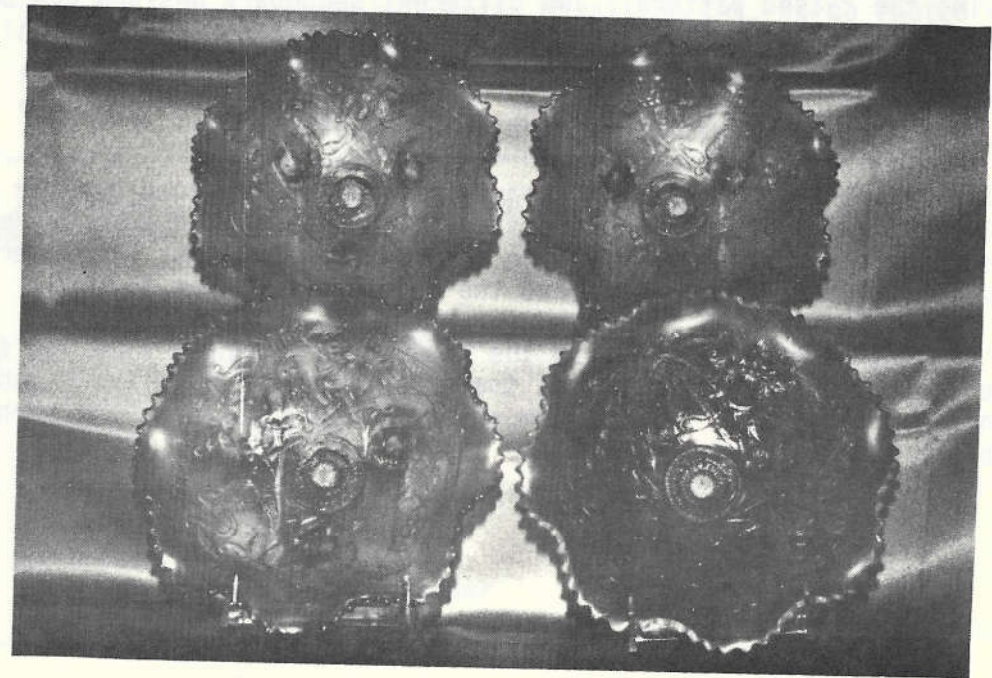
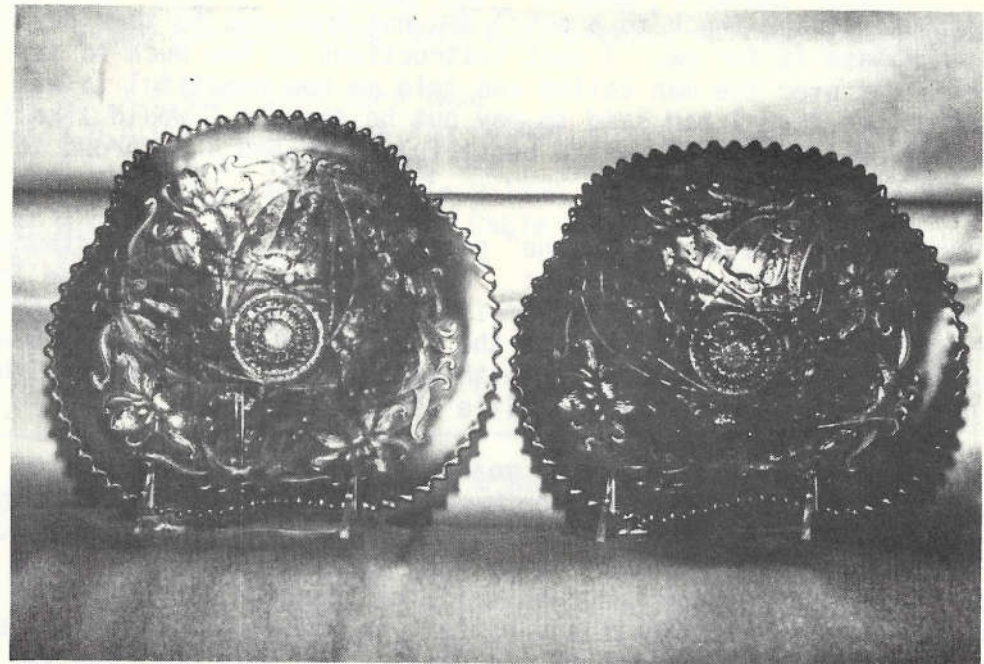
the glasses she was spellbound. She held it so gently in her hand and stroked the pattern and told me what it was. She said what you have is called the "Wishbone" pattern and the color was purple. She said you have a very rare set of tumblers and if you can find the pitcher you will have a beautiful set.

At that time a complete water set was not known. She begged for me to let her buy just one of those tumblers. Of course I said I just could not, it was a family heirloom.

Then the fun began. Here I had 6 tumblers that were very rare and they had been a gift. I started to look for a pitcher to go with it. We knew John Woody and had been to some of his auctions so had him looking out for a pitcher for me. 5 years went by when one day he called and said he had located the pitcher but it had six tumblers with it. He said if you will buy the pitcher I will take the tumblers. Of course I was happy to find the pitcher and the purchase was made. The tumblers happened to be green with the purple pitcher and at that time I was not interested in them. A short time later how I wished I had taken them also. That's how I got hooked on the "Wishbone" pattern. For those of you who have seen my collection know what it has grown to.

Over the earlier years we became well acquainted with John & Lucile Britt. John always kidded me, saying some day he would find me an aqua opal bowl in the Wishbone. Sure enough he came up with one and placed it in a Heart of America Convention auction and I was fortunate enough to get it. Today a few more have shown up but they are still very rare in the aqua opal color. Emma Tilton found an unusual blue color 9½" bowl that she let me buy. A lot of discussion has emerged from this piece. Everyone has a different idea on just what color blue it really is. I tend to lean toward aqua, but the experts in color all have a different idea so, as Don Moore says, it's your bowl, you call it the color blue you want to.

Many interesting little stories go along with many of my "Wishbone" pieces. The ice blue epergne came from the Rose Presznick estate sale. I do not have the ice green epergne, but know where one is complete. The owner just will not sell but I do have hopes of some day placing it among the other 5 colors. The large 10" green flat plate came from Mississippi. The folks who found it had been trying for several years to buy it thinking it was purple. When they were finally able to get hold of it the color was a beautiful green. John & Lucile Britt were able to purchase it and sold it to me. As far as I know at this time it is the only green large plate that has ever been seen. We sometimes do strange things when we hear of a piece of glass we do not have and want badly enough. On the ice green footed bowl



The Wishbone Story continued...

I sent a signed blank check to a man I did not know and to this day do not know, to purchase it for me. I sent instructions on how much to pay. When the auction was over the man called and told me how beautiful it was and he had to give more than I had said to pay but he thought I would like it. When it arrived it certainly was a beautiful piece and I am proud to have it with the collection.

Mrs. Hartung describes the "Wishbone" pattern, in her book, "Northwood Pattern Glass in Color", as follows: "Orchids" are almost as rare in pattern glass as they are in West Virginia, and so the Northwood pattern joins a very select group. Although the name given here was bestowed many years ago by a writer more familiar with blown glass than pressed, the design has come to be known by the title he gave it.

This is a complicated design, by no means as naturalistic as some of the other flower patterns as made by Northwood, still it has a certain charm all of its own. It is unknown on any other type than the iridescent.

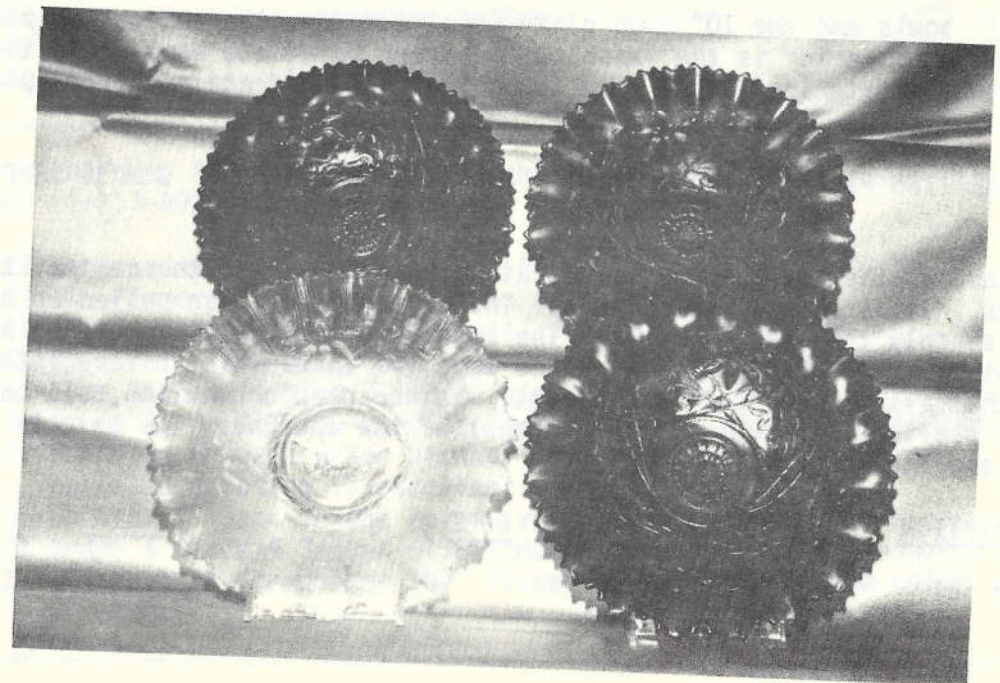
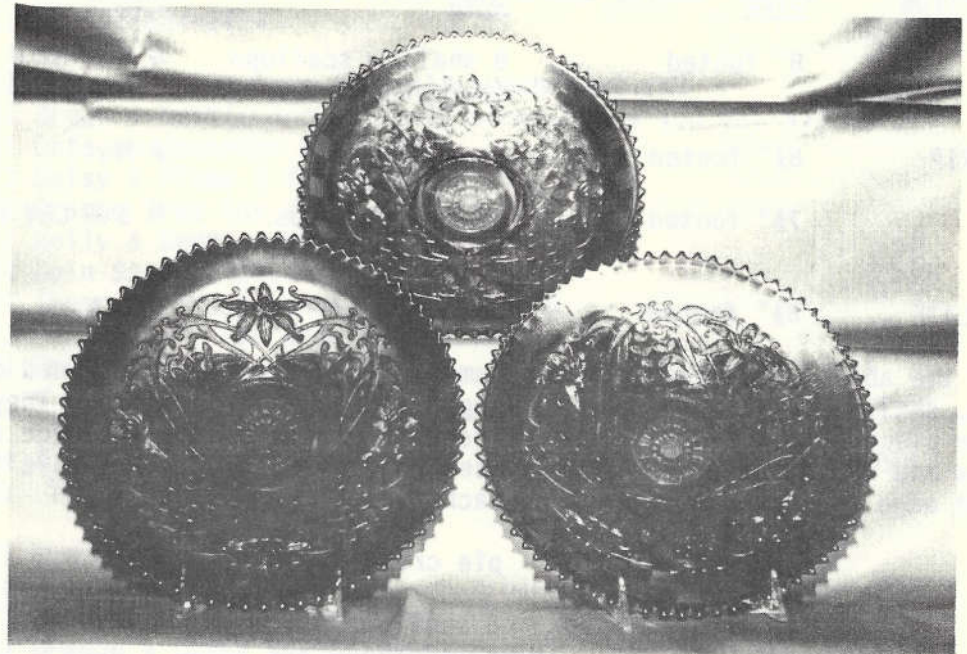
This is an embossed pattern, used on a limited range of shapes. One form quite scarce in any color as in any pattern in Carnival Glass, is the epergne. On Wishbone pieces, both the dome footed base bowl and the single tall lily carry the pattern.

Water sets are seldom found, and the pitcher is bulbous with flat panels underlying the raised pattern. Two different secondary designs can be found on the exterior of bowls in Wishbone. These are first the small Basketweave, and secondly, that of Ruffles and Rings.

*Note: Mrs. Presznick called this pattern "Melinda".

We really do not know when the Wishbone pattern was produced but the general feeling was in the teen years of 1900. We do have some evidence of this in some etched dates found on some of the tumblers. They were used as souvenirs of some towns event and the date observed was 1914.

I have tried in the information on the next page, to share with you the different pieces, shapes and colors that I know to exist in the Wishbone pattern. I hope it will help inform anyone who did not know and perhaps refresh our memory.



The Wishbone Story continued...

<u>DESCRIPTION</u>	<u>SIZE</u>	<u>EDGE</u>	<u>COLOR</u>
BOWL	8" footed	8 shallow scallops sawtoothed	G P M IB W AO IG S Pas M
HAND GRIP	8½" footed	sawtoothed	P M
BOWL	7½" footed	8 deep scallops sawtoothed	M B G LAV P
FLAT PLATE	8½" footed	sawtoothed	P G M

All of the above were made from the same mold. They were flattened out into plates, shallow scalloped, deep scalloped and hand grip shapes. They are a three piece mold. The Wishbone pattern is always on the interior and the Ruffles and Rings appear in three places on the exterior. All have the sawtoothed edge and have three feet on each piece.

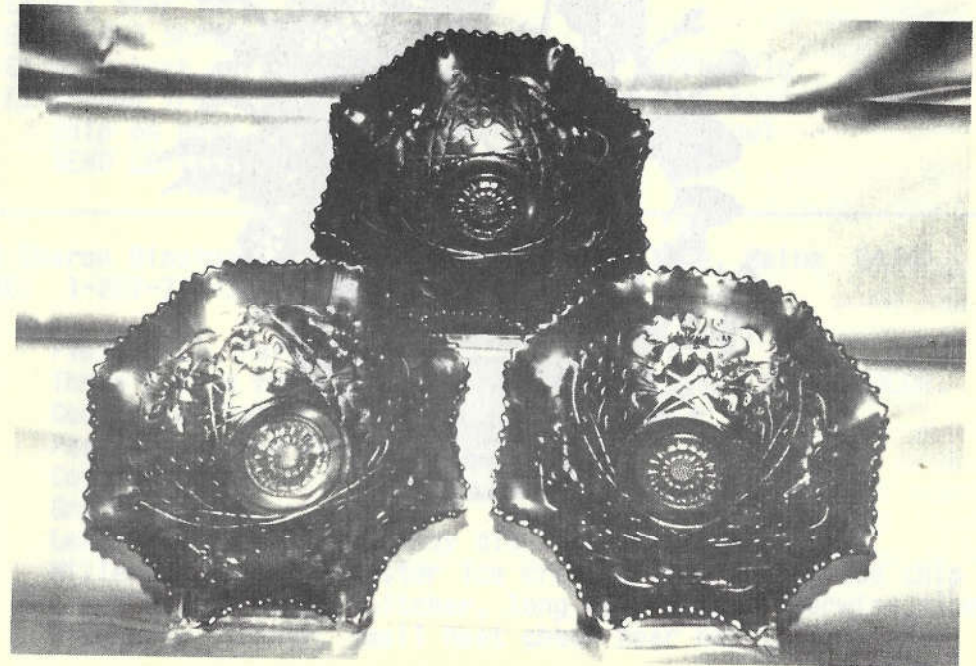
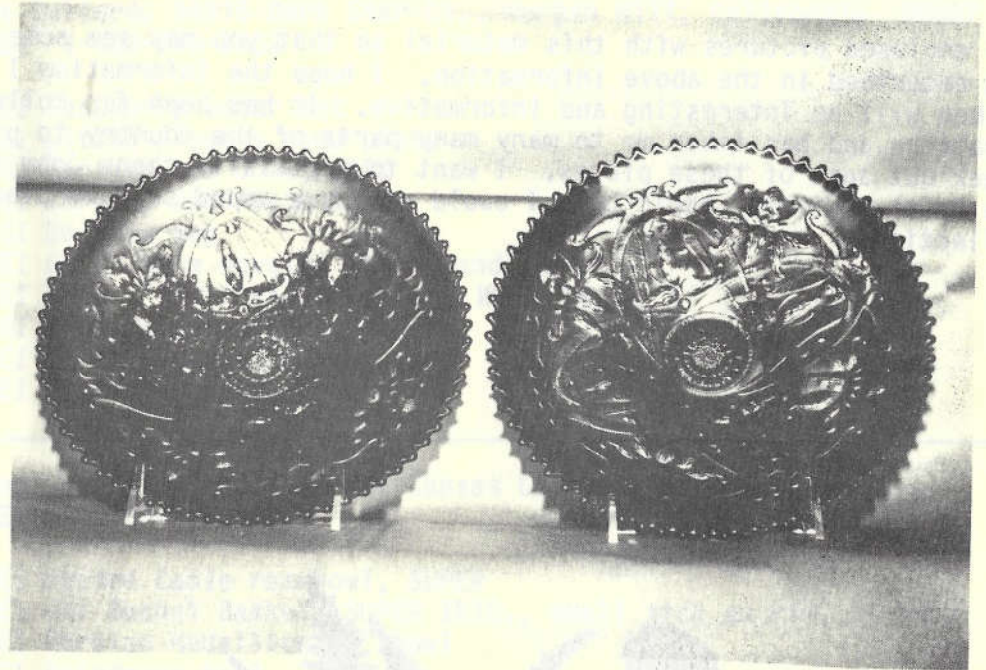
BOWL	9½" collar base	pie crust	EB M P W
BOWL	9½" collar base	8 shallow scallops sawtoothed	G P M AQ
CHOP PLATE	10" collar base	sawtoothed	G P M

The 9½" bowls and the 10" chop plate were made from the same three piece mold. The interior is the "Wishbone" pattern but these bowls have the Basketweave exterior. They have the collar base and again a three piece mold.

EPERGNE (TWO PIECE)	dome footed	8 shallow scallops smooth edge	G W IB IG P M
---------------------	-------------	-----------------------------------	---------------

The base of the epergne was a separate mold from any of the rest of the pieces. It is a dome footed mold. The sides of the base pulled up much more sharply than on the bowls. The edge is smooth on the epergnes and all the other pieces have the sawtoothed edge. I think it also very interesting that all of the scalloped pieces, whether deep or shallow, all contain eight scallops, including the base bowl of the epergne. The base is 8" wide and the lily is 9 3/4" high.

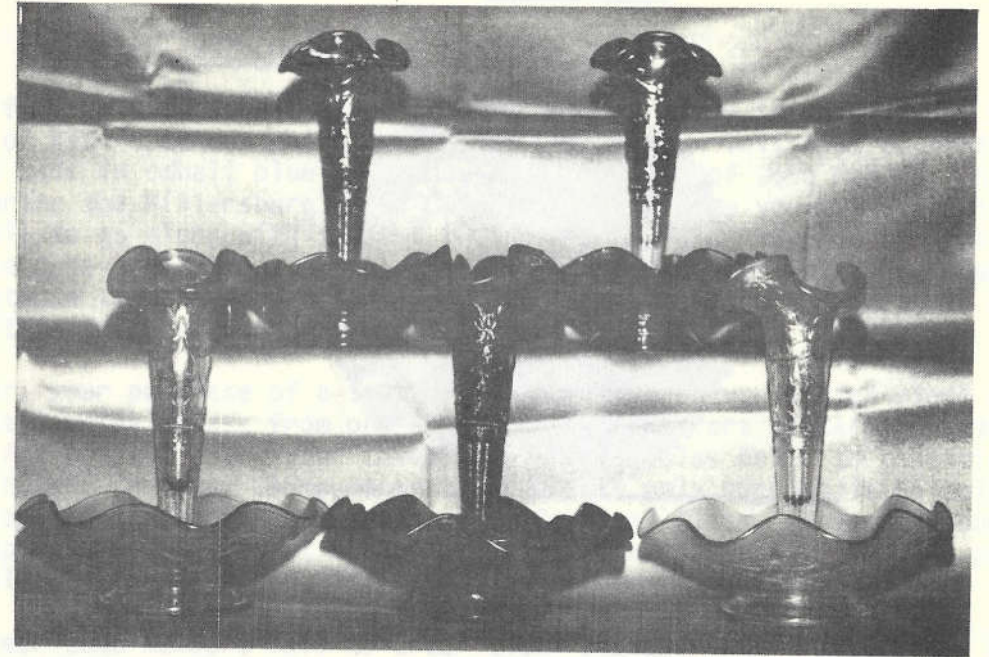
<u>DESCRIPTION</u>	<u>SIZE</u>	<u>EDGE</u>	<u>COLOR</u>
WATER SET	bulbuos		M P G



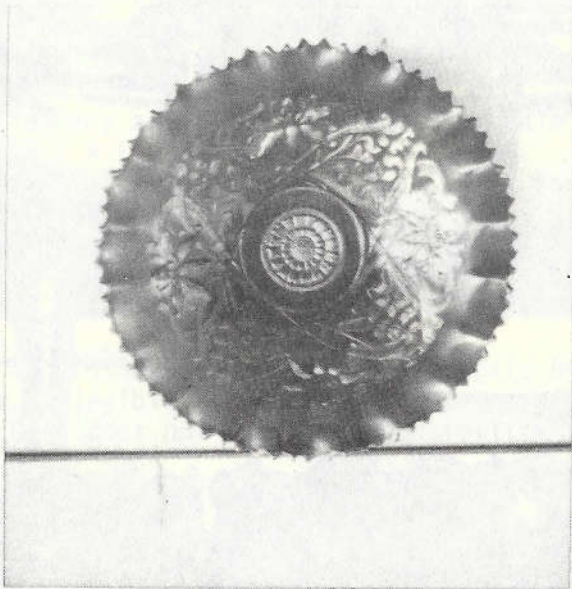
The Wishbone Story continued...

I have enclosed pictures with this material so that you may see some of the pieces described in the above information. I hope the information I have furnished will be interesting and informative. It has been fun collecting this pattern and has taken me to many many parts of the country to pick up and seek out some of these pieces. I want to especially thank John and Lucile Britt. Without their help I could not have added so many pieces to my collection.

ROLAND KUHN



RARE GLASS



Electric Blue 10" Wishbone PCE Bowl

To paraphrase Mrs. Hartung's rule about red Carnival Glass, if you're not sure it's electric blue, it probably isn't. When we first glimpsed this bowl, it was practically shooting sparks. Even today, some four years later, we use it as the standard by which we judge all other alleged electric blues and we have yet to see a better one. How we managed to stumble upon this fabulous piece of glass literally on our own doorstep in our (pop. 9,000, Carnival Glass collectors, 2) own hometown in the middle of nowhere-northern Maine-remains a mystery except it is said that God looks after drunks and beginning Carnival Glass collectors (and we were sober that day).

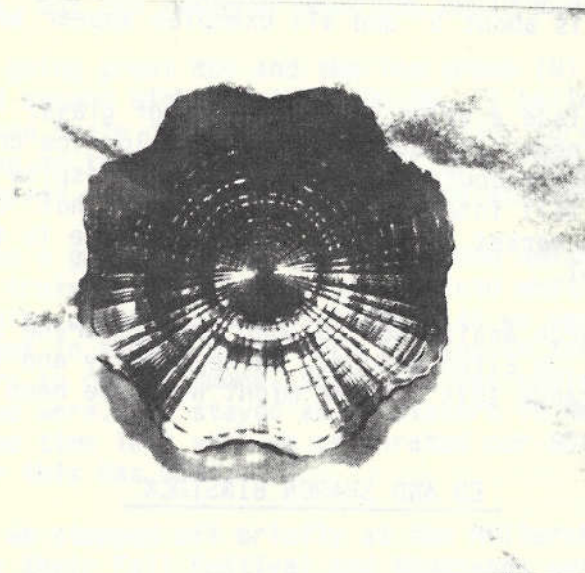
This bowl launched us on what has become an expensive but gratifying path of collecting as much of the Wishbone pattern as possible.

Blue bowls, electric or otherwise, are very uncommon in the Wishbone pattern. Most are footed and while probably more scarce than the ice blue examples, will fetch only about half the price of the pastels. I would estimate that there are perhaps ten blue footed Wishbone bowls known and most if not all tend to be the deeper variety which does not show the pattern as advantageously as a flared 8½" example might, if a flared example in blue existed.

Rare Glass continued...

The collar base PCE bowl in blue pictured on the preceding page is far more scarce than the footed variety. We have been able to trace exactly two others; one in Kansas and the other which is slightly damaged is in the collection of an Australian lady. I cannot swear that there aren't others, and we would love to hear from anyone else who owns an example.

Additionally, we have been beating the bushes for a large size Wishbone bowl, blue, but ruffled and not PCE. To date, we have not been able to locate or confirm the existence of one. Again, we would appreciate input from fellow collectors on this variation of the bowl shown. As far as we know, all large size collar base bowls, PCE or ruffled, have the typical Northwood Basketweave exterior. As to value of the bowl shown, the two similar examples mentioned above changed hands sometime ago for well under \$1,000.00, but considering the strong current market for rarities, electric blue, and PCE bowls, I would anticipate the next one to be sold will command well into four figures.



Amethyst Plaid ruffled Bowl

All Plaid bowls are scarce and some are very rare, but the pattern has not achieved wide popularity. Many, perhaps; consider the design uninteresting and seldom see examples with truly outstanding iridescence.

We admit that we might never have taken to the pattern had we not stumbled upon a super red bowl with a small chip that we bought very reasonably.

Rare Glass continued...

Then, as happens to many of us, the pattern "grew on us", and having the red as a starter, we hoped to complete a set. We later obtained a rare green and were looking hard for the two blue varieties known to exist.

Up until about a year ago we had never heard of an amethyst Plaid bowl. In fact, we never gave it a thought owing to the lack of any recent data on this color. Typical of some Fenton patterns, there seems to be one rare color where the other colors are plentiful or at least obtainable. The Panther large bowls come to mind: The blue and green examples, while scarce are findable, but just try getting hold of an amethyst one!

Naturally when we were offered the amethyst Plaid bowl shown on the preceding page, we snapped it up. The bowl has purple and amethyst mixed together throughout, darker at the collar base fading somewhat as the bowl flares out. The iridescence we consider super, although owing to the textured interior of the bowls in general, I think iridescence ought to be judged a little more leniently than for other patterns. This bowl like all other Plaid ruffled bowls is about 9" and all examples appear to have a plain back.

It is difficult to place a value on this piece of glass. As far as rarity, this is one of two known, the other being a shallow ice cream shaped bowl or deep plate, its whereabouts unknown. However, despite its undeniable rarity, it does not fall into any of the currently "hot" categories in today's Carnival Glass market. All we can say for sure is that we are very glad to own this bowl.

Our thanks for research assistance to John Britt, Norene Duran, George Loescher, Don Moore, Jo Ellen Rotondi, Burney Talley and to Tom Mordini without whose assistance this article might not have been written.

ED AND SHARON BINSTOCK

=====

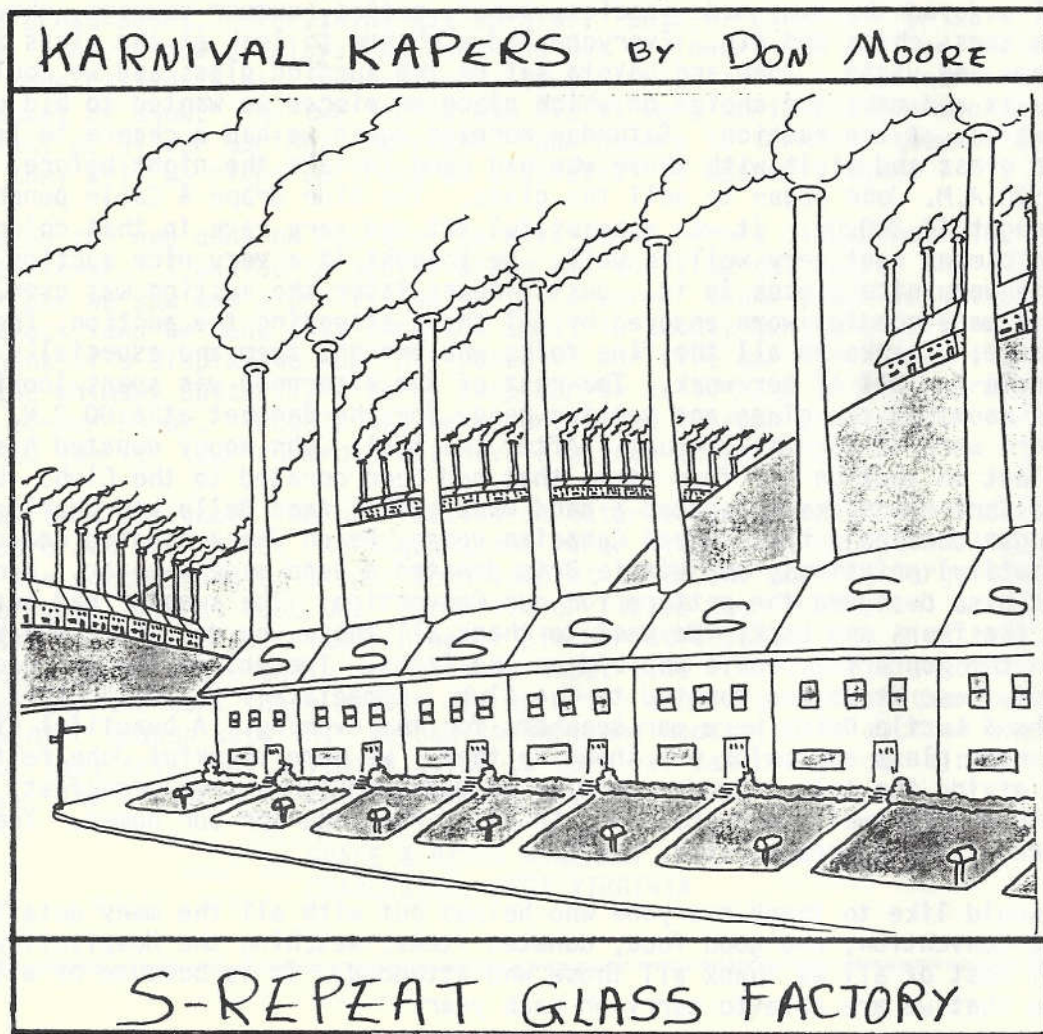
For those who did not get to attend our 6th Annual Convention, you missed out on a wonderful time and get together.

A large number of folks arrived on Thursday, even though the Convention activities did not begin until Friday. Two rooms were rented on Wednesday as well. Registration began at 8:00 A.M. and someone was there until 2:00 P.M. At 2:00 P.M. we were honored to be able to have Helen James present a Program on Imperial Glass. She had 2 large tables of Imperial and her presentation was outstanding. She gave us a glance at how beautiful a collection of Imperial Glass can be. She has many unusual colors and as we all know, the color of Imperial is usually outstanding. Immediately following the Program the Hospitality Room was open from 3:00 P.M. until ?. All enjoyed the home made goodies, punch, coffee, summer sausage, cheese, crackers, chips and dip. Everyone had a chance to look at the glass in the rooms and visit. John and LaVeta set up the auction glass and we could all see it and make our choice on which piece or pieces we wanted to bid on the next day at the auction. Saturday morning again we had a chance to look at the glass and visit with those who had come in late the night before. At 10:00 A.M. John began to sell the glass. The blue Grape & Cable punch set brought \$4,200.00. It was a beautiful set and very rare in that color. The red pieces went very well as well. We thought it a very nice auction and some very nice pieces in it. Just 3 hours later the auction was over. The home made goodies were enjoyed by all those attending the auction, free of charge. Thanks to all the fine folks who brought them and especially to Winnie for all of her work. The rest of the afternoon was spent looking in the rooms at the glass and getting ready for the Banquet at 6:00 P.M. There were 62 for the Banquet. After the meal, John Woody donated his talent to auction off four items that had been donated to the Club. Louise and Carl Hendrickson donated a hand made quilt, Anna Belle and Charles Vaughn donated a hand carved Canadian goose, Helen James donated one of her beautiful paintings, and Winnie Brim donated a hand made sweater. Winnie had also designed the pattern for our Convention. The sweater had peacocks on the front and back. We want to thank all those who donated these items and the wonderful people who bid on the items. The entire amount received from these items was donated to the Club. Immediately following this event John & Lucile Britt were our speakers for the evening. A beautiful display of rare glass and color was shown by them. We were thankful John felt up to giving the talk. Sunday morning we gathered for a free breakfast, and said our farewells and proceeded in all directions for our homes. There were 11 states represented.

I would like to thank everyone who helped out with all the many details of the Convention, and good food, donated items, watching the Hospitality Room, but most of all we thank all those who attended. It is because of all of you that we are able to carry on each year.

Our room displays were down some this year, but we appreciated those who did bring a display. Our three winners were as follows: First Place went to Ken and Marty Young for their "Carnival Gold", Second Place to Harold and Shirley Vest for their "Autumn Carnival" and Bob and Rosa Grissom for their "All That Green Stuff". The winners were presented with solid brass engraved letter openers with ribbons attached.

DONALD E. KIME
SECRETARY
AIR CAPITAL CARNIVAL GLASS CLUB



LETTERS FROM OUR MEMBERS.....

Dear Michael:

Just a note to say you are doing a wonderful job on the Bulletin, it gets better every issue. Tony and I sincerely appreciate all the effort and time you spend on it. Keep up the good work.

Also appreciate what each of the other Board members do to make the Heart of America Carnival Glass Association a success.

TONY & NORENE DURAN
OCATE, NEW MEXICO

The following prices were realized at the Canadian Carnival Glass Association auction on October 2, 1987 at Cornwall, Ontario. We would like to thank Charles Grossmann of Rochester, New York for providing these prices for us.

M Panther small berry bowl	42.00	PO Ski Star small bowl	55.00
M Graceful vase	35.00	A Floral & Grape pitcher	250.00
SM Acanthus bowl	46.00	P Beaded Cable rosebowl	180.00
M Little Fishes 10" bowl	85.00	M Peacock Tail 6" plate	44.00
P Good Luck bowl	220.00	M Lion 7" bowl	75.00
G Imperial Grape bowl	52.00	G Peacock Tail bon bon	45.00
P Diamond Point 10" vase	65.00	R Holly bowl	1,100.00
G Long Thumbprint 10" vase	25.00	AMB Lustre Rose bowl	30.00
B Illusion bon bon	65.00	W Drapery candy dish	100.00
IG Swan Salt	80.00	A Pond Lily bon bon	45.00
M Grape Delight rosebowl	85.00	MMG Holly hat shape	220.00
M Octagon decanter	65.00	B Cherry Circles bon bon	50.00
W Nippon piecrust edge bowl	115.00	M Persian Medallion 6" plate	42.00
M Beaded Shell butter dish	50.00	M Singing Birds mug	65.00
W Bushel Basket 8 sides	140.00	R Open Edge basket	400.00
G Buttermilk goblet	30.00	EB Poppy Show plate	1,600.00
A Pine Cone bowl	30.00	M Wide Panel epergne	750.00
PO Nautilus	350.00	G Wishbone water pitcher	1,000.00
M Puzzle bon bon	35.00	G Tree Trunk vase	55.00
P Pansy dresser tray	85.00	A Three Fruits plate	210.00
B Ten Mums tumbler	70.00	M Zipper Loop lamp	550.00
B Rambler Rose tumbler	35.00	IB Rose Show plate, flake	900.00
G Wild Rose candy dish	22.00	R Holly hat	280.00
IG Rose Show bowl	675.00	CBO Fenton Grape & Cable bowl	1,200.00
AO Beaded Cable rosebowl	190.00	G Open Rose plate	150.00

THE MID-ATLANTIC CARNIVAL GLASS JAMBOREE

We heard about a Carnival Jamboree being planned for October 16, 17 and 18 at Hagerstown, Maryland. Almost at the last minute we decided to go, thinking of the fall colors was an added incentive. We left early on Friday for the 300 mile trip. The weather was beautiful, the scenery over the mountains was a spectacular display in every direction. We stopped to picnic at a nice park and still arrived at the Ramada Inn before 1:00 P.M.

As expected, many familiar faces were every where. Some rooms weren't ready yet but the Hospitality Room was open so lots of visiting while munching on the best cookies etc. We were sorry we had picnicked so recently. So good to see the Ward Russels again and the Stonebreakers. Believe they can take well deserved credit for organizing the Jamboree and feel it was something to be proud about. Everything was so nice. Lots of carnival for sale in rooms. Only a few displays but each one was a winner. We admired one so well done called "Winter Wonderland", lovely white and ice blue carnival on a blanket of snow. The two ladies who did it were Doris Cox and Janice Rothlauf of Silver Springs, Maryland. New comers to Carnival they said, but feel they will be right up front on displays. It was well done.

We loved the one done on ABC'S of Carnival too. A big blackboard etc. Quite clever. I wanted to see it again but the time got away. The only other one we saw was a pretty "Butterfly & Berry" theme which coincidentally was exact idea we had, only ours too small to hardly mention. With no time to think of a display we hurriedly boxed up our five carnival butterflies and the whimsy Butterfly & Berry cuspidor so as to have a tiny representation of our hobby. Trouble was we never stayed in room long enough for many to see it. Our room did not have a window to walk by.

The auction was good. Before leaving on Saturday we heard of 86 bidders so a good crowd was there. We thought the rarer items went exceptionally well. With the Smokey handled Zipper Loop lamp at \$2,200.00 and the large size Zipper Loop lamp at \$850.00. A ruffled or fluted Courthouse bowl at \$455.00, a white Peacock at the Fountain water pitcher at \$675.00. We didn't buy a thing. Had to leave early so got home about 6:00 P.M. We did enjoy it and appreciate the work those people did to bring a nice group together before the winter season sets in. We had thought the Hudson, Ohio auction would be our last trip, but anything doing on Carnival can change our minds in a hurry. The winter will be long enough anyway.

GRACE & BYRON RINEHART
CHARLESTON, WEST VIRGINIA

=====

THE HUDSON OHIO AUCTION

Tom Burns had an October 10th auction scheduled at Hudson, Ohio so we left on the 9th for the extra visiting...making our trips double pleasure. It was so pretty when we left but before noon rain began. Nothing keeps carnival people from going on. We enjoyed the day, shopping at Amish bakery and going to Millersburg on the way.

Several persons at the Holiday Motel and carnival all ready to be admired. A surprise to see Peggy Bullard and her friend Ruth, not sure on her last name. Will say their trip was not in vain as they bought some lovely carnival. That seemed appropriate as it was a California collector, Helen Bell, who was selling.

A nice size crowd came in, about 65 bidding numbers were out. Prices held up quite good all the way and a pretty large purple "Floral and Scroll" vase sold highest at \$1,550.00 to the Dick Otts of New York. They also bought the large Fenton "Diamond Rib" funeral vase at \$500.00, both rare items. Vases seem to be gaining in popularity all the time. We have always liked vases, but can remember when you could hardly give one away.

The pastels are going great too and the ice green (N) Peacock at the Fountain compute sold second highest at \$1,200.00. I believe they did say it was to go to Karen Engle of Oregon. We did enjoy Karen and Helen James' visit this summer as they returned from A.C.G.A. Convention. Many write-in bids which proves carnival can be had, even staying home.

After the auction a group went to the well known Amish restaurant called "The Barn". It truly was a big barn turned into what must be one of the most popular eating places in that section. As we were leaving such a crowd was waiting to get in though rains were falling in torrents. We wondered if anyone bothers to cook anymore, surely no way could they all be tourists or visiting as we were. We stayed at my sisters in nearby Ashland. We recalled the same time last year we celebrated our 50th Wedding Anniversary. What a fast year this has been.

On the way home we stopped off briefly at the Millersburg Antique Show. They were having their Fall Festival and thousands were there for it. The weather was gloomy but at least not raining as it had the day and night before. We also had been to Sugar Creek Festival on October 2nd and weather so terrible we came back home which was a 400 mile trip.

We had a side trip to Baltic, Ohio on the way home too. Its not far from Millersburg. We had been invited to come by to see Wayne and Dorothy Closes'

carnival. We had heard of them some time ago so were pleased to have the opportunity to visit. They live out in the farm country and saw so many Amish buggies on the road. Our time to really see all their pretty carnival was too limited as we felt we should get home by dark.

Will say the Closes' are two of the nicest persons one could ever hope to visit. They were most gracious and have beautiful carnival in a lovely new built home. She had a prize winning apple pie ready to eat. Our weekend in Ohio surely added on to our weight too.

Dorothy Close says she orders most of her carnival since the farm keeps them close to home. Believe they have a large dairy with a son to help on it. It is a full time job. They have a variety of carnival with a preference for Millersburg when possible. They have several Ohio Star vases and still own the aqua opal pair once shown at Jack Wilsons auction. We did not see them as they are safe in a bank vault. We loved the visit with this nice couple and surely want to go again with some extra time to enjoy seeing their pretty collection. A visit to remember. We won't be going far from November on, but its been a good year.

GRACE & BYRON RINEHART
CHARLESTON, WEST VIRGINIA

Below are prices of a few items sold at the Hudson, Ohio auction. We thank Grace and Byron Rinehart for providing us with them:

Red Fenton Open Edge basket hat \$275.00
Ice green (N) Grape & Cable 5½" sauce \$425.00
Amethyst (N) Tree Trunk vase, funeral size \$500.00
Custard (N) funeral mid-size vase \$595.00
Marigold large Zipper Loop lamp \$350.00
Purple Imperial Loganberry vase \$450.00
Light amethyst Palm Beach swung vase \$300.00
Aqua Opal (N) Beaded Cable rosebowl \$300.00
Electric Blue (N) Hearts & Flowers compote \$310.00
Millersburg Multi-Fruits & Flowers punch bowl 8 piece set \$925.00
Aqua Opal (N) Daisy & Drape footed vase \$325.00

=====

THE 1987 COBALT BLUE SOUVENIR BELL

Orders for the 1987 Cobalt Blue Souvenir Bell continue to come in and the number of available souvenirs continue to decrease. This 1987 Souvenir Bell is made in cobalt blue and contains a portrait of John Fenton, thereby honoring the Millersburg Glass Company. We're sure you will want this 1987 Bell to go along with the Red 1985 and Green Opal 1986 Souvenir Bells, as these make a great collectible series. If you are one of those members who continue to put off ordering your Souvenir, then you should do so now while it is fresh on your mind.

Remember, your purchase of a Souvenir not only gives you a nice piece of handmade Carnival glass from one of the original makers of Carnival, the Fenton Art Glass Co. for your collection, but it also helps to financially maintain this Carnival Glass organization whose only purpose is to help you keep informed about your interest in Carnival Glass. These revenues are also returned to you at Convention time with many activities and programs planned for YOUR benefit.

Every year some members fail to order their Souvenir until after they have all been sold and then they are disappointed and sorry that they did not get a Souvenir. Don't let this happen to you this year. Order yours now while they are still available.

Listed below are the Souvenir Bells which are available. Please note that the Red 1985 Bell is in VERY short supply, so if you want one, please order as soon as possible.

1985 Red Bell with a portrait of Harry Northwood, honoring the Northwood Glass Co.
1986 Green Opal Bell with a portrait of Frank Fenton, honoring the Fenton Art Glass Co.
1987 Cobalt Blue Bell with a portrait of John Fenton, honoring the Millersburg Glass Co.

The above bells are \$35.00 each, plus postage and insurance of \$2.50 for each bell. Please send your orders to: John Britt, 3048 Tamarak Drive, Manhattan, Kansas 66502. Be sure to include postage and insurance for each bell.

WE THANK YOU FOR YOUR COOPERATION & SUPPORT!

POLICY FOR ADVERTISING IN THE H.O.A.C.G.A. BULLETIN

1. All advertisements, announcements, letters or any other item to be printed, must be received by the Bulletin Secretary no later than THE LAST DAY OF THE MONTH, to insure being published in that months' Bulletin.
2. Member families may advertise ten (10) "For Sale" and ten (10) "Want Ads" per month F R E E of charge.
3. Only OLD CARNIVAL GLASS items or H.O.A.C.G.A. Souvenirs will be published.
4. Damage or manufacturing flaws should be noted.
5. All "For Sale" items must be priced; no bid items will be published.
6. A 5-day return privilege, at buyers' expense; providing it is not as advertised.
7. All postage and insurance is extra, to be paid by buyer.
8. All ads must be legible, or they will not be printed.
9. The H.O.A.C.G.A. does not accept responsibility for accuracy of any ads.

FOR ACCURACY OF DESCRIPTION, THE FOLLOWING COLOR KEY IS RECOMMENDED:

A----Amethyst	HA--Honey Amber	P----Purple
AMB--Amber	IB--Ice-Blue	PRL--Pearl/Pastel/Milk Glass
AO---Aqua Opalescent	IG--Ice-Green	PM---Pastel Marigold
B----Blue	IGO--Ice-Green Opal.	PO---Peach Opal
BO--Blue Opal or Blue Opaque	LAV--Lavender	R----Red
CLM--Clambroth	M---Marigold	RA---Amberina
EB---Electric Blue	MMG--Marigold on Milk Glass	SM---Smokey
G----Green		VAS--Vaseline

NOTE: If you wish to describe a piece as light or dark, use the body of the ad.

P L E A S E U S E T H E F O L L O W I N G :

EI-Excellent Iridescence, GI-Good Iridescence, LI-Light Iridescence

EXAMPLES:

AO	EI Good Luck plate, one point broken & repaired	375.00
M	LI Peacock at the Fountain 7 piece water set, pitcher has flake	225.00
MMG	GI Peacock & Grapes bowl	360.00
A	GI Wishbone tumbler, heat check, light amethyst	47.50

It would be greatly appreciated by everyone, if you would use these codes, as suggested.

THANKS!!!!!! THE EDITOR

***** CARNIVAL GLASS FOR SALE *****

Chuck Bullard, 14915 Dark Star Ct., Morgan Hill, California 95037
PHONE: 1-408-779-1452

G	EI Raspberry water set	550.00
M	EI Little Flowers chop plate	400.00
M	GI Panther low bowl, RARE	300.00
M	EI Bo-Peep ABC Plate RARE	300.00
M	GI Bo-Peep mug	95.00
M	EI Gun - Rare novelty item, Hand, pg 191	150.00
M	EI Canoe, tiny chip	55.00
M	GI Pipe Match Holder	55.00
M	EI Stork ABC Plate	50.00
P	EI Diamond Lace sauce	30.00

Michael J. Basey, 4315 Adams, Kansas City, Kansas 66103
PHONE: 1-913-432-2460

B	EI Beaded Cable rosebowl, SUPER	120.00
B	EI (N) Bushel Basket, SUPER IRID., small tick on rim, no harm	100.00
B	EI Persian Medallion 8½" bowl	65.00
PO	EI Raindrops bowl	75.00
PO	EI Ski Star dome based banana boat shape	180.00
M	EI Good Luck ruffled bowl, Basketweave exterior	120.00
PO	EI Ski Star large bowl	90.00
P	EI Beaded Shell mug	75.00
P	EI Good Luck ruffled bowl, Ribbed ext., SUPER IRID.	180.00
G	EI Orange Tree candy ribbon edge bowl, collar base 9", small chip on edge of one tip, scarce color and bowl	60.00

SEND LETTER SIZE SASE FOR LIST.

Ed & Sharon Binstock, P. O. Box 351, Presque Isle, Maine 04769
PHONE: 1-207-764-3612

G	Plaid bowl, ruffled, RARE	350.00
W	Three Fruits ruffled bowl, rare collar base, SUPER COLOR	500.00
M	Good Luck plate	225.00
B	Peacocks on the Fence ruffled bowl	245.00
P	Coin Dot plate	60.00
G	Graceful vase	45.00
G	Leaf & Beads whimsey candy dish	45.00
P	Millersburg Cherry master ice cream shaped bowl, base chip	95.00
G	Grape & Cable water pitcher, long heat check otherwise nice	90.00
W	Blueberry pitcher, small heat check near handle top, RARE	300.00

***** CARNIVAL GLASS FOR SALE *****

Michael H. Beville, 1811 Carla Ave., Arlington, Texas 76014
PHONE: 1-817-275-4525

R	EI Fine Rib vase, OUTSTANDING	225.00
M	EI Scale Banded tumbler, SUPER	26.00
M	EI Wreath of Roses punch cups, each	10.00
M	EI Orange Tree punch cups, each	10.00
G	EI Panelled Dandelion tumbler	28.00
CB	EI Enameled Cherries water pitcher	200.00
M	EI Heavy Grape chop plate	85.00
M	EI Hanging Cherries creamer	50.00
M	EI Singing Birds mug	45.00

SEND SASE 2 STAMPS FOR CARNIVAL GLASS LISTING

Don Sherman, 4225 O'Keefe Dr., El Paso, Texas 79902
PHONE: 1-915-533-3580

G	EI Hanging Cherries creamer	70.00
P	EI Acanthus bowl	50.00
P	EI Imperial Flute creamer & sugar	125.00
B	EI Vintage fernery	45.00
M	EI Star & File tumbler	45.00
M	EI Memphis punch cup	20.00
P	EI Wishbone tumbler	145.00
M	EI Peacock at the Fountain Vt. tumbler	30.00
B	EI Beaded Shell tumbler	45.00
M	EI Crab Claw tumbler	45.00

Paul Berube, 11 Doris Ave., Tiverton, Rhode Island 02878
PHONE: 1-401-625-5303

M	EI Star & File creamer & sugar, PERFECT CONDITION	48.00
B	EI Leaf Chain 7½" plate, GORGEOUS COLOR	80.00
M	EI Scale Band 7" plate, dark	22.00
W	EI Persian Garden 6" ice cream bowl	48.00
G	EI (N) midsize funeral vase Flute 4½" X 12½"	32.00
M	EI Golden Oxen beer mug	25.00
G	EI Scarab hatpin	24.00
B	EI Grape Delight nutbowl, feet perfect	55.00
G	EI Small Rib stemmed rosebowl #74 in notebook	28.00
M	EI Wild Rose ribbed nutbowl, feet perfect	32.00

***** CARNIVAL GLASS FOR SALE *****

Joseph Mello, 535 Fish Rd., Tiverton, Rhode Island 02878
PHONE: 1-401-624-2174

IG	EI Grape & Cable base to small punch bowl (N)	400.00
M	EI Grape & Gothic Arches small berry bowls (3) ea. \$14.00 all	35.00
M	EI Octagon decanter with top	65.00
M	EI Daisy & Plume 3 footed candy dish	35.00
B	EI Orange Tree ice cream stemmed	25.00
PO	EI Holly & Berry nappy	55.00
PO	EI Coin Spot compote	50.00
M	EI Imperial Grape wines, have 7, each	25.00
M	EI Fentons Two Row Open Edge basket	35.00
A	EI Grape & Cable butter top	45.00

Vaunda & Swede Tilberg, Rt. 5, Box 1064, Joplin, Missouri 64804
PHONE: 1-417-782-9627

PO	EI Beaded Panel compote (2)	55.00
M	EI Poppy Show bowl	300.00
P	EI Beaded Cable rosebowl	65.00
PO	EI Dragon & Lotus spatula footed bowl	190.00
B	EI Fine Rib vase	25.00
M	EI Garland rosebowl	50.00
P	EI Lattice & Heart exterior bowl, GREAT IRIDESCENCE INSIDE	75.00
R	EI Orange Tree mug, amberina bottom	250.00
G	EI Zig-Zag large bowl	350.00
M	EI Three Fruits stippled plate	110.00

Dick Wetherbee, 847 Stafford St., Rochdale, Massachusetts 01542
PHONE: 1-617-892-4420

M	EI Embossed Scroll/File exterior 9" bowl, OUTSTANDING COLOR	35.00
B	EI Two Flowers 10" 3 ftd. bowl, a real pretty one	135.00
G	EI (N) Tree Trunk 7" squatty vase, very nice	32.00
M	EI Imperial Grape water set, all 7 pieces matching GORGEOUS	245.00
W	EI Lame Shade 4½" high X 4 3/4" dia. 12 panels inside white opaque	45.00
P	EI Pansy Spray 9½" low ruffled bowl, almost a plate OUTSTANDING	52.00
M	EI Enameled Freesia water pitcher, bulbous shape & 5 tumblers enameled painting is excellent	285.00
A	EI Corinth 8" jack in the Pulpit vase, very pretty	48.00
B	EI Grape & Cable 9 3/4" X 5" 3 ftd. orange bowl points up SUPER	255.00
M	EI Millersburg Strawberry 10½" fluted bowl, light radium color 1" crack so	28.00

***** CARNIVAL GLASS FOR SALE *****

Marie Martin, P. O. Box 12262, St. Petersburg, Florida 33733
PHONE: 1-813-323-3609

M	EI Peacock & Grape plate	175.00
W	EI Fanciful plate	150.00
B	GI Fanciful plate	150.00
PO	GI Dragon & Lotus bowl	250.00
P	EI Town Pump	400.00
VAS	EI Leaf Chain bowl	95.00
M	EI Field Thistle plate	300.00
A	GI Mayday Adv. bowl	275.00
PO	EI Ski Star handgrip plate	150.00

SELLING OUT WHAT WE HAVE, GOOD PIECES: PLEASE CALL

Dick & Elaine Petersen, Box 62, 709 11th Avenue, Clarkfield, Minnesota 56233
PHONE: 1-612-669-7350 after 5:00 P.M.

M	GI Peach & Pear banana bowl, with oval frame	107.00
M	EI Windflower bowl	23.00
G	EI Stippled Rays compote	37.00
A	EI Coin Dot (Coin Spot?) compote	47.00
G	EI Pansy oval pickle, Helios	47.00
G	EI Imperial Grape cup/saucer	87.00
M	EI Lustre & Clear tumble up	63.00
G	EI Vintage Grape 2 handled bon bon	57.00
M	GI Kittens cup, cracked	37.00
	GI Interior Ribbed one handled nappy, light marigold with Imperial Old Iron Cross mark	27.00

Mr. & Mrs. Joseph Purdy, RD 1, Box 75A, Hamilton, New York 13346
PHONE: 1-315-824-1980 weekdays only 7:00 A.M. - 5:00 P.M.

P	EI Farmyard fluted bowl, excellent inside and out	3,000.00
---	---	----------

Charles Perry, 8641 Lakeshore Dr., Southaven, Mississippi 38671
PHONE: 1-601-342-1694

DM	Peacock & Dahlia 6½" ice cream shape bowl	50.00
P	Grape & Cable punch bowl base, large size	125.00
IG	Drapery vase	95.00
IB	Grape Arbor tankard pitcher, crack in neck	150.00

***** CARNIVAL GLASS FOR SALE *****

George Bond, 1406 N. Ferncreek Ave., Orlando, Florida 32803
PHONE: 1-305-894-0327 after 5:00 P.M. please, postage & insurance extra.

R	EI H.O.A.C.G.A. 1978 Corn Vase	50.00
R	EI H.O.A.C.G.A. 1977 Hat Pin Holder	50.00
R	EI H.O.A.C.G.A. 1979 Loving Cup	50.00
IG	EI H.O.A.C.G.A. 1980 Hat Pin Holder	50.00
R	EI H.O.A.C.G.A. 1981 Grape & Cable Candle Lamp	75.00
M	EI Fishermans mug	175.00
M	EI Octagon goblet	20.00
M	EI Orange Tree loving cup	110.00
AMB	EI Three Fruits plate	80.00
A	EI Grape & Cable lid for cookie jar, no harm flake	80.00

Bob Slaughter, Route 2, Box 568, Graham, North Carolina 27253
PHONE: 1-919-376-9552 after 7:00 P.M.

LAV	GI Wreathed Cherry large oval berry bowl	65.00
B	EI Fentons Two Flowers 9" ball footed bowl	75.00
M	EI Grape Arbor/Feather Scroll ext. 9½" footed bowl	65.00
A	EI Dugans Cherries/Jeweled Heart ext. 9½" bowl	65.00
DM	EI Windmill & Mums large footed bowl, OUTSTANDING (2) each	55.00
PO	EI Ski Star 11" master berry bowl (2) each	65.00
*	EI *Black Amethyst Fentons Waterlily 9" ball footed bowl	75.00
G	EI Fentons Grape & Cable/Persian Medallion int. large footed fruit bowl, scarce in this color	225.00
P	EI Broken Arches punch bowl/base MINT	400.00
A	EI Many Fruits punch bowl/base and 1 cup	370.00

Gil Corriveau, Box 5, Sturbridge, Massachusetts 01566
PHONE: 1-617-347-3304 days, 1-617-347-9930 evenings, postage & ins. extra

P	EI Bushel Basket	85.00
P	EI Grape & Cable centerpiece bowl, points up	275.00
AMB	EI Louisa rosebowl	125.00
G	EI Raspberry water pitcher	200.00
P	EI Tiger Lily tumbler	65.00
PO	EI Honeycomb rosebowl	160.00
P	EI Millersburg Diamond water pitcher	160.00
M	EI Three Fruits plate	60.00
P	EI Broken Arches punch top	90.00
P	EI Grape & Cable water pitcher	225.00

***** CARNIVAL GLASS FOR SALE *****

Burney Talley, 1814 Slate, N.W., Albuquerque, New Mexico 87104
PHONE: 1-505-242-1261

G	Pine Cone 6" plate	95.00
P	Poppy Show vase	750.00
P	Scroll Embossed plate	200.00
EB	Dandelion mug	550.00
AO	Dandelion mug, light opal	475.00
P	Luster Rose large round bowl	95.00
P	Three Fruits plate	85.00
M	Beauty Bud vases, the pair for	40.00
M	Inverted Strawberry spittoon	650.00
B	Elks Bell 1911 Atlantic City	1,150.00

Ted Sheibley, 304A Hillcrest Drive, New Cumberland, Pennsylvania 17070
PHONE: 1-717-938-6417

CLM	EI Waffle Block parfait glass stemmed	15.00
CLM	EI Waffle Block sugar with cross	30.00
G	EI Fruit & Flowers spatula footed bowl	65.00
M	EI Sunflower footed bowl	40.00
M	EI Three Fruits stippled 9" bowl	40.00
P	EI Strawberry pie crust edge bowl	65.00
M	EI Strawberry 9" plate	85.00
P	EI Strawberry 9" plate	130.00
B	EI Concord 9" bowl	100.00
M	EI Windmill pickle dish	20.00

Eva Backer, 12 Sherwood Rd., West Hartford, Connecticut 06117
PHONE: 1-203-233-3761 10:00 A.M. to 2:00 P.M. - After 7:00 P.M.

A	Diamond Lace water pitcher	200.00
M	Kittens saucer, base chip, beautiful color	50.00
A	Three Fruits plate, slight wear on fruits	75.00
M	Vintage powder jar	65.00
M	Fentons Grape & Cable orange bowl, Persian Medallion int.	110.00
M	Fentons Flowers rosebowl	65.00
M	Stag & Holly deep ruffled 10" bowl, footed	98.00
A	Wishbone footed bowl, Ruffles & Rings exterior	85.00
A	Grape & Cable banana boat	275.00
M	Beaded Cable rosebowl	85.00

***** CARNIVAL GLASS FOR SALE *****

Glen Fortney, P.O. Box 303, Buckner, Missouri 64016
PHONE: 1-816-249-5208

P	EI Acorn Burrs tumbler, very nice	60.00
A	EI Checkerboard tumbler, VERY RARE AND BEAUTIFUL	425.00
G	EI Millersburg Cherries tumbler, flared top, nice	250.00
M	EI Diamond & Daisy Cut tumbler	50.00
M	EI Field Thistle tumbler	60.00
M	EI File tumbler, SUPER COLOR & IRIDESCENCE	375.00
W	EI Grape Arbor tumbler	135.00
LAV	EI Maple Leaf tumbler, RARE TINT	150.00
A	EI Millersburg Marilyn tumbler	110.00
M	EI Orange Tree Orchard tumbler	40.00

SEND SASE FOR LIST OF TUMBLERS FOR SALE, MANY RARE AND HARD TO FIND.

Jane Dinkins, 1100 Ridgeley Dr., Houston, Texas 77055
PHONE: 1-713-465-0557

M	* *Worn, Ranger butterdish base	20.00
M	EI Split Diamond individual creamer	20.00
M	EI Banded Rib Variant tumbler	15.00
M	EI Octagon collar based tumbler	20.00
M	GI Rex small tumbler	15.00
P	EI Beaded Shell tumbler	70.00
CLR	GI Optic & Buttons pedestal based creamer, small heat check in foot, signed with Imperial Iron Cross	25.00
CLM	EI Waffle Block sugar & Creamer also signed with Imperial Iron Cross, the pair for	60.00
LM	GI Fans milk pitcher	25.00
LM	EI Shell & Balls perfume atomizer, complete	30.00

Mary Welch, 213 Alexander, Scotia, New York 12302
PHONE: 1-518-393-7748

G	Imperial Grape wines, have 3, each	26.00
OG	Imperial Grape wines, olive green, have 2, each	26.00
M	Imperial Grape wines, have 3, each	25.00
CLM	Frosted Block 9" plate (made in U.S.A. on base)	25.00
SM	Fashion 9½" dia. deep bowl	45.00
B	Celeste Blue Swan Salt	24.00
CLM	Leaf Chain 8" ice cream shaped bowl	55.00

SEND 2 STAMPS FOR 300 PIECES OF CARNIVAL FOR SALE

***** CARNIVAL GLASS FOR SALE *****

Mrs. Clarence Osterbuhr, 802 Hackberry, Garden City, Kansas 67846
PHONE: 1-316-275-5615

CL	EI Imperial Grape 7 piece berry set, chip on 1 sauce	65.00
P	EI Flute 5 piece berry set	95.00
B	EI Leaf & Beads rosebowl (N)	65.00
B	EI Fenton's Flowers rosebowl	65.00
W	GI Vintage rosebowl, chip on 1 foot	65.00
B	EI Garland rosebowl	75.00
R	EI 1978 H.O.A.C.G.A. Souvenir Corn Vase	35.00
R	EI 1979 H.O.A.C.G.A. Souvenir Loving Cup	40.00
R	EI 1981 H.O.A.C.G.A. Souvenir Candle Lamp	95.00
R	EI 1985 H.O.A.C.G.A. Souvenir Bell	35.00

Bobby & Shirley Hill, Route 8, Box 413, Reidsville, North Carolina 27320
PHONE: 1-919-342-3096

A	Stork & Rushes punch cup	18.00
M	Inverted Coin Dot pitcher	160.00
M	Three Fruits plate	55.00
B	Vintage Fernery, three footed	50.00
A	Vintage bowl, candy ribbon edge	25.00
B	Grape & Gothic Arches sugar lid	18.00
PM	Holly plate	70.00
P	Three Fruits plate	70.00
G	Inverted Feather cracker jar, small sliver on inside rim	215.00
M	Illinois Daisy cracker jar, slight roughness on inside rim	35.00

Mary C. Kesterson, 3020 Mesa Rd., Willow Park, Texas 76086
PHONE: 1-817-441-8410

W	Peacock & Urn master ice cream bowl (N) frosty	450.00
AO	Three Fruits ruffled, spatula footed bowl, pastel	395.00
CB	Texas tumbler, 6½" tall 4½" top opening, English	225.00
IB	Rose Show bowl, ruffled, SUPER IRIDESCENCE	850.00
IG	Frog Covered Dish (Hartung Book 8, page 108)	450.00
PM	Peacocks bowl (N), pie crust edge, super pastel	225.00
W	Rose Show plate, very nice	425.00
B	Orange Tree hatpin holder, SUPER COLOR & IRIDESCENCE	250.00
M	Peacocks plate (N) very pretty	425.00
IB	Hearts & Flowers ruffled bowl	350.00

***** CARNIVAL GLASS FOR SALE *****

Patricia Craver, P. O. Box 8015, Allandale, Florida 32023
PHONE: 1-904-427-9380

M	Rose Spray ruffled compote	25.00
M	Flute toothpick holder	45.00
M	(N) Grape Leaves bowl	40.00
A	(N) Grape Leaves bowl	50.00
B	Pine Cone 7" bowl	28.00
B	Strawberry bon bon	30.00
DM	Sailboats sauce dish, round	25.00
AMB	Pansy relish dish	25.00
G	Fine Cut & Roses candy dish	45.00
M	(N) Drapery vase	40.00

William Coles, Rt. #1, Box 273B, Hickory, Kentucky 42051
PHONE: 1-502-674-5916

B	EI Stippled Grape & Cable 8½" ruffled bowl, Rib ext. SCARCE	265.00
P	EI Grape & Cable Hair Pin nappy (cup whimsey) ruffled edge	50.00
A	EI Millersburg Boutinere compote, satiny	85.00
CLM	EI Lustre & Clear rosebowl	25.00
P	EI Greek Key 8½" ruffled bowl, Basketweave exterior	165.00
B	EI Peacock & Dahlia ruffled 7" bowl	125.00
M	EI Thistle & Lotus ruffled 7" bowl, SUPER	75.00
G	EI Wild Strawberry handgrip plate	95.00
A	EI Acorn Burrs tumblers, set of 6, 1 has small chip on 1 acorn, good matched set	200.00
A	(N) Peacocks 8 ruffled bowl, just silvery	95.00

Dick Hatscher, Box 261, Walnut Hill Rd., Bethel, Connecticut 06801
PHONE: 1-203-743-1468

M	Fentons Little Flowers 6½" plate	138.00
P	Diamond Lace 7 piece water set	375.00
B	Beaded Shell mug	120.00
W	Round-Up 8½" plate	215.00
IB	Embroidered Mums bowl	925.00
IG	(N) Peacocks plate, Ribbed exterior	375.00
R	Holly bowl	365.00
AO	Bushel Basket, round	375.00
AO	Drapery rosebowl	275.00
M	Lattice & Grape 6 piece water set	225.00

HAVE MORE FOR SALE

***** CARNIVAL GLASS FOR SALE *****

Tony & Norene Duran, Box 107, Ocate, New Mexico 87734
PHONE: 1-505-666-2237

IB	Hearts & Flowers pie crust edge bowl	650.00
R	Holly bowl	975.00
R	Sailboats dish, low ruffled	550.00
LAV	Trout & Fly candy ribbon edge bowl	800.00
P	Octagon pitcher, mid size	625.00
*	*Sapphire Blue Ripple vase	55.00
*	*Moonstone Acorn round bowl	450.00
M	Town Pump	1,375.00
P	Pansy bowl	100.00

Georgia Martin, 324 Maylawn Ave., Wadsworth, Ohio 44281
PHONE: 1-216-336-7383

A	EI Grape & Cable hatpin holders (N) good feet, each	220.00
G	EI Plaid bowl, ruffled and perfect	300.00
M	EI Good Luck bowl, Ribbed exterior, SUPER IRIDESCENCE	155.00
H	EI Good Luck bowl, Basketweave exterior	150.00
G	EI Good Luck bowl, emerald green, Basketweave exterior	275.00
PO	EI Four Flowers 10" bowl, 8 ruffled	100.00
G	EI Wishbone three footed bowl, emerald green	95.00
W	EI Leaf Chain 9" plate, Berry exterior	175.00
R	EI H.O.A.C.G.A. Waterset, good color	115.00
R	EI H.O.A.C.G.A. Whiskey Decanter & 7 glasses	150.00

Bruce & Darcy Hill, 943 S.E. 13th Ave., Forest Lake, Minnesota 55025
PHONE: 1-612-464-3684

EB	EI Rose Show plate, chip on rose	275.00
B	EI Orange Tree plate	190.00
IG	EI Grape & Cable master ice cream bowl, chip on collar base, FANTASTIC	1,000.00
G	EI Strawberry ruffled bowl	75.00
P	EI Town Pump	550.00
M	EI Hearts & Flowers ruffled bowl	250.00
M	EI Golden Grape rosebowl	35.00
P	EI 17" X 6" Morning Glory vase	160.00
AO	EI Leaf & Beads rosebowl	180.00
G	GI Little Barrel	50.00

***** CARNIVAL GLASS FOR SALE *****

Steve Davis, 3331 Warpath Rd., Macon, Georgia 31201
PHONE: 1-912-741-4252

P	EI Oriental Poppy tumblers, FANTASTIC color & perfectly matched. have 5 at \$60.00 each or all for	275.00
M	EI Grape & Cable cookie jar, dark marigold	250.00
P	EI Four Flowers bowl	145.00
M	EI Robin mug	30.00
A	GI Vintage epergne	125.00
M	EI Pony bowl	50.00
M	EI Vineyard water pitcher	110.00
P	EI Vineyard water pitcher and 1 tumbler	395.00
M	EI Windflower plate	50.00
P	GI Fieldflower pitcher	400.00

Doris Gerber, 5688 CR7, Garrett, Indiana 46738
PHONE: 1-219-357-5405

G	EI Strawberry 8½" bowl, 2 tips chipped off	30.00
A	EI Three Fruits 9" plate (N)	80.00
PO	EI Stippled Flower 8½" tri-cornered bowl	50.00
M	EI Floral & Wheat stemmed bon bon	30.00
R	EI Holly hat	225.00
B	EI Vintage fernery	50.00

Ruby C. Quandt, 352 Queen Anne Road, Stevensville, Maryland 21666
PHONE: 1-301-643-5496

R	EI 1979 H.O.A.C.G.A. Loving Cup	50.00
PO	EI 1983 H.O.A.C.G.A. Loving Cup	45.00
IG	EI 1980 H.O.A.C.G.A. Hat Pin Holder	60.00
R	EI 1978 H.O.A.C.G.A. Corn Vase	50.00
M	EI (N) Peacock at the Fountain covered sugar bowl, 2 small chips on edge of inner lid	80.00
P	EI (N) Grape & Cable hat pin holder, thumb nail size chip off of top of one foot	90.00
M	EI 5½" hat design bowl, advertising "John H. Brand Furniture, Wilmington, Del."	35.00

Barbara Nelson, RFD 1, Box 258, Moultonboro, New Hampshire 03254
PHONE: 1-603-476-5733

SEND LARGE SASE FOR 50 PIECE LIST

42

42

***** CARNIVAL GLASS FOR SALE *****

Bob & Carol Schneider, 6540 Pinebrook Way, Rocklin, California 95677
PHONE: 1-916-782-7694 evenings

B	EI Stag & Holly 11" bowl, ruffled	235.00
M	EI Stag & Holly 11" bowl, ruffled	175.00
A	EI Stag & Holly 11" bowl, ruffled, all the above bowls have nice color and iridescence.	425.00
G	EI Orange Tree powder jar with lid (rare in this color), rim is perfect, small chip on side of jar, but still very nice.	215.00
P	EI Wishbone plate	225.00
IB	EI Nippon bowl, pie crust edge	195.00
P	EI Stag & Holly 8" bowl, ruffled	150.00
M	EI Three Fruits plate, stippled, dark marigold	150.00
PM	EI Three Fruits plate	80.00
M	EI Stag & Holly 8" bowl, ruffled, dark marigold	75.00

John Gibney, 3423 1st Ave. S.W., Cedar Rapids, Iowa 52405
PHONE: 1-319-396-7900

G	EI Trout & Fly ice cream shape bowl	450.00
G	EI Millersburg Cherries covered butter	175.00
A	EI Grape & Cable orange bowl	200.00
A	EI Millersburg Peacock bowl	225.00
A	EI Peacock at the Fountain covered butter	200.00
A	EI Orange Tree breakfast set	125.00

Robert J. Suslowicz, P. O. Box 6358, Pittsburgh, Pennsylvania 15212
PHONE: 1-412-331-6491 after 5:00 P.M.

A	EI Millersburg Swirl Hobnail vase	225.00
M	EI Millersburg Swirl Hobnail 12" vase	175.00
P	EI Imperial Grape water bottle	165.00
P	EI Octagon collar based tumbler - RARE	175.00
M	EI Grape Arbor tankard water pitcher	160.00
M	GI Footed Orange Tree tumbler	45.00
*	*Not carnival, Northwood Bushel Basket, black amethyst, round	75.00

Mr. & Mrs. J. C. Barker, Rt. 3, Box 163-BB, Savannah, Missouri 64485
PHONE: 1-816-662-2265

45 pieces of carnival glass for sale. Good iridescence and no damage. Send SASE for list, or call.

***** CARNIVAL GLASS FOR SALE *****

Ray Hitchcock, R.R. #1, Box 301, Winterset, Iowa 50273
PHONE: 1-515-462-2074

AMB	Holly bowl	175.00
A	Millersburg Bullseye - Loop vase	200.00
M	Cherry & Cable berry bowl (N)	65.00
P	Good Luck ruffled bowl, SUPER	140.00
W	Grape Arbor tankard, SUPER IRIDESCENCE	400.00
G	Feathered Serpent 3-1 edge bowl, nice	60.00
P	(N) Grape & Cable 14 piece banquet punch set	1,350.00
M	(N) Waterlily & Cattails tumblers, each	40.00
AO	(N) Drapery rosebowl, mold line chiggers	165.00
IG	Open Edge 7" ice cream shape bowl, crack between holes	60.00

Larry Keig, 1521 West 31st Street, Cedar Falls, Iowa 50613

P	Imperials Grape tumbler, great color	35.00
P	Imperials Grape tumbler, great color	12.50
B	Cherry Circles bon bon	60.00
M	Imperials Arcs bowl, excellent color & iridescence	22.50
M	Pulled Loop 11" vase	17.00
M	Dragon & Lotus bowl	35.00
G	Graceful vase	45.00
G	Leaf & Beads nut bowl, scarce	65.00
B	Pine Cone ice cream shaped bowl	35.00
B	Cherry Chain small ruffled bowl	35.00



***** CARNIVAL GLASS WANTED *****

Chuck Bullard, 14915 Dark Star Ct., Morgan Hill, California 95037
PHONE: 1-408-779-1452

M Multi-Fruits & Flowers punch cup
M Double Star tumblers
P Fashion tumblers
AMB Imperial Grape punch bowl
* *ANY COLOR Stretch guest sets
M Beaded Shell sauces, footed
* *Crystal Hobstar & Feather tumbler
IG Acorn Burrs punch set
* *ANY COLOR Hobstar & Feather table set pieces

Ed & Sharon Binstock, P. O. Box 351, Presque Isle, Maine 04769
PHONE: 1-207-764-3612

B Wishbone footed bowl, min. 8½"
ANY Hearts & Flowers plates except purple, damage OK
G,IG,IB Rose Show plates with small damage
G,IG,IB Poppy Show plates with small damage
IB Fruits & Flowers bon bon
P Corn vase, slight damage OK
LAV Peacocks on the Fence plate
LAV Hearts & Flowers pie crust edge bowl
P Windmill pitcher, slight damage OK
M Poinsettia & Lattice bowl

Dick Hatscher, Box 261, Walnut Hill Rd., Bethel, Connecticut 06801
PHONE: 1-203-743-1468

Hearts & Flowers anything

Barbara Nelson, RFD 1, Box 258, Moultonboro, New Hampshire 03254
PHONE: 1-603-476-5733

P Constellation compote

Richard Conley, 4504 Gaynor Rd., Silver Spring, Maryland 20906
PHONE: 1-301-942-3425

G Acorn Burrs punch bowl
IB Concave Diamond lid for pitcher

46

***** CARNIVAL GLASS WANTED *****

Elmer Cregger, 12505 Renner Rd., Keymar, Maryland 21757
PHONE: 1-301-898-7550

G,W Orange Tree loving cups
R Large size Sunken Hollyhock lamp top
HA Cosmos & Cane pitcher
IG Peacock & Urn small ice cream bowls, need 5
IB (N) Peacocks plate
IG,W Fine Cut & Roses rosebowl
IG,W Beaded Cable rosebowl

Joseph S. Corrothers, 3260 Butz Rd., Maumee, Ohio 43537

P Hobstar & Feather base to punch bowl
P Broken Arches base to punch bowl
M Persian Garden base to punch bowl
AO Peacock at the Fountain top to punch bowl
R Globe to Sunken Hollyhock lamp
B ANY KITTENS
M ANY KITTENS
ANY Small plates

Eva Backer, 12 Sherwood Rd., West Hartford, Connecticut 06117
PHONE: 1-203-233-3761 10:00 A.M. to 2:00 P.M. After 7:00 P.M.

IB Grape & Cable powder jar cover only
M Persian Garden fruit bowl base only
A Memphis punch bowl only
IG Peacock at the Fountain punch bowl only
A Peacock at the Fountain punch bowl only

Ted Sheibley, 304A Hillcrest Drive, New Cumberland, Pennsylvania 17070
PHONE: 1-717-938-6417

G Peacock on the Fence bowl or plate
G Rose Show bowl or plate
M Stag & Holly plate
AO Good Luck bowl
AO Three Fruits plate
IG Peacock on the Fence bowl or plate
ANY Pastel Grape & Cable pieces
ANY Red items

47

***** CARNIVAL GLASS WANTED *****

Tony & Norene Duran, Box 107, Ocate, New Mexico 87734
PHONE: 1-505-666-2237

PO Fruit Salad punch cups, need 2
SM Fashion punch cups, need 3
P Broken Arches punch base only, must be brilliant
G Oriental Poppy tumblers, need 4
P Double Dutch bowl
M Colonial Lady vase, good dark color
M,P Thumbprint & Ovals vases
SM,G Heavy Grape chop plates, green must have some gold mixed in the
Helios or be multicolor.
R Ribbon Tie bowl
R Peacock & Urn bowl

Bruce & Darcy Hill, 943 S.E. 13th Ave., Forest Lake, Minnesota 55025
PHONE: 1-612-464-3684

G Hearts & Flowers compote
EB Poppy Show plate or bowl
AO Peacock & Urn master ice cream bowl
* *ANY COLOR Peacock at the Fountain compotes

Lloyd L. Davis, 274 Old Bay Front Dr., Mobile, Alabama 36615

IG Grape & Cable powder jar lid (N)
ALL Cups, any color, any pattern, singles preferred
PRL 1 piece of glass, any pattern
AP (Apricot) any pattern
TL (Teal) cup, any pattern, consider every piece
AQ 1 piece of glass, any pattern, cups preferred
BO (Blue Opal) any pattern
PEB (Persian Blue) any pattern
CEB (Celeste Blue) any pattern
Please write with description and price.

Mrs. Raymond Boyd, Rt. #1, Box 68, Weatherby, Missouri 64497
PHONE: 1-816-449-5491

M Butterfly & Berry exterior with Fantail pattern interior,
individual footed berry bowls.

***** CARNIVAL GLASS WANTED *****

Gil Corriveau, Box 5, Sturbridge, Massachusetts 01566
PHONE: 1-617-347-3304 days, 1-617-347-9930 evenings

M Rose Show plate
M Rose Show bowl
M Poppy Show bowl
P Grape & Cable sweetmeat top
B Vintage epergne base
M Grape & Cable butter base
P Grape & Cable sugar bottom
B Grape & Cable stippled humidor top
IB Grape & Cable med size punch base
P Grape & Cable perfume base

Gilbert (Buz) Carter, 3718 Friday Ave., Everett, Washington 98201
PHONE: 1-206-252-0276

* *Helios Green Imperial Grape water carafe
SM Imperial Grape water carafe

Stanley & Donna Williams, 7711 N.W. 69th Terr., Kansas City, Mo. 64151
PHONE: 1-816-587-7357

Blue, Amethyst, Ice-Blue, Ice-Green or White Open Edge Baskets
with plain, Blackberry, or advertising interiors. Please give
dimensions in answer.

Judy Miller, 3920 Harlequin Terrace, Fremont, California 94555
PHONE: 1-415-796-1098

M Tree of Life miniature handled basket
* *Green, Blue, Lavendar, Aqua Flute toothpicks
AO Estate sugar with advertising
G Blackberry miniature compote
A Amaryllis compote

Patricia Craver, P. O. Box 8015, Allandale, Florida 32023
PHONE: 1-904-427-9380

B Grape & Cable stippled tobacco humidor bottom

Larry Keig, 1521 West 31st Street, Cedar Falls, Iowa 50613

- ANY Shapes and colors with Iowa town names enameled on them
- M Anemone enameled tumbler
- P,G Beauty Bud vases

Mr. and Mrs. Patrick Kroll, 3714 W. Wrightwood, Chicago, Illinois 60647
PHONE: 1-312-384-8475

We want the following gas or electric lamp shades for our collection:

- Dragon Tongue - marigold on clear glass base or all white
- Leaf Tier - marigold on clear glass base or all white
- Dragon Fly - Hartung Book 8, page 106, any size
- G Fine Block, Hartung book 9, page 31
- August Flower, ANY COLOR
- G,A Starlyte
- G,A Mayflower
- Buzz Saw - ANY SIZE
- Flared Panels (9 ribs), green outside
- Small Palms - Hartung book 8, page 77

Mrs. L. G. Matthew, Sr., 707 E. Hilltop Dr., Rogers, Arkansas 72756
PHONE: 1-501-636-2917

- P (N) Maple Leaf stemmed small sherberts with excellent iridescence
- M Footed Orange Tree tumblers
- M Orange Tree breakfast creamer

Helen Manning, 17 Vadnais St., E. Long, Massachusetts 01028

- W Many Fruits punch cups, need 2

APPLICATION FOR MEMBERSHIP

THE HEART OF AMERICA CARNIVAL GLASS ASSOCIATION, INC.

DATE _____

NAME _____

SPOUSE _____

ADDRESS _____

CITY _____ STATE _____

ZIP CODE _____ TELEPHONE NUMBER _____

RECOMMENDED BY _____

Membership June to May, per couple or single

DUES: \$20.00 U.S. & CANADA
\$35.00 FOREIGN

SEND DUES TO: H.O.A.C.G.A.
Berneice Bell, Treasurer
1305 W. Wight
Nevada, Missouri 64772

A FEW OF THE BENEFITS OUR CLUB OFFERS:

The ONLY MONTHLY PUBLICATION on just Carnival Glass collecting, keeping you informed of new discoveries and all of the current events. Members only may advertise, FREE OF CHARGE!!

An exclusive PATTERN NOTEBOOK with yearly special inserts. (ALL inserts are still available)

ANNUAL SOUVENIR AND CONVENTION WITH SOME OF THE GREATEST PEOPLE YOU COULD HOPE TO MEET!!

***** JOIN TODAY *****

QUIZ

M C O L U M N S L I O N P L
 M A K A D O S E H S I F O E
 I B N M Y L A D Y M T G R A
 R C N Y M A W T M F A B D F
 E P A A S I U O L N E D W C
 W E Y M N T N U B A E S E H
 O L R C D Y A E E U R M D A
 L E A K L I R R H T T A F I
 F R M I M R N O S I S Y P N
 Y R R T Y S U T O L U A S R
 A A S I H P M E M U L N Y A
 M B U W A I T T E S N I O P

- | | |
|---------------|----------------|
| 1. DEWDROP | 12. LUSTRE |
| 2. LEAF CHAIN | 13. MANY STARS |
| 3. COLUMNS | 14. MARY ANN |
| 4. LION | 15. MAYAN |
| 5. BARREL | 16. MAYFLOWER |
| 6. FISHNET | 17. MEMPHIS |
| 7. LOGANBERRY | 18. MAKADO |
| 8. LOTUS | 19. MILADY |
| 9. POINSETTIA | 20. NAUTILUS |
| 10. LOUISA | |
| 11. MARILYN | |

H O L L Y D A E T S E M O H
 E O C D E E K A N G A R O O
 R M B G I H L M N G P R S N
 O C A S T B C E G H I K L E
 N K I T T E N S O N E N M Y
 P O R E A A S T A P B O C C
 D K E N H F R C A A S I H O
 S I R I C H E R R I E S S M
 I N K V L M G N O N P U R B
 L I K T I Y H F E C D L B A
 M P O R V H O B N A I L R S
 N T P A L A I R E P T I A U
 T A E E P M L K F E D C B T
 A H S H R N O I H Y A D A M

- | | |
|----------------|---------------|
| 1. MADAY | 11. HOMESTEAD |
| 2. CHERRIES | 12. HONEYCOMB |
| 3. HATPIN | 13. ILLUSION |
| 4. HATTIE | 14. IMPERIAL |
| 5. HEART VINE | 15. INCA |
| 6. HEAVY GRAPE | 16. IRIS |
| 7. HERON | 17. ISAAC |
| 8. HOBNAIL | 18. KANGAROO |
| 9. HOBSTAR | 19. KITTENS |
| 10. HOLLY | 20. KOKOMO |