

DECEMBER 87

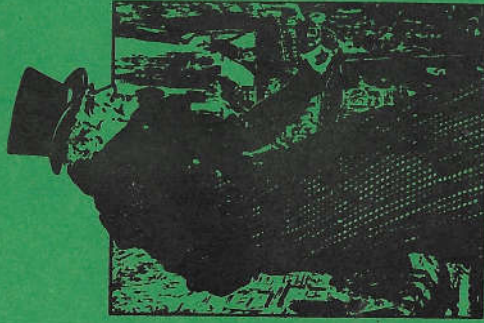
HOACGA

Heart Of America Carnival Glass Assoc. Inc.

RETURN ADDRESS

Michael J. Basey
Bulletin Secretary
H.O.A.C.G.A.
4315 Adams
Kansas City, Kansas 66103

Christmas



A Christmas Carol



First Class Mail
U.S. Postage
PAID
Kansas City, Mo
Permit No. 4352



Membership June to May, per couple or single
DUES: \$20.00 U.S. & CANADA
\$35.00 FOREIGN

Published the 15th
of each month

PRESIDENT.....Robert Grissom
7900 Crescent
Raytown, Missouri 64138
1-816-356-5320

VICE-PRESIDENT.....Nadine Paulsen
700 Purdom
Olathe, Kansas 66061
1-913-782-1313

TREASURER.....Berneice Bell
1305 W. Wight
Nevada, Missouri 64772
1-417-667-4866

SECRETARY.....Glen Fortney
Post Office Box 303
Buckner, Missouri 64016
1-816-249-5208

BULLETIN SECRETARY.....Michael Basey
4315 Adams
Kansas City, Kansas 66103
1-913-432-2460

All monetary figures quoted are U.S. dollars. Please make checks for dues payable to H.O.A.C.G.A. and send them to the Treasurer Berneice Bell, at the above address.

MINUTES OF THE MONTHLY H.O.A.C.G.A. MEETING IN NOVEMBER

At 10:30 A.M. November 15, 1987, President Robert Grissom called the November H.O.A.C.G.A. monthly meeting to order at the Adventureland Inn in Des Moines, Iowa. Secretary Glen Fortney read the minutes of the last monthly meeting and they were approved as read. Treasurer Berniece Bell gave the Treasurers Report and it was approved as read and placed on file for audit.

President Grissom gave a report on the Clubs' recent display of Carnival Glass at the Bingham-Waggoner Estate in Independence, Missouri during National Carnival Glass Month. He stated there were 12 local members displaying approximately 250 piece of glass. He also reported that attendance at the Estate was greatly increased during October because of our Carnival Glass Display. Our Vice-President Nadine Paulsen also had a beautiful display in Olathe, Kansas and received recognition in the local newspaper.

There was much discussion as to the re-publishing of the Marion Hartung Carnival Glass Pattern Books. The Board is investigating all avenues concerning this project and as more information becomes available, we will pass it on to you.

President Grissom stated the 1988 H.O.A.C.G.A. Souvenir honoring the Imperial Glass Co. will be made in marigold. The Banquet Table Favor Mugs and the Room Display Awards will be made also in marigold. There is the possibility of continuing the Souvenir Bell Series to honor the Dugan Glass Co. If anyone wishes to purchase a Souvenir, please contact John Britt.

As the 1988 Convention swiftly approaches, we welcome all thoughts and suggestions you may have to make the Convention even more enjoyable. We are planning to recognize John Britt at a special ceremony to acknowledge the outstanding work he has done in the field of Carnival Glass.

The auction at the 1988 Convention will be some of Ivan Mitchell's glass auctioned by Mr. John Woody.

President Grissom thanked everyone for coming to the meeting in Des Moines and thanked the Hitchcocks for the fine Program on plates that Ray gave. It was most informative and enjoyed by all. We believe everyone had a great weekend visiting, buying and selling glass and also attending the huge Antiques Extravaganza and also the local shops in the Des Moines area.

President Grissom also thanked Joe and Shirley Williams for their efforts in organizing the meeting in Des Moines, and also for the fine refreshments they provided.

Remember, due to the Holiday Season, there will be no monthly meeting in December. Happy Holidays to everyone and hope to see you all in January.

Glen Fortney
Secretary
H.O.A.C.G.A.

 **HOLIDAY GREETINGS**

The Board of Directors, their families and loved ones, of the Heart of America Carnival Glass Association, extend to each and everyone of you our Best Wishes for a very Merry Christmas and a most Prosperous New Year!

It is our hope that 1988 will bring you all many Carnival Glass treasures and also many warm friendships! GOD BLESS ALL OF YOU.

THE BOARD OF DIRECTORS

SMALL PLATES - - NOTEBOOK

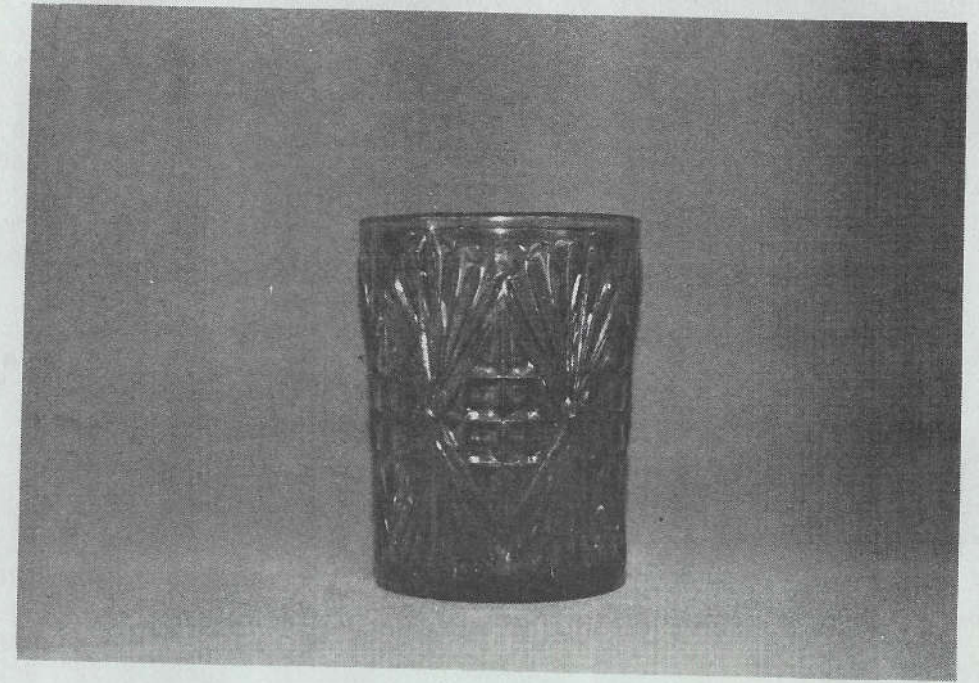
The second part of the Notebook section on Small Plates will be completed for 1988. This section will contain those small plate patterns which were not included in the first section, and also small advertising plates. A photograph of the following listed plates and any of the advertising plates is needed:

1. Checkers
2. Garden Mums (without advert.)
3. Pineapple

I need a photograph of these patterns and any advertising plates to complete the Small Plate section of the H.O.A.C.G.A. Pattern Notebook. If you know anyone who has any of these patterns, please let me know. Your help with these photos is appreciated.

Robert Grissom
7900 Crescent, Raytown, Missouri 64138
1-816-356-5320

EDUCATIONAL TUMBLER SERIES
By John & Lucile Britt



THE MAJESTIC TUMBLER BY MCKEE

The "Majestic" pattern was made by the McKee Glass Company of Jeanette, Pennsylvania. This is the first carnival glass tumbler that we have ever seen in this pattern. We consider it as extremely rare. The tumbler is 3 7/8 inches tall and 3 inches across the top. It is 2 1/2" wide at the base with a 24 point star figure on the bottom. Six of the double fan type figures are spaced around the outside of the tumbler and alternated with six of the quartered block designs. The iridescence is very nice and the color is a good marigold. "Majestic" is one of McKee's popular patterns that is usually found in crystal and ruby stain glass. In picture #2 we show the ruby stain tumbler along with the one in carnival glass.

McKee actually made huge quantities of pressed glass, but very little carnival or iridescent glass. Heart Band is another McKee pattern that can be found in carnival glass tumblers, mugs in two sizes and a few other pieces.

The "Majestic" tumbler continued....



MAJESTIC TUMBLERS IN RUBY STAIN & CARNIVAL GLASS

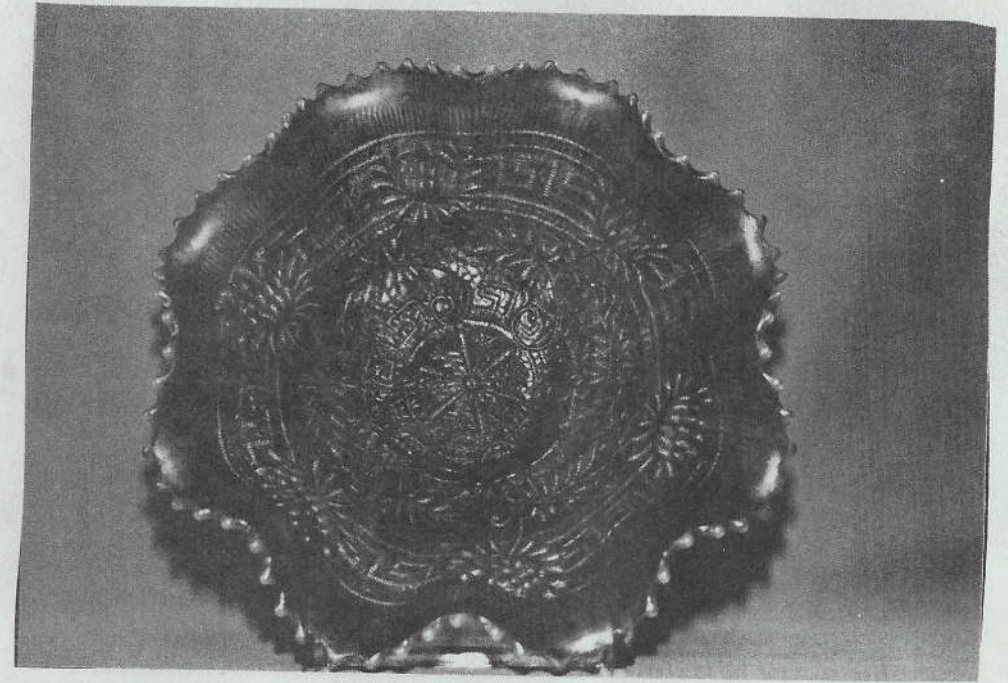
We covered the "Heart Band" tumbler in the August 1984 Bulletin as Article #79. Heart Band is listed as #91 in Richard Owens' carnival glass tumbler book. To the best of my knowledge however, the "Majestic" tumbler is not listed in any of the carnival glass books. McKee also made some carnival glass wines, cordials and goblets in what is known as their "Cuba" pattern line. We have a number of these in our collection and will cover them at another time.

This article, on the unusual and rare "Majestic" tumbler, is #119 in this series. Next month we will cover the "Oklahoma" pattern tumbler.

JOHN AND LUCILE BRITT

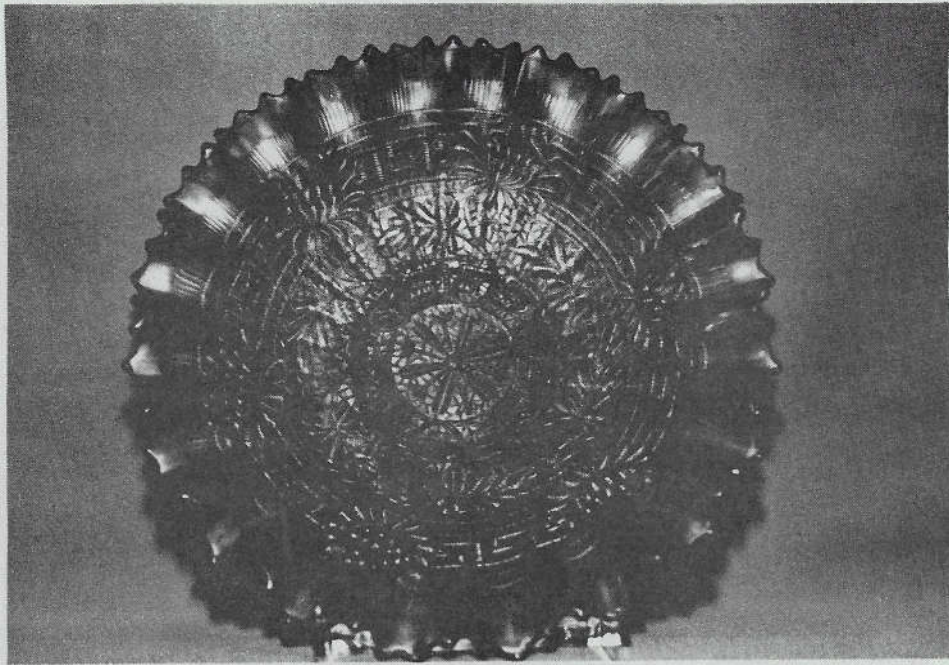
PICTORIAL PATTERN PARADE

By John & Lucile Britt



EMBROIDERED MUMS IN LIME GREEN OPALESCENT

"Embroidered Mums" is one of our favorite patterns. It is an intricate and lacey type pattern that looks like it has been hand stitched with a fine needle. It certainly took a lot of work and patience to tool out the mold for this piece. "Embroidered Mums" was made by the Northwood Company. About half of the pieces that we have seen were marked with the underlined "N" in a circle. In photo #1, we show the eight ruffled type bowl in lime green opalescent. It is extremely rare in that color. We also have these eight ruffled bowls in marigold, pastel marigold, ice blue, ice green, purple, electric blue, lavender, teal blue and aqua opalescent. We consider them beautiful and very desirable in any color. Photo #2 shows the pie crust edge bowl in the beautiful sapphire blue. This color is somewhat lighter than cobalt blue yet darker than teal blue. The pie crust edge bowls are much harder to find than are those of the eight ruffled shape and most likely it would be near impossible to find them in all the colors that are mentioned above. We are still searching for the eight ruffle bowls in the dark green color and also in white.



EMBROIDERED MUMS IN SAPPHIRE BLUE, PIE CRUST EDGE BOWL

In addition to the bowls that are shown here, the "Embroidered Mums" pattern can be found in plates and a two handled dome footed bon bon. Perhaps you would rather call it a two handled compote. Anyway, these two handled pieces are very hard to find. I have only seen three of them, all in white, and we are still looking for one for our collection. I might add that these pieces are made in the exact shape as Northwood's "Fruits and Flowers" footed bon bons.

"Embroidered Mums" is a very close relative to the "Hearts & Flowers" pattern. We consider this pattern to be another Northwood masterpiece. "Hearts & Flowers" also has a lacey embroidered type design that contains the same type of stitched workmanship as does "Embroidered Mums". In this case, Hearts & Flowers are featured over a lacey background. This pattern will be covered in more detail in a later issue.

JOHN AND LUCILE BRITT

TO ALL CARNIVAL GLASS COLLECTORS AND THEIR LOVED ONES

We are certain everyone in Britian would wish to be included in sending Best Wishes for a Very Happy Christmas and a prosperous New Year!

Through the Heart of America Carnival Glass Association and especially your excellent Bulletin, we feel that we already know a lot of members. To improve on this, all being well; we hope to fly over to next years' Convention.

You will recognize us. We will be the ones with green faces, through envy of the wonderful glass you must have. The like of which we shall never hope to see over here, let alone have a chance to own.

We have always said that our best and most expensive pieces of Carnival Glass would be a form of savings to finance such a visit. To this purpose I have enclosed a "For Sale" list. Yes, a case of raising dollars to spend dollars.

Sorry! No red pieces, pastels, or water sets. It is about five years ago since we started collecting and soon after that we let two red bowls escape us. There they were, sitting within ten paces of each other. Like the novices we were, we thought we would find a piece sometime later, possibly cheaper, so on we went to buy more ordinary pieces. We have never been lucky enough to get the chance again. (Call us what you like, we have most likely called ourselves it many times.)

In this part of the world, to most dealers, Carnival is Carnival is Carnival. Not many have any knowledge as to patterns, color, or quality. That can be a blessing occasionally but most times it is a problem because if they see another dealer with a high price on a very special piece of glass, they tend to raise their prices on quite ordinary, secondary or even new Carnival. For example, the red Fashion toothpick holder on offer as a punch cup for 145.00 Pounds (\$250.00 approx.) New? Old? Price? You tell us. The shop was not open but since then we have been in to see what else was on offer. One piece amongst about ten, to give you an idea, was a green Dragon & Lotus bowl (nothing special) had a price on it at 96.00 Pounds (\$170.00). When I told him his prices were too high, he just shrugged his shoulders and on mention of the so-called punch cup he replied "A dealer bought it so he knew what it was." Please tell us. Do you have these mysterious dealers, ghostly collectors and visitors with more money than sense? Perhaps life would not be the same without them.

One dealer was for real. He was the one who happened to be in the right place at the right time with me only a few minutes away. An attractive

item eluded me at an Antiques Fair in the north of England. I learnt from the seller that an East Coast dealer had just bought it from him, but it came home to me, here in the South West, via a Midlands dealer with a stand at our local Fair. (One of our red bowl dealers, as a matter of fact.) They were surprised, but confirmed my belief when I suggested where they had purchased it. But how much extra had it cost me. Oh! What was it? It was a very nice marigold Panther centerpiece bowl, ice cream shaped, 10½" across, as described by Don Moore in an early Bulletin. Value? I do not know, as I have never seen one listed.

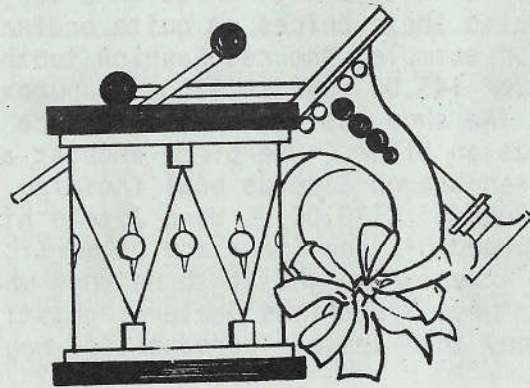
So you win some and you lose some, but it keeps the collectors' adrenalin flowing and like many other things through the years, the anticipation can be more fun than the results.

And with the memories going well back into our childhood, especially at this time of year, that stretch of water appears to have narrowed and we realize out lands and our people are not very far apart.

A New Years Resolution---Do not be down-hearted when you miss a nice piece of Carnival Glass. You may have paid for it and then dropped it on the way home.

Yours very sincerely,

Bernard & Elsie Howe
Devon, England



The Texas Carnival Glass Club changed the regular meeting date for November so members could attend the First Monday Trade Days and Flea Market in Canton, Texas.

With the La Quinta Motor Inn in Tyler as a meeting place, people started arriving on Friday October 30. There was glass for sale in several rooms and while some members shopped, others visited in the home of Helen and Roy Bagby to see their beautiful collection of Carnival Glass.

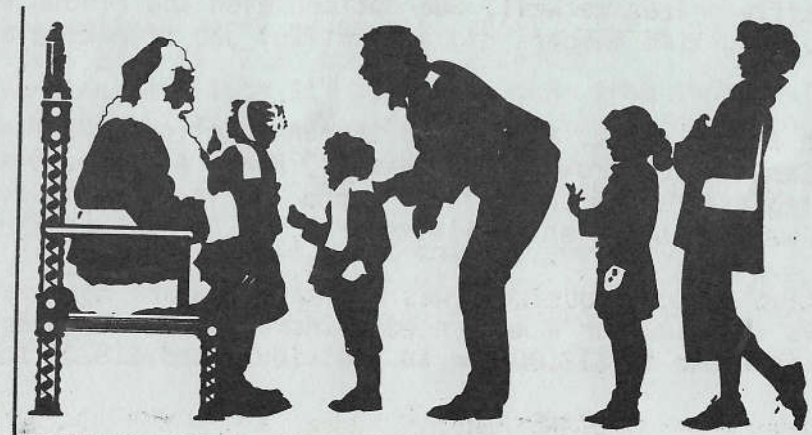
Everyone left the motel early Saturday to drive the 35 miles to Canton for a day of shopping. There were a number of dealers with Carnival Glass for sale, including Tom Burns, Mike Bevill, and Merle Richardson. Many members returned with nice additions to their collections.

Bob and Joyce Etheredge had arranged for a dinner at a restaurant near the motel. After dinner Ray and Charlene Hieger, new collectors and some of the newest additions to the Club, entertained with Open House. A delightful evening was enjoyed.

On Sunday morning 44 members attended a Buffet breakfast preceding the business meeting presided over by President Doyle Green. Plans were discussed for the 9th Anniversary Meeting to be held at the Marriot Hotel in Houston on February 19-21, 1988. Cecil Whitley and Frances Jackson are in charge of arrangements. Details will be announced later.

An invitation is extended to everyone and you need not be a member to attend.

Jane Brown
Secretary
TEXAS CARNIVAL GLASS CLUB



This article contains choice information about the appearance of a certain individual of high esteem who resides in Alameda, California.

When word circulates that this gentleman is to present a program, phone lines buzz, day to day schedules are re-arranged and almost no distance is considered "too far" to go in order to be in his company.

His "side-kick" is a definite added attraction. She is utterly charming and supportive of his jokes, his buying habits and his insistence to share his knowledge and gorgeous collection with all his admirers.

Don & Connie Moore and 50 spectacular RED carnival investments graciously enhanced the November 15 meeting in Huntington Beach, California.

They are "crowd pleasers"! Some 70 bedazzled collectors were spellbound with the sight and sound of the glass display and this "iridized orator" of well-respected repute.

There were no red Peter Rabbits, Kittens, punch sets nor water sets, but Fenton's flaming glory provided prime examples in Cherry Circles, Stag & Holly, Vintage, and other patterned pieces as well as stretch goblets, and stretch orange bowl. Of course, the red Plaid & Ribbon Tie were star attractions.

We are always pleased when the Moores come to visit & those of you out there in "Carnival Land" will be pleased to note that Al Shupert and his video camera were also there, so get out your cards and letters and order your copies today! A High-Grade tape is \$20.00, a 3M Commercial tape is \$25.00. Please add \$4.00 for postage anywhere in the U.S. What better way to usher in the Christmas Season than to watch the RED EXTRAVAGANZA by DONALD MOORE?

Bob and Shirley Patterson hosted this meeting, providing 8 table prizes and door and raffle prizes as well. We noticed even the ribbon was iridized! These two long-time members did a beautiful job of making all decorations festive.

Dick Harris won a door prize, along with Lauren Angelick. Raffle prizes went to Angie Cash, Gerry Brown, Judy Maxwell, Margo Andrews, Diane Haire, Wanda Kelso, Virginia Marlow and Delores Leone. A very pretty revolving Christmas tree was won by Helen Ouellette.

The most important order of business was a discussion and motions to re-word the by-laws to allow for a much needed increase in dues. Both motions carries. Dues increase to \$12.00 for an individual and \$18.00 for two or more.

DIANE FRY

quiz

P O L D R O S E A P C O
 E E N O C E N I P E F G
 T E R P L A I D K A H I
 A R Y F K L M C I C P N
 L T L O E P O T R H A R
 S E R S O C T A G U N A
 L G A T A E T O W L T T
 L N E E S W A I C D H S
 E A P N N I P P O N E O
 N R I P A N S Y E N R I
 A O K L A H O M A F I H
 P L U M E G D E N E P O

- | | |
|----------------|----------------|
| 1. NIPPON | 11. PANTHER |
| 2. OCTAGON | 12. PEACH |
| 3. OHIO STAR | 13. PEACOCK |
| 4. OKLAHOMA | 14. PEARLY |
| 5. OLD ROSE | 15. PERFECTION |
| 6. OPEN EDGE | 16. PETALS |
| 7. ORANGE TREE | 17. PINE CONE |
| 8. OWL | 18. PLAID |
| 9. PANELLS | 19. PLUME |
| 10. PANSY | 20. POINSETTIA |

M C O L U M N S L I O N P
 M A K A D O S E H S I F O E
 I B N M Y L A D Y M T G R A
 R C N Y M A W T M F A B D F
 E P A A S I U O L N E D W C
 W E Y M N T N U B A E S E H
 O L R C D Y A E E U R M D A
 L E A K L I R R H T T A F I
 F R M L M R N O S I S Y P N
 Y R R T Y S U T O L U A S R
 A A S I H P M E M U L N Y A
 M B U W A I T T E S N I O P

- | | |
|---------------|----------------|
| 1. DEWDROP | 12. LUSTRE |
| 2. LEAF CHAIN | 13. MANY STARS |
| 3. COLUMNS | 14. MARY ANN |
| 4. LION | 15. MAYAN |
| 5. BARREL | 16. MAYFLOWER |
| 6. FISHNET | 17. MEMPHIS |
| 7. LOGANBERRY | 18. MAKADO |
| 8. LOTUS | 19. MILADY |
| 9. POINSETTIA | 20. NAUTILUS |
| 10. LOUISA | |
| 11. MARILYN | |

FOUR PIECE TABLE SETS

Research Source: Edwards' Price Guide & Books
Compiled by: CR & Wilma Mitchell

PATTERN	MAKER	M	A	G	B	Pas
Acorn Burr	Northwood	x	x			x
Beaded Shell	Dugan	x	x			
Butterfly & Berry	Fenton	x	x	x	x	
Cherry	Millersburg	x	x	x		
Cherry & Cable	Northwood	x				
Circle Scroll	Dugan	x	x			
Cosmos & Cane	Imperial	x				W
Country Kitchen (butter)	Millersburg	x	x	x		vas
" " (other pieces)	"	x	x			W
Dahlia	Dugan	x	x			
Diamond Point Columns	Imperial	x				
Fentonia	Fenton	x			x	
Field Thistle	US Glass	x				
File	Imperial	x				
Flute #3	Imperial	x	x	x		
474	Imperial	x	x	x		x
Grape & Cable	Northwood	x	x	x	x	PL
Grape & Gothic Arches	Northwood	x	x	x	x	
Hobnail	Millersburg	x	x	x	x	CM
Hobstar	Imperial	x	x	x		
Hobstar & Feather	Millersburg	x	x	x		
Inverted Feather	Cambridge	x	x			
Inverted Thistle	Cambridge	x	x	x		
Leaf Tiers	Fenton	x				AM
Lustre Rose	Imperial	x	x	x		
Maple Leaf	Dugan	x	x		x	
Octagon	Imperial	x		x		W
Orange Tree	Fenton	x			x	AM
Palm Beach	US Glass	x				W
Peach	Northwood	x				W
Peacock at the Fountain	Northwood	x	x	x	x	x
Sheraton	US Glass					x
Singing Birds	Northwood	x	x	x		
Springtime	Northwood	x	x	x		
Star Medallion	Imperial	x				
Stork & Rushes	Dugan	x	x			
Triads (TRIADS)	British	x				
Waterlily & Cattails	Fenton	x				W
Wreathed Cherry	Dugan	x	x			

CR & Wilma Mitchell
Beaver Springs, PA.

121

APPLICATION FOR MEMBERSHIP

THE HEART OF AMERICA CARNIVAL GLASS ASSOCIATION, INC.

DATE _____

NAME _____

SPOUSE _____

ADDRESS _____

CITY _____ STATE _____

ZIP CODE _____ TELEPHONE NUMBER _____

RECOMMENDED BY _____

Membership June to May, per couple or single

DUES: \$20.00 U.S. & CANADA

\$35.00 FOREIGN

SEND DUES TO: H.O.A.C.G.A.
Berneice Bell, Treasurer
1305 W. Wight
Nevada, Missouri 64772

A FEW OF THE BENEFITS OUR CLUB OFFERS:

The ONLY MONTHLY PUBLICATION on just Carnival Glass collecting, keeping you informed of new discoveries and all of the current events. Members only may advertise, FREE OF CHARGE!!

An exclusive PATTERN NOTEBOOK with yearly special inserts. (ALL inserts are still available)

ANNUAL SOUVENIR AND CONVENTION WITH SOME OF THE GREATEST PEOPLE YOU COULD HOPE TO MEET!!

***** JOIN TODAY *****

***** CARNIVAL GLASS FOR SALE *****

Michael J. Basey, 4315 Adams, Kansas City, Kansas 66103
PHONE: 1-913-432-2460 Please call after 6:30 P.M.

P	EI Good Luck bowl, ruffled, Ribbed ext., SUPER IRID.	180.00
B	EI Good Luck ruffled bowl, Ribbed Ext., SUPER, SUPER, ALMOST ELECTRIC	275.00
*	EI *Teal Blue Good Luck ruffled bowl, VERY RARE, 2 tips chipped off, SUPER COLOR & IRID. Ribbed exterior	180.00
PO	EI Ski Star dome based banana boat shape	185.00
P	EI Beaded Cable rosebowl, Rayed interior	75.00
A	EI Beaded Cable rosebowl	75.00
G	EI Orange Tree candy ribbon edge bowl 9" collar based, small chip on edge, scarce	65.00
B	EI (N) Bushel Basket, SUPER, SUPER IRID., small tick on rim, no harm	105.00
G	EI Fentons Thistle banana boat with SUPER green color and irid. Rare and hard to find in this good dark color	325.00
A	EI Fentons Thistle banana boat with SUPER color & irid. Rare and hard to find in this color	225.00

Dick Hatscher, Box 261, Walnut Hill Rd., Bethel, Connecticut 06801
PHONE: 1-203-743-1468

M	EI Fenton Little Flowers 6½" plate	100.00
M	EI Poinsettia milk pitcher	38.00
M	GI Fashion water pitcher	90.00
M	EI Tree Trunk mid size vase (N)	48.00
B	EI Beaded Shell mug	98.00
IB*	EI *Ice-blue/Aqua Embroidered Mums bowl	650.00
TB	EI Rose Show Variet plate	1,195.00
G	GI Fentons Heavy Grape punch cup	68.00
PO	EI Carolina Dogwood bowl	135.00
W	EI Pair of Heavy Shells	115.00

Charles Perry, 8641 Lakeshore Dr., Southaven, Mississippi 38671
PHONE: 1-601-342-1694

M	Grape & Cable cologne with stopper	150.00
P	Zippered Heart 5" bowl	20.00
P	Grape & Cable punch bowl base - master	125.00

***** CARNIVAL GLASS FOR SALE *****

JoEllen Rotondi, P. O. Box 401, Butler, Wisconsin 53007
PHONE: 1-414-354-8254

W	EI Oriental Poppy pitcher & one tumbler, VERY RARE	1,900.00
IB	EI Oriental Poppy tumbler	135.00
BO	EI Pearly Dots compote, sapphire blue stem, extensive opal	485.00
LGO	EI Holly compote, pastel iridescence	600.00
LAV	EI Dreibus Parfait Sweets ruffled bowl, smoky lavender	250.00
P	EI Three Fruits stippled piecrust bowl	175.00
P	EI Strawberry stippled plate	350.00
VAS	EI Little Fishes footed sauce	95.00
W	EI Apple Blossom Twigs 9" flat plate, RARE	295.00
G	EI Captive Rose plate, RARE IN GREEN	475.00

ALL GLASS PERFECT. RETURN PRIVILEGE GUARANTEED.

Darlene Yohe, P. O. Box 343, Stuttgart, Arkansas 72160
PHONE: 1-501-673-3437

P	Leaf & Beads rosebowl	65.00
IG	Bushel Basket, round (N), crack at top of handle	55.00
G	(N) Flute butter lid	45.00
B	Peacock at the Fountain tumblers, have 2, each	30.00
A	Flute tumbler, crack in base	25.00
W	Grape Arbor tumbler	95.00
P	Grape & Cable hatpin holder	175.00
M	Garland rosebowl	40.00
A	Beaded Cable rosebowl	65.00
P	Tiger Lily tumbler, crack in base	30.00

Lee Bryant, Rt. #1, Box 109, Decatur, Indiana 46733
PHONE: 1-219-639-3415

M	Brooklyn Bridge bowl, ruffled (10 folds) 8"	275.00
M	Octagon goblets, have 4, \$37.50 each or in pairs each	30.00
B	Singing Birds mug	100.00
B	Persian Medallion bon bon, almost electric blue	40.00
B	Fruits & Flowers bon bon with electric blue iridescence	80.00
P	Holly & Berry bowl, Dugan, excellent iridescence	40.00
P	Footed Shell, large size, nice	35.00
G	Louisa rosebowl	50.00
G	Buttermilk goblet, plain interior	42.50
A	Buttermilk goblet, plain interior (or both for \$75.00)	42.50

Bob Slaughter, Route 2, Box 568, Graham, North Carolina 27253
PHONE: 1-919-376-9552 after 7:00 P.M. E.S.T.

B	EI (N) Grape & Cable piecrust edge, stippled, shallow bowl, tiny scratches on some ruffles	100.00
A	GI Circle Scroll creamer, VERY RARE	125.00
A	EI Circle Scroll vase whimsy, RARE, have 2, each	75.00
A	EI Circle Scroll hat whimsy, RARE	65.00
DM	EI Hearts & Flowers piecrust edge bowl, one point missing and one small chip	125.00
DM	EI Diamond & Sunburst wine, mint, have 6, each	17.50
A	EI Fine Cut & Roses rosebowl, nice feet, have 2, each	65.00
M	EI Swirl tankard water pitcher, thin glass over inside, flat, quarter size, bubble flaked off	50.00
LG	EI Interior Panels 10" tall water pitcher with non-iridized cobalt blue applied handle	125.00
M	EI Tree Bark tumblers, old and mint, have 6, each	5.00

Vaunda & Swede Tilberg, Rt. #5, Box 1064, Joplin, Missouri 64804
PHONE: 1-417-782-9627

W	EI Rose Show ice cream shape bowl, RARE	550.00
P	EI Imperial Grape large 11" bowl, a beauty	125.00
M	EI Singing Birds mug	45.00
PO	EI Wide Rib vase	45.00
P	EI Imperial Grape carafe	95.00
P	EI Wishbone 10" bowl, excellent color	150.00
M	EI Stag & Holly ice cream shaped bowl, spatula footed	90.00
M	EI Pony bowl	60.00
G	EI Blackberry Bramble compote	30.00
M	EI Good Luck piecrust edge bowl	115.00

Due to illness in the family, we were not home when the last months' H.O.A.C.G.A. Bulletin was delivered, therefore most of the items listed are still available.

Woody Evans, 617 E. 18th St., South Sioux City, Nebraska 68776
PHONE: 1-402-494-5269

A	EI Wishbone ruffled bowl	55.00
M	EI Butterfly & Berry 7 piece water set	300.00
M	EI Panther large ruffled bowl and 4 sauces	160.00
IB	EI Drape 8" vase	60.00
A	Northwood Fan sauce boat	50.00
C	1908, 1909, 1910 Shriners Champagnes, each	65.00

Richard Thorne, 1237 N.E. 140, Seattle, Washington 98125
PHONE: 1-206-363-5812

B	EI Holly 9½" plate, super gold irid., rough spot at mold line on base	230.00
B	EI Persian Medallion 10½" plate, several straw marks	195.00
B	EI Butterfly & Berry pitcher	350.00
B	EI Butterfly & Berry tumblers, each	45.00
B	GI Little Fishes 9½" footed bowl	190.00
M	EI Poinsettia milk pitcher	70.00
IG	EI Open Edge basket, 5½", ice cream shape	150.00
M	EI Fenton Lattice & Grape tankard pitcher	115.00
A	EI Ski Star small bowl	45.00
M	EI Stag & Holly 8" spade footed bowl	60.00

Joan & Warren Place, RD #2, Box 100, Mehoopany, Pennsylvania 18629
PHONE: 1-717-833-5222

P	EI Imperial Grape tumbler	30.00
M	EI Beaded Shell tumbler	85.00
M	EI Kittens cup	110.00
M	EI Mary Ann vase	60.00
M	EI Hearts & Flowers compote	120.00
W	EI Hearts & Flowers compote	155.00
M	EI Three Fruits stippled bowl	60.00
PO	EI Four Flowers 6" plate	150.00
A	EI Trout & Fly ice cream bowl	400.00
BO	EI Coin Dot 8½" round bowl	300.00

David L. Sharp, 2271 Catalpa Dr., Dayton, Ohio 45406
PHONE: 1-513-276-5897

A	EI Wreathed Cherry butter dish	225.00
*	EI *Moonstone Holly hat	200.00
R	EI Open Edge hat, jack-in-the-pulpit shape	210.00
W	EI Captive Rose compote	100.00
MMG	EI Wide Panel deep 8" bowl	100.00
B	EI Panther 5" footed sauce	85.00
M	EI Panther 5" footed sauce	45.00
AQ	EI Embossed Scroll 7" bowl, SUPER	85.00
PM	EI Fishcale & Beads flat plate, SUPER PASTEL IRID.	60.00
M	EI File spooner	50.00

John D. Resnik, 10031 Banner Lava Cap, Nevada City, California 95959
PHONE: 1-916-477-1345

M	GI Fentonia butter dish, RARE	125.00
A	EI "Jockey Club" handgrip plate	425.00
M	EI Drapery rosebowl	310.00
B	EI Captive Rose 9" plate	200.00
A	EI Grape & Cable 7 piece water set	375.00
P	EI Vineyard water pitcher, SUPER	395.00
M	EI Morning Glory funeral vase 16" X 7½" wide, open bubble on base	80.00
G	GI Grape & Cable cologne bottle & stopper	235.00
AQ	EI Blackberry Spray hat shape, square top	85.00
MMG	EI Dragons Tongue shades, set of three	200.00

William Coles, Route #1, Box 273B, Hickory, Kentucky 42051
PHONE: 1-502-674-5916

M	EI Millersburg Hanging Cherry 10" master ice cream	95.00
M	EI Millersburg Blackberry Wreath 6" ruffled sauce	35.00
A	EI Millersburg Whirling Leaves 9 3/4" ruffled bowl, SUPER	95.00
CLM	EI Lustre & Clear rosebowl	20.00
A	EI Acorn Burrs tumblers (N), set of 6, 1 has small chip on acorn, the set for	200.00
M	EI Wishbone 10" collar based ruffled bowl (N)	60.00
M	EI Daisy & Plume 3 ftd. rosebowl, Stippled Rays interior, (N) super dark	75.00
P	EI Three Fruits 9" piecrust edge bowl (N) SUPER	85.00
A	EI Grape & Cable 2 sides up dish, 6½" (N)	60.00
AQ	EI Persian Medallion 6" ruffled bowl	65.00

Delouris Craft, 702 Bradley Drive, Bloomington, Illinois 61701
PHONE: 1-309-662-3610

G	Millersburg Peacock sauce/berry 5¼" X 2¼" high	75.00
G	Beaded Cable (N) footed candy dish, Ribbed interior	30.00
A	Captive Rose plate	160.00
A	Birds & Cherries compote	48.00
M	Question Marks compote	25.00
W	Grape & Cable master ice cream (N), minor flaw, very frosty and pretty	190.00

Georgia Martin, 324 Maylawn Ave., Wadsworth, Ohio 44281
PHONE: 1-216-336-7383

DM	Vintage Grape powder box & lid, each	50.00
DM	Lions 6" bowl	70.00
IG	Swan 4"	65.00
DM	Poinsettia milk pitcher, SUPER	55.00
LM	Bo Peep mug	60.00
M	Mikado compote, ruffled, clear stem	100.00
DM	Mary Ann vase	40.00
M	EI Daisy & Plum stemmed rosebowl (N)	35.00
DM	Panther berry set, ball feet, fluted	250.00
A	Peacock & Grape ruffled bowl	80.00
	POSTAGE AND INSURANCE EXTRA	

W. J. Warren, 38 Mosher Drive, Tonawanda, New York 14150
PHONE: 1-716-692-2886

B	EI Singing Birds mug	100.00
M	EI Singing Birds mug	40.00
P	EI Fish mug	65.00
M	EI Orange Tree mug	20.00
M	EI Stork & Rushes mug	20.00
M	EI Vintage Banded mug	20.00
M	EI Little Fishes sauce dish	45.00
M	EI Grape & Cable with Persian Medallion, fruit bowl	65.00
M	EI Orange Tree fruit bowl	45.00
M	EI Butterfly & Berry large berry bowl	40.00

Dick Wetherbee, 847 Stafford St., Rochdale, Massachusetts 01542
PHONE: 1-617-892-4420

M	EI Butterfly & Berry sugar top, great color & perfect	22.00
*	EI *Teal #270 6½" X 3" compote, a beauty	45.00
P	EI Persian Medallion 9½" bowl CRE, made from chop plate, SUPER	85.00
PO	EI Wide Rib 5" high X 6" wide squatty vase, lovely shape, color	45.00
M	EI Star Medallion milk pitcher, a nice one	35.00
G	EI Vintage 9" fluted bowl, Wide Panel ext., outstanding	35.00
P	EI Dugans Holly & Berry 8½" bowl, gorgeous	45.00
M	EI (N) Drapery 8" vase, dark color & perfect	42.00
PO	EI Caroline 9½" flared PCE bowl, almost a plate, SUPER	55.00
P	EI (N) Fruits & Flowers 2 handled stemmed bon bon, a beauty	80.00

J. Richard Brandt, 1313 Church St., Lititz, Pennsylvania 17543
PHONE: 1-717-626-7393 after 6:00 P.M.

W	EI Floral & Grape pitcher	270.00
G	EI Stippled Rays 10½" bowl	30.00
G	EI Three Fruits bowl, dome footed	80.00
A	EI Three Fruits bowl, dome footed	80.00
W	EI Grape & Cable punch set, 7 pieces, small set	1,750.00
A	GI Butterfly & Berry nut bowl	425.00
W	EI (N) Peacocks plate, plain exterior	310.00
M	EI Grape & Cable handgrip plate	55.00
A	EI Strawberry bowl	85.00
M	GI Sunflower bowl	28.00

Ted Sheibley, 304A Hillcrest Drive, New Cumberland, Pennsylvania 17070
PHONE: 1-717-938-6417

P	EI Grape & Cable colognes, repaired stoppers, have 2, each	75.00
M	EI Peacocks on the Fence ruffled bowl	150.00
P	EI Sweetmeat	200.00
R	EI Two Row Open Edge basket, six sided	250.00
B	EI Kittens spooner	300.00
W	EI Peach 7 piece berry set	350.00
M	EI Wreathed Cherry 5 piece water set	400.00
R	GI Orange Tree mut	400.00
B	EI Peacock at the Fountain compote	535.00
G	EI Singing Birds 7 piece water set, dark green	700.00

James & Judy Key, Rt. 1, Box 153B, Marianna, Arkansas 72360
PHONE: 1-501-295-6770

R	EI Acorn ruffled bowl	400.00
M	EI Kittens six ruffled dish	125.00
*	EI *Reverse Amberina Strawberry bon bon	300.00
G	EI Fentons low Open Edge basket	175.00
M	EI Beaded Shell mug	125.00
LAV	EI Stork & Rushes mug	175.00
M	EI Three Fruits stippled plate	125.00
B	EI Peach tumbler	65.00
G	EI Strawberry ruffled bowl	95.00
HA	EI Cosmos & Cane tumbler	85.00

Richie Rosenhoch, 441 W. 49th St. #16, New York, New York 10019
PHONE: 1-212-582-8333 Please phone after 9:30 P.M. Other times leave word on machine.

M	GI Imperial Ripple vase 12"	22.00
B	EI Fenton Fine Rib vase 8½"	35.00
G	EI Fenton Knotted vase 12"	35.00
A	EI Fenton April Showers vase 12", Peacock Tail interior	50.00
A	EI Fenton Stippled Rays 2 handled bon bon	25.00
A	EI Dugan Cherry ruffled 5" bowl, Jeweled Heart exterior	32.00
A	EI Dugan Leaf Rays nappy	35.00

Harm Westerhuis, R.R. #1, Box 49, Platte, South Dakota 57369
PHONE: 1-605-337-3631

P	(N) Three Fruits plate, EXCELLENT COLOR	115.00
A	Round-Up ruffled plate	125.00
M	Windflower 9" flat plate	65.00
B	Vintage nut bowl, have 2, each	50.00
M	Hobstar & Fruit miniature banana boat	75.00
P	Imperial Grape decanter, no stopper, 2 wines, 1 perfect and 1 base chipped, EXCEPTIONAL COLOR	120.00
M	Engraved Grape tumble-up	70.00
M	Wine & Roses stemmed goblet	40.00

Ed & Sharon Binstock, P. O. Box 351, Presque Isle, Maine 04769
PHONE: 1-207-764-3612

B	Grapevine Lattice tankard pitcher	225.00
B	Peacocks on the Fence ruffled bowl	240.00
G	Leaf & Beads whimsy candy dish	40.00
M	Butterfly & Berry large footed bowl, extra dark	60.00
M	Peach & Pear large oval bowl	65.00
G	Grape & Cable pitcher, long internal crack, BUT NICE	85.00
A	Millersburg Peacock & Urn round deep bowl, SUPER GORGEOUS!	300.00
P	Wishbone footed bowl	55.00
R	Plaid ruffled bowl, chip but beautiful, not silvery	800.00
A	Plaid ruffled bowl, TOP RARITY! ONLY ONE REPORTED!	1,500.00

Bernard C. Howe, 40 Broadsands Road, Paignton, Devon TQ4 6HH, England
 PHONE: British time, daytime work 08043 2111, evenings home 0803 843091

AO	EI Dragon & Lotus collar based bowl, blue/white tips only	500.00
PO	EI Dragon & Lotus footed bowls, dark or light marigold, each	350.00
PO	EI Peacock & Grapes footed bowl	320.00
A	EI Good Luck bowl, Basketweave or Rib exterior	200.00
G	EI Peacock & Urn (Fenton) bowl	100.00
G	GI Stag & Holly footed ice cream shaped bowl	100.00
G	EI (N) Grape & Cable punch bowl base only	120.00
G	EI Orange Tree punch bowl base only	95.00
A,G	EI Dragon & Lotus bowls (selection) each	65.00
M	GI Pony bowls	45.00

ALL PRICES QUOTED ARE IN U.S. DOLLARS. ALL ORDERS PLUS FIRST \$10.00 OF POSTAGE.

Paul Berube, 11 Doris Ave., Tiverton, Rhode Island 02878
 PHONE: 1-401-625-5303

P	EI Windmill 8" collar based bowl, OUTSTANDING COLOR	85.00
M	EI (N) 10½" master berry bowl, ruffled	55.00
G	EI Fentons Rays 9" bowl	18.00
M	EI Peacock & Urn compote, ruffled	35.00
M	EI Windmill 9" footed bowl, feet perfect	30.00
AQ	EI Louisa rosebowl, feet perfect	120.00
P	EI Question Marks 2 handled bon bon	35.00
PO	EI Stippled Flower 8" bowl	24.00
W	EI Dahlia butter dish, feet perfect	235.00
EB	EI Fruits & Flowers 2 handled bon bon, OUTSTANDING COLOR	165.00

Ray Hitchcock, R.R. #1, Box 301, Winterset, Iowa 50273
 PHONE: 1-515-462-2074

EB	Dandelion mug, damaged, but a beauty	50.00
M	Plaid bowl, round	50.00
SM	Soda Gold pitcher collar base, damaged but outstanding color	50.00
A	Vintage (Golden Harvest) wines, each	30.00
IG	Grape & Cable centerpiece bowl, small heat check	400.00
LM	Ranger creamer	20.00
PO	Pinched Swirl rosebowl, outstanding	65.00
M	Swan salt	75.00
MMG	Floral & Optic rosebowl	195.00
AMB	Holly bowl	150.00

Rudolf Hafner, 574 Miles Ave., Greenfield Park, Quebec, Canada J4V 1S6
 PHONE: 1-514-672-3300

LM	EI Waterlily & Cattails tumbler (N)	60.00
M	EI Apple & Pear intaglio bowl, 10", mint	100.00
M	EI Apple & Pear intaglio bowl 5", have 4, each	25.00
A	EI Spiralex vase 11½" SUPER	65.00
M	GI Coin Spot compote	30.00
A	EI Thin Rib vase (N) 10"	30.00
G	GI Thin Rib vase (N) 10"	40.00
G	EI Autumn Acorns bowl, candy ribbon edge	35.00
M	EI Diamond Point Columns butter, MINT	50.00
A	EI Hanging Cherries creamer, SUPER	50.00

Hubert F. Shelton, Rt. 1, Box 290, Munfordville, Kentucky 42765
 PHONE: 1-502-528-5893

G	EI Lustre Rose butter lid	25.00
M	EI Imperial Grape 7 piece water set	175.00
P	EI Dandelion tumbler (N) perfect	45.00
M	EI Vineyard tumblers, have 6, \$18.00 each or all for	105.00
M	EI Stag & Holly footed bowl	65.00
A	EI Vintage nut bowl, 3 footed, pretty	50.00
M	EI Butterfly & Berry tumblers, have 5, \$18.00 each, all for	90.00
M	EI Pitcher to match above tumblers, beautiful but damaged so	20.00
LM	GI Waterlily & Cattails tumbler	18.00
M	EI Pansy Sugar, stippled	16.00

Richard & Carol Cinclair, 3605 South Echo Trail, Plano, Texas 75023
 PHONE: 1-214-596-0014

G	EI Peacock Tail (DELMAR GARDENS)	70.00
B	EI Vintage epergne	115.00
VAS	EI Master salt and 4 individuals	200.00
VAS	EI Wide Panels compote	65.00
A	EI Wishbone & Spades 6" plate, VERY DARK	100.00
VAS	EI Holly compote	65.00
M	EI Daisy Dear (yellow tint)	30.00
G	EI Beaded Cable rosebowl	110.00
M	EI Horse Medallion bowl	45.00
B	EI Waterlily & Thistle banana boat, flakes	225.00

Burney Talley, 1814 Slate, N.W., Albuquerque, New Mexico 87104
PHONE: 1-505-242-1261

A	Holly plate, SCARCE	275.00
G	Pine Cone 6" plate, SCARCE	95.00
A	Diamond Rib funeral vase large, 19½" tall X 8½" RARE	425.00
M	Rustic funeral vase 21" tall by 7" mouth	200.00
G	Rose Columns Millersburg vase, RARE	1,050.00
M	Ripple funeral vase 19" tall by 7" mouth	200.00
M	Heavy Iris tumbler, lovely satin finish	65.00
M*	*Marigold or Amber Sailboats ruffled sauce	30.00
P	Grape & Cable 5 piece punch set	600.00
P	Wishbone footed bowl, NICE	85.00

Shirley Goolsby, 1809 Larkspur Ln., Ceres, California 95307
PHONE: 1-209-537-8244

B	GI Poppy Show plate	325.00
M	EI Poppy Show plate	425.00
W	EI Poppy Show plate	325.00
W	EI Beaded Cable rosebowl	500.00
W	EI Fine Cut & Roses rosebowl	500.00
P	EI Hobnail Swirl rosebowl	350.00
P	EI Leaf & Beads rosebowl	95.00
M	EI Leaf & Beads rosebowl	75.00
R	GI Orange Tree mug	275.00
AMB	EI Orange Tree mug	125.00

I HAVE OTHER CARNIVAL FOR SALE

Don Sherman, 4225 O'Keefe Dr., El Paso, Texas 79902
PHONE: 1-915-533-3580

G	EI Blackberry Block tumbler	125.00
B	EI Strawberry Scroll tumbler	210.00
M	EI (N) Pretty Panels tumbler	30.00
W	GI Cherry Chain bowl	50.00
M	EI Ranger pitcher	150.00
G	EI Acorn Burrs tumbler	60.00
M	EI Curved Star creamer	45.00
M	EI Inverted Coin Dot tumbler	40.00
G	EI Diamonds tumbler	40.00
M	EI Cut Cosmos tumbler	175.00

Doris Gerber, 5688 CR7, Garrett, Indiana 46738
PHONE: 1-219-357-5405

M	EI Beaded Cable rosebowl	40.00
G	EI Wishbone 9½" ruffled bowl	60.00
M	EI Acorn 7½" ruffled bowl	30.00
P	EI Drapery 8½" vase	50.00
G	EI Feathers 8" vase	30.00
M	EI Urn 9" vase	40.00
P	EI Scroll Embossed/File 5½" ruffled bowl	60.00
M	EI Daisy & Plume compote	30.00

Mary C. Kesterson, 3020 Mesa Rd., Willow Park, Texas 76086
PHONE: 1-817-441-8410

CB	Grape & Cable punch bowl & base 6 cups, small	725.00
R	Holly goblet, amberina base, SUPER IRID.	475.00
M	Millersburg Peacock & Urn master ice cream, dark marigold	485.00
R	Orange Tree mug, regular, super color and irid.	485.00
G	Peacocks bowl, ruffled, hard color to find (N)	925.00
B	Orange Tree plate, flat, SUPER	250.00
AO	Three Fruits plate, pastel	1,385.00
IB	Fine Cut & Roses rosebowl	395.00
A	Millersburg Peacock berry bowl 9½", radium	425.00
B	Peacocks bowl, ruffled, (N) FANTASTIC	385.00

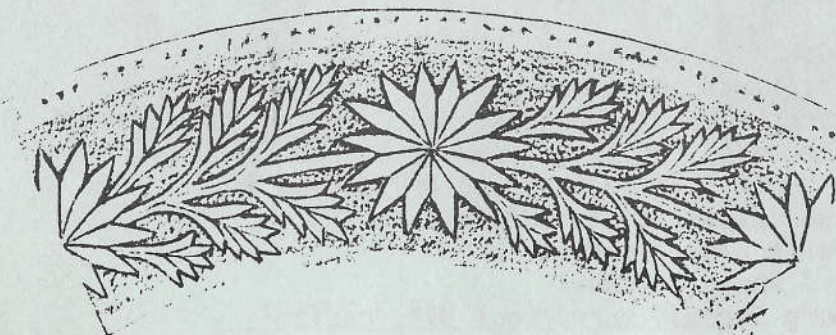
Larry Keig, 1521 W. 31st. St., Cedar Falls, Iowa 50613
PHONE: 1-319-277-0358 or 425-4467

M	Apple Blossom Twigs ruffled bowl, excellent irid.	50.00
A	Blackberry Bramble compote	25.00
A	Rosalind large bowl, chip on collar base	70.00
M	Inverted Coin Dot pitcher	130.00
G	Imperial Grape rosebowl	65.00
G	Graceful vase	45.00
B	Wreath of Roses compote	35.00
B	Butterfly & Fern tumbler	45.00
A	Peacock Tail ice cream bowl	25.00

SASE FOR LISTING OF OTHER ITEMS FOR SALE

Charles Propst, 1005 Park Ln., Osceola, Iowa 50213
 PHONE: 1-515-342-2697

M	Grape & Gothic Arches table set	250.00
M	Lions 7" bowl	90.00
B	Ribbon Tie ruffled plate	150.00
G	Orange Tree loving cup	250.00
A	Vintage 7½" plate	110.00
M	Vintage bowl, 3/1, ruffled 8½"	40.00



In search of the unknown.....
 Have two small bowls 6 1/8"d x 2 1/8"h
 Marigold with ruffled top edge
 Pattern repeats three times
 Similarities to Imperial and Frosted Block
 Heavy glass
 Sawtooth type pattern around top and bottom
 Star in base (no sawtooth-plain)
 Stippled background
 S.L. SCHOLZ, Box 369, Prairie City, Iowa 50228

Trudy Brown, 107 E. Main, Smithville, Missouri 64089
 PHONE: 1-816-532-4381

(N) Cherry & Cable tumblers, need 3, must have good color.

Fred G. Roque, Jr., 1427 W. Orchard St., Bloomington, California 92316
 PHONE: 1-714-820-4955

- A Wreathed Cherry butter dish
- IG Grape & Cable (N) powder jar lid
- M Millersburg Peacock master berry bowl, as pictured in Sherman Hands book 1, page 15.

Ed & Sharon Binstock, P. O. Box 351, Presque Isle, Maine 04769
 PHONE: 1-207-764-3612

- IG Rose Show plate, damage OK
- G Rose Show plate, damage OK
- IB Poppy Show plate, damage OK
- IG Poppy Show plate, damage OK
- M Poinsettia bowl
- G Wishbone large piecrust edge bowl
- ANY Damaged Hearts & Flowers plates, except purple
- P Corn vase with small damage
- LAV Hearts & Flowers piecrust edge bowl
- LAV Peacocks (N) plate

Ted Sheibley, 304A Hillcrest Drive, New Cumberland, Pennsylvania 17070
 PHONE: 1-717-938-6417

- G,IB,IG Peacocks on the Fence bowl or plate
- AO Rose Show bowl or plate
- AO Three Fruits plate

J. Richard Brandt, 1313 Church St., Lititz, Pennsylvania 17543
 PHONE: 1-717-626-7393 after 6:00 P.M.

- G Drapery rosebowl
- IG Drapery rosebowl
- AO Grape & Cable powder jar lid
- A Grape & Cable perfume bottle stopper

John D. Resnik, 10031 Banner Lava Cap, Nevada City, California 95959
PHONE: 1-916-477-1345

- G EI Grape & Cable butter base only
- M EI Wide Panel epergne side lillies, need two
- IB EI Wide Panel epergne
- EI ANY COLOR Detroit Elk plates
- A EI "Sterling Furniture" 6" adv. plate
- A EI "E. A. Hudson Furniture" 6" adv. plate
- IG EI Wishbone epergne
- B EI Orange Tree punch cups, need three
- PO EI Hearts & Spades ice cream shape 10" bowl
- M EI Garden Path Variient ice cream shape 10" bowl

William Coles, Route #1, Box 273B, Hickory, Kentucky 42051
PHONE: 1-502-674-5916

- A Acorn Burrs pitcher
- Peacock & Urn bowls in marigold, blue, purple and green
- Hearts & Flowers bowls in blue, purple and green

Woody Evans, 617 E. 18th St., South Sioux City, Nebraska 68776
PHONE: 1-402-494-5267

- B Fentons Little Flowers piecrust edge bowl

J. C. McPherson, Jr., 3125 Ramsgate Rd., Augusta, Georgia 30909

- Wise Owl Bank - Hartung Bk 3, p. 108
- Humpty-Dumpty Bottle - Hartung Bk 4, p. 103
- Napoleon Bottle - Hartung Bk 7, p. 152
- Frosty Bottle - Hartung Bk 6, p. 81
- Heinz Bottle - Hartung Bk 5, p. 89
- Peter Rabbit 111 Bottle - Presznick Bk 4, plate 156
- Cleopatra Bottle - Hartung Bk 9, p. 87
- Kittens Nursing Bottle - Hartung Bk 7, p. 149

Gloria Pfeiffer, 219 Delamaine Dr., Rochester, New York 14621
PHONE: 1-716-266-1273 after 6:00 P.M.

- G Lustre Rose sugar or creamer

John C. Munden, 2289 So. Military Highway, Chesapeake, Virginia 23320
PHONE: 1-804-545-1463

- G EI Memphis punch top, MINT, or with damage other than cracked
- B EI Bouquet tumblers up to 3
- A EI Grape & Cable medium punch top or will sell super base
- B EI Butterfly & Berry water pitcher
- P EI Dahlia water pitcher with some blue iridescence
- P EI Acorn Burrs punch cups, need 6, or have 6 green punch cups will trade
- * EI ANY color Peacock at the Fountain punch set, except marigold

Ray Hitchcock, R.R. #1, Box 301, Winterset, Iowa
PHONE: 1-515-462-2074

- G Acorn Burrs punch top, or sell base
- PO Fish Net epergne base

Larry Keig, 1521 W. 31st. St., Cedar Falls, Iowa 50613
PHONE: 1-319-277-0358 or 425-4467

- ANY Shape with Iowa town names stenciled on them.
- AMB Imperial Grape tumbler
- P,G Bud vase whimsey (pictured in Hand)
- M Enameled Anemone tumbler

Charles Propst, 1005 Park Ln., Osceola, Iowa 50213
PHONE: 1-515-342-2697

- IB Peacocks on the Fence bowl, PCE and ruffled
- IG Peacocks on the Fence bowl, PCE and ruffled
- M Feather & Hearts pitcher



THE 1987 COBALT BLUE SOUVENIR BELL

Orders for the 1987 Cobalt Blue Souvenir Bell continue to come in and the number of available souvenirs continue to decrease. This 1987 Souvenir Bell is made in cobalt blue and contains a portrait of John Fenton, thereby honoring the Millersburg Glass Company. We're sure you will want this 1987 Bell to go along with the Red 1985 and Green Opal 1986 Souvenir Bells, as these make a great collectible series. If you are one of those members who continue to put off ordering your Souvenir, then you should do so now while it is fresh on your mind.

Remember, your purchase of a Souvenir not only gives you a nice piece of handmade Carnival glass from one of the original makers of Carnival, the Fenton Art Glass Co. for your collection, but it also helps to financially maintain this Carnival Glass organization whose only purpose is to help you keep informed about your interest in Carnival Glass. These revenues are also returned to you at Convention time with many activities and programs planned for YOUR benefit.

Every year some members fail to order their Souvenir until after they have all been sold and then they are disappointed and sorry that they did not get a Souvenir. Don't let this happen to you this year. Order yours now while they are still available.

Listed below are the Souvenir Bells which are available. Please note that the Red 1985 Bell is in VERY short supply, so if you want one, please order as soon as possible.

1985 Red Bell with a portrait of Harry Northwood, honoring the Northwood Glass Co.

1986 Green Opal Bell with a portrait of Frank Fenton, honoring the Fenton Art Glass Co.

1987 Cobalt Blue Bell with a portrait of John Fenton, honoring the Millersburg Glass Co.

The above bells are \$35.00 each, plus postage and insurance of \$2.50 for each bell. Please send your orders to: John Britt, 3048 Tamarak Drive, Manhattan, Kansas 66502. Be sure to include postage and insurance for each bell.

WE THANK YOU FOR YOUR COOPERATION & SUPPORT!