

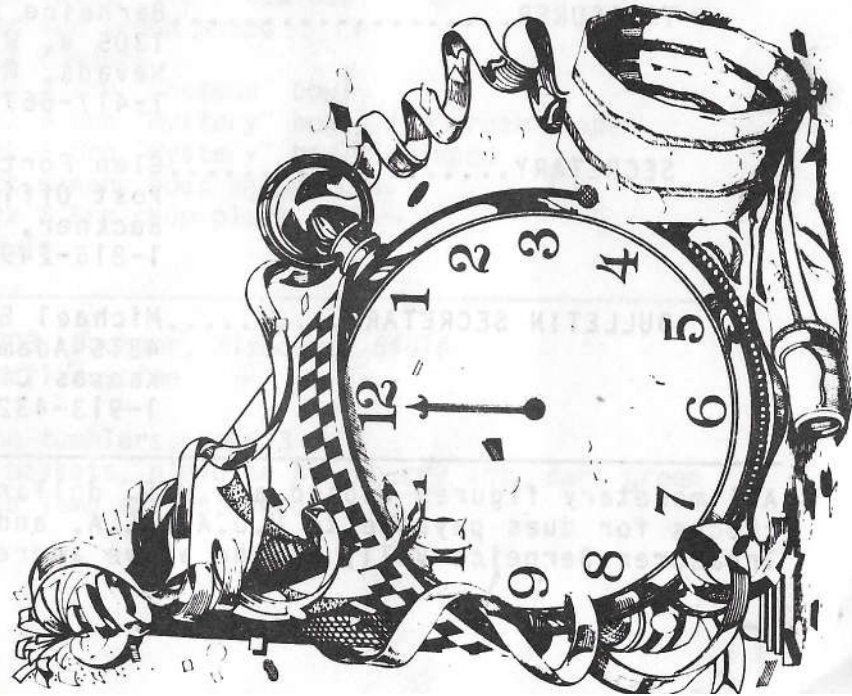
RETURN ADDRESS

Michael J. Basey
Bulletin Secretary
H.O.A.C.G.A.
4315 Adams
Kansas City, Kansas 66103

HOACCGA

Heart Of America Carnival Glass Assoc. Inc.

Happy New Year 88



First Class Mail
U.S. Postage
PAID
Kansas City, Mo.
Permit No. 4352



BEAUTIFUL CARNIVAL GLASS PLATE DISPLAY & PROGRAM IN DES MOINES, IOWA

On November 14, 1987, Ray Hitchcock of Winterset, Iowa gave a display and Program on Plates at our monthly meeting in Des Moines, Iowa. The Program was most interesting and informative. We all enjoyed it very much. THANKS RAY! Below are some pictures of his display.

Heart Of America Carnival Glass Assoc.

Membership June to May, per couple or single
DUES: \$20.00 U.S. & CANADA
\$35.00 FOREIGN

Published the 15th
of each month

PRESIDENT.....Robert Grissom
7900 Crescent
Raytown, Missouri 64138
1-816-356-5320

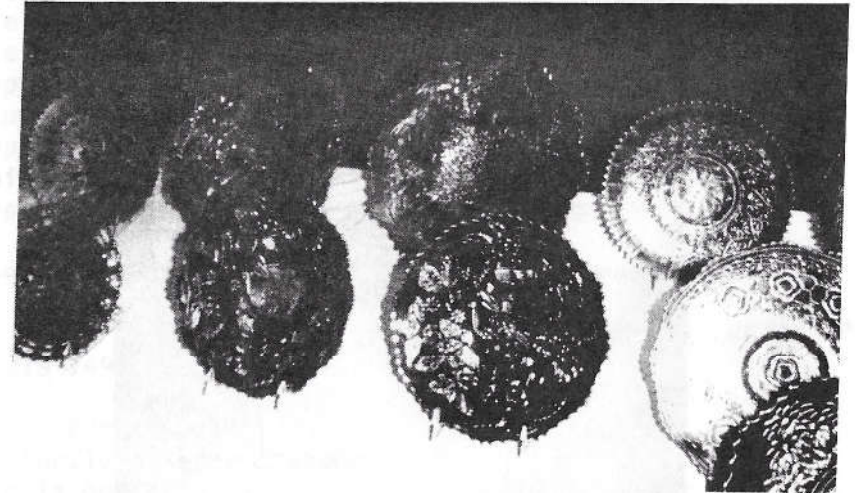
VICE-PRESIDENT.....Nadine Paulsen
700 Purdom
Olathe, Kansas 66061
1-913-782-1313

TREASURER.....Berneice Bell
1305 W. Wight
Nevada, Missouri 64772
1-417-667-4866

SECRETARY.....Glen Fortney
Post Office Box 303
Buckner, Missouri 64016
1-816-249-5208

BULLETIN SECRETARY.....Michael Basey
4315 Adams
Kansas City, Kansas 66103
1-913-432-2460

All monetary figures quoted are U.S. dollars. Please make checks for dues payable to H.O.A.C.G.A. and send them to the Treasurer Berneice Bell, at the above address.



AN INTERESTING FIND



I recently purchased this pair of Imperial Grape Water Carafes. They are not plentiful in any color, but in the Amber Color shown they are very rare. An additional bonus is the fantastic iridescence typical of Imperial.

When I purchased these, I was told they were found and bought from a funeral home where they were used as vases. Thus they truly can be called "Funeral Vases".

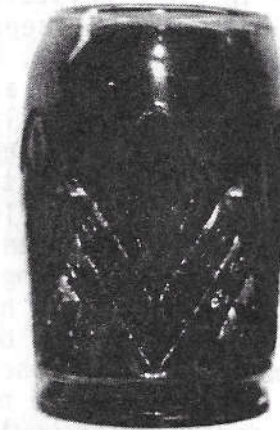
I have been unable to locate any more of these. Does anyone out there know of any more in this color? One of these now resides in the collection of Burney Talley. I have kept the other one.

I will be writing more articles in the future on rare and underestimated pieces of glass by Imperial Glass Company.

NORENE DURAN

EDUCATIONAL TUMBLER SERIES

By John & Lucile Britt



THE UNUSUAL "OKLAHOMA" TUMBLER

The "Oklahoma" tumbler is quite impressive, unique and as mentioned above, very unusual. First of all, note the cupped in shape that is used at the top. This inward curving rim is not found on any other carnival glass tumbler, to the best of our knowledge. The top opening of 2½ inches is narrower than the base diameter of 2½ inches, making it unique in the carnival glass tumbler field. It is made of heavy glass with rich dark marigold color and has very nice iridescence. No other color has ever been reported. It rests on a collar base with a fourteen point rayed star that is pressed into the under side of the base. In the center of the star figure is the trademark, which consists of a large "M" inside an even larger "C". This stands for "Cristales of Mexico". The tumbler is of the regular table size standing slightly over 4 inches high.

In our early collecting years we did a lot of work and research with carnival glass tumblers. This is one of the patterns that puzzled us a great deal. We had noticed that every one of these that had been found could be traced to the Texas, Oklahoma and Mexico area. From this, we suspected that they were either made in that area or that special shipments were sent

The Oklahoma tumbler continued...

into that particular part of the Country. Sometime later we corresponded with Mrs. Lois Langdon of Idaho. Along with her husband, they had spent the winters in Monterrey, Mexico for a number of years. This is the home of the Cristales Glass Company which we found out had made a lot of crystal. The "Oklahoma" pattern was also made in clear crystal. Mrs. Langdon had observed it around Monterrey, Mexico and we had seen several tumblers in the state of Oklahoma. Due to the language barrier, Mrs. Langdon could never find out whether these "Oklahoma" tumblers were actually made there or not. She did, however, find six or seven of these "Oklahoma" tumblers, over the years, in the immediate Monterrey area. So it seems reasonable to assume that these tumblers were either made by the Cristales Glass Company of Monterrey, Mexico or this company had these tumblers made and iridised for them by a company such as Imperial. A tumbler and water pitcher of this pattern is illustrated in an old Imperial catalog, only in this case, the tumbler is not cupped in at the top nor does it have the collar base. Whether the mold for this tumbler was borrowed, bought, or copied from Imperial and made at the Monterrey factory or whether Imperial made and iridised them for the Cristales Company, we are not sure at this time. Anyway they carry the Cristales trademark which would indicate that they were either made by them or made for them. They are a rather hard tumbler to find, and in our opinion, one of these would fit in very nicely in any carnival glass tumbler collection.

In January of 1983, we wrote an article on the Ranger tumbler, which also contains this same "M" inside a "C" trademark. That article included reprints of some of the Cristales advertising which was printed in Spanish. This material was provided to us by Mrs. Langdon. You might want to read that article in the January 1983 Bulletin for added information on this glass company.

Another carnival glass pattern, which is called "Votive Light", also carries this trademark. "Votive Light" is a religious piece and was probably used as a candle holder, since some of them have been found containing old wax from previous use, most likely in Catholic Churches. See Hartung book 8 - page 135 for a sketch and description of this rather rare piece.

The "Oklahoma" tumbler is #120 in this Educational Tumbler Series. Next month we will feature the "Diamond & Daisy Cut" tumbler, which is sometimes referred to as "Mayflower".

JOHN & LUCILE BRITT

PICTORIAL PATTERN PARADE

By John & Lucile Britt

NORTHWOOD'S TREE TRUNK VASES

The "Tree Trunk" pattern is one of the most popular of all the carnival glass vases. They were made in many different colors, three distinct sizes, and in a wide selection of heights. There seems to be a lot of confusion between this Northwood pattern and the "Rustic" pattern that was made by Fenton. We have found that many auctioneers will list a vase as "Tree Trunk" only to find out it is a "Rustic" vase when you arrive at the auction. We have also noticed that many collectors get these two patterns confused with one another.

Both of these patterns contain many rows of hobs or hobnails that circle around the vase. On the "Tree Trunk" vase, these rows are somewhat uneven and are meant to look like knots on the trunk of a tree. These so called "knots" also vary in size on the vase, especially on the two larger size vases. Between these hobs or knots are many short curving lines that run upward on the vase. These curving lines are actually meant to represent the uneven shaped bark that is found on most real life trees. A few of these knots that are found on some of the funeral vases, especially the short squatty ones, are much larger and extend out far enough to hang a ladies wrist watch upon them. On the "Rustic" vase, these hobs are in more uniform rows that extend around the vase. On this vase, the background is plain or smooth with none of the curving lines between the hobs that are found on the "Tree Trunk" vase. If you keep this in mind, you will have no trouble in telling these two vases apart.

The big majority of the vases, in both of these patterns, have been swung out to a greater length, while the glass was still hot. When this process is used, the hobs are stretched out somewhat and lose part of their hob-nail appearance. Usually the hobs on the bottom and very top rows keep their original shape. The shorter vases, that have not been swung out, will have the true hobnail effect.

Tree Trunk vases continued...



PHOTO #1 TREE TRUNK FUNERAL VASE

Photo #1 shows the "Tree Trunk" in the large size which is called a funeral vase. Notice the ladies wrist watches hanging from the large knots. This particular funeral vase is only 12½ inches high with a 5½ inch base. Some of these have been swung out to 20 or more inches. The height of a "Tree Trunk" vase should not be used in determining the size of the piece. If the base is 5½ inches wide it is called the large size or funeral vase. This is true whether it is 12 inches high or 20 or more inches in height. The top of this particular vase is eight inches across at the widest point.

Tree Trunk vases continued...



PHOTO #2 LOW SQUATTY TREE TRUNK FUNERAL VASE OR JARDINIERE

Photo #2 shows one of these large size vases that has been pushed down and is very low and squatty. The base is 5½ inches wide and stands only 8 inches high with a top opening of 10 inches. This wide example is usually called a whimsy jardiniere and is considered rare. Notice the ladies wrist watch and several rings hanging from the large "extended out" knots on this piece. Also notice the curving lines, that we mentioned earlier, between the hobs or knots. It is was in the "Rustic" pattern these lines would not appear. Both #1 and #2 vases are in the purple color.

Tree Trunk vases continued...



PHOTO #3 TREE TRUNK VASES IN THREE SIZES

Photo #3 shows the "Tree Trunk" vases in the small size, large size or funeral vase, and the middle size. The small size vase has a base diameter of $3 \frac{3}{8}$ inches and the middle size is $4 \frac{5}{8}$ inches across the bottom. As mentioned earlier, the large size or funeral vase always has a base diameter of $5 \frac{1}{2}$ inches. Remember, that to determine the size of any "Tree Trunk" vase, you refer to the base diameter and not to the height. Notice the "elephant foot" type of base used on the large funeral vase in the center. This type of base is also shown on the examples in both photo #1 and #2. I might add that most "Tree Trunk" vases are signed with the underlined "N" in a circle. Keep in mind that they are not all signed, however. The "Rustic" vase is never signed. This pattern was produced by the Fenton Art Glass Company and Fenton never signed any of their old carnival glass.

Tree Trunk vases continued...



PHOTO #4 MEDIUM SIZE TREE TRUNK VASES IN PASTEL COLORS

Photo #4 shows the medium size vases in pastel blue and pastel green. They are quite rare in these pastel colors, but an example in the aqua opal color would be even more rare. Notice that these two medium size vases do not have the elephant foot type base. We do have one of these in marigold that contains the elephant foot type base, however. While these medium size vases shown here are $12 \frac{1}{2}$ inches and 12 inches tall, the small size is sometimes found of equal or taller height. In that case, the base would be only $3 \frac{3}{8}$ inches wide instead of $4 \frac{5}{8}$ inches found on the medium size vases.



PHOTO #5 SMALL SIZE TREE TRUNK VASES IN DIFFERENT HEIGHTS

In photo #5 we show the small size vases in pastel green, aqua opal and pastel blue. This photo also illustrates several of the many heights found in the small size "Tree Trunk" vases. Vases in this size will all have the same 3 3/8 inch base. We hope that this will be of some help to collectors, dealers and auctioneers to tell the difference between the "Tree Trunk" and "Rustic" vases. Keep in mind the different base dimensions that are found on the three sizes of the "Tree Trunk" vases. With only a little experience, you will be able to recognize the three sizes on sight.

Our December meeting was probably a first in carnival programs. Since Linda Taglioli, one of our charter members, has collected "new" or "contemporary" glass for longer than some old glass collectors have practiced the habit, she gathered up 70 known patterns which we all know to have been reproduced, spent long hours of research, and created an excellent comparison study for all of us.

Mona Nevins brought new glass, Gerry Brown and the Frys provided some and many members brought the old counterparts, making about 150 pieces in the display.

Charles Hof sold four dozen plate holders for \$2.00 each and contributed the proceeds to the Club.

Dee Sponsler organized a bake sale with Margaret Halbert acting as clerk. Those donations created a tidy sum of \$48.00 for the Club. Raffles were so numerous and interestingly wrapped that proceeds from that endeavor totaled \$151.50.

Nine table prizes were awarded--gingerbread house ornaments hand made of mesh and yarn with tiny teddy bear candles inside. These were donations also.

Grace & Byron Rinehart sent three lovely door prizes--a necklace made by Christ Harnish, and two pretty new pieces of Gibson Glass. Another member donated a basket of Christmas napkins to be used as door prize.

Attendance was just great, considering how busy everyone is at the Holiday Season. 72 members and guests attended, nine for their first time. Of those, 5 joined at the meeting and two more since then.

Rusti Shupert, our Historian, gave a timely report on the Holly pattern. Al Shupert was there with his camera, so we have another San Diego tape to offer the Carnival collecting world. We feel this is the up and coming method of sharing the glass--much less expensive than books. Since our meetings are convention seminar stype with MUCH glass in the program and a prepared speaker, we are proud to have spearheaded the taping effort. Al does a fine job of producing good coverage. Dean & I own all the tapes made thus far and encourage each of you to enjoy them as well.

All VHS tapes are \$20.00, High Grade \$25.00, 3M Commercial grade, plus \$4.00 postage anywhere in the U.S. Order from: Al Shupert, 4074 Vista Calaveras, Oceanside, California 92056. PHONE: 1-619-724-5306.

DON MOORE	BASICS OF SHAPE & COLOR September 1986
MARGARETE WERDAL	WATERSETS--78 OF THEM! June 1987
MARIE MCGEE	MILLERSBURG September 1987
LINDA TAGLIOLI	OLD PATTERNS/REPRODUCED December 1987

Our March meeting will be very interesting, with Dr. Chris Reynolds coming to visit us from Tacoma, Washington with his prize collection of Dragon & Lotus.

Respectfully submitted
Diane Fry,
President

=====

TEXAS CARNIVAL GLASS CLUB NEWS

The Texas Carnival Glass Club will hold its 9th Anniversary meeting at the Marriott Hotel in Houston, Texas on February 19-21, 1988.

Don Moore has accepted an invitation to be the Banquet speaker. He will talk on plates.

Tom Burns will bring a collection of glass for an Auction on Saturday. Other activities are planned.

We wish to extend an invitation to everyone, and you need not be a member to attend.

To reserve a room, call the Houston Greenspoint Marriott at 1-713-875-4000. Mention the Texas Carnival Glass Club to receive a special rate of \$40.00 per night. The Marriott is located 3/4 mile east of I-45, Beltway 8 (Intercontinental Airport) exit 60, 255 N. Belt 77060.

Jane Brown
Secretary

TAMPA BAY CARNIVAL GLASS JAMBOREE

Just want to let you know the Tampa Bay Carnival Glass Club is having its' Jamboree in Clearwater, Florida this coming year. We are planning on making it our biggest and best. I hope that everyone who loves Carnival Glass can come to Florida and be with us. John & Lucile Britt are coming and are going to do a Program on Carnival Glass for us.

DATE: February 12th and 13th
PLACE: Holiday Inn - Central, 400 U.S. 19 South,
Clearwater, Florida 34625
PHONE: 1-813-797-8173 or call Maria 1-813-937-6147
There will be a show and sale on Saturday February 13th and auction that night.

My address and phone is changed as you will see. I hope all you northern friends will call and come by to see me while you are in Florida.

Love to all and looking forward to seeing you this winter.

Naomi Calkins
Vice-President Tampa Bay Carnival Glass Club
120 Woodland Court
Safety Harbor, Florida 34695
PHONE: 1-813-725-4145



Has anyone seen my parents? I recently acquired this duckling and would appreciate any info as to who made it.

I have a feeling that it might have been Co-Operative Flint. It is similar in texture and weight of the glass, also the marigold iridescence to the covered frog made by that Company.

Naomi Calkins

Our December meeting and covered dish meal was attended by 15 members and 2 guests. This perhaps is always one of our most important meetings of the year. We have our Christmas covered dish dinner and election of officers for the coming year. The weather was very threatening, but were very happy so many of our out-of-town members were able to be with us. The evening and next day produced 8 inches of blowing snow and very bad roads.

The new officers for the coming year are as follows:

PRESIDENT	Donald Kime
VICE-PRESIDENT	Ken Young
SECRETARY	Frank Spangler
TREASURER	Roland Kuhn
HISTORIAN	Wilma Elder

Please mark your calendars now for our Convention in 1988. It will be October 14, 15, and 16, at the same motel (The Heritage Inn). The Woody Auction Co. will conduct the Convention auction so it will be a good auction and we are looking forward to seeing many of you in October.

This will be my final news item for the different Clubs newsletters, but I am sure our new secretary will be furnishing you with monthly news items throughout the year. I have appreciated all of you putting our Club news in your newsletters.

Donald E. Kime
Secretary



The Tampa Bay Carnival Glass Club held their November meeting at the home of Nick and Maria Vafiadis in Palm Harbor. We enjoyed a delicious roast turkey dinner. Maria roasted the turkey and did a superb job. Her first fenture and the bird turned out to be a masterpiece. Following the buffet, we turned to our business meeting.

Our Jamboree Chairlady, Maria; gave us a report on our motel selection-- Holiday Inn, Clearwater Central, 400 U.S. 19 South, Clearwater, Florida 34625, 1-813-797-8173. Several activities are scheduled for the Jamboree weekend in our area--Depression Club sale in Clearwater and an Antique Show at the Tampa Fairgrounds. Hope you plan to attend. Make your reservations early. We will be happy to greet all our out-of-town members again.

Don't forget to call or write Maria Vafiadis for table rentals for selling your beautiful Carnival Glass - 1-813-787-3889, 3132 D Beecher Drive East, Palm Harbor, Florida 33565.

December 20, 1987 Meeting - Christmas Party. Hostess - Naomi Calkins, 120 Woodland Court, Baywoods 11 Subdivision, Safety Harbor, Florida 34695, 1-813-725-4145. Election of Officers - no program - just fun. Please bring white elephant articles for Auction.

NEWS FLASH! Rodney and Susie Hardee were blessed with a beautiful baby girl November 8, 1987. She weighed in at 7 lbs. 11 oz. Welcome Lisa Marie Hardee. Congratulations Rodney and Susie!

Ruby E. Pitt,
President

CARNIVAL GLASS AUCTION PRICE REPORT FOR 1986

A listing of over 3,000 prices from 1986 auctions. Listed by Hartung name. Information includes description, shape, color, sale price, date of auction, auctioneers and sellers name.

This years report will include a section on pastels. When ordering, please specify 1986 report. The 1984-85 price report is still available. Either report may be ordered for \$8.00 postpaid. Overseas delivery add \$1.00.

ORDER DIRECT FROM: TOM & SHARON MORDINI
36 N. Mernitz Ave.
Freeport, Illinois 61032

TAMPA BAY CARNIVAL GLASS CLUB
 1988 MINI-JAMBOREE

LOSE YOUR HEART TO CARNIVAL GLASS!

PLACE

Holiday Inn, Clearwater Central
 400 U.S. Highway 19 South
 Clearwater, Florida 34625
 1-813-797-8173

THURSDAY, FEBRUARY 11th

Early arrivals - get acquainted

FRIDAY, FEBRUARY 12th

7:00 P.M. till ?, Hospitality Room
 Show and Tell Program - slides, etc.

SATURDAY, FEBRUARY 13th

Show and Sale - 8:00 A.M. - 4:00 P.M.
 Table Rentals - \$20.00 per table
 B-B-Q Dinner - all you can eat - Price - \$13.09 (Make reservations early)
 Carnival Glass Auction - 7:00 P.M. till ?
 Tom Burns will bring an attractive and desirable selection.
 BE THERE!

Call Maria Vafiadis for table rentals at 1-813-937-6147 (days).

***** CARNIVAL GLASS FOR SALE *****

Eva Backer, 12 Sherwood Rd., West Hartford, Connecticut 06117
 PHONE: 1-203-233-3761 10:00 A.M. - 2:00 P.M. after 7:00 P.M.

A	Acorn Burrs punch cups, have 3, each	35.00
A	Cattails hatpin	30.00
A	Scarab hatpin	30.00
CB	Grape & Cable, Persian Medallion int. orange bowl, Fenton	175.00
CB	Panther sauce, footed	85.00
A	Flute creamer, breakfast (Imperial)	45.00
M	Grape & Cable creamer	85.00
A	Singing Birds creamer	95.00
A	Strawberry 9" plate	65.00
W	Grape Delight rosebowl	95.00

Stan & Donna Williams, 7711 N.W. 69th Terr., Kansas City, Missouri 64151
 PHONE: 1-816-587-7357

G	Advertising plate, Grape & Cable, stippled interior, Old Rose Distilling Co.; Wines and Liquors, Chicago, fantastic iridescence!	375.00
A	Grape & Cable cologne bottle, usual nicks on base of stopper, no harm	160.00
A	Millersburg Whirling Leaves bowl	85.00
IB	Hearts & Flowers bowl, Ribbed exterior	250.00
W	Peacock & Urn compote	95.00
A	Grape & Cable sweetmeat whimsey, small nicks on stem, so	50.00
A	Millersburg Leaf & Little Flowers miniature compote	250.00
G	Dragon & Lotus 9" flat bowl	65.00
B	Fenton Vintage epergne	115.00

Mr. & Mrs. J. C. Barker, Route 3, Box 163-BB, Savannah, Missouri 64485
 PHONE: 1-816-662-2265

40 pieces of Carnival. No damage and good iridescence.
 Send SASE or call 1-816-662-2265

David Deem, 1746 N. California St., Burbank, California 91505
 PHONE: 1-818-845-4530

P	Good Luck 9" plate	375.00
B	Lotus & Grape 9" plate	750.00
B	Captive Rose 9" plate	175.00
B	Peacock & Urn 9" plate	350.00
ABOVE ARE SUPER ITEMS, BOTH IN COLOR & IRID.		

***** CARNIVAL GLASS FOR SALE *****

David L. Sharp, 3717 Wilmington Pk., Dayton, Ohio 45429
PHONE: 1-513-299-8420

AO	EI	Drapery rosebowl, pastel iridescence	275.00
M	EI	Millersburg Peacock & Urn berry bowl	160.00
G	EI	Millersburg Boutonniere compote	100.00
VAS	GI	Peacock & Urn compote	110.00
PO	EI	Puzzle bon bon	60.00
AQ	EI	Blackberry Spray hat, 4 sides up	65.00
B	EI	Grape & Gothic Arches sugar bowl	80.00
P	GI	Bushel Basket, 8 sided	110.00
M	EI	Grape & Cable sugar lid	20.00
W	EI	(N) Thin Rib 10" vases, have 2, each	75.00

Dick Wetherbee, 847 Stafford St., Rochdale, Massachusetts 01542
PHONE: 1-617-892-4420

M	EI	Star Medallion 6 3/4" tall stemmed goblet, beautiful	30.00
P	EI	(N) Grape & Cable butter dish, absolutely mint & gorgeous	175.00
G	EI	Panelled Holly 2 handled bon bon, not an easy pattern to find	45.00
M	EI	Blackberry Spray 6" jack-in-pulpit hat, super piece	32.00
VAS	EI	Orange Tree mug, a beauty but cracked; pretty displayed	12.00
P	EI	Westmorlands' Footed Shell, large one, very pretty	28.00
PO	EI	Ski Star 8 3/4" handgrip plate, yellowish color, SUPER	125.00
M	EI	Blackberry Banded 5 3/4" hat, radium finish, lovely	30.00
P	EI	(N) Three Fruits 8 3/4" bowl, PCE, OUTSTANDING	85.00
P	EI	Dugans Pannelled 5 1/2" X 5 1/2" jack-in-Pulpit short vase SUPER	65.00

Ted Sheibley, 304A Hillcrest Drive, New Cumberland, Pennsylvania 17070
PHONE: 1-717-938-6417

IG		Peacock on the Fence plate, Ribbed exterior	375.00
M		Orange Tree hatpin holder	150.00
B		Orange Tree 9" plate	240.00
M		Three Fruits stippled plate, Ribbed exterior	130.00
M		Memphis 10 piece punch set	400.00
W		Peacock & Urn compote	100.00
M		Fern compote, Daisy & Plume exterior	45.00
P		Greek Key 9" bowl, Basketweave exterior	95.00
P		Peacock & Urn 3 piece ice cream set (N)	525.00
B		Peacock & Urn 3 piece ice cream set (N)	600.00

***** CARNIVAL GLASS FOR SALE *****

Rudolf Hafner, 574 Miles Avenue, Greenfield Park, Quebec, Canada J4V 1S6
PHONE: 1-514-672-3300

G	GI	Panelled Holly (N) bon bon	60.00
B	EI	Two Flowers 10" footed bowl, SUPER	80.00
G	EI	Grape & Leaves (N) 8 1/2" bowl	70.00
EB	EI	Three Fruits stemmed bon bon	65.00
B	EI	Luster Rose 7 1/2" footed bowl	75.00
G	EI	Vintage (Fenton) 8 1/2" ruffled bowl	50.00
B	EI	Captive Rose 9" ruffled bowl	55.00
G	EI	Peacock Tail Vt. compote, scarce and super	95.00
G	EI	Three Fruits ruffled 7 1/2" bowl	60.00
B	EI	Acorn 7" ruffled bowl	50.00

Charles F. Kremer, 430 Rose Avenue, New Haven, Indiana 46774
PHONE: 1-219-749-4909

B		Blackberry Block tumbler	55.00
M		Bouquet tumbler	25.00
B		Grape & Gothic Arches tumbler	45.00
M		Jewelled Heart tumbler	70.00
B		Orange Tree Scroll tumbler	50.00
M		Hobstar butter	65.00
P		Circle Scroll spooner	135.00
M		Grape & Cable sugar	80.00
G		Millersburg Cherries spooner	90.00
M		Diamond & Daisy Cut tumbler	35.00

Tom & Sharon Mordini, 36 N. Mernitz Ave., Freeport, Illinois 61032
PHONE: 1-815-235-4407

AO	EI	Hearts & Flowers compote, pastel	425.00
W	EI	Cosmos & Cane large bowl	175.00
W	EI	Peacock & Urn master ice cream bowl	550.00
W	EI	Hearts & Flowers compote	160.00
W	EI	Rose Show bowl	350.00
W	EI	Hearts & Flowers ruffled bowl	250.00
W	EI	(N) Bushel Basket, round	225.00
B	EI	Embroidered Mums bowl	320.00
M	EI	Blossomtime compote	165.00
P	EI	Imperial Grape 7 piece punch set	875.00

***** CARNIVAL GLASS FOR SALE *****

Glen Fortney, P. O. Box 303, Buckner, Missouri 64016
PHONE: 1-816-249-5208 Call anytime

M	EI	Oklahoma tumbler, SUPER COLOR, IRIDESCENCE & MINT	675.00
G	EI	Millersburg Morning Glory tumbler, beautiful	900.00
M	EI	S-Repeat tumbler, guaranteed old & gorgeous	450.00
A	EI	Checkerboard tumbler, beautiful & RARE	400.00
M	EI	File tumbler, SUPER COLOR & IRIDESCENCE	340.00
G	EI	Millersburg Cherries tumbler, flared top, SUPER	225.00
IB	EI	Knights Templar Dandelion mug	875.00
EB	EI	(N) Dandelion mug, SUPER	500.00
B	EI	Beaded Shell mug, scarce color	135.00
P	EI	Millersburg Perfection tumbler, gorgeous	450.00

SEND SASE FOR LISTING OF TUMBLERS & MUGS. MANY RARE AND HARD TO FIND.

Bob & Carol Schneider, 6540 Pinebrook Way, Rocklin, California 95677
PHONE: 1-916-782-7694 evenings

M	EI	Little Flowers 10" collar base bowl, small rim chip	45.00
M	EI	Wishbone ruffled footed bowl, very pretty	65.00
A	GI	Three Fruits plate	70.00
M	EI	Three Fruits stippled plate, SUPER	145.00
B	EI	Holly bowl, tight candy ribbon edge	110.00
IB	EI	Nippon bowl, piecrust edge, NICE	185.00
G	EI	Holly bowl, ruffled	125.00
A	EI	Holly bowl, ruffled	125.00
A	EI	Stag & Holly 8" bowl, ruffled	150.00
R	EI	Fine Rib 12" vase, cherry red	165.00

Mary Welch, 213 Alexander, Scotia, New York 12302
PHONE: 1-518-393-7748

M		Star & File wines, have 4, each	25.00
CLM		Imperial Grape wines, have 4, each	18.00
M		Grape & Cable banana boat, stippled	135.00
M		Open Rose ruffled sauce	15.00
M		Florentine candlestick, 1 only	20.00
IG		Florentine candlestick, 1 only	20.00
M		Peacock at the Fountain punch bowl base, have 2, each	25.00
M		Stork & Rushes punch cups, have 5, each	10.00

SEND 2 STAMPS FOR 300 PIECES OF CARNIVAL FOR SALE

***** CARNIVAL GLASS FOR SALE *****

Ed & Sharon Binstock, P. O. Box 351, Presque Isle, Maine 04769
PHONE: 1-207-764-3612

W		Grape Arbor tankard pitcher, frosty multi-color	400.00
R		Plaid ruffled bowl, chip but beautiful, not silvery	750.00
G		Leaf & Beads whimsey candy dish	35.00
P		Coin Dot plate, SCARCE	55.00
G		Grape & Cable water pitcher, long internal crack, but nice	80.00
M		Peach & Pear large oval bowl	60.00
W		Bushel Basket, super color, usual handle cracks	75.00
A		Millersburg Cherry master ice cream bowl, base chip but pretty	90.00
P		Wishbone footed bowl	50.00
EB		Wishbone large PCE bowl, 1 of 2 perfect examples known, too beautiful for words (Ref. Nov. 87 Bulletin)	2,500.00

Hubert F. Shelton, Rt. 1, Box 290, Munfordville, Kentucky 42765
PHONE: 1-502-528-5893

CB	EI	Persian Medallion 2 handled 7½" bon bon	36.50
M	EI	Grape & Cable punch cups, have 6 (N), each	18.00
P	EI	Grape & Cable tumbler (N)	25.00
M	EI	Butterfly & Berry tumblers, have 5, each	16.00
P	EI	Dandelion tumbler, beautiful	40.00
M	EI	Vineyard tumblers, have 6, each	16.00
G	EI	Inverted Strawberry tumbler, listed extremely rare, made by Cambridge Glass Co.	100.00
G	EI	Lustre Rose butter dish lid	20.00
M	EI	Stag & Holly footed 9½" bowl (deep bowl)	60.00
LM	GI	Waterlily & Cattails tumbler	16.00

Jane Dinkins, 1100 Ridgeley Dr., Houston, Texas 77055
PHONE: 1-713-465-0557

PM	EI	Imperial Grape center-handled sandwich tray	25.00
M	GI	Pony bowl, ruffled	45.00
G	GI	Twins ruffled bowl	28.50
RA	EI	Colonial sherbert-compote	75.00
M	EI	Curved Star large ruffled compote	25.00
A	EI	Little Beads small compote	40.00
W	EI	Orange Tree punch cup, vert. crack in side	15.00
P	EI	Diamond Lace tumbler	50.00
M	EI	Butterfly & Berry tumbler, fleabites under collar base	10.00
M	EI	White Oak tumbler	250.00

***** CARNIVAL GLASS FOR SALE *****

Mary C. Kesterson, 3020 Mesa Road, Willow Park, Texas 76086
PHONE: 1-817-441-8410

M	EI Near-Cut Souvenir Mug, Wilton, Me., RARE	175.00
AO	EI Drapery rosebowl, pastel	350.00
IB	EI Hearts & Flowers bowl, ruffled	325.00
W	EI (N) Peacocks plate 9"	395.00
M	EI Blossomtime compote, SCARCE PATTERN, SUPER COLOR	165.00
IB	EI (N) Peacock & Urn master ice cream bowl, SUPER	895.00
M	EI Millersburg Leaf & Little Flowers compote	275.00
B	EI Embroidered Mums bowl, ruffled	285.00
PM	EI (N) Peacocks plate, 9", SUPER COLOR & IRID.	425.00
W	EI (N) Peacock & Urn master ice cream bowl	495.00

John Mikkonen, 8673 McGuire Ct., Shakopee, Minnesota 55379
PHONE: 1-612-445-6098

M	Jeweled Heart tumbler	65.00
B	Lily of the Valley tumbler	275.00
B	Strawberry Scroll tumbler	200.00
B	Prism Band; Forget-me-nots, tumbler	20.00
A	Butterfly & Fern tumbler	45.00
M	Millersburg Cherry tumbler	300.00
W	Floral & Grape tumbler	50.00
P	Grape & Cable tumbler, electric blue irid.	75.00
M	Northwood Cherry tumbler, small chip	45.00
B	Stork & Rushes tumbler	40.00

Charles Propst, 1005 Park Lane, Osceola, Iowa 50213
PHONE: 1-515-342-2697

LG*	EI *Lime Green Holly bowl, ruffled	225.00
A	EI Ribbon Tie ice cream shaped bowl	45.00
M	EI Three Fruits plate	75.00
B	EI Captive Rose plate	175.00
B	EI Holly ice cream shaped bowl	75.00
IB	GI Hearts & Flowers ruffled bowl, has 1 tip repaired	75.00
M	EI Lions ruffled bowl	75.00
M	GI Butterfly & Berry tumblers (5), all for	75.00
M	EI Peacock & Grape spatula footed plate	150.00
A	EI Three Fruits plate, 12 sided	75.00

***** CARNIVAL GLASS FOR SALE *****

Richard Cinclair, 3605 S. Echo Trail, Plano, Texas 75023
PHONE: 1-214-596-0014

A	EI Peacocks bowl, stippled, small chips, beautiful	100.00
M	GI Stork ABC bowl	50.00
G	EI Lotus & Grape footed bowl, unusual	65.00
B	EI Orante Tree fruit bowl, rough edges	175.00
B	EI Vintage bowl	?
M	EI Heavy Grape chop plate, 1 flake	75.00
M	EI Orange Tree rosebowl	50.00
M	EI Orange Tree footed master berry bowl	35.00
M	EI Waterlily & Cattails sugar	85.00
M	Horse Medallion fluted bowl	55.00
M	Grape & Cable jelly	20.00

Roy Craver, P. O. Box 8015, Allandale, Florida 32023
PHONE: 1-904-427-9380

G	EI (N) Petals compote	60.00
A	EI (N) Petals compote	40.00
M	EI Stippled Rays 6 3/4" plate	20.00
AMB	EI Pansy Relish dish	25.00
M	EI Wine & Roses wine	25.00
B	EI Peacock Tail hat	20.00
G	EI Imperial Grape 6 1/2" plate	40.00
G	EI Rays & Ribbons 9" bowl	45.00
B	EI Strawberry bon bon	30.00
M	EI Stork & Rushes 8 piece punch set	250.00

Mr. Steve Davis, 3331 Warpath Road, Macon, Georgia 31201
PHONE: 1-912-741-4252

M	EI Peacocks bowl	175.00
M	EI Peacocks bowl (stippled)	225.00
G	EI Grape & Cable candlestick lamp, complete	650.00
P	EI Four Flowers bowl	135.00
P	EI Memphis 8 piece fruit set	425.00
P	EI Vineyard water pitcher	350.00
P	EI Vineyard tumbler	65.00
P	EI Singing Birds water pitcher and 1 tumbler	395.00
M	EI Vineyard water pitcher	100.00
AMB	EI Homestead plate	775.00

***** CARNIVAL GLASS FOR SALE *****

Shirley Stansbery, 9839 Moorberry, Houston, Texas 77080
PHONE: 1-713-465-1450 after 4:00 P.M.

B	EI Miniature Blackberry compote RARE & BEAUTIFUL	95.00
M	EI Millersburg Cherry creamer, gorgeous	60.00
G	EI Singing Birds tumblers, fine, have 3, each	35.00
G	EI Tree Trunk vase	30.00
A	EI Millersburg Whirling Leaves bowl, OUTSTANDING	100.00
M	EI Kittens spooner RARE	110.00
M	EI Fentons Little Flowers rosebowl, A BEAUTY	45.00
M	EI Garland rosebowl, GREAT COLOR	45.00
M	EI Rose Wreath nappy, pretty	45.00
A	EI Northwood Strawberry 9" bowl, OUTSTANDING	100.00
	POSTAGE EXTRA	

Darlene Yohe, P. O. Box 343, Stuttgart, Arkansas 72160
PHONE: 1-501-673-3437

M	Orange Tree sugar lid	25.00
B	Peacock at the Fountain butter base, chip on lip	50.00
G	(N) Flute butter lid	40.00
P	Grape & Cable butter base, 2 small base nicks	45.00
P	Dahlia sugar base	75.00
G	Butterfly & Berry large footed bowl	105.00
P	Leaf & Beads rosebowl	60.00
W	Grape Arbor tumbler	90.00
M	Garland rosebowl	35.00
A	Beaded Cable rosebowl	60.00

Ray Hitchcock, R.R. #1, Box 301, Winterset, Iowa 50273
PHONE: 1-515-462-2074

B	Three Fruits bowl, stippled, A BEAUTY	125.00
P	Good Luck bowl, SUPER	125.00
P	Three Fruits bowl, P.C.E. SUPER	65.00
G	Feathered Serpent bowl	50.00
AMB	Open Rose rosebowl	55.00
W	Garden Path Variet 6" plate	250.00
M	Fishermans mug	175.00
B	(N) Bushel Basket	85.00
P	(N) Grape & Cable 14 piece punch set	1,300.00
M	(N) Waterlily & Cattails tumblers, each	30.00

***** CARNIVAL GLASS FOR SALE *****

William Coles, Rt. #1, Box 273B, Hickory, Kentucky 42051
PHONE: 1-502-674-5916

G	GI Flute toothpick	60.00
M	EI Blackberry mini cake plate, 2 minor edge chips, scarce	75.00
B	EI Peacock at the Fountain (Dugan) tumblers, have 4, each	35.00
M	GI Ranger tumbler	25.00
M	EI Dragon & Strawberry collar base bowl	300.00
IB	EI Diamond Point 10" vase, spot on edge where irid. did not adhere, as made	150.00
B	EI Ribbon Tie ruffled plate, SUPER	185.00
M	EI Stippled Strawberry pie crust edge bowl	95.00
A	EI Stork in the Rushes mug, scarce	180.00
PO	EI Ski Star large 8 ruffled bowl	120.00

Larry & Wanda Riley, 108 Ashland Ave., Paducah, Kentucky 42003
PHONE: 1-502-898-3582

A	EI Fentons Thistle banana boat bowl, scarce and hard to find in this color	190.00
B	GI Persian Medallion bon bon	38.00
A	GI Fine Cut & Roses rosebowl, feet good	45.00
M	EI Ripple 10" vase	20.00
M	EI Ripple 8" vase	15.00
M	EI Wreath of Roses punch cup, Persian Medallion interior	10.00
M	EI Vintage fernery	25.00
M	EI Star & File 7" bowl	10.00
M	EI Lustre Flute 5½" bowl (N)	15.00

Doris Gerber, 5688 CR7, Garrett, Indiana 46738
PHONE: 1-219-357-5405

M	EI Garland footed rosebowl	50.00
G	EI Louisa footed rosebowl	50.00
B	EI Acorn 7½" bowl	50.00
M	EI Sailboats 6" bowl	25.00
M	EI Open Edge Basketweave 6" bowl	30.00
AQ	EI Waterlily 5" footed bowl	90.00
M	EI Two Flowers 5" footed bowl	40.00
B	EI Butterfly & Berry 5" footed bowl	60.00
M	EI Orange Tree 5" stemmed bowl	30.00
B	EI Orange Tree 5" stemmed bowl	30.00

***** CARNIVAL GLASS FOR SALE *****

Gil Corriveau, Box 5, Sturbridge, Massachusetts 01566
 PHONE: 1-617-347-3304 days, 1-617-347-9930 nights POSTAGE & INS. EXTRA

P	EI Oriental Poppy 7 piece waterset	750.00
G	EI Grape & Cable PCE Basketweave Ext. bowl	110.00
B	EI Persian Medallion small plate 6½"	80.00
B	EI Good Luck stippled bowl	300.00
AO	EI Drapery rosebowl	300.00
P	EI Tiger Lily tumbler	70.00
P	EI Prism compote	50.00
M	EI Peacock at the Fountain orange bowl	150.00
G	EI Greek Key bowl	90.00
P	EI Millersburg Diamond water pitcher	175.00



***** CARNIVAL GLASS WANTED *****

Ed & Sharon Binstock, P. O. Box 351, Presque Isle, Maine 04769
 PHONE: 1-207-764-3612

M	Poinsettia & Lattice bowl
G	Blossomtime compote
B	Panther small ruffled bowls
G	Rose Show plate
IG	Rose Show plate
IB	Poppy Show plate
IG	Poppy Show plate
P	Poppy Show plate
IB	Fruit & Flowers bon bon
ANY	Unusual color PCE Hearts & Flowers bowls

Charles F. Kremer, 430 Rose Avenue, New Haven, Indiana 46774
 PHONE: 1-219-749-4909

M	Acorn Burrs sugar
G	Butterfly & Berry creamer
A	Dahlia butter
B	Fentonia sugar
M	Leaf Tiers sugar
B	Orange Tree sugar
G	Butterfly & Berry sugar lid
M	Maple Leaf butter
G	Millersburg Cherries sugar
A	Wreathed Cherry sugar

David L. Sharp, 3717 Wilmington Pk., Dayton, Ohio 45429
 PHONE: 1-513-299-8420

P	Grape & Cable sweetmeat lid, slight damage OK
B	Peacock at the Fountain fruit bowl
B	Peacock at the Fountain compote
IB	Hearts & Flowers compote
IB	Wide Panel epergne center lily
B/M	Peacock at the Fountain punch cups
A	Grape & Cable creamer

***** CARNIVAL GLASS WANTED *****

Ted Sheibley, 304A Hillcrest Drive, New Cumberland, Pennsylvania 17070
PHONE: 1-717-938-6417

ANY Peacocks on the Fence bowls/plates
AO Good Luck bowl
AO Three Fruits plate
M Stag & Holly plate
G Grape & Cable hatpin holder
ANY Grape & Cable stippled plates
ANY Strawberry stippled plates
A Primrose bowl
ANY Peacock at the Fountain compotes
ANY Rose Show bowls/plates

Richard Cinclair, 3605 S. Echo Trail, Plano, Texas 75023
PHONE: 1-214-596-0014

B Kittens saucer or plate

Charles Propst, 1005 Park Lane, Osceola, Iowa 50213
PHONE: 1-515-342-2697

IB Peacocks on the Fence ruffled bowl
G Luster Rose tumblers
IB Peacocks on the Fence P.C.E. bowl

John Mikkonen, 8673 McGuire Ct., Shakopee, Minnesota 55379
PHONE: 1-612-445-6098

W Wisteria tumbler
PO,BO Holly bowl
Holly compote or sherbert in lime green opal, red, or white
P,G Octagon wines
M Holly rosebowl
Hearts & Flowers plates in purple, ice blue or ice green
ANY Unusual color Holly plate
M Octagon cordial

***** CARNIVAL GLASS WANTED *****

Henry & Alfreda Simonis, 51 Douty St., Southbridge, Massachusetts 01550
PHONE: 1-617-764-4178

IB Fenton Open Edge basket
ANY COLOR Fenton Open Edge basket, ice cream shape

John Muehlbauer, 7051 La Costa Lane, Citrus Heights, California 95621
PHONE: 1-916-355-2455 days; 1-916-723-2852 evenings

IB Memphis punch base, minor damage OK
IB Memphis punch cups, need 4
G,W Embroidered Mums ruffled bowl
G Stippled Three Fruits plate
G (N) Peacock & Urn master ice cream bowl
G,IG Acorn Burrs punch set
(N) Tree Trunk funeral vases, 5" base in marigold, ice blue
and ice green
MMG Dragon & Lotus bowl or plate

Singleton Bailey, P. O. Box 95, Loris, South Carolina 29569
PHONE: 1-803-756-7495

G Millersburg Peacock small berry dish
M Millersburg Peacock master ice cream bowl
M Big Fish square and ice cream shape
M,A Millersburg Peacock compote
A Millersburg Peacock & Urn "Shotgun" bowl
G Millersburg Peacock & Urn "Mystery" bowl, ice cream shape
A Millersburg Peacock & Urn "Mystery" bowl, crimped
A Millersburg Peacock banana boat shape bowl
A,M Millersburg Peacock & Urn chop plate
ANY Radium Big Fish bowls

Glen Fortney, P. O. Box 303, Buckner, Missouri 64016
PHONE: 1-816-249-5208 call anytime

B Panelled Dandelion tumblers, need 3
Fenton Open Edge baskets, plain or Blackberry int. dark green
CLM Interior Fishscale lamp shades, need 2

Keith Miller, 3541 Park Ave. So., Minneapolis, Minnesota 55407
PHONE: 1-612-827-4907

- M Apple Tree tumblers, need three
- M Bouquet tumblers, need three
- B Bouquet tumblers, need six
- W Bouquet tumblers, need six
- A Bouquet tumblers, need four
- M Floral & Grape tumblers, need twelve

Ray Hitchcock, R.R. #1, Box 301, Winterset, Iowa 50273
PHONE: 1-515-462-2074

- P Fishnet lily C.R.E. (or will sell base)

Gil Corriveau, Box 5, Sturbridge, Massachusetts 01566
PHONE: 1-617-347-3304 days, 1-617-347-9930 nights, POSTAGE & INS. EXTRA

- M Grape & Cable butterdish base
- B Vintage epergne base
- P Wishbone epergne base
- P S-Repeat punch bowl top
- B Grape & Cable stippled humidor top
- B Rose Show bowl
- P Grape & Cable sugar bottom
- M Rose Show plate
- W Rose Show bowl
- B Poppy Show plate

