

HOACCGA

Heart Of America Carnival Glass Assoc. Inc.

RETURN ADDRESS

Michael J. Basey
Bulletin Secretary
H.O.A.C.G.A.
4315 Adams
Kansas City, Kansas 66103

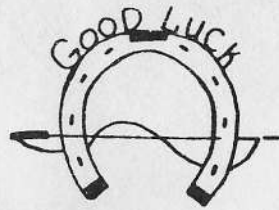


1989

HAPPY NEW! YEAR!

First Class Mail
U.S. Postage
PAID
Kansas City, Mo.
Permit No. 4352





**Heart of America
Carnival Glass Association, INC.**

Membership is June to May, per couple or single
DUES: \$20.00 U.S. & CANADA
\$35.00 FOREIGN

Published the 15th
of each month.

PRESIDENT.....Robert Grissom
7900 Crescent
Raytown, Missouri 64138
1-816-356-5320

VICE-PRESIDENT.....Eleanor Moche1
6409 Beverly Drive
Mission, Kansas 66202
1-913-432-1129

TREASURER.....Doug Peters
4307 N.E. 46th Terr.
Kansas City, Missouri 64117
1-816-453-3488

SECRETARY.....Glen Fortney
Post Office Box 303
Buckner, Missouri 64016
1-816-249-5208

BULLETIN SECRETARY.....Michael Basey
4315 Adams
Kansas City, Kansas 66103
1-913-432-2460

All monetary figures quoted are U.S. DOLLARS. Please make checks for dues payable to H.O.A.C.G.A. and send them to the Treasurer, Doug Peters, at the above address.

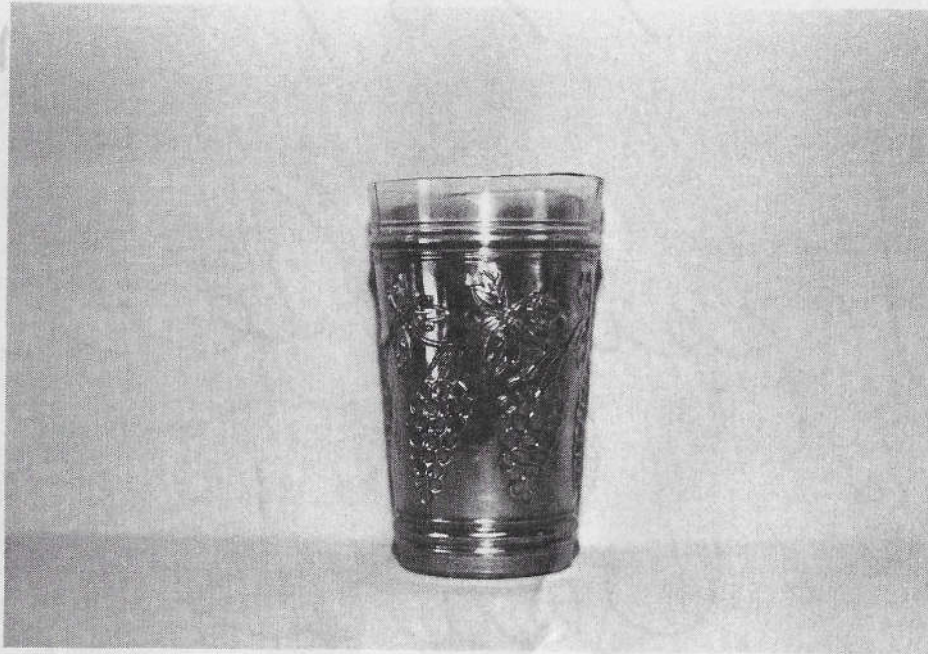
1989

Happy New
Year's
from your Board
of Directors

1989

EDUCATIONAL TUMBLER SERIES

By John & Lucile Britt



THE VINEYARD HARVEST TUMBLER

The "Vineyard Harvest" tumbler was made in Australia. It is only the third Australian pattern that we have used in this tumbler series. The others were "Banded Diamonds" and "Blocks & Arches". We will cover the "Beaded Spears", another tumbler that is thought to be Australian, sometime in the future.

The "Vineyard Harvest" was named by Muriel Triplett of Australia. The Triplett's had sent us information and a photo of this tumbler long before we had ever seen one. The following was part of the letter written to us by Muriel Triplett: "In our Australian collection is a very tall Australian tumbler that I have named "Vineyard Harvest". It is 5½ inches high, 3 5/8 inches across the top and holds 3/4 of a pint. This one has the initials "A.G.W." impressed in the base, which I have found out stands for the name of the mold maker, A. G. Walters. He worked for the Crystal Glass Company of Sydney, Australia."

I might add to this that Lucile and I later purchased a much smaller tumbler than this one from another lady from Australia. This one did not contain the "A.G.W." initials in the base, but the pattern is definitely

EDUCATIONAL TUMBLER SERIES

continued

"Vineyard Harvest". This means that this Australian tumbler was made in at least two different sizes.

The "Vineyard Harvest" tumbler is called "Australian Grape" by one author. Since the Triplett's, and other carnival glass collectors in Australia, were rather upset by the change of the name "Vineyard Harvest" to "Australian Grape" in the USA, we are going to use the original Australian name of "Vineyard Harvest" in this series on carnival glass tumblers.

This is an interesting tumbler and is another one of the many carnival glass patterns that contain grapes. It is our 132nd entry into this series. Next month, we will feature a tumbler in the "American" pattern that was made by Fostoria.

JOHN & LUCILE BRITT



PICTORIAL PATTERN PARADE

By John & Lucile Britt



BEADED BASKETS IN TWO STYLES

The "Beaded Basket" was quite possibly Dugan's answer to the Northwood's basketweave bushel basket and Fenton's open edge baskets. They are shown above, on the left, in the flared out shape along side the straight sided example. The flared out shape is seen much more often. On this style, the rim flares out to almost flat at the bottom of the handle. On the straight up sided version, shown on the right, the sides continue on up to the top. For some reason, much less of these were made in this style and they will demand a higher price. They are 4 inches to the top of the rim and 4½ to 5 inches to the top of the handle.

These baskets are found much more often in marigold, and as mentioned above, in the flared out shape. Purple is the next most common color in the flared out shape, but is not seen very often with the straight up sides. Blue is much harder to find than are the purple examples.

PICTORIAL PATTERN PARADE
continued



STRAIGHT SIDED BEADED BASKETS IN PURPLE & WHITE

Photo #2 above shows the straight up sided baskets in purple and white. The white "Beaded Basket" is very seldom seen in either shape. We have often wondered if one of these baskets might show up sometime in celeste blue. It would be super and extremely rare in that color. Also, we have wondered why you don't see these in peach opalescent. Several have been reported in smoke and lavender, and they also would be quite rare.

This article on the "Beaded Basket" is #120 in our Pictorial Pattern Parade series. Next month we will cover the "Fashion" rose bowl whimsys.

JOHN & LUCILE BRITT

=====

A PEAK INTO THE PAST - - IN CARNIVAL GLASS

By John & Lucile Britt

Let's take another "Peak into the Past" from some of our old 1970 Antique Trader ads. The owners and some of the pieces they had for sale are as follows:

HENRY TAYLOR, BELOIT, WISCONSIN: Purple Corn vase (N) \$150.00; purple Wishbone 10" plate \$185.00; blue Peacocks on the Fence bowl \$70.00; marigold Rose Show Variet plate \$95.00; marigold Rose Show plate \$110.00; aqua opal Peacocks on the Fence bowl \$110.00; aqua opal Dandelion mug \$110.00; aqua opal Rose Show bowl \$160.00; white Orange Tree Orchard water set, rare, \$375.00.

MELTONS ANTIQUES, CHESAPEAKE, VIRGINIA: Pastel green 9" Three Fruits bowl, opalescent edge \$95.00.

LEONARD MIELEWSKI, FLINT, MICHIGAN: White Three Fruits stippled footed bowl \$75.00; purple Elks bowl, beautiful, \$250.00; purple Nautilus \$125.00.

DON OLSON, MAQUOKETA, IOWA: Purple Millersburg Holly handled bon bon \$35.00; green Millersburg Holly Sprig tri-cornered bowl \$27.00; ice blue Nippon bowl \$55.00; vaseline Acorn bowl \$25.00; white Fine Cut & Roses candy dish, fancy interior \$50.00.

MARY McCASLIN, NEW CASTLE, INDIANA: White Orange Tree loving cup, rare color \$175.00; green Good Luck bowl \$75.00; purple Acorn Burrs water set, fine purple color \$400.00; white Vintage powder jar, very rare in this color \$100.00; ice green Poppy Show bowl \$140.00; blue Kittens banana bowl \$75.00; ice green Peacocks on the Fence bowl \$85.00; red Orange Tree mug \$110.00; marigold Horses Heads plate \$40.00.

FERNE MOORE, SUPERIOR, NEBRASKA: GREEN Dandelion, rare carnival water pitcher, \$120.00.

OLD BOTTLE SHOP, ORLIE & EVA TANNER, HARRISBURG, ILLINOIS: Amethyst Millersburg Courthouse bowl, scarce \$195.00; ice green signed Corn vase \$95.00.

HAROLD DETTY, DAYTON, OHIO: Green Peter Rabbit bowl \$750.00; green Nu Art Homestead plate \$600.00.

WALTER & VICKIE LAMB JR., PLATTSBURGH, NEW YORK: Purple Town Pump \$350.00; purple Grape & Cable sweetmeat \$135.00; purple Peacock & Urn 7 piece ice cream set, all marked (N) \$230.00; purple 10" Wishbone bowl \$45.00; amethyst Rose Show bowl \$110.00; red Sailboats 6" bowl, rare \$140.00; red Acorn bowl, slag bottom \$130.00; red Orange Tree mug \$100.00; Fenton basket Blackberry interior \$85.00; same without Blackberries \$80.00; green Grape & Cable

"A PEAK INTO THE PAST"
continued

hat pin holder \$70.00; green Millersburg Peacock & Urn 10" bowl \$65.00; blue Grape & Gothic Arches 7 piece water set \$230.00; blue Mikado compote \$145.00; white Daisy & Drape vase \$55.00; white Northwood basket \$50.00; ice green Three Fruits bowl \$63.00; white Poppy Show bowl \$130.00; ice blue Drapery rose bowl \$64.00; ice blue Rose Show bowl \$135.00; marigold Captive Rose 9" plate \$35.00; peach opal Northwood Cherry 9½" bowl, Jewel Heart exterior \$34.00 (Note: this one is now known to be Dugan's Cherries.)

SUZANNE MILES, MILWAUKEE, WISCONSIN: White Nippon bowl \$49.00; ice green Peacock & Urn large ice cream bowl \$140.00; aqua opal Fine Cut & Roses footed candy dish \$42.00; green Millersburg Holly tri-cornered dish \$35.00; purple Dragon & Lotus footed rose bowl \$45.00; green Louisa rose bowl \$35.00.

D. FARRELL, GRANITE CITY, ILLINOIS: Aqua opal Daisy & Drape vase \$60.00; aqua Louisa rose bowl \$35.00; white Fine Cut & Roses rose bowl \$75.00; white Hearts & Flowers compote \$40.00; white Corn vase \$150.00; marigold Corn vase \$150.00.

MRS. J. R. DAVIS, CAMBRIDGE, OHIO: Amethyst Courthouse ruffled bowl \$200.00.

LOESCHERS, BELOIT, WISCONSIN: Purple Perfection tumbler \$75.00; marigold Cherry Chain 11" chop plate, very rare \$75.00; red 6" 3 footed Waterlily dish, very rare \$115.00; marigold Cosmos Variet 10" chop plate, very rare \$75.00.

MRS. LOUISE ESPENSCHIED, DOVER, OHIO: Green Grape & Cable cologne bottle with stopper \$115.00; marigold Orange Tree loving cup \$65.00; white Holly bowl \$65.00; white Three Fruits, 3 spatula feet \$75.00.

THE BRASS DOLPHIN, NEW YORK, NEW YORK: Marigold Harvest Poppy compote \$20.00; purple Grape & Cable water set \$225.00; blue Rooster hat pin \$7.00; ice green Leaf & Beads, opalescent, rose bowl \$60.00.

In the March 3, 1970 issue appeared a block ad: INTERNATIONAL CARNIVAL GLASS ASSOCIATION invites your membership - share your enjoyment of collecting - informational quarterly bulletin - annual convention - beautiful displays - dues \$3.00 per year - - Herbert B. Ripley, President - Mrs. Francis Heaton, Sect., Editor. (Note: This is about the time we joined the I.C.G.A.. Herb Ripley was president and Mrs. Heaton was Secretary when we joined. Our first convention was at Louisville, Kentucky in 1971.)

This is #6 in this series of "A Peak into the Past - - In Carnival Glass." Hope you have found this one interesting.

JOHN & LUCILE BRITT

1989 LOSE YOUR HEART TO CARNIVAL GLASS JAMBOREE

LOCATION: The Rodeway Inn, 401 U.S. 19 South, Clearwater, Florida 34625.
PHONE: Local (813) 799-1181, Nationwide 1-800-228-2000. North of Rt. 60 - Off North Bound Service Road.

THURSDAY, FEB. 9: Early arrivals ask for special rates \$40.00 single/\$48.00 double in block of reserved rooms, make reservations using the toll free number or mail to the motels' address. Room sales, Raffle Tickets on sale most of the time. Hospitality Room with Program, 7:00 P.M. - ?, horsd'oeuvres and coffee, Program by Tom Burns, Questions & Answers, Show & Tell.

FRIDAY, FEB. 10: Room sales. Program at 1:00 P.M., Janet Knechtel "Reproductions & New Items." Banquet with speaker 7:00 P.M. Dinner choices are: Prime rib or Chicken Cordon Blue, includes soup to desert. \$15.00 per person. Banquet reservations MUST be made through Maria Vafiadis prior to Convention.

SATURDAY, FEB. 11: Show & Sale 8:00 A.M. - 4:00 P.M. (set up 7:00 A.M.)
Table rentals - \$20.00 per table - contact Maria.
Identification and Appraisals 8:00 A.M. - 4:00 P.M.
Raffle drawing at 6:30 P.M. by Tom Burns, prior to the Auction. Auction Preview 5:00 P.M., Auction is at 6:30 P.M. with 150 pieces. AUCTION HIGHLIGHTS - ice blue Raspberry water pitcher, water pitchers (Oriental Poppy tankard and olive green 474), green Raspberry water set, green Trout & Fly bowl, plus punch sets. To name a few items!

CHAIRPERSON: Maria Vafiadis, 3132 D Beecher Dr. E., Palm Harbor, Florida 33563. PHONE: 1-813-937-6147 days, 1-813-787-3889 evenings.

This is sponsored by the Tampa Bay Carnival Glass Club. Subject to minor change.



A WOODY AUCTION

When we received the auction list from John Woody on Louise and Carl Hendrickson's Carnival to be sold at the St. Louis, Missouri auction on Nov. 18 and 19 auction, we thought no way could we ever go. We had just attended the Tom Burns auction on November 11 and 12. We had a good time there for it and surprised ourselves by buying the punch set and the Hobnail whimsey jardiniere.

Such a busy time and Thanksgiving so close, yet we decided at last minute on Thursday the 17th to fly around to get ready to drive part way. We didn't leave until 2:30 so only went 145 miles, as dark comes early. We arrived at St. Louis Holiday Inn about 1:30 on Friday. 539 miles.

Carnival was already set up and was just beautiful. Saw so many friends, some we had only seen at Burns sale the weekend before. So many rooms had Carnival too. Just like a Convention display.

With nearly 800 pieces to sell, the sale had to be prompt and fast. Woody had a good helper named Scott and they sold 300 items the first night, in 3 hours. A lovely Poppy Show plate in ice green went for \$3,500.00 on the first night. That was the highest item for the entire sale. Yet many pieces sold for very good prices.

On Saturday, Woody sold about 100 pieces that weren't listed on the brochure, so that added an hour or so to the sale. We finally had to leave with almost 200 items left to sell. We did drive about 200 miles to stay at Evansville, Indiana. It began to rain too and we were happy to stop. It rained all night but we seemed to leave it behind except a hard storm that lasted briefly. Such strong winds though kept rocking the car along. We got in safely and with Thanksgiving so close too.

Will check off a few of the highest items. Millersburg Hobstar and Feather punch set in marigold \$1,250.00; green Peacock & Urn compote \$1,100.00; ice green Embroidered Mums plate \$1,500.00; blue Good Luck bowl \$850.00; aqua opal Peacocks on the Fence bowl \$900.00; white Poppy Show plate \$600.00; ice blue Wishbone bowl \$800.00; ice blue Rose Show plate \$2,000.00; green Rose Show bowl \$1,450.00; red Dragon & Lotus bowl \$900.00; amethyst Homestead plate \$425.00, amethyst (N) Peacocks on the Fence plate \$625.00; ice blue Embroidered Mums bowl \$1,050.00; marigold (N) Peacock & Urn chop plate \$1,600.00; purple (N) Grape & Cabme banquet punch set \$2,000.00; ice blue Grape & Cable fernery \$1,300.00; celeste blue (N) Bushel Basket \$1,900.00; green Wide Panel epergne \$725.00, marigold Illinois Soldiers & Sailors plate \$900.00; (N) Grape & Cable tankard purple water set \$700.00; red Imperial punch bowl and base \$700.00; aqua opal Three Fruits plate \$2,700.00; purple Butterfly & Tulip bowl \$1,600.00; pair of short Elephant Foot funeral vases

A WOODY AUCTION
continued

in marigold \$2,900.00 EACH. We loved them ourselves, but heard they were going to California. We did not buy a thing, but certainly enjoyed the trip and to see the Carnival and friends made it well worthwhile. 1988 has been a very good year.

GRACE AND BYRON RINEHART
CHARLESTON, WEST VIRGINIA

=====

The Keystone Carnival Glass Club would like to announce their 1989 dates for: EIGHTH ANNUAL CARNIVAL GLASS SHOW AND SALE, MARCH 11, 1989, FROM 9:00 A.M. TO 4:00 P.M. AT THE LITITZ RECREATION HALL, LITITZ, PA.

THE KEYSTONE CARNIVAL GLASS CLUB CONVENTION WILL BE MAY 26-28, 1989 AT THE DAYS INN, BROOKVILLE, PA. (Exit 13 off I-80)

For further information, please contact Nancy Williams, 2009 Cullum Drive, Reading, Pa. 19601. PHONE: 1-215-374-9033

=====

A MOST APPRECIATIVE THANK YOU TO EVERYONE

I offer my deepest thanks and gratitude to ALL of my Carnival Glass friends who sent cards, called, and offered their support to me during my recent retina and cataract surgery.

Without your support and especially that of my Mom and Dad, Glen and Jackie Fortney, the many weeks of recovery would have been much harder to endure. Thanks to God and the doctors, everything turned out well.

Carnival Glass people ARE THE BEST PEOPLE IN THE WHOLE WORLD! THANKS!

Harold L. Fortney
910 Pennsylvania
Kansas City, Missouri 64105

=====

S E Z W H O

Remember the cooler temperatures and the new ice age warnings? If my memory is correct, that was the 1970's. Now that the average temperatures are warmer we are hearing about the greenhouse effect. Why the change? Is there really a change or is it due to reporters and writers wanting to say something sensational or write "attention getter" stories? Or is it factual? One thing for sure, times do change.

Hot or cold--sounds like our Carnival Glass hobby. Remember the 1970's? Carnival got HOT! Our gurus told us dark was better; water sets and Farmyard bowls were "it". Then the 80's were upon us. A new set of Storytellers appeared. Water sets cooled, dark was OK, but pastels were far better and aqua opal was super. Millersburg got going upward, but the push was short lived--one auction deflated it for quite awhile and then the pen was raised again and another upward attempt was underway. Red--well, you know the story. And on and on.

What is next? Are the writers going to decide or create the next direction our hobby takes? I think not. In fact, it is already unfolding, but I'll save that for another time.

ANOM.

=====

Dear Michael:

I really enjoy the Bulletin each month and I appreciate your work in putting it together. Am also grateful to John & Lucile Britt for their monthly contributions, and the "human interest stories", but wish that more of the knowledgeable members would contribute educational articles.

I especially wish that someone would take the time to outline the different sizes and colors in the Fenton Open Edge Baskets and those with the Black-berry interior.

How about encouraging someone to take on this project?

Sincerely,
Larry Keig

=====

TAMPA BAY CARNIVAL GLASS CLUB NEWS

Our November meeting was held at the home of Nick and Maria Vafiadis. Fourteen members were in attendance and we would especially like to welcome Bob and Sandi Johnson and daughter from Homosassa who were attending their first meeting and Glen and Janet Knechtel of Breslau, Ontario who are back for the winter season. We enjoyed seeing you all! Also, all appreciated Maria's effort to put out an outstanding Thanksgiving turkey and trimmings as well as all the delicious and appropriate "goodies" brought by the guests to compliment the dinner. It seemed like we would never get to the business part of the meeting since everyone was enjoying the meal so much. Thanks Maria, Nick and Virginia for all your efforts to make our meeting a success!

The nominating committee submitted the recommended slate of candidates for 1989 as follows:

President	J. J. Williams
Vice-President	Naomi Calkins
Secretary	Shirley Conyers
Treasurer	Barbara Hobbs

No nominations were proposed from the floor at this time. Elections will be held at the December meeting at which time nominations will again be solicited from the floor.

Jamboree committee reports indicate that all is progressing on schedule to date. Janet Knechtel will present a session on "Reproductions/Fakes in Carnival Glass" as an educational program. John and Lucile Britt will also present a program, subject undetermined. Tom Burns will hold the usual auction, but from what I hear it will be unusual! There will be many fine pieces such as an ice blue Raspberry water pitcher and others equally as rare and desirable. (Should be about 150 pieces) Previews will be at 5:00 P.M. with the Auction starting at 6:30 P.M. The winner of the Raffle will be named at the beginning of the auction.

In addition to the Programs and Auction, an Identification/Appraisal Session will be held for those people attending the show who are not ardent Carnival Glass enthusiasts, but who may have a piece or two in their homes.

Our December Christmas meeting will be at the home of Naomo Calkins, 120 Woodland Court, Baywoods 11 Subdivision, Safety Harbor, Florida. Phone: 1-813-725-4145 on Sunday, December 18 at 12:00 noon.

I wish to take this opportunity to thank all members who have been patient and helpful in keeping the Club rolling, especially with the loss of our President during the year. We wish a Merry Christmas and a healthy, prosperous and Happy New Year to all.

SAN DIEGO CLUB NEWS

Donald and Connie Moore were with us on December 4, for our regular quarterly meeting and Christmas Party. Fellow Californians to be sure, but an eight hour drive to reach us is quite a trip. We always appreciate the privilege of entertaining them and this was no exception. 74 members and guests attended this marvelous program on VASES. Connie does the packing and Don does the talking. She packed 68 beautiful vases and Don talked about every one of those and an additional couple dozen brought in by members for Show & Tell. There were only a couple of duplicates among all of them. We viewed that FAMOUS Hobstar example, which he now calls "Connie's Follie", as well as his latest "Great", the teal Corn Vase. The Tropicana, Elephant Foot, and many more made it impossible to decide which one was most desirable.

Don Kime and Roland Kuhn arrived on an early Saturday morning flight, so we had quite a weekend. It was great fun to have them here. We hope they will return before long and encourage the rest of you to drop on over and see what goes on here.

Two dozen prizes were awarded for door and raffle, including 5 beautiful red poinsettias.

Election of officers consisted of acceptance of the slate presented by the nominating committee: Dorothy Joseph, V.P., Kathy Harris, Secretary, Gail Westphall, Treasurer. Helen Ouellette will remain in the voluntary position of Newsletter Editor. Sara Valverde is our new Historian, a voluntary post. In spite of the fact, yours truly announced in June that I would not be running for office again, apparently no one was listening. I will serve as President another two years.

Our next meeting on March 19 will have John Muehlbauer as guest speaker with a subject, The Color, Character and Quality of Carnival Glass. You are welcome to join us!

Respectfully submitted,
Diane Fry,
President

=====

WESTERN BUCKEYE CARNIVAL GLASS CLUB NEWS

The Western Buckeye Carnival Glass Club met December 11, 1988 at the Chalet Restaurant with the Heeleys as hosts. Those attending were: Raymond and Betty Heeley of Sidney, Mildred Markley of Springfield, Emil and Mary Hannenkrat of Waynesfield, Tom and Jean Bucher of Lime, Ross Updegraff and Sherrill of Delaware, Larry and Mary Helen Yung of Cincinnati. After dinner we drove to the Heeleys and their son Craig also arrived. After admiring their beautiful Carnival, we had election of Officers: Beverly Hawk of Lima was elected President; Larry Yung Vice-President; Mary Hannenkrat Recording Secretary and since Mildred Markley was appointed Secretary at last meeting, she is the Secretary.

We were served cookies, punch and coffee. It was decided to go to the Yungs of Cincinnati on April 9 and to bring a piece of Carnival Glass we wished we hadn't bought. Mildred had a Program on Red, White, and Blue, but the Blue had to cancel. Larry Yung showed a red Little Flowers bowl and gave the story about acquiring it. Mildred Markley had a 7 piece white ice cream set in Peacock & Urn and gave the story behind her purchasing it.

Mary Hannenkrat brought their first piece of Carnival, an amethyst Millersburg Grape Wreath bowl bought in 1967 and Mildred brought her first piece, a green Captive Rose bowl she bought in 1969.

The Hannenkrats also brought a REAL CARNIVAL bowl, an amethyst Open Rose her sister had won for .10 at a carnival in Madison, Kansas where they lived 2 years before returning to Lime.

Norm and Barb Archer heard on the radio at a restaurant on the 11th that Henry and Beverly Hawk were involved in an accident on returning from Nashville in a rented car. The accident was near Piqua, Ohio and Henry hit an abandoned car. Their car turned over and slid on its top quite a way. They were taken to Pique Hospital, but since Beverly required plastic Surgery on a cut on her forehead, they were transferred to St. Rita in Lima. She also suffered a broken left wrist and ankle, cuts on her right arm and chest injuries from seat straps. Henry had facial and shoulder injuries. They are both at home.

Mary Hannenkrat,
Recording Secretary

=====

THE HARTUNG CARNIVAL GLASS BOOKS

The Hartung Carnival Glass Pattern Books 1 through 10, are available.

The copyright to the Hartung Carnival Glass Pattern Books, 1 through 10 is the property of the Heart of America Carnival Glass Association. The out-of-print books have all be reprinted. Any of these books, or the complete set of 10 may be purchased. The price is \$3.25 each, plus \$1.00 postage per book, up to a maximum of \$5.00 for postage.

The Marion Hartungs' "Northwood Pattern Glass In Color" book is also available. The price for this hardbound book is \$6.00 plus \$2.00 postage.

Please send your orders to the Treasurer, Doug Peters, 4307 N.E. 46th Terrace, Kansas City, Missouri 64117

=====

ADVERTISING CONCERNS

One of the purposes of the Heart of America Carnival Glass Associations monthly Bulletin is to allow members the opportunity to offer glass for sale or to advertise for glass they want to purchase. This is a mutual benefit to all members, buyers, and sellers. In either case both should deal in a fair and reasonable manor with each other.

Periodically a member calls and expresses their concern about another member dealing on a piece of glass. We refrain from printing these concerns in the Bulletin, but if the member wishes, he can express his concerns to any individual, that wish to contact him George Loescher called with a concern. He may be contacted at 1-608-362-3104.

=====



THE H.O.A.C.G.A. SOUVENIR BELL SERIES

In 1985, the Heart of America Carnival Glass Association decided to make a series of Souvenir Bells, which would commemorate the major Carnival Glass producing companies. Each different Bell would feature a portrait of the founder of each glass company. The Circle Scroll pattern is used as the basic pattern and the Fenton logo is on each Bell.

The first Bell, the 1985 Souvenir; has a portrait of HARRY NORTHWOOD. The Bell was made in Ruby Red Carnival and is sold out.

The second Bell, the 1986 Souvenir; has a portrait of FRANK L. FENTON, the founder of the Fenton Art Glass Co. The Bell was made in a beautiful Lime Green Opalescent with a Marigold iridescence.

The third Bell, the 1987 Souvenir; has a portrait of JOHN W. FENTON, founder of the Millersburg Glass Co. The Bell was made in Cobalt Blue (a rare color for Millersburg) with a beautiful blue iridescence.

The fourth Bell, the 1988 Souvenir; has the portrait of EDWARD MUHLEMAN, founder of the Imperial Glass Co. The Bell is made in a very nice Marigold. Imperial made some very beautiful Marigold glass.

The fifth Bell, the 1989 Souvenir, will feature the founder of the Dugan Glass Co. Information about this Bell will appear in a later Bulletin.

We hope you have the previous Souvenir PORTRAIT BELLS and will want the 1989 Bell to add to your set.

THE H.O.A.C.G.A. SOUVENIR BELL ORDER FORM

The 1986, 1987 and 1988 Souvenir Bells are \$35.00 each, plus \$2.50 shipping.

PLEASE MAKE CHECKS PAYABLE TO: H.O.A.C.G.A.
MAIL ORDERS TO: John Britt, 3048 Tamarak Drive,
Manhattan, Kansas 66502

I wish to order _____ 1986 Souvenir Bells at \$35.00 each plus \$2.50.

I wish to order _____ 1987 Souvenir Bells at \$35.00 each plus \$2.50.

I wish to order _____ 1988 Souvenir Bells at \$35.00 each plus \$2.50.

NAME: _____

ADDRESS: _____

CITY, STATE, ZIP CODE: _____

OLD CARNIVAL GLASS LIBRARY

CARNIVAL GLASS RARITIES-A color line approach. Lists the top 10 rarities in each color-plus complete rarities price guide-40 pages of black and white pictures, special section on whimsys. \$8.50 PP. Also THE SHAPE OF THINGS IN CARNIVAL GLASS, 110 pages, 200 items in full color-\$9.95. Don Moore, 2101 Shoreline Drive, Apt. 462, Alameda, California 94501.

CARNIVAL IN LIGHTS-A full color book on Carnival Lighting, including Gone-With-The-Wind Lamps, candle lamps and shades, price guide included. \$11.95 plus postage, Helen Greguire, 103 Trimer Road, Hilton, New York 14468.

THE STANDARD ENCYCLOPEDIA OF CARNIVAL GLASS, Revised Edition, many new photographs and expanded European carnival section-\$24.95 (with new price guide), NEW PRICE GUIDE includes eight color columns, size 8X11 - \$4.95, IMPERIAL CARNIVAL GLASS-THE EARLY YEARS-\$9.95, MILLERSBURG THE QUEEN OF CARNIVAL GLASS-\$8.95, NORTHWOOD, KING OF CARNIVAL GLASS-\$9.95, Bill Edwards Author, Collectors Books, Paducah, Kentucky.

A NEW CARNIVAL GLASS REFERENCE BOOK WRITTEN BY DON MOORE This book is a collection of the writings of Don Moore, as published originally in the Heart of America Carnival Glass Association Newsletters. 175 pages, 225 black and white photos. Price is \$12.50 (\$1.00 postage U.S. & Canada, \$2.00 overseas) Order direct from: Don Moore, 2101 Shoreline, Apt. 462, Alameda, Calif. 94501.

A CARNIVAL OF IRIDESCENT LUSTER BUTTONS by Ruth M. Clark. 147 pages include researched introduction, more than 850 drawings of old Carnival Glass buttons, indexed. Price is \$10.00 U.S. (plus \$1.00 postage in US, Canada, and surface overseas. Overseas air-mail postage is \$4.00). Order direct from Ruth M. Clark, 2723 Canyon Oaks Ct., Temple, Texas 76502.

CARNIVAL GLASS AUCTION PRICE REPORT A listing of over 3,000 prices from 1987 auctions. Listed by Hartung name. Information includes description, shape, color, sale price, date of auction, auctioneers and sellers name. This years report will include a section on pastels. When ordering, please specify 1987 report. Report may be ordered for \$8.00 postpaid. Overseas delivery add \$1.00. Order direct from Tom & Sharon Mordini, 36 N. Mernitz Ave., Freeport, Illinois 61032.

THE WORLD OF ENAMELED CARNIVAL GLASS TUMBLERS Author/Photographer Cecil Whitley. 10 pages "60 tumblers in full color". \$10.00 includes shipping. Call or write Cecil Whitley, 104 Cheshire Lane, Houston, Texas 77018 PHONE: 1-713-681-0807.

If ANY member has ANY books on old Carnival Glass for sale, please notify the Bulletin Secretary, Michael Basey. THANK YOU!

=====

POLICY FOR ADVERTISING IN THE H.O.A.C.G.A. BULLETIN

1. All advertisements, announcements, letters or any other item to be printed, must be received by the Bulletin Secretary no later than the first (1st) day of the month, to insure being published in that month's Bulletin.
2. Member families may advertise ten (10) 'For Sale' and ten (10) 'Want Ads' per month F R E E of charge.
3. Only old Carnival Glass items or H.O.A.C.G.A. Souvenirs will be published.
4. Damage or manufacturing flaws should be noted.
5. All 'For Sale' items must be priced; no bid items will be published.
6. A 5-day return privilege, at buyers' expense; providing it is not advertised.
7. All postage and insurance is extra, to be paid by buyer.
8. All ads must be legible, or they will not be printed.
9. The H.O.A.C.G.A. does not accept responsibility for accuracy of any ads.

FOR ACCURACY OF DESCRIPTION, THE FOLLOWING COLOR KEY IS RECOMMENDED:

A--Amethyst	HA--Honey Amber	P--Purple
AMB--Amber	IB--Ice-Blue	PRL--Pearl/Pastel/Milk
AO--Aqua Opalescent	IG--Ice-Green	Glass
B--Blue	IGO--Ice-Green Opal.	PM--Pastel Marigold
BO--Blue Opal or Blue Opaque	LAV--Lavender	PO--Peach Opalescent
CLM--Clammoth	M--Marigold	R--Red
EB--Electric Blue	MMG--Marigold on	RA--Amberina
G--Green	Milk Glass	SM--Smokey
		VAS--Vaseline

NOTE: If you wish to describe a piece as light or dark, use the body of the ad.

PLEASE USE THE FOLLOWING:

EI-Excellent Iridescence, GI-Good Iridescence, LI-Light Iridescence

EXAMPLES:

AO	EI	Good Luck plate, one point broken & repaired	375.00
M	LI	Peacock at the Fountain 7pc wtr. set, pitcher has flake	225.00
MMG	GI	Peacock and Grape bowl	360.00
A	GI	Wishbone tumbler, heat check, light amethyst	47.50

It would be greatly appreciated by everyone, if you would use these codes, as suggested.

THANKS!!!!!! THE EDITOR

***** CARNIVAL GLASS FOR SALE *****

Tom & Sharon Mordini, 36 N. Mernitz Ave., Freeport, Illinois 61032
PHONE: 1-815-235-4407

PO	EI	Caroline basket	490.00
P	EI	Dandelion mug	295.00
M	EI	Daisy Cut Bell	395.00
W	EI	Fanciful plate, FLAT	235.00
G	EI	Grape & Cable punch set, 8 pieces, small	825.00
B	EI	Hobnail creamer, EXTREMELY RARE!	650.00
M	EI	Peacocks ruffled bowl	180.00
B	EI	Orange Tree Orchard pitcher	500.00
P	EI	Town Pump	600.00
M	EI	Ragged Robin C.R.E. bowl	100.00

=====
Gary O. Lickver, P. O. Box 1778, San Marcos, California 92069
PHONE: 1-619-744-5686

B	EI	Fluffy Peacock tumblers, have 4, each \$100.00 or all for	340.00
A	EI	S-Repeat punch cup	33.00
M	EI	Pine Cone 6" ruffled bowl	22.00
A	EI	Wreath of Roses compote	45.00
M	EI	Peacock & Dahlia 7" ruffled bowl	25.00
A	EI	Tree Trunk 10" vase	25.00
P	EI	Diamond Point 10" vase	30.00
G	EI	(N) Pair Thin Rib 11" vases (32 star bottom), will take \$60.00 for the pair, or each	33.00
G	EI	Leaf & Little Flowers Millersburg compote	400.00
B	EI	Orange Tree compote, no silver iridescence	55.00

=====
Larry Keig, 1521 West 31st. Street, Cedar Falls, Iowa 50613
PHONE: 1-319-425-4467, 277-0358 or 273-2308

AQ		Pansy open sugar	110.00
A		Fishscale & Beads 7" plate	375.00
G		Wishbone footed bowl	100.00
PO		Double Stemmed Rose footed bowl	110.00
B		Stag & Holly 10" ice cream bowl	175.00
P		Plain/Basketweave (N) compote, nice, but flat sliver off	22.50
M		Inverted Coin Dot pitcher	135.00
G		Leaf & Beads footed nut bowl	55.00
A		Beaded Cable candy dish, nice	55.00
PO		Coin Dot 10" ruffled bowl	165.00

SASE FOR LARGE LIST OF CARNIVAL GLASS FOR SALE

***** CARNIVAL GLASS FOR SALE *****

Dean & Diane Fry, 5395 Middleton Rd., San Diego, California 92109
PHONE: 1-619-272-1663 after 5:00 P.M. Pacific Time

M	EI Sailboats ruffled sauce	25.00
A	GI Beaded Basket	50.00
PO	EI Leaf Rays/Leaf exterior nappy, SUPER	40.00
M	EI Star Medallion milk pitcher, strong marigold	32.00
B	EI Little Fishes ice cream shape 10" footed bowl	300.00
A	GI Dugan Cherry footed ruffled 8" bowl	50.00
A	EI Grape Arbor fruit bowl	150.00
M	EI Persian Medallion hair receiver	45.00
AO	EI Drapery rosebowl	250.00

Yvonne F. Vorthman, 5 Main St., Box 33, Treynar, Iowa 51575
PHONE: 1-712-487-3909 anytime

IB	EI (N) Peacock & Urn ice cream bowl 10½"	1,200.00
PO	EI Ski Star handled basket, Dugan, 8½" X 6½", 7" high	520.00
PO	EI Fishnet epergne, Dugan	425.00
R	EI Fenton Acorn bowl 6½"	520.00
*	EI *Fiery amethyst Grape & Cable banana boat 12" diameter	300.00
M	EI Panther inside, Butterfly & Berry ext bowl, claw feet	95.00
M	EI Panther inside, Butterfly & Berry ext sauces, each	55.00
M	EI Peacock & Grapes Fenton, berries outside	250.00
M	EI Kittens vase, Fenton	160.00
M	EI Kittens saucer	128.00
M	EI Kittens bowl	129.00

ALSO HAVE 500 PIECES OF CARNIVAL GLASS FOR SALE

Mary Welch, 213 Alexander Ave., Scotia, New York 12302
PHONE: 1-518-393-7748

M	Fashion tumblers, dark, have 6, each	20.00
PO	Raindrops dome footed bowl	60.00
M	Diamond & Sunburst wines, have 5, each	25.00
M	Imperial Grape wines, have 5, each	24.00
DM	Grape & Cable creamer (N)	60.00
DM	Imperial Grape tumblers, have 6, each	18.00
AMB	Leaf Swirl compote	50.00
M	Fancy Flowers dome footed bowl, smoothed place under base	49.00
M	Heavy Prism Panels vase	45.00

SEND 2 STAMPS FOR LIST OF 300 PIECES OF CARNIVAL FOR SALE

***** CARNIVAL GLASS FOR SALE *****

William L. Waggener, 1206 St. Charles, Quincy, Illinois 62301
PHONE: 1-217-222-6651

P	EI Nautilus (lettered)	285.00
AO	EI Drapery rosebowl	235.00
AO	EI Bushel Basket, 3/8" heat crack in bottom near side	250.00
P	EI Grape & Cable hatpin holder	195.00
B	EI Orange Tree hatpin holder, small chip on one foot	160.00
W	EI Rustic 16" vase	135.00
B	EI S-Repeat toothpick holder	100.00
P	EI Grape & Cable sweetmeat base	75.00
R	EI 1976 H.O.A.C.G.A. 7 piece whiskey set	135.00
R	EI 1974 H.O.A.C.G.A. 7 piece water set	135.00

Charlotte Tweddell, 4908 Darnton Ln., Louisville, Kentucky 40216
PHONE: 1-502-447-1670

PO	EI Four Flowers set, large bowl and 6 small	475.00
A	EI Wishbone & Spades 6½" plate, RARE	100.00
W	EI Persian Garden 7" plate	125.00
M	EI Millersburg Peacock & Urn 10" bowl	90.00
IG	EI Fenton Basket 7", top square shape	150.00
AQ	EI Peacock & Urn round bowl, BEAUTIFUL, several flakes on collar base, RARE	500.00
B	EI Ten Mums tumbler	70.00
W	EI Heart & Flowers bowl	125.00
W	EI Heart & Flowers compote	100.00
SM	EI Frosted Block 7½" plate	100.00

Stan & Donna Williams, 7711 N.W. 69th Terr., Kansas City, Missouri 64152
PHONE: 1-816-587-7357

G	Imperial Cobblestone ruffled bowl	100.00
G	Dragon & Lotus bowl, 3 in 1 edge	65.00
G	Scroll Embossed compote	42.00
B	Peacock & Grapes bowl	70.00
B	Lotus & Grape card receiver, BEAUTIFUL COLOR	50.00
M	Orange Tree compote, goblet shape	35.00
M	Fenton Open Edge basket	20.00

***** CARNIVAL GLASS FOR SALE *****

Ann Slaughter, Rt. 2, Box 568, Graham, North Carolina 27253
PHONE: 1-919-376-9552

W	EI Peacock at the Fountain punch cup, RARE	60.00
P	EI Imperial Heavy Grape 6½" bowl, SUPER IRIDESCENCE	30.00
M	EI Imperial Grape handled basket, scarce, have 2, each	65.00
B	GI Apple Blossom Twigs, saw toothed edge, flat plate. Iridescence didn't take near center in spots, but otherwise perfect	75.00
LAV	EI Ribbon Tie 9" C.R.E. bowl, mint	45.00
A	EI Poinsettia & Lotus 9" footed master berry bowl, have 2, each	65.00
A	EI Thistle 9" fluted bowl, mint, have 2, each	35.00
B	EI Illusion bon bon, mint, satin iridescence	40.00
PO	EI Fan sauce boat, mint, including feet	75.00
G	EI (N) Strawberry flat plate, nicest I've had	125.00

Make checks payable to: ANN SLAUGHTER, CARNIVAL GLASS & COLLECTIBLES.

=====
Roy & Bev Johnson, 631 E. Morgan Avenue, Milwaukee, Wisconsin 53207
PHONE: 1-414-481-6137, If weekdays, call after 4:00 P.M.

R	EI Stippled Rays 7" bowl, BEAUTIFUL	250.00
R	EI Blackberry Spray hat, BEAUTIFUL	250.00
R	EI Fenton Two Row Open Edge ruffled basket	200.00
AO	EI Drapery rosebowl	250.00
AO	EI Leaf & Beads rosebowl	250.00
IG	EI Plain Jane basket, RARE	275.00
M	EI Classic Arts rosebowl, RARE	250.00
B	EI Fenton Two Flowers spatula footed rosebowl, RARE	150.00
M	EI Diamond Ring rosebowl, RARE	150.00
M	EI Classic Arts vase, rare, 1 of 3, small crack on bottom	150.00

=====
Valmer Cross, Sr., Prattsville, New York 12468
PHONE: 1-607-588-6698

G	Persian Medallion 6" bowl	30.00
M	Iris & Herringbone wine	15.00
G	Imperial Grape water bottle, chip on base	60.00
M	Urn vase	35.00
M	Vintage Banded mug	25.00
M	Ripple 10½" vase	26.00
M	Dutch Mill 8" plate	20.00
M	Swirl 8" plate	35.00
M	Dutch Twins ashtray	40.00
PM	Vineyard tumbler	12.00

***** CARNIVAL GLASS FOR SALE *****

Ken Bakshas, 16845 Antioch Rd., White City, Oregon 97503
PHONE: 1-503-826-4256

G	Fine Cut & Roses footed candy dish	65.00
M	Feathered Arrow 9" ruffled bowl	45.00
CLM	Imperial Grape 9" ruffled plate	95.00
G	Captive Rose 8½" C.R.E. bowl	60.00
M	Lotus & Grape bon bon	36.00
M	Urn vase 9"	38.00
P	Imperial Grape wine decanter, no stopper	100.00
G	Fenton Stippled Rays bon bon	36.00
M	Peacock & Grape 9" ruffled bowl	38.00
A	Fenton Stippled Rays compote	42.00

=====
Robert Hutchison, Rt. 2, Box 461, Seymour, Missouri 65746
PHONE: 1-417-935-4908

B	Nu Art Homestead plate, several chips	650.00
B	Beaded Shell tumbler	110.00
M	Hobstar Band tumbler	55.00
M	Enameled Lily with Prism Band tumbler	25.00
M	Leaf Rays nappy	17.50
M	Question Marks bon bon	17.50
M	Question Marks dish	25.00
M	Question Marks compote	30.00
G	Sailboats sauce	55.00
P	Kingfisher bowl	90.00

=====
Singleton Bailey, P. O. Box 95, Loris, South Carolina 29569
PHONE: 1-803-756-7495

PM	EI Stippled Good Luck bowl	175.00
A	GI (N) Fern compote	65.00
MMG	GI Daisy Wreath bowl, worn spot	65.00
A	EI Ripple vases, pair	85.00
A	GI Embroidered Mums bowl	175.00
A	EI Fashion tumbler	175.00
B	EI Dugan Double Stem Rose dome footed bowl	75.00
W	EI Leaf Chain 9" plate	175.00
B	EI Grape & Cable orange bowl	295.00
G	EI Fentons Thistle footed banana bowl	250.00

***** CARNIVAL GLASS FOR SALE *****

Gil Corriveau, Box 5, Sturbridge, Massachusetts 01566
 PHONE: 1-508-347-3304 days, 1-508-347-9930 nights, postage & ins. extra

M	EI	Wishbone epergne base only	150.00
P	EI	Town Pump (N), spout broken off	100.00
PRL	EI	Leaf & Beads rosebowl (N)	350.00
PO	EI	Petal & Fan large ruffled 11" bowl	125.00
B	EI	Sailboat wine glass	75.00
PO	EI	Ski Star large 11" bowl	95.00
M	EI	Butterfly & Berry tumblers, set of 6	110.00
M	EI	Peacock at the Fountain berry bowls, 6	90.00
W	EI	Three Fruits dome footed bowl	400.00
M	GI	Vineyard water pitcher	85.00

Vaunda & Swede Tilberg, Rt. #5, Box 1064, Joplin, Missouri 64804
 PHONE: 1-417-782-9627

P	EI	Leaf & Beads rosebowl, plain petals interior	85.00
M	EI	Peacocks ruffled bowl	225.00
M	EI	Little Stars small bowl	75.00
M	EI	Wild Blackberry bowl	45.00
B	EI	Good Luck bowl	200.00
G	EI	Zig-Zag large bowl	300.00
P	EI	Ferns compote, Daisy & Plume exterior	65.00
P	EI	Greek Key ruffled bowl	160.00
P	EI	Nippon ruffled bowl	140.00
M	EI	Lotus & Grape bon bon	55.00

Pat Lower, P. O. Box 686, Galion, Ohio 44833
 PHONE: 1-419-468-1269 evenings

P		Wishbone & Spades 6" plate, RARE	120.00
LAV		Little Flowers large ruffled bowl, SUPER IRIDESCENCE	100.00
M		Apple Blossoms small ruffled bowl, pastel	30.00
M		Lustre Rose small bowl, ice cream shape 7"	20.00
M		Poinsettia milk pitcher, beautiful	55.00
LAV		Question Marks bon bon	40.00
G		Rainbow compote, green clear glass on stem, iridescence on bowl part	40.00
B		Vintage small ruffled bowl	25.00
M		Waterlily & Cattails tumbler, beautiful	30.00
B		Peacock at the Fountain tumbler, Dugan	30.00

PLEASE SEND A S.A.S.E. FOR LIST OF CARNIVAL GLASS

***** CARNIVAL GLASS FOR SALE *****

William & Deborah Coles, Rt. #1, Box 273B, Hickory, Kentucky 42051
 PHONE: 1-502-674-5916

M	EI	Question Marks stemmed plate, SCARCE	80.00
A	EI	Wild Blackberry bowl, Adv. "H. Maday & Co. 1910" SCARCE	155.00
G	GI	Open Rose 9" plate, pretty for green one	68.00
M	EI	(N) Peacocks plate, Ribbed exterior	285.00
M	EI	Wreathed Cherry butter dish, base has D in Diamond mark	75.00
B	EI	Peacock & Urn, Fenton, ice cream shape bowl	105.00
W	EI	Daisy & Drape vase	145.00
B	EI	Stippled Grape & Cable Variient bowl, Ribbed ext, SCARCE	165.00
A	EI	Dugans Cherries large bowl, Jeweled Heart ext.	115.00
A	EI	Pony bowl, ruffled, EXTRA NICE	125.00

W. J. Warren, 38 Mosher Drive, Tonawanda, New York 14150
 PHONE: 1-716-692-2886

PO	EI	Ski Star tri-cornered footed 8 3/4" bowl	65.00
M	EI	Grape & Cable 10" salad bowl, RARE	100.00
P	EI	Raspberry milk pitcher (N)	165.00
PO	EI	Raindrops ruffled 8 1/2" bowl	50.00
B	EI	Wreath of Roses punch bowl top, Persian Medallion interior	150.00
B	EI	Stag & Holly ruffled 11" bowl	175.00
G	EI	Thin Rib funeral vase 16 1/2" high 7 1/2" opening	135.00
M	EI	Heavy Grape punch bowl and base	175.00
M	GI	Polo Pony ash tray	25.00
M	GI	Octagon wine decanter and stopper	55.00

Dave Sharp, 3717 Wilmington Pike, Dayton, Ohio 45429
 PHONE: 1-513-299-8420

A	EI	Chrysanthemum 9" ruffled bowl, light amethyst	150.00
G	EI	Horse Medallion jack-in-the-pulpit footed bowl, SUPER GREEN	185.00
M	EI	(N) Grape & Cable handgrip plate	75.00
PO	EI	Ski Star 10 1/2" ruffled bowl	80.00
VAS	GI	Blackberry Spray crimped edge jack-in-the-pulpit hat	60.00
P	EI	Hobstar creamer, some pattern roughness	55.00
G	GI	Scotch Thistle compote, scarce	45.00
AMB	EI	Fine Rib 12 1/2" vase, slight peeling effect on 1 point	40.00
P	EI	Embossed Scroll 5" berry bowl	20.00
B	EI	Rose Wreath compote	45.00

***** CARNIVAL GLASS FOR SALE *****

Ted Shibley, 304A Hillcrest Drive, New Cumberland, Pennsylvania 17070
PHONE: 1-717-938-6417

M	EI	Flute toothpick	50.00
M	EI	Dragon & Strawberry collar based bowl	325.00
M	EI	Peacock & Urn (N) master ice cream bowl, SUPER	375.00
M	EI	Persian Medallion hair receiver	55.00
PO	EI	Peacock & Grapes spatula footed bowl	300.00
P	EI	Strawberry 9" plate, SUPER	140.00
A	EI	Elks 1910 Detroit ruffled bowl	480.00
A	EI	Three Fruits Variet (N) stippled 9" plate, SUPER	750.00
A	EI	Wreath of Roses 6 piece punch set	525.00
B	EI	Diamond & Rib 13" vase	35.00

Ed & Sharon Binstock, P. O. Box 351, Presque Isle, Maine 04769
PHONE: 1-207-764-3612

IG		Prism Banded decorated tankard, frosty multi-color	750.00
B		Greek Key P.C.E. bowl, few known in this color, NICE	750.00
B		Wishbone footed bowl, very few in this color	650.00
IB		Grape & Cable banana bowl, SUPER	650.00
IB		Hearts & Flowers ruffled bowl, nice, darker than average	300.00
G		Corn vase, flake on base, real dark, nice color	400.00
M		Corn vase, chip on one kernal, very dark example	400.00
A		Millersburg Courthouse ruffled bowl, SUPER, but a few minor open bubbles	400.00
P		Hearts & Flowers plate, top SUPER COLOR, sliver down side of one point	550.00
IB		Fruits & Flowers bon bon SUPER	750.00

Dick Wetherbee, 847 Stafford St., Rochdale, Massachusetts 01542
PHONE: 1-508-892-4420

B	EI	Stag & Holly 7½" spatula footed bowl, great color	135.00
M	EI	(N) Graceful 5 3/4" vase, completely iridised	32.00
G	EI	Millersburg Diamonds pitcher, pinhead, no harm, SUPER	175.00
W	EI	Big Basketweave 11" vase, a real frosty one	65.00
IG	EI	Leaf Columns 9½" vase, GREAT, but a small base flake	95.00
M	EI	(N) Bushel Basket, 8 sided, iridised completely, pretty	120.00
G	EI	(N) Lustre Flute punch cup, nice dark color	25.00
B	EI	Fruits & Flowers 2 handled stemmed bon bon ELECTRIC BLUE	125.00
G	EI	Millersburg Cosmos 6" dish, no harm base pinhead	28.00
PM	EI	Fishscale & Beads 7" flat plate, SUPER IRIDESCENCE	75.00

***** CARNIVAL GLASS FOR SALE *****

Mrs. J. C. Barker, Rural Route 3, Box 163-BB, Savannah, Missouri 64485
PHONE: 1-816-662-2265

50 pieces of Carnival Glass for sale. Call or send S.A.S.E.

Marc A. Palma-Cicorio, 189 Dolores #4, San Francisco, California 94103
PHONE: 1-415-861-2416

Carnival Glass for sale, Happy Holidays!, please send a S.A.S.E. for an up-to-date listing of Carnival for sale Thank you. NO cards please.

Steve Davis, 3331 Warpath Rd., Macon, Georgia 31201
PHONE: 1-912-741-4252

M	EI	Imperial Grape ruffled plate	45.00
PO	EI	Four Flowers 6" plate	85.00
AO	EI	Fenton Blackberry Spray hat, EXTRA NICE, but no harm flake underneath	175.00
P	EI	Grape & Cable dresser tray, EXTRA NICE	185.00
M	EI	Open Rose large fruit bowl, SUPER IRIDESCENCE	85.00
P	EI	Holly bowl, C.R.E.	95.00
M	EI	"474" water pitcher	150.00
M	EI	Strawberry handgrip plate	80.00
P	EI	Poppy Show plate, SUPER COLOR!	1,400.00
AMB	EI	Pansy pickle dish	65.00

Glen L. Fortney, P. O. Box 303, Buckner, Missouri 64016
PHONE: 1-816-249-5208

B	EI	(N) Singing Birds mug, SUPER	125.00
B	EI	Holly plate, THE BEST AND MINT!	275.00
EB	EI	(N) Dandelion mug	500.00
PM	EI	(N) Dandelion mug, pastel marigold	275.00
B	EI	Orange Tree plate, SUPER	275.00
AQ	EI	Rose Show bowl, small flake under outside rim, bowl is aqua without opalescence, RARE	900.00
M	EI	Grape Arbor water pitcher, GORGEOUS AND MINT	225.00
P	EI	Millersburg Perfection tumbler, SUPER	475.00
M	EI	Rising Sun tumbler, VERY RARE	500.00
M	EI	File tumbler, SUPER IRIDESCENCE	200.00

***** CARNIVAL GLASS FOR SALE *****

Richard & Carol Cinclair, 3605 South Echo Trail, Plano, Texas 75023
PHONE: 1-214-596-0014

A	EI	Checkerboard goblet	260.00
B	GI	Blackberry miniature compote	50.00
G	EI	Daisy & Plume candy dish, footed	55.00
R	EI	Holly hat, internal crack	100.00
PO	EI	Leaf Rays ruffled nappy	45.00
*	EI	*Moonstone Holly ice cream shaped bowl	925.00
G	GI	Trout & Fly ruffled bowl	250.00
G	EI	Wild Strawberry ruffled bowl	65.00
G	EI	Stippled Rays bon bon	45.00
R	EI	Imperial Jewels plate	65.00

Mary C. Kesterson, 3020 Mesa Road, Willow Park, Texas 76087
PHONE: 1-817-441-8410

P		Rose Show ruffled bowl	500.00
M		Poppy Show ruffled bowl, NICE	325.00
M		(N) Peacocks plate, SUPER IRIDESCENCE	450.00
EB		(N) Peacocks bowl, P.C.E., SUPER COLOR & IRIDESCENCE	550.00
G		(N) Peacocks bowl, ruffled, SUPER	995.00
IB		(N) Peacock & Urn master ice cream bowl, SUPER IRIDESCENCE	995.00
G		Millersburg Peacock 9" ruffled bowl, airy green with SUPER RADIUM	750.00
B		Embroidered Mums ruffled bowl	325.00
M		Leaf & Little Flowers 4½" compote, ruffled, radium	310.00
G		Leaf & Little Flowers 4½" compote, round top, satin	325.00

Ray Hitchcock, R.R. 1, Box 301, Winterset, Iowa 50273
PHONE: 1-515-462-2074

B	GI	Kittens saucer, 4 sides up, 2 kittens	225.00
M	EI	Orange Tree punch top	85.00
PM	EI	Orange Tree plate, A BEAUTY	90.00
P	EI	Flute toothpick	65.00
IG	EI	Peacocks plate, tiny holder fleck on back of point	300.00
W	EI	Fentons Flowers rosebowl, SUPER COLOR, tiny toe flake	225.00
M	EI	Lions bowl, round	90.00
OG	EI	Four Flowers Variet bowl, A BEAUTY	155.00
MMG	EI	Floral & Optic fernery/rosebowl	195.00
P	EI	Strawberry plate	110.00

***** CARNIVAL GLASS FOR SALE *****

Don Sherman, 4225 O'Keefe Dr., El Paso, Texas 79902
PHONE: 1-915-533-3580

PO	EI	Westmorland Scales bowl	95.00
B	EI	Good Luck bowl, P.C.E., chip	125.00
M	EI	Milady tumbler	55.00
M	EI	Lustre Rose pitcher	70.00
M	EI	Lustre Rose tumbler	20.00
M	EI	Windmill pitcher	75.00
M	EI	Windmill tumbler	25.00
B	EI	Vintage footed fernery	40.00
B	EI	Orange Tree footed rosebowl	55.00
P	EI	Greek Key tumbler	85.00

Harold L. Fortney, 910 Pennsylvania, Apt. 404, Kansas City, Mo. 64105
PHONE: 1-816-474-2054 after 6:00 P.M.

VAS	EI	Two Flowers footed sauces, have 2, each	75.00
M	EI	Millersburg Ohio Star vase, no harm flake inside of rim, SUPER BLUE & ROSE IRIDESCENCE TOP TO BOTTOM! THIS VASE IS SUPER! May be pastel marigold	650.00
G	EI	Millersburg Poppy compote, BEAUTIFUL DARK GREEN COLOR AND SUPER RADIUM IRIDESCENCE, MINT!	450.00
M	EI	Millersburg Seaweed 8 3/4" low bowl, RARE	350.00
G	EI	Millersburg Rosiland large ruffled bowl, satin, NICE	225.00
M	EI	Two Flowers footed sauce	30.00
G	EI	(N) Grape & Cable with thumbprints sauce, NICE	35.00

Ann Slaughter, Route 2, Box 568, Graham, North Carolina 27253
PHONE: 1-919-376-9552

G	EI	April Showers vase, infrequently seen color	40.00
P	EI	Imperial Grape ruffled plate	60.00
P	EI	Imperial Scroll Embossed small compote, SCARCE, MINT	55.00
B	EI	Feather Stitch ruffled 9" bowl	45.00
B	EI	Butterfly & Berry master berry bowl, NICE	95.00
P	EI	Dugans Cherry/Jewelled Heart ext., bullet edge 9½" bowl	65.00
M	EI	Stork A B C plate, MINT	30.00
SM	EI	Imperial Grape compote, MINT	30.00
B	GI	(N) Bushel Basket	65.00
G	EI	Peacock Tail small compote, MINT	25.00

Please make checks payable to: ANN SLAUGHTER, CARNIVAL GLASS AND COLLECTIBLES

***** CARNIVAL GLASS FOR SALE *****

Doris J. Gerber, 5688 CR7, Garrett, Indiana 46738
PHONE: 1-219-357-5405

P	EI	Pillow & Sunburst 8" ruffled bowl	45.00
G	EI	Mayan 8" bowl	80.00
LAV	EI	Coin Dot 8½" C.R.E. bowl	75.00
B	EI	Waterlily 5" footed bowl	40.00
G	EI	Windmill 9" relish, slight damage	25.00
B	EI	Open Edge Basket, one side up	35.00
M	EI	Star & File large compote	35.00
PM	EI	Holly 9" bowl, 3 in 1 edge	50.00
A	EI	(N) Grape Leaves ruffled bowl, Wild Rose exterior	50.00

Bill Keith, 714 E. Spring, St. Marys, Ohio 45885
PHONE: 1-419-394-3574 before 8:00 P.M.

P	EI	Diamond Lace water sets, have 2, each	425.00
A	EI	Grape & Cable (N) 11" punch bowl & base, EXCEPTIONAL COLOR	425.00
PO	EI	Folding Fan compote	75.00
PO	EI	Beaded Panels compote	65.00
M	EI	Trout & Fly Millersburg 9" collar based bowl	365.00

***** CARNIVAL GLASS WANTED *****

Gil Corriveau, Box 5, Sturbridge, Massachusetts 01566
PHONE: 1-508-347-3304 days, 1-508-347-9930 nights

IB Grape & Cable punch base, medium

Betty Klutts, 3800 N.W. 24th Street, Oklahoma City, Oklahoma 73107
PHONE: 1-405-946-6714

AMB Grape & Cable top to Gone with the Wind lamp

Chuck & Marge Kremer, 430 Rose Avenue, New Haven, Indiana 46774
PHONE: 1-219-749-4909

A Inverted Feather butter
A Dahlia butter
G Butterfly & Berry creamer
M Acorn Burrs sugar
B Orange Tree covered sugar
G Singing Birds spooner
M Leaf Tiers sugar

Alen & Lorraine Pickup, 531 Holiday Avenue, Hazelwood, Missouri 63042
PHONE: 1-314-895-3430

W Ragged Robin C.R.E. bowl
M Leaf Tiers butter dish
G Springtime sugar LID ONLY
M Grape & Cable powder jar LID ONLY

Ruth Schinestuhl, 3903 West Avenue, Ocean City, New Jersey 08226
PHONE: 1-609-398-7325

P Broken Arches punch cups, need 12
M Memphis punch cups, need 6
M Octagon wines, need 6

Harold L. Fortney, 910 Pennsylvania, Apt. 404, Kansas City, Mo. 64105
PHONE: 1-816-474-2054 after 6:00 P.M. weekdays, anytime weekends

SM Imperial Grape tumbler

***** CARNIVAL GLASS WANTED *****

Ted Sheibley, 304A Hillcrest Drive, New Cumberland, Pennsylvania 17070
PHONE: 1-717-938-6417

ANY COLOR Rose Tree bowl
IB/IG Peacocks on the Fence bowl
R Chrysanthemum bowl
ANY COLOR Peacock & Urn plates/bowls
ANY COLOR Horsehead Medallion plate
IB/IG Hearts & Flowers bowl
M Spectors Department Store plate
IG Nippon bowl
ANY COLOR Trout & Fly square or tri-cornered bowl
IB/IG Grape & Cable items

=====
Ralph G. Tomlin, 828 S. Sandusky Avenue, Bucyrus, Ohio 44820
PHONE: 1-419-562-7674 evenings

DM EI Stopper for Imperial Grape wine decanter
B EI Wreath of roses punch cups, Persian Medallion interior, at least 6
M EI Engraved Daisy tumblers, "fat middle, flared top" (1987 Sept.
H.O.A.C.G.A. Bulletin) need 2

=====
Mr. & Mrs. Mario Cabrera, 611 Belford #4, Grand Junction, Colorado 81501

We have 6 items we would like to trade for 6 amethyst Diamond
Lace tumblers with excellent iridescence, 4 1/8" tall. We have
and will trade for:

1. 1 Grape & Cable butterdish top, marigold, excellent irid.
for one Diamond Lace dark amethyst, excellent irid. tumbler.
2. 1 Grape & Cable standard punch bowl base, amethyst with
excellent irid., for 1 Diamond Lace tumbler, amethyst EI.
3. 1 Butterfly & Fern green tumbler, excellent irid., for 1
dark amethyst EI Diamond Lace tumbler.
4. 1 Vintage lily (top) green GI, chips on bottom where it sits
into the bowl, chips do not effect lily from staying in
bowl for 1 dark amethyst EI Diamond Lace tumbler.
- 5 & 6 2 Lattice & Daisy marigold tumblers GI for 2 Diamond Lace
dark amethyst GI tumblers.

***** CARNIVAL GLASS WANTED *****

Richard & Carol Cinclair, 3605 South Echo Trail, Plano, Texas 75023
PHONE: 1-214-596-0014

B Kittens saucer
B Kittens cup and saucer
W Peach pitcher
W Peach table set

=====
Loren M. Parker, Rt. 1, Box 121, Meta, Missouri 65058
PHONE: 1-314-229-4427

M Peacock at the Fountain tumblers
M Peacock at the Fountain butter dish bottom
M Peacock at the Fountain punch cup
M Butterfly & Berry vase, 1 or 2

=====
Herbert A. Hull, 13001 Stephenson St., Anchorage, Alaska 99515
PHONE: 1-907-345-4855

I would like to purchase the following Northwood Bushel
Baskets (will consider damaged pieces): ice-green in
8 side only, Green, celeste blue, electric blue, ice-
blue, vaseline, amber, smoke, horehound, lime-green opal,
and any other really scarce piece.

=====
Larry Keig, 1521 West 31st. Street, Cedar Falls, Iowa 50613
PHONE: 1-319-277-0358, or 273-2308

M Anemone enameled tumbler
G Bud vase whimsey
P Bud vase whimsey
ANY Pieces with Iowa town names enameled on them

=====
Gary O. Lickver, P. O. Box 1778, San Marcos, California 92069
PHONE: 1-619-744-5686

A Panelled Dandelion tumbler
A Concord bowl
R Vases

***** CARNIVAL GLASS WANTED *****

Ruby & Yvan Beaudry, 109 5e Ave., Boisbriand, Quebec, Canada J7G 1Y8
PHONE: 1-514-437-4585

- A Dahlia butter dish
- A Maple Leaf sugar top only
- A Grape & Cable large compote top only
- M Singing Birds butter dish
- M Field Thistle butter dish base only
- M Raspberry tumblers, need 6 matching
- B Grape & Gothic Arches butter dish base only
- B Blueberry tumblers, need 2
- M Town Pump, no damage
- G Wishbone tumbler, need 1

=====