

HOACGA

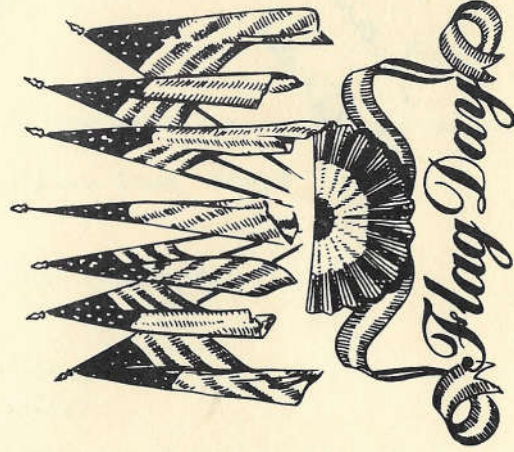
Heart Of America Carnival Glass Assoc. Inc.

June 1989

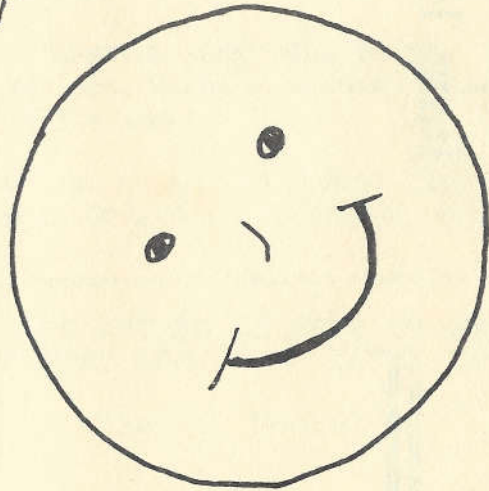
RETURN ADDRESS

H.O.A.C.G.A.
Eleanor Mochel
6409 Beverly Dr.
Mission, Ks. 66202

FIRST-CLASS MAIL
U.S. POSTAGE
PAID
Shawnee Mission, KS
Permit No. 958



Membership dues last due! This bulletin is the past are your dues until you will receive your dues to Doug. Please have your dues paid to Doug before the 30th.



HEART OF AMERICA CARNIVAL GLASS ASSOCIATION
BOARD OF DIRECTORS

President Robert Grissom
7900 Crescent
Raytown, Missouri 64138
816-356-5320

Secretary Nadine Paulsen
700 Purdom
Olathe, Kansas 66061
913-782-1313

Vice-President Eleanor Mochel
6409 Beverly Dr.
Mission, Kansas 66202
913-432-1129

Treasurer Doug Peters
4307 N.E. 46th Terr.
Kansas City, Missouri 64117
816-453-4903

Bulletin Secretary Pro-Tem
Eleanor Mochel
6409 Beverly Dr.
Mission, Kansas 66202
913-432-1129

=====

IN MEMORY OF JOHN C. MUNDEN

John "Jack" Munden passed away on April 15, 1989, at his home in Chesapeake, Virginia.

Jack was well-known throughout the world of Carnival Glass and he will be sadly missed.

He was an avid, advanced, intelligent collector and had accumulated one of the largest and finest collections known. His collection included some of the rarest pieces known, many of them "one of a kind." To visit his home and view this collection was always an education and a pleasure. He really enjoyed the wonderful hobby of collecting Carnival Glass and will be missed by his many friends.

He is survived by his wife, Thelma.

E. A. Zeppieri

=====

IN SYMPATHY

Robert Katowitz, a long time member of HOACGA died May 3, 1989. Our sympathy goes to his wife Josephine and their family.



IMPERIAL FLUTE HANDLED TOOTHPICK (CENTER)

Our featured toothpick is the one shown in the center with the two handles. We took the snapshot with a standard Flute toothpick on each side, in order for you to see the difference between the two examples. This little handled toothpick is very hard to find. Evidently, they did not make many of them as we searched for years to find the one in our collection. We have seen only a very few of them. They are listed in Edwards new carnival glass price guide for \$60.00, but we had to pay \$210.00 for ours at an auction in the Cleveland, Ohio area last year. Take it from us, they are very hard to find.

The toothpick is listed in the large Imperial Glass blue book, by Margaret & Douglas Archer. This book was put out with the cooperation of the Imperial Glass Corporation. It is illustrated on page 120 of that very fine book on Imperial Glass. It measures 2 $\frac{1}{4}$ " high with a top opening of 2". It is 3 $\frac{3}{4}$ " across the outer most points of the handles. The collar base is 1 $\frac{3}{4}$ " in diameter and contains a 14 point star pressed into the underside of the base. The old Imperial Iron Cross mark is on the inside bottom of the base. Ten panels are used around the outside of the toothpick. This little two handled gem has been reported only in marigold.

The regular Flute toothpick has six larger panels around its' outer surface. It can be found quite often in the standard colors of marigold, helios green and purple. Very rarely one will show up in cobalt blue or vaseline. Consider them very rare in those two colors.



THE PORTLAND OR LONG BUTRESS TUMBLER

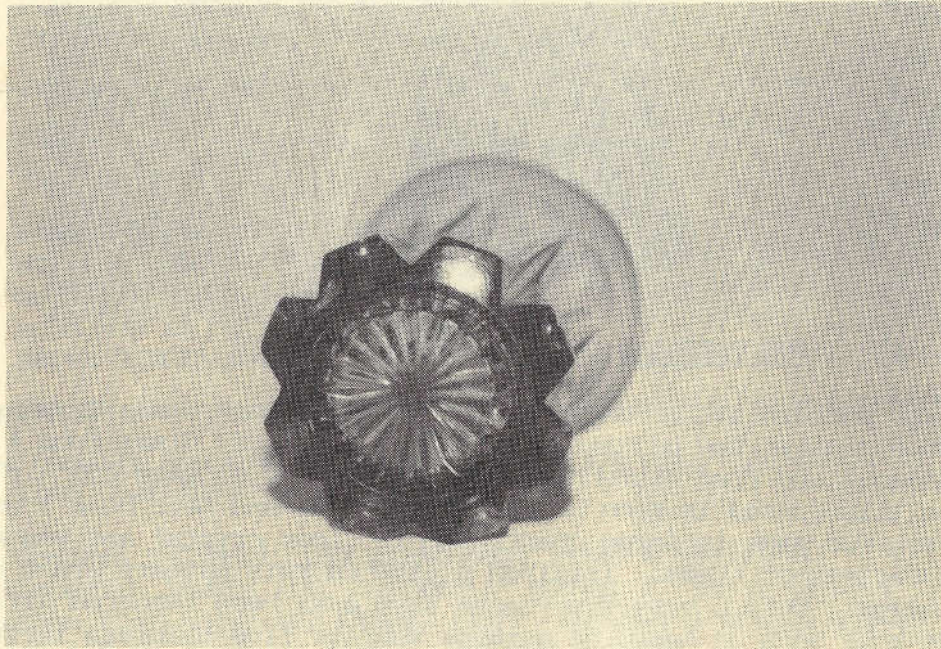
The Portland pattern was produced by the United States Glass Company of Pittsburgh, Pennsylvania. The pattern can be found in "U.S. Glass from A to Z" by William Heacock and Fred Bickenheuser. It is shown on page 155 - plate D. It is also illustrated in Kamm book #1 - page 107 and Metz book 1 on page 106. This pattern was made in large quantities in clear crystal and was produced in a wide variety of items. Iridised pieces in this pattern are a different story, however. Only a very few pieces have ever been reported with iridescence. We have seen or heard of perhaps four or five tumblers in this pattern. We have only owned one of these tumblers in our years of collecting carnival glass.

One of these Portland tumblers caused considerable excitement several years ago when the owner thought they had a marigold Cone & Tie tumbler. On examination however, it turned out to be the Portland pattern. Elmer and Eleanor Kaisner of Forrest, Illinois owned a water pitcher in this pattern. This pitcher was also thought to be the Cone & Tie pattern by O. J. Olson and others. After comparing it with the writers Cone & Tie tumbler, at one of the Conventions, one could see that the patterns were not the same. This pitcher was later sold at the Kaisner auction in March of 1983 by Tom Burns for \$200.00. It is the only water pitcher known in this pattern with iridescence. It was listed and sold as Butress, which this pattern is sometimes called. Bill Edwards lists the Portland pattern in an 8 $\frac{1}{2}$ " bowl, but not in any other piece. Port-

continued...

land or Butress is not listed in any other carnival Glass book, to the best of our knowledge.

The Portland tumbler is made of thicker glass and is much heavier than most other carnival glass tumblers. It is 4½" tall, 3½" across the top and 3" in diameter at the base. A 20 point star is pressed into the underside of the base. Eight panels are used around the outside of the tumbler. Both the tumbler and water pitcher contain deep slashes at the base. Photo #2 illustrates the unusual base that was used on this tumbler.



UNUSUAL BASE OF THE PORTLAND TUMBLER

Cecil Whitley, of Houston, Texas, reports that many knowledgeable carnival glass collectors show a lot of interest in the Portland tumbler, when viewing their collection. Al Rodenhouse also has one of these in his tumbler collection, but most of the tumbler collections that we have seen, are missing this unusual tumbler. We suspect that U. S. Glass was experimenting with iridised glass when these early iridised pieces were made.

We now know that the U. S. Glass Company produced the famous Butterfly and Frolicking Bears tumblers. Two other very rare carnival glass tumblers, that were made by them, are Pacifica and Diamond Whirl. The two most often seen U. S. Glass tumblers are the beautiful Palm Beach and Cosmos and Cane tumblers. Lucile has always rated the white Palm Beach as one of her favorite tumblers.

continued...

The very pretty grapes and leaves design and the super iridescence make it a sure winner. Rising Sun is another U. S. Glass tumbler.

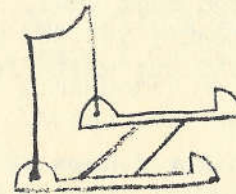
The Portland tumbler is #137 in this Educational Tumbler Series. Next month we will cover the Blocked Panels pattern, another tumbler that is not often seen.

JOHN & LUCILE BRITT

=====

I T E M S F O R S A L E

Heart of America Carnival Glass Association has for sale some metal shade holders for the red candle lamps. Our cost and what they are selling for is \$8.00 each. There are no shipping or handling charges for these. Order from John Britt, 3048 Tamarak Dr., Manhattan, Kansas 66502.



H.O.A.C.G.A. has purchased some of the Gibson Plate holders. They have the clear plastic base and white rubber over metal adjustable back. They are for sale at \$21.00 per dozen, which includes the shipping.

They may be ordered from the Treasurer Doug Peters, 4307 N.E. 46th Terr., Kansas City, Missouri 64117

=====

ROSTER PHONE NUMBER CORRECTION

Please make note that the phone number listed in the new roster for Al Rettke of 5533 14th Ave. So., Minneapolis, Minnesota 55417 is incorrect.

His correct phone number is 1-612-822-7411.

A PEAK INTO THE PAST - - IN CARNIVAL GLASS

By John & Lucile Britt

Let's take another peak in the past. It is almost unbelievable, the amount of carnival glass found in the 1970-71 Antique Traders, compared to what we find in the 1989 Antique Traders. In fact, there is more carnival glass advertised in the H.O.A.C.G.A. Bulletin now than there is found in the Antique Trader. This should tell us something - - carnival glass is not as plentiful to pick up as it was in the 1970's. The following ads are from 1970 Antique Traders. We are sure that some of these prices will surprise you, especially those of you who have started collecting in recent years. We are also quite sure a lot of you older members will recognize the names of some of those people who had carnival glass for sale back then.

CHUCK VIERRA, LOS ANGELES, CALIFORNIA: Marigold Plaid bowl \$20.00; marigold Golden Harvest decanter and 6 wines \$125.00; marigold Zipper Loop lamp, tall, \$100.00; marigold Zipper Loop hand lamp \$115.00; peach Posy & Pod flat 6½" plate, beautiful \$22.00; (NOTE: This is the same pattern as Four Flowers), green Wishbone footed bowl \$35.00; green Corn vase \$115.00; purple Good Luck bowl \$70.00; purple (N) Raspberry milk pitcher \$55.00.

WILLRETT'S, DEKALB, ILLINOIS: Tumblers: White Dahlia \$52.00; blue Strawberry Scroll \$67.00; ice green Oriental Poppy \$46.00; purple Heavy Iris (2) \$28.00 each; marigold Milady \$24.00; marigold footed Orange Tree \$11.50.

KILLBUCK ANTIQUES, KILLBUCK, OHIO: Ice blue Embroidered Mums bowl, lovely \$75.00; ice blue Hearts & Flowers bowl, breathtaking beauty \$85.00; white 9½" Leaf Chain plate \$85.00; amethyst Captive Rose plate \$80.00; white Peacock & Urn plate \$85.00.

MERTIE B. SIMON, BROOKSVILLE, FLORIDA: Marigold Embroidered Mums 8½" bowl \$25.00; marigold Fashion 2 piece punch bowl \$30.00. (NOTE: Mertie B. Simon is the lady that put out the book on tumblers called "Tumblers with a Past". She sold a lot of carnival glass and lived only a few miles from Webster, Florida, a little town noted for its' big flea market that is held every Monday all year round.

LOESCHERS, BELOIT, WISCONSIN: Carnival glass for sale: The collection of George & Mavis Loescher is for sale. This is a rare and top-rated collection. Send stamp for list. (NOTE: This is from the May 12, 1970 Antique Trader.)

MRS. ROY DEAL, FANWOOD, NEW JERSEY: Amethyst Butterfly bon bon, "Horlacher" \$45.00; amethyst Prisms compote \$35.00; green Millersburg Peacock & Urn with bee, 10" ice cream bowl \$65.00; marigold Good Luck ruffled bowl, Ribbed back \$33.00.

A PEAK INTO THE PAST

continued...

MARY McCASLIN, NEW CASTLE, INDIANA: Ice green 10" Peacock & Urn ice cream bowl \$125.00; amethyst 7" Millersburg Courthouse bowl \$175.00; amethyst Gevurtz Bros. adv. plate \$115.00; amber Loganberry vase \$80.00; amethyst Trout & Fly bowl \$75.00.

SUZANNE MILES, MILWAUKEE, WISCONSIN: White Orange Tree Orchard water pitcher \$170.00; white Peacocks on the Fence 9" plate \$100.00; marigold Millersburg Peacock & Urn with bee 10½" deeply scalloped bowl \$55.00; ice blue two handled Persian Medallion bon bon \$40.00. (NOTE: This was probably what is now called celeste blue. What a buy!!!)

HENRY TAYLOR, BELOIT, WISCONSIN: Purple Grape & Cable perfume w/stopper \$350.00; purple Swan salt \$110.00; marigold Grape & Cable perfume w/stopper \$250.00; marigold Grape & Cable whiskey decanter w/stopper \$450.00; marigold Swan master salt \$65.00; marigold Sea Coast pin tray \$125.00; amber Homestead plate, signed "NU ART" \$425.00; peach opal Swan master salt \$85.00; aqua opal Rose Show bowl \$135.00. (NOTE: Are you ready to get your check books out? This was from the May 19, 1970 Trader, so you are about 19 years too late. Ha!)

THELMA KINKEAD, PASADENA, TEXAS: Amethyst Hudson Furniture Co. signed (N), \$67.50; marigold Kittens banana dish \$45.00; two marigold Kittens soup bowls \$60.00 each; blue miniature Blackberry compote \$37.50.

MELTON'S ANTIQUES, CHESAPEAKE, VIRGINIA: Carnival glass rare Rose Show bowl 8" diameter, pastel aqua, gorgeous coloring \$150.00.

OPEN CUPBOARD ANTIQUES, NEW LISBON, WISCONSIN: Blue Ten Mums 10" bowl \$55.00; purple Wreathed Cherry banana boat \$87.00; purple Dandelion mug \$52.00; white Bushel Basket, eight sided \$55.00; white Peacocks on the Fence plate \$95.00; blue Bushel Basket, "N" \$47.00.

DON MOORE, SAN FRANCISCO, CALIFORNIA: Amethyst Grape & Cable 7 piece water set \$275.00; amethyst Acorn Burrs punch bowl set (bowl, stand & 6 cups) \$650.00; ice green Peacocks on the Fence plate \$105.00; purple Diamond Lace water pitcher & 1 tumbler \$175.00; amethyst 7 piece Raspberry water set \$235.00; marigold Robin water pitcher \$135.00. (NOTE: This ad from the November 1970 Antique Trader. We did not know Don Moore at that time, but was fortunate to have made his acquaintance a short time later. The Don Moores are still active in carnival glass today. They have one of the largest, if not the largest carnival glass collections in America. Don is well-known today as an outstanding speaker, author, and carnival glass authority. We salute you Don and Connie. This is not only for the work you have done for carnival glass collectors, but also for the friendship we have experienced throughout the years.)

A PEAK INTO THE PAST
continued...

This is number eleven in this Series that has taken a look back into the past. We hope that they have brought fond memories to some of you older collectors and will give newer collectors a peak at what carnival glass collecting was like in the early 1970's.

JOHN & LUCILE BRITT

=====

The following prices were realized at the SUPER John Britt Carnival Glass Auction on March 3 and 4, 1989 at the Harley Hotel, St. Louis, Missouri:

IB (N) Feathers 7" vase	130.00	G Greek Key P.C.E. bowl	200.00
IG (N) Fine Rib 11½" vase	100.00	BO Holly bowl	1,400.00
CB Good Luck bowl	140.00	R Holly bowl	1,250.00
W Ten Mums tumbler	130.00	VAS Holly bowl	175.00
G Good Luck P.C.E. bowl	300.00	A Marilyn tumbler	90.00
AMB Hattie rose bowl	325.00	IB Oriental Poppy tumbler	100.00
VAS Rose Show plate	3,400.00	G Blackberry Block tumbler	210.00
R Acorn bowl	400.00	P Loganberry vase	400.00
LGO Boggy Bayou vase	250.00	R Holly hat shape	250.00
AO Four Pillars vase	120.00	M Dragon Tongues 11" bowl	850.00
G Greek Key tumbler	90.00	B Fentons Rose Tree bowl	1,200.00
M Corn Vase	800.00	AO Embroidered Mums bowl	2,250.00
G Corn Vase	500.00	G Harvest Poppy compote	600.00
B Acorn Burrs punch cup	80.00	B Beaded Shell tumbler	160.00
IB Drapery rose bowl	625.00	M File tumbler	60.00
M Drapery rose bowl	190.00	R Plume Panels vase	500.00
R Coin Dot bowl	1,250.00	M Perfection tumbler	575.00
AO Hearts & Flowers bowl	1,000.00	P Imperial 3-Row vase	2,000.00
G Hearts & Flowers bowl	650.00	P Colonial Lady vase	400.00
R Two Flowers spat. ftd.	800.00	IG Hearts & Flowers compote	850.00
IG Tree Trunk 6½" vase	250.00	IB Hearts & Flowers compote	800.00
P Victorian bowl	225.00	G Captive Rose plate	525.00
VAS Fentons Flowers rose bowl	425.00	P Peacocks plate	650.00
IG Three Fruits ftd. bowl	1,100.00	R Chrysanthemum 9½" bowl	3,600.00
W Singing Birds mug	500.00	R Orange Tree I.C.S. bowl	1,800.00
IB Memphis punch cup	90.00	G Daisy Squares rose bowl	650.00
M Singing Birds tumbler	40.00	R Holly bowl	1,000.00
M Blueberry tumbler	35.00	IB G/C 11" ice cream bowl	2,100.00
M Star & File tumbler	90.00	M Rising Sun tumbler	450.00
G Sailboats goblet	375.00	AO Fine Cut & Roses rose bowl	1,000.00
IB Leaf Columns vase	225.00	IG Beaded Cable rose bowl	1,400.00

NEWS FROM OUR MEMBERS...

I enjoyed my first H.O.A.C.G.A. Convention very much. I met the irresistible Ken Osbon and his lovely wife Beverly, a super guy by the name of Merle Richardson and a charming man named Bob A. Llaire, who kindly prevented me from spending over \$2,000.00 on a red Lotus & Grape bon bon. Dear Bob: Thanks for not bidding on the compote, but a lovely lady named Whitley also wanted it.

I was quite honored to spot my Zig-Zag bowl in the Britt display (tri-cornered), guess I should have hung on to that one, right John?

Oh well, the money it brought helped to pay for the three hungry chickens I found in Tom & Sharon Mordini's room.

One thing those chickens will not nibble on is the green Corn vase I also bought back; because this little vase has two butterflies on it!!!

Yes, it's the Butterfly & Corn vase, previously known only twice in marigold on vaseline. This one is a good dark green and will surely cause our friend Mr. Moore to revise his top ten list. How much? Let's just say that I am now learning how to walk on one leg and cut my steak one-handed....

For those who would like to see this vase and attend what I am told is another good Convention, I will show it at the P.N.W.C.G.A. Convention in August.

Well, thanks again H.O.A.C.G.A. for a great time and a job well-done. The displays were fabulous and Ruby and I look forward to seeing you all again!

Sincerely,
Yvan Beaudry
Quebec, Canada



The April meeting of the TBCGC met at Dr. and Helen Barbar's home in Tampa on the 16th of April, 1989. Twenty members were in attendance to enjoy a beautiful afternoon of good fellowship with lunch, some business and a most enjoyable & informative program on "Hansen Glass" presented by Dr. and Mrs. Hansen in a most comfortable atmosphere. It certainly is sad to learn that the old Pennsylvania Dutch adage of "Too late smart, too soon old" is really true--especially since I have passed up some good opportunities to acquire Hansen but not knowing what it was, chose to pass on it! Never again! Blanche and I learned a lot from the educational program and are sure most of those in attendance were able to glean some gems of wisdom from Bob's experiences. A most informative program for all. Thanks Doctor.

The most significant item of business was one of concern to all Club members. Needless to say it was about the Jamboree and again finds us on the move with our location to the Countryside Ramada in Clearwater. We will enjoy an improvement in rooms, meeting and show facilities and better more convenient dining accommodations. To those not familiar with the area, I am told the ramada is about 4 miles north of Gulf to Bay Road (Hwy 60) on US 19.

Other business concerned the expenditure of money for Club business calls by various committee members which was immediately approved by vote. Also the purchase of a paper cutter to trim up our letters, maps and Club flyers was brought up but before being brought to a vote, it was obtained thru the offer by Bill and Ginger Tendl. Thanks folks!

I have mentioned to several members that the one thing about the newsletter is that it makes time fly by. It seems every time I turn around, another newsletter is due. I think also that it is meant to be an organ for all members to express ideas, state needs, offer for sale, relate stories, etc. To date I have not received any input. Please think about it and have something for us at the next meeting. I did obtain a much needed punch bowl base some time ago by putting out the word, so I am going to do it again at the close of this one!

Our next meeting will be at the home of Shirley Conyers. I'm asking Bill Hobbs to provide the map since I don't have a current one at my disposal. Meeting date is Sunday, 21 May, 1989 at 12:00 noon. The usual "covered dish" and white elephant auction item is expected. Questions?? Call Shirley at 1-813-345-1970.

J.J. WILLIAMS
President

AN INVITATION TO CARNIVAL GLASS LOVERS

Have you ever visited New England in the fall? Warm, lazy days beckon you. Cool nights and hints of frost in the early morning sun warn of what is coming. Mother Nature will be fast at work at her easel, daily changing from her palette the landscape into a crazy quilt of color. It's a great time to come and enjoy some of the best New England has to offer.

The New England Carnival Glass Association requests the honor of your presence at its 8th Annual Convention to be held Friday and Saturday, September 15 and 16, -1989, at the Quality Inn and Conference Center in Chicopee, Massachusetts. The convention will feature a Tom Burns Carnival Glass Auction at 8 p.m. on September 15. On Saturday, September 16, there will be a Carnival Glass Show and Sale, 9 a.m. - 3 p.m., followed by the Convention Banquet at 7 p.m. Convention speaker Bill Richards will present "Nostalgia on the Carnival Glass Trail."

Our convention comes at a time when there will be lots of activity in the nearby area (ie. Eastern States Exposition, Brimfield Flea Market, Polish Festival). In addition, it is possible you might wish to make your trip include a visit to northern New England at a time when the fall foliage is just about at its peak--superb color for you camera buffs.

Quality Inn & Conference Center
Welcomes

NEW ENGLAND CARNIVAL GLASS

Arrival: September 15, 1989

Departure: September 17, 1989

Rate: \$50 Single \$55 Double

Extra person \$5.00
plus 9.7% tax

Release Date: August 31, 1989



At Exit 6 of I-90 (Mass Pike)
296 Burnett Road, Chicopee, MA 01020
Telephone 413-592-7751

Guest's Name: _____

Group/Company Name: _____

Street: _____ Phone: _____

City: _____ State: _____ Zip: _____

Date of Arrival: _____ No. of People: _____

Date of Departure: _____ 1 or 2 double beds: _____

Credit Card #: _____ MC VISA AMX Diner's Club

Expiration Date: _____ Signature: _____

A \$25.00 deposit must accompany reservation

In order to guarantee room for arrival, please list credit card number or enclose one night's deposit. Check-in time is 3:00 p.m./Check-out time is 12:00 noon. Cancellation must be received by 4:00 p.m. day of arrival or room will be charged. Make check payable to Quality Inn & Conference Center.

CARNIVAL GLASS RARITIES-A color line approach. Lists the top 10 rarities in each color-plus complete rarities price guide-40 pages of black and white pictures, special section on whimsys. \$8.50 PP. Also THE SHAPE OF THINGS IN CARNIVAL GLASS, 110 pages, 200 items in full color-\$9.95. Order from Don Moore, 2101 Shoreline Drive, Apt. 462, Alameda, California 94501.

CARNIVAL IN LIGHTS-A full color book on Carnival Lighting, including Gone-With-The-Wind Lamps, candle lamps and shades, price guide included. \$11.95 plus postage, Helen Greguire, 103 Trimer Road, Hilton, New York 14468.

THE STANDARD ENCYCLOPEDIA OF CARNIVAL GLASS, Revised Editio, many new photographs and expanded European carnival section-\$24.95 (with new price guide), NEW PRICE GUIDE includes eight color columns, size 8 X 11 - \$4.95, IMPERIAL CARNIVAL GLASS-THE EARLY YEARS-\$9.95, MILLERSBURG, THE QUEEN OF CARNIVAL GLASS-\$8.95, NORTHWOOD, KING OF CARNIVAL GLASS-\$9.95, Bill Edwards, Author; Collectors Books, Paducah, Kentucky.

A NEW CARNIVAL GLASS REFERENCE BOOK WRITTEN BY DON MOORE. This book is a collection of the writings of Don Moore, as published originally in the Heart of America Carnival Glass Association Newsletters. 175 pages, 225 black and white photos. Price is \$12.50 (1.00 postage U.S. & Canada, \$2.00 overseas) Order direct from: Don Moore, 2101 Shoreline, Apt. 462, Alameda, Ca. 94501.

A CARNIVAL OF IRIDESCENT LUSTER BUTTONS by Ruth M. Clark. 147 pages include researched introduction, more than 850 drawings of old Carnival Glass buttons, indexed. Price is \$10.00 U.S. (plus \$1.00 postage in U.S., Canada, and surface overseas. Overseas air-mail postage is \$4.00) Order direct from Ruth M. Clark, 2723 Canyon Oaks Ct., Temple, Texas 76502.

CARNIVAL GLASS AUCTION PRICE REPORT A listing of over 3,000 prices from 1988 auctions. Listed by Hartung name. Information includes description, shape, color, sale price, date of auction, auctioneers and sellers name. This years report will include a section on pastels. When ordering, please specify 1988 Report. Report may be ordered for \$8.00 postpaid. Overseas delivery add \$1.00. Order direct from Tom & Sharon Mordini, 36 N. Mernitz Ave., Freeport, Illinois 61032.

THE WORLD OF ENAMELED CARNIVAL GLASS TUMBLERS Author/Photographer Cecil Whitley. 10 pages "60 tumblers in full color". \$10.00 includes shipping. Call or write Cecil Whitley, 104 Cheshire Lane, Houston, Texas 77018
PHONE: 1-713-681-0807.

If ANY member has ANY books on old Carnival Glass for sale, please notify the Bulletin Secretary Pro-Tem, Eleanor Mochel. THANK YOU!

Dick Wetherbee, 847 Stafford St., Rochdale, Massachusetts 01542
PHONE: 1-508-892-4420

M	EI	Westmoreland 6" large 3 footed Shell, beautiful satin	28.00
PO	EI	Hobnail & Rib 13½" vase, opal tips, flared	38.00
M	EI	Leaf & Beads 3 footed rose bowl, plain interior, SUPER	75.00
SM	EI	Diamond Ring 9½" bowl, highly iridised	35.00
CLM	EI	Pansy Spray 9" X 6" relish, SUPER BLUES & PINK COLOR	28.00
M	EI	Wishbone/Ruffles & Rings 8" 3 footed fluted bowl	75.00
B	EI	Orange Tree 11" flared punch top, GREAT COLOR	175.00
G	EI	Millersburg Cosmos 6" dish, SUPER RADIUM	55.00
M	EI	(N) Tree Trunk 10" vase, a real beauty	32.00
P	EI	Single Flower 9" bowl, fluted edge, GREAT	45.00

John Boyd, 720 Gran Paseo Dr., Orlando, Florida 32825
PHONE: 1-407-275-6565

W	EI	Fanciful low bowl	95.00
M	EI	Rose Show Variient plate, SUPER IRID., end of 1 tooth chipped	565.00
M	EI	Coin Dot 9" bowl, 3 in 1 edge, nice	30.00
M	EI	Orange Tree footed butter TOP ONLY, several small heat checks around bottom edge	40.00
M	GI	Blackberry Wreath bowl	35.00
M	EI	Wreath of Roses rose bowl	20.00
A	GI	Grape & Cable master punch bowl BASE ONLY	35.00
A	GI	Grape & Cable master punch cups, have 4, each	20.00
W	LI	Orange Tree footed butter, bottom has several small usual chips on feet, top is perfect, but lacks iridescence	75.00

Ernest & Lydia Caudle, Route 1, Box 292, State Road, N.C. 28676
PHONE: 1-919-874-2519

M	EI	Grapevine & Lattice tumbler	22.00
M	EI	Stork & Rushes tumbler	20.00
M	EI	Cosmos & Cane advertising tumbler, tiny nick on bottom	45.00
P	EI	Tornado vase, chip on bottom, nice	45.00
M		Fruit Luster tumblers, have 4, each	7.00
P	EI	Singing Birds tumbler	28.00
M	EI	Orange Peel punch cup	12.00

***** CARNIVAL GLASS FOR SALE *****

Bill Tendl, 1816 Albright Dr., Clearwater, Florida 34625
PHONE: 1-813-796-3150 after 4:30 E.S.T.

P	Grape & Cable sweetmeat	175.00
M	Vintage powder jar with lid	40.00
P	Diamond Lace pitcher, have 2, each	165.00
M	Acorn Burrs large berry bowl	75.00
P	Grape & Cable footed plate	75.00
M	Octagon wines, have 4, each	22.00
M	Grapevine Lattice tumblers, have 5, each	25.00
M	Butterflies bon bon, Fenton	25.00
G	Heavy Grape 8" plate	50.00
M	Open Edge Baskets, various shapes, each	20.00

=====
Mary C. Kesterson, 3020 Mesa Road, Willow Park, Texas 76087
PHONE: 1-817-441-8410

IB	(N) Peacock & Urn master ice cream bowl, SUPER	995.00
IG	(N) Peacocks plate, flat & SUPER IRIDESCENCE	445.00
G	(N) Peacocks plate, SUPER COLOR & IRIDESCENCE	1,750.00
P	Corn vase	625.00
B	(N) Peacocks plate, SUPER PINK & BLUE IRIDESCENCE	750.00
R	Fenton Coin Dot 6" ice cream shape bowl, good red	1,500.00
M	(N) Peacocks plate, stippled	550.00
R	Acorn bowl, ruffled, SUPER RED	725.00
DM	Stream of Hearts compote, SUPER NICE	145.00
IG	(N) Peacock & Urn 6" ice cream bowl	450.00

=====
Richard & Carol Cinclair, 3605 South Echo Trail, Plano, Texas 75023
PHONE: 1-214-596-0014

AQ	EI	Orange Tree mug	160.00
VAS	EI	Orange Tree mug	165.00
IG	EI	Open Edge Basket, mid-size	210.00
IG	EI	Peacock & Urn small ice cream bowl	385.00
IG	EI	Grape & Cable footed plate	850.00
A	EI	Checkerboard goblet, RARE	210.00
G	EI	Plaid ice cream shape bowl, OUTSTANDING	735.00
*	EI	*Moonstone Holly bowl, ice cream shape	885.00
G	EI	Waterlily sauce, footed	175.00
AQ	EI	Waterlily sauce, footed	185.00

***** CARNIVAL GLASS FOR SALE *****

Ed & Sharon Binstock, Post Office Box 351, Presque Isle, Maine 04769
PHONE: 1-207-764-3612

EG	Rose Show plate, fantastic heavy blue-green irid., small flake on rose	2,400.00
EG	Homestead plate, signed NU-ART, top super color, small in making sep. on flute	650.00
P	Peacocks P.C.E. bowl, gorgeous, very flat, almost a ruffled plate	540.00
P	Rose Show plate, super color, two small chips	475.00
P	Greek Key 5 piece water set, fantastic color, all perfectly matched	1,100.00
P	Peacocks plate, nice and perfect	500.00
G	Peacocks ruffled, stippled bowl, one of two known, prof. repair on point	500.00
B	Rose Show Variient ruffled bowl, nice and perfect	550.00
B	Rose Show Variient plate, nice color, in the making short point, only known cobalt	550.00
A	Millersburg Courthouse ruffled bowl, super color, a few small open bubbles on reverse edge	350.00

=====
Maxine Twedt, 44646 Cedar Ave., Lancaster, California 93534
PHONE: 1-805-942-6890

G	EI	Grape & Cable hatpin holder, small chip on leaf, bronze at top	125.00
G		Graceful vase	60.00
M	EI	Acorn 7" bowl, satiny	30.00
PO		Scales card tray, nice	60.00
M		Singing Birds pitcher	200.00
M		Waffle Block punch cups, have 4 matched, won't break set	80.00

=====
Jo Ann Mitchell, 6584 William Hwy., Grants Pass, Oregon 97527
PHONE: 1-503-862-2635

A	EI	Strawberry bowl P.C.E.	100.00
M	EI	Homestead NU-ART chop plate, odd shade irid.	500.00
G	EI	Beaded Cable rose bowl, Rayed interior	125.00
G	EI	Tree Trunk vase 4 3/4" X 13", super pink irid. small flake	140.00
B	GI	Bushel Basket, round	150.00

Maurice Myers, Post Office Box 3180, No. Conway, New Hampshire 03860
PHONE: 1-603-356-6610

M	EI	Millersburg Zig-Zag 9½" ruffled bowl	195.00
M	EI	Millersburg Nesting Swan 9½" ruffled bowl	110.00
M	EI	Imperial Beaded Bulls Eye vase	40.00
IP	EI	Fostoria Brocaded Daffodils divided dish	45.00
IP	EI	Fostoria Brocaded Palms 2 handled nappy	55.00
IB	EI	Fostoria Brocaded Acorns 2 handled nappy	85.00
P	EI	Imperial Broken Arches punch bowl top	210.00
M	EI	Fenton Butterfly & Berry tumblers, each	40.00
P	EI	(N) Grape & Cable tumblers, each	40.00
CLM	EI	Imperial Cosmos & Cane 5 piece water set	250.00

Dick Thompson, 2904 Princeton Ave., St. Louis Park, Minnesota 55416
PHONE: 1-612-922-7885

M	GI	Harvest wine decanter with stopper	130.00
M	GI	Grape & Cable cologne, stopper chipped on bottom	125.00
P	EI	(N) Peacocks P.C.E. bowl, SUPER!	700.00
M	EI	Stag & Holly large footed ice cream bowl	125.00
IG	LI	Fenton Basket, Open Edge	85.00
A	GI	Peacocks & Grape ruffled bowl	70.00
PO	EI	Ski-Star large ruffled bowl	125.00
P	EI	(N) Grape & Cable 7 piece berry set	550.00
P	EI	Imperials Star of David ruffled bowl	140.00
M	EI	Peacock Tail bon bons, matched pair, the pair for	90.00

Bob Slaughter, 4717 N.C. Hwy. 54 East, Graham, North Carolina 27253
PHONE: 1-919-376-9552

M	EI	Hearts & Tree/Butterfly & Berry ext. 9" ftd berry bowl, small flake back of 1 point, scarce	75.00
M	EI	Wishbone/Ruffles & Rings 8¼" ftd. bowl, exceptional pastel irid.	65.00
M	EI	Mlsbg. Rays & Ribbons/Cactus ext. 9 3/4" C.R.E. radium bowl	55.00
B	EI	Cherry Chain/Orange Tree ext. 6¼" small plate	75.00
M	EI	Persian Medallion 6 3/8" small plate, mint	25.00
M	EI	Leaf Chain/Bearded Berry ext. 7½" small plate	55.00
M	EI	Pine Cone 6¼" small plate	30.00
B	EI	Fentons Flowers rosebowl nice one, including feet	70.00
P	GI	Four Flowers Vt. 10 3/4" low bowl, satin iridescence	65.00
PO	EI	Honeycomb/Flowers & Beads tightly crimped edge 7" small plate	125.00

MAKE CHECKS PAYABLE TO: ANN SLAUGHTER, CARNIVAL GLASS & COLLECTIBLES

Pat Lower, Post Office Box 686, Galion, Ohio 44833
PHONE: 1-419-468-1269 evenings

P	EI	Cherries plate, Dugan, crimped edge 6", mint	100.00
SM	EI	Imperial Grape basket, smoke, pretty, scarce	150.00
R	EI	Fine Rib vase, 12½" high, CHERRY RED	475.00
P	EI	Golden Honeycomb 2 handled bon bon, Imperial	45.00
A	EI	Stippled Rays ruffled 8" bowl, rough base, nice	25.00
M	EI	Tree Trunk 10" vase, colorful	35.00
G	EI	Diamond & Rib 12" vase, ½" internal crack	20.00
A	EI	Grape & Cable ruffled bowl, electric blue irid., GORGEOUS	90.00
PO	EI	Triplets ruffled bowl, pretty	45.00
IB	EI	Wide Panel covered candy dish, not noticeable flake on inside rim of lid, color almost a celeste blue	50.00

Mike Mings, Rt. #1, Box 106, Nixa, Missouri 65714
PHONE: 1-417-725-3185

AO	GI	Vintage bowl, tight candy ribbon edge, PERFECT, BEAUTY!	2,000.00
G	EI	Grape & Cable tumblers, have 6, each	45.00
A	EI	Holly Sprig tri-cornered nappy, SUPER RADIUM	200.00
CLM	GI	Waffle Block sugar & creamer, old Imperial mark, the pair	60.00
P	EI	Flute toothpick	75.00
W	EI	Palm Beach butter dish	250.00
P	EI	Pansy bowl, OUTSTANDING	75.00
A	EI	Fern Brand Chocolate plate, card tray shape, THE BEST	300.00
P	EI	Imperial Grape pitcher, BEAUTIFUL, manufacturing flaw runs across base, but definately not cracked	200.00
EB	EI	Northwood Poppy pickle dish	120.00

Dick Hatscher, 142 Walnut Hill Rd., Bethel, Connecticut 06801
PHONE: 1-203-743-1468

M		Grape & Cable shade to candle lamp & metal holder, tiny chip on top where holder fits	185.00
M		Pony bowl	30.00
M		Grape & Cable plate	65.00
PO		Border Plants scarce handgrip plate	148.00
PO		Coin Dot scarce bowl	98.00
P		Grape & Cable shade to candle lamp & holder, sm. worn spot	195.00
P		Birds & Cherries bon bon, 2 handled	55.00
W		Bushel Basket, 8-sided	145.00
IB		Nippon bowl	250.00
AO		Drapery rose bowl	225.00

***** CARNIVAL GLASS FOR SALE *****

Ted Sheibley, 304A Hillcrest Drive, New Cumberland, Pennsylvania 17070
PHONE: 1-717-938-6417

G	EI	Peacocks on the Fence 9" stippled bowl	1,400.00
AO	EI	Fine Cut & Roses rose bowl, perfect feet	1,300.00
IB	EI	Hearts & Flowers compote, SUPER	1,000.00
IG	EI	Hearts & Flowers compote	1,000.00
R	EI	Holly 9" ruffled bowl	1,000.00
R	GI	Two Flowers spatula footed bowl	1,000.00
G	EI	Vintage 10" bowl, Hobnail exterior, Millersburg	950.00
IG	EI	Pony bowl, 10 ruffles	925.00
IG	EI	Hearts & Flowers 9" ruffled bowl	850.00
M	EI	Multi-Fruits & Flowers 8 piece punch set, Millersburg	800.00

Larry Keig, 1521 West 31st. Street, Cedar Falls, Iowa 50613
PHONE: 1-319-277-0358 or 1-319-273-2308

M		"Souvenir of Minot, N. Dak." punch cup, stenciled lettering	40.00
G		Daisy & Plume footed bowl	35.00
B		Vintage fernery, GREAT COLOR	55.00
B		Cherry Circles large bon bon	60.00
M		Arcs 8" bowl, TERRIFIC COLOR	22.50
W		Fine Cut & Roses/Fancy int. candy dish, minor foot damage	25.00
PO		Single Flower ruffled bowl	35.00
M		Pulled Loop vase	17.50
M		Star Spray round bowl	25.00
A		Grape Delight nut bowl	95.00
		S.A.S.E. for large list of carnival for sale	

Valmer Cross, Sr., R.D. Box 311, Prattsville, New York 12468
PHONE: 1-607-588-6698

G		(N) Rays compote	50.00
M		Crackle candy dish with lid	24.00
G		Peacock Tail 7" bowl	30.00
B		Good Luck bowl, 2 chips	40.00
M		Question Marks candy dish	20.00
M		(N) Flute sherbert	30.00
M		Imperial Grape water bottle	100.00
M		Peacock Tail sherbert	25.00
M		(N) Butterfly bon bon	45.00
SM		Diamond Ring 9" bowl	40.00

***** CARNIVAL GLASS FOR SALE *****

Ray Hitchcock, R.R. #1, Box 301, Winterset, Iowa 50273
PHONE: 1-515-462-2074

M		Rose Spray compote, hard to find	30.00
W		Grape & Cable (N) bon bon, nick on back of point	125.00
P		Star of David bowl, beautiful, but 1 1/2" internal crack	40.00
G		Butterfly & Berry tumbler, none finer	85.00
B		Pine Cone 6" plate, tiny open bubble	60.00
P		Vintage wines, each	25.00
P		Heavy Grape nappy, SUPER	50.00
P		Flute toothpick, perfect	55.00
P		Grape Delight nut dish	55.00
G		Orange Tree I.C. shape bowl, bruise on collar, BUT SUPER	65.00

Kent P. Zimmerman, Post Office Box 12821, Wichita, Kansas 67277
PHONE: 1-316-943-4584

AQ	EI	Sailboats sauce	60.00
M	EI	Grape & Cable card tray	50.00
M	EI	Persian Medallion rose bowl	60.00
B	EI	Butterfly & Berry vase	50.00
A	EI	Strawberry P.C.E. bowl	85.00
M	EI	Flowering Dill hat	18.00
M	EI	Butterfly & Berry spooner	40.00
A	EI	Grape & Cable butter dish	125.00
B	EI	Blackberry miniature compote	45.00
A	EI	Louisa rose bowl	60.00

William & Deborah Coles, Rt. #1, Box 273B, Hickory, Kentucky 42051
PHONE: 1-502-674-5916

M	EI	Two Flowers deep ball ftd. ruffled bowl, DARK & SUPER	95.00
M	EI	Octagon goblet	30.00
G	EI	Grape & Cable small size orange or fruit bowl	245.00
M	EI	Blackberry Wreath 8" bowl, radium	39.00
P	EI	Grape Delight 6 ftd. nut bowl, electric blue iridescence	85.00
M	EI	Lattice & Daisy sauces, have 3, all for	30.00
M	EI	Leaf Tiers ftd. 5 piece berry set, 1 sauce has mfg. flaw, will separate, the set for	100.00
B	EI	Cobalt Bushel Basket, round	85.00
B	EI	Peacock & Dahlia ruffled bowl, real nice	90.00
B	EI	Blackberry Spray ruffled hat, nice	35.00

***** CARNIVAL GLASS FOR SALE *****

Bill Keith, 714 E. Spring, St. Marys, Ohio 45885
 Phone evenings before 8:00 P.M., weekends before 5:00 P.M. (No number given)

P	EI	Diamond Lace water set	375.00
PO	EI	Folding Fan compote	65.00
EB	EI	Three Fruits Variant collar based ruffled stippled bowl 9" damaged tip, SUPER COLOR, THE BEST!	100.00
EB	EI	Fenton Grape & Cable 8" ruffled bowl	85.00

Charles Perry, 8641 Lakeshore Drive, Southaven, Mississippi 38671
 PHONE: 1-601-342-1694

G		Persian Medallion compote C.R.E. RARE	225.00
*		Holly compote, *Lime Green	125.00

Doris J. Gerber, 5688 C.R. 7, Garrett, Indiana 46738
 PHONE: 1-219-357-5405

A	EI	Butterfly bon bon	75.00
G	EI	Grape & Cable bon bon	75.00
IB	EI	Concave Diamonds tumblers, have 4, each	30.00
R	EI	Open Edge Basket, one side up	325.00
B	EI	Open Edge Basket, amber iridescence, one side up	50.00
AQ	EI	Open Edge Basket, two sides up, 2 chips	35.00
P	EI	Rustic 10 1/2" vase	60.00
M	EI	April Showers 11" vase	40.00
P	EI	Graceful vase, 2 chips on bottom of base	30.00
BA	EI	Lined Lattice 8 1/2" vase	85.00

Dave Sharp, 3717 Wilmington Pike, Dayton, Ohio 45429
 PHONE: 1-513-299-8420

B	EI	(N) Poppy relish, SUPER	100.00
M	EI	Kittens cup, dark color	130.00
M	EI	Kittens bowl, 4 sides up	115.00
G	EI	Millersburg Cherries 4" berry bowl, SUPER RADIUM	75.00
A	EI	Holly 6 ruffled bowl, SUPER	65.00
PO	EI	File & Fan compote	25.00
M	EI	"474" goblet	75.00
P	EI	Windmill 7" bowl, SUPER	60.00
P	EI	Imperial Grape master berry bowl	70.00
M	EI	Peacock & Urn goblet, scarce shape	45.00

***** CARNIVAL GLASS FOR SALE *****

Mrs. J. C. Barker, Rural Route 3, Box 163-BB, Savannah, Missouri 64485
 PHONE: 1-816-662-2265

Carnival Glass for sale, nice color and iridescence. Call or
 send S.A.S.E. for a list.

Robert J. Suslowicz, 1868 Columbia Rd. N.W., #14, Washington D.C. 20009
 PHONE: 1-202-483-5998

IB	EI	Knights Templar mug	1,000.00
LGO	GI	Strawberry bon bon, glows under blacklight	500.00
AO	EI	Dandelion mug	500.00
MMG	GI	Corinth Jack-in-the-Pulpit vase	175.00

Gary Lickver, P. O. Box 1778, San Marcos, California 92069
 PHONE: 1-619-744-5686

M		"474" punch cups, have 2, each	20.00
M		Butterfly & Fern tumbler	30.00
G		Imperial Grape punch bowl base	50.00
M		Imperial Grape water pitcher	75.00
M		Crackle rose bowl	30.00
M		Beauty Bud vase 8", even 1/2 irid. have 2, each	14.00
G		Acorn Burrs punch cup	28.00
M		Acorn Burrs punch cup	22.00
M		Imperial Grape wine glass	15.00

Many items from April issue still available. Will consider trading.

Robert Hutchison, Route 2, Box 461, Seymour, Missouri 65746

M		Rosalind bowl	110.00
M		Ten Mums tumbler	65.00
M		Question Marks bon bon	17.50
M		Leaf Rays nappy	17.50
M		Hattie bowl	35.00
M		Butterfly & Berry berry bowl	30.00
M		Optic & Buttons bowl	27.00
G		Little Flowers sauces (1 chipped, FREE) all for	60.00
A		(N) Grape Leaves bowl	75.00
A		Vintage bowl	55.00

***** CARNIVAL GLASS FOR SALE *****

Marc A. Palma-Cicorio, 189 Dolores, #4, San Francisco, California 94103

CARNIVAL GLASS FOR SALE. Must sell complete collection. Please send a S.A.S.E. No phone calls please.

Herbert Hull, 13001 Stephenson St., Anchorage, Alaska 99515
PHONE: 1-907-345-4855

P	EI	Grape & Cable large open compote	350.00
AO	EI	(N) Bushel Basket	300.00
P	EI	(N) Bushel Basket, 8-sided	175.00
IG	EI	(N) Bushel Basket, 8-sided	450.00

Peter & Margaret Sawkins, 122 Prospect Road, Garden Suburb, Australia NSW 2289
PHONE: 011-61-49-546310

A	EI	Banded Diamonds tumbler	275.00
B	EI	Holly 9" plate, OUTSTANDING IRIDESCENCE FRONT & BACK. Slight mold roughness on collar base. This is as it came from the mold and is not subsequent damage. ABOVE PIECES INCLUDE BOTH POSTAGE & INSURANCE AT OUR COST.	

Hubert & Lucille Shelton, 6298 Boiling Springs Rd., Munfordville, Ky. 42765
PHONE: 1-502-528-5893

M	EI	Concord 8½" bowl, pie crust edge, RARE & BEAUTIFUL	75.00
IB	EI	Imperial Jewels ftd. buttermilk goblet 6" tall, 4¼" top opening	35.00
G	EI	Open ftd. sugar (N) Flute, flint, beautiful bronze irid., listed at \$90.00, Hartung Book 2, Edwards 5th Ed.	75.00
G	EI	Blackberry Spray 7" hatshape, pie crust edge	40.00
M	EI	Ripple vase, beautiful pastel, 9" tall 3½" flared top	30.00
M	EI	(N) Grape & Cable ice cream dish 5" wide, 2 3/4" tall	28.00
P	EI	(N) Grape & Cable tumblers, perfect & lovely, have 2, each	30.00
B	EI	Vintage 3 ftd. nut bowl, scroll feet, beautiful	60.00
M	EI	Flute pitcher and 11 goblets, RARE	575.00
G	EI	Fleur-de-Lis 10¼" bowl, MINT	225.00

John Gibney, 3423 1st. Ave. S.W., Cedar Rapids, Iowa 52405
PHONE: 1-319-396-7900

AO	EI	Three Fruits spatula based bowl	400.00
A	EI	Imperial Grape water bottle	100.00
A	EI	Fenton Grape & Cable centerpiece bowl	125.00
			185.00

***** CARNIVAL GLASS WANTED *****

Bill Keith, 714 E. Spring, St. Marys, Ohio 45885
Phone evenings before 8:00 P.M. weekends before 5:00 P.M. (No number given)

P	Peacock at the Fountain butter bottom
A	Hanging Cherries butter bottom

Franklin & Maxine Gibson, P. O. Box 148, Milner, Georgia 30257
PHONE: 1-404-358-0344 after 6:30 P.M.

DM	Long Hobstar large punch bowl base, excellent irid. and mint condition
P	EI Diamond Lace tumblers, must be mint

John Nicholson, 43 Skipper Dr., West Islip, New York 11795
PHONE: 1-516-587-7547

G	Imperial Grape punch bowl base
G	Imperial Grape punch cups
B	Panneled Dandelion tumblers
A	Maple Leaf creamer
P	Many Fruits punch bowl base
P	Many Fruits punch cups

Robert V. Larsen, 3214 19th St., Columbus, Nebraska 68601
PHONE: 1-402-564-2304

ANY COLOR Peacock at the Fountain hatpin holder
"End of Day" hatpin holder

Ernest & Lydia Caudle, Route 1, Box 292, State Road, N.C. 28676
PHONE: 1-919-874-2519

B	Peacock at the Fountain, Singing Birds or Springtime butter bottom
M	Grape & Cable butter bottom
EB	Maple Leaf butter top

Richard & Carol Cinclair, 3605 South Echo Trail, Plano, Texas 75023
PHONE: 1-214-596-0014

W	Peach butter & lid
W	Peach creamer

***** CARNIVAL GLASS WANTED *****

Peter & Margaret Sawkins, 122 Prospect Road, Garden Suburb, Australia NSW 2289
PHONE: 011-61-49-546310

ANY Kiwi bowls
ANY Kookaburra Variient bowls

Herbert Hull, 13001 Stephenson St., Anchorage, Alaska 99515
PHONE: 1-907-345-4855

P EI Grape & Cable large covered compote
B EI Orange Tree table set, or individual pieces
M EI Northwood Basket, 8-sided
EI Northwood Baskets in smoke, amber, lime green opal
EI Pansy breakfast sets, or individual pieces, in any color

Valmer Cross, Sr., R.D. Box 311, Prattsville, New York 12468
PHONE: 1-607-588-6698

M Royalty punch bowl BASE ONLY

Ernil Campo, 5209 Crest Acres Lane, Yakima, Washington 98908
PHONE: 1-509-966-7949

FRAME ONLY for pickle castor, Concave Diamond, as pictured in
Hand book, page 135, or will sell insert.

Dick Hatscher, 142 Walnut Hill Rd., Bethel, Connecticut 06801
PHONE: 1-203-743-1468

Hearts & Flowers ANYTHING!!

Darlene Yohe, Post Office Box 343, Stuttgart, Arkansas 72160
PHONE: 1-501-673-3437

M Harvest Flower tumblers
M Country Kitchen butter base
M File butter base
P Dahlia butter lid

***** CARNIVAL GLASS WANTED *****

Maxine Twedt, 44646 Cedar Avenue, Lancaster, California 93534
PHONE: 1-805-942-6890

Windmill milk pitcher, ANY COLOR
Poinsettia milk pitcher
M Octagon creamer
Peacock creamer, ANY COLOR
Cream pitchers, variety of patterns
M Bottom to Grape & Cable butter dish, dark
M Grape & Cable powder jar
M Single Grape & Cable candlestick

James C. Marshall, Post Office Box 469, Barnesville, Georgia 30204
PHONE: 1-404-358-0595

M Grape & Cable punch base, banquet size
P Inverted Strawberry tumbler, need 1
A Panelled Dandelion tumbler, need 1

Ted Sheibley, 304A Hillcrest Drive, New Cumberland, Pennsylvania 17070
PHONE: 1-717-938-6417

Peacock & Urn plate, ANY COLOR
Rose Tree bowl, ANY COLOR
Strawberry stippled plate, ANY COLOR
Horsehead Medallion plate, ANY COLOR
Hearts & Flowers bowl/compote, ANY COLOR
B Millersburg items
IB/IG Grape & Cable items
IB/IG Peacocks on the Fence bowl/plate
M/B Lions plate
IG Rose Show plate

Larry Keig, 1521 West 31st. Street, Cedar Falls, Iowa 50613
PHONE: 1-319-277-0358 or 1-319-273-2308

ANY Iowa town souvenirs (stenciled or hand lettered)
M Anemone enameled tumbler
G Pulled Loop vase, 1-12" tall
G Bud vase whimsey (see Hand Encyclopedia)
P Bud vase whimsey (see Hand Encyclopedia)

CARNIVAL CALENDAR

JUNE, 15, 16, 17, 1989 - NORTHERN CALIFORNIA CARNIVAL GLASS CONVENTION-Holiday Inn-Holidome-Modesto, California. For more Information, contact June McCarter, 1205 Clifton Drive, Modesto, California 95355 1-209-523-6778.

JULY 5, 6, 7, 8, 1989 - AMERICAN CARNIVAL GLASS CONVENTION - Best Western, New Philadelphia, Ohio, Theme "Down on the Farm".

JULY 25-29, 1989 - INTERNATIONAL CARNIVAL GLASS CONVENTION - Midway Motor Lodge, Elkhart, Indiana 1-800-446-7999 ask for David Azinger. Thursday auction.

AUGUST 13-15, 1989 - PACIFIC NORTHWEST CONVENTION - Holiday Inn, Eugene, Oregon. Contact Karen Engle at 1-503-466-5989.

SEPTEMBER 28-30, 1989 - CANADIAN CARNIVAL GLASS CLUB CONVENTION - Holiday Inn, Burlington, Ontario. Hospitality Room, Jimmy Forbes Auction, Show & Tell, Banquet, Guest Speakers. A warm welcome to all! For information contact: Ingrid Spurrier, 45 Ruby St., Kitchener, Ontario N2M 3E2, 1-519-745-2474.

OCTOBER 13-15, 1989 - AIR CAPITAL CARNIVAL GLASS CONVENTION - Heritage Inn, 5400 West Kellogg, Wichita, Kansas. Woody Auction Co. in charge of the auction.

Anyone wishing to announce Conventions or auction dates, please send information to Eleanor Mochel, 6409 Beverly Dr., Mission, Kansas 66202.

=====
ALL BULLETIN ARTICLES AND ADS ARE TO BE SENT TO THE BULLETIN SECRETARY. PLEASE SEND SO THEY ARRIVE NO LATER THAN THE 28th OF THE MONTH. THANKS.

Eleanor Mochel

NO DUES, NO NEWS, RENEW NOW!