

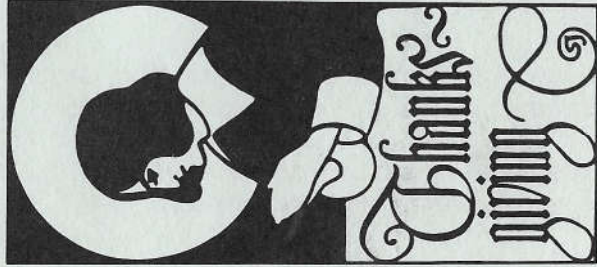
# HOACGA

Heart Of America Carnival Glass Assoc. Inc.

November 1989

RETURN ADDRESS

H.O.A.C.G.A.  
Eleanor Mochel  
6409 Beverly Dr.  
Mission, Ks. 66202



FIRST-CLASS MAIL  
U.S. POSTAGE  
PAID  
Shawnee Mission, KS  
Permit No. 958

HEART OF AMERICA CARNIVAL GLASS ASSOCIATION  
BOARD OF DIRECTORS

President Robert Grissom  
7900 Crescent  
Raytown, Missouri 64138  
816-356-5320

Secretary Nadine Paulsen  
700 Purdom  
Olathe, Kansas 66061  
913-782-1313

Vice-President  
Bulletin Secretary Pro-Tem  
Eleanor Mochel  
6409 Beverly Dr.  
Mission, Kansas 66202  
913-432-1129

Treasurer Doug Peters  
4307 N.E. 46th Terr.  
Kansas City, Missouri 64117  
816-453-3488

The Bulletin is published the 15th of each month. Membership year is from June 1 to May 31, per couple or single. DUES ARE \$20.00 U.S. & CANADA, \$35.00 FOREIGN. All monetary figures quoted are in U.S. Dollars. Please make checks for dues payable to H.O.A.C.G.A. and send them to the Treasurer Doug Peters, at the above address.

=====

IN SYMPATHY

Mrs. Jewel Bennett, East Point, Georgia, passed away on October 3, 1989. The funeral was at Charmichals Funeral Home, East Point, on October 4, 1989.

Mrs. Bennett was very active in organizing the Peach State Carnival Glass Club. She was in charge of the Hospitality Room when the Georgia Club sponsored the I.C.G.A. Convention in Marietta, Georgia in 1977.

Her husband, W. D. (Dick) Bennett survives. Anyone wishing to send cards may send them to: 3191 Harris Drive, East Point, Georgia 30344.

Bob and Kitty Vining  
Chatsworth, Georgia

=====

OUR DEEPEST SYMPATHIES...

We were saddened to hear of the death of William "Bill" Harmon from North Vernon, Indiana. He passed away on Wednesday, October 18, 1989. Our deepest sympathy goes out to Thelma and other members of the family. We will all miss Bill's smiles and friendship at the Conventions and other activities. He was a very special person.

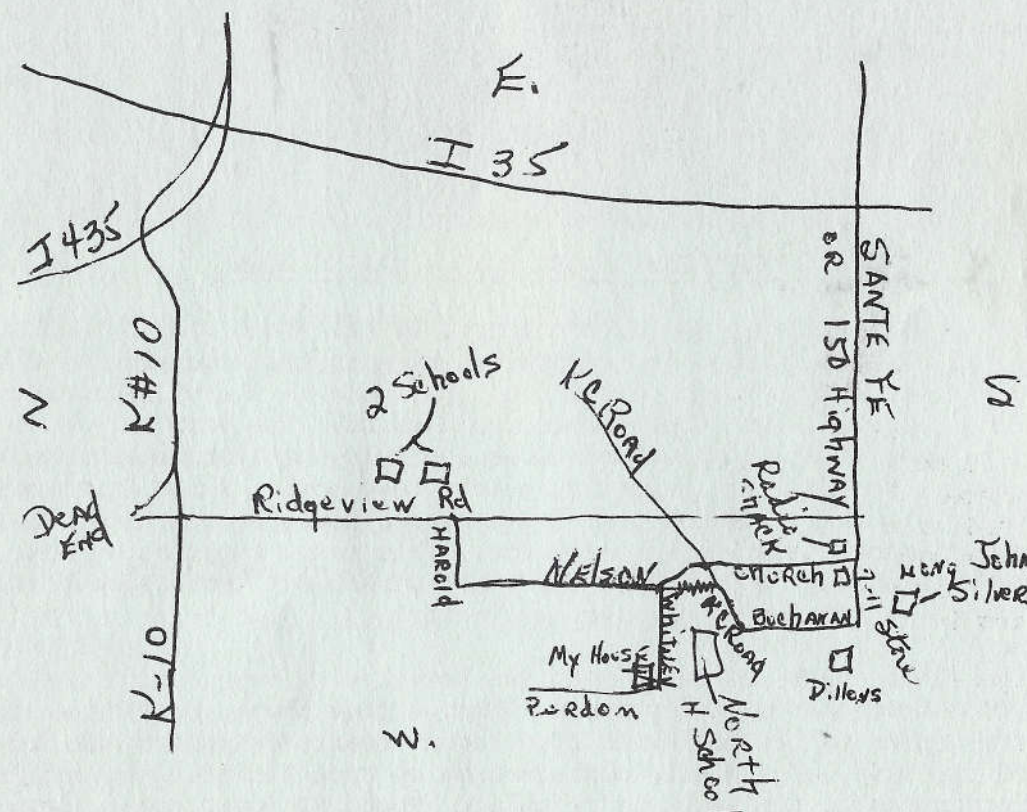
JOHN & LUCILE BRITT

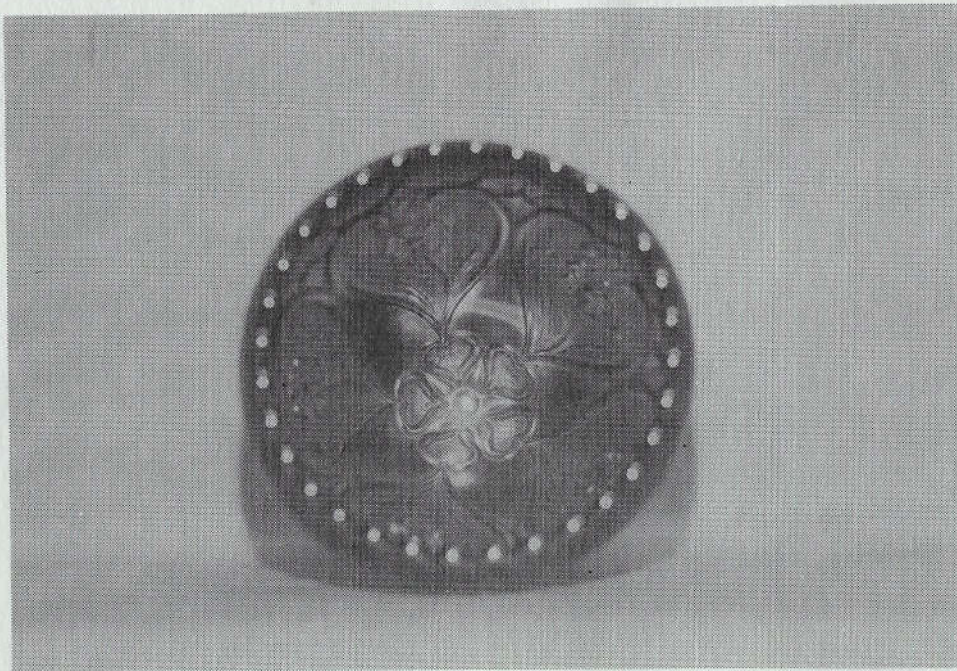
MONTHLY MEETING NEWS

The November 1989 meeting of the Heart of America Carnival Glass Association will be at the Holiday Inn, Des Moines, Iowa, on November 10, 11, and 12, 1989. Please refer to the October, 1989 issue of the H.O.A.C.G.A. Bulletin for further information.

The December 1989 meeting will be a Christmas Party at the home of Barney and Nadine Paulsen on Sunday, December 3, 1989 at 1:00 P.M. Their address is 700 N. Purdom, Olathe, Kansas. (See map below)

Each family is asked to bring a salad or vegetable, plus a desert. There will also be a gift exchange (\$10.00 to \$15.00). Men should bring a gift for a man and ladies should bring a gift for a lady. Please mark your gifts appropriately. We are looking forward to a fun time.

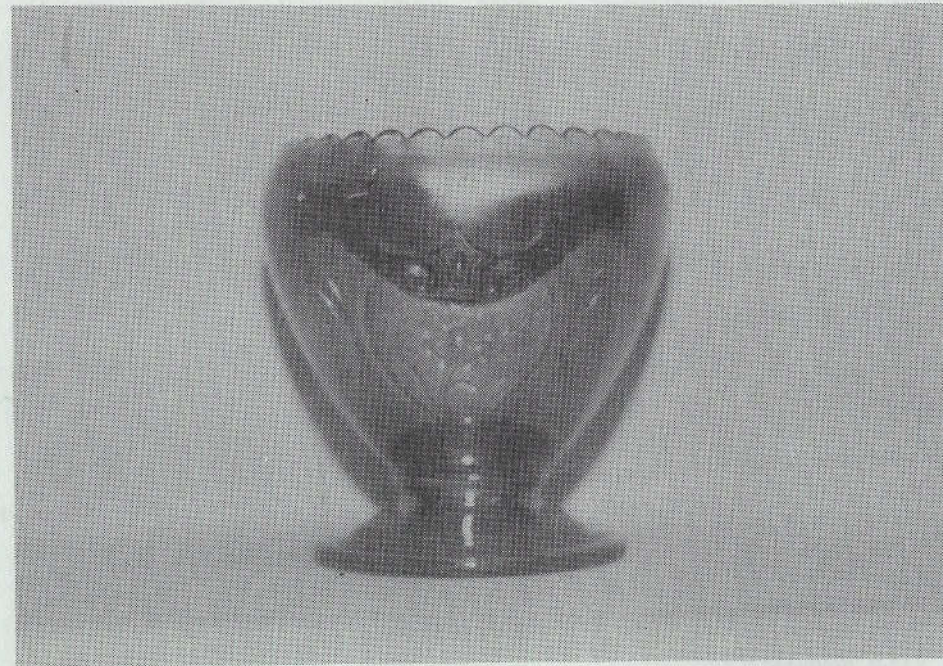




FIVE HEARTS ROSE BOWL - LAYING DOWN

The Five Hearts pattern is considered to have been made by Dugan. It is usually found in dome footed bowls. Even in the regular bowl shape, you don't see this pattern very often. Marigold is the only color that has been reported, but other colors could exist. The very rare Five Hearts rose bowl, that is shown above, is the only one that we have seen in this shape. We consider it very rare in a rose bowl. Randy Smith of Pennsylvania reports of owning one of these rose bowls at one time. He sold it to a prominent Pennsylvania collector. This makes two that we have heard about in this shape. We are sure there are others out there somewhere, just waiting to be found by some alert collector.

The above photo was taken with the bowl laying down, which enables us to give you a good view of the pattern. Notice that there are five small hearts in the center of the bowl with five larger hearts extending out from them. Each of the five large hearts contain a daisy type flower, stem and leaves. The background of the heart is stippled. Photo #2 (next page) shows the rose bowl in an upright position. The base of the dome footed bowl is  $3\frac{1}{2}$  inches in diameter. The piece stands  $4\frac{3}{4}$  inches high with a cupped in top opening of 4 inches. Even though this is an interior pattern, it shows up very well through the glass in the sitting position. We did get some shadow in



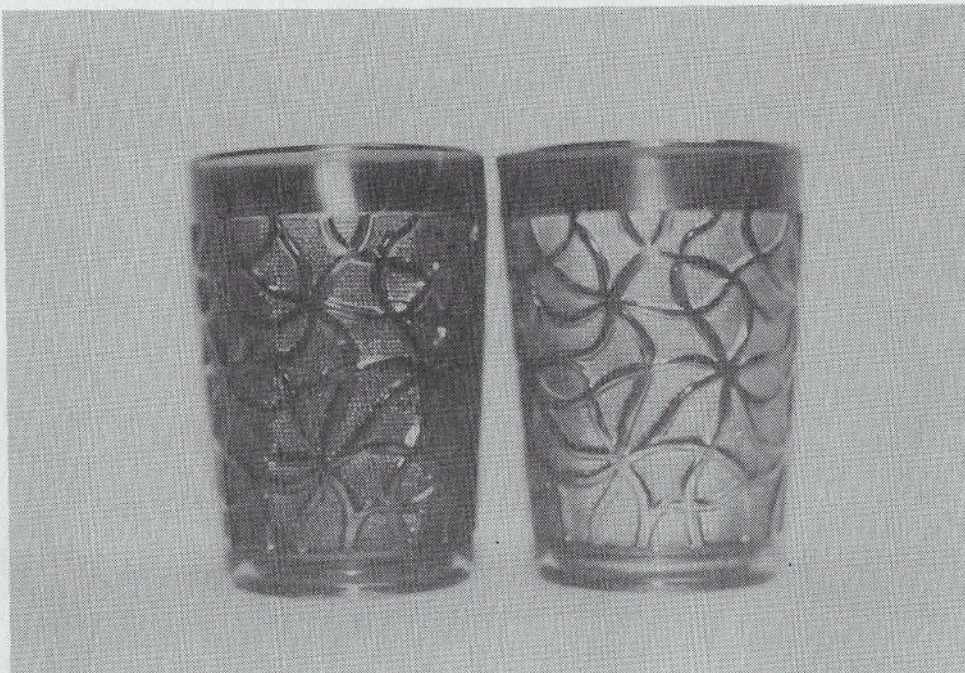
FIVE HEARTS ROSE BOWL - UPRIGHT POSITION

our photo which marred the view somewhat. The piece is actually in a very uniform color of good marigold. This very rare and pretty rose bowl is one that any Carnival Glass collector should be very proud to own. It would make a super addition to any rose bowl collection.

The Five Hearts rose bowl is #130 in this original Carnival Glass Pictorial Pattern Parade. Next month, we will feature the beautiful and rare Millersburg Rosalind compotes.

JOHN & LUCILE BRITT

=====



SODA GOLD TUMBLERS - - AN IMPERIAL FAVORITE

In October of 1980, we used the Soda Gold pattern to show the difference between it and the Tree of Life, Crackle and Tree Bark tumblers. Tumblers in these four patterns are very often confused with one another. You might want to read that October, 1980 article for more information on these four patterns. The other three pattern tumblers, that are mentioned above, are of lesser value and were produced later than those of the Soda Gold pattern. We consider Soda Gold as a very desirable pattern.

Soda Gold tumblers are shown above in smoke and dark marigold. We have also seen them in a beautiful pastel marigold and the clambroth color. We have never seen or heard of one of these Soda Gold tumblers in purple, but Imperial did make a few purple tumblers in most of their water set patterns. Some of them, such as Fashion, are very rare in purple.

The meandering lines, rim and base areas on the Soda Gold tumblers stand out 1/32 of an inch. Though appearing to be stippled, the background actually consists of thousands of tiny raised dots systematically placed to produce a very pleasing effect. This design is also carried out on the bottom of the base. Like many other Imperial pattern tumblers, this pattern has a collar base. These tumblers are of standard table size measuring almost 4 1/4 inches high. The Soda Gold tumblers will add charm and color to any

tumbler collection, and when included with the pitcher, they make a very pretty water set.

This is number 142 in our Educational Tumbler Series. Next month, we will cover the Hobstar Band tumblers.

JOHN & LUCILE BRITT

=====

NEWS FROM OUR MEMBERS.....

Dear Eleanor:

Recently one evening, the phone rang and a voice with a slow drawl introduced himself as Dr. Allan Jones from Tennessee, and for a few moments I could not place him until he mentioned I had sent him a letter to purchase an item some two months previously.

Initially we had some difficulty in getting together until he had a free few hours, something most understand when traveling, and I was able to bring him to my home to see my collection and talk Carnival Glass.

Unfortunately, Allan had visited Australia at a time when we were having an airline strike and this made his mode of travel more difficult, but he assured me his trip was very much worthwhile. After this, he was off to New Zealand for a couple of weeks before heading back home.

I am certainly glad I had the opportunity of meeting such a nice person and hopefully we will meet up again soon.

To any other collector visiting Australia, if time allows; give me a ring and make yourself known.

Dick Jamieson  
Sydney, Australia

Let's take another peak into the past. This time we would like to concentrate on the 1971 I.C.G.A. Convention that was held in Louisville, Ky. Even though this was our first Convention, we have always considered this one of our favorites. We were just beginners then and this Convention will always stand out as one of the bright stars in our collecting years. It is true that we had purchased some rather nice pieces of Carnival Glass before this event and that we were already hooked, but our fever was running much higher now. We are sure that nearly all of you have experienced this fever and know just how hard it is to find a cure for it.

To begin with, we had been told by experienced and very knowledgeable collectors like Rosalie and John White, Elizabeth and Ed Collier and Betty & Thad Klutts, people that we had visited earlier on the advice of Marion Hartung, that we should attend the upcoming Convention in Louisville. They assured us that we would learn a lot about Carnival Glass, meet a lot of nice people, and see more Carnival Glass than we had ever seen before. They were right. We couldn't believe our eyes. We marveled at all the beautiful glass. Many of the pieces that we had seen here, we had never seen before. We had never seen anything like this back home in Kansas. We both agreed that we were going to attend every Convention from now on, if it was possible to do so. We met many wonderful Carnival Glass people while we were there and still value their friendship very much today. We met, for the first time, people like the Rinehart's, Harnish's, Wishard's, Vining's, Ripley's, Jack Burk, Bill Crawl, John Roller's, Osteen & Mary Lou Smith and many, many others. We also saw for the first time the George Loescher's, Henry Taylor's and Carl Geissler's. We had purchased some Carnival Glass from these people earlier through the Antique Trader, but it was great to see them. There were others there that we had already met, such as Helen & Kenny James, Jack & Mary Adams, the Mochel's, the Kavanaugh's and a number of others that don't come to mind at this moment.

Ed Collier, who many of you older members will remember, had told us to get to the Convention early. We followed his advice and arrived there before the Convention actually started. We can remember seeing an ice blue Oriental Poppy water set in the Reno's room. They had priced it at \$350.00. We drooled over it for a while, but decided to look around for a little while and then come back. The thought of that set kept bothering me, so after about 30 minutes I told Lucile "Let's go back and buy that pretty set." In the meantime Dick Clair, a very knowledgeable collector, had checked into the room next door to the Reno's. When we got back to the Reno's room, the set was gone. They said Dick Clair had just bought it. Well, we had learned an important lesson - - if you find something you like, buy it while you can, it might not be there when you go back.

Even though we were disappointed about this, we eagerly looked forward to finding something else that we would like. We were indeed very happy with our later finds. Some of the pieces we purchased at the Convention, and the prices we paid for them are as follows: aqua opal Dandelion mug \$85.00; aqua opal Fruits & Flowers bon bon \$60.00; aqua opal Hearts & Flowers compote \$100.00; very pretty purple bowl in which we did not know the pattern \$44.00. (We later learned that it was a "Northwoods Lovely" pattern bowl); vaseline Fenton nut cup \$18.00; green Buzz Saw cruet \$375.00; aqua opal Three Fruits plate \$325.00, the last two pieces were from Henry Taylor's room); marigold Kittens cereal bowl \$35.00; purple Stork & Rushes mug \$45.00; marigold Corn vase from Jack Burk \$170.00; blue Soldiers & Sailors plate from Betty Klutts \$450.00; marigold three footed Daisy & Plume rose bowl \$35.00, and a few other Kittens pieces, one of which was in blue. So all in all, we thought we had done very well with our purchases at the Convention.

In closing, we would like to say that we will never forget all of our experiences while at the 1971 Louisville Convention. We had met a lot of real nice people and took home some Carnival Glass that we were really proud of. We also gained a lot of knowledge about Carnival Glass that we would be able to use in our coming collecting years. To all of you beginning collectors and older collectors too, that have never attended a Carnival Glass Convention, we highly recommend that you do so if you possibly can. You will find them most interesting and educational. You will also enjoy your new friendships and see a lot of beautiful glass.

This has been #16 in the "Peak Into The Past" series. Next month we will take another peak into the past - - in Carnival Glass.

John & Lucile Britt

=====

THOUGHT FOR THE MONTH

*It's nice to be important, but  
it's just as important to be nice.*

THE 1990 NOTEBOOK SECTION

The next section of the H.O.A.C.G.A. Notebook will be on the 9" plates. If you have a plate(s), why not get out the camera and take a photograph of your plate(s) and send them to me.

Don't use the excuse that everyone else uses "that you cannot take a good photograph". If you can't take a good photo, then get your neighbor or friend to photograph the plates for you. The more photos I receive, the better the choice of pictures for the Notebook.

So get all of your plates out of the cabinet and take a photograph of them.

Remember, we want to include all patterns, as all patterns are important for the Notebook. Send photographs to:

Bob Grissom  
7900 Crescent  
Raytown, Missouri 64138

=====

CAN ANYONE HELP TO IDENTIFY THIS PIECE?

I need some help from the experts in the United States on a find of mine. I acquired a Pond Lily bon bon in amethyst of all colors, and it has an iridescence that takes a back seat to no one. The problem is that I cannot find any mention of an amethyst Pond Lily in Edwards, in Hartung, in auction reports, or any other book or article on Carnival Glass.

I asked the question some time ago now in the Canadian Carnival Glass monthly publication, but nobody has seen or heard of one. If someone has one, he or she is sure keeping quiet about it. If someone has one, I would like to hear from that person.

Leslie Lavoie  
421 Vaudreuil  
Rosemere, P.Q.  
Canada J7A 4C5  
PHONE: 1-514-621-1218

=====

IMPORTANT CARNIVAL GLASS BOOK INFORMATION

The handbook, A Carnival of Iridescent Luster Buttons is now sold out. A second edition and a supplement are planned for publication in a few months, and will be advertised when published. Thanks to all.

Ruth M. Clark  
Temple, Texas

=====

A LETTER OF THANKS FROM DON MOORE...

Dear Eleanor:

Just a note that perhaps you can get into the next Bulletin, to thank our many friends for their concern as to our welfare during the devastating earthquake here in the Bay area. We were in Iowa at the time, so our personal safety was never in jeopardy.

We took off for home the next morning and drove almost night and day. It was a stressful period as we could not get through to anyone on the telephone. We are only a couple of miles from where the highway collapsed and we really expected to be wiped out.

It was really a miracle when we found our building standing and for the most part our collection intact. We lost a white Rustic funeral vase, a pastel marigold (N) Peacock & Urn master ice cream and 5 tumblers. Several pieces were undamaged on the floor. There was considerable structural damage to the condominium complex where we live. The other collectors in this area were equally fortunate. We are all going through a period of gratefulness, but with an accompanying feeling of guilt that we could be so fortunate when so many are so devastated.

Thanks so much for your many letters and telephone calls.

Don & Connie Moore  
Alameda, California

=====

The September meeting was held in Oldsmar, Florida at the home of Tim & Kim Rice. 12 members were in attendance in addition to Kim's Grandma who was a guest. The Rices did all they could to spoil everybody with a fine dinner & their warm hospitality. It was good to see some of our long-absent members, Maris & Nick, along with Virginia. Ruby, who was back from her vacation up North, was present as well. Hope to see all the regulars, with the addition of a few of the other absentees at the next meeting!

Guess what week the first week of October is! (Was, by the time you get this) It was National Carnival Glass Week. Since we are hovering about the 100 year mark of the existence of Carnival Glass, don't you think it would be appropriate that we initiate a movement to get a postage stamp to commemorate the American Carnival Glass Centennial? Lord knows they issue stamps for every other kind of thing! All of you members of other Carnival Glass Clubs help get the ball rolling with your organizations. Remember, you heard it here (TBCGC Newsletter) fir (I hope). Tru Carnival Glass is an American "institution" for lack of a better descriptor, and deserves recognition as such!

A short committee report on the status of the Jamboree assures us that Mrs. Helen Greguire will be our banquet speaker. In addition to her book "Carnival in Lights", she has found time to publish another on Granite ware which I am sure will interest many of our readers!

We are looking for a suitable raffle prize for the Jamboree. If anyone has a nice piece of Carnival Glass as either a donation or a piece for sale at a reasonable price, please let us know. Bill Tendel is directing efforts in that area. Good Luck, Bill!

Our next meeting (Sunday, October 15) will be held at the home of Naomi Calkins at noon. Please coordinate your covered dish with Naomi at 813-725-4145. The map is provided.

I believe I have acquired two pieces of Carnival that I need help to identify. Please bring your best glasses, references, and whatever to lend a hand. It might be easy for someone else, but I have exhausted many sources and have not come up with answers that I totally agree with. I am sure they are not as much spectacular finds as they are unusual, since I have never seen anything like them.

Remember, our Newsletter needs some input from our members, even if only in the form of "Wanted to Buy" or "For Sale" entries. It costs you nothing, but it does provide a service to the membership.

Hope to see you all at Naomi's. 'Till then, "Adios."

J. J. WILLIAMS  
President

Our 1989 Convention is now past history and another wonderful chapter goes down in our memory book.

Three rooms were filled already on Wednesday of Convention week. Thursday about 20 rooms had been taken and the rest came in on Friday. Expect the total rooms rented for the Convention was at about 45. Thursday evening began by 41 coming out to Roland and Don's for a picnic lunch and for everyone to look at their collection. Friday afternoon was a sight to behold. A collection of bon bons were put together for a super educational program. We used the majority of bon bons from the collection of Charles and Anna Belle Vaughn. Roland and Don furnished some. Also Don Moore and John Britt brought some rare ones. Dean and Diane Fry of California brought the very rare and beautiful Lotus Land bon bons to top off the event. To my knowledge, this was the first time a program was presented on bon bons. We had close to 150 in all when we were ready for our program. We recruited John and Lucile Britt to tell us about them and want to thank them for the presentation.

On Saturday we were treated to an auction, with glass furnished by Jim Seeck. There were approximately 67 bidding numbers out and some good glass was up for bid. In the evening our banquet was held. A quilt, donated by Don Lacock was auctioned off with all proceeds going to the Club. Thanks Don for your help and support. Our speaker, Karen Engel, had brought some beautiful glass for her talk. She had carried her glass on the plane all the way from Oregon to share it and some wonderful stories about her collecting. Thanks Karen for a wonderful program.

Sunday morning found us saying our farewells, at breakfast, until we meet again soon.

We were very surprised to receive two phone calls just the week of Convention from Dean and Diane Fry and Don and Connie Moore, from California, advising us they would be at our Convention. What a wonderful surprise and were very pleased you came to be with us. We want to thank Dean and Diane Fry for giving the Club a surprise raffle gift for the Club. It was a wonderful thing to do and our Club is most grateful to you. It was a nice new red piece of Carnival Glass and was won by Howard Fletcher of Texas.

Our Hospitality Room was a popular place throughout the entire Convention again this year. Thanks to all who brought goodies and especially to Winnie, Marty and Nola for their help in keeping things organized in the Hospitality Room.

We also want to thank Ken Young for providing the video camera and taping the banquet speaker for us.

continued...

Just a few interesting facts on the Convention that may be of interest to you.

New members	15
States represented	13
Bidding numbers used	67
Friday program attendance	64
Banquet attendance	68

Room display winners: "Grapes & The Raisin Men" 1st place winners John and Lucile Britt, "Amber Ripple Vases" 2nd place winner Roger Gladson, "Ain't This The Berries" 3rd place winners Doyle and Ruth Green.

Thanks to all who made it a great time and remember you are the ones who make it all happen.

This next month we will be starting to plan 1990, so as some of the plans come to light, we will be letting you know in the newsletter, so you can plan to be with us.

DONALD E. KIME  
President



Diane Haire, 10209 E. Ave. S-8, Littlerock, California 93543  
PHONE: 1-805-944-1964

B	Leaf & Beads rose bowl, a little iridescence wear inside, nice outside	72.00
B	Orange Tree breakfast sugar & creamer, well matched set	48.00
CB	Stork & Rushes tumbler	23.00
A	Stork & Rushes punch cup	20.00
M	Grape Arbor tumbler	18.00
M	Crabclaw tumbler, small base chip	15.00

Ruby & Yvan Beaudry, 109 - 5e Ave., Boisbriand, Quebec, Canada J7G 1Y8  
PHONE: 1-514-437-4585

IB	Tree Trunk short squatty 6 3/4" vase	425.00
IG	Raspberry tumbler, MINT	900.00
IG	Raspberry tumbler, flake	400.00
IG	Memphis punch base only, flake	225.00

Charles Mochel, 6409 Beverly Drive, Mission, Kansas 66202  
PHONE: 1-913-432-1129

B	EI Parkersburg 1914 Elk plate 7 1/2", SUPER IRIDESCENCE	995.00
A	EI Good Luck P.C.E. bowl	210.00
W	EI Fanciful plate, points turn up	195.00
AO	EI Drapery rose bowl	325.00
B	EI Peacock & Urn plate, SUPER!!	425.00

Wilma & Paul Thurston, 2360 N. Old S.R. 9, Columbus, Indiana 47203  
PHONE: 1-812-546-5724 SHIPPING EXTRA

M	2 handled large Basketweave basket	45.00
LM	Peaches & Pears banana bowl	30.00
M	Premium candle holders, the pair	50.00
M	Tree Bark pitcher	35.00
M	Banded Grape mug	25.00
B	Fine Rib 13" vase	35.00
M	Cattails & Waterlily tumblers, have 5, each	30.00
A	Diamond & Rib 10" vase	30.00
M	Open Rose 3 footed fernery	35.00



Harold E. Moore, Box 616A, Rt. 2, California, Kentucky 41007  
 PHONE: 1-606-635-5588

G	EI	Memphis punch cups, SUPER, have 3, each	23.50
IG	GI	(N) Bushel Basket, round	185.00
SM	EI	Acanthus bowl	50.00
B	EI	Holly ruffled bowl	40.00
AMB	EI	Ripple vase 10 $\frac{1}{2}$ " tall	35.00
M	EI	Blackberry Basket, Two Rows Open Edge, mid-size	30.00
W	EI	Frosted Block rose bowl, SUPER PASTEL IRIDESCENCE	50.00
M	GI	Stream of Hearts compote, small outside rim chip	30.00
M	EI	Dragon & Lotus ruffled bowl	30.00
B	EI	Cup, no pattern, name & date written in script, similar to ruby glass	40.00

Robert Anderson, 153 Douglas Drive, Rittman, Ohio 44270  
 PHONE: 1-216-927-2496 after 4:00 P.M.

M	EI	Cosmos Variant bowl 9 $\frac{1}{2}$ ", SUPER	50.00
A	EI	Millersburg Many Stars 9 $\frac{1}{2}$ " bowl, radium, 2 points damaged	125.00
M	EI	Cherry Chain bowl	40.00
CB	EI	Acanthus bowl 8", 3 $\frac{1}{2}$ " deep, very good color	50.00
G	EI	Millersburg Diamonds tumblers, have 3 ea. \$45.00, or all for	120.00
A	EI	Millersburg Feather & Heart tumbler	85.00
DM	EI	Lions 6 $\frac{1}{2}$ " bowl	80.00
M	EI	Perfume Bottle & Atomizer bottle, DeVilbiss, like new condition	125.00
DM	EI	Diamond & Sunburst 7 piece wine set	225.00
G	EI	Concord 7 $\frac{1}{2}$ " bowl, 3" deep, SUPER	125.00

Beverly Franzen, 18550 Echo Way, Gladstone, Oregon 97027  
 PHONE: 1-503-655-9223

M		Wishbone bowl, dark marigold, SUPER IRIDESCENCE	60.00
M		Butterfly & Berry vase, dark marigold	50.00
B		Captive Rose compote, nice	50.00
P		Pin Ups bowl, SUPER IRIDESCENCE	95.00
W		Dahlia sauce	90.00
R		Dragon & Lotus ruffled bowl, SUPER CHERRY RED, gold iridescence, several chips	325.00
M		Beaded Basket	50.00
P		Fisherman's mug	95.00
M		Stork & Rushes mug	30.00
VAS		Acorn bowl, nice	175.00

SOUVENIRS FOR SALE

Number desired		Cost	Handling Shipping
<u>Sold Out</u>	1981 Red Candle Lamp (less than 1 doz. avail.)	\$75.00	\$2.50
_____	1983 Marigold on Milk Glass Loving Cup	\$40.00	\$2.50
_____	1986 Green Opalescent Bell	\$35.00	\$2.50
_____	1987 Cobalt Blue Bell	\$35.00	\$2.50
_____	1988 Marigold Bell	\$35.00	\$2.50
_____	1989 Teal Bell	\$35.00	\$2.50
_____	1983 Amber Table Favor Mug	\$ 7.00	\$1.50
_____	1984 Amethyst Table Favor Mug	\$ 7.00	\$1.50
_____	1985 Heather Bloom (lavender) Table Favor Mug	\$ 7.00	\$1.50
_____	1986 Green Opalescent Table Favor Mug	\$ 7.00	\$1.50
<u>Sold Out</u>	1987 White Table Favor Mug	\$ 7.00	\$1.50
_____	1988 Teal Table Favor Mug	\$ 7.00	\$1.50
_____	1989 Shell Pink Table Favor Mug	\$ 7.00	\$1.50
_____	Metal holder for the candle lamps	\$ 8.00	(no shipping)
	TOTALS		+

Please make checks payable to: H.O.A.C.G.A. and  
 send orders and checks to: John Britt  
 3048 Tamarak Dr.  
 Manhattan, Kansas 66502

GRAND TOTAL

NAME \_\_\_\_\_  
 ADDRESS \_\_\_\_\_  
 CITY, STATE, ZIP CODE \_\_\_\_\_

In the past 16 years, many members have written informative and educational articles which have been published in the H.O.A.C.G.A. monthly Bulletin. How many times have you remembered reading an article and would like to read it again but cannot recall or find the Bulletin it was in. If you are a new member/collector, chances are, you are not aware of the many past articles.

In order to combine the many educational articles so they will continue to be available as reference material for the present and future Carnival collector, it was decided to reprint the articles in a series of books. The first book will contain many of the "Pictorial Pattern Parade" articles that have been written by John & Lucile Britt. John has revised and updated each of the articles to be reprinted. We believe this will be a convenient and useful source of information for all collectors now and also in the future.

The first book will cover approximately 100 different articles and be about 150 pages, with the appropriate pictures.

The printing of the first book is experiencing some delay, but should be available for shipment in about 2 months.

Don Moore published a book of educational articles he wrote which appeared in the month Bulletin. Many members have purchased his book "Carnival Glass A Collection of Writings by Don Moore" and have found it to be a convenient source of information.

You may order the first book "H.O.A.C.G.A. Educational Series - Book 1" by sending your order to the Treasurer, Doug Peters, 4307 N.E. 46th Terrace, Kansas City, Missouri 64117. The price is \$12.50 per book plus \$1.00 for shipping.

ORDER FORM

I would like to order "H.O.A.C.G.A. Educational Series - Book 1".

_____ Copies at \$12.50 each	\$ _____
Postage \$1.00 per book	\$ _____
TOTAL	\$ _____

NAME \_\_\_\_\_

ADDRESS \_\_\_\_\_

The set of five Commemorative Souvenir Bells are now complete. These bells commemorate the original Glass companies that produced the major portion of the Carnival Glass. Northwood, Fenton, Millersburg, Imperial, and Dugan. Each different bell features a portrait of the glass company founder. The Circle Scroll is used as its' pattern and it also has the Fenton logo.

The 1985 souvenir bell, commemorating the Northwood Glass Co. has the portrait of its' fonder, Harry Northwood. This bell was made in Ruby Red Carnival and is now sold out.

The 1986 bell was made in Lime Green Opalescent with a beautiful Marigold iridescence, commenorating the Fenton Art Glass Co. and has a portrait of its' founder, Frank L. Fenton.

The 1987 bell is Cobalt Blue, which is a rare color for the Millersburg Glass Co. The portrait on the bell is of John W. Fenton, its' founder.

The 1988 bell recognizes the Imperial Glass Co. and its' founder, Edward Muhleman and is a beautiful Marigold. The 1989 bell, the last of the Series, commemorates the Dugan Glass Co. The portrait is of Thomas E. A. Dugan, its' founder. The color of the bell is Fentons Teal Marigold.

We hope you have the complete set of these bells. If you are missing some of the Series or you have not ordered any of the bells yet, you may use the order form below:

The Souvenir Bells are \$35.00 each, plus \$2.50 shipping.

PLEASE MAKE CHECKS PAYABLE TO:  
MAIL TO:

H.O.A.C.G.A.  
John Britt  
3048 Tamarak Drive  
Manhattan, Kansas 66502

I wish to order \_\_\_\_\_ 1986 Bells at \$35.00 each plus \$2.50  
I wish to order \_\_\_\_\_ 1987 Bells at \$35.00 each plus \$2.50  
I wish to order \_\_\_\_\_ 1988 Bells at \$35.00 each plus \$2.50  
I wish to order \_\_\_\_\_ 1989 Bells at \$35.00 each plus \$2.50

NAME: \_\_\_\_\_

ADDRESS: \_\_\_\_\_

CITY, STATE, ZIP CODE: \_\_\_\_\_

Carnival Glass Pattern Books by Marion Hartung. Many patterns in EACH book.

_____	First Book of Carnival Glass	\$5.00 plus \$1.00 S. & H.
_____	Second Book of Carnival Glass	\$5.00 plus \$1.00 S. & H.
_____	Third Book of Carnival Glass	\$5.00 plus \$1.00 S. & H.
_____	Fourth Book of Carnival Glass	\$5.00 plus \$1.00 S. & H.
_____	Fifth Book of Carnival Glass	\$5.00 plus \$1.00 S. & H.
_____	Sixth Book of Carnival Glass	\$5.00 plus \$1.00 S. & H.
_____	Seventh Book of Carnival Glass	\$5.00 plus \$1.00 S. & H.
_____	Eighth Book of Carnival Glass	\$5.00 plus \$1.00 S. & H.
_____	Ninth Book of Carnival Glass	\$5.00 plus \$1.00 S. & H.
_____	Tenth Book of Carnival Glass	\$5.00 plus \$1.00 S. & H.
A COMPLETE SET OF THE ABOVE MAY BE PURCHASED FOR \$50.00 PLUS \$5.00 SHIPPING.		
_____	Northwood Pattern Glass in Color; Clear, Custard & Carnival, By Marion Hartung	\$6.00 plus \$1.00 S. & H.

\_\_\_\_\_ + \_\_\_\_\_ = \_\_\_\_\_  
TOTAL

Carnival Glass Pattern Notebook in Color

_____	Section 1, Punch Sets (Not available now, but will be later)	
_____	Section 2, Mugs	\$5.00 plus \$1.00 S. & H.
_____	Section 3, Table Sets	\$5.00 plus \$1.00 S. & H.
_____	Section 4, Water Sets	\$5.00 plus \$1.00 S. & H.
_____	Section 5, Water Sets	\$5.00 plus \$1.00 S. & H.
_____	Section 6, Water Sets	\$5.00 plus \$1.00 S. & H.
_____	Section 7, Rose Bowls	\$5.00 plus \$1.00 S. & H.
_____	Section 8, Rose Bowls	\$5.00 plus \$1.00 S. & H.
_____	Section 9, Small Plates	\$5.00 plus \$1.00 S. & H.
_____	Section 10, Small Plates	\$5.00 plus \$1.00 S. & H.
_____	Section 11, Chop Plates	\$5.00 plus \$1.00 S. & H.

On the above Sections, there is a maximum shipping & handling charge of \$5.00.

_____	Empty Notebook Binder	\$10.00 plus \$2.50 S. & H.
_____	Complete Notebook Binder with 10 available Sections	\$50.00 plus \$5.00 S. & H.
_____	Gibson plate holders	\$21.00 a doz. (no shipping & handling)

Make checks payable to  
H.O.A.C.G.A. and send checks and  
orders to: Doug Peters,  
4307 N.E. 46th Terr.  
Kansas City, Missouri 64117

NAME \_\_\_\_\_  
 ADDRESS \_\_\_\_\_  
 CITY, STATE, ZIP CODE \_\_\_\_\_

Richard & Carol Cinclair, 3605 South Echo Trail, Plano, Texas 75023  
 PHONE: 1-214-596-0014

B	EI	Orange Tree plate, SUPER, looks green	350.00
A	EI	Peacocks plate	575.00
G	EI	Peacocks ruffled bowl	975.00
B	EI	Peacocks plate	525.00
B	EI	Embroidered Mums, EXCELLENT bowl	400.00
A	EI	Embroidered Mums bowl	375.00
R	EI	Dragon & Lotus I.C.S. bowl	925.00
M	EI	Daisy & Drape vase, very nice	275.00
B	EI	Orange Tree mug	20.00
W	EI	Bushel Basket, round	185.00
M	EI	Good Luck bowl, SUPER COLOR	250.00

Don Mays, 710 Naked Creek Run, Earlysville, Virginia 22936  
 PHONE: 1-804-973-3941

IB	EI	(N) Corn vase	1,200.00
G	EI	(N) Dandelion mug	475.00
M	EI	Cosmos & Cane tumbler with advertising	175.00
W	EI	Persian Garden ice cream bowl	75.00
P	EI	Scroll Embossed plate	150.00
M	EI	Dugan's Cherries 3 footed bowl	85.00
AQ	EI	Compote, plain, no pattern	45.00
P	EI	Oriental Poppy tumbler	50.00
P	EI	Good Luck ruffled bowl	185.00
G	EI	Grape & Gothic Arches sugar lid	15.00

Ted L. Sheibley, 304A Hillcrest Drive, New Cumberland, Pennsylvania 17070  
 PHONE: 1-717-938-6417

G	EI	Wishbone footed bowl	100.00
G	EI	Grape & Cable 9" P.C.E. bowl	85.00
P	EI	Diamond Lace 6 piece water set	400.00
W	EI	Peacock & Urn compote	140.00
P	EI	Memphis 2 piece fruit bowl	275.00
P	EI	Lustre Rose butterdish, SUPER	225.00
M	EI	Peacock & Urn 9" mystery bowl, Millersburg	145.00
M	EI	Dragon & Lotus 9" bowl, 3 in 1 edge	45.00
IG	EI	Hearts & Flowers 9" bowl	850.00
IG	EI	Grape & Cable banana boat	750.00

SEND 2 STAMPS FOR LARGE LIST

\*\*\*\*\* CARNIVAL GLASS FOR SALE \*\*\*\*\*

Barbara M. Nelson, R.F.D. 1, Box 258, Moultonboro, New Hampshire 03254  
PHONE: 1-603-476-5942

M	EI	Headdress 9 $\frac{1}{4}$ " bowl	30.00
G	EI	Two Row Open Edge Basket, Blackberry int. round 6 ruffles 5 $\frac{1}{2}$ "	95.00
CLM	EI	Leaf Chain 9" plate, light gold iridescence	95.00
W	EI	Constellation compote, frosty	95.00
AO	EI	Beaded Cable rose bowl	250.00
AO	EI	Beaded Cable rose bowl, tiny smoothed nick on one toe	125.00
W	EI	Peacock on the Fence 8 3/4" plate, Ribbed ext., (N) dime-size flake off surface interior at bottom of plate	110.00

Robert Hutchison, Rt. 2, Box 461, Seymour, Missouri 65746  
PHONE: 1-417-935-4908

B	EI	3 Beaded Stork & Rushes tumblers, 1 w/mold flaw on rim, all	110.00
M	EI	5 Wreathed Cherry tumblers, all for \$155.00, or each	35.00
M	EI	Grapevine Lattice tumblers, each	45.00
A	EI	3 Fluffy Peacock tumblers, each	70.00
B	EI	Chatelaine tumbler	310.00
M	GI	Question Marks bon bon	32.00
M	EI	Heavy Grape 7 piece berry set	150.00
M	EI	Headdress bowl	40.00
M	GI	Optic & Buttons 9" bowl	27.00
A	EI	Apple Blossom 6" bowl	40.00

Charlotte Tweddell, 4908 Darnton Ln., Louisville, Kentucky 40216  
PHONE: 1-502-447-1670

PO	EI	Dugan Cherries set, large 8" bowl and 5 small bowls. Two small bowls have minor flakes	275.00
----	----	--	--------

Leslie Martin, 522 Yale Ave., Farmington, Missouri 63640  
I have the following books on Carnival Glass for sale. Prices are as listed, plus postage.

Millersburg "The Queen of Carnival Glass" by Bill Edwards, 1982	7.00
Northwood "King of Carnival Glas" by Bill Edwards, 1978	7.00
Rarities in Carnival Glass by Bill Edwards, 1978	7.00
Imperial Carnival Glass "The Early Years" by Bill Edwards, 1980	7.00
Fenton "The First Twenty-Five Years" 1907-1932 by William Heacock, 1978	12.00

\*\*\*\*\* CARNIVAL GLASS FOR SALE \*\*\*\*\*

Eva Backer, 12 Sherwood Rd., West Hartford, Connecticut 06117  
PHONE: 1-203-233-3761, 10:00 A.M. to 2:15 P.M. E.S.T. after 11-12-89

M	EI	Wild Strawberry handgrip plate	115.00
G	EI	Singing Birds water pitcher and 6 tumblers	675.00
SM	EI	Fashion sugar & creamer, breakfast	375.00
CB	EI	Mid-size Funeral vase	250.00
A	EI	Diamond Lace water pitcher	225.00
PO	EI	Fan sauce or gravy	175.00
M	EI	Fashion punch bowl, base & 6 cups	150.00
M	EI	Castle Scene large center shade	165.00
M	EI	Kittens cereal bowl	200.00
G	EI	Blackberry miniature compote	235.00

Pat Lower, Post Office Box 686, Galion, Ohio 44833  
PHONE: 1-419-468-1269 evenings

M	EI	Imperial Grape wine decanter, stopper has small crack at base	55.00
P	EI	Scroll Embossed bowl, File ext., rose & green iridescence	65.00
AMB	EI	Fine Rib (N) vase, 8" high, 5" dia. at top, 3 3/4" dia. base	55.00
SM	EI	Ripple 10" base	55.00
G	EI	April Showers 11" vase, Peacock Tail interior	72.00
P	EI	Rainbow compote, beautiful	65.00
P	EI	Greek Key ruffled bowl	75.00
M	EI	Cherry Chain 10" ruffled bowl, base has $\frac{1}{2}$ " edge crack	40.00

Dick Wetherbee, 847 Stafford St., Rochdale, Massachusetts 01542  
PHONE: 1-508-892-4420

PM	EI	Two Flowers 11" 3 footed ice cream shaped bowl, SUPER PASTEL	65.00
PO	EI	Pinches in Swirl Rib 6" vase, RARE SHAPE	55.00
W	EI	Lamp Shade, milky ribs inside, iridised with design outside	22.00
M	EI	Imperial Grape 9" low ruffled bowl, beautiful	24.00
B	EI	Enamelled Cherries handpainted water set, GREAT	425.00
P	EI	Flowers & Beads 7" tri-shaped small plate, SUPER	75.00
VAS	EI	Pastel Swan Salt, glows under black light, RARE	110.00
M	EI	Orange Tree punch set, matching and nice	225.00
IB	EI	Brocaded Acorns 8 $\frac{1}{2}$ " flat plate, gold gilded	55.00
P	EI	Grape & Cable/Thumbprint (N) 2 $\frac{1}{2}$ " pedestal sherbert	45.00

\*\*\*\*\* CARNIVAL GLASS FOR SALE \*\*\*\*\*

Virgil St. John, Box 400, LeGrand, Iowa 50142  
PHONE: 1-515-479-2952

B	EI	Apple Tree tumbler	48.00
A	EI	Beaded Shell tumbler	65.00
P	EI	Beaded Shell tumbler	65.00
P	EI	Dandelion tumbler	50.00
B	EI	Butterfly & Fern tumbler	50.00
A	EI	Milady tumbler	125.00
W	EI	Palm Beach tumbler	150.00
EB	EI	Peacock at the Fountain tumbler	65.00
P	EI	Singing Birds tumbler	60.00
SM	EI	Soda Gold tumbler	50.00

George Bond, 1406 N. Ferncreek Ave., Orlando, Florida 32803  
PHONE: 1-407-894-0327

M	EI	Butterfly & Berry tumbler	25.00
P	EI	Oriental Poppy tumbler	45.00
M	EI	Panelled Dandelion tumbler	30.00
M	EI	Octagon Variet tumbler	20.00
R	EI	1981 H.O.A.C.G.A. Souvenir Grape & Cable candlelamp	75.00
M	EI	Persian Medallion 6" plate	30.00
PO	EI	Dugans Cherries 5" round bowls, each	40.00

Mr. & Mrs. J. C. Barker, Route 3, Box 163-BB, Savannah, Missouri 64485  
PHONE: 1-816-662-2265

Carnival Glass for sale, variety of pieces and colors.  
Send S.A.S.E. for list.

Garth Irby, 3415 Leola, St. Louis, Missouri 63139  
PHONE: 1-314-781-1535, after 6:00 P.M.

M		Little Flowers chop plate	325.00
A		Millersburg Peacock ice cream sauce	100.00
G		Grape & Cable hatpin holder	235.00
P		Grape & Cable hatpin holder	190.00
M		Hen on Nest	90.00
M		Beaded Cable rose bowl	75.00
M		Millersburg Hobnail Swirl vase	225.00

\*\*\*\*\* CARNIVAL GLASS FOR SALE \*\*\*\*\*

LeRoy K. Smith, 764 East Walnut Street, Kutztown, Pennsylvania 19530  
PHONE: 1-215-683-5368

G	EI	Blackberry Bramble compote	50.00
B	EI	Rose Wreath compote (twisted stem)	50.00
B	EI	Holly goblet	25.00
P	EI	Grape & Cable banana boat, a beauty	275.00
M	EI	Grape & Cable 9" plate	85.00
A	EI	Diamond Lace 7 piece water set, base chip on pitcher, small	385.00
B	GI	Butterfly & Berry 7 piece berry set	180.00
M	EI	Poinsettia milk pitcher	48.00
M	EI	Daisy Basket	75.00
G	EI	Shell & Jewel sugar & creamer with lids	65.00

Gladys & Alton Skouby, 3107 Garnette Dr., A-8, Bridgeton, Missouri 63044  
PHONE: 1-314-298-8279

A	EI	Grape & Cable sweetmeat	215.00
M	EI	Acorn Burrs 7 piece berry set	275.00
M	EI	Butterfly & Berry 7 piece water set	400.00
M	EI	Heavy Iris tankard pitcher, PASTEL, beautiful	375.00
M	EI	Octagon 8" vase, PASTEL, very pretty	75.00
M	EI	Louisa 9" plate, 3 footed, RARE	115.00
M	EI	Mikado compote, Cherries exterior, large	90.00
M	EI	Blossoms & Bands 8 piece berry set	140.00
M	EI	Beaded Star compote, 4", ruffled, square	30.00
M	EI	Crab Claw fruit bowl and base	110.00

Ray Hitchcock, R.R. 1, Box 301, Winterset, Iowa 50273  
PHONE: 1-515-462-2074

M		Diamond Ring rose bowl	65.00
P		Pansy bowl, SUPER	65.00
B		Beaded Shell mug, SUPER	75.00
M		Holly bowl I.C.S.	30.00
AMB		Holly bowl, 3 in 1 edge (light amber)	120.00
MMG		Grape & Cable round bowl	150.00
B-R		Blackberry Hat, 2 sides up, SUPER, shows some red	110.00
M		Estate mug, Iowa souvenir, nick on handle	30.00
P		Grape Delight nut bowl, 2 feet nicks	25.00
M		Big Basketweave handled basket	50.00

\*\*\*\*\* CARNIVAL GLASS FOR SALE \*\*\*\*\*

Tyson & Norma Boone, 5149 Covert Rd., Salida, California 95368  
 PHONE: 1-209-545-1832

M	EI	Peacock at the Fountain orange bowl	200.00
P	GI	Acorn Burrs 4 piece berry set	150.00
G	EI	Blackberry Wreath 7½" bowl, radium	55.00
G	EI	Peacock Tail compote	45.00
A	EI	Heart & Vine bowl	40.00
M	EI	Leaf Chain 7" ruffled bowl	35.00
A	EI	Captive Rose 8½" bowl	45.00
A	EI	Leaf Rays nappy	35.00

Leslie Martin, 522 Yale Ave., Farmington, Missouri 63640  
 PHONE: 1-314-756-5643

A	EI	Dugans Cherries bowl C.R.E., good feet	250.00
G	EI	Imperial Lustre Rose butter dish	75.00
G	EI	Buzz Saw Cruet, 4", RARE, original stopper	450.00
AO	EI	Beaded Cable rose bowl	275.00
M	EI	Kittens cup	110.00
M	EI	Kittens toothpick	140.00
B	EI	Stork & Rushes tumblers, have 5, each	30.00
AMB	EI	Open Rose 9" plate	110.00
B	EI	Stag & Holly 9" bowl	250.00
B	EI	Orange Tree tumbler	40.00

John & Lucile Britt, 3048 Tamarak Drive, Manhattan, Kansas 66502  
 PHONE: 1-913-539-1933

M		Banded Diamonds tumbler, SUPER & RARE	250.00
P		Banded Diamonds tumbler, very hard to find	200.00
W		Cosmos & Cane tumbler, frosty with SUPER IRIDESCENCE	150.00
M		Inverted Strawberry tumbler, RARE & VERY NICE	145.00
P		Windmill tumbler, a beauty	75.00
*		*Olive Green Windmill tumbler, VERY RARE COLOR, FANTASTIC	125.00
P		Milady tumbler, very nice, RARE COLOR	125.00
A		Checkerboard tumbler, VERY RARE, SUPER	450.00
M		Stippled Strawberry tumbler, very good color & detail	100.00
M		Cherry Smash, VERY RARE, nice color & detail	145.00

\*\*\*\*\* CARNIVAL GLASS FOR SALE \*\*\*\*\*

Joe Williams, Post Office Box 193, Prairie City, Iowa 50228  
 PHONE: 1-515-994-2160

M	GI	Leaf Tiers 5" sauces, 6 perfect	180.00
M	GI	Orange Tree 5" sauces, 4 perfect, 2 with small foot chips	150.00

Palmer Welch, 213 Alexander Ave., Scotia, New York 12302

M	GI	Shell & Jewel covered sugar	30.00
G	GI	Shell & Jewel creamer	30.00
G	GI	Shell & Jewel sugar, no lid	18.00
M	EI	Imperial Grape tumblers, have 6, each	18.00

2 stamps for long list of Carnival Glass, which includes a few items from the private collection of the late Mary Welch.

Valmer E. Cross, Sr., Johnson Hollow Rd., Prattsville, New York 12468  
 PHONE: 1-607-588-6698

M		Crackle covered candy	20.00
G		Persian Medallion 5" bowl	30.00
A		Peacock Tail 5" bowl	30.00
M		Louisa salt & pepper	17.50
M		Peach & Pear banana boat	45.00
SM		Diamond Ring 9" bowl	40.00
M		Oval Star & Fan rose bowl	40.00
M		Ripple vase 10"	20.00
M		Dutch Twins ashtray	40.00
A		Millersburg Flute vase	250.00

Dave Sharp, 3717 Wilmington Pike, Dayton, Ohio 45429  
 PHONE: 1-513-299-8420

G	GI	Leaf Chain plate, silver iridescence	200.00
*	EI	*Teal (N) Stippled Strawberry bowl, 3 points off	150.00
SM	EI	Double Scroll candlesticks, SUPER COLOR	80.00
G	EI	Oriental Poppy tumbler, SUPER	65.00
P	EI	Oriental Poppy tumbler, have 2, each	60.00
B	EI	Captive Rose C.R.E. bowl, SUPER	70.00
PO	EI	Dogwood Sprays dome footed bowl	60.00
A	EI	Miniature Blackberry compote, large base chip	30.00
G	EI	Grape & Gothic Arches 5" berry bowls, have 2, each	12.00
M	EI	Embossed Scroll 5" berry bowl, SUPER	10.00

\*\*\*\*\* CARNIVAL GLASS FOR SALE \*\*\*\*\*

Albert M. Rodenhouse, 220 Seaview Ct., Apt. 411, Marco Island, Florida 33937  
PHONE: 1-813-642-7611

*	EI	*Pastel amethyst Tiger Lily, RARE COLOR	79.00
*	EI	*Violet Imperial Grape, RARE COLOR	79.00
M	EI	Star Medallion	29.00
G	EI	Singing Birds	39.00
M	EI	Soda Gold, a nice one	29.00
P	EI	Vineyard, SUPER	29.00
G	EI	Tiger Lily	29.00
P	EI	Wreathed Cherry	59.00
A	EI	Stork & Rushes (Banded), RARE	69.00
P	EI	Chatelaine	189.00

John Dubinski, 705 Vandiver, Suite G714, Columbia, Missouri 65202  
PHONE: 1-314-474-2644

M	EI	Heavy Prisms celery vase 6", OUTSTANDING COLOR	55.00
A	EI	Rainbow compote, STRIKING	70.00
P	EI	Rosettes 8½" footed bowl	80.00
IB		Fruits & Flowers stemmed bon bon, Basketweave exterior	595.00
M	EI	Open Rose 9" plate, SUPER	75.00
AO	EI	Hearts & Flowers compote, small heat check in center and minor pinpoint on edge (negligible flaws)	650.00
G	LI	Whirling Leaves ruffled bowl, minor rough spot on edge	70.00
B	EI	Horse Medallion 7" ruffled bowl - FLOWS! Jewel-like iridescence and deep color	130.00
M	GI	Horse Medallion 7¼" ruffled bowl	60.00
G	GI+	Pansy 9" ruffled bowl, lovely	45.00

SEND S.A.S.E. FOR ADDITIONAL SALE LIST

Harold R. Wagner, 5951 Fredericksburg Road, Wooster, Ohio 44691  
PHONE: 1-216-264-3703 Call after 6:00 P.M.

M	EI	Millersburg Marilyn water pitcher	550.00
M	EI	Millersburg Peacock & Urn 10" fluted bowl	275.00
A	EI	Millersburg Country Kitchen butter dish (chip on base)	175.00
A	GI	Millersburg Country Kitchen creamer	225.00
G	EI	Millersburg Zig-Zag 10" fluted bowl	275.00
G	GI	Millersburg Holly Sprig bon bon	75.00
M	EI	Millersburg Grape Leaves 9½" fluted bowl	275.00
B	EI	Embroidered Mums 9" fluted bowl, 2 pinhead chips on points	150.00
A	EI	Leaf Rays nappy	65.00
B	EI	Floral & Grape water pitcher	175.00

\*\*\*\*\* CARNIVAL GLASS FOR SALE \*\*\*\*\*

Tony & Norene Duran, Post Office Box 79, Ocate, New Mexico 87734  
PHONE: 1-505-666-2237

P	EI	Lattice & Poinsettia bowl (N)	450.00
P	EI	Rose Show bowl, slight base damage	375.00
P	EI	Peacocks bowl P.C.E., EXTRA SUPER!!!	650.00
M	EI	Lattice & Poinsettia bowl (N)	375.00
IB	EI	Hearts & Flowers bowl, ruffled	350.00
IB	EI	Embroidered Mums ruffled bowl	875.00
IB	EI	Poppy Show bowl	1,800.00
B	EI	Peacocks ruffled bowl	525.00
G	EI	Grape & Cable pitcher	525.00
G	EI	Rose Show bowl	2,000.00

Omer E. Sweeney, 28 Esmond Street, Esmond, Rhode Island 02917  
PHONE: 1-401-231-4108

M	EI	Peacock Tail compote	45.00
M	EI	Imperial Grape punch cups, have 5, each	15.00
M	EI	Apple Tree tumblers, have 2, each	35.00
B	EI	Teal Blue Leaf Swirl compote	75.00
P	EI	Grape & Cable sweetmeat compote	275.00
M	EI	Fenton Cherry (Mikado interior) compote	130.00
M	EI	Basketweave Basket	35.00
P	EI	Star of David & Bows 7" dome footed bowl	50.00
G	EI	Cherry or Hanging Cherries 10" ice cream bowl	135.00
M	EI	Panelled NU-ART shade	40.00

Mary C. Kesterson, Willow Park, 3020 Mesa Road, Weatherford, Texas 76087  
PHONE: 1-817-441-8410

R	EI	Holly 9" bowl, ruffled, good red	850.00
R	EI	Coin Dot 7½" bowl, round, SUPER RED	1,600.00
IB	EI	Poppy Show plate, SUPER IRIDESCENCE	2,350.00
*	EI	(N) Peacocks plate (*Sapphire blue) RARE COLOR	975.00
P	EI	Mlsg. Peacock & Urn master ice cream bowl, SUPER RADIUM	1,000.00
G	EI	(N) Peacocks plate, SUPER RED & PINK IRIDESCENCE	1,850.00
EB	EI	Leaf & Beads rose bowl, SUPER COLOR	175.00
AO	EI	Drapery rose bowl	300.00
LAV	EI	Millersburg Trout & Fly bowl, 3 in 1 edge	500.00
B	EI	Embroidered Mums bowl, ruffled, SUPER IRIDESCENCE	485.00

\*\*\*\*\* CARNIVAL GLASS FOR SALE \*\*\*\*\*

Dick Hatscher, 142 Walnut Hill Rd., Bethel, Connecticut 06801  
PHONE: 1-203-743-1468

M	Brooklyn Bridge bowl	225.00
M	Columbus Sailing Ship 8" plate, Soda Gold exterior	10.00
PO	Coin Dot bowl	95.00
PO	Border Plants handgrip plate	165.00
G	Grape & Cable candlestick	110.00
G	Grape & Cable 3 footed bowl, Meander exterior	35.00
P	Small Swan	100.00
W	Bushel Basket	125.00
W	Leaf Rays nappy	35.00
IG	Thin Rib (N) 11" vase	130.00

Steve Davis, 3331 Warpath Rd., Macon, Georgia 31201  
PHONE: 1-912-741-4252

M	EI	Wreath of Roses punch bowl/base, dark marigold, Plain int.	265.00
M	EI	Rose Show bowl, dark marigold, very pretty!	435.00
M	EI	"474" water pitcher and 1 tumbler	195.00
M	GI	Circle Scroll water pitcher, RARE, but cracked	300.00
M	EI	Grape & Cable 8 piece punch set, small size	395.00
M	EI	Fentons Peacock & Urn bowl, unusual 3 in 1 edge	125.00
P	EI	Imperial Heavy Grape water pitcher, SUPER COLOR	350.00
P	EI	Homestead plate, FANTASTIC COLOR!	1,100.00
AMB	EI	Homestead plate, FANTASTIC!	1,050.00

Bob Slaughter, 4717 N.C. Hwy. 54, Graham, North Carolina 27253  
PHONE: 1-919-376-9552

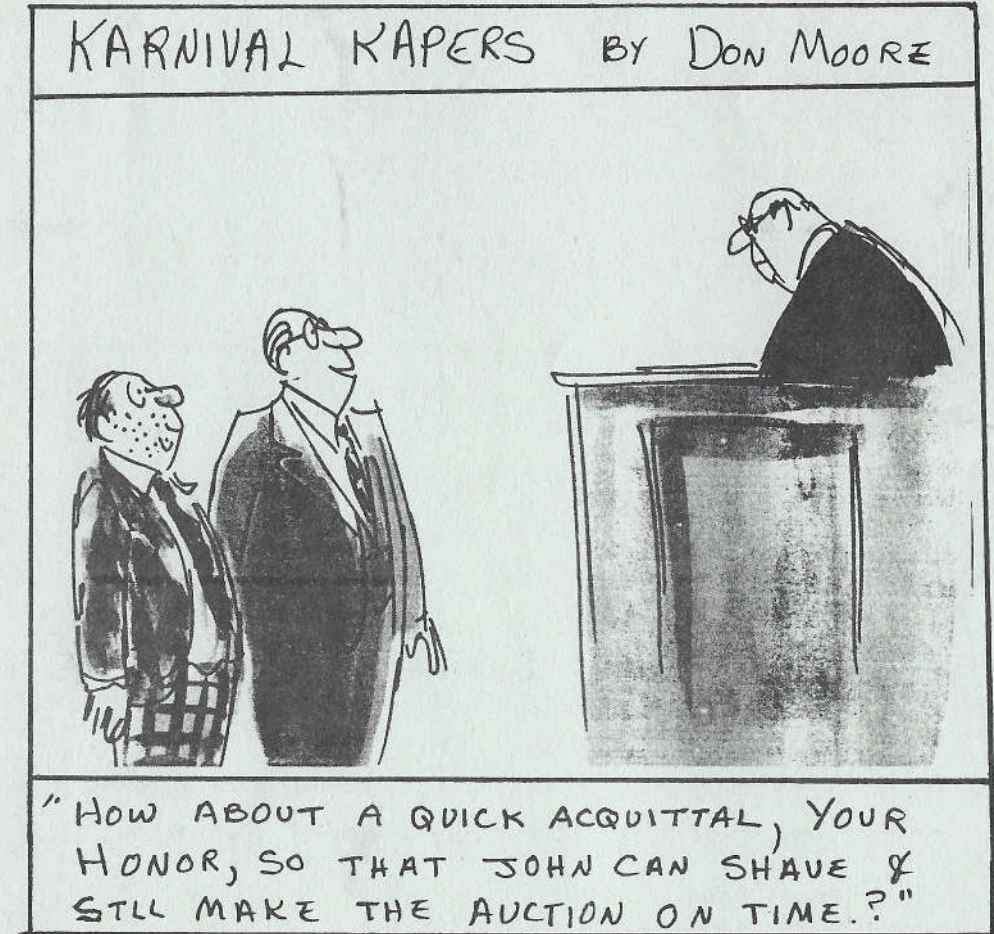
B	EI	Hearts & Flowers compote, flat flake underside of base	125.00
M	EI	Coin Dot 9 1/4" fluted bowl	30.00
M	EI	Stippled Rays 9 1/2" fluted c.b. bowl	25.00
EB	EI	(N) Grape & Cable bon bon, MINT	100.00
SM	EI	Morning Glory 7 1/2" tall vase	35.00
G	*	*G-EI, (Helios) Open Rose 8" deep c.b. fruit bowl	30.00
G	EI	Stippled Rays compote, pretty (shallow bowl)	25.00
P	EI	(N) Butterfly with Threaded ext. bon bon, SCARCE	175.00
M	GI	Horse Medallion 6 3/4" I.C.S. bowl, collar base	45.00
M	EI	Peacock & Dahlia 6 3/4" I.C.S. bowl, collar base	40.00

MAKE CHECKS PAYABLE TO: ANN SLAUGHTER, CARNIVAL GLASS & COLLECTIBLES

\*\*\*\*\* CARNIVAL GLASS FOR SALE \*\*\*\*\*

Ruth M. Clark, 2723 Canyon Oaks Ct., Temple, Texas 76502  
PHONE: 1-817-774-9543 anytime

A few cards of good Carnival Glass buttons by the entire card of 35 to 42 buttons each. Price of each 9" X 12" card varies from \$75.00 to \$400.00. More information furnished upon request.





Brenda Fowler & Craig Kuckelburg, 517 N. Jay St., Aberdeen, South Dakota 57401  
 PHONE: 1-605-226-1660

- M Stippled Rays stemmed creamer in blue, green or smoke
- M Frosted Block stemmed sugar
- G Open Edge Basket, small with 6 ruffles
- M Orange Tree punch base only

=====  
 Singleton Bailey, Post Office Box 95, Loris, South Carolina 29569  
 PHONE: 1-803-756-7495

- Imperial Double Dutch bowl, ANY COLOR
- Singing Birds spooner, damage OK, ANY COLOR
- Radium Big Fish bowls, ANY COLOR
- B Millersburg Peacock & Urn pieces
- VAS Tri-cornered Millersburg Peacock bowl
- A Millersburg Peacock & Urn "shotgun" bowl
- G Millersburg Peacock & Urn "mystery" I.C.S.
- A Millersburg Peacock & Urn "mystery" C.R.E.
- Tri-cornered Trout & Fly bowl, ANY COLOR

=====  
 Ruby & Yvan Beaudry, 109 - 5e Ave., Boisbriand, Quebec, Canada J7G 1Y8  
 PHONE: 1-514-437-4585

Collection of old H.O.A.C.G.A BULLETINS for a new collector

=====  
 Leslie Lavoie, 421 Vaudreuil, Rosemere, P.Q. Canada J7A 4C5  
 PHONE: 1-514-621-1218

- M Base for Hobstar & Arches/Long Hobstar punch bowl
- G Top to Peacock at the Fountain butter
- G Top to Peacock at the Fountain sugar

=====  
 Lea Van De Sype, Box 12, Site 1, Maxim Sask, Canada 54H 2L6

- DM EI Wine goblets, need 2
- DM EI Water pitcher
- DM EI Cattails & Waterlily water pitcher

=====  
 Ray Hitchcock, R.R. 1, Box 301, Winterset, Iowa 50273  
 PHONE: 1-515-462-2074

- P Fishnet epergne lily, or sell base

Dave Sharp, 3717 Wilmington Pike, Dayton, Ohio 45429  
 PHONE: 1-513-299-8420

- G Springtime butter base
- W Orange Tree punch cups
- P/B Peacock at the Fountain punch cups, above average color
- G Butterfly & Berry butter lid
- P Springtime sugar lid

=====  
 Dick Hatscher, 142 Walnut Hill Rd., Bethel, Connecticut 06801  
 PHONE: 1-203-743-1468

Hearts & Flowers, ANYTHING

=====  
 Tony & Norene Duran, Post Office Box 79, Ocate, New Mexico 87734  
 PHONE: 1-505-666-2237

- AO Three Fruits plate
- AO Embroidered Mums bowl
- AO Hearts & Flowers bowl
- B Rose Tree bowl
- ANY GOOD RED

=====  
 Flyn Willis, 211 Clem Street, Ottumwa, Iowa 52501  
 PHONE: 1-515-684-4205

- (N) Bushel Basket, dark green, round type
- 6" plates
- P Stopper for Grape & Cable perfume bottle

=====  
 Mary Krueger, 299 E. North Ave., Antigo, Wisconsin 55409  
 PHONE: 1-715-623-5267

- G EI Holly bowl with 3 in 1 edge
- G EI Orange Tree ICS bowl
- G EI Waterlily sauce
- R Waterlily sauce
- \* EI Blue or electric blue Rose Show bowl
- P EI Poppy Show bowl
- IB EI Rose Show bowl
- P EI Apple Blossom Twigs bowl
- \* EI \*Blue or electric blue Poppy Show bowl
- W EI Poppy Show bowl

Ted L. Sheibley, 304A Hillcrest Drive, New Cumberland, Pennsylvania 17070  
PHONE: 1-717-938-6417

- W Persian Garden 6" low ice cream shaped bowl
- M Trout & Fly bowl, 3 in 1 edge
- Rose Tree bowl, ANY COLOR
- Horsehead Medallion plate, ANY COLOR
- Hearts & Flowers bowl/compote/plate ANY COLOR
- IB/IG Grape & Cable items
- Peacock at the Fountain compote, ANY COLOR
- Peter Rabbit bowl/plate, ANY COLOR
- IB/IG Peacocks on the Fence items
- W Peacock at the Fountain water pitcher

Don Mays, 710 Naked Creek Run, Earlysville, Virginia 22936  
PHONE: 1-804-973-3941

- G Acorn Burrs punch bowl
- P Many Fruits punch base
- B Orange Tree punch base
- P Many Fruits punch cups
- P Grape & Cable punch bowl

Richard & Carol Cinclair, 3605 South Echo Trail, Plano, Texas 75023  
PHONE: 1-214-596-0014

- R Primrose & Fishnet vase
- R Orange Tree rose bowl
- B Hearts & Flowers bowl, ruffled or pie crust edge
- R Strawberry bon bon
- Hearts & Flowers plates, ANY COLOR
- A Hearts & Flowers compote
- B Kittens saucer, PLEASE

Mr. & Mrs. Herbert L. Fish, Post Office Box 18, Milan, Illinois 61264  
PHONE: 1-309-787-1460

- M Grape & Cable candle lamp, shade and metal holder
- Wild Rose lamp, Millersburg or Northwood, ANY COLOR

George Bond, 1406 N. Ferncreek Ave., Orlando, Florida 32803  
PHONE: 1-407-894-0327

- M EI Stopper for dark marigold Octagon decanter

Bill McNamara, 2 First Avenue, Sandgate, Brisbane 4017, Australia  
PHONE: (07) 269-1640

- M/G Herringbone & Iris tumblers, need 6
- A Imperial Grape wine goblets, need 6
- M/G Star & File wine goblets, need 2
- M/G Star & File decanter & stopper
- M/G Fashion punch bowl base, not ruffled
- M/G Tree Bark pitcher lid only
- M/G Tree Bark tumblers, need 4
- ANY Australian Kiwi bowls
- ANY Punch cups, bases, bowls, ANY COLOR OR DESIGN
- B Floral & Grape tumbler, need 1

Barbara M. Nelson, R.F.D. 1, Box 258, Moultonboro, New Hampshire 03254  
PHONE: 1-603-476-5942

- P Constellation compote, PLEASE!!!

Pat Lower, Post Office Box 686, Galion, Ohio 44833  
PHONE: 1-419-468-1269 evenings

- Trout & Fly or Big Fish, radium, ANY COLOR
- Millersburg Carnival in radium
- Whirling Leaves in amethyst and radium
- Peacock & Urn small berry bowl, radium, Millersburg

Eva Backer, 12 Sherwood Rd., West Hartford, Connecticut 06117  
PHONE: 1-203-233-3761, 10:00 A.M. to 2:15 P.M. E.S.T. after 11-12-89

- PO Base for Fishnet epergne, dark
- M Base for Persian Garden fruit bowl, dark
- M Base for Wide Panel epergne, dark
- IB Lid for Grape & Cable powder jar

CARNIVAL CALENDAR

NOVEMBER 3-4, 1989 - JIM SEECK CARNIVAL GLASS AUCTION at the Harley Hotel, St. Louis, Missouri (across the river from St. Charles). Auction begins at 6:00 P.M. Nov. 3, and at 9:30 A.M. Nov. 4. 450+ pieces of Carnival will be sold including many rare and hard to find pieces. For more information, contact Jim Seeck at 1-515-424-1116.

NOVEMBER 5, 1989 - MICHEY REICHEL CARNIVAL GLASS AUCTION. 350+ pieces of glass Preview will be Sunday, November 5, 1989 at 8:00 A.M. and auction will begin at 10:30 A.M. Auction will be at the Reichel Auction Center, 1440 Ashley Rd., Booneville, Mo. 65233. For more information, please call 1-816-882-5292.

NOVEMBER 17, 1989 - WOODY CARNIVAL GLASS AUCTION at the Harley Hotel, St. Louis Missouri (across the river from St. Charles). Auction begins at 7:00 P.M. with the preview at 4:00 P.M. 200+ pieces of Carnival will be sold including many rare and hard to find pieces. For more information, contact the Woody Auction Company at 1-316-746-2694.

NOVEMBER 10-12, 1989 - MID-ATLANTIC CARNIVAL GLASS JAMBOREE, Ramada Inn, 901 Dual Highway, Hagerstown, Maryland 21740, 1-301-733-5080. 2 day Burns auction beginning Nov. 10, educational program, Buffet Banquet on Saturday, make reservations with Ramada Inn by Nov. 1. Check in will be 2:00 P.M. For more information, contact Nancy Williams at 1-215-374-9033 or Ward Russell at 1-301-384-9242.

FEBRUARY 8-10, 1990 - LOSE YOUR HEART TO CARNIVAL GLASS JAMBOREE, Ramada Inn, 2560 U.S. 19 North, Clearwater, Florida 33575, 1-800-272-6232. Room sales and raffle, Hospitality Room with program by Tom Burns, educational program "Carnival Glass Blues", auction on Nov. 9, banquet on Nov. 10, with Helen Greguire as speaker. For more information, contact Naomi Calkins at 1-813-725-4145.

FEBRUARY 16-18, 1990 - TEXAS CARNIVAL GLASS CLUB MINI-CONVENTION in Houston, Texas at the Marriott Hotel, Greenspoint. 1-713-875-4000. Mention the TCGC for \$40.00 per day rate. Tom Burns auction, Marie McGee, banquet speaker, free picnic supper Friday night, Glass for sale in rooms, Educational seminar. Ya'll come!!!. Need not be a member to attend.

Anyone wishing to announce Convention or auction dates, send information to Eleanor Mochel, 6409 Beverly Drive, Mission, Kansas 66202.

=====