

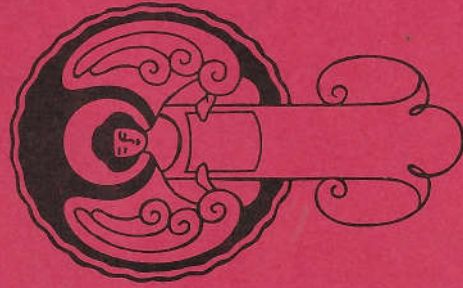
HOACCGA

Heart Of America Carnival Glass Assoc. Inc.

December 1989

RETURN ADDRESS

H.O.A.C.G.A.
Eleanor Mochel
6409 Beverly Dr.
Mission, Ks. 66202



FIRST-CLASS MAIL
U.S. POSTAGE
PAID
Shawnee Mission, KS
Permit No. 958



HEART OF AMERICA CARNIVAL GLASS ASSOCIATION
BOARD OF DIRECTORS

President Robert Grissom
7900 Crescent
Raytown, Missouri 64138
816-356-5320

Secretary Nadine Paulsen
700 Purdom
Olathe, Kansas 66061
913-782-1313

Vice-President
Bulletin Secretary
Eleanor Mochel
6409 Beverly Dr.
Mission, Kansas 66202
913-432-1129

Treasurer Doug Peters
4307 N.E. 46th Terr.
Kansas City, Missouri 64117
816-453-3488

The Bulletin is published the 15th of each month. Membership year is from June 1 to May 31, per couple or single. DUES ARE \$20.00 U.S. & CANADA, \$35.00 FOREIGN. All monetary figures quoted are in U.S. Dollars. Please make checks for dues payable to H.O.A.C.G.A. and send them to the Treasurer Doug Peters, at the above address.

H O L I D A Y G R E E T I N G S



F R O M Y O U R B O A R D O F D I R E C T O R S

CARNIVAL GLASS COLLECTION STOLEN

If you are like I am, you were quite upset after reading the October Bulletin which listed items stolen while the couple was at a Convention. Also very thankful that something like that hasn't happened to you. I know I was. That is until November 17th. Sometime during the day, someone kicked in the patio door and stole a collection built over the last four years.

Following is a list of some of the scarce to very rare pieces taken. If any of these show up, please contact: Dan Mohne, 10005 E. 118th St. S., Bixby, Oklahoma 74008 PHONE: 1-918-369-3596.

VERY RARE: Northwood lavender Leaf & Beads rose bowl, Fentons green/vaseline Chrysanthemum bowl, Northwood electric blue non-stippled Good Luck plate, Millersburg green Hobnail Variant vase, Northwood ice blue Daisy & Drape vase, (top turns in), Dugan marigold Pony plate (confirmed old), Millersburg 7 3/4" X 3 3/4" deep vaseline Strawberry bowl, Northwood blue opal Rose Show bowl, Northwood electric blue Grape & Cable large I.C.S. bowl.

VERY SCARCE TO RARE: Peacocks (2) ice blue P.C.E., (2) ice blue eight ruffle, P.C.E. marigold with Basketweave back, Fenton amethyst Holly plate, (2) Peacocks Basketweave back amethyst, amber Imperial Grape plate.

In all there were 168 pieces stolen. In addition to the items listed above, there were other Peacock pieces, Rose Show bowls and plates, some beautiful, Strawberry pieces including a green stippled plate and an amethyst stippled plate, an aqua opal and electric blue Dandelion mug, Thistle banana boats in marigold, blue and green, two Elks pieces, matched pair of 13 1/2" blue Rustic Funeral Vases, and (4) Three Fruits footed bowls including a stippled aqua opal and lavender.

THEY WILL BE SADLY MISSED

H.O.A.C.G.A. was deeply saddened to hear of the recent deaths of three of our loyal members; Dorothy Perry, Gladys Casey and Mary Welch.

We express our deepest sympathy to their loved ones. May God comfort them in their loss.

We have just heard of the recent death of Sherman Hand. He was one of the early collectors of Carnival Glass and also was the author of several books on Carnival Glass. We are deeply saddened and send our condolences to his wife and family.

H.O.A.C.G.A.



The highest price ever paid for a piece of Carnival Glass at public auction was recorded November 17, 1989 in St. Louis, Missouri when the Woody Auction Company auctioned the Aqua Opal Poppy Show Bowl. The bowl was from the estate of Phyllis Whitworth of Oklahoma City, and sold for \$18,500.

John Woody stated the bowl had been traded by Betty Klutts of Oklahoma City to Mrs. Whitworth in the early 1970's for a purple Acorn Burrs water set. The beautiful piece of glass went to Dr. and Mrs. Gary Hackenberger from Bethlehem, Pennsylvania.

The last high auction price was for the Aqua Opal Acorn Burrs punch set which sold at the Marion Hartung estate auction for \$12,500.00. Recently, a second Aqua Opal Acorn Burrs punch bowl and base surfaced and was sold at a private sale for \$19,000.00.

=====



MILLERSBURG ROSALIND COMPOTES

The shorter ruffled compote on the left is in amethyst. It is 6 inches high and a little over 6 inches wide at the top. This size is listed as rare. We purchased it from Don Moore, while at the Pacific Northwest Carnival Glass Convention in 1984. The tall stemmed jelly compote on the right is almost 9 inches high. The jelly compotes are not ruffled. This tall size is considered as extremely rare. We might add that they are also very beautiful and most desirable. The one shown here has the radium iridescence. Notice that the base on the tall compote is nine sided. Each of these "so-called" sides represents a panel that extends from the very outside of the base up the stem and bowl to the very top of the compote. In contrast to this one, the base of the smaller compote is round and smooth. The stem on this one contains eight smaller panels. The exterior of the bowl on this piece is smooth. We purchased the tall compote from Mr. Hagen of Kentucky while at the 1988 I.C.G.A. Convention at La Crosse, Wisconsin.



ROSALIND TALL COMPOTE AND TWO ROSALIND SAUCES

Photo #2 shows this tall Rosalind compote alongside two small six inch sauces. We consider these little sauces as being very rare. The ruffled one on the left is in amethyst. We purchased it from William & Deborah Coles of Hickory, Kentucky. The ice cream shape sauce is in green and came from Mary Kesterson of Texas. Needless to say, we are very proud to have these Millersburg pieces in our collection.

This article, on the Millersburg Rosalind compotes and sauces, marks our 131st entry into the Pictorial Pattern Parade series. We hope that you have found it interesting and educational.

JOHN & LUCILE BRITT

=====



HOBSTAR BAND VARIET AND HOBSTAR BAND TUMBLERS

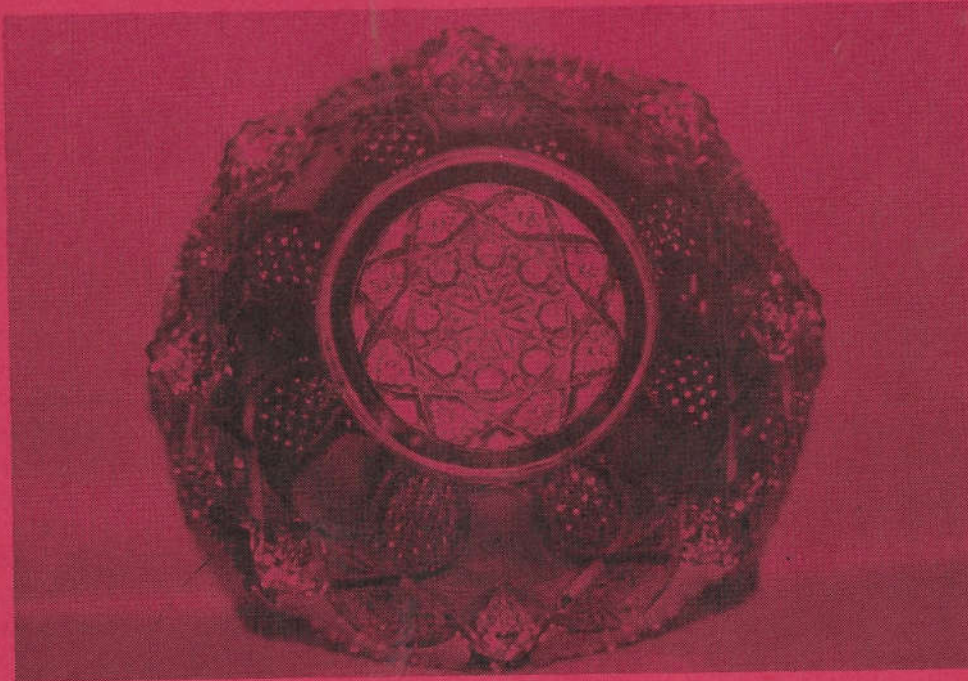
The above photo shows the Hobstar Band Variet tumbler (Owens #97) on the left and the Hobstar Band (Owens #96) on the right. Actually, the only difference in these two tumblers is the rim diameter. The Variet goes straight up to the top while the regular Hobstar Band flares out at the top. It has a top opening of $3\frac{1}{2}$ inches, while the Variet is 3 inches in diameter. The base on both tumblers measures $2\frac{3}{8}$ inches wide. The height is slightly more than $4\frac{1}{4}$ inches on the Variet with the regular Hobstar Band a little less.

There are six Hobstars around these tumblers, each of which rest on a pointed and patterned support. Diamond shaped patterns containing hobnail designs separate each of these six hobstars. An eight pointed star, with a hobstar in the center, is impressed into the underside of the base.

We have seen these tumblers only in marigold and the color runs from very light to a good dark color. We have noticed that the color is usually darker on the Variet. The water pitchers in this pattern were made in two different shapes. One has a flat or skirted base while the other is of the dome footed style. In the few parts of sets that we have seen, the flared out tumblers accompanied the pitcher with the flat based or straight down sided water pitcher. On the other hand, the dome footed pitcher was with the Hobstar Band

Variet tumblers. In each case the Hobstar Band Variet tumblers and pitchers were of much darker marigold. Whether this is always true or not, we are not sure, as we have not seen all that many of either.

We have refrained from writing about this pattern for a number of years due mostly to the fact that we were not sure who made it. After searching through a lot of old glass books and talking to many glass dealers and collectors, we are still not sure. Even though this is a near cut or intaglio pattern, we have never been convinced that this pattern was made by Imperial. A few collectors relate to it as Imperial and we respect their opinion. Jane Dinkins of Houston, Texas, who does a lot of pattern research, also seems to believe that this pattern was not made by Imperial. Perhaps in the future, Jane or some other Carnival Glass pattern researcher will find out who really did make this one. Until we know for sure, we are going to call it "maker unknown".



HOBSTAR BAND BOWL

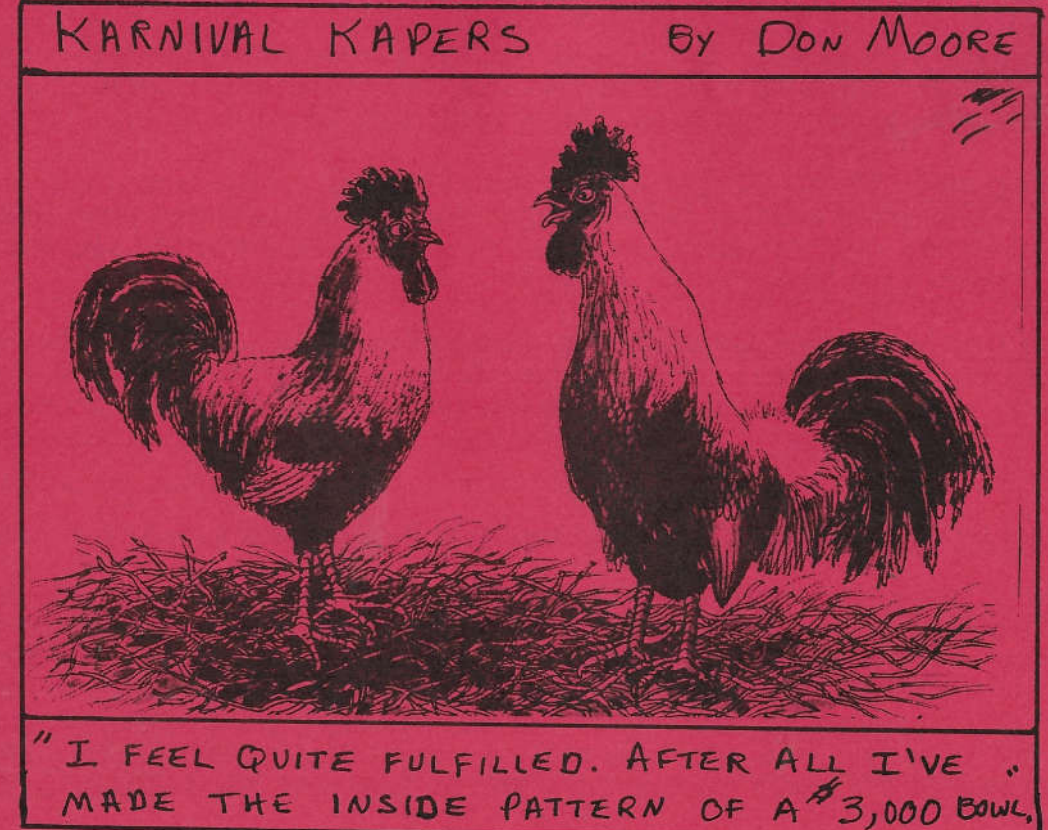
In the above photo, we show this same pattern adapted to a regular size bowl. This bowl is owned by Mr. and Mrs. Bob Allaire of Texas. We photographed it at the Air Capitol Convention. This photo will give you some idea as to how the maker altered the pattern somewhat in order to fit the piece. The late Mrs. Hartung in her book #8, in describing the Hobstar Band pattern, related

to this procedure, where the mold-maker had to adapt the basic motif to fit the shape of the piece. We suspect that very few collectors would actually recognize this pattern on the bowl shape. For this reason we have included this photo along with the Hobstar Band tumblers.

We have also seen the two handled celery in this pattern. See Hartung book 4- page 27 for a sketch of this one. In the April, 1980 H.O.A.C.G.A.C. Bulletin, we wrote about the Hobstar Band compote. At that time it was the first one we had ever seen. Since then we have heard of several more, but we believe them to be quite rare in this shape. The pattern is found on the outside of all of these pieces.

This is #143 in this Educational Tumbler Series. Next month we will cover the small Sydney juice or champagne glass.

JOHN & LUCILE BRITT



A PEAK INTO THE PAST -- IN CARNIVAL GLASS

By John & Lucile Britt

This time, in looking back into the past, we thought you might be interested in viewing some of the Carnival Glass pieces that we purchased back in the year of 1971. The prices we paid at that time should be of special interest to you. We are listing the people we purchased them from, the pieces and patterns, and the price we paid for them in 1971.

CARL GEISLER, CARTHAGE, MISSOURI: On 9-29-71 we received a letter (we still have the letter) from Carl that he was giving us first chance on an aqua opal Peacock at the Fountain 3 footed fruit bowl for \$385.00. This was certainly one of the many super pieces of Carnival Glass that we have owned. In 1975, when we were thinking of moving to Florida, we had John Woody sell about half of our Carnival in an auction at St. Louis, Missouri. The other half was sold through the Antique Trader ads and at Conventions, etc. We kept our tumblers and mugs. This bowl sold at the St. Louis auction for \$2,700.00 in 1975. Cooley Miller's daughter bought it at our auction and Cooley later purchased it from her. Sometime later Ken Osbon purchased it from Cooley. Later on Karen Engle purchased it from Ken and she has it in her collection at the present time. We wonder what it would sell for today? Other items we purchased from Carl Geisler in 1971: Blue Rose Show Variet plate \$145.00; purple Millersburg Heavy Grape compote \$150.00; purple Three Fruits plate \$75.00; marigold Dragon & Strawberry footed bowl \$75.00; purple Millersburg Diamonds water set \$250.00; aqua opal Rose Show bowl \$95.00; purple Wishbone plate \$105.00; mint green Daisy Squares rose bowl \$160.00.

ELMER GERDING, WARRENTON, MISSOURI: Electric blue P.C.E. bowl \$75.00; same in purple \$75.00; red Persian Medallion bon bon \$55.00; marigold Four-Seventy-Four punch set \$90.00; peach opal Four Flowers small plate \$12.00; marigold Beaded Stars rose bowl \$15.00; green Little Corn Bottle \$111.00.

GEORGE LOESCHER, BELOIT, WISCONSIN: Purple Town Pump \$303.28; ice blue Grape & Cable centerpiece bowl \$329.50; green Grape & Cable candle lamp with shade \$255.28; green Millersburg Peacock & Urn large compote \$229.50; aqua opal Good Luck bowl \$145.43. (These pieces have postage and insurance included in the price.)

KROKERS ANTIQUES, TOPEKA, KANSAS: Marigold Kittens cup & saucer \$72.00.

MURRAY'S ANTIQUES, SKIATOOK, OKLAHOMA: Electric blue Peacock at the Fountain orange bowl \$165.00; amethyst Wreath of Roses punch bowl and 5 cups \$165.00; amber Nu-Art Homestead plate \$450.00; white Daisy & Drapes vase \$42.00.

FRANK HULSIE, PAWHUSKA, OKLAHOMA: Ice blue Hearts & Flowers flat plate \$180.00; blue Pine Cone 6" plate \$17.50; purple Grape & Cable plate \$75.00; purple Hearts & Flowers ruffled bowl \$45.00; amethyst Zig-Zag bowl \$37.50;

A PEAK INTO THE PAST

continued...

purple Wishbone epergne \$200.00; purple stippled Strawberry plate \$85.00.

WHITE'S ANTIQUES, SPRINGFIELD, MISSOURI: Purple 7 piece Acorn Burrs water set \$450.00; marigold Good Luck plate \$140.00; marigold Peacocks on the Fence plate \$95.00; purple Round Up plate \$135.00; blue Persian Medallion plate \$85.00; purple Heart & Vine plate \$120.00; marigold handled May Basket \$30.00.

HAZEL RAWLS, ORANGE, TEXAS: Cobalt blue Iris compote \$32.00.

MRS. BETTY KLUTTS, OKLAHOMA CITY, OKLAHOMA: Green Double Star water set \$350.00; electric blue Rose Show plate \$125.00; electric blue Poppy Show plate \$250.00; amethyst Seacoast Pin Tray \$165.00; purple Town Pump \$250.00; blue Persian Medallion large chop plate \$190.00; green Town Pump \$750.00.

DON WILLIAMS, OTTUMWA, IOWA: Ice blue Fine Cut & Roses rose bowl \$60.00; green Singing Birds mug \$45.00; purple Greek Key ruffled bowl \$35.00.

MARSHALL'S ANTIQUES, HASTINGS, NEBRASKA: Marigold Fishermans mug \$40.00; blue Panelled Dandelion water set \$275.00.

CHARLES MOCHEL, SHAWNEE MISSION, KANSAS: Dark lime green Bushel Basket \$50.00; blue Rambler Rose tumbler \$25.00; blue Floral & Grape tumbler \$15.50.

DOROTHY NELSON, MANHATTAN, KANSAS: Ice blue Peacock & Urn large ice cream bowl \$125.00; amethyst Peacocks on the Fence plate \$125.00; smoke Little Barrel \$2.75, same in marigold \$2.50.

JEAN'S ANTIQUES, OKLAHOMA CITY, OKLAHOMA: Marigold Ladies Slipper \$45.00; blue Beaded Cable rose bowl \$58.50; marigold (2) Panther sauce dishes \$15.00 each.

MARION HARTUNG, EMPORIA, KANSAS: Marigold Inverted Strawberry powder jar \$45.00; white Constellation compote \$30.00; marigold Inverted Feather compote or sundae \$14.40; ice green Corn Vase \$120.00.

KEAN AUCTION SALE, ABILENE, KANSAS: Green Six Sided candlestick \$19.00; blue Stippled Strawberry bowl \$47.50; red Acorn bowl \$50.00; blue Butterfly & Berry pitcher and 2 tumblers \$160.00.

ANTIQUES UNLIMITED, OKLAHOMA CITY, OKLAHOMA: Amethyst Victorian bowl \$50.00; marigold Daisy & Drapes vase \$16.00; marigold Stork & Rushes handled basket \$27.00.

A PEAK INTO THE PAST
continued...

KURT KREMERS, TUSCON, ARIZONA: Ice Green Bushel Basket \$35.00; amethyst Fluffy Bird Peacock pitcher and 5 tumblers \$220.00; marigold Split Diamonds small cream pitcher \$4.50; amethyst Many Stars bowl \$110.00.

S. BELGRAVE, PARMA, OHIO: Purple Colonial Lady vase \$50.00; purple Four Flowers Variet flat plate \$80.00.

DEANE LAYNE, BELVUE, NEBRASKA: Red amberina Two Flowers footed bowl \$150.00; green Grape & Cable fruit bowl \$120.00.

ANETTE ZWIRN, TUSTIN, CALIFORNIA: Blue Captive Rose plate \$85.00; blue Orange Tree plate \$120.00; blue Holly plate \$60.00; marigold Garden Path Variet rose bowl \$55.00.

DALE FRAZIER, HUTCHINSON, KANSAS ANTIQUE SHOW: Ice blue Daisy & Drapes vase \$67.50. (NOTE: When we were selling our glass in order to move to Florida in the mid 1970's, we sold this vase to Roma & Jerry Cole of Michigan for \$225.00. What would it bring today?) Ogden Furniture advertising piece \$65.00.

SUZANNE MILES, MILWAUKEE, WISCONSIN: Purple Colonial Lady vase \$49.00; marigold Soda Gold salt & pepper shakers \$60.00; white Bushel Basket \$45.00.

This has been #17 in this series of looking back into the past. We hope that you have found it interesting. Lucile and I would like to wish you all a very Merry Christmas and a Happy and Healthy New Year.

JOHN & LUCILE BRITT

=====

THOUGHT FOR THE MONTH

*Wisdom is knowing what to do
next; virtue is doing it.*



MILLERSBURG FESTIVAL AND THE HUDSON AUCTION

We love an excuse to go to Millersburg, Ohio and see this pretty little Amish town, the old Courthouse with hitching posts for the horses and buggies that bring these folks in for shopping. As always, the first weekend in October is Festival Weekend and we don't recall ever missing a one for many years. The window displays aren't quite as interesting as years ago when more Carnival was shown. Always an antique show. This year lots of crafts everywhere and a nice parade on Saturday. The weather had a nip in the air but we enjoyed browsing around with some relatives and friends. Went to a nice Amish restaurant to eat. The Amish cooks are among the best.

A Tom Burns auction took us back again on October 27 and 28. The weather was so nearly perfect, beautiful sunny days at about 75°. The Fall colors were peaking and made lovely pictures in every direction. We stopped off at Canton for lunch with relatives and on to Hudson by 2:30. So many already there Preview was later than expected due to motel double scheduling the auction room. Tom and faithful helpers worked hard to get it ready by 8:00 P.M. A nice sized crowd gathered. A happy surprise to see Rose Schleede of New York and the Sam Wolf's of Indiana besides loads of the regular auction people.

Sale began prompt enough, as over 300 items to sell. Everything looked pretty with many rare items in the miniature group especially. The (N) Peach tumbler took everyone's eye as most of us had never seen one in the marigold color. Wonder why Northwood didn't make more in that color as they made several in other colors? Sales were brisk and doing well up to when previous plans caused us to leave at noon when number 100 had sold. Sure hated to go, but we had a long drive ahead of us, not going home but to our hometown for a one room schoolhouse benefit we are involved with. The schoolhouse is moved now to a state park and we are pleased about the progress after three years since we first started.

There were about 75 bidding numbers and the (N) Peach tumbler sold for \$1,600.00, do not lucky owner, but bet they don't drink tea from it and then put it in the dish washer. Some other items sold well too. An ice blue Wishbone bowl at \$800.00, green Wishbone water pitcher \$875.00, (N) Grape & Cable ice blue ruffled bowl at \$1,000.00, green Inverted Feather tumbler \$750.00, a Millersburg blue Hobnail water pitcher \$1,400.00, Millersburg green Hobnail tumbler \$1,450.00. We have never heard prices on rest of sale but assume it went well.

It looks like winter is about to keep us at home. Thanksgiving so near and then Christmas. What a fast year it has been. A good one too. Have heard lately of an ice blue Butterfly being found. Emma Tilton had a lovely Millersburg Fleur de Lis rose bowl to show.

MILLERSBURG FESTIVAL

continued...

Everyone shocked and saddened at Bill Harmon's unexpected death. The Harmons of Indiana always attend Conventions and Thelma makes such pretty displays. A Memorial Fund was being taken at the registration desk for him. Our deepest sympathy to all the family. He will certainly be missed by all of us.

We also lost another Carnival collector from years ago. Jewell Bennett of Marietta, Georgia suffered a long illness and died October 3, 1989. Her Carnival was sold at auction only a few years ago. We know of others whom we've lost this year and it is sad to give them up.

We hear of the Hagerstown, Maryland Jamboree and the John Woody auction at St. Louis for November, but we won't take a chance on a snowfall so will have to pass them by. Both events will be good.

We'll wish everyone a very Merry Christmas and a Happy New Year. Hope to see you all again in 1990, with a good year in Carnival.

Grace & Byron Rinehart
Charleston, West Virginia

THE 1990 NOTEBOOK SECTION

The next section of the H.O.A.C.G.A. Notebook will be on the 9" plates. If you have a plate(s), why not get out the camera and take a photograph of your plate(s) and send them to me.

Don't use the excuse that everyone else uses "that you cannot take a good Photograph". If you can't take a good photo, then get your neighbor or friend to photograph the plates for you. The more photos I receive, the better the choice of pictures for the Notebook.

So get all of your plates out of the cabinet and take a photograph of them.

Remember, we want to include all patterns, as all patterns are important for the Notebook. Send photographs to:

Bob Grissom
7900 Crescent
Raytown, Missouri 64138

CARNIVAL CALENDAR

FEBRUARY 8-10, 1990 - LOSE YOUR HEART TO CARNIVAL GLASS JAMBOREE, Ramada Inn, 2560 U.S. 19 North, Clearwater, Florida 33575, 1-800-272-6232. Room sales and raffle, Hospitality Room with program by Tom Burns, educational program "Carnival Glass Blues", auction on November 9, banquet on November 10, with Helen Greguire as speaker. For more information, contact Naomi Calkins at 1-813-725-4145.

FEBRUARY 16-18, 1990 - TEXAS CARNIVAL GLASS CLUB MINI-CONVENTION in Houston, Texas at the Marriott Hotel, Greenspoint. 1-713-875-4000. Mention the TCCG for \$40.00 per day rate. Tom Burns auction, Marie McGee, banquet speaker, free picnic supper Friday night, Glass for sale in rooms, Educational seminar. Ya'll come!!!. Need not be a member to attend.

Anyone wishing to announce Convention or auction dates, send information to Eleanor Mochel, 6409 Beverly Drive, Mission, Kansas 66202.

NEWS FLASH - - - AUCTION HIGHLIGHTS

What you've all been waiting for. Reasons to join us for the February, 1990 "Lose Your Heart to Carnival Glass" Jamboree. If you haven't been a member in the last 2 years and may want to come, let us know by requesting a Jamboree packet. It's full of all details and tidbits you want to know.

120 pieces to include, but not limited to THESE:

- | | | | |
|---|------------------------------|----|--|
| R | Orange Tree mug | G | Corn Vase |
| P | Town Pump | IB | Corn Vase |
| B | 1914 BPOE plate | A | Trout & Fly bowl |
| B | Peacock & Urn plate | AO | Fruits & Flowers bon bon |
| W | Peacocks plate | B | Zig-Zag pitcher |
| G | Inverted Strawberry spittoon | B | Forget-Me-Not tumblers (originally sold with Zig-Zag) |
| M | Oriental Poppy pitcher | B | Peacock at the Fountain |
| B | Rose Show bowl | | 8 piece punch set |
| B | Orange Tree hatpin holder | IG | Pony bowl, tiny damage to a point |
| M | Kittens cup & saucer | | |

Send for or call for information packet to:

- CHAIRPERSON:
- | | | |
|---|--|--|
| Naomi Calkins 110 Woodland Court Safety Harbor, Fl. 34695 1-813-725-4145 | Kim Rice (Co-Chairman) 310 Park Blvd. Oldsmar, Fl. 34677 1-813-855-2904 | Barbara Hobbs, (Treas.) 5501 - 101st. Ave. N. Pinellas Park, Fl. 34664 1-813-541-6164 |
|---|--|--|

FROM OUR CANADIAN FRIENDS...

How are you all down there? A little news from Quebec. Our Club is doing fine. A recent find up here was the first known and confirmed RED Cherry Chain large bowl! I examined it myself; mint and cherry red: WOW!

You guys should get to see it because I'm told it was sold to a collector from your neck of the woods! I guess nobody here wanted it....

Also, now living and found here, an amethyst flat, Windflower plate, a green Peacock at the Fountain table set, and my electric blue, RARE, Fancy interior, unheard of, Fine Cut & Roses candy dish, that I showed at the Convention.

It's out there all right. All you have to do is search. You'll get lucky sooner or later.

In our last newsletter, I wrote an article on the H.O.A.C.G.A. Notebook and inserts. I was, however, unable to write about future sections without just guessing. So, what I would like to know is there a master plan? What are the future sections going to be about? What's the next section. What do you require from members who would like to supply information for any future sections? A photo? Black & white? Color? A negative? Or is the Notebook finished now? Maybe you could publish an answer in the H.O.A.C.G.A. Bulletin as I'm sure many out-of-town members would also like to know.

Yvan Beaudry
Boisbriand, Quebec

EDITORS NOTE:

Thank you for telling your Canadian collectors about the H.O.A.C.G.A. Notebook. Each year as sections are added, it becomes a more valuable source of information to the collector.

Now to your questions:

1. Master Plan: No master plan has been developed. When a category is completed, we decide what to start next. So far, there are a lot of categories to choose, but as time goes by, it will become more difficult.

2. Future Sections: The 1990 section will be on the regular size (9") plates. They will take two years to complete this part. After that, we welcome suggestions of the next category.

3. Member Participation: Member participation is always welcome and is necessary in order to obtain the complete information about the various pieces of glass in each category. As you notice each section contains a listing of

FROM OUR CANADIAN FRIENDS
continued...

members that contribute to the section. Each year members are asked to help by sending photographs. Without member participation, the project would not be possible.

4. Photographs: Since the Notebook is in color, we need a regular color photograph. A slide is also acceptable and is probably better, but most members have photographs of their collection.

5. Is The Notebook Complete? It will take several years to complete the Notebook. The original intent of the Notebook was to include a photograph of all patterns by category. This will take many years to complete.

We welcome any members' help and/or suggestions with the Pattern Notebook.

=====

LETTERS FROM OUR MEMBERS...

Dear Friends:

I advertised some Carnival Glass books in the H.O.A.C.G.A. for sale and caused quite a riot. They were all sold on Monday evening, by phone. I continued to get calls for 4 days and nights from almost all the 48 states. That wasn't so bad, but a lot of people called the phone number in the 1989-90 Roster Book, which was a number I had 4 years ago. The lady who now has the number called me and bawled me out about it and wait, that isn't all.

The letters started arriving with checks for the books. Some asked for their checks back but didn't send a self addressed envelope or even a stamp. Wednesday came five and today, Thursday; came 6 more. These all cost me a \$.25 stamp to return.

I think maybe our readers should be educated to the fact they should send an S.A.S.E.

Mr. Leslie Martin
Farmington, Missouri

TAMPA BAY CARNIVAL GLASS CLUB JAMBOREE

Besides the available schedule of our February 8, 9 and 10, 1990 Jamboree being printed in many national newsletters, I'd like to encourage you to come thaw out at the first event of the new year.

First I'd like to thank all those who helped us in the past and those who will help us this year to spread the word of our Jamboree and pull it off.

All the details have been finalized. We will be in a different hotel this year. Maybe this place will turn out to be our new permanent home. We continue to look for the very best place to entertain our traveling guests.

This year we'll have a bigger show and sale room. Everything for the public is on the first floor. There are 2 elevators in our 5 floor hotel. This place is like Lakeland. We'll have rooms inside. No outside exposure. All efforts will be made to keep us on one floor and in a block. You can reserve your room now with no prepayment or credit card # required. Make sure you say your one of us. Rooms will be held till 4:00 P.M. on the first day of your scheduled arrival. Special rates apply to your entire stay, in case you'll be here before the 8th and after the 10th. There are 3 restaurants here and at least one is open for 24 hour eating.

Notice the schedule, we're gonna have the Burns auction the day before the show and sale. We've been convinced to try it this way.

If you are in town before or after the Jamboree, some of local members want to invite you to visit our homes, see our glass or just sit a spell. Personally I'm glad to show off my glass to any one I can drag in, who appreciates my collections of Carnival and dust. Your rosters may come in handy.

More advertising is being done to bring in even more crowds than ever. I believe if you ask anyone who was with us last year, we had the attendance to rival any antique show. Plans are already started to have TV coverage again. Recorded in advance and timely broadcast for maximum effectiveness.

If you are not a current member, please let us know. We'll be glad to send you a Convention package.

Barbara Hobbs
Treasurer & Advertising

***** CARNIVAL GLASS FOR SALE *****

Donald H. Walker, Jr., 6120 Ridge Rd., Mt. Airy, Maryland 21771
PHONE: 1-301-831-7234

| | | | |
|----|----|--|--------|
| A | EI | Princess lamp | 875.00 |
| R | EI | Stippled Rays sherbert | 300.00 |
| G | EI | Grape & Cable butter | 195.00 |
| B | EI | Blackberry miniature compote | 95.00 |
| PO | EI | Folding Fan compote | 125.00 |
| PO | EI | Flour Flowers 6 $\frac{1}{4}$ " scalloped dish | 165.00 |
| IB | EI | Cornucopia candlestock | 75.00 |
| M | EI | Robin tumblers, have 2, each | 65.00 |
| W | EI | Grape Delight footed rose bowl | 125.00 |
| B | EI | Swan Pastel | 35.00 |

=====

Donna Courts, 4011 Tollgate Road, Batavia, Ohio 45103
PHONE: 1-513-724-2564

| | | | |
|----|----|--|--------|
| M | EI | Good Luck P.C.E. bowl | 150.00 |
| M | EI | Good Luck ruffled bowl, Basketweave exterior | 135.00 |
| M | GI | Dugans Wreath Cherry tumbler | 30.00 |
| P | EI | Grape & Cable perfume botton, beautiful | 650.00 |
| P | EI | Strawberry plate, beautiful | 120.00 |
| M | EI | Stippled Strawberry P.C.E. bowl | 210.00 |
| M | EI | Stippled Three Fruits plate | 225.00 |
| AO | GI | Four Pillars 11" vase | 85.00 |
| B | EI | Persian Medallion plate | 500.00 |

=====

Leslie Martin, 522 Yale, Farmington, Missouri 63640
PHONE: 1-314-756-5643

| | | | |
|---|----|---|--------|
| M | EI | Vintage wines, have 4 at \$20.00 each, or all for | 80.00 |
| A | EI | Vintage wines, have 2 at \$30.00 each, or all for | 60.00 |
| M | EI | Singing Birds mug | 32.50 |
| M | EI | Orange Tree wine | 30.00 |
| B | EI | Orange Tree wine | 40.00 |
| B | EI | Wine & Roses wine | 60.00 |
| W | EI | Hearts & Flowers compote | 100.00 |
| A | EI | Grape & Cable sweetmeat | 250.00 |
| W | EI | Grape 6" ruffled edge bowl | 30.00 |
| B | EI | Orange Tree mugs, have 4 at \$40.00 each or all for | 160.00 |

=====

***** CARNIVAL GLASS FOR SALE *****

Gary Lickver, Post Office Box 1778, San Marcos, California 92069
 PHONE: 1-619-744-5686 leave message

| | | |
|-----|--|--------|
| P | Town Pump, perfect and pretty | 800.00 |
| P | Embroidered Mums bowl, pretty, golden | 450.00 |
| P | Hanging Cherries tumbler, side base nick | 150.00 |
| IG | Drapery vase, footed | 180.00 |
| W | Holly plate, pinks and blues | 260.00 |
| AMB | Dragon & Lotus I.C.S. bowl | 300.00 |
| AMB | Coin Dot 8" bowl | 65.00 |
| M | Milady tumbler | 65.00 |
| M | Waterlily 5" footed bowl | 30.00 |
| PO | Bells & Beads 7" bowl | 65.00 |

David Sharp, 3717 Wilmington Pike, Dayton, Ohio 45429
 PHONE: 1-513-299-8420

| | | |
|-------|---|--------|
| IG EI | Hearts & Flowers compote, nick on outer edge | 650.00 |
| AQ EI | Blackberry Open Edge ruffled basket, mid-size | 200.00 |
| * EI | *Violet Blackberry Open Edge ruffled basket, mid-size, stress lines in bottom | 60.00 |
| A EI | Ten Mums 10" ruffled bowl | 165.00 |
| PO EI | Fanciful ruffled plate | 260.00 |
| A EI | (N) Petals ruffled compote | 60.00 |
| M EI | (N) Tree Trunk 10" vase, SUPER | 38.00 |
| A EI | Hearts & Flowers ruffled bowl | 40.00 |
| B EI | Rose Wreath compote | 35.00 |
| A EI | Persian Medallion compote | 75.00 |

Ray Hitchcock, R.R. #1, Winterset, Iowa 50273
 PHONE: 1-515-462-2074

| | | |
|----|--|-------|
| M | Panther 3 piece berry set, each with small chip, all for | 80.00 |
| DM | Holly Whirl bowl, Millersburg | 50.00 |
| B | Blackberry miniature compote | 32.50 |
| M | (N) Good Luck bowl, P.C.E. SUPER, but 2" C.R. crack | 35.00 |
| G | (N) Grape & Cable butter base, SUPER | 90.00 |
| G | (N) Acorn Burrs butter base | 65.00 |
| M | Hobstar Band, base chip | 65.00 |
| B | Orange Tree Loving Cup, chip inside bowl, SUPER | 75.00 |
| B | Pine Cone 6" plate | 55.00 |
| P | Grape & Cable (N) sugar, has small lid nick, SUPER | 50.00 |

***** CARNIVAL GLASS FOR SALE *****

Ruby & Yvan Beaudry, 109 -5e Ave., Boisbriand, Quebec, Canada J7G 1Y8
 PHONE: 1-514-437-4585

| | | |
|----|--------------------------------|--------|
| IG | Raspberry tumbler, flake | 400.00 |
| IG | Memphis punch base only, flake | 225.00 |

Ted Sheibley, 304A Hillcrest Drive, New Cumberland, Pennsylvania 17070
 PHONE: 1-717-938-6417

| | | |
|-------|--|----------|
| M EI | Imperial Grape wine glass | 20.00 |
| M EI | Grape & Cable individual ice cream bowl | 65.00 |
| R EI | Two Row Open Edge basket, 2 sides up | 365.00 |
| P EI | Hatpin, 3 Bees | 40.00 |
| P EI | Double Stemmed Rose dome footed bowl | 90.00 |
| M EI | Golden Harvest wine bottle with stopper | 65.00 |
| AO EI | Daisy & Drapes footed vase | 625.00 |
| P EI | Octagon Variet tumbler | 100.00 |
| G EI | Buzz Saw Cruet, small size, with stopper | 375.00 |
| IB EI | Peacocks on the Fence plate (N) | 1,705.00 |

SEND \$.45 postage for large list for sale

John Dubinski, 705 Vandiver, Suite G714, Columbia, Missouri 65202
 PHONE: 1-314-474-2644

| | | |
|-------|---|--------|
| B EI | Horse Medallion footed J.I.P. bowl, excellent color and beautiful silvery iridescence | 135.00 |
| IB EI | Hearts & Flowers 9" ruffled bowl | 450.00 |
| EB EI | Grape & Cable 9" bowl, stippled P.C.E. | 340.00 |
| EB EI | Fruits & Flowers stemmed bon bon, SUPER | 145.00 |
| A EI | Stippled Rays Variet, dome based with Greek & Scales ext., reversed (N) | 90.00 |
| A EI | Grape & Cable 8½" ruffled bowl (N) | 82.00 |
| A EI | Acorn Burrs 7 piece berry set (N) | 360.00 |
| A EI | Nesting Swan 10" ruffled bowl | 350.00 |
| G EI | Wishbone 8½" footed bowl (N) | 125.00 |
| M EI | Cherry 7" Millersburg, pastel and lovely | 75.00 |

Harold L. Fortney, 910 Penn. Apt. 704, Kansas City, Missouri 64105
 PHONE: 1-816-474-2054

| | | |
|------|--|--------|
| G EI | Millersburg Peacock Tail Variet compote, nice color | 95.00 |
| A EI | Millersburg Strawberry tri-cornered C.R.E. bowl, GORGEOUS! | 450.00 |

Sarah Clifford, Post Office Box 3592, Mansfield, Ohio 44907
 PHONE: 1-419-756-4712 evenings

| | | | |
|----|----|---|-------|
| A | EI | Peacock & Grape 8" spatula footed bowl, colorful green and bronze iridescence | 75.00 |
| A | EI | Stippled Rays 6" bowl, blue iridescence | 35.00 |
| M | EI | Stag & Holly I.C.S. spatula footed shallow 8" bowl, nice | 75.00 |
| A | EI | Grape & Cable (N) 8½" bowl, electric blue iridescence | 75.00 |
| DM | EI | Pansy oval pickle dish, excellent color | 40.00 |
| P | EI | Grape & Cable (N) C.R.E. 8½" bowl | 75.00 |
| DM | EI | Plain Jane 10" bowl, beautiful | 35.00 |

=====
 Dorothy Baur, HCR#2, Box 269A, Canyon Lake, Texas 78133
 PHONE: 1-512-935-2261

| | | | |
|----|----|---|--------|
| B | GI | Holly 9½" plate | 200.00 |
| B | GI | Covered Hen (OLD) small rim chiggers inside | 100.00 |
| PM | GI | Kittens plate, 2 sides up | 100.00 |
| PM | EI | Leaf Chain 8½" bowl | 55.00 |
| G | EI | Feathered Serpent 10" bowl | 65.00 |
| G | EI | Peacock Tail 10" bowl | 75.00 |
| G | EI | Grape Leaves (N) 8 3/4" bowl | 70.00 |
| G | GI | Imperial Grape 6½" plate, small chigger on underside of plate | 80.00 |
| OG | EI | Wide Panel candlesticks, pinhead on one candlestick, the pair | 75.00 |
| R | LI | Orange Tree mug, large size, thumb-size chip at base | 115.00 |

=====
 Virgil St. John, Box 400, Le Grand, Iowa 50142
 PHONE: 1-515-479-2952

| | | | |
|----|----|--------------------------|--------|
| M | EI | Blackberry Block tumbler | 45.00 |
| A | EI | Imperial Grape tumbler | 45.00 |
| M | GI | Horseshoe tumbler | 30.00 |
| B | EI | Lattice & Grape tumbler | 50.00 |
| B | EI | Lattice & Daisy tumbler | 50.00 |
| P | EI | Raspberry (N) tumbler | 50.00 |
| M | EI | Ten Mums tumbler | 50.00 |
| IG | EI | Corn Vase (N) | 495.00 |
| AQ | EI | Hearts & Flowers compote | 750.00 |
| W | EI | Hearts & Flowers compote | 250.00 |

Mary Kesterson, 3020 Mesa Road, Willow Park, Weatherford, Texas 76087
 PHONE: 1-817-441-8410

| | | | |
|-----|----|---|----------|
| LAV | EI | (N) Peacocks bowl, P.C.E., SUPER IRIDESCENCE | 550.00 |
| R | EI | Dragon & Lotus bowl, I.C.S. GOOD RED | 1,200.00 |
| R | EI | Acorn bowl, ruffled | 650.00 |
| R | EI | Dragon & Lotus, ruffled, SUPER RED | 1,900.00 |
| P | EI | Millersburg Rosalind Variet compote, RARE & SUPER IRID. | 685.00 |
| EB | EI | (N) Peacocks plate | 750.00 |
| G | EI | (N) Peacocks bowl, ruffled, SUPER!!! | 1,200.00 |
| P | EI | (N) Peacocks plate | 825.00 |
| AO | EI | (N) Peacocks bowl, ruffled, pink iridescence | 1,100.00 |
| B | EI | (N) Peacock & Urn small ice cream bowl, stippled | 150.00 |

=====
 Bob & Carol Schneider, 6942 Silverthorne Circle, Sacramento, Ca. 95842
 PHONE: 1-916-332-7712 evenings

| | | | |
|---|----|---|--------|
| B | EI | Peacock & Urn plate | 375.00 |
| G | EI | Butterfly & Berry master berry bowl | 180.00 |
| M | EI | Lions bowl, ice cream shaped, SUPER | 120.00 |
| M | EI | Peacock & Urn ruffled bowl | 65.00 |
| M | EI | Peacock at the Fountain punch bowl and base | 275.00 |
| A | EI | Fanciful low ruffled bowl | 135.00 |
| G | EI | Three Fruits Variet plate | 145.00 |
| P | EI | Three Fruits plate | 135.00 |
| M | EI | Floral & Grape water pitcher | 100.00 |

=====
 Pat Lower, Post Office Box 686, Galion, Ohio 44833
 PHONE: 1-419-468-1269 evenings

| | | | |
|-----|----|--|-------|
| M | EI | John H. Brand Open Edge Basket | 75.00 |
| G | EI | General Furniture Co. 1910 Peacock Tail hat | 75.00 |
| M | EI | Feldman Bros. Furniture, Salisbury, Md., Open Edge Basket | 75.00 |
| P | EI | Greek Key ruffled bowl | 65.00 |
| AMB | EI | Fine Rib vase, amber 5" diameter at top and 4" diameter at base | 45.00 |
| P | EI | Acorn Burrs tumbler | 55.00 |
| A | GI | Beauty Bud vase | 30.00 |
| G | EI | Pansy bowl | 25.00 |
| A | EI | Blackberry Wreath 8½" ice cream shaped bowl, Millersburg, radium | 75.00 |
| M | EI | Cherry Chain 10" 3 in 1 edge bowl, bruise on base edge | 40.00 |

***** CARNIVAL GLASS FOR SALE *****

Steve Davis, 3331 Warpath Road, Macon, Georgia 31201

PHONE: 1-912-741-4252

| | | | |
|---|----|--|--------|
| P | EI | Grape & Cable water pitcher and 1 tumbler | 300.00 |
| M | EI | Grape & Cable tankard water pitcher, SUPER MARIGOLD ALL THE WAY DOWN | 500.00 |
| G | EI | Double Star pitcher and 1 tumbler | 475.00 |
| M | EI | Wreath of Roses punch bowl and base | 225.00 |
| M | EI | Rose Show bowl, extra nice | 425.00 |
| B | EI | Dragon & Lotus bowl, SUPER | 90.00 |
| P | EI | Fieldflower tumbler, SUPER | 75.00 |
| P | GI | Fieldflower pitcher | 250.00 |
| P | EI | Diamond Lace pitcher and 1 tumbler | 275.00 |
| M | EI | (N) Peacocks bowl, ruffled | 200.00 |

Will trade for want items (See Wants Section)

Barbara Hobbs, 5501 101st. Ave. N., Pinallas Park, Florida 34333-3311

PHONE: 1-813-541-6164 or 1-813-545-4833 answering machine

| | | | |
|-----|----|---|--------|
| M | GI | Flash Souvenir mug (not in books) says 1901, Eva, Ocean Grove | 35.00 |
| P | EI | S-Repeat punch cups, have 3, each \$90.00, or all for | 240.00 |
| G | EI | Dandelion mug | 450.00 |
| M | EI | Cut Cosmos tumbler, only 5 known | 400.00 |
| P | EI | Heavy Iris tumbler, heavily iridised | 70.00 |
| W | GI | Rose Spray goblet | 125.00 |
| AMB | | Imperial Grape cup and saucer | 65.00 |
| BMG | | Blue Milkglass 8" cupped in, low bowl, 27 raised ribs ext. | 175.00 |
| G | GI | Double Star pitcher | 300.00 |
| AMB | | Imperial Grape punch base ONLY, pretty, put wide candle in | 50.00 |

Eugene R. Snyder, Jr., 56 W. Main St., Dallastown, Pennsylvania 17313

PHONE: 1-717-244-7175

| | | | |
|-----|----|----------------------------|--------|
| PO | EI | Flowers & Beads plate | 85.00 |
| AQ | EI | Persian Medallion sauce | 135.00 |
| M | EI | Rose Spray goblet | 55.00 |
| G | EI | Blackberry Bramble compote | 55.00 |
| G | EI | Ribbon Tie bowl | 40.00 |
| B | EI | Fenton Flowers rose bowl | 85.00 |
| VAS | EI | Acorn bowl | 125.00 |
| G | EI | Peacock Tail hat | 40.00 |
| M | GI | Lions bowl | 100.00 |

***** CARNIVAL GLASS FOR SALE *****

Omer E. Sweeney, 28 Esmond Street, Esmond, Rhode Island 02917

PHONE: 1-401-231-4108

| | | | |
|---|----|---|--------|
| G | EI | Millersburg Cherries 10" bowl | 125.00 |
| P | EI | Grape & Cable sweetmeat | 250.00 |
| M | EI | Apple Tree tumblers, have 2, each | 30.00 |
| M | EI | Panneled Nu-Art shade | 35.00 |
| G | EI | Cosmos 6" bowl | 50.00 |
| M | EI | Columbia compote | 45.00 |
| P | EI | Singing Birds mug, manufacturing defect inside base | 80.00 |
| M | EI | Singing Birds sugar cover | 15.00 |
| P | EI | Tree Trunk 15" high with elephant foot vase | 325.00 |

Harold R. Wagner, 5951 Fredericksburg Road, Wooster, Ohio 44691

PHONE: 1-216-264-3703 Call after 6:00 P.M.

| | | | |
|---|----|---|----------|
| A | EI | Millersburg Wild Rose jelly compote | 1,850.00 |
| G | EI | Millersburg Hanging Cherries large compote | 1,500.00 |
| A | EI | Millersburg Rosalind 5½" round sauce | 800.00 |
| M | EI | Millersburg Marilyn water pitcher | 500.00 |
| M | EI | Millersburg Peacock & Urn 10" fluted bowl | 275.00 |
| A | EI | Millersburg Country Kitchen butter dish, chip on base | 175.00 |
| A | GI | Millersburg Country Kitchen creamer | 225.00 |
| G | GI | Millersburg Holly Sprig bon bon | 75.00 |
| A | EI | Millersburg Holly 6½" tri-cornered bowl | 135.00 |
| A | EI | Millersburg Holly 7½" tri-cornered bowl | 135.00 |

Dennis L. Runk Post Office Box 235, Littlestown, Pennsylvania 17340

PHONE: 1-717-359-7205

| | | | |
|-----|----|---|--------|
| W | EI | Leaf Chain 8" ice cream shaped bowl | 110.00 |
| CLM | EI | Leaf Chain 9" plate | 140.00 |
| P | EI | (N) Double Loop open sugar chalice | 80.00 |
| P | EI | Imperial Grape goblet | 55.00 |
| G | GI | Imperial Grape goblet | 40.00 |
| VAS | EI | Orange Tree mug, standard size | 100.00 |
| B | EI | (N) Fruits & Flowers bon bon, electric blue | 110.00 |
| P | GI | Heavy Iris (Dugan) tumbler, have 3, each | 50.00 |
| B | EI | Stork & Rushes tumbler | 42.00 |
| M | EI | Milady tumbler | 85.00 |

***** CARNIVAL GLASS FOR SALE *****

Lee Bryant, Rt. #1, Box 109, Decatur, Indiana 46733
 PHONE: 1-219-639-3415 after 6:00 P.M. E.S.T.

| | | |
|---|--|--------|
| P | Scroll Embossed 8" bowl, round, plain ext., SUPER COLOR | 50.00 |
| M | Stag & Holly giant rose bowl | 190.00 |
| P | Peacocks on the Fence 9" plate | 550.00 |
| P | Grape & Cable plate with Basketweave exterior | 110.00 |
| G | Open Rose 9" plate, nice color | 115.00 |
| M | Whirling Leaves 10" ruffled bowl, radium | 60.00 |
| M | Holly Whirl 9" bowl, radium | 75.00 |
| M | Blackberry Wreath 9" ruffled bowl, 3 in 1 edge, radium | 60.00 |
| M | "474" 7 piece water set, well matched | 350.00 |
| P | Strawberry 9" plate, (N), plain exterior, good color & irid. | 140.00 |

Barbara Nelson, R.F.D. #1, Box 258, Moultonboro, New Hampshire 03254
 PHONE: 1-603-476-5942 END OF YEAR, CROWDED SHELF SALE

| | | |
|---------------------|--|----------|
| M | Imperial Grape large fruit bowl 10" | |
| M | Octagon wine decanter, no stopper, dark | |
| B | Beaded Cable rose bowl, uneven irid., good feet | |
| M | Lotus & Grape bon bon, flaw inside 1 handle | |
| M | Imperial Grape 8 $\frac{1}{4}$ " bowl, ruffled, very shallow, yellow shade | |
| B | Grape & Gothic Arches tumblers, 3, bottoms show wear | |
| M | Holly 8 $\frac{1}{2}$ " bowl, ruffled, tiny base nick, SUPER | |
| M | Wreath of Roses rose bowl, tiny base nick | |
| M | Beaded Basket | |
| M | Cherry Circles large bon bon | |
| A L L THE ABOVE FOR | | \$200.00 |

Robert & Joyce Etheredge, 1812 Yosemite, Tyler, Texas 75703
 PHONE: 1-214-581-0451 PLEASE ADD \$5.00 SHIPPING CHARGE

| | | |
|---|--|--------|
| A | EI Acorn Burrs 7 piece water set, beautiful | 800.00 |
| W | EI Memphis fruit bowl | 700.00 |
| M | EI Two Fruits divided 5 $\frac{1}{2}$ " bowl, scarce | 60.00 |
| A | EI Grape & Cable sweetmeat with lid | 200.00 |
| A | EI Grape & Cable hatpin holder | 145.00 |
| B | EI Peacock at the Fountain orange bowl, footed | 285.00 |
| B | EI Persian Medallion 9 $\frac{1}{2}$ " plate | 200.00 |
| A | EI Singing Birds advertising mug | 125.00 |
| M | EI Three Fruits 9" plate, 12 sided | 125.00 |
| M | EI Iris buttermilk goblet, scarce | 50.00 |

***** CARNIVAL GLASS FOR SALE *****

Hubert & Lucille Shelton, 6298 Boiling Springs Rd., Munfordsville, Ky. 42765
 PHONE: 1-502-528-5893

| | | |
|---|---|--------|
| M | EI Lustre Rose fernery, footed, stippled, deep color | 38.00 |
| M | EI Ripple 9" vase, 5 $\frac{1}{2}$ " flared top, beautiful | 30.00 |
| M | EI Grape & Cable ice cream dish-sherbert (N) | 30.00 |
| G | EI Ripple 12 3/8" vase, beautiful | 45.00 |
| P | EI Grape & Cable tumbler (N) beautiful | 35.00 |
| M | EI Butterfly & Berry tumbler | 25.00 |
| B | EI Vintage 3 footed nut bowl | 55.00 |
| M | EI Floral & Grape 7 piece water set, minor damage on 2 tumblers | 225.00 |
| B | EI Butterfly & Berry tumbler, small chip inside top edge | 20.00 |
| G | EI Lustre Rose butter top only | 15.00 |

Richard & Carol Cinclair, 3605 South Echo Trail, Plano, Texas 75023
 PHONE: 1-214-596-0014

| | | |
|----|---------------------------------------|--------|
| A | EI Beauty Bud Vase 6 $\frac{1}{2}$ " | 125.00 |
| IG | EI Peacock & Urn small ice cream bowl | 425.00 |
| A | EI Strawberry bowl, P.C.E. | 105.00 |
| W | EI Drapery rose bowl, heat check | 275.00 |
| M | EI Drapery rose bowl, SUPER | 450.00 |
| A | EI Drapery rose bowl, EXCELLENT | 350.00 |
| W | EI Drapery vase, squat | 175.00 |
| V | EI Persian Medallion bon bon | 105.00 |
| * | EI Clambroth Orange Tree bowl | 105.00 |
| W | EI Grape Delight nut bowl | 85.00 |

John Boyd, 720 Gran Paseo Dr., Orlando, Florida 32825
 PHONE: 1-407-275-6565

| | | |
|---|----------------------|-------|
| W | LI Fanciful low bowl | 95.00 |
|---|----------------------|-------|

Delouris Craft, 702 Bradley Drive, Bloomington, Illinois 61701
 PHONE: 1-309-662-3610

| | | |
|-----|---|--------|
| B | EI Dandelion mug (N), small nick on mold line, BEAUTIFUL COLORS | 375.00 |
| LAV | EI Three Fruits plate, stippled, pinhead, BRILLIANT | 375.00 |
| LAV | EI Rose Show plate, rose chip, GORGEOUS PASTEL IRIDESCENCE | 525.00 |
| B | EI Peacocks on the Fence plate, FANTASTIC ARRAY OF COLORS | 625.00 |

***** CARNIVAL GLASS FOR SALE *****

Maurice "Moe" Myers, P. O. Box 3180, North Conway, New Hampshire 03860
PHONE: 1-603-356-6610

| | | | |
|----|----|---|--------|
| M | EI | Octagon goblets, matched set of 6 | 250.00 |
| P | EI | Grape & Cable cup | 25.00 |
| M | EI | "474" punch cup | 25.00 |
| G | EI | Singing Birds tumbler | 45.00 |
| P | EI | Grape & Cable tumbler | 45.00 |
| M | EI | Ribbon Tie 9" bowl, 3 in 1 edge | 45.00 |
| A | EI | Lined Lattice vase 9", SUPER | 50.00 |
| M | EI | Hattie 8 $\frac{1}{4}$ " round bowl | 40.00 |
| PO | EI | Target 10" vase | 75.00 |
| G | EI | Imperial Grape small plate, SPECTACULAR COLOR | 85.00 |

William & Deborah Coles, Rt. #1, Box 273B, Hickory, Kentucky 42051
PHONE: 1-502-674-5916

| | | | |
|---|----|---|--------|
| M | EI | Good Luck P.C.E. bowl, SUPER | 165.00 |
| P | EI | (N) Peacock & Urn large ice cream bowl | 395.00 |
| P | EI | (N) Peacock & Urn ice cream sauces, have 4, 2 have minor base roughness, all for | 175.00 |
| M | EI | Ragged Robin bowl, 3 in 1 edge, scarce | 85.00 |
| M | EI | Fentons Peacock & Urn 8 ruffled bowl, SUPER | 100.00 |
| M | GI | Millersburg Hanging Cherries straight side tumbler | 170.00 |
| P | GI | Dandelion mug | 185.00 |
| B | EI | Good Luck P.C.E. bowl | 240.00 |
| M | EI | Millersburg Hanging Cherries 7" I.C.S. bowl | 75.00 |
| * | EI | Vintage 8 $\frac{1}{2}$ " 8 ruffled low bowl, teal? green? Base color is green with blue cast | 75.00 |

Jo Ann Mitchell, 6584 Williams Highway, Grants Pass, Oregon 97527
PHONE: 1-503-862-2635

| | | | |
|-----|----|---|--------|
| A | EI | Ribbon Tie low bowl | 50.00 |
| M | EI | Butterflies & Waratah compote | 80.00 |
| M | EI | Inverted Feather compote | 50.00 |
| AMB | EI | Lustre Rose rose bowl | 40.00 |
| A | EI | Coin Dot rose bowl | 65.00 |
| G | EI | Corn Bottle, ground top, some roughness | 250.00 |
| M | EI | Double Stem bowl | 15.00 |
| M | EI | Imperial Grape 10" bowl | 25.00 |
| M | EI | Windflower bowl | 20.00 |

***** CARNIVAL GLASS FOR SALE *****

Dick Wetherbee, 847 Stafford St., Rochdale, Massachusetts 01542
PHONE: 1-508-892-4420

| | | | |
|-----|--|--|-------|
| M | | Fern Panels hat, square shape opening with piecrust edge | 32.00 |
| G | | (N) Fine Rib 10 $\frac{1}{2}$ " vase, very pretty | 32.00 |
| M | | (N) Strawberry/Basketweave back 8 $\frac{1}{2}$ " P.C.E. BOWL, GREAT | 65.00 |
| A | | Thumbprint 7" squatty vase, 5 $\frac{1}{2}$ " flared opening | 32.00 |
| CIH | | Smooth Rays 4" sherbert with 6" underplate, set of 8 pieces at \$5.00 each, or all for | 35.00 |
| M | | Morning Glory 7 $\frac{1}{2}$ " bud vase, highly iridised | 25.00 |
| P | | Greek Key/Stippled Rays inside 8 sided nut bowl, has the reversed (N), a rare item | 85.00 |
| B | | Prism Band/Forget-Me-Not handpainted tumbler | 45.00 |
| M | | Cherry Cable Intaglio 5" sauce dish | 25.00 |
| PO | | Stippled Flower 7" tri-shaped bowl, pretty | 28.00 |

Charles Perry, 8641 Lakeshore Drive, Southaven, Mississippi 38671
PHONE: 1-601-342-1694

| | | | |
|-----|----|--|--------|
| M | EI | Wishbone 9 $\frac{1}{2}$ " collar based bowl, P.C.E. | 95.00 |
| M | EI | Plaid 9" shallow bowl | 85.00 |
| IG | EI | Windflower gravy boat, chips | 55.00 |
| P | EI | Strawberry bowl, P.C.E. | 75.00 |
| M | EI | Imperial Grape 9" plat plate | 75.00 |
| VAS | EI | Leaf Chain 7" bowl, ruffled | 75.00 |
| P | EI | Dugan 10 $\frac{1}{2}$ " Flour Flowers ruffled bowl, SUPER | 125.00 |
| M | EI | Heavy Iris tankard pitcher | 165.00 |

Darlene Yohe, Post Office Box 343, Stuttgart, Arkansas 72160
PHONE: 1-501-673-3437

| | | | |
|----|--|---|--------|
| M | | Harvest Flower tumbler | 70.00 |
| AQ | | Blackberry Basket, Open Edge | 150.00 |
| V | | Fenton Basketweave, Open Edge bowl, tiny line under 1 lattice | 60.00 |
| M | | Two Fruits large oval bowl in metal holder | 165.00 |
| P | | Grape & Cable hatpin holder | 165.00 |
| M | | Good Luck bowl, stippled | 95.00 |
| B | | Butterfly & Fern tumbler | 50.00 |
| B | | Ground Cherries enameled tumblers, have 2, each | 45.00 |
| P | | Leaf & Beads rose bowl | 55.00 |
| M | | Garland rose bowl | 35.00 |

***** CARNIVAL GLASS FOR SALE *****

Don Sherman, 4225 O'Keefe Drive, El Paso, Texas 79902
PHONE: 1-915-533-3580

| | | | |
|---|----|---|--------|
| P | EI | Multi-Fruits & Flowers punch cups, have 2, each | 30.00 |
| P | EI | Acorn Burrs tumbler | 50.00 |
| M | EI | Poinsettia milk pitcher | 50.00 |
| M | EI | Ranger pitcher | 60.00 |
| P | EI | Peacock Tail compote | 50.00 |
| M | EI | Windmill pitcher | 60.00 |
| M | EI | Windmill tumbler | 22.00 |
| M | EI | File tumbler | 135.00 |
| B | EI | Strawberry Scroll tumbler | 150.00 |
| P | EI | Tiger Lily tumbler | 40.00 |

=====
Albert M. Rodenhouse, 220 Seaview Court, Apt. 411, Marco Island, Fla. 33937
PHONE: 1-813-642-7611

| | | | |
|-----|----|--|--------|
| M | EI | Grape & Cable tankard tumbler | 49.00 |
| M | EI | Grape & Cable tankard stippled | 69.00 |
| P | EI | Grape & Cable tankard stippled | 89.00 |
| P | EI | Raspberry tumbler | 25.00 |
| B | EI | Tiger Lily | 89.00 |
| * | EI | *Teal blue Peacock at the Fountain | 139.00 |
| B | EI | Imperial Fieldflower, RARE COLOR | 89.00 |
| A | EI | Morning Glory | 995.00 |
| M | EI | Inverted Fan & Feather, GUARANTEED OLD | 129.00 |
| LAV | EI | Vineyard, SUPER NICE | 79.00 |

=====
James Key, Rt. 1, Box 153B, Marianna, Arkansas 72360
PHONE: 1-501-295-6770

| | | | |
|-----|----|--|--------|
| W | EI | Fine Cut & Roses rose bowl, minor flakes on feet | 450.00 |
| B | EI | Three Fruits stippled plate | 350.00 |
| M | EI | Rose Show bowl | 350.00 |
| AQ | EI | Double Stemmed Rose dome footed bowl | 450.00 |
| G | EI | Dandelion mug | 450.00 |
| M | EI | Dragon & Strawberry footed bowl | 350.00 |
| A | EI | Isaac Benesch advertising bowl | 300.00 |
| W | EI | Peacocks on the Fence plate, Ribbed ext., flat | 500.00 |
| G | EI | Grape & Cable advertising plate, Old Rose Distillary | 400.00 |
| PRL | EI | Grape & Gothic Arches tumbler | 125.00 |

***** CARNIVAL GLASS FOR SALE *****

Joan & Bob Anderson, 153 Douglas Dr., Rittman, Ohio 44270
PHONE: 1-216-927-2496

| | | | |
|---|----|---|--------|
| G | EI | Nesting Swan bowl, Millersburg | 245.00 |
| A | EI | Butterfly & Berry creamer | 145.00 |
| M | EI | Fruits & Flowers bon bon, stippled | 80.00 |
| A | GI | Singing Birds creamer | 80.00 |
| M | EI | Fruits & Flowers 6" ruffled bowl, stippled | 60.00 |
| M | EI | Three Fruits 8" ruffled bowl | 85.00 |
| M | EI | Field Thistle 5" berry bowls, each \$40.00, both for | 65.00 |
| M | EI | Sail Boat wine | 45.00 |
| B | GI | Fenton Orange Tree rose bowl, made into 8" candy dish | 90.00 |
| M | EI | Orange Tree wines, have 4 at \$30.00 each, or all for | 100.00 |

=====
Don Mays, 710 Naked Creek Run, Earlysville, Virginia 22936
PHONE: 1-804-973-3941

| | | | |
|---|----|--------------------------------------|--------|
| G | EI | Feathered Serpent 10" bowl | 70.00 |
| P | EI | Springtime cream pitcher | 235.00 |
| B | EI | Grape & Gothic Arches master berry | 70.00 |
| M | EI | Fentons Two Flowers 7½" footed bowl | 35.00 |
| M | EI | Feather & Heart tumbler, etched 1911 | 55.00 |
| A | EI | Heavy Grape 7" ruffled bowl | 45.00 |
| M | EI | Dugans Cherries 3 footed bowl | 75.00 |
| G | EI | Greek Key dome footed bowl | 45.00 |
| M | EI | Fashion punch bowl, base, and 3 cups | 125.00 |



Jo Ann Mitchell, 6584 Williams Highway, Grants Pass, Oregon 97527
PHONE: 1-503-862-2635

M EI Funeral Vases, 18" or taller
ANY Double Dolphin covered compote
Double Dolphin, ANY SHAPE, in white of wisteria

Maurice "Moe" Myers, P. O. Box 3180, North Conway, New Hampshire 03860
PHONE: 1-603-356-6610

P EI Paneled Tree Trunk vase
SM EI Gothic Arches vase

Robert & Joyce Etheredge, 1812 Yosemite, Tyler, Texas 75703
PHONE: 1-214-581-0451

M EI Pineapple stemmed sugar, English
M EI Pineapple butter (complete), English
A EI Singing Birds sugar
A EI Singing Birds creamer
A EI Singing Birds spooner
M EI Grape & Cable butter bottom only

Lee Bryant, Rt. #1, Box 109, Decatur, Indiana 46733

M Maple Leaf water pitcher, medium color and good detail (reasonable)
or will sell 8 matched tumblers.
M Diamond & Sunburst wine decanter (reasonable) or will sell 6 matched
wines and stopper.
Would rather receive offer on above by mail, then could evaluate and
contact seller back. THANK YOU.

Ruby & Yvan Beaudry, 109 - 5e Ave., Boisbriand, Quebec, Canada J7G 1Y8
PHONE: 1-514-437-4585

Collection of past H.O.A.C.G.A. Newsletters for a new collector.

John Boyd, 720 Gran Paseo Dr., Orlando, Florida 32825
PHONE: 1-407-275-6565

B EI Wreath of Roses punch bowl BASE ONLY

Richard & Carol Cinclair, 3605 South Echo Trail, Plano, Texas 75023
PHONE: 1-214-596-0014

A Hearts & Flowers compote
B Hearts & Flowers ruffled bowl
M Corn Vase
R Rustic Vase
B Peacock & Urn small ice cream
W Peach pitcher, creamer, butter
R Two Flowers bowl
R Chrysanthemum bowl
R Panther
R Coin Dot low bowl

Barbara Nelson, R.F.D. #1, Box 258, Moultonboro, New Hampshire 03254
PHONE: 1-603-476-5942

P Constellation compote, ANYBODY?

Ken & Jo Young, 103 Navarre St., Gulf Breeze, Florida 32561
PHONE: 1-904-932-4064

W EI Peacock at the Fountain punch cups, need 6
* EI *Fentons Arched Flute toothpick holders, ANY COLOR

Singleton Bailey, Post Office Box 95, Loris, South Carolina 29569
PHONE: 1-803-756-7495

M Millersburg Peacock & Urn compote
Imperial Double Dutch bowl, ANY COLOR
Singing Birds spooner, damage OK, ANY COLOR
Radium Big Fish bowls, ANY COLOR
B Millersburg Peacock & Urn pieces
VAS Tri-cornered Millersburg Peacock bowl
A Millersburg Peacock & Urn "shotgun" bowl
G Millersburg Peacock & Urn "mystery" I.C.S.
A Millersburg Peacock & Urn "mystery" C.R.E.
Tri-cornered Trout & Fly bowl, ANY COLOR

Barbara Hobbs, 5501 101st. Ave. N., Pinallas Park, Florida 34333-3311
 PHONE: 1-813-541-6164 or 1-813-545-4833 answering machine

Pieces I need to match with mine:

- P Singing Birds spooner
 M 1 or 2 Butterfly & Fern tumblers, ground base
 G TOP ONLY to Shell & Jewel or Sturtting Peacocks pieces
 B Little Flowers small berry bowl, no ruffles, tiny fluted edge
 A 2 piece complete Sturtting Peacock sugar

Steve Davis, 3331 Warpath Road, Macon, Georgia 31201
 PHONE: 1-912-741-4252

- IB Acorn Burrs punch cups
 M (N) Peacock & Urn ice cream sauces
 EB (N) Peacock & Urn ice cream sauces
 W (N) Peacock & Urn ice cream sauces
 B Rose Show bowl
 P Poppy Show bowl
 P (N) Peacock & Urn master I.C. bowl
 M Acorn Burrs punch bowl top

Ted Sheibley, 304A Hillcrest Drive, New Cumberland, Pennsylvania 17070
 PHONE: 1-717-938-6417

- M Trout & Fly bowl, 3 in 1 edge
 M Strawberry P.C.E. bowl, NICE
 Grape & Cable stippled plate, ANY COLOR
 Rose Tree bowl, ANY COLOR
 Horsehead Medallion plate, ANY COLOR
 Hearts & Flowers bowl/compote/plate ANY COLOR
 Peacock at the Fountain compote/fruit bowl ANY COLOR
 Peter Rabbit bowl/plate ANY COLOR
 Peacocks on the Fence bowl in ice blue, ice green, green
 R Panther sauce

Harold L. Fortney, 910 Penn. Apt. 704, Kansas City, Missouri 64105
 PHONE: 1-816-474-2054

- B Two Flowers sauce, collar based or ball footed
 G Two Flowers sauces
 B (N) Drapery vase
 P (N) Drapery vase

Pat Lower, Post Office Box 686, Galion, Ohio 44833
 PHONE: 1-419-468-1269 evenings

- Millersburg Carnival in radium
 Millersburg Peacock & Urn small and large verry bowl in radium
 Trout & Fly in radium, ANY COLOR
 AO Three Fruits bowls or plates
 Large vases, ANY COLOR
 B Peacock & Urn large ice cream shaped bowl (N)
 P Imperial Grape wines
 IB/IG Peacock bowl or plates

Donald H. Walker, Jr., 6120 Ridge Road, Mt. Airy, Maryland 21771
 PHONE: 1-301-831-7234

- M Lid for Inverted Strawberry powder jar
 W Base to Orange Tree butter
 W Dahlia sugar and spooner
 A Floral & Grape water pitcher



....but Santa, I would be happy with
 just one Aqua Opal Poppy Show Bowl.

