

HOACGA

Heart of America Carnival Glass Assoc. Inc.

RETURN ADDRESS

H.O.A.C.G.A.
Eleanor Mochel
6409 Beverly
Mission, Ks. 66202

July 1990

FIRST CLASS MAIL

FIRST-CLASS MAIL
U.S. POSTAGE
PAID
Shawnee Mission, KS
Permit No. 958

HEART OF AMERICA CARNIVAL GLASS ASSOC.
BOARD OF DIRECTORS, 1990

PRESIDENT.....Robert Grissom
7900 Crescent
Raytown, Missouri 64138
1-816-356-5320

VICE-PRESIDENT.....Daryl Strohm
8904 E. 29th St.
Kansas City, Missouri 64129
1-816-252-8137

TREASURER.....Doug Peters
8708 N. Chatham Avenue
Kansas City, Missouri 64154
1-816-587-5696

SECRETARY.....Nadine Paulsen
700 Purdom
Olathe, Kansas 66061
1-913-782-1313

BULLETIN SECRETARY.....Eleanor Mochel
6409 Beverly Dr.
Mission, Kansas 66202
1-913-432-1129

The Bulletin is published the 15th of each month. Membership year is from June 1 to May 31, per couple or single. DUES ARE \$20.00 U. S. & CANADA, \$35.00 FOREIGN. All monetary figures are quoted in U. S. Dollars.

Please send all items for the Bulletin, i.e. glass for sale, glass wanted, articles, information, to the Bulletin Secretary, whose address appears above. Please have all Bulletin material sent to us so that we receive it by the 28th of the month.

Please send checks for dues and books, and any address changes, to the Treasurer whose address appears above.

We thank you so much for your cooperation in these matters.

WELCOME NEW MEMBERS

We would like to welcome the following new members to the Heart of America Carnival Glass Association and wish them Happy Carnival Hunting!

Donald Anderson, Topeka, Kansas
Omar Kauffeld, Omaha, Nebraska
Michael Marshall, Mosinee, Wisconsin
Howard & Barbara Scruggs, Charlottesville, Virginia
Mr. & Mrs. Ken Carter, Pocatello, Idaho
Mr. & Mrs. David Davis, Yadkinville, North Carolina
John & Erma Dillon, Burr Oak, Kansas
James & Rose Feld, Algoma, Wisconsin
Carl & Frances Howard, Linneus, Missouri
Joan & Arthur McGiverin, Ottumwa, Iowa
Bill & Dorothy Stewart, Estill Springs, Tennessee
Stephen & Glen Thistlewood, Hampshire, England
William & Mary Alice Wilson, Bay St. Louis, Mississippi
John Wycesany, Nelson, British Columbia, Canada
George & Shelly Eichloen, Des Moines, Iowa
Richard & Margaret Martin, Kokomo, Indiana
Ron & Mary Ann Roque, San Francisco, California
Orin & Henri Wahrenbrock, Florence, Oregon

=====

CARNIVAL CALENDAR

JULY 11-14, 1990 - INTERNATIONAL CARNIVAL GLASS ASSOCIATION CONVENTION at the Holiday Inn, Cedar Rapids, Iowa PHONE: 1-319-365-9441.

JULY 21, 1990 - ANTIQUE QUCTION at the Civic Center, Miami, Oklahoma. 50 plus pieces of Carnival Glass including a red Holly bowl, red amberina Grape & Cable bowl, red hat, marigold Ten Mums pitcher, blue Peacock at the Fountain water set, amethyst Stippled Three Fruits plate, other plates & bowls and more. Auctioneer Delbert Rowden 1-316-674-3357 evenings.

JULY 25-28, 1990 - AMERICAN CARNIVAL GLASS CLUB CONVENTION Holiday Inn, Parkersburg, West Virginia.

AUGUST 9-11, 1990 - PACIFIC NORTHWEST CARNIVAL GLASS CLUB CONVENTION at the Holiday Inn, Eugene, Oregon. Many activities planned. For further information, contact Karen Engle, Post Office Box 398, Brownsville, Oregon 97327. PHONE: 1-503-466-5989 evenings.

OCTOBER 19-21, 1990 - AIR CAPITAL CARNIVAL GLASS CLUB CONVENTION Holiday Inn (formerly Heritage Inn) same motel as last year.

VITAL INFORMATION TO OUR MEMBERSHIP:

1. WE NEED YOU Starting in July, a door prize of Carnival Glass will be given to one lucky person in attendance at each monthly meeting. We hope this will encourage more members to attend. If you would enjoy a couple of hours once a month with fellow collectors, come to the next meeting. It will be worth your time and effort to attend. Bring something for Show & Tell, or your new purchases.

The Program in July will be on rose bowls, so bring any rose bowls you may have and join us at the Raytown City Hall at 2:00 P.M., on July 22, 1990 for a nice time. Out-of-town members, please call any Club officer for directions to the Raytown City Hall. MEMBERS, WE NEED YOU!

THE BOARD

2. COST INCREASE Any checks received July 15, 1990 or thereafter should reflect the new prices for the Club items for sale. We are sorry to have to increase prices, but the cost of all printing and also producing the Notebook Sections has increased, making it necessary if we are to maintain a financially sound association. All of the items are still a bargain at the new prices.
3. FUTURE UPDATE OF THE NOTEBOOK SECTIONS We are asking all members to send in pictures to President Grissom of pieces that have patterns not presently pictured in the Sections that have been done up to this time. Also, if you know of any corrections that should be made, we are also interested in receiving those.

When enough pictures or corrections in a Section are received to fill a sheet, an update sheet on that Section will then be done. Check your unusual pieces and see if they are in the Notebook. If not, take a picture of them and send it in so all members may know of the piece.

Thank you for your continued effort in making our Notebook complete.

4. RED TABLE FAVOR MUGS We have a few of the Red Table Favor Mugs that were made for this years' Convention. The red is a very nice red, so if you are collecting all the mugs you will not want to miss this one. They are \$12.50 each plus \$1.50 shipping and handling. See listing under Souvenirs for Sale.
- =====



PASTEL PANELS TUMBLERS

While this is certainly not an elaborate pattern, the effect of the many narrow panels on lovely pastel shades and the rainbow-type iridescence make this a most desirable tumbler for any collection of Carnival Glass.

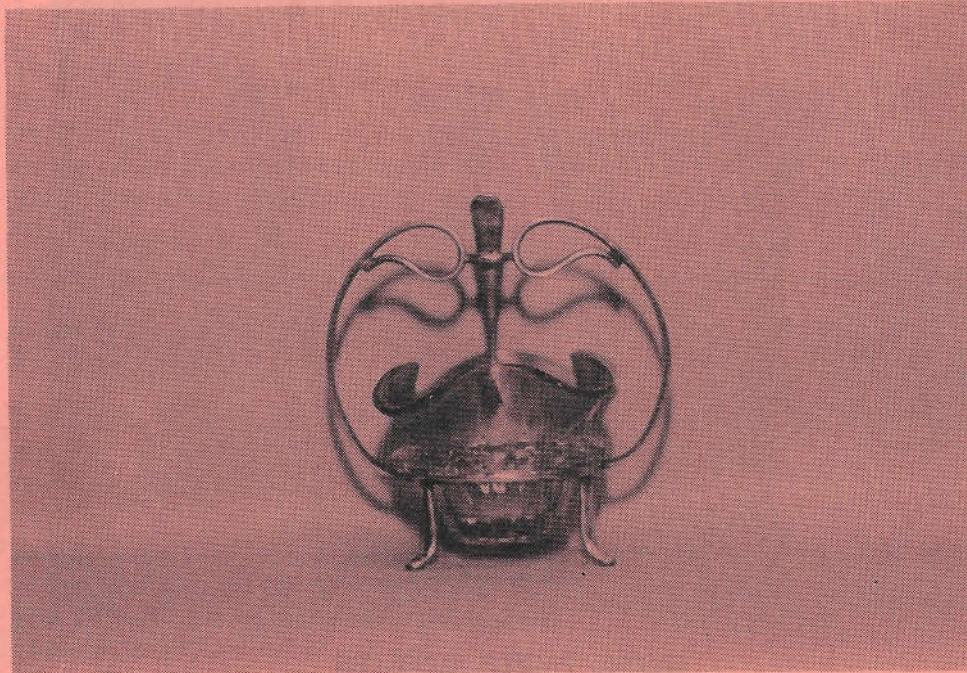
The tumblers shown are called lemonade glasses. They range from 4½" to 4 ¾" high and flare out at the top to a full 3". The panel portion extends straight down to only 2" wide at the base. There is no pattern of any kind on the under side. Eighteen narrow panels surround the tumbler. The colors found are pastel shades of Celeste Blue and Florentine Green. A few have been reported in a darker shade of blue called Sapphire Blue. The surface is of the stretch glass type. The pattern was made by the Fenton Art Glass Company of Williams-town, West Virginia.

You would not have much trouble finding one of these tumblers for your collection and they are usually priced very reasonable. They will add color and variety to any Carnival Glass collection, and should be a "must" for the tumbler collector.

This pastel stretch glass type tumbler is number 150 in our Educational Tumbler Series. Next month we will feature the Inverted Coin Dot tumblers.

JOHN & LUCILE BRITT

By John & Lucile Britt

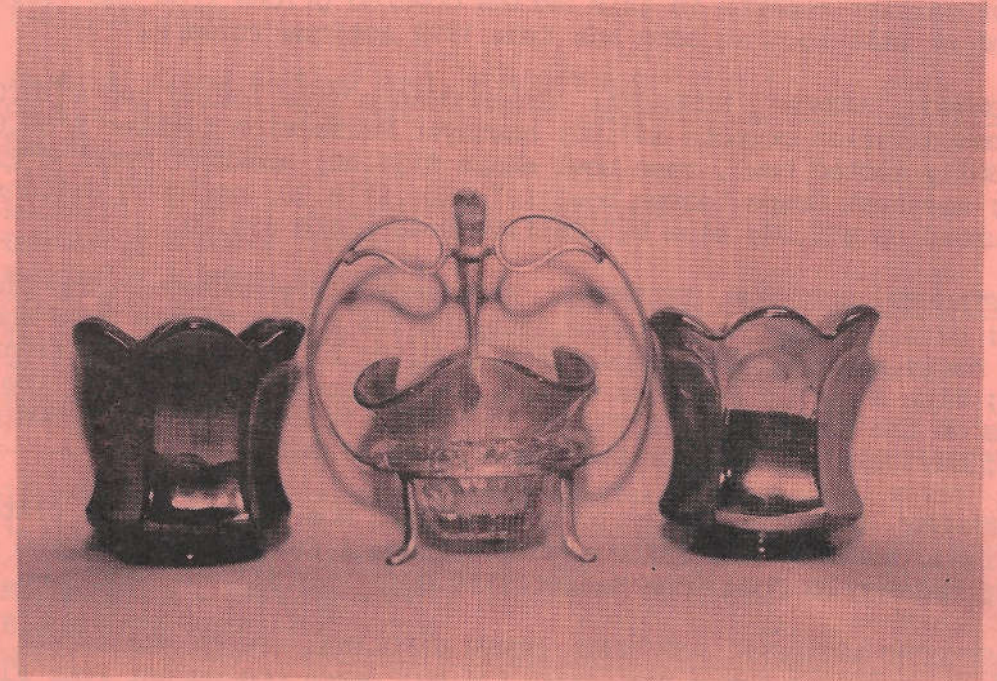


THE RIBBED PANELS MUSTARD DISH

Due to the tiny size of this piece, we believe it was probably made to contain mustard. It is actually too small for use as a jelly or mayonnaise container. The little bowl part is in a very nice marigold Carnival Glass. It is ruffled at the top, which the photo shows very well. Many ribbed panels extend from the top down to the very bottom. The base is flat and was factory ground and polished. Near the center of the bowl, a glass flange extends out from the bowl. This flange rests on part of the round metal structure and holds the glass about $\frac{1}{4}$ inch above the table level. The metal container is of pewter type and is made to hold a tiny spoon. You can see the top of the spoon in the center of the photo. The top of the bowl is 3" wide at the widest part of the ruffles. The base is only about 1" in diameter. The artistic metal container is $3\frac{1}{2}$ " high and $4\frac{1}{4}$ " wide at the widest point.

Photo #2 (next page) shows this cute little piece along side two Imperial Flute toothpick holders. This will give you a better idea of its actual size. This is the only one of these that we know about, but we are sure there are others out there somewhere.

continued...



RIBBED PANELS MUSTARD DISH WITH IMPERIAL FLUTE TOOTHPICKS IN PURPLE & GREEN

At this time, we do not know where it was made, but would guess that it is a product of one of the European countries. Regardless of where it was made, it is certainly a delightful addition to our Carnival Glass collection.

This unusual and interesting little piece of Carnival Glass marks our 138th entry into our Pictorial Pattern Parade.

JOHN & LUCILE BRITT

=====

A PEAK INTO THE PAST - - IN CARNIVAL GLASS

Since our earlier reports in this Series covered prices from the 1969-1972 era, this time we will look at some ads from 1974 Antique Traders.

ELDEN JOHNSON, FREMONT, NEBRASKA: Green Orange Tree loving cup \$110.00; amethyst Constellation compote \$49.00; amethyst Perfection tumbler \$150.00; blue Stag & Holly footed bowl, rose bowl shape \$135.00; amethyst Trout & Fly bowl \$150.00; amethyst Grape Leaves bowl 10" wide \$110.00; marigold Kittens bowl, 2 sides turned up \$55.00; blue 9½" Captive Rose plate \$95.00.

MARGIE STAGNER, ROBINSON, ILLINOIS: Rare smoke Chrysanthemum chop plate \$475.00; purple Stag & Holly plate \$500.00; ice blue & purple Rose Show plates \$300.00 each; marigold Rose Show plate \$200.00; blue Rose Show Variet plate \$250.00; blue & purple Peacocks on the Fence plates \$200.00 each; ice blue Peacocks on the Fence plate \$175.00; ice green Peacocks on the Fence plate \$130.00; marigold Peacocks on the Fence plate \$130.00.

FRANK ANTHONY, DANBURY, CONNECTICUT: Marigold Rose Show Variet plate \$160.00; purple Isaac Benesch bowl \$95.00; purple Grape & Cable large covered compote \$325.00; red Fenton Open Edge Basket \$110.00.

NORTH ASHEBORO ANTIQUES, ASHEBORO, NORTH CAROLINA: Peach opalescent with ice green feet, Dragon & Lotus ftd. bowl \$75.00; peach opalescent Four Flowers 6½" plate \$35.00; marigold Snow Fancy sugar & creamer, pair \$35.00; marigold Hearts & Flowers compote \$35.00; green Persian Medallion compote \$42.00.

CAUDLE ANTIQUES, STATE ROAD, NORTH CAROLINA: Purple Hobnail Swirl spittoon, rare, beautiful \$290.00; white Question Mark compote, double pattern \$35.00; marigold Mikado compote \$85.00; blue Orange Tree wine goblet, rare in this color \$45.00; marigold Orange Tree loving cup \$110.00; marigold Peacocks on the Fence bowl \$85.00; marigold Good Luck bowl \$59.00; yellowish green opalescent Dragon & Lotus bowl \$95.00.

VICKI L. LAMB, BELLEFONTAINE, OHIO: Pale ice blue Persian Medallion 9" plate \$250.00; ice blue Rose Show bowl \$225.00; purple Stag & Holly 11" bowl \$115.00; purple Fanciful plate \$115.00.

DAVE & JANET KNOKE, ATLANTA, GEORGIA: Aqua opal Good Luck bowl \$295.00; aqua opal Peacocks on the Fence bowl \$225.00; aqua opal Daisy & Drapes vase \$185.00; aqua opal Grape & Cable 2 handled bon bon, very rare \$195.00; aqua opal Three Fruits spatula ftd. bowl \$135.00; aqua opal Fruits & Flowers 2 handled bon bon \$125.00; aqua opal Drapery rose bowl \$110.00; aqua opal Beaded Cable rose bowl \$125.00.

ANNA LEE GREEN, DELAND, FLORIDA: Purple stippled Singing Birds mugs \$50.00 each, same in blue \$50.00 each. (Writers note: We can remember calling on

A PEAK INTO THE PAST
continued...

these. She had several of each color. We ordered one of each color. They were beautiful and very rare with the stippled background in the dark colors.)

HAZEL RAWLS, ORANGE, TEXAS: Green Panelled Dandelion tankard \$295.00; aqua opal Beaded Cable rose bowl \$125.00; marigold Little Covered Hen \$250.00; marigold Rose Show bowl \$175.00; red Fenton Open Edge Basket \$120.00; ice green Peacocks on the Fence plate \$187.50.

DENNIS B. KECK, PUNXSUTAWNEY, PENNSYLVANIA: Marigold Daisy Cut Bell \$295.00; ice green Corn vase \$180.00; amber 11" Heavy Grape chop plate \$135.00; purple Grape & Cable cup & saucer \$195.00; amethyst Trout & Fly 9" bowl \$185.00; green Nesting Swan 10" bowl \$135.00; purple Little Stars 8" bowl, very nice \$50.00.

CHARLES F. DODSON, ARLINGTON, VIRGINIA: Blue Peacock & Urn 9" plate, super \$195.00; blue Butterfly & Berry 7 piece water set, scarce \$450.00; green Good Luck plate, Basketweave exterior \$275.00; white (frosty) Peacocks on the Fence plate (N) \$170.00; marigold Peacocks on the Fence plate (N) \$130.00; marigold Good Luck plate (N) \$175.00; marigold Peacock & Grape collar based plate, scarce \$125.00.

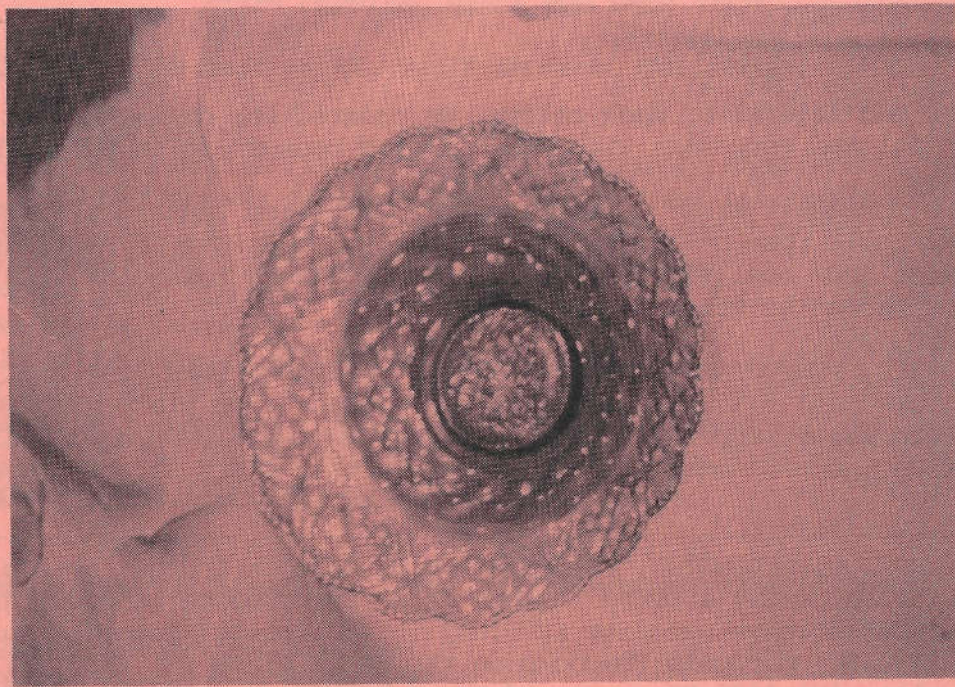
GLADYS BOYINGTON'S ANTIQUES, POPEJOY, IOWA: Amethyst (N) dish Davidsons Chocolates \$185.00; white 11" Persian Garden ice cream bowl \$150.00; peach opalescent Honeycomb rose bowl \$98.00.

MERTIE B. SIMON, BROOKSVILLE, FLORIDA: Marigold Zippered Loop 7½" lamp \$150.00; blue Good Luck bowl, Ribbed exterior \$95.00; green Millersburg Peacock & Urn deep fluted bowl \$110.00; peach opalescent Caroline handled basket, a beauty \$115.00.

This is our 24th entry into this Peak Into the Past Series. Next month we will go further into the 1974 Antique Traders.

JOHN & LUCILE BRITT

=====



The above photo shows a previously unlisted "chop plate" by the Millersburg Glass Company. My wife, Carol, and I happened onto it at a flea market, recommended by John & Lucile Britt, while vacationing in Florida.

The pattern is "Trefoil Fine Cut", which is a reverse pattern found on the Many Stars and Bernheimer bowls. The only noticeable difference in this chop plate and the Many Stars bowl is the obverse diamond pattern is replicated through to the top surface of the plate. As you can see, the marigold iridescence is quite lovely and is on both the top and bottom surfaces. We had this chop plate at the H.O.A.C.G.A. Convention and Mr. Fenton referred to the iridization being applied as a "lustre" process, hope that's the correct terminology, Frank. This chop plate would have to be considered as rare, as none have previously been reported, but as often time happens, once this article appears, other plates may also begin to appear. Since we are the first to come forward with such an example, we have dubbed this as "Absentee Minnie" Stars. (Sorry Mickey).

This find should also provide encouragement to the other collectors who may think that there are no more "good finds" in Carnival Glass. Just today I found a beautiful Colonial Lady vase in marigold. I would encourage all collectors to give due consideration to all flea markets as a potential "hiding" place for many Carnival Glass treasures such as the aforementioned.

Jerry and Carol Curtis
Oklahoma City, Oklahoma

On a sunny Tuesday in May, I decided to give in to my Carnival fever and take off work. I drove over to Mobile, Alabama, about an hours drive from my house in Pensacola, Florida, on a Carnival hunting excursion.

I searched my normal hunting grounds and came up with exactly nothing. Boy, was I disappointed! I was beginning to feel the Florida heat and my conscience could not justify an hours drive and taking off work to come up empty handed! So, upon leaving the picked antique mall, I noticed a new antique shop had opened next door. I decided to check it out, after all, I had the rest of the day to hunt other areas.

Immediately after entering the building, I saw it; from across the room, sitting on an open phone book on the edge of a table, waiting to fall on the floor, was an unpriced cobalt blue Carnival Glass plate. In two split seconds I crossed the room and put the plate under my arm, desperately trying to regain my breath, and slow my heart beat to normal. Not wanting the owner to see my excitement, I calmly asked the price of the plate in my arms. He replied, "I handle a lot of Carnival Glass, and that is the best piece I have ever had, I was going to put \$60.00 on it, but if you want it for \$40.00, you can have it." With both hands shaking, I immediately wrote a check for my cobalt blue Rose Show plate with gorgeous electric iridescence!!!! I thought I would have to crawl out of the shop! I also left my name and number in hopes that he would run into some more "good pieces".

Needless to say, I stared at it all the way home, and went immediately to my good friends, the Youngs, to show it off. They really were almost as excited as I was! Of course, the blue Rose Show plate is the centerpiece, although the only Rose Show, of my collection!

I guess the moral certainly isn't to take off work to hunt Carnival, but rather good Carnival buys can still be made. The person I bought the plate from bought it in an estate sale in the attic of an old Mobile home. He made money at \$40.00, and when I am a hundred I'm sure I might make a little bit on it. So, Good Luck to all the H.O.A.C.G.A. members.

Tom Courts
Pensacola, Florida

Members attending were small in number (8), but a few important items were dispatched in an expeditious and business-like manner! First, Naomi Calkins reported that after her hopes of finding a suitable raffle prize were brought to new heights, they were "crushed when she had the opportunity to inspect the Ski-Star peach opalescent bowl.....it had a few "nicks" in it and was not suitable as a raffle prize. That seems to happen more often than not these days with Carnival Glass, doesn't it? One can't be too careful when buying at flea markets, shows, garage sales, etc. I have even run into a person who told me that her husband knew how to take out nicks by grinding and had a way of "fixing it up" so that you wouldn't know it was ground. What "fixing it up" meant, I would like to know, as I am sure we all would. At any rate, Bill Tendl recommended that we all be on the look out for a new raffle prize on the premise that time is fleeting by. So, anyone out there that may be aware of a good deal that they can pass on to the Club will indeed be appreciated.. please let Naomi know.

The banner for TBCGC has been finished and is in the safekeeping of Maria Vafiadis at this time. Maria was successful in getting us "a good deal on it". remember, it is a memorial in the name of Alan Winslow of Zephr Hills, a dedicated member, donated to the Club in his memory by his gracious wife, Libby!

Bill Tendl suggested that we may be able to make a VCR tape/film suitable for use by the Club as a publicity vehicle in future jamboree advertising, membership drives, etc.

Our next meeting will be on June 24, 1990 at the home of Blanche and J. J. Williams, Eustis, Florida.

J. J. WILLIAMS

The set of five Commemorative Souvenir Bells are now complete. These bells commemorate the original Glass companies that produced the major portion of the Carnival Glass. Northwood, Fenton, Millersburg, Imperial, and Dugan. Each different bell features a portrait of the glass company founder. The Circle Scroll is used as its' pattern and it also has the Fenton logo.

The 1985 souvenir bell, commemorating the Northwood Glass Co. has the portrait of its' fonder, Harry Northwood. This bell was made in Ruby Red Carnival and is now sold out.

The 1986 bell was made in Lime Green Opalescent with a beautiful Marigold iridescence, commemorating the Fenton Art Glass Co. and has a portrait of its' founder, Frank L. Fenton.

The 1987 bell is Cobalt Blue, which is a rare color for the Millersburg Glass Co. The portrait on the bell is of John W. Fenton, its' founder.

The 1988 bell recognizes the Imperial Glass Co. and its' founder, Edward Muhleman and is a beautiful Marigold. The 1989 bell, the last of the Series, commemorates the Dugan Glass Co. The portrait is of Thomas E. A. Dugan, its' founder. The color of the bell is Fentons Teal Marigold.

We hope you have the complete set of these bells. If you are missing some of the Series or you have not ordered any of the bells yet, you may use the order form below:

The Souvenir Bells are \$35.00 each, plus \$2.50 shipping.

PLEASE MAKE CHECKS PAYABLE TO:
MAIL TO:

H.O.A.C.G.A.
John Britt
3048 Tamarak Drive
Manhattan, Kansas 66502

I wish to order _____ 1986 Bells at \$35.00 each plus \$2.50

I wish to order _____ 1987 Bells at \$35.00 each plus \$2.50

I wish to order _____ 1988 Bells at \$35.00 each plus \$2.50

I wish to order _____ 1989 Bells at \$35.00 each plus \$2.50

NAME: _____

ADDRESS: _____

CITY, STATE, ZIP CODE: _____

SOUVENIRS FOR SALE

<u>Number desired</u>		<u>Cost</u>	<u>Handling & Shipping</u>
_____	1983 Marigold on Milk Glass Loving Cup	\$40.00	\$2.50
_____	1986 Green Opalescent Bell	\$35.00	\$2.50
_____	1987 Cobalt Blue Bell	\$35.00	\$2.50
_____	1988 Marigold Bell	\$35.00	\$2.50
_____	1989 Teal Bell	\$35.00	\$2.50
_____	1983 Amber Table Favor Mug	\$ 7.00	\$1.50
_____	1984 Amethyst Table Favor Mug	\$ 7.00	\$1.50
_____	1985 Heather Bloom (lavender) Favor Mug	\$ 7.00	\$1.50
_____	1986 Green Opalescent Table Favor Mug	\$ 7.00	\$1.50
_____	1988 Teal Table Favor Mug	\$ 7.00	\$1.50
_____	1989 Shell Pink Table Favor Mug	\$ 7.00	\$1.50
_____	1990 Red Table Favor Mug	\$12.50	\$1.50
_____	Metal holder for candle lamps	\$ 8.00	(no shipping)

TOTALS

+

Please make checks payable to: H.O.A.C.G.A. and
 send orders and checks to: John Britt
 3048 Tamarak Drive
 Manhattan, Ks. 66502

GRAND TOTAL

NAME _____

ADDRESS _____

CITY, STATE, ZIP CODE _____

=====

VHS VIDEO TAPES FOR SALE

VHS video tapes of the 1990 Heart of America Carnival Glass Association Convention Seminars are now available. They are:

<u>Number desired</u>		<u>Price</u>	<u>Total</u>
_____	1990 Red Carnival Glass by Richard Cinclair, Bob Allaire and Joyce Seale	\$20.00	_____
_____	Millersburg Glass by Singleton Bailey	\$20.00	_____
_____	Little Bowls by Garth Irby	\$20.00	_____
_____	Peacock & Urn Ice Cream Sets by Harold Cox	\$20.00	_____
	TOTAL		=====

These tapes are all very good and would be a very nice addition to your Carnival Glass library. There is no shipping and handling charge for these tapes.

Please make checks payable to H.O.A.C.G.A. and send them to:

Doug Peters
 8708 N. Chatham Ave.
 Kansas City, Missouri 64154
 1-816-587-5696

CORRECTION

Mr. & Mrs. Doyle Green were incorrectly listed as winners in the Theme Category for the H.O.A.C.G.A. Convention Room Displays. Mr. & Mrs. Robert Brown of Orange, Texas should have been listed.

My apology to both the Browns and the Greens for this error.

Sharla Peters

Carnival Glass Pattern Books by Marion Hartung. Many patterns in EACH book.

First Book of Carnival Glass	\$5.00 plus \$1.00 S. & H.
Second Book of Carnival Glass	\$5.00 plus \$1.00 S. & H.
Third Book of Carnival Glass	\$5.00 plus \$1.00 S. & H.
Fourth Book of Carnival Glass	\$5.00 plus \$1.00 S. & H.
Fifth Book of Carnival Glass	\$5.00 plus \$1.00 S. & H.
Sixth Book of Carnival Glass	\$5.00 plus \$1.00 S. & H.
Seventh Book of Carnival Glass	\$5.00 plus \$1.00 S. & H.
Eighth Book of Carnival Glass	\$5.00 plus \$1.00 S. & H.
Ninth Book of Carnival Glass	\$5.00 plus \$1.00 S. & H.
Tenth Book of Carnival Glass	\$5.00 plus \$1.00 S. & H.

A COMPLETE SET OF THE ABOVE MAY BE PURCHASED FOR \$50.00 plus \$5.00 SHIPPING.

Northwood Pattern Glass in Color; Clear, Custard & Carnival, by Marion Hartung	\$6.00 plus \$2.00 S. & H.
	+ =
	=====

H.O.A.C.G.A Educational Book, Series I	\$12.50 plus \$2.50 S. & H.
Carnival Glass Pattern Notebook in Color	
Section 1, Punch Sets (Not available now, but will be later)	
Section 2, Mugs	\$ 6.00 plus \$1.00 S. & H.
Section 3, Table Sets	\$ 6.00 plus \$1.00 S. & H.
Section 4, Water Sets	\$ 6.00 plus \$1.00 S. & H.
Section 5, Water Sets	\$ 6.00 plus \$1.00 S. & H.
Section 6, Water Sets	\$ 6.00 plus \$1.00 S. & H.
Section 7, Rose Bowls	\$ 6.00 plus \$1.00 S. & H.
Section 8, Rose Bowls	\$ 6.00 plus \$1.00 S. & H.
Section 9, Small Plates	\$ 6.00 plus \$1.00 S. & H.
Section 10, Small Plates	\$ 6.00 plus \$1.00 S. & H.
Section 11, Chop Plates	\$ 6.00 plus \$1.00 S. & H.
Section 12, Large Plates	\$ 6.00 plus \$1.00 S. & H.

On the above Sections, there is a maximum shipping & handing charge of \$5.00.

Empty Notebook Binder	\$10.00 plus \$2.50 S. & H.
Complete Notebook Binder with 11 available Sections	\$76.00 plus \$5.00 S. & H.
Gibson Plate Holders	\$21.00 per doz. (NO SHIPPING)
	+ =
	=====

Make checks payable to: H.O.A.C.G.A.
and send checks and orders to:
Doug Peters
8708 N. Chatham Avenue
Kansas City, Missouri 64154

NAME _____
ADDRESS _____
CITY, STATE, ZIP CODE _____

1. All advertisements, announcements, letters or any other item to be printed must be received by the Bulletin Secretary no later than the 28th day of the month, to insure being published in the next months' Bulletin.
2. Member families may advertise ten (10) "For Sale" and ten (10) "Want Ads" per month F R E E of charge.
3. Only old Carnival Glass items or H.O.A.C.G.A. Souvenirs will be published. The Editor reserves the right to delete any item considered to be new glass (made after 1940) or any non-Carnival glass.
4. Damage or manufacturing flaws should be noted.
5. All "For Sale" items must be priced, no bid items will be published.
6. A 5-day return privilege, at buyers' expense; providing it is not as advertised.
7. All postage and insurance is extra, to be paid by buyer.
8. All ads must be legible, or they will not be printed.
9. The H.O.A.C.G.A. does not accept responsibility for accuracy of any ads.

FOR ACCURACY OF DESCRIPTION, THE FOLLOWING COLOR KEY IS RECOMMENDED:

A-Amethyst	HA-Honey Amber	P-Purple
AMB-Amber	IB-Ice Blue	PRL-Pearl/Pastel/Milk Glass
AO-Aqua Opalescent	IG-Ice Green	PM-Pastel Marigold
B-Blue	IGO-Ice Green Opal.	PO-Peach Opalescent
BO-Blue Opal or Blue Opaque	LAV-Lavender	R-Red
CLM-Clamroth	M-Marigold	RA-Amberina
EB-Electric Blue	MMG-Marigold on Milk Glass	SM-Smoke
G-Green		VAS-Vaseline

NOTE: If you wish to describe a piece as light or dark, please use the body of the ad.

P L E A S E U S E T H E F O L L O W I N G

EI-Excellent Iridescence	GI-Good Iridescence	LI-Light Iridescence
--------------------------	---------------------	----------------------

EXAMPLES

AO	EI	Good Luck plate, one point broken and repaired	375.00
M	LI	Peacock at the Fountain 7 piece water set, pitcher has flake	225.00
MMG	GI	Peacock & Grape bowl	360.00
A	GI	Wishbone tumbler, heat check, light amethyst	47.50

It would be greatly appreciated by everyone if you would use these codes, as suggested above.

=====

***** CARNIVAL GLASS FOR SALE *****

Ray Hitchcock, R.R. #1, Box 301, Winterset, Iowa 50273
PHONE: 1-515-462-2074

DM	Flute & Cane pitcher	200.00
P	Beaded Cable rose bowl, Ribbed interior	125.00
IB	Poppy pickle dish, rim chip	125.00
G	Louisa rose bowl, SUPER	70.00
DM	Butterfly & Tulip square bowl, SUPER	500.00
W	Fanciful plate, SUPER	200.00
B	Stag & Holly ball footed bowl, SUPER	180.00
P	Grape & Cable hat pin holder	165.00
G	Strawberry P.C.E. bowl, Plain exterior, nice	120.00
B	Fentons Peacock & Urn 8 ruffled bowl, SUPER	150.00

Jack & Eleanor Hamilton, Post Office Box 20203, Waco, Texas 76702
PHONE: 1-817-857-3148

A	EI	Cherry 6" plate, Dugan	120.00
A	EI	Louisa nut bowl (candy dish)	60.00
SM	EI	Star Medallion milk pitcher	65.00
M	EI	Lattice & Daisy tumbler (has vaseline base)	50.00
M	EI	Ten Mums tumbler, small chip on base	45.00
P	EI	Grape & Cable dresser tray	160.00
W	EI	Cosmos & Cane sugar top, or will buy bottom	40.00
B	EI	Grape & Cable punch cup	40.00
A	EI	Fishscale & Beads 7" plate, Dugan	100.00
M	EI	Stork A B C plate	50.00

Robert Hutchison, Rt. #2, Box 461, Seymour, Missouri 65746
PHONE: 1-417-935-4908

W	Wreathed Cherry tumbler, SUPER	90.00
M	Dandelion mug	300.00
M	Rambler Rose tumblers, have 4, all for	120.00
M	Tiger Lily 7 piece water set	300.00
PO	Caroline 8½" bowl, real nice	90.00
M	Hearts & Vine 9" bowl	35.00
M	Dragon & Lotus 8½" bowl	55.00
A	Beaded Cable rose bowl	60.00
B	Thistle 9" bowl	55.00
B	Knotted Beads 10" vase	30.00

***** CARNIVAL GLASS FOR SALE *****

Joseph Mello, 535 Fish Road, Tiverton, Rhode Island 02878
PHONE: 1-401-624-2174

M	EI	Grape & Cable cracker jar, nice	250.00
M	EI	Imperial Grape punch cups, have 12, each	15.00
M	EI	Fashion punch cups, have 12, each	15.00
M	EI	Octagon tumbler	30.00
W	EI	Vintage rose bowl, small flake on outside of bowl	85.00
A	EI	Millersburg Hanging Cherries butter top, nice	45.00
A	EI	Strutting Peacock creamer & sugar, the pair	65.00
A	EI	Scroll Embossed bowl, flared, nice	45.00
B	EI	Dragon & Lotus I.C.S. bowl, nice	45.00
PO	EI	Single Flower	45.00

Dave Sharp, 3300 Wyoming Blvd. N.E. #B, Albuquerque, New Mexico 87111
PHONE: 1-505-298-6190

PO	EI	Fishscale & Beads crimped edge plate, SUPER	150.00
A	EI	Ten Mums ruffled bowl	150.00
AQ	EI	Blackberry J.I.P. crimped edge hat	85.00
SM	EI	Windflower ruffled bowl, RARE COLOR	125.00
W	EI	Garden Path Variet 10" ruffled bowl, chip on 1 point, SUPER	120.00
G	EI	Springtime butter lid	85.00
A	EI	Orange Tree breakfast sugar	45.00
G	GI	Grape & Gothic Arches tumbler	35.00

Bill Tendl, 1816 Albright Drive, Clearwater, Florida 34625
PHONE: 1-813-796-3150 after 6:00 P.M. E.S.T.

M	Thin Rib 10¼" vase	12.00
DM	Stork & Rushes hat, nice color and iridescence, but small crack	8.00
P	Grape & Cable powder jar, nice color and iridescence, but base is cracked and lid rim is rough	15.00
M	Three Fruits plate	60.00
M	Millersburg Zig-Zag 10" bowl, <u>very</u> small edge nick	75.00
P	Singing Birds mug, small pinhead near base rim	35.00
B	Captive Rose compote, nice	60.00
P	Blackberry Open Edge hat	50.00
M	Stag & Holly 10½" footed bowl, I.C.S.	90.00
SM	Diamond Ring fruit bowl	20.00

Dick Wetherbee, 847 Stafford St., Rochdale, Massachusetts 01542
PHONE: 1-508-892-4420

P	EI	Diamond Lace 5" sauce dish, SUPER	35.00
M	EI	Peacock & Urn goblet shaped compote	55.00
B	EI	Stag & Holly 10½" 3 footed bowl, OUTSTANDING	325.00
G	EI	(N) Raspberry tumbler, nice color	60.00
IP	EI	Brocaded Acorns 6½" 2 handled flat tray, pretty	32.00
P	EI	Grape & Cable banana boat, a beauty	325.00
M	EI	Apple Blossom Twigs 8½" low ruffled bowl	95.00
CLM	EI	Waffle Block 10" basket, very pretty	55.00
P	EI	Millersburg Poppy/Potpouri 7" compote	750.00
M	EI	Star Medallion tumblers, have 6 matching, all for	75.00

SEND S.A.S.E. FOR A LIST OF 200 PIECES

Ted Sheibley, 304A Hillcrest Drive, New Cumberland, Pennsylvania 17070
PHONE: 1-717-938-6417

A	EI	Braziers Candies saucer	550.00
A	EI	Sunflower pin tray	475.00
A	EI	Trout & Fly bowl, 3 in 1 edge	575.00
AQ	EI	Panther individual berry bowl	450.00
B	EI	Apple Blossom Twigs 9" plate	240.00
B	EI	Embroidered Mums bowl	450.00
B	EI	Hearts & Flowers compote	425.00
B	EI	Peacock & Urn individual ice cream bowl (N)	100.00
G	EI	Blossomtime compote	400.00
G	EI	Grape & Cable candlelamp	750.00

Dick Hatscher, 142 Walnut Hill Road, Bethel, Connecticut 06801
PHONE: 1-203-743-1468

G	GI	Millersburg Zig-Zag 10" bowl, 3 in 1 edge	95.00
G	EI	Nesting Swan bowl, ruffled, SUPER	265.00
G	EI	Singing Birds 7 piece water set, SUPER	495.00
G	GI	Inverted Strawberry powder jar	195.00
G	GI	Inverted Feather cracker jar	245.00
G	EI	Captive Rose bowl C.R.E.	65.00
G	EI	Grape & Cable/Old Rose Distillery plate, SUPER, some flaking on collar	225.00
G	GI	Hattie chop plate, ¼" scratch near edge	395.00
G	GI	Scroll Embossed plate	75.00
G	EI	Springtime table set, one finial has damage	CALL

Pat Lower, Post Office Box 686, Galion, Ohio 44833
PHONE: 1-419-468-1269 evenings

A	EI	Hanging Cherries 7" I.C.S. satin	65.00
AO	EI	Hearts & Flowers compote	575.00
B	EI	Double Loop chalice, electric blue	50.00
B	EI	Good Luck P.C.E. bowl, multi-color iridescence	250.00
G	EI	April Showers vase with Rosette	45.00
M	EI	Grape & Cable I.C.S. bowl	30.00
M	EI	Heavy Grape large I.C.S. bowl, pretty	50.00
M	EI	Poppy relish/pickle dish	110.00
EB	EI	Fruits & Flowers 2 handled bon bon	70.00
M	EI	Windflower low ruffled bowl	30.00

Alton & Gladys Skouby, 3107 Garnette Drive, A-8, Bridgeton, Missouri 63044
PHONE: 1-314-298-8279

M	EI	Big Basketweave basket, pastel	85.00
M	EI	Cosmos Varient, beautiful color	50.00
M	EI	Cornucopia 5" vase	65.00
M	EI	Floral & Grape 4 piece water set	175.00
M	EI	Graceful vase	45.00
M	EI	Holly stemmed sherbert dishes, have 6	60.00
M	EI	Pony 8" 6 ruffled bowl	70.00
M	EI	Three Fruits 9" ruffled bowl, pastel	90.00
M	EI	Wishbone/Ribbons & Rings exterior	60.00
M	EI	Waterlily & Cattails tumbler	85.00

Lee Bryant, Rt. #1, Box 109, Decatur, Indiana 46733
PHONE: 1-219-639-3415

B		Butterfly & Berry 9½" footed bowl, good color	100.00
PO		Carolina Dogwood 8½" ruffled bowl	95.00
G		Grape & Cable 9" bowl P.C.E. (N), Basketweave exterior, with soft red iridescence	100.00
P		Stag & Holly spatula footed ruffled bowl	90.00
P		Strawberry 9" ruffled bowl (N), Basketweave	80.00
A		Thistle 9" bowl, 3 in 1 edge, good color	72.50
A		Pineapple compote, good color & iridescence	75.00
M		Malaga 8½" bowl, round, hard to find	97.50
B		Stag & Holly 7½" bowl, I.C.S.	95.00
P		Grape & Cable ftd. plate with Meander (N)	80.00

***** CARNIVAL GLASS FOR SALE *****

Richard & Carol Cinclair, 3605 South Echo Trail, Plano, Texas 75023
PHONE: 1-214-596-0014

A	EI	Hearts & Flowers plate, gold iridescence	1,050.00
*	EI	*Sapphire Hearts & Flowers compote	895.00
VAS	EI	Horse Medallion footed, J.I.P.	425.00
AO	EI	Bushel Basket	445.00
M	EI	Kittens cup & saucer	295.00
B	EI	Peacock at the Fountain orange bowl, SUPER	675.00
G	EI	Grape & Cable bowl, P.C.E.	125.00
P	EI	Broken Arches punch set (6 cups)	575.00
M	EI	Wine & Roses cider set	475.00
R	EI	Open Edge Basket, amberina bottom	375.00

Bob Slaughter, 4717 N.C. Hwy. 54, Graham, North Carolina 27253
PHONE: 1-919-376-9552

M	EI	Horse Medallion plate, sliver top of one point	75.00
M	EI	Garland rose bowls, have 2, each	35.00
*	EI	*Honey amber Wreath of Roses Variet compote	35.00
G	EI	Northwoods Petals compote, scarce color	45.00
M	EI	Imperial Grape goblet	15.00
M	EI	Orange Tree small mug	25.00
M	EI	Louisa footed plate	45.00
W	EI	Grape & Cable punch cups, RARE, have 2, each	50.00
M	EI	Star & File tall stemmed sherbert	12.00
B	EI	Northwoods Double Loop open sugar	25.00

MAKE CHECKS PAYABLE TO: ANN SLAUGHTER, CARNIVAL GLASS & COLLECTIBLES

N. E. Nething, 10784 Airview Drive, N. Huntingdon, Pennsylvania 15642
PHONE: 1-412-863-4025 Leave message on answering machine

LM		Dog Ash Tray, RARE, I have only heard of one other	250.00
M		Millersburg fluted Zig-Zag bowl	150.00
A		Millersburg Rays & Ribbons bowl I.C.S.	65.00
*		*White or clambroth Frosted Block compote, RARE	150.00
W		Persian Garden plate 6 3/4" RARE	85.00
*		Amberina Strawberry bon bon, crack in one handle, hard to see	150.00
G		Feather vase (N)	37.50
M		Greek Key bowl (N)	70.00
B		Orange Tree loving cup, bursted bubble on foot	155.00
B		Panther master berry bowl, excellent color	300.00

Cathy & Richard Fenton, 1356 Meadowlawn, Macedonia, Ohio 44056
PHONE: 1-216-467-3399

G		Singing Birds mug	150.00
M		Three Fruits stippled bowl	85.00
M		Woodlands vase	200.00
M		Kittens bowl, 4 sides up, 2 kittens on pattern	375.00
CLM		Persian Medallion rose bowl	300.00
A		Double Dutch bowl, tiny chip on one foot	95.00
PO		Coin Spot compote	80.00
M		Rose Show plate, great dark marigold	650.00
W		Orange Tree mug	1,000.00
M		Mini oil lamp, enamelled and complete	250.00

Dennis L. Runk, Post Office Box 235, Littlestown, Pennsylvania 17340
PHONE: 1-717-359-7205

IB	EI	Fine Cut & Roses rose bowl, rough foot	195.00
M	EI	Memphis punch cup	25.00
A	EI	Stork & Rushes punch cup	35.00
A	EI	S-Repeat punch cup	23.00
IB	EI	Memphis punch cup, flake off handle	25.00
M	GI	Bouquet tumbler, have 2, each	30.00
M	EI	Crab Claw tumbler	37.00
M	EI	Octagon tumbler	22.00
G	GI	(N) Grape & Cable cologne bottle & stopper (aqua-green)	160.00
W	EI	Peacock & Urn compote	230.00

Joe Merrifield, 10018 N.E. Alton, Portland, Oregon 97220
PHONE: 1-503-253-8276

A	GI	Grape & Cable tumbler	45.00
B	GI	Grape & Gothic Arches tumbler	45.00
A	EI	Imperial Grape tumbler	32.50
B	EI	Orange Tree Orchard tumbler	42.50
M	GI	Imperial Grape goblet	25.00
M	GI	Lattice & Daisy tumbler	35.00
B	EI	Grape & Gothic Arches tumbler	45.00
P	GI	Imperial Pansy pickle dish	45.00
P	EI	Oriental Poppy tumblers, have 6, each	45.00
M	GI	Near-Cut Souvenir mug "Tripp S.D.", small base crack	48.00

Due to an oversight, this ad was not published earlier, we apologize for any inconvenience.

Mario & Helen Cabrera, 611 Belford Avenue #2, Grand Junction, Colorado 81501
PHONE: 1-303-245-5781

G	EI	(N) Oriental Poppy 5 piece water set, FANTASTIC IRIDESCENCE	1,450.00
A	EI	Fentons Prism Band lemonade (water) pitcher & 1 tumbler, fiery iridescence!	500.00
B	EI	Fentons Prism Band lemonade (water) pitcher & 6 tumblers in cobalt blue. Tumblers are ground on the bottom with what looks like pull from the mold marks on some tumblers, FANTASTIC IRIDESCENCE	700.00
B	EI	Cherry Blossoms 7 piece water set, tumblers are more on the light satiny side	225.00
P	EI	Dugans Fanciful ruffled plate in electric blue. Plate is 2" high & 9 $\frac{1}{4}$ " wide. This is what Carnival Glass is all about.	900.00
W	EI	Dahlia 6 piece berry set, 2 sauces have 1 chip on 1 foot	450.00
B	EI	Fentons toothpick holder, base glass is not cobalt but a lighter blue with excellent iridescence	375.00
P	EI	(N) Tornado vase, large, plain 6 $\frac{1}{2}$ ", with small pinhole on side, beautiful satin iridescence	350.00
M	EI	Sowerbys Diving Dolphins rose bowl	150.00
P	EI	(N) Good Luck bowl, ruffled, satiny iridescence	250.00

Barbara Barker, Rt. #3, Box 163BB, Savannah, Missouri 64485
PHONE: 1-816-662-2265

STILL 45 pieces of Carnival Glass for Sale. All nice pieces!
SEND S.A.S.E. FOR LIST.

Robert C. McGuire, 2014 Meadowbrook Drive, Milan, Tennessee 38358
PHONE: 1-901-686-8091 after 6:00 P.M. C.D.T.

G	EI	Mayan 8" I.C.S. bowl, radium	85.00
M	EI	Cherry Chain low 10" bowl, 3 in 1 edge	45.00
P	EI	Strawberry 9" plate	165.00
G	EI	Thistle banana boat, SUPER COLOR	250.00
*	EI	*Marigold over smoke Robin mug	165.00
AQ	EI	Acorns 7" bowl	85.00
M	EI	Two Fruits divided bowl, scarce	55.00
P	EI	Fishermans Mug, not as silvery as most	110.00
M	EI	Chrysanthemum 11" footed & ruffled bowl	65.00
*	EI	*Moonstone opal Carolina Dogwood 6 ruffled bowl	225.00

Jane Dinkins, 1100 Ridgeley Drive, Houston, Texas 77055
PHONE: 1-713-465-0557

A	EI	Stippled Grape & Cable P.C.E. 8 $\frac{1}{2}$ " bowl	80.00
RG	EI	Four Flowers Variet chop plate, Long Thumbprint exterior	600.00
SM	EI	Handled vase, Imperial	45.00
M	EI	Pineapple rose bowl	40.00
VI	EI	Little Beads compote, not ruffled, base color almost pink	40.00
A	EI	9" handgrip plate, Rainbow top pattern, like listed compote, Basketweave exterior (N)	110.00
A	EI	Wishbone ftd. plate, Ruffles & Rings exterior	250.00
CL		Snowcrest Bear Bank, has original slotted cap "Mr. Honey Bear"	15.00
A	EI	Grape & Cable butter dish base	70.00

Kenneth L. Clark, 2723 Canyon Oaks Ct., Temple, Texas 76502
PHONE: 1-817-774-9543

A limited number of old Carnival Glass buttons. Also a few Carnival Glass "cone shank" hatpins or buttons including Dragon Fly, Egyptian Butterfly, Six Plums, and others plus eight different treatments of the Rooster. Write for complete information. Satisfaction guaranteed.

Ken & Bev Osbon, 34931 S.E. Dodge Park, Gresham, Oregon 97080
PHONE: 1-503-663-4433

CB	EI	Tobacco Jar	725.00
IB	EI	Singing Birds mug	750.00
R	EI	Fine Rib vase	475.00
M	EI	Orange Tree mug	22.00
W	EI	Palm Beach pitcher	450.00
G	EI	Plaid bowl, different shape	575.00

Flyn Willis, 211 Clem Street, Ottumwa, Iowa 52501
PHONE: 1-515-684-4205

M	GI	Pond Lily bon bon	30.00
G	GI	Peacock Tail hat with advertising	50.00
M	LI	Iris buttermilk goblet	40.00
M	GI	Grape & Cable hat, flared top	35.00
A	GI	(N) Grape Leaves	45.00
A	GI	Multi-Fruits & Flowers punch cup	35.00
P	GI	S-Repeat cup	50.00
P	GI	Acorn Burrs cup	35.00

Alaine M. Pennetti, 23 Nancy Lane, Ft. Myers Beach, Florida 33931
PHONE: 1-813-463-3918

B	Grape & Gothic Arches pitcher	350.00
M	Wreath of Roses rose bowl	45.00
M	Leaf Tiers tumbler, good feet	75.00
A	Heart & Feather tumbler	95.00
A	Wreathed Cherry banana boat 13 $\frac{1}{4}$ " X 10" X 4 $\frac{1}{4}$ ", unlisted in this size and shape, beautiful	525.00
PO	Ski-Star/Compass 11" bowl, 6 scallops	95.00
A	Butterfly nappy, Fenton	60.00
AMB	Heavy Grape 8" plate	90.00
M	Fine Rib plate, 8 sided, 9", pretty iridescence	85.00
A	Grape & Cable plate, spatula footed	95.00

John D. Resnik, 10031 Banner Lava Cap, Nevada City, California 95959
PHONE: 1-916-477-1345

W	EI	Grape & Cable 6" ice cream bowl, RARE	265.00
P	EI	Grape & Cable banana boat	200.00
R	EI	Dragon & Lotus I.C.S. bowl, small rim chip backside	750.00
A	GI	Bushel Basket, 8 sided	275.00
W	EI	Bushel Basket, 8 sided	165.00
B	EI	Bushel Basket, round	145.00
M	EI	Bushel Basket, round	135.00
IG	EI	Bushel Basket, round	265.00
A	EI	Singing Birds table set, 6 pieces, missing sugar lid	625.00
M	EI	Peacock at the Fountain table set, 7 pieces	475.00

Jeanette M. Blackburn, 3975 Dora Wood Drive, Mt. Dora, Florida 32757
PHONE: 1-904-383-7579

B	EI	(N) Stippled Ray	40.00
M	EI	Double Stemmed Rose	30.00
M	EI	(N) Memphis 11" berry bowl	85.00
M	EI	Beaded Cable footed bowl, Rays interior, VERY NICE	35.00
A	EI	Triplets ruffled 7 $\frac{1}{2}$ " bowl	30.00
M	EI	Imperial Grape decanter, <u>no stopper</u>	40.00
A	EI	Scales 5" deep bowl	28.00
M	EI	Blackberry Open Edge, 2 sides up	30.00
M	EI	Cobblestone 7" low bowl	40.00
P	EI	Nautilus (heat check) SUPER COLOR & IRIDESCENCE	125.00

Maurice "Moe" Myers, Post Office Box 3180, North Conway, New Hampshire 03860
PHONE: 1-603-356-6610

M	EI	Little Stars 8" ruffled bowl	115.00
G	EI	Little Stars 8" ruffled bowl	135.00
A	EI	Corinth vase	45.00
G	EI	Fleur de Lis footed bowl, beautiful, but has small crack	100.00
B	EI	Three Diamonds & Bows vase	75.00
M	EI	Persian Medallion hair receiver	65.00
M	EI	Beaded Bullseye vase 11" tall	35.00
P	EI	Grape & Cable 9" plate, (N), very small rim chip	75.00
P	EI	Dugans Cherries 6" bowl, SUPER COLOR	60.00
*	GI	*Persian blue Interior Flute 4 $\frac{1}{2}$ " berry bowl	40.00

Harold R. Wagner, 5951 Fredericksburg Road, Wooster, Ohio 44691
PHONE: 1-216-264-3703 after 6:00 P.M.

M	EI	Millersburg Peacock & Urn 10" fluted bowl	225.00
A	EI	Millersburg Peacock & Urn 10" fluted bowl	325.00
G	EI	Millersburg Trout & Fly 9" bowl, open bubble on edge	325.00
M	EI	Millersburg Peacock Variet 9" bowl	250.00
M	EI	Millersburg Primrose 10" fluted bowl	65.00
A	EI	Millersburg Rosalind 9" fluted bowl	275.00
G	EI	Millersburg Holly 2 handled bon bon	65.00
A	EI	Millersburg Peacock Whinsey Proof 5" berry bowl, chip on base	50.00
M	EI	Millersburg Holly 2 handled bon bon	65.00
A	EI	Millersburg Peacock 5" berry bowl, radium	145.00

Rod & Joan Sutfin, 215 N. Canal, Lot 156, Lansing, Michigan 48917
PHONE: 1-517-627-6997

W	EI	Three Fruits dome based 8" ruffled bowl	350.00
W	EI	Rustic 10" vase	90.00
M	EI	Sailboats plate	375.00
AMB	EI	Sailboats sauce, ruffled	120.00
A	EI	Sailboats sauce, ruffled	120.00
G	EI	Sailboats sauce, ruffled	100.00
EG	EI	Sailboats sauce, ruffled, emerald	155.00
B	EI	Sailboats sauce, ruffled, light blue with amy. overlay	90.00
B	EI	Sailboats sauce, ruffled, light blue with marigold overlay	70.00
AQ	EI	Sailboats I.C.S. sauce, bruise on bottom	60.00

Marc A. Cicorio, 189 Dolores #4, San Francisco, California 94103

R	EI	Open Edge Basket	400.00
AMB	EI	Berry bowl signed (N), dark beautiful color, RARE	200.00
M	EI	Colonial lemonade goblet, handled, very tiny chip on bottom	80.00
P	EI	Heavy Grape (N) 5" bowl, Basketweave exterior	150.00
G	EI	Fentons Acorn bowl	95.00
*	EI	*Lime green compote, Stippled Rays	200.00
M	EI	Rustic 9½" vase, have 2, each	75.00
G	EI	Grape & Cable wine glasses, have 6, each	30.00
P	EI	(N) Butterfly bon bon	150.00

Must sell complete collection of Carnival Glass! Please send a S.A.S.E. for an UP-TO-DATE listing. Please, NO phone calls before you receive the listing. THANK YOU!

Nigel Gamble, 309 Wellington Ct. Apt. 507, London, Ontario, Canada N6C 4P2

W	EI	Beaded Cable rose bowl	695.00
IB	EI	Beaded Cable rose bowl	895.00

Barbara Nelson, R.F.D. 1, Box 258, Moultonboro, New Hampshire 03254
PHONE: 1-603-476-5942

P		Raspberry tumblers, have 6, fair iridescence, @ \$20.00, all for	100.00
P		Maple Leaf tumblers, 2 poor \$15.00 each, 2 good \$20.00 each, all for	60.00
G		Singing Birds tumblers, have 8, average iridescence, (N) 1 has tiny nick, \$20.00 each or all for	140.00
M	EI	Panther small berry bowls, have 6, good matching dark set, \$30.00 each or all for	150.00
M	EI	Butterfly & Berry 7 piece berry set, 1 small bowl has tiny nick on foot	125.00
G/P	EI	Singing Birds butter dish, green top, purple base (N) blends in to match well	125.00
G	EI	Singing Birds 7 piece berry set, super bronze & purple iridescence, 2" internal check on inside of master (N)	125.00
P		Acorn Burrs 4 piece berry set, (N), gold iridescence, multi inside, 1 small has bruise on leaf	125.00
G	EI	Memphis punch cups, have 4, (N), \$30.00 each, all for	100.00
M	EI	Octagon milk pitcher	65.00

Doug & Sharla Peters, 8708 N. Chatham Ave., Kansas City, Missouri 64154
PHONE: 1-816-587-5696

P	EI	Imperial Grape ruffled bowl, FANTASTIC!	95.00
M	EI	Persian Medallion bon bon	35.00
A	EI	Raspberry tumbler	50.00
M	EI	"474" tumbler	40.00
M	EI	Butterfly & Berry butterdish, lid has crack	45.00
M	EI	Butterfly & Berry creamer	50.00
M	EI	Butterfly & Berry spooner	50.00
A	EI	Greek Key bowl, point missing	25.00
M	EI	Three Fruits Medallion with Meander exterior, pretty	70.00
*	EI	*Sapphire blue Three Fruits Medallion with Meander exterior BEAUTIFUL, but 2 points missing	50.00

Arvin Wolfgram, 1119 E. Marquette Street, Appleton, Wisconsin 54911
PHONE: 1-414-734-7075

M		Millersburg Cherry spooner	60.00
M		Blackberry Banded hat shape	25.00
A		Wreath of Roses punch cup, Vintage interior	25.00
A		Top Hat vase	15.00
*		*Lime Green with marigold overlay Blackberry Spray hat, J.I.P shape	35.00
R		1978 H.O.A.C.G.A. Souvenir Corn Vase	40.00

John L. Boyd, 720 Gran Paseo Drive, Orlando, Florida 32825
PHONE: 1-407-275-6565

W		Double Stemmed Rose 9" bowl, dome based, 10 ruffles, SUPER	95.00
W		Fanciful low bowl 8½", I.C.S. good color	85.00
A		Grape & Cable Sweetmeat open compote 6½" whimsey, excellent color inside and out	185.00
M		Maple Leaf butter top, excellent color	40.00

Harold L. Fortney, 910 Pennsylvania, Apt. 704, Kansas City, Missouri 64105
PHONE: 1-816-474-2054

M	EI	Millersburg Whirling Leaves bowl, satin iridescence	50.00
M	EI	Millersburg Primrose ruffled bowl, satin iridescence	65.00
VAS	EI	Two Flowers footed saucers, have 2, each	75.00
B	GI	Peacock & Grape ruffled collar based bowl	45.00

Tom Courts, 106 Aquamarine Drive, Pensacola, Florida 32505
PHONE: 1-904-456-2240

A	Millersburg Little Stars bowl	125.00
EG	Wreath of Roses compote, emerald green	60.00
LAV	Heavy Grape plate	150.00
PO	Single Flower Framed candy ribbon edge bowl	150.00
A	Northwood vase with electric iridescence	60.00
W	Open Flower & Vining Twigs 8 ruffled bowl, rainbow iridescence	150.00
M	Good Luck bowl	150.00
M	Wreathed Cherry banana bowl	100.00
W	Hammered Bell, rough bottom, RARE	100.00
G	Imperial Grape decanter, no stopper	50.00

George Loescher, 2420 Park Avenue, Beloit, Wisconsin 53511
PHONE: 1-608-362-3104 after 5:00 P.M.

G	EI	Plaid ruffled bowl	425.00
G	GI	Diamond Point vase	32.00
B	EI	Rose Show Variet plate	500.00
A	EI	E. A. Hudson handgrip plate	625.00
W	EI	Three Fruits spatula footed bowl (J. Britt collection)	375.00
G	EI	Fine Cut & Roses rose bowl, feet mint	125.00
IB	EI	Fine Cut & Roses rose bowl, has aqua tinge	200.00
A	EI	Funeral vase 5 1/4" base 19" tall, Diamond & Rib (Jardinere)	600.00
W	EI	Bushel Basket (Horehound) round	375.00

Barbara Farmer, RD. #5, Box 462, Wheeling, West Virginia 26003
PHONE: 1-304-336-7689

P	EI	Thumbprint & Oval vase	700.00
P	EI	3 1/2" Twig vase	600.00
W	EI	Dugan Beaded Basket	325.00
AMB	EI	Butterfly & Berry vase	130.00

Robert Hutchison, Rt. #2, Box 461, Seymour, Missouri 65746
PHONE: 1-417-935-4908

B	Rambler Rose pitcher
A	Fluffy Peacock pitcher and 1 tumbler
ANY	Plates reasonably priced

Jack & Eleanor Hamilton, Post Office Box 20203, Waco, Texas 76702
PHONE: 1-817-857-3148

M	Lid only, Wild Berry powder jar
M	Leaf Tiers butter dish
	ANY PIECES CHIPPED, CRACKED OR BROKEN

Leonard Brooks, 372 Laduemont Drive, St. Louis, Missouri 63141
PHONE: 1-314-576-1577

ANYTHING IN HEARTS & FLOWERS

Herb Hull, 13001 Stephenson St., Anchorage, Alaska 99515
PHONE: 1-907-345-4855

M	Pansy sugar
G	Pansy sugar & creamer
P	Pansy sugar & creamer
AQ	Pansy sugar & creamer
ANY	Grape Delight rose bowls, scalloped top only, not crimped.

Greg & Rene Cline, 920 W. Webb Road, DeWitt, Michigan 48820
PHONE: 1-517-669-5895

B	EI	Butterfly & Berry water pitcher
B	EI	Butterfly & Berry 5" footed berry bowls, need 3
B	EI	Butterfly & Berry spooner

Isabell Aldridge, 6407 Rushmore Drive, Sacramento, California 95842
PHONE: 1-916-331-4290

B	EI	Butterfly & Berry ball footed butter dish with lid
M	EI	Peacock at the Fountain (N) butter dish with lid
ANY		Owl/Strawberry/Beetle hat pins

N. E. Nething, 10784 Airview Drive, N. Huntingdon, Pennsylvania 15642
 PHONE: 1-412-863-4025 Leave message on answering machine

R Imperial Jewels sugar
 M Palm Beach butterdish bottoms, need 2, or will sell tops
 IG Peacock at the Fountain punch cups, need 6
 B Millersburg Hanging Cherries butter dish bottom or will sell top,
 RARE, have not seen another top
 P Base for Flute punch bowl, or will sell top

Richard & Carol Cinclair, 3605 South Echo Trail, Plano, Texas 75023
 PHONE: 1-214-596-0014

G Hearts & Flowers compote
 A Hearts & Flowers compote
 B Hearts & Flowers ruffled bowl
 B Hearts & Flowers plate
 B Kittens saucer
 B Grape & Cable master ice cream bowl
 B Peacock at the Fountain punch cups
 R Stag & Holly
 R Leaf Chain bowl
 ANY Grape & Cable pin trays

Pat Lower, Post Office Box 686, Galion, Ohio 44833
 PHONE: 1-419-468-1269 evenings

ANY Millersburg Nesting Swans
 ANY Millersburg Peacock & Urn bowls
 ANY Millersburg deep berry bowls or sauces
 ANY (N) Peacock & Urn in white, ice green, or ice blue
 ANY Cherry red bowls/hats/baskets/vases

Joseph Mello, 535 Fish Road, Tiverton, Rhode Island 02878
 PHONE: 1-401-624-2174

G Oriental Poppy tumblers, need 2
 B Lattice & Daisy water pitcher
 M Octagon tankard water pitcher
 A Maple Leaf tumblers, need 6
 B (N) Bushel Basket, 8 sided
 B Panelled Dandelion tumblers, need 5

John D. Resnik, 10031 Banner Lava Cap, Nevada City, California 95959
 PHONE: 1-916-477-1345

A EI "Geo. W. Getts Pianos" 5" to 6" advertising bowl
 A EI "Geo. W. Getts Pianos" 5" to 6" advertising handgrip plate
 A EI "Eagle Furniture" 5" to 6" advertising bowl
 A EI "Brazier's Candies" 5" to 6" advertising plate
 A EI "Greengard Furniture" 5" to 6" advertising bowl
 A EI "Norris N. Smith" 5" to 6" advertising handgrip plate
 A EI "Sterling Furniture" 5" to 6" advertising plate
 A EI "Sterling Furniture" 5" to 6" advertising handgrip plate
 A EI "Ogden Furniture" 5" to 6" advertising plate
 A EI "Ballard - Merced, Cal." 5" to 6" advertising handgrip plate

Flyn Willis, 211 Clem Street, Ottumwa, Iowa 52501
 PHONE: 1-515-684-4205

P Grape & Cable cologne bottle with stopper

Rosie Feld, C5995 Co. Hwy. K., Algoma, Wisconsin 54201
 PHONE: 1-414-487-3357 after 5:00 P.M.

W Dahlia sugar lid
 M Orange Tree punch base

Ted Sheibley, 304A Hillcrest Drive, New Cumberland, Pennsylvania 17070
 PHONE: 1-717-938-6417

Hearts & Flowers bowl/compote ANY COLOR
 Peacock at the Fountain fruit bowl, ANY COLOR
 Peter Rabbit bowl/plate, ANY COLOR
 R Leaf Chain bowl
 Concord bowl/plate, ANY COLOR
 G Blackberry Block water pitcher
 Rose Tree bowl, ANY COLOR
 Horsehead Medallion plate, ANY COLOR
 Poinsettia & Lattice footed bowl, ANY COLOR
 Corn vase, ANY COLOR, must have good pink/blue exterior iridescence

Harold L. Fortney, 910 Pennsylvania, Apt. 704, Kansas City, Missouri 64105
 PHONE: 1-816-474-2054

B (N) Diamond Points vase

John L. Boyd, 720 Gran Paseo Drive, Orlando, Florida 32825
 PHONE: 1-407-275-6565

B Wreath of Roses punch base only, with very good color to match my top

Tom & Tommy Lu Van Eaton, Rt. #3, Box 686, Henryetta, Oklahoma 74437
 PHONE: 1-918-652-4798

B Orange Tree punch bowl, we have the base

Tom Courts, 106 Aquamarine Drive, Pensacola, Florida 32505
 PHONE: 1-904-456-2240

- ANY Open Edge Basket, ESPECIALLY PASTELS
- ANY Peacocks plates
- M Rose Show or Poppy Show bowl/plate
- W Rose Show or Poppy Show bowl/plate
- AO Four Pillars vase
- ANY Swan Salts, ESPECIALLY MARIGOLD AND PEACH OPALESCENT

Charles Mochel, 6409 Beverly Drive, Mission, Kansas 66202
 PHONE: 1-913-432-1129

- G EI Holly plate
- DM EI Lotus & Grape plate
- G EI Ohio Star vase
- Tree Trunk funeral vases, ANY COLOR, WITH EXCELLENT IRIDESCENCE
- G/A EI Captive Rose plate
- B EI Millersburg pieces
- A EI Cleveland Centennial Ash Tray

THE HEART OF AMERICA CARNIVAL GLASS ASSOCIATION, INC.

DATE _____

NAME _____

SPOUSE _____

ADDRESS _____

CITY, STATE, ZIP CODE _____

PHONE NUMBER () _____ RECOMMENDED BY _____

Membership year is from June 1 to May 31, per couple or single.
 Dues are \$20.00 U.S. & Canada and \$35.00 Foreign.

Please send checks for dues to: H.O.A.C.G.A.
 Doug Peters, Treasurer
 8708 N. Chatham Avenue
 Kansas City, Missouri 64154

JUST A FEW OF THE BENEFITS OUR CLUB OFFERS:

The ONLY MONTHLY PUBLICATION on just Carnival Glass collecting, keeping you informed of new discoveries and all of the current events. Members only may advertise 10 for sale items or want items each month, FREE OF CHARGE!

An exclusive PATTERN NOTEBOOK with yearly special inserts. (MOST inserts are still available)

ANNUAL CONVENTION WITH SOME OF THE GREATEST PEOPLE YOU COULD HOPE TO MEET!!

Questions/Comments _____

I would like to receive a membership card, yes ___ or no ___.

APPOINTMENT FOR THE OFFICE OF THE ATTORNEY GENERAL
STATE OF TEXAS
THE BOARD OF AMERICA CARRIAGE GLASS MANUFACTURING CO.

THE BOARD OF AMERICA CARRIAGE GLASS MANUFACTURING CO.
1000 WEST WASHINGTON STREET
DALLAS, TEXAS
DALLAS, TEXAS
DALLAS, TEXAS

THE BOARD OF AMERICA CARRIAGE GLASS MANUFACTURING CO.
1000 WEST WASHINGTON STREET
DALLAS, TEXAS
DALLAS, TEXAS
DALLAS, TEXAS

THE BOARD OF AMERICA CARRIAGE GLASS MANUFACTURING CO.
1000 WEST WASHINGTON STREET
DALLAS, TEXAS
DALLAS, TEXAS
DALLAS, TEXAS

THE BOARD OF AMERICA CARRIAGE GLASS MANUFACTURING CO.
1000 WEST WASHINGTON STREET
DALLAS, TEXAS
DALLAS, TEXAS
DALLAS, TEXAS