

HOACGA

Heart of America Carnival Glass Assoc. Inc.

RETURN ADDRESS

H.O.A.C.G.A.
Eleanor Mochel
6409 Beverly
Mission, Ks. 66202

January 1991

FIRST CLASS MAIL

FIRST-CLASS MAIL
U.S. POSTAGE
PAID
Shawnee Mission, KS
Permit No. 958



PRESIDENT.....Robert Grissom
7900 Crescent
Raytown, Missouri 64138
1-816-356-5320

VICE-PRESIDENT.....Daryl Strohm
8904 E. 29th St.
Kansas City, Missouri 64129
1-816-252-8137

TREASURER.....Doug Peters
8708 N. Chatham Avenue
Kansas City, Missouri 64154
1-816-587-5696

SECRETARY.....Nadine Paulsen
700 Purdom
Olathe, Kansas 66061
1-913-782-1313

BULLETIN SECRETARY.....Eleanor Mochel
6409 Beverly Dr.
Mission, Kansas 66202
1-913-432-1129

The Bulletin is published the 15th of each month. Membership year is from June 1 to May 31, per couple or single. DUES ARE \$20.00 U. S. & CANADA, \$35.00 FOREIGN. All monetary figures are quoted in U. S. Dollars.

Please send all items for the Bulletin, i.e. glass for sale, glass wanted, articles, information, to the Bulletin Secretary, whose address appears above. Please have all Bulletin material sent to us so that we receive it by the 28th of the month.

Please send checks for dues and books, and any address changes, to the Treasurer whose address appears above.

We thank you so much for your cooperation in these matters.

A beautiful marigold Rose Show Variet bowl has been obtained by the Club for the purpose of raffling to some lucky member.

The drawing will be held during the 1991 Convention. This Rose Show Variet bowl would make a very nice addition to any collection and we believe that any member would be pleased to own such an outstanding piece of Carnival.

Complete information about the raffle will be included in the February Bulletin.

1990 CARNIVAL GLASS AUCTION PRICE REPORT

The 1990 Carnival Glass Auction Report is ready for mailing. Over 3,800 entries from Carnival Glass auctions held in 1990. Please note price increase to \$9.00 per copy. Postage paid for U. S. & Canada.

Canadian friends, please send Canadian Postal Money Order in U. S. Funds. Overseas add \$2.00 for each copy.

Back issues are still available at \$8.00 each. Mail your orders to Tom and Sharon Mordini, 36 N. Mernitz Ave., Freeport, Illinois 61032.

H.O.A.C.G.A. MONTHLY MEETING FOR JANUARY, 1991

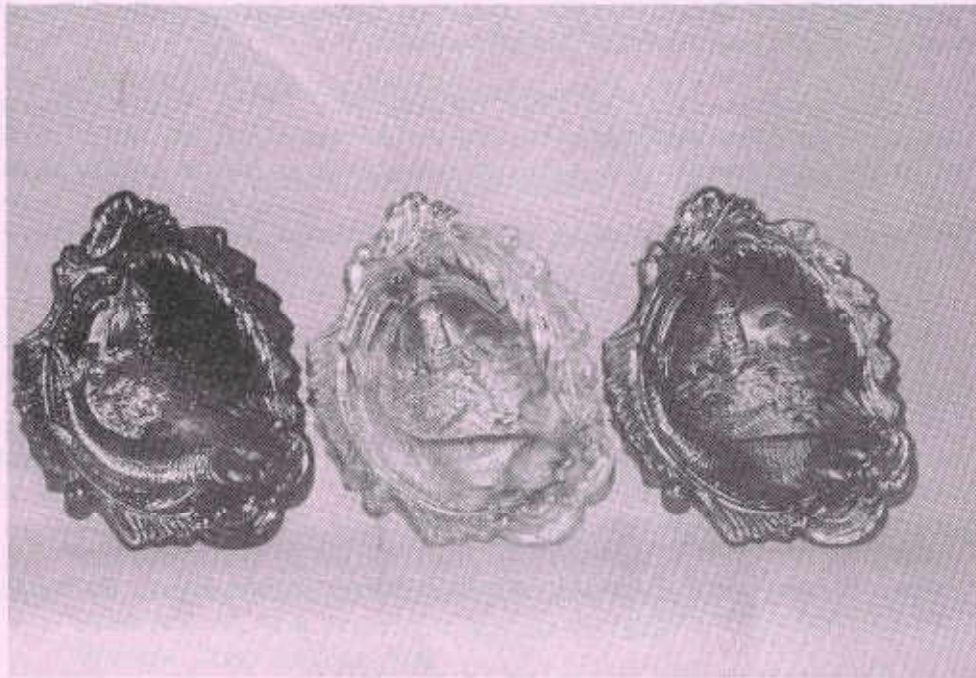
The next monthly meeting of the Heart of America Carnival Glass Association will be on January 27, 1991, at 2:00, at the Raytown City Hall, Raytown, Missouri.

We encourage everyone to attend this meeting and to bring some glass with you for the Program. For the January meeting, please bring some of your favorite pieces of Carnival, recent finds, etc. for the Program.

We hope to see everyone there!

=====

By John & Lucile Britt



MILLERSBURG SEACOAST PIN TRAYS

This little piece of Millersburg Carnival Glass is most attractive and very desirable. The design has great detail and is very interesting. The pattern contains a large fish with a curving tail that covers a good part of the left side of the pin tray. In the background, which is dwarfed by the big fish, are the ocean waves, lighthouse, large sailboat and several birds in flight that are high above the ocean. In the far background the sun is partially submerged beyond the horizon. The sun's rays extend out over the water, making it a very realistic scene. The border of this small pin tray consists of several long leaf scroll type figures and three other much smaller scrolls. The irregular shaping, the beautiful coloring and very fine detail make this an outstanding piece of Carnival Glass. It would be difficult for me to imagine anyone not liking this little gem.

The pattern was made only in the pin tray in old Carnival Glass. It measures 5½" in length, 3 ¾" wide and rests on an oval collar base. The colors found are green, amethyst and marigold. Of the three colors, we have seen more green examples with the marigold appearing the least often.

We might add that this pattern was used by the A.C.G.A. in the making of their beautiful souvenir cuspidors in 1982 to 1985 in peach opalescent, green, red and teal blue in that order. They were made by the Fenton Art Glass Company.

continued...

and we think that they are outstanding souvenir pieces. With this very fine pattern, these cuspidors are sure to grow in demand and value.

This article, featuring the beautiful Millersburg Seacoast pin trays, is #144 in this series. We hope that you have one or more of these in your collection.

JOHN & LUCILE BRITT



"NOW MIND YOU, IT MUST HAVE GOOD OPAL WITH PASTEL IRIDESCENCE."



THE ROLL TUMBLER

The Roll tumbler that we will discuss in this article is the one shown and described in the Owens Carnival Glass Tumbler book. It is #149 in that book. This tumbler is also sketched and described on page 52 of Hartung book 9.

This pretty little tumbler contains only the pleasing roll effect as a pattern, if indeed you can call this a pattern. Otherwise it is plain, but does have a narrow enameled black band around the top, which we think adds to the color of the tumbler. The marigold color, on the few that we have seen, has been very nice.

The height of the tumbler is of the standard 4 inches. It is, however, slightly smaller in diameter than most other Carnival Glass tumblers. Its top measures 2½" wide with a base diameter of 2". It was made of rather thin light-weight glass. It would make an excellent juice glass tumbler, in our opinion.

Mrs. Hartung suggested that this was possibly a Heisey product. We would certainly not argue with her, but we have not been able to find any precise information as to who was the producer of this fine tumbler. Richard Owens reports this tumbler to be scarce and we have also found that to be the case.

As mentioned, we consider this a pretty tumbler and it looks real nice in your display. One collector, who has a large collection of tumblers, told me that many of the people that view their collection, point this tumbler out as one of their favorites.



THE ROLL VARIANT (LEFT), ROLL TUMBLER (RIGHT)

The above photo shows our featured Roll tumbler on the right, with a larger size Roll tumbler on the left. The pitcher that goes with this tumbler is a tall tankard type and of course with a larger number of rolls. It has an applied handle and a narrow black band around the top. It too, is quite attractive. We have also seen these larger and taller sized Roll tumblers with a narrow enameled black band placed on the top of each of the rolls. Those that we have seen in this type have 5 of these black rings going around the tumblers.

The Roll tumbler marks our 156th entry into the Educational tumbler series. Next month we will feature the Northwoods Swirl tumbler.

JOHN & LUCILE BRITT

=====

For our Peek into the Past this time, we will continue through the 1975 Antique Trader ads. We are sure that you will recognize some of the names of the people that had the glass for sale. Perhaps you older members might have even purchased some of these pieces that were for sale back then.

JOHN WOODY AUCTION, Holiday Inn West, St. Louis, Missouri, March 1, 1975

John and Lucile Britt are planning on moving to Florida and have decided to sell their collection, except for tumblers and mugs. Many outstanding pieces are listed in this auction including an aqua opal Peacock at the Fountain fruit bowl, purple Christmas compote, purple Butterfly & Tulip bowl, green Town Pump, blue and marigold Diamond Fruit baskets, 1912 & 1914 Elks Bells, Tornado vases in ribbed ice blue and ribbed cobalt blue, ice blue and blue Peacock at the Fountain compotes, teal blue and green Corn Vases, green Concord plate, green Seaweed plate, purple experimental Round-Up plate from Presznick museum, 5 Poppy Show plates in green, blue, ice green, ice blue and marigold, purple Octagon wine set, purple Roods Chocolate advertising plate, blue Butterfly & Berry hat pin holder, unusual green Scroll Embossed 7" plate with unlisted reverse pattern, blue Rose Show Variet plate, marigold Brooklyn Bridge bowl with gold colored bridge, Zephlin and boats and many other nice pieces. (WRITERS NOTE: After considerable study on this move, we decided that we would be better off spending our winters in Florida where we both worked week days and antiqued on week ends, coming back to Kansas to spend the summer months. So, that is what we did for a good many years. In a later issue of this series, we will cover the prices realized from this auction as well as other auctions held at about that time.)

HELEN LAZAS, SOMERVILLE, NEW JERSEY: Cobalt blue Kittens toothpick holder \$70.00.

MRS. ROBERT FOSTER, SEYMOUR, INDIANA: Marigold Embroidered Mums 8 3/4" bowl, beautiful pastel iridescence \$40.00; green tri-cornered Whirling Leaves bowl \$60.00; green (N) Bushel Basket \$45.00.

GRANDMOTHERS ANTIQUES, ROHNS, PENNSYLVANIA: Purple Bat & Stars hatpin \$30.00; marigold Soldiers & Sailors plate \$400.00; marigold square Trout & Fly bowl, rare, \$190.00; rare Peacocks on the Fence plate, aqua \$275.00; ice green Peacock & Urn ice cream bowl \$200.00.

COACH HOUSE ANTIQUES, LINCOLN, NEBRASKA: Red 9" Holly bowl \$295.00; purple Peacocks on the Fence plate, bright iridescence \$130.00.

MYRTLE NESS, OCEAN PARK, WASHINGTON: White Rose Show plate \$225.00; red Peacock & Grape bowl \$250.00; white Hearts & Flowers bowl \$80.00; aqua opal Hearts & Flowers compote \$80.00; white Peacock & Urn plate \$140.00.

DONALD E. MOORE, ALAMEDA, CALIFORNIA: Rare Little Flowers marigold chop plate \$295.00, rare Grape & Cable marigold tankard water pitcher (base roughness) \$495.00; purple Grape & Cable banana boat \$175.00; amethyst Northwood's Lovely footed bowl \$75.00.

BETTE HULMES, CHAMPAIGNE, ILLINOIS: Marigold 6 1/2" Horses Heads Medallion plate \$60.00; marigold 9 1/2" Peacock & Urn plate \$110.00; green 9" Three Fruits plate \$70.00; green 7 1/2" Vintage plate \$38.00; green 9" Old Rose Distillery plate \$140.00; blue 9" Peacocks on the Fence plate \$142.00; ice green Peacocks on the Fence plate \$145.00; red 6 1/2" Stippled Rays bowl \$130.00.

CURVAN MILLER, FAIRBORN, OHIO: Marigold Amaryllis miniature compote \$50.00; purple Nesting Swan bowl \$155.00; purple Poppy Show 9" bowl, outstanding iridescence \$185.00.

HAZEL RAWLS, ORANGE, TEXAS: Marigold Northwood Peacocks bowl \$65.00; blue Round-Up plate \$125.00; purple Braziers Candies handgrip plate \$160.00; amethyst Hobnail rose bowl \$105.00; blue (N) Bushel Basket \$50.00; white Grape & Cable handled bon bon \$70.00; ice blue Rose Show bowl \$195.00; marigold Horses Heads plate \$95.00; ice green Fentons Open Edge Basket \$35.00.

ANNETTES ANTIQUES, VINELAND, NEW JERSEY: Marigold Big Fish bowl, excellent color, no fly! \$120.00.

JACK WILSON, CHICAGO, ILLINOIS: Red Dragon & Lotus bowl, two tiny chips \$275.00; ice blue Rose Show bowl, finest iridescence \$225.00; marigold Kittens cup and saucer \$115.00.

MORRIS DULANY, MOBERLY, MISSOURI: Aqua opal Drapery rose bowl \$125.00; marigold Scale Band water set \$165.00; ice blue Hearts & Flowers bowl \$55.00; ice blue Nippon bowl \$65.00; green Orange Tree wine \$44.00; marigold Rose Show bowl \$85.00.

JOE CORROTHERS, MAUMEE, OHIO: Collector will pay \$1,000.00 for the following Carnival Glass water pitchers. Pastel green in any pattern. All colors of Inverted Feather, Cherry & Thumbprint, Perfection, Circle Scroll, Hobnail, Quill, Multi-Fruits & Flowers, Checkerboard, Late Thistle, Strawberry Scroll, Wishbone, Wisteria, Cosmos & Cane and Holly & Berry.

LEONARD MIELEWSKI, FLINT, MICHIGAN: Blue Peacock & Urn plate \$170.00; marigold Wishbone chop plate \$295.00; marigold Orange Tree loving cup \$75.00; marigold Peacock & Urn plate \$115.00; aqua opal Good Luck bowl \$295.00; ice green Peacocks on the Fence plate \$160.00.

DAVID C. HIGGINS, BATH, MAINE: Pastel blue (N) Bushel Basket \$90.00; N's Oriental Poppy tumbler \$18.50; aqua opal Drapery rose bowl \$79.00.

CAUDLE ANTIQUES, STATE ROAD, NORTH CAROLINA: Amethyst Grape & Cable pin tray \$145.00; purple footed Wishbone bowl \$49.00; blue Good Luck bowl \$99.00; aqua opal Peacocks on the Fence bowl \$185.00; aqua opal Leaf & Beads rose bowl \$95.00; aqua opal Beaded Cable rose bowl \$110.00; red Fenton Open Edge Basket, round \$149.00; amethyst Wreath of Roses rose bowl \$39.00; marigold "474" milk pitcher \$55.00; amethyst Holly 9" flat plate \$69.00; green Butterfly & Plume 7 piece water set \$395.00; green Good Luck plate \$239.00; red Fine Ribbed 10½" vase \$125.00; purple Blossom Time compote \$45.00; ice green Grape & Cable cookie jar, complete with lid. Only one we have seen. Small flake on side, so only \$275.00.

RAY REICHARD, DALLASTOWN, PENNSYLVANIA: Purple Wishbone 2 piece epergne \$185.00; green Dragon & Lotus bowl \$60.00; blue Hearts & Flowers compote \$50.00; purple Hearts & Flowers compote \$50.00; purple Prism two handled small piece \$70.00; peach opal Round-Up plate \$90.00.

RICHARD HATSCHER, BETHEL, CONNECTICUT: Marigold Bushel Basket \$29.00; marigold (four) Feather & Heart tumblers, each \$35.00; purple (three) Diamond Lace tumblers, each \$29.00; red 6½" Acorn bowl \$295.00; red Orange Tree 9" bowl \$195.00.

We hope that you have enjoyed this episode of the 29th edition of the Peek Into the Past series. Next month we will cover further prices that were asked for Carnival Glass at that time.

JOHN & LUCILE BRITT

=====

W E L C O M E N E W M E M B E R S

We would like to welcome the following new members to the Heart of America Carnival Glass Association and wish them Happy Carnival Hunting!!

Charles Buffington, Bartlesville, Oklahoma
Gary Kimbro, Broomfield, Colorado
Steven & Phyllis Long, Sunnyside, Washington
Hazel Rawls, Orange, Texas
David & Judy Zwanziger, Indianola, Iowa
Robert & Marlene Couch, Indiana, Pennsylvania
Jimmy & Mary Johnson, Stuttgart, Arkansas
Jim & Flood Wells, Dayton, Ohio

THE CAMBRIDGE GLASS COMPANY AND IT'S CARNIVAL GLASS PRODUCTION

Recent articles that have appeared in the H.O.A.C.G.A. have prompted me to share this material with our Club members. There seems to be a great deal of confusion in regards to the Cambridge Glass Company, it's dates of production, the dates of the various trade-marks used, and it's contribution to the field of Carnival Glass. Hopefully, this article will clear up some of that confusion. First, we need to take a brief look at the history of the Company and the sequence of the marks it used.

The Cambridge Glass Company was born out of the National Glass Company, a combination of 19 glass making factories, including Northwood, which was formed in November of 1899. Cambridge was incorporated in 1901 as a part of that combination, and production at the new Ohio plant began in May of 1902. Pressed glass water pitchers were the first items made.

The famous "NEAR-CUT" trade-mark was adopted in 1910, and was used until 1920. Contrary to what has appeared in some articles, the "C" within a triangle mark was NOT used prior to this. This mark was registered in 1925, and any glass bearing that mark dates from after that year. In 1935, they began using an oval shaped, black and gold paper label to mark their wares, and this practice continued until the factory closed. And we know the exact date and time that this occurred. The Cambridge Glass Company ceased it's operations at 3:30 P.M. on June 17, 1954. Mr. Orie J. Mosser, who was the plant manager at that time, confirms this.

The production of Carnival Glass by Cambridge has long been a source of considerable mystery, confusion and speculation. Many Carnival enthusiasts have often commented on the striking similarity of the iridescence on Cambridge Carnival to that of the "radium" finish on many Millersburg items. Could there have been a connection of some kind between the two firms? Indeed there was! And there was an important connection to another well-known producer of Carnival Glass as well!

The credit for uncovering the evidence in the story of the production of Carnival Glass at Cambridge must go to two individuals. First, Mr. Bill Edwards, who uncovered key information in his exhaustive research on Millersburg, and secondly to the late William Heacock, who discovered more vital parts of the puzzle. In the course of his Millersburg research, Mr. Edwards discovered that the formula for this firm's beautiful radium iridescence was developed by a Mr. Oliver Philips, a glass maker and chemist who was very active in the early 1900's. In fact, this same Oliver Philips, in the years prior to his association with Millersburg was, (and here is a key point), "instrumental in the establishment of the National Glass Company plant at Cambridge, Ohio". But that is only the first hint of a connection. Two more important events were to lead to the production of Carnival Glass at Cambridge.

Late in 1912, Thomas Dugan resigned from his position at the company in Indiana, Pa., that bore his name, the Dugan Glass Co., which had been producing Carnival Glass since early in 1909. By early in the following year, 1913, he was employed by the Cambridge Glass Co. as their New York sales representative. A trade journal dated October, 1913, confirms this.

The second event also occurred in 1912. By May of that year the factory at Millersburg, Ohio, then known as the Radium Glassware Co., had ceased operations. There is now evidence to indicate that Oliver Philips returned to Cambridge, Ohio to the firm he had helped to create nearly 12 years earlier, taking his formula for radium iridescence with him.

The stage was now set. The Cambridge Glass Co. now had in it's employ Oliver Philips, with his formula, to oversee the production of the glass, and Thomas Dugan, already well established in the field, to market it. Thus, production of Carnival Glass at Cambridge began, in all probability sometime in the mid to late 1913 or early 1914 period. These dates coincide with the earliest appearance of Cambridge Carnival in the wholesale catalogs.

The Carnival Glass patterns produced at Cambridge include: Inverted Strawberry, Inverted Thistle, Inverted Feather, Double Star, Buzz Saw and Zippered Heart to name a few. The colors primarily produced were undoubtedly also because of the influence of Oliver Philips, namely, marigold, green and amethyst. Sound familiar, Millersburg fans?

Sadly, the production of Carnival at Cambridge was to be fairly short lived, which accounts for the relative scarcity of it today. By the late teen's, this innovative company was already developing new techniques, concepts and colors in glass-making that were to make them a leader in the field, and would insure the survival of the Cambridge Glass Co. long after the demise of most of their competitors.

CARL O. BURNS
ANDOVER, MAINE

SOURCES:

- THE CAMBRIDGE GLASS BOOK by Harold & Judy Bennett
- THE STANDARD ENCYCLOPEDIA OF CARNIVAL GLASS by Bill Edwards
- COLLECTING GLASS, VOLUMES 1-3 by William Heacock
- HARRY NORTHWOOD: THE EARLY YEARS 1881-1900 by William Heacock, James Measell, and Barry Wiggins
- BUTLER BROS. WHOESALE CATALOGS, Various dated 1905-1920
- POTTERY & GLASS SALESMAN MAGAZINE, October 1941, March 1942
- CAMBRIDGE GLASS CO. CATALOGS, 1930 - 1934

"Dedicated to the many people who have contributed to the field of Carnival Glass literature; their unselfish sharing of knowledge has made the hobby easier and more enjoyable for all."

This is copied from the "Millersburg Research Notes" by Jack Wilson. With these thoughts in mind I'm asking your help to update the notes again.

The Millersburg Research Notes by Jack Wilson haven't been updated since 1982. With so many Millersburg pieces of glass now appearing, we must continue our research to find which are still extremely rare, which are scarce and which different patterns and shapes have been found.

Will you take a few minutes to supply information about the following Millersburg glass. This information will be used to update the "Millersburg Research Notes".

V A S E L I N E

PATTERN	SHAPE	NOTE OR COMMENT
---------	-------	-----------------

B L U E

PATTERN	SHAPE	NOTE OR COMMENT
---------	-------	-----------------

Colors, patterns or shapes not listed in earlier books or research notes.

PATTERN	COLOR	SHAPE	NOTES AND COMMENTS
---------	-------	-------	--------------------

Your help is needed in order that the Carnival collector can continue to keep himself informed about our great Carnival Glass hobby. Your help is appreciated. Send replies to: Marie McGee, 3906 E. Acacia Ave., Fresno, Ca. 93726.

=====

1991 LOSE YOUR HEART TO CARNIVAL GLASS JAMBOREE

The Ramada Inn, 6 miles north of Rt. 60, same as last year, 2560 U.S. 19 No., Clearwater, Florida 33575. LOCAL: 1-813-796-1234 - NATIONWIDE 1-800-272-6232.

THURSDAY, FEBRUARY 7 - Ask for Jamboree rates of \$45.00 single, \$48.00 double. When reserving room or upon arrival ask for 1st or 2nd floor. 800 number can only reserve at normal rate, special rates will be settled upon arrival.

ROOM SALES - ANYTIME

HOSPITALITY ROOM 7:00 P.M. - Show & Tell, Question & Answer by Tom Burns. \$1.00 raffle - amethyst Peacock at the Fountain butter dish.

FRIDAY, FEBRUARY 8 - ROOM SALES

Program, 1:00 P.M., Janet Knechtel, "Shapes & Edges". Short Business Meeting after program.

AUCTION, 6:30 P.M., preview at 5:00 P.M.

A few items from Tom's memory are: purple Imperial Grape pitcher & 1 tumbler, white Persian Garden large ice cream bowl, purple (N) Peacocks stippled, ruffled bowl, amethyst 4 piece Maple Leaf table set, blue 16" to 20" funeral vase, vaseline with marigold overlay Bullseye & Beads vase, purple Grape & Cable & Thumbprint berry set, several good peach opal pieces. If not on Tom Burn's mailing list, I should have some brochures by 2-1-91. Try me then.

SATURDAY, FEBRUARY 9 - Show & Sale, 8:00 A.M. to 4:00 P.M., set up at 6:30 A.M. Room must be vacant by 5:00 P.M. \$20.00 per 8' table.

Banquet 7:00 P.M., Herb Stuffed Chicken or London Broil, salad to desert, \$14.50 per person.

Program - Singleton Bailey on Millersburg Glass, Raffle drawing.

CHAIRPERSON:

Barbara Hobbs

5501 - 101st Ave. N.

Pinellas Park, FL 34666-3311

PHONE: 1-813-541-6164 or

BUSINESS: 1-813-545-4833

CO-CHAIRPERSON:

Kim Rice

1778 Stable Trail

Palm Harbor, FL 34685

PHONE: 1-813-785-1393

MINI-CONVENTION IN TEXAS

The Texas Carnival Glass Club invites you to attend our Annual Mini-Convention in Houston, Texas in mid-February. You need not be a member to attend.

FEBRUARY 15-16-17, 1991 at the Marriott Hotel, Greenspoint, Houston, Texas. PHONE: 1-713-875-4000.

RATES: \$43.00 per day (Mention Texas Carnival Glass Club)

RESERVATIONS MUST BE MADE BY JANUARY 24 TO OBTAIN THIS RATE.

VISIT WITH YOUR FRIENDS ----- BUY & SELL IN ROOMS

FRIDAY AFTERNOON: EDUCATIONAL PROGRAM

FRIDAY EVENING: PICNIC SUPPER IN HOSPITALITY ROOM - FREE -

SATURDAY MORNING: AUCTION -- JIM SEECK

SATURDAY EVENING: TEXAS BARBECUE!!!

SPEAKER: BOB AND MARY ALICE LOVELL

TOPIC: WATERLILY'S AND --- FROGS!

BANQUET TICKETS: \$20.00 BANQUET TICKETS MUST BE PAID FOR BY WEDNESDAY, FEBRUARY 13
Make checks payable to:
Texas Carnival Glass Club

Remit to: Carol Cox, Treasurer
Rt. 1, Box 912
Cleburne, Texas 76031



THOUGHT
FOR THE MONTH

You can't control the length
of your life, but you can
control its width and depth.

POLICY FOR ADVERTISING IN THE H.O.A.C.G.A. BULLETIN

1. All advertisements, announcements, letters or any other item to be printed must be received by the Bulletin Secretary no later than the 28th day of the month, to insure being published in the next months' Bulletin.
2. Member families may advertise ten (10) "For Sale" and ten (10) "Want Ads" per month F R E E of charge.
3. Only old Carnival Glass items or H.O.A.C.G.A. Souvenirs will be published. The Editor reserves the right to delete any item considered to be new glass (made after 1940) or any non-Carnival glass.
4. Damage or manufacturing flaws should be noted.
5. All "For Sale" items must be priced, no bid items will be published.
6. A 5-day return privilege, at buyers' expense; providing it is not as advertised.
7. All postage and insurance is extra, to be paid by buyer.
8. All ads must be legible, or they will not be printed.
9. The H.O.A.C.G.A. does not accept responsibility for accuracy of any ads.

FOR ACCURACY OF DESCRIPTION, THE FOLLOWING COLOR KEY IS RECOMMENDED:

A-Amethyst	HA-Honey Amber	P-Purple
AMB-Amber	IB-Ice Blue	PRL-Pearl/Pastel/Milk Glass
AO-Aqua Opalescent	IG-Ice Green	PM-Pastel Marigold
B-Blue	IGO-Ice Green Opal.	PO-Peach Opalescent
BO-Blue Opal or Blue Opaque	LAV-Lavender	R-Red
CLM-Clambroth	M-Marigold	RA-Amberina
EB-Electric Blue	MMG-Marigold on Milk Glass	SM-Smoke
G-Green		VAS-Vaseline

NOTE: If you wish to describe a piece as light or dark, please use the body of the ad.

P L E A S E U S E T H E F O L L O W I N G

EI-Excellent Iridescence GI-Good Iridescence LI-Light Iridescence

EXAMPLES

AO	EI	Good Luck plate, one point broken and repaired	375.00
M	LI	Peacock at the Fountain 7 piece water set, pitcher has flake	225.00
MMG	GI	Peacock & Grape bowl	360.00
A	GI	Wishbone tumbler, heat check, light amethyst	47.50

It would be greatly appreciated by everyone if you would use these codes, as suggested above.

***** CARNIVAL GLASS FOR SALE *****

Tom & Sharon Mordini, 36 N. Mernitz Ave., Freeport, Illinois 61032
PHONE: 1-815-235-4407

AQ	EI	Blackberry Open Edge hat	190.00
IB	EI	Concave Diamonds tumblers & matching coasters, have 10 sets, each	35.00
IB	EI	Concave Diamonds covered pitcher	150.00
M	EI	Estate mug, scarce	120.00
G	EI	Field Flower pitcher	115.00
M	EI	Grape & Cable bon bon, SUPER	75.00
AQ	EI	Open Edge basket, small, ruffled, no marigold overlay, SUPER AQUA	175.00
M	EI	Poppy Show bowl	650.00
G	EI	Strawberry hat pin, VERY RARE	250.00
G	EI	Wishbone P.C.E. bowl, large size	175.00

Dave Ackerman, 4677 Kennebec Dr., Cass City, Michigan 48726
PHONE: 1-517-872-2023

G	EI	Thin Rib (N) mid-size funeral vase, 4 3/4" base	100.00
P	GI	Singing Birds tumbler (N)	55.00
M	GI	Jackman 1/2 pint whiskey bottle	25.00
M	GI	Butterfly & Berry 4 piece table set, will sell separately	300.00
DM		Tulip & Cane small dome footed bowl, 2 base nicks	38.00
AQ	GI	Corinth J.I.P. 9" vase, Westmoreland	50.00
IG	GI	Memphis punch cup	70.00
PO	EI	Single Flower 9" 10 ruffled bowl	50.00
M	GI	Curved Star butter bottom	15.00
G	GI	Multi-Fruits & Flowers punch cup	35.00

Gerald M. Hess, 500 Woodland Trail, Argos, Indiana 46501
PHONE: 1-219-892-6193

M	EI	Thistle 9" bowl	32.00
B	EI	Orange Tree sugar bowl	50.00
M	GI	Orange Tree mug, small flake off base	20.00
A	GI	Oriental Poppy tumbler	40.00
M	GI	Panel & Thumbprint compote	20.00
A	EI	Memphis punch cup	38.00
G	GI	Lustre Fruit creamer	30.00
M	GI	Pine Cone 6" bowl	23.00
M	EI	Diamond Lace 5" bowl	20.00
A	GI	Grape & Cable tumbler	35.00

***** CARNIVAL GLASS FOR SALE *****

Doug & Sharla Peters, 8708 N. Chatham, Kansas City, Missouri 64154
PHONE: 1-816-587-5696

EB	EI	Beaded Cable rose bowl, BEAUTIFUL	175.00
G	EI	Grape & Cable large footed bowl, bowl has irregularities in bottom	70.00
A	EI	Peacock at the Fountain covered sugar, has repaired damage under lid	25.00
A	EI	Peacock at the Fountain creamer, has internal crack in bottom	20.00
A	EI	Peacock at the Fountain spooner, large base chip	10.00
A	EI	Imperial Grape ruffled bowl, NICE	55.00
G	EI	Imperial Grape ruffled bowl, beautiful gold iridescence	50.00
AMB	EI	Open Rose rose bowl, BEAUTIFUL	60.00
IB	EI	Grape Arbor tumbler, base damage	25.00
W	EI	Grape Arbor tumbler, tiny flick on base	75.00

Naomi Calkins, 120 Woodland Court, Safety Harbor, Florida 34695
PHONE: 1-813-725-4145

PO	EI	Stippled Flower 8" bowl	65.00
PO	EI	Stippled Petals 9" bowl	60.00
PO	EI	Fishscale & Beads 6½" oval ruffled bowl	125.00
DM	EI	Fine Rib (N) 10" ruffled vase, beautiful	35.00
M	EI	Leaf Column 11" vase, have 2, each	30.00
G	EI	Louisa nut bowl	50.00
M	EI	Lotus & Grape bon bon	35.00
A	EI	Floral & Grape tumbler, chip on base	12.00

Robert & Carole Hooper, 338 Veterans Blvd., Bayville, New Jersey 08721
PHONE: 1-201-269-7866

R	EI	Reverse Amberina Scale Band 6½" bowl, stippled	350.00
*	EI	*Amethyst opal Holly 6½" hat	300.00
PRL	EI	Grape & Gothic Arches tumbler	125.00
W	EI	Grape Delight rose bowl	100.00
M	EI	Garland rose bowl	50.00
CLM	EI	Concave Flute rose bowl	50.00
P	EI	Maple Leaf large stemmed fruit bowl	125.00
IP	EI	Brocaded Palms 2 handled 6¼" bowl	35.00
M	EI	Drapery 9" bowl, SUPER	50.00
BO	EI	Scales 8½" bowl, iridized on inside	225.00

Mr. & Mrs. J. C. Barker, Route 3, Box 163-BB, Savannah, Missouri 64485

Carnival Glass for beginners. Prices range from \$30.00 to \$250.00. All have nice iridescence. S.A.S.E. for list.

Brad Steinmetz, 213 Yorkshire Lane, Janesville, Wisconsin 53546
PHONE: 1-608-756-4963

M	EI	Orange Tree individual berry	15.00
M	EI	Orange Tree footed orange bowl, nice	75.00
M	EI	Orange Tree punch bowl & base, may consider separating these	85.00
B	EI	Orange Tree wine goblet	60.00
M	EI	Orange Tree 7 piece water set, ding on 1 pitcher foot	195.00

Barbara Farmer, R.D. #5, Box 462, Wheeling, West Virginia 26003
PHONE: 1-304-336-7689

B	EI	Kittens toothpick, pin point mark	150.00
BA	EI	Bushel Basket, round, GREAT COLOR	400.00
P	EI	Dugan Beaded Basket, straight sides	250.00
AQ	EI	Leaf Chain 6½" I.C.S. bowl	80.00

Charles Perry, 8641 Lakeshore Drive, Southaven, Mississippi 38671
PHONE: 1-601-342-1694

A	EI	Imperial Grape compote, SUPER	80.00
M	EI	Question Mark compote, C.R.E., SUPER	45.00
G	EI	Millersburg Boutonniere compote	90.00

Steve Davis, 3331 Warpath Rd., Macon, Georgia 31201
PHONE: 1-912-741-4252

M	EI	Holly plate, very nice	135.00
G	EI	Cosmos 6" bowl, I.C.S.	37.50
SM	EI	Morning Glory 7" vase, extra nice	70.00
P	EI	Greek Key ruffled bowl, blue hilites, almost electric, NICE	145.00
AO	EI	Drapery rose bowl, SUPER PASTEL!	345.00
M	EI	Open Rose plate	75.00
IB	EI	Peacock & Urn master ice cream bowl, cracked	165.00
AMB	GI	Open Rose plate	85.00
G	EI	Double Star water pitcher and 1 tumbler	500.00
PO	EI	Four Flowers 10½" chop plate, RARE	600.00

***** CARNIVAL GLASS FOR SALE *****

Dwyane & Barbara Davis, 808 Hialeah Ct., Saginaw, Texas 76179
PHONE: 1-817-232-1477

M	EI	(N) Round Bushel Basket, feet perfect	125.00
G	EI	Strawberry ruffled bowl, Basketweave ext., SUPER COLOR & IRID.	95.00
M	EI	Stippled Rays berry bowls, have 9, \$25.00 each, or all for	200.00
G	EI	Honeycomb & Clover bon bon, GREAT COLOR & IRIDESCENCE	73.00
A	EI	Beaded Cable rose bowl, feet perfect	135.00
B	EI	Windflower ruffled bowl	70.00
M		Windflower gravy boat, light marigold	48.00
A	EI	Stippled Rays compote	44.00
B	EI	Grape Delight nut bowl, feet perfect	87.00
G	EI	Grape & Cable tumblers, SUPER COLOR & IRIDESCENCE, 3 perfect at \$65.00 each, 1 with small chip on bottom \$45.00, or all for	220.00

Dick Wetherbee, 847 Stafford St., Rochdale, Massachusetts 01542
PHONE: 1-508-892-4420

M	EI	Mikado 8" compote with Cherry Circles back, great	135.00
P	EI	Grape & Cable covered compote, SUPER	325.00
M	EI	Peacock at the Fountain 10" 3 ftd. fruit bowl, SUPER	225.00
G	EI	Tree Trunk 13" mid-size funeral vase, a beauty	225.00
M	EI	Smooth Panels 11" large console bowl, great dark color	30.00
A	EI	Imperial Grape 11" master berry fluted bowl, SUPER	135.00
M	EI	Prism & Daisy Band master berry & 6 sauces, great set	45.00
B	EI	Butterfly & Berry 3 ftd. master berry ruffled bowl, SUPER	195.00
A	EI	Rustic 16" vase, 5 1/2" flared opening, a beauty	75.00
G	EI	Waterlily 5 1/2" 3 ftd. berry dish, SUPER RARE COLOR	175.00

Eugene Snyder, Jr., 56 W. Main St., Dallastown, Pennsylvania 17313
PHONE: 1-717-244-7175

B	EI	Banded Grape & Cable hat pin holder, SUPER & RARE	1,250.00
AMB	EI	Horse Medallion nut bowl, hard to find flake on 1 foot, RARE	395.00
P	EI	Beaded Bullseye 12" vase, flake on edge, FANTASTIC IRID.	95.00
AO	EI	Daisy & Drape vase, nice pastel	450.00
B	EI	Miniature Blackberry compote	95.00
VAS	EI	Sailboats ruffled bowl, RARE COLOR	225.00
M	EI	Sailboats square bowl	125.00
M	EI	Cherry & Cable creamer, SUPER COLOR	175.00
M	EI	Horse Medallion plate	200.00
VAS	EI	Acorn ruffled bowl	110.00

***** CARNIVAL GLASS FOR SALE *****

Richard Cinclair, 3605 South Echo Trail, Plano, Texas 75023
PHONE: 1-214-596-0014

M	EI	Kittens, two sides up	155.00
M	EI	Kittens, six ruffles	235.00
A	EI	Wishbone P.C.E. collar based	135.00
*	EI	*Celeste blue Concave Diamonds tumbler	28.00
A	EI	Hearts & Flowers plate	1,100.00
G	EI	Double Star tumbler	75.00
G	EI	Old Rose Distillery plate	385.00
M	EI	Peacocks plate	390.00
*	EI	*Renninger blue Hearts & Flowers compote	900.00
W	EI	Peach covered sugar	125.00

Vaunda & Swede Tilberg, Rt. 5, Box 1064, Joplin, Missouri 64804
PHONE: 1-417-782-9627

G	EI	Good Luck ruffled bowl, Basketweave exterior	300.00
G	EI	Good Luck P.C.E. bowl, Ribbed exterior	400.00
G	EI	Coral I.C.S. bowl	200.00
B	EI	Dragon & Strawberry collar based bowl	650.00
B	EI	Holly plate	350.00
B	EI	Rose Show plate	1,500.00
P	EI	Fieldflower pitcher and 1 tumbler	350.00
P	EI	Good Luck P.C.E. bowl, ELECTRIC	350.00
P	EI	Peacocks ruffled bowl, ELECTRIC	450.00
W	EI	Peacocks plate, Ribbed exterior	475.00

Garth L. Irby, 3415 Leola, St. Louis, Missouri 63139
PHONE: 1-314-781-1535 Call after 6:00 P.M.

W		Rose Spray compote, J.I.P.	110.00
G		"474" punch cups, have 4, each	25.00
M		Fanciful bowl I.C.S.	60.00
SM		Soda Gold tumbler	50.00
B		Butterfly & Berry tumbler	45.00
M		Peacock & Urn bowl, 8 ruffles	125.00
A		Peacock & Urn bowl, 8 ruffles	210.00
B		Strawberry 2 handled bon bon	60.00
M		Octagon butter dish	100.00
M		Octagon cream pitcher	60.00

***** CARNIVAL GLASS FOR SALE *****

John D. Resnik, 10031 Banner Lava Cap, Nevada City, California 95959
PHONE: 1-916-477-1345

M	Lions 7" ruffled bowl	150.00
M	Two Flowers giant rose bowl, RARE	165.00
M	Three Fruits 8" ruffled bowl, stippled	110.00
M	Buzz Saw Cruet, incorrect stopper, heat check at stopper opening	50.00
M	Grape & Cable centerpiece bowl, points turn in	265.00
B	Poppy pickle dish, GREAT COLOR	150.00
B	Holly 9" plate	295.00
PO	Fanciful 9" ruffled plate	185.00
LAV	Orange Tree mug	125.00
G	Plaid 8" ruffled bowl, RARE	345.00

Gil Corriveau, Box 5, Sturbridge, Massachusetts 01566
PHONE: DAYS 1-508-347-3304, NIGHTS 1-508-347-9930, POSTAGE & INS. EXTRA

B	Grape & Cable hat pin holder, chip on foot	400.00
IB	Acorn Burrs 5 piece punch set, 1 tooth off	700.00
AO	Three Fruits bowl, spatula footed, chip	75.00
P	Imperial Grape water carafe	125.00
P	Bushel Basket	100.00
P	Rose Show bowl	700.00
PRL	Grape & Cable banana boat	550.00
M	Millersburg Blackberry Wreath bowl	175.00
M	Greek Key bowl	125.00
IG	Grape & Cable punch cups, each	65.00

Ted Sheibley, 304A Hillcrest Drive, New Cumberland, Pennsylvania 17070
PHONE: 1-717-938-6417

A	EI	Grape & Cable covered compote	325.00
A	EI	Peacocks on the Fence ruffled bowl	375.00
AO	EI	Bushel Basket	400.00
AO	EI	Dandelion mug	485.00
B	EI	Bushel Basket, round	115.00
B	EI	Captive Rose 9" plate	345.00
B	EI	Dandelion mug	400.00
B	EI	Good Luck 9" stippled bowl	325.00
B	EI	Grape & Gothic Arches table set	425.00
G	EI	Grape & Cable cologne bottles, have 2, each	200.00

SEND \$.45 STAMPS FOR LARGE LIST

***** CARNIVAL GLASS FOR SALE *****

Robert & Sherry Cyza, 7426 Oakland Ave. So., Richfield, Minnesota 55423
PHONE: 1-612-869-6980 Please leave us a message if we aren't home.

*	EI	*Fiery amethyst Bushel Basket, round	115.00
DM	EI	Sailboats sauce, pretty pink highlights	30.00
DM	EI	Persian Medallion hair receiver, bright marigold	60.00
M	EI	Bushel Basket, round	95.00
M	EI	Fieldflower tumbler	38.00
B	EI	Blueberry tumblers, have 4, \$55.00 ea. or all 4 for	200.00
G	EI	Tumblers (2) Banded Drape, Prism Band with enameled irises. (See Whitley #31, except all flowers "face left". Each	44.00
G	EI	Peacock Tail stemmed compote	38.00
A	EI	Scroll Embossed stemmed compote, approx. 5" tall, bright purple and blue highlights, slight flake on edge, so	30.00

Maxine Twedt, 44646 Cedar Ave., Lancaster, California 93534
PHONE: 1-805-942-6890

B	Peacock & Urn ruffled bowl	150.00
M	Peacock & Urn I.C.S. bowl	75.00
M	Good Luck bowl, nice	150.00
P	Grape & Cable ruffled bowl	95.00
M	Captive Rose R.C.E. bowl	75.00
G	Grape & Cable P.C.E. bowl, yellowish, very pretty	95.00
M	Lions bowl, nice	140.00
A	Dragon & Lotus footed bowl	75.00

Arvin Wolfgram, 1119 E. Marquette Street, Appleton, Wisconsin 54911
PHONE: 1-414-734-7075

PO	Dugans Fan gravy boat	95.00
M	Butterfly & Berry spooner	40.00
M	Millersburg Cherry spooner	50.00
M	Blackberry Banded hat shape	15.00
*	*Lime green with marigold overlay Blackberry Spray hat, J.I.P. shape	28.00

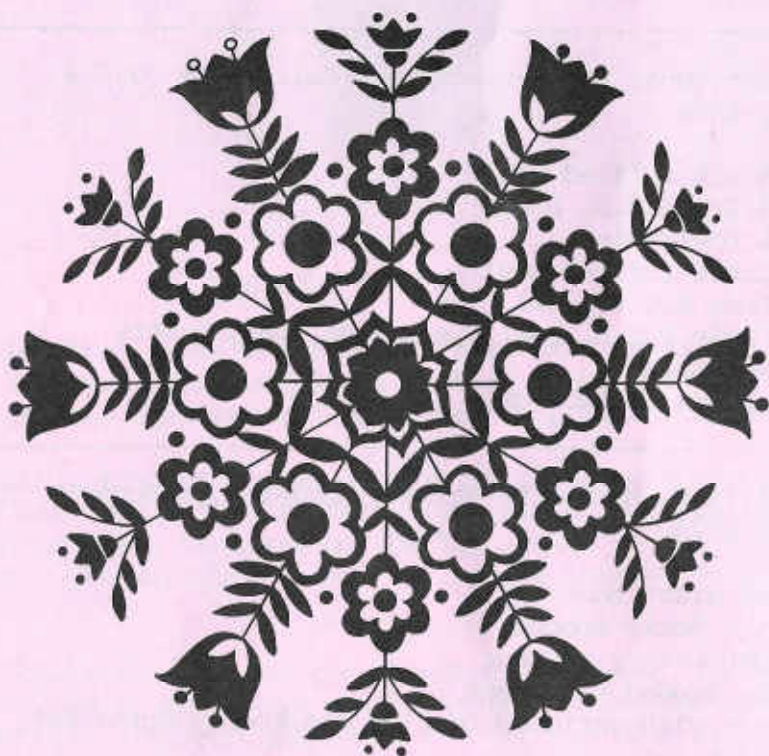
Harold L. Fortney, 620 W. 44th St. Apt. 25, Kansas City, Missouri 64111
PHONE: 1-816-531-1862 after 6:00 P.M.

B	GI	Peacock & Grape ruffled bowl	40.00
M	EI	Dugans Cherries 3 footed bowl	55.00

***** CARNIVAL GLASS FOR SALE *****

Jim Roach, 2850 S. Beltline Rd. #186, Dallas, Texas 75253
 PHONE: 1-214-286-4345

- | | | | |
|---|----|--|--------|
| M | EI | Butterfly & Tulip 4 footed large deep bowl, mold roughness on one foot | 325.00 |
| W | EI | Big Basketweave 10" vase, SUPER | 85.00 |
| W | EI | Grape & Cable small ice cream (N) | 235.00 |
| M | EI | Persian Medallion orange bowl, Grape & Cable exterior, minor nick on one tooth | 95.00 |
| A | EI | Diamond & Rib vases, 15½" and 16" tall, SUPER COLOR \$55.00 each or both for | 99.00 |



***** CARNIVAL GLASS WANTED *****

Gil Corriveau, Box 5, Sturbridge, Massachusetts 01566
 PHONE: DAYS 1-508-347-3304, NIGHTS 1-508-347-9930

- | | |
|----|---------------------------------|
| IB | Grape & Cable medium punch base |
| G | Master Grape & Cable punch base |

***** CARNIVAL GLASS WANTED *****

Steve Davis, 3331 Warpath Rd., Macon, Georgia 31201
 PHONE: 1-912-741-4252

- | | | |
|---|----|--|
| B | EI | Wreath of Roses punch cups with Persian Medallion interior, need 6 |
| M | EI | Acorn Burrs punch bowl top |
| P | EI | Heavy Grape punch cup, need 1 |

Joseph E. Corrothers, 3260 Butz Rd., Maumee, Ohio 43537

- | | |
|---|-----------------------------------|
| W | Orange Tree punch bowl base |
| A | Hobstar & Feather punch bowl base |
| M | Wreath of Roses punch bowl base |
| M | Orange Tree punch bowl base |

Dave Ackerman, 4677 Kennebec Dr., Cass City, Michigan 48726
 PHONE: 1-517-872-2023 GOOD TO EXCELLENT IRIDESCENCE

- | | |
|----|--|
| P | Diamond & Sunburst decanter stopper |
| M | Diamond & Sunburst decanter stopper and 1 wine glass |
| HG | Octagon decanter stopper and 6 wine glasses |
| P | Golden Harvest decanter stopper and 1 wine |
| M | Golden Harvest, 1 wine glass |
| M | Imperial Grape decanter stopper and 1 wine glass, Rayed base and thin stem |
| P | Imperial Grape, 1 wine, fat stem, Rayed base |
| LM | (Clambroth) Imperial Grape decanter stopper |
| M | Star & File cordial |
| M | Flute & Cane, 1 oz. cordial and 1 3 oz. wine glass |

Richard Cinclair, 3605 South Echo Trail, Plano, Texas 75023
 PHONE: 1-214-596-0014

- | | |
|-----|--|
| M | Acorn Burrs water pitcher |
| R | Vases, any pattern |
| ANY | Hearts & Flowers plates, P.C.E. bowls |
| B | Stippled Master Peacock & Urn ice cream bowl |
| B | Kittens saucer |
| ANY | Deep Grape compotes |
| W | Open Edge Basket |
| G | Poppy compote |
| | Any other color in PEACH other than marigold or blue |
| | Any Grape & Cable individual ice creams (flat) |

OLD CARNIVAL GLASS LIBRARY

ENCYCLOPEDIA OF CARNIVAL GLASS LETTERED PIECES - 120 pages, black and white as well as colored photographs of all known advertising and commemorative pieces. Price guide included. Mail checks or money orders to John D. Resnik, 10031 Banner Lava Cap, Nevada City, CA 95959. Price is \$15.95 plus \$2.50 postage & handling.

1990 CARNIVAL GLASS AUCTION REPORT - Over 3,800 entries from Carnival Glass auctions held in 1990. Price is \$9.00 per copy. Postage paid for U.S. and Canada. Canadians, please send Canadian Postal Money Order in U.S. funds. Overseas, add \$2.00 for each copy. Back issues are available at \$8.00 each. Send orders to Tom & Sharon Mordini, 36 N. Mernitz Ave., Freeport, IL 61032.

THE SHAPE OF THINGS IN CARNIVAL GLASS-110 pages, 200 items in full color, \$9.95. Order from Don Moore, 2101 Shoreline Drive, Apt. 462, Alameda, California 94501.

CARNIVAL IN LIGHTS A full color book on Carnival lighting, including Gone-with-the-Wind lamps, candle lamps and shades, price guide included. \$11.95 plus postage. Order from Helen Greguire, 103 Trimer Road, Hilton, New York 14468.

THE WORLD OF ENAMELED CARNIVAL GLASS TUMBLERS Author/Photographer, Cecil Whitley, 10 pages "60 tumblers in full color". \$10.00 includes shipping. Call or write Cecil Whitley, 1041 Cheshire Lane, Houston, Texas 77018. PHONE: 1-713-681-0807.

THE STANDARD ENCYCLOPEDIA OF CARNIVAL GLASS, Revised Edition, many new photographs and expanded European Carnival section-\$24.95 (with new price guide), NEW PRICE GUIDE includes eight color columns, size 8 X 11 - \$4.95, Bill Edwards, Author, Collectors Books, Paducah, Kentucky.