

HOACGA

Heart of America Carnival Glass Assoc. Inc.

RETURN ADDRESS

H.O.A.C.G.A.
Eleanor Mochel
6409 Beverly
Mission, Ks. 66202

February 1991

FIRST CLASS MAIL

FIRST-CLASS MAIL
U.S. POSTAGE
PAID
Shawnee Mission, KS
Permit No. 958

PRESIDENT.....Robert Grissom
7900 Crescent
Raytown, Missouri 64138
1-816-356-5320

VICE-PRESIDENT.....Daryl Strohm
8904 E. 29th St.
Kansas City, Missouri 64129
1-816-252-8137

TREASURER.....Doug Peters
5414 N.W. 86th Terr.
Kansas City, Missouri 64154
1-816-587-5696

SECRETARY.....Nadine Paulsen
700 Purdom
Olathe, Kansas 66061
1-913-782-1313

BULLETIN SECRETARY.....Eleanor Mochel
6409 Beverly Drive
Mission, Kansas 66202
1-913-432-1129

The Bulletin is published the 15th of each month. Membership year is from June 1 to May 31, per couple or single. DUES ARE \$25.00 U. S. & CANADA, \$40.00 FOREIGN. All monetary figures are quoted in U. S. Dollars.

Please send all items for the Bulletin, i.e. glass for sale, glass wanted, articles, information, etc., to the Bulletin Secretary, whose address appears above. Please have all Bulletin material sent to us so that we receive it by the 28th of the month.

Please send checks for dues and books, and any address changes, to the Treasurer, whose address appears above.

We thank you so much for your cooperation in these matters.

Effective February 15, 1991, the yearly dues will be \$25.00 for United States and Canadian, and \$40.00 for all foreign memberships. This is an increase of \$5.00. Membership dues are set to only cover the cost of publishing, printing and mailing the Bulletin.

We regret having to make this increase, but the increase in postal rates and printing cost necessitates this change. The increase in postal rates alone will add approximately \$2.50 to the yearly cost of mailing of each monthly Bulletin.

The Bulletin, with its educational articles, news of other Clubs and organizations, information of general nature and the opportunity to buy and/or sell Carnival is one of the important Club activities that is necessary in maintaining the Carnival Glass hobby.

Even with this increase in membership dues, we believe you will still receive full value for your money.

Thank you for your cooperation and understanding.

BOARD OF DIRECTORS
BOB GRISSOM, PRESIDENT

=====

OUR DEEPEST SYMPATHIES.....

The sad news has just been received of the sudden death of another Carnival Glass super person, Doyle Green of Cleburne, Texas. Doyle passed away on February 6, 1991. We will all miss Doyle with his witty sayings and home-spun philosophy.

Doyle and Ruth participated and attended many different Carnival Glass organizations and Conventions.

Our deepest sympathies to Ruth and family. Doyle will always be remembered by Carnival Glass collectors.

Condolences may be sent to Ruth Green, 1209 Surrey Place Drive, Cleburne, Texas 76031

=====

The regular monthly meeting of the Heart of America Carnival Glass Association was called to order by President Bob Grissom at 2:00 P.M., January 27, 1991, at the Raytown City Hall. The minutes of the last meeting were not read, as Secretary Nadine Paulsen was not present at the November meeting, and no one took the minutes. Treasurer Doug Peters gave the Treasurers' Report, which was approved and placed on file for audit.

President Grissom showed a pamphlet that anyone can have to take to auctions or to friends who want to join the Club.

President Grissom told about the piece of glass we will be raffling at the 1991 Convention. Each member will be receiving 12 tickets. These tickets will cost \$10.00. The piece to be raffled is a beautiful marigold Rose Show Varient bowl, which the Club purchased for \$750.00. It really is a very beautiful piece of glass.

The Souvenir for 1991 will be a small plate in the Peacock & Dahlia pattern, made in beautiful red Carnival. The price of the souvenir will be \$37.50 plus \$2.50 postage, if mailed. We will have some whimsys made from the plate which will be auctioned after the Banquet.

There was some discussion as to what color to make the spittoon for the Room Display Awards this year. Mr. Joe Williams suggested the Board members make the final decision.

Rooms at the Convention will be \$57.00 plus tax this year. This is \$3.00 cheaper than last year.

The speakers for the Banquet at the 1991 Convention will be Mr. and Mrs. Carl Shroeder. John Woody will tell us how he puts on an auction. Jerry Curtis of Oklahoma City will speak on "Heinz 57" variety in Carnival Glass. The Foxs' of Dallas will talk on hatpins and holders. All programs and speakers sound very interesting this year.

On Friday evening, after viewing the auction glass, we will have pie & coffee.

Our Annual Business Meeting will be at 2:00 P.M. Friday afternoon. After the business meeting we will be having a sale. We are asking people to bring odd pieces of glass such as lids, punch cups, a dresser piece, etc. or anything else they would like to sell.

Banquet price will be \$16.00 for a sit down steak dinner. This year they raised the breakfast price to \$6.50. Previously the Club has paid for the breakfast, but due to the high cost, we are asking members to pay \$2.50 towards the breakfast for each one, and the Club will pay \$4.00.

The Bulletin cost will be raised due to the postage & paper expense, so we are raising the dues for membership to \$25.00 this coming year in order to absorb the additional cost. We still feel it is a bargain.

President Grissom gave dates on upcoming auctions for the next couple of months, and we discussed the different types of name tags for the Convention

We have asked Mr. Fenton not to make more than 35 whimsys to be auctioned after the Banquet. The sale of the whimsys help with the cost of the Convention.

Joe and Shirley Williams of Iowa brought a guest with them, Mrs. DeWitt. We were pleased to have her with us and hope she returns soon.

We will be printing a new membership roster this year. We would like to have any corrections in addresses and phone numbers, or any other corrections sent to the Treasurer, Doug Peters.

The colored section of the H.O.A.C.G.A. Notebook will be the completion of the 9" plates. There will be about 36 pictures in this section.

Joe and Shirley Williams donated a beautiful blue Fine Rib vase as a door prize, which was won by Doug Peters. Marilyn De Witt won another prize, which was beautiful white whimsy hobnail spittoon. We have these drawings each month, so come to the next meeting and get your name in. The next winner could be YOU!

The March meeting will be a dinner meeting. The place and date will be decided on at the February meeting.

We took a break for coffee and cake. The cake was baked by Norma Strohm and it was delicious!

President Grissom gave the Program on the Carnival Glass brought to the meeting by our members. Many beautiful pieces were shown and discussed, including many nice pieces of white Carnival. Thanks to everyone for sharing your glass with us.

The next meeting will be February 24, 1991 at the Raytown City Hall. The program will be on red Carnival Glass.

NADINE PAULSEN
SECRETARY,
H.O.A.C.G.A.

By John & Lucile Britt



MANY FRUITS PUNCH SET IN RARE WHITE

This very pretty Dugan-Diamond pattern was made only in the punch set. The different fruit designs that were used are heavy and very realistic. The color and iridescence are most beautiful in any of the colors. It is quite unfortunate that this pattern was limited to the punch set. It would have made a very pretty water set and we believe a fruit bowl would have been a sure winner.

The interior of the bowl contains five clusters of cherries, one in the center and four going around the inside wall of the bowl. The outside contains two large bunches of grapes and two good sized peaches. Very well designed leaves in natural form are accompanied with all the different fruits. The outside of the base contains four clusters of cherries. The inside is smooth and both sides are heavily iridised so that it could be turned over and adapted to a compote, when not being used with the punch set. The punch cups feature four small bunches of grapes around the outside of the cup. These grapes match the much larger bunches of grapes that are found on the outside of the punch bowl. The top of the Many Fruits punch bowl and the bottom of the base are sometimes ruffled instead of the scalloped shape that is used on the punch set that is shown above.

The Many Fruits punch set is most often seen in a gorgeous purple with super iridescence. In a lesser extent, it is found in a rich marigold. Occasionally a set will show up in blue, but we consider them quite rare in that color. We have never seen this set in green. This is not surprising, since Dugan made only a tiny bit of Carnival Glass in green. The frosty white set, that we feature here, is very rare and has super pastel iridescence. Don Moore shows this white Many Fruits punch set in his very fine book on Carnival Glass Rarities. He lists it as one of the top ten pieces of white Carnival Glass. Even though the white is more rare in this pattern, one should be very proud to own this beautiful set in any color.

This article, on the super Many Fruits punch set, is the 145th entry into our Pictorial Pattern Parade. We hope that you have found it interesting.

JOHN & LUCILE BRITT

WELCOME NEW MEMBERS

We would like to welcome the following new members to the Heart of America Carnival Glass Association and wish them Happy Carnival Hunting!

Virgil & Maria Lemos, Quebec, Canada
Mark Huebnec, Bailey's Harbor, Wisconsin
Wilfred M. Schutz, Lincoln, Nebraska
Robert & Kathy Shoemaker, Alburtis, Pennsylvania

TREASURERS REPORT

DECEMBER, 1990

Beginning Balance, December 1, 1990	\$12,627.46
December receipts	1,050.13
December disbursements	2,337.50
Ending Balance, December 31, 1990	\$11,340.09

By John & Lucile Britt



THE NORTHWOOD SWIRL TUMBLERS IN GREEN & MARIGOLD

For actual beauty, the Swirl tumbler is certainly not one of Northwoods' greatest contributions to the Carnival Glass tumbler field, even though he produced a lot of beautiful tumblers in other patterns. The Swirl pattern is very simple and is found on the interior only. The entire design consists of 21 swirls, which go from left to right, when viewed through the glass. The circled "N" is found on the inside of the base. The exterior is smooth.

This tumbler, with the pattern on the inside, is made like the Inverted Coin Dot and Interior Poinsettia tumblers, in that respect. All three of these tumblers are of standard size and are smooth on the outside.

The color most often seen in this pattern is marigold. Those in green are not easily found. Both Owens and Edwards report these tumblers in amethyst. While we have never been fortunate enough to locate or even see a Swirl tumbler in that color, we would definitely class them as rare in amethyst.

At the time Mrs. Hartung published her Book #8, which was in 1968, she had never seen the water pitcher in the Swirl pattern. We have seen very few of these in our travels. A good photo of the green tankard, listed as Ribbed Swirl, is shown in the H.O.A.C.G.A. Notebook in color. The water pitcher has been reported in several different styles.

continued...

Even though the Northwood Swirl is not one of our prettiest tumblers, it was important for us to add these to our collection. The green example is really quite nice, and if you can locate one in amethyst, you have accomplished something that we have never done. We would be interested in hearing from you if you do have one in that color.

This is article #157 in our Educational Tumbler Series. Next month we will feature the Late Waterlily tumbler.

JOHN & LUCILE BRITT

=====

CARNIVAL AUCTION

A sale of approximately 90 pieces of old Carnival Glass will be held on Saturday, May 4, 1991 at 1:00 P.M. The location will be at Grove Hall, 168 Chateauguay Street, Huntingdon, Quebec (follow Route 138 to Huntingdon). The sale will be conducted by Lyell Graham Auction Service, Athelstan, Quebec J0S 1A0. PHONE: Huntingdon 514-264-2289.

Some of the pieces to be sold are: Red Fine Rib vase, marigold Orange Tree and Stork mugs, ice blue Diving Dolphins compote, vaseline Blackberry Spray hat, marigold Dahlia fruit bowl and 6 nappies, amethyst Grape & Cable bowl, marigold Butterfly berry bowl and 4 nappies, green Grape Leaf epergne and base, pink and green Postoria card trays with gold trim, green Swan, marigold 6 sherbert glasses, marigold Persian Medallion plate, Baskets, footed and open edge, white green, marigold, decanter, bon bon, compote, candle sticks, gravy boat, hair receiver, pigs, bottles, rose bowl, all different colors and patterns, Louisa, Stag & Holly, Strutting Peacocks, Question Marks, Lotus & Grape, Persian Garden, Scroll Embossed, Coin Spot, Palms, Mums, Brocaded Daffodils, and others too numerous to mention.

TERMS - Cash or acceptable check. Refreshments by Rockburn Ladies Aid.
PREVIEW - Friday, May 3, 1991, 2:00 to 4:00 P.M. and from 9:30 A.M. day of sale.

=====

Let's take another look at some old 1975 Antique Trader ads. Take particular notice at the prices in the collection of Hearts & Flowers compotes and Bushel Baskets from the Caudle ad. A lot of good plates are also advertised in a number of ads at bargain prices compared to what they bring today. Notice that red pieces too, are priced much lower than they are at the 1990 sales. Mrs. Annette Zwirn, of the Shadow Hills Antiques, was one of the big dealers in Carnival Glass in the 1970's. She has many super pieces in the ad featured in this month's "Peek Into the Past" article. A lot of her Carnival Glass was obtained by purchasing complete collections of Carnival Glass.

CAUDLE ANTIQUES, STATE ROAD, NORTH CAROLINA: Great collection of Hearts & Flowers compotes in the following colors: electric blue \$65.00; ice green \$80.00; ice blue \$95.00; white \$75.00; marigold \$40.00; green \$65.00; aqua opalescent \$115.00; Northwood Bushel Baskets in the following colors: marigold \$40.00; blue \$59.00; purple \$59.00; ice green \$79.00; orchid, rare color \$65.00; white \$69.00; green, the hard one to find \$75.00; aqua opal \$110.00; blue Good Luck bowl, a beauty \$99.00; aqua opalescent Leaf & Beads rose bowl \$79.00; amethyst Holly plate, not many in this color \$69.00; red 7" Acorn bowl, really beautiful \$175.00.

SHADOW HILLS ANTIQUES, TUSTIN, CALIFORNIA: Purple Farmyard bowl, super color & iridescence \$1,850.00; blue Leaf Chain plate \$85.00; green Many Stars bowl \$150.00; blue Round-Up plate \$135.00; green Dragon & Lotus bowl \$37.50; purple Scroll Embossed plate \$75.00; white Rose Show bowl \$175.00; marigold Millersburg Many Stars bowl \$125.00; marigold Kittens ruffled bowl \$49.00; blue Orange Tree hatpin holder \$125.00; ice green Peacocks on the Fence plate \$135.00; marigold Trout & Fly bowl \$150.00; marigold Garden Path Variet rose bowl \$35.00; blue Carnival Holly plate \$85.00; aqua opalescent variety, looks like slag with iridescence in the Lotus & Grape pattern bowl. Really one of a kind and most attractive \$150.00. (Writers Note: This was probably what we now know as the Persian Blue colored piece. It certainly was a rarity.) Blue Poppy Show bowl, electric vibrant color \$225.00; blue Rose Show bowl, same electric color as above \$225.00; white Rose Show beautiful plate \$275.00; white Poppy Show plate to match \$295.00; green Greek Key plate, rare and exceptional \$350.00; marigold Kittens cup & saucer \$125.00; exceptional green Beaded Cable rose bowl \$65.00.

MARION T. HARTUNG, EMPORIA, KANSAS: Red Dragon & Lotus 8½" bowl, extra fine \$325.00; red slag Butterfly & Berry 9" vase \$125.00; ice blue Poppy Show plate extra fine \$335.00; white Poppy Show plate, frosty \$250.00; marigold Rose Show plate, very fine \$200.00; purple Northwood Peacocks plate, extra fine \$215.00; blue Round-Up flat plate, very nice \$225.00; ice green Peacocks on the Fence plate \$125.00; ice blue Peacocks on the Fence plate \$225.00; ice blue Northwood Grape, stippled plate \$225.00.

continued...

RICHARD COPELAND, CASSELBERRY, FLORIDA: Marigold 10¼" Wishbone plate, Basket-weave back \$200.00; aqua opal Hearts & Flowers stemmed compote \$80.00; green Northwoods Bushel Basket \$45.00; ice blue (N) Peacock & Urn berry dish \$30.00.

MORRELL'S ANTIQUES, GARDINER, MAINE: Ice green Peacocks on the Fence ruffly rim low bowl, approx. 9" X 2", tiny chip on one point \$49.50.

GEISSLERS ANTIQUES, CARTHAGE, ILLINOIS: Peach opal Honeycomb rose bowl \$98.00; peach opal Fishnet epergne, ribbon candy edge, rare \$118.00; marigold Mikado compote \$85.00; marigold Daisy Block row boat 12" long \$95.00; aqua opal Leaf & Beads rose bowl \$98.00; aqua opal Beaded Cable rose bowl \$98.00; aqua opal Drapery rose bowl \$98.00; blue Dandelion mug \$128.00; blue Orange Tree powder jar and lid \$55.00; marigold Fishermans mug \$85.00; marigold Brooklyn Bridge ruffled bowl \$195.00; rare vaseline opal Peacocks & Grapes 3 footed bowl \$58.00; blue Orange Tree loving cup \$99.00; ice green (N) Peacock & Urn 9 ¾" ice cream bowl \$129.00; green Millersburg Whirling Leaves bowl \$55.00; green Millersburg Nesting Swan bowl \$95.00; purple 10" Fleur-De-Lis bowl \$85.00.

CINDYS ANTIQUES, DANBURY, CONNECTICUT: Rare green Grape & Cable candle lamp complete \$365.00; ice blue Peacock & Urn 10½" ice cream bowl \$185.00.

H. L. DETTY, HILLSBORO, OHIO: Purple Grape & Cable candle lamp \$525.00; peach opal Fanciful 9" low bowl \$80.00; marigold Kittens cereal bowl \$45.00.

THE BURTONS, PETERBOROUGH, NEW HAMPSHIRE: Marigold Brooklyn Bridge \$210.00; marigold Kittens bowl, 2 sides up \$47.50; red 11" Fine Rib vase \$85.00; amethyst Dreibus Parfait Sweets 6" bowl \$165.00.

LEONARD MIELEWSKI, FLINT, MICHIGAN: Purple Grape & Cable perfume & stopper \$410.00; purple Grape & Cable cup & saucer \$115.00; purple Grape & Cable card tray, 2 sides up \$75.00; amethyst Millersburg Two Eyed Elk bowl, the rare one \$525.00; purple Flute creamer & sugar \$110.00; purple Seacoast pin tray \$225.00; green Millersburg Dolphin compote \$425.00; dark green Corn Vase, a beauty \$250.00; smoke Corn Bottle \$165.00.

MINNAHS, SOUTH WEYMOUTH, MASSACHUSETTS: Marigold Wide Panelled epergne \$295.00.

BEN PEREZ, STURBRIDGE, MASSACHUSETTS: Purple Drapery rose bowl \$65.00; white (N) Bushel Basket \$65.00; purple Wishbone & Spades chop plate \$450.00; purple Carnival Swan \$70.00; purple Oval & Thumbprint vase \$40.00; purple Hearts & Flowers plate \$175.00; white Rose Show bowl \$175.00; ice blue Hearts & Flowers 9" bowl \$50.00; smoke Shell 9" plate \$75.00.

A PEEK INTO THE PAST
continued...

J. T. SISK, MARIETTA, GEORGIA: Marigold Corn Vase \$125.00; green Wild Rose oil lamp \$475.00; amethyst Courthouse bowl \$275.00; purple Ivy Town Pump \$375.00; green Rose Show bowl \$175.00.

This is entry #30 into this series of the "Peek Into the Past." We hope that you have found it interesting.

JOHN & LUCILE BRITT

NEW NORTHWOOD BOOK

HARRY NORTHWOOD, THE EARLY YEARS 1881-1900 by Heacock/Measell/Wiggins.

This new book has recently been released by Antique Publications, Post Office Box 553, Marietta, Ohio 45750. Although this book covers the pre-Carnival period, all Carnival Glass collectors are sure to find it most interesting. It traces Harry Northwood's activities from his immigration to America through his affiliation with the National Glass Company conglomerate.

The book is well illustrated and traces the patterns to the various glass factories Northwood worked at or managed. The research for the book was done by the late William R. Heacock. This book is one of a series of books that Bill was working on at the time of his death. Now with the help of his friends Bill's lifetime work of glass research can still be enjoyed and appreciated by all glass collectors.

This book will be followed by "THE WHEELING YEARS" and a book on "DUGAN-DIAMOND". Both books should be on a Carnival Glass collector's must have list.

The book is also available directly from James Measell, Post Office Box 72-1052 Berkley, MI 48072 at \$21.95 plus \$1.00 postage and handling.

LORRAINE M. PICKUP
HAZELWOOD, MISSOURI



UNUSUAL GRAPE & CABLE FRUIT BOWL, "OUR MYSTERY BOWL"

At least 15 to 18 years ago Roland purchased this bowl at a flea market in Topeka, Kansas. A fellow would come each week, from Lawrence, Kansas, where he maintained a permanent booth. At that time, we would not miss an estate sale, flea market, rumor that a piece of Carnival Glass might show up or any hint that we might find something great. At that time the budget was really restricted and a \$50.00 price tag was just about all that we thought should be spent on a piece of glass.

One particular Sunday, Roland decided to go see what was at the flea market. Upon arrival, a Grape & Cable large bowl was for sale. The color was a dark color, we thought purple. The piece was really amethyst. We really did not know the difference. On the inside of the bowl were some berries of some kind, but all we knew it was a Grape & Cable bowl. Roland priced the bowl and the fellow said it was \$100.00, but you must take the two bowls with it. I am not sure we even knew what peach opal was at that time, but anyway there were two peach opal bowls that had to go with it. Well, like I said, the \$100.00 was an awful lot of money and was just way out of our range. After several inspections, Roland bought the three pieces.

We had only known John and Lucile for a short time. It was our policy each time we got a piece of Carnival, we would dash up to Manhattan and check out what we had bought. Well, needless to say, when John saw the bowl things picked up. He wanted to buy it or trade something, but we held out and brought

"OUR MYSTERY BOWL"
continued...

it home with us.

It has turned out to be quite a conversation piece of glass. As I have mentioned, the outside is Grape & Cable, but the interior is Blackberry. As you know, most of these bowls have the plain or Persian Medallion interior. As we all know now, Grape & Cable was made by both Fenton and Northwood, but the Blackberry was made only by Fenton. We figured then that it was a Fenton product. We hauled it all over the country to the Conventions, meetings and to individual people showing it off the asking them what they thought. Mr. Fenton asked to take the bowl back to the factory so he could really examine it and do some research on it. The report and the bowl came back in a few months. Mr. Fenton believes they did not make the bowl. The grapes are not Fenton grapes, but the Blackberry pattern is a Fenton product. He gave few clues to how it might have been made.

The bowl has 3 feet, 11" across the top and 6" high. There is one bunch of grapes, 2 large leaves then a bunch of grapes. There are 3 large bunches of grapes and 6 leaves around the outside of the bowl. The cable is prominent all the way around the top of the bowl. The interior consists of 2 leaves, a bunch of blackberries and 2 more leaves, making a total of 8 large blackberry leaves and four bunches of blackberries.

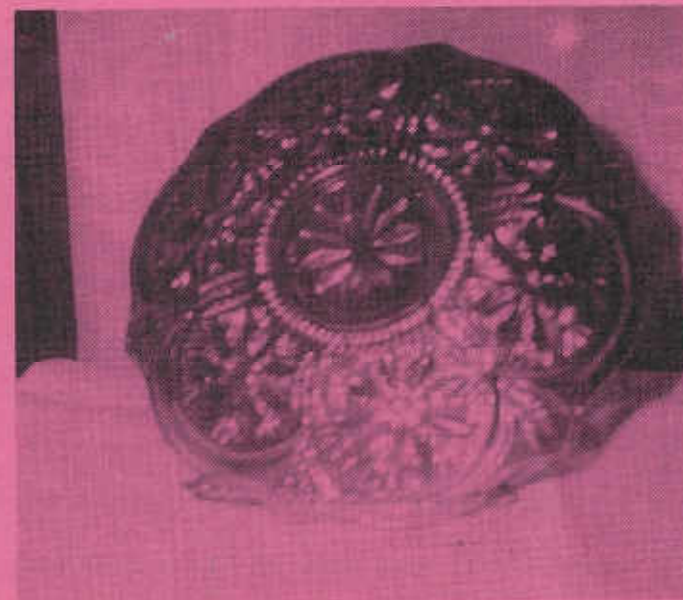
Well, now you have the facts. How do you suppose the Northwood Grape and Cable bowl has a Fenton Blackberry interior? I suppose there are a number of answers on how it could have taken place, but no one really knows. We do know plungers were traded, perhaps borrowed, who knows. When the experts are stumped and no real answer can be proven, it remains, "The Mystery Bowl" of our collection. It is a beautiful bowl and as far as I know is one of only 2 known. I believe the other is in a collection in Wisconsin.

This is just another true story, among the many, we all have experienced in our quest to find that special piece of glass.

We wonder at why more pieces were not made in some of these patterns. Perhaps someone just decided to experiment with one or two pieces and see what came forth. If we knew all the answers it would take the fun out of our wonderful hobby of collecting. What a joy, however; when it is you who has the good fortune to find something unusual and beautiful.

ROLAND KUHN
DONALD KIME

=====



I'm enclosing pictures of two pieces of Carnival Glass which I discovered about 6 weeks ago. In the hope that someone in the H.O.A.C.G.A. membership can give some information on these pieces, I'm hoping you can find room in the Bulletin for at least one of the pictures. Here's the main point: Both the small (4 3/8" dia., 2" high) bowl and the small (6 3/8" dia., 7/8" high) plate rest on a ground circular raised base. The pattern is on the underside and is intaglio--but in letters slightly less than 1/16" just inside the round base, raised (not cut in) are the words INDUSTRIA ARGENTINA. Both plate and bowl are from the same 3-part mold. Iridescence is applied to both sides and is really good. I have talked to Don Moore and he said this was unfamiliar to him--particularly that tiny lettering on the underside.

The antique dealer where I found these pieces hadn't even noticed the lettering and couldn't tell me anything about it. The pieces had paper stickers from an auction house here in Houston, which advertises as having auctions of English, French, etc., antiques on designated nights, so I'm reasonably sure the dealer who sold me these must have bid them in some months ago.

There was also a 12" marigold bowl--same pattern, same lettering, which I left there as too large for my collection. Several other plates and bowls, like mine, are still there--and I have a feeling this was some kind of set--but whether it was made in Argentina or for Argentina by American or English or Swedish glassmakers is unknown. The glass is clear, the moldwork is great and so is the iridescence--and if any of our members can furnish any information as to where or when or for whom this very attractive set was made, I would be most grateful.

I collect Dragon & Lotus and was curious to find out more information. I've read various articles and all were very interesting and informative. But, I still have lots of questions. So, in September I asked for information about Dragon & Lotus from H.O.A.C.G.A. members. I want to share this with all of you and thank those that responded. Thank you Angie Cash; Dennis & Virgy Land, Emil & Dorothy Campo, Sharon & Bill Mizell, Grace & Byron Rinehart, Judy Kasper, Jane Dinkins, Bill & Rosalinda Lozado; James & Judy Key, and Dr. Chris Reynolds. A total of about 200 Dragons was used in my chart.

When I first started collecting Dragon & Lotus, I called Don Moore and he advised me to call Dr. Reynolds. That was the first time I knew anyone collected just Dragons. I've bought quite a few Dragons from his since then. He gave a program for our San Diego Club and then he was the banquet speaker for the Northwest Carnival Convention in Eugene. He made some informative and interesting remarks in his program. It's always hard to remember everything, so I bought the video tape of the program. I don't see that much Carnival where I live, but from what I've seen and read many of these facts haven't been in print.

We know that around the turn of the century the oriental motif was most popular. Mr. Fenton has said his father was interested in oriental art. Maybe this is the reason for this mold. This is a very popular pattern of the Fenton Company. Dragon & Lotus was made in a limited number of shapes, but has made up for it in the wide variety of colors to choose from. It was even made in depression glass later. When you take a good look at the pattern it's apparent that someone knew alot about the oriental culture. Was it Mr. Fenton or the mold maker? I'm not going to go into the background of the Dragon & Lotus flower. If you take a close look at the Dragons on the spatula footed bowls and plates you'll find one Dragon that has five toes on one foot only. The rest of the Dragons have four toes. Why? This wasn't an accident. Someone must have known that the five toed Dragon was reserved for use by royalty only. The four toed Dragon was used by everyone else. Why didn't the mold maker make these on the collar base bowls and plates? It would be interesting to find out. I've never seen the nut bowl shape mentioned as a distinct shape in any writings. Sherman Hand told Dr. Reynolds that this shape was probably the most rare in this pattern. The only ones I've seen belong to Dr. Reynolds.

I compiled this chart from the information I received. There were some exciting surprises! An amethyst spatula footed plate, WOW! Did you know one existed? There were several colors I wasn't aware of before. I know we like to put shades of a color into one niche, but I didn't. I was in hopes someone would have a spatula footed red or amberina or even reverse amberina bowl. How about a green plate? There could be one lurking out there someplace. Has

anyone ever seen a Dragon & Lotus with a pie crust edge? What about an exterior pattern? The possibilities could be endless. That's what makes this hobby so challenging. If anyone out there is lucky enough to have some of these or knows someone who does, please help us fill in the chart.

The colors are not listed in order of rarity. There are quite a few colors which seem to be in short supply. Another interesting fact which bears out what is already. Only a third of the bowls were spatula footed. Why didn't they make more. There were only 7 plates. If there wasn't the flat plate, two cobalt and one peach opal bowl fit the definition for a ruffled plate. I hope this will be of use to everyone and happy hunting.

ARDONNA BUCHER
IMPERIAL, CALIFORNIA

P.S. I decided to try my hand at putting a list together of the Dragon & Lotus in color order according to rarity. Hope some others will put their ideas in a list. Common colors first.

Marigold, clambroth, green, amethyst, cobalt blue, purple, fiery amethyst, emerald green, olive green, amber, blue/lavender, persian blue, blue/red, red/blue, red, peach opal, ice green opal, lime green opal, vaseline opal, brown (not amber), lavender, yellow slag, lime green, ice green, vaseline, amberina, yellow opal, slag amber, aqua opal, lavender opal, amethyst opal, amber opal, moonstone, reverse amberina, aqua, MMG, blue opal, white.

COLOR	PLATE		PODS			PODS - DOLLAR			RES. #	ONLY 1 SHAPES KNOWN
	SPT.	PTD.	UPPER	ICE	DEEP	RUFFLED	ICE	RES. #		
	D/B		RUFFLED	ICE	RUFFLED	RUFFLED	ICE	RES. #		
Marigold	X	9 1/2"	X	X	X	X	X	X	*1 in 1 edge	
Emerald			X	X	X	X	X	X		
Amethyst	X (1 known)		X	X	X	X	X	X		
Purple										
Floral Amethyst										
Green			X	X	X	X	X	X		
Olive Green										
Emerald Green										
Lime Green										
Ice Green										
Vaseline										
Aqua										
Cobalt Blue	X		X			X	X	X	(2 known) X X	
Cobalt Blue/Red										
Serbian Blue										
Blue/Lavender										
LAVENDER				X						
Amber										
Yellow (Star)										
BROWN (not amber)										
Red (Cherry/Brick)										
Amberina										
Reverse Amberina										
HMC										
Moonstone										
White				X (1 known)						
Peach Opal	X		X	X						
Amethyst Opal										
Lavender Opal										
Ice Green Opal					X					
Lime Green Opal			X	X	X	X	X			
Vaseline Opal			X	X						
Yellow Opal										
Aqua Opal										
Amber Opal										
Cobalt Blue Opal								X (1 known)		
NOT CARNIVAL										
Ice Green						X	X			
Pink										
Red						X	X			
Cobalt Blue						X	X			
White (Ceramic)								X (smaller)		

If you can add more information to this list please let us know. Arionna Bucher, 419 South "P", Imperial, Ca. 92251. The Star Amber (named by Tom Burns) Glows like red under black light. X

ATTENTION: ALL MEMBERS:

Watch your mail for a special mailing with enclosures telling about the Convention, this years' Souvenir, and our raffle.

Lots of fun is in store for our members. Come to the Convention and be a part of it!

Below is a partial listing of the fine Carnival Glass that is being offered at this years' H.O.A.C.G.A. Convention auction: (Auction 9:30 A.M. April 26)

- | | |
|---|--------------------------------------|
| Emerald green Pods & Posy 10" plate | Blue Kittens toothpick |
| Moonstone Apple Blossom bowl | Marigold Kittens plate, 2 sides up |
| Ice green Bushel Basket, 6 sided | Marigold Kittens plate, 4 sides up |
| Amethyst Fluffy Peacock 6 piece water set | Purple (N) Good Luck ruffled bowl |
| Cobalt blue (N) Peacock at the Fountain | Amethyst Rustic funeral vase, GREAT |
| 7 piece water set, EXCELLENT | Green Captive Rose plate, CHOICE |
| Amethyst Butterfly & Plume 7 piece | Purple Princess Lamp, BEAUTIFUL |
| water set | Purple Greek Key plate |
| Purple Maple Leaf 4 piece water set | Purple Grape & Cable hatpin holder |
| Marigold Ten Mums pitcher & 1 tumbler | 5 Hatpins, Bat, Scarab, Dragonfly, |
| Marigold over milk glass Rose Show | amber Rooster, Tapestry |
| plate, BEAUTIFUL (small flaw) | Peach Opal Fanciful ruffled plate |
| Aqua Opal (N) Peacocks on the Fence | Blue Holly plate |
| ruffled bowl, EXCELLENT | Blue Captive Rose bowl, GOOD COLOR |
| Aqua Opal Rose Show bowl, VERY FINE | Amethyst Captive Rose bowl, NICE |
| Purple Farmyard bowl, some damage | White Oriental Poppy tumbler |
| but an EXCELLENT bowl | Purple Grape Arbor tumbler |
| Red Holly 8" bowl, ruffled, NICE | Purple Grape & Cable tankard tumbler |
| White Persian Medallion 9" plate | Blue Milady tumbler |
| Green Trout & Fly ruffled bowl | Blue Peach tumbler |
| Cobalt Fruits & Flowers bon bon | Purple Singing Birds mug |
| Blue Horse Medallion rose bowl | Amethyst Mlsbg. Wild Roses pedestal |
| Ice blue (N) Grape & Cable hatpin | bon bon |
| holder (chips on foot) | Green Peacock & Urn compote, RARE |
| Aqua Opal (N) Bushel Basket | PO Beaded Petal bowl |
| Marigold Christmas compote, GORGEOUS | Amethyst Mlsbg. 8" Holly bowl |
| Aqua Opal Daisy & Drape vase | Purple Imperial Grape 6" plate |
| Purple (N) Town Pump, GORGEOUS COLOR | Ice Blue Embroidered Mums bowl |
| Marigold Feathered Serpent 10" bowl | Purple Strawberry-stippled bowl |
| Green Tornado vase, large | Marigold Orange Tree goblet |
| Purple Tornado vase, Ribbed | White Apple Blossom Twig 6" |
| BPOE Bell, Atlantic City, 1911 | ruffled plate |
| BPOE Paperweight, Green, RARE | Marigold ABC Childs plate |
| Ice Green Peacock plate | Marigold Poppy Show vase |
| Red Open Edge Basketweave bowl | Marigold Orange Tree hatpin holder |

CARNIVAL TRIP

Since I am a college mathematics professor, I try to attend at least one major mathematics convention each year; this year there were two meetings which appealed to me. The American Mathematical Association of Two-Year Colleges (AMATYC) was meeting in Dallas, Texas in October and a joint meeting of the Mathematical Association of America and the American Mathematical Society was to be held in San Francisco, California in January. Since I had attended an AMATYC convention before and had enjoyed it so much and learned a lot, I decided to ask my division chairman if funds were available for the trip to Dallas. With the state of affairs in Georgia and budget cuts galore, I already knew the answer and I was told there were no funds for travel and education available. I was very disappointed, but little did I know that fate had intervened on my (Carnival Glass) behalf.

It was soon mid-December and the last day to purchase an airplane ticket so that two persons could fly for the price of one. I decided, along with a colleague, to see if that old adage, "persistence pays off", was really true. So I talked with my division chairman again, this time with hopes of going to San Francisco. After all, two could go for the price of one, I told him. Much to my surprise he agreed and I was enthusiastically making plans for the January meeting. (Don't ask where the money came from---I'll never understand State appropriations!)

It is very rewarding in the teaching profession to see a student finally understand a difficult concept and when he or she does, one can see the "light click on". Well, suddenly my "light clicked on". I quickly found my map and sure enough, Alameda was just across the Bay from San Francisco. I don't know why I had not thought of it before because when I think of California Carnival Glass collectors, the first names that come to mind are Connie & Don Moore.

I called the Moores and told them I would be in California the weekend of January 19 - 20 and that if at all possible, I would love to see their collection. I was in luck! They would be home on the 19th and I was to call from San Francisco to make final plans.

On the 19th, after a quick ride from San Francisco, Connie and Don met us (I dragged my colleague along) at the train station and drove us to their lovely home. The closer we got, the more anxious I became. When we arrived and entered their home, my eyes didn't know where to go first. What a collection! With aqua opal Acorn Burrs punch set (and every other color Acorn Burrs punch set), aqua opal Poppy Show plate, a collection of reds, an attractive display of whites, Rose Shows and Poppy Shows in every color, rare water pitchers, plates, bowls, and one of a kind pieces. It was a sight to behold!

After a nice visit, some of Connie's delicious coffee cake, and a view of her contemporary Carnival Glass collection, it was time to return to our hotel, as

CARNIVAL TRIP

continued...

the math meeting was still in progress.

I would like to thank Connie and Don for allowing me the pleasure of viewing their glass. Their outstanding collection can be surpassed only by their warmth and gracious hospitality. Thanks, Connie and Don, for a trip I'll never forget.

STEVE DAVIS
MACON, GEORGIA

NEWS FROM THE SAN DIEGO CARNIVAL GLASS CLUB

Plates, both 9" and chop size were the program topic for the December 2 meeting. More than 160 examples were displayed and discussed, with 58 patterns represented in many different colors.

57 members and guests were present. This was our Christmas party, so many prizes were awarded. An afghan, made and donated, brought in \$42.00 for the Club Treasury.

There was a Christmas tree and poinsettia table centerpieces. Nine poinsettias were raffled off, along with some red/white crocheted doilies or hot pads.

George Thomas, President of N.C.C.G.C., will present a program on vases for our March 17 meeting. He has a wonderful sense of humor, so we're going to have a great time. Join us if you can!

DIANE FRY
IMMED. PAST PRESIDENT

H.O.A.C.G.A. readers might like to know I recently acquired an unusually low shallow bowl in the Peacocks on the Fence pattern.....much flatter than the regular bowls. You could almost call it a ruffled plate???

And the frosting on the cake is the color--light blue opal, with lots of opal and super pastel iridescence. First one I've seen like this in 22 years of hunting Carnival. Also, just acquired what I think is the 2nd known green Northwoods Lovely bowl. I've heard there is one in North Carolina!

Finds like this are what keeps me on the road, and proves its still out there, all it takes is perserverance and a lot of luck.

RICHARD HAGOOD

We enjoy the Bulletin very much and really appreciate John & Lucile Britt's articles.

I found several pieces lately that I find very interesting and wanted to share with the members.

Went to a small antique mall, walked in and everything "junk"; flea market stuff. Had gone through one side of the store and was on the last side when I looked at the shelves in the windows, which had all pressed glass on it. But wait a minute--I couldn't be that lucky--its a Carnival pattern, but probably not iridised. I took it down, it is iridised white Carnival. Look at the price \$12.00. Store owner comes up. I asked the same old question, "Can you do better?". He says "\$8.00", and I said "I'll take it". Not bad for a white Orange Tree loving cup. Started walking through the rest of the shop and what do I spy with my little eye--Carnival Glass. I picked it up. This is more expensive, \$59.00. Will he do better? He said he'd have to phone his wife who is setting up a show (which I was going to next). Couldn't get ahold of her. I can have it for \$45.00. I'll take it. A Corinth jack-in-the-pulpit vase in moonstone Carnival.

The scenario: Go to the show, part way through, see the vase, mate to mine, ask the lady if they have a store. Some lady, got the vase for same price.

Her girlfriend is sharing the booth. While I'm standing there waiting for her to wrap up the vase, I look at rest of booth. Friend has a piece of Carnival too. Walk over. Ask favorite question. She's happy, I'm really happy. She wraps up an aqua opal Beaded Cable rose bowl.

Another rare piece I found lately. It is a super plate, (N) Peacocks on the

Fence. I phoned Don Moore about the color. He said Northwood didn't make that color. In my research I find on page 98 of the H.O.A.C.G.A. Book, Educational Series I, that John Britt says he has seen a Fine Cut & Roses rose bowl in the same color. I have also found information about the Wild Rose rose bowl (also a Northwood pattern) and have seen a (N) Bushel Basket in this color. Concave Diamonds is another pattern they made it in. Comparing the plate to another one in ice blue, there is a tremendous difference in color. Also compared it to other ice blue Northwood pieces and others agree with me it is not ice blue. Also it has all the other characteristics of Celeste Blue. It has the stretch iridescence and also the pinks and blues in the iridescence. The stretch effect is on both sides of the plate.

I bought this plate in Canada, sight unseen. A dealer said he had it and I bought it on the condition it being perfect. When he brought it to the next show, as soon as he unwrapped it, I saw it was Celeste. My heart stopped as I checked it for damage. Perfect. Bought it in the same area that I bought the Celeste Blue Carnival Holly plate in. I am going to check this area out more often.

Happy Carnival Hunting!

JANET KNECHTEL
ARCADIA, FLORIDA

CARNIVAL CALENDAR

TAMPA BAY CARNIVAL GLASS CLUB JAMBOREE - February 7-9, 1991, Ramada Inn, Clearwater, Florida, U.S. 19 and 580 (same as last year).

TEXAS CARNIVAL GLASS CLUB CONVENTION - February 15-17, 1991, Houston, Texas, Marriott Hotel, 1-713-875-4000, Speakers, Bob & Mary Alice Lovell.

HEART OF AMERICA CARNIVAL GLASS ASSOCIATION CONVENTION - April 25-28, 1991, Holiday Inn, Lenexa, Kansas. **MAKE PLANS TO ATTEND NOW!!!**

AMERICAN CARNIVAL GLASS CLUB CONVENTION - June 26-29, 1991, Parkersburg, West Virginia.

INTERNATIONAL CARNIVAL GLASS CLUB CONVENTION - July 23-26, 1991, St. Louis, Missouri, Holiday Inn West Airport, 1-800-325-1395.

AIR CAPITAL CARNIVAL GLASS CLUB CONVENTION - October 17-19, 1991, Holiday Inn Airport, 5500 West Kellogg, Wichita, Kansas. Mr. Frank Fenton, Speaker.

335 PIECES OF OLD CARNIVAL GLASS
 FROM THE COLLECTION OF MR. AND MRS. HENRY HAWK ALONG WITH A
 SELECTION FROM SINGLETON BAILEY
 SELLING ON MARCH 22 AND 23 AT THE HUDSON HOLIDAY INN, 240
 HINES HILL ROAD, HUDSON, OHIO 44236 (216) 653-9191
 AUCTIONEER WILL BE ROSS THOMAS OF MARIETTA, OHIO
 FOR INFORMATION CONTACT SINGLETON BAILEY, P.O. BOX 95,
 LDRIS, SOUTH CAROLINA 29569

Grape and Cable 4pc table set-purple
 Grape and Cable sweetmeat-purple
 Fenton Peacock and Urn ruffled bowl-blue
 Grape and Cable hatpin holder-marigold
 Orangetree ruffled bowl-marigold
 Beaded Cable rosebowl-aqua opal
 Good Luck pce bowl-marigold
 Fenton Butterfly ornament-marigold
 Fenton tumble-up quest set-marigold with cobalt handle
 Grape Arbor hat shape-blue
 Dugan Wreathed Cherry banana boat-white
 Beaded Leaf ftd nut dish-white
 Orangetree breakfast creamer and sugar-blue
 Fenton Hobnail 9" whimsey vase, pinched in on 3 sides
 and not swung, damage-blue
 Diamond tumbler, two-blue, sold choice
 M'burg Hobnail Swirl vase-green
 M'burg Strawberry wreath tri-corner bowl-radium green
 M'burg Holly Sprig tri-corner bowl-marigold
 M'burg Zig-Zag tri-corner bowl-radium amy
 M'burg Strawberry Wreath square bowl-radium amy
 M'burg Hanging Cherry 8 1/2" ruffled bowl, rare
 size-marigold
 Grape and Cable 8pc punch set-amy
 Hums lamp shade with metal base, only one
 known, moonstone
 Fentons Flowers rosebowl, foot damage-green
 Fentons Flowers rosebowl-white
 Fentons Flowers rosebowl-blue
 Fentons Flowers rosebowl, foot damage-amy
 Fentons Flowers rosebowl-marigold
 Fentons Flowers rosebowl, not iridized-blue
 "Isaac Benesch and Sons" Holly Spring nappy-marigold
 M'burg Leaf and Little Flowers comport, damage-amy
 M'burg Trout and Fly, 6 ruffle bowl-amy
 M'burg Holly Sprig tri-corner nappy-radium amy
 M'burg Holly Sprig nappy-green
 M'burg Holly Sprig nappy-marigold
 M'burg Holly Sprig nappy-radium amy
 M'burg Holly Sprig deep nappy-radium marigold
 M'BURG HOLLY Sprig deep nappy-green
 M'burg Many Stars 6 ruffle bowl, 5 point star-green
 M'burg Hanging Cherries ics sauce-radium green
 M'burg Many Stars 3 in 1 bowl, 5 point star-green

 M'burg Many Stars 3 in 1 bowl-radium pastel marigold
 M'burg Big Fish ics bowl-green
 M'burg Peacock 6 ruffle bowl-radium amy
 M'burg Fleur de Lis ics bowl-radium amy
 M'burg Fleur de Lis 6 ruffle bowl-radium marigold
 M'burg Peacock and Urn 3 in 1 mystery bowl-silver amy
 M'burg Whirling Leaves 6 ruffle bowl-radium amy
 M'burg Strawberry Wreath varient bowl-radium amy
 M'burg Primrose 6 ruffle bowl-radium amy

VHS VIDEO TAPES FOR SALE

VHS video tapes of the 1990 Heart of America Carnival Glass Association Con-
 vention Seminars are now available. They are:

<u>Number desired</u>		<u>Price</u>	<u>Total</u>
_____	1990 Red Carnival Glass by Richard Cinclair, Bob Allaire and Joyce Seale	\$20.00	_____
_____	Millersburg Glass by Singleton Bailey	\$20.00	_____
_____	Little Bowls by Garth Irby	\$20.00	_____
_____	Peacock & Urn Ice Cream Sets by Harold Cox	\$20.00	_____
		TOTAL	_____

These tapes are all very good and would be a very nice addition to your Carni-
 val Glass library. There is no shipping and handling charge for these tapes.

Please make checks payable to H.O.A.C.G.A. and send them to:

Doug Peters
 8708 N. Chatham Ave.
 Kansas City, Missouri 64154
 1-816-587-5696

ATTENTION ALL MEMBERS

IF YOU DO NOT WANT YOUR NAME, ADDRESS, OR TELEPHONE NUMBER
 TO APPEAR IN THE NEXT HOACGA ROSTER YOU MUST WRITE DOUG
 PETERS IMMEDIATELY GIVING HIM THE INFORMATION YOU WANT
 WITHHELD. ALL MEMBERS WILL BE INCLUDED UNLESS DOUG HEARS
 FROM YOU.

SOUVENIRS FOR SALE

<u>Number desired</u>		<u>Cost</u>	<u>Handling & Shipping</u>
_____	1983 Marigold on Milk Glass Loving Cup	\$40.00	\$2.50
_____	1986 Green Opalescent Bell	\$35.00	\$2.50
_____	1987 Cobalt Blue Bell	\$35.00	\$2.50
_____	1988 Marigold Bell	\$35.00	\$2.50
_____	1989 Teal Bell	\$35.00	\$2.50
_____	1983 Amber Table Favor Mug	\$ 7.00	\$1.50
_____	1986 Green Opalescent Table Favor Mug	\$ 7.00	\$1.50
_____	1990 Red Table Favor Mug	\$12.50	\$1.50
_____	Metal holder for candle lamps	\$ 8.00	(no shipping)
	TOTALS		+
		_____	_____
		=====	=====
		GRAND TOTAL	

Please make checks payable to H.O.A.C.G.A. and
 send orders and checks to: John Britt
 3048 Tamarak Drive
 Manhattan, KS. 66502

NAME _____

ADDRESS _____

CITY, STATE, ZIP CODE _____

TAMPA BAY CARNIVAL GLASS CLUB NEWS

11 members and 2 guests were in attendance at our meeting. Although not mentioned in the minutes, I would guess that Shirley served Christmas punch from the fabulous Grape & Cable punch bowl. Maybe it's just fantasizing, but I think there's something added to the flavor of the punch when it is drawn from that beautiful bowl! I'm sorry I wasn't there to enjoy the festivities.

Although our appointed nominating committee had a difficult time, due to time and distance problems, a slate was decided upon and presented at the December meeting. Results are as follows: President - Bill Tendl; Vice-President - Ruby Pitt; Secretary - Shirley Hubbard; Treasurer - Barbara Hobbs.

In accordance with the provisions of our constitution, additional nominations, if any, may be proposed at the January meeting with voting to take place at the Annual General Meeting during the Convention (Friday, February 8, 1991, about 2:30 P.M.).

After the business meeting, the Christmas gift exchange took place with many pleasant surprises being enjoyed by the recipients from our official Santa representative, Heather Tendl. Bill Tendl followed the gift exchange with guitar accompaniment for the singing of Christmas carols. It is rumored that the singing has improved so greatly that offers are expected for public appearances next year!

Our next meeting will be Sunday (at noon), January 20th, 1991, and will take place at the home of Tim and Kim Rice, 1778 Stable Trail, Palm Harbor. Their phone number is 1-813-785-1393. Please contact Kim to coordinate covered dishes.

Our Jamboree chairman has requested that I ask those members who are nearby and planning to attend the Jamboree to please submit their requests for meal choice, sales table requirements, and next years dues as soon as possible to reduce the workload and facilitate processing at the Jamboree. Please cooperate because it does take a lot of effort to get everything finished. I would like to take this opportunity to thank you on her behalf for your timely cooperation in this matter!

To those who we won't see, let me take this opportunity to wish you all a healthy, prosperous New Year.

=====

Worry is like a rocking chair---it gives you something to do, but it doesn't get you anywhere.

REFLECTIONS

We watched 1990 go away into history and wondered what 1991 would bring to all of us. Looking back through the year brings memories, both good and sad.

One has to say it was a good year for Carnival. Many auctions with record prices all along. We loved the two Conventions we could attend and wished we could have taken them all in. Its wonderful to have the different Conventions at locations scattered over the whole United States. It gives more members a chance to go. Same way on auctions. These events help to keep Carnival alive and healthy.

Just great to hear from so many Carnival friends during the holidays. It seemed like a visit to get the cards and personal letters or notes. That look a special effort at such a busy time.

We had little snow for old Santa. We know our Australian friends have their Christmas in mid summer, so guess it makes no difference. Florida and California too are supposed to be snowless. Not sure about California this year as weather patterns are changing.

It was great to have Allen & Ann Blanchard of Australia at a Convention too. Also several nice people from England. Our hobby reaches out to other countries. Our Canadian friends are closer so can attend auctions and conventions more often.

It was a fast year. We were involved in restoring a one-room school house for nearly four years so were happy to see it all finished and set up at a state park.

The year too took away some loved ones too. Some Carnival friends and some from our own family. Talked to Kitty Vining and glad she sounded good. She said friends had given \$29,300.00 in Bob's memory to their Church. What a wonderful tribute to him, so well deserved. Sure will miss him.

Beale Carneals sudden passing on November 3 was a shock. He and Arnice had attended A.C.G.A. Convention and said they would see us again for next one at Parkersburg, W.V. They had lovely Carnival in their room. Arnice has our deepest sympathy. They lived at St. Stephens Church, Va. 23148.

Shall hope the new year will be full of happy days, good luck, good finds for everyone. One can always hope, then take whatever comes. Look forward to the Carnival family gatherings at auctions & Conventions. Thats what makes the Carnival hobby so worthwhile.

GRACE & BYRON RINEHART
CHARLESTON, WEST VIRGINIA

POLICY FOR ADVERTISING IN THE H.O.A.C.G.A. BULLETIN

1. All advertisements, announcements, letters or any other item to be printed must be received by the Bulletin Secretary no later than the 28th day of the month, to insure being published in the next months' Bulletin.
2. Member families may advertise ten (10) "For Sale" and ten (10) "Want Ads" per month F R E E of charge.
3. Only old Carnival Glass items or H.O.A.C.G.A. Souvenirs will be published. The Editor reserves the right to delete any item considered to be new glass (made after 1940) or any non-Carnival glass.
4. Damage or manufacturing flaws should be noted.
5. All "For Sale" items must be priced, no bid items will be published.
6. A 5-day return privilege, at buyers' expense; providing it is not as advertised.
7. All postage and insurance is extra, to be paid by buyer.
8. All ads must be legible, or they will not be printed.
9. The H.O.A.C.G.A. does not accept responsibility for accuracy of any ads.

FOR ACCURACY OF DESCRIPTION, THE FOLLOWING COLOR KEY IS RECOMMENDED:

A-Amethyst	HA-Honey Amber	P-Purple
AMB-Amber	IB-Ice Blue	PRL-Pearl/Pastel/Milk Glass
AO-Aqua Opalescent	IG-Ice Green	PM-Pastel Marigold
B-Blue	IGO-Ice Green Opal.	PO-Peach Opalescent
BO-Blue Opal or Blue Opaque	LAV-Lavender	R-Red
CLM-Clambroth	M-Marigold	RA-Amberina
EB-Electric Blue	MMG-Marigold on	SM-Smoke
G-Green	Milk Glass	VAS-Vaseline

NOTE: If you wish to describe a piece as light or dark, please use the body of the ad.

P L E A S E U S E T H E F O L L O W I N G

EI-Excellent Iridescence GI-Good Iridescence LI-Light Iridescence

EXAMPLES

AO	EI	Good Luck plate, one point broken and repaired	375.00
M	LI	Peacock at the Fountain 7 piece water set, pitcher has flake	225.00
MMG	GI	Peacock & Grape bowl	360.00
A	GI	Wishbone tumbler, heat check, light amethyst	47.50

It would be greatly appreciated by everyone if you would use these codes, as suggested above.

***** CARNIVAL GLASS FOR SALE *****

Gary C. Kesterson, 3020 Mesa Road, Weatherford, Texas 76087
PHONE: 1-817-441-8410

R	EI	Leaf Chain 7½" bowl, ruffled, cherry red, SUPER	1,350.00
R	EI	Acorn 7½" bowl, ruffled, medium red	425.00
W	EI	(N) Peacock & Urn master ice cream, frosty	695.00
W	EI	Hearts & Flowers compote, SUPER IRIDESCENCE	165.00
AO	EI	Hearts & Flowers compote	450.00
LAV	EI	(N) Peacocks bowl, P.C.E.	385.00
PM	EI	Rose Show bowl, SUPER IRIDESCENCE	525.00
AO	EI	Three Fruits bowl, collar based, SUPER	1,200.00
IG	EI	Hearts & Flowers bowl, ruffled	795.00
AO	EI	Good Luck bowl, ruffled	1,350.00

Ted Sheibley, 304A Hillcrest Drive, New Cumberland, Pennsylvania 17070
PHONE: 1-717-938-6417

AO	EI	Bushel Basket, round, (N)	400.00
B	EI	Captive Rose 9" plate	325.00
B	EI	Good Luck stippled bowl	325.00
B	EI	Hearts & Flowers compote	425.00
G	EI	Grape & Cable candlelamp	750.00
G	EI	Nippon 9" ruffled bowl	150.00
G	EI	Rosalind 10" ruffled bowl, Millersburg	175.00
G	EI	Tree Trunk squatty vase	150.00
IB	EI	Embroidered Mums bowl	900.00
P	EI	Star of David ruffled bowl	80.00

Steve Davis, 3331 Warpath Road, Macon, Georgia 31201
PHONE: 1-912-741-4252

M	EI	Imperial Grape 6" plate	60.00
P	EI	Imperial Grape 6" plate, SUPER!	175.00
AO	EI	Drapery rose bowl, pastel	345.00
PO	EI	Four Flowers 10½" chop plate	500.00
A	EI	Millersburg Leaf & Little Flowers compote, super little 3" piece, with radium finish	400.00
B	EI	Dragon & Lotus ruffled bowl, SUPER	95.00

Harold L. Fortney, 910 Pennsylvania, Apt. 1007, Kansas City, Missouri 64105
PHONE: 1-816-421-4169

*	EI	*Smokey blue with marigold overlay Holly bowl, 3 in 1 edge	100.00
---	----	--	--------

***** CARNIVAL GLASS FOR SALE *****

Eugene Snyder, Jr., 56 W. Main Street, Dallastown, Pennsylvania 17313
PHONE: 1-717-244-7175

AMB	EI	Acorn ruffled bowl	100.00
VAS	EI	Acorn ruffled bowl, SUPER	110.00
M	LI	Seaweed kerosene lamp, RARE	275.00
M	EI	Kittens banana bowl	135.00
M	EI	Kittens plate	175.00
B	EI	Horse Medallion J.I.P. footed bowl	165.00
M	EI	Dragon & Strawberry footed bowl, SUPER IRIDESCENCE	375.00
W	EI	Three Fruits stippled, ruffled bowl, collar based, SUPER	750.00
B	EI	Banded Grape & Cable hatpin holder, SUPER & RARE	1,200.00
G	EI	Three Fruits stippled plate, EXTREMELY RARE, FANTASTIC IRID.	3,500.00

Paul Berube, 11 Doris Avenue, Tiverton, Rhode Island 02878
PHONE: 1-401-625-5303

M	EI	(N) Grape & Cable shot glass	100.00
W	EI	(N) Grape & Cable small ice cream, each	175.00
G	EI	(N) Grape & Cable hat pin holder	235.00
G	EI	(N) Grape & Cable powder jar, chip on cover	70.00
P	EI	(N) Grape & Cable breakfast sugar	60.00
P	EI	Nautilus, script signed	265.00
AO	EI	Leaf & Beads rose bowl	340.00
AO	EI	Vintage bowl, 3 in 1 edge, VERY RARE	1,600.00
R	EI	Rooster hat pin	100.00
AQ	EI	Open Edge Basket, 4 sides turned up	145.00

Dwyane & Barbara Davis, 808 Hialeah Ct., Saginaw, Texas 76179
PHONE: 1-817-232-1477

A	EI	S-Repeat punch cup	45.00
*	EI	*Clambroth to marigold top Ripple vases, 11" & 12", each	38.00
P	EI	Grape & Cable hatpin holder, perfect	285.00
M	EI	Stippled Rays berry bowl, Fenton, have 9 at \$24.00 ea, all for	180.00
A	EI	Dragon & Lotus 7½" spatula footed bowl	70.00
P	EI	(N) Grape & Cable tumblers, SUPER COLOR, have 4 at \$45.00 ea. or all for	160.00
M	EI	Fenton Flowers nut bowl, feet perfect	43.00
G	EI	Blackberry Wreath 9" I.C.S. bowl, Millersburg, radium, SPECTACULAR COLOR & IRIDESCENCE	90.00
P	EI	Strutting Peacock creamer with lid	45.00
G	EI	Stippled Rays compote, 7" across top, SUPER	48.00

***** CARNIVAL GLASS FOR SALE *****

Dave Ackerman, 4677 Kennebec Drive, Cass City, Michigan 48726
PHONE: 1-517-872-2023

M	Butterfly & Berry covered butter, creamer & spooner, or will sell separately	225.00
G	Multi-Fruits & Flowers punch cup	35.00
PM	Fine Rib Variet 5" vase, odd and cute, flared, (N) or Dugan	20.00
M	Hobstar Band 2 tumblers, each \$45.00 or both for	80.00
M	Frosted Block 7 3/4" square plate, flat and scarce	30.00
M	Pearly Dots (Coin Dot Vt.) rose bowl, scarce	50.00
M	Lotus & Grape 9" 8 ruffled plate or very low bowl	125.00
M	Feather Stitch 9" 8 ruffled bowl	50.00
M	Spiral, pair 7 3/4" candleholders	100.00
CB	Cherries & Blossoms decorated water set, 7 pieces, some grinding chips, (N)	250.00

John Mikkonen, 8673 McGuire Ct., Shakopee, Minnesota 55379
PHONE: 1-612-445-6098

M	Holly compote, double crimped edge	75.00
*	*Smokey blue with marigold overlay Holly bowl	125.00
IG	Holly bowl, I.C.S.	3,200.00

Adam Fikso, 3420 Glenview Road, Glenview, Illinois 60025
PHONE: 1-708-729-7707

G	EI Wild Flower (Blossomtime) compote, iridescence on interior only (N)	475.00
B	GI Dragon & Strawberry bowl, incomplete chip on base	600.00
B	EI Good Luck bowl, Ribbed exterior, ELECTRIC	275.00
G	EI Beaded Cable rose bowl, Fine Rib marigold interior, shines through exterior (N)	80.00
M	EI Acorn Burrs covered butter dish (N)	190.00
G	EI Persian Medallion/Wreath of Roses punch cups, have 4, each	35.00
G	EI Grape & Cable plate, Old Rose Distilling Co., Chicago, Illinois, stippled	375.00

Charles Perry, 8641 Lakeshore Drive, Southaven, Mississippi 38671
PHONE: 1-601-342-1694

M	EI Question Mark compote, C.R.E., SUPER	45.00
G	EI Millersburg Boutonniere compote	90.00
M	EI Daisy Cut Bell	375.00

***** CARNIVAL GLASS FOR SALE *****

Richard Hagood, 109 Spring Road, Lexington, South Carolina 29073
PHONE: 1-803-791-5086

G	EI Double Star tumbler, nice	45.00
G	EI Millersburg Cherry tumbler, flared top, super radium irid.	275.00
G	EI Millersburg Cherry tumbler, flared top, super radium irid., tiny nick on rim	125.00
M	EI Hearts & Flowers compote	185.00
B	EI Grape Arbor tumbler, ELECTRIC, RARE COLOR, small chip on base	65.00
W	EI Floral & Optic ftd. chop plate, pink highlights	75.00
M	EI (N) Memphis punch cups, each	22.00
	1965, August, Womans Day magazine, large Carnival article,	15.00

Richard Cinclair, 3605 South Echo Trail, Plano, Texas 75023
PHONE: 1-214-596-0014

G	EI Old Rose Distillery plate	375.00
W	EI Grapevine & Lattice	85.00
M	EI Lattice & Daisy tumbler	35.00
M	EI Kittens cup & saucer	195.00
M	EI Grape & Cable flat small ice cream	125.00
M	EI Fern compote, hard to find	85.00
R	EI Blackberry Spray hat	295.00
W	EI Orange Tree punch set	700.00
G	EI Double Star tumbler	75.00
A	EI Wishbone 10" P.C.E., collar based bowl	95.00

Jim or Tecky Miller, 9600 Justin Pl., Riverridge, Louisiana 70123
PHONE: 1-504-737-2374

G	EI Northwood mug, good condition	225.00
B	EI Northwood mug, base slight defect	180.00
B	EI Penton Thistle centerpiece bowl, see 1ST 25 YEARS, FENTON #211	380.00
M	GI Vase, Jack-in-the-pulpit, 9 1/2" high, good condition	100.00
M	GI Stag & Holly 10 1/2" footed bowl, good	165.00
M	GI Chicken on Nest, small rim chip, Edwards lists as covered hen	125.00
M	GI Thistle & Thorn large footed nut bowl 5 1/2" dia.	60.00
M	GI Northwood berry 4 1/2" dia. good	35.00
B	EI Panelled Dandelion tumblers, have 2, 1 is good, other slight rim imperfection	35.00

***** CARNIVAL GLASS FOR SALE *****

Robert & Carole Hooper, 338 Veterans Blvd., Bayville, New Jersey 08721
PHONE: 1-201-269-7866

B	EI	Peacock at the Fountain tumbler (N)	75.00
B	EI	Smokey blue/marigold Blackberry Open Lattice Edge Basket	125.00
B	EI	Grape & Cable 2 handled electric blue bon bon	95.00
M	EI	Open Rose 7 $\frac{1}{4}$ " bowl, has 2 no harm no see nicks on edge and three perfect sauce bowls	50.00
R	EI	Jewels 8 $\frac{1}{4}$ " plate	100.00
AMB	EI	Open Rose rose bowl	75.00
M	GI	Horsehead Medallion rose bowl, light in color	85.00
*	GI	*Moonstone/marigold Acorn 7 $\frac{1}{2}$ " bowl, above average iridescence for moonstone	450.00
A	EI	Louisa rose bowl, perfect feet	55.00
G	EI	Pansy banana boal, 9" long 5 3/4" wide, SUPER	50.00

Mrs. Adam Henn, N951 Highway 27, Conrath, Wisconsin 54731
PHONE: 1-715-532-5816

M	EI	Hattie bowl	28.00
M	EI	Three In One 6" bowl	13.00
G	GI	Grape & Cable 5 punch cups, each	20.00
B	EI	Fenton Peacock & Urn I.C.S. bowl	145.00
G	EI	Millersburg Mayan I.C.S. bowl	95.00
M	EI	Cherry Chain 2 handled bon bon	30.00
A	EI	Millersburg Diamond tumbler	35.00
G	EI	Singing Birds tumblers, have 5, each	35.00
B	EI	Orange Tree large mug	45.00

Hubert & Lucille Shelton, 6298 Boiling Springs Road, Munfordville, KY 42765
PHONE: 1-502-528-5893

M	EI	Corn Vase, RARE	1,000.00
A	EI	Grape & Cable (N) 9" bowl, P.C.E., Basketweave exterior	65.00
M	EI	Beaded Bullseye 8 $\frac{1}{4}$ " vase	40.00
M	EI	Grape & Cable (N) ftd. ice cream bowl, lovely	35.00
A	EI	Oriental Poppy (N) tumbler, beautiful gold iridescence	45.00
B	EI	Old Fenton Orange Tree powder box, roughness on base	15.00
PO	EI	Rays interior/small flowers ext. 6" fluted bowl, excell. color	30.00
B	EI	Peacock at the Fountain 4 matched tumblers, MINT, DEEP BLUE, ea.	50.00
P	EI	13 $\frac{1}{2}$ " X 10" oval banana boat, rare Cherry pattern	165.00
A	EI	Millersburg Cherry creamer, beautiful color and pattern	90.00

***** CARNIVAL GLASS FOR SALE *****

Doug & Sharla Peters, 8708 Chatham Ave., Kansas City, Missouri 64154
PHONE: 1-816-587-5696

P		Hobstar Flower compote	65.00
W		Grape Arbor tumbler	50.00
M		Grape Arbor tumbler	35.00
M		Imperial Grape compote	25.00
W		Hearts & Flowers compote	130.00
PM		Imperial Grape plate	30.00
M		Butterfly & Berry butter, lid has damage, so	20.00
G		Grape & Cable large fruit bowl, has damage, so	65.00

Reg & Linda Dunham, 1512 S. Main, Jacksonville, Illinois 62650
PHONE: 1-217-245-6733 after 5:00 P.M. C.S.T.

W	EI	Oriental Poppy tumbler, these are really nice & frosty with pastel highlights	90.00
G	EI	Butterfly & Berry tumbler, nice example	90.00
P	EI	Grape & Cable tumbler	35.00
G		Strawberry plate, stippled. The iridescence is a light gold with highlights of purple around the strawberries, RARE PLATE	600.00
B	EI	Singing Birds mug, pretty, mug	80.00
M	EI	Grape & Cable tankard tumbler	60.00
G?	EI	Blackberry Bramble compote, an extremely unusual green base glass and pretty	75.00
R	EI	Blackberry Spray hat, 2 sides up	450.00
M	EI	Leaf Tiers tumbler, flake on foot	35.00
M	EI	Greek Key plate, very nice plate	500.00

Ken & Aileen Oppenlander, 3513 Stagecoach Circle, Manhattan, Kansas 66502
PHONE: 1-913-776-5512 evenings

HA	GI	Palm Beach tumblers, have 2, each	95.00
B	GI	Miniature Blackberry compote	65.00
M	EI	Grape & Gothic Arches creamer and sugar	65.00
*	EI	*Marigold over aqua Holly ruffled hat	55.00
AMB	EI	Ripple 7 $\frac{1}{2}$ " vase	55.00
PO	EI	Stippled Flower tri-cornered bowl	55.00
B	EI	French Knots ruffled hat	45.00
M	EI	Flute & Cane sherberts, scarce, have 3, each	40.00

S.A.S.E. FOR LIST OF ITEMS UNDER \$100.00 EACH

***** CARNIVAL GLASS FOR SALE *****

Harold R. Wagner, 5951 Fredericksburg Road, Wooster, Ohio 44691
PHONE: 1-216-264-3703 after 6:00 P.M.

W	EI	Pine Cut & Roses candy dish, Fancy interior	135.00
W	EI	Bushel Basket, 8 sided	135.00
B	EI	Hearts & Flowers compote	475.00
B	EI	Leaf & Beads rose bowl	200.00
M	EI	Millersburg Peacock & Urn 10" fluted bowl	250.00
B	EI	Embroidered Mums 9" fluted bowl, 2 pin heads on edge	145.00
M	EI	Millersburg Primrose 10" fluted bowl	65.00
G	EI	Millersburg Holly 2 handled bon bon	65.00
M	EI	Millersburg Holly 2 handled bon bon	65.00

Bob Slaughter, 4717 N.C. Highway 54, Graham, North Carolina 27253
PHONE: 1-919-376-9552 after 6:00 P.M. E.S.T.

A	EI	(N) Singing Birds water pitcher, nice with blue iridescence	350.00
A	EI	(N) Bushel Basket, 8 sided	135.00
PO	EI	Honeycomb rose bowl, very nice	200.00
A	EI	Pulled Loop 12" vase, electric blue iridescence	45.00
B	EI	Thin Rib 10" vase, electric blue iridescence	35.00
PO	EI	Wreathed Cherry 5" oval bowl, lots of opalescence	35.00
DM	EI	Grape & Gothic Arches creamer	35.00
A	EI	(N) Peacock & Urn small berry bowls, have 4, each	65.00
P	EI	Louisa rose bowl	70.00
M	EI	Pine Cone small plate	35.00

John & Terri Dubinski, 2408 Fleetwood Drive, Columbia, Missouri 65202
PHONE: 1-314-474-2644

PO		Wide Rib 10½" vase, opal on tips & some of the ribs, nice color	75.00
B		Dragon & Lotus 8 ruffled bowl, platinum grey finish	85.00
W		Cherry Chain I.C.S. small bowl	65.00
A		Thistle 7½" scalloped bowl	45.00
M		Butterfly & Berry small 3 footed berry bowl	30.00
M		Beaded Stars sauce, 4 sides up	24.00
M		Three Fruits 9" STIPPLED plate, BEAUTIFUL!!!	225.00
M		Little Flowers ruffled berry bowl	28.00
G		Two Flowers 8" ruffled, spatula footed bowl, VERY NICE!	65.00
*		*Teal Ripple 11½" vase	75.00

***** CARNIVAL GLASS FOR SALE *****

John & Mary Reeves, 103 W. Quail Trail, Lewes, Delaware 19958
PHONE: 1-302-645-5965

P	EI	Chatelaine tumbler, excellent condition	325.00
P	EI	Chatelaine tumbler, 2 slivers off near bottom	150.00
A	EI	Springtime pitcher, RARE	750.00
A	EI	Springtime tumbler	90.00
G	EI	Springtime tumblers, have 2, each	120.00
A	EI	Scroll Embossed desert, SUPER IRIDESCENCE	100.00
PO	EI	Petal & Fan bowls, 5", have 2, each	40.00

Jo Ann Mitchell, 6584 Williams Highway, Grants Pass, Oregon 97527
PHONE: 1-503-862-2635

M	GI	Blossoms & Band, pr. wall vases, 1 lighter at top, plain metal holders, the pair	40.00
M	EI	Polo ash tray	40.00
A	EI	Fenton Peacock & Urn 3 in 1 edge bowl, 6 small chips on edge	100.00
PO	EI	Folding Fan compote	85.00
G	EI	Beaded Cable rose bowl, one side more silver	85.00

Nigel Gamble, 309 Wellington Ct. Apt. 507, London, Ontario, Canada N6C 4P2
PHONE: 1-519-439-3342

P		Grape & Cable large ice cream bowl, nice color, blues, greens	295.00
P		Farmyard square bowl (See page 165, Don Moores Collection of Writings), OUTSTANDING COLOR	3,800.00

Alaine M. Pennetti, 23 Nancy Lane, Ft. Myers Beach, Florida 33931
PHONE: 1-813-463-3918

M		Soda Gold candlesticks, the pair	65.00
M		Vintage tumbler	30.00
DM		Grape & Gothic Arches tumbler	45.00
CB		Grape & Gothic Arches pitcher	375.00
A		Flute toothpick	60.00
A		Grape & Cable ice cream, stemmed	30.00
M		Grape & Cable ice cream, stemmed	30.00
M		Double Stemmed Rose 8" bowl	40.00
M		Butterfly pin tray	20.00
		NORTHWOOD, KING OF CARNIVAL GLASS BOOK	5.00

***** CARNIVAL GLASS FOR SALE *****

Dick Hatscher, 142 Walnut Hill Rd., Bethel, Connecticut 06801
PHONE: 1-203-743-1468 anytime

M		Hanging Cherries tumblers, light iridescence, each	165.00
M	EI	Good Luck P.C.E. bowl	125.00
M	EI	Holly plate	115.00
G	EI	Good Luck bowl	165.00
G	GI	Inverted Feather cracker jar	165.00
G	EI	Tree Trunk mid-size vase	145.00
W	EI	Dahlia tumbler	125.00
EB	EI	Peacocks bowl, ELECTRIC BLUE, stippled, P.C.E. & SUPER	695.00
P	EI	Imperial Grape water bottle	100.00
W	EI	Acorn Burrs punch base	100.00
		Plus a few more nice pieces	

Maurice "Moe" Myers, Post Office Box 3180, North Conway, New Hampshire 03860
PHONE: 1-603-356-6610

AO	EI	Footed Rib (4 Pillars) vase	125.00
M	EI	Butterfly & Berry vase	50.00
B	EI	Butterfly & Berry vase	75.00
M	EI	Beaded Bullseye vase	30.00
G	EI	Diamond & Rib vase	40.00
B	EI	Three Diamonds & Bows vase	65.00
M	EI	Boggy Bayou vase	25.00
RG	EI	Footed Rib 10" vase	60.00
M	EI	Woodpecker vase	75.00
M	EI	Plume Panels vase	35.00

Valmer E. Cross, Sr., Prattsville, New York 12468
PHONE: 1-607-588-6698

M		Vintage Banded mug	30.00
M		Mill & Checkers 8" plate, pattern on back	20.00
M		Iris & Herringbone wine	20.00
M		Optic & Button 7½" plate	15.00
M		Urn 2 handled vase	45.00
M		Plain/Waterlily & Cattails 5½" plate, shown in H.O.A.C.G.A. Notebook, Small Plates	50.00
A		(N) Rays bon bon	50.00
SM		Diamond Ring 9" bowl	45.00
M		Louisa salt & pepper, no tops	6.00
A		Peacock Tail 5" bowl, tiny chip	25.00

***** CARNIVAL GLASS FOR SALE *****

Lee Bryant, Rt. #1, Box 109, Decatur, Indiana 46733
PHONE: 1-219-639-3415

A		Acorn Burrs tumblers, have 6, nice set, all for	300.00
W		Three Fruits 9" ruffled bowl, ftd., stippled, VERY RARE	475.00
AO		Three Fruits 9" ruffled bowl, ftd., stippled, GREAT OPAL	575.00
M		Grapevine Lattice tumblers, have 3, each	30.00
A		Holly 9½" ruffled bowl, excellent color	100.00
B		Leaf & Beads rose bowl, gold iridescence	175.00
PO		Garden Path Vt. 9½" ruffled bowl	220.00
P		Scroll Embossed 8" round bowl	40.00
M		Coral 8" ruffled bowl	90.00
		Send large S.A.S.E. for approx. 150 pieces, including several plates, a few vases, 3 water sets.	

Gil Corriveau, Box 5, Sturbridge, Massachusetts 01566
PHONE: 1-508-347-3304 DAYS, 1-347-9930 NIGHTS, POSTAGE & INSURANCE EXTRA

NMB	EI	Dragon & Lotus bowl	125.00
P	EI	Grape & Cable stippled bowl	225.00
PO	EI	Fan gravy boat	75.00
P	EI	Peacock & Urn small ice cream bowls, each	65.00
W	EI	Peacock & Urn small ice cream bowls, each	150.00
P	EI	Good Luck bowl	200.00
M	EI	Greek Key bowl	90.00
M	EI	Three Fruits stippled bowl	50.00
P	EI	Dandelion tumblers (N), each	45.00
P	EI	Acorn Burrs punch base	65.00

Dick Wetherbee, 847 Stafford St., Rochdale, Massachusetts 01542
PHONE: 1-508-892-4420

M	EI	Star & File 6" nut bowl, great dark color	32.00
G	EI	Panelled Holly (N) 6" 2 handled bon bon, very pretty	65.00
PO	EI	Little Beads 2" miniature compote, real nice	65.00
M	EI	Grape & Cable (N) 9½" centerpiece bowl, points up, SUPER	225.00
B	EI	Ribbon Tie (Comet) 9" fluted bowl, outstanding	85.00
M	EI	Beaded Basket, 2 handles, nice dark one	35.00
AMB	EI	Poppy & Daisy (N) 7¼" fluted bowl, amber	45.00
P	EI	Pansy Spray/Arcs back 9" fluted bowl, SUPER	75.00
M	EI	Beaded Shell footed creamer, perfect feet, bluish tinge	65.00
M	EI	Sailing Ship 5" pedestal fan vase, silvery overlay, great	70.00

***** CARNIVAL GLASS FOR SALE *****

Dave Sharp, 8212 Bret Pl N.E., Albuquerque, New Mexico 87111
PHONE: 1-505-298-6190

* EI	*Olive green Fruits & Flowers bon bon, scarce color	125.00
VAS EI	Strawberry bon bon	125.00
G EI	Vintage compote	65.00
A EI	Iris goblet	75.00
A EI	Orange Tree breakfast sugar	55.00
M GI	Golden Wedding quart bottle with labels	25.00
M EI	Rose Spray goblet	35.00
P EI	Open Rose 5" berry bowl, ruffled	35.00
B EI	Holly goblet	30.00

Robert Hutchison, Rt. 2, Box 461, Seymour, Missouri 65746
PHONE: 1-417-935-4908

M	Peacocks on the Fence 8 3/4" bowl, chip	45.00
B	Panelled Dandelion tankard, great iridescence	490.00
M	Heavy Iris pitcher	375.00
SM	Open Rose large footed 11" bowl	75.00
M	Hattie 9" bowl	30.00
M	Hearts & Vine 9" bowl	40.00
M	Heavy Grape 7 piece berry set	135.00
A	Ten Mums 9" bowl, 3 in 1 edge	90.00
M	Grape & Cable 10" bowl, Basketweave exterior	60.00
M	Cherry Chain 9" bowl, Orange Tree exterior	65.00

Jane Dinkins, 1100 Ridgeley Drive, Houston, Texas 77055
PHONE: 1-713-465-0557

A EI	Millersburg Blackberry Wreath small ice cream bowl	60.00
M EI	Polo ash tray	27.50
M GI	Zipper Variant sugar bowl, no cover	20.00
HA EI	Cosmos & Cane tumbler	60.00
M EI	Orange Tree wine	25.00
M EI	Flute & Cane stemmed sherbert dish	30.00
M EI	Fentons Thistle footed banana boat	200.00
* EI	*Florentine green small Jewels-type rose bowl, fluoresces under black light	25.00
CIM EI	Imperials Heavy Diamond individual open sugar	22.50
CIM EI	Imperials Heavy Diamond individual creamer, has small chip on collar base at mold line	20.00

***** CARNIVAL GLASS FOR SALE *****

Pat O'Connell, Post Office Box 686, Galion, Ohio 44833
PHONE: 1-419-468-1269 evenings

M EI	Peacock P.C.E.	190.00
P EI	Good Luck ruffled bowl, blue iridescence	185.00
B EI	Good Luck ruffled bowl	225.00
M EI	Good Luck ruffled bowl	125.00

Bev Franzen, 20815 S. South End Rd., Oregon City, Oregon 97045
PHONE: 1-503-263-1611

M	Strawberry bowl, excellent irid., 8 ruffles	35.00
*	*Ice blue/marigold overlay Holly C.R.E. bowl, nice	60.00
G	Wreath of Roses compote, very nice	35.00
A	Wreath of Roses compote, very nice	35.00
AO	Leaf & Beads rose bowl, beautiful butterscotch	320.00
M	Acorn Burrs punch cups, have 2, each	22.00
AMB	Strawberry bon bon, nice	50.00
M	Kittens cup, dark marigold, great mold, nice	125.00
A	Sunflower 8 ruffled bowl, nice	60.00
G	Leaf & Beads nut bowl, very good	65.00

Jeanette M. Blackburn, 3975 Dora Wood Dr., Mt. Dora, Florida 32757
PHONE: 1-904-383-7579

A EI	Millersburg Holly Sprig bon bon, radium	65.00
PO EI	Leaf Rays nappy	30.00
G EI	(N) Wild Rose open edge bowl	35.00
P EI	Fish mug	70.00
P EI	(N) Fine Rib 10" vase	45.00
P EI	Shell 5"	25.00
PO EI	Petal & Fan sauce	42.00
P EI	Grape Delight nut bowl	70.00
M EI	Heavy Grape 10" berry bowl	40.00
M EI	Heavy Grape nappy, have 2, each	23.00

Julie Mitchell, 24511 S. E. 39th Pl., Issaquah, Washington 98027
PHONE: 1-206-391-7208

PO GI	Peacock & Grape, 3 in 1 edge bowl, some wear	150.00
G EI	Corn Bottle	160.00
TG EI	Rib Vase 3 1/2" X 8" tall	40.00
AM EI	Lustre Rose rose bowl	30.00

***** CARNIVAL GLASS WANTED *****

Maurice "Moe" Myers, Post Office Box 3180, North Conway, New Hampshire 03860
PHONE: 1-603-356-6610

- ANY Handled Vase
- ANY Palm Beach vase
- ANY Mitered Ovals vase
- ANY Hot Springs vase

Lee Bryant, Rt. #1, Box 109, Decatur, Indiana 46733
PHONE: 1-219-639-3415

- M Crab Claw tumblers, need 2
 - M Fentonia tumbler, need 1
- Reasonable priced - any offers please send in a note so I can consider any or all offers.

Gil Corriveau, Box 5, Sturbridge, Massachusetts 01566
PHONE: 1-508-347-3304 DAYS, 1-508-347-9930 NIGHTS

- G Grape & Cable banquet punch base
- IB Grape & Cable medium size punch base
- P Wishbone epergne base

Dick Hatscher, 142 Walnut Hill Rd., Bethel, Connecticut 06801
PHONE: 1-203-743-1468 anytime

- Hearts & Flowers, ANYTHING
- Poinsettia & Lattice, ANYTHING
- Rose Show or Poppy Show, ANYTHING
- Embroidered Mums, ANYTHING

Tim Steinkruger, Box 1302, Columbus, Nebraska 68602

- M Peacock & Urn (N) small ice creams

John Mikkonen, 8673 McGuire Ct., Shakopee, Minnesota 55379
PHONE: 1-612-445-6098

- Holly bowls in any opal, peach opal, lime green opal
- W Holly compote
- IB Holly bowl

***** CARNIVAL GLASS WANTED *****

John & Terri Dubinski, 2408 Fleetwood Drive, Columbia, Missouri 65202
PHONE: 1-314-474-2644

- A Peacock at the Fountain punch cups, need 4
- B Peacock at the Fountain pitcher
- A Strutting Peacock creamer lid
- A Grape & Cable powder jar lid
- G Grape & Cable butter cover

Daniel West, 744 Washington St. #2, Dorchester, Massachusetts 02124
PHONE: 1-617-825-8033

- ANY Acorn Burrs pieces, especially punch cups or tumblers
- ANY Grape & Gothic Arches pieces
- ANY Orange Tree mugs or tumblers
- ANY Robin mugs or tumblers
- ANY Singing Birds pieces
- ANY Grape & Cable tumblers
- ANY Maple Leaf pieces
- Iris & Herringbone pieces

Nelson J. Brown, R.D. #1, Box 48, Fulton, New York 13069
PHONE: 1-315-592-2380

I would like to buy damaged or broken Carnival Glass.

Harold R. Wagner, 5951 Fredericksburg Road, Wooster, Ohio 44691
PHONE: 1-216-264-3703 after 6:00 P.M.

- A Base only, Millersburg Country Kitchen butter dish
 - G Bowl only, Millersburg Diamond punch bowl
 - G Base only, Millersburg Hobnail butter dish
- Will consider selling if someone needs one of the above.

Tom Esligir, 105 De Languedoc, St. Lambert, Quebec, J4S 1B8, Canada
PHONE: 1-514-672-4198

- M Grape & Cable small punch bowl base with good color

Steve Mitchell, 792 Argonne Ave. N.E., Atlanta, Georgia 30308
PHONE: 1-404-876-4569 after 7:00 P.M.

- P EI Wreathed Cherry oval bowl, large 12" X 9"
B EI Peacock at the Fountain pitcher, Dugan or Northwood
P EI Peacock at the Fountain punch cups, need 6
P EI Grape & Cable pitcher, standard
P EI Many Fruits punch bowl, base and 6+ cups
ANY EI Hatpin holders
P EI Wide Panel epergne
P,B EI Peacock at the Fountain orange bowl
ALL THE ABOVE MUST BE IN EXCELLENT CONDITION

Dave Ackerman, 4677 Kennebec Drive, Cass City, Michigan 48726
PHONE: 1-517-872-2023

- P Diamond & Sunburst decanter stopper
M Diamond & Sunburst decanter stopper and 1 flared wine glass
G Helios decanter stopper and 6 wine glasses
P Golden Harvest decanter stopper and 1 wine glass, E.I.
M Golden Harvest, 1 wine glass
P Imperial Grape, 1 wine glass, thick stem, rayed base
M Beaded Shell sugar cover or entire piece
M Golden Wedding whiskey botton, quart size, full, with labels or plain
M Star & File 6 $\frac{1}{4}$ " under plate, 8 stars on base
AQ/IG Embroidered Mums bowl

Richard Hagood, 109 Spring Road, Lexington, South Carolina 29073
PHONE: 1-803-791-5086

- P/A (N) Grape & Cable humidor lid only
M Cooleemee, N.C. advertising plate
G Orange Tree plate
G Fenton Peacock & Urn compote or plate
G (N) Three Fruits plate with Ribbed exterior
M Strawberry plate with Ribbed exterior
P/PO Constellation compote
G/AQ Stag & Holly large footed bowl
P/M (N) Peacock & Urn chop plate
G Orange Tree mug

Richard Cinclair, 3605 South Echo Trail, Plano, Texas 75023
PHONE: 1-214-596-0014

- B Kittens saucer
ANY Pin trays
UNUSUAL punch bases
B Hearts & Flowers bowl, plate
M Corn Vase
G Grape & Cable STIPPLED punch cups
R Butterfly & Berry vase
G Hearts & Flowers compote
G Peacock at the Fountain water set
IB Grape & Cable P.C.E. bowl

Ken & Aileen Oppenlander, 3513 Stagecoach Circle, Manhattan, Kansas 66502
PHONE: 1-913-776-5512 evenings

H.O.A.C.G.A. Table Mugs, 1978 to 1980 and 1987

Dwyane & Barbara Davis, 808 Hialeah Ct., Saginaw, Texas 76179
PHONE: 1-817-232-1477

- G (N) Acorn Burrs punch bowl, top only
P (N) Peacock at the Fountain butter dish, bottom
G (N) Springtime or Peacock at the Fountain butter dish, top
A Grape & Cable powder jar lid
M Luster Rose butter dish, bottom

Pat O'Connell, Post Office Box 686, Galion, Ohio 44833
PHONE: 1-419-468-1269 evenings

- ANY Poppy Show bowls/plates
ANY Rose Show bowls/plates
G Memphis punch bowl only
R Peacock & Grape bowl
G Ohio Star vase

Ted Sheibley, 304A Hillcrest Drive, New Cumberland, Pennsylvania 17070
PHONE: 1-717-938-6417

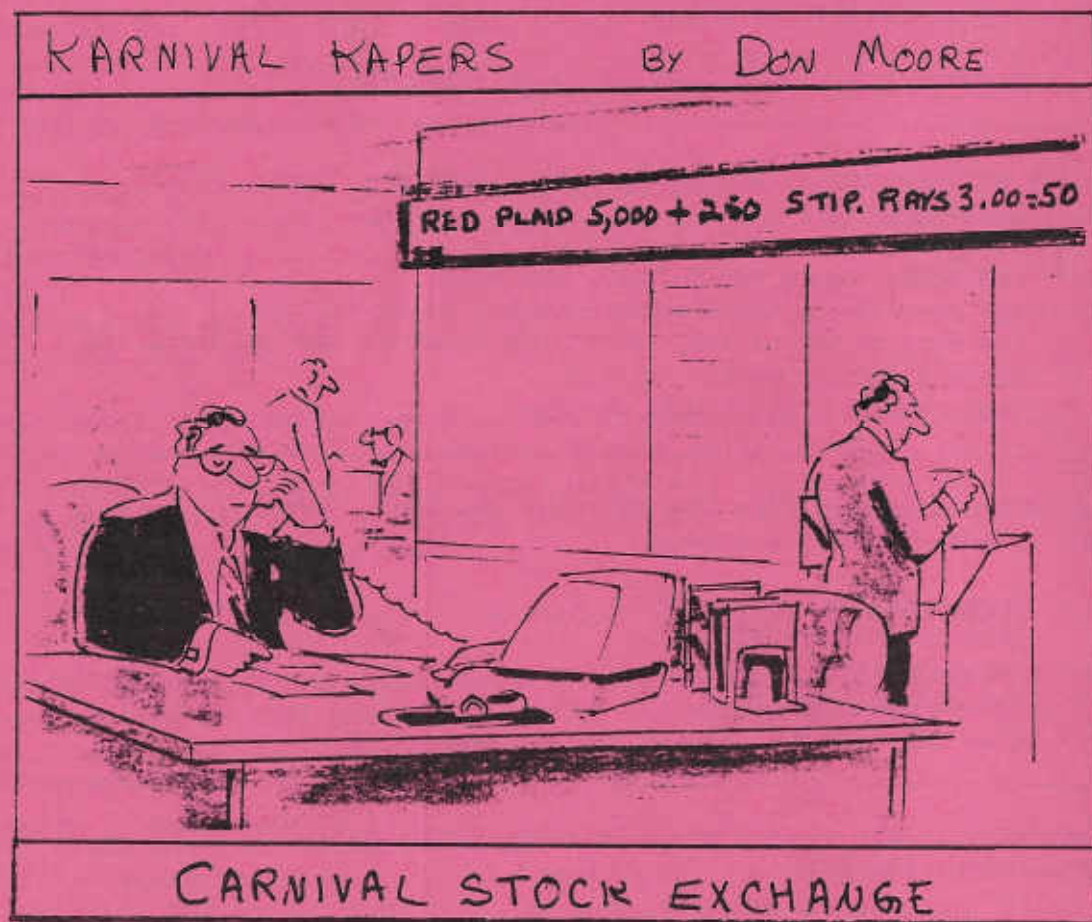
- A Hanging Cherries butter bottom, Millersburg
Peter Rabbit bowl or plate, ANY COLOR

Bev Franzen, 20815 S. South End Rd., Oregon City, Oregon 97045
PHONE: 1-503-263-1611

G Orange Tree punch bowl
M Kittens saucers, need 4

Shawn Cowan, 1105 3rd St. North, Brandon, Manitoba, Canada R7A 6H6
PHONE: 1-204-726-5182 anytime

Holly plates or bowls in pastel colors, vaseline, ice blue,
ice green, lavender, amber, etc.
Any piece with definite black amethyst coloring.



ENCYCLOPEDIA OF CARNIVAL GLASS LETTERED PIECES - 120 pages, black and white, as well as colored photographs of all known advertising and commemorative pieces. Price guide included. Mail checks or money orders to John D. Resnik, 10031 Banner Lava Cap, Nevada City, CA 95959. Price is \$15.95, plus \$2.50 postage & handling.

1990 CARNIVAL GLASS AUCTION REPORT - Over 3,800 entries from Carnival Glass auctions held in 1990. Price is \$9.00 per copy. Postage paid for U.S. and Canada. Canadians, please send Canadian Postal Money Order in U.S. funds. Overseas, add \$2.00 for each copy. Back issues are available at \$8.00 each. Send orders to Tom & Sharon Mordini, 36 N. Mernitz Ave., Freeport, IL 61032.

THE SHAPE OF THINGS IN CARNIVAL GLASS - 110 pages, 200 items in full color, \$9.95. Order from Don Moore, 2101 Shoreline Drive, Apt. 462, Alameda, California 94501.

CARNIVAL IN LIGHTS - A full color book on Carnival lighting, including Gone-with-the-Wind lamps, candle lamps and shades, price guide included. \$11.95 plus postage. Order from Helen Greguire, 103 Trimer Road, Hilton, New York 14468.

THE WORLD OF ENAMELED CARNIVAL GLASS TUMBLERS - Author/Photographer, Cecil Whitley, 10 pages "60 tumblers in full color". \$10.00 includes shipping. Call or write Cecil Whitley, 1041 Cheshire Lane, Houston, Texas 77018. PHONE: 1-713-681-0807.

THE STANDARD ENCYCLOPEDIA OF CARNIVAL GLASS - Revised Edition, many new photographs and expanded European Carnival section, \$24.95 (with new price guide), NEW PRICE GUIDE - includes eight color columns, size 8 X 11 - \$4.95, Bill Edwards, Author, Collectors Books, Paducah, Kentucky.

HARRY NORTHWOOD, THE EARLY YEARS 1881 - 1900 - Heacock, Measell, Wiggins. This book traces Harry Northwood's activities from his immigration to America through his affiliation with the National Glass Company conglomerate. Send orders to Antique Publications, Post Office Box 553, Marietta, Ohio 45750 or order directly to James Measell, Post Office Box 72-1052, Berkley, MI 48072. The cost is \$21.95 plus \$1.00 postage and handling.

THE HEART OF AMERICA CARNIVAL GLASS ASSOCIATION, INC.

DATE _____

NAME _____

SPOUSE _____

ADDRESS _____

CITY, STATE, ZIP CODE _____

PHONE NUMBER () RECOMMENDED BY _____

Membership year is from June 1 to May 31, per couple or single.

Dues are \$25.00 U. S. & Canada and \$40.00 Foreign.

Please send checks for dues to: H.O.A.C.G.A.
 Doug Peters, Treasurer
 5414 N.W. 86th Terr.
 Kansas City, Missouri 64154

JUST A FEW OF THE BENEFITS OUR CLUB OFFERS:

The ONLY MONTHLY PUBLICATION on just Carnival Glass collecting, keeping you informed of new discoveries and all of the current events. Members only may advertise 10 for sale items or want items each month, F R E E O F C H A R G E

An exclusive PATTERN NOTEBOOK with yearly special inserts. (MOST inserts are still available.)

ANNUAL CONVENTION WITH SOME OF THE GREATEST PEOPLE YOU COULD HOPE TO MEET!

Questions/Comments _____

I would like to receive a membership card, yes ___ or no ___.

=====