

# HOACGA

Heart of America Carnival Glass Assoc. Inc.

**RETURN ADDRESS**

H.O.A.C.G.A.  
Jackie Fortney  
P.O. Box 303  
Buckner, MO 64016

**November 1992**

**FIRST CLASS MAIL**

FIRST CLASS MAIL  
U.S. POSTAGE  
PAID  
Buckner, MO  
Permit No. 03



HEART OF AMERICA CARNIVAL GLASS ASSOC.  
BOARD OF DIRECTORS, 1992

---

PRESIDENT.....Robert Grissom  
7900 Crescent  
Raytown, Missouri 64138  
1-816-356-5320

VICE-PRESIDENT.....Daryl Strohm  
8904 E. 29th St.  
Kansas City, Missouri 64129  
1-816-252-8137

TREASURER.....Doug Peters  
3514 S.W. Jackson St.  
Blue Springs, Missouri 64015  
1-816-224-5162

SECRETARY.....Ed Kramer  
4305 W. 78th St.  
Prairie Village, Kansas 66208  
1-913-642-3587

BULLETIN SECRETARY.....Jackie Fortney  
Post Office Box 303  
Buckner, Missouri 64016  
1-816-249-5208

---

The Bulletin is published the 15th of each month. Membership year is from June 1 to May 31, per couple or single. DUES ARE \$25.00 U.S. & CANADA, \$40.00 FOREIGN. All monetary figures are quoted in U.S. dollars.

Please send all items for the Bulletin, i.e., glass for sale, glass wanted, articles, information, etc., to the Bulletin Secretary, whose address appears above. Please have all Bulletin material sent to us so that we receive it by the 28th of each month.

Please send checks for dues and books, and any address changes to the Treasurer whose address appears above.

We thank you so much for your cooperation in these matters.

=====

A FEW WORDS FROM YOUR BULLETIN SECRETARY:

I would like to apologize to any member of H.O.A.C.G.A who received their Bulletin late last month or received a Bulletin with reversed pages, blank pages etc. For the last two months we have had terrific problems with the printer we have been using. However, this situation has been resolved. We have a new printer who promises a MUCH IMPROVED, quality Bulletin, which we expect. We thank you all for your patience and understanding.

I always enjoy hearing and talking with our members and really encourage all of you to keep sending in those articles, information, for sales and want ads to us for publication. Remember, this is YOUR CLUB and without your support we wouldn't have a Bulletin. We appreciate each and every member of this Association.

On a more serious note, Davis Shikles of Independence, Missouri (a past president of H.O.A.C.G.A.) has suffered a heart attack and was in the Independence Regional Hospital for a while. By the time this Bulletin is published, Davis should be home and on the road to recovery. If you wish to send a card or note, you may send them to Davis Shikles, 606 Leslie Drive, Independence, Missouri 64055.

Glen and I hope to see many of you in Des Moines, Iowa for the November meeting. If anyone has any questions or ideas for the Bulletin, please contact me.

JACKIE FORTNEY  
BULLETIN SECRETARY,  
H.O.A.C.G.A.

=====

W E L C O M E     N E W     M E M B E R S

We would like to welcome the following new members to the Heart of America Carnival Glass Association and wish them Happy Carnival Hunting!

Mr. & Mrs. Dean Thomas, North English, Iowa  
Sybil Frese, Quincy, Illinois  
Edward Cornelius, Pittsburgh, Pennsylvania  
Jim Williams, Indianapolis, Indiana

=====

The regular H.O.A.C.G.A. monthly meeting for November, 1992 will be held in Des Moines, Iowa this year. The meeting will be at the Best Western Starlight Village Motel on Friday and Saturday, November 13 and 14. Details of this meeting are in the October Bulletin.

There will be no meeting in December, 1992; due to the Holiday Season.

The Sunday, October 25, 1992 meeting was attended by thirteen people and an interesting discussion of eighteen varied color and patterned bon bons was lead by President Bob Grissom. Mike Hood won the door prize, a beautiful sea mist green hobnail basket made from a 1992 Room Display Cuspidor.

Don't forget the Des Moines meeting and your 1993 New Years' resolution to attend more of the Kansas City (Raytown) meetings on the fourth Sunday of each month, 2:00 P.M., usually at the Raytown, Missouri City Hall.

ED KRAMER,  
SECRETARY,  
H.O.A.C.G.A.

=====

C A R N I V A L C A L E N D A R

SECOND ANNUAL NEW YEARS MICKEY REICHEL CARNIVAL GLASS AUCTION - Saturday, January 2, 1993 at 10:00 A.M. held at the Mickey Reichel Auction Center, Booneville, Missouri. 350 pieces will be sold. Look for more information in the December Bulletin.

1993 LOSE YOUR HEART TO CARNIVAL GLASS JAMBOREE - February 11, 12 & 13, 1993 at the Howard Johnson Hotel, St. Petersburg, Florida. Many activities planned along with a Tom Burns Auction. For information, call Bill Tendl at 1-813-769-3150 or Barbara Hobbs at 1-813-541-6164.

TEXAS CARNIVAL GLASS CLUB CONVENTION - February 18 and 19, 1993 at the Marriott Hotel, Greenspoint, phone: 1-713-875-4000. Jim Seeck Auction and banquet with George Loescher, speaker. To make reservations, call Carol Cox at 1-817-645-0637.

=====

By John & Lucile Britt

This month we will continue on with the prices received at the large Collier auction held at St. Louis, Missouri on February 6 & 7, 1976. For the prices realized on the plates and rarities, see last months' Bulletin.

BOWLS

POPPY SHOW ice blue.....	190.00	ROSE SHOW custard with marigold	
POPPY SHOW ice green.....	190.00	iridescence.....	250.00
POPPY SHOW white.....	100.00	ROSE SHOW aqua opal.....	135.00
POPPY SHOW blue.....	170.00	ROSE SHOW green.....	270.00
POPPY SHOW marigold.....	75.00	ROSE SHOW blue.....	100.00
DIVING DOLPHINS rare green....	70.00	ROSE SHOW ice blue.....	175.00
DOGWOOD SPRAYS purple.....	70.00	ROSE SHOW amethyst.....	100.00
DRAGON & BERRY marigold.....	130.00	PEACOCKS ON FENCE aqua opal.....	210.00
GOOD LUCK electric blue.....	140.00	PEACOCKS ON FENCE purple.....	90.00
GOOD LUCK marigold.....	40.00	PEACOCKS ON FENCE green.....	75.00
DAISY WREATH moonstone with		PERSIAN GARDEN large ice cream,	
marigold iridescence.....	50.00	peach opal.....	140.00
DRAGON & LOTUS lime green		PONY very scarce ice green.....	300.00
opal.....	135.00	PERSIAN MEDALLION, Grape & Cable	
GREEK KEY green.....	75.00	exterior, green.....	230.00
NIPPON ice blue.....	65.00	PONY rare purple.....	135.00
PANTHER large blue.....	170.00	RIBBON TIE blue.....	50.00
PEACOCK AT FOUNTAIN purple....	290.00	ROSALIND interior, THREE DOLPHINS	
PEACOCK & URN amethyst Mlsb...	290.00	feet, amethyst.....	475.00
NESTING SWAN green.....	150.00	STAG & HOLLY blue.....	35.00
TEN MUMS C.R.E. purple.....	110.00	STAR OF DAVID amethyst.....	60.00
THISTLE, large footed, oval,		TWO FLOWERS blue, a beauty.....	100.00
green.....	150.00	TWO FRUITS divided bowl, blue.....	45.00
TROUT & FLY green.....	175.00	CAROLINA DOGWOOD beautiful sky blue	
TROUT & FLY marigold.....	90.00	on opalescent back.....	220.00
LIONS blue.....	75.00	MLSBG. STRAWBERRY amethyst.....	65.00
(N) PEACOCK & URN large ice			
cream bowl ice blue.....	260.00		

ROSE BOWLS

HONEYCOMB peach opal.....	60.00	FENTONS FLOWERS white.....	60.00
DRAPERY blue.....	160.00	FINE CUT & ROSES white.....	140.00
DRAPERY aqua opal.....	175.00	FINE CUT & ROSES green.....	70.00
LEAF & BEADS aqua opal.....	90.00	HORSES HEADS marigold.....	85.00
LEAF & BEADS purple.....	60.00	SWIRLED HOBNAIL purple.....	225.00
PARLOR PANELS deep amber.....	40.00	SWIRLED HOBNAIL marigold.....	150.00

ROSE BOWLS (contd.)

GRAPE DELIGHT 6 ftd. white.....75.00 DAISY & PLUME green.....70.00  
DAISY & PLUME marigold.....50.00

VASES

TWIGS short J.I.P. purple.....230.00	DAISIES & DRAPE aqua opal.....235.00
BUTTERFLY & BERRY blue.....30.00	DAISIES & DRAPE white.....80.00
CORN VASE ice green.....170.00	DAISIES & DRAPE blue.....160.00
CORN VASE purple.....225.00	DAISIES & DRAPE ice blue.....200.00
CORN VASE dark marigold.....325.00	DAISIES & DRAPE marigold.....170.00
CORN VASE white.....150.00	FORMAL purple.....55.00
CORN VASE ice blue.....900.00	LOGANBERRY amber.....90.00
CORN VASE green.....225.00	MARY ANN purple.....65.00
PEOPLES VASE marigold.....4,500.00	ROSE COLUMNS green.....350.00
BUTTERFLY & BERRY red.....250.00	TORNADO rare threaded, blue.....425.00
TORNADO green.....140.00	TORNADO amethyst.....150.00
TORNADO marigold.....110.00	TORNADO marigold.....110.00

TUMBLERS

BLOCKED PANELS marigold.....250.00	JEWEL HEART, white.....465.00
BLUEBERRY white.....135.00	JEWEL HEART, marigold.....75.00
BUTTERFLY & FERN green.....20.00	INVERTED THISTLE purple.....280.00
CHATELAINE (2) purple 185.00..160.00	LATTICE & DAISY purple.....90.00
CHECKERBOARD amethyst.....300.00	LATTICE & DAISY white.....160.00
CIRCLE SCROLL purple.....450.00	LEAF TIERS marigold.....45.00
CONE & TIE purple.....325.00	LILY OF THE VALLEY blue.....275.00
COSMOS & CANE white.....95.00	LILY OF THE VALLEY marigold.....350.00
COSMOS & CANE marigold (J. R. Millner advertising).....100.00	LUSTRE ROSE marigold.....25.00
CUT COSMOS marigold.....225.00	MARILYN amethyst.....40.00
DAHLIA marigold.....42.50	MORNING GLORY amethyst perfect...850.00
DAHLIA white.....70.00	MORNING GLORY amethyst chipped...400.00
DANDELION ice blue.....95.00	OCTAGON purple.....50.00
DANDELION white.....65.00	ORANGE TREE VARIANT marigold.....35.00
DIAMONDS purple.....70.00	FLUFFY PEACOCK amethyst.....55.00
DIAMONDS marigold.....30.00	FLUFFY PEACOCK marigold.....30.00
DIAMOND & DAISY CUT marigold...55.00	QUILL purple.....350.00
DOUBLE STAR green.....50.00	RASPBERRY marigold.....20.00
FASHION purple (2) 120.00.&...115.00	SPRINGTIME purple.....55.00
FEATHER & HEART amethyst.....75.00	SPRINGTIME green.....90.00
	SPRINGTIME marigold.....37.50

TUMBLERS (condt.)

FIELD THISTLE light marigold....225.00	STAR & FILE marigold.....45.00
FIELD FLOWER purple.....25.00	STORK & RUSHES blue, Lattice Bd..50.00
FROLICKING BEARS green.....3,500.00	STRAWBERRY SCROLL marigold.....90.00
HOBNAIL purple.....400.00	VINEYARD white.....105.00
INTERIOR POINSETTIA marigold...400.00	WHITE OAK marigold.....190.00
INVERTED FEATHER green.....450.00	WINDMILL purple.....30.00
HEAVY IRIS white.....130.00	WISHBONE green.....60.00
WISTERIA white.....250.00	WISHBONE purple.....90.00
WREATHED CHERRIES white.....70.00	WISHBONE marigold.....40.00

PUNCH SETS

ACORN BURRS set ice blue.....4,100.00	BROKEN ARCHES set purple.....450.00
ACORN BURRS set ice green.....1,800.00	"474" bowl & base purple.....400.00
ACORNS BURRS set purple.....625.00	HOBSTAR & FEATHER set purple..2,200.00
ACORN BURRS set green.....850.00	MANY FRUITS bowl & base white...350.00
ACORN BURRS set marigold.....525.00	MANY FRUITS bowl & base marig...200.00
MEMPHIS set ice blue.....1,400.00	PEACOCK AT THE FOUNTAIN bowl & base ice green, damage on base..350.00
MEMPHIS bowl & base white.....500.00	PEACOCK AT THE FOUNTAIN set, purple.....475.00
ORANGE TREE set blue.....350.00	PEACOCK AT THE FOUNTAIN set, marigold.....250.00
ORANGE TREE set marigold.....150.00	PEACOCK AT THE FOUNTAIN punch cups, ice green, 2 for.....95.00
ORANGE TREE set white with base damage.....170.00	WREATH OF ROSES bowl & base....300.00
S-REPEAT set purple.....1,400.00	GRAPE & CABLE small set marig...375.00
GRAPE & CABLE master set purple.....1,450.00	GRAPE & CABLE 14" size set green.....625.00
GRAPE & CABLE master set marigold.....800.00	GRAPE & CABLE 10-11" bowl & base white.....800.00
GRAPE & CABLE small set purple..600.00	
GRAPE & CABLE 14" size set bowl & base green.....500.00	
GRAPE & CABLE small set marig...375.00	

RED

ACORN bowl red amberina.....150.00	CHRYSANTHEMUM excellent red....650.00
BASKETWEAVE OPEN EDGE BASKET....115.00	DRAGON & LOTUS red.....325.00
BLACKBERRY OPEN EDGE BASKET....260.00	CARNIVAL HOLLY red amberina....220.00
BUTTERFLY & BERRY VASE red.....250.00	CARNIVAL HOLLY amber with red iridescence.....130.00
COIN DOT bowl a beauty red.....300.00	HORSE HEAD bowl red amberina....255.00
PEACOCK & GRAPE bowl red.....290.00	

RED (contd.)

STIPPLED RAYS small bowl red.....240.00    ORANGE TREE mug red.....275.00  
STRAWBERRY bon bon amberina.....70.00    ORANGE TREE bowl red.....290.00

This has been the second part of the large Collier auction. Due to the amount of pieces in that auction, we will still continue with the list in next months Bulletin. It will cover advertising pieces, compotes, mugs, water sets, water pitchers and miscellaneous. This auction contained an unusually large amount of water sets, many of them very rare. We hope that you are enjoying these 1976 auction prices.

JOHN & LUCILE BRITT

=====



By John & Lucile Britt



THE BUZZ SAW AND FILE TUMBLER

The Buzz Saw and File tumbler is of the intaglio or near cut type. After several years of researching this pattern, we now know that they were made in two different sizes. The smaller of the two tumblers is shown above. It is of standard table size standing 4 1/8 inches high and has a top opening of 2 1/2 inches. The base is 2 1/4 inches in diameter and contains a whirling star on the bottom. Two sides of the tumbler also carry one of these large whirling stars. The other two sides contain a rather large hobstar with smaller triangular file, cane and fan designs.

The photo on the next page shows the larger size tumbler in this pattern. This particular tumbler is owned by the Allen Blanchard's of Edgewater, Western Australia. We have corresponded with them for several years regarding this pattern and we are giving them the credit for naming this pattern. The name "Buzz Saw and File" seems to fit this pattern very well.

Notice that this tumbler is somewhat larger than the one shown above. This one would be classed as an ice tea or lemonade tumbler. It is 5 3/4 inches high and 3 inches wide at the top. The bottom width is 2 5/8 inches. The predominate features are a large whirling star on two sides of the tumbler, below which is a smaller hobstar separated by two triangular file designs. The other two sides feature a hobstar separated by triangular files, above which is a

continued...

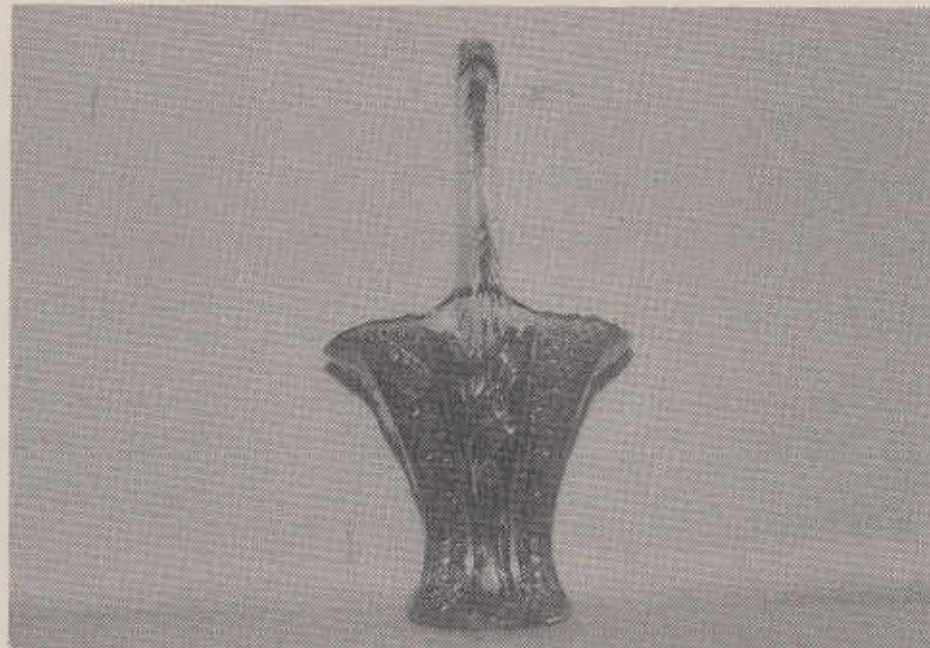


BUZZ SAW AND FILE LARGE SIZED LEMONADE TUMBLER

hobnail or cane type design. It also has a large buzz saw figure on the underside of the base. Due to the larger size of this tumbler, the pattern arrangement is slightly different from the smaller example, but all of the motifs used on the two tumblers are the same. This larger example is also in dark marigold. We might also report that we recently found a goblet in this pattern, the first one that we had ever seen.

When we first saw this pattern, we suspected it was made by the United States Glass Company. It is very similar to several U.S. Glass patterns found in the very fine book "U.S. Glass from A to Z" by William Heacock and Fred Bickenheuser. On the other hand, we were unable to find this exact pattern in that book or any of the other pattern books that we have studied. We still lean to U.S. Glass Company as the maker, but at the present time we can not be sure. Regardless by whom it was made, it is a pretty tumbler, very desirable and certainly rare. The Buzz Saw and File tumbler is our 178th entry into the Educational Tumbler Series. We hope that you have found them interesting and educational. Next month we will cover a Carnival Glass champagne tumbler that was made by the McKee Glass Company. The name of this pattern is called Rainbow.

By John &amp; Lucile Britt



THE PANELED DAISY AND CANE BASKET

The featured "Paneled Daisy and Cane" basket measures 11 inches to the top of the handle. The handle extends upward 5 inches from the top of the basket. The top is 6 inches across at the widest point and 3 1/2 inches wide at the base of the handle. The top edge is notched instead of the smooth edge found on most of the handled baskets that we have seen. The bottom of the base is 3 1/4 inches in diameter and contains an eight point star on the underside. There are four cane designed panels and four alternating panels that feature the daisy and leaves. These panels cover the entire outer surface of the bowl part of the basket. The interior is smooth and both sides are iridised.

We consider the Paneled Daisy and Cane basket as quite rare. This example, which is part of our basket collection, is the only one that we have ever seen. We are quite sure that there are others out there somewhere, but we have not seen them. The only place that we could find any information on this pattern is in Presznick book 4 on page 57. The basket is illustrated in plate 153. Presznick states that it was made in two different sizes. Marigold is the only color that she had seen. She also mentions that the manufacturer is unknown.

If you collect baskets, this is a very pretty and unusual example and one that you might want to look for on your Carnival Glass hunting trips. We consider it a fine addition to any Carnival Glass collection.

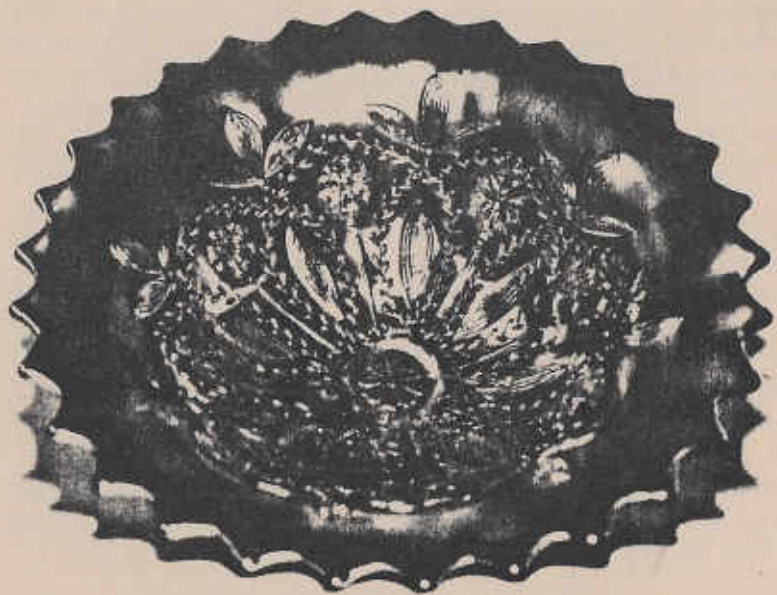
This is #166 in our Pictorial Pattern Parade. Next month we will feature a very unusual piece of Carnival Glass. It is extremely rare, most desirable and certainly very beautiful.

JOHN & LUCILE BRITT

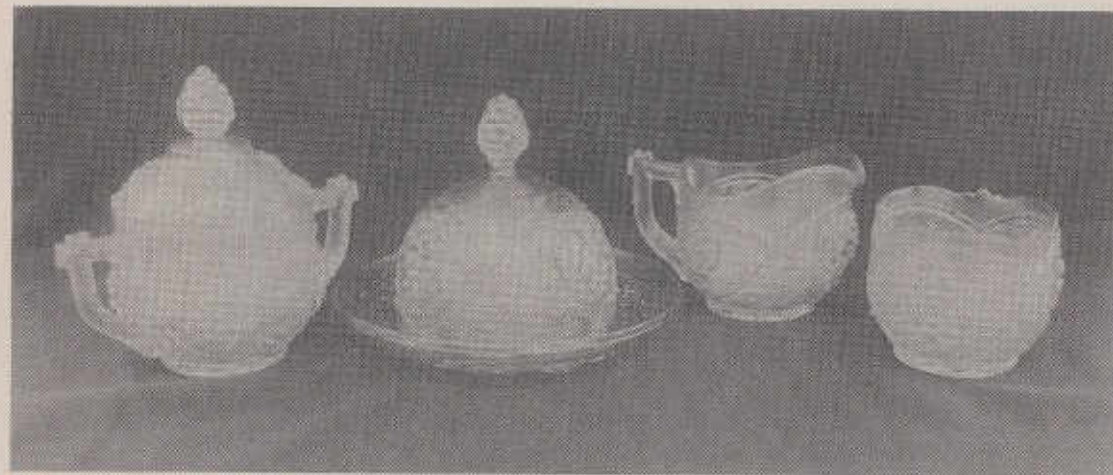
---

### "NORTHWOOD'S LOVELY" FOOTED BOWL

The "Northwood's Lovely" pattern is found in Hartung Book 10 - page 101. This is only the second one of these bowls found. The reverse side of this pattern contains the "Leaf & Beads" pattern. It has the three twig like feet that are found on "Leaf & Beads" pattern. The color is a deep purple with super iridescence. This piece is rare, beautiful and very desirable. It has also shown up in a beautiful green bowl. It is possible that it also exists in marigold.



By Chuck & Marge Kremer



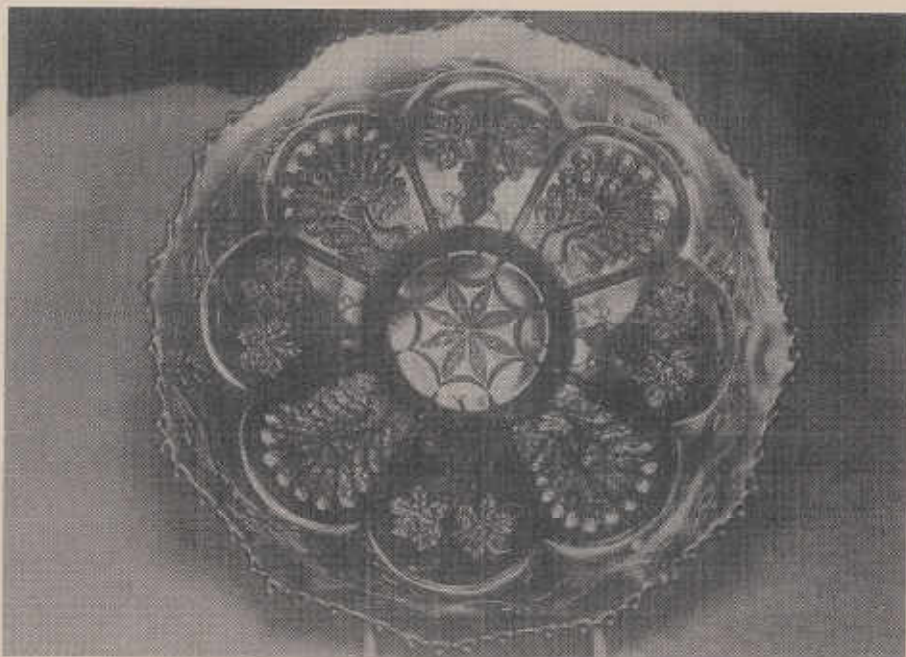
THE PALM BEACH TABLE SET IN WHITE

This is an old pattern carried over from another era into Carnival Glass. It is a U. S. Glass pattern and is available in marigold, honey amber and white. All colors are considered scarce. One author once said the color is often weak. We have often wondered if they were not thinking of the honey amber color and confusing it with a so called "weak" marigold. We like this soft honey color. We heard one collector say the white looked like poor gray. Actually we think many white pieces have a tinge of blue that gives it a distinctive look, especially when the piece is frosty. The pattern can be described as a rugged grape pattern.

The butter base has only a faint ridge that outlines the surface it rests on. The other three pieces rest on collar bases. All four pieces have a leaf with a bunch of grapes superimposed on it on the bottom of the base. The finials are a glob of grapes. The handles on the sugar and creamer look like woody vines. There is little in this pattern that relates to the name Palm Beach in our opinion. The glass is heavy and this is one of the more massive looking sets.

We have seen more complete white sets and pieces offered for sale than honey amber. Our white set has one damaged piece that so far we have not been able to replace. All pieces we found in white were hard to find so we don't consider one piece more scarce than the other. For some reason we have not found a honey amber spooner, so that set remains incomplete.

CHUCK & MARGE KREMER



COBALT BLUE COLLAR BASED PEACOCK & GRAPE PLATE

This article will cover Peacock & Grape pieces made in cobalt blue. The Fenton Art Glass Company used cobalt blue as one of their primary colors for Carnival Glass. Fentons' cobalt varies in the blue color from a very light to a very good deep color.

Although most Fenton patterns were produced primarily in cobalt, the Peacock & Grape pieces are not plentiful in this color. The only shape that can be readily found is the collar based ruffled bowl. This is definitely unusual for a Fenton pattern. As is usual in Carnival, the iridescence on these pieces can be found from poor to outstanding.

Plates, both collar based and spatula footed, are more available in blue than other colors. A piece with a 3 in 1 edge would be a very nice find.

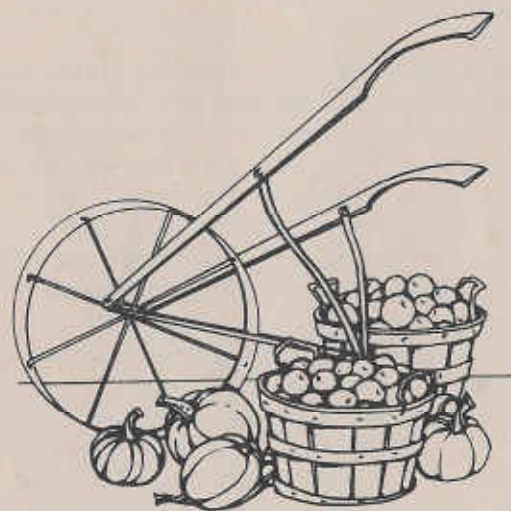
On the following page, we are providing the availability of pieces made in the cobalt blue color.

If anyone has any information on the following unreported pieces, please contact us so we can update our records.

Shapes and availability of cobalt blue pieces are as indicated:

<u>SHAPE</u>	<u>COLLAR BASED</u>	<u>SPATULA FOOTED</u>
Ruffled.....	Easy to find.....	Scarce
Ice Cream Shape.....	Scarce.....	None Reported
Three-In-One Edge.....	Rare.....	None Reported
Nut Bowl.....	Rare.....	None Reported
Candy Ribbon Edge.....	None Reported.....	None Reported
Plate.....	Rare.....	Rare
Frisbee Shaped.....	Scarce.....	None Reported

ROBERT GRISSOM  
HAROLD FORTNEY







During the American Convention in Lexington, Kentucky in late July, a lovely Indiana couple came into our room with the first known marigold ice cream shaped ELEGANCE bowl. They had purchased it at a farm sale south of Indianapolis about a year ago, realizing at the time that they had never seen another like it. We hope you can see much of the great detail involved from this good picture provided by the owners. It has satin finish. The only other known color is pastel blue.

Our ice blue plate in the ELEGANCE pattern was first purchased in 1969 at an I.C.G.A. Convention auction by Dr. Beckner of Los Angeles, California. The sister of Dr. Beckner, who still lives in the Los Angeles area was with him at the time of purchase and recalls the excitement over the plate at that sale. We purchased it in June, 1988.

Page 58, Book 8, Mrs. Hartung Series illustrates and describes the pastel blue 8 ruffled bowl she borrowed from a William Robert Essin of Washington DC. Richard Cinclair of Texas purchased that same bowl from Mr. Essin in 1990. To date, this is the only pastel blue bowl known and has satin finish.

On September 28, 1992 a call came from Connecticut with excited questions about the second pastel blue plate which was purchased September 27 at a flea market. We are told that this plate has the same radium type colorful irides-

cence as ours and that the owner plans to retain ownership.

The base upon which these pieces rest is unusual. The octagon measures  $3\frac{1}{2}$ " in width, and is slightly domed. The entire underside is filled with raised ribs radiating from the center. Around the base, again on the exterior, are eight Wide Panels one inch in length. The dominant feature of the face pattern is the detailed and stippled open blossom in the center, which looks much like the Northwood Petals pattern. There are stylized flowers and leaf fronds around the outer edge and THESE PIECES HAVE A UNIQUE EDGE among Carnival Glass patterns in the form of a tiny inverted scallop which appears on some crystal and etched pieces of glass. A row of beading in the central pattern lends itself effectively in separating two rows of flower bands. This device is not often found in the more simple patterns of Carnival Glass.

On seeing the marigold bowl, we feel that U.S. Glass cannot be ruled out as maker. While nothing like their Honey Amber, neither is it like any of Fenton, Northwood, Millersburg or Dugan. The departure from "NORM" is as distinct as in the pastel blue pieces. Cambridge should not be ruled out either. The maker is still a mystery.

DEAN & DIANE FRY  
SAN DIEGO, CALIFORNIA



INVERTED STRAWBERRY, CAMBRIDGE GLASS CO.

DATE: 1906, TRADEMARK: "NEAR CUT"

Here is a superb water pitcher in amethyst. The iridescence is like no other I have ever seen. In looking at this design, you can't help but admire Cambridge for making such beautiful glass. On this pitcher, Cambridge managed to present a tremendous amount of detail without overcrowding the design.

It is said, that one can tell a great deal about a company by the quality of their products, or the service they offer. Well!

Cambridge must have been very highly regarded in the market place, for the quality and beautiful glass they produced. Consider this, the least noticeable part of a bowl, vase, or pitcher is the outer base of course, yet! Cambridge decorated the base on this pitcher as if it was one of the most visible areas with an intricate design made up of four branches in a form of a wreath, each carrying a strawberry, and guided by a cluster of three little flowers in the center.

On the inside we find the Cambridge trademark, "NEAR CUT". This pitcher was also made in green and marigold, tumblers are known in blue.

This pattern was also used on berry sets, candlesticks, large compotes, milk pitchers, table sets and many other items.

Should you have a Cambridge piece in your collection, you'll understand my appreciation for Cambridge Glass. Although not many of these change hands, some have shown up at auctions. Here are some of the prices fetched in the last four years, none were sold in 1991 according to Mordini:

1988	PITCHER	GREEN	\$1,500.00
1989	PITCHER	MARIGOLD	\$ 500.00
	PITCHER	GREEN	\$1,150.00
1990	PITCHER	MARIGOLD	\$ 550.00
	WATER SET 7 PCS.	MARIGOLD	\$ 700.00
	WATER SET 7 PCS.	PURPLE	\$1,600.00



ON THE AUCTION TRAIL WITH CHUCK & MARGE

October 2-3, 1992: For Marge's first auction in a couple of months we decided to head for the mecca of Carnival auctions--the Harley Hotel in St. Louis--for the Seeck (Baur) Auction. There also was a consignment auction in Michigan but Jim was selling at least one piece we wanted so the choice was easy, besides we like the Harley and St. Louis.

It may be a no-no to talk about "new" Carnival Glass but Seeck sold about a hundred pieces of real pretty--yes downright attractive--new glass on Friday night. The prices, in our opinion, were only so-so but the various souvenirs sold very well, especially the red pieces.

Jim brought out the "real stuff" Saturday. The tenth item sold was a red Little Flowers 10" ruffled bowl at \$11,000.00--how much more real can you get? There was glass for everyone with the midrange pieces selling well. The few low end items offered suffered however. Any hint of damage seemed to cause the bidders to back off considerably.

The brochure said the amethyst Country Kitchen spooner had super dooper radium blue iridescence and it was just as Jim said. This was the piece we went to the auction for and the one we bought. It was a great match with pieces we had at home and it completed our amethyst set.

It is 400 miles each way so we broke up the drives by stopping at daughter Cindy's house in Indianapolis. Jim & Jan had a good auction, we liked the location, the weather was good and the delicious cake and coffee at a friend's home in St. Louis made this a very nice weekend. And best of all the trip was no problem for Marge.

October 9-10, 1992: We could not get a motel reservation so we had to miss the Burns auction at New Philadelphia, Ohio. We can't give a first hand report, but heard the glass was not available for sale Friday night as cataloged.

October 15-18, 1992: Air Capital Convention, Wichita, Kansas. The local Club members had it all well organized. It officially started with a free buffet dinner on Thursday evening topped off with Roland Kuhn's homemade ice cream and ended with a free farewell breakfast Sunday morning.

We expected and got a good educational session on Millersburg glass narrated by Marie McGee with many members furnishing the glass for the discussion. There was more than 125 pieces of Millersburg glass from A to Z in the display. The Saturday night banquet featured Richard Cinclair and his Red, White and Blue theme. Well done and appreciated by all.

Tucked in between were the "icing on the cake" things that makes this a "must attend" Convention for us. We were treated to a tour of the Don Kime and Ro-

land Kuhn home and the Keith and Nola Schmoker home to see their beautiful collections--a highlight for us. And the Hospitality Room is the one that sets the standard for the rest. We sampled dozens of varieties of cookies and candies, the homemade summer sausage and meat balls, apples, mints, nuts, punch and coffee. All were very good and in an endless quantity. They even move the Hospitality Room goodies to the auction area where they are available during the auction.

The Jim Seeck auction had the usual variety of glass and featured numerous Bushel Baskets and Swans. We would have liked to have seen more middle of the road glass offered. In Jim's opinion the sale was successful. There is usually a piece or two that is a conversation piece and this time it seemed to be the aqua opal Grape & Cable powder jar with a cracked base that sold for \$2,150.00.

October 24, 1992: Cooper Auction, Flint, Michigan. When it comes to a Carnival Glass auction Gary Cooper and Herb Albrecht do it up real well. Gary is noted for his "Hors D'oeuvres Preview". There was no glass sold Friday night but the good food and relaxed atmosphere was ideal for visiting as well as viewing the sale glass. The glass was clean, well displayed and fairly represented.

There was a good crowd Saturday and they came to buy. The sale started off strong with 32 of the first 120 pieces selling for \$500.00 or more. The sale tapered off somewhat toward the end due to the sequence of the catalog, but in our opinion the prices were good.

Some prices were: Teal Corn Vase \$2,700.00, aqua opal Hearts & Flowers compote \$650.00, ice green Peacock at the Fountain compote \$1,325.00 and the ice blue one at \$1,500.00, white Beaded Shell mug \$425.00, ice blue Good Luck bowl at \$3,450.00, red Blackberry Open Edge Basket \$400.00, amethyst Round Up ruffled plate \$325.00, ice blue Peacocks plate \$1,900.00, and an aqua opal Rose Show bowl at \$1,250.00. The sale contained several Hansen iridised pieces and as usual they sold very well. Our favorite piece was an amethyst Rustic funeral vase that brought \$1,000.00.

The auction company thoughtfully provided juice, donut holes and coffee before and during the sale Saturday. The glass could be viewed at any time during the sale and a few buyers took advantage of this for a second or last minute look. We didn't take home a box of glass but really enjoyed our weekend.

CHUCK & MARGE KREMER

R Little Flowers 10" ruffled bowl, SUPER COLOR & IRID.	11,000.00	A Hobnail Swirl spittoon	700.00
LGO Holly compote	650.00	IB Peacocks 9" plate	1,400.00
VAS Whirling Leaves bowl	450.00	M Kittens cup & saucer	225.00
IG Hearts & Flowers ruff. bowl	900.00	A Grape & Cable pin tray	200.00
G Greek Key 9" plate	1,000.00	AO Hearts & Flowers compote	450.00
M Peacocks 9" plate	325.00	A 1910 Detroit Elk bowl	650.00
IB (N) Bushel Basket 8 sided	625.00	AO Beaded Cable rosebowl	300.00
A Courthouse ruffled bowl	500.00	M Leaf Chain 9" plate	450.00
AO Peacocks ruffled bowl	950.00	M Brooklyn Bridge bowl	300.00
G Bushel Basket, SUPER	475.00	Celeste blue Bushel Basket	850.00
P Greek Key 9" deep plate	400.00	P Peacocks plate	500.00
IG Grape Arbor hatshape	300.00	SM Zipper Loop lamp 9½"	425.00
Celeste blue Fenton Grape & Cable ftd. bowl	600.00	B Holly plate	200.00
R Holly C.R.E. J.I.P. hat	275.00	B Good Luck stippled bowl	375.00
R Holly ruffled hatshape	625.00	LAV "474" milk pitcher	550.00
W Round Up 9" plate	300.00	IB Nippon P.C.E. bowl	300.00
R Orange Tree shaving mug	450.00	AO Leaf & Beads rosebowl	245.00
IG Peacocks plate	500.00	M Three Fruits stippled plate	250.00
B Fanciful 9" plate	300.00	P Tornado Vase	550.00
M Seaweed kerosene lamp	235.00	M Zipper Loop lamp 7"	350.00
R Open Edge hatshape	300.00	A Country Kitchen spooner	300.00
PO Ski Star large bowl	65.00	M Good Luck plate	350.00
G Imperial Grape 6" plate	100.00	W Three Fruits ruffled bowl	425.00
M Octagon wine set	135.00	A Grape & Cable dresser tray	200.00
M Beaded Cable rosebowl	45.00	B Leaf Chain 7½" plate	85.00
G Vintage small epergne	125.00	W Grape Delight rosebowl	95.00
A Thistle banana boat	285.00	M Open Rose 9" plate	50.00
AO Daisy & Drape vase	575.00	EB Good Luck ruffled bowl	475.00
M (N) Bushel Basket	95.00	P Singing Birds mug	55.00
A Scotch Thistle compote	50.00	P Embroidered Mums bowl	425.00
AO Drapery rosebowl	225.00	AO Bushel Basket	375.00
A Stork & Rushes mug	45.00	M "474" goblet	40.00
VAS Two Flowers sauce	80.00	AO Four Pillars vase	85.00
M Kittens ruffled bowl	135.00	M Little Stars 7" bowl	100.00
A Iris compote	75.00	LG Two Flowers sauce	45.00
P Morning Glory 6" vase	45.00	G Flute toothpick	50.00
M Lions I.C.S. bowl	80.00	M Orange Tree mug	30.00
B Peacock & Grape bowl	65.00	B Peacock & Urn compote	75.00
M Kittens banana boat	85.00	EB Three Fruits stippled plate	375.00
M Diamond Prisms compote	70.00	B Kittens toothpick, cracked	55.00
B Persian Medallion 9" bowl	50.00	AQ Acorns ruffled bowl	55.00
		P Fruits & Flowers bon bon	30.00
		M Octagon 8" vase	35.00

The following prices were realized at the Jim Seeck auction on October 18, 1992 in conjunction with the Air Capitol Carnival Glass Convention.

B Poppy Show plate	1,600.00	VAS Waterlily sauce	155.00
M Daisy Cut Bell	350.00	R Orange Tree mug	250.00
AO Grape & Cable powder jar, cracked base	2,150.00	A Mlsb. Peacock 6" plate	190.00
R Grape & Cable 7½" bowl	350.00	M Rose Show Vt. bowl	600.00
Teal blue Bushel Basket	450.00	VAS Bushel Basket, buffed chip on side of basket	375.00
AO Bushel Basket	450.00	IG Bushel Basket	180.00
W Bushel Basket	145.00	EB Bushel Basket	175.00
M Bushel Basket	85.00	M Zipper Loop 7½" lamp	500.00
A Wishbone 8¼" ftd. plate	350.00	M Leaf & Little Flowers compote	400.00
M Cane & Daisy Cut vase	145.00	B Rose Show plate	725.00
G Octaton wine decanter	700.00	M Enameled Radiance tumbler	195.00
IB Rose Show ruffled bowl	1,800.00	B Embroidered Mums bowl	400.00
B Rustic funeral vase	550.00	B Blueberry water set	750.00
P Pastel Swan Salt	300.00	PO Pastel Swan Salt	275.00
VAS Holly I.C.S. bowl	115.00	W Poppy pickle dish	250.00
IB Corn Vase	350.00	W Corn Vase	325.00
M Amarylis compote	225.00	W Daisy & Drape vase	190.00
M Kittens toothpick	145.00	SM Fashion creamer & sugar	100.00
P Town Pump	225.00	B Greek Key P.C.E. bowl, pinhead on edge	275.00
G Scroll Embossed plate	55.00	SM Soda Gold tumbler	50.00
EB Singing Birds mug	90.00	A (N) Butterfly bon bon	70.00
M Scale Band tumbler	50.00	SM Imperial Grape wine	90.00
G Dragon & Lotus ruff. bowl	95.00	B Dragon & Lotus I.C.S. bowl	70.00
A Strawberry plate	95.00	Teal blue Good Luck ruffled bowl, SUPER	1,100.00
M Fine Cut & Roses rosebowl	45.00	A Sunflower pin tray crack	85.00
M Captive Rose C.R.E. bowl	45.00	M Orange Tree ruffled compote	50.00
G Thistle C.R.E. bowl	75.00	A Beaded Cable rosebowl	65.00
PO Four Flowers 6" plate	95.00	M Holly I.C.S. bowl	35.00
G Morning Glory 5¼" vase	65.00	A Vintage 7½" plate	170.00
AQ Ripple 14" vase	50.00	P Beaded Bullseye 13" vase	125.00
G Vintage 7½" plate	155.00	B Open Edge Basket	40.00
B Peacocks bowl, pinhead	150.00	G Nippon ruffled bowl	125.00
Smokey amber Morning Glory 15" vase, heat check	20.00	P Graceful vase	95.00
G Beaded Bullseye 10" vase	25.00	A Grape & Cable creamer	65.00
B April Showers 10" vase	100.00	P Imperial Flute toothpick	40.00
A Holly I.C.S. bowl	65.00	A Ripple 12" vase	45.00
A Pulled Loop 11" vase	60.00	B Butterfly & Berry 9" vase	60.00
SM Frosted Block vase	100.00	G Tree Trunk 7" vase	30.00
G Waterlily ruffled sauce	90.00	B Holly compote	55.00
M Holly compote	30.00	B Holly 3 in 1 edge bowl	85.00
G April Showers 10" vase	40.00		

We had our annual September meeting on September 20, 1992. There were 46 members and guests present. Our guest was Sheila Franklin. New members Donna Summers and Lori Berkelo. Wally McDaniels renewed his membership. To all of you WELCOME!

After lunch the meeting was called to order. We had our drawings. We had many nice gifts and four special raffle gifts. We always seem to have great gifts donated for the benefit of our Club. A very talented group, many items were hand made. Thanks! We also had an unusual amount of beautiful glass for sale. It's an education looking at all the different patterns and colors. I appreciate all the members who bring glass for sale and show and tell. It takes time to pack and unpack all that glass. Gail introduced our speaker. Ed Stalder volunteered to give us a program about Westmoreland glass. I heard he was reluctant to do it. He said he wasn't a speaker or an expert. You sure fooled me Ed.

It's especially nice when a Club member will give a program. I never gave much thought about Westmoreland glass before. Ed started with the history of the Company and how they began and raised the money to build the factory. He also showed a map of the different glass company locations. I didn't know they made all of the different specialty items he told us about. My memory is not that good so I'm afraid to quote too much for fear it's wrong. So, I certainly encourage you to write your information in a series of articles for our bulletin. There was so much interesting information. I'm sure you did a lot of research. After the information we viewed the glass. There weren't that many pieces but quite a few patterns were represented and some outstanding glass in beautiful colors. As soon as I got home I checked my Corinth vases and discovered they were Westmoreland and not Dugan. The low exaggerated 3 in 1 ruffled Rays bowl that I always wondered about was also made by Westmoreland. Ed also showed us the different marks and stickers the Company used during its history, not just Carnival. Congratulations, a job well done!

We have busy members. What a pleasant surprise when I got my September H.O.-A.C.G.A. Bulletin. Diane Fry's booklet "About Those Bon Bons" was a delight. Thanks to all those responsible. Diane and Dean are both dedicated Carnival lovers. Diane is always encouraging us to write about our glass. It's such a great way to learn and share knowledge with the Carnival family.

Our Club is looking forward to the December meeting. Gail announced that Smoky Cloud is doing a program on small plates. Sounds great. Until then, happy hunting!

ARDONNA BUCHER,  
IMPERIAL, CALIFORNIA

A large group attended the Convention again this year. What a wonderful group you all were. We have finally even convinced the hotel we are a great group & they are giving us a fine service throughout.

It all began with a free supper, furnished by the Club on Thursday evening. We knew we would have a large group as over 40 rooms had been reserved for Thursday evening. Much to our surprise we had 74 attending the meal.

On Friday, Registration began early and at 4:00 P.M. our Educational Program began. **WHAT A SHOW!!** Perhaps we will never see such a display of beautiful Millersburg glass in one place. Not only did we have the glass but we had Marie McGee as the narrator of the Program. She is one of the experts on Millersburg glass. What a great way to add the greatest to our Convention. We thank all of you for bringing your glass and to Marie for narrating the Program for us. Friday evening we viewed the auction glass. At 9:00 P.M. we had our midnight auction. Some glass changed hands and we had fun doing it.

Saturday at 9:00 A.M. the auction began, furnished by Jim Seeck. He was done around noon. Evening came and we held our banquet. Lots of interesting things happened there. Richard Cinclair presented Jim Seeck with a bolo tie made by Jack Hamilton. Room display awards were given with first, second and third place prizes given. They were the square paper weights. First place going to Don Lacock, second place to Diane and Dean Fry and third place going to Eleanor and Jack Hamilton. Lots of first time people were asked to hold up their hands and there were several. Then came one big event, the drawing for the aqua opal Drapery rose bowl. As the drum turned and the suspense grew, a name was drawn out of over 1,200 tickets. The lucky winner was Wilma Elder. Then came a second great event. We were treated to a talk by Richard Cinclair on RED, WHITE AND BLUE. A man who knows his Carnival Glass and is an excellent speaker. There were 90 people attending the banquet.

This year we had a silent auction. A great number of pieces were donated and it was a great boost to the Club. All of the proceeds went to the Club. Thanks to all who donated the glass and to the high bidders for participating. Also we had a super Hospitality Room which seemed to be a very popular place anytime someone went by. I wouldn't dare tell you how many times Chuck came by to visit.

On Sunday the Club furnished a free breakfast and 58 folks came in for that. We said our farewells and we all began our journey homeward. Lots of nice memories until next year. Again I want to thank all who brought glass, food, speakers and most of all those who came to the Convention. We hope you will make plans to come again next year.

DONALD E. KIME  
PRESIDENT

Here is your personal invitation to our 12th Annual Convention. If you've been down to visit us before but not lately, this is the year to do it again. If your one of the yearly travelers who are the backbone of our Jamboree, you'll like the change in accomodations. We'll be at the Howard Johnson Hotel, 3600 - 34th Street S., St. Petersburg, Florida 33711. The room rate is \$46.00 single our double. This hotel is a resort with extras to make your stay extra special. There is a Fun Bar & Dance Club, satellite sports on 6 large screen TV's, lighted tennis court, award winning restaurant and an enormous pool with oasis poolside bar.

The rooms all have 2 queen sized beds and even though the hotel won't supply tables, there is room to bring your own. **IMPORTANT: YOU MUST MAKE YOUR RESERVATIONS BY JANUARY 10TH, SO YOU WILL BE IN THE "BLOCK".** CALL 1-800-654-2000 If you can't make it to the Jamboree, you can cancel. So if you are debating on coming get a room reserved just in case.

This year we'll have a bigger show & sale room. Sorry we had to raise the table rental to \$25.00 for Saturday's Show & Sale which is open to the public. Our dinner selections for the banquet on Saturday night are 1/2 of a broasted chicken with fresh rosemary or roast sliced serloin with burgandy sauce for \$15.00 each. We are in the process of getting our program speakers lined up & looking for an exceptional raffle item. Tom Burns will be bringing some nice glass for the Friday night auction. Bring your pieces that you have questions on to our Thursday night question & answer, show & tell session at our Hospitality Room.

For information or a "Jamboree Pack" with all information needed, contact:

Bill Tendl, President  
1816 Albright Drive  
Clearwater, FL 34625  
1-813-769-3150

or

Barbara Hobbs  
5501 - 101 Ave. N.  
Pinellas Park, FL 34666  
1-813-541-6164

If you'll still be in the area the weekend following the Jamboree, Rennigers at Mt. Dora, Florida is having an "Extravaganza" weekend.

=====

TEXAS CARNIVAL GLASS CLUB CONVENTION  
FEBRUARY 18 & 19, 1993, HOUSTON TEXAS

The Convention will be at the Marriott Hotel, Greenspoint, phone number is 1-713-875-4000. Room rates are \$50.00 per night. Please reserve rooms by February 1, 1993 and mention the Texas Carnival Club to receive the SPECIAL RATES. The Marriott will provide FREE transportation from the International Airport.

THURSDAY, 6:00 P.M....EARLY BIRDS MEET AT LUBY'S FOR DINNER  
7:30 P.M....TEXAS BINGO---PRIZES  
9:00 P.M....MAKE YOUR OWN BLUE BELL SUNDAE

FRIDAY, .....A.M....VISIT HOUSTON SHOPS & MALLS---GOOD HUNTING!  
4:00 P.M....PROGRAM BY RUTH CLARK - BUTTONS  
6:00 P.M....FREE HOSPITALITY ROOM PICNIC  
12TH FLOOR.....OVERLOOKS HOUSTON  
8:00 P.M....VIEW AUCTION GLASS  
9:30 P.M...."MIDNIGHT AUCTION"....BUY GLASS....SELL GLASS

SATURDAY, 10:00 A.M....SEECK AUCTION  
2:00 P.M....ROOM SHOPPING....VISIT WITH FRIENDS  
6:00 P.M....BANQUET...TEXAS BAR-B-Q  
GUEST SPEAKER....GEORGE LOESCHER

The Banquet is \$20.00 per person. Please make your reservations by February 1, 1993 to Carol Cox, Rt. #2, Box 912, Cleburne, Texas 76031, phone number 1-817-645-0637.

RICHARD CINCLAIR  
PRESIDENT,  
TEXAS CARNIVAL GLASS CLUB  
1-214-596-0014



ADVANCE SECOND ANNUAL MICKEY REICHEL CARNIVAL GLASS AUCTION NOTICE

The Mickey Reichel Auction Service will be conducting its SECOND ANNUAL NEW YEARS Carnival Glass Auction on Saturday, January 2, 1993 at 10:00 A.M. at the Mickey Reichel Auction Center, 1 mile north of I-70 on Highway 5, Exit 101, Booneville, Missouri.

350 items will be sold. Call or write Mickey Reichel Auction Service at 516 Third Street, Booneville, Missouri 65233-1536, phone: 1-816-882-5292 days, or 1-816-882-5283 evenings.

Give us a call when selling your glass, either one piece or an entire collection. More information will be provided in the December, 1992 Bulletin.

=====

NEW COMPUTER SERVICE AVAILABLE TO CARNIVAL GLASS COLLECTORS

Computer service available to catalogue your Carnival Glass collection. This service will provide information for each item, description and maker, date purchased, purchase price, current value.

This service will include:

1. Catalogued in alphabetical order in duplicate, including purchase price and current value.
2. Catalogued in alphabetical order in duplicate deleting purchase price (great for insurance purposes).
3. Initially sent in plastic side-grip folder.
4. May be updated at any time, monthly, quarterly, semi-annually or annually.
5. Service includes postage and handling.

Initial set-up is \$25.00 for every 100 pieces, pro-rated for more or less. Each update or quarterly update is \$5.00.

Send list to: Lee Tyrolm  
64530 E. Squash Blossom Ln.  
Tucson, AZ 85737  
1-602-825-9346  
(November thru April)

Lee Tyrolm  
1855 Calhoun St.  
Klamath Falls, OR 97601  
1-503-883-8484  
(May thru October)

=====

POLICY FOR ADVERTISING IN THE H.O.A.C.G.A. BULLETIN

1. All advertisements, announcements, letters or any other item to be printed must be received by the Bulletin Secretary no later than the 28th day of the month, to insure being published in the next months' Bulletin.
2. Member families may advertise ten (10) "For Sale" and ten (10) "Want Ads" per month F R E E of charge.
3. Only old Carnival Glass items or H.O.A.C.G.A. Souvenirs will be published. The Editor reserves the right to delete any item considered to be new glass (made after 1940) or any non-Carnival glass.
4. Damage or manufacturing flaws should be noted.
5. All "For Sale" items must be priced, no bid items will be published.
6. A 5-day return privilege, at buyers' expense; providing it is not as advertised.
7. All postage and insurance is extra, to be paid by buyer.
8. All ads must be legible, or they will not be printed.
9. The H.O.A.C.G.A. does not accept responsibility for accuracy of any ads.

FOR ACCURACY OF DESCRIPTION, THE FOLLOWING COLOR KEY IS RECOMMENDED:

A-Amethyst	HA-Honey Amber	P-Purple
AIB-Amber	IB-Ice Blue	PRL-Pearl/Pastel/Milk Glass
AO-Aqua Opalescent	IG-Ice Green	PM-Pastel Marigold
B-Blue	IGO-Ice Green Opal.	PO-Peach Opalescent
BO-Blue Opal or Blue Opaque	LAV-Lavender	R-Red
CLM-Clammoth	M-Marigold	RA-Amberina
EB-Electric Blue	MMG-Marigold on Milk Glass	SM-Smoke
G-Green		VAS-Vaseline

NOTE: If you wish to describe a piece as light or dark, please use the body of the ad.

P L E A S E U S E T H E F O L L O W I N G

EI-Excellent Iridescence    GI-Good Iridescence    LI-Light Iridescence

EXAMPLES

AO	EI	Good Luck plate, one point broken and repaired	375.00
M	LI	Peacock at the Fountain 7 piece water set, pitcher has flake	225.00
MMG	GI	Peacock & Grape bowl	360.00
A	GI	Wishbone tumbler, heat check, light amethyst	47.50

It would be greatly appreciated by everyone if you would use these codes, as suggested above.

C A R N I V A L G L A S S F O R S A L E

Gladys Hutchison, Rt. #2, Box 2966, Seymour, Missouri 65746  
PHONE: 1-417-935-4908

M	Good Luck 8½" bowl	150.00
M	Three Fruits (N) 9" plate	140.00
M	Field Flower 7 piece water set	325.00
G	Grape & Cable 9" plate, spatula footed	130.00
M	Imperial Heavy Grape 8" plate, lots of color	50.00
DM	Thistle banana boat	225.00
M	Heavy Iris pitcher	290.00
M	Millersburg Whirling Leaves 10" bowl	75.00
G	Millersburg Holly Sprig 7" bowl	60.00
M	Grape & Cable dresser tray	145.00

Dave D. Ackerman, 4677 Kennebec Drive, Cass City, Michigan 48726  
PHONE: 1-517-872-2023

PO	Single Flower 8 3/4" dome footed 10 ruffled bowl	50.00
CB	Lattice & Grape 6 tumblers, very good color, each	35.00
M	Lotus & Grape 9" very low bowl, 10 ruffles	50.00
W	Tulips electric shades, frosty etched-like, 2 ea. \$10.00, both	18.00
M	Star Medallion large sherbet shaped compote	40.00
M	Harvest Flower tumbler, SCARCE	85.00
PO	Soutache 9" 6 ruffled dome footed bowl	150.00
P	Grape & Cable jumbo (large) tumbler (N)	55.00
M	Imperial Grape wine glass, thin stem & plain base	20.00
PRL	Grape & Gothic Arches 3 small berry dishes, ea. \$30.00 or all	85.00

Bill Neal, Rt. #2, Box 211J, Yadkinville, North Carolina 27055  
PHONE: 1-919-961-6975 Please call after 9:00 P.M.

G	EI Waterlily sauce	250.00
G	EI Three Fruits P.C.E., Basketweave exterior	125.00
P	EI Three Fruits ruffled bowl, Basketweave exterior	85.00
G	EI Three Fruits plate, Basketweave exterior	175.00
A	EI Millersburg Strawberry Wreath compote	225.00
A	EI Floral & Grape water pitcher	195.00
EB	EI Orange Tree mug, large	48.00
P	EI Poppy pickle dish	175.00
M	EI Panther small bowl	45.00
P	EI Beaded Cable rose bowl, Ribbed interior	75.00

CARNIVAL GLASS FOR SALE

Delbert Jackson, Post Office Box 255, Shawnee, Oklahoma 74802  
PHONE: 1-405-273-7653

G	EI Ten Mums tight crimped 9" bowl	120.00
LAV	EI Singing Birds mug (N)	125.00
G	EI (N) Grape & Cable tumbler	50.00
A	EI (Lavender?) Grape & Cable plate ELECTRIC	300.00
W	EI Constellation compote, frosty	95.00
G	EI Persian Medallion large compote	300.00
A	EI Stork & Rushes punch cups, have 11, all for	125.00
AO	EI Drapery rose bowl, good one	300.00
M	EI Zig-Zag water pitcher with Morning Glories, GORGEOUS	285.00
G	EI Heart & Vine tight crimped edge bowl	85.00

Lee & Phyllis Bryant, 11645 N.W. Winchester Road, Decatur, Indiana 46733  
PHONE: 1-219-639-3415

P	Pansy 9" ruffled bowl, SUPER COLOR & IRIDESCENCE	65.00
M	Star Medallion compote, hard to find	40.00
M	Blackberry Wreath 9½" I.C.S. bowl, radium	90.00
A	Holly 8½" I.C.S. bowl, red & gold multi-irid., SUPER NICE	85.00
M	Butterfly & Plume 7 piece water set, SUPER NICE	365.00
A	Scotch Thistle compote, ruffled C.R.E., nice	50.00
P	Imperial Grape water pitcher, very nice	185.00
G	Holly 9½" plate, SUPER COLOR & IRID., but has base chip 3/4" long, 1/8" deep	175.00
SM	Daisy Basket (Imperial), OLD & SUPER	70.00
LAV	Pansy 9" ruffled plate, rust gold on pansy lite lav. back- ground	100.00

SEND S.A.S.E. FOR FALL SALE LIST APPROX. 200 ITEMS, NEW MERCHANDISE

Joseph A. Mello, 535 Fish Road, Tiverton, Rhode Island 02878  
PHONE: 1-401-624-2174

P	EI Acorn Burrs punch bowl & base, NO CUPS	795.00
P	EI Grape & Cable punch bowl & base, NO CUPS	495.00
G	EI Grape & Cable hat pin holder	275.00
*	EI *Black amethyst Fenton Waterlily bowl, nice	75.00
M	EI Fenton Waterlily bowl 9", good color	50.00
B	EI Dragon & Lotus bowl	65.00
A	EI Three Fruits bowl, spatula footed, Meander exterior	125.00
G	EI Oriental Poppy tumbler, nice	60.00
M	EI Raspberry milk pitcher	125.00

CARNIVAL GLASS FOR SALE

Dick Wetherbee, 847 Stafford Street, Rochdale, Massachusetts 01542  
PHONE: 1-508-892-4420

M	EI Lustre Rose butter top only, dark color & perfect	20.00
P	EI Acorn Burrs tumblers, have 6, all match & SUPER	375.00
PM	EI Heavy Iris tumbler, great pastel marigold color	60.00
G	EI Millersburg Cosmos 6¼" flat dish or plate, radium	60.00
W	GI Grape & Cable cologne bottle, RARE, not frosty	625.00
M	EI Star & File 5½" 2 handled celery, scarce shape	65.00
PO	EI Scales 8½" tri-cornered bowl, lots of opal, a beauty	135.00
B	EI Dragon & Lotus 8" I.C.S. bowl, SUPER	125.00
M	EI Big Basketweave 5" basket, crystal applied handle	75.00
SM	EI Pansy Spray 9" ruffled bowl, RARE COLOR & SUPER	95.00

Richard Cinclair, 3605 South Echo Trail, Plano, Texas 75023  
PHONE: 1-214-596-0014

M	EI Three Fruits plate, STIPPLED & SUPER	275.00
W	EI Three Row Open Edge Basket, I.C.S.	275.00
M	EI Peacock at the Fountain tumbler, extra nice	65.00
*	EI Grape & Cable 7½" bowl, BRICK RED	295.00
G	EI Morning Glory 6¼" vase	75.00
M	EI Peacock & Urn master ice cream	425.00
IB	EI Fine Cut & Roses candy dish	250.00
W	EI Rustic vase	85.00
*	EI *Brick red Orange Tree mug, small size	285.00
AO	EI Dandelion mug, SUPER	475.00

Swede Tilberg, Rt. #5, Box 1064, Joplin, Missouri 64804  
PHONE: 1-417-782-9627

G	EI Beaded Cable rose bowl, Ribbed interior	100.00
B	EI Daisy bon bon	250.00
B	EI Vintage 10" I.C.S. bowl, almost a plate	200.00
B	EI Leaf & Beads rose bowl, ELECTRIC	250.00
B	EI Hearts & Vine plate	350.00
B	EI Holly plate	350.00
P	EI Butterfly bon bon, Ribbed exterior	250.00
P	EI Fenton Peacock & Urn ruffled bowl, OUTSTANDING	325.00
IB	EI Hearts & Flowers ruffled bowl	400.00
G	EI Captive Rose C.R.E. bowl, SUPER	75.00



Larry Keig, Post Office Box 601, Fayette, Iowa 52142  
PHONE: 1-319-425-4467

SM	Floral & Optic bowl, excellent iridescence	55.00
CB	Persian Medallion 9" plate	195.00
PO	Caroline square bowl	65.00
CB	Blackberry Banded hat	45.00
M	Imperials Arcs ruffled bowl	25.00
PO	Puzzle/Floral & Wheat bon bon	45.00
M	Star Medallion small plate	45.00
M	Beaded Acanthus milk pitcher	95.00
M	Fentons Peacock & Urn ruffled bowl, excellent iridescence	95.00
M	Two Flowers round bowl, excellent iridescence	50.00

Jerry Reynolds, 1305 N. Highlands Pkwy., Unit B-6, Tacoma, Washington 98406  
PHONE: 1-206-564-7714 SHIPPING & POSTAGE EXTRA, Call after 5:30 P.M.

M	EI Grape & Cable perfume bottle, small broken bubble at base of stopper	350.00
B	GI Two Flowers rose bowl, no harm flat chip at base of one spatula foot, SCARCE	225.00
RED	1990 H.O.A.C.G.A. Hobnail Cuspidor Room Display Award	40.00
PO	EI Dogwood Spray footed bowl, super color & opal, no harm flake chip at footed base	90.00
IB	1991 H.O.A.C.G.A. Hobnail Cuspidor Room Display Award	40.00
M	GI Orange Tree hat pin holder, MINT	250.00
*	*Camphor Glass RARE Grape & Cable hat pin holder, iridescence on grape leaves & grapes, experimental run, no harm flake chip on bottom of one foot	400.00
G	1980 H.O.A.C.G.A. Souvenir Hat Pin Holder	90.00
RED	1977 H.O.A.C.G.A. Souvenir Hat Pin Holder	95.00
W	1980 H.O.A.C.G.A. Souvenir Hat Pin Holder	250.00

Karen Skinner, 108 Riverwoods Cove, East Alton, Illinois 62024-1618  
PHONE: 1-618-259-1373 after 6:00 P.M.

PM	EI Engraved Grape (Fenton) tumblers 5 1/8" tall, have 3, each	35.00
PM	EI Kings Crown (U.S. Glass) lemonade tumblers, top two thirds is iridised. Have factory ground bases, 2 1/4" base, 5 5/8" tall, flared at top, very nice, have 4, each	125.00
M	EI Kokomo rose bowl	75.00
*	EI *Fostoria water goblets, Swirled pattern, marigold base to clear top, very thin and elegant, have 3, each	55.00

John & Terri Dubinski, 2408 Fleetwood Drive, Columbia, Missouri 65202-2262  
PHONE: 1-314-474-2644

M	EI Stag & Holly spatula footed bowl	78.00
G	EI Stag & Holly spatula footed I.C.S. bowl, SCARCE SHAPE	160.00
M	EI Holly 3 in 1 edge bowl, very nice color & iridescence	65.00
G	EI Holly I.C.S. bowl, hard to find	110.00
B	EI Holly I.C.S. bowl, nice color	95.00
*	EI *Marigold on moonstone Holly 8 ruffled bowl, RARE & BEAUTIFUL, very nice butterscotch	975.00
G	EI Autumn Acorns plate, very nice, RARE, but 1/4" base crack, so	550.00
A	EI Captive Rose I.C.S. bowl	75.00
B	EI Grape & Gothic Arches tumbler, MINT!!	59.00
B	EI Persian Medallion 8 ruffled bowl, Bayberry exterior	75.00

Jane Dinkins, 1100 Ridgeley Drive, Houston, Texas 77055  
PHONE: 1-713-465-0557

P	EI Scarab hatpin	35.00
M	EI Waterlily & Cattails plate whimsey	30.00
M	GI Cornucopia 5" vase	20.00
M	GI Horn of Plenty whiskey bottle, good stopper	40.00
CLM	EI Ladys Slipper, slight mold roughness	70.00
M	EI Unshod tumbler, Owens #99	20.00
LM	GI Blue Willow decorated tumbler, juice size	20.00
*	GI *Cranberry Shrine "Wheat State" wine	140.00
M	GI Prince Matchabelli perfume	15.00
M	EI Octagon goblet	40.00

Ray Hitchcock, R.R. #1, Box 301, Winterset, Iowa 50273  
PHONE: 1-515-462-2074

P	Peacocks plate, a nice one for	350.00
G	(N) Grape & Cable hat pin holder, a cracked beauty	50.00
G	"474" milk pitcher	110.00
IG	(N) Bushel Basket, round	175.00
IB	(N) Tree Trunk 12" vase	275.00
W	(N) Thin Rib mid-sized funeral vase 13"	200.00
P	(N) Tree Trunk squatty vase 6" high with 5" top	150.00
P	Beauty Bud Vase	75.00
P	(N) Tree Trunk 12" vase, ELECTRIC & SUPER	75.00
B	(N) Embroidered Mums bowl, teeny irid. nick behind point	150.00

CARNIVAL GLASS FOR SALE

John & Jeanette Rogers, Route #1, Box 89, Kittrell, North Carolina 27544  
PHONE: 1-919-492-1472

A	EI Peacocks plate	595.00
G	EI Peacock at the Fountain master berry bowl	600.00
G	EI Big Fish I.C.S. bowl, satin	900.00
A	EI Trout & Fly 3 in 1 edge, satin	675.00
M	EI Horse Medallion J.I.P. bowl	150.00
M	EI Hobstar & Feather punch cups, have 5	150.00
IB	EI Peacock at the Fountain small berry bowl	90.00
A	EI Fruits & Flowers handgrip plate, Basketweave exterior	185.00
A	EI Grape & Cable 7 piece dresser set	2,400.00
A	EI Many Fruits 8 piece punch set	850.00

Eva Backer, 12 Sherwood Road, West Hartford, Connecticut 06117  
PHONE: 1-203-233-3761 10:00 A.M. to 3:00 P.M., after 7:00 P.M. E.S.T.

G	EI Wild Strawberry handgrip plate	190.00
M	EI Peacocks bowl P.C.E.	275.00
M	EI Pony bowl	75.00
P	EI Diamond Lace water pitcher	250.00
M	EI Millersburg Whirling Leaves bowl	100.00
M	EI Vintage 7" plate	150.00
G	EI Wishbone footed bowl	100.00
M	EI Fine Cut & Roses rose bowl	85.00
A	EI Wishbone & Spades 6½" plate, SUPER IRIDESCENCE	350.00
M	EI Peacock & Urn master ice cream bowl STIPPLED	550.00

Gerald M. Hess, 500 Woodland Trail, Argos, Indiana 46501  
PHONE: 1-219-892-6193

G	EI Louisa rose bowl	55.00
M	EI Floral & Grape tumbler	25.00
M	GI Daisy & Plume single footed rose bowl	45.00
A	EI Grape & Cable 7" bowl	35.00
M	EI Windmill & Mums 9" bowl	60.00
G	EI Heavy Grape 6" bowl	32.50
M	EI Leaf Rays one handled spade shaped nappy	25.00
M	GI Field Thistle tumbler, chip on base	14.00
M	EI Corning Insulator	16.00
G	EI Tree Trunk 9" vase	35.00

CARNIVAL GLASS FOR SALE

Tyson or Norma Boone, 5149 Covert Road, Salida, California 95368  
PHONE: 1-209-545-1832

P	EI Many Fruits punch bowl and ruffled base	475.00
A	EI Vintage bon bon	40.00
B	EI Holly flat I.C.S. bowl	60.00
M	EI Imperial Grape water set	130.00
M	EI Raspberry tumblers, have 2, each	20.00
W	EI Drapery candy dish, chip on one foot	65.00
G	EI "474" punch cup	25.00
A	EI Embroidered Mums bowl, hard to find 2" crack	75.00
M	EI Golden Harvest decanter & stopper	100.00
P	EI Wishbone footed bowl	75.00

John D. Resnik, 10031 Banner Lava Cap, Nevada City, California 95959  
PHONE: 1-916-477-1345

MMG	EI Hearts & Flowers compote	5,000.00
W	EI Poinsettia & Lattice ruffled bowl	4,000.00
B	EI Lily of the Valley pitcher	5,000.00
IB	EI Grape & Cable hat pin holder	2,500.00
P	EI Chatelaine pitcher	2,500.00
IB	EI Oriental Poppy 7 piece water set	5,000.00
P	EI Inverted Strawberry 7 piece water set	3,750.00
P	EI Inverted Thistle pitcher	2,500.00
IB	EI Hearts & Flowers 9" plate	4,000.00
IB	EI Poinsettia & Lattice 9" footed bowl	2,850.00
	LARGE DOUBLE STAMPED S.A.S.E. FOR 500 PIECE LIST	

Carl O. Burns, Star Rt. Box 111, Rumford Center, Maine 04278  
PHONE: 1-207-392-3044

W	EI Orange Tree 8" bowl, I.C.S. SUPER IRIDESCENCE & FROSTY	130.00
W	EI Leaf Chain 8" bowl, I.C.S. nice and frosty	100.00
P	EI Imperial Grape water carafe, nice color	150.00
M	EI Stag & Holly large 11" ball ftd. ruffled bowl, a beauty	125.00
A	EI Peacock & Grape 9" ruffled bowl, Bearded Berry, nice color	70.00
P	EI Open Rose 7" round, deep bowl, GREAT IRIDESCENCE	55.00
G	GI Heavy Grape 8" flat plate	45.00
M	EI Imperial Grape 9" flat plate, nice one	80.00
M	EI Strawberry (N) 9" plate, Plain ext., nice color, tong mark on back	75.00
A	EI Beaded Cable rose bowl, tiny pinhead on edge	65.00

CARNIVAL GLASS FOR SALE

Donald Harris, 527 Lavina Drive, Mechanicsburg, Pennsylvania 17055  
PHONE: 1-717-790-0412

A	Isaac Benesch & Sons advertising bowl	400.00
B	Fanciful 9" flat plate	250.00
B	Grape Arbor tumbler, RARE	275.00
G	Leaf Chain 9" ruffled bowl	45.00
G	Orange Tree 9" bowl, 3 in 1 edge	125.00
*	*Horehound Bushel Basket (N)	385.00
IG	Two Row Open Edge hat, 6 ruffles	240.00
M	Bushel Basket, 8 sided (N)	115.00
M	Captive Rose stemmed compote	45.00
M	Dahlia sugar with lid	65.00

Ted L. Sheibley, 5071 Bass Lake Drive, Apt. 203, Harrisburg, PA 17111  
PHONE: 1-717-564-9364

A	EI Hanging Cherries sugar lid	25.00
A	EI Captive Rose 9" plate	485.00
A	EI Blackberry Wreath 7" ruffled bowl, Millersburg	55.00
AQ	EI Peacock & Urn compote	160.00
AO	EI Leaf & Beads rose bowl	300.00
B	EI Grape & Cable 9" stippled bowl	275.00
B	EI Carnival Holly 9" plate	325.00
B	EI Pine Cone 6" plate	125.00
G	EI Sailboats I.C.S. bowl	125.00
G	EI Singing Birds creamer	150.00

Dick Hatscher, 142 Walnut Hill Road, Bethel, Connecticut 06801  
PHONE: 1-203-743-1468

M	EI Corn Vase (N)	695.00
M	EI Broken Arches 12 piece punch set	198.00
M	EI Hearts & Flowers compote, SUPER IRIDESCENT	250.00
M	EI Hearts & Flowers P.C.E. bowl, SUPER	445.00
W	EI Hearts & Flowers compote	158.00
B	EI Hearts & Flowers compote	475.00
B	EI Hearts & Flowers bowl, silvery	425.00
RED GI	Acorn bowl, slag	445.00
MMG GI	Holly I.C.S. bowl	895.00
*	EI *Marigold on custard Hearts & Flowers compote, SUPER	3,600.00

CARNIVAL GLASS FOR SALE

Jim Roach, 2850 S. Beltline Road #186, Dallas, Texas 75253  
PHONE: 1-214-286-4345

G	EI Grape & Cable hat pin holder, nick on top	275.00
A	EI Tree Trunk mid-sized funeral vase	165.00
G	EI Vintage Leaf 7 3/4" plate, OUTSTANDING	325.00
M	EI Morning Glory funeral vase	95.00
B	EI Orange Tree large berry bowl, footed	115.00
*	EI *Aqua Acorn 6" bowl, deep round	140.00
CLM	EI Blackberry Wreath 3 in 1 edge bowl 7 1/2"	75.00
M	EI Little Barrel	85.00
A	EI Holly 3 in 1 edge bowl, very scarce	125.00
A	EI Grape & Cable hat pin holder, GREAT COLOR	275.00

Pat Housewright, 225 Rowland, Stephenville, Texas 76401  
PHONE: 1-817-968-2997 Please call after 5:00 P.M. please.

G	EI Millersburg Boutonniere compote	175.00
B	EI Singing Birds mug	135.00
G	EI Grape & Cable 9" bowl, Basketweave exterior	95.00
M	EI Stag & Holly 8" bowl, spatula footed	95.00
PO	EI Fanciful 8 1/2" flat bowl	200.00
M	EI Poinsettia 6" milk pitcher	120.00
M	EI Holly compote	30.00
G	EI Millersburg Cosmos 6" dish	65.00
M	EI Pansy 8 1/2" bowl, SUPER PIECE	35.00
G	EI Acanthus 8" bowl	90.00

Phil Hassenius, 1701 E. Roma, Phoenix, Arizona 85016  
PHONE: 1-602-277-6306

IG	EI Nippon (N) P.C.E. 8 3/4" bowl, PERFECT	900.00
M	EI Leaf & Beads rose bowl, Fancy interior	105.00
G	EI Four Pillars 11" vase (russet) (N)	60.00
P	EI Fine Rib (N) 9" vase	75.00
B	EI Diamond Point Columns 16" vase	250.00
M	EI Kittens cup	135.00
B	EI Drapery rose bowl	250.00
M	EI Rustic mid-sized Variant 16" vase, 9 flame points, 4 1/8" base	250.00
M	EI Singing Birds mug, STIPPLED	150.00

Fred G. Roque, 1427 W. Orchard Street, Bloomington, California 92316  
PHONE: 1-714-820-4955

G	EI Poppy Show plate, MINT	5,800.00
IB	EI Wishbone footed bowl, VERY RARE	2,200.00
*	EI *Horehound Poinsettia footed bowl, EXTREMELY RARE	4,200.00
IG	EI Nippon 8 ruffled bowl, SUPER	1,200.00
P	EI Utah Liquor advertising plate, only a few known	1,800.00
P	EI Gevurtz advertising plate, SUPER	1,350.00
P	EI Spring Opening handgrip plate, RARE	1,650.00
AO	EI Grape & Cable Variant P.C.E. bowl, RARE	3,100.00
*	EI Persian blue Fenton Peacock & Urn bowl, RAREST OF THE 4 PATTERNS KNOWN IN THIS COLOR	1,600.00
IB	EI Fruits & Flowers bon bon SUPER	575.00

Reg & Linda Dunham, 1512 South Main, Jacksonville, Illinois 62650  
PHONE: 1-217-245-6733

G	EI Good Luck ruffled bowl, Basketweave exterior, this is a real nice piece	300.00
AMB	EI Holly I.C.S. bowl, really good color, you'll have no trouble telling the color on this one	125.00
AMB	EI Dragon & Lotus ruffled bowl, Bearded Berry exterior, no trouble with the color on this one either	125.00
B	EI Peacock & Urn ruffled bowl, Bearded Berry exterior, you'll like it	175.00
G	GI Strawberry stippled plate. The iridescence is gold & silver. This is a rare plate.	500.00
EB	EI Leaf & Beads rose bowl, very pretty piece of glass	250.00
G	EI Butterfly & Berry tumbler, these are hard to find	70.00
IB	EI Hearts & Flowers ruffled bowl, there is a tiny tic on one of the points	250.00
G	EI Coral ruffled bowl, a scarce pattern with nice color	125.00
G	EI Grape & Cable hat pin holder, the feet are good and the color goes all the way to the bottom	275.00

Barbara Barker, Rt. #3, Box 163BB, Savannah, Missouri 64485

LIST OF CARNIVAL GLASS FOR SALE.  
SEND S.A.S.E.

Virgil Lemos, 33 Dawn, D.D.O., Quebec, Canada H9B-3C7  
ALL PRICES QUOTED ARE IN U.S. DOLLARS

W	EI Wreahted Cherry lid for sugar bowl	30.00
M	EI Wreathed Cherry lid for butter dish	30.00
A	EI Lustre Rose lid for sugar bowl	30.00
M	EI Peacock at the Fountain lid for butter dish	65.00
M	EI Imperial Six-Sided candle stick	225.00
M	EI Persian Garden small plate	55.00
IB	EI Nippon P.C.E. bowl pin head nick on one point	250.00

WILL ALSO ACCEPT TRADE AGAINST MY LIST IN THE "WANTED SECTION".  
BASED ON (AVERAGE), FROM MORDINIS' LATEST LISTING.

Bill & Sharon Mizell, 52 Old Bonifant Road, Silver Spring, Maryland 20905  
PHONE: 1-301-384-8952 after 6:00 P.M. If we are not there, please leave a message on recorder and we'll return your call.

B	GI Concave Diamonds pitcher with lid, celeste blue, very small inside rim chip on pitcher	100.00
B	GI Concave Diamonds tumblers with coasters, celeste blue, have 3, each	45.00
A	GI Seacoast pin tray	425.00
RED	EI Horsehead Medallion nut bowl, cherry red with slaggy look	1,550.00
M	GI Late Sunflower tumblers, 3 sizes (3-3/4", 5-1/4", 5 3/4") of each size, each	4.00
W	EI Palm Beach tumbler	95.00
*	GI Tumbler, upper part *clear iridised, small nick on top rim; bottom 1" flares out and is enameled blue with narrow black band above - believed to be made by Fry, very different.	15.00
B	EI (N) Peacock at the Fountain water pitcher, has circle in bottom without N, but is definately the Northwood design.	425.00
B	EI Poppy pickle dish, ELECTRIC BLUE	100.00
*	EI Westmoreland Coin Dot ruffled bowl *dark teal, nice iridescence and no wear	85.00

Diane Haire, 10209 E. Ave. S-8, Littlerock, California 93543  
PHONE: 1-805-944-1964

*	*Amberina 8" trumpet style vase, BEAUTIFUL RED. Light amber base and on edge of iridised, stretch, fluted top	145.00
M	EI Apple Tree pitcher	115.00
M	EI Apple & Pear intaglio 9 1/2" bowl, SUPER	75.00
B	EI Celeste blue Florentine candlesticks, matched pair	50.00

CARNIVAL GLASS FOR SALE

John McGrath, 16 Elder Ave., Baulkham Hills N.S.W. 2153, Australia  
 PHONE: 01161-639-9105 ALL PRICES QUOTED ARE IN U.S. DOLLARS

M	EI Butterfly & Berry hat pin holder	1,500.00
A	Banded Diamonds tumbler, BLINDING IRIDESCENCE	175.00
M	Banded Diamonds tumbler, BLINDING IRIDESCENCE	175.00
M	EI Diamond Cut Shields water pitcher, excellent dark marigold, no harm flake up under base. See page 7 of H.O.A.C.G.A. Educational Series.	185.00
	<u>PHOTOS AVAILABLE</u>	

Norman E. Nething, 10784 Airview Drive, N. Huntingdon, Pennsylvania 15642  
 PHONE: 1-412-863-4025 PLEASE LEAVE MESSAGE ON MACHINE

A	EI 1910 Detroit Elk I.C.S. bowl	675.00
G	Loganberry vase	325.00
RED	Imperial Jewels creamer	125.00
SM	EI Poinsettia milk pitcher, dark color	135.00
G	Northwood plain plate 9", Basketweave exterior	35.00
A	Peacocks P.C.E. bowl, OUTSTANDING COLOR, quite flat (N)	550.00
VAS	EI Orange Tree regular sized mug	90.00
W	EI Oriental Poppy tumbler	120.00
IB	EI Raspberry water pitcher	2,100.00
CB	EI Starflower pitcher	1,250.00

Robert & Carole Hooper, 338 Veterans Boulevard, Bayville, New Jersey 08721  
 PHONE: 1-908-269-7866

IG	EI Northwood Corn Vase	300.00
P	EI Northwood Drapery rose bowl	325.00
B	EI Northwood Leaf & Beads rose bowl	250.00
AQ	EI Fenton 5" footed Waterlily sauce	95.00
M	EI English Hob & Button rose bowl, a heavy rose bowl	225.00
*	EI *Amethyst or lavender Peacock Tail compote	95.00
M	EI Grape & Cable compote, spiral stem	95.00
B	EI A beautiful compote with a stemmed flower on the inside edge and a wide panel design on the outside edge?	95.00
G	EI (N) Daisy & Plume compote, with inside pattern	95.00
*	EI *Amber small ribbed rose bowl on pedestal	95.00

CARNIVAL GLASS FOR SALE

Steve Davis, 3331 Warpath Road, Macon, Georgia 31201  
 PHONE: 1-912-741-4252 POSTAGE & INSURANCE INCLUDED

W	EI Beaded Basketweave basket, 2 handles	125.00
M	EI Ripple squat vase, dark marigold, base 3 1/8", 5 1/2" high, 6 1/8" wide at top	95.00
B	EI Dragon & Lotus ruffled bowl	80.00
P	EI Three Fruits ruffled bowl, VERY NICE	125.00
M	EI Heavy Grape chop plate, has some wear, SUPER IRIDESCENCE	100.00
M	EI Norming Glory 7" vase	30.00
M	EI Morning Glory 6" vase	35.00
RED	EI Peacock Lamp	1,000.00

Karen Skinner, 108 Riverwoods Cove, East Alton, Illinois 62024  
 PHONE: 1-618-259-1373 after 6:00 P.M.

M	EI Waterlily & Cattails Variant tumbler, see H.O.A.C.G.A. Educational Series II, page 173	35.00
*	EI *Cranberry Encrusted Vine, Whitley #61, pretty gold trim	22.50
M	GI Studs milk pitcher	22.50
M	GI Blossoms & Spear plate	22.50
M	GI Sailing Ship plate	22.50
M	EI Harvest Poppy compote	270.00



CARNIVAL GLASS WANTED

Richard Thomas, RT. #2, Box 2253, Fair Play, Missouri 65649  
PHONE: 1-417-276-4024 evenings

- M Acorn Burrs tumblers, need 6
- M Acorn Burrs large berry bowl
- P Acorn Burrs small berry bowls, need 3
- P Acorn Burrs sugar
- G Acorn Burrs sugar & spooner
- G Acorn Burrs berry set

Dean H. Thomas, 503 West Oak Street, North English, Iowa 52316  
PHONE: 1-319-664-3368

- P Dahlia spooner
- M Inverted Strawberry candle stick, need only 1

Dave D. Ackerman, 4677 Kennebec Drive, Cass City, Michigan 48726  
PHONE: 1-517-872-2023

- M Imperial Grape 1 wine glass, thin stem, rayed base
- LM Imperial Grape decanter stopper & 1 wine glass, thin stem, Plain base
- P Imperial Grape 1 wine glass, fat stem & rayed base
- SM 1 wine glass, thin stem & rayed base
- M Diamond & Sunburst 1 wine glass flared
- M Smooth Interior Panels 1 oz. & 2 oz. wine glasses
- M Tulip & Cane 1½ oz. & 3 oz. wine glasses
- M Star & File cordial
- PRL Grape & Gothic Arches sugar cover or complete bowl
- Embroidered Mums plates, ANY EXCEPT ICE GREEN

Gladys Hutchison, Rt. #2, Box 2966, Seymour, Missouri 65746  
PHONE: 1-417-935-4908

- A/P Millersburg Hanging Cherries sugar and lid
- M Beaded Shell sugar lid
- M Tiger Lily tumblers, need 6 matched
- M Butterfly & Fern tumblers, need 5 with excellent iridescence
- B Rambler Rose pitcher
- A Fluffy Peacock pitcher
- M Cosmos & Cane table set
- P Lid for Grape & Cable Sweetmeat, or will sell bottom
- M Springtime water set
- M Hobstar & Band tumblers

CARNIVAL GLASS WANTED

Larry Keig, Post Office Box 601, Fayette, Iowa 52142  
PHONE: 1-319-425-4467

- P Dugans Vintage powder jar, LID ONLY
- M Wild Berry powder jar, LID ONLY
- P/G Bud Vase Whimsey, see article & picture in the December, 1991 and January, 1992 H.O.A.C.G.A. Bulletin.
- ANY Souvenirs with Iowa town names stenciled and written on them.

Ray Hitchcock, R.R. #1, Box 301, Winterset, Iowa 50273  
PHONE: 1-515-462-2074

I NEED THE FOLLOWING BUTTER LIDS, OR WILL SELL BOTTOMS:

- G Butterfly & Berry
- G Acorn Burrs
- M/P/W Dahlia
- M Leaf Tiers

Gerald L. Thomas, 44 E. Highland Ave., Atlantic Highlands, New Jersey 07716  
PHONE: 1-908-872-8051

- SM EI Twins small berry bowls, need 4 to 6
- P EI Northwood Grape & Cable large master berry bowl with Thumbprints
- P EI Northwood Acorn Burrs tumblers

John & Terri Dubinski, 2408 Fleetwood Drive, Columbia, Missouri 65202-2262  
PHONE: 1-314-474-2644

- A/G Persian Medallion bon bons, rose bowls, compotes
- M Grape & Cable punch bowl and base
- M Peacock at the Fountain punch bowl top only and butter base
- Rays & Ribbons I.C.S. bowls, radium finish, ANY COLOR

Rose Barash, 7200 s.w. 6th St., Miami, Florida 33144  
PHONE: 1-305-261-0640

- M EI Fruit Salad punch bowl top
- G EI Wreath of Roses punch bowl top
- Damaged Rose and Poppy Show, Singing Birds, Drapery, tankard pitchers, aqua opalescent pieces, epergnes.

CARNIVAL GLASS WANTED

George Bond, 720 Gran Paseo Drive, Orlando, Florida 32825  
PHONE: 1-407-382-5681 NO DAMAGE

- G EI Wreath of Roses punch bowl only
- G EI Wreath of Roses punch cups
- A/P EI Acorn Burrs punch bowl only
- M EI Butterfly & Berry butter top
- M EI Peacock at the Fountain butter bottom
- B EI Orange Tree butter bottom
- M EI Orange Tree butter bottom
- W EI Orange Tree butter top

Paul Warren, 1935 Camden Way, Carrollton, Texas 75007  
PHONE: 1-214-492-1285

- M Horseshoe shot glass
- A Pony bowl
- Pansy bowl in aqua or green

Richard Cinclair, 3605 South Echo Trail, Plano, Texas 75023  
PHONE: 1-214-596-0014

- ANY Scarab Shell hatpin
- ANY Little Owl hatpin
- IB Grape & Cable hat pin holder
- DM Peacock at the Fountain water pitcher
- B Kittens saucer
- RED Little Flowers rose bowl
- IG Poppy Show plate
- IG Rose Show bowl
- W Grape & Cable centerpiece bowl
- G Orange Tree hat pin holder

Thomas Esliger, 105 DeLanguedoc, St. Lambert, Quebec J451B8, Canada  
PHONE: 1-514-672-4198

- G EI Springtime sugar MINT
- PO EI Base Big Basketweave for Persian Garden fruit bowl. I require 2 bases, both in peach opal. See base on page 17, Sherman Hand Book, MINT.

CARNIVAL GLASS WANTED

Richard Forbush, 4825 Bryan Station Road, Lexington, Kentucky 40516  
PHONE: 1-606-293-6532

- G Base for Grape & Cable master punch bowl
- G Grape & Cable punch cups

Gloria Pfeiffer, 140 Eaton Road, Rochester, New York 14617  
PHONE: 1-716-467-3472 Please call after 6:00 P.M.

- M Dahlia sugar and cover
- G Lustre Rose sugar, creamer, spooner

John & Jeanette Rogers, Route #1, Box 89, Kittrell, North Carolina 27544  
PHONE: 1-919-492-1472

- A Grape & Cable sweetmeat lid
- B Blackberry Block pitcher
- IB Oriental Poppy tumbler
- M Grape & Cable punch bowl base - master
- M Peacock at the Fountain punch bowl top
- M Grape & Cable perfume
- A Grape & Cable pin tray
- A Grape & Cable dresser tray

Ben Morey, 816 W. Olson Road, Midland, Michigan 48640  
PHONE: 1-517-631-2982

- G Grape & Cable shade only for candle lamp

Harold L. Fortney, 910 Pennsylvania Apt. 908, Kansas City, Missouri 64105  
PHONE: 1-816-421-4169 ANYTIME

- B Peacock & Grape spatula footed I.C.S. bowl
- A Peacock & Grape collar based I.C.S. bowl
- B Peacock & Grape 3 in 1 edge bowl
- ANY Peacock & Grape tight C.R.E. bowls
- M (N) Thin Rib mid-sized funeral vase
- W Two Flowers sauce
- Two Flowers sauces in blue or dark green
- TEAL (N) Leaf Columns vase
- G Drapery vase

CARNIVAL GLASS WANTED

Ed Kramer, 4305 W. 78th Street, Prairie Village, Kansas 66208  
PHONE: 1-913-642-3587

- RED EI Butterfly & Berry vase, minor damage acceptable
- M EI Imperial Grape water carafe
- M EI Soda Gold candlesticks
- M EI Imperial Six-Sided candlesticks
- M EI Cut Ovals candlesticks
- M EI Butterfly (Northwood) bon bon
- M EI "474" table set, berry set. (I have a berry set and partial table set in clear, but have not established for sure that Imperial made these in Carnival Glass.)
- M EI "474" wines, cordials
- M EI "474" vase

---

Dorothy Mapes, Box 264, Atkinson, Illinois 61235  
PHONE: 1-309-936-7561

- B Orange Tree powder jar lid
- M Butterfly & Berry butter bottom
- A Grape & Cable butter bottom

---

John Katko, Box 333, Eddyville, Iowa 52553  
PHONE: 1-515-969-4474

- IB Peacock at the Fountain punch bowl top (N)
- G Inverted Strawberry candlestick
- A Grape & Cable base to sweetmeat

---

Bill & Mary McNamara, 2 First Avenue, Sandgate, Brisbane 4017, Australia  
PHONE: (07) 269-1640

- W Memphis punch bowl top only
- W Orange Tree punch base
- B/P Orange Tree punch base
- A Stork in the Rushes punch bowl top, straight sides
- G Imperial Grape punch cups, need 8
- M Star & File decanter & stopper
- M Stud tray 10" diameter
- M Stud juice tumblers, need 5
- M Peacock at the Fountain punch bowl top only
- G Imperial Grape wine goblets, need 8

CARNIVAL GLASS WANTED

Virgil Lemos, 33 Dawn, D.D.O., Quebec, Canada H9B 3C7

- ANY Bushel Baskets
- ANY Daisy & Plume rose bowls
- ANY Beaded Cable rose bowls
- G EI Wreath of Roses punch set (base only)
- B EI Wreath of Roses punch set (base only)
- G EI Wide Panel epergne (base only)

---

John McGrath, 16 Elder Ave., Baulkham Hills N.S.W. 2153, Australia  
PHONE: 01161-639-9105

- A EI Wreath of Roses punch cup, Vintage interior
- M EI Triads base for butter dish
- LM EI Cosmos & Cane dome for butter dish
- W EI Persian Garden base to fruit bowl
- M EI Grape & Cable spooner
- A EI Millersburg Cherry covered sugar
- A EI Millersburg Cherry creamer
- A EI Millersburg Cherry spooner
- A/M Kiwi bowls, large or small

---

A CHALLENGE FROM ONE OF OUR MEMBERS:

FOR RESEARCH PURPOSES: If anyone owns a white Oriental Poppy Variant (Ribbed) tumbler, I will pay them \$50.00 for a distinct photo of it.

ROBERT SMITH  
8 Joy Street  
Boston, Massachusetts 02114



ENCYCLOPEDIA OF CARNIVAL GLASS LETTERED PIECES - 120 pages, black and white, as well as colored photographs of all known advertising and commemorative pieces. Price guide included. Mail checks or money orders to John D. Resnik, 10031 Banner Lava Cap, Nevada City, CA 95959, price is \$15.95 plus \$2.50 postage & handling.

MORDINI'S 1991 CARNIVAL GLASS AUCTION PRICE REPORT - Single copy is \$9.00 including postage, order 2 or more copies and the price is \$8.00 each. Back issues are still available for 1985, 1986, 1989 & 1990. 1987 & 1988 are sold out. Please specify year when ordering. Canadian friends should send postal money order in U.S. funds. Overseas mailings add \$2.00 for each copy. Order direct from TOM & SHARON MORDINI, 36 N. MERNITZ AVE., FREEPORT, IL 61032.

CARNIVAL IN LIGHTS - A full color book on Carnival Lighting, including Gone-with-the-Wind lamps, candle lamps & shades, price guide included. \$11.95 plus postage. Order from Helen Greguire, 103 Trimer Road, Hilton, NY 14468.

THE WORLD OF ENAMELED CARNIVAL GLASS TUMBLERS - Author/Photographer, Cecil Whitley, 10 pages "60 tumblers in full color", \$10.00 including shipping. Call or write Cecil Whitley, 1041 Cheshire Lane, Houston, TX 77018.

PHONE: 1-713-681-0807.

A CARNIVAL OF IRIDESCENT LUSTER BUTTONS, BOOK II - New book of Carnival Glass buttons, contains 139 pages, 450 more pattern drawings, named & numbered. Special section on cone shank buttons. Index and price guide also covers Book I. Price is \$14.00 postpaid in U.S.A.; \$16.00 (U.S.) postpaid in Canada and Mexico; \$20.00 (U.S.) postpaid overseas. Order direct from the author, Ruth M. Clark, 2100 Dawn Drive, Georgetown, Texas 78628.

\*\*\*\*\*

H.O.A.C.G.A. EDUCATIONAL SERIES - BOOK I - 148 articles with pictures, on a variety of Carnival Glass patterns including plates, compotes, bon bons, rose bowls and many other pieces. Price is \$15.00 plus \$2.50 postage.

H.O.A.C.G.A. EDUCATIONAL SERIES - BOOK II - 180 articles with pictures on Carnival Glass tumblers. All of these articles have previously appeared in the H.O.A.C.G.A. Bulletin and have now been assembled and updated in a convenient book form. Price is \$17.50 plus \$2.50 postage.

CARNIVAL GLASS PATTERN BOOKS BY MARION HARTUNG - A set of 10 books identifying the different patterns in Carnival Glass. These books provide the single most complete pattern information and is a must for every collector. Price of each book is \$5.00 plus \$1.00 postage or the complete 10 book set is \$50.00 plus \$5.00 postage.

Please make checks payable to H.O.A.C.G.A. and send checks and orders to Doug Peters, 3514 S.W. Jackson St., Blue Springs, Missouri 64015.

=====