

HOACGA

Heart of America Carnival Glass Assoc. Inc.

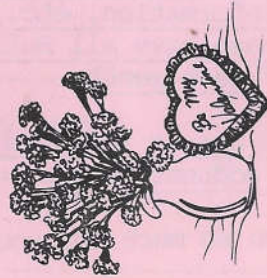
February 1993

RETURN ADDRESS

H.O.A.C.G.A.
Jackie Fortney
P.O. Box 303
Buckner, MO 64016

FIRST CLASS MAIL

FIRST-CLASS MAIL
U.S. POSTAGE
PAID
Buckner, MO
Permit No. 03



HEART OF AMERICA CARNIVAL GLASS ASSOC.
BOARD OF DIRECTORS, 1993

PRESIDENT.....Robert Grissom
7900 Crescent
Raytown, Missouri 64138
1-816-356-5320

VICE-PRESIDENT.....Daryl Strohm
8904 E. 29th Street
Kansas City, Missouri 64129
1-816-252-8137

TREASURER.....Doug Peters
121 Kel Court
Blue Springs, Missouri 64015
1-816-229-6138

SECRETARY.....Ed Kramer
4305 W. 78th Street
Prairie Village, Kansas 66208
1-913-642-3587

BULLETIN SECRETARY.....Jackie Fortney
Post Office Box 303
Buckner, Missouri 64016
1-816-249-5208

The Bulletin is published the 15th of each month. Membership year begins with the month your dues are paid. DUES ARE \$25.00, PER COUPLE OR SINGLE, U. S. & CANADA, \$40.00 FOREIGN. All monetary figures are quoted in U. S. dollars.

Please send all items for the Bulletin, i.e., glass for sale, glass wanted, articles, information, etc., to the Bulletin Secretary, whose address appears above. Please have all Bulletin material sent to us so that we receive it by the 28th of each month.

Please send checks for dues and books, and any address changes to the Treasurer whose address appears above.

We thank you so much for your cooperation in these matters.

2

REGULAR H.O.A.C.G.A. MONTHLY MEETING FOR FEBRUARY, 1993

The February, 1993 regular meeting of the Heart of America Carnival Glass Association will be on Sunday, February 28, 1993, at 2:00 P.M. at the Raytown City Hall.

On January 24, 1993 a lively meeting was attended by 28 people. It must have been the "cabin fever" from all the January ice and snow, but everyone was there, and early too! Over thirty pieces of white Carnival Glass were brought and President Bob Grissom led an interesting discussion. We wish we had it on video tape! Gene Cox won the door prize.

Please plan to attend the February meeting on the 28th. ICE CREAM SHAPED pieces of any color and pattern will be the February topic.

ED KRAMER
SECRETARY,
H.O.A.C.G.A.

=====

1993 H.O.A.C.G.A. CONVENTION - 20TH ANNIVERSARY

The 1993 H.O.A.C.G.A. Convention will be April 21, 22, 23, 24 & 25, 1993 at the Holiday Inn, I-35 and 95th Street, Lenexa, Kansas (same location as previous years). You may make your Motel reservation by calling the Holiday Inn at 913-888-6670 or their toll-free number 1-800-527-0582. The room rate is \$57.00 per day plus tax. The special room rate is for those members attending the Convention. A member must register to receive the special rate. Please do not wait until the last day to make your reservations. WHEN MAKING YOUR RESERVATION, PLEASE MENTION THAT YOU ARE WITH THE H.O.A.C.G.A. CONVENTION.

This year we have selected three ORANGE TREE HATPIN HOLDERS as our raffle prizes. The colors GREEN, BLUE & MARIGOLD will be drawn in that order, therefore we will have three winners. Twelve raffle tickets are enclosed in your Convention packet, which you should have by now. The tickets are \$1.00 each or all 12 tickets for \$10.00. Please complete the tickets stubs and return them completed along with your money to the Secretary. If you want additional tickets at \$1.00 each or 12 for \$10.00, you may obtain them from the Secretary, Ed Kramer. The raffle drawing will be held April 24, 1993 during the Convention Banquet, you do not need to be present to win. Winners will be notified.

EDWARD KRAMER, SECRETARY
4305 W. 78th Street
Prairie Village, Kansas 66208

3

A PEEK INTO THE PAST - - IN CARNIVAL GLASS

In this months Peek Into the Past, we will take a look at one of the auctions of 1973, which was held at the Hospitality Motor Inn of Toledo, Ohio. The date was May 26, 1973. It contained approximately 350 pieces from the collection of Mr. & Mrs. Gil Schmedlin and Mr. & Mrs. Marshall Shafer.

Many of the pieces from the Shafers' were part of the fabulous Harry Whitlow collection. Below you will find a good sampling of the pieces in this auction. Sales Manager John M. Woody - - Auctioneer Terry L. Logsdon.

P L A T E S

Garden Path Variient chop, purple (the most spectacular piece of Carnival Glass we have ever seen).....1,775.00	Soldiers & Sailors, blue.....400.00
Poppy Show, ice green.....300.00	(N) Peacocks on the Fence, ice green.....130.00
Rose Show, ice blue.....330.00	(N) Peacocks on the Fence, white.....140.00
Large Stag & Holly, marigold...225.00	(N) Peacocks on the Fence, blue.200.00
Persian Medallion chop, blue...225.00	Three Fruits, aqua opal.....425.00
Pods & Posies, green.....95.00	Three Fruits, blue.....60.00
Peacock & Urn, white.....115.00	Three Fruits, marigold.....60.00
Captive Rose, blue.....52.50	Horse Medallion, marigold.....60.00
Peacock & Grape, ftd. green....115.00	Apple Blossom Twigs, blue.....100.00

G R A P E & C A B L E

Banquet punch bowl & base, purple.....740.00	Sweetmeat compote, whimsey, purple.....120.00
Candle Lamp, green.....340.00	Sweetmeat, covered, purple.....160.00
Perfume, purple.....330.00	7 piece water set, purple.....400.00
Cracker jar, purple.....210.00	Hatpin holder, marigold.....70.00
Hatpin holder, white with yellow top.....210.00	Hatpin holder, purple.....160.00

B O W L S

Hearts & Horseshoe, marigold...225.00	Peacock & Urn lg. ice cream, white.....130.00
Rose Show, aqua opal.....230.00	Good Luck, blue.....135.00
Rose Show, white.....140.00	Good Luck, purple.....115.00
Peacocks on Fence, aqua.....190.00	Good Luck, green.....110.00
Hearts & Flowers, white.....42.50	Good Luck, marigold.....65.00
Carolina Dogwood, blue opal.....37.50	Little Fishes, marigold.....40.00
Mlsbg. Cherries, Hobnail exterior, purple.....140.00	Little Stars, amethyst.....55.00

B O W L S (contd.)

Many Stars, amethyst.....170.00	Mlsbg. Peacock & Urn, amethyst.170.00
Fleur-de-lys, amethyst.....135.00	Blackberry Wreath, amethyst.....50.00

M I S C E L L A N E O U S

(N) Town Pump, purple.....360.00	Seacoast pin tray, green.....220.00
Daisy Cut Bell, marigold.....200.00	Buzz Saw cruet & stopper green.270.00
Mlsbg. Courthouse bowl, ameth..265.00	Hobnail Swirl cuspidor, ameth..300.00
Mlsbg. Dolphin compote, Rosalind interior, amethyst....285.00	Corn Vase, ice green.....140.00
Spectors Dept. Store plate, marigold.....180.00	Corn Vase, white.....115.00
Signed Nautilus, peach opal....135.00	Grape & Cable Old Rose Distill- ery plate, green.....125.00
Greek Key water set, green.....800.00	Fern Brand Chocolates, one side up, purple.....120.00
Butterfly & Plume water set, amethyst.....400.00	Peacock at the Fountain pitcher, white.....375.00
(N) Dandelion pitcher, purple..575.00	Flute pitcher, purple.....310.00
God & Home tumbler, blue.....150.00	Lacey Dewdrop pitcher, pearl...240.00
Grape Arbor tumbler, purple....45.00	Daisy & Drape vase, marigold....90.00
Peacock at the Fountain orange bowl, purple.....170.00	

E L K S P I E C E S

Elks nappy, purple, 1 known..2,425.00	Elks Bell, Parkersburg 1914 blue.....800.00
Elks paperweight, purple.....720.00	Elks Bell, Atlantic City 1911, blue.....975.00
Elks plate, Parkersburg 1914, blue.....540.00	Elks bowl, Detroit 1910, green.290.00
Elks plate, Atlantic City 1911, blue.....800.00	Elks bowl, Detroit 1910, blue..290.00
Elks bowl "Two Eyed" Detroit 1910, amethyst, RARE.....600.00	Elks bowl, Detroit 1910, amethyst.....340.00

This is #49 in our "Peek Into the Past" series. We hope that you have found these prices interesting. Next month we will cover the 1969 Thrawley auction. Some great rarities were featured in this auction including a blue Millersburg Peoples Vase, an amethyst Country Kitchen cuspidor and a La Belle Rose Wreath square plate.

JOHN & LUCILE BRITT

=====

By John & Lucile Britt



THE TWINS TUMBLER

Twins is a geometric or imitation cut glass pattern. Hartung lists this pattern as Twins, while Presznick called it Horseshoe Curve. Minnie Watson Kamm also shows this pattern as Horseshoe Curve. A good description and photo of the water pitcher is shown on page 149 of Kamm book #5. She does not name the maker of this pattern, however. Most authors and collectors of today consider it to be an Imperial pattern, however.

The Carnival Glass piece that is found most often in this pattern is the two piece fruit bowl. We have seen many of the Twins fruit bowls in marigold. The Twins tumbler that we feature above is the first tumbler that we have ever seen in Carnival Glass, however. This tumbler was found by David Cotton of Mansfield, Ohio.

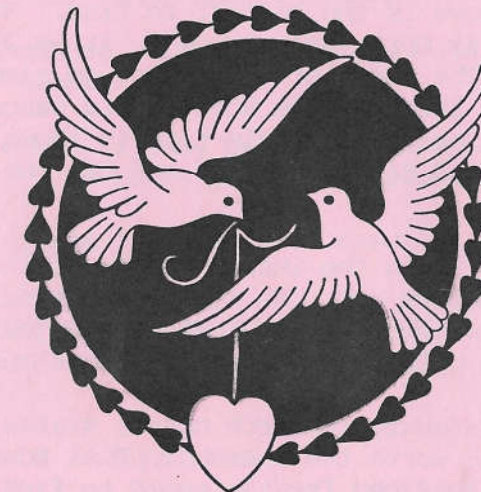
The featured Twins tumbler is 4 1/8 inches high with a top opening of 3 inches. The base is about 2 1/8 inches in diameter. The pattern contains a variety of imitation cut glass motifs including hobstars, diamonds, fans and also a file design. There are four of the large horseshoe type figures that are evenly spaced around the tumbler. Near the bottom of the tumbler are four hobstars with smaller file and fan designs between each hobstar. Actually this combination of motifs makes a rather unusual and pretty pattern. The color is a light marigold with rather light iridescence.

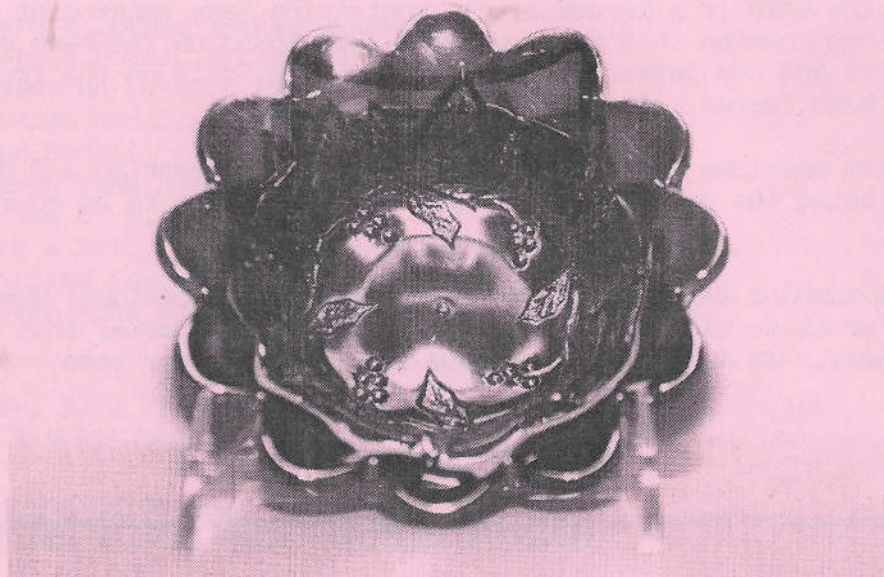
The bottom of the base is very unusual. It is a different design than any we have ever seen on a Carnival Glass tumbler. A small hobstar is in the center of the base with a tiny band of diamond points circling the hobstar. On the outer edge of the base is a larger circle containing many spearpoint type figures. We have checked this base out with that found on the base of the Twins fruit bowl and the pattern is exactly the same, only on the fruit bowl the design is much larger, of course.

This is a pretty American made tumbler that is both interesting and desirable. This example, being the only one ever reported, would have to be considered as rare.

The rare Twins tumbler marks our 181st entry into the Educational Tumbler Series. Next month we will cover an unusual and pretty tumbler that we have named Cane Panels. It is the only example that we have ever seen. Maker is unknown.

JOHN & LUCILE BRITT





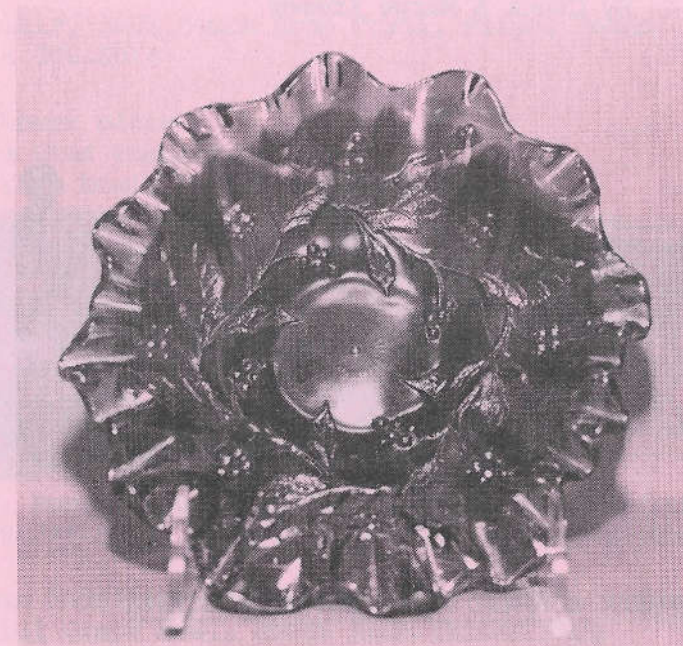
HOLLY SPRIG DEEP SAUCE

All of the little Millersburg Holly Sprig sauce dishes are very desirable, but the one that is shown above is the hardest to find. Millersburg collectors call this piece "The Holly Sprig deep sauce". It is $2\frac{1}{4}$ inches high and 5 inches across the top. The sides of this piece go almost straight up to the flared out top. Usually these little Holly Sprig sauces are flattened out much more than that. An example of this type is shown on the next page. This sauce is $1\frac{1}{2}$ inches high and $6\frac{1}{4}$ inches wide and has the candy ribbon or 3 in 1 edge.

Note the little dot that is in the inside center of the sauce. These are sometimes called the jewelers dot. We really don't believe that these dots had anything to do with a jeweler, but instead are just a plunger mark. We find that this to be the opinion of most collectors and authors of today.

Jack Wilson, in his Millersburg research notes, states that "this deep shape sauce is hard to find and worth the search". Bill Edwards also reports that this shape as rare. We searched for ten years to find one for our collection, so we agree that they are indeed hard to find.

These little sauces contain the wide panel pattern on the outside and a 28



HOLLY SPRIG SHALLOW SAUCE

point star is pressed into the bottom of the base. The deep sauce featured here is in amethyst and is the only color that we have seen in this shape. Since the flattened out examples exist in green and marigold, we suspect the deep sauce also exists in those colors, but we have not seen them.

This article featuring the Holly Sprig deep sauce is #169 in our Pictorial Pattern Parade. Next month we will describe and illustrate the rare Columbia rose bowl which was made by Imperial.

JOHN & LUCILE BRITT

A LOOK AT TABLE SETS

By Chuck & Marge Kremer



BUTTERFLY & BERRY TABLE SET IN AMETHYST

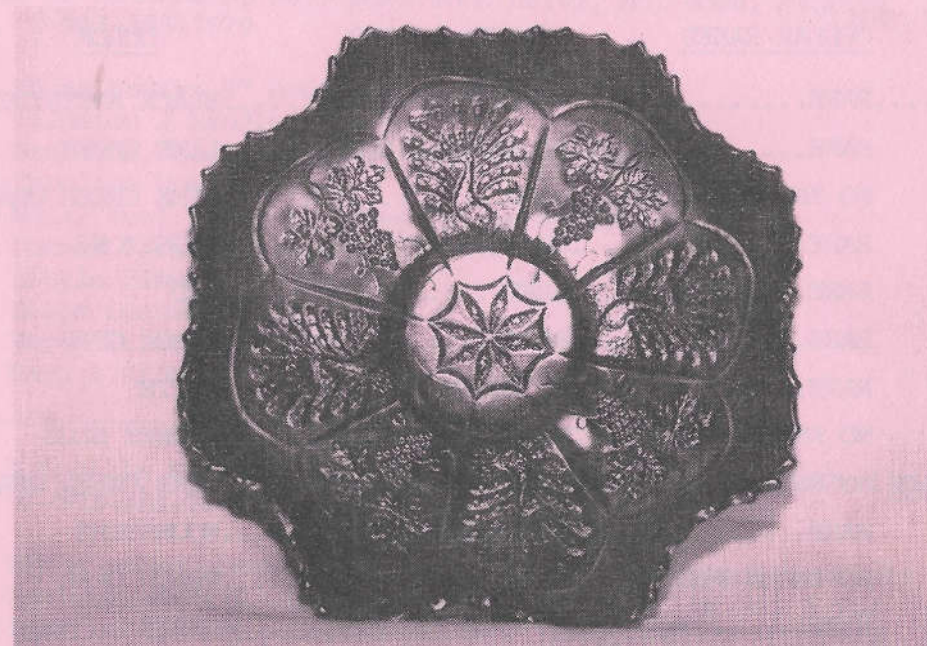
Butterfly & Berry is a Fenton pattern. The table set is found in four colors, marigold, blue, green and amethyst. The green set is considered rare. This was one of Fenton's "bread and butter" patterns, and they must have made an awful lot in the marigold and cobalt blue colors judging from the number surviving. All four pieces of the set rest on ball feet and probably more than a few were knocked off in the cast iron sinks.

A great many marigold and blue pieces have been offered for sale over the years, but it takes time and patience to assemble a good matching set due to the wide variation in color & iridescence. Complete sets are occasionally offered in marigold & blue. Maybe we were lucky, as our green set went together easier than our amethyst set. Our green sugar has a lid that is only iridized on the inside, but we know of a couple of cracked bowls with good lids so sometime we will probably be able to upgrade a little. Our amethyst set is our favorite and was acquired piece by piece over a short period of time and is by far our most costly set. Complete sets in green & amethyst rarely come up for sale. With a little patience undamaged pieces can be found in all colors.

Prices for complete sets will run from \$250.00 up for the marigold to \$600.00 plus on the amethyst one and slightly more on good green sets. The blue set will be somewhere between the marigold and amethyst sets. This is the eighth in our series on Table Sets.

=====

PEACOCK AND GRAPE



COLLAR BASED 8 RUFFLED PEACOCK & GRAPE BOWL IN RED

Our previous articles on the Peacock & Grape pattern have been about the primary colors of marigold, blue, green and amethyst. This article will attempt to cover the more hard to find colors. As in a lot of the Fenton patterns, the Peacock & Grape pattern was made in several unusual colors.

We would consider any of the pieces in these unusual colors as scarce to rare. The colors we will cover are amber, red, peach opalescent, lime green, lime green opalescent, white, moonstone, smokey blue and black amethyst. These pieces can be found in either collar based or spatula footed.

The red spatula footed pieces usually have a lot of amberina in the bottom of the bowl, but the collar based pieces are generally a good cherry red.

It should also be noted that most of these pieces made in the unusual colors have very good to excellent iridescence.

The chart on the next page will show the availability of known pieces in these unusual colors.

If anyone has any information regarding these unusual colors, please let us know, so we can update our records.

SHAPE	COLLAR BASED	SPATULA FOOTED	COLOR
<u>RUFFLED</u>	RARE.....	NO KNOWN PIECES.....	BLACK AMETHYST
	RARE.....	NO KNOWN PIECES.....	LIME GREEN
	NO KNOWN PIECES....	RARE.....	LIME GREEN OPAL
	RARE.....	NO KNOWN PIECES.....	MOONSTONE
	RARE.....	RARE.....	RED
	RARE.....	RARE.....	PEACH OPAL
<u>ICE CREAM SHAPE</u>	NO KNOWN PIECES....	RARE.....	LIME GREEN OPAL
	RARE.....	NO KNOWN PIECES.....	MOONSTONE
	NO KNOWN PIECES....	RARE.....	PEACH OPAL
	RARE.....	NO KNOWN PIECES.....	AMBER
<u>THREE-IN-ONE</u>	RARE.....	NO KNOWN PIECES.....	LIME GREEN OPAL
	RARE.....	NO KNOWN PIECES.....	PEACH OPAL
<u>NUT BOWL</u>	RARE.....	NO KNOWN PIECES.....	RED

No plates are known in any colors than marigold, green, blue or amethyst. Wouldn't it be nice to find one in red or peach opal?

ROBERT GRISSOM
HAROLD FORTNEY

Don't forget that our Treasurer, Doug Peters has a new address. His new address of 121 Kel Court, Blue Springs, Missouri 64015. Any correspondence to him should be sent to his new address.

Thanks for your cooperation.

SEEK AUCTIONEERING UPDATE:

Our rest and relaxation time is almost over and now we are gearing up for our spring auctions! The first one on the agenda is the Texas Convention auction. This will be a super dooper!!! A few items to mention are:

Butterfly & Tulip square bowl in amethyst, Millersburg Dolphins compote in amethyst, Dandelion tankard pitcher in SUPER purple, Millersburg Roses & Fruits bon bon in green, Christmas compote in purple with a small nick but FANTASTIC, Stippled Strawberry 9" plate in amethyst, Trout & Fly ruffled bowl in radium amethyst, Peacocks ruffled bowls in green and purple, Peacocks 9" plates in purple, blue, ice green, and stippled marigold, Fine Rib vases in aqua opal, aqua, red and amber slag. Fenton's Good Luck ruffled bowl in marigold, Thumbprint & Ovals vases in purple and marigold, Stippled Grape & Cable 9" plate in emerald green with Basketweave exterior, Peacock & Grape ruffled bowl in moonstone, Fentons Peacock & Urn plates in blue and marigold, plus many outstanding miniatures including Fentons Butterfly ornament in marigold.

Tentative Upcoming Auction Schedule:

- FEBRUARY 20.....TEXAS CLUB CONVENTION AUCTION
- MARCH 20.....RICHARD CONLEY COLLECTION, ST. LOUIS, MO
- APRIL 3.....RICHARD HAGOOD COLLECTION, LEXINGTON, KY
- MAY 14, 15.....ST. LOUIS
- JUNE 5.....LINCOLN LAND CONVENTION AUCTION
- JUNE 19.....NORTHERN CALIFORNIA CONVENTION AUCTION
- JULY 27-30.....INTERNATIONAL CONVENTION AUCTION,
INDIANAPOLIS, IN.
- OCTOBER 2.....MOORE COLLECTION, ST. LOUIS, MO

Watch for more sales coming this fall!

MAKE YOUR PLANS NOW TO ATTEND OUR 20TH ANNIVERSARY CONVENTION IN APRIL!!! PLEASE SEND IN YOUR PRE-REGISTRATION FORMS IN AS EARLY AS POSSIBLE, AS THIS GREATLY ELIMINATES MUCH WORK DURING THE CONVENTION AND BENEFITS YOU ALSO BY GETTING YOU THROUGH CONVENTION REGISTRATION QUICKLY!

ALSO DON'T FORGET TO SEND IN YOUR RAFFLE TICKET STUBS FOR THE BEAUTIFUL MARIGOLD, BLUE AND GREEN ORANGE TREE HATPIN HOLDERS!

SUPER CARNIVAL GLASS AUCTION

On April 3, 1993, Mr. Jim Seeck of Seeck Auctioneering of Grafton, Iowa, will be selling the collection of Richard Hagood of Lexington, South Carolina. The auction will be at the Holiday Inn - Lexington North, Lexington, Kentucky, Exit 115 off Interstate 75. The auction will begin at 9:30 A.M.

SOME OF THE SUPER ITEMS OFFERED INCLUDE:

- Aqua Opal Peacock at the Fountain compote
- Green Concord plate
- Peach Opal (N) Strawberry plate
- Blue Starflower pitcher
- Marigold Strawberry Scroll pitcher
- Lots of Hearts & Flowers, including a green compote and 2 pie crust edge bowls
- LOTS OF REDS, PASTELS
- Embroidered Mums in purple, blue & horehound!
- White & blue (N) Grape & Cable sweetmeats!
- 2 Grape & Cable master punch sets
- Blue Homestead chop plate
- Ice green (N) Wild Strawberry bowl
- Marigold over custard (N) Four Pillars vase
- (N) Peacock & Urn ice cream sets, electric blue & marigold
- AND THE LIST GOES ON AND ON.....

For more information contact Richard Hagood, 109 Spring Road, Lexington, South Carolina 29073. PHONE: 1-803-791-5086.

If you are not on Jim Seecks' mailing list, please call or write for a free brochure.

=====

WE HOPE TO SEE YOU AT THE CONVENTION!

The following prices were realized at the January 2, 1993 Mickey Reichel auction in Booneville, Missouri. From Mickey; "Considering the weather, we had a great auction. Carnival buyers are like the mail, they go rain, sleet, or snow. A special thanks to all who attended and all the write-in bids."

M Hobstar butter dish	110.00	A Mlsbg. Peacock & Urn deep bowl	400.00
A Fishermans mug	100.00	A (N) Butterfly bon bon threaded	250.00
A Good Luck ruffled bowl	190.00	B Milady tumbler, SUPER	130.00
M Heavy Pineapple bowl	1,200.00	PO Nautilus	245.00
VAS Horse Heads JIP bowl	225.00	RED Two Row Open Edge Basket	400.00
B Poppy Show plate	800.00	IB Hearts & Flowers compote	925.00
AO Good Luck ruffled bowl	1,000.00	A Pony ruffled bowl	170.00
M Peacocks PCE bowl	245.00	VAS Persian Medallion bon bon	200.00
VAS Dragon & Lotus bowl	200.00	G Tree Trunk squatty vase	125.00
G Peacock Tail Vt. compote	170.00	IG Peacock & Urn ice cream bowl	1,125.00
M Hobnail Vt. 12" vase	425.00	B Stippled Strawberry bowl	350.00
PO Folding Fan compote	130.00	PO Honeycomb rose bowl	225.00
AO Fruits & Flowers bon bon	475.00	P Diamond Point 11" vase	200.00
A Field Flower tumbler	75.00	B Horse Heads JIP bowl	230.00
A Singing Birds mug	75.00	A (N) Grape Leaves bowl	85.00
G Peacock & Grape ruff. bowl	75.00	B Holly compote	40.00
M Stippled 3 Fruits plate	250.00	M Rococo vase	80.00
VAS Orange Tree mug	90.00	B (N) Poppy pickle dish	125.00
M (N) Poppy pickle dish	50.00	B Dragon & Lotus bowl	80.00
PO Target 12 $\frac{1}{4}$ " vase	55.00	A Beaded Bullseye vase	130.00
B Holly ruffled bowl	85.00	B Two Flowers ftd. rose bowl	150.00
M Imp. Grape 9" flat plate	115.00	M Kittens card tray	160.00
AO Hearts & Flowers compote	500.00	G Dragon & Lotus bowl	120.00
M Cathedral Chalice	80.00	W Oriental Poppy tumbler	55.00
VAS Holly ICS bowl	285.00	M Interior Drape 4" vase	160.00
A Peacock & Grape bowl	80.00	M Singing Birds mug	80.00
B Fentonia tumbler	75.00	A Imperial Grape decanter	75.00
M Dandelion (N) tumbler	60.00	G Inverted Feather cracker jar	125.00
A Strawberry bowl	95.00	G Grape & Cable ftd. plate	100.00
M Leaf & Beads rose bowl	70.00	VAS Holly compote	60.00
M Holly plate	190.00	A Fenton Peacock & Urn bowl	350.00
M Good Luck ruffled bowl	110.00	G Mlsbg. Peacock & Urn 10" bowl	500.00
M Twins 2 pc. fruit bowl	45.00	G Wishbone PCE (N) bowl	170.00
G Stag & Holly 7" bowl	100.00	IG 3 Row Open Edge bowl	250.00
PO Pinched Swirl vase	55.00	AMB Ripple 7" vase	30.00
M Brooklyn Bridge bowl	200.00	M Concord ruffled bowl	40.00
M Captive Rose bowl	65.00	A Beaded Shell mug	65.00
P Acanthus 7 $\frac{1}{2}$ " bowl	52.50	A Leaf Swirl compote	65.00
PO Coin Spot compote	60.00	M Dragon & Lotus 3 in 1 bowl	45.00
M Diamond Point vase	80.00	M Orange Tree 3 in 1 bowl	90.00
M Peacock & Grape bowl	32.50	M Holly 3 in 1 bowl	60.00

As one year ends it seems nice to look back where you've been, then ahead to where you are going; or hope to go.

Our year, as a whole, was a good one. It did seem to go faster than usual. A sure sign we were busy and no time to be bored. Auctions began early and we did attend all we could. Had a wonderful Convention at Lexington, Kentucky last week of July. Plan to be there again July 7, 8, 9, and 10th. We hear of several good auctions already being planned and hope some are close enough for us to go.

We had several Carnival friends to visit through the year. A big surprise to see George & Mavis Loescher at our door February 6. They were on their way to the Florida Jamboree. Dean & Diane Fry of California also a surprise. They had been to Parkersburg for his mothers' passing. We remember her as such a lovely lady at our Parkersburg Convention. Tom & Sharon Mordini came by in February. They find some rare Carnival often we haven't tracked down. Allen & Anne Blanchard of Australia stayed a few days with us. They were on an extensive trip in the United States. We took them to Gibson Glass Company one day. They toured Fenton Glass Company one day too, before leaving to visit friends in the south, then on to California. Our hobby reaches a long way.

John & Jeanette Rogers of North Carolina came by from the I.C.G.A. Convention. They are buying some lovely Carnival so must have a nice collection. After the A.C.G.A. Convention Carl & Eunice Booker stopped for a while as they began their summer vacation. They find some good Carnival on their trips too. Don & Doreen Ashbridge of Canada visited over night on August 2. They have since gone to Ireland checking on ancestors. Ruth Schinestuhl of New Jersey came a few days before and after the A.C.G.A. Convention. She does the beautiful color page for the Newsletter and has been to Australia finding some rare pastels. Also in August John & Carrie Mikkonen of Minnesota stopped by from a trip. They are known for their rare collection of Holly Carnival plates. Their three children were so nice too.

In October Phyllis & Dick Ott came for an afternoon. He had finished up his term as President of the A.C.G.A., so seemed happy to let it go to the younger Eddie Radcliff. We have enjoyed each visit and look back as it being the best part of the whole year.

This year has started off great too. Dr. Jack & Mary Adams, with daughter Laura, came to visit recently. All will remember him being President of the I.C.G.A. and they lived in Wisconsin. We once visited their home there from a close by Convention. A beautiful home and some very rare Carnival too. They have moved to West Virginia so are only about 50 miles from us. So good

to have them close again. Laura is a pretty young lady, the rarest dish of all.

After so many good memories we do feel sad on losing some good Carnival friends in 1992. Just recall the ones we knew best. First was Don Moore, missed so much. Linwood Hart of Massachusetts, Lucille Lowe, Killbuch, Ohio, Ralph Brown of New York, Mildred Mummert of Indiana and Gladyce Bacon of Pennsylvania, plus some others. Each one leaves a lasting memory with us and we will always remember the good times we have had together.

Must look ahead now to a new year and hope it will be a good one for all of our Carnival Club friends. So many out there we wish we could really know better, but the time never stretches far enough. We'll leave a little thought found recently which seems most timely.

"The past is my heritage.....The present is my responsibility.....The future is my challenge."

Let's make 1993 a very special year, one to look back on with pleasure when it goes away to 1994.

GRACE & BYRON RINEHART
CHARLESTON, WEST VIRGINIA

=====

MORDINI'S 1992 CARNIVAL GLASS AUCTION PRICE REPORT

The 1992 Carnival Glass Auction Price Report is now available for mailing. This Report covers all major Carnival Glass auctions conducted in 1992. Over 4,000 entries, the price is \$9.00 for a single copy and \$8.00 each for multiple copies. Canadian friends please send Postal Money Order in U.S. funds. Overseas mailing add \$2.00 for each copy. Order from Tom & Sharon Mordini, 36 N. Mernitz Ave., Freeport, Illinois 61032. PHONE: 1-815-235-4407.

=====

We haven't written to the Bulletin before, so we thought it was about time.

First of all we would like to tell the world that we had our Golden Wedding Anniversary on the 26th of December, 1992 and are now looking forward to our next.

If people are coming down this way we would like to meet them; there are some good collections in Australia as Ruth Schinestuhl might verify, "Hi Ruth".

We own 6 Fir Cones tumblers in blue and would like to buy or swap for the pitcher, PLEASE. We would like to know more about the Rising Sun pattern. There was a lot of U.S. made glass sent to Australia, but there was never any doubt as to where it was made. I think the same goes for other glass found in other countries like Argentina. I think it is about time that the birth place of the Rising Sun pattern was cleared up. I think there are only 2 complete water sets in Australia. Has there been a count among members in America? After all, this pattern was among the rarities and in my opinion deserves that spot. I think I can say for all Australian members to all American members that we wish them all the best of luck and health in the New Year. Happy birthday Carol.

DICK & JOAN BIRD
VICTORIA, AUSTRALIA

=====

WE HAVE LOST ANOTHER CARNIVAL GLASS FRIEND

The Carnival Glass world lost another good friend on January 7, 1993, when Gene Fox of Dallas, Texas passed away after her struggle with cancer. She is survived by her husband Clint Fox.

After a hospital stay in November, she was able to come home and spend the Holidays with her husband and two daughters. My last conversation with her, naturally, was about Carnival Glass. I will always remember her as my source of information when I needed to identify a piece.

The Texas Club will miss her but in our hearts we also remember her for her support of our Club and as a kind person.

RICHARD CINCLAIR, PRESIDENT
TEXAS CARNIVAL GLASS CLUB

=====

Our December 6, 1992 meeting was a real treat. Smokey Cloud came all the way from Michigan to give a Program on his small plate collection. It was also our Christmas meeting. We had many gifts to raffle. Dean & Diane Fry had a silent auction with three beautiful Carnival pieces. The Club made \$135.00 due to their generosity!

It was a fun meeting. We also held elections for Secretary and Vice-President. A big THANK YOU to the out-going officers. Kathy Harris has been an officer since she joined the Club as a charter member. She deserves a break. Charles Hof was really fortunate. Gail, our President, said Charles should thank her for never missing a meeting. Thanks to both of you. Our new Secretary is Bonny Cook and Gary Lickver is our new Vice-President. Welcome aboard! We were reminded that it is dues time again already. As usual, we had many desirable pieces of Carnival for sale.

After a filling lunch we finally got to the Program. There were two tables with many gorgeous plates on display. I listed 45 different patterns and many colors. Smokey started with stemmed plates and odd shapes. An unusual Lotus & Grape was first, a Millersburg handled Holly - is it a plate? Then Grape Wreath, (N) Peacock & Urn, blue Fruits & Flowers, Pine Cone (larger size), marigold Double Open Edge, blue Horse Medallion, green Cherry Chain, and Lions plates were some of the hard to find and rare. I purposely left out one. Smokey was asked which one was his favorite? He said he liked the Peacocks BUT the ice blue MIRRORED LOTUS (only one known) was his favorite! I could see why. Smokey said he started collecting about 1978. He does collect other shapes. I'm sure we all left with more knowledge about the small plates after his informative Program. Thank you Smokey.

Gail announced that we'll have Eleanor and Jack Hamilton from Texas to give a Program on miniatures for the March, 1993 meeting.

Wish everyone Happy Holidays and a Prosperous New Year!

HAPPY HUNTING
ARDONNA BUCHER

=====

CARNIVAL GLASS FOR SALE

Stephen R. Kocsis, 3493 Wolfcreek Road, Cuba, New York 14727
PHONE: 1-716-968-2499

PM	EI Strawberry bowl, Basketweave exterior	59.00
A	EI Grape & Cable hat	55.00
M	EI Beaded Cable rose bowl	50.00
G	Imperial Star of David bowl, radium	69.00
G	EI Strawberry bowl, plain exterior, P.C.E., ELECTRIC	110.00
M	EI Good Luck bowl, Basketweave exterior	125.00
M	EI Fentons Two Row Open Edge basket, 6", square	29.00
P	EI Three Fruits P.C.E. bowl, Basketweave exterior	75.00
*	EI *Teal Fine Rib J.I.P. vase	110.00
P	EI Fruits & Flowers berry bowl, Basketweave exterior	55.00

Isabell Aldridge, 6407 Rushmore Drive, Sacramento, California 95842
PHONE: 1-916-331-4290

M	Grapevine Lattice tumbler	32.50
M	Fine Rib vase 17 3/4"	65.00
M	Rays 3 in 1 edge bowl, bright blues and pinks	45.00
M	Windflower nappy, small base chip	35.00
M	Peacock Tail 8 1/2" bowl	22.50
M	Lustre Rose tumbler	22.50
M	Imperial Grape decanter w/o stopper	30.00
M	Beaded Bullseye vase 13 1/2", unusually tall for this vase	65.00
B	Rustic 9" vase	45.00
M	Panther berry bowl	65.00

Dave D. Ackerman, 4677 Kennebec Drive, Cass City, Michigan 48726
PHONE: 1-517-872-2023

PO	Soutache 9" 6 ruffled bowl, dome footed, dark	145.00
CB	Lattice & Grape tumblers, have 5, much electric, \$35.00 each or all for	170.00
M	Hobstar Band pitcher, dark, especially nice	260.00
W	2 Tulips electric shades, etched like, each \$8.00 or both	15.00
M	Dugan Vintage 9 1/2" dome footed bowl	65.00
M	Harvest Flower tumbler	70.00
CB	Grape & Gothic Arches butter bottom	50.00
M	Imperial Grape wine glass	20.00
P	Peacock at the Fountain tumbler, electric	60.00
M	Inverted Feather parfait compote, small flake on base	28.00

CARNIVAL GLASS FOR SALE

Robert & Sherry Cyza, 7426 Oakland Ave. So., Richfield, Minnesota 55423
PHONE: 1-612-869-6980

IG	EI Windflower nappy, looks like a gravy boat with great color	350.00
PO	EI Fanciful I.C.S. bowl	115.00
W	EI Apple Blossom Twigs ruffled bowl	105.00
W	EI Six Petals ruffled bowl	80.00
BO	GI File & Fan stemmed compote	125.00
SM	EI Poppy Show vase, gorgeous electric blue highlights	3,300.00
M	EI Fruits & Flowers bon bon	40.00
M	EI Lattice & Grape tumbler	28.00
RED	EI Open Edge Basket, 2 sides up, some silver irid., but cherry red from top to bottom	315.00
	EI Turban hatpin, blue iridescence	195.00

Ray Hitchcock, R.R. #1, Box 301, Winterset, Iowa 50273
PHONE: 1-515-462-2074

P	Sunflower pin tray	400.00
SM	Zipper Loop 8 3/4" lamp, SUPER, tiny nick	550.00
G	(N) Nippon bowl, 8 ruffles, Basketweave exterior, nice	250.00
M	(N) Grape & Cable hat pin holder, OUTSTANDING	250.00
M	(N) Three Fruits plate, Basketweave ext., nice as they come	150.00
*	*Teal Waffle Block handled basket	150.00
RED	Colonial? candlesticks, flat base blake on one, the pair	250.00
M	Many Stars 3 in 1 edge bowl, satin & nice	325.00
M	Mlsbg. Vintage I.C.S. bowl, Hobnail ext. <u>tiny</u> nick, so	350.00

Karen E. Skinner, 108 Riverwoods, E. Alton, Illinois 62024
PHONE: 1-618-259-1373 after 6:00 P.M. and after February 20, 1993

*	*Cranberry Encrusted Vine tumbler	20.00
M	Golden Harvest stopper	20.00
*	*Cranberry Golden Holly depression era tumbler	12.50
M	Jeanette ice cream soda glass, old Jeanette logo in base	22.50
M	Late Waterlily tumbler, some wear	18.00
M	Long Hobstar fruit bowl	45.00
AMB	Pansy pickle dish, base roughness	22.50
M	Star Medallion rose bowl, cracked	17.50
PM	Star & File celery vase	35.00
M	Waterlily & Cattails Variant tumbler	30.00

CARNIVAL GLASS FOR SALE

Dick Wetherbee, 847 Stafford Street, Rochdale, Massachusetts 01542
PHONE: 1-508-892-4420

B	EI Strawberry 5" bon bon, not easily found, real pretty	75.00
M	EI Fantail/Butterfly & Berry 9" claw ftd. bowl, SUPER	70.00
A	EI Imperial Grape 11" master berry bowl, OUTSTANDING	95.00
B	EI Blackberry Spray 5" ruffled hat, 4 sprays, a beauty	35.00
M	EI Windflower 6" tri-shaped nappy, great color	35.00
G	EI Waterlily 6" fluted 3 ftd. sauce dish, RARE COLOR, cute	135.00
P	EI (N) Fruits & Flowers 6" ruffled sauce dishes, ea. \$38 or 3 for	100.00
PO	EI Stippled Single Flower 7½" handgrip plate, a beauty	65.00
B	EI Fenton Acorns 7" slight ruffled bowl, GORGEOUS	55.00
M	EI Grape & Cable 6" 2 handled bon bon, a real beauty	70.00

Harold R. Wagner, 5951 Fredericksburg Road, Wooster, Ohio 44691
PHONE: 1-216-264-3703 after 5:00 P.M.

RED GI	Open Edge Basket, small	275.00
P	EI Beaded Cable rose bowl, OUTSTANDING	165.00
M	GI Grape & Cable orange bowl	125.00
A	EI Scroll Embossed compote, miniature	325.00
IB	EI Acorn Burrs punch cup, dated 1914	125.00
G	EI Millersburg Peacock & Urn 10" ice cream bowl	875.00
G	EI Millersburg Peacock Tail Variet compote	85.00
M	EI Kittens bowl, 4 sides up	175.00
M	GI Millersburg Trout & Fly bowl	425.00
M	EI Millersburg Hanging Cherries spooner	95.00

Don Donovan, R.R. #1, Selkirk, Ontario, Canada NOA 1PO
PHONE: 1-416-776-2453

P	Butterfly & Tulip square bowl, rim pinhead, EXCEL. IRID.	1,550.00
P	Flying Bat hatpin, SUPER NICE	275.00
W	Poppy Show bowl	375.00
M	Wreath of Roses rose bowl, dark & pretty	75.00
CLM	Frosted Block large rose bowl	65.00
RED	Persian Medallion bon bon, cherry red & excellent irid.	950.00
G	Sailboat sauce round, HAS OUTSTANDING IRIDESCENCE	275.00
A	Sailboat sauce, ruffled	75.00
AO	Dragon & Lotus ruffled bowl, ex. color, smooth points & pin-head	950.00
W	Hearts & Flowers compote, extra pretty	165.00

CARNIVAL GLASS FOR SALE

Joseph Mello, 535 Fish Road, Tiverton, Rhode Island 02878
PHONE: 1-401-624-2174

A	EI Fluffy Peacock tumblers, have 6, nice & scarce, all for	425.00
M	EI Inverted Feather parfait, nice	90.00
M	EI Grape & Cable berry set, complete; with Thumbprints	195.00
P	EI Grape & Cable butter dish base	65.00
M	EI Flowering Dill J.I.P. hat, nice	25.00
G	EI GRape & Cable hat pin holder	275.00
B	EI Dragon & Lotus bowl	65.00
G	EI Oriental Poppy tumbler	65.00
M	EI Raspberry milk pitcher	100.00
W	EI Dahlia sugar, no cover	45.00

Don Harris, 527 Lavina Drive, Mechanicsburg, Pennsylvania 17055
PHONE: 1-717-790-0412 LAY-A-WAY AVAILABLE

A	EI Isaac Benesch & Sons advertising bowl	400.00
A	EI Peacock & Urn 6" plate, Millersburg	825.00
AO	EI Rose Show 9" ruffled bowl	800.00
B	EI Peacock at the Fountain 5 piece water set	500.00
G	EI Bushel Basket 8 sided, (N), SUPER	500.00
G	EI Peacocks on the Fence 9" ruffled bowl	1,150.00
*	EI *Horehound Bushel Basket, round, (N)	385.00
IB	EI Embroidered Mums 9" ruffled bowl	925.00
IG	EI Peacocks on the Fence 9" ruffled bowl	1,400.00
P	EI Poppy Show vase, GORGEOUS	2,150.00

Ted L. Sheibley, 5071 Bass Lake Dr. Apt. 203, Harrisburg, Pennsylvania 17111
PHONE: 1-717-564-9364

B	EI Good Luck 9" ruffled bowl, Ribbed exterior	250.00
B	EI Holly 9" flat plate	325.00
B	EI Orange Tree 9" flat plate	325.00
B	EI Peacock & Urn 9" ruffled bowl, Fenton	175.00
G	EI Peacocks on the Fence 9" plate (N)	1,300.00
*	EI *Horehound Good Luck 9" ruffled bowl	585.00
IB	EI Peacocks on the Fence 9" plate (N)	1,750.00
IG	EI Two Row Open Edge Basket, 6 ruffles	240.00
M	EI Diamond & Sunburst wine	25.00
P	EI Vintage wine	30.00

CARNIVAL GLASS FOR SALE

Lee & Phyllis Bryant, 11645 n.w. Winchester Road, Decatur, Indiana 46733
PHONE: 1-219-639-3415

G	Butterfly bon bon (N), nice iridescence	75.00
P	Imperial Grape 9" ruffled bowl, SUPER LITE BLUE IRID.	100.00
M	Three Fruits 9" ruffled bowl, Basketweave ext. good dark color	60.00
M	Nippon 8½" ruffled bowl, Basketweave ext. good dark color	70.00
M	Three Fruits bowl, stippled, ftd., Meander, RARE, SUPER COLOR	90.00
BO	Scales 8½" ruffled bowl, good opal	110.00
G	Lotus & Grape bon bon, scarce pattern	90.00
M	Blackberry Wreath 9½" I.C.S. bowl, radium, SUPER BOWL	80.00
M	Butterfly & Tulip 9" bowl, good color & iridescence	325.00
M	Strawberry 8½" P.C.E. bowl, Basketweave ext. nice	45.00

Gerald M. Hess, 500 Woodland Trail, Argos, Indiana 46501
PHONE: 1-219-892-6193

M	GI Daisy & Plume single footed rose bowl, crimped top	40.00
M	EI Floral & Grape tumbler, Dugan	25.00
G	EI Louisa rose bowl	50.00
M	EI Windmill & Mums 9" bowl, 8 ruffles	60.00
B	EI Grape & Cable spatula footed 7" bowl	47.50
CLM	GI Frosted Block 5½" bowl, rather deep	35.00
A	GI Coin Dot 7½" bowl	35.00
G	EI Heart & Vine 9" fluted bowl	60.00
G	EI Butterfly & Fern tumbler, small base repair	30.00
M	EI Scale Band tumbler	20.00

Ken & Jo Young, 108 Navarre Street, Gulf Breeze, Florida 32561
PHONE: 1-904-932-4064

G	EI Flute toothpick	75.00
PO	GI Four Flowers chop plate	250.00
*	*Red flash Shriner's wine, St. Paul, 1908	140.00
AMB	EI Pansy relish dish	55.00
B	EI Butterfly & Berry tumblers, have 4, each	50.00
A	EI Acorn Burrs tumblers, have 4, each	55.00
B	EI Peacock at the Fountain tumbler	55.00
B	EI Pond Lily bon bon	70.00
A	EI Singing Birds mug	85.00
M	EI Stag & Holly 11" I.C.S. footed bowl	150.00

CARNIVAL GLASS FOR SALE

Jeanette M. Blackburn, 3975 Dora Wood Drive, Mt. Dora, Florida 32757
PHONE: 1-904-383-7579

DM	EI Three Fruits 9" bowl, P.C.E. (N)	45.00
B	EI Illusion 2 handled bon bon	75.00
PO	EI Nautilus, script signed, heat check in base	175.00
M	EI Carolina Dogwood bowl	55.00
B	EI Holly bowl (large), green iridescence, extra nice	65.00
M	EI Cosmos Variant large bowl 9 3/4"	40.00
B	EI Little Flowers 5" bowl	40.00
M	EI Grape Leaves (N) 9" bowl	50.00
G	EI Three Fruits bowl, fluted (N) 9"	50.00
M	EI Rays & Ribbons	55.00

Hubert & Lucille Shelton, 6298 Boiling Springs Rd., Munfordville, KY 42765
PHONE: 1-502-528-5893

M	EI Flute water pitcher, rare & beautiful, 6 matching goblets	650.00
M	EI Goblets, have 5, matching above \$30.00 ea. or all 5 for	150.00
VAS	EI Imperial Jewels pedestal plate 2" tall, 7½"	45.00
G	EI Grape & Cable butter dish (N), a beauty, MINT	175.00
M	EI Grape & Cable butter dish (N), a beauty, MINT	165.00
P	EI Grape & Cable butter dish (N), MINT, SUPER	195.00
P	EI Grape & Cable sweetmeat, pagoda top, MINT, BEAUTIFUL	250.00
CB	EI Butterfly & Berry tumbler, tiny chip inside top rim, not noticeable outside	28.00
G	EI Grape & Cable (N) punch cup, small mfg. defect	22.00
M	EI Imperial Grape wine, stippled, MINT, Rayed base	25.00

Greg Bakshas, 16783 Antioch Road, White City, Oregon 97503
PHONE: 1-503-826-1823 after 6:00 P.M.

LM	EI Peacock at the Fountain pitcher with one tumbler	220.00
W	EI Hearts & Flowers compote	160.00
DM	EI Thin Rib and Drape 5¼" vase	75.00
W	EI Leaf Rays nappy	55.00
A	EI Three Fruits ruffled bowl, Basketweave, fruits not scratched	105.00
DM	EI Panther berry bowl, small	60.00
G	EI Lustre Flute bon bon	35.00
PM	EI Beaded Cable rose bowl, NICE	110.00
A	EI Grape Wreath Variant bowl, 3 in 1	75.00
M	EI Imperial Grape wine decanter and stopper with 3 goblets	175.00

CARNIVAL GLASS FOR SALE

Jane Dinkins, 1100 Ridgeley Drive, Houston, Texas 77055
PHONE: 1-713-465-0557

SM	EI Imperial Grape twig handled cookie tray	35.00
M	EI Creamer, Heisey breakfast set	35.00
LM	EI Open sugar, Heisey breakfast set	35.00
M	EI Unshod tumbler	20.00
G	EI Grape & Cable "Old Rose Distillery" advertising plate	225.00
G	EI Cosmos I.C.S. small bowl 5 5/8" dia. Millersburg	50.00
G	EI Inverted Strawberry NEAR CUT Cambridge, 6 1/2" I.C.S. bowl. Mold roughness outside scalloped edge	45.00
M	EI Optic & Buttons 7 3/8" flat plate, small flakes off under opposite outside edges (wire holders?)	30.00
A	EI Coin Dot, stippled 8 1/8" dia. ruffled plate	70.00
CLM	EI Star Medallion chop plate, on pinkish base glass	45.00

Phil Hassenius, 1701 E. Roma, Phoenix, Arizona 85016
PHONE: 1-602-277-6306

IG	EI Nippon (N) 8 3/4" 8 ruffled bowl, perfect	800.00
M	EI Leaf & Beads rose bowl, Fancy interior, beaded top, not scalloped	85.00
G	EI Four Pillars 11" vase (N) (russet)	60.00
B	EI Diamond Point Columns 16" vase	200.00
M	EI Rustic mid-sized Variant 16" vase, 4 1/8" base, 9 hobs 9 flame points	200.00
P	EI Maple Leaf tumbler	40.00
AQ	EI Blackberry Spray hat	65.00
B	GI Feather Stitch 8 3/4" ruffled bowl	120.00

Dennis Runk, Post Office Box 235, Littlestown, Pennsylvania 17340
PHONE: 1-717-359-7205

B	EI (N) Grape & Cable stippled bon bon	110.00
VAS	EI Waterlily 5" sauce	125.00
RED	EI Waterlily 5" sauce, not cherry red	550.00
M	EI (N) Memphis punch cups, have 6, each	16.00
G	EI Butterfly & Berry master berry bowl	190.00
M	EI Fashion punch base only	24.00
AMB	GI Orange Tree standard sized mug	110.00
A	EI Twigs Beauty Bud Vase 4 1/4" high	525.00
LAV	GI Star of David dome based bowl	100.00
M	EI Crab Claw tumblers, chipped, each	8.00

CARNIVAL GLASS FOR SALE

Richard Cinclair, 3605 South Echo Trail, Plano, Texas 75023
PHONE: 1-214-596-0014

M	EI Windflower plate	90.00
G	EI Double Star tumbler	70.00
B	EI Good Luck bowl, P.C.E. & stippled	525.00
SM	EI Smooth Panels funeral vase	250.00
AO	EI Four Pillars vase, tiny bruise	80.00
G	EI Leaf & Beads rose bowl	145.00
W	EI Rustic vase	75.00
*	EI *Lime green opal Strawberry bon bon	425.00
*	EI *Reverse amberina Strawberry bon bon	400.00
W	EI Daisy & Drape vase, SUPER FROSTY	210.00

Gary Lickver, Post Office Box 1778, San Marcos, California 92069
PHONE: 1-619-744-5686 Best early or late or leave message.

B	Persian Medallion chop plate, VERY PRETTY, balanced, no silver	485.00
A	Imperial Grape bowl, SUPER BLUE IRIDESCENCE	120.00
M	Five Hearts dome footed bowl, very pretty, scarce	125.00
M	Strawberry bowl (N), GREAT COLORS	75.00
RED	Holly hat, cherry red and SUPER	470.00
RED	Plume Panels 11" vase, looks red, RARE	775.00
M	Morning Glory miniature vase	50.00
M	Fenton Peacock & Urn flat plate, BEAUTIFUL	450.00
A	Three Fruits 9" plate (N), flat & golden	135.00
B	French Knots hat, silvery	20.00

Robert C. McGuire, 2014 Meadowbrook Drive, Milan, Tennessee 38358
PHONE: 1-901-686-8091 after 6:00 P.M. E.S.T.

AMB	Open Rose 9" plate	150.00
A	Millersburg 10" Hanging Cherries I.C.S. bowl	200.00
G	(N) Grape & Cable 9" plate, smooth exterior	125.00
P	(N) Grape & Cable banana boat, excellent color	200.00
P	(N) Grape & Cable footed fruit bowl, excellent color	250.00
P	(N) Grape & Cable butter dish	150.00
M	Millersburg Little Stars bowl	75.00
PO	Raindrops dome footed bowl	75.00
M	Chrysanthemum ruffled bowl	55.00
*	*Moonstone Carolina Dogwood bowl, with opal edges	200.00

CARNIVAL GLASS FOR SALE

Pam MacDonald, Post Office Box 3180, North Conway, New Hampshire 03860
PHONE: 1-603-367-8077

M	Fashion water pitcher	150.00
M	Tiger Lily 5 piece water set	155.00
M	Imperial Grape water pitcher	95.00
M	Robin water pitcher	295.00
M	Octagon water pitcher	95.00
M	Poinsettia milk pitcher	95.00
M	Fans milk pitcher	75.00
M	Raspberry milk pitcher	95.00
LAV	"474" milk pitcher (has crack so)	125.00
M	Star & File milk pitcher	55.00

Dick Hatscher, 142 Walnut Hill Road, Bethel, Connecticut 06801
PHONE: 1-203-743-1468

M	EI Millersburg Hobnail cuspidor, small crack & chip so	68.00
M	EI Strawberry plate, SUPER	129.00
M	EI Peacock at the Fountain 3 footed orange bowl	275.00
B	EI Dragon & Lotus I.C.S. bowl	68.00
B	EI Captive Rose 3 in 1 edge bowl	68.00
*	EI *Light amethyst Flute toothpick	58.00
P	EI Strawberry P.C.E. bowl, Basketweave exterior	78.00
P	EI Grape & Cable plate, Basketweave exterior	148.00
P	EI (N) Thin Rib mid-sized funeral vase	98.00
P	EI Leaf Rays ruffled nappy	45.00
	<u>S.A.S.E. FOR LIST</u>	

John Boyd, 720 Gran Paseo Drive, Orlando, Florida 32825
PHONE: 1-407-275-1608

A	Courthouse bowl, ruffled, with excellent iridescence	550.00
W	Hearts & Flowers 8½" 8 ruffled bowl, very nice with delicate pastel iridescence	225.00

Barbara Barker, Rt. #3, Box 163BB, Savannah, Missouri 64485

CARNIVAL GLASS AND HARTUNG PATTERN BOOKS FOR SALE.
S.A.S.E. FOR LIST.

CARNIVAL GLASS FOR SALE

Maurice "Moe" Myers, P. O. Box 3180, North Conway, New Hampshire 03860
PHONE: 1-603-367-8077

M	Ripple vase	45.00
G	Ripple vase	55.00
P	Ripple vase	75.00
M	Butterfly & Berry vase	50.00
G	Rustic vase	75.00
M	Beaded Bullseye vase	50.00
P	Beaded Bullseye vase	100.00
G	Diamond Points vase	60.00
G	Diamond & Rib vase	55.00
*	*V C R 2 HOUR TAPE OF 170 CARNIVAL GLASS VASE PATTERNS IN COLOR AS AN I.D. GUIDE FOR COLLECTORS, INCLUDES SHIPPING & HANDLING.	25.00

Flyn Willis, 211 Clem Street, Ottumwa, Iowa 52501
PHONE: 1-515-684-4205

M	EI Wild Strawberry handgrip plate	135.00
M	EI Grape & Cable handgrip plate	90.00
P	EI Dugans Cherries 6" tight crimped edge plate	150.00
P	EI Nautilus	225.00
DM	EI Grape & Cable plate	125.00
EB	EI Grape Arbor tumbler	125.00

Charles Perry, 8641 Lakeshore Drive, Southaven, Mississippi 38671
PHONE: 1-601-342-1694 nights

G	EI 3 Wide Panel epergne lilies, one center & 2 side, all for	145.00
AQ	EI Imperial Grape 9 3/4" berry bowl, marigold overlay on aqua base glass	75.00
*	EI *Teal Imperial Ripple 10½" vase, 3" base, tiny shallow flake inside	45.00

Bill Griffith
PHONE: 1-414-564-2732

IG	EI Pony bowl, perfect and gorgeous	1,500.00
*	EI *Sapphire blue Fentons Acorn 6" bowl, perfect piece of glass, like new	675.00
W	EI Blackberry Spray hat, flat across the top, frosty & great color, ONE OF A KIND	800.00

CARNIVAL GLASS FOR SALE

Bernie & Myrtle Mahn, 1001 Rock Road, DeSoto, Missouri 63020
 PHONE: 1-314-586-6226

M	GI Grape & Gothic Arches creamer	45.00
M	GI Grape & Gothic Arches butter dish	115.00
A	EI Grapevine Lattice tumblers, have 6, each	50.00
M	EI Persian Medallion 6" plate	65.00
CLM	EI Star Medallion 9" plate	50.00
B	EI Orange Tree butter top	85.00
A	GI Scales 6" plate	45.00
M	EI Stag & Holly 11" 3 ftd. shallow bowl, SUPER COLOR	125.00
M	EI Whirling Leaves 9½" ruffled bowl, SUPER COLOR	110.00
AMB	EI Lustre Rose sugar lid	25.00

John Gibney, 3423 First Avenue S.W., Cedar Rapids, Iowa 52405
 PHONE: 1-319-396-7900

A	EI Singing Birds mug	95.00
B	EI Hat pin holder, SUPER (PATTERN NOT GIVEN)	285.00



CARNIVAL GLASS WANTED

Flyn Willis, 211 Clem Street, Ottumwa, Iowa 52501
 PHONE: 1-515-684-4205

ANY Persian Garden small plates in amethyst, purple, blue or green

Maurice "Moe" Myers, P. O. Box 3180, North Conway, New Hampshire 03860
 PHONE: 1-603-367-8077 I WANT THE FOLLOWING VASES IN ANY COLOR:

- Western Thistle vase
- Star & Fan vase
- Maypole vase
- Rose Garden vase
- Queens vase
- Zippered Heart vase
- Butterfly & Corn vase
- Fine Prisms & Diamonds vase

Gary Lickver, Post Office Box 1778, San Marcos, California 92069
 PHONE: 1-619-744-5686 Best early or late or leave message.

- G Peacock at the Fountain master berry
- B Orange Tree punch base
- G Wreath of Roses punch base, chips O.K.
- A Wreath of Roses punch base, need 2

Steven & Phyllis Long, 2441 E. Edison Road, Sunnyside, Washington 98944
 PHONE: 1-509-837-3747

- G Hearts & Flowers P.C.E. bowl
- IG Grape & Cable powder jar lid
- B/P Peacock at the Fountain compote
- ANY Hearts & Flowers plates

Harold R. Wagner, 5951 Fredericksburg Road, Wooster, Ohio 44691
 PHONE: 1-216-264-3703 after 5:00 P.M.

- G Millersburg Diamond punch bowl ONLY, or will sell base
- G Millersburg Hobnail butter bottom ONLY, or will sell base
- A Millersburg Country Kitchen butter bottom, or will sell top
- M Millersburg Peacock 6" ice cream bowl

CARNIVAL GLASS WANTED

Pam MacDonald, Post Office Box 3180, North Conway, New Hampshire 03860
PHONE: 1-603-367-8077

M/P/G Covers for Grape & Cable powder jars

Richard Cinclair, 3605 South Echo Trail, Plano, Texas 75023
PHONE: 1-214-596-0014

M Poppy Show bowl
B Poppy Show bowl
M Rose Show bowl
B Rose Show bowl
ANY Scarab Shell hat pin
ANY Owl hat pin
M Acorn Burrs pitcher, must be dark
W Grape Arbor tumbler
M Rose Show Variant plate or bowl
B Kittens saucer

Clarence Cheek, 3031 Mebane Oaks Road, Mebane, North Carolina 27302
PHONE: 1-919-563-6581

W Wishbone epergne lily
P Wishbone epergne base

Mrs. L. G. Matthew, Sr., 707 East Hilltop Drive, Rogers, Arkansas 72756
PHONE: 1-501-636-2917

DM Fashion water tumblers, need 2
M Orange Tree punch cups, need 2

Harold L. Fortney, 910 Pennsylvania Apt. 908, Kansas City, Missouri 64105
PHONE: 1-816-421-4169

P Stopper for Imperial Grape decanter
RED Stopper for 1976 H.O.A.C.G.A. Souvenir Decanter
IB (N) Thin Rib vase
AO (N) Drapery vase, small damage O.K.
TEAL (N) Diamond Point vase
G Butterfly & Berry vase
ANY Unusual color Fenton Fine Rib vase

CARNIVAL GLASS WANTED

Rod Dow, Post Office Box 161, North Conway, New Hampshire 03860
PHONE: 1-603-356-9177

IG Grape & Cable (N) powder jar cover, PERFECT ONLY

James M. Bower, Post office Box 504, Cassville, Missouri 65625
PHONE: 1-417-847-2182 after 5:00 P.M. I WOULD LIKE THE FOLLOWING FENTON
PATTERNS:

Peacock Tail
Scotch Thistle
Thistle
Iris
Little Flowers

Delores Becicka, 67 Devonwood Ave. S.W., Cedar Rapids, Iowa 52404

A EI Little Stars 7" or 8" bowl
CLEAR Shriners Champagne 1910

Ken & Jo Young, 108 Navarre Street, Gulf Breeze, Florida 32561
PHONE: 1-904-932-4064

M EI Captive Rose 9" flat plate
B EI Hearts & Flowers ruffled bowl
LAV EI Good Luck ruffled bowl
A EI Leaf Chain 9" flat plate

George Bond, 720 Gran Paseo Drive, Orlando, Florida 32825
PHONE: 1-407-382-5681

M EI Peacock at the Fountain butter bottom
B EI Orange Tree butter bottom
M EI Orange Tree butter bottom
P/A EI Grape & Cable humidor lid only, NO DAMAGE
W EI Orange Tree butter top
M EI Butterfly & Berry butter top
A/P EI Acorn Burrs punch bowl top
G EI Wreath of Roses punch cups
G EI Wreath of Roses punch bowl top

CARNIVAL GLASS WANTED

Geneva Nickerson, 906 - 1st Ave. South, Coquille, Oregon 97423
PHONE: 1-503-396-3748

ANY Birds & Cherries pieces

Dick Strever, 1610 East McFadden, Santa Ana, California 92705
PHONE: 1-714-972-2334

RED Butterfly & Berry flower vase to replace mine lost in fire.

Joseph A. Mello, 535 Fish Road, Tiverton, Rhode Island 02878
PHONE: 1-401-624-2174

M Windmill tumblers, need 2
B Panelled Dandelion tumblers, need 5
P Vineyard tumblers, need 4
B Peacock at the Fountain punch cups, need 2
M Acorn Burrs punch bowl top
A/P Acorn Burrs spooner
B Lattice & Daisy pitcher
B Peacock at the Fountain base
P Memphis punch bowl top

Lynn Lewis, Post office Box 1782, Richland, Washington 99352
PHONE: 1-509-627-3702

B LION RUFFLED BOWL, DAMAGE O.K.
B/G/A HORSE MEDALLION RUFFLED COLLAR BASED BOWL, DAMAGED O.K.
DAMAGED, CHIPPED, CRACKED, GLUED TOGETHER CARNIVAL,
REASONABLY PRICED.

Jerry & Doris Rissmiller, Rt. #2, Post Office Box 172, Elverson, PA 19520
PHONE: 1-215-286-9879

G Wreath of Roses punch bowl base
G Wreath of Roses cups, Persian Medallion interior
P Broken Arches punch bowl base
MUST BE A GOOD ONE.

CARNIVAL GLASS WANTED

Bill & Mary McNamara, 2 First Avenue, Sandgate, Brisbane 4017, Australia
PHONE: (07) 269-1640

A Stork in Rushes, straight side, PUNCH BOWL TOP
M "474" PUNCH BOWL TOP
M Peacock at the Fountain PUNCH BOWL TOP
G Acorn Burrs PUNCH BOWL TOP
M Memphis PUNCH BOWL TOP
M Fashion PUNCH BOWL TOP
P Acorn Burrs PUNCH BOWL TOP
M Memphis PUNCH BOWL TOP
P Imperial Grape PUNCH BOWL TOP
ANY S-Repeat, some damage, but no cracks, PUNCH BOWL TOP

Jim Nicholls, 15 Fallowfield Grove, Padgate, Warrington, England WA2 0QQ

I am most interested in hopefully purchasing from someone a set of or part set of Presznick Carnival Glass Pattern Books, etc. I know they are hard to find, but I'm only going to get them from the States.

ANY GLASS FOR SALE LIST FROM SELLERS, ETC.

Dawn Depping, 2108 59th Street, Des Moines, Iowa 50322
PHONE: 1-515-255-7859

M Orange Tree powder jar LID ONLY
G Pansy creamer

Chuck & Marge Kremer, 430 Rose Avenue, New Haven, Indiana 46774
PHONE: 1-219-749-4909

A Lustre Rose sugar and creamer
M Field Thistle butter
A Inverted Thistle butter
B Peacock at the Fountain butter and sugar

Glen Fortney, Post Office Box 303, Buckner, Missouri 64015
PHONE: 1-816-249-5208

P Imperial Grape wines, need 2

CARNIVAL GLASS WANTED

Ed Kramer, 4305 W. 78th Street, Prairie Village, Kansas 66208
PHONE: 1-913-642-3587

- M EI Imperial Grape water carafe
 - M EI Fenton master nut cup
 - RED EI Butterfly & Berry vase, some damage acceptable
 - M EI Soda Gold, Cut & Oval, Imperial Six-Sided candlesticks (pairs only)
 - M EI "474" wines, cordials
 - M EI "474" vase
-

