

# HOACGA

Heart of America Carnival Glass Assoc. Inc.

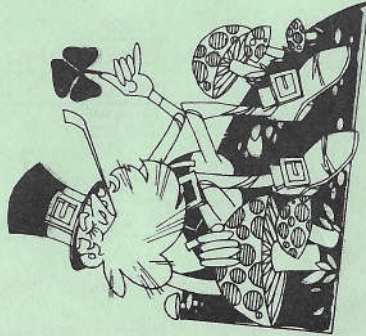
**RETURN ADDRESS**

H.O.A.C.G.A.  
Jackie Fortney  
P.O. Box 303  
Buckner, MO 64016

**March 1993**

**FIRST CLASS MAIL**

FIRST-CLASS MAIL  
U.S. POSTAGE  
PAID  
Buckner, MO  
Permit No. 03



*See  
bon bon  
section in  
color.  
Diane Fry is a HOACGA  
member and an  
expert on Bon Bons.  
Ed Kramer  
Jc.*

~~Handwritten scribble~~



HEART OF AMERICA CARNIVAL GLASS ASSOC.  
BOARD OF DIRECTORS, 1993

---

PRESIDENT.....Robert Grissom  
7900 Crescent  
Raytown, Missouri 64138  
1-816-356-5320

VICE-PRESIDENT.....Daryl Strohm  
8904 E. 29th Street  
Kansas City, Missouri 64129  
1-816-252-8137

TREASURER.....Doug Peters  
121 Kel Court  
Blue Springs, Missouri 64015  
1-816-229-6138

SECRETARY.....Ed Kramer  
4305 W. 78th Street  
Prairie Village, Kansas 66208  
1-913-642-3587

BULLETIN SECRETARY.....Jackie Fortney  
Post Office Box 303  
Buckner, Missouri 64016  
1-816-249-5208

---

The Bulletin is published the 15th of each month. Membership year begins with the month your dues are paid. DUES ARE \$25.00, PER COUPLE OR SINGLE, U. S. & CANADA, \$40.00 FOREIGN. All monetary figures are quoted in U. S. dollars.

Please send all items for the Bulletin, i.e., glass for sale, glass wanted, articles, information, etc., to the Bulletin Secretary, whose address appears above. Please have all Bulletin material sent to us so that we receive it by the 28th of each month.

Please send checks for dues and books, and any address changes to the Treasurer whose address appears above.

We thank you so much for your cooperation in these matters.

---

2

REGULAR H.O.A.C.G.A. MONTHLY MEETING FOR MARCH, 1993

The March, 1993 regular monthly meeting of the Heart of America Carnival Glass Association will be on Sunday, March 28, 1993 at 2:00 P.M., at the Raytown City Hall.

On February 28, 1993 the meeting was attended by 15 people. Several regulars were in St. Louis, Missouri at a Woody auction. Ice cream shapes were discussed and over a dozen varied patterns and colors were discussed. Jo Ann Ball won the door prize, a pink Hobnail ruffled dish.

Please plan to attend the March 28 meeting. We will discuss flower patterns of any color. This is the last meeting before the April Convention, so be there to get any late breaking news.

Also, while it may sound like a broken record, the more members and friends who attend, the more lively the discussions and the more enjoyable it is for everyone. See you there!

ED KRAMER  
SECRETARY,  
H.O.A.C.G.A.

=====

FROM THE EDITOR:

It has come to our attention that one of our members, Mr. David Darby of Waverly, Missouri is ill and at home.

You can send your cards and get well wishes to him at Rt. #1, Box 223-D Broad St., Waverly, Missouri 64096.

GET WELL SOON!

=====





Dear Fellow Members:

As I was preparing my Program on Carnival Glass Small Plates for the Convention, I realized that I do not have every pattern in my collection. It would be all but impossible to get every one known.

So, I know that several of you have some that I don't have and I hope you will bring them to the Convention and make the Program a great one and share them with us. If you have something that you feel is a rare pattern or color, I would certainly be interested in seeing it even if we have one. Betty is not planning on joining me, so I will have to find a suitable replacement.

Some of the patterns that I don't have are: Lions, Two Row Open Edge, Bells & Beads, Millersburg Blackberry, Cosmos, Hanging Cherries, Palm Beach, Peacock Tail and Northwoods Peacock & Urn, Scroll Embossed and Lattice & Points. Also the commeratives, Indiana Soldiers and Sailors and the Indianapolis Soldiers and Sailors.

I'm looking forward to a great Convention and hope to see all of you there.

SMOKEY CLOUD

=====

NEWS FROM OUR MEMBERS

Dear Mrs. Fortney:

After reading the very informative Pictorial Pattern Parade #168 about rose bowls, I decided to take a closer look at mine. I have 3 Fine Cut & Roses rose bowls, one in marigold, one in purple and one in green. Low and behold! The green one is a Varient!

I had purchased this in 1982 from Palmer Welch of Scotia, New York. One foot has a small sliver off it that is very smooth. It's hardly noticeable. Now, being these are quite rare, I am wondering what the value is. The coloring is lovely. It has a satin looking finish.

Because of the article by Mr. and Mrs. Britt I know I have a good piece of glass. Many thanks to them. I always look forward to my monthly issue of H.O.A.C.G.A. I wish all of you a Happy New Year.

PAULINE ROBERTS  
CHAMPLAIN, NEW YORK

WEDNESDAY, APRIL 21

2:00 P.M. to 5:00 P.M.....Registration & Hospitality Room  
PARTY DECK

THURSDAY, APRIL 22

8:00 A.M. to 12:00 P.M.....Registration - PARTY DECK  
3:00 P.M.....Educational Program "Two Flowers"  
Bob & Betty Stremming,  
PRESIDENTS ROOM  
7:00 P.M.....Educational Program "Small Plates"  
Smokey & Betty Cloud,  
PRESIDENTS ROOM  
8:30 P.M.....Hospitality Room - Pie & Coffee  
PARTY DECK

FRIDAY, APRIL 23

8:00 A.M. to 9:30 A.M.....Registration - PARTY DECK  
10:00 A.M.....Educational Program "Blue Carnival"  
Richard & Carol Cinclair,  
PRESIDENTS ROOM  
12:30 P.M.....Luncheon - Honoring John & Lucile  
Britt & Frank Fenton - BALLROOM  
(\$13.00 per person)  
2:00 P.M.....Annual Business Meeting - BALLROOM  
(Following Luncheon)  
3:00 P.M. to 5:00 P.M.....Room Display Judging  
Please have displays available  
for judging.  
6:00 P.M.....Auction Glass viewing - BALLROOM

SATURDAY, APRIL 24

7:00 A.M.....View Auction Glass - BALLROOM  
8:00 A.M. to 9:00 A.M.....Registration - PARTY DECK  
9:30 A.M.....Auction - Tom Burns Auction Service,  
BALLROOM  
6:30 P.M.....Banquet - BALLROOM  
(Pork Loin Dinner \$17.00 per person)  
Guest Speaker - Tom & Sharon Mordini  
Whimsey Auction

DRAWING FOR ORANGE TREE HATPIN HOLDERS - BALLROOM

LL

5



SUNDAY, APRIL 25

7:00 A.M. to 9:30 A.M.....Farwell Breakfast - BALLROOM

=====

1993 H.O.A.C.G.A. CONVENTION - 20TH ANNIVERSARY

The 1993 H.O.A.C.G.A. Convention will be April 21, 22, 23, 24 & 25, 1993 at the Holiday Inn, I-35 and 95th Street, Lenexa, Kansas (same location as previous years). You may make your Motel reservations by calling the Holiday Inn at 913-888-6670 or their toll-free number 800-527-0582. The room rate is \$57.00 per day, plus tax. The special room rate is for those members attending the Convention. A member must register to receive the special rate. Please do not wait until the last day to make your reservations. WHEN MAKING YOUR RESERVATION, PLEASE MENTION THAT YOU ARE WITH THE H.O.A.C.G.A. CONVENTION. We would also like to remind you to send in your Convention Registration early, as this greatly reduces a lot of work during Registration and also saves you a lot of time.

C O N V E N T I O N    H I G H L I G H T S

SOUVENIR PLATE

This year will mark our 20th Convention. To commemorate this anniversary, we will have a small "Good Luck Plate" made in red. The price will be \$42.50 plus \$2.50 shipping. There will be approximately 250 plate available. An order form is in this Bulletin.

AWARD LUNCHEON

We will be honoring John & Lucile Britt and Frank Fenton at a Luncheon on April 23rd, for their contributions to Carnival Glass Collecting. H.O.A.C.G.A. will initiate an annual award named the "Britt Award for Excellence in Carnival Glass" to be given to a member each year. This first award will be given to John & Lucile Britt and Frank Fenton. Luncheon will begin at 12:30 P.M., the cost is \$13.00 per person. The Annual Meeting will follow, immediately after the Luncheon.

RAFFLE

This year we have selected three Orange Tree Hat Pin Holders as our raffle prizes. The colors Green, Blue and Marigold will be drawn in that order, therefore we will have three winners. Twelve raffle tickets were

enclosed in your Convention Packet. Tickets are \$1.00 each or all 12 tickets for \$10.00. Please complete the ticket stubs and return them completed along with your money to the Secretary:

Edward Kramer  
4305 W. 78th Street  
Prairie Village, KS 66208

The raffle drawing will be held April 24th, during the Convention Banquet. You do not need to be present to win. Winners will be notified.

CONVENTION BANQUET

By Saturday evening, we will probably be saturated with glass and will be ready to enjoy a good meal, a casual visit with friends and enjoy an opportunity to listen to an informative talk by our Banquet Speakers Tom & Sharon Mordini.

Tom is past President of Lincoln Land and is presently their Bulletin Secretary. Tom & Sharon publish an annual Auction Price Guide and they have been active in Carnival Glass collecting for several years.

The Banquet dinner begins at 6:30 P.M. on April 24, the cost is \$17.00 per person. The drawing for the raffle prizes and Whimsy Auction will begin after Tom & Sharon Mordini's Presentation.

FARWELL BREAKFAST

Sunday morning breakfast will be served starting at 7:00 A.M., so everyone can get an early start back home. The charge for the breakfast is \$2.50 per person.

WE ARE LOOKING FORWARD TO SEEING YOU AT THE CONVENTION!

=====



CONVENTION REGISTRATION		\$ 5.00	_____
APRIL 23 LUNCHEON 12:30 P.M.			
\$13.00 PER PERSON	_____ @ \$13.00		_____
APRIL 24 BANQUET 6:30 P.M.			
\$17.00 PER PERSON	_____ @ \$17.00		_____
APRIL 25 BREAKFAST 7:00 A.M.			
\$2.50 PER PERSON	_____ @ \$ 2.50		_____
MEMBERSHIP DUES RENEWAL		\$25.00	_____
H.O.A.C.G.A. COMPOTE INSERT	_____ @ \$ 8.00		_____
IF MAILING, INCLUDE \$1.00 SHIPPING			_____
			=====

NAME: \_\_\_\_\_  
 ADDRESS: \_\_\_\_\_  
 CITY, STATE, ZIP: \_\_\_\_\_

1993 H.O.A.C.G.A. SOUVENIR ORDER FORM  
20TH ANNIVERSARY SOUVENIR

RED 6" "GOOD LUCK PLATE"	_____ @ \$42.50 each	_____
	PLUS \$2.50 EACH SHIPPING	_____
	TOTAL	_____

NAME: \_\_\_\_\_  
 ADDRESS: \_\_\_\_\_  
 CITY, STATE, ZIP: \_\_\_\_\_  
 PLEASE MARK IF PICKING UP AT CONVENTION \_\_\_\_\_

For all of the above, make checks payable to H.O.A.C.G.A. and send orders and checks to:

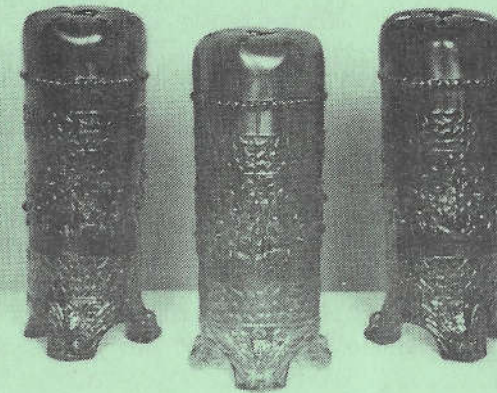
DOUG PETERS  
 121 Kel Court  
 Blue Springs, Missouri 64015

The mail has slowed down from the mid-February peak and we want to remind everyone to send in their raffle tickets.

This year you have 3 chances to win! Three Orange Tree hatpin holders, green, blue and marigold are the raffle prizes. All three of these hatpin holders have outstanding color and iridescence.

We have more tickets if you want them. They are \$1.00 each or 12 for \$10.00. Remember, this is one of the ways H.O.A.C.G.A. raises money for the yearly activities and Convention activities we all enjoy so much. You need not be present to win. Winners will be notified.

ED KRAMER  
 SECRETARY,  
 H.O.A.C.G.A.





A PEEK INTO THE PAST - - IN CARNIVAL GLASS

By John & Lucile Britt

This month we will go back a long way and take a peek at the prices received from one of the early Woody auctions that was held at St. Louis, Missouri. This auction dates back to August 16, 1969 and was the collection of Mr. & Mrs. Charles Thrawley of Indiana.

We might mention that this was before we had taken up Carnival Glass collecting. We returned from the farm during 1969 and started collecting about everything in antiques. At that time we knew nothing about Carnival Glass, nor did we know any Carnival Glass collectors. This was even before we had met John & LaVeda Woody.

As we moved from the farm to our new home about two miles away at the outskirts of Manhattan, I saw some of the old antiques that Lucile had handed down to her from her grandparents. There was no Carnival Glass in it however but seeing these old things gave me the urge to start collecting and we worked quite hard at it. The first piece of Carnival that we ever owned was a marigold Little Flowers large ruffled bowl. I had bought it at my uncle and aunts farm auction in 1969. This got me started in Carnival Glass. From there on it has been a long story and a great adventure to both of us. It would fill a book so we will close right here.

This Thrawley auction report and prices are through the courtesy of the late O. J. Olson of Kansas City, Missouri. He had given me many of his old Carnival Glass News reports when we were writing Carnival Glass articles on tumblers and mugs for his Carnival Glass News and Views. The following are a few of the pieces sold at that auction and the prices received for them.

R A R I T I E S

Peoples Vase, deep blue...2,700.00	Daisy & Cable G.W.T.W. lamp, rich marigold.....1,900.00
Grape & Cable hatpin holder flared into a whimsy vase, purp...200.00	Hobnail Town Pump, purple.....550.00
LaBelle Rose Wreath plate, smokey amb.....650.00	Butterfly & Tulip ftd. bowl, purple.....650.00
Country Kitchen cuspidor whimsy, purple.....375.00	Ivy Town Pump, purple.....550.00
Mlsbg. Wild Rose lamp, amethyst.....100.00	Mlsbg. Peacock & Urn large compote.....160.00
Mlsbg. Wild Rose lamp, marigold.....100.00	Wild Rose Syrup, marigold.....150.00
Hobstar & Feather giant rose bowl, purple.....600.00	Mlsbg. Multi-Fruits & Flowers compote, blue.....100.00

P L A T E S

Peter Rabbit, marigold.....700.00	Three Fruits, green.....50.00
Soldiers & Sailors, marigold..250.00	Poppy Show, pastel yellow.....170.00
Homestead, amber.....510.00	Orange Tree, blue.....75.00
Homestead, marigold.....175.00	Captive Rose, blue.....65.00
Chrysanthemum, marigold.....425.00	Old Rose Distillery, green.....175.00

B O W L S

Poppy Show, blue.....140.00	Pony, purple.....150.00
Poppy Show, ice green.....95.00	Pony, marigold.....45.00
Poppy Show, aqua opal.....160.00	Big Fish, amethyst.....150.00
Rose Show, ice green.....110.00	Inverted Strawberry, purple.....90.00

G R A P E & C A B L E

Humidor, purple.....350.00	Whiskey decanter w/stopper, purple.....350.00
Covered Compote, purple.....300.00	(4) shot glasses, pur. ea.....210.00
Cracker jar, purple.....290.00	Whiskey decanter w/stopper, marigold.....450.00
Sweetmeat, purple.....130.00	(6) shot glasses, marig. ea....125.00
Pin Tray, purple.....175.00	Perfume bottle, purple.....350.00
Pin Tray, marigold.....80.00	Perfume bottle, marigold.....275.00
Dresser Tray, purple.....160.00	Cologne bottle, purple.....140.00
Dresser Tray, marigold.....85.00	Cologne bottle, marigold.....110.00
Cup & Saucer, purple.....100.00	Powder Jar, purple.....140.00
Banana bowl, purple.....135.00	Powder Jar, marigold.....110.00
Orange bowl, purple.....125.00	Hatpin holder, marigold.....70.00
Ruffled berry set, purple.....210.00	
Hatpin holder, purple.....95.00	

W A T E R S E T S

Northwood Peach, blue.....475.00	Acorn Burrs, marigold.....275.00
Springtime, purple.....450.00	Floral & Grape, amethyst.....155.00
Peacock at Fountain, blue.....270.00	Singing Birds, purple.....250.00
Footed Orange Tree, blue.....275.00	Mlsbg. Diamond, amethyst.....180.00
Diamond Lace, purple.....230.00	Grape & Cable, purple.....135.00
Flute, purple.....325.00	

M I S C E L L A N E O U S

Kittens toothpick, blue.....140.00	Seacoast pin tray, marigold....125.00
Singing Birds mug, purple.....50.00	Hobnail cuspidor, marigold.....150.00



Orange Tree mug, blue.....	17.50	Tornado Vase, purple.....	60.00
Robin mug, marigold.....	32.50	(3) Shriners champagnes, ea.....	40.00
Zipper Loop finger lamp, marigold.....	135.00	Mikado compote, marigold.....	65.00
Buzz Saw cruet 5" marigold..	350.00	Panther sauce, blue.....	40.00
Orange Tree loving cup, green.....	55.00	Small covered Hen dish, mari.....	20.00
Soda Gold salt & pepper set, marigold.....	180.00	Morning Glory tumbler, green....	135.00
Corn Vase, ice green.....	125.00	Oriental Poppy pitcher, white...	150.00
(4) Kittens bowls, marigold, each.....	50.00	Raspberry pitcher, purple.....	70.00
		Covered Swan dish, marigold....	100.00
		Kittens cup & saucer, marigold..	100.00
		Maple Leaf 4 piece table set, purple.....	290.00

This is #50 of the "Peek Into the Past" series. We hope that you have found it interesting. Wouldn't it be great to find a Peoples Vase for \$2,700.00 today, or a purple Country Kitchen cuspidor for \$375.00 or a Peter Rabbit plate for \$700.00 or even an aqua opal Poppy Show bowl for \$160.00???

JOHN & LUCILE BRITT



By John & Lucile Britt



THE COLUMBIA ROSE BOWL

It was indeed a big surprise to us when we first saw a rose bowl in this pattern. We have seen the Columbia pattern in bowls, vases, compotes and even several salvers or cake plates, but to see a rose bowl in this pattern was almost unbelievable for us. We have seen only three of these beauties, all in marigold. Carl and Eunice Booker own the first one that we ever saw. It was brought to one of the conventions for the "Show and Tell" program. The Booker's later purchased this example. The second one that we saw, which is the one shown above, was brought to the Des Moines, Iowa I.C.G.A. Convention to show by the Rod Suftin's. It actually belonged to his sister and was not for sale at that time. About two years later we were happy to be able to purchase it. The third example that we have seen is a part of the Marvin and Sharon Gill's very fine rose bowl collection.

Both Hartung and Presznick named this pattern Columbia, but they listed it only in the compote, bowl and vase. So we assume that neither of those fine authors had ever seen the rose bowl at the time that their books were published. Bill Edwards shows the pattern in a compote in his 1982 first edition Carnival Glass book. In 1988 in his second edition, he illustrates and lists it in the rare rose bowl. It can also be found in the H.O.A.C.G.A. Notebook



and they also point out its rarity. We believe that the rose bowl shown in these latter two books is the one owned by the Booker's. So, from this study, we believe we are safe in stating that the Columbia rose bowl is rare. It is also beautiful and very desirable. Does any of our reader friends out there own or know of one of these Columbia rose bowls? We would be pleased to hear from you if you do.

Our featured Columbia rose bowl is in a good dark marigold with very fine iridescence. It is just a trace over 5 3/4 inches tall. The top opening is very small, measuring only 1 3/4 inches wide. The base is 3 1/4 inches in diameter. Between the wide loop panels at the upper portion of the bowl, are very narrow deep wedges, each of which is pointed at the upper and lower ends. There are eight of these wide looped panels that extend down to the outer part of the base forming a scalloped edge. On the underside of these scallops is an almond shaped thumbprint that is pressed into each one.

This pattern was made by the old Imperial Glass Corporation of Bellaire, Ohio. The Columbia pattern can be found in old Imperial catalogs. The large Imperial blue book, arranged by Margaret & Douglas Archer, shows this pattern in the rose bowl, banana dish, celery boat, ice cream dish, salver, card tray, vase and compotes in a number of shapes. We highly recommend that fine book on Imperial glass. It was published in 1978. Reprints of this book are still available wherever antique books are sold.

This is our 170th entry into our Pictorial Pattern Parade. Next month we will cover the Fleur-De-Lis vase. It is rare, beautiful and was made in Czechoslovakia. More about it in next months column.

JOHN & LUCILE BRITT



THE RARE CANE PANELS TUMBLER

Here is a very pretty tumbler that we have named Cane Panels. While we are unable to find the maker of this pattern, we are quite sure that it was made in a foreign country. At the present time we are going to call it "maker unknown". We hope to find out more on this pattern sometime in the future, however. The above illustrated tumbler is the only one that we have ever seen in our some 24 years of collecting Carnival Glass.

The tumbler is a little smaller than most American made tumblers, standing 2 2/3 inches tall. The top opening is 2 5/8 inches wide while the base is 1 7/8 inches in diameter. The underside of the base is slightly depressed and contains a true checkerboard pattern. We have never seen this type of design used on the base of any other Carnival Glass tumbler, American or foreign made. There is a smooth band at the top of the tumbler that is about three fourths of an inch wide. Below this plain band are six cane pattern panels. Between each of the panels is a raised one fourth inch wide arched rib. The pattern is very impressive and it would be nice to find a complete water set in this pattern. It is quite possible that this pattern was made in other pieces as well as the water set.



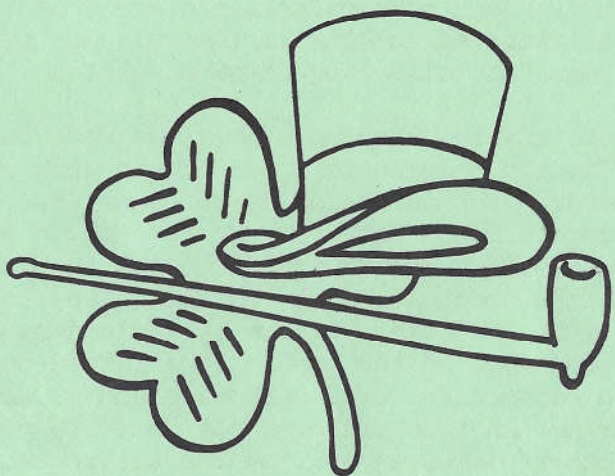
On page 26 of issue number three of the Glass Collector, Bill Heacock showed a pitcher in a cane type pattern. He later named that pattern Regal Cane. We have a cordial in that pattern, but it is entirely different than the Cane Panels in which we discuss in this article. Cane Panels has the cane design only on the six panels, while on the Regal Cane pattern the cane design covers the entire surface, except for a small plain area near the top. The cane type design is also entirely different on these two distinct patterns. Heacock was unable to designate the maker of Regal Cane at that time. (Summer of 1982).

A few years ago we found another pretty marigold cordial in a cane type pattern which is different from either of the above mentioned cane patterns. The cane effect on this cordial is very similar to the cane used by Imperial on the Flute and Cane pieces. While all three of these cane patterns have similarities, we believe that they were all made by different companies.

This is #182 in our Educational Tumbler Series. Next month we will feature the Banded Whirl tumbler. This is a very fine and extremely rare Carnival Glass tumbler.

JOHN & LUCILE BRITT

---



GRAPE & GOTHIC ARCHES TABLE SET IN BLUE

This set is credited to Northwood. All pieces we have seen have been marked with a half inch diameter circle (without the N) in the bottom. This is an old pattern that is also found in crystal and custard. We considered this to be a somewhat ordinary pattern, but it does grow on one. The design is essentially the same on all pieces, with the butter dish base having the pattern on the underside only.

Individual pieces and an occasional complete set in blue is the color usually found. Marigold is not considered scarce, but fewer pieces are seen than the blue ones. Green is considered rare, and we only remember seeing one complete set offered for sale. Occasionally an individual amethyst piece is seen, which suggests a complete set does exist although we have not seen one. The fifth color is pearl (iridized custard) and is rarely found.

Table set collectors should be able to locate a set or pieces in blue or marigold and find good quality pieces. The other colors are a different story. The spooner and sugar base look alike, with the sugar slightly larger in diameter. The sugar lid is an over-the-top lid and we have seen more poor fitting lids in this pattern than any other, so buy your sugar with the lid as chances of finding a good lid later are slim.

This is the ninth in our series on Table Sets.

CHUCK & MARGE KREMER

---



FEBRUARY 17, 1993: Fort Wayne, Indiana. For a change there was an auction close to home. This was a consignment auction with 250 pieces of Carnival Glass mixed in with a lot of other items including a large doll collection, many primitives, several sets of dinner ware, Fostoria and Sandwich Glass, etc. One of our old time collectors had passed away and the heirs were selling part of the Carnival Glass--so the story went. One dealer said it was a case of "Keep the best and sell the rest". Fortunately they ran two auction rings. The Carnival sold in the main room and was interspersed with just about everything the crew picked up. When we left after six hours there still was some 75 pieces of Carnival to sell and less than 15 people in the room.

The ad said 51 deep bowls, 60 vases, 140 "pieces and sets" and 25 "others" etc. There was little detail in the advertising. Not mentioned was a somewhat scruffy looking amethyst Grape & Cable master punch bowl and base that brought \$1,000.00, a marigold Peacock & Urn seven piece ice cream set at \$520.00 and six blue Peacock & Urn small ice cream bowls of which two sold early for \$150.00 and \$110.00 with the other four put back to be sold later. About 4 hours later the four sold for \$40.00 each. A smoke Shell plate brought \$310.00, a footed Grape & Cable plate \$100.00, amethyst Three Fruits plate \$140.00 and a stippled one at \$375.00.

The seller had each piece marked with manufacturer, color and pattern name. This helped as there was no itemized list. At least the auctioneer could tell us what he was selling. Old memories were brought back when the auctioneer would say "It is marked." Over 90% of the pieces sold while we were there brought less than \$100.00. In our opinion, the seller had to be happy with the overall results. There were 2 pieces we would have liked to add to our collectin but were disappointed when they were both damaged--wecame home empty handed.

There were 2 heavy buyers that we have never seen at any Carnival Glass auction. What would it take to get them to the regular all Carnival auctions? One was a dealer that sets up at shows on weekends but the other was a relatively new collector that we believe could be reached by advertising. He told us he was not on a miling list and didn't belong to any Carnival Club. He went home with a sample H.O.A.C.G.A. Bulletin and a membership application. I believe we will see him again!

CHUCK & MARGE KREMER

=====

Much of the publicity surrounding Carnival Glas centers on "the big five", (Northwood, Fenton, Dugan, Millersburg and Imperial). Often the numerous other Carnival producers are overlooked and relatively little is written about them. The inquiry in the February H.O.A.C.G.A. Bulletin by Dick and Joan Bird of Australia concerning the Rising Sun pattern brings this point to light. I hope this information will be of help to them, and that others will find it interesting as well.

The U. S. Glass Company began as a combination of 20 different glass factories located in Pennsylvania, Ohio, West Virginia and Indiana, which united under a common management. The Company was chartered on July 1, 1891, and it's first President was Daniel G. Ripley of the Ripley Glass Company, in Pittsburgh, Pennsylvania. By the time Carnival Glass arrived on the scene in 1908, only 8 of these factories were still in operation. It was from only 2 of these that the Carnival produced by this combination was to come; The Ripley Company and the newly built factory at Glassport, Pennsylvania.

Rising Sun was one of these patterns. It had been made in non-iridized crystal and gold decorated crystal by the Ripley Company since early in 1908. It appears in a 1909 U. S. Glass catalog. The original pattern name was "Sunshine", and it was U. S. Glass pattern #15110. As it is now known that the bulk of the Carnival made by this Company came from the Glassport factory, it is likely that the Rising Sun molds were transferred there from Ripley. In Carnival, production of the pattern appears to have been quite limited. It is primarily found on rare water pitchers of two styles, one pedestal based and the other with a more broadly skirted base. There are also two styles of tumblers, a standard size and a smaller "juice" size. These pieces are found mostly in marigold, but there are a few blue examples known. A couple of white pieces have also been reported. I would not be surprised if other items in this pattern turned up in Carnival, as table sets, berry sets and other items are known in non-iridized crystal.

Many other well-known Carnival patterns were products of the U. S. Glass Co. Perhaps the most famous is the Frolicking Bears water set. William Heacock confirmed it as a U. S. Glass pattern in 1982, when he found it in a 1910 U. S. Glass catalog now in the posession of the Corning Museum. Another rarity from this Company is the Big Butterfly tumbler. The pattern is shown in their 1915 Mexican and South American Export Catalog. This is noteworthy because, as I recall, the first one of these tumblers that was found many years ago, turned up in the southwestern United States, very near the Mexican border! In fact, several patterns known to have been produced in Carnival are shown in the 1915 and 1919 U. S. Glass Export Catalogs. This may be a blue as to why so many of their Carnival patterns are so difficult to locate



today. It is possible that a large percentage of them were shipped out of the country. Perhaps someday a Big Butterfly water pitcher will turn up in Carnival Glass. It was undoubtedly made, because it is pictured in the 1915 Export Catalog. Perhaps an expedition to the Amazon jungle in search of one should be organized.

Listed here are the Carnival Glass patterns that can now be definitely attributed to U. S. Glass. They are listed by the names most familiar to Carnival collectors. In some cases the original pattern name is different, and where known is listed in parentheses afterwards:

FROLICKING BEARS	RISING SUN (SUNSHINE)
FEATHER SWIRL (SOLAR)	DAISY IN OVAL PANELS
KING'S CROWN	MANHATTAN
DIAMOND & DAISY CUT	JACOB'S LADDER
COSMOS & CANE	CHERRY SMASH
FIELD THISTLE (JUNGLE)	PRINCESS LAMP
BIG BUTTERFLY	FINE CUT FLOWER (PENNSYLVANIA)
PALM BEACH	PANAMA
MASSACHUSETTS	INTAGLIO OVALS
DIAMOND BAND & DAISY (SHOSHONE)	STIPPLED STRAWBERRY
SHRINERS CHAMPAGNES	SUNK DIAMOND BAND
SOUVENIR PIN TRAY (PORTLAND)	CHATHAM

A wide array of Carnival novelties can now be attributed to U. S. Glass as well. These include: The Canoe, Coal Bucket, Pipe Match Holder, Witches Pot, Hatchet and the Skaters Shoe. There are probably others. There is still a great deal of Carnival Glass that is of unknown origin. Time and research will probably rectify this. I would not be surprised if many more Carnival patterns turn out to be products of the U. S. Glass Company.

CARL O. BURNS  
ANDOVER, MAINE

NOTE: Recently, several Club members brought something to my attention that I was not aware of. For some unknown reason I am listed in the most recently published Club Roster in the wrong state and with the wrong phone number. I do NOT live in Massachusetts! I live in the Township of Andover, MAINE, and my correct address and phone number are as follows: Carl O. Burns, Star Rt., Box 111, Rumford Center, Maine 04278, PHONE: 1-207-392-3044.

=====

YOUR CHOICE--HANDLED COMPOTE OR FOOTED BON-BON  
By: Diane Fry

IRIDESCENT DOUBLE  
HANDLED FOOTED BOWL.



C1131 - 4x5 1/4,  
rich golden tint,  
heavy relief floral  
and wheat  
sprays, conventional  
embossing  
inside. 1 doz.  
pkg. Doz. 92c

1913 Butler Bros. Catalog

While not as numerous in pattern variety as the collar-base bon-bons, these offer yet another interesting dimension to our collecting.

We offer a "bakers dozen" in this fascinating shape for your consideration.

They are listed alphabetically according to manufacturer. Hesitation grasps as I state that no Imperial designs appear in this shape, however, I can locate none.

Sources of research have been H.O.A.C.G.A. Educational Series I by John & Lucile Britt, Edwards early guide books and the latest Encyclopedia, Hartung Series, Fenton Glass-First 25 Years, and Mordini Auction Results.

Personal thanks for their special assistance go to Linda and Andrew Heaton, Cathy & Fred Roque and John & Lucile Britt.

Should anyone locate an unreported color or pattern in this compote or bon-bon shape, please advise us so that an update can be made. It will be most appreciated!



## DUGAN PATTERNS

An appealing design with stippled background, a pretty scalloped edge and a notable exterior called Floral and Wheat. Found in a rare blue on occasion, also green, mgld., peach opal, purple, and a quite beautiful white. None appear to have sold at auction the past couple of years. This same Puzzle design appears on the foot of the stemmed cake plate in the Question Mark pattern. Desirability peaks with a blue one, but white or green are not easy to locate either. Some nice examples exist in the other colors as well. Worth the search.

### PUZZLE



2.

continued

### QUESTION MARK

Exterior is usually plain. You can look for this one in marigold, peach opal, purple and white. Prices are not unreasonable in any color. A non-handled compote and once in a while a stemmed cake plate in mgld., purple or white will surface with an exterior pattern called Georgia Belle and a third dimension pattern called Puzzle on the foot. These are not easily found. Consider yourself fortunate if you own one. They are lovely little pieces.



3.

continued



### STARFISH

Plain exterior. Colors are green, mgld., peach opal and purple. This is a nice pattern to own, since it only appears on the "footed bon-bon" shape and a "non-handled compote" which is usually ruffled. Starfish examples are not readily available, but worth the search. Any color is usually priced under \$100. The small compote is 4½" tall, 4" across and can be found in a flat cake plate also.



4.

continued

### FENTON PATTERNS

#### PEACOCK TAIL

Circa 1911-This pattern is similar to the Northwood Nippon. Also found in bowls, sauces, whimsy shapes, very rare 9" plates and certainly can be called a "standard" for Fenton Carnival Glass. There is also a collar-base version of bon-bon. This "footed" type is available in amethyst, blue, green and marigold. This lovely example brought \$75 at the 1992 Air Capitol Conv. auction. Recent auction results indicate that neither version of this bon-bon often presents itself. A white would be nice!



5.

continued



WREATH OF ROSES

This is a nicely balanced pattern available in amethyst, green, and marigold. Most likely a blue exists. I have not seen one. The panelled exterior extends down over the foot creating added interest to the overall design. Prices are usually less than \$100 for any color.

This pattern should not be confused with the stippled and unstippled Northwood BASKET OF ROSES found in a collar-base bon-bon with basketweave exterior usually marked N. Another name for Basket of Roses is ROSE WREATH.

A similar Wreath of Roses pattern appears on the base and bowl exterior of a beautiful punch set, also made by Fenton.



6.

continued

FUCHSIA

John and Lucile Britt wrote about this rare blue "footed bon-bon" in H.O.A.C.G.A. Bulletin in June 1992. It was found by a fortunate couple in Maryland. The Britt article notes that this pattern has also been found in marigold. Their conclusion is that this piece is so similar in shape and design to that of Wreath of Roses that more than likely Fenton is the maker. Since only the two are known, the proud owners can state their value best.



7.

continued



## MILLERSBURG PATTERNS

### ROSES AND FRUIT

Again, as with the Fruit Basket, the deep bowl effect displays the lovely pattern of this quite scarce and unusual piece. Observe the stippling around the interior edge. It is the only "handled compote" I know of with such an interesting band of stippling on the handles, as well. Amethyst price begins at more than \$500. Green extends to more than \$1,000. Currently, marigold, which is more scarce, and is found with radium treatment will sell in the \$1,000 range as well. Two blue are known. The one I have seen is in satin-radium finish and sold at auction in 8/31/91 for \$2600.



### FRUIT BASKET



VERY FEW are known. The pattern exists only on this "footed bon-bon". An amethyst brought \$450 in 1990 (with poor irid.) Another, (with smoothed spot) sold for \$925 in March 1991. These prices reveal the interest and desirability of this beautifully executed piece. Could there still be a green or marigold to be found? Perhaps even a blue could surface! Wouldn't THAT be nice?

NOTE: Since the collar-base bon-bon article appeared in the Sept. 1992 issue of the Bulletin the following information has been received.

A fourth Lotus Land in amethyst has turned up in Texas.

I failed to list green as a Cherry Circles color. A call from Washington reminded me of that. The gentleman had found a very pretty one.

A letter from Canada and a call from Oklahoma described lovely amethyst Pond Lily's, another color I had not stated.

We were privileged to see THE quite beautiful ice green Pond Lily at Air Capitol Convention. It was priced at \$3000. A lovely couple from North Carolina took it home.

MANY thanks to those who took time to contact us with information to up-date the collar-base bon-bon article.



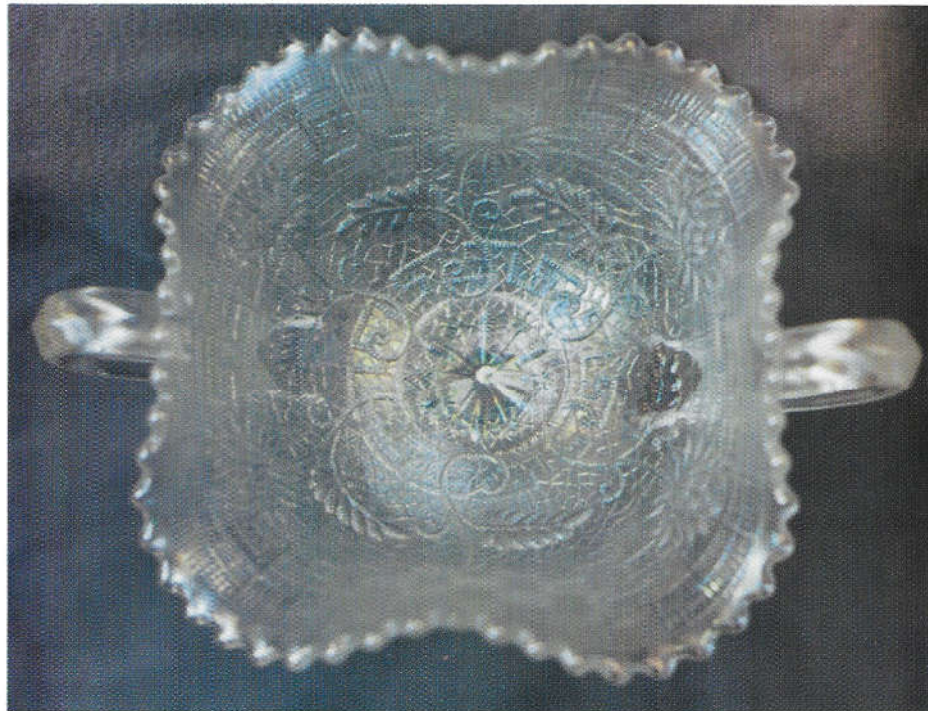
## NORTHWOOD PATTERNS

### EMBROIDERED MUMS

These are extremely difficult to find. Seen only in white with beautiful iridescence. This "footed bon-bon" is the exact same shape as Fruits and Flowers.

The pattern is intricate and exquisite. When found in the ruffled bowls of various colors or particularly in an ice green 9" plate, price sometimes exceeds desire, but SOMEONE is always willing to pay the price for such a prize!

Currently, these white bon-bons will usually bring in the \$1,000-\$1,100 range.



10.

continued



### FRUITS & FLOWERS

Available in smooth background behind the pattern, with basketweave exterior in aqua opal, amethyst, blue green, ice blue, ice green, lavender, mgld., purple, sapphire, smoke, teal and white. 1991 auction results indicate that prices range from under \$100 for mgld. and ameth. to \$900 for ice green. The pictured example is of a rare sapphire color. It brought \$750 at the 10/92 Air Capital Conv. Auction. An ice blue will sell for around \$550. A stippled version exists with the stippling extending over all area behind the pattern. Eight panels begin at the top of foot, continuing down to the outer edge of the base. These variants can be found in blue green, and mgld. They are more difficult to locate and will bring slightly more than their smooth counterparts. These are a nice alternative to search for.



### PANELLED HOLLY

More often found in green, however, purple and marigold do exist. The green ones I have seen usually have a marigold overlay of iridescence on the interior only. You will find them both deep and more open, such as card tray shape.

Prices tend to be unworthy of most Northwood pieces, probably because the pretty pattern is all exterior, however, in turning this piece over, we see a unique feature. None of the other bon-bons in this series have SUCH a lovely foot. It redeems the plain interior of the bowl sufficiently. None are listed as sold at auction during 1991. Perhaps we should look more closely for one to add to our collection?

11.



WESTMORELAND PATTERNS



PRISMS

Measures 7 1/4" across handles and is 2 1/2" tall. Three amethyst ones sold in 1991 ranging from \$45-\$90. The pattern is intaglio with iridescence on the inside of the bowl only. An ornate star is under the base. Green exists along with a few marigold examples, but this piece is not easy to obtain.



KEYSTONE COLONIAL

This compote stands 6 1/4" tall. At least three of these have been reported in purple, all with the Keystone trademark containing a "W". A lavender one brought \$100 in a 1990 auction. (NOTE: the Keystone trademark using the "W" was used between 1910-1920.)

The following prices were realized at the Lose Your Heart to Carnival Glass Jamboree Auction on February, 12, 1993 in St. Petersburg, Florida. Tom Burns, Auctioneer.

LM Novelty Coal Bucket	230.00	IG 8 sided Bushel Basket	425.00
W Daisy & Drape vase	150.00	IB Grape Arbor tumbler	150.00
P Lattice & Poinsettia bowl	375.00	P Wishbone ftd. plate	275.00
W Fanciful ruffled plate	135.00	VAS Holly ruffled bowl	200.00
W Holly ruffled bowl	160.00	G Scroll Embossed 9" plate	100.00
M Butterfly & Tulip deep bowl	300.00	IB Hearts & Flowers plate	3,300.00
AO Double Loop chalice	200.00	AO Peacocks ruffled bowl	850.00
AO Three Fruits ruffled bowl	425.00	A Zig-Zag ruffled bowl	250.00
R Holly hat shape	650.00	DM Rustic 19" funeral vase	600.00
G Swirl Hobnail vase	200.00	DM Brooklyn Bridge bowl	225.00
W Peacocks plate	375.00	W Leaf & Beads nut bowl	370.00
EB Good Luck P.C.E. bowl	400.00	G Good Luck ruffled bowl	250.00
M Rose Show plate	475.00	IG Drapery vase	200.00
DM Three Fruits stippled plate	300.00	B Rustic 22 1/2" funeral vase	450.00
B Orange Tree hatpin holder	275.00	B Holly 9" plate	350.00
CLM Holly 9" plate	150.00	B Ten Mums ruffled bowl	100.00
AMB Dragon & Lotus ICS bowl	150.00	A Mlsbg. Hanging Cherries with	
M Trout & Fly 3 in 1 bowl	375.00	Hobnail ext. ICS bowl	600.00
P Beaded Bullseye vase	150.00	PO Soutache crimped edge bowl	130.00
EB Poppy relish dish	150.00	B Orange Tree mug	60.00
A Drapery Vt. vase	125.00	DM Tree Trunk mid-sized vase	50.00
LG Two Flowers ftd. sauce	60.00	DM Stream of Hearts compote	70.00
AMB Holly hat	50.00	AQ Holly hat	45.00
G Scotch Thistle compote	75.00	M Persian Medallion compote	50.00
VAS Fine Rib vase	75.00	W Rustic 7" squatty vase	80.00
AMB Fine Rib 13" vase	70.00	M Sailboats compote	85.00
B Peacock & Urn compote	60.00	AQ Open Edge Basket	90.00
A Peacock & Grape ICS bowl	70.00	B Dragon & Lotus ICS bowl	80.00
P Lined Lattice vase	85.00	W Constellation compote	65.00
LM Rococo vase	60.00	P Pansy ruffled bowl	50.00
P Flute toothpick	70.00	DM Dugans Twig Bud Vase	45.00
M Peacocks ruffled bowl	150.00	G Daisy & Plume rose bowl	70.00
B Holly ruffled bowl	80.00	G Blackberry Wreath 10" bowl	75.00
W Fine Cut & Roses candy dish	70.00	G (N) Thin Rib mid-sized vase	75.00
A Fenton Three Fruits plate	90.00	M Wreath of Roses punch bowl &	
G Peacock & Grape 3 in 1 bowl	70.00	base	225.00
W Grape Arbor tumbler	35.00	B Lattice & Grape pitcher	150.00
G Embossed Scroll 9" plate	100.00	G Coin Spot rose bowl	30.00
DM 8 sided Bushel Basket	120.00	DM G & C hatpin holder	325.00
G G & C candlestick	150.00	M Horse Medallion rose bowl	90.00
G Primrose ruffled bowl	120.00	M Little Stars bowl	95.00



We would like to announce that Encore (Contemporary Carnival Glass collectors) will be holding its' Convention on April 18, 19, 20 and 21, 1993 at the Days Inn, 9630 Rose Hill Road, Lenexa, Kansas (across the street from the Holiday Inn where the H.O.A.C.G.A. Convention will be held). You can make your reservations for the Encore Convention by calling the Days Inn at 1-913-492-7200. Mention you will be attending the Encore Convention and Days Inn will give you a special rate.

ENCORE CONVENTION HIGHLIGHTS:

GLASS FOR SALE:

Rooms with glass for sale should be open by 10:00 A.M. on Monday and every day thereafter. Dorothy says approximately 35 rooms have been reserved.

GUEST SPEAKER:

Wilma Grossarth will speak on Westmoreland Glass. This should be very interesting, as we all learn from these educational programs.

AUCTION:

There will be an auction on April 21, 1993 of the contemporary Carnival Glass of John Muhlbauer. There will be many water sets, along with single pitchers and tumblers to complete your sets. Make plans to attend now!

HOPE TO SEE YOU ALL AT THE 1993 ENCORE CONVENTION!



The Texas Carnival Glass Club had its annual Convention in Houston on February 18th through the 20th, 1993. Eighteen states were represented. 78 people played Texas Bingo on Thursday evening and then were treated to Blue Bell ice cream sandaes.

On Friday, an educational program on Carnival Glass buttons was presented by Ruth Clark. The sessions were well attended and Research Editor, Jane Dinkins, did a short follow-up on small buttons. I think everyone agrees that information is like gold. Following the seminar, everyone was treated to the famous Texas Hospitality picnic. There was plenty of food and lots of "Southern Hospitality". Later that evening, a midnight auction was conducted with lots of Carnival exchanging hands.

Throughout the Convention, there was an abundance of Carnival for sale in the individual rooms, ranging in price from a few dollars to over \$10,000.00. At 10:00 A.M. on Saturday, the Seek Auction Company sold a fine collection of Carnival. There were just under 100 bidding cards and well over 200 people in the auction room. The Convention was concluded Saturday evening with a great Texas Barbecue followed by a "SUPER" presentation by George & Mavis Loescher from Beloit, Wisconsin. George is an entertaining speaker and the program was spectacular due to the rarities that he brought. Each of the pieces was a story onto itself. The audience of over 100 was spellbound.

This years raffle winners of the "cherry" red Persian Medallion bon bon were Mr. & Mrs. Ronald Burt of Florissant, Missouri.

We hope you can join us next year!

RICHARD CINCLAIR  
PRESIDENT,  
TEXAS CARNIVAL GLASS CLUB

The Keystone Carnival Glass Club announces their 1993 dates for: 12TH ANNUAL OLD CARNIVAL GLASS SHOW AND SALE, March 13, 1993 from 9:00 A.M. to 3:00 P.M., at the Holiday Inn-North, Lancaster, Pennsylvania.

KEYSTONE CARNIVAL GLASS CLUB CONVENTION, May 27-30, 1993 at the Days Inn, Brookville, Pennsylvania (Exit 13 off I-80).

For further information, please contact: Nancy C. Williams, 2009 Cullum Drive, Reading, Pennsylvania 19601 PHONE: 1-215-374-9033.



Eight inches of snow and lots of ice does not keep us home when there is a Carnival Glass Convention within a days drive from Wichita. The weather was horrible a couple of days before we were to leave Wichita, Kansas for Houston, Texas for their Convention. The day we left the snow was still there with 1 degree above zero for a temperature. The roads had been cleared off however, and were bare. My boss let me off at 1:00 P.M. so got an early start in that direction. We drove just past Dallas, Texas and decided to stay the night. It was still cold and windy but the temperature in Dallas was about 29, but seemed much colder. The next morning we headed towards Houston and each few miles the temperature was warming up. At Houston it hasn't given them a freeze yet, but it was chilly.

As we entered the hotel, we began to see familiar faces and the Texas hospitality began to show. We were quite scattered out, on all floors of the hotel from 2nd to the 12th. We got lots of exercise going to all of the rooms which did not hurt us at all.

At 5:30 we all met in the lobby where we all went to Luby's for a great evening meal. I believe there were about 51 attending. Back to the hotel where we played Texas Bingo. I believe Richard & Carol Cinclair came up with this unique game. The cards, instead of having numbers, had names of Carnival patterns in the squares. We used M & M candy to place on the squares. Something new and different and enjoyed by all. After bingo, we were treated to Texas famous Blue Bell ice cream, where we made our own sundaes and it was mighty tasty stuff. The ice cream was compliments of Cecil & Floyd Whitley.

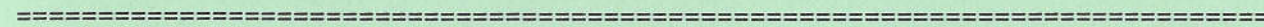
At 4:00 P.M. on Friday, we gathered in the auction room for a program on buttons. This was given by Ruth Clark who has authored books on the various Carnival Glass buttons. At the program she sent out cards with the buttons on the them to show us what she was talking about. At the end of her talk Jane Dinkins had a few words to say about some of the very tiny buttons that are Carnival. She is researching those. At 9:00 P.M. the ever popular midnight auction took place. Lots of glass was brought and several of them changed hands.

Saturday the big auction took place, with Jim Seeck. I believe nearly 100 numbers were out. The auction was over about 2:00 P.M. and everyone hurried back to look in the rooms for that last minute purchase. Later in the evening at 6:00 P.M. we all gathered to go to the great banquet the Texas folks always have. We always know that when Richard Cinclair is in charge, we probably will be in for some surprises during the evening. George and Mavis Loescher were the banquet speakers and a great job he and Mavis did. We were able to see many one-of-a-kind pieces. Many of his pieces had lots

of little stories to go with each piece. He pointed out he had known about one of the pieces and waited for 20 years before he was able to buy the item. The seller just would not sell. With Georges' wit and humor mixed in the talk was very interesting.

As we left Houston, the temperature was a balmy 70 degrees. Between Dallas and Ardmore, Oklahoma the temperature dropped 20 degrees. As we came into Kansas there was still drifts of snow along the fence rows and the temperature was a chilly 25 degrees with a low expected of 17. Of course the wind was blowing about 30 mph. Don't you Houston folks just hate it that we have such wonderful weather in Kansas!

DONALD KIME  
WICHITA, KANSAS





John & Terri Dubinski, 2408 Fleetwood Drive, Columbia, Missouri 65202-2262  
PHONE: 1-314-474-2644

VAS EI Vintage 7" ruffled bowl, hard to find	110.00
M EI Three Fruits stippled plate	210.00
VAS EI Two Flowers footed sauce	88.00
M EI Persian Garden 6" plate, nice	70.00
M EI Leaf Chain 7" plate, nice dark one	110.00
G EI Blackberry Wreath small berry bowl, 3 in 1 edge, satin and Millersburg	57.00
M EI Cherry Chain 6" plate, nice dark one	85.00
B EI Autumn Acorns ruffled bowl	59.00
A EI Nesting Swan ruffled bowl, satin and nice	350.00
G EI Oriental Poppy tumbler, no harm leaf flake	44.00

Isabell Aldridge, 6407 Rushmore Drive, Sacramento, California 95842  
PHONE: 1-916-331-4290

M Open Rose plate, Imperial, perfectly nice	85.00
AMB Louisa footed bowl, RARE COLOR	35.00
B Ladies drawstring beaded bag, very nice	70.00
M Grape & Cable bon bon (N)	95.00
M Fentons Flowers (Orange Tree) rose bowl	60.00
M Peacock & Urn compote	85.00
A Cherry bowl, 6 $\frac{1}{2}$ ", Jewelled Heart exterior pattern	40.00
B Persian Medallion 6 $\frac{1}{2}$ " plate, SCARCE & BEAUTIFUL	165.00
M Kittens cup	90.00
A Bat hatpin	175.00

Kimberly Landry, 6836 Forum Street, San Diego, California 92111  
PHONE: 1-619-560-1717 after 4:00 P.M.

M Hanging Cherry 10" master ice cream, satin	175.00
A Hanging Cherry 10" master ice cream, satin	200.00
G Hanging Cherry 10" master ice cream, satin	225.00
M Vintage, Hobnail ice cream shape	575.00
M Rosalind 10" 3 in 1 edge, satin	200.00
* *Teal Wide Panels rose bowl	200.00
B Plaid I.C.S. bowl, cobalt	175.00
P Peacock at the Fountain fruit bowl, SUPER!	425.00
P Butterfly bon bon, Threaded exterior	200.00
M Circle Scroll whimsey, low, J.I.P.	125.00

CARNIVAL GLASS FOR SALE

Richard Cinclair, 3605 South Echo Trail, Plano, Texas 75023  
PHONE: 1-214-596-0014

G EI Grape & Cable master ice cream bowl	925.00
W EI Acorn Burrs punch cup	80.00
M EI Rococo Vase	150.00
M EI Three Fruits stippled plate, SUPER	255.00
W EI Corn Vase	375.00
B EI Blackberry Wreath (Millersburg) bowl	750.00
A EI Diamond Lace pitcher, OUTSTANDING	275.00
A EI Diamond Lace tumbler, SUPER	45.00
A EI Hobnail Swirl Vase, Millersburg	250.00
G EI Persian Medallion 10" 3 in 1 edge	225.00

Charles Fowler, Post Office Box 64, Londonderry, New Hampshire 03053-0064  
PHONE: 1-603-432-2635

G EI Grape & Cable (N) tankard tumbler	200.00
M EI Pansy creamer, light blue base	30.00
G EI Lustre Flute (N) punch cup	30.00
M EI Windmill & Mums 10" bowl, footed	75.00
P GI Grape & Cable (N) large ice cream bowl	375.00
M EI Grape & Cable (N) large ice cream bowl, some wear in middle	225.00
PM EI Memphis (N) punch cup	50.00
G EI Wishbone bowl, footed, chip on one point so	50.00
G EI Star of David & Bows bowl, collar based	110.00
P EI Butterfly bon bon, Fenton	55.00

Dick Wetherbee, 847 Stafford Street, Rochdale, Massachusetts 01542  
PHONE: 1-508-892-4420

M EI Harvest Poppy 6" compote, SUPER DARK COLOR, RARE	225.00
W EI Constellation 5" compote, a real frosty one	130.00
PO EI Caroline/Smooth Rays 8 $\frac{1}{2}$ " tri cornered shaped bowl, SUPER	60.00
G EI Leaf & Beads/Sunflower int. 3 ftd. rose bowl, a beauty	120.00
M EI Grape & Cable, Basketweave ext. 8 $\frac{1}{2}$ " fluted bowl, GREAT COLOR	50.00
P EI Fern (Northwood) 5" compote, a real pretty one	75.00
VAS EI Waterlily 6" fluted 3 ftd. sauce dish, great vaseline	125.00
PO EI Flowers & Frames 8 $\frac{1}{2}$ " dome ftd. bowl, great color & opal	115.00
SM EI Imperial Grape 10" donut tray/Tree Bark handle, SUPER	45.00
M EI Peacock & Urn 5 $\frac{1}{2}$ " fluted compote, very pretty	60.00



Lee & Phyllis Bryant, 11645 N.W. Winchester Road, Decatur, Indiana 46733  
PHONE: 1-219-639-3415

M	Octagon wine stopper & 1 wine, will sell separately, ea.	20.00
M	Northwoods Poppy pickle dish, dark marigold, nice	70.00
P	Dahlia spooner, nice	40.00
M	Beaded Shell spooner, dark marigold	35.00
W	Open Edge Basket, 2 sides up, 6½" across, very nice	150.00
P	Grape Delight nut dish, nice, hard to find	90.00
M	Imperial Basket (woven basketweave) nice, <u>SELDOM SEEN</u>	50.00
B	Chrysanthemum 10" ruffled bowl, ball footed	120.00
M	Two Flowers 10½" ruffled bowl, ball ftd., good color & detail	65.00
A	Blackberry Open Edge Basket, very nice, <u>RARE, FIRM</u>	150.00

Dick Hatscher, 142 Walnut Hill Road, Bethel, Connecticut 06801  
PHONE: 1-203-743-1468

M	EI Constellation compote	48.00
M	EI Grape & Cable one handled nappy	38.00
B	EI Open Edge Baskets, J.I.P., have 2, each	38.00
B	EI Orange Tree large mug	35.00
G	EI (N) Grape & Cable large open compote	795.00
G	EI Feathered Serpent master bowl, Honeycomb exterior	55.00
P/A	EI Strawberry bon bon, <u>SCARCE IN AMETHYST</u>	45.00
P/A	EI Holly & Berry one handled sauce boat	38.00
W	EI Constellation compote	78.00
*	EI *Red slag Acorn 6½" bowl	350.00

Craig & Brenda Kuckelburg, 517 North Jay St., Aberdeen, South Dakota 57401  
PHONE: 1-605-226-1660

AQ	EI Holly ruffled hat	60.00
W	EI Orange Tree ruffled bowl	130.00
M	EI Waterlily & Cattails toothpick whimsey	30.00
M	EI Beaded Star rose bowl	50.00
VAS	EI Blackberry Spray ruffled hat (2 sprigs)	55.00
VAS	EI Fine Rib 12" vase	85.00
A	EI Fruits & Flowers stemmed bon bon	85.00
*	EI *Lime green Holly hat J.I.P., C.R.E.	60.00
M	EI Hearts & Flowers compote, <u>SUPER</u>	200.00
CLM	EI Lustre Rose 7½" footed, round bowl	75.00

Valmer Cross, Sr., Prattsville, New York 12468  
PHONE: 1-607-588-6698

M	Urn Vase, 2 handles	45.00
M	Checkers & Mill 8" plate	12.00
P	Plain compote, 5" high, 6" across	30.00
M	Stork Vase	45.00
M	Studs tumbler, 4" high	5.00
M	Iris & Herringbone wine	30.00
M	Louisa salt & pepper, no tops	12.00
G	Mayan 8" bowl, <u>small chip</u>	25.00
M	Louisa creamer	7.00
M	Tree Bark water pitcher	35.00

Gerald M. Hess, 500 Woodland Trail, Argos, Indiana 46501  
PHONE: 1-219-892-6193

G	EI Heart & Vine 9" fluted bowl	60.00
M	GI Pine Cone 6" bowl	20.00
PO	GI Little Beads dome footed 5" sauce	45.00
M	EI Floral & Grape tumbler (Dugan)	25.00
M	EI Scale Band tumbler	20.00
G	EI Louisa rose bowl	50.00
M	GI Insulator (Pyrex)	17.50
M	EI Harvest Flower tumbler, rim has been ground	30.00
M	EI Persian Medallion 6" bowl	30.00
M	GI Vintage 5" bowl	25.00

Pat Housewright, 225 Rowland, Stephenville, Texas 76401  
PHONE: 1-817-968-2997 after 5:00 P.M.

G	EI Grape & Cable 9" bowl, Basketweave exterior	95.00
A	EI Fruits & Flowers stemmed bon bon	70.00
W	EI Fine Cut & Roses candy dish, Fancy interior	165.00
G	EI Three Fruits 9" plate, Basketweave exterior	100.00
PO	EI Fanciful 8½" flat I.C.S. bowl	190.00
B	EI Two Flowers 10½" ruffled bowl	165.00
M	EI Blackberry Wreath 10" ruffled bowl, satin	75.00
M	EI Blackberry Miniature Compote	80.00
B	EI Orange Tree mug	75.00
B	EI Singing Birds mug	135.00



Bob & Genny Bishop, 277 Loonhill Road, Dracut, Massachusetts 01826  
PHONE: 1-508-453-1849

* GI	*Marigold on custard Prayer Rug bon bon	400.00
PO EI	Folding Fan compote, pinhead	50.00
P EI	Town Pump, chip on spout & bottom	125.00
M GI	Flute milk pitcher	20.00
M GI	Block & Arches milk pitcher	25.00
EB EI	Fruit & Flowers bon bon, OUTSTANDING	200.00
M GI	Golden Wedding Bottles, all sizes, some with labels, from	12.00
M EI	Jackman Whiskey Bottle, all sizes, from	15.00
M EI	Flute large compote, 11" top, 6 $\frac{1}{4}$ " base, 7" tall	100.00
IG EI	Grape & Cable stippled bowl, chipped	300.00

Dave D. Ackerman, 4677 Kennebec Drive, Cass City, Michigan 48726  
PHONE: 1-517-872-2023

M	Grape & Cable sherbet, tiny chip on base	35.00
M	Lotus & Grape 9" eight ruffled very low bowl	50.00
*	*Pearl/custard Grape & Gothic Arches small bowls, have 2, each \$30.00 or both for	55.00
DM	Astral electric shade	50.00
M	Star Medallion large sherbet shaped compote	35.00
CB	Grape & Gothic Arches sugar cover (hard to find)	35.00
DM	Star & File 8" square bowl	50.00
M	Octagon 8" vase, scarce	65.00
G	Millersburg Cherry sugar cover	25.00
G	Dragon & Lotus 7 3/4" spatula footed bowl, VERY NICE	150.00

Robert C. McGuire, 2014 Meadowbrook Drive, Milan, Tennessee 38358  
PHONE: 1-901-686-8091 after 6:00 P.M. Central Time

SM EI	Field Flower pitcher, open bubble on base	75.00
P EI	Tree Trunk mid-sized funeral vase	175.00
PO EI	Caroline tri-cornered bowl	75.00
M GI (N)	Graceful vase, dark	35.00
G EI	Hattie chop plate	450.00
A EI	Millersburg Whirling Leaves 10" ruffled bowl	115.00
A EI	Stag & Holly 8" spatula footed bowl	150.00
M LI	Little Fishes footed sauce	40.00
M GI	Imperial Grape decanter, no stopper	35.00
M EI	Imperial Grape wines, fat stem, each	20.00

Gladys Hutchison, Rt. #2, Box 2966, Seymour, Missouri 65746  
PHONE: 1-417-935-4908

M	Heavy Iris tankard	290.00
A	Grape & Cable cologne bottle and stopper	160.00
M	Three Fruits 9" plate, SUPER	200.00
M	Fashion punch bowl base	35.00
M	Peacock at the Fountain butter lid	90.00
M	Lustre Rose butter lid	35.00
M	Field Flower 7 piece water set	325.00
M	Mikado large compote, clear foot, 3 rim points are smoothed	80.00
P	Beaded Shell mug, some roughness on bottom, excellent color & iridescence	75.00
M	Rambler Rose tumblers, have 5, each	25.00

Stephen R. Kocsis, 3493 Wolfcreek Road, Cuba, New York 14727  
PHONE: 1-716-968-2499

A EI	Birds & Cherries compote	65.00
M EI	Persian Medallion compote	50.00
G EI	Iris compote, SUPER	65.00
A EI	Grape Wreath 7 $\frac{1}{2}$ " bowl, 3 in 1 edge, radium	80.00
G EI	Blackberry Wreath 8 $\frac{1}{4}$ " I.C.S. bowl	70.00
PO EI	Single Flower Framed dome base	110.00
G GI	Leaf & Beads rose bowl, interior pattern	65.00
PO EI	Ski-Star dome based 8 $\frac{1}{2}$ " bowl	90.00
* EI	*Lime green Northwoods Fine Rib 10 $\frac{1}{2}$ " vase	70.00
M EI	Peacock & Dahlia 7 $\frac{1}{2}$ " bowl	45.00

Don Harris, 527 Lavina Drive, Mechanicsburg, Pennsylvania 17055  
PHONE: 1-717-790-0412

A EI	Good Luck P.C.E. bowl	235.00
A EI	Primrose 9" ruffled bowl, Millersburg	110.00
A EI	Rays & Ribbons 9" I.C.S. bowl	60.00
AO EI	Beaded Cable rose bowl	300.00
B EI	Dragon & Strawberry bowl	550.00
B EI	Fentonia creamer	100.00
B EI	Grape & Cable fruit bowl, Persian Medallion interior	225.00
B EI	Hearts & Flowers compote	425.00
G EI	Grape & Gothic Arches tumbler	85.00
G EI	Three Fruits 9" plate	185.00

SEND \$ .52 STAMP FOR LARGE LIST



Ted Sheibley, 5071 Bass Lake Drive #203, Harrisburg, Pennsylvania 17111  
PHONE: 1-717-564-9364

G	EI Tree Trunk mid-sized funeral vase	225.00
*	EI *Horehound Good Luck 9" ruffled bowl	585.00
IB	EI Fruits & Flowers bon bon	550.00
M	EI Bushel Basket, 8 sided	115.00
M	EI Dragon & Strawberry bowl	350.00
M	EI Grape Arbor tankard water pitcher	275.00
M	EI Kittens dish, 2 sides up	145.00
M	EI Lions bowl	140.00
M	EI Little Stars ruffled bowl	90.00
M	EI Peacocks on the Fence plate, Ribbed exterior	475.00

Bob & Aggie Natali, 5514 E. National, Fresno, California 93727  
PHONE: 1-209-291-3296

M	Twig Vase, manufacturing flaw, SUPER IRIDESCENCE	30.00
G	Chrysanthemum 9" bowl, SCARCE COLOR	75.00
M	Persian Medallion 6" plate	40.00
M	Feathered Serpent 9 1/2" I.C.S. bowl, BEAUTIFUL IRIDESCENCE	45.00
RED	Two Row Open Edge Basket, base crack, so POSTAGE & INSURANCE IS EXTRA	95.00

Franklin E. Gibson, Post Office Box 148, Milner, Georgia 30257  
PHONE: 1-706-358-0344 evenings, after March 29 1-404-358-0344

DM	EI Fashion punch set, 6 cups	225.00
DM	EI Fashion punch set, 8 cups	265.00
DM	EI Fashion punch set, 10 cups	300.00
DM	EI "474" punch set, 6 cups	325.00
DM	EI Twins fruit bowl & base	70.00

Doug & Nancy Davis, 7050 Carmelita Ave., Atascadero, California 93422  
PHONE: 1-805-466-3762

G	EI Lustre Flute 6" bon bon, 2 handled, pretty	45.00
*	*Celeste blue stretch 10" bowl, pretty	40.00
*	*Celeste blue stretch 6 3/4" bowl, pretty	30.00
A	EI Double Stemmed 8" bowl, dome footed	55.00
M	EI Tree Bark pitcher & 5 tumblers, all perfect	85.00
M	GI Windflower 8 1/4" ruffled bowl, honey marigold, has 1/4" small glass repair inside ridge	27.50
M	EI Lamp shades signed NU-ART, have 2, Wide Panel, each	35.00

Debbie & Mike Heinl, 240 Mize Road N., Cullman, Alabama 35055  
PHONE: 1-205-739-0281 after 5:00 P.M. Central Time

DM	EI Northwood Grape & Cable standard punch base	60.00
PM	EI Dugan Lattice & Daisy tumbler	35.00
PM	EI U.S. Glass Golden Harvest wine glass	25.00
DM	EI Imperial Grape ruffled 5" sauce bowl	20.00
DM	EI Imperial Crackle candy jar bottom	10.00
A	EI Fenton Vintage Leaf 9" bowl, some roughness on marie, silver iridescence	45.00
DM	EI Fenton Scale Band tumbler	35.00
DM	EI Waterlily & Cattails unmarked tumblers, have 2, each	45.00
PM	EI Dugan Fish Scale & Beads 8" ruffled flat bowl, flake on back	25.00
PM	EI Dugan Wreath of Roses rose bowl	35.00

Larry Keig, Post Office Box 601, Fayette, Iowa 52142  
PHONE: 1-319-425-4467

W	Hearts & Flowers compote	180.00
B	Blackberry Banded hat shape	35.00
P	Scroll Embossed large compote, TERRIFIC COLOR	85.00
M	Fenton's Thistle 3 in 1 bowl	55.00
B	Fenton's Grape & Cable round bowl, NICE	70.00
M	Wide Panels goblet	15.00
*	*Horehound Fine Cut & Roses candy dish, excellent color & iridescence, but has a little foot damage	70.00
M	Beaded Hearts footed bowl/compote, nice iridescence	40.00
M	Diamond & Rib 7" vase	25.00
M	Wide Panels 8" plate, excellent iridescence	45.00

S.A.S.E. FOR LIST OF FOR SALE ITEMS

Maurice "Moe" Myers, Post Office Box 3180, North Conway, New Hampshire 03860  
PHONE: 1-603-367-8077

M	Diamond Points vase	60.00
M	Plume Panels vase	55.00
G	Ripple vase	45.00
P	Ripple vase	55.00
M	Robin water pitcher	245.00
G	Wishbone footed bowl	95.00
M	Horse Medallion plate	145.00
G	Good Luck bowl	325.00
M	Holly 9" plate	145.00
B	Bulls Eye & Beads 14" vase, Fenton, RARE, Hartung Bk 10, pg 12	175.00



CARNIVAL GLASS FOR SALE

Pam MacDonald, 21 Kingswood Drive, Silver Lake, New Hampshire 03875

IG	Pastel Swan Salt, pretty	30.00
DM	Fashion water pitcher, excellent one	145.00
M	Imperial Grape water pitcher	80.00
B	Lattice & Grape tumbler	65.00
M	Lattice & Daisy (Dugan) tumbler	40.00
W	Colonial Stretch (Imperial Jewel) tumbler	75.00
B	Ten Mums tumbler	75.00
M	Peacock at the Fountain Northwood tumbler, lovely	45.00
B	Grape & Gothic Arches tumbler, ELECTRIC	45.00

Billy G. Hughes, 30 Park Street, Farmington, Missouri 63640  
PHONE: 1-314-756-3172

P	EI Hearts & Flowers bowl, SUPER	485.00
W	EI Hearts & Flowers compote, a nice one	165.00
G	EI Open Edge Basket J.I.P., small, SCARCE COLOR, A BEAUTY	275.00
VAS	EI Open Edge Basket, J.I.P., small	125.00
P,	EI Pastel Swan Salt, SUPER COLOR & SCARCE	365.00
M	EI Pastel Swan Salt, SCARCE COLOR, NICE ONE	265.00
AMB	EI Pastel Swan Salt, light amber, SCARCE COLOR	125.00
PO	EI Pastel Swan Salt, VERY DARK & SCARCE	325.00
M	EI (N) Dandelion tankard pitcher, nice but has crack at handle	85.00
M	GI Grape & Cable tankard pitcher & 4 tankard tumblers, pitcher has crack in bottom	145.00

Ray Hitchcock, Rt. #1, Box 301, Winterset, Iowa 50273  
PHONE: 1-515-462-2074

M	Painted 7 piece water set, Lotus #153	250.00
M	Bouquet pitcher, SUPER, SUPER COLOR	225.00
AO	Leaf & Beads rose bowl, EXTRA NICE ONE	350.00
IG	Peacocks P.C.E. bowl	1,650.00
LAV	Little Fishes footed sauce	100.00
M	Nut Cup/Salt, Wide Panel	50.00

Barbara Barker, Rt. #3, Box 163BB, Savannah, Missouri 64485

MUST SELL CARNIVAL GLASS & HARTUNG PATTERN BOOKS.

S.A.S.E. FOR LIST

CARNIVAL GLASS FOR SALE

Ken Oppenlander, 3513 Stagecoach Circle, Manhattan, Kansas 66502  
PHONE: 1-913-776-5512, evenings and weekends

G	Good Luck P.C.E. bowl, Basketweave exterior	285.00
B	Holly plate, tiny epoxy on 1 point, but a SUPER plate	250.00
*	Pastel blue with smokey iridescence Ribbon Tie 3 in 1 edge bowl	225.00
P	Butterflies & Waratah flat compote with unusual crimped edge, Australian	200.00
W	Holly plate	190.00
W	Cherry Chain large, ruffled bowl	125.00
P	Grape & Cable plate	165.00
G	Three Fruits ruffled bowl, Plain exterior, SUPER COLOR	95.00
A	Peacock & Grape ruffled bowl	80.00
M	Holly ruffled compote	25.00

Michael Basey, 4315 Adams, Kansas City, Kansas 66103  
PHONE: 1-913-432-2460 after 6:00 P.M.

B	EI Good Luck ruffled bowl, Ribbed exterior, SUPER COLOR	310.00
M	EI Holly 9½" very flat bowl	100.00
G	EI Wreath of Roses compote, NICE COLOR	48.00
G	EI Peacock Tail compote, Fenton, VERY NICE	48.00
PO	EI Ski-Star ruffled sauce	35.00
G	EI Fentons Stippled Rays bon bon, NICE	48.00
B	EI (N) Bushel Basket, round, small flake on rim, so	85.00
B	EI Fentons Acorn 7½" ruffled bowl, probably reninnger blue, GORGEOUS IRIDESCENCE	105.00





Jerry & Doris Rissmiller, Rt. #2, Post Office Box 172, Elverson, PA 19520  
PHONE: 1-215-286-9879

- G Wreath of Roses punch bowl base
  - G Wreath of Roses cups, Persian Medallion interior
  - P Broken Arches punch bowl base
- MUST BE A GOOD ONE.

---

Dick Strever, 1610 East McFadden, Santa Ana, California 92705  
PHONE: 1-714-972-2334

- RED Butterfly & Berry flower vase to replace mine lost in fire.

---

Isabell Aldridge, 6407 Rushmore Drive, Sacramento, California 95842  
PHONE: 1-916-331-4290

- M Peacock at the Fountain (N) butter dish
- B Butterfly & Berry butter dish

---

Doug & Sharla Peters, 121 Kel Court, Blue Springs, Missouri 64015  
PHONE: 1-816-229-6138

ANY DAMAGED WATER SETS

---

Harold L. Fortney, 910 Pennsylvania, Apt. 908, Kansas City, Missouri 64105  
PHONE: 1-816-421-4169

- W Fenton Fine Rib vase

---

Ed Kramer, 4305 W. 78th Street, Prairie Village, Kansas 66208  
PHONE: 1-913-642-3587

- M EI Imperial Grape water carafe
- M EI Imperial Six-Sided, Cut & Oval & Soda Gold candlesticks, pairs only
- M EI Powder Jars with Ducks or Rabbit on top
- M EI 3" lily for epergne, clear glass with spiral body, marigold interior petals
- M EI Fenton Master Nut Cup
- M EI "474" vase

CARNIVAL GLASS WANTED

George Bond, 720 Gran Paseo Drive, Orlando, Florida 32825  
PHONE: 1-407-382-5681

- W EI Orange Tree butter top
- A/P Acorn Burrs punch bowl top
- M EI Orange Tree butter bottom
- M EI Peacock at the Fountain butter bottom
- G EI Wreath of Roses punch bowl top
- G EI Wreath of Roses punch cups

---

Richard Cinclair, 3605 South Echo Trail, Plano, Texas 75023  
PHONE: 1-214-596-0014

- W Wide Panel epergne base
- IG Lily for Wishbone epergne
- W Lily for Wishbone epergne
- \* \*Celeste Concave Diamond GUEST SET tumbler
- W Grape Arbor tumbler
- ANY Acarab Shell hat pin
- G Poppy Show bowl
- W Hearts & Flowers bowl, P.C.E.
- G Hearts & Flowers compote
- M Rose Show bowl

---

John & Terri Dubinski, 2408 Fleetwood Drive, Columbia, Missouri 65202-2262  
PHONE: 1-314-474-2644

- A/G Persian Medallion bonbons, rose bowls, compotes
- Rays & Ribbons I.C.S. bowls
- M Bottom to Peacock at the Fountain butter and the punch bowl top
- A Oriental Poppy tumblers, need 2
- M Grape & Cable punch bowl and base

---

Gloria Pfeiffer, 140 Eaton Road, Rochester, New York 14617  
PHONE: 1-716-467-3472 after 6:00 P.M.

- B Orange Tree master berry, pedestal, round
- M Orange Tree master berry, footed, round
- M Snow Fancy master berry, round



Ray Hitchcock, Rt. #1, Box 301, Winterset, Iowa 50273  
PHONE: 1-515-462-2074

IG Base only for Wide Panel epergne, or will sell complete set with slight damage to base.

Billy G. Hughes, 30 Park Street, Farmington, Missouri 63640  
PHONE: 1-314-756-3172

- A EI Inverted Thistle spooner
- A EI Inverted Thistle covered butter
- A EI Inverted Thistle water pitcher
- A EI Inverted Thistle 5" bowl
- G EI Inverted Thistle cream pitcher
- M EI Inverted Thistle cream pitcher

Debbie & Mike Heinl, 240 Mize Road N., Cullman, Alabama 35055  
PHONE: 1-205-739-0281 after 5:00 P.M. Central Time

M Iris & Herringbone demitasse cup

Bob & Aggie Natali, 5514 E. National, Fresno, California 93727  
PHONE: 1-209-291-3296

- M Bottom to Butterfly & Berry sugar
- M Bottom to Grape & Cable butter dish
- A Dahlia butter dish, top & bottom
- G Singing Birds sugar, creamer, spooner

Don Harris, 527 Lavina Drive, Mechanicsburg, Pennsylvania 17055  
PHONE: 1-717-790-0412

P Memphis fruit bowl

Steve R. Kocsis, 3493 Wolfcreek Road, Cuba, New York 14727  
PHONE: 1-716-968-2499

M EI Grape & Cable 9" stippled plate

Tom Knighton, 512 Church Street, Doylestown, Ohio 44230  
PHONE: 1-216-658-6805

SPITTOONS, WHIMSEYS AND ANY RARE PIECES

Gladys Hutchison, Rt. #2, Box 2966, Seymour, Missouri 65746  
PHONE: 1-417-935-4908

- B Rambler Rose pitcher
- M Tiger Lily water set
- M Lid for Beaded Shell sugar
- A Millersburg Hanging Cherries sugar

Richard Thomas, Rt. 2, Box 2253, Fair Play, Missouri 65649  
PHONE: 1-417-276-4024

- M Acorn Burrs tumblers, need 6
- M Acorn Burrs 10" berry bowl
- P Acorn Burrs sugar
- G Acorn Burrs 5" berry bowls, need 6
- G Acorn Burrs sugar - butter

Bob & Genny Bishop, 277 Loonhill Road, Dracut, Massachusetts 01826  
PHONE: 1-508-453-1849

- P EI Lilies for Wide Panel epergne, need 4
- M EI Bottom for Wide Panel epergne
- M EI Grape & Cable candlestick, light marigold  
Lids for Grape & Cable powder jars, in ice blue, ice green, white aqua opal, blue and green
- M EI Cover for Grape & Cable humidior
- M EI Sunflower pin tray
- PO EI Flowers & Spades bowl

Dee DeBenedictis, 18167 Deer Run, Penn Valley, California 95946  
PHONE: 1-916-432-2058

- B Fenton Orange Tree breakfast sugar
- M Fine Cut & Roses rose bowl
- ANY Acorn Burrs tumbler
- A Acorn Burrs creamer



ENCYCLOPEDIA OF CARNIVAL GLASS LETTERED PIECES - 120 pages, black and white, as well as colored photographs of all known advertising and commemorative pieces. Price guide included. Mail checks or money orders to John D. Resnik, 10031 Banner Lava Cap, Nevada City, CA 95959, price is \$15.95 plus \$2.50 postage and handling.

MORDINI'S 1992 CARNIVAL GLASS AUCTION PRICE REPORT - The 1992 Carnival Glass Auction Price Report is now available for mailing. This Report covers all major Carnival Glass auctions conducted in 1992. Over 4,000 entries, the price is \$9.00 for a single copy and \$8.00 each for multiple copies. Canadian friends please send Postal Money Order in U.S. funds. Overseas mailing add \$2.00 for each copy. Order from Tom & Sharon Mordini, 36 N. Mernitz Ave., Freeport, IL 61032. PHONE: 1-815-235-4407.

CARNIVAL IN LIGHTS - A full color book on Carnival Lighting, including Gone-with-the-Wind lamps, candle lamps & shades, price guide includes. \$11.95 plus postage. Order from Helen Greguire, 103 Trimer Road, Hilton, NY 14468.

THE WORLD OF ENAMELED CARNIVAL GLASS TUMBLERS - Author/Photographer, Cecil Whitley, 10 pages "60 tumblers in full color", \$10.00 including shipping, Call or write Cecil Whitley, 1041 Cheshire Lane, Houston, TX 77018  
PHONE: 1-713-681-0807.

A CARNIVAL OF IRIDESCENT LUSTER BUTTONS, BOOK II - New book on Carnival Glass buttons, contains 139 pages, 450 more pattern drawings, named & numbered. Special section on cone shank buttons. Index and price guide also covers Book I. Price is \$14.00 postpaid in U.S.A.: \$16.00 (U.S.) postpaid in Canada, and Mexico; \$20.00 (U.S.) postpaid overseas. Order direct from the author, Ruth M. Clark, 2100 Dawn Drive, Georgetown, TX 78628.

=====

H.O.A.C.G.A. EDUCATIONAL SERIES - BOOK I - 148 articles with pictures, on a variety of Carnival Glass patterns including plates, compotes, bon bons, rose bowls and many other pieces. Price is \$15.00 plus \$2.50 postage.

H.O.A.C.G.A. EDUCATIONAL SERIES - BOOK II - 180 articles with pictures on Carnival Glass tumblers. All of these articles have previously appeared in the H.O.A.C.G.A. Bulletin and have now been assembled and updated in a convenient book form. Price is \$17.50 plus \$2.50 postage.

CARNIVAL GLASS PATTERN BOOKS BY MARION HARTUNG - A set of 10 books identifying the different patterns in Carnival Glass. These books provide the single most complete pattern information and is a must for every collector. Price of each book is \$6.00 plus \$1.50 postage or the complete 10 book set is \$60.00 plus \$6.00 postage.

FOR THE ABOVE H.O.A.C.G.A. AND HARTUNG CARNIVAL GLASS PATTERN BOOKS, PLEASE MAKE CHECKS PAYABLE TO H.O.A.C.G.A. AND SEND CHECKS AND ORDERS TO DOUG PETERS, 121 KEL COURT, BLUE SPRINGS, MISSOURI 64015.