

# HOACGA

Heart of America Carnival Glass Assoc. Inc.

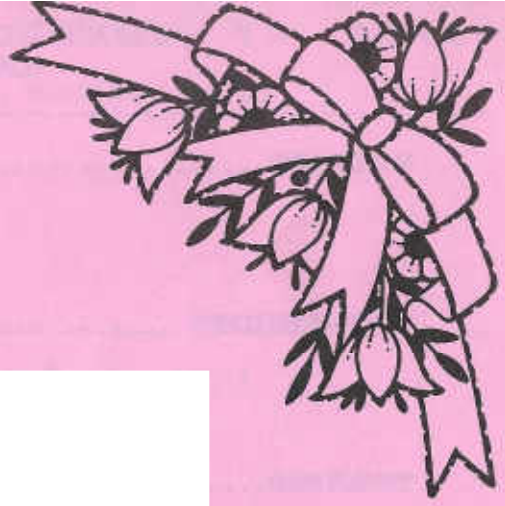
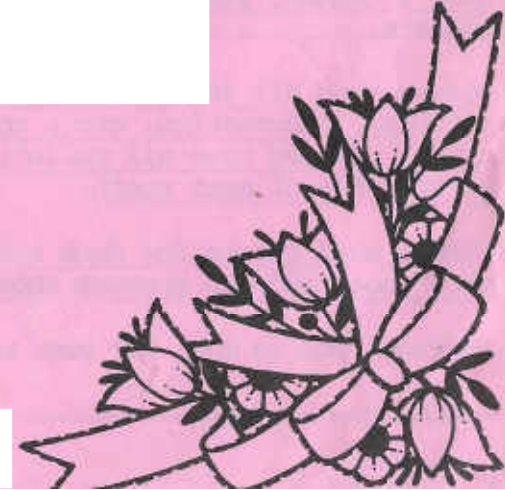
RETURN ADDRESS

H.O.A. C.G.A.  
Jackie Fortney  
P.O. Box 303  
Buckner, MO 64016

December 1993

FIRST CLASS MAIL

FIRST-CLASS MAIL  
U.S. POSTAGE  
PAID  
Buckner, MO  
Permit No. 03



PRESIDENT.....ROBERT GRISSOM  
7900 Crescent  
Raytown, Missouri 64138  
1-816-356-5320

VICE-PRESIDENT.....DARYL STROHM  
8904 E. 29th Street  
Kansas City, Missouri 64129  
1-816-252-8137

TREASURER.....DOUG PETERS  
Post Office Box 1545  
Blue Springs, Missouri 64013  
1-816-254-5755

SECRETARY.....ED KRAMER  
4305 W. 78th Street  
Prairie Village, Kansas 66208  
1-913-642-3587

BULLETIN SECRETARY.....JACKIE FORNEY  
Post Office Box 303  
Buckner, Missouri 64016  
1-816-249-5208

The Bulletin is published the 15th of each month. Membership year begins with the month your dues are paid. DUES ARE \$25.00, PER COUPLE OR SINGLE, U.S. & CANADA, \$40.00 FOREIGN. All monetary figures are quoted in U.S. Dollars.

Please send all items for the Bulletin, i.e. glass for sale, glass wanted, articles, information, etc., to the Bulletin Secretary, whose address appears above. Please have all Bulletin material sent to us so that we receive it by the 28th of each month.

Please send checks for dues and books, and any address changes to the Treasurer whose address appears above.

We thank you so much for your cooperation in these matters.

=====



THE PANELLED THISTLE TUMBLER

The Panelled Thistle tumbler is 4" tall with a top opening of 3¼". There are 6 panels that go around the tumbler. There is a raised glass frame around each of the panels. Three of these panels contain a true thistle design with flower, stem & leaves. The alternating three panels contains a star with rays extending out from the star. The bottom of the base contains an unusual design appearing much like the spokes of a wagon wheel.

There are only two of these old Panelled Thistle tumblers that have ever been reported, both in marigold with very nice iridescence. The first one of these tumblers that we ever saw was in the fabulous Whitley collection of Houston, Texas. The second example showed up at the H.O.A.C.G.A. Convention in April, 1993. When it was brought to our room to examine, we were really surprised to see it. It was not a Crider iridised tumbler. The color, condition and everything about this tumbler convinced us that it was definitely old. This particular tumbler was found by Forrest Dryden of Lawrence, Kansas. It is now a part of the large Robert Smith collection of Boston, Massachusetts.

Panelled Thistle is a Higbee pattern. The Higbee Company was producing glass during the years that this type of iridised glass was very popular, so we suspect that they wanted to get into the act of producing some of this iridised type of glass, which we now call Carnival Glass. This is only a guess on our part, but it does seem logical to us. Panelled Thistle marks our 191st entry



into our Educational Tumbler Series. Next month we will feature the extremely rare Northwood's Drapery tumbler.

JOHN & LUCILE BRITT

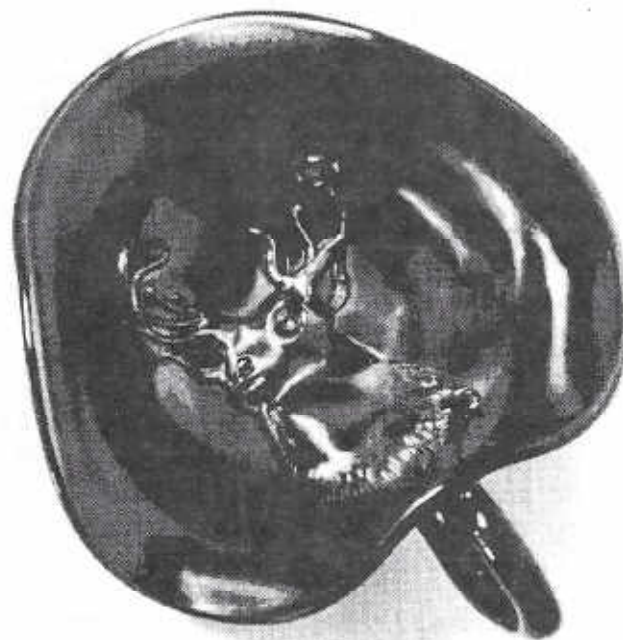
---

Merry Christmas  
and  
Happy New Year from  
the Board of Directors

It is with sadness that we have learned that one of our members has passed away. Mr. Flynn Willis of Ottumwa, Iowa passed away on October 28, 1993. He was diagnosed with advanced cancer of the lungs and was hospitalized since September 27, 1993. Our prayers and condolences go out to his wife Maryella Willis. You may send cards to her at 211 Clem St., Ottumwa, Iowa 52501.

We have also learned that John L. Boyd of Orlando, Florida passed away on June 23, 1993. Our prayers and condolences go out to the family. These two friends of ours in Carnival Glass will be dearly missed.

---



THE ELKS NAPPY

This little Elks nappy is a product of the old Dugan Glass Company of Indiana, Pennsylvania. Actually, the basis for this pattern was Dugan's own Leaf Rays handled nappy, which was utilized with a plunger that imparted the Elks motif. This nappy is said to be made as a souvenir for the convention of the Benevolent and Protective Order of Elks.

It is surprising to us that so few of these have ever been reported. We have seen or heard of only eight or ten of them. Several of these have been ruffled. They all have been in the purple color.

The first one of these that we knew about was from the collection of Harry H. Whitlow of Riverview, Michigan. Mr. Whitlow was an authority and collector of art glass. He published a book on that type of glass, but he also collected Carnival Glass.

The Marshall Shafer's of Ohio purchased the Carnival Glass part of the Whitlow collection and sold some of it through a list. We purchased our first Millersburg Cleveland Memorial Tray from that list. The Shafer's later sold the bal-

ance of the collection in a Woody auction held at Toledo, Ohio on May 26, 1973. The Elks nappy sold for \$2,425.00 at that auction.

The Elks nappy that is shown in this article is owned by Glen and Jackie Fortney of Buckner, Missouri. Here is a little on the history of this nappy. It was purchased at an auction in the Higginsville, Missouri area by Clifford Cannon. He knew it was an exceptional and beautiful piece of Carnival Glass, but did not know the pattern, maker or value of the piece. He liked it very much so he bought it. He later took it to the next convention where he found out more about it. After finding out the rarity of the piece, his wife forgave him for paying \$100.00 for it.

Mr. and Mrs. Clifford Cannon were early members of H.O.A.C.G.A. After the death of Mr. Cannon, his wife decided to have an auction and sell their Carnival Glass and collection of other antiques, furniture, etc. Glen purchased the little Elks nappy at that auction held by LaRue at Leeton, Missouri in May of 1988. He had to pay \$3,000.00 to out bid other bidders. Considering what it sold for at the LaRue auction, Mr. Cannon certainly made a good buy. After watching an Elks nappy sell at the Earl and Gladys Bacon's auction in June of 1993 for \$6,750.00, we believe that Glen and Jackie Fortney made a very good purchase. Congratulations Glen and Jackie!

This is #179 in our Pictorial Pattern Parade Series. We hope that you have found it interesting and educational. The photo of the Elks nappy is courtesy of David Doty.

JOHN & LUCILE BRITT



A PEEK INTO THE PAST -- IN CARNIVAL GLASS

BY JOHN & LUCILE BRITT

Let's take another peek into the past in Carnival Glass and review the Carnival Glass ads from old 1979 Antique Traders. Some of the dealers, their pieces of Carnival Glass for sale and prices asked are listed below:

JEAN CLARK, HUTCHINS, TEXAS: Green rare Inverted Thistle 11" bowl marked "Near Cut", outstanding \$275.00; white miniature Blackberry compote \$85.00; marigold Brooklyn Bridge bowl \$225.00; very rare Peacock & Urn 11" flat plate \$900.00 in purple; rare ice green Raspberry pitcher \$750.00; marigold Waffle Block pitcher and 4 tumblers \$245.00; ice blue Hearts & Flowers compote \$95.00; blue miniature Kittens cup and saucer \$175.00; purple Peacock at the Fountain punch bowl, base and 3 cups \$375.00.

SINGLETON BAILEY, LORIS, SOUTH CAROLINA: White Orange Tree loving cup \$175.00; white Palm Beach tumbler \$89.00; purple Acorn Burrs water pitcher \$350.00; purple Heavy Iris tumbler \$32.00; blue Peach tumblers, 3 at \$50.00 each; pastel green Rose Show bowl \$225.00; pastel green Embroidered Mums plate \$265.00.

GIL CORRIVEAU, STURBRIDGE, MASSACHUSETTS: Peach opal Persian Garden 11" ice cream bowl \$175.00; ice green Grape & Cable ice cream set, 5 pieces \$275.00; ice green Peacocks on the Fence 9" plate \$140.00; ice green Peacock at the Fountain compote \$225.00; red Orange Tree bowl \$350.00; aqua opal Daisy & Drape vase \$190.00; aqua opal Drapery rose bowl \$160.00; aqua opal Leaf & Beads rose bowl \$150.00; blue opal Daisy Wreath bowl \$160.00; aqua opal Good Luck bowl \$350.00; aqua opal Peacocks on the Fence bowl \$270.00; aqua opal Hearts & Flowers compote \$175.00; white Peacock at the Fountain compote \$200.00.

LAWRENCE E. ASHLEY, POTSDAM, NEW YORK: Aqua opalescent Embroidered Mums bowl, terrific color, \$340.00.

GENE'S ANTIQUES, INDEPENDENCE, MISSOURI: Red 8½" Orange Tree bowl \$320.00; red Panther 5½" footed bowl \$300.00; blue 10½" Stag & Holly bowl \$250.00; marigold Brooklyn Bridge bowl \$250.00.

ST. JOHNS ANTIQUES, CLEAR LAKE, IOWA: Mint green 9" Rose Show bowl \$195.00; marigold File tumbler \$38.00; cobalt Kittens cereal bowl \$185.00; marigold Kittens bowl \$125.00.

MARION T. HARTUNG, EMPORIA, KANSAS: Green Acorn Burrs covered butter \$175.00; amethyst Millersburg Diamonds pitcher \$300.00; marigold Wishbone epergne \$150.00; marigold Lattice & Daisy water set \$170.00; marigold Acanthus plate \$85.00; green Leaf & Beads rose bowl \$55.00; cobalt blue Grape & Gothic Arches water set \$185.00; purple Good Luck plate \$185.00; white Leaf Chain 9½" plate \$90.00; white Grape & Cable banana bowl \$285.00; pastel blue Hearts & Flowers bowl \$85.00; purple (N) Grape whiskey decanter complete \$985.00; marigold Inverted Strawberry power jar \$60.00; green (N) Grape banana boat \$150.00.



ESTELLE LEBOWITZ, VALLEY STREAM, NEW YORK: Blue Oriental Poppy tumbler \$18.00.

HAROLD OLSON, ETTRICK, WISCONSIN: White Orange Tree plate \$69.00.

NOTICE, TEXAS CARNIVAL GLASS CLUB: Organized February 18, 1979, dues \$5.00 per family. Information and application forms may be obtained from F. M. Whitley, Mrs. Jody Mitchell and Mrs. Chester Herring.

CAUDLE ANTIQUES, STATE ROAD, NORTH CAROLINA: Purple Town Pump, a beauty \$495.00 blue miniature Blackberry compote \$45.00; marigold Stag & Holly large low footed bowl \$69.00; marigold Horses Heads Medallion bowl \$55.00; marigold Pony Head bowl \$59.00; purple Many Fruits punch bowl with base and 4 cups \$475.00; green Wide Panel 4 Lily epergne, complete \$375.00; amethyst Millersburg Nesting Swan nice as they come \$239.00; blue Panther sauce \$49.00; purple Embossed Scroll plate \$49.00; blue 12 sided Three Fruits plate \$110.00; white Hearts & Flowers bowl \$69.00, purple Fishermans mug \$95.00; blue Heart & Vine plate \$165.00; purple Tornado Vase, a beauty \$189.00; green Sailboats small bowl \$49.00; white Orange Tree plate \$95.00; marigold Horse Heads plate, extra nice \$129.00.

JONES ANTIQUES, COPENHAGEN, NEW YORK: Ice blue Embroidered Mums ruffled bowl \$125.00; green Sunflower pin tray \$155.00; green Whirling Leaves bowl \$95.00.

You have no doubt noticed from these listings that a good many super and rare pieces of Carnival Glass could still have been purchased in 1979. The only difference that we have noticed from the earlier 1970's compared to the 1979 listings is that there was considerably less of those super rare pieces listed in 1979. This trend has continued every year up to the present time. On the other hand there are many more auctions today than there were in the 1970's.

This is #57 in our Peek Into the Past Series. We hope that you have found it interesting.

JOHN & LUCILE BRITT

=====

A LOOK AT TABLE SETS  
BY CHUCK & MARGE KREMER



THE FLUTE TABLE SET IN MARIGOLD

This is a rather simple Northwood pattern. Table sets are listed in marigold, rare green and rare amethyst. If there ever was a set made for everyday use, this one certainly fills the bill. A smooth simple design, that was easy to clean and yet attractive, probably put these on many tables. The butter base is one of the molded shapes without a collar of any form, while the other pieces have modified collars that are a continuation of the Flute pattern.

We bought our marigold set in the mid 70's at an auction where the auctioneer was claiming it was a rare set. We thought he was blowing smoke, but over the years we have come to realize very few Flute sets are ever offered for sale. Occasionally we see a green piece but have never added one to our collection. If we ever acquire a green set, it will be purchased complete. If amethyst pieces or sets exist, we do not remember seeing any. In an era when animals, fruits and flowers dominate the best seller lists this somewhat plain pattern suffers and the prices are in proportion to its popularity.

This is the eighteenth in our Series on Table Sets.

CHUCK AND MARGE KREMER

=====

OCTOBER 27, 1993: Estate Sale at Fort Wayne, Indiana. A local sale for a change. This was the second part of a deceased Muncie, Indiana collector's glass. The ad said 300 pieces of Carnival Glass and listed many patterns (some several times) but no color was given for any piece. It was another "Buyer beware--we won't tell you anything sale."

This lady had many water, berry and table sets--not all complete and some mismatched. Of the 10 water sets there was a couple of nice ones but the rest were unexciting. When one butter dish was put up the helper showed the damage (there was quite an area of chips) to the auctioneer and he said, "It's perfect." We formed an opinion of this auction team quickly and it wasn't good.

We stayed six hours while they sold glass, guns, furniture, china, more glass and miscellaneous stuff, but left when they still had 50 or so pieces of Carnival to sell. We bought nothing, but there were a few good buys and prices were average on the good pieces and high on the rest.

OCTOBER 29-30, 1993: Seeck Auctions sold glass from the Mamie and Dewey Bell collection at St. Louis, Missouri. This was one of those fun sales--quick and smooth. The crowd was relaxed and seemed to be enjoying themselves. The glass was super clean and the good iridescence glistened.

There was a limited amount of top end pieces and a large number of middle of the road kind. It seemed to us that prices were generally good. We have said before, Jim and Vern are the Kings of the mail bids, and they had them again this time.

At most auctions there is a piece or group that catches our eye and the blue flat Fanciful plate with radium iridescence (\$675.00) did this time. Also there were groups of three Raspberry milk pitchers, three Four Seventy Four milk pitchers and three Poinsettia milk pitchers. We added a green Hobstar butter dish to our collection--now we need the sugar and spooner. This seems to be a habit; add one piece and want more!

NOVEMBER 6, 1993: Burns Auction Service had a sale in Lansing, Michigan at the Great Lakes Club's Mini-Convention. With snow forecast, we waited to check the weather and at the last minute decided to go, and since it was only 125 miles we drove up Saturday morning. Nothing in the brochure caught our fancy so we just went to see friends and chat a bit. It was good to see Dottie Gallo able to attend the Convention and sale.

The sale had an average group of glass and brought average prices. The highlight probably was the green 9" Persian Medallion plate (only one of four known) at \$3,250.00. There were 3 or 4 big buyers and in our opinion they took home some bargains. The Burns team got the sale over quickly and efficiently. We

did buy a couple of small plates.

NOVEMBER 12-13, 1993; Gary Cooper's Fall Auction at Flint, Michigan. As with most consignment auctions there was a wide variety of glass offered. Friday night 125 pieces of somewhat ordinary glass was offered to a relatively small crowd. Doors were open early for our viewing and then they rolled out the hors d'oeuvres. As usual, Gary and his partners Herb and Dave Albrecht arrived all decked out in their matching wardrobes. We looked awhile and then socialized over Swedish meatballs, breaded cheese sticks, vegetable tray and dip, fruit tray, cheese tray, apples, punch and coffee--all delicious and in endless quantity.

Saturday was a different story. A big crowd rolled in to enjoy the donut holes, juice and coffee and buy the glass. Gary commented on the number of people coming from a distance for the sale. More top end glass was sold Saturday and at good prices. WE thought the vases were a little soft except maybe for the blue Parlor Panels 4" vase at \$1,750.00, but it was one of only 2 known so who knows. The green mini Coal Bucket (\$250.00), Shrine toothpick (\$425.00), blue Kittens cereal (\$600.00), amethyst non-Carnival Tomahawk (\$110.00), three Cridder iridized small tumblers (\$10.00, \$15.00, \$17.50) were some of the small items sold. An ice green Peacocks 9" plate \$750.00, a purple one \$600.00, a 6" amethyst Millersburg Peacock at the Urn plate \$1,250.00, an ice blue Rose Show 9" bowl \$1,350.00, a marigold 9" Poppy Show plate \$800.00, and an amethyst small Grape & Cable eight piece punch set at \$425.00 are some representative prices.

We were treated to a fast moving, well conducted sale and computerized check-out--plus the goodies. What more could we ask for? Garys' business card says "When it Comes to Glass We Use a Touch of Class!!!" How true.

CHUCK AND MARGE KREMER







COSMOS & CANE - - HOBSTAR BAND

What DO these two patterns have in common? Let us examine the goods to decipher that question. Just let me say that it has taken TEN years to acquire the Cosmos & Cane tankard and nearly four years to obtain the correct tumbler for the Hobstar Band set. (Steve Morrow likes to tell me to be patient. This is over doing it.) He sold us the tankard recently and through the generosity of John & Lucile Britt, we have the tumbler.

I've never thought the Hobstar Band was an Imperial pattern. While the Britts were allowing me to select the tumbler from a set they had, John mentioned he had always wondered about the manufacturer, not feeling it to be Imperial. We discussed the possibility that it could be U.S. Glass. The thickness of the glass, the type of iridescence and even the moldwork seem to fit. There are two thin rings at the top of the foot on the pitcher just as it attaches to the container. These same two rings appear at the top of the foot on the Cosmos & Cane ruffled compote.

Cosmos & Cane is found in marigold or honey amber, but Hobstar Band is found only in marigold, usually quite strong in color, with clear foot and handle.

There is a second type pitcher in Hobstar Band pattern, which has straight sides extending down as the tumbler does. I'm told on great authority (John

Britt) that the tumbler for this pitcher has a FLARED top. One of those sold at the Bacon sale last June for \$235.00! I'm certainly grateful that John practiced friendly discretion in pricing this one for me.

All of the above mentioned sets are quite rare, very distinctive in grace and beauty and well-worth the exercise of patience to obtain.

Cosmos & Cane is available in whimsy shapes of the compote and a beautiful table set.

Hobstar Band can be found in a rare compote and an equally rare handled celery in marigold. A recent auction listed the only known GREEN celery. Does this indicate we are back to square one? Is there any OTHER known GREEN U.S. glass?

Can you shed any light on this subject? Please let us hear!

DIANE FRY



REQUEST FOR RARITIES

The next H.O.A.C.G.A. project is to compile a list of the top 250 Carnival Glass rarities. We would like to have this list compiled, checked and printed by the 1994 Convention.

Your help is needed in compiling this list. Your list can be as few or as many as you want it to be. Any number of rarities that you send in will be of help to us. We will try to assemble a list from the information that members send in.

The information needed is as follows:

EXAMPLE

	<u>PATTERN</u>	<u>COLOR</u>	<u>ITEM</u>	<u>MANUFACTURER</u>	<u>NUMBER KNOWN</u>
1.	Acorn Burrs	Aqua Opal	Punch Set	Northwood	1
2.					
3.					
4.					
5.					

We ask Club members to send in your rarities list to us as soon as possible to the Club Vice-President. We thank those Club members who have responded with their completed lists.

Please compile your list and send to: Daryl Strohm  
8904 E. 29th Street  
Kansas City, Missouri 64129

REQUEST FOR INFORMATION

This month, in our continuing research into Carnival Glass patterns, we ask that you, members of H.O.A.C.G.A., send any and all information on the FARM-YARD pattern.

We need information on shapes, colors known, and also the different edgings used in the manufacturing of this pattern.

We will publish the results of our inquiry in a future H.O.A.C.G.A. issue.

Please send your information to the Vice-President, Daryl Strohm, 8904 East 29th Street, Kansas City, Missouri 64129.

WE thank you for your cooperation and assistance.

NEW ENGLAND CARNIVAL GLASS ASSOCIATION 1994 CONVENTION

The New England Carnival Glass Association (N.E.C.G.A.) will hold it's 1994 Convention again at the Ramada Hotel, 1080 Riverdale Road, West Springfield, Massachusetts 01089. PHONE: 1-413-781-8750, The Convention will be on September 10 and 11, 1994. The Hospitality Room will be open Thursday, September 9th for "Early Birds" and all day Friday and Saturday as usual.

Make your reservations now at our group rates and go to the Fabulous Brimfield Flea Market mornings and enjoy Convention activities in the afternoon and evenings. The Hotel will give our special room rates throughout "Brimfield Days" if you tell them you're with our Carnival Club. Tom Burns will hold an Auction Friday evening and we will have a Banquet on Saturday evening, plus a fine speaker followed by a fun-filled "mini-auction". Tom will conduct a seminar on Saturday after lunch. N.E.C.G.A. will subsidize \$5.00 for each Banquet meal. WE will have a contest again this year for room displays. Come and have a great time...ask anyone who has been to one of our Conventions.

For further information, contact me, Sam McGill at 1-203-623-4645, 27 Wells Road, Broad Brook, Connecticut 06016 and I will send you all the information. If you call and I'm not home, leave your name, number and message and I will return your call. Whatever you do, don't wait...call now and reserve your deluxe room around the beautiful Courtyard at \$65.00 or a standard room at \$55.00 and expect to have a great time. Plan your 1994 vacation around this Convention once and you'll do it every year!

MICKEY REICHEL AUCTION SERVICE 3RD ANNUAL NEW YEARS CARNIVAL GLASS AUCTION

The Mickey Reichel Auction Service presents the 3rd Annual New Years Day Carnival Glass Auction on Saturday, January 1, 1994 at 9:30 A.M. C.S.T. 375 GREAT LOTS OF CARNIVAL WILL BE SOLD!

The Auction will be held at the Mickey Reichel Auction Center, 1 mile north of I-70 on Highway 5, Exit 101, Booneville, Missouri. This is 20 miles west of Columbia, Missouri.

Please call for FREE catalogue or write Mickey Reichel, 516 Third Street, Booneville, Missouri 65233-1536. The phone number is 1-816-882-5292 days or 1-816-882-5283 evenings. "Three Times A Charm" Auction full of rarity, color and quality. Brochures will be mailed out the last week of November, 1993.

CLIP AND SAVE THIS AD!



TEXAS CARNIVAL GLASS CLUB CONVENTION

The Texas Carnival Glass Club will again host its Convention at the Marriott Hotel-Greens Point in Houston, Texas beginning February 17, 1994. The convention is open to anyone wanting to experience Southern Hospitality along with Carnival activities and a great auction.

Marriott - Greenspoint (713) 875-4000 \$50.00 per night plus tax (Be sure to mention the Club & Convention).

Thursday, February 17, 1994:

6:00 P.M. Dinner at Luby's Cafeteria  
 7:00 P.M. Texas Bingo - Prizes  
 8:00 P.M. Make Your Own BLUE BELL Ice Cream Sundae

Friday, February 18, 1994:

A.M. Antiquing Houston and room shopping.  
 4:00 P.M. Educational Seminar - "Window Treatments: Drapery and Parlor Panels" presented by Dr. Roy Hieger  
 6:00 P.M. Texas Picnic - Plenty of food and free  
 7:30 P.M. Seeck Auction Preview  
 8:30 P.M. "Midnight Auction"

Saturday, February 19, 1994:

9:30 A.M. Seeck Auction - mid-auction surprise  
 2:00 P.M. Carnival Glass Word Scramble - prizes  
 6:00 P.M. Banquet  
 Speaker - Mr. Smokey Cloud on "Something In Between"  
 Raffle drawing for aqua opal Rose Show Bowl

Sunday, February 20, 1994:

9:00 A.M. Open House at Whitley's

Banquet Tickets are \$20.00 including tax and gratuity and must be purchased/reserved by February 15, 1994. Contact Carol Cox at 1-817-641-1738.

Raffle tickets are a dollar contribution each or twelve for ten dollars. Contact Bob Allaire at 1-903-592-7665.

We hope y'all come!

The following prices were realized at an October 29 & 30, 1993 auction by Jim Seeck. The glass was from the collection of Mamie & Dewey Bell from Beloit, Wisconsin.

P G & C master ice cream bowl	400.00	RED Vintage fenery	1,600.00
G Orange Tree 3 in 1 bowl	115.00	G Double Star pitcher	275.00
P Big Basketweave 4 3/4" vase	175.00	M Zipper Loop 9 1/2" lamp	575.00
M Peacock & Urn 9" plate	500.00	P Acorn Burrs pitcher	275.00
G Hobstar butter dish	245.00	RED Stippled Rays sauce	325.00
IB G & C PCE bowl, chip	215.00	P Diamond Lace pitcher	150.00
P Swan Salt	300.00	Three Fruits spatula ftd.	
A Nesting Swan bowl	275.00	bowl in emerald green	425.00
M Nesting Swan bowl, radium	350.00	P Windmill milk pitcher	700.00
B Embroidered Mums bowl	350.00	B Mikado I.C.S. compote	525.00
P Fashion pitcher, nick	950.00	SM Fashion pitcher	450.00
RED Leaf Chain 7" bowl	750.00	M Classic Arts rosebowl	200.00
PO Four Flowers chop plate	475.00	RO Blackberry Spray hat	700.00
G Flute punch set	425.00	M Potpourri milk pitcher	2,450.00
RED Dragon & Lotus bowl	1,250.00	SM Heavy Grape chop plate	2,500.00
M Zipper Loop lamp	450.00	M Big Fish ruffled bowl	500.00
B Fanciful plate, radium	650.00	M Hobnail Swirl spittoon	800.00
AQ Holly ruffled bowl	550.00	P Corn Vase	525.00
G Poppy compote	350.00	IG Corn Vase	375.00
P "474" pitcher	725.00	G "474" milk pitcher	400.00
B Inverted Strawberry creamer	300.00	M Orange Tree loving cup	210.00
G Leaf Chain 9" plate	775.00	G Holly 9" plate	1,000.00
P Scroll Embossed plate	225.00	M Lions flat plate	700.00
M Wild Rose syrup	600.00	IB Knights Templar mug	700.00
Horse Medallion round bowl, brick red	1,250.00	A Trout & Fly bowl	625.00
M Leaf & Little Flowers compote	275.00	IB (N) Thin Rib 7" vase	500.00
B Good Luck PCE bowl	375.00	RED Blackberry Spray hat	225.00
G Fenton Peacock & Urn bowl, SUPER ELECTRIC	450.00	A Gevurtz Bros. Furniture & Clothing flat plate	1,600.00
M Seaweed kerosene lamp	245.00	G Drapery vase, nicks	275.00
M Poppy Show vase	325.00	M Fruit Salad punch set	275.00
M Peacocks 9" plate	375.00	B Leaf Chain 7" plate	125.00
M Pidgeon paperweight	400.00	AMB Heavy Grape chop plate	400.00
PO Fishnet epergne	140.00	IG Peacocks 9" plate	400.00
P Shell & Sand plate, chip	155.00	G Tiger Lily pitcher	160.00
P G & C dresser tray	175.00	G Two Flowers large bowl	150.00
M Raspberry milk pitcher	175.00	PO Ski Star large bowl	105.00
B (N) Peacock & Urn sauce	65.00	IB Hearts & Flowers bowl	250.00
M Orange Tree 9" plate	425.00	A Waterlily ftd. sauce	65.00
AQ Leaf Chain bowl	65.00	B Pine Cone 6" plate	135.00
		A G & C plate	135.00
		B Cherry Circles bon bon	95.00

CARNIVAL GLASS FOR SALE

Floyd & Barbara Fine, Route #2, Box 150, Noel, Missouri 64854  
PHONE: 1-417-475-3667

M ✓	GI Late Waterlily & Cattails tumbler	12.50
M ✓	EI Crabclaw tumbler	45.00
IB ✓	EI Concave Diamonds tumbler	22.50
M	EI Luster & Clear shaker with white plastic top	25.00
M	GI Fostoria Alexis high footed sherbert (Not listed in Carnival books)	15.00
M	EI Souvenir Banded mug (Nowata, OK)	50.00
M	Chippendale Quadraped Souvenir creamer (Goss & Beaman, Ceresco, Nebraska), light marigold	60.00

Greg & Amy Pearson, 1817 San Antonio Ave. #B, Alameda, California 94501  
PHONE: 1-510-523-0786 after 7:00 P.M.

M	EI Pine Cone 6" plate, dark	80.00
P	EI Lustre vase 11"	55.00
G	GI Leaf and Beads rose bowl	85.00
*	EI *Russet Thin Rib 11" vase	30.00
G	GI Tree Trunk 8" squatty vase	45.00
B	EI Dragon & Lotus, SUPER	90.00
M	EI Orange Tree bowl, SUPER DARK	50.00
G	GI Vintage bowl	49.00
B	EI Good Luck, Ribbed exterior	260.00

Diane & Herb Rahn, N. 11298 Clear Lake Road, Elcho, Wisconsin 54428  
PHONE: 1-715-275-3807

IG	Fine Cut & Roses (N) rose bowl, MINT, this one belongs in a museum, Fancy interior	800.00
RED	Jewels by Imperial 10" bowl, iridized inside, excellent blood red color	300.00
W	Dugans Double Stemmed Rose	200.00
PO	Ski Star one side up, SUPER OPALESCENT	150.00

Stan & Donna Williams, PHONE: 1-816-468-5289  
Before 9:30 A.M. or after 4:30 P.M. C.S.T. POSTAGE & INSURANCE EXTRA

M	EI Zipper Loop Lamp 8", A BEAUTY	550.00
B	EI Hearts & Flowers ruffled bowl	595.00
AO	EI Hearts & Flowers compote, VIVID AQUA, BEAUTIFUL COLOR	850.00

CARNIVAL GLASS FOR SALE

Karen E. Skinner, 108 Riverwoods, E. Alton, Illinois 62024  
PHONE: 1-618-259-1373 after 6:00 P.M. Central Time

\$ 35.00

M	EI Towers hat vase (shown in Edwards with Triands), a little rough spot on rim	30.00
* ✓	GI *Cranberry Satin Orchid Depression era ice tea glass, etched orchid with engraved veins and stems	10.00
* PM	EI Imperial Chesterfield (Colonial Vt.) footed tumbler, see January 1993, H.O.A.C.G.A. Bulletin	35.00
M	GI Interior Swirl tumbler, ice tea size. Have never seen before, not Owens #195 or Optic Swirl	20.00
M	GI Pennsylvania Dutch Depression era (Jeannette) tumbler 12 oz. size, Whitley #59, brown decor	12.50
PM	GI Libby Maize celery vase, blue leaves, VERY RARE PATTERN	200.00
PM	GI Barrel (Lucky) Bank, Hartung 6:93	50.00
*	GI *Aramis tumblers, dark marigold, blue or pastel marigold 5" size, few scratches, each	15.00
M	GI Melon Rib shakers (Jeannette's National pattern). Plastic tops have seen better days	20.00

Hubert & Lucille Shelton, 6298 Boiling Springs Road, Munfordville, KY 42765  
PHONE: 1-502-528-5893

RED	Imperial Candlestick Vase, only one we've seen!	1,000.00
*	*Helious Grape & Cable punch cup (N), lots of gold	45.00
M	Imperial Grape tumbler, good iridescence & color	25.00
M	EI Butterfly & Berry footed berry dish, MINT	32.50
G	EI Grape & Cable punch cups, mfg. defect, (N), no chips or cracks	20.00
B	EI Butterfly & Berry tumbler, small chip inside top rim	25.00
?	Orange Tree powder jar, no lid, chips on base on one orange	18.00

Arvin Wolfgram, 1119 E. Marquette Street, Appleton, Wisconsin 54911  
PHONE: 1-414-734-7075

M	EI Nesting Swan, Millersburg, bowl tiny flake underneath outer edge	150.00
G	EI Millersburg Primrose bowl, tiny flake on bottom collar base	95.00

Harold L. Fortney, 910 Pennsylvania Apt. 908, Kansas City, Missouri 64105  
PHONE: 1-816-421-4169

B ✓	GI Grape & Gothic Arches tumbler	35.00
-----	----------------------------------	-------



CARNIVAL GLASS FOR SALE

Jane Dinkins, 1100 Ridgley Drive, Houston, Texas 77055  
PHONE: 1-713-465-0557

B	EI Grape & Cable (N) 9" 8 ruffled berry bowl, stippled with Basketweave exterior	300.00
M	✓ EI Unshod tumbler	20.00
M	✓ EI White Oak tumbler	200.00
SM	EI Imperial Grape twig handled cookie server	25.00
PM	EI Imperial Grape twig handled cookie server	25.00
M	EI Propeller small compote, Imperial	20.00
M	EI Long Thumbprint creamer	20.00
W	EI Hearts & Flowers ruffled compote	150.00
B	EI Enamelled Apple Blossom water pitcher and 1 tumbler	300.00

Yvan Beaudry, 109 - 5th Ave., Boisbriand, Quebec, Canada J7G 1Y8  
PHONE: 1-514-437-4585

AMB	EI Open Rose plate	145.00
A	EI Oriental Poppy tankard pitcher, MINT	950.00
G	EI Vintage nut bowl	110.00
G	EI Leaf Chain ice cream shaped bowl	225.00
G	EI Rustic 6" squatty vase	90.00
M	EI Captive Rose plate	170.00
M	EI Waterlily and Cattails large footed bowl	80.00
G	EI Grape & Gothic Arches creamer	200.00
G	EI Grape & Gothic Arches spooner	190.00
G	EI Little Stars ruffled 7½" bowl, radium	250.00

Charles Fowler, Post Office Box 64, Londonderry, New Hampshire 03053-0064  
PHONE: 1-603-432-2635

G	Corn Vase (N) bronze irid., has chigger bites on husks, mfg. flaw on upper edge, so	400.00
P	GI Grape & Cable (N) large ice cream bowl, Basketweave ext.	350.00
M	EI Grape & Cable (N) large ice cream bowl, Basketweave ext., slight wear in middle	200.00
G	✓ EI Grape & Cable tankard tumbler (N)	175.00
G	GI Heart & Vine 9" bowl, dark iridescence	75.00
M	EI Peacock & Urn (N) with bee, large ice cream bowl	300.00
W	EI (N) Peacocks plate	450.00
M	✓ EI Waterlily & Cattails #2 tumbler	45.00
CB	GI Grape & Gothic Arches tumbler, dark iridescence ?	45.00
P	EI Floral & Grape tumbler ?	45.00

CARNIVAL GLASS FOR SALE

John & Terri Dubinski, 2408 Fleetwood Drive, Columbia, Missouri 65202-2262  
PHONE: 1-314-474-2644

B	EI Millersburg Hanging Cherries 3 in 1 edge sauce, <u>RARE &amp; MINT!!!</u>	925.00
A	EI Pulled Loop vase	39.00
M	EI Leaf Tiers small berry	40.00
A	EI Beaded Shell mugs, have 5, each \$80.00 or all for	350.00
M	EI Nippon ruffled bowl, not often seen	200.00
CLM	EI Orange Tree plate, SUPER!!!	275.00
VAS	EI Two Flowers footed sauce	75.00
G	EI Wildflower compote (N)	425.00
M	EI Persian Garden 6" plate, scarce	95.00
M	EI Sailboats compote, not often seen	55.00

LARGE S.A.S.E. FOR SALE LIST

Gary Lickver, Post Office Box 1778, San Marcos, California 92069  
PHONE: 1-619-744-5686 Best call early or late, or leave message

AO	Three Fruits stippled plate, no butterscotch, opal tips & ¼" on edge, a beauty	2,000.00
M	Hearts & Flowers plate	1,095.00
B	Persian Medallion 9" plate, fair iridescence	150.00
M	Three Fruits P.C.E. bowl, Basketweave exterior, a beauty	90.00
LM	Orange Tree plate, light marigold or clambroth	195.00
AMB	Heavy Grape chop plate	350.00
M	Nippon bowl, BASKETWEAVE exterior	100.00
PM	Wreathed Cherry banana boat, extra special	150.00
M	Illusion bon bon, a dark one	65.00
AO	Three Fruits stippled bowl, SUPER	1,100.00

SEND DOUBLE STAMPED LARGE ENVELOPE FOR LIST OF 150 PIECES UNDER \$200.00

Fred Stone, 10750 N.W. 13th, Topeka, Kansas 66604  
PHONE: 1-913-478-9004

A	Millersburg Courthouse, radium	1,000.00
A	Grape Wreath Variant 8" bowl, radium 3 in 1 edge	200.00
G	Greek Key 9" flat plate, SUPER COLOR	1,100.00
B	Fenton Peacock & Urn flat plate, BRILLIANT & SUPER	900.00
A	Millersburg Peacocks deep center flat edge out, radium	500.00
*	*Light shade of blue Peacock at the Fountain I.C.S.	1,600.00



CARNIVAL GLASS FOR SALE

Ted L. Sheibley, 5071 Bass Lake Dr., Apt. 203, Harrisburg, Pennsylvania 17111  
PHONE: 1-717-564-9364

A	EI Grape Wreath Variant individual ice cream bowls have 4, each	125.00
B	EI Bushel Basket (N), round	125.00
B	EI Stag & Holly large ruffled fruit bowl	290.00
M	EI Apple Blossom Twigs 9" low ruffled bowl	85.00
M	EI Big BASKETWEAVE handled flower basket	35.00
M	EI Fashion water pitcher and 1 tumbler	128.00
M	EI Horseheads Medallion 8" ruffled bowl	85.00
M	EI Lotus & Drape enameled water pitcher	185.00
M	EI Morning Glory & Drape miniature vase	100.00
M	EI Round Up 9" ice cream shaped bowl	100.00

Don Harris, 527 Lavina Drive, Mechanicsburg, Pennsylvania 17055  
PHONE: 1-717-790-0412

A	EI Strawberry 9" plate, Plain exterior	150.00
B	EI Boggy Bayou 7" vase	60.00
B	EI Windflower 9" plate	100.00
G	EI Fashion open sugar	50.00
G	EI Heart & Vine 9" bowl, 3 in 1 edge	65.00
G	EI Scroll Embossed 9" plate	95.00
M	EI Scroll Embossed 9" plate	85.00
P	EI Scroll Embossed 9" plate	250.00
M	EI Iris stemmed compote	45.00
M	EI Peacock at the Fountain fruit bowl	325.00
	<u>SEND STAMP (\$ .52) FOR LIST</u>	

Debbie & Mike Heinl, 240 Mize Road N., Cullman, Alabama 35055  
PHONE: 1-205-739-0281 after 6:00 P.M. Central Time

M	Fenton Waterlily 10" ruffled bowl, ball footed, rich colors, prettiest I've seen	155.00
B	(N) Poppy oval pickle dish, stippled, electric blue highlights, small flake on one point, hard to find	135.00
A	Imp. Pansy ruffled 9" bowl stippled, EB & bronze highlights	125.00
	Top of the Morning hatpin	65.00
	GRreek Key hatpin	25.00
A	✓ Cambridge Double Star tumblers, each has chip on lip, each	15.00
A	Imperial Grape wine, have 2, each has hairline crack, each	8.00
A	Fenton Vintage fernery, heat checks inside, heavy gold irid.	65.00
G	Imperial Heavy Grape 8" plate	50.00
M	Imperial Open Rose 9" plate	40.00

CARNIVAL GLASS FOR SALE

Adam Fikso, 3620 Glenview Road, Glenview, Illinois 60025-2537  
PHONE: 1-708-729-7707

W	EI Grape & Cable (N) master ice cream bowl, BASKETWEAVE ext.	325.00
B	EI (N) Bushel Basket	130.00
PM	EI (N) Bushel Basket	110.00
A	EI Acorn Burrs (N) berry dish	55.00
A	EI Leaf & Beads (N) rose bowl, manufacturing flaw	85.00
A	EI Grape & Cable (N) sugar	95.00
M	EI Star Medallion milk pitcher, golden	75.00
*	EI *Rose pink Brocaded Acorns centerpiece footed bowl, very scarce	120.00
M	EI Diamond Ring giant rose bowl, RARE	400.00

Rick McDaniel, 3420 Morningstar Lane, Dallas, Texas 75234  
PHONE: 1-214-243-4574 evenings after 7:00 P.M.

M	EI Fenton Butterfly & Berry pitcher	295.00
P	EI Northwood Grape Leaves 8 ruffled 9" bowl	120.00
M	EI Honeycomb oil lamp	95.00
P	EI Imperial Open Rose 8" bowl	72.00
M	EI Imperial Waffle Block handled basket, radium, NICE	55.00
A	EI Fenton Grape & Cable spatula footed 8" ruffled bowl	62.00
M	EI Fenton Holly 3 in 1 edge 9" bowl, NICE	60.00
M	EI Fenton Wine & Roses cider goblets, have 4, each	35.00
PO	EI Dugan Flowers & Beads 7" plate, 6 sided	100.00
A	EI Fenton Coin Dot ruffled 8" bowl	40.00

Virgil Lemos, 33 Dawn, D.D. O., Quebec, Canada H9B 3Y7  
PHONE: 1-514-683-9543

G	✓ EI Oriental Poppy tumblers, have 2, each	45.00
M	EI Butterfly & Berry vase	30.00
M	EI Morning Glory 5" vase	45.00
M	EI Morning Glory 7½" vase	35.00
G	EI Epergne side lily	110.00
B	EI Loving Cup, tiny chip on handle base	175.00
M	EI Grape & Cable butter dish lid	35.00
M	EI Peacock at the Fountain butter dish lid	35.00
M	EI Wreathed Cherry butter dish lid	35.00
W	EI Wreathed Cherry sugar lid	35.00



CARNIVAL GLASS FOR SALE

Billy & Sharon Mizell, 52 Old Bonifant Road, Silver Spring, Maryland 20905  
 PHONE: 1-301-384-8952 POSTAGE & INSURANCE EXTRA

B	EI Tree Trunk 9½" vase. ELECTRIC	125.00
A	EI Scroll Embossed bowl, Plain exterior, GORGEOUS	65.00
M	EI Golden Oxen mug, good dark color	40.00
M	EI Peacocks stippled P.C.E. bowl, beautiful multi-color irid.	400.00
*	EI *Teal Ripple 11" vase, great iridescence	250.00
*	EI *Pink with gold trim Brocaded Acorns handled small plate	40.00
M	EI Morning Glory 5" vase, top wide flared	50.00
M	EI Morning Glory 4¼" vase. slightly flared	40.00
*	EI *Teal Butterfly small trays, goes with larger one, have 4, all for \$50.00, or each for	15.00
W	GI Leaf Chain I.C.S. bowl	60.00

Maurice "Moe" Myers, P. O. Box 3180, North Conway, New Hampshire 03860  
 PHONE: 1-603-367-8077

M	Hanging Cherries, Millersburg, 3 in 1 10" bowl, GREAT COLOR	195.00
PO	Scales 8" I.C.S. bowl	80.00
W	Two Row Open Edge square basket, 4 sides up	125.00
P	Primrose 10" bowl, BEAUTIFUL	125.00
M	Columbia footed plate whimsy	90.00
AMB	Open Rose 9" plate, lovely one	195.00
PM	Memphis 12" bowl, colorful	145.00
B	Tree Trunk 14" mid-sized funeral vase, ELECTRIC	375.00
M	Fruits & Flowers 7" plate, excellent color	215.00
B	Vintage 10" bowl I.C.S., Dugan, SUPER ONE	125.00

Bonnie Wiggins, 621 Grant Street, Indiana, Pennsylvania 15701  
 PHONE: 1-412-349-9420 weekdays and after 5:00 P.M. call 1-412-465-7446 any day

B	EI Ten Mums 7 piece water set	1,050.00
B	EI Butterfly & Berry tumblers, have 4 at \$45.00 each or all for	160.00
B	EI Stork & Rushes tumblers, have 6 at \$35.00 each or all for	195.00
SM	EI Zipper Loop Lamp, mid-sized	775.00
BO	Daisy Wreath 8¼" bowl	145.00
A	EI Diamond Lace 7 piece water set	475.00
M	EI Lattice & Daisy 7 piece water set	400.00
M	EI Panalled Dandelion 7 piece water set	550.00
M	EI Raspberry 5 piece water set	350.00
M	EI Hobstar Band pitcher, pedestal footed	145.00

CARNIVAL GLASS FOR SALE

Dick Wetherbee, 847 Stafford Street, Rochdale, Massachusetts 01542  
 PHONE: 1-508-892-4420

P	EI Singing Birds mug, real beautiful color	95.00
PO	EI Raindrops 9" low ruffled dome footed bowl, a beauty	90.00
M	EI Imperial Grape 9" flat plate, pretty	65.00
G	EI Beads (N) 7½" bowl, great color	45.00
P	EI Cherries/Jeweled Heart ext. 9½" bowl, Dugan, OUTSTANDING	275.00
PO	EI Stippled Flower 7 3/4" 6 fluted bowl, great color & opal	60.00
M	EI Chrysanthemum 9" collarbased bowl, SUPER COLOR & DETAIL	75.00
*	EI *Pink & blue Pastel Top Hat 4" wide, J.I.P. shape, cute	27.00
P	EI Blossomtime/Wild Flower ext. 5" spiral stem compote, SUPER	325.00
PO	EI Folding Fan 6 3/4" compote, pinky iridescence, a beauty	95.00

Dave Ackerman, 4677 Kennebec Drive, Cass City, Michigan 48726  
 PHONE: 1-517-872-2023

DM	Ashtral electric shade	50.00
M	Grape & Cable ice cream sherbet, slight flake on mold line base	34.00
M	Fancy Flowers large compote, scarce	80.00
*	*Cobalt blue Blackberry miniature compote	85.00
M	Star & File 6¼" under plate	80.00
P	Grape DELight nut bowl, ELECTRIC & PRETTY	85.00
AQ	Fenton Fine Rib 9¼" vase, nice	65.00
M	Lattice & Daisy 5 tumblers, each	35.00
*	*Black amethyst Imperial Plain Rays 2 handled pickle dish, best black amethyst I've seen	40.00
G	Holly Sprig tri-cornered nappy sauce boat	85.00

Phillip & Marian Ross, 833 W. Pershing Drive, Ardmore, Oklahoma 73401  
 PHONE: 1-405-223-1283 after 6:00 P.M.

G	EI Wishbone footed bowl	95.00
P	EI Wishbone footed bowl	95.00
PM	EI Wishbone footed bowl	85.00
IB	EI Peacock & Grape ruffled bowl, marigold overlay	195.00
VAS	EI Grape & Cable ruffled 7½" bowl, yellow base/marigold overlay	150.00
*	EI *Moonstone Dragon & Lotus ruffled bowl, OUTSTANDING	1,250.00
M	EI Dragon & Lotus ruffled bowl	65.00
M	EI Blackberry Wreath 3 in 1 edge bowl 8½", Millersburg	65.00
P	EI Peacock at the Fountain fruit bowl	875.00
M	EI Peacock at the Fountain fruit bowl	375.00



CARNIVAL GLASS FOR SALE

Richard Cinclair, 3605 South Echo Trail, Plano, Texas 75023  
PHONE: 1-214-596-0014

G	EI Butterfly bon bon, Threaded, 2 collar base chips	235.00
A	EI Holly Sprig nappy, radium	95.00
A	GI Fern Brand Chocolates plate	800.00
A	EI Millersburg Peacock & Urn bowl, 3 in 1 edge, SUPER	650.00
IG	EI Ripple vase, 14 1/2"	245.00
A	EI Grape & Cable bowl, P.C.E.	105.00
A	EI Tree Trunk mid-sized funeral vase	195.00
G	EI Knotted Beads vase	85.00
B	EI Grape & Cable banded, stippled, orange bowl, ELECTRIC	1,350.00
G	EI Raspberry 5 piece water set	485.00

Tamara McKay, 11052 Mill Pond Court, Jacksonville, Florida 32257  
PHONE: 1-904-262-8705 POSTAGE & INSURANCE EXTRA

P	EI Grape & Cable banquet punch set, includes 15 cups, MINI CONDITION, EXQUISITE!	3,000.00
W	EI Oriental Poppy tumblers, have 6, 1 with several underside base chips, 1 with circular hairline crack underside base, all for	900.00
RED	EI Stretch plate 8 3/4" with collar base, FABULOUS!	100.00
P	EI Nautilus Novelty piece, one end turned up, unlettered	175.00
M	EI Lions 7" bowl	95.00
A	EI Blackberry Block tumbler	75.00
M	EI Fashion punch cup	20.00
A	EI Butterflies bon bon, small nick in base	35.00
M	EI Swirl tumbler, tiny nick in base	50.00
M	EI Fruit Lustre tumbler	20.00

Joseph Mello, 535 Fish Road, Tiverton, Rhode Island 02878  
PHONE: 1-401-624-2174

M	Grape Arbor tumbler	25.00
A	EI Grape & Cable orange bowl	285.00
G	EI Greek Key bowl	95.00
A	EI Greek Key bowl	145.00
M	EI Grapevine Lattice tumbler	25.00
G	EI Heavy Grape 8" plate	50.00
G	EI Millersburg Mayan 8" bowl	40.00
M	EI Little Stars 7" bowl	95.00
G	EI Little Stars bowl	150.00
G	EI Grape & Cable small berry bowls with Thumbprints, each	20.00

CARNIVAL GLASS FOR SALE

Pam MacDonald, Post Office Box 5, Silver Lake, New Hampshire 03875  
PHONE: 1-603-367-8077

P	Rosary Beads with case	50.00
*	*Blue milk glass Rosary Beads with case	75.00
*	*Teal Smooth Panels 10" vase	50.00
M	Beaded Cable rose bowl	50.00
M	Wreath of Roses rose bowl	40.00
P	Diamonds tumbler	55.00
SM	Soda Gold tumbler	60.00
M	File 8" bowl	40.00
M	Waterlily footed 5" bowl	25.00
M	Morning Glory 10" J.I.P. vase	35.00

David Sharp, 316 E. Front Street, Lititz, Pennsylvania 17543  
PHONE: 1-717-626-8231

G	EI (N) Greek Key tankard, GREAT	1,300.00
A	EI Isaac Benesch 6" ruffled bowl, SUPER	350.00
W	EI (N) Peacock & Urn 10" ice cream bowl, SUPER	550.00
AO	EI (N) Diamond Points 9" vase, NICE ONE	485.00
G	EI (N) Diamond Point 10 1/2" vase, SUPER	80.00
EB	EI (N) Tree Trunk 10" vase	150.00
P	EI Diamond Lace tumblers, have 3 at \$65.00 each, or all for	180.00
SM	EI Star Medallion milk pitcher, GREAT	85.00
G	EI Wreath of Roses/Vintage punch cup, SUPER	37.00
G	EI Fenton Grape & Cable footed plate, OUTSTANDING	185.00

Harold R. Wagner, 5951 Fredericksburg Road, Wooster, Ohio 44691  
PHONE: 1-216-264-3703 after 5:30 P.M.

M	EI Good Luck fluted bowl (N), stippled	165.00
G	EI Millersburg Peacock & Urn 10" I.C.S. bowl	895.00
G	EI Millersburg Trout & Fly square bowl	945.00
PM	EI Peacock & Urn 10" ice cream bowl (N), stippled	485.00
M	EI Millersburg Peacock & Urn 9 1/2" I.C.S. bowl	295.00
A	EI Millersburg Peacock 5 1/2" ice cream sauce,	135.00
A	EI Beaded Cable rose bowl, OUTSTANDING IRID.	
A	EI Millersburg Courthouse bowl	625.00
M	EI Millersburg Blackberry Wreath fluted sauce	65.00
M	EI Peacock & Urn small ice cream bowl	75.00



CARNIVAL GLASS FOR SALE

Ray Hitchcock, R. R. #1, Box 301, Winterset, Iowa 50273  
PHONE: 1-515-462-2074

B	Fenton Peacock & Urn 8 ruffled bowl	150.00
W	Grape Delight rose bowl, smooth top	95.00
W	Blueberry tumbler	140.00
M	Diamond Ring rose bowl	145.00
M	(N) Peacock at the Fountain tumbler, SUPER	45.00
M	Little Fishes sauce, RARE COLLAR BASE	125.00
*	*Lime green Stag & Holly I.C.S. bowl	300.00
P	(N) Grape & Cable powder jar lid	60.00
EP	Grape & Cable Sweetmeat lid, FABULOUS	140.00
M	Three In One 7" flat plate, SUPER	135.00

Gerald M. Hess, 500 Woodland Trail, Argos, Indiana 46501  
PHONE: 1-219-892-6193

A	EI Beaded Shell tumbler	70.00
SM	EI Soda Gold tumblers, have 2, each	55.00
A	EI Butterfly & Berry tumbler	70.00
M	EI Apple Tree tumbler <i>call</i>	45.00
M	EI Louisa tumbler <i>call</i>	20.00
M	EI Panelled Dandelion tumbler	40.00
B	EI Stork & Rushes tumbler (Beaded)	40.00
M	EI Floral & Grape tumbler (Fenton)	25.00
M	EI Floral & Grape tumbler (Dugan)	22.50
M	EI Imperial Grape footed wine	22.50

Isabell Aldridge, 6407 Rushmore Drive, Sacramento, California 95842  
PHONE: 1-916-331-4290

	Basket Flower hatpin, BEAUTIFUL	325.00
	Top-Of-The-Morning A.K.A. Pheasant hatpin	95.00
	Tufted Throw Pillow hatpin	110.00
M	Footed Shell, large	40.00
DM	Open Rose plate, GREAT PIECE	105.00
M	Singing Birds mug	85.00
B	Master Panther berry bowl, SUPER	295.00
G	Three Fruits ruffled bowl (N), VERY NICE	75.00
M	Peacock & Grape I.C.S. 8" bowl, SUPER PIECE	85.00
B	Rustic 9" vase	45.00

CARNIVAL GLASS FOR SALE

Lee & Phyllis Bryant, 11645 N.W. Winchester Road, Decatur, Indiana 46733  
PHONE: 1-219-639-3415

HA	✓ Cosmos & Cane tumbler advertising Lynchburg, VA, J. R. Milner & Co.	100.00
W	Oriental Poppy tumblers, nice & frosty, have 4, each <i>call</i>	100.00
M	✓ Arched Panels tumbler, nice	30.00
G	✓ Northwood Swirl tumbler, nice	25.00
M	✓ Beaded Shell tumbler, nice dark color	40.00
M	✓ Ten Mums tumbler, nice	50.00
A	✓ Grape & Cable tumblers (5) all match, super best have ever seen, all for	190.00
M	✓ Peacock at the Fountain tumbler, extra nice	35.00
A	Zig Zag water pitcher, super color & irid, slite base mark 1" long from collar base up	125.00

Pat Housewright, 225 Rowland, Stephenville, Texas 76401  
PHONE: 1-817-968-2997

RED	EI Fine Rib 8" vase	390.00
PO	EI Single Flower FRamed handgrip plate	85.00
G	EI Grape & Cable 9" bowl	95.00
G	EI Acanthus 8" bowl	85.00
G	EI Heavy Grape chop plate	235.00
B	EI Vintage fernery	85.00
B	EI Dragon & Lotus I.C.S. bowl	95.00
M	EI Heavy Grape chop plate	160.00
M	EI Singing Birds mug	110.00
M	EI Blackberry Wreath 10" ruffled bowl, satin	65.00

Louis Carpick, 36 Center Road, Dudley, Massachusetts 01571  
PHONE: 1-508-943-4223

M	EI Grape & Cable bowl, spatula footed	45.00
M	EI Strawberry bowl, P.C.E., SUPER	65.00
A	EI Daisy & Plume rose bowl, stippled interior	55.00
IB	EI Fruits & Flowers bon bon, real dark	550.00
AO	EI Leaf & Beads rose bowl	300.00
AO	EI Drapery rose bowl	285.00
RED	EI Open Edge Basket, J.I.P., small	300.00
IB	Captive Rose compote, light color	185.00
AQ	EI Open Edge Basket, small, round	160.00
A	EI Strawberry ruffled bowl, FANTASTIC COLOR	80.00

28

29

CARNIVAL GLASS FOR SALE

Charles Perry, 8641 Lakeshore Drive, Southaven, Mississippi 38671  
PHONE: 1-601-342-1694 NIGHTS

G	EI Waterlily footed sauce, SUPER EMERALD GREEN	160.00
M	EI Waterlily footed sauce, SUPER	20.00
M	EI Tree Trunk squatty sized vase, nice	60.00
G	EI Northwood Grape & Cable bowl, P.C.E., nice	95.00
M	EI Northwood Grape & Cable bowl, stippled, ruffled, SUPER	105.00
M	EI Holly bowl, 3 in 1 edge, EXCELLENT	45.00
M	EI Fenton Peacock & Urn ruffled bowl, SUPER	100.00
AMB	EI Open Rose 9" plate, nicks, SUPER	55.00
RED	EI Peacock Lamp, SUPER	740.00
P	EI Ripple vase, wide flared top, SUPER	65.00

Darlene Yohe, Post Office Box 343, Stuttgart, Arkansas 72160  
PHONE: 1-501-673-3437

P	Heavy Iris tumbler	70.00
VAS	Concave Diamond tumbler, RARE COLOR	125.00
M	Orange Tree hoblet, small	35.00
M	Wine & Roses goblet	40.00
AQ	Beaded Cable rose bowl	345.00
P	Imperial GRape pitcher and 4 tumblers	380.00
M	Octagon goblets, have 3, each	35.00
M	Heavy Iris water pitcher	290.00
M	GRape Arbor pitcher and 6 tumblers	495.00
P	Dahlia butter base	85.00

Bob & Sherry Cyza, 7426 Oakland Avenue So., Richfield, Minnesota 55423  
PHONE: 1-612-869-6980

AO	EI Rose Show bowl, BEAUTIFUL!	925.00
EB	EI Good Luck ruffled bowl, stippled	400.00
*	EI *Celeste hatpin, Rooster, painted	67.00
EB	EI Three FRuits bowl, stippled	475.00
M	EI Peacock & Urn plate, BEAUTIFUL!	400.00
RED	EI Holly hat, 2 sides up, minor pinhead	475.00
M	EI Nesting Swan bowl, satin	195.00
B	EI Holly plate	270.00
*	EI *hatpin, Garden Path	85.00
AO	EI Leaf & Beads rose bowl, BEAUTIFUL!	325.00

CARNIVAL GLASS FOR SALE

Darlene Barnes, 706 N.W. 53rd Street, Vancouver, Washington 98663  
PHONE: 1-206-694-3988 POSTAGE & INSURANCE EXTRA

M	Swan Salt Dip	150.00
M	Imperial Grape decanter	150.00
P	Boutonniere compote	185.00
M	Grape & Cable centerpiece bowl	185.00

Gerald L. Thomas, 44 E. Highland Ave., Atlantic Highlands, New Jersey 07716  
PHONE: 1-908-872-8051

VAS	AI Fenton Acorns 6" bowl	125.00
A	EI Wreath of Roses punch cups, have 5, Grape interior, MINT CONDITION, each	32.50
M	EI Millersburg Swirl Hobnail spittoon, tiny pinchip on one point	685.00



CARNIVAL GLASS WANTED

Durwood Evans, 617 E. 18th Street, So. Sioux City, Nebraska 68776  
PHONE: 1-402-494-5269

M Butterfly & Berry footed sugar bowl, with or without lid  
M Octagon wine glasses

Billy G. Hughes, 30 Park Street, Farmington, Missouri 63640  
PHONE: 1-314-756-3172

A Inverted Thistle butter dish  
A Inverted Thistle spooner  
A Inverted Thistle tumbler  
Springtime butter top in lavender or light amethyst  
IB Grape Arbor tumbler  
B Ten Mums tumbler  
G Fluffy Peacock tumblers  
P Fluffy Peacock pitcher  
ALL ITEMS MUST BE MINT WITH EXCELLENT IRIDESCENCE

Alan & Lorraine Pickup, 531 Holiday Avenue, Hazelwood, Missouri 63042  
PHONE: 1-314-895-3430

W Bud Vase Whimsey, see article and pictures of pattern in the  
December, 1991 and January, 1992 H.O.A.C.G.A. Bulletins.  
RED Fenton Wide Panel covered bon bon NO. 643 (iridized), see  
Fenton's 1st 25 Years.  
Northwoods Wide Panel covered bon bons NO. 643 (both iridized),  
see H. Northwood, The Wheeling Years, in blue iris and custard  
M Leaf Tiers butter dish top  
M Grape & Cable powder jar top  
B Orange Tree powder jar top

Ed Kramer, 4305 W. 78th Street, Prairie Village, Kansas 66208  
PHONE: 1-913-642-3587

M EI Imperial Grape water carafe  
M GI Powder jars with Duck, Rabbit lids  
M EI Fenton Master Nut Cup  
RED EI Butterfly & Berry vase  
M EI "474" large vase, cordial, berry set, table set. The latter were  
made in pressed glass sets. I'm looking for these too.

CARNIVAL GLASS WANTED

Darlene Barnes, 706 N.W. 53rd Street, Vancouver, Washington 98663  
PHONE: 1-206-694-3988

SM Imperial Crackle candlestick, need 1  
G Imperial Grape tumblers, need 4  
A BRides Basket  
A Pickle Caster  
B/P Fine Cut & Roses candy dish, Fancy interior

Gerald L. Thomas, 44 E. Highland Ave., Atlantic Highlands, New Jersey 07716  
PHONE: 1-908-872-8051

M EI Springtime small 5" berry bowl, dark marigold, need 1  
SM AI Twins small berry bowls, need 4

Yvan Beaudry, 109 - 5th Ave., Boisbriand, Quebec, Canada J7G 1Y8  
PHONE: 1-514-437-4585

M Flute (N) sherbets, small, need 2  
B Fine Cut & Roses rose bowl

Gary Lickver, Post Office Box 1778, San Marcos, California 92069  
PHONE: 1-619-744-5686 Best call early or late, or leave message.

G Wide Panel side lily  
A Wreath of Roses punch base  
W Grape & Cable cracker jar top  
G/B Lined Lattice vase

John & Terri Dubinski, 2408 Fleetwood Drive, Columbia, Missouri 65202-2262  
PHONE: 1-314-474-2644

ANY I.C.S. Rays & Ribbons bowls  
M Base to Peacock at the Fountain butter dish  
M Base to Orange Tree punch bowl  
M Waffle Block punch bowl  
M Grape & Cable punch bowl and base

CARNIVAL GLASS WANTED

Debbie & Mike Heinl, 240 Mize Road N., Cullman, Alabama 35055  
PHONE: 1-205-739-0281 after 6:00 P.M. Central Time

- M Iris & Herringbone demitasse cup, need 1
- M Fenton Grape & Cable powder jar lid need 1
- M Dugan Vintage powder jar bottom, need 1

Ted L. Sheibley, 5071 Bass Lake Dr. Apt. 203, Harrisburg, Pennsylvania 17111  
PHONE: 1-717-564-9364

- A/P Persian Garden fruit bowl bottom
- Imperial Grape wine stopper, ANY COLOR
- P Memphis fruit bol top
- M/G Long Hobstar punch bottom
- M "474" punch cups, need 4, good inside and out

Rick McDaniel, 3420 Morningstar Lane, Dallas, Texas 75234  
PHONE: 1-214-243-4574 evenings after 7:00 P.M. C.S.T.

- P EI Acorn Burrs creamer

Billy & Sharon Mizell, 52 Old Bonifant Road, Silver Spring, Maryland 20905  
PHONE: 1-301-384-8952

- M Halloween tumbler

Phillip & Marian Ross, 833 W. Pershing Drive, Ardmore, Oklahoma 73401  
PHONE: 1-405-223-1283 after 6:00 P.M.

- Enameled water sets in ice green, white, purple, green
- Drapery candy dishes in aqua, white, ice green, marigold
- M/G Butterfly bon bon, Threaded exterior
- W Dianthus tumbler, enameled
- IG Florabelle tumbler, enameled
- G Lotus tumbler, enameled

Harold L. Fortney, 910 Pennsylvania Apt. 908, Kansas City, Missouri 64105  
PHONE: 1-816-421-4169

- W Fenton Fine Rib vase

CARNIVAL GLASS WANTED

Dave Ackerman, 4677 Kennebec Drive, Cass City, Michigan 48726  
PHONE: 1-517-872-2023

- SM Imperial Grape wine glass
- P Golden Harvest decanter stopper
- G Octagon stopper and 6 wine glasses
- ANY Cordials (decanter and 6 wine glasses)

David Sharp, 316 E. Front Street, Lititz, Pennsylvania 17543  
PHONE: 1-717-626-8231

- G Springtime butter base
- G Acorn Burrs butter lid
- IB Memphis punch base
- P Broken Arches punch base, good color

Isabell Aldridge, 6407 Rushmore Drive, Sacramento, California 95842  
PHONE: 1-916-331-4290

- ANY Owl hatpins
- ANY Unusual iridized glass hatpins

Richard Thomas, Rt. #2, Box 2253, Fair Play, Missouri 65649  
PHONE: 1-417-276-4024

- G Inverted Feather cookie jar, top only
- M Acorn Burrs sugar & creamer
- P/A Acorn Burrs sugar & butter
- M Acorn Burrs punch cups, need 6

Richard Cinclair, 3605 South Echo Trail, Plano, Texas 75023  
PHONE: 1-214-596-0014

- B Grape & Cable bowl, stippled and P.C.E.
- \* \*Book, Owens, CARNIVAL GLASS TUMBLERS
- \* Book, Notley, CARNIVAL GLASS
- M Wide Panel epergne lily
- IB Grape & Cable hatpin holder
- W Hearts & Flowers P.C.E. bowl
- A Owl hatpin
- G Poppy Show bowl, plate
- IG Hearts & Flowers plate



CARNIVAL GLASS WANTED

Richard Cinclair, 3605 South Echo Trail, Plano, Texas 75023  
PHONE: 1-214-596-0014

IB Grape & Cable stippled bowl

---

Joseph Mello, 535 Fish Road, Tiverton, Rhode Island 02878  
PHONE: 1-401-624-2174

B Peacock at the Fountain punch cups, need 2  
A/B Peacock at the Fountain punch bases  
B Lattice & Daisy water pitcher  
M Acorn Burrs punch top or both pieces

---