

HOACCGA

Heart of America Carnival Glass Assoc. Inc.

RETURN ADDRESS

H.O.A.C.G.A.
Jackie Fortney
P.O. Box 303
Buckner, MO 64016

January 1994

FIRST CLASS MAIL

FIRST-CLASS MAIL
U.S. POSTAGE
PAID
Buckner, MO
Permit No. 03



PRESIDENT.....ROBERT GRISSOM
7900 Crescent
Raytown, Missouri 64138
1-816-356-5320

VICE-PRESIDENT.....DARYL STROHM
8904 E. 29th Street
Kansas City, Missouri 64129
1-816-252-8137

TREASURER.....DOUG PETERS
Post Office Box 1545
Blue Springs, Missouri 64013
1-816-254-5755

SECRETARY.....ED KRAMER
4305 W. 78th Street
Prairie Village, Kansas 66208
1-913-642-3587

BULLETIN SECRETARY.....JACKIE FORTNEY
Post Office Box 303
Buckner, Missouri 64016
1-816-249-5208

The Bulletin is published the 15th of each month. Membership year begins with the month your dues are paid. DUES ARE \$25.00, PER COUPLE OR SINGLE, U.S. & CANADA, \$40.00 FOREIGN. All monetary figures are quoted in U.S. Dollars.

Please send all items for the Bulletin, i.e. glass for sale, glass wanted, articles, information, etc., to the Bulletin Secretary, whose address appears above. Please have all Bulletin material sent to us so that we receive it by the 28th of each month.

Please send checks for dues and books, and any address changes to the Treasurer whose address appears above.

We thank you so much for your cooperation in these matters.

The January, 1994 meeting of the Heart of America Carnival Glass Association will take place on Sunday, January 23, 1994 at 2:00 P.M., at the Raytown City Hall, Raytown, Missouri.

White Carnival Glass will be discussed. Let's hope January doesn't produce too much white stuff! Make your New Year's Resolution to come to more monthly meetings. They are informative and enjoyable and door prizes and refreshments are added inducements.

The November 28, 1993 meeting was attended by 16 people including new member Sandy Simmons. Glen Fortney won the door prize, a plum whimsey from the 1993 Convention. JoAnn Ball graciously took minutes and read October's minutes as Ed Kramer was in Las Vegas (looking for Carnival Glass). 33 marigold pieces were displayed and discussed.

There was no December, 1993 monthly meeting.

ED KRAMER
SECRETARY,
H.O.A.C.G.A.

=====
CAN ANYONE HELP.....

I'm sure this is impossible, but nothing ventured, nothing gained.

Would the person who bought the Heron mug from St. John's Antiques at least 10 or 12 years ago still have it or know who does, and if it might be for sale.

Please forward any information to Norma Wagner, 119 21st. Street, Spirit Lake, Iowa 51360.



By John & Lucile Britt

The Holidays are over and a New Year is beginning. It is now time to start making plans for the 1994 Carnival Glass year. The 1994 H.O.A.C.G.A. Convention will be April 21, 22, 23 and 24, 1994 at the same motel as past Conventions, the Holiday Inn, Lenexa, Kansas, 1-913-888-6670 or 1-800-517-0582.

527

Preliminary plans are made. Three Educational Programs will be presented. Ruth Green's and Jane Brown's Plate Collection will be presented by Richard Cinclair; Robert Bishop, President of the New England Carnival Glass Club will present a Program on Carnival Vases; Bob Leonard, Chuck Kremer and Bob Grissom will provide a display and Program on Carnival Glass Table Sets. All known table set patterns will be displayed.

Our Banquet Speakers this year will be Dean & Diane Fry. Dean & Diane have been collectors of Carnival Glass for several years. They have been very instrumental in the organizing and success of the San Diego Club. You can be assured of an interesting and informative talk.

The recipients of the John & Lucile Britt Award for Excellence in Carnival Glass will be Floyd & Cecil Whitley for their many years of contributing to the Carnival Glass collecting hobby.

The Convention Auction will be presented by the Seck Auction Service. We are looking forward to a very good auction by Jim, Vern, Jan & Susie.

More detailed information and a schedule of events will be sent at a later time.

**ROBERT GRISSOM
PRESIDENT,
H.O.A.C.G.A.**

=====

REQUEST FOR INFORMATION

This month, in our continuing research into Carnival Glass patterns, we ask that you, members of H.O.A.C.G.A., send any and all information on the FARM-YARD pattern.

We need information on shapes, colors known, and also the different edgings used in the manufacturing of this pattern.

We will publish the results of our inquiry in a future H.O.A.C.G.A. issue.

Please send your information to the Vice-President, Daryl Strohm, 8904 East 29th Street, Kansas City, Missouri 64129.

4 WE thank you for your cooperation and assistance.



THE DRAPERY TUMBLER

The Drapery tumbler is one of the more rare tumblers that can be found in Carnival Glass. There are only two examples that have ever been reported, both in white. We have seen the Drapery tumblers in blue & white opalescent glass fairly often, but to find one in Carnival Glass is quite a different story. They were made by Northwood and carry the underlined "N" in a circle on the inside of the base.

The Drapery tumbler is 4¼" tall, 3" across the top and 2½" across the base. There is a ¾" wide smooth area at the top that extends around the tumbler & above the drapery pattern. The tumbler itself contains narrow plain panels alternated with much wider panels containing the Drapery pattern. The bottom of the base is smooth. The one shown above is a part of the Whitley's collection.

Don't confuse the Northwood Drapery tumbler with the Drapery Variet tumbler that was made by Riihimaen Lasie O.Y. of Finland. The Drapery Variet tumbler is shown in the Educational Series #2 book on page 43.

This very rare Northwood Drapery tumbler marks our 192nd entry into our Educational Tumbler Series. Next month we will feature an enameled type tumbler that is known as Floral Spray.

JOHN & LUCILE BRITT



PHOTO #1 THE VINTAGE CUSPIDOR

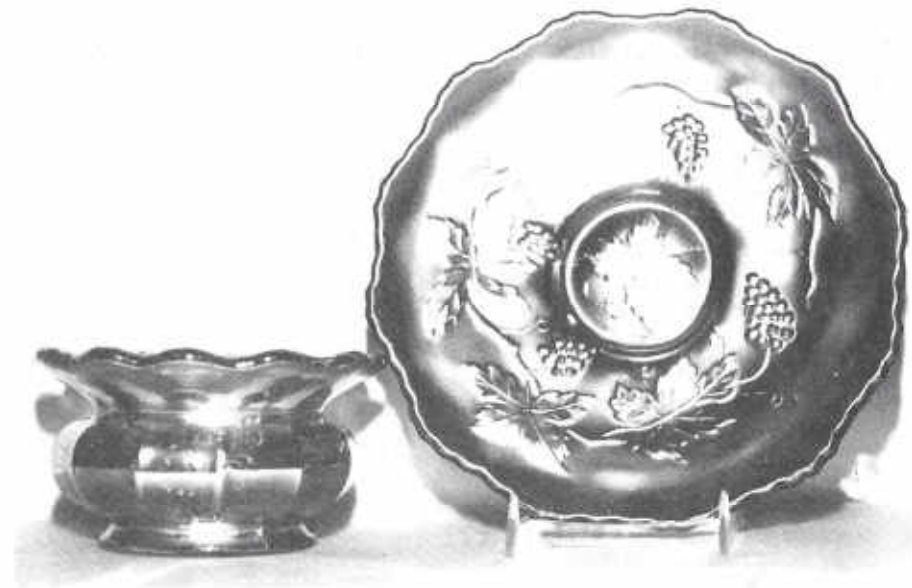


PHOTO #2 VINTAGE CUSPIDOR ALONGSIDE THE VINTAGE 6" PLATE

THE VINTAGE CUSPIDOR

The Vintage pattern is a very popular Fenton pattern and it was made in many different shapes and in a number of different colors. The Vintage Cuspidor, that is shown in photo #1, is one of those shapes. We don't believe that they made many pieces in this shape, however. If there is another one of these around, we haven't heard about it.

This piece is most likely a whimsey that someone made while the factory was producing the little 6 inch plates and small sauce dishes. You see the sauce dishes quite often, but we have not seen many of the 6 inch plates. The 7½ inch plates are seen more often. The 6 inch plate in green is shown in Photo #2 alongside our featured cuspidor.

This little cuspidor is four inches wide at the top and stands 2¼ inches high. The base diameter is 2½ inches. The back pattern used by Fenton on this pattern was Wide Panels. The interior of this size Vintage cuspidor contains four bunches of grapes and six leaves. Five of those leaves are distributed between the grape clusters and the sixth being in the center. The bottom of the marie or collar base contains the popular rayed star design. We consider the cuspidor as very rare and desirable. Actually the 6 inch plate in green is not easy to find.

This is #180 in our Pictorial Pattern Parade series. We hope that you have found it interesting.

JOHN & LUCILE BRITT





THE PEACH TABLE SET IN WHITE

A Northwood pattern table set that was made in white only and considered rare. All pieces usually have gilding on the leaves, fruit and cables. The pieces in this set closely follow the shape of Northwood's Peacock at the Fountain set and look like they were made to be used. A high percentage of the pieces we have seen were a good frosty white.

We bought a butter dish in the Bill Carroll auction, but were unable to locate matching pieces to our liking so we sold the butter and put this set out of our mind. We had no more done this when the 1990 I.C.G.A. Convention came along and had a complete set in the auction--we quickly got reacquainted with this pattern.

When we were looking for individual pieces, we found those that were frosty with chips, clear and perfect or poor gilding. Perfect, good gold and frosty in the same piece was tough to find. The few times we saw a piece we liked, it seemed the gold on the peach was tied to the gold bullion market. For us this was another time when "whole hog or none" proved to be the best route.

This is the nineteenth in our series on Table Sets.

CHUCK & MARGE KREMER

=====

PLEASE TAKE NOTE: WE NEED YOUR RESPONSE

As a result of our quest for Butler Brothers Catalogs last fall, we now have an accumulation of some 300 pages illustrating Carnival Glass patterns and their original selling prices.

There are 39 issues of Butler Brothers, 2 issues of John M. Smyth Co., 1 issue of Baltimore Bargain House, and 1 issue of Charles Broadway Rouss, Inc. These were all wholesale distributors. The years involved within these catalogs extend from 1905-1931 with no duplication of issue dates.

Not every issue illustrates the same assortments of glass and certainly not every pattern we know in Carnival is represented. They DO represent verification of manufacture AND the continuity of many patterns over many years of sale.

Before printing this publication, the size of which is: 11" X 14" with a price range of \$20.00 to \$22.00, H.O.A.C.G.A. would like an idea of the desirability of such re-production of the actual pages of these historical old catalogs. To bring the re-sale price into the reach of collectors, 1,000 books will need to be the initial printing.

If you are interested in purchasing such a book, please get in touch with ED KRAMER, SECRETARY OF H.O.A.C.G.A., 4305 W. 78TH STREET, PRAIRIE VILLAGE, KANSAS 66208, 1-913-642-3587.

Only with this response can we assess the cost effectiveness of continuing with this proposed project. PLEASE LET US HEAR FROM YOU WHILE THIS ANNOUNCEMENT IS FOREMOST IN YOUR THOUGHTS.

=====

NEW CARNIVAL GLASS BOOK

"CARNIVAL GLASS OF AUSTRALIA", 100 pages, some colored, hard cover. Produced by the Australian Carnival Enthusiasts Association, Inc. Cost is \$30.00 Australian, includes Airmail post.

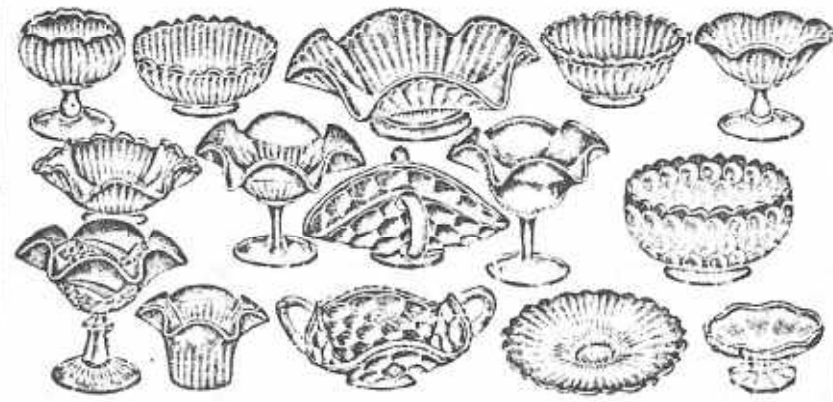
Please send International Money Order made out to Australian Carnival Enthusiasts Association, Inc. to Margaret Dickinson, R.S.D. Fryerstown, Victoria, Australia 3451.

=====

FINE CUT FLOWER OR PENNSYLVANIA?

"GOLDEN SUNSET" IRIDESCENT ASSORTMENT.

A deviation from the exclusive imported glass in price only—the same beautiful color effects and art shapes.



1C1576—Well made finished crystal, surface in all-over golden iridescent luster reflecting rainbow hues, assist. water lily, peonies and beaded star designs. Colors burnt in and will not wear off. $\frac{1}{2}$ doz. each the following items:

6 $\frac{1}{2}$ in. high footed crimped compote.	5 $\frac{1}{4}$ in. deep round footed nappy.	Star shape violet bowl.
6 in. square double handled bonbon.	4 in. high footed nut bowl, crimped design.	4 $\frac{1}{4}$ in. novel design receptacle.
4 $\frac{1}{2}$ in. low footed almond dish or compote.	7 $\frac{1}{2}$ in. double handled bonbon, turned-up sides.	6 in. high footed crimped compote.
5 $\frac{1}{4}$ in. crimped footed bowl.	6 in. high footed crimped compote.	9 in. large footed crimped salad.
6 in. round footed tray plate.	6 $\frac{1}{2}$ in. extra deep footed nut bowl.	Total 7 $\frac{1}{2}$ doz. in bbl., 105 lbs.
5 $\frac{1}{2}$ in. high footed jelly dish, crimped edge.		Per dozen, 89c

It is far more likely that Fenton simply copies the U.S. Glass Company's Pennsylvania pattern. Few Glass companies during the Carnival era ever filed for exclusive patents on their designs, and pattern copying was a common practice. (Peacock & Urn is a classic example of this). Simple enough. Case closed, right? Note quite. There's more.....

In Marion Hartung's Book 8, on page 87, is pictured a Wafer Carafe that she named Cut Crystal. Guess what, folks! It's the same pattern! Fine Cut Flower or Pennsylvania, whichever you prefer. Because of the drastically different shape, she simply did not recognize it as such. This Water Carafe is listed among a group of other Pennsylvania pieces in the U.S. Glass Company's 1915 Export Catalog. This date coincides precisely with the time of manufacture of many Carnival patterns by U.S. Glass. The Carnival version of this Carafe is no doubt a U.S. Glass product. The few examples known generally have a rather light, transparent type of Marigold iridescence that is typical of many U.S. Glass Carnival pieces. Also, Fenton is not known to have produced Carafe shapes during the Carnival Glass era. U.S. Glass made many! It looks like we have yet another case of two firms both making the same design. The Fine Cut Flower Compote is definitely Fenton, while the Cut Crystal Water Carafe, (which should rightly be called Pennsylvania) is probably a U.S. Glass Company product.

Now we come to the so called Fine Cut Variant Compote. Notice that I used the term so called. Both the Fine Cut Flower and the Variant Compote are extremely plentiful, here in the Northeast. Over the years I have had and seen at least 2 to 3 dozen of these. Several of them were the so called Variant. The difference between the two is a lack of some of the pressed diamonds within the Flower petals on the Variant. I examined several of these under high magnification. In virtually all cases, I discovered faint traces of these characteristics, namely traces of the "missing" diamonds. In my own opinion, the Fine Cut Flower Variant Compote is nothing more than the standard version, molded in a badly worn or retooled mold. Also, most of these compotes are rather deeply ruffled, which often results in pattern distortion, especially on near-cut type patterns.

The Fine Cut Flower Compote is found primarily in Marigold. The Green example reported in the November H.O.A.C.G.A. Bulletin is really quite rare, but not surprising. A large number of early Fenton Carnival patterns, like those pictured in the assortment shown in this article do turn up in Green. Honeycomb & Clover, Coin Dot and Waterlily & Cattails are good examples of this. All were produced very early, circa 1908-1909, and when found in examples other than Marigold, it is often Green. Many of these early designs often turn up in Amethyst, but no Fine Cut Flower Compotes have yet been reported in that color.

CARL O. BURNS
ANDOVER, MAINE

The recent articles in the Bulletin concerning the Fine Cut Flower Compote reminded me that I had considerable information on that pattern, somewhere in my research files. A little searching through them turned it up, and here it is.

We don't often associate geometric or near-cut type Carnival patterns with Fenton, primarily because that Company made so few of them. However, the Fine Cut Flower Compote is most definitely a Fenton product. Shown here is a grouping from a 1909 Butler Brothers Wholesale Catalog. Included in it are several confirmed Fenton designs, such as Honeycomb & Clover, Coin Dot, Smooth Rays and Stippled Rays. Also included, at the lower left, is the Fine Cut Flower Compote, so there is no doubt that it is a Fenton product. This is where it gets interesting. This Compote is virtually identical to a very well known U.S. Glass Company pattern called Pennsylvania! The U.S. Glass Company began manufacture of this design, in non-iridized crystal around 1901. It was made in just about every imaginable shape, including a Compote and a Goblet. One might therefore assume that Fenton simply purchased this mold from U.S. Glass, but here is where we have a big problem with that.

This catalog assortment proves that the Fenton Fine Cut Flower Compote was in production in 1909. However, the Pennsylvania Compote, in non-iridized form, continues to appear in U.S. Glass Co. Factory Catalogs as late as 1915! It is therefore quite unlikely that Fenton could have purchased this mold from them.

I would like to thank all of the many Club members who responded to my request for photographs in the November H.O.A.C.G.A. Bulletin. The response was tremendous and most gratifying. I received nearly all of the needed photos. I can think of no better way to say thank you than to quote from my own book. "Carnival Glass is nothing more than inanimate objects, sitting on a shelf. It is the people who collect and preserve it that reflect it's beauty. No matter what the time, place or occasion may be, they are always willing and eager to assist in any way possible".

My book, "The Collectors Guide to Northwood's Carnival Glass" is now at the publishers. It will be available sometime between mid March and April 1st. It contains 200 pages, with nearly 250 pieces of Northwood Carnival pictured in full color. The text provides information on all known shapes and colors for every Northwood pattern, which ones are rare and which ones are not, and even the dates of production for each pattern. As this book will be distributed to booksellers nationwide, it will include an encouragement for all collectors & newcomers to the hobby to join one or more of the Carnival Glass Collectors Clubs. The names and addresses to all of the major and regional clubs will be included. It is my hope that this will help to broaden the membership of all of the clubs.

Club members will be able to order their copies directly from me, and all will be personally autographed. This brings me to a proposal that I would like to make, which I hope will be acceptable to members and club officers. For every copy sold through the H.O.A.C.G.A., a percentage of the profits will go to the club treasury. I feel that this is the best way to say thank you to all the members who contributed to this project. In this small way, all can benefit from the sale of the book.

TO ALL WHO CONTRIBUTED PHOTOS: I will return any un-used photos to you as soon as possible. I hope you will not mind if I hold on to them for a short while. I would like to have a few "back-up" photos, just in case of any problems at the publishers. As soon as I am sure that there will be none, your photos will be returned.

Watch for an announcement on the book, hopefully in the March issue of the Bulletin. The price, my address and all other pertinent ordering information will be provided at that time. Once again, my heart-felt thanks and appreciation goes out to all who contributed to and supported this project.

CARL O. BURNS
ANDOVER, MAINE

This final segment of our four "Convention-Type" meetings brought 51 great folks together for the purpose of doing what Carnival Glass Collectors do BEST! Have a wonderful time sharing that iridescence in every way imaginable.

There were 6 new members there for their first meeting, along with 4 guests who seemed to be enjoying themselves in a big way right along with the rest of us "Confirmed Regulars".

There were 7 Poinsettias, 7 Christmas potholders, and a surprise wrapped gift, and yes, a Whimsey-Diddle on each table, also. In addition to these items, two hand made shaker boxes which had been hand-painted, home-made fudge containers, many other raffle prizes and three pieces of Carnival Glass given away.

Election of Officers brings Robbie Robertson in as our new President for the next couple of years and Gail Westphall changes from President to our new Treasurer. They are both seasoned collectors and dedicated workers. WE look forward to another great couple of years with such fine talent. The outgoing Treasurer, Ardonna Bucher has done us a great service in the past. She was given a hand-made and carved cedar cross frame to picture her future in. She's our favorite Dragon Lady.

Gail was presented with another such frame containing a carefully worded Certificate of Accomplishment in having reached her pinnacle of success as a fully qualified President-In-Charge-Of-Any-Matter-Of-The-Moment, right down to shopping for a different hotel for meetings next year. Beginning with the March 1994 Meeting, we shall be at Holiday Inn in Mission Valley. A map and explicit directions as to ramp exit will be included in the March issue of the Newsletter. WATCH FOR IT! This change should make for better solutions in several areas. Ground floor parking and entrance to LARGER meeting room. LOOK! NO ELEVATOR!

The Program presented by Robbie Robertson, Gail Westphall, Ardonna Bucher, Ed Stalder, Linda Heaton, Judy Maxwell, Donald Carter, Kathy Harris, Gary Lickver, & Diane Fry (hope I did not imit anyone). There were at least 200 spectacular Red and Green examples discussed by these folks, AND IT WAS TAPED BY JUDY MAXWELL. THE AVAILABILITY WILL BE LISTED IN THE NEWSLETTER.

Roughly checking on glass SALES, reveals that about 50 pieces changed owners. this was a busy and FUN day; a FULL one too. More than 8 hours of Carnival Glass exchange and not NEARLY as many miles of walking as a day in Disneyland-- just not hot dogs and cotton candy! They weren't EVEN MISSED. See you on March 20--FOR SURE!

DIANE FRY
SAN DIEGO, CALIFORNIA

The following prices were realized at the Annual Autumn Consignment Carnival Glass Auction held by Cooper & Albrecht Auction Services on November 12 & 13, 1993 at the Ramada Inn in Flint, Michigan.

HAS ANYONE EVER SEEN THIS COMPOTE?



The above photo shows a compote we bought in Syracuse, New York at a show. It is cracked, but as we'd never saw one before, we bought it anyway.

The base color of the compote is purple. It measures 6½" high and 9" across the top. There is no pattern on the interior of the compote. There is a cherry & leaves pattern on the exterior.

We would like to know more about this piece (it isn't in any of our books). We were wondering how scarce it is.

If anyone has any information on this compote, please contact us. THANK YOU!

Larry & Therese Ashley
3586 Everett Drive
Norton, Ohio 44203
1-216-825-3653

=====

RED G & C 9" ftd. bowl	650.00	IB Peacock/Fountain tumbler	150.00
M Hearts & Flowers compote	100.00	AO Hearts & Flowers compote	500.00
P Peacocks 9" plate	600.00	IG Peacocks 9" plate	750.00
A Trout & Fly 9" bowl	400.00	M Trout & Fly 9" bowl	280.00
RED Persian Medallion bon bon	800.00	A Poppy compote	425.00
M Poppy compote	400.00	B Peacocks 9" PCE bowl	550.00
RED Leaf Chain 7" bowl	800.00	B Kittens toothpick	400.00
B Kittens cereal bowl	600.00	RED Acorn 7" bowl	700.00
RA Waterlily sauce	1,450.00	W Corn Vase	275.00
G Vintage 7" plate	250.00	B Parlor Panels 4" vase	1,750.00
IB Rose Show bowl	1,350.00	W Rose Show bowl	400.00
IB Poppy Show plate	1,150.00	M Poppy Show plate	800.00
RED Holly 9" bowl	500.00	IB G & C dresser tray	600.00
B Harvest Poppy compote	775.00	B Daisy & Drapes vase	400.00
G Raspberry milk pitcher	225.00	RED Boggy Bayou 9½" vase	425.00
A Morning Glory 5" vase	200.00	PM Embroidered Mums bowl	300.00
G Wishbone tumbler	130.00	RED Open Edge Basket	370.00
PO Four Flowers chop plate	200.00	B Windflower 9" plate	225.00
A Rose Wreath bon bon	175.00	G Orange Tree bowl	225.00
A Poinsettia 9½" ftd. bowl	300.00	M Leaf Chain 9" plate	130.00
A Strawberry Wreath compote	350.00	W Oriental Poppy tumbler	75.00
M Fenton Peacock & Urn plate	215.00	A Stag & Holly 9" bowl	175.00
A Bushel Basket	85.00	W Open Edge Basket	110.00
P Flute toothpick	60.00	AMB Peacock & Grape 9" bowl	85.00
B Orange Tree bowl	75.00	G Beaded Cable rosebowl	85.00
B Orange Tree plate	145.00	SM Zipper Loop 7" lamp	850.00
B Hearts & Flowers bowl	200.00	B Fanciful 9" flat plate	175.00
M Vineyard water pitcher	60.00	G Lotus & Grape 9" bowl	110.00
G Wild Rose lamp	1,300.00	A Persian Medallion 6" plate	225.00
M Grape Arbor pitcher	145.00	G Strawberry 9" plate	120.00
AQ Persian Medallion bon bon	125.00	M Beaded Shell mug	85.00
A Imp. Grape 6" plate	120.00	P Good Luck PCE bowl	215.00
B Heart & Vine bowl	65.00	A Strawberry 9" plate	230.00
B Butterfly & Berry vase	65.00	G Captive Rose compote	50.00
CLM Waffle Block tumbler	150.00	W Rustic 9" vase	55.00
P Dandelion tumbler	40.00	P Thunderbird 9" bowl	290.00
M Primrose 10" bowl	85.00	M Floral & Grape pitcher	70.00
M Little Stars 8" bowl	90.00	VAS Orange Tree mug	45.00
B G & C bon bon	60.00	VAS Daisy Squares rosebowl	425.00
A Shrine 1908 toothpick	400.00	W Peacocks 9" plate	350.00
M Kittens cup	250.00	B Lattice & Grape pitcher	135.00
A G & C 7" plate	105.00	A Vintage 7" plate	150.00
M Boutonniere compote	75.00	B Leaf Chain 7" plate	145.00

CARNIVAL GLASS FOR SALE

Dave Sharp, 316 E. Front Street, Lititz, Pennsylvania 17543
PHONE: 1-717-626-8231

W	EI Fenton Peacock & Urn plate, SUPER	525.00
B	EI (N) Grape & Cable large fruit bowl	475.00
W	EI Dianthus enamelled tankard, SUPER & FROSTY	350.00
B	EI Lotus & Grape 9" ruffled bowl, GREAT	165.00
LAV	EI Diamond Lace pitcher, 2 mfg. separations at top, FABULOUS COLOR	150.00
B	EI Waterlily 5" footed sauce	85.00
M	GI Australian Magpie 10" ruffled bowl	120.00
M	EI Magnolia & Drape enamelled 5 piece water set	225.00
B	EI Wreath of Roses/Vintage punch cup	30.00
A	EI Golden Harvest/Vintage wines, have 5, each	30.00

Trudy Brown, 3425 Nickel Drive, St. Joseph, Missouri 64506
PHONE: 1-816-279-3708

RED	Blackberry Open Edge 2 sides up, SUPER COLOR	700.00
RED	Open Edge J.I.P. Basket, BEAUTIFUL	625.00
G	Good Luck 9" plate, Basketweave exterior, pinhead on edge	700.00
M	Sailboat 6 1/4" plate, extra nice, RARE	450.00
A	Isaac Benesch 6 1/2" round bowl, nice	450.00
M	Kittens cup & saucer, dark, extra nice	320.00
M	Good Luck bowl, extra nice color	375.00
IG	Hearts & Flowers bowl, SPEAKS FOR ITSELF	485.00

I HAVE A NICE SELECTION OF GOOD CARNIVAL GLASS FOR SALE.

Robert C. McGuire, 2014 Meadowbrook Drive, Milan, Tennessee 38358
PHONE: 1-901-686-8091 after 6:00 P.M. C.S.T.

RED	EI Fine Rib 10 1/2" vase, silvery	225.00
M	EI Acanthus chop plate 10", small flake	100.00
G	EI Hattie chop plate	400.00
M	EI Heavy Grape chop plate, bubble on back	85.00
M	EI Three Fruits stippled plate, edge bruise	85.00
P	EI Grape & Cable banana boat, SUPER	200.00
A	EI Stag & Holly 8 ruffled, spatula footed bowl	125.00
M	EI Heavy Iris tankard pitcher, open bubble	75.00
PO	EI Leaf Rays nappy	35.00
*	EI *Moonstone Carolina Dogwood bowl	200.00

CARNIVAL GLASS FOR SALE

Beth & Harry Daniels, 1405 N. Wood Ave., Apt. 197, Roselle, New Jersey 07203
PHONE: 1-908-245-3116 Please leave message.

M	EI Fenton Holly ruffled hat, 4 sides up	25.00
G	GI Fenton Iris ruffled compote	50.00
M	EI Dragon & Lotus low, ruffled bowl	45.00
G	EI (N) Strawberry ruffled bowl, Basketweave ext., no harm chips inside two points	65.00
A	EI Fenton Thistle ruffled bowl, Panelled exterior	60.00
B	EI Fenton Vintage small I.C.S.	25.00
B	GI Fenton Holly small ruffled compote	50.00
A	EI Daisy & Plume compote	55.00
A	EI Fenton Stippled Rays 6 1/2" low ruffled bowl, SUPER COLOR & IRID.	30.00
M	EI Singing Birds mugs, 2 at \$90.00 & 1 at \$30.00, SUPER DARK COLOR	

Ted L. Sheibley, 5071 Bass Lake Dr., Apt. 203, Harrisburg, Pennsylvania 17111
PHONE: 1-717-564-9364

A	EI Fanciful 9" I.C.S. bowl	165.00
A	EI Holly 9" bowl, candy ribbon edge	75.00
A	EI Iris stemmed compote	65.00
G	EI Two Row Open Edge Basket, J.I.P.	240.00
M	EI Lotus & Drape enameled water pitcher	185.00
M	EI Poinsettia milk pitcher	75.00
M	EI Primrose 9" ruffled bowl, Millersburg	85.00
M	EI Star & File 8 piece wine set	210.00
P	EI Lustre Rose creamer/spooner, each	125.00
W	EI Drapery rose bowl	600.00

Donald Harris, 527 Lavina Drive, Mechanicsburg, Pennsylvania 17055
PHONE: 1-717-790-0412

A	EI Pearly Dots rose bowl	45.00
B	EI Orange Tree punch cups, have 4, each	35.00
G	EI Dragon & Lotus 9" ruffled bowl	75.00
M	EI Beaded Shell creamer/spooner, each	40.00
M	EI Embroidered Mums 9" ruffled bowl, Ribbed exterior	275.00
M	EI Golden Grapes rose bowl	45.00
M	EI Kittens dish, 6 ruffled	110.00
M	EI Orange Tree punch bowl and base	175.00
M	EI Orange Tree punch cups, have 7, each	25.00
M	EI Palm Beach rose bowl	250.00

SEND \$.52 S.A.S.E. FOR LARGE LIST

CARNIVAL GLASS FOR SALE

Robert L. Grissom, 7900 Crescent, Raytown, Missouri 64138
PHONE: 1-816-356-5320 POSTAGE & INSURANCE EXTRA

M	Circle Scroll master berry & 4 small bowls, BEAUTIFUL	200.00
RED	1976 H.O.A.C.G.A. Good Luck whiskey decanter & 6 shot glasses	235.00
A	Oriental Poppy tumbler, OUTSTANDING	55.00
G	Grape & Gothic Arches butter bottom	65.00
M	Grape & Cable butter top	40.00
M	Grape & Cable sugar lid, light color	10.00
A	Circle Scroll spooner, silver iridescence, SCARCE	50.00
A	Carnival Hobstar creamer, silver iridescence, SCARCE	30.00
M	Maple Leaf sugar bottom	30.00
G	Lustre Rose spooner, silver iridescence	25.00

John D. Resnik, 10031 Banner Lava Cap, Nevada City, California 95959
PHONE: 1-916-477-1345

M	EI Blackberry Wreath 9" square bowl, radium	225.00
A	EI Trout & Fly square bowl, satin	900.00
M	EI Trout & Fly square bowl, satin	700.00
A	EI Many Stars 10" C.R.E. bowl, radium	650.00
M	GI Little Stars 10" ruffled bowl, satin, RARE SIZE	450.00
AO	EI Daisy & Drape vase, butterscotch	650.00
IG	EI Wishbone 8½" footed, ruffled bowl	1,650.00
W	EI Wishbone 8½" footed, ruffled bowl	500.00
W	EI Three Fruits ruffled, stippled bowl	800.00
M	EI Ten Mums 6 piece water set	1,150.00

LARGE DOUBLE STAMPED S.A.S.E. FOR 500-600 PIECE LIST

Dave Ackerman, 4677 Kennebec Drive, Cass City, Michigan 48726
PHONE: 1-517-872-2023

*	*Pearl Custard Grape & Gothic Arches small berry bowls, have 2, each \$30.00 or both for	55.00
M	Star Medallion large sized sherbet	35.00
DM	Star & File 8" square bowl, scarce	50.00
M	Circle Scroll tri-cornered hat shape	70.00
G	Peacock Tails interior, Horlacher exterior 7" bowl	95.00
M	(N) Grape & Cable sherbet ice cream, tiny flake on base	34.00
M	Magnolia & Drape decorated 7 piece water set, good color	500.00
W	Pond Lily bon bon	90.00
DM	Hobstar Band water pitcher, footed	255.00
*	*Dark purple Beaded hatpin, shaped like a bottle stopper	25.00

CARNIVAL GLASS FOR SALE

Lee & Phyllis Bryant, 11645 N.W. Winchester Road, Decatur, Indiana 46733
PHONE: 1-219-639-3415

G	Imperial Grape 7 piece wine set, plus stopper	275.00
P	Stag & Holly 10" I.C.S. ball footed bowl	250.00
W	Fish Scales & Beads 7" flat plate	150.00
M	Grape & Cable banana shape fruit bowl, dark color, nice	125.00
M	Imperial Grape 9" flat plate, nice	100.00
G	Sunflower 8" ruffled bowl	85.00
G	Wreath of Roses 2 handled bon bon, stemmed	75.00
PB	Lotus & Grape card tray shape bon bon, true powder blue	65.00
PO	Puzzle 2 handled bon bon, round	50.00
W	FRosted Block rose bowl, 5" opening, nice	50.00

Pat Housewright, 225 Rowland, Stephenville, Texas 76401
PHONE: 1-817-968-2997

A	EI Peacock Tail Vt. compote	105.00
A	EI Wishbone 8½" footed, ruffled bowl	140.00
A	EI Dugans Cherry 8½" footed, ruffled bowl, SUPER	255.00
B	EI Strawberry Scroll tumbler	185.00
B	EI Stag & Holly 7½" footed, ruffled bowl	200.00
G	EI Open Rose 9" plate	165.00
PO	EI Coin Spot 4½" compote	85.00
M	EI Open Rose 9" plate	125.00
M	EI Little Fishes 9" bowl	185.00
M	EI Good Luck 8½" P.C.E. bowl, BASKETWEAVE exterior	190.00

Gary Young, 33 Vaughn Ct., Eatontown, New Jersey 07724

P	EI Grape Delight rose bowl, perfect feet, heat checks base, very pretty	35.00
M	EI Butterfly & Fern tumbler	55.00
B	EI Orange Tree mug, large, internal crack & flake where handle joins on bottom	25.00
M	EI Peacock & Urn bowl, Fenton	125.00
VAS	EI Coin Dot rose bowl, Smooth exterior	115.00
P	EI Wishbone footed bowl with Ruffles & Rings exterior	155.00
PO	EI Dugan Ski Star bowl, Compass exterior	120.00
AO	EI Leaf & Beads rose bowl, small chip inward side of one leg, internal crack second leg	500.00
M	EI Fashion punch cup	24.00
M	GI Stork & Rushes punch cup	15.00

ALL PRICES INCLUDE POSTAGE

CARNIVAL GLASS FOR SALE

Richard Cinclair, 3605 South Echo Trail, Plano, Texas 75023
PHONE: 1-214-596-0014

A	EI Checkerboard goblet	175.00
A	EI Millersburg Peacock & Urn 5"	155.00
B	EI Peach 7 piece water set	1,450.00
W	EI Peacock at the Fountain master berry bowl	275.00
IB	EI Good Luck bowl	3,500.00
M	EI Octagon cordial	375.00
RED	EI Holly hat	550.00
PO	EI Folding Fan compote	85.00
A	EI Rays & Ribbons bowl	95.00
M	EI Blackberry Block tumbler	80.00

John & Terri Dubinski, 2408 Fleetwood Drive, Columbia, Missouri 65202-2262
PHONE: 1-314-474-2644

IG	EI Peacocks plate	450.00
A	EI Pulled Loop vase	39.00
M	EI Leaf Tiers small berry	40.00
A	EI Beaded Shell mugs, have 5, each \$80.00 or all for	350.00
PO	EI Leaf Rays nappy, NICE	65.00
CLM	EI Orange Tree plate, SUPER!!!!	275.00
VAS	EI Two Flowers footed sauce	70.00
G	EI Wildflower compote (N)	425.00
M	EI Persian Garden 6" plate, SCARCE	95.00
M	EI Sailboats compote, not often seen	50.00

Dick Wetherbee, 847 Stafford Street, Rochdale, Massachusetts 01542
PHONE: 1-508-892-4420

M	EI Butterflies 2 handled card tray, radium finish	35.00
PO	EI Flowers & Frames 8 3/4" dome ftd. bowl, GREAT COLOR & OPAL	130.00
B	EI Acorn Burrs punch cup, RARE COLOR, REAL PRETTY	75.00
M	EI Little Flowers 6" tri-shaped dish, UNUSUAL SHAPE, SUPER	55.00
G	EI April Showers 10" vase, Peacock Tails inside, GREAT	65.00
P	EI Three Fruits w/Leaf Ctr w/Basketweave & Grape ext. 8 1/2" dome footed bowl	75.00
M	EI Bullseye & Beads 12" vase, GREAT COLOR TO THE BASE, STATELY	55.00
B	EI Grape & Gothic Arches 8 1/2" master berry bowl, SUPER	95.00
G	EI Grape & Cable/Thumbprints 7" flared out hat from tumbler, GREAT	75.00
VAS	EI Leaf Chain 7" fluted dish, RARE VASELINE COLOR, GLOWS	95.00

CARNIVAL GLASS FOR SALE

Bonnie Wiggins, 621 Grant Street, Indiana, Pennsylvania 15701
PHONE: 1-412-349-9420 weekdays & after 5:00 P.M. call 1-412-465-7446 any day.

M	EI Vineyard 7 piece water set	195.00
M	EI Lattice & Daisy 7 piece water set	350.00
M	EI Raspberry 7 piece water set	350.00
M	EI Panelled Dandelion 7 piece water set	475.00
M	EI Grape & Cable 5 piece water set, chip on thumbprint of pitcher	115.00
A	EI Grape & Cable 7 piece water set	450.00
B	EI Ten Mums 6 piece water set	900.00
M	EI Hobstar Band pitcher, pedestal footed	125.00
SM	EI Zipper Loop Lamp, mid-sized	750.00
M	EI Grape & Cable centerpiece bowl	175.00

Dick Hatscher, 142 Walnut Hill Road, Bethel, Connecticut 06801
PHONE: 1-203-743-1468 IF ITEM IS SOLD, YOUR CALL WILL NOT BE RETURNED.

M	EI Stag & Holly 9" plate, RARE	925.00
M	EI Vineyard tumblers, have 4, each	15.00
M	EI Apple Blossom tumblers, have 4, each	19.00
M	EI Robin mug, stippled	38.00
PO	EI Ski Star handgrip plate	78.00
*	EI *Helios Hattie chop plate	325.00
G	EI Good Luck bowl	325.00
IG	EI Peacocks plate	385.00
RED	EI Stippled Rays sauce	325.00

Larry & Vicki Whitts, 311 N. Washington Place, Kennewick, Washington 99336
PHONE: 1-509-582-7367

M	EI Luster Rose table set	250.00
M	EI Luster Rose 7 piece water set	295.00
M	EI Cathedral (Curved Star) 7" chalice	125.00
M	EI Floral & Grape (D) 7 piece water set	355.00
M	EI Floral & Grape (D) tumblers, have 12, each	35.00
B	EI Floral & Grape (D) 5 piece water set	485.00
M	EI Flute #3 creamer & sugar	200.00
G	EI Orange Tree centerpiece 9" bowl, ONLY 1 OF 3 KNOWN, SUPER!!	2,000.00

CARNIVAL GLASS FOR SALE

Debbie & Mike Heinl, 240 Mize Road N., Cullman, Alabama 35055
PHONE: 1-205-739-0281

M	EI Imperial Hobstar Band tumblers Variet, straight sided, RARE, have 2, each	35.00
B	EI (N) Peacock & Urn stippled ice cream sauce 5 1/2" bowl, heavy gold iridescence	120.00
A	EI (N) Grape & Cable open 2 handled breakfast sugar	40.00
M	EI Fenton Waterlily & Cattails tumblers, each	25.00
G	EI Millersburg Cosmos I.C.S. 5 3/4" bowl	35.00
B	EI (N) Good Luck P.C.E. 8 1/4" bowl, Ribbed exterior	275.00
W	EI Palm Beach 4 1/2" bowl, U.S. Glass	105.00
B	EI Fenton Orange Tree footed tumbler, pinhead on top of foot, one leg slightly shorter from factory	30.00
M	EI (N) Grape & Cable footed ice cream sherbert	15.00
M	EI Inverted Feather ruffled compote sundae, Cambridge	45.00

SEND S.A.S.E. FOR ADDITIONAL ITEMS FOR SALE

Floyd & Barbara Fine, Route #2, Box 150, Noel, Missouri 64854
PHONE: 1-417-475-3667

M	EI Salt Cups, have 2, one has iridized stem & foot, other has clear stem & foot, each	30.00
M	EI Ashtray, advertising Alfred F. Steiner - Men's Wear 1608-S Broadway, 6119 - Easton Ave., molded in the making of the glass	30.00
W	GI Palm Beach butter dish and top, top is mint, bottom has crack nearly halfway across, so	60.00
M	EI 1/10 pint Golden Wedding bottle with cap but no paper label on bottle	15.00
M	EI Horseshoe tumbler	35.00
M	EI Unshod tumbler	12.50
A	EI Millersburg Holly Sprig/Whirl tri-cornered handled nappy	110.00

Ron Smith, 3850 S. Meridian #111, Wichita, Kansas 67217
PHONE: 1-316-529-4432 after 5:00 P.M. Monday to Friday; Sat. & Sun. anytime.

RA	EI Stippled Rays with Scale Band 6", dome based. A super matched set of 5, will not be sold separately	1,300.00
PM	GI Good Luck bowl, stippled & ruffled, tiny chip between point	130.00
RED	EI Acorn bowl, 10 ruffled, small chip on base, brick red	375.00
M	EI SEagulls bowl, tough to find	60.00
M	EI Fieldflower water pitcher, small chip on base	75.00

CARNIVAL GLASS FOR SALE

Gerald M. Hess, 500 Woodland Trail, Argos, Indiana 46501
PHONE: 1-219-892-6193

P	EI Dandelion tumblers, set of our, well matched, all for	200.00
SM	EI Soda Gold tumbler	55.00
A	EI Diamond tumbler	40.00
A	EI Acorn Burrs 4 3/4" bowl	50.00
B	EI Orange Tree jelly compote	30.00
B	EI Peacock & Urn compote, broken air bubble on base	35.00
B	EI Grape & Gothic Arches 4 1/2" bowl	25.00
M	EI Persian Medallion 6" bowl	30.00

Karen E. Skinner, 108 Riverwoods, E. Alton, Illinois 62024
PHONE: 1-618-259-1373 after 6:00 P.M. Central Time

M	EI Frosted Ribbon pitcher	35.00
M	EI Frosted Ribbon tumblers, each	10.00
PM	GI Late Eagle Bank	15.00
M	GI Interior Swirl tumbler, ice tea size. Have never seen before, not Owens #195 or Optic Swirl	15.00
M	GI Pennsylvania Dutch Depression era (Jeanette) tumbler 12 oz. size, Whitley #59, brown decor	8.00
M	EI Star & File decanter, no show stopper damage	175.00
M	EI Star & File wine glass, each	60.00
M	EI Honeycomb kerosene lamp	65.00
M	GI Jeanette Depression era Dots & Daisy large ice tea size tumbler. Scarce. See Texas Newsletter April 1992 for sketch	35.00
M	GI Arched Panels tumblers, each	35.00

Doug & Nancy davis, 7050 Carmelita, Atascadero, California 93422
PHONE: 1-805-466-3762

B	Floral & Grape tumblers, have 2, each	45.00
G	Grape & Cable punch bowl base, small sized, great pinkish and purple colors	110.00
P	Fishermans mug, silvery color	115.00
B	Orange Tree mug, 3 1/2" tall	65.00
M	TREE Bark pitcher & 5 tumblers, perfect	85.00
M	Question Marks 2 handled compote	35.00
A	Double Stemmed Rose 8" bowl, dome footed	53.00

CARNIVAL GLASS FOR SALE

Gladys Hutchison, Route #2, Box 2966, Seymour, Missouri 65746
 PHONE: 1-417-935-4908

MMG	Prayer Rug bon bon, marigold is light in bottom, otherwise perfect, A VERY SCARCE ITEM	400.00
M	Windflower 9" ruffled bowl	36.00
G	Double Star water pitcher, a beauty	375.00
EB	Peacocks on the Fence 9" plate, ONE OF THE PRETTIEST I'VE EVER SEEN	800.00
M	Imperial Heavy Grape 11½" bowl, nice	130.00
M	Wreath of Roses 5 punch cups, Vintage interior, one has chigger bite on rim, all 5 for	100.00
M	Dragon & Lotus ruffled 9" flat bowl	55.00
B	Butterfly & Fern tumbler, shallow chip on bottom	25.00
M	Butterfly & Fern tumbler, some roughness on bottom, very good iridescence	35.00
G	Scroll Embossed compote	60.00

Gerald L. Thomas, 44 E. Highland Ave., Atlantic Highlands, New Jersey 07716
 PHONE: 1-908-872-8051

VAS	AI Fenton Acorns 6" bowl	110.00
A	EI Wreath of Roses punch cups, have 5, Grape interior, mint condition, each	32.50
M	EI Millersburg Swirl Hobnail spittoon, tiny pinch on 1 point	650.00
M	EI Dugan Wreath of Roses rosebowl, mint	40.00

Dave Deem, 1746 N. California St., Burbank, California 91505
 PHONE: 1-818-845-4530

M	Dragon & Lotus 9" low bowl	30.00
A	Holly 9" bowl 3 in 1 edge	95.00
*	*Black amethyst Two Row Open Edge Basket, 2 sides up	125.00
G	Strawberry 9" bowl P.C.E.	90.00
B	Pond Lily bon bon	50.00

Stan & Donna Williams, PHONE: 1-816-468-5289
 Before 9:30 A.M. or after 4:30 P.M. C.S.T. POSTAGE & INSURANCE EXTRA

M	EI Zipper Loop Lamp 8", A BEAUTY	450.00
AO	EI Hearts & Flowers compote, VIVID AQUA, BEAUTIFUL COLOR	600.00

CARNIVAL GLASS FOR SALE

Don Donovan, R.R. #1 Selkirk, Ontario, Canada NOA 1PO
 PHONE: 1-905-776-2453 Please call between 8:30 and 11:00 P.M.

G	GI (N) Strawberry 9" plate, Basketweave exterior	175.00
M	EI (N) Three Fruits stippled 9" plate, dark marigold	375.00
M	EI Fenton Captive Rose 9" plate, A BEAUTY	475.00
P	EI Imperial Scroll Embossed 9" plate, ELECTRIC IRIDESCENCE	250.00
M	EI Millersburg Peacock Proof 5½" berry bowl, radium iridescence	250.00
G	EI Fenton Concord Grape 8½" six-ruffled bowl, MOST OUTSTANDING WITH ELECTRIC IRIDESCENCE	750.00
M	EI Fenton Fantail whimsey centerpiece bowl, VERY PRETTY	220.00

Pat Halliburton, 2702 St. George, Garland, Texas 75044
 PHONE: 1-214-495-5365

M	EI Kittens cereal bowl, DARK and good mold	225.00
M	EI Peacock Tail 9" bowl, ruffled, PRETTY	55.00
M	EI Pine Cone 6" plate	75.00
M	EI Morning Glory 4 3/4" vase, SUPER LITTLE GUY	95.00
G	EI Little Stars ruffled 7" bowl, SCARCE	195.00
W	EI (N) Drapery candy dish, DELICATE	165.00
P	EI (N) Grape & Cable large open compote, PRETTY inside & out	595.00
M	EI (N) Grape & Cable 8½" plate, Plain exterior, NICE	175.00
M	EI (N) Wild Strawberry 7" hand grip plate, NICE	185.00
G	EI (N) Singing Birds mug, SCARCE	175.00

CARNIVAL GLASS WANTED

Dick Hatscher, 142 Walnut Hill Road, Bethel, Connecticut 06801
PHONE: 1-203-743-1468

M Fashion punch top, deep marigold with excellent iridescence
HEARTS & FLOWERS A N Y T H I N G

Chuck & Marge Kremer, 430 Rose Avenue, New Haven, Indiana 46774
PHONE: 1-219-749-4909

B Hobnail spooner
A Octagon butter dish
B Peacock at the Fountain complete table set
A Inverted Feather butter dish
W Peacock at the Fountain butter dish
G Peacock at the Fountain spooner
A Lustre Rose sugar

Dave Deem, 1746 N. California Street, Burbank, California 91505
PHONE: 1-818-845-4530

B/P Round Up flat plates
B/P Strawberry 9" plate
M Captive Rose 9" plate
M/G Good Luck 9" plate

Gerald L. Thomas, 44 E. Highland Ave., Atlantic Highlands, New Jersey 07716
PHONE: 1-908-872-8051

M EI Springtime small 5" berry bowl, dark marigold, need one
SM AI Twins small berry bowls, need 4
W EI Acorn Burrs punch bowl and base

Gladys Hutchison, Route #2, Box 2966, Seymour, Missouri 65746
PHONE: 1-417-935-4908

M Beaded Shell butter and lid
M Millersburg Hanging Cherries butter and lid
G Double Star tumblers, need 6
M Butterfly & Plume tumblers with excellent iridescence
A Fluffy Peacock water pitcher
B Rambler Rose water pitcher

CARNIVAL GLASS WANTED

Doug & Nancy Davis, 7050 Carmelita, Atascadero, California 93422
PHONE: 1-805-466-3762

G Acorn Burrs butter dish lid

Ron Smith, 3850 S. Meridian #111, Wichita, Kansas 67217
PHONE: 1-316-529-4432 after 5:00 P.M. Monday to Friday, Sat. & Sun. anytime

P Imperial Grape stopper for decanter
G Stopper for Cambridge cologne bottle

Debbie & Mike Heintz, 240 Mize Road N., Cullman, Alabama 35055
PHONE: 1-205-739-0281

M Iris & Herringbone demitasse cup
M Iris & Herringbone 8 oz. 5 3/4" goblet
M Dugan Vintage powder jar bottom
M Fenton Grape & Cable powder jar lid

John & Terri Dubinski, 2408 Fleetwood Drive, Columbia, Missouri 65202-2262
PHONE: 1-314-474-2644

ANY I.C.S. Rays & Ribbons bowls
M Base to Peacock at the Fountain butter dish
M Base to Orange Tree punch bowl
M Waffle Block punch bowl
M Grape & Cable punch bowl and base

John D. Resnik, 10031 Banner Lava Cap, Nevada City, California 95959
PHONE: 1-916-477-1345

Peacock at the Fountain punch cups, ANY COLOR

Harold L. Fortney, 910 Pennsylvania Apt. 908, Kansas City, Missouri 64105
PHONE: 1-816-421-4169

W Fenton Fine Rib vase
W (N) Fine Rib vase
A Peacock & Grape I.C.S. collar based bowl with excellent irid.
B Peacock & Grape I.C.S. spatula footed bowl
W Peacock & Grape collar based or spatula footed bowl

2/10

37

CARNIVAL GLASS WANTED

Richard Cinclair, 3605 South Echo Trail, Plano, Texas 75023
PHONE: 1-214-596-0014

G Inverted Strawberry creamer, spooner, butter
A Owl hatpin
ANY Twin Gattors hatpin
ANY Leaf & Veil hatpin
Either Kittens cuspidor
M Peacock at the Fountain compote
M Wide Panel epergne side lily

Ted L. Sheibley, 5071 Bass Lake Dr. Apt. 203, Harrisburg, Pennsylvania 17111
PHONE: 1-717-564-9364

Persian Garden fruit bowls or bases, ANY COLOR
Imperial Grape wine stoppers, ANY COLOR
P Imperial Grape punch cup
M "474" punch cups, need 4, good inside and out

Tom & Erika Esliger, 105 DELanguedoc, St. Lambert, Quebec, Canada J4S 1B8
PHONE: 1-514-672-4198

G (N) Springtime sugar, MINT

UPCOMING CONVENTIONS:

1994 LOSE YOUR HEART TO CARNIVAL GLASS JAMBOREE - February 10 - 12, 1994,
Best Western Mirage, St. Petersburg, Florida. Room sales, Raffle drawing,
Hospitality Room with Show & Tell, Educational Program, Tom Burns Auction,
Banquet with Speaker. For further information, contact Barb Hobbs at
1-813-541-6164 or 1-813-545-4833 (answering machine).

TEXAS CARNIVAL GLASS CLUB CONVENTION - February 17 - 20, 1994 at the Marriott
Hotel-Greens Point, Houston, Texas. Educational Seminar, Texas Bingo, Texas
Picnic, Midnight Auction, Jim Seeck Auction, Banquet with Speaker, Raffle
drawing for Aqua Opal Rose Show Bowl, Open House at the Whitley's.
For further information, contact Carol Cox at 1-817-641-1738.

1994 H.O.A.C.G.A. CONVENTION - April 21 - 24, 1994 at the Holiday Inn, Lenexa,
Kansas. Room sales, three Educational Programs, Hospitality Room, the John
& Lucile Britt Award for Excellence in Carnival Glass, Banquet with Speakers
Dean & Diane Fry, Jim Seeck Auction and much, much more!! Make your plans
to attend now! Further details and a schedule of events will follow.