

# HOACGA

Heart of America Carnival Glass Assoc. Inc.

February 1995

RETURN ADDRESS

H.O.A.C.G.A.  
Jackie Fortney  
P.O. Box 303  
Buckner, MO 64016

FIRST CLASS MAIL  
U.S. POSTAGE  
PAID  
Buckner, MO  
Permit 03



CONVENTION INFORMATION  
IN CENTER SECTION

## HEART OF AMERICA CARNIVAL GLASS ASSOCIATION

### BOARD OF DIRECTORS, 1994

---

PRESIDENT.....	ROBERT GRISSOM 7517 Evanston Raytown, Missouri 64138 PHONE: 1-816-356-5320
VICE-PRESIDENT.....	DARYL STROHM 8904 E. 29th Street Kansas City, Missouri 64129 PHONE: 1-816-252-8137
TREASURER.....	CLIFF BALL 572 W. Park Street Olathe, Kansas 66061 PHONE: 1-913-782-0415
SECRETARY.....	ED KRAMER 4305 W. 78th Street Prairie Village, Kansas 66208 PHONE: 1-913-642-3587
BULLETIN SECRETARY.....	JACKIE FORTNEY Post Office Box 303 Buckner, Missouri 64106 PHONE: 1-816-650-5208

---

### ALL CARNIVAL GLASS CLUBS:

Please send the following information about your Club to the Bulletin Secretary. We want to include this information in the Bulletin.

NAME OF CLUB  
SECRETARY NAME & ADDRESS  
AMOUNT OF DUES  
MEETING PLACE & TIME

Send to: Jackie Fortney, Bulletin Secretary, H.O.A.C.G.A. (Address Above)

### San Joaquin Valley Carnival Glass Club

Marie McGee, Treasurer  
3906 E. Acacia Ave., Fresno, California 93726-0907

Luncheon Meetings in March, September, December, in the Cedar Room, Cedar Lanes Restaurant, Fresno California.

Picnic - Pot Luck - is held in July.

Newsletter is published 4 times a year. A raffle at the December meeting helps pay for the newsletter.

Payable March 1st, Dues are \$5.00 per year at the present time.

### Officers for 1994 - 1995

President	Marie Capps, Clovis, California	1-209-434-7786 and 1-209-683-7886
Vice President	Norma Boon, Salida, California	1-209-545-1832
Secretary	Diana Mills, Fresno, California	1-209-431-7540
Treasurer	Marie McGee, Fresno, California	1-209-222-0796

### Elected

Directors	Bob Natali, Fresno, California	1-209-291-3296
	Bob Ludy, Waso, California	1-805-792-2327
Editor	Marie McGee	

---

### Western Buckeye Carnival Glass Club

Name of Club:	Western Buckeye Carnival Glass Club
Secretary:	David L. Cotton, 582 Austin Rd., Mansfield, OH 44903
Amount of Dues:	\$5.00 per year, family
Meeting Place:	Random, 3 times a year with an after brunch gathering in a members home. Places generally decided at the first meeting of the year.

---

### Australian Carnival Enthusiasts Association, Inc.

Secretary	M. Dickinson, RSD Fryerstown 3451 (054) 73 4351
Treasurer	A. Howard, 21 Alexander Avenue, Dandenong, Vic. 3175 Phone (03) 792-4139
Dues	\$12.00 per annum family or \$10.00 per annum single
Meetings	Meetings are held quarterly in members homes, Visitors are welcome form midday on.
Newsletter	A newsletter is published between these meetings to keep the members unable to attend in touch with activities of the club, as well as other help in collecting.

### Keystone Carnival Glass Club

Secretary: Mary Sharp, 719 W. Brubaker-Valley Road  
Lititz, Pennsylvania 17543  
Dues: \$10.00 family membership per year (June - May)  
Meetings: Second Saturday of each month at Iooft Hall, N. Broad Street,  
Lititz, Pennsylvania at 7:30 P.M.

---

### Southern California Carnival Glass Club

Treasurer: Betty Robertson  
1430 Kendall Avenue  
Camarillo, California 93010-3606  
Membership Dues: \$12.00 for single or \$18.00 for couples  
Meeting Place: Golden Sails Hotel, Long Beach, California, at 10:00 A.M. setup,  
lunch served at noon, meet 3rd Sunday of February, May, August  
and November.

---

### San Diego County Carnival Glass Club

Secretary: Diane Fry  
5395 Middleton Road, San Diego, CA 92109-1525  
Dues: \$12.00 Single                      Newsletter produced 4 times per year  
\$18.00 Dual / Family  
Meeting Place: Mission Valley Holiday Inn, San Diego, California  
Dates & Times: 10:00 A.M. 1st Sunday - April, 2nd Sunday - June  
3rd Sunday - September, 1st Sunday - December

---

### Hoosier Carnival Glass Association

Secretary: Eunice E. Booker  
944 W. Pine Street, Griffith, Indiana 46319  
Dues: \$5.00 yearly, per family  
Meeting: Monthly - 3rd Saturday at 5:00 P.M. except February, July & August  
Meetings are hosted by members in their homes, therefore; we move around the state for  
our meetings.

### L'Association Du Verre Carnival Du Quebec

Secretary: J. Leo Richer  
3250 Leon Brisebois  
Ile Bizard  
Quebec H9C 1T6, Canada  
Phone: 1-514-620-1541  
Membership Dues: \$20.00 (Canadian Money) per year, per family  
Meetings: Meetings are announced in our newsletter at each two months.  
N.B. Our newsletter is published in both French and English.

---

### Pacific Northwest Carnival Glass Club

Dues \$10.00 per year, due June 1 through May 31.  
(May change to \$15.00 in August. Will voted on at the Convention  
August 13, 1994  
Meetings 3 times a year, the second Saturday of April, the second weekend  
of August (Convention) and the second Saturday of November.  
Club Secretary Jerry Reynolds  
1305 N. Highlands Parkway B-6  
Tacoma, Washington 98406  
1-206-759-2263

---

### Great Lakes Carnival Glass Club

Secretary: Maxine Burkhardt  
12875 Chippewa Drive  
Grand Ledge, MI 48837  
Dues: \$5.00 per year, per family  
Meeting Place: Members homes three times a year. The first Sunday in February,  
May and August. Convention the first weekend in November.

### Northern California Carnival Club

- Treasurer: June McCarter  
1205 Clinton Drive  
Modesto, California 95355
- Dues: \$10.00 per year (individual or family, January 1 through December 31)
- Meetings: Third Sunday in January, April and October, 11:00 A.M. to 3:00 P.M. with lunch at noon, Guiseppe's Restaurant, 2501 McHenry Avenue, Modesto, California. Annual Convention will be June 15-17, 1995 at the Holiday Inn, 1612 Sisk Road, Modesto, California.
- 

### Carnival Companions

- Secretary: Harry Atwater  
108 Sunset Blvd. Cambridge, Ontario, Canada N1S 1A7
- History: 10 Years Old
- Dues: \$7.50 / Donation per person, per year
- Meetings: 5 or 6 meetings per year, usually to a restaurant 1st and then to a members home to view their collection. Sometimes meetings are held just in private homes with or without a meal. There is always a topic and always lots of glass to view. A very informal club with few rules and little structure. The emphasis is on fun.
- 

### The Carnival Glass Society (UK) Ltd.

- Secretary: Vernon Kelvin  
162 Green Lane, Edgware, Middx. HA8 8EJ. England
- Dues: Overseas Members 15 pounds (Sterling) per year
- Meetings: Convention during August in Mid-England and at get-togethers in members homes
- Newsletter: Approximately 6 times per year

### New England Carnival Glass Club

- President: Maurice "Moe" Myers  
Silver Lake, NH 03875 (1-603-367-8077)
- Secretary: Marie M. Heath  
HCR 31, Box 15, St. Johnsbury, VT 05819 (1-802-748-2100)
- Dues: \$12.00 per year per family
- Meetings: Feb. 19, Apr. 23, Jun. 25, Aug. 20, Oct. 15, and Dec. 3, 1995 at noon in the Pulaski Club Hall, Southbridge, MASS. The Club Convention is the second weekend in September.
- V. President: Sam McGill, Convention Chairman  
27 Wells Road, Broad Brook, CT 06016 (1-203-623-4645)
- 

### Air Capital Carnival Glass Club

- Secretary: Donald Kime,  
15201 E. 47th S, Derby, KS 67037 (1-316-733-8424)
- Dues: \$10.00 per year per family
- Meetings: Every second month. February, April, June, August, October, December. The second Sunday at 2:30 P.M. Individuals homes
- Newsletter: Published each month
- Convention: 2nd full week of each October.

#### FIRST HOACGA PRESIDENT DIES

Davis Shikles, the first President of H.O.A.C.G.A. died as a result of a Heart Attack. Davis and wife Vi have been members of HOACGA since its inception. Davis was always a willing worker of the organization and will be missed by all of those who knew him. You may send condolences to Vi at 606 Leslie Drive, Independence, Missouri 64055.



# DID YOU KNOW?

## WHAT'S UP - IN NORTHWOOD PLATES

By Greg Gilliland & Don Grizzle  
(The Sanctified Cross-Eyed Bear & Bear Club)

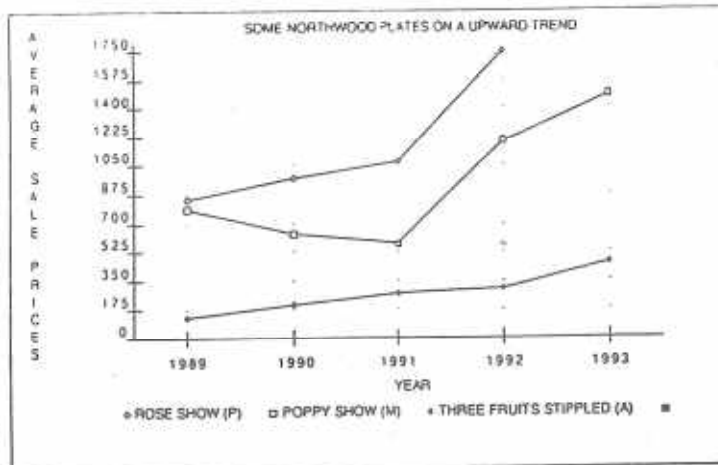
Back in the "good old days" carnival glass collectors did not have to really concern themselves as much with the price of the pieces that they bought. Beautiful pieces were found at very reasonable prices. However with more collectors loving our glass these days, we are paying a lot more than we used to. Spending several hundreds of dollars for the pieces that we want has become a reality we now face. Now we must exercise great care in choosing what we want to buy. Before I spend my hard earned money on carnival glass, I want to know if it has a good chance of maintaining or even growing in value.

It would be nice to think that every piece of carnival glass goes up in value every year. But the truth of the matter is that this is simply not true. For instance, a marigold Millersburg Peacock at the Um large IC bowl has on the average gone down in value every year since 1989. In 1989, the average price of this piece was \$600. In 1993, the average sales price was only \$250. One just recently sold at auction in 1994 for \$225. (Boy, I'm sure glad that I didn't buy one of those back in 1989.) Downward trends like this concern me. Before I buy pieces, I like to see the average sales price consistently going up over a period of time. When I see this happening, it tells me that collectors are demanding this piece and they are willing to pay a little more each year for what they want.

I thought that you would enjoy becoming aware of how three Northwood plates, Rose Show, Poppy Show, and Three Fruits Stippled, have shown a nice trend over that past five years.

(See the graph on the right.) I didn't choose to discuss these plates because they showed sky rocketing growth. If you would like to see a listing of those pieces, our book contains 18 pages of pieces that have increased in value 50% or more during the past 5 years. I chose these plates because they were more readily found and are still selling at somewhat reasonable prices.

Here is an excerpt from our book  
The Sanctified Cross-Eyed Bear's Price



Trend Guide For Carnival Glass. It shows the average sales price of these 3 Northwood plates between the years 1989 to 1993. It will give you a more exact idea of how the prices of these plates have changed over the past 5 years.

GLASS NAME	COLOR	AVG '89	AVG '90	AVG '91	AVG '92	AVG '93	CHANGE	PREVIEW AVG '94
ROSE SHOW PLATE	P	850	975	1067	1750	1480	106%	
POPPY SHOW PLATE	M	783	638	569	1200	1480	89%	900
3 FRUITS PLATE, STPLD	A	125	200	272	300	458	266%	

Of these three plates, the amethyst Three Fruits Stippled plate has the best track record. By looking at the table below with information from our book, you can see how the average sales price has changed. In 1989, the average sale price for one of these plates was only \$125. Right now you would have to pay around \$450 for one. (That's 266% increase in 5 years.) I also like the fact that the average sales price for this plate has gone up every year for the past five years. When I see a consistent trend of increased average price on a piece, it makes me feel a lot more comfortable when I make my purchase decisions.

The purple Rose Show plate has also shown a nice average price growth trend. Between 1989 and 1992, its selling price has gone up every year. To my knowledge one was not sold at auction in 1993. If you own one of these plates, you are fortunate. If you bought it in 1989 or earlier, it has probably at least double in value.

The average price trend of the marigold Poppy Show plate is a bit more interesting. Unlike the others, it has not gone up every year for the past 5 years. It has, however, shown a nice jump in price in the past 2 years. This shows me that peoples interest in these plates are beginning to grow. Now the question on my mind is, "Will the prices being paid for these plates dip back down?" That's one of the reasons that we have included a preview price average for the current year in our book. By looking at this preview average, I know that at least one plate sold at auction in 1994 for less than the \$1480 average. What does this mean? Was it sold at a poorly attended auction? Was something wrong with the plate(s)? Did everyone spend all of their money before this plate was auctioned? Unless you were at the auction, you just will not know. One would have to proceed with caution before buying one of these plates. If you are planning to buy one, make sure that you get it for the right price and that it "glows".

As you can see, our book contains information that is very valuable to collectors. The over 7,400 line entries of the average price sales during 1989 to 1994 greatly assist a collector in getting the "big picture" on sales prices. Don and I have enjoyed the positive feedback from collectors as well as dealers on how our book has helped them. Our hope is that the 210 pages of information can provide help to you also.

Copies can be obtained by writing to: THE SANCTIFIED CROSS-EYED BEAR, P.O. BOX 1516 PORT HUENEME, CA 93044. Send \$19.95 postpaid for U.S. & Canada; \$21.95 for Overseas mailings. (California Residents add 1.45 sales tax.) For additional information, please call (805) 982-7189.

## BUTTERFLY ORNAMENT



In the February 1988 issue of the H.O.A.C.G.A. newsletter, an article appeared titled "Northwood's Butterfly Ornament?". I found the above Butterfly ornament at an antique show & flea market.

I was wondering if there has been any more information uncovered on the ornament. Ours seems to be a smoke colored and is in perfect condition.

I was also wondering what its worth would be and if it would be considered a rare item. I Don't want to sell it, but would like to know more about it.

If anyone can assist my request for more information, please write to me at:

Sharon Rezarch  
R.R. 1, Box 256A  
Bloomer, WI 54724-9639

## MARY ANN VASES

By Richard & Elaine Peterson



Pictured above are 3 Mary Ann (Cordetia) vases. On the left is a ruby (not iridized), in the center is a blue opalescent (not iridized) and on the right is a marigold carnival glass.

The marigold carnival and blue opalescent are identical in design and measurements. Except for the type of glass measurements & pattern design, intricacies would suggest coming from the same mold.

The ruby red vase was found at an antiques show in Ft. Collins, CO. The pair was being offered by a California dealer. As to the vintage, the sometimes "bought from an older lady" was offered.

Our Mary Ann experience began years ago when we purchased a blue opalescent Mary Ann from the Tonawanda, New York Warrens. A less than perfect carnival - condition & iridescence seemed to be easier to locate. Bill Heacock photographed the BO and highlighted it in his Antique Trader column several years ago. Bill Edwards in his opalescent price guide first pictured one in BO.

The ruby Mary Ann has 10 arcs around its top, flares  $3 \frac{5}{8}$  compared to  $3 \frac{1}{4}$ , is a 2 mold piece compared to 4, with 10 arcs measuring the same as carnival & BO 8 arcs  $3 \frac{1}{4}$ .

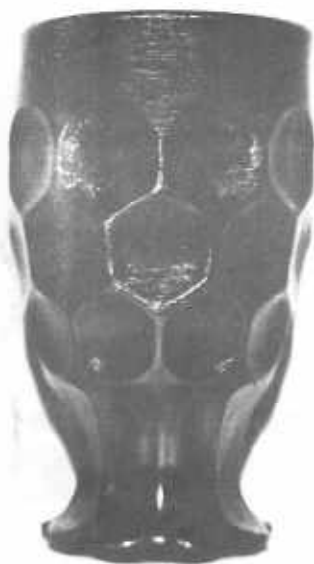
As many of you readers know, we in our carnival collecting search out BO and PO carnival pieces in same patterns and shapes as carnival glass counter parts. We have yet to find a BO epergne base for our BO fishnet lily.

Anyone have an awareness of ruby Mary Ann vases as shown?

Richard K. Peterson

## EDUCATIONAL TUMBLER SERIES

By John & Lucile Britt



### **HONEYCOMB PANELS TUMBLER**

Here is a very unusual and interesting tumbler. The pattern is called Honeycomb Panels. It is shown in Edwards fourth edition carnival glass book on page 109. We have not been able to find any material as to the maker of this pattern, but Edwards suspects that it might be made by one of the European companies. Regardless of who made this piece, they certainly did a very fine job, in our opinion.

The color of this tumbler is a beautiful red with very fine iridescence. It is a little larger than most carnival glass tumblers standing 5 3/4 inches high. The top opening is 3 3/8 inches wide. There is a smooth area around the top of the tumbler measuring about one inch wide. Below the honeycomb design are nine panels that extend downward to the outer edge of the base forming a scalloped edge. The bottom of the base is smooth and is slightly depressed. The base is 2 5/8 inches in diameter.

We consider the Honeycomb Panels tumbler as very rare. It is definitely the only example that we have ever seen. We expect to do more research in finding the maker of this tumbler, but for the present time we can only say "maker unknown". The photo of the Honeycomb Panels tumbler is courtesy of David Doty.

The Honeycomb Panels tumbler is #205 in our Educational Tumbler Series. Next month we will feature a tumbler from the Whitley collection that is known as Bullseye Panel.

## CAMBRIDGE NEAR CUT WHISKEY SET

By John Muehlbauer

While not carnival glass, the Near Cut Whiskey set in the photo is hopefully as interesting to you as carnival collectors, as it is to me. To begin with, the darn thing is really neat. In my china cabinet it looks every bit like a cut glass set, with beautiful shiny highlights and a wonderfully balanced design.

Now the ties to our carnival glass world. As most of you know, the decanter is extremely rare in carnival, with no more than two or three know, all in green, but not all perfect or with the stopper. My research shows the only perfect one that sold publicly in "near" time (Mordini/Rettke price guides) was at Ed and Marge Garner's auction in 1983, for \$3,500.00 (I'm missing the '85 and '86 price guides, anyone got extras?)

Interestingly enough, a crystal one listed as "rare" was also sold at the same auction for \$160.00. I was there, but I must confess, I really don't remember the crystal one. At any rate, in my 20 plus years of prowling through antique stores and malls looking for glass in a zillion states as well as England and Australia, I don't remember ever seeing another one. And I think I would have remembered, just because of the attractiveness of the thing.

Looking at the decanter, one can't help notice the similarity in design to the Grape & Cable whiskey decanter; the stout handle at the top, the bulbous base and the "mushroom" stopper. Also the shot glasses are very much shaped like the G&C versions. "Near Cut" is molded in the base of the handle of the Cambridge decanter. I'd be willing to bet that the similarities are not by accident. We're all aware of the duplication of patterns and etc. by the various glass companies. Wonder which one came first, the Cambridge design or Harrys.

But here's the kicker. As is obvious in the picture, there are matching shot glasses! My set had seven shots when I found it, probably came with eight and one got broken or lost. Wouldn't you love to be the person to find the shots in carnival, even one?! Keep looking, they (it) might be out there!



## PICTORIAL PATTERN PARADE

By John & Lucile Britt



### **RARE HOLLY SPRIG COMPOTE IN TRI-CORNER SHAPE**

We wrote a two page article for the May 1994 issue of the H.O.A.C.G.A. bulletin on the Millersburg Holly Sprig compote. The ruffled amethyst compote shown in that article belongs to Debbie and Mike Heint of Cullman, Alabama. Even though we have collected Millersburg carnival glass for many years, we had never owned the rare Holly Sprig compote at that time. We were very happy to be able to use photos of the Heint's compote in that article because we thought it should be pointed out to all collectors, and especially beginning collectors, just how rare the Holly Sprig compote really was.

After all these years of trying to find the Holly Sprig pattern in the compote shape, we are happy to announce that we finally own one. We are featuring it here, so soon after the original May 1994 article, for two reasons. Firstly, because this one is in the unusual tri-corner shape with crimped edging and secondly because we were just so proud to own one of these in any shape. The tri-cornered example is the first one that we have ever seen. The above photo shows the compote on its side which gives a better view of the pattern and shape. The photo on the facing page illustrates the piece sitting on its base. Notice the dome shaped base. The compote is in very good marigold color.



We might mention that the Millersburg Holly Sprig compote was made in the same fashion as the Millersburg Strawberry compote. Both contain ten of the concave panels on the underside. The only difference is that one compote features the Strawberry pattern on the underside and the other contains the Holly Sprig pattern on the inside. The Millersburg Company could accomplish that by simply changing the upper plate of the mold and in that way would save somewhat in the production cost. These compotes are known in amethyst, green and marigold. It is possible that one might exist in vaseline since we once found the Millersburg Strawberry compote in that color.

The above compote was found by Robert Smith of Boston, Massachusetts in a little out of the way antique shop at a very modest price. This article featuring the Millersburg marigold tri-cornered Holly Sprig compote is #195 in our Pictorial Pattern Parade series.



## SYDNEY PITCHER

By Dean & Diane Fry

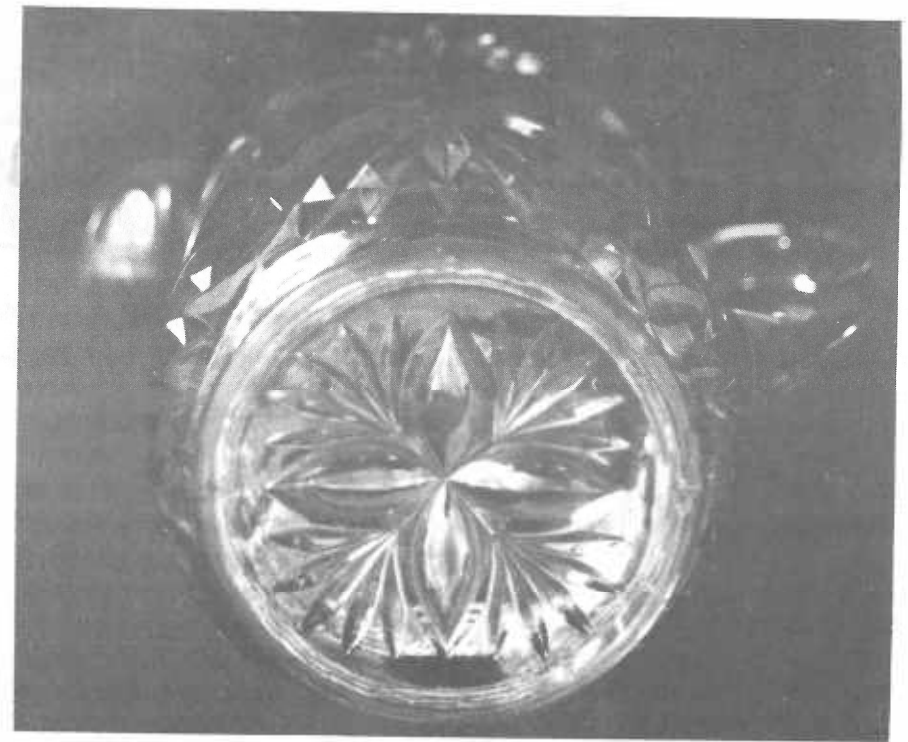


It is a privilege to announce the presence of this rare pitcher. The five rare tumblers in the Sydney pattern now have their "anchor".

Galen Johnson of Minnesota travels constantly in his work. Recently he spent a couple of weeks in Pascagoula, Miss. A local shop with two pieces of Carnival Glass offered this beautiful pitcher. The iridescence is precisely as John Britt describes on the tumblers, pages 162 & 163 in the Educational Series Book II offered by HOACGA. The amberish honey color is on clear, thick, heavy glass with a moulded handle. This lovely pitcher has the distinct appearance we find on the early pressed glass pieces from McKee Glass Company. The iridescence is flawless, making the distinction of cold-flashing color versus customary carnival glass iridescence a bit difficult. However, the cold-flash method is most evident.

The continuance of the side pattern onto the base of the collar is certainly a characteristic of U.S. Glass work. The thickness of the glass would indicate McKee origination, as well as the use of extruded side panel in the diamond design. The use of the "fan" in the design is very much like the one appearing on the Majestic pattern by McKee, shown in the above mentioned book on page 102.

Hobstar Diamonds shown on page 82, seems another likely candidate for McKee designation. The same type of diamond-shaped extrusions along the side of the tumbler, along with the general overall appearance and seeming weight, compares to the Sydney.



Further complicating the issue, page 119 of the HOACGA Tumbler Book shows us the Oklahoma tumbler, credited to Christales Glass Co. in Mexico. Despite the accreditation, we must admit the striking similarities to Sydney. Please consider the use of the "fan" and the "diamond points". We have handled one of these tumblers, and the appearance, as well as the thickness of glass really do appear to be the same.

John refers to "spokes of a wheel" on the base of the Hobstar Diamonds, a 24 point star on the bottom of the Majestic, a 14 point rayed star on the base of Oklahoma. Presumably, the Sydney tumblers possess the well-raised eclipses, just as the base of the pitcher does.

We wish to thank Galen & Kathi for allowing us to photograph this unusual "find". They, of course, would enjoy hearing from anyone who can shed more "iridescence" on this subject.

Examination of this significant rarity would indicate a new assessment as to manufacturer might be considered.

Statistics and measurements of this handsome Sydney pitcher:

9" tall at the spout

4¼" base

5½" across top

¼" thick glass at the top edge, increasing to possibly ½" near base where cuts into the design at the base of the clear handle measure ¼" deep. This is an impressive pitcher!!



GARY COOPER, Auctioneer

202 South Mill Street  
Clio, Michigan 48420

(810) 686-2158



3884 Saginaw Rd. Vassar, Mich. 48768

Ph. (517) 823-8835

**FOURTEENTH ANNUAL KEYSTONE  
OLD CARNIVAL GLASS SHOW & SALE  
HOLIDAY INN - NORTH  
SR501 & US 222 - 1492 LITITZ PIKE  
LANCASTER, PA  
MARCH 11, 1995  
9 A.M. TO 3 P.M.**

February 1, 1995

Dear Editor / Secretary,

Due to conflicting dates with another Carnival Glass Auction, Cooper & Albrecht Auction Services have cancelled our March 24 & 25 Auction at the Ramada Inn in Flint, Michigan.

We will be conducting our Annual Spring Carnival Glass Auction on May 12 & 13 at the Ramada Inn in Flint, Michigan. Please make a note of this date and plan to attend. We presently have 2 nice collections, but we will be adding a few good pieces to the auction. You can contact Gary Cooper early A.M. or late P.M. at 1-810-686-2158 if interested in consigning for this auction or our Annual Fall Auction.

If you would like to be placed on our Carnival Glass Mailing List, send a post card with name & address to Gary Cooper, 202 South Mill, Clio, Michigan 48420.

Sincerely,

Gary, Herb & Dave

A wide assortment of Carnival Glass made from about 1907 until the early 1920's, including many rare pieces, will be displayed by some 27 dealers from seven states.

This Carnival Glass Show offers an excellent opportunity for anyone to bring their glass to be identified and appraised.

A small admission will be charged.

For more information contact:

Nancy C. Williams  
2009 Cullum Drive  
Reading, PA 19601  
Phone: 1-610-374-9033

*Network* by Glen & Stephen Thistlewood.



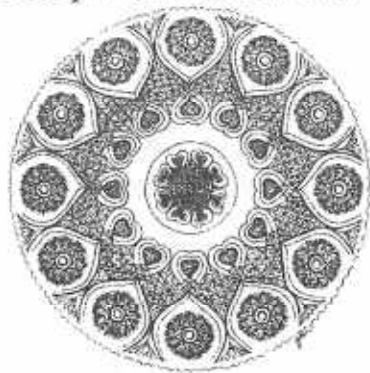
Now into its second, successful year, the publication is full of detailed line drawings and photos; new, exclusive material and original research. Featuring guest authors from both sides of the Atlantic and also readers' contributions.

In *Network* #5, Marie McGee, author of "Millersburg Glass" writes on Millersburg patterns, and full page, intricate line drawings accompany the article - invaluable for pattern identification.

*Network*

**Don't miss it!**

USA subscription from:  
PageWorks, PO Box 14493,  
Chicago, Illinois 60614.  
The cost: \$20 for 4 quarterly issues (checks payable to PageWorks). A limited numbers of back issues of *Network* are still available at \$5 per copy.



## Carnival Glass Book

Iridescent Hatpins & holders  
of the Carnival Glass Era.

**Postage**

\$3.25 Priority  
\$1.50 Surface  
\$2.60 Canada Air

**Send To:**

Jerry F. Reynolds  
13051 Highland Parkway  
Tacoma, WA 98406

## H.O.A.C.G.A.

### CLUB NEWS & GENERAL INFORMATION

The Bulletin is published the 15th of each month.

Membership year begins with the month your dues were paid. Check the upper right hand corner of your mailing label for month and year your membership expires. Example: 595 is May, 1995.

Dues: U.S. & Canada, Couple or Single..... \$25.00  
Foreign..... \$40.00

All monetary figures quoted are in U.S. dollars.

Make all checks payable to H.O.A.C.G.A. and send them to the Secretary, whose name and address appears on the inside front cover of this newsletter.

Send all items for the Bulletin, i.e. glass for sale, glass wanted, articles, information, etc., to the Bulletin Secretary, whose name and address appears on the inside front cover of this newsletter.

The Heart of America Carnival Glass Association is initiating a membership drive. This contest started in the October •Carnival Glass Month• and will end on March 31, 1995. The growth and longevity of our hobby is dependent on our ability to promote the hobby and encourage new members to join us in the collecting of carnival glass.

The member who signs up the most new members by March 31, 1995, will be awarded a \$200.00 Savings Bond. A membership application with a place to list the member who referred the new member to join will be in the bulletin each month of the contest. If you know of a potential new member, give them the membership application and sign them up!

The contest winner will be announced at the April Convention.

Good Luck in your hunt for new members.

## MEMBERSHIP APPLICATION H.O.A.C.G.A.

NAME \_\_\_\_\_

ADDRESS \_\_\_\_\_

TELEPHONE \_\_\_\_\_

REFERRED BY \_\_\_\_\_

Send to: Ed Kramer, 4305 W. 78th Street, Prairie Village, KS 66208

## H.O.A.C.G.A. - CLUB INFORMATION

The purpose of the Heart of America Carnival Glass Association is to promote the growth and continuation of the Carnival Glass collecting hobby and to provide support to the many collectors by providing current information about the hobby.

Growth is accomplished by supplying educational information for the collector and soliciting new collectors into the hobby.

A convention is held annually in April (Convention date always includes the 4th Friday). Some of the activities provided at the convention are:

- \* Members provide Room Displays with glass from their collection.
- \* Members are encouraged to bring glass for Sale.
- \* Educational Seminars are provided by members.
- \* A Major Carnival Glass Auction is provided.
- \* The Convention offers members an opportunity to meet new collectors, renew old friendships and enjoy discussing carnival glass with other knowledgeable collectors.
- \* A banquet is held with a Carnival Collector as our Speaker.
- \* A Hospitality time is provided by the club. This is a time of relaxation and enjoy visiting with other members.

It takes the support of all collectors and members to promote the hobby in order that its growth and expansion can continue.

In order to obtain our objective, the members must financially support the organization. The Heart of America Carnival Glass Association receives its financial support through the Annual Membership dues and the sale of the following.

\* **Membership Dues** - \$25.00 per year - U.S. & Canada. \$40.00 per year for Foreign. The Membership Year is from the date of joining to one year later. Dues are set by the Board of Directors to support the publication of the monthly bulletin, typing, printing and mailing.

\* **Educational Series - Book I** - 148 articles with pictures (black and white) on a variety of Carnival Glass Patterns.

\* **Educational Series - Book II** - 180 articles with pictures (black and white) of Carnival Glass Tumblers

\* **Hartung Carnival Glass Pattern Books** - A set of 10 books identifying Carnival Glass Patterns. These books are a must for all Carnival Glass Collectors, especially for the beginner. These are the only complete set of books available that identifies the majority of the carnival glass patterns.

\* **Pattern Notebook** - A notebook containing sections on Mugs, Table Sets, Rose Bowls, Watersets (including painted sets), Plates (small, regular & chop), and Compotes (large, regular & small). Each section of the notebook identifies each pattern with a colored picture along with information about the Maker and colors of each different pattern.

\* **Souvenirs** - Periodically H.O.A.C.G.A. makes a souvenir to be sold to members. Souvenirs have been made since 1974, a few of these are presently available. They are the small "Peacock and Dahlia" and "Good Luck" plates in ruby red, the "Green Opalescent - Fenton", "Cobalt - Millersburg", "Marigold - Imperial", and "Teal - Dugan" Bells. Each year that Souvenirs were made, Whimseys were also made and sold at the convention banquet.

\* **Video Tapes** - Video Tapes of educational programs given during the various conventions are available. A complete listing of the available video tapes are shown on the Order Form, which is part of this section of the Bulletin.

## ORDER FORM - VIDEO TAPES

### H.O.A.C.G.A. CONVENTION SEMINAR VIDEO TAPES

"Red Carnival Glass"..... (Richard Cinclair, Bob Allaire & Joyce Seale)	\$20.00
"Shades of Blue" - (Richard Cinclair).....	\$20.00
"Poppy & Rose Show Pieces" - (Tom Mordini).....	\$20.00
"Fenton Two Flower" - (Bob Stremming).....	\$20.00
"Carnival Glass Smalls"..... (Eleanor & Jack Hamilton)	\$20.00
"Small Plates" - (Smokey Cloud).....	\$20.00
"Hatpin & Hatpin Holders" - (Clint Fox).....	\$20.00
"Northwood Peacock & Urn Ice Cream Sets"..... (Harold Cox)	\$20.00
"Millersburg Big Fish & Trout & Fly"..... (Singleton Bailey)	\$20.00
"Carnival Glass Collecting Experiences"..... (Carl & Fern Schroeder)	\$20.00
"Heinz 57 Variety Carnival Glass Collection"..... (Jerry & Carol Curtis)	\$20.00
"Little Sauces" - (Garth Irby).....	\$20.00
"Miniatures" - (John & Lucile Britt).....	\$20.00
"Table Sets" - (Leonard, Kremer & Grissom).....	\$20.00
"Plates" - (Ruth Green & Richard Cinclair).....	\$20.00
"Luncheon Honoring Floyd & Cecil Whitley"..... (Britt award of Excellence in Carnival Glass)	\$20.00
"Plethora of Patterns" - (Dean & Diane Fry).....	\$20.00

TOTAL \$ \_\_\_\_\_

POSTAGE INCLUDED WITH PRICE OF TAPE

SEND ORDERS TO:

ED KRAMER  
4305 W. 78th Street  
Prairie Village, KS 66208

Name \_\_\_\_\_  
Address \_\_\_\_\_  
\_\_\_\_\_

## ORDER FORM - BOOKS

### HARTUNG CARNIVAL GLASS BOOKS

Book 1 - \$6.00	Book 6 - \$6.00
Book 2 - \$6.00	Book 7 - \$6.00
Book 3 - \$6.00	Book 8 - \$6.00
Book 4 - \$6.00	Book 9 - \$6.00
Book 5 - \$6.00	Book 10 - \$6.00

Complete Set of 10 Books (#1 thru #10) - \$60.00

(Hartungs "Northwood Pattern Glass" included with a Set)

Include \$1.00 each, for shipping when purchasing books separately.

Maximum of \$6.00 shipping for a set.

### H.O.A.C.G.A. PATTERN NOTEBOOK

Mugs.....	(1980).....	\$7.00
Table Sets (Photos 1 thru 40).....	(1981).....	\$7.00
Water Sets 1 (Photos 1 thru 60).....	(1982).....	\$7.00
Water Sets 2 (Photos 61 thru 120).....	(1983).....	\$7.00
Water Sets 3 (Photos 121 thru 167).....	(1984).....	\$7.00
Rose Bowls 1 (Photos 1 thru 60).....	(1985).....	\$7.00
Rose Bowls 2 (Photos 61 thru 101).....	(1986).....	\$7.00
Small Plates 1 (Photos 1 thru 48).....	(1987).....	\$7.00
Small Plates 2 (Photos 49 thru 81).....	(1988).....	\$7.00
Chop Plates (Photos 1 thru 40).....	(1989).....	\$7.00
Regular Plates 1 (Photos 1 thru 48).....	(1990).....	\$7.00
Regular Plates 2 (Photos 49 thru 81).....	(1991).....	\$7.00
Compotes 1 (Photos 1 thru 57).....	(1993).....	\$8.00
Compotes 2 (Photos 58 thru 113).....	(1994).....	\$8.00
Complete Pattern Notebook.....		\$113.00
Shipping for complete notebook.....		\$5.00
Shipping for each selection.....		\$1.00
(Maximum Shipping \$5.00)		

TOTAL \$ \_\_\_\_\_

SEND ORDERS TO:

ED KRAMER  
4305 W. 78th Street  
Prairie Village, KS 66208

Name \_\_\_\_\_  
Address \_\_\_\_\_  
\_\_\_\_\_

**ORDER FORM - SOUVENIRS & BOOKS**

\_\_\_\_\_ **H.O.A.C.G.A. Educational Series Book I**.....\$15.00  
 Shipping for each book.....\$2.50  
 Total.....\$17.50

\_\_\_\_\_ **H.O.A.C.G.A. Educational Series Book II**.....\$17.50  
 Shipping for each book.....\$2.50  
 Total.....\$20.00

**H.O.A.C.G.A. SOUVENIRS:**

\_\_\_\_\_ **1993 Ruby Red 6" "Good Luck" Plate**.....\$37.50  
 (20th Anniversary)  
 \_\_\_\_\_ **1991 Ruby Red 6" "Peacock & Daliha" Plate**.....\$37.50  
 \_\_\_\_\_ **1989 Teal Bell**.....\$35.00  
 (Honors Dugan Glass Company)  
 \_\_\_\_\_ **1988 Marigold Bell**.....\$35.00  
 (Honors Imperial Glass Company)  
 \_\_\_\_\_ **1987 Cobalt Blue Bell**.....\$35.00  
 (Honors Millersburg Glass Company)  
 \_\_\_\_\_ **1986 Green Opalescent**.....\$35.00  
 (Honors Fenton Glass Company)

*Include \$2.50 for shipping of each souvenir.*

**PLATE HOLDERS - Dozen**.....\$21.50

**TOTAL** \$ \_\_\_\_\_

**SEND ORDERS TO:**  
**ED KRAMER**  
 4305 W. 78th Street  
 Prairie Village, KS 66208

Name \_\_\_\_\_  
 Address \_\_\_\_\_  
 \_\_\_\_\_

**BEGINNINGS**

“How did you become interested in Carnival Glass?” Ask that question to a dozen of your collector friends, and you will probably hear a dozen interesting stories.

In our case our interest dates back to a general household auction. When we arrived at the sale, I spotted an orange colored glass bowl amid an assortment of dishes. “Look dear, it has a deer on it”, I told my wife. “Well, if you like it go ahead and bid”, she replied.

When we returned home with the bowl, she said that she thought that it was “Carnival Glass”, and that we should look it up in a book to see what we could learn about it. She also said that she thought that the purple colored hatpin holder that we had purchased years ago, full of hatpins, for \$7.00 was Carnival Glass.

Our investigation revealed that our “deer” bowl was a Fenton, marigold Stag and Holly... and that our hatpin holder was Northwood, amethyst Grape and Cable.

A few weeks later, we noticed in the paper that HOACGA was having its annual convention about ten miles from our home. We stopped by, saw room after room of beautiful glass... and were forever “hooked”. We joined the club, started attending its monthly meetings, began our ongoing quest for items to build our collection and met some of this country’s best collectors and nicest people.

I am certainly glad that I was attracted to that orange colored bowl with the “deer”.

How did *you* become interested in Carnival Glass?

Cliff Ball  
 Treasurer  
 HOACGA

## HAVE YOU FOUND A SLEEPER?

Over the Holidays, we invited some of our Carnival Glass collector friends to our home to see our collection, which is a modest but growing one.

We anticipated that they might key in on... or make some comments on... our prized red Fine Rib vase, the green Trout and Fly Bowl once owned by the Britts, our collection of various colored Fine Cut and Roses rose bowls... or perhaps the pretty Millersburg bowls that we brought home from the auction in Boonville. We were wrong, wrong, wrong. They came into the house and went almost immediately to a small cylinder shaped marigold vase. We had picked it up in a combined antique shop-flea market the previous week for \$20.00. Well, according to our Carnival friends the vase was a "prize", a "real find", a "sleeper". Its pattern is Circle Scroll and it is a whimsey pulled from a tumbler. It wasn't pulled much and so it isn't too tall.

During the last year or so I have heard Bob Grissom, Mike Hood and Richard Cinclair tell about "sleepers" that they have acquired. You probably have had some of these nice experiences. Why not share your "sleeper" story with us in one of our HOACGA newsletters.

Cliff Ball  
Treasurer  
HOACGA

## MORE NOTES FROM THE SECRETARY

- Punch Sets are being redone in 1995 as it is out of print and plates no longer exist to print copies. It was the first section of the pattern notebook in 1979.
- Those ordering the pattern notebook section on Punch Sets will either receive them at the convention in April or get them in the mail in early May. They won't be ready until the convention. Please include \$1.00 for postage if you want the section mailed.

## MONTHLY MEETINGS

For those of you who do not get to attend our meetings at the Raytown MO City Hall, Sandy Simmons took a picture of the glass displayed at the November 1994 meeting for our discussion of different feet on Carnival Glass. Over 50 pieces were discussed.



## CORRESPONDENCE

Ed,

Thank you for the complimentary copy of the HOACGA bulletin - it pictured a Holly Compton that I've been trying to identify for several months, fantastic.

I'm looking forward to membership with HOACGA and life long learning through the bulletin, conventions and new found friends. What a common denominator "Carnival Glass" can be. I've been hooked since the summer of 1993 when a friend and I pooled our money and invested \$15.00 in what we knew was a *real* old piece of carnival, because I had seen it pictured in a book. We even hesitated because neither of us had ever looked at a price listing. We took the chance, made the purchase, and found out later that our 1st piece (find) was truly "luck" - not the Good Luck bowl, but close. It was a Jockey Club bowl. Happy Hunting.

Kathy Evans, Pierre, South Dakota

### NOTES FROM THE SECRETARY

- Make all checks payable to HOACGA
- Ads for the bulletin must go to the bulletin Secretary Jackie Fortney (address inside the front cover)
- New membership contest is still in progress. Please show the name of the member referring you (if applicable) when you join
- Our computer can only hold one address per member so if you have a summer and winter address, please notify us a month before your move so the bulletin will arrive uninterrupted.
- Your membership expires the month shown in the upper right hand corner of your mailing label. Please renew early.
- Preregister for the convention if possible. This speeds up the process. We will have a drawing at the banquet from the names of those preregistering and a prize will be awarded.

### CONVENTION AUCTION

The following is a sample listing of some items in the Woody Auction for the HOACGA Convention.

1. Marigold Buddha - only one known to exist - Excellent Piece
2. Daisy Cut Bell - marigold
3. Large Buzz Star Cruet - marigold
4. RARE Purple Picture Frame - original frame found by Betty Klutz in '60's
5. Spring Time Table Set - purple
6. Wreath of Roses Square Shaped Punch Bowl - vintage inside - green - RARE
7. Beaded Shell water pitcher with six tumblers - marigold
8. Inverted Strawberry Table Set - hobstar and feather base - VERY RARE
9. Memphis Punch Set - green
10. Diamond Rib Jardiniere - green with round panels
11. Dandelion Mug - deep butterscotch - aqua opalescent
12. Persian Medallion Two Handled Nappy - Red
13. Small Zippered Loop Lamp - hand grip - marigold
14. Grape and Cable Cup and Saucer - white - VERY RARE
15. Wishbone Epergne - marigold
16. Wishbone Epergne - green
17. Inverted Strawberry large Open Compote - marigold
18. Inverted Thistle Water Set - purple.
19. Drapery Vase - ice green

### WELCOME NEW MEMBERS

Judy Goodman.....	Hopkinville, KY
Joan Weerts.....	Kirksville, MO
Jimmie Gibson.....	Pueblo West, CO
Kathy Evans.....	Pierre, SD
James W. Crouch.....	Newport News, VA
Floyd & Diane Rounds.....	Little Rock, CA
James R. & Ruth A. Dahlman.....	Grand Rapids, MN
Steve & Joan Massey.....	Antelope, CA
John Leon.....	East Liverpool, OH
Rae & Karen Enders.....	Rocklin, CA
William & Carol Huddy.....	Pasadena, MD
John & Wavelene Hill.....	Lansing, IL
Ted Corriel.....	Brooklyn, NY
Charles & Jacqueline Hayes.....	Memphis, TN

### FEBRUARY, 1995 REGULAR H.O.A.C.G.A. MONTHLY MEETING

The next regular meeting of the Heart of America Carnival Glass Association will be on Sunday, February 26, 1995 at 2:00 P.M. at the Raytown, Missouri City Hall. We will discuss Red, White, and Aqua opalescent glass. Bring all your red glass for Valentines' Day (or mortgage the house and buy some).

The January meeting was well attended. Twenty-one members were there including Janet Wilke from Topeka who joined on Sunday. Imogene Grissom won the door prize, a dozer plate holders. President Grissom led the discussion of 45 pieces of glass brought to display different edges. Everyone had a good time.

Hope to see you in February.

Ed Kramer  
Secretary  
HOACGA



## 1995 H.O.A.C.G.A. CONVENTION

The 1995 Convention will be held April 27, 28, 29 & 30 at the Holiday Inn, I-35 and 95th Street, Lenexa, Kansas (same location as previous years). You may make your Motel Reservations by calling the Holiday Inn at 913-888-6670 or 1-800-527-0582. The room rate is \$59.00 per day plus tax. The special room rate is for those members who register and are attending the Convention. **WHEN MAKING YOUR RESERVATIONS, MENTION THAT YOU ARE WITH THE HOACGA CONVENTION.**

**PREREGISTRATION** - A registration form is included in this packet. You are encouraged to complete this form and return it with your check to the Secretary prior to the convention. It will eliminate a lot of work for him during the convention. **THOSE MEMBERS WHO RETURN THEIR REGISTRATION FORM WILL HAVE THEIR NAME ENTERED INTO A DRAWING FOR A SPECIAL PIECE OF GLASS.** Your cooperation is appreciated.

### CONVENTION HIGHLIGHTS

At the 1993 Convention John & Lucile Britt were recognized for their many contributions to the Carnival Glass hobby, and as part of that recognition, H.O.A.C.G.A. established a **JOHN & LUCILE BRITT AWARD FOR EXCELLENCE IN CARNIVAL GLASS** award. Each year a member(s), that has made a substantial contribution to Carnival Glass, will be honored.

The recipient of this year's honor will be **CARL AND FERNE SCHROEDER**. The Schroeders have collected Carnival Glass for many years and have contributed greatly to the success of the Carnival Glass hobby. Carl is a past President of I.C.G.A. and has served in various capacities with the organization. Carl and Ferne have been speakers at several of the Carnival clubs. The Schroeders will be honored with this award at a luncheon on Friday, April 28.

\*\*\*We are very pleased that Floyd and Cecil Whitley will be our banquet speakers. If you have had an opportunity to visit with Floyd or Cecil, or attended any of the Texas Carnival club's conventions, and/or have accepted their invitation to view their collection, you know how gracious they are. Floyd and Cecil are, indeed, as asset to the Carnival Glass hobby. We are looking forward to their talk.

\*\*\*The Woody Auction Company will be conducting the auction on Saturday. We know that John will present an outstanding auction with something for everyone in attendance.

\*\*\*Three Educational Programs will be presented to add to your Carnival Glass knowledge.

**MILLERSBURG GLASS** Dick and Jennie Hostetler will present a program on Millersburg glass. They have been actively acquiring Millersburg for their collection and are very avid collectors. This should be an interesting program as well as timely, with the recent publication of the Marie McGee book on Millersburg glass.

**VASES** David & Joan Dory will present a program on Swung Vases. Joan has been studying and collecting vases for sometime. Vases have been enjoying some popularity among the collectors for the

past few years. This increased interest is due to collectors, like the Doty's, doing more research and sharing this information. We know that you will learn much from this program.

**HOLLY PATTERN** John Mikkonen will present an educational program on the Holly pattern. John has an extensive collection of the various pieces made in the Holly pattern. You will add to your carnival knowledge from John's presentation.

\*\*\***ROOM DISPLAYS** You are encouraged to bring glass and set up a room display. The displays are always an enjoyable part of the convention because they are educational. Room displays are appreciated by all of those in attendance.

A \$50.00 award will be given to the winner in each category, and a \$100.00 award will be given for the Room Display judged as the best overall. The best overall display will be judged on originality, creativity, and its overall appearance.

**ONLY THE DISPLAYS OF THOSE MEMBERS ATTENDING AND RESIDING IN THE CONVENTION MOTEL WILL BE JUDGED OR PRESENTED WITH A ROOM DISPLAY AWARD.**

Displays are to be entered in one of the six categories:

- |                     |                 |
|---------------------|-----------------|
| 1. Same Color       | 4. Same Pattern |
| 2. Same Maker       | 5. Same Shape   |
| 3. Theme (Your Own) | 6. Rarities     |

Each Display will receive a Hobnail Cuspidor.

\*\*\***THURSDAY EVENING** After the Educational program, a special hospitality room will be available for your enjoyment. Pie and drinks will be served. This is an opportunity to sit back, relax, and visit friends that you probably have not seen for a few months or share with new friends.

\*\*\***FRIDAY EVENING** This time is for viewing the Auction glass, visit the rooms, or to do your buying and/or selling.

\*\*\***SATURDAY AUCTION** This year's Auction will be presented by the Woody Auction Service. The Auction will start at 9:30 A.M. with previewing at 7:00 A.M. John Woody will be sending you a complete brochure of the glass.

\*\*\***SATURDAY EVENING** Saturday evening will be the time to relax, enjoy dining with friends, and enjoy an educational program by Floyd and Cecil Whitley.

\*\*\***SUNDAY BREAKFAST** A Sunday morning breakfast will be served at 7:00 A.M., so everyone can get an early start back home. The charge for the Breakfast is \$2.50 each

**WE ARE LOOKING FORWARD TO SEEING YOU AT THE CONVENTION**

**1995 H.O.A.C.G.A. CONVENTION SCHEDULE**

**WEDNESDAY, APRIL 26**

2:00 P.M. to 5:00 P.M. .... Hospitality Room - Registration - **PARTY DECK**

**THURSDAY, APRIL 27**

9:00 A.M. to Noon ..... Registration - **PARTY DECK**  
 3:00 P.M. .... Educational Program - "Millersburg" by Dick & Jennie Hostetler - **PRESIDENTS ROOM**  
 7:00 P.M. .... Educational Program - "Swung Vases" by David & Joan Doty - **PRESIDENTS ROOM**  
 8:30 P.M. .... Hospitality Room - Pie & Coffee - **PARTY DECK**

**FRIDAY, APRIL 28**

8:00 A.M. to 9:30 A.M. .... Registration - **PARTY DECK**  
 10:00 A.M. .... Educational Program - "Holly Pattern" by John Mikkonen - **PRESIDENTS ROOM**  
 12:30 P.M. .... Luncheon - Honoring Carl & Ferne Schroeder with the John & Lucile Britt Award - **BALLROOM**  
 2:00 P.M. .... Annual Business Meeting (After Luncheon) - **PRESIDENTS ROOM**  
 3:00 P.M. to 5:00 P.M. .... Room Display Judging - All Room Displays should be viewable for Judging during this time.  
 6:00 P.M. .... Auction Glass viewing - **BALLROOM**  
 8:30 P.M. .... Hospitality Room - **PARTY DECK**

**SATURDAY, APRIL 29**

7:00 A.M. .... View Auction Glass - **BALLROOM**  
 8:00 A.M. to 9:00 A.M. .... Registration - **PARTY DECK**  
 9:30 A.M. .... Woody Auction - **BALLROOM**  
 6:00 P.M. .... Cash Bar - **BALLROOM**  
 6:30 P.M. .... Banquet - Floyd & Cecil Whitley, Speakers  
 Whimsey Auction - **BALLROOM**

**AUCTION OF WHIMSEYS - FROM 1994 MUGS AND SPITTOONS**

**SUNDAY, APRIL 30**

7:00 A.M. to 9:00 A.M. .... Farewell Breakfast - **BALLROOM**

**1995 H.O.A.C.G.A. CONVENTION REGISTRATION**

**APRIL 28** - LUNCHEON - 12:30 P.M.  
 BREAST OF CHICKEN

\_\_\_\_\_ @ \$14.00/Person      \$ \_\_\_\_\_

**APRIL 29** - BANQUET - 6:30 P.M.  
 STUFFED PORK CHOP

\_\_\_\_\_ @ \$18.00/Person      \$ \_\_\_\_\_

**APRIL 30** - BREAKFAST - 7:00 A.M.

\_\_\_\_\_ @ \$2.50/Person      \$ \_\_\_\_\_

**1995 MEMBERSHIP RENEWAL**

\$25.00 U.S. & CANADA

\$40.00 FOREIGN

\$ \_\_\_\_\_

**1995 HOACGA NOTEBOOK INSERT - PUNCH SETS**

\$8.00 EACH PLUS \$1.00 SHIPPING

\_\_\_\_\_ @ \$8.00 EACH      \$ \_\_\_\_\_

**CONVENTION REGISTRATION**

(helps defray some of the convention costs)

\$ \_\_\_\_\_

TOTAL      \$ \_\_\_\_\_

NAME: \_\_\_\_\_

ADDRESS: \_\_\_\_\_

CITY, STATE & ZIP: \_\_\_\_\_

STAYING AT HOLIDAY INN:    YES \_\_\_\_\_    NO \_\_\_\_\_

(check one)

MAKE CHECKS PAYABLE TO H.O.A.C.G.A. AND SEND TO:  
 ED KRAMER, 4305 W. 78TH STREET, PRAIRIE VILLAGE, KS 66208

## H.O.A.C.G.A. BULLETIN - ADVERTISEMENT POLICY

1. All advertisements of glass for SALE or WANTS must be received by the Bulletin Secretary no later than the LAST DAY OF THE MONTH to insure being published in the next bulletin.
2. Members may advertise ten (10) •For Sale• and/or •Wants• per month. The •For Sale• Glass must be members glass and not the property of a non-member. Advertising is at no cost.
3. Only •OLD CARNIVAL GLASS• items or H.O.A.C.G.A. Souvenirs will be published.
4. Damage or flaws should be noted.
5. All •For Sale• items must be priced; NO BID ITEMS WILL BE PUBLISHED.
6. A 5 day return privilege, at buyer's expense, providing it is not as advertised, or as discussed.
7. Postage and Insurance is to be the responsibility of the buyer, both when returning and receiving the glass.
8. The sender of the glass (be it the seller or the buyer returning it) is responsible for the condition of the glass as it arrives at its destination.
9. H.O.A.C.G.A. does not accept responsibility for accuracy of any advertisement.

### USE THE FOLLOWING ABBREVIATIONS FOR GLASS DESCRIPTION.

A	Amethyst	HA	Honey Amber	P	Purple
AMB	Amber	IB	Ice Blue	PRL	Pearl
AO	Aqua Opal	IG	Ice Green	PM	Pastel Marigold
B	Blue	IGO	Ice Green Opal	PO	Peach Opal
BO	Blue Opal	LAV	Lavender	R	Red
CLM	Clammoth	M	Marigold	RA	Amberina
EB	Electric Blue	MMG	Marigold on Milk Glass	SM	Smoke
G	Green			VAS	Vaseline

Note: If you wish to describe a piece as light or dark, use the body of the ad.

EI - Excellent, GI - Good, LI - Light Iridescence

## CARNIVAL GLASS FOR SALE

Greg Gilliland, 2324 E. Lansdale Ct., Simi Valley, CA 93065  
Phone: 1-805-522-8887

M	EI	Stag & Holly 11¼" deep bowl (pumpkin)	275.00
B	EI	Grape & Cable Fruit Bowl	450.00
A	EI	Millersburg Blackberry Wreath 6" Bowl (Radium)	200.00
A	GI	Captive Rose Plate	600.00
A	EI	Millersburg Primrose Bowl 9½" (Radium)	450.00
G	EI	Butterfly Bon Bon plain back	185.00
M	GI	Greek Keg Plate	850.00
M	EI	Three Fruits Stippled Plate	225.00

Send S.A.S.E. for list of other pieces for sale

Phil Hessenius, 1701 E. Roma, Phoenix, AZ 85016  
Phone: 1-602-277-6306

P	EI	Fruits & Flowers 5" Berry Ruffled Berry Bowls (have 3)	Each 30.00
P	EI	Fanciful I.C. Shaped Bowl - Multicolored Iridescence	275.00
M	EI	Holly Plate - Super Dark and Perfectly Symmetrical	275.00
P	EI	Peacock & Urn Small Ice Cream Beautiful	100.00
P	EI	Cherries 6" Plate W/Crimped Edge - Heavy Iridescence	400.00
M	EI	Kittens 6 Ruffled Bowl - Super Color & Dark	350.00
G	EI	Blackberry Spray Hat 6 ruffled hard to find Reds in Irid.	175.00
*	EI	Amber Ripple 12" Vase ¾ base	30.00

Pat Housewright, 225 Rowland, Stephenville, TX 76401  
Phone: 1-817-968-2997

PO	EI	Petal & Fan 6" Sauce	40.00
W	EI	Oriental Poppy Tumbler	165.00
G	EI	Double Star Tumbler	60.00
G	EI	April Showers 12" Vase	65.00
M	EI	Blackberry Miniature Compote	115.00
M	EI	Star & File Rosebowl	65.00
M	EI	Tumble-Up	80.00
A	EI	Grape & Cable Sweetmeat - Northwood	250.00
A	EI	Dandelion Tumbler	95.00
A	EI	Singing Birds Mug Adv. (Amazon Hotel & Cafe)	200.00
A	EI	Thistle 8" 3 in 1 Edge Bowl	85.00

## CARNIVAL GLASS FOR SALE

Robert Smith, 8 Joy St., Boston, Mass. 02114  
Phone: 1-617-367-9244

P	Diamond Lace Ruffled Bowl 9½"	70.00
P	Maple Leaf Butter Dish, Mint	95.00
W	Grape & Cable Mid Size Punch Base, Bruise inside rim	75.00
P	Heavy Grape (Imperial) Small Bowl	20.00
M	Octagon Water Pitcher, Mint	60.00
M	Octagon Decanter w/stopper	50.00
SM	Morning Glory Vase 7-8", Pretty	50.00
AO	Three Fruits Medallion Bowl, Ftd, Stippled, Mint, Super	550.00
M	Apple Blossom Twigs Plate, Mint	85.00
-	Aurora Pearls, 12" Bowl (call for details) Postage Extra	200.00

Rick McDaniel, 3420 Morningstar Lane, Dallas, TX 75234  
Phone: 1-214-243-4574 after 7 PM CST

G EI	Westmoreland Smooth Rays 6 Ruf Bowl Radium	50.00
SM EI	Star Medallion Goblet	45.00
G EI	Peacock & Grape Ftd ICS Bowl	140.00
CB EI	Peacock & Grape Collar Base Ruf Bowl - minor flake - 1 point	125.00
VAS EI	Vintage 8" ICS Bowl	175.00
M EI	Rising Sun Tumbler	150.00
M EI	Strawberry Vt. Bon-Bon (berry-in-base)	65.00
PM GI	Estate Mug - typical iridescence	55.00
M EI	Heavy Diamond open sugar - pretty	25.00
*B EI	Celeste Floral & Optic ICS Bowl - very pretty	145.00

Lee & Phyllis Bryant, 11645 NW Winchester Rd., Decatur, Indiana 46733  
Phone: 1-219-639-3415

M	Premium Candlesticks pair nice	30.00
M	Poinsettia Milk Pitcher nice	60.00
M	Beaded Acanthus Milk Pitcher dark marigold rare	110.00
PO	Stippled Flower 7" bowl 3 sides up good peach	40.00
M	Pinecone 6½" flat plate nice	60.00
M	Good Luck 9" ruffled bowl ribbed <u>pastel</u> multi	200.00
A	Strawberry 8½" PCE Bowl BW nice	100.00
A	Grape Wreath 8½" bowl 3 in 1 radium lavender tinge	80.00
	Send S.A.S.E. for our For Sale List - selection still good	

## CARNIVAL GLASS FOR SALE

Bob Slaughter, 4717 N.C. Hwy 54, Graham, N.C. 27253  
Phone: Nights 1-910-376-9552 or Days 1-910-578-2942

M EI	Millersburg Hobnail Ladies Cuspidor	600.00
M EI	Dugan's Formal Hatpin holder, scarce to rare	300.00
S EI	Imp. Rococco 5½" vase, scarce, w/pencil eraser sized chip on base	45.00
B EI	(N) Thin Rib mid-sized funeral vase	150.00
LAV EI	Thin Rib standard size vase, nice	30.00
A EI	(N) Hearts and Flowers Compote	450.00
M EI	Imperial 474 milk pitcher, scarce	100.00
A EI	Millersburg Isaac Bencsch 6½" Advertising Bowl	350.00
A EI	Millersburg Leaf & Little Flowers miniature compote, manufacturing flaw (split or tear in glass) scarce to rare	300.00
M GI	Bo Peep mug, with above average iridescence for this pattern	175.00

Gerald M. Hess, 500 Woodland Trail, Argos, IN 46501  
Phone: 1-219-892-6193

M EI	Two Crab Claw tumblers, both are extra nice & dark in color	each 65.00
M EI	Vineyard tumbler (excellent)	30.00
M EI	Lustre Rose tumbler	25.00
M EI	Star & File tumbler	65.00
M EI	Grape & Cable shot glass, scarce, but has some epoxy on the base	65.00
M EI	Beaded Stars 5" bowl	35.00
M EI	Ripple 9" vase	30.00
M GI	Leaf Tiers footed bowl	35.00
B EI	Waterlily 5½" footed bowl	50.00
M EI	Lattice and Daisy tumbler	17.50

Tamara McKay, 11052 Mill Pond Court, Jacksonville, FL 32257  
Phone: 1-904-262-8705

P EI	(N) Grape & Cable Banquet Punch Set, includes 14 cups, perfect	2400.00
W EI	(N) Oriental Poppy Tumblers, have 2 each	100.00
M EI	(N) Interior Swirl Tumbler, tiny nick on underside base	25.00
M EI	Fruit Lustre Tumbler	15.00
P EI	Stork and Rushes Punch Cup	18.00
P EI	(N) Grape & Cable Punch Cup, no interior iridescence	25.00
M EI	Vineyard Tumbler	25.00

## CARNIVAL GLASS FOR SALE

Dick Wetherbee, 847 Stafford St., Rochdale, MA 01542  
Phone: 1-508-892-4420

M	EI	Stag & Holly 8" Spatula Footed Bowl, great color & detail	95.00
PO	EI	Wide Rib 6½" Pinched-in-vase, a real beauty	80.00
B	EI	Strawberry 6" Bon-Bon, a real pretty one	85.00
M	EI	Persian Medallion 6" fluted compote, super color & shape	90.00
G	EI	Wishbone 8" 3 Ftd bowl - rings & ruffles back, a real pretty one	125.00
ANYEI		Apple Blossom 7" ruffled bowl, rare color for this pattern, great	85.00
M	EI	Waffle Block 9½" Basket, a nice one	38.00
SM	EI	Acan thus 9" bowl, a beautiful smokey color	95.00
P	EI	Rustic 16" Vase tall & cylindrical	95.00
M	EI	Plaid 9" low ruffle bowl, hard pattern to find, very pretty	120.00

Send S.A.S.E. for Special Discounted list

Gladys Hutchinson, Rt. 2, Box 2966, Seymour, MO 65746  
Phone: 1-417-935-4908

C.M.		Orange Tree 9" Plate, beaded berry exterior, gold/purple highlights	325.00
M		Basket Weave 8½" bowl, pie crust edge, plain interior	45.00
M		Heavy Grape 12" punch bowl	140.00
M		Persian Medallion 6" plates	55.00
PO		Flowers and Frames, ruffled edge 9" bowl, a nice one	150.00
A		Fine Cub and Roses Candy	85.00
M		Dragon and Lotus 8½" bowl	70.00
M		Double Stem Rose 8½" bowl	75.00
B		Grape & Gothic Arches small bowl, some wear in bottom	30.00
M		Three Fruits 6" Berry Bowls, have 3, ruffled edge, BW exterior	Ea. 28.00

Doug & Nancy Davis, 7050 Carmelita Ave., Atascadero, CA 93422  
Phone: 1-805-466-3762

M		Peacock & Urn, stemmed Compote, (Fenton) nice color	43.00
M		Blackberry Wreath, 6" ruffled berry bowl, pretty color	50.00
P		Grape & Cable punch bowl base (N) small. Blue & Gold colors	
		Has small bruise on rim of base	50.00
P		Fishermans Mug, silvery outside, fair iridescence	85.00
B		Blueberry Tumbler	65.00
B		Orange Tree Mug, 3½" tall, factory scratch in bottom, nice color	65.00

## CARNIVAL GLASS FOR SALE

Kent Patrick Zimmerman, P.O. Box 12821, Wichita, KS 67277  
Phone: 1-316-943-3487

G	EI	Butterfly Fern Tumbler	50.00
B	EI	Butterfly Fern Tumbler	50.00
A	EI	Butterfly Fern Tumbler	50.00
A	EI	N Peacock Fountain Tumbler	50.00
B	EI	Dugan Peacock Fountain Tumbler	45.00
M	EI	Ten Mums Tumbler	50.00
M	EI	Milady Tumbler	50.00
B	EI	Milady Tumbler	80.00
M	EI	Fentonia Tumbler	50.00
B	EI	Fentonia Tumbler	80.00

Doug Evans, 14 Quintin Place, Durham, NC 27705  
Phone: 1-919-383-5754 8 A.M. - 2:30 P.M.

L	EI	Bushel basket, round	650.00
B	EI	Dragon & Lotus ICS	85.00
B	EI	Dragon & Lotus	85.00
G	EI	Three Fruits Plate 12 sided, some ware	175.00
W	EI	Hearts & Flowers Compote	185.00
M	EI	Hearts & Flowers Bowl, dark	375.00
G	EI	Wreath of Roses Bon-Bon	85.00
M	GI	Kittens Ruffled Toothpick Holder	195.00
P	EI	Hobnail Rose Bowl (Electric)	350.00
P	EI	Daisy Web Hat Shape CRE (Electric)	450.00

Harry & Beth Daniels, 1405 N. Wood Ave., Apt. 197, Roselle, NJ 07203  
Phone: 1-908-245-3116, leave message

M	EI	(N) Strawberry 8" ruffled bowl	75.00
M	EI	Hobstar Band tumbler(s), 4 each	55.00 each or all for 190.00
M	EI	Orange Tree mug (st. size)	30.00
IB	EI	(N) 8-sided bushel basket, has no harm flake	700.00

Noreen & Gordon Curtis, Box 2327, Arizona, AZ 85223  
Carnival reference books. Please send S.A.S.E. for a list.

## CARNIVAL GLASS FOR SALE

John & Terri Dubinski, 2408 Fleetwood Drive, Columbia, MO 64202  
Phone: 1-314-474-2644

M	EI	Leaf Chain 7" Plate, scarce size	225.00
M	EI	Cherry Chain 6" Plate, dark	120.00
IB	EI	Fruits & Flowers Bon-Bon	575.00
P	EI	Diamond Points 11" vase, super	165.00
M	EI	Persian Gardens, 6" plate	95.00
BA	EI	Persian Medallion, 6" plate, rare	395.00
B	EI	Persian Medallion Hair Receiver, scarce	195.00
M	EI	Flute 6" celery, N, rare	130.00
M	EI	Dragon & Lotus nut bowl, rare shape	225.00
A	EI	Nesting Swan ruffled bowl	325.00

Joe & Winelle Orr, 2224 Burlingate Drive, Cordova, TN 38018  
Phone: 1-901-373-4504

G		Leaf & Beads Candy Dish, rays int.	90.00
A		Leaf & Beads Candy Dish, plain petals int.	80.00
B		Lotus & Grape 6" Ftd Bowl	60.00
P		Petals Compote	60.00

Debbie and Mike Heintz, 240 Mize Rd. North, Cullman, Alabama 35055  
Phone: 1-205-739-0281, after 6 P.M. central

A		Fenton Pinecone 6" ruffled bowl	50.00
A		Imperial Grape 5" Berry bowl grapes electric color	45.00
P		Northwood Smooth Ray ruffled 6" bowl electric colors	60.00
M		Imperial Grape punch cups (2)	each 25.00
M		Fenton Waterlily Footed Bowl 10" ruffled, rich color	155.00
B		NW Stippled Peacock/Urn IC Sauce 5½" bowl hvy gld highlights	115.00
B		NW Poppy Oval Pickle Dish Stippled, small flake on edge of point hard to find electric blue highlights	135.00
A		Imperial Pansy ruffled 9" stippled bowl electric blue and bronze irradiation beautiful vivid color	125.00
W		Palm Beach Sauce Bowl (U.S. Glass) 4½"	105.00
P		Dugan Ftd. 6" Grape Delight Nut Bowl, scarce to find One foot has slight roughness on edge	75.00

## CARNIVAL GLASS FOR SALE

Dave D. Ackerman, 4677 Kennebec Drive, Cass City, Michigan 48726  
Phone: 1-517-872-2023

M		Grape & Cable ice cream sherbet - pin head on base	32.00
M		Star & File 6¼ small plate - 8 stars on back	65.00
M		Magnolia & Drape 7 pcs. decorated water set	350.00
M		Miniature Hobnail cordial decanter with stopper, a cutie	350.00
SM		Ripple 12½" vase, not a common color	100.00
M		Plain 7¼" odd ftd. single rose vase	35.00
G		8" tri-cornered radium bowl, Holly Sprig - Mlbg	185.00
		Dark Cattails hat pin - Cattails only irid.	55.00
P/LAV		8½" 10 ruffled bowl - Pony	200.00
SM		Waffle Block hndl. basket scarce	75.00

Marvin J. Loughmiller, 29106 Division Drive, Troutdale, OR 97060-9448  
Phone: 1-503-665-9225

		Suns Up Lavender	400.00
		Dimples & Brilliants Black	250.00
		Spiral Dance Black	125.00
		Waves Chocolate	150.00
		Tufted Throw Pillow Black	90.00
		<b>Roosters</b>	
		Red / White / Clear / Amber / Marigold	125.00
		Light Blue / Sapphire	100.00
		Light Green / Cobalt Blue	90.00
		Amethyst / Lavender	85.00

Gary Lickver, P.O. Box 1778, San Marcos, CA 92069  
Phone: 1-619-744-5686, leave message if no one home

G		Captive Rose plate	750.00
W		Fanciful bowl, low	200.00
W		Wreathed Cherry Banana Boat, painted red cherries, gold trim	275.00
P		Grape & Cable 6" plate	160.00
G		Orange Tree bowl ICS, a beauty	275.00
P		Three Fruits stippled plate, golden	265.00
M		Two Flowers 8" ICS bowl, no feet, scarce	125.00
P		Grape & Cable tumblers (6)	40.00 ea. or All 6 for 200.00
HA		Cosmos & Caine 7 piece berry set	250.00
BI		Hearts & Flowers compote, super	600.00

## CARNIVAL GLASS FOR SALE

Bill Neal, 2904 Lori Lane, Yadkinville, NC 27055  
Phone: 1-910-961-6975, call after 9 p.m.

P	EI	Good Luck ruffled bowl	185.00
M	EI	Good Luck ruffled bowl	125.00
AMBEI		Heavy Grape chop plate	125.00
G	EI	Pinecone 6" plate	125.00
W	EI	Constellation Compote	95.00
P	EI	Rays & Ribbons ruffled bowl	65.00
M	EI	6" ruffled kitten bowl	195.00
G	EI	Concord bowl	350.00
BO	EI	Smooth Rays bowl	125.00
AMBEI		Open Rose plate	125.00

Dave Deem, 1746 N. California Street, Burbank, CA 91505  
Phone: 1-818-845-4530

P/A	EI	Stag / Holly 8" Ftd. bowl	300.00
M	EI	Grape & Cable 9" plate, vt type plain back	165.00
W	EI	Constellation Compote, real frosty	75.00
CLMEI		Orange Tree w/trunk 9" plate	225.00
P	EI	Pond Lily Bon-Bon	75.00
M	EI	Strawberry 9" plate plain back	165.00

Omer Sweeney, 28 Esmond Street, Esmond RI 02917  
Phone: 1-401-231-4108

B		Peacock at the Fountain Orange Bowl	895.00
B		Holly and Berry small compote	40.00
B		Renniger Blue N stippled 8½ scalloped pearl bowl pie crust edge	525.00
R		J.I.P. two row edge hat 3x5 3/4	550.00
M		Cherry and Cable spooner	95.00
M		Painted castle scene electric shade (3)	ea. 50.00
M		Grape & Cable tumblers (4)	ea. 25.00
G		Captive Rose 2 handle bon-bon	70.00
AO		Four Pillars vase 11"	150.00

## CARNIVAL GLASS FOR SALE

Richard K. Peterson, P.O. Box 62, Clarkfield, MN 56223-0062  
Phone: 1-612-669-7350

M	EI	Harvest Flower Tumbler	75.00
G	EI	Shell & Jewell, C & S w/covers pr.	50.00
A	EI	Westmoreland Coin Dot Compote	60.00
G	EI	Stippled rays compote	45.00
M	EI	Beaded Bullseye 11" vase	40.00
PO	EI	Flared Panel Shade	65.00
M	EI	Coral Shell Shade	45.00
PO	EI	Hat Shape crimped edges top	45.00
IB	EI	Thin Rib 10¼" vase	260.00
		Womans Day 1965 Diet of Carnival Glass	15.00

Richard Cinclair, 3605 South Echo Trail, Plano, TX 75023  
Phone: 1-214-596-0014

G	EI	Little Flowers Bowl, 10" 3 in 1	175.00
B	EI	Holly Bowl, almost a plate, super	115.00
EG	EI	Dragon & Lotus, OUTSTANDING, ICS	325.00
W	EI	Pillar & Drape Lamp Shade	125.00
M	EI	Wishbone Tumbler, dark	115.00
M	EI	Butterflies & Belles / Australian compote	285.00
W	EI	Poppy Show Plate	750.00
A	EI	Perfection Tumbler	375.00
M	EI	Kittens Cup & Saucer	265.00
M	EI	Flowering Dill Hat, etched "Oscar"	95.00

Frank E. Gibson, P.O. Box 148, Milner, GA 30257  
Phone: 1-404-358-0344, evenings after 6:00 P.M.

M	EI	3 Fashion Punch sets (6 cups), dark	Ea. 250.00
M	EI	Fashion Punch set (10 cups), dark	325.00
M	EI	Fashion Punch set (12 cups), dark	375.00
M	EI	474 Punch set (6 cups), dark	325.00
M	EI	4 Twins Fruit bowls	Ea. 80.00
		(2 - scalloped shape bowls, 2 round shaped bowls)	

All in excellent condition, insurance and postage extra.

CARNIVAL GLASS FOR SALE

Janie Housewright, 3632 NW 107th Terrace, Gainesville, FL 32606  
Phone: 1-904-332-4350

P	EI	Singing Birds Mug	130.00
P	EI	Broken Arches Punch Cup	25.00
B	EI	Beaded Shell Tumbler	150.00
EB	EI	Singing Birds Mug	245.00
M	EI	Fashion Rose Bowl	145.00
G	EI	Singing Birds Mug	220.00

Marlin L. Blosser, 4705B Charles Road, Mechanicsburg, PA 17055  
Phone: 1-717-975-2920

M	EI	Ripple mid size funeral vase	65.00
M	EI	Imperial Grape tumblers (9)	Ea. 18.00
M	EI	Butterfly & Berry master berry bowl	65.00
M	GI	Frosted Block milk pitcher	35.00
B	EI	Cherries & Little Flowers 5 piece water set	250.00
B	EI	Milady tumbler	75.00
A	EI	Strutting Peacock creamer with lid	45.00
P	EI	Singing Birds tumbler	50.00
W	EI	Panels stemmed rose bowl	45.00
B	EI	Two flowers 9" ICS bowl, ball footed	65.00

Ted L. Sheibley, 53 Meadow Brook Court, New Cumberland, PA 17070  
Phone: 1-717-770-0616

A	EI	Butterflies bon bon, card tray shape	60.00
B	EI	Little Flowers berry bowls (6)	Ea. 60.00
B	EI	Persian Medallion bon bon	75.00
B	EI	Singing Birds mug	135.00
G	EI	Feather Stitch 9" ruffled bowl	95.00
G	EI	Grape & Cable handgrip plate	165.00
IB	EI	Embroidered Mums 9" ruffled bowl	925.00
A	EI	Leaf & Beads rose bowl, sunflower int	110.00
IG	EI	Grape & Cable 9" spatula footed plate	875.00
M	EI	Poppy Show vase	650.00

CARNIVAL GLASS FOR SALE

Barb Farmer, RD 5, Box 462, Wheeling, WV 26003  
Phone: 1-304-336-7689

P	EI	Hattie Chop plate	1,200.00
P	EI	Blossom Time compote	175.00
SM	EI	Rococco vase	150.00
P	EI	Grape & Cable Sherbet	30.00
P	EI	Blackberry open edge card plate	125.00

Donald L. Harris, 527 Lavina Drive, Mechanicsburg, PA 17055  
Phone: 1-717-790-0412

M	EI	Singing Birds berry bowl (4)	Ea. 35.00
M	EI	Waterlily & Cattails tumblers (5)	Ea. 35.00
M	EI	Orange Tree punch cups (7)	Ea. 25.00
M	EI	Wreathed Cherry spooner	45.00
SM	EI	Imperial Grape wines (3)	Ea. 25.00
VAS	EI	Stretch ring tray	45.00
W	EI	Fishscale 7" plate	100.00
B	EI	Lotus & Poinsettia 5" bowl	95.00
G	EI	Acorn Burr tumbler	85.00
B	EI	Thumbprint stemmed compote (electric)	525.00
Send .52 stamp for large list of FOR SALE glass			

Rudy A. Kovacs, 551 S.W. 135 Ave., B-147, Pembroke Pines, FL 33027  
Phone: 1-305-435-4487

A	EI	Memphis punch base	75.00
VAS	EI	Persian Medallion bon bon	225.00
A	EI	Diamond Lace 9" bowl	75.00
G	EI	Thistle 8½" ruffled bowl	90.00
M	EI	Thistle 8½" ruffled bowl	65.00
PO	EI	Caroline 8" crimped bowl	90.00
M	GI	Grape & Cable (N) water pitcher	210.00
M	EI	Butterfly - Berry water pitcher	250.00
B	GI	Strawberry bon bon	65.00
A	EI	Butterflies bon bon	85.00



## CARNIVAL GLASS FOR SALE

Bonnie Wiggins, 515 Hamill Road, Indiana, PA 15701  
 Phone: 1-412-349-9420 Weekdays before 4 P.M. EST or  
 1-412-465-7446 After 5 P.M. Anyday

R	Vintage 9" 8 ruffled bowl super iridescence & cherry red color	3,400.00
B	God & Home 7 piece water set	3,400.00
B	Dragon & Lotus 8" ruffled bowl	75.00
B	Beaded Cable rose bowl	160.00
B	Panther 9" master berry bowl	425.00
A	Three Fruits plate / basketweave ext.	175.00
A	Isaac Benesch adv. bowl	450.00
G	Fenton Grape & Cable Orange bowl (per. med int.)	245.00
G	Leaf & Beads rose bowl	115.00
G	Beaded Cable rose bowl	135.00



"Honey, this vase you just bought- why are there ASHES in it?"

## CARNIVAL GLASS WANTED

Greg Gilliland, 2324 E. Lansdale Ct., Simi Valley, CA 93065  
 Phone: 1-805-522-8887

P Acorn Burr Punch Bowl Base - Must have good color

---

Phil Hassenius, 1701 E. Roma, Phoenix, AZ 85016  
 Phone: 1-602-277-6306

B Nippon Bowl  
 G Stippled Grape & Cable Punch Bowl top only or will sell base  
 B Double Loop Creamer or will sell open sugar  
 P Grape & Cable Candlestick

---

Donald Royer, 602 Cedar Drive, Willard, OH 44890  
 Phone: 1-419-935-4013

A Many Fruits Punch Cup (1)  
 A Many Fruits Punch Base - Ruffled  
 P Broken Arches Punch Base  
 P Broken Arches Punch Cups  
 B Butterfly & Berry Small Berry Bowls (4)  
 G Butterfly & Berry Small Berry Bowls  
 G Small Grape & Cable Punch Bowl

---

Chuck & Marge Kremer, 430 Rose Ave. New Haven, IN 46774  
 Phone: 1-219-749-4909

P Lustre Rose Sugar  
 M Cherry Cable Creamer  
 M Field Thistle Butter & Sugar  
 A Inverted Strawberry Sugar  
 A Springtime Sugar

---

Rick McDaniel, 3420 Morningstar Lane, Dallas, TX 75234  
 Phone: 1-214-243-4574 after 7 PM CST

A EI Prism Band Tumbler w/o enameling (Branded Drape, Zig-Zag, etc.)  
 \* EI Depression Pink Crackle Tumbler  
 P EI Field Flower Tumbler - Excellent to Super

## CARNIVAL GLASS WANTED

George Bond, 720 Gran Paseo Drive, Orlando, FL 32825-7923  
Phone: 1-407-382-6201

M EI Peacock at the fountain butter bottom  
M EI Orange Tree Butter bottom  
W EI Orange Tree Butter top  
DM EI Orange Tree Punch Cups, dark  
B EI Orange Tree Punch Cups  
M EI Orange Tree Hat Pin Holder, dark  
B EI Butterfly & Fern Tumblers  
DM EI Acorn Burrs Water Pitcher, dark

Harry & Beth Daniels, 1405 N. Wood Ave., Apt. 197, Roselle, NJ 07203  
Phone: 1-908-245-3116, leave message

A/G Sunflower Pin Tray, MINT condition only

John & Terri Dubinski, 2408 Fleetwood Drive, Columbia, MO 64202  
Phone: 1-314-474-2644

M ICS Rays & Ribbons bowls  
M Peacocks at fountain or singing birds butter base  
M,G Small Persian Medallion compotes

Joe & Winelle Orr, 2224 Burlingate Drive, Cordova, TN 38018  
Phone: 1-901-373-4504

A,G Nesting Swan Bowl  
A,G Primrose Bowl  
A,PO Five Hearts Bowl  
A,G Fleur-De-Lis Bowl  
A,G Many Stars Bowl  
G Seaweed 9" Bowl  
A,G Whirling Leaves Bowl  
A,G,B Poinsettia Bowl

Debbie and Mike Heinl, 240 Mize Rd. North, Cullman, Alabama 35055  
Phone: 1-205-739-0281, after 6 P.M. central

M Iris & Herringbone Demitasse Cup & Saucer  
M Grape & Cable Powder Jar Lid

## CARNIVAL GLASS WANTED

Glen & Stephen Thistlewood, 11A Wellhouse Road, Beech, ALTON, Hampshire GU3 4AH, England. Phone: 1420 86936. 5 hours AHEAD of U.S.A. time.

A Holly Sprig or Holly Whirl Millersburg Bowl. Must have the Near Cut Wreath exterior pattern.  
White and gilt Peach Creamer Northwood  
M Dotted Diamonds & Daises enameled tumbler  
Cobalt enameled Apple Blossom pitcher or any part of table set. Northwood  
A Butterfly & Waratah large compote, Australian  
A Kangaroo bowl, Australian

Wally McDaniel, 12982 Rough & Ready Road, Rough & Ready, CA 95975  
Phone: 1-916-432-3378

P EI Imperial Grape punch set (or parts)  
P EI Octagon butter and / or sugar  
P EI Lustre Rose butter, sugar, creamer  
P EI Broken Arches punch set (or parts)  
P EI Windmill water pitcher and / or tumblers  
P EI Tiger Lily water pitcher and / or tumblers  
P EI 474 water pitcher and / or tumblers  
P EI Diamond & Sunburst decanter and / or wines  
P EI Colonial Lady vase  
P EI Three Row vase

(Damage OK)

Larry Thorne, 805 South Sunset, Alva, OK 73717  
Phone: 1-405-327-1201

MAR Memphis Base Stand for fruit bowl

Dave Deem, 1746 N. California Street, Burbank, CA 91505  
Phone: 1-818-845-4530

M Sceptors dept store heart & vine 9" plate  
M Peacock / Dahlia 7" plate  
ANY Captive Rose 9" plate  
B/P Fanciful 9" plate  
G/B Persian Medallion 9" plate  
B/P 3 Fruits 12 sided 9" plate  
B Nippon 9" bowl

## C A R N I V A L G L A S S W A N T E D

Gary Lickver, P.O. Box 1778, San Marcos, CA 92069  
Phone: 1-619-744-5686, leave message if no one home

P Wreath of Roses punch bases (2)  
P Imperial electric blue colors, anything  
G Northwood, blue iridescence

---

➤ Hazel Mayes, R#1 Box 332, Sedalia, MO 65301

ANY Little Fishes

---

Ed Kramer, 4305 W. 78th St., Prairie Village, KS 66208  
Phone: 1-913-642-3587

M EI 474 Large and Small vases  
M EI Fenton Master nut cup  
CB EI Imperial Grape Water Carafe (Clambroth)

---

Richard Cinclair, 3605 South Echo Trail, Plano, TX 75023  
Phone: 1-214-596-0014

W Many Fruits Punch Base  
A Cherries Butter Bottom  
W Orange Tree Punch Base  
W Wide Panel Epergne Base  
\* Any Owl Hatpins  
\* Kittens Cuspidor  
\* Any Concord Plate

---

Craig & Brenda Kuckelburg, 517 North Jay Street, Aberdeen, SD 57401  
Phone: 1-605-226-1660

Stippled Rays Stemmed Sugar - Green  
Stippled Rays Stemmed Creamer - Smoke, Helois, Vaseline, Red  
Wreathed Cherry Sugar Lid - Dark Marigold  
Peacock at the Fountain Butter, Sugar, & Creamer - Ice Blue

## C A R N I V A L G L A S S W A N T E D

Marlin L. Blosser, 4705B Charles Road, Mechanicsburg, PA 17055  
Phone: 1-717-975-2920

G Flute punch bowl top  
G Hobstar sugar lid  
G Long Hobstar punch base  
G Shell & Jewel lids (need 2)  
M Diamond Point Columns butter lid  
Any Peacock at the Fountain punch cups  
M 474 punch bowl top  
M Grape & Cable cracker jar bottom  
M Grape & Cable powder jar lid  
➤ M Hobstar cracker jar bottom

---

Ted L. Sheibley, 53 Meadow Brook Court, New Cumberland, PA 17070  
Phone: 1-717-770-0616

M Grape & Cable butter bottom  
P Four Seventy Four punch bowl top  
G Orange Tree loving cup or hatpin holder  
G Imperial Grape punch bowl  
M Beaded Shell sugar lid  
B Grape & Cable stippled humidior lid  
M Butterfly & Berry sugar bottom  
M Heavy Grape punch base  
P Vintage powder jar lid  
M Wreathed Cherry butter base

---

Donald L. Harris, 527 Lavina Drive, Mechanicsburg, PA 17055  
Phone: 1-717-790-0412

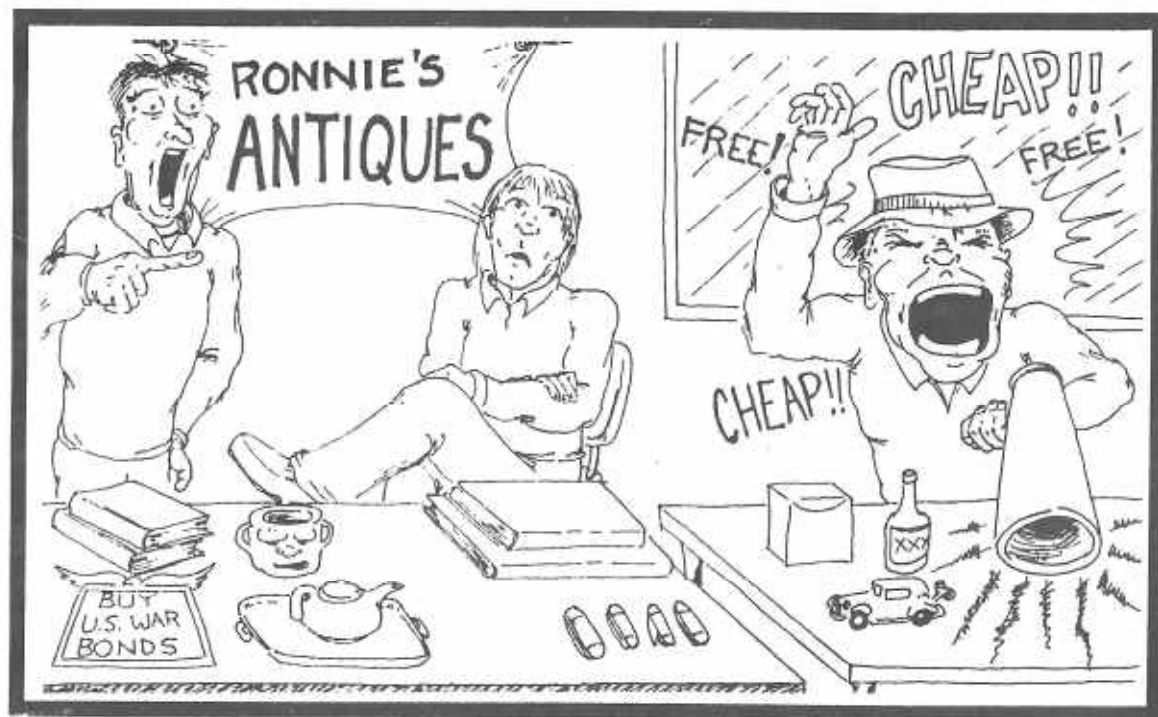
P Imperial Grape punch cups  
P Peacock at the Fountain butter lid  
P Springtime butter lid  
P Imperial Grape 9" plate  
B Orange Tree powder lid  
Any Imperial Grape wine stopper (need M,P,G,SM)  
Any Plaid bowls  
Any Orange Tree punch cups  
P 474 punch cups  
P Lustre Rose butter and sugar

OR WILL SELL ANY OF ABOVE PARTS

## CARNIVAL GLASS WANTED

Rudy A. Kovacs, 551 S.W. 135 Ave., B-147, Pembroke Pines, FL 33027  
Phone: 1-305-435-4487

PO Fanciful bowl or plate  
PO Round up bowl or plate  
PO Heavy Web bowl  
PO Hobstar - Fruit bowl  
PO Daisy - Plume



"How much do they pay you to set up next to HIM?"



## MICKEY REICHEL AUCTION SERVICE

IMPORTANT - OUTSTANDING COLLECTION  
**Carnival Glass Auction**  
EARL VAN DORIEN COLLECTION, ETAL.

**Saturday, March 4th, 1995, 9:30 A.M. Sharp**  
**Held at Mickey Reichel Auction Center**  
1 mile North of I-70 on Hwy. 5 Exit 101 - Boonville, Missouri

Preview Friday 2:00 P.M. - 5 P.M.  
8:00 A.M. - 9:30 A.M. Day of Auction

(Many Items First Time Ever Offered At Auction)

Make Reservations Now At One Of These Local Motels:

Comfort Inn 816-882-5317

Super 8 Motel 816-882-2900



# RICKEY REICHEL AUCTION SERVICE

Important! Glass Auction  
and Broken Collection Sale

7:00 PM - 10:00 PM  
at the Holiday Inn - Holiday Center

1000 S. ...  
... ..

... ..  
... ..