

HOACCGA

Heart of America Carnival Glass Assoc. Inc.

March 1995

RETURN ADDRESS

H.O.A.C.G.A.
Jackie Fortney
P.O. Box 303
Buckner, MO 64016

FIRST CLASS MAIL
U.S. POSTAGE
PAID
Buckner, MO
Permit 03



CONVENTION INFORMATION
IN CENTER SECTION

HEART OF AMERICA CARNIVAL GLASS ASSOCIATION

(Since 1973)

BOARD OF DIRECTORS

PRESIDENT.....	ROBERT GRISSOM 7517 Evanston Raytown, Missouri 64138 PHONE: 1-816-356-5320
VICE-PRESIDENT.....	DARYL STROHM 8904 E. 29th Street Kansas City, Missouri 64129 PHONE: 1-816-252-8053
TREASURER.....	CLIFF BALL 572 W. Park Street Olathe, Kansas 66061 PHONE: 1-913-782-0415
SECRETARY.....	ED KRAMER 4305 W. 78th Street Prairie Village, Kansas 66208 PHONE: 1-913-642-3587
BULLETIN SECRETARY.....	JACKIE FORTNEY Post Office Box 303 Buckner, Missouri 64016 PHONE: 1-816-650-5208

ALL CARNIVAL GLASS CLUBS:

Please send the following information about your Club to the Bulletin Secretary. We want to include this information in the Bulletin.

NAME OF CLUB
SECRETARY NAME & ADDRESS
AMOUNT OF DUES
MEETING PLACE & TIME

Send to: Jackie Fortney, Bulletin Secretary, H.O.A.C.G.A. (Address Above)

San Joaquin Valley Carnival Glass Club

Treasurer: Marie McGee, 3906 E. Acacia Ave., Fresno, California 93726-0907
Dues: \$5.00 per year, payable March 1st
Meetings: Luncheon Meetings in March, September, December, in the Cedar Lanes Restaurant, Fresno, California

Western Buckeye Carnival Glass Club

Secretary: David L. Cotton, 582 Austin Rd., Mansfield, OH 44903
Dues: \$5.00 per year, family
Meeting: Locations are random, 3 times a year with an after brunch gathering in a members home. Places generally decided at the first meeting of the year.

Australian Carnival Enthusiasts Association, Inc.

Secretary: M. Dickinson, RSD Fryerstown 3451 (054) 73 4351
Treasurer: A. Howard, 21 Alexander Avenue, Dandenong, Vic. 3175 Phone (03) 792-4139
Dues: \$12.00 per annum per family or \$10.00 per annum single
Meetings: Meetings are held quarterly in members homes. Visitors are welcome from noon on.

Keystone Carnival Glass Club

Secretary: Mary Sharp, 719 W. Brubaker-Valley Road, Lititz, Pennsylvania 17543
Dues: \$10.00 family membership per year (June - May)
Meetings: Second Saturday of each month at loof Hall, N. Broad Street, Lititz, PA at 7:30 P.M.

Southern California Carnival Glass Club

Treasurer: Betty Robertson, 1430 Kendall Avenue, Camarillo, California 93010-3606
Dues: \$12.00 for single or \$18.00 for couples
Meeting Place: Golden Sails Hotel, Long Beach, California, at 10:00 A.M. setup, lunch served at noon, meet 3rd Sunday of February, May, August and November.

San Diego County Carnival Glass Club

Secretary: Diane Fry, 5395 Middleton Road, San Diego, CA 92109-1525
Dues: \$12.00 Single, \$18.00 Dual / Family
Meeting Place: Mission Valley Holiday Inn, San Diego, California. 10:00 A.M. 1st Sunday - April, 2nd Sunday - June, 3rd Sunday - September, 1st Sunday - December

Hoosier Carnival Glass Association

Secretary: Eunice E. Booker, 944 W. Pine Street, Griffith, Indiana 46319
Dues: \$5.00 yearly, per family
Meeting: Monthly - 3rd Saturday at 5:00 P.M. except February, July & August

L'Association Du Verre Carnival Du Quebec

Secretary: J. Leo Richer, 3250 Leon Brisebois, Ile Bizard, Quebec H9C 1T6, Canada
Phone: 1-514-620-1541
Dues: \$20.00 (Canadian Money) per year, per family
Meetings: Meetings are announced in our newsletter at each two months.

Pacific Northwest Carnival Glass Club

Secretary: Jerry Reynolds, 1305 N. Highlands Parkway B-6, Tacoma, Washington 98406
Phone: 1-206-759-2263
Dues: \$10.00 per year, due June 1 through May 31.
Meetings: 3 times a year, the second Saturday of April, the second weekend of August (Convention) and the second Saturday of November.

Great Lakes Carnival Glass Club

Secretary: Maxine Burkhardt, 12875 Chippewa Drive, Grand Ledge, MI 48837
Dues: \$5.00 per year, per family
Meeting: Held in members homes three times a year. The first Sunday in February, May and August. Convention the first weekend in November.

Northern California Carnival Club

Treasurer: June McCarter, 1205 Clinton Drive, Modesto, California 95355
Dues: \$10.00 per year (individual or family, January 1 through December 31)
Meetings: Third Sunday in January, April and October, 11:00 A.M. to 3:00 P.M. with lunch at noon, Guisepe's Restaurant, 2501 McHenry Avenue, Modesto, California. Annual Convention will be June 15-17, 1995 at the Holiday Inn, 1612 Sisk Road, Modesto, California.

Carnival Companions

Secretary: Harry Atwater, 108 Sunset Blvd. Cambridge, Ontario, Canada N1S 1A7
Dues: \$7.50 / Donation per person, per year
Meetings: 5 or 6 meetings per year, usually to a restaurant 1st and then to a members home to view their collection.

The Carnival Glass Society (UK) Ltd.

Secretary: Vernon Kelvin, 162 Green Lane, Edgware, Middx. HA8 8EJ. England
Dues: Overseas Members 15 pounds (Sterling) per year
Meetings: Convention during August in Mid-England and at get-togethers in members homes

New England Carnival Glass Club

Secretary: Marie M. Heath, HCR 31, Box 15, St. Johnsbury, VT 05819 (1-802-748-2100)
Dues: \$12.00 per year per family
Meetings: Feb. 19, Apr. 23, Jun. 25, Aug. 20, Oct. 15, and Dec. 3, 1995 at noon in the Pulaski Club Hall, Southbridge, MASS. The Club Convention is the second weekend in September.

Air Capital Carnival Glass Club

Secretary: Donald Kime, 15201 E. 47th S, Derby, KS 67037 (1-316-733-8424)
Dues: \$10.00 per year per family
Meetings: Every second month. February, April, June, August, October, December. The second Sunday at 2:30 P.M. Individuals homes.

Western N. Y. Carnival Glass Club

Secretary: Linda Matties, 1246 Flynn Road, Rochester, NY 14612
Dues: \$5.00 single membership + 2.00 associate
Meetings: American Legion on Buffalo Road, Churchville, NY, 3rd Wed. of each month, 7:30 PM

We have decided to devote a section of the bulletin to questions and answers on carnival glass that we receive from our members. The following letter is typical. We would like the membership to respond and we will publish the answers we receive. If you would like to send questions or if you would like to respond to questions presented in this forum, please send correspondence to HOACGA Secretary (address located in front cover).

CARNIVAL GLASS - QUESTIONS & ANSWERS

Dear Ed,

I was excited to receive my first HOACGA bulletin. The publication is both interesting and informative. I commend the group putting it together. Being new to collecting Carnival Glass, I naturally have a lot of questions which I hope your readers can answer.

1. What is "Opalescent"?
2. What is the difference between "radium" and "satin" finish glass?
3. What is considered a "pinhead"? How much value is lost when a piece contains one.
4. Describe the difference between "Pie Crust Edge" and "Candy Ribbon Edge".
5. What is the difference between a "Compote" and a "Sweetmeat Compote"?
6. Do you have any advice on things to watch out for while collecting glass?

This is probably enough questions for now. I will greatly appreciate any help you can give me. I want to take some time learning as much as I can. Hopefully then I can keep poor buying decisions to a minimum. Thank you.

Sincerely,
Steve Santos
Marysville, WA

TRACKING DOWN "LUCILLE".....ONE STEP AT A TIME

By Carl O. Burns

"RUBY STAR" DECORATED ASSORTMENT.

New in pattern and decoration. Will retail at from 10c to 50c and net you a handsome profit.



1C1561—Bright crystal, rich deep cut medallion and star design, medallions decorated in ruby with emerald green and canary color outlines—the bright effects attained by cold colors only. Comprises:

- | | |
|--|--|
| only 1/2 gal. tankard jugs. | 12 only 7 1/2 x 4 1/2" spoon trays. |
| " 8 1/2 in. deep round berry bowls. | 12 " 4 1/2 in. high footed jelly dishes. |
| " 5 1/2 in. high footed covered bowls. | 12 " 9 1/2 in. oblong celery trays. |
| " large covered butter dishes. | 12 " 4 1/2 in. round nappies. |
| " covered sugar bowls. | 12 " extra heavy table tumblers. |
| " spoonholders. | 12 " 6 1/2 in. round deep bowls. |
| " cream pitchers. | 12 " 6 1/2 in. fancy flower vases. |
| " large oil bottles. | |
| Total 100 pcs. in bbl., 1 lb. | Each, 6 1/2 c |

The process of researching glass often yields unexpected surprises. I guess that's one of the things that I like about it. One moment you're hot on the trail of one thing, then something else suddenly runs across your path, and you're off in a different direction. That's exactly what happened to me recently, as I was doing research for my upcoming book on Imperial's Carnival Glass. A merry chase ensued and the end result was certainly a surprise.

I was going through the October, 1909 Butler Brothers Wholesale Catalog, when the grouping pictured here under the name of "Ruby Star Decorated Assortment" jumped right out at me. There was something awfully familiar about that pattern, especially the Water Pitcher and Tumbler in the center of the group. This was the "LUCILLE" Water Set! For those of you not familiar with it, this set is shown in the newest edition of Bill Edward's "Standard Encyclopedia of Carnival Glass". It is known in marigold and cobalt blue. It has been credited to the Brockwitz Co., a German Glass maker. But, how could this be?

The appearance of this set in a 1909 Butler Brothers Catalog pre-dates the manufacture of European Carnival Glass by over 15 years! Therefore, it had to have been made right here, in the good old U.S.A. But, by whom?



"PREMIER" HALF GALLON JUG ASSORTMENT.

A still cheaper price on these "value renowned."

1C1880—Full 1/2 gal. sizes, all extra heavy, brilliantly finished, popular shapes, rich cut, 1 optic pattern, equal quantities. Total 2 1/2 doz. in tierce, 135 lbs. Per dozen, \$1.90

The first step in the process was to find the pattern again, in company with at least one other design that could be traced to a specific maker. (Remember, Butler Brothers assortments were packed at the factory of origin.) Just three pages further, I found it! It is pictured here as the "Premier Half Gallon Jug Assortment". The "LUCILLE" Pitcher is on the left. The Pitcher in the center would be of no help, but the one on the right just might offer a clue. After nearly an hour of searching, I found the pitcher on the right listed in William Heacock's book on Ruby Stain Glass. It is a pattern called "NOGI", and it was made by The Indiana Glass Company of Dunkirk, Indiana. I was completely stunned! We don't associate that company with the manufacture of much Carnival, especially major shapes like water sets. Could it be? I wanted further proof.

On to the next step, namely finding either of these two patterns in company with yet a third design. I found them both in company with a pattern known as "GAELIC". The maker... you guessed it, The Indiana Glass Company! These assortments were all in non-iridised crystal, so I began to wonder if "LUCILLE" might have another name, one used by pattern glass collectors. It does. It is listed in Minnie Watson Kamm's pattern glass series in book 4, on page 27. The design is called "FERRIS WHEEL". At the time her books were published, in the 1940's, she listed it as "maker unknown". During the late 1970's and early 1980's, William Heacock published extensive updates to series of books. A quick cross reference with these revealed "FERRIS WHEEL", a.k.a. "LUCILLE", to be a product of.... The Indiana Glass Company!

So, there it is! The "LUCILLE" Water Set was not made in Europe. It was made by the Indiana Glass Company. This opens up a whole world of possibilities. There are still a surprisingly large number of Carnival patterns that are of unknown origin. Perhaps, just perhaps, we had all better start learning a bit more about just what went on at The Indiana Glass Company of Dunkirk, Indiana.



DID YOU KNOW?

WHAT'S TOUGH TO FIND IN NORTHWOOD BONBONS

By Greg Gilliland & Don Grizzle

(The Sanctified Cross-Eyed Bear & Bear Cub)

It's amazing what happens when someone uses the words "rare" or "one of three known" in reference to a piece of carnival glass. Our hearts beat faster, our palms start to sweat, our ears hear better, and our eyes see better than they have for years. Statements like these just capture our attention.

Since there are so many collectors and so many patterns to be found, it's difficult to know exactly how many pieces of a particular pattern exist. This forces us to listen to those people whom we consider "experts" to tell us about the rarity of pieces. Unfortunately, how often does the average collector have the opportunity to get this kind of information?

When talking to other collectors about the rarity of a piece, Don and I have a statement that we like to use. The statement is "It's a tough one." We base this statement on our experience as collectors, and facts derived from our book The Sanctified Cross-Eyed Bears Price Trend Guide For Carnival Glass. Our book gives average price sales over a six year period of time. When we see that a desired pattern in certain colors is not sold or has sold only once, "it's a tough one". This is one reason why we feel that our book is so valuable to other collectors and dealers. Collectors can understand things much better when they are able to see the "big picture" on carnival glass sales.

GLASS NAME	COLOR	AVG '89	AVG '90	AVG '91	AVG '92	AVG '93	CHANGE	PREVIEW	AVG '94
Basket of Roses Bon Bon	A	130							
Basket of Roses Bon Bon	B				300				
Basket of Roses Bon Bon	M				325				
Basket of Roses Bon Bon	P				275				
Butterfly Bon Bon, Rib. Ext.	G			475					
Butterfly Bon Bon, Rib. Ext.	I,B	1600							
Fruits & Flowers Bon Bon	SAPH				750				
Fruits & Flowers Bon Bon	SMOKE		600						
Fruits & Flowers Bon Bon	TEAL			250					
Grape & Cable Bon Bon	A, O				3900				
G & C Bon Bon, Electric	B								400
G & C Bon Bon, Stippled	Moon								3250
Lotus Land Bon Bon	M				1400				

Now let's use some information from our book to get the "big picture" on some of the more popular Northwood bonbons. These bonbons have been sold at auction only once in the past 6 years. They are "Tough Ones"!

Now with this information, you can hunt down those "tough ones". With the information from our book, I have recently purchased three of the more "tough" to find bonbons at very good prices. I have noticed that if things don't sell frequently, people forget how difficult they are to find. Many times sellers do not give them the value that they deserve and sell them very reasonably. Don and I hope that you can use the 210 pages from our book to understand and enjoy your hobby even more.

Copies of our book can be obtained by writing to:

THE SANCTIFIED CROSS-EYED BEAR

P.O. Box 1516 Port Hueneme, CA 93044

Send \$19.95 postpaid for U.S. & Canada; \$21.95 for overseas mailings. (California residents add \$1.45 sales tax.) For additional information, please call (805) 982-7189.

A LOOK AT TABLE SETS

By Chuck & Marge Kremer



LUSTRE ROSE TABLE SET

This table set was an Imperial product and made in marigold, green amber and amethyst. Amber and amethyst are considered rare. Lustre Rose was a popular old Imperial pattern and was apparently made in large quantities. The pattern was reproduced in several shapes in the 60's and occasionally we see a piece with the new Imperial IG trademark.

This is an "oversize" set, very massive. The glass is heavy, each piece very large and the rose is in high relief. All four pieces have the collar base. All background surfaces are stippled. There is little unusual about this set unless it would be the interior ribbing. The ribs show through in the light colored pieces and, in our opinion, do little to make this an attractive pattern.

Marigold pieces and sets are available and usually the iridescence is good. Other colored sets are seldom offered for sale. Prices are quite reasonable in most cases. This is a pattern where color "makes the set"; the amethyst one can be as attractive as the marigold is ordinary. This is number 32 in our series on table sets.

TEXAS CARNIVAL GLASS CLUB CONVENTION

Its convention time again for the coming year. We left 25 degree weather in Wichita, Kansas and headed south for Houston, Texas. As we were going thru Dallas it was 71 degrees but we understand it fell to the 40's that evening. Of course as we neared Houston we came into the rainy season but in general the temperature was nice. We must have rain during the convention or we just do not know what to do.

Lots of people had already come in on Wednesday. The rooms were filled with lots of glass for sale or trade.

Thursday evening, we gathered in the lobby to be escorted to our favorite choice for an eating place. A local member would escort us. We chose to go to a B-B-Q place and we certainly enjoyed it. Jerry was our escort and we thank him for getting us there and back. After we returned to the hotel we all gathered for a real carnival glass wheel of fortune. Names were drawn out of a bowl for contestants. We played 5 games and at the end, the winners were presented with one of those famous Texas baskets filled with lots of goodies. The game was so authentic because they had a real Texas Vanna and Pat hosting the show. After the wheel of fortune we enjoyed the famous Blue Bell ice cream make your own sundae's. This was compliments of Cecil and Floyd Whitley. We thank them very much for this wonderful event.

Friday, the rest of the folks checked in and so everyone had arrived safely. At 4 PM, Roland Kuhn gave the program on "Wishbone". Lots of the group turned out to hear the program. At 6 PM, we all gathered for the Texas picnic. Lots of good food and fun for all. At around 7:30 PM, we were able to look at the auction glass to be sold at the auction the next day. The ever popular midnight auction took place around 9 PM.

Saturday, it was up early to take a last minute look at the glass for auction. The price held up well. Rather than quote some of the prices for the items, you can see the auction results as the list comes out in the various newsletters. On second thought, I will mention a few of the pieces. The Cambridge Inverted Feather 8 pc. punch set \$4,000, Lily of The Valley water pitcher in blue \$6,000. There were probably 130 bidding numbers out, a very nice crowd. That evening at 6 PM, we gathered for the banquet - a highlight of any convention. The room was filled to capacity and believe it is the largest turn out for the Texas club. The long awaited event came when it was time to find out who would take home the AO Peacock on The Fence bowl. The young lady, from London, England, was asked to pull out the winning ticket. Ms. Thistlewood drew the name. Would you believe it was my name they called. What a beautiful bowl and I was so pleased to be the winner. Thanks to all who made it possible. It will have a special place on the shelf. The banquet meal was excellent as well. Then came the speakers, Glen and Stephen Thistlewood, of London, England. They showed slides of their collection and spoke on collecting Carnival glass in the United Kingdom. There was also glass on display they talked about. A very interesting program and we appreciate them coming so far to talk to us.

I would like to thank the Texas club for a super convention, we enjoyed every minute.

PICTORIAL PATTERN PARADE

By John & Lucile Britt



THE MINNESOTA MUG

At an I.C.G.A. convention in Indianapolis, Indiana, we were asked to discuss the different mugs that were brought in for the convention display room. Some of you might remember that we brought along the unusual mug that is shown above for that display. At the time, we did not know the name of the pattern. We had purchased it a short time earlier hoping to find out the name and maker of the pattern.

We thought that you might like to know that we found this pattern in the book "U.S. Glass from A to Z" by William Heacock and Fred Bickenheuser. The name of this pattern is called Minnesota. An illustration of this pattern can be found on page 144 in that book. It was made by the old U.S. Glass Company. This large glass company made a series of state patterns including Minnesota, Michigan, Texas, Pennsylvania, Delaware, Missouri, Kansas and many other patterns that were named after a state. They made many pieces

in most of these state patterns in both clear and colored glass including the popular ruby stain glass. It is only seldom that a piece in these patterns will be found in carnival glass, however. We have seen several pieces of iridised glass in the Massachusetts pattern. A marigold vase in that pattern is shown in Bill Edwards 3rd edition book on page 131.

The Minnesota mug is the only piece in this pattern that we have ever seen in carnival glass. We suspect that this was made when the U.S. Glass Company was experimenting with the popular iridescent glass that was being made in large volume by such companies as Fenton, Northwood, Imperial and Dugan. Even Westmorland was in the production of iridised glass in the early years.

The United States Glass Company also made the very rare Frolicking Bears and Big Butterfly patterns with only a few pieces known to exist with iridescence. They also iridised a number of the small novelty pieces which are becoming very popular with collectors today. Their most extensively produced patterns with iridescence were Palm Beach and Cosmos and Cane.

The featured marigold Minnesota pattern mug is 3¼ inches high with a top opening of 2 5/8 inches. The collar base or marie is 2¼ inches in diameter. A 24 point star is pressed into the underside of the base. The handle was included in the four part mold. The outside of the handle is flat and contains a washboard type pattern. The pattern on the outside of the mug contains three large diamonds with hobnails that are alternated with four smaller diamonds containing a hobstar like figure. This will give the carnival glass collectors another pattern to look for when they are out on their hunting trips.

In an update on this pattern we would like to report that a very pretty Minnesota marigold toothpick was recently found. More on this rare toothpick at a later date when we will provide information and photo of this little U.S. Glass pattern piece. This article featuring the Minnesota mug is #196 in our Pictorial Pattern Parade series.

A TIME FOR ELEGANCE

By Lance & Pat Hilkene



Dear Carnival Friends,

The first find of the New Year was very exciting for Pat and myself. I would like to share the experience. First, I was dreaming all week long of what lovely piece of glass would be waiting for me this year. I certainly did not expect a fabulous find on the second Saturday of January. I also had dreams about what would be my first carnival glass purchase this year. We were walking through a local antique center and I spied a lovely ice blue piece of carnival glass in a locked china closet just sitting there waiting for the elderly gentleman I had asked, to open the cabinet. He was having a difficult time with the key and I could all but restrain myself from opening it myself. But patience triumphed and the case opened and he allowed me to remove the article which was a "My Lady" powder jar in a beautiful iridised ice blue. I turned it over and there on the bottom in the middle was that Westmoreland W and my treasure turned into a reissued piece of carnival glass. Still it was nice, but I wanted my first purchase to be an old piece.

I turned away from the cabinet after thanking the gentleman and began to resume my search. Pat was down at the other end of the store when I saw this blue bowl on a plate holder on a shelf in the middle of other various dishes similarly displayed. I took it down from its resting place and started to study it rather closely. Was it new? I wasn't sure. It didn't have a signature yet it was in such nice condition although the base did show wear indicating that it was sitting for many years. But still the pattern was an enigma. I did not recall ever seeing anything like it. I returned to bowl to its place and preceded with my search. "Pat" I said, "see the bowl in the other

room". "Let's take a look, she said, oh yeah I saw that one. I thought it might interest you, why don't you get it?" I replied, "I think it might be a new piece and I'm not sure". Pat said, "Look, if you like it and the price is ok, then buy it." So I took it to the desk and I had them wrap it up.

Now, on the way home I began to think to myself. The first purchase of the year will probably have been a new or reissue piece which I will have to wait 50-60 years to make anything on my investment. But I really liked it anyway and isn't that what collecting is all about, the love of the glass.

Ok, I get home and I start to look through my reference books for possible identification. There is it in Edwards Encyclopedia under the name of Elegance. Could it be? I open the Hartung books, there it is, in book eight. I looked further and I found references to this pattern in several places including a picture in the HOACGA note books which Pat bought me for Christmas. Thank you Pat! Also a nice article by Diane Fry in the ACGA newsletter.

After my mind clears from the excitement, I began making phone calls to the people who may know about the pattern. Ruth Schinestuhl was very helpful and she got me excited all over again when she described the pattern with several "verys" before she said the word rare. I then called Diane Fry in California, who has personal knowledge of this pattern and I found out that I as the second known owner of a Ice Blue Ruffled Elegance Bowl. I have determined some differences between the two bowls. One being mine is slightly smaller in diameter at seven and three quarter inches. Also there seems to be a different finish on the two bowls, mine having a radium iridescence while the other is a matt finish making the bowl more frosty in appearance. So each piece has its own beautiful characteristics which is why each of our collections has its own unique beauty.

The bowl is basically as described by most of the articles written on it. I will attempt to add my own description. The pattern itself is an all over pattern with the edge being rolled or beveled with a slight but definite indication of scallops or indentions on the edge. The outer row of flowers and leaves are separated by a row of beading. The next row consists of a large predominate circle of flowers separated by triangles pointed to the outside edge. These triangles are stippled, matching the stippling on the leaves of the outer row. Again a circle of beads separating the center device, which is a stippled open blossom which Hartung describes as reminiscent of Northwoods "Petals" pattern. The bowl has eight ruffles evenly and methodically spaced around the bowl with the iridescence on the interior only. The reverse shows two mold marks with a plain exterior except for eight wide panels one inch long radiating from the slightly domed octagonal base. The base measures three and one quarter inches from flat end to flat end. It has a many rayed star radiating from the center.

I certainly wish each of you a truly magnificent find as this. I again thank all of you for the time you spent with me sharing this find with you. I hope the photo I've enclosed do justice to this wonderful and very rare pattern.

I returned to the store where we purchased this bowl and we found out from the antique dealer that she had purchased it from an elderly woman selling her estate. She was a life time resident in a small shore community here in New Jersey and it was the only piece of Carnival she owned. She had it in her possession for many years along with lots of other Victorian era pieces according to the dealer.

IMPERIAL'S RIPPLE VASE

By Ken Oppenlander

The Ripple vase was manufactured by the Imperial Glass Company. Marian Klamkin stated in her Carnival Glass guide that the Ripple vase was produced by several different companies. I see no evidence that this is true. I base this on the fact that there are no variances in mold features in any of the vases that I have examined.

I believe this vase to be one of the most prolific pieces of Carnival glass available. It is the only pattern that I know of which was produced in the exact same shape, but in five mold sizes. This is a "swung vase" and each mold size appears in many different heights. Multiply this by the number of colors in which each vase was produced and you have a tremendous number of color/size vases to be collected.

The Ripple vases all have the typical Imperial star design base. There are 16, 20 and 24 point stars, depending on the size of the base. One of the most interesting features of the Ripple vase is that all vases from the smallest to the largest have 17 horizontal rings or "ripples" that encircle the body of the vase. Many of the vases are stretched to the extent that the exterior rings become nearly invisible. There is also a very fine vertical ribbing on the interior of the vase. The combination of the horizontal and vertical patterns combine to produce a very pleasant appearance. Another similarity in appearance is that all vases, regardless of size, have a six-ruffle top.

Marigold is the most common color of the group of 239 vases that were involved in this research. Blue is the most rare with white just a little more abundant. If you study the charts, you will find that certain colors in certain sizes are either very rare or nonexistent. I have added teal and all variations of green into the same class. The reason for this is that there are so many variations of green within the Ripple vases that it would be impossible to separate them all. There is also the problem of individual opinions of color.

I have only listed the primary colors in the charts, but for some reason, there seems to be a very large number of Ripple vases in some very odd colors. Vases have been reported to me in pastel marigold, clambroth, olive, lavender, yellow, powder blue, root beer, coke-bottle green, and a strange aqua color that glows under black light. I have personally examined many of these vases and can assure you that these colors are not the result of wild imaginations. There are some very strange colors in these vases and we should all do as John Britt says, "Pick up each piece of glass and examine its color closely".

The most common size seems to be the 2 7/8" while the most rare appears to be the 3 7/8" vase. With the margin of error involved in working with 239 vases, the 4 3/4" is most likely as rare as the 3 7/8" size.

In the 1960's and 1970's, the Ripple molds were brought out of retirement and reproduced. The IG logo was added to the center of the star base, but other than that, they are very authentic in appearance. They were reproduced in marigold, smoke and pink.

I would like to thank the many collectors who have shared their time and information with me over the past three years in order to make this project possible. I am going to continue to record vases in the hopes of updating this information every few years. I need data on all vases, not just the more uncommon ones. Any assistance will be appreciated.

BASE PATTERN AND RANGE OF HEIGHT

<u>BASE SIZE</u>	<u>BASE DESIGN</u>	<u>HEIGHT RANGE</u>
2 1/2"	16 point star	4 3/8" to 10 1/4"
2 7/8"	20 point star	5 1/4" to 12 3/4"
3 3/8"	20 point star	6 5/8" to 14 1/2"
3 7/8"	20 point star	10 1/2" to 16 1/2"
4 3/4"	24 point star	11 1/2" to 20"

TOTAL VASES BY SIZE AND COLOR

<u>BASE SIZE</u>	<u>MRG</u>	<u>PRP</u>	<u>GRN</u>	<u>AMB</u>	<u>SMK</u>	<u>AQU</u>	<u>WHT</u>	<u>BLU</u>
2 1/2"	32	6	11	0	0	0	4	0
2 7/8"	29	11	11	19	5	13	1	2
3 3/8"	13	26	12	3	10	0	0	0
3 7/8"	6	3	3	1	2	0	0	0
4 3/4"	7	3	5	1	0	0	0	0
TOTALS	87	49	42	24	17	13	5	2

LINED LATTICE

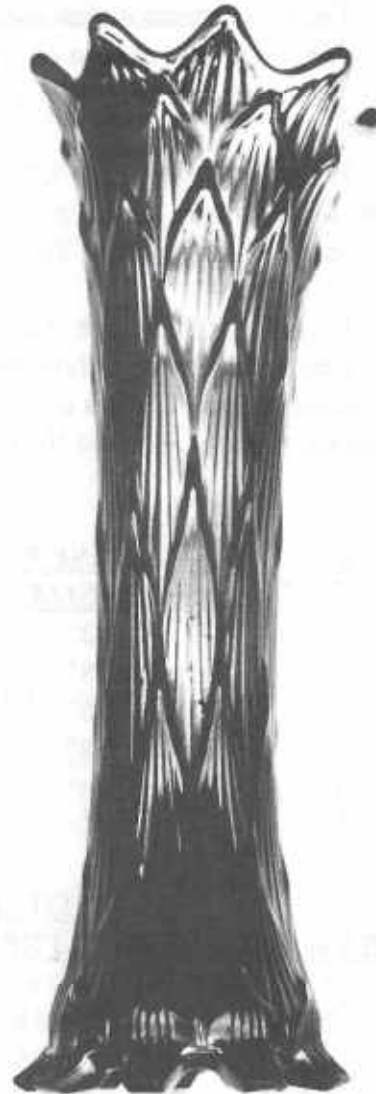
By Dean & Diane Fry

This vase made by Dugan Glass usually is found with very good iridescence, no matter the color or the "version".

The overlapping leaf-like design is interesting and, as with many of the various vase patterns, there are several differing heights to select from.

Usually found with small, scalloped feet-like projections, in marigold, amethyst, blue, green, peach opal and white, prices according to quality and color ranged in 1993 auctions from \$35 to \$115. The sizes mentioned range from 6" to 10".

Very occasionally, the version with the "squared toes" as seen in our picture, appears in amethyst. Vase collectors consider them quite scarce. We would like to hear from anyone who has this vase style in any other than amethyst color.



EDUCATIONAL TUMBLER SERIES

By John & Lucile Britt



BULLSEYE PANEL TUMBLER

The Bullseye Panel tumbler is in good dark marigold and is shaped very similar to the Jacobean Ranger. See photo of the Jacobean Ranger in the popular HOACGA tumbler book, Educational Series #2, on page 92. The center two around the outside of the Bullseye Panel tumbler contains 12 circles instead of the squares or blocks found on the Jacobean Ranger. Both of these tumblers are made of rather heavy glass and the color used on both is dark marigold.

The Bullseye Panel tumbler is 3½ inches tall and 2 ¾ inches across the top. A 12 rayed star is found on the bottom of the base. We are not able to name the maker of this tumbler, but we very much suspect that it is foreign made. We consider this tumbler as rare. It is the only one that we have ever seen.

The Bullseye Panel tumbler is owned by Cecil Whitley, author of the very fine book "The World of Enamelled Carnival Glass Tumblers". She also named the pattern. It was acquired by her from the Joe Olson collection, who at one time had a rather large collection of tumblers. We can remember that we purchased our first Morning Glory tumbler from him many years ago.

This article on the Bullseye Panel tumbler is #206 in our Educational Tumbler series. Next month we are going to discuss the rare Rose Band pattern and feature a little Rose Band shot glass that we recently purchased. It is a real cutie and in a size that we never knew existed. We originally wrote about the Rose Band pattern tumbler in March of 1979 and this will be an update.

ON THE AUCTION TRAIL

By Chuck & Marge Kremer

January 28, 1995: The "weather gamblers Jim & Vern, also known as Seeck Auctions, had their first 1995 carnival auction in St. Louis (St. Peters Holiday Inn). A week earlier the big snow in Missouri might have been a real problem, but this weekend was just rain, drizzle and fog both Friday and Saturday in the St. Louis area. Driving in from the east we had dry roads until the last 100 miles. Air travelers had delays because of the fog, but were able to make it. Those coming in from the North had to contend with ice as well.

Put a few people in a big room and the party could be dull, but squeeze them in a smaller room and they have a ball. We had the latter - a big crowd, a full house and a very good auction. The hallmark of a Seeck Auction is organization, and early opening and a long viewing time. They opened the doors two hours before the scheduled viewing time, and we were greeted by the cleanest, brightest and most colorful glass we have seen in a long time. The owners were there and were obviously proud of the appearance of their glass.

Five different colors of master Grape & Cable punch sets in one auction has to be a rare occurrence, and to have the 19" Tree Trunk ice blue funeral vase as the auction leader at \$27,000 set this auction apart from the average. Prices were strong in our opinion with a good buy here and there like a nice white piece or two that went to Kansas City - Daryl is probably still smiling.

This was the first chance we had to go to an auction this winter so we checked the weather reports and decided to go. The forecast for Saturday night in St. Louis wasn't the best so we left the sale early and stopped in central Illinois for the night on the way home - a good choice as there was ice in the Indianapolis area Saturday night. We really enjoyed seeing friends and just visiting - after all, looking at the glass and visiting is a big part of the enjoyment in collecting carnival glass.

We missed not having John and Jeanette Rogers on the front row at the auction. We have since talked to Jeanette and she was very upbeat, but said she had more treatments ahead of her. In her typical gracious southern manner she had high praise for "her carnival friends" and was very appreciative of the many cards, letters and phone calls. When we asked if the "February" grandbaby had arrived we could literally hear the smile spread across her face - if that is possible. Jeanette went home from the hospital practically passing the daughter on her way to the hospital - they now have a new granddaughter. We wish you well, Jeanette and keep smiling.

INTRODUCING A NEW BOOK WITH THE FACTS YOU'VE BEEN WAITING FOR

Wouldn't it be nice to have at your fingertips answers to questions like these?

What is the average sales price for this piece?

Is this piece on the average going up or down in value?

How frequently does this piece come up at auction?

What pieces are the ones that are showing an upward trend in value?

We have a book that is being recognized as a MUST for all SERIOUS carnival glass collectors. It is designed to give you the BIG PICTURE in carnival glass sales. It's called

THE SANCTIFIED CROSS-EYED BEARS PRICE TREND GUIDE FOR CARNIVAL GLASS FOR THE YEARS 1989 - 1993 (PLUS 1994 PREVIEW LISTING)

THIS INFORMATIVE BOOK GIVES YOU:

- ** over 7,400 line entries of the average price sales during 1989 to 1994. That's over 193 pages of valuable information!
- ** statistics that clarify the upward or downward average price trends during 1989 to 1993.
- ** an early preview of average sale prices occurring in 1994.
- ** Ranked lists of glass by color that have increased in value 50% or more between 1989 to 1993. That's 16 pages of the very best glass.

Copies of our book can be obtained by writing to:

THE SANCTIFIED CROSS-EYED BEAR

P.O. Box 1516 Port Hueneme, CA 93044

Send \$19.95 postpaid for U.S. & Canada; \$21.95 for overseas mailings. (California residents add \$1.45 sales tax.) For additional information, please call (805) 982-7189.

LATE TUMBLER COLLECTORS

Are you involved in collecting tumblers and/or water sets from the 1930's through 1950? I am looking into the possibility of developing an informal newsletter to establish some levels of communication between those of us that are collecting from this period. These tumblers are commonly referred to as depression era tumblers and include Late Sunflower, Late Waterlily, Royal Scroll, Pennsylvania Dutch, Minuet and hundreds of others in mostly marigold and cranberry. If you would like to be involved in this venture, please send me your name and address or give me a call as soon as possible,

Ken Oppenlander
3513 Stagecoach Circle
Manhattan, KS 66502
1 (913) 776-5512

Carnival Glass Book

Iridescent Hatpins & holders
of the Carnival Glass Era.

\$15.⁰⁰ Plus Postage

Postage

\$3.25 Priority

\$1.50 Surface

\$2.60 Canada Air

Send To:

Jerry F. Reynolds

13051 Highland Parkway

Tacoma, WA 98406

H.O.A.C.G.A. CLUB NEWS & GENERAL INFORMATION

The Bulletin is published the 15th of each month.

Membership year begins with the month your dues were paid. Check the upper right hand corner of your mailing label for month and year your membership expires. Example: 594 is May, 1994.

Dues: U.S. & Canada, Couple or Single..... \$25.00

Foreign..... \$40.00

All monetary figures quoted are in U.S. dollars.

Make all checks payable to H.O.A.C.G.A. and send them to the Secretary, whose name and address appears on the inside front cover of this newsletter.

Send all items for the Bulletin, i.e. glass for sale, glass wanted, articles, information, etc., to the Bulletin Secretary, whose name and address appears on the inside front cover of this newsletter.

The Heart of America Carnival Glass Association is initiating a membership drive. This contest started in the October •Carnival Glass Month• and will end on March 31, 1995. The growth and longevity of our hobby is dependent on our ability to promote the hobby and encourage new members to join us in the collecting of carnival glass.

The member who signs up the most new members by March 31, 1995, will be awarded a \$200.00 Savings Bond. A membership application with a place to list the member who referred the new member to join will be in the bulletin each month of the contest. If you know of a potential new member, give them the membership application and sign them up!

The contest winner will be announced at the April Convention.

Good Luck in your hunt for new members.

MEMBERSHIP APPLICATION **H.O.A.C.G.A.**

NAME _____

ADDRESS _____

TELEPHONE _____

REFERRED BY _____

Send to: Ed Kramer, 4305 W. 78th Street, Prairie Village, KS 66208

H.O.A.C.G.A. - CLUB INFORMATION

The purpose of the Heart of America Carnival Glass Association is to promote the growth and continuation of the Carnival Glass collecting hobby and to provide support to the many collectors by providing current information about the hobby.

Growth is accomplished by supplying educational information for the collector and soliciting new collectors into the hobby.

A convention is held annually in April (Convention date always includes the 4th Friday). Some of the activities provided at the convention are:

- * Members provide Room Displays with glass from their collection.
- * Members are encouraged to bring glass for Sale.
- * Educational Seminars are provided by members.
- * A Major Carnival Glass Auction is provided.
- * The Convention offers members an opportunity to meet new collectors, renew old friendships and enjoy discussing carnival glass with other knowledgeable collectors.
- * A banquet is held with a Carnival Collector as out Speaker.
- * A Hospitality time is provided by the club. This is a time of relaxation and visiting with other members.

It takes the support of all collectors and members to promote the hobby in order that its growth and expansion can continue.

In order to obtain our objective, the members must financially support the organization. The Heart of America Carnival Glass Association receives its financial support through the Annual Membership dues and the sale of the following.

* **Membership Dues** - \$25.00 per year - U.S. & Canada. \$40.00 per year for Foreign. The Membership Year is from the date of joining to one year later. Dues are set by the Board of Directors to support the publication of the monthly bulletin, typing, printing and mailing.

* **Educational Series - Book I** - 148 articles with pictures (black and white) on a variety of Carnival Glass Patterns.

* **Educational Series - Book II** - 180 articles with pictures (black and white) of Carnival Glass Tumblers

* **Hartung Carnival Glass Pattern Books** - A set of 10 books identifying Carnival Glass Patterns. These books are a must for all Carnival Glass Collectors, especially for the beginner. These are the only complete set of books available that identifies the majority of the carnival glass patterns. Sketches are in black and white.

* **Pattern Notebook** - A notebook containing sections on Mugs, Table Sets, Rose Bowls, Water sets (including painted sets), Plates (small, regular & chop), Compotes (large, regular & small), and punch sets. Each section of the notebook identifies each pattern with a **COLOR** picture along with information about the Maker and colors of each different pattern.

* **Souvenirs** - Periodically H.O.A.C.G.A. makes a souvenir to be sold to members. Souvenirs have been made since 1974, a few of these are presently available. They are the small Good Luck plate in ruby red, the Green Opalescent - Fenton, Cobalt - Millersburg, Marigold - Imperial, and Teal - Dugan Bells. Each year that Souvenirs were made, Whimsies were also made and sold at the convention banquet.

* **Video Tapes** - Video Tapes of educational programs given during the various conventions are available. A complete listing of the available video tapes are shown on the Order Form, which is part of this section of the Bulletin.

ORDER FORM - VIDEO TAPES

H.O.A.C.G.A. CONVENTION SEMINAR VIDEO TAPES

"Red Carnival Glass".....	\$20.00
(Richard Cinclair, Bob Allaire & Joyce Seale)	
"Shades of Blue" - (Richard Cinclair).....	\$20.00
"Poppy & Rose Show Pieces" - (Tom Mordini).....	\$20.00
"Fenton Two Flower" - (Bob Stremming).....	\$20.00
"Carnival Glass Smalls".....	\$20.00
(Eleanor & Jack Hamilton)	
"Small Plates" - (Smokey Cloud).....	\$20.00
"Hatpin & Hatpin Holders" - (Clint Fox).....	\$20.00
"Northwood Peacock & Urn Ice Cream Sets".....	\$20.00
(Harold Cox)	
"Millersburg Big Fish & Trout & Fly".....	\$20.00
(Singleton Bailey)	
"Carnival Glass Collecting Experiences".....	\$20.00
(Carl & Fern Schroeder)	
"Heinz 57 Variety Carnival Glass Collection".....	\$20.00
(Jerry & Carol Curtis)	
"Little Sauces" - (Garth Irby).....	\$20.00
"Miniatures" - (John & Lucile Britt).....	\$20.00
"Table Sets" - (Leonard, Kremer & Grissom).....	\$20.00
"Plates" - (Ruth Green & Richard Cinclair).....	\$20.00
"Luncheon Honoring Floyd & Cecil Whitley".....	\$20.00
(Britt award of Excellence in Carnival Glass)	
"Plethora of Patterns" - (Dean & Diane Fry).....	\$20.00

TOTAL \$ _____

POSTAGE INCLUDED WITH PRICE OF TAPE

SEND ORDERS TO:

ED KRAMER
4305 W. 78th Street
Prairie Village, KS 66208

Name _____
Address _____

ORDER FORM - BOOKS

HARTUNG CARNIVAL GLASS BOOKS

(Black and white sketches)

Book 1 - \$6.00	Book 6 - \$6.00
Book 2 - \$6.00	Book 7 - \$6.00
Book 3 - \$6.00	Book 8 - \$6.00
Book 4 - \$6.00	Book 9 - \$6.00
Book 5 - \$6.00	Book 10 - \$6.00

Complete Set of 10 Books (#1 thru #10) - \$60.00

(Hartungs "Northwood Pattern Glass" included with a Set)

Include \$1.00 each, for shipping when purchasing books separately.

Maximum of \$6.00 shipping for a set.

H.O.A.C.G.A. PATTERN NOTEBOOK

(COLOR Photos)

Mugs.....	(1980).....	\$7.00
Table Sets (Photos 1 thru 40).....	(1981).....	\$7.00
Water Sets 1 (Photos 1 thru 60).....	(1982).....	\$7.00
Water Sets 2 (Photos 61 thru 120).....	(1983).....	\$7.00
Water Sets 3 (Photos 121 thru 167).....	(1984).....	\$7.00
Rose Bowls 1 (Photos 1 thru 60).....	(1985).....	\$7.00
Rose Bowls 2 (Photos 61 thru 101).....	(1986).....	\$7.00
Small Plates 1 (Photos 1 thru 48).....	(1987).....	\$7.00
Small Plates 2 (Photos 49 thru 81).....	(1988).....	\$7.00
Chop Plates (Photos 1 thru 40).....	(1989).....	\$7.00
Regular Plates 1 (Photos 1 thru 48).....	(1990).....	\$7.00
Regular Plates 2 (Photos 49 thru 81).....	(1991).....	\$7.00
Compotes 1 (Photos 1 thru 57).....	(1993).....	\$8.00
Compotes 2 (Photos 58 thru 113).....	(1994).....	\$8.00
Punch Sets, 2nd Edition (Photos 1 thru 36).....	(1995).....	\$8.00
Complete Pattern Notebook.....		\$113.00
Shipping for complete notebook.....		\$5.00
Shipping for each selection.....		\$1.00
(Maximum Shipping \$5.00)		

TOTAL \$ _____

SEND ORDERS TO:

ED KRAMER
4305 W. 78th Street
Prairie Village, KS 66208

Name _____
Address _____

ORDER FORM - SOUVENIRS & BOOKS

H.O.A.C.G.A. Educational Series Book I.....	\$15.00
Shipping for each book.....	\$2.50
Total.....	\$17.50
H.O.A.C.G.A. Educational Series Book II.....	\$17.50
Shipping for each book.....	\$2.50
Total.....	\$20.00

H.O.A.C.G.A. SOUVENIRS:

1993 Ruby Red 6" "Good Luck" Plate.....	\$37.50
(20th Anniversary)	
1989 Teal Bell.....	\$35.00
(Honors Dugan Glass Company)	
1988 Marigold Bell.....	\$35.00
(Honors Imperial Glass Company)	
1987 Cobalt Blue Bell.....	\$35.00
(Honors Millersburg Glass Company)	
1986 Green Opalescent.....	\$35.00
(Honors Fenton Glass Company)	

Include \$2.50 for shipping of each souvenir.

PLATE HOLDERS - Dozen.....	\$21.50
(Postage Included)	

TOTAL \$ _____

SEND ORDERS TO:
 ED KRAMER
 4305 W. 78th Street
 Prairie Village, KS 66208
 28

Name _____
 Address _____

HELPFUL HINTS TO NEW COLLECTORS

I receive many requests from new collectors and they usually ask the same questions. I myself am a 10 year collector so I'm still learning but I do give the following advice. First, everyone is aware of and usually has Edward's Standard Encyclopedia of Carnival Glass (4th Edition) with color pictures. In addition, I always recommend Marion Hartung's 10 volume set - Hartung Carnival Glass Books. They are in black and white but the sketches and narrative are indispensable in identifying the many patterns of carnival glass. These books are available only through HOACGA. The third resource I think a person should have is the Carnival Glass Auction Prices for each year available from Tom and Sharon Mordini, 36 N Mernitz, Freeport, IL 61032. Tom and Sharon are members of HOACGA and each year they publish a booklet showing the "real world" prices of all carnival glass sold at major auctions by pattern and color for the past year. They are a great investment at \$9 or \$10 a copy and go back several years. Fourth, many excellent books published by Antique Publications, P.O. Box 553, Marietta, OH 45750, discuss glass companies and topics. They have books on Fenton, Northwood, Westmoreland, Millersburg and other glass companies. Fifth, the Pattern Notebook available only from HOACGA has color photos showing each pattern, maker and colors available for plates, water sets, table sets, mugs, compotes and punch sets. A section is added each year. It can be purchased a section at a time or complete (to date).

This is not an ad for these items, but is my sincere recommendation for basic resources for the carnival glass collector. I have repeated this information on many phone calls I receive and have decided to give it exposure in the bulletin. Feel free to write us your ideas and recommendations.

Ed Kramer
 Secretary
 HOACGA

MARCH, 1995 REGULAR H.O.A.C.G.A. MONTHLY MEETING

The next regular meeting of the Heart of America Carnival Glass Association will be on Sunday, March 26, 1995 at 2:00 P.M. at the Raytown, Missouri City Hall. Green glass will be the discussion topic.

The February 26 meeting had a good attendance and discussion of 25 pieces of red, white, and aqua opal glass. Cliff Ball won the door prize, a spittoon, and Phil Williams won the second door prize, a 1994 Mordini Auction Price Guide. Several members reported on their enjoyable trip to the Texas convention in February.

Hope to see everyone at the March meeting.

Ed Kramer
Secretary
HOACGA

CORRESPONDENCE

Dear Mr. Kramer,

Please find a check enclosed for one year dues in HOACGA. I am looking forward to monthly bulletin glass ads - FOR SALE, educational materials, Hartung Book Series, Pattern Note Book, and Annual April Convention, Etc. I'm looking forward to also being a member.

Thank You,
Jerry Hislope, Fort Collins, MO

Dear Mr. Kramer,

Enclosed is our check for the renewal of our membership in HOACGA. On behalf of my wife and myself, I would like to say that for the knowledge we gained, for the experiences we've had, for the information we've received, for the beautiful glass we've gotten to see, and for the wonderful people we have met in carnival glass collecting we thank the HOACGA. It is well worth the price of admission.

Thanks Again,
Tom & Mickey Brzyski, E. Pembroke, NY

CONVENTION AUCTION

The following is a sample listing of some items in the Woody Auction for the HOACGA Convention.

1. Marigold Buddha - only one known to exist - Excellent Piece
2. Daisy Cut Bell - marigold
3. Large Buzz Star Cruet - marigold
4. RARE Purple Picture Frame - original frame found by Betty Klutz in '60's
5. Spring Time Table Set - purple
6. Wreath of Roses Square Shaped Punch Bowl - vintage inside - green - RARE
7. Beaded Shell water pitcher with six tumblers - marigold
8. Inverted Strawberry Table Set - hobstar and feather base - VERY RARE
9. Memphis Punch Set - green
10. Diamond Rib Jardiniere - green with round panels
11. Dandelion Mug - deep butterscotch - aqua opalescent
12. Persian Medallion Two Handled Nappy - Red
13. Small Zippered Loop Lamp - hand grip - marigold
14. Grape and Cable Cup and Saucer - white - VERY RARE
15. Wishbone Epergne - marigold
16. Wishbone Epergne - green
17. Inverted Strawberry large Open Compote - marigold
18. Inverted Thistle Water Set - purple.
19. Drapery Vase - ice green

CORRESPONDENCE

Dear Mr. Kramer,

My husband and I have admired the beauty of Carnival Glass for years. Within the last year we began to collect pieces of this beautiful glass. Our thirst for knowledge regarding this obsession we seem to have become involved with, led us to purchase a book written by Carl O. Burns entitled "The Collector's Guide to Northwood's Carnival Glass". Mr. Burns devoted a page in the back of his book to listing Carnival Glass collector's associations and your name and address appeared on that page. Mr. Burns suggests that people like us would benefit greatly from an affiliation with these associations.

We now get to the purpose of this letter. Would you please send us information regarding your association. We are hungry to learn more about this hobby and others who share the same interest.

Sincerely, Sandra Bradon, Kansas City, MO

NOTES FROM THE SECRETARY

- Make all checks payable to HOACGA
- Ads for the bulletin must go to the bulletin Secretary Jackie Fortney (address inside the front cover)
- New membership contest is still in progress. Please show the name of the member referring you (if applicable) when you join
- Our computer can only hold one address per member so if you have a summer and winter address, please notify us a month before your move so the bulletin will arrive uninterrupted.
- Your membership expires the month shown in the upper right hand corner of your mailing label. Please renew early.
- Preregister for the convention if possible. This speeds up the process. We will have a drawing at the banquet from the names of those preregistering and a prize will be awarded.
- To be sure your name is on John Woody's mailing list and that you will receive a listing of the glass for our 1995 convention auction you can contact John Woody at (316) 747-2694 or write to John Woody, Rt. 1, Box 104, Douglass, KS 67039
- Punch Sets, the pattern notebook section for 1995, is \$8.00 if you pick it up at the convention. If you have it mailed, the cost is \$9.00 (1.00 postage) and the mailed copies won't go out until early May.
Note: Punch sets 1995 is a redo of the first notebook section in 1979 which is no longer available. It is updated and photographic processes are better so you will want a copy even if you have the 1979 version.
- The major Carnival Glass auctioneers do not always request our roster of club members for their mailings, so if you wish to be on their mailing lists for future auction listings and information contact them as follows:

COOPER & ALBRECHT	202 S. Mill St., Clio, MI 48420 (810) 686-2158
TOM BURNS	109 E. Steuben St., Bath, NY 14810 (607) 776-7942
JIM SEECK	405 1st St., Graffon, IA 50440 (515) 424-1116
MICKEY REICHEL	516 3rd St., Boonville, MO 65233 (816) 882-5292 days, (816) 882-5283 evenings
JOHN WOODY	Rt. 1, Box 104, Douglass, KS 67039 (316) 747-2694
- To those submitting pictures for the bulletin, please note that lighter backgrounds give better definition for the subject of the photo. Also note that black and white photos will give more detail than color photos when submitted for bulletin usage.
- BEGINNING IN THE APRIL NEWSLETTER, ALL ADS SUBMITTED FOR CLASSIFIED ADVERTISING MUST BE TYPED, COMPUTER PRINTED OR OTHERWISE LEGIBLY CONVEYED. Hand-written ads for sale or wanted can only be accepted when clearly hand printed.

WELCOME NEW MEMBERS

William & Constance Piccione	Charleston, TN
Douglas & Marcie Snow	Flushing, MI
Robert C. Salisbury	Elwood, NE
Ron & Linda Rhine	Oakridge, OR
Kenneth & Janet Wilke	Topeka, KS
Richard & Janet Bennett	Oxford, MA
Bobby & Libby Smiddy	La Follette, TN
Donna Slayton	Greenville, TX
Rodney Weiland	New London, WI
Willard & Carol Chase	Marshalltown, IA
Jerry Hislope	Ft. Collins, CO
Diane Blair	Seattle, WA
Virginia & Rusty Lewis	Milford, DE
Randall & Debra Hughes	Portland, OR
Craig Hanna	Clawson, MI
Robert Calchera	Brookfield, MA
Sherry Winger	Ft. Collins, CO
Rob & Joanne DeJong	Aberdeen, SD
Larry & Barbara Dorsey	Lutz, FL
James & Barbara Pepper	Eldorado, AR
George & Maureen Ballentine	Orlando, FL
Joseph Vietti	St. Charles, MI
Stanley & Hellen Loomau	Yazoo City, MS
Nita Anderson	Covington, TX
Harold Riddle	Port Washington, OH
Esther Wooley	Annandale, VA
Joyce & Jon Kinney	Dallas, TX
Robert & Renee Cooper	Newark, DE
Bernard & Barbara Fox	Armada, MI

1995 H.O.A.C.G.A. CONVENTION

The 1995 Convention will be held April 27, 28, 29 & 30 at the Holiday Inn, I-35 and 95th Street, Lenexa, Kansas (same location as previous years). You may make your Motel Reservations by calling the Holiday Inn at 913-888-6670 or 1-800-527-0582. The room rate is \$59.00 per day plus tax. The special room rate is for those members who register and are attending the Convention. **WHEN MAKING YOUR RESERVATIONS, MENTION THAT YOU ARE WITH THE HOACGA CONVENTION.**

PREREGISTRATION - A registration form is included in this packet. You are encouraged to complete this form and return it with your check to the Secretary prior to the convention. It will eliminate a lot of work for him during the convention. **THOSE MEMBERS WHO RETURN THEIR REGISTRATION FORM WILL HAVE THEIR NAME ENTERED INTO A DRAWING FOR A SPECIAL PIECE OF GLASS.** Your cooperation is appreciated.

CONVENTION HIGHLIGHTS

At the 1993 Convention John & Lucile Britt were recognized for their many contributions to the Carnival Glass hobby, and as part of that recognition, H.O.A.C.G.A. established a **JOHN & LUCILE BRITT AWARD FOR EXCELLENCE IN CARNIVAL GLASS** award. Each year a member(s), that has made a substantial contribution to Carnival Glass, will be honored.

The recipient of this year's honor will be **CARL AND FERNE SCHROEDER**. The Schroeders have collected Carnival Glass for many years and have contributed greatly to the success of the Carnival Glass hobby. Carl is a past President of I.C.G.A. and has served in various capacities with the organization. Carl and Ferne have been speakers at several of the Carnival clubs. The Schroeders will be honored with this award at a luncheon on Friday, April 28.

***We are very pleased that Floyd and Cecil Whitley will be our banquet speakers. If you have had an opportunity to visit with Floyd or Cecil, or attended any of the Texas Carnival club's conventions, and/or have accepted their invitation to view their collection, you know how gracious they are. Floyd and Cecil are, indeed, as asset to the Carnival Glass hobby. We are looking forward to their talk.

***The Woody Auction Company will be conducting the auction on Saturday. We know that John will present an outstanding auction with something for everyone in attendance.

***Three Educational Programs will be presented to add to your Carnival Glass knowledge.

MILLERSBURG GLASS Dick and Jennie Hostetler will present a program on Millersburg glass. They have been actively acquiring Millersburg for their collection and are very avid collectors. This should be an interesting program as well as timely, with the recent publication of the Marie McGee book on Millersburg glass.

VASES David & Joan Doty will present a program on Swing Vases. Joan has been studying and collecting vases for sometime. Vases have been enjoying some popularity among the collectors for the

past few years. This increased interest is due to collectors, like the Doty's, doing more research and sharing this information. We know that you will learn much from this program.

HOLLY PATTERN John Mikkonen will present an educational program on the Holly pattern. John has an extensive collection of the various pieces made in the Holly pattern. You will add to your carnival knowledge from John's presentation.

*****ROOM DISPLAYS** You are encouraged to bring glass and set up a room display. The displays are always an enjoyable part of the convention because they are educational. Room displays are appreciated by all of those in attendance.

A \$50.00 award will be given to the winner in each category, and a \$100.00 award will be given for the Room Display judged as the best overall. The best overall display will be judged on originality, creativity, and its overall appearance.

ONLY THE DISPLAYS OF THOSE MEMBERS ATTENDING AND RESIDING IN THE CONVENTION MOTEL WILL BE JUDGED OR PRESENTED WITH A ROOM DISPLAY AWARD.

Displays are to be entered in one of the six categories:

1. Same Color
2. Same Maker
3. Theme (Your Own)
4. Same Pattern
5. Same Shape
6. Rarities

Each Display will receive a Hobnail Cuspidor.

*****THURSDAY EVENING** After the Educational program, a special hospitality room will be available for your enjoyment. Pie and drinks will be served. This is an opportunity to sit back, relax, and visit friends that you probably have not seen for a few months or share with new friends.

*****FRIDAY EVENING** This time is for viewing the Auction glass, visit the rooms, or to do your buying and/or selling. Midnite auction at 9:30 pm. (Limit 2 pcs.)

*****SATURDAY AUCTION** This year's Auction will be presented by the Woody Auction Service. The Auction will start at 9:30 A.M. with previewing at 7:00 A.M. John Woody will be sending you a complete brochure of the glass.

*****SATURDAY EVENING** Saturday evening will be the time to relax, enjoy dining with friends, and enjoy an educational program by Floyd and Cecil Whitley.

*****SUNDAY BREAKFAST** A Sunday morning breakfast will be served at 7:00 A.M., so everyone can get an early start back home. The charge for the Breakfast is \$2.50 each

WE ARE LOOKING FORWARD TO SEEING YOU AT THE CONVENTION

1995 H.O.A.C.G.A. CONVENTION SCHEDULE

WEDNESDAY, APRIL 26

2:00 P.M. to 5:00 P.M. Hospitality Room - Registration - **PARTY DECK**

THURSDAY, APRIL 27

9:00 A.M. to Noon Registration - **PARTY DECK**
 3:00 P.M. Educational Program - "Millersburg" by Dick & Jennie Hostetler - **PRESIDENTS ROOM**
 7:00 P.M. Educational Program - "Swung Vases" by David & Joan Doty - **PRESIDENTS ROOM**
 8:30 P.M. Hospitality Room - Pie & Coffee - **PARTY DECK**

FRIDAY, APRIL 28

8:00 A.M. to 9:30 A.M. Registration - **PARTY DECK**
 10:00 A.M. Educational Program - "Holly Pattern" by John Mikkonen - **PRESIDENTS ROOM**
 12:30 P.M. Luncheon - Honoring Carl & Ferne Schroeder with the John & Lucile Britt Award - **BALLROOM**
 2:00 P.M. Annual Business Meeting (After Luncheon) - **PRESIDENTS ROOM**
 3:00 P.M. to 5:00 P.M. Room Display Judging - All Room Displays should be viewable for Judging during this time.
 6:00 P.M. Auction Glass viewing - **BALLROOM**
 8:30 P.M. Hospitality Room - **PARTY DECK**
 9:30 P.M. Midnite Auction - **PRESIDENTS ROOM**

SATURDAY, APRIL 29

7:00 A.M. View Auction Glass - **BALLROOM**
 8:00 A.M. to 9:00 A.M. Registration - **PARTY DECK**
 9:30 A.M. Woody Auction - **BALLROOM**
 6:00 P.M. Cash Bar - **BALLROOM**
 6:30 P.M. Banquet - Floyd & Cecil Whitley, Speakers
 Whimsey Auction - **BALLROOM**

AUCTION OF WHIMSEYS - FROM 1994 MUGS AND SPITTOONS

SUNDAY, APRIL 30

7:00 A.M. to 9:00 A.M. Farewell Breakfast - **BALLROOM**

1995 H.O.A.C.G.A. CONVENTION REGISTRATION

APRIL 28 - LUNCHEON - 12:30 P.M.

BREAST OF CHICKEN _____ @ \$14.00/Person \$ _____

APRIL 29 - BANQUET - 6:30 P.M.

STUFFED PORK CHOP _____ @ \$18.00/Person \$ _____

APRIL 30 - BREAKFAST - 7:00 A.M.

_____ @ \$2.50/Person \$ _____

1995 MEMBERSHIP RENEWAL

\$25.00 U.S. & CANADA
 \$40.00 FOREIGN \$ _____

1995 HOACGA NOTEBOOK INSERT - PUNCH SETS

\$8.00 EACH PLUS \$1.00 SHIPPING
 _____ @ \$8.00 EACH \$ _____

CONVENTION REGISTRATION

(helps defray convention costs) \$ 5.00

TOTAL \$ _____

NAME: _____

ADDRESS: _____

CITY, STATE & ZIP: _____

STAYING AT HOLIDAY INN: YES _____ NO _____

(check one)

MAKE CHECKS PAYABLE TO H.O.A.C.G.A. AND SEND TO:
 ED KRAMER, 4305 W. 78TH STREET, PRAIRIE VILLAGE, KS 66208

H.O.A.C.G.A. BULLETIN - ADVERTISEMENT POLICY

1. All advertisements of glass for SALE or WANTS must be received by the Bulletin Secretary no later than the LAST DAY OF THE MONTH to insure being published in the next bulletin.
2. Members may advertise ten (10) •For Sale• and/or •Wants• per month. The •For Sale• Glass must be members glass and not the property of a non-member. Advertising is at no cost.
3. Only •OLD CARNIVAL GLASS• items or H.O.A.C.G.A. Souvenirs will be published.
4. Damage or flaws should be noted.
5. All •For Sale• items must be priced; NO BID ITEMS WILL BE PUBLISHED.
6. A 5 day return privilege, at buyer's expense, providing it is not as advertised, or as discussed.
7. Postage and Insurance is to be the responsibility of the buyer, both when returning and receiving the glass.
8. The sender of the glass (be it the seller or the buyer returning it) is responsible for the condition of the glass as it arrives at its destination.
9. H.O.A.C.G.A. does not accept responsibility for accuracy of any advertisement.

USE THE FOLLOWING ABBREVIATIONS FOR GLASS DESCRIPTION.

A	Amethyst	HA	Honey Amber	P	Purple
AMB	Amber	IB	Ice Blue	PRL	Pearl
AO	Aqua Opal	IG	Ice Green	PM	Pastel Marigold
B	Blue	IGO	Ice Green Opal	PO	Peach Opal
BO	Blue Opal	LAV	Lavender	R	Red
CLM	Clambroth	M	Marigold	RA	Amberina
EB	Electric Blue	MMG	Marigold on Milk Glass	SM	Smoke
G	Green			VAS	Vaseline

Note: If you wish to describe a piece as light or dark, use the body of the ad.

EI - Excellent, GI - Good, LI - Iridescence

CARNIVAL GLASS FOR SALE

NOTICE

BEGINNING IN THE APRIL NEWSLETTER, ALL ADS SUBMITTED FOR CLASSIFIED ADVERTISING MUST BE TYPED, COMPUTER PRINTED OR OTHERWISE LEGIBLY CONVEYED. Handwritten ads for sale or wanted can only be accepted when clearly hand printed.

Greg Gilliland, 2324 E. Lansdale Ct., Simi Valley, CA 93065
Phone: (805) 522-8887

A	EI	Millersburg Primrose bowl - Radium	275.00
A	EI	Millersburg Whirling Leaves 9½" bowl - Radium	275.00
W	EI	Hearts & Flowers bowl	425.00
EB	EI	Grape & Cable Bon Bon	295.00
A	EI	Millersburg Grape Wreath - Radium	145.00
M	EI	Acorn Burr 4 pc. Table Set - Beautiful	895.00
M	EI	Two Flowers bowl	80.00
EB	EI	Good Luck ruffled bowl	525.00

Jack Carwile, P.O. Box 35, Gainsboro, TN 38562
Phone: (615) 268-0773

M	EI	(N) Corn Vase	1,200.00
---	----	---------------	----------

Ann Silverman, 10 Cannon Forge Drive, Foxboro, MA 02035
Phone: (508) 543-8696

B	EI	Wreath of Roses punch cups (have 8)	40.00
G	EI	Singing Birds tumblers (have 3)	150.00
A	EI	Maple Leaf tumbler	50.00
M	EI	Imperial Grape punch cups (have 9)	20.00
M	EI	Imperial Grape base for punch bowl	30.00
M	EI	Northwood Beaded Cable candy dish	45.00

CARNIVAL GLASS FOR SALE

Dick Wetherbee, 847 Stafford St., Rochdale, MA 01542
Phone: (508) 892-4420

PO	EI	Panelled 6" tri-shaped vase CRE, great color & opal	85.00
M	EI	Boggy Bayou 6½" vase, pattern is clear dark color	55.00
AMBEI		Smooth Rays 5" stemmed spittoon compote, rare shape, pretty	95.00
SM	EI	Imperials blank 9" basket, dark smoky color, rare	85.00
A	EI	Butterfly Northwood 6" bonbon, Light Amy., super color	110.00
M	EI	Drapery Variet 9" vase, great dark	85.00
G	EI	Wreath of Roses/wide panel 6", 2 hld stemmed bonbon, real pretty	95.00
MMGEI		Smooth Panels 10½" vase flared opening, a beauty	130.00
T	EI	Cornith 8" vase, great iridescence for this pattern	35.00
B	EI	Peacock at the Urn 5" goblet shaped compote, real pretty	125.00

Gerald M Hess, 500 Woodland Trail, Argos, IN 46501
Phone: (219) 892-6193

M	EI	Lattice & Daisy tumbler	17.50
SM	EI	Soda Gold tumbler	50.00
SM	GI	Oval & Round 5" bowl	20.00
M	EI	File tumbler	90.00
M	EI	Vintage fernery	45.00
M	EI	Grape decanter (nice but no stopper)	50.00
A	EI	Leaf rays one handled spade shaped nappy	35.00
A	EI	Snow Fancy 4½" bowl (plain interior)	45.00
M	EI	Jenkins "Cut Flowers" 10" vase (has base crack, excellent shelf piece)	30.00
M	GI	Pretty Panels tumbler	45.00

Kermit Howard, 10888 SR 68 W., Elberfeld, IN 47613
Phone: (812) 983-4814

M	EI	Rambler Rose tumblers (have 2 each)	20.00
M	EI	"Old" Robin Mug perfect	50.00
M	EI	Grape Vine Lattice tumbler, beautiful dark color	45.00
A	EI	Butterfly, 2 handle bonbon	50.00
B	EI	Persian Medallion, 2 handle bonbon	50.00

CARNIVAL GLASS FOR SALE

Dave Ackerman, 4677 Kennebec Drive, Cass City, MI 48726
Phone: (517) 872-2023

M		Grape & Cable sherbet slight pin head on base mold line	32.00
M		Miniature cordial hobnail decanter, scarce	300.00
SM		Ripple 12½" vase	90.00
PRL		Custard - Grape & Gothic Arches 4 pc. table set no cov. sugar	425.00
G		Mlbg. Holly Sprig tri-cornered 8" bowl	180.00
P		Hat Pin, Cattails only iridised	50.00
M		Single rose plain vase un-patterned but cute	35.00
M		Wide Panels, 4 pc. console set, plate 15", bowl 12" premium pair candle sticks, good color, probably Imperial	150.00
M		Hobstar Band water pitcher, dome fld.	255.00
W		Ripple 9¼" vase	190.00

Carl O. Burns, Star Rt. Box 111, Rumford Center, Maine 04278
Phone: (207) 392-3044

G	EI	Ten Mums 9½" bowl, 3 in 1 edge, a beauty	275.00
M	EI	Grape & Cable banana bowl, banded edge, super irid.	130.00
A	EI	Millersburg Hanging Cherries covered butter dish	195.00
A	EI	Three Fruits 8½" plate, basketweave ext. super irid.	145.00
M	EI	Drapery 7" vase (N), super dark, rich color	100.00
B	EI	Grape & Gothic Arches Master berry bowl, nice color	95.00
B	EI	Windflower 8" ruffled bowl, great color & scarce	80.00
P	EI	Lustre Rose tumbler, outstanding elec. blue irid.	75.00
G	EI	Fenton's Grape & Cable 7" spat. fld. round bowl, a beauty	85.00
A	EI	Millersburg Hanging Cherries spooner	75.00

Jeanne Asadourian, 2471 W. Sample Ave., Fresno, CA 93711
Phone: (209) 435-3313

AO	EI	Fruits & Flowers bonbon, fantastic piece	575.00
B	EI	Beaded Cable rose bowl, electric & gorgeous	325.00
B	EI	Rooster hatpin, lovely	95.00
B	EI	Open Edge basket, lovely	70.00
B	EI	Orange Tree bowl, satin & great	115.00
*	EI	Rooster hatpin, Sapphire	105.00
G	EI	Grape & Cable cologne bottle, fantastic color & irid.	425.00
A	EI	Rooster hatpin, lovely	95.00
M	EI	Captive Rose bowl, dark	80.00
G	EI	Peacock...Urn 10½" bowl, Millersburg, fantastic radium	350.00

CARNIVAL GLASS FOR SALE

Bill & Sharon Mizell, 52 Old Bonifant Rd., Silver Spring, MD 20905
Phone: (301) 384-8952

M	EI	Feldman Bros Advertising Open-edge basket	75.00
G	EI	Tree Trunk 8" small size vase	100.00
IG	EI	Brocaided Daffodil 7" candy dish, looks like upside down umbrella w/open heart-shaped handle, gold decoration intact	125.00
B	GI	Small open-ended basket - pulled up and around never seen another in this shape	100.00
W	EI	Three Fruits ruff bowl, footed and a beauty	300.00
M	GI	Pig Bank, Save with Marathon Oil Advertising on side	75.00
G	EI	Oriental Poppy tumbler	65.00
*	EI	Cattails Variet hatpin, plums not iridised - dark	80.00
G	EI	Three Fruits PCE bowl, small burn mark on back	115.00
G	GI	Panelled Dandelion tumbler	60.00

Pat Housewright, 225 Rowland, Stephenville, TX 76401
Phone: (817) 968-2997

M	EI	Star & File rosebowl	65.00
M	EI	Star & File tumbler	125.00
M	EI	Good Luck 8½" PCE bowl b/w ext.	175.00
M	EI	Octagon Wine decanter	90.00
HA	EI	Cosmos & Cane tumbler	90.00
B	EI	Peach tumbler	85.00
B	EI	Orange Tree small compote	45.00
G	EI	Acanthus 8" bowl	85.00
A	EI	Thistle 8" 3 in 1 edge bowl	85.00
SM	EI	Orange Tree with bands wine glass	85.00

Stephen R. Kocsis, 3493 Wolfcreek Rd., Cuba, NY 14727-9526
Phone: (716) 968-2499

G		(N) thin rib vase 13 3/4" high 4 3/4" base, great color	200.00
M		Grape & Cable plate, basketweave back, nice color & irid.	125.00
G		Strawberry plate, basketweave back, nice even soft color	215.00
G		Fine cut & roses rosebowl, good feet, no fancy int., beaut. color	140.00
B		Double Stem rose dome - footed bowl, super color & irid.	200.00
A		Little Stars ruffled bowl 7¼", nice color & irid.	145.00
M		Grape & Cable nappy (made from punch cups), nice color & irid.	90.00

CARNIVAL GLASS FOR SALE

Debbie & Mike Heintl, 240 Mize Rd. North, Cullman, AL 35055
Phone: (205) 739-0281

M		Imperial Crackle 5 pc. water set, beautiful rubigold	100.00
M		Imperial Grape bowl 6½", marie glows under black light	35.00
M		Fenton Waterlily and Cattail tumblers (2)	each 25.00
B		Fenton Orange Tree footed tumbler, pin head one ft.	30.00
M		Imperial Tree Bark 5 pc. water set, one tumbler has sm. chip on lip ..	55.00
M		Imperial 2 pc. set golden honey comb creamer & sugar Handle has small chip on side	8.00
B		Northwood round bushel basket flake on rim	50.00
M		Persian Garden 6" plate, rare, dugan	90.00
A		Northwood Beaded Cable rose bowl rays int, flake on one ft.	75.00
P		Acorn sugar & creamer (sugar cracked no lid, no harm flicks of burr of creamer), good color	300.00

Bill Tendl, 1816 Albright Dr., Clearwater, FL 34625
Phone: (813) 796-3150

IG		Rose spray compote, JIP, rare shape and color	145.00
M		Peacock at the Fountain water pitcher, perfect condition	235.00
M		Oval Star and Fan footed rose bowl, perfect feet, scarce	45.00
M		Star of David and bows footed bowl, scarce color, nice	60.00
G		Greek key dome footed bowl	95.00
M		Peacock at the Fountain punch cup	28.00
P		Memphis punch cups, outstanding color, have 6	each 30.00
M		Sailboats small ruffled bowl, nice dark color	20.00
M		Strawberry bon bon	20.00
M		Persian Garden 6 inch plate, nice color	65.00

Sam Swierc, 520 East Avenue, Dover, DE 19901
Phone: (302) 736-6635

W	EI	Poppy Show plate	500.00
A	EI	Peacocks plate	500.00
M	EI	Good Luck plate	350.00
G	EI	Trout & Fly square bowl	1,100.00
M	EI	Grape & Cable plate (basketweave)	135.00
A	EI	Grape & Cable plate (radium finish)	350.00
A	EI	Grape & Cable Cologne Bottle	250.00
M	EI	Star & File cordial	150.00
G	EI	Dandelion tumbler	80.00
DA	EI	Tiger Lily tumbler (have 2)	each 125.00

CARNIVAL GLASS FOR SALE

Joe & Winelle Orr, 2224 Burlingate Dr., Cordova, TN 38018
Phone: (901) 373-4504

*	(N) Grape & Cable 6" ruff bowl, color of Horehound	175.00
A	Leaf & Beads rose bowl, sunflower int.	90.00
A	Leaf & Beads footed candy dish, sunflower int.	80.00
G	Leaf & Beads footed candy dish, rays int.	90.00
B	Blackberry block tumbler	60.00
A	Rustic 11" vase	45.00
B	Diamond & Rib 10" vase	65.00
G	Tree Trunk 7½" squatty vase	125.00
A	Three Fruits plate, light wear on fruit	135.00
M	Chrysanthemum 9" deep footed bowl, dark	45.00

George Bond, 720 Gran Paseo Dr., Orlando, FL 32825-7923
Phone: (407) 382-6201

PO	EI	Large 6 ruffles ski star bowl	85.00
----	----	-------------------------------------	-------

Adam Fikso, 3620 Glenview Rd., Glenview, IL 60025
Phone: (708) 729-7707

B	EI	Bushel Basket (N) usual minor crack in one handle	120.00
CH/CLM		Leaf Chain ics bowl 8" (plates are more frequent.)	160.00
G	GI	Wildflower (N) Compote (blossomtime w/out interior)	200.00
W	EI	Grapevine Lattice 6" rfd plate bowl, frosty	75.00
*	EI	Diamond Lace ics bowl, radium (near smoke in color)	120.00
G	EI	Lustre Flute (N) sugar and creamer	110.00
G		Leaf Chain very flat plate 9½", usual light pastel irid.	150.00
A	GI	Wild Blackberry 3/1 edge bowl, satin	110.00

Tamara McKay, 11052 Mill Pond Court, Jacksonville, FL 32257
Phone: (904) 262-8705

P	EI	(N) Grape & Cable banquet punch set, includes 14 cups, perfect ...	2,300.00
W	EI	(N) Oriental Poppy tumblers, have 2 each	100.00
M	EI	(N) Interior Swirl tumbler, tiny nick on underside base	25.00
M	EI	Fruit Lustre tumbler	15.00
P	EI	Stork & Rushes punch cup	18.00
P	EI	(N) Grape & Cable punch cup, no interior iridescence	25.00
M	EI	Vineyard tumbler	25.00

CARNIVAL GLASS FOR SALE

Mike Cain, Rt. 2 Box 294-D, Camden, TX 38320
Phone: (901) 584-6568

CRANGI		Encrusted Vine tumbler	20.00
B	GI	Grape & Cable stippled punch cup	50.00
M	GI	Jeanette plain juice glass, no pattern	5.00
M	EI	Enameled Cherries tumbler, Whitley #9	35.00
M	GI	Fenton Engraved Flower Ice Tea, 5½"	25.00
	GI	Celest Blue Fenton #220 tumbler, clear handle	25.00
M	GI	Round bottom tumbler, flashed, no pattern, 5"	10.00
SM	EI	Hobnail tumbler, signed IG	50.00
G	EI	Millersburg Hanging Cherries tumbler, small base chip	75.00
M	GI	Fenton Engraved Double Daisy tumbler, 4"	30.00

Lee & Phyllis Bryant, 11645 NW Winchester Rd., Decatur, IN 46733
Phone: (219) 639-3415

G		Feather Stitch 9" ruffled bowl multi	75.00
M		Millersburg Furniture two row open edge basket	55.00
M		Fishermans Mug dark satin finish nice	225.00
M		Primrose 9½" ruffled bowl radium finish	125.00
M		Coral 8½" ruffled bowl dark marigold	100.00
B		Pond Lily bonbon dark tray shape multi	80.00
A		Thistle 8½" bowl 3 in 1 multi	75.00
IB		Drapery Candy Dish good feet super nice	150.00
M		Wishbone 8" ruffled bowl dark marigold	65.00
M		LBJ Hat Ash Tray dark color	25.00

Send SASE for list, consisting of large selection of bowls, 20 plates and several vase.

John & Terri Dubinski, 2408 Fleetwood Dr., Columbia, MO 65202
Phone: (314) 474-2644

B	EI	Peacock at Urn small ICS, N	125.00
A	EI	Persian Medallion ruffled sauce, scarce	75.00
M	EI	Persian Gardens 6" plate	95.00
M	EI	Peacock Tail bonbon	45.00
M	EI	Scroll Embossed compote radium	40.00
G	EI	Wildflower compote N	295.00
M	EI	Persian Medallion bonbon	40.00
M	EI	Little Stars 7½" ruffled bowl, scarce	135.00
B	EI	Peacock & Grape ICS bowl	120.00
M	EI	Late Waterlily & Cattails tumbler have 12	15.00 each or all for 150.00

CARNIVAL GLASS FOR SALE

Kent Patrick Zimmerman, P.O. Box 12821, Wichita, KS 67277
 Phone: (316) 943-3487

P/A	Dugan wreathed cherry banana bowl, Super Nice	140.00
EB	Peach tumbler, Electric Iridescence.....	175.00

Marlin L. Blosser, 4705B Charles Rd., Mechanicsburg, PA 17055
 Phone: (717) 975-2920

W	EI	Apple Blossom Twigs ice cream shape bowl	145.00
IG	EI	Brocaded Palms 7" 2 handled bowl.....	35.00
B	EI	Thistle footed banana boat.....	325.00
M	EI	Poppy relish dish (N).....	35.00
B	EI	Cherries & Little Flowers 7 pc. water set.....	345.00
M	EI	Roundup 9" ice cream shape bowl	85.00
M	EI	Lea 6 sided footed bowl.....	35.00
G	EI	Diamonds tumbler.....	45.00
G	EI	Pansy creamer.....	35.00
G	EI	Open Rose 9" flat plate.....	125.00

Donald L Harris, 527 Lavina Dr., Mechanicsburg, PA 17055
 Phone: (717) 790-0412

P	EI	Windmill milk pitcher, small size	625.00
M	EI	Butterfly & Berry sugar with lid.....	95.00
P	EI	Knotted Beads 11" vase (scarce color)	85.00
P	EI	Imperial Grape carafe.....	225.00
M	EI	Grape & Cable banded cologne bottles (2)	each 185.00
B	EI	Horseheads rose bowl (chip on edge)	68.00
W	EI	Mirrored Lotus rose bowl.....	650.00
P	EI	Hobstar creamer.....	125.00
Teal	EI	Octagon butterdish.....	185.00
A	EI	Primrose ruffled bowl (Millersburg).....	125.00

SEND .52 STAMP FOR LARGE LIST OF FOR SALE GLASS

CARNIVAL GLASS FOR SALE

Barbara Rowe, Box 87, Shoreham, VT 05770
 Phone: (802) 948-2090

LAV G	Star Medallion milk pitcher.....	45.00
LAV G	Corinth vase 9 3/4".....	38.00
CLMG	Waffle Block cream pitcher	40.00
M G	Grape & Cable punch base, dark.....	40.00
M G	Fashion punch base, dark.....	28.00
VAS G	(5) stretch sherberts	50.00

Ted L. Sheibley, 53 Meadow Brook Court, New Cumberland, PA 17070
 Phone: (717) 770-0616

B	EI	Grape & Gothic Arches butter dish.....	200.00
G	EI	Primrose ruffled bowl (radium).....	175.00
P	EI	Diamond Lace 9" ruffled bowl	50.00
P	EI	Grape & Cable powder jar with lid.....	175.00
G	EI	Trout & Fly 9" ice cream bowl.....	675.00
B	EI	Thin Rib 10 1/2" vase (N).....	75.00
P	EI	Imperial Grape carafe.....	225.00
P	EI	Floral & Grape water pitcher	250.00
P	EI	Grape & Cable whiskey glass.....	225.00
M	EI	Peacock at Fountain 7 pc. water set, point damage on pitcher	275.00

LAYAWAYS AVAILABLE

Gerald L. Thomas, 44 E. Highland Ave., Atlantic Highlands, NJ 07716
 Phone: (908) 872-8051

A	EI	N Memphis punch cup (mint).....	25.00
M	EI	Stork & Rushes tumbler banded top, radium finish.....	25.00
M	EI	Grape & Cable tumbler, thumbprint base	25.00
M	EI	Propeller compote, dark.....	35.00
M	EI	Butterfly and Tulip bowl.....	300.00
R	EI	Orange Tree Mug standard size.....	565.00
P	EI	Grape & Cable ruffled 7 pc. berry set.....	325.00
M	EI	Whirling leaves bowl, Millersburg, radium finish.....	70.00
B	EI	Persian Med. compote, small heat check - cobalt blue	70.00
M	EI	Grape & Cable made from tumbler	40.00

CARNIVAL GLASS FOR SALE

Jerry Rissmillen, R. #2, Box 172, Elverson, PA 19520
Phone: (610) 286-9879

B	Lions Bowl, powder blue base	190.00
P	Pansy Creamer, super color	60.00
P	Lustre Rose tumblers elec., have six	each 80.00
M	Peacock at the Fountain punch cups, have 5	each 25.00
P	Springtime tumbler, great	100.00
G	Diamonds tumbler	50.00
M	474 water pitcher	125.00
M	Little Stars bowl 7½", very nice	125.00
P	N Bushel Basket, 8 sided	90.00
M	Peacock at the Urn 10" ice cream bowl	250.00

Dave Deem, 1746 N. California St., Burbank, CA 91505
Phone: (818) 845-4530

B	EI	Captive Rose 9" plate	350.00
CLMEI		Holly plate	175.00
G	EI	Leaf Chain 9" plate	210.00
M	EI	Peacock Dahlia 7" bowl ruffled	45.00
B	EI	Sailboats 6¼" flat plate - rare	600.00
P	EI	Three Fruits 9" plate, very flat	165.00
M	EI	Peacock/Grape 9" ftd flat plate, super	325.00

Yvan Beaudry, 109 5th Ave., Boisbriand, QC J7G 1Y8
Phone: (514) 437-4585

A	EI	Panelled Dandelion tumbler	30.00
		Hartung original 10 book set, complete	50.00
		"Colors in Carnival Glass", book 4 by Sherman Hand, 100 pages in color	7.50

CARNIVAL GLASS FOR SALE

Ray Hitchcock, R.R. 1, Box 301, Winterset, IA 50273
Phone: (515) 462-2074

A	Concord bowl, 3 in 1 ruffle, fantastic	215.00
M	Devilbiss atomizer, mint	85.00
M	Orange Tree 8 pc. punch set	165.00
M	Vintage powder jar, nice one	60.00
A	Fine Rib 14" vase, with pouring spout	100.00
G	Strawberry bonbon	75.00
V	Strawberry bonbon	65.00
M	Lotus & Thistle 7" ICS bowl	65.00
G	Vintage large lily	75.00
M	Wreath of roses tri-cornered whimsey	65.00

Phil Hessenius, 1701 E. Roma, Phoenix, AZ 85016
Phone: (602) 277-6306

P	EI	Fruits & Flowers 5" berry ruffled berry bowls (have 3)	each 30.00
P	EI	Fanciful I.C. shaped bowl, multicolored iridescence	250.00
M	EI	Holly plate, super dark & perfectly symmetrical	250.00
W	EI	Fanciful I.C. shaped bowl 8 3/4"	185.00
M	EI	Kittens 6 ruffled bowl, super color and dark	320.00
G	EI	Blackberry spray hat 6 ruffled hard to find reds in iridescence	160.00
*	EI	Vaseline Holly hat	120.00

Pamela M. MacDonald, P.O. Box 5, Silver Lake, NH 03875
Phone: (603) 367-8077

B	Stork in Rushes tumbler	50.00
SM	Soda Gold tumbler	55.00
M	Twins Fruit bowl complete set	75.00
G	Flute toothpick	45.00
PO	Dogwood sprays footed bowl	110.00
W	Dahlia candy dish	45.00
M	Six sided 9" plates, deep marigold	20.00
M	Waterlily mstr berry bowl	50.00
PO	Six Petals tri-cornered bowl	65.00
AMB	Open Rose 9" plate, great color	90.00

CARNIVAL GLASS FOR SALE

Maurie "Moe" Myers, P.O. Box 3180, North Conway, NH 03860
Phone: (603) 367-8077

B	Two row open edge basket 2 sides up.....	40.00
W	Grape Delight rose bowl, a beauty	80.00
IG	Swan	30.00
M	Three in one small plate, real nice.....	120.00
AO	Rose show ruffled bowl, super clean, best I've seen	995.00
M	Inverted feather, parfait, perfect.....	110.00
IB	Ripples lamp shade, full size, great color	100.00
M	Crackle, wall vase	25.00
B	Dragon & Lotus ruffled bowl, a beauty	75.00
*	VCR tape on 200 plus old Carnival glass vases. Patterns in full color. In alphabetical order. Narrated. Price includes S&H. 2 hour tape.....	25.00

Gary Young 4965 Crofton Drive, Rockford, IL 61114
Phone: (815) 637-2770

VAS EI	Fenton Coin Dot Rose Bowl	100.00
W EI	Apple Tree water pitcher, nice	695.00
PO EI	Starfish compote, dark	100.00
P EI	Wishbone bowl, footed	135.00
M EI	Birds and Cherries card receiver (florescence)	90.00
M EI	Vintage Powder jar, rim chips, lid mint	40.00
M EI	Stork & Rushes mug, dark and pretty.....	25.00

Gladys Hutchinson, Rt. 2, Box 2966, Seymour, MO 65746
Phone: (417) 935-4908

A	Grape & Cable cup & saucer	190.00
M	Lattice and Daisy tumbler (3) each.....	25.00
B	Butterfly and Berry tumbler	50.00
B	Panelled Dandelion tumbler.....	60.00
HA	Cosmos & Cane 4 tumblers. Bottoms have been ground otherwise they are nice. Each.....	70.00
M	Rambler Rose (5) each	25.00
PO	Flower and Frames 8½" bowl.....	160.00
M	Pine Cone ruffled top 6" bowl.....	75.00
M	Soda Gold water pitcher	185.00
M	Heavy Grape punch bowl	140.00

CARNIVAL GLASS WANTED

NOTICE

BEGINNING IN THE APRIL NEWSLETTER, ALL ADS SUBMITTED FOR CLASSIFIED ADVERTISING MUST BE TYPED, COMPUTER PRINTED OR OTHERWISE LEGIBLY CONVEYED. Handwritten ads for sale or wanted can only be accepted when clearly hand printed.

Jack Carwile, P.O. Box 35, Gainsboro, TN 38562
Phone: (615) 268-0773

- A (N) Grape & Cable Sweet Meat Lid
- A (N) Grape & Cable Shot glasses & decanter
- A (N) Grape & Cable Perfume

Barbara & Ron Shoff, 154 Rockport Drive, Cape Girardeau, MO 63701
Phone: (314) 335-0587

- B Wreath of Roses punch cups with Persian Medallion interior
- A Peacock at the Fountain sugar and spooner
- G Wide Panel epergne lily

Danny McNease, 22711 Laurelwood Lane, Tomball, TX 77375
Phone: (713) 351-8448

- M Fluffy Peacock tumblers (need 6)

Ed Kramer, 4305 W. 78th St., Prairie Village, KS 66208
Phone: (913) 642-3587

- M EI Need 2 lilies for silver and glass epergne. Lilies are clear glass bottom with spiral design and marigold 4 ruffle on top
- CLMEI Imperial Grape Water Carafe
- M EI Fenton Master Nut Cup
- M EI 474 Vases

CARNIVAL GLASS WANTED

Carl O. Burns, Star Rt. Box 111, Rumford Center, Maine 04278
Phone: (207) 392-3044

- B Orange Tree butter base only (or will sell lid)
- A Millersburg Hanging Cherries sugar base (or will sell lid)
- A Millersburg Hanging Cherries creamer
- HA Cosmos & Cane sugar lid (or will sell base)
- SM Fashion breakfast sugar

Chuck & Marge Kremer, 430 Rose Avenue, New Haven, IN 46774
Phone: (219) 749-4909

- A Lustre Rose sugar
- A Inverted Feather butter base
- M Inverted Strawberry sugar
- A Inverted Thistle butter
- TEAL Octagon sugar, creamer & spooner

Norma Wagner, 119 21st St., Spirit Lake, IA 51360

- P Open Rose 9" plate (reg.)
- P Imperial Grape 9" plate (reg.)
- Leaf Chain 9" (reg.) any color

Stephen R. Kocsis, 3493 Wolfcreek Rd., Cuba, NY 14727-9526
Phone: (716) 968-2499

- A Acorn Burrs covered sugar base, must be mint & have good color

Debbie & Mike Heintz, 240 Mize Rd. North, Cullman, AL 35055
Phone: (205) 739-0281

- M Iris & Herringbone Demitasse cup & saucer
- M Grape & Cable powder jar lid

Bill Tendl, 1816 Albright Dr., Clearwater, FL 34625
Phone: (813) 796-3150

- P Memphis fruit bowl base
- P Broken arches punch bowl base, silvery iridescence
- A Millersburg Cherry, covered sugar

CARNIVAL GLASS WANTED

George Bond, 720 Gran Paseo Dr., Orlando, FL 32825-7923
Phone: (407) 382-6201

- M EI Peacock at the Fountain butter bottom
- M EI Orange Tree butter bottom
- W EI Orange Tree butter top
- B EI Orange Tree punch cups
- M EI Orange Tree hatpin holder, dark
- P/A EI Many Fruits ruffled punch base
- P/A EI Acorn Burr punch bowl (no cups needed)

Marlin L. Blosser, 4705B Charles Rd., Mechanicsburg, PA 17055
Phone: (717) 975-2920

- G Flute punch bowl top
- G Hobstar sugar lid
- G Long Hobstar punch base
- G Shell & Jewel lids (need 2)
- M Diamond Point Columns butter lid
- Any Peacock at Fountain punch cups
- M 474 punch bowl top
- M Grape & Cable cracker jar bottom
- M Grape & Cable powder jar lid
- M Hobstar cracker jar bottom

Donald L. Harris, 527 Lavina Dr., Mechanicsburg, PA 17055
Phone: (717) 790-0412

- P Imperial Grape punch cups
 - P Peacock at Fountain butter lid
 - P Springtime butter lid
 - B Hen on Nest with Chicks Lid
 - M Orange Tree powder lid
 - Any Imperial Grape wince stopper (need M,P,G,SM)
 - M Octagon sugar bottom
 - P Grape & Cable cracker jar bottom
 - P 474 punch cups
 - P Hobstar butter base
- OR WILL SELL ANY OF ABOVE PARTS

CARNIVAL GLASS WANTED

Mike Cain, Rt. 2 Box 294-D, Camden, TX 38320
Phone: (901) 584-6568

A/P Grape & Cable stippled powder jar lid, purple and gold iridescence
M Jeanette North Carolina souvenir tumbler

Ted L. Sheibley, 53 Meadow Brook Court, New Cumberland, PA 17070
Phone: (717) 770-0616

M Grape & Cable butter bottom
P Four Seventy Four punch bowl top
G Orange Tree loving cup or hatpin holder
G Imperial Grape punch bowl
M Beaded Shell sugar lid
B Grape & Cable stippled humidior lid
M Maple Leaf butter lid
M Heavy Grape punch base
P Vintage powder jar lid
M Wreathed Cherry butter base
OR WILL SELL ANY OF THE ABOVE PARTS

Dennis Comer, 68695 U.S. 12 E., Edwardsburg, MI 49112
Phone: (616) 663-2202

HOACGA Souvenir pieces wanted. Please send list of items & prices.

Dave Ackerman, 4677 Kennebec Drive, Cass City, MI 48726
Phone: (517) 872-2023

G Octagon decanter stopper & 6 wine glasses

Robert & Sherry Cyza, 7426 Oakland Ave. So., Richfield, MN 55423
Phone: (612) 869-6980

M Lotus enameled tumbler, need 3
M Freesia enameled tumbler, need 4

Gary Young 4965 Crofton Drive, Rockford, IL 61114
Phone: (815) 637-2770

M Peacock at the Fountain butter bottom
G Butterfly and Berry butter lid
M Grape & Cable powder jar lid
M Butterfly and Berry sugar bottom
A/P Vintage powder jar lid
G Acorn Burrs punch bowl top
B Vintage Epergne bottom, small
A/P Grape & Cable sugar bottom
A/P Many Fruits ruffled punch base
A/P Grape & Cable butter bottom

CARNIVAL GLASS WANTED

Dave Deem, 1746 N. California St., Burbank, CA 91505
Phone: 1-818-845-4530

B/G/A Peacock & Grape 9" collar base
P Open rose 9" flat plate
Any Strawberry stippled 9" plates
P/B/G Three Fruits PCE stippled 9" bowls
B Grape & Cable stippled 9" bowl
A Captive rose plate
B Leaf Chain 9" plate
P/B/G Thistle 9" plate
B/A/G Vintage 9" plate

Ray Hitchcock, R.R. 1, Box 301, Winterset, IA 50273
Phone: (515) 462-2074

B Grape & Cable punch base stippled

Phil Hessenius, 1701 E. Roma, Phoenix, AZ 85016
Phone: (602) 277-6306

B Nippon bowl
G Stippled Grape & Cable punch bowl top only or will sell base
B Double Loop creamer or will sell open sugar
P Grape & Cable candlestick

Pamela M. MacDonald, P.O. Box 5, Silver Lake, NH 03875
Phone: (603) 367-8077

Teal Base to waffle block punch set
M Base to Royalty punch set

Gladys Hutchinson, Rt. 2, Box 2966, Seymour, MO 65746
Phone: (417) 935-4908

HA Cosmos and Cane sugar, creamer, spooner
M Bottom for Lustre Rose butter
M Hobstar Band 6 tumblers
M Butterfly & Plume 3 tumblers

CARNIVAL GLASS AUCTION

SATURDAY, JANUARY 28, 1995 - 9:30 A.M.

Holiday Inn -- St. Louis West/St. Peters -- St. Peters, MO

Seeck Auctions is pleased to start the new year off with a bang. Dee & Paul Bekemeier from Vero Beach, Florida and Jackie and Randy Poucher from Seminole, Florida have taken part of their collections and put them together to form an outstanding auction. From the top rarity to the more available, this is a well rounded grouping of glass. Hope to see you at the Holiday Inn in St. Peter, Missouri. I don't think you want to miss this one!

PREVIEW: Friday, January 27th, 3:00 P.M.

RESERVATIONS: Call (314) 928-1500 (Please mention you are with the Seeck Auction)

WRITE-IN BID POLICY

1. Write-in bids will be accepted by sending the numbers of the item(s) desired and the amount bid on each to: Seeck Auctions, 405 1st St., Grafton, IA 50440.
2. If known by Auction Company, bids may be done over the telephone. (515)424-1116 or (515)748-2923.
3. There is a \$5 handling charge for each successful bid. Shipping and insurance charges are additional.
4. Bidders will be notified by a phone call if their bid(s) are successful. This call will be made 1 - 3 days after the auction is over.
5. Please have all bids in by Wednesday, January 25th. All bids (by mail or phone) after this date will not be carried out.
6. If you do not receive an item that sold for less than your bid, assume we cancelled your bid because the piece of glass had below average color, manufacture problem, damage or was not listed correctly.
7. To receive price lists send: \$20 -- for this auction and next 7 auctions
\$5 -- for only this auction or individual auction (please specify)

Send to the above address.

- | | |
|---|---|
| <p>25__ 1. Melon Rib salt & pepper - marigold
55__ 2. Ripple 7" vase - purple - 3" base
60__ 3. Target 9" vase - purple
40__ 4. N's Wild Rose open edge bowl - green
X__ 5. N's Thin Rib JIP 8" vase - green
25__ 6. Thin Rib 10" vase - green
20__ 7. Acorn IC shaped bowl - blue - silvery
55__ 8. Orange Tree IC shaped bowl - white
55__ 9. Orange Tree IC shaped bowl - clambroth
1200 10. Pastel Swan salt whimsey - aqua teal - head is touching chest, an outstanding piece, only one known, WOW!</p> <p>175__ 11. Pastel Swan salt - amethyst - very scarce
60,40 12. Pastel Swan salt (2) - ice green - choice
55ea 13. Butterflies bon bons (2) - amethyst choice
160__ 14. Fleur De Lis ruffled bowl - marigold - radium & scarce</p> <p>475__ 15. Wreath of Roses punch bowl & base w/Persian Medallion interior & 3 cups - marigold - outstanding color & iridescence, super</p> <p>90,65 16. Dandelion tumblers (3) - purple - choice
65__ 17. Diamond Points 10 1/2" vase - purple
25__ 18. Diamond Points 9 3/4" vase - marigold</p> | <p>200__ 19. Luster Rose 4 pc. table set - marigold
1600 20. Grape & Cable master IC bowl - blue - super, super, color, blue is extremely rare in Grape & Cable!</p> <p>325__ 21. Grape & Cable master IC bowl - white - scarce & pretty</p> <p>80__ 22. Rustic 16 1/2" vase - amethyst
110__ 23. Rustic 16 3/4" vase - blue
100__ 24. Rustic 14 1/2" vase - marigold
27000 25. Tree Trunk 19" funeral vase - ice blue - ultra rare, extra pretty, an exciting piece of carnival glass, a top piece in the collecting hobby! One of two known!</p> <p>100__ 26. Puzzle bon bon - purple
60__ 27. Spiralex 12" vase - white
400__ 28. N's Peacock at the Fountain water pitcher - blue - super nice pitcher, has electric irid.</p> <p>45x3 29. N's Peacock at the Fountain tumblers (5) - blue - have outstanding color, choice</p> <p>7500 30. Grape & Cable 8 pc. MASTER punch set - blue - the rarest of the vivid colors, super pretty, one of 2 or 3 known, a key piece in this collection</p> |
|---|---|

- | | |
|---|--|
| <p>65__ 31. Top of the Morning Var. hatpin - dark
50__ 32. Ball hatpin - dark
200__ 33. Grape & Cable orange bowl - marigold - very pretty</p> <p>550__ 34. Acorn Burrs water pitcher - amethyst - a very desired pattern & quite rare</p> <p>55,4535. Acorn Burrs tumblers (2) - amethyst - choice
50__ 36. Knotted Beads 9 1/2" vase - amethyst
95__ 37. Knotted Beads 10 1/2" vase - blue
1000 38. Nippon 9" plate - amethyst - extremely rare plate & very nice</p> <p>500__ 39. Nippon 9" plate - marigold - also very rare & nice</p> <p>110__ 40. N's Thin Rib midsize funeral vase - green - very pretty</p> <p>55__ 41. N's Thin Rib midsize funeral vase - amethyst</p> <p>150__ 42. N's Thin Rib midsize funeral vase - marigold - pink & blue irid.</p> <p>900__ 43. Dragon & Lotus IC shaped bowl - red - very rare & desirable, another fine piece in this auction</p> <p>75__ 44. N's Fine Rib 10 1/2" vase - blue - pretty
45__ 45. N's Fine Rib 9" vase - marigold
55__ 46. N's Fine Rib 10" vase - green
550__ 47. Field Flower water pitcher - aqua teal - rare color, unusual</p> <p>300__ 48. Double Loop creamer - blue - extremely rare, nick on base, insignificant on a rare piece like this</p> <p>25__ 49. Double Loop chalice - blue
115__ 50. Drapery 7" vase - marigold - pretty
4000 51. Strawberry Scroll water pitcher - marigold - a neat shaped water pitcher, outstanding color & irid., extremely rare</p> <p>100__ 52. Grape & Gothic Arches spooner - green - pretty</p> <p>50__ 53. Grape & Gothic Arches creamer - marigold
275__ 54. Fine Cut & Roses rosebowl - ice blue - pretty</p> <p>65__ 55. Fine Cut & Roses rosebowl - amethyst
1300 56. Captive Rose 9" plate - amethyst - super nice irid., very rare</p> <p>550__ 57. N's Bushel Basket - green - super nice, as good as they get, rare in this color</p> <p>200__ 58. N's Bushel Basket - lavender - very rare color, a must for basket collectors</p> <p>235__ 59. N's Bushel Basket - blue
155__ 60. N's Bushel Basket - marigold - pretty
70__ 61. Mary Ann vase - marigold
20__ 62. Raspberry tumbler - marigold
1900 63. Stippled Grape & Cable 9" plate - sapphire - super nice plate & very rare</p> <p>70__ 64. Peach & Pear banana boat master berry</p> | <p>bowl - marigold</p> <p>575__ 65. Orange Tree 10 pc. punch set - blue - not ruffled, scarce</p> <p>300__ 66. Orange Tree 12 pc. punch set - marigold - not ruffled</p> <p>75__ 67. Captive Rose CRE bowl - blue
90__ 68. Caroline CRE flat bowl - peach opal</p> <p>750__ 69. Fine Rib 10 1/2" vase - red - cherry & quite rare</p> <p>80__ 70. Fine Rib 9 1/2" vase - blue
40__ 71. Singing Birds mug - green - minor rim chip
90__ 72. Singing Birds mug - purple - nice</p> <p>350__ 73. Grape & Cable cologne bottles (2) - green each - very scarce items, nice color & irid., the following pieces are a good match</p> <p>X__ 74. Grape & Cable pin tray - green - very scarce, pretty - <i>nick</i></p> <p>300__ 75. Grape & Cable dresser tray - green - also very scarce, pretty</p> <p>355__ 76. Grape & Cable powder jar - green - ditto
325__ 77. Grape & Cable hatpin holder - green - super, hatpin holders are in high demand</p> <p>115__ 78. Wishbone tumbler - purple
140__ 79. Wishbone tumbler - green
125__ 80. Miniature cordial - marigold - similar to roll pattern but rolls only half way up bowl of cordial</p> <p>550__ 81. Grape & Cable open ruffled compote - green - extremely rare item, not many sold in the last ten years, super color & irid. (epoxy on edge)</p> <p>575__ 82. Grape & Cable open ruffled compote - amethyst - very scarce & desirable</p> <p>350__ 83. Grape & Cable open ruffled compote - marigold - very nice & very scarce</p> <p>95__ 84. Acorn Burrs punch cups (4) - ice green - nice, choice
65x3
4000 85. Wishbone epergne - ice blue - a top notch rarity, first one I've ever had the chance to sell, super!</p> <p>375__ 86. Wishbone epergne - amethyst - very pretty, as nice as I've seen</p> <p>425__ 87. Wishbone epergne - marigold - very scarce Northwood item, nice</p> <p>105__ 88. Cherry Chain large size ruffled bowl - marigold - pretty</p> <p>600__ 89. Old Rose Distillery Stippled Grape & Cable plate - green - very scarce plate, pretty</p> <p>475__ 90. Fishnet epergne - peach opal - scarce
245__ 91. Fenton's Peacock at Um goblet shaped compote - pastel blue - scarce color</p> |
|---|--|

550_92. Orange Tree standard size mug - red - cherry color

65_93. Grape & Cable ruffled bowl - green

500_94. Ruffles & Rings ftd round bowl - peach opal - experimental piece? 1" of opal looks applied, this is the back pattern to the Wishbone pattern

65_95. M'burg Hanging Cherries spooner - green - nice

400_96. Grape & Cable ruffled 11" bowl - green - extremely rare shape, this is the large IC bowl

225_97. Grape & Cable ruffled 11" bowl - white - also very rare

60_98. Holly & Berry one hld nappy - peach opal

20_99. Leaf Tiers spooner - marigold

_X_100. Grape & Cable MASTER 8 pc. punch set - green - extremely rare, one of a handful known, outstanding! (epoxy on top)

105_101. Pansy ruffled bowl - purple - nice

650_102. Oriental Poppy tankard water pitcher - amethyst - a classic tankard pitcher

80_103. Oriental Poppy tumbler - amethyst - nice

145_104. Ripple 18 1/2" vase - marigold - has 4 3/4" base

150_105. Stippled Three Fruits PCE bowl - marigold - very scarce

225_106. Stag & Holly large size ruffled bowl - blue - very pretty

155_107. Stag & Holly large size ruffled bowl - marigold - dark & pretty

400_108. Blackberry miniature compote - white - scarce item, nice (bottom buffed)

95_109. Blackberry miniature compote - marigold - from the Preznick collection

50_110. Blackberry miniature compote - blue

1400_111. Persian Garden chop plate - white - super pretty irid., outstanding & rare! Impressive

85_112. Thistle 3 in 1 edge bowl - amethyst

200_113. Tree Trunk midsize funeral vase - green - very scarce, nice

250_114. Tree Trunk midsize funeral vase - amethyst - scarce

115_115. Tree Trunk midsize funeral vase - marigold - scarce

450_116. Peacocks PCE bowl - blue - super electric irid., as pretty as they get (nick on edge)

65_117. Grape & Cable punch cup - lime green - rare color

175_118. M'burg Zig Zag ruffled bowl - amethyst - radium

1200_119. Grape & Cable sweatmeat - marigold - extremely rare and very pretty! nick on underside of lid, insignificant on a piece of this caliber!

325_120. Grape & Cable sweatmeat - purple - super pretty, as nice as I've seen

55_121. Beaded Bullseye 12" vase - marigold

750_122. Hearts & Flowers 9" plate - green - extremely rare plate, insignificant nick on back of point

115_123. Concave Diamond tumble-up tumblers (2) 45 - russet - scarce, who has the bottoms?

115_124. Concave Diamond tumble-up tumbler - vaseline - also very scarce

155_125. Grape & Cable powder jar - purple

65_126. Heart & Vine ruffled bowl - blue

55_127. Heart & Vine ruffled bowl - marigold - very pretty

525_128. Nesting Swan ruffled bowl - green - radium & super

35_129. Dugan's Peacock at the Fountain tumbler - blue

2650_130. Rose Show 9" plate - green - super nice plate, flat with wonderful irid., extremely rare & desirable

65_131. Star Medallion milk pitcher - smoke

55_132. Star Medallion milk pitcher - marigold

850_133. Florentine candlesticks - red - a very rare pair in this color, extremely desirable

850_134. Tree Trunk 10 1/2" vase - ice blue - scarce & nice

85_135. Tree Trunk 10 1/2" vase - green

210_136. Grape & Cable table set - amethyst - 195x2 outstanding set, sold choice

50_137. Vintage ruffled bowl - green

_X_138. Vintage ruffled bowl - marigold *not here*

1100_139. Dragon & Lotus 9" plate - blue - rare plate, Fenton plates are hot!!

95_140. N's Raspberry ftd ruffled bowl - green - Daisy & Plume exterior

95_141. Wishbone ruffled bowl - amethyst

350_142. Open Rose 9" plate - purple - very rare, has minor nick on rose

100_143. Three Fruits ruffled bowl w/plain back - green

95_144. Three Fruits ruffled bowl w/plain back - amethyst

200_145. Chatelaine tumbler - purple - super pretty & quite rare

135_146. Grape & Cable 9" plate w/BW back - amethyst

105_147. Grape & Cable 9" plate w/BW back - marigold - nice

600_148. Peacock at the Fountain punch bowl only - renegers blue - only one I've seen, where's the base?

35_149. Cherry Circle bon bon - marigold - pretty

350_150. Drapery rosebowl - marigold - scarce color for this rosebowl, nice

175_151. Drapery rosebowl - amethyst - scarce

50_152. Dogwood Spray dome ftd ruffled bowl - purple - chip on base

40_153. Dogwood Spray dome ftd ruffled bowl - marigold

10x4_154. Grape & Gothic Arches tumblers (4) - blue - choice, silvery

300_155. Three Fruits ruffled bowl w/BW back - horehound - rare color for this piece, pretty

80_156. Greek Key ruffled bowl - purple - silvery

155_157. Miniature Morning Glory 4 3/4" vase - purple - has odd texture on vase, neat

70_158. Miniature Morning Glory 6" vase - green

1200_159. Grape & Cable centerpiece bowl - ice blue - pretty color, looks like a giant rosebowl

75_160. Strawberry ruffled bowl - green

90_161. Strawberry ruffled bowl - amethyst

60_162. Strawberry ruffled bowl - marigold

300_163. N's Poppy pickle dish - ice blue - very scarce, minor heat check in base

150_164. N's Poppy pickle dish - marigold

425_165. N's Poinsettia ball ftd ruffled bowl - ice blue - extremely rare, has chip on back of one point

700_166. N's Poinsettia ball ftd ruffled bowl - purple - pretty irid., scarce

100_167. Three Fruits PCE bowl w/plain back - amethyst

75_168. Two Flowers spt ftd round bowl - blue

75_169. Wreath of Roses bon bon - amethyst

8000_170. Grape & Cable MASTER punch set - white - another outstanding rarity, frosty & has super irid., another WOW!

100_171. Acorn Burrs berry bowls (3) - marigold

35_172. M'burg Country Kitchen butter top - amethyst - scarce

120_173. Drapery candy dish - purple - pretty

750_174. Embroidered Mums ruffled bowl - blue - electric irid. on this demanded piece

25x4_175. Forget Me Not tumblers (4) - green - choice

165_176. Grape & Cable candlestick - green - nice & scarce

30_177. Holly ruffled bowl - marigold

175_178. Leaf & Beads rosebowl w/plain interior - blue

95_179. Leaf & Beads rosebowl w/plain interior - amethyst

75_180. Leaf & Beads rosebowl w/ayed interior - marigold

650_181. Rustic 19 1/2" funeral vase - blue -

outstanding, very scarce & desirable

225_182. Rustic 20 1/4" funeral vase - marigold - dark & pretty

35_183. Persian Medallion bon bon - marigold

1000_184. N's Peach water pitcher - white - has gold trim, nice

105_185. N's Peach tumbler - white - gold trimmed

155_186. Ribbon Tie 3 in 1 edge bowl - blue - super pretty

65_187. Ribbon Tie 3 in 1 edge bowl - green

35_188. Ribbon Tie 3 in 1 edge bowl - marigold

120x2_189. Peacock at Urn IC sauces (3) - blue - 60 electric irid., choice

80_190. Stippled Rays divided bon bon - blue - rare, this shape usually comes in the Two Fruits pattern

1300_191. Lotus & Grape 9" plate - blue - very rare & desirable, another great Fenton plate

65_192. Vintage 3 in 1 edge bowl - blue

40_193. Autumn Acorn 3 in 1 edge bowl - amethyst - pretty

700_194. Grape & Cable tankard water pitcher - marigold - super example of this rare pitcher

65_195. Grape & Cable tankard tumbler - marigold

225_196. Grape & Cable tankard water pitcher - amethyst - prettiest I've ever seen, has chip on base

65_197. Stippled Grape & Cable tumbler - amethyst

600_198. Memphis 10 pc. fruit bowl set - amethyst - scarce & nice

50_199. Dugan's Cherries ruffled sauce - peach opal

1050_200. Grape & Cable cracker jar - ice green - extremely rare item, opportunities don't come along often for a piece like this, pretty!

1500_201. Grape & Cable cracker jar - white - very rare & extremely desirable, nice

525_202. Grape & Cable cracker jar - amethyst - nice & quite scarce

1025_203. Grape & Cable cracker jar - marigold - also quite scarce & pretty

85_204. Thin Rib 16 1/4" vase - amethyst

110_205. Thin Rib 16 1/4" vase - blue

75_206. Grape & Cable PCE bowl - pastel marigold - pretty

375_207. Hearts & Flowers ruffled bowl - ice blue - always desired

300_208. Hearts & Flowers ruffled bowl - white - pretty

250_209. Grape & Cable water pitcher - marigold - very nice

45_210. Grape & Cable tumblers (2) - marigold - choice

- 550_211. Rose Show ruffled bowl - blue - outstanding example, one of the more rare colors in this bowl!
- 400_212. Rose Show ruffled bowl - amethyst - a dandy
- 110_213. M'burg Holly Sprig crimped edge bowl - green - radium & pretty
- 50_214. Leaf Swirl compote - amber
- 300_215. Basketweave Open Edge JIP basket - aqua - super
- 90_216. Persian Medallion large size compote - blue - super nice, scarce
- 95_217. Pulled Loop 9" vase - peach opal
- 30_218. Pulled Loop 7" vase - purple - chip on base
- X_219. Starfish bon bon - amethyst - scarce color
- 825_220. Wide Panel epergne - green - very scarce, a great large shape in carnival
- 70_221. Thistle ruffled bowl - blue
- 100_222. N's Wide Panel 11 3/4" mid size funeral vase - marigold - 4 1/2" base
- 75_223. N's Wide Panel 9 1/2" mid size funeral vase - green - 4 1/2" base
- 350_224. Stippled Three Fruits spt ftd ruffled bowl - blue - outstanding electric blue irid.
- 550_225. Three Fruits spt ftd ruffled bowl - aqua opal - a collector's favorite!
- 210_226. Kittens cup & saucer - marigold - nice
- 215_227. Kittens ruffled bowl - dark marigold
- 375_228. Grape & Cable centerpiece bowl - white - points straight up, rare & has super irid.
- 65_229. Six Plums Var. hatpin - dark
- 850_230. Poppy Show 9" plate - ice blue - extremely rare & very desirable
- 575_231. Poppy Show 9" plate - white - very scarce & nice
- 240_232. Crab Claw 7 pc. tankard water set - marigold
- 105_233. Fisherman's mug - black amethyst - nice
- 225_234. Orange Tree loving cup - green - scarce in green!
- 60_235. Flowers & Frames dome ftd deep ruffled bowl - peach opal
- 85_236. Flowers & Frames dome ftd ruffled bowl - purple
- 45_237. Grape Leaves ruffled bowl - green
- 225_238. Fruits & Flowers bon bon - white - scarce piece
- 140_239. Fruits & Flowers 2 hldd bon bon - blue - nice
- 2350_240. Grape & Cable MASTER 8 pc. punch set - amethyst - this set is straight sided which is much rarer than the ruffled, very pretty & very desirable
- 140_241. Maple Leaf 7 pc. berry set - marigold
- 45_242. Peacock & Grape ruffled bowl - marigold
- 75_243. Singing Birds tumbler - green
- 115_244. Kittens toothpick - marigold - scarce
- 95_245. Kittens 2 sides up bowl - marigold
- 700_246. Persian Garden 11" IC shaped bowl - amethyst - very rare, nice color & irid.
- 500_247. Banded Grape & Cable large size fruit bowl - blue - extremely rare, super pretty
- 375_248. Wreath of Roses punch bowl top w/Vintage interior - green - who has the base?
- 55_249. Acanthus deep round bowl - marigold
- 300_250. Floral & Grape water pitcher - blue - supe irid.
- 65_251. Floral & Grape tumbler - blue
- 35_252. Acorn ruffled bowl - lime green - edge nick
- 60_253. Dugan's Cherries ball ftd ruffled bowl - amethyst
- X_254. Grape & Cable breakfast set - green - scarce color (damage)
- 200_255. Grape & Cable breakfast set - amethyst
- 275_256. Grape & Cable breakfast set - marigold
- 55_257. Double Stemmed Rose dome ftd IC shaped bowl - peach opal - nice
- 115_258. Imperial Flute punch bowl & base - marigold - scarce
- 40_259. Imperial Grape cup & saucer - marigold
- 1400_260. Rose Show Variant ruffled bowl - reninger blue - super pretty color & irid., much more rare than the Rose Show
- 105_261. N's Wide Panel 18" funeral vase - marigold - 5" base
- 75_262. Lotus & Grape bon bon - blue
- 275_263. Fenton's Grape & Cable w/Persian Medallion interior fruit bowl - green - scarce color
- 60_264. Ribbon Tie 3 in 1 edge bowl - amethyst
- 65_265. Wreath Cherry banana boat shape bowl - marigold
- 175_266. Roccoco vase - smoke - very pretty
- 500_267. Stippled Three Fruits ruffled bowl w/ribbed back - green - rare color
- 225_268. Poinsettia milk pitcher - smoke - scarce
- 55_269. Autumn Acorn ruffled bowl - green - silvery
- 135_270. Good Luck ruffled bowl - marigold - scarce
- 115_271. Cherry Chain IC shaped bowl - blue - silvery
- 125_272. Dragon & Lotus ruffled bowl - blue
- 450_273. Stippled Three Fruits 9" plate - blue - a nice example for this rare plate
- 700_274. Stippled Three Fruits 9" plate - amethyst - outstanding blue irid., a great piece
- 50_275. Four Flowers deep round bowl - marigold
- 55_276. Heart & Vine 3 in 1 edge bowl - green
- 195_277. Octagon 7 pc. wine set - marigold
- 95_278. Persian Medallion 3 in 1 edge bowl -