

HOACGA

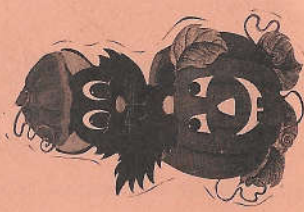
Heart of America Carnival Glass Assoc. Inc.

October 1995

RETURN ADDRESS

H.O.A.C.G.A.
Jackie Fortney
P.O. Box 303
Buckner, MO 64016

FIRST CLASS MAIL
U.S. POSTAGE
PAID
Buckner, MO
Permit 03



HEART OF AMERICA CARNIVAL GLASS ASSOCIATION

(Since 1973)

BOARD OF DIRECTORS

PRESIDENT.....	ROBERT GRISSOM 7517 Evanston Raytown, Missouri 64138 PHONE: 1-816-356-5320
VICE-PRESIDENT.....	DARYL STROHM 8904 E. 29th Street Kansas City, Missouri 64129 PHONE: 1-816-252-8053
TREASURER.....	CLIFF BALL 572 W. Park Street Olathe, Kansas 66061 PHONE: 1-913-782-0415
SECRETARY.....	ED KRAMER 4305 W. 78th Street Prairie Village, Kansas 66208 PHONE: 1-913-642-3587
BULLETIN SECRETARY.....	JACKIE FORTNEY Post Office Box 303 Buckner, Missouri 64016 PHONE: 1-816-650-5208

ALL CARNIVAL GLASS CLUBS:

Please send the following information about your Club to the Bulletin Secretary. We want to include this information in the Bulletin.

NAME OF CLUB
SECRETARY NAME & ADDRESS
AMOUNT OF DUES
MEETING PLACE & TIME

Send to: Jackie Fortney, Bulletin Secretary, H.O.A.C.G.A. (Address Above)

CALENDAR OF EVENTS

MICKEY REICHEL AUCTION SERVICE

500 LOT - TWO DAY CARNIVAL GLASS AUCTION

Friday, October 6, 1995, 6:00 P.M. - *Preview 12:00 till Auction Time*
Saturday, October 7, 1995, 9:30 P.M. - *Preview 8:00 till Auction Time*

Held at Mickey Reichel Auction Center

1 mile north of I-70 on Hwy. 5 Exit 101-Boonville, MO
Spurlin and Elva Crook Collection, from Oklahoma

816-882-5292 days or 816-882-5283 evenings

YOU ARE INVITED TO ATTEND

The Second Annual San Diego / Southern California Carnival Glass Convention
March 6-9, 1996 Sheraton Inn Bakersfield #(805) 325-9700

UPDATE ON MARGE KREMER

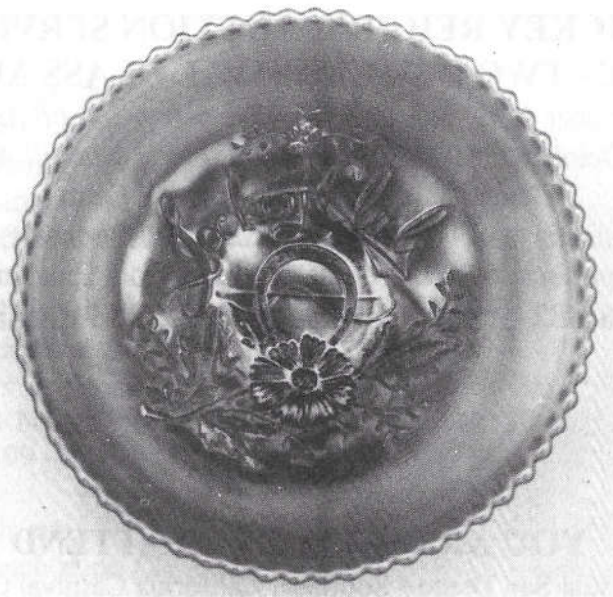
Marge Kremer suffered a stroke in early September. Word from Chuck is that although she is seriously ill, her condition has shown some improvement.

We send good wishes on behalf of all HOACGA members. If you wish to write, the address is as follows:

Chuck & Marge Kremer
430 Rose Ave.
New Haven, IL 46774
(219) 749-4909

JOCKEY CLUB

By Dean & Diane Fry



The Jockey Club Advertising pieces are not easily found in either flat plate, hand-grip, or bowl. They are the 6" variety in size and amethyst in color.

John Resnik's book on Lettered Pieces states all three shapes are Very Scarce.

A nice bowl was sold at ICGA auction in Aug. this year for \$1,200. In Feb., this year, at the Texas Club Convention, a beautiful plate brought \$1,050. According to the Mordini Guides, none in any form sold at auctions during 1993 or 1994.

There is mention in the Book on Advertising, or Letter Pieces, that contrary to published reports, most likely there are no marigold examples in this pattern.

We tend to believe that the plate pictured with this article is, perhaps, the one leading to the "marigold myth". This plate is extremely light amethyst base glass, with a significant amount of marigold overlay. At first glance, anyone might make the wrong assessment.

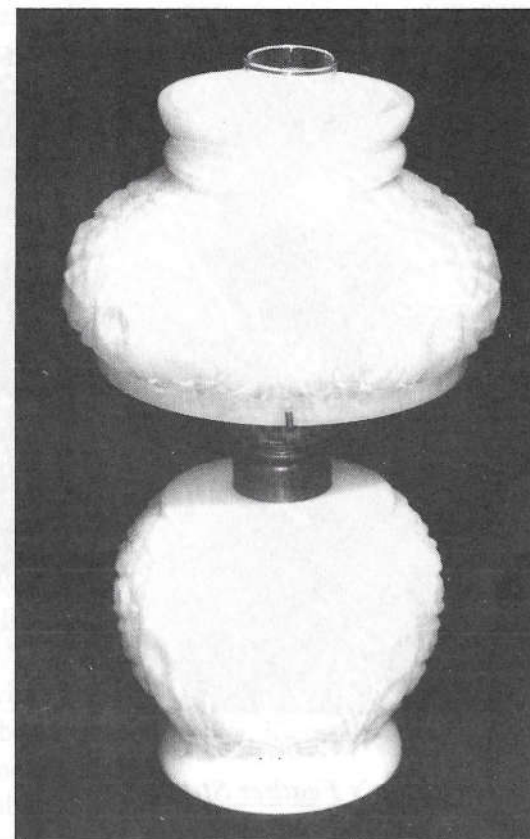
When compared to many of our other Advertising pieces, this is the only one with such and appearance.

According to John and his research, Jockey Club was a perfume. The identical logo appears on some print advertising from the 1850's. Seems the trail of the company disappears in the early 1900's. The product was sold in California, but point of origin has not been established. - Maker is Northwood, and the typical basketweave back is easily identified.

These pieces of various Advertising are fascinating to collect. Some are not very well iridized, but if you are willing to play the waiting game, and are not in a hurry to complete the collection, careful scrutiny will locate some VERY nice examples. All things come to those willing to wait!

MINIATURE LAMP

By Robert Natali



Above is a photo of a miniature lamp which was found on the West Coast.

It measures 7 3/4" in total height. The base is 3" in diameter and 3 1/2" high. The shade is 4" in diameter at the bottom and 2 3/4" in diameter at the top.

The finish is a light butterscotch iridescence over milk glass. *(Editors note: Because this piece is milk glass with light iridescence photographed on a black background, the photograph's detail does not reproduce well in black and white.)*

The pattern is unfamiliar to me. The pattern is 4 panels of daisy buttons separated by 4 narrow strips with 5 concave depressions on each strip.

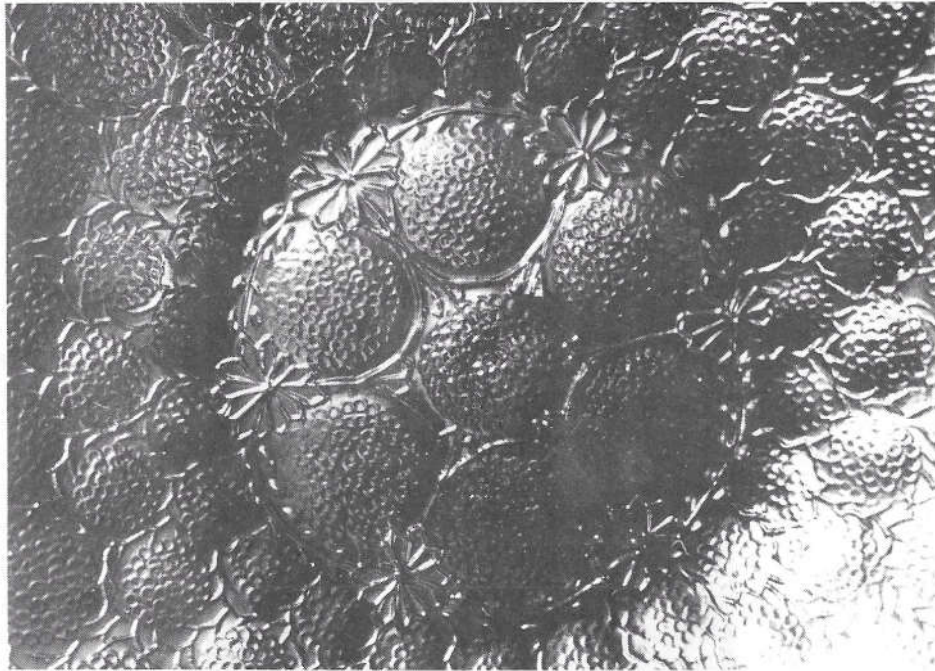
The shape and dimension of the lamp are the very same as the cosmos lamp shown in Sherman Hands book *The Collectors Encyclopedia of Carnival Glass*, page #243. There are no trade marks on the glass at all. If anyone has any information on who may have manufactured this item, I would appreciate it.

Robert Natali

5514 E. National, Fresno, CA 93727 (209) 291-3296

FENTON'S FEATHER STITCH BOWL

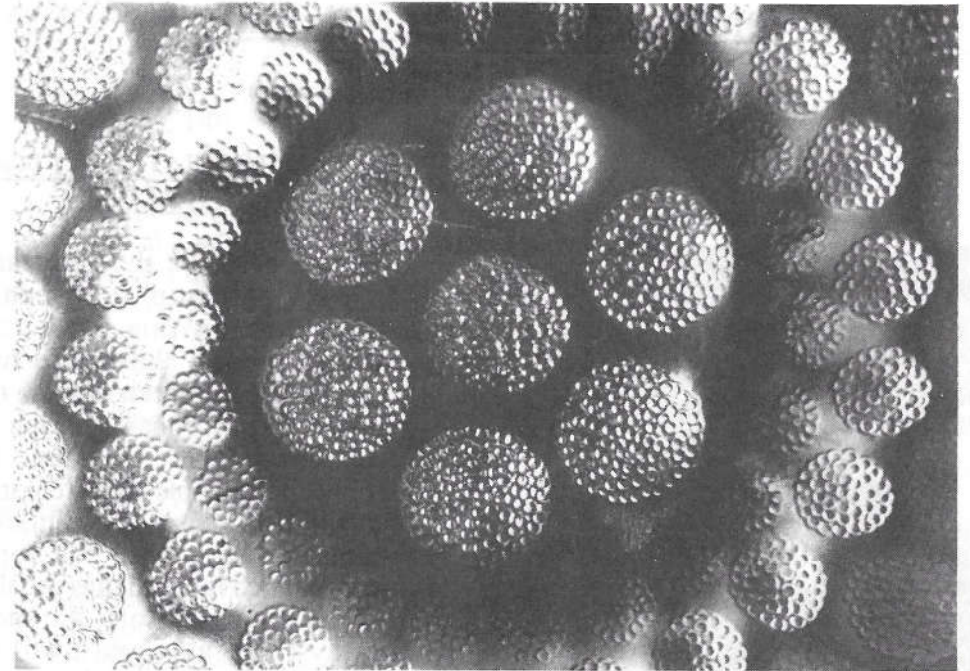
By Alan & Lorraine Pickup



Fenton's Feather Stitch Bowl

Edward's Standard Encyclopedia of Carnival Glass states "This pattern is a kissing cousin of the well-known Coin Dot design." We agree, but would like to take that statement one step further. The mould for this pattern was very possibly the Coin Dot mould that was sent back to the mould shop and re-tooled to create a new design that we know today as Feather Stitch. First, let me say that there are two different moulds for the Coin Dot bowl. One has eight coin dots in the center and the other has a seven coin dot center. Obviously the Feather Stitch mould was created from the latter. By comparing the basic glass colors, iridescence and available shapes, both Coin Dot bowls appear to be Fenton products.

Several years ago during a discussion with Frank Fenton, he informed us that moulds were re-tools creating new designs. He was talking at the time about adding hobs to many older moulds to keep the Hobnail glass line going. Competition between glass makers was intense and in order to keep one's share of the glass market, new designers were in constant demand. The cost of making the moulds was a big expense and if an existing mould could be changed to create a new design, it was very cost effective to do so.



Fenton's Coin Dot Bowl

Read Joan Doty's article in the April 94 Texas Carnival Glass Newsletter. Her observations on Fenton's Long Thumbprint and Long Thumbprint Hobnail vases states, "It is as though a Long Thumbprint mould had hobnails cut into each of the thumbprints." She also pictures a Fenton Knotted Beads vase. These look to me like hobs were added to the Diamond and Rib vase moulds.

We recently found a green Feather Stitch bowl with the 3-1 candy ribbon edge. A shape that we have collected for many years. Feather Stitch is not a frequently seen pattern in green and the first 3-1 edge Feather Stitch bowl we have seen. Most of the thirty seven 3-1 bowls on our wall are Fenton and Dugan patterns, so a detail comparison of the Coin Dot and Feather Stitch bowls was easily made. The addition of the six small flowers, and the connecting wreath, plus add the stitching between the stippled coin dots and *Presto* - a new pattern is born.

We feel another mould that was re-tooled was the popular Holly and Rib compote. This small compote that is easily found in any antique mall today, and in many colors, was probably crated by cutting the holly and berries into a slow selling Rib compote. We have to presume the small Rib compote was a slow seller in its day because of their scarcity today. On the other hand, the Holly and Rib compote must have been a big success from their abundant availability today. Apparently the Feather Stitch bowl was not enough of a pattern change to whip up much excitement among the buyers as they are rather scarce today.

PICTORIAL PATTERN PARADE

By John & Lucile Britt

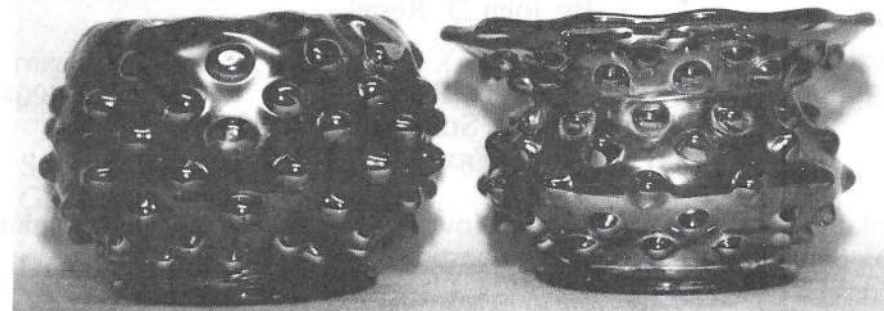
SWIRL HOBNAIL SPITTOON IN GREEN



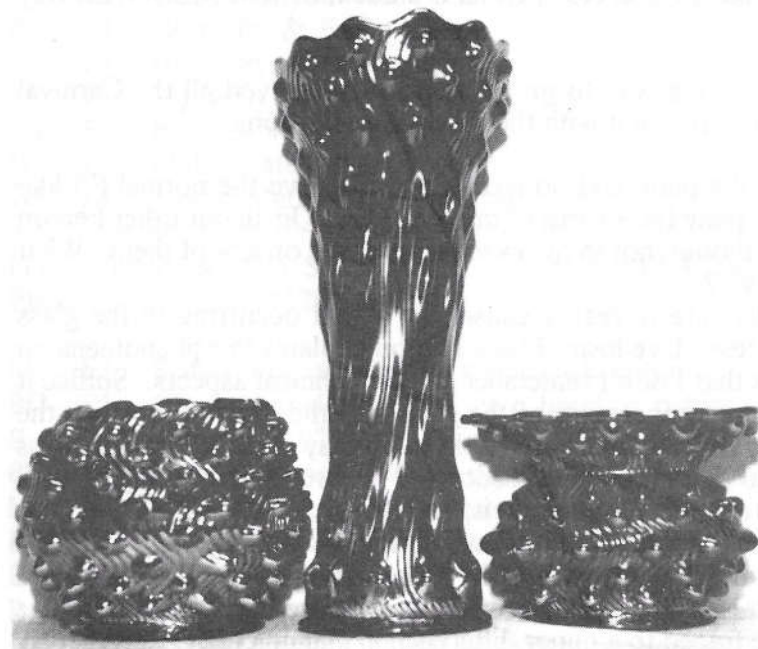
Shown above is the very rare Swirl Hobnail spittoon in green. The iridescence on this little beauty is fantastic. Jack Wilson, in his 1982 Millersburg Research Notes, reported that the Swirl Hobnail spittoon in green as extremely rare. At that time, he knew of only one example in that color. Notice that the featured green spittoon is in a whimsy shape with the top flared upward much more than is usually found on this piece. Photo #2 shows the amethyst and marigold Swirl Hobnail spittoons. You can see that the tops are much flatter than they are on the featured green example. This is the only Swirl Hobnail spittoon that we have ever seen with this unusual top. There are probably

others out there somewhere, but we have never seen another in any color that was in this whimsy shape.

At one time we owned the regular Hobnail spittoon in green. It is shown in photo #3 alongside a Hobnail green rosebowl. This particular Hobnail spittoon had satin iridescence instead of the radiant type that is found on the green Swirled Hobnail example. Notice that the top is also much flatter on the Hobnail spittoon.



The Millersburg Hobnail Swirl pattern was made in the rosebowl, vase and spittoon. All of these are very desirable and certainly beautiful in any color. They are shown in the below photo in amethyst. Marie McGee reports a Hobnail Swirl vase in blue that was recently found in Northern California. This would certainly be a great find. You might also want to keep your eyes open for a green Swirl Hobnail rosebowl. This would also be an extremely rare piece of Millersburg carnival glass.



This article, featuring the unusual and rare green Swirl Hobnail spittoon, is our 203rd entry into the Pictorial Pattern Parade. Next month we will feature a Northwood pattern - the rare Wishbone chop plate in green.

Q & A

By John D. Resnik

Send any questions to:

John D. Resnik
235 Walnut Street, Statesville, NC 28677
(704) 872-7075, Fax# (704) 872-0272

I want to thank Sandra Bernis of Winterset, Iowa for her nice letter; and, my column says it loves you too. Sandra asks the following question:

Q. What constitutes a real vaseline piece?

A: My first answer for this query bordered on the obscene, so I guess I'd better play this one straight. The ultimate test for vaseline is, does it fluoresce when exposed to ultraviolet radiation. However, specific pieces in almost all base glass colors will pass this test, so it is not of itself an absolute solution. Vaseline pieces should possess a strong yellow base glass color with varying degrees of green overtones. The primary problem most people have with identifying vaseline items, results from the fact that the vast majority of them have a fairly heavy marigold overlay, which obscures the true base glass color. This heavy iridescent coating is also the reason that these pieces usually only fluoresce at the collar base or feet, where the iridescence is less intense or non-existent, and the glass is thicker and therefore reacts more strongly to the black light. In conclusion, it is usually safe to assume that if it looks like a duck, etc, it either is a duck, or Wilf Nash on his way to the PNWCGC dance.

Kathi Johnson assures me that I have a way to go yet before I've solved all the Carnival Glass problems, and then goes on to prove it with the following questions.

Q: We recently bought a blue Holly plate and noticed it doesn't have the normal (?) line across the inside middle of the plate (straw mark? mold mark?). On all our other Fenton pieces this mark is obvious, although not in the exact same place on any of them. What gives with these Fenton pieces???

A: These so called "Straw Marks" are in reality caused by a fold occurring in the glass during the manufacturing process. I've heard Frank Fenton explains this phenomena on several occasions, but confess that I don't remember all the technical aspects. Suffice it to say that it has to do with the temperature of the glass and the manner in which the mold was filled. While I'm in the neighborhood, I'd like to slay on old Carnival Glass myth: The story has been told that straw marks occurred as a result of placing the still warm glass on a bed of straw to cool. Think about it; the temperature at which glass can still be malleable, is well above the temperature at which straw would ignite! As to the second half of the question, I don't really know why these marks seem to appear more often on Fenton glass (though I do agree that seems to be the case), but I'm certain it is safe to assume that it could be traced to a minor difference in manufacturing techniques. Your Holly plate, sans the mark, has no real significance other than one of chance.

Q: Enclosed is a picture of two Carnival Glass pieces for identification. The vase is 6" tall with 21 ribs and is 6" across the base. The bowl (sic; banana bowl) is 9 3/4" long, 6 3/4" wide, and stands 5 1/4" tall and has the Louis XV pattern. Both are marigold. Can you tell me the approximate age, maker, and give a value for these pieces?

Happy to receive an inquiry from a fellow hairy leg; Ron Scalf of Erlanger, Kentucky (I wonder if the gene that prevents us men from asking directions, also precludes our sending in questions about anything?)

Kathi, the only limit on the number of questions you can ask is, how much paper do you have? And, that's not a sense of humor you admired, it's the onset of senility. P.S. The tougher the questions, the better I like it; because when the going gets tough, the tough go antiquing.

Q: We recently bought a (G) Leaf & Beads footed nut bowl with 30 points on the top edge. We've not seen another like it. Just how rare might it be, and how many have you seen? A: I hate to answer a question with a question, but, does your nut bowl have the Lovely (pattern name, not commentary on it's beauty) interior? The only pieces I know of in the Leaf & Beads pattern that have the top edge you describe, have this primary interior pattern, and, as in most cases, are known by the interior pattern name. I.E., Lovely nut bowl with Leaf & Beads exterior. Carl O. Burns in his excellent book on Northwood, states that no Lovely bowl has ever been found bearing the Northwood trademark, and speculates that it might be a Dugan "copycat" item. If your bowl doesn't have the Lovely interior, then it's most likely still a Lovely bowl sans the Lovely, in which case, it should have a plain interior and not be signed. If it is signed or has either of the ribbed interiors, we need to go back to the drawing board. Let me know. If your bowl turns out to be Lovely, it would be classified as quite scarce, especially in green. If it is anything else, it would be considered rare, as I haven't heard of any others.

Q: On red pieces the marie (the marie is the place at which the mold was drawn together at the bottom; normally the collar base) and the edges of the flutes are often amberina. What causes this? Was it intentional? A: The answers are: Temperature, and, not really (sounds like Jeopardy, don't it). Time to slay another myth: The story goes that there is so little red Carnival Glass because gold was used in it's manufacture. Pooch Pooch. If there is any gold in Carnival Glass, it's in Carnival is that it is the most temperature sensitive of all the colors. Heat red Carnival insufficiently and you get amberina; over compensate, and you get amber. The variations from red to amberina, in any one specific piece, are as a result of either the thickness of the glass (collar base) or the mold extremities (flutes) making it more difficult to achieve an ideal temperature.



A: First, let me congratulate you on sending everything that could possibly be required to make a determination concerning these items. However, don't know a darned thing about either of them.

Just kidding. I've got some good news and some bad news: The bad news is that your banana bowl is an Imperial Glass Company product, and is all of 14 or 15 minutes old. Just kidding, again. Actually, it was discontinued in 1974 after a three year run. I have an old (1974) Imperial sales brochure advertising your banana bowl for eight dollars. I suppose it must have at least tripled in value since then. The good news is your vase is a pattern called Rib and Panel and is listed by Sherman Hand as being rare. This item comes in vases of various sizes and a really seldom seen spittoon. One thing you did neglect to tell me was that this piece has a ground pontil on it's base. For reasons outlined in last months column, this pontil mark technically removes your vase from the annals of Carnival Glass, so it would probably behoove you to send it to me, and I'll see about finding it a good art glass home. To my knowledge, no maker has been professed for this item, but for whatever it's worth, my personal opinion is that it is most likely of foreign manufacture; possibly Czechoslovakian. I went back through my Auction Price Reports to 1983, but couldn't find where a Rib and Panel anything had sold; even though I'm certain I've been in attendance when one went across the block. This is most likely due to auctioneers doing what I do when confronted with a piece you don't know the name for: Name it and get on with your life! I did find in my own records that I had sold a Spittoon shape in 1982 for \$95 (boy would I like to have that one back!). My best SWAG (Scientific Wild ___ Guess) evaluation for your vase would be in the \$200 - \$300 range.

Thanks for the kind words, Ron, and I will return your photos as quickly as I get them back from the printing process.

Dear Bev (AKA, Bev Schneider, Loveland, Co.), How can we continue our ongoing affair, in print that is, if you insist on calling me Mr. Resnik? People who know me don't even know who Mr. Resnik is (he was my father), and most would snicker if I was ever so reverently referred to in their presence. John will do just fine, thank you ever so much. Now that we have that straightened out, I'll try to answer your inquiries.

Q: What is a plunger base? Is it the base of the mid-size Tree Trunk variant vase, as described in the June issue?

A: What do you need me for when you correctly answer your own questions? The "plunger" base is indeed the smooth 3/4"-1 3/4" band found just above the collar base on Northwood's mid-size Tree Trunk Variant vases and also on their Elephant Foot vases.

Q: Can you give me some information on Carnival Glass by: Robert Hansen, Joe St. Clair, and Crider? What they made, how collectable, and what is described as Crider iridescence.

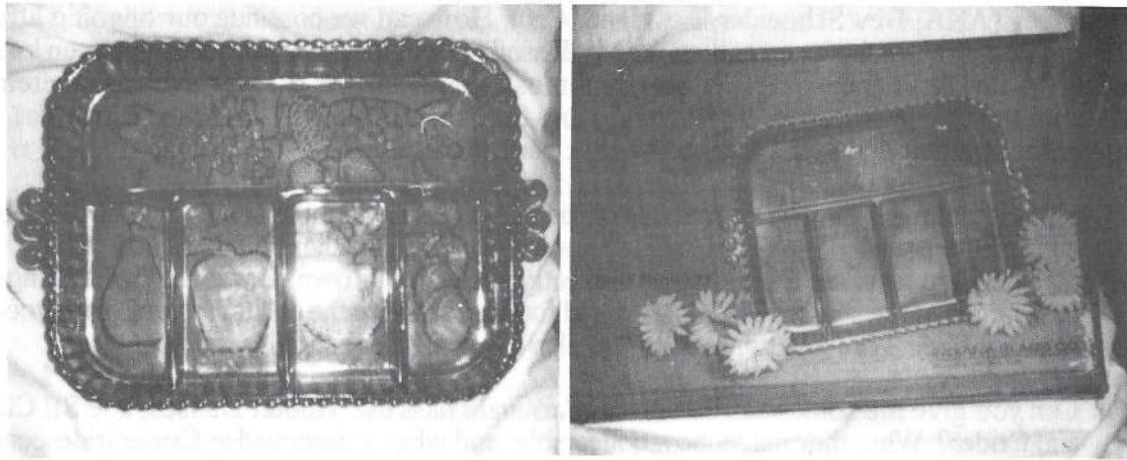
A: You won't gain much knowledge from me on this issue, except to discover that I know very little about new glass, and have no desire to be educated about it. I'm a firm believer in everyone doing their own thing, but my personal advice would be to conserve your resources for the purchase of all the old glass that interests you, and then consider getting in to the repro stuff. Of the ones you named, only Hansen holds the least bit of interest for me, and is the only one that has shown a growth (investment wise) potential. As far as what "Crider" iridescence is, I'd assume it probably means gauche & gaudy. Now all you people who collect this stuff, don't bother to write to castigate me for my opinion, because you aren't going to change my mind, cuz I occasionally do the Dew, but I hardly ever do the new.

ADDENDUM: The light just dawned. It's now a week or so since I wrote the above answer, and I received a Seeck Auction Brochure in the mail today that lists a tumbler as being Crider iridised. Duh, what a dummy (me, I mean). Crider iridescence (or more correctly, iridised) means that the item was originally without iridescence, and was applied after the fact by Mr. Crider. I believe this was done to both old an new blanks.

Q: In auction brochures, Jim Seeck refers to the "IG (Imperial Glass) mark with a peanut". What does that mean?

A: I'm certain I haven't a clue, so I called Jim, and he hadn't a clue either. If he used that term, it must have been an inside joke that he has since forgotten about.

Ralph Cope of Henrietta, Oklahoma sent in the following pictures for identification.



Q: My sister bought this large relish dish at a garage sale. It is on amber base glass with gold iridescence and has a stippled back. It came in the original box bearing the name Indiana Glass Co., subsidiary of Lancaster Colony Corp., Dunkirk, Indiana. What can you tell me about it?

A: Your relish dish was made sometime between 1971 and yesterday. The Indiana Glass Co., under various names, dates back to 1896, but first produced Carnival Glass in 1971. To the best of my knowledge, they are still in business. I somewhat carelessly used the term repro in a previous answer, which implies that the specific item under discussion had been previously manufactured. In the case of Indiana Glass, and almost every other maker of new glass excepting Imperial & Fenton, manufactured Carnival items which were never made in original Carnival Glass, and, should therefore, be called new (or as certain people are wont to say; contemporary) glass. Your dish shows up in antique malls, all across the country, in the \$15 to \$25 range.

The following questions were sent in by John & Karen Schlumbohm of Decorah, Iowa.

Q: I appreciate your comments about Bill Edwards price guide and it prompts the question; Who does publish an accurate price guide?

A: To my way of thinking, the Auction Price Report, published by Tom & Sharon Mordini, is the most consistently accurate guide available today. This is not to say it doesn't have a problem or two : 1) It is always a year in arrears (unavoidable, since it gives prices actually received for items at auction for the previous year). 2) Since there are no pictures, you have to know what the pattern name is for the item you want to look up (not a major drawback even for tyros, as you can almost always find the pattern from one of the "picture" books). 3) You won't always find the item you are looking for, even if you have several years worth of issues, if the item hasn't sold at auction, or is too "common" to be listed (I consider the tendency of the Report to concentrate on the prices of the mid to

upper end to be a problem for new collectors). 4) Since our hobby has never come to a total agreement on which authors names we are going to use for which pieces, it is almost incumbent upon one to know the personal peccadillos (Carnival Glass wise, that is) of the various auctioneers to find a specific price (that was a long winded way of saying that some items could be listed under one or more names). 5) Since the Report is taken from auction results, the information within it is only as accurate as the brochures from which it was taken (ie, damage or overall quality is not always noted). 6) Human nature being what it is, it is generally unrealistic to expect to achieve auction prices from private sales.

Even with all this nit-picking, I still believe Tom & Sharon's publication to be the best available, if the reader will apply a little common sense, In most cases, I recommend throwing out the high & low prices, average the rest, and use the result as your guide value. Of course, it is also always incumbent upon the user to take into consideration the basic quality of the piece of glass they are trying to price.

Q: I have five (5) of the pieces Bill Edwards calls "little Imperial cuties" on page 141 of his book, but the price is nowhere to be found. Could you please advise me as to their value? Also, are there any other pieces in this pattern other than the goblets?

A: What's in a number doesn't have much of a ring, so we'll call this item Tulip and Cane rather than #9. I'm afraid this is one of those "rare, but who cares?" items. Although this small berry bowl is seldom seen, it just has too many things against it to command any great interest: It's Imperial, it's a geometric nearcut pattern, and it's exterior pattern only. Try to name one thing that has all those attributes, and still stirs the juices of the masses. Other shapes that I am aware of are; 9"-10" large berry bowl, and the stems, cordial / claret / wine / goblet. The bowl shapes come in marigold and smoke, but I've only seen the stems in marigold. Value like beauty is pretty much unto the beholder, but ballpark would be: large berry bowl; marigold \$35-\$45, smoke \$50-\$60; small berry bowl; marigold \$10-\$15, smoke \$20-\$30. P.S. I'll buy all the stem I can find in this pattern at the prices shown in Edwards!!

Y'all been doing a right fine job the last couple months, so keep them cards and letters comin. And remember, I also give advice to the lovestorm (sic).

THOUGHT FOR THE DAY

The ultimate measure of a man is not where he stands in moments of comfort and convenience, but where he stands at times of challenge and controversy.

- Martin Luther King, Jr.

ANTIQUES, CARNIVAL GLASS AND PASTELS

By Gerald Thomas

The 13 March 1995 issue of Antique Week contains a well written article by Mark A. Roeder discussing antique values and the sometimes "perceived" high prices associated with antique rarities. In the article, Mr. Roeder discusses the concepts of supply, demand and condition of antiques, using specific examples to explain why some antique rarities escalate in price while others seem to languish in low collector demand and price appreciation. The Antique Week article offers many useful insights into the pricing of antiques and old glassware.

Though an antique may be rare or somewhat difficult to locate and purchase, being a rarity in itself will not permit an antique owner to solicit a high sales price if collector demand simply does not exist. Beyond supply, demand and condition of an antique, a fourth factor requires consideration, which is the antique's artistic qualities or aesthetics. Artistic quality encompasses many elements including: skill of the artist or craftsman, appropriate selection of production materials, and visual appeal of the end product.

In the world of Carnival Glass, the artistic quality of the glassware serves as the foundation for collector demand and pricing beyond the economics of supply and demand. This is especially true for Carnival Glass pastels and experimental colors. The continuous escalating prices of pastel carnival can be attributed to the talents of the glass designers and craftsmen who manufactured this prized glassware. Most of the pastel carnival was produced for display purposes versus utilitarian use. I firmly believe Harry Northwood intended this late form of art glass to compete with art glass products of both European and American origins. Pastel carnival was not intended to be everyday kitchen ware. An extensive amount of effort and labor was involved in producing quality glass molds, modifying glass composition and applying high quality iridescence to the Pastel glassware.

Differentiating Pastel Carnival from the more common colors is supported by Carnival glass price trends. Compare the price history of Northwood's pattern glassware in ice green, blue, white or opalescent to similar pattern glassware produced in marigold, green or purple. A look at the price history of the Pastels reflects a greater price appreciation than realized for the basic colors. Price appreciation is greater over time for the pastel colors as compared to the basic colors, which I contend is the artistic value of the glass overshadowing supply and demand factors. If we look at Tom and Sharon Mordini's published auction reports, 60 percent of the top ten highest selling pieces of Carnival in 1993 and 1994 are pastel Carnival - including the "ice colors". The remaining glassware consists of very rare Carnival pieces either in color and / or pattern.

Harry Northwood produced quality Carnival glassware and his experimental efforts with pastels and opalescent glass is a testimonial to his artistic ability. Collectors acknowledge Northwood's artistic talents by competitively purchasing his glassware at ever increasing prices. The highest known prices ever paid for Carnival center on Pastels produced by Northwood. Examples include the Aqua Opalescent Peacock and Urn bowl selling for \$31,000, and ice blue Tree Trunk funeral vase for \$26,000 and ice blue Grape & Cable punch set for \$25,000. Prices may even be higher for private sales transaction involving Carnival Glass rarities.

Pastel carnival has a following of collectors who admire the glassware for the reasons stated. I wrote this article not to promote Pastel Carnival Glass, but to share some thoughts on how experienced collectors place values on Carnival. As with most collectors, my Carnival Glass collection contains a wide variety of shapes and colors encompassing the whole spectrum of our hobby. I have \$25.00 pieces of glass on display next to pieces market priced in excess of \$3,000. Sometimes I feel more attached to the lesser priced pieces than the rarities. No matter what your glass collecting preferences are, the friendship of fellow collectors and the challenge derived from assembling a collection of fine glassware is the most enjoyable aspect of Carnival collecting.

ON THE AUCTION TRAIL WITH CHUCK & MARGE

By Chuck & Marge Kremer

August 25-26, 1995: A Burns Auction at Lennox Inn, Reynoldsburg, Ohio. The Lennox Inn is a nice place to hold an auction and the glass offered covered a wide range - a lot of the middle of the road kind with a few upper end pieces for good measure. As we looked back at the brochure we had written "damage" a few too many times, but there were plenty of nice pieces for everyone. The auction was smooth and relatively fast. Both the Friday night and Saturday sessions were short and we were out of there early.

A few of the prices paid were amethyst Inverted Strawberry 7 piece water set at \$3600, a super purple Grapevine Lattice tankard pitcher at \$1300, an aqua opal Holly hat at \$1200, the 10 piece green Acorn Burr punch set at \$2100, a red Rustic vase with tight crimped edge at \$2100, the 5 piece Bouquet bulbous water set with super pitcher brought \$1300 as the last item in the sale. The sale had 13 Australian sauces in several patterns plus several bowls at fair prices in our opinion. We took home 10 items and saw the friendly banker on Monday. It was an enjoyable sale for us.

After the above was written came the bad news. On Thursday morning, August 31, Marge had a stroke. As I add this note on September 12, she remains in the hospital in serious condition.

EDUCATIONAL TUMBLER SERIES

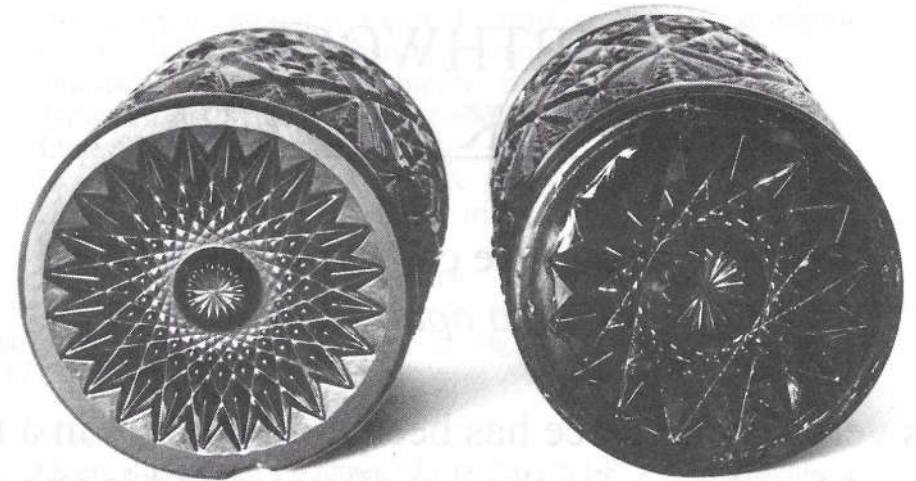
By John & Lucile Britt



VARIATION IN THE DIAMOND LACE TUMBLERS

After collecting and working with carnival glass tumblers for many years, it was only recently that we realized that there was a variation in the tumblers of the Diamond Lace pattern. This variant is shown on the left in both of the photos included in this article. The regular Diamond Lace tumbler is on the right.

In the above photo, you will notice that the variant example is somewhat shorter and does not contain the collar base that is used on the regular Diamond Lace tumbler. The big difference in the tumblers is shown in the photo on the facing page where the two tumblers are shown in the lying-down position. This gives an excellent view of the bottom of the bases. The variant contains a star type figure with 24 points while the regular tumbler has only 16 points. Also notice that the variant example is ground along the outer edge of the base, while this is not true on the regular tumbler. Also notice that the design in the center of the base is much larger on the regular tumbler than that used on the variant.



This is an interesting variation in one of Imperial's popular patterns. We would assume that the one which we call the variant was made first and the mold later changed to the regular type base which would allow the collar base as a place to apply the clamp. We also observed that the very rare marigold Diamond Lace whimsey rosebowl that was sold at the ACGA auction recently was made from the variant tumbler mold.

The credit for first recognizing this unusual variation in the Diamond Lace tumblers was Rodney Suftin of Lansing, Michigan. He had purchased a group of 8 Diamond Lace tumblers and after placing them on the shelf, he noticed that one was different. We had the opportunity to display these two different examples of Diamond Lace tumblers at the ACGA convention. There was a lot of interest in them. We would be happy to hear from anyone out there who might have this Variant tumbler or tumblers in their collection.

This article featuring the Diamond Lace Variant tumbler is #213 in our Educational Tumbler Series. We wish to thank the Suftin's for allowing us to display the tumbler at the ACGA convention. We would also like to thank Dave Doty for his very fine photos showing the variation of the featured tumbler very well.

We are pleased to present a magnificent

**NORTHWOOD
PEACOCK AND URN**

master ice cream bowl
in *aqua opalescent*

This very special piece has been hidden away in a rural Maryland farmhouse for the last 40 years and is one of only a handful known to exist.

*We invite inquires from serious collectors, please;
we intend to sell this piece before November 1, 1995.*

To View or for further details, call:

Bill Payne Auctions, Inc.

P.O. Box 178

Amissville, VA 22002

(540) 937-4142 or 675-3729 (before 9 P.M., please)

RESOURCE INFORMATION

1. HARTUNG CARNIVAL GLASS PATTERN BOOKS

Set of 10 books for \$60.00 plus \$6.00 postage. Order from Ed Kramer, Secretary HOACGA, 4305 W. 78th Street, Prairie Village, KS 66208

2. HOACGA EDUCATIONAL SERIES BOOK I - 148 articles with pictures (black & white) on a variety of carnival glass patterns. Books consists of articles written by John & Lucile Britt which have been printed in previous monthly bulletins. \$15.00 plus \$2.50 postage. Order from Ed Kramer, Secretary HOACGA, 4305 W. 78th Street, Prairie Village, KS 66208

3. HOACGA EDUCATIONAL SERIES BOOK II - 180 articles with pictures (black & white) on carnival glass tumblers. Book consists of articles written by John & Lucile Britt which have been printed in previous monthly bulletins. \$17.50 plus \$2.50 postage. Order from Ed Kramer, Secretary HOACGA, 4305 W. 78th Street, Prairie Village, KS 66208

4. THE ENCYCLOPEDIA OF CARNIVAL GLASS LETTERED PIECES. 120 pages of black & white and color photographs of all known carnival glass advertising and commemorative pieces. \$15.95 plus \$2.50 postage. Order directly from John D. Resnik, 235 Walnut Street, Statesville, NC 28677

5. COLLECTOR'S GUIDE TO NORTHWOOD'S CARNIVAL GLASS by Carl O. Burns. This Northwood book includes 166 pages with 250 pieces pictured in full color, including many rarities never shown in any carnival glass book. \$24.95 plus \$3.00 Shipping. Order from Carl O. Burns, Star Rt. Box 111, Rumford Center, Maine 04278 (Mention you are a member of HOACGA)

6. MILLERSBURG CARNIVAL GLASS BOOK by Marie McGee. \$29.95 for paperback, \$37.95 for Hardback. Send orders to 3906 E. Acacis Ave., Fresno, CA 93726

7. THE WORLD OF ENAMELED CARNIVAL GLASS TUMBLERS by Cecil Whitley. Book on painted Carnival Glass tumblers. Ten pages of full color photographs of sixty painted tumblers. \$10.00, postage included. Order from Cecil Whitley, 1041 Cheshire Lane, Houston, TX 77018

8. 1995 CARNIVAL GLASS APPOINTMENT CALENDAR by Dave & Joan Doty. Weekly appointment calendar featuring more than 65 all new full color photos of rare and unusual Carnival glass. \$10.00 plus \$3.00 Shipping. Order from PageWorks, P.O. Box 14493, Chicago, IL 60614

9. NEW! NEW! NEW! IRIDESCENT HATPINS & HOLDERS of the CARNIVAL GLASS ERA by Jerry Reynolds. \$16.50 - book. \$3.25, Priority or \$1.65 Book Mail. Canada, \$17.60. Order from Jerry Reynolds, 1305 N. Highland Pkwy, Tacoma, WA 98406

10. PRICE GUIDE FOR IMPERIAL AND HANSEN NEW CARNIVAL GLASS 1994 - 1995. Completely updated. Very helpful to both new and old collectors. Most complete listing of Imperial and Hansen known. Price is \$5.25 postpaid. Order from Scott Ackerman, 4677 Kennebec Dr. Cass City, MI 48726

11. **AUCTION PRICE REPORT - CARNIVAL GLASS** - Auction price report for 1989 thru 1994 is available. \$10.00, postage included. \$9.00 if 2 or more ordered. Please specify year when ordering. Canadian friends should send Canadian Postal Money Order. Overseas mailings add \$2.00 for each copy. Order from Tom & Sharon Mordini, 36 N. Mernitz Ave., Freeport, IL 61032 (815) 235-4407
12. **NETWORK** by Glen & Stephen Thistlewood of Hampshire, England. Quarterly publication devoted exclusively to Carnival glass. One year subscription (4 issues) \$20, available in the US only through PageWorks, P.O. Box 14493, Chicago, IL 60614
13. **BUTTON, BUTTON.** Carnival Glass, Iridescent, Luster Buttons. Over 100 buttons listed - Over 140 pages packed with information. Each button has a color and black & white photo, detailed drawing & description - shown in actual size. \$15.50, postage included. Order from Clint Arsenault, P.O. Box 1845, Monrovia, CA 91017
14. **THE SANCTIFIED CROSS-EYED BEAR'S PRICE TREND GUIDE FOR CARNIVAL GLASS FOR THE YEARS 1990 - 1995 (SECOND EDITION)** - reports on over 8,000 auctions sales occurring in 1995 by informing you of the high, low, and average sale price - provides you with over 8,500 line entries of average sale prices during 1990 to 1995 and clarifies upward and downward price trends - over 200 full pages. \$24.95 for U.S. & Canada; \$34.95 for Overseas Mailings. Order from The Sanctified Cross-Eyed Bear, P.O. Box 1296, Huntsville, AL 35805-1296
15. **CARNIVAL GLASS HATPIN PATTERNS** - This book shows the hatpins in detail with beautiful illustrations, many showing top and side views. A number of these hatpins have never appeared in any previous carnival books. \$15.00 plus \$1.00 postage & handling. Canada and overseas - \$15.00 plus \$3.00 postage and handling. Order from Alphonse Tvaryanas, 284 Clearstream Rd., Jackson, NJ 08527
16. **A CARNIVAL OF IRIDESCENT LUSTER BUTTONS, BOOKS I & II.** Book I has 856 named design drawings. Indexed. \$13 ppd. Book II has 450 more drawings, indexed, with price guide covering both books. \$14.00. Canada and Mexico please add \$2.00 (US) to each for extra postal cost. Overseas please add \$4.00 (US) to each for surface mail. Add \$6.00 (US) each for air mail. Order from author Ruth M Clark, 2100 Dawn Dr., Georgetown, TX 78628.
17. **CARNIVAL GLASS OF AUSTRALIA** - 100 pages, some colored, hard cover. Produced by Australian Carnival Enthusiasts Association, Inc. Cost \$20.00, this includes Air Mail Postage. Please contact Mrs. Margaret Dickinson, Secretary. R.S.D. Fryerstown, Victoria, Australia 3451, for advice on the uncomplicated purchase of this book.
18. **THE CARNIVAL HUNTER'S COMPANION**, a unique cross-referencing system for easy identification of pattern features and names. \$27.95 ea., includes shipping. Texas residents add \$2.06 tax. Check payable to Elaine Blair, P.O. Box 116335, Carrollton, TX 75011-6335, 214-492-1528

H.O.A.C.G.A.
CLUB NEWS & GENERAL INFORMATION

The Bulletin is published the 15th of each month.

Membership year begins with the month your dues were paid. Check the upper right hand corner of your mailing label for month and year your membership expires. Example: 595 is May, 1995.

Dues: U.S. & Canada, Couple or Single..... \$25.00
Foreign..... \$40.00

All monetary figures quoted are in U.S. dollars.

Make all checks payable to H.O.A.C.G.A. and send them to the Secretary, whose name and address appears on the inside front cover of this newsletter.

Send all items for the Bulletin, i.e. glass for sale, glass wanted, articles, information, etc., to the Bulletin Secretary, whose name and address appears on the inside front cover of this newsletter.

MEMBERSHIP APPLICATION
H.O.A.C.G.A.

New Member **Renewal**

NAME _____

ADDRESS _____

TELEPHONE _____

REFERRED BY _____

Send to: Ed Kramer, 4305 W. 78th Street, Prairie Village, KS 66208

H.O.A.C.G.A. - CLUB INFORMATION

The purpose of the Heart of America Carnival Glass Association is to promote the growth and continuation of the Carnival Glass collecting hobby and to provide support to the many collectors by providing current information about the hobby.

Growth is accomplished by supplying educational information for the collector and soliciting new collectors into the hobby.

A convention is held annually in April (Convention date always includes the 4th Friday). Some of the activities provided at the convention are:

- * Members provide Room Displays with glass from their collection.
- * Members are encouraged to bring glass for Sale.
- * Educational Seminars are provided by members.
- * A Major Carnival Glass Auction is provided.
- * The Convention offers members an opportunity to meet new collectors, renew old friendships and enjoy discussing carnival glass with other knowledgeable collectors.
- * A banquet is held with a Carnival Collector as our Speaker.
- * A Hospitality time is provided by the club. This is a time of relaxation and visiting with other members.

It takes the support of all collectors and members to promote the hobby in order that its growth and expansion can continue.

In order to obtain our objective, the members must financially support the organization. The Heart of America Carnival Glass Association receives its financial support through the Annual Membership dues and the sale of the following.

- * **Membership Dues** - \$25.00 per year - U.S. & Canada. \$40.00 per year for Foreign. The Membership Year is from the date of joining to one year later. Dues are set by the Board of Directors to support the publication of the monthly bulletin, typing, printing and mailing.

- * **Educational Series - Book I** - 148 articles with pictures (black and white) on a variety of Carnival Glass Patterns.

- * **Educational Series - Book II** - 180 articles with pictures (black and white) of Carnival Glass Tumblers

- * **Hartung Carnival Glass Pattern Books** - A set of 10 books identifying Carnival Glass Patterns. These books are a must for all Carnival Glass Collectors, especially for the beginner. These are the only complete set of books available that identifies the majority of the carnival glass patterns. Sketches are in black and white.

- * **Pattern Notebook** - A notebook containing sections on Mugs, Table Sets, Rosebowls, Water sets (including painted sets), Plates (small, regular & chop), Compotes (large, regular & small), and punch sets. Each section of the notebook identifies each pattern with a **COLOR** picture along with information about the Maker and colors of each different pattern.

- * **Souvenirs** - Periodically H.O.A.C.G.A. makes a souvenir to be sold to members. Souvenirs have been made since 1974, a few of these are presently available. They are the small Good Luck plate in ruby red, the Green Opalescent - Fenton, Cobalt - Millersburg, Marigold - Imperial, and Teal - Dugan Bells. Each year that Souvenirs were made, Whimseys were also made and sold at the convention banquet.

- * **Video Tapes** - Video Tapes of educational programs given during the various conventions are available. A complete listing of the available video tapes are shown on the Order Form, which is part of this section of the Bulletin.

OCTOBER, 1995 REGULAR HOACGA MONTHLY MEETING

(Note Different Location)

The next regular meeting of the Heart of America Carnival Glass Association will be on Sunday, October 22, 1995 at 2:00 P.M. at the home of Bob and Imogene Grissom. 7517 Evanston, Raytown, MO. 816-356-5320. Their home is 3 blocks west of 76th and Raytown Road. The Grissom's glass will be the subject of our discussion.

The September 24, 1995 meeting was well attended and after a break for coffee and chocolate cake baked by Lucy Hood, we discussed 27 pieces of many patterns and colors with animals, birds, fish and insects, and there were several pieces in each category and amazingly, no repeats. Everyone had a good time. Imogene Grissom won the door prize, a plum mug whimsy pitcher. We wish more of you local and surrounding area people could attend the monthly meetings.

We look forward to seeing you at the Grissom's on Sunday, October 22. Their Carnival Glass collection is unique and absolutely beautiful.

Ed Kramer, Secretary HOACGA

THANK YOU...

On behalf of all HOACGA members thanks to Al and Eleanor Rodenhouse for the check received this month to the HOACGA treasury for the sale of some of the books in their carnival glass library. They asked John and Lucile Britt to sell the books for them on the Britts many travels and they donated to proceeds to HOACGA. Some more books remain to be sold. Thanks to Al and Eleanor and also to John and Lucile for your efforts. It's members like you who make this organization great!

Ed Kramer, Secretary HOACGA

NOTES FROM THE SECRETARY

- 1.) Please make all checks payable to HOACGA.
- 2.) Please do not send cash.
- 3.) Please send ads to Jackie Fortney (address on front inside cover). Sending them to ME delays them.

Ed Kramer, Secretary HOACGA

HOACGA PATTERN NOTEBOOK

The HOACGA Pattern Notebook was started in 1979. Each year a different section has been added. The complete listing of the available sections of the notebook are contained in this section of the bulletin. Each section contains individual pictures, in color, of the various patterns within that section. The maker and known colors of each pattern are also identified.

The notebook is becoming one of the best single sources of information for the carnival collector. If you do not have one you are missing a very valuable reference source. The notebook not only shows you the pattern, but it also tells you who made the pattern, the known colors, and something about its scarcity.

If you have not kept your notebook current, or have missed some of the sections, you might want to review the available sections and order the missing ones. If you do not have a notebook, and would like to order only some of the sections, you may order as many sections as you would like.

See the information in this bulletin for a complete listing of the available sections, their prices, and how to order

1996 HOACGA NOTEBOOK SECTION

The next section of the HOACGA Notebook will be the first section of many, on Vases. This first section will cover about 60 vase patterns. We will have the vases alphabetically. As far as we know now there are about 300 different Vase patterns. The first year will cover those Vases where the pattern name starts with A, B, C, or D. WE NEED PHOTOGRAPHS OF YOUR VASES. So get out your Brownie and your best light and photograph your vases. A 3x5 colored photograph is the size to send. Take a close-up of the vase so it shows the pattern.

Send you vase photograph to: Bob Grissom, 7517 Evanston, Raytown, MO 64138.

1996 HOACGA CONVENTION DATE

Plans are being made for the 1996 HOACGA Convention. The dates of the convention are April 25, 26, 27 & 28. The convention motel will be the Lenexa Holiday Inn, I35 & 95th Street, Lenexa, KS, (This is the same motel as previous years). We are making plans and we hope that you are making plans also to join us.

ORDER FORM - SOUVENIRS & BOOKS

_____ H.O.A.C.G.A. Educational Series Book I	\$15.00
Shipping for each book.....	\$2.50
Total.....	\$17.50
_____ H.O.A.C.G.A. Educational Series Book II	\$17.50
Shipping for each book.....	\$2.50
Total.....	\$20.00

H.O.A.C.G.A. SOUVENIRS:

_____ 1993 Ruby Red 6" "Good Luck" Plate	\$37.50
(20th Anniversary)	
_____ 1989 Teal Bell	\$35.00
(Honors Dugan Glass Company)	
_____ 1988 Marigold Bell	\$35.00
(Honors Imperial Glass Company)	
_____ 1987 Cobalt Blue Bell	\$35.00
(Honors Millersburg Glass Company)	
_____ 1986 Green Opalescent	\$35.00
(Honors Fenton Glass Company)	

Include \$2.50 for shipping & handling of each above souvenir.

_____ PLATE HOLDERS - Dozen	\$21.50
(Postage Included)	

TOTAL \$ _____

SEND ORDERS TO:

ED KRAMER
4305 W. 78th Street
Prairie Village, KS 66208

Name _____
Address _____

ORDER FORM - VIDEO TAPES

H.O.A.C.G.A. CONVENTION SEMINAR VIDEO TAPES

_____ "Red Carnival Glass"	\$20.00
(Richard Cinclair, Bob Allaire & Joyce Seale)	
_____ "Shades of Blue" - (Richard Cinclair)	\$20.00
_____ "Poppy & Rose Show Pieces" - (Tom Mordini)	\$20.00
_____ "Fenton Two Flower" - (Bob Stremming)	\$20.00
_____ "Carnival Glass Smalls"	\$20.00
(Eleanor & Jack Hamilton)	
_____ "Small Plates" - (Smokey Cloud)	\$20.00
_____ "Hatpin & Hatpin Holders" - (Clint Fox)	\$20.00
_____ "Northwood Peacock & Urn Ice Cream Sets"	\$20.00
(Harold Cox)	
_____ "Millersburg Big Fish & Trout & Fly"	\$20.00
(Singleton Bailey)	
_____ "Carnival Glass Collecting Experiences"	\$20.00
(Carl & Ferne Schroeder)	
_____ "Heinz 57 Variety Carnival Glass Collection"	\$20.00
(Jerry & Carol Curtis)	
_____ "Little Sauces" - (Garth Irby)	\$20.00
_____ "Miniatures" - (John & Lucile Britt)	\$20.00
_____ "Table Sets" - (Leonard, Kremer & Grissom)	\$20.00
_____ "Plates" - (Ruth Green & Richard Cinclair)	\$20.00
_____ "Luncheon Honoring Floyd & Cecil Whitley"	\$20.00
(Britt award of Excellence in Carnival Glass)	
_____ "Plethora of Patterns" - (Dean & Diane Fry)	\$20.00
_____ "Millersburg" - (Dick & Jennie Hostetler)	\$20.00
_____ "Swung Vases" - (Dave & Joan Doty)	\$20.00
_____ "Holly Pattern" - (John Mikkonen)	\$20.00
_____ "Britt Award Luncheon" - (Carl & Ferne Schroeder)	\$20.00
_____ "95 HOACGA Banquet" - (Floyd & Cecil Whitley)	\$20.00

TOTAL \$ _____

POSTAGE INCLUDED WITH PRICE OF TAPE

SEND ORDERS TO:

ED KRAMER
4305 W. 78th Street
Prairie Village, KS 66208

Name _____
Address _____

ORDER FORM - BOOKS

HARTUNG CARNIVAL GLASS BOOKS

(Black and white sketches)

_____ Book 1 - \$6.00	_____ Book 6 - \$6.00
_____ Book 2 - \$6.00	_____ Book 7 - \$6.00
_____ Book 3 - \$6.00	_____ Book 8 - \$6.00
_____ Book 4 - \$6.00	_____ Book 9 - \$6.00
_____ Book 5 - \$6.00	_____ Book 10 - \$6.00

_____ Complete Set of 10 Books (#1 thru #10) - \$60.00

(Hartungs "Northwood Pattern Glass" included with a Set)

Include \$1.00 each, for shipping when purchasing books separately.

Maximum of \$6.00 shipping for a set.

H.O.A.C.G.A. PATTERN NOTEBOOK

(COLOR Photos)

_____ Mugs.....	(1980).....	\$7.00
_____ Table Sets (Photos 1 thru 40).....	(1981).....	\$7.00
_____ Water Sets 1 (Photos 1 thru 60).....	(1982).....	\$7.00
_____ Water Sets 2 (Photos 61 thru 120).....	(1983).....	\$7.00
_____ Water Sets 3 (Photos 121 thru 167).....	(1984).....	\$7.00
_____ Rosebowl 1 (Photos 1 thru 60).....	(1985).....	\$7.00
_____ Rosebowl 2 (Photos 61 thru 101).....	(1986).....	\$7.00
_____ Small Plates 1 (Photos 1 thru 48).....	(1987).....	\$7.00
_____ Small Plates 2 (Photos 49 thru 98).....	(1988).....	\$7.00
_____ Chop Plates (Photos 1 thru 40).....	(1989).....	\$7.00
_____ Regular Plates 1 (Photos 1 thru 48).....	(1990).....	\$7.00
_____ Regular Plates 2 (Photos 49 thru 81).....	(1991).....	\$7.00
_____ Compotes 1 (Photos 1 thru 57).....	(1993).....	\$8.00
_____ Compotes 2 (Photos 58 thru 113).....	(1994).....	\$8.00
_____ Punch Sets, 2nd Edition (Photos 1 thru 36).....	(1995).....	\$8.00
_____ Complete Pattern Notebook.....		\$120.00
_____ Shipping for complete notebook.....		\$5.00
_____ Shipping for each selection.....		\$1.00
(Maximum Shipping \$5.00)		

TOTAL \$ _____

SEND ORDERS TO:

ED KRAMER
4305 W. 78th Street
Prairie Village, KS 66208

Name _____
Address _____

FROM MY CORNER

By Bob Grissom

NEW ENGLAND CARNIVAL GLASS CONVENTION

In June, I received a call from Moe Myers, and he asked me to give a program on Table Sets at the New England Carnival Club Convention in September. It was tempting to suggest that he call Chuck Kramer or Bob Leonard since they are about 600 miles closer than I am. But, it is not easy to say no to someone since I am always asking collectors to give talks each year at the HOACGA convention. It is important to the Carnival collecting hobby that we should be willing to help with the educational aspect when we have the opportunity.

Another compelling reason to go was that Imogene taught American History for many years but had never had an opportunity to visit the Boston area and see all of the historical places which she had talked about so many times. So this gave us an opportunity to provide an educational program at the New England convention and visit some of the historical places of that area. So we decided to pack our bags and go. We had a very enjoyable trip, and we were glad that we were able to take advantage of both opportunities.

It was interesting to see that they had some of the same problems with the convention hotel as we at HOACGA, and that other clubs do also, that is getting the rooms that were previously promised. They also had a familiar problem, the changing of motel managers several times during the year. With all of the problems, Sam McGill was able to work through them, and he helped provide a very enjoyable convention for all of those attending.

The New England Convention is held each year to coincide with the September Brimfield Flea Market. On the way from Boston to Springfield we stopped there. After about an hour of looking I found a pair of Crucifix Candlesticks, so I was able to bring them back to Kansas City for Ed Kramer to go in his candlestick collection. Brimfield Flea Market is very big and it does not take long to get an overdose of the flea market "Junque" and "Junk".

It was good to see, and have the opportunity to visit with several new collectors at the convention, it is always encouraging. It is to the interest of the hobby that we encourage and help the newer collector.

They had a very interesting program on tumblers which was put on by Bob Smith of their club. Tom Burns MC'd a program on pattern identification. As usual these programs are always well attended.

On behalf of my wife Imogene and myself, I would like to thank Sam McGill, Moe Myers and all of the New England club members for their hospitality in making our visit to their convention a very enjoyable one.

WELCOME NEW MEMBERS

Fred & Janice Cade	Chandler, TX
Mike Carwile	Lynchburg, VA
Mary Lynn	Nashville, TN
Steve & Nancy Mailloux	Northampton, MA
Robert & Agnes Natali	Fresno, CA (rejoin)
Ron & Camilla Pierce	Mt. Juliet, TN
Ritchie Phillip	Graham, NC
Col. Sam (Ret.) & Lois Porter	Severna Park, MD
Dennis & Dranne Prevo	Aurora, MD
John & Karen Schlumbohm	Decorah, IA
Michael & Cindy Thomas	Tulsa, OK
Lloyd & Corine Ward	Eules, TX
Ken & Song Nyum White	Northbrook, IL
Vern & Cathy Webster	Prairie du Chien, WE

CORRESPONDENCE

Dear Ed,

Thank you for the magazine over the past year. I really look forward to its arrival and many articles. Must say I enjoy John Resnik's tongue in cheek brand of humour.

Many thanks, Margaret Bryant
Hamilton, New Zealand

Dear Ed,

Enclosed are my dues for another years membership in this great association. Everyone's help and cooperation is greatly appreciated. Please add my new brides name to my membership, as she shows the same admiration and respect for the beauty of Carnival Glass as I.

Denny & Shelia Smith
Sioux City, Iowa

Dear Ed,

Can't believe its been a whole year since I became a ember of HOACGA. I really enjoy the monthly newsletters, very informative. I also enjoyed attending the HOACGA convention in Kansas City. I've met some wonderful people this past year at conventions and auctions. My interest in Carnival glass as a hobby has increased since joining HOACGA and getting to meet others all around the country who are interested in Carnival. Everyone should join a club and attend a convention.

Gale Eichhorst
Mankato, MN

Antiques Hidden In Old Vinita House

Estate's New Owner Finds Treasure Trove

By Pam Keyes (World Correspondent)

VINITA - Craig Sparks' eyes must have shone like stars when he realized what he had found in the old house.

The Vinitan, while going through a homeful of treasures following an estate sale, discovered a rare astronomy book which might be worth several thousand dollar.

"The book was among about 1,000 others I found two weeks ago in the (Kenneth Mongold estate), including a complete set of Tarzan and Buck Rogers comic books," Sparks said. "When I opened the book up, I found a Tulsa World clipping from March 10, 1963, titled 'Treasures in Tulsa' about a Tulsa woman finding the book and donating it to the Holland Hall book fair."

The large volume, titled "Atlas Designed to Illustrate the Geography of the Heavens," was printed in Connecticut in 1833. Sparks said he believes it might be worth more than the comic books. He said one of the Buck Rogers titles lists for more than \$2,000 in a price guide.

The centerpiece of the collection so far seems to be the astronomy book.

The Tulsa World clipping from 1963 reported that Mrs. Howard Conhaim of Tulsa had purchased the astronomy guidebook at an estate auction in Newport, Rhode Island. The story also described the rarity of the volume, which illustrates some constellations no longer recognized by astronomers, and gives Herschel as the name for the planet know now known as Uranus.

Sparks, a real estate agent, purchased the entire contents of the Mongold estate in a sale on Sunday. He was amazed at how much stuff the family collected over the years.

"This is the first estate I've bought like this, and it will probably be the last one like it," Sparks said. "My auctioneer, J.B. Robison, said this is the first estate he's seen in 15 years that was untouched."

In addition to the rare books, Sparks said the Mongold estate turned up all kinds of ornate antique furniture. He also found a jewelry box brimming with gold jewelry and pocket watches stuffed under a sofa. The kitchen cabinets were packed with depression and carnival glass.

Other items found in the estate include wind-up toys and two unusual horse and bear pull-toys.

Sparks said he also hauled away probably 7,000 pounds of newspapers.

"The relatives didn't take one thing out of the house, not even the family pictures," he said.

"This family saved everything, too. I found

probably 10,000 lids off orange juice containers, all sorts of old medicine tins, military items from World War I and II, over 1,000 records, coin, stamp, knife and marble collections, and all sorts of old calendars, including Vargas girlie ones from the 1950's."

Sparks said Mongold, the son of a physician, had lived in Vinita since 1945. He was in his 70s when he died recently.

Sparks doesn't know when the surprises from the estate will end.

"I still don't know what I'll run into next," he said. "I'm still digging... Everybody I've told about the place has said it's like winning the lottery."

This article was sent by Michael and Cindy Thomas of Tulsa, Oklahoma. There is still hope for some new Carnival glass finds. It hasn't all been discovered yet.

H.O.A.C.G.A. BULLETIN - ADVERTISEMENT POLICY

1. All advertisements of glass for SALE or WANTS must be received by the Bulletin Secretary no later than the LAST DAY OF THE MONTH to insure being published in the next bulletin.
2. Members may advertise ten (10) "For Sale" and/or "Wants" per month. The "For Sale" Glass must be members glass and not the property of a nonmember. Advertising is at no cost.
3. Only "OLD CARNIVAL GLASS" items or H.O.A.C.G.A. Souvenirs will be published.
4. Damage or flaws should be noted.
5. All "For Sale" items must be priced; NO BID ITEMS WILL BE PUBLISHED.
6. A 5 day return privilege, at buyer's expense, providing it is not as advertised, or as discussed.
7. Postage and Insurance is to be the responsibility of the buyer, both when returning and receiving the glass.
8. The sender of the glass (be it the seller or the buyer returning it) is responsible for the proper packaging of the glass.
9. H.O.A.C.G.A. does not accept responsibility for accuracy of any advertisement.

USE THE FOLLOWING ABBREVIATIONS FOR GLASS DESCRIPTION.

A Amethyst	HA Honey Amber	P Purple
AMB Amber	IB Ice Blue	PRL Pearl
AO Aqua Opal	IG Ice Green	PM Pastel Marigold
B Blue	IGO Ice Green Opal	PO Peach Opal
BO Blue Opal	LAV Lavender	R Red
CLM Clambroth	M Marigold	RA Amberina
EB Electric Blue	MMG Marigold on	SM Smoke
H Horehound	Milk Glass	T Teal
G Green		VAS Vaseline

Note: If you wish to describe a piece as light or dark, use the body of the ad.

EI - Excellent, GI - Good, LI - Iridescence

C A R N I V A L G L A S S F O R S A L E

Dick Hatscher, 142 Walnut Hill Road, Bethel, CT 06801
Phone: (203) 743-1468

M	EI	Kittens spooner	148.00
M	EI	Kittens six ruffled dish	178.00
P	EI	Corn vase	515.00
P/A	EI	10" Millersburg swirl hobnail vase	175.00
P/A	EI	Pony bowl	245.00
G	EI	Nesting swan 9" bowl	258.00
G	EI	Birds & Cherries 2 handled bon-bon	68.00
VAS	EI	Acorn ruffled bowl	85.00
IG	EI	Pony bowl	675.00
IB	EI	Brocaded Acorn 3 pc. console set	248.00

Dennis Runk, PO Box 235, Littlestown, PA 17340
Phone: (717) 359-7205

M	EI	N Memphis master berry bowl	130.00
B	EI	Orange Tree fruit bowl	225.00
M	EI	N Peacock at Fountain fruit bowl	285.00
P	EI	N Singing Birds - 5 pc. water set	725.00
G	EI	Butterfly & Berry master berry bowl	210.00
A	EI	Vintage 5" deep round bowl	25.00
G	EI	Shell covered sugar	30.00
IB	EI	N Wishbone 8" footed bowl	1,200.00
B	EI	Enameled Cherries - bulbous pitcher (spout chip)	35.00
M	GI	Milady tumbler - lite color	22.00

Greg Dilian, 450 Shore Rd., Long Beach, NY 11561
Phone: (516) 432-1164

B	EI	Bud Vase Whimsey, 2 sides up, cobalt	75.00
B	EI	Covered Swan, super irid., perfect	325.00
W	EI	Brocaded Roses console bowl	70.00
M	EI	Fenton JIP ribbed vase, slender stem nice	55.00
A	EI	Fanciful ruffled plate, nice but chip on pt.	40.00
M	EI	Double Scroll candlestick (1) w/ swirl base	30.00
G	EI	Imperial Grape Wine, better irid. than most	25.00
G	EI	Millersburg Mayan ICS 8" bowl, radium	75.00
W	EI	Drapery candy dish, super irid.	115.00
G	EI	Dragon and Lotus high ruffled ftd. bowl, super	110.00

CARNIVAL GLASS FOR SALE

Virgil St. John, Box 400, LeGrand, IA 50142
Phone: (515) 479-2952

W	Apple Blossom Twigs 8½" bowl	200.00
M	Northwood 6 sided basket	150.00
M	Beaded Shell spooner	75.00
A	Big Fish bowl 3-1 edge minor roughness	575.00
AO	Daisy and Drape vase	675.00
B	Feather Stitch bowl	150.00
P	Greek Key bowl	200.00
M	Greek Key bowl	100.00
P	Millersburg many stars bowl, minor nick	600.00
C/B	Concave Diamonds tumble up complete, rare	250.00

Doug & Nancy Davis, 7050 Carmelita, Ave., Atascadero, CA 93422
Phone: (805) 466-3762

M	Peacock & Urn, stemmed compote (Fenton), nice color	40.00
M	Blackberry wreath 6" ruffled berry bowl, pretty	50.00
P	Grape & Cable, punch bowl base (N) small. Blue & Gold colors. No harm bruise on rim of base	50.00
P	Fishermans mug, silvery outside	80.00
B	Orange Tree mug, 3½" tall, factory mark in bottom, nice color	65.00
M	Grape & Cable (Fenton) footed orange bowl, Persian Medallion interior, pinhead chip on one point. Super color	150.00
G	Panelled Dandelion tankard (Fenton), Excellent Irid., beautiful	650.00
G	Lustre Flute, hat shape, made from tumbler (N)	25.00

Bill Neal, 2904 Lori Ln, Yadkinville, NC 27055
Phone: (910) 961-6975 Call after 9:00 P.M.

G	EI	Strawberry ruffled bowl	125.00
VAS	EI	Feather Stitch 3/1 edge, rare	450.00
M	EI	Waterlily sauce	28.00
P	EI	Petal & Fan 6" CRE bowl, super	65.00
B	EI	Ribbon Tie 3/1 edge, super	195.00
P	EI	Windmill pickle dish, super	95.00
P	EI	Leaf & Beads rosebowl sunflower interior	90.00
Aqua	EI	Pine Cone 5" sauce	55.00
Aqua	EI	Persian Medallion 5½" sauce	55.00
M	EI	Butterfly Berry butter lid	35.00

CARNIVAL GLASS FOR SALE

Dave Sharp, 316 E. Front St., Lititz, PA 17543
Phone: (717) 626-8231

P	EI	Peacock at the Fountain fruit bowl, super	650.00
*	EI	Amber Opal Dragon & Lotus IC bowl, opal swirls throughout	745.00
M	EI	Banded Ribs water pitcher, nice color	95.00
PO	EI	Question Mark crimped compote, super	125.00
M	EI	Three Fruits dome ftd bowl, pastel irid	85.00
*	EI	Lime IG N Corn vase, nice irid	600.00
W	EI	Grape Delight rosebowl, mint & great color	85.00
B	EI	Holly hat w/ 2 sides up, Silver irid.	35.00
P	EI	Springtime sugar base, super	90.00
P	EI	Peacock at the Fountain spooner, base crack, exc. irid.	45.00

Rosalinda Lozada, 17315 Tall Cypress, Spring, TX 77388
Phone: (713) 353-3083

M	EI	Washboard pitcher 5"	65.00
AMBEI		Open Rose plate (Whimsey from fernery) 9 3/4" a beauty	250.00
B	GI	Tiger Lily tumbler	250.00
M	EI	New Jersey wine (VS Glass)	125.00
AMBEI		Octagon tumbler	90.00
A	EI	Circle Scroll vase	175.00
IB	GI	Seaweed lamp (large)	350.00
B	GI	Mikado compote ruffled	280.00
V	EI	Holly compote	95.00
CLMEI		Star Medallion milk pitcher	60.00

Bill & Sharon Mizell, 52 Old Bonifant Rd., Silver Spring, MD 20905-5903
Phone: (301) 384-8952 (Postage & Insurance extra)

G	GI	Poinsettia milk pitcher	375.00
M	EI	Pepper Plant hat, usual nicks on factory ground base	50.00
B	EI	Fenton Floral & Grape pitcher	250.00
EB	EI	Two Flowers 10" ruff bowl, footed, pretty pink highlights	350.00
G	EI	Diamond Point Columns 11" vase, emerald green/no marigold, beaut.	135.00
T	EI	Imperial Grape tumbler	135.00
M	GI	Barrel bank	45.00
M	EI	Mary Ann vase	85.00
LAV	EI	Leaf Rays nappy, very frosty	150.00
B	GI	Open-edge basket, JIP	95.00

CARNIVAL GLASS FOR SALE

Gladys Hutchinson, Rt. 1 Box 259A, Stockton, MO 65785
 Phone: (417) 276-4119

PO	Four Flowers 10" bowl, smooth edge	210.00
P	Victorian 11" bowl, a beauty, has some wear in bottom	395.00
M	Thistle Banana Boat, nice	190.00
A	Thistle 9" bowl, very pretty	190.00
M	Light Heavy Grape 8" plate	55.00
M	Memphis 11" master berry bowl	110.00
M	Springtime butter and lid, nice	310.00
B	Captive Rose 9" plate, beautiful	375.00
B	Butterfly & Berry tumbler	60.00
G	Inverted Strawberry 7" bowl	100.00

Alan & Virginia Hodges, RR1 Box 253, Lyndonville, VT 05851
 Phone: (802) 626-5216

W	EI	Poppy Show plate	525.00
B	EI	Poppy Show plate	1,100.00
M	EI	Peacock at Urn compote, have 2, priced each	35.00
P	EI	Colonial Lady vase, best example I have seen	850.00
PO	EI	Six Petals ruffled bowl collar base	85.00
M	EI	Daisy & Drape vase	425.00
B	EI	God & Home tumbler	200.00
G	EI	Singing Birds tumbler, have 2 one lite iridescence, priced each	60.00
M	EI	Wreath of Roses, vintage interior punch bowl & base, 8 cups	500.00
B	EI	Iridized stretch centerpiece bowl, 12" & gold border	75.00

George Loescher, N 6016 Hwy 180, Marinette, WI 54143
 Phone: (715) 735-7135

P	EI	Leaf Rays Nappy adv. tell city, ind	70.00
W	EI	Floral & Optic 3 ftd plate, nick on back	22.00
M	EI	Vintage bowl hobnail back ICS	800.00
P	EI	Flute Toothpick, flake on side	12.00
M	EI	Tree Trunk vase, sm size	26.00
M	EI	Oval & Round 10½" chop plate rare	475.00
M	EI	Three Fruits ftd stippled bowl, how many have you seen in M?	175.00
PO	EI	Apple Blossom Twig plate, has flutes	310.00
PM	EI	Orange Tree plate very nice	210.00
M	EI	Strawberry bowl PCE, basketweave back	85.00

CARNIVAL GLASS FOR SALE

Dave Deem, 1746 N. California St., Burbank, CA 91505
 Phone: (818) 845-4530

B	Apple Blossom Twig 9" flat plate, super	415.00
P	Good Luck stippled 9" plate, thin base	1,300.00
R	Holly Hat, ruffled, nice, no silver	425.00
P	Grape & Cable 8" vt. plate, leaf center, super	195.00

Douglas Snow, 2412 Ashford Blvd., Flushing, MI 48433-2502
 Phone: (810) 732-8197

G	Imperial plate 9" Heavy Grape	80.00
G	Imperial ruffled edge 9" bowl Pansy	90.00
G	Northwood bowl ruffle edge 8" stippled rays	65.00
M	Fenton bowl 9" 3 in 1 edge Cut Arcs	40.00
M	Fenton ruffle edge bowl 9" Thistle	85.00
M	Dugan 7" ruffle edge bowl Fishscales & Beads	40.00
M	West Moreland 6" rosebowl Coin Dot	45.00
M	Dugan 9" dome footed bowl Double Stem Rose	55.00
A	Fenton 8" bowl ruffled edge Coin Dot	50.00
A	Fenton 9" bowl 3 in 1 edge Holly	80.00

Debbie & Mike Heintz, 240 Mize Rd. North, Cullman, AL 35055
 Phone: (205) 739-0281 After 6 PM central (Send SASE for more items, P&I EXTRA)

M	Fenton Waterlily and Cattail tumblers (2)	ea. 25.00
M	Imperial Grape bowl 6½"	35.00
M	Imperial Grape punch cups (2), (marie on one has internal bruise)	ea. 25.00
B	NW Poppy Oval Pickle Dish stippled, small flake, EB highlights	135.00
A	Fenton vintage Fernery (straw marks/inside), hvy gold irid on rough ft	65.00
M	Imperial Open Rose 9" ruffled bowl	40.00
M	Persian Garden 6" plate rare, Dugan	90.00
P	Acorn Burr sugar & creamer	set 175.00
M	NW G&C powder jar bottom, sml flakes & open bubble in bottom	15.00
LG	Fenton int. rib ft. spittoon / rosebowl pin on btm of ft., M overlay	100.00

CARNIVAL GLASS FOR SALE

Pat Housewright, 225 Rowland, Stephenville, TX 76401
Phone: (817) 968-2997

A	EI	Dandelion mug	220.00
A	EI	Wishbone 8½" ruffled footed bowl	170.00
B	EI	Butterfly & Berry 8½" vase	85.00
G	EI	Three Fruits 9" bowl	140.00
W	EI	Persian Garden 6" ICS bowl	80.00
W	EI	Oriental Poppy tumbler	165.00
PO	EI	Honeycomb rosebowl	200.00
M	EI	Horse Head 6½" ICS bowl	145.00
M	EI	Rococo 4½" vase (lav. tint base)	160.00
M	EI	Diamond tumbler	70.00

Stephen R. Kocsis, 3493 Wolfcreek Rd., Cuba, NY 14727
Phone: (716) 968-2499

M	EI	Grape & Cable bon-bon, dark	80.00
G	EI	Grape & Cable bon-bon, bronze highlights	165.00
G	EI	N Strawberry bowl (plain back), electric	165.00
G	EI	Blackberry Wreath bowl 7" (satin)	85.00
M	EI	Blackberry Wreath bowl 8" (satin) 3/1 edge	110.00
B	EI	Persian Medallion bowl 9", super	150.00
M	EI	Dahlia master berry bowl, good feet	95.00
P	EI	Grape & Cable plate (basketweave back)	175.00
M	GI	Scotch Thistle compote	60.00
PO	EI	Holly & Berry bowl 7" nice	65.00

Chuck & Peggy Bullard, 14915 Dark Star Court, Morgan Hill, CA 95037
Phone: (408) 778-7922

B	EI	Fenton's Flowers rosebowl, nick on one foot	95.00
M	EI	Fenton's Peacock & Urn plate	475.00
PO	EI	Ski Star sauce	95.00
P	GI	Fisherman's mug	150.00
M	EI	Octagon Variet tumbler	45.00
M	EI	Lustre Rose pitcher & 2 tumblers	250.00
P	EI	Grape & Cable sweetmeat	220.00
CB	EI	Pastel Swan, celeste	95.00
G	EI	Persian Medallion rosebowl, chip on collar base	125.00
B	EI	Holly compote	65.00

CARNIVAL GLASS FOR SALE

Richard Cinclair, 3605 South Echo Trail, Plano, TX 75023
Phone: (214) 596-0014

R	EI	Open Edge basket, blackberry interior	535.00
W	EI	Diamond & Rib vase, tough color	145.00
M	EI	Octet Dome footed bowl, pretty	115.00
M	EI	Wild Rose Syrup, great lid	775.00
A	EI	Wishbone & Spades 9" ruffled bowl	245.00
A	EI	Wishbone & Spades 5" ruffled bowl	115.00
A	EI	Imperial Grape water bottle	185.00
A	EI	Diamond Lace tumbler	65.00
IG	EI	Diamond Point vase	275.00
B	EI	Kittens spooner	495.00

Phil Hessenius, 1701 E. Roma, Phoenix, AZ 85016
Phone: (602) 277-6306

G	EI	Blackberry open edge ruffled basket, super irid., has ¼" heat check ..	140.00
W	EI	Cherry Chain ICS sauce, Clambroth?	80.00
R	EI	Open edge basket JIP shape	380.00
IB	EI	6 Concave Diamonds tumblers, exc. color, one has int heat crack	160.00
VAS	EI	Sailboats ruffled sauce dish, fluoresces	155.00
B	EI	Holly Hat, square shape, super	35.00
G	EI	Seaweed 3 in 1 edge bowl, colorful	350.00

Rick McDaniel, 3420 Morning Star Lane, Dallas, TX 75234
Phone: (214) 243-4574 (L'allure Photographic) (after 7 PM CST)

M	EI	Fine Cut and Flowers Vt. compote	50.00
M	EI	N Strawberry plate, mint condition	175.00
G	EI	Imperial Star of David 9" ruffled bowl, radium type irid.	170.00
M	EI	Wine & Roses wine	45.00
M	EI	Louisa 7" footed bowl	45.00
M	EI	Wreathed Cherry Toothpick, appears genuinely old	35.00
M	EI	Oriental Poppy tumbler	35.00
M	EI	Butterfly & Berry tumbler	35.00
SM	EI	Imperial Ranger 8" vase	65.00
M	EI	Northwood Wide Panel water goblet (have 3)	ea. 35.00

CARNIVAL GLASS FOR SALE

Jim Gibson, P.O. Box 7478, Pueblo West, Colorado, 81007
Phone: (719) 547-3638

B	EI	Butterfly & Berry tumblers (6, matched set)	360.00
B	EI	Peacock at Fountain, Northwood tumbler	75.00
B	EI	Paneled Dandelion tumbler	70.00
B	EI	Orange Tree punch cups (2)	70.00

Stephen Sivonda, 375 Congdon St., Middletown, CT 06457
Phone: (203) 346-9356

M	EI	Golden Harvest decanter / stopper	135.00
A	EI	Dugan Butterfly & Tulip bowl	2,400.00
IG	EI	Fenton Zig Zag pitcher	610.00
PO	EI	Dugan Folding Fan	110.00
PO	EI	Dugan Leaf Rays	45.00
M	EI	Fenton Cosmos variant	32.00
AMBEI		Blackberry Spray Hat, dark...horehound	125.00

Dave Ackerman, 4677 Kennebec Drive, Cass City, Michigan 48726
Phone: (517) 872-2023

M		Lattice & Daisy 5 tumblers, each 30 or all for	145.00
M		Golden Harvest wine decanter & stopper	135.00
W		9½" Ripple vase, scarce	150.00
M		Plain 7½" odd bud vase - different	30.00
IG		Draperly vase, chip on one foot	150.00
M		Imp. Flute toothpick holder, mint	75.00
CB		Electric Leaf & Beads footed rosebowl, very nice	300.00
SM		Imp. Grape handled basket, scarce especially in this color	150.00
M		9½" Apple & Pear N. Intaglio bowl - thick glass	100.00
M		Grape & Cable sherbet slight mold chip	30.00

CARNIVAL GLASS FOR SALE

Ann R. Silverman, 10 Cannon Forge Drive, Foxboro, MA 02035
Phone: (508) 543-8696

AO	EI	Rose Show bowl, absolutely beautiful	1,100.00
P	EI	Singing Birds water set, magnificent	850.00
IG	EI	Fruit & Flowers bon-bon, rare color, no harm nick under base	350.00
W	EI	Persian Garden bowl, large & frosty	225.00
P	EI	Singing Birds mug, amazing color	125.00
B	EI	Cherries, ground enamelled tumbler	65.00
IG	EI	Swan Salt Dish	40.00
M	EI	Open edge basket JIP	30.00
A	EI	Maple Leaf tumbler, no harm nick under base	30.00
PO	EI	Coin spot compote	55.00

Donald L. Harris, 527 Lavina Drive, Mechanicsburg, PA 17055
Phone: (717) 790-0412 (Send .55 stamp for large list of FOR SALE glass)

AMBEI		Ripple 8½" vase	55.00
A	EI	Butterflies two handled bon-bon	60.00
AQ	EI	Acorn 8" ICS bowl	145.00
AQ	EI	Draperly rosebowl	345.00
B	EI	Bushel basket, round (N)	125.00
B	EI	Grape & Cable stippled 5 pc. punch set	1,025.00
B	EI	Holly 9" flat plate	345.00
B	EI	Kittens cup	425.00
B	EI	Pulled Loop 12½" vase	55.00
B	EI	Thumbprint stemmed compote, ruffled	525.00

Marlin L. Blosser, 4705B Charles Road, Mechanicsburg, PA 17055
Phone: (717) 975-2920

A	EI	Strutting Peacock breakfast set w/ lids	90.00
AQ	EI	Tree Trunk 9" vase, teal, crack	55.00
B	EI	Horseheads rosebowl, chip on edge	75.00
G	EI	Diamonds water pitcher with tumbler	200.00
G	EI	Leaf Chain 9" ICS bowl	65.00
G	EI	Shell & Jewell breakfast set w/ lids	90.00
M	EI	Crab Claw tumbler	25.00
M	EI	Grape & Cable creamer	65.00
M	EI	Grape & Cable cracker jar lid	45.00
M	EI	Northwood jack in pulpit vases (2)	ea. 45.00

CARNIVAL GLASS FOR SALE

Ted L. Sheibley, 53 Meadow Brook Court, New Cumberland, PA 17070
Phone: (717) 770-0616 (Layaways Available)

B	EI	Two Fruits divided dish	125.00
G	EI	Diamond Point Columns 9" vase	35.00
G	EI	Horseheads Medallion footed bowl, super	395.00
G	EI	Open Rose 9" flat plate	100.00
G	EI	Rustic 12½" mid-size funeral vase	125.00
G	EI	Strawberry 9" PCE bowl	125.00
M	EI	Grape & Cable candlesticks	ea. 85.00
W	EI	Grapevine Lattice tumbler	225.00
M	EI	Kittens cereal bowl	185.00
M	EI	Magpie 8 ruffled sauce (Australian)	125.00

Evan Walker, 33 Ridge Rd., Malvern, PA 19355
Phone: (610) 647-4290

B	EI	Blackberry Miniature plate whimsey, from compote	290.00
P	EI	Diamond Lace 7 pc. water set	500.00
B	EI	Peacock at the Urn bowl (Fenton)	180.00
A	EI	Peacock at the Urn (Millersburg) deep sauce	150.00
A	EI	Petal & Fan 6" cr plate	400.00
IB	GI	Tree Trunk 11" vase (standard) great base color	215.00
G	EI	Good Luck plate	700.00
EB	EI	(N) Dandelion mug, beautiful	600.00
EB	EI	(N) G&C bon-bon, super	375.00
PRL	EI	(N) G&C bon-bon, rare item, irid. custard w/delicate pastel center ...	625.00

Jack & Eleanor Hamilton, PO Box 20203, Waco, TX 76702
Phone: (817) 857-3148

A	EI	Vintage wine, nice	55.00
B	GI	Lattice & Grape tumbler	35.00
M	EI	Grape arbor tumbler, blue & gold iridescence	45.00
A	EI	Oriental Poppy tumbler, super	70.00
LM	GI	Wooden Shoe, miniature, some roughness on edge	60.00
M	EI	Lattice & Daisy tumbler, has vaseline base	40.00
VAS	EI	Ice Green, Pastel Swan, chip on edge, glows under black light	35.00
M	EI	Coin Dot 9" plate, Fenton	85.00
B	EI	Grape & Cable punch cup, scarce color	40.00
DM	EI	Star & File vase, two handled, chip on one saw-tooth edge,	45.00

CARNIVAL GLASS FOR SALE

John R. Dubinski, 2408 Fleetwood Drive, Columbia, MO 65202
Phone: (314) 474-2644

A	EI	Bushel basket round	125.00
B	EI	Rambler Rose tumbler	46.00
A	EI	Peacock at Fountain tumbler, Dugan 75. ea. / matched set of 6 for ..	375.00
M	EI	Pony, 10 ruffled flat bowl, scarce shape & nice	125.00
M	EI	Field Flower pitcher, scarce	165.00
G	EI	Grape & Cable 9" plate BW back	295.00
B	EI	Peacock at Urn small ICS bowl	125.00
A	EI	Boutonniere compote satin	175.00
M	EI	Blueberry tumbler	55.00
G	EI	Scroll Embossed small compote	60.00

Joe & Winelle Orr, 224 Burlingate Dr., Cordova, TN 38018
Phone: (901) 373-4504

M		N Grape & Cable 8½" plate, BW	115.00
AMB		Four Flowers var. 9" bowl, rare color	195.00
H		N Grape & Cable 6" bowl, rare color	95.00
B		Cherry Chain 10" bowl	135.00
P		Greek Key 9" PCE bowl	225.00
VAS		Open edge two row JIP basket	75.00
B		Double Loop sugar	75.00
P		Big Fish 8" ICS radium, some silvery	500.00
B		Beaded Cable rosebowl	185.00
B		Apple Blossom Twigs 9" plate	275.00

Lee & Phyllis Bryant, 11645 NW Winchester Road, Decatur, IN 46733
Phone: (219) 639-3415

B		Orange Tree Hat Pin holder, perfect condition	225.00
M		Inverted Strawberry compote 5" tall 9½" across	210.00
B		Apple Blossom Twigs 9" flat plate multi	325.00
IB		Fine Cut & Roses rosebowl frosty	290.00
P		Imperial Grape 9" ruffled bowl nice	100.00
A		Holly 9½" flat plate radium finish nice	600.00
A		G & C Whimsey Sweetmeat compote nice	150.00
G		Acorn 7½" ICS bowl multi	75.00
M		Persian Garden 6½" flat plate BW nice	100.00
A		Autumn Acorn 9" ruffled bowl multi no silver	60.00

CARNIVAL GLASS FOR SALE

Gerald M Hess, 500 Woodland Trail, Argos, IN 46501
Phone: (219) 892-6193

SM	EI	Soda Gold tumbler	45.00
M	EI	Peacock & Grape 9" fluted bowl	37.50
M	EI	Orange Tree 9" fluted bowl with bearded berry exterior, small chip	45.00
B	EI	Grape & Cable ind. ice cream dish.....	30.00
B	EI	Two Stork & Rushes tumblers	ea. 32.50
A	EI	Inverted Thistle tumbler	165.00
M	EI	Imperial Grape goblet	35.00
G	EI	Fenton Holly hat	37.50
M	EI	5 pc. Octagon water set, exc. except for base damage on 8" pitcher	100.00
B	EI	Open edge 5 3/4" bowl, basketweave exterior, two sides up	42.50

Larry Yung Sr., 5758 Nightingale Ct., Cincinnati, OH 45227
Phone: (513) 271-6399

M	EI	Rose Show plate, small base chip.....	750.00
B	GI	Orange Tree punch cup	18.00
PO	EI	6" Jewelled Heart ruffled bowl	20.00
PO	EI	6" Jewelled Heart plate crimped edge	140.00
M	EI	Kitten Cereal bowl, super	225.00
B	EI	Blueberry pitcher, super	1,275.00
B	GI	Blueberry tumblers (4), silvery.....	ea. 25.00
M	GI	Octagon punch cup, rare.....	22.00
PO	EI	8 1/2" Corinth flaired bowl	75.00
M	EI	Crab Claw tumblers 4 with minor base chip	100.00

Bonnie Wiggins, 515 Hamill Road, Indiana, PA 15701
Phone: (412) 349-9420 Weekdays 8-4 pm & (412) 465-7446 anyday after 5 pm.

B	EI	Panther 9" ruffled master berry.....	375.00
B	EI	Dugan Peacock at Fountain 7 pc. water set.....	775.00
B	EI	Embroidered mums ruffled bowl.....	450.00
B	EI	Thistle 8 1/2" 3/1 edge bowl	115.00
B	EI	9 3/4" Stag & Holly ruffled, sugar	325.00
A	EI	Grape & Cable 7 pc. water set	425.00
A	EI	Peacock at Fountain 10 pc punch set.....	1,450.00
A	EI	Acorn Burrs 7 pc. water set.....	1,175.00
A	EI	Singing Bird 7 pc. water set.....	950.00
A	EI	Peacock at Fountain 4 pc. table set.....	850.00

CARNIVAL GLASS FOR SALE

Richard Jarnig, 3202 FM 50, Brenham, TX 77833
Phone: (409) 836-5545

M	EI	Stippled 3 fruits plate w/ ribbed back.....	275.00
P	EI	G&C butter dish	250.00
G	EI	Fenton Peacock @ Urn 8 ruffle bowl, scarce color.....	300.00
SM	EI	Dragon & Lotus footed ruffle bowl (smoke) unlisted color.....	500.00
G	EI	Millersburg Sunflower pintray	450.00
G	GI	Plain ruffled bowl.....	350.00
SM	EI	Pansy ruffled bowl	150.00
RB	EI	Grape & Gothic Arches sm berry bowl (Rennigers blue).....	400.00
*	EI	Scales (Moonstone) ruffled bowl	150.00
P	GI	Wreathed Cherry pitcher	250.00

Barb Farmer, RD 5, Box 462, Wheeling, WV 26003
Phone: (304) 336-7689

G	EI	Boggy Bayou vase	115.00
A	EI	Boggy Bayou vase	95.00
B	EI	Butterfly & Berry vase.....	225.00
P	EI	Butterfly & Berry vase.....	215.00
M	EI	Butterfly & Berry vase.....	195.00
SM	EI	Rococo vase.....	135.00
B	EI	Holly plate.....	300.00
DM	EI	Horse Medallion footed JIP bowl	125.00

Dick Wetherbee, 875 Stafford St., Rochdale, MA 01542
Phone: (508) 892-4420

M	EI	Robin mug all stipple, super dark color	75.00
PO	EI	Cherry Panels 8 1/2" 3 footed bowl, 6 ruffles, perfect.....	95.00
P	EI	Raindrops 9" dome footed bowl, a real pretty one	95.00
G	EI	Plain stemmed 6 1/4" Spittoon shaped compote, rare shape	95.00
M	EI	Waterlily 6" 3 footed sauce dish, great color	45.00
PO	EI	Caroline / Rays inside 9 1/2" round CRE plate, a beauty	95.00
B	EI	Butterfly & Berry 8 1/2" vase, great color & detail.....	125.00
P	EI	Peacock at the Fountain tumbler, great purple color	60.00
IG	EI	Stipple Rays 7" fluted compote, rare compote	110.00
M	EI	Strawberry 8 1/2" fluted bowl, beautiful pastel color	75.00

CARNIVAL GLASS FOR SALE

Gary Lickver, PO Box 1778, San Marcos, CA 92069
Phone: (619) 744-5686 Please leave message.

M	EI	Acorn Burrs punch set, 8 cups.....	1,150.00
P	GI	Grape & Cable hatpin holder, good feet	235.00
SM	EI	Fashion tumbler.....	175.00
M	EI	Bushel Basket, 8 sided.....	160.00
AMBEI		Ripple 9" vase.....	65.00
A	EI	Free Form vase, Imperial.....	85.00
P	EI	Diamond Lace water set, 5 glasses.....	425.00
M	EI	Windmill small water pitcher.....	85.00
B	EI	Dragon & Lotus bowl.....	100.00
W	EI	Rose Show plate.....	575.00

George Bond, 720 Gran Paseo Dr., Orlando, FL 32825-7923
Phone: (407) 275-1608 (Postage extra)

P		Acorn Burrs punch cups, (4).....	ea. 35.00
B		Enamel Cherries & Little Flowers pitcher	150.00
PO		Ski Star, 6 ruffled bowl, 10 3/4".....	85.00
M		Base for Twins bowl, dark and very nice.....	30.00
M		Fruit Salad punch cups, (10).....	ea. 20.00
M		Large footed Little Fishes, 8 ruffle bowl, light irid. in bottom of bowl.....	75.00
P		N Stippled Rays 9 3/4" bowl, 8 ruffle.....	35.00
M		Vintage 9" bowl, 6 ruffles, very pretty.....	25.00
		Celest Blue Florentine Candlesticks, pair.....	90.00

Pamela McLean, 20 Skandia North, Tamworth, NH 03886
Phone: (603) 323-7140

P		Grape & Cable candle lamp 3 pc. complete.....	700.00
R		Blackberry spray, 4 sides up hat, fantastic red	450.00
M		Old Oaken bucket with metal cover & handle, super novelty.....	400.00
P		Nautilus, open sugar, as pictured in Edwards	275.00
M		Grape & Cable stippled and banded 9" plate, a honey	525.00
B		Beaded Cable rosebowl, nice color.....	250.00
G		Acorn Burrs spooner, excellent color	225.00
M		Persian Medallion 6" plate, great example.....	210.00
G		Loganberry vase.....	175.00
M		Singing Birds stippled mug, dark & pretty.....	125.00

CARNIVAL GLASS FOR SALE

Maurice "Moe" Myers, PO Box 3180, North Conway, NH 03860
Phone: (603) 323-7140

P		Grape & Cable 14 pc. punch set, banquet size.....	1,900.00
M		Peacock at the Fountain, 8 pc. punch set, just beautiful.....	775.00
P		Colonial Lady vase, supendous color.....	850.00
P		Petal & Fan 6" CRE plate.....	550.00
B		Grape & Gothic Arches 4 pc. table set, complete	525.00
B		Orange Tree punch set, unusually colorful	350.00
P		Wreathed Cherry 7 pc. berry set, original & nice	250.00
LAV		Strawberry 9" plate.....	250.00
PO		Jewelled Heart 6" plate.....	250.00
IB		Finecut & Roses Candy Dish with Fancy interior	200.00

Greg Gilliland, Simi Valley, CA 93065
Phone: (805) 8887

LAV		Concentric Circles, hatpin.....	160.00
P		Sunflower basket hatpin.....	130.00
P		Six Plums hatpin.....	50.00
P		Triad hatpin.....	30.00
B		Grape & Cable Fruit bowl Fenton (plain interior).....	395.00
P		Acorn Burrs 6 pc. berry set.....	525.00
EB		Grape & Cable bon-bon.....	295.00
A		Petals & Fan ruffled plate 6".....	800.00
G		Nesting Swan bowl, radium.....	500.00
M		Stag & Holly giant rosebowl.....	425.00

CARNIVAL GLASS WANTED

Pamela McLean, 20 Skandia North, Tamworth, NH 03886
Phone: (603) 323-7140

W		2 row open edge basket, may have some imperfection
Amberina		2 row open edge basket, may have some imperfection
VAS		(pastel) 2 row open edge basket, may have some imperfection

Maurice "Moe" Myers, PO Box 3180, North Conway, NH 03860
Phone: (603) 323-7140

M		Base to Royalty punch set
T		Base to Waffle Block punch set
A		Bowl to Memphis punch or Fruit set

CARNIVAL GLASS WANTED

Dave Sharp, 316 E. Front St., Lititz, PA 17543
Phone: (717) 626-8231

G Springtime butter base
P Springtime sugar lid
IG Footed Orange Tree butter lid
P Broken Arches punch base
M Oriental Poppy tankard, dark color only
B Grape & Cable small punch bowl
PO Fishnet epergne base
M Millersburg Cherry butter lid

Rosalinda Lozada, 17315 Tall Cypress, Spring, TX 77388
Phone: (713) 353-3083

IB EI Wishbone epergne
A EI Orange Tree cover for powder jar
B EI Orange Tree punch bowl top
W EI Peacock butter dish base
G EI Acorn Burrs butter dish base
M EI Orange Tree butter base
W EI Orange Tree punch bowl base
B EI Butterfly & Berry butter dish top
G EI Millersburg Hanging Cherries butter dish base
will sell or trade

Jack Callender, 416 Stanbery, Bexley, OH 43209
Phone: (614) 258-9005

A/P Grapevine Lattice tumbler, electric iridescence only
AMB Field Flower tumbler

Gladys Hutchinson, Rt. 1 Box 259A, Stockton, MO 65785
Phone: (417) 276-4119

HA Cosmos and Cain: spooner, creamer sugar and lid

CARNIVAL GLASS WANTED

Alan & Virginia Hodges, RR1 Box 253, Lyndonville, VT 05851
Phone: (802) 626-5216

P EI Base for Many Fruits punch bowl either style
P EI Punch bowl for G&C mid-size base
M/B EI Good Luck Plate
G EI Inverted Feather cracker jar cover

George Loescher, N 6016 Hwy 180, Marinette, WI 54143
Phone: (715) 735-7135

GR-G/C Butter dish bottom or sell top
A/O Acorn Burr punch bowl top, any condition
B Imperial Grape punch bowl base

Dave Deem, 1746 N. California St., Burbank, CA 91505
Phone: (818) 845-4530

B Nippon bowl or plate
B Strawberry bowl or plate
A Heart & Vine 9" plate
G Grape & Cable stippled bowl
P Strawberry stippled 9" plate
B Grape & Cable stippled bowl
A Captive Rose 9" plate
M Lions plate

Debbie & Mike Heinel, 240 Mize Rd. North, Cullman, AL 35055
Phone: (205) 739-0281 After 6 PM central

M Iris & Herringbone Demitasse cup & saucer

Stephen R. Kocsis, 3493 Wolfcreek Rd., Cuba, NY 14727
Phone: (716) 968-2499

G Shade for Grape & Cable candle lamp

CARNIVAL GLASS WANTED

Richard Cinclair, 3605 South Echo Trail, Plano, TX 75023
Phone: (214) 596-0014

B G & C punch cups
Any Owl hatpins
AMB Strawberry hatpins
W Wide panel epergne base
M G & C pin tray, stippled & banded
M G & C powder jar / lid stippled & banded
M G & C hatpin holder, stippled & banded

Phil Hassenius, 1701 E. Roma, Phoenix, AZ 85016
Phone: (602) 277-6306

B Nippon bowl
P Grape & Cable covered sugar

Sam McGill, 27 Wells Rd., Broad Brook, CN 06016
Phone: (860) 623-4645

G/A Panelled Dandelion pitchers
P Tiger Lily pitcher
P Lustre Rose pitcher

Donald L. Harris, 527 Lavina Drive, Mechanicsburg, PA 17055
Phone: (717) 790-0412 (Will sell any of the below parts)

IB Wishbone epergne base
A Plaid bowl
M Peacock at Fountain butter bottom
B Hen on Nest with Chicks lid
B Wreath of Roses punch base
A Orange Peel punch bowl top
B Orange Tree punch bowl top
P Grape & Cable covered compote
M Grape & Cable punch base, small size
H Grape & Cable powder jar lid (horehound)

CARNIVAL GLASS WANTED

Marlin L. Blosser, 4705B Charles Road, Mechanicsburg, PA 17055
Phone: (717) 975-2920

G Flute punch bowl top
G Hobstar sugar lid
M Long Hobstar punch base
G Shell & Jewell lids (need 2)
M Diamond Point Columns butter lid
Any Peacock at Fountain punch cups
M 474 punch bowl top
M Grape & Cable cracker jar bottom
M Grape & Cable powder jar lid
G Little Stars bowl

Ted L. Sheibley, 53 Meadow Brook Court, New Cumberland, PA 17070
Phone: (717) 770-0616 (Will sell any of the below parts)

P Ten Mums bowl
P Four Seventy Four punch bowl top
G/P Acorn Burr table set pieces
B Lions plate
B Wreath of Rose punch base
B Grape & Cable stippled humidor lid
M Maple Leaf butter lid
G Inverted Strawberry powder jar lid
P Vintage powder jar lid
M Wreathed Cherry butter base

John R. Dubinski, 2408 Fleetwood Drive, Columbia, MO 65202
Phone: (314) 474-2644

G Persian Medallion rosebowl, small compote
M Peacock at Fountain butter base, punch bowl top
M Persian Medallion small compote

C A R N I V A L G L A S S W A N T E D

Dick Clough, 524 N. Main, Carrollton, IL 62016
Phone: (217) 942-3115

- W Floral & Grape pitcher
- W Grape Arbor pitcher
- W Wisteria, damage okay
- W Footed Orange Tree pitcher
- W Lattice & Grape pitcher
- Any Tankard pitchers
- Any Northwood Peach
- Any White Peacock at the Fountain

Larry Yung Sr., 5758 Nightingale Ct., Cincinnati, OH 45227
Phone: (513) 271-6399

- P Flute punch cup
- SM Fashion punch cups (2)
- G Multi Fruits & Flowers bowl
- P Hobstar sugar lid or complete sugar, some damage OK if pretty

Gary Lickver, PO Box 1778, San Marcos, CA 92069
Phone: (619) 744-5686 Please leave message.

- B Grape & Cable small punch base stippled & 4 cups, pretty
- G Acorn Burrs punch cups, very pretty
- A Wreath of Roses punch base, damage is OK

George Bond, 720 Gran Paseo Dr., Orlando, FL 32825-7923
Phone: (407) 275-1608

- P/A Many Fruits punch base
- M Orange Tree hatpin holder, dark marigold
- B EI Wreath of Roses punch cups, Persian Medallion interior
- W Orange Tree butter top
- M Orange Tree butter bottom
- M Peacock at the Fountain butter bottom
- P/A Grape & Cable Sweetmeat top

SEECK AUCTIONS

August 3, 1995, Dallas, Texas, ICGA Convention,
(Listing continued from last month, items 1-171 in September issue)

- 1650_172. M'burg Courthouse IC shaped bowl - amethyst - radium & outstanding, hard to find in the IC shape
- 225_173. N's Stippled Peacock at Urn large ruffled bowl - marigold - pastel, made from the ice cream bowl
- 750_174. M'burg Strawberry square crimped edge compote - marigold - an outstanding piece of glass, unusual shape w/super radium irid.
- 195_175. Stippled Good Luck PCE bowl - marigold - pastel
- 85_176. Tree Trunk 10" vase - purple - pretty
- 375_177. M'burg Trout & Fly 3 in 1 edge bowl - marigold - satin, scarce shape
- 400_178. Petal & Fan 6" tight crimped edge plate - purple - pretty & very scarce
- 50_179. Beaded purse - dark
- 500_180. Florentine candlesticks - red - very rare items, nice
- 75_181. Florentine candlesticks - celest blue
- 275_182. Peacocks ruffled bowl - marigold - always in demand
- 160_183. Ripple 10" vase - aqua teal - scarce
- 475_184. Formal JIP vase - marigold - much harder to find than the purple, nice
- 135_185. Nippon ruffled bowl - marigold - nice
- X_186. Rustic 22" funeral vase - blue - pretty (small crack)
- 650_187. M'burg Strawberry large square bowl - marigold - radium, very rare shape
- 30_188. Vintage Banded shaving mug - marigold - has slag effect in base
- 450_189. Rose Show 9" plate - white - very rare & desirable, nice
- 1500_190. Lotus & Grape 9" plate - green - very rare plate, Fenton plates are hot!
- 175_191. Little Barrel - smoke - super
- 525_192. M'burg Zig Zag crimped edge square bowl - amethyst - radium & super, very unusual shape
- 400_193. M'burg Tulip Scroll 7" vase - marigold - extremely rare, dark & even
- 75_194. Rustic CRE vase - marigold
- X_195. Garden Path Variant chop plate - amethyst - extremely rare & desirable, pretty (nick)
- 75_196. Orange Tree standard size mug - aqua - scarce color
- 1400_197. N's Stippled Peacock at Urn large IC bowl - marigold - spectacular, have to see it to believe it
- 700_198. Holly 9" plate - green - very rare color for this plate
- 335_199. Three Fruits 9" plate - green - pretty
- 1400_200. Lovely tri-cornered ftd bowl - purple - outstanding piece, very pretty & rare
- 105_201. Dragon & Lotus ruffled bowl - marigold
- 450_202. Dandelion mug - aqua opal - a collector's favorite
- 250_203. Dandelion mug - purple - scarce & nice
- 215_204. M'burg Rays & Ribbons ruffled bowl - amethyst
- 300_205. Hearts & Flowers compote - ice blue - light, but has nice irid.
- 700_206. Hearts & Flowers compote - aqua blue opal - a bluer shade, nice
- 350_207. Hearts & Flowers compote - violet - very bright purple, very pretty
- 175_208. Hearts & Flowers compote - white - pretty
- 350_209. Good Luck PCE bowl - blue - electric & super
- 3650_210. Christmas Compote - marigold - extremely rare, a classic rarity, nice!
- 275_211. Brooklyn Bridge 10 ruffle bowl - marigold - scarce, nice
- 1000_212. M'burg Roses & Fruits bon bon - green - radium, super, a rare bon bon
- 400_213. Corn bottle - marigold - nice
- 1200_214. Waterlily ftd ruffled sauce - red - outstanding red! looks red from a distance, extremely rare
- 85_215. Waterlily ftd ruffled sauce - blue
- 900_216. M'burg Zig Zag tri-cornered crimped edge bowl - green - radium & super, rare shape
- 1350_217. Blackberry Block 7 pc. water set - marigold - a great matching set, very rare
- 375_218. Nautilus whimsy 6" vase - purple - scarce color
- 200_219. N's Poppy pickle dish - green - scarce color

2300_220. Wishbone & Spades chop plate - purple - super pretty w/blue irid.
 900_221. Wishbone & Spades 6" plate - purple - super, super, super, the best I've seen!
 35_222. Thin Rib & Drape 7" plate - marigold
 475_223. Fenton's Peacock at Urn 9" plate - blue - nice plate
 375_224. Basketweave Open Edge ruffled bowl - red - always in demand
 400_225. N's Bushel Basket - green - outstanding, as pretty as they get!
 300_226. N's Bushel Basket - horehound - nice
 225_227. N's Bushel Basket - orchid - a lighter shade of purple, pretty
 145_228. N's Bushel Basket - amethyst
 325_229. Orange Tree 9" plate - blue - always in demand
 950_230. Oriental Poppy 3 pc. water set - purple - pretty, tumblers sold seperate, choice
 550_231. Oriental Poppy 7 pc. water set - marigold - a very pretty set!
 95_232. Holly ruffled bowl - amethyst
 395_233. M'burg Boutonniere compote - amethyst - radium, nice
 185_234. Kittens 6 ruffle bowl - marigold
 375_235. Stippled Peacocks 9" plate - marigold - pastel pink irid., pretty
 115_236. M'burg Blackberry Wreath Variant 6" deep crimped edge bowl - amethyst - unusual shape
 275_237. Peacock PCE bowl - marigold
 425_238. N's Butterfly bon bon w/ribbed back - blue - very pretty & very rare
 70_239. Orange Tree trunk ruffled bowl - marigold
 135_240. Stippled Three Fruits ruffled bowl - marigold - very scarce
 375_241. Zippered Loop medium size lamp - smoke - very rare & desirable
 1050_242. Broken Arches 8 pc. punch set - purple - very pretty, Imperial at its best
 85_243. Grape & Cable powder jar - marigold
 60_244. Top of the Morning hatpin - dark
 25_245. Scarab hatpin - dark
 50_246. Six Plums hatpin - dark
 55_247. Collie Hat hatpin - dark
 185_248. Corn vase - ice blue - Crider iridescence
 65_249. Butterfly's hatpin - dark
 20_250. Floral carnival shade - marigold
 55ea251. Auto vases (2) - marigold
 40_252. Tree of Life small basket - marigold
 45_253. Necklace - white
 10_254. Imperial Grape compote - marigold
 50_255. Garland rosebowl - marigold
 20_256. Small Basketweave basket - marigold