

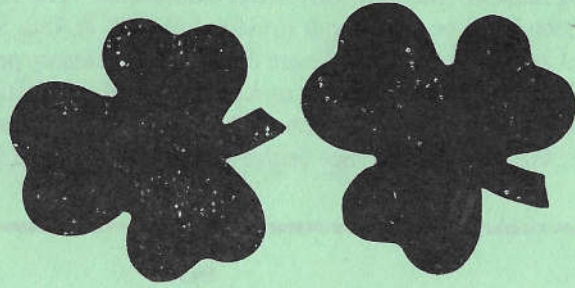
HOACGA

Heart of America Carnival Glass Assoc. Inc.

March 1996

RETURN ADDRESS

H.O.A.C.G.A.
Jackie Fortney
P.O. Box 303
Buckner, MO 64016



FIRST CLASS MAIL
U.S. POSTAGE
PAID
Buckner, MO
Permit 03



IMPORTANT
MARCH CONVENTION INSERT ENCLOSED

HEART OF AMERICA CARNIVAL GLASS ASSOCIATION

(Since 1973)

BOARD OF DIRECTORS

PRESIDENT.....	ROBERT GRISSOM 7517 Evanston Raytown, Missouri 64138 PHONE: 1-816-356-5320
VICE-PRESIDENT.....	DARYL STROHM 8904 E. 29th Street Kansas City, Missouri 64129 PHONE: 1-816-252-8053
TREASURER.....	CLIFF BALL 572 W. Park Street Olathe, Kansas 66061 PHONE: 1-913-782-0415
SECRETARY.....	ED KRAMER 4305 W. 78th Street Prairie Village, Kansas 66208 PHONE: 1-913-642-3587
BULLETIN SECRETARY.....	JACKIE FORTNEY Post Office Box 303 Buckner, Missouri 64016 PHONE: 1-816-650-5208

Please send information about your Club to the Bulletin Secretary. We will include the name of your club, the secretary's name, address & phone number, dues, and the meeting place(s) and time(s) in the Bulletin.

1996 HOACGA CONVENTION DATES

Plans are being made for the 1996 HOACGA Convention. The dates April 25, 26, 27, & 28. The conventional motel will be the Lenexa Holiday Inn, I-35 & 95th Street, Lenexa, Kansas, (This is the same Motel as previous years). We are making the necessary preparations and we hope that you are making plans to join us. You may make your Motel reservations by calling 800-527-0582 or 913-888-6670. The reservationists name is Mark. Make sure that you tell the Motel that you are with the HOACGA Convention. See center section for complete details.

CARNIVAL GLASS CLUB INFORMATION

Air Capital Carnival Glass Club

Secretary: Donald Kime, 15201 E. 47th S, Derby, KS 67037 (1-316-733-8424)
Dues: \$10.00 per year per family
Meetings: Every second month. February, April, June, August, October, December. The second Sunday at 2:30 P.M. Individuals homes.

Australian Carnival Enthusiasts Association, Inc.

Secretary M. Dickinson, RSD Fryerstown, Victoria. Australia 3451 (054) 73 4351
Treasurer Mrs. K. Breward. 3/11 Butlers Rd. Ferntree Gully Victoria. Aust 3156 (03) 9752 2103
Dues \$12.00 per annum per family or \$10.00 a single \$15 per annum overseas
Meetings Meetings are held quarterly at members homes. Visitors are welcome 12 noon on.

The Carnival Glass Society (UK) Ltd.

Secretary: Vernon Kelvin, 162 Green Lane, Edgware, Middx. HA8 8EJ. England
Dues: Overseas Members 15 pounds (Sterling) per year
Meetings: Convention during August in Mid-England and at get-togethers in members homes

Carnival Companions

Secretary: Nigel Gamble, 24 Crabtree Ave., London, Ontario Canada N6G 2H7
Dues: \$7.50 / Donation per person, per year
Meetings: 5 or 6 meetings per year, usually to a restaurant first and then to a members home to view their collection.

Gateway Carnival Glass Club

Treasurer: Karen Skinner, 108 Riverwoods Cove, East Alton, IL 62024 (618) 259-1373
Dues: \$5 per year, per family
Meetings: In the homes of members living in St. Louis & surrounding areas.

Great Lakes Carnival Glass Club

Secretary: Maxine Burkhardt, 612 White Pine Blvd., Lansing, MI 48917
Dues: \$5.00 per year, per family
Meeting: Held in members homes three times a year. The first Sunday in February, May and August. Convention the first weekend in November.

Hoosier Carnival Glass Association

Secretary: Eunice E. Booker, 944 W. Pine Street, Griffith, Indiana 46319
Dues: \$5.00 yearly, per family
Meeting: Monthly - 3rd Saturday at 5:00 P.M. except February, July & August

Keystone Carnival Glass Club

Secretary: Mary Sharp, 719 W. Brubaker-Valley Road, Lititz, Pennsylvania 17543
Dues: \$10.00 family membership per year (June - May)
Meetings: Second Saturday of each month at Iooof Hall, N. Broad Street, Lititz, PA at 7:30 P.M.

L'Association Du Verre Carnival Du Quebec

Secretary: J. Leo Richer, 3250 Leon Brisebois, Ile Bizard, Quebec H9C 1T6, Canada
Phone: 1-514-620-1541
Dues: \$20.00 (Canadian Money) per year, per family
Meetings: Meetings are announced in our newsletter at each two months.

Lincoln-Land Carnival Glass Club

Secretary: Ellen Hemm, N. 951, Hwy 27, Conrath, WI 54731
Dues: \$15.00 per year USA & Canada, \$20.00 Overseas
Convention: Each June. Newsletter 6 times a year, list of glass For Sale published every month.

New England Carnival Glass Club

Sec./Treas.: Lynn & Harold March, 10 Seminole Rd., Canton, MA 02021 (617) 821-3425
Dues: \$12.00 per year per family
Meetings: Feb. 18, Apr. 21, Jun. 23, Aug. 18, Oct. 20, and Dec. 8, 1996 at noon in the Pulaski Club Hall, Southbridge, Mass. The Club Convention is the second weekend in September.

Northern California Carnival Club

Treasurer: June McCarter, 1205 Clinton Drive, Modesto, California 95355
Dues: \$10.00 per year (individual or family, January 1 through December 31)
Meetings: Third Sunday in January, April and October, 11:00 A.M. to 3:00 P.M. with lunch at noon, Guiseppe's Restaurant, 2501 McHenry Avenue, Modesto, California. Annual Convention will be June 15-17, 1995 at the Holiday Inn, 1612 Sisk Road, Modesto, California.

Pacific Northwest Carnival Glass Club

Secretary: Bev Osbon, 1305 N. Highlands Parkway B-6, Tacoma, Washington 98406
Phone: 1-206-759-2263
Dues: \$10.00 per year, due June 1 through May 31.
Meetings: 3 times a year, the second Saturday of April, the second weekend of August (Convention) and the second Saturday of November.

San Diego County Carnival Glass Club

Secretary: Diane Fry, 5395 Middleton Rd., San Diego, CA 92109-1525
Dues: \$18.00 Household, USA & Canada, \$23.00 Foreign -- annually
Meeting Place: Holiday Inn, San Diego - April 14, June 2, Sept. 15, Dec. 1, 10AM-3PM
Educational, noon lunch, quarterly Newsletter

San Joaquin Valley Carnival Glass Club

Treasurer: Marie McGee, 3906 E. Acacia Ave., Fresno, California 93726-0907
Dues: \$5.00 per year, payable March 1st
Meetings: Luncheon Meetings in March, September, December, in the Cedar Lanes Restaurant, Fresno, California

Southern California Carnival Glass Club

Treasurer: Betty Robertson, 1430 Kendall Avenue, Camarillo, California 93010-3606
Dues: \$12.00 for single or \$18.00 for couples
Meeting Place: Golden Sails Hotel, Long Beach, California, at 10:00 A.M. setup, lunch served at noon, meet 3rd Sunday of February, May, August and November.

Texas Carnival Glass Club

Treasurer: Carol Cox, Route 1, Box 912, Cleburne, TX 76031
Dues: \$20.00 per year per family
Convention: Houston, mid-February

Western N. Y. Carnival Glass Club

Secretary: Linda Matties, 1246 Flynn Road, Rochester, NY 14612
Dues: \$5.00 single membership + 2.00 associate
Meetings: American Legion on Buffalo Road, Churchville, NY, 3rd Wed. of each month, 7:30 PM

RESOURCE INFORMATION

1. **HARTUNG CARNIVAL GLASS PATTERN BOOKS**
Set of 10 books for \$60.00 plus \$6.00 postage. Order from Ed Kramer, Secretary HOACGA, 4305 W. 78th Street, Prairie Village, KS 66208
2. **HOACGA EDUCATIONAL SERIES BOOK I** - 148 articles with pictures (black & white) on a variety of carnival glass patterns. Books consists of articles written by John & Lucile Britt which have been printed in previous monthly bulletins. \$15.00 plus \$2.50 postage. Order from Ed Kramer, Secretary HOACGA, 4305 W. 78th Street, Prairie Village, KS 66208
3. **HOACGA EDUCATIONAL SERIES BOOK II** - 180 articles with pictures (black & white) on carnival glass tumblers. Book consists of articles written by John & Lucile Britt which have been printed in previous monthly bulletins. \$17.50 plus \$2.50 postage. Order from Ed Kramer, Secretary HOACGA, 4305 W. 78th Street, Prairie Village, KS 66208
4. **THE ENCYCLOPEDIA OF CARNIVAL GLASS LETTERED PIECES.** 120 pages of black & white and color photographs of all known carnival glass advertising and commemorative pieces. \$15.95 plus \$2.50 postage. Order directly from John D. Resnik, 235 Walnut Street, Statesville, NC 28677
5. **COLLECTOR'S GUIDE TO NORTHWOOD'S CARNIVAL GLASS** by Carl O. Burns. This Northwood book includes 166 pages with 250 pieces pictured in full color, including many rarities never shown in any carnival glass book. \$24.95 plus \$3.00 Shipping. Order from Carl O. Burns, Star Rt. Box 111, Rumford Center, Maine 04278 (Mention you are a member of HOACGA)
6. **MILLERSBURG CARNIVAL GLASS BOOK** by Marie McGee. \$29.95 for paperback, \$37.95 for Hardback. Please include \$3.50 extra for shipping. Send orders to 3906 E. Acacis Ave., Fresno, CA 93726
7. **THE WORLD OF ENAMELED CARNIVAL GLASS TUMBLERS** by Cecil Whitley. Book on painted Carnival Glass tumblers. Ten pages of full color photographs of sixty painted tumblers. \$10.00, postage included. Order from Cecil Whitley, 1041 Cheshire Lane, Houston, TX 77018
8. **NEW! NEW! NEW! IRIDESCENT HATPINS & HOLDERS of the CARNIVAL GLASS ERA** by Jerry Reynolds. \$16.50 - book. \$3.25, Priority or \$1.65 Book Mail. Canada, \$17.60. Order from Jerry Reynolds, 1305 N. Highland Pkwy, Tacoma, WA 98406
9. **PRICE GUIDE FOR IMPERIAL AND HANSEN NEW CARNIVAL GLASS 1994 - 1995.** Completely updated. Very helpful to both new and old collectors. Most complete listing of Imperial and Hansen known. Price is \$5.25 postpaid. Order from Scott Ackerman, 4677 Kennebec Dr. Cass City, MI 48726
10. **AUCTION PRICE REPORT - CARNIVAL GLASS** - Auction price report for 1989 thru 1995 is available. \$10.00, postage included. \$9.00 if 2 or more ordered. Please specify year when ordering. Canadian friends should send Canadian Postal Money Order. Overseas mailings add \$2.00 for each copy. Order from Tom & Sharon Mordini, 36 N. Mernitz Ave., Freeport, IL 61032 (815) 235-4407
11. **NETWORK** by Glen & Stephen Thistlewood of Hampshire, England. Quarterly publication devoted exclusively to Carnival glass. One year subscription (4 issues) \$20, available in the US only through PageWorks, P.O. Box 14493, Chicago, IL 60614

12. **BUTTON, BUTTON.** Carnival Glass, Iridescent, Luster Buttons. Over 100 buttons listed - Over 140 pages packed with information. Each button has a color and black & white photo, detailed drawing & description - shown in actual size. \$15.50, postage included. Order from Clint Arsenault, P.O. Box 1845, Monrovia, CA 91017
13. **THE SANCTIFIED CROSS-EYED BEAR'S PRICE TREND GUIDE FOR CARNIVAL GLASS FOR THE YEARS 1991 - 1995 (2nd EDITION)** - Over 8,300 line entries of the average price sales - reports on approximately 8,000 auctions sales in 1995 by informing you of the high, low, and average sale price - statistics that clarify upward or downward average price trends - over 230 pages of valuable information. Send \$24.95 postpaid for U.S.; \$29.95 for Canada to: The Sanctified Cross-Eyed Bear, P.O. Box 1296, Huntsville, AL 35805-1296
14. **CARNIVAL GLASS HATPIN PATTERNS** - This book shows the hatpins in detail with beautiful illustrations, many showing top and side views. A number of these hatpins have never appeared in any previous carnival books. \$15.00 plus \$1.00 postage & handling. Canada and overseas - \$15.00 plus \$3.00 postage and handling. Order from Alphonse Tvaryanas, 284 Clearstream Rd., Jackson, NJ 08527
15. **A CARNIVAL OF IRIDESCENT LUSTER BUTTONS, BOOKS I & II.** Book I has 856 named design drawings. Indexed. \$13 ppd. Book II has 450 more drawings, indexed, with price guide covering both books. \$14.00. Canada and Mexico please add \$2.00 (US) to each for extra postal cost. Overseas please add \$4.00 (US) to each for surface mail. Add \$6.00 (US) each for air mail. Order from author Ruth M Clark, 2100 Dawn Dr., Georgetown, TX 78628.
16. **CARNIVAL GLASS OF AUSTRALIA** - 100 pages, some colored, hard cover. Produced by Australian Carnival Enthusiasts Association, Inc. Cost \$20.00, this includes Air Mail Postage. Please contact Mrs. Margaret Dickinson, Secretary. R.S.D. Fryerstown, Victoria, Australia 3451, for advice on the uncomplicated purchase of this book.
17. **THE CARNIVAL HUNTER'S COMPANION**, a unique cross-referencing system for easy identification of pattern features and names. \$27.95 ea., includes shipping. Texas residents add \$2.06 tax. Check payable to Elaine Blair, P.O. Box 116335, Carrollton, TX 75011-6335, 214-492-1528
18. **A CARNIVAL OF IRIDESCENT LUSTER BUTTONS, BOOK III** contains 287 pattern drawings not found in Books I and II by Ruth M. Clark, plus color photographs of 38 buttons. \$11.50 postpaid in USA; \$13.50 (US) postpaid in Canada and Mexico; \$17.50 (US) postpaid overseas. Order from author: Alan G. Perry, 7614 McHenry St., Houston, TX 77087
19. **SKETCHBOOK OF LITTLE CARNIVAL GLASS BUTTONS, 1996 EDITION** contains drawings and descriptions of 342 little old buttons (less than 5/8" diameter). Loose-leaf format for easy annual update, and geometric classification for easy identification. Indexed. \$11.50 PPD, Canada and Mexico please add \$2 US to each for extra postage. Overseas please add \$4 US surface or \$6 airmail. Order from author: Jane O. Dinkins, 1100 Ridgeley Dr., Houston, TX 77055, 1-713-465-0557. Owners of 1995 edition may receive 1996 update pages by sending \$1 for postage.
20. **IMPERIAL GLASS - IDENTIFICATION AND VALUE GUIDE** by Carl O. Burns. Price \$18.95 plus \$2.50 shipping (Canadian US funds plus \$3.50 shipping), (Foreign US funds plus \$5.00 shipping) mention you are a member of HOACGA. Order from Carl O. Burns, Star Route Box 111, Rumford Center, ME 04278

COOPER/ALBRECHT ANNUAL SPRING CARNIVAL GLASS AUCTION

APRIL 12 & 13, 1996 - FLINT, MI

This Auction is based around a Very Strong Collection which includes the following pieces: **Memphis Punch Bowl & Base in Ice Green, Raspberry Water Pitchers in Ice Green & Ice Blue, Hattie Chop Plate in Amber, Town Pump in Mrg., Plume Panels Vase in Cherry Red, N.W. Grape & Cable Orange Bowl in White, Peacocks Ruf. Bowl and Tree Trunk Vase in Aqua Opal, Daisy & Drape Vase in Mrg., Approx. 50 Pieces from the Personal Collection of Mrs. Robert Hansen!**

Once again we will have our Preview Video, which will be available before the Auction for absentee bidders at a cost of \$15 which includes shipping/handling and a Post Auction Price Report. The Video has a close-up of each lot w/ a narrated description. We have had rave response to these Videos w/ a sales increase over 100% on our last Auction. Absentee bidders find the Video to be a useful tool, with absentee bids increasing over 100% as well. If interested, please send a check for \$15 to Albrecht Auction Service. If time is of the essence, call and we will send a video out immediately w/ check to follow.

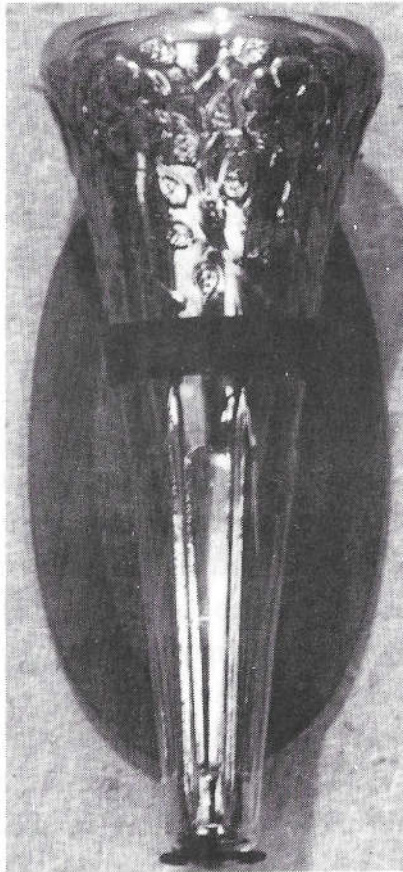
If you would like to be placed on our mailing list, please send a postcard if time permits to: Albrecht Auction Service at 3884 Saginaw Rd., Vassar, MI 48768 or call (517) 823-8835. We have a mailing list for those interested in consigning Carnival or Art Glass to future Auctions, please specify if you wish to be on that list. We will be sending letters in the near future for our Annual Fall Auctions.

We also have an Excellent outlet for selling med to lower range Carnival Glass and other glassware, pottery, china, figurines, antique furniture & collectibles of all kinds at our Country Auction Market in Vassar or other Estate & Antique Auctions. Call for rates or additional information.

Gary, Herb & Dave

BLOSSOMS & BAND CAR VASE

By Alan & Lorraine Pickup



We purchased three Blossoms and Band car vases in 1983 at the Bill Carroll estate auction here in St. Louis. Many of us probably wish we could relive that sale again. With over 800 lots and more than 2000 pieces of carnival glass, it was a three day fantasy-land for carnival glass collectors.

Bill Edwards' books list the Blossoms and Band pattern as "origin is questionable", but state that it is "possibly an Imperial pattern." The Imperial Glass Encyclopedia Vol. I A-Cane says the Blossoms and Band pattern does not appear in any of the many original Imperial catalogs that were used in research for this book. And then we have the Dugan/Diamond book published in 1993. It shows the Blossom and Band car vase and relates that, "This marigold Carnival wall vase is a likely Dugan/Diamond product." What do you think?



We know today that glass was purchased from the glass houses by various companies and combined with their metal products to enhance the sale of their products. Examples include bride baskets, perfume atomizers, light fixtures and rare pickle castors, to name a few.

We don't have the original holder for this car vase but the Bill Edwards' Standard Encyclopedia of Carnival Glass shows it in a holder decorated with small metal rosettes and leaves at the base. The earlier editions of Bill Edwards' books also show a Star Spray bowl in a bride basket employing a metal holder that was obviously made by the same metal goods company. Star Spray is considered an Imperial Glass pattern. We show in this article a similar metal holder that we found some 15 years ago with two Imperial Open Rose sauces in it.

Obviously, we cannot be certain today that these three items include the original glass. But I think we might conclude that whoever possessed these items over the last 75 or so years, would have had little reason to substitute glass should a dish or vase be accidentally broken, the glass being the primary item, not the metal holder.

Whoever made and marketed these items surely was a customer of Imperial Glass. Without some rationale as to why the Dugan/Diamond book reached their conclusion, the conclusion we have reached is that this car vase could very well be an Imperial product.

EDUCATIONAL TUMBLER SERIES

By John & Lucile Britt



LUSTRE ROSE TUMBLER WITH INTERIOR SPEARPOINT RAYS

This unusual and rare Lustre Rose tumbler is shown above on the right. Notice that the interior rays or ribs in this tumbler are spear pointed instead of the rounded type rays found in the regular type Lustre Rose tumbler on the left. Also note that it contains only one ring around the tumbler near the top just above the rose panels. Both tumblers, however contain three rings that go around the tumblers just above the collar base or marie. Both also contain a 24 point star on the bottom of the base.

There is one other unusual characteristic about this tumbler that we should point out. It is in the very rare olive green color. To the best of my knowledge this is the only known olive green Lustre Rose tumbler containing the spear point rays on the interior. Since this unusual interior pattern was pointed out to me, I have noticed several marigold examples with this same "spear point rays" interior pattern. So we know that this particular variation was made in at least two colors. We are now checking other Lustre Rose tumblers to see if this variation was made in other colors.

David Cotton of Mansfield, Ohio found this rare olive green Lustre Rose tumbler and we credit him for discovering the unusual spear pointed rays interior pattern. The photo, which illustrates this different Lustre Rose interior, is courtesy of Dave Doty.

This is the 218th entry into our Educational Tumbler Series. Next month we will feature the Fenton Engraved Cornflower tumbler. We will also show a photograph of the tall marigold Engraved tankard type pitcher with a dark blue handle that goes with this tumbler.

MOTEL ROOM RESERVATIONS - SPECIAL REQUEST: We are anticipating a larger attendance at this year's convention. Because of the lack of poolside rooms, it is not possible for everyone attending the convention to have one of these rooms. If you are not bringing a room display, or do not have glass for sale, and would be willing to take a room that opens into a hallway, rather than poolside, it would be appreciated. Every attempt will be made to place all of the members in the same area of the motel. If you would volunteer to take one of the non-poolside rooms, would you please indicate that to the motel personnel when you make your reservation. Your cooperation would be appreciated very much. Motel reservation information is included in the center section of this bulletin.

WHEN CALLING FOR ROOM RESERVATION, BE SURE YOU MENTION THAT YOU ARE WITH HOACGA. OTHERWISE THEY DO NOT HAVE ANY AVAILABLE ROOMS. ALL MOTEL ROOMS IN KANSAS CITY ARE FULL FOR THE CONVENTION WEEKEND.

IMPERIAL GLASS NEEDED: One of the educational talks to be given at the convention will be on Imperial Glass. The talk will be presented by Noreen Duran. If you have an unusual piece of Imperial and would be willing to bring it, so it could be part of Norene's talk, it would be appreciated. An unusual piece could be one of an unusual color, pattern, shape or scarcity. The talk will be on Thursday evening.

ANNIVERSARIES: I have become aware of the fact that several HOACGA members have been married for forty or more years. I would like to recognize, each month, those members that will be celebrating their Fortieth, or later wedding anniversary. If you are one of those members, or if you know of a member that will be celebrating their Fortieth or later anniversary in 1996, would you please let me know. Please give me which anniversary and the date. Your help with this information will be appreciated.

JACKIE FORTNEY
Post Office Box 303
Buckner, Missouri 64016
PHONE: 1-816-650-5208

HOPE SPRINGS ETERNAL

By Pat Call, Stratham, NH

It is often said that the price of Carnival Glass, as well as its availability, varies from region to region. With that in mind, let me share with you what I have seen in the group shops in my area of New England.

The following items were noted on one day's journey to three local malls:

Blue Orange Tree hatpin holder, good color, foot chips	179.50
Marigold Millersburg Cherries 8" ICS bowl with super iridescence, and very satiny and a base chip about a half inch long	20.00
Purple Strawberry ruffled bowl with brilliant blue highlights... with chip on the rim...	65.00
Marigold Blackberry Spray hatshape, good color, and chip on the base.....	18.00
Marigold Diamond and Columns 7" vase, no visible damage.....	15.00
Marigold Imperial Grape 7 pc. water set, excellent iridescence and assumed to be undamaged (it was inside a cabinet)	190.00
Green N's Fine Rib 9" vase, average irid.	70.00
Helios Pansy nappy (new or old?) (in cabinet)	18.00
Marigold Butterfly and Berry water set (in a cabinet) reduced from 500.00 to	400.00
Purple Ripple vase, about 12", exc. irid.	59.00
Blue Rustic 12" vase, average irid.	59.00
Amethyst spatula footed Grape and Cable bowl	89.00
Blue 9" ICS Vintage bowl (fair iridescence).....	85.00
Marigold Persian Medallion bon bon, chipped	18.00
Marigold Fashion punch cups, reduced to	ea. 10.00
Marigold Stork & Rushes 6 sauces, reduced from 100.00 to	75.00
Blue Stag & Holly 8" spatula footed bowl	450.00
Blue Vintage ice cream, 5-6" size, silver iridescence	45.00
Marigold Orange Tree mug, reg. size, poor iridescence	22.00
Marigold Luster Rose spooner, ribbed interior	28.00
Marigold Lattice and Grape tumbler	28.00
Purple Star of David and Bows bowl, average iridescence	95.00
Marigold Grape and Gothic Arches tumblers (6), exc iridescence	ea. 35.00
Purple Rustic vase, 9" approx. average iridescence	65.00

Note that when items are in locked cases, one can only assume that they are "mint". However, frequently when we have taken the time to have someone open the cabinet to inspect the glass, we have found items to have "fair wear and tear". Pinpoints, chigger bites, flakes, scratches, hairlines, etc., are rarely mentioned, if, indeed, they are noticed at all by the seller.

These regional observations are offered as a means of comparison to the prices in various guides, the relative availability of colors and patterns, and the actual condition found when one used the Biblical method of collecting, (i.e. "seek and ye shall find").

In quantity, the number of pieces found in just three groups shops, is quite a few. In fact, there were probably a dozen more that I did not write down, such as a Tree Bark water set, a Marigold Twins sauce, a Marigold 9" Hobstar bowl, a Marigold Pillar Flute creamer (no sugar), a Marigold 12" Ripple vase... to name a few. And we keep saying "There's no Carnival Glass out there."

What we are really saying is one does not find the most popular pieces at affordable prices. When a relatively desirable item turns up, all too often, it is damaged or priced beyond our means, or willingness, to pay. For example: There is a Marigold ruffled Lion bowl in another shop priced at \$110.00. It has been there for several months. Likewise, the same shop has a Green Singing Birds mug for \$300.00, that has been there for a year or longer.

The truth is, in 30 years, nothing has really changed! I can remember when we complained and struggled to pay \$28.00 for an 11" Marigold Stag and Holly bowl that was magnificent with iridescence. I can also remember borrowing the money to pay \$65.00 for a complete wine set in Imperial Grape in Clambroth, and other collectors thought I was out of my mind!

So we (Jim and I) do our searching, just as we did when we began in 1967 (when a dealer told us Carnival Glass was scarce and very hard to find), always with the hope that sometime, somewhere, in some cabinet or dusty corner, there might be a treasure lurking that the scores of other collectors in our region have either dismissed or overlooked. It happens... but not nearly as often as it once did.

PICTORIAL PATTERN PARADE

By John & Lucile Britt



RARE ROSE WINDOWS WATER PITCHER IN MARIGOLD

While a few Rose Windows tumblers have been found in marigold, this is the first carnival glass water pitcher that has ever been reported in that pattern. The color of the pitcher is in good marigold with very nice iridescence. The pitcher is of the same general size as the Diamond Lace and Grape & Cable water pitchers. It is listed as being a ½ gallon jug. A 32 point star is pressed into the bottom of the base or marie.

The Rose Windows pattern, showing the water pitcher and description can be found in Minnie Watson Kamm's book #4, but she does not mention the name of the maker. The water pitcher is also shown in Mollie McCains pattern glass book on page 235, plate #112, but she too, does not mention the maker. Recently while I was fingering through the book, "Fostoria, Its First Fifty Years" by Hazel Marie Weatherman, looking for information on another pattern, I came across the Rose Windows water pitcher on page 57 of that very fine



Fostoria book. I must say that I was rather surprised, as I didn't expect Rose Windows to be a Fostoria pattern. Anyway, we now know that the Rose Windows pattern was made by Fostoria. We knew that Fostoria did make some carnival glass as we have seen and own a number of pieces in marigold carnival glass that were made by that company.

In the May 1988 HOACGA bulletin, we featured the Rose Windows pattern tumbler in our Educational Tumbler Series. Of course, at that time we did not know who made it, but rather suspected the U.S. Glass Company as the maker. In the above photo, we show the Rose Windows tumbler. We are including the photo at this time for you to see that it does match the featured Rose Windows water pitcher. We consider the water pitcher and tumbler as very rare.

This article on the pretty Rose Windows water pitchers is #208 in our Pictorial Pattern Parade. We hope that you have found it interesting.

Network

The journal exclusively devoted to Carnival Glass. Issue #10 looks at

COLOR

Unique

CARNIVAL COLOR REFERENCE GUIDE

Over 60 Carnival colors in current usage are fully defined

Also

Color Reference Chart

Shows all Carnival colors in relation to each other for comparison purposes

Plus

Color Special

Extra supplement with *Network* #10 has full color photographs of some of the more interesting and unusual Carnival shades

Also in *Network* #10 **Buildings on Carnival Patterns** features some superb designs and provides an insight into the background of these lovely pieces

To subscribe: for 4 quarterly issues send \$20 to PageWorks, PO Box 14493, Chicago, IL 60614 (Checks payable to PageWorks)
\$5 per single issue

England: send £11.20 Canada & Australia send £15 to: G & S Thistlewood "Linwood", 11A Wellhouse Road, Beech, Alton, Hampshire, GU34 4AH, England

HOACGA CONVENTION AUCTION HIGHLIGHTS

Saturday, April 27th, Lenexa, KS - HOACGA Convention Auction - Bob & Faye Allaire Collection from Texas. It will be one of the finest collections to be sold. Their collection contains a great variety of fantastic pieces.

Millersburg including:

Many Stars chop plate in M

Acorn compote in M

Wildflower compote in A

Flat Poppy compotes in P,G

Deep Grape compotes in G,M

Rosalind jelly compotes in A,G

Dolphins compotes in B,G,A

Perfection water pitcher in A

2 Eyed Elk bowl

Approx. 80 plates includ.

Hearts/Flowers in IB,P,M,W

Peacock in 8 different colors

Rose Show in Em.G,W,M,B,IB

Rose Show Var. in Ren. B

Poppy Show in G,M,B,IB,P

Homestead Chop in P

Imperial Grape in P

Open Rose in P

Peter Rabbit in M

Stippled 3 Fruits in AO

Approx. 30 pc. of Red

Vintage 3/1 edge bowl

Chrysanthemum bowl

Holly bowl

Orange Tree bowl

Luster Rose fruit bowl

Peacock & Grape bowl

Dragon & Lotus bowl

Stag & Holly

Coin Dot ruffled bowl

Waterlily

Lotus & Grape bowl

Peacock at Urn compote

Peacock at Urn IC -

bowls in M,pastel M,IG,IB,W,P,B

Grape Arbor tankards in W,IB

Peter Rabbit bowl in B

plus many other fantastic pieces!!!

MICKEY REICHEL AUCTION RESULTS

January 6, 1996 Auction

55.00	1.	B-6 3/4" - 6 Ruffle Pine Cone Bowl - Nice Example	135.00	50.	Celest Blue - Concave Dia. Tumblers - 6x\$ 22.50
35.00	2.	M - Columbia Compote - Dark Top To Bottom	30.00	51.	Celest Blue Concave Dia. Pitcher Lid Only - Rare Find
70.00	3.	A - Imp. Pansy Nappy - Beauty		52.	Em. G. - 10 1/2" Fine Rib Vase - Scarce Color
25.00	4.	Olive - Imp. Grape Wine - Scarce Color	65.00	53.	Lav. - N Grape and Cable Berry Bowl - Radium - M - Irid.
70.00	5.	A - Mlbg. 9" Rays & Ribbons Bowl - Pretty Satin	25.00	54.	M - Round Hattie Bowl
70.00	6.	M - 6 1/4" Pine Cone Plate - Fine Example		55.	W - Hearts and Flowers Compote - Pinks, Blues, & Frosty
55.00	7.	M - Inverted Feather Compote - Scarce	40.00	56.	B-8 1/2" Low I.C.S. Fenton Holly Bowl-Near Elec.
20.00	8.	Teal - Little Beads Rd. Sherbet or Compote - Very Scarce Color	160.00	57.	B - Ruffled Fenton Holly Bowl - Rare Iridized Back Only - Beautiful Effect
	9.	P.O. - Ruffled Little Beads Sherbet or Compote - Also Scarce	175.00	58.	M - 6" Imperial Grape Plate - Good and Dark
35.00	10.	M - Prisms Bon Bon - Rarity - 7 or 8 Known	35.00	59.	M - Imperial Grape Wine - Dark All The Way
65.00	11.	A - Prisms Bon Bon - Scarce	25.00	60.	P - 8" Dugan Lattice Heart Flat I.C.S. Points Up Plate? Rarity
45.00	12.	M - Rocco Vase - Very Nice One	75.00	61.	Aqua - 6 1/2" I.C.S. Leaf Chain Bowl - Scarce
60.00	13.	Smoke - 6" Frosted Block Stem Vase - Scarce Color	115.00	62.	Teal Fenton Lotus & Grape Bon Bon - Scarce - Excellent Color
45.00	14.	Amber - 7 1/2" Tall Ripple Vase, 5" Top - Rare	175.00	63.	B-Milday Tumbler-Multi Irid.-Always in Demand
85.00	15.	M - Rose Panels Australiian Compote - Scarce	65.00	64.	Vas. - Persian Medallion Bon Bon
115.00	16.	W - Puzzle or Floral & Wheat, Stemmed Bon Bon Very Pretty	75.00	65.	M - Persian Garden 7" Plate - Frosty Stretch Irid.
95.00	17.	M - Martha, English Bowl - Very Scarce	100.00	66.	M - Fenton Stippled Rays 7" Plate - Bright Radium
95.00	18.	W - Grape Delite Rose Bowl	27.50	67.	M - Ten Mums Tumbler - Excellent Even Irid. Pin Head on Edge Top
47.50	19.	M - Water Lily & Cattail Vt. Tumbler - Rare - Dark Radium	25.00	68.	G - 9" C.R.E. Ten Mums Bowl - Rare Shape
65.00	20.	M - Silver Band Tumbler - 6 or 7 Known	300.00	69.	P - N Grape & Cable Dresser Tray - Always Desirable
60.00	21.	A - Vintage Nut Bowl - One of The Best	50.00	70.	M - Mlbg. 3in1 Rays and Ribbon Bowl - Radium Pastel Irid.
25.00	22.	M - 8" Heavy Grape Plate - Dark	275.00	71.	LAV. A - N Bushel Basket - Radium
100.00	23.	A - 9" Three Fruits Plate - Smooth Back N - Nice One	475.00	72.	M - Many Fruits 8 pc. Punch Set - Nice Set - Ruffled Base
100.00	24.	M - 9 3/4" - 6 Ruffle Mlbg. Primrose Bowl - Beautiful Satin	200.00	73.	W - 9" Round Up Shallow Plate - Great Irid.
30.00	25.	Cobalt Blue - 6 1/2" Fenton Acorns Bowl	85.00	74.	P.O. - 6 1/2" Four Flower VT. - B.W. Plate
100.00	26.	W - Constellation Compote - Beautiful Irid.	400.00	75.	RED - Ruffled Spat. FTD. Peacock and Grape Bowl Super - Buff on Ft.
9.00	27.	B - Scottish Thistle Compote - Great Pinks & Blues	600.00	76.	A-9 1/2" Fenton Holly Plate-Beautiful-Multi-Irid.
30.00	28.	P - N - 10 1/2" Tree Trunk Vase - Multi Irid. - Base Chips	90.00	77.	A - N Ruffle Strawberry B.W. Bowl-Rainbow Irid.
55.00	29.	P - 12 1/4" Ripple Vase - Great Example	900.00	78.	P - N Acorn Burrs 7 pc. Water Set - in Big Demand
35.00	30.	M - Fine Cut Flower VT. Compote - Scarce	300.00	79.	P - N Acorn Burrs 4 Place Table Set
15.00	31.	M - Imp. Grape Compote	500.00	80.	B - Orange Tree Orchard Pitcher - Rare
175.00	32.	P - N Lg. Grape & Cable Orange Bowl FTD.	120.00	81.	M - Oval Stippled Grape & Cable Dresser Tray - Very Scarce
150.00	33.	B - 7 1/2" Vintage Grape Plate - Great One	500.00	82.	B - N FTD Grape & Cable Orange Bowl - Rare w/N Mark
60.00	34.	M - N P.C.E. BW. - Grape & Cable Bowl - Pretty & Dark	250.00	83.	A - Mlbg. Cherries Spooner - Scarce - Great Example
100.00	35.	P - 8 1/4" Ruffled, Imp. Star of David Bowl	325.00	84.	M - Hob Star & Shield Tumbler - Radium & Rare European
100.00	36.	M - Enamel Magnolia & Drape Pitcher - Dark - Nice Enamel	250.00	85.	M - 7 pc. Matching Set Octagon Water Set - Great Set
40.00	37.	M - Enamel Magnolia & Drape Tumbler	50.00	86.	P - N Diamond Point Vase - Polished Base
30.00	38.	G-7" Ruffled Mlbg. Grape Wreath Bowl-4 Feather Center-Radium	17.00	87.	Smoke Imperial Swirl Vase - Beautiful Example of Smoke
70.00	39.	A - N, 11" Stippled Rays, B.W. Bowl Ruffled - Beauty	115.00	88.	CLAM - 10" Cherry Chain Ruffled Bowl - Scarce Color & Size
45.00	40.	M - 8 1/2" Mlbg., 3in1, Grape Wreath VT. Bowl w/Star Center	75.00	89.	M - 6 Memphis Punch Cups - 6x\$ 12.50
175.00	41.	M - 9" Fenton Holly Plate - Dark	60.00	90.	B.A. - Swirl Hat Pin - Pattern? Radium Irid.
75.00	42.	M - 9" FTD. Rd. Penetria & Lotus Bowl	315.00	91.	M - 7 pc. Fenton Panthers Berry Set - All Ruffled
45.00	43.	A - Mlbg. Holly Sprig Bon Bon Card Tray - Super Radium	175.00	92.	M.M.G. - Oak Leaf & Acorn Torch Floor Lamp w/16" Shade - Super Rare
150.00	44.	A - 7 1/2" Mlbg. 6 Ruffle Little Stars Bowl - Scarce	200.00	93.	G - Greek Key N Tumbler - Rarity
100.00	45.	Deep Amber 7 1/2" Acorn Low Ruffled Bowl - Excellent Irid. - Red Look			
170.00	46.	M - Apple Tree Pitcher - Nice and Bright Radium			
35.00	47.	M - Apple Tree Tumblers - A or B			
45.00	48.	B - 6" Flat Cherry Chain Plate - 3 Cherry Variety Scarce			
75.00	49.	M - 10" - 6 Ruffle Cherry Chain Bowl - Beautiful Color - Irid.			
65.00	94.	P - Imperial Windmill Tumbler - Super Radium Example	325.00	146.	A - Garden Path VT - Soda Gold EXT - Chop Plate - Beautiful - Rare
60.00	95.	M - Footed Orange Tree Tumbler - Super Irid.	150.00	147.	CLAM - 9" Orange Tree w/Trunk Plate - Great One
150.00	96.	Mandarin Red Slag Fenton 7 1/2" Peacock Vase - Not Irid. - 1934 Circ. (Rare)	295.00	148.	G - 9" N Strawberry w/BW Plate - Beautiful - Even Irid.
120.00	97.	Mongolian Green Slag Fenton 7 1/2" Peacock Vase - Not Irid. - 1935 Circ. (Rare)	275.00	149.	A - 9" Apple Blossom Twig w/Lg. BW EXT. Plate - Scarce & Flat
150.00	98.	Periwinkle Blue Slag Fenton 7 1/2" Peacock Vase - Not Irid. - 1935 Circ. (Rare)	225.00	150.	G - 9" Spat. FTD. Grape & Cable Meander Plate Best I've Seen
325.00	99.	A - 9 3/4" Mlbg. Hobnail Swirl Vase - Super One	210.00	151.	B - 9" Spat. FTD. Fenton Grape & Cable Plate - Rare Color
425.00	100.	Super Green Irid.	100.00	152.	M - 7" Grape Vine & Lattice Plate - Beautiful Multi Irid.
225.00	101.	W - N 10 3/4" Leaf Column Vase - Very Scarce	250.00	153.	CLAM - 9 1/2" Fenton Holly Plate - Scarce Color Nice Example
200.00	102.	I.G. - N Bushel Basket - Beauty	275.00	154.	W - 9" Leaf Chain Plate - Pink & Blue Hilites
50.00	103.	Marigold Flash Devilbiss Perfume w/Dobber - Rarity	125.00	155.	M - 9" N Grape & Cable BW Plate - Pinks & Green Irid.
1,450.00	104.	A - 21" Rustic Funeral Vase - Plunger Base - 8" Top - Super Item	60.00	156.	M - 9 1/2" - 6 Ruffled Ribbon Tie Bowl - Dark, Beautiful Irid.
400.00	105.	Hyacinth Gone with the Wind Lamp Base & Font - Super Item	425.00	157.	B - Lrg. Grape & Cable FTD Orange Bowl - Beautiful Item
2,300.00	106.	A - 9" Concord Plate - Rare w/Radium Gold & Silver Irid.	350.00	158.	A - 10 1/4" 6 Ruffled Mlbg. Rosalind Bowl - Beautiful & Scarce
110.00	107.	P - Acorn & Burrs Tumblers - 2x\$ 55.00	225.00	159.	Amber - Lustre Rose Butter Dish - Rare, Beautiful Amber Item
280.00	108.	W - Acorn & Burrs Punch Cups - 4x\$ 70.00	275.00	160.	Amber - 9" Flat Stippled Open Rose Plate - One of the Best
90.00	109.	P - Acorn & Burrs Punch Cups - 3x\$ 30.00	300.00	161.	Amber - 9" Beaded Bull's Eye - 6" Top Vase - Rare Color
375.00	110.	A - 6" Rfld. Isaac Bensch Adv. Bowl - Cute Rarity	325.00	162.	B - 10 1/2" FTD. ICS - Chrysanthemum Bowl - Super Elec. Multi-Irid.
525.00	111.	A - 6" "Eat Paradise Soda" - Plate - Scarce Item	725.00	163.	IB - Ruffled, Ribbed Back EMB. Mums Bowl - Great Pastel
475.00	112.	Red - 6 Rfld. Blackberry Spray Hat-Great Color	375.00	164.	RED - Open Edge - 2 Sides Up BW. Ext. Bowl Beautiful
150.00	113.	IB - Brocaded Acorns Cake Plate - Fleurdelis Handle	160.00	165.	M - 474 Milk Pitcher - Dark Radium
450.00	114.	Lime Green - N - Bushel Baskt - Rd. - Very Rare Color	200.00	166.	M - Mlbg. 9 1/2" Deep Rd. Peacock-At-Urn Bowl - No Beads
195.00	115.	Carnival Glass Buttons in Display Case (Approx. 45)	250.00	167.	M - Australian 9" - Dia. Cuts - Dome Base Bowl - Rare
175.00	116.	AO (contemporary) Cherry Chain Chop Plate	200.00	168.	IG - Rose Spray JIP Compote - Glows Under Black Lite - Rare
50.00	117.	M - Concentric Circles Candlesticks (Pair)	275.00	169.	IG - Wind Flower Tri Corner Nappy - Glows Under Black Lite - Rare
145.00	118.	M - Constellation Compote - Scarce Color	575.00	170.	B - Milady Tankard Pitcher - Always in Demand
30.00	119.	M - Crab Claw Tumbler - Dark, Rich Irid.	155.00	171.	A - Butterfly Bon Bon - Horlacher Adv. on Base - Rare
160.00	120.	A - Daisy Block Rowboat - Rare Color - Chips on Base	200.00	172.	P - Amaryllis TriCorner Sm. Compote - Very Scarce
105.00	121.	M - Dia. Pt. Columns - 5 1/2" Vase - 6" Flared Top	250.00	173.	P 0 Imp. Grape Water Pitcher - Tiny Flaw on 1 Grape - Super Example
500.00	122.	Amber Opal - 8 3/4" ICS Bowl - Super & Rare	350.00	174.	P - Imp. Grape Tumbler - Elec. Blues & Purple Irid.
110.00	123.	AO - 8 3/4" Drapery Vase - N - Rare - 1 ft. Repaired	300.00	175.	A - Checkerboard Tumbler - Very Scarce Tumbler In Any Color
20.00	124.	M - Engraved Juiceglass - Marked "Made in China"	150.00	176.	M - Int. Poinsettia Tumbler N - 10 or 12 Known
45.00	125.	M - Individual Stemmed Salt	275.00	177.	A - Fishnet Epergne W - CRE Insert - Scarce
35.00	126.	M - Lrg. Size Flute Compote	125.00	178.	B - 7 3/4" Leaf Chain Plate - Rare Irid. Back Only - Beautiful Effect
115.00	127.	PO - 6 3/4" 4-Flowers Plate - Smooth Back - Lots of Opal	175.00	179.	M - Ruffled Concord Grape Bowl - In Big Demand
375.00	128.	G - Good Luck Rfld. Bowl - BW Back - Super Color	450.00	180.	W - 10 1/2" 6 Ruffled Garden Path - Soda Gold EXT. Bowl - Beautiful Irid.
475.00	129.	B - Good Luck - Rib Back - PCE Bowl - Elec. Irid.	275.00	181.	A - 8" N Wishbone FTD. Plate - Scarce Size
35.00	130.	M - Beaded Panels & Grapes European Tall Tumbler - Radium & Rare	650.00	182.	M - Peacock-at-Fountain N 8 pc. Punch Bowl Set - Fantastic
525.00	131.	P - Dia. Lace - 7 pc. Water Set - Super Irid. - 1 Tumbler Chipped	450.00	183.	M - Peacock-at-Fountain N 7 pc. Water Set - Super Set
37.50	132.	B - Stork in Rushes Tumbler - Great Example	375.00	184.	P - N Grape & Cable Pitcher w/4 Tumblers - Great - 2 Tumblers Chipped
72.50	133.	M - Stork in Rushes Tumbler-Lattice Band Top	500.00	185.	B - Lattice & Grape - 7 pc. Tankard Water Set Super Set
20.00	134.	M - N Grape & Cable Tumbler	1,050.00	186.	P - Heavy Iris Tankard Pitcher-Super Example
400.00	135.	W - 8" Rfld. RB - N - Peacocks Bowl - Multi Irid. Scarce Item	230.00	187.	P - Heavy Iris Tumblers - 3 - Choice
70.00	136.	M - N - Beaded Cable Rose Bowl - Rich & Dark	750.00	188.	B - Butterfly & Berry 6 pc. Water Set - Beautiful Tough Set To Find
225.00	137.	M - 9 1/4" Rd. Mlbg. Fleurdelis Bowl - Radium Finish	910.00	189.	PO - 10 Ruffled Roundup Bowl - Very Pretty
200.00	138.	M - 9" N Stippled 3 Fruits RB Plate - Scarce			
30.00	139.	P - N - Memphis Punch Bowl Base - Elec. Hilites			
130.00	140.	P - Memphis Punch Cups - 9x\$ 20.00			
300.00	141.	M - 13 1/2" Midsize Tree Trunk Funeral Vase - Beautiful Example			
525.00	142.	G - 10 3/4" N Grape & Cable - ICS - BW - Bowl Super			
375.00	143.	A - 6 Rfld. Concord Grape Bowl - Very Scarce Color			
275.00	144.	M - Hearts & Flowers Pitcher - Super Example & Scarce			
400.00	145.	Super Red - 10 3/4" Fine Rib Vase - Sm. Mfg. Flaw on Edge - Super			

NORTHERN CALIFORNIA CARNIVAL CLUB

The Northern California Carnival Club has had to make a change in our convention date this year.

Our 1996 Northern California Carnival Club convention will be held at the Holiday Inn, 1612 Sisk Road, Modesto, CA from June 20th through June 22nd. Jim Seeck will handle our auction this year. Educational programs are being planned. It goes without saying that there will be glass for sale and beautiful glass displays as well as the opportunity to visit with old carnival glass friends and to make new friends. Everyone is welcome.

For detailed information or registration information, call or write to me at the address below.

June McCarter, Treasurer
1205 Clifton Drive
Modesto, CA 95355
(209) 523-6778

NEW ENGLAND CARNIVAL GLASS ASSOCIATION

(N.E.C.G.A.) will hold it's 1996 Convention at the Ramada Hotel, 1080 Riverdale Rd., West Springfield, MA 01089 (413) 781-8750 on September 6th and 7th, 1996.

The Hospitality Room will be open at noon on Thursday, Sept. 5th for "early birds" and all day Friday and Saturday, as usual. Make your reservations now at our group rates (new management has guaranteed better rates and services) and be sure to tell them you're with NECGA. The new Courtyard rates are \$62, with the standard room rate still \$55.00

Spend your mornings at the *Fabulous Brimfield Antique Markets* and unwind at the Convention activities in the afternoon and evenings.

Tom Burns will hold the big Auction Friday evening. Saturday will be a busy day with a seminar after lunch and a fun-filled evening including our banquet, an information speaker and our famous "mini-auction". NECGA will subsidize \$5.00 for each banquet meal.

This year's room display contest will be DIFFERENT: The top three displays will be given cash awards. What a better way to plan a vacation - Brimfield and our Convention. Join us for a great weekend!

For further information contact either Sam McGill (203) 623-4645 or Harold March (617) 821-3425.

H.O.A.C.G.A. CLUB NEWS & GENERAL INFORMATION

The Newsletter is published on the 15th of each month. The Heart of America Carnival Glass Association is a Not-for-Profit organization registered in the State of Missouri.

Members are encouraged to contribute articles for publication in the newsletter and to advertise carnival glass for "sale" or glass "wanted". Articles may be educational in nature or about collecting experiences, or letters of interest to the membership. Other carnival glass organizations may announce their meetings and/or conventions. Auctioneers who are members may announce their future auctions. Members may announce their upcoming carnival glass educational books, price guides, and other pertinent publications; after the initial announcement the information will only appear in the bulletin "Resource Section". All items submitted for publication will be published in the next months bulletin or as soon as possible. The final decision to publish the articles will be made by the Board of Directors. Some articles may be edited prior to publication. Articles of an offensive nature or articles intended to discredit individuals will not be published.

Membership is \$25.00 U.S. & Canada, \$40.00 Foreign per family or individual. All monetary amounts quoted are in U.S. dollars. Membership year starts the month your dues were paid. All checks are to be made payable to H.O.A.C.G.A. and mailed to the Secretary, as listed on the inside front cover. All articles and items for publication in the bulletin are to be sent to the Bulletin Secretary whose name and address appear on the inside front cover.

MEMBERSHIP APPLICATION **H.O.A.C.G.A.**

New Member Renewal
\$25.00/year U.S. & Canada — \$40.00/year Foreign

NAME _____

ADDRESS _____

TELEPHONE _____

REFERRED BY _____

Send to: Ed Kramer, 4305 W. 78th Street, Prairie Village, KS 66208

H.O.A.C.G.A. - CLUB INFORMATION

The purpose of the Heart of America Carnival Glass Association is to promote the growth and continuation of the Carnival Glass collecting hobby and to provide support to the many collectors by providing current information about the hobby.

Growth is accomplished by supplying educational information for the collector and soliciting new collectors into the hobby.

A convention is held annually in April (Convention date always includes the 4th Friday). Some of the activities provided at the convention are:

- * Members provide Room Displays with glass from their collection.
- * Members are encouraged to bring glass for Sale.
- * Educational Seminars are provided by members.
- * A Major Carnival Glass Auction is provided.
- * The Convention offers members an opportunity to meet new collectors, renew old friendships and enjoy discussing carnival glass with other knowledgeable collectors.
- * A banquet is held with a Carnival Collector as our Speaker.
- * A Hospitality time is provided by the club. This is a time of relaxation and visiting with other members.

It takes the support of all collectors and members to promote the hobby in order that its growth and expansion can continue.

In order to obtain our objective, the members must financially support the organization. The Heart of America Carnival Glass Association receives its financial support through the Annual Membership dues and the sale of the following.

* **Membership Dues** - \$25.00 per year - U.S. & Canada. \$40.00 per year for Foreign. The Membership Year is from the date of joining to one year later. Dues are set by the Board of Directors to support the publication of the monthly bulletin, typing, printing and mailing.

* **Educational Series - Book I** - 148 articles with pictures (black and white) on a variety of Carnival Glass Patterns.

* **Educational Series - Book II** - 180 articles with pictures (black and white) of Carnival Glass Tumblers

* **Hartung Carnival Glass Pattern Books** - A set of 10 books identifying Carnival Glass Patterns. These books are a must for all Carnival Glass Collectors, especially for the beginner. These are the only complete set of books available that identifies the majority of the carnival glass patterns. Sketches are in black and white.

* **Pattern Notebook** - A notebook containing sections on Mugs, Table Sets, Rosebowls, Water sets (including painted sets), Plates (small, regular & chop), Compotes (large, regular & small), and punch sets. Each section of the notebook identifies each pattern with a **COLOR** picture along with information about the Maker and colors of each different pattern.

* **Souvenirs** - Periodically H.O.A.C.G.A. makes a souvenir to be sold to members. Souvenirs have been made since 1974, a few of these are presently available. They are the small Good Luck plate in ruby red, the Green Opalescent - Fenton, Cobalt - Millersburg, Marigold - Imperial, and Teal - Dugan Bells. Each year that Souvenirs were made, Whimseys were also made and sold at the convention banquet.

* **Video Tapes** - Video Tapes of educational programs given during the various conventions are available. A complete listing of the available video tapes are shown on the Order Form, which is part of this section of the Bulletin.

MARCH, 1996 REGULAR HOACGA MONTHLY MEETING

The next regular meeting of the Heart of America Carnival Glass Association will be on Sunday, March 24, 1996 at 2:00 P.M. at the Raytown Missouri City Hall. We will discuss patterns with grapes so lots of items should be available for sharing. Hope to see lots of members there. This will be our last meeting before the convention and annual meeting in April.

The February 25 meeting was attended by 15 members including John & Lucile Britt from Manhattan, Kansas. John helped Bob Grissom and we had an excellent lecture on about 40 pieces of blue glass. Refreshments were served and everyone had a good time. Mike Hood won a marigold Holly compote door prize.

Ed Kramer, Secretary HOACGA

NOTES FROM THE SECRETARY

- 1.) Please check you mailing label upper right hand corner for the last month of your subscription. We do put "Membership Due Please Renew" stickers on your last-months copy but it helps if you renew before then.
- 2.) Please allow one month for shipment of educational materials or souvenirs. We do try to accommodate special circumstances such as gifts, etc.
- 3.) Remember we are a not-for-profit organization and as such can not sell to the public, only to members. We get many requests from nonmembers and many do join to obtain our many one-of-a-kind excellent educational materials.
- 4.) **Please do not send cash. Please make all checks payable to HOACGA.**
- 5.) When you order, please include the money indicated for postage. Packaging and postage costs are significant.
- 6.) If you do not get your bulletin when you think you should, **LET US KNOW**.
- 7.) If you plan to attend the convention, the cost of the pattern notebook section on vases is 9.00 as we plan to have it available there. If you want it mailed, the postage cost is \$1.00 additional. Copies mail-ordered will not be sent until after the convention (about May 1).

Ed Kramer, Secretary HOACGA

Dear HOACGA Club Members,

I read with interest the letter by Greg Dilian in the November bulletin as he described the circumstances involving his acquisition of an Ice Blue Rose Show bowl. His story ran the gamut of apprehension, hope, doubt, and finally the feelings of pride and joy in the ownership of a rare and beautiful piece of carnival glass.

I read with equal interest the letter from Bruce Edwards in the January bulletin describing how he felt about Greg's acquisition of the Rose Show bowl. Bruce questioned honesty, integrity, and pride in club membership. Bruce went on to describe a carnival glass story in which he did not take advantage of a man with a thirty dollar price tag on an Electric Blue Peacock and Urn complete ice cream set.

As the Editor of our bulletin noted every club member is entitled to voice his or her own opinion. Therefore, I wish to state my perceptions. I saw some significant differences and similarity between the two events.

Greg's piece of carnival was located at a yard sale. A sixty dollar price tag on a piece of glass at a yard sale indicates to me the owner knew the bowl was of some value. Yet due to lack of time, interest, or any number of reasons, he did not seek knowledge of the true value of the bowl. He placed a value on the bowl, was willing to negotiate, and agreed on a selling price. Both parties felt good about the end result.

Bruce's story stated that a man had called him about some glass he wanted to sell. This indicates to me the man knew that Bruce had knowledge of glass and was seeking help in pricing and selling of his pieces. Bruce in turn shared that knowledge and the man decided to keep his ice cream set. Both parties felt good about the end result.

As a relatively new Carnival glass collector, I thank both men for sharing their stories. Bruce gives me faith that there are those among us willing to share vast arrays of knowledge. Greg gives me hope that there will be opportunities for my dreams to become realities.

Kathy Evans
Pierre, South Dakota

ORDER FORM - SOUVENIRS & BOOKS

_____ **H.O.A.C.G.A. Educational Series Book I**.....\$15.00
 Shipping for each book.....\$2.50
 Total.....\$17.50

_____ **H.O.A.C.G.A. Educational Series Book II**.....\$17.50
 Shipping for each book.....\$2.50
 Total.....\$20.00

H.O.A.C.G.A. SOUVENIRS:

_____ **1993 Ruby Red 6" "Good Luck" Plate**.....\$37.50
 (20th Anniversary)
 _____ **1989 Teal Bell**.....\$35.00
 (Honors Dugan Glass Company)
 _____ **1988 Marigold Bell**.....\$35.00
 (Honors Imperial Glass Company)
 _____ **1987 Cobalt Blue Bell**.....\$35.00
 (Honors Millersburg Glass Company)
 _____ **1986 Green Opalescent**.....\$35.00
 (Honors Fenton Glass Company)

Include \$2.50 for shipping & handling of each above souvenir.

_____ **PLATE HOLDERS - Dozen**.....\$21.50
 (Postage Included)

TOTAL \$ _____

SEND ORDERS TO:

ED KRAMER
 4305 W. 78th Street
 Prairie Village, KS 66208

Name _____
 Address _____

ORDER FORM - VIDEO TAPES

H.O.A.C.G.A. CONVENTION SEMINAR VIDEO TAPES

_____ "Red Carnival Glass" \$20.00
 (Richard Cinclair, Bob Allaire & Joyce Seale)
 _____ "Shades of Blue" - (Richard Cinclair) \$20.00
 _____ "Poppy & Rose Show Pieces" - (Tom Mordini) \$20.00
 _____ "Fenton Two Flower" - (Bob Stremming) \$20.00
 _____ "Carnival Glass Smalls" \$20.00
 (Eleanor & Jack Hamilton)
 _____ "Small Plates" - (Smokey Cloud) \$20.00
 _____ "Hatpin & Hatpin Holders" - (Clint Fox) \$20.00
 _____ "Northwood Peacock & Urn Ice Cream Sets" \$20.00
 (Harold Cox)
 _____ "Millersburg Big Fish & Trout & Fly" \$20.00
 (Singleton Bailey)
 _____ "Carnival Glass Collecting Experiences" \$20.00
 (Carl & Ferne Schroeder)
 _____ "Heinz 57 Variety Carnival Glass Collection" \$20.00
 (Jerry & Carol Curtis)
 _____ "Little Sauces" - (Garth Irby) \$20.00
 _____ "Miniatures" - (John & Lucile Britt) \$20.00
 _____ "Table Sets" - (Leonard, Kremer & Grissom) \$20.00
 _____ "Plates" - (Ruth Green & Richard Cinclair) \$20.00
 _____ "Luncheon Honoring Floyd & Cecil Whitley" \$20.00
 (Britt award of Excellence in Carnival Glass)
 _____ "Plethora of Patterns" - (Dean & Diane Fry) \$20.00
 _____ "Millersburg" - (Dick & Jennie Hostetler) \$20.00
 _____ "Swung Vases" - (Dave & Joan Doty) \$20.00
 _____ "Holly Pattern" - (John Mikkonen) \$20.00
 _____ "Britt Award Luncheon" - (Carl & Ferne Schroeder) \$20.00
 _____ "95 HOACGA Banquet" - (Floyd & Cecil Whitley) \$20.00

TOTAL \$ _____

POSTAGE INCLUDED WITH PRICE OF TAPE

SEND ORDERS TO:

ED KRAMER
 4305 W. 78th Street
 Prairie Village, KS 66208

Name _____
 Address _____

ORDER FORM - BOOKS

HARTUNG CARNIVAL GLASS BOOKS

(Black and white sketches)

_____ Book 1 - \$6.00	_____ Book 6 - \$6.00
_____ Book 2 - \$6.00	_____ Book 7 - \$6.00
_____ Book 3 - \$6.00	_____ Book 8 - \$6.00
_____ Book 4 - \$6.00	_____ Book 9 - \$6.00
_____ Book 5 - \$6.00	_____ Book 10 - \$6.00

_____ Complete Set of 10 Books (#1 thru #10) - \$60.00

(Hartungs "Northwood Pattern Glass" included with a Set)

Include \$1.00 each, for shipping when purchasing books separately.

Maximum of \$6.00 shipping for a set.

H.O.A.C.G.A. PATTERN NOTEBOOK

(COLOR Photos)

_____ Mugs.....	(1980).....	\$7.00
_____ Table Sets (Photos 1 thru 40).....	(1981).....	\$7.00
_____ Water Sets 1 (Photos 1 thru 60).....	(1982).....	\$7.00
_____ Water Sets 2 (Photos 61 thru 120).....	(1983).....	\$7.00
_____ Water Sets 3 (Photos 121 thru 167).....	(1984).....	\$7.00
_____ Rosebowl 1 (Photos 1 thru 60).....	(1985).....	\$7.00
_____ Rosebowl 2 (Photos 61 thru 101).....	(1986).....	\$7.00
_____ Small Plates 1 (Photos 1 thru 48).....	(1987).....	\$7.00
_____ Small Plates 2 (Photos 49 thru 98).....	(1988).....	\$7.00
_____ Chop Plates (Photos 1 thru 40).....	(1989).....	\$7.00
_____ Regular Plates 1 (Photos 1 thru 48).....	(1990).....	\$7.00
_____ Regular Plates 2 (Photos 49 thru 81).....	(1991).....	\$7.00
_____ Compotes 1 (Photos 1 thru 57).....	(1993).....	\$8.00
_____ Compotes 2 (Photos 58 thru 113).....	(1994).....	\$8.00
_____ Punch Sets, 2nd Edition (Photos 1 thru 36).....	(1995).....	\$8.00
_____ Complete Pattern Notebook.....		\$120.00
_____ Shipping for complete notebook.....		\$5.00
_____ Shipping for each selection.....		\$1.00
<i>(Maximum Shipping \$5.00)</i>		

TOTAL \$ _____

SEND ORDERS TO:

ED KRAMER
4305 W. 78th Street
Prairie Village, KS 66208

Name _____
Address _____

GOOD-BYE - MARGE

Many of our carnival family hearts had sad days when we learned that Marge Kremer of New Haven, IN passed away January 13th. Marge had health problems for quite a long time but remained active with several carnival clubs. She and husband Chuck shared their carnival auctions and convention trip news with all of us in the newsletters. That means so much to the ones who can't attend these events.

Marge & Chuck came to visit soon after the ACGA Convention at Ft. Wayne, IN July '95. It was just great to have them and will always be a treasured memory. They took me out to eat at a Bob Evans and we had such a nice long talk. She will be greatly missed but not ever forgotten. Much deep sympathy to Chuck and their daughter Cindy.

Grace Rinehart, Charleston, WV

REMEMBERING SADIE

Looking back to the year of 1978, I am remembering our first HOACGA Convention. The Treffs managed a great hospitality for everyone. Such a lovely couple one does not ever forget. We had a wonderful time and made the long trip in 79-80-81-82. Finally had to give up going such a distance but we always wished we could be there for every convention.

The newsletters kept us informed on the events and the Treffs always were being helpful. Celebrated special anniversaries, corresponded and sent Christmas greetings. Was so saddened to hear Sadie had to be in a "care" home for some while. Then heard she passed away December 13, 1995, leaving dear "Herbie" as he was so affectionately known and I believe a son.

Yes indeed many of the older club members will remember Sadie and Herbie. Deepest sympathy to the family - I plan to keep in touch as life does you lonely when a loved one leaves us.

Herbie's address: Herbert Treff, 2636 N. 83rd St., Kansas City, KS 66109-2133.

Memories will keep Sadie close in thought.

Grace Rinehart, Charleston, WV

FROM MY CORNER

By Bob Grissom

In 1990, the first HOACGA Educational Series book was printed. This book contains information on approximately 150 different items of carnival glass. In 1992, the second HOACGA Educational Series book was printed. It contains information on approximately 180 different carnival glass tumblers. These two books contain articles written by John & Lucile Britt. All of these articles have previously appeared in the HOACGA bulletins. These books were printed in order to preserve, and to make this educational information available, for those present and future collectors who do not have access to the past bulletins.

It has been four years since the second book was published. Many additional educational articles have appeared in the monthly bulletins, and so it was decided to record many of these articles by publishing a third Educational Series book. I have been reading and reviewing the articles to be included in this third book. While re-reading these articles, I find them again to be very informative. This type of information can not be found in any other reference material. Most of this information comes from past experiences and knowledge of the member writing the article. Book Three will contain bulletin articles which were written by various HOACGA members. In addition, the book will contain a listing of carnival glass pieces that are considered to be the top rarities, that is, five or less of these items are known.

I thought as I was reviewing the many different articles how fortunate the carnival glass collectors are to have members who are willing to devote the time to research information, write about the various pieces, and then to share their knowledge with us. We believe the collector will find these books very informative and an asset to their collection.

A NOTE FROM THE VICE PRESIDENT

Norma & I attended the Houston, Texas Convention. As in the past, it was great. We saw a lot of our carnival friends and the seminars were excellent. The Houston Convention is a nice treat this time of year. We were also privileged to be able to attend the Spangler Auction in Strongsville, OH held by Tom Burns Auction Co. It was quite a treat for us to watch this array of excellent glass sell in one auction. I asked a lot of questions and gained some useful knowledge. The Richards father and son team were excellent in not so ideal conditions. Hope to see all at the HOACGA convention.

Daryl Strohm, Vice President HOACGA

WELCOME NEW MEMBERS

Larry & Lena Brunk Athens, WV
Nita Cole Upper Saddle River, NJ
Jerry Fish Lansing, MI
Paul & Charlotte Fowler Houston, TX
David & Thelma Hagan Palm Desert, CA
Arthur & Anita Rosean Jamestown, MO
Robert & Eileen Silverstone Huntington, NY
William Sourwine LaBanon, PA
Ronnie & Brenda Thomas Stanfield, NC

H.O.A.C.G.A. BULLETIN - ADVERTISEMENT POLICY

1. All advertisements of glass for SALE or WANTS must be received by the Bulletin Secretary no later than the LAST DAY OF THE MONTH to insure being published in the next bulletin.
2. Members may advertise ten (10) "For Sale" and/or "Wants" per month. The "For Sale" Glass must be members glass and not the property of a nonmember. Advertising is at no cost.
3. Only "OLD CARNIVAL GLASS" items or H.O.A.C.G.A. Souvenirs will be published.
4. Damage or flaws should be noted.
5. All "For Sale" items must be priced; NO BID ITEMS WILL BE PUBLISHED.
6. A 5 day return privilege, at buyer's expense, providing it is not as advertised, or as discussed.
7. Postage and Insurance is to be the responsibility of the buyer, both when returning and receiving the glass.
8. The sender of the glass (be it the seller or the buyer returning it) is responsible for the proper packaging of the glass.
9. H.O.A.C.G.A. does not accept responsibility for accuracy of any advertisement.

USE THE FOLLOWING ABBREVIATIONS FOR GLASS DESCRIPTION.

A Amethyst	HA Honey Amber	P Purple
AMB Amber	IB Ice Blue	PRL Pearl
AO Aqua Opal	IG Ice Green	PM Pastel Marigold
B Blue	IGO Ice Green Opal	PO Peach Opal
BO Blue Opal	LAV Lavender	R Red
CLM Clambroth	M Marigold	RA Amberina
EB Electric Blue	MMG Marigold on	SM Smoke
H Horehound	Milk Glass	T Teal
G Green	VAS Vaseline	

Note: If you wish to describe a piece as light or dark, use the body of the ad.

EI - Excellent, GI - Good, LI - Iridescence

CARNIVAL GLASS FOR SALE

EDITOR'S NOTE: When submitting FOR SALE and WANTED ads, please write legibly so that your ads can be read. ALSO, be sure to include your name, address & phone number on the ad itself. Ads submitted without this vital information must be left out.

Charles & Georgia Passini, 20224 W. McDonald Rd., Trivoli, IL 61569
Phone: (309) 362-2422 after 5:00 P.M.

B	EI	God & Home tumbler	200.00
Aq/TEI		Flute #3 tumbler (Aqua/Teal)	100.00
M	EI	Butterfly & Fern tumbler	80.00
Amb	EI	Imperial Grape tumbler	60.00
P	EI	Raspberry tumbler	50.00
B	EI	Butterfly & Berry tumbler	50.00
M	EI	Crab Claw tumbler	50.00
A	EI	Peacock at Fountain tumbler	45.00
M	EI	Maple Leaf tumbler	35.00
B	E	Grape & Gothic Arches tumbler	50.00

Doug Snow, 2412 Ashford blvd., Flushing, MI 48433
Phone: (810) 732-8197

G	Imperial pansy 9" ruffled bowl, nice color	55.00
M	Fenton cut arcs 9" bowl 3/1 edge	25.00
G	NW stippled rays 8" ruffled edge bowl	45.00
M	Dugan double stemmed rose dome footed bowl	40.00
M	Imperial Star & File creamer and sugar set	55.00
A	NW Treetrunk 9" vase purple irid.	50.00
M	Fenton G&C footed 10" fruit bowl Per. Med. Int.	105.00
M	Fenton Stag & Holly Spatula footed 8" bowl	75.00
G	NW Grape & Cable hat heavy irid.	45.00
M	Fenton Dragon & Lotus ruffled edge bowl flat	80.00

CARNIVAL GLASS FOR SALE

Gerald M. Hess, 220 N. First St., Argos, IN 46501-1010
Phone: (219) 892-6193

M	EI	Stippled strawberry tumbler	50.00
M	EI	File tumbler (tiny chip on the sidewall)	50.00
M	EI	Octagon tumbler, regular	25.00
B	EI	Dugan Peacock at the Fountain tumbler	45.00
G	EI	Grape & Cable tumbler, regular size (small flake/under side of base) ..	42.50
P	EI	Acorn Burrs tumbler	75.00
W	GI	Peach tumbler, gold trim, chip off rim, slight roughness on base	35.00
M	GI	Pretty Panels Northwood tumbler	40.00
SM	EI	Soda Gold tumbler	45.00
A	EI	Acorn Burrs punch cups, one for 40.00 or all four for	140.00

Stephen R. Kocsis, 3493 Wolf Creek Rd., Cuba, NY 14727
Phone: (716) 968-2499

M	EI	Imperial Grape 6½" plate	40.00
M	EI	Grape & Cable plate BW back, nice even color	125.00
P	EI	Grape & Cable plate BW back, nice color	190.00
M	EI	Three Fruits plate BW back, nice	100.00
A	GI	Fenton's 12 sided Three Fruits plate	115.00
B	EI	Thin Rib 10¼" vase	55.00
B	EI	Double Stem Rose dome footed bowl	175.00
G	EI	Strawberry ruffled bowl BW back very nice	110.00
G	EI	Blackberry Wreath 7¼" ruffled bowl, satin finish	80.00
A	GI	Beauty Bud vase, twig feet	45.00

Dick Wetherbee, 875 Stafford St., Rochdale, MA 01542
Phone: (508) 892-4420

PO	EI	Four Flowers 5½" sauce dish, 8 flutes real pretty	70.00
M	EI	Big Basketweave 10" vase super color all the way down	55.00
A	EI	Singing Birds Mug odd light amethyst base color great	155.00
G	EI	Tree Trunk 10½" vase emerald green beautiful	55.00
M	EI	Panther 5½" 3 footed ruffled sauce dish real pretty	75.00
PO	EI	Stippled Single Flower framed 7½ low bowl super	90.00
B	EI	Acorns 7½" fluted bowl outstanding color	75.00
M	EI	Waffle block 9½" handled basket great color	50.00
G	EI	Leaf & Beads 7" flared nut bowl, sunflower inside super	115.00
M	EI	Octagon wine decanter & stopper perfect with great color	95.00

CARNIVAL GLASS FOR SALE

Bonnie Wiggins, 515 Hamill Rd., Indiana, PA 15701
Phone: (412) 349-9420 weekdays 8am-4pm and after 5pm call 412-465-7446 any day

AO	EI	Leaf & Beads rose bowl	335.00
PO	EI	Carolina Dogwood bowl	125.00
M	EI	Peacock at Fountain 7 pc. water set	425.00
A	EI	Maple Leaf 7 pc. water set	425.00
A	EI	Leaf & Beads rose bowl	95.00
A	EI	Bead Cable rose bowl	95.00
W	EI	Leaf Chain 9" 6 ruffled bowl	95.00
W	EI	Grape Delight rose bowl	75.00
W	EI	Dugan 8" six petals ruffled bowl	75.00
W	EI	Fanciful 8" ICS bowl	125.00

Dave Sharp, 316 Front St., Lititz, PA 17543
Phone: (717) 626-8231

G	EI	Grape & Cable pin tray, super color	350.00
G	EI	Millersburg Blackberry Wreath 8" round bowl, great satin irid.	120.00
P	EI	Grape & Cable salad bowl w/crimped edge, excellent example	250.00
B	EI	Captive Rose crimped bowl, mint & nice irid.	110.00
M	EI	Lion round bowl, great color	165.00
M	EI	Fruits & Flowers bon bon, dark M	100.00
PO	EI	Garden Path vt. 5" deep sauce, rare & nice	95.00
P	EI	Diamond Lace tumblers, have 2, super	ea. 70.00
M	EI	Grape Delight rose bowl, mint	75.00
M	EI	Tiger Lily tumbler, dark & super	40.00

Craig & Brenda Kuckelburg, 517 North Jay St., Aberdeen, South Dakota 57401
Phone: (605) 226-1660

M		Pillar & Flute stemmed vase 6 1/8"	30.00
M		Lotus Enameled pitcher (drape int)	165.00
M		Persian Medallion ruffled sauce	40.00
HA		Palm Beach sugar	150.00
M		Fan vase 8" tall (6 3/8" fan)	60.00
M		Propeller small compote	20.00
AQ		Open Edge hat ruffled	125.00
A		Grape Wreath Vt. (star center) 8" 3/1 edge	150.00
A		Blackberry Wreath ICS sauce radium	85.00
A		Blackberry Wreath 7¼" 3/1 edge radium	100.00

CARNIVAL GLASS FOR SALE

Yvan Beaudry, 109 - 5th Avenue, Boisbriand, QC Canada J7G 1Y8
Phone: (514) 437-4585

P	EI	Imperial Grape punch base only	110.00
M	EI	Panther bowls small (6) 25.00 each or all for	120.00
B	EI	Open edge basket small JIP	120.00
B	EI	Orange Tree variant pitcher foot chips	240.00
B	E	Orange Tree tumblers foot chips (2)	ea. 15.00
M	EI	Orange Tree footed butter foot chip	75.00
A	EI	Shell dish footed chip	12.00
M	EI	Greek Key bowl pastel	185.00
A	EI	Hanging Cherries butter int rim chip	190.00

Patricia Call, 34 Lovell Rd., Stratham, NH 03885
Phone: (603) 778-0660

CB		Dragon & Lotus low ruffled bowl, exc irid.....	120.00
M		Imperial Grape tumbler, deep color, tiny rim nick	22.00
W		Dahlia sauce, traces of red, exc irid.	55.00
Clm		Parlor Panels (?) 12" vase, beaut. irid., tiny bruise inside, no dam. out	45.00
Clm		Ripple 7" bud vase, pretty color	25.00
SM		Diamond Rings deep ruffled bowl, super irid.	45.00
M		Feathered Arrows (H3 pg 39) fluted bowl, unusual.....	40.00
Clm		Wide Panel 5" plate, very distinct Ironcross mark in center, exc irid.	7.50
P		Scroll embossed small berry, super color	35.00
P		N's Blackberry Bramble compote, exc irid, tiniest pinpoint nick/rim	45.00

Isabell Aldridge, 6407 Rushmore Drive, Sacramento, CA 95842
Phone: (916) 331-4290

BA	EI	Diamond Sphere hatpin, gorgeous	300.00
BA	EI	Garden Path Hatpin, blue iridescence	145.00
BA		Scarab Shell hatpin, gold	300.00
M	EI	Grape & Cable (N) bon bon.....	50.00
Amb	EI	Open Rose, 8 ruffles bowl	65.00
M	EI	Persian Medallion bon bon.....	65.00
P	EI	Imperial Shell & Sand bowl.....	115.00
Lav	EI	Suns Up hatpin, perfect	350.00
M	EI	Beaded Bullseye vase, 12 3/4".....	85.00
A	EI	Raspberry tumbler	65.00

CARNIVAL GLASS FOR SALE

Pat Housewright, 225 Rowland, Stephenville, TX 76401
Phone: (817) 968-2997

A	EI	Diamond Point 10" vase	85.00
A	EI	Windmill tumbler	95.00
A	EI	Imperial Grape water carafe	225.00
G	EI	Strawberry PCE bowl	210.00
PO	EI	Four Flower 6 3/4" plate	195.00
PO	EI	Single Flower Framed tri-cornered bowl	115.00
W	EI	Persian Garden 6" ICS bowl.....	80.00
M	EI	Rococo 4 1/2" vase, Lav. tint base.....	160.00
M	EI	Feather & Heart tumbler.....	75.00
M	EI	Good Luck 8 1/2" PCE bowl BW ext.....	175.00

Richard Cinclair, 3605 South Echo Trail, Plano, TX 75023
Phone: (214) 596-0014 RJC470@DCCCD.Edu

W	EI	Diamond & Rib vase.....	115.00
M	EI	Oriental Poppy tankard excellent	425.00
M	EI	Acorn Burrs covered sugar, lite.....	165.00
M	EI	Octet dome footed bowl	95.00
M	EI	Kittens cup & saucer	195.00
M	EI	Springtime creamer	135.00
M	EI	Peacock & Grape footed bowl, pumpkin	70.00
A	EI	Imperial Grape water bottle	175.00
G	EI	Peacocks PCE bowl, super iridescence.....	1,750.00
B	EI	Fantail low footed bowl	275.00

Dave Ackerman, 4677 Kennebec Drive, Cass City, MI 48726
Phone: (517) 872-2023

P		Toronado vase.....	300.00
LGO		Dragon & Lotus spat. footed bowl, scarce	600.00
M		Hobstar Band dome footed base, very dark	250.00
VO		Strawberry bon bon, small chip on rim, but scarce	300.00
P		Imperial Flute #3, toothpick holder	75.00
M		Flute & Cane - sherbet on under plate set, nice set	50.00
SM		Imperial handled basket, scarce in this color	125.00
COB		Rooster hat pin	90.00
M		Plain unpatterned bud vase, odd shape	25.00
CLtoW		9 1/2" ripple vase	125.00

CARNIVAL GLASS FOR SALE

Marlin L. Blosser, 4705B Charles Road, Mechanicsburg, PA 17055
Phone: (717) 975-2920

A	EI	Butterfly & Berry footed berry bowl	85.00
A	EI	Floral & Grape tumbler	35.00
A	EI	Stork & Rushes berry bowls (5).....	ea. 30.00
B	EI	French Knots ruffled hat	55.00
B	EI	Orange Tree stemmed sherbet	25.00
G	EI	Diamond Ring berry bowl.....	22.00
G	EI	Hobstar creamer	85.00
G	EI	Shell & Jewel sugar with lid.....	45.00
M	EI	Broken Arches punch cups (6)	ea. 25.00
M	EI	Flute butterdish	145.00

Donald L. Harris, 527 Lavina Drive, Mechanicsburg, PA 17055
Phone: (717) 790-0412 Send .55 stamp for large list of For Sale Glass

P	EI	Memphis fruit bowl with base	345.00
B	EI	April Showers 11" vase	55.00
P	EI	Grape & Cable ruffled hat	75.00
PO	EI	Dogwood Sprays ruffled bowl, dome base.....	95.00
M	EI	Peacock at Fountain water pitcher (N).....	395.00
G	EI	Strutting Peacock lid	25.00
AO	EI	Hearts & Flowers stemmed compote.....	525.00
B	EI	Blackberry miniature compote.....	85.00
B	EI	Butterfly & Berry butter lid	100.00
B	EI	Grape & Gothic Arches tumblers (4)	ea. 50.00

Ted L. Sheibley, 53 Meadow Brook Court, New Cumberland, PA 17070
Phone: (717) 770-0616 Layaways Available

B	EI	Grape & Cable stippled humidor base	150.00
B	EI	Orange Tree punch base	100.00
B	EI	Persian Medallion compote, small size.....	95.00
G	EI	Grape & Cable stippled punch cups (2)	ea. 45.00
B	EI	Thistle 9" ICS bowl	85.00
G	EI	Grape & Cable candlesticks (2)	ea. 150.00
G	EI	Dugan compote vase	75.00
G	EI	Iris stemmed compote	65.00
G	EI	Six sided candlestick, helios	165.00
G	EI	Ten Mums 9½" bowl, 3 in 1 edge	325.00

CARNIVAL GLASS FOR SALE

Lloyd R. Ward, P.O. Box 787, Euless, TX 76039
Phone: (817) 283-3202

EB	EI	Good Luck bowl, PCE	625.00
CB	EI	Vintage Master Ice Cream with 4 individual ice creams	650.00
CB	EI	Persian Medallion 2 handled bon bon	75.00
CB	EI	Grape & Cable 7" nut bowl.....	87.50
CB	EI	Orange Tree Loving Cup, outstanding iridescence	395.00
G	EI	Persian Medallion 9" fluted bowl	135.00
G	EI	Acorns 8½" bowl	125.00
G	EI	Peacock & Grape spatula footed 8½" bowl	135.00
A	EI	Question Mark 2 handled bon bon	67.50
A	EI	Large footed shell	67.50

Rick McDaniel, 3420 Morningstar Lane, Dallas, TX 75234
Phone: (214) 243-4574 (L'allure Photographic) after 7 pm CST

B	EI	Persian Medallion 9" plate, flat	400.00
A	EI	Northwoods Peacock & Urn 10" ice cream bow, nice	475.00
A	EI	Northwoods Double Loop Chalice	90.00
A	EI	Fruit & Flowers stemmed bon bon, lavender cast	125.00
M	GI	Carnival Honeycomb oil lamp	95.00
G	EI	Ribbon Tie 8" ICS bowl, nice	140.00
A	EI	Windflower 9" - 10 ruffled bowl	80.00
PO	EI	Dugan's Fan gravy boat, great opal	130.00
M	GI	Big basketweave miniature basket	35.00
Clm	EI	Waffle block creamer	30.00

John & Jeanette Rogers, Route 1, Box 89, Kittrell, NC 27544
Phone: (919) 492-1472

LimeG		Peacock at Fountain punch bowl & base	8,500.00
M		Acorn Burr punch set, 8 piece	2,100.00
M		Grape & Cable pitcher	260.00
M		Bel-Aire souvenir bowl	300.00
A		Grape & Cable fernery	2,000.00
M		Springtime water set, 5 piece	1,150.00
M		Leaf & Beads rose bowl	120.00
A		Singing Birds mug	115.00
M		Stag & Holly bowl small, ruffled	160.00
W		Leaf Chain ICS bowl 8"	100.00

CARNIVAL GLASS FOR SALE

Richard Jarnig, 3202 FM 50, Brenham, TX 77833
Phone: (409) 836-5545

G	Vintage VT dome footed bowl, Dugan	195.00
M	3 Fruits plate BW ext, above average	175.00
G	Blackberry Wreath Millersburg IC 10" satin & nice	350.00
M	3 Fruits stippled plate rib ext. nice & dark	245.00
M	3 Fruits bowl dome footed w/vintage ext. above avg not sold often	250.00
PK	Leaf Rays Nappy spade shaped, pink is rarer than blue, super	225.00
RA	Blackberry Spray hat nice	285.00
A	Thistle CRE bowl	75.00
G	Millersburg Rays & Ribbons bowl rad one of the better examples	135.00
RB	Sm Grape & Gothic Arches berry, very rare, renniger blue	250.00

Maurice "Moe" Myers, 3730 NW 52nd St., Ft. Lauderdale, FL 33309
Phone: (305) 731-3191

M	EI	Grape & Cable lg. ice cream bowl	175.00
BA	EI	Grape & Cable cracker jar, rare color	450.00
M	EI	"Hot Springs" Heisey souvenir vase, rare	150.00
B	EI	Orange Tree Orchard water pitcher, super color	725.00
AQ	EI	Persian Medallion ICS berry bowl, rare	150.00
P	EI	Hobnail rose bowl, perfect and colorful	395.00
M	EI	474 punch bowl and base and 3 cups	245.00
AQ	EI	Ripple mid size funeral vase, very rare	295.00
M	EI	Finecut and Rings vase, real tough to find	95.00

Pamela McLean, 3730 NW 52nd St., Ft. Lauderdale, FL 33309
Phone: (305) 731-3191

A	EI	Australian Swan 5" bowl	150.00
B	EI	Fruits & Flowers stemmed bon bon	150.00
P	EI	Whirling Leaves 10" bowl, beauty	175.00
B	GI	Orange Tree Orchard tumbler	75.00
A	EI	Three Fruits PCE bowl, lots of colors	125.00
M	EI	Butterfly & Berry butter, dark and perfect	125.00
P	EI	Petal and Fan 6" CRE plate	210.00
M	EI	Persian Garden 6" plate	125.00
P	EI	Fruits and Flowers 7 pc. berry set, tops	325.00
M	EI	Peacock at Fountain 8 pc. punch set, super and perfect, great color	675.00

CARNIVAL GLASS FOR SALE

Phil Schulze, RR 2 Box 2447 Hamme Rd., Glenville, PA 17329
Phone: (717) 235-6666 after 5 pm East time

M	EI	Grape & Cable water pitcher & tumbler, dark pretty	250.00
B	EI	Orange Tree ICS bowl, sweet	135.00
FA	EI	Dragon & Lotus 3 in 1 edge, super	190.00
T	GI	Wide Panel vase	75.00
M	EI	Holly compotes, (2)	ea. 30.00
B	AI	Orange Tree 5 pc. punch set sm chip	185.00
P	EI	Lined Lattice vase sweet	125.00
VAS	EI	2 Orange Tree mugs sm	95.00

Gladys Hutchinson, Rt. 1 Box 259A, Stockton, MO 65785
Phone: (417) 276-4119

MMG	Daisy Wreath 8½" bowl	310.00
M	Heavy Grape 12" bowl	145.00
M	Beaded Shell creamer/sugar, clr ft. Sugar/sml carbon specks, both	105.00
AO	3 Fruits Meander, stippled spat. ftd 9" bowl, has few carbon specks.	750.00
M	Fenton Peacock and Urn 9" bowl	160.00
M	Little Fishes 10" ftd. bowl, great color. Some wear in center bot.	175.00
A	Three Fruits 9" plate, nice	240.00
HA	Cosmos and Cane tumblers (4) ex. color, bot. have been ground, all	140.00
M	474 water set 7 pieces	450.00
M	Holly and Berry gravy boat	55.00

Joe & Winelle Orr, 2224 Burlingate Dr., Cordova, TN 38018
Phone: (901) 373-4504

A	Leaf & Beads tri-corner bowl, nice	150.00
PM	Persian Garden 6½" plate, nice	75.00
G	Leaf & Beads tri-corner bowl, great	150.00
H	N G&C small berry bowl, nice	75.00
M	Orange Tree powder jar, nice, no damage	85.00
B	Persian Medallion bon bon, nice	75.00
P	Diamond Points 10" vase, great	75.00
PO	Four Flowers 6½" plate, great	145.00
VAS	Open Edge 2 row JIP basket, nice	75.00
G	Primrose 9½" bowl, radium	180.00

CARNIVAL GLASS FOR SALE

Rob Cooper, 31 Oak View Dr., Newark, DE 19702
Phone: (302) 455-9225

M	EI	Lions ruffled bowl, real nice	120.00
LAV	EI	Peacock & Grape sp. ftd. ruffled bowl.....	100.00
B	EI	Dragon & Lotus low ruffled bowl.....	115.00
P	EI	Wishbone ftd ruffled bowl, beautiful irid.	135.00
W	EI	Leaf Chain ICS bowl, mint	100.00
M	EI	Dragon & Lotus ICS bowl, great color & irid.	65.00
A	EI	Twigs 8" vase, irid. top to bottom	60.00
LAV	EI	Dragon & Lotus 3 in 1 bowl, fabulous	120.00
BA	EI	Fruits & Flowers stemmed bon bon, electric.....	150.00
PO	EI	Rain Drops dome footed bowl, radium	90.00

Shivonn Clay, 116 Thompson Hollow Lane, Carthage, TN 37030
Phone: (615) 735-9146

M	(N)	Fruits & Flowers bon bon.....	50.00
A		Wreath of Roses stemmed compote	50.00
G	(N)	Basketweave compote	50.00
B	(N)	Stippled Rays large ruffled bowl, base chip.....	50.00
P	(N)	Rainbow stemmed compote	70.00

John & Karen Schlumbohm, 2673 235th Ave., Decorah, IA 52101
Phone: (319) 382-6485

A		Finecut & Roses (N) rose bowl, perfect feet	125.00
P		Lined Lattice 12½" footed vase, electric	105.00
B		Stag & Holly 10½" IC bowl, scroll footed fantastic	400.00
G		Whirling Leaves (M) 10" 6 ruffled bowl minus 1 point, radium.....	125.00
M		Hex Optic kerosene lamp complete, chimney rough on bottom.....	75.00
W		Leaf Chain 8" IC bowl	105.00
SM		Acanthus 8" bowl, pretty	160.00
B		Peacock at Fountain (Dugan) tumbler	80.00
M		Chrysanthemum 9" 8-ruffled bowl, dark red-orange irid.	95.00
W		Ripple 9" vase, 2½" base, pretty	75.00

CARNIVAL GLASS FOR SALE

Sam McGill, 27 Wells Rd., Broad Brook, Conn. 06016
Phone: (860) 623-4645

M	EI	Sunflower 8 ruffle spatula footed bowl	40.00
M	EI	Double Stem rose dome footed bowl, great color	45.00
M	EI	Water Lily 9½" ICS ball footed bowl	55.00
M	GI	Stork vase	32.00
M	EI	Acorn Burr berry bowls (2) dark M.....	ea. 22.00
M	EI	Cherry Chain 10" 8 ruffle bowl, dark irid.	45.00
A	EI	Blackberry Wreath 5½" berry bowls, great color (4).....	ea. 50.00
M	EI	Golden Oxen mug	12.00
M	EI	Big Basketweave 9½" vase	50.00
R	GI	Orange Tree sm mug chunk out of rim.....	85.00

Debbie & Mike Heinl, 240 Mize Rd. North, Cullman, Alabama 35055
Phone: (205) 739-0281 After 6 pm central Postage & Insurance Extra

M		Fenton waterlily and cattail tumblers (2)	ea. 25.00
M		Imperial Grape punch cups (2), marie on one has internal bruise... ea.	25.00
B		NW Poppy Oval pickle dish stippled small flk/point, EB hghlghts	135.00
M		Imperial Open Rose 9" ruffled bowl.....	40.00
M		Fenton Waterlily footed bowl 10" ruffled, beautiful rich color	155.00
A		Fenton Vintage Fernery, straw marks/inside, hvy gold irid. 1 rgh ft....	65.00
M		Imperial Grape bowl 6½"	35.00
P		Acorn Burr sugar & creamer, sug. crkd no lid, crmr/no harm flicks..	125.00
M		NW Grape/Cable powder jar bottom, sml flks/bot., open bubble/bot....	15.00
EB		Northwood GoodLuck ruffled bowl, 1 point missing beautiful	250.00

Greg Dilian, 450 Shore Rd., Long Beach, NY 11561
Phone: (516) 432-1164

M	EI	Octagon tumblers, have 2, super dark	ea. 25.00
M	EI	Miniature Tree of Life handled basket.....	40.00
BO	EI	Smooth Rays ruffled bowl, Westmoreland	130.00
B	EI	Covered Swan butterdish, super irid.	325.00
CLMEI		Frosted Block rose bowl, mint	45.00
P	EI	Acorn Burrs tumbler, tiny flake on base.....	50.00
G	EI	Mayan ICS bowl, radium finish	75.00
CLMEI		Star Medallion 9" plate	40.00
PM	EI	Pillar Flute footed vase, Imperial	45.00
B	EI	Iris ruffled compote, rare color.....	145.00

CARNIVAL GLASS FOR SALE

William & Deborah Coles, 3098 State Route 408 W., Hickory, KY 42051
 Phone: (502) 674-5916 after 4:30 central time

M	EI	Kittens toothpick, super nice	210.00
P	GI	Town Pump	925.00
M	EI	Chrysanthemum 9" 8 ruffled bowl	75.00
P	EI	N's Sunflower, spatula footed, 8 ruffled bowl	85.00
AO	EI	N's Fruits & Flowers bon bon, reddish irid.	525.00
A	EI	Ribbon Tie 9" 3 in 1 edge plate	225.00
B	EI	God & Home tumbler, very nice example	210.00
M	EI	N's stippled Three Fruits, ribbed ext. 8 ruffled bowl	175.00
A	EI	Daisy & Plume, Blackberry int. 3 fld, rose bowl, minor roughness	145.00
*	EI	Red Slag Blackberry open edge ruffled hat, slag effect to webbing ...	525.00

D. Preston Wells, 3202 Thrush Bend, San Antonio, TX 78209
 Phone: (210) 822-8181 Send legal size SASE for large list of sale glass

M	EI	Interior Rays break set/dark/sug., cream., butt., jam, spn.	150.00
M	EI	Hex Optic water set, 7 piece	150.00
M	EI	Imperial Nuart Lamp shades/signed (2)	120.00
M	EI	Stippled Acorns cvd candy	50.00
AMBG		Open Rose 8" bowl	50.00
BA	EI	Two Flowers 3 fld 9" ICS bowl, only one known?, blk amy	500.00
M	EI	Peacock tail, 10½", 6 ruff. bowl, very rare size	500.00
G	EI	Fenton Holly 9" 6 ruff bowl, super	150.00
G	GI	Inverted Strawberry, 6½" bowl, signed "Near Cut"	75.00
B	EI	Boggy Bayou, 8" vase, scarce	60.00

Jack & Eleanor Hamilton, P.O. Box 20203, Waco, TX 76702
 Phone: (817) 857-3148

A	EI	Paneled Dandelion tumbler, red & blue irid.	60.00
M	EI	Lattice & Daisy tumbler, vaseline base	50.00
A	EI	Dorsey & Funkenstein adv. bowl, nice irid.	985.00
PM	EI	Lustre Rose lge. fld. fruit bowl	50.00
AMBEI		Imp. Grape compote	45.00
DM	EI	Crackle candy jar, covered	30.00
PM	EI	Imp. Grape ruffled 9" plate	45.00
M	EI	Scroll embossed compote, curved star ext.	45.00
G	EI	Open Rose sm. berry bowl, Helios, bronze irid.	25.00
A	EI	Blackberry Bramble compote	45.00

CARNIVAL GLASS FOR SALE

Gerald L. Thomas, 44 E. Highland Ave., Atlantic Highlands, NJ 07716
 Phone: (908) 872-8051

M	AI	G&C hat made from tumbler, minor roughness on top rim	35.00
B	EI	Orange Tree punch cups (2), some chips on base of cups	ea. 8.00

Mitch & Julie Mitchell, 24511 SE 39th Place, Issaquah, WA 98029
 Phone: (206) 391-7208

AQ	EI	Aqua Northwood basket, nice	400.00
G	EI	9" Vintage ruffled bowl, some elect. highlights	145.00

Lee & Phyllis Bryant, 11645 NW Winchester Road, Decatur, IN 46733
 Phone: (219) 639-3415 Send SASE for "1996 For Sale List".

W		Hearts & Flowers ruffled bowl, ribbed, frosty irid.	225.00
P		Imperial Grape 9" ruffled bowl near elect. irid.	75.00
M		Grape Wreath 8" ruffled bowl radium gold, rust irid.	70.00
M		Three Fruits stippled bowl, spade feet, dark color	75.00
B		Birds & Cherries bon bon, 4 sides up, no silver	80.00
B		Lotus & Grape 9" ruffled bowl gold, rust, blue irid.	80.00

Beverly J. Downer, 3905 Winchell, Apt. 109, Kalamazoo, MI 49008
 Phone: (616) 381-5219

P	EI	(N) Good Luck 9" plate, BW back, stippled flowers & horseshoe	850.00
G	EI	Blackberry Wreath 9" bowl, Mlrbg CRE stippled leaves & berries	225.00
P	EI	Beaded Shell water pitcher, Dugan stippled, beautiful	1,450.00
P	EI	Beaded Shell tumblers (2)	ea. 95.00
P	EI	Homestead Nu Art plate, Imperial	1,500.00
Lav	EI	Apple Blossom Twigs plate, Dugan	450.00
B	EI	Peacock & Urn L IC bowl, Northwood, stippled	1,750.00
P	EI	Grape & Cable (N) candlestick (1)	210.00
M	EI	Grape & Cable (N) cracker jar (from Hartung coll.) Irid is beaut.	750.00
P	EI	Grape & Cable (N) centerpiece bowl	550.00

CARNIVAL GLASS WANTED

Charles & Georgia Passini, 20224 W. McDonald Rd., Trivoli, IL 61569
Phone: (309) 362-2422 after 5:00 P.M.

SM Double Scroll centerpiece bowl

Dave Sharp, 316 Front St., Lititz, PA 17543
Phone: (717) 626-8231

IG Footed Orange Tree butter lid
G Springtime butter base
M Dugan Peacock at the Fountain water pitcher
B Peacock at the Fountain punch cups
P Peacock at the Fountain punch cups
G Memphis punch bowl top
W Wishbone epergne lily
P Grape & Cable midsize punch bowl only
B Grape & Cable master punch bowl only

Yvan Beaudry, 109 - 5th Avenue, Boisbriand, QC Canada J7G 1Y8
Phone: (514) 437-4585

B Tree Trunk vase, small size, EI only
B Fine Cut & Roses rose bowl, small foot chips OK
A/P Peacock at the Fountain punch cups (6)
B/AQ Tornado vases
Any Ribbed Tornado pieces
M Flute and Cane water pitcher
M Flute and Cane tumbler (1)

Richard Cinclair, 3605 South Echo Trail, Plano, TX 75023
Phone: (214) 596-0014 RJC470@DCCCD.Edu

G Grape & Gothic Arches butter set
M Wicker Works plate
W Palm Beach butter bottom
W Wide Panel epergne bottom
V Kittens cup
A Hanging Cherries butter bottom

CARNIVAL GLASS WANTED

Marlin L. Blosser, 4705B Charles Road, Mechanicsburg, PA 17055
Phone: (717) 975-2920

G Flute punch bowl top
G Hobstar sugar lid
M Long Hobstar punch base
G Shell & Jewel lids (need 2)
M Diamond Point Columns butter lid
Any Peacock at Fountain punch cups
M 474 punch bowl top
M Grape & Cable cracker jar bottom
M Grape & Cable powder jar lid
G Little Stars bowl, round

Donald L. Harris, 527 Lavina Drive, Mechanicsburg, PA 17055
Phone: (717) 790-0412 Or will sell any of the below parts

P Wishbone epergne lily
A Orange Peel punch bowl top
B Grape & Cable stippled humidor lid
B Hen on Nest with Chicks lid
B Orange Tree punch bowl top & cups
IB Wishbone epergne base
M Grape & Cable humidor lid
M Grape & Cable sugar bottom
M Maple Leaf butter lid
M Persian Garden fruit bowl top

Ted L. Sheibley, 53 Meadow Brook Court, New Cumberland, PA 17070
Phone: (717) 770-0616 Or will sell any of the below parts

M Wreathed Cherry butter bottom
W Persian Garden fruit bowl or base
P 474 punch bowl top & cups
Any Grape & Cable powder jar lids (need M, HOR, G, P)
P Persian Garden fruit bowl base
P Vintage powder jar lid
B Butterfly & Berry butter bottom
P Grape & Cable banquet size punch bowl
B/M Lions plate
G Inverted Strawberry powder jar lid

CARNIVAL GLASS WANTED

Kent Thompson, 5548 N. St. Clair St., Wichita, KS 67204-1839
Phone: No number provided.

Imperial original Pillar and Flute (pattern #682) footed open sugar bowl with Iron Cross mark, pale marigold. Please write to above address stating condition and price including packaging, shipping and insurance.

Lloyd R. Ward, P.O. Box 787, Euless, TX 76039
Phone: (817) 283-3202

Any Carnival Glass Epergne lilies, epergne bases, punch bowl tops or bottoms, butter dish tops or bottoms, sugar bowl lids & bases, tobacco jar or cookie jar lids or bases, or other odd parts in carnival glass.

R Roses & Ruffles Gone with the Wind Lamp Shade

John & Jeanette Rogers, Route 1, Box 89, Kittrell, NC 27544
Phone: (919) 492-1472

A Wreath of Roses, vintage interior punch cups
B Acorn Burr punch bowl top
B Grape & Cable punch bowl top, small, stippled
Any Ten Mums 3 in 1 bowl

Gladys Hutchinson, Rt. 1 Box 259A, Stockton, MO 65785
Phone: (417) 276-4119

HA Cosmos and Cane sugar and lid

Rob Cooper, 31 Oak View Dr., Newark, DE 19702
Phone: (302) 455-9225

DM Singing Birds tumblers
DM Singing Birds pitcher
A Singing Birds tumblers
Any Fine Cut & Roses candy dish w/fancy int.
Any Fine Cut & Roses rose bowls

CARNIVAL GLASS WANTED

Shivonn Clay, 116 Thompson Hollow Lane, Carthage, TN 37030
Phone: (615) 735-9146

A/P/B (N) Peacock at the Fountain water set
A/P (N) Grape & Cable punch set, small
PO Dugan Cherries Deep ruffled bowl
R Field Flower tumblers
Any Brocade patterns and colors

Sam McGill, 27 Wells Rd., Broad Brook, Conn. 06016
Phone: (860) 623-4645

P Tiger Lily pitcher or water set
A Panelled Dandelion pitcher or water set
Any Panelled Dandelion pitcher w/handle applied to stem
B Field Flower pitcher or water set

William & Deborah Coles, 3098 State Route 408 W., Hickory, KY 42051
Phone: (502) 674-5916 after 4:30 central time

A/G Fenton's Peacock at Urn plates, also any odd colored ones
Any N's Peacocks plates w/plain ext., except Ice Green & Green
Any N's Peacocks bowls w/plain ext.
Any N's Peacocks plates w/BW ext., except white

Gerald L. Thomas, 44 E. Highland Ave., Atlantic Highlands, NJ 07716
Phone: (908) 872-8051

A EI Acorn Burr punch bowl top
B EI Wreath of Roses punch bowl base

Mitch & Julie Mitchell, 24511 SE 39th Place, Issaquah, WA 98029
Phone: (206) 391-7208

B EI Peacock Tail 8" or larger ruffled bowl, must be outstanding
M EI Peacock Tail 8" or larger ruffled bowl, pumpkin iridescence
G EI Persian Medallion 8" or larger ruffled bowl, must be outstanding
M EI Plaid 8" or larger ruffled bowl, pumpkin iridescence

COOPER/ALBRECHT AUCTION RESULTS

November, 1995 Auction

The Victorian Opalescent Glass Descriptions are Followed by 'NC' Which Stands For 'Not Carnival' throughout the Catalog.

- 35-1. Holly 9" Ruf. Bowl- Bl- Fen (Great Irid.)
- 40-2. Grape, Imp. 9" Ruf. Bowl- Pur- Im (Super w/ Elec. Irid.)
- 55-3. Leaf Chalice Spooner- Blue Opal- NW (NC)
- 75-4. Stippled Rays 11" Ruf. Bowl- Gr- Sgnd. NW (Outstanding w/ Near Elec. Irid.)
- 175⁵-5. G & C 6" Ruf. Berry- Lt. Am- Sgnd. NW- Delicate Pastel Irid.
- 80-6. Persian Med.- Card Tray- Gr- F (Nice Color)
- 25-7. Beaded Panel/Opal Open- Compote- Green Opal- Du (NC)
- 60-8. Dugan Chetry/Jewel Heart Ext. 6" Ruf. Low Bowl- Am- Du (Very Pretty)
- 60-9. Peacock Tail 9" Bowl w/ CRE- Gr- F (Nice Color)
- 55-9A. Peacock Tail 9" Bowl w/ 3-in-1 Edg- Mrg- F (Unusual w/ Radium)
- 55-10. Strawberry/Bsktw. Ext. 9" Bowl w/ PCE- Gr- Sgd. NW (Good Irid.)
- 75-11. Holly Ruf. Compote- Vas- F (Super Glow w/ Radium Irid.)
- 45-11A. Holly Ruf. Compote- Pale Blue- F (Nice)
- 85-12. Beaded Panel Compote w/ CRE-3 Sides Up- P.O.- Du (Very Pretty)
- 55-13. Beaded Panel/Open- Ladies Spittoon/Stemmed Rosebowl- Blue Opal- Du (NC)
- 65-14. 'Cashews' Vas. Opal Bowl (NC- Super Glow)
- 90-15. Fruits & Flowers Bon Bon- Mrg- NW (Great Color)
- 90-15A. Fruits & Flowers Bon Bon- Gr- Sgnd. NW
- 135-16. Three Fruits 9" Plate w/ Plain Bk- Pur- Sgd. NW (Great Col. & Ir.)
- 80-17. Fluted Scrolls Creamer- Vas. Opal- NW (NC- Glows)
- 40-18. Beaded 45" Rope Necklace- Alternated Amber, Dark Carn. & White Carn. Glass w/ Pearls
- 25-18A. (62) Carn. Buttons- 1 w/ Bird, 1 Paperweight (Poss. Hansen)- Most Rather Plain
- 75-19. Thistle 9" Bowl w/ 3-in-1 Edge- Bl- F (Great Piece)
- 50-20. Coin Dot 9" Bowl w/ 3-in-1 - Emerald Gr- F (Great Color & Irid.)
- 90-21. Fancy Fantails 8" Ruf. Bowl- Vas. Opal w/ Cranberry Edge- NW (NC)
- 45-22. Flute Toothpick- Am- Imp (Pretty & Near Lav.)
- 50-23. Heavy Diamond 6" Vase- Deep Smoke- Im (Very Pretty)
- 40-23A. Thin Rib & Drape 5" Mini Vase- Mrg.
- 60-24. Frosted Block 9" Flat Plate- Lt. Mrg- Im (Good Pink Irid.)
- Ref. 25. Beads & Bark Stem Goblet/Vase- Grn Opal- NW (NC)
- 40-26. Stippled Rays 9" Bowl w/ CRE- Sgnd. NW (Very Nice)
- 275-27. HOLLY 9" PLATE- Deep Mrg- F (Fantastic Color & Irid.- A Show Stopper!)
- 65-28. Ocean Shell Compote- Blue Opal- NW (NC)
- 30-28A. Ocean Shell Compote- White Op.- NW (NC - Mfg. Flaw on Edge)
- 65-29. Leaf Chain 9" Ruf. Bowl- Unusual Grn- F (Frosty/Silvery Irid.)
- 50-30. Flowers & Frames 9" Ruf/Dome Fld. Bowl- P.O.- Du (Very Pretty)
- 250-31. Peacock at Urn 9" PLATE- Mrg- F (Super Color & Irid.)
- 45-32. Daisy & Plume Nut Dish- Am- Sgnd. NW (Nice)
- 65-33. Pearls & Scales Stem Rosebowl- Dark Grn. Opal w/ Cranberry Edging- NW (NC)
- 65-34. Persian Medallion Lg. Compote- Bl- F (Rare w/ Good Color)
- 550-34A. Persian Medallion Sm. Compote- Gr- F (Scarce w/ Exc. Color)
- 125-35. Drapery 7" Vase- Deep Mrg- Sgnd. NW (Super Color)
- 45-35A. Captive Rose Compote- Am- F (Mfg. Flaw)

- 30-36. Knotted Beads 10" Vase w/ CRE Top- Mrg- Fen (Very Pretty)
- 20-37. Diamond Rib 11" Vase- Am- F (Good Color). *Small chip*
- 75-38. Pony 8" IC Bowl- M- Du (Great Color- Seldom Seen Shape)
- 55-39. Northwood Trough (Sugar)- Vaseline Opal (NC- Glows)
- 45-40. Vintage Nut Bowl/Fernery- Bl- F (Super Irid.)
- 50-41. Acorn Burrs Tumbler- G- Sgnd. NW (Nice)
- 55-41A. Oriental Poppy Tumbler- Lav/Amc- NW
- 30-42. Beaded Circle & Fan Pickle Dish- Blue Opal (NC)
- 40-43. Grape Delight Nut Bowl- Mrg- Du (Good Feet & Nice Irid.)
- 85-44. Tree Trunk 10" Vase- Pur- Sgnd. NW (Good Irid.)
- 35-45. Long Thumbprint 10" Vase- Gr- Du
- 80-46. Woodpecker Wall pocket- Mrg- Du (Nice Irid.)
- 50-47. Bird w/ Grapes Wall pocket- Mrg.
- 70-48. Tree Trunk 11" Vase- Blue Opal- NW (NC- A Beauty)
- 80-49. Open Edge/Bsktw. JIP 2-Row Hat- Good Red- F (Good Color & Irid.- Touch of Amberina in Base- has sm. crack in lattice)
- 45-50. Beaded Fan Rosebowl- Green Opal- Jefferson (NC)
- 65-51. Beaded Cable Rosebowl w/ Plain Int.- Am- Sgnd. NW (Has Slag Effect in Base)
- 200-52. Alaska Creamer w/ Enam.- Blue Opal- NW (NC)
- 85-53. Two Flowers 9" Fld. Bowl- Smokey Blue- F (Beautiful Pastel Smoke Irid.)
- 95-54. Windflower 9" Ruf. Bowl- Bl- Du (Good Irid.)
- 35-55. G & C Bon Bon- Beaded- Mrg- NW (Nice Irid.)
- 75-56. Leaf & Beaded/Ray Int.- Rosebowl- Gr- Sgnd. NW
- 55-57. Drapery Creamer- Blue Opal- Sgnd. NW (NC)
- 75-58. Scroll Embossed 9" Bowl- Pur- Imp (Beautiful Irid.)
- 45-59. Diamond Point 10" Vase- Pur- Sgnd. NW (Nice)
- 35-60. Diamond & Rib 11" Vase- Am- F (Good Color)
- 45-61. Lustr.- Bowl- Mrg- Im (Outst. Irid.)
- 55-62. Heather Bloom 7 1/2" Vase- Green Opal- Jefferson (NC)
- 55-63. Grape, Imp. 9" Flat PLATE- Mrg (Super Color & Irid.- Slight Vaseline Glow)
- 200-64. Jack in the Pulpit 7" Vase- Pur- NW (Very Pretty)
- 45-65. Springtime 5" Berry- P- Sgnd. NW (Great Irid.)
- 45-66. Argonaut Shell Low Compote- White Opal- NW (NC)
- 80-67. Acorn 8" Bowl- Vaseline- F (Super Glow)
- 50-68. G & C Punch Cup- Whit- Sgnd. NW (Nice Irid.)
- 120-69. Lion 6 1/2" Bowl- Mrg- F (Nice Color & Detail)
- 10-70. Carnival Glass Necklace- Amb- Double Strand
- 50-71. Fluted Scrolls Spooner/Rosebowl- Blue Opal- NW (NC)
- 25-72. Lattice & Points 8" Vase- Mrg- Du (Good Irid.)
- 150-73. Dragon & Lotus 9" Ruf. Bowl- Amb- Fen (Scarce, Super Color w/ Good Irid.)
- 95-74. Drapery 9" Vase- Blue Opal- Sgnd. NW (NW- A Beauty)
- 30-75. Dbl. Stem Rose 9" Dome Fld. Bowl- Mrg- Du (Pretty but has spotty irid. on base)
- 55-76. Greek Key 8" Ruf./Fld. Bowl- White Opal- NW (NC)
- 100-77. Holly 9" 6-Ruf. Bowl- White- F (Nice & Frosty)
- 150-78. #270 Compote- Bl. Op.- Westm. (Great Color/Super Opal.)
- 130-79. Fine Cut & Roses Rosebowl- Lt. Gr. Op.- NW (NC- Pretty)
- 45-80. Persian Med. 6" PLATE- Mrg- Fen (Nice & Desirable)
- 30-81. Grape, Imp. 6" PLATE- Mrg- Imp (Good Irid.)
- 50-82. Shriners Orange Peel Cup & S.- Los Angeles- May 1906 (Scarce)
- 50-83. Cosmos IC Dish- Green- Mb (Super Irid.)
- 50-84. Meander 9" Fld. Bowl w/ 3-in-1 - Green Opal- NW (NC- Very Nice)
- 30-85. Panther 5" Berry- Mrg- Fen.

- 25-85A. Brocaded Acorns 6" 2-Handled Dish- Pink- Fostoria
- 30-85B. Brocaded Acorns 7" 2-Handled Plate- Lt. Blue- Fostoria
- 100-86. Colonial 2 Handled Toothpick- Mrg- Im (Good Color, A Nice Mini.)
- 50-87. Piase Bird- Fld. 8" CRE Bowl- Blue Opal (NC)
- Ref. 88. Open Rose 9" Plate- Green- Im (Silvery)
- 30-89. Lustre Rose 8" Ruf. Bowl- Grn- Imp
- 245-89A. Big Basketweave 3 1/2" Vase/Hat- Ruf. Top Flairs to 6"- Elec. Pur- Du (Super)
- 50-90. Twigs 4 1/2" Vase- White Opal- NW (NC)
- 55-91. Dragon & Lotus 9" Ruf. Bowl- Mrg- Fen (Nice)
- 110-92. Three Fruits/Bskw. Ext. 9" PLATE- Grn- NW (Slight Wear on Fruit)
- 60-93. Persian Medallion Bon Bon - Vas - F (Super Color, Irid. & Glow- has tiny chip on handle)
- 50-94. Waterlily & Cattails 9" Deep Berry Bowl- Deep Bl. Op. (NC)
- 80-95. Scroll Embossed 9" PLATE - Grn - Imp
- 30-96. Pastel Swan Master Salt- Ice Grn (Super Glow)
- 110-97. Petal & Fan 5 1/2" Bowl w/ Tight Crimp Edge- Am (Nice)
- 75-98. Fan Sauce Boat- Rich Bl. Opal- NW/Dugan (NC- Elegant)
- 75-99. Double Stem Rose 8 1/2" Dome Fld. Bowl- P.O.- Du (Delicate Color w/ Great Irid.)
- 60-100. 'Crider, Sgnd.' Coal Bucket- Mrg (Super Color)
- 35-101. Holly 9" Bowl w/ 3-in-1 Edge- Mrg- F (Nice)
- 40-102. Flora 7" Bowl w/ CRE (2-Sides Up) White Opal- Beaumont Glass Co. (NC)
- 20-103. Rays & Ribbons 10" Ruf. Bowl - Mrg- Mb (Nice Rad. Irid.- has repair on collar base)
- 35-104. Thistle 9" Bowl w/ CRE- Mrg- F (Good Color)
- 155-105. Beaded Swag Toothpick- White Opaque w/ Enam.- Heisey
- 25-105A. Apple Tree Tumbler- Mrg- F (Nice)
- 40-106A, B & C (3) Grape, Imp.-Cups & Saucers- Deep Mrg
- 35-E (Great Color - Choice Out)
- 65-107. Thin Rib 8" Vase- Blue- Sgnd. NW (Scarce Color & Nice)
- 105-108. Jackson Cov./Footed Dresser Jar- Blue Opal w/ Gold Trim- Harry N.W. (NC- slight wear on gold)
- 50-109. Two Flowers 6" Ruf. Fld. Sauce- Pale Blue/Mrg- F
- 50-110. Lustre Rose 9 1/2" ICS Fld. Fernery/Bowl- Grn (Scarce Color but silvery)
- 25-111. Orange Tree Sm. Shaving Mug- Pale Blue w/ Mrg Irid.- F (Good Color)
- 45-112. Dahlia Twist Epergne Lily Only- Green Opal- Jefferson (NC- If you own the base- what a find!)
- 60-113. Butterfly & Berry 7" Vase w/ CRE- Mrg- F (Nice Color w/ More Detail than Most)
- 50-113A. Wide Panel 8" Vase- Mrg- Imp
- 50-114. April Showers 13" Vase- Bl- F (Great Color/Unusual Top)
- 75-115A. 'Crider, Sgnd.' 4" Frog Paperweight- Aqua Opal (Super)
- 75-115B. 'Crider, Sgnd.' 4" Frog Paperweight- White (Good Irid.)
- 55-115C. 'Crider, Sgnd.' 4" Frog Paperweight- Mrg (Great Irid.)
- 50-116. Persian Med. Bon Bon- Blue- F (Nice but a little silvery)
- 75-117. Paneled Interior 3 1/2" Cuspidor- Mrg (Simple but Nice)
- 45-118. Open Edge/Blackberry 2-Row Hat- Smokey Blue- F
- 65-118A. Open Edge/Blackberry 2-Row Hat- Bl- F (Nice)
- 185-119. Lined Lattice 10 1/2" Vase- Pur- Du (Beauty w/ Elec. Irid.)
- 45-120. G & C 6" Plate- Am- Sgd. NW (Nice Ir./little odd shaped)
- 75-121. Bushel Basket- 8-Sided- White- Sgnd. N.W.
- 30-122. Windmill Pickle Dish- Grn- Imp
- 25-123. G & C 5" Berry- Am- Sgnd. N.W. (Nice)
- 40-124. Wildrose- Nut Dish- Gr- Sgnd. N.W. (Nice)
- 30-125. Stippled Flower 7" Tri-Corn. Bowl- Pch. O.- Du (Nice Color & Irid.)
- 30-126. Fruits & Flowers (4) 6" Ruf. Bowls- Am- Sgd. NW (Very

- Nice- 4x5)
- 25-127. Peacock Tail 6 Ruf. Hat- Grn- F (Good Irid.)
- 35-128. Beads 9" Ruf. Bowl- Grn w/ Alaska Finish- Sgnd. N.W. (Pretty)
- 65-129. Pansy 9" Ruf. Bowl- Pur- Imp (Great Irid.- has tiny pinhead on rim)
- 45-130. Acorn 7" bowl- Bl- F (Good Irid.)
- 60-131. Plume Panels 12" Vase- Am- F (Very Nice)
- 30-132. Lotus & Grape 6" Fld. Bowl- Deep Mrg- F (Great Irid.)
- 25-133. Orange Peel Sherbet- Peach O- Wm (a pretty little piece)
- 35-134. Heavy Grape 8" PLATE- Mrg- Imp (Great Irid.)
- 60-135. Garland Rosebowl- Bl- F (silvery)
- 40-135A. Garland Rosebowl- Deep Mrg- Fen (Nice Color)
- 35-136. Holly Ruf. Hat- Aqua- F
- 60-136A. Holly Ruf. Hat- Vas- F (Nice Color & Great Glow)
- 65-137. Open Edge/Bsktw. Hat - 2-Sides Up- Aqua- F (V. Pretty)
- 55-137A. Open Edge/Bsktw. Ruf. Hat- Lav- F (Nice)
- 55-138. Blackberry Open Eg. Ruf. Hat- Vas- F (Great Color/Glow)
- 30-138A. Blackberry Open Edge Ruf. Hat- Am- F (little silvery)
- 90-139. Fine Rib 11" Vase- Lav. w/ Mrg. Irid.- F (Pretty w/ Rad. Ir.)
- 40-140. Orange Tree 9" Ruf. Bowl- Mrg- F (Super Color, sm. carbon spot)
- 100-141. English Hobstar Pickle Dish in S.P. Bracket w/ Leaves- Mrg (Unusual & Nice)
- 115-142. Grape, Imp. (Sgnd. 'IG') 7 Pc. Water set- Pur (Very Pretty Contemporary Set)
- 45-142A. Open Rose (Sgnd. 'IG') Cream & Sug.- Smoke (Nice Contemporary Set)
- 175⁵-143. Unknown Pattern 8" Tray/Plate- Deep Amber (Appears to be Foreign- Geometric Design in Center)
- 35-144. Imperial Cov. Candy Dish- White- Sgnd. I.G.
- 20-145. Apple Blossom 7" Ruf. Bowl- Mrg- Du
- 45-146. Open Rose Cov. Butter- Mrg- Im (Nice)
- 20-147. Open Rose Cov. Sugar & Spooner- Mrg- Imp (Good Color, sm. lid chip on sug. & rim chip on spoon- both on)
- 100-148. Sword & Circle Juice Glass- Mrg (Rare w/ Soft Col. & Ir.)
- 40-148A. Six Panel 4 1/2" Mini. Candlestick w/ Silver Overlay- Souv. Of Saratoga Springs N.Y., A Little Cutie)
- 30-149. Persian Med./G & C Ext. 6" Ruf. Fld. Sauce- Mrg- F
- 70-150. Rustic 13" Vase- Bl- F (Very Nice)
- 40-151. Tree Trunk 11" Vase- Am- N.W. (Silvery)
- 20-152. Vintage 7" Ruf. Bowl- Am- F (silvery)
- 65-153. St. Clair Inverted Feather & Fan Tumbler- Pur (Very Coll. & Pretty)
- 50-154. Morning Glory 5" Mini. Vase- Grn (light irid.)
- 70-155. Fenton #3 Fld. Sugar- Tangerine (Glows)
- 10-156. Two Fruits Divided Relish- Deep Mrg- Fen (Nice Color & Irid.)
- 100-157. Fan Gravy Boat- Peach Opal- Du
- 35-158. Triplets 7" Ruf. Bowl- Peach Opal (Nice Irid.)
- 225⁵-159. Cosmos, Vt. 9" Ruf. Bowl- Mrg- F (Good Irid.)
- 100-160. Cherry & Cable 10" Deep Berry- Dk. Mrg- Sgnd. NW (Scarce & Great Color)
- 40-161. Stippled Rambler Rose Nut Dish- Mrg- Du (Scarce w/ Good Color)
- 40-162. Carnival Bead Necklace 48" Rope Beads- Amber
- 25-163. Sailboats 6" Ruf. Dish- Bl- F
- 175⁵-164. Colonial Lg. Goblet- Wh- Im (Nice Onion Skin Irid.)
- 40-165. Diamond Rib 15 1/2" Vase- Mrg- F (Nice Color)
- 45-165A. Diamond Rib 16" Vase- Mrg- F (Good Irid.)
- 40-166. Morning Glory 5" Mini Vase- Deep Mrg
- 20-166A. Morning Glory 7 1/2" Mini Vase- Pastel Mrg
- 40-167. G & C 9" Ruf. Bowl- Am- Sgd. NW (Pretty, sm. chip on pt.)

- 4 X 20-168. Grape, Imp. (4) Wines- Grn- Imp (4 x \$).
 30-169. Plain w/ 4 Enam. Blue Bands- 5" Cuspidor- Mrg (Unusual).
 25-170. Bushel Basket Round-BI- Sgnd.NW(Has Nice Color but int. crack).
 10-171. Bushel Basket Round- Ice Bl. Opal- Sgnd.NW (chip on handle).
 12-172. Acorn Burrs Tumbler- Am- Sgnd.NW (Nice but has sm. rim chip).
 20-173. Aqua Velvet.Bi Centennial After Shave Bottle w/ Paper Label, Amber & Amway Powder Horn Shape After Shave Bottle w/ Sailing Ship- Amber (2 PCS. Both On).
 9-174A, B & C Bud Vases w/ Stems- Mrg (Choice Out).
 20-175. Polo Ashtray- Mrg.

SATURDAY SESSION

- 145-176. Holly 9" PLATE- Drk. Mrg- F (Fantastic Radium Irid).
 250-177. Ribbon Tie 9" Ruf. PLATE/Bowl w/ 3-in1 Edge- Elec. Blue- F (Spectacular Vibrant Color & Irid- Rare).
 850-178. Town Pump- Am- Sgnd.NW. (Scarce w/ Good Color).
 350-179. Hearts & Flowers Compote- Aqua O- N.W. (Very Pretty w/ Mrg. Overlay).
 350-180. Three Fruits 9" Stippled PLATE- BI- NW (Super Near Electric Blue Irid).
 160-181. Dragon & Lotus 9" Ruf. Bowl- Vas- F (Sup. Color/Glow).
 325-182. Hearts & Flowers 9" Ruf. Bowl- Ice Bl- NW (Pretty w/ Plain Ext.- Very Pretty Irid).
 350-183. Holly 6-Ruf. Hat- Cherry Red- F (Very Nice Color & Irid- Touch of Amber in Color).
 135-184. Cherries, Dugan- 9" Ruf. Bowl- Pur (Nice).
 275-185. OPTIC FLUTE STEMMED WHIMSEY LADIES RUF. SPITTOON- Mrg- Imp (Very Rare & Unique- Maybe a Sleeper!).
 475-186. Daisy & Drape Vase- Aqua O- N.W.- (Pastel & Very Pretty- One of the Best!).
 210-187. Daisy & Drape Vase- White- NW (Nice Pink & Bl. Pastel Irid).
 75-188. Hanging Cherries 7" IC Bowl- Unusual Green for Mb (Very Pretty w/ Satin Finish).
 225-189. Isaac Benesch 6" Ruf. Adv. Bowl- Am (Scarce, Nice Detail, Irid, a little light).
 510-190. THREE FRUITS 9" BOWL w/ PCE- Smoke- Sgnd.NW (Rare Color, 1/4" carbon streak at point).
 105-191. Smooth Panels (Imp.'s Iron Cross Mark)- 8 1/2" h. x 4 1/2" base x 7 1/4" top- Elephant Foot Style Vase- Wh- Im (Rare).
 425-192. THREE FRUITS 8 1/4" Spat. Ftd./Stippled Bowl- Renninger Blue- NW (Very Rare w/ Delicate Irid).
 2,250-193. CHRYSANTHEMUM 9" RUF. BOWL - Cherry, Cherry Red- F (Very Rare, Nice Irid. But Light in Center).
 800-194. Poppy Show 9" Plate- BI- NW (Scarce w/ Sup. Col. & Ir.).
 4000-195. HEARTS & FLOWERS 9" Plate- Deep Ice Blue- NW (Exc. Detail w/ Exc. Irid).
 325-196. FENTON FLOWERS Rosebowl- BI- Fen (Very Rare Mold w/ Smooth Top - Only 2 or 3 Known!).
 3700-197. ROSE SHOW 9" PLATE- Lime/Ice Green- NW (Very Rare & Fantastic w/ Beautiful Pink, Blue & Green Pastel Irid. & Perfect!).
 275-198. Peacocks 9" Stip. PLATE- Mrg- NW (Sup. Multicol. Ir.).
 85-199. Grape & Cable 10" Ruf. Bowl- Lime Green- Sgnd.NW (Tough Color).
 175-200. Fruits & Flowers 10" Ruf. Bowl- Am- NW (Above Average Irid).
 1050-201. Plume Panels 1 1/4" Vase- Red- F (Rare w/ Good Irid).
 900-202. Orange Tree 8 1/4" IC Bowl- Mrg on Moonstone- F (Very Rare w/ Beautiful Mrg & White Coloring).
 145-203. Kittens Cup (Only 2 Kittens) Deep Mrg- F (Rare & Nice Detail).
 75-203A. Kittens Saucer- Mrg- F (Scarce & Real Nice).
 120-203B. Kittens Toothpick- Mrg- F (Scarce).
 70-203C. Kittens Toothpick- BI- F (Rare, The Best Blue I've Seen, but has internal crack).
 170-204. Kittens 6-Ruf. Bowl- Mrg- F (Scarce w/ Good Color).
 400-205. Blackberry Spray 4-Ruf. Hat- Good Red- F (Nice w/ Good Irid).
 450-206. BEADED CABLE ROSEBOWL- Ice Bl- NW (Nice Dark Color- A Beautiful Example).
 95-207. Fishscale & Beads 6 1/4" Ruf. Bowl- Aqua- Du (Very Scarce Color w/ Delicate Irid).
 275-208. Blackberry Spray 6-Ruf. Hat- Deep, Deep Red w/ Amberina Base- F.
 150-209. Blackberry Spray 4-Ruf. Hat (Only 2 Sprays)- Am. Opal- Fen (NC- Very Rare Color).
 2,750-210. THREE FRUITS 9" STIP. PLATE w/ Rib Back- Aqua Opal- NW (Rare w/ Outstand. Irid- Little Wear on Fruit).
 35-211. Oval & Round 11" Chop Plate- Mrg- Imp (Good Color).
 825-212. HEARTS & FLOWERS COMPOTE- Ice Blue- NW (Scarce- Great Pastel Irid).
 1000-213. HEARTS & FLOWERS COMPOTE- Aqua Opal- NW (Scarce w/ Super Irid., slight mold roughness on base).
 150-214. Hearts & Flowers Compote- Mrg- NW (Great Irid).
 300-215. GRAPE & CABLE 9" Spat. Ftd. PLATE- Drk. Ice Green- NW (Very Rare, Has Exc. Pink Irid).
 375-216. Pearly Dots/Coin Dot Compote- Drk.Blue Opal- Wm (A Little Gem, Very Rare, Super Irid.).
 175-217. Drapery Water Pitcher- Blue Opal- NW (NC- Beautiful, has wear on gold trim).
 2X 35-217A. Drapery (2) Tumblers- Blue Opal- Sgnd.NW (NC- Wear on Gold Trim - 2 x \$).
 60-218. Drapery Spooner- Blue Opal- Sgnd.NW (NC).
 50-218A. Drapery Creamer- Blue Opal- Sgnd.NW (NC).
 180-219. Drapery Cov. Butter- Blue Opal- Sgnd.NW (NC).
 1750-220. DRAGON & LOTUS 9" 8-Ruf. Bowl - Deep Red- F (Rare, Good Color & Irid.- Slight Amberina in Base).
 2,500-221. HOMESTEAD, SGND. NuART 10 1/4" Chop Plate- Amber- Im (Outstanding! Sky Looks like a Bronze Tone Sunset w/ Beautiful Multi-Color Irid. On Pattern- You'd be Proud to Own This One!).
 130-222. Orange Tree 9" ICS Bowl- White- F (Nice & Frosty).
 120-223. Floral & Optic 11" Ftd. Chop Plate- Smoky Blue- Im (Super Pastel Irid. On this Unusual Color).
 275-224. Zig Zag 9" IC Bowl- Am- Mb (Very Nice Even Radium Irid).
 500-225. Palm Beach 10" Chop Plate- Vas. Opal- US Glass (NC- Flat, Flat, Flat & Rare, Rare, Rare- The Glow will Knock Your Socks Off!).
 325-226. Corinth 9" Vase- Blue Opal- Wm (Very Attractive w/ Extensive Opal).
 325-227. Tree Trunk 14" Mid-Size Funeral Vase- Mrg- Sgnd.NW (Good Color, Rare w/ Elephant Foot Shaped Base).
 350-228. Oriental Poppy Tankard Pitcher- Wh- NW (Perfect w/ Pink Irid. & Frosty 4" Top).
 225-229. N.W. Pump (Creamer)- BI. Op. (NC- Very Rare- Sgnd. In Script).
 45-229A. Trough (Sugar)- Blue Opal- NW (NC).

- 95-230. Finecut & Roses Rosebowl- Lt. Mrg- Sgnd.NW (Pretty Pastel Irid).
 350-231. Grape & Cable Cologne Bottle w/ Stopper- Grn- NW (Lt. but very Pretty Irid.- Perfect).
 450-232. Captive Rose 9 1/4" Plate- Gr- F (Flat w/ Nice Multi-Color Irid).
 115-233. Dbl. Stem Rose 9 1/4" Dome Ftd. Bowl- Wh- Du (Nice Frosty Irid).
 210-234. Swag w/ Brackets Vinegar Cruet w/ Orig. Stopper- Green Opal- Jefferson Glass (Extremely Rare).
 50-234A. Swag w/ Brackets Jelly Compote- Green Opal- Jefferson.
 95-235. Hatie 9" Ruf. Bowl- Am- Im (Exc. Color, Scarce, has insignif. pinhead on point).
 300-236. Palm Beach Water Pitcher- Blue Opal- US Glass (NC- Very Beautiful & Extremely Rare).
 4X 70-236A. Palm Beach (4) Tumblers- BI. Op.- US Glass (NC-Also Outstand. & Beautiful Match to Above Pitcher & Rare).
 110-237. Orange Tree Sm. Shaving Mug- BI- F (Unusual Bowed-in Shape).
 175-238. Diamond Water Pitcher- Pastel Mrg- Mb (Scarce- Nice Color- Usual Roughness on bottom).
 225-239. Grape Arbor Fruit Bowl- Am- Du (Scarce/Good Color).
 550-240. Grand Thistle Water Pitcher- BI- Sweden (Rare/Avg. Ir.).
 225-241. Peacock at Fount. 5 Pc. Berry Set- P- Sgd.NW (Avg. Color & Irid).
 325-242. Star & Fan Cordial Bottle w/ Stopper- Mrg- Eng (Very Rare w/ Great Color in Exc. Cond.).
 5X 1250-243. Presznick (4) Books plus Price Guide (5 x \$).
 55-244. Paneled Block & Star? - (2) Cordial/Wines- Mrg.
 20-244A. Poss. Eng. (Were w/ star & fan cordial bottle #244, but I don't believe thats what they are - Choice Out).
 10x 5-245. Hartung Set of (10) Books w/ (2) Price Guides (10 x \$).
 30-245A. Hartung Carnival Glass in Color. Books.
 10-245B. Fenton Carn. Glass 'The Early Years' by Edwards (Out of Print).
 30-246. Carnival Glass Encyclopedia- Bill Edwards- 1st Edition.
 15-246A. Carnival Glass Encyclopedia- Bill Edwards- 3rd Edition.
 90-247. Piassa Bird Ladies Spittoon- Blue Opal- Very Pretty (NC).
 140-248. Colonial 5 Pc. Lemonade Set- Wh- Im (Very Rare Set- Base Chip on Underside of 1 Stemmed Goblet).
 125-249. G & C/Bsktwv. Ext. 10" Salad Bowl w/PCE- Grn (Good Color).
 120-250. Fleur De Lis 10" ICS Dome Ftd. Bowl- Gr- Mb (Scarce w/ Super Irid. - Pulled pt. On base).
 400-251. Peacock at Urn 9" Ruf. Bowl- Persian Blue- F (Ext. Rare & Super- 1 of 3 Known, rim chip).
 250-252. Peacock at Urn 9" PLATE - Drk Mrg- F (Flat w/ Fabulous Color & Irid).
 75-253. Mb. Peacock (No Bee) 5 1/4" IC Bowl- Am- Mb (Good Ir.).
 165-254. Peacock at Urn 5 1/4" Stippled IC Bowl- BI- Sgnd.NW (Great Irid).
 400-255. Hanging Cherries Milk Pitcher- Mrg- Mb (Very Rare w/ Good Irid., poss. Int. 1/4" heatcheck in lip).
 250-255A. Loganberry Vase- Grn- Im (Scarce w/ Nice Color).
 425-256. Good Luck/Rib Back 9" Bowl w/PCE- P- NW (Great Ir.).
 400-257. Good Luck/Bsktwv. Ext. 9" PLATE- Am- Sgnd.NW (Avg. Irid).
 75-258. Oriental Poppy Tumbler- Wh- NW (Frosty w/ Pink Irid).
 225-259. Inverted Fan & Feather Ladies Spittoon- Blue Opal (NC).
 225-260. G & C Ftd. Banana Boat/Master Berry- Irid. Custard w/ Nutmeg- NW (Very Unusual Color & Rare- A Beauty!).
 135-261. Grape & Gothic Arches- Cov.Butter- Irid. Custard- NW (Scarce).
 75-262A. G & Gothic Arches Cov. Sugar- Irid. Custd.- NW (Wear on Gold).
 60-262B. G & Gothic Arch. Spoon.- Irid. Cus.- NW (wear on gold).
 60-262C. G & Gothic Arch. Cream.- Irid. Cus.- NW (wear on gold).
 #s 261-262C Make a Nice Table Set- Hard to Come By!
 225-263. Greek Key/Bsktwv. Ext. 9" PCE Bowl- Am- Sgnd.NW (Frosty Irid. w/ Exc. Irid).
 200-264. Mikado Compote- Pastel Mrg- F (Flared Out Top-Nice).
 240-265. Peacocks w/ Rib Back 9" Ruf. Bowl- Mrg- NW (Outstanding Color & Irid).
 65-266. Grape Delight Rosebowl- Clam- Du (Drk. Ginger Ale Color w/ Perfect Feet).
 350-267. Lotus & Grape 9" Flat Plate- B- Fen (Rare-Great Irid. Overall but a little weak in center, minute pinhead on center petal).
 90-268. Holly Rosebowl- Mrg- Fen (Scarce & Nice).
 200-269. Apple Blossom Twigs 9" PLATE- Wh- Du (Nice & Frosty Irid).
 80-270. Stippled Rays 6" Bowl- Deep Teal- F (Rare Col./Sup.Ir.).
 700-271. Fentons #249 Pr. Red 6" Irid. Candlesticks w/ Gold Decor.
 60-272. Unshod Water Pitcher- Amb (Rare, Never Seen One).
 75-273. Three Fruits/Bsktwv. Ext. 9" Bowl- Mrg- NW (Super Color & Irid).
 125-274. Pr. Beli Shaped Dugan 8 1/4" Candlesticks- Red (See Pg. 112 Du/Dia).
 40-274A. 9" ICS Low Console Bowl- Red (Good Match to Above).
 110-275. Ripple 9 1/4" Teal- Im (Burst bubble on base).
 135-276. Elephant Novelty Paperweight- Peach O w/ Mrg. Irid. (Could be a Little Sleeper).
 165-277. Holly 9" Bowl w/ 3-in-1- Am- F (Scarce Color/Great Irid.).
 550-278. Strawberry/Bsktwv. Ext. 8 1/2" Stip/Ruf. Bowl- BI- NW (A Rare Beauty w/ Multi-Color Irid).
 100-279. Town Pump- Am- Sgnd.NW (Scarce w/ Good Color- has lg. Chip & crack @ handle).
 150-280. Swirled Flute 17" Mid-Size Vase w/ 4 1/4" Base- Emr.Grn- Sgd.NW.
 125-281. Rose Garden 11" Cylindrical Vase- Mrg- Eda/Sweden (Rare w/ Nice Color- This Size Not Listed). (Internal Crack)
 2X 35-282. Orange Tree Breakfast Set- Blue- F (Beautiful Color & Irid.- 2 x \$).
 200-283. Daisy Block 10 1/2" Row Boat- Mrg- Sowerby, Eng. (Scarce- Nice, Deep Mrg on Wood Stand).
 250-284. Grape & Cable Hatpin Holder- Mrg- Sgnd.NW (Scarce, Good Irid. & Good Feet).
 75-285A. Top of the Morning Hatpin- Dark w/ Nice Irid.
 65-285B. Painted Rooster Hatpin- Red w/ Black Paint (Scarce).
 55-285C. Egyptian Butterfly Hatpin- Dark w/ Green & Pur. Irid.
 60-285D. Six Plums Hatpin- Dark w/ Only Plums Irid.
 125-286A. Palm Beach- Cov. Butter- Blue Opal- US Glass (NC- Beautiful & Rare- crack in base).
 130-286B. Palm Beach Cov. Sug.- BI. Op.-US Glass (NC- Beautiful & Rare).
 40-286C. Palm Beach Creamer- BI. Op.-US Glass (NC- Beautiful & Rare).
 45-286D. Palm Beach Spooner- BI. Op.-US Glass (NC- Beautiful & Rare).
 (Get all 4 and what a Knockout Table set!)
 70-287. Pr. of 7" Irid. Russett Candlsts w/ Gold Trim @ Base (Poss.N.W.).
 75-288. Beaded Fleur De Lis Compote- Blue Opal- Jefferson (NC).
 20-289. Orange Tree Hatpin Holder- Mrg- F.

- 185-290. Strawberry/Bsktw. Ext. 9" Plate- Gr- Sgnd. NW (Nice Even Irid. - a little wear on fruit).
- 175-291. Corn Vase- Lime/Ice Grn- Sgnd. NW- Very Nice w/ Plain Base (which appears to have a surface Mfg. Flaw/heatcheck on base mold line- You be the Judge).
- 150-292. Greek Key Nut Bowl- Am- N.W. (Unusual w/ Irid. Inside Only).
- 246-293. PANELED HOLLY Water Pitcher- Wh. Opal w/ Gold Trim- NW (Very Rare & Beautiful- slight wear on gold but who cares!).
- 35-293A, B & C Paneled Holly (3) Tumblers- Wh. Opal w/ Gold- NW (Some Wear- Choice Out).
- 80-294. Pr. Of Bell Shaped 6 1/2" Candlesticks- Irid. Russett Grn- Poss. Du.
- 150-295. ~~150-295. The Frank 7 1/2" Vase- Lt. Ice Bl- NW (Good Irid.).~~
- 400-296. DIAMOND FOUNTAIN Cruet w/ Stopper- Mrg (Rare Little Beauty).
- 110-297. Three Fruits/Plain Back 9" Bowl w/ 3-in-1 Edge- Gr- Sgnd. NW (Scarce Color & Pretty).
- 75-298. Grape & Cable Dresser Tray- Grn- NW (Scarce Color, some small dings on grapes).
- 300-299. Good Luck 9" Bowl w/ 3-in-1 Edge- Mrg- NW (Super Detail & Great Color).
- 25-300. Smooth Rays 8" Ruf. Bowl- Blue Irid. Milk Glass- Wm (Very Unusual Color, but has rim chip).
- 350-301. Fashion 8 Pc. Punch Set (Bowl, Base & 7 Cups) Mrg- Im (Very Nice).
- 100-302. Grape Wreath 9" Bowl w/ 3-in-1- Am- Mb (Super Rad. Ir.).
- 150-303. Grape & Cable Candlestick- Am- Sgnd. NW (A Nice One).
- 195-304. Mb. Peacock & Urn 9" Ruf. Mystery Bowl- Am (Exc. Satin Irid.). *Surface Scratches*
- 350-305. Three Fruits/Bsktw. Ext. 9" PLATE- Emer. Grn- NW (Unusually Bright Color w/ Nice Highlights).
- 75-306. Corinth 8 1/2" Vase- Moonstone- Westm (Scarce Color).
- 150-307. G & C/Bsktw. Ext. 9" PLATE- Am- Sgnd. NW (Exc. Irid.).
- 250-308. Blackberry Spray JIP Hat- Red- F (Scarce, little silvery).
- 75-308A. Blackberry Spray Hat 2-Sides Up- Vas- F (Super Glow w/ Great Irid.).
- 60-309. Blackberry Spray/2 Sprays Only - 4-Ruf. Hat- Aqua- F (Scarce w/ 2 Sprays).
- 65-310. Peacocks 9" Ruf. BRASS Bowl (Good Detail, Unusual Novelty Item- 1st I've Seen).
- 105-311. Fenions #634 Stretch Glass Cov. Candy Dish- Lav (Beautiful Soft Irid.).
- 60-312. Three Fruits 9" Stip. Bowl- Bl- NW (Outstand. w/ Near Elec. Ir.). *Epsy on 1 point*
- 120-313. Bushel Basket- 8-Sided- Wh- Sgd. NW. (Good & Frosty).
- 105-314. #474 Water pitcher w/ 1 Tumbler- Deep Mrg- Im (Super Color).
- 450-315. DETROIT ELKS 7" Ruf. Bowl- Am- Fen (Scarce- Mfg. Flaw on Point).
- 225-316. Double Scroll- Pr. Candlesticks- Red/Amberina- Imp (1 has some roughness inside base).
- 225-317. Leaf & Bead Rosebowl- Lav- Sgnd. NW (Rare Color w/ Outst. Irid.).
- 250-318. RISING SUN PITCHER- Mrg- US Glass (Rare- Good Color, little mold roughness on base).
- 70-319. Rising Sun Cov. Sugar- Mrg- US. Glass (Rare/Good Col.).
- 155-320. Celeste Blue 9" Pr. Irid. Candlesticks w/ White Mse West Trim (Nice, In Dugan/Diamond Book).
- 245-321A. Paneled Holly Cov. Butter- Blue Op. w/ Gold Trim (Some Wear) Sgnd. NW (Very Rare & Beautiful).
- 155-321B. Paneled Holly Cov. Sugar- Blue Op. W/ Gold Trim (Some Wear) Sgnd. NW (Very Rare & Beautiful).
- 100-321C. Paneled Holly Spooner- Blue Op. W/ Gold Trim (Some Wear) Sgnd. NW (Very Rare & Beautiful).
- 600-322. Rose Show 9" PLATE- Pur- NW (Scarce- Super Color w/ Near Elec. Irid. - has some minor rghns. on roses).
- 150-323. Peacock at Urn 9" PLATE- Mrg- F (A Beauty). *Little carbon*
- 70-324. Big Bsktw. 11" Vase- Wht- Du (Great Frosty Pink & Green Irid.). *Strain*
- 130-325. Wheel Cut Pr. White Irid. Candlesticks (Very Nice).
- 350-326. Three Fruits, Med. 9" Spat. Fid. Stippled Bowl- Aqua O- NW (Good Irid. - sm. carbon spot on ext.) *(sm. heat check)*
- 30-327. Orange Tree Tumbler- Mrg- F (A Beauty).
- 120-328. Raspberry Tumbler- Mrg- NW (Super Irid.).
- 150-329. Pr. 8" Irid. Candlesticks- Am- Du (Pg. 112 in Dug/Diamond Book).
- 125-330. Hanging Cherries Cov. Butter- Am- Mb (Good Irid. - has tiny rim chip inside).
- 50-331. Diamond Spearhead Creamer- Drk. Green Opal- NW (NC- Highly Sought After!).
- 95-332. Hobstar & Feather 11" Oval Fruit Bowl- Crystal (Not Irid.) Mb (Scarce).
- 40-333. Fruit & Flowers Bon Bon - Mrg- NW (Good Irid.).
- 300-334. Butterfly & Fern Water Pitcher- Am- F (Nice).
- 4 x 25-335. Butterfly & Fern (4) Tumblers- Am- F (Nice Match to Above).
- 170-336. Floral & Grape Water Pitcher - Wht- F (Nice & Frosty Irid.).
- 95-337. Mini Rib Child's 2 Pc. Breakfast Set- Blue Opal - Model Flint Glass Co. (NC).
- 170-338 & 338A. ~~Geometric Pattern~~ (2) Tumblers- Ultra Violet Blue- Poss. "Lucille" Finland (Rare, 1 has mold roughness- Choice Out).
- 85-339. Peacock at Fountain Cov. Sug- Mrg- Sgd. NW (Nice One).
- 200-340. Grape & Cable Hatpin Holder- Pur- Sgd. NW (Avg. Irid. w/ Usual Roughness on Feet).
- 90-341. Apple Blossom Twigs 9" Ruf. Bowl- Wh- Du (Frosty Irid.).
- 90-342. Cherry 10" IC Dish- Pastel Mrg- Mb (Nice Pastel w/ Satin Finish).
- 95-343. Heavy Grape 8" Plate- Am- Im (Pretty Plate- Great Color).
- 80-344. "Crider, Sgnd." Geometric Cruet w/ Stopper- Mrg (Super Color).
- 140-345. Fanciful 9" Bowl w/ Deep 3-in-1- Am- Du (Super w/ Radium Irid.).
- 400-346. Good Luck 9" Plate- Am- Sgnd. NW (Super Color & Irid., has tiny no harm nick on horseshoe).
- 75-347. Butterflies/Horlacher Adv. Bon Bon- Am- NW.
- 200-348. G & C Hatpin Holder- Gr- Sgd. NW (Nice Ir.- Usual Rghns on Feet)
- 40-349. Horse Med. 7" Ruf. Bowl- Mrg- Fen (Good Color & Irid.).
- 275-350. Wine & Roses Pitcher & 1 Goblet- Mrg- F (Good Irid. & Scarce).
- 300-351. Drapery 8" Vase- Deep Ice Blue- Sgnd. NW- (Beautiful Color, has sm. chip on 1 toe).
- 90-352. Leaf Chain 7 1/2" PLATE- Mrg- F (Great Color & Irid.).
- 10-353. Geometric Pattern Wine Glass- Bl (You Be the Judge).
- 80-354. Peacock at Urn Compote- Bl- F (Nice).
- 125-355. Feather & Heart Tumbler- Am- Mb (Scarce w/ Nice Irid.).
- 40-356. Greek Key Tumbler- Am- NW (Good Irid.).
- 40-357. Estate Mug- Mrg- Westm (Nice Color & Detail)
- 100-358. Heart Band Mug- Mrg- McKee (Scarce).