

# HOACGA

Heart of America Carnival Glass Assoc. Inc.

## June 1996

RETURN ADDRESS

H.O.A.C.G.A.  
Jackie Fortney  
P.O. Box 303  
Buckner, MO 64016

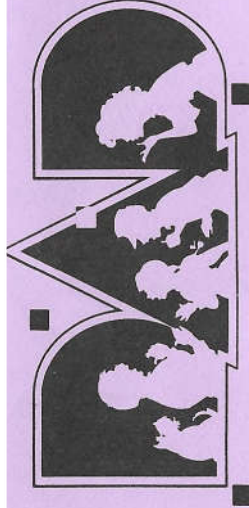
FIRST CLASS MAIL  
U.S. POSTAGE  
PAID  
Buckner, MO  
Permit 03



New HOACGA Educational  
Series III Book  
Available



1996 Convention  
Video Tapes Ready



# HEART OF AMERICA CARNIVAL GLASS ASSOCIATION

(Since 1973)

## BOARD OF DIRECTORS

PRESIDENT.....ROBERT GRISSOM  
7517 Evanston  
Raytown, Missouri 64138  
PHONE: 1-816-356-5320

VICE-PRESIDENT.....DARYL STROHM  
8904 E. 29th Street  
Kansas City, Missouri 64129  
PHONE: 1-816-252-8053

TREASURER.....CLIFF BALL  
572 W. Park Street  
Olathe, Kansas 66061  
PHONE: 1-913-782-0415

SECRETARY.....ED KRAMER  
4305 W. 78th Street  
Prairie Village, Kansas 66208  
PHONE: 1-913-642-3587

BULLETIN SECRETARY.....JACKIE FORTNEY  
Post Office Box 303  
Buckner, Missouri 64016  
PHONE: 1-816-650-5208

Please send information about your Club to the Bulletin Secretary. We will include the name of your club, the secretary's name, address & phone number, dues, and the meeting place(s) and time(s) in the Bulletin.

## NEW HOACGA EDUCATIONAL BOOK III

The HOACGA Educational Series Book III is now available. This Educational Series contains articles which were previously printed in the monthly bulletin. The book contains articles written on several different subjects; i.e. Bon Bons, Bowls, Drinking Vessels, Novelties, Rose Bowls, Table Sets, by several different members. Members who contributed articles are Britt, Fry, Kremer, Pickup, Brooks, Roque, Kuhn, Curtis & Briix.

The book contains educational information on about 150 different patterns and it also contains a list of approximately 500 rarities (only 5 or less known). This type of information is not found in any other carnival reference material.

It is a very informative book.

You may order it from: Ed Kramer, Secretary, 4305 W. 78th Street, Prairie Village, KS 66208. Make checks payable to HOACGA

## ORDER FORM

### HOACGA Educational Series Book III

Number of copies \_\_\_\_\_ @ \$20.00 ea. = Total \$ \_\_\_\_\_  
(Postage included)

## EDUCATIONAL TUMBLER SERIES

By John & Lucile Britt



### THE RADIANCE TUMBLER

Radiance is an enameled type tumbler. We consider it very unusual in a number of ways. It is much heavier than other old carnival glass tumblers. The six panels are creased on the outside. We don't remember seeing any other carnival glass tumblers that used creases to form the panels. The interior of the tumbler is perfectly smooth. The sides of the tumbler are straight up and it has a wider diameter than any of the other carnival glass tumblers. In fact, you can place tumblers such as Silver Queen, God and Home and Strawberry Scroll down inside the featured Radiance tumbler.

The tumbler is slightly over 3½" high with a top opening of 3". The base is 2 5/8" wide and is smooth and slightly depressed in the center. The outer ¼" edge of the base has been factory ground. In photo #2, we show it along side the enameled Forget Me Not tumbler. We have never been able to find the maker of this unusual tumbler.



The Radiance tumbler is not listed in the popular Richard Owens tumbler book, but it is shown and described in Cecil Whitley's "The World of Enameled Carnival Glass Tumblers". This is a very fine book and should be a part of every carnival glass collectors library. She reports the Radiance tumbler as rare with only 2 reported at the time she wrote the book in 1985. These were the only two that I knew about until the Bauer's of Texas found a third example in 1995. We still consider the Radiance tumbler as very hard to find.

We have never seen the water pitcher in this pattern, but we were happy to see that Bill Edwards has a very nice photo of both the water pitcher and tumbler in his new 5th Edition Carnival Glass Encyclopedia on page 213.

This article, on the unusual Radiance tumbler, is #222 in our Educational Tumbler Series. Next month we will cover the Rayed Flower tumbler.

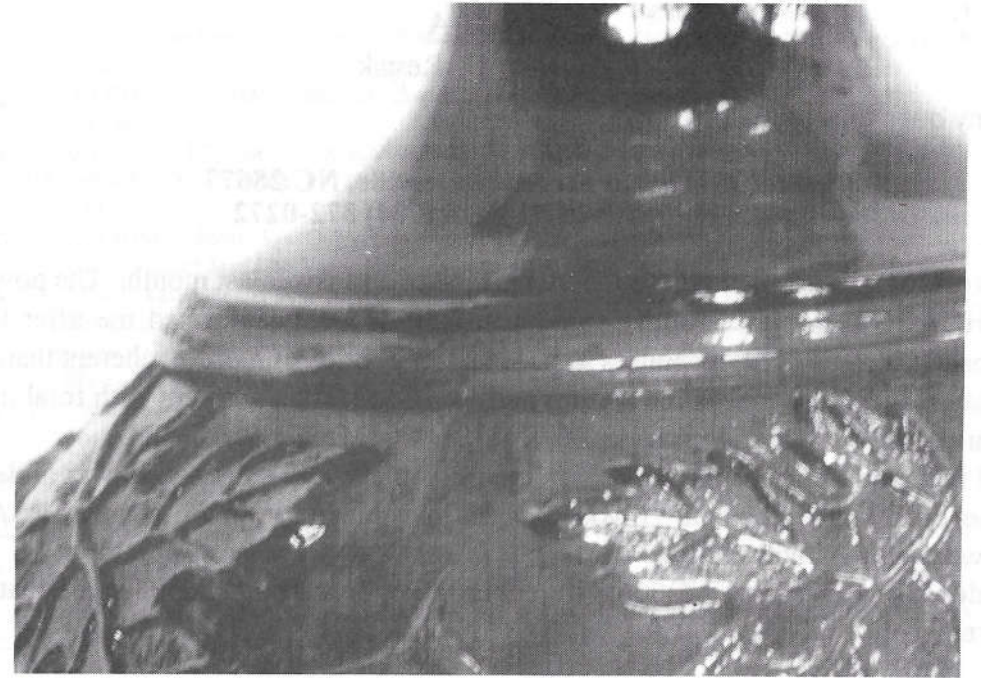
## NORTHWOOD'S GRAPE

By Alan & Lorraine Pickup



We recently purchased a pair of marigold cologne bottles from a local antique shop. We often find that there is something to be discovered whenever a new piece of glass is added to our collection. The magic is, of course, in bringing the new treasure home. That certain something that you had not noticed before that you paid little attention to now jumps out at you. No, we are not talking about the crack that you didn't see till you washed it. We are talking about learning something that increases your knowledge a little and heightens your enjoyment a lot.

When we spotted the two cologne bottles, little attention was paid to pattern details. They were different than the humdrum items we normally see and had no damage, but most importantly, they were priced right. They had "take me home" written all over them, and we did. After carefully unpacking them we realized that these Grape & Cable cologne bottles were not Grape & Cable at all. They were Northwood's Grape. That is, they just have a wide band rather than the cable design. We found that interesting and felt that it called for some additional study. Our Northwood books, Hartung books, and price guides were all scrutinized. Nothing that we could find referred to or explained in any detail the alterations to the moulds.



The Mordini auction price reports do indicate that dresser sets in marigold, custard and amethyst came with and without the cable, with the possible exception of the powder jar. And the dubious name applied to these dresser set items, that is the pin tray, dresser tray, hatpin holder and cologne bottles, is Grape & Cable - Banded. Does anyone know if a powder box was also made without the cable? Also some fruit bowls or orange bowls and banana bowls are listed as the "banded" type.

We have picked up and looked at several cologne bottles since finding ours. We have not seen one signed with the Northwood (N). These are obviously mould blown items. The glass weight understandably is quite delicate. Their scarcity is probably due to use breakage rather than how many were produced.

Marion Hartung's "Northwood Pattern Glass In Color" book makes the case for the name Northwood's Grape. We agree.

## Q & A

By John D. Resnik

Send any questions to:

**John D. Resnik**  
235 Walnut Street, Statesville, NC 28677  
(704) 872-7075, Fax# (704) 872-0272

I want to apologize to all of you to whom I promised an answer last month. The powers that be at HOACGA cut last months column in half, and only informed me after the fact. Additionally, if some of the responses seemed unusually brief, or more incoherent than normal, it's because there also was some editing performed to certain answers with total disregard for context or continuity. I promise THIS WILL NOT OCCUR AGAIN.

Since I received squat for questions this month, I suppose the dissection was a blessing in disguise, but it still ticks me off. If you want the unexpurgated version, send me a SASE and I'll forward all the juicy stuff.

If yall don't send in some questions, I'll either retire, or start making up some that I'd like answered!

### MAY COLUMN CONTINUED

Questions from Ron Bredeson of Lena, Wisconsin:

Q: Can't find this pattern. Was told it might be Stretch glass, but it sure looks like Carnival to me. What is it?



A: The reason your stretch glass covered candy dish looks like Carnival to you, is because Stretch is just like Carnival, only it has no pattern. This item is called both Wide Panel & Colonial, and came in several sizes measured by the weight of the candy in would hold

(ie, 1 pound, 3 pound, etc). The color is celeste blue. Value about \$65 - \$75.

Q: Plain Jane basket. Color not listed. What's going on?



A: This item is also Stretch glass, and the color is ice green. It has no pattern name that I am aware of. Value it in the \$100 range.

Repeat customers are not only welcome, they are necessary to the continuance of this column. Apparently, there are only about ten members of HOACGA who don't know all there is to know about Carnival Glass, so without these stalwart ten, I'd be unemployed!. The foregoing was in response to Jeri Sue Lucas of Federal Way, Washington who feared she was being a bother. Jeri sends questions in droves, and pictures in passels, which is fine with me. Why waste thirty-two cents to send one stinking question?

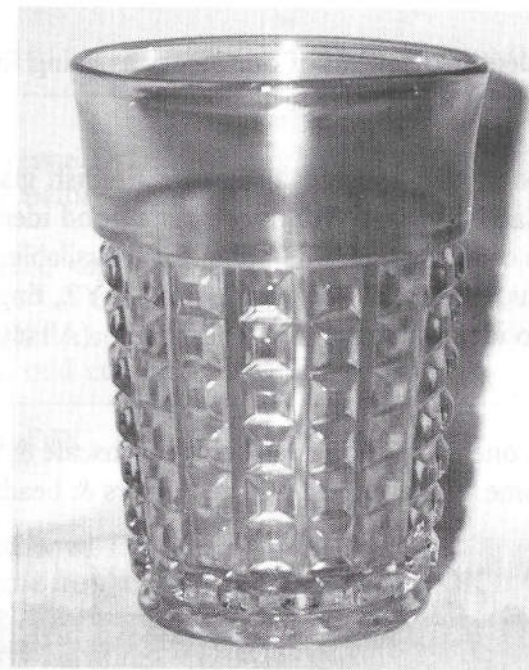
Q: I recently saw a Fentons Flowers rosebowl that had a perfectly smooth rim, no scallops. It wasn't marked FENTON, and was cheap. I couldn't find it in my books, and feel maybe I should have bought it. What can you tell me about it?

A: I couldn't find it in my books either. All the examples that I could find of this rosebowl (both old and new), had the standard 14 flame top. These rosebowl edges are getting to be a problem! I would suggest inspecting the rim carefully for evidence of grinding and polishing, as someone may have tried to salvage a piece with a flame or two missing. Caveat emptor is not a bad policy; cause if something seems to good to be true, it usually is. If it all seems acceptable, buy it and send me a picture. I probably still won't be able to help you, but at least I'll know what the darned thing looks like.

Q: Did Northwood and Imperial do the fancy edges, like 3 in 1 & candy ribbon? I have plenty of Fenton and Dugan with these edges, but none from the other two.

A: I guess a part of this answer depends on how you define “fancy”. Piecrust was probably Northwoods version of 3 in 1. And though I’ve owned an Imperial piece or two with a CRE type edge, for the most part, they kept their edge treatment pretty simple. PCE, CRE, and 3 in 1 edge treatments were all obtained by use of a crimping tool, while simple ruffled edges could be done with only the use of a wooden paddle. The extra step required to do the more involved edges is probably why we see less of them. Each manufacturer had their own little peccadillos when it came to edge treatments, and it probably had more to do with the personnel in their finishing departments, than it did with company policy. Now that I’ve talk all around your question, the answer is a qualified, no.

Q: This may sound a little esoteric (knock it off Jeri Sue, I’m the only one that gets to use big words in this column), but, in Carnival terms, how do they define scarce & rare? The following three items were all purchased at very reasonable prices, at the same time and place. Since they all are listed as “rare”, what are the chances that I’d find them all together?



A: Slim & none. A great deal of what has been written about Carnival glass was done before the days of “a convention/auction per week”, so those pioneers authors did not see as much glass in a year as we can now see at a single event. Therefore, if they hadn’t seen an item before, it was all too easy to reach for the “R” word. Basically, there are no rules for what is rare and what is scarce, and I’m totally uncertain that realistic guidelines can be established.

Q: This question has to do with the first item pictured. I believe the pattern is Hobstar Diamonds, but I’m a little compulsive about identification, so can you tell me who made it?

A: Close, but no cigar. The pattern is Hobstar Band, and has been attributed to Imperial by several authors. I have found no data in my Imperial catalogues to substantiate this. Personally, I have always felt it to be a product of US Glass, but I can’t substantiate that either.

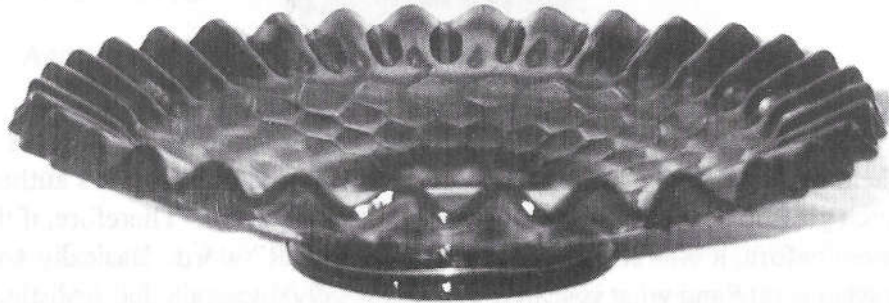
Q: This is about the third item shown. What color is it?

A: Your Waffle Block tumbler is clambroth. Colors, like people, come in all shades.  
PS: I’m glad you didn’t ask about the second item, cause I have no idea what it is.

Q: You had previously identified several of our pieces as being English. Can you give me the name of a good book on English Carnival?

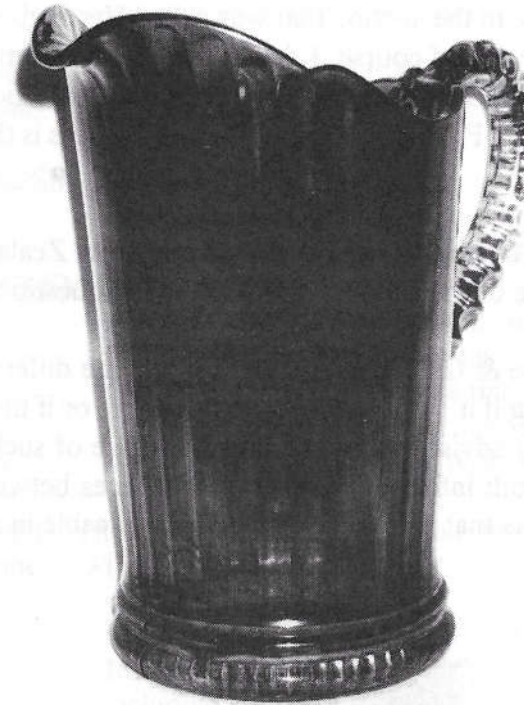
A: I don't know of a book that specifically covers English glass, but Marion Quintin-Baxendale's book "Carnival Glass Worldwide" is a good identification book for many foreign pieces. I'm uncertain if this 1983 book is still available, but if it is, the address is: Carnivalia Publications, PO box #1, Cornwall, PL22 OYZ, England. The price shown is 8.75 lbs, but I have no idea what that is in real money. (All my English friends will love that!)

Q: This item is shown in one of our books as being "Fishscale & Beads", but it isn't really the same, or is this some "variant"? It has the flowers & beads exterior.



A: Very perceptive of you! There are two distinctly different patterns that have been, more or less, lumped together. Yours is the real Fishscale & Beads. It has the smooth edge, flowers & beads on the exterior, and is a Dugan product. These pieces are generally in the 6" range. The other pattern is usually found in a 7-7½" size, has a serrated edge, has only beads on the obverse side, and is, most likely, a Fenton product. Edwards calls this second pattern Scales (and incorrectly identifies it as Northwood), but that conflicts with the Westmoreland Scales that comes in 6" bowls and plates, has a smooth edge, and no back pattern. I utterly detest "Variants", but we seem to be running out of options, what with all these Scales patterns.

Q: I know this pitcher is not terribly exotic, but I like it. Trouble is, I don't know what to call it (Fred is already taken!) Can you help? (Jeri Sue went on to give me every dimension, blood type, and chemical analysis of the glass. Good job!!)

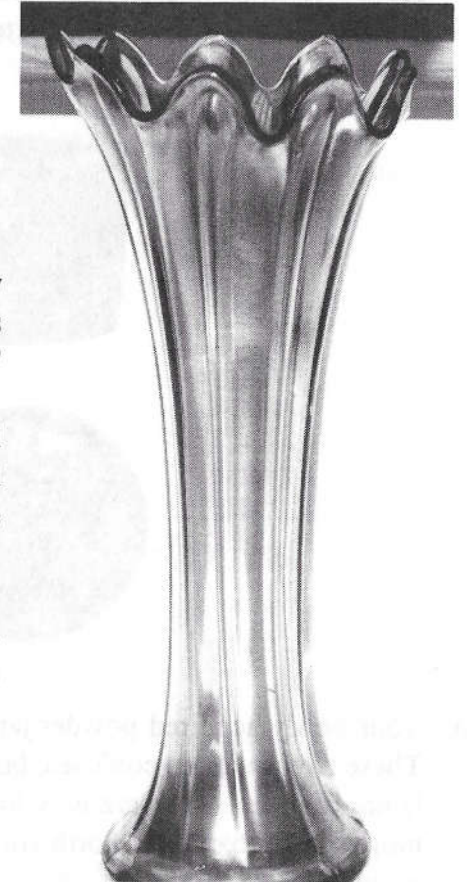


A: It's Interior Panels & is an Imperial product. HINT: Anytime you see that fancy cut handle on something (it's just like Fashion & several others), you can be sure it's Imperial.

Q: This is rehash of a Question I sent in before, only this time I'm sending a picture! I think this vase is Northwood, but I don't know what color it is. Help?

A: I looked up my previous response, sans picture, and now understand why a picture is worth a thousand words. Forget everything I said before. You are correct, it's Northwood. The pattern is Thin Rib. The color is sapphire. I hope you are sitting down, because if your vase is a small size (3½" base) it's worth about \$300. If it's mid-size (4½" base), it's worth \$600 - \$900.

I look forward to your next assault on my dubious knowledge.



UPDATE: I just returned from Gary Coopers Auction in Michigan, and, lo & behold, I now know the name of your compote. There was one in the auction that was called Herringbone & Beaded Ovals, was listed as one of four known, (of course, I doubt they were counting yours) and was attributed to Imperial. I haven't a notion where they got this information, nor if it has any validity, but the name is sexier than Fred. It sold for \$250. (My guess is that this was an aberration)

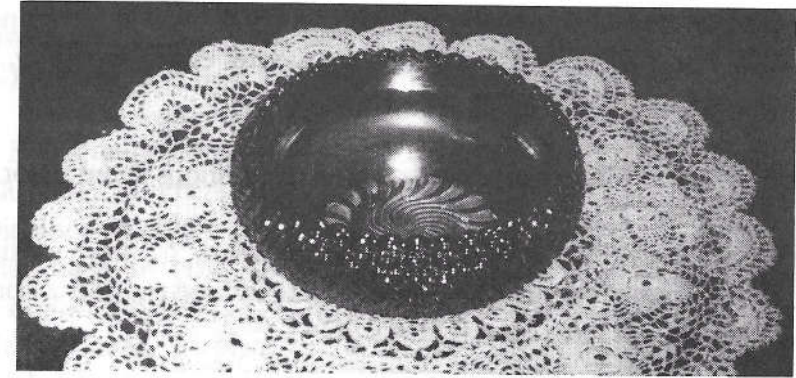
Received a nice letter from "Down Under". Margaret Bryant of Hamilton, New Zealand (has to be one of the greenest places on the face of the earth) had the following questions:

Q: I recently purchased a black amethyst Grape & Cable powder jar that is quite different from another one that I have. I'm wondering if it's an excellent reproduction, or if these jars came in two sizes and molds. Can you advise me on the rarity & value of such a piece? (Margaret provided excellent in-depth information on the differences between the two pieces, the most telling of which was that her new purchase has no cable in the pattern.)



A: Your newly acquired powder jar is not Grape & Cable, but Vintage, made by Dugan. These two are often confused, but the lack of a cable, and the fact that the Vintage piece is noticeably shorter, are easy indicators to avoid confusion. Vintage powder jars are more scarce than their Northwood counterparts, particularly in amethyst, and have sold in the \$250 range.

Q: Enclosed is a photo of a marigold rosebowl that I have been unable to identify. Could you possibly provide the pattern name, manufacturer, and rarity.



A: Yes I can. (How do I know all this stuff?) The name is Chunky (named by Marion Quintin-Baxendale), maker is Sowerby of England, and it's said to be rather plentiful there. I would think the rosebowl shape would be rather unique, but I wouldn't suggest planning a seaside cottage on the proceeds of its sale.

Heard from the "Bashful Canadian" again. I don't know why he should be afraid to be thought a fool, it never deterred me.

Q: Could you explain the terms "flared plate" & "flat plate"?

A: "Flared plate" means "I'm really a bowl". Actually, this term is used to describe those pieces (generally Northwood) that are in that grey area between "flat plates" and bowls. The word "deep" could just as easily be used, and would probably be more accurate. However, flared usually also carries with it a connotation of being cupped (turned softly upwards at the outer extremities). A "flat plate" should describe one which has a totally flat plane from base to rim, and very little, if any, increase in elevation. Plates of this type are generally 1/2" high, or less, at the outer edge.

Q: What is meant by the term "pulled point"?

A: During manufacture, when the outer edge treatment is being performed, the glass is in a semi-molten state. The tool used to add the serrations to the edge is much like pinking shears used in sewing, and if the temperature of the glass is not correct, or the glassmaker pulls the shears away prior to fully completing the trimming, a small amount of glass is pulled away with the shears leaving a sharp or "pulled point".



Q: What is the difference between an “internal crack” and a “heat crack”?

A: About a hundred dollars. Technically, an “internal crack” will be contained within the body of the item, but a “heat check” can run to an outer edge. In reality, however, the terms are often used interchangeably.

Ann Silverman of Foxboro, Mass. had some interesting questions about color.

Q: What is the definition of the color “marigold on milkglass”? I have a Stippled Flower bowl that is dark marigold on the inside, while the unridised outside is opaque white. I thought it was MOM, but have been told it’s PO.

A: To the best of my knowledge, Stippled Flower wasn’t made in MOM, so I assume yours is PO. There are actually three distinctly different types of this glass, and each was, more or less, peculiar to one manufacturer. Marigold on Milkglass is personified by the non-slag, milky white opaque base glass, and was made by Westmoreland. Fenton’s version is characterized by a slaggy, semi-opaque, pale yellow base glass that often has white swirls running through it, and is called Marigold On Moonstone. Northwood’s contribution exhibits a base glass that is creamy yellow, nearly opaque glass, that occasionally shows a slight slag effect, and is known as Marigold On Custard. All Northwood examples that I can think of would be considered rare. The telltale place to look to determine what color your item is, is always the bottom of the collar base. Some variation in the base glass color and texture of all these manufacturers should be expected. While I’m at it, might as well throw in Pearl, which is Custard glass that has a delicate pastel iridescence. This color was also relatively an exclusive product of Northwood.

Q: I recently acquired a Northwood Thin Rib vase that is a strange shade of blue. I think it may be sapphire, but am uncertain. Can you define sapphire?

A: Color is one of those places where a picture is worth a thousand words, but since I don’t have a color reproduction available to me, I’ll give it a shot. Sapphire blue is a cross between cobalt and ice blue, with an affinity for the cobalt side. In other words, a very dark ice blue, generally with red overtones. There is an excellent picture of a Thin Rib vase in sapphire (which for some reason they choose to call teal) on page 127, plate 723, in the Heacock/Measell/Wiggins book, Harry Northwood, The Wheeling Years. The big problem with identifying this color is that it came with a variety of iridescent finishes, which greatly enhance its’ appearance. The aforementioned vase has pastel iridescence,

which makes identification easy, but other pieces in this color come with various colors of fairly dense iridescence, which tend to disguise the true base glass color. As always, look where the iridescence ain’t; usually the bottom of the collar base. This color is virtually a Northwood exclusive.

Had a late arrival from Caroleta (neat name!) Jackson, of Madill, OK. Caroleta is a tyro collector, and a recent HOACGA joiner. Welcome aboard!

Q: I have a Grape Delight piece that is signed Northwood. In Bill Edwards book he says he feels this pattern is a Dugan item. How can that be? Also, I am unsure of the color.

A: Several pieces of this pattern were found at the old Dugan plant at Indiana, Pa., and Butler Bros. ads further proved this to be a Dugan product, so I think SOB (Sweet Old Bill) can trust his “feelings”. I hate to be the bearer of sad tidings, but your nut bowl is a L.G. Wright reproduction that was made around 1980. This item was produced in both rosebowl and nut bowl shapes, in purple and ice green. Yours is the latter color, which was never made in the original production. The utilization of the N in a Circle Northwood Trademark set off a lawsuit between The America Carnival Glass Association, who owns the copyright to the trademark, and L.G. Wright, who was obviously trying to fool someone when they add a trademark to a reproduce item that was never made by that company to begin with! The lawsuit was won by the ACGA, after which, Wright added a line to the left side of the N, making it a lazy looking W, and continued production.

A word (or twenty) about color. Novice collectors often confuse iridescence color with base glass color. In Carnival Glass, when we say a piece is blue, we are talking about the base glass color, regardless of what color iridescence it may have. To make this determination; always hold an item up to a strong light source so that the light is passing through it, to you. The color you see, is the color it is.

Q: I would like to know what books you recommend for the beginner? The list enclosed with the bulletin was great, and I’m sure I’ll be purchasing many of them, but where is the best place to start?

A: My very first Carnival books were the Hartung series, and I spent many an hour poring over them to find an elusive pattern. And, therein lies the rub: If you don’t know pattern names very well, it does take a bit of time and study to find what you are looking for. In these days of instant gratification, most people don’t want to work that hard, even though you’ll learn a lot along the way. So called “picture books” make things a lot simpler, and

faster, but I don't think there is any one book currently available that covers the Carnival gamut. Bill Edwards books are (wash my mouth out with soap!), unfortunately, the best general coverage books that can presently be acquired, and they are so replete with error, sloppy research, and pricing misinformation, that I am reticent to recommend them. Recent books by Carl Burns, Heacock/Measell/Wiggins, and Marie McGee, are all generally well researched and accurate, but they all are devoted to a single Carnival Glass manufacturer. I guess what I'm trying to tell you is that there isn't a single book that will answer all your questions. To be absolutely serious for a moment (which is not at all easy for me), I recommend buying every single book you can find, read every word of every book, pick and choose that which you feel is appropriate and germane, and then go out and buy your first piece of Carnival Glass. Trust me: You will never go wrong buying books, and in the end, they will prove to be the best investment you will ever make. P.S. Not everything written is necessarily correct. Question everything.

Apparently some of you out there are under the mistaken assumption that I get paid for this. Why sugar, I don't even get car fare! Ergo, if you request a personal response, please send a SASE.

It would seem that the length of some of the questions, (not to mention the length of some of the answers) and the late arrivals have turned my molehill back into a mountain. So, see you at the old popstand, same time, next month.

### ANOTHER VIEWPOINT

In my 1st year as a member, I hav enjoyed most parts of each bulletin; especially March & April.

However, I wish to voice my opinion on the Q&A segment by Mr. John Resnik.

Your put-down toward Bill Edwards and his books are uncalled for. Mr. Edwards has made a life long contribution to the field of Carnival glass and he'll be the first to admit that he too makes mistakes.

I say "if you can do any better, then you write the book, or don't buy it." You stated in the February issue on page 18, and I quote, "Edwards is fine as a picture book, but under no circumstances should you read any of the words." Well, hold on to your hat. Also, I advertised in February for Acorn bowls & plates. Your comment to me in the same issue on page 16 was "Autumn Acorn yes, Acorn, I don't think so." Well, I have a photo of an Acorn plate and several "big-time" collectors have told me they have seen and held Acorn plates in 3 different colors. I don't see how anyone can say a piece does not exist unless they have seen every piece of carnival glass ever made.

So I say, Mr. Resnik's articles are fine as far as the pictures, but under no circumstances should you read any of the words.

Sincerely,  
Mike Carwile, Lynchburg, VA

Dear Mr. Grissom,

As to our conversation on 10 May at the Woody Auction in St. Louis, I thought I would send you a copy of the obituary I prepared when Iva Rambo passed away.

Iva Rambo began collecting Carnival Glass in 1958 and always had a keen eye for her favorite glass. Iva blessed me with the same affliction many years ago. She sold most of her collection in March of 1995 after symptoms of her illness presented themselves. A few days after the sale we sent her to the Mayo clinic to find our what the real problem was as her local doctors were unsure. The Mayo clinic immediately diagnosed ALS, a terminal illness, and told her not to expect more than 6 months. This is a very cruel disease - slowly taking the ability to use ones muscles as it progresses. It started in Iva's throat making it impossible to speak and quickly rendered her totally helpless and bed-ridden the last two months of her life. Even though she had around the clock nurses at her side, it was a terrible experience for anyone, let alone her husband Bert, 90 years old next month.

Bert has remained on the farm and on my weekend visits he often tells me of all the terrific folks he met attending auctions and conventions with Iva. He still tells some pretty wild tales about some of you fellows while your wives were buying up the good deals. HA! Iva still receives cards and letters from many carnival glass friends so I hope you might publish this obituary in your next newsletter so all will know of her passing. I apologize for not sending this note sooner. Thank you for your help.

Ron S. Locke (Iva's nephew)  
Shiloh, IL

### OBITUARY

Iva Irene Rambo, 78, of Long Lane, Missouri, born November 4, 1917, died Saturday, December 16, 1995, at her home after suffering many months from Amyotrophic Lateral Sclerosis (ALS), commonly referred to as "Lou Gehrig's disease".

Mrs. Rambo operated a beauty shop in Buffalo, MO for 39 years, from 1942 to 1981 when she retired. She was an active member of the Pisgah Baptist Church of Long Lane and belonged to many Carnival Glass Associations/clubs. Iva was known by most people through her kindness to others. Iva was also a very active painter after she retired. Over the years she won many blue ribbons for her paintings and quilts at both local and state competitions.

She was preceeded in death by her parents, Issac and Flossie Locke of Fairfield, IL and three brothers; Gordon, Barton, and Myron.

Surviving are her husband, Bert Rambo, of Long Lane, MO whom she married October 5, 1939 in Lousiville, IL, and four brothers; Elvyn Locke, Howard Locke of Fairfield, IL, Richard Duane Locke of Great Falls, MT, John Locke, Long Lane, MO. Although she had no children of her own, she had many nieces and nephews who thought of her as "Mom". Funeral services were held on December 19, 1995 at Canton's funeral home, Buffalo, MO.

## PICTORIAL PATTERN PARADE

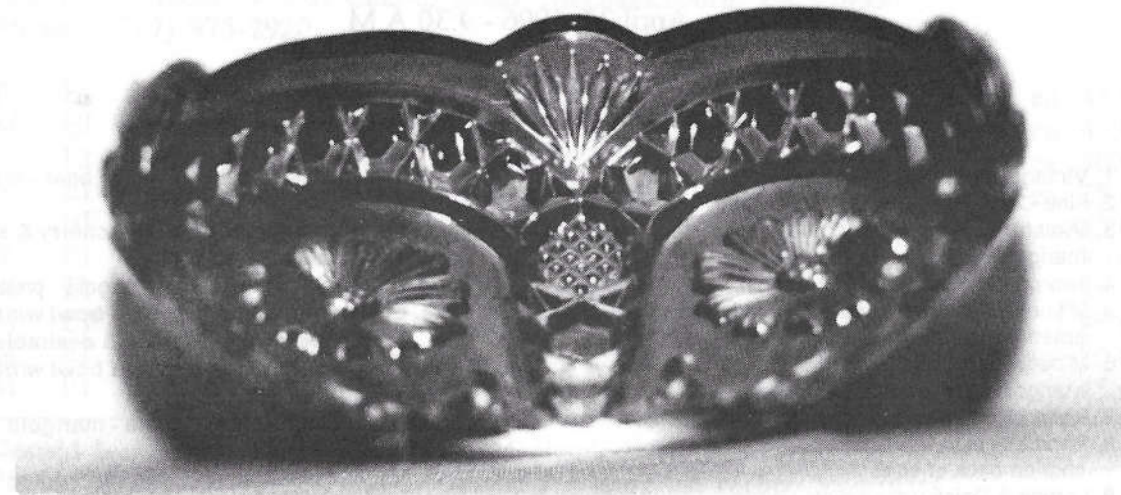
By John & Lucile Britt



### THE ASTERS PATTERN

In photo #1, we show the Asters pattern in a small 5½ inch plate. In the sitting position, the top edge of the plate stands only ¾'s of an inch from the table top. The color is in a very good marigold with nice iridescence. This is the only plate that we have ever seen in this pattern. There are probably others out there somewhere, but we have never seen or heard of another example in a plate.

The Asters pattern is not very well known by collectors, auctioneers and dealers. This is probably because so few of the pieces are available or have been seen. Marion Hartung shows a very good picture of this pattern in her book #7 on page 116. She reports it only in a bowl, however. In her description of this pattern she states that it is unique in the field of carnival glass, and easily discernible from any other pattern. Bill Edwards reports the pattern in the bowl and compote, but no mention by either author was made of the little plate that is shown above.



In photo #2, we illustrate the small Asters rose bowl which is also in good dark marigold. The rose bowl too, has not been mentioned in any of the books. Due to the small size of the rose bowl shown here, we suspect that it was made from the little plate. We should mention that Richard and Carol Cinclair recently found a blue rose bowl in the Asters pattern. This is the first piece in the blue color that we have ever seen in the Asters pattern. We suspect that there will be more pieces of blue show up in the future in this pattern, however.

Since the Asters pattern has now been found in blue, and since the underside of the base of the Asters pattern is so similar to the pattern used on the underside of the Northern Lights base, we wonder if it is possible that the Asters and Northern Lights patterns might have been made by the same company. This is only food for thought, however, and until we are sure, we will simply state that the maker of the Asters pattern is unknown.

This article, featuring the Asters pattern, is our 211<sup>th</sup> entry into our Pictorial Pattern Parade. We hope that you have found it interesting. Next month we will discuss Northwood's beautiful Poinsettia and Lattice pattern.

SEEK AUCTIONS -- PRICE RESULTS

***H.O.A.C.G.A. Convention Auction***

Saturday, April 27, 1996 - 9:30 A.M.

- 7.50 1. Vintage Band mug - marigold
- 80\_\_ 2. Fine Cut & Roses candy dish - white
- 115\_\_ 3. Miniature Hobnail wine bottle w/stopper - marigold
- 145\_\_ 4. Fenton handled tumble-up or desk set - marigold
- 85\_\_ 5. M'burg Blackberry Wreath 6" ruffled sauce - amethyst - radium & super
- 55\_\_ 6. M'burg Blackberry Wreath 6" ruffled sauce - marigold - radium
- 35\_\_ 7. Pond Lily card tray shaped bon bon - marigold
- 35\_\_ 8. Pond Lily card tray shaped bon bon - white - chip on back of edge
- 120\_\_ 9. Lattice & Daisy ruffled bowl - white
- 1200 10. N's Peacock at Urn master IC bowl - blue - stunning example, as nice as I have ever seen, a SUPER DOOPER
- 155\_\_ 11. N's Peacock at Urn indiv. IC sauces (6) - blue
- 2x115 - just as nice as the big one, makes a great
- 3x95 set, choice
- 195\_\_ 12. Grape & Cable butter dish - purple - pretty
- 85\_\_ 13. Grape & Cable butter dish - marigold
- 450\_\_ 14. M'burg Zig Zag square crimped edge bowl - amethyst - radium, super tough piece to find
- 325\_\_ 15. Grape & Cable sweetmeat - purple - pretty
- 475\_\_ 16. M'burg Rosalind Variant ruffled compote - green - satin w/super irid., extremely rare
- 145\_\_ 17. Thistle banana boat - marigold
- 575\_\_ 18. Seacoast pin tray - amethyst - rare, nice
- 255\_\_ 19. M'burg Strawberry Wreath 7 1/2" square bowl - amethyst - radium & pretty
- 4750 20. M'BURG MANY STARS CHOP PLATE - MARIGOLD - only one known in any color, one of the top pieces in this sale, a once in a lifetime opportunity

- 75\_\_ 21. M'burg Rays & Ribbons round bowl - marigold - radium
- 925\_\_ 22. Fine Rib 9 1/2" vase - red - cherry & super, as good as they get
- X\_\_ 23. Poinsettia milk pitcher - marigold - pretty
- 625\_\_ 24. Embroidered Mums ruffled bowl w/ribbed back - ice blue - very rare & desirable
- 650\_\_ 25. Embroidered Mums ruffled bowl w/ribbed back - blue
- 425\_\_ 26. Peacock & Grape 9" plate - marigold - super
- 95\_\_ 27. M'burg Mayan IC shaped bowl - green - radium
- 475\_\_ 28. Basketweave Open Edge ruffled hat - cherry red
- 375\_\_ 29. Grape & Cable covered compote - purple - scarce item
- 105\_\_ 30. M'burg Rays & Ribbons crimped edge ruffled bowl - amethyst - radium
- 4500 31. VINTAGE 9" 3 in 1 EDGE BOWL - RED - extremely rare item, one of just a handful known, a must for any red collector, nice
- 95\_\_ 32. M'burg Whirling Leaves ruffled bowl - green - radium
- 115\_\_ 33. M'burg Whirling Leaves ruffled bowl - amethyst - radium
- 500\_\_ 34. Isaac Benesch & Sons ruffled adv. bowl - amethyst
- X\_\_ 35. Fashion water pitcher & tumbler - smoke - 115 (tumbler) very rare color in this pattern, nice, tumbler sold separate
- 115\_\_ 36. Cherry Chain 6" plate - blue
- 400\_\_ 37. M'burg Peacock at Urn shotgun bowl w/3 in 1 edge - green - radium & super!
- 300\_\_ 38. Grape & Cable humidor - purple - roughness on edge of lid & bottom

- 1100 39. N's Peacock at Urn master IC bowl - ice green - super irid., very nice
- 1050 40. N's Peacock at Urn master IC bowl - ice blue - super irid., also very nice
- 1200 41. N's Peacock at Urn master IC bowl - green - super rare, minor heat check in base
- 575\_\_ 42. N's Peacock at Urn master IC bowl - white - very pretty
- 550\_\_ 43. N's Peacock at Urn master IC bowl - amethyst
- 425\_\_ 44. N's Peacock at Urn master IC bowl - dark marigold
- 325\_\_ 45. N's Peacock at Urn master IC bowl - pastel marigold - lots of pink & blue irid.
- 95\_\_ 46. Pillow & Sunburst ruffled bowl - peach opal
- 155\_\_ 47. M'burg Boutonniere compote - marigold - radium
- 1200 48. M'burg Tracery square shaped 2 hdd bowl bon - green - satin & rare, very seldom sold
- 1900 49. Waterlily ftd ruffled sauce - red - cherry & pretty, nice
- 405\_\_ 50. M'burg Holly Sprig crimped edge sauce - marigold - radium & super
- 2250 51. Christmas compote - marigold - extremely rare, a collector's classic
- 100\_\_ 52. Open Rose deep round bowl - purple
- 20\_\_ 53. Open Rose deep round bowl - amber
- 325\_\_ 54. M'burg Peacock at Urn mystery bowl - green - satin & super, a very pretty bowl
- 185\_\_ 55. M'burg Rosalind large ruffled bowl - amethyst - satin & nice
- 125\_\_ 56. M'burg Hanging Cherries round berry bowl - green - radium
- 450\_\_ 57. Oriental Poppy tankard water pitcher & tumbler - marigold - nice, tumbler sold separate
- 80\_\_ 58. Two Fruits divided bon-bon - marigold
- 1600 59. Two Flowers ftd chop plate - marigold - super nice
- 1300 60. Stag & Holly ftd chop plate - marigold - super
- 90\_\_ 61. Acanthus deep round bowl - green
- 6000 62. Peter Rabbit 9" plate - marigold - extremely rare, just a few known, very pretty
- 205\_\_ 63. M'burg Peacock Tail Variant ruffled compote - amethyst - radium
- 750\_\_ 64. Panther ftd ruffled sauce - red - fairly flat
- 135\_\_ 65. M'burg Holly Sprig 7" ruffled bowl - amethyst - radium
- 425\_\_ 66. Peacock at the Fountain water pitcher & tumbler - blue - very nice, tumbler sold separate
- 85\_\_ 67. Peacock at the Fountain water pitcher & tumbler - purple - very pretty & harder to get than the blue, tumbler sold separate
- 110\_\_ 68. Grape & Cable spt ftd ruffled bowl w/Meander back - green
- 1300 69. Garden Path 10" IC shaped bowl - purple - super! a fabulous piece of glass
- 195\_\_ 70. Grape & Cable cup & saucer - purple
- 1000 71. Embroidered Mums 9" plate w/ribbed back - ice green - super irid., minor nick on base, a

- very rare plate
- 375\_\_ 72. Heisey cream & sugar - marigold
- 2350 73. Butterfly & Tulip square shaped ftd bowl - purple - super pretty, as nice as they get!
- 40\_\_ 74. M'burg Blackberry Wreath ruffled sauce - marigold - satin
- 475\_\_ 75. M'burg Trout & Fly IC shaped bowl - marigold - satin & super, a nice example
- 500\_\_ 76. M'burg Trout & Fly IC shaped bowl - green - satin & nice, great shape
- X\_\_ 77. Coin Dot ruffled bowl - red - cherry & super
- 155\_\_ 78. N's Poppy pickle dish - blue - nice
- 650\_\_ 79. Panelled Dandelion tankard water pitcher & tumbler - green - tumbler sold separate, outstanding color & iridescence, rare
- 105\_\_ 80. Panelled Dandelion tankard water pitcher (cracked) & tumbler - marigold - could be rarer than the dark colors, tumbler separate
- 135\_\_ 81. M'burg Holly Whirl ruffled bowl - marigold
- 20\_\_ 82. Rose Show 9" plate - emerald green - a dandy! true emerald, not many around
- 75\_\_ 83. Rose Show 9" plate - ice blue, very rare plate
- 1650 84. Rose Show 9" plate - blue - sought after
- 1850 85. Rose Show 9" plate - marigold, very nice
- 425\_\_ 86. Rose Show 9" plate - white - chip on base
- 155\_\_ 87. M'burg Grape Wreath Variant crimped edge sauce - green - radium
- 450\_\_ 88. M'burg Whirling Leaves tri-corned crimped edge bowl - amethyst - radium, rare shape
- 400\_\_ 89. Strawberry bon bon - red - some amberina, but nice
- 115\_\_ 90. Strawberry bon bon w/strawberry in center - marigold - scarce w/strawberry
- 250\_\_ 91. Thumbprint & Oval vase - marigold
- 400\_\_ 92. Grape & Cable water pitcher & tumbler - green - harder color to get, nice, tumbler sold separate
- 75\_\_ 93. Grape & Cable water pitcher & tumbler - purple - always in demand, tumbler sold separate
- 225\_\_ 94. Grape & Cable water pitcher & tumbler - marigold - super dark & pretty, as nice as they get, tumbler sold separate
- 30\_\_ 95. Constellation compote - white
- 1150 96. M'burg Courthouse IC shaped bowl - amethyst - radium & super, more rare than the ruffled
- 145\_\_ 97. Rose Spray JIP shaped compote - white
- 2450 98. Luster Rose ftd ruffled fruit bowl - red - a super nice one, highly sought after piece
- 75\_\_ 99. M'burg Blackberry Wreath 7" ruffled bowl - amethyst - radium
- 2550 100. Hearts & Flowers 9" plate w/ribbed back - ice blue - nice color & irid., extremely rare
- 2450 101. Hearts & Flowers 9" plate w/ribbed back - white - a dandy, pretty irid.
- 1850 102. Hearts & Flowers 9" plate w/ribbed back - green - very rare color
- 1250 103. Hearts & Flowers 9" plate w/ribbed back - amethyst - very pretty

900\_104. Hearts & Flowers 9" plate w/ribbed back - marigold, very nice  
 105\_105. Hobstar Flower ruffled compote - marigold  
 400\_106. Singing Birds water pitcher & tumbler - amethyst - very nice & scarce, tumbler sold separate  
 500\_107. Singing Birds water pitcher & tumbler - green - very scarce, tumbler sold separate  
 1650\_108. Lotus & Grape ruffled bon bon - red - extremely rare to find this shape, beautiful  
 325\_109. Lotus & Grape bon bon - aqua - very scarce color, pretty  
 165\_110. M'burg Blackberry Wreath large ruffled bowl - amethyst - radium & nice  
 4500\_111. M'BURG ROSALIND TALL JELLY COMPOTE - GREEN - radium irid., super! an incredible piece of glass!  
 4250\_112. M'BURG ROSALIND TALL JELLY COMPOTE - AMETHYST - radium irid., all you can say is incredible!  
 135\_113. Pansy ruffled bowl - purple - pretty  
 425\_114. Hearts & Flowers ruffled bowl w/ribbed back - ice blue  
 375\_115. Inverted Strawberry giant IC shaped compote - marigold - signed Near Cut, extremely rare  
 250\_116. M'burg Peacock at Urn 3 in 1 edge mystery bowl - amethyst - radium  
 300\_117. M'burg Rosalind 9" ruffled bowl - amethyst - satin & super, a very rare size for this piece  
 4750\_118. STIPPLED THREE FRUITS 9" PLATE - AQUA OPAL - spectacular pastel, lots of opal, super iridescence, WOW!  
 275\_119. Stippled Three Fruits 9" plate w/ribbed back - amethyst - scarce  
 215\_120. Stippled Three Fruits 9" plate w/ribbed back - marigold - nice  
 275\_121. Carolina Dogwood ruffled bowl - blue opal - very scarce & desirable  
 195\_122. Carolina Dogwood ruffled bowl - peach opal  
 X\_\_\_123. Greek Key tankard water pitcher - green - super nice  
 155\_124. Greek Key tumblers (2) - green - choice  
 650\_125. Greek Key tankard water pitcher & tumbler - marigold - very nice, tumbler sold separate  
 60\_126. M'burg Grape Wreath 7" crimped edge bowl - marigold - radium  
 3500\_127. Orange Tree ruffled bowl - red - very pretty example, a rare piece  
 255\_128. M'burg Little Stars 7" ruffled bowl - amethyst - satin  
 725\_129. M'burg Big Fish 3 in 1 edge bowl - amethyst - radium, a nice bowl in a rare shape  
 95\_130. Horse Medallion JIP ftd bowl - marigold  
 1100\_131. Grape Arbor tankard water pitcher & tumbler - ice blue - super nice example, tumbler sold separate, rare  
 275\_132. Grape Arbor tankard water pitcher - white - small nick on inside lip  
 90,65133. Grape Arbor tumblers (2) - white - choice

325\_134. Grape & Cable cracker jar - marigold  
 1750\_135. Stag & Holly spt ftd ruffled bowl - red - rare piece, very seldom sold  
 295\_136. Unusual bowl in bride's basket frame - marigold - cute  
 1400\_137. Peter Rabbit IC shaped bowl - blue - extremely rare & very seldom sold, a great piece of glass!  
 185\_138. Dugan's Cherries ftd ruffled bowl w/enamelled flowers - peach opal  
 1700\_139. Wishbone ftd ruffled bowl - ice green - pretty example, very rare  
 1200\_140. Wishbone ftd ruffled bowl - ice blue - nice irid., good color, rare  
 375\_141. Wishbone ftd ruffled bowl - white - very scarce & frosty  
 235\_142. Wishbone ftd ruffled bowl - green  
 125\_143. Wishbone ftd ruffled bowl - amethyst  
 115\_144. Wishbone ftd ruffled bowl - marigold  
 3600\_145. Rose Show Variant 9" plate - reninger blue - a super nice example! Rare!  
 235\_146. Leaf Chain ruffled 7" bowl - red - large spot of epoxy on edge  
 235\_147. Four Flowers Variant 9" plate - olive green  
 1700\_148. Hearts & Flowers PCE bowl w/ribbed back - ice green - very pretty, rare in PCE  
 475\_149. Hearts & Flowers PCE bowl w/ribbed back - marigold - lots of pinks  
 1100\_150. Rising Sun water pitcher - blue - very rare pitcher, not owned by many  
 525\_151. Rising Sun water pitcher - marigold - rare  
 155\_152. Rising Sun tumbler - marigold - scarce  
 125\_153. Rising Sun juice glass - marigold  
 800\_154. M'burg Wild Rose kerosene lamp (6" base, 9 1/2" tall) - green - radium - a nice one, nick on inside bottom base  
 225\_155. Three Fruits 9" plate w/plain back - purple - super color & iridescence  
 550\_156. Blackberry Spray ruffled hat - red opal - very rare color & nice  
 205\_157. Three Fruits 9" plate w/basketweave back - green - nice  
 2700\_158. Holly ruffled bowl - red - super! irid. & color are great  
 285\_159. Shell & Sand deep round bowl - purple - super  
 750\_160. M'burg Trout & Fly square shaped bowl - marigold - satin w/super color & iridescence  
 175\_161. M'burg Rosalind 10" IC shaped bowl - green - very pretty, satin  
 350\_162. Twins 6" deep ruffled bowl - blue - a rare Imperial color, pretty  
 300\_163. Kittens toothpick - blue - nice example, very scarce  
 195\_164. Kittens toothpick - marigold  
 350\_165. Captive Rose 9" plate - blue - scarce plate  
 215\_166. Windflower 9" plate - blue - pretty  
 145\_167. Windflower 9" plate - marigold  
 5250\_168. M'BURG DOLPHINS COMPOTE - BLUE - outstanding piece of M'burg, super pretty, a rare opportunity to buy a rare piece!

4500\_169. M'BURG DOLPHINS COMPOTE - GREEN - very rare, another great piece!  
 900\_170. M'BURG DOLPHINS COMPOTE - AMETHYST - rough spots on edge, typical of M'burg  
 75\_171. Persian Medallion 6" plate - marigold  
 475\_172. Butterfly & Fern water pitcher & tumbler - amethyst - scarce & nice  
 400\_173. Corn Vase - ice green - scarce  
 275\_174. Amaryllis ftd flat plate - marigold - pretty  
 135\_175. Leaf Chain 9" plate - clambroth  
 500\_176. Leaf Chain 9" plate - green  
 650\_177. Sunflower pin dish - amethyst - very scarce item, not often sold  
 415\_178. Four Seventy Four milk pitcher - green - very scarce  
 375\_179. Four Seventy Four milk pitcher - marigold - scarce  
 155\_180. Apple Blossom Twigs 9" plate - amethyst - minor nick on point  
 3500\_181. M'burg Perfection water pitcher & tumbler - 550 amethyst - radium, a top M'burg water pitcher, tumbler sold separate  
 145\_182. Strawberry 9" plate w/BW back - marigold  
 500\_183. Rose Show ruffled bowl - aqua opal - minor nick on base  
 500\_184. Rose Show ruffled bowl - amethyst - scarce  
 235\_185. M'burg Fleur De Lis dome ftd IC shaped bowl - amethyst - super radium, minor nicks on the domed base  
 200\_186. Horse Medallion 7" plate - marigold - small plates are hot  
 500\_187. Western Thistle tumbler - blue - rare tumbler  
 600\_188. Orange Tree loving cup - green - spectacular irid.  
 40\_189. Orange Tree loving cup - blue - handle crack  
 195\_190. Orange Tree loving cup - marigold - pastel  
 X\_\_\_191. Chrysanthemum ruffled bowl - red - extremely rare bowl  
 95\_192. Open Rose ruffled bowl - purple - pretty  
 2600\_193. Stippled Grape & Cable 9" plate w/ribbed back - saphire blue - very rare item  
 1300\_194. Stippled Grape & Cable 9" plate - blue - flat & very nice! rare  
 125\_195. Cosmos & Cane collar based low ruffled 8" bowl - honey amber  
 2500\_196. M'BURG WILDFLOWER JELLY COMPOTE - AMETHYST - radium & spectacular, RARE, RARE, RARE  
 900\_197. Hearts & Flowers compote - ice green - nice, very rare  
 700\_198. Hearts & Flowers compote - ice blue - nice irid., scarce  
 800\_199. Hearts & Flowers compote - aqua opal - scarce  
 450\_200. Hearts & Flowers compote - purple - scarce  
 475\_201. Hearts & Flowers compotes (2) - blue - choice  
 215\_202. Hearts & Flowers compote - marigold  
 225\_203. Hearts & Flowers compote - white  
 245\_204. Dugan's Cherries 8 ruffled bowl - peach opal

235\_205. M'burg Peacock Whimsey proof sauce - marigold - missing his leg  
 700\_206. Mary Ann 3 hdd vase - marigold - very rare w/3 handles, nice  
 280\_207. Stippled Rays 6" plate - blue  
 300\_208. Fenton's Grape & Cable deep round bowl - cherry red - unusual to find no amberina  
 625\_209. Heart & Vine 9" plate - blue - very pretty  
 275\_210. Peacocks PCE bowl w/ribbed exterior - marigold - scarce  
 300\_211. Good Luck PCE bowl w/BW - green - nice  
 165\_212. Grape & Cable 9" plate w/BW back - green  
 175\_213. Grape & Cable 9" plate w/BW back - purple  
 800\_214. M'burg Hobnail swirl spittoon - amethyst - very nice  
 125\_215. Grape & Cable 9" plate w/plain back - marigold  
 2100\_216. Dragon & Lotus ruffled bowl - red - very scarce & desirable  
 400\_217. Imperial Grape water pitcher - aqua - very, very rare color, has some buffing on base  
 425\_218. Imperial Grape water pitcher & tumbler - 60 purple - super color, tumbler sold separate  
 375\_219. Classic Arts rose bowl - marigold - rare item  
 375\_220. Classic Arts large tumbler, or small vase - marigold - very rare  
 55\_221. M'burg Blackberry Wreath crimped edge sauce - marigold - radium & neat  
 2700\_222. M'BURG POPPY FLATTENED OUT COMPOTE - AMETHYST - spectacular radium irid., as nice as you can imagine  
 1600\_223. M'BURG POPPY FLATTENED OUT COMPOTE - GREEN - just like the amethyst, fantastic!  
 90\_224. Petal & Fan low ruffled bowl - peach opal  
 3100\_225. M'burg 1910 Detroit Elks 3 in 1 edge bowl - amethyst - radium - super rare w/super color, minor buff on edge, hard to find the spot  
 285\_226. Brooklyn Bridge 10 ruffled bowl - marigold  
 400\_227. Holly ruffled hat - red - cherry & pretty  
 450\_228. Fanciful 9" plate - blue - a nice one  
 200\_229. Fanciful 9" plate - marigold  
 700\_230. Plume Panels 10" vase - red - very rare vase, cherry & nice  
 135\_231. Four Flowers large ruffled bowl - purple - pretty  
 300\_232. Imperial Jewels candlesticks - red - cherry as can be  
 190\_233. Wicker Work 8" plate - marigold  
 525\_234. Peacock at Urn 9" plate - blue - very nice  
 525\_235. Peacock at Urn 9" plate - marigold - dark & dandy  
 295\_236. Imperial Grape 6" plate - purple - pretty  
 500\_237. Leaf & Little Flowers ruffled compote - amethyst - radium, very scarce  
 275\_238. Leaf & Little Flowers sherbert shaped compote - green - satin  
 325\_239. Leaf & Little Flowers sherbert shaped compote - marigold - radium & nice  
 2550\_240. Concord 9" plate - amethyst - extremely rare plate & nice! in high demand

35\_241. Ribbon Tie ruffled plate - marigold  
 2750 242. Peacock 9" plate w/ribbed back - ice blue - dark w/nice irid., very rare  
 1850 243. Peacock 9" plate w/ribbed back - green - extremely rare & very nice  
 500\_244. Peacock 9" plate w/ribbed back - blue - in high demand  
 550\_245. Peacock 9" plate w/ribbed back - amethyst - pretty  
 450\_246. Peacock 9" plate w/ribbed back - marigold - super pretty pink irid.  
 400\_247. Peacock 9" plate w/ribbed back - ice green  
 375\_248. Peacock 9" plate w/ribbed back - white - pretty  
 195\_249. Roccoco vase - smoke - pretty  
 1000 250. Heavy Iris Tankard water pitcher - white - lots of multi-color irid., rare!  
 190\_251. Heavy Iris tumblers (2) - white - choice  
 335\_252. Heavy Iris tankard water pitcher & tumbler - marigold - tumbler sold separate  
 145\_253. Imperial Grape water bottle - purple  
 500\_254. Peacock & Grape ruffled bowl - red - nice example, cherry, rare  
 315\_255. Peacock & Grape ruffled bowl - lime green - pretty, edge did not fill out when made  
 1000 256. M'BURG PRIMROSE 3 in 1 EDGE BOWL - BLUE - only one known in this shape, a M'burg collector's dream  
 25\_257. Imperial Grape ruffled bowl - purple - pretty  
 25\_258. Tornado vase, small size - purple - very scarce & desirable, getting tougher  
 100\_259. Poppy Show ruffled bowl - marigold - very good example  
 35\_260. Three Fruits dome ftd ruffled bowl - purple  
 100\_261. Wishbone epergne - green - pretty & quite scarce  
 100\_262. Wishbone epergne - amethyst - also pretty  
 35\_263. Four Flowers 6" plate - peach opal - nice  
 50\_264. Stag & Holly 9" spt ftd plate - marigold - rare & nice  
 75\_265. Acanthus chop plate - smoke - dark, a nice example  
 45\_266. Acanthus chop plate - marigold - also nice  
 75\_267. M'burg Vintage w/Hobnail back IC shaped bowl - marigold - satin & nice  
 100\_268. Inverted Strawberry powder jar - green - a scarce powder jar  
 105\_269. M'burg Hanging Cherries large IC shaped bowl - marigold - satin & nice  
 2150 270. Open Rose 9" plate - purple - spectacular! blue irid., as nice as I've seen  
 100\_271. Open Rose 9" plate - amber - very nice  
 115\_272. Open Rose 9" plate - green  
 100\_273. M'burg Peacock at Urn master IC bowl - amethyst - satin, minor rub on edge  
 050 274. Coral 9" plate - marigold - very rare plate, seldom sold  
 5\_275. M'burg Holly Sprig tri-cornered 8" bowl - green - radium  
 950 276. Hearts & Flowers ruffled bowl w/ribbed back

- green - super spectacular, a pretty example of this rare bowl  
 575\_277. Hearts & Flowers ruffled bowl w/ribbed back - purple - scrumptious, manufacture peeling on base  
 235\_278. Blackberry Spray ruffled hat - red - cherry color, lacks irid.  
 600\_279. Dragon & Strawberry IC shaped bowl - marigold - very nice, rare & desirable  
 85\_280. Persian Garden 6" plate - marigold  
 900\_281. Holly goblet shaped compote - red - rare  
 105\_282. Holly & Berry ruffled bowl - peach opal  
 500\_283. Good Luck 9" plate w/BW back - purple - always desirable  
 550\_284. Good Luck 9" plate w/BW back - marigold - scarce  
 245\_285. Field Thistle 6" plate - marigold - very scarce  
 1650 286. Homestead chop plate - purple - signed NUART & fantastic, a great chop plate  
 95\_287. Octagon 7 piece wine set - marigold - stopper has some damage  
 2550 288. Lattice & Poinsettia ftd ruffled bowl - ice blue - a nice example, extremely rare & desirable  
 300\_289. M'burg Nesting Swan ruffled bowl - amethyst - radium & super  
 115\_290. Question Mark ftd plate - amethyst - scarce  
 900\_291. M'burg Night Stars 2 hddl bon bon - olive green - radium & very rare  
 750\_292. M'burg Night Stars 2 hddl bon bon - marigold - radium & fantastic, very rare  
 450\_293. Stippled Rays IC shaped bowl - red - cherry & super  
 75\_294. Cherry Chain large size ruffled bowl - marigold  
 2200 295. Poppy Show 9" plate - green - minor buffing on base, very rare  
 1000 296. Poppy Show 9" plate - blue - minor chip off poppy, very nice  
 2150 297. Poppy Show 9" plate - ice blue - very nice! rare & desirable  
 1200 298. Poppy Show 9" plate - purple - very nice! very rare  
 850\_299. Poppy Show 9" plate - marigold - nice  
 210\_300. M'burg Primrose ruffled bowl - amethyst - radium  
 400\_301. Orange Tree standard size mug - red - nice example, small nick on base  
 425\_302. Scroll Embossed 9" plate - purple - incredible  
 525\_303. Lattice & Grape tankard water pitcher & tumbler - blue - very scarce, tumbler sold separate  
 165\_304. Nautilus sugar - purple - scarce  
 400\_305. Dandelion mug - aqua opal - very scarce & desirable, butterscotch & nice  
 115\_306. Grape & Cable PCE bowl w/plain back - green  
 475\_307. Wishbone 9" ftd plate - purple - super pretty, flat & nice  
 925\_308. Double Scroll console set - red - very pretty set & very hard to find  
 85\_309. M'burg Cosmos IC shaped sauce - green - radium

300\_310. M'burg Hobnail rosebowl - amethyst - nice  
 150\_311. M'burg Hobnail rosebowl - marigold  
 55\_312. Daisy Wreath IC shaped bowl - marigold - has anyone seen one of these before?  
 275\_313. Four Flowers chop plate - peach opal  
 425\_314. Blackberry Spray square hat - red - cherry & nice  
 300\_315. Peacock at Urn ruffled compote - red - dark, prettier than most  
 185\_316. Fisherman's Mug - amethyst - nice  
 1500 317. M'burg Deep Grape compote - green - satin, super color & iridescence, very rare!  
 1400 318. M'burg Deep Grape compote - marigold - satin, very pretty, rare & desirable  
 155\_319. Wine & Roses wine glass - aqua  
 425\_320. M'burg Trout & Fly 3 in 1 edge bowl - amethyst - satin & nice  
 300\_321. Floral & Optic ftd round bowl - red - stretchy  
 10\_322. Floral & Optic ftd round bowl - marigold on milk glass  
 700\_323. Dahlia water pitcher - amethyst - rare  
 35\_324. Dahlia tumblers (2) - amethyst - choice  
 235\_325. File & Fan ruffled compote - marigold on milk glass  
 300\_326. Wide Panel Epergne - green - rare epergne, very desirable & pretty, minor roughness around holes  
 220\_327. M'burg Peacock at Urn ruffled bowl - green - satin, silvery  
 450\_328. M'burg Fleur De Lis dome ftd tri-cornered crimped edge bowl - marigold - radium  
 35\_329. Grape & Cable breakfast set - purple  
 2950 330. Imperial Grape 9" plate - purple - spectacular!, super irid. & rare!  
 15\_331. M'burg Blackberry Wreath 3 in 1 edge sauce - green - satin  
 350\_332. Acorn IC shaped bowl - red - very pretty example, one of the nicer I've seen  
 425\_333. Acorn ruffled bowl - red - a little to the brick side, but has pretty irid.  
 35\_334. Kittens ruffled bowl - marigold - 2 sets of kittens  
 350\_335. Kittens cup & saucer - marigold  
 3000 336. Lotus & Grape 9" plate - amethyst - extremely beautiful & RARE!  
 15\_337. M'burg Blackberry Wreath 9" ruffled bowl - marigold - satin & dark  
 400\_338. Inverted Strawberry creamer - green - pretty, signed Near Cut  
 550\_339. Round Up 9" plate - peach opal - nice opal  
 135\_340. Round-Up 9" plate - blue - pinpoint on edge  
 750\_341. Stippled Peacock 9" plate w/ribbed back - blue - pretty  
 350\_342. Floral & Optic ftd chop plate - red - minor spot on one foot, extremely rare & pretty  
 20\_343. Floral & Optic cake plate - marigold  
 300\_344. M'burg Roses & Fruits 2 hddl ftd bon bon - marigold - super pretty satin, very rare  
 300\_345. M'burg Roses & Fruits 2 hddl ftd bon bon - green - super pretty radium, rare  
 145\_346. M'burg Blackberry Wreath 3 in 1 edge sauce -

green - radium, nice  
 900\_347. Persian Medallion bon bon - red  
 600\_348. Orange Tree 9" plate - blue - a stunner!  
 225\_349. Orange Tree 9" plate - white - pretty example  
 215\_350. Orange Tree 9" plate - marigold  
 1600 351. M'BURG ACORN JELLY COMPOTE - MARIGOLD - radium, only one known in marigold, a fantastic piece of M'burg  
 95\_352. M'burg Holly Sprig card tray shaped bon-bon - marigold - satin  
 115\_353. M'burg Holly Sprig card tray shaped bon-bon - green - radium & pretty  
 975\_354. Florentine large size candlesticks - red - very pretty & rare  
 400\_355. Nippon PCE bowl - green - much rarer than the pastels, nice  
 225\_356. Nippon PCE bowl - ice blue  
 950\_357. Holly 9" plate - green - nice, rare & desirable  
 X\_358. Holly 9" plate - blue - super  
 155\_359. Holly 9" plate - marigold  
 850\_360. Victorian ruffled bowl - purple - spectacular color for this piece, flat, almost square shaped, the best one I've seen, minor spot on back edge  
 70\_361. Flowers & Frames domed ftd ruffled bowl - peach opal  
 900\_362. Inverted Strawberry spittoon - marigold - signed Near Cut, nice  
 350\_363. M'burg Diamonds water pitcher - green - very nice example  
 65\_364. M'burg Diamonds water pitcher - amethyst - chip on base  
 375\_365. Grape & Cable pin dish - purple - very scarce & nice  
 45\_366. Open Rose rosebowl - amber  
 475\_367. Grape & Cable tankard pitcher - marigold - very scarce pitcher  
 115\_368. Stippled Grape & Cable ruffled bowl w/ribbed back - green - very scarce stippled  
 40\_369. Fishscale & Beads ruffled bowl - marigold  
 1100 370. M'burg Many Stars 10" IC shaped bowl (5 point star) - green - radium & super!  
 95\_371. M'burg Grape Wreath 3 in 1 edge 7" bowl - amethyst - radium, pretty  
 235\_372. Pinecone 6" plate - green - a hot item, nice  
 225\_373. Kittens two sides up dish - blue - scarce  
 1000 374. N's Lovely tri-cornered ftd bowl - purple - super pretty, very rare & desirable  
 850\_375. Peacocks ruffled bowl w/ribbed back - aqua opal - very nice  
 500\_376. Fenton's Flowers rosebowl - red - feet have damage, is your's perfect? very pretty  
 2600 377. Illinois Soldiers & Sailors 9" plate - blue - very nice example, rare  
 25\_378. Hobstar Band ruffled bowl - marigold  
 35\_379. Flute & Clear cream and sugar - white stretch  
 300\_380. Wide Panel 8 1/4" plate - red  
 20\_381. Wide Panel 8 1/4" plate - white  
 50\_382. Frosted Block 9" plate - clambroth  
 50\_383. Tumble Up - marigold

## WHERE'S THE PATTERN?

By Gerald Thomas

How do you value Carnival Glass compotes and punch sets which do not have "ornate" exterior patterns? This is a question which deserves some thought and is the theme of this article. A few years ago at an Antique store, I contemplated buying a marigold Peacock at the Urn compote. I observed the compote in a display case and decided to examine the glassware piece more closely. The Peacock at the Urn compote had excellent color and iridescence, nice mold work and I like the pattern. After examining the compote in my hand, I laid the compote down on it's side to see how it looked from a horizontal position. After a few moments of contemplation, I decided to pass on buying the Peacock at the Urn compote. I really didn't want to display the compote on it's side in a showcase nor on top of a hutch where I couldn't see the interior pattern. The exterior pattern was somewhat plain. I didn't give the matter much further thought until I read the Sanctified Cross Eyed Bear Price Guide advertisement in the November 1994 HOACGA issue. I noticed in the advertisement a statement which indicated that white Peacock at the Fountain compotes had not gained much in price appreciation and in fact white Peacock at the Fountain compotes had decreased in value. An interesting situation when you consider most carnival glass pieces traditionally hold their value and increase in price. My initial reaction was that this might be a "sleeper", a pattern which is not widely collected or it's true value is not fully recognized in the Carnival marketplace. As time passed, I felt the pattern or glass color was not the reason for the Peacock at the Fountain compote's poor price performance, there must be other factors at work here.

Recently, a Millersburg Big Thistle punch set sold at auction and I thought this extremely rare punch set would have sold for much more money than it did, considering what a true rarity it is, only two are reported to exist. I decided to do some research. The punch set was complete, had excellent color and no damage to my knowledge. I was curious

as to why the punch set did not sell for more money when you consider several other Carnival Glass items (which are certainly not as rare) have sold at higher price levels. I inspected the auction brochure and noticed two things of significance: 1) the Big Thistle pattern is in the interior of the punch bowl only and 2) the exterior of the Big Thistle punch set has a rather plain exterior pattern (flute). If you display this punch set on top of a hutch that is all that you will see - the flute pattern, unless of course you get a step ladder to inspect the Big Thistle punch bowl interior.

As I have commented in part articles, I feel Carnival Glass artistic qualities often take precedence over rarity considerations when pricing glassware. The three examples I discussed above only illustrate this point further. In closing, I wouldn't mind owning a Big Thistle punch set even if I had to get a ladder to see the punch bowl interior. On a serious note, if I were the owner of a Big Thistle punch set, I would place the punch set on a coffee table and enshrine it in a glass display case so I could enjoy the beauty of the punch set to it's fullest. The glass case would also prevent my four year old son from putting play dough in the punch bowl and the glass case would also serve as an added safety device protecting the punch set from my son's toy G.I. Joe missile launcher. Missile attacks frequently occur in my house. If you are pursuing a Carnival piece for the pattern, you may want to give some thought as to just where the pattern actually is.

## CORRESPONDENCE

Dear HOACGA,

Another year gone and our pleasure in collecting only increases. In a large way, your magazine contributes to our enjoyment.

John & Lorraine Friend  
Sydney, Australia

## CORRESPONDENCE

Dear HOACGA,

Please find enclosed a U.S. Money Order for \$25.00 to renew our membership in HOACGA for 1 year (96-97). We enjoy the bulletins very much and especially John Resnik's Question and Answer feature.

The HOACGA Notebook is becoming very valuable as a source of information on Carnival Glass. Many thanks to those members who devote their time and effort researching the needed material.

We need a correction to our telephone number in the HOACGA roster. Our number now is 519-893-3549. Same address, just new number.

I would like to let the members know that Ward has just returned home from University Hospital in London, On. He underwent open heart surgery on May 6th in which he received a new aortic valve and had a double by-pass. He is mending quite favorably and will soon be out and about again

Ward & Pat Atwater  
Kitchener, Ontario, Canada

Dear HOACGA,

Just wanted to express my sincere thanks to all the Board of Directors for the superior work. To newsletter articles contributors -- for their willingness to share their knowledge and experience in carnival hunting. I enjoy the newsletter in its entirety.

More Power to all of you!

Ogie Sacristia,  
San Francisco, CA

## H.O.A.C.G.A. CLUB NEWS & GENERAL INFORMATION

The Newsletter is published on the 15th of each month. The Heart of America Carnival Glass Association is a Not-for-Profit organization registered in the State of Missouri.

Members are encouraged to contribute articles for publication in the newsletter and to advertise carnival glass for "sale" or glass "wanted". Articles may be educational in nature or about collecting experiences, or letters of interest to the membership. Other carnival glass organizations may announce their meetings and/or conventions. Auctioneers who are members may announce their future auctions. Members may announce their upcoming carnival glass educational books, price guides, and other pertinent publications; after the initial announcement the information will only appear in the bulletin "Resource Section". All items submitted for publication will be published in the next months bulletin or as soon as possible. The final decision to publish the articles will be made by the Board of Directors. Some articles may be edited prior to publication. Articles of an offensive nature or articles intended to discredit individuals will not be published.

Membership is \$25.00 U.S. & Canada, \$40.00 Foreign per family or individual. All monetary amounts quoted are in U.S. dollars. Membership year starts the month your dues were paid. All checks are to be made payable to H.O.A.C.G.A. and mailed to the Secretary, as listed on the inside front cover. All articles and items for publication in the bulletin are to be sent to the Bulletin Secretary whose name and address appear on the inside front cover.

## **MEMBERSHIP APPLICATION** **H.O.A.C.G.A.**

**New Member**       **Renewal**  
\$25.00/year U.S. & Canada --- \$40.00/year Foreign

**NAME** \_\_\_\_\_

**ADDRESS** \_\_\_\_\_  
\_\_\_\_\_

**TELEPHONE** \_\_\_\_\_

**REFERRED BY** \_\_\_\_\_

Send to: Ed Kramer, 4305 W. 78th Street, Prairie Village, KS 66208



## H.O.A.C.G.A. - CLUB INFORMATION

The purpose of the Heart of America Carnival Glass Association is to promote the growth and continuation of the Carnival Glass collecting hobby and to provide support to the many collectors by providing current information about the hobby.

Growth is accomplished by supplying educational information for the collector and soliciting new collectors into the hobby.

A convention is held annually in April (Convention date always includes the 4th Friday). Some of the activities provided at the convention are:

- \* Members provide Room Displays with glass from their collection.
- \* Members are encouraged to bring glass for Sale.
- \* Educational Seminars are provided by members.
- \* A Major Carnival Glass Auction is provided.
- \* The Convention offers members an opportunity to meet new collectors, renew old friendships and enjoy discussing carnival glass with other knowledgeable collectors.
- \* A banquet is held with a Carnival Collector as our Speaker.
- \* A Hospitality time is provided by the club. This is a time of relaxation and visiting with other members.

It takes the support of all collectors and members to promote the hobby in order that its growth and expansion can continue.

In order to obtain our objective, the members must financially support the organization. The Heart of America Carnival Glass Association receives its financial support through the Annual Membership dues and the sale of the following.

\* **Membership Dues** - \$25.00 per year - U.S. & Canada. \$40.00 per year for Foreign. The Membership Year is from the date of joining to one year later. Dues are set by the Board of Directors to support the publication of the monthly bulletin, typing, printing and mailing.

\* **Educational Series - Book I** - 148 articles with pictures (black and white) on a variety of Carnival Glass Patterns.

\* **Educational Series - Book II** - 180 articles with pictures (black and white) of Carnival Glass Tumblers

\* **Educational Series - Book III** - 150 articles with pictures (black and white) of Bon Bons, Bowls, Drinking Vessels, Novelties, Rose Bowls, and Table Sets. Also included is a listing of 500 rarities.

\* **Hartung Carnival Glass Pattern Books** - A set of 10 books identifying Carnival Glass Patterns. These books are a must for all Carnival Glass Collectors, especially for the beginner. These are the only complete set of books available that identifies the majority of the carnival glass patterns. Sketches are in black and white.

\* **Pattern Notebook** - A notebook containing sections on Mugs, Table Sets, Rosebowls, Water sets (including painted sets), Plates (small, regular & chop), Compotes (large, regular & small), Punch Sets and Vases. Each section of the notebook identifies each pattern with a **COLOR** picture along with information about the Maker and colors of each different pattern.

\* **Souvenirs** - Periodically H.O.A.C.G.A. makes a souvenir to be sold to members. Souvenirs have been made since 1974, a few of these are presently available. They are the small Good Luck plate in ruby red, the Green Opalescent - Fenton, Cobalt - Millersburg, Marigold - Imperial, and Teal - Dugan Bells. Each year that Souvenirs were made, Whimseys were also made and sold at the convention banquet.

\* **Video Tapes** - Video Tapes of educational programs given during the various conventions are available. A complete listing of the available video tapes are shown on the Order Form, which is part of this section of the Bulletin.

## JUNE, 1996 REGULAR HOACGA MONTHLY MEETING

The next regular meeting of the Heart of America Carnival Glass Association will be on Sunday, June 23, 1996 at 2:00 P.M. at the Raytown Missouri City Hall. We will discuss Dugan glass.

The May 1996 meeting was canceled due to Memorial Day weekend scheduling conflicts.

Ed Kramer, Secretary HOACGA

## BRITT AWARD LUNCHEON

April 26, 1996

At the 1996 Britt Award Luncheon honoring Chuck and the late Marge Kremer, Norma Strohm took this photo. Chuck is accompanied by his daughter Cindy and his sister-in-law Frances Howard. The luncheon honoring the Kremers was attended by 140 members in the Ballroom of the Holiday Inn in Lenexa, KS.



## CORRESPONDENCE

Just a short note to let you know what a good time we had at the convention. Everyone is always so friendly and helpful that we always learn something new about carnival glass. Unfortunately, we didn't arrive in time to attend the talk given by Noreen but we heard that it was very interesting. We did, however, thoroughly enjoy the presentation given by the Fenton representative.

We really like the tobacco jar we won at the banquet. It is a wonderful reminder of the great time we had.

Gary & Alice Howard, Carlsbad, NM  
6/96

## CORRESPONDENCE

Dear HOACGA,

THANKS TO ALL HOACGA MEMBERS! Eunice and I would like to thank all the HOACGA members who were involved in any way in planning and expediting the recent convention. While we have been reading about the convention for years, this was our first opportunity to attend. We felt that everything was very enjoyable.

It was nice to be included in honoring Chuck (and Marge) Kremer for their contributions to Carnival Glass. We certainly hope that we will continue to read about Chuck's "trail" adventures.

We were honored to be asked to give the banquet display and talk. While the glass did most of the "talking", we were happy to share some of our collection with those attending the banquet. We hope that you were able to see a few Carnival Glass items that you had not seen before.

While "rare is in the eye of the beholder" is a rather generic topic, it allowed us to make a statement about rarities. While "rare" refers to quantity, it has nothing to do with value or desirability. One of Don Moore's favorite phrases was "rare, but who cares?" Probably every collection has a few of these items. It's what makes a collection unique and pleasing to the owner.

Again, thank you, HOACGA, for a great convention.

Carl and Eunice Booker  
Griffith, Indiana

Dear HOACGA,

I would like to thank ALL for your cards, letters, flowers, phone calls, visits and prayers while I was out with open heart surgery (5 by-pass) on April 20. Also those who stopped by on their way home from the HOACGA convention. Each and everyone was very special to me. I am doing real well.

Donald E. Kime  
Derby, KS

## ORDER FORM - SOUVENIRS & BOOKS

\_\_\_\_\_ **H.O.A.C.G.A. Educational Series Book I**.....\$15.00  
 Shipping for each book.....\$2.50  
 Total.....\$17.50

\_\_\_\_\_ **H.O.A.C.G.A. Educational Series Book II**.....\$17.50  
 Shipping for each book.....\$2.50  
 Total.....\$20.00

\_\_\_\_\_ **H.O.A.C.G.A. Educational Series Book III (postage included)**.....\$20.00

**H.O.A.C.G.A. SOUVENIRS:**

\_\_\_\_\_ **1993 Ruby Red 6" "Good Luck" Plate**.....\$37.50  
 (20th Anniversary)  
 \_\_\_\_\_ **1989 Teal Bell**.....\$35.00  
 (Honors Dugan Glass Company)  
 \_\_\_\_\_ **1988 Marigold Bell**.....\$35.00  
 (Honors Imperial Glass Company)  
 \_\_\_\_\_ **1987 Cobalt Blue Bell**.....\$35.00  
 (Honors Millersburg Glass Company)  
 \_\_\_\_\_ **1986 Green Opalescent**.....\$35.00  
 (Honors Fenton Glass Company)

*Include \$2.50 for shipping & handling of each above souvenir.*

\_\_\_\_\_ **PLATE HOLDERS - Dozen**.....\$21.50  
 (Postage Included)

TOTAL \$ \_\_\_\_\_

**SEND ORDERS TO:**

ED KRAMER  
 4305 W. 78th Street  
 Prairie Village, KS 66208

Name \_\_\_\_\_  
 Address \_\_\_\_\_  
 \_\_\_\_\_

## ORDER FORM - VIDEO TAPES

### H.O.A.C.G.A. CONVENTION SEMINAR VIDEO TAPES

\_\_\_\_\_ "Red Carnival Glass" ..... \$20.00  
 (Richard Cinclair, Bob Allaire & Joyce Seale)  
 \_\_\_\_\_ "Shades of Blue" - (Richard Cinclair) ..... \$20.00  
 \_\_\_\_\_ "Poppy & Rose Show Pieces" - (Tom Mordini) ..... \$20.00  
 \_\_\_\_\_ "Fenton Two Flower" - (Bob Stremming) ..... \$20.00  
 \_\_\_\_\_ "Carnival Glass Smalls" ..... \$20.00  
 (Eleanor & Jack Hamilton)  
 \_\_\_\_\_ "Small Plates" - (Smokey Cloud) ..... \$20.00  
 \_\_\_\_\_ "Hatpin & Hatpin Holders" - (Clint Fox) ..... \$20.00  
 \_\_\_\_\_ "Northwood Peacock & Urn Ice Cream Sets" ..... \$20.00  
 (Harold Cox)  
 \_\_\_\_\_ "Millersburg Big Fish & Trout & Fly" ..... \$20.00  
 (Singleton Bailey)  
 \_\_\_\_\_ "Carnival Glass Collecting Experiences" ..... \$20.00  
 (Carl & Ferne Schroeder)  
 \_\_\_\_\_ "Heinz 57 Variety Carnival Glass Collection" ..... \$20.00  
 (Jerry & Carol Curtis)  
 \_\_\_\_\_ "Little Sauces" - (Garth Irby) ..... \$20.00  
 \_\_\_\_\_ "Miniatures" - (John & Lucile Britt) ..... \$20.00  
 \_\_\_\_\_ "Table Sets" - (Leonard, Kremer & Grissom) ..... \$20.00  
 \_\_\_\_\_ "Plates" - (Ruth Green & Richard Cinclair) ..... \$20.00  
 \_\_\_\_\_ "94 Britt Award Luncheon" (Floyd & Cecil Whitley) ..... \$20.00  
 \_\_\_\_\_ "Plethora of Patterns" - (Dean & Diane Fry) ..... \$20.00  
 \_\_\_\_\_ "Millersburg" - (Dick & Jennie Hostetler) ..... \$20.00  
 \_\_\_\_\_ "Swung Vases" - (Dave & Joan Doty) ..... \$20.00  
 \_\_\_\_\_ "Holly Pattern" - (John Mikkonen) ..... \$20.00  
 \_\_\_\_\_ "95 Britt Award Luncheon" - (Carl & Ferne Schroeder) ..... \$20.00  
 \_\_\_\_\_ "95 HOACGA Banquet" - (Floyd & Cecil Whitley) ..... \$20.00  
 \_\_\_\_\_ "96 Britt Award Luncheon" - (Chuck & Marge Kremer) ..... \$20.00  
 \_\_\_\_\_ "96 HOACGA Banquet" - (Carl & Eunice Booker) ..... \$20.00  
 \_\_\_\_\_ "Imperial Glass" - (Norene Duran) ..... \$20.00  
 \_\_\_\_\_ "The Molding Process" - (Howard Seufer of Fenton Glass Co.) ..... \$20.00

TOTAL \$ \_\_\_\_\_

**POSTAGE INCLUDED WITH PRICE OF TAPE**

**SEND ORDERS TO:**

ED KRAMER  
 4305 W. 78th Street  
 Prairie Village, KS 66208

Name \_\_\_\_\_  
 Address \_\_\_\_\_  
 \_\_\_\_\_

## ORDER FORM - BOOKS

### HARTUNG CARNIVAL GLASS BOOKS

*(Black and white sketches)*

_____ Book 1 - \$6.00	_____ Book 6 - \$6.00
_____ Book 2 - \$6.00	_____ Book 7 - \$6.00
_____ Book 3 - \$6.00	_____ Book 8 - \$6.00
_____ Book 4 - \$6.00	_____ Book 9 - \$6.00
_____ Book 5 - \$6.00	_____ Book 10 - \$6.00

\_\_\_\_\_ Complete Set of 10 Books (#1 thru #10) - \$60.00

(Hartungs "Northwood Pattern Glass" included with a Set)

Include \$1.00 each, for shipping when purchasing books separately.

Maximum of \$6.00 shipping for a set.

### H.O.A.C.G.A. PATTERN NOTEBOOK

*(COLOR Photos)*

_____ Mugs.....	(1980).....	\$7.00
_____ Table Sets (Photos 1 thru 40).....	(1981).....	\$7.00
_____ Water Sets 1 (Photos 1 thru 60).....	(1982).....	\$7.00
_____ Water Sets 2 (Photos 61 thru 120).....	(1983).....	\$7.00
_____ Water Sets 3 (Photos 121 thru 167).....	(1984).....	\$7.00
_____ Rosebowls 1 (Photos 1 thru 60).....	(1985).....	\$7.00
_____ Rosebowls 2 (Photos 61 thru 101).....	(1986).....	\$7.00
_____ Small Plates 1 (Photos 1 thru 48).....	(1987).....	\$7.00
_____ Small Plates 2 (Photos 49 thru 98).....	(1988).....	\$7.00
_____ Chop Plates (Photos 1 thru 40).....	(1989).....	\$7.00
_____ Regular Plates 1 (Photos 1 thru 48).....	(1990).....	\$7.00
_____ Regular Plates 2 (Photos 49 thru 81).....	(1991).....	\$7.00
_____ Compotes 1 (Photos 1 thru 57).....	(1993).....	\$8.00
_____ Compotes 2 (Photos 58 thru 113).....	(1994).....	\$8.00
_____ Punch Sets, 2nd Edition (Photos 1 thru 36).....	(1995).....	\$8.00
_____ Vases A - C (Photos 1 thru 57).....	(1996).....	\$9.00
_____ Complete Pattern Notebook.....		\$129.00
_____ Shipping for complete notebook.....		\$5.00
_____ Shipping for each selection.....		\$1.00
<i>(Maximum Shipping \$5.00)</i>		

TOTAL \$ \_\_\_\_\_

SEND ORDERS TO:

ED KRAMER  
4305 W. 78th Street  
Prairie Village, KS 66208

Name \_\_\_\_\_  
Address \_\_\_\_\_  
\_\_\_\_\_

## FROM MY CORNER

By Bob Grissom

A few years ago, collectors started questioning some of the strange looking places that were appearing on some pieces of carnival. Why did the use of epoxy to cover up defects in carnival glass start? The epoxy started to appear about the same time that pinholes, dings, chips, etc., started to become a factor in the price of a piece of glass.

Carnival glass does not lend itself to being repaired without the repair being noticeable due to the iridescence. Many of the other types of glass, i.e. Pressed, Cut, Depression, China and Pottery, have and can be repaired so it is very difficult to detect.

The use of epoxy on carnival glass is a blatant attempt to deceive someone that the piece is perfect when it is not. Usually this type of repair does not deceive the experienced collector. The epoxy becomes a problem for the new and lesser experienced collector who is not familiar with how to detect these deceptions. The deliberate use of epoxy is an attempt to profit from a less than perfect piece of glass.

I was at a Carnival glass auction recently where a large number of the pieces had been repaired with epoxy. The auctioneer did call all of the repairs that he was aware of, but some pieces were returned that had not been called. As one collector said, "Rather than all of these pieces being in one collection they are now dispersed to many collections." All of the epoxy seemed to have a negative effect on the pieces that were not repaired.

If a piece of carnival glass is damaged why not leave the damage alone. The epoxy does not make the piece any better. The usual comments from most collectors is that they would rather have a piece with the damage rather than having the epoxy.

The use of epoxy in an attempt to deceive. This should be of great concern to all carnival glass collectors. The continuation of this practice will have a negative effect on the Carnival Glass collecting hobby.

THE CARNIVAL GLASS COLLECTION YOU PROTECT MAY BE YOUR OWN.

## TREASURER'S ANNUAL REPORT

By Cliff Ball

The financial condition of our association is sound. At our annual business meeting during the April convention, the following financial reports was presented. The figures are for the fiscal year ending on February 29, 1996, and are the same as those reported to the Internal Revenue Service.

### HOACGA FINANCIAL SUMMARY

(For Fiscal Year)

Cash on Hand March 1, 1995 .....	\$ 2,627.90
Receipts For Year Ending February 29, 1996 .....	\$ <u>55,205.00</u>
Total Available Cash Funds .....	\$ 57,832.90
Less Expenses For Year Ending February 29, 1996 .....	\$ <u>53,987.11</u>
Cash on Hand February 29, 1996 .....	\$ 3,845.79 *

\* In addition to these funds... there is a Certificate of Deposit for \$18,736.58 with the Merchantile Bank of Kansas City.

\* The former treasurer continues to make restitution to the club in the amount of \$250 per month.

### HOACGA RECEIPTS

March 1, 1995 - February 29, 1996

#### MEMBERSHIP DUES

New Members .....	\$ 3,845.00
Renewals .....	\$ <u>21,643.00</u>
	\$ 25,488.00

#### OTHER RECEIPTS

Souvenirs and Tapes .....	\$ 9,546.02
Educational Books .....	\$ 9,078.56
Convention Receipts .....	\$ 5,756.50
Doug Peter's Payments .....	\$ 2,500.00
Sale of Whimseys .....	\$ 1,775.00
Postage from members on orders .....	\$ <u>1,061.00</u>
	\$ 29,717.08

TOTAL RECEIPTS .....

	\$ 55,205.08
--	--------------

NOTE: Membership dues provide 46.2 percent of our income... and 97.8 percent of these membership dues are used in printing and mailing the monthly newsletter.

## HOACGA EXPENSES

March 1, 1995 - February 29, 1996

### NEWSLETTER

Typing and Printing .....	\$ 13,292.86
Postage - Domestic and Foreign .....	\$ 10,957.84
Roster Updating and Mailing Labels .....	\$ <u>686.17</u>
	\$ 24,936.84

### OTHER EXPENSES

Holiday Inn - Convention Expenses .....	\$ 6,551.19
Notebook Inserts - Punch Sets .....	\$ 6,412.79
Fenton Company - Glass and Hatpins .....	\$ 3,272.33
Packing and Shipping Orders .....	\$ 2,393.99
Membership Roster Books .....	\$ 1,903.28
Notebook Inserts - Mugs & Table Sets .....	\$ 1,890.10
Video Taping and Tape Duplication .....	\$ 1,398.42
Legal Fees, Copyrights, Bonding .....	\$ 1,110.37
Convention Decorations and Materials .....	\$ 822.32
Computer Sorting and Listing .....	\$ 695.00
Pies For Convention Hospitality .....	\$ 400.77
Advertising .....	\$ 384.88
Secretarial Supplies .....	\$ 361.46
Contest Prizes, Flowers and Gifts .....	\$ 361.27
Gifts to Convention Speakers .....	\$ 300.00
Photos .....	\$ 258.63
Refunds on Orders .....	\$ 239.44
Other Miscellaneous Expenses .....	\$ 206.10
Bank Fees .....	\$ <u>88.10</u>
	\$ 29,050.24

### TOTAL EXPENSES

\$ 53,987.11

If you have any questions, I will be happy to try to answer them.

Cliff Ball, Treasurer HOACGA

## H.O.A.C.G.A. BULLETIN - ADVERTISEMENT POLICY

1. All advertisements of glass for SALE or WANTS must be received by the Bulletin Secretary no later than the LAST DAY OF THE MONTH to insure being published in the next bulletin.
2. Members may advertise ten (10) "For Sale" and/or "Wants" per month. The "For Sale" Glass must be members glass and not the property of a nonmember. Advertising is at no cost.
3. Only "OLD CARNIVAL GLASS" items or H.O.A.C.G.A. Souvenirs will be published.
4. Damage or flaws should be noted.
5. All "For Sale" items must be priced; NO BID ITEMS WILL BE PUBLISHED.
6. A 5 day return privilege, at buyer's expense, providing it is not as advertised, or as discussed.
7. Postage and Insurance is to be the responsibility of the buyer, both when returning and receiving the glass.
8. The sender of the glass (be it the seller or the buyer returning it) is responsible for the proper packaging of the glass.
9. H.O.A.C.G.A. does not accept responsibility for accuracy of any advertisement.

### USE THE FOLLOWING ABBREVIATIONS FOR GLASS DESCRIPTION.

A	Amethyst	HA	Honey Amber	P	Purple
AMB	Amber	IB	Ice Blue	PRL	Pearl
AO	Aqua Opal	IG	Ice Green	PM	Pastel Marigold
B	Blue	IGO	Ice Green Opal	PO	Peach Opal
BO	Blue Opal	LAV	Lavender	R	Red
CLM	Clammoth	M	Marigold	RA	Amberina
EB	Electric Blue	MMG	Marigold on	SM	Smoke
H	Horehound		Milk Glass	T	Teal
G	Green			VAS	Vaseline

Note: If you wish to describe a piece as light or dark, use the body of the ad.

EI - Excellent, GI - Good, LI - Iridescence

## CARNIVAL GLASS FOR SALE

*EDITOR'S NOTE: When submitting FOR SALE and WANTED ads, please write legibly so that your ads can be read. ALSO, be sure to include your name, address & phone number on the ad itself. Ads submitted without this vital information must be left out.*

Pat Housewright, 225 Rowland, Stephenville, TX 76401  
Phone: (817) 968-2997

PO	EI	Honeycomb Rosebowl.....	200.00
PO	EI	Single Flower Framed tri-cornered bowl .....	100.00
M	EI	Tumble-Up .....	70.00
A	EI	Ripple 13½" vase .....	135.00
B	EI	Vintage Fernery.....	60.00
W	EI	Oriental Poppy tumbler .....	165.00
G	EI	Greek Key tumbler.....	195.00
G	EI	Three Fruits bowl.....	140.00
G	EI	Acanthus 8" bowl.....	85.00
G	EI	Acorn Burrs punch cup.....	65.00

Ray Steele, PO Box 27, Chase, MI 49623  
Phone: (616) 832-4931

IG		Enameled Crocus tumbler (Whitley's #18), 4 .....	ea. 50.00
M		Imperial Grape tumbler .....	10.00
M		Imperial Grape wine decanter with broken stopper .....	20.00
M		Imperial Grape wines (5) ea. 12.00 or all for .....	50.00
G		Tiger Lily tumbler, nice .....	35.00
M		Rambler Rose tumbler .....	15.00
M		Orange Tree tumbler .....	35.00
G		Raspberry tumbler .....	40.00
M		Lattice & Daisy tumbler (3) ea. 15.00 or all for.....	40.00

CARNIVAL GLASS FOR SALE

Roland Kuhn, 15201 E. 47th South, Derby, KS 67037  
Phone: (316) 733-8424

M	EI	Apple Tree pitcher .....	200.00
G	EI	Butterfly bon-bon .....	250.00
W	EI	Footed Orange Tree sauce .....	150.00
M	EI	Northern Star sauce .....	25.00
M	EI	Wreath of Rosess bon-bon .....	100.00
B	EI	Fruits and Flowers bon-bon .....	125.00
M	EI	Holly hat shape .....	45.00
M	EI	Octagon bowl .....	35.00

Send SASE for list of other carnival

Dave Deem, 1746 N. California St., Burbank, CA 91505  
Phone: (818) 845-4530

M	EI	Coral ruffled 9" bowl, dark and outstanding .....	375.00
B	EI	Strawberry stippled ruffled 9" bowl, real nice, elec. highlights .....	515.00
M	EI	Orange Tree 9 1/4" flat plate, dark & super .....	450.00
P	EI	Grape & Cable VT 8" plate, nice .....	195.00
A	EI	Peacock & Grape 9" bowl, ruffled, super .....	110.00
IG	EI	Peacocks 9" plate, plain back, almost lime, real nice one .....	525.00
AMOEI		Dragon & Lotus 9" bowl collar base super opal & irid. ....	1,350.00

Mike Bevill, 700 Shady Creek, Kennedale, TX 76060  
Phone: (817) 572-6934 Evenings & weekends ONLY

R	EI	HOACGA 1979 Good Luck Loving Cup souvenir .....	65.00
R	EI	HOACGA 1981 Shade for candle souvenir .....	50.00
IB	EI	Dandelion tumbler .....	200.00
W	EI	Diamond Point vase .....	110.00
M	EI	Circle Scroll Hat, 2 sides up .....	75.00
M	EI	Leaf Tiers tumbler, super color, 1 toe chipped .....	15.00
M	EI	Butterfly and Berry tumbler .....	20.00
M	EI	Grapevine Lattice tumbler .....	25.00
M	EI	Wine and Roses wine .....	25.00
Cel	EI	Stretch Salts (or nut cups), set of 6 .....	75.00

CARNIVAL GLASS FOR SALE

Ed Buschini, 631 Division Rd., Zillah, WA  
Phone: (509) 8295854

B		Ten Mums 7 pc. water set, super .....	1,295.00
P		Peacock at Fountain punch bowl & base .....	795.00
P		Four Flowers VTs bowl .....	125.00
A		Panther sauce .....	325.00
P		Acanthus bowl .....	100.00
IB		Hearts & Flower plate, super .....	3,975.00

Jack & Eleanor Hamilton, P.O. Box 20203, Waco, TX 76702  
Phone: (817) 857-3148

W	EI	Hearts & Flowers compote, gold & blue irid. ....	225.00
M	EI	Star Center plate, nice .....	60.00
G	EI	Beaded Cable rose bowl, rays int. ....	120.00
A	EI	Zig Zag ruffled bowl, red & blue irid. ....	230.00
G	GI	Dragon & Lotus bowl, 3/1 edge, gold irid. ....	120.00
M	EI	Chrysanthemum Spat. footed bowl, Fenton .....	70.00
A	GI	Grape & Cable tumbler .....	35.00
PM	EI	Candle vase, pink & blue irid. ....	40.00
A	EI	Smooth rays compote, nice, dark color .....	50.00
W	EI	Cosmos & Cane sugar bowl top .....	40.00

Yvan Beaudry, 109 5th Avenue, Boisriand, Quebec J7G1Y8  
Phone: (514) 437-4585

G	EI	(N) Singing Birds tumblers (3) .....	330.00
G	EI	(N) Singing Birds tumblers (3) pinheads .....	75.00
G	EI	(N) Grape & Cable PCE bowl .....	95.00
IB	EI	(N) Tumbler raspberry .....	275.00
G	EI	Stag & Holly spatula footed bowl small .....	265.00
B	EI	Holly Square ruffled hat, nice .....	40.00
Moon		Wide Panel shade script signed (N) .....	65.00
G	EI	(N) Butterfly bon-bon .....	95.00
P	EI	Scroll vase 7 3/4", nice .....	200.00
W	EI	Spiralex vase 10", 4" base, frosty .....	85.00

CARNIVAL GLASS FOR SALE

Dennis Runk, Box 235, Littlestown, PA 17340  
Phone: (717) 359-7205

IB	EI	(N) Acorn Burrs, punch base.....	310.00
RB	EI	(N) Peacocks plate, base crack.....	280.00
G	EI	(N) Stippled Strawberry 9" ruffled bowl.....	800.00
AMBG	I	Orange Tree, standard size mug.....	80.00
PO	EI	Leaf rays nappy.....	50.00
M	EI	Rising Sun pitcher, scarce.....	600.00
P	EI	(N) Singing Birds, 5 pc water set.....	725.00
P	EI	Dugan Beads & Bells 7" ruffled bowl.....	110.00
R	GI	Orange Tree, standard size mug, crack.....	135.00
AO	EI	Singing Birds mug, large crack.....	130.00

Jim Yarger, 2584 Harding Hwy West, Marion, OH 43302-9413  
Phone: (614) 387-4663

A	EI	Bushel Basket.....	135.00
W	EI	Peacock & Urn compote.....	225.00
G	EI	Panelled Dandelion tankard & two tumblers.....	1,000.00
PO	EI	Petal & Fan 6 pc. Berry set.....	350.00
Vas	EI	Fenton Grape & Cable ruffled bowl.....	100.00
A	EI	Panelled Dandelion tumblers, 3 @.....	ea. 65.00
M	EI	Stag Holly large IC footed.....	140.00
A	EI	Ski Star large ruffled bowl.....	275.00
M	EI	Peacock at Fountain master Berry dark M.....	150.00
G	GI	Hanging Cherries table set butter chipped.....	375.00

Bill Neal, 2904 Lori Ln., Yadkinville, NC 27055  
Phone: (910) 961-6975 After 8 PM

M	EI	Acanthus chop plate.....	130.00
P	EI	(N) Grape & Cable large Berry bowl, super.....	175.00
M	EI	(N) Bushel basket.....	135.00
P	EI	(N) Bushel basket.....	140.00
G	EI	Waterlily sauce.....	145.00
IG	EI	Brocaided Palms plate, handled.....	95.00
G	EI	Peacocks Tail 9" CR bowl.....	125.00
P	EI	Fruits & Flowers bon-bon small nick on one point, so.....	48.00
G	EI	Inverted Strawberry bowl 7".....	95.00
G	EI	Good Luck bowl PCE, super.....	395.00

CARNIVAL GLASS FOR SALE

Ron & Carolyn Chesney, 1408 Myary Ln, Knoxville, TN 37919  
Phone: (423) 691-0043

B		Lily of the Valley tumbler, nice.....	750.00
IG		Hearts & Flowers bowl, very nice.....	1,100.00
G		Dragon & Lotus bowl footed ICS.....	180.00
M		Dragon & Lotus bowl ICS.....	80.00
B		Dragon & Lotus bowl.....	100.00
PO		Caroline bowl crimped edge.....	160.00
PO		Caroline bowl, 3 sides up.....	150.00
G		Mayan bowl ICS.....	80.00
M		Stippled ray creamer & sugar.....	50.00
G		Diamond Points vase (N).....	70.00

Isabell Aldridge, 6407 Rushmore Drive, Sacramento, CA 95842  
Phone: (916) 331-4290

M	EI	Dugan Golden Grape rose bowl.....	45.00
MMGEI		Westmoreland Scales, 8½" ruffled bowl.....	65.00
M	EI	Dugan Wreath of Roses rose bowl.....	40.00
PO	EI	Dugan Six Petals ruffled hat, small base slice.....	45.00
B	EI	Plume Panels vase, 11½".....	45.00
A	EI	Swirled Flute vase, 9".....	60.00
AMBEI		Open Rose 8 ruffles bowl.....	60.00
M	EI	Dragon & Lotus bowl.....	60.00
M	EI	Little Flowers bowl, pulled so nicely.....	85.00
A	EI	Dugan Cherries ICS bowl.....	145.00

Carl O. Burns, Star Rt Box 11, Rumford Ctr., ME 04278  
Phone: (207) 392-3044

IB	EI	Wishbone 8½" footed bowl, a beauty.....	1,150.00
M	EI	Grape & Cable (N) water set, 5 pc.....	325.00
A	EI	Peacock @ Fountain punch cups, 4, ea. - 45.00, all for.....	160.00
A	EI	Ribbon Tie 8½" bowl, 3 in 1, nice color.....	100.00
A	EI	Mlrbg Rays & Ribbons 10" bowl, satin, a beauty.....	90.00
CelB	EI	Florentine 8½" candlesticks, pair.....	85.00
AMBEI		Strawberry 2 handled bon-bon, scarce color.....	55.00
M	EI	Imperial Grape 6" flat plate, great color.....	45.00
B	EI	Persian Medallion 2 handled bon-bon.....	45.00
G	EI	Peacock Tail 6" ruffled bowl, pretty.....	30.00



CARNIVAL GLASS FOR SALE

Stephen R. Kocsis, 3493 Wolf Creek Rd., Cuba, NY 14727  
Phone: (716) 968-2499

B	EI	Dragon & Lotus ruffled bowl with gold irid.....	70.00
A	GI	Bushel basket, round.....	110.00
CobBEI		Open Edge basket, small, ruffled.....	75.00
M	EI	Windflower plate, nice color & irid.....	100.00
B	EI	Windflower plate, super but has a chip on the backside of one flute.....	125.00
W	EI	Fanciful 3 in 1 edge bowl, very pretty.....	150.00
B	EI	Thin rib vase 10½".....	50.00
M	EI	Blackberry Wreath 9" bowl, 3 in 1 edge.....	70.00
M	EI	Imperial Grape 6" plate.....	30.00
PO	EI	Apple Blossom Twigs low bowl/ruff. plate, super color, smooth edge.....	175.00

Rick McDaniel, 3420 Morningstar Lane, Dallas, TX 75234  
Phone: (214) 243-4574 (L'allure Photographic) after 7 PM CST

M	EI	Honeycomb & Clever bon-bon.....	40.00
A	EI	Scales 6½" flat plate.....	70.00
M	EI	Canada Dry bottle.....	25.00
B	EI	Leaf Chain 8½" ruffled bowl.....	125.00
G	EI	N's Grape Leaves 9" 8 ruffled bowl.....	125.00
G	EI	Four Pillars 11" vase, Russet with pastel irid.....	95.00
M	EI	Canada Dry Bottle.....	27.00
M	EI	Water Lily & Cattails 6" plate whimsey, edge turned up.....	20.00
PO	EI	Folding Fan CRE compote.....	125.00
Cel	EI	Concave Diamonds tumbler.....	40.00

Craig & Brenda Kuckelburg, 517 North Jay St., Aberdeen, SD 57401  
Phone: (605) 226-1660

M		Pillar & Flute stemmed vase 6 1/8".....	30.00
M		Lotus Enameled pitcher, drape int.....	150.00
HA		Palm Beach sugar.....	125.00
HA		Palm Beach large berry, manufacturers roughness.....	125.00
HA		Palm Beach small berry.....	85.00
M		Etched Deco compote.....	30.00
M		Diamond Points vase 10½".....	50.00
M		Feather Stitch bowl 9" ICS.....	80.00
CLM		Smooth Panels vase 8¼".....	20.00
A		Footed Shell small.....	20.00

CARNIVAL GLASS FOR SALE

Richard Cinclair, 3605 South Echo Trail, Plano, TX 75023  
Phone: (214) 596-0014 RJC4470@DCCCD.EDU

R	EI	Fine Rib vase.....	550.00
AQ	EI	Stag & Holly ICS ball footed bowl.....	875.00
W	EI	Poppy Show plate, nice.....	725.00
W	EI	Fine Cut & Roses rose bowl.....	525.00
M	EI	Kittens Cereal bowl.....	200.00
A	EI	Hearts & Flowers PCE bowl.....	900.00
A	EI	Hearts & Flowers compote.....	500.00
IG	EI	Three Row Open Edge basket, ICS.....	325.00
G	EI	G & C Pin tray.....	350.00
B	EI	Kittens Four sides up.....	425.00

Adam Fikso, 3620 Glenview Rd., Glenview, IL 60025-2537  
Phone: (847) 729-7707

M	EI	Ripple, med. size funeral vase, flared, 4x17½.....	120.00
M	EI	Peacock at Urn, Goblet, 6x4¼, rare.....	70.00
M	EI	Wreath of Roses (Dugan), rose bowl.....	40.00
CLM		Waffle Block handled basket, excellent irid.....	80.00
B	EI	Leaf Chain 7½ plate.....	160.00
G	EI	Grape & Cable large plate (N).....	275.00
M	EI	Covered Hen on Nest (Sowerby).....	120.00

Rob Cooper, 31 Oak View Dr., Newark, DE 19702  
Phone: (302) 455-9225

M	EI	Lions ICS bowl.....	95.00
LAVEI		Peacock & Grape footed bowl, nice.....	100.00
AMBEI		Dragon & Lotus ICS bowl, excellent color & irid.....	195.00
P	EI	Wishbone footed ruffled bowl, beautiful irid.....	100.00
M	EI	Advertising, John H. Brand, open edge basket.....	55.00
G	EI	Fine Cut & Roses candy dish, good feet.....	65.00
M	EI	Persian Garden 6" flat plate, mint.....	110.00
M	EI	Apple Blossom Twigs low ruffled bowl.....	70.00
DM	EI	Good Luck PCE bowl, fabulous.....	285.00
B	EI	Birds & Cherries compote, beautiful.....	75.00

CARNIVAL GLASS FOR SALE

Fred or Julia Hemm, Box 103, Grandview Manito BA Canada  
Phone: (204) 546-2339 After 8 PM CST

G	Acorn Burrs tumbler	70.00
G	Singing Birds tumbler	115.00
M	Singing Birds tumbler	75.00
W	Dandelion tumbler	100.00
S	Fashion tumbler	75.00
P	Wreathed Cherries, a beauty tumbler	75.00
AMB	Grape & Cable tumbler	90.00
AMB	Floral & Grape tumbler	35.00
IB	Grape Arbor tumbler	175.00
B	Lattice & Grape tumbler w/M overlay, small rim chips	20.00

Geraldine L. (Gerry) Delan, 1923 Linden Ave., South Plainfield, NJ 07080  
Phone: (908) 754-2987 Call for For Sale list

AMB	Whirling Leaves bowl, super color & irid	200.00
AMB	Fleur De Lys bowl, 3/1 edge, super color & irid	600.00
B	Apple Blossom Twigs plate, pink/teal irid	300.00
B	Grape Delight rose bowl, a rare one	100.00
LAV	Grape & Cable var. bowl, a true pastel	250.00
PO	Four Flowers chop plate/soda gold ext.	375.00
EG	Diamond and Rib vase, electric irid	100.00
Saph	(N) Thim Rib vase	200.00
P	Hobnail Swirl rose bowl	300.00
M	Fisherman's mug, nice color, no silver	150.00

Gladys Hutchinson, Rt. 1 Box 259A, Stockton, MO 65785  
Phone: (417) 276-4119

B	Vintage 7" plate	160.00
A	Three Fruits, light color, var. 9" plate B	140.00
CLM	Orange Tree 9" plate, berry ext., great highlights	275.00
M	Waterlily, dark, 9½" bowl, nice	85.00
M	Stork and Rushes tumbler	35.00
B	Persian Medallion 8½" bowl	160.00
M	Peacock at Urn bowl 9"	170.00
PO	Flowers and Frames bowl 9", nice	160.00
B	Rambler Rose tumbler	45.00
M	Heavy Grape 12" bowl, punch?	145.00

CARNIVAL GLASS FOR SALE

Marlin L. Blosser, 4705B Charles Road, Mechanicsburg, PA 17055  
Phone: (717) 975-2920

P	EI	Many Fruits punch cups (7)	ea. 45.00
M	EI	Oriental Poppy tumblers (4)	ea. 45.00
A	EI	Stork & Rushes berry bowls (7)	ea. 30.00
B	EI	Cherries & Little Flowers tumblers (6)	ea. 25.00
B	EI	Dragon & Lotus 9" ruffled bowl	95.00
B	EI	Strawberry two handled bon-bon	70.00
M	EI	Daisy & Plume stemmed rose bowl	55.00
M	EI	Fashion rose bowl	85.00
M	EI	474 punch cups (6)	ea. 20.00
M	EI	Garland footed rose bowl	45.00

Donald L. Harris, 527 Lavina Drive, Mechanicsburg, PA 17055  
Phone: (717) 790-0412 Send .55 stamp for large list of For Sale glass

A	EI	Fanciful 9" ICS bowl	225.00
A	EI	Persian Medallion berry bowl, round	45.00
B	EI	Grape & Gothic Arches water pitcher	425.00
G	EI	Hanging Cherries powder jar lid (Mlrbg)	350.00
IB	EI	Fine Cut & Roses rose bowl, fancy int.	325.00
P	EI	Good Luck ruffled bowl, bright blue irid	285.00
IG	EI	Fan vase	65.00
M	EI	Grape & Cable powder jar with lid (N)	145.00
M	EI	Peacocks individual berry bowl (Mlrbg)	85.00
W	EI	Poppy Show 9" plate	550.00

Ted L. Sheibley, 53 Meadow Brook Court, New Cumberland, PA 17070  
Phone: (717) 770-0616 Layaways available

P	EI	Fruit & Flowers 7" ruffled bowl	95.00
P	EI	Grapevine Lattice 7" ruffled bowl	100.00
P	EI	Leaf Rays nappy ruffled	48.00
P	EI	Octagon tumblers (2)	ea. 150.00
P	EI	Acorn Burr sugar with lid	285.00
A	EI	Peacock Tail variant compote (Mlrbg)	125.00
W	EI	Grape & Cable individual IC	100.00
W	EI	Leaf Chain 9" ruffled bowl	135.00
IG	EI	Bushel basket, round (N)	325.00
P	EI	Flute breakfast creamer	75.00

CARNIVAL GLASS FOR SALE

Gerald M. Hess, 220 N. First St., Argos, IN 46501  
 Phone: (219) 892-6193

M	EI	Vintage fernery, feet are good	32.50
M	EI	Flute tumbler (N)	50.00
M	EI	Diamond & Sunburst footed wine	25.00
M	EI	Grape Goblet	35.00
SM	EI	Soda Gold tumbler, excellent	45.00
CLMEI		Scroll embossed 7" compote, has an exterior pattern	60.00
CLMEI		Frosted Block 5½" nut bowl	30.00
A	EI	Flute toothpick, nice but has small chip near the base	32.50
G	EI	Orange Tree small mug	750.00
A	EI	Maple Leaf jelly compote	40.00

Dave Ackerman, 4677 Kennebec Drive, Cass City, MI 48726  
 Phone: (517) 872-2023

M		Apple & Pear 9 3/4" bowl, ½" thick glass	90.00
A		Boutonairre compote Mlrbg	150.00
M		Flute toothpick holder, mint	65.00
M		Golden Harvest decanter & stopper	130.00
T		Imperial Grape 6" plate, very rare color	1,500.00
B		Not Cobalt, Rooster hat pin	90.00
G		Soft green Rooster hat pin	100.00
M		Hobstar band water pitcher pedestal footed dark	250.00
A		Peacock Tail varient compote, Mlrbg	125.00
M		Flute & Cane sherbet on under plate, nice & different	50.00

Harry Doiron, 290 Myrna Loy Dr., Beaumont, TX 77705  
 Phone: (409) 832-2628

A	GI	S-Repeat punch cup	100.00
A	EI	Flute toothpick	70.00
G	EI	Flute toothpick	75.00
M	EI	Hobnail soda gold spittoon	75.00
A	EI	Fishermans mug, nice	180.00
M	EI	Cosmos and Cane tall compote	300.00
M	EI	Jewell vase, 5½" tall	90.00

CARNIVAL GLASS FOR SALE

Evan Walker, 33 Ridge Rd., Malvern, PA 19355  
 Phone: (610) 647-4290

A	EI	Petal & Fan 6" CR plate, very nice	275.00
EB	EI	(N) G&C bon-bon, super	250.00
P	EI	Dugan Cherries 6" 8-low ruffled bowl, rich multi-colored irid	140.00
A	GI	Peacock at the Urn deep sauce (Mlrbg) pretty center, goldish cast	125.00
G	GI	(N) G&C bon-bon, nice satin finish	80.00
Lime	EI	(N) Memphis punch cup, rare and super	115.00
EB	EI	(N) G&C Banana Boat banded, super electric blue, small flake inside	400.00
G	GI	(N) G&C Banana Boat	275.00
PO	EI	Dugan Coin Spot compote, very pretty	50.00
A	EI	Dugan Six Petals ruffled bowl	100.00

Dick Wetherbee, 875 Stafford St., Rochdale, MA 01542  
 Phone: (508) 892-4420

M	EI	Estate 2 handled sugar beautiful dark color, cute	45.00
B	EI	Double Loop Chalice compote (N), gorgeous color	90.00
SM	EI	Acanthus 9" round bowl, super smokey irid	90.00
M	EI	Iris Buttermilk 6 3/4" Goblet, a real pretty one	80.00
PO	EI	Fan sauce boat, perfect feet, very nice	90.00
P	EI	Many Fruits punch bowl with ruffled base, gorgeous, mint	950.00
M	EI	Butterfly (N) 6" 2 handled bon-bon, great color	110.00
AMBEI		Lustre Rose 8" 3 footed bowl, beautiful amber color	95.00
P	EI	Wishbone 8½" 3 footed bowl, super color	125.00
M	EI	Smooth Rays 5½" stemmed spittoon compote, rare shape	75.00

Barbara Hobbs, 5501 101st Ave. N., Pinellas Park, FL 34666  
 Phone: (813) 541-6164 or (813) 545-4833 Machine Call/send for 500+ list of Sale Items

M	GI	2 Honey comb oil lamps	ea. 200.00
RB	EI	Good Luck ruffled bowl, stippled electric, Renninger Blue	3,000.00
M	EI	Star & File decanter/stopper, 4 wines (2 have base chips)	600.00
EB	EI	Fruits & Flowers stemmed, handled bon-bon	400.00
M	GI	Atomizer, 1" ball signed made in USA (Fenton)	35.00
AQ	EI	Acorns bowl	250.00
B	EI	Welch bell	50.00
R	EI	Stretch/Jewels rose bowl, 7" across wide part	275.00
M	EI	Waffle block 2 pc. punch bowl & 6 cups, scarce	400.00
A	EI	SM Panther non ruffled footed berry bowl, rare	600.00

CARNIVAL GLASS FOR SALE

Pamela McLean, 1701 White Mt. Hwy, #20, Tamworth, NH 03886  
Phone: (603) 323-7140

B	Holly ICS bowl, real nice color all over .....	95.00
M	Acorn Burrs tumbler, dark & pretty .....	55.00
G	Grape Imperial punch bowl with base .....	175.00
M	Butterfly & Berry butter with top, dark & colorful .....	105.00
P	Petal & Fan 6" CRE plate .....	125.00
PO	Jeweled Heart 6" CRE plate .....	125.00
M	Persian Medallion 6" plate .....	125.00
M	Persian Garden 6" plate .....	125.00
M	Singing Birds stippled mug, dark & colorful .....	125.00
G	Beaded Cable rose bowl .....	125.00

Maurice "Moe" Myers, 1701 White Mt. Hwy, #20, Tamworth, NH 03886  
Phone: (603) 323-7140

M	Inverted Feather Parfait, rare, perfect .....	65.00
P	Fruits and Flowers 7 pc. Berry set, super color, rare set .....	275.00
M	Broken Arches punch set 10 pc. ....	250.00
P	Peacock at the Fountain tumbler, super color .....	60.00
M	Hearts & Flowers 9" bowl, dark & pretty .....	405.00
PO	Fanciful 3 in 1 9" bowl, super example .....	250.00
P	Star of David 9" bowl, great color .....	175.00
W	Peacocks on the Fence 9" plate, lovely .....	400.00
IB	Nippon PCE bowl, rainbow colors .....	300.00
B	Fanciful 9" plate, not often seen .....	400.00

Douglas Snow, 2412 Ashford Blvd., Flushing, MI 48433  
Phone: (810) 732-8197

A	Lustre Flute hat .....	55.00
M	Grape & Cable powder jar, perfect .....	90.00
M	Cosmos Variet 10" ruffled bowl .....	45.00
G	Stippled Rays bon-bon .....	35.00
M	Blackberry Spray hat .....	35.00
G	Coin Dot 8" ruffled edge bowl .....	45.00
M	Blackberry open edge basket .....	40.00
M	Peacock Tail 6½" ruffled bowl .....	35.00
G	Grape & Cable hat ext. pattern small chip on base .....	35.00
A	Vintage Leaf 7" ruffled edge bowl .....	45.00

CARNIVAL GLASS FOR SALE

Debbie & Mike Heintz, 240 Mize Rd. North, Cullman, AL 35055  
Phone: (205) 739-0281 After 6 PM Central Postage & Insurance extra

M	Fenton Waterlily and Cattail tumblers (2) .....	ea. 25.00
M	Imperial Grape punch cups (2), internal bruise on one marie .....	ea. 25.00
M	Imperial Open Rose 9" ruffled bowl .....	40.00
M	Fenton Waterlily footed bowl 10" ruffled, beautiful rich color .....	155.00
B	NW Poppy Oval pickle dish stippled, sml flake/point, EB highlights ..	135.00
A	Fenton Vintage Fernery, straw marks/inside, hvy gold irid, 1 rough ft.	65.00
M	Imperial Grape bowl 6½" .....	35.00
P	Acorn Burr sugar/creamer, sugar crckd no lid, creamer no harm flick	125.00
M	NW G&C powder jar bottom, sml flakes/bottom, open bubble/bottom	15.00
EB	NW Good Luck ruffled bowl, 1 point missing beautiful .....	250.00

Joe & Winelle Orr, 2224 Burlingate Dr., Cordova, TN 38018  
Phone: (901) 373-4504 Call or write for list

B	Parkersburg Elk plate .....	1,700.00
B	Orange Tree Loving Cup, electric .....	435.00
B	Good Luck PCE bowl .....	425.00
A	Isaac Benesch bowl .....	450.00
P	Hearts & Flowers compote .....	450.00
M	Peacocks Rib bowl .....	275.00
G	Mlrgbg Peacock large ruffled bowl, radium .....	500.00
M	Many Stars 3/1 bowl .....	445.00
M	Hearts & Flowers bowl .....	375.00
AO	3 Fruits Medallion footed stippled bowl .....	625.00

Ann Silverman, 10 Cannon Forge Drive, Foxboro, MA 02035  
Phone: (508) 543-8696 Call after 6 PM EST or leave message

M	EI	Lattice & Daisy tumbler .....	25.00
M	EI	Peacock at Fountain tumbler .....	45.00
B	EI	Cherries, ground enamelled tumbler .....	45.00
G	EI	Daisy & Plume compote .....	65.00
M	EI	Drapery vase, tiny flake on one toe .....	75.00
G	EI	Leaf and Beads (N) rose bowl .....	100.00
G	EI	Fine Rib vase, 9" flake on side near base .....	45.00
		Woman's Day magazines 1965 carnival issue, never been opened .....	12.00

CARNIVAL GLASS FOR SALE

Lee & Phyllis Bryant, 11645 NW Winchester Road, Decatur, IN 46733  
 Phone: (219) 639-3415 Send SASE for list 100+ pc. For Sale

P	Flute (Imperial) 7 pc. Berry set slite elect.....	200.00
PO	Star Fish ruffled 6½" compote dark peach.....	125.00
PO	Question Marks bon-bon good peach.....	75.00
M	Miller Furniture Open Edge 2 row basket.....	55.00
P	Imperial Grape water carafe nice.....	175.00
A	Heron Mug, nice mug.....	175.00
A	Leaf Swirl compote rust irid., with soft blue.....	55.00
G	Persian Medallion bon-bon square nice.....	100.00
A	Diamond Lace 5" ruffled saucers, 2 pc. both.....	50.00
A	G&C 10" ruffled bowl BW nice.....	95.00

John D. Resnik, 235 Walnut St., Statesville, NC 872-7075  
 Phone: (704) 872-7075 Large double stamped SASE for 600 pc. list

M	EI	Acanthus 10" chop plate, radium.....	175.00
M	GI	Crackle car vase with bracket.....	75.00
M	EI	Fenton Flowers nut bowl.....	65.00
M	EI	Floral & Grape JIP hatshape.....	75.00
M	EI	Heavy Grape chop plate.....	195.00
M	EI	Hobnail Swirl 9½" vase.....	225.00
M	EI	Imperial Grape ruffled plate 9".....	35.00
M	EI	Kitten Toothpick holder, very dark.....	250.00
M	EI	Orange Tree butter dish.....	350.00
M	EI	Poppy Show plate.....	1,450.00

Harry Daniels, 1405 Wood Ave., Apt 197, Roselle, NJ 07203  
 Phone: (908) 245-3116

P	EI	Northwood G&C plate, plain back.....	170.00
M	EI	Persian Medallion 6" plate, super color.....	35.00
VAS	EI	Blackberry Spray ruffled hat, super frosty butterscotch.....	85.00
A	GI	Lotus & Grape bon bon.....	120.00
B	GI	Waterlily ruffled sauce.....	70.00
VAS	EI	Holly ruffled compote.....	65.00
M	EI	Feathered Serpent tri-cornered sauce, great dark color.....	70.00
M	EI	Orange Tree mug.....	15.00
VAS	EI	Florentiine candlesticks 8 3/4", super & perfect.....	125.00
B	LI	Illusion bon bon, 2 small nicks in pattern.....	40.00

CARNIVAL GLASS FOR SALE

Samuel A. Swierc, 520 East Ave., Dover, DE 19901  
 Phone: (302) 736-6635

M	EI	3 Fruits, stippled bowl.....	150.00
B	EI	Blueberry tumblers (6).....	400.00
G	EI	Diamond tumblers (4).....	160.00
M	EI	Blackberry 6" bowl, Millersburg.....	60.00
G	EI	3 Fruits ruffled bowl, PCE, basketweav ext.....	175.00
P	EI	Heavy Grape, 8" plate.....	150.00
B	EI	Bushel Basket round.....	150.00
G	EI	Tornado vase.....	400.00
A	EI	Springtime butter bottom.....	50.00
M	EI	Holly, Nappy, Isaac Benesch adv.....	100.00

Sue Boeke, 3225 Kingman Blvd., Des Moines, IA 50311  
 Phone: (515) 279-7560

M	EI	Thin Rib & Drape english mini 5" vase.....	120.00
M	GI	Double Stem Rose Dugan dome base bowl.....	60.00
PO	EI	Single Flower framed Dugan flat ruffled 7 3/4" bowl.....	115.00
M	EI	Orange Tree Fenton 3½" mug.....	75.00
M	EI	Fashion Imperial tumbler.....	10.00
M	EI	Stork & Rushes Dugan tumbler.....	20.00
M	EI	Grape Imperial center handle tray.....	40.00
SM	EI	Ripple Imperial 12½" vase marked.....	100.00
PM	LI	Wide Panel Imperial 10½" vase marked.....	20.00
A	GI	#270 Westmoreland compote scrated inside & tiny chip on base.....	15.00

Corul D. Pate, 1354 Cardinal, Nashville, TN 37216  
 Phone: (615) 228-1710

M		Deep Grape compote, Millersburg.....	2,000.00
---	--	--------------------------------------	----------

CARNIVAL GLASS WANTED

Dave Deem, 1746 N. California St., Burbank, CA 91505  
Phone: (818) 845-4530

B PCE Strawberry bowls  
G PCE/ruffled stippled Strawberry bowl  
B PCE 3 Fruits bowl  
P Open Rose 9" plate  
P/G Strawberry 9" plate stippled  
Any Stippled Grape & Cable bowls  
A/O 3 Fruits stippled bowl  
Any Stippled Strawberry plates  
B Leaf Chain 9" plate  
M Lions plate

Leon L. Travis, 9 Lindenwood Ct., Sterling, VA 20165-5646  
Phone: (703) 430-7413

M EI Top to beaded Shell sugar  
DM EI Hobstar spooner, must be dark and even  
P EI Top to Hobstar Butter

Ron & Carolyn Chesney, 1408 Myary Ln, Knoxville, TN 37919  
Phone: (423) 691-0043

W Ten Mums water set  
Any Ten Mums plates  
M Ten Mums bowls  
B Wreath of Roses punch base  
M Orange Tree punch base

Isabell Aldridge, 6407 Rushmore Drive, Sacramento, CA 95842  
Phone: (916) 331-4290

RA HOACGA Hatpin Holder

Craig & Brenda Kuckelburg, 517 North Jay St., Aberdeen, SD 57401  
Phone: (605) 226-1660

P Stippled rays stemmed creamers (AMB/P/R/SM/VAS)  
Stippled rays stemmed sugar

CARNIVAL GLASS WANTED

Carl O. Burns, Star Rt Box 11, Rumford Ctr., ME 04278  
Phone: (207) 392-3044

M/G/SM Hobstar Flower compotes  
M Imperial Grape punch base only  
M Memphis punch bowl only  
AMB/SM Pansy bowls  
P/G Fashion Breakfast creamer & sugar  
B Orange Tree butter base only  
G Grape & Gothic Arches butter base only  
A Millersburg Hanging Cherries sugar base only  
Any Imperial pieces in P/G/B/W/R/AMB/SM/T

Kent L. Thompson, 5548 N. St. Clair St., Wichita, KS 67204-1839  
Phone: (316) 838-0923

Imperial original Pillar and Flute footed open sugar bowl with  
Iron Cross mark, pale marigold. Please write stating condition and price  
including packaging, shipping, and insurance.

Rob Cooper, 31 Oak View Dr., Newark, DE 19702  
Phone: (302) 455-9225

M Singing Birds, master berry bowl  
Any Fine Cut & Rose rose bowls  
Any Birds & Cherries bowls and bon-bons  
G Horse Medallion footed bowl

Maurice "Moe" Myers, 1701 White Mt. Hwy, #20, Tamworth, NH 03886  
Phone: (603) 323-7140

T Base for Waffle Block punch bowl  
M Base for Royalty punch bowl  
PM Shades for (N) G&C candlesticks  
P Shades for (N) G&C candlestick  
M Top for Maple Leaf butter  
IG Cover for G&C powder jar  
M Decanter for Grape Imperial stopper, or will sell/trade for parts

## CARNIVAL GLASS WANTED

---

Marlin L. Blosser, 4705B Charles Road, Mechanicsburg, PA 17055  
Phone: (717) 975-2920

G Flute punch bowl top  
G Hobstar sugar lid  
M Long Hobstar punch base  
G Shell & Jewell lids (need 2)  
M Diamond Point Columns butter lid  
Any Peacock at Fountain punch cups  
M 474 punch bowl top  
M Grape & Cable cracker jar bottom  
M Grape & Cable powder jar lid  
G Little Stars bowl, round

---

Donald L. Harris, 527 Lavina Drive, Mechanicsburg, PA 17055  
Phone: (717) 790-0412 or will sell any of the below parts

P Wishbone epergne lily  
A Orange Peel punch bowl top  
Any Ragged Robin bowls  
B Hen on Nest with Chicks lid  
W Orange Tree punch base  
IB Wishbone epergne base  
M Grape & Cable humidor lid (plain or stippled)  
M Grape & Cable sugar bottom  
M Maple Leaf butter lid  
AO Drapery rose bowl, (or M)

---

Ted L. Sheibley, 53 Meadow Brook Court, New Cumberland, PA 17070  
Phone: (717) 770-0616 or will sell any of the below parts

M Wreathed Cherry butter bottom  
Any Persian Garden fruit bowl or base  
P 474 punch bowl top & cups  
Any Grape & Cable powder jar lids (need M/HOR/G/P)  
Any Tornado vases  
P Vintage powder jar lid  
W Grape & Cable punch bowl  
P Grape & Cable banquet size punch bowl  
M/G Memphis fruit bowl  
G Inverted Strawberry powder jar lid

## CARNIVAL GLASS WANTED

---

Mike Carwile, 213 Cheyenne Dr., Lynchburg, VA 24502  
Phone: (804) 237-4247 before 10:30 PM EST

Leaf Ray ruffled nappies with or without Daisy May exterior  
Ripple vases 7" & under  
Fenton Fins Rib vases, iridized or not  
Acorn bowls, odd colors & any plates

---

Virgil Lemos, 33 Dawn, DDO, Quebec, Canada H9B-3Y7  
Phone: (514) 683-9543

G EI G & C punch bowl small  
A EI G & C cologne bottle with stopper, damage OK  
W EI Peach, butter dish  
B EI Grape & Gothic Arches, butter dish  
M EI Side Lily wide panel epergne (2)  
A EI Peacock at Fountain punch cups (3)

---

Greg & Rene Cline, 1354 W. Webb Rd., Dewitt, MI 48820  
Phone: (517) 669-5895 after 6 PM or leave message

B Floral & Grape tumblers need 5  
A Hanging Cherries butter complete  
A Hanging Cherries sugar bottom only or will take complete  
A Feathered Serpent 5" sauces  
B Butterfly & Berry covered sugar

---

Diana Comer, 68695 US 12, Edwardsburg, MI 49112  
Phone: (616) 663-2202

W HOACGA Souvenir corn vase

---

Patricia Atwater, 55 Fifth Ave., Kitchener, ON Canada N2C 1P5  
Phone: (519) 893-3549

M GI Maple Leaf sugar lid only

CARNIVAL GLASS WANTED

Donald Royer, 602 Cedar Drive, Willard, OH 44890  
Phone: (419) 935-4013

- A Many Fruits punch bowl & base
- B Butterfly & Berry small berry bowls (4)
- B Butterfly & Berry pitcher
- B Butterfly & Berry covered butter dish
- G Butterfly & Berry small berry dish (1)
- G Grape & Cable small berry bowls (3)
- A Singing Bird tumblers (2)

Harry Daniels, 1405 Wood Ave., Apt 197, Roselle, NJ 07203  
Phone: (908) 245-3116

- M Acorn Burrs punch cups (6 or 8), good color, no damage

**CARNIVAL GLASS AUCTION**

Saturday, July 6 - 9:35 AM

Ramada Inn - Columbia, MO. Exit 127 off I-70 Phone: 573-449-0051. For Reichel Auction Rate \$54.00 Phone 816-849-2430 for program or write P.O. Box 236, Jamestown, MO 65046 To Lloyd Reichel Auctioneer Approximately 350 lots Several rare Red and PO as other pcs. Something for everyone.

**Wedding Anniversaries**

Waymon & Nilah Espy  
42 Years June 20th  
4311 Susan Curve  
Box 208 Cortland, IL 60112

Cliff & Jo Ann Ball  
40 Years June 4th  
572 W. Park St.  
Olathe, KS 66061

John & Lucile Britt  
58 Years June 22nd  
3048 Tamarak Drive  
Manhattan, KS 66502

John & Jeanette Rogers  
40 Years June 3rd  
R #1 Box 89  
Kittrell, NC 27544

Harry & Christina Sherman  
47 Years July 3rd  
PO Box 396  
Atlanta, IL 61723

**COOPER-ALBRECHT -- AUCTION RESULTS**

April 12 & 13, 1996

- 90- 1. Grape & Cable 8" Ruf. Bowl- G- Sg.NW (Super Red Ir.)
- 50- 2. Peacock & Gr. 9" Ruf. Bowl- G- F (Great Ir.)
- 80- 3. Open Edge Adv. 'Brand Furniture' Hat w/ 2 Sides Up- Mrg- F.
- 80- 4. Knotted Bead 10" Vase- Cobalt- F (Nice).
- 200- 5. Heavy Grape Master Berry- P-I(Fantastic E.I.)
- 95- 6. Hen on Nest- M- Eng (Scarce w/ Nice Ir.)
- 75- 7. Windmill Milk Pitcher- M- I.
- 120- 8. Vintage Compote- G- F.
- 60- 9. Stippled Rays Card Tray- G- F (Nice Ir.)
- 60- 10. Butterfly Bon Bon- A- Sg.NW
- 50- 10A. Butterfly Bon Bon- M- Sg.NW (Super, has mfg. separation)
- 90- 11. Fruits & Flowers 7" Ruf. Bowl- A- N.W.
- 45- 12. Diamond & Rib 11" Vase- A- F.
- 30- 13. Grape & Cable Tumbler- P- Sg.NW (Outstanding Ir.)
- 75- 14. Holly & Berry 7" Nut Dish- PO- Du.
- 55- 15. Holly & Berry Gravy Boat- PO- Du (Nice)
- 90- 16. Mary Ann Vase- M- Du.
- 200- 17. Windmill Master Berry Bowl- P- I (Outstanding E.B. Ir.)
- 80- 18. Grape & Cable Bon Bon- G- Sg.NW.
- 145- 19. Flute & Cane Milk Pitcher- Deep M- I.
- 85- 20. April Showers 14" Vase- Cobalt- F.
- 70- 21. Singing Birds Mug- A- Sg.NW (Pretty)
- 40- 22. Singing Birds Mug- M- Sg.NW (Nice)
- 40- 23. Orange Tree Sm. Mug- Cobalt- F.
- 25- 24. Orange Tree Shaving Mug- M- F.
- 65- 25. Stork & Rushes Mug- A- Du (Silvery)
- 40- 26. Robin Mug- M- Im (Nice)
- 70- 27/27A. Fisherman's Mugs- P-Du (Slvry- Choice)
- 80- 28. Fisherman's Mug- M- Du (Rare w/ Nice Detail)
- 40- 29. Beaded Shell Mug- M- Du (Scarce w/ Nice Color, sm. base burst bubble)
- 300-30. 2-ROW O.E. JIP HAT - Super Red- F (Scarce)
- 125-31. 2-Row O.E. JIP Hat- Aq- F.
- 60-32. Grape & Cable 9" Ball Fid. Bowl- Vas/G- F (Super Glow)
- 100-33. Lotus & Grape 6" Ruf./Fid. Bowl- Vas- F (Super Color & Glow)
- 160-34. Hexagon Shape Pr. of 8 1/2" Candlesticks- Irid. Vas (Super Glow)
- 90-35. Pastel Swan Master Salt- Vas.
- 175-36. Holly 9" Ruf. Bowl- Vas- F (Very Pretty)
- 200-37. Brocaded Palms Cov. Candy- G/Vas- Fostoria (Glow)
- 45-38. Brocaded Daffodils 6" Handled Bowl- G/Vas- Fostoria
- 50-39. Brocaded Daffodils 7" Handled Plate- G/Vas.
- 45-39A. Brocaded Daffodils 7" Card Tray w/ 2 Sides Up- G/Vas.
- 90- 40. Dugan Freeform 4 1/2" Vase- Pinched w/ 2 Sides Up- Vas.
- 45-41. Brocaded Daisy? Bon Bon- W/Vas (Delicate Glow)
- 350-42. Butterfly & Tulip 11" Sq. Bowl w/ 2 Sides Up- M/Vas (Scarce w/ Glow)
- 115-43. Prayer Rug 7 1/2" Plate- Irid. Custard (Rare w/ Very Weak Irid.)
- 100-44. Louisa Rosebowl- Helios/Vas- WM (Unusual w/ Strong Glow)
- 80- 44A. Louisa Rosebowl- Lemon Yel/Amb (Rare Color w/ Nice Radium Ir.)
- 80- 45. Diamond Pt. Columns 7" Vase- Vas w/ M Overlay (Super Glow)
- 110-45A. Wide Panels 11 1/2" Vase- Vas/IG- F (Glow)
- 450-46. Cov. Frog Candy Dish- Irid. Vas/G- ~~Heavy~~ (Glow)
- 50- 47. Heart Band Creamer- Vas/Teal G- McKee (Scarce but has a couple sm. base nicks)
- 55-47A. Heart Band Creamer- M- McKee (Scarce, Etched 'Annie 1909')
- 150- 48. Acanthus 10 1/2" Chop Plate Vas/M- I (Glow)
- 145-49. Orange Tree 5 Pc. Berry Set- W/Vas w/ Soft Glow- F(Nice Set, has usual rghns on some fi)
- 225-50. Stippled Rays/Scale Band 6" Ruf. Bowl- Red/Amberina- F (Scarce, has silvery irid.)
- 70- 51. Stag & Holly 8" Spat. Fid. Ruf. Bowl- M- F (Nice Col. & Detail). Tiny mfg. sep. on edge
- 50- 52. Persian Med. 9" Ruf. Bowl- A- F (Very Nice Ir.)
- 170- 52A. Persian Med. 10" Bowl w/ 3-in-1- A- F (Super Col. & Ir.)
- 60- 53. Wide Panel Cov. Compote- Celeste B
- 100- 53A. Wide Panel Cov. Compote- P.
- 175- 54. Three Fruits 9" Plate w/ Bsktwv. Ext.- Sg.NW (Good Irid. & slight wear on fruit)
- 200- 54A. Strawberry w/ Bsktwv. 9" Plate- A- Sg.NW (Very Pretty)
- 95- 55. Grape & Cable Cov. Sugar- P- Sg.NW (Slight Wear on Lid)
- 160- 56. Question Marks w/ Georgia Peach Ext. 7" Stemmed Cake Plate- W- Du (Rare Beauty)
- 180- 57. Iris Compote- Cobalt- F (Outstdng Col. & Ir.)
- 70- 58. Cosmos 6" IC Dish/Plate- G- Mb.
- 55- 58A. Open Rose 9" Plate- G- I(silvery & weak ir.)
- Rtn- 59. Peacock & Grape 9" Ruf. Bowl- M- F (Pretty)
- 150- 60. Wishbone 8" Ruf. Ball Fid. Bowl- G- Sg.NW
- 110- 61. Wishbone 9" Ruf. Ball Fid. Bowl- A- Sg.NW
- 200- 62. Holly Sprig 6" Tri-Corner Bowl- G w/ Rad. Ir.- Mb (Scarce)



- 70-63. Brocaded Rose Garden 10" Banana Shaped Handled Bowl- Pink- Fostoria.  
100-64. Colonial Pr. 8 1/2" Candlesticks- M- I (Nice).  
275-65. JIP 6 1/2" Vase- P- NW (Very Elegant, Nice Ir.).  
 (Note: Normal Mfg. Grind Chips on All Hatpins are Not Listed on Catalog)  
170-65A. Sunflower Hatpin- Ir. White Opaque w/ Gold Enam (Scarce- Not Listed).  
50-65B. Hatpin- Ir. White Opaq. w/ Rhinest. Square Dome Shaped. (Scarce- Not Listed).  
100-65C. Egyptian Butterfly Hatpin- Drk. w/ Nice Ir.  
65-65D. Veiling & Beads Hatpin- Dark.  
70-65E. Faceted Spear Hatpin- Dark (2 1/2" x 1" w Flat, Not Listed).  
50-65F. Triad Hatpin- Drk. w/ Nice Ir.  
10-65G. Glass Beads, Pearls & Rhinest. Hatpin (Short).  
180-66. Enam. Red Cherries & Blossoms- Cannon Ball Water Pitcher- B- F (Very Pretty).  
2x20-66A. Enam. Cherries (3) Tumblers- B- F (3 x 5).  
725-67. PEACOCKS W/ RIB BACK 9" Ruf. Bowl- Aq.O- NW (Super Pastel w/ Nice Pastel Ir., Scarce) Sm. ground spot between 2 points  
95-68. 'Terry Crider, Sgnd.' Dated 1976- Maple Leaf Water Pitcher- W (Nice & Frosty).  
75-69. 'Terry Crider, Sgnd.' 8" OE Bsktww. Plate- PO (Flat & Very Pretty).  
175-70. Persian Med. Rose Bowl- A- F  
95-71. Pony 9" Ruf. Bowl- P- Du (Outstnd Detail Ir.)  
75-72. Pony 9" Ruf. Bowl- M- Du (Also Very Nice)  
130-73. Horse Head Med. Rose Bowl- M- F  
325-74. LEAF & BEADS ROSE BOWL- Aq.O- Sg.NW (Scarce & Pretty Pastel)  
Rtn 75. Leaf & Beads w/ Ray Int. Rose Bowl- A- N W  
120-76. Leaf & Beads w/ Ray Int. Rose Bowl- G- N W (Very Nice).  
65-76A. Smooth Panels Lg. Rosebowl- Pastel M- Im (Scarce in Carl Burns Book).  
135-77. Drapery 8" Vase- G- Sg.NW (Super Ir., has tiny tick on foot)  
75-78. Four Pillars 9" Vase- Aq- Du (Nice Ir., sm tick on foot)  
50-79. Fine Rib 13" Vase- Emer G- F (Ir weak at top)  
80-80. Fine Rib 16" Vase- Cobalt- F (Very Nice)  
50-81. Wide Panel 16" Mid-Size Vase- G- Sg.NW (Top 2" Ir.)  
100-82. Wreathed Cherry Master Berry- A- Du (Nice)  
115-83. Lustre Rose 4 Pc. Table Set- M- I (Pretty Set)  
65-84. Daisy Block Row Boat- M- Sowerby  
210-85. Vintage Sm. Epergne- Cobalt- F (Usual slit rhgns on lily base)  
45-86. Premium Pr. Candlesticks- M- I  
160-87. Blackberry Wreath 8" IC Bowl- A- Mb (Rare

- Size- Nice w/ Satin Irid.  
85-88. Butterfly & Berry 7 Pc. Berry Set- M- F (Nicely Matched).  
250-89. Grape & Cable Water Pitcher w/ 1 Tumbler- P- Sg.NW (Very Pretty, has tiny nick on side flute at base).  
130-90. Peac. at Urn Compote- Smokey Bl- F (Pretty).  
45-91. Peacock at Urn Compote- M- F (Nice Ir.).  
50-91A. Peacock at Urn Goblet- M- F (Rare).  
50-92. Question Marks Bon Bon- A- Du.  
50-93. Question Marks Bon Bon- PO- Du (Nice Col.).  
40-94. Fern Compt.- A- Sg.NW (some wear on ferns).  
95-95. Star Fish Compote- PO- Du.  
30-96. Petals Compote- G- N W.  
50-97. Scotch Thistle Compote- M- F.  
30-98. Blackberry Bramble Compote- A- F  
105-99. Streaming Hearts Compote- M- F (Underrated Pattern).  
130-100. Grape & Cable Cup & Saucer- A- Sg.NW (Unique/Diff. w/ Saucer a Handgrip Plate) <sup>sm. chip on plate</sup>  
175-101. Grape & Cable Sweetmeat- A- Sg.NW (Very Desirable, has sm. tick on lid & base).  
125-102. Grape & Cable Cologne Bottle- M- Sg.NW (Very Pretty & No Damage).  
130-103. Flute 7 Pc. Berry Set- P Smk Lav - I (tiny chigger on 1 base point)  
90-103A. Flute 9 Pc. Berry Set- M- Sg.NW <sup>1 has minor chip</sup>  
235-104. 10 Mums 10" Ruf Bowl- B- F (Outst Multi-Color Irid.)  
55-105. Persian Med. Card Tray- G- F (Nice)  
75-106. Persian Med. Card Tray- M- F (Very Flat & Outstanding Ir.).  
95-107. Persian Med. Compote- M- F (Super Ir.)  
95-108. Grape & Cable 9" Spat Ftd Plate- G- F  
50-109. Heavy Grape 8" Plate- G- I  
250-110. Peach & Pears Brides Basket in Silver Plate Bracket- A- Du  
1,950-110A. Three Fruits/Rib Ext. Stip 9" Plate- Aq.O- NW (Heavy Opal w/ Pastel Ir - A Beauty) <sup>EP... PT.</sup>  
200-111. Four Flowers, Vt. 10 1/2" Ruf Bowl- Black A w/ Blue Ir. - Scandinavian.  
170-112. Dahlia 6 Pc. Berry Set- M- Du.  
135-113. Smooth Panels 7" Vase- Smokey Bl- I (Unusual Shape & Color)  
40-114. Smooth Panels 5" Vase- W- I  
20-115. Wide Panel Compote- Smk- I  
800-115A. Good Luck 9" Ruf. Bowl- Aq.O- NW (Pastel Ir., has tiny edge crack & chip on tip of horseshoe)  
75-116. Dugan Free Form 4" Girdled Vase- Celeste Bl W/ Mica Ribs

- 85-116A. Dugan Free Form 4" Girdled Vase- G w/ Mica Ribs.  
80-116B. Dugan Free Form 6" Graniteware Pinched Vase- B w/ Mica.  
100-117. Big Bsktww. 10" Vase- Cobalt- Du (Super Rad. Ir.).  
65-118. Big Bsktww. 10" Vase- M- Du (Outstanding).  
Rtn. 119. Parlor Panels 11 1/2" Vase- P- I (Outstanding Rad. Ir.).  
35-120. Ron Hansen, Pontel Sgn. Only- Blinks Blank- Pinched Mini Dbl. Vase- A.  
40-120A. Ron Hansen, Pontel Sgn. Only- Blinks Blank- Red Melon Ribbed Toothpick.  
45-120B. Ron Hansen, Pontel Sgn. Only- Blinks Blank- Teal Girdled Toothpick.  
45-120C. Ron Hansen, Pontel Sgn. Only- Blinks Blank- Amber Girdled Squat Toothpick.  
40-120D. Ron Hansen, Pontel Sgn. Only- Blinks Blank- Gm. w/ P. Ir.- Straight Side Toothp.  
65-120E. Ron Hansen, Pontel Sgn. Only- Blinks Blank- Red w/ Crackle Effect- Ruf. Toothp.  
85-120F. Ron Hansen, Heart Shaped Cov. Pin Dish- A. (Not Sgnd.).  
20-120G. Ron Hansen, Pontel. Sgn. Only- Blinks Blank- Red Ruf. Toothpick.  
55-120H. Ron Hansen, Pontel Sgn. Only- Blinks Blank- A. Toothpick.  
60-121. Colonial 2 Hndl. Toothpick- Red- I (Not Ir. But Very Pretty & Rare).  
70-122. Flute Toothpick- Lav- I (Rare in this Color).  
250-123. Kittens 4-Ruf. Toothpick- M- F (Scarce w/ Only 2 Sets of Kittens).  
95-124. Kittens Cup- M- F (Scarce w/ Nice Detail).  
40-125. Perfume w. Atomizer- M- Holm Spray (Ribbed w/ Graduated Pearl Effect).  
50-126 & 126A. Crabclaw Tumblers- Deep M- I (Rare & Beautiful - Choice Out).  
75-127. Stork & Rushes Tumbler- B- Du (Pretty).  
70-128. Jeweled Heart Tumbler- M- Du (Rare w/ Super Color).  
70-129. Orange Tree Ftd. Tumbler- B- F.  
55-130. Diamond & Daisy Cut Tumbler- M- US Glass (Rare)  
55-131. Grape Arbor Tumbler- M- Sg.NW (Great Ir.).  
20-132. Enam. Iris w/ Prism Band Tumbler- M- F  
20-133. Enam. Cherries Tumbler- B- F.  
35-133A. Enam. Cherries Tumbler- M- F  
37-134. Peacock at the Fountain Tumbler- M- NW (Very Pretty)  
70-135. Paneled Dandelion Tumbler- A- F  
15-135A. Flute Tumbler- Flashed Lav w/ Light Ir (slight rhgns at base)

- 2x15-135B & C. Exterior Swirl Lg. Tumblers- Deep M- Sgnd. ? (Can't make it out).  
90-136. Ski Star 11" Ruf. Bowl- PO- Du (Pretty & Underrated).  
45-137. Persian Med. 6" Plate- M- F.  
155-137A. My Lady Powder Jar w/ Lid- M  
90-138. Grape & Cable 9" Ruf. Bowl- P- Sg.NW (Super Color w/ Stretch Effect).  
45-139. Pastel Swan Master Salt- Cel.B (Scarce Col.)  
350-140. Whirling Leaves 9" Bowl w/ 3-in-1 Edg.- A- Mb (Super/Scarce Shape w/ Radium Ir.).  
825-141. FRUIT SALAD PUNCH BOWL w/ Base- PO- WM (Rare w/ Good Color).  
260-142. FRUIT SALAD PUNCH BOWL w/ Base- M- WM (Rare, Very Pretty w/ Pastel Ir.).  
6x20-142A. Fruit Salad (6) Cups- M (Rare, 6 x S).  
175-143. Fruit Salad Punch Bowl on Flute Base- A.  
25-143A. Fruit Salad (6) Cups- A (1 w/ Rhgns.- Selling All on).  
6x5-144. Fashion (6) Punch Cups- M- I (6 x S) <sup>appear to have braises</sup>  
5-145. Wreath of Roses w/ Persian Med. Int - Punch Cup- M- F  
75-146. Broken Arches w/ Ray Int. (8) Punch Cups- P- I (All On, weak ir.).  
5-147. Broken Arches Punch Cup- M- I.  
50-148. Fashion Punch Cup- Smk. on Pale B Glass- I  
4x20-148A. S-Repeat (4) P Cups- Am- Du (Rare, 4xS)  
20-148B. Hobstar & Feather Punch Cup- G- Mb <sup>slight roughness on rim</sup>  
50-149. April Showers 11" Vase- Cobalt- F  
40-150. Rustic 10" Vase- Cobalt- F  
40-151. Pulled Loop 12" Vase- PO- Du (Mfg. rhgns on base).  
45-152. Wide Rib 7" JIP Vase- M- Du.  
60-153. Wide Rib 8" Vase- M- Du.  
50-154. Morning Glory 10" Vase- M.  
55-155. Hex Base Pr. of Candlesticks- M.  
50-156. Premium w/ Swirled Base Candlestick - Smk- I (Pretty Ir.)  
60-157. Finecut & Roses Nut Dish- A- Sg.NW (Pinhead on Toe)  
65-158. Wild Rose w/ Rays Int. Nut Dish- A- Sg.NW (Very Pretty).  
100-159. Vintage Fernery- G- F (Outstanding Multi- Col. Rad Ir.)  
50-160. Vintage Sm. Fernery- Cobalt- F (Outst. Multi- Color Rad Ir.)  
10-161. Scales 7" Plate- A- WM (Some Ir. Wear)  
100-162. ABC Stork Plate- M- I  
55-163. Coin <sup>Spot</sup> 9" Plate- A- WM  
45-164. Stippled Rays 9" Ruf. Bowl- A- Sg.NW (Bronze Ir.)  
25-165. Heavy Grape Master Berry w/ 2 Sauces- M

## SATURDAY SESSION

- 75-166. Orange Tree 9" IC Bowl- Cobalt- F (Avg. Ir.)  
 65-167. Dragon & Lotus 8" Spat. Ftd. Bowl- M- F.  
 60-168. Panther 5" Ftd. Ruf. Sauce- M- F.  
 25-169. Blackbry Bramble Compote-G-F(Very Open).  
 25-170. Blackberry Bramble Compote- A- F (Silvery).  
 25-171. Wreath of Roses Compote- M- F.  
 20-172. Hobstar Whirl Compote- M- I.  
 45-173. Propeller Compote- G- I.  
 50-174. Propeller Compote- M- I.  
 150-175. Imp. Grape Compote- Unusual Olive Gr. (w/ Striking Radium Ir.).  
 20-176. Coin Dot/Pearly Dot Rose Bowl- A- F (sm. base chigger).  
 50-177. Welch, Sgnd. "H.W.P.N.R." Paperweight- Ir. Cobalt.  
 20-178. God & Home Mug- ACGA Conv. Souv. 1968- Aqua/Teal.  
 2x 20-179. God & Home (2) Contemp. Tumblers- P- Sgnd. Wright (2 x S).  
 45-180. Vogel/Summit. Sgnd. Dbl. Elephant Toothpick- Red/Amberina.  
 60-181. Joe St. Clair, Sgnd. Santa Claus Tthpick-Red.  
 25-182. Swan Mug- Red- Contemp.  
 50-183. S-Repeat Contemp. Tthpick- Cobalt- St. Clair?  
 22.50-184. S-Repeat Contemp. Toothpick- Wht- St. Clair? (1/4" Heat Check at Top)  
 20-185. I.G. Sgnd.- Octagon Toothpick- Smk  
 65-186. I.G. Sgnd - Loganberry Vase- Smk  
 150-186A. Poppy Show Vase- Made by Fenton for Singleton Bailey, Sgnd., Only 145 Made from Orig. Imp. Mold. Elec. Ir. On Black Glass  
 85-187. Turkey Cov. Candy Dish- Red/Amb- Poss Smith Glass.  
 35-188. Fenton Bird Paperweight- Irid. Red.  
 40-189. St. Clair Indian Head Toothpick- W  
 15-190. Fenton, Sgnd. Diamond Rib- 5" JIP Vase- Red- ICGA '94 Conv.  
 50-191. 3-in-1 Toothpick- G- Contemp Imp  
 20-192. Contemp Ruf. Ir. Toothpick- Drk. Glass.  
 140-193. Wright, Sgnd. Stork & Rushes- 7 Pc. Water Set- P (Nice Matching Set).  
 75-194. Wright, Sgnd. Stork & Rushes- 3 Pc. Table Set (Cream. Cov. Sug. & Spooner)- P  
 70-195. Wright, Sgnd. Stork & Rushes- 7 Pc. Berry Set- P (Very Pretty Matched Sets)  
 10-196. Wheaton, Sgnd. Eisenhower Bottle. A.  
 12.50-197. Wheaton, Sgnd. (2) Mini. Grant & Buchanan Bottles- Red  
 40-198. Heritage/Octagon Water Pitcher- P- Smith Gl  
 10-199. Duckie Cov. Candy Dish- M. Big Chip under-  
 15-200. Butterfly 5 Pc. Nut Set- M. Side of lid.

- 100-201. Peacock at Urn 6" IC Dish- B- Sg. NW (Outstanding w/ Elec. B. Ir.)  
 160-202. Peacock at Dahlia 7" Ruf. Bowl- Aq. (Pretty)  
 2x 50-203. Peacock at Fountain (2) 5" Berries- B- Sg. NW (Choice Out).  
 150-204. Grape & Cable 12 1/2" Banana Boat- A- NW  
 85-205. Grape Leaves, Dugan? (See Pg. 94 Edwards IV), 9" Bowl w/ 3-in-1, G (Sg. NW, Pretty)  
 85-206. Beaded Cable Rosebowl- A- Sg. NW  
 80-207. Fruits & Flowers w/ Bsktrw. Ext. 7" Plate- M (Sg. NW, Very Pretty).  
 500-208. Fruits & Flowers Bon Bon- Lav- NW (Rare Color w/ Very Pretty Pink & Blue Ir.).  
 75-209. Fruits & Flowers Bon Bon- Pastel M- Sg. NW (Has Super Pastel Ir.)  
 75-210. Fruits & Flowers Bon Bon- P-Sg. NW (Pretty)  
 150-211. Fruits & Flowers 10" Ruf. Bowl- G- Sg. NW (Outst. Multi-Color Ir.)  
 400-212. HANSEN, ROBERT.- SGND. Tomahawk w/ Indian Warrior- Cobalt w/ El. B. Ir.- Dagenhart Blank (Outstnd. & Very Lmtd.)  
 80-213. Hansen, Robt.- Sgnd. Owl on Books Pprwt - Cobalt w/ El. B. Ir. on Dagenhart Blank  
 115-214. Hansen, Robt.- Sgnd. 5" Art Glass Vase w Applique Collar- Aq. Teal- Pilgrim Blank (Outstanding!)  
 125-215. Hansen, Robt.- Sgnd. Inverted Strawberry- 6" Handled Bskt - A- Sgnd. Nearcut (Very Pretty & Very Lmtd.)  
 200-216. Hansen, Robt.- Sgnd. 6" Hndl. Bskt - Aq/Teal- Sgnd. Nearcut (Very Lmtd.)  
 75-217. Hansen, Robt.- Sgnd. Daisy & Button Rosebowl-Cobalt w/ El. Ir. - LG Wright Blank  
 245-218. HANSEN, ROBERT.- SGND. 7" SWAN w/ Twisted Neck- Candy Dish- M (Rare Beauty)  
 125-219. Hansen, Robt.- Sgnd. Inv. Thumbprint- Toothpick- Teal w/ El. Ir.  
 70-220. Hansen, Robt.- Sgnd. Daisy & Button Rosebowl- M w/ Outst. Ir.  
 1,200-221. PEACOCKS w/ RIB EXT. 9" RUF. BOWL. Aq. O- NW (A Top Pastel. Gorgeous!).  
 750-222. Peacocks w/ Rib Ext. 9" Ruf. Bowl- E B (One of the Best!)  
 900-223. Peacocks w/ Rib Ext.- 9" Low Stip. Bowl w PCE- NW (Blue w/ Outst. Multi-Col. Ir.)  
 200-223A. Peacocks/Rib Back 9" Ruf. Bowl- M- Sg. NW (Outst. w/ Pastel Ir.)  
 225-224. Question Marks w/ Georgia Peach Ext. - 7" Stenmed Cake Plate- W- Du (Super Frosty)

- 190-224A. Fentons Flowers Rosebowl- W (Nice & Frosty).  
 175-224B. Fentons Flowers Rosebowl- Lav/Am.  
 85-225. Holly Sprig Bon Bon- G- Mb (Radium).  
 45-226. Holly Sprig Bon Bon- A- Mb (Radium).  
 50-227. Vintage Fernery- G- F (Nice One).  
 325-228. Blackberry Spray Hat w/ 2 Sides Up- Red, Red- F (Scarce w/ Nice Ir.).  
 55-229. Mini. Blackberry Compote- B- F (Nice, tiny tick on base).  
 60-230. Mini. Blackberry Compote- G- F (Silvery).  
 425-231. Strawberry Wreath 10" Sq. Bowl- A- Mb (Rare Shape w/ Rad. Ir., A Beauty).  
 75-232. Circled Scroll Tri-Corner Whimsy Hat- Pastel M- Du.  
 175-232A. Blackberry Open Edg. Two-Row Hat- G- F (Hard Color w/ Good Ir.).  
 90-233. Holly Ruf. Compote- Lav- F (Rare Color).  
 900-234. GREEK KEY WATER PITCHER w/ Beads on Prisms- G- NW (Outst. & Rare!).  
 2x 145-235A - 235F GREEK KEY (6) Tumblers w/ Beads on Prisms- G- Sg. NW (Choice Out).  
 200-236. Apple Blossom Twigs 9" Flat Plate- B- Du (Multi-Color Ir.).  
 110-236A. Holly 9" Plate- M- F (Fantastic Col. & Ir. w/ tiny chip on one berry).  
 155-237. Hansen, Robert- Sgnd. - Owl w/ Wings Up 2 1/2" Toothpk. - G w/ El. Ir. (Very Lmtd.).  
 250-238. Hansen, Robert- Sgnd. - 4" Solid Owl Paperwt.- Cobalt- El. Ir.  
 200-239. Hansen, Robert- Sgnd. - 7 1/2" Owl Bottle- Teal w/ El. B. Ir. (Rare).  
 90-240. Hansen, Robert- Sgnd. - Owl on Stump Toothpk. - Cobalt- Mosser Blank (A Cutie).  
 300-241. HANSEN, ROBT.- SGND- 5" Hollow Blown Owl Paperwt.- Cel. B- Pilgrim Blank (Very Rare- A Choice Pc.).  
 300-242. Hansen, Robert- Sgnd. - 4" Polar Bear Paperwt. - Teal (Scarce).  
 100-243. Hansen, Robert- Sgnd. - 4" Frog Paperwt.- Aqua/Teal- Pilgrim Glass  
 70-244. Hansen, Robert- Sgnd. - 5" Turtle Paperwt.- Aqua/Teal- Pilgrim Glass.  
 450-245. HANSEN, ROBT.- SGND- 5" Eagle Bi-Cent. Paperwt.- A w/ El. B. Ir.- Mosser Blank (Highly Sought After).  
 1,000-240. PEACOCK AT URN LG. IC BOWL- I.B.- NW (Rare/Outst. w/ Heavy Pink & Bl. Ir.).  
 375-247. Peacock at Urn Lg. IC Bowl- W- NW (Scarce, Nice & Frosty)  
 450-248. PEACOCK AT URN LG. STIP. IC BOWL M- NW (Rare - A Knock Out!).

- 500-249. Peacock at Urn Lg. IC Bowl- A- Sg. NW (w/ Near Elec. Highlights).  
 6 x 45-249A. Peacock at Urn (6) Sm. IC Bowls- A- Sg. NW (6 x S- Makes a Beautiful Matched Set to the Above).  
 300-250. Peacock at Urn 10" 6-Ruf. Bowl- Am- Mb (No Beads on Urn & Outst. Satin Ir.).  
 325-251. Three Fruits Plate w/ Bsktrw.- G- Sg. NW (Outst. Multi-Col. Ir.).  
 700-251A. Three Fruits Rib Back 9" Stip. Plate- Near El. B. (A Beauty).  
 810-251B. Three Fruits/Rib Back 9" Stip. Plate- A- NW (Outst. El. Bl. Ir., has slight wear on fruit).  
 300-252. Holly Ruf. Hat- Cherry Red- F (A Scarce Beauty).  
 65-253. Holly JIP Hat w/ CRE- B- F.  
 30-254. ~~Holly~~ Hat- M- F (Very Pretty). *Pepper Hat*  
 70-255. Holly & Berry Ruf. Gravy Boat- Du (Nice).  
 70-256. Holly & Berry Tri-Corn. Gravy Boat- Du- PO.  
 300-257. Grape & Cable Lg. Cov. Compote- P- Sg. NW (Hard to Find- Above avg. Ir. overall- none on finial tip).  
 140-258A. & 258B. Obv. Pntd. Mountain & Winter Scenic 11" Hall Lamp Shades- M (1 w/ Orig. Chez. Paper Label).  
 225-259. Beaded Bulls Eye 8" Vase w/ Wide Spread Top- P w/ El. B. Ir. (Beautiful).  
 105-260. Int. Rib 11" Vase- A (Elegant & Pretty).  
 85-261. Morning Glory Mini 7" Swung Vase- Smk.  
 65-262. Morning Glory 5" Mini Vase- Deep M.  
 175-263. Rococo Vase- M- Imp.  
 195-264. Swag & Bracket Toothpk.- Pastel A (Very Rare in Carnival, has Delicate Pastel Ir.).  
 215-265. Grape & Cable Hatpin Holder- M- Sg. NW (Ex. Color).  
 150-266. Jute Braid Hatpin- Drk. Glass (Rare w/ Near El. Ir.).  
 325-266A. ELEGANCE HATPIN- Drk. Glass (Very Rare w/ Outst. Near El. Ir.)  
 90-266B. Rooster Hatpin- B. w/ Pastel Ir.  
 65-266C. Sunflower Basket Hatpin- Drk. Glass w/ Near El. G. Ir., Scarce)  
 150-266D. Big Bsktrw. Hatpin- Drk. Glass w/ El. P. Ir. (Bright & Nice).  
 85-266E. Dragon Flies Hatpin- Drk w/ Bl. Ir. (Pretty)  
 45-266F. Egyptian Butterfly Hatpin- Drk. W/ Nice Ir.  
 55-266G. Oval Sphere Hatpin- Drk. Glass.  
 75-267. Trophy Toothpk. - Souv. Of Calif - Flashed Red w/ Ir. (Rare Little Mini, enam. worn)  
 125-267A. Water Lily 5" Ruf. Sauce- Em. Grn- F (Little Tuffly w/ Super Ir.)

- 350-268. HANSEN, ROBERT- SGND.- S-REPEAT CRUET-Red w/ Orig. Mrg. Stopper- LG Wright Blank.
- 150-269. Hansen, Robt.- Sgnd- S-Repeat Toothpk.- Red (Super Ir.).
- 800-270. HANSEN, ROBERT- SGND.- MIRROR & ROSES PICKLE CASTER- RED in S.P. Bracket- LG Wright Blank (1 of 3 Known & Fabulous!).
- 110-271. Hansen, Robt.- Sgnd.- Owl on Books Paperwt.- Red (Dagenhart Blank).
- 110-272. HANSEN, ROBERT- SGND.- SANTA CLAUS FERRY LAMP- Red- F. Blank (1 of 11 Known, Super Col. & Ir.).
- 90-273. Hansen, Robt.- Sgnd- Eyewinker Tumbler- Red- LG Wright Blank (A Beauty).
- 105-274. Hansen, Robt.- Sgnd- Eyewinker Toothpk.- Red- LG Wright Blank.
- 100-275. Hansen, Robt.- Sgnd- Hobnail Rose Bowl- Red- F. Blank (Very Lmted.).
- 100-276. Hansen, Robt.- Sgnd- Turkey- Toothpk.- Red- LG Wright (A Cutie).
- 350-277. Holly 9 1/4" Plate- B- F (Fantastic).
- 250-278. Holly 9 1/2" Plate- Drk.M- F (Very Pretty).
- 550-279. Grape Arbor Tankard Pitcher- P- NW (Scarce. Makes a Nice Match w/ Tumblers).
- 6x50-279A. Grape Arbor (6) Tumblers- P- NW (6 x 5)
- 5600-280 CHERRY CIRCLES BON BON- Super Cherry Red Throughout- F (A Knock Out Rarity- Seldom Offered- Raise Your Sights on This Outstanding Piece!).
- 325-281. Persian Med. Rosebowl- A- F
- 700-282. ROSES & FRUIT BON BON- G- Mb (Rad Ir., Super & Very Rare)
- 450-283. TORNADO VASE - G- NW (Super Ir. & Very Rare)
- 225-284. Tornado Vase - P-Sg NW(base chips)
- 250-285. Fishnet Epergne- PO- Du (Nice Color).
- 250-286. Rose Garden Sm. Rose Bowl- B- Eda. Sweden (Rare)
- 250-287. Little Stars 7" Ruf. Bowl- G- Mb (Very Pretty w/ Satin Ir)
- 450-288. Persian Garden 7" Plate-A-Du(Great Col. Ir)
- 150-288A. Grape. Imp. 11" Ruf Bowl- Teal/Aq- 1m (Rare Color & Shape)
- 900-289. Nippon 9" Bowl w/ PCE- Lime/I.G - Sg NW (Beautiful Pastel Ir)
- 150-290. Ski Star 9" Banana Boat- A- Du(Very Pretty)
- 235-291. Raspberry Water Pitcher- P- Sg NW
- 6x25-291A. Raspberry (6) Tumblers- P- Sg NW (Nice Match to Pitcher)
- 750-292. PEACOCK & GRAPE 9" IC Bowl-

- Red/Amberina- F (Rare w/ Nice Ir).
- 125-293. Palm Beach Cov. Butter- W- US Glass (Nice & Frosty).
- 90-294. Palm Beach Spooner-W-US Glass(Nice & F) <sup>Bas. Ch.</sup>
- 100-295. Palm Beach Creamer-W-US Glass(Nice & F)
- 110-296. Apple Blossom Twigs 9" IC Bowl- PO- Du (Very Nice).
- 900-297. Rose Tree 10" IC Bowl- B- F (Rare & Beautiful & has chip on one point).
- 400-298. Daisy & Drape Vase- M- NW (Rare Color w/ Good Ir.).
- 400-299. Good Luck/Rib Back 9" Bowl w/ PCE- B- NW (Super).
- 15,000-300. MEMPHIS PUNCH BOWL & BASE- Ice Green- SG.NW- FANTASTIC & Extremely Rare, First Mint One Sold in 20 Yrs. - Don Moore's #2 Fav. Pc. Of Ice Green).
- 300-301. Memphis Punch Cup- IG- Sg.NW (Rare & a Nice Match w/ Above).
- 10-301A. Memphis Punch Cup- Deep M- Sg.NW
- 1000-302. PLUME PANELS 10" Vase- Cherry Red- F (Rare/Beaut. Ir., Slight Amberina in Base)
- 60-302A. Plume Panels 14" Swung Vase- Am- F
- 95-303. Ribs + Panels 8 1/2" Vase- M- I (1 of 2 Known. see p 53 of Carl Burns New Imp. Book).
- 175-304. HANSEN, RBT.- SGND. BANJO BOTTLE- Teal (Very Lmted.).
- 150-305. Hansen, Rbt.- Sgnd. Octagon Cruet- M- I (Super Ir.).
- 300-306 HANSEN, RBT.- SGND. VIOLIN BOTTLE- Teal (Very Lmted. & Outst.).
- 75-307 Hansen, Rbt.- Sgnd. Long Thumb Print Mini Pitcher- Cobalt- Sgn Dagenhart Blank
- 2x175-308 Hansen, Rbt.- Sgnd. 3 Faces Salt & Pepper. IB- LG Wright Blanks (Choice Out)
- 80-309 Hansen, Rbt.- Sgnd. Art Glass Vase w Applique 3 1/2" Teal Pilgrim Blank
- 145-310 Hansen, Rbt.- Sgnd. Cigars Tied w/ Bow Tihpick- Teal- Souv of Wheeling, WV (Rare)
- 500-311 Good Luck, Vt. #2 9" Plate- M- NW (Rare chip w/ Only 16 Berry Pods Opposed to 35 on horse shoe)
- 1,250-312. Good Luck/Rib Back 9" Ruf Bowl- Aq O- NW (Beautiful Pastel. has insig. chip at top of horse shoe)
- 250-312A. Good Luck 9" Bowl w/ PCE- M- NW (A Real Beauty)
- 180-313 Strawberry. Bsktwv Ext 9" Bowl w/ PCE- G- NW (Super Color & Ir)
- 350-313A. Fanciful 9" Ruf Plate- A- Du (Sharp Detail & Ir)

- 1,200-314. TREE TRUNK 13 1/2" MID-SIZE VASE- IB (Very Rare & Outst.).
- 1,100-315. TREE TRUNK 11 1/2" MID-SIZE VASE- LIME/I.G.- NW (Very Rare in This Col.).
- 275-316. Tree Trunk 10" Vase- IG- Sg.NW (Rare w/ Nice Pastel Ir.).
- 620-317. Tree Trunk 6 1/2" Squat Vase- IB- Sg.NW (Very Nice Ir. & About as short as they get).
- 950-318. TREE TRUNK 10 1/2 VASE- AQ.O- Sg.NW (Beautiful Pastel w/ Lots of Opal, Very Rare).
- 400-319. Orange Tree Sm. Mug-Cherry Red-F(Rare).
- 200-320. Springtime 7 Pc. Berry Set- Deep M- Sg.NW (Rare w/ Outst. Col. & Ir.).
- 290-321. Wig Wam Tumbler- M- Heisey (Very Rare, has normal base grind chips, see Dec. HOACGA Article by Britts).
- 115-322. Inverted Strawberry Tumbler- P- Camb/Sgn. Nearcut (Rare w/ Fantastic Ir.).
- 75-323. Kings Crown Wine- M (Seldom Seen in Carnival).
- 50-324 & 324A. Peacock at Fountain Tumbler- P- Sg.NW (Very Nice Ir. - Choice Out).
- 625-325 CHERRY & CABLE WATER PITCHER- M- Sg.NW (a NW Rarity- 1 of 3 Known, slight mold rghns. on 2 ribs- but who cares?)
- 30-A  
95-B  
60-C-326A/B/C Cherry & Cable Tumblers- M- Sg.NW (Rare, Nice Match to Pitcher- Choice Out-normal grind chips on base).
- 325-327 OPEN EDGE 2-ROW JIP HAT- Cherry Red- F (Rare & Outst.).
- 650-328 HANSEN, RBT.- SGND. Antique Swirl Mini. Oil Lamp- M (1 of a kind).
- 229-329 HANSEN, RBT.- SGND. Moon & Star 2 Pc. Epergne- Teal- LG Wright (Very Lmted & Very Prcty).
- 225-330 HANSEN, RBT.- SGND. Antique Nappy Oil Lamp (No Burner)- M (One of a Kind).
- 90-331 Hansen, Rbt. Sgnd. Open Candy Dish - Teal w/ El. Ir.
- 125-332. Hansen, Rbt. Sgnd. 8" Dolphin Open Candy Dish- M (Very Lmted.).
- 100-333 Hansen, Rbt. Sgnd. Loganberry 6" Vase- Red (Scarce).
- 130-334 Hansen, Rbt. Sgnd. Inverted Strawberry Tihpick- Red- Sgnd. Nearcut- Bennet Blank.
- 450-335 HANSEN, RBT.- SGND. Bird on Nest Cov. Candy Dish - Teal w/ El. Ir (Very Lmted.- Very Beautiful).
- 550-336 HANSEN, RBT.- SGND. Baseball Paperwt.- M (One of a Kind).

- 1050-337. RASPBERRY WATER PITCHER, ICE BL.- SG.NW (Very Rare w/ Outst. Pastel Ir., Seldom Offered).
- 165-338. RASPBERRY TUMBLER- ICE BL.- Sg.NW (Very Rare, Mint- Nice Match to Pitcher).
- 75-338A. Raspberry Tumbler- IB- Sg.NW (Very Rare, has sm. base chip).
- 1950-339. RASPBERRY WATER PITCHER, ICE GR.- SG.NW (Nice Pastel Ir., Ext. Rare, Seldom Seen or Sold). 1/4" heat check in base
- 300-340. RASPBERRY TUMBLER- IG- Sg.NW (Rare & Mint, Nice Match to Pitcher).
- 85-340A. Raspberry Tumbler- IG- Sg.NW (Rare, smoothed at base).
- 225-341. Mini. Flowers Basket w/ Orig. Wire Handle- PO- Du (A Rare Little Cutie!).
- 400-342. Amaryllis Whimsey Compote- M- Du (Super Rare Color w/ Outst. Color & Ir.).
- 2400-343. TOWN PUMP- M- Sg.NW (Ext. Rare, Seldom Sold & Very Sought After).
- 800-344. Shell & Sand 9" Plate- G- I (Ext. Rare, slightly silvery ir.)
- 175-345. <sup>waterily</sup> ~~Pommette & Lattice~~ 10" Ruf./Ball Ftd Bowl- Deep M- NW (A Show Stopper)
- 1150-346. DRAGON & LOTUS 9" IC BOWL- Cherry, Cherry Red- F (Rare & Beautiful, has 2 mfg. flat flutes where mold didn't fill Should be insignif. on a pc. Like This).
- 250-347. Hansen, Rbt.- Sgnd. Hobnail Fairy Lamp. Teal. Fenton Blank.
- 425-348 HANSEN, RBT.- SGND. Hobnail 5 1/2" Pitcher- A w/ Mrg. Ir. (One of a Kind).
- 115-349. Hansen, Rbt.- Sgnd. Art Glass Vase w/ Applique- Teal- Pilgrim Gl. Blank (Pretty).
- 95-350. Hansen, Rbt.- Sgnd. Hen on Nest- Cobalt w/ El. Ir. (A Nice 3" Miniature).
- 120-351. Hansen, Rbt.- Sgnd. Owl on Limb- Ring Tree- Teal w/ El. Bl Ir - Fen Blank (Very Lmted. & Pretty).
- 150-352. Hansen, Rbt.- Sgnd. Mary Gregory Bell- Cobalt- Enam. Boy (Very Lmted.).
- 95-353. Hansen, Rbt.- Sgnd. Hobnail- Sm. Ruf Rose Bowl- Teal w/ El. Ir. - Fen. Blank
- 175-354. Panther Master Berry- M- F (Fantastic Color & Mold Work).
- 3,850-355. HATTIE 10 1/2" CHOP PLATE- Amber- I (Very Rare/Outst. Ir. - Seldom Seen/Sold).
- 650-356. GRAPE & CABLE FERNERY- W- Sg.NW (Nice & Frosty & Much Rarer in This Color than IB or IG)

- 450-357 GRAPE & CABLE ORANGE BOWL- W- Sg.NW (Nice & Frosty, Very Rare- 1 of 3 Known)
- 250-358 Imp. Jewels Stretch Console Set- 10" Cherry Red Deep Bowl on Bl. Ame Plynth & Pr. of Cherry Red Bell Shaped Candlesticks- Du (Scarce Set).
- 185-359 Inv. Feather Cracker Jar w/ Lid- Grn- Cambridge (Scarce & Very Pretty).
- 450-360 Dragon & Lotus 9" Ruf. Bowl- Pastel M on Moonstone- F (Rare Pc. w/ Rare Pastel Ir.).
- 600-361 Holly 9" Ruf. Bowl- Moonstone- F (Rare Col., has 1 pulled pt.).
- 275-361A Peacock & Grape 9" Ruf. Bowl- Moonst.- F (Great Col., has sm. chip on 1 point).
- 2x 175-362 Grape & Cable Pr. Candlesticks- G- Sg.NW (Very Pretty & Hard to Find, Selling 2 x 5).
- 325-363 Scale Band 6" Bowl- Deep, Deep Red- F (Good Col. & slight silver ir.).
- 450-364 Hearts & Flowers Compote- Pastel Aq. O- NW (Outstanding).
- 125-365 Hearts & Flowers Compote- Pastel M- NW (Very Pretty).
- 150-366 Acorn Burrs Cov. Butter- M- Sg.NW (Very Pretty).
- 185-367 Acorn Burrs Cov. Butter- Am- Sg.NW (lid covers a small nick on base).
- 150-368 Fishscale & Beads 7" Plate w/ CRE- Am- Du (Super Ir.).
- 50-369 Fishscale & Beads 7" Ruf. Bowl- Am- Du.
- 30-369A Fisherman's Mug- P- Du (Great Ir.) <sup>chip at base of handle</sup>
- 105-370 Puzzle Bon Bon- W- Du (Nice & Frosty, Unusual Glows under black light).
- 70-371 Puzzle Bon Bon- PO- Du (Very Pretty)
- 325-372 Zig Zag Enam. Blossoms Water Pitcher- P- F (Super Ir. - Seldom Sold).
- 3x 20-372A Zig Zag (3) Tumblers- A- F (3 x 5)
- 3x 375-372B Zig Zag (3) Tumblers- B- F (3 x 5)
- 200-373 Berry Band & Rib 5 pc. Cordial Set- B- European (Very Rare & Possibly Only 1 Known in Blue, silvery & has lg. Silver chip on top of stopper).
- 25-373A Berry Band & Rib Cordial- Bl (Rare).
- 60-373B Band of Roses Decanter- No Stopper- M- Europe (Rare)
- 325-374 Four Flowers (Pods & Posies) w/ Soda Gold Ext. 11" Chop Plate- PO- Du (Very Pretty).
- 125-375 Four Flowers (Pods & Posies) Ruf. Banana Boat- PO- Du (Very Nice Ir.).
- 110-375A Little Flowers 6" Whimsy Plate- 4 Sides Turned Lip- M- F (Outst. Ir.)
- 925-376 GREEK KEY W/ PLAIN PRISMS Water Pitcher- G- NW (Rare & Beautiful).
- 350-377 Acorn Burrs Water Pitcher- P- Sg.NW (tc w/ bronze Ir., a little weak at bottom).
- 6x 30-377A Acorn Burrs (6) Tumblers- P- Sg.NW (6x5)
- 300-378 Rose Show Plate/Bowl 2" High- W- NW (Nice & Frosty, has some minor rghns. on rose).
- 875-379 Rose Shop Plate- 1 B- NW (Outstanding Col. & Ir., has some usual sm. ticks on rose)
- 1600-380 Farm Yard Bowl- 11" Sq. Ruf. Bowl- P- Du (Fantastic Col. & Ir., unfortunately has 1 point missing).
- RN 381 Inverted Strawberry Ladies Spittoon- Sg. Nearcut- G- Cambridge (Rare & Outstanding has 3" carbon streak at base).
- 500-382 Hobnail Swirl Lds. Spittoon- M- Mb (Scarce & Beautiful, has sm. tick on one hob)
- 275-382A Hobnail Swirl Rosebowl- M- Mb (Nice w/ Rad. Ir.).
- 195-383 Dimples 7 Pc. Cordial Set- M (Scarce & Pretty).
- 325-384 Scale Band 6" Ruf. Bowl- Red- F (Nice Ir.)
- 250-384A Fine Cut & Roses Nut Dish- El. Bl- NW (Ext. Rare & Outst. w/ insignif. tick on 1 foot. Try to Find a Prettier One!).
- 160-385 Hobstar/Geometric Water Pitcher- Deep M- Imp. (Orig. From Don Moore Coll.).
- 165-386 Three Fruits Stip. w/ Rib Back 9" Plate- NW (Super & has slight wear on fruit).
- 210-387 Magpie 10" Ruf. Bowl- P- Australian.
- 165-387A Ribbon Tie 9" Bowl/Plate w/ 3-in-1- B- F (Nice Multi-Col. Ir.).
- 345-388 Diamond Ring Rose Bowl- Smk- I (Rare w/ Nice Ir.)
- 125-389 Swirled Int. Rose Bowl- Smk- I (Possibly Only One Known)
- 20-390 Wide Panel 7" Goblet- Smk- I (Unusual w/ Beautiful Pastel Ir.).
- 400-391 Bushel Basket, Vt. w/ Smooth Handles. Round- G- Sg.NW (Super Ir.).
- 200-392 Bushel Basket. Rnd.- Lav (Scarce Color & weak ir.).
- 250-393 Three Fruits, Stip Plate w/ Rib Back, B, NW (Outst. w/ Near El. Ir., slight wear on fruit)
- 250-394 Herringbone & Beaded Oval Compote- M (1 of 4 Known w/ Super Rad. Ir.).
- 90-395 Thin Rib 12 1/2" Mid-Size Vase- G- Sg.NW (Great Color)
- 75-396 Parlor Panels, Twisted- 11" Vase- G- I
- 80-397 Drapery, Vt. 8" Vase- M- NW (Nice Col./Ir.)
- 105-398 Leaf Columns 7" Vase- M- Sg.NW
- 140-399 Big Bskt. Wve. 5" Vase- W w/ Frosty Lav Ir.
- 105-400 Ripple 12" Vase- Smk- I (A Nice One).
- 190-401 Wreathed Cherry 5 Pc. Berry Set- W- Du (Nice & Frosty).
- 750-401A Wreathed Cherry (2) 5" Berries- W- Du (both w/ chips).
- 200-402 Wreathed Cherry 7 Pc. Berry Set- A- Du (Very Pretty Set).
- 125-403 Wreathed Cherry 7 Pc. Berry Set- M- Du (Nicely Matched w/ Pastel Ir.).
- 80-404 Lustre Rose Cov. Butter- Amb- I (Rare Col. w/ Outst. Ir.).
- 160-405 Hanging Cherries Cov. Butter- M- Mb (Nice w/ Rad. Ir.).
- 600-406 Blackberry Spray JIP Hat w/ CRE- Cherry Red- F (Scarce w/ Super Col. & Ir.).
- 325-407 Butterfly & Fern Water Pitcher- Cobalt- F (Very Pretty).
- 3x 175-407A Butterfly & Fern Tumblers- B- F (3 x 5)
- 4x 20-407B Butterfly & Fern Tumblers- G- F (4 x 5)
- 60-408 Inv. Strawberry 9" Ruf. Bowl- G- Sg. Nearcut - Camb. (Avg. Ir.).
- 45-408A Inv. Strawberry 7" IC Bowl- G-Sg. Nearcut
- 95-409 Nesting Swan 10" Ruf. Bowl- M- Mb (Nice w/ Satin Ir., sm. flake on 1 ruffle).
- 475-410 Zipper Loop Oil Lamp- Smk- I (Rare, has mfg. imperfection where stem meets font)
- 80-411 Leaf Chain 9" Plate- W- F (Has a Tinge of Mrg. Ir.)
- 75-411A Grape Vine Lattice 7" Ruf. Plate- W- Du (Nice & Frosty)
- 275-412 Strawberry w/ Bsktwv Ext. 9" Plate- Am- Sg.NW (Nice Col. & Ir.).
- 150-413 Honeycomb Rosebowl- PO- Du (Scarce/Nice Col.)
- 300-414 Heavy Iris <sup>Tankard</sup> Pitcher- P- Du (Ir. a little weak at bottom & has a pea size flake on face).
- 2x 140-70-414A Heavy Iris (3) Tumblers- P- Du (Very Nice Col. & Ir. - Choice Out)
- 200-415 Orange Tree Lov. Cup- Cobalt-F (Scarce/Silvery).
- 950-416 Vintage 6" Ruf. Bowl- Cherry Red (Super Col. & Ir., has tiny tick on rim).
- 300-417 Persian Med. Bon Bon- Rev. Amberna- F (Rare w/ Exc. Col. & Ir., has 1" heat check at handle).
- 310-418 Singing Birds Water Pitcher- A- Sg.NW (Nice w/ Avg. Ir.).
- 3x 25-418A Singing Birds (3) Tumblers- A- Sg.NW (3x5)
- 3x 225-418B Singing Birds (3) Tumblers- G- Sg.NW (3 x 5, slight rghns. on rib of 1, but Irid.).
- 90-419 Ripple 8" Vase- A- I (Nice Ir.).
- 30-420A Tufted Throw Pillow Hatpin- Drk. Nice Ir.
- 30-420B Moire Taffeta Hatpin- Drk. w/ Nice Ir.
- 30-420C Egyptian Butterfly Hatpin- Drk.
- 125-420D Veiling & Beads Hatpin- Drk. w/ weak ir.
- 30-420E Sunflower Basket Hatpin- Drk., silvery
- 15-420F Six Plums Hatpin- Drk (silvery).
- 125-420G Triad Hatpin- Drk
- 80-420H Faceted Star of David Hatpin- Drk. (Only 3/8" Not Listed)
- 375-420I Double Crown Hatpin- Drk., silvery
- 10-422 Beaded Carnival Eve. Bag (Ruff Shape, buying primarily for beads)
- 60-423 4 Books: Imp. Carnival Glass-The Early Years by Edwards, Carnival Tumblers- New & Repros. by Sprain, Encore Book I & II by Dor. Taylor (All on)
- 10x 3-424 Marion Hartung Books 1-10 (10 x 5).
- 75-425 Stippled Estate 6 1/2" Pinched Tri-Cornered Vase- M- W (Rare Shape).
- 245-426 Owl 6" Novelty Bottle- Ir. W (Rare & Cute)
- 350-427 Holly 9" IC Bowl-Aq-F (Unusual w/ Rad. Ir.)
- 250-428 Bronze Desk Lamp w/ Paneled Floral Shade- M.
- RN 429 Acanthus Chop Plate- M- Im (Great Ir.).
- 15-430 Blackberry Open Edg./Bsktwv. Ruf. Hat- Deep Red- F (Cracked).
- 5x 7-431 S-Repeat (5) Punch Cups- A- D (Rare w/ Nice Ir. - 5 x 5)
- 8x 10-432 Grape & C (8) Punch Cups- P- Sg.NW (8x5)
- 175-433 Heavy Grape Chop Plate- Amb- I.
- 160-434 Imp. Grape 5 Pc. Wine Set w/ Good Stopper- M.
- 70-435 Buzz Saw Sm. Cruct- G- Camb. (Rare, not orig. stopper)
- 175-436 Petal & Fan 5 Pc. Berry Set- PO- Du.
- 90-436A Petal & Fan 10" Ruf. Bowl- PO- Du (Very Pretty)
- 280-437 Holly Spring 10" IC Shaped Bowl- A- Mb (Nice w/ Rad. Ir.)
- 90-438 Grape & Cable Center Pc. Bowl- M- Sg.NW (From Presznick Museum, chip on 1 flute).
- 80-439 Apple Blossom Twigs 9" IC Bowl- PO- Du (Pretty)
- 160-440 Primrose 10" 8-Ruf. Bowl w/ Rad. Ir. - A- Mb (Nice)
- 75-441 Primrose 10" 6-Ruf. Bowl w/ Satin Ir. - A- Mb
- 100-442 Primrose 10" 6-Ruf. Bowl w/ Satin- G- Mb
- 100-443 Blackberry Wreath 9" Bowl w/ 3-in-1- A- Mb (Outst. Satin Ir. & Color).
- 140-444 Grape Wreath 7" Bowl w/ 3-in-1- A- Mb w/ Rad. Ir.
- 275-445 Fleur De Lis 10" IC Bowl- Am- Mb (Rad. Ir., has usual minor rghns. on base)
- 60-446 Rays & Ribbons 9" Ruf. Bowl- M- Mb (Nice w/ Rad. Ir.)
- 165-447 Grape Wreath, Vt. 9" Bowl w/ 3-in-1- A- Mb (Rad. Ir., slight mold rghns. on edge)
- 105-448 Blackberry Wreath 10" Ruf. Bowl- M- Mb (Nice w/ Satin)
- 75-449 Primrose 10" 6-Ruf. Bowl- G- Mb w/ Rad. (slight mold rghns. on edge)
- 60-450 Rosalind 10" Ruf. Bowl- M- Mb w/ Satin Ir.
- 125-451 Trout & Fly 9" Bowl w/ 3-in-1- A- Mb (A Beauty w/ Satin, has 1/2" chip on base).
- 50-452 Hanging Cherries 8" IC Bowl- G- Mb (Nice Satin Ir., has 1/2" base chip filled w/ epoxy).
- 165-453 Lions 7" Ruf. Bowl- M- F (Super Col., Detail & Ir.)
- 80-454 Lions 7" IC Bowl- M- F (ir. a little weak in center)
- 55-455 Grape & Cable/Bsktwv Ext. 9" Bowl w/ PCE - M- Sg.NW (Super w/ Pastel Pink Ir.)
- 50-456 Three Fruits/Bsktwv Ext. 9" Bowl w/ PCE- M- Sg.NW (Very Pretty w/ Pastel Ir.)

- ~~55~~-457 Peacock at Urn 5" IC Bowl- A- Sg NW  
~~155~~-458 Good Luck/Rib Back 9" Bowl w/PCE- M- NW (Pretty).  
~~55~~-459 Grape & Cable/Rib Back 9" Bowl w/PCE- Pastel M- Sg NW (A Super Pastel)  
~~70~~-460 Nugget Cruet- Hex Shaped- Blue w/ Amber Handle.  
~~80~~-461 Dragon & Lotus 9" Ruf Bowl- B- F (Pretty).  
~~90~~-461A Dragon & Lotus 9" IC Bowl- B- F (Beauty).  
~~85~~-462 Dragon & Lotus 9" Bowl w/ 3-in-1- M- F (Nice Pastel Ir.).  
~~35~~-463 Persian Garden 7" IC Bowl- W- Du (Nice & Frosty Pink).  
~~70~~-463A Leaf Chain 7" IC Bowl- W- F (Nice, Frosty & Scarce).  
~~65~~-464 Windmill Dresser Tray- M- I (Scarce Color w/ Radium).  
~~90~~-465 Chrysanthemum 11" Ball Ftd. IC Shaped Bowl- M- I (Exc. Ir.).  
~~65~~-466 Stag & Holly 9" Spat. Ftd. IC Bowl- M- F (Very Nice).  
~~40~~-467 Orange Tree Shaving Mug- B- F.  
~~70~~-467A Orange Tree Souv. Shaving Mug- B- F.  
~~55~~-467B Singing Birds Mug- Deep M- Sg NW (Super Color & Detail).  
~~130~~-468 Grape Arbor Tankard Pitcher- A- NW (Very Nice, has crack & repair at handle).  
~~20~~ - ~~35~~-468A-F Grape Arbor Tumblers- P/Lav/A (Choice Out).  
~~50~~-469 Grape & C. Water Pitcher- P- Sg NW (cracked).  
~~6~~ x ~~15~~-469A Grape & Cbl. (6) Tumblers- P-Sg NW (6x\$).  
~~10~~-469B G & C Powder Dish (no cover)-A-Sg NW (sm. rim chip)  
~~45~~ ~~5x~~ ~~15~~-470A-F Acorn Burrs (6) Tumblers- P- Sg NW (Choice Out).  
~~350~~-471 Thin Rib 13" Mid-Size Vase- Smk- Sg NW (Scarce NW Color, has sm. base chip)  
~~50~~-472 Feathers 10" Vase- G- Sg NW  
~~30~~-473 Long Thumb Print 8" Vase- A- Du  
~~Rtn~~-474 Ripple 8" Vase- Smk- I (Pretty, has mfg. carbon streak).  
~~40~~-474A Ripple 10" Swung Mini-Vase- Climb - I.  
~~95~~-475 Mary Ann Vase- M- Du.  
~~70~~-476 Wild Blackberry 9" Ruf Bowl- A- F (Scarce & Pretty).  
~~85~~-477 Open Edge Bsktwy. Ruf. Hat- Aq- F.  
~~30~~-477A Open Edge Bsktwy. Adv. Hat w/ 2 Sides Up- 'Miller Furniture'- M- F.  
~~80~~-477B Open Edge Blackberry Ruf. Hat- G- F (a little silvery).  
~~30~~-478 Grape ~~Apple~~ Spooner- G- NW

- ~~125~~-479 Enam. Apple Blossom Spooner- B- NW (Scarce, some mold rghns. on handles).  
~~25~~-479A Strutting Peacock Cov. Cr. & Sugar- A- WM (Scarce & silvery, some minor chips on sugar base).  
~~75~~-480 Ribbon Tie 8" Bowl w/ CRE- B- F (Outst. Color & Ir.)  
~~50~~-481 Blackberry Spray 4-Ruf. Hat- Ame Opal- F (Not Carnival but Very Rare).  
~~40~~-482 Palm Beach Butter Cov. Only- Blue Opal- US Glass (Not Carnival).  
~~55~~-482A Pump- White Opal- NW (Not Carnival, usual rghns on feet).  
~~25~~-483 Smooth Panels Lg. Rose Bowl w/ Frog- M- I (Scarce, See Carl Burns Book).  
~~20~~-484 Coin Dot Lg. Rose Bowl- A- WM (Nice Ir.).  
~~25~~-485 Star & File Rose Bowl- M- I.  
~~40~~-486 Dbl. Stem Rose 8" Dome Ftd. Bowl- A- Du (Pretty).  
~~15~~-486A Dbl. Stem Rose 8" Dome Ftd. Bowl- M- Du (Nice Ir.) <sup>Base</sup>  
~~35~~-487 Grape Imp. Master Berry- P <sup>chr.</sup>  
~~60~~-488 Stippled Rays Compote- G- Unusual Size.  
~~15~~-489 Persian Med.- M- F (Very Pretty).  
~~50~~-489A Pine Cone 6" Sauce- G- F (Nice Ir.).  
~~50~~-490 Corinth 8" Plate/Bowl- PO- WM.  
~~80~~-490A Melon Rib Salt & Pepper- M- I.  
~~5~~-490B Plain Stemmed Cordial- M w/ Gold Trim.  
~~45~~-491 Three Fruits 9" Ruf Bowl- M- NW (Beautiful Pastel Ir.)  
~~85~~-492 Leaf Swirl Compote- Teal- WM (Super Color & Ir.)  
~~50~~-492A Garland & Bows Lg. Compote- M- Poss. Eng. (Good Ir., slight mold rghns. on stem)  
~~110~~-493 Three Fruits Med. w/ Meander Ext 9" Ruf/Spat Ftd Bowl- A- NW (Very Pretty).  
~~60~~-494 Thistle 9" Bowl w/ 3-in-1- A- F  
~~45~~-495 Orange Tree 9" Ruf Bowl- Pastel M- (Pretty w/ Pastel Ir.)  
~~40~~-496 Sailboats 6" Ruf. Sauce- M- F (Nice Detail).  
~~80~~-497 Pony 9" Ruf Bowl- M- Du  
~~5~~-498 Geometric Pattern 9 1/2" Tray for Cordial Set, sim. to war dance patt., minor chips on edge  
~~125~~-499 Shell Nut Dish- M.O.M.  
~~5~~-500 Buttermilk Goblet w/ Drapery Int. & Studded Star Ext.-M