

HOACGA

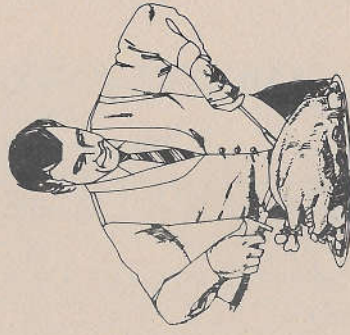
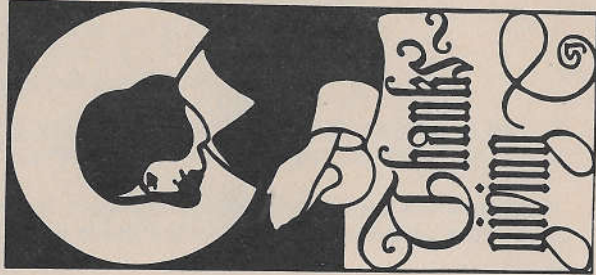
Heart of America Carnival Glass Assoc. Inc.

November 1996

RETURN ADDRESS

H.O.A.C.G.A.
Jackie Fortney
P.O. Box 303
Buckner, MO 64016

FIRST CLASS MAIL
U.S. POSTAGE
PAID
Buckner, MO
Permit 03



HEART OF AMERICA CARNIVAL GLASS ASSOCIATION

(Since 1973)

BOARD OF DIRECTORS

PRESIDENT	ROBERT GRISSOM 7517 Evanston Raytown, Missouri 64138 PHONE: 1-816-356-5320
VICE-PRESIDENT	DARYL STROHM 8904 E. 29th Street Kansas City, Missouri 64129 PHONE: 1-816-252-8053
TREASURER	CLIFF BALL 572 W. Park Street Olathe, Kansas 66061 PHONE: 1-913-782-0415
SECRETARY	ED KRAMER 4305 W. 78th Street Prairie Village, Kansas 66208 PHONE: 1-913-642-3587
BULLETIN SECRETARY	JACKIE FORTNEY Post Office Box 303 Buckner, Missouri 64016 PHONE: 1-816-650-5208

Please send information about your Club to the Bulletin Secretary. We will include the name of your club, the secretary's name, address & phone number, dues, and the meeting place(s) and time(s) in the Bulletin.

CONVENTION DATES

REMEMBER, 1997 CONVENTION DATES ARE MAY 1, 2, 3, 4.
THE CONVENTION IS IN A NEW LOCATION AT
THE EMBASSY SUITES HOTEL NEAR KCI AIRPORT

Anniversaries

CONGRATULATIONS!!! to those members who are celebrating their 40th or more wedding anniversary. The anniversary date and the number of years is indicated.

James & Janelle Marshall
PO Box 469, Barnesville, GA 30204
Married 45 years October 4

A card or note recognizing this event would surely be appreciated. Each monthly bulletin will contain the names of those members who are currently celebrating their 40th or more wedding anniversary.

If you have not notified the Bulletin Secretary, Jackie Fortney, of your anniversary, please send the information. Your anniversary will be recognized in the appropriate monthly bulletin.

NEW HOACGA EDUCATIONAL BOOK III

The HOACGA Educational Series Book III is now available. This Educational Series contains articles which were previously printed in the monthly bulletin. The book contains articles written on several different subjects; i.e. Bon Bons, Bowls, Drinking Vessels, Novelties, Rose Bowls, Table Sets, by several different members. Members who contributed articles are Britt, Fry, Kremer, Pickup, Brooks, Roque, Kuhn, Curtis & Briix.

The book contains educational information on about 150 different patterns and it also contains a list of approximately 500 rarities (only 5 or less known). This type of information is not found in any other carnival reference material.

It is a very informative book.

You may order it from: Ed Kramer, Secretary, 4305 W. 78th Street, Prairie Village, KS 66208. Make checks payable to HOACGA

NOVEMBER / DECEMBER SPECIAL

During November and December you may buy a SET of Educational Series I, II, and III for \$45 total which includes USA shipping and handling.

ORDER FORM

HOACGA Educational Series Book III

Number of copies _____ @ \$20.00 ea. = \$ _____

(USA S&H included)

HOACGA Educational Series I, II and III Set

Number of sets _____ @ \$45.00 set = \$ _____

(USA S&H included)

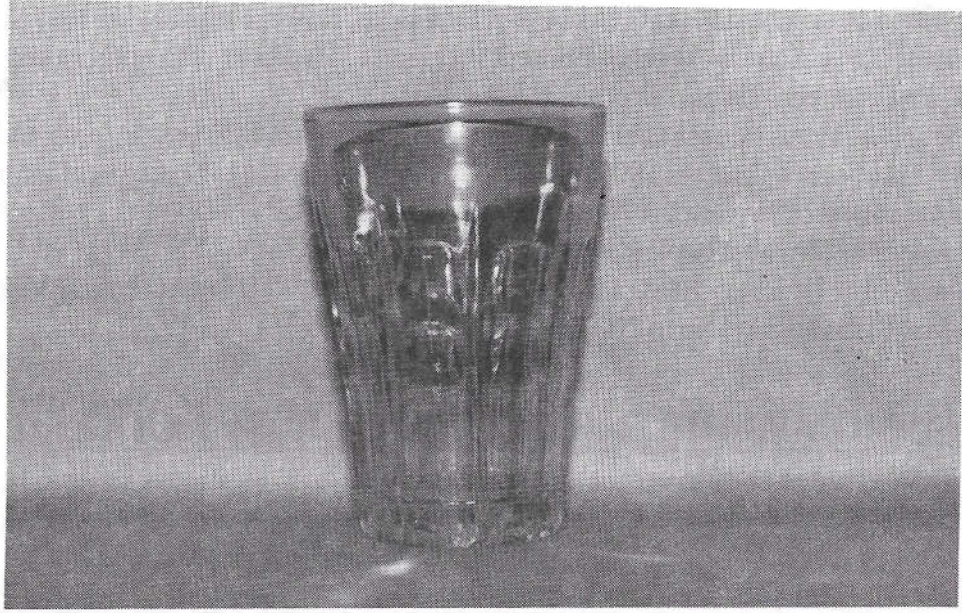
Total Enclosed \$ _____

Name _____

Address _____

EDUCATIONAL TUMBLER SERIES

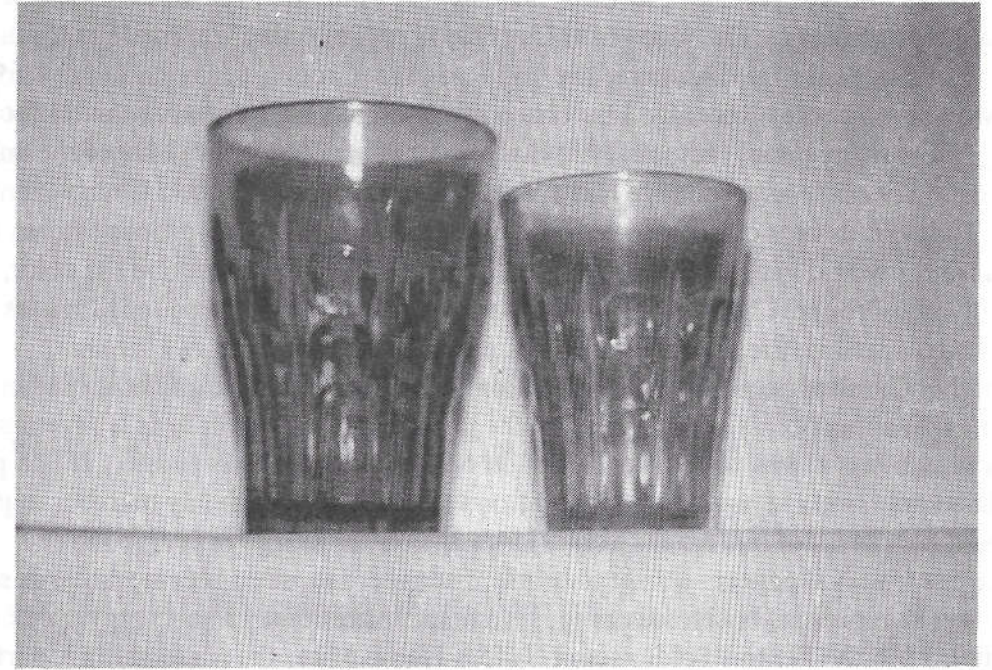
By John & Lucile Britt



SWORD AND CIRCLE JUICE TUMBLER

We wrote about the regular size Sword and Circle tumbler in the August 1989 bulletin. It is also shown and described in the HOACGA Educational Series Book #2. We learned about the Sword and Circle tumbler by reading about it in Hartung book #7 on page 112. It is also illustrated in Richard Owen's tumbler book on carnival glass tumblers as #168.

We purchased the Sword and Circle tumbler that is shown in the Owen's tumbler book from the Arnold Preheims of Garden Grove, California in 1976, at the time that they decided to sell their collection. Sometime later, that tumbler became a part of the Whitley's beautiful tumbler collection at Houston, Texas. It is still the only one that we have ever seen in that size, but about a year ago we were surprised and happy to find one of these in the smaller juice size. It had been a part of a small, but very nice tumbler collection. A close up view of the juice size tumbler is illustrated in photo #1 above.



The featured juice tumbler is made exactly like the regular size tumbler except that it is somewhat smaller in size. It is shown in photo number 2, above, alongside the regular size tumbler. We had to borrow the Whitley's regular size tumbler in order to get a side by side view of the two tumblers. The juice tumbler is 3½" tall and has a top opening of 2½". The base is 1 5/8" in diameter. Like the regular table size tumbler, it also contains the unusual "wagon wheel" type figure on the bottom of the base. It is in light marigold with very nice iridescence. As yet, we have found no information as to the maker of this pattern. We plan on spending a good amount of time in researching this pattern during the next year.

This article on the Sword and Circle juice tumbler marks our 226th entry into the Educational Tumbler Series. Next month, we will feature the Heavy Vine tumbler.

CAN YOU SEE THE HISTORY IN CARNIVAL GLASS?

By Gerald Thomas

One of the unique things about collecting old Carnival is that it sometimes captures history for us. Many pieces of Carnival reflect a way of life that has already disappeared or is rapidly disappearing. The focus of this article is on collecting Carnival for its historical value. Let me begin by discussing the hand painted Ground Cherries pattern found on Northwood water sets. Recently, I purchased two tumblers in this pattern and I thought to myself, "How many people actually know what a Ground Cherry is?" I know the answer to this question because as a child we had a large garden and wild Ground Cherry plants grew there. Today, it is very difficult to purchase Ground Cherries from grocery stores or farm markets and I would venture to say 9 out of 10 people could not describe the color, texture or flavor of a Ground Cherry if asked to do so. The Northwood Ground Cherries pattern allows us to visualize the appearance of this most uncommon fruit.

Another Carnival item I wanted to mention is the Iris buttermilk goblet manufactured by Fenton. While most of us would question the popularity of buttermilk as a beverage today, I'm confident that it was widely consumed in households many years ago. It is a pleasant thought to contemplate how a grandparent or some other older family member might have enjoyed a cold glass of buttermilk from a large Iris buttermilk goblet.

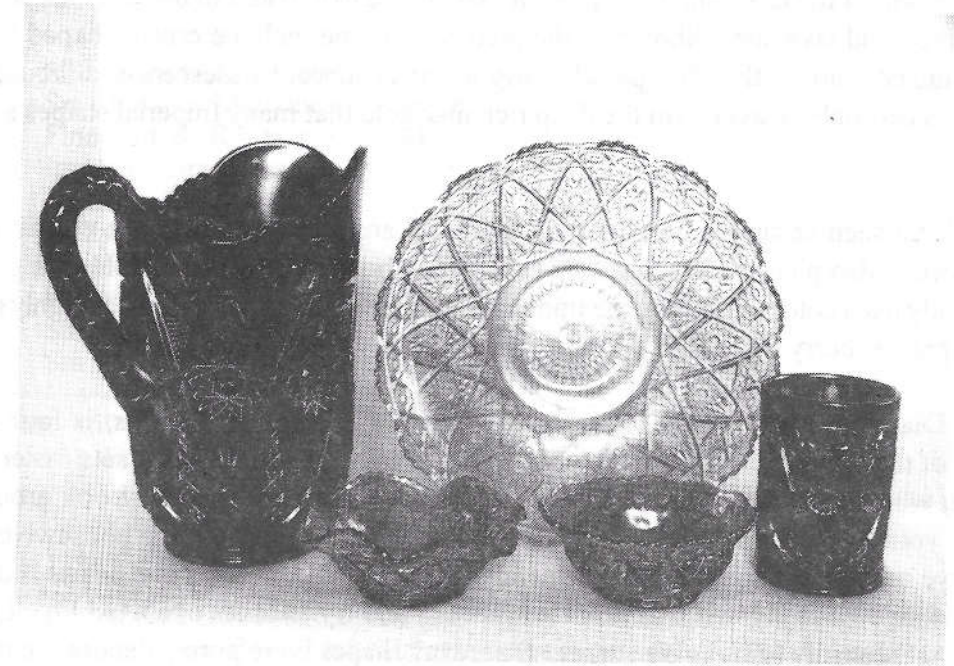
The last Carnival patterns I want to briefly discuss are those commemorative or souvenir pieces which represent businesses or government institutions. The Carnival pieces I am referring to are the Fenton Soldiers and Sailors Home plate, the Millersburg Court House bowl and the Fenton Birmingham Age Herald commemorative plate. I like these plates and bowls not only for their visual appeal, but for what their patterns represent. These bowls and plates allow us to see architecture that was popular 85 years ago. Not all of the buildings shown in Carnival glassware will be with us forever. The buildings portrayed in Carnival are very ornate and possess architecture not found elsewhere.

The old Millersburg Court House continues to function as a court house serving the people of Holmes county. Amish people frequently hitch their horses and buggies in front of the court house and conduct errands or shopping in the center of Millersburg. The Millersburg Court House bowl portrays a simple and disappearing way of life in glass for us to remember and reflect upon.

In this article, I discussed only a few Carnival patterns which artistically recorded earlier life-styles and architectural accomplishments. The history behind Carnival Glass is just one more good reason to collect it. Happy glass hunting everyone!

IMPERIAL'S DIAMOND LACE

By Alan & Lorraine Pickup



The Diamond Lace pattern is easily found and readily recognized by collectors in the beautiful purple water set. These water sets with their striking blue iridescence are undoubtedly Imperial at its best. This water pitcher has also been reported in a 1995 auction list in a lavender color. This pleasing geometric pattern can also be found in berry bowl sets. When found in berry sets, some collectors confuse this pattern with the similar Octagon pattern.

Besides the super colored purple, tumblers are also found in marigold and the previously mentioned lavender. A very rare marigold whimsy rose bowl with a crack, supposedly shaped from a tumbler, sold for \$1850 in a 1995 Tom Burns auction. However, the marigold tumbler itself is considered a rare find. A 1983 auction listed a Diamond Lace bowl in blue and was sold for \$35. Was it really blue? Who has it today? Do others exist?

Continued -

Carl Burns' most recent informative book covering Imperial glass lists the shapes and colors known for the Diamond Lace pattern. We would like to add to his color list clambroth, helios green and lavender. Shown in the picture is a nine inch ice cream shaped bowl in a nicely iridized clambroth. The pastel marigold or clambroth iridescence, although not as popular, is certainly scarcer than the deep rich marigold that many Imperial shapes are found in.

We have seen complete berry sets in marigold and in purple with the classic Imperial iridescence. Also pictured is a small six ruffle berry bowl in helios green. Helios green was a frequently used color utilized by the Imperial Glass Company. It would seem highly probable that the master berry bowls are also out there in helios green somewhere.

The Diamond Lace pattern, like most of Imperial's berry set designs, is found on the exterior of the bowl with a smooth interior. This certainly made the berry sets easier to clean after use which certainly was a plus for the person washing the dishes. Look around your house at your collection today and ask yourself how in the world did the housewives of that time serve anything in many of the carnival shapes we hold dear to our hearts today. Lift your Diamond Lace jug and then fill it with liquid and try another one hand lift. Lovely to look at, but ungainly to use. We suspect that many shapes were purely decorative in nature.

Old Imperial 1909 catalog reprints from the original catalog including prices. The catalog is 13½ inches by 11 inches containing 192 pages that are full of Imperial pattern pictures. Price is \$28.00 plus \$4.00 shipping and handling. Order from Lucile Britt, 3048 Tamarak Drive, Manhattan, Kansas 66503

PICTORIAL PATTERN PARADE

By John & Lucile Britt



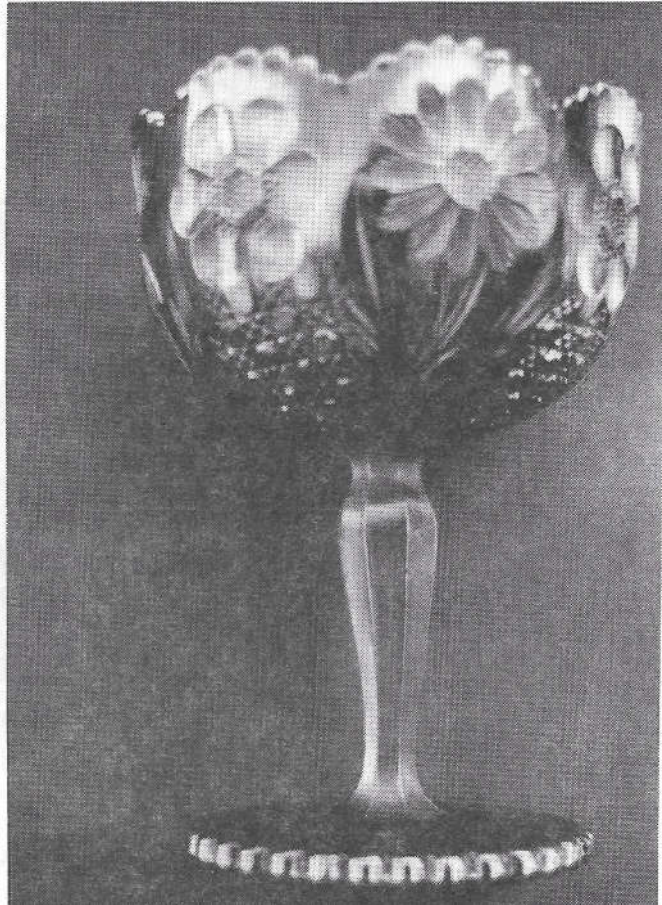
COSMOS AND CANE WHIMSEY ROSE BOWL

The featured whimsey rose bowl that is shown above is in the honey amber color with excellent iridescence. We consider these whimseys as rare, having seen very few of them in our collecting years. In addition to the honey amber whimsey example, we have also seen one of these in purple, a color not often used in this pattern. As yet, we have not seen any in white, but we suspect that there could be a few out there somewhere in that color.

These whimseys were made from the small size compotes that are shown at both ends of Photo #2. The compote on the left is in honey amber and the one on the right is in lavender. They were also made in frosty white. The honey amber rose bowl that is illustrated in the center of photo #2 is quite rare. It was also shaped from the small compote into a rose bowl. One of these sold at auction in 1989 in St. Louis for \$1300.00. It was the only example in this shape that we have ever seen. It is possible that there may be a few others out there somewhere, but we have not seen them.

AIR CAPITAL CARNIVAL GLASS CONVENTION 1996

By Donald Kime



The Cosmos and Cane stemmed compote is illustrated in Photo #3, shown above. This one is generally referred to as the tall compote and measures 6 to 7 inches in height. We consider these as very desirable and certainly hard to find. We have seen these in honey amber and white.

The Cosmos and Cane pattern was made by the United States Glass Company. They were noted for making whimsies in both the Cosmos and Cane and Palm Beach patterns. These pieces are very collectable today.

The stemmed compote show in the photo above is owned by Judy Maxwell of Redlands, California. She also sent us the photo of the compote so that we might show beginning collectors the difference between the two sizes of the Cosmos and Cane compotes. We thank her very much. Photo #1 is courtesy of David Doty. We also would like to thank him for the photos he has supplied for us in many of our articles. We would like to wish you all a very Happy Thanksgiving.

This year some began to arrive as early as Monday for the convention which was to begin on Thursday. Fourteen more rooms were filled by Wednesday and on Thursday, 25 or 26 arrived with five or six coming in on Friday.

A record turn out for the free early bird meal that was provided by the club. 95 came to this event and we all enjoyed the meal that was prepared by the hotel.

This year we were blessed with the most glass ever in the rooms and the displays that were provided for our enjoyment. The displays were all very good and it was hard to pick out the one you liked best.

On Friday, there were two busses to provide transportation to the homes of Nola and Keith Schmoker and to the home of Roland Kuhn and Donald Kime. Several took the advantage of this to be able to see two collections. Later in the afternoon, the hospitality room was opened and it seemed to be the best spot of the whole convention. Those in charge of the hospitality room done a fine job. At four o'clock, we all gathered for the educational program. Jim Seeck was kind enough to do the program for us on odd shapes and whimsies. He did a great job and we thank him for it. The auction glass was set up early so we were able to get a good look at it before the midnight auction at 9 pm. Several pieces were donated to the club at this event. We certainly appreciate everyone's generosity and support.

Saturday morning, we were up early to once again view the glass and get ready for the auction. There were lots of pieces and approximately 120 people attending. The hospitality room was open after the auction and rooms as well for those last minute shoppers who were not able to get what they wanted at the auction. At 6 pm, we gathered for the banquet. Again, about 95 people were there for that. After the meal, the officers were recognized and the many items that had been donated were auctioned off. All proceeds went to the club and those who bought the items were very generous. Thank you all. Suzie and Lavern White were honored with a lifetime membership and plaque as honorary members of the Air Capital Carnival Glass Club. Then came the big moment for the drawing of the raffle piece. We asked Molly Evans to draw out the lucky name. It went to Texas, Joyce Seal being the lucky one to win the lavender Round Up bowl.

Room display awards went to the following: 1st place going to Wilford and Judy Shutz, 2nd going to Ken and Eileen Oppenlander and 3rd going to Molly Evans. What a hard choice it was to make - there were so many great ones.

Then came the great talk given by Mr. Harold Cox on those beautiful birds (Peacocks). We all enjoyed his talk so much and want to thank him for bringing them to Wichita to share with us. With his wit and knowledge, it was a super program.

The Seeck Auction Company gave the club a generous donation and that came as a great surprise of which we are most grateful.

The midnight auction was great fun. With the help of Jim Seeck, Mickey Reichel and that great auctioneer Col Todd Kuwitzky we had a great time. Todd only sold one item and could not get a bid so maybe before you consign your collection to him, you might want to let him get a little more practice!!!!!!

We had a great time and missed those who were not there, but maybe you can come next year.

SEEK AUCTIONS - PRICE RESULTS

Saturday, September 21, 1996 - Wentzville, Missouri

- 20_ 9. Diamond Rib 11" vase - green
2250 10. Butterfly & Tulip square ruffled bowl - purple - outstanding example, highly desired & extremely rare
25ea 11. Tree Trunk 10 1/2" vases(2) - green - choice
30_ 12. Tree Trunk 10" vase - purple
30_ 13. Tree Trunk 11 1/2" vase - amethyst
1300 14. Peacock at the Fountain straight sided fruit bowl - purple - extremely rare w/out ruffle, a must for any Northwood collector, very pretty
75_ 15. Captive Rose crimped edge ruffled compote - amethyst
1900 16. Milady 7 pc. tankard water set - blue - outstanding set, as nice as they get, very rare & desirable
650_ 17. Milady tankard water pitcher - marigold - nice even color from top to bottom, also very rare
70_ 18. Milady tumbler - marigold
2300 19. Stippled Three Fruits 9" plate w/ribbed back - sapphire - very pretty example, extremely rare color
800_ 20. Stippled Three Fruits 9" plate w/ribbed back - lavender - very pretty
425_ 21. Stippled Three Fruits 9" plate w/ribbed back - purple - flat & nice
200_ 22. Stippled Three Fruits 9" plate w/ribbed back - marigold
300_ 23. N's Thin Rib 16" funeral vase - vaseline - pretty irid. & very rare
115_ 24. N's Thin Rib 12 1/2" mid-size funeral vase - white - scarce & nice
225_ 25. N's Thin Rib 12 1/2" mid-size funeral vase - green
575_ 26. Stippled Strawberry 9" plate w/ribbed back - purple - very rare stippled, nice even irid., hard to find
55_ 27. Blackberry Open Edge ruffled hat shape - green
1500 28. Peacocks 9" plate w/ribbed back - green - rare color & nice, highly desired
500_ 29. Peacocks 9" plate w/ribbed back - blue - nice!
575_ 30. Peacocks 9" plate w/ribbed back - purple
750_ 31. Peacocks 9" plate w/ribbed back - ice green
250_ 32. Peacock & Grape 9" ftd plate - green - very scarce item
135_ 33. Autumn Acorn IC shaped bowl - amethyst - pretty
2000 34. Strawberry Scroll water pitcher - marigold - a beautifully shaped water pitcher, even color from top to bottom, extremely rare
& desirable
325_ 35. Acorn ruffled bowl - amber opal - very rare color for this bowl
130_ 36. M'burg Hobnail Swirl 10" vase - green - very nice, scrapes along top edge
275_ 37. M'burg Hanging Cherries milk pitcher - marigold - minor heat check in base, rare
700_ 38. Many Fruits 8 pc. punch set - purple, has blue base - extremely rare, a matching set, blue Dugan base is very rare (matches too well to separate)
145_ 39. Stippled Rays IC shaped compote - vaseline - very rare
450_ 40. Grape & Cable water pitcher - green - always in demand
70_ 41. Grape & Cable tumbler - green
400_ 42. Grape & Cable 7 pc. water set - purple - outstanding set, pretty!
250_ 43. Peacocks ruffled bowl w/ribbed back - aqua opal - chip off front edge, nice irid.
1550 44. Peacocks ruffled bowl w/ribbed back - green - rare color, a nice bowl
300_ 45. Peacocks ruffled bowl w/ribbed back - purple - super nice bowl
350_ 46. Diamond Lace 7 pc. water set - purple - pretty
575_ 47. Diamond Points 10" vase - aqua opal - very nice w/lots of opal
250_ 48. Diamond Points 10" vase - ice green - scarce
45_ 49. Diamond Points 10" vase - green
35_ 50. Diamond Points 10" vase - amethyst
1050 51. Fruits & Flowers bon bon - sapphire - very, very rare color, few around, nice
750_ 52. Fruits & Flowers bon bon - lavender - true lavender, pretty w/pastel irid., very rare
165_ 53. Fruits & Flowers bon bon - blue - has electric irid., super
95_ 54. Fruits & Flowers bon bon - green
115_ 55. Fruits & Flowers bon bon - purple
50_ 56. Fruits & Flowers bon bon - marigold - dark
600_ 57. Peacock at the Fountain water pitcher - white - has gold painting, frosty & pretty
205_ 58. Peacock at the Fountain tumbler - white
500_ 59. Peacock at the Fountain water pitcher - ice blue - collar base has been buffed all the way around, fantastic irid.
175_ 60. Peacock at the Fountain tumbler - ice blue - nice
400_ 61. Peacock at the Fountain 7 pc. water set - marigold - pretty set, nice matching color
475_ 62. Leaf Chain 9" plate - green - a better example than most
525_ 63. Leaf Chain 9" plate - marigold - very nice w/pretty irid.
200_ 64. Leaf Chain 9" plate - white - nice
500_ 65. Grape & Cable banana boat - ice green - rare & desirable
X_ 66. Grape & Cable banana boat - green - scarce color
35_ 67. Ranger juice glass - marigold
400_ 68. Poppy Show vase - marigold - very scarce & very desirable
155_ 69. Pansy low ruffled bowl or plate - lavender - pretty, unusual & nice
625_ 70. Blackberry Spray JIP shaped CRE hat - red - super nice
105_ 71. Basketweave Open Edge ruffled hat - lavender
30_ 72. Basketweave Open Edge ruffled hat - blue
85_ 73. Basketweave Open Edge ruffled hat - vaseline
450_ 74. Good Luck ruffled bowl - blue - electric, even & super irid.
650_ 75. Butterfly & Berry 7 pc. water set - blue - extremely rare set
X_ 76. Ripple 9" vase - purple - pretty, nick
450_ 77. Hearts & Flowers ruffled compote - aqua opal - desirable & nice
185_ 78. Hearts & Flowers ruffled compote - marigold - nice
135_ 79. Hearts & Flowers ruffled compote - white
295_ 80. Stag & Holly large size ftd IC shaped bowl - blue
155_ 81. Fruits & Flowers 7" ruffled bowl - blue - scarce color
3250 82. Hattie chop plate - amber - spectacular! extremely rare plate, few known
X_ 83. Double Loop chalice or sugar bowl - green
600_ 84. Stag & Holly large size ftd ruffled bowl - green - extremely rare color, very nice example
200_ 84a. Stag & Holly large size ftd ruffled bowl - odd lime green - has an amber tint, neat bowl
195_ 85. Stag & Holly large size ftd ruffled bowl - blue
185_ 86. Kittens ruffled bowl - marigold - nice
185_ 87. Kittens 4 sides up bowl - marigold - 2 sets of kittens
275_ 88. Kittens cereal bowl - marigold
1000 89. Holly ruffled bowl - red - cherry red, always in demand
600_ 90. Memphis 8 pc. punch set - purple - very scarce & desired set
900_ 91. Fenton's Peacock at Urn 9" plate - blue - electric & fantastic!
105_ 92. Stag & Holly small size spt ftd ruffled bowl - green
135_ 93. Pinecone 6" plate - green - scarce
10_ 94. Octagon punch cup - marigold - very rare punch cup, seldom seen
250_ 95. Australian Swan large ruffled bowl - purple - beautiful
105_ 96. Australian Swan ruffled sauce - purple
600_ 97. Grape & Gothic Arches water pitcher - blue - pretty & scarce
25_ 98. Grape & Gothic Arches tumbler - blue
X_ 99. Grape & Gothic Arches tumbler - marigold
2100 100. Peacock at the Fountain 8 pc. punch set - blue - super set, hard to find in blue
1300 101. Peacock at the Fountain 8 pc. punch set - purple - outstanding example, pretty
500_ 102. Peacock at the Fountain punch bowl & base - marigold - very pretty & scarce
2x45 103. Peacock at the Fountain punch cups (2) - marigold - choice
575_ 104. Nippon ruffled bowl - ice green - very pretty irid. on this very rare bowl
75ea105. Imperial Grape water carafes (2) - purple - choice
135_ 106. M'burg Grape Wreath Variant crimped edge 8" ruffled bowl - amethyst - radium
600_ 107. Orange Tree 9" plate - blue - very pretty example
250_ 108. Orange Tree 9" plate - marigold
105_ 109. Orange Tree 9" plate - clam:broth
525_ 110. N's Peacock at Urn master IC bowl - marigold - super special, lots of pink & blue irid.
900_ 111. N's Peacock at Urn master IC bowl - ice green - a very good example
600_ 112. N's Peacock at Urn master IC bowl - purple - very nice
30ea113. N's Peacock at Urn sauces (4) - purple - choice
185_ 114. Grape & Cable PCE bowl w/BW back - pastel marigold - yellow irid.
1550 115. Exchange Bank, Glendive, Montana adv. handgrip plate - amethyst - very pretty, rare & desirable
135e116. Greek Key tumblers (3) - amethyst - choice
175_ 117. Chrysanthemum large size IC shaped ftd bowl - blue - pretty blue irid.
650_ 118. Drapery rosebowl - ice blue - scarce, nice
275_ 119. Drapery rosebowl - aqua opal - butterscotch & nice
650_ 120. Grape & Cable 7 pc. small size punch set - purple - outstanding irid., a good quality set
125_ 121. N's Bushel Basket - blue
550_ 122. Grape & Cable centerpiece bowl w/points straight up - ice green - rare, nice irid.

115_123. Heavy Grape 8" plate - pastel marigold - super pastel irid.
 775_124. N's Thin Rib 6 1/2" midsize jardiniere - purple - this is the midsize vase that has not been swung, slightly ruffled at the top, neat piece!
 3500_125. Thistle 9" plate - amethyst - extremely rare plate, outstanding example, one of just a few known
 65_126. Rustic 10" vase - white
 75_127. Rustic 10" vase - green
 150_128. Blackberry Block tankard water pitcher - blue - a very pretty pitcher, hard to find, a Fenton classic (cracked)
 250_129. Blackberry Block 7 pc. tankard water set - marigold - very dark to the bottom of pitcher, rare (cracked)
 105,25_130. Blackberry Block tumblers (2) - amethyst - scarce
 250_131. Thistle ruffled bowl - aqua - very scarce color, nice
 300_132. Leaf & Beads rosebowl - green - very pretty example
 175_133. Leaf & Beads rosebowl - blue - nice
 300_134. Holly 9" plate - blue - scarce & nice
 350_135. Holly 9" plate - marigold - super
 650_136. Peacock & Grape IC shaped bowl - amberina red - very pretty bowl, extremely rare
 220_137. N's Swirl tankard water pitcher - green - scarce
 105_138. N's Swirl tumbler - green - scarce
 250_139. Rose Show 9" plate - blue - very pretty, has epoxy on a rose
 525_140. Rose Show 9" plate - marigold - always in demand
 250_141. Rose Show 9" plate - white - a little deep, scarce
 105_142. Stippled Fruits & Flowers bon bon - marigold
 450_143. M'burg Peacock at Urn master berry bowl - green - radium, rare in green, nice
 275_144. M'burg Peacock at Urn master berry bowl - amethyst - radium
 450_145. Leaf Column 10" vase - sapphire - very rare vase, pretty
 600_146. Poppy Show ruffled bowl - marigold - very pretty, scarce
 300_147. Pulled Loop 11" vase - blue - very rare color, nice
 375_148. Grape & Cable 9" plate - purple - outstanding
 175_149. M'burg Grape Wreath Variant crimped edge sauce - green - radium, super

3000_150. Memphis 8 pc. fruit bowl set - white - outstanding iridescence & frosty, extremely rare & desirable, a great opportunity to buy a this set
 1050_151. Memphis 8 pc. fruit bowl set - green - also very nice for this scarce set
 175_152. Orange Tree hatpin holder - blue
 X_153. Orange Tree hatpin holder - marigold - nice
 800_154. N's Corn vase - purple - very pretty example, these don't show up this nice
 145_155. Beaded Cable rosebowl - blue
 105_156. Grape & Cable centerpiece bowl - amethyst - a scarce piece, nice, small chip off toe
 495_157. Holly IC shaped bowl - white
 275_158. M'burg Rays & Ribbons square bowl - marigold - rare shape for this bowl, radium & nice
 95_159. N's Stippled Rays 10" PCE bowl - purple
 1950_160. Four Seventy Four milk pitcher - purple - super, one of just a few known, a must for milk pitcher collectors
 85_161. Panelled JIP vase - purple - nice
 750_162. Dugan Heavy Grape large ruffled bowl - purple - super irid. on this rare bowl
 300_163. Stippled Good Luck ruffled bowl - blue - super example
 55_164. Stippled Good Luck ruffled bowl - pastel marigold - fantastic irid.
 185_165. Tree Trunk 13" mid size vase - green - very scarce vase, minor spot on point
 195_166. Tree Trunk 13" mid size vase - purple - scarce
 105_167. Tree Trunk 13" mid size vase - marigold
 1000_168. Stippled Peacock 9" plate - blue - very pretty, very scarce
 600_169. Stippled Peacock 9" plate - marigold - also a nice example
 425_170. Garden Path Variant large ruffled bowl - peach opal - very pretty, very scarce
 225_171. Grape & Cable 7 1/2" plate - purple
 900_172. Peacock at the Fountain fruit bowl - blue - scarce item, nice
 45_173. Lotus & Grape fto sauce - blue
 85_174. M'burg Hobnail Swirl spittoon - amethyst - rare & desirable, nice (cracked)
 30_175. Diamond Point 10" vase - purple
 500_176. Banded Grape & Cable banana boat - reninger blue slag - very rare color, has slag effect in glass
 115_177. Dandelion tumbler - ice blue - scarce
 50ea178. Dandelion tumblers (3) - purple - choice
 275_179. Ranger oblong squatty pitcher - marigold - dark & beautiful, only one we have seen
 135_180. Stream of Hearts ruffled compote - marigold

600_181. Lattice & Poinsettia ftd ruffled bowl - purple - very scarce, pretty
 X_182. Lattice & Poinsettia ftd ruffled bowl - marigold - scarce
 55_183. Lattice & Poinsettia ftd ruffled bowl - white opal - not carnival, scarce
 500_184. Tornado large size vase - purple - always in demand, nice
 125_185. Three Fruits 9" plate - purple - super
 450_186. Stag & Holly small size fto ruffled bowl - red - extremely rare, has chip on face near edge, cherry red color
 145_187. Stag & Holly small size ruffled ftd bowl - green
 725_188. Dreibus Parfait Sweets adv. ruffled bowl - amethyst - very scarce & nice
 165_189. Thin Rib & Drape 5" squatty vase - purple - has 3 3/4" base, is flared 7" wide, a very rare vase
 600_190. M'burg Courthouse ruffled bowl - amethyst - scarce & desirable, radium
 55_191. Stippled Grape & Cable bon bon - marigold - pretty
 850_192. Fluffy Peacock 6 pc. water set - green - very hard set to find, nice
 325_193. Australian Kingfisher large ruffled bowl - purple - pretty
 115_194. Australian Kingfisher small ruffled sauce - purple - pretty
 700_195. Greek Key ruffled bowl - blue - electric & super, very rare in blue
 65_196. Imperial Grape water bottle - marigold
 325_197. M'burg Peacock ruffled sauce - amethyst - radium & super, a neat little bowl, pretty
 185_198. Little Flowers rosebowl - smoke - very rare color
 275_199. Blossomtime ruffled compote - purple - pretty irid.
 2200_200. Diamond Points basket - marigold - extremely rare basket, very pretty, a must for basket collectors
 95_201. Imperial Grape punch bowl & base - marigold
 800_202. Daisy & Drape vase - aqua opal - super pretty butterscotch
 75ea203. Rustic midsize 15" vases(2) - green - choice
 95_204. Rustic midsize 15" vase - amethyst
 75_205. Rustic midsize 15" vase - blue
 675_206. Springtime butterdish - green - hard to find
 275_207. Grape & Cable cologne bottle - amethyst - pretty
 1300_208. M'burg Many Stars IC shaped bowl - amethyst - radium & super, 5 point star, a

great piece of M'burg
 145_209. Grape Arbor fruit bowl - marigold
 165_210. Honeycomb rosebowl - peach opal - pretty example
 300_211. Hearts & Flowers ruffled bowl - ice blue
 30_212. M'burg Blackberry Wreath 8" 3 in 1 edge bowl - green - radium
 1500_213. Dragon & Lotus IC shaped bowl - red - cherry red color, very scarce & desirable
 475_214. Tree Trunk 10 1/2" vase - ice blue - scarce & nice
 375_215. Good Luck 9" plate w/BW back - marigold - very scarce
 35,15_216. Memphis punch cups (8) - purple - choice
 500_217. M'burg Trout & Fly ruffled bowl - green - satin & super
 125_218. Oriental Poppy tumbler - ice blue - scarce
 350_219. Dragon & Strawberry ftd ruffled bowl - marigold - dark & pretty
 650_220. Imperial Grape 6" plate - purple
 675_221. Wishbone ftd ruffled bowl - blue - hard to find color
 650_222. Wishbone ftd ruffled bowl - white - also very hard to find
 70_223. Grape & Cable tankard water pitcher - marigold - great color, has chip on base
 75ea_224. Heavy Iris tumblers (2) - purple - pretty, choice
 95_225. Australian Swan ruffled sauce - marigold - dark & pretty
 X_226. Embroidered Mums ruffled bowl - purple - pretty
 65_227. Beaded Shell mug - marigold - super! souvenir "Christine, N.D."
 950_228. Rose Show ruffled bowl - ice green - super irid., very nice
 125_229. Grape Delight rosebowl - purple - stunning!
 85_230. Three Fruits dome ftd ruffled bowl - horehound - scarce color
 50_231. Four Seventy Four punch cup - purple
 155_232. Lined Lattice 9" vase - purple - pretty irid.
 625_233. Wreath of Roses 5 pc. punch set - marigold - super dark super pretty!
 195_234. Grape & Cable PCE bowl w/BW back - amethyst
 150_235. Waterlily ftd sauce - vaseline
 900_236. Persian Medallion bon bon - red - very scarce & desirable
 50_237. Waterlily large IC shaped ftd bowl - marigold
 130_238. M'burg Grape Wreath Variant 6" ruffled bowl - amethyst - radium & super!
 175_239. Stippled Peacocks ruffled bowl - reninger blue - very rare, one point has epoxy

**SAN DIEGO / SOUTHERN CA.
CARNIVAL GLASS CONVENTION**

You are CORDIALLY invited to attend the 3rd Annual Convention to be held at the GOOD NITE INN, 1801 G Street, Ontario, Ca. 91762. Dates are: March 5-9. Room reservations: #909-983-3604. Mention our Group for special rate of \$31.00/plus tax per nite. Shuttle service from Ontario Int'l Airport.

For Banquet reservations: contact Betty Robertson, 1430 Kendall Ave., Camarillo, Ca. 93010-3606 before 2/15/97. Chicken or beef - \$21. per person. \$5. Regis.fee.per.person. Post check to S.C.C.G.C.

*Thurs. Seminar - Beaded Purses, Hatpins, Buttons, etc. by Heaton's and Arsenault's. (Clint Arsenault is working on a NEW Button book.) * Free ice cream party Thurs. eve. * Friday Seminar - Small plates with Jack & Eleanor Hamilton, of Texas. * Sat. - Seck Auction, and * Banquet program presented by Robert Gallo, of Michigan, on Millersburg and other rarities.

Cambridge	•	Heisey	•	Duncan Miller	•	Fosteria
American Pottery	American China	WESTERN RESERVE DEPRESSION GLASS CLUB				Old Fenton • Akro Agate • Mckee
		presents				
		Cleveland's Semi - Annual				
		Depression Era Glass, Pottery & China				
		SHOW and SALE				
		Guest Author: James Measell,				
		Director of Glass History Research at Antique Publications				
		GLASS IDENTIFICATION				
		Sat., October 21, 1995		Sun., October 22, 1995		
		10 A. M. - 5 P.M.		11 A. M. - 4 P.M.		
ST. SAVA HALL						
2151 W. Wallings • Broadview Heights, Ohio						
Between Broadview & State Roads						
Wallings Rd. Exit I-77 - 2 Miles West						
RAFFLE	Admission \$2.00	FOOD AVAILABLE				
Imperial	•	Westmoreland	•	Paden City		

**MORDINI'S 1996 CARNIVAL GLASS AUCTION
PRICE REPORT WILL BE AVAILABLE JAN, 1997**

1996 Carnival Glass Auction Price Report (12th edition) will be ready to mail in early January, 1997. 4,500 listings of Carnival Glass sold at major auctions in the United States during 1996. Order now.

PRICES ARE AS FOLLOWS:

1996 Report	\$ 10.00
1996 Report (2 or more) each	\$ 9.00
Back Issues (1990-95) each	\$ 9.00

Canadian orders should be by Canadian Postal money order in U.S. funds. Overseas mailings add (per report) \$3.00 (Int'l Money Order in U.S. funds)

ORDER FROM:

Tom & Sharon Mordini, 36 N. Mernitz Av., Freeport, IL 61032

- 160_240. Imperial Grape compote - aqua - scarce color
- 675_241. M'burg Many Stars crimped edge ruffled bowl - amethyst - radium & rare, has six point star
- 35_242. Raspberry tumbler - green
- 20_243. Raspberry tumbler - marigold
- 400_244. Four Flowers large ruffled bowl - purple - super pretty, Dugan purple is hot!
- 315_245. Christmas Holly 10" vase - pale marigold - self named, never have I seen another
- 125_246. M'burg Peacock small berry bowl - amethyst - radium, nice
- 40_247. Wreathed Cherry tumbler - purple
- 1050_248. N's Wide Panel epergne - green - outstanding, perfect
- 35_249. Palm Beach 5" bcwl - white
- 55_250. Double Stemmed Rose dome ftd bowl - smoky lavender - rare color
- 450_251. Butterfly & Fern 5 pc. water set - blue - scarce in this color
- 115_252. Beaded Bullseye 12" vase - purple - super
- 30_253. Beaded Bullseye 12" vase - marigold
- 1000_254. Rose Show Variant ruffled bowl - reniger blue - very rare bowl, much more rare than Rose Show
- 70_255. Inverted Feather parfait - marigold
- 300_256. Horse Medallion 7" plate - marigold - nice
- 90_257. Bouquet water pitcher - marigold - nice
- 20_258. Bouquet tumbler - marigold
- 60_259. Holly ruffled compote - pale blue - marigold overlay
- 55_260. Holly ruffled compote - amethyst - scarce color
- 800_261. Davidson Society Chocolates handgrip plate - amethyst - advertising is hot
- 200_262. Corinth JIP vase - blue opal - as nice of one I've seen
- 185_263. God & Home tumbler - blue - scarce
- 105_264. Fenton Wide Panel 12" vase - blue - very pretty!
- 135_265. Fenton Wide Panel 12" vase - ice green - scarce & pretty!
- 350_266. Persian Garden large ruffled bowl - peach opal - very pretty, scarce
- 20_267. Fashion tumblers (2) - marigold - choice
- X_268. Stippled Three Fruits ruffled bowl - marigold - dark & pretty
- 75_269. Cosmos & Carat tumbler w/j. R. Millner Co. adv. - honey amber, a rare tumbler
- 105_270. Beaded Shell mug - blue - scarce color
- 325_271. Grape Arbor 7 pc. water set - marigold - scarce
- 145_272. Wild Rose ftd bowl - blue - rare color, pretty

- 105_273. Grape & Cable 10" ruffled bowl - marigold - pink irid., stunning, small nick on base
- 125_274. Florentine candlesticks - vaseline
- 1700_275. Apple Tree water pitcher - blue - very pretty, very rare, very nice
- 95_276. Big Basketweave 10" vase - purple
- 425_277. Palm Beach large bulbous vase - amethyst - very scarce item, neat
- 20_278. Grape Wreath 7" ruffled bowl - green
- 75_279. Singing Birds mug - purple
- 400_280. Three Fruits spt ftd ruffled bowl - aqua opal - scarce
- X_281. April Showers 10" vase - green
- 30_282. April Showers 11" vase - amethyst
- 165_283. Dandelion tankard water pitcher - green w/gold paint - not carnival
- 15_284. Four Pillars 10" vase - aqua opal(damaged)
- 25_285. Grape & Cable tumbler - marigold
- 205_286. M'burg Little Stars 7" ruffled bowl - green - satin & pretty
- 205_287. N's Bushel Basket - ice green
- 55_288. Grape & Cable large ruffled bowl - green
- 45_289. N's Thin Rib 9" vase - amethyst
- 1200_290. Princess Lamp w/Lined Lattice shade - purple - fantastic irid. pretty!
- 50_291. Imperial Jewels vase w/Imperial Cross mark - marigold
- 135_292. Enameled Daisies bulbous water pitcher - marigold - dark
- 55_293. Grape & Cable ruffled bowl w/BW back - green
- 40_294. Orange Tree mug - blue - super pretty
- 235_295. Stippled Grape & Cable ben ben - vaseline opal - not carnival!
- 30_296. Peacock at the Fountain tumbler - blue
- 30_297. Stork & Rushes tumbler - blue
- 20_298. Fenton's Thin Rib 16 1/2" vase - marigold
- 25_299. Daisy & Plumbe whimsy tri-cornered compote - green
- 550_300. Heavy Grape chop plate - purple - fantastic!!! a super dooper!
- 75,35301. Wide Panel plates (2) - red stretch - choice
- 5_302. Wide Panel goblet - red, not stretch
- 20_303. Thin Rib midsize 12" funeral vase - ice blue - probably new
- 150_304. Paneled Diamonds & Bows 8" vase - blue
- 55_305. Diamond Points 8" squatly vase - green
- 10_306. Imperial Grape large round bowl - smoke
- 10_307. N's Thin Rib 10 1/2" vase - russet
- 35_308. Wide Panel candlestick - russet
- 45_309. Wide Panel oval candy dish - ice green
- 55_310. Homestead chop plate - white - not old
- 25_311. Large ftd fruit bowl - white - not old
- 15_312. Paneled lamp shade - marigold

ON THE AUCTION TRAIL WITH CHUCK

By Chuck Kremer

October 11-12, 1996: Cooper-Albrecht Auction at Flint, Michigan. I bought the Preview Video and after viewing it twice, I decided this was one auction I shouldn't miss. Dave Albrecht said they sent out well over 100 videos and the number of mail bidders and total mail bids was a pleasant surprise. This video is one tool that sure helps in the decision making for those unable to attend the sale. Every time C-A have another auction the video increases in popularity - it is easy to understand why. In a related tone, I personally like the large screens and the showing of the "frozen" view of each item as it comes up for sale. Sure cuts down on the running of each piece up and down the aisle, and we get a larger than life view to look at.

The auction itself was very good. There was a large amount of crystal to be sold, and to their credit, they started the sale an hour earlier. The crystal sold very well. When some pieces sell I ask myself, "Why that price?" One such question occurred when the marigold Marilyn water pitcher sold for \$500 and on the opposite side of the coin was the matching tumbler at \$450. Another was the amethyst six inch Cherry Chain plate at \$800, or the purple Acorn Burrs spooner at \$550, or the purple Town Pump at \$1900.

Some other prices included the blue 10" Wishbone PCE bowl at \$1600 and the amethyst one at \$1300, the super radium finish Courthouse bowl at \$1150, amethyst 9" Orange Tree with tree trunk center plate at \$4500, the red Plume Panels 11" vase at \$1000, and the green Hobstar and Feather giant rose bowl at \$3500.

The weather was nice, but the leaves were not as colorful as I expected. The hotel had been refurbished and as usual the Cooper-Albrecht hospitality made the day.

October 17-20, 1996: Air Capital Convention at Wichita, Kansas. I had missed the last couple of Air Capital conventions, so this was like old home week to me. So well organized and every little detail taken care of. This club is famous for their hospitality room - it sets the standard for the rest. Super food, goodies and drink to no end. Did I enjoy it? You bet I did! In my opinion, there was more good glass for sale in the rooms than I remembered from the past and there were many very nice displays.

A highlight of this convention for me is the opportunity to see some local collections. This year we traveled by yellow bus, to the "Farm" to see Don Kime and Roland Kuhn's super collection. I had seen most of their collection before, but not at the new location. To an old farm boy, this was right up my alley. A very nice home in a rural setting was a horse in the pasture. I did look at the glass, but missed the chickens and calf.

The bus tour also stopped at Keith and Nola Schmoker's new home. I had been to their previous home several times and knew we would see some fantastic glass, but it took the new setting to really show it off. I took a look at the colorful landscaping and offered to hire

the gardener, but Keith said one yard was enough.

Our young carnival glass collector Molly Evans was playing hooky from grade school and as she boarded the bus I saw a twinkle in her eyes and heard her say, "This is my first school bus ride." She gave all the glass a close look. A double treat for her.

At the banquet, Harold Cox showed and talked about a portion of his extensive Peacocks collection. From the buffet dinner Thursday night to the breakfast Sunday, there was something for everyone at this convention. Auctions - we had two. The midnight auction was a very relaxed and fun affair and the regular Seeck Auction Saturday exceeded expectations. The red Dragon and Lotus IC shaped bowl sold for \$4100 and the ice green G&C Tankard pitcher at \$4500 were the top items.

THANKS!

By Pat Call

I would like to say "Thank You" to Alan Pickup and Ken Oppenlander for putting into words feelings that I found difficult to express. I was so angered and discouraged by the attitude expressed by Mr. Thomas, suggesting segregating upper class and lower class collectors, that I did not dare to write my own response. I nearly dropped out of Carnival Glass circles all together because this attitude has been seeping in from other sources as well.

We began collecting Carnival Glass when the only national organization was the American Carnival Glass Association. What impressed us then, and continued to be the case until very recently, was that there were no social or economic barriers between collectors. (Back then, there were no price guides, either.)

The advice that we received from Charlotte Ormsbee, a fellow collector of more experience, was the best advice we've ever received. Her criteria, when it came to deciding how much she was willing to pay was, "If I have to sell it tomorrow, can I get my money back?"

Even a beginning collector can look at a piece of Carnival Glass and determine if the iridescence makes it very attractive or just average. Even a beginner can determine if damage is minor or significant. But it takes a collector who has been in the market for a while to help the new collector learn the patterns, shapes, colors and overall desirability among the world of collectors.

Those who received a "hand-up" have a responsibility to "extend a hand" to those who follow. There is no room in this hobby, or any other, for snobbishness.

Thanks for letting me have my say.

THE IMPERIAL PROCLAMATIONS

By Carl O. Burns



"Puttin' Em On A Pedestal"

When you think about it, there just aren't many Pedestal Footed Vases in carnival glass. Northwood made a couple, like the Corn Vase and the Pulled Husk Corn Vase. Dugan also made a few, like the Mary Ann and Formal Vases. At the moment, I can't think of a single Fenton one. However, when we start talking Imperial, the situation is very different. Without question, this firm made more Pedestal Footed Vases than any of the other carnival producers. At least a dozen patterns were made in this shape, with multiple sizes available in some of them. This might tend to make one think that this must have been a very popular shape. Yet, most of them are really not all that easily found!

The three examples show in the photo here make for a nice overall representation of size, pattern and rarity. The Heavy Diamond Vase, on the left, stands 6" tall, and is a dark, rich marigold, with a crystal pedastal foot. This is the most common of the three, yet it will still take some searching to come up with one. I've seen these sell in the \$50 to \$65 range. They

are also reported in smoke, clambroth, and green. In the center is a personal favorite of mine - an 8" Ranger Vase in a rich, exceptionally dark smoke, with a crystal pedastal foot. In smoke, this vase is, in my opinion, very scarce and much underrated. They are very difficult to find, yet they usually only sell in the \$100 to \$125 range. By rights, they should bring much more! This vase is also known in marigold and clambroth, both of which are just a little easier to find. On the right is what I feel to be one of the most impressive pieces of glass in the entire field of carnival glass. This is a 10" Four-Seventy-Four, in marigold, and it is the only large carnival vase that combines both styles of molding: high relief geometric and floral intaglio. The glass is thick and of exceptional quality and brilliance. I've never taken the trouble to weigh one of these, but I'll wager it's close to 5 lbs.! In addition to this 10" size, there are smaller 8" examples and a positively gigantic 14" size. All three of these sizes, but especially the 10" and 14" sizes, are really very, very rare, in any color. It has been a long, long time since one changed hands at auction, and I now feel that I GROSSLY undervalued these in my Imperial Book! All three sizes are known in marigold. In addition, the 14" vase has been reported in purple; the 10" vase is known in green; and the 8" vase is known in true red, making it, in my opinion, one of the truly rarest pieces in all of carnival glass!

In addition to the above three patterns, Imperial produced Pedestal Footed Vases in the following designs: Diamond Block, Frosted Block, the #5 Celery Vase, Octagon, Pillar Flute, Propellor, Star Medallion, Two-Handled, and two sizes of Zippered Heart, the large Queen's vases and a smaller 5" version. With the exception of the Pillar Flute, all are rather scarce to quite rare. It is also quite unusual that, with the exception of the Four-Seventy-Four and the Zippered Heart Queens vase, virtually all of these are found only in marigold, clambroth or smoke! (Not all of them are found in all three colors).

Pedestal Footed Vases add a lot of class to a collection. They are especially impressive and attractive when displayed with stemmed compotes or rosebowls. So, be on the lookout for them, and remember: None of them are all that easily found! Until next month, as we used to say in the 60's: "Keep the Faith."

HEARTS & FLOWERS COMPOTE - IC SHAPE

By Virgil Lemos

This past weekend, I decided to go for a tour of some local villages and check out the antique shops.

After a long day of driving, I arrived at a village where the only antique shop was closed. After walking around for 10 minutes, I came across a diner. I thought, here I'm sure to get some information on where to find other local antique shops.

I approached the cashier and asked her, "Excuse me, could you tell me where I could go to find some antique shops?"

She paused to concentrate.

As she was about to reply, an elderly man, sitting at the counter, overheard my inquiry, and asked, "You buy antiques?"

"Yes", I replied.

He explains, "I own an old house that I inherited two years ago, and its full of stuff. Would you be interested to look at it?"

"Sure!", I replied.

After a short drive, we arrived at an old boarded up and abandoned house. Tall weeds were everywhere, indicating that no one had been there for quite some time. While he attempted to remove a couple of boards from the door, I couldn't help wondering what I was going to see inside, possibly nothing of interest, surely, by now, this place had been picked clean of its goodies.

After laboring for 10 minutes to remove the boards, he reaches overhead towards a crack in the wall, pulls out a small roll of potato bag material, unties several knots, and unwraps a double ring cast iron key.

As he turns the key and slowly pushes the door, the hinges let out a continuous screech, driving a shiver up my spine, forcing me to bite my teeth.

Inside, there were packed boxes everywhere, some furniture against the wall, and several shelves with dishes. As I glanced down the shelves, I spotted what looked like two compotes. As I walked closer, I noticed that one looked like ice blue, and the other marigold.

That's odd!, I thought, these compotes have the top in the ice cream shape.

I couldn't believe my eyes when, at hands reach, I recognized the Hearts and Flowers pattern inside of the compotes.

I asked the man, "what do you want for these two pieces?"

He replied, "give me 10 dollars for each one." I pulled out 20 dollars and paid the man.

As I walked out the door, my wife turned on the light and woke me up.

And may all your dreams come true.

H.O.A.C.G.A.

CLUB NEWS & GENERAL INFORMATION

The Newsletter is published on the 15th of each month. The Heart of America Carnival Glass Association is a Not-for-Profit organization registered in the State of Missouri.

Members are encouraged to contribute articles for publication in the newsletter and to advertise carnival glass for "sale" or glass "wanted". Articles may be educational in nature or about collecting experiences, or letters of interest to the membership. Other carnival glass organizations may announce their meetings and/or conventions. Auctioneers who are members may announce their future auctions. Members may announce their upcoming carnival glass educational books, price guides, and other pertinent publications; after the initial announcement the information will only appear in the bulletin "Resource Section". All items submitted for publication will be published in the next months bulletin or as soon as possible. The final decision to publish the articles will be made by the Board of Directors. Some articles may be edited prior to publication. Articles of an offensive nature or articles intended to discredit individuals will not be published.

Membership is \$25.00 U.S. & Canada, \$40.00 Foreign per family or individual. All monetary amounts quoted are in U.S. dollars. Membership year starts the month your dues were paid. All checks are to be made payable to H.O.A.C.G.A. and mailed to the Secretary, as listed on the inside front cover. All articles and items for publication in the bulletin are to be sent to the Bulletin Secretary whose name and address appear on the inside front cover.

MEMBERSHIP APPLICATION **H.O.A.C.G.A.**

New Member **Renewal**

\$25.00/year U.S. & Canada --- \$40.00/year Foreign

NAME _____

ADDRESS _____

ZIP CODE (NINE DIGITS)

TELEPHONE _____

REFERRED BY _____

Send to: Ed Kramer, 4305 W. 78th Street, Prairie Village, KS 66208

H.O.A.C.G.A. - CLUB INFORMATION

The purpose of the Heart of America Carnival Glass Association is to promote the growth and continuation of the Carnival Glass collecting hobby and to provide support to the many collectors by providing current information about the hobby.

Growth is accomplished by supplying educational information for the collector and soliciting new collectors into the hobby.

With the exception of 1997, when the Convention is to be May 1, 2, 3 and 4, a Convention is held annually in April in conjunction with the annual meeting (Convention date always includes the 4th Friday). Some of the activities provided at the convention are:

- * Members provide Room Displays with glass from their collection.
- * Members are encouraged to bring glass for Sale.
- * Educational Seminars are provided by members.
- * A Major Carnival Glass Auction is provided.
- * The Convention offers members an opportunity to meet new collectors, renew old friendships and enjoy discussing carnival glass with other knowledgeable collectors.
- * A banquet is held with a Carnival Collector as our Speaker.
- * A Hospitality time is provided by the club. This is a time of relaxation and visiting with other members.

It takes the support of all collectors and members to promote the hobby in order that its growth and expansion can continue.

In order to obtain our objective, the members must financially support the organization. The Heart of America Carnival Glass Association receives its financial support through the Annual Membership dues and the sale of the following.

* **Membership Dues** - \$25.00 per year - U.S. & Canada. \$40.00 per year for Foreign. The Membership Year is from the date of joining to one year later. Dues are set by the Board of Directors to support the publication of the

monthly bulletin, typing, printing and mailing.

* **Educational Series - Book I** - 148 articles with pictures (black and white) on a variety of Carnival Glass Patterns.

* **Educational Series - Book II** - 180 articles with pictures (black and white) of Carnival Glass Tumblers

* **Educational Series - Book III** - 150 articles with pictures (black and white) of Bon Bons, Bowls, Drinking Vessels, Novelties, Rose Bowls, and Table Sets. Also included is a listing of 500 rarities.

* **Hartung Carnival Glass Pattern Books** - A set of 10 books identifying Carnival Glass Patterns. These books are a must for all Carnival Glass Collectors, especially for the beginner. These are the only complete set of books available that identifies the majority of the carnival glass patterns. Sketches are in black and white.

* **Pattern Notebook** - A notebook containing sections on Mugs, Table Sets, Rosebowls, Water sets (including painted sets), Plates (small, regular & chop), Compotes (large, regular & small), Punch Sets and Vases. Each section of the notebook identifies each pattern with a **COLOR** picture along with information about the Maker and colors of each different pattern.

* **Souvenirs** - Periodically H.O.A.C.G.A. makes a souvenir to be sold to members. Souvenirs have been made since 1974, a few of these are presently available. They are the small Good Luck plate in ruby red, the Green Opalescent - Fenton, Cobalt - Millersburg, Marigold - Imperial, and Teal - Dugan Bells. Each year that Souvenirs were made, Whimseys were also made and sold at the convention banquet.

* **Video Tapes** - Video Tapes of educational programs given during the various conventions are available. A complete listing of the available video tapes are shown on the Order Form, which is part of this section of the Bulletin.

NOVEMBER, 1996 REGULAR HOACGA MONTHLY MEETING

NOTE NEW MEETING PLACE

The next regular meeting of the Heart of America Carnival Glass Association will be on Sunday, November 24, 1996 at 2:00 P.M. at the Holiday Inn at the K.C., MO Sports Complex (right across from the stadiums at I-70 and Blue Ridge Cutoff). We plan to hold our monthly meetings (4th Sunday) there for the next 6 months. There will be no DECEMBER meeting. At November's meeting we will discuss patterns with birds and berries (November is Turkey and Cranberry month).

The October 27, 1996 meeting was at the home of Cliff and JoAnn Ball in Olathe, KS. Thirteen members enjoyed the Ball's beautiful glass and hospitality, and the meeting was great. After the business portion, the Balls served pumpkin pie and coffee, and we discussed Westmoreland, Cambridge, Sowerby and carnival glass of unknown origin. JoAnn Ball won the door prize, an amethyst 2 Flowers sauce dish. John and Lucile Britt came from Manhattan. It is a shame that more local area members (you know who you are) don't attend these monthly meetings. Rides can be arranged.

Ed Kramer, Secretary HOACGA

NOTES FROM THE SECRETARY

- 1.) Please send ads to JACKIE FORTNEY, orders for printed material and souvenirs and memberships (new & renewal) to ED KRAMER. Addresses inside front cover. Any other destination delays processing.
- 2.) **Please do not send cash. Please make all checks payable to HOACGA.**
- 3.) Please allow 3-4 weeks to process orders unless there are special circumstances.
- 4.) Your membership expires with the month shown in the upper right hand corner of your mailing Label, for example 1096 is October 1996, Please renew early. We try to put a "Membership due please renew" label on your last bulletin, If you do not receive a bulletin when you think you should, let me know as soon as possible. All checks are logged in (manually). If an Error is made, it is much easier to correct before months go by. We keep detailed records but occasionally a mistake can be made. I appreciate your Cooperation, We have over 1000 Memberships.

Ed Kramer, Secretary HOACGA

ANOTHER FIRST

By Bob Grissom

AQUA OPALESCENT --- PUNCH SET ---GRAPE & CABLE

In 1989 John Wood, after he had sold the Aqua Opal Poppy show bowl for \$18,500 at his St. Louis auction, predicted that before the year 2000 A.D. a piece of Carnival Glass would sell for at least \$100,000. We are all aware of the Aqua Opal Acorn Burr Punch Set that originally sold at Marion Hartung's auction for \$12,000, and in more recent years sold in the \$65,000 to \$75,000 range. Within the last year, one of the two known complete Aqua Opal Peacock At Fountain Punch Set sold for a reported \$75,000. It is now very exciting to hear that the all time favorite pattern, Northwood's "Grape & Cable" has taken over the headlines again. For several years now Don & Becky Hamlet of North Carolina have had an Aqua Grape & Cable Punch Cup and were optimistically looking for the rest of the set. In early October their optimism was rewarded. They were able to purchase an Aqua Opal small size Punch Bowl, Base, and five Punch Cups to go with their lone punch cup.

We wish to congratulate Don & Becky on their purchase of this wonderful one-of-a-kind rarity. Isn't it still amazing that after this many years a piece of Carnival such as this shows up?

Rumor has it that John Woody's 1989 prediction is getting very close to being a reality. Other collectors that have of the Aqua Opal Grape & Cable punch cups have renewed hope that they may find one also.

Don is at home recovering from Triple Bypass surgery after a heart attack. He had the Punch set about two weeks before his heart attack though. We all wish Don a speedy recovery.

A photograph of the Punch Set will appear in a later bulletin.

SHIPPING AND HANDLING (S&H) INFORMATION

The shipping charges to USA members are as indicated for each item. The shipping charges to members who reside outside the USA will be the actual cost. Upon receipt of item(s), the member will be expected to reimburse the club for the actual cost of shipping, as indicated by the postage on the package. At the time of placing your order, please indicate your shipping preference (air or surface). Unless otherwise specified, items will be shipped by surface mail.

ORDER FORM - SOUVENIRS & BOOKS

H.O.A.C.G.A. Educational Series Book I	\$15.00
USA S&H for each book	\$2.50
Total	\$17.50
H.O.A.C.G.A. Educational Series Book II.....	\$17.50
USA S&H for each book	\$2.50
Total	\$20.00
H.O.A.C.G.A. Educational Series Book III (USA S&H included)	\$20.00
H.O.A.C.G.A. SOUVENIRS:	
1993 Ruby Red 6" "Good Luck" Plate	\$37.50
(20th Anniversary)	
1989 Teal Bell	\$35.00
(Honors Dugan Glass Company)	
1988 Marigold Bell.....	\$35.00
(Honors Imperial Glass Company)	
1987 Cobalt Blue Bell	\$35.00
(Honors Millersburg Glass Company)	
1986 Green Opalescent	\$35.00
(Honors Fenton Glass Company)	
<i>Include \$2.50 for USA S&H of each above souvenir.</i>	
PLATE HOLDERS - Dozen.....	\$21.50
(USA S&H Included)	

TOTAL \$ _____

SEND ORDERS TO:

ED KRAMER
4305 W. 78th Street
Prairie Village, KS 66208

Name _____
Address _____

SPECIAL NOVEMBER / DECEMBER - ALL TAPES \$15 EACH ORDER FORM - VIDEO TAPES

H.O.A.C.G.A. CONVENTION SEMINAR VIDEO TAPES

_____ "Red Carnival Glass"	\$20.00
(Richard Cinclair, Bob Allaire & Joyce Seale)	
_____ "Shades of Blue" - (Richard Cinclair).....	\$20.00
_____ "Poppy & Rose Show Pieces" - (Tom Mordini).....	\$20.00
_____ "Fenton Two Flower" - (Bob Stremming)	\$20.00
_____ "Carnival Glass Smalls"	\$20.00
(Eleanor & Jack Hamilton)	
_____ "Small Plates" - (Smokey Cloud)	\$20.00
_____ "Hatpin & Hatpin Holders" - (Clint Fox).....	\$20.00
_____ "Northwood Peacock & Urn Ice Cream Sets"	\$20.00
(Harold Cox)	
_____ "Millersburg Big Fish & Trout & Fly"	\$20.00
(Singleton Bailey)	
_____ "Carnival Glass Collecting Experiences"	\$20.00
(Carl & Ferne Schroeder)	
_____ "Heinz 57 Variety Carnival Glass Collection"	\$20.00
(Jerry & Carol Curtis)	
_____ "Little Sauces" - (Garth Irby)	\$20.00
_____ "Miniatures" - (John & Lucile Britt).....	\$20.00
_____ "Table Sets" - (Leonard, Kremer & Grissom).....	\$20.00
_____ "Plates" - (Ruth Green & Richard Cinclair)	\$20.00
_____ "94 Britt Award Luncheon" (Floyd & Cecil Whitley)	\$20.00
_____ "Plethora of Patterns" - (Dean & Diane Fry)	\$20.00
_____ "Millersburg" - (Dick & Jennie Hostetler)	\$20.00
_____ "Swung Vases" - (Dave & Joan Doty).....	\$20.00
_____ "Holly Pattern" - (John Mikkonen)	\$20.00
_____ "95 Britt Award Luncheon" - (Carl & Ferne Schroeder).....	\$20.00
_____ "95 HOACGA Banquet" - (Floyd & Cecil Whitley)	\$20.00
_____ "96 Britt Award Luncheon" - (Chuck & Marge Kremer).....	\$20.00
_____ "96 HOACGA Banquet" - (Carl & Eunice Booker)	\$20.00
_____ "Imperial Glass" - (Norene Duran).....	\$20.00
_____ "The Molding Process" - (Howard Seufer of Fenton Glass Co.)	\$20.00

TOTAL \$ _____

USA S&H INCLUDED WITH PRICE OF TAPE

SEND ORDERS TO:

ED KRAMER
4305 W. 78th Street
Prairie Village, KS 66208

Name _____
Address _____

ORDER FORM - BOOKS

HARTUNG CARNIVAL GLASS BOOKS

(Black and white sketches)

_____ Book 1 - \$6.00	_____ Book 6 - \$6.00
_____ Book 2 - \$6.00	_____ Book 7 - \$6.00
_____ Book 3 - \$6.00	_____ Book 8 - \$6.00
_____ Book 4 - \$6.00	_____ Book 9 - \$6.00
_____ Book 5 - \$6.00	_____ Book 10 - \$6.00

_____ Complete Set of 10 Books (#1 thru #10) - \$60.00

(Hartungs "Northwood Pattern Glass" included with a Set)

USA S&H - Include \$1.00 each, for shipping when purchasing books separately.

Maximum of \$6.00 shipping for a set.

H.O.A.C.G.A. PATTERN NOTEBOOK

(COLOR Photos)

_____ Mugs	(1980)	\$7.00
_____ Table Sets (Photos 1 thru 40)	(1981)	\$7.00
_____ Water Sets 1 (Photos 1 thru 60)	(1982)	\$7.00
_____ Water Sets 2 (Photos 61 thru 120)	(1983)	\$7.00
_____ Water Sets 3 (Photos 121 thru 167)	(1984)	\$7.00
_____ Rosebowls 1 (Photos 1 thru 60)	(1985)	\$7.00
_____ Rosebowls 2 (Photos 61 thru 101)	(1986)	\$7.00
_____ Small Plates 1 (Photos 1 thru 48)	(1987)	\$7.00
_____ Small Plates 2 (Photos 49 thru 98)	(1988)	\$7.00
_____ Chop Plates (Photos 1 thru 40)	(1989)	\$7.00
_____ Regular Plates 1 (Photos 1 thru 48)	(1990)	\$7.00
_____ Regular Plates 2 (Photos 49 thru 81)	(1991)	\$7.00
_____ Compotes 1 (Photos 1 thru 57)	(1993)	\$8.00
_____ Compotes 2 (Photos 58 thru 113)	(1994)	\$8.00
_____ Punch Sets, 2nd Edition (Photos 1 thru 36)	(1995)	\$8.00
_____ Vases A - C (Photos 1 thru 57)	(1996)	\$9.00
_____ Complete Pattern Notebook		\$129.00
_____ USA S&H for complete notebook		\$5.00
_____ USA S&H for each selection		\$1.00
<i>(USA Maximum S&H \$5.00)</i>		

TOTAL \$ _____

SEND ORDERS TO:

ED KRAMER

4305 W. 78th Street

Prairie Village, KS 66208

30

11/96

Name _____

Address _____

2ND NOTEBOOK SECTION ---- VASES

PHOTOGRAPHS NEEDED

The first Vase section of the HOACGA Notebook has been completed, with the help of many of the members. The first section has been received very well.

I am now in the process of assembling the necessary photographs for the second Vase section of the Notebook. The first section was those whose pattern names started with A thru C. For this second section, it is planned to add those vases whose pattern name starts with D thru G (Daisy & Drape thru Graceful). I presently have several of the pictures, but there are some of the patterns for which I need a photograph. These patterns are listed below. If you have one of these vases, or any unlisted vase, and would be willing to photograph it and send me a picture, I will appreciate it very much.

PATTERN

MAKER

DIAMOND POINT COLUMNS	IMPERIAL
ENAMELED CORN LILY	UNKNOWN
FEATHER SWIRL	U.S. GLASS
FINE RIB	IMPERIAL
FISH	CZECHOSLOVAKIAN
FISHSCALE 7 PANELS	DUGAN
FLEUR DE LIS / BEADED SHELL	HEISEY
FLORENTINE HAT	FENTON
FLORENTINE HAT VARIANT	FENTON
FLUTE	DUGAN
FLUTE	FENTON
FLUTE	IMPERIAL
FLUTE	NORTHWOOD
FLUTE, STEMMED	U.S. GLASS
FOOTED RIB & PANEL	DUGAN
FOUR PILLARS	DUGAN
FROSTED BLOCK	IMPERIAL
GOTHIC ARCHES	UNKNOWN

BOB GRISSOM

7517 EVANSTON

RAYTOWN, MO 64138

11/96

31

FROM MY CORNER

By Bob Grissom

BUYING, SELLING, OR TRADING CARNIVAL GLASS

Last November, I had an article in the HOACGA Bulletin about the same subject as this article. We, the HOACGA officers, continue to receive a few complaints from members who are buying or selling glass through the monthly bulletins. Most of these complaints are from buyers that have received glass which does not meet their expectations. In some cases, the glass was damaged without any obvious damage to the packaging container. We have discussed possible ways of trying to prevent the reoccurrence of these problems. We do not want to have to police these types of problems. If these complaints continue to occur, we will have to start some kind of record-keeping to monitor these. It would be much better if all members would abide by a good "fair play" policy.

The HOACGA Monthly Bulletin normally contains the club's advertising policy. This is for the mutual benefit of both the buyer and seller. If any member has any suggestions as to how the policy should be improved, please let us know.

When you call about an item that is advertised in the bulletin, always ask about all of the qualities that you desire in the piece. Some questions that you might want to ask are:

1. What kind and how good is the iridescence? Is the iridescence uniform, or does it vary over the face of the piece? Does it have iridescence on the backside?
2. Does it have any damage? If so, to what extent?
3. Is it Ice Cream Shape; ruffled, if so how many ruffles; what type of edge does it have (3-in-1, PCE, etc.)?
4. Do not assume that the piece that you want to buy is a certain size. Ask about its size (diameter, depth, shape, etc.).
5. Make sure you understand how the glass is to be packaged and shipped. Is it to be insured? Who is responsible if the item is damaged in shipment? If the carrier (UPS, Post Office, etc.) says that they will not pay the insurance because it was not packaged properly, who is responsible for the damage?
6. Make sure you understand the return privileges.

Finally, when you are selling an item from your ad in the Bulletin, you should not only describe the item when you send in the ad, but you should also describe it in detail to the person that calls to inquire about it.

One thing that we should remember is that all members do not have the same amount of collecting experience, and we do not all describe iridescence the same way. It is difficult to describe over the telephone, especially if you are not familiar with the persons collecting experience.

The "FOR SALE" and "WANTS" section of the bulletin is for the mutual benefit of both the buyer and the seller. With cooperation by both parties, the hobby will be better for it.

WELCOME NEW MEMBERS

We welcome the following new members:

Tom & Joan Steskal	Ahwahnee, CA
Edward & Niki Corbin	Smithville, MO
Keith & Delana Shackelford	Wichita, KS
Jerry & Cleo Kudlac	Piedmont, OK
Leo & Leatrice Vitalich	Arson, CA
Sam Allen	Baltimore, MD
Marvin & Brenda Dodson	Leesburg, VA
David & Lynda Ames	Horseheads, NY
Bob & Val Appleton	New Malden, Surrey, England
Leon Smith	Stuarts Draft, VA
Robert & Kathleen Tyler	Newark, NY
Terry & Ruth Simmitt	Topeka, KS
Wade & Ruthann Wilson	Brandenburg, KY
Dr. John & Marilyn Churchill	Mukilteo, WA
Thomas & Sondia Bagot	Barnegat, NJ
Kim & Rebecca Gary	Ranch Cucamonga, CA

We thank our members who encouraged new members or rejoined:

John & Lucile Britt
Chuck Kremer
Carnival Glass Society, UK
Bernie & Nancy May
Francis & Dolores Fenn
Glen & Stephen Thistlewood
Moe Myers
Ray & Shirley Henry
Paul Berube
Steven & Phyllis Long
Gerald Hess

H.O.A.C.G.A. BULLETIN - ADVERTISEMENT POLICY

1. All advertisements of glass for SALE or WANTS must be received by the Bulletin Secretary no later than the LAST DAY OF THE MONTH to insure being published in the next bulletin.
2. Members may advertise ten (10) "For Sale" and/or "Wants" per month. The "For Sale" Glass must be members glass and not the property of a nonmember. Advertising is at no cost.
3. Only "OLD CARNIVAL GLASS" items or H.O.A.C.G.A. Souvenirs will be published.
4. Damage or flaws should be noted.
5. All "For Sale" items must be priced; NO BID ITEMS WILL BE PUBLISHED.
6. A 5 day return privilege, at buyer's expense, providing it is not as advertised, or as discussed.
7. Postage and Insurance is to be the responsibility of the buyer, both when returning and receiving the glass.
8. The sender of the glass (be it the seller or the buyer returning it) is responsible for the proper packaging of the glass.
9. H.O.A.C.G.A. does not accept responsibility for accuracy of any advertisement.

USE THE FOLLOWING ABBREVIATIONS FOR GLASS DESCRIPTION.

A Amethyst	HA Honey Amber	P Purple
AMB Amber	IB Ice Blue	PRL Pearl
AO Aqua Opal	IG Ice Green	PM Pastel Marigold
B Blue	IGO Ice Green Opal	PO Peach Opal
BO Blue Opal	LAV Lavender	R Red
CLM Clambroth	M Marigold	RA Amberina
EB Electric Blue	MMG Marigold on	SM Smoke
H Horehound	Milk Glass	T Teal
G Green		VAS Vaseline

Note: If you wish to describe a piece as light or dark, use the body of the ad.

EI - Excellent, GI - Good, LI - Iridescence

CARNIVAL GLASS FOR SALE

Samuel A. Swierc, 520 East Ave., Dover, DE 19901
Phone: (302) 736-6635

P	EI	Penny Match holder	1,000.00
G	EI	Trout and Fly square bowl	1,000.00
AO	EI	Hearts and Flowers compote	550.00
AO	EI	Drapery rosebowl	325.00
B	EI	Hearts and Flowers compote	375.00
W	EI	Hearts and Flowers compote	175.00
IB	EI	Hearts and Flowers ruffled bowl	350.00
AO	EI	Peacocks ruffled bowl	1,000.00
AO	EI	Leaf and Beads rosebowl	325.00
R/AM/EI		Holly Hat, reverse amberina, top and bottom.....	425.00

William Wesley, 10240 Fairway Dr., Ellicott City, MD
Phone: (410) 461-3713

P	EI	Ripple vase 10½ x 5¼ top EB highlights	175.00
P	EI	G&C sweetmeat	375.00
G	EI	Inverted Strawberry nearcut bowl	65.00
M	EI	Inverted Strawberry powder box	375.00
PO	EI	Coin Spot compote	65.00
P	EI	Diamond Points vase 10"	70.00
M	EI	Poinsettia milk pitcher	55.00
P	EI	11" April Showers Peacock Tail interior	70.00
M	EI	Hobnail Soda gold spittoon	65.00
B	EI	Fine Rib vase, several	ea. 45.00

Richard Conley, 4504 Gaynor Rd., Silver Springs, MD 20906
Phone: (301) 942-3425

B	EI	Covered Swan candy dish	325.00
SM	EI	Bushel basket	750.00
M	EI	Pretty Panels enameled tumbler	75.00
W	EI	Crocus VT enameled with pink flowers tumbler	65.00
M	EI	Raspberry tumbler	35.00
M	EI	Wreathed Cherry tumbler	60.00
M	EI	Grape Arbor tumbler	40.00
A	EI	Beaded Shell tumbler	85.00
M	EI	Dahlia tumbler	160.00
IB	EI	Paneled interior plain exterior vase 15½"	195.00

CARNIVAL GLASS FOR SALE

Greg Warhol, 6C Brookside Hts., Wanaque, NJ 07465
Phone: (201) 839-1747

B	EI	(N) Hearts & Flowers compote, pretty	475.00
M	GI	MaryAnn vase	55.00
M	EI	Octagon 8" water pitcher	75.00
M	EI	Scroll Embossed compote, large	50.00
P	EI	(N) Three Fruits Medallion bowl	140.00
G	EI	(N) 7" JIP vase, scarce	250.00
*	EI	Helios, Lustre Rose water pitcher	170.00
P	EI	10" Tree Trunk vase, very nice	60.00
G	EI	(N) Daisy & Plume footed rosebowl, plain interior	65.00
A	GI	(N) Strawberry bowl PCE, plain back	55.00

Isabell Aldridge, 6407 Rushmore Drive, Sacramento, CA 95842
Phone: (916) 331-4290

AMB		Open Rose 8" 8 ruffles, super great color	60.00
G		G&C thumbprint master berry bowl, great PCE	225.00
B		Waterlily sauce	120.00
G		Millersburg Blackberry Wreath, 7¼" ruffled bowl	110.00
M		Beauty Bud & Twigs vase, 8½", color all the way down	65.00
W		Leaf Rays nappy	85.00
M		Violet bowl, Holly	15.00
M		Idyll vase, extremely rare	800.00
BA		Garden Path / Flower Arcs hatpin	125.00
G		Stylized Scarab hatpin, silvery - they all are	200.00

Helen & Greg Ferguson, 3146 Acushnet Ave., New Bedford, MA 02745
Phone: (508) 995-6936 or E-mail us at Fergy1979@aol

B	EI	Dragon & Lotus, IC non-iridized back	95.00
M	EI	Columbia vase, ruffled	45.00
PO	EI	Fishscale & Bead low ruffled crimped edge	90.00
P	EI	Dugan Cherry tri-corner footed CRE, gold cherries	145.00
M	EI	Orange Tree 8" IC shape bowl, blue highlights	55.00
P/G	EI	Singing Birds berry bowls, 1 each	ea. 30.00
BA	GI	Holly 8" bowl, non-ruffled, rarely found color	225.00
P	EI	Three Fruits 9" plate, basketweave back, slight wear on fruit	350.00
*	EI	Butterfly & Berry footed berry, odd violet, rough edges	120.00
PO	EI	Dugan Cherry footed ruffled, outside pattern only	145.00

CARNIVAL GLASS FOR SALE

Dennis Runk, P.O. Box 235, Littlestown, PA 17340
Phone: (717) 359-7205

B	EI	Butterfly & Berry 9" vase	90.00
B	EI	Dragon & Lotus 8 3/4" ruffled bowl	95.00
A	EI	(N) Grape & Cable pin tray	240.00
G	EI	Butterfly & Berry master berry bowl	180.00
G		(N) Acorn Burrs tumbler, silvery	50.00
B		(N) Peach tumbler, silvery	50.00
AO	EI	Singing Birds mug, large crack	100.00
R	EI	Orange Tree, standard size mug, crack	100.00
M	EI	Rising Sun pitcher, scarce	475.00
P	EI	(N) Singing Birds 5 pc. water set	700.00

Richard Cinclair, 3605 South Echo Trail, Plano, TX 75023
Phone: (972) 596-0014 or RJC4470@DCCCD.EDU

M	EI	Covered Hen & Chicks	95.00
M	EI	G&C Whimsey pin holder from cup	95.00
M	EI	Octet Dome footed bowl	90.00
M	EI	Butterfly & Berry hatpin holder, rare	1,750.00
B	EI	Dragon & Strawberry ICS bowl	775.00
G	EI	Parlor Panels 11" vase	110.00
G	EI	G&C hatpin holder	425.00
HOREI		G&C bon bon, super	375.00
A	EI	Nautilus, electric	300.00
M	EI	Buzz Saw & File water pitcher, rare	650.00

Bernie & Nancy May, 703 Stone Rd., Westminster, MD 21158
Phone: (410) 876-3798

B	EI	Fenton Little Flowers rosebowl	125.00
B	EI	Vintage Fernery	100.00
B/O	EI	Small Little Bead compote	125.00
M	EI	Leaf & Bead souvenir rosebowl	125.00
M	EI	5" Ripple vase	125.00
BA	EI	Open Edge basket, 2 sides up	175.00
G	EI	Captive Rose IC shape bowl	125.00
PO	EI	Large Persian Garden fruit bowl	325.00
*	EI	Ski Star hand grip plate/bowl, pumpkin M int, P ext.	250.00
B	EI	Ribbon Tie low ruffled bowl gold int.	225.00

CARNIVAL GLASS FOR SALE

Pat Housewright, 225 Rowland, Stephenville, TX 76401
Phone: (817) 968-2997

A	EI	G&C Sweetmeat	250.00
A	EI	G&C 5" footed sherbert bowl	80.00
A	EI	Beaded Bullseye 12" vase	165.00
M	EI	Lattice & Grape 5 pc. water set, dark	280.00
M	EI	Rising Sun tumbler	115.00
M	EI	Horse Medallion 6½ ICS bowl	155.00
B	EI	Horse Medallion footed JIP bowl	325.00
PO	EI	Honeycomb rosebowl	200.00
Celeste		Swan Salt	45.00
M	EI	Hobstar & Shield water pitcher	165.00

Douglas Snow, 2412 Ashford Blvd., Flushing, MI 48433
Phone: (810) 732-8197

A		Rosette ruffled 9" bowl NW	85.00
P		Stippled Rays 10" PCE bowl NW	80.00
M		Jesters Cap 9" vase	30.00
P		Tree Trunk vase 9½" tall NW	95.00
M		Cosmos variant 10" ruffled bowl	45.00
P		Stork & Rushes spooner Dugan	90.00
G		Luster Rose rosebowl, Imp	65.00
B		Persian Medallion bon bon	55.00
G		Butterfly bon bon	65.00
M		Cherry 9" footed bowl, Dugan	130.00

Gerald M. Hess, 220 N. First St., Argos, IN 46501-1010
Phone: (219) 892-6193

P	EI	Daisy & Plume ruffled compote	50.00
M	EI	Star & File large compote	30.00
M	EI	Coin Spot compote	25.00
A	EI	Grape & Cable 9" plate with BW ext, slight chip on one point, so	80.00
A	EI	Captive Rose 8" bowl, CRE	65.00
PO	EI	Ski Star 6" ruffled bowl	50.00
M	EI	Stork & Rushes mug, excellent	20.00
T	EI	Tiger Lily tumbler, excellent	95.00
M	EI	Grape & Cable tumbler	25.00
M	EI	Star Medallion tumbler	25.00

CARNIVAL GLASS FOR SALE

Dave D. Ackerman, 4677 Kennebec Drive, Cass City, MI 48726
Phone: (517) 872-2023

P		Flute toothpick holder, mint	60.00
M		Lattice & Daisy, 5 tumblers, each 25, or all for	120.00
A		Butterfly & Berry tumbler, rare color	90.00
Pearl		Grape & Gothic Arches 7 pc. Berry sets, 98% gold trim, like new ...	600.00
VO		Strawberry bon bon, small rim chip but scarce piece	100.00
LGO		Dragon & Lotus spatula footed bowl, not all that common	500.00
A		Peacock Tails compote, Millersburg	100.00
M		Hobstar Banded dark pitcher	250.00
M		Star & File 7 pc. water set, very nice, good M	400.00
M		Fisherman's mug	200.00

Tyson or Norma Boone, 5149 Covert Rd., Salida, CA 95368
Phone: (209) 545-1832

B	GI	Floral & Grape water pitcher, Fenton	200.00
B	EI	Floral & Grape tumbler	35.00
M	EI	Fruit & Flowers stippled ruffled bowl	50.00
A	EI	Coin Dot ruffled bowl	30.00
M	EI	Vintage large flat bowl	35.00
A	GI	Peacock at Urn large IC bowl, N small chip on back	275.00
G	EI	Wild Strawberry 10" bowl	200.00
P	EI	Imperial Grape wine decanter, no stopper, electric blue irid	100.00
M	EI	Wreath of Roses footed bon bon	50.00
G	EI	Grape & Cable centerpiece bowl rare but cracked	75.00

Lee & Phyllis Bryant, 11645 NW Winchester Rd., Decatur, IN 46733
Phone: (219) 639-3415

AO	EI	Three Fruits Medallion ruffled bowl stippled	510.00
PO	EI	Persian Garden 11" ICS bowl dark peach	475.00
W	EI	Holly 8" ICS bowl 2" deep multi	140.00
AO	EI	Fruit & Flowers bon bon butterscotch overlay	550.00
B	EI	Peacock at the Urn ruffled compote nice	125.00
M	EI	Captive Rose 9" plate dark M multi	275.00
B	EI	Peacocks Plate ribbed multi nice	750.00
A	EI	Butterfly bon bon Northwood rust overlay	70.00
R	EI	Holly ruffled hat no amberina	400.00
M	EI	Wreath of Roses bon bon dark M multi	45.00

CARNIVAL GLASS FOR SALE

Joseph & Arlene Johannets, 31 Sycamore Drive, Beacon, NY 12508
Phone: (914) 831-6825

G	EI	Grape & Cable centerpiece bowl, points up, rare color	750.00
M	EI	(N) Peacock at Urn stippled master IC, fantastic	695.00
CEL	EI	Double Stem Rose dome footed bowl, pulled up, super	675.00
B	EI	Three Fruits stippled footed bowl, electric	425.00
PO	EI	Border Plants dome footed 3/1 edge bowl, scarce	245.00
P	EI	Leaf Column's squatty 6½" vase, nice one	160.00
P	EI	Scroll embossed compote, electric	140.00
AMBEI		Blackberry Spray, JIP, CRE hat, a beauty	145.00
SM	EI	Imperial Morning Glory mini 5" flared vase	95.00
VAS	EI	Open-Edge basket, 2 sides up, w/M over	65.00

Kermit Howard, 10888 SR 68 W., Elberfeld, IN 47613
Phone: (812) 983-4814

M	EI	Lattice & Daisy tumblers (5) 25.00 each or all for	100.00
IB	EI	Hearts & Flowers ruffled bowl, a beauty	450.00
M	EI	Star Medallion, milk pitcher	50.00
M	EI	Country Kitchen, spooner	200.00
A	EI	Vintage Fernery	50.00
B	EI	Persian Medallion bon bon	75.00
G	EI	Blackberry Wreath bowl	75.00
M	EI	Orange Tree 9" footed bowl	60.00
M	EI	Orange Tree powder box, no lid	40.00

Richard Jarnig, 3202 FM 50, Brenham, TX 77833
Phone: (409) 836-5545

AQ		Panther ruffled Berry rare	225.00
M		JIP Horse Medallion footed bowl, very nice	125.00
G		Fenton footed G&C plate, emerald	145.00
P		Grapevine tumbler, EB highlights	75.00
M		Jenkins Diamond & Daisy CT VT punch bowl, 1 of 2 known, perf ..	650.00
B		Lucille water pitcher, hairline, so	550.00
AQ		Stag & Holly large ruffled footed bowl, nice	675.00
*		Pastel Blue Stag & Holly large ruffled footed bowl	350.00
W		Q-Mark 7" cake plate, Georgia Peach puzzle on ext, dome footed ...	265.00
W		Palm Beach sm oval Berry has gooseberry int, very nice irid	55.00

CARNIVAL GLASS FOR SALE

Rob Cooper, 31 Oak View Dr., Newark, DE 19702
Phone: (302) 455-9225 rcooper@dpnet.net

AMBEI		Orange Tree ruffled bowl, very scarce & beautiful	300.00
M	EI	Peacock at Urn master IC bowl, very nice	400.00
M	EI	Good Luck PCE bowl, outstanding, irid. both sides	250.00
A	EI	Peacocks (N) ruffled bowl, golds, pinks, blue highlights	375.00
B	EI	Dragon & Lotus ICS bowl, super example	165.00
M	EI	Birds & Cherries bon bon, super color and irid	125.00
EB	EI	Peacock at Urn individual ice bowl, electric	200.00
M	EI	Fine Cut & Roses rose bowl, a beauty, w/perfect feet	125.00
M	EI	Singing Birds tumbler, excellent highlights	50.00
PM	EI	Wishbone footed ruffled bowl, super pastel-radium	150.00

Omer Sweeney, 28 Esmond St., Esmond, RI 02917
Phone: (401) 231-4108

M		Grape & Cable 9" plate BW back	95.00
G		Grape & Cable hatpin holder	275.00
M		Grape & Cable powder jar with lid	145.00
M		Singing Birds 7 pc. water set	515.00
P		Peacocks on Fence bowl ruffled PCE	375.00
M		Peacock at the Fountain gravy bowl	250.00
M		Pony bowl	100.00
G		Scroll embossed compote	30.00
M		Water Lily 9" footed bowl	50.00
M		16" Fine Rib flared & pleated	75.00

Joan & Warren Place, R.D. #2, Box 100, Mehoopany, PA 18629
Phone: (717) 833-5222

M	EI	G&C Banana Boat	130.00
M	GI	Kittens Cup	100.00
B	EI	Butterfly & Fern 7 pc. water set	650.00
G	EI	Leaf Chain ruffled bowl, chip one point	60.00
PO	EI	Fishnet epergne, great color & irid	375.00
G	EI	Fruit & Flowers 10" ruffled bowl, terrific color	150.00
M	PI	Six sided Candle Sticks pr. color is clear to very good	200.00
P	EI	Imperial Grape water carafe	275.00
A	EI	Holly ruffled bowl	95.00
LG	EI	Rose Show 9" plate, super	3,500.00

CARNIVAL GLASS FOR SALE

Harry Daniels, 1405 N. Wood Ave., Apt. 197, Roselle, NJ 07203
Phone: (908) 245-3116

M	EI	Weeping Cherries 3 in 1 bowl, super radium	165.00
P	EI	Acorn Burrs tumbler, good color	85.00
M	EI	Panama Wine, 1 of 2 known	395.00
PO	EI	Apple Blossom Twigs 3 in 1 bowl, great blues & pinks	160.00
A/P	EI	Rustic 16" Swung vase, radium	125.00
M	EI	Peacock Tail variant compote, pretty & satin	85.00
M	EI	Peacock at Urn stippled large ICS, dark, exec. color	600.00
M	EI	Peacock at Urn stippled large ICS, pastel, great blues & pinks	650.00
B	EI	Orange Tree mug, super color	75.00
OG	EI	Russet Northwood #657 candlesticks	pr. 75.00

Rudy Kovacs, 551 SW 135 Ave., B-417, Pembroke Pines, FL 33027
Phone: (954) 435-4487

P	EI	Vintage Rose Bowl, 6 mint feet	75.00
P	EI	Blackberry Wreath 8" ICS satin bowl	75.00
G	EI	Blackberry Wreath 8" ICS satin bowl	80.00
P	EI	Strawberry plate 9" (N)	175.00
P	EI	Oriental Poppy tumbler	60.00
P	EI	Diamond Lace tumbler	55.00
M	EI	Grape Wreath 7½" radium multi star variant bowl	125.00
G	EI	Inv. Feather cracker jar, no lid	75.00
B	EI	Vintage nut bowl, 6 mint feet	95.00
M	GI	Kittens cup, burst bubble	45.00

Gary Lickver, P.O. Box 1778, San Marcos, CA 92079
Phone: (619) 744-5686

B	EI	God and Home tumblers	ea. 175.00
G	EI	Fluffy Peacock tumbler	165.00
W	EI	Garden Path variant 6" plate	525.00
A	EI	Stork & Rushes tumbler, scarce color	120.00
M	EI	Wishbone tumbler, med irr.	95.00
M		Orange Tree punch bowl top	75.00
SM	EI	Windmill 8" deep round bowl	165.00
M	EI	Peacocks & Ern mystery bowl 3/1 edge, satin	260.00
RB	EI	Hearts and Flowers compote, very pretty	1,750.00
W		Cherry Chain 6" plate, Orange Tree exterior	160.00

CARNIVAL GLASS FOR SALE

Marlin L. Blosser, 4705B Charles Road, Mechanicsburg, PA 17055
Phone: (717) 975-2920

M	EI	Iris stemmed compote	55.00
M	EI	Grape & Cable creamer (N)	65.00
M	EI	Leaf & Beads footed candy, flower inside	45.00
M	EI	Hobstar 5 pc table set	100.00
M	EI	Poinsettia milk pitcher	75.00
M	EI	Diamond Lace 5 pc. water set	425.00
P	EI	Hobstar Flower stemmed compote	85.00
P	EI	Singing Birds creamer	150.00
B	EI	Strawberry two handled bon bon	70.00
M	EI	Thistle 9" ICS bowl	45.00

Donald L. Harris, 527 Lavina Drive, Mechanicsburg, PA 17055
Phone: (717) 790-0412 Send .55 stamp for large list of for sale glass

G	EI	Autumn Acorn 9" bowl, 3 in 1 edge	85.00
B	EI	Carnival Holly 9" ruffled bowl	75.00
M	EI	Horseheads Medallion low ICS bowl	85.00
B	EI	Orange Tree 9" low ruffled bowl	75.00
P	EI	Ski Star 10" large ruffled bowl	225.00
M	EI	Lions low ICS bowl	100.00
W	EI	Rose Show 9" deep plate	375.00
B	EI	Orange Tree punch cup	30.00
B	EI	Rooster hatpin	85.00
M	EI	Peacock & Grapes 9" footed plate	325.00

Ted L. Sheibley, 53 Meadow Brook Court, New Cumberland, PA 17070
Phone: (717) 770-0616 Layaways available

G	EI	Thin Rib mid size funeral vase (N)	275.00
B	EI	Peacock Tail 9" bowl, 3 in 1 edge	65.00
B	EI	Beaded Cable footed rose bowl	175.00
R	EI	Fine Rib 9" vase	400.00
P	EI	Grape & Cable hatpin holder	375.00
M	EI	Grape & Cable hatpin holder	335.00
R	EI	Holly ruffled hat	400.00
B	EI	Fentonia footed 5" berry bowl	30.00
M	EI	Grape & Cable 7 pc. water set (N)	425.00
P	EI	Flying Bat hatpin	150.00

CARNIVAL GLASS FOR SALE

Evan Walker, 33 Ridge Rd., Malvern, PA 19355
 Phone: (610) 647-4290 If item is sold, your call will not be returned

G	EI	(N) Fruits & Flowers 7" ruffled bowl, BW back	120.00
M	EI	Stag & Holly large ICS footed 11" bowl, super example	150.00
A	EI	Dugan Six Petals ruffled bowl	75.00
IG	EI	Brocaded Lilies bon bon	95.00
G	GI	Blackberry Spray hat JIP/CRE, rare color	200.00
B	GI	Four Pillars vase - chips, gold, rare color	55.00
G	EI	Poppy pickle dish, real pretty	225.00
A	EI	Petal and Fan CR plate 6"	225.00
G	GI	Strawberry 9" ruffled bowl	95.00
M	EI	Millersburg large 6 ruffle Rosalind bowl, outstanding, satin	225.00

Craig & Brenda Kuckelburg, 517 North Jay St., Aberdeen, SD 57401
 Phone: (605) 226-1660

M		Morning Glory vase 4 1/8" flared 4 3/8"	90.00
M		Morning Glory vase 4 1/4" flared 4 3/4"	90.00
M		Morning Glory vase 5 1/2"	40.00
M		Morning Glory vase 7 3/8"	30.00
M		Diamond Points vase 10 1/2", good color	50.00
R		Fine Rib vase 8 3/4", small nick 1 rib	325.00
M		Lotus enameled pitcher, drape int.	125.00
IB		Peacock at the Fountain sm berry, bead damage	30.00
M		Stork vase	45.00
B		Blackberry Spray hat JIP CRE, super color	85.00

Debbie and Mike Heintz, 240 Mize Rd. North, Cullman, AL 35055
 Phone: (205) 739-0281 After 6 pm Central P&I extra

A		NW beaded cable rose bowl rays interior, flake on one foot	75.00
M		Fenton Waterlily and Cattail tumblers (2)	ea. 25.00
M		Imperial Grape punch cups (2), marie on one has internal bruise ...	ea. 20.00
B		NW Poppy oval pickle dish stippled sm flk edge of point EB hilghts	135.00
M		Fenton Waterlily footed bowl 10" ruffled, beautiful rich color	155.00
G		Mllrsbrg Mayan 8 1/4" ICS bowl radium pinhead on back of 1 point	50.00
EB		NW Goodluck ruffled bowl 2 points missing, beautiful	240.00
P		Acorn Burr sugar & creamer, sugar cracked no lid, creamer has no-harm flicks on burr	100.00
M		Imperial Open Rose 9" ruffled bowl	40.00

CARNIVAL GLASS FOR SALE

Dick Wetherbee, 875 Stafford St., Rochdale, MA 01542
 Phone: (508) 892-4420

M	EI	Three Fruits 8 3/4" PCE bowl, great dark color	85.00
B	EI	Vintage 6 1/2" Fernery 3 footed Lite shade of blue, great	70.00
PO	EI	Stipple Petals 2 sides up banana shape dome footed bowl, super	135.00
M	EI	Pony 8 1/2" fluted bowl, great satin finish & detail	115.00
AMBEI		Acorns 7 3/4" fluted bowl, super color looks reddish, rare	175.00
G	EI	Mayan Millersburg 8" round bowl great radium color	125.00
CLMEI		Star Medallion milk pitcher, super clambroth irid	55.00
M	EI	Imperial Grape wines / Spiral stems dark color, (2) 28. each or both	50.00
B	EI	Sailboats 5 1/2" round sauce dish, great shape, color & detail	110.00
PO	EI	Honeycomb Rosebowl, more opal than most	250.00

Charles & Georgia Passini, 20224 W. McDonald Rd., Trivoli, IL 61569
 Phone: (309) 362-2422

P	EI	Diamond Lace pitcher	220.00
P	EI	Formal hatpin holder, no-see chip on bottom of base	650.00
M	EI	Kittens saucer, 4 sides up	220.00
W	EI	Rose Show bowl	410.00
P	EI	Wishbone & Spades small plate	390.00
AO	EI	Drapery rosebowl	275.00
B	EI	Peacocks stippled bowl	700.00
AO	EI	Poppy relish dish	590.00
PM	EI	Three Fruits stippled plate	425.00
IB	EI	Big Basketweave vase	600.00

Woody and Marlene Funk, 1717 S. Colebrook Rd., Manheim, PA 17545
 Phone: (717) 898-5802

MoonEI		Grape & Cable 7" bowl	295.00
HA	EI	Cosmos & Cane spooner	70.00
HA	EI	Cosmos & Cane creamer, flake	40.00
G	EI	Grape & Cable, footed, Fenton	80.00
A	EI	Peacock at Urn bowl, Fenton	260.00
M	EI	Blossomtime compote	270.00
P	EI	Nippon bowl PC edge	380.00
G	EI	Butterfly & Fern pitcher	595.00
B	EI	Fentonia pitcher	695.00
P	EI	Diamond Lace tumbler	50.00

CARNIVAL GLASS FOR SALE

Maurice "Moe" Myers, 3730 NW 52nd St., Ft. Lauderdale, FL 33309
Phone: (954) 731-3191

M	Grape & Cable water pitcher, perfect & super color	230.00
M	Soda Gold water pitcher, excellent color, scarce	185.00
M	Waterlily butter excellent with full color	125.00
M	Kittens ruffled bowl, nice strike, pretty one	125.00
Wisteria	Double Dolphins, pr. candlesticks	100.00
P	Peacocks at Urn 5" IC bowl, great color	75.00
M	Lions ruffled bowl	90.00
B	Ribbon Tie 3 in 1 ruffled plate, very nice	185.00
AO	Drapery Rosebowl, beautiful color	250.00
AO	Leaf & Beads Rosebowl, perfect & super ex.	350.00

Pamela McLean, 3730 NW 52nd St., Ft. Lauderdale, FL 33309
Phone: (954) 731-3191

G	Memphis punch bowl w/base, emerald & super color	2,300.00
LGO	Strawberry bon bon, superior color, glows	400.00
IBO	Leaf & Beads Rosebowl, cracked but super	75.00
G	Inverted Feather cracker jar, real nice	150.00
G	Field Flower water pitcher, rare and nice	250.00
CLM	Ripple 15½" mid-size Funeral vase, super	225.00
CLM	3-row Open Edge 9" bowl, super color	315.00
G	Ten Mums CRE bowl, emerald & scarce	150.00
Ginger-Ale	ICS Leaf Chain 9" bowl	140.00
CLM	Frosted Block 9" plate, lovely	140.00

Ken & Beverly Osbon, 34931 SE Dodge Pk. Blvd., Gresham, OR 97080
Phone: (503) 663-4433

M	Stag & Holly chop plate	825.00
M	Stag & Holly giant rose bowl	350.00
R	Stippled Rays ruffled bowl	325.00
G	Holly ruffled compote scarce	195.00
W	Poppy pickle dish	350.00
M	Concord Plate manufacturers flaw with small chip on back	650.00
VAS	Stag & Holly large ball footed ruffled bowl	425.00
B	Orange Tree powder jar	165.00
M	Dutch ash tray	25.00
B	Round bushel basket	165.00

CARNIVAL GLASS FOR SALE

Roger Henry, PO Box 3808, Brandon, FL 33509
Phone: (813) 659-3322

DM	Pansy stippled dresser tray	150.00
M	Orange Tree powder jar/lid	110.00
W	Vintage powder jar base only	55.00
G	Camb. Invt. Strawberry powder jar base only	60.00
B	Orange Tree powder jar base only	45.00
P	Diamond Lace tumbler, electric	65.00
DM	Springtime tumbler, sharp edge at base	55.00
B	Peach tumbler, electric, pin head inside rim	65.00
A	Wreath of Roses punch cup, vintage int.	35.00
B	Grape & Cable stippled punch cup, avg. irid.	45.00

Leon Travis, 9 Lindenwood Ct., Sterling, VA 20165-5646
Phone: (703) 430-7414

M	EI	Springtime spooner	125.00
M	EI	Springtime creamer	125.00
M	GI	Heavy Grape chop plate	125.00
M	GI	Hobstar Band water pitcher, usual roughness on bottom	65.00
M	EI	Laurel Wreath water pitcher, scarce	75.00
M	EI	Jeweled Heart water pitcher & 2 tumblers, minor chip, rare pitcher	650.00
M	EI	Springtime covered sugar, very dark	175.00
PO	GI	Dragon & Lotus bowl	300.00
A	EI	Butterfly & Berry individual berry bowl	65.00
A	EI	N Petals compote	65.00

Sharon & Bill Mizell, 52 Old Bonifant Rd., Silver Spring, MD 20905-5903
Phone: (301) 384-8952

M	GI	Louisa large size tumbler, rare	65.00
A	EI	Grape & Cable tankard tumbler	60.00
AMBG	GI	Dragon & Lotus ICS bowl	155.00
M	GI	Lucky Barrel bowl	35.00
PO	EI	Stippled Flower, dark, among the best	70.00
A	GI	Ski Star small 8 ruffle bowl	100.00
AMBEI	GI	Imperial Grape ruffled sauce	45.00
M	EI	Colonial footed mug, dark	30.00
M	EI	Isaac Beneach Holly Spring bon bon	110.00
A	EI	Diamond Points 7" vase, EB highlights	100.00

CARNIVAL GLASS FOR SALE

Larry Yung, Sr, 5758 Nightingale Ct., Cincinnati, OH 45227
Phone: (513) 271-6399

M	EI	Holly plate.....	165.00
M	EI	Cosmos variant chop plate.....	145.00
BA	EI	Open Edge basket, key color.....	160.00
M	EI	Horse Medallion, footed JIP.....	140.00
M	EI	Gothic Arches tumblers.....	ea. 25.00
M	EI	Crab Claw tumblers.....	ea. 30.00
P	EI	Wild Strawberry small bowl.....	45.00
M	EI	Kittens cereal bowl, great detail.....	180.00
AQ	EI	Peacock at Urn compote.....	145.00
Olive	EI	Peacock at Urn compote.....	400.00

John & Karen Schlumbohm, 2673 235th Ave., Decorah, IA 52101
Phone: (319) 382-6485

AQ		2 Flowers 10" footed IC bowl, pretty.....	450.00
VAS		Strawberry Wreath 10" 6 ruffle bowl small flake edge.....	Call
B		Open Rose footed Fernery, good multi-color irid.....	135.00
W		Six Petal 8½" 6 ruffle bowl, lots of color.....	135.00
M		Peacock & Grape 9" 8 ruffle bowl, pretty.....	65.00
A		Concord 9" 6 ruffle bowl, rust and gold irid.....	400.00
IG		Fenton 9" Florentine candle holders pastel irid.....	105.00
CelB		Dugan 10" candle holder, vase light stretch irid.....	pr. 50.00
B		Pepper Plant almost square, good color.....	125.00

Ellen Hemm, N. 951 Hwy 27, Conrath, WI 54731
Phone: (715) 532-5816

W	EI	Memphis punch cups (2).....	ea. 50.00
M	GI	Stork & Rushes tumbler.....	25.00
AQ	EI	Grape & Cable bowl.....	75.00
M	EI	Wine & Roses wine.....	30.00
M	EI	Orange Tree goblet.....	35.00
M	EI	Octagon wine.....	20.00
G	EI	Star of David and Bows bowl.....	80.00
M	EI	Anemone enameled tumbler.....	35.00
M	EI	Peach and Pear banana bowl.....	65.00
IB	EI	Grape Arbor tumbler.....	115.00

CARNIVAL GLASS FOR SALE

Jerry Rissmiller, 107 Sheeler Lane, Elverson, PA 19520
Phone: (610) 286-9879

P		8" Heavy Grape plate.....	125.00
B		Sm. Persian Medallion compote.....	95.00
A		Fine Cut & Roses rose bowl.....	65.00
SM		Imperial Grape compote.....	200.00
P		Acantus Berry bowl, large.....	125.00
R		Holly ruffled hat, cherry.....	475.00
P		Greek Key ruffled bowl.....	135.00
SM		Rococo vase, flake on base.....	80.00
PM		Singing Birds mug.....	75.00
G		Sm Butterfly & Berry bowl, flake on foot, super.....	125.00

Greg Dilian, 450 Shore Rd., Long Beach, NY 11561
Phone: (516) 432-1164

AQ	EI	Pansy handled nappy, tough color.....	45.00
M	EI	Thistle & Lotus 9¼" footed ICS bowl, unlisted size.....	115.00
M	EI	(N) Three Fruits plate, excellent color irid.....	125.00
B	EI	Iris ruffled compote, scarce/rare color.....	120.00
VAS	EI	Fenton Open Edge basket, 2 sides up.....	75.00
PO	EI	Dugan Folding Fan compote, CRE, 2 sides up.....	115.00
A	EI	(N) Grape & Cable dresser tray, rocks a little on base.....	175.00
B	EI	Miniature Blackberry compote, tiny base flake, so.....	30.00
M	EI	Two Flower giant footed rosebowl.....	125.00
CLMEI		Waffle Block creamer, Iron Cross, radium.....	30.00

Richard Fenton, 1356 Meadowlawn Dr., Macedonia, OH 44056
Phone: (216) 467-3399

W	EI	4 Heavy Iris tumblers, frosty.....	ea. 225.00
P	EI	474 tumbler, pinhead on side, great color.....	87.00

Paul Thurston, 2360 N. Old S.R. 9, Columbus, IN 47203
Phone: (812) 546-5724

R		Carnival 1977 HOACGA hatpin holder.....	75.00
M		Carnival iridized over milkglass 1983 HOACGA Loving Cup.....	55.00
R		Carnival 1984 HOACGA Fernery.....	80.00
R		Carnival 1979 HOACGA Loving Cup.....	75.00

CARNIVAL GLASS FOR SALE

Adam Fikso, 3620 Glenview Rd., Glenview, IL 60025
Phone: (847) 729-7707

M	Leaf Chain plate 7"	140.00
M	Corning Glass Pyrex Insulator (used) (2)	ea. 60.00
G	Beaded Cable rosebowl, marig, rays interior	185.00
M	Waterlily & Cattails toothpick whimsey	75.00
A	Grape & Cable oval dresser tray	300.00
*	Urn vase, Jenkins - not Imperial	50.00

Darrell Neeley, Rt. 1, Box 63, Chillicothe, MO 64601
Phone: (816) 646-6455 After 7:00 pm

B	EI	(5) Orange Tree punch cups	ea. 35.00
G	EI	(2) Acorn Burr small berry dishes	ea. 60.00
G	EI	Acorn Burr small berry dish, small nick on base	55.00
P	EI	(N) Grape & Cable powder jar, no lid	45.00

Virgil Lemos, 33 Dawn, D.D.O. Quebec H9B 3Y7
Phone: (514) 683-9543

M	EI	Grape & Cable large IC bowl, mint	160.00
P	EI	Many Fruits punch bowl, super color	450.00
P	EI	Vintage 6 punch cups, Many Fruits	150.00
M	EI	Beaded Shell mug	95.00
B	EI	Butterfly & Berry vase 8½"	85.00
M	EI	Fish Scales & Beads plate 7"	50.00
A	EI	Scales plate 6¼"	55.00

CARNIVAL GLASS WANTED

Adam Fikso, 3620 Glenview Rd., Glenview, IL 60025
Phone: (847) 729-7707

M Double Dolphins short candlestick(s)

Virgil Lemos, 33 Dawn, D.D.O. Quebec H9B 3Y7
Phone: (514) 683-9543

B	EI	Grape & Gothic Arches butter dish with lid
M	EI	Wide Panel side lily
P	EI	Grape & Cable stopper for cologne bottle, or will sell bottle
W		Peach butter dish with lid, gold decoration

CARNIVAL GLASS WANTED

William Wesley, 10240 Fairway Dr., Ellicott City, MD
Phone: (410) 461-3713

B	EI	Orange Tree punch bowl base
A/P	EI	Peacock at Fountain punch bowl top

Ed Kramer, 4305 W. 78th St., Prairie Village, KS 66208
Phone: (913) 642-3587

M		4" lilies for silver/glass epergne with M petals & clear base with spiral lines. 474 vases, 12" and 8" Unusual color Ripple, Butterfly & Berry vases
CLM		Imperial Grape water carafe
M		474 Cordial

Richard Conley, 4504 Gaynor Rd., Silver Springs, MD 20906
Phone: (301) 942-3425

IB & P Lilies for wishbone epergnes

Isabell Aldridge, 6407 Rushmore Drive, Sacramento, CA 95842
Phone: (916) 331-4290

B		Butterfly & Berry butter dish with lid
Any		Unusual hatpins

Richard Clardy, 26 Wynnwood Cr., Midland City, AL 36350
Phone: (334) 983-1589

A		Grape & Cable powder jar lid
A		Grape & Cable butter bottom
A		Grape & Cable small punch bowl
G		Panelled Dandelion tumblers (2)
G		Imperial Grape wine decanter stopper
B		Kittens saucer
G		Wishbone epergne bottom
B		Enamelled Daisy & Little Flowers pitcher

Jerry Rissmiller, 107 Sheeler Lane, Elverson, PA 19520
Phone: (610) 286-9879

P Many Fruits punch bowl base

CARNIVAL GLASS WANTED

Richard Cinclair, 3605 South Echo Trail, Plano, TX 75023
Phone: (972) 596-0014 or RJC4470@DCCCD.EDU

- * Concave Diamond Celeste pitcher
- W Wide Panel epergne base
- B Wide Panel epergne base

Rob Cooper, 31 Oak View Dr., Newark, DE 19702
Phone: (302) 455-9225 rcooper@dpnet.net

- M Singing Birds, master berry bowl
- Any Birds & Cherries bowl
- B Fine Cut & Roses rose bowl & candy dish
- G Dragon & Lotus bowl
- G Singing Birds water pitcher

Omer Sweeney, 28 Esmond St., Esmond, RI 02917
Phone: (401) 231-4108

- M 474 punch bowl top

Rudy Kovacs, 551 SW 135 Ave., B-417, Pembroke Pines, FL 33027
Phone: (954) 435-4487

- G EI Square Trout - Fly bowl
- B EI Peacocks bowl

Edna Kring, RR #1, Box 426, Kempner, TX 76539
Phone: (817) 547-3769

- M Grape & Cable punch bowl base (N)
- A/P Singing Birds sugar w/lid (N) or lid only

Gary Lickver, P.O. Box 1778, San Marcos, CA 92079
Phone: (619) 744-5686

- B Peacock at Fountain base
- B Grape & Cable stippled small punch base
- B Grape & Cable stippled punch cups (4) nice irid.
- B Imperial Grape bowls, any
- A Vintage epergne or sell base

CARNIVAL GLASS WANTED

Marlin L. Blosser, 4705B Charles Road, Mechanicsburg, PA 17055
Phone: (717) 975-2920

- G Flute punch bowl top
- G Hobstar sugar lid
- M Long Hobstar punch base
- G Shell & Jewel lids (need 2)
- M Diamond Point Columns butter lid
- Any Peacock at Fountain punch cups
- M 474 punch bowl top
- M Grape & Cable cracker jar bottom
- M Grape & Cable powder jar lid
- G Little Stars bowl, round

Donald L. Harris, 527 Lavina Drive, Mechanicsburg, PA 17055
Phone: (717) 790-0412 Or will sell any of the below parts

- IB Wishbone epergne base
- M Wreath of Roses punch base
- M Wreathed Cherry butter bottom
- P Vintage powder jar lid
- W Orange Tree punch base
- Any Ragged Robin bowls
- P Dahlia butter lid
- P Grape & Cable butter bottom
- Any Grape & Cable powder jar lid
- P Grape & Cable master punch bowl top

Ted L. Sheibley, 53 Meadow Brook Court, New Cumberland, PA 17070
Phone: (717) 770-0616 Or will sell any of the below parts

- A Orange Peel punch bowl top
- B Butterfly & Berry sugar bottom
- B Hen on Nest with Chicks top
- Any Grape & Cable powder jar lids (need M,HOR,G,P)
- G Acorn Burr punch bowl top
- G Hanging Cherries powder jar bottom
- G Memphis fruit bowl top
- M Broken Arches punch base
- M Grape & Cable humidor lid (plain or stippled)
- M Grape & Cable sugar bottom

CARNIVAL GLASS WANTED

Craig & Brenda Kuckelburg, 517 North Jay St., Aberdeen, SD 57401
Phone: (605) 226-1660

P Stippled Rays stemmed creamers - AMB,P,R,SM,VAS
DM Stippled Rays stemmed sugar
Wreathed Cherry sugar lid

Maurice "Moe" Myers, 3730 NW 52nd St., Ft. Lauderdale, FL 33309
Phone: (954) 731-3191

T Waffle Block punch base

Roger Henry, PO Box 3808, Brandon, FL 33509
Phone: (813) 659-3322

Any Hanging Cherries powder jars/lid
P/G/W Orange Tree powder jars/lid
IG/IB/W Grape & Cable powder jars/lid
IG/IB Grape & Cable punch cups
IG/IB/W Acorn Burr punch cups
DM Grape & Cable Whiskey decanter/stopper
DM Grape & Cable cracker jar/lid
DM Grape & Cable humidor/lid
DM Grape & Cable tankard pitcher
DM Grape & Cable hatpin holder

Larry Yung, Sr, 5758 Nightingale Ct., Cincinnati, OH 45227
Phone: (513) 271-6399

P Hobstar sugar lid or complete
B Hanging Cherries butter base
A Hanging Cherries butter top
B (N) Fern compote
G EI Daisy & Plume rose bowl, blackberry int.

Greg Dilian, 450 Shore Rd., Long Beach, NY 11561
Phone: (516) 432-1164

P Open Rose 5" indiv. berry bowls, round
Any Imperial squatty vases - need AMB,P,EmG
(Ripple, Beaded Bullseye, Parlor Panels, etc.)

RESOURCE INFORMATION

- HARTUNG CARNIVAL GLASS PATTERN BOOKS**
Set of 10 books for \$60.00 plus \$6.00 postage. Order from Ed Kramer, Secretary HOACGA, 4305 W. 78th Street, Prairie Village, KS 66208
- HOACGA EDUCATIONAL SERIES BOOK I** - 148 articles with pictures (black & white) on a variety of carnival glass patterns. Books consists of articles written by John & Lucile Britt which have been printed in previous monthly bulletins. \$15.00 plus \$2.50 postage. Order from Ed Kramer, Secretary HOACGA, 4305 W. 78th Street, Prairie Village, KS 66208
- HOACGA EDUCATIONAL SERIES BOOK II** - 180 articles with pictures (black & white) on carnival glass tumblers. Book consists of articles written by John & Lucile Britt which have been printed in previous monthly bulletins. \$17.50 plus \$2.50 postage. Order from Ed Kramer, Secretary HOACGA, 4305 W. 78th Street, Prairie Village, KS 66208
- THE ENCYCLOPEDIA OF CARNIVAL GLASS LETTERED PIECES.** 120 pages of black & white and color photographs of all known carnival glass advertising and commemorative pieces. \$15.95 plus \$2.50 postage. Order directly from John D. Resnik, 235 Walnut Street, Statesville, NC 28677
- COLLECTOR'S GUIDE TO NORTHWOOD'S CARNIVAL GLASS** by Carl O. Burns. This Northwood book includes 166 pages with 250 pieces pictured in full color, including many rarities never shown in any carnival glass book. \$24.95 plus \$3.00 Shipping. Order from Carl O. Burns, 60 Rumford Center Rd., Andover, MA 04216 (Mention you are a member of HOACGA)
- MILLERSBURG CARNIVAL GLASS BOOK** by Marie McGee. \$29.95 for paperback, \$37.95 for Hardback. Please include \$3.50 extra for shipping. Send orders to 3906 E. Acasis Ave., Fresno, CA 93726
- THE WORLD OF ENAMELED CARNIVAL GLASS TUMBLERS** by Cecil Whitley. Book on painted Carnival Glass tumblers. Ten pages of full color photographs of sixty painted tumblers. \$10.00, postage included. Order from Cecil Whitley, 1041 Cheshire Lane, Houston, TX 77018
- NEW! NEW! NEW! IRIDESCENT HATPINS & HOLDERS of the CARNIVAL GLASS ERA** by Jerry Reynolds. \$16.50 - book. \$3.25, Priority or \$1.65 Book Mail. Canada, \$17.60. Order from Jerry Reynolds, 1305 N. Highland Pkwy, Tacoma, WA 98406
- PRICE GUIDE FOR IMPERIAL AND HANSEN NEW CARNIVAL GLASS 1994 - 1995.** Completely updated. Very helpful to both new and old collectors. Most complete listing of Imperial and Hansen known. Price is \$5.25 postpaid. Order from Scott Ackerman, 4677 Kennebec Dr. Cass City, MI 48726
- AUCTION PRICE REPORT - CARNIVAL GLASS** - Auction price report for 1989 thru 1995 is available. \$10.00, postage included. \$9.00 if 2 or more ordered. Please specify year when ordering. Canadian friends should send Canadian Postal Money Order. Overseas mailings add \$2.00 for each copy. Order from Tom & Sharon Mordini, 36 N. Mernitz Ave., Freeport, IL 61032 (815) 235-4407
- NETWORK** by Glen & Stephen Thistlewood of Hampshire, England. Quarterly publication devoted exclusively to Carnival glass. One year subscription (4 issues) \$20, available in the US only through PageWorks, P.O. Box 14493, Chicago, IL 60614

12. **BUTTON, BUTTON.** Carnival Glass, Iridescent, Luster Buttons. Over 100 buttons listed - Over 140 pages packed with information. Each button has a color and black & white photo, detailed drawing & description - shown in actual size. \$15.50, postage included. Order from Clint Arsenault, P.O. Box 1845, Monrovia, CA 91017
13. **THE SANCTIFIED CROSS-EYED BEAR'S PRICE TREND GUIDE FOR CARNIVAL GLASS FOR THE YEARS 1991 - 1995 (2nd EDITION)** - Over 8,300 line entries of the average price sales - reports on approximately 8,000 auctions sales in 1995 by informing you of the high, low, and average sale price - statistics that clarify upward or downward average price trends - over 230 pages of valuable information. Send \$24.95 postpaid for U.S.; \$29.95 for Canada to: The Sanctified Cross-Eyed Bear, P.O. Box 1296, Huntsville, AL 35805-1296
14. **CARNIVAL GLASS HATPIN PATTERNS** - This book shows the hatpins in detail with beautiful illustrations, many showing top and side views. A number of these hatpins have never appeared in any previous carnival books. \$15.00 plus \$1.00 postage & handling. Canada and overseas - \$15.00 plus \$3.00 postage and handling. Order from Alphonse Tvaryanas, 284 Clearstream Rd., Jackson, NJ 08527
15. **A CARNIVAL OF IRIDESCENT LUSTER BUTTONS, BOOKS I & II.** Book I has 856 named design drawings. Indexed. \$13 ppd. Book II has 450 more drawings, indexed, with price guide covering both books. \$14.00. Canada and Mexico please add \$2.00 (US) to each for extra postal cost. Overseas please add \$4.00 (US) to each for surface mail. Add \$6.00 (US) each for air mail. Order from author Ruth M Clark, 2100 Dawn Dr., Georgetown, TX 78628.
16. **CARNIVAL GLASS OF AUSTRALIA** - 100 pages, some colored, hard cover. Produced by Australian Carnival Enthusiasts Association, Inc. Cost \$20.00, this includes Air Mail Postage. Please contact Mrs. Margaret Dickinson, Secretary. R.S.D. Fryerstown, Victoria, Australia 3451, for advice on the uncomplicated purchase of this book.
17. **THE CARNIVAL HUNTER'S COMPANION**, a unique cross-referencing system for easy identification of pattern features and names. \$27.95 ea., includes shipping. Texas residents add \$2.06 tax. Check payable to Elaine Blair, P.O. Box 116335, Carrollton, TX 75011-6335, 214-492-1528
18. **A CARNIVAL OF IRIDESCENT LUSTER BUTTONS, BOOK III** contains 287 pattern drawings not found in Books I and II by Ruth M. Clark, plus color photographs of 38 buttons. \$11.50 postpaid in USA; \$13.50 (US) postpaid in Canada and Mexico; \$17.50 (US) postpaid overseas. Order from author: Alan G. Perry, 7614 McHenry St., Houston, TX 77087
19. **SKETCHBOOK OF LITTLE CARNIVAL GLASS BUTTONS, 1996 EDITION** contains drawings and descriptions of 342 little old buttons (less than 5/8" diameter). Loose-leaf format for easy annual update, and geometric classification for easy identification. Indexed. \$11.50 PPD, Canada and Mexico please add \$2 US to each for extra postage. Overseas please add \$4 US surface or \$6 airmail. Order from author: Jane O. Dinkins, 1100 Ridgeley Dr., Houston, TX 77055, 1-713-465-0557. Owners of 1995 edition may receive 1996 update pages by sending \$1 for postage.
20. **IMPERIAL8 GLASS - IDENTIFICATION AND VALUE GUIDE** by Carl O. Burns. Price \$18.95 plus \$2.50 shipping (Canadian US funds plus \$3.50 shipping), (Foreign US funds plus \$5.00 shipping) mention you are a member of HOACGA. Order from Carl O. Burns, 60 Rumford Center Rd., Andover, MA 04216