

HOACGA

Heart of America Carnival Glass Assoc. Inc.

August 1997

RETURN ADDRESS

H.O.A.C.G.A.
Jackie Fortney
P.O. Box 303
Buckner, MO 64016

FIRST CLASS MAIL
U.S. POSTAGE
PAID
Buckner, MO
Permit 03



**HEART OF AMERICA
CARNIVAL GLASS ASSOCIATION**
(Since 1973)
BOARD OF DIRECTORS

| | |
|--------------------------|---|
| PRESIDENT | ROBERT GRISSOM 7517 Evanston Raytown, Missouri 64138 PHONE: 1-816-356-5320 |
| VICE-PRESIDENT | DARYL STROHM 8904 E. 29th Street Kansas City, Missouri 64129 PHONE: 1-816-252-8053 |
| TREASURER | CLIFF BALL 572 W. Park Street Olathe, Kansas 66061 PHONE: 1-913-782-0415 |
| SECRETARY | ED KRAMER 4305 W. 78th Street Prairie Village, Kansas 66208 PHONE: 1-913-642-3587 |
| BULLETIN SECRETARY | JACKIE FORTNEY Post Office Box 303 Buckner, Missouri 64016 PHONE: 1-816-650-5208 |

Please send information about your Club to the Bulletin Secretary. We will include the name of your club, the secretary's name, address & phone number, dues, and the meeting place(s) and time(s) in the Bulletin.

Anniversaries

CONGRATULATIONS!!! to those members who are celebrating their 40th or more wedding anniversary. The anniversary date and the number of years is indicated.

Fred & Pat Curtis
3800 C.R. 335, Pagosa Springs, CO 81147
Married 40 years August 31st

Mr. & Mrs. Robert Leonard
3130 N. Custer Rd., Monroe, MI
Married 42 years August 19th

GM & Sarah Wells
R.R. 2 Box 131, Henrietta, TX 76365
Married 49 years August 7th

Mrs. & Mrs. Alvia Fulty
267 N. Campbellsburg Rd.,
Campbellsburg, IN 47108
Married 66 years August 20th

Arvin & Betty Wolfgram
1119 E. Marquette St., Appleton, WI
Married 42 years August 20th

Charles & Jeanette Echols
397 Alexander Cir.
Marietta, GA 30060
Married 52 years August 15th

Cleon & Joan Freeze
4205 W. 7th Ave., Kennewick, WA 99336
Married 47 years August 21st

A card or note recognizing this event would surely be appreciated. Each monthly bulletin will contain the names of those members who are currently celebrating their 40th or more wedding anniversary.

If you have not notified the Bulletin Secretary, Jackie Fortney, of your anniversary, please send the information. Your anniversary will be recognized in the appropriate monthly bulletin.

SUNDAY AUGUST 24, 1997 2:00 P.M.
AUGUST MEETING OF HOACGA
SPECIAL GUEST SPEAKER

At the regular August monthly meeting of the Heart of American Carnival Glass Association we will have some special guests.

John and Lucile Britt will be here from Manhattan, Kansas. John will discuss some of his current finds and you are welcome to bring some of yours. Refreshments will be served. We encourage all members who can, to attend.

The meeting is at the Park Lane Medical Center at 5151 Raytown Trafficway. The room is on the first floor of the Doctor's Building which is at the South end of the medical center complex. The complex is on the East side of Raytown trafficway.

Ed Kramer, Secretary HOACGA

HOACGA EDUCATIONAL BOOK III

The HOACGA Educational Series Book III is now available. This Educational Series contains articles which were previously printed in the monthly bulletin. The book contains articles written on several different subjects; i.e. Bon Bons, Bowls, Drinking Vessels, Novelties, Rose Bowls, Table Sets, by several different members. Members who contributed articles are Britt, Fry, Kremer, Pickup, Brooks, Roque, Kuhn, Curtis & Briix.

The book contains educational information on about 150 different patterns and it also contains a list of approximately 500 rarities (only 5 or less known). This type of information is not found in any other carnival reference material.

It is a very informative book.

You may order it from: Ed Kramer, Secretary, 4305 W. 78th Street, Prairie Village, KS 66208. Make checks payable to HOACGA

ORDER FORM

HOACGA Educational Series Book III

Number of copies _____ @ \$20.00 ea. = \$ _____

(USA S&H included)

Name _____

Address _____

CARNIVAL GLASS CLUB INFORMATION

Air Capital Carnival Glass Club

Secretary: Donald Kime, 15201 E. 47th S, Derby, KS 67037 (1-316-733-8424)
 Dues: \$15.00 per year per family
 Meetings: Every second month. February, April, June, August, October, December. The second Sunday at 2:30 P.M. Individuals homes.

American Carnival Glass Association, Inc.

Secretary: Dolores Wagner, 5951 Fredricksburg Rd., Rt. 4, Wooster, OH 44691 (330) 264-3703
 Dues: \$15.00 per family
 Meetings: At convention in July, quarterly newsletter

Australian Carnival Enthusiasts Association, Inc.

Secretary: M. Dickinson, RSD Fryerstown, Victoria. Australia 3451 (054) 73 4351
 Treasurer: Mrs. K. Breward, 3/11 Butlers Rd. Ferntree Gully Victoria. Aust 3156 (03) 9752 2103
 Dues: \$12.00 per annum per family or \$10.00 a single \$15 per annum overseas
 Meetings: Meetings are held quarterly at members homes. Visitors are welcome 12 noon on.

Canadian Carnival Glasses Association

Secretary: Margaret Hunt, 107 Montcalm Dr., Ketchener Ontario N2B 2R4
 Dues: \$20.00 per year
 Meetings: 6 to 8 a year. Convention: October 3, 4 & 5th 1996

The Carnival Glass Society (UK) Ltd.

Secretary: Vernon Kelvin, 162 Green Lane, Edgware, Middx. HA8 8EJ. England
 Dues: Overseas Members 15 pounds (Sterling) per year
 Meetings: Convention during August in Mid-England and at get-togethers in members homes

Carnival Companions

Secretary: Nigel Gamble, 24 Crabtree Ave., London, Ontario Canada N6G 2H7
 Dues: \$7.50 / Donation per person, per year
 Meetings: 5/6 mtgs per year, usually to a restaurant first, then a members home to view their collection.

Gateway Carnival Glass Club

Treasurer: Karen Skinner, 108 Riverwoods Cove, East Alton, IL 62024 (618) 259-1373
 Dues: \$5 per year, per family
 Meetings: In the homes of members living in St. Louis & surrounding areas.

Great Lakes Carnival Glass Club

Secretary: Maxine Burkhardt, 612 White Pine Blvd., Lansing, MI 48917
 Dues: \$5.00 per year, per family
 Meetings: At members homes 3 times/year. 1st Sun. in Feb., May, Aug. Conven. 1st wknd in Nov.

Hoosier Carnival Glass Association

Secretary: Eunice E. Booker, 944 W. Pine Street, Griffith, Indiana 46319
 Dues: \$5.00 yearly, per family
 Meeting: Monthly - 3rd Saturday at 5:00 P.M. except February, July & August

International Carnival Glass Association (ICGA)

Secretary: Lee Markley, Box 306 Mentone, IN 46539 (219) 353-7678, (219) 894-3451
 Dues: \$15.00 per year
 Meetings: Convention: 1 yearly - July or August, Newsletter - quarterly

Keystone Carnival Glass Club

Secretary: Mary Sharp, 719 W. Brubaker-Valley Road, Lititz, Pennsylvania 17543
 Dues: \$10.00 family membership per year (June - May)
 Meetings: Second Saturday of each month at loof Hall, N. Broad Street, Lititz, PA at 7:30 P.M.

L'Association Du Verre Carnaval Du Quebec

Secretary: J. Leo Richer, 3250 Leon Brisebois, Ile Bizard, Que. H9C 1T6, Canada 1-514-620-1541
 Dues: \$20.00 (Canadian Money) per year, per family (Bilingual Newsletter - French/English)
 Meetings: Meetings are announced in our newsletter at each two months.

Lincoln-Land Carnival Glass Club

Secretary: Ellen Hemm, N. 951, Hwy 27, Conrath, WI 54731
 Dues: \$15.00 per year USA & Canada, \$20.00 Overseas
 Convention: Each June. Newsletter 6 times a year, list of glass For Sale published every month.

New England Carnival Glass Club

Sec./Treas.: Lynn & Harold March, 10 Seminole Rd., Canton, MA 02021 (617) 821-3425
 Dues: \$12.00 per year per family
 Meetings: Feb. 18, Apr. 21, Jun. 23, Aug. 18, Oct. 20, and Dec. 8, 1996 at noon in the Pulaski Club Hall, Southbridge, Mass. The Club Convention is the second weekend in September.

Northern California Carnival Club

Treasurer: June McCarter, 1205 Clinton Drive, Modesto, California 95355
 Dues: \$10.00 per year (individual or family, January 1 through December 31)
 Meetings: 3rd Sun. in Jan., April and Oct., 11:00 AM to 3:00 PM, lunch at noon, Guiseppe's Restaurant, 2501 McHenry Avenue, Modesto, California.

Pacific Northwest Carnival Glass Club

Secretary: Bev Osbon, 34931 S. E. Dodge Ph. Blvd. Phone: 1-503-663-4433
 Dues: \$10.00 per year, due June 1 through May 31.
 Meetings: 3 times/year, 2nd Saturday of April, 2nd wknd of Aug. (Conven.) and 2nd Sat. of November.

San Diego County Carnival Glass Club

Secretary: Diane Fry, 5395 Middleton Rd., San Diego, CA 92109-1525
 Dues: \$18.00 Household, USA & Canada, \$23.00 Foreign -- annually
 Meeting Place: Handlery Hotel, San Diego - April 13, June 1, Sept. 21, Dec. 7, 10AM-3PM
 Educational program, noon lunch, quarterly newsletter, March convention

San Joaquin Valley Carnival Glass Club

Treasurer: Joan Steskal, PO Box 389, Ahwahnee, CA 93601
 Dues: \$5.00 per year, payable March 1st
 Meetings: Luncheon s in Mar., Sep., Dec., in the Cedar Lanes Restaurant, Fresno, California

Southern California Carnival Glass Club

Treasurer: Betty Robertson, 1430 Kendall Avenue, Camarillo, California 93010-3606
 Dues: \$12.00 for single or \$18.00 for couples
 Meeting Place: Golden Sails Hotel, Long Beach, California, at 10:00 A.M. setup, lunch served at noon, meet 3rd Sunday of February, May, August and November.

Tampa Bay Carnival Glass Club

President: Naomi Calkins, 120 Woodland Court, Safety Harbor, FL 34695, 813-725-4145
 Dues: \$7.50 per household, year starts March 1st.
 Meetings: Members homes, 3rd Sun. of each month except Jun, Jul, Aug. Convention in February.

Texas Carnival Glass Club

Treasurer: Carol Cox, Route 1, Box 912, Cleburne, TX 76031
 Dues: \$20.00 per year per family
 Convention: Houston, mid-February

Western N. Y. Carnival Glass Club

Secretary: Linda Matties, 1246 Flynn Road, Rochester, NY 14612
 Dues: \$5.00 single membership + 2.00 associate
 Meetings: Union Congregational United Church, N. Main Street, Churchville, NY, 3rd Wed. of each month, Sept. - June, 7:30 PM

PICTORIAL PATTERN PARADE

By John & Lucile Britt



THE STATES PATTERN BUTTER DISH

We were indeed surprised, but delighted to find this beautiful carnival glass butter dish at the 1997 HOACGA convention. It is a U.S. Glass pattern. This company was noted for naming many of their patterns after various states in the union. The last of the state-named patterns appears to have been Washington the "The States" pattern climaxing the series. Two of the U.S. Glass state patterns that we have been able to find pieces in carnival glass are Massachusetts and Minnesota. We might also mention that the Fenton Glass Company copied the U.S. Glass Company's Pennsylvania pattern and produced what Hartung calls the "Fine Cut Flower" pattern in a compote.

Minnie Watson Kamm, in her book #5, on page 142, reports that "the States" pattern was one that U.S. Glass took considerable pride in and called it "the Winner of the year". A full page advertisement in 1905 shows the water pitcher, tumbler, compote, celery and toothpick. A reproduction of that ad is shown in Kamm book #5 on plate 25. The complete table set is illustrated in the very fine book "U.S. Glass from A to Z" by Heacock and Beckenheuser.

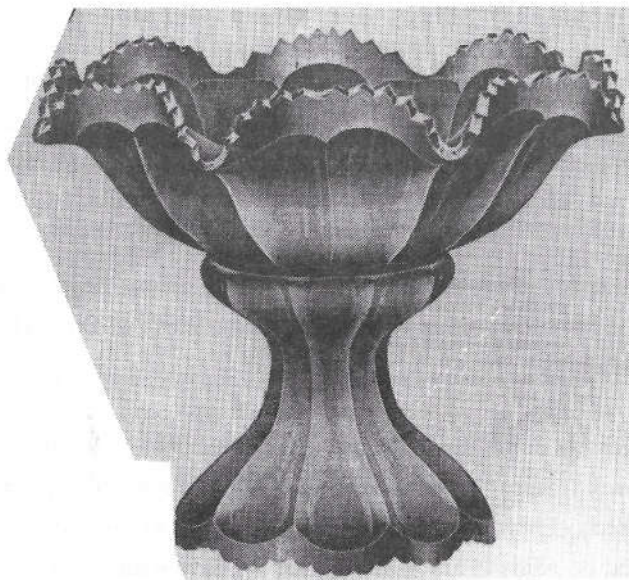
The States pattern butter dish is of standard size, 5½" to the top of the finial and approximately 7¼" across the top of the bowl part. A very unusual rayed star pattern is used on the bottom of the base. It is in good dark marigold with very fine iridescence.

This piece was found in Argentina along with an oblong bowl in the same pattern and color. Photos used in this article are courtesy of Dave Doty. We appreciate his help a lot.

The States pattern butter dish article is #225 in our Pictorial Pattern Parade. Next month we will feature a beautiful vase that can be found in Josef Inwald A. G. of Prague, Czechoslovakia material. It is listed only as #8515. Since this vase has a number and no name in any material that we have read, we have called it Princeton. In our opinion, it is a very fine piece of carnival glass with great color and iridescence. More on it in next months HOACGA bulletin.

NOT MILLERSBURG FLUTE PUNCH BOWL

By Alan & Lorraine Pickup



Flute - a rounded groove. Sounds simple enough, but here is another controversial glass pattern. Some say this is an Imperial Glass product and some feel just as vigorously that it was made by the Millersburg Glass Company. We were inclined to lean towards Millersburg. Why would the Imperial Glass Company make two totally different Flute punch bowl sets? But they did indeed.

Marie McGee's book states "that fragments found at the factory site leave no doubt that Millersburg made a colonial style pattern designated No. 400." She also states that it is sometimes called Wide Panel. We are not what you would call Millersburg collectors. But as with all accumulations of Carnival Glass, you will find some Millersburg throughout our house. After checking our glass we found that Wide Panel was used as a secondary pattern on many of our Millersburg pieces. Flute or Wide Panel was no stranger to Millersburg. So why wouldn't they use it as a primary pattern?

Our marigold punch bowl is a very rich color and the glass clarity, as would be expected in a pattern such as this, is of a very fine quality. Busy patterns can cover up many glass impurities but this Flute pattern has to be top grade glass. Another Millersburg characteristic?

The HOACGA note book pictures this punch bowl in a rare green and also lists it in marigold and a rare amethyst color. The small 1979 Millersburg book by Bill Edwards pictures a marigold punch set with the punch base ruffled rather than non ruffled as shown in the HOACGA notebook. The auction guides only list two Flute punch bowls and bases over the years and they don't specify whether they were Imperial or Millersburg punch sets.

We were convinced it was Millersburg and had an article ready to send in. All I was waiting for was a decent picture. I am not a photographer and it sometimes takes me a while to get an acceptable picture.

Our Gateway Carnival Glass Club meeting this month was hosted by Fred and Karen Skinner of East Alton, Illinois. We would have to say that Karen's carnival glass collection has many strange and seldom seen patterns. She enjoys researching these seldom seen patterns and plans to someday publish a book on the subject. Lorraine and I were getting ready to leave the meeting when Lorraine spotted the so called Millersburg Flute Punch bowl set in one of the many display cases. She told Karen we had recently bought a Millersburg punch bowl and base. "Not so," said Karen, and then in minutes had us convinced. She put the proof in our hands that it was indeed an Imperial product advertised in the now available reprint of Imperial's 1909 General catalog. This catalog was not carnival glass but crystal glass. The moulds were then used a year or two later for carnival glass.

Thanks, Karen, for the rescue and loaning us the catalog to photograph the ad for this story. So now we know that this is not only Imperial glass but the catalog shows it as an 11" No. 03939C *Orange Bowl* and foot. The punch bowl is shown on another page as a 10" No. 03939A punch bowl and foot. The fruit or orange bowl is ruffled whereas the punch bowl is round (not ruffled). It is also interesting to note that punch bowls could be bought as sets at \$6.00 a dozen with 6 cups, with or without the foot (base). The punch cups could be bought separately packed 30 dozen to a barrel.

Do any of you "old folks" like us remember the comic strip Ally Oop and his time machine? Too bad he wasn't a carnival glass collector instead of a dinosaur chaser. How would you like to have a barrel full of punch sets today at those prices?

A VALUE OTHER THAN MONEY

By Pat Call

Mrs. Nichols was about 85 and enjoyed reminiscing. She'd heard that I was interested in antiques, especially glassware, and she had some things she thought I'd enjoy seeing.

She didn't want to sell anything - she just wanted to share her pleasure in them, and her memories. She was my next door neighbor.

I took her up on her invitation one afternoon, and listened as she showed me cups and saucers, blue opalescent tumblers, vases with handpainting, and goblets that had belonged to her grandmother.

Every item had a little story to go with it; some funny, some moving, but the one that held my attention was a vase on the buffet with a few dried flowers in it. It was covered with dust. It was cracked at the bottom, and mended on the side. There was a chip in the handle... but she held it lovingly. "My first beau won this for me at a carnival in 1917. His name was Robert."

She took the flowers out of it and handed it to me. "I guess I'd sell it now, if your interested."

I was interested. It wasn't worth a whole lot of money, considering the condition, but it had a value beyond monetary.

It was a marigold Ivy Town Pump.

CORRESPONDENCE

Dear HOACGA,

After receiving the bulletin for more than 20 years, I still look forward to the different articles written each issue.

There's always something new to be learned and I always enjoy reading about new finds by different people.

Paul Berube
Tiverton, RI

Dear HOACGA,

Please find enclosed my renewal form and check for \$25.00. Also, please note the change of address and phone number. I would like to thank the entire editorial staff for putting together, what I consider to be, the best news letter from any Carnival Glass Club. Keep up the good work. Thank-you.

Jay Emmert
Salem, NH

Dear HOACGA,

It's time to renew, and we enclose a check for \$25.00 for the dues and \$10.00 for the pattern notebook section vases D-G.

In May, it was our pleasure to meet John and Lucile Britt at the Sweeney Auction in Grand Island, Nebraska. It was a pleasure to see so many wonderful items, and meet the authors of so many interesting articles.

Thank you for providing such a good service to carnival glass folks.

Cheryl & Phillip Smith
Berwyn, NE

Dear HOACGA,

We really enjoy the newsletter, and enjoy the articles. We are new to the carnival world, and all the help is appreciated. I know this might sound silly, but how do you clean the carnival glass? I have been told not to wash it, and use different items. We are looking for the best way to care for it. Also, some of my vases are so dirty on the bottom, what is the best method for getting them cleaned (especially if you can't reach the bottom)? We would appreciate your help in this matter. Thanks so much.

David & Toni Morrow
2938 180th Street
Ft. Madison, Iowa
(319) 528-4214



National Imperial Glass Collectors' Society, Inc.

Headquarters
P. O. Box - 534 / Bellaire, Ohio / 43906



A non-profit organization dedicated to the preservation and study of Imperial glassware.

July 21, 1997 -- For Immediate Release

IMPERIAL GLASS -- SUCH ARE THE WAYS OF SKEPTICS

Bellaire, Ohio -- When Robert Fulton was ready to test his new invention, the steamboat, dozens of skeptics were crowded on the banks of the river shouting "Fulton's Folly!" and "It'll never start! It'll never start!" But it did start. With a lot of clanking, groaning and huge billows of smoke pouring from its stacks, it slowly began making its way down the river. The skeptics, proven wrong, stood watching, in dead silence -- for a minute. Recovering from their shock they all began shouting "It'll never stop! It'll never stop!" Such are the ways of skeptics.

In 1901, several progressive-minded investors from Wheeling, West Virginia and Bellaire, Ohio began a venture that was considered, by the skeptics, too risky and a downright foolhardy gamble. Their goal: to build the biggest and the best glassware factory in existence, and to show their confidence, they named the new company "Imperial."

The venture, like most, did pose some risks. The glassware industry had been in an economic recession in recent years. Competition in and around the Ohio Valley was fierce from the well-established glasshouses -- the town of Bellaire was already known as "the Glass City." But the founding fathers had a belief in themselves and their glass products and they successfully silenced the "Nay-sayers" and skeptics.

For 8 decades these "Imperial people," and the hundreds who followed in their footsteps, accomplished their goal by providing the consumer with superior glassware, in a myriad of creative shapes, styles and colors, all at an affordable price. It was this "affordable quality," tempered with the dedication of the people, that proved to be the most significant factors in the Imperial's success. Some of the more popular lines were NuCut, Imperial's Art Glass, NuArt, Free Hand, Candlewick, Cape Cod, Imperial's iridized or "Carnival" ware, Milk Glass, Slag Glass, and Cathay, to name just a few. It wasn't until the 1970's did the company begin to succumb to the pressures of a changing economic world and in the spring of 1985 the furnaces were silenced.

National Imperial Glass Collectors Society

In an effort to preserve Imperial's contribution to the heritage of glassmaking, to pay tribute to the people & products of this great glass "hand house" and to interest and educate the "glass collecting community," the National Imperial Glass Collectors Society was established 21 years ago. Membership in the NIGCS provides a glassware enthusiast the opportunity to learn many facets about the Imperial as a company, its people, how the glassware was made and about the numerous lines of glassware itself, plus the activities of the Society and its study groups. During the year, much of this is accomplished through the quarterly newsletter, the *Glasszette*. For the more inquiring minds, the NIGCS, in conjunction with Antique Publications, offers Volume-1 of the *Imperial Glass Encyclopedia* (soon to be followed by Volume-2). In addition, the Society offers videotapes on various glassware lines and catalogs for sale.

The Convention

Being a member of the Imperial Society is not all formal education. Each year several hundred members meet in Ohio at "the Convention" which is a mixture of learning, fun, excitement, re-establishing old relationships, meeting new people and making new friends. On day one, amid a reunion-like atmosphere, the official festivities commence with the exclusive Imperial auction. Describing the auction cannot compare to experiencing this event. Many rarely seen and often one-of-a-kind Imperial items are offered to those willing to do battle. Though heated at times, these bidding wars are all good fun, especially for the victor.

National Imperial Glass Collectors Society (Page-2)

The Convention (continued)

Day two of the Convention begins with one of the most interesting, educational and entertaining segments: the question & answer session with the former Imperial employees. Each year Convention attendees have an opportunity to gain a glimpse into the past and learn first hand from the people responsible for bringing the beautiful glassware into existence. This year's offering included Imperial workers representing departments like Mould-Making, Hot Metal and even an Imperial factory Tour Guide along with a "home movie" showing the day-to-day operations of glass making at the plant.

This day also brings the much-anticipated start of the Show & Sale. As the doors open there is a collective gasp when anticipation gives way to wonderment as the eyes are met with the hundreds of items of glassware, meticulously displayed and ready for purchase. The glassware display featured one of the more popular of Imperial's glassware lines: the radiant, iridescent finish on glassware, named "Carnival" by collectors. Mr. Carl O. Burns and his wife Marsha provided the main display offering over 100 pieces of the brilliant "old Imperial Carnival" glassware. The following day, Mr. Burns, the man who wrote the book on Imperial Carnival (*Imperial Carnival Glass--Identification and Value Guide*) shared his vast knowledge of this Imperial line in an interactive, educational seminar that left his audience wanting more when he was finished.

The Future

In addition to the Imperial glassware, there was another much-discussed topic during this year's gathering. It's been nearly 100 years since the inception of the Imperial Glass Company, and the NIGCS has embarked upon a venture similar to that of the founding fathers of Imperial. It's considered, by the skeptics, too risky and a downright foolhardy gamble. A few have said: "It's a folly. It will never start." Our goal: the National Imperial Glass Museum.

During this year's Convention dinner, Paul Douglas, our Banquet Chairman, opened with a quote from Abraham Lincoln that set the mood for the present and the future for our Society: "'This land is ours to enjoy, ours to preserve, and ours to transmit.' In our case, this Imperial is ours to enjoy, ours to preserve, and especially ours to transmit. We call it 'The memory of the Big I.' This banquet is a celebration to enjoy, preserve and transmit that memory to future collectors...we have seen our emphasis slowly shift towards preservation and transmission with the publishing of the *Imperial Encyclopedia* and now the growing movement toward the Museum."

Our guest speaker, Robert L. Calhoun, was the former Vice President and General Manager of the Imperial Glass Corporation during the years Lenox owned the factory (1972-1981). He gave us some insights into the challenges facing the glass "hand house" during this period. He concluded by giving all of us something to think about for our Society's future: "The future is you folks here tonight. There's no more 'Big I' and there's no more glass. It's really sad, but that's the way it is. The Imperial is going to have to live through you collectors. Get your Museum. Build a monument to Imperial Glass ... It's important ... we had the skills, the glass, the people ... Imperial truly did some unique things ... and to lose that kind of heritage would really be a cardinal sin."

Now that the movement toward a Museum has started, we're waiting for the skeptics to say: "It will never stop! It will never stop!" !" Such are the ways of skeptics.

For more information please contact: NIGCS / PO Box-534 / Bellaire, OH / 43906 / (410) 995-1254

ON THE AUCTION TRAIL WITH CHUCK

By Chuck Kremer

June 28, 1997: Mickey Reichel Auction at Boonville, Missouri. A large auction of mostly middle of the road glass. Many Elks pieces, 50 or more tumblers, about 75 mostly small size plates, some 30 kittens pieces and many hatpins that almost all went to a single mail bidder.

Mickey had a full house with 107 bidders plus a lot of mail bids. It was a lively sale with prices holding up well throughout. In my opinion, prices were generally good with the usual surprises both up and down.

July 9-12, 1997: American Carnival Glass Association Convention at Batavia, New York. A nice location and convenient for the members from the Northeast and Canada. Niagara Falls was nearby and several people took advantage of this and other nearby attractions. One ACGA couple chose Saturday as their wedding day. Did they honeymoon at the Falls?

It was a somewhat laid back convention with the various activities spread out to allow plenty of time for what conventions are all about - visiting and looking for that special piece of glass. I was a little disappointed in the overall quality of the glass available in the rooms. I like the miniature amethyst Hobstar and Feather punch bowl and four cup ACGA souvenir.

Early in June at the Lincoln-Land convention, Bill Richards Sr. cried part of the sale. He was not feeling well and shortly thereafter underwent serious surgery. Carnival glass called - he was back crying part of this convention. Sheer determination!

The auction was a study in contrasts price wise. In my opinion some pieces that should have sold well didn't and some that shouldn't have did very well. Price examples included the purple master 14 piece Grape and Cable punch set at \$1600, the purple 8 piece Imperial Flute punch set with some damage at \$1900, purple

Imperial Grape punch bowl and base at \$2025, purple Loganberry vase at \$1525, the marigold Diamond Rib jardiniere at \$1250, and the perfect amethyst Elks paper weight at \$3500.

July 19, 1997: I had to make a choice -- Maryland or Missouri. I ended up with a phone bid to Maryland on a piece that I didn't get and I went to the Mickey Reichel auction at Boonville, Missouri. Mickey had a good auction, but the two pieces I went for didn't fit in my plans so I came home empty handed.

At the Reichel auction the high end pieces had the color, iridescence and quality the bidders were looking for and the prices reflected this. The nine pieces pictured on the front of the brochure averaged a bit under \$3000. A few auctions back Mickey started using a colored brochure and the results have spoken. I'll bet there will be few black and white brochures in the future. There was a large and buying crowd with many coming from quite a distance.

This sale was a little unusual in that there were 18 or 19 pairs of well matched candle sticks and 50 or more vases; plus a large number of upper end pieces. The good stuff sold well, and beyond that I believe it was another well run Reichel auction with the usual variations in prices.

What is next on my list? I'll definitely be at the Albrecht Auction at Lapeer, Michigan, on August 22 and 23, 1997. The late Gary Cooper and the Albrecht crew always had a good well-planned auction with so many extras tacked on for our enjoyment. Dave Albrecht tells me they will carry on in the same fashion. This will be a "must" in my book.

EDUCATIONAL TUMBLER SERIES

By John & Lucile Britt



STARBURST TUMBLER

It is indeed a pleasure for us to add this rare and very pretty tumbler to our educational Tumbler Series. This tumbler was made in Finland. Bob Smith found it in Finland while he was traveling in that country. He also visited the Finland glass museum and was able to pick up a book that illustrated many Finish made patterns. The pieces of glass were all listed with numbers only, none with actual names. In addition to the Starburst tumbler, which was designated as number 5040, other tumbler patterns that were made in Finland that we recognized were Drapery Variet, Grand Thistle, Tiger Lily Variet, Flashing Stars and Western Thistle. The Sunk Daisy rose bowl that we recently wrote about is also shown in this Finland Riihimaki catalog as well as a Four Flowers copy of Dugans Four Flowers pattern.

Our featured Starburst tumbler is in very nice marigold. Since Riihimaki also made iridised glass in blue, it is quote likely that there are some blue tumblers out there somewhere in this pattern. The tumbler is a little smaller than most American

made tumblers, being just slightly over 3½" tall and 2 ¾" across the top. The underside of the base contains an unusual 8 pointed petal like figure that has been factory ground and polished. We have also seen the Starburst pattern in vases and cuspidors and know that the water pitcher exists.

The Starburst tumbler is a very fine example of carnival glass and we believe that it will find a place right up there at the top with other Riihimaki Finish tumblers such as the popular Western Thistle tumbler. Photo is courtesy of Dave Doty.

The Starburst tumbler marks our 235th entry into the Educational Tumbler Series. Next month we will feature another very fine foreign made tumbler called Tartan. This pattern is shown and described in Ray Notley's Journal #13. Notley lists it as a Brockwitz pattern that was made in Germany. More on this rare tumbler next month.

AUCTION

WHO: HOACGA members Alvia & Ester Fultz
267 N. Campbellsburg Livonia Rd.
Campbellsburg, IN 47108. (812) 755-4465

WHAT: Selling collection of 200 pieces old glass
Also 70 pieces carnival glass souvenirs
53 pieces contemporary carnival glass

WHEN: September 20, 1997, 9:00 A.M.

WHERE: Best Western Motel, Scottsbury, IN 47170
(800) 528-1234

AUCTIONEERS: Day & Lyles of Salem, IN
(812) 883-3975

OLD CARNIVAL GLASS

1. 10 PC. PUNCH SET 474-MAR.
2. 9" ROSE PATTERN SCALLOPED PLATE-GR.
3. PEACOCK ON FENCE SCALLOPED BOWL-GR.
4. 15" FENTON VASE-AMETH.
5. 12" VASE-AMETH. DING ON BOTTOM
6. 8" JACK IN THE PULPIT VASE-MAR.
7. BULLSEYE SCALLOPED-EDGE BOWL-MAR.
8. 7" RIBBONS & BOWS SCALLOPED JELLY DISH-MAR.
9. CHERRY & RIBBON SCALLOPED DESSERT DISH-MAR.
10. 6 1/2" SCALLOPED FAN BOWL-SMOKY
11. 9" STARS SCALLOPED BOWL ROSETTED-GR.
12. RIBBON & RASPBERRY BACK PLATE-GR.
13. HEN ON NEST COVERED DISH W/ CHICKS-MAR.
14. WREATH OF ROSES & GRAPES PUNCH SET W/ 12 CUPS-AMETH.
15. MILK PITCHER WITH CHRISTMAS DESIGN-MAR.
16. SAME AS 15
17. PEACOCK & GRAPE BOWL W/ BERRIES ON BACK-MAR.
18. GRAPE & CABLE SPATULA FOOTED BOWL-GR.
19. PEACOCK ON FENCE SCALLOPED CHIPPED-MAR.
20. STRAWBERRY STIPPLED TURNED-UP PLATE NORTHWOOD W/ BASKET WEAVE BACK-PURPLE VERY RARE
21. NORTHWOOD NIPPON W/ MANY SCALLOPS-ICE GR.
22. TWO TREE TRUNK VASES MARKED N 2-OPAL. AQUA
23. CHERRY PATTERN PAINTED PITCHER W/ 4 TUMBLERS-BL.
24. PUNCH BOWL BASE-MAR.
25. PUNCH BOWL W/OUT BASE FASHION PATTERN-MAR.
26. STAR OF DAVID & BOWS BOWL-AMETH.
27. SINGING BIRD WATER SET-GR.
28. GRAPE & CABLE FRUIT BOWL-DARK BL.
29. VASE-GR.
30. SMALL DISH CHERRY PATTERN-AMETH.
31. FENTON BUTTERFLY & BERRY BOWL W/ THREE FEET-AMETH.
32. SWEETMEAT-AMETH. PERFECT
33. BERRY & LEAVES BOWL-MAR. SMALL DING
34. CHERRY CIRCLES TWO-HANDLED DISH-GR.
35. CAPTIVE ROSE NAPPY W/ TWO HANDLES-MAR.
36. WHIMSEY-MAR.
37. WHIMSEY-MAR.
38. TURNED-UP SIDES PEACOCK AT URN WITH BEE BERRY BACK-AMETH.
39. GRAPE & CABLE WATER PITCHER AND SIX TUMBLERS-AMETH.
40. CANDY TWO-PIECE CONTAINER-MAR.
41. PEACOCK AT URN W/ BEE PLATE THISTLES ON BACK-BL.
42. STORK OR HERON IN RUSHES BASKET- MARG. VERY RARE
43. GREEN SWAN
44. GRAPE & CABLE HATPIN HOLDER-AMETH.
45. PEACOCK ON FENCE-CELESTE BL. CHIGGER
46. PEACOCK AT FOUNTAIN W/ BEE PLATE W/ THISTLE BACK-MAR.

47. TWO-PIECE GRAPE & CABLE SWEETMEAT-AMETH.
48. POWDER DISH ORANGE TREE PATTERN-AMETH.
49. POWDER DISH GRAPE & CABLE MARKED N-AMETH.
50. POWDER DISH GRAPE & VINE-MAR.
51. POWDER DISH GRAPE & VINE-WH.
52. POWDER DISH-GRAPE & CABLE-GR. SMALL DING
53. POWDER DISH GRAPE & CABLE MARKED N-GR.
54. PEACOCK ON FENCE PLATE- ICE GR.
55. PEACOCK ON FENCE PLATE-ICE BL.
56. PEACOCK ON FENCE PLATE-WH
57. PEACOCK ON FENCE BOWL W/ PANEL BACK-AMETH.
58. STAG AND HOLLY SPATULA FOOTED BOWL-MAR.
59. SWAN SALT HOLDER-MAR.
60. SWAN SALT HOLDER-OPAL. BL.
61. SWAN SALT HOLDER-WH
62. 9" POPPY SHOW PLATE-MARG.
63. STRUTTING PEACOCK CREAM & SUGAR SET-AMETH.
64. SMALL WINE GOBLET-MARG.
65. BROOKLYN BRIDGE BOWL SIGNED-MARG. SMALL DING
66. OPEN EDGED TURNED UP BASKET-RED
67. PANTHER BOWL ON BALL FEET-DARK BL.
68. DAISY BASKET-MARG.
69. MAPLE LEAF BUTTER DISH-AMETH.
70. GRAPE & VINE ROSEBOWL-AMETH.
71. SCALLOPED BOWL-ICE BL.
72. MILLERSBURG RAYS & RIBBONS BOWL-GR.
73. 4 SALT DIPS-BL. AND AMB.
74. HOLLY SCALLOPED BOWL-DARK BL.
75. CONCORD FRUIT BOWL W/ BALL FEET-MARG.
76. 10 1/2" LOOP VASE-AMETH
77. 13" VASE-MARG.
78. BUTTER DISH TOP PAINTED ON BLUE
79. FENTON GRAPE SPITTOON-OPAL. MAR.
80. GRAPE VARIANCE ROSEBOWL-WH
81. BANDED GRAPE & LEAF PITCHER AND FIVE TUMBLERS-MAR.
82. CAPTIVE ROSE NAPPY-MAR.
83. 9" 3 FRUITS PLATE-MAR.
84. RAYS & RIBBONS BOWL W/ CACTUS ON BACK-AMETH.
85. PEACOCK AT URN W/ BEE FLAT BOWL-MAR.
86. BASKET-MAR.
87. 2 PEACOCK AT FOUNTAIN TUMBLERS-BL.
88. GRAPE DELIGHT BOWL MARKED N-AMETH.
89. RAYS FLAT BOWL MARKED N-GR.
90. TURNED-UP BASKET-RED
91. HANDLED NAPPY-OPAL. MAR.
92. STRAWBERRY BASKET WEAVE BOWL-GR.
93. SHORT VASE-MAR AND OPAL
94. RAYS & RIBBONS W/ CACTUS-AMETH.
95. STAR DEEP BOWL-AMETH
96. PONY BOWL-AMETH.
97. LILY NAPPY-MARG.
98. 9" VASE-BL.
99. 10" VASE-GR.
100. 10" VASE-GR.
101. 8" GRAPE & CABLE BOWL-GR.
102. GRAPE & VINE ROSEBOWL-MAR.
103. ROSE paneled DESSERT-BL.
104. GRAPE & CABLE SMALL BOWL-MAR.
105. NAPPY-MAR.

- 106. GARDEN PATH BOWL-MAR.
- 107. CAPTIVE ROSE BOWL-BL.
- 108. GRAPE & LEAF SMALL BOWL-AMETH.
- 109. PANSY BOWL-MAR.
- 110. GRAPE POWDER JAR NO LID-AMETH
- 111. IMPERIAL GRAPE MILK PITCHER-MAR.
- 112. PLAIN PITCHER AND 6 GLASSES MAR. PITCHER IS DAMAGED
- 113. ROSES TUMBLER-MAR.
- 114. SMALL BOWL-BLUE OVER MILK GLASS
- 115. OCTAGON 7 PIECE WATER SET-MAR
- 116. SCALLOPED HEART BOWL-AMETH.
- 117. TUMBLER-GR.
- 118. GREEN PAINTER PITCHER W/ FIVE TUMBLERS
- 119. PUNCH BOWL BASE-MAR.
- 120. IMPERIAL GRAPE PITCHER-MAR RARE
- 121. GRAPE & CABLE PITCHER & 6 TUMBLERS MARKED N-AMETH
- 122. DRAGON & LOTUS SPATULA FOOTED BOWL-MAR.
- 123. TIGER LILY PITCHER AND 5 MATCHING TUMBLERS-MAR.
- 124. LARGE FOOTED BOWL LUSTRE ROSE-MAR
- 125. 9 1/2" VASE-MAR.
- 126. 9 1/2" VASE-MAR.
- 127. 9 1/2" VASE-AMETH
- 128. PANTHER BERRY SET W/ FIVE DESSERTS-MARG
- 129. 11" CLEAR VASE
- 130. 10" VASE-AMETH.
- 131. 11 HOLLY TUMBLERS-AMBER MADE IN EARLY 1900s
- 132. ACORN BURR BERRY SET W/ 2 DESSERTS MARKED N-MAR.
- 133. TWO DOUBLE CANDLE HOLDERS IRIS PATTERN-MARG.

- 134. ACORN BURR SMALL SCALLOPS-MAR
- 135. ROSEBOWL ROSES PATTERN-AMETH.
- 136. TWO-HANDLED BASKET WEAVE BASKET MARKED N-AMETH
- 137. MIKADO-MARG.
- 138. GRAPE BANANA BOAT-AMETH.
- 139. SMALL COMPOTE-GR.
- 140. PEACOCK SUGAR BOWL-WH DAMAGED
- 141. PEACOCK CREAM PITCHER-WH
- 142. PEACOCK SPOON HOLDER-WH
- 143. PEACOCK BUTTER DISH-WH DAMAGED
- 144. PUNCH BOWL BASE-MARG.
- 145. SCALLOPED BOWL-MARG.
- 146. COIN DOT FLAT BOWL-AMETH.
- 147. RASPBERRY OPEN EDGE BOWL W/ BASKET WEAVE BACK-BL.
- 148. TWO-HANDLED DISH-MAR & OPAL.
- 149. TUMBLER W/ FLOWER-MAR.
- 150. GOLDEN WEDDING BOTTLE-MAR
- 151. GREEN LONG BOWL W/ FLOWERS TINTED GOLD
- 152. 8 1/2" STORK IN RUSHED BERRY BOWL-MAR
- 153. TWO-HANDLED NAPPY-MAR. & OPAL.
- 154. ROSE & VINE SCALLOPED BOWL-AMB.
- 155. GRAPE AND VINE SMALL BOWL-MAR.
- 156. RUFFLED BOWL W/ BASKET WEAVE EXTERIOR-MAR.
- 157. PERSIAN MEDALLION NAPPY-BL
- 158. RUFFLED BOWL-BL.
- 159. SWEETMEAT-AMETH. DING IN LID
- 160. 3 FRUITS BASKET WEAVE BACK-MAR.
- 161. NAPPY CACTUS PATTERN W/ THREE BALL FEET-MAR.

- 162. ROSEBOWL ROSES PATTERN-GR.
- 163. TWO-HANDLED BASKET-MAR.
- 164. STAG & HOLLY THREE-FOOTED BOWL-BL.
- 165. 8 1/2" GRAPE & CABLE PLATE W/ BASKET BACK-AMETH.
- 166. 3 FRUITS SHALLOW BOWL-GR.
- 167. STAG AND HOLLY SPATULA FOOTED BOWL-MAR.
- 168. LARGE BOWL PONY HEAD PATTERN-MAR.
- 169. MILLERSBURG TALL PEACOCK AT URN W/ BEE AT HEAD
- 170. GRAPE & VINE SMALL DISH
- 171. FLOWERS & LEAVES SMALL NAPPY-MAR.
- 172. KITTEN FOUR SIDES UP PIECE-MARG.
- 173. KITTEN FLAT PIECE-MAR.
- 174. KITTEN FLAT PIECE-MAR
- 175. KITTEN FLAT PIECE-MAR.
- 176. KITTEN FLAT PIECE-MAR.
- 177. KITTEN CUP-MAR
- 178. KITTEN CUP-MAR
- 179. KITTEN CUP-MAR
- 180. KITTEN CUP-MAR
- 181. TWO KITTENS BOWL-MAR
- 182. TWO SIDES UP KITTEN BOWL-MAR.
- 183. KITTEN SPOON HOLDER-MAR.
- 184. KITTEN VASE-MAR.
- 185. KITTEN VASE-BL.
- 186. KITTEN FLAT PLATE-MAR.
- 187. 1984 ICGA STRAWBERRY PATTERN ROSEBOWL-AMETH
- 188. VASE-AMETH
- 189. PUNCH BOWL & 6 CUPS-MAR.
- 190. PUNCH BOWL & 6 CUPS-MAR.
- 191. BLUEBERRY TUMBLER MARKED N-AMETH.
- 192. 6 DESSERTS GRAPE & VINE-AMETH

- 193. 3 TUMBLERS GRAPE & VINE-AMETH.
 - 194. NAPPY-MARG.
 - 195. 3 FRUITS BASKET WEAVE BACK BOWL-MAR.
 - 196. 5 PUNCH CUPS FASHION PATTERN-MAR.
 - 197. HOLLY & BERRY FLAT BOWL-MAR.
- Page 4 of 4198. BEADED STAR TURNED UP
- BOWL-MAR.
 - 199. STRAWBERRY BOWL-MAR.
 - 200. ROSES AND RUFFLES "GONE WITH THE WIND" LAMP-RED

THE BIRTH OF A BULLETIN

By Ed Kramer - Secretary HOACGA

Photographs by Cliff Ball - Treasurer HOACGA

Publishing a monthly Bulletin for over 1100 members is no small task. Many have written to tell us how useful and enjoyable the publication is and how they look forward to it. Cliff Ball, our Treasurer, has reported how the membership dues go mostly to the cost of the Bulletin. Please keep in mind that all labor except typesetting, printing, postage and label printing is voluntary.

First and foremost, our article contributors deserve our thanks for sharing their knowledge and experience with all of us. This is how we learn about our hobby. We have a lot of contributors and especially thank the "regulars", John and Lucile Britt, Alan and Lorraine Pickup, Chuck Kremer, and Carl Burns. We encourage all members to contribute. The editorial policy is in each month's bulletin in the center section. Articles by new collectors are welcome.

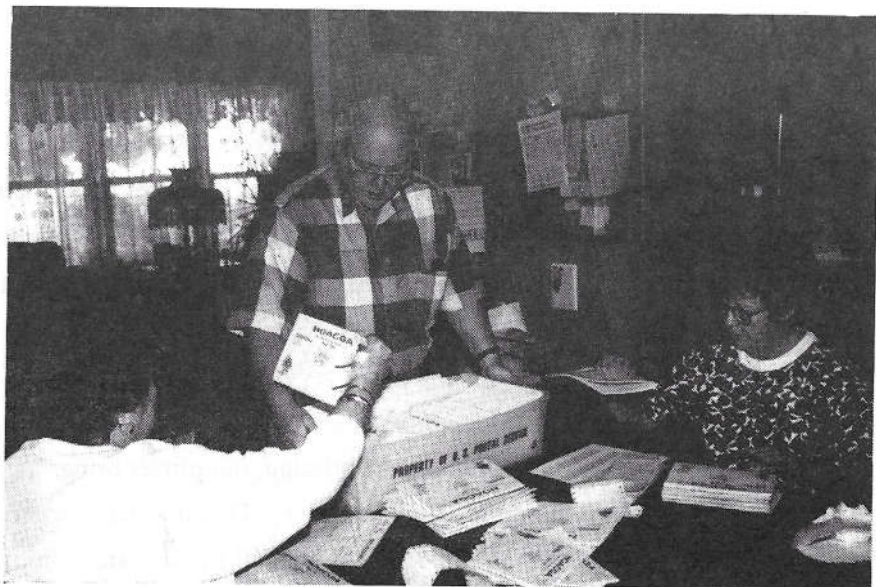
The bulletin is usually 50 - 64 pages consisting of 1/3 articles, 1/3 listing of HOACGA educational materials available, and 1/3 ads for FOR SALE and WANTS by HOACGA members.

Secondly, Jackie Fortney, our bulletin secretary, deserves a big thanks for coordinating the effort. Most of the materials come to her each month and she organizes them. It's a big pile of information that is sent to the printer.

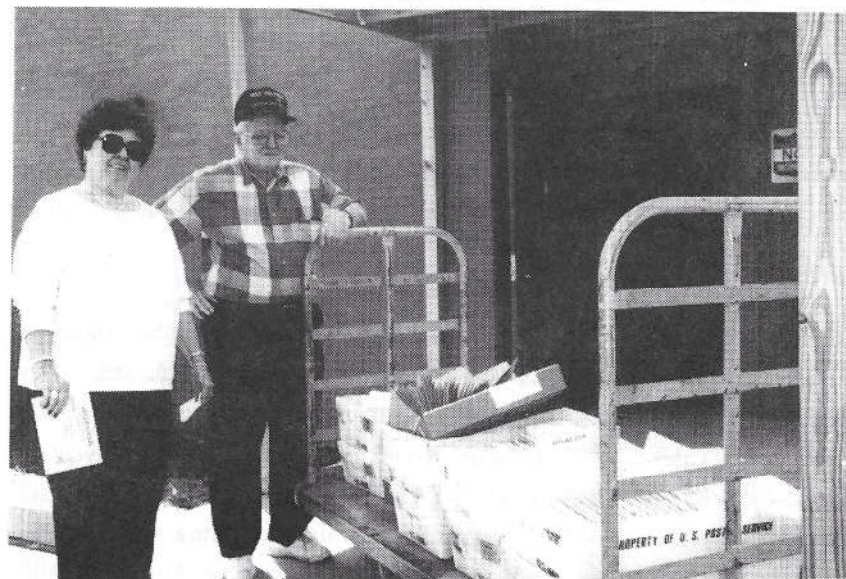
After the typesetting, proofreading and printing, our printer brings nearly 1200 copies to Jackie's home in Buckner, MO. This is 4 large cartons. Jackie and myself, along with Cliff and JoAnn Ball or Bob and Imogene Grissom or Daryl and Norma Strohm put the computer labels on the bulletins and take them to the post office in Buckner, MO.

This is usually a 3 hour job and almost always occurs on the 15th of the month. We have incorporated every cost savings we know of but still have a postal bill of approximately \$800.00

We think the bulletin is well worth the cost and effort it takes. Some photos of the Birth of the Bulletin are shown on the following pages.



Jackie, Ed and Joann adding labels



Ed and Joann loading Post Office Cart



1100 + Bulletins loaded in Ed's Van



Carolyn at Buckner, MO Post Office processing the Bulletins

THE BEST KEPT SECRET IN CARNIVAL GLASS

By Ed Kramer

The HOACGA Pattern Notebook. There, the secret is out! We sell these regularly but should really be selling a lot more with 1100 members. The pattern notebook is a resource unique to HOACGA and available to members only. Nowhere in carnival glass literature is the information grouped and categorized as well.

The effort began in 1979 (18 years ago) with a section on Punch Sets (now out of print). That was followed *each* year by a section on mugs, table sets, water sets, rose bowls, small plates, chop plates, regular plates, compotes, punch sets (2nd edition) and vases. The sections are issued in April each year at convention time. The 1998 section now in work is VASES H-P. If you have such vases please send photographs to Bob Grissom at 7517 Evanston, Raytown, MO 64138. There may be 2 more sections on vases. As they say in the record business, **THIS IS NOT AVAILABLE IN ANY STORE.**

Our president Bob Grissom has been the coordinator of this massive project and **many members** have participated with photographs, information, editing and proof reading.

The sections list each pattern with very good color photographs and an accompanying listing of maker(s) and colors available. The photos are printed by the three color process and are generally excellent. They are a great resource for identifying patterns for new and old collectors.

The order form and a listing of specific sections are in the center section of each month's bulletin. You can order sections individually or the entire notebook (to date... \$138). Please don't overlook one of the best carnival glass resources available.

H.O.A.C.G.A.

CLUB NEWS & GENERAL INFORMATION

The Newsletter is published on the 15th of each month. The Heart of America Carnival Glass Association is a Not-for-Profit organization registered in the State of Missouri.

Members are encouraged to contribute articles for publication in the newsletter and to advertise carnival glass for "sale" or glass "wanted". Articles may be educational in nature or about collecting experiences, or letters of interest to the membership. Other carnival glass organizations may announce their meetings and/or conventions. Auctioneers who are members may announce their future auctions. Members may announce their upcoming carnival glass educational books, price guides, and other pertinent publications; after the initial announcement the information will only appear in the bulletin "Resource Section". All items submitted for publication will be published in the next months bulletin or as soon as possible. The final decision to publish the articles will be made by the Board of Directors. Some articles may be edited prior to publication. Articles of an offensive nature or articles intended to discredit individuals will not be published.

Membership is \$25.00 U.S. & Canada, \$40.00 Foreign per family or individual. All monetary amounts quoted are in U.S. dollars. Membership year starts the month your dues were paid. All checks are to be made payable to H.O.A.C.G.A. and mailed to the Secretary, as listed on the inside front cover. All articles and items for publication in the bulletin are to be sent to the Bulletin Secretary whose name and address appear on the inside front cover.

MEMBERSHIP APPLICATION **H.O.A.C.G.A.**

New Member **Renewal**

\$25.00/year U.S. & Canada --- \$40.00/year Foreign

NAME _____

ADDRESS _____

TELEPHONE _____ ZIP CODE (NINE DIGITS)

REFERRED BY _____

Send to: Ed Kramer, 4305 W. 78th Street, Prairie Village, KS 66208

H.O.A.C.G.A. - CLUB INFORMATION

The purpose of the Heart of America Carnival Glass Association is to promote the growth and continuation of the Carnival Glass collecting hobby and to provide support to the many collectors by providing current information about the hobby.

Growth is accomplished by supplying educational information for the collector and soliciting new collectors into the hobby.

A Convention is held annually in April in conjunction with the annual meeting (Convention date always includes the 4th Friday). Some of the activities provided at the convention are:

- * Members provide Room Displays with glass from their collection.
- * Members are encouraged to bring glass for Sale.
- * Educational Seminars are provided by members.
- * A Major Carnival Glass Auction is provided.
- * The Convention offers members an opportunity to meet new collectors, renew old friendships and enjoy discussing carnival glass with other knowledgeable collectors.
- * A banquet is held with a Carnival Collector as our Speaker.
- * A Hospitality time is provided by the club. This is a time of relaxation and visiting with other members.

It takes the support of all collectors and members to promote the hobby in order that its growth and expansion can continue.

In order to obtain our objective, the members must financially support the organization. The Heart of America Carnival Glass Association receives its financial support through the Annual Membership dues and the sale of the following.

- * **Membership Dues** - \$25.00 per year - U.S. & Canada. \$40.00 per year for Foreign. The Membership Year is from the date of joining to one year later. Dues are set by the Board of Directors to support the

publication of the monthly bulletin, typing, printing and mailing.

- * **Educational Series - Book I** - 148 articles with pictures (black and white) on a variety of Carnival Glass Patterns.

- * **Educational Series - Book II** - 180 articles with pictures (black and white) of Carnival Glass Tumblers

- * **Educational Series - Book III** - 150 articles with pictures (black and white) of Bon Bons, Bowls, Drinking Vessels, Novelties, Rose Bowls, and Table Sets. Also included is a listing of 500 rarities.

- * **Hartung Carnival Glass Pattern Books** - A set of 10 books identifying Carnival Glass Patterns. These books are a must for all Carnival Glass Collectors, especially for the beginner. These are the only complete set of books available that identifies the majority of the carnival glass patterns. Sketches are in black and white.

- * **Pattern Notebook** - A notebook containing sections on Mugs, Table Sets, Rosebowls, Water sets (including painted sets), Plates (small, regular & chop), Compotes (large, regular & small), Punch Sets and Vases. Each section of the notebook identifies each pattern with a **COLOR** picture along with information about the Maker and colors of each different pattern.

- * **Souvenirs** - Periodically H.O.A.C.G.A. makes a souvenir to be sold to members. Souvenirs have been made since 1974, a few of these are presently available. They are the small Good Luck plate in ruby red, the Green Opalescent - Fenton, Cobalt - Millersburg, Marigold - Imperial, and Teal - Dugan Bells. Each year that Souvenirs were made, Whimseys were also made and sold at the convention banquet.

- * **Video Tapes** - Video Tapes of educational programs given during the various conventions are available. A complete listing of the available video tapes are shown on the Order Form, which is part of this section of the Bulletin.

AUGUST 1997
HOACGA MONTHLY MEETING

The next monthly meeting of the Heart of America Carnival Glass Association will be on Sunday, August 24, 1997 at 2:00 P.M. at the PARK LANE MEDICAL CENTER at 5151 Raytown Road, Raytown, Missouri. Park West of the doctors building, which is on the south end of the hospital complex.

The July 27 meeting was well attended. About 20 members heard Bob Grissom's presentation on table sets and breakfast sets. The display was mostly Bob's but with others added, 30 table sets and breakfast were discussed. Joe & Shirley Williams came from Prairie City, IA and Hazel Mayes from Sedalia, MO. JoAnn Ball won the door prize - an Octagon goblet in marigold.

Ed Kramer, Secretary HOACGA

HOACGA ROSTER

This Fall a new HOACGA Roster will be printed. This is the last call for changes. Is your phone area code correct in our records? Has it changed recently? Do you wish any changes in your listing?

Let me know with a post card.

Ed Kramer, Secretary HOACGA

WELCOME NEW MEMBERS

We welcome the following new members:

| | |
|--|-------------------------|
| Ronnie & Marilyn Booker | Dugger, IN |
| Robert Christie | Wilmington, CA |
| Kathleen Atwell & Richard Brazel | Bellmore, NY |
| Viola Bristol Johnson | Ft. Morgan, CO |
| Mr. & Mrs. N. J. Blanchard | Orange, TX |
| Rick & Connie Spicer | Ashton, Ontario, Canada |
| Bud & Gladys Martin | Little Rock, AR |
| Lee & Lynn Efirm | Kannapolis, NC |
| Rena O'Malley | Flagstaff, AZ |
| Kenneth & Carolyn Elingburg | Candler, NC |
| Shod & Joanne Decker | Afton, NY |
| Robert Robinson | Red Lion, PA |
| Am & Hedy Goodman | Louisville, KY |
| Saul Betancourt | Miami, FL |
| Karen Warren | Bellevue, WA |
| Mr. & Mrs. Donnie McLin | Macon, MO |
| * John Kerr | Glasgow, Scotland |
| Ronald & April Duncan | Boulder City, NV |
| ** Dr. Jerald & Patricia Hamblin | Kansas City, MO |

* John Kerr is our first Scottish member

** Patricia Hamblin is the daughter of member Billie Ridings who passed away April 30. We extend our sympathy and we are glad Patricia is carrying on the family tradition.

We thank those members sending us new members:

Lois Porter
John & Lucile Britt
Chuck Kremer
Arnold & Dorothy Snell

Ed Kramer, Secretary HOACGA

SHIPPING AND HANDLING (S&H) INFORMATION

The shipping charges to USA members are as indicated for each item. The shipping charges to members who reside outside the USA will be the actual cost. Upon receipt of item(s), the member will be expected to reimburse the club for the actual cost of shipping, as indicated by the postage on the package. At the time of placing your order, please indicate your shipping preference (air or surface). Unless otherwise specified, items will be shipped by surface mail.

ORDER FORM - SOUVENIRS & BOOKS

| | |
|--|---------|
| HOACGA Educational Series Book I | \$15.00 |
| USA S&H for each book | \$2.50 |
| Total | \$17.50 |
| HOACGA Educational Series Book II..... | \$17.50 |
| USA S&H for each book | \$2.50 |
| Total | \$20.00 |
| HOACGA Educational Series Book III (USA S&H included) | \$20.00 |
| H.O.A.C.G.A. SOUVENIRS: | |
| 1993 Ruby Red 6" "Good Luck" Plate | \$37.50 |
| (20th Anniversary) | |
| 1989 Teal Bell | \$35.00 |
| (Honors Dugan Glass Company) | |
| 1988 Marigold Bell..... | \$35.00 |
| (Honors Imperial Glass Company) | |
| 1987 Cobalt Blue Bell | \$35.00 |
| (Honors Millersburg Glass Company) | |
| 1986 Green Opalescent | \$35.00 |
| (Honors Fenton Glass Company) | |

Include \$2.50 for USA S&H of each *above* souvenir.

PLATE HOLDERS - Dozen Clear plastic base, white wire back
holds plates and bowls
 \$21.50 |

(USA S&H Included)

TOTAL \$ _____

SEND ORDERS TO:

ED KRAMER Name _____
4305 W. 78th Street Address _____
Prairie Village, KS 66208 _____

ORDER FORM - VIDEO TAPES

H.O.A.C.G.A. CONVENTION SEMINAR VIDEO TAPES

| | |
|--|---------|
| "Red Carnival Glass" | \$20.00 |
| (Richard Cinclair, Bob Allaire & Joyce Seale) | |
| "Shades of Blue" - (Richard Cinclair) | \$20.00 |
| "Poppy & Rose Show Pieces" - (Tom Mordini) | \$20.00 |
| "Fenton Two Flower" - (Bob Stremming) | \$20.00 |
| "Carnival Glass Smalls" | \$20.00 |
| (Eleanor & Jack Hamilton) | |
| "Small Plates" - (Smokey Cloud) | \$20.00 |
| "Hatpin & Hatpin Holders" - (Clint Fox) | \$20.00 |
| "Northwood Peacock & Urn Ice Cream Sets" | \$20.00 |
| (Harold Cox) | |
| "Millersburg Big Fish & Trout & Fly" | \$20.00 |
| (Singleton Bailey) | |
| "Carnival Glass Collecting Experiences" | \$20.00 |
| (Carl & Ferne Schroeder) | |
| "Heinz 57 Variety Carnival Glass Collection" | \$20.00 |
| (Jerry & Carol Curtis) | |
| "Little Sauces" - (Garth Irby) | \$20.00 |
| "Miniatures" - (John & Lucile Britt) | \$20.00 |
| "Table Sets" - (Leonard, Kremer & Grissom) | \$20.00 |
| "Plates" - (Ruth Green & Richard Cinclair) | \$20.00 |
| "'94 Britt Award Luncheon" (Floyd & Cecil Whitley) | \$20.00 |
| "Plethora of Patterns" - (Dean & Diane Fry) | \$20.00 |
| "Millersburg" - (Dick & Jennie Hostetler) | \$20.00 |
| "Swung Vases" - (Dave & Joan Doty) | \$20.00 |
| "Holly Pattern" - (John Mikkonen) | \$20.00 |
| "'95 Britt Award Luncheon" - (Carl & Ferne Schroeder) | \$20.00 |
| "'95 HOACGA Banquet" - (Floyd & Cecil Whitley) | \$20.00 |
| "'96 Britt Award Luncheon" - (Chuck & Marge Kremer) | \$20.00 |
| "'96 HOACGA Banquet" - (Carl & Eunice Booker) | \$20.00 |
| "Imperial Glass" - (Norene Duran) | \$20.00 |
| "The Molding Process" - (Howard Seuffer of Fenton Glass Co.) | \$20.00 |
| "Iridescence" - ('97, John Muehlbauer) | \$20.00 |
| "Plates" - ('97, Judy Maxwell) | \$20.00 |
| "'97 Britt Award Luncheon" - (Marie McGee) | \$20.00 |

TOTAL \$ _____

USA S&H INCLUDED WITH PRICE OF TAPE

SEND ORDERS TO:

ED KRAMER

4305 W. 78th Street

Prairie Village, KS 66208

Name _____

Address _____

ORDER FORM - BOOKS

HARTUNG CARNIVAL GLASS BOOKS

(Black and white sketches)

| | |
|-----------------------|------------------------|
| _____ Book 1 - \$6.00 | _____ Book 6 - \$6.00 |
| _____ Book 2 - \$6.00 | _____ Book 7 - \$6.00 |
| _____ Book 3 - \$6.00 | _____ Book 8 - \$6.00 |
| _____ Book 4 - \$6.00 | _____ Book 9 - \$6.00 |
| _____ Book 5 - \$6.00 | _____ Book 10 - \$6.00 |

_____ Complete Set of 10 Books (#1 thru #10) - \$60.00

(Hartungs "Northwood Pattern Glass" included with a Set)

USA S&H - Include \$1.00 each, for shipping when purchasing books separately.

Maximum of \$6.00 shipping for a set.

H.O.A.C.G.A. PATTERN NOTEBOOK

(COLOR Photos)

| | | |
|--|--------------|----------|
| _____ Mugs | (1980) | \$7.00 |
| _____ Table Sets (Photos 1 thru 40) | (1981) | \$7.00 |
| _____ Water Sets 1 (Photos 1 thru 60) | (1982) | \$7.00 |
| _____ Water Sets 2 (Photos 61 thru 120) | (1983) | \$7.00 |
| _____ Water Sets 3 (Photos 121 thru 167) | (1984) | \$7.00 |
| _____ Rosebowl 1 (Photos 1 thru 60) | (1985) | \$7.00 |
| _____ Rosebowl 2 (Photos 61 thru 101) | (1986) | \$7.00 |
| _____ Small Plates 1 (Photos 1 thru 48) | (1987) | \$7.00 |
| _____ Small Plates 2 (Photos 49 thru 98) | (1988) | \$7.00 |
| _____ Chop Plates (Photos 1 thru 40) | (1989) | \$7.00 |
| _____ Regular Plates 1 (Photos 1 thru 48) | (1990) | \$7.00 |
| _____ Regular Plates 2 (Photos 49 thru 81) | (1991) | \$7.00 |
| _____ Compotes 1 (Photos 1 thru 57) | (1993) | \$8.00 |
| _____ Compotes 2 (Photos 58 thru 113) | (1994) | \$8.00 |
| _____ Punch Sets, 2nd Edition (Photos 1 thru 36) | (1995) | \$8.00 |
| _____ Vases A - C (Photos 1 thru 57) | (1996) | \$9.00 |
| _____ Vases D - G (Photos 58 thru 117) | (1997) | 9.00 |
| _____ Complete Pattern Notebook | | \$138.00 |
| _____ USA S&H for complete notebook | | \$5.00 |
| _____ USA S&H for each selection | | \$1.00 |

(USA Maximum S&H \$5.00)

TOTAL \$ _____

SEND ORDERS TO:

ED KRAMER

4305 W. 78th Street

Prairie Village, KS 66208

Name _____

Address _____

H.O.A.C.G.A. BULLETIN ADVERTISEMENT POLICY

1. All advertisements of glass for SALE or WANTS must be received by the Bulletin Secretary no later than the LAST DAY OF THE MONTH to insure being published in the next bulletin.
2. Members may advertise ten (10) "For Sale" and/or "Wants" per month. The "For Sale" Glass must be members glass and not the property of a nonmember. Advertising is at no cost.
3. Only "OLD CARNIVAL GLASS" items or H.O.A.C.G.A. Souvenirs will be published.
4. Damage or flaws should be noted.
5. All "For Sale" items must be priced; NO BID ITEMS WILL BE PUBLISHED.
6. A 5 day return privilege, at buyer's expense, providing it is not as advertised, or as discussed.
7. Postage and Insurance is to be the responsibility of the buyer, both when returning and receiving the glass.
8. The sender of the glass (be it the seller or the buyer returning it) is responsible for the proper packaging of the glass.
9. When submitting FOR SALE and WANTED ads, please write legibly so that your ads can be read. ****IMPORTANT**** - be sure to include your name, address & phone number on the ad itself. Ads submitted without this vital information must be left out.
10. H.O.A.C.G.A. does not accept responsibility for accuracy of any advertisement.

USE THE FOLLOWING ABBREVIATIONS FOR GLASS DESCRIPTION.

| | | | | | |
|-----|---------------|-----|----------------|-----|-------------|
| A | Amethyst | HA | Honey Amber | P | Purple |
| AMB | Amber | IB | Ice Blue | PRL | Pearl |
| AO | Aqua Opal | IG | Ice Green | PM | Pastel Mar. |
| B | Blue | IGO | Ice Green Opal | PO | Peach Opal |
| BO | Blue Opal | LAV | Lavender | R | Red |
| CLM | Clammoth | M | Marigold | RA | Amberina |
| EB | Electric Blue | MMG | Marigold on | SM | Smoke |
| H | Horehound | | Milk Glass | T | Teal |
| G | Green | VAS | Vaseline | | |

Note: If you wish to describe a piece as light or dark, use the body of the ad.

EI - Excellent, GI - Good, LI - Iridescence

CARNIVAL GLASS FOR SALE

Dave Sharp, 316 Front St., Lititz, PA 17543
Phone: (717) 626-8231

| | | | |
|----|----|---|--------|
| BO | EI | Corinth JIP vase, great color | 350.00 |
| P | EI | Dugan Cherry 6 rfd bowl, electric..... | 235.00 |
| A | EI | Grape & Cable pin tray, super even color | 275.00 |
| G | EI | M'burg Blackberry Wreath 8" IC, nice satin | 135.00 |
| G | EI | Butterfly & Berry master berry, scarce color & super..... | 185.00 |
| M | EI | (N) Bushel basket, 8-sided, super | 185.00 |
| SM | EI | Star Medallion milk pitcher, light smoke | 85.00 |
| G | EI | Captive Rose bon bon, excellent color | 95.00 |
| A | EI | Captive Rose bon bon, nice color | 75.00 |
| M | EI | (N) Greek Key rfd bowl, beautiful irid. | 85.00 |

Gary Young, 4965 Crofton Drive, Rockford, IL 61114
Phone: (815) 637-2770 Send SASE for list

| | | | |
|----|----|--|--------|
| G | EI | Acorn Burrs punch cup | 45.00 |
| AQ | EI | Blackberry Spray 4 sides up hat shape | 100.00 |
| M | EI | Blackberry basket | 35.00 |
| B | EI | Blackberry spray JIP hat shape | 50.00 |
| B | EI | Blackberry banded hat shape | 45.00 |
| G | EI | Blackberry wreath 3/1 edge sauce | 65.00 |
| P | EI | Blackberry wreath round sauce | 55.00 |
| M | EI | Cherry Chain sauce, multi irid | 35.00 |
| A | EI | Fine Cut and Roses candy dish, mint feet | 60.00 |
| P | EI | Grape & Cable sugar lid | 45.00 |

Pat Housewright, 225 Rowland, Stephenville, TX 76401
Phone: (214) 968-2997

| | | | |
|----|----|--|--------|
| B | EI | Vintage 7 3/4" plate | 195.00 |
| B | EI | Horse Medallion footed JIP bowl | 325.00 |
| B | EI | Bushel basket | 165.00 |
| B | EI | Blackberry Block tumbler | 70.00 |
| M | EI | Octagon goblet | 55.00 |
| M | EI | Peacock at Urn 8 1/2" ICS bowl Fenton, great | 145.00 |
| M | EI | Horse Medallion 6 1/2" ICS bowl | 155.00 |
| A | EI | Wild Strawberry handgrip plate 7 3/4" | 275.00 |
| G | EI | Strawberry PCE bowl B/W ext, beautiful | 250.00 |
| HA | EI | Cosmos & Cane tumbler | 80.00 |

CARNIVAL GLASS FOR SALE

Richard A. Commini, 4 Bayberry Drive, Bordentown, NJ 08505-2702
Phone: (609) 298-6979

| | | | |
|---|----|--------------------------------------|--------|
| W | EI | Persian Gardens 11" IC | 210.00 |
| W | EI | Cherry Chain berry bowl 9" | 200.00 |
| P | EI | Star of David Imp ruffled bowl | 150.00 |
| M | EI | Poinsettia milk pitcher | 100.00 |
| M | EI | Waterlily footed berry bowl | 80.00 |
| M | EI | Two Flowers footed berry bowl | 85.00 |
| M | EI | Hex Optic water set 9 tumblers | 175.00 |
| M | EI | Peacock at Urn 9" ruffled bowl | 155.00 |
| M | EI | Floral & Grape 7 pc. water set | 250.00 |
| M | EI | Orange Tree punch bowl & base..... | 225.00 |

Richard Cinclair, 3605 South Echo Trail, Plano, TX 75023
Phone: (972) 596-0014 RJC4470@DCCCD.EDU

| | | | |
|----|----|-------------------------------------|----------|
| B | EI | Peach water set, super | 1,450.00 |
| M | EI | G&C perfume | 695.00 |
| M | EI | G&C pin tray | 295.00 |
| M | EI | G&C dresser tray | 325.00 |
| M | EI | G&C hatpin holder | 385.00 |
| M | EI | G&C powder box, unreal | 175.00 |
| B | EI | G&C bowl, stippled & electric | 1,100.00 |
| BA | EI | Crystal Fountain hatpin | 200.00 |
| BA | EI | Tufted Throw pillow hatpin | 125.00 |
| BA | EI | Belle hatpin, tiny chip so | 195.00 |

Dennis Runk, PO Box 235, Littlestown, PA 17340
Phone: (717) 359-7205

| | | | |
|----|----|---|--------|
| G | EI | (N) Grape & Cable punch base small size | 70.00 |
| M | EI | (N) Grape & Cable punch base mid size | 90.00 |
| IB | EI | (N) Acorn Burrs punch base | 265.00 |
| P | EI | (N) Peacock at Urn master ice cream bowl | 475.00 |
| P | EI | (N) Peacock at Urn IND ice cream bowl | 65.00 |
| P | EI | Pads & Posies 9" ruffled bowl | 90.00 |
| B | EI | Holly 8 3/4" ICS bowl | 90.00 |
| EB | EI | (N) Sunflower 8 1/4" spatula footed ruffled bowl, electric | 700.00 |
| EB | EI | (N) Embroidered mums 8 1/2" ruffled bowl, electric | 575.00 |
| M | EI | Ripple 8" vase, nice | 28.00 |

CARNIVAL GLASS FOR SALE

Ted L. Sheibley, 53 Meadow Brook Court, New Cumberland, PA 17070
Phone: (717) 770-0616 Layaways available

| | | | |
|----|----|---|--------|
| M | EI | Leaf & Beads footed rose bowl..... | 85.00 |
| B | EI | Leaf & Beads footed rose bowl..... | 125.00 |
| A | EI | Leaf Chain 7½" ruffled bowl..... | 85.00 |
| W | EI | Leaf Chain 6½" ice cream shape bowl..... | 90.00 |
| G | EI | Lotus Poinsettia 5" ruffled saucc..... | 125.00 |
| B | EI | Captive Rose 9" bowl, candy ribbon..... | 125.00 |
| M | EI | Fenton's Flowers footed rose bowl..... | 65.00 |
| B | EI | Two Flowers spatula footed rose bowl..... | 145.00 |
| P | EI | Rose Show 9" ruffled bowl..... | 695.00 |
| IG | EI | Grape & Cable master ice cream bowl..... | 975.00 |

Donald L. Harris, 527 Lavina Drive, Mechanicsburg, PA 17055
Phone: (717) 790-0412 Send .55 stamp for large list of for sale glass

| | | | |
|-----|----|--|-----------|
| P | EI | Diamond Points 10" vase..... | 75.00 |
| P | EI | Thin Rib 10" vase (N)..... | 65.00 |
| PO | EI | Thin Rib 6" vase, flared top..... | 65.00 |
| M | EI | Acorn Burr punch cups (3)..... | ea. 35.00 |
| P | EI | Imperial Grape punch base..... | 225.00 |
| B | EI | Hearts & Flowers 9" pie crust edge bowl..... | 785.00 |
| IG | EI | Bushel basket round (N)..... | 335.00 |
| P | EI | G&C footed fruit bowl, small size (N)..... | 250.00 |
| VAS | EI | Leaf Chain 7½" ruffled bowl..... | 110.00 |
| AQ | EI | Leaf Chain 7½" ruffled bowl..... | 110.00 |

Marlin L. Blosser, 4705B Charles Road, Mechanicsburg, PA 17055
Phone: (717) 975-2920

| | | | |
|-----|----|---|--------|
| AMB | EI | Lustre Rose footed centerpiece bowl..... | 125.00 |
| A | EI | Windflower one handled gravy boat..... | 65.00 |
| B | EI | Butterfly & Berry master berry bowl..... | 150.00 |
| G | EI | Paneled Holly two handled bon bon..... | 65.00 |
| M | EI | Acanthus 9" ice cream shape bowl..... | 50.00 |
| M | EI | Flowering Dill ruffled hat..... | 35.00 |
| M | EI | Leaf & Beads footed candy, floral interior..... | 30.00 |
| M | EI | Persian Garden 6" flat plate..... | 85.00 |
| M | EI | Strawberry two handled bon bon..... | 30.00 |
| P | EI | Daisy & Plume stemmed compote..... | 65.00 |

CARNIVAL GLASS FOR SALE

Steve & Pat Beranek, 305 Pleasant Street, Lost Nation, IA 52254
Phone: (319) 678-2425

| | | | |
|--------|--|--|--------|
| M | | JIP Morning Glory 9" vase..... | 50.00 |
| B | | Butterfly & Berry 9" vase..... | 85.00 |
| SM/LAV | | Double Stem rose dome footed bowl..... | 170.00 |
| B | | Little Flowers 5 pc. berry set, matching..... | 290.00 |
| B | | Holly 8" ruffled bowl..... | 85.00 |
| P | | 9" strawberry plate BW back, point chips..... | 125.00 |
| P | | Three Fruits medallion ruffled bowl, small chip..... | 125.00 |
| P | | Diamond Points 9" vase..... | 85.00 |
| A | | April Showers 11" vase..... | 80.00 |
| M | | Drapery 8" vase..... | 120.00 |

Rick McDaniel, 3420 Morningstar Lane, Dallas, TX 75234
Phone: (972) 243-4574 after 7 PM CST. Email: lallure1@airmail.net

| | | | |
|----|----|--|--------|
| M | EI | Acorn Burrs butter dish, real nice..... | 225.00 |
| A | EI | Flowers and Beads 7" plate, tri-corner, very nice..... | 125.00 |
| PO | EI | Panelled Cherry (Dugan) 7" tight CRE ftd bowl, scarce..... | 160.00 |
| M | EI | Grape & Cable banana boat, great color..... | 140.00 |
| G | EI | N's Grape Leaves ruf bowl, very nice..... | 90.00 |
| CB | EI | Strawberry bon bon, great color..... | 55.00 |
| M | EI | Daisy & Plume stemmed rose bowl, nice..... | 40.00 |
| OG | GI | N's russet thin rib vase, pastel irid, scarce color..... | 45.00 |
| M | EI | Wahboard/Diamond & Petals butter dish, excellent..... | 45.00 |
| CB | EI | Dugan Peacock & Fountain tumblers, super, have 2..... | 50.00 |

Maurice Myers, 1701 White Mt. Hwy., #20, Tamworth, NH 03886
Phone: (603) 323-7140

| | | | |
|-----|----|---|----------|
| G | EI | Memphis punch bowl & base, perfect & super color..... | 1,300.00 |
| LAV | EI | Three Fruits stippled & banded pastel plate, v. rare..... | 1,100.00 |
| G | EI | Peacock at Urn N small IC, rare & spectacular..... | 700.00 |
| P | EI | Peacock at Urn M'burg small IC bowl, 5 3/4" super..... | 275.00 |
| P | EI | Good Luck PCE bowl, ex. color all over..... | 350.00 |
| P | EI | Scroll embossed electric plate, perfect..... | 395.00 |
| P | EI | Town Pump mint condition, a beauty..... | 950.00 |
| M | EI | Grape & Cable master punch 8 pc. set, v. scarce..... | 1,800.00 |
| R | EI | Dugan's Imperial Jewels center or punch bowl..... | 200.00 |

SASE for 300+ list of CG for sale - good deals

CARNIVAL GLASS FOR SALE

Pamela McLean, 1701 White Mt. Hwy., #20, Tamworth, NH 03886
Phone: (603) 323-7140

| | | |
|----|---|--------|
| B | Butterfly & Berry master berry bowl, super | 175.00 |
| G | Finecut & Roses Candy bowl, beautiful color | 135.00 |
| B | Grape & Cable spatula footed plate, lovely colors | 195.00 |
| G | Strawberry 9" ruffled bowl, ex. color & irid | 195.00 |
| M | Peacock at Urn 9" 3/1 bowl, hard to find | 125.00 |
| P | Grape & Cable 9" plate, ex. color & irid | 190.00 |
| M | Grape & Cable candle lamp, a real honey & scarce | 675.00 |
| IG | Basketweave 2 row IC bowl, super color, tops | 295.00 |
| B | Thistle 3/1 9" bowl, ex color & perfect | 100.00 |
| P | Dugan's Cherries triangular CRE bowl, just super | 225.00 |

Douglas Snow, 2412 Ashford Blvd., Flushing, MI 48433
Phone: (810) 732-8197

| | | |
|---|---|--------|
| G | Beads 8" ruffled bowl | 85.00 |
| M | Coin Dot rose bowl W.M. | 35.00 |
| A | Vintage Leaf 7" ruffled bowl | 45.00 |
| M | Wreath of Roses rose bowl | 45.00 |
| G | Butterfly bon bon Fenton | 65.00 |
| M | Persian Medallion hair receiver, deep color | 85.00 |
| B | Persian Medallion bon bon | 60.00 |
| M | Stag & Holly spatula footed ruffled bowl | 125.00 |
| P | Peacock at the Fountain tumbler | 50.00 |
| M | Three Fruits bon bon | 55.00 |

Gene & Sherry Dugger, 1724 Ripon Ave., Lewiston, ID 83501
Phone: (208) 746-1289

| | | | |
|---|----|---|--------|
| M | EI | Double Stem rose, ICS dome footed bowl | 90.00 |
| M | GI | Cosmos variant 10½" plate, some wear | 160.00 |
| M | EI | Kittens dish, 2 sides up | 135.00 |
| M | EI | Kittens dish, 4 sides up | 135.00 |
| B | EI | Two Flowers, 3 footed deep 9" bowl | 375.00 |
| G | EI | Little Flowers 5½" bowl | 70.00 |
| M | EI | Waterlily 3 footed ICS bowl 9½" | 85.00 |
| P | EI | Victorian 11½" bowl, some wear | 500.00 |
| G | EI | Three Fruits plate, some wear on fruit | 350.00 |
| B | EI | Cherries & Little Flowers pitcher & 10 tumblers | 300.00 |

CARNIVAL GLASS FOR SALE

Richard Wiegand, 8831 Eureka Lane, Walkersville, MD 21793
Phone: (301) 845-8997

| | | |
|----|--|-----------|
| PO | Raindrops/Keyhole dome footed 9" bowl | 125.00 |
| P | Wreathed Cherry small berry bowl | 70.00 |
| A | Star of David (I) 9" low ruffled bowl | 225.00 |
| M | Daisy & Plume stemmed rose bowl | 67.00 |
| B | Orange Tree master berry bowl, nice | 200.00 |
| G | Vintage Leaf 8½" bowl 3/1 edge, nice | 74.00 |
| B | Orange Tree wine | 100.00 |
| A | Strawberry epergne, very tip of lily base cracked/repaired | 625.00 |
| P | Memphis punch cups (3) | ea. 45.00 |
| A | Orange Tree shaving mug | 75.00 |

Craig & Brenda Kuckelburg, 517 North Jay St., Aberdeen, SD 57401
Phone: (605) 226-1660

| | | |
|------|---|--------|
| * | Big Butterfly hatpin | 50.00 |
| * | Cattails hatpin | 65.00 |
| * | Dragonfly hatpin | 65.00 |
| * | Morie Scarab hatpin | 55.00 |
| AMB | Rooster hatpin | 75.00 |
| B | Rooster hatpin | 75.00 |
| Lt.M | Open Edge dish, Miller's Furniture | 80.00 |
| A | Holly Sprig 6½" CRE bowl | 235.00 |
| B | Beaded Cable rose bowl, electric | 350.00 |
| G | Strawberry 9" bowl, pinks & blues great color | 185.00 |

Bill Smith, PO Box 61, Hallwood, VA 23359
Phone: (757) 824-5320 after 7 PM

| | | | |
|--------|----|---|----------|
| A | EI | Good Luck plate | 550.00 |
| P | EI | Bushel basket | 140.00 |
| VAS | EI | 7" Vintage ruffled bowl, super nice | 125.00 |
| B | EI | Imperial JIP vase | 250.00 |
| EMG | EI | 8 sided Bushel basket elect | 550.00 |
| M | EI | Concord bowl, excellent color | 250.00 |
| LAV | EI | Peacock at Fountain fruit bowl, super | 1,350.00 |
| SM/AMB | EI | Peacocks plate super rare spectacular, EI | 4,000.00 |
| AO | EI | Bushel basket nice butterscotch | 400.00 |
| P | EI | 3 Fruits plain back plate, super | 275.00 |

CARNIVAL GLASS FOR SALE

Connie O'Connor, 115 N. Wakefield St., Arlington, VA 22203
 Phone: (703) 358-5045 weekdays; eve. weekends: (703) 524-0752

| | | |
|----|---|----------|
| A | Nesting Swan ruffled bowl | 350.00 |
| IG | Embroidered mums ruffled bowl | 1,200.00 |
| A | M. Peacocks at Urn, bee, no beads | 400.00 |
| A | Fanciful low ruffled plate | 250.00 |
| AO | Daisy & Drape in brass holder | 300.00 |
| T | Waterlilies footed bowl | 275.00 |
| A | Iris compote | 125.00 |
| G | Fern compote, Daisy & Plume ext. | 125.00 |
| G | Butterflies bon bon | 125.00 |
| P | Nippon PCE bowl | 450.00 |

Gladys Hutchison, Rt. 1, Box 259A, Stockton, MO 65785
 Phone: (417) 276-4119

| | | |
|----|---|--------|
| B | Apple Blossom twigs plate 9" | 160.00 |
| B | Orange Tree 9" plate, Dugan | 245.00 |
| G | Heavy Grape 8" plate, small wear | 75.00 |
| PO | Petals and Fan small ruffled berry bowl | 45.00 |
| M | Waterlily dark footed ruffled 9" bowl, pretty | 75.00 |
| PO | Wishbone and Spades 9" bowl, nice | 160.00 |
| G | Inverted Feather cracker jar small roughness | 190.00 |
| M | Imperial Grape 7 pc. water set | 180.00 |
| A | EI Blackberry Block tumbler, chip on top rim | 25.00 |
| M | Thistle banana boat waterlily and cattails exterior, nice | 160.00 |

Gerald M. Hess, 220 N. First Street, Argos, IN 46501-1010
 Phone: (219) 892-6193

| | | | |
|---|----|--|--------|
| M | EI | Dandelion tumbler, dark color | 40.00 |
| M | EI | Lustre & Clear tumbler | 40.00 |
| B | EI | Peacock at the Fountain tumbler, a varient and excellent.... | 55.00 |
| P | EI | Vineyard tumbler | 60.00 |
| M | EI | Wide Panel #2 tumbler | 20.00 |
| G | EI | Acorn Burrs punch cup | 47.50 |
| G | EI | Heavy Grape 5" circular bowl | 32.50 |
| M | EI | Rococo vase | 120.00 |
| B | EI | Strawberry bon bon | 75.00 |
| M | EI | Star & File 6 ruffle compote, 7½" dia | 25.00 |

CARNIVAL GLASS FOR SALE

Greg Warhol, 6C Brookside Hts., Wanaque, NJ 07465
 Phone: (973) 839-1747

| | | | |
|----|----|--|--------|
| P | EI | Oriental Poppy Tankard, shelf piece, cracked | 70.00 |
| A | EI | Wreath of Roses compote | 35.00 |
| M | EI | Propellor, Giant ruffled compote, very unusual | 110.00 |
| P | EI | Imperial Grape water carafe | 225.00 |
| B | EI | Lattice Banded stork & rushes mug, rare | 950.00 |
| A | EI | April Showers 7" vase, Peacock Tail int. | 65.00 |
| M | EI | (N) JIP 7" vase, ribbed stem | 140.00 |
| P | EI | Imperial Heavy Grape 8" plate | 115.00 |
| PO | EI | Dugan Fan gravy boat | 115.00 |
| B | EI | Heart & Flowers compote | 450.00 |

Bill Neal, 2904 Lori Lane, Yadkinville, NC 27055
 Phone: (910) 961-6975 after 8 PM

| | | | |
|----|----|--|--------|
| W | EI | Fanciful bowl 3/1 edge | 95.00 |
| W | EI | Fanciful plate | 195.00 |
| M | EI | Grape & Cable shot glasses (6), evenly matched super | 550.00 |
| W | EI | Oriental Poppy tumbler (3) frosty | 225.00 |
| M | EI | Memphis punch cups (6) super | 95.00 |
| M | EI | Open Rose plate, nice | 55.00 |
| PO | EI | Four Flowers 5" bowl crimped edge | 45.00 |
| P | EI | Round Up plate flat, super | 600.00 |
| P | EI | Springtime tumbler | 110.00 |
| G | EI | Dandelion tumbler | 110.00 |

Stephen Sivonda, 375 Congdon St., Middleton, CT 06457
 Phone: (860) 346-9356 items subject to prior sale, please call days if poss.

| | | | |
|----|----|--|--------|
| G | EI | Imp. Helios ripple 8½" vase | 75.00 |
| G | EI | Imp. Luster Rose fern gold irid, a beauty | 150.00 |
| M | EI | (N) Peacocks rib back multi color, hi-lites exec. | 325.00 |
| G | EI | (N) Diamond Points 11" vase, Alaskan irid | 140.00 |
| A | EI | (N) 3 Fruits 8½" bowl, BW back knockout irid | 110.00 |
| A | EI | Dugan Cherries 8½" 3 footed bowl, electric hilites | 325.00 |
| PO | EI | Dugan Pulled loops 9" vase great looking | 75.00 |
| AO | EI | (N) Beaded cable rose bowl ½" int check, flaw on foot | 140.00 |
| PO | EI | Dugan Apple Blossom twigs, pink blue & gold hilites | 185.00 |
| W | EI | Dugan Grapevine lattice 6½" sauce, pinks & blues | 65.00 |

CARNIVAL GLASS FOR SALE

Dave Ackerman, 4677 Kennebec Drive, Cass City, MI 48726
Phone: (517) 872-2023

| | | |
|----|--|--------|
| M | Apple & Pear N 9 3/4" thick glass bowl, different..... | 70.00 |
| M | Hobnail rose bowl M'burg..... | 250.00 |
| P | Hobnail Swirl rose bowl M'burg..... | 400.00 |
| DM | Hobstar Band hi collar base..... | 249.00 |
| M | Lattice & Daisy pair tumblers..... | 25.00 |
| PO | Nautilus sauce boat..... | 275.00 |
| W | Palm Beach rose bowl, small, in metal basket cute..... | 275.00 |
| M | Star & File 7 pc. water set, good color..... | 360.00 |
| M | Star & File 3 1/2" sherbet on under plate..... | 100.00 |
| M | Star & File 5" sherbet on under plate..... | 100.00 |

John & Karen Schlumbohm, 2673 235th Ave., Decorah, IA 52101
Phone: (319) 382-6485

| | | |
|-----|---|-----------|
| P | Tree Trunk 8 1/2" vase pretty blue hilites..... | 115.00 |
| VAS | Peacock & Grape 9" 8 ruff bowl..... | 445.00 |
| A | Floral & Grape (F) tumblers good color, have 4..... | ea. 35.00 |
| A | Thistle 8" 6 ruff bowl pretty multi..... | 120.00 |
| PM | Lined Lattice 8 1/2" vase pretty..... | 95.00 |
| G | Heart & Vine 8" IC bowl, dark multi..... | 95.00 |
| M | Stag & Holly 10 1/2" ftd IC bowl great multi..... | 175.00 |
| P | Fruits & Flowers (N) ftd bon bon lots of color..... | 125.00 |
| PO | Ski Star 11" 6 ruff bowl pretty..... | 95.00 |
| A | Thin Rib 12 1/2" vase 4 1/2" base rainbow..... | 225.00 |

Bob Bishop, 277 Loonhill Rd., Dracut, MA 01826
Phone: (508) 453-1849

| | | | |
|-----|----|---|--------|
| CB | EI | G&C humidor, stippled, small fakes inside cover..... | 800.00 |
| P | EI | Lined Lattice vase, chip on bottom, outstanding irid..... | 30.00 |
| PO | EI | Creamer, pretty piece..... | 175.00 |
| PO | EI | Soutache plate, beautiful..... | 275.00 |
| CB | EI | Electric Diamond Point vase, chip on bottom..... | 100.00 |
| M | EI | 2 Flowers rose bowl..... | 45.00 |
| M | GI | 474 compote..... | 25.00 |
| AMB | EI | Strawberry Spray bon bon..... | 75.00 |
| IB | EI | Brocaded Acorns bowl, 2 handles..... | 50.00 |
| P | EI | Vintage, Fenton, tri-corner bowl, beautiful..... | 80.00 |

CARNIVAL GLASS FOR SALE

Richard W. Jarnig, Carousel Acres, 3202 FM 50, Brenham, TX 77833
Phone: (409) 836-5545

| | | |
|---|--|--------|
| G | G&C footed plate, emerald green..... | 175.00 |
| R | Vintage Fernery perfect bargain..... | 675.00 |
| M | Two Flowers large footed ruffled bowl, dark..... | 135.00 |
| G | Raspberry tumbler, very nice..... | 65.00 |
| W | Question Mark 7" cake plate, G.B. ext. frosty..... | 180.00 |
| A | Blackberry Wreath 8" IC satin scarce..... | 160.00 |
| A | Whirling Leaves 9" bowl 3/1 edge, rad awesome..... | 375.00 |
| R | O.T. Std. mug, very nice..... | 350.00 |
| M | 3 Fruit plate BW ext. super irid..... | 135.00 |
| G | Vintage VT dome footed bowl, Dugan scarce..... | 110.00 |

Dick Wetherbee, 875 Stafford St., Rochdale, MA 01542
Phone: (508) 892-4420

| | | | |
|-----|----|--|--------|
| LtM | GI | Bushel Basket (N) light M, perfect..... | 85.00 |
| P | EI | Tree Trunk 12" mid size Funeral vase, a beauty..... | 285.00 |
| G | EI | April Showers 10 1/2" vase, Peacock tails inside, great..... | 85.00 |
| M | EI | Orange Tree breakfast creamer, beautiful deep color..... | 45.00 |
| B | EI | Ground Cherries enamelled tumbler, a beauty..... | 50.00 |
| G | EI | Diamond Point 9 1/2" vase, 5" flared opening, emerald..... | 85.00 |
| M | EI | Panther 6" ruffled 3 footed sauce dish, real pretty..... | 55.00 |
| A | EI | Imperial Grape 6" ruffled sauce dish, rare size, great..... | 55.00 |
| B | EI | Rustic 10" vase, super color & detail all the way down..... | 75.00 |
| M | EI | Two Fruits 6" 2 handled round crimped bon bon, super..... | 85.00 |

Marvin & Sharon Gill, P.O. Box 416, Mt. Vernon, IL 62864
Phone: (618) 242-3405

| | | |
|-----|---|----------|
| VAS | Coin Dot rose bowl..... | 100.00 |
| M | Cosmos & Cane rose bowl, rare large size..... | 850.00 |
| AMB | Holly ruffled bowl..... | 125.00 |
| M | Fine Cut & Roses rose bowl..... | 125.00 |
| A | Hobstar/cut triangles rosebowls(S-100,M-125,L-55)all3for..... | 250.00 |
| M | Leaf & Beads rose bowl..... | 85.00 |
| A | Imperial Grape ruffled bowl, electric irid..... | 150.00 |
| A | Wreath of Roses rose bowl..... | 75.00 |
| G | Zippered Heart Queens vase..... | 2,500.00 |
| A | Top of the Morning hatpin..... | 60.00 |

CARNIVAL GLASS FOR SALE

Alan & Virginia Hodges, RR 1 Box 253, Lyndonville, VT 05851
Phone: (802) 626-5216

| | | | |
|----|----|---|------------|
| B | EI | Persian Medallion dark B, rose bowl | 170.00 |
| R | | Holly ruffled hat shape | 150.00 |
| M | EI | Horse Medallion rose bowl | 150.00 |
| M | | Horse Medallion footed JIP bowl, beautiful color, perfect | 225.00 |
| B | EI | God & Home tumbler | 200.00 |
| A | EI | Dome footed bowl, Star of David & bows | 50.00 |
| W | EI | Fine Cut & Roses rose bowl | 250.00 |
| EB | EI | Poppy Show plate | call |
| M | EI | Singing Bird mug, have 2, nice dark color | ea. 100.00 |
| IB | EI | Fine Cut & Rose rose bowl very small chip on foot | 250.00 |

Jack & Eleanor Hamilton, P.O. Box 20203, Waco, TX 76702
Phone: (254) 857-3148

| | | | |
|-----|----|---|--------|
| A | EI | Acorn Burrs tumbler, super | 65.00 |
| DM | EI | Morning Glory 5" vase, not flared at top, neat | 60.00 |
| PO | EI | Honeycomb & Beads small plate, lots of opal | 130.00 |
| VAS | EI | Scale Band bowl 6" | 95.00 |
| B | EI | Peacock & Urn compote, Fenton, nice | 95.00 |
| A | EI | Holly ruffled bowl, blue & gold irid | 95.00 |
| * | EI | Two Flowers footed small bowl, M/Lt.B | 100.00 |
| G | GI | Fruits & Flowers 7" plate | 250.00 |
| M | EI | Panther small bowl, footed small chip on one foot | 35.00 |
| B | EI | Iridized stretch 10" bowl | 50.00 |

Greg Dilian, 450 Shore Rd., Apt. 1B, Long Beach, NY 11561
Phone: (516) 432-1164

| | | | |
|-----|----|---|--------|
| M | EI | Interior Panels decanter & stopper, Edwards p. 144 | 50.00 |
| P | EI | Imperial Grape water carafe, super | 185.00 |
| LtA | EI | Beaded cable rose bowl w/ribbed int. | 125.00 |
| B | EI | Powder B Holly ruffled hat | 90.00 |
| W | EI | Lustre & Clear large fan vase, multi color irid | 65.00 |
| M | EI | Columbia stemmed compote, the one pictured in Burns | 75.00 |
| A | EI | (N) 3 Fruits ruffled bowl, BW ext | 80.00 |
| M | EI | Grape Delight rose bowl, one foot chipped | 25.00 |
| M | EI | Double Scroll candlesticks, M from top to bottom | 75.00 |
| M | EI | Chrysanthemum footed orange bowl, red irid, super | 95.00 |

CARNIVAL GLASS FOR SALE

Art Van Curen Jr., 3517 W. 47th Ct., Gary, IN 46408
Phone: (219) 887-0871 send large SASE for 1st of glass

| | | | |
|-------|----|--|--------|
| M | EI | (N) Thin Rib 12" tall 5 1/2" top M.D vase | 150.00 |
| B | EI | Fenton Fine Rib 12" tall 4" top | 70.00 |
| IB | EI | Diamond Point 11 1/4" tall, small heatcheck | 200.00 |
| B | EI | Rustic Variant 15" tall, mid size, super color | 300.00 |
| AMBEI | | Free Fold 13" tall vase | 70.00 |
| SM | EI | Free Fold 12 1/2" tall vase | 80.00 |
| M | EI | Beaded Bullseye 11 1/4" tall, 5" top vase | 50.00 |
| M | EI | Beaded Bullseye 7 1/2" tall, 6" top vase | 70.00 |
| M | EI | Morning Glory 4 3/4" tall, 4 1/4" top vase | 35.00 |
| G | EI | Tree Trunk 10 3/4" tall vase | 70.00 |

Thomas E. Bagot, 5 Tenth St., Barnegat, NJ 08005
Phone: (609) 698-2279 leave message

| | | | |
|----|----|--|--------|
| EB | EI | Drapery candy dish | 350.00 |
| M | EI | Funeral vase, ripple 14" | 225.00 |
| M | EI | Strawberry bowl | 90.00 |
| G | EI | Scroll embossed bowl, file ext. | 195.00 |
| P | EI | Wreathed Cherries pitcher | 350.00 |
| G | GI | Chrysanthemum bowl 9" | 120.00 |
| A | EI | Memphis fruit bowl & 4 cups | 725.00 |
| B | EI | Plaid bowl IC | 325.00 |
| M | EI | Rose Show bowl, small chip on back | 175.00 |
| B | EI | Peacock at Urn IC bowl | 225.00 |

Rob Cooper, 31 Oak View Dr., Newark, DE 19702
Phone: (302) 455-9225 Email: rcooper@dpnet.net

| | | | |
|---|----|--|--------|
| B | EI | Persian Medallion small ICs berry bowl | 65.00 |
| A | EI | Little Fishes small footed bowl, scarce | 175.00 |
| G | EI | Fine Cut & Roses rose bowl w/fancy interior, rare | 365.00 |
| G | EI | Ribbon Tie ICS bowl, electric blue hilites | 150.00 |
| B | EI | Holly low ruffled bowl, electric green irid, super | 175.00 |
| P | EI | Fine Cut & Roses rose bowl w/fancy interior, rare | 345.00 |
| A | EI | Poppy Show bowl, electric blue, purple & gold irid | 950.00 |
| B | EI | Dragon & Lotus ICS bowl, super electric irid | 225.00 |

CARNIVAL GLASS FOR SALE

Mike & Debbie Heinl, 240 Mize Rd., NE, Cullman, AL 35055
 Phone: (205) 739-0281 after 5 PM, Email: mheinl@airnet.net P&I extra

| | | |
|----|--|--------|
| M | NW Goodluck bowl PCE | 215.00 |
| AO | NW Beaded Cable footed rose bowl, rough feet | 225.00 |
| P | NW Town Pump small, very small flake on marie | 920.00 |
| A | Millersburg Leaf & Little Flowers miniature compote | 495.00 |
| M | Fenton Invrtd Coin Dot 7 pc. wtr set, ruf top/bulbous bot | 750.00 |
| B | Fen. 2 Flowers 8 3/4" round ftd deep bowl, silver irid | 375.00 |
| CM | Fen. Orange Tree plate, trunk center/bead. berry bk 9 1/2" | 375.00 |
| P | Dugan Circle Scroll JIP hat | 100.00 |
| M | Dugan Vintage powder jar with lid | 75.00 |

Nancy & Bernie May, 703 Stone Rd., Westminster, MD 21158
 Phone: (410) 876-3798

| | | | |
|-----|----|--|--------|
| T | EI | Corinth 9" vase | 75.00 |
| T | EI | Corinth 10" JIP vase | 125.00 |
| M | EI | 8 sided bushel basket | 200.00 |
| AMB | EI | 9 1/2" Ripple vase, super | 120.00 |
| A | EI | Fine Cut & Rose candy, EB hilites int | 125.00 |
| M | EI | Diamond & Sunburst wine set 5 pc, no stopper | 140.00 |
| M | EI | Wide Panel side lily for epergne | 75.00 |

William & Charlotte Wesley, 10240 Fairway Dr., Ellicott City, MD 21042
 Phone: (410) 461-3713

| | | | |
|----|----|--|--------|
| BA | EI | Lined Lattice 9 7/8" vase, super | 175.00 |
| P | EI | Ripple 11 3/4" vase, EB highlights | 175.00 |
| B | EI | Fine Rib 9 1/2" vase | 45.00 |
| M | EI | Mary Ann vase | 75.00 |
| G | EI | Thistle ruffled bowl | 65.00 |
| M | EI | Adv. Issac Ben. card tray | 160.00 |
| P | EI | Rainbow compote | 65.00 |
| PO | EI | Cherries 2 sides VP bowl, opal in feet | 300.00 |

David & Toni Morrow, 2938 180th Street, Ft. Madison, IA 52627
 Phone: (319) 528-4214

| | | | |
|----|----|---|----------|
| IB | EI | Poppy Show bowl, small chip on back so | 800.00 |
| B | EI | Rustic Funeral vase, 19 1/4"H, 5 1/4"base, 7 1/4"mouth, super | 1,000.00 |

CARNIVAL GLASS FOR SALE

Phil Hessenius, 1701 E. Roma, Phoenix, AZ 85016
 Phone: (602) 277-6306 Email: tiera@goodnet.com

| | | | |
|----|----|---|--------|
| M | EI | 6 Late Waterlily tumbler 15.00 ea. or all 6 for | 80.00 |
| M | EI | Thin Rib & Drape 4 3/4" vase dark color | 80.00 |
| W | EI | Orange Tree open sugar, crack in 1 handle | 50.00 |
| M | EI | Poppy Show ruffled bowl | 425.00 |
| RA | EI | Fenton Strawberry bon bon, reverse amberina | 375.00 |
| P | EI | Nippon PCE bowl | 325.00 |
| A | GI | Checkerboard tumbler, small chip on bottom of 1 chkrbrd | 200.00 |
| G | GI | Grape & Cable 10" ruffled bowl, from large ice cream | 175.00 |

Walt Belawski, 504 Atlantic Ave, York, PA 17404
 Phone: (717) 843-4352

| | | | |
|------|----|--|-----------|
| CelB | EI | Concave Diamond tumblers 6 for 170.00 or | ea. 35.00 |
| BA | EI | Question Mark bon bon, EB highlites | 150.00 |
| M | EI | G&C dresser tray | 135.00 |
| EB | EI | Stippled Good Luck bowl, ribbed back PCE | 500.00 |
| B | EI | Holly bowl ICS | 110.00 |
| M | EI | G&C stippled punch cups (2) | ea. 15.00 |
| M | EI | Boggy Baygan 4 1/2" vase | 45.00 |
| M | EI | Holly bowl 3/1 edge | 45.00 |
| BA | GI | Three Fruits bowl PCE BW ext | 145.00 |

Omer E. Sweeney, 28 Esmond Street, Esmond, RI 02917
 Phone: (401) 231-4108

| | | |
|----|--|--------|
| B | Grape & Cable 8" bowl Fenton | 90.00 |
| M | Thistle banana bowl | 150.00 |
| M | Pony bowl | 80.00 |
| PO | 6 petals 8 1/2" bowl | 90.00 |
| PO | Question Mark bon bon, stem is crooked | 50.00 |

Charles Wiltshire, 2300 W. Michigan Ave., Unit #43, Pensacola, FL 32526
 Phone: (850) 944-8946

| | | | |
|----|----|---|--------|
| M | EI | Zipper Loop Lamp 7 1/2"H, 4 1/4" base, a real jewel | 600.00 |
| M | EI | Daisy Cut bell | 500.00 |
| A | EI | Pastel Swan, tiny flake on top of wing | 125.00 |
| PO | EI | Apple Blossom Twigs bowl, low ruffled, real nice | 225.00 |
| R | EI | 6 1/2" stippled Rays bowl small flake inside of collar base | 125.00 |
| IB | EI | Fine Cut and Roses rose bowl, very nice | 325.00 |

CARNIVAL GLASS FOR SALE

Jerry Rissmiller, 107 Sheeler Lane, Elverson, PA 19520
Phone: (610) 286-9879

| | | |
|-----|---|--------|
| G | Singing Birds tumblers (have 3) | 75.00 |
| P | Peacock and Urn compote | 80.00 |
| M | Strawberry bowl, PCE | 85.00 |
| CLM | Lustre Rose fernery, super | 85.00 |
| B | Wreathed Cherry sm. oval berry bowl, very rare, base chip | 50.00 |
| R | Vintage fernery rare | 625.00 |
| M | Lions bowl 7½" ICS | 110.00 |
| G | Diamonds tumbler | 50.00 |
| G | Fenton flowers rose bowl | 125.00 |

Shivonn Clay, 116 Thompson Hollow Lane, Carthage, TN 37030
Phone: (615) 735-9146 after 7 pm

| | | |
|------|------------------------------------|----------|
| P | Acorn Burrs 7 pc. water set, nice | 1,000.00 |
| AQ | Butterfly Guest set 5 pc. MIB | 150.00 |
| G | Blackberry spray hat CRE | 105.00 |
| BA | Leaf & Beads rose bowl, plain int. | 135.00 |
| B | Horsehead med. JIP ft. bowl | 225.00 |
| A | Singing Birds mug, nice | 120.00 |
| IG | Brocaided Summer Garden vase | 120.00 |
| Pink | Brocaided Palm handled bowl | 95.00 |
| IB | Brocaided Acorns 6 sided plate | 150.00 |

Trudy Brown, 107 E. Main, P.O. 138, Smithville, MO 64089
Phone: (816) 532-3234

| | | |
|----|--|--------|
| IG | Grape Arbor hat beautiful | 345.00 |
| A | Good Luck 9" plate, BW back, excellent | 800.00 |
| G | Strawberry 9" plate BW back, nice | 270.00 |
| PO | Bells & Beads Adv. Fairfield, Iowa | 125.00 |
| B | Panther 6" footed bowl, extra nice | 125.00 |

Dick Hatscher, 142 Walnut Hill Rd., Bethel, CT 06801
Phone: (203) 743-1468

| | | | |
|---|----|--------------------------|--------|
| R | EI | 7 pc. HOACGA water set | 145.00 |
| R | EI | 7 pc. HOACGA whiskey set | 145.00 |

CARNIVAL GLASS FOR SALE

Joan & Warren Place, R.D. #2, Box 100, Mehoopany, PA 18629-9625
Phone: (717) 833-5222 Call after August 18, 1997

| | | | |
|----|----|--|-----------|
| G | EI | Nippon ruffled bowl | 275.00 |
| R | EI | Acorn 6½" bowl, very pretty | 700.00 |
| | EI | Brkred Lotus & Grape bon bon, show stopper | 800.00 |
| AO | EI | Four Pillars 11" vase | 325.00 |
| M | EI | Dandelion tumbler, have 2 | ea. 45.00 |
| M | EI | Oriental poppy tankard set 3 piece | 490.00 |
| | EI | Amberina Blackberry Spray hat 2 sides up | 400.00 |
| A | EI | G&C hatpin holder | 350.00 |
| LM | EI | Crab Claw round bowl | 20.00 |
| A | EI | Isaac Benesch ruffled bowl | 325.00 |

CARNIVAL GLASS WANTED

Alan & Virginia Hodges, RR 1 Box 253, Lyndonville, VT 05851
Phone: (802) 626-5216

| | |
|----|------------------------------------|
| M | Wreath of Roses punch bowl base |
| M | Peacock at the Fountain punch bowl |
| IG | Peacock at the Fountain punch bowl |
| B | G&C small stippled punch bowl |
| M | Good Luck plates |
| P | Many Fruits punch bowl base |

Rob Cooper, 31 Oak View Dr., Newark, DE 19702
Phone: (302) 455-9225 Email: rcooper@dpnet.net

| | |
|-----|---|
| P | Persian Gardens 2 piece fruit bowl & base |
| P | Many Fruits punch cups |
| P | Many Fruits punch bowl base |
| P | Singing Birds water pitcher |
| G | Singing Birds tumblers |
| Any | Big Basketweave vases |

Thomas E. Bagot, 5 Tenth St., Barnegat, NJ 08005
Phone: (609) 698-2279 leave message

| | | |
|---|----|---|
| A | EI | Grape & Cable creamer large Tornado vases Any color, will consider damage |
|---|----|---|

CARNIVAL GLASS WANTED

Dave Sharp, 316 Front St., Lititz, PA 17543
Phone: (717) 626-8231

B Grape & Gothic Arches water pitcher, super color
W Dahlia sugar
B Blueberry tumbler, nice color
P Grape & Cable butter base
P Grape & Cable creamer & spooner
G Springtime butter top

Gary Young, 4965 Crofton Drive, Rockford, IL 61114
Phone: (815) 637-2770

A/P Stork & Rushes punch base
A/P Memphis punch top
P Peacock at the Fountain butter lid
M Orange Tree sugar bottom
A/P Orange Tree breakfast sugar
B Butterfly and Berry butter lid
M Acorn Burrs sugar bottom
A/P Wreath of Roses punch top with Persian Medallion interior
B Peacock at the Fountain butter, creamer, punch base and cups
Any Wreath of Roses punch cups with Persian Medallion interior

Shivonn Clay, 116 Thompson Hollow Lane, Carthage, TN 37030
Phone: (615) 735-9146 after 7 pm

A/P G&C water pitcher, good one only
G Springtime 7 pc. water set, good one only

Trudy Brown, 107 E. Main, P.O. 138, Smithville, MO 64089
Phone: (816) 532-3234

Lid for Lustre Rose sugar bowl

Cleo & Jerry Kudlac, 1425 Apache NE, Piedmont, OK 73078
Phone: (405) 373-4455

Any of the following in the Windflower pattern with excellent iridescence:
Ice cream shape bowl - A, B, PK, G; Ruffled bowl - B, PK, G
Nappy - B, A, IG, PK; Unusual shapes or colors

CARNIVAL GLASS WANTED

Ted L. Sheibley, 53 Meadow Brook Court, New Cumberland, PA 17070
Phone: (717) 770-0616 Will sell any of the below parts

Any Tree Trunk mid-size & AO standard size vases
P Grape & Cable sugar lid
IG Wishbone epergne lily
M Broken Arches punch base
M Grape & Cable butter bottom, also need P
M Grape & Cable humidor lid, plain or stippled
M Wreathed Cherry butter bottom
Any Diamond Point vases, must be super
P Vintage powder jar lid
VAS Stretch water pitcher with cobalt handle

Donald L. Harris, 527 Lavina Drive, Mechanicsburg, PA 17055
Phone: (717) 790-0412 Will sell any of the below parts

Any Grape & Cable powder jar lid
A Hanging Cherries sugar bottom
A Orange Peel punch bowl
Any Drapery rose bowls
B Hen on Nest with Chicks top
B Orange Tree powder jar lid
B Orange Tree punch base, also need W
G Acorn Burr punch bowl
G Grape & Cable sugar bottom, also need M
G Hanging Cherries powder jar bottom

Marlin L. Blosser, 4705B Charles Road, Mechanicsburg, PA 17055
Phone: (717) 975-2920

G Flute punch bowl top
G Hobstar sugar lid
M Long Hobstar punch base
G Shell & Jewel lids, need 2
M Heavy Grape punch base
Any Peacock at Fountain punch cups
M 474 punch bowl top
Any Grape & Cable open or covered compote
M Grape & Cable powder jar lid
G Little Stars bowl, round or 3/1

CARNIVAL GLASS WANTED

Phil Hossenius, 1701 E. Roma, Phoenix, AZ 85016
Phone: (602) 277-6306 Email: tiera@goodnet.com

B Nippon bowl
A/P Base only for small Grape & Cable stippled punch bowl
G Top only for small Grape & Cable stippled punch bowl
G Stippled Three Fruits medallion spatula footed bowl
W Stippled Three Fruits medallion spatula footed bowl

Maurice Myers, 1701 White Mt. Hwy., #20, Tamworth, NH 03886
Phone: (603) 323-7140

M 474 punch bowl top
G Springtime sugar cover
T Waffle Block punch bowl base
P/A Grape & Cable master punch bowl top
M Springtime or Peacock at Fountain butter bottom
M Royalty punch bowl base
G Vintage large epergne lily
G Wide Panel epergne side lily one

Richard Wiegand, 8831 Eureka Lane, Walkersville, MD 21793
Phone: (301) 845-8997

SM Soda Gold tumblers
P Fashion creamer & sugar
P Fashion pitcher
P Field Flower water pitcher
P Hobstar butter dish
P Hobstar covered sugar
P Open Rose water pitcher
P Open Rose 9" plate
P Pansy Oval dresser tray
P Zippered Heart master berry bowl

Craig & Brenda Kuckelburg, 517 North Jay St., Aberdeen, SD 57401
Phone: (605) 226-1660

* Stippled Rays stemmed creamers - A, P, R, SM, VAS, CLM
P,CLM Stippled Rays stemmed sugar
DM Wreathed Cherry sugar lid

CARNIVAL GLASS WANTED

Gladys Hutchison, Rt. 1, Box 259A, Stockton, MO 65785
Phone: (417) 276-4119

P Dahlia sugar, creamer, spooner
M Pineapple creamer and sugar

Chuck Kremer, 11553 Belmont Court, Carmel, IN 46032
Phone: (317) 815-0850

G Inverted Strawberry butter base
A Circle Scroll butter
M Field Thistle butter
M Circle Scroll sugar and or spooner
G Grape & Gothic Arches butter

John & Karen Schlumbohm, 2673 235th Ave., Decorah, IA 52101
Phone: (319) 382-6485

A Vintage sm. epergne
T Lustre/Open Rose butter base, creamer, sugar, spooner
W Persian Garden fruit bowl, bowl only

Tim Steinkruger, Box 1302, Columbus, NE 68602
Phone: (402) 564-9162

Opalescent & Custard more commonly found in Carnival Glass.
Especially Fenton pieces.

Leon Travis, 9 Lindenwood Ct., Sterling, VA 20165
Phone: (703) 430-7314

M EI Butterfly & Berry sugar lid
M EI Butterfly & Berry butter bottom

David & Toni Morrow, 2938 180th Street, Ft. Madison, IA 52627
Phone: (319) 528-4214

Any EI Open Edge Blackberry baskets
* EI Dragon & Lotus, need G, R, A, AO, AMB
* EI Ripple vases, need SM, R, B, CL, W, AMB, LAV, VIO, T
A/GREI Pony bowl
P EI Freefold vase
M/CL EI Imperial Grape basket

UPCOMING EVENTS

Great Lakes Carnival Glass Club

The Great Lakes Carnival Glass Club's annual "Glass Bash" and auction will be held October 23-26, 1997 at the Holiday Inn, I-75 & Rochester Road in Troy, Michigan. Festivities begin on Thursday evening with a 6:00 PM complimentary social. A Friday morning trip to Bob Gallo's home and his famous collection of carnival glass, including rare Millersburg, should not be missed! Friday afternoon seminar to be announced.

Tom Burns auction begins 6:00 PM Friday, (preview at 4:00 PM) and resumes Saturday at 10:00 AM (preview at 8:00 AM) Saturday evening promises to be exciting with dinner, presentations and dancing to live entertainment.

Sunday morning breakfast and a Club business meeting will close the year's "Glass Bash" celebration. Be sure to specify the Great Lakes Carnival Glass Club for special room rate of \$59.00 at the Holiday Inn, (248) 689-7500.

For additional information or convention registration contact:

Michael R. Swope, 33519 Crestwell Drive, Sterling Heights, MI 48310-6022
Telephone: 810-979-0766, or Email: mswope@ameritech.net

UPCOMING EVENTS

AIR CAPITAL CARNIVAL GLASS CLUB CONVENTION

OCTOBER 16-17-18-19

We are hoping you will attend our 1997 CARNIVAL GLASS CONVENTION this year. The dates are October 16-17-18-19. It will be held at the same hotel, Holiday Inn, 5500 West Kellogg, Wichita, Kansas. Very close to the airport if you are flying in. For reservations please use this special number 1-800-255-6484 and tell them you are with the carnival glass group. We have the 1st and 2nd floors reserved and NO ONE BUT CARNIVAL GLASS PEOPLE WILL BE ON THESE FLOORS. Sorry the 1st floor is full but plenty of room on the 2nd floor.

Our banquet speaker will be Mr. Tom Mordini. You will not want to miss his talk. He will be talking on colors.

For those arriving and checking in on Thursday, you will be treated to a free EARLY BIRD meal at 6 PM. Friday afternoon at 4 PM, we will have an educational program, presented by Jerry and Carol Curtis. On Saturday, at 10 am, Seck Auction Service will provide us with the auction glass. Saturday evening, at 6 PM, will be our banquet. Sunday morning we will send you off with a free breakfast at 7 am.

Our hospitality room is well known throughout the carnival glass world as being a special place to hand out and partake of its contents.

Our raffle piece this year, is a beautiful plate, Peacock on the Fence pattern. This plate is a beautiful marigold. The kind of marigold everyone wants to own. The tickets are \$1.00 each, 6 for \$5.00 or 12 for \$10.00. We will be glad to send you tickets if you would like. Just contact Roland Kuhn, 15201 E. 47 S., Derby, Kansas 67037. Phone: (316) 733-8424

We look forward to seeing you in October for a great time.

Donald E. Kime
President
Air Capital Carnival Glass Club
15201 E. 47 S.
Derby, Kansas 67037
316-733-8424

UPCOMING EVENTS

TWENTY-FIRST ANNUAL MID-ATLANTIC CARNIVAL GLASS JAMBOREE

The Mid-Atlantic Carnival Glass Jamboree, Auction, Show & Sale will be held October 16, 17 and 18, 1997 at the Best Western/Venice Inn, US Route 40, 431 Dual Highway, Hagerstown, Maryland, 21740. Telephone 1 800 283-6423.

Room reservations are to be made directly with the Best Western/Venice Inn before October 3, 1997. NOTE: It is suggested that if you want to be in the main hotel, request the 2nd to the 5th floors. The 1st floor is a motel adjoining the hotel. Early reservations ARE advised and check-in time will be 2 PM.

There will be a two-part Tom Burns Auction. The first session is at 7 PM Friday, October 17, and the second session will be Saturday, October 18 at 10 AM.

Bill, Carole, and Billy Richards will be presenting a program on **Collecting Miniatures**. If you have an unusual miniature you would like to share, please bring it to the program.

Carnival Glass will be for sale and on display in designated rooms Thursday, Friday and Saturday. Cash awards will be given for the three best displays. First Prize \$75, Second Prize \$50, Third Prize \$25. We ask that you use **Flowers and/or Fruits Patterns** as your theme.

The hospitality room will be in room 271 on the second floor. It will be open according to the schedule and we would appreciate your donation of cookies and some of your time to help serve in the hospitality room.

Again this year we will be having a Special Dinner Buffet at 6:30. The Special price will be \$10.00 per person.

The White Elephant Sale is planned after the banquet and donations will be accepted. Items are **NOT** limited to carnival glass.

For additional information, you may contact:

Nancy Williams, 2009 Cullman Drive, Reading PA 19601
Phone: (610) 374-9033

RESOURCE INFORMATION

1. **HARTUNG CARNIVAL GLASS PATTERN BOOKS**
Set of 10 books for \$60.00 plus \$6.00 postage. Order from Ed Kramer, Secretary HOACGA, 4305 W. 78th Street, Prairie Village, KS 66208
2. **HOACGA EDUCATIONAL SERIES BOOK I** - 148 articles with pictures (black & white) on a variety of carnival glass patterns. Books consists of articles written by John & Lucile Britt which have been printed in previous monthly bulletins. \$15.00 plus \$2.50 postage. Order from Ed Kramer, Secretary HOACGA, 4305 W. 78th Street, Prairie Village, KS 66208
3. **HOACGA EDUCATIONAL SERIES BOOK II** - 180 articles with pictures (black & white) on carnival glass tumblers. Book consists of articles written by John & Lucile Britt which have been printed in previous monthly bulletins. \$17.50 plus \$2.50 postage. Order from Ed Kramer, Secretary HOACGA, 4305 W. 78th Street, Prairie Village, KS 66208
4. **THE ENCYCLOPEDIA OF CARNIVAL GLASS LETTERED PIECES**. 120 pages of black & white and color photographs of all known carnival glass advertising and commemorative pieces. \$15.95 plus \$2.50 postage. Order directly from John D. Resnik, 235 Walnut Street, Statesville, NC 28677
5. **COLLECTOR'S GUIDE TO NORTHWOOD'S CARNIVAL GLASS** by Carl O. Burns. This Northwood book includes 166 pages with 250 pieces pictured in full color, including many rarities never shown in any carnival glass book. \$24.95 plus \$3.00 Shipping. Order from Carl O. Burns, 60 Rumford Center Rd., Andover, ME 04216 (Mention you are a member of HOACGA)
6. **MILLERSBURG CARNIVAL GLASS BOOK** by Marie McGee. \$29.95 for paperback, \$37.95 for Hardback. Please include \$3.50 extra for shipping. Send orders to 3906 E. Acacia Ave., Fresno, CA 93726
7. **THE WORLD OF ENAMELED CARNIVAL GLASS TUMBLERS** by Cecil Whitley. Book on painted Carnival Glass tumblers. Ten pages of full color photographs of sixty painted tumblers. \$10.00, postage included. Order from Cecil Whitley, 1041 Cheshire Lane, Houston, TX 77018
8. **NEW! NEW! NEW! IRIDESCENT HATPINS & HOLDERS of the CARNIVAL GLASS ERA** by Jerry Reynolds. \$16.50 - book. \$3.25, Priority or \$1.65 Book Mail. Canada, \$17.60. Order from Jerry Reynolds, 1305 N. Highland Pkwy, Tacoma, WA 98406
9. **MORDINI'S 1996 CARNIVAL GLASS AUCTION PRICE REPORT** - Auction price report for 1996 is available. Over 5000 entries. \$10.00 postage included. \$9.00 if two or more ordered. Please specify year when ordering. Canadian friends should send Canadian Postal Money Order. Overseas mailings add \$3.00 for each copy. Back issues are available for 1990-1995 at \$9.00 each. Order from Tom & Sharon Mordini, 36 N. Mernitz Ave., Freeport, IL 61032
10. **NETWORK** by Glen & Stephen Thistlewood of Hampshire, England. Quarterly publication devoted exclusively to Carnival glass. One year subscription (4 issues) \$20, available in the US only through PageWorks, P.O. Box 14493, Chicago, IL 60614
11. **BUTTON, BUTTON**. Carnival Glass, Iridescent, Luster Buttons. Over 100 buttons listed - Over 140 pages packed with information. Each button has a color and black & white photo, detailed drawing & description - shown in actual size. \$15.50, postage included. Order from Clint Arsenaault, P.O. Box 1845, Monrovia, CA 91017

12. **THE SANCTIFIED CROSS-EYED BEAR'S PRICE TREND GUIDE FOR CARNIVAL GLASS AND INDIVIDUAL SALES SUPPLEMENTAL GUIDE FOR 1996** - The 3rd edition provides the most exhaustive price resource available by covering over 30,000 sales occurring during the years 1992-1996. Reports on over 9,000 sales for the 1996 reporting year alone by informing you of the high, low, and average sales prices. Over 230 full pages that help clarify the upward or downward average price trends. **THE INDIVIDUAL SALES SUPPLEMENTAL GUIDE FOR 1996** reports on the pieces that have reached at least 200 in sales price at least once and then reports every sale price for a piece. Reference over 4,100 sales. Send \$24.95 for Trend Guide, \$8.00 for Supplement, or \$30.95 for both to: The Sanctified Cross-Eyed Bear, P.O. Box 1296, Huntsville, AL 35807
13. **CARNIVAL GLASS HATPIN PATTERNS** - This book shows the hatpins in detail with beautiful illustrations, many showing top and side views. A number of these hatpins have never appeared in any previous carnival books. \$15.00 plus \$1.00 postage & handling. Canada and overseas - \$15.00 plus \$3.00 postage and handling. Order from Alphonse Tvaryanas, 284 Clearstream Rd., Jackson, NJ 08527
14. **A CARNIVAL OF IRIDESCENT LUSTER BUTTONS, BOOKS I & II**. Book I has 856 named design drawings. Indexed. \$13 ppd. Book II has 450 more drawings, indexed, with price guide covering both books. \$14.00. Canada and Mexico please add \$2.00 (US) to each for extra postal cost. Overseas please add \$4.00 (US) to each for surface mail. Add \$6.00 (US) each for air mail. Order from author Ruth M Clark, 2100 Dawn Dr., Georgetown, TX 78628.
15. **CARNIVAL GLASS OF AUSTRALIA** - 100 pages, some colored, hard cover. Produced by Australian Carnival Enthusiasts Association, Inc. Cost \$20.00, this includes Air Mail Postage. Please contact Mrs. Margaret Dickinson, Secretary. R.S.D. Fryerstown, Victoria, Australia 3451, for advice on the uncomplicated purchase of this book.
16. **THE CARNIVAL HUNTER'S COMPANION**, a unique cross-referencing system for easy identification of pattern features and names. \$27.95 ea., includes shipping. Texas residents add \$2.06 tax. Check payable to Elaine Blair, P.O. Box 116335, Carrollton, TX 75011-6335, 214-492-1528
17. **A CARNIVAL OF IRIDESCENT LUSTER BUTTONS, BOOK III - 1997 EDITION** contains 391 pattern drawings not found in Books I and II by Ruth M. Clark, plus color photographs of 87 buttons. \$13.50 postpaid in USA; \$14.50 (US) postpaid in Canada; \$16.50 (US) postpaid in England; \$17.50 postpaid in Australia. Order from author: Alan G. Perry, 7614 McHenry St., Houston, TX 77087-3834
18. **SKETCHBOOK OF LITTLE CARNIVAL GLASS BUTTONS, 1997 EDITION** contains drawings and descriptions of over 500 little old buttons (less than 5/8" diameter). Loose-leaf format for easy annual updates, and geometric classification for easy identification. Indexed. \$13.00 plus 1.50 postage for US buyers, Canada and Mexico please add \$2 US to each for extra postage. Overseas please add \$4 US surface or \$6 airmail. Order from author: Jane O. Dinkins, 1100 Ridgeley Dr., Houston, TX 77055, 1-713-465-0557. Owners of 1996 edition may receive 1997 update pages by sending \$3 (includes postage).
19. **IMPERIAL GLASS - IDENTIFICATION AND VALUE GUIDE** by Carl O. Burns. Price \$18.95 plus \$2.50 shipping (Canadian US funds plus \$3.50 shipping), (Foreign US funds plus \$5.00 shipping) mention you are a member of HOACGA. Order from Carl O. Burns, 60 Rumford Center Rd., Andover, ME 04216
20. **OLD IMPERIAL 1909 CATALOG REPRINTS FROM THE ORIGINAL CATALOG** The catalog is 13½" by 11" containing 192 pages that are full of Imperial pattern pictures. Price is \$28.00 plus \$4.00 shipping and handling. Order from Lucile Britt, 3048 Tamarak Drive, Manhattan, KS 66503 Phone: (913) 539-1933