

*Membership Due  
Please Renew*

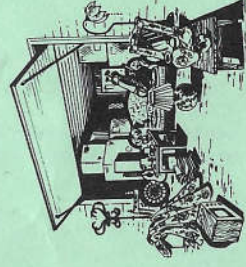
# HOAGGA

Heart of America Carnival Glass Assoc. Inc.

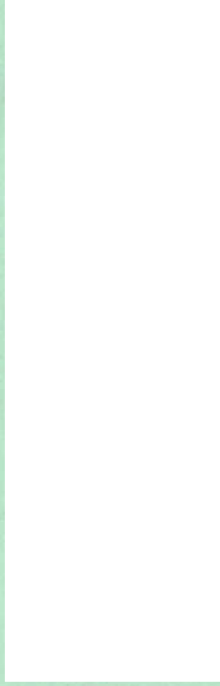
September 1997

RETURN ADDRESS

H.O.A.C.G.A.  
Jackie Fortney  
P.O. Box 303  
Buckner, MO 64016



FIRST CLASS MAIL  
U.S. POSTAGE  
PAID  
Buckner, MO  
Permit 03



**HEART OF AMERICA  
CARNIVAL GLASS ASSOCIATION**  
*(Since 1973)*  
**BOARD OF DIRECTORS**

PRESIDENT ..... ROBERT GRISSOM  
7517 Evanston  
Raytown, Missouri 64138  
PHONE: 1-816-356-5320

VICE-PRESIDENT ..... DARYL STROHM  
8904 E. 29th Street  
Kansas City, Missouri 64129  
PHONE: 1-816-252-8053

TREASURER ..... CLIFF BALL  
572 W. Park Street  
Olathe, Kansas 66061  
PHONE: 1-913-782-0415

SECRETARY ..... ED KRAMER  
4305 W. 78th Street  
Prairie Village, Kansas 66208  
PHONE: 1-913-642-3587

BULLETIN SECRETARY ..... JACKIE FORTNEY  
Post Office Box 303  
Buckner, Missouri 64016  
PHONE: 1-816-650-5208

Please send information about your Club to the Bulletin Secretary. We will include the name of your club, the secretary's name, address & phone number, dues, and the meeting place(s) and time(s) in the Bulletin.

## *Anniversaries*

CONGRATULATIONS!!! to those members who are celebrating their 40th or more wedding anniversary. The anniversary date and the number of years is indicated.

Mr & Mrs. Raymond Rentfrow  
905 N. Division St., Bristol, IN 46507  
Married 48 years September 25th

Daryl & Norma Strohm  
8904 E. 29th, Kansas City, MO 64129  
Married 47 years September 23rd

Jane & Bob Brown  
2600 Fairway Dr., Orange, TX 77630  
Married 55 years September 1st

Bernard & Nadine Paulsen  
700 Purdom, Olathe, KS 66061  
Married 51 years September 28th

Morris & Pauline Roberts  
302 Rapid Road, Chomplain, NY 12919-9766  
Married 44 years September 14th

Virgil & Betty St. John  
PO Box 400, Le Grand, IA  
Married 51 years September 21st

Carl & Fern Schroeder  
Box 157 Kendall, WI 54638  
Married 47 years September 30th

Carl & Doris Gerber  
5688 CR 7, Garrett, IN 46738  
Married 50 years September 7th

A card or note recognizing this event would surely be appreciated. Each monthly bulletin will contain the names of those members who are currently celebrating their 40th or more wedding anniversary.

If you have not notified the Bulletin Secretary, Jackie Fortney, of your anniversary, please send the information. Your anniversary will be recognized in the appropriate monthly bulletin.

## NEW HOACGA EDUCATIONAL BOOK III

The HOACGA Educational Series Book III is now available. This Educational Series contains articles which were previously printed in the monthly bulletin. The book contains articles written on several different subjects; i.e. Bon Bons, Bowls, Drinking Vessels, Novelties, Rose Bowls, Table Sets, by several different members. Members who contributed articles are Britt, Fry, Kremer, Pickup, Brooks, Roque, Kuhn, Curtis & Briix.

The book contains educational information on about 150 different patterns and it also contains a list of approximately 500 rarities (only 5 or less known). This type of information is not found in any other carnival reference material.

It is a very informative book.

You may order it from: Ed Kramer, Secretary, 4305 W. 78th Street, Prairie Village, KS 66208. Make checks payable to HOACGA

### ORDER FORM

### HOACGA Educational Series Book III

Number of copies \_\_\_\_\_ @ \$20.00 ea. = \$ \_\_\_\_\_  
(USA S&H included)

Name \_\_\_\_\_

Address \_\_\_\_\_

\_\_\_\_\_



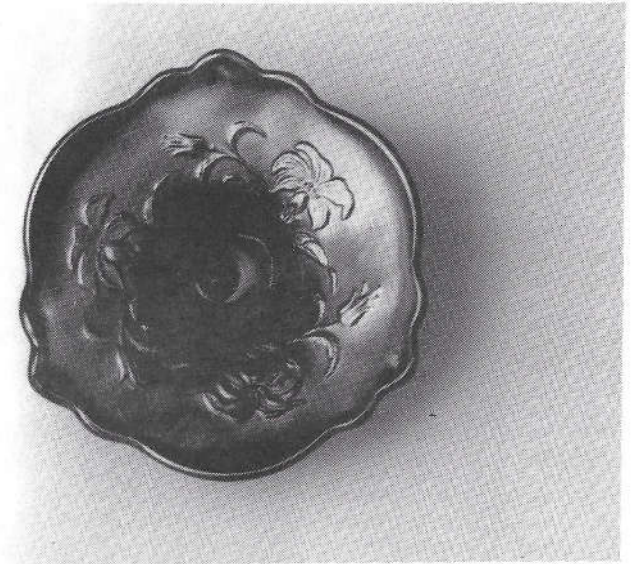
## AMARYLLIS COMPOTE

By Alan & Lorraine Pickup



This petite compote could be classified as a miniature. Quite small compared to most compotes, it only measures a couple of inches tall and five inches across. The Amaryllis compote was made by Harry Northwood and Company. This compote seems to be the only shape found today by carnival glass collectors. However, Marion Hartung's book, "Northwood Pattern Glass In Color", released in 1969 describes a seldom seen crystal glass 10" intaglio plate and shallow bowl in this pattern, some possibly painted in what we now call goofus glass.

These compotes are not easily found today so we can assume that they were not made in great numbers. They are known in only three colors: white, marigold and purple or amethyst. Blue compotes are listed by some writers but are missing altogether from our past auction guides, with only one white compote shown. You will have to be the judge as to rarity, blue or white. There are several "whimsey" shapes that can be found. The amethyst example shown here is pulled out into a plate shape.



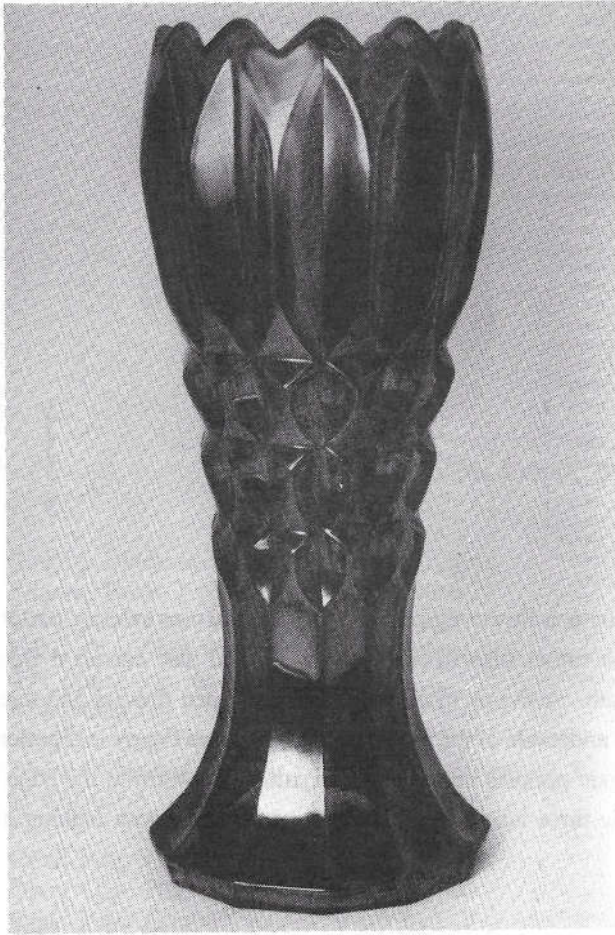
Amaryllis is a flowering plant. The secondary or exterior pattern is intaglio, that is cut in rather than in relief or raised, and also carries a flower. It's call Poppy Wreath. A Poppy motif with buds and open flowers and three clusters of leaves. The underside of the foot also carries a three Poppy leaf pattern in intaglio. The three open poppies on the exterior pattern conform to the edge shape. This results in the three lobe edge shape that can best be seen looking down into the compote.

It has been reported that these compotes carry the Northwood (N) trade mark, however, this one does not. It is interesting to note that this pattern is carried in the HOACGA compote section as No. 58 with a plain back. Was that an error or are there two varieties, one with the Poppy Wreath exterior and the other without? We would be dubious that there is a plain back compote as we previously pointed out the back pattern's open poppies are responsible for the three lobe edge shape.



## PICTORIAL PATTERN PARADE

By John & Lucile Britt



THE PRINCETON VASE

This beautiful intaglio type vase is in deep marigold and has super iridescence. It measures slightly over 10½" tall and is 3 ¾" across the top. The base is 4" in diameter and is deeply depressed. The outer ¼" of the bottom of the base contains a registration number. We have a Jacobean shot glass and tumbler that also contain this type of number and is in the same location.

This vase is shown in Josef Inwald material included in William Heacock's Collector Glass, Volume #2 on page 88. That volume contains 12 pages of Inwald patterns. Volume #3 includes 6 more pages of patterns from this same source. All the glass is listed by photos and numbers, but no pattern names are used. The Thistlewood's of England illustrated this same vase in their very fine Network series in No. 15.

The Fleur-De-Lis vase, which we wrote about in the April 1993 HOACGA bulletin on page 13 is a Josef Inwald product. We have also owned various sizes of plates in this pattern. The Intaglio Stars tumbler, shown in the March 1990 HOACGA bulletin, is another Inwald pattern, as well as Double Diamonds in which Bob Smith and I have numerous pieces. We might also mention that Bob has found material in the Boston library that indicates that Josef Inwald had a factory in Austria as well as five factories in Czechoslovakia.

Back to the Inwald Princeton vase. It is indeed a stunning piece of carnival glass. We were thrilled to find it and happy to include it in our Pictorial Pattern Parade series.

This article, featuring the very fine Inwald Princeton vase, is #226 in the Pictorial Pattern Parade series. Next month we will cover the graceful Covered Swan butter dish by Sowerby of England.



## TREASURES IN THE BACK YARD

By Pat Call

Have you ever had someone tell you about a great find right in your own neighborhood? Have you cringed while you heard about a marigold Grape & Cable Fernery that was bought in the shop two miles from your house?

I don't know why it is, but we seem to think we have to go far afield to find our dreams. If we live near the mountains, we head for the shore. If we live on the seacoast, we head for the mountains...

When we lived in Virginia, we used to travel up to Newmarket, Maryland where antique shops lined both sides of the street. In at least two of those shops were two other couples who were both dealers and Carnival Glass collectors we'd come to know through the Nation's Capitol Carnival Glass Club.

Logic would tell one that no Carnival Glass worth having would be found in that town; it would have been scooped up as soon as it hit the shelves, right?

We walked down the sidewalk one Saturday, just a couple doors away from one of the shops belonging to avid, experienced Carnival Glass collectors, and there, in the window of a neighboring shop was a marigold Grape & Cable Sweetmeat compote. We went into the shop, examined it and some other items to which we were attracted, and bought the compote and a pair of Fry Foval candlesticks. The candlesticks (which later proved to be repros) cost us \$120.00, the Sweetmeat cost \$5.00.

When we showed the compote to our dealer friends, they couldn't believe they hadn't seen it... But they had some satisfaction in telling us about the fernery they'd found in our "back yard."

## ON THE AUCTION TRAIL WITH CHUCK

By Chuck Kremer

August 22 & 23, 1997: Lapeer, Michigan. Could they do it? Yes, they did it! Albrecht's are carrying on - and Gary Cooper would have been proud of this auction. This proved to be a good two day carnival glass auction in the "old Cooper" pattern. We have to thank our fellow carnival collector Bob Gallo for his help in cataloging this sale. By the way, if you would like to consign glass to a future Albrecht auction, contact them or Bob Gallo.

The sale had a fast and smooth rhythm that seemed to please the large crowd - most of whom became bidders and buyers. On a positive note, any damage was identified prior to the sale and only one item was returned due to missed damage. I ordered the preview video to help make bidding plans and it seemed like many more people did the same thing, as there were many mail bids. There were almost 60 Hansen items from Mrs. Hansen's personal collection that were very well received by the buyers.

I thought the vases sold well. A few that I really like were the 7" purple Lined Lattice at \$210, the 9" purple Beaded Bulls Eye at \$170, and the red 10½" Plume Panels at \$650. Like all auctions, there were some good buys and some surprises. In my opinion, I thought the prices were generally good. The very nice ice blue Peacock at the Fountain pitcher found a good home at \$2,000. Some other pieces that caught my eye were the white Swan master salt (\$300), green G&C hatpin holder (\$350), the super green Two Row Open Edged JIP basket (\$100), amethyst ruffled Good Luck bowl (\$300), Fenton green ICS Peacock at the Urn 8" bowl (\$300), the Hansen marigold 7" one of a kind beautiful Corn vase with husks (\$725) and the 10" amber Hansen Turtle covered candy dish at \$850.

I almost forgot - I came home well pleased with a very nice green Springtime water pitcher and matching tumbler. Not cheap, but super to look at. Albrecht's handed out a preview list and showed pictures of their next October 4th carnival glass auction. There is no question where I will be on October 4th - there are pieces I really want to own in this next sale. The picture of the 3 in 1 edge Farmyard bowl looked real good.



# ALBRECHT AUCTION RESULTS

Lapeer, Michigan - August 22 & 23, 1997

Price report for Auction held August 22 & 23, 1997 at Lapeer, Michigan.

ALBRECHT AUCTION SERVICE INC., VASSAR, MICH. 1-517-823-8835

- 75 1. Strawberry Plate w/Bsktw. Ext.-M (Lt. Ir.)  
 100 2. Whirling Leaves Ruf. Bowl-G. Mb. (Radium Ir.)  
 40 3. Imp. Grape Cup & Saucer-Mrg.  
 45 4. Persian Garden 6" Plate-Wh. Du.  
 95 5. Pinecone 6" Plate-Bl.-F. (Silvery Ir.)  
 85 6. Grapevine Lattice Low Ruf. Bowl-W. Du.  
 40 7. Single Flower 7" Plate-P.O.-Du.  
 15 8. Acanthus 7 1/2" Bowl-M. Imp. (Nick Ir. Over)  
 50 9. Acanthus 7 1/2" Bowl-Smoke-Imp.  
 40 10. Hansen, Robt.-Sgnd. Owl Paperwt.-Amber  
 85 11. Hansen, Robt.-Sgnd. Mini Creamer-Bl. Degenhart.  
 65 12. Hansen, Robt.-Sgnd. Pilgrim Gl 3" Vase-Amber.  
 65 13. Hansen, Robt.-Sgnd. Owl Paperwt., Teal  
 75 14. Grape, Imp. Decanter w/Stopper-M. Nice Color.  
 175 15. Rococo Ruf Bowl-M. Imp.  
 90 16. Grape Delight Nut Bowl-W. Du. (Good Ft.)  
 65 17. Lotus & Grape Low Ruf. Bowl-M. F. (Beautiful Ir.)  
 85 18. Holly-Ruf. Bowl-A. (Good Ir.)  
 60 19. Vintage 9" Ruf Bowl-G. F.  
 80 20. Fine Cut 10" Vase-M. Jenkins.  
 40 21. Vineyard Water Pitcher-M. Du.  
 60 22. Peacock & Grape Spat Fid. I.C. Bowl-G. F.  
 60 23. Flute 15 1/2" Vase-M. N.W.  
 70 24. Rustic 10 1/2" Vase-W.  
 45 25. Big Bsktw. 10" Vase-B. Exc. Color, Slightly Silvery.  
 50 26. Tree Trunk 11" Vase-Ame.  
 30 27. Dutch Mill Ashtray-Mrg.  
 20 28. Flute (2) Berry Bowls-A. (One Has Sm. Chip-Selling Both For One Money)  
 20 29. Northern Star 6" Plate w/2 Sides Up-Very Lt. Mrg.-Fen.  
 40 30. Drapery 8" Vase-I.G. (Nice Ir.-Chips on fl.)  
 150 31. Whirling Leaves 6-Ruf. Bowl-Ame.-Mb.  
 75 32. Persian Med. Bowl w/3 in 1-A. F. Ind. on Back Only.  
 65 33. Cosmos Sm. 6" I.C. Shape Bowl-G.  
 25 34. Sm. Pink Candy Compote-Wide Panel/Stretch Effect-Pink.  
 35 35. G & C Ruf. Bowl w/Bsktw. Ext.-Nice Mrg.-N.W. (Pinhead).  
 30 36. Holly Ruf. Bowl-M. Good Color-(Nick on Edge).  
 22 37. 2 Row O.E. Basket w/Blackberry Int.-W. Lg. Collar (Has Nick Top Outside Edge).  
 140 38. Grape & Cable Plate w/Bsktw. Ext.-M. (Beautiful Ir.)  
 160 39. Fanciful I.C. Shape Bowl-P.O.-Du.  
 10 40. Double Loop Chalice-B. N.W. (Rim Chip).  
 80 41. Grape & Cable 9" Plate w/Plain Back-Mrg.-N.W. (Nice, Nice Ir.)  
 40 42. Swan Master Salt-Celeste Blue.  
 40 43. Swan Master Salt-I.G.  
 25 44. Swan Master Salt-Pink.  
 75 45. 8" Stretch Bowl-I.C. Shape-Citron w/Gold Rim.  
 70 46. Pinecone 6" Plate-M. F. Exc. Color (One of Prettier Ones).  
 25 47. Star Medallion 9 7/8" Plate-Clambrth.  
 35 48. Ribbed 9 1/2" Vase w/3rd Rib Plain & Others Filed. (Very Diff).  
 35 49. Long Thumbprint 7" Vase-A. Du.  
 135 50. Hearts & Flowers Compote-W. N.W.-Good Ir.  
 40 51. Hansen, Robt.-Sgnd. Owl Paperwt.-B.  
 50 52. Hansen, Robt.-Sgnd. Centennial Eagle Paperwt.-B.  
 40 53. Hansen, Robt.-Sgnd. Toothpick-Forget Me Not-Degenhart-B.  
 60 54. Scroll Embossed Plate-Gr. (Avg. Ir.), Imp.  
 20 55. Terry Crider, Sgnd. 2 1/2" Art Glass Toothpick-Mauve (Sq. Top).  
 70 56. Terry Crider, Sgnd. 5" Threaded Bud Vase-Lt. Bl.  
 40 57. Terry Crider, Sgnd. 4" Threaded Vase w/One Side Up-Lt. Bl.  
 35 58. Terry Crider, Sgnd. 4" Threaded Bud Vase-Pink.  
 50 59. Terry Crider, Sgnd. Art Glass Tumbler-Dark Pu.  
 95 60. Mt. Gambier Mug-Mrg.-Australia-Etched "For A Good Girl".  
 80 61. Scroll Embossed Lg. Compote-Deep Ame.-Imp.  
 100 62. Good Luck Ruf. Bowl-Ame.-Avg. Ir. (Has Nick On Flute).  
 90 63. Ribbon Tie Bowl w/3 in 1-Beautiful Bl.-Exc. Ir. F.  
 130 64. Ribbon Tie Bowl w/3 in 1-Ame.-Very Close to Amber-Exc. Ir.  
 30 65. Floral & Optic Fid. Cake Plate-Mrg.  
 24 66. Grape & Cable (2) Tumblers-Mrg.- (2x5).  
 25 67. Grape & Cable Tumbler-Ame. (Base Rghns).  
 50 68. Butterfly & Fern Tumbler-Ame.-F.

- 45 139. Grape Leaves Ruf. Bowl-Gr.-N.W.  
 60 140. Enam. Cherries Tumbler-Bl.  
 125 141. Golden Grape Rosebowl-Mrg.-Du.  
 275 142. 7" Low Bowl/Plate-P.O.-Tightly Crimped Edge.  
 20 143. 10 Panel 6 1/2" Vase-Amber-Made in Czech.  
 30 144. Carolina Dogwood 8 1/2" Ruf. Bowl-Mrg.-Westm.  
 24 145. Butterfly & Berry (2) Tumblers-Bl.-Fen. (2x5).  
 20 146. Imp. Grape Tumbler-Mrg.  
 34 147. Beaded Shell (3) Tumblers-Mrg.-F (3x5).  
 40 148. Maple Leaf Tumbler-Ame.-Du.  
 20 149. Grape & Cable Tumbler-Ame.  
 40 150. Bsktw. Sm. 2-Part Basket-Mrg.  
 65 151. Moon & Stars Toothpick-Mrg.  
 15 152. Terry Crider Tumbler-Sword & Circles.  
 15 153. Crider Tumbler-Lucille-Mrg.  
 30 154. Crider Tumbler-Majestic-Mrg.  
 20 155. Crider Fid. Tumbler-Red Sunflower-W.  
 25 156. Crider Tumbler-Bears-Mrg.  
 50 157. Crider Tumbler-Circles & Ovals-Red.  
 175 158. Crider Tumbler-Paneled Ovals-Ame.  
 25 159. Crider Tumbler-Geometric Pattern w/Diamonds-W.  
 175 160. Crider Tumbler-Flowered Pattern-Mrg.  
 40 161. Crider Tumbler-Circles Around Bottom-Amber.  
 50 162. Windmill Pickle Dish-Aqua.  
 50 163. Diamonds Tumbler-Gr.-Mb.  
 30 164. Tiger Lily Tumbler-Mrg.-Imp.  
 10 165. Grape & Lattice Tumbler-Mrg.  
 25 166. Stork & Rushes Mug-Mrg.-Du.  
 70 167. Little Flowers 6" Ruf. Bowl-Aqua.  
 55 168. Flowers & Frames Dome Fid. Bowl-P.O. (Nice Ir.)  
 15 169. Golden Oxen Mug-Mrg.  
 30 170. Swan Master Salt-Celeste Blue.  
 45 171. Ski-Star Dome Fid. Bowl w/3 in 1 Edge.  
 80 172. Fruits & Flowers 7 1/2" Ruf. Bowl w/B.W. Ext.-G.-N.W.  
 60 173. Persian Garden 5 1/2" L.C. Shape Bowl-Whit.-Du.  
 110 174. Orange Tree 9" Ruf. Bowl-Whit.-F.  
 80 175. Grape & Cable Bal Fid. Bowl-Aqua-Fen. (Good Ir.)

## SATURDAY SESSION

- 85 176. Round-Up Low Ruf. Bowl-Du. (Beautiful Ir.)  
 150 177. Heads & Flowers Compote-Wh.-N.W. (Good Ir.)  
 200 178. Bushel Basket-Round-Wh. (Good Ir.)  
 160 179. Holly Hat, 4 Sides Up-Aq.-Fen. (Beaut. Color, Lt. Mrg. Overlay).  
 150 180. Vintage 7 1/2" Plate-Gr.-Fen.-Exc. Color & Detail.  
 50 181. Dbl. Stem Rose Bowl-Aqua-Du.  
 80 182. Bkt. w/3 Vase-W. Du. (Good Ir.)  
 120 183. Dragon & Lotus Ruf. Bowl w/Plain Back-Amber-F. (Tough Color & Good Ir.)  
 260 184. Peacock at Urn 9" Plate-Deep M.-Fen. (Great Ir.)  
 100 185. Two Flowers Fid. Rosebowl-Bl.-Fen. (Good Detail).  
 90 186. Fruits & Flowers 7 1/2" Plate w/Bsktw.-Ame.-N.W. (Some wear on Fruit).  
 150 187. Strawberry Low L.C. Shape Bowl/Plate w/Plain Back-Ame.-N.W. (Beautiful Color).  
 245 188. TREE TRUNK (12" H X 4 3/4" BASE) MID-SIZE VASE-Ame. Sgnd. N.W. (Great Ir.)  
 90 189. Thin & Wide Rib 13" Mid Size Vase-M. Exc. Col. Top to Bottom.  
 550 190. Singing Birds Mug-IB.-N.W. (One of the Prettier Ones).  
 220 191. Lustre Rose 10" Fid. I.C. Shape Bowl-P. Imp. (Quite Unusual).  
 All Saturday's Hansen Glass Comes from Mrs. Hansen's Personal Collection & Includes Many Rare & One Of A Kind Pieces!  
 85 192. Hansen, Robt.-Sgnd. Stork Mini-Mug-Cobalt.  
 140 193. Hansen, Robt.-Sgnd. Elephant Head Toothpick Holder-Ame/Cobalt, Degenhart Ruf. Top (Great Color).  
 110 194. Hansen, Robt.-Sgnd. Elephant Head Toothpick-A.-Flared Top.  
 110 195. Cut Flowers 10" Vase-Mrg.-Jenkins Glass.  
 235 196. Rose Show Ruf. Bowl-A.O.-Good Color (Chips on Collar).  
 40 197. Circle Scroll JIP Hat Shape-Deep P.-Du. (Slight Discolor).  
 135 198. Grape & Cable 7 3/4" Hand Grip Plate w/Bsktw. Ext.-Gr.-Sgnd. N.W.-Good Ir.

- 205 199. Fine Cut & Roses Rosebowl-Wh.-Exc. Ir. & Feet are Good.  
 2,000 200. PEACOCK AT FOUNTAIN PITCHER-IB.-N.W. (Beautiful Ir., Exc. Col. One of the better we've seen! -Gorgeous.)  
 100 201. Peacock at Fountain Tumbler-IB.-NW (Exc. Ir.-Good Match)  
 325 202. Orange Tree Sm. Mug-G. F. (Scarce Color w/Avg. Ir.)  
 80 203. Orange Tree Lg. Mug-B. F. (Exc. Color).  
 80 204. Orange Tree Sm. Mug-B. F.  
 75 205. Singing Birds Mug-Ame.-N.W. (Beautiful Color).  
 30 206. Hansen, Robt.-Sgnd. Art Glass Type Rosebowl-Ame.-Rare 2 3/4" T x 4"W.  
 45 207. Hansen, Robt.-Sgnd. 5" Art Glass Vase-Ame.-Rare.  
 90 208. Hansen, Robt.-Sgnd. 3 1/2" Art Glass Vase, Swirl-Ame.-Pilgrim-Rare w/ Appl. Band.  
 90 209. Hansen, Robt.-Sgnd. 4" Art Glass Vase-Red-Pilgrim-Rare w/ Appl. Band.  
 300 210. FASHION ROSEBOWL-G. Imp (Rare-Slight Wear on Bottom)  
 140 211. Thistle Banana Boat-Beautiful Deep Rich Mrg.  
 225 212. Holly 9 1/2" Plate-Good Rich Mrg.-Fen. (Good Ir.)  
 40 213. Plume Panels Compote-G. N.W.  
 45 214. Peacock at Urn Compote-B. Fen.-Avg. Ir.  
 450 215. Persian Gardens 10 1/2" Deep Ruf. Bowl-P. Du. (One of the Better Bowls in this Pattern).  
 110 216. Hansen, Robt.-Sgnd. Hobnail Hat Shape Toothpick Holder-P.O.  
 50 217. Hansen, Robt.-Sgnd. Hobnail Lds. Spittoon-Teal-(Only one known-has indized chip on Rim. (2 1/4" T x 4"W).  
 90 218. Hansen, Robt.-Sgnd. Hobnail Dinner Bell-Teal-Rare.  
 50 219. Hansen, Robt.-Sgnd. Hobnail 2 Pc. Ferry Lamp-Teal (Rare).  
 900 220. SPRINGTIME WATER PITCHER-Gr.-N.W. (Rare-Exc. 1 x 70 -Detail-Super Color & Great Ir.)  
 4 x 55 221. SPRINGTIME TUMBLERS (5)-Gr.-N.W. (Choice Out-(2) are a good match to pitcher, others Better than Avg. Ir.)  
 125 222. April Showers 6" Squatty Vase-Ame. (Beautiful).  
 125 223. Knotted Beads 9 1/2" Vase-Aqua-Fen. (Nice Ir.)  
 80 224. Drapery 8" Vase-I.G.-N.W. (Dings on One Foot).  
 45 225. Four Flowers, VT-Scalloped Bowl-Olive Gr.-Minor Mfg. Grind Chips-Scandinavian.  
 250 226. Hansen, Robt.-Sgnd. 8 1/2" Owl Vase-Teal-Unusual & Rare. (Sight Ir. Mfg. Rghns. on 2 Feet).  
 725 227. Hansen, Robt.-Sgnd. 7" Corn Vase w/Husks, w/Candy Ribbon Flared Out Top-Cased Glass w/Mrg. Ext. & Pearl Int. (Only One Made).  
 105 228. Hansen, Robt.-Sgnd. 6" Art Glass Vase, Appl. Ribbon on Neck-Teal-(Only one Made)-6"W. at Bottom.  
 175 229. Hansen, Robt.-Sgnd. 6" Stemmed Spooner/Vase w/Eagle & Stump Base Supporting 4' Cattle's Pattern Top, Bennet, Rare.  
 130 230. Fantasia Flowers Rosebowl-Wh.-Feet & Ir. Good (Scarce Side).  
 400 231. Poppy Show 9" Plate-Wh.-N.W. (Scarce-Beautiful Pastel Pink Bl. Highlights Minor Damage on Poppy).  
 70 232. Smooth Panels 8" Vase-Mrg. on Milk Glass-Imp. (Different).  
 80 233. Estate 5" Bud Vase-Very Rare-Smoke-W.M.  
 170 234. Beaded Bulls eye 9" Vase-P. Imp.-Near Elec. Ir.  
 200 235. Three Fruits Plate w/Bsktw. Ext.-Gr.-N.W.-Exc. Example (No Wear on Fruit).  
 175 236. Orange Tree Plate w/Trunk Base-Wh.-Fenton's Better Whites).  
 225 237. Strawberry Plate w/Plain Back-Ame.-N.W. (Good Detail).  
 70 238. Strawberry Ruf. Bowl w/Bsktw. Ext.-G.-N.W. (Nice Example).  
 130 239. Fruits & Flowers Hand Grip Plate w/Bsktw. Back-Ame.-N.W. (Good Example).  
 1,000 240. PEACOCK AT FOUNTAIN COMPOTE-IB. (Good Example)  
 245 241. Hansen, Robt.-Sgnd. Cherry Wreath Sug. & Cr.-Red- (Rare & Pretty, 2 x 5).  
 90 242. Hansen, Robt.-Sgnd. Cherry Wreath Toothpick-Red.  
 85 243. Hansen, Robt.-Sgnd. Grape & Panel Cup & Saucer-Red- (Rare).  
 850 244. Hansen, Robt.-Sgnd. 10" Turtle Cov. Candy Dish-Amber-L.G.W. (Only One Known).  
 350 245. GRAPE & CABLE HATPIN HOLDER-Gr.- (A Better One).  
 60 246. Veiling Hatpin-Drk. w/Bl. Ir.  
 50 247. Big Butterfly Hatpin-Drk.  
 35 248. Rippled 12" w/4" Base Mid-Size Vase-Imp.-Very Light IB. Base (Beautiful Vase) Internal Crack on Side

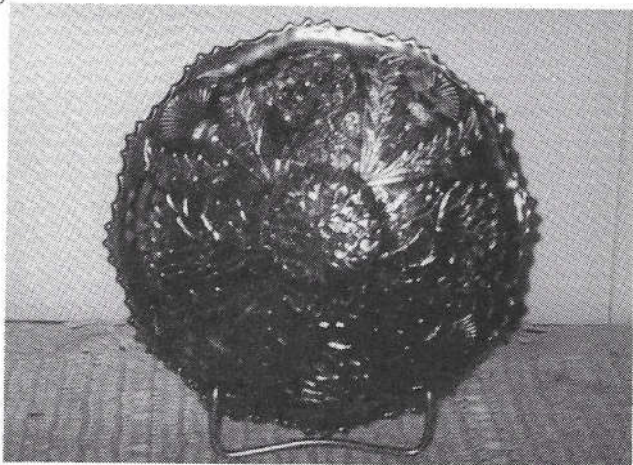






## CORRESPONDENCE

Dear HOACGA,



Here is the picture of our new find. Thistle & Lotus 7 1/4" plate. We enjoy reading the HOACGA bulletin every month.

Kandis Richmond  
803 S. Hancock St.,  
Ottumwa, IA 52501

Dear HOACGA,

Some new collectors wanted to know how to clean their glass, here are some tips:

1. Inside vases: drop 2 polident tablets inside, add water. They will remove the mineral stains with no harm to glass.
2. To remove glue from price stickers the mall usually has on the glass, use peanut butter. It will dissolve the glue with a little rubbing and not bother the finish of the glass.
3. Heavy dirt & grime, use "Wrights Silver Polish" and rub with soft cloth. Rinse after done and apply windex glass cleaner.

Happy Hunting  
Richard Jarnig  
Brenham, TX

## CORRESPONDENCE

Dear HOACGA,

I received the two tapes on carnival glass from Mr, Kramer the other day, and made up my mind to take time to sit and watch them.

What a treat they are! I just couldn't believe how lovely and pretty all the carnival glass is. The colors are beautiful and the displays were all so nice. Also, the speakers were very interesting and some of the "cute" stories were fun to hear.

It was so nice to meet so many members who were attending the various conventions. Makes you wish you were there and just maybe someday I'll be able to attend one.

It's a very good investment for anyone who can't attend the conventions. I'm glad I have mine.

Helen G. Arnett  
Las Vegas, NV

---

## TRIVIAL PURSUIT OF CARNIVAL GLASS

By Virgil Lemos

Q: What pattern was named after a South American plate having tapering scarlet leaves surrounded by small yellow flowers?

A: \_\_\_\_\_

Q: What color is described as follows: stretchy in appearance, close to aqua known as a Fenton and Dugan color?

A: \_\_\_\_\_

Q: What is the term used to identify a color having a swirl effect in the glass?

A: \_\_\_\_\_

Q: What two colors are named after precious stones?

A: \_\_\_\_\_

Q: What pattern was named after a marine plant found in the ocean and is an important source of food and minerals?

A: \_\_\_\_\_

*Look for the answers in upcoming bulletins.*

## EDUCATIONAL TUMBLER SERIES

By John & Lucile Britt



THE TARTAN TUMBLER

This is a pretty little tumbler that measures 3½" high. It is 2 5/8" across the top with a base diameter of slightly less than 2". The base is depressed about ¼". The outer edge has been ground and polished. The bottom of the base is smooth. It has good marigold color with very nice iridescence. We suspect that the Tartan tumblers were also made in a larger size, but we have not seen a larger example as yet.

The pattern of this tumbler consists of three rows of 8 sided buttons that are flat and smooth on top. There are 4 buttons in each of the rows that circle around the tumbler. A cross hatch of bars separate the buttons from one another. The pattern is the same as the small creamer illustrated by the Thistlewoods's in their Network #11 at the top of page 13. Both the small pitcher and our featured tumbler very likely came from the same factory.

Further reference of the Tartan pattern can be found in the Carnival Glass Society Journal #13. Ray Notley discusses the Tartan pattern and illustrates it in an epergne on page 261. Brochwitz of Germany is believed to be the maker of this pattern.

We have noticed that there are variations in this pattern. One in particular, is where the smooth top buttons that are found on our tumbler, contains alternating can and daisy like designs on the top surface of the buttons. This one is sometimes called Daisy and Cane. We have seen a cuspidor that contained this variation. Edwards shows a decanter shape piece with this type of design in his 5th Edition Book on page 70 where he lists the pattern as Daisy and Cane. It is quite possible that a tumbler might be found in that variation in the future. Anyway, we find the pattern very interesting.

We consider this pretty tartan tumbler as rare. It is for sure the only example that we have ever owned or even seen for that matter. We are proud to include it in Our Education Tumbler series. The photo is courtesy of Dave Doty.

The rare and pretty Tartan tumbler marks our 236th entry into the Educational Tumbler Series. Next month we will feature the Enameled Single Flower, another pretty tumbler in the enameled category.



**CHECKERBOARD...**  
**WESTMORELAND OR CAMBRIDGE?**

By Bob Bishop



The bowl on the right is Checkerboard by Cambridge. Marked Near Cut in the bottom. I believe this to be an original Cambridge design. I have seen a large fruit bowl marked Near Cut and a ruffled bowl also marked the same. I believe that Westmoreland copied or purchased the original molds. This is shown in the Westmoreland Book by Charles West Wilson on page 276, number 500, circa 1915. Cambridge produced this pattern in 1908, number 2653.

Tumbler on the left, is one of three tumblers known in marigold. I purchased 2 of these at a flea market for \$8.00. One was sold at auction, to Eleanor Hart. The other one was sold to John Britt, who sold it to another collector. I still have the third one. This tumbler if sold today at auction would command a four digit figure.

**SEEK AUCTION RESULTS**

Portland, Oregon - August 9th 1997

Our Next Auction

<http://www.willowtree.com/~seekcauction/prwgc.htm>

**Results of the August 9th 1997 Auction in  
Portland, Oregon**

- 45,25 1. Tumblers including Windmill (2), Imperial Grape, Octagon, Apple Tree, Four-Seventy- Four, Waterlily, Lattice & Daisy - marigold - choice (\$30x3)
- 30\_ 2. Grape & Cable sherbert - purple
- 10\_ 3. Grape & Cable sherberts (2) - marigold - choice
- 25\_ 4. Butterflies bon bon - amethyst
- 55,35 5. Butterfly & Berry 10" vases (2) - blue - choice
- 50\_ 6. Blackberry Bramble ruffled compote - green
- 45\_ 7. Blackberry Bramble ruffled compote - amethyst
- 25\_ 8. Blackberry Bramble ruffled compote - marigold
- 115\_ 9. Hattie ruffled bowl - purple - super pretty
- 800\_ 10. Utah Liquor Co. 6" advertising plate - amethyst - a super rare plate, very few known, a top adv. piece
- 30\_ 11. Imperial Grape tumbler - purple - nice
- 25\_ 12. Springtime tumbler - purple
- 35\_ 13. Heavy Iris tumbler - purple
- 850\_ 14. Captive Rose 9" plate - green - very pretty, very rare
- 400\_ 15. Captive Rose 9" plate - blue - also very nice, scarce
- 105\_ 16. Captive Rose CRE bowl - marigold - dark & super
- 165\_ 17. Iris ruffled compote - blue - scarce color
- 100\_ 18. Iris ruffled compote - green
- 115\_ 19. Iris ruffled compote - amethyst
- 475\_ 20. Panther IC shaped centerpiece bowl - marigold - very rare bowl & pretty, lots of pinks & blues, made from master berry bowl
- 80\_ 21. M'burg Boutonniere ruffled compote - amethyst - satin
- 65\_ 22. M'burg Boutonniere ruffled compote - green - radium & nice
- 130\_ 23. M'burg Boutonniere ruffled compote - marigold - radium & super
- 175\_ 24. Chrysanthemum large fld ruffled bowl - green - very scarce color
- 2150 25. M'burg Rosalind giant ruffled compote - green - radium & super, extremely rare & desirable, one of the top compotes in carnival glass
- 30\_ 26. Concave Diamonds tumbler - celest blue
- 80\_ 27. Concave Diamonds tumble-up tumbler - celest blue - if you need it, here's a rare chance
- 115\_ 28. Concave Diamonds tumble-up tumbler - russet - more rare than the celest blue
- 75\_ 29. Constallation ruffled compote - white
- 1000 30. M'burg Multi Fruits & Flowers 8 pc. punch set - amethyst - very rare set, not many around, very desirable
- 30\_ 31. Grape & Cable ruffled hat shape - marigold - made from tumbler
- 225\_ 32. Panther master berry bowl - blue - very pretty, scarce
- 250\_ 33. Panther master berry bowl - olive green - very rare color, a toughy
- 110\_ 34. Panther master berry bowl - marigold
- 700\_ 35. Blackberry Spray ruffled hat - red opal - very rare item, nice
- 400\_ 36. Blackberry Spray ruffled hat - red - super pretty, cherry color w/red irid.
- 850\_ 37. Blackberry Spray ruffled hat - aqua opal - very rare & super, the best I have sold
- 45\_ 38. M'burg Feather & Heart tumbler - amethyst - scarce
- 70,45 39. Dandelion tumblers (2) - purple - nice, choice
- 1750 40. Hearts & Flowers ruffled compote - reninger blue - very rare color for this compote, & very



nice

- 350\_41. Hearts & Flowers ruffled compote - ice green - also very scarce, buffed nick on base  
 850\_42. Hearts & Flowers ruffled compote - aqua opal - nice opal on this desirable piece  
 450\_43. Hearts & Flowers ruffled compote - blue - very scarce, nice  
 205\_44. Hearts & Flowers ruffled compote - marigold - in demand  
 175\_45. Hearts & Flowers ruffled compote - white - nice  
 65\_46. Acorn Burrs tumbler - purple  
 30\_47. Oriental Poppy tumbler - purple  
 35\_48. Oriental Poppy tumbler - green  
 45\_49. Tiger Lily tumbler - purple  
 650\_50. Stag & Holly large IC shaped ftd bowl - amberina w/red streaks - very unusual piece, only one I've ever seen  
 425\_51. Stag & Holly large IC shaped ftd bowl - amethyst - very scarce color  
 200\_52. Stag & Holly large IC shaped ftd bowl - blue - scarce  
 155\_53. Stag & Holly large IC shaped ftd bowl - marigold  
 40\_54. Ten Mums tumbler - blue  
 315\_55. Grape & Cable 9" plates (3) - amethyst - 275,125 choice(one damaged)  
 1000\_56. Rose Show ruffled bowl - aqua opal - very pretty bowl, rare & desirable  
 450\_57. Rose Show ruffled bowl - marigold - dark & super, scarce  
 350\_58. Persian Medallion CRE large ruffled compote - amethyst - scarce  
 200\_59. Persian Medallion CRE large ruffled compote - blue - nice  
 550\_60. Good Luck 9" plate w/BW back - horehound - extremely rare color for this plate, very pretty & desirable  
 600\_61. Good Luck 9" plate w/BW back - marigold - very scarce, nice  
 100\_62. Round Up 3 in 1 edge bowl - marigold  
 215\_63. Little Fishes master berry bowl - marigold - dark, nice  
 55\_64. Vintage 3 in 1 edge sauce - marigold  
 250\_65. Kittens toothpick - blue - very scarce, nice  
 105\_66. Kittens toothpick - marigold - nice  
 325\_67. Flute #3 tumbler - blue - very rare, I thought someone told me there was no Imperial blue, wrong  
 75\_68. Blueberry tumbler - blue  
 100\_69. Footed Orange Tree tumbler - blue  
 1400\_70. Daisy & Drape turned in vase - amethyst - almost lavender, super pretty, rare  
 95\_71. Diamond Points 12" vase - amethyst  
 100\_72. Tree Trunk 10" vase - green  
 185\_73. Leaf & Beads rosebowl w/smooth top - lavender - very unusual rosebowl  
 70\_74. Blackberry Spray square hat shape - green - scarce color  
 X\_75. Round Up 9" plate - amethyst - super pretty & desirable, a tough piece(damage)  
 375\_76. Round Up 9" plate - blue - edge turns up just slightly  
 195\_77. Heavy Grape 8" plate - purple - very pretty  
 60\_78. Heavy Grape 8" plate - marigold  
 105\_79. Single Flower crimped edge handgrip 8" plate - peach opal  
 800\_80. Stippled Peacocks 9" plate - blue - very pretty, a nice example  
 105\_81. Fine Cut & Roses candy dishes (2) - ice blue - choice  
 50\_82. Fine Cut & Roses candy dish - white  
 55\_83. Fine Cut & Roses candy dish - amethyst  
 145\_84. Horse Medallion JIP shaped ftd bowl - marigold - nice  
 600\_85. Holly 9" plate - green - very rare in this color  
 425\_86. Holly 9" plate - blue - pretty, scarce

- 375\_87. Holly 9" plate - marigold - dark & nice  
 225\_88. Holly 9" plate - clambroth - nice  
 250\_89. Holly 9" plate - white - pretty  
 2700\_90. Embroidered Mums ruffled bowl - aqua - super pretty example, one of the better that I have seen  
 850\_91. Embroidered Mums ruffled bowl - ice blue - extremely scarce & nice  
 300\_92. Coin Spot compote - purple - electric  
 50\_93. Coin Spot ruffled compote - amethyst  
 85\_94. Coin Spot ruffled compote - peach opal - lots of opal  
 600\_95. M'burg Trout & Fly 3 in 1 edge bowl - green - satin & super!  
 170\_96. Strawberry 9" plate w/BW back - green  
 115\_97. Strawberry 9" plate w/BW back - marigold - nice  
 105\_98. Two Flowers ftd ruffled master berry bowl - blue - pretty  
 125\_99. Two Flowers ftd ruffled master berry bowl - marigold  
 2050\_100. Acorn Burrs punch cup - aqua opal - outstanding pastel irid., opal at least 1" down, a great piece!  
 145\_101. Acorn Burrs punch cup - blue - very rare, where is the punch bowl?  
 65\_102. Acorn Burrs punch cup - ice green - very scarce  
 145\_103. Acorn Burrs punch cup - ice blue - scarce  
 105\_104. Acorn Burrs punch cup - white - scarce  
 25\_105. Acorn Burrs punch cup - green  
 40\_106. Acorn Burrs punch cup - marigold  
 15,10107. Acorn Burrs punch cups (2) - purple - choice  
 105\_108. M'burg Cherries tumbler - green - radium & nice, very scarce  
 195\_109. M'burg Marilyn tumbler - amethyst  
 800\_110. Peacocks PCE bowl - lavender - very rare & pretty, a neat piece of glass  
 75\_111. Wild Blackberry 3 in 1 edge bowl - marigold  
 550\_112. Stippled Grape & Cable/Old Rose Distillery 9" plate - green - pretty & very scarce, nice piece!  
 65,60\_113. Pepper Plant ruffled hatshapes (2) - blue - choice  
 55\_114. Grape & Cable hldd pin dish - green  
 375\_115. Good Luck PCE bowl w/ribbed back - purple - has blue irid., super pretty, a dandy  
 450\_116. Good Luck PCE bowl w/BW back - green - nice  
 375\_117. Good Luck PCE bowl - marigold - super  
 65\_118. Blackberry miniature compote - green - scarce color  
 65\_119. Blackberry miniature compote - blue  
 X\_120. Rose Show 9" plate - amethyst - small nick on rose, super pretty, could almost call this lavender(nick on edge)  
 1100\_121. Rose Show 9" plate - blue - a very pretty one, rare  
 70\_122. Dahlia tumbler - amethyst - pretty  
 50\_123. Greek Key tumbler - green  
 75,45\_124. Wishbone tumblers (2) - purple - choice  
 4250\_125. Persian Medallion 9" plate - green - one of just a few known, extremely desirable, a must for Fenton plate collectors  
 125\_126. Dragon & Lotus ruffled bowl - amber - scarce color  
 250\_127. Orange Tree 9" plate - white - scarce  
 170\_128. Orange Tree 9" plate - clambroth - pretty  
 240\_129. Imperial Grape 6" plate - purple  
 2000\_130. Stag & Holly spt ftd ruffled bowl - red - super red color, with nice irid.  
 150\_131. Stag & Holly spt ftd ruffled bowl - aqua - extremely rare color, has large open bubble on foot filled with epoxy



- 105\_132. Stag & Holly spt fld ruffled bowl - blue  
 X\_\_133. Fine Cut & Roses rosebowl - white - scarce color for these  
 175\_134. Fine Cut & Roses rosebowl - ice blue - scarce, minor buffing on one foot  
 235\_135. Fine Cut & Roses rosebowl - green - super  
 115\_136. Fine Cut & Roses rosebowl - lavender - minor chip on bottom of foot, scarce color  
 95\_137. Fine Cut & Roses rosebowl - purple  
 105\_138. Fine Cut & Roses rosebowl - pastel marigold  
 135\_139. Fine Cut & Roses rosebowl - dark marigold  
 2100\_140. Rustic 19" funeral vase - green - super pretty irid., very rare color  
 40\_141. Cosmos & Cane tumbler - honey amber  
 35ea142. Jeweled Heart tumblers (2) - marigold - choice  
 75\_143. Leaf Tiers tumbler - marigold  
 75\_144. Heart & Vine ruffled bowl - blue - pretty  
 475\_145. Stippled Three Fruits 9" plate - purple - electric blue irid.  
 750\_146. Stippled Three Fruits 9" plate - marigold - super, dark & pretty  
 35ea147. Persian Medallion 6" plates (2) - marigold - choice  
 245\_148. Fenton's Flowers rosebowl - green - scarce color  
 140\_149. M'burg Grape Wreath Variant ruffled 8" bowl - amethyst - radium  
 1800\_150. Hattie chop plate - purple - extremely rare plate & pretty! a top piece in the auction  
 45\_151. Strawberry Scroll tumbler - blue - scarce  
 145\_152. Peach tumbler - blue - electric  
 X\_\_153. Oriental Poppy tankard water pitcher - purple - scarce water pitcher & nice(nicks in pattern)  
 205\_154. M'burg Primrose ruffled bowl - amethyst - radium, nice  
 2000\_155. Poppy Show 9" plate - marigold - rare & desirable, very sought after  
 95\_156. Mikado ruffled compote - marigold - open bubble on base  
 175\_157. Panther round sauce - green - extremely rare color, nice  
 85\_158. Panther round sauce - blue - manufacture roughness on base  
 50\_159. Panther round sauce - marigold  
 X\_\_160. Wreath of Roses punch bowl & base w/Persian Medallion interior - blue - extremely rare color for these, nice(rim nick)  
 105\_161. Blackberry Block tumbler - green - scarce tumbler  
 45\_162. Orange Tree & Scroll tumbler - blue  
 500\_163. Drapery rosebowl w/smooth top - white - very scarce especially w/smooth top  
 55\_164. Vintage powder jar - marigold  
 800\_165. Stippled Peacocks PCE bowl w/ribbed back - blue - very rare & desirable  
 450\_166. Stippled Peacocks PCE bowl w/ribbed back - marigold - nice  
 650\_167. Tree Trunk 12" mid-size vase - blue - rare color & nice  
 255\_168. Tree Trunk 12" mid-size vase - green - also nice  
 85\_169. Scroll Embossed 9" plate - green  
 425\_170. Panther fld ruffled sauce - red - very rare & desirable  
 195\_171. Panther fld ruffled sauce - aqua - probably more rare than the red  
 195\_172. Panther fld ruffled sauce - lavender - probably more rare than the other two  
 85\_173. Panther fld ruffled sauce - blue  
 50\_174. Panther fld ruffled sauce - pastel marigold  
 55\_175. Panther fld ruffled sauce - marigold  
 900\_176. Greek Key 7 pc. tankard water set - purple - extremely rare set  
 95\_177. Captive Rose ruffled bowl - amethyst  
 300\_178. Dandelion mug - blue - rare color & nice  
 225\_179. Imperial Flute 10 pc. punch set - green  
 1050\_180. Stag & Holly 9" fld plate - marigold - very rare & desirable, nice

- 20\_181. Field Flower tumbler - purple  
 50\_182. Wreathed Cherry tumbler - purple  
 650\_183. Three Fruits 9" plate w/BW back - green  
 225\_184. Three Fruits 9" plate w/Bw back - marigold - super  
 425\_185. Australian Butterfly Bush large ruffled compote - purple - rare  
 275\_186. Acorn Burrs butterdish - marigold - nice  
 275\_187. Persian Garden 11" IC bowl - white  
 900\_188. Stippled Strawberry ruffled bowl - horehound - super pretty irid., a very scarce bowl  
 110\_189. Vintage 7" plate - amethyst  
 500\_190. Peacocks 9" plate - lavender - very rare & desirable, nice  
 550\_191. Peacocks 9" plate - purple - pretty  
 800\_192. Peacocks 9" plate - ice green - super example(lime green)  
 145\_193. Fenton's Peacock at Urn ruffled bowl - blue - looks radium  
 125\_194. Fenton's Peacock at Urn ruffled bowl - marigold  
 2700\_195. Grape & Cable master IC bowl - ice green - super & very rare  
 55\_196. Fluffy Peacock tumbler - amethyst  
 750\_197. M'burg Courthouse ruffled bowl - amethyst - radium, a super bowl, scarce  
 250\_198. Panther 6 pc. berry set - marigold  
 70\_199. Panther fld ruffled sauce - blue  
 1500\_200. Grape & Cable punch cup - aqua opal - lots of opal, nice, a super rare piece of glass!  
 75\_201. Grape & Cable punch cup - ice green - rare!  
 5\_202. Stippled Grape & Cable punch cup - green  
 25\_203. Stippled Grape & Cable punch cup - reningers - scarce color  
 10\_204. Stippled Grape & Cable punch cup - blue  
 45\_205. Grape & Cable punch cup - purple  
 5\_206. Grape & Cable punch cup - marigold  
 15\_207. Stippled Grape & Cable punch cup - marigold  
 5\_208. Grape & Cable Variant (has only 2 sets of Grapes) punch cup - marigold  
 1200\_209. Waterlily fld ruffled sauce - reverse amberina opal - a super rare sauce & pretty  
 125\_210. Round Up IC shaped bowl - white - nice  
 75\_211. Fenton's Grape & Cable 7" ruffled bowl - aqua  
 265\_212. Fenton's Peacock at Urn 9" plate - blue - silver irid.  
 325\_213. Fenton's Peacock at Urn 9" plate - marigold - nice  
 155\_214. Wide Panel console bowl - red stretch  
 600\_215. Stippled & Banded Grape & Cable fruit bowl - blue - very rare & desirable, unusual & pretty!  
 X\_\_216. Stag & Holly IC shaped spt fld bowl - teal green - unusual(heat check in base)  
 425\_217. Holly deep ruffled crimped edge hatshape - red - unusual shape & scarce  
 400\_218. Wishbone PCE 10" bowl - clambroth - very scarce  
 95\_219. Pinecone 6" plate - blue  
 1600\_220. N's Peacock at Urn master IC bowl - ice green - super, as pretty as they get  
 475\_221. N's Peacock at Urn master IC bowl - marigold - scarce & desirable  
 450\_222. N's Peacock at Urn master IC bowl - white - scarce & desirable  
 225\_223. Singing Birds mug - green  
 55\_224. Singing Birds mug - blue - nice X\_\_225. Grape & Cable banana boat - ice blue - very rare & desirable, nice(nick on edge)  
 275\_226. Basketweave Open Edge ruffled basket - red - scarce & desirable  
 300\_227. Basketweave Open Edge ruffled basket - black amethyst - scarce color  
 90\_228. Blackberry Open Edge ruffled basket - powder blue  
 50\_229. Basketweave Open Edge ruffled basket - marigold  
 255\_230. Basketweave Open Edge JIP shaped basket - aqua - scarce in this color & shape.



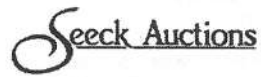
- 800\_231. Stippled Three Fruits collar based ruffled bowl w/ribbed back - blue - electric & pretty
- 70\_232. M'burg Diamonds tumbler - green
- 40\_233. Luster Rose tumbler - purple
- 250\_234. M'burg Hobnail butterdish w/N's Springtime bottom - amethyst - a rare butterdish top
- 300\_235. M'burg Hobnail cvd sugar bowl - amethyst - extremely rare, very few known
- 800\_236. Stag & Holly large fld IC shaped bowl - blue - electric & super, a dandy
- 225\_237. God & Home tumbler - blue - scarce, probably the best I've seen
- 120\_238. Beaded Shell tumbler - blue
- 65ea239. Fisherman's mugs (2) - purple - choice
- 650\_240. Peacocks ruffled bowl w/ribbed back - green - a super example, very hard to find
- 475\_241. Peacocks ruffled bowl w/ribbed back - purple - super!
- 135\_242. Australian Magpie ruffled sauce - purple
- 95\_243. Australian Swan ruffled sauce - purple
- 135\_244. Australian Kingfisher Variant ruffled sauce - marigold
- 135\_245. Australian Kangaroo ruffled sauce - marigold
- 225\_246. Australian Kingfisher large ruffled bowl - purple
- 165\_247. Grand Thistle tumbler - blue - very scarce tumbler
- 165\_248. Orange Tree ruffled bowl - blue
- 215\_249. Lotus & Grape fld round sauce - green - pretty
- 325\_250. N's Bushel Basket - aqua opal - lots of opal, butterscotch, nice
- 250\_251. N's Bushel Basket - ice green - scarce
- 145\_252. N's Bushel Basket - blue - nice
- 105\_253. N's Bushel Basket - marigold - super
- 105\_254. Persian Medallion large crimped edge ruffled compote - marigold
- 145\_255. Stippled Grape & Cable 9" plate - amethyst
- 255\_256. Stippled Grape & Cable 9" plate - blue - a pretty example, has minor pinhead on edge, rare
- 400\_257. Poinsettia milk pitcher - green - extremely rare color & nice
- 250\_258. Floral & Grape water pitcher - purple
- 165\_259. Orange Tree ruffled compote - aqua - super pretty & nice
- 375\_260. Grape & Cable pintray - irid. custard - very scarce
- 215\_261. Drapery 8" vase - ice green - very scarce & nice
- 275\_262. Strawberry bon bon - vaseline opal - rare & desirable, nice
- 300\_263. Strawberry bon bon - amberina red - also rare & nice
- 75\_264. Acorn Burrs spooner - green - scarce, nice
- 525\_265. Hearts & Flowers ruffled bowl w/plain back - ice blue
- 275\_266. Hearts & Flowers ruffled bowl w/ribbed back - white - scarce, nice
- X\_267. Birds & Cherries ruffled compote - blue - pretty(edge pinhead)
- 245\_268. M'burg Nesting Swan ruffled bowl - marigold - radium & super
- 225\_269. Kittens cup & sauce - marigold
- 250\_270. Corn vase - ice green - pretty, scarce
- 165\_271. Corn vase - green - has heat check in base, scarce
- 295\_272. Stippled Rays ruffled bowl - red - very scarce
- 250\_273. Stag & Holly giant rosebowl - marigold - nice example!
- 85\_274. Hen on Nest - marigold
- 300\_275. Fenton's Grape & Cable w/Persian Medallion interior ruffled fruit bowl - amethyst - scarce color
- 210\_276. Fenton's Grape & Cable w/Persian Medallion interior ruffled fruit bowl - blue
- 220\_277. Dragon & Lotus 3 in 1 edge bowl - green - pretty
- 85\_278. Peacock & Grape spt fld 9" plate - marigold
- 250\_279. Grape Arbor tankard water pitcher - marigold - very nice

- 600\_280. Many Fruits punch bowl & base - purple - pretty
- 95\_281. Fruits & Flowers bon bon - purple - pretty
- 95\_282. Fruits & Flowers bon bon - marigold - also pretty
- 325\_283. M'burg Peacock large ruffled bowl - amethyst - radium & super!
- 55\_284. Beaded Shell mug - amethyst - nice
- 850\_285. Embroided Mums 9" plate - ice green - extremely rare plate & very desirable
- 135\_286. Dragon & Lotus deep 3 in 1 edge bowl - green - nice
- 125\_287. Classic Arts rosebowl - marigold - very scarce
- 25\_288. Strawberry Wreath compote - marigold - minor spot of epoxy on base otherwise super, radium
- 450\_289. Leaf Chain 7" ruffled bowl - red - very rare & desirable
- 275\_290. Holly ruffled hatshape - red - cherry red color, scarce
- 35\_291. Rainbow 9" handgrip plate - purple - different
- 200\_292. Good Luck ruffled bowl w/ribbed back - blue - nice, scarce
- 10\_293. Inverted Feather parfait - marigold
- 205\_294. Horse Medallion ruffed fld bowl - green - scarce color
- 400\_295. Basketweave Open Edge JIP shaped basket - red - nice!
- 90\_296. Daisy & Plume ruffled compote - purple
- 75\_297. Daisy & Plume ruffled compote - green
- 50\_298. Daisy & Plume ruffled compote - marigold
- 35\_299. Brooklyn Bridge ruffled bowl - marigold - nice
- 180\_300. N's Town Pump - purple - super! a great example(has crack)
- 55\_301. Grape & Cable ruffled bowl - purple
- 50\_302. Question Mark round compote - marigold
- 40\_303. Peacock Tail ruffled compote - amethyst
- 15\_304. Prisms hdd compote - amethyst
- 500\_305. Acorn Burrs water pitcher - purple - nice, scarce
- 105\_306. Wreathed Cherry banana boat shaped sauce - amethyst
- 250\_307. Isaac Benesch & Sons ruffled adv. bowl - amethyst - nice
- 75\_308. Heron mug - amethyst - scarce
- 45\_309. Orange Tree mug - blue
- 225\_310. Horse Medallion fld rosebowl - blue - a super nice example
- 55-25 311. All BLUE tumblers - Butterfly & Fern, Milady, Floral & Grape, Bouquet (2), Grape & Gothic Arches, Lattice & Grape, Butterfly & Berry, Stork & Rushes, Ramble Rose - choice
- 40\_312. Thorn & Thistle fld ruffled bowl - marigold
- 155\_313. Wild Strawberry handgrip plate - amethyst - nice
- 650\_314. Lattice & Poinsettia fld ruffled bowl - blue - electric & nice
- 40-15 315. All PURPLE tumblers - Grape Arbor, Floral & Grape, Vineyard, Grape & Cable (2), Singing Birds, Raspberry, Maple Leaf, Panelled Dandelion - choice
- 700\_316. Leaf Chain 9" plate - blue - super pretty irid.
- 55,25x6 317. Question Mark bon bon - marigold
- Stippled Rays round sauce - blue
- Open Rose large ruffled bowl - green
- Plain 2 sides up basket - ice green
- Candlestick - marigold w/black base
- Cruet - marigold
- Drapery fld crimped edge bowl - aqua opal - not old
- Sold Choice
- 70,25 318. Grape & Cable tumbler - green
- Raspberry tumbler - green
- Sold Choice



70,35,10 319. Robin mug - marigold  
 Vintage mug - marigold  
 S-Repeat punch cup - purple  
 Wreath of Roses punch cup w/Persian  
 Medallion interior - blue  
 Stork & Rushes punch cup - amethyst  
 Sold Choice  
 65 - 20 320. Twins fruit bowl - marigold - damaged Peacock of the Fountain spooner - amethyst - cracked  
 God & Home mug - blue - not old  
 Storybook mug - red(65),  
 Agnew Nixon mug - amber(65),  
 Plain car vases - marigold  
 Engraved flowers bud vase - marigold  
 SCGC 1964 Indian toothpick - white  
 1982 ACGA spittoon - peach opal  
 Sailboat plate - marigold  
 Humidor - new  
 Sold Choice

[Back to home page](#)



## CARNIVAL GLASS CLUB INFORMATION

### Air Capital Carnival Glass Club

Secretary: Donald Kime, 15201 E. 47th S, Derby, KS 67037 (1-316-733-8424)  
 Dues: \$15.00 per year per family  
 Meetings: Every second month. February, April, June, August, October, December. The second Sunday at 2:30 P.M. Individuals homes.

### American Carnival Glass Association, Inc.

Secretary: Dolores Wagner, 5951 Fredricksburg Rd., Rt. 4, Wooster, OH 44691 (330) 264-3703  
 Dues: \$15.00 per family  
 Meetings: At convention in July, quarterly newsletter

### Australian Carnival Enthusiasts Association, Inc.

Secretary M. Dickinson, RSD Fryerstown, Victoria. Australia 3451 (054) 73 4351  
 Treasurer Mrs. K. Breward, 3/11 Butlers Rd. Ferntree Gully Victoria. Aust 3156 (03) 9752 2103  
 Dues \$12.00 per annum per family or \$10.00 a single \$15 per annum overseas  
 Meetings Meetings are held quarterly at members homes. Visitors are welcome 12 noon on.

### Canadian Carnival Glasses Association

Secretary: Margaret Hunt, 107 Montcalm Dr., Ketchener Ontario N2B 2R4  
 Dues: \$20.00 per year  
 Meetings: 6 to 8 a year. Convention: October 3, 4 & 5th 1996

### The Carnival Glass Society (UK) Ltd.

Secretary: Vernon Kelvin, 162 Green Lane, Edgware, Middx. HA8 8EJ. England  
 Dues: Overseas Members 15 pounds (Sterling) per year  
 Meetings: Convention during August in Mid-England and at get-togethers in members homes

### Carnival Companions

Secretary: Nigel Gamble, 24 Crabtree Ave., London, Ontario Canada N6G 2H7  
 Dues: \$7.50 / Donation per person, per year  
 Meetings: 5/6 mtgs per year, usually to a restaurant first, then a members home to view their collection.

### Gateway Carnival Glass Club

Treasurer: Karen Skinner, 108 Riverwoods Cove, East Alton, IL 62024 (618) 259-1373  
 Dues: \$5 per year, per family  
 Meetings: In the homes of members living in St. Louis & surrounding areas.

### Great Lakes Carnival Glass Club

Secretary: Maxine Burkhardt, 612 White Pine Blvd., Lansing, MI 48917  
 Dues: \$5.00 per year, per family  
 Meetings: At members homes 3 times/year. 1st Sun. in Feb., May, Aug. Conven. 1st wknd in Nov.

### Hoosier Carnival Glass Association

Secretary: Eunice E. Booker, 944 W. Pine Street, Griffith, Indiana 46319  
 Dues: \$5.00 yearly, per family  
 Meeting: Monthly - 3rd Saturday at 5:00 P.M. except February, July & August

### International Carnival Glass Association (ICGA)

Secretary: Lee Markley, Box 306 Mentone, IN 46539 (219) 353-7678, (219) 894-3451  
 Dues: \$15.00 per year  
 Meetings: Convention: 1 yearly - July or August, Newsletter - quarterly

### Keystone Carnival Glass Club

Secretary: Mary Sharp, 719 W. Brubaker-Valley Road, Lititz, Pennsylvania 17543  
 Dues: \$10.00 family membership per year (June - May)  
 Meetings: Second Saturday of each month at loof Hall, N. Broad Street, Lititz, PA at 7:30 P.M.

### L'Association Du Verre Carnaval Du Quebec

Secretary: J. Leo Richer, 3250 Leon Brisebois, Ile Bizard, Que. H9C 1T6, Canada 1-514-620-1541  
 Dues: \$20.00 (Canadian Money) per year, per family (Bilingual Newsletter - French/English)  
 Meetings: Meetings are announced in our newsletter at each two months.



**Lincoln-Land Carnival Glass Club**

Secretary: Ellen Hemm, N. 951, Hwy 27, Conrath, WI 54731  
 Dues: \$15.00 per year USA & Canada, \$20.00 Overseas  
 Convention: Each June. Newsletter 6 times a year, list of glass For Sale published every month.

**New England Carnival Glass Club**

Sec./Treas.: Lynn & Harold March, 10 Seminole Rd., Canton, MA 02021 (617) 821-3425  
 Dues: \$12.00 per year per family  
 Meetings: Feb. 18, Apr. 21, Jun. 23, Aug. 18, Oct. 20, and Dec. 8, 1996 at noon in the Pulaski Club Hall, Southbridge, Mass. The Club Convention is the second weekend in September.

**Northern California Carnival Club**

Treasurer: June McCarter, 1205 Clinton Drive, Modesto, California 95355  
 Dues: \$10.00 per year (individual or family, January 1 through December 31)  
 Meetings: 3rd Sun. in Jan., April and Oct., 11:00 AM to 3:00 PM, lunch at noon, Guiseppes's Restaurant, 2501 McHenry Avenue, Modesto, California.

**Pacific Northwest Carnival Glass Club**

Secretary: Bev Osbon, 20815 S. South End Rd., Oregon City, OR 97045 Phone: 1-503-663-4433  
 Dues: \$10.00 per year, due June 1 through May 31.  
 Meetings: 3 times/year, 2nd Saturday of April, 2nd wknd of Aug. (Conven.) and 2nd Sat. of November.

**San Diego County Carnival Glass Club**

Secretary: Diane Fry, 5395 Middleton Rd., San Diego, CA 92109-1525  
 Dues: \$18.00 Household, USA & Canada, \$23.00 Foreign -- annually  
 Meeting Place: Handlery Hotel, San Diego - April 13, June 1, Sept. 21, Dec. 7, 10AM-3PM  
 Educational program, noon lunch, quarterly newsletter, March convention

**San Joaquin Valley Carnival Glass Club**

Treasurer: Joan Steskal, PO Box 389, Ahwahnee, CA 93601  
 Dues: \$5.00 per year, payable March 1st  
 Meetings: Luncheon s in Mar., Sep., Dec., in the Cedar Lanes Restaurant, Fresno, California

**Southern California Carnival Glass Club**

Treasurer: Betty Robertson, 1430 Kendall Avenue, Camarillo, California 93010-3606  
 Dues: \$12.00 for single or \$18.00 for couples  
 Meeting Place: Golden Sails Hotel, Long Beach, California, at 10:00 A.M. setup, lunch served at noon, meet 3rd Sunday of February, May, August and November.

**Tampa Bay Carnival Glass Club**

President: Naomi Calkins, 120 Woodland Court, Safety Harbor, FL 34695, 813-725-4145  
 Dues: \$7.50 per household, year starts March 1st.  
 Meetings: Members homes, 3rd Sun. of each month except Jun, Jul, Aug. Convention in February.

**Texas Carnival Glass Club**

Treasurer: Matzi Thrasher, 611 W. Main St., Tomball, TX 77375, (281) 351-2202  
 Dues: \$20.00 per year per family  
 Convention: Houston, mid-February, quarterly meetings May, Aug, Nov

**Western N. Y. Carnival Glass Club**

Secretary: Linda Matties, 1246 Flynn Road, Rochester, NY 14612  
 Dues: \$5.00 single membership + 2.00 associate  
 Meetings: Union Congregational United Church, N. Main Street, Churchville, NY, 3rd Wed. of each month, Sept. - June, 7:30 PM

**ATTENTION CLUB OFFICERS**

You must let me know of changes to this list.  
 Jackie Fortney - HOACGA Bulletin Secretary

**H.O.A.C.G.A.****CLUB NEWS & GENERAL INFORMATION**

The Newsletter is published on the 15th of each month. The Heart of America Carnival Glass Association is a Not-for-Profit organization registered in the State of Missouri.

Members are encouraged to contribute articles for publication in the newsletter and to advertise carnival glass for "sale" or glass "wanted". Articles may be educational in nature or about collecting experiences, or letters of interest to the membership. Other carnival glass organizations may announce their meetings and/or conventions. Auctioneers who are members may announce their future auctions. Members may announce their upcoming carnival glass educational books, price guides, and other pertinent publications; after the initial announcement the information will only appear in the bulletin "Resource Section". All items submitted for publication will be published in the next months bulletin or as soon as possible. The final decision to publish the articles will be made by the Board of Directors. Some articles may be edited prior to publication. Articles of an offensive nature or articles intended to discredit individuals will not be published.

Membership is \$25.00 U.S. & Canada, \$40.00 Foreign per family or individual. All monetary amounts quoted are in U.S. dollars. Membership year starts the month your dues were paid. All checks are to be made payable to H.O.A.C.G.A. and mailed to the Secretary, as listed on the inside front cover. All articles and items for publication in the bulletin are to be sent to the Bulletin Secretary whose name and address appear on the inside front cover.

**MEMBERSHIP APPLICATION  
H.O.A.C.G.A.**

New Member       Renewal

*\$25.00/year U.S. & Canada --- \$40.00/year Foreign*

NAME \_\_\_\_\_

ADDRESS \_\_\_\_\_

ZIP CODE ( NINE DIGITS)

TELEPHONE \_\_\_\_\_

REFERRED BY \_\_\_\_\_

Send to: Ed Kramer, 4305 W. 78th Street, Prairie Village, KS 66208



## H.O.A.C.G.A. - CLUB INFORMATION

The purpose of the Heart of America Carnival Glass Association is to promote the growth and continuation of the Carnival Glass collecting hobby and to provide support to the many collectors by providing current information about the hobby.

Growth is accomplished by supplying educational information for the collector and soliciting new collectors into the hobby.

A Convention is held annually in April in conjunction with the annual meeting (Convention date always includes the 4th Friday). Some of the activities provided at the convention are:

- \* Members provide Room Displays with glass from their collection.
- \* Members are encouraged to bring glass for Sale.
- \* Educational Seminars are provided by members.
- \* A Major Carnival Glass Auction is provided.
- \* The Convention offers members an opportunity to meet new collectors, renew old friendships and enjoy discussing carnival glass with other knowledgeable collectors.
- \* A banquet is held with a Carnival Collector as our Speaker.
- \* A Hospitality time is provided by the club. This is a time of relaxation and visiting with other members.

It takes the support of all collectors and members to promote the hobby in order that its growth and expansion can continue.

In order to obtain our objective, the members must financially support the organization. The Heart of America Carnival Glass Association receives its financial support through the Annual Membership dues and the sale of the following.

- \* **Membership Dues** - \$25.00 per year - U.S. & Canada. \$40.00 per year for Foreign. The Membership Year is from the date of joining to one year later. Dues are set by the Board of Directors to support the

publication of the monthly bulletin, typing, printing and mailing.

- \* **Educational Series - Book I** - 148 articles with pictures (black and white) on a variety of Carnival Glass Patterns.

- \* **Educational Series - Book II** - 180 articles with pictures (black and white) of Carnival Glass Tumblers

- \* **Educational Series - Book III** - 150 articles with pictures (black and white) of Bon Bons, Bowls, Drinking Vessels, Novelties, Rose Bowls, and Table Sets. Also included is a listing of 500 rarities.

- \* **Hartung Carnival Glass Pattern Books** - A set of 10 books identifying Carnival Glass Patterns. These books are a must for all Carnival Glass Collectors, especially for the beginner. These are the only complete set of books available that identifies the majority of the carnival glass patterns. Sketches are in black and white.

- \* **Pattern Notebook** - A notebook containing sections on Mugs, Table Sets, Rosebowl, Water sets (including painted sets), Plates (small, regular & chop), Compotes (large, regular & small), Punch Sets and Vases. Each section of the notebook identifies each pattern with a **COLOR** picture along with information about the Maker and colors of each different pattern.

- \* **Souvenirs** - Periodically H.O.A.C.G.A. makes a souvenir to be sold to members. Souvenirs have been made since 1974, a few of these are presently available. They are the small Good Luck plate in ruby red, the Green Opalescent - Fenton, Cobalt - Millersburg, Marigold - Imperial, and Teal - Dugan Bells. Each year that Souvenirs were made, Whimseys were also made and sold at the convention banquet.

- \* **Video Tapes** - Video Tapes of educational programs given during the various conventions are available. A complete listing of the available video tapes are shown on the Order Form, which is part of this section of the Bulletin.



**SEPTEMBER 1997**  
**HOACGA MONTHLY MEETING**

The next monthly meeting of the Heart of America Carnival Glass Association will be on Sunday, September 28, 1997 at 2:00 P.M. at the PARK LANE MEDICAL CENTER at 5151 Raytown Road, Raytown, Missouri. Park West of the doctors building, which is on the south end of the hospital complex. We will discuss patterns with leaves for Fall.

About 20 members attended the August 24, 1997 meeting including some guests from the Westmoreland Club. John & Lucile Britt displayed 40 pieces of their fabulous glass and John gave a presentation on the items most of which will be in the Britt auction at the ICGA convention next June at the Embassy Suites near the KCI Airport. An embroidered Mums sapphire blue bowl, a marigold Inverted Feather cordial (only 4 or 5 known), and a vaseline Opal Swan were among the many pieces discussed.

Norma Strohm won the door prize to be awarded later.

Hope to see you at the September meeting!

Ed Kramer, Secretary HOACGA

**NOTES FROM THE SECRETARY**

- 1.) We still have 20 plum opal votives and 4 blue opal votives from the 1997 and 1996 banquets respectively. They are \$20.00 each, postage included. This is the last of these.
- 2.) Changes to your listing for the Roster should be sent to the secretary by the end of September

Ed Kramer  
Secretary HOACGA

**WELCOME NEW MEMBERS**

We welcome the following new members:

Mr. & Mrs. Sam Finney .....	Crossett, AR
Galen & Maxine Sorensen .....	Harlan, IA
Kenneth & Helen Berger .....	Louisville, KY
Zygmunt & Marianne Kondzielewski .....	Humboldt, Sask., Canada
Normand DesRosiers .....	Sorel, QC, Canada
Jerry & Bonnie Svec .....	Rockville, MD
Ernie & Pattie Hilling .....	Cresskill, NJ
Audrey Barnhart .....	Houston, MO
Nancy Ruda .....	Bristow, NE
Tim & Diana Blankenship .....	Old Hickory, TN
Eugene & Brenda Ledford .....	Burnsville, NC
Pete & Paula Bingham .....	Riesel, TX
Tom & Carol Hughey .....	Columbia, MO
Francis & Janet Tate .....	Belvidere, IL
Wm & Bobbi Hatfield .....	Buffalo Grove, IL
William Weber & Carolyn Harley .....	Jackson, MI
Joan Wright .....	Manchester, NH
James Bettis .....	Jacksonville, IL
Dan & Vicki Gearhart .....	Winthrop, IA
Bill & Mauri Payne .....	Amirsville, VA
Ed & Diane Rosington .....	North Greece, NY

We thank those members sending us new members:

Chuck Kremer	Bernie & Nancy Mae
Robert & Elaine Cooper	Yvan Beaudry
Bruce Edwards	Bob & Imogene Grissom
Swede Tilberg	Gale Eichhorst
Ginger Riffel	Alton Jones
Pattie Harris	John & Lucile Britt
Alberta White	Don & Barb Chamberlain
Carl Burns	Bill & Sharon Mizell

Ed Kramer, Secretary HOACGA



### SHIPPING AND HANDLING (S&H) INFORMATION

The shipping charges to USA members are as indicated for each item. The shipping charges to members who reside outside the USA will be the actual cost. Upon receipt of item(s), the member will be expected to reimburse the club for the actual cost of shipping, as indicated by the postage on the package. At the time of placing your order, please indicate your shipping preference (air or surface). Unless otherwise specified, items will be shipped by surface mail.

### ORDER FORM - SOUVENIRS & BOOKS

HOACGA Educational Series Book I .....	\$15.00
USA S&H for each book .....	\$2.50
Total .....	\$17.50
HOACGA Educational Series Book II.....	\$17.50
USA S&H for each book .....	\$2.50
Total .....	\$20.00
HOACGA Educational Series Book III (USA S&H included) .....	\$20.00
<b>H.O.A.C.G.A. SOUVENIRS:</b>	
1993 Ruby Red 6" "Good Luck" Plate .....	\$37.50
(20th Anniversary)	
1989 Teal Bell .....	\$35.00
(Honors Dugan Glass Company)	
1988 Marigold Bell.....	\$35.00
(Honors Imperial Glass Company)	
1987 Cobalt Blue Bell .....	\$35.00
(Honors Millersburg Glass Company)	
<b>SOLD OUT</b> 1986 Green Opalescent .....	\$35.00
(Honors Fenton Glass Company)	

Include \$2.50 for USA S&H of each *above* souvenir.

**PLATE HOLDERS - Dozen** Clear plastic base, white wire back  
holds plates and bowls .....
 \$21.50 || (USA S&H Included) |  |

TOTAL \$ \_\_\_\_\_

SEND ORDERS TO:

ED KRAMER  
4305 W. 78th Street  
Prairie Village, KS 66208

Name \_\_\_\_\_

Address \_\_\_\_\_

### ORDER FORM - VIDEO TAPES

#### H.O.A.C.G.A. CONVENTION SEMINAR VIDEO TAPES

"Red Carnival Glass" .....	\$20.00
(Richard Cinclair, Bob Allaire & Joyce Seale)	
"Shades of Blue" - (Richard Cinclair) .....	\$20.00
"Poppy & Rose Show Pieces" - (Tom Mordini).....	\$20.00
"Fenton Two Flower" - (Bob Stremming).....	\$20.00
"Carnival Glass Smalls" .....	\$20.00
(Eleanor & Jack Hamilton)	
"Small Plates" - (Smokey Cloud) .....	\$20.00
"Hatpin & Hatpin Holders" - (Clint Fox).....	\$20.00
"Northwood Peacock & Urn Ice Cream Sets" .....	\$20.00
(Harold Cox)	
"Millersburg Big Fish & Trout & Fly" .....	\$20.00
(Singleton Bailey)	
"Carnival Glass Collecting Experiences" .....	\$20.00
(Carl & Ferne Schroeder)	
"Heinz 57 Variety Carnival Glass Collection" .....	\$20.00
(Jerry & Carol Curtis)	
"Little Sauces" - (Garth Irby) .....	\$20.00
"Miniatures" - (John & Lucile Britt) .....	\$20.00
"Table Sets" - (Leonard, Kremer & Grissom) .....	\$20.00
"Plates" - (Ruth Green & Richard Cinclair) .....	\$20.00
"94 Britt Award Luncheon" (Floyd & Cecil Whitley) .....	\$20.00
"Plethora of Patterns" - (Dean & Diane Fry) .....	\$20.00
"Millersburg" - (Dick & Jennie Hostetler) .....	\$20.00
"Swung Vases" - (Dave & Joan Doty).....	\$20.00
"Holly Pattern" - (John Mikkonen).....	\$20.00
"95 Britt Award Luncheon" - (Carl & Ferne Schroeder).....	\$20.00
"95 HOACGA Banquet" - (Floyd & Cecil Whitley) .....	\$20.00
"96 Britt Award Luncheon" - (Chuck & Marge Kremer) .....	\$20.00
"96 HOACGA Banquet" - (Carl & Eunice Booker).....	\$20.00
"Imperial Glass" - (Norene Duran) .....	\$20.00
"The Molding Process"-(Howard Seuffer of Fenton Glass Co.) .....	\$20.00
"Iridescence" - ('97, John Muehlbauer) .....	\$20.00
"Plates" - ('97, Judy Maxwell) .....	\$20.00
"97 Britt Award Luncheon" - (Marie McGee) .....	\$20.00

TOTAL \$ \_\_\_\_\_

USA S&H INCLUDED WITH PRICE OF TAPE

SEND ORDERS TO:

ED KRAMER  
4305 W. 78th Street  
Prairie Village, KS 66208

Name \_\_\_\_\_

Address \_\_\_\_\_



## ORDER FORM - BOOKS

### HARTUNG CARNIVAL GLASS BOOKS

*(Black and white sketches)*

_____ Book 1 - \$6.00	_____ Book 6 - \$6.00
_____ Book 2 - \$6.00	_____ Book 7 - \$6.00
_____ Book 3 - \$6.00	_____ Book 8 - \$6.00
_____ Book 4 - \$6.00	_____ Book 9 - \$6.00
_____ Book 5 - \$6.00	_____ Book 10 - \$6.00

\_\_\_\_\_ Complete Set of 10 Books (#1 thru #10) - \$60.00

(Hartungs "Northwood Pattern Glass" included with a Set)

USA S&H - Include \$1.00 each, for shipping when purchasing books separately.

Maximum of \$6.00 shipping for a set.

### H.O.A.C.G.A. PATTERN NOTEBOOK

*(COLOR Photos)*

_____ Mugs .....	(1980) .....	\$7.00
_____ Table Sets (Photos 1 thru 40) .....	(1981) .....	\$7.00
_____ Water Sets 1 (Photos 1 thru 60) .....	(1982) .....	\$7.00
_____ Water Sets 2 (Photos 61 thru 120) .....	(1983) .....	\$7.00
_____ Water Sets 3 (Photos 121 thru 167) .....	(1984) .....	\$7.00
_____ Rosebowl 1 (Photos 1 thru 60) .....	(1985) .....	\$7.00
_____ Rosebowl 2 (Photos 61 thru 101) .....	(1986) .....	\$7.00
_____ Small Plates 1 (Photos 1 thru 48) .....	(1987) .....	\$7.00
_____ Small Plates 2 (Photos 49 thru 98) .....	(1988) .....	\$7.00
_____ Chop Plates (Photos 1 thru 40) .....	(1989) .....	\$7.00
_____ Regular Plates 1 (Photos 1 thru 48) .....	(1990) .....	\$7.00
_____ Regular Plates 2 (Photos 49 thru 81) .....	(1991) .....	\$7.00
_____ Compotes 1 (Photos 1 thru 57) .....	(1993) .....	\$8.00
_____ Compotes 2 (Photos 58 thru 113) .....	(1994) .....	\$8.00
_____ Punch Sets, 2nd Edition (Photos 1 thru 36) .....	(1995) .....	\$8.00
_____ Vases A - C (Photos 1 thru 57) .....	(1996) .....	\$9.00
_____ Vases D - G (Photos 58 thru 117) .....	(1997) .....	9.00
_____ Complete Pattern Notebook .....		\$138.00
_____ USA S&H for complete notebook .....		\$5.00
_____ USA S&H for each selection .....		\$1.00

(USA Maximum S&H \$5.00)

TOTAL \$ \_\_\_\_\_

SEND ORDERS TO:

ED KRAMER

4305 W. 78th Street

Prairie Village, KS 66208

Name \_\_\_\_\_

Address \_\_\_\_\_

## UPCOMING EVENTS

### AYERS AUCTION SERVICE

**Hello members!** Just a little note to let you know about some of our highlighted items for the September 20, 1997 auction at the Best Western Eastlight Inn, E. Peoria, IL. 1-800-325-6088. The auction will begin at 9:30 AM with 324 items to be sold. A few items included are: W-Dandelion Pitcher, B-Birds & Cherry chop plate (only one known), M-Star & File tall Sundae's (6, a perfect set of the only 6 know from Australia), M-Omnibus pitcher & 6 tumblers, M-Hand vase, M-Fish vase, R-Holly bowl, G-18" Funeral vase Fenton Rustic, R-Acorn bowl, R-6" Vintage bowl, M-Dragon & Lotus plate, A-Hattie chop plate, G-Peacock & Grape plate, M-Soldier & Sailors of IL plate, A-Jockey Club bowl, A-Eat Paradise Soda's bowl. This is just a partial listing. We have over 30 plates for all of you plate collectors.

Due to the delays of receiving items sent through U.P.S., we apologize that our color brochures will not be arriving at the homes of those on the mailing list until 1 short week before the sale.

Please check the website "www.woodsland.com/ayers" for a listing with pictures. All phone in bids must be in by Thursday night, September 18th at (309) 925-3115. See you at the auction.

### 1997 and 1998

#### EARLY BIRD CARNIVAL AUCTION CALENDAR

October 4, 1997	Mickey Reichel Auction Center, Boonville, MO
January 3, 1997	7th Annual New Years Extravaganza, Boonville, MO
February 21, 1997	Boonville, MO Carnival Auction Center
March 21, 1997	Boonville, MO Carnival Auction Center
April 11, 1997	Boonville, MO Carnival Auction Center
May 9, 1997	Boonville, MO Carnival Auction Center

Call us today, if you have carnival glass to auction (1 piece or collection) we need early notice to do advertising etc. Thanking you in advance - Mickey Reichel  
Call 816-882-5292 or 816-882-5283. Write to: 516 Third Street, Boonville, MO 65233-1536



## UPCOMING EVENTS

### CARNIVAL GLASS AUCTION - Lapeer, MI

SATURDAY - OCTOBER 4, 1997 - 10 A.M. From the Bruce & Gladys Irish Collection of Michigan. We are adding a few more 'top-end only' consignments. Call immediately to participate in this excellent Auction!

Advance Notice: A FEW HIGHLIGHTS INCLUDE:

- |   |  |
|---|--|
| <p>ACORN BURRS 8 PC. PUNCH SET, White, Extremely Rare, 1 of 4? Known, Nice Set.</p> <p>FARMYARD BOWL, Purple, Extra Rare w/3 in 1 Edge, Top of the Line- Superior Irid.!</p> <p>GRAPE &amp; CABLE 12 PC. MASTER PUNCH SET, Ame, Super-Super Pc., Int. &amp; Ext. Stunning, One of Better Masters!</p> <p>GRAPE &amp; CABLE LG. COV. COMPOTE, Pur, Beautiful- Absolutely Gorgeous- One of Best We've Seen!</p> <p>PEACOCK ON THE FENCE BOWL, A.O., Nice Exam. of N.W. Aqua Op.!</p> <p>ORANGE TREE 8 Pc. PUNCH SET, Bl, Good Color, Nice Set.</p> <p>POPPY SHOW PLATE, Bl, Exc. Irid., has no harm nick on back side.</p> <p>GOOD LUCK BOWL, A.O., perfect cond., has tiny infg. bubbles in glass.</p> <p>HEARTS &amp; FLOWERS BOWL w/ PCE, Ice Blue, On Scarce Side.</p> <p>HEARTS &amp; FLOWERS BOWL w/ PCE, Ice Green, On Rare Side (minute flake on Edge).</p> <p>DAISY &amp; DRAPE VASE, Ice Green, Good Piece- Rare!</p> <p>FR. CRUCIFIX CANDLE STICKS, Mrg, Very Rare Set- Beautiful Irid.!</p> <p>GRAPE &amp; CABLE COV. COMPOTE, Pur, Tough to Find, Beautiful Example.</p> <p>GRAPE &amp; CABLE "OLD ROSE DISTILLERY" Plate, Gr, Rib Back.</p> <p>Grape &amp; Cable Stip. Bowl w/ PCE, Pumpkin, Beautiful &amp; Stunning.</p> <p>Grape &amp; Cable 4 Pc. Breakfast Set, Ame.</p> <p>(2) Grape &amp; Cable 7 Pc. Water Sets, Ame, Beautiful Color.</p> <p>Good Luck Bowl w/ PCE, Bl, Rib Back, Near Elec. Irid.!</p> <p>Hearts &amp; Flowers Ruf. Bowl, Ice Blue.</p> <p>Orange Tree Cov. Butter, Mrg, Beautiful- One of best Bob's Seen.</p> | <p>Orange Tree Mug, Gr, Tough Color.</p> <p>Orange Tree Loving Cup, Gr, Tough Color.</p> <p>Octagon Cov. Sugar, Unusual Teal Bottom, Green Top.</p> <p>Peacock at the Fountain 4 Pc. Table Set (sold individually).</p> <p>Tree Trunk Mid-Size, Gr, 13½" x 4½" Base.</p> <p>Tree Trunk 9" Vase, Bl, Exc. Color.</p> <p>Tree Trunk 13½" Vase, Bl, Beautiful.</p> <p>Orange Tree L.C. Shape Bowl, Gr, Hard Color &amp; Great Irid.</p> <p>Hobstar 4 Pc. Breakfast Set, Gr (selling separately).</p> <p>Mb. Trout &amp; Fly Bowl, Ame, Radium Ir.</p> <p>Mb. Whirling Leaves Bowl, Ame, Beautiful Gold on Leaves, Exc. Radium Irid.</p> <p>Mb. Whirling Leaves Tri-Corner Bowl, Mrg, Beautiful Radium Irid. (Rare).</p> <p>Mb. Rays &amp; Ribbons Bowl, Ame, Beautiful Exam. Of Radium Irid.</p> <p>Mb. Holly Sprig Tri-Corner Nappy, Gr, Rare Shape.</p> <p>Mb. Grape Wreath 10" Sq. Bowl, Star &amp; Bar Int., Mrg, Rad. Irid, Rare Shape.</p> <p>Mb. Blackberry Wreath 6" Bowl, Mrg, Tightly Crimped Edge, Rad. Ir.</p> <p>Mb. Strawberry Wreath Ruf. Bowl, Pur, Rad. Ir.</p> <p>Near Cut Tumbler, Advertising Souvenir.</p> <p>Headress Bowl w/ Cosmos &amp; Cane Ext, Mrg, U.S. Glass.</p> <p>Horses Head Nut Bowl, Blue.</p> <p>Bushel Basket, Aq. Opal, Butterscotch Effect.</p> <p>Acorn Burrs 4 Pc. Berry Set, Ame.</p> <p>Good Luck Ruf. Bowl, Mrg, Rib Back.</p> <p>Hanging Cherry Cov. Butter, Mrg, Good Color.</p> |
|---|--|

ALBRECHT AUCTION SERVICE, INC.  
3884 Saginaw Rd., Vassar, MI 48768 (517) 823-8835

# AUCTION

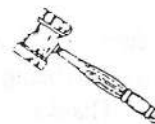
## CARNIVAL GLASS

*Sun., Oct. 12, 1997, at 1 pm*  
at the gallery in Amissville

Offering will include:

Blue **Captive Rose** 9" plate; super purple **Good Luck** 9" plate; red **Blackberry Spray** hat; aqua opal **Daisy & Drape** vase; green **Three Fruits** 9" plate; purple **Raspberry** 7-pc. waterset; awesome blue **Hobnail Vt.** 17" vase; ice blue **Peacock at the Fountain** bowl; + **MUCH MORE!!**

Detailed catalog available Sept. 21; please call (540)937-4142 for more information.



**Bill Payne Auctions, inc.**

VA.A.F. #330

540-937-4142 ★ 540-675-3729 ★ P.O. Box 178 ★ Amissville, VA 20106  
Antiques ★ Real Estate ★ Liquidations ★ Estate Auctions



## CORRESPONDENCE

Dear HOACGA,

I was sitting here thinking it is almost time for the August monthly mailing. Then the thought occurred to me, my dues are this month. I apologize for the lateness of getting the check to you.

I look forward each month to the articles and list of "For Sale" and "Wanted" ads. Your publication is excellent and very informative.

I made two pleasantly unexpected purchases this year. One was a 3 footed red (amberina) water lily small bowl for \$23. Another was a marigold mirrored Lotus rose bowl for \$15. I'm sure the antique shop and the auctioneer had no idea of the real values. Lucky for me!!

Can't wait for the August issue. I hope I'm not too late.

Lois Lee Porter  
Severna Park, MD

Dear HOACGA,

Please find enclosed my renewal form & check for \$25.00 Thank you to the entire staff for the most educational & information newsletter I receive every month. Thank you for all the dedication and hard work.

Greg & Rene Cline  
Dewitt, MI

Dear HOACGA,

I am excited and pleased to send you my 1 year membership dues for HOACGA. I have heard so many great things about HOACGA & look forward to being a part of them. Please put my husband, Ed, on as a member with me. Thanks.

Diane Rosington  
North Greece, NY

## H.O.A.C.G.A. BULLETIN ADVERTISEMENT POLICY

1. All advertisements of glass for SALE or WANTS must be received by the Bulletin Secretary no later than the LAST DAY OF THE MONTH to insure being published in the next bulletin.
2. Members may advertise ten (10) "For Sale" and/or "Wants" per month. The "For Sale" Glass must be members glass and not the property of a nonmember. Advertising is at no cost.
3. Only "OLD CARNIVAL GLASS" items or H.O.A.C.G.A. Souvenirs will be published.
4. Damage or flaws should be noted.
5. All "For Sale" items must be priced; NO BID ITEMS WILL BE PUBLISHED.
6. A 5 day return privilege, at buyer's expense, providing it is not advertised, or as discussed.
7. Postage and Insurance is to be the responsibility of the buyer, both when returning and receiving the glass.
8. The sender of the glass (be it the seller or the buyer returning it) is responsible for the proper packaging of the glass.
9. When submitting FOR SALE and WANTED ads, please write legibly so that your ads can be read. **\*\*IMPORTANT\*\*** - be sure to include your name, address & phone number on the ad itself. Ads submitted without this vital information must be left out.
10. H.O.A.C.G.A. does not accept responsibility for accuracy of any advertisement.

### USE THE FOLLOWING ABBREVIATIONS FOR GLASS DESCRIPTION.

A	Amethyst	HA	Honey Amber	P	Purple
AMB	Amber	IB	Ice Blue	PRL	Pearl
AO	Aqua Opal	IG	Ice Green	PM	Pastel Mar.
B	Blue	IGO	Ice Green Opal	PO	Peach Opal
BO	Blue Opal	LAV	Lavender	R	Red
CLM	Clambroth	M	Marigold	RA	Amberina
EB	Electric Blue	MMG	Marigold on	SM	Smoke
H	Horehound		Milk Glass	T	Teal
G	Green	VAS	Vaseline		

Note: If you wish to describe a piece as light or dark, use the body of the ad.

EI - Excellent, GI - Good, LI - Iridescence



## CARNIVAL GLASS FOR SALE

Douglas Snow, 2412 Ashford Blvd., Flushing, MI 48433  
Phone: (810) 732-8197

M	Pony 6 ruffle bowl.....	70.00
B	Holly 9" bowl 3/1 edge .....	50.00
M	Horse Heads footed JIP .....	90.00
A	Peacock Tail 8½ bowl 3/1 edge .....	65.00
M	Blackberry Spray Hay .....	40.00
G	Coindot 8" ruffled bowl .....	45.00
M	Shell 8" bowl .....	45.00
W	Fine Cut & Roses footed candy dish.....	85.00
M	Beaded Basket.....	45.00
G	Blackberry Spray ruffled edge compote .....	50.00

Richard A Commini, 4 Bayberry Drive, Bordentown, NJ 08505-2702  
Phone: (609) 298-6979

B	EI	Orange Tree punch set 4 cups.....	200.00
M	EI	9½" Luster Rose ruffled bowl .....	45.00
M	EI	9" Holly ruffled bowl .....	40.00
AQ/BEI		4 Pillars vase (N) 11" rough ed .....	95.00
M	EI	Orange Tree punch bowl & base.....	200.00
G	EI	Imperial Grape punch base .....	45.00
A	EI	Imperial Star of David ruffled bowl .....	125.00
G	EI	Pansy ruffled 9" bowl .....	45.00
M		Northwood Stippled Rays 9½" ruffled bowl.....	50.00
B		Two Flowers 7" deep bowls, pair.....	85.00

Gladys Hutchison, RT 1 Box 259A, Stockton, MO 65785  
Phone: (417) 276-4119

W		Hearts & Flowers 8 ruffle bowl pretty, 1 point missing ....	120.00
G		Luster Rose creamer .....	45.00
G		Heavy Grape chop plate, nice.....	290.00
M		Waterlily footed 9" bowl, dark .....	75.00
AO		Three Fruits meander stippled bowl.....	500.00
M		Windflower 9" plate.....	75.00
W		Grapevine Lattice 6½" ruffled plate .....	60.00
B		Stork & Rushes tumbler, nice .....	42.00
G		Vintage 5" bowl.....	22.00
PO		Petals and Fan sm ruffled berry bowl .....	45.00

## CARNIVAL GLASS FOR SALE

Steve & Pat Beranek, 305 Pleasant St., Box 126, Lost Nation, IA 52254  
Phone: (319) 678-2425

SM/LAV	Double Stem rose bowl.....	165.00
PO	Starfish compote base crack .....	25.00
P	Lined Lattice 7" vase .....	135.00
M	Tree Bark var. brass cherub candleholder .....	35.00
B	Little Flowers 5 pc. berry set matching .....	285.00
P	Strawberry PCE bowl .....	165.00
P	Diamond Points 9" vase.....	55.00
M	Drapery 7" vase.....	110.00
P	Three Fruits medallion bowl, small chip.....	125.00
B	Butterfly & Berry 9" vase .....	80.00

Marlin L. Blosser, 4705B Charles Road, Mechanicsburg, PA 17055  
Phone: (717) 975-2920

A	EI	Stork & Rushes berry bowls (4) .....	ea. 30.00
B	EI	Dragon & Lotus 9" ICS bowl .....	75.00
IB	EI	Concave Diamond tumblers (6) .....	ea. 35.00
M	EI	Diamond Lace 9" low ICS bowl .....	45.00
M	EI	Fentonia creamer.....	75.00
M	EI	Golden Grapes rose bowl.....	25.00
M	EI	Grape & Cable cologne bottle w/stopper.....	225.00
M	EI	Heavy Grape master berry, ruffled .....	35.00
M	EI	Lustre & Clear creamer .....	20.00
M	EI	Octagon tumblers (6) .....	ea. 30.00

Donald L. Harris, 527 Lavina Drive, Mechanicsburg, PA 17055  
Phone: (717) 790-0412 Send .55 stamp for large list of for sale glass

A	EI	Peacocks master berry bowl, Mlbrg .....	225.00
*	EI	Dragon & Lotus 9" ruffled bowl, amber/opal .....	250.00
A	EI	Isaac Benesch 5" ruffled dish .....	325.00
B	EI	Pulled Loop 12" vase.....	95.00
*	EI	Fine Rib 12" vase, red/opal .....	500.00
B	EI	Big Basketweave 11" vase .....	225.00
G	EI	Grape Wreath vt 9" ruffled bowl, radium .....	75.00
M	EI	Hanging Cherries 5" berry bowl, Mlbrg .....	100.00
B	EI	Rustic 17½" mid-size funeral vase .....	85.00
B	EI	Vintage Leaf 8" flat plate .....	125.00



## CARNIVAL GLASS FOR SALE

Ted L. Sheibley, 52 Meadow Brook Court, New Cumberland, PA 17070  
Phone: (717) 770-0616 Layaways available

B	EI	Thin Rib 10" vase, sapphire .....	225.00
B	EI	Fruit & Flowers 2 handled bon bon .....	165.00
P	EI	Kingfisher 5" ruffled bowl .....	100.00
P	EI	Sunflower 9" low ruffled bowl .....	85.00
P	EI	Octagon stemmed wine .....	65.00
W	EI	Fanciful 9" low ruffled bowl .....	145.00
R	EI	Two Flowers spatula footed bowl .....	450.00
A	EI	Cosmos varient 9½" ruffled bowl .....	65.00
A	EI	Beaded Shell tumbler .....	45.00
W	EI	Persian Garden 7" plate, pool/pearl ext .....	125.00

Bradley L. Johnson, C/O 835 South Spencer Street, Mesa, AZ 85204  
Phone: (None)

A	GI	Northwood raspberry sauceboat .....	150.00
M	GI	Fenton Strawberry bon bon .....	80.00
EB	EI	Sunflower 8" footed bowl, electric & nice .....	675.00
P	EI	Wishbone & Spades 6" plate, electric & nice .....	650.00
G	EI	Vintage compote, nice .....	100.00
B	EI	Vintage 6" low ruffled bowl, a beauty .....	115.00
P	EI	Dugan Cherry 8" footed bowl, wide CRE .....	225.00
B	EI	God - Home tumbler .....	210.00
G	EI	Fenton Peacock Tail 3/1 edge bowl .....	195.00
B	EI	Fenton footed Grape & Cable plate .....	205.00

Dick Wetherbee, 875 Stafford St., Rochdale, MA 01542  
Phone: (508) 892-4420

M	EI	G&C (N) 6" handled nappy, made from punch cup .....	65.00
PO	EI	Cherry Panels 7" 3 ftd bowl CRE outstanding color/opal ..	115.00
P	EI	Scroll embossed 7½" bowl, file ext., gorgeous .....	95.00
M	EI	Tumble-up 6" bottle with the glass etched IET .....	45.00
G	EI	Grape & Cable 9½" fruit bowl 3 ftd w/plain int, rare col.	295.00
B	EI	Open Lace basketweave 5" round ruf hat, great .....	45.00
M	EI	Butterfly & Berry 3 ftd claw foot spooner, perfect .....	65.00
P	EI	Nippon 8½" fluted bowl, mfgers chiggers on base, no harm	135.00
W	EI	Holly 9" fluted bowl, outstanding frosty color .....	155.00
M	EI	Q-Marks 6½" ruffled plate compote, Georgia Bell back ....	125.00

## CARNIVAL GLASS FOR SALE

Bill Or Lori Deering, 13176 158th St., Jupiter, FL 33478  
Phone: (561) 743-8834 leave message, call will be returned. Layaway avail.

A		Stag-n-Holly 8" ICS bowl, exc .....	275.00
B		Good Luck bowl ruffled exc multi color .....	475.00
W		Grape Vine & Latic low ruffled plate, bowl, exc irid .....	115.00
M		Grape Arbor tankard 6 pc. set v pretty .....	425.00
M		Two Flowers lg ball ftd bowl v pretty .....	80.00
M		Horse Med JIP ftd bowl, v nice .....	130.00
A		Dragon & Lotus low ruff bowl, exc .....	145.00
P		Three Fruits med ftd bowl beautiful elec highlights, super.	195.00
M		Strawberry bowl, stippled exc .....	130.00
M		Mikado lg compote v nice .....	150.00

Pamela McLean, 1701 White Mt. Hwy., #20, Tamworth, NH 03886  
Phone: (603) 323-7140

P/A	EI	Good Luck PCE bowl with electric irid, super .....	325.00
B	EI	Grape & Cable spat ftd Fenton 9" plate, beautiful color ...	175.00
IG	EI	Two Row small size Open Edge basket, really nice .....	300.00
P	EI	Beaded Bulls Eye squatty vase with electric irid, super ....	300.00
M	EI	Orange Tree hatpin holder with nick on one foot, great col	95.00
VAS	EI	Bell/Rope cndlstcks/ctr piece bowl, US Glass, rare, super	500.00
IG	EI	Premium candlesticks/ctr piece bowl/w base, mint/pretty....	400.00
P	EI	Scroll embossed plate with electric highlights, super color.	375.00
G	EI	Strawberry 9" ruffled bowl with great color and balance...	175.00
P	EI	Lined Lattice 7" vase with electric irid, beautiful shape....	145.00

Maurice Myers, 1701 White Mt. Hwy., #20, Tamworth, NH 03886  
Phone: (603) 323-7140

W	EI	Peach 7 pc. water set gold trim, frosty & exquisite .....	1,500.00
W	EI	Peach 7 pc. berry set gold trim, also super duper set .....	650.00
G	EI	Tree Trunk Elephant ft. funeral vase, v rare, none better	6,500.00
G	EI	Memphis punch bowl & base, perfect with great color ...	1,300.00
P	EI	NW Ivy Town Pump novelty vase, perfect one .....	950.00
*	EI	Brocaded Acorns 6 column 8" vase in rare Wisteria color	800.00
LAV	EI	Stag & Holly spat ftd small IC bowl, beautiful & rare .....	500.00
LAV	EI	Thrc Fruits 9" plate stippled, banded, pastel irid, super	1,100.00
G	EI	Peacock at Urn small IC bowl, pastel irid, lovely .....	700.00
*	EI	Inverted Coin Dot tri-topped crimped vase in Cerulean B	600.00



## CARNIVAL GLASS FOR SALE

Dave Ackerman, 4677 Kennebec Drive, Cass City, MI 48726  
Phone: (517) 872-2023

A	Acorn Burrs 7 pc. berry set .....	450.00
A	Butterfly & Berry tumbler, not a common color .....	60.00
M	Corn bottle .....	300.00
LtM	Daisy Cut Bell .....	350.00
P	Dandelion mug .....	200.00
LGO	Dragon & Lotus spat ftd bowl .....	350.00
M	Fisherman's mug .....	200.00
M	Golden Harvest decanter .....	125.00
G	Grape & Cable hat pin holder .....	325.00
A	Sun's Up hat pin, large .....	400.00

Gerald M. Hess, 220 N. First St., Argos, IN 46501-1010  
Phone: (219) 892-6193

PM	EI	Grape Arbor tumbler .....	60.00
M	EI	Fruit Lustre tumbler .....	15.00
G	EI	Inverted Strawberry tumb, Cambridge, near cut, rim dam ..	110.00
M	EI	Grape decanter, no stopper .....	50.00
G	EI	Acanthus 8" bowl .....	75.00
A	EI	Three Fruits 8½" PCE collar based bowl, (N) .....	95.00
A	EI	Diamond Lace 5" sauce .....	32.50
M	EI	Persian Medallion 6" ruffled bowl .....	30.00
P	EI	Heavy Grape dome based bowl .....	60.00
M	EI	Flute toothpick holder, old Imperial .....	65.00

Jeanne Asadourian, 2471 W. Sample, Fresno, CA 93711  
Phone: (209) 435-3313

B	EI	Persian Medallion chop plate, showstopper .....	700.00
B	EI	Capative Rose plate, 9¼", beautiful example .....	280.00
P	EI	Nautilus creamer, super color & irid .....	225.00
B	EI	Lotus & Grape bon bon, fantastic color & irid .....	95.00
G	EI	Tree Trunk vase, 8½", a beauty .....	95.00
M	EI	Imperial Grape deep bowl, 9¼" scalloped, dark .....	60.00
B	EI	Peacock & Urn compote, outstanding .....	155.00
R&G	EI	Rooster hatpins, very lovely .....	ea. 125.00
Sapp	EI	Rooster hatpins, very lovely (2) .....	ea. 105.00
B	EI	Persian Medallion sauce bowl, super color & irid .....	75.00

## CARNIVAL GLASS FOR SALE

Tom Bagot, 5 Tenth St., Barnegat, NJ 08005  
Phone: (609) 698-2279 Leave message

B	EI	Persian Medallion 11" chop plate .....	575.00
AMB	EI	Ripple 7" squatty vase .....	130.00
EB	EI	Leaf & Bead rose bowl .....	275.00
G	EI	Blackberry Wreath 3/1, radium finish master bowl .....	350.00
IB	EI	Fine Cut & Roses rose bowl, foot flake .....	195.00
P	EI	Pansy bowl .....	150.00
R	EI	Open Rose ftd ctr pc bowl, rim chip .....	2,150.00
M	EI	Peacock at Urn IC bowl, dark & beautiful .....	175.00
EB	EI	Drapery candy dish, rare & special .....	350.00
B	EI	Dragon & Lotus IC bowl, very dark .....	130.00

Joe & Winelle Orr, 1705 Camille Way, Cordova, TN 38018  
Phone: (901) 756-8594

B		G&C NW Mammoth orange bowl .....	475.00
A		Swirl Hobnail rose bowl .....	385.00
P		G&C sweetmeat .....	225.00
P		Holly bowl .....	115.00
G		Holly bowl .....	155.00
M		Leaf & Little Flowers Rd compote .....	375.00
M		G&C Fenton footed orange bowl .....	165.00
M		Hearts & Flowers compote .....	200.00
M		Peacock at Fountain butter .....	225.00
B		Good Luck PCE Rib bowl .....	395.00

Isabell Aldridge, 6407 Rushmore Drive, Sacramento, CA 95842  
Phone: (916) 331-4290

M		Imperial Grape 6 pc. wine set .....	100.00
BA		Scarab Shell hatpin, blue irid .....	495.00
PO		Holly & Berry gravy boat, lots of opal .....	85.00
M		Orange Tree orange bowl, bracket feet .....	65.00
M		(N) G&C bon bon .....	60.00
BA		Garden Path hatpin, blue irid .....	125.00
AMB		Open Rose 8 ruffles bowl .....	60.00
A		Coin Dot 3/1 edge bowl .....	95.00
M		Holly 8 ruffles bowl, dark and nice .....	55.00
M		Holly violet bowl .....	17.50



## CARNIVAL GLASS FOR SALE

Richard Cinclair, 3605 South Echo Trail, Plano, TX 75023  
Phone: (972) 596-0014 RJC4470@DCCCD.EDU

M	EI	Octagon Cordial, rare & pretty .....	275.00
IB	EI	Daisy & Plume candy .....	660.00
PO	EI	Peacock & Grape 3/1 edge .....	550.00
A	EI	Holly plate, super example .....	990.00
G	EI	Peacock & Grape footed plate .....	440.00
IG	EI	Wishbone footed bowl .....	1,440.00
G	EI	Rose Show bowl, super, base crack .....	770.00
*	EI	Sapphire Wishbone footed bowl, two known, chip .....	1,320.00
B	EI	G&C stippled plate, excellent .....	880.00
B	EI	Sunflower footd bowl, near electric .....	600.00

Greg & Rene Cline, 1354 W. Webb Rd., Dewitt, MI 48820  
Phone: (517) 669-5895 after 6 PM or leave message. Call for list.

B	GI	Apple Tree pitcher .....	900.00
A	EI	Zig-Zag bowl .....	335.00
A	EI	Courthouse ruffled bowl .....	960.00
A	EI	Thistle banana boat .....	325.00
R	EI	Blackberry spray hat .....	540.00
A	EI	Grape & Cable banana boat .....	235.00
M	EI	Peacock at urn plate .....	585.00
B	EI	Apple Tree tumblers (2) .....	125.00
P	EI	Imperial Flute toothpick .....	125.00
G	EI	Feathered Serpent 10" green bowl .....	95.00

Yvan Beaudry, 109 5th Ave., Boisbriand, QC J7G1Y8  
Phone: (514) 437-4585

M	EI	Inverted Thistle creamer .....	325.00
M	EI	Inverted Strawberry sugar & cover .....	350.00
M	EI	Inverted Strawberry tumbler .....	150.00
M	EI	Inverted Strawberry giant compote .....	325.00
M	EI	Near Cut souvenir truro NS tumbler .....	60.00
M	EI	Double Star tumbler .....	140.00
P	EI	Pair Grape & Cable candlesticks .....	320.00
G	EI	Holly ruffled hat .....	40.00
G	EI	Heavy Grape chop plate 12" .....	175.00
VAS	EI	Fine Rib vase 9" .....	110.00

## CARNIVAL GLASS FOR SALE

Bob & Donna Courts, 4011 Tollgate Road, Batavia, OH 45103  
Phone: (513) 724-2564

IB	EI	Peacock on Fence ruffled bowl .....	1,500.00
P	EI	Grape & Cable 4 pc. table set .....	450.00
P	EI	13" Thin Rib mid-size vase .....	175.00
P	EI	Wreath Cherry large banana boat .....	150.00
P	EI	Dugan Cherries footed bowl CRE .....	200.00
P	GI	Grape & Cable punch cups .....	ea. 45.00
B	EI	Cherries & Little Flowers 7 pc. water set .....	225.00
B	EI	Fenton Thistle banana boat .....	275.00
G	EI	Dragon & Lotus spat footed bowl .....	115.00
SM	EI	Fashion compote straight sides, roughness on bottom/base .....	450.00

Carl & Robin Dodd, 169 Leaning Pine Lane, Moncks Corner, SC 29461  
Phone: (803) 899-7928

M		10½" Seaweed 3/1 bowl, super pastel .....	300.00
PO		10" Flowers & Spades bowl, very rare w/ super color .....	325.00
AO		Bushel Basket, excellent butter scotch .....	350.00
SM		Double Scroll console set 3 pc. dark & mint .....	200.00
P		Basketweave hat pin, spectacular elec. irid .....	200.00
R		Dugan Jewels console bowl, mint & scarce .....	140.00
M		Dugan Windflower 9" plate excellent greens & blues .....	130.00
B		(N) Thin Rib mid-size vase, super reds & greens .....	325.00
PO		Ski Star 6" plate w/crimped edge 1 1/8" H, excellent .....	120.00
W		Orange Tree plate, TTC, mint & nice .....	175.00

Doug & Nancy Davis, 7050 Carmelita Ave., Atascadero, CA 93422  
Phone: (805) 466-3762

M		3 Fruits plate BW back, multi irid .....	150.00
M		Grape & Cable cologne bottle with stopper .....	200.00
A/P		Singing Birds mug (N), very nice .....	90.00
M		Grape & Cable footed Orange bowl, persian medallion interior, Fenton, small pinhead on 1 point .....	150.00
P		Grape & Cable punch bowl base (N) small, blue/gold colr .....	35.00
M		Blackberry Wreath 6" ruffled berry bowl, nice .....	50.00
M		Peacock and Urn, Fenton compote .....	45.00
G		Butterfly bon bon (N), scarce & nice .....	125.00
A		Diamond and Rib vase 10½" nice example .....	60.00



## CARNIVAL GLASS FOR SALE

Barbara Hobbs, 5501 101st Ave. N., Pinellas Park, FL 33782  
 Phone: (813) 541-6461 or (813) 545-4833 Machine. 450 pc. list available

B	EI	Stag & Holly bowl, 7½" 8 ruf spat ftd scarce size .....	310.00
PO	EI	10" pulled loop vase .....	75.00
A	EI	Primrose 10" 6 ruffled bowl, satin finish .....	250.00
B	EI	Light Blue shot glass, signed "France" .....	25.00
VAS	EI	Persian Medallion bon bon, M overlay, 4 sides up .....	330.00
G	EI	Mayan 8" IC bowl, radium .....	150.00
M	EI	Holly goblet/compote, no ruffles, scarce .....	40.00
AQ	EI	8" large berry bowl, sides straight up .....	110.00
M	EI	Grape Wreath 7" IC bowl, radium, scarce shape .....	150.00
M	GI	Inez vase, Presznick #4, 10"H 7"W, gold trim .....	200.00

Jack & Eleanor Hamilton, PO Box 20203, Waco, TX 76702  
 Phone: (254) 857-3148

*	EI	Two Flowers small bowl, ftd, marigold over light blue .....	100.00
VAS	EI	Stippled Rays int. Scale Bande rev. pat. bowl 6" .....	95.00
DM	EI	Kittens, 4 sides, good mold, small chip on edge .....	95.00
A	EI	Whirling Leaves ruffled bowl, Mlbrg red & gold irid .....	250.00
G	GI	Fruits & Flowers 7" plate .....	235.00
LM	EI	Stippled Rays ruf bowl, rev pat BW, 2 N's - 1 in, 1 out... ..	70.00
*	EI	Tail Hat vase 4" tall, lt blue with pink top .....	35.00
PO	GI	Petal & Fan 6" plate, tight crimped edge .....	135.00
LM	EI	Tumble Up .....	35.00
DM	EI	Star & File tumbler, nice .....	55.00

Walter Belawski, 504 Atlantic Ave., York, PA 17404  
 Phone: (717) 843-4352

PO	EI	Handgrip Smooth Rays daisy back bowl .....	90.00
CelB	EI	Concave Diamond water set w/lid .....	300.00
M	EI	10" Waffle Block basket .....	110.00
SapB	EI	Pair candlestick holders, iridized .....	45.00
Yel	EI	Heisy Colonial compote, iridized .....	90.00
W	EI	Grapevine Lattice ruffled plate 7" .....	135.00
P	EI	Peacock at Fountain punch cup EB highlites .....	75.00
M	EI	Imperial Grape punch cup .....	7.00
M	EI	Grape & Cable tumbler, pumpkin .....	35.00
B	EI	Ramblin Rose tumbler, super color & irid .....	45.00

## CARNIVAL GLASS FOR SALE

Harold Fortney, Box 303, Buckner, MO 64016  
 Phone: (816) 650-5208

M	EI	Cut Cosmos, very nice .....	200.00
G	EI	Mlbrg flared top Hanging Cherries tumbler, excellent .....	300.00
G	EI	Mlbrg straight sides Hanging Cherries tumbler, beautiful ..	300.00
P	EI	(N) Stippled Grape & Cable tumbler, beautiful .....	80.00
P	EI	Chataleine tumble, very pretty, top edge roughness .....	150.00
M	EI	Enamelled Windflower, very rare .....	500.00
B	EI	Mlbrg Hobnail tumbler, very rare .....	800.00
AMB	EI	Open Rose flat plate, beautiful .....	300.00
P	EI	Wishbone footed bowl, nice .....	175.00
LAV	EI	(N) Grape & Cable ruffled bowl, very nice .....	100.00

Richard Jarnig, 3202 FM 50, Brenham, TX 77833  
 Phone: (409) 836-5545

B		Plaid ruffled bowl, super irid .....	300.00
P		Petal/Fan 10" bowl, EB irid with fiery A ctr, awesome ...	600.00
P		Optic & Flute 7" bowl, EB irid .....	160.00
IB		G&C 7½" bowl, BW ext, rare .....	575.00
P		Coin Spot compote, rarer than blue .....	225.00
M		10 ruffle Brooklyn Bridge, rad. the best .....	300.00
AQ		Panther small berry, small flake ext so .....	150.00
IP		Fenton Flowers rose bowl, very rare .....	175.00
T		Shell & Sand bowl, rare .....	175.00
*		Rose Spray compotes, celeste, W, M .....	CALL

Rick Boldt, 21333 Lassen Street, Unit 2-B, Chatsworth, CA 91311  
 Phone: (818) 882-0162

CelB	EI	Coin Spot compote, super & rare .....	775.00
M	EI	Acorn Burrs berry set 7 pc., dark .....	350.00
M	EI	Holly plate, very flat, great color .....	285.00
PO		Apple Blossom Twigs, 3/1 bowl, good opal, deep ruffle ...	190.00
B	GI	Fenton Peacock at Urn 8 ruffle bowl .....	150.00
M	EI	Cobblestone bowl, rare .....	150.00
B	EI	Persian Medallion 6" plate .....	115.00
M	EI	Rose Show plate, medium/dark .....	1,100.00
P/A	EI	Peacock at urn master ice cream (N) .....	575.00
B		Kittens six ruffle bowl .....	495.00



CARNIVAL GLASS FOR SALE

Craig & Brenda Kuckelburg, 517 North Jay St., Aberdeen, SD 57401  
Phone: (605) 226-1660

M	Peacock & Dahlia bowl 7¼"	65.00
M	Peacock at Fountain large berry, very nice	150.00
M	Stag & Holly large ICS, pinks & blues	150.00
M	Pansy 9" ruffled bowl great color	75.00
M	Orange Tree punch bowl flared	60.00
M	Circle Scroll hat JIP very good	85.00
A	Acorn Burrs small berry, 3 ea	50.00
A	Acorn Burrs small berry, small flake on base	30.00
B	Big Basketweave 10 ¾", small crack/base	100.00
G	Fine Rib vase 8 ¾" very good	150.00

Dave Sharp, 316 Front St., Lititz, PA 17543  
Phone: (717) 626-8231

B	EI	Chrysanthemem deep footed bowl, great color	150.00
P	EI	N Fine Cut & Roses rose bowl, mint	125.00
G	EI	N Fine Cut & Roses rose bowl, mint	150.00
G	EI	Grape & Cable pin tray, super	335.00
A	EI	Stag & Holly 10" ICS bowl, scarce color & super	675.00
M	EI	N Bushel Basket, 8 sided, super	185.00
M	EI	Hobstar butter dish	75.00
B	EI	Persian Medallion bon bon, excellent color	85.00
A	EI	Persian Medallion bon bon, nice satin color	75.00
M	EI	N Grape & Cable butter dish	125.00

Richard Wiegand, 8831 Eureka Lane, Walkersville, MD 21793  
Phone: (301) 845-8997

M	(D)	Windflower triangular handled nappy, nice	55.00
A	(F)	Orange Tree standard size mug	75.00
G	(F)	Vintage Leaf 8½" bowl 3/1 edge, nice	65.00
P	(D)	Wreathed Cherry small oval berry bowl	60.00
A	(N)	G&C nappy with 1 ¾" base	85.00
B	(F)	Waterlily 3 footed 6" ruffled sauce bowl, nice	60.00
B	(F)	Peacock & Grape shallow 8 ruffled bowl, nice	85.00
B	(F)	Garland footed rose bowl, minor chip on one foot	90.00
A	(N)	G&C 9 ¾" ruffled bowl, BW ext., nice	80.00
B	(D)	Stork & Rushes tumbler	55.00

CARNIVAL GLASS FOR SALE

Rick McDaniel, 3420 Morningstar Lane, Dallas, TX 75234  
Phone: (972) 243-4574 (L'allure Photographic), after 7 PM CST

AMB	EI	Acorn 7½" 8 ruf bowl, pretty reddish irid	140.00
CRY	EI	Brocaded Summer Garden stemmed cake stand	150.00
HA	EI	Flute & Cane 6¼" vase or parfait glass, radium, unlisted	65.00
P		Leaf Rays nappy, tri-corner, nice	90.00
M	EI	Open Rose flat plate, super, slight out-of-round	80.00
M	EI	Canada Dry bottle, great color	20.00
M	EI	Fine Cut & Flowers vt. compote, pretty	25.00
AMB	EI	Small Rib stemmed rose bowl, cutie	60.00
M	EI	Recessed Panel (Fenton #636) covered candy, great	35.00
M	EI	Tree of Life small console bowl, super	20.00

Lee & Phyllis Bryant, 11645 NW Winchester Rd., Decatur, IN 46733  
Phone: (219) 639-6415

P		G&C Dresser tray multi nice	185.00
M		G&C Powder jar & lid (N) dark color	90.00
P		Spiralex 11" vase nice	75.00
M		Chrysanthemum 9½" ruffled footed bowl	70.00
B		Plaid 8½" ICS bowl	250.00
M		Octagon Goblets (have 2) both for 45.00 or	ea. 25.00
M		Persian Medallion compote ruffled CRE 6" tall	60.00
M		Stag & Holly 11" ICS bowl multi sharp	125.00
A		Petals compote 8" across nice	55.00
Q		Fentons Flowers rose bowl tiny toe tick	65.00

Dennis Runk, PO Box 235, Littlestown, PA 17340  
Phone: (717) 359-7205

M	EI	(N) Singing Birds mug, real nice	80.00
AO	EI	(N) Singing Birds mug, large crack	90.00
AMB	EI	Orange Tree standard size mug	80.00
P	EI	Beaded shell mug	75.00
P	EI	(N) Singing Birds tumblers (3)	ea. 55.00
M	EI	(N) Springtime tumblers (2)	ea. 70.00
B	EI	(N) Peach tumblers (2)	ea. 90.00
P	EI	(N) Acorn Burrs tumbler	70.00
G	GI	(N) Acorn Burrs tumbler, silvery	55.00
M		Milady tumbler, lite color	25.00



CARNIVAL GLASS FOR SALE

Darlene Yohe, PO Box 343, Stuttgart, AR 72160  
Phone: (870) 673-3437

P	Grape & Cable spooner .....	125.00
P	Grape & Cable breakfast sugar .....	125.00
AMT	Panelled Dandelion tumbler .....	55.00
M	Circle Scroll sugar base .....	150.00
IB	Finecut & Roses rose bowl, fancy int, 2 small foot flakes	200.00
W	Pond Lily bon bon .....	90.00
M	Crabclaw tumblers, 2 .....	ea. 70.00
B	Vintage Fern dish .....	75.00
M	Octagon 8" dia. bowl pastel .....	40.00
M	Diamond Point Columns butter .....	55.00

Stephen Sivonda, 375 Congdon St., Middletown, CT 06457  
Phone: (860) 346-9356 call days if possible, items subject to prior sale

G	EI	Imperial Ripple 8½" helios vase .....	75.00
G	EI	Imperial Morning Glory, smoke, sm point flake 5½" .....	30.00
M	EI	(N) Peacocks Rib back, multi color hilites, exc .....	325.00
G	EI	(N) Diamond Points vase 11" Alaskan irid .....	130.00
A	EI	(N) 3 Fruits 8½" bowl, BW back super irid, epoxy spot ..	100.00
A	EI	(N) Greek Key 8½" bowl, great irid .....	220.00
PO	EI	Dugan Pulled Loops vase 9" great looking .....	75.00
A	EI	Dugan Cherries 8½" 3 footed bowl, elec hilites .....	275.00
G	LI	Cherry Chain 9" bowl, lite irid, emerald green .....	72.00
B	EI	Oepn Edge, basketweave, 2 sides up, scarce unlisted black	120.00

Carl O. Burns, 60 Rumford Center Rd., Andover, ME 04216  
Phone: (207) 392-3044

G	EI	Inverted Feather covered cracker jar .....	250.00
A	EI	Four Pillars 6" squat vase, very rare size .....	250.00
A	EI	Hattle 9" ruffled bowl, unusually satiny .....	175.00
A	EI	Florentine 8" candlesticks, scarce pair .....	125.00
W	EI	Leaf Chain 9" ruffled bowl, nice pastel irid .....	125.00
M	EI	Three Fruits 9" ruffled bowl, super dark color .....	55.00
G	EI	Daisy & Plume (N) compote .....	65.00
M	EI	Grape & Gothic Arches covered sugar .....	55.00
B	EI	Grape & Gothic Arches tumbler, a beauty .....	45.00

CARNIVAL GLASS FOR SALE

Bob Bishop, 277 Loon Hill Road, Dracut, MA 01826  
Phone: (508) 453-1849

PO	EI	Soutache plate CRE .....	275.00
PO	EI	Raindrop bowl .....	75.00
PO	EI	Folding Fan compote, crimped .....	60.00
M	EI	Star & File tumbler .....	40.00
G	EI	Mayan bowl, MIbrg .....	75.00
M	EI	MIbrg Strawberry Wreath, satin .....	70.00
PO	GI	Fan sauce .....	40.00
M	EI	Robin mug .....	25.00

Gene & Sherry Dugger, 1724 Ripon, Lewiston, ID 83501  
Phone: (208) 746-1289

G		Persian Medallion berry bowl .....	60.00
IG		Peacocks plate .....	600.00
M		Dugan Wreath of Roses rose bowl .....	50.00
		6 Plums hatpin, have 3 .....	ea. 75.00
PO		Ski Star 8 ruffle bowl .....	140.00
M		Pansy pickle dish .....	35.00
M		Wreathed Cherry 5 pc. berry set .....	200.00
G		Little Flowers 5½" bowl .....	70.00

Marvin & Sharon Gill, PO Box 416, Mt. Vernon, IL 62864  
Phone: (618) 242-3405

PO		Pinched swirl vase unusual 1½" round tube top .....	160.00
W		Beaded cable frosty white rose bowl .....	475.00
IB		Daisy & Plume 3 footed rose bowl, usual roughness/feet ..	600.00
M		Star & File sugar & creamer set, good dark M .....	50.00
M		Beaded stars rose bowl .....	55.00
B		Strawberry two handled bon bon .....	60.00
W		Drapery rose bowl with rare smooth ribbon top .....	400.00
M		Cosmos & Cane small rose bowl with Headdress int .....	375.00
W		Frosted Block rose bowl marked "Made in USA" .....	40.00



## CARNIVAL GLASS FOR SALE

Adam Fikso, 3620 Glenview Rd., Glenview, IL 60025  
Phone: (847) 729-7707

B	Covered Swan.....	275.00
M	474 Short compote, 8 ruffled 7" diam.....	175.00
M	Waterlily & Cattails toothpick whimsey.....	70.00
M	Poppy Show vase.....	500.00
W	Sunburst, McKee, butterdish, rare.....	600.00
G	Poinsettia, Helios, milk pitcher.....	600.00
W/CLM	Crab Claw, Blaze, rad 10" ICS bowl, see Mar HOACGA.....	150.00

Trudy Brown, 107 E. Main St., PO Box 138, Smithville, MO 64089  
Phone: (816) 532-3234

P	Wild Strawberry 8" hand grip plate, BW back, beaut col.....	230.00
B	Captive Rose 9" plate, plain back, extra nice.....	485.00
G	Strawberry 9" plate, BW back.....	270.00
B	Peacock/Urn 5" (N) IC bowl, beautiful Blue.....	ea. 155.00
A	Strawberry 6" berry bowl ruffled edge BW back, nice.....	58.00
M	Butterfly/Berry pitcher w/6 tumblers, extra nice deep M.....	650.00
A	Memphis punch bowl w/base, 5 cups, very nice.....	750.00

Kent Patrick Zimmerman, PO Box 12821, Wichita, KS 67212-2821  
Phone: (316) 943-3487

IB	Grape & Cable master punch cup pink/red highlights.....	125.00
G	Grape & Cable pin dish exc red/bluc hilts even irid.....	350.00
M	Grape & Cable pin dish pastel marigold.....	250.00
G EI	Peacock / Fountain spooner, rarer than ice blue.....	300.00
AQ	Fenton Open Edge JIP basket super aqua w/v little bronze.....	175.00
G	Fenton Open Edge JIP basket exc for N green.....	300.00

Rob Cooper, 31 Oak View Dr., Newark, DE 19702  
Phone: (302) 455-9225

A EI	Little Fishes small footed bowl,scarce color.....	175.00
W EI	Two Row open edge basket, super irid & scarce.....	195.00
G EI	Ribbon Tie ICS bowl, electric blue hilites.....	150.00
B EI	Holly low ruffled bowl, electric green irid, super.....	175.00
P EI	Fine Cut & Roses rose bowl w/ fancy int, very rare.....	345.00
A EI	Lattice & Points vase, outstanding irid.....	125.00
B EI	Dragon & Lotus ICS bowl, super electric irid.....	195.00

56

9/97

## CARNIVAL GLASS FOR SALE

Lloyd R. Ward, PO Box 956, Mayfield, KY 42066  
Phone: (502) 251-2005 Anytime

B EI	Thistle banana boat.....	495.00
G EI	Thistle banana boat.....	595.00
B EI	Mikado compote, ruffled.....	575.00
M EI	Dandelion tumbler (N).....	55.00
A EI	Millersburg Rays & Ribbons bowl, super.....	165.00
P EI	Acorn Burrs punch cups (4).....	ea. 60.00
M EI	Butterfly bon bon (N), deep color.....	95.00
W EI	Nippon PCE bowl, frost.....	395.00
M EI	Grape & Cable bon bon.....	95.00
M EI	Vintage compote.....	65.00

## CARNIVAL GLASS WANTED

Richard Wiegand, 8831 Eureka Lane, Walkersville, MD 21793  
Phone: (301) 845-8997

SM	Sida Gold tumblers
SM	Fieldflower tumblers
P	Fashion cream & sugar
P	Fashion pitcher
P	Fieldflower water pitcher
P	Hobstar butter dish
P	Hobstar covered sugar
P	Open Rose water pitcher
P	Open Rose 9" plate
P	Pansy oval dresser tray

Carl O. Burns, 60 Rumford Center Rd., Andover, ME 04216  
Phone: (207) 392-3044

P	Imperial Grape tumbler w/electric blue irid
M	Fieldflower water pitcher
A	Hanging Cherries butter base only
A	Hanging Cherries sugar base only
B	Orange Tree butter base only

Lloyd R. Ward, PO Box 956, Mayfield, KY 42066  
Phone: (502) 251-2005 Anytime

Any	Epergnes, complete or odd lilies/bases
Any	Odd punch bowl tops or bottoms
Any	Whimsey/Cologne/Perfume stoppers or bottles
Any	Tobacco Jar/Cookie Jar lids or bottoms
Any	Other odd parts - i.e. sugar bowl lids/bases, lamp shades/bases in carnival

9/97

57



## CARNIVAL GLASS WANTED

---

Jocelyn Thomas, 7706 Concord Pl., New Orleans, LA 70126  
Phone: (504) 246-7040

P Grape & Cable cologne  
P Grape & Cable perfume  
P Grape & Cable powder jar lid  
P Grape & Cable hatpin holder

---

Gladys Hutchison, RT 1 Box 259A, Stockton, MO 65785  
Phone: (417) 276-4119

M Grape & Cable stippled punch bowl and base  
P Dahlia cr. sug and spooner  
M 474 punch bowl and base

---

Marlin L. Blosser, 4705B Charles Road, Mechanicsburg, PA 17055  
Phone: (717) 975-2920

G Flute punch bowl top  
G Hobstar sugar lid  
M Long Hobstar punch base  
G Shell & Jewel lids, need 2  
M Heavy Grape punch base  
Any Peacock at Fountain punch cups  
M 474 punch bowl top  
Any Grape & Cable open or covered compote  
M Grape & Cable powder jar lid  
G Little Stars bowl, round or 3/1

---

Donald L. Harris, 527 Lavina Drive, Mechanicsburg, PA 17055  
Phone: (717) 790-0412 or will sell the below parts

Any Grape & Cable powder jar lid  
A Hanging Cherries sugar bottom  
A Orange Peel punch bowl  
Any Drapery rose bowls  
B Hen on Nest with Chicks top  
B Orange Tree powder jar lid  
B Orange Tree punch base, also need W  
G Acorn Burr punch bowl  
G Grape & Cable sugar bottom, also need M  
G Hanging Cherries powder jar bottom

## CARNIVAL GLASS WANTED

---

Ted L. Sheibley, 52 Meadow Brook Court, New Cumberland, PA 17070  
Phone: (717) 770-0616

Any Tree Trunk mid-size & AO standard size vases  
P Grape & Cable sugar lid  
IG Wishbone epergne lily  
M Broken Arches punch base  
M Grape & Cable butter bottom, also need P  
M Grape & Cable humidor lid, plain or stippled  
M Wreathed Cherry butter bottom  
Any Diamond Point vases, must be super  
P Vintage powder jar lid  
VAS Stretch water pitcher with cobalt handle

---

Shirley Hill, 126 Glendale Drive, Reidsville, NC 27320  
Phone: (910) 342-3096

A or P Covered Carnival Frog  
Waterlily or Poinsettia & Lotus  
5" sauce bowl

---

Gloria Pfeiffer, 140 Eaton Rd., Rochester, NY 14617  
Phone: (716) 467-3472

Any Gooseberry Spray compote  
M Laurel Band tumbler (3)  
M Magnolia & Drape en. tumbler (2)  
Any (N) Near Cut compote

---

Maurice Myers, 1701 White Mt. Hwy., #20, Tamworth, NH 03886  
Phone: (603) 323-7140

G 1 side lily for Wide Panel epergne by Northwood  
G Need the lily for a Large size Vintage single lily epergne by Fenton

---

Jeanne Asadourian, 2471 W. Sample, Fresno, CA 93711  
Phone: (209) 435-3313

B Lined Lattice vase  
Black New Fenton Poppy Show vase  
CelB New Fenton Poppy Show vase



## CARNIVAL GLASS WANTED

---

Tom Bagot, 5 Tenth St., Barnegat, NJ 08005  
Phone: (609) 698-2279 Leave message

A EI Grape & Cable creamer/table set  
AO-BEI Fine Cut & Roses rose bowl  
Any EI Toronado vases, will consider damage

---

Yvan Beaudry, 109 5th Ave., Boisbriand, QC J7G1Y8  
Phone: (514) 437-4585

B Orange Tree punch base  
M Peacock at Fountain punch base  
B Tree Trunk squatty base  
B Fine Cut Roses rose bowl foot chips OK

---

Carl & Robin Dodd, 169 Leaning Pine Lane, Moncks Corner, SC 29461  
Phone: (803) 899-7928

P Singing Birds covered sugar, mint & nice  
P Singing Birds 2 pc. butter, mint & nice  
PM G&C punch top, banquet, excellent irid  
P G&C 9" ruffled bowl, stippled, excellent irid  
S 474 punch top, damage OK  
V 474 punch top damage OK

---

Kandis & Robert Richmond, 803 S. Hancock St., Ottumwa, IA 52501  
Phone: (515) 684-6765

BA Open Edge Fenton's basket, small ruffled  
IB Open Edge Fenton's basket, small ruffled  
A Open Edge Fenton's basket, small ruffled  
AMB Open Edge Fenton's basket, small ruffled  
B Blackberry Open Edge basket, deep nut bowl

---

Doug & Nancy Davis, 7050 Carmelita Ave., Atascadero, CA 93422  
Phone: (805) 466-3762

A Grape & Cable powder jar lid  
A/P Grape & Cable cologne bottle stopper

## CARNIVAL GLASS WANTED

---

Cleo & Jerry Kudlac, 1425 Apache NE, Piedmont, OK 73078  
Phone: (405) 373-4455

A, B EI Windflower ICS bowl, satin and radium finish  
B EI Windflower six and ten ruffled bowl, satin and radium finish  
A EI Windflower six ruffled bowl, satin and radium finish  
B EI Windflower nappy, satin and radium finish  
\* EI Windflower, any unusual shapes or colors, satin/radium finish

---

Rob Cooper, 31 Oak View Dr., Newark, DE 19702  
Phone: (302) 455-9225

P Persian Gardens Fruit bowl base  
P Many Fruits punch cups  
P Many Fruits punch bowl base  
M Singing Birds water pitcher  
Any Squatty big basketweave vases

---

Walter Belawski, 504 Atlantic Ave., York, PA 17404  
Phone: (717) 843-4352

M EI Waterlily & Cattail pitcher  
M EI Orange Tree punch bowl base

---

Chuck Kremer, 11553 Belmont Court, Carmel, IN 46032  
Phone: (317) 815-0850

A Springtime sugar  
A Lustre Rose sugar  
M Circle Scroll sugar and or spooner  
M Cherry Cable creamer  
M Hobnail spooner

---

Larry R. Moore, 2625 Underwood Rd., Waverly, KS 66871-9349  
Phone: (785) 733-2731

M Northwood's Smooth Rays 6 ruffled master berry bowl 8"-9"



## CARNIVAL GLASS WANTED

Rick Boldt, 21333 Lassen Street, Unit 2-B, Chatsworth, CA 91311  
Phone: (818) 882-0162

G Small Buzz Saw cruet stopper  
P Broken Arches punch base, super electric  
P Wreath of Roses punch bowl, excellent color  
G Inverted Strawberry puff jar top  
B Orange Tree puff jar top  
A Grape & Cable puff jar top

Albert Goodman, 2008 Lonesome Hollow Rd., Louisville, KY 40272-2148  
Phone: (502) 935-9021

M EI Imperial Octagon pitcher  
M EI Lustre Rose tumblers (2), rib. int.  
M EI Lustre Rose butter bottom  
P EI Lustre Rose tumbler  
AMB EI Imperial Pansy sugar

Craig & Brenda Kuckelburg, 517 North Jay St., Aberdeen, SD 57401  
Phone: (605) 226-1660

Stippled Rays stemmed creamers - AMB, P, R, SM, VAS, CLAM  
Stippled Rays stemmed sugar - P, CLAM  
DM Wreathed Cherry sugar lid  
M Orange Tree punch base

Dave Sharp, 316 Front St., Lititz, PA 17543  
Phone: (717) 626-8231

B Grape & Gothic Arches water pitcher, super color  
W Dahlia sugar  
B Blueberry tumbler, nice color  
P Grape & Cable butter base  
P Grape & Cable creamer  
G Springtime/Peacock at Fountain butter top  
G or A Springtim sugar lid

## RESOURCE INFORMATION

1. **HARTUNG CARNIVAL GLASS PATTERN BOOKS**  
Set of 10 books for \$60.00 plus \$6.00 postage. Order from Ed Kramer, Secretary HOACGA, 4305 W. 78th Street, Prairie Village, KS 66208
2. **HOACGA EDUCATIONAL SERIES BOOK I** - 148 articles with pictures (black & white) on a variety of carnival glass patterns. Books consists of articles written by John & Lucile Britt which have been printed in previous monthly bulletins. \$15.00 plus \$2.50 postage. Order from Ed Kramer, Secretary HOACGA, 4305 W. 78th Street, Prairie Village, KS 66208
3. **HOACGA EDUCATIONAL SERIES BOOK II** - 180 articles with pictures (black & white) on carnival glass tumblers. Book consists of articles written by John & Lucile Britt which have been printed in previous monthly bulletins. \$17.50 plus \$2.50 postage. Order from Ed Kramer, Secretary HOACGA, 4305 W. 78th Street, Prairie Village, KS 66208
4. **HOACGA EDUCATIONAL SERIES BOOK III** - contains about 150 articles from past bulletins on bon bons, bowls, drinking vessels, novelties, rose bowls, and table sets by several different members. It also lists approximately 500 rarities with 5 or less known. Cost is \$20.00. USA postage included. Order from Ed Kramer, Secretary HOACGA, 4305 W. 78th Street, Prairie Village, KS 66208
5. **HOACGA PATTERN NOTEBOOK** - contains sections on punch sets, water sets, table sets, mugs, rose bowls, small, regular and chop plates, compotes, and vases. Each section has color photos of each known pattern and the maker and colors available. A section is added each year. The project began in 1979. Present cost \$138 + \$5 USA postage. Order from Ed Kramer, Secretary HOACGA, 4305 W. 78th Street, Prairie Village, KS 66208
6. **THE ENCYCLOPEDIA OF CARNIVAL GLASS LETTERED PIECES.** 120 pages of black & white and color photographs of all known carnival glass advertising and commemorative pieces. \$15.95 plus \$2.50 postage. Order directly from John D. Resnik, 235 Walnut Street, Statesville, NC 28677
7. **COLLECTOR'S GUIDE TO NORTHWOOD'S CARNIVAL GLASS** by Carl O. Burns. This Northwood book includes 166 pages with 250 pieces pictured in full color, including many rarities never shown in any carnival glass book. \$24.95 plus \$3.00 Shipping. Order from Carl O. Burns, 60 Rumford Center Rd., Andover, ME 04216 (Mention you are a member of HOACGA)
8. **MILLERSBURG CARNIVAL GLASS BOOK** by Marie McGee. \$29.95 for paperback, \$37.95 for Hardback. Please include \$3.50 extra for shipping. Send orders to 3906 E. Acacia Ave., Fresno, CA 93726
9. **THE WORLD OF ENAMELED CARNIVAL GLASS TUMBLERS** by Cecil Whitley. Book on painted Carnival Glass tumblers. Ten pages of full color photographs of sixty painted tumblers. \$10.00, postage included. Order from Cecil Whitley, 1041 Cheshire Lane, Houston, TX 77018
10. **NEW! NEW! NEW! IRIDESCENT HATPINS & HOLDERS of the CARNIVAL GLASS ERA** by Jerry Reynolds. \$16.50 - book. \$3.25, Priority or \$1.65 Book Mail. Canada, \$17.60. Order from Jerry Reynolds, 1305 N. Highland Pkwy, Tacoma, WA 98406
11. **MORDINI'S 1996 CARNIVAL GLASS AUCTION PRICE REPORT** - Auction price report for 1996 is available. Over 5000 entries. \$10.00 postage included. \$9.00 if two or more ordered. Please specify year when ordering. Canadian friends should send Canadian Postal Money Order. Overseas mailings add \$3.00 for each copy. Back issues are available for 1990-1995 at \$9.00 each. Order from Tom & Sharon Mordini, 36 N. Mernitz Ave., Freeport, IL 61032
12. **NETWORK** by Glen & Stephen Thistlewood of Hampshire, England. Quarterly publication devoted exclusively to Carnival glass. One year subscription (4 issues) \$20, available in the US only through PageWorks, P.O. Box 14493, Chicago, IL 60614



13. **BUTTON, BUTTON.** Carnival Glass, Iridescent, Luster Buttons. Over 100 buttons listed - Over 140 pages packed with information. Each button has a color and black & white photo, detailed drawing & description - shown in actual size. \$15.50, postage included. Order from Clint Arsenault, P.O. Box 1845, Monrovia, CA 91017
14. **THE SANCTIFIED CROSS-EYED BEAR'S PRICE TREND GUIDE FOR CARNIVAL GLASS AND INDIVIDUAL SALES SUPPLEMENTAL GUIDE FOR 1996** - The 3rd edition provides the most exhaustive price resource available by covering over 30,000 sales occurring during the years 1992-1996. Reports on over 9,000 sales for the 1996 reporting year alone by informing you of the high, low, and average sales prices. Over 230 full pages that help clarify the upward or downward average price trends. THE INDIVIDUAL SALES SUPPLEMENTAL GUIDE FOR 1996 reports on the pieces that have reached at least 200 in sales price at least once and then reports every sale price for a piece. Reference over 4,100 sales. Send \$24.95 for Trend Guide, \$8.00 for Supplement, or \$30.95 for both to: The Sanctified Cross-Eyed Bear, P.O. Box 1296, Huntsville, AL 35807
15. **CARNIVAL GLASS HATPIN PATTERNS** - This book shows the hatpins in detail with beautiful illustrations, many showing top and side views. A number of these hatpins have never appeared in any previous carnival books. \$15.00 plus \$1.00 postage & handling. Canada and overseas - \$15.00 plus \$3.00 postage and handling. Order from Alphonse Tvaryanas, 284 Clearstream Rd., Jackson, NJ 08527
16. **A CARNIVAL OF IRIDESCENT LUSTER BUTTONS, BOOKS I & II.** Book I has 856 named design drawings. Indexed. \$13 ppd. Book II has 450 more drawings, indexed, with price guide covering both books. \$14.00. Canada and Mexico please add \$2.00 (US) to each for extra postal cost. Overseas please add \$4.00 (US) to each for surface mail. Add \$6.00 (US) each for air mail. Order from author Ruth M Clark, 2100 Dawn Dr., Georgetown, TX 78628.
17. **CARNIVAL GLASS OF AUSTRALIA** - 100 pages, some colored, hard cover. Produced by Australian Carnival Enthusiasts Association, Inc. Cost \$20.00, this includes Air Mail Postage. Please contact Mrs. Margaret Dickinson, Secretary. R.S.D. Fryerstown, Victoria, Australia 3451, for advice on the uncomplicated purchase of this book.
18. **THE CARNIVAL HUNTER'S COMPANION**, a unique cross-referencing system for easy identification of pattern features and names. \$27.95 ea., includes shipping. Texas residents add \$2.06 tax. Check payable to Elaine Blair, P.O. Box 116335, Carrollton, TX 75011-6335, 214-492-1528
19. **A CARNIVAL OF IRIDESCENT LUSTER BUTTONS, BOOK III - 1997 EDITION** contains 391 pattern drawings not found in Books I and II by Ruth M. Clark, plus color photographs of 87 buttons. \$13.50 postpaid in USA; \$14.50 (US) postpaid in Canada; \$16.50 (US) postpaid in England; \$17.50 postpaid in Australia. Order from author: Alan G. Perry, 7614 McHenry St., Houston, TX 77087-3834
20. **SKETCHBOOK OF LITTLE CARNIVAL GLASS BUTTONS, 1997 EDITION** contains drawings and descriptions of over 500 little old buttons (less than 5/8" diameter). Loose-leaf format for easy annual updates, and geometric classification for easy identification. Indexed. \$13.00 plus 1.50 postage for US buyers, Canada and Mexico please add \$2 US to each for extra postage. Overseas please add \$4 US surface or \$6 airmail. Order from author: Jane O. Dinkins, 1100 Ridgeley Dr., Houston, TX 77055, 1-713-465-0557. Owners of 1996 edition may receive 1997 update pages by sending \$3 (includes postage).
21. **IMPERIAL GLASS - IDENTIFICATION AND VALUE GUIDE** by Carl O. Burns. Price \$18.95 plus \$2.50 shipping (Canadian US funds plus \$3.50 shipping), (Foreign US funds plus \$5.00 shipping) mention you are a member of HOACGA. Order from Carl O. Burns, 60 Rumford Center Rd., Andover, ME 04216
22. **OLD IMPERIAL 1909 CATALOG REPRINTS FROM THE ORIGINAL CATALOG** The catalog is 13½" by 11" containing 192 pages that are full of Imperial pattern pictures. Price is \$28.00 plus \$4.00 shipping and handling. Order from Lucile Britt, 3048 Tamarak Drive, Manhattan, KS 66503 Phone: (913) 539-1933