

HOACCGA

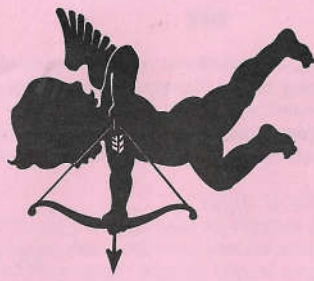
Heart of America Carnival Glass Assoc. Inc.

February 1998

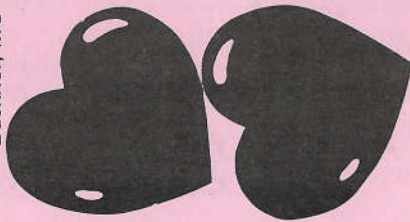
RETURN ADDRESS

H.O.A.C.G.A.
Jackie Fortney
P.O. Box 303
Buckner, MO 64016

FIRST CLASS MAIL
U.S. POSTAGE
PAID
Buckner, MO
Permit 03



CONVENTION INFORMATION INCLUDED



**HEART OF AMERICA
CARNIVAL GLASS ASSOCIATION**
(Since 1973)
BOARD OF DIRECTORS

PRESIDENT ROBERT GRISSOM
7517 Evanston
Raytown, Missouri 64138
PHONE: 1-816-356-5320

VICE-PRESIDENT DARYL STROHM
8904 E. 29th Street
Kansas City, Missouri 64129
PHONE: 1-816-252-8053

TREASURER CLIFF BALL
572 W. Park Street
Olathe, Kansas 66061
PHONE: 1-913-782-0415

SECRETARY ED KRAMER
4305 W. 78th Street
Prairie Village, Kansas 66208
PHONE: 1-913-642-3587

BULLETIN SECRETARY JACKIE FORTNEY
Post Office Box 303
Buckner, Missouri 64016
PHONE: 1-816-650-5208

Please send information about your Club to the Bulletin Secretary. We will include the name of your club, the secretary's name, address & phone number, dues, and the meeting place(s) and time(s) in the Bulletin.

Anniversaries

CONGRATULATIONS!!! to those members who are celebrating their 40th or more wedding anniversary. The anniversary date and the number of years is indicated.

Douglas & Nancy Williams
2009 Cullum Drive
Reading, PA 19601
Married 44 years February 5th

A card or note recognizing this event would surely be appreciated. Each monthly bulletin will contain the names of those members who are currently celebrating their 40th or more wedding anniversary.

If you have not notified the Bulletin Secretary, Jackie Fortney, of your anniversary, please send the information. Your anniversary will be recognized in the appropriate monthly bulletin.

3RD NOTEBOOK SECTION -- VASES PHOTOGRAPHS NEEDED BY JANUARY 31, 1998

The first two vase sections of the HOACGA Notebook have been completed, thanks to the help of many members. The vase information has been received very well. It is very useful information for all collectors.

I am now in the process of assembling the necessary photographs for the third Vase section of the Notebook. The first two sections covered the pattern names which started with the letters A through G. For this third section, it is planned to add those vases whose pattern name starts with H through P (Hand Vase through Pulled Loop). I presently have a photograph of several of the patterns, but there are some for which I need a photograph. These patterns are listed below. If you have one of these vases, any unusual, or unknown vase, and would be willing to photograph it, I would appreciate your sending me a picture. It will be a great help in providing useful information to all collectors. The more information that is received, the more complete the Notebook section will be.

PATTERN

Hobnail
Hobnail Panels
Hobstar Band
Hobstar Reverse
Hot Springs
Inca
Interior Ribs
Jack-In-The-Pulpit
Katy
Leaf Swirl & Flower
Lily of the Valley
Luster & Clear
Massachusetts
Pineapple & Fan
Plain Panel

MAKER

Anchor Hocking
Unknown
Unknown
Sowerby
Unknown
Czechoslovakia
Imperial
Northwood
Imperial
Unknown
Czechoslovakia
Fenton
U.S. Glass
U.S. Glass
Fenton

Bob Grissom
7517 Evanston
Raytown, MO 64138
816-356-5320

AQUA OPAL - PATTERNS / PIECES NEEDED

An Aqua Opalescent Carnival Glass display and educational program is being planned for the Convention. We are attempting to have all patterns along with the different pieces (shapes) represented in this display.

Several collectors have agreed to bring pieces for display, but there are some pieces that we still need.

Listed are the pieces that are still needed and the ones that members have agreed to bring:

AQUA OPALESCENT PATTERNS / ITEMS NEEDED

Basket	Hat Shape	Northwood
Carolina Dogwood	Bowl	Westmoreland
Coin Dot	Compote	Westmoreland
Daisy Wreath	Bowl	Westmoreland
Double Loop	Sugar	Northwood
Estate	Creamer & Sugar	Westmoreland
Hobstar & Fruit	Bowl	Northwood
Leaf & Beads	Candy Dish	Northwood
Leaf Chain	Plate	Fenton
Orange Tree	Plate	Fenton
Peacock at Fountain	Punch Bowl & Base	Northwood
Peacock at Fountain	Compote	Northwood
Poinsettia	Bowl	Northwood
Scales	Plate	Westmoreland
Superb Drape	Vase	Northwood
Three Fruits	Bowl, Stippled	Northwood
Vintage	Bowl, Ruffled, 6"	Fenton
Waterlily	Sauce	Fenton
Wide Panel	Epergne, 4 Lily	Northwood

AQUA OPALESCENT PATTERNS AVAILABLE / COMING

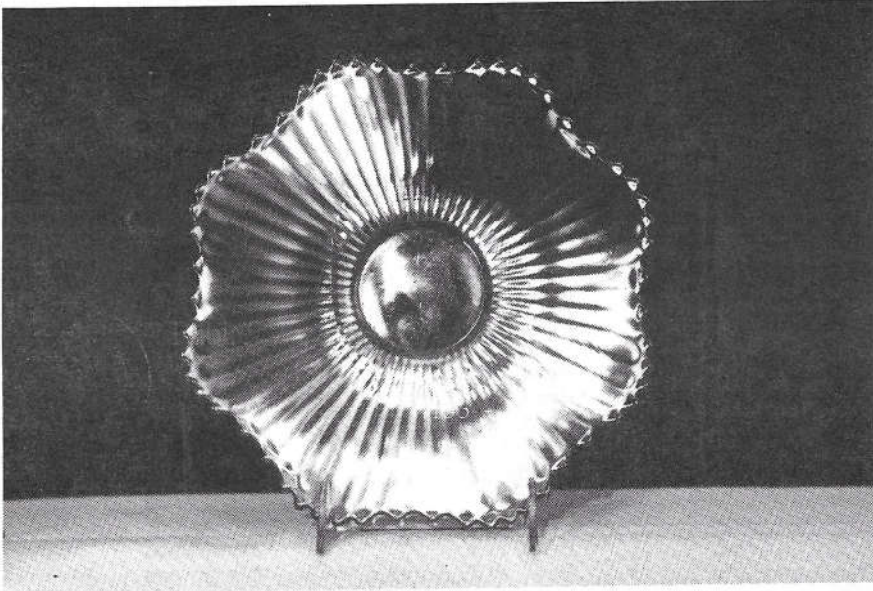
Acorn Burr	Punch Bowl W/Base	Northwood
Acorn Burr	Punch Cup	Northwood
Beaded Cable	Rose Bowl	Northwood
Blackberry Spray	Hat Shape, Ruffled	Fenton
Blackberry Spray	Hat Shape, JIP	Fenton
Corn	Vase	Northwood
Daisy & Drape	Vase	Northwood
Daisy & Plume	Rose Bowl	Northwood
Dandelion	Mug	Northwood
Diamond Points	Vase	Northwood
Double Loop	Chalice	Northwood
Dragon & Lotus	Bowl, Ruffled	Fenton
Drapery	Vase	Northwood
Drapery	Rose Bowl	Northwood
Embroidered Mums	Bowl, Ruffled	Northwood
Finecut & Roses	Rose Bowl	Northwood
Finecut & Roses	Candy Dish	Northwood
Fine Rib	Vase	Fenton
Four Pillars	Vase	Northwood
Fruits & Flowers	Bon Bon, Pedestal	Northwood
Good Luck	Bowl, PCE	Northwood
Good Luck	Bowl, Ruffled	Northwood
Grape & Cable	Bon Bon	Northwood

Grape & Cable	Bowl, Pce	Northwood
Grape & Cable	Cracker Jar	Northwood
Grape & Cable	Hatpin Holder	Northwood
Grape Cable	Powder Jar	Northwood
Grape & Cable	Punch Bowl W/Base	Northwood
Grape & Cable	Punch Cup	Northwood
Hearts & Flowers	Bowl, Ruffled	Northwood
Hearts & Flowers	Compote	Northwood
Hearts & Flowers (Persian Blue)	Compote	Northwood
Holly	Bowl, Ruffled	Fenton
Holly	Hat Shape, Ruffle	Fenton
Holly	Plate	Fenton
Leaf & Beads	Candy Dish	Northwood
Leaf & Beads	Nut Bowl	Northwood
Leaf Chain	Bowl, Ruffled	Fenton
Orange Tree	Mug	Fenton
Orange Tree	Loving Cup	Fenton
Peacock & Grape	Bowl, Ruffled	Fenton
Peacock & Urn	Bowl, ICS, Large	Northwood
Peacock & Urn	Bowl, ICS, Small	Northwood
Peacock at Fountain	Bowl, Fruit	Northwood
Peacock at Fountain	Punch Cup	Northwood
Peacock at Fountain	Compote	Northwood
Peacock on Fence	Bowl, Ruffled	Northwood
Peacock on Fence	Bowl, PCE	Northwood
Peacock on Fence	Bowl, PCE, Stippled	Northwood
Poppy	Pickle Dish	Northwood
Poppy Show	Bowl, Ruffled	Northwood
Poppy Show	Plate	Northwood
Rose Show	Bowl, Ruffled	Northwood
Rose Show	Plate	Northwood
Singing Birds	Mug	Northwood
Strawberry	Bowl, Stippled	Northwood
Strawberry	Plate	Northwood
Thin Rib	Vase, Mid Size	Northwood
Three Fruits	Bowl, Ruffled	Northwood
Three Fruits	Plate, Stippled	Northwood
Three Fruits Medallion	Bowl, Ruffled	Northwood
Three Fruit Medallion	Bowl, Ruffled W/SE	Northwood
Tree Trunk	Vase, Small	Northwood
Tree Trunk	Vase, Mid-Size	Northwood
Vintage	Bowl, ICS, 6"	Fenton
Vintage	Bowl, 3-in-1	Fenton
Wishbone	Bowl, Ruffled	Fenton

If you have any pieces of Northwood or Fenton Aqua Opal, or Westmoreland Blue Opal pieces that are not on either of the above lists and would be willing to bring them to the convention please do so. It will add to the display and educational program. If you have a piece and are not coming to the convention, please call Daryl Stohm, (816-252-8053) and let him know. Your help is always appreciated. Each piece will be photographed and possibly used as a section for the HOACGA Notebook at a later time. The program will also be video taped.

IMPERIAL'S SMOOTH RAYS PLATE

By Alan & Lorraine Pickup



Our most recent antique mall find was this smoke Imperial Smooth Rays plate. For some unexplained reason, the imperial Smooth Rays pattern is not shown or even mentioned in Bill Edward's "Standard Encyclopedia of Carnival Glass". However, Carl Burns' book "Imperial Carnival Glass" does show it in marigold. He also lists this 8" plate as available in clambroth and teal. He lists 15 various shapes and sizes of Smooth Rays in marigold, clambroth and teal as well as a white rose bowl. None are listed in smoke, although it was a common Imperial Glass Company color. We have not seen any of the listed shapes or colors with the exception of this smoke plate.

This plate can be found in the regular plate section of the HOACGA notebook listed as #74. The picture smoke plate was submitted by us several years ago and we will use that picture again for this article. We bought that smoke plate in a Mid-West carnival glass auction and after enjoying it for a few years, sold it to a Florida collector.

The plate we just found has the same outstanding blue iridescent color as the first one we had. That is the good news. The bad news is this smoke plate, like many white plates, needs a dark background to really show off the color. The reason is that with plates made from clear glass like smoke, white, clambroth and marigold; the color is the result of the iridescent spray. But give this plate a favorable background and the color is just spectacular. It reminds me of a display of Northern Lights.

Should anyone question the Imperial Glass Attribution for this plate, it should be pointed out that the basic two part plate mould is the same shape used on the Scroll Embossed, Shell, and Shell and Sand Imperial plates. Also, the same bottom plate mould with the intricate eight pointed star can be found on Scroll Embossed plates and some Shell, and Shell and Sand plates, as well as this Smooth Rays plate.

We are not sure that the plate pictured here had the star in the marie area. Our recent find does. More than one mould bottom plate, one without a star pattern and one with, were obviously used.

The Smooth Rays plate shown as #75 in the notebook, and also attributed to Imperial, not only has a many rayed base plate pattern, but the basic shape of the plate is not the same pronounced eight sided shape as #74. Are both plates Imperial?

Dear Carnival Glass Friends:

We would like to express our sincere thanks and appreciation to all of you for the condolences we received in the death of our husband and father, John Britt.

John fought a long and hard battle against his health problems and enjoyed many fruitful years beyond what time the medical staff believed he would have. When he left this world, it was in a most peaceful manner and we feel that this was his last reward for the life that he had lived.

It is truly amazing that we have received cards, flowers, and phone calls in such great numbers from all over the world. We have received many long and sympathizing letters from persons who have never met or talked to John. This outpouring of feelings has given us great strength in our time of loss.

Carnival Glass has been John's life for the past 25 years. It is what has kept him going strong in spite of his health for the past 10 years. We have you, his carnival glass friends to thank for the enjoyment that he derived from this great hobby.

Sincerely, Lucile Britt, Ken, & Aileen Oppenlander

REMEMBERING JOHN BRITT

By Grace Rinehart

We have lost a very special part of our Carnival Glass family when the sad news came in that John Britt had passed away January 8th, 1998. For many years, our newsletters have carried the wonderful articles on patterns, colors and information they have so graciously shared with all of us. We feel such a loss.

John & Lucile have been a big part of nearly every convention for many long years. They brought loads of their rare carnival to show and talk about it. They have received many awards, well deserved.

We are grateful for the articles and the tapes they have left for everyone's enjoyment and education - a way to keep them always with us.

Our hearts go out to Lucile and his family. We shall miss him very much but memories will always keep him in our hearts.

MY CARNIVAL GLASS STORY

By Ed Kramer

Cliff Ball, our treasurer, has asked for collectors, new and old, to tell how they became interested in our hobby. We have had a few members write so far, and here goes my story.

In the 1950's when I was just a "kid", my mother was visiting her mother's home in Dallas (my maternal grandmother) and she asked if she could take home this orange punch bowl she had admired since she was little. Grandma said yes and the punch bowl and 6 cups came to Prairie Village, Kansas.

It sat on a serving cart in our dining room for a long time. In 1959, when I graduated from high school, we had some friends over, made an ice ring (in a jello mold), and served punch from the orange punch bowl. The ice ring went clang, clang, clang against the side of the bowl as we dipped out the punch.

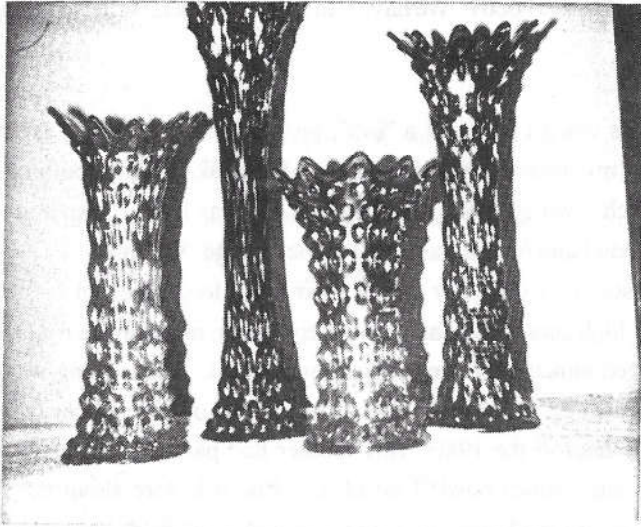
Many years later in the 1980's (my mother had passed away and I was the owner of the orange punch bowl) I decided to find out more about the glass. I asked some questions, read some literature, and found out my pattern was "474" in marigold carnival glass. I read about a Bob Grissom who was president of the carnival glass club in Kansas City. I knew a Bob Grissom at my workplace (Bendix Corp, Kansas City Division) where we were both Engineers. I stopped by his desk and told him about this Bob Grissom in carnival glass and he said it's me. So in about 1987 he invited me to some club meetings. He and his first wife Rosa were very kind and nurturing and I joined HOACGA and my real education began.

I now have nearly every piece made in 474 and I know marigold from orange. This pattern is my favorite. I wouldn't take \$10,000 for my punch bowl even though the market is only around \$300. My collection also has a lot of marigold Butterfly and Berry (I didn't mention earlier that my mother took home a Butterfly and Berry cream and sugar in marigold from grandma's house) I have a collection of Butterfly and Berry vases in many colors. I do have other patterns as well.

My collection is not huge, but I enjoy it and especially the fine people I have met in HOACGA. I've been the secretary since January of 1992 and have a lot of close personal friends among our members. What beautiful glass! What a great hobby!

MILLERSBURG HOBNAIL VARIANT
OR FENTON RUSTIC VARIANT MID-SIZE FUNERAL VASE

By Bob Bishop



A noted author has listed this piece as a variant of Millersburg. When this blue vase (pictured second from left) was shown to Mr. Fenton, he said it was a Rustic Vase.

First vase from the left is marigold, measuring 12½" high, 4¼" on the bottom. It is very pretty and the hobs are pretty good. Second vase, measuring 16½" high and again 4¼" on the bottom is blue. Third vase, Rustic Variant in marigold, measuring on 9" high, with hobnails jutting out 3/8", top being 5½" and the bottom 4¼". There are 9 hobs on the top row. It has to have been only swung once or twice. It is still Rustic! If you look at Fenton's "1st 25 years", you will notice this very same vase on page 118 of their catalogue. Look through a magnifying glass and you should notice only 9 hobs. Fourth vase, is Fenton green, measuring 14½" high and again 4¼" on the bottom, with the hobs stretched a little.

I have been studying the Fenton blue for over ten years. You will notice when looking at the top edge of bowl or vase that the Fenton blue has the habit of turning yellow or orange-yellow. This vase has that characteristic. There are 50 to 100 vases known in blue, which would be impossible to be Millersburg. There are none known in radium.

GLASS CARE

By Russ Bibbee, Fostoria, OH

A simple reply to the advice of polishing your carnival glass in order to brighten, clean, shine, and ruin it. Please note the advice of the following.

The word or act of polishing is best described as an act of friction according to Webster. In doing so, the very surface is being removed and soon your carnival glass will become bright, shiny and glassy looking on the high points of the mold detail, and as each time the polishing is repeated by all the changing hands, it will become more apparent. And eventually ruined.

Some time ago I saw a perfect example of this at an auction, where the previous owner had polished his pieces very nice with silver polish, of course he had ruined several good pieces along with the rest. They sold for half the ordinary price, blamed the auctioneer.

You see, all real polish of any kind has an abrasive of some kind in the product, or it wouldn't polish. However, there are so called polishes that do not have abrasives in them, however, they are chemical based to only remove the oxidation from the surface and may or may not do the type of cleaning intended for carnival glass.

Any good detergent without any abrasives in the product is fine for cleaning your carnival glass, some better than others. Do use low temp hot water when cleaning your glass. A brush of flexible bristles is fine to use with the cleansing soap as the soap acts as a lubricator when cleaning in the tight molded detail. The brush will not scratch the iridescence during cleaning. However, don't be surprised to find or see a scratch or two after cleaning, as I often have, that the cleaning showed up! Remember, it is the water and soap that is the lubrication that takes away the friction during the cleaning process. A dry cloth is no way to rub by friction to shine or clean carnival glass.

I use plain vinegar by soaking to remove lime deposit. Perhaps Lime-Away may work just as well, there may also be some denture cleaners too, for your vases.

It also helps to soak your carnival glass thirty (30) minutes or so before cleaning, and even do a repeat on the cleaning process. nothing instant here, but safe for the carnival glass, we are trying to preserve the glass for the future.

Remember, you can't put something on a piece of carnival glass that was never there. Now you must decide has that piece been polished or is it glistening from it's natural radium finish!

FEW FARMYARD BOWLS ARE BEING OFFERED AT AUCTION

By Cliff Ball

Many Carnival Glass collectors would love to have a Farmyard Bowl in their collection. These bowls continue to be much sought after and appear to be escalating in price. Only three with good iridescence and without chips or nicks were offered at auction during 1997. These three sold for \$7,000, \$7,500 and \$8,000. All were purple in color which is the color almost always found.

Over the years, Farmyard bowls have been called by several names... "Chicken Bowls", "Busy Chickens", "Mother's Flock" and "Pa and The Girls". On page 10 of Rose Presznick's 1966 book I on Carnival and Iridescent Glass she included a note about a man in West Virginia who said that his mother had several pieces of this pattern that she called "Pa and The Girls". If you have access to her book you might want to read the entire story.

As a child in eastern Kansas during the 1940's, I belonged to a 4H Club and had chicken raising as my project. When the chickens were entered in the county fair they were shown as a "pen" which was composed of one rooster and two hens. Interestingly, the chickens shown in the design of the Farmyard pattern appear to be a "pen"... a rooster and two hens.

Reproductions of the farmyard bowl and plate have been made... but they are easily recognized as reproductions by collectors who have had an opportunity to study the original Dugan pieces.

ON THE AUCTION TRAIL WITH CHUCK

By Chuck Kremer

January 3, 1998: Boonville, Missouri. The 1998 auction season got off with a "bang" January 3 with Mickey Reichel's traditional New Year's Extravaganza. A full house with about 120 bid numbers. The 60 degree plus weather was a real help. The colorful brochure and glass to match made for a top notch sale. There were people in attendance from Colorado to Pennsylvania and Texas to Minnesota as well as points in between.

Mickey had the mail bids and those in attendance were very spirited bidders. When the piece was good, it appeared the price picked up a bit from the end of last year. In my opinion, those in attendance were paying more attention to very good iridescence and paid accordingly. If there were bargains, they were probably the chop plates.

I went out to look at the Plaid bowl, but it wasn't my kind of iridescence, so I still do not own one. A few pieces that caught my eye were the super electric green Rose Show plate (\$6,000), blue giant Stag & Holly rose bowl (\$3,500), white Palm Beach butter (\$325), amethyst square 8 ruffled Butterfly and Tulip bowl (\$2,600) and the rare blue Butterfly and Berry fernery at \$725.

While visiting with Mickey and viewing the glass to be included in the next couple of auctions (good glass by the way), I saw a box of badly broken glass that had been shipped a great distance and - well double boxing with much more soft packing material would probably have avoided the loss. Don't trust the carrier or Uncle Same to take it easy on your glass, and there is nothing you can write on the box to help.

Seventeenth Annual Keystone **OLD CARNIVAL GLASS SHOW & SALE**

Holiday Inn - North
SR 501 & US 222, 1492 Litz Pike,
Lancaster, PA 17601-6504

March 14, 1998 • 9 A.M.-3 P.M.

Admission \$3.00

**For More Information Contact Nancy Williams
2009 Cullum Dr., Reading, PA 19601
(610) 374-9033**

Sponsored by
The Keystone Carnival Glass Club

Mickey Reichel's Annual Carnival Glass New Years Extravaganza

January 3, 1998. Price Results, 352 Items

SOLD WITH NO RESERVES - NO BUYERS PREMIUM

Held Inside the Mickey Reichel Auction Center

1 Mile North of I-70 on Hwy. 5, Exit 101, Boonville, Missouri - 20 Miles West of Columbia, MO on I-70
Preview Friday 12 p.m. - 6 p.m. and 7:30 a.m. - 9:30 a.m. Day of Auction

Make Reservations **NOW** at one of these local motels:

Days Inn: 660-882-8624 • Comfort Inn: 660-882-5317 • Super 8: 660-882-2900

Auction consists of Rarity, Great Irid. and Variety

WRITE IN BIDS: If you are unable to attend the auction, we will be happy to accept absentee bids which must be received by THURSDAY, January 1, 1998. Don't Delay. **FOR AUCTION PRICE RESULTS:** Send S.A.S.E and \$3.00 to 516 Third Street, Boonville, MO 65233.

PLEASE NOTE: There is a \$5 handling charge for each successful bid which will be added to the selling price for all write-in bids. This is in addition to the cost of postage, insurance and packing. Your write-in bid will be entered just as if you are present and bidding. Successful bidders will be notified in 1 to 3 days by the auctioneer (so be sure to include your phone number). Direct mail bids to Auctioneer Mickey Reichel, 516 Third Street., Boonville, MO 65233-1536. Terms: Cash or Check accepted with proper I.D. and Social Security Number and References. Announcements made day of the auction supercede all printed material. Not Responsible for Accidents or Sold Items. **No return on any items once they leave the Auction Center (No Exceptions).**

Call for additional information: 660-882-5292 days or 660-882-5283 evenings.

FAX: 660-882-5292 (evening hours start FAX transmission after beep)

NOTE: Read each line, Bold and Plain print. Our Best New Year's Yet.

1500	1. M - 5 1/2" Morning Glory Vase - 5" Top - Great	130.00	24. G - 8 Ruffle Holly Bowl - Super Irid. & Base Color
3500	2. Saph. - 8 1/2" Florentine Candlesticks	170.00	25. G - Grape and Cable Powder Jar & Lid - Minor Roughness on Lid - Rare
60.00	3. G - Birds and Cherries Compote - Neat Pattern	605.00	26. G - Mlbg. Deep Whimsy Holly Bon Bon - Radium
30.00	4. M - Grape and Cable Candlestick	2500	27. M - Persian Med. Hair Receiver - Scarce & Nice
8000	5. G - Grape and Cable Candlestick	190.00	28. G - Inverted Feather Cracker Jar - Normal Lid Roughness - Rare
17000	6. M - 3 in 1 Mlbg. Seaweed Bowl - Beauty - Sm. Base Chip	80.00	29. M - Beaded Shell Mug - Dark, Pinks & Golds - Very Nice
42.50	7. M - Collar Base Deep Peacock & Grape Ruffle Nut Bowl	1800.00	30. Smoke Pastel Amber? - 9" Peacocks Plate - Rib Back - Ultra Rare Pastel
110.00	8. G - Fruits and Flowers Bon Bon - Nice One	31. M - N Strawberry - B.W. Plate - Golds & Pinks	
12500	9. M - Stippled Fruits and Flowers Bon Bon - Very Scarce	125.00	32. M - 3 in 1 Lotus and Grape Bowl - Rare Shape - Super Blues & Pinks
6500	10. M - N Wishbone Bowl - Super Irid Flake on Foot	22500	33. M - Mlbg. Radium 6 Ruffle Ribbon Edge Zig Zag Bowl - Great
7500	11. W - 7" Grapevine Lattice Plate - Stretch Pink & Blues	950.00	34. Brick Red - 8 Ruffle Fenton Holly Bowl - Great One
6500	12. W - 4 1/2" Opening - Frosted Block Rose Bowl - Very Scarce Color	14500	35. B - 6 Ruffle Fenton Holly Bowl - Super Multi Elec.
280.00	13. Lav. A - Rose Show Plate - Rare - Chips on Roses - Still Beautiful	125.00	36. P - 8 Ruffle Imp. Pansy Stippled Bowl - Super Satin
85.00	14. Smoke - 10 1/2" Round Imp. Grape Bowl - Rare Color & Size	275.00	37. Lav. P - 8 Ruffle N Grape Leaves Bowl - Beautiful Irid.
210.00	15. B - Ruffle Embroidered Mums Bowl - Very Rare - Minor Nicks - Pretty	370.00	38. B - Ruffle Rib Bk. Good Luck Bowl - Near Elec.
6000	16. E.G. - Rose Show Plate - Super Rarity - Top Piece in the Auction - Emerald w/Blues	1500.00	39. Lav. A - 8 Ruffle Dragon & Lotus Bowl - Collar Base - Very Scarce Color
9000	17. Lav. - 10 1/2" N Dia. Points Vase - Very Scarce Color & Pretty	450.00	40. P - N Embroidered Mums Bowl - Rib Bk. - Multi Irid. Rarity
8000	18. P - 8" Ruffle Imp. Open Rose Bowl - Imperials Hot	300.00	41. G - 3 in 1 Edge Concord Bowl - Popular Pattern - Rare Color & Shape
29500	19. M - Stippled Three Fruits Plate - Great Example	1000.00	42. Pastel - A.O. Peacocks Bowl - Rib Back - Pastel Irid. Beauty
7500	20. A - Dome Base Dugan Ruffle Vintage Grape Bowl - Rare - Super Irid.	130.00	43. B - Imp. Lustre Rose Fernery Bowl - Rare Imp. Blue
160.00	21. M - Mlbg. Strawberry Wreath Compote - Trys to Glow - Black Lite		
11000	22. M - Lattice and Daisy Tankard Pitcher - Dark Top to Bottom		
160.00	23. M - Rocco Vase - Little Favorite		

4500	44. M - Cambridge Inverted Feather Whimsy Compote from Wine	7000	79. P.O. - Wishbone and Spades Sauce Bowl - 8 Ruffle & Super
475.00	45. Super Red Amb. - Holly Goblet Compote - Rare & Pretty	40.00	80. M - Round Mlbg. Blackberry Wreath Sauce - Radium
130.00	46. G - 8 Ruffle Imp. Star of David Bowl - Radium - Scarce Color	245.00	81. M - Horse Medallion Flat Plate - Radium w/Great Detail
130.00	47. M - 10" 6 Ruffle Mlbg. Rosalind Bowl - Satin Beauty	325.00	82. Teal G - Mlbg. 10" I.C.S. Hanging Cherries Bowl - Soft Satin - Rare Color
150.00	48. Pumpkin M - Lighting Flower Nappy - Very, Very Nice & Scarce	4500	83. A - Flat Scales 6" Plate
325.00	49. M - N Acorn Burs 7 pc. Berry Set - Super - 1 Berry Bowl - Chipped	7500	84. M - Fenton Holly Plate - Always in Demand
3000.00	50. Red - Very Rare - Sq. 8 Ruffle Plaid Bowl - Few Known	250.00	85. G - Imp. 474 Milk Pitcher - Rare - Radium & Pretty
160.00	51. A - 6 Ruffle Fenton Autumn Acorn Bowl - Super Irid.	7000	86. P - Spat. FTD. 3 Fruits Medallion Bowl - Great Irid. - Nick on Edge
185.00	52. A - 6 Ruffle Captive Rose Bowl - Also Super Irid.	100.00	87. M - 9 1/2" Cosmos VT. Chop Plate Radium
1090.00	53. M - 9 1/2" Flat Spat. FTD. Stag and Holly Plate - Super Pinks & Golds	160.00	88. A - 8" Spat. FTD. Stag and Holly Bowl - Very Nice - Scarce Color
6500	54. P - 8 Ruffle Imp. Cobblestone Bowl - Super Example - Elec.	100.00	89. M - 9" Imp. Oval & Round Bowl w/Brides Basket Frame
225.00	55. P - 8 Ruffle Lotus and Grape Bowl - Valued Pattern - Scarce Color	4500	90. H.A. - Contemporary Flocking Bears - I.C.G.A. 1993 - Spooner - Lg. Tumbler
300.00	56. Pumpkin M - 9" Flat - Spat. FTD. Grape and Cable Plate - Super Golds, Greens & Pinks	7000	91. M - Ten Mums Tumbler - Super One
160.00	57. P - N Daisy and Plume, Rib Int. FTD. Rose Bowl - Great One	270.00	92. Vas. - 7 1/4" 6 Ruffle Peacock and Dahlia Bowl - Rare and Beautiful
90.00	58. P - N Beaded Cable, Rib Int. Rose Bowl - Blue & Purple Irid.	225.00	93. B - 8 Ruffle Orange Tree Bowl, w/Trunk VT. - Scarce Super Irid.
2500.00	59. M - Dark P.C.E. Nippon Bowl - B.W. Ext. - Rare Shape w/B.W.	750.00	94. M - 9" Leaf Chain Plate - Great Multi Pinks and Golds
85.00	60. P - Imp. Lustre Rose Tumbler - Dark Multi Irid.	160.00	95. M - 8 Ruffle Fenton Peacock and Um Bowl - Pinks, Golds & Greens
50.00	61. B - Butterfly and Fern VT. Tumbler w/Etched Initials	300.00	96. A - 6" 6 Ruffle Mlbg. Peacocks Sa. Bowl - No Bee or Beads - Super Radium
605.00	62. Smoke - Fashion Tumble - Very Scarce Color	350.00	97. M - 5 1/2" I.C.S. Mlbg. Peacocks Bowl - No Bee - No Beads - 6 Columns - 7 Tail Feathers?
140.00	63. Aqua - 7" 6 Ruffle Peacock and Dahlia Bowl - Scarce Color	85.00	98. M - 11 1/4" Imp Beaded Bulls Eye Vase - Super Radium
200.00	64. Blue Opal - 5" Irid. Hobstar & Fruit 5" Sauce - Rare and Super	115.00	99. Teal - 10" Corinth Vase - Radium Beauty - Scarce Color
75.00	65. Celeste B - Wide Panel Cov. Candy Dish - 1864-1924 - Schiller Lodge Adv. Piece	2350.00	100. Super Elec. B - Poppy Show Plate - Rare - Magnificent
500.00	66. Amy Opal - Kittens Cup & Saucer - Not Irid - Super Rare - I of a Kind?	2000.00	101. Super Pinks and Golds Poppy Show Plate - Super Pumpkinish Marigold
12500	67. M - Flashed Unknown Pattern Decanter w/4 Shot Glass Mk. Germany	25.00	102. Celeste - Concave Diamonds Tumbler - Nice Find
425.00	68. M - Omnibus Rare Water Pitcher - 2nd One Known - Base Roughness	115.00	103. Metal Brass Decor. Carn. Irid. Hat Pins - A, B, C, D, E Choice
2100	69. M - Omnibus Very Rare Tumbler	8000	104. B.A. - Hat Pin - Jute Braid
2100	70. M - Apple Tree Tumbler	10500	105. B.A. - Hat Pin - Cut Flower
30.00	71. P - Grape and Cable Tumbler - Great Example	130.00	106. B.A. - Hat Pin - Elephant - Super - Star
4500	72. M - Enamel Pretty Panels Tumbler - A Beauty	7000	107. B.A. - Hat Pin - Elephant VT. Small - Super
7500	73. G - Enamel Iris Tumbler w/Prisms Banding	2000	108. B.A. - Hat Pin - Elephant VT. Small - Super
7000	74. I.G. - Enamel Orchid Tumbler - Rare Irid.	11000	109. B.A. - Hat Pin - Elephant VT. Small - Super
17500	75. Olive G - 8 Ruffle Collar Base Dragon & Lotus Bowl - Rare Color	80.00	110. B.A. - Hat Pin - Bars and Beads
1500.00	76. A - 10" Mlbg. Blackberry Wreath Bowl - 3 in 1 Edge - Satin	2500	111. B.A. - Hat Pin - Cherries - Rare Little Beauty
85.00	77. P.O. - Lg. 6 Ruffle Ski Star and Compass Bowl	1500	112. B.A. - Hat Pin - Basket Flower - A or B 75.00 each
180.00	78. P.O. - Garden Path VT. and Soda Gold Sauce Bowl - Lots of Opal	20.00	113. B.A. - Hat Pin - Dogwood Rare Beauty
		11000	114. B.A. - Hat Pin - Diamond Sphere - Super
		60.00	115. B.A. - Hat Pin - Basket Weave
		200.00	116. B.A. - Hat Pin - Spiral Dance
		180.00	117. B.A. - Hat Pin - Four Hearts or Hearts and Cross
		4000	118. B.A. - Hat Pin - Pen Star
			119. B.A. - Hat Pin - Fancy w/Rooster - Not Irid

- 950.00 120. P - Imp. Lustre Rose Water Pitcher - Elec. B and Golds
- 400.00 121. G - N Grape and Cable Pitcher - Great Greens and Golds
- 250.00 122. W - Fenton Frosty Orange Tree Orchard Pitcher
- 250.00 123. G - N Grape and Cable Tankard Pitcher - Rare Beauty - Base Cracked - 3 or 4 Known
- 130.00 124. M - Floral and Grape Ribbon Edge Top Pitcher - Super Top to Bottom
- 100.00 125. W - N Raspberry Milk Pitcher - Beautiful, Super Rare - Base Cracked
- 1,050.00 126. B - Orange Tree Variant Tankard Pitcher - Rare Beauty
- 250.00 127. B - Orange Tree Variant Tumbler
- 275.00 128. P - Dugan 10 Ruffle Flowers and Frames Bowl - Multi Elec.
- 450.00 129. P - 8 Ruffle N Peacocks Bowl, Rib Ext. - Super Pink, Purple & Blue Irid.
- 290.00 130. Elec. B - 8 Ruffle N Peacocks Bowl, Rib Ext. - Manf. Tool Marks on Edge - Still Super
- 750.00 131. W - 10" Rd. FTD. Gold Trim Orange Tree Master Bowl - Frosty - Super Irid. & Rare
- 270.00 132. Amber - 11 1/2" Imp. Beaded Bullseye Vase - Rare Color - Great Irid.
- 120.00 133. Pumpkin M - Stipped Grape and Cable Bon Bon - Rare Beauty
- 250.00 134. B - Ruffle Dragon and Lotus Collar Base Bowl - Gorgeous Bowl
- 1,300.00 135. Cobalt Blue Base - N Rose Show Plate - Elec. Irid. of All Irid. - #10 Even Multi Irid.
- 750.00 136. G - Mibg. Radium 3 in 1 Trout and Fly Bowl - Super Radium
- 60.00 137. G - Birds and Cherries, 2 Sides Up, Bon Bon
- 175.00 138. Dark M - Daisy & Drape FTD. Rose Bowl - Blackberry Int. Outstanding - Perfect Feet
- 60.00 139. Pumpkin - Persian Medallion Int. Grape and Cable Lg. Fruit Bowl - Fabulous
- 325.00 140. G - 17" Mibg. Hobnail VT. Mid Size Vase - Scarce Color - Very Nice
- 160.00 141. M - 16" Mibg. Hobnail VT. Vase - Dark and Nice Mid Size
- 175.00 142. A - 16" Mibg. Hobnail VT. Vase - Mid Size - Multi Irid.
- 160.00 143. A - 9" Grape and Cable B.W. Plate - All Time Favorite
- 2,600.00 144. P - Sq. 8 Ruffle Butterfly and Tulip Bowl - Super All Over Electric Irid. - The Best
- 360.00 145. M - Vas. ? Square Butterfly and Tulip Bowl - Glows under Black Lite
- 190.00 146. G - N Wishbone FTD. Plate - Rare Color - Bruise on Back - Don't Show in Front
- 375.00 147. P - Scroll Embossed Imp. Plate - Multi Elec.
- 350.00 148. P.M. - Stippled, Ruffled, Rib Bk. Good Luck Bowl - Super Blues, Golds & Pinks
- 450.00 149. P - Imperial Grape 7 Pc. Water Set - Super Multi Elec Set
- 550.00 150. G - Poinsettia Milk Pitcher - Very Scarce Color - Dark
- 325.00 151. G - P.C.E. Grape and Cable B.W. Bowl - Very Scarce Color & Shape
- 350.00 152. G - Ruffle N Nippon Bowl - B.W. Ext. - Scarce Beauty
- 195.00 153. B - Round Master Fantail FTD. Bowl - Scarce Pattern - Blackberry Ext.
- 165.00 154. A - Spat. FTD. 8" Low I.C.S. Stag and Holly Bowl - Super Color & Shape
- 170.00 155. P - N 8" Plain Bk. Grape and Cable VT. Plate - Very Flat & Pretty
- 300.00 156. P.O. - Collar Base - 3 in 1 Dragon & Lotus Bowl - Rare - Super Irid. All Over
- 130.00 157. M - Mibg. 6 Ruffle 10" Rosalind Bowl - Super Satin Beauty
- 475.00 158. Red - 8 1/2" Fenton Fine Rib Vase - Excellent Easy to See Red
- 325.00 159. G - 8 1/2" Tight C.R.E. Ten Mums Bowl - Super Irid - No Wear - Tops
- 1,050.00 160. Ultra Rare Lav. A - 6 1/2" Mibg. Flat Peacocks Plate - And Its Pretty
- 105.00 161. M - Imp. 9" Open Rose Stippled Plate - Pinks & Golds
- 170.00 162. P - Imp. Windmill 8" Ruffle Bowl - Super - Imperials Hot
- 140.00 163. P - Imp. Grape 9" Ruffled Bowl - Super Multi Elec.
- 100.00 164. Lav. A - 6" 6 Ruffles Sail Boats Sauce - Rare Color
- 425.00 165. B - 9 1/2" Little Fishes FTD. Ruffle Bowl - Great Item
- 325.00 166. M - I.C.S. Coral Bowl - Scarce in Any Shape or Color
- 70.00 167. A - Dugan Double Stem Roses Bowl w/10 Ruffles
- 60.00 168. Red - 8 1/2" Stretch Colonial Panels Plate - Gorgeous
- 205.00 169. P - Collar Base 6 Ruffle 9 1/2" Dugan Cherries Bowl - Rare Shape
- 850.00 170. B - N Rose Show Plate - Multi Elec. Blues Etc.
- 450.00 171. M - 6" Scales Plate - Very Pretty Example
- 105.00 172. B - 12" Plume Panels Vase
- 180.00 173. Emerald G - Imperial Grape Wines - Super - 2 x S - Rare Color *900 each*
- 525.00 174. B - P.C.E. Rib Bk. Good Luck Bowl - Multi Elec. - Always in Demand
- 705.00 175. Blue - Butterfly and Berry Fernery from Master Berry Bowl - Only a Couple Known - Very Rare
- 140.00 176. M - 10" N Wishbone Collar Base Bowl - Satin Blues, Pinks & Greens
- 45.00 177. M - 7" Bullseye and Beads Vase - 5" Top
- 40.00 178. Smoke - Radium 11" Parlor Panels Vase - Blues and Pinks - Wow!
- 155.00 179. P - 8 1/2" Super Ripple Vase - 5 1/2" Top - 3 1/2" Base - Multi Elec.
- 1,400.00 180. P - Wishbone and Spades Chop Plate - Super Color and Quite Scarce
- 300.00 181. P - Wishbone and Spades 6 1/2" Plate - Great Little Rarity - Smooth Bk.
- 60.00 182. P.O. - 10" Ruffle Single Flower Bowl - Scarce Shape
- 170.00 183. B - Low 3 in 1 Ruffle Ribbon Tie Bowl or Plate
- 100.00 184. W - I.C.S. Leaf Chain Bowl - Super Blue & Pink Irid.

- 650.00 185. M - Good Luck Stippled Plate - Rib Bk. - Only a Few Known w/ Stippling - Rare
- 210.00 186. P - N Three Fruits B.W. Plate - Multi Satin - No Scratches
- 300.00 187. M - Ruffle Rib Bk. N Peacocks Bowl - Dark w/Pink, Blues & Gold
- 82.50 188. P - N Singing Birds Mug
- 200.00 189. B - Flat Fenton Holly Plate - Radium Golds & Pink Hi-lites
- 1,150.00 190. Rare Ice Blue - 3 Fruits Medallion FTD. Bowl - Low Ruffle - Fantastic Pink & Blues
- 650.00 191. Ice Blue - N Ruffle Rib Bk. Embroidered Mums Bowl - Great Base Color
- 185.00 192. P - N 9" Grape and Cable Plate - B.W. Ext. Stipple All Over - Blue Irid.
- 425.00 193. P - 5 Pc. Imp. Diamond Lace Stunning Elec. Water Set
- 450.00 194. M - 9 1/2" Flat Captive Rose Plate - I'll Give a 10 till I See One Better
- 475.00 195. G - Mibg. Mystery Peacock 6 Ruffle Bowl - Super Radium
- 325.00 196. A - Mibg. Mystery Peacock 6 Ruffle Bowl - Super Radium
- 425.00 197. A - Mibg. Large I.C.S. Peacock and Urn Bowl - Satin 10"
- 425.00 198. A - Mibg. 9 1/2" Deep I.C.S. Peacock and Urn Bowl - Satin - Neat Shape
- 325.00 199. A - Mibg. 9 1/2" Flared Round Peacocks Bowl - Radium & Nice
- 300.00 200. G - Mibg. Leaf and Little Flowers Rd. Small Compote - Rare Satin & Green
- 60.00 201. G - Mibg. Holly Sprig Deep Don Bon - Radium
- 75.00 202. G - Mibg. Holly Sprig Spade Shape Nappy - Radium
- 50.00 203. M - Mibg. Holly Sprig Card Tray Bon Bon - Radium
- 60.00 204. G - Mibg. 6 Ruffle Holly Whirl Radium Bowl
- 700.00 205. M - Mibg. Hobnail Swirl Rose Bowl - Scarce Anytime
- 150.00 206. P - Imperial Grape Carafe - Multi Irid.
- 110.00 207. P - Grape Delite Rose Bowl - Radium Blues and Purples - Good Feet
- 80.00 208. B - 16 1/2" Spearhead and Rib Vase Swung
- 120.00 209. G - large Grape and Cable Berry Bowl - Beautiful Example
- 1,800.00 210. Pastel Aqua Opal - Rib Back 3 Fruits Plate - Blues, Pinks, Greens & Golds - No Scratches
- 325.00 211. M - Daisy Cut Bell - Rare and Super Radium Pinks and Blues
- 600.00 212. G - 9 1/2" Fenton Holly Plate - Flat w/Even Blue & Pink Irid - No Wear
- 105.00 213. M - 9" N Grape and Cable VT. Smooth Bk. Plate - Pretty & Scarce
- 250.00 214. B - 9 1/2" Heart and Vine Plate - Satin Golds, Silver & Pink Center
- 750.00 215. Red - Holly Fenton Ruffle Bowl - Dark Multi Irid.
- 40.00 216. M - Aqua Base 10 Ruffle Double Stem Roses Bowl - Most Unusual Color
- 120.00 217. M - 15 1/2" Mid Size Ripple Imp. Vase - 3 1/2" Base - Dark Beauty
- 650.00 218. B - 12 1/2" April Showers Vase
- 105.00 219. I.G. - 7 1/2" N Drapery Vase - Pretty Pinks and Blues
- 750.00 220. B - 12 1/2" N Mid Size Tree Trunk Vase - Multi Elec.
- 225.00 221. M - 12 1/2" N Mid Size Tree Trunk Vase - Deep Marigold *Hent Check Base*
- 375.00 222. P - 10 1/2" 6 Ruffle Ski Star Bowl - Fantastic Elec. Blue Irid.
- 900.00 223. B - N Rose Show Bowl Ruffled - Super Multi Elec. Blues Etc.
- 250.00 224. Dark Ice Blue N Ruffled Rose Show Bowl
- 530.00 224. (A) - Blue Ruffle N Poppy Show Bowl - Elec. Multi Irid - *chipped*
- 170.00 224. (B) - Amy. Mibg. Radium Zig Zag Ruffle Bowl
- 125.00 225. Memphis Whiskey Crystal Decanter - Not Irid. - Very Rare
- 325.00 226. A - Mibg. 7 1/2" Ruffle Little Stars - Beautiful Multi Satin *Mum's Den*
- 100.00 227. M - Inverted Strawberry Power w/Lid - Normal Lid Nick - Great Match
- 100.00 228. P.O. - Spat. FTD. Ruffle Peacock and Grape Bowl - Very Scarce
- 100.00 229. Super Lav. A - 3 in 1 Crimp Dugan Double Stem Roses Bowl
- 1,275.00 230. M - Rare 9" Fenton Coral Plate - Few Ever Offered - Best I've Seen
- 1,450.00 231. Lav. Opal - Collar Base Dragon and Lotus Bowl - Super Rarity
- 190.00 232. Amber - Collar Base Dragon and Lotus Bowl - Scarce Base Color
- 400.00 233. Emerald Green - N Ruffle Smooth Back Strawberry Bowl - Super
- 175.00 234. G - 7 1/2" N Stippled Fruits and Flower VT. Ruffle Bowl - Few Known
- 1,350.00 235. M - 10 1/2" Imp. Hattie Chop Plate - Great Pinks and Blues
- 150.00 236. A - Ruffle Fenton Peacock and Urn Bowl - Very Scarce Base Color
- 500.00 237. P - N Ruffle Rose Show Bowl - Super Elec. Irid. - Nick on Edge
- 700.00 238. P.M. - Flat 12" FTD. Rare Two Flowers Chop Plate - Soft Satin Beauty
- 100.00 239. P - N 7 1/2" Grape and Cable Leaf Center Plate - B.W. Ext. - Super
- 1,500.00 240. Red - Lustre Rose Ruffled Fruit Bowl - A Major Item for A Red Collector *Base Check?*
- 450.00 241. B.A. - 9 1/2" Lined Lattice Vase - Scarce and Nice
- 100.00 242. P - 8 1/2" Lined Lattice Vase - Great Multi Elec.
- 525.00 243. M - N Plain Base Corn Vase - A Nice One
- 425.00 244. P - P.C.E. Collar Base 3 Fruits Smooth Back Bowl - Super - The Best
- 530.00 245. Teal - Swan Salt - Super Find - Possible 1 of a Kind

57500246. G - Sunflower Mlb. Pin Tray - A Beauty - Perfect
80.00 247. P - Whimsy-S-Repeat Pitcher from Punch Cup - Super Rare
275.00 248. Dark I.B. - Fancy Int. Fine Cut and Roses Rose Bowl - Good Feet - A Dandy
150.00 249. A - Cherry Circles Lg. Bon Bon - A Very Rare Color
1,900.00 250. P - 11" Garden Path VT. Chop Plate - Extremely Rare Beauty - Super
900.00 251. M - IL. Soldiers and Sailors Plate - 2 Surface Dings that blend w/back Berries - Rare and Beautiful - Great Item
250.00 252. P - N Grape and Cable Hat Pin Holder - Mint - Elec. B and P Hillites
300.00 253. M - N Grape and Cable Hat Pin Holder - Mint - Rich Color
150.00 254. M - Master Butterfly and Berry Bowl - Gorgeous Pinks, Golds & Blues
575.00 255. E.B. - Good Luck Ruffle Bowl - Super Satin - The Absolute Best
3250.00 256. P.M. - Good Luck Ruffle Bowl - Super Satin Pinks, Blues and Golds
3750.00 257. P.M. - N Peacocks Bowl - Pastel Irid. Soft Golds, Blues and Pinks - Wow!
275.00 258. A.O. - Leaf and Beads Rose Bowl - Great Pink and Blue Hillites *Heart Check 110 Feet*
2300.00 259. P - Grape and Cable N 5 pc. Round Berry Set - Old Favorite
725.00 260. M - N Rose Show Flat Plate - A Great Scarce Plate
1000.00 261. Celeste or Saph. - Florentine Candle Sticks - Very Desirable
75.00 262. G - 8" I.C.S. Mayan Bowl - Pretty Soft Satin
75.00 263. W - Constellation Compote - Frosty Pinks and Purples
250.00 264. A - Stag & Holly Lg. I.C.S. Bowl - Very Rare Shape & Color
4750.00 265. P - Persian Garden 6 pc. Berry Set - Also Very Rare
1750.00 266. M - 6 Ruffle Concord Bowl - Hot Pattern - Pretty Bowl
40.00 267. M - Dark Round Panther FTD. Sa. Bowl - Dark & Nice
325.00 268. W - Palm Beach Rare Butter Dish - Bl. and Pink Irid on a Rare Dish
150.00 269. Custard - Green - Lions 7 1/2" Plate - Not Irid. Though Very Rare
450.00 270. M - On Custard 8" Prayer Rug Plate - Never Seen One Before
375.00 271. M - Australian 10" 8 Ruffle Magpie Bowl - Dark Beautiful Radium
550.00 272. G - N Acorn Burrs Tumbler - Great Multi Pink, Green and Golds
1750.00 273. B - Rare Lily of the Valley Tumbler - Very Tough to Find
- 425.00 274. Red - Persian Medallion Bon Bon
400.00 275. P - Ruffle Rib Bk. N Hearts and Flowers Bowl - Scarce & Pretty
75.00 276. M - 6 Ruffle Pony Bowl - Satin Dark - Old Favorite
550.00 277. A - 2 Row Open Edge Blackberry Ruffle Basket - Pretty and Rare Color
60.00 278. G - Leaf and Beads Stipple Ray Int. Nut Bowl - Super One
90.00 279. M - Imp. Grape Decanter & Stopper - Very Pretty
550.00 280. M - Stork and Rushes 7 pc. Water Set - Rare - Few Known
220.00 281. M - Flat 9 1/2" Fenton Holly Plate - Super Multi Pink, Gold & Blues
275.00 282. Pastel P.O. - 3 in 1 Dragon and Lotus Bowl - Rare w/Satin Irid.
175.00 283. P.M. - 9 1/2" I.C.S. Mlb. Fleur De Lis Bowl - Collar Base - Rare
650.00 284. P Amaryllis 3 Corner Flat Plate or Compote - Rare Beauty
1,700.00 285. G - Hearts and Flowers Compote - Great Rare Beauty
550.00 286. G - 9" Ripple Imp. Vase
2000.00 287. W - Dugan 9" Dome Base Plate - Super Blues & Pinks
155.00 288. B - 9" 3 in 1 Ribbon Tie Bowl - Super Blues, Purple & Pinks
300.00 289. G - Rare Smooth Handle N Rd. Bushel Basket - Few Known
1300.00 290. P - Large FTD. Square Butterfly and Tulip Bowl - Scarce Beautiful Pattern - Collector's Delight!
550.00 291. M - P.C.E. Hearts and Flowers Bowl - Dark and Rare P.C. Edge
3000.00 292. M - I.C.S. Collar Base Dragon and Strawberry Pattern - Hot Pattern - *see in Cracker*
7500.00 293. P - 10 1/2" Four Flowers Chop Plate - Extra Rare - Few Known
950.00 294. P - N Peacock at Fountain Fruit Bowl - A Real Beautiful Item
9000.00 295. P - N Peacock at Fountain 2 pc. Punch Bowl Set - Great Pattern
35.00 296. M - Mlb. Peacock Tail VT. Compote - Light Satin
80.00 297. G - 6" Mlb. Cosmos Sauce - Ruffled Radium - Very Rare Shape *Nick 340*
100.00 298. Honey Amber - 12" 6 Ruffle Imp. Fashion Fruit Bowl - Super Rare
525.00 299. W - Large Persian Medallion Compote - Blues, Pinks, Frosty & Rare Color
3500.00 300. B - Giant Stag and Holly Rosebowl - Beauty - Extremely Rare - 3 Known
10.00 301. M - 10" Fenton Fine Rib - Very Nice
35.00 302. 10" Fenton Fine Rib - A Beaut
40.00 303. Custard Nutmeg - N Drapery Vase 9" - Rare - Not Irid.
80.00 304. Yellow - 10" Corinth Vase - Rare Color
80.00 305. Teal - 9" Corinth Vase - Radium Beauty
1400.00 306. G - 8" Imp. Beaded Bulls Eye Vase - 6 1/2" Top - Great Find

42500 - 289-B - *Stencils Union Plate*

- 2500.00 307. M - 7" Imp. Beaded Bulls Eye Vase - 6" Top
350.00 308. M - 17 1/2" Morning Glory Funeral Vase - 8 1/2" Top - WOW!
3500.00 309. P - 16 1/2" Morning Glory Vase - 8" Top - Beauty w/Star Base
350.00 310. M - 10 1/2" Imp. Free Fold Vase - Radium Beauty
650.00 311. P - N 8 1/2" Diamond Point Vase - 4 1/2" Top - Always in Demand
350.00 312. M - 8" Imp. J.L.P. Morning Glory Swirl - Neat Vase
4250.00 313. B - N Hearts and Flowers Compote - Great Item.
2750.00 314. Smoke - Imp. Rare Lg. Diamond Ring
4750.00 315. Rosebowl - 1st to Surface
P.M. - Large Imp. Poppy Show Vase - Pastel Blues, Pinks & Golds
250.00 316. Dark M - Oval Stippled Grape and Cable Dresser Tray - The Best
445.00 317. P - N Ruffle Rib Back Peacocks Bowl - Multi Elec. Blue & Purples
200.00 318. Saph. - 8 1/2" I.C.S. Fenton Orange Tree Bowl - 1 of a Kind?
500.00 319. Moonstone - 8" I.C.S. Orange Tree Bowl - A Beautiful Rarity
1300.00 320. Power Blue - Base 8 1/2" I.C.S. Orange Tree Bowl - Horehound Top
625.00 321. Persian Blue 7 1/2" I.C.S. Lotus and Grape Bowl - Few Known
3000.00 322. I.G. - Fine Cut and Roses Fancy Int. Candy Dish
875.00 323. B - N Stippled, Rib Bk. 3 Fruits Plate - Elec. Bl. w/Purple Hi-lite
500.00 324. I.G. - N Grape and Cable Banana Bowl - Dk. Beautiful Rarity
1,000.00 325. Dark I.B. - N Rib Bk. Peacocks Plate - Blue, Purple - Very Scarce Dark Base Color
9500.00 326. B - N Rib Bk. Stippled Peacocks Plate - Multi - A Dandy Item
300.00 327. P.M. - P.C.E. N Stippled Strawberry Bowl - Blues, Pinks & Golds - Rare
300.00 328. Moonstone Slag - Ruffled Fenton Holly Bowl - Rare and Pretty
2,250.00 329. Teal - Lotus and Grape Bon Bon - Great Irid on a Rare Base Color
30.00 330. W - N Fine Cut and Roses Fancy Int. Candy Dish - Beauty - Toe Roughness
1200.00 331. W - N 8 Sided Bushel Basket - Frosty Pinks and Greens
450.00 332. G - Rare N 8 Sided Bushel Basket - Great Find
4750.00 333. W - N FTD. Wishbone Ruffled Bowl - Frosty Bl. Pink & Golds
4750.00 334. M - Ultra Rare 474 Water Pitcher and 6 Goblets
325.00 335. M - 8 1/2" Rising Sun Juice Pitcher - Dark Radium Rarity
190.00 336. P - N Butterfly Bon Bon - Threaded Back
950.00 337. M - N Ruffled FTD. Wishbone Bowl - Pretty One
70.00 338. Clear - Shriners 1911 Champaign - Pittsburgh
140.00 339. M - Flashed 7" Enamel Decor. Stein - Pewter Top - A Rarity
- 6750.00 340. M - N Ruffled Poinsettia and Lattice Bowl - Beautiful Example
2000.00 341. Clear - Radium Irid. Open Opals Compote - Very Rare - Chip Bottom Base
400.00 342. P - Octagon Salt Shaker - One Only - Rare
1000.00 343. M - 5 Grape Arbor Tumblers - 5 x \$20.00
50.00 344. M - 2 Enamel Flower Tumblers w/Int. Panels - 2 x \$25.00
375.00 345. Smoke - Grape and Cable Punch Bowl - Extremely Rare - 1 of 2 Known - 1 Missing Flute
100.00 346. M - I.C.S. 8" Peacock Tail Bowl - Rare Shape - Near Pumpkin
1000.00 347. EB - Vintage Fernery Bowl - Super Elec. - Must See to Believe
125.00 348. G - N Grape and Cable Master Punch Base - Where are they when needed?
1000.00 349. G - Near Em. Grape and Cable Sm. Punch Base A - Hobnail Swirl 9 1/2" Vase - Rare Mlb. Pc. - Base Chip - A Beauty
600.00 350. Base Chip - A Beauty
2750.00 351. Teal - Contemporary 1989 H.O.C.C.A. Bell - Thomas Dugan
1500.00 352. 6 Woman's Day Carnival Glass Issues - August 1965 - Choice 2, 50

APPROXIMATELY 100
UNNUMBERED PIECES
SOLD AT END OF AUCTION

THANK YOU
WE APPRECIATE YOUR BUSINESS!
BOTH BUYER AND SELLER

EARLY BIRL 1998 CARNIVAL CALENDAR
CARNIVAL GLASS CENTER
BOONVILLE, MO
FEBRUARY 21, 1998
MARCH 21, 1998
APRIL 11, 1998
MAY 9, 1998

Respectfully
Mickey Reichel

IMPERIAL - THREE ROW VASE

By Bev Franzen

Pictured here is another great find by Randy & Debbie Hughes of Portland, Oregon - a VERY RARE marigold Imperial Three Row vase. The vases are the only shapes known in this pattern. They have been discovered in purple and marigold with the marigold color being the tougher color to come by. There are around 5 known. One cracked smoke example also exists.

This vase measures 8" in height and so far has only been found with the ruffled top. It fades very slightly from the top being a strong marigold to the base in a slightly lighter shade.

A Two Row vase also exists and is even rarer, with known colors of purple and marigold.

This vase was found in an antique mall in Portland, Oregon at a nominal price in December, 1997.

In all of my years of collecting I have seen a purple example, but never one in marigold.

What a GREAT find - Congrats to the Hughes!!



A "TREASURED" FENTON FIND

By Bev Franzen



Pictured here is the first blue Wine & Roses pitcher known. The pitcher and matching goblets are referred to as a "cider set". The goblets have been reported in the colors of marigold, blue, lime green, and celeste blue. There have been a few marigold pitchers found through the years, and only in marigold.

This blue example measures 8" from spout to pedestal base and only 5" in diameter, so it is one of Fenton's smaller water or cider sets. It has a production date of 1915.

John Britt reported on this pattern in 1989, also stating that no other pitcher but marigold had ever been found.

This pitcher was found in the southern U.S. where it was purchased at a local estate auction, and it has been in storage for the past few years. It now resides in the Pacific N.W. - owner's: Randy & Debbie Hughes - where it is greatly treasured.

NOTES FROM THE HOACGA SECRETARIES

Roster: As noted last month, corrections to the roster called to our attention will be printed periodically in the bulletin so you can mark up your copy. The roster is published every 2 years.

The Roster lists your name(s) numbers as they appear on your mailing label. It takes costly computer programming to do otherwise. Older entries were "Mr. & Mrs...." Newer entries list first names of husbands and wives unless the membership is specified to be in one name only. Please be advised if you would like your address label in a different format than it presently appears on your bulletin, you should drop us a post card.

Ed Kramer, Secretary HOACGA

TRIVIAL PURSUIT OF CARNIVAL GLASS

By Virgil Lemos

Q1: Name four giant open compotes.

A: _____

Q2: What two whimsies were made from the amaryllis compote?

A: _____

Q3: Name 3 rare regular size plates, (known to be less than 5 in existence), in the following colors: White, Red and Teal.

A: _____

Q4: I'm made up of five parts and serve multi purposes! What am I?

A: _____

Q5: What do the initials M.M.G. stand for?

A: _____

Look for the answers in upcoming bulletins. Answers from last time:

A1: Loganberry, Strawberry, Raspberry, Blackberry, Blueberry.

A2: Vintage.

A3: Amethyst, Lavendar.

A4: Lime Green, Peach Opalescent, Olive Green.

A5: Zig Zag.

HOACGA Meeting, January 25, 1998 - Charlie & Eleanor Mochel's home
(Article, Center Section Page 28)



L to R. Imogene Grissom, Lucile Britt, Aileen & Ken Oppenlander, Pam Rothwell, Jo Ann Ball.



L to R. Don & Bob Lacock, Daryl Strohm, (V.P.), Eleanor & Charlie Mochel
talking about their funeral vases

HOACGA Meeting, January 25, 1998 - Charlie & Eleanor Mochel's home
 (Article, Center Section Page 28)



Charlie Mochel discussing his funeral vases. Center two are rare Aqua Opal.



L to R. Doris & Harold Mayes, Norma & Daryl Strohm.

H.O.A.C.G.A. CLUB NEWS & GENERAL INFORMATION

The Newsletter is published on the 15th of each month. The Heart of America Carnival Glass Association is a Not-for-Profit organization registered in the State of Missouri.

Members are encouraged to contribute articles for publication in the newsletter and to advertise carnival glass for "sale" or glass "wanted". Articles may be educational in nature or about collecting experiences, or letters of interest to the membership. Other carnival glass organizations may announce their meetings and/or conventions. Auctioneers who are members may announce their future auctions. Members may announce their upcoming carnival glass educational books, price guides, and other pertinent publications; after the initial announcement the information will only appear in the bulletin "Resource Section". All items submitted for publication will be published in the next months bulletin or as soon as possible. The final decision to publish the articles will be made by the Board of Directors. Some articles may be edited prior to publication. Articles of an offensive nature or articles intended to discredit individuals will not be published.

Membership is \$25.00 U.S. & Canada, \$40.00 Foreign per family or individual. All monetary amounts quoted are in U.S. dollars. Membership year starts the month your dues were paid. All checks are to be made payable to H.O.A.C.G.A. and mailed to the Secretary, as listed on the inside front cover. All articles and items for publication in the bulletin are to be sent to the Bulletin Secretary whose name and address appear on the inside front cover.

MEMBERSHIP APPLICATION H.O.A.C.G.A.

<input type="checkbox"/> New Member	<input type="checkbox"/> Renewal
\$25.00/year U.S. & Canada --- \$40.00/year Foreign	

NAME _____

ADDRESS _____

TELEPHONE _____ ZIP CODE (NINE DIGITS) _____

REFERRED BY _____

Send to: Ed Kramer, 4305 W. 78th Street, Prairie Village, KS 66208

H.O.A.C.G.A. - CLUB INFORMATION

The purpose of the Heart of America Carnival Glass Association is to promote the growth and continuation of the Carnival Glass collecting hobby and to provide support to the many collectors by providing current information about the hobby.

Growth is accomplished by supplying educational information for the collector and soliciting new collectors into the hobby.

A Convention is held annually in April in conjunction with the annual meeting (Convention date always includes the 4th Friday). Some of the activities provided at the convention are:

- * Members provide Room Displays with glass from their collection.
- * Members are encouraged to bring glass for Sale.
- * Educational Seminars are provided by members.
- * A Major Carnival Glass Auction is provided.
- * The Convention offers members an opportunity to meet new collectors, renew old friendships and enjoy discussing carnival glass with other knowledgeable collectors.
- * A banquet is held with a Carnival Collector as our Speaker.
- * A Hospitality time is provided by the club. This is a time of relaxation and visiting with other members.

It takes the support of all collectors and members to promote the hobby in order that its growth and expansion can continue.

In order to obtain our objective, the members must financially support the organization. The Heart of America Carnival Glass Association receives its financial support through the Annual Membership dues and the sale of the following.

* **Membership Dues** - \$25.00 per year - U.S. & Canada. \$40.00 per year for Foreign. The Membership Year is from the date of joining to one year later. Dues are set by the Board of Directors to support the

publication of the monthly bulletin, typing, printing and mailing.

* **Educational Series - Book I** - 148 articles with pictures (black and white) on a variety of Carnival Glass Patterns.

* **Educational Series - Book II** - 180 articles with pictures (black and white) of Carnival Glass Tumblers

* **Educational Series - Book III** - 150 articles with pictures (black and white) of Bon Bons, Bowls, Drinking Vessels, Novelties, Rose Bowls, and Table Sets. Also included is a listing of 500 rarities.

* **Hartung Carnival Glass Pattern Books** - A set of 10 books identifying Carnival Glass Patterns. These books are a must for all Carnival Glass Collectors, especially for the beginner. These are the only complete set of books available that identifies the majority of the carnival glass patterns. Sketches are in black and white.

* **Pattern Notebook** - A notebook containing sections on Mugs, Table Sets, Rosebowls, Water sets (including painted sets), Plates (small, regular & chop), Compotes (large, regular & small), Punch Sets and Vases. Each section of the notebook identifies each pattern with a **COLOR** picture along with information about the Maker and colors of each different pattern.

* **Souvenirs** - Periodically H.O.A.C.G.A. makes a souvenir to be sold to members. Souvenirs have been made since 1974, a few of these are presently available. They are the small Good Luck plate in ruby red, the Green Opalescent - Fenton, Cobalt - Millersburg, Marigold - Imperial, and Teal - Dugan Bells. Each year that Souvenirs were made, Whimseys were also made and sold at the convention banquet.

* **Video Tapes** - Video Tapes of educational programs given during the various conventions are available. A complete listing of the available video tapes are shown on the Order Form, which is part of this section of the Bulletin.

FEBRUARY 1998
HOACGA MONTHLY MEETING

The next monthly meeting of the Heart of America Carnival Glass Association will be on Sunday, February 22, 1998 at 2:00 P.M. at the PARK LANE MEDICAL CENTER at 5151 Raytown Road, Raytown, Missouri. Park West of the doctors building, which is on the south end of the hospital complex. We will discuss red and white glass and any color with hearts in the pattern. (Happy Valentines Day.)

The January 25, 1998 meeting was well attended. Twenty-one members found their way to Charlie and Eleanor Mochel's beautiful home in Overland Park, Kansas. Charlie and Eleanor were charter members of HOACGA in 1972 and have a fabulous collection of glass. After our business meeting, Charlie talked about the collection starting with the beautiful collection of Tree Trunk Funeral vases including 2 rare aqua opal examples. He discussed several other pieces including beautifully iridescent oriental poppy and morning glory pitchers. After a break for refreshments, Charlie continued with a discussion of some of his rare pitchers and tumblers, many of which have only 5 or 6 known. Then on to a cabinet of beautiful plates and the collection of aqua opal in the dining area. I should add that Eleanor also helped keep Charlie accurate on the statistics (where, who, how much etc). We were all enthralled with the glass. Charlie and Eleanor were very gracious hosts and we thank them.

SEE PHOTOS FROM THIS MEETING IMMEDIATELY
PRECEDING THIS COLORED CLUB SECTION

Ed Kramer, Secretary HOACGA



A REAL DING DONG SALE



Our stock of past souvenir bells will be sold at reduced prices between now and May 1, 1998. These bells were made by Fenton honoring the various Carnival Glass Companies.

	Reduced Price
55 left Cobalt Blue (1987) Honors Millersburg	\$27.50*
23 left Marigold Bell (1988) Honors Imperial	\$27.50*
70 left Teal Bell (1989) Honors Dugan	\$27.50*

*Price Includes USA Postage

Send Orders To
Ed Kramer, 4305 W. 78 Street, Prairie Village, KS 66208

SHIPPING AND HANDLING (S&H) INFORMATION

The shipping charges to USA members are as indicated for each item. The shipping charges to members who reside outside the USA will be the actual cost. Upon receipt of item(s), the member will be expected to reimburse the club for the actual cost of shipping, as indicated by the postage on the package. At the time of placing your order, please indicate your shipping preference (air or surface). Unless otherwise specified, items will be shipped by surface mail.

ORDER FORM - SOUVENIRS & BOOKS

HOACGA Educational Series Book I	\$15.00
USA S&H for each book	\$2.50
Total	\$17.50
HOACGA Educational Series Book II.....	\$17.50
USA S&H for each book	\$2.50
Total	\$20.00
HOACGA Educational Series Book III (USA S&H included)	\$20.00
H.O.A.C.G.A. SOUVENIRS:	
1993 Ruby Red 6" "Good Luck" Plate	\$37.50
(20th Anniversary)	
1989 Teal Bell	\$35.00
(Honors Dugan Glass Company)	
1988 Marigold Bell.....	\$35.00
(Honors Imperial Glass Company)	
1987 Cobalt Blue Bell	\$35.00
(Honors Millersburg Glass Company)	
SOLD OUT 1986 Green Opalescent	\$35.00
(Honors Fenton Glass Company)	

Include \$2.50 for USA S&H of each above souvenir.

PLATE HOLDERS - Dozen, Clear plastic 5" base, white wire 4" back holds plates and bowls \$21.50
(USA S&H Included)

TOTAL \$ _____

SEND ORDERS TO:

ED KRAMER Name _____
4305 W. 78th Street Address _____
Prairie Village, KS 66208 _____

ORDER FORM - VIDEO TAPES

H.O.A.C.G.A. CONVENTION SEMINAR VIDEO TAPES

..... "Red Carnival Glass"	\$20.00
(Richard Cinclair, Bob Allaire & Joyce Seale)	
..... "Shades of Blue" - (Richard Cinclair)	\$20.00
..... "Poppy & Rose Show Pieces" - (Tom Mordini)	\$20.00
..... "Fenton Two Flower" - (Bob Stremming)	\$20.00
..... "Carnival Glass Smalls"	\$20.00
(Eleanor & Jack Hamilton)	
..... "Small Plates" - (Smokey Cloud)	\$20.00
..... "Hatpin & Hatpin Holders" - (Clint Fox)	\$20.00
..... "Northwood Peacock & Urn Ice Cream Sets"	\$20.00
(Harold Cox)	
..... "Millersburg Big Fish & Trout & Fly"	\$20.00
(Singleton Bailey)	
..... "Carnival Glass Collecting Experiences"	\$20.00
(Carl & Ferne Schroeder)	
..... "Heinz 57 Variety Carnival Glass Collection"	\$20.00
(Jerry & Carol Curtis)	
..... "Little Sauces" - (Garth Irby)	\$20.00
..... "Miniatures" - (John & Lucile Britt)	\$20.00
..... "Table Sets" - (Leonard, Kremer & Grissom)	\$20.00
..... "Plates" - (Ruth Green & Richard Cinclair)	\$20.00
..... "94 Britt Award Luncheon" (Floyd & Cecil Whitley)	\$20.00
..... "Plethora of Patterns" - (Dean & Diane Fry)	\$20.00
..... "Millersburg" - (Dick & Jennie Hostetler)	\$20.00
..... "Swung Vases" - (Dave & Joan Doty)	\$20.00
..... "Holly Pattern" - (John Mikkonen)	\$20.00
..... "95 Britt Award Luncheon" - (Carl & Ferne Schroeder)	\$20.00
..... "95 HOACGA Banquet" - (Floyd & Cecil Whitley)	\$20.00
..... "96 Britt Award Luncheon" - (Chuck & Marge Kremer)	\$20.00
..... "96 HOACGA Banquet" - (Carl & Eunice Booker)	\$20.00
..... "Imperial Glass" - (Norene Duran)	\$20.00
..... "The Molding Process" - (Howard Seuffer of Fenton Glass Co.)	\$20.00
..... "Iridescence" - ('97, John Muehlbauer)	\$20.00
..... "Plates" - ('97, Judy Maxwell)	\$20.00
..... "97 Britt Award Luncheon" - (Marie McGee)	\$20.00

TOTAL \$ _____

USA S&H INCLUDED WITH PRICE OF TAPE

SEND ORDERS TO:

ED KRAMER

4305 W. 78th Street

Prairie Village, KS 66208

Name _____

Address _____

ORDER FORM - BOOKS

HARTUNG CARNIVAL GLASS BOOKS

(Black and white sketches)

..... Book 1 - \$6.00 Book 6 - \$6.00
..... Book 2 - \$6.00 Book 7 - \$6.00
..... Book 3 - \$6.00 Book 8 - \$6.00
..... Book 4 - \$6.00 Book 9 - \$6.00
..... Book 5 - \$6.00 Book 10 - \$6.00

Complete Set of 10 Books (#1 thru #10) - \$60.00

(Hartungs "Northwood Pattern Glass" included with a Set)

USA S&H - Include \$1.00 each, for shipping when purchasing books separately.

Maximum of \$6.00 shipping for a set.

H.O.A.C.G.A. PATTERN NOTEBOOK

(COLOR Photos)

..... Mugs	(1980)	\$7.00
..... Table Sets (Photos 1 thru 40)	(1981)	\$7.00
..... Water Sets 1 (Photos 1 thru 60)	(1982)	\$7.00
..... Water Sets 2 (Photos 61 thru 120)	(1983)	\$7.00
..... Water Sets 3 (Photos 121 thru 167)	(1984)	\$7.00
..... Rosebowls 1 (Photos 1 thru 60)	(1985)	\$7.00
..... Rosebowls 2 (Photos 61 thru 101)	(1986)	\$7.00
..... Small Plates 1 (Photos 1 thru 48)	(1987)	\$7.00
..... Small Plates 2 (Photos 49 thru 98)	(1988)	\$7.00
..... Chop Plates (Photos 1 thru 40)	(1989)	\$7.00
..... Regular Plates 1 (Photos 1 thru 48)	(1990)	\$7.00
..... Regular Plates 2 (Photos 49 thru 81)	(1991)	\$7.00
..... Compotes 1 (Photos 1 thru 57)	(1993)	\$8.00
..... Compotes 2 (Photos 58 thru 113)	(1994)	\$8.00
..... Punch Sets, 2nd Edition (Photos 1 thru 36)	(1995)	\$8.00
..... Vases A - C (Photos 1 thru 57)	(1996)	\$9.00
..... Vases D - G (Photos 58 thru 117)	(1997)	9.00
..... Complete Pattern Notebook		\$138.00
..... USA S&H for complete notebook		\$5.00
..... USA S&H for each selection		\$1.00
(USA Maximum S&H \$5.00)		

TOTAL \$ _____

SEND ORDERS TO:

ED KRAMER

4305 W. 78th Street

Prairie Village, KS 66208

Name _____

Address _____

WELCOME NEW MEMBERS

We welcome the following new members:

Richard Betker	Franklin, WI
John & Katherine Dillard	Chillicothe, MO
Randy & Barbara Godsey	Rogers, AR
Bernard & Judith Newman	Philadelphia, PA
Gary Jozwick	Farmington Hills, MI
A.D. Hudnall	Dallas, TX
Chris Beebe	Evergreen, AL
Edward Martin	No. Muskegon, MI
Dan Benedict	Boca Raton, FL
Ken Goodwin	Springdale, AR
John & Sandy Martin	Hope, IN
James Peterson	Prairie du Sac, WI
Isabelle Pearson	Claremont, CA
Richard & Kathy Winn	Greenville, KY
Dr. Bruce Hartung	Gastonia, NC

We thank those members who referred new members to HOACGA

Richard Cinclair
 Tom & Sandy Bagot
 Phillip & Nancy Gilliland
 Chuck Kremer
 Gary Winn
 Mr. & Mrs. A.G. Magan

Ed Kramer, Secretary HOACGA

H.O.A.C.G.A. BULLETIN ADVERTISEMENT POLICY

1. All advertisements of glass for SALE or WANTS must be received by the Bulletin Secretary no later than the LAST DAY OF THE MONTH to insure being published in the next bulletin.
2. Members may advertise ten (10) "For Sale" and/or "Wants" per month. The "For Sale" Glass must be members glass and not the property of a nonmember. Advertising is at no cost.
3. Only "OLD CARNIVAL GLASS" items or H.O.A.C.G.A. Souvenirs will be published.
4. Damage or flaws should be noted.
5. All "For Sale" items must be priced; NO BID ITEMS WILL BE PUBLISHED.
6. A 5 day return privilege, at buyer's expense, providing it is not as advertised, or as discussed.
7. Postage and Insurance is to be the responsibility of the buyer, both when returning and receiving the glass.
8. The sender of the glass (be it the seller or the buyer returning it) is responsible for the proper packaging of the glass.
9. When submitting FOR SALE and WANTED ads, please write legibly so that your ads can be read. ****IMPORTANT**** - be sure to include your name, address & phone number on the ad itself. Ads submitted without this vital information must be left out.
10. H.O.A.C.G.A. does not accept responsibility for accuracy of any advertisement.

USE THE FOLLOWING ABBREVIATIONS FOR GLASS DESCRIPTION.

A	Amethyst	HA	Honey Amber	P	Purple
AMB	Amber	IB	Ice Blue	PRL	Pearl
AO	Aqua Opal	IG	Ice Green	PM	Pastel Mar.
B	Blue	IGO	Ice Green Opal	PO	Peach Opal
BO	Blue Opal	LAV	Lavender	R	Red
CLM	Clambroth	M	Marigold	RA	Amberina
EB	Electric Blue	MMG	Marigold on	SM	Smoke
H	Horehound		Milk Glass	T	Teal
G	Green	VAS	Vaseline		

Note: If you wish to describe a piece as light or dark, use the body of the ad.

EI - Excellent, GI - Good, LI - Iridescence

CARNIVAL GLASS FOR SALE

Casey Rich, 1113 N. High St., Franklin, VA 23851
Phone: (757) 562-3033

P	EI	7 piece Dahlia water set	1,400.00
IG	EI	5 piece Prism Band tankard set	550.00
M	EI	Thistle banana boat, dark	225.00
PB	EI	Acorn bowl, powder blue	165.00
LAV	EI	Apple Blossoms bowl	185.00
G	EI	Acorn Burr punch cups (5)	ea. 32.00
PO	EI	Fan gravy boat	80.00
SM	EI	Star Medallion pitcher	60.00
A	EI	10" Vintage bowl	60.00
R	EI	Elks paperweight	50.00

Gary Lickver, PO Box 1778, San Marcos, CA 92079
Phone: (760) 744-5686 Call anytime

M	EI	Persian Medallion 3/1 edge compote	120.00
M	EI	File vase spittoon, rare	375.00
P	EI	Dandelion mug	300.00
W	EI	Rose Show bowl	350.00
M	EI	Golden Wedding Nip bottle	50.00
P	EI	Imperial Grape glass (2)	ea. 55.00
M	EI	Singing Bird mug	85.00
G	GI	G&C cologne bottle top	120.00
B	GI	Strawberry Scroll tumbler	100.00
A	EI	Detroit Elks 1910 ruffled bowl, Fenton	850.00

Theresa Brantley, 6586 Dovecote Drive, Columbia, MD 21044
Phone: (410) 964-3766, Vmail: (410) 419-3766, Email: anztiqes@aol.com

B	EI	Grape Delight nut bowl, perfect feet	145.00
SM	EI	Ovals & Round ruffled bowl, great highlights	65.00
M	EI	Primrose 9" ruffled bowl, radium	160.00
B	EI	Nuggate miniature pitcher, amber handle	90.00
M	EI	Grape & Gothic Arches tumbler	25.00
M	EI	Harvest Flower tumbler	85.00
M	EI	Pansy creamer	30.00
A	EI	Whirling Leaves 9½" bowl, radium	235.00
G	EI	Diamonds tumbler	75.00
B	GI	Sailboat small wine goblet	75.00

CARNIVAL GLASS FOR SALE

Donald L. Harris, 527 Lavina Drive, Mechanicsburg, PA 17055
Phone: (717) 790-0412 Send .55 stamp for large list of for sale glass

A	EI	Cherry Chain 6" ruffled bowl	65.00
A	EI	Holly 9" ruffled bowl	95.00
B	EI	Cherry Circles bon bon, card tray shape	65.00
B	EI	Lattice & Grape 7 piece water set	575.00
B	EI	Orange Tree punch cups (2)	ea. 35.00
B	EI	Rustic 9" vase, candy ribbon top	55.00
G	EI	Acorn Burr tumblers (N) (2)	ea. 85.00
G	EI	Drapery vase, damaged feet	65.00
G	EI	Grape & Cable 9" PCE bowl, plain ext.	85.00
G	EI	Town pump (N)	4,750.00

Marlin L. Blosser, 4705B Charles Road, Mechanicsburg, PA 17055
Phone: (717) 975-2920

G	EI	Fleur de Lis 9½" ruffled bowl, Millersburg	245.00
G	EI	Inverted Feather cracker jar w/lid	210.00
M	EI	Butterfly & Berry footed creamer	75.00
M	EI	Fentonia sugar w/lid	85.00
M	EI	Flute butter dish (N)	145.00
M	EI	Heavy Grape punch bowl	250.00
M	EI	Little Stars 7½" ruffled bowl, Millersburg	135.00
M	EI	Lotus & Drape water pitcher, enameled	185.00
M	EI	Poinsettia milk pitcher	75.00
M	EI	Vineyard 7 piece water set	175.00

Ted L. Sheibley, 53 Meadow Brook Court, New Cumberland, PA 17070
Phone: (717) 770-0616 Layaways available

IB	EI	Oriental Poppy tankard pitcher, crack	675.00
IG	EI	Peacocks on Fence 9" ruffled bowl	1,400.00
M	EI	Bushel basket, 8 sided (N)	155.00
M	EI	Diamond & Sunburst 8 piece wine set	200.00
M	EI	Diamond Lace 4" ruffled berry	24.00
M	EI	Flute punch cup signed with iron cross	35.00
M	EI	Fruit Salad punch cup	25.00
M	EI	Grape & Cable perfume bottle w/stopper	575.00
M	EI	Hanging Cherries 5" berry, Millersburg	100.00
IB	EI	Grape & Cable ICS bowl, ball footed, celeste	1,350.00

CARNIVAL GLASS FOR SALE

Pamela McLean, 3730 NW 52nd St., Ft. Lauderdale, FL 33309
Phone: (954) 731-3191

B	Orange Tree wine, super color & irid	175.00
R	Three Ladies commemorative bell #1405	150.00
R	Grape & Cable St. Clair tumbler, super	100.00
P	Peacock at Urn small IC bowl, Mlrsbg, ex. color	205.00
G	Scotch Thistle CRE compote, pretty & scarce	115.00
SM	Swirl JIP vase, Imperial, super color & irid	125.00
B	Two Flowers footed 8" ICS bowl, ex. color	125.00
IB	Brocaded Acorns 11" 2 handled plate, super	105.00
G	Fine Cut & Roses candy dish with super color & irid	125.00
A	Three Fruits PCE bowl, a beauty	125.00

Maurice Myers, 3730 NW 52nd St., Ft. Lauderdale, FL 33309
Phone: (954) 731-3191

LAV	3 Fruits 9" stippled & Banded plate, pastel w/super irid ...	900.00
LAV	Stag & Holly IC bowl, scarce pastel	245.00
LAV	Pansy 9" bowl, another true pastel	140.00
G	Concord 9" bowl, ex. color & irid	425.00
G	Strawberry 9" bowl, perfect with ex. color	145.00
W	Rustic 9" vase, frosty with ex. irid	125.00
W	Peach, fantastic 7 pc. berry set, perfect & rare	500.00
PO	Four Flowers 6" plate with ex. color & irid	150.00
IB	Grape Arbor tumbler, super color, g.b.	95.00
B	Grape & Cable footed plate, ex. color & irid	175.00

Rich Brazel, 122 Beach Ave., Bellmore, NY 11710
Phone: (516) 785-1016

P	Border Plants handgrip dome footed	475.00
M	Grape & Cable bon bon	70.00
M	Millersburg Rays & Ribbons IC shape bowl, radium	105.00
A	Grape & Cable bon bon	70.00
M	Peacocks rib back bowl PCE	240.00
P	Grape & Cable cologne bottle w/stopper, an silvery side...	200.00
M	Good Luck ruffled bowl, BW ext, dark	200.00
CLM	Fashion IC shape bowl super rid, rare shape for Imperial ..	80.00
AMB	Lustre Rose 8" bowl	60.00
M	Holly plate, super color	295.00

CARNIVAL GLASS FOR SALE

Richard W. Jarnig, Carousel Acres, 3202 FM 50, Brenham, TX 77833
Phone: (409) 836-5545, Email: jbrextex7@pdq.net

M	Lil Flowers 8 ruf Sq 9" bowl, dark M w/G hilites, wow ..	260.00
LAV	Lil Flowers 3/1 edge lg bwl, nonlisted/sold dripping w/irid	260.00
M	Two Flowers chop plate, the best	1,900.00
A	Hobnail UT Mlrsbrg 16" mid-size vase radium & sparkes	475.00
P	Large Petal & Fan bowl electric	525.00
M	Brooklyn Bridge bowl rad & nice	285.00
AQ	Peacock & Dahlia 7" bowl very nice	200.00
PO	Four Flowers 6" flat plate, lots of opal	170.00
B	Rose Show plate, elect hilites, a "10"	1,550.00
PO	Q-Mark plate Fm compote 6" CRE	175.00

Lee & Phyllis Bryant, 11645 NW Winchester Road, Decatur, IN 46733
Phone: (219) 639-3415

B	Persian Medallion rose bowl, good mold	125.00
A	Blackberry open edge basket ruffled, no silver	70.00
A	Persian Medallion ruffled compote plain ext.	200.00
G	Primrose 9" flared bowl radium nice	170.00
M	Kittens vase / Toothpick 2 kittens, dark color	125.00
M	G&C powder jar & lid (N) dark M	80.00
M	Morning Glory 5½" vase with drape, dark color	100.00
A	Ribbon Tie 9" ruffled bowl, multi	70.00
M	Peacock at the Urn compote goblet shape multi	45.00

Send SASE for 1998 Carnival Glass for sale list, one stamp

Richard Cinclair, 4404 Briar Hollow, Plano, TX 75093
Phone: (972) 596-0014, Email: RJC4470@DCCCD.EDU

A	EI	Three Fruits ruffled stippled collar based bowl	450.00
M	EI	Hearts & Flowers ruffled bowl, super	425.00
A	EI	Grape & Cable perfume, the best	950.00
A	EI	Tree Trunk vase, electric	185.00
A	EI	Strawberry bowl, stippled and ruffled	475.00
M	EI	Butterfly & Berry hatpin holder	1,980.00
M	EI	Grapevine Lattice small plate	125.00
A	EI	Heavy Iris tumbler	145.00
G	EI	Orange Tree 3/1 edge, collar base	195.00
B	EI	Sunflower bowl, near electric	550.00

CARNIVAL GLASS FOR SALE

Tom Bagot, 5 Tenth St., Barnegat, NJ 08005
Phone: (609) 698-2279, Leave message (EST)

M	EI	Hearts & Flowers ruffled compote, dark & beautiful.....	250.00
A	EI	Peacocks at Urn sauce.....	125.00
PB	EI	Dragon & Lotus IC bowl.....	225.00
M	GI	Grape & Cable hat pin holder.....	195.00
A	EI	Strawberries plate, plain ext.....	195.00
M	EI	Pine Apple creamer.....	70.00
B	EI	Peacocks Tail sauce 6".....	275.00
PM	EI	Leaf Columns 10" vase, spectacular.....	125.00
B	EI	Orange Tree Loving Cup, minor flaw.....	195.00
LAV	EI	Toronado vase, rare.....	950.00

Gerald M. Hess, 220 N. First St., Argos, IN 46501-1010
Phone: (219) 892-6193

M	EI	Round-Up 8½" bowl, nice but has point missing.....	40.00
M	EI	Pretty Panels enameled tumbler by Northwood.....	60.00
M	EI	Hobstar Diamonds tumbler, rare/diffi. to find, chips/base..	250.00
P	EI	Dahlia tumbler.....	125.00
M	EI	Fruit & Lustre tumbler.....	10.00
M	EI	Lustre & Clear tumbler.....	30.00
M	EI	Banded Diamonds tumbler by Crystal Glass, Australia.....	210.00
PO	EI	Daisy Dear 7" ruffled bowl.....	60.00
W	LI	Grapevine Lattice, 6½" low bowl, mfg's stress marks.....	37.50
G	EI	Double Star tumbler.....	50.00

William & Charlotte Wesley, 10240 Fairway Dr., Ellicott City, MD 21042
Phone: (410) 461-3713

M	EI	Ripple vase 5½".....	90.00
P	EI	N. Diamond Points vase 10½" EB and EP highlights.....	125.00
G	EI	N. Diamond Points vase 10½" super.....	150.00
B	EI	April Showers electric.....	110.00
M	EI	Bushel basket, dark.....	150.00
M	EI	Peacock & Grape ruffled bowl.....	65.00
G	EI	Strawberry PCE.....	225.00
BA	EI	Line Lattice 10".....	200.00
B	EI	Dragon & Lotus.....	150.00
M	EI	Grape & Cable, dark.....	200.00

CARNIVAL GLASS FOR SALE

Gladys Hutchison, Rt. 1 Box 259A, Stockton, MO 65785
Phone: (417) 276-4119

M		Star & File creamer and sugar, both.....	60.00
M		Imperial Pansy nappy.....	25.00
PO		Petals and Fan large ruffled bowl.....	150.00
M		Blackberry Bramble compote.....	50.00
M		Waterlily 10" bowl, nice.....	75.00
PO		Dogwood Spray bowl.....	90.00
G		Inverted Feather cracker jar and lid.....	170.00
HA		Cosmos and cane tumblers (4).....	ea. 45.00
B		Rambler Rose tumbler.....	45.00
M		Ramgler Rose tumblers (4).....	ea. 42.00

Steve & Pat Beranek, Box 126 305 Pleasant St., Lost Nation, IA 52254
Phone: (319) 678-2425

A		Holly 9½" plate, super color.....	700.00
P		Three Fruits med. bowl, elec.....	225.00
M		Stipple Three Fruits med. bowl, very nice.....	175.00
M		Stag & Holly 10" footed, IC bowl, very nice.....	175.00
MMG		Floral & Optic footed rose bowl, rare.....	100.00
W		Chester Field rose bowl, unlisted color.....	75.00
PO		Question Mark bon bon, very nice.....	80.00
P		Question Mark bon bon, very nice.....	70.00
B		Butterfly & Berry 9" vase, very nice.....	70.00
M		Star & File sq. bowl, very nice.....	25.00

Alan & Virginia Hodges, RR1 Box 253, Lyndonville, VT 05851
Phone: (802) 626-5216

P	EI	Hearts/Flowers PC bowl red/purple clr, blue irid, rare ...	1,000.00
P	EI	Same bowl as above, perfect match, diff. to find damage..	200.00
AP	EI	Singing Birds mug.....	90.00
AP	EI	Singing Birds mug Amazon hotel/cafe minor wear/top rim	190.00
M	EI	Singing Birds mugs, have 2.....	ea. 80.00
A	EI	3 Fruits var. 8 sided plate, minor wear on fruit.....	175.00
A	EI	Same plate as above, but perfect.....	500.00
M	EI	Fancy Flowers 9½" compote.....	95.00
B	EI	God & Home tumbler, perfect.....	200.00
B	EI	Persian Medallion rose bowl or round top hair receiver.....	125.00

CARNIVAL GLASS FOR SALE

Douglas Snow, 2412 Ashford Blvd., Flushing, MI 48433
Phone: (810) 732-8197

M	Peacock & Grape 9" bowl	95.00
B	Holly 9" bowl 3/1 edge	65.00
M	Holly/Panel tumb. deep M, almost red. 25.00 each...6 for	110.00
B	Pond Lily bon bon	55.00
M	Three Fruits bon bon NW	55.00
A	Pony Bowl small base chip	150.00
G	Daisy & Plume footed rose bowl NW	95.00
B	Peacock & Urn ICS bowl	250.00
A	Ribbon Tied 8" bowl 3/1 edge	65.00
P	Peacock at the Fountain tumbler	50.00

Greg & Rene Cline, 1354 W. Webb Rd., Dewitt, MI 48820
Phone: (517) 669-5895 Call or send double stamped SASE for 150+ list

A	GI	Hanging CHerry 10" ruffled bowl, Hobnail ext. rare	1,190.00
A	GI	Little Stars 7" bowl, scarce	125.00
A	GI	Courthouse lettered, ruffled bowl, scarce	900.00
B	E/GI	Apple Tree pitcher and 6 tumblers	855.00
SM	GI	Star Spray Brides Basket with metal frame	215.00
R	GI	Open Edge basketweave hat, ruffled, amberina base	335.00
R	GI	Open Edge basketweave hat, 2 sides up	380.00
G	EI	April Showers 12" vase	95.00
W	GI	Northwood 8 sided basket	190.00
B	G/LI	Butterfly & Berry round footed sauces (2)	190.00

Lloyd R. Ward, PO Box 956, Mayfield, KY 42066
Phone: (502) 251-2005 Anytime - Layaways available

P	Fishnet epergne 3/1 edge, super color	575.00
P	Fishnet epergne, ruffled edge, outstanding	575.00
B	Thistle banana boat, great color & irid	495.00
G	Thistle banana boat, scarce in green	595.00
W	Cherry Chain 6" plate, very scarce in pastel	395.00
B	Dragon & Lotus ICS bowl, choice	165.00
PO	Ski-Star 11" 8 ruffled bowl	375.00
M	Waterlily & Cattails covered butter, rare	325.00
P	Pony bowl, outstanding deep purple	435.00
P	Persian Medallion CRE ICS bowl, super	165.00

CARNIVAL GLASS FOR SALE

Pat Housewright, 225 Rowland, Stephenville, TX 76401
Phone: (254) 968-2997

M	EI	Grape & Cable cracker jar	300.00
M	EI	Persian Medallion hair receiver	95.00
M	EI	Fluffy Peacock tumbler	65.00
M	EI	Greek Key tumbler	95.00
A	EI	Singing Birds mug	145.00
A	EI	Greek Key tumbler	125.00
B	EI	Beaded Shell tumbler	150.00
G	EI	Springtime tumbler	225.00
G	EI	Butterfly & Berry tumbler	125.00
G	EI	Mayan 8 1/4" bowl, radium	95.00

Bob McGuirr, 2014 Meadowbrook Drive, Milan, TX 38358
Phone: (901) 686-8091 after 6 PM CST

G	Feather stitch bowl deep ICS	135.00
G	Grape & Cable PCE bowl	150.00
*	Smooth Rays ruffled bowl, iridized blue milk glass, rare	225.00
A	Peacock Tail 7 pc. fruit bowl set, nice matching set	250.00
W	Six Petals ruffled bowl	85.00
M	10" Grape & Cable salad bowl PCE	150.00
P	10" Grape & Cable salad bowl PCE	195.00
PO	Bells & Beads tri corner bowl with crimped edge	95.00
M	Little Flowers 5 1/2" sauce, dark	45.00
P	Pansy ruffled bowl, gold irid.	75.00

Harry Daniels, 1405 N. Wood Ave., Apt. 197, Roselle, NJ 07203
Phone: (908) 245-3116

P	EI	Diamond Lace pitcher, super color	195.00
M	EI	Horse Medallion nut bowl	95.00
M	EI	Lattice & Grape 7 pc. water set	225.00
P	EI	Acorn Burr tumbler	65.00
G	EI	Ribbon Tie 3/1 edge bowl	75.00
M	EI	Peacock at Fountain 7 pc. water set	400.00
A	EI	Pansy bowl, radium	125.00
M	EI	Windmill milk pitcher	75.00
AQ	EI	Diamonds tumbler, Millersburg	85.00
M	EI	Stippled Peacock & Urn master ICS flat & super color	575.00

CARNIVAL GLASS FOR SALE

Dave Ackerman, 4677 Kennebec Drive, Cass City, MI 48726
Phone: (517) 872-2023

DM	Hobstar Band pedestal base pitcher	200.00
PO	Nautilus whimsey sauce boat	275.00
A	Large Sun's Up hat pin	400.00
M	Star & File 5" sherbet on an under plate	90.00
G	Plaid 9" bowl, scarce color	400.00
M	Star & File 3½" sherbet on an under plate	90.00
W	9½" Leaf Chain plate, nice one	200.00
R	Blackberry Spray (bright) hat	450.00
M	Blackberry Wreath 10" ice cream bowl Millersburg	100.00
W	Frosty Moxie, Diamond & Optic bottle	100.00

Bernie & Nancy May, 703 Stone Rd., Westmoreland, MD 21158
Phone: (410) 876-3798 Postage included in USA

M	EI	Grape & Cable CPE bowl	135.00
M	EI	Raspberry tumbler, super pastels	55.00
M	EI	Scroll embossed compote, ext. Eastern Star	75.00
A	EI	Daisy Web tri-cornered hat	325.00
A	EI	Fine Cut & Rose candy dish w/fancy interior	225.00
A	EI	Holly Sprig bon bon	85.00
A	EI	Blackberry Wreath small IC bowl	60.00
A	EI	Grape Wreath var. small IC bowl	60.00
T	EI	Scroll embossed bowl plain ext.	85.00
P	EI	Dugan Cherry crimped edge 6" plate	125.00

Henry Shoenfelt, 4133 Siefer Dr., Rootstown, OH 44272
Phone: (330) 325-2490

M	EI	Orange Tree breakfast creamer, dark & nice	85.00
P	EI	Flowers & Frame dome footed bowl, very dark	170.00
M	EI	9" Beaded Bulls'eye vase, nice	50.00
SM	EI	7" Morning Glory M over SM, 1 pt. rough	45.00
M	EI	Windflower bowl	40.00
PO	EI	Six Petals 8½" bowl, ruffled & crimped	75.00
A	EI	Wreath of Roses compote, almost LAV	45.00
B	EI	Pine Cones ruffled bowl, very nice	90.00
G	GI	Blackberry Wreath ICS, radium	80.00
G	EI	Mayan ICS bowl	125.00

CARNIVAL GLASS FOR SALE

Ed Buschini, 631 Division Rd., Zillah, WA 98953
Phone: (509) 829-5854

G	Peacock at Urn Millersburg master IC bowl	1,525.00
P	Three Fruits plate, pretty	210.00
W	Wild Strawberry bowl, base chip	185.00
P	Bushel Basket	175.00
M	Panther bowl	125.00
A	Paneled Dandelion tankard, super	450.00
IG	Corn vase	375.00
IB	Hearts & Flowers plate, dark IB	3,000.00
AO	Three Fruits plate, chip	525.00
G	Hearts & Flowers PCE bowl, chip	895.00

Carl O. Burns, 60 Rumford Center Rd., Andover, ME 04216
Phone: (207) 392-3044

B	EI	Grape & Cable (N) banquet punch base, rare color	375.00
M	EI	Stork in the Rushes punch base, scarce	60.00
M	EI	Memphis (N) punch base, nice dark one	50.00
M	EI	Waffle Block punch base	30.00
B	EI	Orange Tree butter lid, very scarce	60.00
G	GI	Grape & Gothic Arches butter lid, rare color	50.00
A	EI	Millersburg Hanging Cherries butter lid	50.00
A	EI	Millersburg Hanging Cherries sugar lid	30.00
M	EI	Curved Star, English, butter base	30.00
G	EI	Lustre Rose sugar base, repaired lid	30.00

Isabell Aldridge, 6407 Rushmore Drive, Sacramento, CA 95842
Phone: (916) 331-4290

M	Birds & Cherries bon bon	110.00
A	Coin Dot bowl, 8 dot center	110.00
B	Two Fruits divided bon bon	185.00
A	Petal & Fan sauce	75.00
A	Dugan Beaded Shell mug	185.00
M	Peacock & Grape ICS 8" bowl	85.00
B	Waterlily sauce, great little piece	85.00
M	Strawberry plate, choice piece	175.00
BA	Dimples & Brilliants hatpin	225.00
A	Raspberry gravy boat	110.00

CARNIVAL GLASS FOR SALE

Harold & Jackie Fortney, Box 303 Buckner, MO 64016
Phone: (816) 650-5208 Anytime

M	EI	(N)Peacocks plate stippled 9", super irid, unusal edge irid.	700.00
A	EI	Mlrsbrg Strawberry 8½" crimped bowl with jewelers bead	200.00
A	EI	Wishbone footed and ruffled bowl 8½", nice satin irid	125.00
G	EI	Millersburg Mayan 8" ICS bowl, nice radium irid	80.00
B	EI	Millersburg Hobnail tumbler, sm. mfg chip/base, rare	650.00
G	EI	Wishbone 8¼" footed and ruffled bowl, nice satin irid	125.00
PO	EI	Dugan Holly & Berry gravy handled boat, nice	85.00
G	EI	Mlrsbrg Hanging Cherries flared tumbler, beaut. rad irid	200.00
PO	EI	Four Flowers 6 3/4" plate, nice satin irid	125.00
P	EI	(N) Grape & Cable stippled tumbler, gorgeous irid	90.00

Dick Wetherbee, 875 Stafford St., Rochdale, MA 01542
Phone: (508) 892-4420

CLM	EI	Star Medallion milk pitcher, outstanding color	55.00
PO	EI	Beaded Panels 6" tri-cornered compote, super	110.00
M	EI	Grape & Cable banana boat, great dark color	175.00
R	EI	Blackberry open lace 6" rd. ruffled hat, great color	650.00
G	EI	Millersburg Peacock at the Urn 10" 3/1 edge bowl	450.00
PO	EI	Ski Star 8½" handgrip plate, outstanding	245.00
M	EI	Hearts & Flowers 8½" fluted bowl, very pretty	475.00
W	EI	Persian Garden 11½" Fruit bwl top, 8 flutes, super frosty	350.00
PO	EI	Caroline 8" handled basket, crystal handle rare	595.00
M	EI	Fantail 9" 3 footed ICS bowl, outstanding	125.00

Richard Communi, 4 Bayberry Drive, Bordentwon, NJ 08505-2702
Phone: (609) 298-6979 Send for new 1998 glass list - SASE

P	EI	Springtime sauce dish (N)	50.00
P	EI	Grape Leaves ruffled bowl (N)	75.00
M	EI	Grape Leaves ruffled bowl (N)	45.00
W	EI	Double Stem rose 9" bowl	120.00
W	EI	Persian Gardens 11" IC bowl	175.00
M	EI	Diamond Points squatty vase 6"	100.00
G	EI	Diamond Points 10" vase	85.00
P	EI	Lined Lattice 10" vase	145.00
P	EI	Ski Star sauce dish	75.00
M	EI	Leaf Chain plate 7½"	160.00

CARNIVAL GLASS FOR SALE

Bill Smith, PO Box 61, Hallwood, VA 23359
Phone: (757) 824-5320 after 7 PM

G	EI	Round Bushel Basket, super blues, reds, purples	500.00
M	EI	Poppy Relish, super yellow, blues, pinks	100.00
M	EI	6" Persian Gardens plate, super example	90.00
W	EI	6-7" Grapevine Lattice low ruffled plate, super	90.00
P	EI	Imperial Grape wine decanter, no stopper, electric	110.00
P	EI	7 pc. Butterfly & Fern water set, outstanding	875.00
M	EI	Wild Strawberry handgrip dark with great irid	200.00
IG	EI	Four Flowers var. ruffled bowl, super color & irid	800.00
A	EI	Radium Strawberry plate, BW back, very rare, super	475.00
LGO	EI	Waterlily footed sauce, 8 known, rare example	900.00

Mike Carwile, 213 Cheyenne Dr., Lynchburg, VA 24502
Phone: (804) 237-4247 before 10:30 EST

B		Hearts & Flowers compote, average, nick on bottom	125.00
M		Heisey Breakfast set	55.00
CelB		Fenton #643 cupped bon bon, Fenton #1 pg. 86	55.00
M		Fenton #736 compote, Fenton #1, pg. 90	75.00
M		Imperial Grape cup & saucer	60.00
G		Imperial Mayflower shape, Helios with some multi	55.00
P		Memphis punch cup, average irid	40.00
M		Triads small compote, unlisted	35.00
M		Imperial Grape 6" low ruffled bowl/plate, super, chipped	25.00
M		Imperial Grape small ruffled bowl, pulled on 2 ends, oval	25.00

Greg Dilian, 450 Shore Rd., Long Beach, NY 11561
Phone: (516) 432-1164

DM	EI	Beaded Bulls'eye 7" squatty flared vase	75.00
M	EI	Cattails & Waterlily 5 ruffled toothpick holder	60.00
OG	EI	Lustre Rose 7" collar base flared bowl, rare color	120.00
CLM	EI	Optic & Button 10½" chop plate, super blue irid	85.00
DM	EI	Soda Gold chop plate 12"	75.00
G	EI	Heavy Grape chop plate, leans to teal	200.00
B	EI	Open Edge basket, 2 sides up, a beauty	55.00
LAV	EI	Brocaded Summer Gardens 11" bowl, taffeta lustre	250.00
G	EI	Blackberry Spray ruffled hat, scarce color	100.00
VAS	EI	Blackberry Spray ruffled hat, pumpkin over VAS	125.00

CARNIVAL GLASS FOR SALE

Omer Sweeney, 28 Esmond St., Esmond, RI 02917
Phone: (401) 231-4108

M	Singing Birds 5 pc. water set	700.00
M	Singing Birds creamer	95.00
M	Thistle banana bowl	100.00
PO	6 petals 8½" bowl	70.00
PO	Question Mark bon bon, stem slightly tilted from mold	40.00
M	Cherry Circles ruffled 6" bowl	45.00
B	Fenton Basketweave with interior cherries	60.00
P	(N) Powder jar Grape & Cable	220.00

Robert Comer, 51380 Kenilworth, South Bend, IN 46637
Phone: (219) 272-7419

M	EI	Beaded Shell open sugar (spooner?)	70.00
M	EI	Horse Medallion 7½" plate	275.00
M	EI	Illusion bon bon	50.00
Lilac	EI	S-Repeat toothpick, small chip, old, some gold	200.00
M	GI	Stippled Strawberry Flowers	40.00
M	EI	Stippled Cherry tumbler	45.00
B	GI	Millersburg Blackberry Wreath, 10" fluted bowl	1,000.00

Lance Hilken, 8 Castle Ave., Jackson, NJ 08527
Phone: (732) 928-2950

M	Jacobs Ladder rose bowl, rare & pretty	340.00
M	Imperial Columbia compote whimsey 8 3/4" plate	270.00
G	Small Buzz Saw cruet, no stopper	230.00
PO	10" Ski Star ruffled bowl pretty	120.00
AQ	Holly bowl ruffled 9" rough on collar base	215.00
SAPH	Big Basketweave vase saphire blue 10 3/4" bruise on base	180.00
M	Fenton Waterlily & Cattail tumbler	60.00
T	Imperial Octagon butter dish	240.00
P	Imperial Diamonds Lace ruffled large bowl	40.00
BO	Rose Show bowl, not iridized, small chip inside base	185.00

CARNIVAL GLASS FOR SALE

Jim Roach, 5356 Fairway Circle, San Angelo, TX 76904
Phone: (915) 944-4719 After 6 PM

B	GI	Bushel Basket	95.00
Celeste	EI	Florentine Candlestick pair	125.00
P	EI	Ripple vase 8½" electric	135.00
Helios	EI	Ripple vase 13" vase 3½"	145.00

Rob Cooper, 31 Oak View Dr., Newark, DE 19702
Phone: (302) 455-9225, Email: rcooper@dpnet.net

B	EI	Holly low ruffled bowl, electric G iridescence, super	150.00
W	EI	Big Basketweave 5" vase, super multi-color iridescence	200.00
P	EI	Holly & Berry 10 ruffled bowl, electric iridescence	225.00
G	EI	Singing Birds water pitcher, emerald G, mint	700.00
M	EI	Birds & Cherries bon bon, great detail & iridescence	125.00
A	EI	Trout & Fly very low ICS bowl, outstanding irid	775.00
P	EI	Dugan Raindrops dome footed, ruffled bowl, electric	150.00
M	EI	Concord ruffled bowl, almost pumpkin, very nice bowl	275.00
B	EI	Four Pillars vase, multi-color radium irid	250.00

Trudy Brown, 107 E. Main, PO Box 138, Smithville, MO 64089
Phone: (816) 532-3234

G	N. 10" 8 sided Strawberry var. bowl	385.00
A	Grape & Cable lg bowl w/4 berry dishes, beautiful color	375.00
M	Rosaline 10" ruffled bowl, nice	150.00
M	9" Holly ruffled bowl, dark M	70.00
A	Memphis punch bowl w/5 cups, extra nice	750.00
M	Butterfly & Berry table set, beautiful dark color creamer has chip on handle still nice set	350.00

CARNIVAL GLASS FOR SALE

Bob Bishop, 277 Loonhill Rd., Dracut, MA 01826
Phone: (978) 453-1849

G	EI	Venetian Giant rose bowl	1,050.00
P	EI	Holly plate, outstanding	650.00
G	EI	Captive Rose plate, chip, rare	300.00
M	EI	Leaf Chain plate, beautiful	300.00
M	EI	Peacock Tail var. compote, Millersburg, radium	75.00
P	EI	Millersburg beautionere compote, radium	100.00
IB		Hearts & Flowers 8 ruffled bowl, chip on base	175.00
M		Magnolia & Drape enameled pitcher, 2 tumblers	300.00
PO		Nautilus creamer	270.00
M		Imperial Pansy bowl, pumpkin	50.00

CARNIVAL GLASS WANTED

Lance Hilken, 8 Castle Ave., Jackson, NJ 08527
Phone: (732) 928-2950

G		Inverted Strawberry powder jar lid
B		Cherry & Cable sugar lid, no repros
P		Vintage powder jar lid
W/B		Mid Size Tree Trunk vase
IG/W		Squatty (N) Diamond Point vase

Chuck Kremer, 11553 Belmont Court, Carmel, IN 46032
Phone: (317) 815-0850

M		Cherry Cable creamer
M		Circle Scroll sugar and spooner
A		Lustre Rose sugar with electric irid.
M		Field Thistle butter
G		Grape and Gothic Arches butter
M		Hobnail spooner

CARNIVAL GLASS WANTED

Cleo & Jerry Kudlac, 1425 Apache NE, Piedmont, OK 73078
Phone: (405) 373-4455

A,PO,G		Windflower Plate
B		Windflower IC shape, nappy or gravy boat
*		Any unusual shapes or colors in the Windflower pattern

Casey Rich, 1113 N. High St., Franklin, VA 23851
Phone: (757) 562-3033

P	EI	Diamond T Sunburst wine decanter, bottle only
---	----	---

Gary Lickver, PO Box 1778, San Marcos, CA 92079
Phone: (760) 744-5686 Call anytime

B		Grape & Cable small stippled punch base and/or 2 cups
B		Peacock at Fountain punch base

Theresa Brantley, 6586 Dovecote Drive, Columbia, MD 21044
Phone: (410) 964-3766, Vmail: (410) 419-3766, Email: anztiqes@aol.com

M		Grape & Cable jar lid
M		Imperial Grape decanter stopper
A		Westmoreland Strutting Peacocks sugar lid

Donald L. Harris, 527 Lavina Drive, Mechanicsburg, PA 17055
Phone: (717) 790-0412 Will sell part I have

Any		Grape & Cable powder jar lid
A		Hanging Cherries sugar bottom
Any		Drapery vases
Any		Drapery rosebowls
P		Grape & Cable lid for covered compote
B		Orange Tree powder jar lid
B		Orange Tree punch base, also need W
P		Grape & Cable perfume bottle
M		Grape & Cable sugar bottom
G		Hanging Cherries powder jar bottom

CARNIVAL GLASS WANTED

Marlin L. Blosser, 4705B Charles Road, Mechanicsburg, PA 17055
Phone: (717) 975-2920

Any Pastel vases
G Hobstar sugar lid
M Long Hobstar punch base
G Shell & Jewel lids, need 2
M Heavy Grape punch base
Any Peacock at Fountain punch cups
M 474 punch bowl top
Any Grape & Cable open or covered compote
M Grape & Cable powder jar lid
G Little Stars bowl, round or 3/1

Ted L. Sheibley, 53 Meadow Brook Court, New Cumberland, PA 17070
Phone: (717) 770-0616

Any Tree Trunk mid-size & AO standard size vases
M/G Inverted Strawberry powder lid
IG Wishbone epergne lily
P Peacock at Fountain sugar lid
M Grape & Cable butter bottom, also need P
B Fentonia butter lid
M Wreathed Cherry butter bottom
P Beaded Bulls'eye vase
P Vintage powder jar lid
VAS Stretch water pitcher with cobalt handle

Tom Bagot, 5 Tenth St., Barnegat, NJ 08005
Phone: (609) 698-2279, Leave message (EST)

A EI Grape & Cable creamer table set size
AO/BEI Fine Cut & Roses rose bowl
Any Toronado vases, will consider minor damage

Gladys Hutchison, Rt. 1 Box 259A, Stockton, MO 65785
Phone: (417) 276-4119

P Dahlia creamer, sugar and spooner

50

2/98

CARNIVAL GLASS WANTED

Steve & Pat Beranek, Box 126 305 Pleasant St., Lost Nation, IA 52254
Phone: (319) 678-2425

P/G/AMG/OG Imperial Grape compotes
P Stippled Grape & Cable bon bon
G/AMD Hattie bowls

Alan & Virginia Hodges, RR1 Box 253, Lyndonville, VT 05851
Phone: (802) 626-5216

IG or M Peacock at Fountain punch bowls

Robert E. Krause, 1045 East Hawthorne Ave., St. Paul MN 55106
Phone: (612) 771-4037, Email: rekrause@yahoo.com

W Orage Tree punch base & cups
A/P Grape & Cable punch bowl sm/md size
M Lustre Rose butter dish bottom
M Long Hobstar / Hobstar & Arches fruit bowl base
M Twins sm berry bowls
Helios Long Hobstar fruit bowl & base

Rob Cooper, 31 Oak View Dr., Newark, DE 19702
Phone: (302) 455-9225, Email: rcooper@dpnet.net

P/W Persian Gardens fruit bowl base
P Many Fruits punch bowl base
P Peacock at Fountain punch cups
P Many Fruits punch cups
B Wreath of Roses punch cups w/vintage interior
G Singing Birds tumblers
DM Peacock at Fountain tumblers
DM Singing Birds water pitcher

Michale Swope, 33519 Crestwell, Sterling Heights, MI 48310
Phone: (810) 979-0766

B Leaf rays nappy
OG Westmoreland footed shell

2/98

51

CARNIVAL GLASS WANTED

Wally McDaniel, 12982 Rough & Ready Rd., Rough & Ready, CA 95975
Phone: (916) 432-3378

Custard with nutmeg stain OR iridized custard
Blue Opal non-iridized in carnival glass patterns
IB Peacocks at Fountain punch bowl, damage OK
W Anything
Crystal Anything Memphis
Crystal Anything Millersburg
Crystal Anything Grape & Cable
Crystal Anything Cambridge
Crystal Anything Fenton
Damaged Pastels, punch sets, water sets, etc.

Lloyd R. Ward, PO Box 956, Mayfield, KY 42066
Phone: (502) 251-2005 Anytime

Carnival epergne liles/bases; punch bowl tops/bottoms; butter dish lids/bases;
sugar bowl lids/bases; tobacco or cookie jar lids/bases; whiskey, cologne, or
perfume bottles or stoppers

Cliff & Jo Ann Ball, 572 West Park St., Olathe, KS 66061
Phone: (913) 782-0415

R HOACGA Souvenir hatpin holder
P Hobstar sugar bowl lid
P Hobstar sugar bowl with lid
P Hobstar creamer
SM Lid for Estate perfume bottle

Gloria Pfeiffer, 140 Eaton Rd., Rochester, NY 14617
Phone: (716) 467-3472 after 6 PM

M Snow Fancy small round sauce
G Lustre Rose covered sugar
G Lustre Rose creamer
M En. Magnolia & Drape tumbler
DM (N) Dahlia sugar & cover

CARNIVAL GLASS WANTED

Ed Buschini, 631 Division Rd., Zillah, WA 98953
Phone: (509) 829-5854

B Peacock at Fountain punch bowl base
M Acorn Burrs punch base
AO Pansy pickle dish
W Panther sauce

Harold L. Fortney, Box 303 Buckner, MO 64016
Phone: (816) 650-5208 Anytime

AO EI Tree Trunk standard size vase,
I will pay your price for a nice vase.

Richard Commini, 4 Bayberry Drive, Bordentwon, NJ 08505-2702
Phone: (609) 298-6979 Send for new 1998 glass list - SASE

SM 9-10" Smoke Twins bowl, ruffled or round

A.M. Goodman, 2008 Loneome Hollow Rd., Louisville, KY 40272
Phone: (502) 935-9021

M EI Lattice & Grape pitcher
AMBEI Imperial pansy sugar
M EI Imperial Octagon pitcher large
M EI Imperial Luster Rose butter bototm

Bill Smith, PO Box 61, Hallwood, VA 23359
Phone: (757) 824-5320 after 7 PM

B,G Stippled bowls & petals, super color & irid
Pumpkin Poppy Show plate, super color & irid
P Broken Arches punch base, super color & irid
P&M Persian Gardens fruit bases, super color & irid.

Mike Carwile, 213 Cheyenne Dr., Lynchburg, VA 24502
Phone: (804) 237-4247 before 10:30 EST

SM Pansy sugar
Cosmos & Cane advertising tumblers,
J.R. Millner Co. Lynchburg, VA

THANK YOU

WE APPRECIATE YOUR BUSINESS!
BOTH BUYER AND SELLER

EARLY BIRD 1998 CARNIVAL CALENDAR
CARNIVAL GLASS CENTER
BOONVILLE, MO

FEBRUARY 27 & 28, 1998
MAY 9, 1998

MARCH 21, 1998
SEPTEMBER 19, 1998

APRIL 11, 1998
OCTOBER 3, 1998

RESPECTFULLY

MICKEY REICHEL

New England Carnival Glass Association (N.E.C.G.A.) will hold its 1998 Convention at the Ramada Hotel, 1080 Riverdale Rd., West Springfield, MA 01089 (tel: 413-781-8750) on Thursday, September 10th through Saturday September 12th. The Hospitality Room will be open at noon on Thursday, September 10th for "Early Birds" and all day Friday and Saturday, as usual. Make your reservations now at our group rates and be sure to tell them you're with NECGA. Remember, book early for the Courtyard rooms.

Spend your mornings at the *Fabulous Brimfield Markets* and unwind at the Convention activities in the afternoon and evenings. Tom Burns will hold the big Auction Friday evening. Saturday will be a busy day with the seminar after lunch and a fun-filled evening including our banquet with **Robert Grissom, President of HOACGA**, as our speaker. Bob will be talking about the Peacock & Grape pattern, with examples many have never seen before. Of course, we will have our renown mini auction afterwards.

Last year's convention was the best ever, with many more rooms booked, as well as the best auction results to date. NECGA has decided to add more hours to relax after Brimfield, with a Social on Thursday night. Join us for a great weekend! For further information, contact either Harold March at (781) 821-3425 or Sam McGill at (860) 623-4645.

RESOURCE INFORMATION

1. **HARTUNG CARNIVAL GLASS PATTERN BOOKS**
Set of 10 books for \$60.00 plus \$6.00 postage. Order from Ed Kramer, Secretary HOACGA, 4305 W. 78th Street, Prairie Village, KS 66208
2. **HOACGA EDUCATIONAL SERIES BOOK I** - 148 articles with pictures (black & white) on a variety of carnival glass patterns. Books consists of articles written by John & Lucile Britt which have been printed in previous monthly bulletins. \$15.00 plus \$2.50 postage. Order from Ed Kramer, Secretary HOACGA, 4305 W. 78th Street, Prairie Village, KS 66208
3. **HOACGA EDUCATIONAL SERIES BOOK II** - 180 articles with pictures (black & white) on carnival glass tumblers. Book consists of articles written by John & Lucile Britt which have been printed in previous monthly bulletins. \$17.50 plus \$2.50 postage. Order from Ed Kramer, Secretary HOACGA, 4305 W. 78th Street, Prairie Village, KS 66208
4. **HOACGA EDUCATIONAL SERIES BOOK III** - contains about 150 articles from past bulletins on bon bons, bowls, drinking vessels, novelties, rose bowls, and table sets by several different members. It also lists approximately 500 rarities with 5 or less known. Cost is \$20.00. USA postage included. Order from Ed Kramer, Secretary HOACGA, 4305 W. 78th Street, Prairie Village, KS 66208
5. **HOACGA PATTERN NOTEBOOK** - contains sections on punch sets, water sets, table sets, mugs, rose bowls, small, regular and chop plates, compotes, and vases. Each section has color photos of each known pattern and the maker and colors available. A section is added each year. The project began in 1979. Present cost \$138 + \$5 USA postage. Order from Ed Kramer, Secretary HOACGA, 4305 W. 78th Street, Prairie Village, KS 66208
6. **THE ENCYCLOPEDIA OF CARNIVAL GLASS LETTERED PIECES.** 120 pages of black & white and color photographs of all known carnival glass advertising and commemorative pieces. \$15.95 plus \$2.50 postage. Order directly from John D. Resnik, 235 Walnut Street, Statesville, NC 28677
7. **COLLECTOR'S GUIDE TO NORTHWOOD'S CARNIVAL GLASS** by Carl O. Burns. This Northwood book includes 166 pages with 250 pieces pictured in full color, including many rarities never shown in any carnival glass book. \$24.95 plus \$3.00 Shipping. Order from Carl O. Burns, 60 Rumford Center Rd., Andover, ME 04216 (Mention you are a member of HOACGA)
8. **MILLERSBURG CARNIVAL GLASS BOOK** by Marie McGee. \$29.95 for paperback, \$37.95 for Hardback. Please include \$3.50 extra for shipping. Send orders to 3906 E. Acacia Ave., Fresno, CA 93726
9. **THE WORLD OF ENAMELED CARNIVAL GLASS TUMBLERS** by Cecil Whitley. Book on painted Carnival Glass tumblers. Ten pages of full color photographs of sixty painted tumblers. \$10.00, postage included. Order from Cecil Whitley, 1041 Cheshire Lane, Houston, TX 77018
10. **NEW! NEW! NEW! IRIDESCENT HATPINS & HOLDERS of the CARNIVAL GLASS ERA** by Jerry Reynolds. \$16.50 - book. \$3.25, Priority or \$1.65 Book Mail. Canada, \$17.60. Order from Jerry Reynolds, 1305 N. Highland Pkwy, Tacoma, WA 98406
11. **MORDINI'S 1997 CARNIVAL GLASS AUCTION PRICE REPORT** - Auction price report for 1997 is available. Over 5000 entries. \$10.00 postage included. \$9.00 if two or more ordered. Please specify year when ordering. Canadian friends should send Canadian Postal Money Order. Overseas mailings add \$3.00 for each copy. Back issues are available for 1990-1996 at \$9.00 each. Order from Tom & Sharon Mordini, 36 N. Mernitz Ave., Freeport, IL 61032
12. **NETWORK** by Glen & Stephen Thistlewood of Hampshire, England. Quarterly publication devoted exclusively to Carnival glass. One year subscription (4 issues) \$20, available in the US only through PageWorks, P.O. Box 2385, Mt. Pleasant, SC 29465, USA

13. **BUTTON, BUTTON.** Carnival Glass, Iridescent, Luster Buttons. Over 100 buttons listed - Over 140 pages packed with information. Each button has a color and black & white photo, detailed drawing & description - shown in actual size. \$15.50, postage included. Order from Clint Arsenault, P.O. Box 1845, Monrovia, CA 91017
14. **THE SANCTIFIED CROSS-EYED BEAR'S PRICE TREND GUIDE FOR CARNIVAL GLASS AND INDIVIDUAL SALES SUPPLEMENTAL GUIDE FOR 1996** - The 3rd edition provides the most exhaustive price resource available by covering over 30,000 sales occurring during the years 1992-1996. Reports on over 9,000 sales for the 1996 reporting year alone by informing you of the high, low, and average sales prices. Over 230 full pages that help clarify the upward or downward average price trends. THE INDIVIDUAL SALES SUPPLEMENTAL GUIDE FOR 1996 reports on the pieces that have reached at least 200 in sales price at least once and then reports every sale price for a piece. Reference over 4,100 sales. Send \$24.95 for Trend Guide, \$8.00 for Supplement, or \$30.95 for both to: The Sanctified Cross-Eyed Bear, P.O. Box 1296, Huntsville, AL 35807
15. **CARNIVAL GLASS HATPIN PATTERNS** - This book shows the hatpins in detail with beautiful illustrations, many showing top and side views. A number of these hatpins have never appeared in any previous carnival books. \$15.00 plus \$1.00 postage & handling. Canada and overseas - \$15.00 plus \$3.00 postage and handling. Order from Alphonse Tvaryanas, 284 Clearstream Rd., Jackson, NJ 08527
16. **A CARNIVAL OF IRIDESCENT LUSTER BUTTONS, BOOKS I & II.** Book I has 856 named design drawings. Indexed. \$13 ppd. Book II has 450 more drawings, indexed, with price guide covering both books. \$14.00. Canada and Mexico please add \$2.00 (US) to each for extra postal cost. Overseas please add \$4.00 (US) to each for surface mail. Add \$6.00 (US) each for air mail. Order from author Ruth M Clark, 2100 Dawn Dr., Georgetown, TX 78628.
17. **CARNIVAL GLASS OF AUSTRALIA** - 100 pages, some colored, hard cover. Produced by Australian Carnival Enthusiasts Association, Inc. Cost \$20.00, this includes Air Mail Postage. Please contact Mrs. Margaret Dickinson, Secretary. R.S.D. Fryerstown, Victoria, Australia 3451, for advice on the uncomplicated purchase of this book.
18. **THE CARNIVAL HUNTER'S COMPANION**, a unique cross-referencing system for easy identification of pattern features and names. \$27.95 ea., includes shipping. Texas residents add \$2.06 tax. Check payable to Elaine Blair, P.O. Box 116335, Carrollton, TX 75011-6335, 214-492-1528
19. **A CARNIVAL OF IRIDESCENT LUSTER BUTTONS, BOOK III - 1997 EDITION** contains 391 pattern drawings not found in Books I and II by Ruth M. Clark, plus color photographs of 87 buttons. \$13.50 postpaid in USA; \$14.50 (US) postpaid in Canada; \$16.50 (US) postpaid in England; \$17.50 postpaid in Australia. Order from author: Alan G. Perry, 7614 McHenry St., Houston, TX 77087-3834
20. **SKETCHBOOK OF LITTLE CARNIVAL GLASS BUTTONS, 1997 EDITION** contains drawings and descriptions of over 500 little old buttons (less than 5/8" diameter). Loose-leaf format for easy annual updates, and geometric classification for easy identification. Indexed. \$13.00 plus 1.50 postage for US buyers, Canada and Mexico please add \$2 US to each for extra postage. Overseas please add \$4 US surface or \$6 airmail. Order from author: Jane O. Dinkins, 1100 Ridgeley Dr., Houston, TX 77055, 1-713-465-0557. Owners of 1996 edition may receive 1997 update pages by sending \$3 (includes postage).
21. **IMPERIAL GLASS - IDENTIFICATION AND VALUE GUIDE** by Carl O. Burns. Price \$18.95 plus \$2.50 shipping (Canadian US funds plus \$3.50 shipping), (Foreign US funds plus \$5.00 shipping) mention you are a member of HOACGA. Order from Carl O. Burns, 60 Rumford Center Rd., Andover, ME 04216
22. **OLD IMPERIAL 1909 CATALOG REPRINTS FROM THE ORIGINAL CATALOG** The catalog is 13½" by 11" containing 192 pages that are full of Imperial pattern pictures. Price is \$28.00 plus \$4.00 shipping and handling. Order from Lucile Britt, 3048 Tamarak Drive, Manhattan, KS 66503 Phone: (913) 539-1933
23. **C.C.G.A.'s 1998 Imperial Price Guide** lists Imperials colors, patterns names and numbers with current values. Cost is \$5.00. Order from Annetta Bosselman, 3103 Brentwood Circle, Grand Island, NE 68801