



RETURN ADDRESS

H.O.A.C.G.A.
Eleanor Mochel
15427 Woodward Court
Overland Park, KS 66223

OCTOBER
2003

Please Submit Your Ads
For Sale and Wanted

HOACGA

Heart of America Carnival Glass Association Inc.

HEART OF AMERICA CARNIVAL GLASS ASSOCIATION

(Since 1973)

President

Robert Grissom
7517 Evanston
Raytown, MO 64138
Phone: (816) 356-5320
e-mail: bobimocg@aol.com

Vice President

Don Lacock
PO Box 33
Delia, KS 66418
Phone: (785) 771-3125

Treasurer

Cliff Ball
572 W Park Street
Olathe, KS 66061
Phone: (913) 782-0415

Secretary

Send new & renewal memberships,
address changes, orders for educ.
matl. and souv. Make all checks
payable to HOACGA and send to
Ann McMorris. Membership:
\$35 USA & Canada, \$50 Foreign

Ann McMorris
PO Box 4361
Topeka, KS 66604-0361
Phone: (785) 478-9004
e-mail: mcmorris@woodsland.com

Bulletin Secretary

Send ads & articles for bulletin
no later than 5 days prior to the end
of the month.

Eleanor Mochel
15427 Woodward Court
Overland Park, KS 66223
Phone: (913) 685-2182
Fax: (913) 685-2182 (call first)
e-mail: cmochel@yahoo.com

Membership expiration month and year is posted on address label
Following the name: (i.e. 504 = expires May 2004)

Opinions and information expressed in the HOACGA bulletin are not necessarily those of the Bulletin Secretary or Officers. Neither HOACGA nor Bulletin Secretary accepts any responsibility for accuracy or claims made, or for any outcomes resulting from the use of the information either printed or implied.

Dugan's Vintage

By Alan and Lorraine Pickup

Dugan Glass Company apparently didn't make a complete dresser set like Northwood's Grape and Cable but they did make a couple of items that do fit into the dresser set category that should get more attention than they do. Pictured here are the perfume bottle that has been erroneously attributed to Northwood for some time and a super electric iridescence amethyst powder jar. Both carry the same pattern of a bunch of grapes superimposed on a grape leaf separated by another grape leaf. The powder jar has a ring of beads below the grape pattern and the perfume carries the ring of beads above. But for some reason that continues to escape us, the Vintage perfume bottle is still carried in auction prices realized as Grape and Cable instead of Vintage. For further reference, Carl Burns' Dugan/Diamond Carnival Glass book covers this subject very thoroughly.

Both the powder jar and the perfume bottle can be found in marigold and amethyst. But their glass color scarcity seems to be opposite one another. That is, marigold Vintage powder jars are quite common but the amethyst jars are really another story. They don't seem to surface that often and when they do, we think that they could be considered a prize in any carnival glass collection. The powder jar has been found in blue and white also but we have never had the pleasure of seeing either color.

The perfume bottle, on the other hand, finds that there are more amethyst examples found than marigold examples. But both colors are treasured and are usually incorrectly identified with the Grape and Cable dresser set. Yes, we are guilty of doing it too!



Geo. W. Getts Pianos Grand Forks, ND

By Dean & Diane Fry

Advertisements for Mr. Getts' business indicate establishment as early as 1889, although the first telephone directory listing did not appear until 1907. A full line of musical instruments was sold here, along with sheet music and other associated musical merchandise. Apparently pianos were the sales leaders.

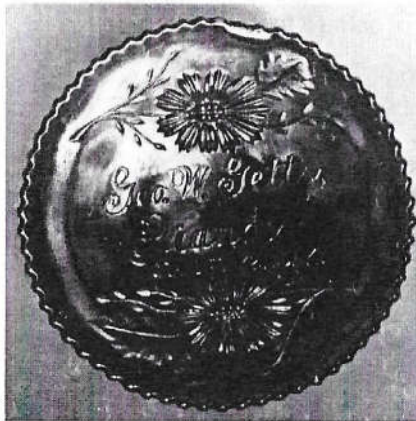
Getts' store was located at 123 S Third Street in Grand Forks, North Dakota. With the demise of Mr. Getts in 1923, the business was discontinued.

Maker of this design was Fenton, with a back pattern of Wide Panel.

The descending order of rarity by shape is: Bowl, H/G, Plate. Descending order of desirability is very likely just the opposite. All known examples have the "S" in the word Forks, reversed.

A plate in this design sold in 1998 for more than \$3,000. Recently, a very nice example of flat plate brought more than \$4,000 in an Ebay auction. There are no examples listed as having sold during 2001 Carnival Glass auctions, and this NOT surprising! We have searched for a nice plate for many years.

Thanks are in order to Robert and Betty Stremming of IL. They had been traveling in ND, and walked into a store where this beauty was on display. It was for sale in their room during the 2000 Sunshine State Convention...finally we were in the right place at the right time! Bob collects advertising items, but he needed a new piece of farm equipment worse!...Cannot say: "Bargain Here," as Jim Seeck says when something sells cheap, but we are grateful to finally have a lovely example of this design!



AND THE AUCTION BEAT GOES ON!

By Bud & Gladys Martin

At the last minute, our plans changed enabling us to attend John Woody's Auction in St. Louis at the Four Points Sheraton Hotel on September 19th & 20th. This was a 3-part auction of American Cut Glass, Wave Crest and Carnival Glass. We had a chance to visit with John on Friday afternoon. He looks well and says he feels Great! We're glad he's back and in the swing of things.

Among the 25 Carnival Glass collectors present were Emmett & Dorothy Morgan, Robert & Sherry Cyza, Reg & Linda Dunham, Richard Cinclair and Mickey Reichel.

I know next-to-nothing about Wave Crest except that I would love to have a piece or two. But, after watching 140 pieces sell and the prices they brought convinced Dorothy Morgan and I that we definitely did not need to branch off into collecting Wave Crest. Just stick to Carnival Glass!

As only Woody can do, the auction was fast-paced, no-nonsense, hold your card up or you'll be left behind (150 pieces in less than 90 minutes) With few exceptions, only the item number was announced with no embellishments as to pattern, base color, condition, rarity, etc. On a few items, Woody did mention that he had sold this very same piece some 40 yrs ago and the person who purchased it.

As we have seen in recent auctions, the better pieces brought good to super prices and the bidding on the more common pieces was a little soft with some bargains to be had. Top dollar items were:

G	NuArt Chrysanthemum Chop Plate	\$11,000
A	NuArt Homestead Chop Plate	2,000
AO	Grape & Cable PCE Bowl	1,900
P	Peacock at the Ftn Punch Bowl & Base	1,800
B	Peacock at the Ftn Compote	1,450
P	G & C Whiskey Decanter w/6 shot glasses	1,400
P	G & C Plate, stippled	1,200

And The Auction Beat Goes On continued...

We came home with the green Acorn & Burrs Pitcher (great iridescence) & 6 tumblers (so-so iridescence) and the amethyst Grape & Cable pitcher (with blue & gold iridescence).

Next auction for us will be Mickey Reichel's at the Air Capital Carnival Glass Club Convention in October.

“PULLED HUSK” or “CORN HUSK” Vase

By Ruth Herrington

The October harvest season is upon us, so it seems a good time to tell about a previously unreported “Pulled Husk” or “Corn Husk” vase that has surfaced. We receive many inquiries on many subjects because of our web site presence on the Internet. With more than 30 pages of carnival glass on our site, we were contacted for information about a family heirloom. The woman said that her mother had an amethyst corn vase that was different from anything she could learn about. This is what she wrote in an email:

“My mother has a corn vase in the amethyst color, but I have never seen another like it. It has the “N” for Northwood I assume, on the bottom of the base. It is different in that it has husks that run all the way up the sides and curl out from the body of the vase. It also has a fluted top. I notice that all the others are very plain, this one is more ornate. I know it's old as my grandmother got it when my mother, now 73 years of age, was a little girl. She purchased a box of knick-knacks and it was in it. It's in perfect condition, no chips at all that I am aware of. It was used for years to prop up a window until a friend back in the 50's told us that it was an antique. I am curious to know what you think of this and if you've ever seen anything like it. My mother passed away this past April but was offered \$10,000 some years ago.”

I told her that I thought it was the “Pulled Husk” vase, and asked if she could send me some pictures. She wrote back and said, *“I only know of one picture of the vase, it's not very good and since my mom passed away I'm not sure where to find it. The vase is wrapped in bubble-wrap in a safe at her home. I will try to get a decent picture if I can.”*

Pulled Husk or Corn Husk Vase continued...



A week or so later, she sent me the pictures you see here, and gave me permission to share them with anyone interested. It is not for sale, since it is a family piece, which is totally understandable. Although the pictures are in black and white here, the color pictures I received show the vase as somewhat golden with the colorful iridescence only on the top of the base, but the top edge has a tri-corner flare that is very interesting.

Some of the Woodsland (Internet) members offered information and suggested contacts regarding this rarity. One person sent me a beautiful picture of an amethyst one he/she owned. As suggested, I contacted George Thomas for information, since he has three (yes, 3) “Corn Husk” vases, including the only one known in green. Amethyst and green are the only colors reported, and it is estimated that there are 12-14 examples known in this unique pattern. According to George, all of these vases are whimsies and no two are alike, even though they came from the same mold. It was left to the finisher to determine how to attach the husks (small loops or large loops) and how to finish the top. Most are somewhat smooth and round at the top rim.

Just as people said he would, George graciously agreed to talk with her. With his permission, I provided his telephone number, she called him, and sent the pictures she had sent to me. The owner of the vase (who lives in the northeastern part of the Midwest) appreciated all of the information. Of course, this kind of thing is what we thrive on as collectors, so I was thrilled to have been a participant in the unfolding of this discovery... even if it is locked away where no one can enjoy it. You never know when someone will “knock on your door.” It keeps us ALL going.

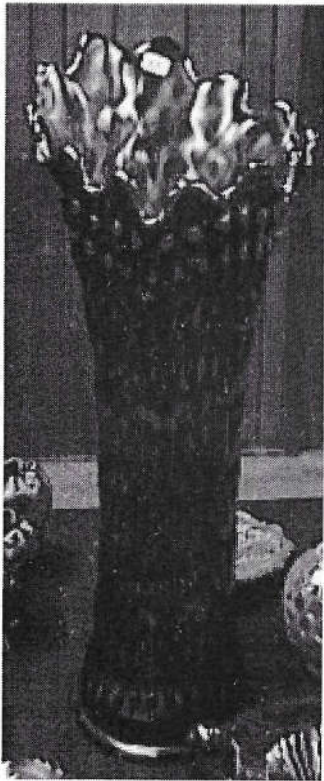


Hello From Iowa

From Vicki Gearhart

Hello to all, it seems so long since the last time we attended a carnival glass event. Actually the last time was HOACGA Convention in April. That is 5 months, I don't believe we've ever went that long without attending an event. Today we got to attend the Seeck Auction in Mason City. As always it's great to see friends and see the glass. My favorite piece that sold today was the Rustic Funeral Vase in Amethyst with great color sold for \$1,400. Well worth every penny.

A friend said they just bought a very nice Electric Blue Tree Trunk Funeral Vase for \$2,800. I would love to see it one day. I have a friend that has a couple of them but doesn't want to part with them and I don't blame her I wouldn't either.



As always when you go to the Seeck Auction Center you are able to preview upcoming auction glass in his glass booths. I must say after seeing the wonderful items he plans to sell in November at Wentzville Missouri – we definitely plan to attend. They will be offering some very pretty glass and some very rare glass as well. You can reserve a room at the Wentzville Holiday Inn if you have a weekend free November 22 is the Auction. The Holiday Inn # is 636-327-7001 tell them you are with the Seeck Auction Group for the special low room rate. Rooms are booking up quickly so don't wait if you want to attend this event. The auction brochures will be mailed out in October. Keep an eye out on their website for updates.

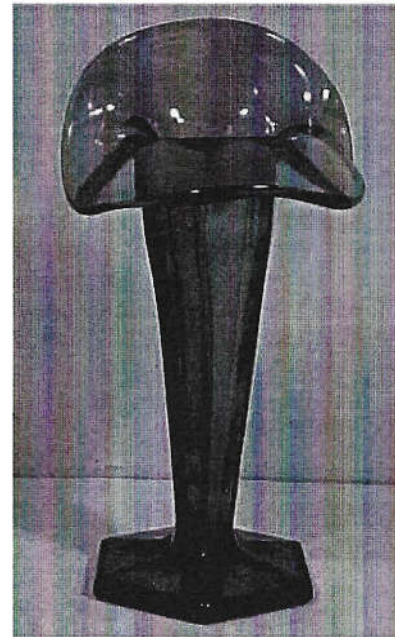
The Vase is from today's auction and the other glass is going to be offered at the upcoming auction. Hope to see many friends there.

Westmoreland's 1700 Colonial Lily Vase

By Barb Chamberlain

Picture the lily at the top of an Easter Lily plant and you will see how the name 1700 Colonial Lily Vase was chosen. This vase has the elegant jack in the pulpit top edge treatment that is so much like the Dugan Formal vase. Like the Formal vase, this has six panels, but unlike the Formal vase, the Colonial Lily vase has a hexagonal base. This pretty little vase has a lavender base glass with a light flashed on iridescence. This stands about 6 7/8" tall, is 3 1/2" wide at the top, and has a 2 5/8" base diameter.

According to Charles West Wilson in his book, Westmoreland Glass, Identification and Value Guide, the Colonial Lily vase was shaped from Westmoreland's 1700 Colonial vase that was originally produced c. 1912, and was marketed as a 6" vase or hatpin holder. This listing changed in a 1924 catalog, when it was designated as a 7" vase. Mr. Wilson doesn't believe that the vase was redesigned, but rather had been misidentified in the 1912 catalog. As with any handmade glass, sizes can vary slightly from one piece to another after coming from the molds. Of course, with JIP shaping, sizing varies according to how high the back is pulled, as well.



Mr. Wilson stated that this vase was also made in crystal only in 9", 11", and 12" sizes in 1912. Although the 1700 Colonial Lily vase (JIP) was advertised in the 1912 catalog in crystal, no mention was made of colors until 1932, so this carnival glass vase was very probably made during this period.

I found it interesting that Mr. Wilson reported that the 9" Colonial Vase crystal vase or hatpin, manufactured in 1912, reportedly cost 2 1/2 times as much to produce as the crystal 6"-7" vase or hatpin holder.

Westmoreland's 1700 Colonial Lily Vase continued...

This vase, perhaps not as flashy as some of the more costly carnival glass pieces, is probably one of those rarer items that many of us can add to our carnival glass collections, making a very attractive item to display, as well.

Are there other colors or sizes that you have seen in carnival glass? Do you have one in your collection? Let me know or report it to Eleanor for inclusion in the next bulletin.

LOOKING BACK

By Charles Mochel

The Carnival Glass

T & M

February 25, 1980

Tumbler & Mug News

O. Joe Olson

Kansas City, MO

SPOTLIGHT ON TOP TEN TUMBLERS

The most sought after old tumblers today are: Cone & Tie, Hobnail, Multi Fruits and Flowers, Morning Glory, Gay 90's and Inverted Feather.

These six come close behind the leaders - six most-prized "one-of-a-kind" tumblers that were not considered in the survey because only one of each pattern and color has been found.

The first four patterns named finished highest in the balloting by mail late in 1979. The Gay 90's and Inverted Feather came next.

The Cone & Tie tumbler, known only in purple, had most first place votes.

LOOKING BACK continued...

For this balloting, the six most rare tumblers were placed in a "special" category. They were withheld from the survey.

TOP 10 TUMBLERS

Russ Lytle - Pico Rivera, CA

Cone and Tie
Banded Diamonds
Chain and Star
Aztec
Gay Nineties
Western Thistle
Multi Fruits and Flowers
Morning Glory
Hobnail
Perfection

TOP 10 TUMBLERS

Don Moore - Alameda, CA

Gay Nineties
Fentonia Fruit
Hobnail
Morning Glory
Inv. Feather
Checkerboard
Multi Fruits and Flowers
Cone and Tie
Perfection
Quill

TOP 10 TUMBLERS

Joe Corrothers, Maumee, OH

M. Hobnail
M. Inv. Feather
M. Vintage Banded
M. Near Cut
M. Multi-Fruits
M. Morning Glory
B. Grape Arbor
IB Grape/Cable
IB Wisteria
IB Grape Arbor

LOOKING BACK continued...

Voting instructions to collectors requested that the six one-of-a-kind tumblers not be listed on the ballots for the Top 10 tumblers. In this restriction, collectors were able to make their Top 10 choices more meaningful since most of the tumblers listed are still available although some are scarce.

Nearly everyone who participated went along with the restriction. In the case of a few who included one or more of the "special category" tumblers, their choices were not tabulated.

Criteria Guided Judgments

Tumbler collectors who were readers of the 1979 Tumbler & Mug News were asked to evaluate the better old tumblers on the basis of supply, demand and, where possible, verified prices paid for the tumblers. Still other criteria applied were to measure the beauty and desirability of the tumblers.

The most popular six patterns that emerged from the survey have been listed. Other patterns followed in order of voting. They were: Harvest Flower in purple, Aztec and Vintage Banded. Then came Banded Diamonds,

TOP 10 TUMBLERS

- Lloyd Scott - Camdenton, MO
- P. Harvest Flr.
- Cone and Tie
- Orange Tree Ftd. (variant)
- M. Diamond Lace
- M. Cherry (N)
- Gr. Inverted Feather
- M. Interior Poinsettia
- IG Grape Arbor
- Lily of the Valley
- Perfection

TOP 10 TUMBLERS

- Dick Clough - Carrollton, IL
- Multi Fruits & Flowers
- Morning Glory
- Hobnail
- Gay Nineties
- Perfection
- Cone and Tie
- P. Harvest Flr.
- Inv. Feather
- M. Cut Cosmos
- Inv. (late) Thistle M.

LOOKING BACK continued...

SPECIAL CATEGORY

"One of a Kind"

Frolick'g Bears

Big Butterfly

Blue Western Thistle or Thistle w/ Tri-Band of Diamonds

Pastel Green Orange Tree Ftd.

Marigold, Checkerboard

Cobalt Rising Sun

Note: Analysis of Tumbler Market in next month's bulletin.

NEXT REGULAR HOACGA MEETING

By Ed Kramer

The next regular bi-monthly meeting of HOACGA will be held on Sunday, November 23, 2003 at 2:00 pm at the Prairie Village Community Center, 7700 Mission Road, Prairie Village, KS. We will discuss patterns with opal.

The September 28, 2003 Meeting was attended by Don Lacock from Topeka, KS, Cliff & JoAnn Ball, Daryl & Norma Strohm and Ed Kramer. Bob Grissom was on a trip to the Northern CA Convention and the Mochels were not there as Eleanor was ill.

At the Business Meeting, it was unanimously decided to continue the bi-monthly meetings at the Prairie Village Community Center. There is a new change for 2004...we will have 6 meetings for \$50 total.

A tentative date of December 8 was set for a Christmas Party at Bob Grissom's home, similar to last year. It was decided to eliminate the gift exchange.

The July ending balance was reported by Cliff Ball to be \$18,464.

We stopped for refreshments - a cake by VP Don Lacock and coffee and then members discussed the 20 pieces of geometric and advertising carnival glass they had brought.

Ed Kramer won the door prize, a George & Mavis Loescher presentation tape from HOACGA Convention 2003.

BEADED BASKETS (Revised and Updated)

By Larry Keig



Easily identified, the Beaded Basket, reminiscent of an old-time clothes basket, is one of the most detailed of this shape in carnival glass. Beaded Baskets were produced, according to Carl O. Burns (in *Dugan & Diamond Carnival Glass*), between 1915 (when they were first listed in trade catalogs) and the late 1920s by the Diamond Glass Company. It also may have been made, I believe, during the Dugan years because it is available in African Iridescent, a color known to have been produced mostly and in large quantities by Dugan, though Diamond also may have produced small quantities in that color. Regardless, the Beaded Basket was marketed over many years because it comes in colors associated not only with the dawning of carnival glassmaking at Indiana, Pennsylvania, but also with its sunset.

BEADED BASKETS continued...



Two-Handled Baskets

Closely resembling a wicker basket, this novelty item stands about 3.5 inches tall up to, but not including, the two handles and from about 4.75 inches to around 5.5 inches from base to top of handles, depending on the handle configuration. Most of the surface of the basket itself is covered by three bands of differing treatments of wicker work, the top two about three-fourths of an inch wide and the bottom one nearly an inch wide. Each section of wicker work is connected by small beads. The uppermost section of wicker work and the vertical panels at the top of the basket are also connected by beads.

Beaded Baskets were produced in several colors. They are known in marigold, amethyst (one reported with a slag swirl in the base), oxblood or black amethyst (African Iridescent), white, cobalt blue (most with silvery exterior iridescence), sapphire, smokey lavender, pink with marigold overlay, and lime green with marigold overlay (the latter two iridized examples of Diamond's "After Glow" line). They also have been reported in purple and in aqua, but I have yet to see them in what I consider a bona fide purple or a true aqua. Those which have been called purple appear either amethyst or oxblood to me, and those which have been called aqua look like sapphire when looking through them at the narrowest point, just above the basket's base.

BEADED BASKETS continued...

Beaded Baskets were made with two different handle configurations: straight-up and flared-out. They also were made with two different top shapes: round and oblong. It's possible, I believe, that the different handle configurations were associated with one era of the plant's operation or the other, but that claim certainly is conjectural. I have speculated, for example, that those with the flared-out handles were made during the Dugan years and those with the straight-up handles during the Diamond era, because the colors of those with flared-out handles are typical of Dugan carnival glass and the colors of those with the straight-up handles are more representative of the wider spectrum of colors made during the Diamond era.

In the table below, I list the top shapes – round or oblong -- which have been reported in each color and handle configuration. The information in the table may not be complete since it reflects only what I have learned from a relatively small sample of reports.

Two-Handled Beaded Baskets: Colors, Handle Configurations (Flared-Out or Straight-Up), and Top Shapes (Round or Oblong)

COLOR	FLARED-OUT HANDLES*	STRAIGHT-UP HANDLES
Marigold	Round	Oblong
Amethyst (purple)	Round/Oblong	Oblong
Oxblood/Black Amethyst	Round	
Cobalt Blue		Oblong
White	Round/Oblong	
Sapphire (Aqua)		Oblong
Smokey Lavender		Oblong
Lime Green, with Marigold Overlay		Oblong
Pink, with Marigold Overlay		Oblong

*If a cell is empty, no baskets have been reported in this color and handle type.

BEADED BASKETS continued...

Except in marigold, Beaded Baskets are much more difficult to find than Northwood's Bushel Baskets. Marigold Beaded Baskets with the oblong top and straight-up handles are plentiful; the marigold ones with a round top and flared-out handles, however, are apparently *very rare*. Amethyst, oxblood, and white are scarce, while cobalt blue, and pink are even scarcer; all of the aforementioned are offered only occasionally for sale. (The pink is not as rare as I once thought, based on the reports I received; the white with the round top is more common than the one with the oblong top, which I consider rare.) Sapphire and lime green are rare. Smokey lavender is very rare, with only one example confirmed.



The "Handleless" Basket

A handleless Beaded Basket, a legitimate whimsey I believe, sold recently on eBay. Standing nearly 4 inches tall, it measures about 5.25 inches at its longest point and 4 inches at its narrowest point at the top. It was almost certainly produced from the same mold as the two-handled baskets, because there are four "bulges" from which the handles would have extended -- two per side -- but no evidence that the handles were lopped off after production. On the day this basket was made, a worker at the factory likely had time to play with it after it came out of the mold, snipping off the handles and then carefully contouring the four areas while the glass was still in a malleable state. To the best of my knowledge, this is the only whimsey that's been reported in this pattern.

BEADED BASKETS continued...

The seller acquired the basket whimsey from his mother in the late 1980s. She and his father – who collected carnival and depression glass -- found it, he thought, at an estate or tag sale somewhere in rural Pennsylvania in the '50s, '60s, or '70s.



Handleless Beaded Basket (Whimsey)
Color and Top Shape

COLOR	ROUND TOP	OBLONG TOP
Marigold		X

An article I wrote on Beaded Baskets appeared in the June 2003 issue of *The Carnival Pump*, the quarterly newsletter of the International Carnival Glass Association. I have updated it for the *HOACGA Bulletin* because, since then, the marigold basket with round top and flared handles and the basket whimsey have sold.

BEADED BASKETS continued...

My thanks to the following for the information they provided: Bob Bishop, Ardonna Bucher, Barb and Don Chamberlain, Greg Dilian, Diane and Dean Fry, Rick and Debbie Graham, Charlie and Jackie Hayes, Jerry and Cleo Kudlac, Lee Markley, Ronnie Primeaux, and John and Sandra Stafford. I also extend thanks to Debra and Kris Remmen and Dan Bloom for photos of the marigold basket with round top and flared handles and of the basket whimsey, respectively. If you as readers have additional information or corrections, please send whatever you have to: Dr. Larry Keig, 1614 Merner Ave., Cedar Falls, IA 50613 or larry.keig@cfu.net.

Alan and Lorraine Pickup just came back from a weekend visit with Rick and Debbie Graham in Kentucky.

Lots of pretty glass and a fun visit with two days of antique mall hopping.

ELEANOR MOCHEL

On Wednesday, September 24, Eleanor was admitted to KU Hospital in Kansas City, MO with a heart fibrillation, apparently due to 5 blood clots in her lungs.

She will continue at KU for at least a week.

The family appreciates your prayers and support for her speedy recovery.

You may send cards and wishes to:
Charles & Eleanor Mochel
15427 Woodward Court
Overland Park, KS 66223

If we have failed to put something in the bulletin that you sent in, please resend it and we will be sure to add it in next months bulletin.

HEART OF AMERICA CARNIVAL GLASS ASSOCIATION BOARD MEETING, SEPTEMBER 11, 2003

The HOACGA Board held their monthly meeting in Lawrence, Kansas on September 11, 2003 starting with lunch at 12:30 p.m. Board members present were Bob Grissom, Don Lacock, Ann McMorris and Eleanor Mochel. Cliff Ball was not present as Cliff and Joan's grandson was returning from Iraq and they had a big reunion planned to welcome him home.

Eleanor Mochel reported the August bulletin was delivered around September 1. An item will appear in the September bulletin explaining this unusual delay. She is working on the September bulletin. She needs articles from the members on their "finds", special pieces, why they started collecting, etc.

Ann McMorris had received an email from Ron Britt of Abilene with a suggestion that the monthly meeting be held possibly in Topeka some months so that members from the west wouldn't have to travel so far and could attend. We will check on a possible meeting place in Topeka.

The planning for the 2004 Convention continued with discussion on a souvenir, room display awards, John and Lucile Britt luncheon, and possible speakers for the banquet. No definite decisions were made as contacts must be made before announcements can be made. The membership is encouraged to write, email or phone any of the board members their suggestions on improving the format of the convention.

Since the Woodland Carnival Glass convention will be held in St. Louis the week prior to the HOACGA 2004 convention, some activities may be planned for those coming directly from St. Louis to Kansas City. We are looking into possible tours to view collections of members in KC.

Adjournment.

Souvenirs & Books - Order Form

_____ HOACGA Educational Series Book I	\$17.50
_____ HOACGA Educational Series Book II	\$20.00
_____ HOACGA Educational Series Book III	\$20.00
_____ PLATE HOLDERS—Dozen, clear plastic 5" base, white wire 4" back holds plates and bowls	\$21.50
_____ SMALL SIZE PLATE HOLDERS—Dozen, clear plastic base, white wire, good for pin trays & small bowls or plates	\$20.00
_____ COMPLETE NOTEBOOK - 22 Sections	\$223.00
_____ NOTEBOOK INDEX SET	\$ 5.00
_____ 2003 ROSTER	\$ 1.50

HOACGA SOUVENIRS:

_____ 2000 Cobalt Blue Imperial Pansy 9" Plate	\$41.00
_____ 1993 Ruby Red 6" "Good Luck" Plate	\$40.00 (20th Anniversary)
_____ 2001 Vaseline Opal Hatpin Holder	\$55.00
_____ 2002 Emerald Green Hatpin Holder	\$55.00

USA Shipping & Handling included in all pricing

Name: _____

Address: _____

City: _____ State: _____ Zip: _____

SEND ORDERS TO:

Ann McMorris, PO Box 4361, Topeka, KS 66604-0361

SHIPPING & HANDLING (S&H) INFORMATION

The shipping charges for members who reside outside the USA will be the actual cost. Upon receipt of item(s), the member will be expected to reimburse the club for the actual cost of shipping, as indicated by the postage on the package. At the time of placing your order, please indicate your shipping preference (air or surface).

CLOSEOUT SALE!

Order Form – Video Tapes

HOACGA CONVENTION SEMINAR VIDEO TAPES

1 Tape for \$10.00 (previously \$20.00); 3 Tapes for \$25.00;

1 Longplay Tape for \$25.00 (previously \$35.00)

_____	"Red Carnival Glass" (Richard Cinclair, Bob Allaire & Joyce Seale).....	\$10.00
_____	"Shades of Blue" (Richard Cinclair).....	\$10.00
_____	"Poppy & Rose Show Pieces" (Tom Mordini).....	\$10.00
_____	"Fenton Two Flower" (Bob Stremming).....	\$10.00
_____	"Carnival Glass Smalls" (Eleanor & Jack Hamilton).....	\$10.00
_____	"Small Plates" (Smokey Cloud).....	\$10.00
_____	"Northwood Peacock & Urn Ice Cream Sets (Harold Cox).....	\$10.00
_____	"Carnival Glass Collecting Experiences" (Carl & Ferne Schroeder).....	\$10.00
_____	"Heinz 57 Variety Carnival Glass Collection" (Jerry & Carol Curtis).....	\$10.00
_____	"Miniatures" (John & Lucile Britt).....	\$10.00
_____	"Table Sets" (Leonard, Kremer & Grissom).....	\$10.00
_____	"Plates" (Ruth Green & Richard Cinclair).....	\$10.00
_____	"Plethora of Patterns" (Dean & Diane Fry).....	\$10.00
_____	"Millersburg" (Dick & Jennie Hostetler).....	\$10.00
_____	"Swung Vases" (Dave & Joan Doty).....	\$10.00
_____	"Holly Pattern" (John Mikkonen).....	\$10.00
_____	"Imperial Glass" (Norene Duran).....	\$10.00
_____	"The Molding Process" (Howard Seufer of Fenton Glass Co.).....	\$10.00
_____	"Iridescence" (97, John Muehlbauer).....	\$10.00
_____	"Plates" (97, Judy Maxwell).....	\$10.00
_____	"98 Aqua Opal Display" (Discussion by Jim Seeck).....	\$10.00
_____	"98 Recollection of Collectors".....	\$10.00
_____	"98 Causes of Imperfections in Glass" (Fenton/Seufer).....	\$10.00
_____	"98 Britt Award/Grissoms, Banquet/Cinclair" LONG PLAY.....	\$25.00
_____	"Aqua Opal, Recollection of Collectors, Causes of Imperfections in Glass" (Fenton/Seufer) LONG PLAY.....	\$25.00
_____	"99 Fenton Glass" (Don & Barb Chamberlain).....	\$10.00
_____	"99 Recollections of Collectors".....	\$10.00
_____	"99 Millersburg Display".....	\$10.00
_____	"99 Britt Award Luncheon" (George & Mavis Loescher).....	\$10.00
_____	"99 Banquet Green Millersburg" (Bill Richards, Sr.).....	\$10.00
_____	"00 Wal-Mart Connection" (Jerry & Carol Curtis).....	\$10.00
_____	"00 Britt Award Luncheon" (Richard & Carol Cinclair).....	\$10.00
_____	"00 Plate Display" (Tom Burns).....	\$10.00
_____	"00 Shoppin' & Hoppin'" (Galen & Kathi Johnson).....	\$10.00
_____	"03 Recollections & Memories (George & Mavis Loescher).....	\$11.50

Shipping & Handling \$1.00 per tape, # of tapes _____ x \$1.00 = S&H Total _____

Name: _____

Address: _____

City: _____ State: _____ Zip: _____

Send Orders To:

Ann McMorris

PO Box 4361; Topeka, KS 66604-0361

2002 HOACGA NOTEBOOK INSERT

Candlesticks – 1st & 2nd Sections

By Bob Grissom

You may not have many candlesticks in your collection, but what is your knowledge of the ones you have? Do you know the difference between a Northwood "Colonial," a Fenton "Florentine," or a Vineland "Colonial?" You will probably be able to identify some of the candlesticks in your collection.

The HOACGA Notebook section for 2002 contains photographs of 72 different candlestick patterns and the section for 2003 contains an additional 53 patterns, including the Fostoria Brocaded pieces. Most collectors have some candlesticks in their collection, but this is an area of Carnival glass collecting where information is not readily found. This is an attempt to compile them in one place, present as much information as possible, and to show them with a color photograph. These two sections are another very informative addition to the HOACGA Pattern Notebook.

Much time has been spent, not only by me, but several other collectors, trying to identify the various pieces. Information such as this is only possible with the help of many members who have supplied photographs and a listing of their candlesticks.

If you have not ordered these two sections, you are missing a good source for information about carnival glass candlesticks.

If you wish to order, please use the order form below (if you are coming to the convention, the 2nd section can be ordered with the pre-registration form).

ORDER FORM

Name: _____

Address: _____

City: _____ State: _____ Zip: _____

1st Candlestick Section (photo 1-72—2002) \$14.00 each

2nd Candlestick Section (photo 73-125—2003) \$13.00 each

_____ @ \$14.00 each (2002) = \$ _____

_____ @ \$13.00 each (2003) = \$ _____

_____ @ \$1.50 each shipping = \$ _____

TOTAL \$ _____

Make Checks Payable to HOACGA and send to:

Ann McMorris

PO Box 4361

Topeka, KS 66604-0361

PLATE HOLDERS

LARGE SIZE..... \$21.50
per dozen

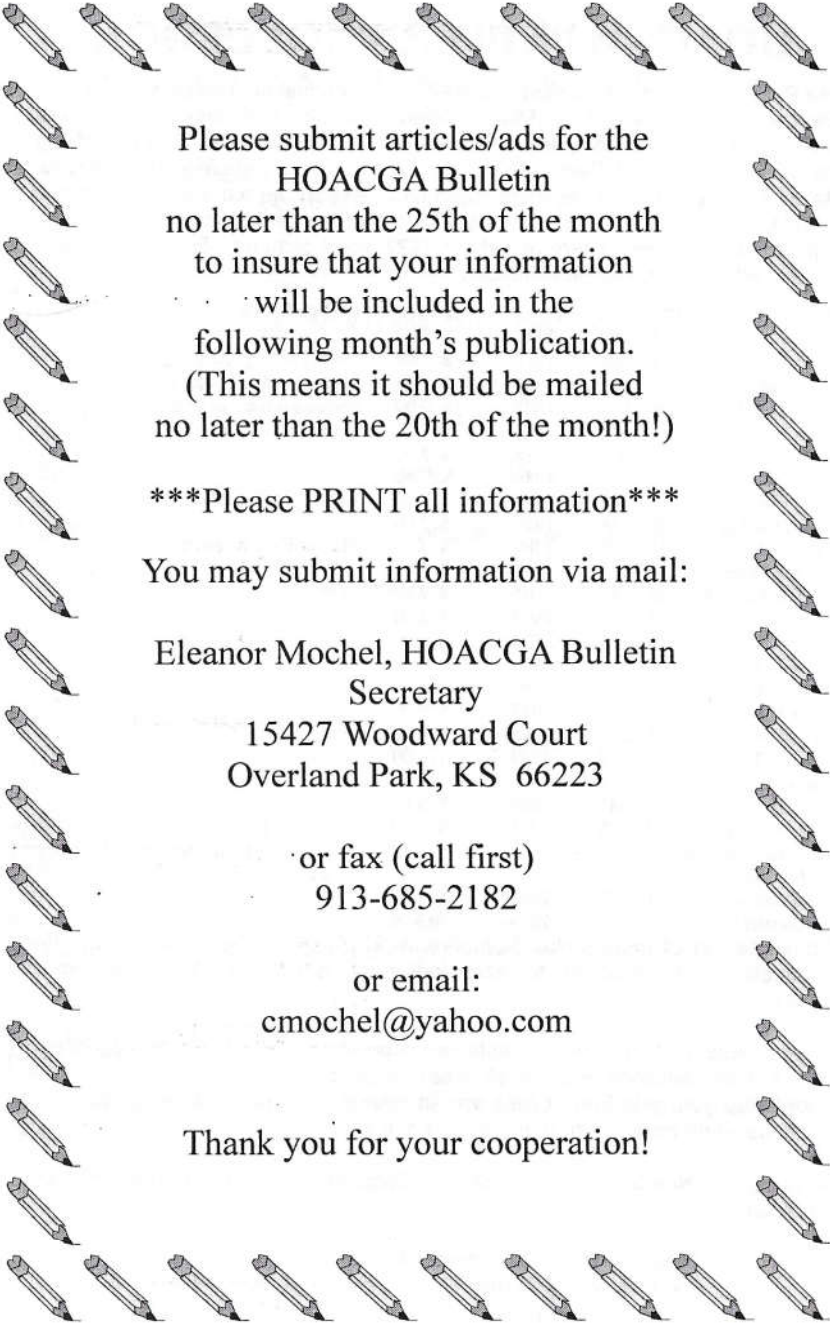
REGULAR SIZE..... \$21.50
per dozen (This size will hold the 8" & 9" plates &
bowls and the larger bowls)

SMALL SIZE \$20.00
per dozen
(These are good for the Pin Trays, 6" & 7" plates and
smaller bowls)

USA Shipping & Handling included in pricing.

SEND ORDERS TO:

Ann McMorris
PO Box 4361, Topeka, KS 66604-0361



Please submit articles/ads for the
HOACGA Bulletin
no later than the 25th of the month
to insure that your information
will be included in the
following month's publication.
(This means it should be mailed
no later than the 20th of the month!)

Please PRINT all information

You may submit information via mail:

Eleanor Mochel, HOACGA Bulletin
Secretary
15427 Woodward Court
Overland Park, KS 66223

or fax (call first)
913-685-2182

or email:
cmochel@yahoo.com

Thank you for your cooperation!

HOACGA PATTERN NOTEBOOK

The Pattern Notebook was started in 1980, with the first section being on mugs. Each year since, except in 1992, a different section had been added. This information has been compiled and printed to assist the collector in identifying the various pieces of Carnival Glass. Each section identifies the Patterns, Maker, Colors and other pertinent information and shows a color picture of the pattern. There are (10) completed sections with the candlesticks section to be completed next year. There are about 1222 items pictured. Each year a new section will be added to the Notebook.

ITEM	PHOTOS	YEAR	PRICE	COMMENTS
Mugs	1 - 40	1980	\$ 7.00	
Table Sets	1 - 40	1981	\$ 7.00	Listing of the 4 pc sets only
Water Sets 1	1 - 60	1982	\$ 7.00	Shows a pitcher & tumbler
Water Sets 2	61 - 120	1983	\$ 7.00	Shows a pitcher & tumbler
Water Sets 3	121 - 167	1984	\$ 7.00	Painted sets included
Rosebowls 1	1 - 60	1985	\$ 7.00	
Rosebowls 2	61 - 97	1986	\$ 7.00	
Small Plates 1	1 - 48	1987	\$ 7.00	Less than 9" in diameter
Small Plates 2	49 - 98	1988	\$ 7.00	
Chop Plates	1 - 40	1989	\$ 7.00	Plates of 10" diameter or greater
Regular Plates 1	1 - 48	1990	\$ 7.00	9" plates
Regular Plates 2	49 - 81	1991	\$ 7.00	9" plates
Compotes 1	1 - 57	1993	\$ 8.00	Smaller compotes
Compotes 2	58 - 113	1994	\$ 8.00	Larger compotes
Punch Sets	1 - 36	1995	\$ 8.00	2nd printing of this Section
Vases A-C	1 - 57	1996	\$ 9.00	
Vases D-G	58 - 117	1997	\$ 9.00	
Vases H-P	118 - 201	1998	\$12.00	
Vases R-T	202 - 274	1999	\$13.00	
Vases Trpt - Z & Non US	275 - 341	2000	\$13.00	
Vases not prev. reported, non-US & brocaded	342 - 428	2001	\$13.00	Non-US patterns & Fostoria's brocaded patterns. Table of contents of all vases, plus corrections
Candlesticks	1 - 72	2002	\$13.00	
Candlesticks	73 - 125	2003	\$13.00	

Complete Set of Inserts plus Notebook is \$215.00. Shipping & Handling for complete Notebook \$8.00, for each individual item \$1.50 for a maximum of \$8.00.

Any of these sections can be purchased separately. The information contained within these sections will be of great help to you as a collector. If the knowledge you gain from it help you in buying just one piece of glass - that could be worth much more than the cost of the information.

A complete Notebook or any of the Sections may be ordered from the Secretary.

Please make check payable to HOACGA and mail to:
Ann McMorris; PO Box 4361, Topeka, KS 66604-0361

2003 HOACGA ROSTER ADDITIONS/CHANGES, Insert #6

NEW MEMBERS

Conley, Richard W., 4504 Gaynor Road, Silver Spring MD 20906; 301-942-3425

Eckert, Carl W., 255 East Stewart Avenue, Columbus OH 43206; 614-444-2262

Goff, John R. 301 Kings Chapel Drive, Troy, OH 45373; 937-440-0968

Holscher, Ernie & Joyce, 28 Wimbledon Way, Bella Vista, AR 72714-2406; 479-876-2083 ; Referred by Bob Chandler, AR

Loughmiller, Marvin & Dorothy, 29106 SE Division Dr., Troutdale, OR 97060; 503-665-9225

Lytle, Marie E., 1120 Market St., Sunbury, PA 17801-2419; 570-286-3178

Payne, Ian, 17 Cornmarsh Ave., Covingham, Swindon, Wiltshire SN3 5DG - England

Samson, Donna & Benito, 3623 Herbert St., Norfolk, VA 23513- 2115; 757-855-7760

NEW PHONE NUMBER

Natali, Bob & Aggie , Fresno CA 93727 - 359-291-3296

NEW E-MAIL

Drabing, Dave & Reva, Mount Vernon, IL –
davereva@consolidated.net

Mayes, Hazel, Sedalia, MO – Hmayes@iland.net

Wolfram, Betty & Arvin, Appleton, WI – bwolfram@sbcglobal.net

NEW ADDRESS

Hodges, Alan & Virginia, P. O. Box 162, Lyndonville, VT 05851 8701
McWharf, Donald & Suzanne, 9685 SE Highway 42, Summberfield, FL 34491-5978 (winter address)

MEMBERSHIP APPLICATION

Heart Of America Carnival Glass Association

(PLEASE PRINT)

Last Name

First Name

Spouse's Name (if applicable)

Address

City

State

9 digit Zip Code

Phone Number

New or Renewal

please circle one of the above

e-mail address

Anniversary (if married more than 40 years)

Name of the Person Who Encouraged You To Become a Member

Questions:

Please remit this form along with your yearly dues to:

(\$35 USA/Canada or \$50 Foreign)

Ann McMorris

PO Box 4361

Topeka, KS 66604-0361

H
O
A
C
G
A

JIM WRODA AUCTION SERVICES c/o

MIDWEST AUCTIONEERS &

REALTY INC.

5239 St. Rt. 49 S., Greenville, OH

937-548-2640

PRICE RESULTS:

August 23, 2003 Carnival Auction

- 275 24. Dugan PO 10 1/2" Persian Garden ICS bowl SUPER! scarce & desirable
- 500 25. Dugan lave. 11" Persian Garden ICS bowl Outstanding example. Getting hard to find!
- 260 38. Dugan blue 9" Round -up plate w/ BW ext. scarce, nice color & irid
- 200 52. M'Burg amy. 10" Hanging Cherries ICS bowl. Radium. Good lookin bowl!
- 210 58. M'Burg amy. 10 1/2" Hanging Cherries ruffled bowl. VERY NICE!
- *700 59. M'Burg light pastel mari./iridized crystal 10 3/4" Hobstar & Feather frosted 4 sides up square shaped bowl VERY RARE! WOW!
- 500 59d. M-Burg crystal large flute stemmed compote. Same shape & size of the giant peacock compote. RARE!
- 275 59e. M-Burg crystal Ohio Star stemmed whimsey 5" rosebowl. Very rare item!
- 205 59f. M-Burg crystal 9 1/2" Ohio star vase.
- 425 59g. M-Burg crystal Ohio Star cider pitcher and 1 tumbler. Very scarce.
- 2@ 250-sug & btr/2@ 105 cmr & spnr 59h.
M-Burg frosted crystal Hobstar & Feather 4 pc. Table set. Selling choice pieces. Butter has a couple of tiny chips
- 225 59m. M-Burg crystal Country Kitchen variant opalescent flared 7 1/2" bowl. Very scarce.
- 300 63. M'Burg amy. 10 1/2" Peacock & Urn 3-1 edge bowl (nice color & irid)
- 800 64. M'Burg green 10" Peacock & Urn ICS bowl Super color and irid. Scarce
- 425 65. M'Burg green 10 1/2" Peacock & Urn 3-1 edge bowl. Super radium irid.
- 325 66. M'Burg green 7 3/4" Little Stars ruffled bowl scarce & desirable, nice irid
- 245 67. M'Burg green 10" Hanging Cherries ICS bowl Very Nice!
- 275 68. M'Burg mari. Trout & Fly 3-1 edge bowl Very nice bowl.
- 650 69. M'Burg green Trout & Fly ICS bowl Very scarce. Nice radium irid.
- 275 86. Imperial elec. purple 8" Heavy Grape plate. Super hot irid.
- 425 92. Pair of Cambridge mari. Inverted Strawberry candle holders Getting very hard to find. 1 has small chip under base

- 525 95. Imperial dark green small Corn Bottle. Has typical cut top w/ flaking.
 400 96. Imperial dark mari. small Corn Bottle. Has typical cut top w/ flaking.
 500 97. Imperial elec. smoke Little Barrel. Rare color, Super irid w/ typical flaking on cut top
 425 98. Imperial green Little Barrel. typical flaking on top cut edge
 350 99. Imperial mari. Little Barrel. Dark color. typical flaking on top edge
 205 120. N-wood cobalt blue Grape & Cable small ftd. ruffled orange bowl. Scarce
 275 121. N-wood amy. Grape & Cable ftd. centerpiece bowl w/ points turned in. Scarce
 275 131. N-wood amy. 8 1/2" Good Luck PCE w/ ribbed ext. (nice irid w/ gold highlights)
 230 132. N-wood mari. 10" Grape & Cable ICS bowl. Very nice multicolor irid.
 200 134. N-wood Black amy. 8 1/2" Grape & Cable 8 ruffled bowl w/ plain ext. (scarce, great color & irid)
 275 136. N-wood mari. 8 1/2" Hearts & Flowers 8 ruffled bowl w/ ribbed ext. Nice
 200 137. N-wood white 8 1/2" Hearts & Flowers 8 ruffled bowl w/ ribbed ext. Very Nice.
 230 138. N-wood IB 8 1/2" Nippon bowl w/ PCE & ribbed ext. Nice pastel irid.
 200 145. N-wood amy. Grape & Cable hatpin holder
 *200 159. N-wood amy. 8 3/4" Wishbone 3 ftd. plate w/ ruffles & rings ext. Nice
 550 161. N-wood clambroth 10 1/2" Peacock & Urn ICS bowl. NICE!
 300 162. N-wood mari. 10 3/4" Peacock & Urn ICS bowl.
 *235 163. N-wood dk. mari. 8 3/4" Peacocks stippled PCE bowl & w/rib ext.
 545 164. N-wood amy. Blackberry & Rays stemmed ruffled compote. Scarce
 500 165. N-wood green Blackberry & Rays stemmed ruffled compote. Scarce
 275 166. N-wood mari. Blackberry & Rays stemmed ruffled compote
 250 167. N-wood ice blue opal 8 3/4" Rose Show 8 ruffled bowl. Has small spot of epoxy on edge. Neat slaggy base glass. Almost looks like fenton persian blue. Cool pc of glass
 1300 180. N-wood purple/elec purple Peacock @ Fountain ruffled punch bowl & base. Very nice! Has nice elec. hilights.
 *425 181. N-wood mari 9" Greek Key flat plate w/BW ext. Getting very hard to find! Nice
 225 185. N-wood amy. 9" Three Fruits stippled plate w/rib back. Light in center.
 425 190. N-wood purple Hearts & Flowers stemmed ruffled compote w/plain ext. Very nice multicolored irid.
 325 191. N-wood blue Hearts & Flowers stemmed ruffled compote w/rib back. great multicolored irid.
 305 192. N-wood IG Peacock @ the Fountain stemmed ruffled compote w/Plain ext-very rare w/great pastel irid. Hard to find polished area on base.
 500 193. N-wood purple 9" Peacocks plate w/rib back. very nice, w/great color & irid.
 450 194. N-wood lt. amy 9" Peacocks plate w/Rib back. great color & irid. an eye catching plate.

- 1200 195. N-wood mari. Peacock @ the Fountain ruffled punch set w/ 8 cups. All have nice color, lots of pink irid. Very pretty set.
 2,750 *196. Dugan Purple/elec purple 10" Farmyard 3-1 edge bowl w/JH ext. Super elec. highlights throughout! Little light in center.
 325 197. N-wood IG 6 1/2" Corn vase w/stalk base. Nice color
 275 201. N-wood mari 12 1/2" x 4 3/4" Tree Trunk mid-size vase. Looks good!
 600 225. Fenton red 8 1/2" Dragon & Lotus ICS bowl. Scarce, nice red color.
 325 232. Fenton mari. 9 1/4" Dragon & Strawberry large ICS bowl. Scarce, nice multicolored irid.
 235 235. Fenton blue 7 3/4" Horse Medallion 3-ftd. 8-ruffled bowl. Nice detail & irid.
 250 236. Fenton green 7 1/2" Horse Medallion 3 ftd. 8-ruffled bowl. Scarce, great details.
 225 244. Fenton white 8 1/2" Peacock & Urn ICS bowl w/BB ext. scarce, nice multicolored irid
 295 260. Fenton amy. 9" Captive Rose plate (very scarce, nice flat plate)
 200 265. Fenton blue 9 1/2" Holly plate. Nice flat plate w/ nice color & irid)
 200 270. Fenton mari. 9 1/4" Peacock & Urn plate w/BB ext.
 245 274. Fenton blue 7 3/4" Vintage plate w/ plain ext. scarce, has super electric irid
 *200 277. Fenton mari. Wreath of Roses 7 PC punch set w/ Vintage int. Very nice irid.

2003 MID-ATLANTIC CARNIVAL GLASS JAMBOREE

OCTOBER 23, 24, 25 2003

THE VENICE INN

431 Dual Highway, Hagerstown, MD

For reservations call: 1-800-283-6423 Group #2963

Thursday, Oct. 23

8-10pm - Hospitality Room - 2nd Floor, Room 271 & Jamboree Registration

Friday, Oct. 24

11-12pm - Ballroom - Chairman's Welcome; Educational Program - to be announced

2-4pm - Hospitality Room; Jamboree Registration

3-6:30pm - Auction Preview

6:30-?pm - Tom Burns Auction

Until 11pm - Hospitality Room, open after auction; Room Visits when rooms are open

Saturday, Oct. 25

8-9am - Auction Preview

9am-? - Tom Burns Auction

6:30-9:30pm - Banquet, Awards, White Elephant Sale

??-Until - Hospitality Room; Room Visits when rooms are open

Sunday, Oct. 26

Check out and have a safe trip home!

For More Information Contact:

Nancy Williams 610-374-9033

2009 Cullum Dr., Reading, PA 19601

or

Bill & Sharon Mizell 301-384-8952

52 Old Bonifant Rd., Silver Spring, MD 20905

SEECK AUCTIONS ANNOUNCES

Oustanding Carnival Glass Auction

Saturday, November 22, 2003

Holiday Inn, Wentzville, MO

For Reservations: 636-327-7001

Partial Listing:

- Soldiers & Sailors Monument Plate, blue
- J.N. Ledford Company, Cooleemee, NC Heart & Vine Plate, marigold
- Roses & Greek Key square plate, smoke
- Ladies Medallion Wild Rose Lamp, green
- Perfectin water pitcher, amethyst
- Cleveland Memorial Ashtray, amethyst
- Multi Fruits & Flowers punch set, amethyst
- Fleur De Lis square shaped dome ftd bowl, Vaseline
- Orange Tree whimsy syrup (made from mug), blue
- Hanging Cherries chop plate, green
- Greengard advertising double handgrip, purple
- 11 different advertising plates
- 8 other shapes of advertising
- M'burg Detroit Elks ruffled bowl, amethyst
- Courthouse ruffled bowl, lavender
- Unlettered Courthouse bowl w/ 3 in 1 edge, amethyst
- Feather & Heart whimsy, marigold
- Dolphins compote, amethyst
- Hanging Cherries pitchers, green & marigold
- Marilyn pitchers, green, amethyst & marigold
- Acorn compote, green
- Whirling Leaves bowl, blue
- Roses & Ruffles GWTW lamp, butterscotch
- Poppy Show Plate, blue (elect)
- N's Stippled Peacock at Urn IC bowl, blue (elect)

Please watch our website for more information: www.seeckauctions.com

**COMBINED SAN DIEGO COUNTY
& SOUTHERN CALIFORNIA
CARNIVAL GLASS CLUBS
10TH ANNUAL CONVENTION**

March 3-6, 2004

****Please Note The New Name of Hotel****

AYRES SUITES

1945 E. Holt Blvd., Ontario, CA 91764

Phone: 909-390-7778; Fax: 909-937-9718

Rate: \$89/night/suite*

*Registration Deadline for special rate is Feb., 13, 2004

SCHEDULE OF EVENTS

WEDNESDAY: Complimentary Breakfast
Free Ice Cream Social
Jim Seeck w/ "Carnival Glass' Weakest Link"

THURSDAY: Complimentary Breakfast
Seminar: Gary Lickver-"CA Sweet Oranges"
Midnight Auction

FRIDAY: Complimentary Breakfast
Program: Galen/Kathi Johnson "Fabulous or Frivolous Finds"
Auction Preview

SATURDAY: Complimentary Breakfast
AUCTION!!
Banquet: Pete/Paula Bingham "Super Bowl in March"
RAFFLE PRIZE - Marigold Show Plate

THE HOSPITALITY ROOM WILL BE OPEN MUCH OF THE TIME
For Registration Information Please Contact:
Betty Robertson 805-482-3473

CARNIVAL GLASS - FOR SALE

DENNIS RUNK

PO Box 235

Littlestown, PA 17340-0235

717-359-7205

postage is extra

- All Damaged -

W	EI	(N) Grape Arbor Tankard (chip/crack).....	70.00
IB	EI	(N) Grape Arbor Tankard (chip/gold painted base	130.00
P	EI	Diamond Lace Pitcher (chip/crack).....	30.00
W	EI	(N) Grape & Cable 10-1/2" Ice Cream Bowl (large base chip)	65.00
AO	EI	(N) Bushel Basket (chip repair on handle).....	80.00
M	EI	M'lbq Hobnail spittoon (chips top rim/heat check base)	95.00
W	Lite	(N) Peacock @ Ftn. Compote (base chip).....	80.00
G	EI	Orange Tree Loving Cup (several chips)	50.00
R	GI	Orange Tree Mug (flat base chip)	80.00
Various	GI/EI	Lot of 10 pieces - damaged (tumblers & small items.....	58.00

CARNIVAL GLASS - FOR SALE

DICK & DIANE WETHERBEE

11 Baker Pond Rd., Ext.
Charlton, MA 01507
508-248-0038
ddwbcc@aol.com

EI	R	Open Lace Basketweave 6" Jack in Pulpit Hat. Dk Red, you know its red	395.00
EI	M	Beaded Shell Mug, great dk color, hard to find in this color, a beauty	135.00
EI	PO	Dugan's Interior Swirl 4" Pinch-in Rosebowl w/ triangle opening, rare & beautiful	175.00
EI	P	Fleur De Lis 9" Ftd. IC shape bowl w/ Country Kitchen back, satin, perfect & super	495.00
EI	M	Holly 4" ruffled compote, real cute & perfect	28.00
EI	B	Stag & Holly 7-3/4" Spatula ftd. bowl, beautiful color w/ great mold detail.....	175.00
EI	P	Hatpin-Scarab 1-3/4x1-1/4 Oval Hatpin w/ long pin, a beauty	85.00
EI	PO	Ski Star 8" Tri-shaped bowl w/ Compass back Super Peach & Lots of Opal.....	195.00
EI	M	Hearts & Flowers 8-1/2" ruffled bowl, nice even color but 1/4" flake on edge so.....	95.00
EI	Amy	Persian Medallion 7" Large Compote w/ crimped edge, very rare color, super	325.00

CARNIVAL GLASS - FOR SALE

GREG WARHOL

PO Box 2385
Mt. Pleasant, SC 29465
843-971-6120
gfwarhol@comcast.net

G	Imperial Columbia vase, rare color.....	290.00
W	Dahlia small berry bowl, red flowers.....	100.00
P	Dahlia tumbler	150.00
LIG	Hearts & Flowers bowl, PCE, very scarce.....	1,650.00
	Imperial Grape tumbler, scarce lime green.....	270.00
DM	Imperial Grape tumblers, set of 6, dark and well matched	120.00
A	Inverted Strawberry tumbler, beautiful.....	150.00
W	Peacocks plate, very scarce basketweave back...	1,700.00
B	Fenton Starflower pitcher, very scarce	1,850.00

CARNIVAL GLASS - WANTED

ED KRAMER

4305 w 78th Street
Prairie Village, KS 66208
913-642-3587

Amy	EI	Butterfly & Berry Vase, CRE Only
M	EI	13" Imperial 474 large vase (marigold)
IB	EI	Drapery vase, good feet (ice blue)
M	EI	Cathedral (curved star) Butter dish hemispherical dome

**HAPPY
FALL**

NOVEMBER ANNIVERSARIES

James & Darlene Grogan
130 Luzon
Morro Bay, CA 93442
Married Nov. 10, 1956

Clarence & Betty Epperhart
5981 Flemingsburg Rd.
Morehead, KY 40351
Married Nov. 12, 1946

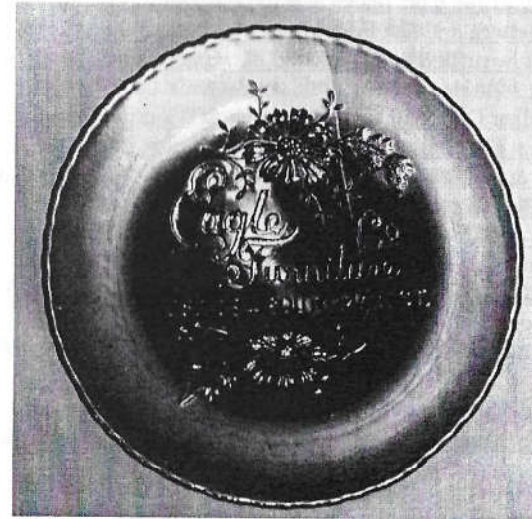
Les & Patti Harris
PO Box 3209
Jackson, TN 38303
Married Nov. 22, 1951

Larry & Fern Robords
635 Seattle Dr.
Lexington, KY 40503
Married Nov. 24, 1948

Submit anniversary information (30 years and above) to Bulletin Secretary.

BULLETIN CORRECTION

In the September Bulletin, the printer mistakenly inverted the picture for the "Eagle Furniture Co." article by Dean & Diane Fry. A corrected picture of this advertising piece follows. The printer apologizes for the error.



**** CARNIVAL GLASS AUCTION ****

***** RESULTS *****

Saturday, Sept 20th, 2003

Seeck Carnival Glass Auction

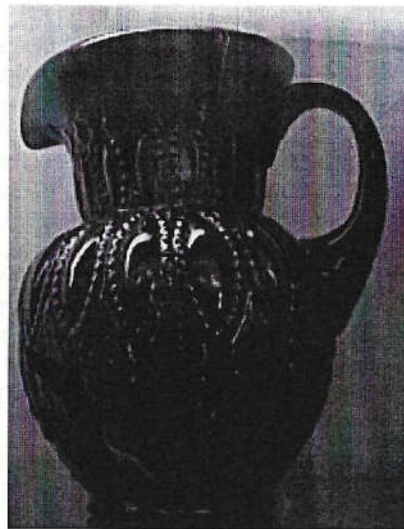
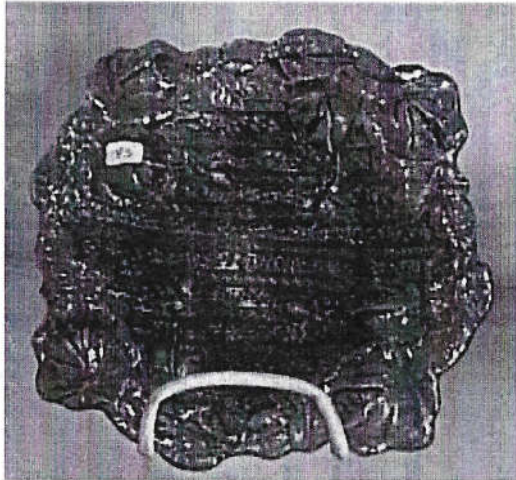
Mason City, Iowa

850_10. Stippled Singing Birds mug - blue - super pretty & very rare, first one I've ever sold at auction
300_15. Leaf Columns 10" vase - white - scarce
190_16. Leaf Columns 10" vase - green - nice
300_18. Wreathed Cherry 7 pc. banana boat shaped berry set - purple
450_24. Fenton #649 candlesticks - wisteria - scarce & nice
1400_45. Rustic 19" funeral vase w/plunger base - amethyst - super! a real beauty, extremely rare & desirable
265_50. Ski Star large ruffled bowl - peach opal - super pretty, very attractive piece
220_54. Wishbone 9" ftd plate - purple - scarce, pretty
1200_76. Victorian 11" IC shaped bowl - purple - extremely rare bowl, one of two that I know of, very pretty
550_78. Tornado small size vase - purple - very scarce & nice
1050_84. Many Fruits 7 pc. punch set - purple - very pretty set, scarce & desirable
300,150_85. Many Fruits 8 pc. punch sets (2) - marigold - choice
220,200_92. Basketweave Open Edge ruffled baskets (2) - red - choice
600_96. Rose Show ruffled bowl - green - extremely scarce bowl, highly desirable
200_102. Australian Diamond Cut giant rosebowl - purple - scarce
250_105. Imperial Grape water carafe - purple - super, scarce
1150_109. Grape & Cable hatpin holder - emerald green - as nice as the one at ICGA, has a small chip on top of one foot, extremely rare
200_111. Grape & Cable hatpin holder - marigold - nice
235_117. N's Thin Rib 11" vase - ice green - nice
1100_120. Cathedral or Curved Star 3 pc. epergne - marigold - very neat European piece, outstanding
650_123. Good Luck ruffled bowl w/BW back - green - fabulous irid., a great piece!
550_125. Persian Medallion crimped edge ruffled compote - white - scarce
425_128. Leaf & Beads rosebowl - aqua opal - pastel & has fantastic opal, a super one!
800_142. Drapery 8" vase - ice blue - nice

IOWA AUCTION RESULTS continued...

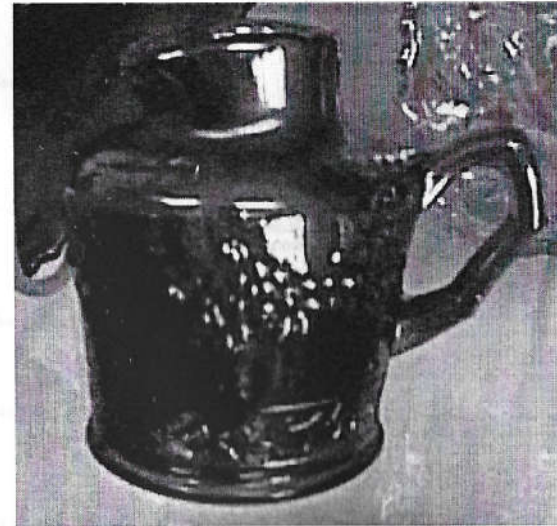
850_148. Peacock at the Fountain fruit bowl - blue - very pretty example, rare
325_157. Grape & Cable cologne bottle - purple
350_165. Peacock & Grape ruffled bowl - smokey powder blue - very pretty, rare color
550_177. Lotus Land bon bon - amethyst - extremely rare, highly desirable, not many around
400_183. Stippled Grape & Cable PCE bowl w/ribbed back - ice blue - very rare bowl, one point has been polished off
210,135_194. Inverted Strawberry powder jars (2) - green - scarce & nice, choice
350_199. M'burg Hobnail spittoon - amethyst - very scarce, nice
325,250x3_202. N's Bushel baskets (3) - aqua opal - sold choice, all nice
250_208. Orange Tree round shaped punch bowl & base - blue - very nice, scarce
220_214. Stippled Three Fruits ruffled bowl - purple - nice, very scarce
250_218. Leaf Chain 9" plate - clambroth - nice
275_223. Basketweave Open Edge large size square shaped basket - ice blue - very nice, scar
375_235. Wreath of Roses 8 pc. punch set - marigold - super nice set, the bowl has a plain interior, 3
230_258. M'burg Peacock at Urn Variant IC sauce - amethyst - has beads on the urn, very scarce
650_268. Four Flowers chop plate - peach opal - very scarce, nice
300_272. Grape & Cable small size fruit bowl - blue - scarce, nice
250_276. Imperial Grape 8 pc. wine set - purple - pretty
400_304. N's Peacock at Urn master IC bowl - white - scarce, nice
300_309. Holly 9" plate - marigold - nice
375_326. N's Corn vase w/stalk base - green - scarce & nice
250_327. N's Corn vase w/stalk base - ice green - scarce
250,85_337. Buzz Saw cruets (2) - green - scarce & desirable, choice
215_344. M'burg Hobnail Swirl rosebowl - amethyst - nice
1100_367. Eagle Furniture & Co. adv. 2 sides up dish - amethyst - super pretty
600_371. M'burg Sunflower pintray - amethyst - very scarce & nice
325_398. Fishnet epergne - purple - scarce, nice
1550_421. Acorn Burrs 8 pc. punch set - purple - super set, rare & desirable

**Pictures of articles to be sold at the
Seeck Auction on November 22, 2003
in Wentzville, MO.**



Perfection Pitcher

Additional Nov. 22 Auction Pictures...



Orange Tree Whimsey



Sterling Furniture Co. Advertising Plate

CARNIVAL GLASS CLUB INFORMATION

Air Capital Carnival Glass Club

Secretary: Randy Thach, 4500 N Ridge Road, Wichita, KS 67205, accgc@cox.net
Dues: \$15.00 per year, per family
Meetings: 1st Sunday of every second month

American Carnival Glass Association, Inc.

Secretary: Dolores Wagner, 5951 Fredricksburg Rd., Rt. 4, Wooster, OH 44691, (330) 264-3703
Dues: \$15.00 per family
Meetings: At convention in July, quarterly newsletter

Australian Carnival Enthusiasts Association, Inc.

Secretary: M. Dickinson, RSD Fryerstown, Victoria, Australia, 3451, (054) 73 4351
Dues: \$12 per annum per family or \$10.00 a single \$15.00 per annum overseas
Meetings: Meetings are held quarterly at member's homes. Visitors are welcome 12 noon on. Please do not send check or money order.

Canadian Carnival Glass Association

Secretary: Joan Stockhausen, 745 Lakelands Rd., Innisfil, Ontario, Canada L9S 4E5
Dues: \$20.00 per year
Meetings: 6 to 8 per year. Convention.

The Carnival Glass Society (UK) Ltd.

Secretary: Phyllis Atkinson, PO Box 14, Hayes, Middx England UB3 5NU (0181 897 8930)
Dues: Overseas Members 15 pounds (Sterling) per year
Meetings: Convention during August in Mid-England and get-togethers in member's homes

Carnival Companions

Secretary: Nigel Gamble, 24 Crabtree Avenue, London, Ontario Canada N6G 2H7
Dues: \$7.50 / Donation per person, per year
Meetings: 5/6 meetings per year, usually to a restaurant first, then a member's home to view their collection

Dakota Territory Carnival Glass Club

Secretary: Kathy Evans, 408 N Euclid Unit #2, Pierre, SD 57501-1364, 605-224-4367, carnivalmom@hotmail.com
Dues: \$10.00 per year, payable January
Meetings: Alternate months beginning January

Gateway Carnival Glass Club

Treasurer: Karen Skinner, 108 Riverwoods Cove, East Alton, IL 62024, (618) 259-1373, fskinner@piasnet.com
Dues: \$5.00 per year, per family
Meetings: In the homes of members living in St. Louis & surrounding areas

Great Lakes Carnival Glass Club

Secretary: Maxine Burkhardt, 612 White Pine Blvd., Lansing, MI 48917
Dues: \$10.00 per year, per family
Meetings: At member's homes 3 times/year. 1st Sun in Feb, May, Aug. Convention in August

Heart of America Carnival Glass Association

Secretary: Ann McMorris, PO Box 4361, Topeka, KS 66604-0361, (785) 478-9004, mcmorris@woodsland.com
Dues: \$35.00 per year US & Canada, \$50.00 Foreign
Meetings: 4th Sunday of the Month, Prairie Village, KS

Hoosier Carnival Glass Association

Secretary: Carl Booker, 944 W Pine Street, Griffith, IN 46319, (219) 924-2910, bookercgbr@aol.com
Dues: \$10.00 yearly, per family
Meetings: Monthly - 3rd Sat. @ 1:00 pm except Feb., July & Aug.

International Carnival Glass Association (ICGA)

Secretary: Lee Markley, Box 306, Mentone, IN 46539, (219) 353-7678, (219) 894-3451
Dues: \$20.00 per year
Meetings: Convention: 1 yearly in July or August, Newsletter quarterly

Keystone Carnival Glass Club

Secretary: Mary Sharp, 719 W Brubaker-Valley Road, Lititz, PA 17543
Dues: \$10.00 family membership per year (June - May)
Meetings: Second Sat. of each month at Ioff Hall, N Broad St., Lititz, PA at 7:00 pm

L'Association De Verre Carnival Du Quebec

Secretary: Jacques Dugas, 155 Seraphin Marion, Boucherville Que. J4B6T6 Canada (450) 641-0138
Jacques.dugas.chum@sss.gouv.qc.ca
Dues: \$20.00 (Canadian) per year, per family (Bilingual Newsletter-French/English)
Meetings: Announced in newsletter at each two months

Lincoln-Land Carnival Glass Club

Secretary: Amy Ayers, PO Box 320, Tremont, IL 61568
Dues: \$20.00 per year US & Canada, \$25.00 overseas
Convention: Each June. Newsletter 6 times per year

New England Carnival Glass Club

Treasurer: Maurice "Moe" Myers, 1701 White Mt. Hwy. #20, Tamworth, NH 03886, (603) 323-7140
Email: snobird@landmarknet.net
Dues: \$15.00 per year per household, \$18.00 outside US, Sept. 1 - Aug. 31
Meetings: 3rd Sunday of the months Feb., April, June, Aug, Dec. at the Pulaski-American Club, Southbridge, MA Club Convention is the 2nd weekend in Sept.

Northern California Carnival Club

Treasurer: June McCarter, 1205 Clifton Drive, Modesto, CA 95355, jmccarter@surfree.com
Dues: \$10.00 per year (individual or family, Jan. 1 - Dec. 31)
Meetings: 3rd Sunday, in Jan, April, Oct., 11.00 am - 3.00 pm, lunch at noon, The Early Dawn Restaurant, 1000 Kansas Avenue, Modesto, CA 95351

Pacific Northwest Carnival Glass Club

Secretary: Lee Swigert, PO Box 700, Middleton, ID 83644
Dues: \$15.00 per year, due Aug. 15 - Aug. 14
Meetings: 3 times/year, 2nd Sat. of April, 2nd wknd. of Aug. (Convention), 2nd Sat. of Nov.

San Diego County Carnival Glass Club

Secretary: Linda Heaton, 4561 Mt. Foraker Ave., San Diego, CA 92117-3032, tiger289@aol.com
Dues: \$18.00 household, USA & Canada, \$23.00 Foreign - annually
Meetings: Handlery Hotel, San Diego, Oct. 13, 03; Jan 11, 04; Apr 18, 04; July 11, 04; Oct 10, 04; 10am-3pm, Educational program, noon lunch, quarterly newsletter, March convention

San Joaquin Valley Carnival Glass Club

Secretary: Joan Steskal, PO Box 389, Ahwahnee, CA 93601
Dues: \$5.00 per year, payable March 1st
Meetings: Luncheons in March, Sept., Dec., in the Cedar Lanes Restaurant, Fresno, CA

Southern California Carnival Glass Club

Treasurer: Betty Robertson, 1430 Kendall Ave., Camarillo, CA 93010-3606, robrtsomme@aol.com
Dues: \$18.00 per year, per household
Meetings: Golden Sails Hotel, Long Beach, CA at 10:00 am setup, lunch served at noon, meet 2nd Sun. of Feb., 3rd Sun. of May, Aug., & Nov. Convention 1st or 2nd week in March

Sunshine State Carnival Glass Association

Secretary: Jackie Poucher, 9087 Baywood Park Dr., Seminole, FL 33777, (727) 398-1866, jpoucher1@aol.com
Dues: \$25.00 per family, per year
Convention: Annually, in February, Quarterly newsletter

Tampa Bay Carnival Glass Club

Contact: Barbara Hobbs, 5501-101 Avenue N, Pinellas Park, FL 33782-3311, 727-541-6164; hobbsbarb@aol.com
Dues: \$12.50 yearly per family USA & Canada, \$15.00 overseas. Starts March 1st
Meetings: Member's homes, 3rd Sun. each month except June, July, Aug/Convention 2nd weekend in Feb.

Texas Carnival Glass Club

Treasurer: Tommy Whitley, 1006 Cheshire Lane, Houston, TX 77018-2012; (713) 686-0630
Dues: \$20.00 per year, per family, \$25.00 outside US
Convention: Dallas, Mid-February, Quarterly meetings May, Aug., Nov.

Western NY Carnival Glass Club

Secretary: Laurel Wagner, 3050 Merrill Rd., Holley, NY 14470
Dues: \$5.00 single membership + \$2.00 associate
Meetings: UC United Church, N Main St., Churchville, NY, 3rd Tues., of each month (except Jan, Feb, July, Aug), 7:30 pm

www.cga Carnival Glass Club

Treasurer: Ed Perva, 210 W Market Street, Hertford, NC 27944, subman@inteliport.com
Dues: \$18.00 annually US
Convention: Annually, date and location to be announced
Notify Eleanor Mochel (HOACGA Bulletin Secretary) of any necessary changes

RESOURCE INFORMATION

1. **HARTUNG CARNIVAL GLASS PATTERN BOOKS:** Set of (10) books for \$60.00 plus \$6.00 postage. Order from Ann McMorris, PO Box 4361, Topeka, KS 66604.
2. **HOACGA EDUCATIONAL SERIES BOOK I:** 148 articles with pictures (black & white) on a variety of carnival glass patterns. Books consist of articles written by John & Lucile Britt, which have been printed in previous monthly bulletins. \$15.00 plus \$2.50 postage. Order from Ann McMorris, PO Box 4361, Topeka, KS 66604.
3. **HOACGA EDUCATIONAL SERIES BOOK II:** 180 articles with pictures (black & white) on carnival glass tumblers. Book consists of articles written by John & Lucile Britt, which have been printed in previous monthly bulletins. \$17.50 plus \$2.50 postage. Order from Ann McMorris, PO Box 4361, Topeka, KS 66604-0361.
4. **HOACGA EDUCATIONAL SERIES BOOK III:** Contains about 150 articles from past bulletins on bon-bons, bowls, drinking vessels, novelties, rose bowls, and table sets by several different members. It also lists approximately 500 rarities with 5 or less known. Cost is \$20.00, USA postage included. Order from Ann McMorris, PO Box 4361, Topeka, KS 66604-0361.
5. **HOACGA PATTERN NOTEBOOK:** Contains sections on punch sets, water sets, table sets, mugs, rose bowls, small, regular and chop plates, compotes, and vases. Each section has color photos of each known pattern and the maker and colors available. A section is added each year. The project began in 1979. Present cost is \$215.00 plus \$8 s/h (USA). Order from Ann McMorris, PO Box 4361, Topeka, KS 66604-0361.
6. **THE WORLD OF ENAMELED CARNIVAL GLASS TUMBLERS:** By Cecil Whitley. Book on painted Carnival Glass tumblers. Ten pages of full color photographs of sixty painted tumblers. \$10.00, postage included. Order from Cecil Whitley, 1041 Cheshire Lane, Houston, TX 77018.
7. **NETWORK SPECIAL:** By Glen & Stephen Thistlewood of Hampshire, England. 40 pages, 8x12". \$15.00, postage included. Available in the US only through PageWorks, PO Box 2385, Mt. Pleasant, SC 29465, USA.
8. **MORDINI'S 2002 CARNIVAL GLASS AUCTION PRICE REPORT FOR AUCTIONS CONDUCTED IN 2002:** 17th Annual Edition by Tom and Sharon Mordini. \$12.00 or \$11.00 each for two or more to the same address. Back issues (91,92,94,95,97,98,99, 00) \$8.00 each. Canadian orders should be by Canadian Postal Money Order in US funds, overseas mailings add \$3.00 (per report) Int'l Money Order in US funds. Order from Tom & Sharon Mordini, 36 N Mernitz Avenue, Freeport, IL 61032; Phone: (815) 235-4407; Fax: (815) 232-3911; Email: tommordini@aol.com.
9. **BUTTON, BUTTON:** Carnival Glass, Iridescent, Luster Buttons. Over 100 buttons listed. Over 140 pages packed with information. Each button has a color and black & white photo, detailed drawing and description – shown in actual size. \$15.50, postage included. Order from Clint Arsenault, PO Box 1845, Monrovia, CA 91017.
10. **THE SANCTIFIED CROSS-EYED BEAR'S PRICE TREND GUIDE (1995-1999):** The 5th Edition – Still \$24.95! Our guide reports on excess of 30,000 pieces of glass sold in this 5-year period. Additional helpful information on "damaged glass" sales. Get the "big picture" in carnival glass in black & white (378 pages). Send \$24.95 to Don "Bear" Grizzle, PO Box 1296, Huntsville, AL 35807-0296; ? to (256) 534-9076.
11. **THE CARNIVAL HUNTER'S COMPANION: A GUIDE TO PATTERN RECOGNITION:** By Elaine & Fred Blair, photographs by Glen & Stephen Thistlewood. Announcing...CD Rom Version 2.01 by Elaine & Fred Blair, photographs by Glen & Stephen Thistlewood. Will run on Windows 95/98/NT/XP operating systems. A unique cross-referencing system which aids in quick identification of 1,053 patterns, accompanied by 378 photos, through use of "descriptors" which describe specific features of each pattern. Every descriptor used narrows the list of possible patterns. USA, send check for \$22, plus \$3.50 s/h to Elaine Blair, 1708 Southampton Drive, Carrollton, TX 75011. TX residents add \$2.10 tax. UK: \$22, plus \$5.70 s/h. Australia \$22, plus \$6.00 s/h. Email: fred.blair3@verizon.net.
12. **SKETCHBOOK OF LITTLE CARNIVAL GLASS BUTTONS, 1997 EDITION:** Contains drawings and descriptions of over 500 little old buttons (less than 5/8" diameter). Loose-leaf format for easy annual updates, and geometric classification for easy identification. Indexed. \$13.00 plus \$1.50 postage for US buyers, Canada & Mexico please add \$2.00 (US) to each for extra postage. Overseas please add \$4.00 (US) surface or \$6.00 airmail. Order from author: Jane O. Dinkins, 1100 Ridgeley Drive, Houston, TX 77055, (713) 465-0557. Owners of 1996 edition may receive 1997 update pages by sending \$3.00 (including postage).
13. **OLD IMPERIAL 1909 CATALOG REPRINTS FROM THE ORIGINAL CATALOG:** The catalog is 13 1/2" x 11" containing 192 pages that are full of Imperial pattern pictures. Price is \$28.00 plus \$4.00 shipping & handling. Order from Ann McMorris, PO Box 4361, Topeka, KS 66604-0361.
14. **A FIELD GUIDE TO CARNIVAL GLASS:** By Dave Doty. Price is \$25.00 postage paid in the US, Order from PageWorks, Box 2385, Mt. Pleasant, SC 29465-2385.
15. **CARNIVAL GLASS, THE MAGIC AND THE MYSTERY:** By Glen & Stephen Thistlewood. Order (USA) from Schiffer Publishing at \$39.95 plus postage. Phone: (610) 593-1777, Fax: (610) 593-2002, Email: schifferbk@aol.com, Website: <http://www.schifferbooks.com>. Books ordered via internet are shipped free with USA.
16. **A CENTURY OF CARNIVAL GLASS:** By Glen & Stephen Thistlewood. Order (USA) from Schiffer Publishing at \$39.95 plus postage. Phone: (610) 593-1777, Fax: (610) 593-2002, Email: schifferbk@aol.com, Website: <http://www.schifferbooks.com>. Books ordered via internet are shipped free with USA.
17. **CARNIVAL PATTERN SEARCH INDEX:** A handy eight-page 5"x8" soft cover bound SMALL pamphlet listing over 600 Carnival Pattern Names in 13 general categories: Animals, Birds, Insects, Flowers-Roses, Flowers-Others, Fruits-Berries, Fruits-Cherries, Fruits-Grapes, Fruits-Others, Nuts, Plants, Hobstars, Nearcuts (or Geometrics). The pattern names are listed alphabetically in each category. Price \$5.95 (postage included). This pamphlet is no big deal. But, then, neither is the price. Order from Norman Angell, RFD 1 Box 686, Bethel, VT 05032, Phone: (802) 234-9855.

CARNIVAL GLASS EVENTS

FUNCTION	DATES	REMARKS
Convention & Auction	October 16-19 2003	Air Capital Carnival Glass Convention; Holiday Inn Airport; Wichita, KS; Reichel Auction Svc.; Contact Don Kime 316-733-8424
Convention & Auction	October 30- November 1 2003	Great Lakes Carnival Glass Club Glass Bash; Best Western Hotel; Lansing, MI @ 517-627-8471
Auction	November 22 2003	Seeck Auctions Outstanding Carnival Glass Auction; Holiday Inn, Wentzville, MO; Reservations 636-327-7001; for more information www.seeckauction.com
Christmas Party	December 6-7 2003	LincolnLand Carnival Glass Club Annual Christmas Party; Midway Motor Lodge, Milwaukee, WI, for further information contact Dick Betker @ 414-425-0632, duganblue@aol.com or Amy Ayers 309-925-3115
Convention & Auction	January 28 - February 1 2004	SSCGA Convention; Howard Johnson Ocean Resort; 305-428-2850 or 800-426-0084 (ask for carnival glass convention block); Rates \$ non ocean side and \$ night ocean side; pets are not allowed; Contact Paul & Dee Bekemeier @ 772-569-1808; depauxox@carnivalglass.net
Convention & Auction	February 2004	Tampa Bay Carnival Glass Club; Contact Barb Hobbs 727-541-6164 or email hobbsbarb@aol.com
Convention & Auction	February 11-14 2004	Texas Carnival Glass Convention – Crown Plaza Hotel; Dallas, TX; 972-233-7600 (must contact hotel by Feb 1); Auction by Seeck Auction Co., contact Emmett Morgan, PO Box 2497, Brenham, TX 77634-2497, 979-836-7896; ecmorgan@startel.net
Convention & Auction	March 3-6 2004	SDCCGC & SCCGC; 10th Annual Convention; Ayres Suites; 909-390-7778; \$89 Suite Rate, contact Betty Robertson @ 805-482-3473 for information; Auction by Seeck Auction Co.
Convention & Auction	April 2004	VWCGA Convention; Crown Plaza Hotel, St. Louis, MO; 314-291-6700; Contact Ed Perva email subman@inteliport.com
Convention & Auction	April 22-25 2004	HOACGA Convention & Auction: Embassy Suites Hotel (Airport); 816-891-7799; Auction by Seeck Auction Co., selling the collection of Dr. Jack Pritchard. For more information contact Bob Grissom @ 816-356-5320, bobimocg@aol.com or Ann McMorris, email mcmorris@woodsland.com