



RETURN ADDRESS

H.O.A.C.G.A.  
Eleanor Mochel  
15427 Woodward Court  
Overland Park, KS 66223

**DECEMBER  
2003**

**Please complete survey**

**HOACGA**

Heart of America Carnival Glass Association Inc.

# HEART OF AMERICA CARNIVAL GLASS ASSOCIATION

(Since 1973)

## President

**Robert Grissom**  
7517 Evanston  
Raytown, MO 64138  
Phone: (816) 356-5320  
e-mail: bobimocg@aol.com

## Vice President

**Don Lacock**  
PO Box 33  
Delia, KS 66418  
Phone: (785) 771-3125

## Treasurer

**Cliff Ball**  
572 W Park Street  
Olathe, KS 66061  
Phone: (913) 782-0415

## Secretary

Send new & renewal memberships,  
address changes, orders for educ.  
matl. and souv. Make all checks  
payable to HOACGA and send to  
Ann McMorris. Membership:  
\$35 USA & Canada, \$50 Foreign

**Ann McMorris**  
PO Box 4361  
Topeka, KS 66604-0361  
Phone: (785) 478-9004  
e-mail: mcmorris@woodsland.com

## Bulletin Secretary

Send ads & articles for bulletin  
no later than 5 days prior to the end  
of the month.

**Eleanor Mochel**  
15427 Woodward Court  
Overland Park, KS 66223  
Phone: (913) 685-2182  
Fax: (913) 685-2182 (call first)  
e-mail: cmochel@yahoo.com

Membership expiration month and year is posted on address label  
Following the name: (i.e. 504 = expires May 2004)

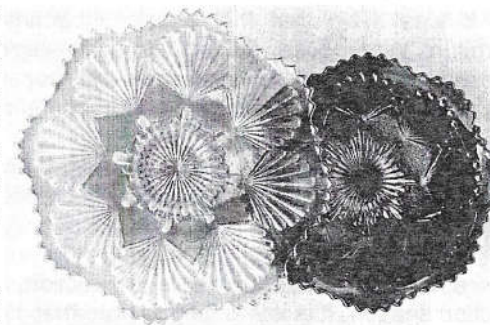
Opinions and information expressed in the HOACGA bulletin are not necessarily those of the Bulletin Secretary or Officers. Neither HOACGA nor Bulletin Secretary accepts any responsibility for accuracy or claims made, or for any outcomes resulting from the use of the information either printed or implied.

## IMPERIAL'S SHELL

By Alan and Lorraine Pickup

The Imperial Glass Company made **Shell** plates and bowls and also **Shell and Sand** plates and bowls. The only difference between the two patterns is that stippling was added to the background of the Shell pattern representing the sand. Pictured here is our pastel marigold 9" Shell plate and brilliant 8" purple bowl.

According to Carl O. Burns' "**Imperial Carnival Glass - Identification and Value Guide**" book, both the Shell plate and Shell and Sand plate can be found in marigold, smoke, green and purple. The Carl Burns book price guide does not separate the two. But appreciably Tom Mordini auction price realized guides separate the two plate patterns in his listings.



A smoke Shell plate, not Shell and Sand, described as pastel-smoke sold at the recent Air Capital Carnival Glass Club auction in Wichita, Kansas for \$1025. In the last five years, smoke colored plates seem to be the most obtainable and usually bring spirited bidding. But marigold Shell plates also turn up now and then and also command respectable prices. We can find no auction prices realized on purple plates. Green plates don't seem to make any showing either, but the auction price guides show that one was sold in 1984 for \$170 and another in 1998 at only \$300.

Bowls are found in greater quantities than the plates in two sizes and are reported in several additional colors, blue, aqua and amber. We can't say that we have ever seen them in those colors but we do have a nice eight-ruffle green and an outstanding example of purple in a deep round shape with electric iridescence. Both are stippled. Shell or Shell and Sand bowls and plates are not easily found. As noted in the Burns Imperial Glass book, bowls "are relatively scarce" and nine inch "plates are very rare in any color", so are the Imperial Shell plates seriously underrated? Regardless whether they are scarce, rare or who cares, they will make a nice addition to any plate collection. And for those collectors that rate a plate by its height off the table the Shell plates can't get much flatter.

## E.A. HUDSON FURNITURE CO. 711 – TRAVIS ST.

By Dean & Diane Fry

With a name like Travis, the first assumption is that this has to be in the south somewhere. And you are absolutely correct!

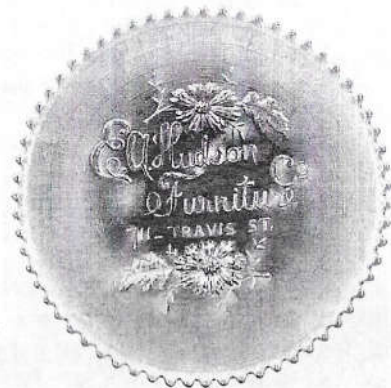
This company was born as the C.D.Hudson Furniture Co., in 1897 at 711 Travis St., Houston, Texas. By 1903 Clarence had turned the reins of power over to his son Eugene, and the company became known as E.A.Hudson. By 1923 the business had moved to 1905-1919 Winters St. It was there that the company became known as E.A.Hudson Furniture Warehouse. During the early stages of WWII, E.A. Hudson ceased operation in furniture sales and became a moving and storage facility. There is no record of the company after 1953.

Northwood provided this design on ruffled bowls, hand grip plates and flat plates. All have the Basketweave exterior, and all shapes can be considered very scarce.

There were no examples sold at auction during the 2001 or 2002 auction season. It is interesting to note that on 4/13/03, what appeared to be a very nice flat plate, did not meet the sellers reserve. The plate failed to sell at \$1,526. Then on 4/20/03, another flat plate sold for \$1499.

Our plate was purchased during an auction in July of 1990.

It would be interesting to know just how many examples exist today in the various designs found in the lettered pieces, but with another assumption looming into view here, we feel confident in saying that many of those presented with such a "souvenir" at the time of "purchase", when the various entrepreneurs were handing them out as an extension of "goodwill"; would have disposed of them almost immediately, lacking a "taste for such frivolity". Many of the examples which are displayed in auctions, illustrate obvious signs of neglect or abuse, while others seemingly have been "protected" in cupboards for many years.



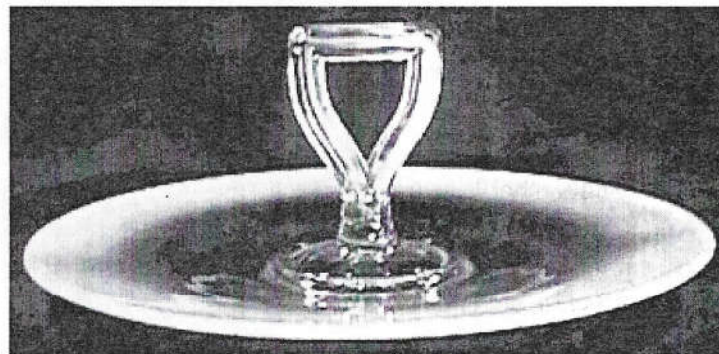
## CENTRAL GLASS CO. Sandwich Tray

By Ruth Herrington

We have purchased many kinds of glassware over the years. When we purchased a sandwich tray at auction a few years ago, it took me a while to identify its maker. Then I acquired, "Great American Glass of The Roaring 20s & Depression Era" by James Measell and Berry Wiggins. I saw my sandwich tray pictured as #148 at the bottom of page 62 in the section about Central Glass Co. of Wheeling, West Virginia. This page shows several items of 'opalescent glass.' The sandwich tray has a center handle for serving, which provides an identifier for the maker. (Clue: Watch for handle and/or stem shapes when you are searching through your books.)

While I was washing the sandwich tray to take a digital picture, I had difficulty removing the sticky tag. I turned it this way and that to get the light just right to see if there was residue. That's when I saw pink, purple, aqua, gold, and blue. Beautiful! But it had to be turned in the right light in order to see it. And this was Central Glass Co.? I had not heard that name in connection with iridescence before. I learned that Glen and Stephen Thistlewood touched on Central Glass iridescence in their book, "Carnival Glass: The Magic and The Mystery."

We seldom hear the name of "Central Glass" come up in carnival discussions. Since, like stretch glass, there is no moulded pattern, perhaps it does not fall into the true realm of 'carnival glass,' but it certainly is iridescent. Is there other information about the Central Glass Co. producing *iridescent* ware? I have learned that the company was founded in the early 1860's. In 1891, the Central plant became "Factory O" of the U.S. Glass Co. combine, and shortly



## CENTRAL GLASS CO. Sandwich Tray continued...

became idle. Soon thereafter, a group bought the plant and reopened it as Central Glass Co. In 1919, the Company purchased all the moulds for the Chippendale pattern from Jefferson Glass, including the registered "Krys-to!" trademark. The factory shut down for a time in 1932-33, but never regained strength, and finally sold a number of moulds and other fixtures to the Imperial Glass Corp. in 1939.

The opalescent items were produced in the 1920's. They were made in clear glass with deep white opalescent edges, and in amber glass with deep white opalescent edges. I have not seen the white/amber pieces, but I suspect that they may also have a rainbow luster, however subtle. These clear or amber opalescent pieces of glass are shown mainly in console sets... a flared or rolled edge bowl, glass stand, and two sizes of candlesticks. They are very simple, elegant, and *iridescent*.

As a side note, "Brocade" glassware is desirable to some carnival glass collectors (who are more 'broad-minded' rather than 'purists?') as a 'crossover' category, like stretch glass. The elegant Brocade (acid etched) line is beautifully iridised and is synonymous with the Fostoria name. But, don't assume all Brocaded pieces are Fostoria. Central Glass and Imperial Glass also produced acid etched iridescent ware in the late 1920's that could be confused with Fostoria production. (A discussion of Brocaded patterns will be held for another time. I mention them here only because it is fun to recognize connections between the glass factories.) Ergo, it is possible that an Imperial Glass handle shape originated with Central Glass. One would have to study the catalogues and time frames of production to attribute its maker. It is like putting one more piece in the puzzle... it fires you up to keep looking.

## NESTING SWAN DEEP 8" BOWL

*By Barb Chamberlain*

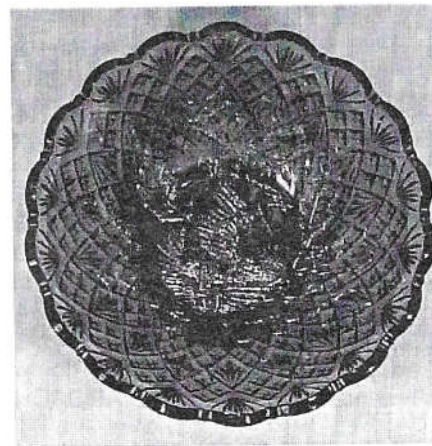
Millersburg Glass Company, as most of us know, was in business for only about three years, but made some of the most collectible glass. That, of course, was partly due to their limited production time, but also to their willingness to produce many unusual shapes.

We were fortunate to purchase one such unusual shape at the Jack and Mary Adams' auction - the green Nesting Swan deep 8" bowl. This was very likely the shape that the piece was when it was removed from the mold, before the usual six ruffle crimp was applied to flatten it to the more normally seen 10" bowl. The large bowls can occasionally be found with a ribbon candy edge, I presume.

Other unusual and rare shapes in Nesting Swan reported by Marie McGee in her book, Millersburg Glass, are a square candy ribbon edge in green, amethyst, and marigold and tri-cornered examples in green and amethyst. A marigold Nesting Swan rose bowl is pictured as well. She says a green spittoon whimsey is also known.

She pictures our green deep bowl and a beautiful amethyst one in the color plates. Our bowl measures 8 1/8" from outside rim to outside rim. It stands about 3 1/4" tall, and has a 4" marie or collar base. The exterior pattern on all Nesting Swan pieces is Diamond and Fan.

We will enjoy the bowl because of the beauty and rarity of the shape, but also because it had been owned by Jack and Mary, who have done so much to promote our carnival glass hobby, and also to impart their knowledge to us.



I would imagine there is a possibility that other pieces could be known in any of these shapes, but I don't think that you could find an abundance of any of them, other than the six ruffle variety. If you have a shape that I haven't listed, and would like to report it, send the info to me, or to Eleanor Mochel for inclusion in a future bulletin.

## LOOKING BACK

*By Charles Mochel*

### TUMBLER & MUG NEWS

**O. JOE OLSON FEBRUARY 25, 1980**

#### FINDER OF FOUR CONE & TIES



*O. Joe Olson*

Collectors' interest in the purple Cone & Tie tumbler was reflected in the Top 10 Tumbler survey late in 1979. The pattern was on the minds of many at auctions and carnival club meetings. Work began to bring answers to many.

In the early 1970's, one of the leading tumbler collectors in the nation was William C. (Pete) Wallace of Hazlewood, St. Louis suburb. He came close to finding a pair of Cone & Tie tumblers at Granite City, IL, northeast of St. Louis. Don Farrell, a young trainman living in Granite City was very active in carnival glass. Farrell seemed to have the knack of coming up with rarities and unusual pieces.

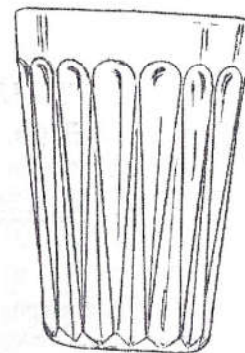
Farrell's first cone & Tie sold quickly. Pete Wallace said he missed it by a few minutes. Then Farrell said he had located a second Cone & tie and traffic got heavy on Farrell's street.

After a few days, Farrell said he had sold the tumbler far afield. This brought hurt feelings to many and some voiced doubts of the tumbler sale.

A few years later, in 1973 or 1974, Mr. & Mrs. Leonard Mielewski of Flint, MI, who were very active in carnival, were attending an antique show at the Detroit armory.

## LOOKING BACK continued...

One dealer displayed a little carnival and the Flint couple stopped. On a table in the back of the booth they spotted four purple Cone & Tie tumblers. Each was in good condition and each had a N-circle trademark in the base.



*Cone and Tie*

Leonard, a telephone installation man sold three of the tumblers in short asking \$45, \$55 and \$75. A few months later, he parted with the fourth tumbler. J.C. (Joe) Corrothers of Maumee, OH, paid \$125. Corrothers kept the tumbler until he became convinced he could not find the matching pitcher. The tumbler went to an Alabama collector.

A few additional Cone & Tie tumblers have been discovered, all in the mid-West. Many collectors would like to own one. Some say there's something about the pattern. The current descriptive word would be "neat," perhaps. The current market price? Considerable.

## JOHN & LUCILE BRITT

### "Award for Excellence in Carnival Glass"

*By Bob Grissom*

Ten years ago HOACGA initiated the "JOHN & LUCILE BRITT Award for Excellence in Carnival Glass". This award was initially given to John & Lucile for the many efforts they gave to the Carnival Glass collecting hobby. They were always willing to help any of the organizations by writing educational articles, giving convention talks, doing research on various items and patterns, they were always available to help in any way they could, they were an invaluable source of help and information.

Since that first award HOACGA has continued to recognize a Carnival Glass collector who has exhibited many of those same characteristics for which the award was given. The 2004, JOHN & LUCILE BRITT - Award for Excellence in Carnival Glass" will be presented to JOHN & JAN MUEHLBAUER, who exhibit the outstanding characteristic for which this award is given. The award will be presented at the 2004 HOACGA Convention luncheon on Friday, April 23.

## **New Williamstown History Book Published**

*By James Measell*

A new book--Fruitful Valley, Revisited: A Chronicle of Williamstown, West Virginia--has just been published by the Williamstown Community Association (WCA). Proceeds from book sales will benefit the WCA's Swimming Pool Fund.

Frank M. Fenton was chairman of the committee which produced the book, and Fenton employees James Measell and Terry Nutter were also involved in editing and layout/design, respectively. This 200-page hardbound book, which has a full-color dust jacket, contains more than 300 historic black-and-white photos.

The first chapter covers Williamstown's earliest times when Isaac Williams and other pioneer settlers came to this area of the Ohio River. Another chapter details the one hundred year history of the Marietta-Williamstown Bridge. Other chapters provide interesting facts and anecdotes about Williamstown's rich past: businesses (including Fenton Art Glass); floods; schools; sports; churches; community and volunteer organizations (including the Fenton Foundation); roads; streetcars and trains; parks; city services; and government.

Copies of the book are \$25 each (add \$5.00 for shipping) and can be purchased through the Fenton Gift Shop, 420 Caroline Ave., Williamstown, WV 26187 (checks payable to: "Williamstown Community Association").

The book was printed by Richardson Printing Corp. in Marietta. This project was supported in part by a grant from the West Virginia Humanities Council.

## **SEECK AUCTIONS PRESENTS**

*By Jan Seeck*

This month we are featuring 2 fabulous Millersburg water pitchers that will be sold at the 2004 HOACGA Convention auction. The first is the Gay Nineties and the second is the Perfection. Both of these pitchers are amethyst and are highly sought after by Millersburg collectors as well as pitcher collectors. The Gay Nineties is a bit rarer than the Perfection but both are considered extremely rare. These two are just a part of Dr. Pritchard's collection of rare pitchers. Next month we'll feature a rare plate to wet the appetite of the plate collectors.



Seeck Auctions wishes everyone a Merry Christmas and Happy New Year.

Thanks for your patronage throughout the year.  
Jim, Jan, Gannon & Carly Jo

## AND THE AUCTION BEAT GOES ON!

*By Bud & Gladys Martin*

We had a beautiful drive thru Tennessee and Kentucky to Columbus, OH, to attend Jim Wroda's auction on November 1st of the Kenneth & Margaret Hatch's carnival glass collection of gorgeous and some rare pieces of Millersburg, Northwood, Dugan, etc. The weather was unseasonably warm and the fall foliage was just beginning to turn their array of colors.

For those of you we've met, you're probably aware that Sadie & Maggie (our kids with four legs and fur) always travel with us. Wroda changed locations to the Ramada Plaza Hotel (a great improvement but bad for us as they don't accept pets). Our thanks to Jim for his help in getting green light for our stay.

Changing locations did not change Wroda Auctions from providing sweet rolls & coffee before the auction and tray after tray of fresh fruit, cold cuts and all the fixin's for making sandwiches at lunchtime for the 150+ attending the auction. Some of those attending we recognized were Don & Becky Hamlet, Randy & Jackie Poucher, Stacy & Desiree Wills, Dave & Reva Drabing, Dick & Jennie Hostetler, Keith & Nola Schmoker and Owen & Laura Loudon.

The glass was top-notch as verified with lively bidding from those attending along with write-in and phone-in bids. All very well orchestrated by Jim Wroda and his crew. (No waiting or break in this fast-paced auction) Top dollar pieces were:

M Hobnail jardiniere-shaped Spittoon, Amethyst	4200
N Tree Trunk Vase, IG	3700
M Nesting Swan deep, round Bowl, Amethyst	3700
M Unlettered Courthouse ICS Bowl, Amethyst	3700
N Embroidered Mums ruffled Bowl, AO	3600
M Seaweed ICS 10" Bowl, Blue	3500
N Peacock at Urn Giant Compote, Green	3000
M Deep Grape square Compote, Green	3000
M Detroit Elk ruffled Bowl, Amethyst	2800
M Vintage(Hobnail Back) ICS Bowl, Green	2700
M Hobstar & Feather Giant Rose Bowl, Green	2500
N Peacocks ruffled 9" Bowl, AO	2300
M Bernheimer Bros. 10" ruffled Bowl, Blue	2200

AND THE AUCTION BEAT GOES ON continued...

The Hostetlers and us were invited to Desiree & Stacy's home to see their collection. Now, for us Arkansas Hillbillies and Oklahoma Sooners, this far exceeded an invitation to the White House. And, my-o-my when we descended the stairs and the lights came up, I thought we had died and gone to Carnival Glass Heaven! Words in our vocabulary could never do justice to the beauty and rarity of this fabulous collection. THANKS to the Wills for sharing their collection with us!

What a way to cap-off a great weekend! Next stop, Wentzville, MO.

---

## JANUARY 10<sup>TH</sup> REICHEL AUCTION

*By Bob Grissom*

For those going to the Reichel auction on January 10<sup>th</sup>, HOACGA will have a Hospitality Room on Friday evening January 9<sup>th</sup>. This year it will be at the Holiday Inn Express in Booneville. The hospitality room will be on the ground floor across from the registration desk, we will be open at 5:30 P.M. Whether you stay at the Holiday Inn motel or one of the others, please come join us for a good evening of socializing with other members.

The room rate is \$74.00, but, they do have an AARP or AAA discount and they also have a nice continental breakfast. The Holiday Inn Express is at Exit 101 off I-70, at the same Exit as the Comfort Inn and the Reichel Auction facilities. You may make a reservation at the Holiday Inn Express by calling 606-882-6882. HOPE TO SEE MANY OF YOU THERE.

**KENNETH & MARGARET HATCH  
CARNIVAL GLASS AUCTION PRICES  
NOVEMBER 1, 2003 / COLUMBUS, OH  
JIM WRODA AUCTIONS**

- 525 3. M-Burg green Hobnail rose bowl, radium, Very nice. Rare color.
- 650 5. M-Burg mari Swirled Hobnail spittoon, radium. Nice!
- 4200 6. M-Burg amy 6" x 4 1/2" Hobnail jardinière shaped spittoon, Very rare, only one we know of.
- 300 7. M-Burg green 10" Swirled Hobnail vase, radium
- 325 8. M-Burg light amy/lavender 11" Swirled Hobnail vase, pastel iridescence, Super color! Scarce!
- \*825 9. M-Burg blue 10" Blackberry Wreath ICS bowl, satin, Very rare
- 425 11. M-Burg mari 10" Blackberry Wreath square bowl w/ CRE, radium. NICE!
- 900 13. M-Burg blue 10" Blackberry Wreath ruffled bowl, satin, VERY RARE. NICE!
- 1,600 26. M-Burg amy Multi Fruits & Flowers punch bowl & base, radium. Getting' hard to find!
- 775 27. M-Burg amy 10" Grape leaves ruffled bowl, radium, Super color. RARE
- 675 28. M-Burg mari 10" Grape leaves ruffled bowl, radium VERY SCARCE!
- 1,700 29. M-Burg mari 5 1/2" Wildflower stemmed compote, radium, VERY RARE. Hardly ever sold!
- 475 30. M-BURG AMY MULTI FRUITS & SHERBET, RADIUM, RARE
- 3,700 35. M-Burg amy 9" Nesting swan deep round bowl. Outstanding blue radium irid & rare shape!! KILLER!
- 1,800 36. M-Burg mari 10" Nesting Swan square CRE bowl, radium. Very Rare!
- 350 37. M-Burg pastel mari 9" Nesting swan ruffled bowl w/blue irid., Super color
- 450 38. M-Burg green 10" Nesting swan ruffled bowl, satin
- 650 39. M-Burg green Seacoast pin tray, rare
- 300 40. M-Burg amy 9" Peacock/Urn 3-in-1 mystery bowl (bee w/ beads), radium
- 305 43. M-Burg green 9" Peacock/Urn ruffled bowl, (bee & beading), silvery
- 425 45. M-Burg amy 9" Trout & Fly 3-in 1 edge bowl. Scarce!

HATCH AUCTION continued...

- 700 46. M-Burg green 9" Trout & Fly ICS, satin, Good color, Scarce!
- 375 47. M-Burg amy Isaac Beseech bowl, satin
- 325 48. M-Burg green Diamond water pitcher, SCARCE
- 525 49. 3- M-Burg purple diamond tumblers, 2 are non-iridized, 1 radium! VERY RARE!
- 375 50. M-Burg amy 8" Tulip scroll vase, radium
- 900 51. N-wood green 9" Peacocks plate w/ plain back. What a plate! Scarce
- 350 52. N-wood amy 9" Peacocks plate w/ rib back. Very nice irid.!
- 325 53. N-wood IG 9" Peacocks plate w/ rib back.
- 525 54. N-wood elec. blue 9" Peacocks bowl w/ rib back. Scarce
- 600 55. N-wood electric purple Dandelion water pitcher (engraved "Ella Kress 1910"). This is an outstanding pitcher!!
- 325 56. N-wood mari Oriental Poppy water pitcher. WOW! They don't get much nicer than this!
- 900 57. N-wood mari Wide panel 4 lily epergne. Again, very hard to find!
- 1,000 58. N-wood purple Wide panel 4 lily epergne. Very scarce!
- 525 69. Fenton blue round Mikado compote. Scarce
- 575 76. M-Burg amy 7" Squatty Tulip scroll vase. Radium!
- 1,000 77. M-Burg amy Ohio Star vase. Scarce
- 625 78. M-Burg green 12" Bull eye & Loop vase, radium, Pretty. odd shade of green.
- 3,500 79. M-Burg blue 10" Seaweed ICS, satin, EXTREMELY RARE. Not many of these bowls known. Has tiny manufactures pulled point.
- 1,200 80. M-Burg green 10" Seaweed ICS, satin. Very scarce
- \*600 81. M-Burg amy 10" Seaweed ICS, radium. Has tiny manufactures pulled point. Scarce.
- 325 82. M-Burg mari 10" Seaweed 3-in-1 edge bowl. Scarce
- 375 83. M-Burg mari 9" Seaweed ICS, satin. Nice!
- 500 84. M-Burg green Poppy compote, radium, good color
- 450 85. M-Burg amy Poppy compote, radium
- 300 86. M-Burg mari Poppy compote, radium
- 750 87. M-Burg amy Hanging cherries compote, radium, Rare
- \*3,000 88. M-Burg green Deep Grape square compote, VERY RARE Has small manufactures heat check in stem.
- 350 92. M-Burg green Roses & Fruit 2 handled bon bon, radium, Rare



HATCH AUCTION continued...

- 350 93. M-Burg green Tracery bonbon, satin. Scarce, lacks irid.  
 400 95. M-Burg amy 10" Rays & Ribbon 3-in-1 edge bowl, radium, Super color  
 325 97. M-Burg amy 9" Rays & Ribbon deep bowl, radium  
 550 101. M-Burg green 9" Zig Zag Tri-corner bowl W/CRE, radium  
 1,200 103. M-Burg mari 10" Whirling leaves square CRE bowl. Super radium irid.!  
 550 109. M-Burg mari 10" Country Kitchen square bowl, radium, VERY RARE!  
 600 111. M-Burg green 6" Rosalind ruffled compote, Rare. Nice irid.  
 375 112. M-Burg green 9" Rosalind ruffled bowl, rare size and very nice.  
 675 114. M-Burg amy 10" Rosalind 3-in-1 edge bowl, great color! Scarce!!!  
 500 115. M-Burg amy Hanging cherries 4 piece table set, radium. VERY SCARCE! SELLING AS A SET!  
 1,200 122. N-wood blue 10" Peacock/Urn master ICS bowl. Super multi-color irid!  
 1,500 123. N-wood elec. blue 9" Peacocks plate w/ rib back. Beautiful elec. irid!  
 360 124. N-wood IG 9" Peacocks plate w/rib back. Nice pastel irid.  
 2,300 125. N-wood aqua opal 9" Peacocks ruffled bowl w/rib back. This is 1 fantastic bowl!  
 325 126. N-wood purple 9" Peacocks ruffled bowl w/rib back  
 500 129. N-wood aqua opal Fruits & Flowers stem bonbon. SUPER!!  
 425 131. N-wood IB-Fruits & Flowers stem bonbon. Wonderful pastel!  
 425 133. Dugan mari Butterfly & Tulip deep round ft'd bowl sides straight up. VERY NICE  
 500 157. Dugan elec. purple 5" Lined Lattice Squatty vase  
 1,250 165. M-Burg green 8" x 4" Peacock/Urn proof round bowl (no bee & no beading), radium w/ blue highlights, 1 of 2 known in green, Very rare. Super!  
 3,000 166. M-Burg green Peacock /Urn giant compote, satin, good color, Rare. Very Sharp!  
 650 167. M-Burg green 7 1/2" Peacock/Urn 3-in-1 shotgun bowl (bee w/beads), Good color. Very Scarce!

HATCH AUCTION continued...

- 350 168. M-Burg mari 10" Peacock/Urn master ice cream bowl (bee & no beading), satin  
 500 171. M-Burg amy 10" Peacock/Urn master ice cream (bee & no beading), bowl.  
 825 187. Fenton red 9" Dragon & Lotus ICS bowl. VERY SCARCE.  
 400 188. Fenton Vaseline Horse Head Medallion ft'd nut bowl. SCARCE!  
 2,200 212. M-Burg blue 10" Bernheimer Brothers ruffled bowl, Very scarce! Spotty irid in center.  
 625 213. M-Burg green 10" Many stars (5pt.) 3-1 edge bowl, radium, Great color. Beautiful color!!  
 700 214. M-Burg mari 10" Many stars (6pt) ruffled bowl, radium, OUTSTANDING!  
 875 215. M-Burg amy 10" Many stars (6pt.) ruffled bowl, radium. WOW!  
 3,700 216. M-Burg amy 8" Unlettered Courthouse ICS bowl. VERY RARE! Nice radium irid.  
 975 217. M-Burg amy 7" Courthouse ruffled bowl. Radium. A tad silvery in center.  
 375 218. M-Burg amy 10" Fleur-de-lys crimped ruffled edge bowl, great color. Radium.  
 2,500 222. M-Burg green Hobstar & Feather giant rose bowl, radium, rare, Pretty  
 800 224. M-Burg frosty white 6" Hobstar & Feather 2 sides up plate, VERY RARE! One of just a handful of white Millersburg pieces known! Outstanding irid!  
 300 225. M-Burg iridized crystal Hobstar & Feather heart shaped dish  
 2,700 226. M-Burg green 10" Vintage Hobnail back ICS, radium, VERY RARE!  
 2,800 229. M-Burg amy Detroit Elk 1910 ruffled bowl, great pressing. Rare. w/ radium irid.  
 900 230. M-Burg mari 9" Big Fish diamond shaped bowl, satin, VERY RARE! True diamond shape!  
 3,600 256. N-wood AO 8 1/2" Embroidered Mums ruffled bowl w/Rib back. Loads of opal. Very Rare!  
 1,700 257. N-wood mari 9" Rose show plate, Super blue iridescence. One of the top ones out there!  
 1,250 258. N-wood elec. blue 8 1/2" Rose show ruffled bowl. WOW!  
 1,800 259. N-wood lime IG 9" Heart & Flowers PCE bowl w/rib back. VERY RARE BOWL!

HATCH AUCTION continued...

- 300 260. N-wood purple 8 1/2" Heart & Flowers ruffled bowl w/ BW back . NICE!
- 300 261. N-wood IB 8 1/2" Heart & Flowers ruffled bowl w/ plain back
- 400 280. N-wood purple 9" Good Luck plate w/ basket weave back
- 350 281. N-wood green 8 1/2" Good Luck PCE w/ rib back. SCARCE
- 400 282. N-wood elec. blue 8 1/2" Good Luck ruffled bowl w/rib back. SUPER!
- 575 284. N-wood white 8 1/2" Poppy show bowl. Nice multi-color pastel irid!
- 400 285. N-wood IB 8 1/2" Embroider mum ruffled bowl w/ plain back. scarce
- 3,700 286. N-wood IG 7" Tree trunk squatty vase, Super pastel iridescence. Very scarce
- 300 287. N-wood elec. blue 10" Tree trunk vase. SCARCE!
- 525 289. N-wood IG corn vase w/ stalk bottom
- 900 293. N-wood mari 9" Greek Key flat plate w/ rib back, outstanding plate, does have bruise on color base
- 400 298. N-wood purple Grape & Cable giant compote w/ ruffled top. NICE!
- 350 299. N-wood green 9" Stippled Grape & Cable plate w/ rib back. SCARCE
- 350 310. M-Burg lavender 10" Hanging cherries ICS bowl, satin. SCARCE!
- 550 316. M-Burg green Night Stars bonbon, radium, nice
- 475 321. M-Burg green 10" Strawberry wreath ruffled CRE bowl, radium
- 320 325. M-Burg amy Strawberry wreath compote, radium

## HOACGA SOUVENIR ---- 2004

*By Bob Grissom*

Both Fenton and Northwood made a "Guest Set" in the mid 1920's. Fenton's "First Twenty Five Years" shows a set made in marigold with a royal blue handle. These sets obviously had a functional use. The pitcher for holding the water and a glass for drinking, this was probably one of the few functional pieces of Carnival Glass. These sets were made in several colors, but a very few are available to today, because of their use they had a difficult time of surviving.

As anyone, that has had experience with the administration of any Carnival Glass club, knows that you are constantly trying to find means of providing financial support. All clubs are experiencing a decrease in membership, which effects their financial position, plus the cost of financing the various activities is continually increasing. WE ALL KNOW THAT THE FINANCIAL SUPPORT MUST COME FROM THE MEMBERS. Many of the clubs produce a souvenir each year as one means of providing financial support, in order for this to be a success the members must purchase the souvenirs.

It continues to be a challenge to have a souvenir made that is appealing to the members. We believe that the 2004 souvenir, a Cobalt Blue "Guest Set" is one that members will want. It is more expensive than any previous souvenir, but we think it is a more desirable souvenir. The cost of the souvenir is \$110.00. The set will be made by Fenton and will be a very limited production. We anticipate only about 150 will be produced. The pieces will be made as soon as Fenton has Cobalt glass available. The souvenir will be shipped as soon as we have them or you can pick yours up at the convention in April.

The "Guest Set" will be ribbed on the inside and will have a Cobalt Blue handle. Since it is a Blown piece it will not be a dark cobalt blue because it is thinner than a molded piece.

### ORDER FORM

NAME: \_\_\_\_\_

ADDRESS: \_\_\_\_\_  
(Street) (City) (State) (ZIP)

COBALT BLUE "GUEST SET" Number \_\_\_\_\_ @ \$110.00 (\_\_\_\_\_)  
 S & H @ \$5.00 each (\_\_\_\_\_)

Will pick up at the Convention \_\_\_\_\_  
(Yes or No)

TOTAL (\_\_\_\_\_)

Make Checks payable to HOADGA and MAIL TO:  
 Ann McMorris  
 PO Box 4361, Topeka, KS 66604-0361

# IMPERIAL GLASS SPECIAL DISPLAY 2004 HOACGA CONVENTION

*By Bob Grissom*  
7517 Evanston, Raytown, MO 64513  
816-356-5320 or bobimocg@aol.com

A special display of Imperial Glass is being planned for the 2004 convention. Imperial glass has probably some of the best iridescence produced by any of the makers and it has gained in popularity in the past few years. So, we thought it would make a fantastic glass display.

As always, for these special displays, we have to rely on many members to bring glass from their collection. Sometimes we have some beautiful pieces of Imperial glass in our collections that we have kind of forgotten about. Would you please look through your cabinets and identify those pieces of Imperial that you would be willing to bring for this special display. Can you imagine how 200 pieces of beautiful Imperial glass will look. If we all share some of the pieces from our collection it will be a very informative and educational display.

WOULD YOU PLEASE TAKE AN INVENTORY OF YOUR IMPERIAL GLASS AND MAKE A LISTING OF THE PIECES THAT YOU WOULD BE WILLING TO BRING AND SHARE IN THIS DISPLAY. I will coordinate the list and then let each person know which pieces to bring.

Each item on your listing needs to be described so I will know its color, pattern and shape. I will make an identification tag for each item on display. You can send the list either by mail or by email.

**YOUR HELP WITH THIS SPECIAL DISPLAY WILL BE GREATLY APPRECIATED. THE SOONER I HAVE YOUR LIST THE EASIER IT WILL BE FOR ME TO GET THE COMPLETE LIST COORDINATED.**

## Souvenirs & Books - Order Form

_____ HOACGA Educational Series Book I .....	\$17.50
_____ HOACGA Educational Series Book II .....	\$20.00
_____ HOACGA Educational Series Book III .....	\$20.00
_____ PLATE HOLDERS—Dozen, clear plastic 5" base, white wire 4" back holds plates and bowls .....	\$21.50
_____ SMALL SIZE PLATE HOLDERS—Dozen, clear plastic base, white wire, good for pin trays & small bowls or plates .....	\$20.00
_____ COMPLETE NOTEBOOK - 22 Sections .....	\$223.00
_____ NOTEBOOK INDEX SET .....	\$ 5.00
_____ 2003 ROSTER .....	\$ 1.50

### HOACGA SOUVENIRS:

_____ 2000 Cobalt Blue Imperial Pansy 9" Plate .....	\$41.00
_____ 1993 Ruby Red 6" "Good Luck" Plate .....	\$40.00
(20th Anniversary)	
_____ 2001 Vaseline Opal Hatpin Holder .....	\$55.00
_____ 2002 Emerald Green Hatpin Holder .....	\$55.00

*USA Shipping & Handling included in all pricing*

Name: \_\_\_\_\_

Address: \_\_\_\_\_

City: \_\_\_\_\_ State: \_\_\_\_\_ Zip: \_\_\_\_\_

### SEND ORDERS TO:

Ann McMorris, PO Box 4361, Topeka, KS 66604-0361

#### SHIPPING & HANDLING (S&H) INFORMATION

The shipping charges for members who reside outside the USA will be the actual cost. Upon receipt of item(s), the member will be expected to reimburse the club for the actual cost of shipping, as indicated by the postage on the package. At the time of placing your order, please indicate your shipping preference (air or surface).

# CLOSEOUT SALE!

## Order Form – Video Tapes

### HOACGA CONVENTION SEMINAR VIDEO TAPES

1 Tape for \$10.00 (previously \$20.00); 3 Tapes for \$25.00;

1 Longplay Tape for \$25.00 (previously \$35.00)

_____	"Red Carnival Glass" (Richard Cinclair, Bob Allaire & Joyce Seale).....	\$10.00
_____	"Shades of Blue" (Richard Cinclair).....	\$10.00
_____	"Poppy & Rose Show Pieces" (Tom Mordini).....	\$10.00
_____	"Fenton Two Flower" (Bob Stremming).....	\$10.00
_____	"Carnival Glass Smalls" (Eleanor & Jack Hamilton).....	\$10.00
_____	"Small Plates" (Smokey Cloud).....	\$10.00
_____	"Northwood Peacock & Urn Ice Cream Sets (Harold Cox).....	\$10.00
_____	"Carnival Glass Collecting Experiences" (Carl & Ferne Schroeder).....	\$10.00
_____	"Heinz 57 Variety Carnival Glass Collection" (Jerry & Carol Curtis).....	\$10.00
_____	"Miniatures" (John & Lucile Britt).....	\$10.00
_____	"Table Sets" (Leonard, Kremer & Grissom).....	\$10.00
_____	"Plates" (Ruth Green & Richard Cinclair).....	\$10.00
_____	"Plethora of Patterns" (Dean & Diane Fry).....	\$10.00
_____	"Millersburg" (Dick & Jennie Hostetler).....	\$10.00
_____	"Swung Vases" (Dave & Joan Doty).....	\$10.00
_____	"Holly Pattern" (John Mikkonen).....	\$10.00
_____	"Imperial Glass" (Norene Duran).....	\$10.00
_____	"The Molding Process" (Howard Seufer of Fenton Glass Co.).....	\$10.00
_____	"Iridescence" (97, John Muehlbauer).....	\$10.00
_____	"Plates" (97, Judy Maxwell).....	\$10.00
_____	"98 Aqua Opal Display" (Discussion by Jim Seeck).....	\$10.00
_____	"98 Recollection of Collectors".....	\$10.00
_____	"98 Causes of Imperfections in Glass" (Fenton/Seufer).....	\$10.00
_____	"98 Britt Award/Grissoms, Banquet/Cinclair" LONG PLAY.....	\$25.00
_____	"Aqua Opal, Recollection of Collectors, Causes of Imperfections in Glass" (Fenton/Seufer) LONG PLAY.....	\$25.00
_____	"99 Fenton Glass" (Don & Barb Chamberlain).....	\$10.00
_____	"99 Recollections of Collectors".....	\$10.00
_____	"99 Millersburg Display".....	\$10.00
_____	"99 Britt Award Luncheon" (George & Mavis Loescher).....	\$10.00
_____	"99 Banquet Green Millersburg" (Bill Richards, Sr.).....	\$10.00
_____	"00 Wal-Mart Connection" (Jerry & Carol Curtis).....	\$10.00
_____	"00 Britt Award Luncheon" (Richard & Carol Cinclair).....	\$10.00
_____	"00 Plate Display" (Tom Burns).....	\$10.00
_____	"00 Shoppin' & Hoppin'" (Galen & Kathi Johnson).....	\$10.00
_____	"03 Recollections & Memories (George & Mavis Loescher).....	\$11.50

Shipping & Handling \$1.00 per tape, # of tapes \_\_\_\_\_ x \$1.00 = S&H Total \_\_\_\_\_

Name: \_\_\_\_\_

Address: \_\_\_\_\_

City: \_\_\_\_\_ State: \_\_\_\_\_ Zip: \_\_\_\_\_

Send Orders To:  
Ann McMorris  
PO Box 4361; Topeka, KS 66604-0361

## 2002 HOACGA NOTEBOOK INSERT Candlesticks – 1st & 2nd Sections

By Bob Grissom

You may not have many candlesticks in your collection, but what is your knowledge of the ones you have? Do you know the difference between a Northwood "Colonial," a Fenton "Florentine," or a Vineland "Colonial?" You will probably be able to identify some of the candlesticks in your collection.

The HOACGA Notebook section for 2002 contains photographs of 72 different candlestick patterns and the section for 2003 contains an additional 53 patterns, including the Fostoria Brocaded pieces. Most collectors have some candlesticks in their collection, but this is an area of Carnival glass collecting where information is not readily found. This is an attempt to compile them in one place, present as much information as possible, and to show them with a color photograph. These two sections are another very informative addition to the HOACGA Pattern Notebook.

Much time has been spent, not only by me, but several other collectors, trying to identify the various pieces. Information such as this is only possible with the help of many members who have supplied photographs and a listing of their candlesticks.

If you have not ordered these two sections, you are missing a good source for information about carnival glass candlesticks.

If you wish to order, please use the order form below (if you are coming to the convention, the 2nd section can be ordered with the pre-registration form).

### ORDER FORM

Name: \_\_\_\_\_

Address: \_\_\_\_\_

City: \_\_\_\_\_ State: \_\_\_\_\_ Zip: \_\_\_\_\_

1st Candlestick Section (photo 1-72—2002) \$14.00 each

2nd Candlestick Section (photo 73-125—2003) \$13.00 each

\_\_\_\_\_ @ \$14.00 each (2002) = \$ \_\_\_\_\_

\_\_\_\_\_ @ \$13.00 each (2003) = \$ \_\_\_\_\_

\_\_\_\_\_ @ \$1.50 each shipping = \$ \_\_\_\_\_

TOTAL \$ \_\_\_\_\_

Make Checks Payable to HOACGA and send to:  
Ann McMorris  
PO Box 4361  
Topeka, KS 66604-0361

## PLATE HOLDERS

SIZE #1 (small) ..... \$20.00  
3-3/4" base; back 3"Hx2-1/4"W  
priced per box - 1 dozen per box  
# ordered \_\_\_\_\_

SIZE #2 (medium) ..... \$21.50  
5-1/4" base; back 4"Hx3-1/4"W  
priced per box - 1 dozen per box  
# ordered \_\_\_\_\_

SIZE #3 (regular) ..... \$21.50  
5-1/4" base; back 4-3/4"Hx3-1/4"W  
priced per box - 1 dozen per box  
# ordered \_\_\_\_\_

SIZE #5 (large) ..... \$21.50  
5-1/4" base; back 6"Hx5-1/2"W  
priced per box - 1 dozen per box  
# ordered \_\_\_\_\_

*USA Shipping & Handling included in pricing.*

Ship to:

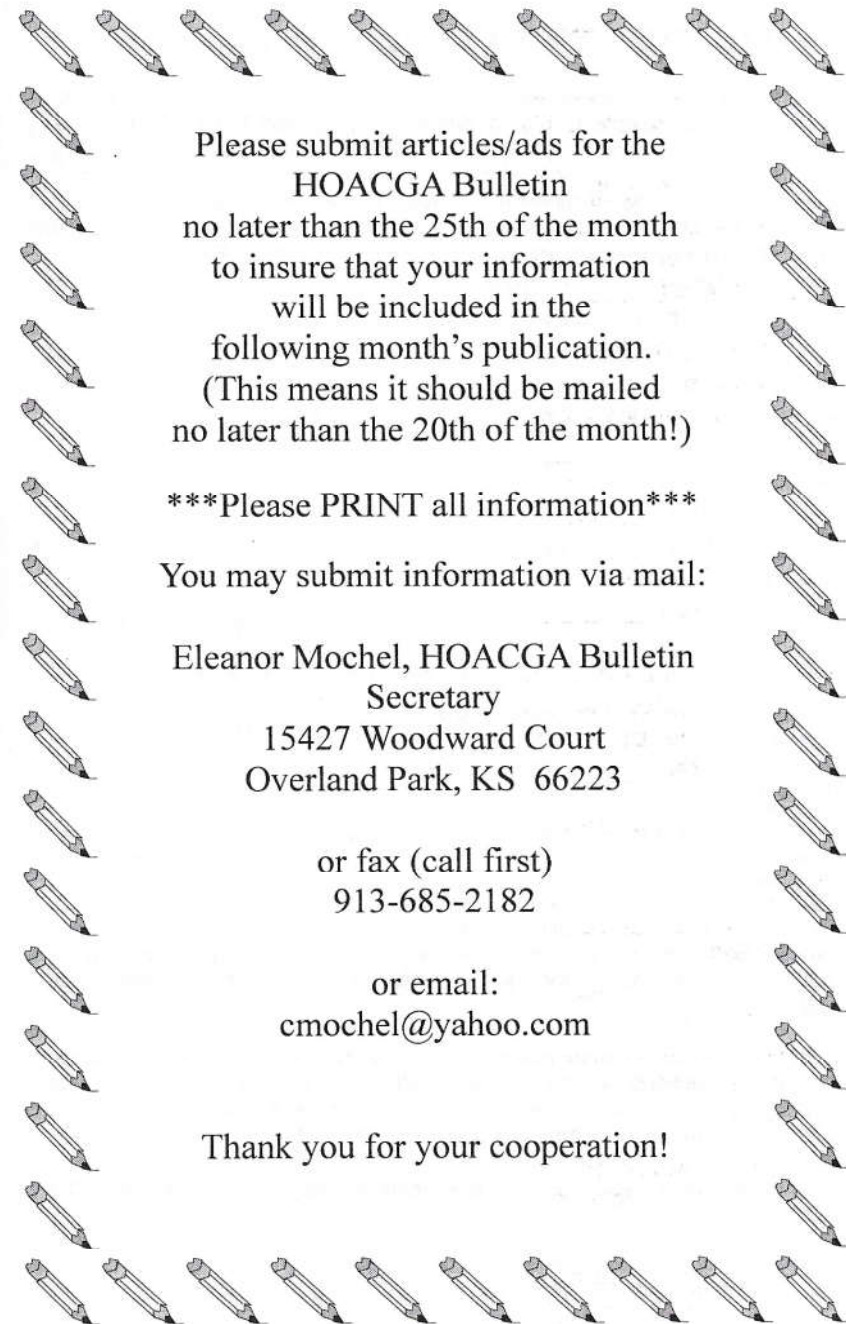
.....  
name

.....  
address

.....  
city/state/zip

**SEND ORDERS TO:**

Ann McMorris, PO Box 4361, Topeka, KS 66604-0361  
(checks payable to HOACGA)



Please submit articles/ads for the  
HOACGA Bulletin  
no later than the 25th of the month  
to insure that your information  
will be included in the  
following month's publication.  
(This means it should be mailed  
no later than the 20th of the month!)

\*\*\*Please PRINT all information\*\*\*

You may submit information via mail:

Eleanor Mochel, HOACGA Bulletin  
Secretary  
15427 Woodward Court  
Overland Park, KS 66223

or fax (call first)  
913-685-2182

or email:  
cmochel@yahoo.com

Thank you for your cooperation!

## HOACGA PATTERN NOTEBOOK

The Pattern Notebook was started in 1980, with the first section being on mugs. Each year since, except in 1992, a different section had been added. This information has been compiled and printed to assist the collector in identifying the various pieces of Carnival Glass. Each section identifies the Patterns, Maker, Colors and other pertinent information and shows a color picture of the pattern. There are (10) completed sections with the candlesticks section to be completed next year. There are about 1222 items pictured. Each year a new section will be added to the Notebook.

ITEM	PHOTOS	YEAR	PRICE	COMMENTS
Mugs	1 - 40	1980	\$ 7.00	
Table Sets	1 - 40	1981	\$ 7.00	Listing of the 4 pc sets only
Water Sets 1	1 - 60	1982	\$ 7.00	Shows a pitcher & tumbler
Water Sets 2	61 - 120	1983	\$ 7.00	Shows a pitcher & tumbler
Water Sets 3	121 - 167	1984	\$ 7.00	Painted sets included
Rosebowls 1	1 - 60	1985	\$ 7.00	
Rosebowls 2	61 - 97	1986	\$ 7.00	
Small Plates 1	1 - 48	1987	\$ 7.00	Less than 9" in diameter
Small Plates 2	49 - 98	1988	\$ 7.00	
Chop Plates	1 - 40	1989	\$ 7.00	Plates of 10" diameter or greater
Regular Plates 1	1 - 48	1990	\$ 7.00	9" plates
Regular Plates 2	49 - 81	1991	\$ 7.00	9" plates
Compotes 1	1 - 57	1993	\$ 8.00	Smaller compotes
Compotes 2	58 - 113	1994	\$ 8.00	Larger compotes
Punch Sets	1 - 36	1995	\$ 8.00	2nd printing of this Section
Vases A-C	1 - 57	1996	\$ 9.00	
Vases D-G	58 - 117	1997	\$ 9.00	
Vases H-P	118 - 201	1998	\$12.00	
Vases R-T	202 - 274	1999	\$13.00	
Vases Trpt - Z & Non US	275 - 341	2000	\$13.00	
Vases not prev. reported, non-US & brocaded	342 - 428	2001	\$13.00	Non-US patterns & Fostoria's brocaded patterns. Table of contents of all vases, plus corrections
Candlesticks	1 - 72	2002	\$13.00	
Candlesticks	73 - 125	2003	\$13.00	

Complete Set of Inserts plus Notebook is \$215.00. Shipping & Handling for complete Notebook \$8.00, for each individual item \$1.50 for a maximum of \$8.00.

Any of these sections can be purchased separately. The information contained within these sections will be of great help to you as a collector. If the knowledge you gain from it help you in buying just one piece of glass - that could be worth much more than the cost of the information.

A complete Notebook or any of the Sections may be ordered from the Secretary.

Please make check payable to HOACGA and mail to:  
Ann McMorris; PO Box 4361, Topeka, KS 66604-0361

## JANUARY ANNIVERSARIES

Norman & Annette Bosselman  
3103 Brentwood Circle  
Grand Island, NE 68801  
*Married Jan. 18, 1942*

Ward & Patricia Atwater  
55 Fifth Avenue  
Kitchener, ONT N2C 1P5  
*Married Jan. 10, 1948*

Alan & Faye Hinnrichs  
2716 Arbor Cove Drive  
Plano, TX 75075-8125  
*Married Jan. 28, 1956*

Rita & Buster Davis  
703 Marlboro Road  
Glen Burnie, MD 21061  
*Married Jan. 2, 1954*

Bernard & Marilyn Morey  
22 Erie Court  
Midland, MI 48640-9054  
*Married Jan. 29, 1955*

### \*\*CARNIVAL GLASS AUCTION\*\*

#### \*\*\* RESULTS \*\*\*

Saturday, November 22nd, 2003

Seck Auctions

700	12.	1981 ICGA Whimsy Frolicking Bear's double hdd sugar or vase - aqua opal
675	13.	1981 ICGA Whimsy Frolicking Bear's hdd pitcher or creamer aqua opal
325	.19.	1997 ICGA Whimsy Frolicking Bear's tumbler - celest blue - has coralene leaves & gold bears, decorated by Spindler
13000	25.	M'burg Big Fish tri-cornered bowl - green - radium & fantastic, an extreme rarity, highly desirable
450	27.	Leaf & Beads rosebowl - ice green - very rare color & nice, minor damage to the back of a foot
300	28.	Leaf & Beads rosebowl - aqua opal - pastel, pretty
1550	30.	Soldiers & Sailors Monument, Indianapolis, Ind. 7" plate - blue - only one I have seen, a top piece in our collecting hobby, super rare, extremely desirable, super pretty. WOW!

Seeck Auctions Results continued...

- 8000 36. M'burg Multi Fruits & Flowers collar based water pitcher - amethyst - extremely rare & super pretty, a top water pitcher, WOW!
- 2400 40. M'burg Peacock master IC shaped bowl - amethyst - super radium irid. on this very rare bowl, nice
- 3300 41. M'burg Peacock master IC shaped bowl - marigold - radium & super pretty, may be the rarest color
- 17000 43. Roses & Greek Key square shaped plate - smoke - ultra rarity, only one known in this color, plus has fantastic irid., WOW!
- 350 46. Orange tree 8 pc. punch set - blue - very scarce, pretty
- 3600 50. Roods Chocolates advertising 6" plate - amethyst - super rare, a very pretty piece
- 1800 51. Sterling Furniture Co. advertising hand grip plate - amethyst - super nice irid., rare
- 5000 55. M'burg Fleur De Lis domed ftd square shaped bowl - vaseline - don't need a black light to see what color it is, super super irid. extremely rare, couple of minor pinpoints on the sawtooth edge of base which is very typical for this base
- 1050 57. Acorn Burrs water pitcher - marigold - super dark, super pretty
- 7000 59. Greengard Furniture Co. advertising handgrip plate - amethyst - extremely rare adv. piece, not many around, pretty
- 1700 60. Exchange Bank advertising 6" plate - amethyst - very rare plate, not many around
- 650 61. Wisteria tumbler - ice blue - super pretty, rare
- 750 64. M'burg Trout & Fly IC shaped bowl - green - satin & super, very scarce
- 625 65. M'burg Trout & Fly IC shaped bowl - marigold - also satin & super
- 9000 69. J.N. Ledford Company, Cooleemee NC/Heart & Vine 9" plate - marigold - extremely rare & highly desirable, super pretty, a must for adv. & plate collectors
- 1000 72. M'burg Hanging Cherries water pitcher - green - super rare, super pretty, an outstanding example(nick on top edge)
- 1800 75. M'burg Hanging Cherries water pitcher - marigold - very dark, as nice as I have ever seen
- 950 79. Fern Brand advertising double handgrip plate - amethyst - super pretty & scarce

Seeck Auctions Results continued...

- 450 83. Good Luck ruffled bowl w/ribbed back - blue - electric irid., very nice bowl
- 2200 86. Rose Show ruffled bowl - lime green opal - very rare & desirable bowl, not many around, super pretty irid. & opal (edge nick)
- 900 87. Rose Show ruffled bowl - aqua opal - super pretty, nice
- 700 89. M'burg Nesting Swan deep round bowl - green - radium & nice, very unusual shape, RARE
- 2200 94. 1914 Parkersburg Elks 7" plate - blue - as nice as I have ever sold, good mold, great irid., very hard to find
- 900 95. 1910 Detroit Elks ruffled bowl - amethyst - again great mold & super irid., rare
- 850 96. 1910 Detroit Elks IC shaped bowl - blue - very scarce, has heat check in base
- 2100,800,700 97. M'burg Morning Glory tumblers(3) -amethyst - super rare tumblers, choice(2 w/chips)
- 1800 100. M'burg Multi Fruits & Flowers 6 pc. punch set - amethyst super nice set, very rare
- 625 102. M'burg Hobnail Swirl spittoon - marigold - dark & nice
- 1500 103. Horse Medallion ftd nut bowl - red - very rare, nice
- 325 104. Cambridge ftd vase - light marigold
- 2600 105. Dorsey & Funkenstein advertising 6" plate - amethyst - very very rare plate, not many around
- 1100 106. Ogden Furniture advertising handgrip plate - amethyst - very rare & pretty
- 600 110. M'burg Feather & Heart water pitcher - green - super nice example, rare
- 300 112. M'burg Feather & Heart water pitcher - amethyst - very rare, does have minor nick on top edge
- 2800 114. M'burg Bernheimer Brothers/Many Stars ruffled bowl - blue - extremely rare & desirable, nice
- 1300 116. Central Shoe Store advertising 6" plate - amethyst - very pretty example of a rare plate
- 1100 117. Dreibus Parfait advertising handgrip plate - amethyst - super pretty, scarce
- 4900 120. Poppy Show 9" plate - blue - electric & fantastic, rare & desirable
- 700 123. M'burg Gay Nineties tumbler - amethyst - very nice & very rare
- 2500 127. M'burg Dolphin compote - amethyst - super pretty, extremely rare & desirable
- 600 128. M'burg Roses & Fruits bon bon - green - radium & super,

Seek Auctions Results continued...

- 800 131. Fluffy Peacock 7 pc. water set - amethyst - super pretty pitcher, nice set, scarce
- 850 132. Fluffy Peacock water pitcher - blue - super pretty, rare color, nice
- 4000 135. M'burg Unlettered Courthouse 3 in 1 edge bowl - amethyst - super pretty & very very rare, WOW!
- 2300 136. M'burg Courthouse ruffled bowl - lavender - very rare color & nice, satin irid. NEAT!
- 350 137. M'burg Courthouse IC shaped bowl - amethyst - very pretty, has a small spot of epoxy on base
- 1200 138. M'burg Courthouse round bowl - amethyst - a rare, deeper shape than an IC bowl, nice
- 625 140. Ten Mums tankard water pitcher - marigold - super pretty, even irid. from top to bottom
- 375 142. M'burg Leaf & Little Flowers sherbert shaped compote - green - radium, nice
- 325 143. M'burg Leaf & Little Flowers sherbert shaped compote - amethyst - radium, nice
- 950 145. NUART Homestead chop plate - white - super pretty & rare, has great mold strike
- 1900 148. Imperial Grape 9" plate - purple - fantastic electric irid., very very rare plate
- 900 149. Dragon & Lotus IC shaped bowl - marigold on moonstone - pastel & nice, rare color
- 700 150. Holly ruffled bowl - marigold on moonstone - very rare, nice bowl
- 600 151. Double Star 7 pc. water set - green - very hard to find set, a Cambridge classic
- 750 152. Captive Rose 9" plate - amethyst - rare plate, nice
- 650 153. Stork & Rushes 7 pc. water set - blue - very scarce set, nice
- 2700 157. Orange Tree hatpin holder - iridized chocolate glass - ultra rare item, only a few known, a top Fenton rarity
- 850 161. Stippled Grape & Cable punch cup - aqua opal - very rare & desirable cup, very nice
- 375 190. 1975 Fenton's Hanging Hearts - blue - #71 of 600 opal
- 1800 195. M'burg Wild Rose lamp - amethyst - very pretty, rare, has 6" base
- 2000 196. M'burg Wild Rose lamp(also Ladies Medallion!) - marigold - super pretty, rare, has a 2" crack in the top bowl, has 6 1/2" base

Seek Auctions Results continued...

- 350 197. Chatelaine tumbler - purple - very pretty
- 1100 200. Brazier's Candies advertising 6" plate - very rare, nice
- 900 201. Brazier's Candies advertising handgrip plate - amethyst - super nice, scarce
- 900 203. Dozen Roses ftd round bowl - purple - very pretty, rare
- 4750 205. M'burg Whirling Leaves 3 in 1 edge bowl - blue - super pretty & extremely rare, only a few known(tiny nick on edge)
- 325 206. M'burg Whirling Leaves tri-cornered crimped edge bowl - green - radium & nice
- 1200 208. Blackberry Block tankard water pitcher - green - very rare & highly desirable, nice
- 500 210. Quill water pitcher - marigold - very scarce & desirable
- 1800 213. Illinois Soldiers & Sailors 7" plate - blue - very pretty plate, rare
- 1900 214. Illinois Soldiers & Sailors 7" plate - marigold - dark & pretty, very rare & desirable
- 750 220. M'burg Hanging Cherries round compote - amethyst - super pretty, very rare
- 300 221. Florentine 8" candlestick - red - very scarce color
- 1100 224. Stippled Strawberry 9" plate w/ribbed back - purple - super pretty example of this rare plate
- 2100,85x5 226. Oriental Poppy 6 pc. water set - ice blue - super rare item, pitcher is ribbed, frosty w/great irid., tumblers sold separately and are not ribbed
- 1200 227. Peacocks ruffled bowl - aqua - rarer color than aqua opal, super nice irid.
- 1400 228. Little Flowers chop plate - marigold - very rare & nice, not many of these around
- 1000 229. Dugan Peacock at the Fountain 7 pc. water set - amethyst - scarce & super, might be the best I've sold
- 1300 230. Geo. W. Getts Pianos advertising 6" plate - amethyst - very nice example, rare
- 1000 231. Davidson Society Chocolates advertising double handgrip plate - amethyst - pretty & scarce
- 650 232. Loganberry vase - marigold - dark w/super color from top to bottom
- 400 233. Imperial Grape water carafe - purple - super pretty, scarce
- 425 234. Windmill deep round bowl - marigold on milk glass - extremely rare color, only one I know of, nice



Seeck Auctions Results continued...

- 7000 241. M'burg Cleveland Memorial Ashtray - amethyst - extremely rare & highly desirable item, radium & nice, another WOW!
- 650 242. Picture Frame - purple - very pretty & rare, only two that I know of, has some manufacture problems on edges
- 300ea 244. N's Corn vases(2) - marigold - one has pinhead on base, other has minor spot on top, scarce, choice
- 1750 246. M'burg Marilyn water pitcher - green - fantastic irid. on this rare pitcher, best I've seen!
- 600 248. M'burg Marilyn water pitcher - marigold - super dark & super pretty, best marigold one I have seen
- 800 250. M'burg Marilyn 7 pc. water set - amethyst - very rare set, nice, not many sets around
- 625 252. Roundup low ruffled bowl - purple - fantastic, scarce
- 1750 255. Utah Liquor Co. advertising double handgrip plate - amethyst - very rare, nice
- 900 256. Wishbone tumbler - purple - nice
- 1200 261. Lotus & Grape 9" plate - amethyst - very rare plate & nice, highly sought after Fenton plate
- 700 262. Enameled Dianthus 7 pc. water set - white - very rare set, not many around
- 1300 263. Hearts & Flowers ruffled bowl - green - very rare color for this pattern, nice
- 350 264. Hearts & Flowers ruffled bowl - ice blue - scarce, nice
- 1600 265. M'burg Strawberry Wreath large square shaped bowl - vaseline - a super rarity, only on I have seen, has marigold overlay, nice
- 350 267. M'burg Strawberry Wreath 8" square shaped bowl - amethyst - super pretty, rare shape
- 350 268. Stippled Good Luck PCE bowl - blue - scarce, nice(couple pinpoints)
- 3700 271. M'burg Hanging Cherries chop plate - green - satin & nice, extremely rare, minor chips on top of collar base
- 400 273. M'burg Peacock at Urn mystery bowl - green - super pretty satin irid., scarce
- 1700 274. Roses & Ruffles GWTW lamp - marigold on moonstone - super pretty & very rare, highly desirable
- 1600 279. Jockey Club advertising 6" plate - amethyst - has a light base color & pretty irid., a novice might call this marigold
- 425 280. Issac Benesch & Sons advertising ruffled bowl - amethyst - scarce, nice

## NEW HOACGA SURVEY

Please complete and return to Eleanor Mochel

### IMPERIALS - LOGANBERRY VASE (not reproductions)

COLOR	NUMBER YOU OWN
Amber	
Green	
Helios	
Marigold	
Purple	
Olive	
Smoke	
Teal	
Other	

### IMPERIALS - GRAPE 9" PLATE

COLOR	NUMBER YOU OWN
Amber	
Helios	
Marigold	
Purple	
Other	

### US GLASS, COSMOS & CANE PITCHER

COLOR	NUMBER YOU OWN
Honey Amber	
Marigold	
White	

---

---

---

---

Place  
37¢  
Stamp  
Here

HOACGA  
Research Project

HOACGA  
Eleanor Mochel  
15427 Woodward Court  
Overland Park, KS 66223

----- *Fold here, please tape top closed* -----

**COMMENTS**

---

---

---

---

---

---

---

---

Seeck Auctions Results continued...

- 1600 284. M'burg Feather & Heart whimsey hair receiver -  
marigold - made from tumbler, super neat, highly  
desirable
- 400 289. Blackberry Open Edge ruffled hat - red - nice, scarce
- 900 290. M'burg Trout & Fly square shaped bowl - marigold -  
satin & super, very rare
- 500 291. M'burg Trout & Fly ruffled bowl - amethyst - satin & nice,  
very scarce
- 575 292. M'burg Holly Sprig 8" round bowl w/crimped edge -  
amethyst - super pretty radium irid.
- 1000 296. M'burg Peacock at Urn master IC shaped bowl - green -  
super satin irid., very rare & desirable
- 350 297. M'burg Peacock deep ruffled bowl - marigold - radium &  
nice
- 2600 300. Birmingham Age Herald 9" plate - amethyst - super  
example, very rare & highly desirable
- 325 304. M'burg Zig Zag IC shaped bowl - amethyst - radium & nice
- 800 305. M'burg Night Stars bon bon - amethyst - super irid., very  
rare, radium
- 700 309. Butterfly & Berry 7 pc. water set - blue - very rare set, nice
- 700 311. Vintage ruffled bowl - Persian blue - very rare color, not  
many around, nice
- 3100 312. M'burg Acorn ruffled compote - green - extremely rare &  
very desirable compote, super pretty radium irid.
- 400 316. Four Flowers 9" plate - green - pretty
- 2200 317. M'burg 1910 Detroit Elks ruffled bowl - amethyst - radium  
& rare, very nice
- 5000 320. Orange Tree whimsey syrup - blue - made from the mug,  
this is an outstanding rarity, a great whimsey, NEAT!
- 3400 322. M'burg Hanging Cherries 6" plate - marigold - radium &  
dark, a very rare little plate
- 1000 324. M'burg Hobstar & Feather diamond shaped dish - marigold  
- part of the bridge set, extremely rare item
- 1200 326. M'burg Blackberry Wreath 10" ruffled bowl - blue - pretty,  
extremely rare color
- 750 328. M'burg Big Fish IC shaped bowl - amethyst - satin &  
super, very rare
- 3500 329. N's Stippled Peacock at Urn master IC bowl - smoke - very  
rare & pretty, not many chances for this one
- 2200 330. N's Stippled Peacock at Urn master IC bowl - blue -  
electric & super, as nice as these get, very rare

## Seek Auctions Results continued...

1300	335.	Ballard advertising 6" plate - amethyst - very rare, nice
1500	336.	Eagle Furniture Co. advertising 6" plate - amethyst - also very rare & nice
450	337.	N's Bushel Basket - aqua opal - super nice
400	340.	M'burg Leaf & Little Flowers sherbert shaped compote - amethyst - radium, nice
5500	342.	M'burg Perfection water pitcher - amethyst - radium & fantastic, a carnival classic, extremely rare
550,400	343.	M'burg Perfection tumblers(2) - amethyst - both super, choice
375	360.	Cambridge Peacock 7pc. water set - old pattern glass
375	361.	Acorn & Squirrel ruffled compote - old blue opal - not carnival

## HOACGA BOARD MEETING, November 13, 2003

*By Ann McMorris*

The HOACGA Board held their monthly meeting in Lawrence, Kansas on November 13, 2003 starting with lunch at 12:30 p.m. Board members present were Bob Grissom, Don Lacock, Cliff Ball, Ann McMorris and Eleanor Mochel.

Treasurer Cliff reported a balance of \$15,371.04 in the HOACGA account and all bills are paid.

The program for the 2004 Convention will include presentations by Stacy Wills and Ed Kramer and contacts are being made on two other programs. The 2004 souvenir will be a cobalt blue guest set. Two samples were sent to Bob for the board to choose from and Bob will contact Frank Fenton to place the order. On contacting the Embassy Suites for a report on their decisions on several matters discussed when we met with the hotel personnel, Bob learned we will now be working with a new person. Susie and Bob went over the several matters that needed clarification and Susie will be reporting on her findings. A preliminary format of the requirements for the HOACGA convention was prepared for the hotel to use in reserving meeting space, etc.

Preliminary findings on the possibility of offering credit card service by the club were reported by Ann and Cliff. Two banks had been contacted regarding merchant services involving acceptance of credit card payments to HOACGA. One bank would sell the Credit Card machine to the Club for \$250, the club would be required to maintain a checking account at that bank and if a minimum \$500 balance was kept there would be no service charge. Each credit card transaction would be assessed 3%, and there would be no monthly service

## HOACGA BOARD MEETING continued...

or other charges. A second bank offered a \$500 software package, charge of 2.52% plus 29 cents per transaction and a minimum charge of \$25 per month. The matter was tabled.

The Board received a report on creating a website. The offer received included designing the website with links, updates monthly or as requested, and hosting the domain name. The matter was tabled.

HOACGA will host a hospitality room in Boonville, MO. prior to Mickey Reichel's New Years Auction, the first Saturday of January 2004.

Discussion and action was taken on the auction offered for the 2005 Convention. Announcement will be made in the future after all details have been worked out.

The Board met for three hours and discussion included continued planning for the 2004 convention and information needed for the December bulletin.

## NEXT REGULAR HOACGA MEETING

*By Ed Kramer*

The next bi-monthly meeting of HOACGA will be on Sunday, January 25, 2004 at 2:00 pm at the Prairie Village Community Center, 7700 Mission Road, Prairie Village, KS. We will discuss shades of blue glass.

The November 23rd meeting was attended by the regulars.

Treasurer, Cliff Ball reported an ending balance of \$15,328. We discussed the 2004 convention and souvenir.

After refreshments of pumpkin pie and coffee, we discussed 25 pieces of peach opal glass.

Norma Strohm won the door prize, an elephant novelty toothpick holder.

**TAMPA BAY CARNIVAL GLASS CLUB**  
**LOSE YOUR HEART TO CARNIVAL GLASS JAMBOREE**

FEBRUARY 4 - 7, 2004

Best Western Waterfront

300 Retta Esplanade, Punta Gorda, FL

All rooms \$80 + tax per night IF reserved by Jan 19th

Call Melissa Baldwin or Pam Davis for reservations  
and hotel info @ 941-639-1165

REGISTRATION - Will be in our Hospitality Suite, during times  
to be announced.

1/31-2/3: Open House @ Jackie & Randy Poucher's, between conventions.  
call 727-398-1866 or 727-510-8241

2/4 @ 5:30pm: Meet for International 180 item Buffet Supper.

2/4 @ 8:00pm: Fun night of games w/ prizes, with Janet (Vanna) Knechtel

2/5 @ 11:00am-1:00pm: Open House @ home of Guy & Marlene Nelson

2/5 @ 6:00 pm: Hospitality Buffet in our Hospitality Suite

2/5 @ 8:00 pm: Downstairs meeting room, Announcements, 15 minute  
Business Meeting, Show & Tell by Tom Burns and the White Elephant  
Auction

2/6 @ 10:00am: Program, Jorge Duhade & Jorge Perri, Carnival Glass from  
Argentina.

2/6 @ 4:00 pm: Auction Preview

2/6 @ 6:00 pm: Carnival Glass Auction by Tom Burns

2/7 @ 9:00am-3:00pm: Show & Sale, open to the public

2/7 @ 6:00pm: Cash bar

2/7 @ 7:00pm: Banquet, Stan Runion & Tom Monoski on Early Iridised  
Dugan glass.

**For additional information & membership/registration information**  
**contact Barbara Hobbs @**  
**727-541-6164 or email: carnivalbarb@aol.com**

**TWENTY-THIRD ANNUAL KEYSTONE**  
**OLD CARNIVAL, STRETCH, CUSTARD**  
**AND VICTORIAN GLASS SHOW & SALE**

**MARCH 13, 2004**

**9 AM - 3 PM**

**ST. JAMES CATHOLIC CHURCH**  
**FELLOWSHIP HALL**

**505 Woodcrest Ave., Lititz, PA**

**ADMISSION \$3.00**

For More Information Contact Nancy Williams  
2009 Cullum Dr., Reading, PA 19601; 610-374-9033

**SPONSORED BY**  
**THE KEYSTONE CARNIVAL GLASS CLUB**  
**Space Available For Rent**

**THE STRETCH GLASS SOCIETY**  
**30TH ANNIVERSARY**  
**CONVENTION, SHOW & SALE**

**JULY 29, 2004 6PM-10PM**

**JULY 30, 2004 9AM-4PM**

**Member Only Sales Stamped Thurs AM**  
**Holiday Inn, Parkersburg, WV**  
**PUBLIC INVITED/ADMISSION FREE**

Beautiful iridescent stretch glass produced in America between 1916-  
1930's! Among the many pieces on display or for sale will be items  
from companies such as Central, Diamond, Fenton, Imperial,  
Jeannette, Lancaster, Northwood, Tiffin/U.S. Glass and Vineland

For more information, write to:  
The Stretch Glass Society  
PO Box 947, Medford, MA 02155  
or email: stretchglasssociety@columbus.rr.com

## MID-ATLANTIC CARNIVAL GLASS JAMBOREE

*By Nancy Williams*

We celebrated our 22nd Anniversary October 23, 24 & 25. There were quite a few early arrivals on Wednesday, the 22nd. Everyone was anxious to set up their glass for sale and room displays of Carnival Glass Colors.

The Hospitality Room was open at various times all three days with delicious treats. Lee Stonebraker and his wife Shirley were in charge and as always did a super job. We thank all of you who brought goodies and helped with the serving.

We also thank Burns Auction for providing us with the Curt & Fran Vietti collection and other consigners for our auction. As always there was some beautiful glass in the auction.

Our educational program was outstanding. Thanks to Bill Mizell and other collectors for presenting a beautiful display of rosebawls.

The Room Display awards were given out at the Banquet. First prize - Richard and Anne Smith. Second prize - Connie O'Conner. Third prize - Ronald Schwentorus. We thank everyone who brought displays of Carnival Glass.

The Banquet Buffet was indeed a celebration of good food. Everyone seemed to enjoy the variety of food the Venice Inn provided for us. Following the Banquet was our entertainment with the White Elephant Sale hosted by Billy and his friend Ken who is learning to be an auctioneer. As usual, it was a fun time for everyone. We thank Billy and Ken for their help and to everyone who donated items. Bill Richards did not participate in the Sale due to his recent surgery which he is recovery quite well. We all wish him a speedy recovery and we were glad he and Carole came to the Jamboree.

We hope everyone had a good time and we look forward to seeing more collectors and room displays next year. Bill Mizell announced the dates for the 2004 Jamboree. They are Oct 21-23, 2004 at the Venice Inn

## MEMBERSHIP APPLICATION

Heart Of America Carnival Glass Association

(PLEASE PRINT)

\_\_\_\_\_  
Last Name

\_\_\_\_\_  
First Name

\_\_\_\_\_  
Spouse's Name (if applicable)

\_\_\_\_\_  
Address

\_\_\_\_\_  
City

\_\_\_\_\_  
State

\_\_\_\_\_  
9 digit Zip Code

\_\_\_\_\_  
Phone Number

\_\_\_\_\_  
New or Renewal

please circle one of the above

\_\_\_\_\_  
e-mail address

\_\_\_\_\_  
Anniversary (if married more than 40 years)

\_\_\_\_\_  
Name of the Person Who Encouraged You To Become a Member

\_\_\_\_\_  
Questions:

\_\_\_\_\_  
\_\_\_\_\_  
\_\_\_\_\_

Please remit this form along with your yearly dues to:  
(\$35 USA/Canada or \$50 Foreign)

Ann McMorris

PO Box 4361

H  
O  
A  
C  
G  
A

## A SUNSHINE STATE OF

MIND.....

by Jackie Poucher

Come to Florida in January and enter into A Sunshine State of Mind basking in the warmth of the sun and the warm friendship of Carnival Glass Collectors.....

Come to Florida in January and enter into A Sunshine State of Mind enjoying the sound of the Atlantic Ocean rushing in to meet the sand in the quaint little town of Deerfield Beach and also enjoy the sound of Carnival Glass Collectors when they find that perfect piece of glass.....

Come to Florida in January and enter into A Sunshine State of Mind by enjoying the Hospitality of the Howard Johnson Hotel and the Hospitality of the Sunshine State Carnival Glass Association.....

Come to Florida in January and enter into A Sunshine State of Mind while you delight in the Riverboat Cruise and the beach activity and the seminars and the Fabulous Auction by the Jim Wroda Auction Team and Fabulous entertainment by our Banquet Speaker Extraordinaire and all the other fun things that are planned for your convention pleasure .....

Come to Florida in January and enter into A Sunshine State of Mind and be a part of the Magical, Whimsical, Mardi Gras Convention.....

Then, when our convention has ended; and all good things must come to an end; think back to January and enter that Sunshine State of Mind.....

Convention Dates: January 28<sup>th</sup> - Feb. 1<sup>st</sup>, 2004

Howard Johnson Resort Hotel - 1/800/426/0084

Rates: Oceanside: \$145.00 - Cityside: \$125.00

Contact: Dee Bekemeier - 772/569/1808 - [depaurox@aol.com](mailto:depaurox@aol.com)

## CARNIVAL GLASS - FOR SALE

MITCH MITCHELL

6584 Williams Hwy., Grants Pass, OR 97527

541-862-2635

G N Peacock Bowl ruffled.....	700.00
W N Peacock Bowl ruffled.....	600.00
M N Peacock Plate ribbed back.....	450.00
W Peacock Plate ribbed back.....	325.00
W Orange Tree Plate.....	200.00
M Orange Tree Plate tree trunk center.....	400.00
W Nippon bowl PCE basketweave back.....	475.00
M Peacock @ Urn plate.....	350.00
M Goodluck plate BW back.....	500.00
M Grape & Cable Plate BW back.....	300.00

ELVA HOUSE

4714 - 63rd Ave., West, University Place, WA 98466

253-564-9371

EI A Pillar & Sunburst 8" bowl.....	65.00
EI M Peacock & Dahlia 7" bowl.....	80.00
EI G Heart & Vine 8" bowl.....	90.00
EI G Thistle 8" bowl.....	140.00
EI A Ten Mums 9" bowl.....	280.00
EI M Dragon & Lotus, Dark marigold, beautiful color, 8" bowl.....	100.00
EI M Coral 8" bowl.....	325.00
EI M Four Flowera 8" ruffled bowl.....	100.00
EI M Grape Vine Lattice 7" plate.....	150.00
A Cherry 8" footed bowl, uneven irid. on exterior...	300.00

## CARNIVAL GLASS - FOR SALE

### DICK & DIANE WETHERBEE

11 Baker Pond Rd., Ext., Charlton, MA 01507

508-248-0038 / ddwbee@aol.com

Send a SASE for Special Holiday discounted list

EI	M	Fruits & Flowers 2 hndld stemmed Square bonbon.. Super dark color.....	145.00
EI	A	Pansy Spray 9" Fluted bowl..Lt Amy base color w/super iridescence.Great.....	125.00
EI	PO	Dugan's Interior Swirl 6" rare Bottle shaped Vase 1-1/2" dia opening..Super.....	110.00
EI	M	Imperial Grape 10" Basket w/Tree bark handle.. Nice dark Marigold.....	105.00
EI	P	Three Fruits Medallion 9" Meander back 3 spatula ft bowl..Super color & mint.....	225.00
GI	G	Lovely 8" 3-ftd bowl w/Leaf & Beads back..Extremely rare pattern and color.....	750.00
EI	M	Three in One 7" small Flat Plate..Beautiful even color. Rare shape.....	165.00
EI	PO	Ski Star 8" Hand-grip Plate w/Compass back..Yellow Peach Opal..Unusual color.....	275.00
EI	P	Imperial Grape Water Carafe..Outstanding Imperial Purple A True Beauty.....	345.00
EI	M	Peacocks 9" Fluted bowl w/Rib back..A Beauty..One of the best.....	335.00

## CARNIVAL GLASS - FOR SALE

### ANNETTA BOSSELMAN

3103 Brentwood Circle, Grand Island, NE 68801

308-382-6384

DM	Strawflowers or Little Daisies 7-3/4" Gas Lamp shade.....	75.00
M	Small Rabbit Bank, mint.....	195.00
M	Stippled Acorns footed, covered dish.....	40.00
DM	2 pc. Tumble up.....	40.00
M	Painted Keg w/ Spigot, in wire stand w/ 4 mini mugs.....	125.00
M	5" swan.....	40.00
V	Waterlily 5" footed bowl, pretty.....	115.00
M	7" oval bank.....	40.00
M	Cambridge inverted feather compote.....	65.00
M	Hemingway insulator, made in USA #D-510.....	40.00
DM	Prince Matchabelli perfume bottle.....	40.00
B	Prince Matchabelli perfume bottle.....	45.00

### DELBERT JACKSON

PO Box 255, Shawnee, OK 74802

B	Captive Rose 9" plate, pretty.....	450.00
M	Vintage 7" plate, scarce.....	185.00
M	Octagon vase, scarce.....	85.00
A	Ripple 10" vase, electric.....	100.00
M	Holly 9" plate, electric.....	145.00
G	Tornado vase, large, perfect.....	800.00
IB	Nippon PCE bowl, beauty.....	295.00
A	Peacock/fountain orangebowl ftd. covered w/ elect. blue irid.....	750.00
P	Cologne bottle w/ stopper.....	225.00
B	Horse head ftd. nut bowl.....	195.00

## CARNIVAL GLASS - WANTED

---

**GERALD THOMAS**

44 E. Highland Ave., Atlantic Highlands, NJ 07716  
732-872-8051 (eve)

G EI Acorn Burr covered sugar  
A EI Acorn Burr covered sugar

---

**LLOYD WARD**

PO Box 956; Mayfield, KY 42066  
270-251-2005 (anytime)

1 piece, 20 pieces, or a collection.  
All discussions confidential.

**HAPPY  
HOLIDAYS**

**FROM YOUR  
HOACGA  
BOARD MEMBERS**



## CARNIVAL GLASS EVENTS

FUNCTION	DATES	REMARKS
Auction	January 10 2004	Reichel Auction Center, Boonville, MO 660-882-5292; 13th New Year's Extravaganza; email mreichel@undata.com or visit website www.yourauctionpage.com/reichel
Convention & Auction	January 28 - February 1 2004	SSCGA Convention; Howard Johnson Ocean Resort; 305-428-2850 or 800-426-0084 (ask for carnival glass convention block); Rates \$ ocean side and \$ non ocean side; pets are not allowed; Contact Paul & Dee Bekemeier 772-569-1808; depaurox@carnivalglass.net
Convention & Auction	February 2004	Tampa Bay Carnival Glass Club; Contact Barb Hobbs 727-541-6164 or email hobbsbarb@aol.com
Convention & Auction	February 11-14 2004	Texas Carnival Glass Convention – Crown Plaza Hotel; Dallas, TX; 972-233-7600 (must contact hotel by Feb 1); contact Matzi Thrasher 281-351-2202, cglady@attglobal.net; Auction by Seeck Auction Co
Convention & Auction	March 3-6 2004	SDCCGC & SCCGC; 10th Annual Convention; Ayres Suites; 909-390-7778; \$89 (Suite Rate special rate deadline 2/13/04), contact Betty Robertson @ 805-482-3473 for information; Auction by Seeck Auction
Auction	March 20	Important Fine Antique Auction, Seeck Antique Auction Center, Mason City, IA
Convention & Auction	April 16-18 2004	WWCGA Convention; Crown Plaza Hotel, St. Louis, MO; 314-291-6700; Auction by Reichel Auction Svc., Contact Ed Perva email subman@inteliport.com
Convention & Auction	April 22-25 2004	HOACGA Convention & Auction; Embassy Suites Hotel (Airport); 816-891-7799; Auction by Seeck Auction Co., selling the collection of Dr. Jack Pritchard. For more information contact Bob Grissom @ 816-356-5320, bobimocg@aol.com or Ann McMorris, email mcmorris@woodsland.com
Auction	May 22 2004	Carnival Glass Auction, Seeck Antique Auction Center, Mason City, IA