



RETURN ADDRESS

H.O.A.C.G.A.
Eleanor Mochel
15427 Woodward Court
Overland Park, KS 66223

FEBRUARY
2004

Happy
Valentines Day

HOACGA

Heart of America Carnival Glass Association Inc.

HEART OF AMERICA CARNIVAL GLASS ASSOCIATION

(Since 1973)

President

Robert Grissom
7517 Evanston
Raytown, MO 64138
Phone: (816) 356-5320
e-mail: bobimocg@aol.com

Vice President

Don Lacock
PO Box 33
Delia, KS 66418
Phone: (785) 771-3125

Treasurer

Cliff Ball
572 W Park Street
Olathe, KS 66061
Phone: (913) 782-0415

Secretary

Send new & renewal memberships,
address changes, orders for educ.
matl. and souv. Make all checks
payable to HOACGA and send to
Ann McMorris. Membership:
\$35 USA & Canada, \$50 Foreign

Ann McMorris
PO Box 4361
Topeka, KS 66604-0361
Phone: (785) 478-9004
e-mail: mcmorris@woodsland.com

Bulletin Secretary

Send ads & articles for bulletin
no later than 5 days prior to the end
of the month.

Eleanor Mochel
15427 Woodward Court
Overland Park, KS 66223
Phone: (913) 685-2182
Fax: (913) 685-2182 (call first)
e-mail: cmochel@yahoo.com

Membership expiration month and year is posted on address label
Following the name: (i.e. 504 = expires May 2004)

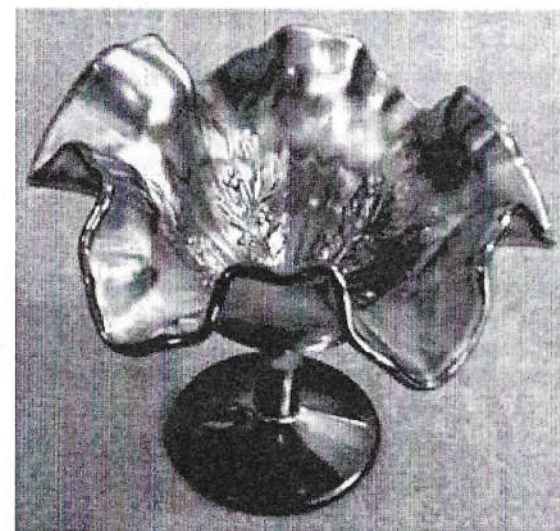
Opinions and information expressed in the HOACGA bulletin are not necessarily those of the Bulletin Secretary or Officers. Neither HOACGA nor Bulletin Secretary accepts any responsibility for accuracy or claims made, or for any outcomes resulting from the use of the information either printed or implied.

BLUE HOLLY COMPOTE

By Alan and Lorraine Pickup

The Fenton Holly compote continues to be a popular collectable among carnival glass enthusiast. They can be found in a number of shapes and in numerous basic glass colors as well as many subtle color variations. And like many collectors we have accumulated our share of them over the years. Marigold seems to be the most common color, but one particular marigold compote, that we considered as the most desirable shape was the tight ruffled or three in one edge compote. We always suspected that this shape would be found in other colors and only recently we have discovered that this shape was made in a pretty cobalt blue glass. And, of course, the possibility exists that other colors could surface in the three-in-one shape.

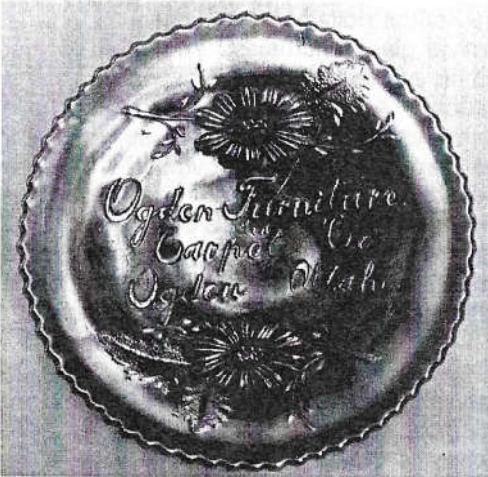
Should anyone have this compote in a color other than marigold or blue, please share this with us. So the many Fenton Holly compote collectors out there will have another affordable "goody" to look for. Webster's dictionary defines "Goody" as something that is particularly attractive, pleasurable, good or desirable. Wouldn't a nice-looking red or white Holly compote with this shape fit into this category?



OGDEN FURNITURE & CARPET CO.

By Dean & Diane Fry

The Ogden Furniture and Carpet Company came into existence early in 1902. 2432-2436 Washington Avenue, Ogden, Utah was their initial location. By 1910, expansion had led them to encompass 2422-2434 Washington Avenue. By 1920 their address became 2422-2428 Washington Avenue, indicating a downturn. Business had not improved by 1930, and they had moved to 385-24th Street, and by 1931, no business address could be found for them.



Print advertising by the company indicates they sold a full line of home furnishings including; furniture, carpet, window coverings, stoves, and appliances. Mail order was also a part of their business.

Fenton made these pieces with their Wide Panel back pattern.

John Resnik lists the ruffled and IC shape bowls, and the handgrip plates as scarce. The flat plate should be considered RARE. Only two bowls and one plate sold at auction in 2001...two examples were beyond the \$1000 figure.

Our plate came from a small antique shop we found to the east of El Cajon, CA, along a more-or-less deserted road in the desert country. The elderly gentleman could not decide whether he really wanted to sell the plate, and once that was determined, could not establish the price. This was November 1987. It is a beautiful example, and well-worth waiting for all this transpire...nearly all afternoon! IF we had made the gentleman an offer (close to true value) to speed things up, we probably would have "changed his mind about selling," but as it was, he priced his own merchandise. For once in our "collecting career," we came away with a "real deal!" They are few and far between, as most of you can attest!

PASTEL PANELS

By Barb Chamberlain

Pastel Panels is a pattern that bridges the true carnival glass period through the stretch glass era. This water set has a pattern of panels, but also has the stretch finish.

Pastel Panels has had a confusing past, starting with Marion Hartung's identification in books seven and nine. In book seven, she has a Drawing of the Pastel Panels tumbler and has identified it correctly. She has drawn our covered pitcher in book nine and has named it Pretty Panels, while drawing a completely different water pitcher on the Adjacent page and has named that Pastel Panels.

In Issue 5, Winter 1983 issue of Glass Collector, William Heacock reports that Lee Markley and Barry Wiggins (noted Stretch Glass authority) both found complete sets of Pastel Panels intact. We also bought our set complete, so we can deduce that the set was sold with the rounded pitcher and the straight sided tumblers.

Confusion also exists as to the maker of the set. In John Britt's tumbler series, John reported that Fenton was the manufacturer. Heacock, at first, believed this set to be Fenton also, but Mr. Wiggins used shards that Bill Heacock had found at the Diamond Glassware Co. in Indiana, PA, and stated that these shards show that this color was different than the pastel colors of other companies, and since this Pastel Panels pitcher and tumbler set exhibit the same colors and features as the Diamond shards, then the pattern must be from the Diamond Glassware Company.

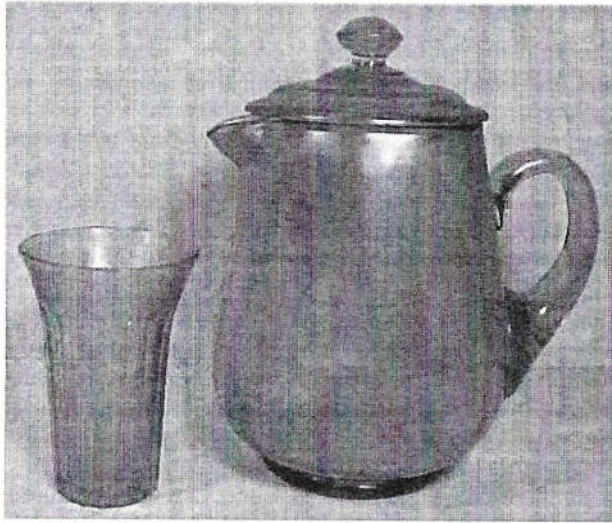
Heacock, Measell and Wiggins, in their Dugan/Diamond, The Story of Indiana, Pennsylvania Glass book., picture this covered water pitcher and tumbler in Pastel Panels in Cerulean Blue, which is what we now call Celeste. They also picture a single tumbler in pastel green. Our set is pastel green.

Our tumblers measure about 4 5/8" tall, but may range in size from about 4 1/2" to 4 3/4" presumably because they feature a ground base. The tumblers were molded, and since they came out of the mold with some roughness, they needed to be ground to set flat. The tumbler features 18 concave panels on the exterior. On the pitcher, which was blown, the 24 panels are interior and much less distinct than the panels on the tumblers.

PASTEL PANELS continued...

You can see why the authorities of carnival glass might have found it hard to determine that the set belonged together with the differences in manufacturing techniques and the difference in shape of the two items. Even our tumblers appear to be a slightly different hue than the pitcher.

The set is not found often, so if you have the opportunity to purchase one, it will make a nice addition to a pastel collection for a reasonable price.



CONDOLENCES TO CAROLYN & VERNON HOLT

Vernon Holt's brother died on January 22, 2004 of pancreatic cancer. He was diagnosed only 17 days earlier.

We send our condolences to Carolyn, Vernon and his family.

If you wish to drop Carolyn & Vernon a note, you can email them at vwhold@fidnet.com or their address is: 12580 State Route BB, Rolla, MO 65401.

COIN DOT

By Ruth Herrington

When you read this pattern name in the title, did you turn up your nose and say, "Oh, that's a common, uninteresting pattern!?" I did when I saw the bowl in the picture on a low shelf in an antique mall several years ago. We always kept our eyes open for interesting items of all kinds that we could resell. "I" was just starting to collect carnival glass and "we" were beginning to expand our mall display to include more of that wonderful iridescent glassware.

As I have stated before, Cecil used to buy anything he thought he could make money on, and we often disagreed on what was "collectible." (We are now retired and are slowly liquidating our large inventory.) Cecil pointed to the bowl as we walked by. I glanced and said, "It's marigold and Coin Dot is common...we can't do anything with that, especially for the price" and kept walking. As a 'new collector,' I didn't like marigold. I thought it was garish and the orange color didn't go with the pink and blue home décor of the time. Anyone could pick up marigold anywhere, so there would be no interest, I thought. I have since changed my mind. ☺

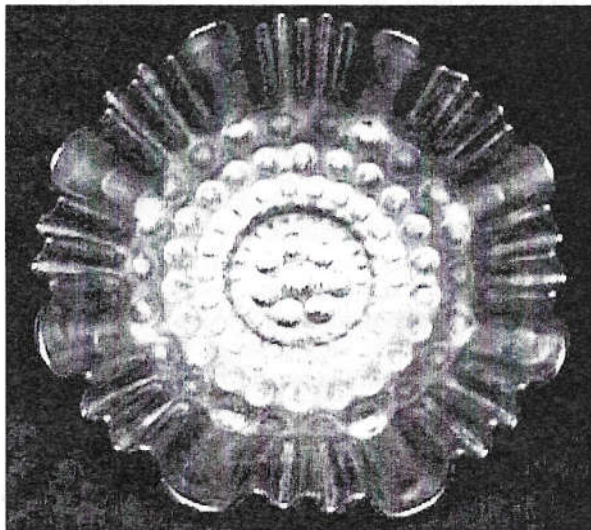
He didn't agree with me, so a few days later, after getting a discount, he brought the bowl home and set it on the dining room table until he could wash it and process it. I walked by it on my way to the kitchen, and did a 'double take'...literally. I picked it up, turned it this way and that, and enthusiastically announced, "Boy! Is that pretty!" With pink, purple, and green around every dot, I took it to better light, turned it over, and saw **lavendar** in the collar base.

Then, I looked it up in Edwards' *"Encyclopedia of Carnival Glass"* and found that this Fenton bowl is frequently found in lavendar, and has a double worth of marigold. Since then, Doty's *"A Field Guide to Carnival Glass"* states that the three-and-one edge, although not rare, is more unusual in all of its colors. (Remember that Fenton's "Coin Dot" has stippled dots, while Westmoreland's "Pearly Dots" are smooth.) I immediately had to recant my previous statements when I sheepishly said, "I want to keep it."

It was then that Cecil fumed and glared at me. His reason surprised me. Like most women, it is difficult to buy gifts for me. He had correctly assumed that I did not want this bowl, so he didn't buy it sneakily and put it away...he put it on the table. I had just deprived him of a possible

COIN DOT continued...

gift to me. As you can see, I got to keep the bowl, and I learned two important lessons: 1) Allow your loved one to love you with secrets; and 2) don't "assume" anything when you see carnival glass in a case. Always ask the clerk to take it out so you can look it over. With either one, you may be surprised!



AND THE AUCTION BEAT GOES ON

By Bud & Gladys Martin

It was a crisp and frosty weekend in Booneville, MO, for the Lucky 13 Annual Carnival Glass Auction at Mickey Reichel's Auction Center on January 10, 2004. The Canadian geese heading South for the winter just kept on going as the ponds were definitely frozen over.

It was a crisp and frosty weekend in Booneville, MO, for the Lucky 13 Annual Carnival Glass Auction at Mickey Reichel's Auction Center on January 10, 2004. The Canadian geese heading South for the winter just kept on going as the ponds were definitely frozen over.

AND THE AUCTION BEAT GOES ON continued...

However, just the opposite was true on Friday night at HOACGA's warm and cozy Hospitality Room at the new Holiday Inn Select. President Bob Grissom provided all the fixing's for sandwiches and snacks and sweets too. It was a great time to sit and visit with old friends and meet new ones. Dave and Reva Drabing treated us to his recent "find" at a local auction. Would you believe he purchased an absolutely gorgeous AQUA OPAL Peacock at the Fountain Compote? He had several offers (including ours) to give it a very good home if he ever feels the needs to downsize his collection. Stacy and Desiree Wills came in carrying a banana box with an S Repeat Punch Bowl going home to Texas with Emmett and Dorothy Morgan. Once again, "THANKS" to Bob for his thoughtfulness.

Saturday's auction was well attended with approximately 100 Carnival Glass collectors present and 60+ registered bidders. As is often the case at Mickey's auctions, write-in bids accounted for about 1/3 of the items sold. Prices on red pieces seems to be rebounding and prices remain strong on advertising pieces.

Some of the top dollar items sold were:

| | | |
|-------------------|---|------|
| Red | Fenton Orange Tree ICS Bowl | 3400 |
| Green | Fenton Horse Medallion Rosebowl engraved "Christ Church 1922" | 3100 |
| Green | Poppy Show Plate, emerald hi-lites (tiny nick on poppy) | 2800 |
| Mari | Dugan Garden Path Vt Chop Plate, 11" | 2300 |
| Amy | Fenton Birmingham Age Herald Plate, 9-1/4" | 2000 |
| Mari | Fenton Illinois Soldiers & Sailors Plate, 8" | 1900 |
| Red | Fenton Stag & Holly Bowl, spat ftd, ruffled | 1900 |
| Lime GrOpal (N) | Embroidered Mums Bowl | 1800 |
| Purple | Fenton Rustic Funeral Vase, 22-1/4" | 1700 |
| White | (N) Peacocks Plate w/BWB | 1700 |
| White | (N) Wide Panel Epergne | 1700 |
| Ice Bl | (N) Peacocks Plate | 1600 |
| Cherry | Red Fenton Vintage Grape Bowl, ruffled | 1600 |
| Sapphire Blue (N) | Grape & Cable Vt Plate, stippled, 9" | 1600 |
| Amy | (N) Eagle Furniture Flat Plate, 6-1/4" | 1500 |

When we returned home, we were saddened to learn of the death of George Loescher. George and Mavis are pioneers in Carnival Glass collecting. His absence will leave a huge void in the world of Carnival Glass. We extend our condolences to Mavis and family.

ICE GREEN GRAPE ARBOR PITCHER

A Story From the late Bonnie & Jack Pritchard (1975)

We received a phone call at 9:00 pm one evening from Henry (Hank) Taylor, an advanced carnival glass collector. He was in Northern Arkansas, driving to Florida, selling his carnival glass. He had called the Ed Colliers of Memphis, Tennessee, who were advanced collectors of that time, to sell this pitcher to them. They were not at home, so he called us.

His first price was not in our budget, so we had to say "no." One hour later, Mr. Taylor called us again, 50 miles closer to us and asked us to make a counter-offer. We did, and he said "yes."

He asked us to meet him at midnight, 20 miles North of our home, off the Interstate, at a certain exit. We met him in the dark and looked at the pitcher with flashlights. We paid him and came home with our pitcher.

Bonnie had seen this pitcher sell at John Woody's auction in September, 1970, to a phone bid collector from California. That was also the auction where we bought the first Christmas compote (purple) that had been sold at auction.

Thank You from the Loescher Family

I, along with my family wish to express our thanks for all the cards, calls, gifts and expressions of kindness shown to us at this most difficult time of George's homecoming. He always loved the HOACGA club and convention and all it's people. You are all very special to us. Thank you for letting us celebrate our many anniversaries with you at the conventions. This year would have been the 52nd.

Sincerely,
Mavis & Family

DUGAN HANDLED CORN VASE

REFERENCE: DUGAN-DIAMOND CARNIVAL GLASS 1909-1931

Page 53, By Carl O. Burns

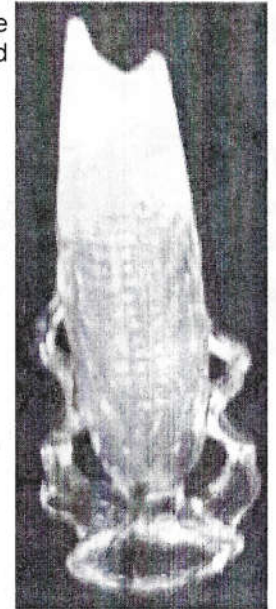
By John & Sandra Stafford

This non-iridized opalescent vase first appeared in Butler Brothers Wholesale Catalog, 1905.

The one we have is white opal. We bought it in Waupun, WI about 7 years ago. We think it's crystal with white opal. It has double husk open handles which caused lots of breakage to get it out of the mold. Each handle has a small chip on it. There is only 1 known in marigold carnival glass that is in perfect condition. Its is 8-3/4" tall. It has been reproduced, but all reproductions have solid glass handles, not open ones. We have seen a couple of reproductions in blue opal, but other colors may exist.

We were wondering if anyone else has one with open handles? We think our vase was made around 1905-1907.

If you have more information on this vase, we would be interested in knowing. Please send information to the Bulletin Secretary or to:
John & Sandra Stafford
W6485 Oak Street, Box 14
Dalton, WI 53926
920-394-3305



SEECK AUCTIONS PRESENTS

The HOACGA convention is just around the corner and this month we are featuring two uniquely shaped water pitchers from the Dr. Pritchard Carnival Glass Collection that will be sold at the 2004 HOACGA Convention.. The first pitcher is the Strawberry Scroll and the second is the Lily of the Valley. Both are made by Fenton and both are blue. Each of these pitchers is extremely rare to find plus the kicker is that they each are super pretty! A great addition to anyone's collection.

Watch our website as the listing and lots of pictures for this upcoming auction will be on our site around the middle of March. WWW.SEECKAUCTION.COM



THE TIE THAT BINDS

By Cliff Ball

When I was growing up my favorite Sunday School song was one entitled "Bless Be The Tie That Binds." Sometimes, now, when I am looking at our Carnival Glass Collection this beloved old song comes back into my mind. Many of our Carnival pieces are no longer just pieces of glass, but they seem to have become objects that "bind" me to an ancestor, to my early childhood, to my days in the 4H Club, to the drought years of the late 1930's, to some of my Carnival Glass friends...and even to my religious faith.

Here are some examples of what I mean...

Our Illinois Soldier and Sailors' plate is a tie which binds our family to Great Grandfather Fannen, who came to the USA from Ireland just in time to fight in the Civil War. He was badly injured and spent much of his later life in the Soldier and Sailors' Home in Quincy, Illinois.

Our Peter Rabbit Bowl ties me to my early childhood when one of the stories often read to my sisters and me was about Peter Rabbit and his adventures in Mr. McGregor's garden.

Our Farmyard Bowl binds me to my days as a teenage member of a Kansas 4H club. My project was raising White Rock Chickens...and I would always enter a "Pen" of my flock in the County Fair. A "pen" was composed of one rooster and two hens. This is the combination shown in the Farmyard design.

Our Town Pump vase always brings back memories of the bad drought years of the late 1930's. When our water supply ran out, my folks would go each evening to the only well left with water in our small town and pump enough water to fill their two ten gallon milk cans.

Our Mikado Compote ties us to some of our dearest Carnival Glass friends. When we celebrated our Golden Wedding Anniversary in 1998, Gale Eichhorst gave us our beautiful Marigold Mikado compote. He had recently purchased it from Daryl & Norma Strohm.

Our Crucifix Candle Sticks are a visual reminder of the religious faith that Jo Ann and I embrace.

THE TIE THAT BINDS continued...

I could go on and on describing how many of our other pieces of glass are definite ties that bind us to some of you who once owned the pieces which now enhance and beautify our collection. We truly can say, "Bless Be The Ties That Bind."

GOODBYE GEORGE LOESCHER

By Grace Rinehart, Charleston, WV

Our new 2004 year had hardly started when the sad news came in "George Loescher of Sherwood, WI had lost a long battle with cancer January 7th."

George and his wife Mavis are well-known in our carnival world. They have supported several carnival clubs through the years with their beautiful displays and information.

They loved carnival and have shown some of the most rare and unusual items. They shared their vast knowledge with everyone.

George will be remembered for his interesting talks and comments at some of the conventions. He will be missed by all of us who have enjoyed visiting together from the beginning of our glass hobby.

Our deepest sympathy goes out to Mavis and the family. Mavis has faithfully been side-by-side through the years of health problems. Our hearts go out to her at this sad time.

What can we do except share your sadness
What can we say except we care
What can we hope except tomorrow
Brings you relief from the sorrows you bear

HOACGA BOARD MEETING, January 14, 2004

By Ann McMorris

The HOACGA Board held their monthly meeting in Lawrence on January 14, 2004. Board members present were Bob Grissom, Don Lacock, Ann McMorris and Eleanor Mochel.

The February bulletin will contain further information on the 2004 HOACGA Convention, April 21-25. This will include tickets for the raffle, registration form, order form for 2004 Souvenir Guest Set and general information about room reservations and other functions of the convention.

Consensus was that further information is need before providing credit card service to members at the convention.

2004 Convention planning continued – Bob reported on the program speakers and his contacts with the hotel regarding total room nights, meeting space, banquet service and our picnic and pie events. Speakers will include Ed Kramer, Pete Bingham and Stacy Wills. There will also be a display of Imperial Glass. Other matters discussed – the Britt Award luncheon, room display judging form and the Seck auction of Jack Pritchard's collection.

Bob reported on the status of the 2004 Souvenirs – Cobalt blue Guest Set. Fenton has made the run of this souvenir and Frank Fenton reported 150 good sets, and possibly extra tumblers will be available. No report on when Fenton would be shipping the order.

In regard to having a website and whether it would be of benefit to the club, several clubs with websites were approached on how much contact they received. At the present, no further action will be taken on having a club website.

The hospitality room for the Reichel New Years January 10, 2004 auction was open on Friday evening, January 9 at the Holiday Inn Express from 5:30 to 9:30 p.m. There was not a very large attendance and no new faces on Friday as most people come in on Saturday morning.

BOARD MEETING continued...

The schedule for open houses to view collections in the Kansas City area on Tuesday, April 20 will be announced soon. The Worldwide Woodsland Carnival Glass convention will be held the week prior and many of those attending that event have indicated they plan to attend the HOACGA Convention and these open houses.

The Board is scheduled to meet with the Embassy Suites personnel and have a food tasting session on February 5, 2004 at 2:00 p.m.

MARCH ANNIVERSARIES

Joe & Shirley Williams
606 N Orchard
Prairie City, IA 50228
Married March 16, 1952

Jerry & Bertie Metzger
RR 1, Box 85
Bragg, OK 74423
Married March 26, 1955

Vern & Susie White
405 - 1st Street
Grafton, IA 50440
Married March 21, 1946

Leslie & Elsie Shawver
222 Rainbow Drive
San Antonio, TX 78209
Married March 11, 1948

Donald & Suzanne McWharf
2598 County Road 6
Hammond, NY 13646
Married March 30, 1963

Edward & Edna Martin
34 S Weber Road
N Muskegon, MI 49445
Married March 5, 1946

SURVEY REPORT

By Eleanor Mochel

IMPERIAL LOGANBERRY VASES

| | |
|----------|----|
| Amber | 11 |
| Green | 1 |
| Helios | 1 |
| Marigold | 6 |
| Purple | 8 |
| Olive | 0 |
| Smoke | 1 |
| Teal | 2 |

IMPERIAL 9" GRAPE PLATE

| | |
|-----------------|---|
| Amber | 3 |
| Aqua | 2 |
| Clambroth | 1 |
| Helios | 1 |
| Marigold | 2 |
| Pastel Marigold | 1 |
| Purple | 9 |
| Teal | 1 |

COSMOS AND CANE PITCHER

| | |
|-------------|---|
| Honey Amber | 2 |
| White | 3 |

HOACGA NEWSLETTER ARTICLES JANUARY - DECEMBER, 2003

| | |
|------|---|
| Jan | Singing Birds Mugs, Pickup, 1 |
| Jan | Compliments Of The Central Store (#6 In Series), Fry, 2 |
| Jan | Imperial's Cape Cod Cruet, Pickup, 3 |
| Jan | Looking Back - Wishard Spectacular, Mochel, 6-7 |
| Feb | Holly & Rib Compotes, Pickup, 3-4 |
| Feb | Sterling Furniture Co., Fry, 5-6 |
| Feb | Rood's Chocolate Plate, The Findings Of A, Dubinski, 7-8 |
| Feb | Looking Back - Hartung Held Up, Robbed, Mochel, 9-11 |
| Mar | Mystery Lampshade Revisited, Pickup, 3-4 |
| Mar | Davidson's Society Chocolates, Fry, 5-6 |
| Mar | Northwood's Horehound Grape & Cable, Dubinski, 7 |
| Mar | Czech Toiletry Set, Dilian, 8 |
| Mar | Hello From Iowa, Gearhart, 9-10 |
| Mar | A Light Went On!, Herrington, 11-12 |
| Apr | Twisted Optic?, Pickup, 3-4 |
| Apr | Seasons Greetings Eat Paradise Sodas, Fry, 5-6 |
| Apr | Pearly Dots, Herrington, 7-8 |
| Apr | Hand-Lettered & Stenciled Carnival Glass Souvenirs, Keig, 9 |
| Apr | Looking Back - Big Carnival City, Mochel, 10-11 |
| May | Alfred F. Steiner Ashtray, Pickup, 3-4 |
| May | Ballard Merced, Ca, Fry, 5-6 |
| May | Inverted Feather, Herrington, 7-8 |
| May | Hello From Iowa, Gearhart, 9-10 |
| May | Looking Back - Here We Go Again, O.J.Olson, Mochel, 11-13 |
| June | Black Carnival Glass, Pickup, 3-4 |
| June | Broeker's Flour, We Use, Fry, 5-6 |
| June | Fan..Breakfast Set?, Herrington, 7-8 |
| June | Hoacga 2003, Muehlbauer, 9-10 |
| June | Looking Back - Millersburg Glass Works Story, Mochel, 11-19 |
| July | Imperial's File, Pickup, 3 |
| July | Campbell & Beesley Co - 1911, Fry, 4 |
| July | Stippled Estate By Dugan, Herrington, 5-6 |
| July | Story Of The Ice Blue Strawberry Plate, Martin, 7-8 |
| July | Looking Back - For Sale List - 1946, Mochel, 9-11 |
| Aug | Cambridge Glass, Pickup, 3-4 |
| Aug | Dreibus Parfait Sweets, Fry, 5 |
| Aug | Chesterfield, Herrington, 6-7 |
| Aug | Looking Back - Presznick Auction, Mochel, 8-9 |
| Aug | And The Auction Beat Goes On!, Martin, 10-12 |

HOACGA NEWSLETTER ARTICLES 2003 continued...

| | |
|------|--|
| Sept | Marigold Conjecture, Pickup, 3-4 |
| Sept | Eagle Furniture Co., Fry, 5 |
| Sept | Beaded Panels, Herrington, 6-7 |
| Sept | Ms Brummett's Punch Bowl, Martin, 8-9 |
| Sept | Looking Back - Collier Auction, Mochel, 10-13 |
| Sept | Confusing Patterns - Blaze & Crab Claw, Chamberlain, 14-15 |
| Oct | Dugan's Vintage, Pickup, 3 |
| Oct | Geo. W. Getts Pianos, Fry, 4 |
| Oct | And The Auction Beat Goes On!, Martin, 5-6 |
| Oct | Pulled Husk Or Corn Husk Vase, Herrington, 6-7 |
| Oct | Hello From Iowa, Gearhart, 8 |
| Oct | Westmoreland's 1700 Colonial Lily Vase, Chamberlain, 9-10 |
| Oct | Looking Back - Ten Top Tumblers, Mochel, 10-13 |
| Nov | Orange Tree Fruit Bowls, Pickup, 4 |
| Nov | Gevurtz Bros, Fry, 5-6 |
| Nov | Brocaded Jack Frost Compote, Chamberlain, 8-9 |
| Nov | Thistle Banana Boat - Don't Rock The Boat, Herrington, 10-11 |
| Nov | And The Auction Beat Goes On, Martin, 12-13 |
| Dec | Imperial's Shell, Pickup, 3 |
| Dec | E. A. Hudson Furniture Co., Fry, 4 |
| Dec | Central Glass Co. Sandwich Tray, Herrington, 5-6 |
| Dec | Nesting Swan Deep 8" Bowl, Chamberlain, 7 |
| Dec | Looking Back - Tumbler & Mug News, Mochel, 8-9 |

NEXT REGULAR MEETING OF HOACGA

By Ed Kramer

The next bi-monthly meeting of HOACGA will be March 28, 2004, Sunday, at 2:00pm at the Prairie Village Community Center, 7700 Mission Road, Prairie Village, KS. We will discuss shades of blue.

The January 25, 2004 meeting was cancelled due to a serious ice storm.

2004 HOACGA - CONVENTION

April 21 - 25, 2004

HOTEL - Embassy Suites Hotel, 7640 N.W. Tiffany Springs Parkway, Kansas City, Missouri (At the Kansas City International Airport) Shuttle service is available from the Airport, use the courtesy phone and call the Embassy Suites.

RESERVATIONS: Reservations can be made by calling the Hotel directly at 816-891-7788, between the hours of 7:00 A.M. & 7:00 P.M. on weekdays. Ask for reservations, and mention the HOACGA convention. FAX No. at the hotel is 816- 891-0630.

PETS: Small pets are allowed. When you check-in please tell the clerk that you will have an animal in the room.

ROOM RATES: The rate for all suites, is \$102.00 + tax, per day for single or double occupancy. For three or four occupancy, the rate is \$112.00 + tax, per day. The room rate includes a free cooked-to-order breakfast, and a manager's reception each evening, from 6 to 8 pm.

The Hotel has assessed a charge to the club for use of the meeting rooms, predicated on the total number of rooms occupied during the convention. So, even if you are only staying Friday night for the Saturday auction, please make your reservations at the Embassy Suites.

RESERVATION DEADLINE: One Hundred and Twenty-Five(125) rooms have been blocked at the reduced rate, but the block is only good until March 31, 2004. If you are thinking of attending please make your reservation, they can always be canceled, so make your reservations on or before March 31. After that date the rooms will be at their regular rate and a room may or may not be available. If you call for a reservation, and they tell you there are no rooms available, or if you have a problem making a reservation, please call Bob Grissom at 816-356-5320. We will make every attempt to accommodate everyone that wants to attend.

CANCELATION NOTICE: If you make a room reservation and then decide, after March 31, to cancel your reservation, please let Bob Grissom (816-356-5320) know and I will cancel your reservation. If you call and cancel your reservation with the hotel, the next person that comes in the door and wants a room will get the room. HOACGA will probably have members on a waiting list for the room.

2004 HOACGA Convention Info continued...

DISPLAY OR SALE TABLES: If you will need a table(s), (6 ft) for your display or for selling glass, please request it when making your reservations. The table rental charge is \$15.00 per table, for the duration of the convention.

SMOKING: The only place that smoking is allowed in the Hotel is inside the individual Rooms and in the Bar area. The smoking floors are 3rd and 8th.

PRE-REGISTRATION: A registration form is included in this packet. You are encouraged to complete this form and return it with your check. It will eliminate a lot of work for the secretary during the convention, and it will expedite the registration. **THOSE MEMBERS WHO RETURN THEIR REGISTRATION FORM WILL HAVE THEIR NAME ENTERED INTO A DRAWING FOR A SPECIAL PIECE OF GLASS TO BE GIVEN AT THE CONVENTION BANQUET (YOU MUST BE PRESENT TO WIN).**

JOHN & LUCILE BRITT AWARD FOR EXCELLENCE IN CARNIVAL GLASS: It is always a pleasure to announce the honorees for the JOHN & LUCILE BRITT AWARD. This year the honorees are John & Jan Muehlbauer. They have been collecting carnival glass for more than 30 years. John has written many educational articles for various clubs and has been the featured speaker at many conventions. In the true spirit of the JOHN AND LUCILE BRITT tradition they are always willing to help and share their knowledge of Carnival Glass.

ROOM DISPLAYS: We encourage each of you to bring glass and set up a room display. Displays should be set up in your room window, so they can be viewed and judged from the outside. Displays are always an enjoyable, educational, and major part of the convention. Regardless of how many conventions you have attended there will be something in a room display that you have not seen before. As always you will see some outstanding pieces of glass along with some very unique ways of displaying it.

The Room Display judging is being changed this year. The displays will not be entered in any category. The members will judge the displays. The five displays receiving the most votes will be awarded a \$50.00 cash prize. Each member will be given a judging form in their registration packet.

2004 HOACGA Convention Info continued...

EDUCATIONAL PROGRAMS: A special "IMPERIAL GLASS " display is being planned. This is not a display of any particular color, pattern or rarity, just any "IMPERIAL CARNIVAL GLASS". Members are being asked to bring pieces of Imperial Glass for the Thursday & Friday display.

Staci and Desiree Wills will present an educational program, "What If". And Ed Kramer will present an educational program on "Candlesticks".

SOUVENIR: The 2004 Souvenir will be a Cobalt Blue "Guest Set". It is made by the Fenton Glass Co. This souvenir will be a very limited production, there will only be about 150 of these souvenirs produced.

Both, Fenton and Northwood made the "Guest Set" in the 1924 to 1927 period. Today these are not often found and very few collectors have one of these in their collection. It is an expensive souvenir, but one we believe the collector would want to have.

AUCTION: The glass to be auctioned on Saturday will be the Dr. Jack Pritchard collection. The Seeck Auction Company will present the auction. Dr. Pritchard and his late wife Bonnie have not been active collectors for about 20 years. This is another outstanding collection, with many Pitchers and Plates, Water Sets and some rare Pitchers. This auction will feature pieces that will be suitable for any collection. This is an opportunity to add some very good pieces to your collection. This is a "Must attend" auction for 2004. It will be an education just to view the glass. The Seeck Auction Company will send a complete brochure of the auction at a later time.

BANQUET: We are very pleased to have Pete & Paula Bingham as our banquet speakers. They will present a program on "Glass made by Millersburg," along with a few surprises.

WEDNESDAY EVENING: Because of the prohibitive cost increase of having a picnic, alternate plans are being made for the evening activities. We will continue the "Dirty Bingo."

SILENT AUCTION: If any member wishes to donate a piece of glass, or some other item, for the silent auction it would be appreciated very much. Ed Kramer, telephone 913-642-3587, will be the person in charge of the auction, if you have something to donate please call Ed.

**Return Tickets and
Checks Made Payable to:**

**HOACGA
Attn: Ann McMorris
PO Box 4361
Topeka, KS 66604-0361**

2004 HOACGA CONVENTION REGISTRATION

Friday, April 23, - Luncheon - 12:30 P.M.

Presentation of the "John & Lucile Britt award for Excellence in Carnival Glass"

John and Jan Muehlbauer - Recipients

_____ @ \$19.00 / Person \$ _____

Saturday, April 24, - Banquet - 6:30 P.M.

Pete and Paula Bingham - Speakers

_____ @ \$29.00 / Person \$ _____

2004 SOUVENIR Cobalt Blue "Guest Set" \$110.00 each

(To be picked up at the convention)

_____ @ \$110.00/each \$ _____

2004 MEMBERSHIP RENEWAL \$ _____

\$35.00 U.S. & CANADA ----- \$50.00 FOREIGN

CONVENTION REGISTRATION \$5.00 per person

_____ @ \$5.00/Person \$ _____

(per person x \$5.00)

TOTAL \$ _____

NAME _____

(Please supply the Husband and Wife's name - For the Name Badges)

ADDRESS: _____

CITY: _____ STATE _____ ZIP _____

Email address _____

Phone Number _____

Make checks payable to HOACGA and send to:

Ann McMorris

P.O. BOX 4361

TOPEKA, KS 66604-0361

*THE NAMES OF THOSE WHO PRE-REGISTER WILL BE ENTERED FOR
A DRAWING FOR A PIECE OF (CONTEMPORARY) FENTON GLASS.
THE DRAWING WILL BE HELD AT THE BANQUET.
YOU MUST BE PRESENT TO WIN.*

Return Tickets and
Checks Made Payable to:

HOACGA
Attn: Ann McMorris
PO Box 4361
Topeka, KS 66604-0361

\$1,000 CASH DONATION DRAWING

When thinking of a piece of glass to be given away as a prize, we found it difficult to come up with an item that we thought would be appealing to all members. So, the decision was made to offer a One Thousand Dollar cash prize. This should fit into anyone's collection. The winner can use the money to buy a piece that they would like to have, or at least make a down payment on it.

For a Ten Dollar donation to HOACGA, you can enter your name twelve times for an opportunity to win the \$1,000.00. The entry forms are included in this bulletin. This will be the 3rd year we have offered a \$1,000 cash prize for donations to HOACGA. Since the members seem to like buying their own glass, we will again enter your name twelve times for a ten dollar donation.

Please fill out the necessary information and return it to the Secretary, Ann McMorris, PO Box 4361, Topeka, KS 66604-0361. Your entries will be submitted for the drawing, which will be held at the Banquet on April 24, 2004. You do not have to be present to win.

To those that like to take a few chances at the Casinos, the odds may be better at this drawing.

IMPERIAL GLASS SPECIAL DISPLAY 2004 HOACGA CONVENTION

By Bob Grissom

7517 Evanston, Raytown, MO 64513

816-356-5320 or bobimocg@aol.com

A special display of Imperial Glass is being planned for the 2004 convention. Imperial glass has probably some of the best iridescence produced by any of the makers and it has gained in popularity in the past few years. So, we thought it would make a fantastic glass display.

As always, for these special displays, we have to rely on many members to bring glass from their collection. Sometimes we have some beautiful pieces of Imperial glass in our collections that we have kind of forgotten about. Would you please look through your cabinets and identify those pieces of Imperial that you would be willing to bring for this special display. Can you imagine how 200 pieces of beautiful Imperial glass will look. If we all share some of the pieces from our collection it will be a very informative and educational display.

WOULD YOU PLEASE TAKE AN INVENTORY OF YOUR IMPERIAL GLASS AND MAKE A LISTING OF THE PIECES THAT YOU WOULD BE WILLING TO BRING AND SHARE IN THIS DISPLAY. I will coordinate the list and then let each person know which pieces to bring.

Each item on your listing needs to be described so I will know its color, pattern and shape. I will make an identification tag for each item on display. You can send the list either by mail or by email.

YOUR HELP WITH THIS SPECIAL DISPLAY WILL BE GREATLY APPRECIATED. THE SOONER I HAVE YOUR LIST THE EASIER IT WILL BE FOR ME TO GET THE COMPLETE LIST COORDINATED.

HOACGA SOUVENIR ---- 2004

By Bob Grissom

On January 2, 2004 I received a call from Frank Fenton about making the "Guest Set" souvenir. It was scheduled to start the next Tuesday at 10:45 A.M. I left Kansas City on Sunday so I could be there by Tuesday morning to watch the making of the souvenir.

I encountered a little freezing rain, sleet, snow and high water detour along the way. I stopped at a few antique malls, thought maybe I could find a bargain, found a Marigold "Lustre Rose" plate which was priced at \$2,250.00 and an Ice Green Peacocks plate at \$1,250.00. I thought they were a little over priced so I passed on them.

Fenton started making the pitcher to the "Guest Set" promptly at 10:45 and worked for two hours. I have watched most of our souvenirs being made by Fenton, but the making of this one seemed to go with only a very few minor problems. I was very surprised at how many workers were required for this production. There were at least 25 workers involved in the process. It started with the gathering of the glass from the pot of molten glass, then a Glass Blower formed it to a size so the ribs could be pressed into it, then it was reheated so another Glass Blower could blow it into its full size and shape, then the top had to be shaped, then reheated again so the handle could be applied, it was then reheated in order for the Iridescence to be sprayed on, then it had to be taken to the Lear for the cool down process, which took about 3 ½ hours. The many in between steps took several workers to carry the glass back and forth to the various processes. The production process of making the tumbler to go with the Pitcher started at 4:00 P.M., they made glasses for 2 more hours. They had to make sure they had enough glasses for the number of Pitchers, but at that time they did not know how many acceptable Pitchers they had produced. I know that we think this souvenir is expensive, but after watching it being made for two hours and the amount of work required it is easy to understand why it costs so much. The Carnival Glass clubs that produce a souvenir are indeed fortunate to have Frank Fenton as a friend of the club.

One of the interesting things about the production of the pitcher, one of the workers rolled up a soft chair and Frank sat and monitored the process for the complete two hour production. He had made out the list of whimsies to be made, along with the colors. Thirteen Whimsies were made in various colors and some different shapes.

This Cobalt Blue "Guest Set" is a much different and more expensive souvenir than has been made before, but we believe it is a souvenir that you would enjoy having in your collection. If you have an old "Guest Set" in your collection, then you know it did not come cheap. The money from the selling of the souvenirs and the membership dues is by far the major financial support of the club. If HOACGA or any of the other clubs are to remain a viable organization that informs and promotes the hobby that we all enjoy, the support can only come from the members.

(SEE ORDER FORM, PAGE 32)

2002/2003 HOACGA NOTEBOOK INSERT Candlesticks – 1st & 2nd Sections

By Bob Grissom

You may not have many candlesticks in your collection, but what is your knowledge of the ones you have? Do you know the difference between a Northwood "Colonial," a Fenton "Florentine," or a Vineland "Colonial?" You will probably be able to identify some of the candlesticks in your collection.

The HOACGA Notebook section for 2002 contains photographs of 72 different candlestick patterns and the section for 2003 contains an additional 53 patterns, including the Fostoria Brocaded pieces. Most collectors have some candlesticks in their collection, but this is an area of Carnival glass collecting where information is not readily found. This is an attempt to compile them in one place, present as much information as possible, and to show them with a color photograph. These two sections are another very informative addition to the HOACGA Pattern Notebook.

Much time has been spent, not only by me, but several other collectors, trying to identify the various pieces. Information such as this is only possible with the help of many members who have supplied photographs and a listing of their candlesticks.

If you have not ordered these two sections, you are missing a good source for information about carnival glass candlesticks.

If you wish to order, please use the order form below (if you are coming to the convention, the 2nd section can be ordered with the pre-registration form).

(SEE ORDER FORM PAGE 32)

ORDER FORM
2002/2003 HOACGA NOTEBOOK INSERT
Candlesticks – 1st & 2nd Sections

Name: _____

Address: _____

City: _____ State: _____ Zip: _____

1st Candlestick Section (photo 1-72—2002) \$14.00 each

2nd Candlestick Section (photo 73-125—2003) \$13.00 each

_____ @ \$14.00 each (2002) = \$ _____

_____ @ \$13.00 each (2003) = \$ _____

_____ @ \$1.50 each shipping = \$ _____

TOTAL \$ _____

Make Checks Payable to HOACGA and send to:

Ann McMorris

PO Box 4361, Topeka, KS 66604-0361

ORDER FORM
HOACGA SOUVENIR - 2004

NAME: _____

ADDRESS: _____

City: _____ State: _____ Zip: _____

_____ Cobalt Blue "Guest Set" @ \$110.00= \$ _____

S & H @ \$6.00 each= \$ _____

Will pick up at the Convention _____

(Yes or No)

TOTAL \$ _____

Make Checks payable to HOADGA and MAIL TO:

Ann McMorris

PO Box 4361, Topeka, KS 66604-0361

HOACGA ROSTER ADDITIONS/CHANGES – 2004 #1

NEW MEMBERS

Burkhardt, Maxine, 612 White Pine Blvd, Lansing MI 48917 – (517) 627

7558 trippingranny@aol.com

Forbush, Richard & Ilene, 1695 Bethlehem Road, Paris KY 49361 - (606)

987 7793

Hammond, Mike, 8719 – 32nd Ave #221, Kenosha, WI 53142-5190 – Ph. (262)

948 1748 Referred by Bob Grissom

Pack, Bobby, 17390 E. Hwy. 12, Rogers AR 73756 – (479) 925 7845

Pritchard, Jack L., P. O. Box 1330, Stuttgart, AR 72160 (970) 673 2760

NEW E-MAIL

Bagot, Tom & Sondra, Mission, TX – tbagottx@sbcglobal.net

Crews, Nick, Houston, TX – ncrews@evl.net

Elkins, William & Mary, Silea City, NC - prosolution@earthlink.net

Pickup, Alan & Lorraine, St. Louis, MO – alpikcup@sbcglobal.net

Williams, Jim & Carol, Indianapolis, IN - indymules@sbcglobal.net

NEW ADDRESS

Briix, Lee and Marva, 2400 N.W. 1113th St., Oklahoma City, OK 73120-7304

Hayes, Charles & Jacqueline, 11716 County Road 54W, Daphne, AL 36526

(251) 625 4769

Morse, Gordon & Judith, 3499 River Rock Drive, Cuyahoga Falls, OH 44223

(330) 647 7338

Nash, Lilla & Bernard, 86 Cypress Run, Bluffton SC 29909 Phone 8(843)

705 3875 (Formerly from Rockville MD)

Shikles, Richard, P. O. Box 307, Clinton MO 64735

Soper, Mike, P. O. Box 36, EYMAR, MD 21757 00063

NEW AREA CODE

COY, LORENE, OREGON, IL – (815) 732 2091

DEATHS

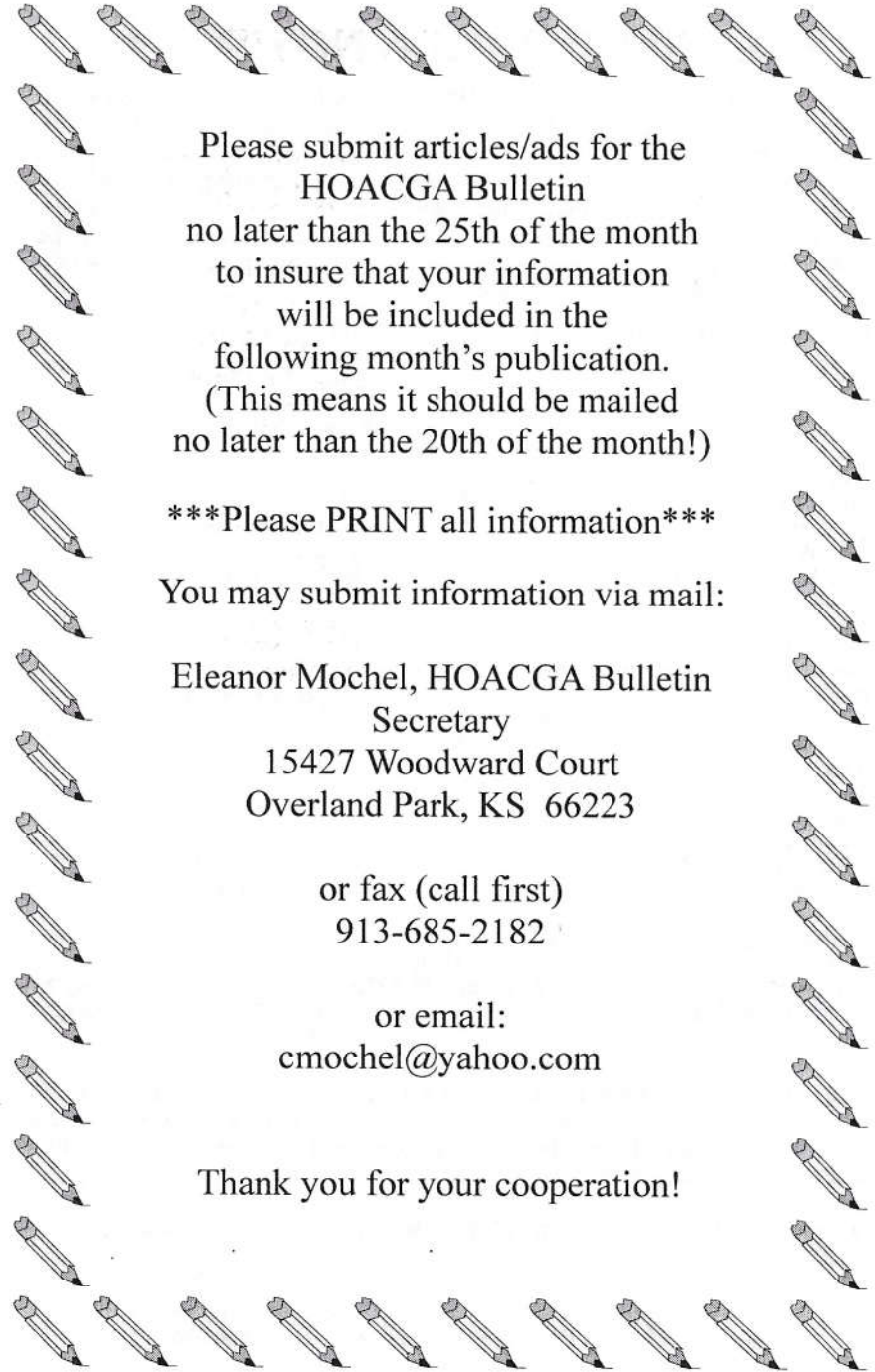
Loescher, George, Sherwood WI

Shikles, Viola, Independence, MO.

CONVENTION NEWS

The WWW.CGA convention will be the week before HOACGA's. For those members that will be attending the WWW convention and then coming to HOACGA, or for anyone that will be coming early, there will be an "Open House" on Tuesday, April 20, from 9:00 A.M. until 4:00 P.M., at three HOACGA members' homes. This will be an opportunity to visit and view three different collections in the Kansas City area. You will have to furnish your own transportation.

Members Charles & Eleanor Mochel, Cliff & Jo Ann Ball, and Bob Grissom will each host an "Open House." Information as to location and travel information will be available at the Embassy Suites Hotel (at the Check-In Desk), and/or will be available at the WWW convention in St. Louis.



Please submit articles/ads for the
HOACGA Bulletin
no later than the 25th of the month
to insure that your information
will be included in the
following month's publication.
(This means it should be mailed
no later than the 20th of the month!)

Please PRINT all information

You may submit information via mail:

Eleanor Mochel, HOACGA Bulletin
Secretary
15427 Woodward Court
Overland Park, KS 66223

or fax (call first)
913-685-2182

or email:
cmochel@yahoo.com

Thank you for your cooperation!

HOACGA PATTERN NOTEBOOK

The Pattern Notebook was started in 1980, with the first section being on mugs. Each year since, except in 1992, a different section had been added. This information has been compiled and printed to assist the collector in identifying the various pieces of Carnival Glass. Each section identifies the Patterns, Maker, Colors and other pertinent information and shows a color picture of the pattern. There are (10) completed sections with the candlesticks section to be completed next year. There are about 1222 items pictured. Each year a new section will be added to the Notebook.

| ITEM | PHOTOS | YEAR | PRICE | COMMENTS |
|---|-----------|------|---------|--|
| Mugs | 1 - 40 | 1980 | \$ 7.00 | |
| Table Sets | 1 - 40 | 1981 | \$ 7.00 | Listing of the 4 pc sets only |
| Water Sets 1 | 1 - 60 | 1982 | \$ 7.00 | Shows a pitcher & tumbler |
| Water Sets 2 | 61 - 120 | 1983 | \$ 7.00 | Shows a pitcher & tumbler |
| Water Sets 3 | 121 - 167 | 1984 | \$ 7.00 | Painted sets included |
| Rosebowls 1 | 1 - 60 | 1985 | \$ 7.00 | |
| Rosebowls 2 | 61 - 97 | 1986 | \$ 7.00 | |
| Small Plates 1 | 1 - 48 | 1987 | \$ 7.00 | Less than 9" in diameter |
| Small Plates 2 | 49 - 98 | 1988 | \$ 7.00 | |
| Chop Plates | 1 - 40 | 1989 | \$ 7.00 | Plates of 10" diameter or greater |
| Regular Plates 1 | 1 - 48 | 1990 | \$ 7.00 | 9" plates |
| Regular Plates 2 | 49 - 81 | 1991 | \$ 7.00 | 9" plates |
| Compotes 1 | 1 - 57 | 1993 | \$ 8.00 | Smaller compotes |
| Compotes 2 | 58 - 113 | 1994 | \$ 8.00 | Larger compotes |
| Punch Sets | 1 - 36 | 1995 | \$ 8.00 | 2nd printing of this Section |
| Vases A-C | 1 - 57 | 1996 | \$ 9.00 | |
| Vases D-G | 58 - 117 | 1997 | \$ 9.00 | |
| Vases H-P | 118 - 201 | 1998 | \$12.00 | |
| Vases R-T | 202 - 274 | 1999 | \$13.00 | |
| Vases Trpt - Z & Non US | 275 - 341 | 2000 | \$13.00 | |
| Vases not prev. reported, non-US & brocaded | 342 - 428 | 2001 | \$13.00 | Non-US patterns & Fostoria's brocaded patterns. Table of contents of all vases, plus corrections |
| Candlesticks | 1 - 72 | 2002 | \$13.00 | |
| Candlesticks | 73 - 125 | 2003 | \$13.00 | |

Complete Set of Inserts plus Notebook is \$215.00. Shipping & Handling for complete Notebook \$8.00, for each individual item \$1.50 for a maximum of \$8.00.

Any of these sections can be purchased separately. The information contained within these sections will be of great help to you as a collector. If the knowledge you gain from it help you in buying just one piece of glass - that could be worth much more than the cost of the information.

A complete Notebook or any of the Sections may be ordered from the Secretary.

Please make check payable to HOACGA and mail to:
Ann McMorris; PO Box 4361, Topeka, KS 66604-0361

MEMBERSHIP APPLICATION

Heart Of America Carnival Glass Association

(PLEASE PRINT)

Last Name

First Name

Spouse's Name (if applicable)

Address

City

State

9 digit Zip Code

Phone Number

New or Renewal

please circle one of the above

e-mail address

Anniversary (if married more than 40 years)

Name of the Person Who Encouraged You To Become a Member

Questions:

Please remit this form along with your yearly dues to:
(\$35 USA/Canada or \$50 Foreign)

Ann McMorris
PO Box 4361

H
O
A
C
G
A

Souvenirs & Books - Order Form

| | |
|---|----------|
| _____ HOACGA Educational Series Book I | \$17.50 |
| _____ HOACGA Educational Series Book II | \$20.00 |
| _____ HOACGA Educational Series Book III | \$20.00 |
| _____ PLATE HOLDERS—Dozen, clear plastic 5" base, white wire 4" back holds plates and bowls | \$21.50 |
| _____ SMALL SIZE PLATE HOLDERS—Dozen, clear plastic base, white wire, good for pin trays & small bowls or plates | \$20.00 |
| _____ COMPLETE NOTEBOOK - 22 Sections | \$223.00 |
| _____ NOTEBOOK INDEX SET | \$ 5.00 |
| _____ 2003 ROSTER | \$ 1.50 |

HOACGA SOUVENIRS:

| | |
|--|---------|
| _____ 1993 Ruby Red 6" "Good Luck" Plate (20th Anniversary) | \$40.00 |
| _____ 2001 Vaseline Opal Hatpin Holder | \$55.00 |
| _____ 2002 Emerald Green Hatpin Holder | \$55.00 |

USA Shipping & Handling included in all pricing

Name: _____

Address: _____

City: _____ State: _____ Zip: _____

SEND ORDERS TO:

Ann McMorris, PO Box 4361, Topeka, KS 66604-0361

SHIPPING & HANDLING (S&H) INFORMATION

The shipping charges for members who reside outside the USA will be the actual cost.
Upon receipt of item(s), the member will be expected to reimburse the club
for the actual cost of shipping, as indicated by the postage on the package.
At the time of placing your order, please indicate your shipping preference (air or surface).

CLOSEOUT SALE!

Order Form – Video Tapes

HOACGA CONVENTION SEMINAR VIDEO TAPES

1 Tape for \$10.00 (previously \$20.00); 3 Tapes for \$25.00;

1 Longplay Tape for \$25.00 (previously \$35.00)

| | |
|---|---------|
| _____ "Red Carnival Glass" (Richard Cinclair, Bob Allaire & Joyce Seale) | \$10.00 |
| _____ "Shades of Blue" (Richard Cinclair) | \$10.00 |
| _____ "Poppy & Rose Show Pieces" (Tom Mordini) | \$10.00 |
| _____ "Fenton Two Flower" (Bob Stremming) | \$10.00 |
| _____ "Carnival Glass Smalls" (Eleanor & Jack Hamilton) | \$10.00 |
| _____ "Small Plates" (Smokey Cloud) | \$10.00 |
| _____ "Northwood Peacock & Urn Ice Cream Sets" (Harold Cox) | \$10.00 |
| _____ "Carnival Glass Collecting Experiences" (Carl & Ferne Schroeder) | \$10.00 |
| _____ "Heinz 57 Variety Carnival Glass Collection" (Jerry & Carol Curtis) | \$10.00 |
| _____ "Miniatures" (John & Lucile Britt) | \$10.00 |
| _____ "Table Sets" (Leonard, Kremer & Grissom) | \$10.00 |
| _____ "Plates" (Ruth Green & Richard Cinclair) | \$10.00 |
| _____ "Plethora of Patterns" (Dean & Diane Fry) | \$10.00 |
| _____ "Millersburg" (Dick & Jennie Hostetler) | \$10.00 |
| _____ "Swung Vases" (Dave & Joan Doty) | \$10.00 |
| _____ "Holly Pattern" (John Mikkonen) | \$10.00 |
| _____ "Imperial Glass" (Norene Duran) | \$10.00 |
| _____ "The Molding Process" (Howard Seuffer of Fenton Glass Co.) | \$10.00 |
| _____ "Iridescence" (97, John Muehlbauer) | \$10.00 |
| _____ "Plates" (97, Judy Maxwell) | \$10.00 |
| _____ "98 Aqua Opal Display" (Discussion by Jim Seeck) | \$10.00 |
| _____ "98 Recollection of Collectors" | \$10.00 |
| _____ "98 Causes of Imperfections in Glass" (Fenton/Seuffer) | \$10.00 |
| _____ "98 Britt Award/Grissoms, Banquet/Cinclair" LONG PLAY | \$25.00 |
| _____ "Aqua Opal, Recollection of Collectors, Causes of Imperfections in Glass" (Fenton/Seuffer) LONG PLAY | \$25.00 |
| _____ "99 Fenton Glass" (Don & Barb Chamberlain) | \$10.00 |
| _____ "99 Recollections of Collectors" | \$10.00 |
| _____ "99 Millersburg Display" | \$10.00 |
| _____ "99 Britt Award Luncheon" (George & Mavis Loescher) | \$10.00 |
| _____ "99 Banquet Green Millersburg" (Bill Richards, Sr.) | \$10.00 |
| _____ "00 Wal-Mart Connection" (Jerry & Carol Curtis) | \$10.00 |
| _____ "00 Britt Award Luncheon" (Richard & Carol Cinclair) | \$10.00 |
| _____ "00 Plate Display" (Tom Burns) | \$10.00 |
| _____ "00 Shoppin' & Hopein'" (Galen & Kathi Johnson) | \$10.00 |
| _____ "03 Recollections & Memories" (George & Mavis Loescher) | \$11.50 |

Shipping & Handling \$1.00 per tape, # of tapes _____ x \$1.00 = S&H Total _____

Name: _____

Address: _____

City: _____ State: _____ Zip: _____

Send Orders To:

Ann McMorris

PO Box 4361; Topeka, KS 66604-0361

2004 HOACGA CONVENTION SCHEDULE

BREAKFAST IS SERVED EACH MORNING FROM

6:00 A.M. UNTIL 9:30 A.M.

MANAGERS RECEPTION EACH EVENING FROM

5:30 P.M. UNTIL 7:00 P.M.

(Included as part of the Hotel room price)

If you have an item for the Silent Auction please check-In with
Ed Kramer (Room 202)

IF YOU HAVE A ROOM DISPLAY, PLEASE SIGN IN AT THE
REGISTRATION DESK. ROOM DISPLAYS WILL BE JUDGED BY ALL
MEMBERS. PLEASE HAVE YOUR DISPLAYS VIEWABLE AT ALL
TIMES. BALLOTS ARE TO BE PLACED IN THE BALLOT BOX AT
THE REGISTRATION DESK.

TUESDAY, APRIL 20

9:00 A.M. to 4:00 P.M. - Open House featuring the collections of:
Charles & Eleanor Mochel / Cliff & Jo Ann Ball / Bob Grissom
Directions supplied - maps available at Embassy Suites Check-in desk

WEDNESDAY, APRIL 21

2:00 P.M. TO 5:00 P.M.: Registration in the Pre-conference area

6:30 P.M. to ????????? Hospitality SUITES 431 & 432

8:00 P.M. to 9:00 P.M.: Dirty Bingo --- SALON G & H.

THURSDAY, APRIL 22

9:00 A.M. to Noon: Registration in the Pre-conference area
Sale of 2004 & previous years Souvenirs, Educational Material and
other club items.

9:30 A.M. to 3:30 P.M.: Check-In of "Imperial Glass" pieces for Display;
SALON E

4:00 P.M.: Educational Program: "WHAT IF" - SALON F, G, & H
STACY & DESIREE WILLS

5:00 p.m. to 10:00 P.M.: View "Imperial Glass" Display; SALON E

7:30 P.M.: Educational Program: "Candlesticks" ED KRAMER;
SALON F, G, & H

8:30 P.M.: Hospitality, Pie & Coffee, ATRIUM AREA

FRIDAY, APRIL 23

8:00 A.M. to 9:30 A.M.: Registration, Pre-conference area

8:00 A.M. to 4:00 P.M.: View "Imperial Glass" display, SALON E

10:00 A.M.: Educational Program - "Imperial Glass" SALON E

12:30 P.M.: Luncheon & Auction of some special items
Presentation of the JOHN & LUCILE BRITT AWARD TO:
JOHN & JAN MUEHLBAUER ---- SALONS A, B, & C.

2:00 P.M.: Annual Business Meeting (After Lunch), SALONS A, B, & C

4:00 P.M. to 4:30 P.M.: OWNERS-Pick-Up glass from the "Imperial
Glass" display

6:00 P.M.: Auction Glass (JACK PRITCHARD COLLECTION) viewing -
SALON E, F, G, & H

8:30 P.M.: Hospitality (Cake & Coffee)---PARTY DECK.

SATURDAY, APRIL 24

7:00 A.M.: View Auction glass , SALONS E, F, G & H

8:00 A.M. to 9:00 A.M.: Registration, Pre-conference area

9:30 A.M.: Auction -JACK PRITCHARD Collection, SALONS E, F,
G, & H.

3:30 P.M.: Silent Auction ends - 2nd Floor outside double elevators

6:30 P.M.: Banquet- SALONS E,F,G & H
Room Display Awards --- Auction of Souvenir & Special Whimsey
Pieces

PETE AND PAULA BINGHAM SPEAKERS:
"COLLECTING MILLERSBURG"
Drawing for the \$1000.00 raffle prize

SUNDAY, APRIL 25

6:30 A.M. to 10:30 A.M.: -"Ready for the trip Home" complimentary
cooked-to- order breakfast - PARTY DECK AREA.

CARNIVAL GLASS - FOR SALE

RICHARD CINCLAIR

4404 Briar Hollow, Plano, Texas 75093
972 596 0014 / rjc4470@dcccd.edu

| | | |
|-------|---|---------|
| EB EI | Electric Blue Grape Arbor Tumbler | 425.00 |
| B EI | Lucile Water Pitcher | 555.00 |
| * EI | Teal Green Horse Medallion JIP | 625.00 |
| * EI | Lime Green Rose Show Bowl | 1895.00 |
| * EI | Amber Grand Thistle Water Pitcher | 450.00 |
| M EI | Grape & Cable Stippled Plate | 1450.00 |
| R EI | Stag & Holly Spatula Ftd. Bowl | 1450.00 |
| * EI | Smokey Lavender G & C Sweetmeat | 265.00 |
| W EI | Beaded Cable Rose Bowl | 375.00 |
| AO EI | Diamond Points Vase | 1750.00 |

All are very pretty and mint. Pictures are available

GREG WARHOL

POB2385 Mt. Pleasant, SC 29465
843/971-6120 gfwarhol@comcast.net

| | | |
|--------|--|---------|
| A EI | Banded Drape Enameled (Iris) Tankard | 1050.00 |
| EB EI | Butterfly and Fern Pitcher, a super example | 700.00 |
| G EI | Columbia Vase, scarce | 285.00 |
| IB EI | Diamond point 11" Vase, perfect | 400.00 |
| EI | Sapphire Fine Rib 10.5" vase, nice | 225.00 |
| W EI | Grape Arbor Tumbler | 80.00 |
| LIG EI | Hearts & Flowers PCE Bowl | 1450.00 |
| EI | Sapphire Thin Rib mid size 14" Vase | 1200.00 |
| W EI | Three Fruits, stippled, ruffled bowl, scarce | 350.00 |
| W EI | Tree Trunk mid size 13" vase | 625.00 |

CARNIVAL GLASS - FOR SALE

DICK & DIANE WETHERBEE

11 Baker Pond Rd Ext., Charlton, MA 01507
508-248-0038 / ddwbee@aol.com

| | | |
|--------|---|--------|
| EI P | Singing Birds (N) Mug, real pretty oneperfect | 85.00 |
| EI M | Windflower 9" Flat Plate, nice/even satin color, real pretty | 135.00 |
| EI PO | Stippled Single Flower Framed 8" Handgrip Plate, super color & lots of opal | 110.00 |
| EI P | Four Flowers Varient 10" Bowl w/Thumbprint back, Rare Bowl | 450.00 |
| EI M | Tree Trunk (N) 7" Squatty Vase, Outstanding Marigold color, A Beauty | 135.00 |
| EI Amy | Stippled Rays 6" Rosebowl, A Rare Stippled Rays shape, Real Pretty | 35.00 |
| EI M | Open Rose 6" Stippled Rosebowl, Dark Marigold and perfect | 55.00 |
| EI W | Persian Garden 6" IC Shaped sauce dish w/Cane Bktw back, Beautiful frosty white | 110.00 |
| EI MMG | Smooth Rays 8-1/2" Ruffled bowl, outstanding Marigold Milk Glass color on front and back, A Beauty | 195.00 |
| EI B | Two Fruits 6" 2-hld square shape divided bonbon, Beautiful shape and color | 135.00 |

LEE BRIIX

2400 NW 113th Street, Oklahoma City, OK 73120
405-286-2219

| | | |
|----|---|--------|
| M | Graceful Varient vase | 30.00 |
| M | Wine & Roses cider pitcher (cracked) exc. irid., scarce | 99.00 |
| M | Wine & Roses wine glass, exc. irid. | 65.00 |
| M | Octagon vase (open bubble on rim) | 50.00 |
| M | Diamond & Daisy Cut Pitcher (small chip on base) & one tumbler, rare | 100.00 |
| M | Coal bucket w/ wire handle, a rare miniature novelty | 120.00 |
| M | Beaded Acanthus milk pitcher | 75.00 |
| CI | Shrine Champagne, 1909 Louisville, KY, gold wash | 75.00 |
| CI | Shrine Champagne, 1910 New Orleans, exc. paint | 75.00 |
| CI | Shrine Champagne, 1911 Rochester, NY, exc. paint | 75.00 |

CARNIVAL GLASS - FOR SALE

LOUIS CARPICK

36 Center Road, Dudley, MA 01571
508-943-4223

| | | | |
|----|----|--|--------|
| M | EI | Brooklyn Bridge bowl..... | 300.00 |
| M | EI | Strawberry bowl, PC edge..... | 75.00 |
| IB | EI | Fruit & Flowers bon-bon..... | 325.00 |
| W | EI | Fruit & Flowers bon-bon..... | 300.00 |
| A | EI | Fruit & Flowers bon-bon..... | 100.00 |
| AO | EI | Bushel basket..... | 475.00 |
| W | EI | Fish scales & beads small plate..... | 160.00 |
| W | EI | Persian garden pool of pearls small plate..... | 155.00 |
| M | EI | Plain three in one small plate..... | 75.00 |
| AO | EI | Beaded cable rosebowl..... | 350.00 |

JIM ROACH

5356 Fairway Circle, San Angelo, TX 76904
325-944-4719

| | | | |
|----|----|--|--------|
| EB | EI | Heavy grape 8" plate, elect. blue..... | 250.00 |
| B | EI | Mae West Candlestick..... | 95.00 |
| M | EI | Muscadine tumbler, JAIN..... | 85.00 |
| M | EI | Grapevine & Spikes (marked JAIN)..... | 95.00 |
| W | EI | Pearl Grape & Cable Bowl..... | 95.00 |
| G | EI | Diamond Points vase, 11" tall..... | 95.00 |
| R | EI | Russet four pillars vase, 12-1/8" tall..... | 75.00 |
| M | EI | Wide Panel rosebowl..... | 45.00 |
| M | EI | Premium candlesticks (pair)..... | 75.00 |
| A | EI | Amber Open rosebowl, collar base, chip on 1 rose ... | 45.00 |

CARNIVAL GLASS - FOR SALE

MARIE BOYD

1769 NE State Road D, Weatherby, MO 64491
816-449-5491

| | | | |
|----|--|---|--------|
| M | | Floral & Grape pitcher w/ 6 tumblers..... | 300.00 |
| M | | Grape & Cable 2 handled bon-bon..... | 55.00 |
| M | | Stag & Holly 10-1/2" - 3 ftd bowl..... | 75.00 |
| DM | | Stag & Holly spatula ftd 8" bowl..... | 75.00 |
| M | | Stag & Holly 3-ftd, 11" bowl..... | 100.00 |
| M | | Lotus & Grape 6" bowl..... | 45.00 |
| M | | Louisa Egg Nog 9" bowl, w/ 6 cups..... | 90.00 |
| M | | Louisa 8-1/2" bowl..... | 50.00 |
| M | | Louisa 13-1/2" cake plate..... | 40.00 |
| M | | Louisa 9-1/2" bowl w/ 2 berry bowls..... | 75.00 |

LARRY & WANDA RILEY

11 Ashland Road, Paducah, KY 42003
270-898-3582

| | | | |
|----|----|---|---------|
| AO | EI | Three Fruits stippled bowl..... | 750.00 |
| A | EI | Peacock & Urn mystery bowl, 3/1 edge, Mlbg radium..... | 350.00 |
| AO | EI | Beaded Cable Rosebowl, 3 sm acid spots, but excel. irid..... | 250.00 |
| M | EI | Grape & Cable Stippled bowl, PCE, scarce..... | 275.00 |
| B | EI | Persian medallion compote, 3/1 edge..... | 100.00 |
| A | EI | Aqua Good Luck ruffled bowl..... | 1050.00 |
| B | EI | Reng. B. Hearts & Flowers compote..... | 1100.00 |
| M | EI | Singing birds mug, stippled..... | 75.00 |
| W | EI | Poppy Show bowl..... | 325.00 |
| A | EI | Grape & Cable hatpin holder..... | 225.00 |

RICHARD K PETERSON

Box 62, 709-11th Avenue, Clarkfield, MN 56223
320-669-7350

| | | | |
|---|----|---|----------------|
| A | EI | Amber Homestead Chop plate, 3 edgings..... | 1500.00 |
| G | | Not iridized Shell & Jewel creamer & sugar covers.... 4 Machine copies of Presznick books..... | 20.00 10.00 |

CARNIVAL GLASS - WANTED

SUSAN HOLM

3398 Shady Grove Road, Cabool, MO 65689
417-962-3927

- Green Stopper for Imperial Wine Decanter
Imperial 474 Marigold & Smoke tumblers
-

BLACKIE SCHOLLES

24116 - 221st Lane SE, Maple Valley, WA 98038
Home: 425-432-3835; Cell: 206-948-8883

- Open Edge Plates
-

NORMAN & CHERRY ANGELL

1458 Dartt Hill Road, Bethel, VT 05032
802-234-9855

- Drapery vase, aqua opal
 - Daisy & Drape vase, ice green
 - Double scroll candlestick, amberina
 - Peacock & Grape plate, spatula ftd., amethyst
-

DICK & SHERRY BETKER

11053 S 76th Street, Franklin, WI 53132
414-425-0632 / duganblue@aol.com

ELECTRIC WITH NO DAMAGE PLEASE (ALL PURPLE)...

- Broken Arches punch bowl base
 - Broken Arches punch cups
 - Fashion Sugar or Creamer
 - Flute creamer
 - S-repeat punch cups
 - S-repeat punch bowl
-

LLOYD WARD

PO Box 956, Mayfield, KY 42066
270-251-2005 (anytime)
1 Piece, 20 Pieces, or a collection.
All discussions confidential.

COMBINED SAN DIEGO COUNTY & SOUTHERN CALIFORNIA CARNIVAL GLASS CLUBS 10TH ANNUAL CONVENTION

MARCH 3-6, 2004

Ayres Suites (Note New Hotel Name)
1945 E Hold Blvd., Ontario, CA 91764

Phone: 909-390-7778 / Fax: 909-937-9718

Rate: \$89 per night/Suite (registration deadline for rate-Feb 13)

SCHEDULE OF EVENTS:

WEDNESDAY:

Complimentary Breakfast/Free Ice Cream Social/Jim Seeck with
"Carnival Glass' Weakest Link"

THURSDAY:

Complimentary Breakfast/Seminar-Gary Lickver; "California
Sweet Oranges"/Midnight Auction

FRIDAY:

Complimentary Breakfast/Program-Galen & Kathi Johnson;
"Fabulous or Frivolous Finds"/Auction Preview

SATURDAY:

Complimentary Breakfast/AUCTION/Banquet-Pete & Paula
Bingham; "Super Bowl in March"/RAFFLE PRIZE-Marigold
Show Plate

THE HOSPITALITY ROOM WILL BE OPEN MOST OF THE TIME
For Registration Information contact: Betty Robertson 805-482-3473

KEYSTONE CLUB CARNIVAL GLASS CONVENTION

MAY 20-21, 2004

Embassy Suites (near the Pittsburg Intl Airport)

550 Cherrington Pkwy., Coraopolis, PA

Phone: 412-269-9070

Discount Rate: \$95 + tax (registration deadline for rate is May 7)

Call Hotel for Shuttle Bus Service from the Airport

THURSDAY: Afternoon Seminar/Evening Banquet

FRIDAY: Morning Auction by Burns Auction Service

For Information Contact: Sharon Royle 610-777-8126

CARNIVAL GLASS EVENTS

| FUNCTION | DATES | REMARKS |
|----------------------|-------------------------|---|
| Convention & Auction | March 3-6 2004 | SDCCGC & SCCGC; 10th Annual Convention; Ayres Suites Hotel; 909-390-7778, Ontario, CA; \$89 (Suite Rate special rate deadline 2/13/04), contact Betty Robertson @ 805-482-3473 for information; Auction by Seeck Auction |
| Show & Sale | March 13 2004 | Twenty Third Annual Keystone-Old Carnival, Stretch, Custard and Victorian Glass; St. James Catholic Church, Lititz, PA; Contact Nancy Williams @ 610-374-9033. |
| Auction | March 20 2004 | Important Fine Antique Auction, Seeck Antique Auction Center, Mason City, IA |
| Convention & Auction | April 15-18 2004 | WWCGA Convention; Crown Plaza Hotel, Bridgeton, MO; 314-291-6700; Auction by Reichel Auction Svc., www.yourauctionpage.com ; Contact Ed Perva email subman@inteliport . |
| Convention & Auction | April 21-25 2004 | HOACGA Convention & Auction: Embassy Suites Hotel (Airport-free shuttle service available) \$102+tax up to 2 people, 3+ people is \$112+tax; 816-891-7788; Auction by Seeck Auction Co., selling the collection of Dr. Jack Pritchard. Special display of Imperial Glass. For more information contact Bob Grissom @ 816-356-5320, bobimocg@aol.com or Ann McMorris, email mcmorris@woodsland.com |
| Auction | May 22 2004 | Carnival Glass Auction, Seeck Antique Auction Center, Mason City, IA |
| Convention & Auction | June 22-26 2004 | ACGA Convention – Embassy Suites, Dublin, OH (Northwest Columbus) – 614-790-9000 (No Pets Allowed) – Pets allowed at Wyndham Hotel – 614-764-2200. Burns Auction Service selling some of the John & Ruth Phillips collection – Burns website www.tomburnsauction.com |
| Convention & Auction | July 14-17 2004 | ICGA Convention – Crowne Plaza Hotel – 11228 Lone Eagle Drive, Bridgeton, MO – 314-291-6700 – Seeck Auction Service will conduct the Auction of the John & Pat Rottschaefter collection. |
| Convention & Auction | September 23-25 2004 | NCCC/SJVCGC (Norther California & San Joaquin) Convention & Auction – Fresno Holiday Inn, Fresno, CA (across from the airport), this is a new location from previous conventions; Contact June McCarter @ 209-523-6778 |