

RETURN ADDRESS

H.O.A.C.G.A.
Eleanor Mochel
15427 Woodward Court
Overland Park, KS 66223

Please check your membership due date on the label and send dues to Ann McMorris if it is due. See page 2 for amount and address.

**MARCH
2004**

HOACGA

Heart of America Carnival Glass Association Inc.

HEART OF AMERICA CARNIVAL GLASS ASSOCIATION

(Since 1973)

President

Robert Grissom
7517 Evanston
Raytown, MO 64138
Phone: (816) 356-5320
e-mail: bobimocg@aol.com

Vice President

Don Lacock
PO Box 33
Delia, KS 66418
Phone: (785) 771-3125

Treasurer

Cliff Ball
572 W Park Street
Olathe, KS 66061
Phone: (913) 782-0415

Secretary

Send new & renewal memberships,
address changes, orders for educ.
matl. and souv. Make all checks
payable to HOACGA and send to
Ann McMorris. Membership:
\$35 USA & Canada, \$50 Foreign

Ann McMorris
PO Box 4361
Topeka, KS 66604-0361
Phone: (785) 478-9004
e-mail: memorris@woodslan.com

Bulletin Secretary

Send ads & articles for bulletin
no later than 5 days prior to the end
of the month.

Eleanor Mochel
15427 Woodward Court
Overland Park, KS 66223
Phone: (913) 685-2182
Fax: (913) 685-2182 (call first)
e-mail: cmochel@yahoo.com

Membership expiration month and year is posted on address label
Following the name: (i.e. 504 = expires May 2004)

Opinions and information expressed in the HOACGA bulletin are not necessarily those of the Bulletin Secretary or Officers. Neither HOACGA nor Bulletin Secretary accepts any responsibility for accuracy or claims made, or for any outcomes resulting from the use of the information either printed or implied.

LEAF CHAIN PLATES

By Alan & Lorraine Pickup

Fenton's Leaf Chain pattern comes in plates large and small and various shaped bowls most likely from the same two mold sizes. The small bowls and plates vary in size from six to seven and one half inches depending on shape or flatness. The larger plates come in the standard 9" size and again the bowls vary in size according to their ultimate form. They were made in a wide variety of colors with several colors so rare that only one or two examples are known. Just looking at a few recent auction guides we note that a 7 1/2" plate sold for \$4100 in ice green, a 9" ice green ruffled bowl for \$2200, a yellow plate for \$5100. Aqua opal plates, and even amethyst plates are known and command very substantial prices.

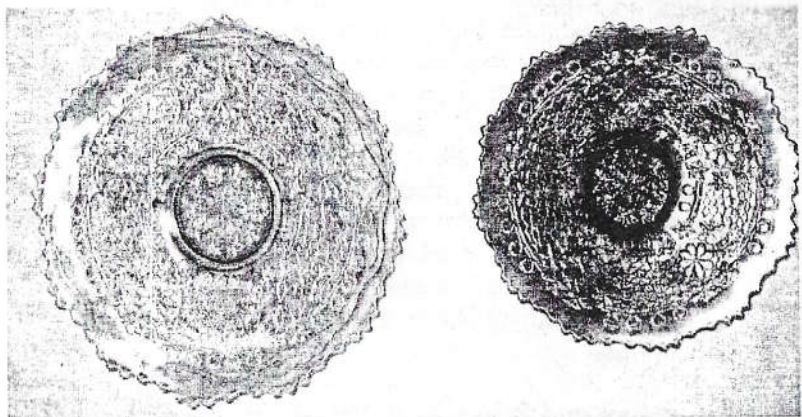
The small plates and bowls have the Horse Chestnut pattern reverse with a stippled background. The larger plates and bowls carry the Bearded Berry pattern on the back. Don't confuse this Leaf Chain pattern with the similar motif of Fenton's Cherry Chain pattern. The Cherry Chain's bowls and plates have an Orange Tree pattern on the reverse.

The Edwards/Carwile seventh edition of the Standard Encyclopedia Of Carnival Glass states that the pattern is known in bowls, plates and bonbons. We are not familiar with the bonbon shape and cannot find any record of past sales of this shape. But with today's access to the carnival glass-collecting world by way of the Internet, many previously unknown shape and colors have been discovered in the various patterns.

Our picture illustrates the two plate sizes in the most common color, marigold. And also illustrates the degree of colors available from a delicate pastel marigold to an intense dark marigold. The prices on marigold nine-inch plates seem to vary to a great extent depending on the intensity of color. With reference to Tom Mordini's 2001 auction prices realized guide, the typical nine inch marigold plates sold from \$180 to \$400 price range. But the dark marigold plates brought prices of \$700, \$1250 and \$2200. Wow!

LEAF CHAIN PLATES continued...

That is quite a wide price range considering the marigold plate is regarded as "the most common color" and you have to wonder how the buyers arrived at those values.



Waffle Block Handled Nappy

By Barb Chamberlain

Another interesting piece has been found by our friend, the prominent Greeley, Iowa collector. He discovered a one handled nappy in the Waffle Block pattern at a local estate auction. It would probably be classified as a pastel marigold with nice soft iridescent highlights.

The only book that we have that mentions this particular shape is in Edward's and Carwiles' Standard Encyclopedia of Carnival Glass. They don't write about it in their text, but have a listing in their price guide.

This pretty nappy measures about 5 1/2" in diameter, with a measurement of 6 3/4" from the edge of the handle to the opposite side of the bowl. It stands about 2 3/8" tall.

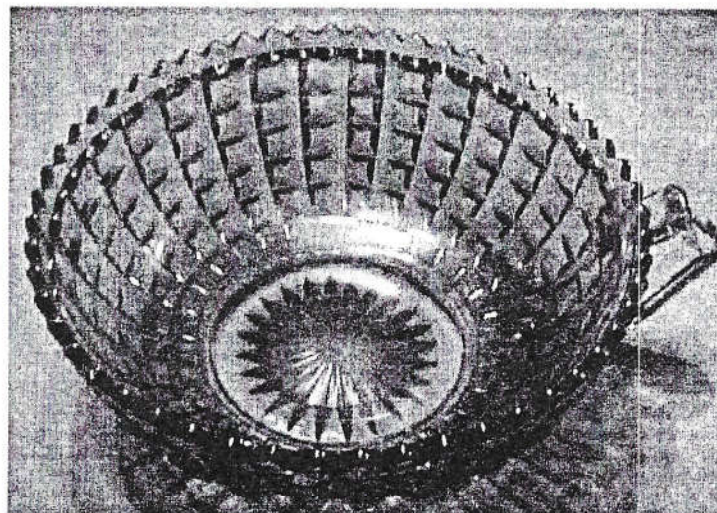
Waffle Block Handled Nappy continued...

Many other shapes have been found in the Waffle Block pattern. Probably the most desirable pieces would be the tumblers, water pitchers, the large spitoon shaped whimsey, and the very rare vaseline handled basket.

Mostly found in marigold or clambroth, the Waffle Block pattern can also be found in teal, but only baskets and a square bowl have been found in this color, according to Dave Doty on his nice internet site.

While rather scarce, the one handled nappy would not bring high prices at auction, but would provide those of us who like unusual pieces to add them to our collections for a modest price.

If you have other items in teal or vaseline or an unreported shape, it would be great if you could let either Eleanor Mochel or me know, so we could include it in an upcoming bulletin.



KALEIDOSCOPE

By Ruth Herrington

Don't be fooled by the name... there are no moving parts to this bowl. Even so, it has interesting lines and if you find it with good iridescence, there could be a multitude of colors to enjoy. The maker is unknown at this time. I think it 'feels like' a McKee or Jenkins piece, but it could be European. My guess is that it dates from the 1920's or early 1930's. The only reference I could find is in *"The Standard Encyclopedia of Carnival Glass"* by Edwards/Carwile. In fact, since there are no other references, the authors of that book named it "Kaleidoscope."

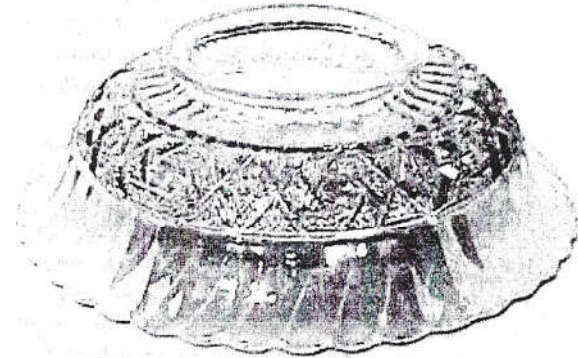
I think the name evokes a sense of excitement and adventure associated with a true carnival... which is where I got my first (fascinating) kaleidoscope many years ago. Allow me to quote Edwards/Carwile's description of the pattern: "The exterior design seems to be top and bottom sections of paneling, with a centered section of strange geometric figures, almost like calligraphy. Some of these figures are filled with file and some are plain." It is a difficult design to describe. I think it has similarities to Imperial's "Diamond Lace" but in a smaller, narrower proportion. The medium wide panels extend up to the edge giving the effect of petals.

I bought this bowl a couple of years ago while on vacation. I had decided to pick up the less expensive pieces that you see everywhere and use them in my entertaining. I particularly like "Star Medallion" but have included "Star and File" and "Starspray" as well as several carnival patterns in crystal. I hadn't seen this pattern before (or at least, I hadn't noticed it). I liked the look, so I bought it very inexpensively. Within a week or so, I found another one, and I haven't seen one since then. Now, I have two matching bowls for a splendid presentation of crackers, chips, salad, or fruit on the table.

This bowl is fairly large at 9" in diameter, standing 3" high from the table. The base is 4" across with a starburst molded into the underside of the base. The interior is plain, but it is iridised inside and out with a very pretty marigold, the only color known. Aside from this one size of bowl, it is also found in crystal and rosebowl. With such a limit in shapes and colors, it is no wonder it is overlooked. It does make a nice serving bowl.

KALEIDOSCOPE continued...

We are all involved in pooling information about carnival glass, so I leave you with a request from Edwards/Carwile: "We welcome information from anyone about this pattern." I encourage you to keep it in the back of your mind as you thumb through various glass books or catalogues. Perhaps, more information can be forthcoming.



THANK YOU TO OUR WRITERS

Eleanor Mochel

No one can know how important it is to have good, reliable writers for a Carnival Glass Newsletter until you are responsible for producing that Newsletter once a month.

This is the first month that Dean and Diane Fry do not have an article in our bulletin since I started my second term as Bulletin Secretary three years ago. I wish to thank them for their articles and pictures and all who have contributed articles for the bulletin; some each month and others sporadically.

I would encourage other members to write. If you are unable to write monthly, several times a year would be great. Members, be sure to express your appreciation to our writers for their efforts when you see them.

AND THE AUCTION BEAT GOES ON

By Bud & Gladys Martin

Ever since the Sunshine State Carnival Glass Assn. formed their Club 6 to 7 years ago, we have wanted to attend their convention. Since I've never been to Florida and wanted to see the Atlantic Ocean, we finally made the decision to head that way. We're here to verify that it is a long way from Little Rock, AR, to Deerfield Beach, FL, but, it was worth every mile!

We arrived on Wednesday afternoon and headed to their Hospitality (with a capital "H") Room sponsored by Jackie and Randy Poucher. We found an endless supply of snacks, drinks and sweets (incl. King Cakes from Louisiana) along with an endless supply of friendly faces (old friends and some new ones), all willing to talk about Carnival Glass. Everyone went out of their way to make us feel welcome.

Since Bud was stationed at the Naval Air Station in Key West, FL, in the mid 50's, we took a "little" side trip on Thursday. According to Bud, the only thing that looked familiar was the water. We thoroughly enjoyed the seafood, raw oysters and the sights as we passed thru the Keys and had lunch in Key West. Bud's request for a Visitor's Pass to tour the Base was denied due to new security rules since 9/11. We're so glad we made the trip.

Friday was another Fun Day and the weather was perfect for 74 Carnival Glass collectors to take a ferry ride up the Atlantic Intercoastal Waterway. Our guide was great and funny and enlightened us with tidbits of info on the owners of these multi-million dollar homes and estates. We're told one of them belongs to Tom Mordini (haven't been able to verify this yet). The ride ended with a fabulous lunch - all compliments of the Sunshine State Club!

Saturday's auction featured the Eric & Teresa Stafford Collection of super-great carnival glass. It would have been easier to mark your catalog with the pieces you didn't want rather than the ones you wanted to bid on. What an incredible auction put on by Jim Wroda and his associates. The room was packed to overflowing with 100+ bidders present. This crowd plus write-in bids and phone bidders kept the bidding lively-no begging necessary. And, very, very few people left until the last piece sold.

And the Auction Beat Goes On continued...

Top dollar pieces were:

16,000	M	Mburg Peacock at Urn 12" Chop Plate
10,000	P	Mburg Rose Columns 10" Vase
8,500	AO	N Poinsettia & Lattice Ftd ruffid Bowl
8,000	Dk M	F Rustic 20 1/2" Funeral Vase
7,700	Pkn M	F Star Flower Water Pitcher
6,500	Em Gr	N Rose Show Plate
5,000	Em Gr	I Homestead 11" Chop Plate
5,000	Elec Gr	N Poppy Show Plate
4,700	Ice Green	N Raspberry Water Pitcher
4,500	Elec P	N Tree Trunk 12 1/4" Vase
4,500	Lime Gr	N Rose Show Plate
4,000	Elec P	I Homestead 11" Chop Plate
4,000	Elec P	I Chrysanthemum 10" Chop Plate
4,000	P	Mburg Hanging Cherries 10" Chop Plate
4,000	P	Mburg Hobnail Water Pitcher

Even though we did not get some of the pieces we were interested in, Rick Stockhill, Stacey & Desi Wills, John & Loretta Nielsen, Pete & Paula Bingham, Paul & Dee Bekemeier, Randy & Jackie Poucher and John & Jeanette Rogers did just fine. In fact, Rick had so many pieces he couldn't get all of them in his suitcase. They found their way home to Michigan via Little Rock.

The grand finale was the Saturday Night Banquet. Everything from salads to desserts was served buffet-style and very delicious. Kudos and recognitions were given to members for their contributions to the Club and Convention. One innovative idea implemented by Sandy Sage enlisted 14 young members (ages 7-14) in a program to instruct future collectors. They will receive quarterly articles for their notebook and activities are planned for them at the next convention.

The Lottery with "strong-arm" assistance from Rich Brazel was a big success and netted a good sum for the Club. Laurie Wroda delighted us with her singing several solos written and recorded by Laurie and also a duet with Jeanette Rogers.

Gale Eichorst as banquet Speaker wowed and dazzled us with some rare and gorgeous vases from "A to Z". As always, Gail kept us entertained and informed. Our thanks to all the super nice people of the Sunshine State Carnival Glass Assn. for a great time and a great convention!!

ACQUIRING OUR CHOP PLATE

By Cliff Ball

Jo Ann and I have been collecting Carnival Glass for a little over ten years now and have put together a collection in which we feel some measure of pride. The one thing that our collection has been lacking was a chop plate.

When the brochure arrived in our Mail for Mickey Reichel's 13 Annual New Year's sale...we noticed that a Dugan Marigold Garden Patch Variant Chop Plate was included.

In checking Mordini's Price Guides for the ten years ending in 2002, we found that only one Marigold Garden Path Variant Chop Plate had been sold at auction during that time. Back in 1993, someone had given \$3,100 for the Marigold plate...which was noted as only 1 of 2 known at the time.

Purple chop plates of this designed seemed to be a lot easier to find, since fifteen of them had been listed in the 1993-2002 auction price guides. One of these sold for \$13,500 and another for \$10,000. The other thirteen purple ones had sold for an average price of around \$4,000.

When we arrived at Mickey's Auction Center, the Marigold Chop Plate was beautiful and in excellent condition. If one of these had brought \$3,100 in 1993...and none had been sold at auction since then, how much would I have to give to get this one? Christmas gifts for our five children and their spouses, eighteen grandchildren and a great grandchild had depleted the old checking account.

The bidding for the chop plate was brisk...and quickly the bids shot past \$2,000. At that point it appeared that my chance of taking home the plate was very slim.

I don't understand what happened, but the bids stopped, and I got the plate for \$2,300. I consider the plate a good buy...and I would not trade it for a purple one.

CARNIVAL GLASS SURVEY

We will be surveying Fenton Carnival Glass for the coming months in preparation for the 2005 Celebration of The Fenton Art Glass Company's 100th Year in Business. Please return the questionnaires the first month as we have more to do and would prefer not to have to repeat the same form.

ALL FENTON PITCHERS THAT YOU OWN

PITCHER PATTERN	COLOR	# TUMBLERS

FENTON PUNCH BOWLS THAT YOU OWN (please note interior pattern)

PUNCH BOWL PATTERN	CUPS	COLOR	INT. PATTERN

Place
37¢
Stamp
Here

HOACGA
Research Project

HOACGA
Eleanor Mochel
15427 Woodward Court
Overland Park, KS 66223

- - - - - Fold here, please tape top closed - - - - -

COMMENTS

**JIM WRODA AUCTION SERVICES c/o
MIDWEST AUCTIONEERS & REALTY, INC
5239 St. Rt. 49 S., Greenville, OH - 937-548-2640
PRICE RESULTS: January 31, 2004 SSCGA Carnival Glass Auction**

- 1,200 11. Regal Iris AO Contemporary GWTW lamp. Very Rare contemporary item. Not many chances to buy one of these! BIG!!
- 1,000 15. N-WOOD CUSTARD W/NUTMEG 15" DANCING LADIES HANGING LAMP. SUPER RARE!!!! THE STORY IS THIS LAMP CAME RIGHT OUT OF HARRY NORTHWOODS HOUSE!
- 4,000 19. IMPERIAL ELEC. PURPLE 11" HOMESTEAD CHOP PLATE. THIS IS THE ONE. YOU WILL WAIT YEARS TO SEE ONE LIKE THIS AGAIN. PERFECT PRESSING W/PERFECT IRID.
- 5,000 19A. IMPERIAL EMERALD GREEN 11" HOMESTEAD CHOP PLATE. EXTREMELY RARE! JUST AN ABSOLUTELY GORGEOUS CHOP PLATE!
- 4,000 20. IMPERIAL ELEC. PURPLE 10" CHRYSANTHEMUM CHOP PLATE. KILLER PLATE!! RARE
- 1,400 21. Imperial marigold 10" Chrysanthemum chop plate. Super radium irid. on a scarce plate.
- 2,000 22. IMPERIAL SMOKE ROBINS WATER PITCHER. FANTASTIC PASTEL IRID. ON A RARE PITCHER!
- 16,000 41. M-BURG MARIGOLD 12" PEACOCK AT URN CHOP PLATE. SUPER IMPRESSIVE RADIUM IRID. AN EXTREMELY RARE ITEM WITH OUTSTANDING RADIUM IRID.! A TOP PIECE IN ANY CHOP PLATE OR MILLERSBURG COLLECTION!
- *4,000 42. M-BURG PURPLE 10" HANGING CHERRIES CHOP PLATE. RADIUM IRID. RARE! Small no harm nick on collar base.
- *10,000 48. M-BURG PURPLE 10" ROSE COLUMNS VASE. SUPER RADIUM BLUE IRID.. THE ABSOLUTE BEST ONE OF THESE I HAVE EVER SEEN! WOW!
- *3,500 49. M-BURG MARIGOLD MILK GLASS HANGING CHERRIES POWDER JAR. EXTREMELY RARE! ONLY 2 PIECES KNOWN IN MMG TOTAL IN MILLERSBURG!!! TINY NO HARM NICK ON LID EDGE.
- 1,000 51. M-burg marigold Hanging Cherries water pitcher. Another killer radium item!
- 4,000 58. M-burg purple Hobnail water pitcher. Outstanding radium irid! VERY RARE!
- *1,450 63. M-BURG GREEN MULTI-FRUITS & FLOWERS TUMBLER. UNBELIEVABLE RADIUM IRID! WOW! RARE!
- 1,900 67. M-BURG MARIGOLD 6" PEACOCK AT URN PLATE-VERY FLAT AND VERY VERY RARE! NEVER SEEN ONE BEFORE!
- 3,000 74. M-BURG MARIGOLD 9" OHIO STAR VASE. SUPER RADIUM BLUE IRID. THROUGHOUT! RARE!

- 8,500 76. N-WOOD AQUA OPAL 8 ½" POINSETTIA & LATTICE FOOTED RUFFLED BOWL. SUPER RADIUM & STRETCHY IRID ON A SUPER RARE BOWL. HAS OPAL DOWN ON THE FEET!!!
- 1,150 77. N-wood dark pumpkin mari. 8 ½" Poinsettia & Lattice footed ruffled bowl. SUPER dark!
- 2,200 78. N-WOOD IG OPAL 8" ROSE SHOW RUFFLED BOWL. LOT'S OF OPAL AND IRID! OUTSTANDING! VERY RARE!
- 1,200 79. N-WOOD LIME IG 8" ROSE SHOW RUFFLED BOWL. RARE!
- *6,500 80A. N-WOOD EMERALD GREEN 9" ROSE SHOW PLATE. THIS PLATES' IRID. IS IN A CLASS OF IT'S OWN. VERY RARE AND EMERALD ALL THE WAY! KILLER!
- 2,000 80B. N-WOOD IB 9" ROSE SHOW PLATE. WOW! THIS IS DEFINITELY THE ONE! RARE WITH KILLER IRID!!!!
- *1,900 81. N-WOOD ELEC. BLUE 9" ROSE SHOW PLATE. WOW!! THIS IS IN THE "JUST BUY IT" CATEGORY!
- 4,500 81A. N-WOOD LIME GREEN 9" ROSE SHOW PLATE. ANOTHER KILLER PASTEL! DEFINITELY LIME! RARE!
- 3,250 81B. N-wood IG 9" Rose Show plate. Brilliant pastel blue irid. Double WOW!!!
- 2,200 81C. N-wood mari. 9" Rose Show plate w/Super Hot Pink & Blue irid. A Screamer!!
- 5,000 82. N-WOOD ELEC. GREEN 9" POPPY SHOW PLATE. FANTASTIC BLUE IRID. A DEFINITE KEEPER! VERY SCARCE!
- 1,000 83. N-WOOD ELEC. BLUE 8" POPPY SHOW RUFFLED BOWL. TOP SHELF PIECE! SCARCE.
- 1,200 85. N-wood IB 8" Poppy Show ruffled bowl. Very hard to find bowl. Super color!!
- 2,500 86. N-WOOD GREEN 9" HEARTS & FLOWERS PLATE W/ RIB BACK. VERY RARE PLATE! NICE.
- 3,500 90. N-WOOD SAPPHIRE 10" WISHBONE RUFFLED BOWL W/BW BACK. VERY RARE! HARDLY EVER SOLD. VERY PRETTY IRID.
- 1,000 91. N-wood IG 8 ½" Wishbone footed ruffled bowl. Another pastel beauty! Scarce.
- 4,700 95. N-WOOD IG RASPBERRY WATER PITCHER. A VERY RARE PASTEL!! NICE!
- 1,800 101. N-WOOD PASTEL AO 9" THREE FRUITS PLATE W/ RIB BACK. WHAT A WONDERFUL PASTEL EXAMPLE.
- 2,000 102. N-WOOD SAPPHIRE 9" THREE FRUITS STIPPLED PLATE W/RIB BACK. VERY NICE IRID ON A VERY RARE PLATE!
- 3,250 102A. N-WOOD HOREHOUND 9" THREE FRUITS STIPPLED PLATE W/RIB BACK. GREAT PASTEL IRID! VERY RARE COLOR!

- 2,500 104A. N-wood emerald green 9" Three Fruits plate w/plain back. Just Beautiful!! Nothing else to say!!! RARE!
- 1,400 105. N-WOOD ELEC. GREEN GRAPE & GOTHIC ARCHES WATER PITCHER. VERY RARE COLOR WITH SUPER NICE BLUE IRID.
- 3,500 112. FENTON KILLER ELEC. BLUE STAR FLOWER WATER PITCHER. SUPER RARE! A REAL BEAUTY! THIS IS THE BEST ONE EVER!!
- 7,700 113. FENTON DARK PUMPKIN MARI. STAR FLOWER WATER PITCHER. WOW!!! ABSOLUTELY THE BEST. EXTREMELY RARE! THIS IS AN UNBELEIVEABLE PITCHER!
- 2,000 114. Fenton blue 8 ½" Peter Rabbit ruffled bowl w/BB ext. Sharp pressing with very nice irid. RARE!
- 1,600 115. Fenton green 8" Peter Rabbit ICS bowl w/BB ext. Very nice and very rare color!
- 1,150 116. Fenton mari. 8 ½" Peter Rabbit ruffled bowl w/BB ext. Super sharp pressing with very nice irid.
- 2,000 117. FENTON GREEN 9" LOTUS & GRAPE PLATE. OUTSTANDING DETAIL AND IRID. NO TRADE UP NEEDED HERE!
- 3,350 119. FENTON ELEC. BLUE 9" PEACOCK & GRAPE PLATE (COLLAR BASE). THE IRID. ON THIS PLATE IS OFF THE CHARTS!!
- 8,000 120. FENTON DARK MARIGOLD RUSTIC 20.5" FUNERAL VASE WITH 4 ¼" BASE. THE BEST ONE AROUND! SUPER!
- 1,500 121. Fenton purple Rustic 20" funeral vase with 5 ¼" base. Very rare & pretty.
- 4,500 121A. N-WOOD PURPLE/ELEC. PURPLE 12 ¼" TREE TRUNK ELEPHANT FOOT FUNERAL VASE W/PLUNGER 5 ¼" BASE. HAS A NICE 7 ¾" FLARED TOP. RARE WITH SUPER ELECTRIC HIGHLIGHTS.
- 2,900 123. Fenton red 8 ½" Dragon & Lotus 8-ruffle bowl. Outstanding piece of red!
- 3,100 126. FENTON RED 10 ½" RUSTIC VASE W/CRE. SUPER RARE. HARDLY EVER SOLD!
- 1,000 138. Fenton Vaseline 8" Peacock & Urn ICS bowl w/BB ext. Very Rare Color!
- 3,500 150. DUGAN PURPLE 10" BARNYARD SIX RUFFLE BOWL. HAS SUPER ELEC. HIGHLIGHTS IN CENTER.
- 1,900 185. Imperial elec. purple pair Six Sided candlesticks. Super! Very scarce!
- 1,000 204. N-WOOD ELEC. BLUE 10" PEACOCK AT URN MIC BOWL. SUPER ELEC. IRID! VERY SCARCE. VERY SCARCE
- 1,250 204A. N-WOOD PASTEL MARI. 10" PEACOCK AT URN MIC BOWL. TREMENDOUS PASTEL BLUE IRID. RARELY SEEN W/ THIS KIND OF IRID!!!

January 31, 2004 SSCGA Carnival Glass Auction continued...

1,700 208A. N-WOOD MARI. 9" PEACOCKS STIPPLED PLATE W/
RIB BACK. SUPER RADIUM BLUE & PINK IRID!! WOW!!! RARE!!

1,200 209. N-WOOD IB 9" PEACOCKS PLATE W/PLAIN BACK.
SUPER PASTEL IRID. VERY RARE PLATE

1,050 215A. N-wood IG Peacock at the Fountain stemmed compote.
Very Rare!

1,100 222. N-WOOD WHITE GRAPE & CABLE FOOTED
FERNER. VERY RARE! GREAT PASTEL IRID ON A RARE ITEM!

2,300 259. FENTON BLUE 7" PARKERSBURG 1914 ELK PLATE.
RARE. SUPER COLOR! VERY HARD TO FIND PLATE

1,600 260. FENTON BLUE 7" ATLANTIC CITY 1911 ELK PLATE.
SUPER! RARE PLATE.

2,800 261. FENTON MARIGOLD 7" ILLINOIS SOLDIERS &
SAILORS PLATE W/BERRY EXT. RARE!

2,000 262. FENTON BLUE 7" ILLINOIS SOLDIERS & SAILORS
PLATE W/BERRY EXT. RARE!

2,900 265A. FENTON MARI. 8 1/2" HEART & HORSESHOE
(FENTON GOOD LUCK)

8-RUFFLE BOWL. NICE DARK COLOR ON A VERY RARE BOWL.

APRIL ANNIVERSARIES

Raymond & Marie Boyd

1769 NE State Route D

Weatherby, MO 64497

Married April 28, 1951

Jack & Eleanor Hamilton

PO Box 20203

Waco, TX 76702

Married April 6, 1947

Dean & Diane Fry

50 Deborah Lane

Whiteland, IN 46184

Married April 26, 1952

Bernie & Nancy May

703 Stone Rd.

Westminster, MD 21158

Married April 2, 1954

Eldon & Edna Kring

Rt. 1, Box 426

Kempner, TX 76539

Married April 2, 1954

*Anyone wishing to have
their anniversary date
posted in the Bulletin
should notify the Bulletin
Secretary (40 years
married and above)*

SURVEY REPORT REVISED

By Eleanor Mochel

IMPERIAL LOGANBERRY VASES

Amber	12
Green	2
Helios	1
Marigold	8
Purple	9
Olive	0
Smoke	2
Teal	2
Clambroth	1

IMPERIAL 9" GRAPE PLATE

Amber	4
Aqua	2
Clambroth	1
Helios	2
Marigold	6
Pastel Marigold	1
Purple	12
Teal	1

COSMOS AND CANE PITCHER

Honey Amber	3
White	4

2004 HOACGA - CONVENTION

April 21 - 25, 2004

HOTEL - Embassy Suites Hotel, 7640 N.W. Tiffany Springs Parkway, Kansas City, Missouri (At the Kansas City International Airport) Shuttle service is available from the Airport, use the courtesy phone and call the Embassy Suites.

RESERVATIONS: Reservations can be made by calling the Hotel directly at 816-891-7788, between the hours of 7:00 A.M. & 7:00 P.M. on weekdays. Ask for reservations, and mention the HOACGA convention. FAX No. at the hotel is 816- 891-0630.

PETS: Small pets are allowed. When you check-in please tell the clerk that you will have an animal in the room.

ROOM RATES: The rate for all suites, is \$102.00 + tax, per day for single or double occupancy. For three or four occupancy, the rate is \$112.00 + tax, per day. The room rate includes a free cooked-to-order breakfast, and a manager's reception each evening, from 6 to 8 pm.

The Hotel has assessed a charge to the club for use of the meeting rooms, predicated on the total number of rooms occupied during the convention. So, even if you are only staying Friday night for the Saturday auction, please make your reservations at the Embassy Suites.

RESERVATION DEADLINE: One Hundred and Twenty-Five(125) rooms have been blocked at the reduced rate, but the block is only good until March 31, 2004. If you are thinking of attending please make your reservation, they can always be canceled, so make your reservations on or before March 31. After that date the rooms will be at their regular rate and a room may or may not be available. If you call for a reservation, and they tell you there are no rooms available, or if you have a problem making a reservation, please call Bob Grissom at 816-356-5320. We will make every attempt to accommodate everyone that wants to attend.

CANCELATION NOTICE: If you make a room reservation and then decide, after March 31, to cancel your reservation, please let Bob Grissom (816-356-5320) know and I will cancel your reservation. If you call and cancel your reservation with the hotel, the next person that comes in the door and wants a room will get the room. HOACGA will probably have members on a waiting list for the room....**RESERVATIONS MUST BE CANCELLED AT LEAST 24 HOURS PRIOR TO ARRIVAL.**

2004 HOACGA Convention Info continued...

DISPLAY OR SALE TABLES: If you will need a table(s), (6 ft) for your display or for selling glass, please request it when making your reservations. The table rental charge is \$15.00 per table, for the duration of the convention.

SMOKING: The only place that smoking is allowed in the Hotel is inside the individual Rooms and in the Bar area. The smoking floors are 3rd and 8th.

PRE-REGISTRATION: A registration form is included in this packet. You are encouraged to complete this form and return it with your check. It will eliminate a lot of work for the secretary during the convention, and it will expedite the registration. **THOSE MEMBERS WHO RETURN THEIR REGISTRATION FORM WILL HAVE THEIR NAME ENTERED INTO A DRAWING FOR A SPECIAL PIECE OF GLASS TO BE GIVEN AT THE CONVENTION BANQUET (YOU MUST BE PRESENT TO WIN).**

JOHN & LUCILE BRITT AWARD FOR EXCELLENCE IN CARNIVAL GLASS: It is always a pleasure to announce the honorees for the JOHN & LUCILE BRITT AWARD. This year the honorees are John & Jan Muehlbauer. They have been collecting carnival glass for more than 30 years. John has written many educational articles for various clubs and has been the featured speaker at many conventions. In the true spirit of the JOHN AND LUCILE BRITT tradition they are always willing to help and share their knowledge of Carnival Glass.

ROOM DISPLAYS: We encourage each of you to bring glass and set up a room display. Displays should be set up in your room window, so they can be viewed and judged from the outside. Displays are always an enjoyable, educational, and major part of the convention. Regardless of how many conventions you have attended there will be something in a room display that you have not seen before. As always you will see some outstanding pieces of glass along with some very unique ways of displaying it.

The Room Display judging is being changed this year. The displays will not be entered in any category. The members will judge the displays. The five displays receiving the most votes will be awarded a \$50.00 cash prize. Each member will be given a judging form in their registration packet.

2004 HOACGA Convention Info continued...

EDUCATIONAL PROGRAMS: A special "IMPERIAL GLASS" display is being planned. This is not a display of any particular color, pattern or rarity, just any "IMPERIAL CARNIVAL GLASS". Members are being asked to bring pieces of Imperial Glass for the Thursday & Friday display.

Staci and Desiree Wills will present an educational program, "What If". And Ed Kramer will present an educational program on "Candlesticks".

SOUVENIR: The 2004 Souvenir will be a Cobalt Blue "Guest Set". It is made by the Fenton Glass Co. This souvenir will be a very limited production, there will only be about 150 of these souvenirs produced.

Both, Fenton and Northwood made the "Guest Set" in the 1924 to 1927 period. Today these are not often found and very few collectors have one of these in their collection. It is an expensive souvenir, but one we believe the collector would want to have.

AUCTION: The glass to be auctioned on Saturday will be the Dr. Jack Pritchard collection. The Seeck Auction Company will present the auction. Dr. Pritchard and his late wife Bonnie have not been active collectors for about 20 years. This is another outstanding collection, with many Pitchers and Plates, Water Sets and some rare Pitchers. This auction will feature pieces that will be suitable for any collection. This is an opportunity to add some very good pieces to your collection. This is a "Must attend" auction for 2004. It will be an education just to view the glass. The Seeck Auction Company will send a complete brochure of the auction at a later time.

BANQUET: We are very pleased to have Pete & Paula Bingham as our banquet speakers. They will present a program on "Glass made by Millersburg," along with a few surprises.

WEDNESDAY EVENING: Because of the prohibitive cost increase of having a picnic, alternate plans are being made for the evening activities. We will continue the "Dirty Bingo."

SILENT AUCTION: If any member wishes to donate a piece of glass, or some other item, for the silent auction it would be appreciated very much. Ed Kramer, telephone 913-642-3587, will be the person in charge of the auction, if you have something to donate please call Ed.

Return Tickets and
Checks Made Payable to:

HOACGA
Attn: Ann McMorris
PO Box 4361
Topeka, KS 66604-0361

DIRECTIONS TO THE CONVENTION HOTEL
EMBASSY SUITES, KANSAS CITY AIRPORT
7640 N.W. TIFFANY SPRINGS PARKWAY
KANSAS CITY, MO 64135
TELEPHONE 816-891-7788

COMING FROM THE SOUTH - U.S. HIGHWAY 71:

EXIT (to the right) to I-435 North (Kansas City/Des Moines) - continue on I-435 North (exit to the right) for approximately 20 Miles. to EXIT 49A (Highway 152 West). Continue West for approximately 9 miles, EXIT to I-29, (Highway 71/ St. Joseph). Go North (about 1 mile) to EXIT 10 (Tiffany Springs Parkway). The Embassy Suites will be on your right.

COMING FROM THE SOUTH - U.S. HIGHWAY 71 (best route from 9:30 A.M. to 3:30 P.M.) (Alternate

Route) - EXIT I-435 North (Kansas City/Des Moines) STAY IN THE LEFT LANES, this is U.S. 71 Highway - continue for about 11 miles (you will encounter 3 stop lights) - When you are approaching downtown Kansas City - EXIT North I-35 and U.S. 71 (Center Lane) - after about 1/2 mile, EXIT I-29, I-35, and U.S. 71 (Saint Joseph/Des Moines) - continue (you will cross the Missouri River) for about 3 miles - EXIT - 8B - I-29 & U.S. 71 North (KCI Airport/Saint Joseph) - continue for about 10 miles to EXIT 10 (Tiffany Springs Parkway) - EMBASSY SUITES HOTEL will be on your right.

COMING FROM THE EAST - I-70:

EXIT from I-70 at EXIT 8B (Des Moines) to I-435 North - continue on I-435 North for approximately 10 miles, to EXIT 49A (Highway 152 West). Continue West for approximately 9 miles, exit to I-29, Highway 71, St Joseph. Go North (about 1 mile) to EXIT 10 (Tiffany Springs Parkway). The Embassy Suites will be on your right.

COMING FROM THE NORTH - I-35:

EXIT from I-35 at EXIT 16 (Liberty - Highway 152), turn right (West), continue on Highway 152 for

HOACGA 2004 CONVENTION DRAWING
Prize: One Thousand (\$1,000.00) Dollar Check
Donation: For a \$10.00 donation, your name will be entered 12 times as a possible winner for the \$1,000.00 prize drawing.

Name: _____ Address: _____
 City: _____ State: _____ Zip: _____

HOACGA 2004 CONVENTION DRAWING
Prize: One Thousand (\$1,000.00) Dollar Check
Donation: For a \$10.00 donation, your name will be entered 12 times as a possible winner for the \$1,000.00 prize drawing.

Name: _____ Address: _____
 City: _____ State: _____ Zip: _____

HOACGA 2004 CONVENTION DRAWING
Prize: One Thousand (\$1,000.00) Dollar Check
Donation: For a \$10.00 donation, your name will be entered 12 times as a possible winner for the \$1,000.00 prize drawing.

Name: _____ Address: _____
 City: _____ State: _____ Zip: _____

HOACGA 2004 CONVENTION DRAWING
Prize: One Thousand (\$1,000.00) Dollar Check
Donation: For a \$10.00 donation, your name will be entered 12 times as a possible winner for the \$1,000.00 prize drawing.

Name: _____ Address: _____
 City: _____ State: _____ Zip: _____

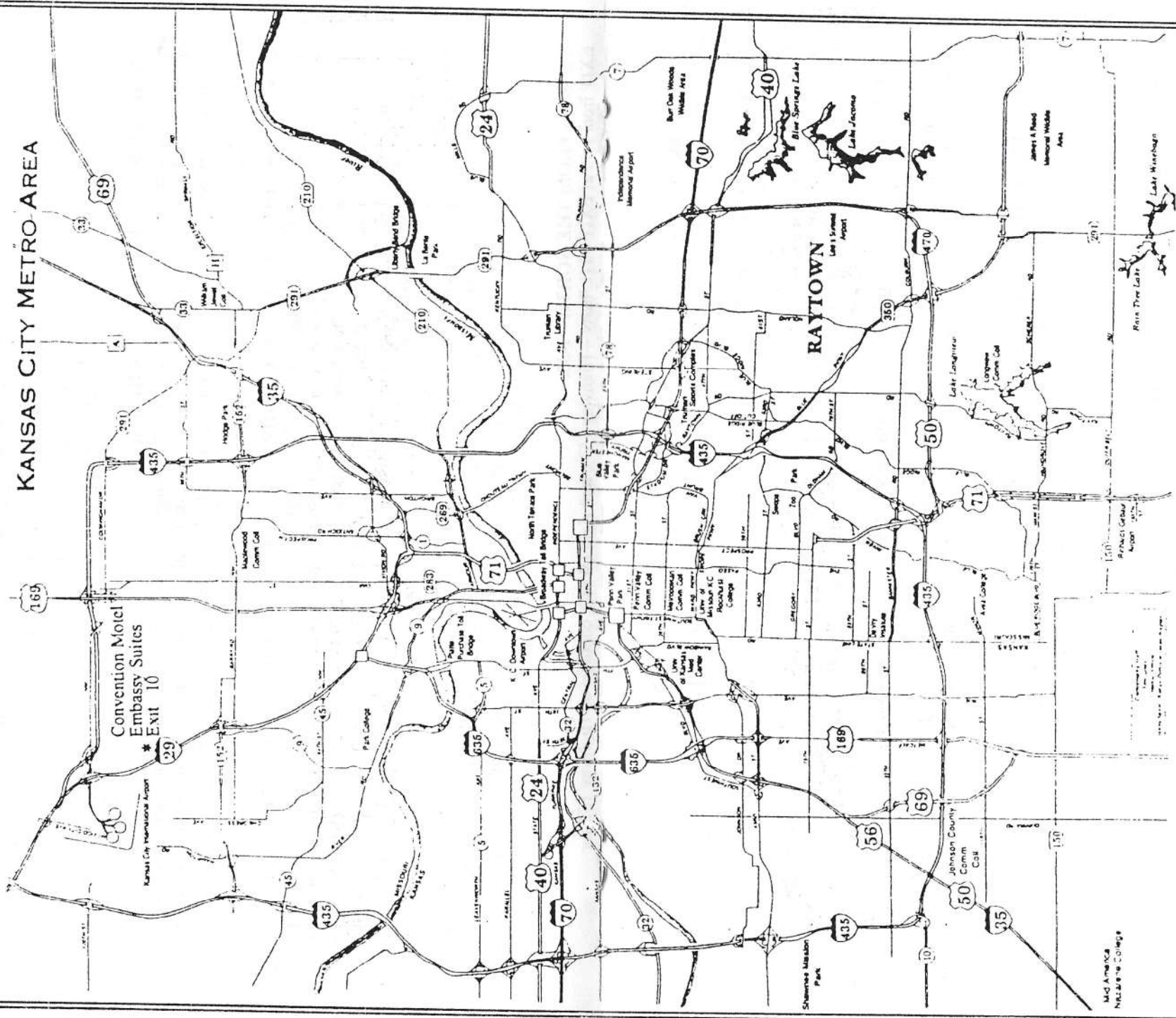
HOACGA 2004 CONVENTION DRAWING
Prize: One Thousand (\$1,000.00) Dollar Check
Donation: For a \$10.00 donation, your name will be entered 12 times as a possible winner for the \$1,000.00 prize drawing.

Name: _____ Address: _____
 City: _____ State: _____ Zip: _____

HOACGA 2004 CONVENTION DRAWING
Prize: One Thousand (\$1,000.00) Dollar Check
Donation: For a \$10.00 donation, your name will be entered 12 times as a possible winner for the \$1,000.00 prize drawing.

Name: _____ Address: _____
 City: _____ State: _____ Zip: _____

KANSAS CITY METRO AREA



Mid-America
Natl. College

HOACGA 2004 CONVENTION DRAWING**Prize: One Thousand (\$1,000.00) Dollar Check****Donation:** For a \$10.00 donation, your name will be entered 12 times as a possible winner for the \$1,000.00 prize drawing.

Name: _____ Address: _____

City: _____ State: _____ Zip: _____

HOACGA 2004 CONVENTION DRAWING**Prize: One Thousand (\$1,000.00) Dollar Check****Donation:** For a \$10.00 donation, your name will be entered 12 times as a possible winner for the \$1,000.00 prize drawing.

Name: _____ Address: _____

City: _____ State: _____ Zip: _____

HOACGA 2004 CONVENTION DRAWING**Prize: One Thousand (\$1,000.00) Dollar Check****Donation:** For a \$10.00 donation, your name will be entered 12 times as a possible winner for the \$1,000.00 prize drawing.

Name: _____ Address: _____

City: _____ State: _____ Zip: _____

HOACGA 2004 CONVENTION DRAWING**Prize: One Thousand (\$1,000.00) Dollar Check****Donation:** For a \$10.00 donation, your name will be entered 12 times as a possible winner for the \$1,000.00 prize drawing.

Name: _____ Address: _____

City: _____ State: _____ Zip: _____

HOACGA 2004 CONVENTION DRAWING**Prize: One Thousand (\$1,000.00) Dollar Check****Donation:** For a \$10.00 donation, your name will be entered 12 times as a possible winner for the \$1,000.00 prize drawing.

Name: _____ Address: _____

City: _____ State: _____ Zip: _____

HOACGA 2004 CONVENTION DRAWING**Prize: One Thousand (\$1,000.00) Dollar Check****Donation:** For a \$10.00 donation, your name will be entered 12 times as a possible winner for the \$1,000.00 prize drawing.

Name: _____ Address: _____

City: _____ State: _____ Zip: _____

approximately 1 mile; EXIT to I-29, Highway 71, St. Joseph. Go North (about 1 mile) to EXIT 10 (Tiffany Springs Parkway). The Embassy Suites will be on your right.

COMING FROM THE NORTH I - 29:

EXIT from I-29 at EXIT 10 (Tiffany Springs Parkway). The Embassy Suites will be on your left.

COMING FROM THE SOUTH - I-35:**ALTERNATE #1 -----Best Route**

EXIT from I-35 at EXIT 222B (I-435 West), after going about ½ mile I-435 West becomes I-435 North, continue on I-435 North, for approximately 24 miles, to EXIT 24 (Highway 152 & N.W. Barry Road), turn right, go about 4 miles, EXIT to I-29 North (St Joseph), go north (about 1 mile) to EXIT 10 (Tiffany Springs Parkway). The Embassy Suites will be on your right.

ALTERNATE #2-----ONLY TRAVEL BETWEEN 9:00A.M. to 3:00 P.M. or After 6:00 P.M.

EXIT from I-35 at EXIT 231A (it exits to the left) to I-635, continue north on I-635 about 12 miles, to EXIT I-29 North (KCI Airport & St. Joseph), continue north on I-29 to EXIT 10 (Tiffany Springs Parkway). The Embassy Suites will be on your right.

COMING FROM THE WEST -----I-70:

EXIT from I-70 at EXIT 411B to I-435 North, continue north on I-435 to EXIT 24 (Highway 152 & N.W. Barry Road), turn right, go about 4 miles to EXIT I-29 North (St Joseph), go north on I-29 (about 1 mile) to EXIT 10 (Tiffany Springs Parkway). The Embassy Suites will be on your right.

KANSAS CITY AREA MAP INCLUDED ON THE BACKSIDE

Return Tickets and
Checks Made Payable to:

HOACGA
Attn: Ann McMorris
PO Box 4361
Topeka, KS 66604-0361

IMPERIAL GLASS NEEDS 2004 HOACGA CONVENTION

*By Bob Grissom, 7517 Evanston, Raytown, MO 64513
816-356-5320 or bobimocg@aol.com*

Several members have sent a list of Imperial pieces for the 2004 Convention Display, but several others have not replied as of this time. I know that most of us have some Imperial Glass in your collection that would be good for the display.

I am especially in need of pieces in the following patterns:

BEADED ACANTHUS (Milk Pitcher)
CRABCLAW (Pitcher & Tumbler)
DAISY BASKET
DIAMOND & SUNBURST (Decanter & Wine)
HEAVY DIAMOND (Vase)
HERRINGBONE & BEADED OVAL (Compote)
IMPERIAL BASKET
LONG HOBSTAR (Any pieces)
POPPY SHOW Vases (Various colors)
ROCOCCO (Vase, different shapes)
SCROLL & FLOWER PANELS (Vase)
SHELL (Plates)
WHIRLING STAR (Punch Bowl)
ZIPPERED LOOP LAMPS (Various sizes)

If you have any of the above items or any other good Imperial pieces I would appreciate if you would send your list to me.

Thanks for sharing your glass.

HOACGA SOUVENIR ---- 2004

By Bob Grissom

On January 2, 2004 I received a call from Frank Fenton about making the "Guest Set" souvenir. It was scheduled to start the next Tuesday at 10:45 A.M. I left Kansas City on Sunday so I could be there by Tuesday morning to watch the making of the souvenir.

I encountered a little freezing rain, sleet, snow and high water detour along the way. I stopped at a few antique malls, thought maybe I could find a bargain, found a Marigold "Lustre Rose" plate which was priced at \$2,250.00 and an Ice Green Peacocks plate at \$1,250.00. I thought they were a little over priced so I passed on them.

Fenton started making the pitcher to the "Guest Set" promptly at 10:45 and worked for two hours. I have watched most of our souvenirs being made by Fenton, but the making of this one seemed to go with only a very few minor problems. I was very surprised at how many workers were required for this production. There were at least 25 workers involved in the process. It started with the gathering of the glass from the pot of molten glass, then a Glass Blower formed it to a size so the ribs could be pressed into it, then it was reheated so another Glass Blower could blow it into its full size and shape, then the top had to be shaped, then reheated again so the handle could be applied, it was then reheated in order for the Iridescence to be sprayed on, then it had to be taken to the Lear for the cool down process, which took about 3 ½ hours. The many in between steps took several workers to carry the glass back and forth to the various processes. The production process of making the tumbler to go with the Pitcher started at 4:00 P.M., they made glasses for 2 more hours. They had to make sure they had enough glasses for the number of Pitchers, but at that time they did not know how many acceptable Pitchers they had produced. I know that we think this souvenir is expensive, but after watching it being made for two hours and the amount of work required it is easy to understand why it costs so much. The Carnival Glass clubs that produce a souvenir are indeed fortunate to have Frank Fenton as a friend of the club.

One of the interesting things about the production of the pitcher, one of the workers rolled up a soft chair and Frank sat and monitored the process for the complete two hour production. He had made out the list of whimsies to be made, along with the colors. Thirteen Whimsies were made in various colors and some different shapes.

This Cobalt Blue "Guest Set" is a much different and more expensive souvenir than has been made before, but we believe it is a souvenir that you would enjoy having in your collection. If you have an old "Guest Set" in your collection, then you know it did not come cheap. The money from the selling of the souvenirs and the membership dues is by far the major financial support of the club. If HOACGA or any of the other clubs are to remain a viable organization that informs and promotes the hobby that we all enjoy, the support can only come from the members.

(SEE ORDER FORM, PAGE 32)

SILENT AUCTION CONVENTION 2004

By Ed Kramer

Please let me know if you will be bringing a piece for the Silent Auction. This has been a successful way for the Club to raise money in these days of increased expenses.

My phone number is 913-642-3587.

We hope to have some new participants this year although we are very grateful to all our "regulars."

WEDNESDAY EVENING SPECIAL HOSPITALITY ROOM

By Bob Grissom

For the past three years HOACGA had an inside Picnic for those members that arrived on Wednesday or before. Because of the prohibitive price increase by the hotel we will have the Hospitality time in two of the Suites. This will allow you a time to greet old friends and do some socializing. It will not reduce the same amount of enjoyment that we had before. The Hospitality Room will be open from 5:00 until 7:00 pm in Suites 431 and 432.

The usual DIRTY BINGO games will be at 8:00 pm following the Hospitality time. See your schedule for the meeting room number.

ORDER FORM
HOACGA SOUVENIR - 2004
Hurry and Order Your Guest Set
Before they are all sold out!
They are Beautiful!!!

NAME: _____

ADDRESS: _____

City: _____ State: _____ Zip: _____

_____ Cobalt Blue "Guest Set" @ \$110.00= \$ _____
 S & H @ \$6.00 each= \$ _____

Will pick up at the Convention _____
 (Yes or No)
 TOTAL \$ _____

Make Checks payable to HOACGA and MAIL TO:
 Ann McMorris
 PO Box 4361, Topeka, KS 66604-0361

CONDOLENCES

Henry Ward, the husband of Helen (James) Ward passed away Sunday, February 8, 2004 at the care center where he had been living. Henry had suffered a stroke necessitating his admission to the care center.

Cards and messages may be sent to Helen Ward, 604 Honeysuckle, Olathe, KS 66061

2004 HOACGA CONVENTION REGISTRATION

Friday, April 23, - Luncheon - 12:30 P.M.
 Presentation of the "John & Lucile Britt award for Excellence in Carnival Glass"

John and Jan Muehlbauer - Recipients
 _____ @ \$19.00 / Person \$ _____

Saturday, April 24, - Banquet - 6:30 P.M.
 Pete and Paula Bingham - Speakers
 _____ @ \$29.00 / Person \$ _____

2004 SOUVENIR Cobalt Blue "Guest Set" \$110.00 each
 (To be picked up at the convention)
 _____ @ \$110.00/each \$ _____

2004 MEMBERSHIP RENEWAL \$ _____
 \$35.00 U.S. & CANADA ----- \$50.00 FOREIGN

CONVENTION REGISTRATION \$5.00 per person
 _____ @ \$5.00/Person \$ _____
 (per person x \$5.00)

TOTAL \$ _____

NAME _____
 (Please supply the Husband and Wife's name - For the Name Badges)

ADDRESS: _____

CITY: _____ STATE _____ ZIP _____

Email address _____
 Phone Number _____

Make checks payable to HOACGA and send to:
 Ann McMorris
 P.O. BOX 4361
 TOPEKA, KS 66604-0361

*THE NAMES OF THOSE WHO PRE-REGISTRER WILL BE ENTERED FOR
 A DRAWING FOR A PIECE OF (CONTEMPORARY) FENTON GLASS.
 THE DRAWING WILL BE HELD AT THE BANQUET.
 YOU MUST BE PRESENT TO WIN.*

CONVENTION NEWS

The WWW.CGA convention will be the week before HOACGA's. For those members that will be attending the WWW convention and then coming to HOACGA, or for anyone that will be coming early, there will be an "Open House" on Tuesday, April 20, from 9:00 A.M. until 4:00 P.M., at three HOACGA members' homes. This will be an opportunity to visit and view three different collections in the Kansas City area. You will have to furnish your own transportation.

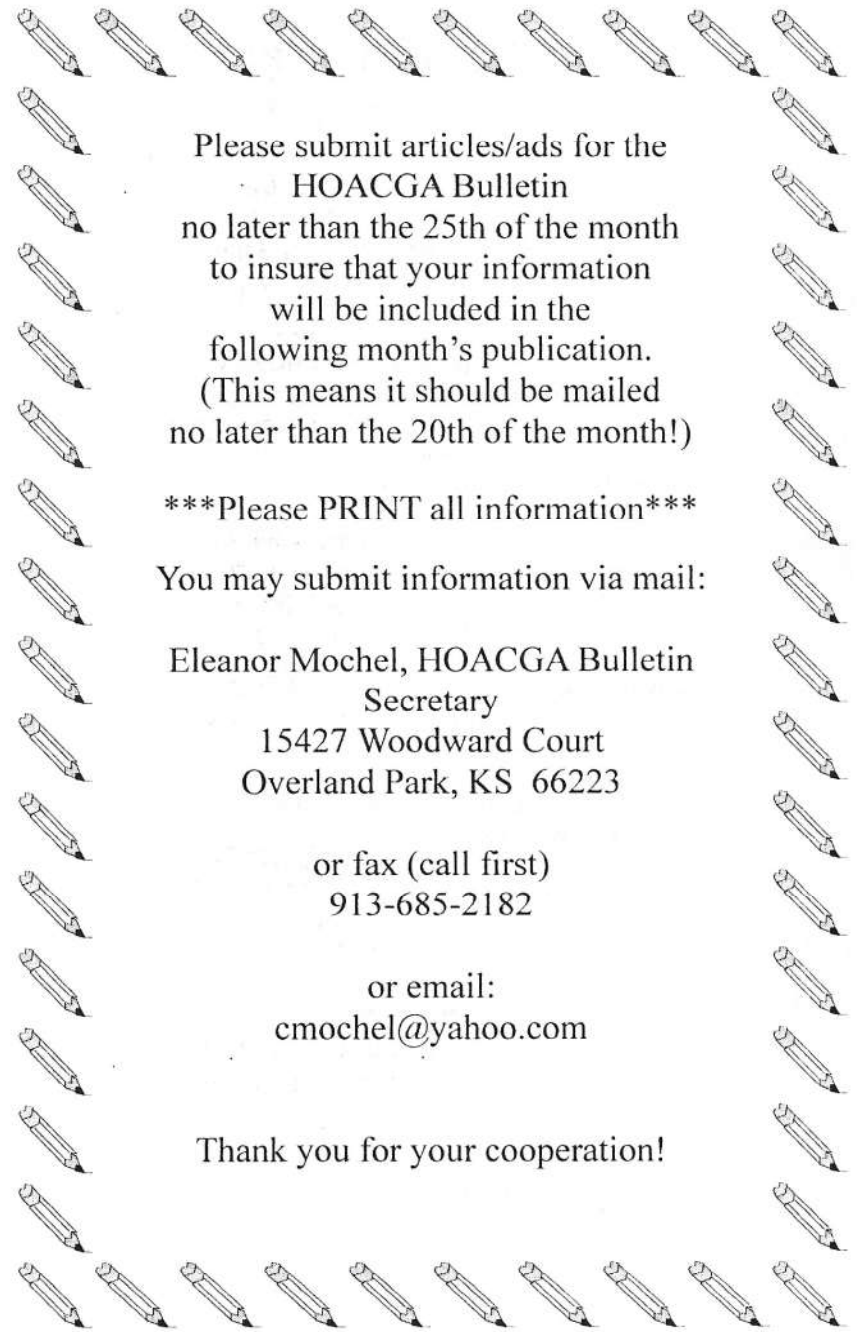
Members Charles & Eleanor Mochel, Cliff & Jo Ann Ball, and Bob Grissom will each host an "Open House." Information as to location and travel information will be available at the Embassy Suites Hotel (at the Check-In Desk), and/or will be available at the WWW convention in St. Louis.

NEXT REGULAR MEETING OF HOACGA

By Ed Kramer

The next bi-monthly meeting of HOACGA will be March 28, 2004, Sunday, at the Prairie Village Community Center, 7700 Mission Road, Prairie Village, KS.

We will discuss shades of blue.



Please submit articles/ads for the
HOACGA Bulletin
no later than the 25th of the month
to insure that your information
will be included in the
following month's publication.
(This means it should be mailed
no later than the 20th of the month!)

Please PRINT all information

You may submit information via mail:

Eleanor Mochel, HOACGA Bulletin
Secretary
15427 Woodward Court
Overland Park, KS 66223

or fax (call first)
913-685-2182

or email:
cmochel@yahoo.com

Thank you for your cooperation!

**Dr. Jack and late Bonnie Pritchard
Collection of Carnival Glass:**

- Strawberry Scroll water pitcher - blue
- NUART Chrysanthemum chop plate - purple
- Christmas compotes - marigold (2) & purple
- Butterfly & Tulip square shaped bowl - purple
- Lily of The Valley tankard water pitcher - blue
 - Farmyard 6 ruffled bowl - purple
 - Birmingham Age Herald 9" plate - amethyst
- M'burg Gay Nineties water pitcher - amethyst
- Grape Arbor tankard water pitchers - ice green/ice blue/white/purple/marigold
 - N's Town pumps - marigold & purple
 - M'burg Peacock at Urn Giant compote - amethyst
- Cosmos & Cane 7 pc. tankard water set - honey amber
- M'burg Cleveland Memorial Ashtray - amethyst
- Heavy Iris 6 pc. tankard water set - white
- Grape & Cable 12 pc. master punch set - green
 - Hattie chop plate - purple
 - Concord 9" plate - amethyst
- M'burg Hobnail water pitchers - blue & amethyst
- Persian Garden chop plates - lavender & white
- Starflower water pitchers - marigold & blue
 - Leaf Chain 9" plate - amethyst
- M'burg Unlettered Courthouse ruffled bowl - amethyst
- God & Home 7 pc. water set - blue
- M'burg Perfection water pitcher - amethyst
- Raspberry water pitcher - ice blue
- Imperial Grape 9" plate - purple
- Ten Mums 9 pc. water set - blue

Check out our website for the complete cataloged listing
and lots of pictures:
www.seeckauction.com

See you in April!
Jim and Jan Seeck

MEMBERSHIP APPLICATION
Heart Of America Carnival Glass Association
(PLEASE PRINT)

Last Name

First Name

Spouse's Name (if applicable)

Address

City

State

9 digit Zip Code

Phone Number

New or Renewal

please circle one of the above

e-mail address

Anniversary (if married more than 40 years)

Name of the Person Who Encouraged You To Become a
Member

Questions:

Please remit this form along with your yearly dues to:
(\$35 USA/Canada or \$50 Foreign)
Ann McMorris
PO Box 4361

H
O
A
C
G
A

2004 HOACGA CONVENTION SCHEDULE

BREAKFAST IS SERVED EACH MORNING FROM

6:00 A.M. UNTIL 9:30 A.M.

MANAGERS RECEPTION EACH EVENING FROM

5:30 P.M. UNTIL 7:00 P.M.

(Included as part of the Hotel room price)

If you have an item for the Silent Auction please check-In with
Ed Kramer (Room 202)

IF YOU HAVE A ROOM DISPLAY, PLEASE SIGN IN AT THE REGISTRATION DESK. ROOM DISPLAYS WILL BE JUDGED BY ALL MEMBERS. PLEASE HAVE YOUR DISPLAYS VIEWABLE AT ALL TIMES. BALLOTS ARE TO BE PLACED IN THE BALLOT BOX AT THE REGISTRATION DESK.

TUESDAY, APRIL 20

9:00 A.M. to 4:00 P.M.- Open House featuring the collections of:
Charles & Eleanor Mochel / Cliff & Jo Ann Ball / Bob Grissom
Directions supplied - maps available at Embassy Suites Check-in desk

WEDNESDAY, APRIL 21

2:00 P.M. TO 5:00 P.M.: Registration in the Pre-conference area

5:00 P.M. to 7:30 P.M.: Hospitality SUITES 431 & 432

8:00 P.M. to 9:00 P.M.: Dirty Bingo --- SALON G & H.

THURSDAY, APRIL 22

9:00 A.M. to Noon: Registration in the Pre-conference area
Sale of 2004 & previous years Souvenirs, Educational Material and other club items.

9:30 A.M. to 3:30 P.M.: Check-In of "Imperial Glass" pieces for Display;
SALON E

4:00 P.M.: Educational Program: "WHAT IF" - SALON F, G, & H
STACY & DESIREE WILLS

5:00 p.m. to 10:00 P.M.: View "Imperial Glass" Display; SALON E

7:30 P.M.: Educational Program: "Candlesticks" ED KRAMER;
SALON F, G, & H

8:30 P.M.: Hospitality, Pie & Coffee, ATRIUM AREA

FRIDAY, APRIL 23

8:00 A.M. to 9:30 A.M.: Registration, Pre-conference area

8:00 A. M. to 4:00 P.M.: View "Imperial Glass" display, SALON E

10:00 A.M.: Educational Program -"Imperial Glass" SALON E

12:30 P.M.: Luncheon & Auction of some special items
Presentation of the JOHN & LUCILE BRITT AWARD TO:
JOHN & JAN MUEHLBAUER ---- SALONS A, B, & C.

2:00 P.M.: Annual Business Meeting (After Lunch), SALONS A, B, & C

4:00 P.M. to 4:30P.M.: OWNERS-Pick-Up glass from the "Imperial
Glass" display

6:00 P.M.: Auction Glass (JACK PRITCHARD COLLECTION) viewing -
SALON E, F, G, & H

8:30 P.M.: Hospitality (Cake & Coffee)---PARTY DECK.

SATURDAY, APRIL 24

7:00 A.M.: View Auction glass , SALONS E, F, G & H

8:00 A.M. to 9:00 A.M.: Registration, Pre-conference area

9:30 A.M.: Auction -JACK PRITCHARD Collection, SALONS E, F,
G, & H.

3:30 P.M.: Silent Auction ends - 2nd Floor outside double elevators

6:30 P.M.: Banquet- SALONS E,F,G & H
Room Display Awards --- Auction of Souvenir & Special Whimsey
Pieces

PETE AND PAULA BINGHAM SPEAKERS:
"COLLECTING MILLERSBURG"
Drawing for the \$1000.00 raffle prize

SUNDAY, APRIL 25

6:30 A.M. to 10:30 A.M.: -"Ready for the trip Home" complimentary
cooked-to- order breakfast - PARTY DECK AREA.

\$1,000 CASH DONATION DRAWING

When thinking of a piece of glass to be given away as a prize, we found it difficult to come up with an item that we thought would be appealing to all members. So, the decision was made to offer a One Thousand Dollar cash prize. This should fit into anyone's collection. The winner can use the money to buy a piece that they would like to have, or at least make a down payment on it.

For a Ten Dollar donation to HOACGA, you can enter your name twelve times for an opportunity to win the \$1,000.00. The entry forms are included in this bulletin. This will be the 3rd year we have offered a \$1,000 cash prize for donations to HOACGA. Since the members seem to like buying their own glass, we will again enter your name twelve times for a ten dollar donation.

Please fill out the necessary information and return it to the Secretary, Ann McMorris, PO Box 4361, Topeka, KS 66604-0361. Your entries will be submitted for the drawing, which will be held at the Banquet on April 24, 2004. You do not have to be present to win.

To those that like to take a few chances at the Casinos, the odds may be better at this drawing.

COLLECTIBLE CARNIVAL GLASS ASSOC. CONVENTION SCHEDULE APRIL 18-20, 2004 EMBASSY SUITES (airport) - KANSAS CITY, MO

SUNDAY, April 18

- 5:30 pm: Registration, Hospitality Room, #220
- 6:30 pm: Light Supper
- 7:30 pm: Rooms Open for Visiting & Glass Sales

MONDAY, April 19

- 6:30 am - 9:30 am: Breakfast, Hotel Atrium,
Complimentary to Hotel Guests
- 9:30 am - 3:00 pm: Rooms will be open to learn more about carnival, visit, buy and sell
- 3:00 pm - 4:00 pm: Registration & Silent Auction of Donated Items, Salon B
- 4:00 pm: Educational Seminar by Dave Hamm
- 5:00 pm - 5:30 pm: Closing of Silent Auction
- 6:00 pm: Pizza party
- 7:00 pm: Glass Bingo

TUESDAY, April 20

- 6:00 am - 9:00 am: Breakfast, Hotel Atrium,
Complimentary to Hotel Guests; guest rooms will be open
- 6:00 pm: Auction Preview, Salon B & C
- 7:00 pm: Auction, Salon B & C, **EVERYONE IS WELCOME**

WEDNESDAY, April 21

- Farewell Breakfast

**COLLECTIBLE CARNIVAL GLASS ASSOC.
Auction - Tuesday, April 20, 2004
SPECIAL AUCTION ITEMS
ALL CARNIVAL**

Red "Black-Eyed Susan" Lacy Edge, 8-1/2" bowl, imperial - scarce.

Purple stretch 7 pc. Tankard Water Set, Fenton

Aqua Opal Grape & Cable Crimped 10" Master Berry Bowl (limited to 50 per Fenton)

Marigold on Milk Large 8" Swan, IG.

Red "Cactus" Gentleman's Spittoon, Fenton

Amethyst Carnival 4-1/2" Round Paper Weight. "The Holly City of America," Millville, NJ.

Amethyst "Mimi" Farmyard Plate, Fenton.

Amethyst God & Home 7 pc. Water Set, Westmoreland

Amethyst Hobnail Cruet, Fenton for Levay, limited edition.

Amethyst Hobstar 11 pc. Punch Set, Gold Base, 1973-74 Smith.

CONDOLENCES

We send our condolences to Dorothy & Emmet Morgan in the death of Dorothy's father, Vencil Broz, Feb., 20, 2004. Cards may be sent to Emmett and Dorothy Morgan, PO Box 2497, Brenham, TX 77634-2497.

**HOACGA ROSTER ADDITIONS/CHANGES
2004 #2**

NEW MEMBERS

Dexter, Kay & Marlynn, 1137 Pleasant View Drive, Grand Island, NE 308

381 1848 Referred by Todd Kuwitsky

Hackett, Joe & Bobbie, 2191 Celina Road, Red Boiling Springs, TN 37150
615 699 2444

Hill, John & Wavelene, 18908 Louise Drive, Lansing IL 60438 Phone 708
418 5857

Lonborg, Dewey & Donna, 4807 E. Oregon St. , Bellingham WA 98226 - 360
671 8092

NEW E-MAIL

Brunk, Larry & Lena, Athens, WV - lnb@fontiernet.net

Espy, Waymon & Nilah, Cortland IL - esmrm402@cs.com

Herrington, Ruth & Cecil - overthehill@cox.net

Hieger, Roy & Charlene, Round Rock, TX - rchieger@hotmail.com

NEW ADDRESS (incl Phone & email)

ARCHER, CHARLES, 6453 BELL BLUFF AVENUE, SAN DIEGO CA 92119

HUTCHASON, DONALD & HATTIE, 1121 ST. MATTHEW ST., GONZALES TX
78629 PH (830) 672 4375

E-MAIL- HATTIES7@AOL.COM

NEW PHONE NUMBER

STOCKHILL, RICK, CASNOVIA, MI - 616 813 9465

CARNIVAL GLASS - FOR SALE

DICK & DIANE WETHERBEE
11 Baker Pond Rd., Ext., Charlton, MA 01507
508-248-0038; ddwbee@aol.com

EI	Blk Amy Diamond & Bows 8-1/2" Vase. Black Amythest.Rare & Beautiful.....	195.00
EI	G Hanging Cherries 10" IC bowl w/Wide Panel back..Millersburg Satin Super.....	375.00
EI	P Holly Whirl 10" Fluted bowl w/Near Cut Wreath back..Millersburg Super Satin.....	195.00
EI	P Persian Garden 11" IC shaped Fruit bowl top only..A Real pretty one.....	995.00
EI	B Lustre Rose 9" Stippled round bowl w/collar base..Very Rare in blue..Real Prett.....	395.00
EI	M Nippon (N) 9" PCE bowl w/Rib back/A real pretty one.....	350.00
EI	M Northwood's Poppy 8" oval pickle dish w/Rib back..Great deep color.....	195.00
EI	PO Caroline 9" Handgrip Plate..Super peach and lots of opal A Beauty.....	110.00
EI	W Pond Lily 7" 2-hld Card Tray w/Wide Panel back..Super example, frosty.....	160.00
EI	M Fashion 7" diameter Rosebowl..Nice dark color..Hard shape to find.....	185.00

DONALD & HATTIE HUTCHASON
11211 St Matthew St., Gonzales, TX 78629
830-672-4375; karnivalman@aol.com

M	EI	Pearly Dots Compote.....	35.00
M	EI	Honeycomb & Clover Compote.....	25.00
M	EI	Sm. Propeller Compote.....	20.00
M	EI	Imp. Grape Compote.....	20.00
M	EI	Wreath of Roses Compote.....	25.00
M	EI	Holly Compote Goblet Shape.....	20.00

OR ALL OF THE ABOVE FOR \$125.00

CARNIVAL GLASS - FOR SALE

DICK CLOUGH
PO Box 71, Carrollton, IL
217-942-3115

P	EI	Corn vase.....	600.00
B	EI	Many fruits punch set.....	1,250.00
IB	EI	Knights Templar Mug.....	650.00
M	EI	G & C Pitcher.....	175.00
P	EI	G & C Pitcher.....	275.00
M	EI	Horse Medallion plate (2) - priced each.....	300.00
P	EI	Sunflower pin tray (chip).....	400.00
M	EI	Stream of Hearts Compote.....	100.00

Except for a few pieces, I am going to sell collection.

LEE BRIIX
2400 NW 113th Street, Oklahoma City, OK 73120
405-286-2219

M	EI	Enameled "Lotus" Pitcher & Tumbler.....	150.00
M	EI	"Blocks & Arches" Milk Pitcher.....	25.00
M	EI	"Twigs" 9-1/2" vase.....	35.00
A	EI	"Pulled Loop" 12" vase.....	65.00
IG	EI	"Pastel Swan" Master Salt Holder.....	55.00
G	EI	"Double Star" Pitcher (chip on handle).....	65.00
M	EI	"Flute & Cane" Pitcher.....	125.00
W	EI	"Wreathed Cherry" Pitcher & Tumbler w/ gold (pitcher has crack & tumbler has chips on bottom).....	100.00
M	EI	"Wreathed Cherry" Pitcher & Tumbler (pitcher has crack & tumbler has chips on bottom).....	80.00
A	EI	"Fine Cut & Roses" Rosebowl (cracked).....	15.00

JOHN HILL
18908 Louise Drive, Lansing, IL 60438
708-418-5857

A	EI	April Showers Vase.....	110.00
M	EI	Morning Glory Vase.....	65.00
G	EI	Tree Trunk Vase.....	100.00
M	EI	Twigs Vase.....	35.00
M	EI	Fine Rib Vase.....	75.00
A	EI	Lined Lattice Vase.....	135.00
M	EI	Spiralex Vase.....	65.00
M	EI	Feathers Vase.....	90.00
G	EI	Swirled Flute Vase.....	85.00
M	EI	Fan Vase.....	65.00

CARNIVAL GLASS - WANTED

ROBERT & CAROL C. DIAMOND
9 Edgewood Drive, Baldwinsville, NY 13027
315-635-1797

Amy Many Fruits (Dugan) Punch Bowl Base and Cups

DICK CLOUGH
PO Box 71, Carrollton, IL
217-942-3115

Base to A Sweetmeat - G&C
Base to A Big Thistle punch set
Master Berry Bowl Peacock @ Fountain - IB
Green or IG tankard Grape & Cable pitc
AO Peacock @ Urn Small ice cream bowl

LLOYD WARD
PO Box 956, Mayfield, KY 42066
270-251-2005 (anytime)

1 piece, 20 pieces or a collection
All discussions confidential

MARTHA LAWSON
303 Cross Creek Drive, Chattanooga, TN 37415
423-874-0174; mlawson@sallybeauty.com

Marigold Octagon Goblets w/ light marigold stem & base.

CREDIT CARD AVAILABILITY

By Bob Grissom

We are presently trying to obtain a Credit Card System that will allow members to pay their membership or make any purchases from the Club with the use of a credit card - VISA or Mastercard.

The plans are to have this in place and available at the April convention.

All purchases made with a Credit Card will have an additional 5% charge added to cover the service charge by the Bank for processing the Credit Card.

SPECIAL --- WHIMSEYS --- 2004

By Bob Grissom

At the convention last year some special WHIMSEY items were offered. These were not made from souvenirs but were some items that were from Fenton's normal production, i.e. Ruby Red 4 Lily Epergne, Ruby Red Single Lily Epergne in Fentons "Diamond Lace" pattern, and a Ruby Red Holly plate. The pieces have been specially decorated for HOACGA, they are a "one-of-a-kind" item. Plus, there will be some additional items again this year. Several WHIMSEY "Guest Sets", made in different colors and some of the souvenir cobalt blue ones are painted. WHIMSEYS from previous souvenirs will also be offered.

CARNIVAL GLASS EVENTS

FUNCTION	DATES	REMARKS
Auction	March 20 2004	Wroda Auction Service - 937-548-2640; 10:00 am; Carnival Glass Collection of Martin Blosser, Mechanicsburg, PA, Midwest Auction Facility, 5239 St. Rt. 49 S., Greenville, OH 45331
Auction	April 3 2004	<u>Burns Auction Service</u> – Selling part of the John & Ruth Phillips collection. Burns Web Site www.tomburnsauction.com or email brnzauctsv@aol.com - Telephone 607-776-7942.
Convention & Auction	April 15-18 2004	WWCGA Convention, Crown Plaza Hotel, Bridgeton, MO; 314-291-6700; Auction by Reichel Auction Svc., www.yourauctionpage.com ; Contact Ed Perva email subman@inteliport.com .
Convention & Auction	April 21-25 2004	HOACGA Convention & Auction: Embassy Suites Hotel (Airport-free shuttle service available) \$102+tax up to 2 people, 3+ people is \$112+tax; 816-891-7788; Auction by Seeck Auction Co., selling the collection of Dr. Jack Pritchard. Special display of Imperial Glass. For more information contact Bob Grissom @ 816-356-5320, bobimocg@aol.com or Ann McMorris, email mcmorris@woodsland.com
Auction	May 1 2004	<u>Jim Wroda Auction Service</u> – 937-548-2640 - Ramada Plaza Hotel, Columbus, OH – Web Site www.jimwrodaauction.com - email jwrodamidwest@earthlink.net - selling the 350 piece collection of Bob Strasburger of Carlisle OH
Auction	May 22 2004	Carnival Glass Auction, Seeck Antique Auction Center, Mason City, IA
Auction	May 28-29 2004	Jim Wroda Auction Service – Midwest Auction Facility – 937-548-2640 – web site www.jimwrodaauction.com - email jwrodamidwest@earthlink.net - selling the collection of Brenda Finfgeld plus other antique glassware
Auction	June 12 2004	Reichel Auction Center – Boonville, MO – Web Site www.awk-shn.com - email mreichel@undata.com -
Convention & Auction	June 22-26 2004	ACGA Convention – Embassy Suites, Dublin, OH (Northwest Columbus) – 614-790-9000 (No Pets Allowed) – Pets allowed at Wyndham Hotel – 614-764- 2200. Burns Auction Service selling some of the John & Ruth Phillips collection – Burns website www.tomburnsauction.com
Convention & Auction	July 14-17 2004	<u>ICGA Convention</u> – Crowne Plaza Hotel – 11228 Lone Eagle Drive, Bridgeton, MO – 314-291-6700 – Seeck Auction Service will conduct the Auction of the John & Pat Rottschaefter collection.
Auction	August 28 2004	Jim Wroda Auction Service; 937-548-2640; 10:00 am; Carnival Glass Collection of Gene & Shirley Metro; Holiday Inn, 131 Bluebell Dr., SW, New Philadelphia, OH 44883
Convention & Auction	September 23-25 2004	NCCC/SJVCGC (Norther California & San Joaquin) Convention & Auction – Fresno Holiday Inn, Fresno, CA (across from the airport), this is a new location from previous conventions; Contact June McCarter @ 209- 523-6778