



**RETURN ADDRESS**

H.O.A.C.G.A.  
Eleanor Mochel  
15427 Woodward Court  
Overland Park, KS 66223

**WE NEED YOUR ADS!!!**

**JUNE  
2004**

Please send in your membership  
renewal to Ann McMorris.

**HOACGA**

Heart of America Carnival Glass Association Inc.

**HEART OF AMERICA  
CARNIVAL GLASS ASSOCIATION**  
(Since 1973)

**President**

**Robert Grissom**  
7517 Eyanston  
Raytown, MO 64138  
Phone: (816) 356-5320  
e-mail: bobimocg@aol.com

**Vice President**

**Don Lacock**  
PO Box 33  
Delia, KS 66418  
Phone: (785) 771-3125

**Treasurer**

**Cliff Ball**  
572 W Park Street  
Olathe, KS 66061  
Phone: (913) 782-0415

**Secretary**

Send new & renewal memberships,  
address changes, orders for educ.  
matl. and souv. Make all checks  
payable to HOACGA and send to  
Ann McMorris. Membership:  
\$35 USA & Canada, \$50 Foreign

**Ann McMorris**  
PO Box 4361  
Topeka, KS 66604-0361  
Phone: (785) 478-9004  
e-mail: mcmorris@woodsland.com

**Bulletin Secretary**

Send ads & articles for bulletin  
no later than 5 days prior to the end  
of the month.

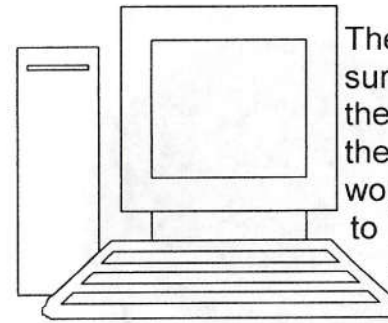
**Eleanor Mochel**  
15427 Woodward Court  
Overland Park, KS 66223  
Phone: (913) 685-2182  
Fax: (913) 685-2182 (call first)  
e-mail: emochel@yahoo.com

Membership expiration month and year is posted on address label  
Following the name: (i.e. 504 = expires May 2004)

Opinions and information expressed in the HOACGA bulletin are not necessarily those of the Bulletin Secretary or Officers. Neither HOACGA nor Bulletin Secretary accepts any responsibility for accuracy or claims made, or for any outcomes resulting from the use of the information either printed or implied.

**ATTENTION ALL MEMBERS  
BULLETIN E-MAIL AVAILABILITY**

*By Eleanor Mochel*



The HOACGA Board has decided to survey the membership to see if there is enough interest in receiving the bulletin by email to make it worthwhile. The bulletin will continue to be sent to members as it is now unless you request to have it sent by email. Email receivers will just not have to depend on the US Postal Service for when they get their bulletin.

For the foreign members who would receive the bulletin by email, their dues would be reduced to \$35.00. Otherwise, the dues for all members would remain the same as they are now.

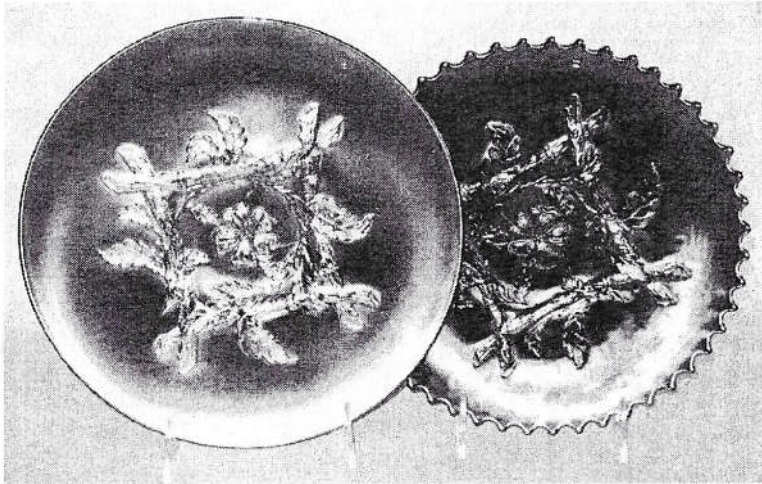
If there are enough members desiring their bulletin be sent by email, our target date for doing so would be with the September 2004 issue. We need to hear IMMEDIATELY from those members that would want their bulletin sent by email.

Please email Ann McMorris at mcmorris@woodsland.com giving her your name and your spouse's name, your city, state and email address if you want the bulletin emailed to you.

We will let everyone know how the survey comes out. Thanks for your IMMEDIATE response.

# TWO APPLE BLOSSOM TWIGS PLATES

*By Alan & Lorraine Pickup*



Dugan's Apple Blossom Twigs can be found only in bowls and plate shapes. A simple but effective pattern of four short overlapping twigs, with numerous attached leaves. The center of the pattern contains a single apple blossom that is recessed into the marie area, giving the pattern a nice two-dimensional appearance. The plates, more so than the bowls, have this two-dimensional form because of the lack of pattern surrounding the central square of twigs devise. When this pattern is shaped into a three-in-one crimped bowl this effect is, as you would expect, missing.

The plates and bowls were made in two different configurations. We would surmise that like many other patterns, there was a transition period that was dictated by how many orders were received. We see other patterns that started out rather basic, and then the moulds were re-tooled by adding something that transformed the pattern into a big seller. Now this is just speculation on our part, but an example that we like to give is Fenton's Holly and Rib compotes. We feel that the small compotes started out with only the ribs, and we have several

Two Apple Blossom Twigs Plates continued...

examples. Then the Holly was added and wow, just look at how many shapes and colors are found today. That change had to be a great moneymaker for the glass company and the Holly compotes are still in demand today by collectors.

The two different plates may be another example of this attempt to make a silk purse out of a sow's ear. First the plate with the smooth edge and without a reverse pattern was introduced. Then somebody decided that this plate lacked sufficient appeal and added a saw tooth edge and a reverse pattern, Big Basketweave. Did it work? Well maybe. It does seem to be a popular pattern with collectors today. But then it was made for only a few years and in somewhat limited colors. No attempt will be made here to list plate colors and rarity. Carl Burns' fine book, "Dugan and Diamond, Carnival Glass" covers that task with ample detail.

The two plates shown are both a very dark amethyst, almost black. They are both nine-inch plus examples, and with the iridescence only applied to the front. The smooth edge plate being flatter does measure nine and one half inches. We have seen Apple Blossom Twigs plates in peach opal and white, but as yet have not added them to our plate collection. Maybe at the next auction we will. It just depends on which we run out of first, space or money. Anybody else have that problem?

# BLUE MILLERSBURG HOBNAIL PITCHER

*By Cliff & JoAnn Ball*

Knowledgeable Carnival Glass collectors are aware that there is very little blue Millersburg carnival glass. As a consequence of this, Millersburg blue pieces usually command high prices in today's auctions.

At the 2004 HOACGA Convention auction we were able to purchase a blue hobnail pitcher from the Jack & Bonnie Pritchard collection. They had obtained the pitcher at the "Wilson Sale" in 1982. This would have been twenty-two years ago.

In searching through our books and auction price guides we found that a Blue Millersburg Hobnail Pitcher had sold at a Burn's auction in Strongville, OH, back in the late 1990s. At that time it sold for \$4,000.00.

When Marie McGee wrote her book on Millersburg Glass in 1995, she indicated on Page 67 that she knew of only one of these blue pitchers. Since the Pritchards had their's at the time of the Burn's auction...there has to be at least two of these pitchers in existence.

We feel extremely privileged to now have the pitcher which was owned by the Wilsons and the Pritchards. It is quite beautiful. If you should know of any others we would like to hear from you.

Happy Collecting.

# CHERRY CHAIN

*By Barb Chamberlain*



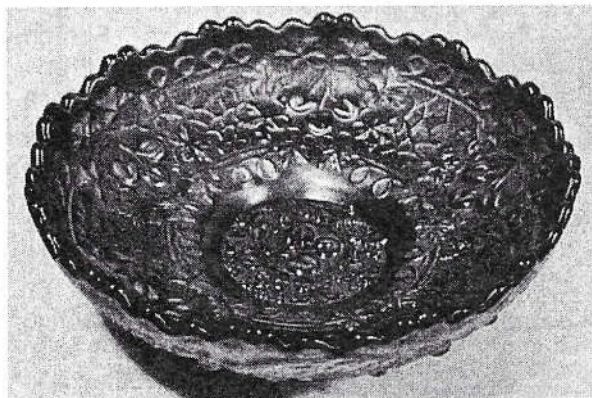
Cherry Chain, a Fenton product, is a pattern that any carnival glass collector can collect. There aren't a lot of different shapes available, but the range of colors can keep everyone happy. The only shapes available, to my knowledge, are 9"-10" ruffled and ice cream shape bowls, 5"-6" ruffled and ice cream shape bowls, 6"-6 1/2" small plates, and the desirable chop plates.

Cherry Chain is a cousin to two other Fenton patterns, Cherry Circles and Leaf Chain. Like Leaf Chain, Cherry Chain has the leaf cluster looping wreath effect. Like Cherry Circles, the wreath encircles a set of three cherries. The wreath of Cherry Circles features a larger single type leaf wreath. Now, there is another pattern to include, and that is Cherry Chain variant which features a six cherry cluster within the leaf cluster looping wreath.

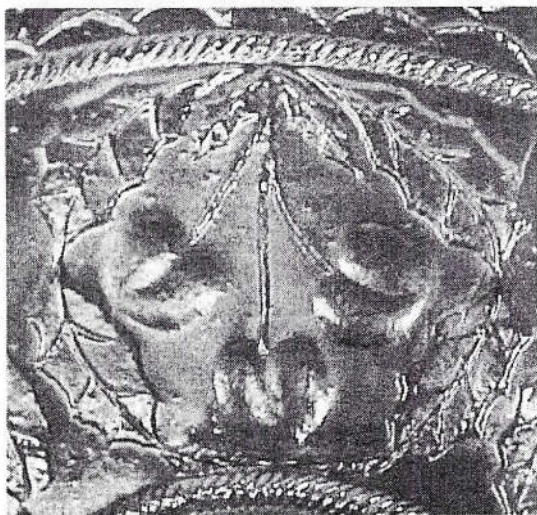
For those who like collecting challenges, you could look for the larger bowls in green, red, and amethyst. More available colors in the larger bowls are blue, clambroth, marigold, vaseline, and white. The small berry bowls are also rare in green, with no amethyst or red ones reported selling. Are they available? These small bowls are relatively easy to find in marigold, white, and blue.

Blue, marigold, and white small plates can be found with some regularity, but amethyst, lavender, and green are rather hard to find. A green small plate sold last year for \$2500. The real collecting challenge in this pattern is the chop plate. Only marigold and white chop plates have been reported, but perhaps you will find the first in another color. That's what makes carnival glass collecting so much fun - the chance of finding an unreported color.

Cherry Chain continued...



The pictured ice cream shape bowl measures about 5 1/4" and is blue with great iridescence. It features the Orange Tree pattern on the exterior.



Shown also, are close-ups of the wreath on both the Cherry Chain and Cherry Circles, so you can differentiate between the patterns. I don't have an example of the six cherry variant.

If you have additional information, other shapes or colors, please contact either Eleanor Mochel or me, so we may include the additional information in a future bulletin.

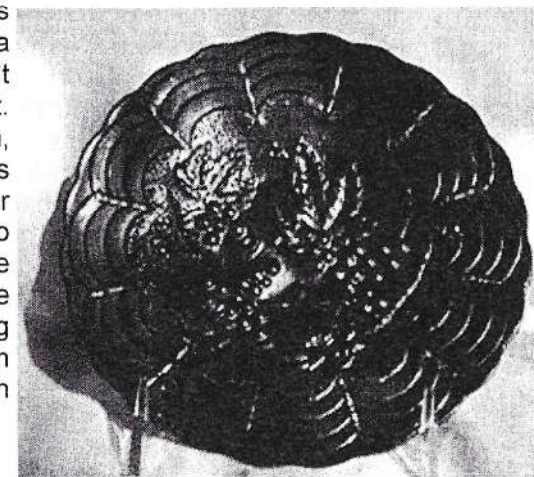
## "IMPERIAL GRAPE" IN BLUE (Reprinted from 1998)

*By Ruth Herrington*

On our vacation to Oklahoma in July 1998, we needed to buy "other" merchandise for our antique and collectible business, but IF we found good carnival, my husband said, "We'll see." I had heard about the rarity of BLUE IMPERIAL and decided it wasn't important to buy/own one, but it sure would be fun to **FIND** one.

We "antiqued" our way to eastern Oklahoma, enjoyed a week with friends, then stopped for more antiques as we headed west. We pulled off I-40, east of Oklahoma City, and followed signs to a big metal building in the middle of a field. We went into a dirty, average sized room with a few rows of depression glass covered with 3" of grime. Back in a corner was a small showcase with three pieces of carnival glass. I bent down closer to see inside and saw a small Imperial Grape plate with a price of \$2,000.00. I said matter-of-factly, "It must be blue." Out of OUR price range, so I went into the large back warehouse, divided in rows, neatly grouped in sections of milk bottles, iron pans, Avon bottles, steins, figuerines, etc. Everything was dirty. (Even if sparkling clean, by tomorrow, out in a field in the dust bowl of Oklahoma, everything would be covered with 3" of grime anyway.)

While waiting for my husband, the store owner told me he found the Imperial Grape plate at a garage sale in a small farm community south of him (about 75 miles southeast of Oklahoma City), and that I wouldn't believe what he paid for it. He didn't say how much, but the implication was that he paid \$1.00. (Or maybe even \$5.) He also said that the plate is "one of three known in the world," apparently adding one to the information in Carl O. Burns' book on Imperial Glass.



## Imperial Grape In Blue continued...

My husband asked to see it. There was no IG on the plate, but Imperial molds are being used by other companies now. How can we know if this is really an old one? No iridisation on the back, fair iridescence on the front (NOT like "Imperial Purple"), and definitely a deep blue color. As we discussed the possibilities, the owner offered a lower price--still a lot of money when we were not sure. We asked him if he would ship it. Yes! We took his card and left. I was glad Cecil injected caution... I would make some phone calls when we got home.

About a week later, I called Judy Maxwell who seems to have the "world's largest collection of blue Imperial"... five pieces. She described her plate exactly like the one we had seen. She thought there were more than two (maybe four or five) 6" plates and all had a bronzy look to the iridised face. As we talked, the picture in my mind became clearer and I was sure the plate we saw was old, and that it was definitely NOT in the count.

So, we called to request shipment of the plate. We sent our personal check and as soon as it cleared his bank, he shipped the plate. About ten days later my package arrived. I opened it, and knew I had my FIND... and my husband said I could keep it. Oh, JOY and RAPTURE!

At the August meeting in Long Beach, I placed my plate in Judy's hands. She took pictures, and I told my story. I was pleased when Judy said she thinks my find has the best color by far of the blue Imperial Grape plates she has seen.

According to an article by Ardonna Bucher in the San Diego Club's newsletter in March 1997, Carl O. Burns keeps a file on blue Imperial and updates it. There are more BLUE pieces known in Imperial Grape and Lustre Rose/Open Rose than any other patterns. In the article, he stated there were three Imperial Grape 6" plates known at that time. At this time, I understand that one is owned by Mollie Keith/Angie Cash, one by Judy Maxwell, one by Dale Matheny, and one advertised by someone I don't know for \$2,000. in a club publication (this was not clear). Mine makes either four or five!?!? Are there others not listed here?

## Imperial Grape In Blue continued...

Is there a pattern as to where blue Imperial shows up? Elvis Randell in Oklahoma owned one; did his or others surface in Oklahoma also? Was there a special order sent to that area long ago? If so, how big was the order and what else may surface in blue? Perhaps, we all had better keep a watch out. HAPPY HUNTING!

## "IMPERIAL GRAPE" IN BLUE (2004 update)

The 2004 HOACGA Convention featured an Imperial glass display. I offered to bring a few pieces to contribute to the diversity, including my BLUE Imperial Grape 6" plate, as described above. I received an email to confirm the pieces they wanted me to bring and the list included my "Oklahoma plate."

We washed the little plate when we received it, but before I took my plate down to the display room at HOACGA, we cleaned it with Mrs. Wright's Silver Polish. We were amazed at the surface color that was exposed from under the oxidation. In the display room, I unwrapped my plate and showed it to a certain president of a midwest carnival glass club. He said, "I've handled this plate many times before." I replied, "No, I have never brought it from California before." He said, "I know, but I have handled it many times over two year's time. I know this plate well."

It seems that this president was raised in an area of Oklahoma where the dusty, metal barn sits. He made frequent trips back to the area, and always stopped in to look at the plate, take it out in the daylight to see the color and try to negotiate a better price. But, the antique dealer would not budge on the price to him... nor to another collector who also dropped in regularly to check on it. The two collectors were waiting for the dealer to come down in price, and the dealer was waiting for one of the collectors to come up with his price. It was a stalemate. Then, along comes a couple from California. The dealer possibly thought that this traveling couple may not come back to the area again and he wouldn't have the opportunity to play the "cat and mouse" waiting game. He negotiated a price and said he would ship it. The California couple (that's us) contacted him when they got home, and he honored his offered price.

Imperial Grape in Blue continued...

Now, I thought that no one in carnival circles knew about this little plate, but I was wrong. I believe it was not in the 'count' at that time. I didn't really FIND it as I thought, but I DID acquire it. And this follow-up story makes it more delicious. **As a reminder, if you see something you want, you had better acquire it while you can.**

Tune in next month for information about my latest find, again, in Oklahoma.

## JULY ANNIVERSARIES

Francis & Janet Tate  
126 Garden Drive  
Belvidere, IL 61008  
*Married July 31, 1956*

Valmer & Stella Cross  
PO Box 45  
Prattville, NY 12468  
*Married July 6, 1947*

Harry & Christina Sherman  
PO Box 396  
Atlanta, IL 61723  
*Married July 3, 1948*

Jim & Pat Vaughan  
PO Box 41  
Hindsville, AR 72738  
*Married July 21, 1962*

Marnen & Betty Robertson  
1430 Kendall Avenue  
Camarille, CA 93010  
*Married July 22, 1954*

John & Loretta Nielsen  
2011 SW Oak Ridge Rd.  
Palm City, FL 34990  
*Married July 13, 1957*

Billy & Pauline Hughes  
30 Park Street  
Farmington, MO 63640  
*Married July 11, 1953*

If you would like to have your anniversary information printed in the bulletin (40 years and over) please make a request in writing to the bulletin secretary.

## 3000 MILES AND COUNTING

*By Jackie Poucher*

Randy and I started out on a Monday afternoon for our trip north. We couldn't leave any earlier as Randy had some bank meetings he had to attend. We arrived in St. Louis on Wednesday to spend some time with our son. He's living there now as he is one of the project managers for the new Cardinal stadium that's being built. Billy, our son, started on that path when he first started working for Randy when he was 16 years old. His first construction job was working during summer vacation. At that time, he couldn't connect the dots between digging ditches and being an electrician. But, he eventually saw the "light".

Since I've mentioned one child, I need to mention our others. We also have a son that is a Sergeant in the Bradenton police force and also a member of their S.W.A.T. unit. Our daughter is a paramedic in Minnesota and one more son is a HVAC mechanic, also in Minnesota. Have to give them all equal time!

Back to carnival!

Thursday morning we headed for Boonville and Mickey Reichel. We have never seen his auction place before. Quite impressive. He was getting ready for a clock auction, and there were clocks everywhere! Then onto Kansas City and HOACGA. The minute we arrived we started seeing a lot of our good friends that we look forward to seeing at every convention. That's always our favorite part.

We missed Stacy and Desi's seminar which we heard was really great. We heard that Stacy is trying out for a singing career. We were able to attend the candlestick seminar by Ed Kramer. That was delightful and very informative. So many candlesticks in one place! A question was presented at the seminar. "Candlesticks or candleholders". You be the judge.

The next event was Roy Heiger's seminar about the Imperial Glass display. What a breathtaking display that was! It was lovingly and artistically arranged by Gale Eichhorst. Thank you, Gale.

The luncheon honoring John and Jan Muelbauer with the John and Lucille Britt award was very good. During the lunch, a slide show of John and Lucille Britt was presented showing them and some others throughout their years of collecting. What a lovely couple!

After the meal, the roasting, uh, I mean, the toasting began. Tom Mordini, Richard Cinclair and Floyd Whitley were the speakers and did a great job paying tribute to John and Jan and they didn't get burned too badly. We all learned a couple of fascinating things about this California couple. Did you know that Jan once ran in a hundred mile marathon that lasted for 27 hours straight!? I needed some oxygen just listening to this.

## 3000 Miles and Counting continued...

Did you know that John once ran with the bulls in Pamplona, Spain? John learned that there is a right way and a wrong way to do this. You need to ask him. What a story that is!

A word of caution; whenever you listen to Floyd Whitley speak, you had better be wearing your Depends. The man is a hoot.

On to the banquet! Pete and Paula Bingham were the speakers and their display and topic was Millersburg. And what a glorious display it was! We saw a Fruits and Flowers Tulip shaped BLUE punch bowl. We saw a Fruits and Flowers Tulip shaped GREEN punch bowl. We saw so many Millersburg rarities that I have only seen in books. What a thrill it was to get to see them up close. The Bingham's even had the BLUE People's vase there. And just when you thought your eyes and mind couldn't possibly take in any more radium and satin, Pete blew the roof off the joint when he unveiled not just one, but 5 People vases. BLUE. GREEN. MARIGOLD. PURPLE RUFFLED. PURPLE STRAIGHT TOP.

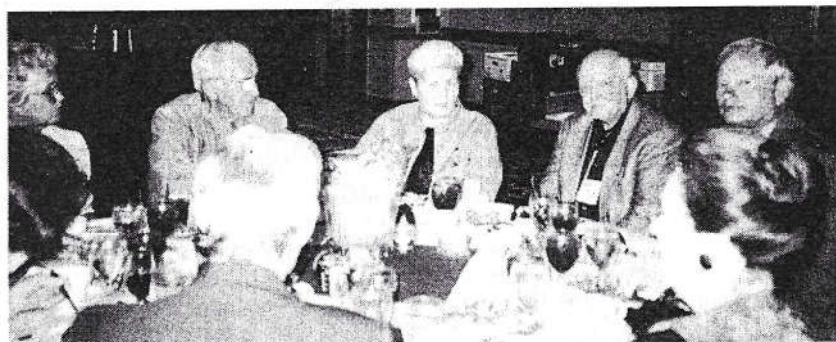
This was an event that might not ever happen again. All colors of the People's vases in one place at one time. Randy and I own the ruffled purple. Floyd and Cecil own the green. Charles and Eleanor Mochel own the marigold. Pete and Paula own the blue. Stacy and Desi own the straight up purple. John and Jeanette Rogers also own a purple one. What a display.

Thank you to all the Officers and Directors of the HOACGA club for providing us with such a wonderful convention.

We left Kansas City on Sunday morning and headed for Chicago. We had some family business we needed to take care of there and when that was done, we were on the road again. We spent the night in Southern Illinois around Mattoon. Monday morning we hit the road and by the time we were driving by Tifton, Georgia, I was ready for a Starbuck coffee. Did you know that they have a drive through Starbucks right off the interstate? Life is good. Just give me a good book to read, like a Harlan Cobin, and a cup of Starbuck coffee and I'm a happy camper.

We finally got home around 2:00 Tuesday afternoon. It was a great trip. We had a great time, but as Dorothy said, "There's No Place Like Home!"

# HOACGA CONVENTION PICTURES



Left to Right: Bev Osborn, Paul & Dee Bekemeir, Ed Kramer, Daryl Strohm, Dorothy & Arnold Snell at Banquet



John Muehlbauer, his wife, Jan and Aileen Oppenlander (the Britt's daughter)

Left to Right:  
Floyd Whitley,  
Richard Cinclair, Tom  
Mordini,  
Cliff Ball at Britt award  
luncheon



*Editor's Note: Thanks to Judy Maxwell, Norma Strohm and Arnold Snell for Convention pictures.*



# LOOKING BACK

## The Last Writings of O. Joe Olson

By Charles Mochel

### *The Carnival Glass News*

Vol. V No. 111

Kansas City, MO

Feb. 10, 1969

#### A PERSONAL WORD

It is with sincere regret that I announce to all SCGC members that the next issue of the SCGC News will be my last. This will be Vol. V No. 4 dated June 10, 1969. It will close the 1968-69 year of SCGC.

We have already shared this news with our officers and directors. The decision has been forced upon me by the state of my health. The doctor puts it in layman's language by saying that I have "run out of gas."

We will be "out of action" as secretary-editor of the SCGC for at least a year.

This means that the proposed SCGC convention this summer will be "out." For no matter who would serve as chairman I would be involved far beyond my present strength.

While the SCGC task has been heavy and demanding, it is one we volunteered for when we had the plan and inspiration for this, the original, carnival glass society for collectors. The SCGC has been chiefly my work although I have had the goodwill and assistance of many along the way.

This pioneering effort came at just the right time. The first reissue carnival came out six months after we were in action and the Women's Day carnival section in color coincided with our first convention! The SCGC News and organization caught on fast. Soon there was one and then two new societies each following our original plan and format of news.

We appreciate the rewards SCGC has brought in the friendship of many wonderful collectors and the dealers on our roster. After five - no, six - years of being at the center of the SCGC wheel, one gets to know persons pretty well.

#### Looking Back continued...

The majority of our members also are affiliated with one or both of the dealer-dominated societies. This makes it easier for me to take this "leave of absence." When the time comes that I am able to resume the work of this publication and organization I will contact our members. In the meantime, we will stand on the record of our work and the quality and integrity of our news. We have tried to be a friend to collectors and a friend to dealers of goodwill and integrity. So long for now.

---

#### Notes from Charles Mochel:

*In going through some of my old papers, I ran across the obituary for O. Joe Olson that had appeared in the KC Star at the time of his death. Mr. Olson was well-educated and held some very responsible jobs during his life.*

*It was not mentioned in the KC Star Obituary that Mr. Olson started the "Society of Carnival Glass Collectors" one of the first organizations for carnival glass collectors and also wrote many articles on carnival glass in his "Carnival Glass News" that went to many collectors and dealers.*

*I feel O. Joe Olson probably did more to teach and excite collectors about carnival glass than any other person to this day.*

#### OLOF J. OLSON

Olof J. Olson, 73, southwest Kansas City, died Tuesday in a nursing home at 904 E. 68th St. He was born in Jamestown, N.Y., and moved to Kansas City from Columbus, Ohio, in 1951. Mr. Olson was a copy editor for *The Kansas City Star* for 15 years and retired in 1968. He had been director of information for Nazarene World Headquarters and previously had been managing editor of the alumni magazine for Ohio State University, Columbus. He was a graduate of Ohio State University, had done graduate work at Oberlin (Ohio) College and later received a degree from Nazarene Theological Seminary. He leaves his wife, Mrs. Ruth B. Olson, and a daughter, Miss Olivia Kristina Olson, both of the home. Cremation.

# A Northwood Grape Arbor Find

By Ted Meeker

One of My favorite patterns is Northwood's Grape Arbor. I find the design of the pattern very interesting and well put together, as well as unusual. The Water Tankards are beautiful and spectacular to view, especially when displayed as a water set. Northwood only made the Grape Arbor pattern in a Water Set, and is not to be confused with Dugan's Grape Arbor pattern while identical to Northwood, was only made as a bowl by Dugan. Northwood Grape Arbor to date consists of Water Sets, and a Hat shape Whimsied from Tumblers.

The pattern consists of a diamond lattice background with grapes appearing as they have been growing on the diamond shaped lattice. Very interesting is that the grape pattern on the tankard is very large, almost life size and very appealing to the eye. The appeal and desirability of Grape Arbor has been constant over the years and its value has remained fairly stable.

Colors are interesting in that the tumblers and Hats come in more (known) colors than the Tankards. Tumblers are known in Marigold, Purple, White, Ice Green, Ice Blue, with Lavender, Smoke, Blue, Sapphire, and Custard much harder to come by for tumblers. Hats coming in Marigold, Blue, Ice Green, and White and you will see shortly one more "color". Tumblers also come with a plain or ribbed interior. These tumblers usually show a degree of flaring, being narrower in the middle than most.

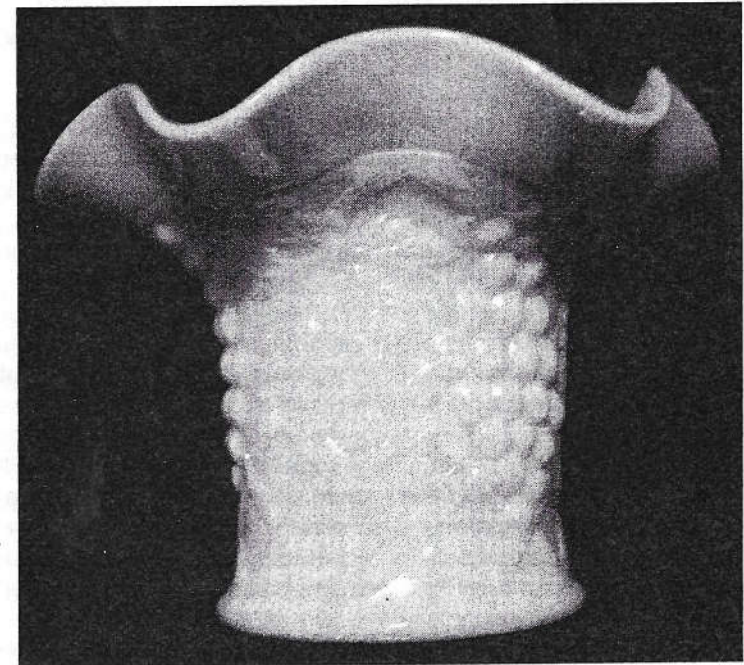
Collecting Grape Arbor has become a challenge, as some of the harder to find colors do not often come up for sale, and when they do there is usually a frenzy of bidding when they are at auction. Prices for a really good hard to find piece with great color and iridescence can go significantly higher than average.

There isn't a week that goes by that I haven't scoured the internet, auction brochures, local antique malls, and other collectors for that tumbler color I don't have. It does get frustrating at times, especially when you haven't found anything in a while. But sometimes patience is rewarded in the carnival world, and you find that one piece that you didn't know was there, and especially when you find it by accident.

## Northwood Grape Arbor Find continued...

One day in the middle of October, I was going through the auction listings on Ebay, doing price through the auctions, I spotted a listing for a Northwood Carnival Glass Custard Iridized Hat. Something made me look at that auction. I immediately became very excited, as the photo was of an iridized custard Grape Arbor Hat! I have seen many Custard Grape Arbor Hats with nutmeg stain, but they were not iridized. I decided to take a chance, and placed a bid on it. I then emailed the lister, whom informed me that she was selling it for another party. I learned that the gentleman selling it lived in Pennsylvania, and had it for many years in his home. I was at work when the auction closed, and when I came home, I was excited to see that I had won the Hat. It was a long wait for it to arrive especially when it had been packed in three boxes! When it did I saw it was well worth the wait and expense. The iridescence was spectacular with purples, blues, yellows, and pinks.

I then wrote and called several people I knew were big tumbler collectors. No one reported ever seeing or hearing of one. It now resides at my home, where it will be treasured for quite a while.



# HOACGA BOARD MEETING

## May 13 , 2004 – Lawrence, KS

*By Secretary Ann McMorris*

The HOACGA Board held their monthly meeting in Lawrence on May 13, 2004. Board members present- Bob Grissom, Cliff Ball, Don Lacock, Ann McMorris and Eleanor Mochel.

Treasurer Ball reported a balance of \$12,855.00 after all bills were paid,

The 2004 Convention events were critiqued. Participation in judging of the Room Displays by ballot from the members was successful. Overall the hotel accommodations and services were fine but as always there were a few matters to take up with the hotel management. The hospitality room on Wednesday night was very popular. The Imperial Glass display presented by Roy Hieger, the Candlesticks program by Ed Kramer, the Big 10 by the Wills and the BIG FIVE by Pete and Paula Bingham were great. The whimsy auction brought lots of bidding and the Saturday auction had a big crowd. The photographic display at the lunch got lots of comments and suggestions for next year. The silent auction headed by Ed Kramer had many items contributed by the members and attracted lots of bidders for a profitable venture.

Plans moved forward for the 2005 Convention, April 20-24 at the Embassy Suites, Kansas City, Missouri, where we will honor the Fenton Glass Company's 100<sup>th</sup> anniversary. The main focus of the educational seminars will be on Fenton – suggestions are invited from the membership on subjects and speakers. Prospective candidates for the John and Lucile Britt award are needed.

At the annual meeting, discussion was held on electronically sending the bulletin to those members with that capability. Our printer put up the May issue of 46 pages on the computer and emailed it to those on the board with computers. The pros and cons of this method of sending the bulletin in addition to using the regular mail for those without computers were debated. Questions: how many of the members will want an electronically transmitted newsletter? Who will maintain the email list and keep it updated? Will this be a substantial savings in postage cost as compared to other expense in changing to a system of sending both ways – electronically and regular mail? What time period would be needed to make this transition? More answers are needed and the board will be seeking these.

HOACGA Board Meeting Minutes continued...

Bob Grissom will contact the Embassy Suites to negotiate contracts for HOACGA conventions in 2006 and 2007.

A meeting place for the monthly meeting to be held in Topeka for one or two times a year will be sought. Those members in Salina, Abilene and Manhattan have suggested this change of location for some of the meetings so that travel time is cut down and they can attend.

# HOACGA ANNUAL MEETING

## APRIL 23, 2004

### EMBASSY SUITES, KCMO

*By Secretary Ann McMorris*

The meeting was called to order following the Britt Award Luncheon by President Bob Grissom. Thirty five members were in attendance.

The minutes of the annual meeting held April 25, 2003 were read and approved.

#### TREASURER'S REPORT

Treasurer, Cliff Ball, presented the annual report. He noted the bank account balance at the end of the fiscal year (March 1, 2003 thru February 29, 2004) was \$16,559.86 - an increase of \$324.06 at the beginning of the previous fiscal year. He commended that membership dues and souvenir receipts are down, but these losses were offset by a very successful whimsy auction at the 2003 convention. Production costs for producing the monthly newsletter have also been reduced. He handed out to the members present a written report of the income and expenses. A copy is attached to the master file.

He also noted the club bank account has been moved from US Bank to Bank of America, so that the club is now able to offer credit card services. Bank of America offered the best credit card program of the banks approached.

No audit of the books for the past fiscal year has been performed but one will be scheduled. The audit was delayed due to the change of banks for the account and preparation of year end reports.

## HOACGA ANNUAL MEETING continued...

Moved and seconded that the treasurer's report be accepted. Motion carried.

### OFFICERS

President Grissom commended the Club officers for the duties they perform for the Club. Treasurer pays all the bills and maintains the financial records. Vice President assists the other officers by being available to fill in and help with all the convention and meeting functions. Secretary receives all correspondence, maintains the membership information, prepares reports as dues, etc. are received. Bulletin Secretary is responsible for publishing the monthly bulletin, which isn't a small task - she receives all the information, assembles it and works with the printer in getting it mailed. She has experienced many difficulties with the Post Office and continues to try to find a solution in this area.

Members offered their thanks to President Grissom for all the work he performs in getting the convention organized, in working with the Fenton Glass Company, and all other functions he handles.

### MONTHLY BULLETIN

Jerry Curtis inquired about the feasibility of going on-line with the bulletin to those members who have internet and offering a printed newsletter to those who don't have internet service or prefer the printed newsletter. He noted this method would save postage and printing costs. Much discussion on the advantages and disadvantages of this proposal. Moved and seconded that a special committee would be appointed to study this proposal. The Board will consider the matter and select the committee. Motion carried.

### OTHER MATTERS

Membership appears to have stabilized as older members sell their collections and don't renew and new members are joining. Members were urged to encourage CG collectors who don't belong to CG clubs to become members.

The cost of publishing a monthly bulletin, cost of producing a souvenir and funding sources was discussed.

A new service recently added for member convenience is the ability to accept Credit Card payments by Mastercard or VISA. This is on a trial basis and can be cancelled at any time if it does not prove to be of benefit.

## HOACGA Annual Meeting continued...

A change was made in the manner of judging room displays and this year the members attending the convention will select the room display winners by ballot. For comparison purposes, a panel of judges will also judge the room displays but their results will not be used in the selection of the winners.

The club has a contract with Embassy Suites for the 2005 convention with room rate of \$104 for double occupancy. Contracts for future years will be negotiated with the hotel.

Since 2005 is the 100th Anniversary of the Fenton Glass Company, this will be the focus of our 2005 Convention with representation of the Fenton family and a display of Fenton glass.

### ELECTION OF OFFICERS

#### Vice President, Bulletin Secretary & Treasurer

Don Lacock, current Vice President, Eleanor Mochel, current Bulletin Secretary and Cliff Ball, current Treasurer elected to serve two years (May 2004 thru May 2006, motion carried).

### ANNOUNCEMENTS

Future activities of other carnival glass clubs were announced. Clubs were ACGA, ICGA, Lincoln Land, Northern CA, Pacific NW, Air Capital, Canada and Michigan. It was noted that Woodsland Worldwide Carnival Glass Association had held their convention in St. Louis the week prior and the date and location for their 2005 convention was not known.

It was noted that there were 26 states and 3 countries represented at this 2004 HOACGA Convention with approximately 200 persons in attendance.

# HOACGA SOUVENIR - 2004

By Bob Grissom

Both Fenton and Northwood made a "Guest Set" in the mid 1920's. Fenton's "First Twenty-Five Years" shows a set made in marigold with a royal blue handle. These sets obviously had a functional use. The pitcher for holding the water and a glass for drinking, this was probably one of the few functional pieces of carnival glass. These sets were made in several colors, but a very few are available today because of their use - they had a difficult time surviving.

As anyone that has experienced the administration of a Carnival Glass club, you know that you are constantly trying to find means of providing financial support. All clubs are experiencing a decrease in membership, which effects their financial position, plus the cost of financing the various activities is continually increasing. WE ALL KNOW THAT THE FINANCIAL SUPPORT MUST COME FROM THE MEMBERS. Many of the clubs produce a souvenir each year as one means of providing financial support. In order for this to be a success, the members must purchase the souvenirs.

It continues to be a challenge to have a souvenir made that is appealing to the members. We believe that the 2004 souvenir, a Cobalt Blue "Guest Set" is one that the members will want. It is more expensive than any previous souvenir, but we think it is a more desirable souvenir. The cost of the souvenir is \$110.00. The set has been made by Fenton and was be a very limited production. The souvenir will be shipped as soon as your order is received.

The "Guest Set" is ribbed on the inside and has a Cobalt blue handle. Since it is a blown piece, it is a dark cobalt blue because it is thinner than a molded piece.

## ORDER FORM - HOACGA SOUVENIR 2004

NAME: \_\_\_\_\_

ADDRESS: \_\_\_\_\_

NUMBER OF SETS: \_\_\_\_\_ @ \$110.00 EACH = \$ \_\_\_\_\_

SHIPPING & HANDLING \$5.00 EACH TOTAL: \$ \_\_\_\_\_

Mail to:  
Ann McMorris, Secretary  
PO Box 4361, Topeka, KS 66604-0361

# NEW CARNIVAL GLASS SURVEY

We will be surveying Fenton Carnival Glass for the coming months in preparation for the 2005 Celebration of The Fenton Art Glass Company's 100th Year in Business. Please return the questionnaires promptly as we have more to do and would prefer not to have to repeat the same form.

## FENTON HATPIN HOLDERS

PATTERN	COLOR	# OF EACH

## FENTON LOVING CUPS

PATTERN	COLOR	# OF EACH

## FENTON ROSE BOWLS

PATTERN	COLOR	# OF EACH

## FENTON BON-BONS

PATTERN	COLOR	# OF EACH

Place  
37¢  
Stamp  
Here

HOACGA  
Research Project

HOACGA  
Eleanor Mochel  
15427 Woodward Court  
Overland Park, KS 66223

----- *Fold here, please tape top closed* -----

**COMMENTS**

---

---

---

---

---

---

---

---

---

**MEMBERSHIP APPLICATION**  
**Heart Of America Carnival Glass Association**  
(PLEASE PRINT)

\_\_\_\_\_  
Last Name

\_\_\_\_\_  
First Name

\_\_\_\_\_  
Spouse's Name (if applicable)

\_\_\_\_\_  
Address

\_\_\_\_\_  
City

\_\_\_\_\_  
State

\_\_\_\_\_  
9 digit Zip Code

\_\_\_\_\_  
Phone Number

\_\_\_\_\_  
New or Renewal  
please circle one of the above

\_\_\_\_\_  
e-mail address

\_\_\_\_\_  
Anniversary (if married more than 40 years)

\_\_\_\_\_  
Name of the Person Who Encouraged You To Become a  
Member

\_\_\_\_\_  
Questions:  
\_\_\_\_\_  
\_\_\_\_\_

Please remit this form along with your yearly dues to:  
(\$35 USA/Canada or \$50 Foreign)  
Ann McMorris  
PO Box 4361

**H  
O  
A  
C  
G  
A**

## Souvenirs & Books - Order Form

_____ HOACGA Educational Series Book I .....	\$17.50
_____ HOACGA Educational Series Book II .....	\$20.00
_____ HOACGA Educational Series Book III .....	\$20.00
_____ PLATE HOLDERS—Dozen, clear plastic 5" base, white wire 4" back holds plates and bowls .....	\$21.50
_____ SMALL SIZE PLATE HOLDERS—Dozen, clear plastic base, white wire, good for pin trays & small bowls or plates .....	\$20.00
_____ COMPLETE NOTEBOOK - 22 Sections .....	\$223.00
_____ NOTEBOOK INDEX SET .....	\$ 5.00
_____ 2003 ROSTER .....	\$ 1.50

### HOACGA SOUVENIRS:

_____ 2000 Cobalt Blue Imperial Pansy 9" Plate .....	\$41.00
_____ 1993 Ruby Red 6" "Good Luck" Plate .....	\$40.00
_____ (20th Anniversary)	
_____ 2001 Vaseline Opal Hatpin Holder .....	\$55.00
_____ 2002 Emerald Green Hatpin Holder .....	\$55.00

*USA Shipping & Handling included in all pricing*

Name: \_\_\_\_\_

Address: \_\_\_\_\_

City: \_\_\_\_\_ State: \_\_\_\_\_ Zip: \_\_\_\_\_

### SEND ORDERS TO:

Ann McMorris, PO Box 4361, Topeka, KS 66604-0361

#### SHIPPING & HANDLING (S&H) INFORMATION

The shipping charges for members who reside outside the USA will be the actual cost. Upon receipt of item(s), the member will be expected to reimburse the club for the actual cost of shipping, as indicated by the postage on the package. At the time of placing your order, please indicate your shipping preference (air or surface).

## CLOSEOUT SALE!

### Order Form – Video Tapes

#### HOACGA CONVENTION SEMINAR VIDEO TAPES

1 Tape for \$10.00 (previously \$20.00); 3 Tapes for \$25.00;

1 Longplay Tape for \$25.00 (previously \$35.00)

_____ "Red Carnival Glass" (Richard Cinclair, Bob Allaire & Joyce Seale) .....	\$10.00
_____ "Shades of Blue" (Richard Cinclair) .....	\$10.00
_____ "Poppy & Rose Show Pieces" (Tom Mordini) .....	\$10.00
_____ "Fenton Two Flower" (Bob Stremming) .....	\$10.00
_____ "Carnival Glass Smalls" (Eleanor & Jack Hamilton) .....	\$10.00
_____ "Small Plates" (Smokey Cloud) .....	\$10.00
_____ "Northwood Peacock & Urn Ice Cream Sets (Harold Cox) .....	\$10.00
_____ "Carnival Glass Collecting Experiences" (Carl & Ferne Schroeder) .....	\$10.00
_____ "Heinz 57 Variety Carnival Glass Collection" (Jerry & Carol Curtis) .....	\$10.00
_____ "Miniatures" (John & Lucile Britt) .....	\$10.00
_____ "Table Sets" (Leonard, Kremer & Grissom) .....	\$10.00
_____ "Plates" (Ruth Green & Richard Cinclair) .....	\$10.00
_____ "Plethora of Patterns" (Dean & Diane Fry) .....	\$10.00
_____ "Millersburg" (Dick & Jennie Hostetler) .....	\$10.00
_____ "Swung Vases" (Dave & Joan Doty) .....	\$10.00
_____ "Holly Pattern" (John Mikkonen) .....	\$10.00
_____ "Imperial Glass" (Norene Duran) .....	\$10.00
_____ "The Molding Process" (Howard Seufer of Fenton Glass Co.) .....	\$10.00
_____ "Iridescence" (97, John Muehlbauer) .....	\$10.00
_____ "Plates" (97, Judy Maxwell) .....	\$10.00
_____ "98 Aqua Opal Display" (Discussion by Jim Seeck) .....	\$10.00
_____ "98 Recollection of Collectors" .....	\$10.00
_____ "98 Causes of Imperfections in Glass" (Fenton/Seufer) .....	\$10.00
_____ "98 Britt Award/Grissoms, Banquet/Cinclair" LONG PLAY .....	\$25.00
_____ "Aqua Opal, Recollection of Collectors, Causes of Imperfections in Glass" (Fenton/Seufer) LONG PLAY .....	\$25.00
_____ "99 Fenton Glass" (Don & Barb Chamberlain) .....	\$10.00
_____ "99 Recollections of Collectors" .....	\$10.00
_____ "99 Millersburg Display" .....	\$10.00
_____ "99 Britt Award Luncheon" (George & Mavis Loescher) .....	\$10.00
_____ "99 Banquet Green Millersburg" (Bill Richards, Sr.) .....	\$10.00
_____ "00 Wal-Mart Connection" (Jerry & Carol Curtis) .....	\$10.00
_____ "00 Britt Award Luncheon" (Richard & Carol Cinclair) .....	\$10.00
_____ "00 Plate Display" (Tom Burns) .....	\$10.00
_____ "00 Shoppin' & Hoppin'" (Galen & Kathi Johnson) .....	\$10.00
_____ "03 Recollections & Memories (George & Mavis Loescher) .....	\$11.50

Shipping & Handling \$1.00 per tape, # of tapes \_\_\_\_\_ x \$1.00 = S&H Total \_\_\_\_\_

Name: \_\_\_\_\_

Address: \_\_\_\_\_

City: \_\_\_\_\_ State: \_\_\_\_\_ Zip: \_\_\_\_\_

Send Orders To:

Ann McMorris

PO Box 4361; Topeka, KS 66604-0361

## 2002 HOACGA NOTEBOOK INSERT

### Candlesticks – 1st & 2nd Sections

By Bob Grissom

You may not have many candlesticks in your collection, but what is your knowledge of the ones you have? Do you know the difference between a Northwood "Colonial," a Fenton "Florentine," or a Vineland "Colonial?" You will probably be able to identify some of the candlesticks in your collection.

The HOACGA Notebook section for 2002 contains photographs of 72 different candlestick patterns and the section for 2003 contains an additional 53 patterns, including the Fostoria Brocaded pieces. Most collectors have some candlesticks in their collection, but this is an area of Carnival glass collecting where information is not readily found. This is an attempt to compile them in one place, present as much information as possible, and to show them with a color photograph. These two sections are another very informative addition to the HOACGA Pattern Notebook.

Much time has been spent, not only by me, but several other collectors, trying to identify the various pieces. Information such as this is only possible with the help of many members who have supplied photographs and a listing of their candlesticks.

If you have not ordered these two sections, you are missing a good source for information about carnival glass candlesticks.

If you wish to order, please use the order form below (if you are coming to the convention, the 2nd section can be ordered with the pre-registration form).

#### ORDER FORM

Name: \_\_\_\_\_

Address: \_\_\_\_\_

City: \_\_\_\_\_ State: \_\_\_\_\_ Zip: \_\_\_\_\_

1st Candlestick Section (photo 1-72—2002) \$14.00 each

2nd Candlestick Section (photo 73-125—2003) \$13.00 each

\_\_\_\_\_ @ \$14.00 each (2002) = \$ \_\_\_\_\_

\_\_\_\_\_ @ \$13.00 each (2003) = \$ \_\_\_\_\_

\_\_\_\_\_ @ \$1.50 each shipping = \$ \_\_\_\_\_

TOTAL \$ \_\_\_\_\_

Make Checks Payable to HOACGA and send to:

Ann McMorris

PO Box 4361

Topeka, KS 66604-0361

## PLATE HOLDERS

LARGE SIZE ..... \$21.50  
per dozen

REGULAR SIZE ..... \$21.50  
per dozen (This size will hold the 8" & 9" plates &  
bowls and the larger bowls)

SMALL SIZE ..... \$20.00  
per dozen  
(These are good for the Pin Trays, 6" & 7" plates and  
smaller bowls)

*USA Shipping & Handling included in pricing.*

#### SEND ORDERS TO:

Ann McMorris

PO Box 4361, Topeka, KS 66604-0361



Please submit articles/ads for the  
HOACGA Bulletin  
no later than the 25th of the month  
to insure that your information  
will be included in the  
following month's publication.  
(This means it should be mailed  
no later than the 20th of the month!)

\*\*\*Please PRINT all information\*\*\*

You may submit information via mail:

Eleanor Mochel, HOACGA Bulletin  
Secretary  
15427 Woodward Court  
Overland Park, KS 66223

or fax (call first)  
913-685-2182

or email:  
cmochel@yahoo.com

Thank you for your cooperation!

## HOACGA PATTERN NOTEBOOK

The Pattern Notebook was started in 1980, with the first section being on mugs. Each year since, except in 1992, a different section had been added. This information has been compiled and printed to assist the collector in identifying the various pieces of Carnival Glass. Each section identifies the Patterns, Maker, Colors and other pertinent information and shows a color picture of the pattern. There are (10) completed sections with the candlesticks section to be completed next year. There are about 1222 items pictured. Each year a new section will be added to the Notebook.

ITEM	PHOTOS	YEAR	PRICE	COMMENTS
Mugs	1 - 40	1980	\$ 7.00	
Table Sets	1 - 40	1981	\$ 7.00	Listing of the 4 pc sets only
Water Sets 1	1 - 60	1982	\$ 7.00	Shows a pitcher & tumbler
Water Sets 2	61 - 120	1983	\$ 7.00	Shows a pitcher & tumbler
Water Sets 3	121 - 167	1984	\$ 7.00	Painted sets included
Rosebowls 1	1 - 60	1985	\$ 7.00	
Rosebowls 2	61 - 97	1986	\$ 7.00	
Small Plates 1	1 - 48	1987	\$ 7.00	Less than 9" in diameter
Small Plates 2	49 - 98	1988	\$ 7.00	
Chop Plates	1 - 40	1989	\$ 7.00	Plates of 10" diameter or greater
Regular Plates 1	1 - 48	1990	\$ 7.00	9" plates
Regular Plates 2	49 - 81	1991	\$ 7.00	9" plates
Compotes 1	1 - 57	1993	\$ 8.00	Smaller compotes
Compotes 2	58 - 113	1994	\$ 8.00	Larger compotes
Punchi Sets	1 - 36	1995	\$ 8.00	2nd printing of this Section
Vases A-C	1 - 57	1996	\$ 9.00	
Vases D-G	58 - 117	1997	\$ 9.00	
Vases H-P	118 - 201	1998	\$12.00	
Vases R-T	202 - 274	1999	\$13.00	
Vases Trpt - Z & Non US	275 - 341	2000	\$13.00	
Vases not prev. reported, non-US & brocaded	342 - 428	2001	\$13.00	Non-US patterns & Fostoria's brocaded patterns. Table of contents of all vases, plus corrections
Candlesticks	1 - 72	2002	\$13.00	
Candlesticks	73 - 125	2003	\$13.00	

Complete Set of Inserts plus Notebook is \$215.00. Shipping & Handling for complete Notebook \$8.00, for each individual item \$1.50 for a maximum of \$8.00.

Any of these sections can be purchased separately. The information contained within these sections will be of great help to you as a collector. If the knowledge you gain from it help you in buying just one piece of glass - that could be worth much more than the cost of the information.

A complete Notebook or any of the Sections may be ordered from the Secretary.

Please make check payable to HOACGA and mail to:  
Ann Morris; PO Box 4361, Topeka, KS 66604-0361

## HOACGA Bulletin Advertising Policy

1. All advertisements of glass FOR SALE or WANTED must be received by the Bulletin Secretary no later than the 25th DAY OF THE MONTH to ensure being published in the next bulletin.
2. Members may advertise ten (10) FOR SALE or WANTED per month. The FOR SALE glass must be member's glass and not the property of a non-member. Advertising is at no cost.
3. Only "OLD CARNIVAL GLASS" items or HOACGA souvenirs will be published.
4. Damage or flaws should be noted.
5. All FOR SALE items must be priced - NO BID ITEMS WILL BE PUBLISHED.
6. A 5-day return privilege, at buyer's expense, providing it is not as advertised or as discussed.
7. Postage and Insurance is to be the responsibility of the buyer, both when returning and receiving the glass.
8. The sender of the glass (be it the seller or the buyer returning it) is responsible for the proper packaging of the glass and it should be insured.
9. When submitting FOR SALE or WANTED ads, please write legibly so that your ad can be read; spell out words as opposed to using abbreviations. Your ad will be formatted to fit as best as possible. Items will be limited to one line, unless you are advertising less than ten items. **\*\*IMPORTANT\*\*** be sure to include your name, address, phone number and email address on the ad itself.
10. HOACGA does not accept responsibility for accuracy of any advertisement.

Use the following abbreviations for Glass Description.

If the color you have is not listed here, please spell your color...

A	Amethyst	EG	Emerald Green	P	Purple
AMB	Amber	G	Green	PRL	Pearl
AO	Aqua Opal	H	Horehound	PM	Pastel Marigold
AQ	Aqua	HA	Honey Amber	PO	Peach Opal
B	Blue	IB	Ice Blue	R	Red
BLK	Black	IG	Ice Green	RA	Amberina
BO	Blue Opal	IGO	Ice Green Opal	RB	Renninger Blue
CLM	Clambroth	LAV	Lavender	SM	Smoke
CeLB	Celeste Blue	M	Marigold	Saph	Sapphire
CobB	Cobalt Blue	MMG	Marigold on Milk	T	Teal
EB	Electric Blue		Glass	VAS	Vaseline

To describe a piece as light or dark, use the body of the ad.

Iridescence: EI - Excellent GI - Good AI - Average LI - Iridescence

## CARNIVAL GLASS - FOR SALE

**Lloyd R. Ward**

P.O. Box 956, Mayfield, KY 42066  
270-251-2005 Anytime

R	Persian Medallion Bon-Bon, exc. Multi-colored Irid	950.00
Lav	Good Luck Ruffled Bowl, Elec. Irid., ribbed back	850.00
	Horehound (N) Bushel Basket, Exc. Irid.	450.00
IG	Grape & Cable Footed Banana Boat, deep color with outstanding iridescence inside & out -	795.00
Amy	Captive Rose CRE Bowl, Excellent Iridescence	150.00
M	Curved Star Epergne, Excellent Iridescence, by Brockwitz, very rare	950.00
M	Rose Show Ruffled Bowl, Excellent Iridescence	750.00
G	Inverted Feather Cracker Jar, Excellent Iridescence, by Cambridge	295.00
M	Marigold on Milk Glass Scales Ruffled Bowl by Westmoreland, Excellent Iridescence	175.00
CB	Peacock at the Fountain Spooner, Excellent Iridescence RARE IN BLUE	350.00

**Nancy Williams**

2009 Cullum Drive, Reading, PA 19601  
610-374-9033

M	Grape & Cable (N) Tankard Tumbler	50.00
P	Dandelion (N) Tumbler	70.00
P	Oriental Poppy (N) Tumbler	40.00
B	Stork & Rushes Tumbler - Elect. Blue	55.00
B	Lattice & Daisy Tumbler - scarce color	60.00
G	Double Star Tumbler	50.00
B	Dugan Peacock At Fountain Tumbler Elect Blue	80.00
M	Rambler Rose Tumbler	40.00
M	Millersburg Diamond Tumbler	50.00
M	Panelled Dandelion Tumbler	50.00

# CARNIVAL GLASS - FOR SALE

## W.G. Kenney

3000 S Swope Drive, Independence, MO 64057  
816-478-9848 / janekenney2@comcast.net

- EL R 1981 Grape & Cable HOACGA Candle Lamp ..... 125.00  
EL W 1981 Grape & Cable HOACGA Candle Lamp ..... 250.00  
I have been told that the white one is a whimsy of which only 2 were made by Fenton and presented to the President of HOACGA in 1981 when they purchased the red ones for the club. Iridescence is great on both pieces.

## Dick & Diane Wetherbee

11 Baker Pond Rd. Ext., Charlton, MA 01507  
508-248-0038 / ddwbee@aol.com

- EI B Thin Rib (N) 11" vase, elect blue irid., a beauty ..... 175.00  
EI M Three Fruits (N) 8-1/2" PCE Bowl, Great dark color & no scratches, Super ..... 90.00  
EI P Nippon 8-1/2" fluted bowl (N) w/Bktw back, Beautiful even color, Super ..... 275.00  
EI PO Leaf Ray 7" Tri corner Nappy, Dark color with lots of opal, Beauty ..... 65.00  
EI M Enamelled Lotus bulbous Water Pitcher/Draperly inside w/4 matching tumblers ..... 235.00  
EI G Strawberry Wreath 10" ruffled bowl..Super Millersburg Radium, A Beauty ..... 550.00  
EI Amy Peacock & Grape 9" ruffled bowl w/Beaded Berry back, Pretty Amethyst color ..... 85.00  
EI P Plume Panels 12" Vase..outstanding color inside and out..Stately ..... 175.00  
EI M Millersburg Peacock Tail 4" Variet compote.. Beautiful satin finish ..... 125.00  
EI W Fanciful 9" ruffled bowl..10 low ruffles, Super frosty white A Beauty ..... 210.00

# CARNIVAL GLASS - FOR SALE

## Annetta M. Bosselman

3103 Brentwood Circle, Grand Island, NE 68801  
308-382-6384

- V Waterlily 3 toed 5" bowl.....69.00  
M EI 474 Tumbler.....35.00  
M EI Split Diamond Small Creamer.....29.00  
M EI Dutch Twins Ashtray .....29.00  
M EI Inverted Feather Compote .....30.00  
M EI Blackberry wreath 6" bowl (2) .....30.00  
M EI Rococo 5" dome footed bowl .....20.00  
M EI Horseshoe Shot Glass .....30.00  
M EI Tumble Up.....40.00  
M EI LBJ Hot Ashtray .....30.00

## Gerald Thomas

44 E Highland Ave., Atlantic Highlands, NJ 07716  
732-872-8051 - evenings  
SHIPPING & INSURANCE EXTRA

- M EI Inverted Strawberry Spittoon (nice quality ex.) ..... 925.00  
G EI Inverted Strawberry Powder jar w/ lid-mind cond. .... 210.00  
B EI Grape Arbor Hat..... 75.00  
W G 16" Fenton rustic vase ..... 95.00  
A EI Acorn Burr partial breakfast set, covered butter, creamer spooner, well-matched pieces ..... 595.00

## CARNIVAL GLASS - WANTED

---

**W.G. Kenney**

3000 S Swope Drive, Independence, MO 64057  
816-478-9848 / janekenney2@comcast.net

EL A Base only for Broken Arches Punch Bowl in Dark Amy.

---

**Lloyd Ward**

PO Box 956, Mayfield, KY 42066  
270-251-2005 (anytime)

1 piece, 20 pieces or a collection  
All discussions confidential


The Stretch Glass Society  
**30<sup>th</sup> ANNIVERSARY**  
**CONVENTION, SHOW & SALE**

Beautiful iridescent stretch glass produced in America between 1916-1930's! Among the many pieces on display or for sale will be items from companies such as CENTRAL, DIAMOND, FENTON, IMPERIAL, JEANNETTE, LANCASTER, NORTHWOOD, TIFFIN/U.S. GLASS and VINELAND!

**PUBLIC INVITED:**

**Thursday, July 29, 2004 6-10pm**  
**Friday, July 30, 2004 9AM-4pm**  
**Member Only Sales Stampede Thurs-AM**  
**HOLIDAY INN/ PARKERSBURG WV**

**ADMISSION IS FREE**



For more information, write to:  
**The Stretch Glass Society**  
P.O. Box 947  
Medford, MA 02155  
or email to:  
[StretchGlassSociety@columbus.rr.com](mailto:StretchGlassSociety@columbus.rr.com)

## **CORRESPONDENCE**

I had a great time at my first HOACGA Convention. The people were very nice, and the glass...WOW!

Thanks.  
Ralph & Kitty Fulton  
Redondo Beach, CA

---

Enjoy the publication and comments from the collectors. It seems the "For Sale" carnival has become smaller the last several months.

Thanks.  
Doris Klevar  
Birmingham, AL



## **CREDIT CARD AVAILABILITY**

We now have obtained a  
Credit Card System  
that will allow members to pay  
their membership dues or  
make any purchases from the Club  
with the use of a credit card -  
Mastercard or VISA.

Contact Ann McMorris  
prior to using this service.

## HOACGA ROSTER ADDITIONS/CHANGES

### NEW MEMBERS

*Blackwell, Loren & Larissa*, 992 8th Ave., NW, New Brighton, MO 55112, Ph: 651-633-0693

*Cook, Carroll*, PO Box 674, Cuero, TX 77954, Ph: 361-275-8350; email: [cecjr@awesomenet.net](mailto:cecjr@awesomenet.net)

*Hurst, Aaron*, 1348 Union Grove Rd., Terre Hill, PA 17581, Ph: 717-445-5726

*Kessler, Mark*, 12305 E 49th St., Independence, MO 64055, Ph: 816-737-3456, Referred by Bob Grissom

*Lamarche, Antoine*, 3008 Cure-Laelle, Provost QC JOR1TO Canada Ph: 450-224-7830

*Mochel, Brent & Sara*, 8735 Reeds Rd., Overland Park, KS 66207, Referred by Eleanor Mochel

*Roush, Henry & Mary*, 1334-216th Place, Harvey, IL 50119, Ph: 641-628-3567

*Fulton, Ralph & Kitty*, 1924-B Gates Avenue, Redondo Beach, CA 90278-1903 Ph: 310-318-2576; email [fltonr@ix.netcom.com](mailto:fltonr@ix.netcom.com); referred by Judy Maxwell

### NEW EMAIL

Bucy, Charles, Maitland, MO: [chuckb@nwmo.net](mailto:chuckb@nwmo.net)

Graning, Fred, Newbury Park, CA: [derfhere@adelphia.net](mailto:derfhere@adelphia.net)

Hamlet, Don, Asheboro, NC: [hamlet@triad.rr.com](mailto:hamlet@triad.rr.com)

Thistlewood, Glen, England: [s.g.thistlewood@btinternet.com](mailto:s.g.thistlewood@btinternet.com)

Wroda, Jim, Gettysburg, OH: [jwroda@woh.rr.com](mailto:jwroda@woh.rr.com)

Alley, Beth & Jim, Elgin TX: [balley@lcra.org](mailto:balley@lcra.org)

Sivonda, Stephen & Judy, Middletown, CT: [ssivonda@att.net](mailto:ssivonda@att.net)

Whitley, Rommy & Jeannie, Houston, TX: [twhitley@houston.rr.com](mailto:twhitley@houston.rr.com)

### NEW ADDRESS/PHONE NUMBERS (includes phone/email)

Green, Ron & Judy, 2160 Princeton Lane, Temperance, MI 48182

Kudlac, Jerry & Cleo, 12208 SW 9th Place, Yukon, OK 73099; Ph: 405-577-2519

Winkle, Jessie, M, 69440 Hinkle Butte Drive, Panoramic View Estates, Sisters, OR 97759

PRICHARD, JACK, P. O. BOX 1330, STUTTGART, AR 72160-1013

Cain, Michael & Linda, Camden, TN, Ph: 731-584-6568

Davis, Steve, Macon, GA, Ph: 478-741-4252

Houghton, R.A. & Florence, Americus, KS Ph: 620-443-5883

## HEALTH REPORTS

Bernard Morey of Midland, MI: needed another series of chemotherapy and is responding well.

---

## CONDOLENCES

Condolences to Bernice Haus on the April 22, 2004 death of her husband Raymond. Cards and notes may be sent to Bernice at: 5854 Chestnut Hill Church Road., Emmaus, PA 18049-5401.

Condolences to Eleanore Shimko on the April 17, 2004 death of her husband, John Shimko. Cards and notes may be sent to Eleanore at:  
9701 Bear Creek Boulevard, White Haven, PA 18661

---

## THE NEXT REGULAR HOACGA MEETING

*By Ed Kramer*

The next regular bi-monthly meeting of HOACGA will be Sunday, July 25, 2004 at 2:00pm at the Prairie Village Community Center, 7700 Mission Road, Prairie Village, KS. We will discuss glass with the same pattern in different shapes.

The May 23, 2004 meeting was attended by the regulars. We discussed over 25 pieces of green glass. Charles Mochel won the door prize, a 2004 sample souvenir guest set pitcher.

Should the location of the July meeting change, those affected will be notified.

# CARNIVAL GLASS CLUB INFORMATION

## Air Capital Carnival Glass Club

Secretary: Randy Thach, 4500 N Ridge Road, Wichita, KS 67205, accgo@cox.net  
Dues: \$15.00 per year, per family  
Meetings: 1st Sunday of every second month

## American Carnival Glass Association, Inc.

Secretary: Dolores Wagner, 5951 Fredricksburg Rd., Rt. 4, Wooster, OH 44691, (330) 264-3703  
Dues: \$15.00 per family  
Meetings: At convention in July, quarterly newsletter

## Australian Carnival Enthusiasts Association, Inc.

Secretary: M. Dickinson, RSD Fryerstown, Victoria, Australia, 3451, (054) 73 4351  
Dues: \$12 per annum per family or \$10.00 a single \$15.00 per annum overseas  
Meetings: Meetings are held quarterly at member's homes. Visitors are welcome 12 noon on. Please do not send check or money order.

## Canadian Carnival Glass Association

Secretary: Tim Raeburn, 228 Mayfield Ave., Waterloo, Ontario CAN, N2J 3S5, raeburn@golden.net, 519-746-2712  
Dues: \$20.00 per year  
Meetings: 6 to 8 per year. Convention: Oct 14-16, 2004

## The Carnival Glass Society (UK) Ltd.

Secretary: Phyllis Atkinson, PO Box 14, Hayes, Middx England UB3 5NU (0181 897 8930)  
Dues: Overseas Members 15 pounds (Sterling) per year  
Meetings: Convention during August in Mid-England and get-togethers in member's homes

## Carnival Companions

Secretary: Nigel Gamble, 24 Crabtree Avenue, London, Ontario Canada N6G 2H7  
Dues: \$7.50 Donation per person, per year  
Meetings: 5/6 meetings per year, usually to a restaurant first, then a member's home to view their collection

## Dakota Territory Carnival Glass Club

Secretary: Kathy Evans, 408 N Euclid Unit #2, Pierre, SD 57501-1364, 605-224-4367, carnivalmom@hotmail.com  
Dues: \$10.00 per year, payable January  
Meetings: Alternate months beginning January

## Gateway Carnival Glass Club

Treasurer: Karen Skinner, 108 Riverwoods Cove, East Alton, IL 62024, (618) 259-1373, fskinner@piasnet.com  
Dues: \$5.00 per year, per family  
Meetings: In the homes of members living in St. Louis & surrounding areas

## Great Lakes Carnival Glass Club

Secretary: Maxine Burkhardt, 612 White Pine Blvd., Lansing, MI 48917  
Dues: \$10.00 per year, per family  
Meetings: At member's homes 3 times/year. 1st Sun in Feb, May, Aug. Convention first week in November

## Heart of America Carnival Glass Association

Secretary: Ann McMorris, PO Box 4361, Topeka, KS 66604-0361, (785) 478-9004, mcmorris@woodsland.com  
Dues: \$35.00 per year US & Canada, \$50.00 Foreign  
Meetings: 4th Sunday of the Month, Prairie Village, KS

## Hoosier Carnival Glass Association

Secretary: Carl Booker, 944 W Pine Street, Griffith, IN 46319, (219) 924-2910, bookercgr@aol.com  
Dues: \$10.00 yearly, per family  
Meetings: Monthly - 3rd Sat @ 1:00 pm except Feb., July & Aug

## International Carnival Glass Association (ICGA)

Secretary: Lee Markley, Box 306, Mentone, IN 46539, (219) 353-7678, (219) 894-3451  
Dues: \$20.00 per year  
Meetings: Convention: 1 yearly in July or August, Newsletter quarterly

## Keystone Carnival Glass Club

Secretary: Mary Sharp, 719 W Brubaker-Valley Road, Litz, PA 17543  
Dues: \$10.00 family membership per year (June - May)  
Meetings: Second Sat. of each month at loof Hall, N Broad St., Litz, PA at 7:00 pm

## L'Association De Verre Carnival Du Quebec

Secretary: Jacques Dugas, 155 Seraphin Marion, Boucherville Que. J4B6T6 Canada (450) 641-0138  
Jacques.dugas.chum@sss.gouv.qc.ca  
Dues: \$20.00 (Canadian) per year, per family (Bilingual Newsletter-French/English)  
Meetings: Announced in newsletter at each two months

## Lincoln-Land Carnival Glass Club

Secretary: Amy Ayers, PO Box 320, Tremont, IL 61568  
Dues: \$20.00 per year US & Canada, \$25.00 overseas  
Convention: Each June. Newsletter 6 times per year

## New England Carnival Glass Club

Treasurer: Maurice "Moe" Myers, 1701 White Mt. Hwy. #20, Tamworth, NH 03886, (603) 323-7140  
Email: snobird@landmarknet.net  
Dues: \$15.00 per year per household, \$18.00 outside US, Sept. 1 - Aug. 31  
Meetings: 3rd Sunday of the months Feb., April, June, Aug, Dec. at the Pulaski-American Club, Southbridge, MA. Club Convention is the 2nd weekend in Sept.

## Northern California Carnival Club

Treasurer: June McCarter, 1205 Clifton Drive, Modesto, CA 95355, jmccarter@surftee.com  
Dues: \$10.00 per year (individual or family, Jan. 1 - Dec. 31)  
Meetings: 3rd Sunday, in Jan, April, Oct., 11:00 am - 3:00 pm, lunch at noon, The Early Dawn Restaurant, 1000 Kansas Avenue, Modesto, CA 95351

## Pacific Northwest Carnival Glass Club

Secretary: Lee Swigert, PO Box 700, Middleton, ID 83644  
Dues: \$15.00 per year, due Aug. 15 - Aug. 14  
Meetings: 3 times/year, 2nd Sat. of April, 2nd wknd. of Aug. (Convention), 2nd Sat of Nov

## San Diego County Carnival Glass Club

Secretary: Linda Heaton, 4561 Mt. Foraker Ave., San Diego, CA 92117-3032, tiger289@aol.com  
Dues: \$18.00 household, USA & Canada, \$23.00 Foreign - annually  
Meetings: Handlery Hotel, San Diego, April/July/October. Educational program, noon lunch, quarterly newsletter, March convention

## San Joaquin Valley Carnival Glass Club

Treasurer: Joan Steskal, PO Box 389, Ahwahnee, CA 93601  
Dues: \$10.00 per year, payable March 1st  
Meetings: In member's homes on 3rd Sun. of Mar/Sept & 2nd Sun. of Dec., 11am-3pm, potluck @ noon

## Southern California Carnival Glass Club

Treasurer: Betty Robertson, 1430 Kendall Ave., Camarillo, CA 93010-3606, robertsonme@aol.com  
Dues: \$18.00 per year, per household  
Meetings: Golden Sails Hotel, Long Beach, CA at 10:00 am setup, lunch served at noon, meet 2nd Sun. of Feb., 3rd Sun. of May, Aug. & Nov. Convention 1st or 2nd week in March

## Sunshine State Carnival Glass Association

Secretary: Jackie Poucher, 9087 Baywood Park Dr., Seminole, FL 33777, (727) 398-1866, jpoucher1@aol.com  
Dues: \$25.00 per family, per year  
Convention: Annually, in February, Quarterly newsletter

## Tampa Bay Carnival Glass Club

Contact: Barbara Hobbs, 5501-101 Avenue N, Pinellas Park, FL 33782-3311, 727-541-6164, hobbsbarb@aol.com  
Dues: \$12.50 yearly per family USA & Canada, \$15.00 overseas. Starts March 1st  
Meetings: Member's homes, 3rd Sun. each month except June, July, Aug/Convention 2nd weekend in Feb

## Texas Carnival Glass Club

Treasurer: Tommy Whitley, 1006 Cheshire Lane, Houston, TX 17018-2912m 713-686-0630  
Dues: \$20.00 per year, per family, \$25.00 outside US  
Convention: Houston, Mid-February, Quarterly meetings May, Aug, Nov

## Western NY Carnival Glass Club

Secretary: Laurel Wagner, 5050 Merrill Rd., Holley, NY 14470  
Dues: \$5.00 single membership + \$2.00 associate  
Meetings: UC United Church, N Main St., Churchville, NY, 3rd Tues. of each month (except Jan, Feb, July, Aug), 7:30 pm

## www.cga Carnival Glass Club

Treasurer: Ed Perva, 210 W Market Street, Hertford, NC 27944, subman@inteliport.com  
Dues: \$18.00 annually US  
Convention: Annually, date and location to be announced

## RESOURCE INFORMATION

- HARTUNG CARNIVAL GLASS PATTERN BOOKS:** Set of (10) books for \$60.00 plus \$6.00 postage. Order from Ann McMorris, PO Box 4361, Topeka, KS 66604.
- HOACGA EDUCATIONAL SERIES BOOK I:** 148 articles with pictures (black & white) on a variety of carnival glass patterns. Books consist of articles written by John & Lucile Britt, which have been printed in previous monthly bulletins. \$15.00 plus \$2.50 postage. Order from Ann McMorris, PO Box 4361, Topeka, KS 66604.
- HOACGA EDUCATIONAL SERIES BOOK II:** 180 articles with pictures (black & white) on carnival glass tumblers. Book consists of articles written by John & Lucile Britt, which have been printed in previous monthly bulletins. \$17.50 plus \$2.50 postage. Order from Ann McMorris, PO Box 4361, Topeka, KS 66604-0361.
- HOACGA EDUCATIONAL SERIES BOOK III:** Contains about 150 articles from past bulletins on bon-bons, bowls, drinking vessels, novelties, rose bowls, and table sets by several different members. It also lists approximately 500 rarities with 5 or less known. Cost is \$20.00, USA postage included. Order from Ann McMorris, PO Box 4361, Topeka, KS 66604-0361.
- HOACGA PATTERN NOTEBOOK:** Contains sections on punch sets, water sets, table sets, mugs, rose bowls, small, regular and chop plates, compotes, and vases. Each section has color photos of each known pattern and the maker and colors available. A section is added each year. The project began in 1979. Present cost is \$223.00 including S&H. Order from Ann McMorris, PO Box 4361, Topeka, KS 66604-0361.
- THE WORLD OF ENAMELED CARNIVAL GLASS TUMBLERS:** By Cecil Whitley. Book on painted Carnival Glass tumblers. Ten pages of full color photographs of sixty painted tumblers. \$10.00, postage included. Order from Cecil Whitley, 1041 Cheshire Lane, Houston, TX 77018.
- NETWORK SPECIAL:** By Glen & Stephen Thistlewood of Hampshire, England. 40 pages, 8x12". \$15.00, postage included. Available in the US only through PageWorks, PO Box 2385, Mt. Pleasant, SC 29465, USA. Website: [www.carnival-glass.net](http://www.carnival-glass.net).
- MORDINI'S 2004 CARNIVAL GLASS AUCTION PRICE REPORT FOR AUCTIONS CONDUCTED IN 2004:** 17th Annual Edition by Tom and Sharon Mordini. \$12.00 or \$11.00 each for two or more to the same address. Back issues (91,92,94,95,97,98,99, 00) \$8.00 each. Canadian orders should be by Canadian Postal Money Order in US funds, overseas mailings add \$3.00 (per report) Int'l Money Order in US funds. Order from Tom & Sharon Mordini, 36 N Mernitz Avenue, Freeport, IL 61032; Phone: (815) 235-4407; Fax: (815) 232-3911; Email: [tommordini@aol.com](mailto:tommordini@aol.com).
- BUTTON, BUTTON:** Carnival Glass, Iridescent, Luster Buttons. Over 100 buttons listed. Over 140 pages packed with information. Each button has a color and black & white photo, detailed drawing and description – shown in actual size. \$15.50, postage included. Order from Clint Arsenault, PO Box 1845, Monrovia, CA 91017.
- THE SANCTIFIED CROSS EYED BEAR'S PRICE TREND GUIDE (1999-2003):** Our guide reports on excess of 30,000 pieces of glass sold in this 5-year period. Additional helpful information on "damaged glass" sales. Get the "big picture" in carnival glass in black & white (378 pages). Send \$24.95 to Don "Bear" Grizzle, PO Box 1296, Huntsville, AL 35807-0296; Questions to (256) 534-9076. Bear Book \$37.95 + \$2.05 S&H; Bear Book CD \$24.95, \$2.05 S&H.
- THE CARNIVAL HUNTER'S COMPANION: A GUIDE TO PATTERN RECOGNITION:** By Elaine & Fred Blair, photographs by Glen & Stephen Thistlewood. Announcing CD Rom Version 2.01 by Elaine & Fred Blair, photographs by Glen & Stephen Thistlewood. Will run on Windows 95/98/NT/XP operating systems. A unique cross-referencing system which aids in quick identification of 1,053 patterns, accompanied by 378 photos, through use of "descriptors" which describe specific features of each pattern. Every descriptor used narrows the list of possible patterns. USA, send check for \$22, plus \$3.50 s/h to Elaine Blair, 1708 Southampton Drive, Carrollton, TX 75011. TX residents add \$2.10 tax. UK: \$22, plus \$5.70 s/h. Australia \$22, plus \$6.00 s/h. Email: [fred.blair3@verizon.net](mailto:fred.blair3@verizon.net)
- SKETCHBOOK OF LITTLE CARNIVAL GLASS BUTTONS, 1997 EDITION:** Contains drawings and descriptions of over 500 little old buttons (less than 5/8" diameter). Loose-leaf format for easy annual updates, and geometric classification for easy identification. Indexed. \$13.00 plus \$1.50 postage for US buyers, Canada & Mexico please add \$2.00 (US) to each for extra postage. Overseas please add \$4.00 (US) surface or \$6.00 airmail. Order from author: Jane O. Dinkins, 1100 Ridgeley Drive, Houston, TX 77055, (713) 465-0557. Owners of 1996 edition may receive 1997 update pages by sending \$3.00 (including postage).
- OLD IMPERIAL 1909 CATALOG REPRINTS FROM THE ORIGINAL CATALOG:** The catalog is 13½" x 11" containing 192 pages that are full of Imperial pattern pictures. Price is \$28.00 plus \$4.00 shipping & handling. Order from Ann McMorris, PO Box 4361, Topeka, KS 66604-0361.
- A FIELD GUIDE TO CARNIVAL GLASS:** By Dave Doty. Price is \$25.00 postage paid in the US, Order from PageWorks, Box 2385, Mt. Pleasant, SC 29465-2385.
- CARNIVAL GLASS. THE MAGIC AND THE MYSTERY:** By Glen & Stephen Thistlewood. Order (USA) from Schiffer Publishing at \$39.95 plus postage. Phone: (610) 593-1777, Fax: (610) 593-2002, Email: [schifferbk@aol.com](mailto:schifferbk@aol.com), Website: <http://www.schifferbooks.com>. Books ordered via internet are shipped free within USA.
- A CENTURY OF CARNIVAL GLASS:** By Glen & Stephen Thistlewood. Order (USA) from Schiffer Publishing at \$39.95 plus postage. Phone: (610) 593-1777, Fax: (610) 593-2002, Email: [schifferbk@aol.com](mailto:schifferbk@aol.com), Website: <http://www.schifferbooks.com>. Books ordered via internet are shipped free with USA.
- CARNIVAL PATTERN SEARCH INDEX:** A handy eight-page 5"x8" soft cover bound SMALL pamphlet listing over 600 Carnival Pattern Names in 13 general categories: Animals, Birds, Insects, Flowers-Roses, Flowers-Others, Fruits-Berries, Fruits-Cherries, Fruits-Grapes, Fruits-Others, Nuts, Plants, Hobstars, Nearcuts (or Geometrics). The pattern names are listed alphabetically in each category. Price \$5.95 (postage included). This pamphlet is no big deal. But, then, neither is the price. Order from Norman Angell, RFD 1 Box 686, Bethel, VT 05032, Phone: (802) 234-9855.
- PROVENANCE BOOKLET:** For use in tracking a piece of carnival glass or heirloom from owner to owner. Order from Eleanor Mochel, 913-685-2182, [cmochel@yahoo.com](mailto:cmochel@yahoo.com); \$4 each or 3 for \$11 + postage, (USA \$1, others \$2.50-each)



## CARNIVAL GLASS EVENTS

FUNCTION	DATES	REMARKS
Convention & Auction	June 22-26 2004	ACGA Convention – Embassy Suites, Dublin, OH (Northwest Columbus) – 614-790-9000 (No Pets Allowed) – Pets allowed at Wyndham Hotel – 614-764-2200. Burns Auction Service selling some of the John & Ruth Phillips collection – Burns website <a href="http://www.tomburnsauction.com">www.tomburnsauction.com</a>
Convention & Auction	July 14-17 2004	<u>ICGA Convention</u> – Crowne Plaza Hotel – 11228 Lone Eagle Drive, Bridgeton, MO – 314-291-6700 – Seeck Auction Service will conduct the Auction of the John & Pat Rottschaefer collection.
Auction	August 28 2004	Jim Wroda Auction Service; 937-548-2640; 10:00 am; Carnival Glass Collection of Gene & Shirley Metro; Holiday Inn, 131 Bluebell Dr., SW, New Philadelphia, OH 44883
Convention & Auction	September 23-25 2004	NCCC/SJVCGC (Norther California & San Joaquin) Convention & Auction – Fresno Holiday Inn, Fresno, CA (across from the airport), this is a new location from previous conventions; Contact June McCarter @ 209-523-6778
Auction	October 9 2004	Jim Wroda Auction Service Midwest Auction Facility 5239 St Rt 49 S, Greenville, OH 45331 - 10:00 am, 350 piece carnival collection