



RETURN ADDRESS

H.O.A.C.G.A.
Eleanor Mochel
15427 Woodward Court
Overland Park, KS 66223

**PLEASE MAIL IN ADS
AND ARTICLES BY THE
25TH OF THE MONTH!**

**JULY
2004**

Please send in your membership
renewal to Ann McMorris.

HOACGA

Heart of America Carnival Glass Association Inc.

HEART OF AMERICA
CARNIVAL GLASS ASSOCIATION

(Since 1973)

President

Robert Grissom
7517 Evanston
Raytown, MO 64138
Phone: (816) 356-5320
e-mail: bobimocg@aol.com

Vice President

Don Lacoek
PO Box 33
Delia, KS 66418
Phone: (785) 771-3125

Treasurer

Cliff Ball
572 W Park Street
Olathe, KS 66061
Phone: (913) 782-0415

Secretary

Send new & renewal memberships,
address changes, orders for educ.
matl. and souv. Make all checks
payable to HOACGA and send to
Ann McMorris. Membership:
\$35 USA & Canada, \$50 Foreign

Ann McMorris
PO Box 4361
Topeka, KS 66604-0361
Phone: (785) 478-9004
e-mail: mcmorris@woodsland.com

Bulletin Secretary

Send ads & articles for bulletin
no later than 5 days prior to the end
of the month.

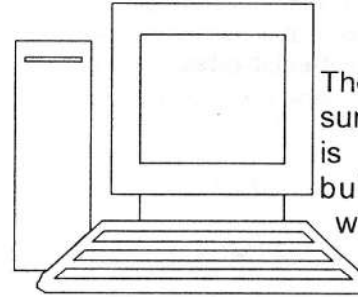
Eleanor Mochel
15427 Woodward Court
Overland Park, KS 66223
Phone: (913) 685-2182
Fax: (913) 685-2182 (call first)
e-mail: cmochel@yahoo.com

Membership expiration month and year is posted on address label
Following the name: (i.e. 504 = expires May 2004)

Opinions and information expressed in the HOACGA bulletin are not necessarily those of the Bulletin Secretary or Officers. Neither HOACGA nor Bulletin Secretary accepts any responsibility for accuracy or claims made, or for any outcomes resulting from the use of the information either printed or implied.

**LAST NOTICE
TO MEMBERS REGARDING
BULLETIN E-MAIL AVAILABILITY**

By Eleanor Mochel



The HOACGA Board has decided to survey the membership to see if there is enough interest in receiving the bulletin by email to make it worthwhile. The bulletin will continue to be sent to members as it is now unless you request to

have it sent by email. Email receivers will just not have to depend on the US Postal Service for when they get their bulletin.

For the foreign members who would receive the bulletin by email, their dues would be reduced to \$35.00 upon renewal. Otherwise, the dues for all members would remain the same as they are now.

If there are enough members desiring their bulletin be sent by email, our target date for doing so would be with the September 2004 issue. We need to hear IMMEDIATELY from those members that would want their bulletin sent by email.

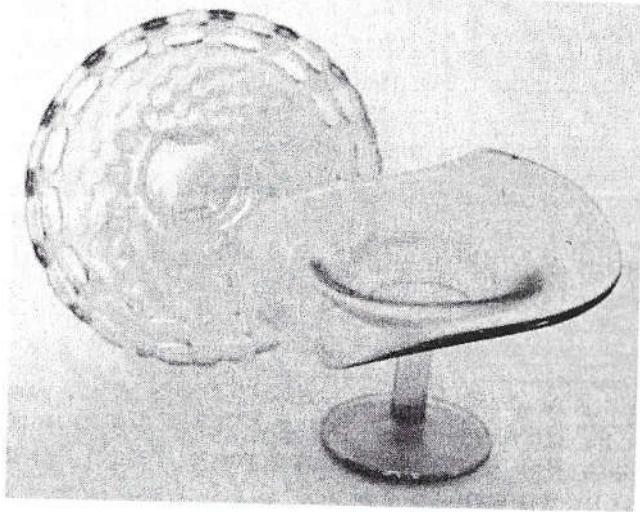
Please email Ann McMorris at mcmorris@woodsland.com giving her your name and your spouse's name, your city, state and email address if you want the bulletin emailed to you.

We will let everyone know how the survey comes out. Thanks for your IMMEDIATE response.

ICE BLUE SMALLS

By Alan and Lorraine Pickup

Smalls? Is this a new pattern name for carnival glass? No, just how most antique dealers and collectors refer to small collectibles. These two Fenton pieces could be considered to fall into this grouping. Why? Well, they are both small enough to fit easily into your china cabinet, and both are easy to love in this very scarce ice blue glass.



First, we have Fenton's little two-row open edge basket in the ice cream shape. They can also be found in a larger three-row size. And the other piece is a Fenton's Rose Spray compote pulled into the jack-in-the-pulpit configuration. Neither piece will win any great rarity awards but then again in today's market they are just not seen on a daily basis either.

Like all collectors we have a story to go along with most of our glass. Many years ago now we were doing our usual search for carnival glass at an antique show one Saturday morning. This one dealer at the show had a mixture of glass and pottery that included both new and old Fenton glass. We were somewhat new collectors then and the mixture of new and old glass puts you in a not "too sure of yourself position." We bought a nice green Ragged Robin 3-1 shaped bowl from this dealer but passed on two I/B open edge baskets at \$7.50 apiece not knowing if they were new or old. We then went to a late breakfast and

ICE BLUE SMALLS continued...

after enjoying some Belgium waffles, Lorraine decided to go back and buy this basket, new or old, just because it was pretty. We later discovered that a friend of ours who was a seasoned collector bought the other I/B basket and assured us it was not only old but also precious.

The small Rose Spray compote was found only recently. Over the years we have passed up several of these Rose Spray compotes because the pattern detail is so delicate that it is virtually non-existent when stretched into the JIP shape. So although we were reluctant to purchase this one, it is hard to pass up an ice blue carnival glass piece in any shape or pattern as long as the price is right.

Besides we needed something to write about and this is one of those pieces that grows on you once to get it home and you ask yourself why you even hesitated buying it in the first place.

And yes, after some twenty years of glass collecting, we are still not sure of ourselves many times and spend a lot of time and miles going back because we saw something that we should have bought and didn't. Anyone else have that problem?

CORRESPONDENCE

To Bob, Ann and all Workers at HOACGA Convention:

We had a wonderful time - enjoyed so much seeing everyone again.

The Imperial and Millersburg glass displays were awesome.

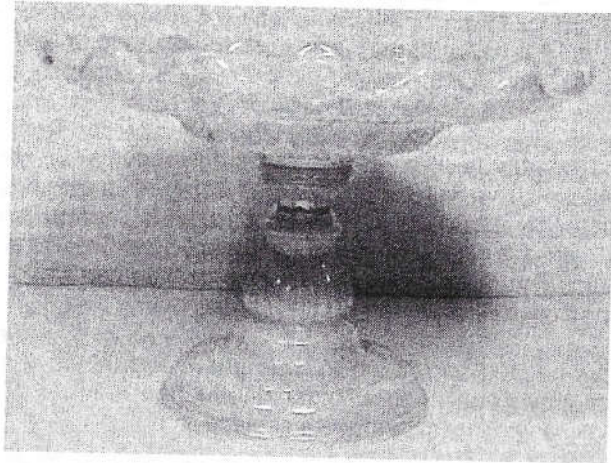
Very proud to receive one of Five Awards on Room Displays.

Thanks for all the hard work that made the convention so great.

Jim & Pat Vaughan

Lacy Dewdrop Whimsey Cake Plate

By Barb Chamberlain



Lacy Dewdrop is a pattern that is known in carnival glass only in marigold on milk glass, to my knowledge.

Bill Edwards and Mike Carwile, in the Standard Encyclopedia of Carnival Glass, question the attribution of the pattern in carnival glass to the Phoenix Glass Co. Pictured in Jack D. Wilson's Phoenix and Consolidated Art Glass 1926-1980 book is a picture with a caption from the Crockery and Glass Journal if December 1940, that attributes this pattern in pearl lustre, caramel lustre, or antique blue (not carnival) finishes to Phoenix Glass Co. In the picture are two sizes of compotes, which required lids (the lids are not pictured), a creamer, and a lid that appears to be for a sugar bowl. As always, the prices tend to fascinate me. These pieces pictured ranged from \$1 to \$3.50.

The mold for Lacy Dewdrop didn't originate at Phoenix, as is often the case, but Wilson gives original ownership to Duncan Flint Glass Works, who in turn sold the mold to Co-Operative Flint Glass, who used them from 1902-1929 when Phoenix acquired the mold after a fire at the Co-Operative company. Phoenix evidently sold these molds shortly before or after the ad in the Crockery and Glass Journal appeared in December of 1940. Since this time, the molds have been used by other companies.

Lacy Dewdrop Whimsey Cake Plate continued...

Edwards/Carwile list Lacy Dewdrop shapes as water sets, covered compotes, covered bowls, table set, goblet, and banana bowl. Doty concurs on these shapes on his web site, but didn't list a spooner or butter dish, and included a stemmed cake plate, which he also pictured. In the last five years of the Mordini guides, very few of the pieces have been listed as selling: one banana dish, four tumblers, one covered compote, one compote, four goblets, and a covered bowl.

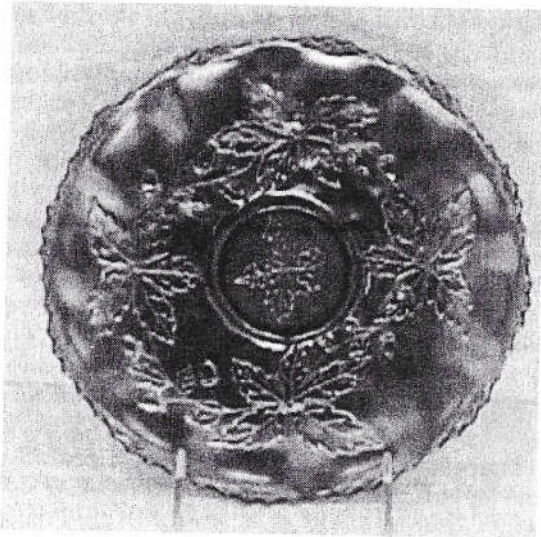
Our pictured whimsey piece is shown from two angles. The one is from the side showing that a compote base had been flattened to make a piece that nearly resembles a small cake stand. It is not quite flat however. The other view is taken upside-down to show the pattern. The inside is plain. This piece measures about 5 1/4" tall (which compares to a compote base selling on Ebay as being 6 1/4" tall). It has a top diameter of 7 5/8", and a base diameter of 4". The bowl/plate depth is less than 1 1/2" deep.

If you have shapes other than the listed pieces, contact either Eleanor Mochel or me for inclusion in a future issue of HOACGA.



Another OKLAHOMA 'FIND'

By Ruth Herrington



Quilts, you say? The sign did say Antiques, too. We hadn't stopped in previous years, because there were so many other places that held more promise for carnival glass. This year (2004), after spending several days with friends in Eufaula, OK, we headed west on I-40. Not many miles up the road, we saw the 'Quilt Barn' and said, "Why not?"

We pulled into a pretty gated estate with garden fountains and statuary for sale in front of the specially built barn of a moderate size. As we entered the main room, we saw shelving placed randomly about, and several doorways to other rooms in all directions. As expected, there were rooms for large quilt displays, fabric for do-it-yourselfers, and supplies of all kinds. The 'smalls' were grouped by color mostly, with islands of depression glass, contemporary glass, and porcelain nicely offsetting the gift items.

In one room, there were several pieces of Indiana Harvest glass in blue, with bits and pieces of many things. I reached for a piece that was about the only "classic" carnival glass in the place. It was a green 9" plate with acorns and leaves by Fenton. I looked it over... hmmm, in good condition. I took it to Cecil (as I always do) to check for the flaws I might miss because I get caught up in the pattern and the beauty of the

Another Oklahoma Find continued...

glass. My books were in the car and I wanted to verify value, since I am limited in knowledge about "Acorns." I usually check a couple of resources, but my Doty's Field Guide got buried somewhere, so I only checked Edwards' price guide. It said that plates are rare and green wasn't listed.

I went back inside where Cecil said he found the plate to be sound. I couldn't find a price, so I decided I would 'take a chance' on the plate that was priced very low. There was no description on the tag, just a price (the lady didn't know carnival glass). I paid and we went on our way. I wasn't able to check on it for two days until we got back to San Diego. I thought about it all the way home. Let me tell you briefly what I learned.

First of all, the plate was not "Acorns." It was "**Autumn Acorns.**" Both patterns were abundantly produced by Fenton in bowls, but plates in both patterns are considered 'rare.' Under "Acorns" the books state that there are a few plates known and only in blue... that is why no price was listed for green. Makes sense! Under "Autumn Acorns" (with a leaf in the center) the books list the rare green plate at about \$1,500. It is also found in blue, with amethyst 'reported.' The iridescence is pretty, and the plate is certainly green. The iridescence was applied in a 'medallion' effect around the surface of the plate. (Perhaps, you can see it in the photo.) This must be a difficult shape to apply, because even the plates made by Fenton today (like my Frank Fenton 85th birthday plate) have this same 'medallion' effect in the iridescence. It is not a problem for me.

I thought another find of 'BLUE' Imperial just might cross our paths (especially in Oklahoma, LOL), but I never expected to find a rare Fenton piece. That is why we all keep searching, right? Just around the corner lies a special treasure waiting for me (or you). Gotta stop at one more shop! Drive that extra mile! Go into the store that only has 'junk'! We all love stories. And it's the story, not the value or the writing style that grabs us. Won't you tell us about your special "FIND"?

AND THE AUCTION BEAT GOES ON!

By Bud & Gladys Martin

Memorial Day Weekend should definitely include a Carnival Glass auction. Jim Wroda & Company certainly came up with a great idea for three-day's worth of auctions with 2-3-4 rings going at the same time. We decided to take in his 6th Annual Memorial Weekend Auction which not only included Carnival Glass, but also, Depression glass, R. S. Prussia, Opalescent Glass and much, much more.

We headed to Greenville, Ohio, on Thursday with our great carnival glass travelling "girl", Maggie, and our newest addition, Katie (3 mo. old Schnauzer). Katie proved she is definitely a CG trooper. The Greenville Inn accepts pets and this was the deciding factor in our making the trip. Turned out to be one of the nicest places (and people) we've stayed in all our travels.

Upon arrival Thursday afternoon, we found glass everywhere, even spilling over to a large outside tent, at the very nice and large Midwest Auction facility. With wind, rain, hail and tornado warnings, the auction must go on and it did! It was like a big family reunion with your favorite hobby included. The Hog Roast and Chicken BBQ Friday night was absolutely delicious -- from the barbeque, baked beans, potato salad, to the big slices of pie.

We are still interested in and collect depression glass, so, Friday was spent bidding on several items for our collection and some for a friend of ours. Just like Carnival Glass, the rare and hard-to-find pieces brought lively bidding and big prices. You don't find too many depression glass auctions, so this was a lot of fun to watch. From the sound of the two and three auction rings going at the same time, bidding was fast-paced with everyone having a great time.

Saturday's highlight was the Carnival Glass auction of the collections of Brenda Finfgeld and Eldon Bicksler. Some familiar faces present were: John & Jeanette Rogers, Gary Lickver, Harold Cox, Lee Markley, Mickey & Lloyd Reichel, Stacy & Desiree Wills and Dave & Reva Drabing. Some top \$ pieces were:

AND THE AUCTION BEAT GOES ON continued...

Millersburg Purple Blackberry Wreath 6" Plate	\$2700
Imperial Amber 6-Sided Candlesticks	\$2500
Imperial Purple Homestead Plate	\$2400
Millersburg Marigold Peacock at urn 6" Plate	\$2000
Imperial Green 6-Sided Candlesticks	\$1800
Dugan Dr Mar Juanita 6" Plate (only one known-named for Mr. Bicksler's wife)	\$1800
Millersburg Purple Peacock at Urn 6" Plate	\$1800
Fenton Emerald Green Cherry Chain 6" Plate	\$1700
Northwood Green Leaf & Beads smooth-top Rosebowl	\$1400
Northwood Elect. P Peacock at Urn 6" Plate	\$1350
Millersburg Green Peacock at Urn 6" 3-N-1 Edge Bowl	\$1100

We came home with the Electric Purple Wishbone & Spades 6" plate and the G&C Emerald Green Hatpin holder and a couple of other pieces. We were happy and our thanks to Jim & Mike, their spouses and all those whose hard work made the weekend a super one!

CONDOLENCES

We heard in early June that Gale Eichhorst's Mother, Iraline, had died on May 25, 2004. She would have been 90 on July 4th. The June Bulletin had already gone to press. Most of you probably know about this by now. Gale is a member of HOACGA and many other clubs.

If you would like to contact him, his address is PO Box 1183, Mankato, MN 56002. His e-mail is gikeeich@chartermi.net.

Gale, HOACGA sends condolences to you and your entire family.

LINCOLN-LAND CONVENTION

By Carl and Eunice Booker

The Lincoln-Land convention convened at the Midway Motor Lodge Airport, Milwaukee, WI, on June 3, 2004, with pizza and fried chicken, salads, and goodies from the Hospitality Room. After eating, members played Dirty Bingo. Several rooms had displays and glass for sale so visiting the rooms was in order.

On Friday morning everyone met for the business meeting with election of officers.

Dick Betker - President	Jim Adams - Vice-President
Amy Ayers - Secretary	Janet Tate - Treasurer
Ted Meeker - Editor	

Following the business meeting Pete Bingham gave a very interesting talk on "Vases from the Wide Open Spaces", assisted by Paula Bingham. The blue Peoples vase was on display along with a beautiful green Rustic funeral vase. There were between 80 - 90 vases on display. Thanks, Pete and Paula, for the beautiful vases and interesting talk.

The "Bunny Hop" room visiting took place from 11:00 a.m. until 3:00 p.m. At 4:00 p.m. delicious sandwiches and salads were served in the Hospitality Room. Goods brought in by members were enjoyed after the sandwiches.

We were all eager to view the auction glass and get our seats, so we waited for David and Amy Ayers and company to get things ready for us. The auction preview was well-attended and the auction started on time at 6:30. Things moved along steadily until the Friday night session ended between 9:30 and 10:00. The rest of the auction took place on Saturday morning. A large marigold Stag and Holly plate had been donated to be sold at the auction in honor of George Loescher. The plate brought \$1,000. Some of the auction prices are given at the end of this article.

On Saturday afternoon two workshops were held. Waymon Espy conducted one workshop on Carnival Colors, and Ted Meeker conducted the other workshop on edge treatments. There is always something new and interesting for us to learn about. Thanks for the workshops.

LINCOLN-LAND CONTENTION Continued...

The banquet was Saturday evening with a nice group attending. We enjoyed the fruit and cheese served before the meal. The buffet dinner moved along smoothly and was very good. The raffle item, a dark blue Orange Tree plate was won by a couple from Ohio. Each family present at the banquet was given a "white elephant" prize. Several other items were auctioned off by "Raggedy Andy and two Raggedy Annies."

The Room Display awards were won by Elmer Kaisner, Francis and Janet Tate, Ted and Judy Meeker, Jim and Emily Adams, and Rich and Sherry Betker. Appreciation awards were presented to Ellen Hemm, Mavis Loescher, and Elmer Kaisner. These three are charter members of Lincoln-Land. The "Bunny Hop" awards were won by Gale Kent and Diane Dettmering.

It was an interesting and enjoyable convention. The officers really work hard to help everyone have a good time.

Auction highlights:

- White Master G/C punch bowl and base, on flange missing - \$1,100
- Marigold - \$1,400
- Blue Hanging Cherries Milk Pitcher - \$7,000
- Amethyst Rustic funeral vase - \$1,500
- Em. Green Eda Kulor 8" vase - \$7,500
- Blue Eda Nanna 6.5" vase - \$1,450
- Marigold Inwald Acanthus 9" flared vase - \$1,200
- Smoke German LGW Kaleidoskop 8" vase - \$4,100
- Purple Dandelion water pitcher - \$800
- White Grapevine Lattice water pitcher - \$950
- White Peacock/Fountain water pitcher - \$750
- White Dahlia water pitcher - \$700
- White Grape Arbor water pitcher - \$800
- Aqua Opal Rose Show 9" ruffled bowl - \$800
- Blue Blueberry water pitcher - \$950
- El. Blue Wishbone 8" footed bowl - \$700
- Marigold Eda Floral/Sunburst 6" vase - \$600
- Blue Milady pitcher and 1 tumbler - \$700
- Green Paneled Dandelion pitcher - \$650
- Marigold Stag/Holly 9" spt. ftd. plate - \$650

GODDESS OF HARVEST

By Galen & Kathi Johnson

The Goddess of Harvest pattern, made by Fenton, is one of a few patterns picturing people. I think, in one of the carnival quizzes, there were only about 12 patterns listed. Obviously, the People's vase is the rarest, with other patterns including the Millersburg Courthouse bowl, the Polo ashtray, the Homestead plate, Double Dutch bowls, Bo-Peep, Classic Arts, My Lady Powder jars, the Cleveland Memorial Ashtray, Soldiers and Sailors Monument, and the Dance of the Veils.

The actual pattern on the Goddess of Harvest is a lovely, simple design of a woman's profile. She has leaves, flowers and berries intertwined in her hair, and is framed by braided ropes forming circles. From about 6 o'clock to the 9 o'clock position, the braided ropes also have some leaves and flowers entwined. The woman portrayed is said to be John Fenton's wife. What a wonderful tribute to the "lady of the house!"

We bought our marigold, 6-ruffle bowl from Tom Mordini in February of 1997. He recorded that he had purchased it from Steve Morrow. Steve had purchased it from Dave Sharp. That's the history on ours as far back as we can go at this time. There is rumor of another 6-ruffle marigold bowl that is not yet confirmed. There have been persistent rumors of an amethyst and marigold plate. Since none have come forward to be photographed, and no one can actually say they have SEEN one, we're going to state that it is now believed that they were actually bowls and there are no plates in existence (at least YET!). In marigold there is a tight crimped (candy-ribbon) edge bowl that belongs to Bernie Talley, however, this was reported stolen a couple of years ago. There is also a 3 & 1 edged bowl owned by Bev Frantzen. At this time, that's the list of marigold reported.

There are also two blue bowls: the tight crimped edge bowl was owned by Dr. Jack Adams, and it recently changed hands and moved to the middle of the country with the Mochels. They can track theirs back to the 60's - they're the 8th owners in that list. There is also a 6-ruffle reported in blue.

In amethyst, there are 4 reported bowls in a variety of edge treatments: a 6-ruffle (currently in CA, we here), a tight crimped bowl (living in FL with the Pouchers), a 3&1 edged bowl in the Fenton museum and a beautiful IC shaped bowl (we have seen the photograph).

Goddess of Harvest continued...

There have been no bowls reported in green. Recognizing that many Fenton patterns are extremely difficult to find in green, this probably is not surprising, but it does allow us to put this color out as a possible find.

So...this adds up to a possible 10 (which is what we think these should be rated!)

It is fascinating that of the 3 colors reported, they seem to have been given such a variety of edge treatments. It makes it feel as if they were either very special pieces made for a very special set of people, or they were really into experimenting to see which edge would best show off the pattern.

As an interesting side note, if you look up 'Goddess of Harvest, carnival glass' on the internet, you will find:

The ICGA article in which Don Moore reported there are definitely 2 plates;

A mention of the rarity of the blue bowls in an article about blue by Richard Cinclair (for www.cga);

A definition of these scarce bowls in CarnivalHeaven by Diane Fry;

And a connection to Dave Doty's site, where he gives a definition of the pattern/rarity.

Nobody seemed to have any for sale... 😊 😊

We're proud and happy to have one of these very special bowls in our collection. She is definitely the 'Lady of OUR house.'

THANK YOU

Please convey to all your members, my appreciation for the cards, phone calls and emails, expressing get well wishes.

I am on the road to recovery and should be back to normal very soon.

Paul Bekemeier

A.C.G.A. CONVENTION REPORT

By Carl & Eunice Booker

The A.C.G.A. convention opened with Dirty Bingo on Tuesday night. Eunice got to keep her prize as she was the last person to win. We understand that several others had the prizes of their choice taken by someone else--Dirty Bingo. After Bingo everyone moved to the Hospitality Room for ice cream. There were several kinds, including sugar free. What goes with ice cream? Cake, of course. The combination was wonderful. It was good to see the officers doing the dipping.

Everyone eagerly awaited the trip to Stacy and Desi Wills' home for the picnic and open house. Stacy and Desi have a beautiful collection and a lovely site for their home. The food was wonderful and so was the entertainment--Laurie Wroda, and later, Jeanette Rogers. Laurie is a Contemporary Christian recording artist and has several hit records. Jeanette loves to sing and has a lovely voice. The combination was very enjoyable.

The Thursday seminar by Bill and Billy Richards was very enjoyable as they related many stories of their collecting experiences with glass on display to support their stories. It seems that Carnival collectors love to hear stories of how pieces were obtained.

The annual business meeting was held on Thursday afternoon. One item of business was the election of officers. All of the present officers were reelected. President, Donna Courts, announced that the Hall of Fame would be suspended. Donna thanked everyone for coming to the convention, and Stacy asked for articles for the Newsletter.

At 7:00 p.m. members gathered to see what the Talent Show would be like. There were musical numbers by Carl Booker, Jeanette Rogers, Richard Smith, harmonica numbers by Harold Cox, and a duet "Sisters" by Ron and Judy Green. (Guess how Ron was dressed!!) It was a lot of fun and seemed to be well-received.

The auction preview by the Burns Auction Service was eagerly awaited and had lots of people looking at the wonderful collection that was being offered. The actual auction started on Friday at 10:00 a.m. It brought out a lot of people. There is a brief auction report at the end of this article.

A.C.G.A. CONVENTION REPORT continued...

The Banquet was held at 6:00 p.m. on Friday. While the attendance was smaller than desired, those who were there seemed to have a great time. Old souvenirs were given away as table favors. Three one-of-a-kind pieces were auctioned. The banquet talk was given by Carl and Eunice Booker who had brought 230+ "little" pieces to show and talk about. Don and Dorene Ashbridge announced the room award winners:

Fifth place - Bob and Mary McCaslin
Fourth place - Dick, Anne, and Amanda Smith
Third place - Harold and Dolores Wagner
Second place - Larry and Mary Helen Yung
First place - Ed and Lori Radcliff

These displays were exceptional, and congratulations are in order for their creative use of Carnival Glass.

Bob and Geneva Leonard were inducted into the Carnival Glass Hall of Fame. Bob and Donna Courts were elected and will be inducted next year.

The door prize was won by Shirley Wade. It was a quilt which was presented by Desi Wills. Desi had done a beautiful job with the quilting.

It was a fun and very enjoyable convention. Watch your newsletters for the date and location of next year's convention.

AUCTION HIGHLIGHTS:

Ice Green Acorn Burrs 8 pc. ruff. punch set - \$8,500
Marigold Blackberry 2 row open edge vase - \$1,300
Ice Blue 7" Feathers squatty vase - \$1,800
Lime Ice Green Hearts/Flowers plate - \$3,000
Ice Blue Hearts/Flowers plate - \$2,250
White Hearts/Flowers plate - \$2,000
Marigold Hearts/flowers plate - \$1,300
Ice Blue Acorn Burrs 8 pc. ruff. punch set - \$6,500
Ice Blue Ribbed Tornado vase - \$8,000
Blue Ribbed Tornado vase - \$1,600
Marigold Ribbed Tornado vase - \$1,900
Green Hanging Cherries water pitcher - \$1,100
Pastel Marigold Poppy Show lg. vase - \$1,300
Lime Ice Green Hearts/Flowers compote - \$2,000
Purple Poinsettia milk pitcher - \$5,500

A.C.G.A. CONVENTION REPORT continued...

HIGHLIGHTS continued...

Aqua Opal Grape/Cable cracker jar base (cracked) - \$3,400
Ice Green Grape/Cable covered cracker jar - \$1,600
White Grape/Cable covered cracker jar - \$1,250
Lime Ice Green Hearts/Flowers bowl, PCE - \$1,100
Aqua Opal "Informal" 6 ruff. vase - \$2,200
White Acorn Burrs 8 pc. ruff. punch set - \$5,000
Ice Green Grape/Cable hatpin holder - \$4,500
Ice Blue Grape/Cable hatpin holder - \$2,300
Blue Grape/Cable hatpin holder - \$1,100
Sapphire Grape/Cable Vt. stipp. plate - \$2,500
Ice Blue Grape/Cable centerpiece bowl - \$1,100
Blue Lily of the Valley water pitcher - \$4,750
Purple S-Repeat 10 pc. punch set - \$7,750
Amethyst Inverted Thistle water pitcher - \$1,750
Amethyst Inverted Strawberry milk pitcher - \$6,250
Ice Green Daisy/Drape vase - \$3,600
Marigold Daisy/Drape vase - \$1,300
Blue Diamond Point round bushel basket - \$1,300
Marigold Diamond Point round bushel basket - \$1,400
Red Plaid IC shaped bowl - \$1,400
Ice Green Opal Leaf/Beads rosebowl - \$1,700
Sapphire Leaf/Beads rosebowl - \$1,000
Aqua Opal Leaf/Beads flared nut bowl - \$1,600
Purple 474 Milk Pitcher - \$1,500
Purple Fashion water pitcher - \$1,100
Purple Butterfly/Tulip lg. ftd. sq. bowl - \$3,250
Blue Starflower water pitcher - \$1,600
French Opal irid. Peacock Summer Gardens vase - \$2,250
Purple Chatelaine water pitcher - \$2,200
Blue Orange Three 6 ruff. crimped edge punch base whimsey - \$1,200
Purple Strawberry 2 pc. ruff. epergne - \$1,500
Ice Blue Leaf Columns squatty flared vase - \$1,700
Red Stag/Holly 8 ruff. bowl - \$1,150 (spt. ftd.)
El. Blue Orange Tree Scroll water pitcher - \$3,000
Lime Ice Green Grape/Cable stipp. PCE bowl - \$1,250
El. Blue Grape/Cable stipp. PCE bowl - \$1,300
El. Blue Grape/Cable stipp. 8 ruff. bowl - \$1,700

ANNIVERSARIES

Cleon & Joan Freeze
4205 W 7th Avenue
Kennewick, WA 99336
Married Aug 21, 1950

Arvin & Betty Wolfgram
1119 E Marquette Street
Appleton, WI 54911
Married Aug 20, 1955

Russell & Marva Ericksen
53434 Lonerock Road
Condon, OR 97823
Married Aug 10, 1952

Harold & Marilyn Randa
3414 Woods Drive
Manhattan, KS 66503
Married Aug 22, 1960

Alvia & Ester Fultz
206 Jackson Street
Salem, IN 47167
Married Aug 20, 1932

Robert & Geneva Leonard
3130 Custer Road
Monroe, MI 48162
Married Aug 19, 1955

Eugene & Shirley Metro
6514 Westminster Drive
Parma, OH 44129
Married Aug 20, 1955

Mosses & Lucy Mason
1314 Careybrook Drive
Richmond, VA 23233
Married Aug 8, 1950

If you would like to have your Anniversary listed
in the HOACGA Bulletin
(40 years married and above)
Please send your information to the Bulletin Secretary

SURVEY REPORT FENTON PUNCH BOWLS

ORANGE TREE

BLUE

# of Sets	Bowl Description	# of Cups
2	Ruffled	6
1	Flared	6
1	Not stated	6
1	Not stated	0
1	ICS	12
1	Spread shape	12

MARIGOLD

# of Sets	Bowl Description	# of Cups
2	Ruffled	6
2	Flared	6 / 7
3	Not stated	8 / 2 / 0
1	Tulip	6

WHITE

# of Sets	Bowl Description	# of Cups
2	Ruffled	6 / 4
1	Not stated	0

WREATH OF ROSES

AMETHYST

# of Bowls	Description	# of Cups
1	Square	8

BLUE

# of Bowls	Description	# of Cups
1	Vintage Interior	3

SURVEY REPORT continued...

GREEN

# of Bowls	Description	# of Cups
3	Vintage Interior	0 / 10 / 6
2	Persian Medallion Int.	5 / 6
1	Green Bowl/Amethyst Base (apparently came from factory this way)	6

SURVEY REPORT FENTON WATER PITCHERS WITH MATCHING TUMBLERS OR GOBLET

APPLE TREE

BLUE: 2 pitchers / 2 & 6 tumblers
MARIGOLD: 3 pitchers / 0,5,6 tumblers
WHITE: 4 pitchers / 0,1,1,1 tumblers

BLACKBERRY BLOCK

AMETHYST: 2 pitchers / 1,6 tumblers
BLUE: 3 pitchers / 5,6,6 tumblers
MARIGOLD: 2 pitchers / 2,6 tumblers
GREEN: 1 pitcher / 6 tumblers

BANQUET

BLUE: 3 pitchers / 0,6,6 tumblers
MARIGOLD: 3 pitchers / 0,1,5 tumblers

BLUEBERRY

BLUE: 4 pitchers / 1,6,6,6, tumblers
MARIGOLD: 1 pitchers / 6 tumblers

BUTTERFLY & BERRY

BLUE: 1 pitchers / 6 tumblers
GREEN: 1 pitcher / 6 tumblers
MARIGOLD: 5 pitchers / 0,4,6,6,7 tumblers
Tumblers only G-1, A-2, B-1

SURVEY REPORT continued...

BUTTERFLY & FERN

AMETHYST: 3 pitchers / 0,6,6 tumblers
BLUE: 5 pitchers / 0,0,6,6,6 tumblers
ELECTRIC BLUE: 1 pitcher / 0 tumblers
GREEN: 6 pitchers / 1,1,6,6,6,6 tumblers (1 is variant)
MARIGOLD: 4 pitchers / 6,6,6,6 tumblers

DIANTHUS

ICE GREEN: 1 pitcher / 1 tumbler
WHITE: 2 pitchers / 1,1 tumblers

ENAMELED BANDED DRAPE

BLUE: 1 pitcher / 0 tumblers
GREEN: 2 pitchers / 4,4 tumblers
PURPLE: 2 pitchers / 0 tumblers

ENAMELED LOTUS

MARIGOLD: 2 pitchers / 2,2 tumblers

FENTONIA

BLUE: 2 pitchers / 4,6 tumblers
MARIGOLD: 2 pitchers / 1,6 tumblers

FLORAL & GRAPE

BLUE: 1 pitcher / 4 tumblers
GREEN: 1 pitcher / 4 tumblers
MARIGOLD: 1 pitcher / 6 tumblers

FLORAL & GRAPE VARIANT

BLUE: 2 pitchers / 1,6 tumblers

FLUFFY PEACOCK

AMETHYST: 3 pitchers / 0,6,6 tumblers
BLUE: 2 pitchers / 0,6 tumblers
GREEN: 1 pitchers / 6 tumblers
MARIGOLD: 2 pitchers / 1,6 tumblers

FORGET ME NOT

BLUE: 2 pitchers / 0,6 tumblers
MARIGOLD: 4 pitchers / 3,4,4,6 tumblers

CHERRY BLOSSOMS

BLUE: 1 pitcher / 2 tumblers

SURVEY REPORT continued...

FORGET ME NOT VARIANT (NO BAND)

MARIGOLD: 1 pitcher / 1 tumbler

FREESIA

MARIGOLD: 2 pitchers / 3,4 tumblers

INVERTED COIN DOT

MARIGOLD: 1 pitcher / 6 tumblers

LATTICE & GRAPE

BLUE: 2 pitchers / 6,7 tumblers
MARIGOLD: 4 pitchers / 6,6,6,6 tumblers
WHITE: 1 pitcher / 0 tumblers

LILY OF VALLEY

BLUE: 13 pitchers (3 damaged) / 35 tumblers
MARIGOLD: 0 pitchers / 15 tumblers

MAGNOLIA DRAPE

MARIGOLD: 4 pitchers / 1,3,5,6 tumblers

LOTUS PITCHER

MARIGOLD: 1 pitcher / 0 tumblers

MAGNOLIA & DRAPE

MARIGOLD: 3 pitchers / 4,6,7 tumblers

MILADY

BLUE: 1 pitcher / 1 tumbler
AMETHYST: 1 pitcher / 4 tumblers

ORANGE TREE

BLUE: 1 pitcher / 6 tumblers
MARIGOLD: 4 pitchers / 4,6,7 tumblers

ORANGE TREE (no scales)

BLUE: 1 pitcher / 0 tumblers

ORANGE TREE (with scales)

BLUE: 1 pitcher / 7 tumblers

SURVEY REPORT continued...

ORANGE TREE ORCHARD

BLUE: 2 pitchers / 6,6 tumblers
MARIGOLD: 2 pitchers / 1,6 tumblers

ORANGE TREE SCROLL

BLUE: 3 pitchers / 0,0,1 tumblers
MARIGOLD: 1 pitcher / 0 tumblers

PANELLED DANDELION

AMETHYST: 4 pitchers / 0,1,6,6, tumblers
BLUE: 5 pitchers / 6,6,6,6,6 tumblers
GREEN VARIANT: 1 pitcher / 6 tumblers
LAVENDAR: 1 pitcher / 1 tumbler
MARIGOLD: 2 pitchers / 3,6 tumblers

PRISM BAND WITH DIANTHUS

ICE GREEN: 1 pitcher / 0 tumblers

SCALE BAND

BLUE: 1 pitcher / 6 tumblers

SILVER QUEEN (BULBOUS)

MARIGOLD: 1 pitcher / 1 tumbler

STARFLOWER

BLUE: 3 pitchers / 0 tumblers
WHITE: 2 pitchers / 0 tumblers

STRAWBERRY SCROLL

BLUE: 2 pitchers / 1 tumbler
MARIGOLD: 2 pitchers / 3 tumblers

TEN MUMS

BLUE: 5 pitchers / 6,6,6,6,6 tumblers
MARIGOLD: 1 pitcher / 6 tumblers

WILDFLOWER

MARIGOLD: 1 pitcher / 2 tumblers

WINE & ROSES

BLUE: 1 pitcher / 6 tumblers
MARIGOLD: 2 pitchers / 6,6 tumblers

SURVEY REPORT continued...

ZIG ZAG SHASTA DAISY

ICE GREEN: 1 pitcher / 1 tumbler

ZIG ZAG

GREEN: 1 pitcher / 2 tumblers



We now have obtained a
Credit Card System
that will allow members to pay
their membership dues or
make any purchases from the Club
with the use of a credit card -
Mastercard or VISA.

Contact Ann McMorris
prior to using this service.

HOACGA Bulletin Advertising Policy

1. All advertisements of glass FOR SALE or WANTED must be received by the Bulletin Secretary no later than the 25th DAY OF THE MONTH to ensure being published in the next bulletin.
2. Members may advertise ten (10) FOR SALE or WANTED per month. The FOR SALE glass must be member's glass and not the property of a non-member. Advertising is at no cost.
3. Only "OLD CARNIVAL GLASS" items or HOACGA souvenirs will be published.
4. Damage or flaws should be noted.
5. All FOR SALE items must be priced - NO BID ITEMS WILL BE PUBLISHED.
6. A 5-day return privilege, at buyer's expense, providing it is not as advertised or as discussed.
7. Postage and Insurance is to be the responsibility of the buyer, both when returning and receiving the glass.
8. The sender of the glass (be it the seller or the buyer returning it) is responsible for the proper packaging of the glass and it should be insured.
9. When submitting FOR SALE or WANTED ads, please write legibly so that your ad can be read; spell out words as opposed to using abbreviations. Your ad will be formatted to fit as best as possible. Items will be limited to one line, unless you are advertising less than ten items. ****IMPORTANT**** be sure to include your name, address, phone number and email address on the ad itself.
10. HOACGA does not accept responsibility for accuracy of any advertisement.

Use the following abbreviations for Glass Description.

If the color you have is not listed here, please spell your color...

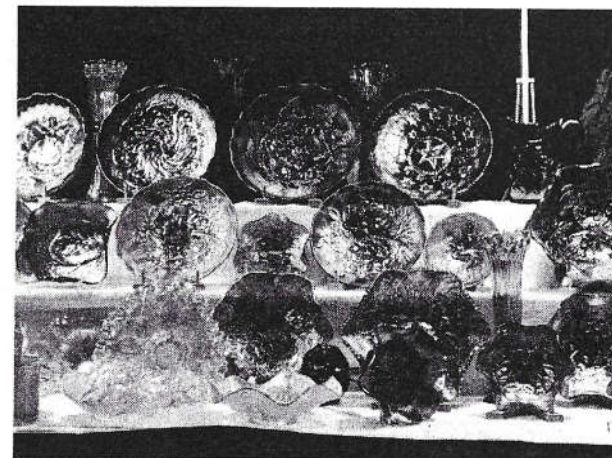
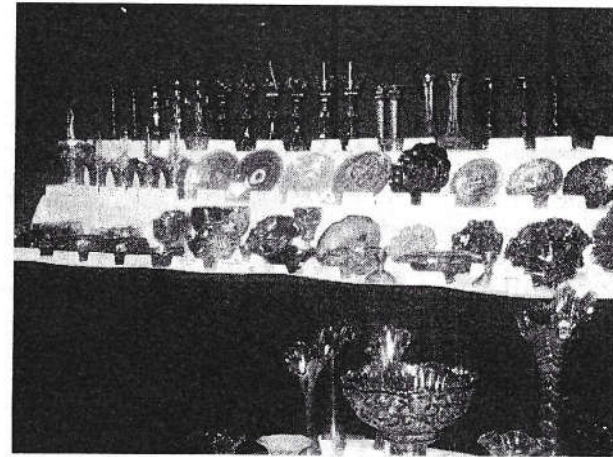
A	Amethyst	EG	Emerald Green	P	Purple
AMB	Amber	G	Green	PRL	Pearl
AO	Aqua Opal	H	Horehound	PM	Pastel Marigold
AQ	Aqua	HA	Honey Amber	PO	Peach Opal
B	Blue	IB	Ice Blue	R	Red
BLK	Black	IG	Ice Green	RA	Amberina
BO	Blue Opal	IGO	Ice Green Opal	RB	Renninger Blue
CLM	Clambroth	LAV	Lavender	SM	Smoke
CelB	Celeste Blue	M	Marigold	Saph	Sapphire
CobB	Cobalt Blue	MMG	Marigold on Milk	T	Teal
EB	Electric Blue		Glass	VAS	Vaseline

To describe a piece as light or dark, use the body of the ad.

Iridescence: EI - Excellent GI - Good AI - Average LI - Iridescence

ADDITIONAL HOACGA CONVENTION PICTURES

Submitted by Dorothy & Arnold Snell



2002 HOACGA NOTEBOOK INSERT

Candlesticks – 1st & 2nd Sections

By Bob Grissom

You may not have many candlesticks in your collection, but what is your knowledge of the ones you have? Do you know the difference between a Northwood "Colonial," a Fenton "Florentine," or a Vineland "Colonial?" You will probably be able to identify some of the candlesticks in your collection.

The HOACGA Notebook section for 2002 contains photographs of 72 different candlestick patterns and the section for 2003 contains an additional 53 patterns, including the Fostoria Brocaded pieces. Most collectors have some candlesticks in their collection, but this is an area of Carnival glass collecting where information is not readily found. This is an attempt to compile them in one place, present as much information as possible, and to show them with a color photograph. These two sections are another very informative addition to the HOACGA Pattern Notebook.

Much time has been spent, not only by me, but several other collectors, trying to identify the various pieces. Information such as this is only possible with the help of many members who have supplied photographs and a listing of their candlesticks.

If you have not ordered these two sections, you are missing a good source for information about carnival glass candlesticks.

If you wish to order, please use the order form below (if you are coming to the convention, the 2nd section can be ordered with the pre-registration form).

ORDER FORM

Name: _____

Address: _____

City: _____ State: _____ Zip: _____

1st Candlestick Section (photo 1-72—2002) \$14.00 each
2nd Candlestick Section (photo 73-125—2003) \$13.00 each
_____ @ \$14.00 each (2002) = \$ _____
_____ @ \$13.00 each (2003) = \$ _____
_____ @ \$1.50 each shipping = \$ _____
TOTAL \$ _____

Make Checks Payable to HOACGA and send to:

Ann McMorris
PO Box 4361
Topeka, KS 66604-0361

PLATE HOLDERS

LARGE SIZE..... \$21.50
per dozen

REGULAR SIZE..... \$21.50
per dozen (This size will hold the 8" & 9" plates &
bowls and the larger bowls)

SMALL SIZE \$20.00
per dozen
(These are good for the Pin Trays, 6" & 7" plates and
smaller bowls)

USA Shipping & Handling included in pricing.

SEND ORDERS TO:

Ann McMorris
PO Box 4361, Topeka, KS 66604-0361

Please submit articles/ads for the
HOACGA Bulletin
no later than the 25th of the month
to insure that your information
will be included in the
following month's publication.
(This means it should be mailed
no later than the 20th of the month!)

Please PRINT all information

You may submit information via mail:

Eleanor Mochel, HOACGA Bulletin
Secretary
15427 Woodward Court
Overland Park, KS 66223

or fax (call first)
913-685-2182

or email:
cmochel@yahoo.com

Thank you for your cooperation!

HOACGA PATTERN NOTEBOOK

The Pattern Notebook was started in 1980, with the first section being on mugs. Each year since, except in 1992, a different section had been added. This information has been compiled and printed to assist the collector in identifying the various pieces of Carnival Glass. Each section identifies the Patterns, Maker, Colors and other pertinent information and shows a color picture of the pattern. There are (10) completed sections with the candlesticks section to be completed next year. There are about 1222 items pictured. Each year a new section will be added to the Notebook.

ITEM	PHOTOS	YEAR	PRICE	COMMENTS
Mugs	1 - 40	1980	\$ 7.00	
Table Sets	1 - 40	1981	\$ 7.00	Listing of the 4 pc sets only
Water Sets 1	1 - 60	1982	\$ 7.00	Shows a pitcher & tumbler
Water Sets 2	61 - 120	1983	\$ 7.00	Shows a pitcher & tumbler
Water Sets 3	121 - 167	1984	\$ 7.00	Painted sets included
Rosebowls 1	1 - 60	1985	\$ 7.00	
Rosebowls 2	61 - 97	1986	\$ 7.00	
Small Plates 1	1 - 48	1987	\$ 7.00	Less than 9" in diameter
Small Plates 2	49 - 98	1988	\$ 7.00	
Chop Plates	1 - 40	1989	\$ 7.00	Plates of 10" diameter or greater
Regular Plates 1	1 - 48	1990	\$ 7.00	9" plates
Regular Plates 2	49 - 81	1991	\$ 7.00	9" plates
Compotes 1	1 - 57	1993	\$ 8.00	Smaller compotes
Compotes 2	58 - 113	1994	\$ 8.00	Larger compotes
Punch Sets	1 - 36	1995	\$ 8.00	2nd printing of this Section
Vases A-C	1 - 57	1996	\$ 9.00	
Vases D-G	58 - 117	1997	\$ 9.00	
Vases H-P	118 - 201	1998	\$12.00	
Vases R-T	202 - 274	1999	\$13.00	
Vases Trpt - Z & Non US	275 - 341	2000	\$13.00	
Vases not prev. reported, non-US & brocaded	342 - 428	2001	\$13.00	Non-US patterns & Fostoria's brocaded patterns. Table of contents of all vases, plus corrections
Candlesticks	1 - 72	2002	\$13.00	
Candlesticks	73 - 125	2003	\$13.00	

Complete Set of Inserts plus Notebook is \$215.00. Shipping & Handling for complete Notebook \$8.00, for each individual item \$1.50 for a maximum of \$8.00.

Any of these sections can be purchased separately. The information contained within these sections will be of great help to you as a collector. If the knowledge you gain from it help you in buying just one piece of glass - that could be worth much more than the cost of the information.

A complete Notebook or any of the Sections may be ordered from the Secretary.

Please make check payable to HOACGA and mail to:
Ann McMorris; PO Box 4361, Topeka, KS 66604-0361

HOACGA ROSTER ADDITIONS/CHANGES – 2004 #6

By Ann McMorris

NEW MEMBERS

Smith, Sally, 2334 S. 33rd Street, Omaha, NE 68105
Phone 402 346 3563

NEW E-MAIL

Fenn, Francis & Delores, Monterey, VA – dfenn26@intelos.net
Finney, Sam & Julia, Corssett AR – finney@cei.net
Gilliland, Phil & Nancy, Hope IN – nancygilliland@canarycreekcinemas.com
Meeker, Ted & Judy, Zion, IL – captnted@comcast.net

NEW ADDRESS (Phone & Email)

LOPER, MIKE, P. O. BOX 63, KEYMAR, MD 21757 0063

HOACGA BOARD MEETING June 14, 2004

By Secretary Ann McMorris

The HOACGA Board held their monthly meeting in Lawrence on June 14, 2004 starting at 12:30 p.m. All Board members were present.

Treasurer Ball reported a balance of \$17,206.00 after all bills were paid.

At the annual meeting during the convention, discussion was held on electronically sending the bulletin to those members with internet capability. The Board is moving forward with its study and the membership is being surveyed to see if there is enough interest in receiving the bulletin by email to make it worthwhile. Foreign members who agree to receiving the newsletter by email would have their dues reduced to \$35. Currently, foreign members pay \$50 to offset the postage required to mail overseas. The Bulletin E-Mail Availability notice is on page 3 of the June bulletin. Our printer is getting information on requirements and cost to send the bulletin on the internet and will report to the board at their next meeting. Target date for sending the newsletter by email would be September 2004.

Secretary was directed to mail an explanatory letter to overseas members and non-members concerning the availability of (1) receiving the newsletter by email, (2) the reduction in dues as a result, and (3) credit card service through HOACGA to pay for dues and materials.

Members in Manhattan and Abilene had inquired about moving the monthly meeting for one or two meetings a year to Topeka so travel time would be more feasible for them to attend. Secretary was directed to poll the members in the western area as to their intent to attend if arrangements were made for the September monthly meeting to be held in Topeka. Secretary will reserve a meeting room contingent on the outcome of the inquiry.

At the time the Britt Award was started, HOACGA purchased 13 special vases to present to nominees. The last vase was presented at the 2004 convention and the Board is in the process of selecting the special gift for future years. Several suggestions were made and Bob will contact Fenton regarding the availability of some of the selections suggested. Possible nominees for the 2005 Britt award were discussed. The Board welcomes suggestions from the membership. The general criteria for selecting nominees are: Those receiving the Britt Award shall be long time collectors who (1) have made significant and recognized contributions to the advancement of the carnival glass collecting hobby; (2) are universally respected by their fellow collectors; (3) are noted for their friendship and congeniality with both new and long time collectors; (4) have been members and supporters of at least two carnival glass clubs or associations; (5) have authored articles, or contributed to articles, on carnival glass for club newsletters and publications; (6) have developed and/or presented programs at carnival glass meetings or conventions.

Other matters discussed were - (1) How to attract new members? (2) Presentations by club members before other glass club conventions – ie Fenton, Stretch, Vaseline. (3) More information on history of new carnival – what year it started, companies producing new carnival, knowledgeable speakers. (4) Souvenir for 2005 convention.

Jim Wroda Auction Services

Carnival Glass Auction

May 1, 2004

- 300 1. Australian 7" purple "Butterflies" stemmed compote. Salver shape. Rare & Nice!
225 3. N-wood 8 1/2" purple Hearts & Flowers ruffled bowl.
375 6A. Imperial 7" Emerald green Windmill deep round bowl. Super blue irid. WOW!
300 9. Imperial 7" elec. purple Scroll Embossed bowl w/Hobstar & Tassel ext.
155 12. Imperial 8 1/2" electric purple Star of David bowl
385 17. Imperial electric purple Grape wine decanter. Super color.
2000 19. Imperial Blasting elec. purple Loganberry vase. Super color! This is in a class of it's own! WOW!!
285 20. Imp. Amber Loganberry vase. Very Rare color! Nice.
525 22. Imperial teal Double Scroll console bowl. Rare! Who has the candlesticks?
335 25. Imperial mari. Heavy Grape punch bowl and base. Very Scarce punch set!
250 39. Stretch Glass 12" purple stretch chop plate
185 41. (2) Stretch 9 1/2" vaseline candlesticks with bell bottom
1500 45. N-wood 10" blue Peacock at Urn stippled master ICS bowl. Super color!
KILLER! Rare!
400 46. N-wood 10" white Peacock at Urn master ICS bowl. Super color!
450 47. N-wood 10" mari. Peacock at Urn master ICS bowl. NICE!
525 49. N-wood electric purple G & C center piece bowl – points turned in. One of the best! WOW!!
425 51. N-wood mari. Peacock at Fountain punch bowl and base. Great color!
450 52. N-wood 8 1/2" AO Three Fruits footed bowl. Scarce. Very nice!
125 53. N-wood 8 1/2" purple Three Fruits footed bowl w/Meander back. Super!
250 58. N-wood 9" IB Hearts & Flowers bowl. Very nice
500 60. N-wood pastel AO Hearts & Flowers compote. Beautiful!
600 60 A. N-wood Renninger blue Hearts & Flowers compote. Nice! Very rare color!
900 62. N-wood purple Basket of Roses stippled 2 handled bon bon. Very scarce
1000 63. N-wood 9" green Strawberry stippled plate. Etched 1913. Wow! Radium irid. Super!
200 64. N-wood smokey-lavender Strawberry PCE bowl w/Plain back. WOW!!
725 69. N-wood 9" purple Strawberry stippled plate. NICE!!
225 71. N-wood 8 1/2" purple Strawberry PCE bowl. Nice!
550 72. N-wood 8 1/2" elec. blue Embroidered Mums bowl. Very scarce. Super!
350 73. N-wood 8 1/2" elec. blue Wishbone footed bowl.
260 77. N-wood AO Drapery rose bowl. Lots of opal.
250 78. N-wood 12 1/2" purple Tree Trunk midsize vase. Nice!
200 84. N-wood 9 1/2" electric blue Diamond Point vase
225 88. N-wood AO Leaf & Beads rosebowl. Nice opal
3000 89. Fenton white Grape & Cable footed orange bowl. VERY RARE ITEM!!! Possibly the only one known. Nice!!!
1000 90. Fenton pumpkin mari. 18" tall, 7" wide, 5 1/4" base Rustic funeral vase. Pumpkin all the way!
2300 91. Fenton amy. 19" tall, 8 1/2" wide, 5 1/4" base Rustic funeral vase w/Plunger base! Wow!!! Must see this one!!!
1500 92. Fenton elec. blue 18" Rustic funeral vase. 5 1/4" base. Super color! KILLER!
1400 95. Fenton 7" blue Elks 1911 plate. Very scarce and nice!
235 97. Fenton blue Kittens 4-sides up bowl. Scarce
425 107. Fenton 11" blue Persian Medallion chop plate. Very Scarce!
225 110. Fenton 8 1/2" vaseline Dragon & Lotus ruffled bowl
40 111. Fenton 8" mari. Dragon & Lotus ICS bowl. SUPER!
150 112. Fenton 11" mari. Stag & Holly footed ICS bowl

Jim Wroda Auction Services continued...

700 116. Fenton 9" red Peacock & Grape ruffled collar base bowl. RARE!
175 119. Fenton 9" blue Peacock & Urn ruffled bowl
160 120. Fenton 9" purple Peacock & Urn ruffled bowl
400 126. Fenton blue Butterfly & Fern 7 pc. water set. Very hard set to find.
800 127. Fenton green Paneled Dandelion 9 pc. water set. Nice!
1550 131. Fenton 9" Electric Blue Peacock & Urn plate. WOW! There may be equals but none better!! BUY IT!!
2500 132. Dugan 11" amy. Farmyard 3-1 edge bowl w/Jeweled Heart exterior. Great goldish irid! A super lookin' bowl with it's own character!
2400 133. Dugan 11" amy Garden Path variant chop plate. WOW How rare is this! Hardly ever sold at auction or privately! Here's your chance!
800 138. N-wood 11" amy. Peacock at the Urn chop plate. Very scarce!
625 159. M-burg 6 1/2" Lt amy/ lavender Peacock flat plate. Very rare odd light color! NICE!
3000 160. M-burg 8 1/2" BLUE Peacock at Urn Mystery bowl!!! A SUPER EXAMPLE! BEAUTIFUL!!
1200 161. M-burg green Peacock at Urn giant compote. Satin irid. Very scarce! NICE!
750 165. M-burg 9 1/2" purple Grape Leaves ruffled bowl. Rare. Radium irid. Super!
375 168. M-burg 6 1/2" purple Bullseye & Loop squatty vase. Radium. Scarce
325 169. M-burg 6" purple Isaac Benesch advertising ruffled bowl
525 171. M-burg 10" mari. Rosalind ICS bowl. Rare in IC shape.
2000 175. M-burg 5 3/4" x 9 1/2" purple Wild Rose lamp. Super color! VERY RARE! Beautiful!
425 180. M-burg 9" purple Trout & Fly 3-1 edge bowl. Nice. Getting hard to find
325 190. Dugan 11 1/4" white Persian Garden ICS bowl. SUPER!
800 194. Dugan deep purple Formal JIP vase. Good color! Extremely hard to find!
175 199. Dugan 8 1/2" purple Apple Blossom Twig banana bowl. RARE shape
250 205. Dugan 9 3/4" lavender Big Basketweave vase. What a vase! OUTSTANDING!! Very scarce
800 206. Dugan Lime IG Floral & Grape water pitcher w/mari. overlay Very Rare and real pretty!
900 209. Dugan 3 1/2" purple/black amy. Twigs vase w/crimped edge. Neat!!!
250 213. Dugan 8 1/2" blue Fanciful plate. Nice!
145 217. Dugan 6" PO Petal & Fan plate.
325 231. Westmoreland marigold milk glass Wild Loganberry pitcher. Very hard to find.
250 235. Westmoreland 7" elec. purple Tulip shape compote. Super Rare! Never seen this before.
4500 239. N-wood 9" double electric blue Poppy Show plate. The best color!! This is the one!! WOW!!
500 245. N-wood 8 1/2" electric blue Embroidered Mums ruffled bowl WOW!! Killer irid! Scarce!
375 248. N-wood 8 1/2" deep purple Poinsettia & Lattice bowl. Super color! RARE!
700 249. N-wood 8 1/2" IB Grape PCE stippled bowl. Nice pastel irid.
450 252. N-wood purple Oriental Poppy pitcher. Nice w/ great detail!
400 257. N-wood 8" blue Wishbone footed bowl. Good color!
175 265. N-wood 9" lavender Strawberry plate. Higher on one side. Super! Scarce color!
135 268. N-wood 8 1/2" blue opal Peacocks bowl, not carnival
350 269. N-wood white Peach butter dish with gold trim. Very hard to find! Frosty!
450 273. N-wood 8 1/2" electric blue Peacocks PCE bowl. NICE! Rare!
400 274. N-wood 8 1/2" electric blue Good Luck bowl. Super
450 276. Fenton 6" purple Garden Mums plate. VERY Rare!!
155 280. Fenton reverse amberina Strawberry bon bon. Very scarce
275 282. Fenton mari. Kittens cup & saucer
185 285. Fenton lime green opal Strawberry bon bon. Very scarce!!!

Jim Wroda Auction Services continued...

500 286. Fenton 9" green Dragon & Strawberry footed bowl. Great color! Very rare!
215 291. Fenton 9" blue Captive Rose plate. Nice color!
275 297. Fenton 7" red G & C ICS bowl. Scarce
375 300. Fenton mari. Ten Mums water pitcher. Nice!
225 303. Imperial 7 1/2" smoke Shell & Sand deep ruffled bowl. Super color!
250 304. Imperial 7 3/4" purple Shell & Sand round edge bowl. Super color!
225 305. Imperial 8 1/2" purple Star of David bowl. Super color! KILLER!
245 307. Imperial 9" elec. purple Scroll Embossed plate. Outstanding!!
600 308. Imperial 6" mari. Colonial Lady vase. Good color. RARE!
245 315. Imperial 7 3/4" purple Scroll Embossed bowl w/plain back. Super Color!
200 335. Top O' The Morning purple hat pin
125 342. N-wood 8 1/2" black amy. Three Fruits bowl. Super color!
115 350. N-wood purple Bushel Basket. Great Color!
225 352. N-wood purple Butterfly bon bon w/Threaded back. Very scarce
300 357. Dugan 9 1/4" deep purple Circle Scroll vase. RARE!! and beautiful!
145 370. Fenton 9" green Three Fruits plate. Has nice irid. Beautiful plate
135 386. Dugan 7" mari. Fishscale & Beads plate

AYERS AUCTION SERVICE LINCOLN-LAND CARNIVAL GLASS RESULTS JUNE 4-5, 2004

Contemporary Marigold Imp. Hobnail Kerosene lamp; \$110
PO Dugan Pinched Swirl tricorner spittoon; \$110
Dk Marigold N Master Grape/Cable punch bowl & base; \$1400
Amethyst Fenton Dragon/Lotus 9" ruffled bowl; \$155
El. Blue Good Luck 9" PCE bowl; \$425
El. Blue Good Luck ruffled 9" stippled bowl; \$450
Amethyst Imp. Scroll Embossed mini compote; \$200
Purple Acorn Burrs water pitcher; \$650
Purple Oriental Poppy water pitcher and 1 tumbler; \$550
Purple Dandelion water pitcher; \$800
Amethyst Trout/Fly 9" bowl w/ 3-1 edge; \$225
Green Fenton Concord 9" ruffled bowl; \$275
El. Amethyst Imp. Hobstar Flower compote; \$170
Blue Dugan Peacock/Fountain Pitcher and 5 tumblers; \$500
Blue Fenton Lattice/Grape pitcher and 6 tumblers; \$500
Blue Fenton Orange Tree Punch Bowl w/ base and 5 cups; \$425
Green N Grape/Cable water pitcher; \$325
Amethyst Imp. Open Rose 8" ruffled, footed bowl; \$175
Marigold Brockwitz Plume Panels/Bows water pitcher; \$200
Purple Imp. Beaded Bullseye 12" vase; \$150
Rare Horehound N G/C 6" handgrip plate; \$170
Amberina Fenton Blackberry Open Edge ruff. bowl; \$250
Amethyst Dugan Maple Leaf Table Set; \$500
Amethyst Dugan Petal/Fan 10" square ruff. bowl; \$500
Violet Dugan Persian Garden 6.5" plate; \$155
Amberina Fenton Holly 9" ruffled bowl; \$225
Shriner's 1905 Niagara Falls mug; \$150
Marigold Kittens two sides up card tray; \$145
Dk. Marigold Kittens toothpick; \$160
Marigold Miniature Shoe w/ buckle; \$135

LINCOLN-LAND CARNIVAL GLASS RESULTS continued...

Amethyst Dugan Dogwood Sprays deep ruffled bowl; \$225
 White N Peacock/Fountain water pitcher; \$750
 White N Peacock/Fountain tumbler; \$100
 White Dugan Dahlia water pitcher; \$700
 White Dugan Dahlia tumbler; \$140
 Blue Hanging Cherries milk pitcher; \$7000
 Dk. Marigold Marilyn water pitcher; \$450
 Green Marilyn water pitcher; \$600
 Amethyst Courthouse 7.5" ruffled bowl; \$675
 Ice Blue Fenton Hearts/Flowers 9" ruffled bowl; \$325
 Pastel Marigold Fenton Blueberry water pitcher; \$400
 Dk. Marigold Blueberry tumbler; \$60
 El. Blue Fenton Blueberry water pitcher; \$950
 Amethyst Fenton Rustic Funeral vase, 209" tall, 5.5" base, 7" mouth; \$1500
 Purple Dugan Circle Scroll 6.5" vase; \$350
 Amethyst Dugan Amaryllis flat compote; \$200
 El. Blue N. Peach tumbler; \$90
 Smoke Imperial Grape tumbler; \$135
 Green Imperial Grape water carafe; \$190
 Marigold Eda Rose Garden 11" cylinder vase; \$300
 Em. Green Eda Kolor 8" vase; \$7500
 Marigold Eda Kolor 6" vase; \$300
 Marigold Eda Floral/Sunburst 6" vase, cupped in like a rose bowl; \$600
 Marigold Possible Inwald Acanthus 9" flared vase; \$1200
 Blue Fenton Butterfly/Berry table set; \$550
 Celeste Blue Dugan Double Stem Rose 8" ruffled bowl; \$450
 Ice Blue N. Peacock/Fountain butter dish; \$600
 Blue Fenton Milady pitcher and 1 tumbler; \$700
 Green Fenton Paneled Dandelion pitcher; \$650
 Purple Imperial Chatelain tumbler; \$300
 Rare Blue Imperial 474 tumbler; \$250
 Ice Blue N. Wisteria tumbler; \$500
 Ice Blue N. Oriental Poppy tumbler Vt.; \$200
 Ice Green N. Oriental Poppy tumbler; \$300
 Green N. Wishbone 8" ruffled bowl; \$125
 Amethyst Millersburg Swirled Hobnail 9" vase; \$250
 Purple Dugan Wishbone/Spades 6" plate; \$275
 Marigold Fenton Stag/Holly 9" spat. fld. plate; \$650
 Marigold Millersburg Poppy compote; \$275
 Rare Lavender Dugan Fanciful 9" ICS bowl; \$300
 Teal Green Fenton April Showers 10" vase; \$125
 Rare Horehound N. Tree Trunk std. 10" vase; \$225
 Marigold Stag/Holly large flat footed plate; \$1000

CARNIVAL GLASS - FOR SALE

BUD JUDISH

PO Box 504, Ashgrove, MO 65604; 417-672-3181

M GI Jain Elephant vase, 6-5/8" high ruffled top,
 mint condition..... \$490.00

JOYCE SEALE

105 Owl Tree Trail, Greenville, TX 75402; 903-450-0361

M EI Hearts & flower PC edge \$ 850.00
 M EI Three fruits plate stippled, rib back \$ 325.00
 M EI Captive Rose Plate \$ 350.00
 Pastel EI Roseshow plate \$1200.00
 M EI Persian Medallion Plate \$ 350.00
 M EI Over moon stone, holly ruffled bowl \$ 900.00
 G EI Hearts & Flower compote \$1400.00
 P EI Elk paper weight \$3400.00

FLOYD & BARBARA FINE

**426 Lakewood Dr., Noel, MO 64854
 417-475-3667; noelsweetiepie@hotmail.com**

M EI Singing birds mug (souvenir Wagoner, OK) sml internal
 flaw in the glass \$50.00
 A EI Beaded shell mug (souvenir savanna) \$75.00
 W GI Leaf Rays nappy \$35.00
 M EI Lustre and Clear Salt Shaker (1) \$35.00
 G EI Cosmos M. 6" ruffled bowl \$75.00
 M AI Spiral candlestick (1) \$45.00
 M AI Washboard creamer \$50.00

CARNIVAL GLASS - FOR SALE

NANCY WILLIAMS

2009 Cullum Dr., Reading, PA 19601; 610-374-9033

M	Dugan Harvest flower (scarce)	\$150.00
HA	US Glass cosmos & cane-honey amber	\$ 70.00
G	Fenton Butterfly & Fern (scarce color)	\$ 95.00
P	N. Grape & Cable - Elect Blue	\$ 75.00
B	Fenton Orange Tree Scroll-electric	\$ 80.00
M	US Glass White Oak (rare)	\$145.00
M	Maker? Cut Cosmos (rare)	\$185.00
A	Westmoreland checkerboard (rare)	\$250.00
M	N. Raspberry	\$ 45.00
M	N. Oriental Poppy	\$ 45.00

LLOYD WARD

PO Box 956, Mayfield, KY 42066; 270-251-2005

	1977 Red HOACGA Hatpin Holder	\$ 50.00
	1979 Red HOACGA Corn Vase	\$ 50.00
	1979 Red HOACGA Loving Cup	\$ 50.00
	1980 Ice Green HOACGA Hatpin Holder	\$ 50.00
	Marigold Peacock at the Urn Compote, deep color	\$ 75.00
	Marigold Three Fruits 12 sided plate, pumpkin	\$195.00
	Marigold 474 Punch Set w/ 6 cups, exc. color	\$395.00
	Marigold Broken Arches Punch set w/ 6 cups, deep color	\$675.00
	Purple Grape & Cable Covered Butter Dish, exc. color	\$245.00
	Peach Opal Fishnet 10Lily epergne, beautiful	\$365.00

DICK HATSCHER

142 Walnut Hill Rd., Bethel, CT 06801; 203-743-1468

M	Gl	7 pc Fenton Engraved corn flower? water set	\$ 395.00
M	EI	Exc. Beaded Cable Rosebowl, beauty	\$ 84.00
M	EI	5 pc water set vineyard, nice	\$ 88.00
M	EI	3 Fruits plate, BWE, 2" high	\$ 84.00
G	EI	12" fine rib vase, scarce size	\$ 84.00
G	EI	M. Square Zig Zag bowl, hard to find	\$550.00
B	EI	Embroided bowl, nice	\$235.00
P	EI	3 Fruits bowl, BWE, deep color	\$ 68.00
R	LI	Blackberry spray hat, silvery irid., amberina base	\$168.00
R-RA	EI	9-1/2" Thin Ribbed vase	\$185.00

CARNIVAL GLASS - FOR SALE

DICK & DIANE WETHERBEE

11 Baker Pond Rd. Ext., Charlton, MA 01507
508-248-0038; ddwbee@aol.com; carnivalglassbee.com

EI	M	Hen on Nest w/ baby chicks 2 pc oval 8"x5-1/2" covered dish	\$110.00
EI	Teal	Prisms 4-1/2" stemmed 2 hld bonbon	\$145.00
EI	PO	Pulled Loop 11-1/4" Vase	\$175.00
EI	M	Millersburg Little Stars 8" ruffled bowl	\$150.00
EI	Aqua	Peacock @ the Urn 6" Compote, Very rare	\$295.00
EI	W	Garden Path 9-1/2" IC shape bowl/Soda Gold back	\$425.00
EI	M	Heavy Diamond 4" Creamer	\$ 25.00
EI	PK/BI	Pastel Top Hat 5-1/2" Jack in Pulpit vase	\$ 25.00
EI	P	Hanging Cherries 7" IC shape bowl	\$155.00
EI	M	Fishscales 6-3/4" small very flat plate w/Flower& Bead back	\$135.00

STEPHEN E. SIVONDA

375 Congdon St., Middletown, CT 06457
860-346-9356; ssivonda@att.net

EI	AQ	Blackberry Spray JIP crimped edge, mari. Overlay	\$110.00
EI	BA	Fenton Open Edge (2 row) 2 sides up	\$200.00
EI	AO	NW Dandelion mug, each panel has hilites	\$170.00
EI	BO	Daisy Wreath 6 ruffle bowl, nice even light mari	\$275.00
EI	G	Imperial Heavy Grape chop plate, helios	\$ 95.00
EI	M	Imperial Morning Glory 5" vase. Mold line	\$ 55.00
EI	A	Fenton Rustic 16-1/4" vase. Great irid.	\$125.00

DELBERT JACKSON

PO Box 255, Shawnee, OK 74802; 405-273-7653

EI	A	Butterfly & Fern water pitcher & 1 tumbler	\$350.00
EI	M	Pansy Dresser Tray, elect	\$150.00
EI	B	Drapery Rosebowl, elect	\$275.00
EI	P	Dugan's ftd. cherries 3-1 edge, elect	\$185.00
EI	P	Goodluck plate	\$600.00
EI	M	Dugan's Garden Path rosebowl	\$165.00
EI	Amb	9-3/4" Ripple vase, elect	\$ 85.00
EI	M	Wine & Roses compote (whimsy) ruffled	\$200.00
EI	M	7" Vintage Plate scarce color	\$185.00
EI	Amb	Lge. ICS Stag & Holly ball ftd. bowl rare	\$400.00

CARNIVAL GLASS - WANTED

FLOYD & BARBARA FINE
426 Lakewood Dr., Noel, MO 64854
417-475-3667; noelsweetiepie@hotmail.com

B Orange Tree Breakfast set creamer

ED KRAMER
4305 W 78th St., Prairie Village, KS 66208; 913-642-3587

M EI Imperial 474 Large Vase 12" (largest of three)
B,Amb EI Imperial Cobblestone bowls
Sm EI Soda Gold Console Set
M,B EI Curved Star Pitcher (Brockwitz)
M EI Candleholder pairs-Firefly, Moonprint, and unusual

LLOYD WARD
PO Box 956, Mayfield, KY 42066; 270-251-2005

1 piece, 20 pieces or a collection - All discussions confidential

LOUIS CARPICK
36 Center Rd., Dudley, MA 01571; 508-943-4223
W EI Beaded Shell mug, mint & great color

THE NEXT REGULAR HOACGA MEETING

By Ed Kramer

The next regular bi-monthly meeting of HOACGA will be Sunday, July 25, 2004 at 2:00pm at the Prairie Village Community Center, 7700 Mission Road, Prairie Village, KS. We will discuss glass with the same pattern in different shapes.

MEMBERSHIP APPLICATION

Heart Of America Carnival Glass Association
(PLEASE PRINT)

Last Name _____ First Name _____

Spouse's Name (if applicable) _____

Address _____

City _____ State _____ 9 digit Zip Code _____

Phone Number _____ New or Renewal
please circle one of the above

e-mail address _____

Anniversary (if married more than 40 years) _____

Name of the Person Who Encouraged You To Become a Member _____

Questions: _____

Please remit this form along with your yearly dues to:
(\$35 USA/Canada or \$50 Foreign)

Ann McMorris
PO Box 4361

H
O
A
C
G
A

HOACGA SOUVENIR - 2004

By Bob Grissom

Both Fenton and Northwood made a "Guest Set" in the mid 1920's. Fenton's "First Twenty-Five Years" shows a set made in marigold with a royal blue handle. These sets obviously had a functional use. The pitcher for holding the water and a glass for drinking, this was probably one of the few functional pieces of carnival glass. These sets were made in several colors, but a very few are available today because of their use - they had a difficult time surviving.

As anyone that has experienced the administration of a Carnival Glass club, you know that you are constantly trying to find means of providing financial support. All clubs are experiencing a decrease in membership, which effects their financial position, plus the cost of financing the various activities is continually increasing. WE ALL KNOW THAT THE FINANCIAL SUPPORT MUST COME FROM THE MEMBERS. Many of the clubs produce a souvenir each year as one means of providing financial support. In order for this to be a success, the members must purchase the souvenirs.

It continues to be a challenge to have a souvenir made that is appealing to the members. We believe that the 2004 souvenir, a Cobalt Blue "Guest Set" is one that the members will want. It is more expensive than any previous souvenir, but we think it is a more desirable souvenir. The cost of the souvenir is \$110.00. The set has been made by Fenton and was be a very limited production. The souvenir will be shipped as soon as your order is received.

The "Guest Set" is ribbed on the inside and has a Cobalt blue handle. Since it is a blown piece, it is a dark cobalt blue because it is thinner than a molded piece.

ORDER FORM - HOACGA SOUVENIR 2004

NAME: _____

ADDRESS: _____

NUMBER OF SETS: _____ @ \$110.00 EACH = \$ _____

SHIPPING & HANDLING \$5.00 EACH TOTAL: \$ _____

Mail to:
Ann McMorris, Secretary
PO Box 4361, Topeka, KS 66604-0361

NEW CARNIVAL GLASS SURVEY

We will be surveying Fenton Carnival Glass for the coming months in preparation for the 2005 Celebration of The Fenton Art Glass Company's 100th Year in Business. Please return the questionnaires promptly as we have more to do and would prefer not to have to repeat the same form.

FENTON HATPIN HOLDERS

PATTERN	COLOR	# OF EACH

FENTON LOVING CUPS

PATTERN	COLOR	# OF EACH

FENTON ROSE BOWLS

PATTERN	COLOR	# OF EACH

FENTON BON-BONS

PATTERN	COLOR	# OF EACH

Place
37¢
Stamp
Here

HOACGA
Research Project

HOACGA
Eleanor Mochel
15427 Woodward Court
Overland Park, KS 66223

- - - - - *Fold here, please tape top closed* - - - - -

COMMENTS

**AYERS AUCTION SERVICE
CARNIVAL GLASS AUCTION**
AUGUST 21, 2004
TO BE HELD AT THE BEST WESTERN
AIRPORT HOTEL & CONVENTION CENTER
5105 South Howell Avenue
Milwaukee, WI
877-461-8547
Ask for Jean for Reservations

**TWENTY-EIGHTH ANNUAL
MID-ATLANTIC
CARNIVAL GLASS JAMBOREE**
OCTOBER 21 - 23, 2004
The Venice Inn
431 Dual Highway, Hagerstown, MD
For Reservations, call: 1-800-283-6423,
Group # 2965
FEATURING A TOM BURNS AUCTION
For Information:
Nancy Williams 610-374-9033
2009 Cullum Dr., Reading, PA 19601
or
Bill & Sharon Mizell 301-384-8952
52 Old Bonifant Rd., Silver Spring, MD 20905

CARNIVAL GLASS EVENTS

FUNCTION	DATES	REMARKS
Auction	August 7 2004	Mickey Reichel Auction - NC Collection; Booneville, MO auction house, 9:00 am; 660-882-5292
Auction	August 28 2004	Jim Wroda Auction Service; 937-548- 2640; 10:00 am; Carnival Glass Collection of Gene & Shirley Metro; Holiday Inn, 131 Bluebell Dr., SW, New Philadelphia, OH 44883
Auction	September 18 2004	Important Eastern OH Auction in St. Louis, MO at Wentzville - Mickey Reichel Antique & Auction; 660-882- 5292
Convention & Auction	September 23-25 2004	NCCC/SJVCGC (Norther California & San Joaquin) Convention & Auction - Fresno Holiday Inn, Fresno, CA (across from the airport), this is a new location from previous conventions; Contact June McCarter @ 209-523- 6778
Auction	October 9 2004	Jim Wroda Auction Service Midwest Auction Facility 5239 St Rt 49 S, Greenville, OH 45331 - 10:00 am, 350 piece carnival collection
Auction	October 9 2004	Seeck Auction Center, Mason City, IA - Ruth & Cecil Herrington Collection
Convention & Auction	October 21-23 2004	Mid-Atlantic Carnival Glass Jamboree- Tom Burns Auction; The Venice Inn, 431 Dual Hwy., Hagerstown, MD; Contact Nancy Williams 610-374-8952 or Bill/Sharon Mizell 301-384-8952