

HOACGA BULLETIN

AUGUST 2006



HEART OF AMERICA CARNIVAL GLASS ASSOCIATION

(Since 1973)

President

Robert Grissom

7517 Evanston
Raytown, MO 64138
Phone: (816) 356-5320
e-mail: bobimocg@sbcglobal.net

Vice President

Don Lacock

PO Box 33
Delia, KS 66418
Phone: (785) 771-3125

Treasurer

Cliff Ball

572 W Park Street
Olathe, KS 66061
Phone: (913) 782-0415

Secretary

Ann McMorris

PO Box 4361
Topeka, KS 66604-0361
Phone: (785) 478-9004
e-mail: mcmorris@woodsland.com

Bulletin Secretary

Eleanor Mochel

15427 Woodward Court
Overland Park, KS 66223
Phone: (913) 685-2182
Fax: (913) 402-1727 (anytime)
e-mail: cmochel@yahoo.com

Membership expiration month and year is posted on address label
Following the name: (i.e. 507 = expires May 2007)

Opinions and information expressed in the HOACGA bulletin are not necessarily those of the Bulletin Secretary or Officers. Neither HOACGA nor Bulletin Secretary accepts any responsibility for accuracy or claims made, or for any outcomes resulting from the use of the information either printed or implied.

2007 HOACGA CONVENTION

By Bob Grissom

Do you know that the 100th Anniversary of the start of production of Carnival Glass will be in 2007. In conjunction with this HOACGA would like to give some recognition to this. We are establishing a theme for the convention "100 YEARS OF CARNIVAL GLASS."

In keeping with this theme the Special Display will consist of both Old and also Contemporary Carnival glass. We are aware of the reluctance to mix the old and the new but we believe it is acceptable to do it for this occasion. We would like to have glass displayed that represents most of the original and contemporary makers.

If you have glass that you would be willing to include in the display, please let Bob Grissom know of the pieces and maker that you would bring.

We are going to suspend the JOHN & LUCILLE BRITT AWARD also for 2007. It is not that there are not members that are deserving of the award, but we want to have a special speaker that will be keeping with the "100 Years of Carnival Glass" theme.

Ron & Judy Britt have consented to give an educational program about the history of Iridescence. The Britts are long time Carnival and Art Glass collectors. I know you will find his talk very interesting and informative.

We are going to go back to Judging the Room Displays by a Judging group so that all displays are judged and by the same people. We will also go back to the five categories for displaying, Same Maker, Pattern, Color, Shape, & Rarity.

On Thursday evening of the convention we are planning a Midnight auction, which will be at Midnight. This is in keeping with the original Midnight Auctions.

We also want to have a display of "Spare Parts". If you have a part to a set i.e, lid to a Powder Jar, lid to a Sugar or just a spare part. If it goes to a set and you would like to sell the piece we want to have a special place where these can be displayed and if you need the "Spare Part" you could buy it. So be looking at you collection and see if you have a "Spare Part" that you would like to sell please bring it to the convention. Maybe someone needs this part.

Then the JOHN MUEHLBAUER collection will be sold by the Wroda Auction Co. I know that this will be another fantastic auction that you will not want to miss.

The dates for the 2007 Convention are Wednesday, April 25 to Sunday, April 28, 2007. The Convention will be at the same Embassy Suites Hotel as previous years.

Bob Grissom
E-mail bobimocg@sbcglobal.net

FENTON'S ACORN BOWL

By Alan and Lorraine Pickup

Several years ago we were discussing our glass collection with our insurance agent and presented him with a list of glass we owned at that time. The printout was alphabetical so the fifteen listed Fenton Acorn bowls near the top of the list just jumped out to him.

He questioned the wide price range value listed, from less than twenty dollars to several hundred dollars. So we explained to him that all carnival glass was priced differently according to its scarcity and desirability. But not necessarily always in that order. Sometimes desirability gets ahead of scarcity such as the red Acorn bowl. The red Acorn bowl is certainly not scarce but still carries a respectable price range because of carnival glass collector's love for red. Then on the other hand some colors that you would not consider being that scarce or particularly desirable may be next to impossible to find and so scarce that they are difficult to even price.

We just celebrated Memorial Day with lots of emphasis on red, white and blue and that reminded us that some time ago we were asked to write an article for the San Diego club with a theme of "Red White and Blue". That sounded pretty easy. With so many different colored Acorn bowls that should be no problem. Much to our dismay we found that a white bowl was not only missing in our collection, but also could be the most valued sleeper color in Fenton's Acorn bowls. Certainly other scarce colors do exist such as the celeste blue bowl shown in our picture. This bowl color is ambiguous as some collectors refer to it as ice blue or even powder blue. After an examination of this bowl by Frank Fenton some years ago he felt it was a light celeste blue.

Also shown in the picture with the red and celeste bowl is a crystal Acorn bowl that was found in a Kentucky antique mall by Debbie Graham, while we were enjoying several days of antiquing with Rick and Debbie. We decided that the crystal bowl was probably the closest thing we would get to white and added it to our Acorn bowl collection. Thanks Debbie, now find us a white one.

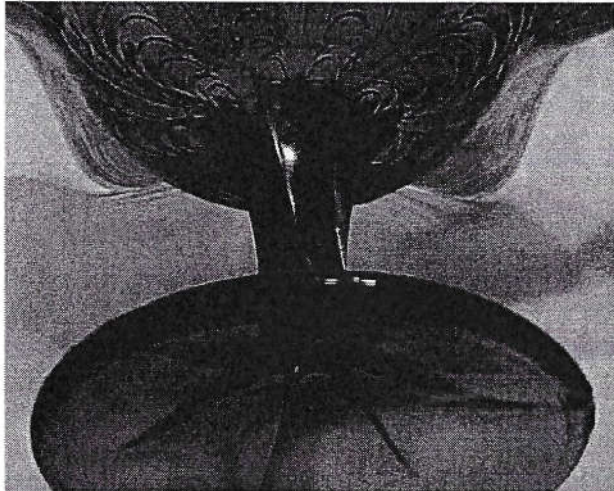


ROSALIND VARIANT

An Attribution at Last

By Barb Chamberlain

About a year ago, Gerald Welsh bought a green Rosalind Variant compote. Many people over the years have speculated that this is a Millersburg product, since Millersburg made several bowls and compotes in the Rosalind pattern, including one with the Dolphins base. There are those who don't believe that this compote was made by Millersburg.



Gerald was prompted to do some observational research after Jim Seeck speculated that he thought that it might be Fenton, just looking at the exterior. Marie McGee, in her Millersburg Glass book, didn't include the Rosalind Variant, either in photos or context, so I must presume that she didn't have enough proof to include it as a piece of Millersburg.

After studying his other compotes, Gerald found one that matched the exterior of his Rosalind Variant compote. His Plain, or Rainbow, compote, marked Northwood, matched the exterior of the Rosalind Variant exactly. Each exterior has the plain bowl with a stem that

features six panels that extend to the edge of the round base. At the top, the six panels end with a rounded top that seem to form a flower look if you look through the compote from the top.

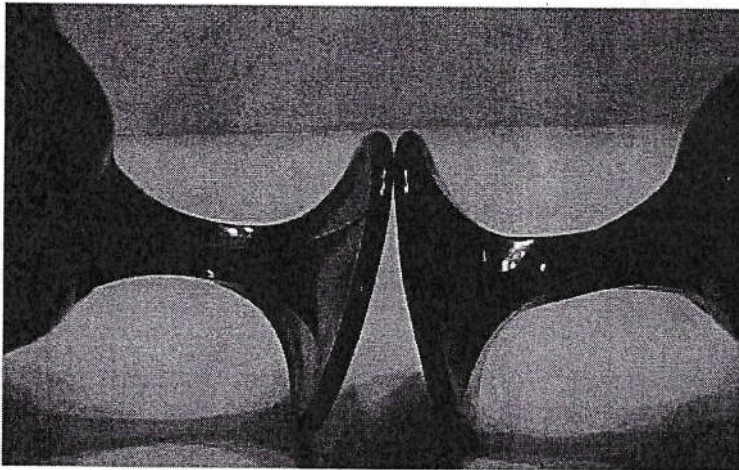
When Gerald showed me his two compotes with the matching exteriors, I checked our few compotes and found a stem pattern that matched on a marked Northwood thick stem Blackberry compote. The only difference that this compote has, is that it features a basket weave exterior instead of the plain bowl exterior. I would imagine that the Rainbow with basket weave exterior compote would also have the six paneled stem, as well.

Observing photos of the Millersburg compotes that Marie McGee pictures in her Millersburg book, it appears that the Boutonniere and Deep Grape compotes have the round base and a paneled stem, but the panels seem to stop at the bottom of the stem rather than extending to edge of the base.



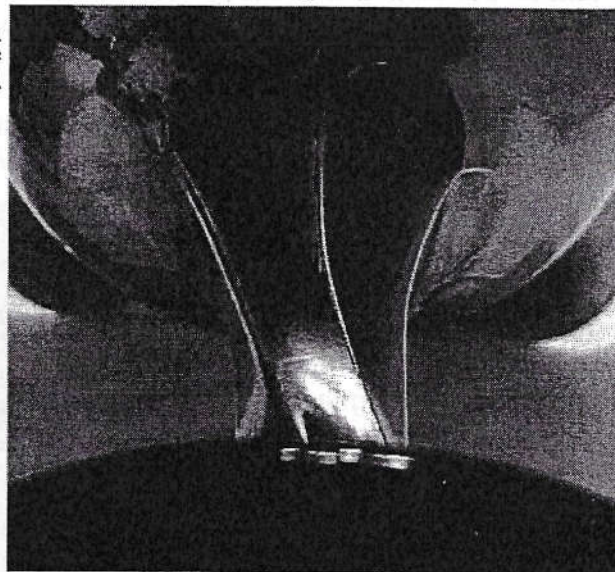
At this time, the Rosalind compote is found only in amethyst and green, and neither color is found often. If you have a different color, it would be quite a rarity, and something that the members would like to know.

ROSALIND VARIANT continued...



In researching the compote section of the HOACGA notebook, I observed three other compotes that have a six panel stem with round bases, and I would like to ask you readers to check your Hobstar Flower by Northwood, your Wreath of Roses and Peacock Tail compotes (both attributed to Fenton), or any other compotes, to determine if they have stems and exteriors that match the pictures included with this article.

Please contact me at dbcham@iowatelecom.net or 124 E. Honey Creek Dr., Manchester, IA 52057 with your findings.



UPDATE ON HEAVY VINE

By Barb Chamberlain

Ted Meeker reminded me that there are at least two vases available in the Heavy Vine pattern. There are a 6" and a 9-10" vase, and Ted and Judy have one of each plate.

Carl & Eunice Booker bought two covered boxes and a perfume without the atomizer bulb at the ACGA convention.

Are there still other pieces out there? Does this pattern come in something other than marigold?

Let us know!

GRACEFUL TUMBLER

By Bob Smith

It has been 15 years since the Graceful Tumbler was written up in the HOACGA Bulletin. Very little was known about it at that time, but now having learned much more about it, we can give our readers a more complete history of the tumbler.

The tumbler was originally found by Al Rodenhouse, a prominent collector in the 1970's and 1980's. He named it Graceful for Grace Rinehart. He stated that the tumbler was originally found in Argentina, but it was considered most probably a European item. We now know that where it was found was where it was made.

The Graceful tumbler was part of a set of six tumblers, a pitcher and a tray that was made by the Cristalerias Piccardo company in Buenos Aires. The Spanish pattern name given to it by the company was Fantasia. It is prominently illustrated in their catalog. Piccardo no longer exists, but whether it went out of business or was absorbed by another company is unknown. Information from Argentina is very hard to come by.

The tumbler is made from a four part mold. There is a half inch plain area from the rim down, below which the main pattern is four scroll-like figures extending from the base up to the plain area. The measurements are 4" high; 2-3/4" rim, and a 2" base, which has a twelve point indented star.

The tumbler is known in the colors of blue and an amber marigold. Only three tumblers in the amber marigold color are known. Two of these were found in Montevideo, Uruguay. This color should be considered rare, whereas the blue is somewhat easier to obtain, but not that plentiful. Any collector coming upon this tumbler should get it while he has the chance. It may be a while until another is found.



Happy Hunting!

Feedback: necgabobsm@aol.com

THE NEXT HOACGA BULLETIN
WILL BE MAILED
SEPTEMBER, 2006

ALL MATERIALS SHOULD BE TO
THE BULLETIN SECRETARY
NO LATER THAN AUGUST 20, 2006
IN ORDER TO BE INCLUDED IN THE BULLETIN

REMEMBERING

By Grace Rinehart, Charleston, WV

Our Carnival Glass World is going through a sad time when the word came out about Eleanor and Jack Hamilton of Waco, TX. Both passed away within a week of each other in May and June, 2006. They will be sadly missed.

We also just learned of Norine Andreatta's sudden death. She collected carnival glass for many years and specialized in Fostoria. She moved to Orange Park, FL recently to be close to her daughter. A real shock to have her go.

Bill Triplett of Australia passed away on June 29, 2006. He and Muriel came to our convention about 25 years ago. They went back and organized a carnival glass club in Australia, which is doing really well. Mureil has in bad health these last few years and passed away December 24, 2005.

Wonderful club members like these are a great loss.

"Memories in the hearts we leave behind is not to die."

Good bye dear ones...

CORRESPONDENCE

By Richard & Elaine Petersen, Clarkfield, Minnesota

We summer here eight miles north of Brainerd, MN. Have a small house (cabin) here in the woods, which is a difference from the cropland of the prairie. We aren't carnivalizing as much as beginning back in 1963 but always on the lookout for collectible pieces. Last two were Heavy Grape Imperial 6 inch bowls, excellent iridescence. One amethyst purple; the other champagne color.

Really enjoy the newsletter and the 2006 info on carnival. Hardly seems 43 years ago we were anxiously awaiting the next Hartung and Preznick books. We did get to Lodi and meet Rose but only talked on phone to Hartung. We enjoy our collecton and relive the when and where of each piece.

One of the best pressure relief values of our nearly 50 years of marriage and 43 years of carnivalizing.

NEXT REGULAR HOACGA MEETING

By Ed Kramer

The next regular bi-monthly meeting of HOACGA is scheduled for Sunday, Sept. 24, 2006 at the Prairie Village Community Center, 7700 Mission Road, Prairie Village, KS 66208.

We will be discussing patterns with leaves - bring some of your own to share.

HOACGA BOARD OF DIRECTORS MEETING

JULY 11, 2006, LAWRENCE, KS

By Ann McMorris

The HOACGA Board of Directors met in Lawrence on July 11, 2006. Present were President Grissom, Treasurer Ball, Secretary McMorris and Editor E. Mochel. Vice President Don Lacock is recuperating from a knee replacement operation and reports he is getting along fine.

President Grissom assigned the duty to Secretary McMorris to put together an updated HOACGA brochure for the Board to consider.

2007 Convention – April 25, 26, 27, 28, 29, 2007

- The planning for the 2007 Convention (Theme - 100 Years of Carnival Glass) was the main topic for the board meeting. Discussion included the various activities for the convention – (1) raffle of \$1,000 check – decision was to continue this activity
- Room display judging and awards will revert to a judging panel and categories and could include both old and contemporary pieces in conjunction with our 100 Year theme
- Britt Award nominee – No award will be offered in 2007
- Special Display to include old carnival from the five major carnival glass producers and contemporary carnival of the last 50 years or more
- Seminars and speakers, Ron Britt of Abilene on Irridescence
- Friday luncheon will be held with special speaker
- Banquet speaker on 100 years of carnival history
- Thursday Seminar at 7:30 p.m.; spare parts room; midnight auction and cake and coffee.
- Friday night – Eat pie and six will be lucky and win \$10 if they choose the special pie. Auction preview – John Muehlbauer collection

Possible speakers are being contacted. President Grissom is negotiating with Fenton Art Glass Company on a possible souvenir. A notebook section is being considered. Eleanor is checking on the room display awards and the banquet table favors. Various matters in connection with the convention theme were discussed – banners, decorations, color schemes, etc. This will be an exciting convention. Some discussion was held regarding extending the convention for an extra day – Tuesday thru Sunday. No decision was made.

HOACGA has purchased 10 Poppy Show Vases from Dick Betker and they are being delivered to Bob at the forthcoming ICGA convention. Betker will relate the story about these vases at the 2007 convention.

Respectfully submitted,
Ann McMorris, Secretary

OCTOBER ANNIVERSARIES

Paul & Yvette Berube
11 Doris Ave
Tiverton RI 02878
Married Oct 7, 1961

Ellis & Margaret Hudson
3626 Pleasant Dr
Prospect OH 43342
Married Oct 30, 1957

Clarence & Betty Epperhart
5981 Flemingsburg Rd
Morehead KY 40351
Married Oct 12, 1946

*If you would like to have
your Anniversary listed in
the Bulletin (40 years +)
Please notify Bulletin Secretary.*





13th ANNUAL MID-ATLANTIC CARNIVAL GLASS JAMBOREE

October 26 - 28, 2006

Featuring a Bill Richards Auctioneers Auction

Best Western Grand Venice Hotel, 431 Dual Highway, Hagerstown, MD
Call for reservations within the
Mid-Atlantic Carnival Glass Block (301-733-0830)

Information Contact:

Nancy Williams, 610-374-9033, 2009 Cullum Dr., Reading PA 19601
Bill & Sharon Mizell, 301-384-8952, 52 Old Bonifant Rd., Silver Spring MD 20905

Thursday, Oct. 26

Hospitality Room - 2nd Floor, Rm 271, Jamboree Registration 8-10pm

Friday, Oct. 27

Potomac Room (1st floor next to elevator)

Chairman's Welcome & Educational Program 11am-12pm

Hospitality Room & Jamboree Registration 2-4pm

Ballroom - Banquet, Awards, White Elephant Sale & Auction Preview 6:30pm

Hospitality Room open after Banquet
Room visits while rooms are open ...til 11pm

Saturday, Oct. 28

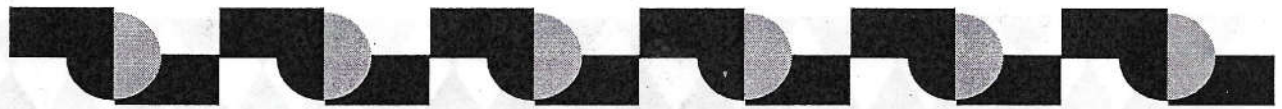
Ballroom - Auction Preview 8-9pm

Bill Richards Auctioneers Auction 9am - ...

Sunday, Oct. 29

Checkout and have a safe trip home!





**NORTHERN CALIFORNIA CARNIVAL CLUB
&
SAN JOAQUIN VALLEY CARNIVAL GLASS CLUB
2006 CONVENTION: SEPTEMBER 21-23**

Holiday Inn, Fresno Airport, 5090 E Clinton Way, Fresno CA
559-252-3611

Free Airport Transportation
Room Rate: \$87, plus tax until Sept. 7

Thursday, Sept. 21

Pie Social 8pm

Friday, Sept. 22

Luncheon & program, "My Second Collection"
presented by Gail Westphall 12pm

President's wine & cheese reception 5pm

Bill Richards Auctioneers auction preview eve.
highlights: www.billrichardsauctioneers.com

Saturday, Sept. 23

Richards Auction 9am

Banquet & Program, "My Collection" by Bob Grissom 6pm

Those with special needs, requiring adjoining rooms, and 1st flr rooms should state when making the reservation that they will be requiring such a room for medical reasons. The hotel will do its best to accommodate your request based on availability upon check-in.



**SUNSHINE STATE IX ANNUAL
CARNIVAL GLASS CONVENTION
JANUARY 23-28, 2007
HOWARD JOHNSON RESORT HOTEL
800-446-4656**

THE SUPERBOWL XXXXI IS IN FLORIDA THIS YEAR SO OUR THEME FOR THE CONVENTION IS "SUPER BOWL" OF CARNIVAL GLASS.

Bring your "Super Bowls" for a Room Display or any theme you so desire.

● Our dress code is always casual so wear your favorite team jersey for the banquet - Best Outfit Will Win A Prize!!!

● Pre-register to be eligible for the "Free" activity. There will be a cut-off date. Our schedule and registration form will be on our website after our June meeting on June 17th and in our September newsletter.

The Jim Wroda Auction Team is bringing the "Super" collection of Bill & Sandy Reyan of Pennsylvania.

We're looking forward to seeing everyone in Beautiful Deerfield Beach, FL.

Contact: Dee Bekemeier, Convention Chairperson:
772-569-1808; depaurox@aol.com



TAMPA BAY CARNIVAL GLASS 25TH CONVENTION
January 31, 2007 - February 3, 2007

Best Western Diplomat Inn, US 98 N, Lakeland, FL
800-237-4699 or 863-688-7972
ask for Mike Shriner for reservations
(includes full hot breakfast buffet)

Wednesday, January 31, 2007

Caravan to Chinese/American Buffet \$10 pp 5:30pm

Thursday, February 1, 2007

Luncheon (choice of hot entrée) to Celebrate 25 Years 12pm
(free to all convention registered guests)

Hospitality Dinner Buffet (free to all conv. registered guests) 6pm

White Elephant Auction; Seminar on Carnival Glass

Friday, February 2, 2007

Business Meeting 10am

Seminar on Carnival Glass

Banquet (\$20pp - choice of entrée) 6pm

Banquet Speakers: John & Loretta Nielsen -
"Rare & Unusual Carnival Glass"

Auction Preview

Saturday, February 3, 2007

Auction Preview 8-9:30am

Auction by Remmen Auctioneers 9:30am

www.remmenauction.com

Convention Contacts:

Janet Knechtel

863-993-2387 (winter) or 705-377-4814

janetkn@amtelecom.net



AUCTIONEER'S CORNER

Any Auctioneer who is a member of HOACGA is welcome to send in an article each month about his current Carnival Glass Auctions and the results thereof.

Seeck Auctions

PO Box 377, Mason City IA 50402
jimjan@seeckauction.com / 641-424-1116

Upcoming Auctions...

September 9

Carnival Glass Auction
Holiday Inn, Wentzville MO
The Gary & Donna Braden Collection

October 21

Carnival Glass Auction
Mason City, IA

November 18

Carnival Glass Auction
Holiday Inn, Wentzville MO
Private Collection

Please watch our website for complete catalogs and lots of pictures:
www.seeckauction.com

BILL RICHARDS AUCTIONEERS

email: br3auctions@aol.com

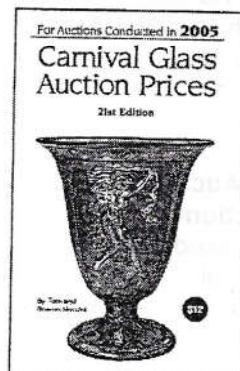
The New England Carnival Glass Assoc. Auction
Sept. 7-9, 2006

(sneak peak of the Northern CA Convention Carnival Glass Auction, Sept. 2006)

Bill Richards III, Auctioneer
36 Water St., Poland OH 44514
Ph 330-318-9897, Fx 330-757-4917
br3auctions@aol.com

Bill Richards, Auctioneer
44 Water St., Poland OH 44514
Ph 330-757-2001
richar1955@aol.com

Mordini's 2005 Carnival Glass Auction Price Report



For auctions conducted in 2005 Order Now!

Auction reports to be mailed in mid January, 2006

Tom and Sharon Mordini's 21st annual Carnival Glass Auction Price Report for all major carnival glass auctions conducted in 2005. Listing over 5,000 items of carnival glass sold at major carnival glass auctions in the U.S.

Order Now!

Don't be without this valuable resource

Prices are as follow:

2005 Report \$12

2005 Report (2 or more, each) \$11

Back Issues ('98 '99 '00 '01 '02 '03 '04) \$8

Canadian orders should be by Canadian Postal money order in U.S. funds
Overseas add (per Report) \$3.00 International Money Order in U.S. funds

Order from Tom & Sharon Mordini

36 N Memitz, Freeport, IL 61032

Phone 815-235-4407 or email tommordini@aol.com

Jim Wroda Auction Services Carnival Glass Auction Calendar **Mark your calendars NOW for these Fantastic Auctions!!**

5239 State Route 49, S Greenville, OH 45331
www.jimwrodauction.com / 937-548-2640

September 2nd 2006 9:45 AM

Carnival Glass Auction
Private Collection, KY
Midwest Auction Facility
Greenville, OH

October 7th 2006 - 9:45 AM

Carnival Glass Auction
Pete & Paula Bingham Collection-Part 2
Holiday Inn, Airport
Columbus, Ohio

November 10, 2006 - 4:00 AM

Part 1 of the Carnival Glass Collection of
Bill & Sandy Reyan - Everett, PA
Midwest Auction Facility
Columbus, OH

November 11, 2006 9:30 AM

Carnival Glass Auction
The Carnival Glass Collection of
Jim & Kelani Lee - Arlington, TX
Midwest Auction Facility
Greenville, OH

January 27, 2007 9:30 AM

SSCGA Convention Auction
Deerfield Beach, FL
Carnival Glass Auction
Bill & Sandy Reyan of Everett, PA

March 9th, 2007 4:00 PM

200 pcs. Millersburg Crystal

March 10th, 2007 9:30 AM

400 pcs. Carnival Glass Auction
Warren and Joan Place, Mehoopany, PA
Holiday Inn - Columbus Airport
Columbus, OH

April 28th, 2007

HOACGA Convention Auction
Carnival Glass Auction
John & Jan Muehlbauer, Seaside, OR
Embassy Suites Hotel
Kansas City, MO

*Jim Wroda Auction Service Carnival Glass Auction
John & Jeanette Roger Collection - May 27, 2006*

- 1a M-burg purple hobnail swirl spittoon. Minor 200 200
17 Australian black amy. Butterfly Bush & Christmas 145 145
22 M-BURG 8" GREEN PEACOCK AT URN MYSTERY BOWL. 175 175
38 Imperial smoke Poinsettia milk pitcher. Super. 175 175
44 Imperial lavender 474 milk pitcher. Scarce. 230 230
49 Imperial smoke Windmill milk pitcher. Scarce. 300 300
52 N-WOOD 9" GREEN G & C STIPPLED PLATE W/BEAUTIFUL 325 325
53 Fenton 9" blue Plaid plate. Very scarce. Silvery. 525 525
55 N-WOOD 9" PURPLE POPPY SHOW PLATE. NICE 750 750
57 N-wood 8 1/2" blue Embroidered Mums bowl. 225 225
65 N-wood elec. purple Town Pump. One of the better 625 625
66 N-WOOD 11" IG LEAF COLUMNS VASE. Super pastel 500 500
76 FENTON 7" GREEN ELKS RUFFLED BOWL. VERY SCARCE. 400 400
77 FENTON 7" BLUE ELKS PLATE. SCARCE. CHIP AT 2:00 200 200
78 FENTON 7" GREEN ELKS ICS BOWL. MFG. SPLIT ON 200 200
89 IMPERIAL 7" EMERALD GREEN WINDMILL DEEP ROUND 410 410
96 IMPERIAL ELEC. PURPLE WINDMILL DRESSER DRAY. 210 210
106 PHOENIX MMG WILD LOGANBERRY WATER PITCHER. RARE! 275 275
112 Dugan mari Amyrillis compote round and super!! 325 325
125 N-wood AO Singing Birds mug. RARE! 700 700
126 FENTON BLUE FENTONIA WATER PITCHER. SUPER COLOR 575 575
127 Fenton mari. Fentonia 7 pc. water set. 200 200
128 FENTON MARI. LEAF TIERS 5 PC. WATER SET. VERY 275 275
130 Fenton blue Orange Tree 7 pc. water set Scarce 300 300
132 Fenton purple Paneled Dandelion water pitcher. 225 225
133 Fenton mari. Paneled Dandelion water pitcher. 160 160
134 Fenton blue Butterfly & Berry 7 pc. water set. 350 350
136 N-wood blue Grape & Gothick Arches 7 pc. water 225 225
140 Fenton purple Butterfly & Fern 5 pc. water set. 300 300
141 Fenton blue Butterfly & Fern 7 pc. water set. Not 375 375
142 Fenton green Butterfly & Fern 5 pc. water set. 400 400
144 Dugan mari. Jewelled Heart 7 pc. water set. Very 500 500
149 N-wood 9" mari. Peacocks on the Fence plate. 320 320
150 N-wood 8 1/2" blue Peacocks on the Fence ruffled 325 325
153 N-wood 8 1/2" blue Good Luck ruffled bowl w/ayed 200 200
154 N-wood 8 1/2" green Good Luck ruffled bowl w/BW 225 225
156 N-wood 8 1/2" purple Good Luck ruffled bowl w/BW 205 205
159 N-wood 9" purple Three Fruits stippled plate 250 250
161 N-WOOD 9" AMY. GOOD LUCK PLATE W/BW EXT. scarce 310 310
162 N-WOOD 9" PURPLE GOOD LUCK STIPPLED PLATE W/rib 625 625
165 N-WOOD 9" MARI. G & C STIPPLED PLATE W/RIB EXT. 325 325
166 N-WOOD 9" GREEN G & C STIPPLED PLATE W/OLD ROSE 375 375
168 FENTON 8 1/2" RED ORANGE TREE ICS BOWL. SUPER!!! 900 900
169 N-WOOD 8 1/2" AQUA W/OPAL TIPS GOOD LUCK RUFFLED 1700 1700
171 N-WOOD PURPLE TOWN PUMP. NICE 550 550
173 N-WOOD 9" HOREHOUND/LAVENDER GOOD LUCK PLATE W/BW 525 525
174 N-wood 9" IG Embroidered Mums plate. Lacking 300 300
176 FENTON 10" MARI. TEN MUMS 3/1 EDGE FOOTED BOWL. 325 325
177 FENTON 10" PURPLE TEN MUMS 3/1 EDGE RUFFLED BOWL. 325 325
178 FENTON 9 1/2" GREEN TEN MUMS 3/1 EDGE BOWL. VERY 225 225
179 FENTON 10" ELEC. BLUE TEN MUMS 3/1 EDGE BOWL. 525 525
184 M-BURG GREEN HOBNAIL SPITTOON. VERY SCARCE. 1550 1550
186 M-BURG 6" PURPLE CAMPBELL & BEESLY CO. 1911 350 350

- 187 M-BURG PURPLE HANING CHERRIES STEMMED COMPOTE. 1200 1200
- 188 M-BURG 8" GREEN BIG FISH SQUARE BOWL. RARE. 1800 1800
- 189 M-BURG 8 1/2" GREEN BIG FISH ICS BOWL. RARE. 700 700
- 190 M-BURG 8" MARI. BIG FISH 3/1 EDGE BOWL. VERY 325 325
- 191 M-BURG 8" PURPLE TROUT & FLY SQUARE BOWL. RARE 750 750
- 192 M-burg 8" green Trout & Fly ruffled bowl. Satin. 375 375
- 193 M-burg 9" purple Trout & Fly ruffled bowl. Flared 425 425
- 194 M-burg 8" purple Court House ICS bowl. Radium 775 775
- 195 M-burg green Seacoast pin tray. Looks ok. No 750 750
- 202 M-burg 10" mari. Peacock at the Urn ICS bowl. 200 200
- 203 M-burg 10" green Peacock at the Urn ICS bowl. 425 425
- 204 M-burg 9" purple Square Rays & Ribbons bowl. 600 600
- 205 M-burg 10" mari. Many Stars 3/1 edge bowl 1000 1000
- 208 M-burg 9" mari. Fleur-de-lys tri-corner CRE dome 600 600
- 210 M-burg 6" purple Grape Wreath Variant CRE ruffled 225 225
- 213 N-WOOD 9" LIME GREEN STIPPLED THREE FRUITS PLATE 16000 16000
- 214 N-WOOD 9" IB STIPPLED THREE FRUITS PLATE. 2500 2500
- 215 N-WOOD 9" HOREHOUND STIPPLED THREE FRUITS PLATE 2000 2000
- 216 KILLER N-WOOD 9" PASTEL AO STIPPLED THREE FRUITS 4000 4000.
- 217 N-WOOD 9" SAPPHIRE STIPPLED THREE FRUITS PLATE. 2400 2400
- 219 N-WOOD 9" AQUA STIPPLED THREE FRUITS PLATE. VERY 1700 1700
- 220 N-wood 9" elec. blue stippled Three Fruits plate. 400 400
- 222 N-WOOD 9" LAVENDER STIPPLED THREE FRUITS PLATE. 575 575
- 224 N-wood 6" purple Fern Brand Chocolates 2-sides up 600 600
- 226 N-WOOD IB G & C HATPIN HOLDER. SUPER DARK. 1600 1600
- 227 N-WOOD WHITE G & C HATPIN HOLDER. NICE FROSTY 2000 2000
- 229 N-wood elec. purple G & C banded hat pin holder. 375 375
- 230 N-WOOD BLUE 8-PC. G & C STIPPLED SMALL TABLE SIZE 4000 4000
- 231 N-WOOD DARK MARI. 8-PC. STIPPLED G & C PUNCH 950 950
- 232 N-WOOD EMERALD GREEN G & C MIDSIZE PUNCH BOWL & 2300 2300
- 233 G & C MARI. 14 PC. MASTER PUNCH SET, SUPER DARK 5300 5300
- 235 N-WOOD ELEC. BLUE HARVEST POPPY STEMMED COMPOTE. 1050 1050
- 236 Fenton 10" Two Flowers rev. amberina 8-ruffled 400 400
- 237 Fenton 5" red Panther footed sauce. Very nice. 725 725
- 242 N-wood IG Grape Arbor ruffled hat. Scarce. 375 375
- 244 N-wood 9" blue Rose Show plate. Very nice elec. 875 875
- 251 N-wood IB round Bushel Basket. Very scarce. 375 375
- 253 N-wood horehound round Bushel Basket. Very 275 275
- 254 N-wood smokey blue round Bushel Basket. Very 195 195
- 263 N-wood pastel mari. G & C cracker jar. 200 200
- 264 N-wood purple G & C humidor w/fantastic elec. 465 465
- 265 N-wood mari. G & C large covered compote. Scarce. 800 800
- 266 N-WOOD LIME GREEN ORIENTAL POPPY TANKARD PITCHER. 16000 16000
- 267 N-WOOD IB ORIENTAL POPPY TANKARD WATER PITCHER. 2400 2400
- 267a IB ORIENTAL POPPY TUMBLER 165 165
- 268 N-WOOD SUPER FROSTY WHITE ORIENTAL POPPY TANKARD 1100 1100
- 269 N-WOOD ELEC. BLUE ORIENTAL POPPY TANKARD PITCHER. 3700 3700
- 270 N-WOOD GREEN ORIENTAL POPPY TANKARD PITCHER. SOME 650 650
- 271 N-wood purple Oriental Poppy tankard pitcher. 450 450
- 272 N-wood mari. Oriental Poppy tankard pitcher. Very 235 235
- 273 N-WOOD 9" PEACH OPAL STRAWBERRY PLATE W/BW EXT. 875 875
- 275 N-wood IB G & C cologne bottle. Has bruise & Mfg. 500 500
- 276 N-wood IB G & C whimsey nappy made out of punch 800 800
- 277 N-wood IB G & C dresser tray 700 700
- 278 N-wood purple G & C dresser tray. 300 300

Jim Wroda Auction Service Carnival Glass Auction May 27, 2006, continued...

- 279 N-wood elec. purple G & C powder jar. 225 225
- 280 N-wood / Dugan elec. purple G & C perfume bottle. 900 900
- 281 N-wood purple/elec. purple G & C pin tray. Very 300 300
- 283 N-WOOD IG G & C CENTERPIECE BOWL. POINTS TURNED 625 625
- 284 N-WOOD GREEN G & C CENTERPIECE BOWL. POINTS 750 750
- 285 N-wood elec. purple G & C large footed fruit 250 250
- 287 RARE N-WOOD PURPLE WHEAT SWEETMEAT, ONLY ONE 6500 6500
- 289 N-wood green Greek Key water pitcher. Rare. Super 1000 1000
- 290 N-wood purple Greek Key water pitcher. Very rare. 550 550
- 291 N-wood WHITE Raspberry water pitcher. Another 825 825
- 293 Dugan mari. Harvest Flower tankard water pitcher. 850 850
- 294 Fenton blue Apple Tree water pitcher. Super nice. 400 400
- 295 Cambridge green Venetian rosebowl. Very scarce. 500 500
- 296 M-burg purple Hobstar & Feather giant rosebowl. 1150 1150
- 297 Imperial smoke Poppy vase. Super massive piece of 1600 1600
- 298 Imperial 12" elec. purple Ripple midsize vase. 450 450
- 300 N-wood 10" blue Peacock at the Urn MIC. Nice. 500 500
- 301 N-WOOD 10" ELEC. PURPLE PEACOCK AT THE URN CHOP 2000 2000
- 303 Fenton green Orange Tree loving cup. Beautiful 275 275
- 305 Fenton elec. blue Orange Tree loving cup. All 1200 1200
- 307 N-WOOD 8 1/2" AO GOOD LUCK RUFFLED BOWL. VERY NICE 1900 1900
- 308 N-WOOD 8 1/2" SAPPHIRE GOOD LUCK RUFFLED BOWL. VERY 850 850
- 309 N-WOOD 8 1/2" KILLER PASTEL MARI. GOOD LUCK 275 275
- 313 FENTON 8" IG HOLLY ICS BOWL. EXTREMELY RARE. 375 375
- 314 N-wood 8 1/2" IG G & C spatula footed bowl 575 575
- 315 FENTON 7" IG LEAF CHAIN RUFFLED BOWL. BEAUTIFUL 725 725
- 316 N-WOOD IG DAISY & PLUME FOOTED ROSEBOWL. VERY 1200 1200
- 317 N-WOOD WHITE DAISY & PLUME FOOTED ROSEBOWL 400 400
- 319 N-WOOD 8 1/2" PEACH OPAL G & C VARIANT RUFFLED BOWL 1000 1000
- 321 N-wood white Singing Birds mug. Nice yellow irid. 450 450
- 324 N-WOOD 6" PUMPKIN MARI. PEACOCK AT THE URN PLATE. 600 600
- 325 N-WOOD 6" PURPLE PEACOCK AT THE URN PLATE. VERY 650 650
- 327 Fenton mari. 4-Kittens cup and saucer. 250 250
- 333 EXTREMELY RARE DUGAN 11" PO BUTTERFLY & TULIP 26500 26500
- 334 DUGAN 10" PURPLE FARM YARD 3/1 EDGE BOWL. 7000 7000
- 335 Fenton 10" outstanding elec. blue Stag & Holly 625 625
- 338 Fenton 10 1/2" GREEN Stag & Holly footed ruffled 425 425
- 339 Fenton 10" aqua Stag & Holly large footed ruffled 600 600
- 342 N-wood elec. purple Blossomtime ruffled compote. 500 500
- 351 N-WOOD MARI. TOWN PUMP. VERY RARE. NICE DARK 3000 3000
- 352 DUGAN 3 1/2" PURPLE TWIGS CRE VASE. NICE COLOR ON A 675 675
- 354 Dugan mari. Formal hat pin holder. Super nice. 675 675
- 357 N-WOOD AO G & C PUNCH CUP. EXTREMELY RARE. 1000 1000
- 358 M-BURG PURPLE MULTI FRUIT & FLOWER PUNCH BOWL & 1200 1200
- 359 IMPERIAL ELEC. PURPLE FLUTE 8-PC. PUNCH SET . 3000 3000
- 361 FENTON WHITE 8-PC. ORANGE TREE RUFFLED PUNCH SET. 650 650
- 364 Fenton blue/elec. blue Butterfly & Fern water 400 400
- 365 Fenton blue Butterfly & Berry water pitcher. Very 400 400
- 366 N-wood 9" blue G & C stippled PCE bowl w/Rib 675 675
- 367 N-WOOD 9" EMERALD GREEN PEACOCKS PCE BOWL W/RIB 550 550
- 368 N-wood 9" outstanding elec. purple Nippon PCE 525 525
- 369 N-wood 8 1/2" killer IB Hearts & Flowers PCE bowl. 650 650
- 370 N-wood 8 1/2" purple Hearts & Flowers PCE bowl. 350 350
- 374 Fenton 9" mari. Heart & Vine Spector's Dept. 650 650
- 375 N-WOOD IB 6-PC. PEACOCK AT THE FOUNTAIN PUNCH 18500 18500

Jim Wroda Auction Service Carnival Glass Auction May 27, 2006, continued...

- 376 N-WOOD WHITE 8-PC. PEACOCK AT THE FOUNTAIN PUNCH 4700 4700
377 N-WOOD AMY. 8-PC. PEACOCK AT THE FOUNTAIN PUNCH 1000 1000
378 N-WOOD MARI. 8-PC. PEACOCK AT THE FOUNTAIN PUNCH 1000 1000
379 N-wood purple G & C tankard water pitcher . Also 325 325
380a N-wood green Singing Birds water pitcher. Very 700 700
382 Westmoreland purple Checker Board water pitcher. 1100 1100
383 Dugan blue God & Home water pitcher. Very rare. 1100 1100
386 Fenton 7" mari. Lions flat plate. Very scarce. 700 700
388 DUGAN PO FISHERMAN MUG. EXTREMELY RARE. 825 825
389 DUGAN BLUE FISHERMAN MUG. MAY BE THE RAREST ONE. 1100 1100
397 Imperial 9" smoke Shell & Sand plate. Extremely 1000 1000
398 Imperial 9" elec. purple Shell & Sand plate. Hot! 1300 1300
399 Imperial 9" pastel mari. Shell & Sand plate. 950 950
406 N-WOOD EMERALD GREEN HEARTS & FLOWERS COMPOTE. 1000 1000
407 N-WOOD AO HEARTS & FLOWERS COMPOTE. SUPER PASTEL 425 425
412 N-wood AO Fruit & Flower bon bon. Pastel, tons of 450 450
413 N-wood horehound/lavender Fruit & Flowers 475 475
414 N-wood IB Fruits & Flowers 2-handle bon bon. Very 350 350
419 Dugan 10" elec. purple Four Flowers chop plate. 675 675
420 DUGAN 10" ELEC. PURPLE WISHBONE & SPADES CHOP 750 750
424 FENTON 10" HONEY AMBER / MARI. CHERRY CHAIN CHOP 575 575
427 Fenton 9" purple Concord plate. Tad silvery, very 550 550
428 Fenton 8 1/2" purple Bermingham Age Herald ruffled 625 625
430 Fenton 8 1/2" reverse amberina (red base, yellow 700 700
431 Fenton 8 1/2" amberina to red Holly 8-ruffled bowl. 425 425
434 Fenton 9" blue/elec. blue Leaf Chain flat plate. 500 500
436 DUGAN PURPLE 12-PC. S-REPEAT ROUND PUNCH BOWL. 3000 3000
439 N-wood white Embroidered Mums 2-handled bon bon. 475 475
443 Imperial 10" honey amber Chrysanthemum chop 400 400
445 Imperial 10" white Homestead chop plate. 375 375
447 N-WOOD 10" IB G & C ICS BOWL. VERY RARE. SUPER 1600 1600
453 Fenton red Orange Tree shaving mug. Beautiful 525 525
454 Imperial white Heavy Grape chop plate. 550 550
455 Imperial elec. purple Heavy Grape chop plate. 375 375
459 FENTON 7" BLUE ELKS 1914 PARKERSBERG FLAT PLATE. 400 400
460 FENTON 7" PURPLE 1910 DETROIT ELKS ROUND BOWL. 625 625
467 N-wood 5" lime green Thin Rib squatty vase. Very 975 975
473 N-wood 8 1/2" green Heart & Flower ruffled bowl. 850 850
479 N-wood green G & C candle lamp w/shade. Very nice 550 550
483 N-WOOD PURPLE PULLED HUSK CORN VASE. 12500 12500
484 N-WOOD TRUE SAPPHIRE CORN VASE. THIS LOOKS 2800 2800
485 N-wood IG Corn vase w/stalk base. Scarce. 500 500
487 N-WOOD BLUE RIBBED TORNADO VASE. VERY RARE COLOR. 950 950
489 N-wood mari. large size Tornado vase. Very nice 650 650
490 N-wood IB G & C fernery. Very rare and beautiful. 1400 1400
491 N-wood lavender Peacock at Fountain footed fruit 825 825
492 N-wood IG Daisy & Drape vase. Top turned in. Very 4000 4000
501 N-wood 8 1/2" white Wishbone footed bowl. Very nice 275 275
505 N-wood mari. G & C whiskey decanter. Rare. 650 650
511 Fenton smokey blue Horse Head Medallion rosebowl. 250 250
515 FENTON 9" GREEN ORANGE TREE PLATE W/TT CENTER. 3100 3100
527 Dugan 8 1/2" sapphire Double Stem Rose dome footed 375 375
528 Fenton purple Persian Medallion 2-handled bon 375 375
534 U.S. Glass smoke Palm Beach rose bowl w/silver 375 375
536 Dugan blue Grape Delight footed nut bowl. 300 300

Seeck Auctions
Lincoln Land Carnival Glass Club Convention Results, June 3, 2006

- 300 7. Kittens two sides up dish - blue - nice
7750 20. Tree Trunk 13 1/2" elephant foot vase - purple - spectacular, maybe the nicest one I've ever had the opportunity to sell
550 27. Captive Rose 9" plate - amethyst - super pretty for this rare plate
425 28. Captive Rose 9" plate - blue - as nice as these get, super
400 30. Vineyard 6 pc. water set - purple - super pretty for these rare sets
315 31. Lion 7" ruffled bowl - blue - scarce color
500 32. Vintage 9" ruffled bowl - Persian blue - pretty irid., extremely rare, highly sought after
400 34. Fruits & Flowers bon bon - sapphire - super pretty, has heat check in handle
400 37. Orange Tree 9" plate - blue - very pretty, scarce
350 47. Venetian rose bowl - green - pretty irid., scarce & desirable
2100 50. N's Peacock at Urn master IC bowl - blue - electric & fantastic, this thing is gorgeous!
425 58. M'burg Trout & Fly 3 in 1 edge bowl - green - satin & nice
300 61. Persian Garden chop plate - purple - extremely rare plate, has straight crack from center flower to edge
2000 62. Persian Garden chop plate - peach opal - extremely rare color, minor chips on base, fabulous
950 68a. Rustic 18 1/2" vase - blue - very scarce & very nice
600 73. Peacocks 9" plate w/ribbed back - ice blue - very scarce & highly desirable
800 74. Peacocks 9" plate w/ribbed back - smokey lavender - super pretty & extremely rare, a great plate!
725 75. Peacocks 9" plate w/ribbed back - horehound - super nice, rare
500 76. Peacocks 9" plate w/ribbed back - green - scarce, nice
550 77. Peacocks 9" plate w/ribbed back - blue - has electric highlights, scarce
325 78. Peacocks 9" plate w/ribbed back - purple - pretty
350 85. M'burg Peacock 6" plate - amethyst - super pretty(epoxy on base)
300 88. Butterfly & Berry 7 pc. berry set - blue - scarce
300 92. Good Luck 9" plate w/BW back - marigold - flat, pretty, scarce
350 97. Grape Arbor 7 pc. tankard water set - marigold - pitcher is dark & fantastic
525 99. Grape & Cable fernery - white - extremely rare & nice(couple hits in base)
20,000 104. M'burg Mitered Ovals vase - green - fantastic multi-colored irid. on an extreme rarity, radium & super!
475 108. Peacocks PCE bowl w/plain back - white - frosty & pretty
675 110. Blackberry Spray JIP CRE hatshape - aqua opal - fantastic irid.
325,300 114. Fenton's Fine Rib 9" vases (2) - red - both super, choice
450 116. Grape & Cable dresser tray - white - very pretty & rare color
350 120. Daisy & Drape flared out vase - aqua opal - scarce & nice
500 121. Daisy & Drape flared out vase - blue - very pretty & rare color
350 124. Grape & Cable water pitcher - ice green - extremely rare, a top rarity, has large crack around the middle
900 125. Grape & Cable water pitcher - smoke - extremely rare in this color plus pretty
350 130. Persian Medallion bon bon - celest blue - extremely rare & highly desirable, chip on edge
475 135. Stippled Three Fruits spt ftd ruffled bowl-aqua opal-has unusual textured type butterscotch irid.
450 136. Stippled Three Fruits spt ftd ruffled bowl - aqua opal - pastel & nice
350 138. Paneled Dandelion tankard water pitcher - amethyst - super pretty, a very nice example for these
450 143. Acorn Burrs 7 pc. water set - purple - scarce & highly desirable
425 145. Wreath of Roses flared out punch bowl & base w/Vintage interior - marigold - hard to find flared out version
6500 148. Peacock at the Fountain fruit bowl - aqua opal - extreme rarity, super pretty, has 1" heat check in base,
300 149. Peacock at the Fountain fruit bowl - marigold - super pretty
325 151. Contemporary Fenton Butterfly & Tulip 4 ruffled bowl - sapphire - super pretty, donation to the club
325 152. Contemporary Fenton Butterfly & Tulip ruffled bowl - lavender - a donation to the club
1800 166. Acorn Burrs 8 pc. punch set - green - fantastic, highly desirable
3x65,2x45,10 167. Green tumblers including: Greek Key; Double Star; Raspberry; Fluffy Peacock; Grape & Cable; Paneled Dandelion - choice
375 168. Hearts & Flowers ruffled compote - blue - electric & super!
325 169. Hearts & Flowers ruffled compote - aqua opal - butterscotch, scarce
800 171. Leaf Chain 9" plate - blue - super, rare & desirable
325ea 176. Dandelion Knights Templar mugs (2) - ice blue - both a bit silvery, rare, choice

- 400 179. Hearts & Flowers 9" plate w/ribbed back - marigold - hard to find plate, highly desirable
350 181. M'burg Trout & Fly IC shaped bowl - green - radium & super, minor pinpoint on base, who cares
1100 183. Peacock Tail & Daisy ruff. bowl-blue milk glass-only one I've heard of. Westmoreland/desirable, chip on base
400 190. M'burg Rays & Ribbons crimped edge bowl - amethyst - radium & fantastic!
450 199. N's Peacock at the Fountain 5 pc. water set - blue - scarce & nice
475 202. Poppy Show 9" plate - ice blue - super pretty, has minor buff spot on poppy
600 204. Poppy Show 9" plate - marigold - dark & nice, a real beauty, extra flat
400 206. Orange Tree w/trunk IC shaped bowl - green - fabulous irid.!
1000 215. M'burg Peacock at Urn giant ruffled compote - amethyst - extremely rare & highly desirable, nice piece
500 218. Stippled Good Luck 9" plate w/ribbed back - marigold - has stretchy irid., scarce & nice
375 224. Persian Garden fruit bowl w/base - peach opal - very scarce & desirable, nice
350 227. Stippled Three Fruits 9" plate w/ribbed back - blue - very pretty example for these
350,265 234. Waterlily fld ruffled sauces (2) - lime green opal - both super, both pretty, both rare! choice
500 243. Grape & Cable pin tray - white - scarce & pretty
500 248. Peacocks ruffled bowl w/ribbed back - aqua opal - scarce & highly desirable
350 251. Leaded Glass lamp made of Carnival Glass pieces
425 252. Rose Pinwheel ruffled bowl - marigold - fantastic irid., (base chips)
850 256. Grape & Cable Variant ruffled bowl w/ribbed back - sapphire - has great irid., a beauty, super rare
700 263. Colonial Lady vase - purple - has super pretty highlights, rare & desirable
800 267. Blackberry Spray ruffled hatshape - reverse amberina opal - very rare & pretty
700 269. Lucile 7 pc. water set - blue - very scarce & desirable set
800 278. Embroidered Mums 9" plate w/ribbed back - ice green - super pretty example, rare & desirable
300 282. Round Up 9" plate - amethyst - scarce & nice
550 294. M'burg Courthouse ruffled bowl - amethyst - radium w/super irid.
800 303. Grape & Cable mid-size punch bowl & base - marigold - super pretty, very rare
300 309. Feathers 7" vase - white - super pretty & rare
250 310. Basketweave Open Edge JIP hatshape - light green w/red - odd color
800 323. Norris N Smith adv. 6" plate - amethyst - extremely rare plate, nice
2200 328. Nuart Homestead chop plate - amber - fantastic! A beautiful plate!
325 329. Nuart Homestead chop plate - marigold - also super nice

Lloyd R Ward

PO Box 956, Mayfield, KY 42066

Tel: 270-251-2005 / Cell: 270-970-0599 / Email: lrward@charter.net

WWW.CARNIVALGLASS.COM

Buy with Confidence!

38 years of satisfied mail-order customers. All Carnival Glass pieces are in mint condition unless noted. All items include a 5-day return policy.

I recently purchased two collections - one from Canada and the other from Maryland totaling 550+ pieces.

Website will have new additions every 2-3 weeks.

TURN YOUR CARNIVAL GLASS INTO CASH!

I buy one piece, twenty pieces, or a collection of Carnival Glass.

PLATE HOLDERS

Don't forget to purchase your plate holders from HOACGA!

Give Ann McMorris, Secretary, a call and

she can help you with the different sizes and costs!

GOD AND HOME, CARNIVAL GLASS SUPERSTAR

By

O. JOE OLSON

Drawings by Joan Kilbourne

Narrated By Charles & Eleanor Mochel

In keeping with the theme for next year's convention, we thought it would be very interesting and appropriate to present the "God and Home Carnival Glass Superstar" by O. Joe Olson.

Intertwined with the God and Home water set is much of the history of Carnival Glass.

We will continue this each month as space allows in the bulletin until it is completed.



GOD AND HOME pitcher honoring God and country



CHAPTER I

PROLOGUE

The God and Home pattern and water set were a major force in the development and growth of the carnival glass hobby.

The documented account of where the God and Home pattern was designed, manufactured and distributed is given against a summary of the history and highlights of the old carnival era and revival.

It will be seen that the God and Home pattern is inextricably interwoven in the recital.

The revival of old carnival glass began in the 1942-52 decade called the period of awakening. The 1952-62 decade brought growing interest through the discovery and identification of patterns and pieces. The carnival hobby's greatest expansion came in 1962-72.

In its unique design, the God and Home pattern honors both God and country.

The old blue God and Home water set became one of the most treasured sets in the hobby. It is a superstar in the old carnival constellation.

CARNIVAL GLASS EVENTS

FUNCTION	DATES	REMARKS
Auction	September 2 2006	Jim Wroda Auction Service; Midwest Auction Facility, Greenville, OH; Private KY Collection;
Auction	September 9 2006	Seeck Auctions; Gary & Donna Braden collection; Holliday Inn, Wentzville, MO
Convention & Auction	September 21-23 2006	N CA Carnival Club Convention, Holiday Inn, Fresno Airport, 559-252-3611. Contact Jeanne Hand 209-892-3840. Auction by Richards Auction Service.
Auction	October 7 2006	Jim Wroda Auction Service 937-548-2640, Pete & Paula Bingham collection, Part 2, Holiday Inn Airport, Columbus, OH
Auction	October 21 2006	Seeck Auctions; Mason City, IA
Auction	November 11 2006	Jim Wroda Auction Service, Carnival Glass Auction, "To Be Announced"
Auction	November 18 2006	Seeck Auctions; Private Collection; Holiday Inn, Wentzville, MO
Convention & Auction	January 27 2007	SSCGA Convention Auction; Jim Wroda Auction Service; Carnival Glass Collection of Bill & Sandy Reyan of Everett, PA
Auction	March 9 2007	Jim Wroda Auction Service; 200 pcs Millersburg Crystal
Auction	March 10 2007	Jim Wroda Auction Service; 400 pc. Carnival Glass Collection of Warren & Joan Place, Holiday Inn - Columbus Airport
Convention & Auction	April 28 2007	HOACGA Convention Auction, Jim Wroda Auction Service; Carnival Glass Auction of John & Jan Muehlbauer collection, Embassy Suites Hotel, Kansas City, MO