

# CARNIVAL GLASS ACTION!

January 2022 A Joint Publication of:



## Texas Carnival Glass Club



In this newsletter, you can read all about your opportunities to see gorgeous Carnival Glass such as this Millersburg Big Fish blank shaped bowl in Vaseline and this square shaped Farmyard bowl in purple.

<b>INSIDE:</b>
<b>Page 2 - Texas President Letter</b>
<b>Page 3 - Texas Convention Highlights</b>
<b>Page 4 - 5 - Texas Auction Glass</b>
<b>Page 6 - 7 - Whitley Display &amp; Awards</b>
<b>Page 8 - 9 - Texas Speakers</b>
<b>Page 10 - Texas Officer Elections</b>
<b>Page 11 - Texas Registration Form</b>
<b>Page 12-20 - The Blue Colors</b>
<b>Page 21 - 2022 Convention Calendar</b>
<b>Page 22 - HOACGA President Letter</b>
<b>Page 23 - HOACGA Auction Glass</b>
<b>Page 24 - HOACGA Convention Itinerary</b>
<b>Page 25 - HOACGA Registration Form</b>
<b>Page 26 &amp; 27 - Britt Articles</b>
<b>Page 28 &amp; 29 - Tree Trunk</b>
<b>Page 30 - Club Resource Info</b>

## President's Corner By Emmett Morgan



Thank goodness that 2021 is over! That means that our 2022 convention (March 16–19) is right in front of us. Unfortunately, in the vein of bumps in the road, our convention hotel just informed us that they are going out of business effective Tuesday the 11<sup>th</sup> of January. This puts us in a scurry to find an alternate location. At this time, we plan on having the convention and are exploring all options. More news to follow, so please pay close attention to Carnival Glass communications, our web site, TCGC Facebook, and email from our club.

This issue is our convention issue, and it includes everything about our convention. This newsletter includes the Convention Schedule of Events, a Convention Registration form, and election of officers (all current officers will stand for reelection). Please refrain from sending in the reservation form until we sort out the venue, associated fees, and location.

As crazy as the last few years has been, we did not anticipate this latest wrinkle. I think it was Murphy that coined the statement “If anything can go wrong, it will”. We’ve had a great run at the Dallas location (20 years +) through the collective work of all officers, spouses, and club members. We plan on making the 2022 convention no less of a success and perhaps will find our second home for subsequent conventions in the process. We’ve got some heavy lifting to find a facility, secure the date, and negotiate prices in a short period of time, but it feels doable. We’ve lined up an exciting convention with great speakers and a sprinkling of fun events. The best activity, however, is that we get to visit with friends and colleagues in the Carnival Glass community.

I encourage everyone to still plan on attending this year and to watch for updates on location and agenda as we work through this activity. Here is a recap of what we are planning for at our convention.

2022 is the year to elect new officers for a two-year term at our business meeting on Friday afternoon. I will run again for President, Bob Sage will run again for Vice President, and Jeannie Whitley will run again for Treasurer. Randy Thach will run for Secretary. If any of our members want to run for any of the above positions, please contact Tommy Whitley at (713)686-0630.

On Thursday evening we will honor current and past Whitley Award winners. We’ll finally get to formally present Brian Foster with his Whitley Award as well. Brian’s devotion to our hobby of carnival glass is unquestionable. I truly believe his efforts hosting the daily web mailing list has brought many new collectors out of the closet and have benefited all our clubs. More on the Whitley award can be seen on 7.

Jim and Jan Seeck will be auctioning the last seven 474 TCGC iridized yellow whimsey vases in our online auction on Saturday March 19, and we’ve inserted a few auction teaser photographs in this newsletter. Again, please stay tuned to communications on our convention and lock down your reservation when you hear from us. Looking forward to spending time with friends again. See you in March.

# Texas Carnival Glass Club Convention Information

## March 16–19, 2022

### SCHEDULE OF EVENTS

#### Wednesday, March 16

Early Bird Fun Night

6:00 p.m. Dinner in the Hospitality Room

7:30 p.m. Share a recent find at “Show & Tell—A Texas Tradition”

#### Thursday, March 17

10:00 a.m. Educational Seminar, “I’ve Got the Northwood Blues.... and Greens,” by Gary Sullivan and Steve Lindquist, of Wethersfield, CT

2:30 p.m. Our hilarious “Annual Gift Exchange”

6:00 p.m. Whitley Award Dinner honoring our past recipients and our most recent award winner, Brian Foster, of Arlington, Texas. Tables with TCGC member’s Whitley Glass pieces will be on display.

#### Friday, March 18

10:30 a.m. Voting closes – Vote for your favorite Room Display – Best of Show receives \$100!

11:30 a.m. Silent Auction closes – Bid on and win your favorite pieces

2:00 p.m. Annual Business Meeting and Election of Officers

6:00 p.m. TCGC welcomes banquet speakers Tony and Mary Jo DeMichael of Aledo, TX, and their presentation, “Poppy Potpourri.”

8:00 p.m. Seeck Auction Preview

#### Saturday, March 19

7:30 - 9:30 a.m. Seeck Auction Preview

9:30 a.m. Seeck Auction

### Show and Tell

Show and Tell is always a highlight of TCGC’s meetings together. Wednesday evening at 7:30 PM you’ll have an opportunity to show off a Carnival Glass treasure...a recent acquisition or a piece that has a special story. We look forward to you sharing.

### DON’T FORGET - YOUR TCGC MEMBERSHIP EXPIRES ON FEBRUARY 1<sup>ST</sup>

Membership in the Texas Carnival Glass Club is due annually on FEBRUARY 1<sup>st</sup> and runs through January 31<sup>st</sup>.

TWO CONVENIENT WAYS TO RENEW OR JOIN:

- ◆ Use the membership registration form in this newsletter on page 11.
- ◆ When you register at the Annual TCGC Convention.

### Room Display Contest

By Cale Wilcox

Each year our convention sees an increase in beautiful and educational entries in our Room Display Contest, and this year we expect to see even more. Display Contest Categories include: Same Color; Same Maker; Same Pattern; Same Shape; Texas Theme; Open Theme (Create your own) AND Best in Show wins \$100!

### White Elephant: Exchange or Steal?

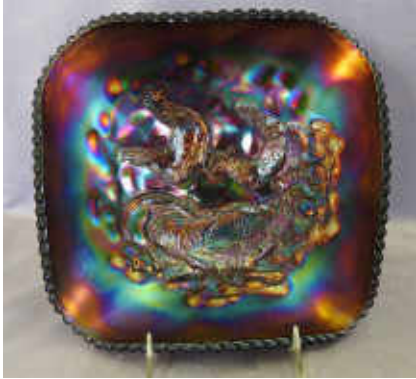
The White Elephant Exchange takes place on Thursday, March 17, at 10:00 am. The Sages are Masters of Ceremonies for this fun-filled and often hilarious event that draws more participants every year. Bring a wrapped gift item, Carnival Glass or other (but Carnival Glass items are always a hit).

### Hospitality Room

Cale Wilcox with help from able assistants Dorothy Morgan and Peggy Wilcox. Our convention hospitality room is a place to sit down, strike up conversations with old friends, and enjoy the delicious food provided by our members. Please contact Cale Wilcox at [roundup327@gmail.com](mailto:roundup327@gmail.com) (214.926.4045) to let him know what you are bringing, or just bring what you did last time!

## 2022 Texas Convention Auction Glass

Seek Auctions is pleased to be selling the Phillip and Late Marian Ross collection out of Oklahoma. Phillip has an outstanding, well-rounded collection with something for every collector! Phillip and Marian were longtime collectors and always looked forward to attending the Texas convention. This will be an online only auction that will end the Saturday morning, March 19<sup>th</sup>, of the Texas convention. Glass will be displayed for preview at the Texas convention in Dallas, Texas.



Square Farmyard bowl in purple



Christmas compote in purple



ZigZag tri-cornered bowl in radium



Millersburg Tracery bonbon in amethyst



Poppy pickle dish in aqua opal



Millersburg Many Stars blank shape in amethyst



Butterfly and Tulip bowl in purple



Sunflower spatula footed bowls in electric blue and ice blue



Several wonderful enameled water pitchers

Additional items in the auction include:

- M'burg Many Stars ruffled bowl in blue
- M'burg Strawberry Wreath tri-cornered bowl in green
- M'burg Fleur de Lis round bowl in the blank shape in amethyst
- Graceful vase in ice blue as well as other super pieces in ice blue
- Many super pieces in aqua opal.

## 2022 Texas Convention Auction Glass—continued

### Last Chance to Own a TCGC 474 Whimsey Vase

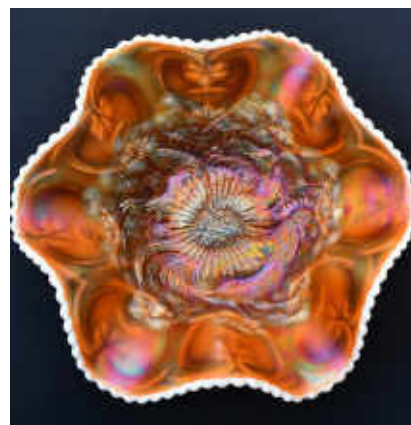
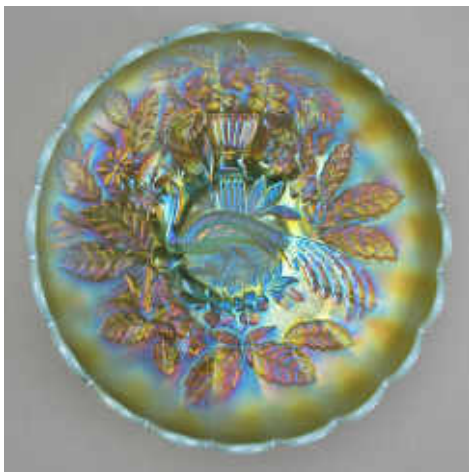
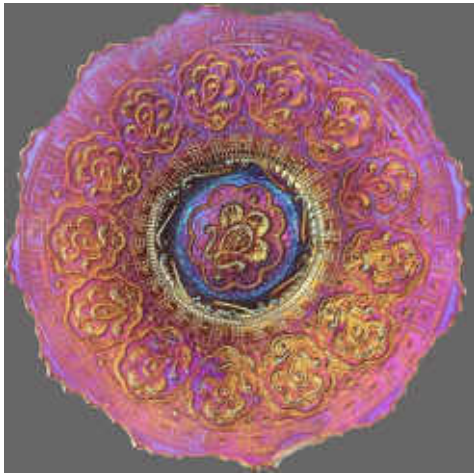
Jim and Jan Seeck will be auctioning the last seven 474 iridized yellow TCGC whimsey vases in our online auction on Saturday March 19. The mould was originally made by Imperial. When Fenton was selling their moulds, our club purchased the 474 vase mould. The whimsies are beautiful and each is different. The online Seeck auction will avail collectors an opportunity to bid for a one-of-a-kind piece as none of the whimsies are exactly alike. Photos of these amazing pieces can be seen below.



## Remembering Floyd and Cecil Whitley through Glass

Our 2022 Texas convention will feature a display of some of the pieces of Carnival Glass from the collection of TCGC club founders, Floyd and Cecil Whitley. Many of these pieces have changed hands over the years but are now in the collections of club members and, with your help, will be displayed during our Thursday evening Whitley Award dinner. We hope you will participate by bringing your “Whitley” pieces to the 2022 convention and be willing to share your story on how they came to end up in your collection.

We will be putting a list together of the pieces on display prior to the convention. Please contact Bob and Sandy Sage [rsage1@austin.rr.com](mailto:rsage1@austin.rr.com) with those pieces that you will be bringing to share. We plan on making labels for the display and will work out the logistics as we get closer to the 2022 convention.



# TCGC 2022 Convention Whitley Award Dinner

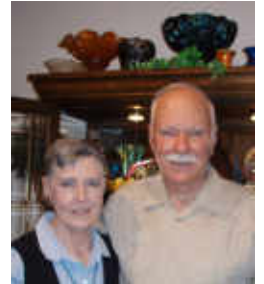
The Whitley Award Dinner on Thursday, March 17<sup>th</sup> will honor our past recipients and our most recent award winner, Brian Foster. Over the course of the 40+ years of the Texas club, we have been fortunate to have had, and continue to have, a very active and engaged membership. The contributions to our hobby, and to the Texas community in general, spans across our entire membership adding to the lasting legacy for Carnival. With this in mind, to recognize some of the individual contributions, the Whitley Award was created in 2003. While it cannot point to all the amazing examples of advocacy across the membership, it did allow us to specifically call out the efforts of a few that truly exemplified the attributes associated with the Texas Club membership.

This year we will, once again, look at the history of this award and honor all the recipients as well as that of the award's namesake, Floyd & Cecil Whitley. We will be looking back at all the recipients since the award's inception, recalling contributions of those that are no longer with us as well as pointing to those that continue to contribute to this hobby. Award recipients are listed below.

- 2003 Floyd & Cecil Whitley, Houston, Texas
- 2005 Leroy & Charlene Hieger, Round Rock, Texas
- 2006 Richard & Carol Cinclair, Plano, Texas
- 2008 Jack & Eleanor Hamilton, Waco, Texas
- 2010 Joyce Seale, Greenville, Texas
- 2011 Robert "Bob" & Grissom, Kansas City, Missouri
- 2012 Marie Capps, Oakhurst, California
- 2013 Jerry & Carol Curtis, Stillwater, Oklahoma
- 2014 Sylvester & Diann Walleck, Edna, Texas
- 2015 Emmett & Dorothy Morgan, Brenham, Texas
- 2016 Tommy & Jeannie Whitley, Houston, Texas
- 2017 Dolores Sage, Cape Coral, Florida
- 2018 Ann & Tom Bumpass, Longview, Texas
- 2019 Carl & Eunice Booker, Griffith, Indiana
- 2020 Brian Foster, Arlington, Texas



2003



2005



2006



2008



2010



2011



2012



2013



2014



2015

## TCGC 2022 Convention Whitley Award Dinner—cont

As a complementary activity at this award dinner, we are calling on members that currently have Whitley pieces in their collection to bring them for display. We are looking to have a number of pieces that owners can speak to and perhaps share some of the acquisition adventures they may have experienced as they were able to capture their Whitley piece(s). Please join us in person for this exciting event, or drop us a note if you like to share your stories but can't be at our convention this year.



2016



2017



2018



2019



2020

## Texas 2022 Convention Banquet Speakers

Poppy Potpourri

Tony and Mary Jo Demichael, Banquet Speakers



Mary Jo and Tony DeMichael moved to Aledo, TX, from Taylorville, IL. Both were born in Illinois, Mary Jo in Quincy and Tony in Stonington. Mary Jo worked in retail for approximately 20 years, and Tony was a teacher and coach for 24 years and a crop adjuster in the summer months. They met in the 90s when Mary Jo's career took her to Taylorville. They were married in 1995, and in 1996 Tony retired from teaching, and both began working full time in the crop insurance industry. Tony retired in 2016, and Mary Jo is still employed as a crop insurance underwriter. They have two daughters and six grandchildren.

They began collecting carnival glass in 1999 and enjoy the hobby together, with a love for both classic and contemporary carnival glass. Mary Jo collects Australian Crown Crystal, Dorothy Taylor Encore, peacock vases, and Fenton Happy Cats among other patterns. Tony likes vases of all kinds. Both collect glass made for Gary Levi by the various companies that made glass for Gary and Dodie. They have one of the largest collections of Levay glass.

They are both Chicago Cub and Chicago Bear fans. Tony enjoys playing golf, and Mary Jo is a dedicated animal lover.



## Texas 2022 Convention Seminar Speakers

I've Got the Northwood Blues...and Greens

Educational Seminar by Gary Sullivan and Steve Lindquist



We have been collecting Carnival Glass since the early 1990s, ever since Steve's mom picked up a piece in an antique mall that we were all visiting and said how much she loved it. At that time, we had no idea what she was holding, even though we had some exposure to glass. We have an uncle and aunt who were Heisey glass dealers and had gone to several of their shows. So, while glass has always been of interest to us, we simply hadn't found anything that got us passionate about it. After leaving Steve's parents, we talked about that piece of Carnival on the trip home, and since we owed them a thank-you gift, we decided to go out the next weekend to some antique malls to search for this Carnival Glass as a thank-you gift. Well, we ended up buying an Imperial Grape ruffled bowl in marigold, although at the time, we just thought of it as an orange iridescent bowl. Since we weren't going to see Steve's parents for a while, this bowl sat on our coffee table for some time, and we continued to stare at it. Wanting to know more about it, we went to a bookstore and bought the *Standard Encyclopedia of Carnival Glass*. We both read the book from cover to cover and promptly headed out to search for more. Along the way we purchased overpriced, damaged, and reproduced pieces, but we were just learning. It wasn't until we found NECGA and attended their auction that we realized how little we knew. When we saw the glass on display, we understood what electric iridescence meant. The colors and iridescence were amazing, and we were hooked. We both enjoy learning as much as we can about the glass.

Our collection has grown over the years, as we enjoy collecting the different patterns and colors. Our collection tends to be very eclectic as we simply buy what we like. If we were to try to describe what we like the most, we would have to say Northwood Electric Blue, Dugan Electric Purple, Imperial Electric Purple, the vast range of Fenton colors, certain patterns such as Northwood's Peacocks at the Urn and Grape and Cable and certain shapes such as vases and punch sets.

Our goal, other than finding a wonderful Carnival Glass treasure, is to combine our passion for traveling to National Parks with visits to Carnival Glass conventions across the US.



## Texas Carnival Glass Club 2022 Elections

### **Nominating Committee for TCGC Officer Election – March 18, 2022**

Thomas Whitley has volunteered to chair the Nominating Committee for the election of officers at the 2022 Convention Business Meeting. All of your Executive Board positions (President, Vice President, Secretary and Treasurer) will be elected at our business meeting at the convention. If you or someone you know would like to run for any of the above positions, please contact either Tom (Tel: 713-628-5285).



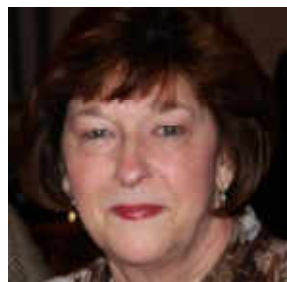
### **TCGC Candidate for Election - President, Emmett Morgan**

As your current President, I would like to submit my name for re-election at our business meeting in Dallas, Texas, on March 18, 2022. It has been a wonderful experience serving as your President for the past 15 years.



### **TCGC Candidate for Election - Vice-President, Bob Sage**

As your current Vice-President, I would like to submit my name for re-election for the 2022-2024 term. I appreciate your support and have really enjoyed working with club members and meeting new friends as your representative for the past 15 years.



### **TCGC Candidate for Election -Treasurer, Jeannie Whitley**

As your current Treasurer, I would like to submit my name for election for the 2022-2024 term. A long-time member of TCGC, I was appointed to the position of Treasurer of TCGC when Carol Curtis resigned in 2015. I appreciate your support these past few years and look forward to serving our club in the future.



### **TCGC Candidate for Election - Secretary, Randy Thach**

As your current Secretary, I would like to submit my name for re-election for the 2022-2024 term. I was appointed to the position of Secretary of TCGC when Sandy Sage resigned in March, 2020. I appreciate your support during my transition and look forward to serving our club for another term.



## Silent Auction

One of the fun parts of the Texas Carnival Glass Club annual convention is the **Silent Auction**. Somehow each of you manage to bring items of interest as donations each year. It could be glass, books, food treats, wine, souvenirs, collectibles, or a host of unexpected items. There are always surprises and friendly competitive bidding right up to the auction close on Friday afternoon. Of course, the proceeds from the Silent Auction assist the club in providing Hospitality Room supplies and in keeping the cost of the annual Banquet Dinner to a minimum. It is fun, friendly, and good for the club.

Should you have questions or simply would like to discuss something regarding the Silent Auction, please contact David Kastor, 713.851.5533. Looking forward to seeing you in Dallas.

# Texas Carnival Glass Club Convention Registration Form

March 16-19, 2022

## Please Print Clearly

Name (s): \_\_\_\_\_

Address: \_\_\_\_\_

City/State/Zip/Country: \_\_\_\_\_

Phone: \_\_\_\_\_ E-mail: \_\_\_\_\_

## Convention Registration (Enter NUMBER of persons attending for each item below)

Convention Registration Fee: \$15.00 per person \_\_\_\_\_ @ \$15.00 each = \$ \_\_\_\_\_

Wednesday Hospitality Room Dinner \_\_\_\_\_ @ FREE = \$ 0.00

Thursday Hospitality Room Lunch \_\_\_\_\_ @ FREE = \$ 0.00

Friday Hospitality Room Lunch \_\_\_\_\_ @ FREE = \$ 0.00

Thursday Whitley Award Dinner \_\_\_\_\_ @ \$35.00 each = \$ \_\_\_\_\_

Friday Banquet Dinner \_\_\_\_\_ @ \$35.00 each = \$ \_\_\_\_\_

Will donate Silent Auction item (circle one) Yes or No

Will contribute food to Hospitality Room (circle one) Yes or No

Please consider a donation to the Hospitality Room = \$ \_\_\_\_\_

**SUB TOTAL** = \$ \_\_\_\_\_

## Refund Policy

Due to hotel catering commitments, refunds for convention meals will not be given for cancellations received **after Friday, March 11, 2022**. Your convention registration fee WILL be refunded.

**Annual TCGC Household Membership, includes 5 PDF Newsletters** \$10.00 \_\_\_\_\_

With printed and mailed newsletter **ADD** \$25.00 \_\_\_\_\_

Be a supporting member of HOACGA **ADD** \$10.00 \_\_\_\_\_

**SUB TOTAL** = \$ \_\_\_\_\_

**GRAND TOTAL** = \$ \_\_\_\_\_

## Make Checks Payable To: Texas Carnival Glass Club

Please mail this form with payment to:

Jeannie Whitley  
Texas Carnival Glass Club  
1006 Cheshire Ln  
Houston, TX 77018

## Office Use Only

Date Postmarked: \_\_\_\_\_ Check/Cash: \_\_\_\_\_ Special Instructions:

# Shades of Blue (in Carnival Glass)

by the Hooked on Carnival Team

We were asked to put together a document that would assist us in being able to more correctly identify colors of pieces sold at auction, so this is the result of that request.

First, the caveats:

In the carnival glass collecting community, through the years colors have been assigned that do NOT match those color names in other venues (color wheel, gemstone, etc.) but that are rather locked in place and will be called something specific in our hobby. *[As an example, Sapphire Blue in a gemstone may look more Blue or even closer to Violet Blue than the color we have assigned in carnival glass collecting.]*

Second, colors can look different on each person's device or monitor (as well as with a different photo background).

Third – some colors seem to be very much manufacturer specific (i.e. Violet Blue is, to date, only found on Imperial patterns).

Fourth – when we started collecting some 35 years ago, almost any light blue base with an opalescent edge was thrown into the 'Aqua Opalescent' classification, and many of them, using this document, will not be correct. We will attempt to sort them out over a period of time.

And lastly, because often you don't have something to compare, it is exceedingly difficult to remain consistent. We do our best to stay the course, but there will always be points of contention.

These are the blue shades currently in the Hooked on Carnival database as of July 2021.

**Aqua** (Sits between green and blue in the color wheel.)



**Aqua/Marigold Overlay** (Sits between green and blue in the color wheel – the glass has a marigold iridescence that may cover almost the entire piece – usually leaving the feet or base as the only real way to tell the color.)



**Aqua Opal** (Aqua Opalescent – Aqua base color with white or light blue, milky edge or tips). In carnival glass, MANY pieces that are actually a different shade of blue (but with an opal edge) are classified as Aqua Opal. Incorrect, **BUT** because there is no ‘color wheel’ for us, that is the term. The Corn Vase below looks a true Aqua Opal, the Tree Trunk vases run the gamut from what looks like Aqua Opal to Blue Opal or Sapphire Blue Opal, but they were all classified as Aqua Opal.)



You will need to go by the pattern as much as by the actual color.

**Aqua Opal Butterscotch** (Aqua Base color with white or light blue, milky edge or tips **AND** has a predominantly marigold/orangey iridescence.)

The top two left Tree Trunk vases could be classified as Aqua Opal Butterscotch. The Corn Vase has some marigold/orangey on the top 1/3 but would probably not be as likely to be called Butterscotch.

**Aqua Opal Pastel** (Aqua Base color with white or light blue, milky edge or tips **AND** has a predominantly light iridescence with blues/pinks/yellows– very easy to see the base glass color.) The same issue is seen with this color as the other two variations of Aqua Opal – often the actual blue tone in the base is NOT aqua, BUT with many patterns, no matter the actual shade of blue, it will be reported as Aqua Opal Pastel. This phenomenon is usually pattern based.



**Aquamarine** (see *Ice Blue for Carnival references* -Described as a mixture of green, cyan and blue, this color is strictly used by Hooked for **Stretch Glass** at this time. It is what carnival collectors usually call Ice Blue (and will typically be frosty). The definition simply says, 'a very pale blue color'.)



**Blue** (A primary color, typically used when the shade is not mixed with green/red). Fenton originally called this Royal Blue, sometimes people call it Cobalt Blue.



**Blue Jade** (Opaque to translucent light robin's egg-like blue or blue-green glass – at this time, specific only to Northwood Stretch glass patterns – and the **Stretch Glass** collectors call it Jade Blue)



**Blue Milk Glass** (Opaque to translucent light blue (or blue-green) glass – specific only to Westmoreland patterns).



**Blue Opal** (Blue base glass with milky white or milky blue opal tips or edges.) The range of different blue colors that make up this category are all the way across the color scale. Often the opal is so heavy that only the base is actually blue and the opal is a light blue opaque color. We currently have 22 patterns in the HoC database in this color – the majority are Westmoreland. Those that are NOT Westmoreland (like Fenton Holly) tend to be a very Blue base with light opal on the edges (and may not have been production colors).



**Blue Slag** (Opaque marbled Blue base glass – can be called Sorbini) NOT the same as a slag effect, where the base glass has streaks of white in the clear base color – **this is actually marbled**. Only 10 or less pieces of this reported in Carnival Glass. You have to see the base to identify the marbling best.



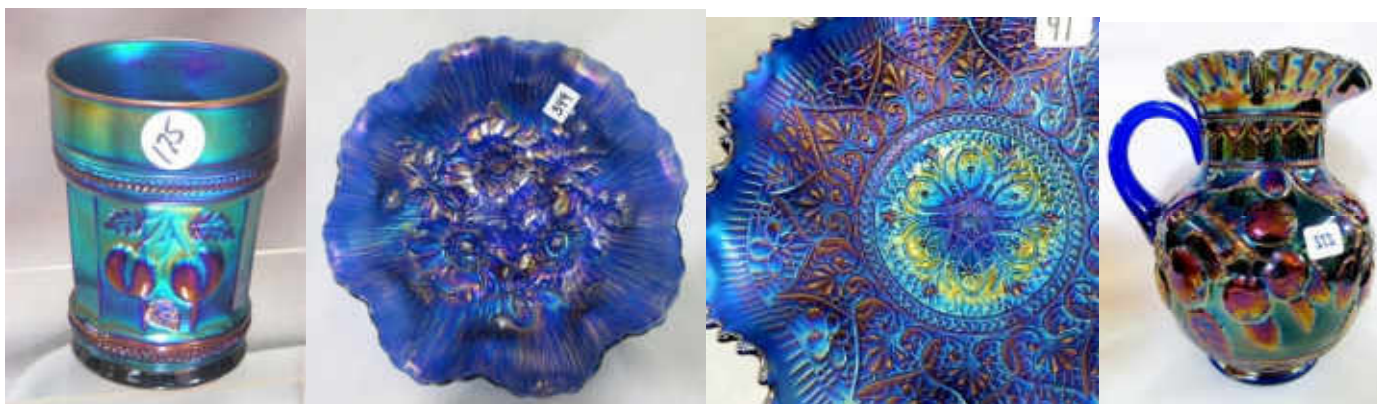
**Blue Swirl** (Opaque marbled Imperial Art Glass – Free Hand or Lead Lustre pieces are found with this exterior and an iridized interior). The shade of blue is not necessarily the same on all pieces.



**Celeste Blue** (A light to medium blue with a pastel iridescence (you can see the base color thru the iridescence, there is **NO** overlay)). The iridescence quite often will be 'stretchy'. It can be like a robin's egg blue; we were originally taught that Dugan/Diamond and Fenton were the two manufacturers that made Celeste Blue. [NOTE: The base color is **very** similar on some Celeste Blue pieces to the Northwood Sapphire Blue (with the pastel iridescence), so the two colors are sometimes interchanged.]



**\*Electric Blue** (Blue base glass – (see Blue for reference) **BUT** this color in Carnival Glass is actually more about the iridescence on that blue base glass. The iridescence typically is predominantly Blue with Red highlights (and can have gold or green in addition to those). Said to look like it's 'lit', it should be very vivid.)



**Ice Blue** (See *Aquamarine for Stretch Glass reference* - A very pale blue color with pastel iridescence (may have some green-light blue tones and may look 'frosty').)





**Ice Blue Opal** (A very pale blue color with pastel iridescence (may have a 'frosty' look) and milky white or milky light blue edges or tips.)



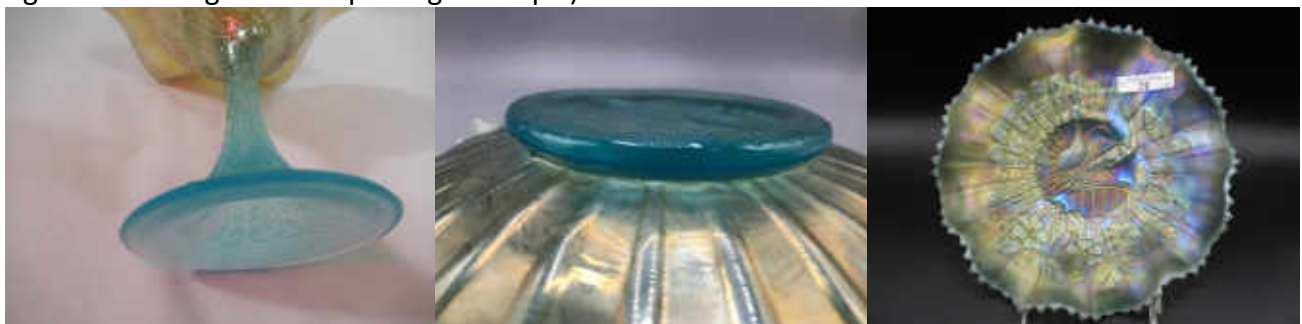
**Pastel Cobalt Blue** (Cobalt blue with pastel iridescence (no overlay).)



**Persian Blue** (Translucent milky robin's egg or light blue, always with a Marigold Overlay- [production color for 4 Fenton patterns].)



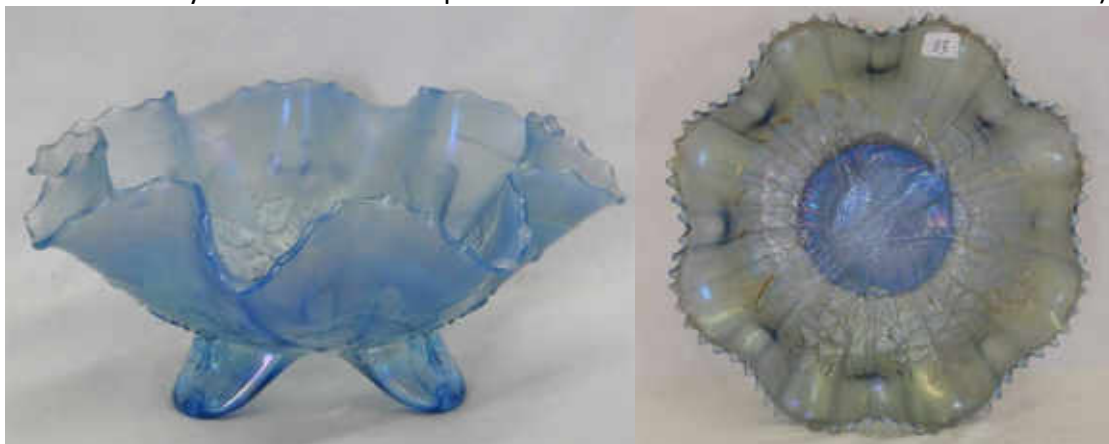
**Persian Blue Opal** (To date, all of the items under this color category are Northwood pieces that have a milky light blue base glass and opal edges or tips.)



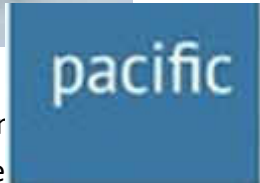
**Powder Blue** (Described as a 'pale grayish-blue', this color is most often seen with the Marigold Overlay (see below), very few pieces of true Powder Blue). It could be described as a 'washed-out' blue color.)



**Powder Blue Opal** (These would be a 'pale grayish-blue' with opal edges – very few classified as this color, at this time only a few Northwood patterns exist in the Hooked on Carnival database.)



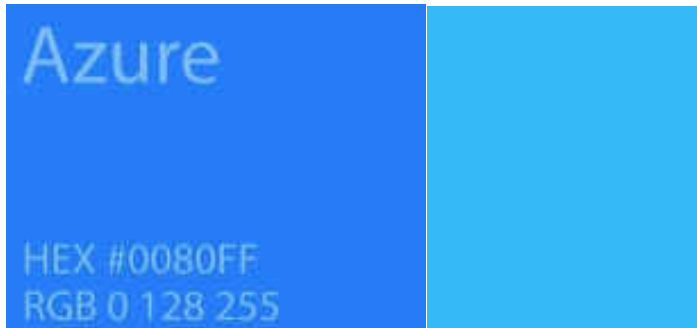
**Powder Blue/Marigold Overlay** (This is, again, pale grayish-blue, but the marigold iridescence usually covers it so that the only way you see it is by turning the piece over and looking at the collar/feet. The majority of pieces in this color category are Fenton.)



**Renninger Blue** (A blue shade that looks to us like Pacific Blue – a shade of cyar with 11% red, 66% green and 79% blue. This is what the internet shows as Pacific Blue. And here are examples from the database:



**Sapphire Blue** (Described to us as 'Windex Blue', Sapphire was originally considered to be a Northwood Color (Dugan & Fenton called it Celeste) and it was *only used to describe the pieces with a pastel iridescence.*) This is now occasionally interchanged with Celeste Blue. It could best be compared to an Azure blue or Deep Sky blue like these from a color chart (depending on the pattern):



Here are some carnival glass database examples:



**Sapphire Blue/Marigold Overlay** (Same as above BUT with a marigold iridescence covering much of the base glass color (**NOT** pastel iridescence))



**Smokey Blue** (Very close to powder blue but with a smokey gray look. It should probably be noted that the iridescence is sometimes what is making the 'smokey' part.)



**Teal** (Defined as a deep blue-green color, named for the colored area around the eye of the bird). Quite honestly, we would simply go with the pattern's availability for this one – most things we call Teal in CG appear to be either Turquoise, Aqua or Aquamarine (much more blue than green). Also, typically teal will have a pastel iridescence (like many Imperial patterns that are classified as this color.)



**Teal/Marigold Overlay** (Should be the deep blue-green color with a marigold iridescence making it difficult to see the base glass color in most cases. On the vase below, look at the color far right where no iridescence is affecting the identification.)



**Violet Blue** (A deep blue - similar to Ultramarine on this color chart picture– violet is described as halfway between blue and purple.) Many carnival pieces are heavily iridized back and front, so difficult to get the color correctly identified. At this time, all pieces identified as this shade are Imperial patterns.)



# 2022 Convention Calendar

## February

### **Tampa Bay Carnival Glass Club**

February 9 thru 12

Punta Gorda Waterfront Hotel, Punta Gorda, FL

Phone: (941) 639-1165

## March

### **Texas Carnival Glass Club**

March 16 thru 19

## April

### **Heart of America Carnival Glass Association**

April 20 thru 23

Embassy Suites Hotel, Kansas City MO,

Phone: (816) 891-7788

## May

### **Keystone Carnival Glass Club**

May 11 thru 14

Holiday Inn, Grantville PA,

Phone: (717) 469-0661

## June

### **American Carnival Glass Association**

June 9 thru 11

Comfort Inn Suites, Berlin OH,

Phone: (330) 893-7400

## July

### **International Carnival Glass Association**

July 13 thru 17

Holiday Inn Airport West, Earth City, MO

Phone: (800) 972-3145

## August

### **Lincoln Land Carnival Glass Club**

August 10 thru 13

Embassy Suites, Brookfield WI

Phone (262) 782-2900

### **The Stretch Glass Society**

August 11 thru 13

Comfort Inn Lancaster County North, Denver PA

Phone (717) 336-7541

## September

### **New England Carnival Glass Association**

September 8 thru 10

## October

### **Millersburg Glass Association**

October 7 thru 8

Comfort Inn Suites, Berlin OH,

Phone: (330) 893-7400

### **Mid-Atlantic Carnival Glass Club**

October 20 thru 21

Ramada Plaza Hotel, Hagerstown MD

Phone: (301) 797-2500

## November

### **Great Lakes Carnival Glass Club**

November 2 thru 5

Lansing Ramada, Lansing, MI

Phone: (517) 627-3211

**Please check club and auctioneers' websites for up-to-date information.**

## HOACGA President's Letter



Welcome to 2022. We are hopeful for the best. HOACGA has not had a true convention in 2 years , so we are looking forward to this year. There are a lot of great conventions scheduled for 2022 and I hope that you can each get to some of them this year to enjoy the glass and the friendship that our hobby has to offer. This newsletter has a lot of information that you need to schedule your year. Please see the calendar of events on page 21. Steve and I will be attending the Texas convention in March where we are actually giving a seminar on Thursday morning. Then we head to HOACGA in Kansas City. Both are quite a distance from our home state of Connecticut, so we try to incorporate other stops into our trip. Our trip to Dallas Texas will include stops at two National Parks, New River Gorge in West Virginia and Hot Springs in Arkansas.

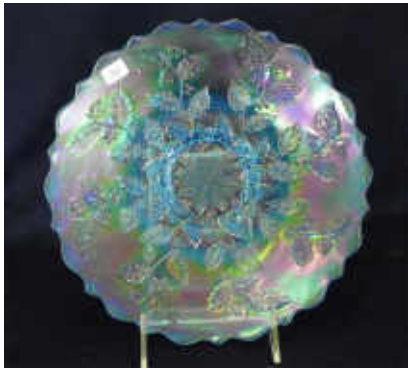
HOACGA's primary responsibility is to hold an annual convention and to publish newsletters. And new ideas are always welcome. This year at HOACGA, we will be electing all officers. I am happy to report that I will be standing for re-election for President, Tony DeMichael will be standing for re-election for Treasurer and Kathi Johnson will be standing for re-election For Secretary. So, we do have openings for Vice-President and Newsletter Editor. Should you have an interest, let me know.

---

In addition to this Millersburg People's Vase w/ruffled top in amethyst and the glass pictured on page 23, our HOACGA auction will feature the following outstanding glass of the Cook Collection from Texas and the Grissom Collection from Kansas City:



Holly 9" plate yellow  
Farmyard bowl in purple  
Peacock at the Fountain table sets in 6 different colors  
Peter Rabbit plate in blue  
Little Daisies ruffled bowl in marigold  
M'burg Peacock at Urn chop plate in marigold  
M'burg Unlettered 3 in 1 edge Courthouse bowl in amethyst  
Wide Panel epergnes in green and white  
Ribbed Tornado vase in amethyst  
Inverted Feather table set in amethyst  
Town pumps in green, purple and marigold  
Embroidered Mums plate in white  
Orange Tree ruffled bowl in celeste blue  
M'burg Whirling Leaves diamond shaped bowl in Vaseline  
Fruits & Flowers whimsey round shape bonbon in amethyst  
Heavy Web bowls, square and round in peach opal  
N's Peacock at Urn chop plate in purple  
Many Lettered Pieces  
Many M'burg Big Fish & Trout and Fly pieces  
Many table sets



Fenton Holly Plate  
in Celeste Blue



M'burg Peacock and Urn  
Large Bowl in Blue



M'burg Big Fish blank  
shaped bowl in Vaseline



N's Peacock at Urn Chop  
Plate in Ice Green



Fenton Peter Rabbit Plate  
in Green



Dragon's Tongue Ruffled  
Bowl in Marigold



M'burg Peacock at Urn Chop  
Plate in Amethyst



Fenton Orange Tree Ruffled  
Bowl in Celeste Blue



Grape & Cable Master Punch  
Set in White



M'burg Country Kitchen  
Table Set



M'burg Whirling Leaves  
Tri-cornered Bowl  
in Vaseline



M'burg Big Fish Whimsey  
Banana Boat Shaped Dish  
in Amethyst

2022 HOACGA Auction Glass

# Heart of America Carnival Glass Association - HOACGA

## 2022 Convention Itinerary - April 20-23, 2022

### Daily

Breakfast in Lobby provided by Hotel

5:30pm to 7:30pm - Manager's Reception in Atrium

### Wednesday - April 20th

Registration available - See Kathi Johnson

5:30pm to 7:30pm - Subway sandwiches served in Salon E

8pm - Volunteers meet in Salon E to set up tables/risers for Display Room, Seminars and Cont Auction

### Thursday - April 21st

Registration open outside of Salon E from 10am to 4pm

3pm - Silent Auction Table opens. Please bring your donations to Salon E

4:30pm - **Gary Senkar Imperial Jewels Presentation**

5:30pm to 7:30pm - Pizza Party served in Salon E

7:30pm - **Contemporary Carnival Glass Auction**

### Friday - April 22nd

Registration open outside of Salon E from 8am to 3pm

9am - **Display Room - Table Sets Presentation**

10am - **Annual Business Meeting**

Noon - **Banquet Luncheon with Morgan's Presentation**

3pm - Volunteers for Room Display Judging Team meet

7:30pm to 9:30pm - Preview Auction Glass

8pm - Volunteers meet to take down risers

9pm - Silent Auction Table closes

### Saturday - April 23rd

7:30am to 9:30am Preview Auction Glass

9:30am - Seeck Auctions presents the Carroll Cook and Robert Grissom Collections

7:00pm - People meet in the hotel restaurant for dinner.

### Room Displays:

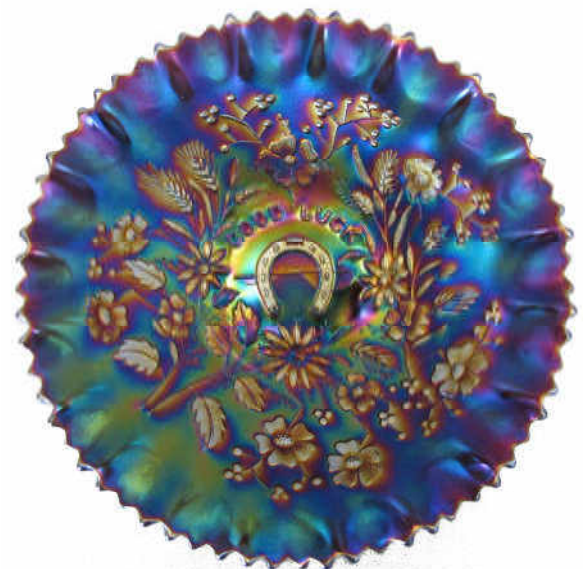
At each convention, HOACGA encourages room displays as they are easily viewable through each room's window to the hall. Attendees so appreciate the effort. Be creative and share your carnival glass with others.

Displays are judged by an volunteer committee and a winner is chosen for each of the following categories:

- Same Maker
- Same Pattern
- Same Color
- Same Shape
- Own Theme

Attendees then vote on their favorite display and an award is presented for "Best Overall Display".

Prizes are \$50 for each of the five categories and \$100 for "Best Overall".



**Register at [HOACGA.com](http://HOACGA.com) or use the form on page 25.**



# Heart of America Carnival Glass Association - HOACGA

## 2022 Convention Registration Form

April 20-23, 2022

Embassy Suites Airport Hotel – 7640 NW Tiffany Springs Pkwy, Kansas City, MO

816-897-7788

Name (s): \_\_\_\_\_

Street: \_\_\_\_\_

City/State/Zip: \_\_\_\_\_

Phone: \_\_\_\_\_

Email: \_\_\_\_\_

### Convention Registration:

Registration fee # attending \_\_\_\_\_ @ \$10 each \$ \_\_\_\_\_

Wed. evening: Free dinner-Salon E (Hoagie sandwiches/fixings, chips, cookies) Free

Thur. evening: Free dinner-Salon E (Pizza and Salad Party) Free

Fri. Banquet Luncheon and Presentation by the Morgans

Friday, 12:00p.m. # attending \_\_\_\_\_ @ \$29 each \$ \_\_\_\_\_

50/50 drawing (select your square on a 10 x 10 board – 100 spaces)

\$10 per square (Prizes totaling up to \$500) # tickets \_\_\_\_\_ \$ \_\_\_\_\_

Convention Total: \$ \_\_\_\_\_

Refunds for meals will not be given for cancellations received after April 15th

(Convention registrations fee will be refunded for cancellations).

Annual Membership (includes 5 emailed newsletters) Free

Mailed Hardcopy Newsletter Subscription \$35 \$ \_\_\_\_\_

Be a Supporting Member of the Texas Carnival Glass Club \$10 \$ \_\_\_\_\_

Membership Total: \$ \_\_\_\_\_

Grand Total: \$ \_\_\_\_\_

Make checks payable to: HOACGA, mail to Kathi Johnson, N13348 Osprey Dr, Minong, WI 54859

You can also register online at [www.hoacga.com](http://www.hoacga.com) where Paypal is accepted.

I will have glass to sell or I will have a Room Display and thus I need a hall window. YES / NO

## Double Star Tumblers by John and Lucille Britt



The Double Star pattern was made by the old Cambridge Glass Company of Cambridge Ohio. Cambridge was not one of the big producers of carnival glass, but they did make a number of patterns in this type of glass, some of which are highly sought after today. Double Star is one of the most often seen Cambridge patterns that was made in carnival glass.

Double Star tumblers are shown above in purple, marigold and green. The center tumbler shows the large whirling star on the front side which also appears on the back — hence the name Double star. The other two sides of the tumbler contain a hobstar and cane type design that is illustrated on the two outside tumblers. A large whirling star is also pressed into the underside of the base. As the photo shows, the tumblers flare out somewhat at the top and bottom. They are standard size measuring slightly over four inches tall. While the water pitchers are sometimes signed with the Near-Cut mark, we have never seen any of the Double Star Tumblers with this Cambridge Near-Cut trademark.

These tumblers can be found without too much trouble in the green color, but we consider them rare and hard to find in purple and marigold. Double Star tumblers in these two colors seldom show up for sale. Don't hesitate to buy a green one for your collection, however, as they are just as pretty as the more rare purple and marigold examples.

John and Lucille Britt wrote many articles on carnival glass patterns that were shared with various clubs for inclusion into their newsletters. These articles also formed the backbone of Heart of America Carnival Glass Assoc. (HOACGA)'s three educational books which were printed in the early 1990s.

Their articles, along with the photos, were printed in black and white. In addition, the articles were condensed and often re-worked to fit into the educational books. HOACGA recently re-discovered John and Lucille's files complete with the original articles and color photos. HOACGA is excited to re-print these articles in this and future newsletters in a new light; original, complete and in color!

# Variation in the Diamond Lace Tumblers

by John and Lucille Britt



After collecting and working with carnival glass tumblers for many years, it was only recently that we realized that there was a variation in the tumblers of the Diamond Lace pattern. This variant is shown on the left in both of the photos included in this article. The regular Diamond Lace tumbler is on the right.

In Photo #1 you will notice that the variant is somewhat shorter and does not contain the collar base that is used on the regular Diamond Lace tumbler. The big difference in the tumblers is shown in photo #2 where the two tumblers are shown in the lying-down position. This gives an excellent view of the bottom of the bases. The variant contains a star type figure with 24 points while the regular tumbler has only 16 points. Also notice that the variant example is ground along the outer edge of the base, while this is not true on the regular tumblers. Also notice that the design in the center of the base is much larger on the regular tumbler than that used on the variant.

This is an interesting variation in one of Imperial's popular patterns. We would assume that the one which we call the variant was made first and the mold later changed to the regular type base which would allow the collar base as a place to apply the clamp. We also observed that the very rare marigold Diamond Lace whimsey rose bowl that was sold at the A.C.G.A. auction recently was made from the variant tumbler mold.

The credit for first recognizing this unusual variation in the Diamond Lace tumblers was Rodney Sutfin of Lansing, Michigan. He had purchased a group of 8 Diamond Lace tumblers and after placing them on the shelf, he noticed that one was different. We had the opportunity to display these two different examples of Diamond Lace tumblers at the A.C.G.A. convention. There was a lot of interest in them. We would be happy to hear from anyone out there who might have this variant tumbler or tumblers in their collection.

This article featuring the Diamond Lace Variant tumblers is #213 in our Educational Tumbler series. We wish to thank the Sutfin's for allowing us to display the tumbler at the A.C.G.A. convention. We would also like to thank Dave Doty for his very fine photos showing the variations of the featured tumbler very well.

## Tree Trunk by Northwood

Northwood's Tree Trunk pattern comes exclusively in vases. Five unique molds were used to make the various Tree Trunk vases. Tree Trunk is distinguished by its irregularly spaced hobs and short crescent shapes around the hobs. The various versions of Tree Trunk are determined by the base size and not by the height of the pieces. Vases with a similar base may be swung to various heights. This difference in the height of a piece will give the vase another name such as "squatty" or "Elephant's Foot".

There are **five** base sizes; Standard - 3 3/8 inches, Standard Variant - 3 5/8 inches, Midsize - 4 5/8 inches, Midsize Variant - 3 3/4 inches, and Funeral - 5 1/4 inches.



1) **Standard** vases have 3 3/8 inch bases and range from 6 to 12 inches tall with the shorter ones being referred to as "squatty". They have the necessary hobs and crescents as well as nine flames around the top. They have a plain base. They are found in a range of colors with amethyst, blue, green and marigold found quite easily. Aqua opal, ice blue, ice green, sapphire and white are also found regularly. Other colors would be considered rare. Some standard vases are marked with Northwood's "N" on the bottom of the base.

2) **Standard Variant** vases are about the same size as the standard vases but have a base size of 3 5/8 inches. Many of the standard variant vases are not swung and thus many standard squatty vases are this variety. The pattern detail is the same but the top has nine points instead of flames. There is also a 32 point star in the base. These vases are only found in amethyst, green and marigold and thus it is thought that this mold came before the standard mold. It is this standard variant mold that was used to make the jester cap vases with the tops pulled down except for one point. Jester Cap vases in the Tree Trunk pattern are very rare. These vases are probably not marked due to the star in the base.



3) **Midsize** vases have a base that is 4 5/8 inches across. There are 10 flames on the top. Midsize vases are consistent in height being in the 12 to 14 inch range. The base is plain. Several colors are found.

## Tree Trunk by Northwood - Continued

Amethyst, green, and marigold are easily found while blue, ice blue, ice green, lime green and white are somewhat harder. Aqua opal, horehound, marigold on moonstone and renninger blue are quite rare. A single midsize vase in blue slag, sometimes called sorbini, is known.

4) Midsize Variant vases are similar to midsize vases except that they have a plunger type base. The midsize variant collar base is only 3 3/4 inches across, but there is a plunger ring just above the collar base that extends out beyond the collar giving the base a larger appearance. There are 10 flames around the top. The pattern ends just before reaching the flames, making for a plain exterior surface at the tops of these vases. The vases can be marked with Northwood's "N" on the bottom base which is plain. Colors are limited to amethyst, green and marigold meaning that these vases were probably early production pieces.



5) Funeral vases are the largest Tree Trunk vase with a base of 5 1/4 inches. Funeral vases are completely determined by this base size and not by the height of the vase as these funeral vases can range in height from 6 to 21 inches. Depending on the height, additional names are given to funeral vases. Jardinières are essentially unswung funeral vases and are about 7 to 8 inches tall. While other pattern jardinières have sides that are straight up, Tree Trunk jardinières can be deeply ruffled. Elephant Foot vases are funeral vases that are in the range of 11 to 15 inches tall. Regular funeral vases range from 16 to 21 inches tall. Regardless of the height; all funeral Tree Trunk vases have a 5 1/4 inch base, 12 flames around the top, a plain base, and an unpatterned space at the top.

Funeral vases are found in fewer colors. Amethyst is the easiest to be located followed by blue, green, marigold and white. Ice blue and ice green are rare. The Elephant's Foot version is only found in amethyst, blue, green and marigold so it is not found in Northwood's pastel colors of ice blue, ice green or white. The jardinières are only found in amethyst. No aqua opal Tree Trunk funeral vase has ever been found.

Many thanks to HookedonCarnival.com for photos and information on colors.



# Carnival Glass Club and Auctioneer Resources

## TCGC and HOACGA Club Officers:

<p><b>Texas Carnival Glass Club (TCGC)</b></p> <p>President – Emmett Morgan 713-857-2966 <a href="mailto:ecmorgan@myalpha1.net">ecmorgan@myalpha1.net</a></p> <p>Vice President – Bob Sage 512-694-7421 <a href="mailto:rsage1@austin.rr.com">rsage1@austin.rr.com</a></p> <p>Treasurer – Jeannie Whitley 713-557-4005 <a href="mailto:jeannie.whitley@gmail.com">jeannie.whitley@gmail.com</a></p> <p>Secretary – Randy Thach 316-722-5837 <a href="mailto:rgthach39@gmail.com">rgthach39@gmail.com</a></p> <p>Newsletter Editor – Elaine Blair 972-965-1655 <a href="mailto:elaineblair@att.net">elaineblair@att.net</a></p> <p>Webmaster – Sandy Sage 512-507-5586 <a href="mailto:rsage1@austin.rr.com">rsage1@austin.rr.com</a></p>	<p><b>Heart of America Carnival Glass Association (HOACGA)</b></p> <p>President – Gary Sullivan 860-257-1816 <a href="mailto:stevenandgary@cox.net">stevenandgary@cox.net</a></p> <p>Vice President – Rod Kaps 334-636-5626 <a href="mailto:rod.kaps@gmail.com">rod.kaps@gmail.com</a></p> <p>Treasurer – Tony DeMichael 217-824-6433 <a href="mailto:hctonyd@ctifiber.com">hctonyd@ctifiber.com</a></p> <p>Secretary – Kathi Johnson 763-441-5587 <a href="mailto:galenandkathi@yahoo.com">galenandkathi@yahoo.com</a></p> <p>Newsletter Editor – Open</p> <p>Webmaster – Galen Johnson 763-441-5587 <a href="mailto:galenandkathi@yahoo.com">galenandkathi@yahoo.com</a></p>
--	--

## Club Websites:

<p><b>Club Name:</b></p> <p>Air Capital Carnival Glass Assn (ACCGC) American Carnival Glass Assn (ACGA) Canadian Carnival Glass Assn (CCGA) International Carnival Glass Assn (ICGA) Iridescent Nation Great Lakes Carnival Glass Club (GLCGC) Heart of America Carnival Glass Assn (HOACGA) Lincoln Land Carnival Glass Club (LLCGC) Mid-Atlantic Carnival Glass Assn Millersburg Glass Assn New England Carnival Glass Assn (NECGA) Quebec Carnival Glass Assn (QCGA) Southern California Carnival Glass Club (SCCGC) Tampa Bay Carnival Glass Club (TBCGC) Texas Carnival Glass Club (TCGC) The Carnival Glass Society (UK)</p> <p>Don't forget to search for these clubs on Facebook!!</p>	<p><b>Web Address:</b></p> <p><a href="http://www.aircapitalcarnivalglass.com">www.aircapitalcarnivalglass.com</a> <a href="http://www.myacga.com">www.myacga.com</a></p> <p><a href="http://www.internationalcarnivalglass.com">www.internationalcarnivalglass.com</a> <a href="http://www.iridescentnation.com">www.iridescentnation.com</a> <a href="http://www.greatlakescgc.com">www.greatlakescgc.com</a> <a href="http://www.hoacga.com">www.hoacga.com</a> <a href="http://www.llcgc.com">www.llcgc.com</a></p> <p><a href="http://www.millersburgglass.com">www.millersburgglass.com</a> <a href="http://www.necga.com">www.necga.com</a> <a href="http://www.verrecarnavalquebec.org">www.verrecarnavalquebec.org</a> <a href="http://www.socalcarnivalglassclub.com">www.socalcarnivalglassclub.com</a> <a href="http://www.tampabaycarnivalglass.org">www.tampabaycarnivalglass.org</a> <a href="http://www.texascarnivalglass.org">www.texascarnivalglass.org</a> <a href="http://www.thecgs.co.uk">www.thecgs.co.uk</a></p>
--	---

## Auctioneer Websites:

<p><b>Burns Auctions</b> 407-592-6552 <a href="http://www.tomburnsauctions.com">www.tomburnsauctions.com</a></p> <p><b>Seeck Auctions</b> 641-424-1116 <a href="http://www.seeckauction.com">www.seeckauction.com</a></p>	<p><b>Sheffield Auctions</b> 833-269-2333 <a href="http://www.sheffieldauctions.com">www.sheffieldauctions.com</a></p> <p><b>Matthew Wroda Auctions</b> 937-548-7835 <a href="http://www.matthewwrodauctions.com">www.matthewwrodauctions.com</a></p>
---	---

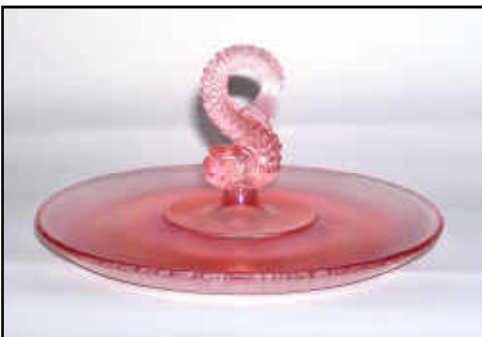




**Unique and special Purpose Items**  
 will be the topic of our *stretch out* discussion on  
**Thursday, January 13, 2022**  
 at 8 pm Eastern, 7 Central, 6 Mountain & 5 Pacific Time.  
 All are welcome to join this Zoom meeting  
 Come share in the discussion and show unusual stretch glass.

All photos will be available on our website: [stretchglassociety.org](http://stretchglassociety.org) one week preceding the call.  
 A Stretch Glass Review of the discussion will also be available several weeks after the call.  
 Further information is available on our email: [info@stretchglassociety.org](mailto:info@stretchglassociety.org)

Many who have joined our discussions are thanking us for identifying their recent purchases.



2022 Calendar of Stretch Out calls:

March 10, 2022 Show and Tell – Candlesticks

May 12, 2022 Colors of stretch glass in Late Period

September 8, 2022 Show and Tell - Wisteria, purple & amethyst stretch glass (2022 Convention theme)

November 10, 2022 Overall Enamel Decorated Pieces (U.S. Glass Pomona, Cumula, Lancaster Lustre)



**POSTMASTER**

**Direct any problems to  
Distribution Manager:**

**Gary Sullivan  
671 Ridge Road  
Wethersfield, CT 06109**



Members: Please check your "Address Label". The numbers after your last name separated by a dash (-) is the date (month and year) for your membership or newsletter renewal.

