

CARNIVAL GLASS

AUCTION



April 25, 1981

OVERLAND PARK, KANSAS



CARNIVAL GLASS AUCTION

Saturday, April 25, 1981

10:00 A.M.

Holiday Inn Mission - Overland Park
7240 West 63rd Street
OVERLAND PARK, KANSAS

It seems that the H.O.A.C.G.A. auctions get better every year. This year's auction certainly upholds that tradition - it contains more rarities & more beautiful color than any previous H.O.A.C.G.A. auction!

This auction combines the "cream" of two outstanding collections - those of Cooley & Marge Miller and Jim & Marlene Mogg. These are the pieces that couldn't be pried loose when the majority of both collections was sold in the past.

Who can be blamed for wanting to keep these outstanding items - whether it's the Millers' gorgeous aqua opal or their extraordinary collection of tumblers, or the Moggs' rare tankards - there is top quality all the way through.

Once again we invite you to attend an exciting auction and in the same trip enjoy one of the most impressive Carnival Glass conventions of the year.

Motel Reservations: Call the Holiday Inn at (913) 262-3010. Be sure to mention the convention and auction.

Convention Information: Call Sadi Treff at (913) 788-7866.

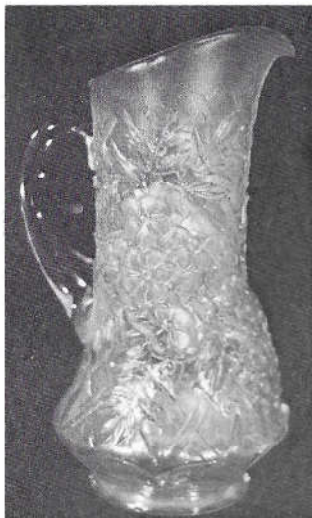
Terms: Cash. Checks accepted if you are known by the auctioneer or owner.

Write-in Bid Policy: Write-in bids are accepted with a 25% deposit. Your bid will be handled just as if you are present and bidding. It is possible that you might get an item for less than your bid. Your bid will not be executed unless the item is in mint condition.

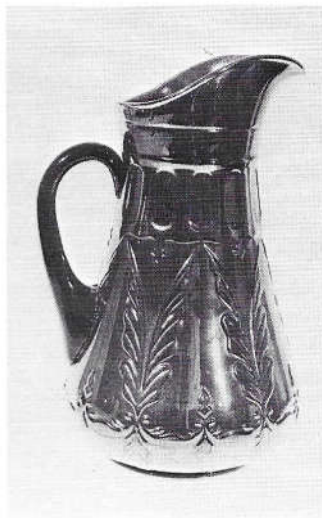
If your bid is successful, you will be notified. The item will be mailed as soon as a check for the balance due (including postage) is received. If your write-in bid is unsuccessful, your check will be returned along with a statement of what the item sold for.



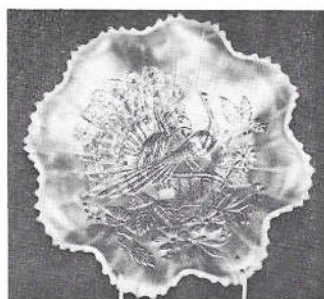
1. Question Mark card tray - m
2. Diamond Sunburst wine - m
3. Big basket - m
4. Beaded Cable rosebowl - b
5. Swan - m
6. Butterfly pin tray - m
7. Fan vase - m
8. Wishbone Lily on metal base - amyt.
9. Pansy relish tray - m
10. Lily of the Valley pitcher & one tumbler - cobalt blue
11. Daisy & Drape vase - aqua opalescent
12. Flute toothpick - blue
13. Small Four Flowers plate - peach opal
14. Vintage epergne - amyt.
15. Frolicking Bears pitcher - green (chip)
16. Good Luck bowl - pastel marigold
17. Orange Tree plate - blue
18. N Raspberry pitcher & one tumbler - ice blue
19. Thistle compote - blue
20. Wisteria water pitcher & one tumbler - white
21. Rose show bowl - aqua opalescent
22. Wisteria pitcher - ice blue
23. Lion bowl - marigold
24. Small vintage plate - blue
25. Chatelaine pitcher & one tumbler - purple
26. N Good Luck plate - green
27. Dragon & Lotus bowl - red
28. N Good Luck plate - amyt.
29. N Good Luck plate - m
30. Quill water pitcher & one tumbler - purple
31. Pansy celery dish - aqua opalescent
32. Formal vase - m
33. Town Pump - green
34. Stag & Holly spatula ftd. plate - marigold, rare
35. Perfection pitcher & one tumbler - amethyst
36. Greek Key plate - green
37. Cherry Circles large two-handle nappy - red
38. Little Bo Peep mug - marigold
39. N Dandelion mug - amyt.
40. Cherry & Thumbprint water pitcher - marigold



Lot 22 - Ice Blue Wisteria



Lot 30 - Quill



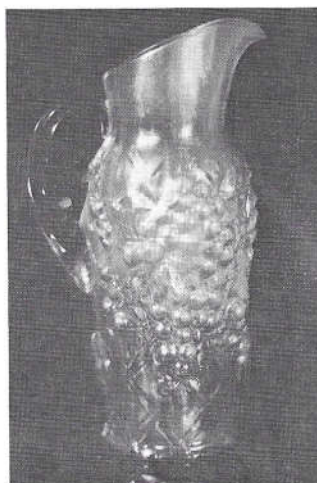
Lot 41 - Aqua Opal Peacock on Fence



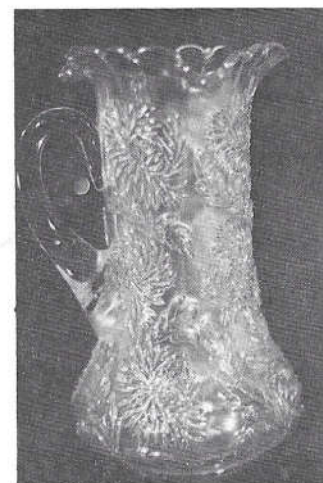
Lot 61 - Aqua Opal Three Fruits Plate

- 41. N Peacock on the Fence bowl - aqua opal
- 42. N Dandelion mug - aqua opalescent
- 43. N Dandelion mug, Knight's Templar - ice green
- 44. N Dandelion mug, Knight's Templar - ice blue
- 45. Hobnail pitcher - amethyst
- 46. N Dandelion mug, Knight's Templar - marigold
- 47. Peacock & Grape bowl - red
- 48. N Dandelion mug - purple
- 49. N Dandelion mug - marigold
- 50. Grape Arbor tankard & one tumbler - ice green
- 51. Hearts & Flowers compote - aqua opal
- 52. N Dandelion mug - green
- 53. N Singing Birds mug - aqua opal
- 54. N Singing Birds mug - ice blue
- 55. Marilyn pitcher - amethyst (chip)
- 56. N Singing Birds mug - white
- 57. Peacock & Grape spatula footed bowl - red
- 58. N Singing Birds mug - lavender
- 59. N Singing Birds mug - blue
- 60. Grape Arbor tankard & one tumbler - ice blue
- 61. Three Fruits plate - aqua opalescent
- 62. N Singing Birds mug - purple
- 63. N Singing Birds mug - electric blue
- 64. N Singing Birds mug - stippled green
- 65. Greek Key water set - amethyst
- 66. N Singing Birds mug - green
- 67. Little Flowers bowl - red to vaseline
- 68. N Singing Birds mug - stippled marigold
- 69. N Singing Birds mug - marigold
- 70. Ten Mums tankard & one tumbler - white

- 71. Fruits & Flowers 2-handled nappy - aqua opal
- 72. Orange Tree mug - red slag; very good
- 73. Orange Tree mug - red
- 74. Orange Tree mug - blue
- 75. Inverted Strawberry pitcher & one tumbler - marigold
- 76. Orange Tree mug, large - blue
- 77. Inverted Strawberry milk pitcher - amethyst
- 78. Orange Tree mug, large - m
- 79. Orange Tree mug - m
- 80. Ten Mums tankard & one tumbler - cobalt blue
- 81. Beaded Cable rosebowl - aqua opalescent
- 82. Stork & Rushes mug - blue, only 2 known
- 83. Stork & Rushes mug - marigold
- 84. N Peacock at Fountain table set - ice blue
- 85. N Peacock at Fountain pitcher & one tumbler - ice blue
- 86. Fisherman mug - marigold
- 87. Fisherman mug - purple
- 88. Beaded Shell mug - blue
- 89. Beaded Shell mug - purple
- 90. Heavy Iris tankard & one tumbler - white
- 91. Jack in the Pulpit vase - aqua opalescent
- 92. Beaded Shell mug - m
- 93. Panel mug - m
- 94. Robin mug - m
- 95. Blackberry Block pitcher - white
- 96. Orange Tree mug - aqua
- 97. Orange Tree mug - vaseline
- 98. Orange Tree mug - green
- 99. Acorn Burrs punch set - green
- 100. Inverted Thistle pitcher & one tumbler - amethyst
- 101. Good Luck bowl - aqua opalescent

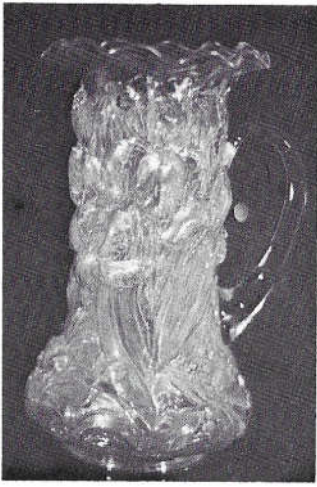


Lot 50 - Ice Green Grape Arbor



Lot 70 - White Ten Mums

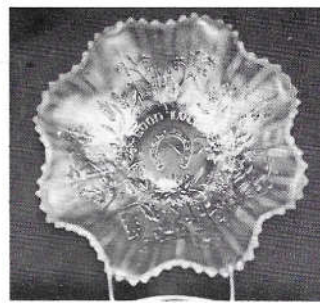
- 102. N Oriental Poppy tankard & one tumbler - cobalt blue
- 103. N Town Pump - marigold
- 104. N Oriental Poppy tankard & one tumbler - ice green
- 105. Thistle plate - green, rare
- 106. N Oriental Poppy tankard & one tumbler - ice blue
- 107. 2 Corn bottles - clambroth; marigold
- 108. N Oriental Poppy tankard - white



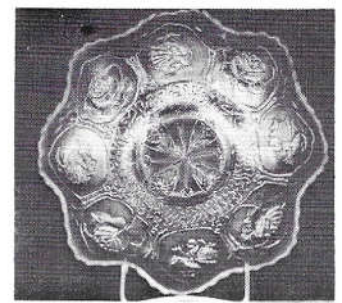
Lot 90 - White Heavy Iris



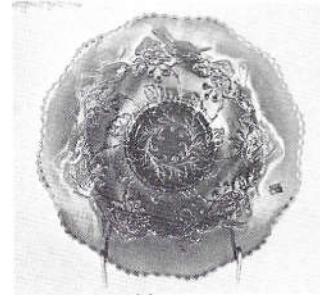
Lot 95 - White Blackberry Block



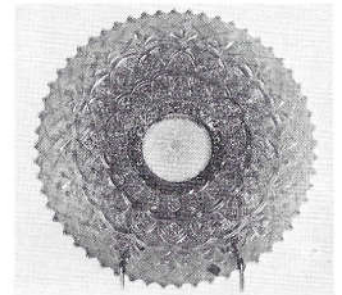
Lot 101 - Aqua Opal Good Luck



Lot 111 - Aqua Opal Dragon & Lotus



Lot 112 - Birds & Cherries chop plate



Lot 119 - Persian Garden chop plate

- 109. N Basket - ice green
- 110. N Oriental Poppy waterset - purple
- 111. Dragon & Lotus bowl - aqua opalescent
- 112. Birds & Cherries chop plate - blue, rare
- 113. N Town Pump - amyt.

- 120. Strawberry Scroll pitcher & one tumbler - blue
- 121. Leaf & Beads rosebowl - aqua opalescent
- 122. Poppy Show plate - ice blue
- 123. Buzz Saw cruet - green
- 124. Poppy Show plate - ice green
- 125. Cosmos pitcher - white
- 126. Poppy Show plate - purple
- 127. Poppy Show plate - marigold
- 128. Poppy show plate - white
- 129. Butterfly & Berry hatpin holder - blue, rare
- 130. Starflower pitcher - blue
- 131. Hearts & Flowers compote - aqua opalescent
- 132. Lotus & Grape plate - green, rare
- 133. Seacoast pin tray - green
- 134. Seacoast pin tray - purple
- 135. Jewelled Heart pitcher & one tumbler - m
- 136. Poppy Show plate - clambroth
- 137. Sunflower pin tray - amyt.
- 138. Homestead plate - amber
- 139. Wishbone plate - amyt.



Rare Town Pumps - green, marigold, purple

- 114. Wishbone tankard - amethyst
- 115. Collection of choice tumblers - Rising Sun - m; Checkerboard - amyt.; Cut Cosmos - m; Inverted Feather - g; Quill - m; **Diamond Lace** - m; God & Home - b; Fentonia - b; Inverted Coin Dot - m; N Peach - b; Ftd. Orange Tree - m; Beaded Shell - m; Double Star - g; Dandelion (dated 1914) - p; Soda Gold - m; Millersburg Diamond - amyt., amber; Leaf Tiers - m; Ten Mums - b; Hobstar Band - m; Fluffy Peacock - amyt.; Bouquet - b; Waterlily & Cattails - m; Crabclaw - m; Oriental Poppy - ice blue; Grape Arbor - ice blue, m, white, ice green; Peacock at Fountain - ice blue; N Raspberry - ice blue; Feather & Heart - p; Inverted Strawberry - p; Dahlia - w; Wreathed Cherry - w; Four-Seventy-Four - p; Grapevine Lattice - amyt.; N Peach - w; Heavy Iris - m; Flute - p; Dahlia - w, amber; Milady - b, m; Concave Diamond - i b; Strawberry Scroll - b, m; Wishbone - m; Grapevine Lattice - m; Unshod - m; Feather & Heart - amyt., m; Cosmos & Cane - m; N Dandelion - g; Star Medallion - m, etc.
- 116. Wishbone tankard & one tumbler - marigold
- 117. Kangaroo small bowl - p
- 118. Strawberry Scroll pitcher & one tumbler - marigold
- 119. Rare Persian Garden large chop plate - amyt.



Lot 120 - Strawberry Scroll



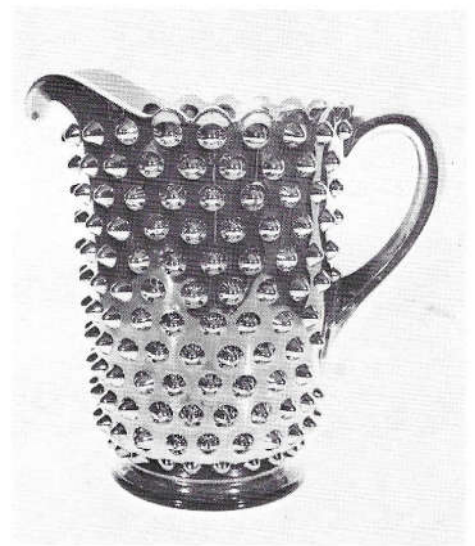
Lot 125 - Cosmos & Cane



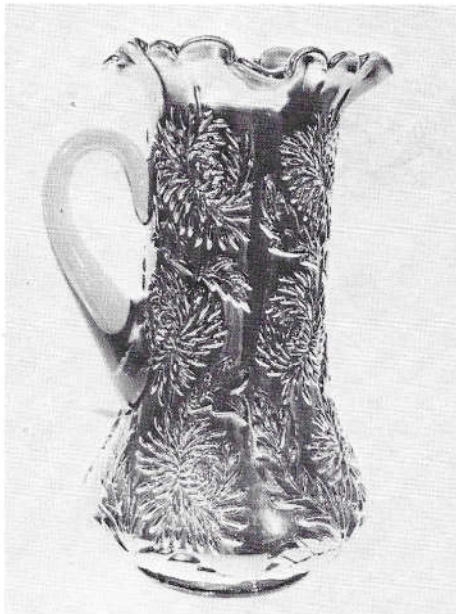
Lot 15 - Frolicking Bears



Lot 130 - Blue Starflower



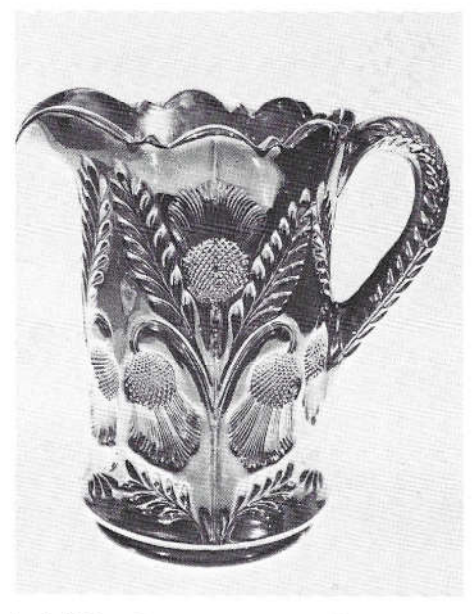
Lot 45 - Amethyst Hobnail



Lot 80 - Cobalt Ten Mums



Lot 140 - God & Home



Lot 100 - Amethyst Inverted Thistle



Lot 10 - Lily of the Valley

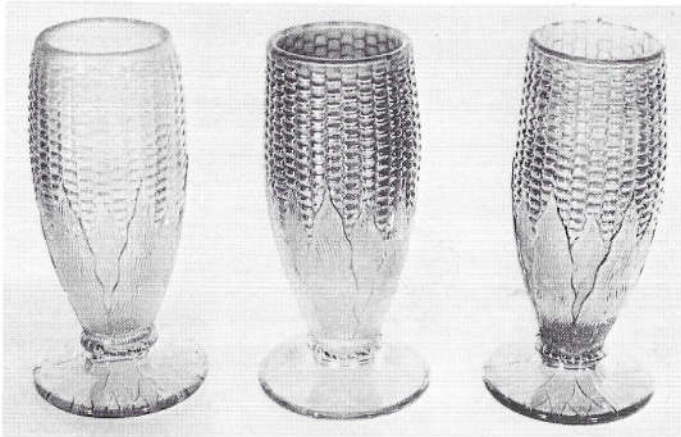


Lot 65 - Amethyst Greek Key



Lot 75 - Inverted Strawberry

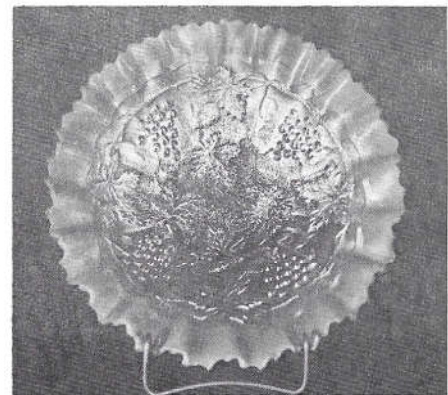
- 140. **God & Home pitcher & one tumbler - blue**
- 141. Fine Cut & Roses rosebowl - ice blue
- 142. Fine Cut & Roses rosebowl - amyt.
- 143. Fine Cut & Roses rosebowl - marigold
- 144. **N Grape & Cable bowl - aqua opal**
- 145. **N Grape & Cable tankard & one tumbler - ice green, rare**
- 146. **N Grape & Cable hatpin holder - blue, rare color**
- 147. **N Grape & Cable large ice cream bowl - ice green**
- 148. **N Grape & Cable plate - amyt.**
- 149. **N Grape & Cable plate (Old Rose Distillery) - green**
- 150. **N Grape & Cable tankard & 2 tumblers - amethyst**
- 151. **N Grape & Cable perfume - amyt.**
- 152. **N Grape & Cable cologne - amyt.**



Corn Vases

- 153. **N Grape & Cable pin tray - amyt.**
- 154. **N Grape & Cable dresser tray - amyt.**
- 155. **N Grape & Cable powder jar - amyt.**
- 156. **N Grape & Cable hatpin holder - amyt.**
- 157. **N Grape & Cable handgrip plate - amyt.**
- 158. **N Grape & Cable Pitcher & 2 tumblers - green**
- 159. **N Grape & Cable perfume - green**
- 160. **N Grape & Cable cologne - green**
- 161. **N Grape & Cable hatpin holder - green**
- 162. **N Grape & Cable pin tray - green**
- 163. **N Grape & Cable dresser tray - green**
- 164. **N Grape & Cable powder jar - green**
- 165. **N Grape & Cable sugar bowl - green**
- 166. **N Grape & Cable whiskey decanter - p. (no stopper)**
- 167. **N Grape & Cable whiskey decanter - m. (crack; good stopper)**
- 168. **N Grape & Cable candle stick - amyt.**
- 169. Garden Path variant bowl - peach opal
- 170. **Wild Rose lamp - green**
- 171. Vintage epergne - blue
- 172. **Farmyard bowl - purple**
- 173. Small Four Flowers bowl - peach opal
- 174. Poseys & Pods plate - purple
- 175. **N Dandelion tankard set - purple**
- 176. Colonial 4 - lily epergne - green, damaged
- 177. Kittens toothpick - m
- 178. **N Drapery bowl - ice blue**
- 179. Kittens cup & Saucer - m
- 180. Corn vase - marigold
- 181. Corn vase - ice green

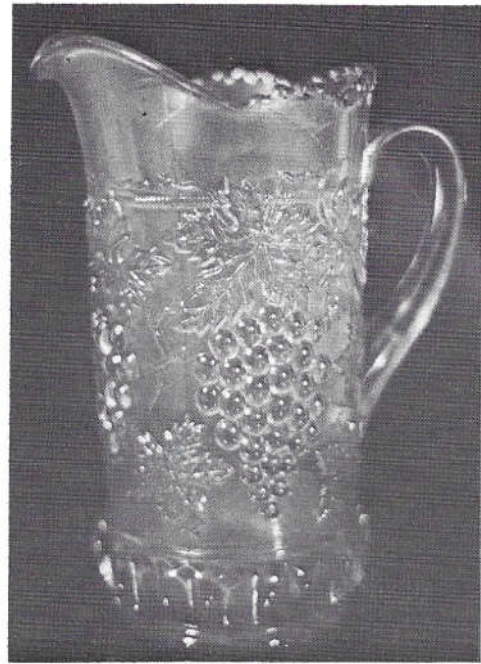
- 182. Corn vase - green
- 183. **Rose Show plate - vaseline lime green, rare color**
- 184. Rose Show plate - cobalt
- 185. Butterfly & Fern waterset - blue
- 186. Rose Show plate - ice blue
- 187. Rose Show plate - amyt.
- 188. Rose Show plate - marigold
- 189. Kittens plate - m
- 190. **Rising Sun pitcher - marigold (chip)**
- 191. Stag & Holly bowl - p
- 192. Heavy Grape chop plate - amyt.
- 193. Heavy Grape plate, 7" - amyt.
- 194. Vintage epergne - m
- 195. Finecut & Roses candy dish - **aqua opal**
- 196. Miniature Blackberry compote - green
- 197. Miniature Blackberry compote - blue
- 198. Miniature Blackberry compote - marigold
- 199. Flowers & Frames bowl - p
- 200. Lattice & Grape water pitcher - blue
- 201. Fanciful plate - p
- 202. Flute toothpick - m
- 203. Peacock on Fence bowl - m
- 204. Holly plate - amyt.
- 205. H. O. A. C. G. A. souvenir
- 206. Vintage bowl - p
- 207. Large Acanthus Plate - m
- 208. Ftd. Wishbone bowl - p
- 209. Stripped Lustre rose plate - blue
- 210. Stork & Rushes waterset - blue, pitcher chipped
- 211. Two Flowers bowl - gn
- 212. Lustre Rose waterset - amyt.
- 213. Ribbon Tie plate - clambroth
- 214. Daisy Wreath bowl - blue opal
- 215. Lattice & Grape waterset - m
- 216. ABC Stork plate - m
- 217. Lamp with 2 white shades
- 218. Base to Northwood punch bowl - amyt.
- 219. Base to Northwood punch bowl, damaged - p
- 220. Milady water pitcher - blue (crack)
- 221. Star Medallion milk pitcher - m
- 222. Covered hen - m
- 223. 5 Lamp shades - m
- 224. Lamp shade - peach opal
- 225. Wreathed Cherry water pitcher - pastel marigold
- 226. Orange Tree sherbet - gn
- 227. Grapevine Lattice tankard - m
- 228. Oval & Thumbprint vase - purple
- 229. Rococo vase - smoky
- 230. Orange Tree butter lid - m



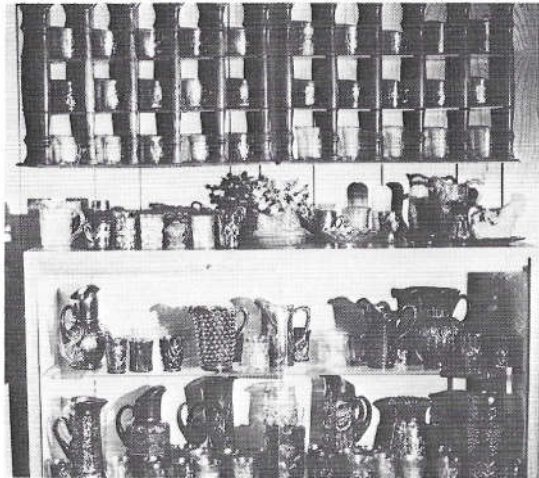
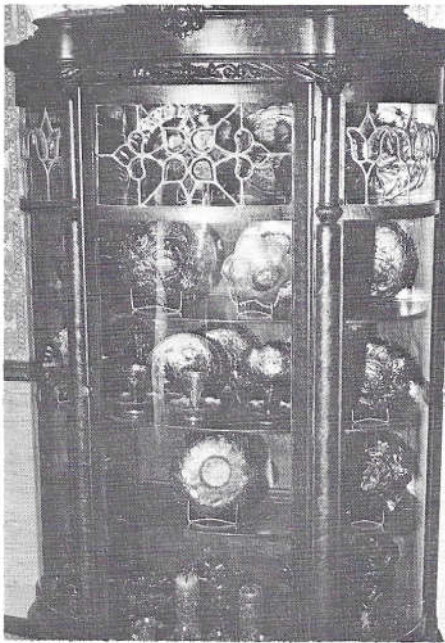
Lot 144 - Aqua Opal N Grape bowl



Lot 135 - Jewelled Heart



Lot 145 - Ice Green N Grape tankard





FIRST CLASS

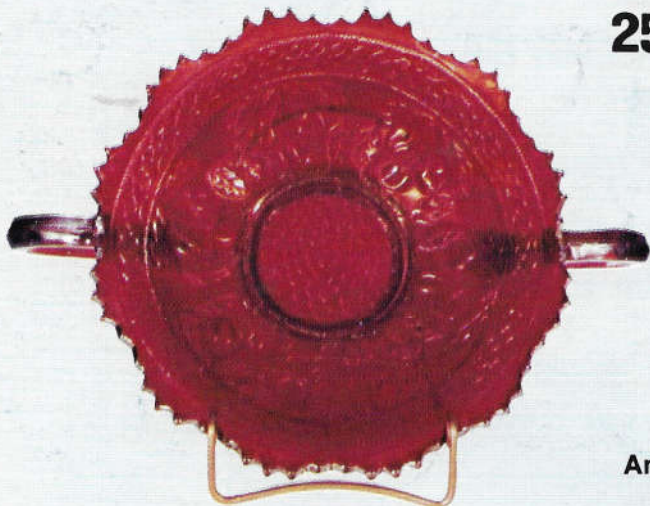


Frank Fenton
of Fenton Glass Company
will be a
featured speaker
at the convention.



**HEART OF AMERICA
CARNIVAL GLASS
ASSOCIATION CONVENTION**

**April 23, 24
25 & 26, 1981**



Another fun-filled weekend for Carnival Glass enthusiasts!

All who attend the auction are invited to visit the convention displays and meet collectors from all over the country.



**CARNIVAL GLASS
AUCTION**
April 25, 1981
10:00 A.M.

