

Leonard Harsch



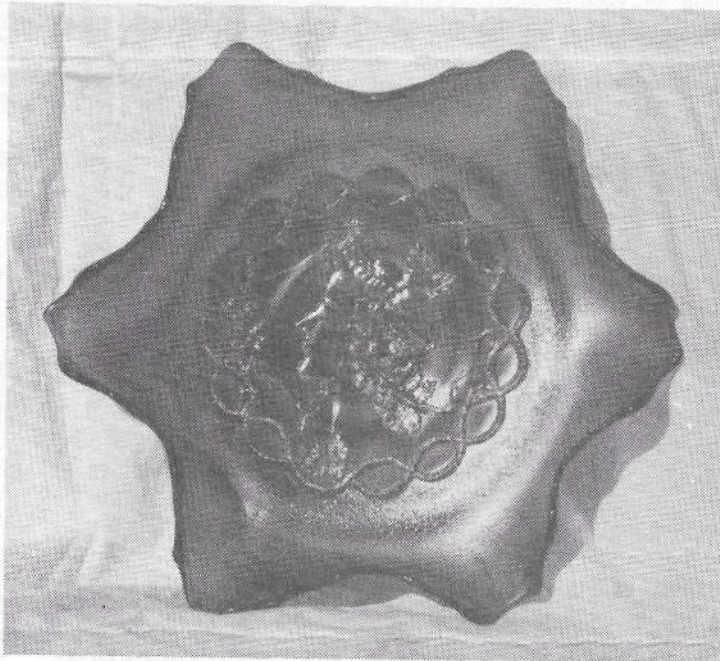
## AUCTION SERVICE

### HOACGA CONVENTION AUCTION

Saturday, April 28, 1984

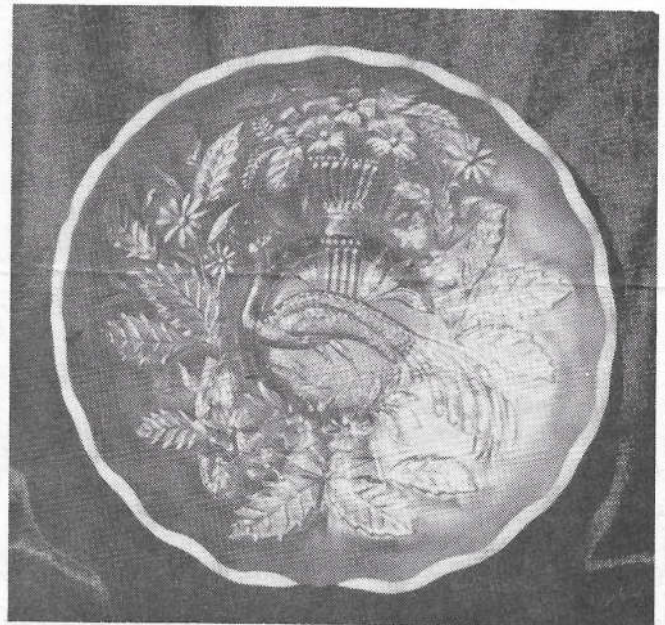
10:00 a.m. (8:00 a.m. Preview,  
with preview Friday night if at all possible)

Holiday Inn  
KCI Airport, Kansas City, MO



Lot No. 150

Lot No. 105





We are very pleased to offer one of the more interesting accumulations of Carnival Glass at auction for this years HOACGA Convention and it's not just the glass that makes it interesting but who's collection it was. This is the collection of the late Leonard Harsch of Bartley, Nebraska. He was known by most as the "old man from Nebraska" who would sit in the front rows at auctions and bid on super pieces - and quite often successfully. In his years of collecting, he massed together a pretty slick assortment with many rarities leading the way. It was an interesting experience visiting his home county with its rolling plains, black angus cattle, native pheasants, and oil wells, and I'm sure the auction will hold every bit of interest - and more. Hope to see all of you there.

This years convention will be held at the Holiday Inn at the Kansas City International Airport off I-29.

To members of HOACGA a pre-registration form was sent in the January newsletter for members convenience, so it would be best to refer to that. For further information contact the convention co-chairmen: either Cooley Miller or Dave Shikles or call the Holiday Inn at (816) 464-2345.

Mail bids honored under the following conditions:

1. 25% deposit required on total number of pieces bid on.
2. Items are bid on in perfect condition with average and above average irridescence OR as listed in the brochure. Bids will not be carried out when damage on an item has been found during the auction.
3. Successful bidders will be notified by COLLECT CALL from the auctioneer - so be sure to include phone number. Balance of payment to be sent upon notification - no items to be mailed until fully paid for; all postage and insurance is extra! Mail bids and returns to be negotiated between auctioneer and buyer, but reimbursed by consignor.
4. Phone inquiries about the glass or any other questions are welcomed, but no bids will be taken over the phone - we must have a mail bid to carry out your bid.
5. All non-successful bids will receive their deposit checks plus a result summary in the mail. Results of all bids will be provided.
6. If you have some other person at the auction bidding for you; they must pay for the item before taking it, or have a deposit from you in which case it would be treated as a normal mail bid - you would have to mail the balance before the items would be sent.
7. Mail bids are due by Friday, April 20, 1984.

Send Mail Bids To:

Tom Burns Auction Service  
R.D. No. 1  
Bath, New York 14810

If we can be of any assistance or for further information of this or future auctions, contact:

BURNS AUCTION SERVICE

TOM BURNS, AUCTIONEER  
R.D. No. 1  
Bath, New York 14810  
(607) 776-7942

BILL RICHARDS, AUCTIONEER  
44 Water Street  
Poland, Ohio 44514  
(216) 757-2001

Licensed and Bonded  
Dept. of Commerce in favor of State of Ohio

- |     |   |       |   |
|-----|---|-------|---|
| 20  | 1. Rays Bowl - Mari.  | 350   | 13. 9 1/2" ROSE SHOW PLATE - COBALT BLUE (SCARCE)                 |
| 750 | 2. Rays Tri-Cornered Bowl - Mari.   | 225   | 14. 9 1/2" ROSE SHOW PLATE - WHITE (SCARCE)                       |
|     | 3. Apple Blossom Bowl - Mari.   | 250   | 15. 9 1/2" ROSE SHOW PLATE - MARI. (SCARCE)                       |
| 30  | 4. Fenton Holly Bowl - Mari.  |       | 16. 9 1/2" Rose Show Plate - Ice Blue (scarce, flake on one rose) |
| 40  | 5. Fenton Holly Bowl - Blue   | 575   |   |
|     | 6. Dugan Cherrys Bowl - Mari.   | 325   | 17. N ROSE SHOW VARIANT BOWL - COBALT BLUE (SCARCE PATTERN)       |
| 30  | 7. Fenton Thistle Bowl - Green  |       |   |
| 40  | 8. Captive Rose Bowl - Amy.   | 275   | 18. Imperial Open Rose 7 pc. Berry Set - Amy. (very scarce set)   |
| 55  | 9. 7 1/2" Fenton Acorn Bowl - Green (scarce color)                                |       |   |
| 50  | 10. N ACORN BURR 6 PC. WATER SET - GREEN (RARE COLOR IN A POPULAR PATTERN)        | 55    | 19. Imperial Cobblestones Bowl - Amy. (rough edge)                |
| 100 |   | 200   | 20. Imperial Grape 7 pc. Water Set - Mari.                        |
| 615 | 11. N ACORN BURR 4 PC. TABLE SET - GREEN (RARE COLOR)                             | 325   | 21. Imperial Grape 8 pc. Punch Set - Helios Green                 |
|     |   | 20    | 22. Imperial Grape Ruffled Bowl - Mari.                           |
| 575 | 12. N Springtime 4 pc. Table Set - Amy. (rare set; sugar lid is for Singing Bird) | 20    | 23. Oval and Round Bowl - Mari.                                   |
|     |   | 17.50 | 24. Windflower Bowl - Mari.                                       |



5	25.	Double Dutch Bowl - Mari.	60	83.	Butterfly and Berry Master Berry Bowl - Blue
25	26.	<b>IMPERIAL GRAPE 7 PC. WINE SET - PUR. (SCARCE SET)</b>	80	84.	N Good Luck Bowl - Pie Crust Edge - Mari.
175	27.	Imperial Grape Water Carafe - Pur. (scarce)	1600	85.	<b>N GOOD LUCK PLATE - RIB EXT. - WHITE (VERY RARE PLATE - SUPER HARD IN PASTEL)</b>
45	28.	Imperial Grape 9" Ruffled Bowl - Amy.	275	86.	N Good Luck Plate - Pur. (scarce)
7.50	29.	Imperial Grape Sauce - Mari.	45	87.	N Good Luck Bowl - Mari. (chipped)
100	30.	Pansy Pickle Tray - Amy.	88.	88.	Imperial Grape 7 pc. Water Set - Mari.
160	31.	10" Imperial Grape Ruffled Bowl - Violet (scarce color)	450	89.	Diamond Lace 7 pc. Water Set - Pur.
45	32.	Waffle Block Handled Basket - Clam	90.	90.	<b>CHERRY CIRCLES (CHERRY CHAIN) CHOP PLATE - MARI. (VERY RARE)</b>
100	33.	Imperial Daisy Handled Basket - Smoke	500	91.	Dugan Peacock at the Fountain 4 pc. Water Set - Blue
40	34.	<b>STORK AND RUSHES HANDLED BASKET - MARI. (SCARCE)</b>	300	92.	Acanthus Plate - Mari.
45	35.	Crackle Miniature Basket - Mari.	175	93.	9" Fanciful Plate - Amy.
60	36.	Big Basketweave Vase - Mari.	200	94.	<b>FENTON BLACKBERRY OPEN EDGE PLATE - MARI. (VERY RARE SHAPE FOR THIS PATTERN)</b>
260	37.	Rococco Vase - Mari.	290	95.	Fenton 9" Peacock at the Urn Plate - White (scarce)
2.50	38.	Rococco Vase - Mari. (chipped)	225	96.	Fenton 9" Peacock at the Urn Plate - Blue
2.50	39.	7" Ripple Vase - Mari.	250	97.	N Peacock (on the Fence) Bowl - Mari.
65	40.	9" Ripple Vase - Amy.	100	98.	N Peacock on the Fence Stippled Bowl - Mari.
2.50	41.	Feather Stitch Vase - Mari.	98.	99.	<b>N PEACOCK ON THE FENCE RUFFLED BOWL - AQUA OPAL. (GOOD COLOR, DESIRABLE PASTEL)</b>
20	42.	Diamond Rib Vase - Mari.	595	100.	N Peacock on the Fence Plate - Ice Green (nice, scarce)
10	43.	Diamond Point Columns Vase - Mari.	285	101.	N Peacock on the Fence Plate - Amy. (scarce)
7.94	44.	Big Basketweave Miniature Vase - Mari.	300	102.	<b>N THREE FRUITS STIPPLED BOWL - TEAL (RARE, BEAUTIFUL COLOR)</b>
700	45.	<b>THUMBPRINT AND OVAL VASE - PUR. (VERY RARE, TOUGH IMPERIAL PATTERN)</b>	525	103.	<b>N THREE FRUITS STIPPLED PLATE - AQUA OPAL. (GOOD COLOR AND IRRID., NOT DEEP OPALESCENCE)</b>
35	46.	Long Thumbprint Vase - Green	103.	104.	N Peacock at the Urn 7 pc. Ice Cream Set - Pur. (scarce set)
25	47.	Butterfly and Berry Vase - Mari.	620	105.	<b>N PEACOCK AT THE URN LARGE ICE CREAM BOWL - AQUA OPAL. (EXT. RARE AND BEAUTIFUL, VERY DESIRABLE)</b>
40	48.	"Three Diamond" Vase (1910 G.E.) - Blue	104.	106.	N Peacock at the Urn Lg. Ice Cream Bowl - Pur.
20	49.	N Thin Rib Vase - Amy.	650	107.	(2) N Peacock at the Fountain Tumblers - Pur.
5000.00	50.	<b>N "HUSK" CORN VASE - PUR. (ONE OF THE MOST BEAUTIFUL NORTHWOOD RARITIES AVAILABLE; SUPER)</b>	3000	108.	(3) N Peacock at the Fountain Tumblers - Blue
30	51.	N Diamond Point Vase - Green	600	109.	N Peacock at the Fountain 4 pc. Table Set - Amy. (less the butter bottom, scarce)
95	52.	N Six Sided Bushel Basket - Amy.	40	110.	<b>N PEACOCK AT THE FOUNTAIN 8 PC. PUNCH SET - WHITE (A VERY RARE, DESIRABLE SET)</b>
2.25	53.	Dugan Beaded Basket - White	45	111.	N Peacock at the Fountain 8 pc. Punch Set - Pur. (scarce)
125	54.	Dugan Beaded Basket - Amy.	45	112.	6" Pine Cone Plate - Green (scarce)
50	55.	Pony Bowl - Mari.	750	113.	N Three Fruits Plate - Amy.
400	56.	<b>FLOWERS AND SPADES ICE CREAM BOWL - PUR. (RARE SHAPE &amp; PATTERN)</b>	110.	114.	N Stippled Three Fruits Plate - Amy.
05	57.	Flowers and Frames Tri-Cornered Bowl - Pur. (scarce)	2250.00	115.	<b>N THREE FRUITS FTD. BOWL - AQUA OPAL. (NICE, SCARCE)</b>
60	58.	Feather Stitch Bowl - Blue (scarce)	740	116.	Apple Blossom Twig Bowl - Amy.
600	59.	N Raspberry 7 pc. Water Set - Pur.	175	117.	Apple Blossom Twig Bowl - Mari.
525	60.	N Raspberry 7 pc. Water Set - Green	180	118.	Dragon and Lotus Bowl - Blue
150	61.	N Raspberry 7 pc. Water Set - Mari. (nick and bruise on pitcher)	375	119.	Lg. Stag and Holly Ftd. Bowl - Mari.
175	62.	N Raspberry Milk Pitcher - Pur.	110	120.	Lg. Stag and Holly Ftd. Bowl - Blue
375	63.	Nautilus Novelty - P. Opal. (scarce)	45	121.	Australian Kingfisher Bowl - Pur.
125	64.	N Leaf and Beads Ftd. Rose Bowl - Blue	80	122.	N Wishbone Ftd. Bowl - Pur.
300	65.	<b>N LEAF AND BEADS FTD. ROSE BOWL - AQUA OPAL. (DESIRABLE PASTEL)</b>	70	123.	N Wild Rose Ftd. Bowl - Mari.
90	66.	N Fine Cut and Roses Rose Bowl - Pur.	170	124.	Fentons Ten Mums Bowl - Blue (scarce)
100	67.	N Fine Cut and Roses Rose Bowl - Mari.	110	125.	Border Plants Domed Bowl - P. Opal.
150	68.	N Fine Cut and Roses Rose Bowl - Green (nick on one foot)	750	126.	Blackberry Spray Hat - Mari.
25	69.	Garland Ftd. Rose Bowl - Mari. (chip)	55	127.	Autumn Acorn Bowl - Amy.
60	70.	Garland Ftd. Rose Bowl - Mari. (rough)	65	128.	Dugan Floral & Grape Whimsey Tumbler - Mari. (Jack in the Pulpit shape)
275	71.	Horse Head Medallion Ftd. Rose Bowl - Blue (scarce)	195	129.	Dugan Cherries Ftd. Bowl - Mari.
75	72.	Grape Delight Ftd. Rose Bowl - Blue	50	130.	<b>N TOWN PUMP NOVELTY - MARI. (VERY RARE, NICE COLOR)</b>
40	73.	N Beaded Cable Ftd. Rose Bowl - Amy. (nick on foot)	35	131.	<b>N TOWN PUMP NOVELTY - PUR. (RARE, NICE)</b>
60	74.	Fenton Flowers Ftd. Rose Bowl - Blue	1400	132.	<b>DUGANS 10" HEAVY GRAPE BOWL/COMPASS EXT. - P. OPAL. (A VERY SCARCE PATTERN IN A RARE COLOR)</b>
50	75.	Signed Robert Hansen Rose Bowl - Red	650	133.	Double Stem Rose Domed Bowl - Amy.
175	76.	<b>IMPERIAL HEAVY GRAPE CHOP PLATE - WHITE (STRETCH EFFECT, VERY RARE COLOR)</b>	45	134.	10" Windmill and Mums Ftd. Bowl - Blue
200	77.	<b>IMPERIAL HOMESTEAD NU ART CHOP PLATE - WHITE (VERY RARE COLOR)</b>	140		
70	78.	Imperial Heavy Grape Chop Plate - Mari.	650		
300	79.	N Grape and Gothic Arch 7 pc. Water Set - Mari.	132.		
900	80.	<b>N GRAPE AND GOTHIC ARCH 4 PC. TABLE SET - GREEN (VERY RARE COLOR)</b>	650		
225	81.	Butterfly and Berry 7 pc. Water Set - Mari.	45		
25	82.	Butterfly and Berry 4 pc. Table Set - Blue (rare color, nice)	140		

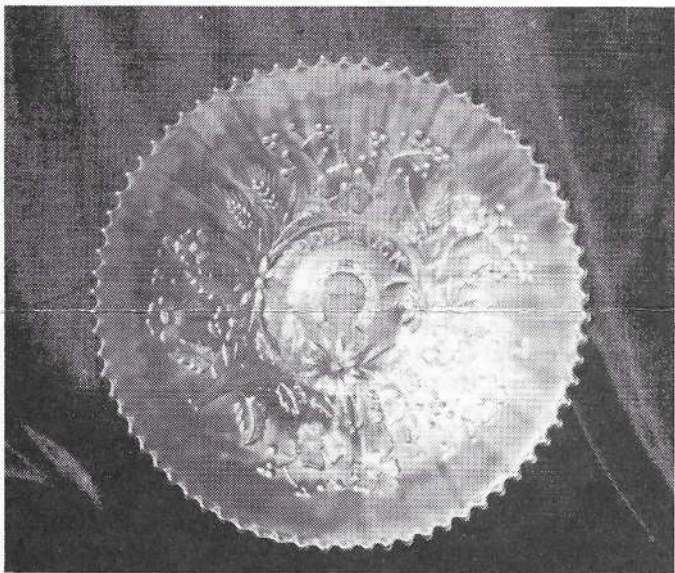




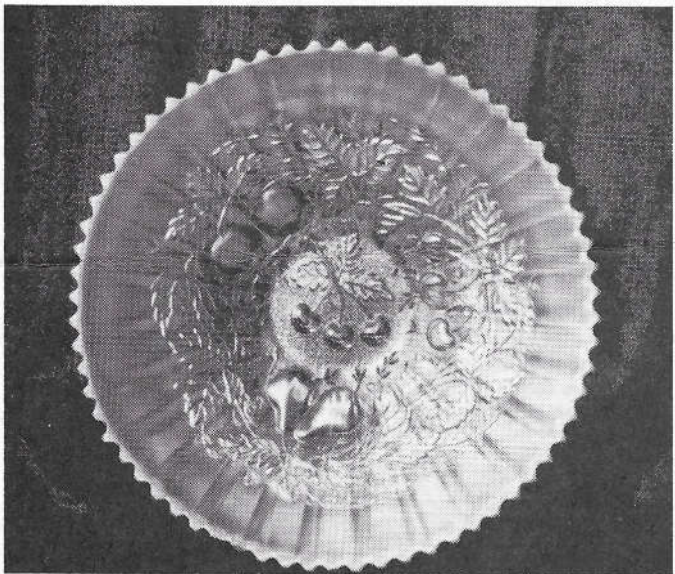
Lot No. 140



Lot No. 50



Lot No. 85



Lot No. 103



Rare McKee Patterned Vase  
Signed "Prescut"  
Only 1 Known - Lt. Marigold



- 20 135. Little Fishes Large Ftd. Bowl - Blue (scarce) 150
- 10 136. Persian Garden Large Ice Cream Bowl - White (scarce) 45
- 55 137. Peacock Tail Bon Bon - Green 300
- 70 138. Orange Tree Ftd. Fruit Bowl - Mari. 400
- 10 139. Mikado Compote - Mari. 175
- 30 140. **BUTTERFLY AND TULIP SQUARE FTD. BOWL - PUR. (RARE PATTERN AND SHAPE, NICE)** 150
- 300.00 141. Butterfly and Tulip Deep Fruit Bowl - Amy. (small chip off one ft.) 193
- 50 142. 9 1/2" Coin Dot Bowl - Amy. 135
- 10 143. Star and File Bowl - Mari. 195
- 15 144. Imperial Pansy Bowl - Pur. 525
- 25 145. **FENTON FLORAL & GRAPE 7 PC. WATER SET - GREEN (VERY RARE COLOR FOR THIS PATTERN)** 250
- 75 146. Dugan Floral and Grape 5 pc. Water Set - Amy. 275
- 10 147. Maple Leaf 4 pc. Table Set - Mari. (sugar lid damaged chip on spooner) 400
- 15 148. Heart and Vine Bowl - Green 35
- 0 149. 10" Petal and Fan Large Bowl - Pur. (scarce) 200
- 3750.00 150. **GODDESS OF THE HARVEST RUFF. BOWL - AMY. (EXTREMELY RARE; ONE OF THE RAREST PCS. OF FENTON KNOWN)** 600
- 50 151. Fenton Wreath of Roses/Vintage Int. 8 pc. Punch Set - Amy. (scarce set) 350
- 0 152. Imp. Flute Breakfast Sugar and Creamer - Pur. 325
- 20 153. Strutting Peacock Breakfast Sugar and Creamer - Amy. 425
- 50 154. N Singing Bird Mug - Green (scarce) 165
- 70 155. N Singing Bird Mug - Amy. 150
- 40 156. Orange Tree Mug - Blue 200
- 40 157. Orange Tree Mug - Blue 200
- 45 158. Heron Mug - Pur. (cracked in handle) 22.50
- 50 159. Dugan Petal and Fan 5 pc. Berry Set - P. Opal. (scarce set) 2250
160. **N ORIENTAL POPPY 7 PC. WATER SET - PUR. (RARE SET)** 212
161. N Dandelion 7 pc. Water Set - Blue/Gold (crystal set, not a carnival item) 150
- 70 162. Kittens Ruffled Bowl - Mari. 55
- 00 163. Kittens Bowl, 4 Sides Up - Mari. 65
- 30 164. Kittens Cup and Saucer - Mari. (saucer damaged) 25
165. **N GRAPE ARBOR TANKARD WATER PITCHER - ICE BLUE (VERY RARE ITEM)** 15
- 50 166. (5) N Grape Arbor Tumblers - Ice Blue (all chipped) 15
- 00 167. N Peach 7 pc. Water Set - Green w/Gold (crystal set, not a carnival item) 15
- 450 168. Crocus 7 pc. Water Set - Green w/Gold (not a carnival set) 425
- 25 169. N Memphis Water Pitcher - Green w/Gold (not a carnival item) 175
- 50 170. N Memphis 8 pc. Punch Set - Mari. (very scarce set) 175
- 20 171. N Memphis 6 pc. Berry Set - Mari. N Peacock at the Urn Ice Cream Bowl - Ice Blue
- 35 172. N G&C Powder Jar Base Only - Pur. Honeycomb Rose Bowl - P. Opal (manf's. flaw)
- 80 173. N G&C Cologne Bottom Only - Pur. 7 1/2" Persian Garden Plate - White
- 00 174. N G&C Covered Cookie Jar - Pur. 10" Vintage Grape Ice Cream Bowl - Red (silvery/gold irrid., rare)
- 60 175. N G&C Covered Sweetmeat Compote - Pur. 200
- 25 176. N G&C/Old Rose Distillery Plate - Green (scarce) Rare McKee Patterned Vase, Signed "Prescut" - (only 1 known) - Lt. Mari.
177. **N G&C HATPIN HOLDER - BLUE (VERY RARE COLOR, ONE OF A FEW KNOWN)** 195
- 75 178. N G&C Banded Hatpin Holder - Mari. (banded is scarce) N G&C Tankard Water Pitcher - Mari.
- 15 179. N G&C Hatpin Holder - Green 425
- 75 180. N G&C 7 pc. Water Set - Pur. 7 pc. Oriental Poppy Water Set - Mari.
- 25 181. G&C Banana Boat - Pur.
- 50 182. N G&C Dresser Tray - Pur.
- 100 183. N G&C Large Fruit Bowl - Pur. (bruised)
- 75 184. N G&C 7 pc. Collar Base Berry Set - Amy.
- 100 185. **N G&C FERNERY - MARI. (RARE, EXCELLENT COLOR AND IRRID.)**
- 5 186. N G&C Centerpiece Bowl - Mari. (scarce)
187. N G&C 7 pc. Berry Set - Mari.
188. N G&C Ruffled Master Berry Bowl - Mari.
189. N G&C 4 pc. Table Set - Mari. (scarce)
190. **N G&C 5 PC. TANKARD WATER SET - MARI. (RARE SET)**
191. N G&C Large Ice Cream Bowl - Amy.
192. Plain Patterned Bowl in Brass Holder - Mari.
193. Lg. Ribbed Stretch Vase - Mari.
194. Kerosene Lamp Base and Shade - Lt. Mari. (damaged)
195. **FENTON 1910 DETROIT ELKS BOWL - AMY. (VERY RARE, A TOUGH ADVERTISING PIECE)**
196. Large Wishbone Bowl - Pur.
197. M'burg Nesting Swan Bowl - Amy.
198. M'burg 6" Peacock at the Urn Plate - Amy. (scarce)
199. M'burg Trout and Fly Bowl - Amy. (scarce)
200. **M'BURG LETTERED COURTHOUSE BOWL - AMY. (RARE, EXCELLENT RADIUM IRRID.)**
201. M'burg Holly One Handled Nappy - Green (flake)
202. **M'BURG SWIRL HOBNAIL CUSPIDOR - AMY. (RARE WHIMSEY SHAPE)**
203. M'burg Peacock at the Urn 7 pc. Berry Set - Amy. (rare set)
204. M'burg Hanging Cherry 4 pc. Table Set - Amy. (base to butter dish is damaged)
205. **CAMBRIDGE INVERTED STRAWBERRY OPEN COMPOTE - AMY. (RARE)**
206. Cambridge Inverted Strawberry 4 pc. Table Set - Amy. (very rare set)
207. Cambridge Inverted Strawberry Covered Powder Jar - Green (scarce)
208. Cambridge Inverted Strawberry 5 pc. Berry Set - Amy.
209. Cambridge Inverted Strawberry 5 pc. Berry Set - Amy.
210. Fenton G&C Ftd. Bowl - Mari.
211. Open Rose Large Berry Bowl - Mari.
212. Blackberry Spray Hat - Mari.
213. Australian Butterfly Bush Compote - Pur. (from Gaida collection)
214. Floral and Wheat/Puzzle Bon Bon - P. Opal.
215. Assorted HOACGA Souvenirs
216. Rays Compote - Green/Mari. Overlay
217. (6) N G&C Stippled Punch Cups - Blue
218. (6) N G&C Stippled Punch Cups - Green
219. (6) Waterlily and Cattails Tumblers - Mari.
220. Lattice and Daisy Tumbler - Mari.

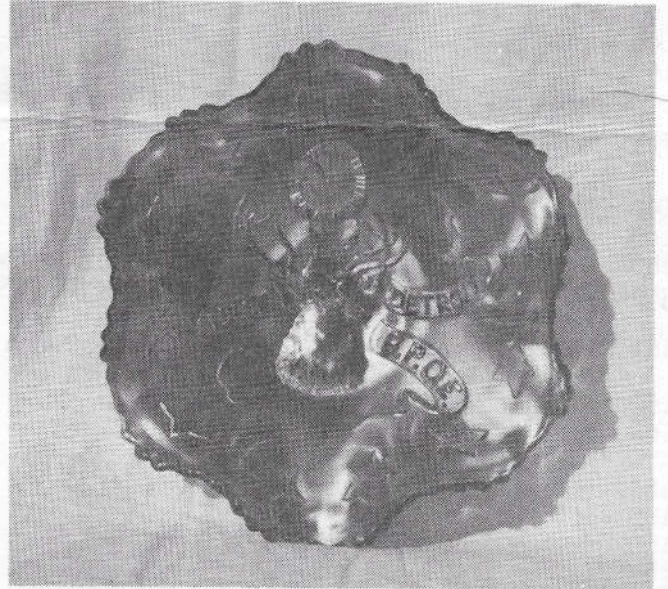
— ADDITIONAL ITEMS —

A SMALL NUMBER OF SCARCE PIECES ARE ALSO TO BE ADDED





Lot Nos. 130 & 131



Lot No. 195

Tom Burns  
R.D. No. 1  
Bath, N.Y. 14810  
(607) 776-7942