

CARNIVAL GLASS AUCTION

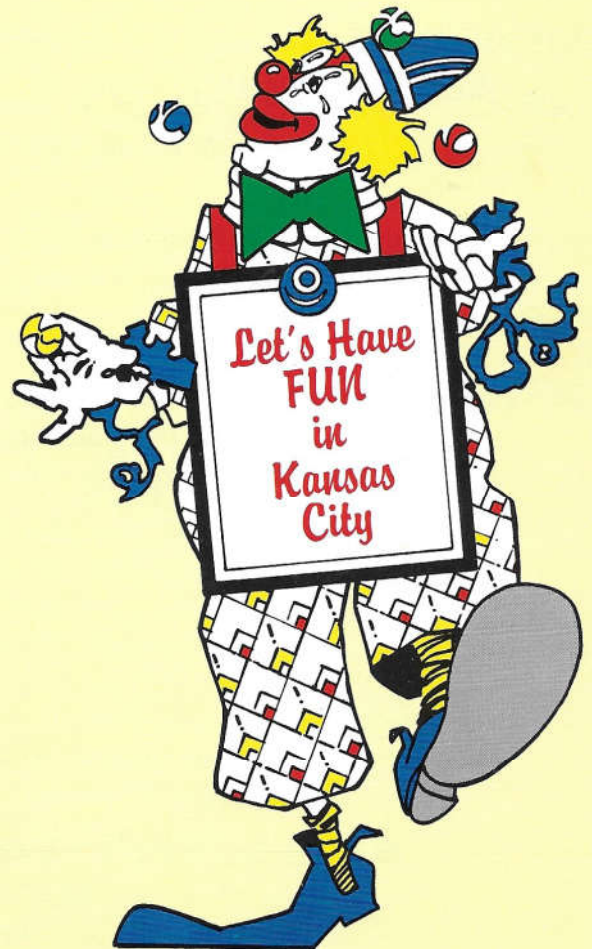
H.O.A.C.G.A. CONVENTION



MILLERSBURG HONEYCOMB & HOBSTAR VASE
Lot #200

An extremely rare MILLERSBURG HONEYCOMB & HOBSTAR VASE will be sold for the FIRST TIME at auction. This one-of-a-kind vase in amethyst, was recently secured from the Cambridge Museum in Cambridge, Ohio, where initially it was thought to be Cambridge glass. Its first journey out of Ohio should prove to be interesting!

May 2, 1987 • 9:30 a.m.
Lenexa, Kansas



HEART OF AMERICA CARNIVAL GLASS ASSOCIATION CONVENTION AUCTION

SATURDAY, MAY 2, 1987
9:30 a.m.

HOLIDAY INN KANSAS CITY S.W.
12601 W. 95 STREET (I-35 at 95th ST.)
LENEXA, KANSAS

We are pleased to offer for sale a part of Joan Westerfeld's collection at the 1987 H.O.A.C.G.A. Convention on Saturday, May 2nd. Joan has tried to select items for the auction so there will be something of interest for every collector.

PREVIEW: SATURDAY, 7:00 - 9:00 A.M.

TERMS: CASH or CHECK with proper identification.
(Statements made Sale Day take precedence over all printed material.)

MOTEL RESERVATIONS: Call the Holiday Inn directly at 913-888-6670 for room reservations. For special room rates mention LaRue Auction Company or H.O.A.C.G.A. Convention. Out-of-state visitors may call toll free at 800-527-0582.

WRITE-IN BID POLICY: Write-in bids will be accepted with a 10% deposit. There will be no charge for postage and insurance to ship the glass. **No telephone bids will be accepted.** Your bid will not be executed unless the item is as stated in the sale bill. You will be notified as to the result of your bid.

Should you have any questions regarding the glass, please contact:

Joan Westerfeld
P.O. Box 3361
Kansas City, Kansas 66103
Tel. 913-381-6244

Coffee and doughnuts will be served Saturday prior to the auction.

SALE CONDUCTED BY LARUE AUCTION SERVICE
Sweet Springs, MO 65351 • Col. Glen LaRue, Auctioneer
Phone 816-335-4538

- _____ 1. Lustre Rose Fernery, Cobalt
 _____ 2. Headdress Bowl, Marig
 _____ 3. Orange Tree Mug, Cobalt
 _____ 4. N. Rib 12½" Vase, Purple
 _____ 5. Louisa Footed Candy, Aqua
 _____ 6. Pr. Barber Bottles (Dogwood),
 Marig
 _____ 7. Pr. Barber Bottles (M. Gregory
 type), Marig
 _____ 8. Grape Arbor Tankard, Marig
 _____ 9. Wreath of Roses Compote, Green
 _____ 10. West. Shell Candy — Marig, Aqua
 _____ 11. Double Stem Rose 9" Bowl, White
 _____ 12. G & C Sweetmeat, Amy
 _____ 13. Pr. 10" Candleholders, Marig
 _____ 14. Feathered Serpent Flared Bowl,
 Amy
 _____ 15. Greek Key Bowl, Green
 _____ 16. Fashion Punchbowl w/base, 6
 cups, Marig
 _____ 17. G & C Footed Orange Bowl,
 Green
 _____ 18. **HEARTS & FLOWERS BOWL,
 WHITE**
 _____ 19. Drapery Rose Bowl, Aqua Opal
 _____ 20. Vertical Rib Vase, Aqua
 _____ 21. Stork & Rushes Pitcher & 1
 Tumbler, Marig
 _____ 22. Stag & Holly 10½" Footed Bowl,
 Cobalt
 _____ 23. Pineapple Creamer — Marig &
 Purple
 _____ 24. Persian Garden 6" Bowl, White
 _____ 25. Imp. Grape Cup & Saucer, Green
 _____ 26. G & C 7-pc. Water Set, Purple
 _____ 27. Star of David Bowl, Imp. Amy
 _____ 28. Four Flowers 10" Bowl, Peach
 Opal
 _____ 29. Star of David & Bows Bowl, Amy
 _____ 30. Holly Bowl, VAS. Base ✕
 _____ 31. Daisy & Drape Vase, White
 _____ 32. Daisy & Drape Vase, Aqua Opal
 _____ 33. Cosmos 6" Plate, Green
 _____ 34. Pinecone 6" Plate, Cobalt
 _____ 35. Coin Spot Compote, Amy
 _____ 36. Peacock at Urn 8½" Bowl, Marig
 _____ 37. 3 Wide-Panel Lilys, 2 Gr., 1 Marig
 _____ 38. Maple Leaf 7-pc. Water Set, Amy
 _____ 39. **HOLY BOWL, RED**
 _____ 40. **HEARTS & FLOWERS BOWL,
 ICE BLUE**
 _____ 41. Persian Medallion 6" Plate, Marig
 _____ 42. **HATTIE CHOP PLATE, GREEN**
 _____ 43. Peacock at Urn Compote, Marig
 _____ 44. Millersburg Rays & Ribbons Bowl,
 Amy
 _____ 45. Grapevine & Lattice 7-pc. Water
 Set, Marig
 _____ 46. Lattice & Daisy 7-pc. Water Set,
 Marig
 _____ 47. Diamond Lace Water Set, Purple
 _____ 48. #270 Westmoreland Compote,
OLIVE
 _____ 49. Folding Fan Compote, Peach Opal
 _____ 50. **N. FLUTE 10½" VASE, GR.
 (UNLISTED SHAPE)**
 _____ 51. **MILLERSBURG COURTHOUSE
 BOWL, AMY, (LETTERED)**
 _____ 52. 4 Pansy Bowls, Marig, Amy,
 Purple, Gr.
 _____ 53. Leaf Chain 7½" Plate, Marig
 _____ 54. Peacock at Urn Compote, Cobalt
 _____ 55. Cobblestone Bowl, Amy
 _____ 56. G & C Ice Cream Bowl, Amy
 _____ 57. Oriental Poppy Pitcher & 1
 Tumbler, Marig
 _____ 58. Acorn & Burr Punchbowl with
 Base, Amy (Repair on one point
 on flange)
 _____ 59. 4 Acorn & Burr Punch Cups, Amy
 _____ 60. Pr. Premium Candlesticks, Marig
 _____ 61. Wide Rib Vase, Aqua Opal
 _____ 62. Heavy Grape Chop Plate (chip on
 back), Amy
 _____ 63. Jack-in-Pulpit Vase, **CELESTE
 BLUE**
 _____ 64. Imp. Grape 8-pc. Wine Set, Amy
 _____ 65. Strawberry Bowl, Marig
 _____ 66. 3-Fruits Plate, Green
 _____ 67. Butterfly & Berry 6-pc. Berry Set,
 Marig
 _____ 68. Wreathed Cherry 10½" Oval
 Bowl, White
 _____ 69. Holly Plate, Amy
 _____ 70. Daisy & Plume Rosebowl, Peach
 Opal
 _____ 71. Millersburg Whirling Leaves
 Bowl, Green

- _____ 72. Imp. Grape 7-pc. Water Set, Marig
 _____ 73. Lustre Rose 9" Bowl, Purple **(BEAUTIFUL IRRID.)**
 _____ 74. Good Luck Ruffled Bowl, Amy
 _____ 75. 3 Iris Buttermilk Goblets, Marig
 _____ 76. G & C 4-pc. Table Set, Amy
 _____ 77. **HEARTS & FLOWERS BOWL, BLUE OPAL**
 _____ 78. **G & C TANKARD PITCHER, MARIG**
 _____ 79. Coin Dot Candy Ribbon Edge Bowl, VAS., **(RARE)**
 _____ 80. 3 Peacock at Urn, double pattern bowls, Cobalt
 _____ 81. Stemmed Celery **(UNLISTED PATTERN)**, Yellow (?)
 _____ 82. **G & C WHISKEY DECANTER w/STOPPER, Amy**
 _____ 83. **3 G & C SHOTGLASSES, AMY**
 _____ 84. N. Blackberry Compote, Marig
 _____ 85. **DAISY ROWBOAT, MARIG**
 _____ 86. Cherries Footed Bowl, Purple
 _____ 87. Peacock & Grape Sp. Footed Bowl, Green
 _____ 88. Peacock & Dahlia 7½" Plate, Marig **(SCARCE)**
 _____ 89. Good Luck Bowl, Stippled, Cobalt
 _____ 90. **FINECUT & ROSES ROSE-BOWL, ICE BLUE**
 _____ 91. **ROSE SHOW VARIENT BOWL, CELESTE BLUE, (RARE)**
 _____ 92. Inverted Feather Cracker Jar, Green
 _____ 93. Pony Bowl, Marig
 _____ 94. Basketweave 8½", Flat Bowl, White
 _____ 95. Singing Birds 7-pc. Water Set, Amy
 _____ 96. Grape Arbor 7-pc. Water Set, Marig
 _____ 97. Singing Birds 7-pc. Water Set, Green
 _____ 98. Floral & Grape Pitcher (Dugan), Amy
 _____ 99. **SCALES 8" BOWL, MARIG/M GLASS BASE**
 _____ 100. Pansy Bowl, Aqua
 _____ 101. Buzz Saw Cruet (large w/sub stopper), Green
 _____ 102. 2 Cosmos & Cane Tumblers, Marig **(RARE)**
 _____ 103. Rose Panel Large Compote (Australian), Marig
 _____ 104. **PEACH WATER PITCHER, COBALT**
 _____ 105. Persian Garden 6" Plate, White
 _____ 106. Fish Scale & Beads 6" Plate, Marig
 _____ 107. **PEACOCK AT FOUNTAIN COMPOTE, ICE BLUE, (RARE)**
 _____ 108. **2 G & C CANDLE LIGHTS, GREEN (RARE)**
 _____ 109. **WIDE PANEL BOWL, MARIG/W MILKGLASS BASE**
 _____ 110. Hearts & Flowers Compote, Elec. Blue
 _____ 111. **3-FRUITS BOWL, AQUA OPAL**
 _____ 112. **G & C TANKARD, MARIG**
 _____ 113. Stag & Holly 8" Sp. Footed Bowl, **LAVENDER**
 _____ 114. Imp. Jewels Candlesticks 7¼" tall, (Edwards, p.111), **COBALT (SCARCE)**
 _____ 115. Imp. Jewels Hair Receiver (signed), **BURNT ORANGE (RARE COLOR)**
 _____ 116. Imp. Jewels Rosebowl, Amy
 _____ 117. Imp. Jewels Bowl, Amy
 _____ 118. Imp. Jewels 7½" Bowl, Amy
 _____ 119. Imp. Jewels 7" (signed) Bowl, Amy
 _____ 120. 474 8-pc. Punch Set, Marig
 _____ 121. Fine Cut & Roses Rosebowl, Amy
 _____ 122. Blackberry Hatshape, **AQUA**
 _____ 123. Millersburg Fleur De Lis Dome-footed Bowl, Amy. (Sliver off the bottom)
 _____ 124. 3-Fruits Plate, Marig
 _____ 125. Good Luck Piecrust Bowl, Elec. Blue
 _____ 126. Grape Delight Rose Bowl, White
 _____ 127. Garland Rose Bowl, Marig
 _____ 128. G & C 2-pc. Breakfast Set, Amy
 _____ 129. Fieldflower Pitcher, Green **(GOOD COLOR)**
 _____ 130. G&C Large Open Compote, Amy

- _____ 131. Orange Tree footed Orange Bowl, Marig
 _____ 132. G & C Pin Tray, Purple
 _____ 133. G & C Pin Tray, Amy
 _____ 134. **HEARTS & FLOWERS COMPOTE, AQUA OPAL**
 _____ 135. Hearts & Flowers Compote, Marig
 _____ 136. **CAMBRIDGE INVERTED STRAWBERRY CELERY (RARE SHAPE, ONLY ONE KNOWN IN COBALT)**
 _____ 137. **N. BASKET, LIME GREEN OPAL. (EXTREMELY RARE COLOR)**
 _____ 138. Butterfly & Fern Pitcher & 1 Tumbler, Cobalt
 _____ 139. 6 Little Flowers 5½" bowls, Cobalt
 _____ 140. Dragon & Lotus Bowl, Marig. (Ex. color)
 _____ 141. Blackberry Spray Compote, Green
 _____ 142. G & C Cracker Jar w/Lid, Amy (some roughness on lid)
 _____ 143. Acanthus Plate, Clambroth? (tiny chip)
 _____ 144. Beaded Shell Mug, Amy
 _____ 145. Nautilus, Peach Opal
 _____ 146. Rose Show Bowl, Amy
 _____ 147. Little Fishes 9½" Bowl, Marig
 _____ 148. Two Flowers footed 10" Bowl, Cobalt
 _____ 149. Cherry Circle large 2-handled Bowl, Cobalt
 _____ 150. Butterfly & Berry Footed Bowl (Panther Int.) and 1 Small Bowl, Marig
 _____ 151. Vintage Grape 7" Plate, Amy
 _____ 152. 4 N. Drapery Lamp Shades, Peach Opal ⁷⁰
 _____ 153. Orange Tree Orange Bowl, Cobalt
 _____ 154. Westmoreland Compote, Aqua
 _____ 155. Imp. Grape Basket, Smoke
 _____ 156. Imp. Grape Daisy Basket, Smoke
 _____ 157. Horsehead footed Bowl, Marig
 _____ 158. Ripple Vase, **AMBER**
 _____ 159. Wishbone footed Bowl, Marig
 _____ 160. Holly Plate, White
 _____ 161. Peacock at Urn ruffled Compote, **DEEP VIOLET COLOR**
 _____ 162. Bullseye Vase, Marig
 _____ 163. Assorted Tumblers [★]
 _____ 164. Cherry Blossoms 7-pc. Water Set, Cobalt
 _____ 165. H.O.A.C.G.A. Whiskey Dec. Set, Red
 _____ 166. Acorn & Burrs 7-pc. Water Set, Amy
 _____ 167. Birds & Cherries 2-Handled Bon-Bon, Marig
 _____ 168. **POPPY SHOW VASE, AMY (RARE & BEAUTIFUL)**
 _____ 169. Persian Garden 7" Plate, White
 _____ 170. **RUSTIC VASE, AQUA OPAL (EXTRA RARE)**
 _____ 171. Poppy Show Pickle Dish, Cobalt
 _____ 172. Fanciful Plate, White
 _____ 173. Imp. Grape 7-pc. Water Set, Green
 _____ 174. G & C Piecrust edge flat Bowl, Amy
 _____ 175. **TIGER LILY PITCHER & 6 TUMBLERS, AQUA-BLUE, (A VERY RARE SET IN THIS COLOR. SEE HOGY BULLETIN, JAN. '87, PAGE 31.)**
 _____ 176. VINTAGE BOWL - BEAUTIFUL RED
 _____ 177. **SCALES 8" BOWL, BLUE OPAL**
 _____ 178. Pr. Target Vases, Cobalt
 _____ 179. 2 Pairs Colonial Candlesticks, Purple & Olive
 _____ 180. H.O.A.C.G.A. 7-pc. Water Set, Red (**PITCHER ONE OF 12 WHIMSEYS**)
 _____ 181. 3 Vintage Ferneries, Marig, Cobalt, ⁴⁷ and Fiery Amy ⁵⁸
 _____ 182. **ROSE SHOW BOWL, BLUE OPAL**
 _____ 183. **HEARTS & FLOWERS COMPOTE, ICE BLUE, RARE —** (small open bubble on rim)
 _____ 184. Apple Tree 7-pc. Water Set, Cobalt (**BEAUTIFUL**)
 _____ 185. **PEACOCKS ON FENCE BOWL, AQUA OPAL**

- _____ 186. **CAROLINA DOGWOOD BOWL
MAR/MILKGLASS BASE**
- _____ 187. **PEACH 4-PC. TABLE SET,
WHITE**
- _____ 188. Dragon & Lotus Sp. footed Bowl,
PEACH OPAL 145 - 680
- _____ 190. Feathered Serpent Large Berry
Bowl, Amy
- _____ 190. Ski-Star Bowl, Peach Opal
- _____ 191. **MILLERSBURG MORNING
GLORY TUMBLER, AMY, EX-
TREMELY RARE** — (½" rough-
ness on the upper rim)
- _____ 192. **MILLERSBURG MORNING
GLORY TUMBLER, GREEN —
(EXTREMELY RARE AND
PERFECT)**
- _____ 193. Corn Bottle, Green
- _____ 194. Grape 6½" Plate, Amy
- _____ 195. Grape Arbor Large Footed Bowl
(Feather Scroll Int.), Marig
- _____ 196. Butterfly & Fern 7-pc. Water Set,
Amy
- _____ 197. **DAHLIA PITCHER, WHITE,
RARE**
- _____ 198. **4 DAHLIA TUMBLERS, WHITE,
RARE**
- _____ 199. Peacock at Fountain 7-pc. Water
Set, Amy
- _____ 200. **MILLERSBURG HONEYCOMB
& HOBSTAR VASE, AMY. ONLY
ONE KNOWN, EXTREMELY
RARE. (SEE COVER)**
- _____ 201. Concord Grape Bowl, Marig
Green
- _____ 202. Millersburg Many Stars 9½"
Round Bowl, Amy, **RARE**
- _____ 203. **CHATELAINE TUMBLER,
PURPLE, RARE**
- _____ 204. Hearts & Flowers Compote,
White
- _____ 205. **MILADY 7-PC. WATER SET,
COBALT, RARE**
- _____ 206. Wreath of Roses 8-pc. Punch
Set, Green
- _____ 207. G & C Whimsey Cup, Green
- _____ 208. **N. (signed) RUSTIC ELEPHANT
BASE FUNERAL VASE, CO-
BALT. (EX. LG. & BEAUTIFUL)**
- _____ 209. **N. (signed) RUSTIC ELEPHANT
BASE FUNERAL VASE, AMY.
(EXTRA LARGE & BEAUTIFUL)**
- _____ 210. Peacock at Fountain Punchbowl
w/base, Marig
- _____ 211. Hobnail Soda Gold Cuspidor,
AMBER
- _____ 212. Hearts & Flowers Compote,
Cobalt
- _____ 213. **HEARTS & FLOWERS COM-
POTE, BLUE OPAL, (RARE)**
- _____ 214. **DIAMOND PT. VASE, AQUA
OPAL (RARE)**
- _____ 215. Floral & Grape Variet 7-pc.
Water Set, Cobalt
- _____ 216. Hobstar 4-pc. Table Set, Marig
- _____ 217. N. Raspberry Sauceboat, Amy
- _____ 218. G & C Ice Cream Bowl, Green
- _____ 219. G & C Banana Bowl, Amy
- _____ 220. Good Luck Piecrust Edge Bowl,
Marig
- _____ 221. Stag & Holly Sp. Footed Bowl,
Green
- _____ 222. Stag & Holly Sp. Footed Bowl,
Marig
- _____ 223. Feather Stitch Bowl, Cobalt
- _____ 224. Feathered Serpent 7-pc. Berry
Set, Marig
- _____ 225. Cherry Circle Large 2-handled
Flat Bon-Bon, Amy
- _____ 226. Peacock at Fountain 10" Bowl,
Green
- _____ 227. Broken Arches Punchbowl
w/base & 5 Cups, Amy
- _____ 228. G & C Footed Orange Bowl,
Cobalt (N)
- _____ 229. G & C Footed Orange Bowl,
Cobalt, Fenton
- _____ 230. Louisa Rose Bowls, Gr. & Amy
- _____ 231. Double Loop Sugar, Amy
- _____ 232. 6 Oriental Poppy Tumblers, Amy
- _____ 233. Six Petals 8½" Bowl, White
- _____ 234. Peacock at Urn Plate, Elec. Blue,
BEAUTIFUL
- _____ 235. Strawberry 2-handled Bon-Bon,
Cobalt
- _____ 236. Coindot Bowl, Aqua
- _____ 237. Millersburg Blackberry Wreath
Bowl, Amy

- _____ 238. Rosettes Ft. Bowl, Amy
 _____ 239. Grape Delight Rose Bowl, White
 _____ 240. Orange Tree Punch Bowl, w/5
 Cups, Cobalt
 _____ 241. Orange Tree Breakfast Set,
 Cobalt
 _____ 242. Feathers Vase, Marig w/Ice
 Green Base
 _____ 243. Peacock at Urn Compote
 (ruffled), Cobalt
 _____ 244. 2 Jack-in-Pulpit Vases, Marig
 _____ 245. Peacock at Urn Compote
 (round), Cobalt
 _____ 246. Daisy & Plume Compote, Green
 _____ 247. Assorted Tumblers: Fluffy Pea-
 cock Gr., Stork & Rushes Blue,
 Peach, Blue, Peacock at Foun-
 tain Marig, Peacock at Fountain
 Blue, Ten Mums Blue
 _____ 248. Orange Tree Bowl, Amy
 _____ 249. Two Flowers Sp. Footed Bowl,
 Cobalt
 _____ 250. **DRAGON & LOTUS BOWL,** ⁵²⁵⁻¹⁰⁰⁰
RED (SUPER COLOR, RARE)
 _____ 251. 3-Fruits 9" Plate, Amy
 _____ 252. Imp. Grape 10" Bowl, Marig (Ex.
 color)
 _____ 253. Petal & Fan Dome Footed Bowl,
 Peach Opal
 _____ 254. Grape & Gothic Arches Partial
 Table Set, Cobalt
 _____ 255. Captive Rose Bowl, Cobalt
 _____ 256. Lattice & Daisy 7-pc. Berry Set,
 Marig
 _____ 257. 3-Fruits 9" Bowl, Purple
 _____ 258. Two Flowers Footed Bowl,
 Marig
 _____ 259. Pinecone Bowl, Cobalt
 _____ 260. Orange Tree Rose Bowl, Cobalt
 _____ 261. 3-Fruits 7-pc. Berry Set, Marig
 _____ 262. N. Strawberry Flat Bowl, Amy
 _____ 263. Iris Compote, Marig
 _____ 264. Beaded Shell Mug, Amy
 _____ 265. 6 Grapevine Lattice Tumblers,
 Marig
 _____ 266. 6 Concave Diamond Tumblers,
 Ice Blue
 _____ 267. Wreath of Roses Compote,
 Amy
- _____ 268. Wreathed Cherry 10½" Oval
 Bowl, Amy
 _____ 269. Estate Creamer, Peach Opal
 _____ 270. Dragon & Lotus Bowl, Cobalt
 _____ 271. Set of 8, Fenton Sherbets &
 Plates — Stretch, Ice Green
 _____ 272. Mikado Compote, Marig
 _____ 273. Windmill & Flowers Dresser
 Tray, Marig
 _____ 274. Maple Leaf Large Stemmed
 Berry Bowl, Amy
 _____ 275. Blackberry Compote, Amy

— NOTES —



LOT #175



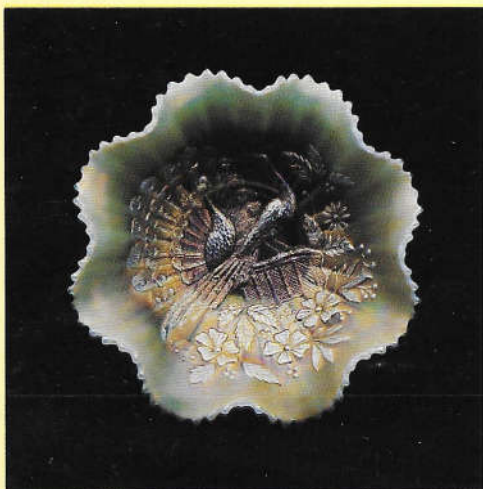
LOT #192 LOT #191



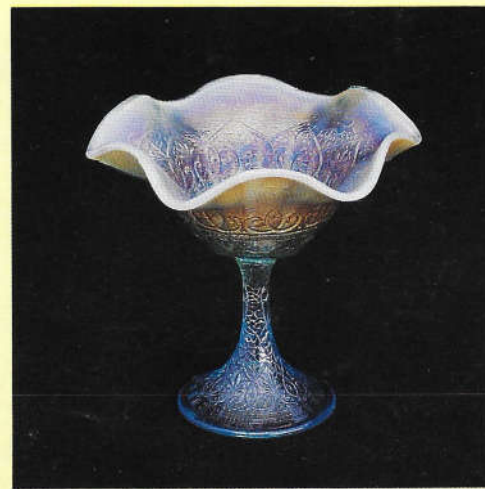
LOT #91



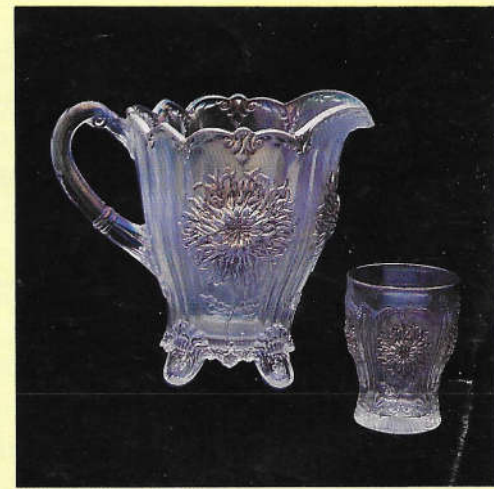
LOT #136 — CAMBRIDGE INVERTED STRAWBERRY CELERY
Rare Shape — Only One Known in Cobalt!



LOT #185



LOT #213



LOT #197-198