

H.O.A.C.G.A. Convention
AUCTION

Bobby and Joyce Seale Collection



Friday, April 24, 1998 - 9:30 A.M.

**Embassy Suites – 7640 NW Tiffany Springs Parkway
Kansas City, MO**

Call (816) 891-7788 for reservations

JIM and JAN SEECK

Seeck Auctions

515-424-1116

HOACGA Convention Auction

Friday, April 24, 1998 -- 9:30 A.M.

Embassy Suites -- Kansas City, MO

Auctioneers dream of auctions like this one! We walk into a home and it is filled with the most outstanding Carnival Glass you can imagine, reds, pastels, vivids, most shapes, sizes and patterns, most all RARE and most all SUPER! This is what we have at the 1998 HOACGA Convention. The proud collectors are Joyce and Bobby Seale from Texas. The wonderful eye that Joyce has will show when you view the fantastic glass. Rarities galore fill this collection and most every piece is as pretty as you could expect. This is one sale you will not want to miss. The Embassy Suites Hotel is wonderful and is near the Kansas City airport! P.S. When you walk by Jan and I, don't wake us!!

Preview: Thursday evening.

HOACGA Convention information: Contact HOACGA President Robert Grissom at (816)356-5320.

Reservations: Call (816)891-7788 (Please ask for the HOACGA Convention block of rooms)

Terms: Cash or Check w/proper I.D. NO Buyer's Premium.

WRITE-IN BID POLICY

1. Write-in bids will be accepted by sending the numbers of the item(s) desired and the amount bid on each to:
Seeck Auctions, PO Box 377, Mason City, Iowa 50402.
2. If known by Auction Company, bids may be done over the telephone. (515)424-1116.
3. There is a \$5 handling charge for each successful bid. Shipping and insurance charges are additional.
4. Bidders will be notified by phone if their bid(s) are successful. This call will be made 1 - 3 days after the auction.
5. Please have all bids in by Monday, April 20th. All bids (by mail or phone) after this date may not be carried out.
6. Please place bids in the following increments: \$1 to \$300 - \$5 increments \$300 up - \$25 increments.
7. If you do not receive an item that sold for less than your bid, assume we cancelled your bid because the piece of glass had below average color, manufacture problem, damage or was not listed correctly.
8. To receive price lists send: \$20 -- for this auction and next 7 auctions
\$5 -- for only this auction or individual auction (please specify)

Send to the above address. (please allow 2 - 3 weeks delivery for price lists) Make checks payable to: Jan Seek.

You may now email us with your write-in bids! Our email address is: seekcauction@willowtree.com

Continue to include the numbers of the item(s) you would like to bid on and amount bid on each, please include your telephone number.

ALSO visit us at our website: <http://www.willowtree.com/~seekcauction>

- | | | | |
|-------------|--|-------------|---|
| <u>105</u> | 1. Imperial Peacock ^{ruffled rib} tri-cornered spittoon shape - marigold - odd shape | <u>900</u> | 16. Miniature Boot w/laces - marigold - scarce |
| <u>125</u> | 2. Star & File 6" plate - marigold | <u>750</u> | 17. Holly 9" plate - amethyst - very rare color, pretty |
| <u>85</u> | 3. Stork & Rushes hdd basket - marigold - scarce | <u>400</u> | 18. Holly 9" plate - green - also a very rare plate, nice |
| <u>215</u> | 4. Spirilex 12 1/2" vase - amethyst - super | <u>400</u> | 19. Holly 9" plate - blue - very nice plate, scarce |
| <u>60</u> | 5. Fine Cut Flower ruffled compote - green | <u>300</u> | 20. Holly 9" plate - white - super irid. |
| <u>235</u> | 6. Imperial Grape ruffled compote - purple - super | <u>325</u> | 21. Holly 9" plate - marigold - dark and nice |
| <u>85</u> | 7. Imperial Grape ruffled compote - lavender - super pretty, scarce color | <u>850</u> | 22. Leaf & Beads rosebowl - aqua opal - pastel and super |
| <u>85</u> | 8. M'burg Grape Wreath 7" 3 in 1 edge bowl - amethyst - radium | <u>175</u> | 23. Leaf & Beads rosebowl - blue - nice |
| <u>175</u> | 9. Hobnail miniature lamp - green - old or new?, might be Hanson | <u>400</u> | 24. M'burg Poppy round compote - amethyst - radium and very scarce, nice |
| <u>4250</u> | 10. FENTON'S PEACOCK AT URN 9" PLATE - BLUE - UNBELIEVABLE, BEST I'VE SEEN, RADIUM, MULTI-COLORED IRID. WOW! <i>Goog</i> | <u>9500</u> | 25. ROSE SHOW 9" PLATE - LIME GREEN OPAL - EXTREMELY RARE, AND SUPER PRETTY, A TOP PIECE IN THIS AUCTION, HOLY COW! |
| <u>625</u> | 11. Fenton's Peacock at Urn 9" plate - white - super pretty and scarce | <u>6500</u> | 26. ROSE SHOW 9" PLATE - EMERALD GREEN - FANTASTIC IRID. ON THIS EXTREMELY RARE PLATE, PRETTIEST I'VE SEEN <i>where Steve Davis</i> |
| <u>650</u> | 12. Fenton's Peacock at Urn 9" plate - marigold - dark and pretty | <u>3750</u> | 27. Rose Show 9" plate - lime green - very rare and super, many collectors would call this color vaseline |
| <u>900</u> | 13. Embroidered Mums ruffled bowl - ice blue - pretty pink, blue, and yellow irid., very scarce | | 28. Rose Show 9" plate - ice blue - very scarce and nice, has epoxy on rose |
| <u>5000</u> | 14. Rose Garden rosebowl - marigold - very rare | | 29. Rose Show 9" plate - blue - super and very rare, a dandy |
| | 15. S-REPEAT 7 PC. PUNCH SET - PURPLE - SUPER PRETTY AND EXTREMELY RARE, A SET THAT ONLY COMES FOR SALE ONCE IN A GREAT WHILE, HERE'S YOUR CHANCE! | | 30. Rose Show 9" plate - purple - super nice example of a rare plate |



- ___ 31. Rose Show 9" plate - marigold - nice pink highlights, scarce
- ___ 32. Rose Show 9" plate - white - nice, scarce
- ___ 33. Dragon & Lotus IC shaped bowl - red - cherry red w/red irid. super and very rare
- ___ 34. N's 8 sided Bushel Basket - green - super, has manufacture split in side of basket
- ___ 35. N's 8 sided Bushel Basket - ice green - more rare then the round versions, nice
- ___ 36. M'BURG PEACOCK MASTER IC SHAPED BOWL - AMETHYST - FANTASTIC MULTI-COLORED RADIUM IRID. ON THIS RARE BIRD
- ___ 37. Good Luck 9" plate w/BW back - green - very pretty and scarce
- ___ 38. Good Luck 9" plate w/BW back - marigold - scarce and nice
- ___ 39. Rustic 9" mid-size vase - marigold - usually taller, nice
- 1500 40. FENTON'S PEACOCK AT URN RUFFLED BOWL - RED - LESS THEN A HANDFULL KNOWN, CHERRY AND PRETTY, A RARE OPPORTUNITY
- ___ 41. Fenton's Peacock at Urn ruffled bowl - amethyst - pretty
- ___ 42. Apple Blossom Twigs 9" plate - blue - pretty and scarce
- ___ 43. M'BURG ROSE COLUMNS VASE - GREEN - ANOTHER TOP RARITY, EXTREMELY DESIRABLE VASE THAT SELDOM SELLS AT AUCTION, SUPER NICE
- ___ 44. Big Basketweave 11" vase - purple - super
- ___ 45. Big Basketweave 10" vase - white
- ___ 46. Hearts & Flowers PCE bowl - ice green - very rare and desirable
- ___ 47. Hearts & Flowers PCE bowl - white - also very rare
- ___ 48. Hearts & Flowers PCE bowl - green - very rare color and nice
- ___ 49. Hearts & Flowers PCE bowl - blue - electric & super, very rare and desirable, WOW!
- ___ 50. Hearts & Flowers PCE bowl - amethyst - as pretty as I've ever seen, rare
- 2300 51. Hearts & Flowers PCE bowl - marigold - dark and super, harder to find then you think!
- ___ 52. Cosmos & Cane 6" whimsey square bowl - white - scarce
- 2700 53. Imperial Grape 9 pc. punch set - purple - super blue irid. on this rare punch set, pretty
- ___ 54. Waterlily large ftd round bowl - amethyst - super
- 3000 55. M'BURG DEEP GRAPE CRE COMPOTE - AMETHYST - ONLY ONE THAT I KNOW OF IN THIS SHAPE, SUPER RADIUM IRID.
- ___ 56. M'burg Strawberry Wreath ruffled sauce - marigold - radium and super
- 3300 57. Holly CRE JIP hat shape - red - red with fantastic red irid., unbelievable
- 2300 58. Dandelion tankard water pitcher - purple - fantastic irid. and very rare, nice *Billy*
- 125 59. Dandelion tumbler - purple - super
- 3600 60. Lotus & Grape 9" plate - amethyst - fantastic radiant lavender colored irid. on this rare plate
- 2100 61. Lotus & Grape 9" plate - green - super rare and desirable
- 525 62. M'burg Strawberry ruffled compote - green - radium and super, scarce
- 550 63. M'burg Strawberry ruffled compote - amethyst - also radium and super, scarce
- 350 64. M'burg Strawberry ruffled compote - marigold - radium and nice
- 4200 65. PEACOCK AT THE FOUNTAIN RUFFLED COMPOTE - AQUA OPAL - PRETTY BUTTERSCOTCH IRID. ON THIS RARE COMPOTE, NEAT!
- ___ 66. Peacock at the Fountain ruffled compote - ice green - very rare and desirable, nice
- ___ 67. Peacock at the Fountain ruffled compote - ice blue - pretty example and rare
- ___ 68. Peacock at the Fountain ruffled compote - blue - pretty and rare, flat
- ___ 69. Peacock at the Fountain ruffled compote - purple - rare and desirable
- ___ 70. Peacock at the Fountain ruffled compote - marigold - pink irid. on this scarce piece
- ___ 71. Peacock at the Fountain ruffled compote - white - very scarce and nice
- ___ 72. Imperial Grape water pitcher - purple - super blue irid. on this scarce pitcher
- ___ 73. Imperial Grape tumbler - purple - matches pitcher
- 900 74. VINTAGE 3 IN 1 EDGE 9" BOWL - RED - EXTREMELY RARE SHAPE, ONLY A FEW KNOWN, CHERRY RED W/RED IRID. FANTASTIC *hard*
- ___ 75. M'burg Hobnail Swirl rosebowl - marigold - scarce
- ___ 76. M'burg Hobnail Swirl rosebowl - amethyst - nice and scarce
- ___ 77. N's Stippled Peacock at Urn master IC bowl - blue - super pretty, and very rare
- ___ 78. N's Stippled Peacock at Urn IC sauces (5) - blue - choice
- ___ 79. N's Stippled Peacock at Urn master IC bowl - marigold - fantastic pink irid., on this rare bowl, WOW!
- ___ 80. Enameled Apple Blossom water pitcher - blue - very rare enameled pitcher, nice
- ___ 81. Enameled Apple Blossom tumbler - blue
- 3500 82. M'BURG HOBSTAR & FEATHER WHIMSEY SPITTOON SHAPE - AMETHYST - MADE FROM THE GIANT ROSEBOWL ONLY ONE KNOWN AND SUPER, MINOR SPOT OF EPOXY ON SAWTOOTH BASE, INCREDIBLE!
- 255 83. Basketweave Open Edge IC shaped bowl - ice green - scarce
- 225 84. Kittens toothpick - blue - scarce color
- ___ 85. Miniature covered Hen "Little Jessie" - marigold - very desirable miniature
- 1700 86. Fashion rosebowl - purple - super irid. on this very rare piece
- 205 87. Four Pillars 10" vase - aqua opal - normal feet
- 7000 88. CHRYSANTHEMUM RUFFLED BOWL - RED -

SUPER PRETTY RED IRID. AND CHERRY RED COLOR ON THIS RARE PIECE

- 200 89. Octagon wine decanter - purple - very rare and pretty
- 175 90. Cosmos and Cane rosebowl - honey amber - has Headress interior, scarce
- 1700 91. Fanciful 9" plate - blue - super example and very scarce
- 200 92. POPPY SHOW 9" PLATE - GREEN - SUPER RARE AND SUPER PRETTY, A FANTASTIC PLATE
- 100 93. Poppy Show 9" plate - blue - super blue irid., on this rare piece *Spot*
- 185 94. Poppy Show 9" plate - amethyst - fantastic irid. for this plate, very rare
- 150 95. Poppy Show 9" plate - ice blue - very pretty and rare
- 1400 96. Poppy Show 9" plate - marigold - super pretty even irid., rare
- 200 97. Poppy Show 9" plate - white - minor spot on edge, pretty
- 80 98. Fentons Flowers rosebowl - red - pretty red colored irid., has normal buffed feet
- 450 99. Texas giant tumbler - blue - very scarce, sometimes called the Texas shootglass
- 500 100. PERSIAN GARDEN CHOP PLATE - LAVENDER - SUPER PRETTY AND SUPER RARE, ANOTHER RARE OPPORTUNITY IN THIS AUCTION
- 400 101. Persian Garden chop plate - white - super irid. on this rare plate *4 plates*
- ___ 102. Butterfly & Berry 9" vase - purple - very scarce color
- ___ 103. Butterfly & Berry 8" CRE vase - blue
- ___ 104. M'burg Nesting Swan square bowl - green - radium and very rare
- ___ 105. Persian Medallion 10" ruffled bowl - blue - fantastic blue irid.
- ___ 106. Waterlily ftd ruffled sauce - reverse anberina opal - extremely rare, and has neat red tips on the opal, nice
- ___ 107. Waterlily ftd ruffled sauce - red - cherry red color w/red irid., very rare
- ___ 108. Waterlily ftd ruffled sauce - amber red - has red irid., very scarce
- ___ 109. Waterlily ftd ruffled sauce - green - super
- 1500 110. M'BURG DEEP GRAPE 12 RUFFLED WHIMSEY COMPOTE - AMETHYST - RADIUM AND SUPER, ONLY ONE I KNOW OF, MINOR RUFFNESS AROUND EDGE
- 400 111. Persian Garden 6" plate - amethyst - very scarce, and nice
- 275 112. Persian Garden 6" plate - peach opal - very scarce
- 2700 113. Loganberry vase - purple - fantastic electric irid., rare and very desirable
- 300 114. M'burg Leaf & Little Flowers sherbert shaped compote - amethyst - radium and scarce
- 900 115. Grape & Cable 7 pc. whiskey decanter set - purple - very rare, nice
- 950 116. Grape & Cable perfume - purple - super example and rare

- 400 117. Grape & Cable pintray - purple - very nice, scarce
- 350 118. Grape & Cable dresser tray - purple - scarce
- ___ 119. Grape & Cable cologne bottles (2) - purple - choice
- 325 120. Grape & Cable powder jar - purple
- 275 121. Grape & Cable hatpin holder - purple - always in demand
- 2350 122. Grape & Cable whimsy sweetmeat - purple
- 2350 123. Grape & Cable 10 pc. master punch set - purple - very rare and extremely desirable, nice
- 195 124. Grape & Cable Variant 9" plate w/plain back - purple - pretty
- ___ 125. Grape & Cable 9" plate w/BW back - purple
- 4000 126. Orange Tree IC shaped bowl - red - fantastic red irid., on this rare and desirable bowl, WOW!
- 4000 127. Orange Tree IC shaped bowl - green - super, very scarce *Mark Nelson*
- ___ 128. Octagon large size water pitcher - purple - extremely rare and nice
- ___ 129. Octagon tumblers (3) - purple - rare tumblers, choice
- ___ 130. M'burg Big Fish 3 in 1 edge bowl - green - very rare, radium
- ___ 131. Peacocks 9" plate w/plain back - green - very rare, nice
- ___ 132. Daisy Square CRE rosebowl - marigold - scarce, nice
- ___ 133. N's Blackberry ruffled compote - purple - fantastic electric irid.
- 1000 134. Round Up 9" plate - blue - very pretty example, scarce
- 600 135. Round Up 9" plate - amethyst - super lavender irid., scarce
- ___ 136. PEACOCK TAIL 7" IC SHAPED BOWL - RED - EXTREMELY RARE AND DESIRABLE, CHERRY RED
- 425 137. Imperial Grape rosebowl - amber - very rare, nice
- ___ 138. Grape & Cable fernery - ice blue - very rare and desirable, nice
- ___ 139. Grape & Cable fernery - marigold - also rare and nice
- ___ 140. Flowers & Frames tri-cornered CRE dome ftd bowl - purple - super
- ___ 141. M'burg Peacock IC shaped sauce - green - radium and scarce
- ___ 142. Vintage dome ftd deep ruffled bowl - celest blue - very pretty and nice, very rare
- ___ 143. Fishnet & Grape 6" vase - red - very rare and desirable, seldom sold
- ___ 144. Fishnet & Primrose 6" vase - red - very rare and desirable
- 550 145. Fishnet & Lotus 6" vase - red - same as the two others
- 800 146. Nippon PCE bowl - lime green - very rare and super, not many around
- 600 147. Nippon PCE bowl - purple - super and scarce
- 600 148. Nippon PCE bowl - ice blue - super pretty
- 1900 149. Cherry Chain chop plate - marigold - dark,

Conf





- 400 super, very rare and desirable
- 150 Fenton's Grape & Cable femery - red - very scarce and desirable
- 300 151. N's Thin Rib 6" squatty vase - lime green - very scarce, squatty vases are hot!
- 1000 152. M'burg Peacock at Urn giant compote - green - satin and nice, very rare
- 400 153. Inverted Strawberry small compote - marigold - very rare, pretty
- 200 154. Sailboat round sauce - amberina - very pretty, scarce
- 2800 155. ORIENTAL POPPY 5 PC. TANKARD WATER SET - ICE BLUE - VERY RARE AND DESIRABLE, NICE
- 675 156. Oriental Poppy tankard water pitcher - purple - very scarce, nice
- 85 157. Oriental Poppy tumbler - purple
- 375 158. Mary Ann vase - amethyst - nice
- 1500 159. Luster Rose ftd fruit bowl - red - very rare and highly desired, nice
- 1800 160. Luster Rose ftd fruit bowl - purple - extremely rare and desirable, super pretty irid.
- 161 M'burg Fleur De Lis collar based IC shaped bowl - marigold - radium and super
- 162 Pony ruffled bowl - ice green - super pretty, very rare
- 163 Daisy & Drape flared out vase - aqua opal - scarce and pretty
- 1900 164. Persian Medallion 9" plate - marigold - a great example, very scarce *Museum*
- 2000 165. Wide Panel Epergne - white - an outstanding rarity, very pretty irid., frosty *Lee*
- 2150 166. Holly ruffled bowl - blue opal - very rare color, very nice
- 1900 167. Holly ruffled bowl - red - has red irid., is pretty, rare *Museum*
- 155 168. M'burg Primrose ruffled bowl - marigold - radium and nice
- 900 169. N's Peacock at Urn chop plate - purple - a super example, very rare and desirable
- 600 170. Diamond Lace 7 pc. water set - purple - fantastic irid.
- 2900 171. Peacocks ruffled bowl w/ribbed back - aqua opal - super pastel irid., as good as they get
- 172 Peacocks ruffled bowl w/ribbed back - marigold - dark and super
- 1400 173. Formal hatpin holder - purple - super and rare
- 400 174. Formal hatpin holder - marigold - very rare and desirable
- 1500 175. Grape Arbor tankard water pitcher - ice blue - dark, super, frosty and very rare
- 550 176. Grape Arbor 6 pc. tankard water set - marigold - dark and nice
- 900 177. Four Flowers Variant chop plate - purple - very rare in this size of plate
- 400 178. Hobstar & Waffle Block large basket - marigold
- 2200 179. Four Seventy Four milk pitcher - purple - extremely rare and pretty, a top milk pitcher
- 550 180. Leaf Column 11" vase - ice blue - scarce
- 181 Hearts & Flowers ruffled compote - ice green - very pretty, rare
- 182 Hearts & Flowers ruffled compote - ice blue - rare and very desirable
- 183 Hearts & Flowers ruffled compote - blue - pretty and scarce
- 184 Hearts & Flowers ruffled compote - aqua opal - pretty butterscotch irid., scarce
- 185 Hearts & Flowers ruffled compote - white - nice
- 186 Hearts & Flowers ruffled compote - marigold - pretty
- 1500 187. Fenton's Grape & Cable ftd ruffled bowl - blue opal - only one known, very pretty, neat
- 1500 188. Fenton's Grape & Cable ftd ruffled bowl - celest blue - super pretty stretch irid., very rare
- 900 189. Little Flowers 10" ruffled bowl - red - cherry red color, nice, has minor buffing on edge
- 300 190. Four Flowers chop plate w/Soda Gold exterior - peach opal - scarce
- 2800 191. GOOD LUCK PCE BOWL W/RIBBED BACK - AQUA OPAL - FANTASTIC PASTEL IRID. ON THIS EXTREMELY RARE PIECE, HAS INSIGNIFICANT EXCESS GLASS
- 192 Good Luck PCE bowl w/ribbed back - marigold - nice
- 3800 193. STRETCH GLASS RUFFLED TOP PUNCH BOWL & BASE - RED - ONLY ONE I KNOW OF, A HIGHLY DESIRABLE PIECE OF STRETCH
- 194 Colonial stretch cream & sugar - red - very nice
- 675 195. Stretch Glass ruffled top punch bowl top - celest blue - also scarce
- 650 196. Daisy & Drape turned in vase - purple - very pretty and scarce
- 1000 197. Field Flower water pitcher - purple - has super lavender irid., rare *Chick* *Green*
- 1300 198. Stippled Rays 6" plate - red - extremely rare plate, highly desirable
- 1000 199. Waterlily whimsey large size spittoon - marigold - only one I know of, is 6 1/2" wide
- 275 200. Cosmos & Cane ruffled compote - white - pretty
- 1400 201. M'burg Elk paperweight - amethyst - very nice and extremely rare, has epoxy in two corners
- 3250 202. STIPPLED GRAPE & CABLE 9" PLATE - SAPHIRE - FANTASTIC PASTEL IRID. ON THIS EXTREMELY RARE PLATE, WOW!
- 1250 203. Stippled Grape & Cable 9" plate - blue - very pretty example for this rare plate
- 204 Stippled Grape & Cable w/"Old Rose Distilling Co." 9" plate - green - very nice, scarce
- 205 Hattie rosebowl - marigold - super pretty irid. on this rare rosebowl
- 206 Blackberry Spray CRE JIP hat shape - reverse amberina - very pretty
- 207 HOBSTAR & FEATHER GIANT ROSEBOWL - GREEN - EXTREMELY RARE AND HIGHLY DESIRABLE, A FANTASTIC RARITY
- 208 Hoffman House goblet - red - rare piece
- 209 ROSE SHOW RUFFLED BOWL - LIME GREEN OPAL - AN EXTREMELY RARE

COLOR FOR THIS PATTERN, NICE

- ___ 210. Rose Show ruffled bowl - aqua opal - super pastel example, highly desirable
- ___ 211. M'burg Grape Wreath Variant crimped edge sauce - amethyst - radium
- ___ 212. PERSIAN MEDALLION 9" RUFFLED BOWL - RED - EXTREMELY RARE AND HIGHLY DESIRABLE PIECE OF RED, CHERRY RED COLOR
- ___ 213. Miniature Blackberry compote - white - rare color, buffed on base
- ___ 214. Vintage 9" ruffled bowl - aqua opal - very rare color, nice
- ___ 215. Vintage 7" ruffled bowl - aqua opal - very rare bowl
- ___ 216. Florentine small size candlesticks - red - very rare and nice, sold as pair
- ___ 217. M'burg Many Stars IC shaped bowl - amethyst - radium and super, very rare, has 5 point star
- ___ 218. Holly ruffled compote - red - super red and nice
- ___ 219. Footed Prism Panels 9" vase - blue - very rare color, nice
- ___ 220. N's Peacock at Urn master IC bowl - ice green - super color and irid., very rare
- ___ 221. N's Peacock at Urn master IC bowl - ice blue - also very pretty and rare
- ___ 222. N's Peacock at Urn master IC bowl - purple - very pretty and scarce
- ___ 223. N's Peacock at Urn master IC bowl - white - frosty and super
- ___ 224. N's Peacock at Urn IC sauces (6) - white - very scarce, choice
- ___ 225. M'BURG DEEP GRAPE ROUND COMPOTE - AMETHYST - SATIN AND SUPER, EXTREMELY RARE AND DESIRABLE
- ___ 226. M'BURG DEEP GRAPE ROUND COMPOTE - GREEN - ALSO SATIN AND SUPER, ONE OF MY FAVORITE PATTERNS
- ___ 227. Basketweave Open Edge large size two sides up basket - white - nice
- ___ 228. Rose Show Variant 9" plate - reninger blue - extremely rare plate and pattern, nice
- ___ 229. Rose Show Variant 9" plate - marigold - very rare and nice, another great plate
- ___ 230. M'burg Holly Sprig Variant CRE 8" bowl - amethyst - radium and super
- ___ 231. Rustic 23" funeral vase w/plunger foot - green - very rare color, has super irid., tough w/plunger foot
- ___ 232. Pond Lily cardtray shaped bon bon - white - super
- 13000 ___ 233. GARDEN PATH VARIANT CHOP PLATE - PURPLE - FANTASTIC EXAMPLE OF THIS EXTREMELY RARE PLATE, UNBELIEVABLE
- ___ 234. Orange Tree loving cup - blue
- ___ 235. HEARTS & FLOWERS 9" PLATE - LIME GREEN - SUPER EXAMPLE, EXTREMELY RARE, HOLY COW!
- ___ 236. Hearts & Flowers 9" plate - white - fantastic

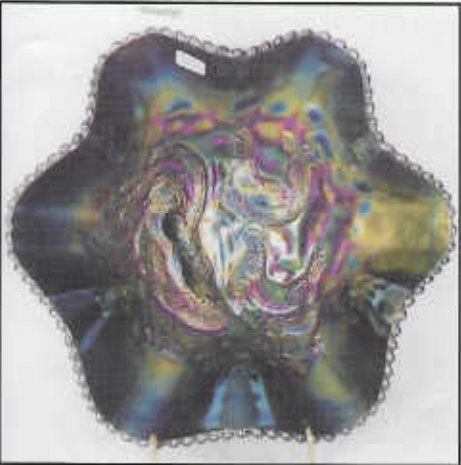
irid. on this rare plate, one of the best examples

- ___ 237. Hearts & Flowers 9" plate - ice blue - another very rare plate, nice
- ___ 238. Hearts & Flowers 9" plate - green - very rare color for this pattern
- ___ 239. Hearts & Flowers 9" plate - purple - super pretty example, very rare
- ___ 240. Hearts & Flowers 9" plate - marigold - has super pastel irid.
- ___ 241. Corn bottle - marigold
- ___ 242. Concord 9" plate - amethyst - very rare and highly desirable, nice
- ___ 243. Corinth 4" vase - peach opal - short little fat vase
- 3450 ___ 244. IMPERIAL GRAPE 9" PLATE - PURPLE - FANTASTIC BLUE IRID., A TOP IMPERIAL RARITY
- ___ 245. Imperial Grape 9" plate - amber - extremely rare and super
- ___ 246. Double Scroll candlesticks - red - scarce, sold as pair
- ___ 247. M'burg Trout & Fly ruffled bowl - amethyst - radium and scarce
- ___ 248. Grape & Cable sweetmeat - marigold - very rare color and super, as pretty as they get
- ___ 249. Grape & Cable sweetmeat - purple - pretty
- ___ 250. Homestead chop plate - purple - super pretty, fantastic mold work, very rare
- ___ 251. Open Rose rosebowl - purple - much more rare than people think, nice
- ___ 252. MEMPHIS 8 PC. FRUIT BOWL SET - ICE BLUE - VERY RARE AND HIGHLY DESIRABLE, SUPER
- ___ 253. Wishbone ftd ruffled bowl - marigold - pretty
- ___ 254. Captive Rose 9" plate - amethyst - super pretty, very rare color
- ___ 255. Captive Rose 9" plate - green - very rare color
- ___ 256. Captive Rose 9" plate - blue - very pretty, scarce
- ___ 257. Captive Rose 9" plate - marigold - very scarce color and nice
- ___ 258. Grape & Cable ftd centerpiece bowl - ice green - points are straight up, rare, nice
- ___ 259. M'burg Hobnail rosebowl - marigold - nice
- ___ 260. Butterfly & Tulip ftd square bowl - purple - very rare and highly desirable, a collectors favorite
- ___ 261. M'burg Nesting Swan ruffled bowl - amethyst - radium and nice
- ___ 262. Poppy Show ruffled bowl - ice green - very rare and pretty
- ___ 263. Poppy Show ruffled bowl - ice blue - also very rare and nice
- ___ 264. Poppy Show ruffled bowl - white - frosty and super
- ___ 265. Coin Dot ruffled bowl - red - fantastic red irid., rare, has spot of epoxy on point
- ___ 266. Peacocks PCE bowl - purple - pretty
- ___ 267. FARMYARD 6 RUFFLED BOWL - PURPLE - FANTASTIC BLUE IRID. ON THIS RARE



**AND EXTREMELY DESIRABLE BOWL,
WOW!**

- ___ 268. Dugan Cherries CRE 6" plate - purple - scarce
- ___ 269. Acorn Burrs 8 pc. punch set - purple - super pretty and highly desirable
- ___ 270. Hand 5" vase - marigold - scarce
- ___ 271. Plume Panels 11" vase - red - very rare and nice
- ___ 272. Singing Birds 10" IC shaped bowl - marigold - only one I know of, probably made from the master berry bowl, neat
- ___ 273. Panther ftd ruffled sauce - red - super example
- ___ 274. N's Corn vase - marigold - rare color, nice
- ___ 275. Persian Medallion chop plate - blue - very pretty for these, scarce
- ___ 276. Fine Cut & Roses rosebowl - aqua opal - super pretty, lots of opal, pretty irid., and rare perfect feet
- ___ 277. Fine Cut & Roses rosebowl - ice blue - very pretty, dark, perfect feet
- ___ 278. M'burg Peacock at Urn 3 in 1 edge shotgun bowl - amethyst - radium, pretty and very rare
- ___ 279. Heavy Vine cologne bottle - marigold - scarce
- ___ 280. Dragon & Lotus collar based ruffled bowl - aqua opal - as good as they get, nice opal and pretty, rare
- ___ 281. Dragon & Lotus collar based ruffled bowl - peach opal - pretty and scarce
- ___ 282. Orange Tree standard size mug - red - very red, nice
- ___ 283. Buzz Saw small size cruet - green - very scarce, nice
- ___ 284. Grape Leaves ruffled bowl - ice blue - very rare, nice
- ___ 285. Leaf Chain 9" plate - marigold - super and very scarce
- ___ 286. Basketweave Open Edge JIP shaped hat - amber red - pretty
- ___ 287. Basketweave Open Edge JIP shaped hat - aqua - pretty
- ___ 288. Strawberry Epergne w/ruffled base and CRE lily - purple - super, very rare
- ___ 289. Drapery 9" vase - ice green
- ___ 290. Diving Dolphins ftd rosebowl - amethyst - very scarce rosebowl
- ___ 291. Vintage 10" IC shaped bowl - red - very red color, very rare
- ___ 292. Imperial Grape 6" plate - purple - pretty
- ___ 293. M'burg Hobnail Spittoon - amethyst - very rare and nice
- ___ 294. Imperial Grape 7 pc. wine set - purple - very pretty
- ___ 295. M'burg Vintage IC shaped bowl w/Hobnail back - marigold - satin & super, very rare
- ___ 296. Apple Blossom Twigs 9" plate w/smooth edge - purple - very rare w/this edge, super
- ___ 297. Ranger cologne bottle - marigold - nice
- ___ 298. Ranger perfume bottle - marigold - pretty
- ___ 299. Autumn Acorn 9" plate - green - very rare and desirable, pretty
- ___ 300. M'burg Peacock ruffled sauce - amethyst - super radium irid., scarce
- ___ 301. **PLAID IC SHAPED BOWL - RED - CHERRY RED AND NICE, EXTREMELY RARE AND DESIRABLE**
- ___ 302. Strawberry 9" plate - amethyst
- ___ 303. Peacocks 9" plate w/ribbed back - ice blue - pretty and very rare
- ___ 304. Peacocks 9" plate w/ribbed back - purple - very nice and scarce
- ___ 305. Peacocks 9" plate w/ribbed back - marigold - dark and pretty
- ___ 306. Peacocks 9" plate w/ribbed back - ice green - nice
- ___ 307. Peacocks 9" plate w/ribbed back - white - frosty and nice
- ___ 308. Persian Garden ruffled fruit bowl - lavender - rare color
- ___ 309. Greek Key 9" plate w/ribbed back - blue - very rare plate, a must for plate collectors
- ___ 310. Greek Key 9" plate w/BW back - marigold - very scarce
- ___ 311. M'burg Peacock at Urn large IC shaped bowl - green - satin and super, very rare
- ___ 312. Octagon small compote - purple - very pretty, rare
- ___ 313. Classic Arts rosebowl - marigold - scarce
- ___ 314. Grape & Cable dresser tray - ice blue - pretty irid., rare
- ___ 315. Grape & Cable pintray - ice blue - very rare and desirable
- ___ 316. Coin Spot ruffled compote - celest blue - super pretty stretch irid. on this rare piece
- ___ 317. Rustic 19" funeral vase - blue - very pretty and scarce
- ___ 318. M'burg Rosalind small size compote - green - very rare compote and nice, satin
- ___ 319. Acanthus round bowl - purple - super
- ___ 320. Hearts & Flowers ruffled bowl - aqua opal - extremely rare and nice, has light marigold overlay
- ___ 321. Three Row Open Edge card tray shaped bowl - ice blue - dark and super
- ___ 322. Penny match holder - purple - extremely rare novelty, super irid.
- ___ 323. Horse Medallion round bowl - amber red - very pretty irid., rare
- ___ 324. Peter Rabbit IC shaped bowl - blue - super rare and pretty, nice mold work
- ___ 325. Estate perfume bottle - smoke - very scarce
- ___ 326. Estate vase - smoke - scarce
- ___ 327. Lotus & Grape cardtray shaped bon bon - red slag - very rare and nice
- ___ 328. Orange Tree 9" plate - marigold - dark and pretty
- ___ 329. Orange Tree 9" plate - white - a super example
- ___ 330. Two Flowers spt ftd ruffled bowl - red - very rare and pretty, cherry red
- ___ 331. Diamond Cut 12" large vase - marigold - pretty, scarce
- ___ 332. Basketweave Open Edge ruffled hat - black amethyst - very scarce



4000

- ___ 333. **STIPPLED THREE FRUITS 9" PLATE W/RIBBED BACK - AQUA OPAL - LOTS OF OPAL, SUPER PASTEL IRID. AND EXTREMELY RARE, WOW!**
- ___ 334. Stippled Three Fruits 9" plate w/ribbed back - blue - super electric irid. on this rare plate
- ___ 335. Stippled Three Fruits 9" plate w/ribbed back - marigold - very pretty
- ___ 336. **Amaryllis miniature dome ftd plate - purple - spectacular, rare**
- ___ 337. **Horse Medallion ftd nut bowl - red - cherry red and super, another nice piece of red**
- ___ 338. Little Barrel - green - scarce, very pretty
- ___ 339. **M'BURG DEEP GRAPE SQUARE COMPOTE - MARIGOLD - SATIN AND SUPER, EXTREMELY RARE AND DESIRABLE**
- ___ 340. Shasta Daisy IC shaped bowl - iridized custard - very rare and desirable
- ___ 341. **Pansy flat relish tray - purple - spectacular irid. on this rare piece**
- ___ 342. **Blackberry Spray ruffled hat shape - red opal - very pretty, rare**
- ___ 343. **1910 Detroit Elks ruffled bowl blue - very rare and desirable**
- ___ 344. **Coral 9" plate - marigold - extremely rare and pretty, a tough plate to get pretty**
- ___ 345. M'burg Holly Sprig round bowl - amethyst - radium and nice
- ___ 346. **Stippled Strawberry ruffled bowl w/ribbed back - lime green - very rare and pretty**
- ___ 347. Stippled Rays IC shaped compote - celest blue - very pretty, rare
- 2400 ___ 348. **OPEN ROSE 9" PLATE - PURPLE - SUPER PRETTY IRID. ON THIS RARE IMPERIAL PLATE**
- ___ 349. Vintage 7" plate - green
- ___ 350. **Inverted Strawberry spittoon - green - a rare little spittoon and highly desired**
- ___ 351. **Inverted Strawberry spittoon - marigold - very pretty and rare**
- ___ 352. **Persian Medallion bon bon - red - cherry red and pretty, looks red**
- ___ 353. Ski Star large ruffled bowl - purple - scarce and pretty
- ___ 354. **Dugan Vintage dome ftd 9" plate - amethyst - very rare, has pretty irid.**
- ___ 355. Grape & Cable bon bon - iridized custard - scarce
- ___ 356. **Leaf Chain 7" ruffled bowl - red - very rare and desirable, nice**
- ___ 357. **Sunflower spt ftd ruffled bowl - ice blue - super irid., very rare, not many around**
- ___ 358. Wishbone & Spades 10" IC shaped bowl - peach opal
- ___ 359. **EMBROIDERED MUMS 9" PLATE - ICE GREEN - FANTASTIC IRID. ON THIS RARE PLATE**
- ___ 360. Pastel Swan salt - purple - nice
- ___ 361. N's Town Pump - purple - scarce, has epoxy on base
- ___ 362. **Peacock & Grape spt ftd ruffled bowl - red - very nice example of this rare bowl**

- ___ 363. Blackberry Wreath 8" ruffled bowl - amethyst
- ___ 364. **Shell 9" plate - marigold - super rare**
- ___ 365. **Fruits & Flowers bon bon - aqua opal - nice, scarce**
- ___ 366. Waffle Block oval hdd basket - marigold
- ___ 367. **Grape & Cable banana boat - ice blue - very pretty and scarce**
- ___ 368. Two Flowers spt ftd rosebowl - purple - scarce color
- ___ 369. **Lotus & Grape IC shaped bowl - persian blue - very rare color and highly desirable**
- ___ 370. **STAG & HOLLY SPT FTD RUFFLED BOWL - RED - CHERRY RED COLOR W/RED IRID., BEST EXAMPLE I'VE SEEN, WOW!**
- ___ 371. Fenton's Butterfly ornament - marigold - missing his or her head
- ___ 372. Butterfly 4" ornament - ice blue
- ___ 373. Butterfly 4" ornament - marigold
- ___ 374. **Heart & Vine "Spector's Department Store" 9" plate - marigold - very pretty, very nice**
- ___ 375. **Peacock & Grape spt ftd IC shaped bowl - lime green opal - very nice and scarce**
- ___ 376. Good Luck ruffled bowl w/ribbed back - purple - nice
- ___ 377. Gothic Arches 10" vase - marigold
- ___ 378. **Stippled Grape & Cable ruffled bowl - aqua - has a pretty marigold overlay, very rare**
- ___ 379. Heavy Grape 7" ruffled bowl - purple - pretty
- ___ 380. **THISTLE 9" PLATE - GREEN - EXTREMELY RARE AND SPECTACULAR, AS GOOD AS THEY COULD POSSIBLY GET**
- ___ 381. **THISTLE 9" PLATE - AMETHYST - ALSO EXTREMELY RARE AND SUPER, A FANTASTIC PLATE**
- ___ 382. Stretch Glass ruffled bowl - red
- ___ 383. Floral enameled tumbler - red
- ___ 384. Ladies Slipper - red flash - dated 1938
- ___ 385. Canoe - red flash
- ___ 386. Wreath of Roses tri-cornered dish - marigold
- ___ 387. Stretch Glass 11" vase - red
- ___ 388. Purse - dark
- ___ 389. Stretch Glass 8 1/2" vase - red
- ___ 390. Stretch Glass ruffled hatshape - celest blue

