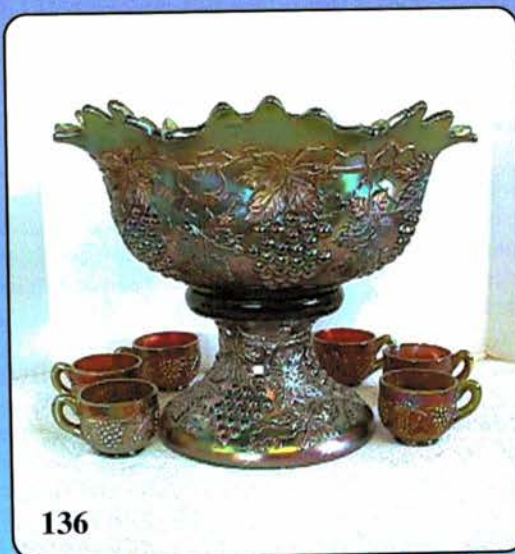


AUCTION

*Heart of America Carnival Glass Club Convention
Saturday, April 24, 2004 -- 9:30 A.M.*

The Pritchard Collection



Embassy Suites Hotel
7640 NW Tiffany Springs Parkway
Kansas City, Missouri
Call (816)891-7788 for reservations

Jim and Jan Seeck

Seeck Auctions 641-424-1116

SATURDAY, APRIL 24, 2004 -- 9:30 A.M.

Embassy Suites Hotel – Kansas City, MO

NO BUYER'S PREMIUM

OPEN TO THE PUBLIC

The Dr. Jack and late Bonnie Pritchard Collection

It is a pleasure to be selling at auction the Dr. Jack and late Bonnie Pritchard collection of Carnival Glass. Dr. Jack is from Arkansas and he and his wife started collecting in the '70s. Their collection is full of wonderful stories of the '70s and '80s days of collecting. Old collections like these are becoming fewer and fewer as they are sold and are spread amongst all the collections of the world. This is a fine auction of Carnival Glass. Many of the pieces are not only extremely rare but also beautiful. Come and enjoy the convention and auction. This auction is open to the public and not only to HOACGA members.

Don't forget to check out our website for lots of pictures!

www.seeckauction.com

Also, please email us and we will put you on our email mailing list for auction notices.

Reservations can be made by calling the hotel directly at 816-891-7788. Ask for reservations and mention the HOACGA Convention. If you have a problem or questions about reservations at the hotel or questions about the convention, please call Bob Grissom at: 816-356-5320. Cut-off date for special rates is March 31st.

Preview: Friday Evening.

Terms: Cash or Check with proper I.D.

ABSENTEE BID POLICY

1. Write-in bids will be accepted by sending the numbers of the item(s) desired and the amount bid on each to:
Seeck Auctions, PO Box 377, Mason City, Iowa 50402.
2. If known by Auction Company, bids may be done over the telephone. (641)424-1116.
3. You may **email** your bids to us: **jimjan@seeckauction.com** Continue to include the numbers of the item(s) you would like to bid on and amount bid on each, please include your telephone number.
4. There is a \$5 handling charge for each successful bid. Shipping and insurance charges are additional.
5. Bidders will be notified by phone/email if their bid(s) are successful. This will be done 1 - 3 days after the auction.
6. Please have all bids in by **Tues., April 20th**. All bids (by mail, phone or **email**) after this date may not be carried out.
7. Please place bids in the following increments: \$1 to \$300 - \$5 increments \$300 up - \$25 increments.
8. **If you do not receive an item that sold for less than your bid, assume we cancelled your bid because the piece of glass had below average color, manufacture problem, damage or was not listed correctly.**
9. Auction results are posted on our website within 5 days of the auction (depending on drive time home from the sale.) Also results are available in many of the club newsletters.

- | | |
|------------------------------------------------------------------------------------------------------------------------------|--------------------------------------------------------------------------------------------------------------------------------------------------|
| ___ 1. Grape Delight ftd nut bowl - purple | ___ 21. Grape & Cable sweetmeat - blue lid, purple base - extremely rare lid, not many around |
| ___ 2. Butterfly bon bon w/plain back - marigold - pretty | ___ 22. Grape & Cable sweetmeats (2) - purple - both nice, choice |
| ___ 3. Miniature bulldogs (2) - marigold - choice | ___ 23. Oriental Poppy 5 pc. tankard water set - purple - as nice of one that I have sold |
| ___ 4. Fenton Peacock at Urn ruffled compote - marigold | ___ 24. Oriental Poppy tankard water pitcher - marigold - very nice |
| ___ 5. Acorn Burrs tumblers (2) - green - choice | ___ 25. Oriental Poppy tumblers (2) - marigold - choice |
| ___ 6. Field Flower tumbler - violet blue - scarce color | ___ 26. Acorn Burrs creamer & spooner - purple - choice |
| ___ 7. Heavy Grape master berry bowl - marigold | ___ 27. Christmas compote - marigold - extremely rare & absolutely super |
| ___ 8. Fentonia tumbler - blue - pretty | ___ 28. Ribbon Tie 3 in 1 edge bowl - amethyst - pretty |
| ___ 9. Pony ruffled bowl - marigold | ___ 29. Inverted Thistle 5 pc water set - marigold - extremely rare color for these, one of only a couple I know of |
| ___ 10. Strawberry Scroll water pitcher - blue - exceptional quality & unique shape make this a fantastic pitcher | ___ 30. Grape & Cable cracker jars (2) - purple - choice |
| ___ 11. Strawberry Scroll tumblers (2) - blue - choice | ___ 31. Grape & Cable cracker jar - marigold - dark, nice |
| ___ 12. Brooklyn Bridge 6 ruffled bowl - marigold - scarce, nice | ___ 32. Fenton Peacock at Urn 9" plate - blue - scare & nice |
| ___ 13. Garden Path Variant 6" plate - white - very scarce, has Soda Gold exterior | ___ 33. Fenton Peacock at Urn 9" plate - white - minor nick on one point |
| ___ 14. Grape & Cable bon bon - purple - exceptional quality | ___ 34. Scales 6" plate - amethyst |
| ___ 15. Grape & Cable 7 pc. water set - purple - pretty | ___ 35. Butterfly & Tulip square shaped ftd ruffled deep bowl - purple - a little deeper than you usually see, very pretty & rare |
| ___ 16. Grape & Cable 6 pc. water set - marigold - nice set | ___ 36. Crabclaw 7 pc. water set - marigold - nice |
| ___ 17. Diving Dolphins ftd bowl w/Scroll Embossed interior - amethyst | ___ 37. Orange Tree hatpin holder - marigold - pretty |
| ___ 18. NUART Chrysanthemum chop plate - purple - fantastic example, super pretty & extremely desirable! | |
| ___ 19. Persian Medallion 6" plate - marigold | |
| ___ 20. Grape & Cable sweetmeat - marigold - dark & pretty, rare | |

- ___ 38. **Lily of the Valley tankard water pitcher - blue – super pretty, an extreme rarity, WOW!**
- ___ 39. Grape & Cable dresser tray - purple - very nice
- ___ 40. Grape & Cable pin tray - purple - scarce
- ___ 41. Grape & Cable powder jar - purple - nick on top rim of base
- ___ 42. Grape & Cable cologne bottles(2) - purple - both nice, choice
- ___ 43. Grape & Cable perfume - purple - nice example
- ___ 44. Vineyard water pitcher - marigold
- ___ 45. **Farmyard 6 ruffled bowl - purple - has super irid., a real beauty, rare & desirable**
- ___ 46. Four Seventy Four 3" tall cordial, has 1 1/4" base - marigold - neat miniature
- ___ 47. Singing Birds 6 pc. water set - green - very pretty pitcher, nice set!
- ___ 48. Singing Birds water pitcher - purple - bit silvery, scarce
- ___ 49. Singing Birds tumbler - purple
- ___ 50. Singing Birds water pitcher - marigold - very nice
- ___ 51. Acorn Burrs 6 pc. berry set - amethyst - scarce set
- ___ 52. **Stag & Holly chop plate - marigold - very scarce & highly desirable, nice**
- ___ 53. Wild Strawberry ruffled sauces (2) - purple - choice
- ___ 54. **Milady tankard water pitcher - blue - very pretty example of this rare pitcher**
- ___ 55. Milady tumbler - blue
- ___ 56. **Fenton Good Luck ruffled bowl - marigold - extremely rare & very pretty**
- ___ 57. Stippled & Banded Grape & Cable banana boat - marigold - scarce version
- ___ 58. **Tiger Lily 7 pc. water set - purple - rare set in this color, pitcher a bit silvery**
- ___ 59. Tiger Lily 6 pc. water set - marigold - nice
- ___ 60. **Birmingham Age Herald 9" plate - amethyst - super pretty plate, as nice as they come**
- ___ 61. Orange Tree breakfast set - white - scarce set
- ___ 62. Wreath of Roses 8 pc. punch set w/Vintage interior - purple - absolutely fantastic irid. on this piece, small chip on top edge of bowl
- ___ 63. Kittens ruffled bowl - marigold
- ___ 64. **M'burg Gay Nineties water pitcher - amethyst - a top pitcher in any collection, extremely rare & highly sought after, WOW!**
- ___ 65. Grapevine Lattice tumbler - amethyst
- ___ 66. **Grape & Cable cvd compote - marigold - extremely rare compote, highly desirable**
- ___ 67. Grape & Cable cvd compote - purple - pretty example, also scarce
- ___ 68. Beaded Shell mug – marigold
- ___ 69. Beaded Shell mug – purple
- ___ 70. **Greek Key tankard water pitcher - amethyst - super rare, haven't sold one in awhile**
- ___ 71. Greek Key tankard water pitcher - marigold – very scarce & pretty, heat check in handle
- ___ 72. Grape & Cable 9" plate - purple - slightly warped
- ___ 73. Grape & Cable small size fruit bowl - purple - scarce
- ___ 74. Grape & Cable small size fruit bowl - marigold - super pretty
- ___ 75. **Octagon large size water pitcher - purple – extremely rare pitcher, not many opportunities to buy this one!**
- ___ 76. Octagon 7 pc. water set w/large size pitcher - marigold - pretty
- ___ 77. **Octagon small size water pitcher - purple - also extremely rare, has super irid., WOW!**
- ___ 78. Octagon small size water pitcher - marigold
- ___ 79. Octagon tumbler - marigold - flat version
- ___ 80. **1914 Parkersburg Elk 7" plate - blue - super pretty, highly desirable**
- ___ 81. Hobstar Band water pitcher w/flat bottom - marigold – has manufacture roughness on bottom
- ___ 82. **Peacocks 9" plate w/ribbed back - blue - electric & super**
- ___ 83. Peacocks 9" plate w/ribbed back - marigold - nick on one point
- ___ 84. Peacocks 9" plate w/ribbed back - lime green - scarce color, pretty
- ___ 85. Peacocks 9" plate w/ribbed back - white - nice
- ___ 86. Florentine large size candlesticks - marigold - sold as pair
- ___ 87. **Grape Arbor tankard water pitcher - ice green - frosty, rare & super, a real dandy!**
- ___ 88. **Grape Arbor 7 pc. tankard water set - ice blue - super rare set, very nice, small heat check in handle**
- ___ 89. **Grape Arbor tankard water pitcher - white – fantastic example, frosty & beautiful**
- ___ 90. Grape Arbor tumblers (2) - white - choice
- ___ 91. **Grape Arbor tankard water pitcher - purple - scarce, pretty**
- ___ 92. Grape Arbor tankard water pitcher - marigold
- ___ 93. Little Fishes ftd ruffled master berry bowl - blue - a bit silvery
- ___ 94. Rose Show 9" plate - purple – pretty, chip on edge
- ___ 95. Rose Show 9" plate - white - scarce, nice
- ___ 96. Heavy Grape punch bowl, base & 8 hdd nappies - marigold - beautiful set
- ___ 97. Manhattan 6 1/2" vase w/The Hale Baths, Hot Springs, AR - marigold
- ___ 98. Mikado round compote - marigold - quite flat
- ___ 99. N's Peacock at the Fountain 7 pc. water set - amethyst - very pretty set
- ___ 100. N's Peacock at the Fountain water pitcher - pastel marigold
- ___ 101. Heavy Grape chop plate – green
- ___ 102. Heavy Grape chop plate - marigold - pretty
- ___ 103. Dandelion mug - aqua opal - has butterscotch irid. - nice
- ___ 104. Kittens cereal bowls (2) - marigold - choice
- ___ 105. Maple Leaf water pitcher - purple - minor pinpoint on top edge
- ___ 106. Robin water pitcher - marigold
- ___ 107. **N's Town Pump - marigold - very very scarce color & nice**
- ___ 108. N's Town Pump - purple - scarce & desirable
- ___ 109. Grape & Cable hdd nappy - marigold - made from punch cup
- ___ 110. **Wishbone 7 pc. water set - marigold - super nice set, hard to find**
- ___ 111. Grape & Cable 10" ruffled bowl - green
- ___ 112. Old Rose Distillery Stippled Grape & Cable 9" plate w/ribbed back - green - scarce & desirable
- ___ 113. **M'burg Peacock at Urn giant compote - amethyst – extremely rare, satin & super**
- ___ 114. Enameled Lotus 6 pc. water set - marigold
- ___ 115. Fisherman's mug – marigold
- ___ 116. Fisherman's mug - purple
- ___ 117. **Cosmos & Cane 7 pc. tankard water set - honey amber - extremely rare to find this pitcher, let alone have a complete set, SUPER**
- ___ 118. Sailboat wine – marigold
- ___ 119. **Illinois Soldiers & Sailors 7" plate - marigold – fantastic irid. on this rare plate**
- ___ 120. Grape & Cable 4 pc. table set - purple - nice set
- ___ 121. M'burg Elk's paperweight - purple - extremely rare, entire base has been polished
- ___ 122. Jeweled Heart water pitcher - marigold - very scarce pitcher
- ___ 123. Kittens 4 sides up dish - marigold
- ___ 124. **M'burg Cleveland Memorial Ashtray - amethyst - extremely rare item, highly desirable, we've had a few of these of late, but for many years, none had sold, this may be your last chance**
- ___ 125. Grape & Cable breakfast set - purple - nice



160



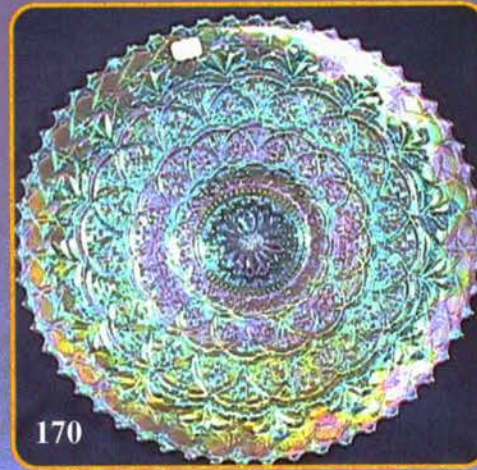
192



175



18



170



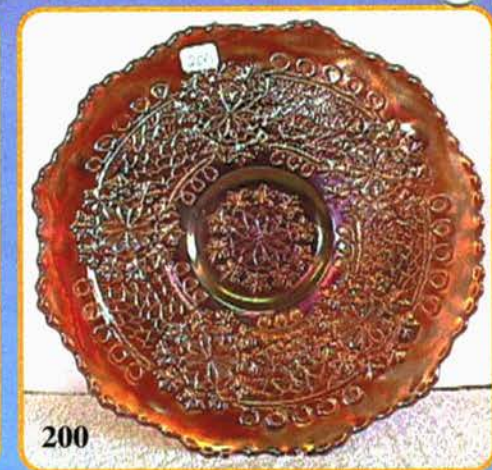
181



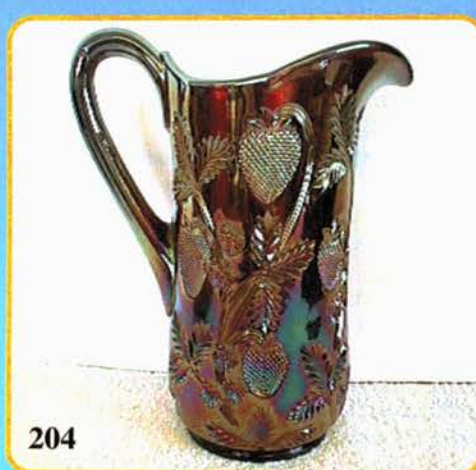
218



232



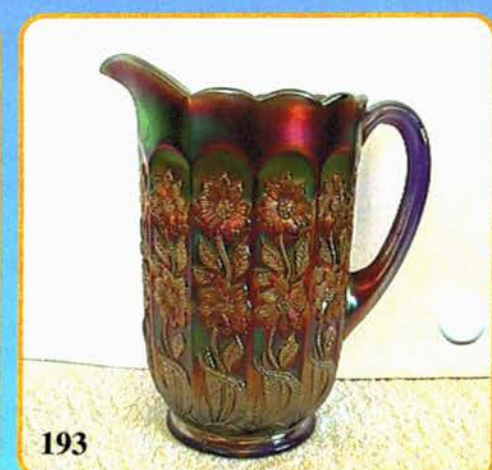
200



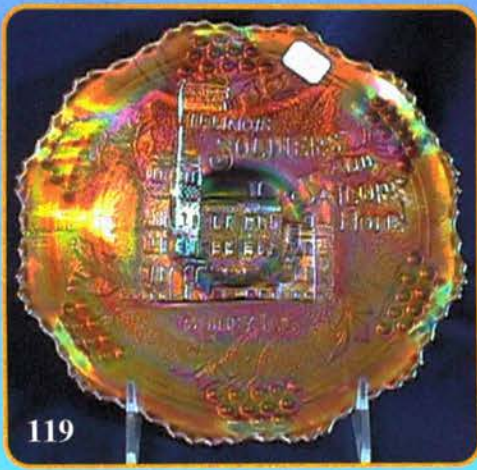
204



20

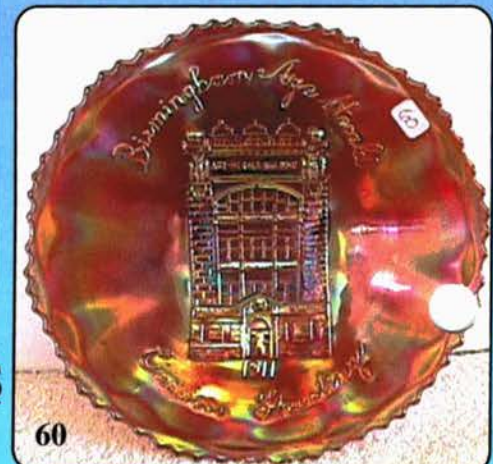
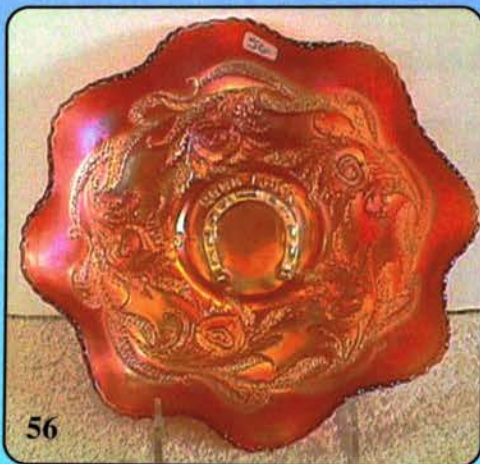
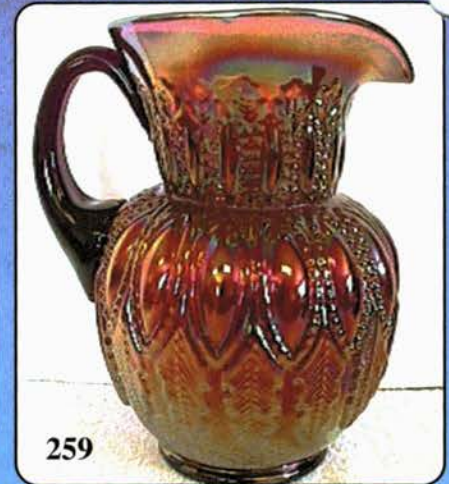
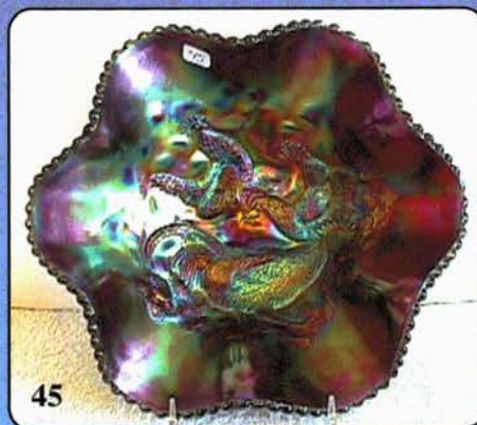
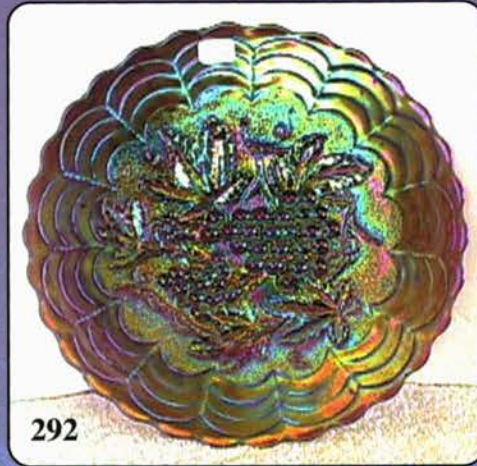
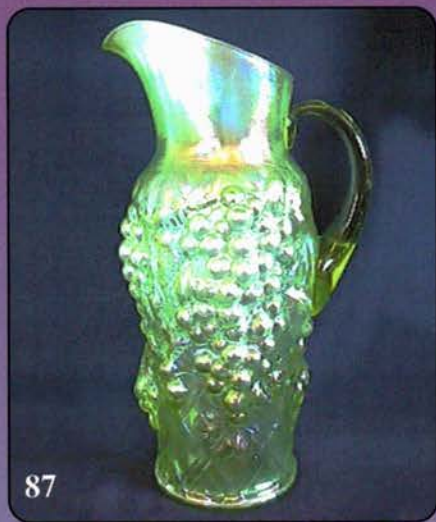


193



- ___ 126. Grape & Cable breakfast creamer - marigold
- ___ 127. Open Rose 9" plate - amber - pretty, scarce
- ___ 128. Open Rose 9" plate - marigold
- ___ **129. Heavy Iris 6 pc. tankard water set - white - super pretty, very rare, a great tankard set**
- ___ 130. Heavy Iris tankard water pitcher - marigold - scarce
- ___ 131. Heavy Iris tumblers (3) - marigold - choice
- ___ 132. Butterfly & Tulip banana boat shaped ftd bowl - marigold - scarce
- ___ 133. Grape & Cable candlesticks - purple - sold as pair
- ___ 134. Palm Beach water pitcher - white - frosty w/super pretty irid.
- ___ 135. Scroll Embossed 9" plate - purple - fantastic
- ___ **136. Grape & Cable 12 pc. master punch set - green - extremely rare color, not many opportunities for this set, cups are stippled**
- ___ 137. Grape Leaves ruffled bowl - purple
- ___ 138. Springtime water pitcher - purple - scarce
- ___ 139. Springtime 6 pc. water set - marigold - pitcher is gorgeous, very scarce
- ___ 140. Corn bottle - smoke - scarce, super
- ___ 141. Corn bottle - marigold - scarce, pretty
- ___ **142. Hattie chop plate - purple - extremely rare & fantastic!**
- ___ 143. Kittens toothpicks (2) - blue - choice
- ___ 144. Grape & Cable banana boat - purple - scarce, pretty
- ___ 145. Grape & Cable banana boat - marigold - fantastic
- ___ 146. M'burg Feather & Heart water pitcher - marigold - very scarce & nice
- ___ 147. Holly 9" plate - blue - scarce
- ___ 148. Holly 9" plate - white - fantastic irid.
- ___ **149. Christmas compote - purple - WOW, this is beautiful, highly desirable, this is Christmas in April!**
- ___ 150. Inverted Strawberry spittoon - green - roughness on edge
- ___ 151. Stork & Rushes water pitcher - amethyst - super nice for these
- ___ 152. Stork & Rushes tumbler - amethyst
- ___ 153. Stork & Rushes 7 pc. water set - marigold - scarce, nice
- ___ 154. Inverted Strawberry large size round compote - marigold - very rare, signed Nearcut
- ___ 155. Grape & Cable 11" ruffled bowl w/BW back - white - very scarce bowl
- ___ **156. Concord 9" plate - amethyst - very pretty, very rare**
- ___ 157. Singing Birds mug - purple
- ___ 158. Singing Birds mugs (2) - marigold - choice
- ___ **159. M'burg Hobnail water pitcher - blue - extremely rare & super, from the Wilson auction**
- ___ **160. M'burg Hobnail water pitcher - amethyst - also extremely rare & nice, another great opportunity**
- ___ 161. M'burg Hobnail swirl rosebowl - amethyst - scarce
- ___ 162. Grape & Cable whiskey decanter - purple - scarce, minor nick around stopper hole
- ___ 163. Grape & Cable shot glass - purple - pinpoint on base
- ___ 164. Grape & Cable 5 pc. whiskey decanter set - marigold - nice set
- ___ 165. Wishbone 9" ftd plate - purple - scarce, nice
- ___ 166. Butterfly & Fern 7 pc. water set - amethyst - scarce set, nice
- ___ 167. M'burg Seacoast pin tray - green - rare, great example, minor pinpoint on back edge
- ___ 168. M'burg Seacoast pin tray - marigold - super pretty, minor nick on back edge
- ___ **169. Persian Garden chop plate - lavender - extremely rare & desirable, not many around, nice, minor pinpoint on point**
- ___ **170. Persian Garden chop plate - white - fantastic irid. on this extremely rare chop plate**
- ___ 171. Heron mug - purple - scarce
- ___ 172. Dandelion tankard water pitcher - purple - very pretty & quite scarce
- ___ 173. Dandelion 7 pc. tankard water set - marigold - nice set
- ___ 174. Fenton's Three Fruits 12 sided 9" plate - amethyst
- ___ **175. 1914 Parkersburg Elk's bell - blue - extremely rare pretty**
- ___ 176. Waterlily toothpick - marigold
- ___ **177. Peach water pitcher - white - extremely rare, has gold decoration, nice**
- ___ 178. Peach tumbler - white - gold, nice
- ___ **179. Peach 7 pc. water set - blue - pitcher has thick white slag streaks throughout, pretty**
- ___ 180. Grape & Cable sweetmeat whimsey - purple - pretty
- ___ **181. Poppy Show 9" plate - blue - super pretty, a dandy plate**
- ___ 182. Raspberry milk pitcher - amethyst - scarce
- ___ 183. M'burg Peacock at Urn master IC bowl - green - satin
- ___ 184. M'burg Rosalind ruffled sauce - green - satin & super, very very rare
- ___ **185. Vineyard 5 pc. water set - purple - extremely hard color to find, nice set**
- ___ 186. Vineyard 5 pc. water set - marigold
- ___ 187. Grape & Cable dresser tray - marigold - nice
- ___ 188. Grape & Cable pin tray - marigold - nick on edge
- ___ 189. Grape & Cable powder jar - marigold
- ___ 190. Grape & Cable cologne bottles(2) - marigold - choice
- ___ 191. Grape & Cable perfume bottle - marigold - very pretty pink & blue irid.
- ___ **192. Starflower water pitcher - marigold - extremely rare color & super, a great pitcher**
- ___ **193. Starflower water pitcher - blue - also extremely rare, very nice, a great pair!**
- ___ 194. Enameled Apple Blossom 7 pc. berry set - blue - extremely rare, 1 of only 2 or 3 sets around
- ___ 195. Wine & Roses cider pitcher - marigold - scarce & nice
- ___ **196. N's Stippled Peacock at Urn master IC bowl - pastel marigold - spectacular irid. on this piece**
- ___ 197. Butterfly & Berry butterdish - amethyst bottom, green lid - irid. is almost a perfect match, two hard colors
- ___ 198. Imperial Grape 5 pc. water set - purple - scarce & nice
- ___ 199. Imperial Grape 7 pc. water set - marigold
- ___ **200. Leaf Chain 9" plate - amethyst - extremely rare color for these, nice plate**
- ___ 201. Stag & Holly large size deep ruffled bowl - blue - pretty
- ___ 202. Stag & Holly large size deep ruffled bowl - marigold
- ___ 203. Beaded Cable rosebowl - aqua opal - very pretty butterscotch example
- ___ **204. Inverted Strawberry tankard water pitcher - amethyst - super rare pitcher, bottom marked NEARCUT**
- ___ 205. Inverted Strawberry tumblers (2) - purple - both contemporary, choice
- ___ 206. Good Luck ruffled bowl w/ribbed back - purple - super pretty
- ___ 207. Grape & Gothic Arches 5 pc. water set - blue - scarce set
- ___ 208. Orange Tree standard size mug - red - scarce, nice
- ___ 209. Orange Tree standard size mugs (2) - marigold - choice
- ___ 210. Grape & Cable turned in centerpiece bowl - purple - scarce & pretty
- ___ 211. M'burg Nesting Swan ruffled bowl - green - radium & nice
- ___ **212. Floral & Grape 6 pc. water set - white - frosty, scarce & pretty**
- ___ 213. Floral & Grape water pitcher - marigold
- ___ **214. Grape & Cable fernery - marigold - pretty - pretty, scarce, small nick on top edge**
- ___ 215. Grape & Cable hatpin holder - green - scarce, nice
- ___ 216. Fluffy Peacock water pitcher - amethyst - pretty, scarce
- ___ 217. Kittens cup & saucer - marigold

- ___ 218. **M'burg Unlettered Courthouse ruffled bowl - amethyst - radium, fantastic irid. on this VERY VERY rare bowl**
- ___ 219. M'burg Courthouse IC shaped bowl - amethyst - radium, very nice
- ___ 220. Lions deep round bowl - marigold
- ___ 221. Acorn Burrs 5 pc. water set - amethyst - very scarce set & nice
- ___ 222. Acorn Burrs 6 pc. water set - marigold - dark & super
- ___ 223. Wishbone epergne - marigold - very scarce
- ___ 224. Persian Garden 6" plates (2) - white - have Pool of Pearls back, choice
- ___ 225. **M'burg Hanging Cherries water pitcher - marigold - super pretty & scarce**
- ___ 226. Stork & Rushes mug - marigold
- ___ 227. Grape & Cable giant ruffled compote - marigold - scarce & desirable
- ___ 228. Grape & Cable giant ruffled compote - purple - scarce & desirable, minor chip on inside of bowl
- ___ 229. Paneled Dandelion tankard water pitcher - blue - scarce & nice
- ___ 230. Paneled Dandelion tankard water pitcher - marigold - scarce & nice, has heat check in applied handle
- ___ 231. Paneled Dandelion tumblers (3) - marigold - choice
- ___ 232. **Farmyard 3 in 1 edge bowl - purple - beautiful, rare**
- ___ 233. Stork ABC baby dish - marigold
- ___ 234. **Luster Rose 7 pc. water set - purple - super pretty, very rare**
- ___ 235. Four Seventy Four milk pitcher - marigold
- ___ 236. Peacock at the Fountain master berry bowl - ice green - very rare
- ___ 237. Four Seventy Four 6 pc. water set - marigold
- ___ 238. **Acorn Burrs 8 pc. punch set - purple - super rare & highly desirable**
- ___ 239. Acorn Burrs punch cup - blue - pretty, add this to your blue punch set
- ___ 240. Peacocks ruffled bowl w/ribbed back - aqua opal - scarce & desirable
- ___ 241. Carnival Hobstar cracker jar w/metal lid - marigold
- ___ 242. **God & Home 7 pc. water set - blue - extremely rare & highly desirable, tough set**
- ___ 243. Grape & Cable humidor - purple - scarce
- ___ 244. Grape & Cable humidor - marigold - nice
- ___ 245. Wishbone & Spades chop plate - purple - quite rare & super pretty
- ___ 246. Lattice & Grape 7 pc. tankard water set - marigold
- ___ 247. **Cherry Chain chop plate - pastel marigold - scarce & highly desirable**
- ___ 248. **1911 Atlantic City Elks 7" plate - blue - rare plate, very desirable**
- ___ 249. Peacock & Grape ruffled bowl - amethyst
- ___ 250. **Orange Tree Orchard 7 pc. water set - blue - super pretty set**
- ___ 251. **Miniature vinegar cruet, has a cut pattern & cute as can be, only 2" high - marigold**
- ___ 252. Horse Medallion ruffled bowl - amberina - very scarce bowl, nice
- ___ 253. **NUART Homestead chop plate - smokey lavender - super pretty irid., could almost call this ice purple**
- ___ 254. Maple Leaf water pitcher - purple
- ___ 255. Maple Leaf tumblers (2) - amethyst - choice
- ___ 256. **Butterfly & Tulip square shaped bowl - purple - extremely rare, highly desirable**
- ___ 257. Australian Plain ruffled compote - purple - pretty
- ___ 258. Four Flowers 6" plate - peach opal
- ___ 259. **M'burg Perfection water pitcher - amethyst - another top pitcher, WOW!!**
- ___ 260. Kittens cup - blue - nice
- ___ 261. Buzz Saw small size cruet w/stopper - green - nice
- ___ 262. **Fenton's Goodluck ruffled bowl - marigold - if you didn't get the first, this is an identical match, nice**
- ___ 263. Quill water pitcher - marigold - dark & nice
- ___ 264. Banded Grape & Cable hatpin holder - purple - scarce, pretty
- ___ 265. Banded Grape & Cable hatpin holder - marigold - dark & super
- ___ 266. Wild Strawberry 7" handgrip plate - purple - very pretty
- ___ 267. M'burg Marilyn 7 pc. water set - amethyst - very pretty set
- ___ 268. Brooklyn Bridge 10 ruffled bowl - marigold - nice
- ___ 269. Banded Grape & Cable large size fruit bowl - marigold - super pretty!
- ___ 270. Three Fruits 9" plate w/BW back - amethyst - pretty
- ___ 271. **Blueberry water pitcher - blue - pretty, great shape, quite scarce**
- ___ 272. Imperial Grape wine bottle - purple - no stopper
- ___ 273. Stag & Holly ftd chop plate - marigold - super scarce, minor pinpoint on one point
- ___ 274. M'burg Diamonds water pitcher - amethyst - pretty
- ___ 275. M'burg Diamonds tumblers (2) - amethyst - choice
- ___ 276. **Christmas compote - marigold - as pretty as the first, a great matching pair, your second chance!**
- ___ 277. Stippled Robins mug - marigold
- ___ 278. **Orange Tree Scroll 5 pc. tankard water set - blue - very pretty set & highly desirable**
- ___ 279. Octagon cordial - marigold - scarce
- ___ 280. Heart & Vine 9" plate - amethyst - pretty example
- ___ 281. Round Up 9" plate - blue - very nice
- ___ 282. **Raspberry water pitcher - ice blue - super color w/very pretty irid., a rare pitcher!**
- ___ 283. Raspberry 5 pc. water set - purple - nice
- ___ 284. N's Eight Sided bushel basket - white - scarce
- ___ 285. N's Eight Sided bushel basket - marigold - scarce
- ___ 286. **Peter Rabbit IC shaped bowl - blue - super pretty, does have one point chipped**
- ___ 287. Diamond Lace 5 pc. water set - purple - minor mold roughness on base, made that way
- ___ 288. Zippered Loop kerosene lamp - marigold - 8" tall w/4 3/4" base
- ___ 289. Good Luck PCE bowl w/ribbed back - blue - would have to call this electric, minor nick between two points
- ___ 290. Fenton's Grape & Cable fruit bowl w/Persian Medallion interior - marigold - nice
- ___ 291. Double Star water pitcher - green - pretty, scarce
- ___ 292. **Imperial Grape 9" plate - purple - super pretty irid. on this rare plate**
- ___ 293. 1981 ICGA Frolicking Bears spittoons (2) - aqua opal - choice
- ___ 294. Eat Paradise Sodas 6" advertising plate - amethyst - scarce, nice
- ___ 295. **Ten Mums 7 pc. water set - blue - exceptional quality on this rare set**
- ___ 296. Ten Mums tankard water pitcher - marigold - very pretty, very scarce
- ___ 297. Choice Lot of 12 pieces
- ___ 298. Choice Lot of 10 pieces
- ___ 299. Choice Lot of 10 pieces
- ___ 300. Choice Lot of 10 pieces
- ___ 301. Choice Lot of 10 pieces
- ___ 302. Choice Lot of 10 pieces
- ___ 303. Choice Lot of 8 pieces



Seeck Auctions
P.O. Box 377
Mason City, Iowa 50402