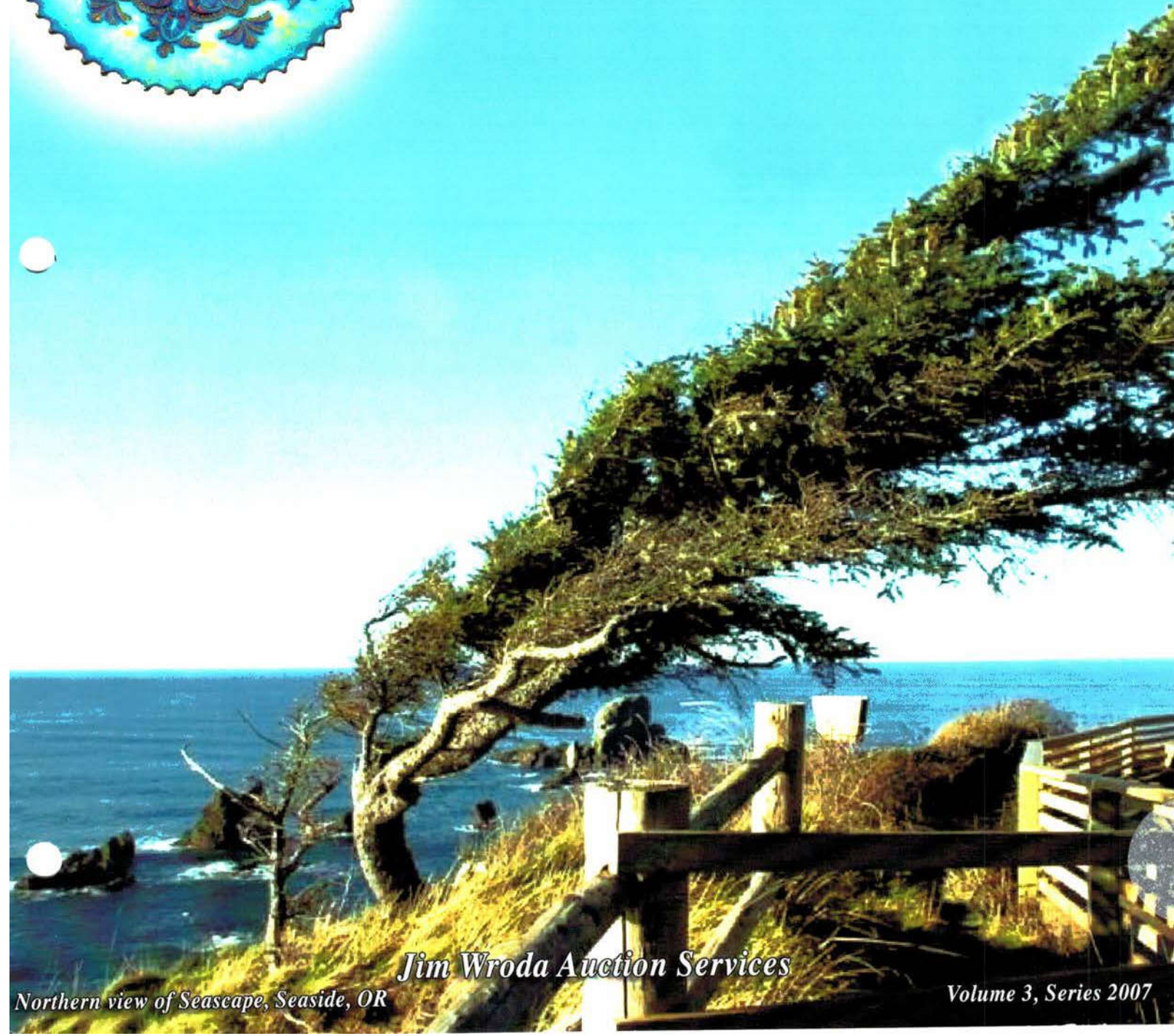


Heart of America Carnival Glass Association 2007
“The 100 Year Celebration of Carnival Glass”
The John Muehlbauer & Jan Lambert Collection



Jim Wroda Auction Services

Volume 3, Series 2007

Northern view of Seascape, Seaside, OR

2007 HOACGA CARNIVAL GLASS CONVENTION PUBLIC AUCTION

Saturday, April 28th 2007 at 9:30 am

Preview Friday April 27th from 6:00pm – 9:30pm and Saturday from 8:00am until auction time.

Embassy Suites, Kansas City Airport

7640 N.W. Tiffany Springs Parkway Kansas City MO 64153

Reservations at 816-891-7788

Well here we are again... What an awesome collection for this year's HOACGA convention. There isn't much I can say that hasn't been said over the last few months. One thing I can tell you is that there is some of the finest carnival glass in this auction that you will ever lay eyes on. John's keen eye for the "best" is going to make this an absolutely incredible opportunity for you to acquire some great glass. With that.. Let's just get to the glass!!

If for some reason you cannot make this auction, please give Laurie a call with some bids. She will be happy to assist you. Thanks! Jim

Terms for all absentee bids

1. Phone inquiries on items of interest are welcome! **937-447-4905 or 937-447-8909.**
2. Bidders take full responsibility to honor any and all bids that are executed in your behalf.
3. All items to be paid for **within 7 days** of notification unless other arrangements are made prior to auction. Successful absentee bidders must also pay **ESTIMATED** shipping costs.
NOTE: There will be a \$5.00 fee added, per item, to the selling price of all **successful** absentee bids plus postage & insurance.
4. All items bid competitively against the audience. **We do not start with your bid.**
5. Items will be bid on in **perfect condition** with average to above average iridescence unless otherwise stated or noted on your order of sale list or absentee bid sheet. **We will describe each item as accurately as possible!! (see listing) Bids will not be carried out if a damage is found during auction.** If manufacture problems bother you such as air bubbles, pulled points, soda ash, tool marks, or any other manufacturing flaw, please be specific in your mail bids or email bids. *If there is a manufacture flaw on an item that we feel is truly distracting, we have noted that in the listing already. Auction Company has the right NOT to execute an absentee bid for any reason.*
6. All bids can be called in to: (937) 447-4905 faxed to 937-548-3492 or sent to POB 1111 Gettysburg, Ohio. You can also e-mail bids and ask questions directly from our website (Please Ask!)
7. All mail, faxed, write-in, call in and email bids due by Thursday, April 26th 2007 - **6:00p.m.**
8. Anyone wishing to bid Live during the auction via telephone **MUST** have their request in by **NOON Wednesday, April 25th 2007.** All items must have a value of approx. \$500.00 or more to live phone bid. **If under \$500.00, please leave an absentee bid.**
9. If someone in the audience is bidding for you they must pay for the item(s) before leaving.
Laurie will get your items shipped to you as fast as possible but, please allow 2 to 3 weeks for your items to arrive **AFTER** Laurie receives payment. Thanks!

*****To view 100's of items go to: www.jimwrodaauction.com *****

Terms and Conditions of Auction: Cash, Travelers checks, business or personal checks with proper I.D. We now have Visa/ MC And Discover with a 3% clerk fee. **All items being sold AS IS w\ NO MINIMUM and NO RESERVE!**

USE YOUR PREVIEW TIME WISELY! LOOK OVER YOUR ITEMS OF INTEREST

Jim Wroda Auction Services

POB 1111 Gettysburg, Ohio 45328

Jim Wroda and Mike Baker CAI - Auctioneers

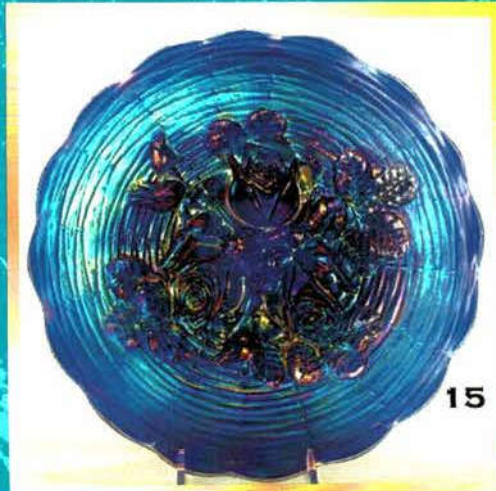
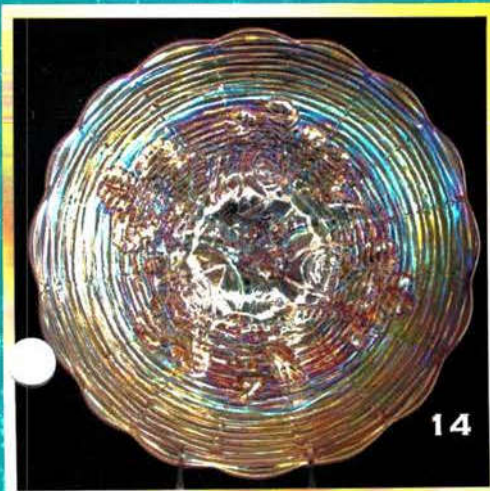
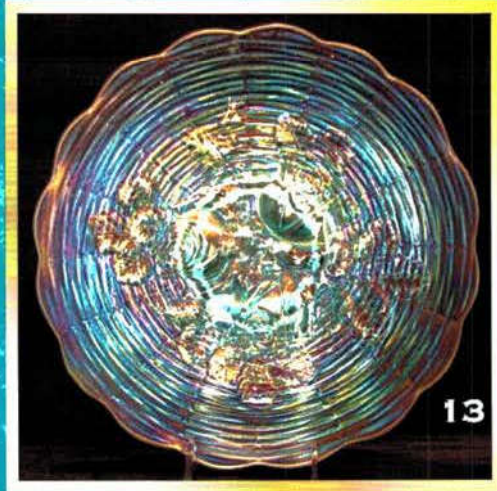
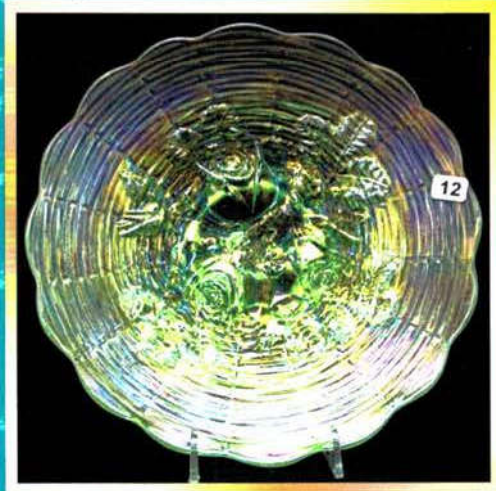
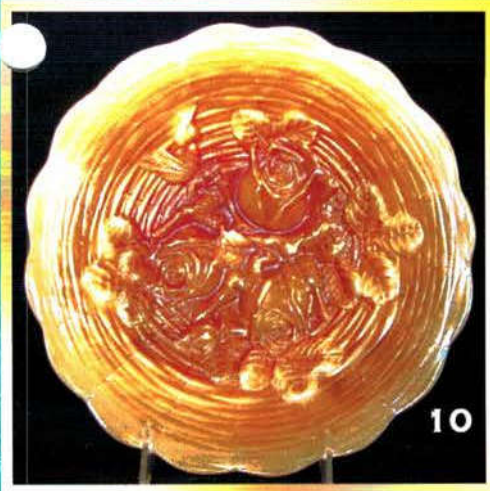
Email all questions to Laurie at: laurie@jimwrodaauction.com

Or call the office at 937-447-4905 or Laurie's cell at 937-459-9562



Jan and I want to sincerely thank you for your interest and moreover, for the many years of enjoyment and love that you all have afforded us. It's been said many times, and in many ways, but we wish to add our declaration of the truth that it is you, our fellow collectors, who have made the hobby what it is, and what it will always be -- simply the best.

John and Jan





- _____ 1. Fenton 7pc blue opaque Hanging Hearts iridized water set. Rare color!
- _____ 2. Fenton 7pc iridized custard Hanging Hearts water set. Rare
- _____ 3. N-wood crystal w/ gold décor Dandelion Tankard pitcher. Scarce
- _____ 4. N-wood crystal w/gold décor Oriental Poppy Tankard pitcher. scarce
- _____ 5. N-wood SAPPHIRE ORIENTAL POPPY TANKARD. THIS IS TRULY AN EXTREMELY RARE NORTHWOOD PASTEL PITCHER THAT HAS EXCEPTIONAL IRID! A TOP SHELF PITCHER FOR ANYONE'S COLLECTION! RARE RARE RARE!!
- _____ 6. N-wood IB Oriental Poppy tumbler. Scarce
- _____ 7. N-WOOD ICE BLUE GRAPE ARBOR TANKARD. JUST A GREAT EXAMPLE OF THIS AWESOME PITCHER!
- _____ 8. 2 N-wood ice blue Grape Arbor tumblers. 2 x money. Nice
- _____ 9. 2 N-wood light ice blue Grape Arbor tumblers. 2 x money.
- _____ 10. N-wood 9" MARIGOLD ON CUSTARD ROSE SHOW PLATE. JUST A HAND FULL KNOWN. IF YOU LOVE TO "SMELL THE ROSES" YOU BETTER GET THIS ONE BOUGHT!!!
- _____ 11. N-wood 9" marigold Rose Show plate. Has a really cool dark orange look with great pastel yellow irid. Here is a really cool looking plate.
- _____ 12. N-wood 9" ice green Rose Show plate. Has very nice pastel multi-color irid.
- _____ 13. N-wood 9" dark ice blue Rose Show plate with gorgeous pastel pink, blue & yellow irid.
- _____ 14. N-wood 9" frosty white Rose Show plate. Super!
- _____ 15. N-wood 9" electric blue Rose Show plate. One of the better ones. You'll like it!
- _____ 16. N-wood 9" electric purple Rose Show plate. Tremendous electric radium irid. A very brilliant looking plate.
- _____ 17. N-wood 9" amethyst Rose Show plate. Has unusual "rose color" irid. Really neat!
- _____ 18. N-wood 9" purple Rose Show plate. Actually a quite hard to find plate and this one is very nice!
- _____ 19. N-wood purple Peacock @ Fountain Punch set with 6 cups. Super multi color irid through out!
- _____ 20. N-wood KILLER MARIGOLD Peacock @ Fountain Punch set with 6 cups. This thing is super unusual, having a heavy yellow irid over marigold. Really cool!
- _____ 21. 7 N-wood marigold Peacock @ Fountain punch cups. 7 x money
- _____ 22. 4 N-wood marigold Peacock @ Fountain punch cups. 4 x money
- _____ 23. N-wood purple Peacock @ Fountain Fruit bowl. Super
- _____ 24. N-wood 11 1/4" DARK MARIGOLD TREE TRUNK ELEPHANT FOOT VASE. ONE OF THE ORIGINAL PAIR. AN EXTREMELY RARE PIECE OF GLASS. SUPER COLOR!
- _____ 25. N-wood 12 1/4" PASTEL MARIGOLD TREE TRUNK ELEPHANT FOOT VASE. ABSOLUTELY PHENOMENAL PASTEL BLUE AND YELLOW IRID. THE ONLY PASTEL EXAMPLE KNOWN.
- _____ 26. N-wood 20" mari. Tree Trunk funeral vase. Extremely rare color. One of four or five known. Does have a "slice" on the base but that's the way it goes. Still very rare!
- _____ 27. N-wood 13 1/2" PURPLE TREE TRUNK ELEPHANT FOOT VASE. OUTSTANDING MULTICOLOR IRID.
- _____ 28. N-wood 14" purple Tree Trunk elephant foot vase. Rare. A very hard to find vase that is always a hit! Impressive size!
- _____ 29. N-wood 17 1/2" electric purple Tree Trunk funeral vase. Brilliant multicolor irid.
- _____ 30. N-WOOD 19 1/2" BEAUTIFUL ELECTRIC BLUE TREE TRUNK FUNERAL VASE. A REAL SHOW STOPPER.
- _____ 31. Imperial 11" EMERALD GREEN CHRYSANTHEMUM CHOP PLATE. WOW IS ABOUT ALL YOU CAN SAY ABOUT THIS SUPER RARE CHOP PLATE. IMPERIAL GOT IT RIGHT ON THIS ONE!
- _____ 32. IMPERIAL 11" ELECTRIC PURPLE CHRYSANTHEMUM CHOP PLATE. BLASTING WITH BRIGHT ELECTRIC IRID.!
- _____ 33. Imperial 11" smoke Chrysanthemum chop plate. A hard color to find.
- _____ 34. Imperial 11" marigold Chrysanthemum chop plate. Actually a tough color for this. Great irid!
- _____ 35. Imperial 10" electric purple Homestead chop plate. As good as you'll find one. WOW!
- _____ 36. IMPERIAL RED CHESTERFIELD LEMONADE PITCHER. HAS UNBELIEVABLE IRID ON THIS EXCEEDINGLY RARE PIECE OF RED. CAN'T REMEMBER ONE EVERY SELLING AT AUCTION IN THE LAST 10 YEARS
- _____ 37. IMPERIAL RED CHESTERFIELD LEMONADE TUMBLERS (2). BOTH ARE INCREDIBLE! SELLING CHOICE. RARE!
- _____ 38. FENTON 9" RED CHRYSANTHEMUM AND WINDMILL RUFFLED BOWL. VERY RARE COLOR AND SUPER!
- _____ 39. Fenton 8 1/2" RED Dragon & Lotus ruffled bowl. A very nice example of a popular bowl!
- _____ 40. Fenton 7" RED Coin Dot bowl. Super detail and color! Quite scarce!
- _____ 41. Fenton 8 1/2" RED Vintage 8-ruffle bowl. Gorgeous cherry red w/slight slag effect. Really sharp!
- _____ 42. Fenton 8 1/2" RED Vintage 3/1 edge bowl. Very beautiful and rare.
- _____ 43. Fenton 8 1/2" RED Holly 8 ruffled bowl. SUPER piece of red!
- _____ 44. Fenton 9" RED Orange Tree 8 ruffled bowl. Really mint and really red!! Here's a good one!
- _____ 45. Fenton 8 1/2" RED Stag and Holly spatula footed bowl. Just beautiful irid.!!
- _____ 46. Fenton 7" RED Grape & Cable ruffled bowl. A Great example for this.



38



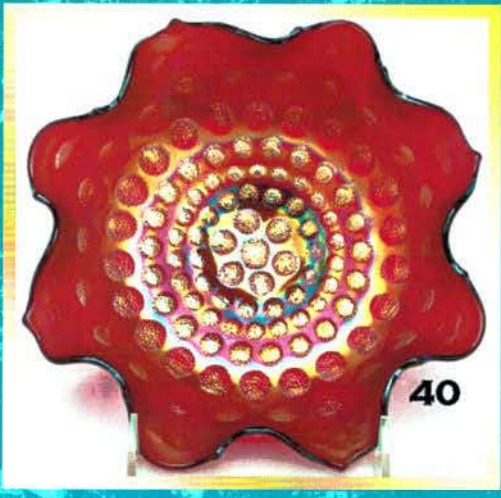
37

36

37



39



40



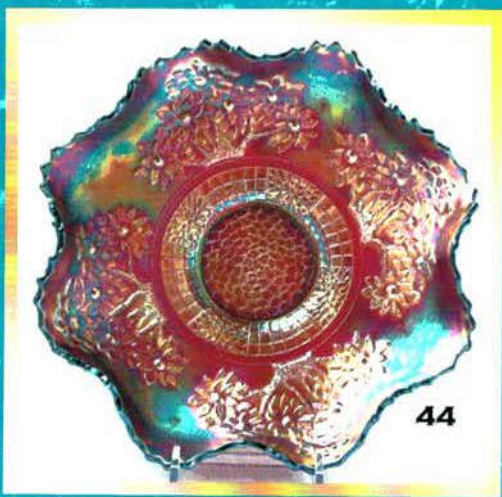
41



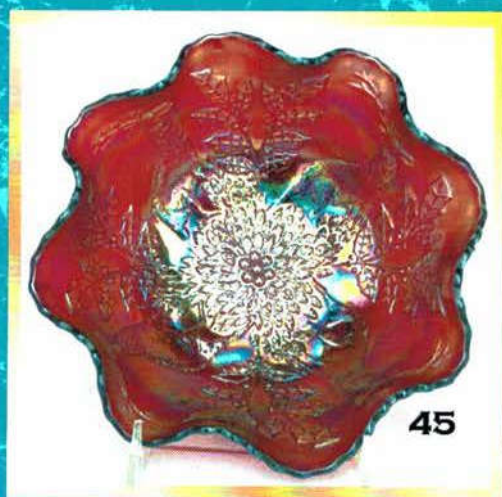
42



43



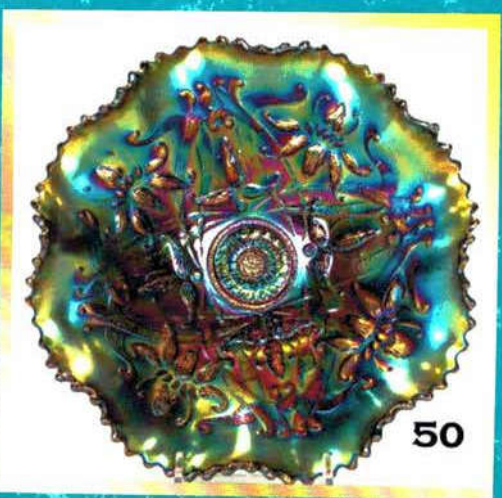
44



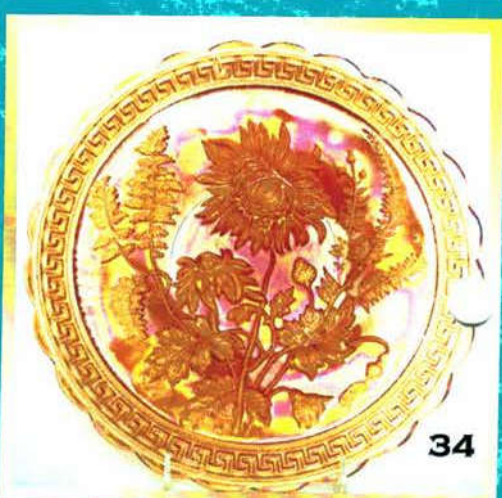
45



33

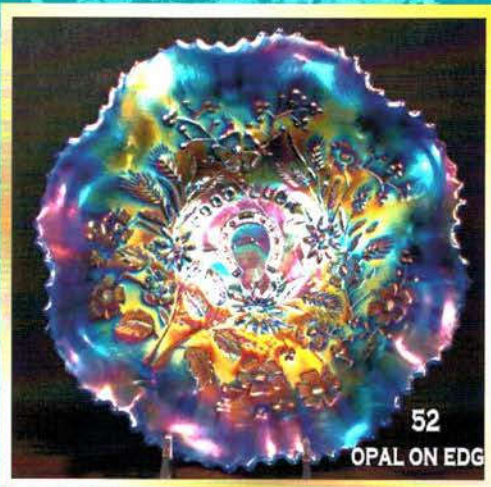


50

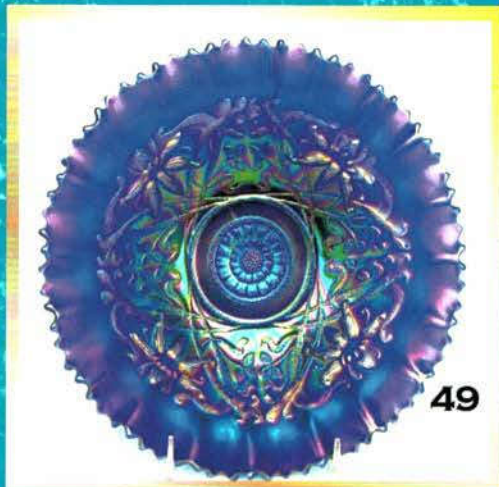


34

47. Fenton 5" RED Water Lily footed sauce. Beautiful cherry color. Rare!
48. Fenton RED 5" Panther footed sauce. Another beautiful piece of red!
**ALL RED CARNIVAL IS ON A COMEBACK!
ESPECIALLY WHEN IT LOOKS LIKE THIS.
DON'T BE LEFT OUT!**
49. N-wood 9 1/2" electric blue Wishbone PCE bowl. Very rare, not many around. Especially that look like this!!!
50. N-wood 8 1/2" electric purple Wishbone footed bowl. Just gorgeous! From the Matheny collection!
51. N-wood 8 1/2" pastel marigold Wishbone footed bowl. Has tremendous yellow irid.
52. N-wood 8 1/2" ELECTRIC BLUE/ ELECTRIC COBALT BLUE OPAL GOOD LUCK RUFFLED BOWL. EXTREMELY RARE. HAS DEFINITE OPAL TIPS ON COBALT BLUE BASE GLASS. HAVE NEVER HEARD OF ANOTHER ONE OR SEEN ANYTHING LIKE THIS IN NORTHWOOD. REALLY COOL!
53. N-wood 8 1/2" AQUA OPAL GOOD LUCK RUFFLED BOWL. VERY RARE AND ALWAYS DESIRABLE. HERE'S A NICE ONE!
54. N-wood 8 1/2" dark mari Good Luck ruffled bowl. This is way darker than pumpkin. Buy it!
55. N-wood 8 1/2" pastel marigold Good Luck ruffled bowl. Super yellow pastel irid.
56. N-wood 8 1/2" Electric blue Good Luck ruffled bowl. SUPER!
57. Imperial GRAPE EMERALD GREEN WATER PITCHER. EXCEEDINGLY RARE PITCHER WITH AWESOME BLUE IRID. JUST BUY IT!
58. Imperial Grape electric purple water pitcher. A real looker!
59. 6 Imperial Grape electric purple tumblers. 6 x money. All wonderful!
60. Imperial GRAPE EMERALD GREEN WATER CARAFE. HOLY SMOKES! OFF THE CHARTS. RARE
61. Imperial Grape electric purple water carafe. SUPER!!
62. Imperial Grape electric purple 7pc. wine set. This is just wonderful!
63. Imperial Grape smoke 7pc wine set. Rare color and pretty!
64. Imperial Grape marigold 8pc. Wine set. KILLER!
65. IMPERIAL ELECTRIC PURPLE OCTAGON WINE SET WITH 6 CORDIALS. QUITE RARE SET AND ABSOLUTELY BEAUTIFUL!
66. Imperial electric purple 7pc Diamond Lace water set. Nothing common about his set! Well matched
67. Imperial 10" electric purple Heavy Grape chop plate. Just incredible. Don Moore collection.
68. Imperial 10" electric purple Heavy Grape ruffled bowl. Brilliant irid.
69. Imperial Grape 8" killer Lavender plate. WOW
70. Imperial 9" electric purple Open Rose plate. Has a tiny nick in one flower but a whole lot of color!
71. IMPERIAL ELECTRIC PURPLE LUSTER ROSE FOOTED FRUIT BOWL. THIS THING IS ON FIRE INSIDE AND OUT!
72. Imperial 9 1/2" red amberina Open rose plate with iron cross mark. Rare plate and color.
73. M-burg purple Hanging Cherries water pitcher. Radium.
74. M-burg 9" lavender Trout & Fly ruffled bowl. Beautiful satin irid. with lavender and green tint. RARE BOWL THAT IS GORGEOUS!
75. N-WOOD 8 1/2" HOREHOUND PEACOCKS PCE BOWL. ONLY A HANDFUL KNOWN IN THIS COLOR. RARE
76. N-wood 8 1/2" Elec Purple Peacocks PCE bowl. This is smokin' hot!
77. N-WOOD 8 1/2" RENNINGERS BLUE PEACOCKS PCE BOWL. WAY ABOVE THE NORM!
78. N-wood 9" EMERALD GREEN PEACOCKS PLATE. YOU'VE HEARD ABOUT IT, YOU'VE HAD A CHANCE TO PREVIEW IT, NOW YOU HAVE A CHANCE TO BUY IT!!
79. N-wood 9" Frosty Ice blue Peacocks plate. Fantastic plate with loads of irid.
80. N-wood 9" Ice Green Peacocks plate. Beautiful plate. Has rib back.
81. N-wood 9" Ice Green Peacocks plate. Another beauty! Has plain back
82. N-wood 9" white Peacocks plate. Super frosty irid! Rib back
83. N-wood 9" blue Peacocks plate. Has a neat "red" irid effect.
84. N-wood 9" Electric amy. Peacocks plate. Great irid on a lighter base glass.
85. N-wood 9" pumpkin marigold Peacocks plate. The best one in the pumpkin patch!
86. N-wood 9" pastel marigold Peacocks plate. Beautiful yellow irid.
87. N-WOOD 9" PASTEL AQUA OPAL THREE FRUITS STIPPLED PLATE. ABSOLUTELY GORGEOUS EXAMPLE. TOP SHELF ALL THE WAY!
88. N-WOOD 9" AQUA THREE FRUITS STIPPLED PLATE. EXTREMELY RARE COLOR W/FABULOUS PASTEL IRID. MAY HAVE SLIGHT OPAL ON THE EXTREME TIPS
89. N-WOOD 9" HOREHOUND THREE FRUITS STIPPLED PLATE. JUST A TREMENDOUS PLATE WITH GORGEOUS BRILLIANT MULTICOLOR IRID.
90. N-wood 9" electric blue Three Fruits stippled plate. Gorgeous even electric irid. all over. WOW!!!!
91. N-wood 9" pumpkin marigold Three Fruits stippled plate. Super dark!
92. N-wood 9" pastel mari. Three Fruits stippled plate. Beautiful yellow irid. on a really nice plate.
93. N-wood 9" electric purple Three Fruits plate w/plain back. Has an interesting "stretchy Jack Frost" irid.



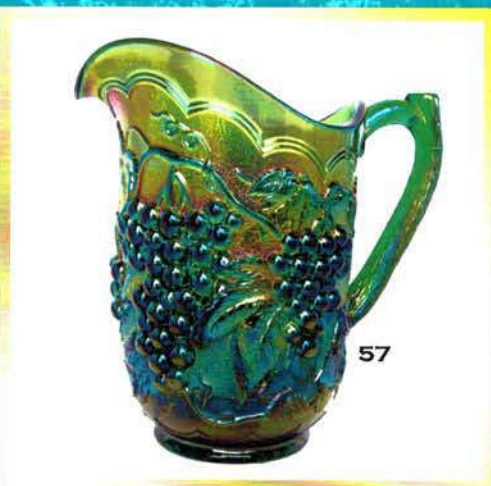
52
OPAL ON EDG



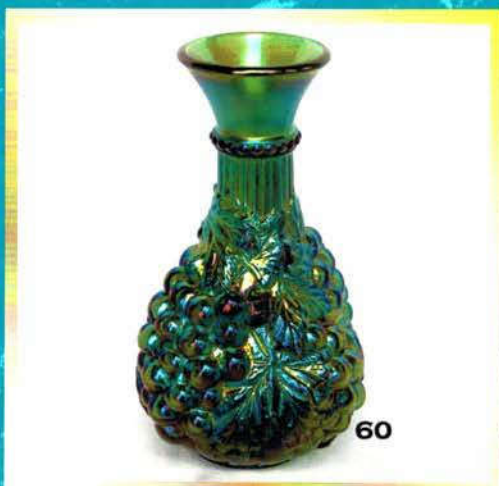
49



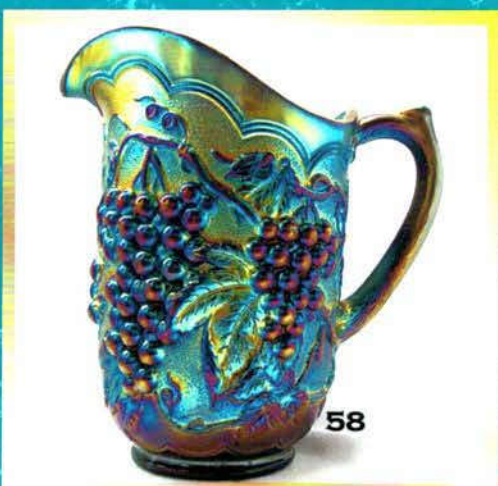
53



57



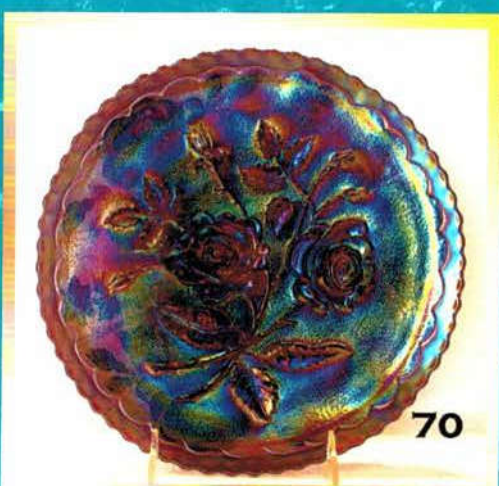
60



58



75



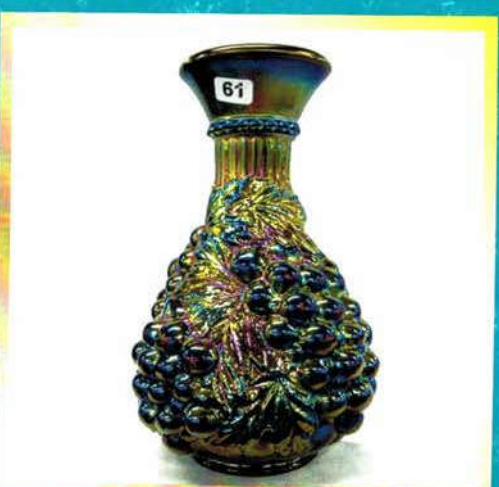
70



77



62

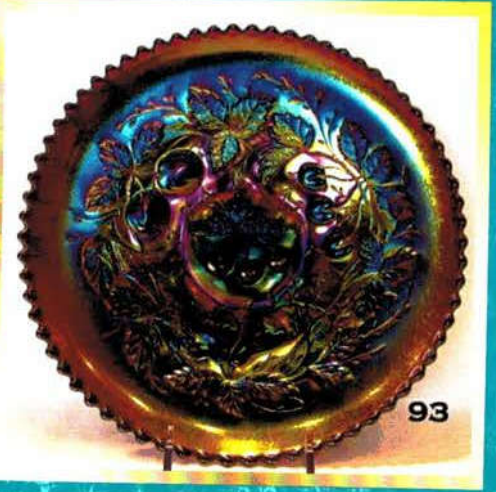
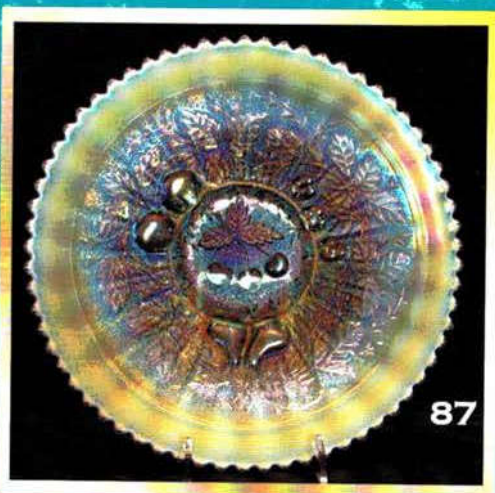
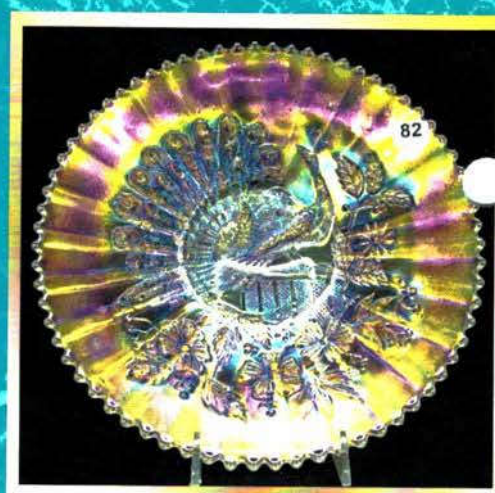


61



65

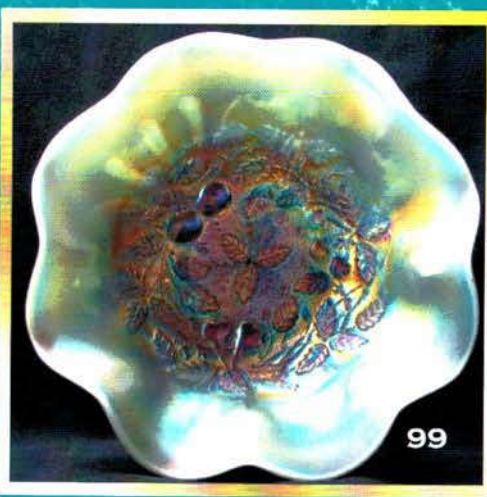
94. N-wood 8 1/2" sapphire Three Fruits stippled ruffled bowl. Very pretty and extremely rare. Has a very tiny flake-no harm.
95. N-wood 8 1/2" aqua opal Three Fruits stippled ruffled bowl. Beautiful pastel color.
96. N-WOOD 8 1/2" FROSTY IB EMBROIDERED MUMS RUFFLED BOWL. SUPER FROSTY IRID! THIS IS THE ONE!
97. N-wood 8 1/2" electric blue Embroidered Mums ruffled bowl. This is one heck of a bowl!! Don't let it get away.....
98. N-wood AO Hearts and Flowers compote. Real bright irid with a light lavender overlay. Nice
99. N-wood 8 1/2" aqua opal Three Fruits Medallion stippled spatula footed bowl w/rare smooth edge. Beautiful.
100. N-wood AO Beaded Cable rosebowl. Here is a great example if not the best!
101. N-wood butterscotch AO Dandelion mug. SUPER
102. WELL THE WAIT IS OVER!! DUGAN 10" ELECTRIC PURPLE FARMYARD 3-1 EDGE BOWL. THE BOWL SPEAKS FOR ITSELF. THERE'S REALLY NOTHING LEFT TO SAY EXCEPT CONGRATULATIONS TO THE NEW OWNER!
103. Dugan 12" BLASTING ELECTRIC PURPLE GARDEN PATH VARIANT CHOP PLATE. TIFFANY COULD NOT HOLD A CANDLE TO THIS PLATE! JUST A WORK OF ART!
104. Dugan 10" electric purple Victorian 6-ruffle bowl. The best example we have ever seen with killer yellow aurene irid.
105. Dugan 10" electric purple Ski Star 6-ruffled bowl. Super electric blue irid.
106. Dugan 10" purple Ski Star 8-ruffled bowl. Tremendous multicolor irid. on a great shape!
107. Dugan 10" white Petal & Fan 8 ruffled bowl. Very frosty and scarce.
108. Dugan 10" Peach Opal Petal & Fan ruffled bowl. Very dark peach opal. You'll like it!
109. Dugan 10" Peach Opal Petal & Fan 8 ruffled bowl. Another dark example.
110. Dugan 10" marigold Petal & Fan Deep round bowl. This is cranking with pink irid.!
111. Dugan 10" electric purple Petal & Fan 6 ruffled bowl. Killer color!
112. Dugan 8 1/2" electric purple Flower & Frames ruffled bowl. A beauty
113. Dugan ELECTRIC ELECTRIC PURPLE HEAVY IRIS TANKARD. KILLER YELLOW AND PURPLE IRID. YOU GOTTA SEE IT TO BELIEVE IT... ANOTHER RECORD ABOUT TO FALL!!
114. Dugan electric purple Heavy Iris tumbler.
115. Dugan white Heavy Iris tankard. Nice pastel irid.
116. Dugan white Heavy Iris tumbler.
117. Dugan 10" elec purple Big Basket weave vase. Killer bright yellow irid.
118. Dugan white Persian Garden 2 pc fruit set. Beautiful pastel irid!
119. Dugan Peach Opal Persian Garden 2 pc fruit set. Another beauty. Base has been polished for a no wobble fit. Very Scarce!!
120. Dugan pastel mari Persian Garden 2 pc fruit set. Killer irid. Base has been polished for a no wobble fit. Very scarce
121. Dugan 9" peach opal Apple Blossom Twigs plate w/smooth edge. Very pretty!
122. Dugan 8 1/2" peach opal Ski Star hand grip footed plate. Dark aurene type irid. One of the best pieces of peach opal I've seen!!!
123. Dugan 9" white Apple Blossom Twigs lw ruffled bowl. Tons of pastel irid! A good one
124. N-WOOD EMERALD GREEN GRAPE & CABLE HATPIN HOLDER. JUST BLASTING WITH BLUE IRID!! DON'T LET THIS ONE SLIP BY!
125. N-wood dark forest green Grape & Cable hatpin holder. Very nice with a different base color
126. N-wood electric purple Grape & Cable BANDED hatpin holder. Very scarce and nice!
127. N-wood purple Grape & Cable hatpin holder.
128. N-wood dark marigold Grape & Cable hatpin holder. Super dark example!
129. N-wood electric purple Corn vase. The best I have ever seen!
130. N-wood 6 1/2" electric blue Thin Rib squatty vase. This thing is so cute you'll want to kiss it! (no lipstick please!)
131. N-wood electric lavender Singing Birds mug. Fabulous!
132. N-wood purple Singing Birds mug. Nice!
133. N-wood electric blue Singing Birds mug. Odd shade of blue. Very nice!!!
134. N-wood marigold Singing Birds mug. Nothing common about this one!
135. N-wood dark marigold Singing Birds stippled mug. Quite scarce!
136. N-wood pastel marigold Singing Birds stippled mug. Has great yellow irid. Wow!!!
137. N-wood custard w/nutmeg Singing Birds mug.
138. N-wood BO Singing Birds mug. Rare!
139. Dugan marigold Fisherman's mug. Real neat yellow irid! KILLER
140. Fenton blue Orange Tree shaving mug. Nice!
141. Imperial smoke Rococco vase. Beautiful but does have a small chip on base.
142. Imperial 5 1/2" electric purple Morning Glory Miniature vase with beautiful gold aurene irid.
143. Imperial 7" marigold Morning Glory vase
144. Fenton ELECTRIC GREEN ORANGE TREE HATPIN HOLDER. THIS THING IS STUNNING! Does have a "who cares" chip on 1 toe but ... WHO CARES! BUY IT!
145. Fenton stunning electric blue Orange Tree hatpin holder. This is an incredible Hatpin holder. I haven't seen a better one.
146. Dugan white over marigold Constellation compote. VERY RARE 2 COLOR PIECE OF CARNIVAL, STEM IS MARIGOLD, BOWL IS FROSTY WHITE! HOW COOL IS THAT!!



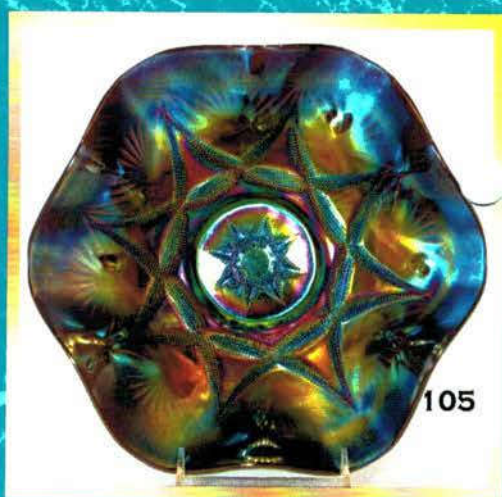
- ___ 147. Dugan ice lavender Constellation compote. Very rare color for this and pretty!
- ___ 148. N-wood electric blue Peacock @ Fountain water pitcher. WOW... here's a beauty!
- ___ 149. N-wood marigold Grape & Cable cologne bottle. Always a hit...
- ___ 150. N-WOOD 9" EMERALD GREEN POPPY SHOW PLATE. AN ABSOLUTELY GORGEOUS PLATE THAT WILL STAND WITH THE BEST OF THEM.
- ___ 151. N-wood ice blue Poppy Show plate. Nice dark base glass color with great pastel iridescence.
- ___ 152. N-WOOD 9" ELECTRIC BLUE POPPY SHOW PLATE. SUPER ELECTRIC MULTICOLOR IRID. ONE A SCREAMER OF A PLATE.
- ___ 153. N-wood 9" electric purple Poppy Show plate. One of the best purple examples you'll find.
- ___ 154. N-wood 9" pastel marigold Poppy Show plate. Beautiful iridescence with a radium type finish.
- ___ 155. N-wood 9" frosty white Poppy Show plate. Gorgeous pinks and blue iridescence.
- ___ 156. N-wood 8 1/2" aqua opal Rose Show ruffled bowl. A tremendous pastel example of a very popular bowl.
- ___ 157. N-wood 8 1/2" ice blue Rose Show bowl. Great frosty irid. w/lots of pink & blue.
- ___ 158. N-wood 8 1/2" electric purple Rose Show ruffled bowl. Outstanding!
- ___ 159. N-wood 8 1/2" Iridized custard "Pearl" Peacocks ruffled bowl w/smooth edge.. Very Rare!
- ___ 160. N-wood 8 1/2" IB Peacocks ruffled bowl. Rare color and very nice!
- ___ 161. N-wood 8 1/2" white Peacocks ruffled bowl. Frosty rich blue and pink irid!!
- ___ 162. N-wood 8 1/2" fabulous Electric blue Peacocks ruffled bowl. Top of the line! WOW!
- ___ 163. N-wood 8 1/2" It amy/Lavender Peacocks ruffled bowl. Very neat base color with lads of color!
- ___ 164. N-wood 9" AO Peacocks ruffled bowl. A very nice pastel example! Scarce
- ___ 165. N-wood 8 1/2" Pastel Marigold Peacocks ruffled bowl. Killer rich yellow irid. BEAUTIFUL!
- ___ 166. N-wood 8 1/2" Pumpkin marigold Peacocks ruffled bowl. Here's a hot one!!
- ___ 167. N-wood 10" purple Peacock @ Urn MIC bowl. Nice multi color irid.
- ___ 168. N-wood 10" purple Peacock @ Urn ruffled bowl. Very Rare bowl. One of just a few known. These large ruffled bowls were made from a Master ice cream bowl.
- ___ 169. N-wood 10" dark marigold Peacock @ Urn ruffled bowl. Super dark example. RARE
- ___ 170. N-wood 10" pastel marigold Peacock @ Urn stippled ruffled bowl. WOW! This is one hot piece of glass!
- ___ 171. N-wood 8 1/2" honey amber/ginger ale Three Fruits ruffled bowl w/plain back. Gorgeous piece of glass! If you want to roll the dice on a piece...here it is!!!
- ___ 172. N-wood 9" Grape & Cable plate. We are not listing a color on this. Has a clear base with all yellow irid. no marigold. Really cool piece of glass. Plain back.
- ___ 173. N-wood 8 1/2" pastel marigold Grape Leaves ruffled bowl. WOW!
- ___ 174. N-wood 8 1/2" pastel mari Greek Key ruffled bowl. Another great pastel in this auction
- ___ 175. Imperial Grape 8" pastel marigold low ruffled bowl. Beautiful pink and yellow irid.
- ___ 176. FENTON 8" CELESTE BLUE GRAPE & CABLE FT'D BOWL. HAS A NEAT ONION SKIN STRETCH APPEARANCE. COOL!
- ___ 177. FENTON 6" CELESTE BLUE STIPPLED RAYS RUFFLED COMPOTE. VERY RARE
- ___ 178. FENTON 5" CELESTE BLUE VINTAGE RUFFLED SAUCE. STRETCHY W/PINK AND BLUE IRID. VERY RARE!
- ___ 179. FENTON CELESTE BLUE PERSIAN MEDALLION BON BON. A BEAUTIFUL PIECE OF GLASS. NOT MANY AROUND!
- ___ 180. Fenton 8 1/2" marigold moonstone Peacock at Urn ruffled bowl. Very rare! Has a neat reddish irid. Just a great example!
- ___ 181. Fenton 9" marigold moonstone Holly ruffled bowl. Super dar irid. almost a red irid. Super!
- ___ 182. Fenton 9" Marigold Holly plate. A good one
- ___ 183. Fenton 9" electric blue Ribbon Tie 3-1 edge low bowl. Tremendous electric blue irid. w/great yellow highlights.
- ___ 184. FENTON 11" MARIGOLD FANTAIL CHOP PLATE. SUPER DARK! ONLY A FEW OF THESE KNOWN. WOW!
- ___ 185. Fenton 8 1/2" Amy Dragon & Lotus ruffled bowl. Very nice multicolor irid.
- ___ 186. MARIGOLD OVER MOONSTONE HYACINTH GWTW LAMP. NOT MANY KNOWN. ALL ORIGINAL. RARE!
- ___ 187. M-burg 9" lavender Peacock @ Urn ruffled bowl. Very scarce
- ___ 188. Fenton 10" electric blue Stag and Holly ball footed ICS bowl. Drop dead gorgeous example!
- ___ 189. N-wood dark marigold Acorn Burrs 7 pc water set. Real rich marigold color!
- ___ 190. N-wood PASTEL marigold Acorn Burrs water pitcher. Haven't seen another one
- ___ 191. N-wood purple Acorn Burrs 8 pc punch set. Very nice multi-color irid. Does have a "small" chip on a point.
- ___ 192. N-wood purple Acorn Burrs 8 pc punch set. Bowl has terrific elec irid, but does have a "flame" restoration. Absolutely beautiful set!
- ___ 193. Sapphire "Crucifix Spider" hatpin. Unlisted pattern. Not iridized
- ___ 194. Amber "Man in the Moon" hatpin. Unlisted
- ___ 195. Moonstone "Man in the Moon" hatpin. Unlisted
- ___ 196. Green opaque "Little Clover" hatpin
- ___ 197. Dark purple "Belle" hatpin
- ___ 198. Dark purple "Dragonflies" hatpin
- ___ 199. Dark purple "Big Butterfly" hatpin.
- ___ 200. Purple "Victorian Lady" hatpin. Not iridized
- ___ 201. Dark purple "Top of the Morning" hatpin
- ___ 202. Dark purple "Six Plums" hatpin
- ___ 203. Dark purple "Moire Beetle" hatpin.



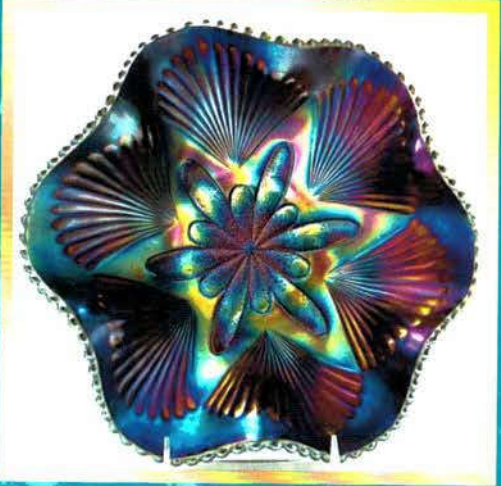
104



99



105



106



124



226

223



145

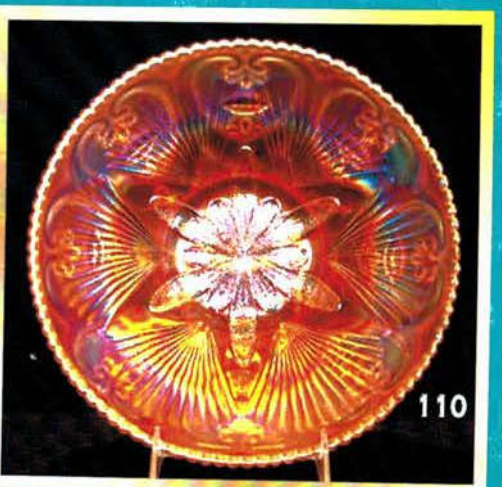
144



130



107

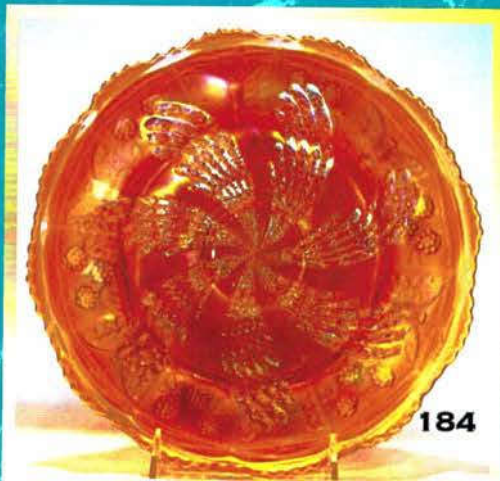
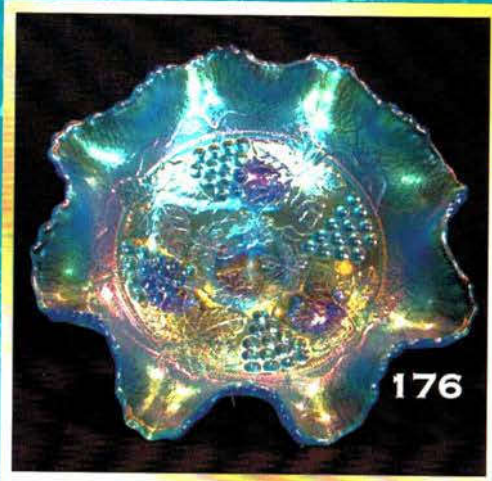


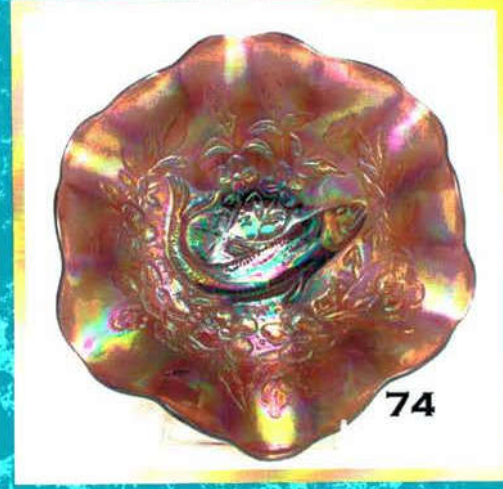
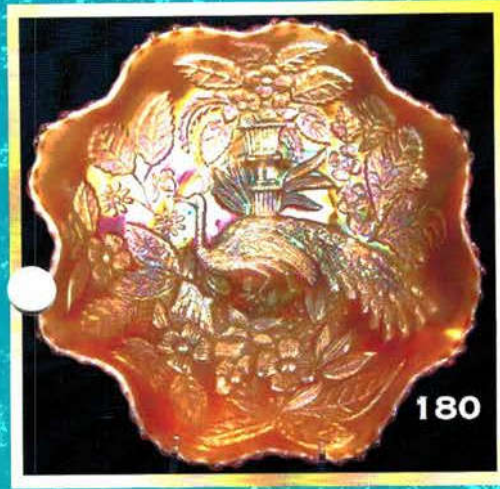
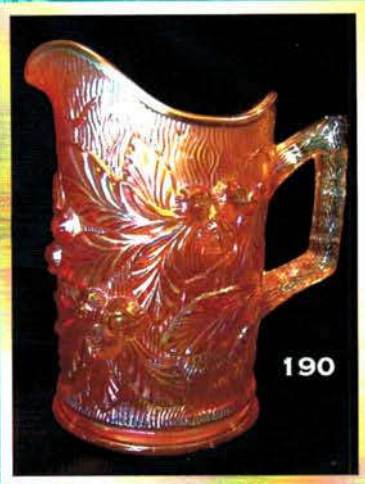
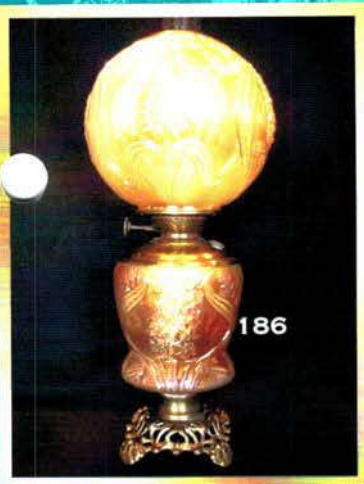
110



204. Darke purple "Triad" hatpin
205. Dark purple "Tufted Throw Pillow" hatpin
206. Dark purple "Turban" hatpin holder
207. Dark purple "Flower Arcs" hatpin
208. Purple "Three Flowers" hatpin
209. Dark purple "Border Path Variant" hatpin. Extremely rare!
210. N-wood 14" sapphire Thin Rib mid-size vase. Wonderful pastel irid. Very hard to find.
211. IMPERIAL BLASTING ELECTRIC PURPLE POPPY SHOW VASE. HOLD YOUR BID CARD UP-GET IT BOUGHT AT ANY PRICE-AND CARRY IT HOME LIKE A BABY!! :) UNREAL COLOR! JOHN SAYS IT MUST HAVE BEEN IRID. ON MARS.
212. Imperial smoke Poppy Show vase. Wonderful blue & soft yellow irid. on a rare vase.
213. Imperial 12 1/2" marigold Ripple Funeral vase. Great color. 4 1/4" base We'll call this size "hippo's foot" vs. elephant's foot!
214. Imperial 10" lavender Ripple mid-size squatty vase. Very rare color w/super irid. 3 7/8" base.
215. Imperial 8 1/4" purple Ripple mid-size vase. Beautiful color. 3 3/8" base.
216. Fenton 6 1/2" green Diamond Rib Jardinière. Here is an extremely rare piece of glass!
217. Fenton 22 æ" green Rustic funeral vase w/plunger base. Very rare and very beautiful. You'll love it.
218. Fenton 19" blue Rustic funeral vase w/plunger base. Very rare. Has beautiful multicolor irid.
219. Fenton 17 1/2" amethyst funeral vase w/plunger base. Very scarce and very very nice!
220. FENTON 20 1/2" DARK MARIGOLD RUSTIC FUNERAL VASE W/PLUNGER BASE. MAY BE THE RAREST OF ALL WITH THE PLUNGER BASE!!!
221. Fenton 19" frosty white Rustic funeral vase. A very tough color to find. Nice!
222. Fenton 18 1/4" blue Rustic funeral vase. Beautiful electric blue example on a hard to find vase.
223. N-WOOD 13" EMERALD GREEN TREE TRUNK MID-SIZE VASE. BEAUTIFUL BASE GLASS AND EVEN NICER IRID.!
224. N-WOOD 13" ELECTRIC BLUE TREE TRUNK MID-SIZE VASE. KILLER!
225. N-wood 13 1/2" electric purple Tree Trunk mid-size vase. Great multicolor electric irid. Scarce.
226. N-WOOD 13" LIGHT LAVENDER TREE TRUNK MID-SIZE VASE. SUPER LOOKIN' VASE. Some may call this horehound. Others will say smoky lavender. Very odd coloration from the base to the tips. This one will intrigue you.
227. N-wood 13" dark marigold Tree Trunk mid-size vase. A great example.
228. N-wood 13" pastel marigold Tree Trunk mid-size vase. Beautiful pastel irid. Very neat!
229. N-wood 13" blue stained Custard Tree Trunk elephant foot vase. Exceedingly rare! Does have a large rim chip, otherwise, the sky would be the limit on the price.
230. 6 Fenton blue Orange tree punch cups. 6 x money
231. Imperial 8 1/2" purple Scroll Embossed plate. Tons of yellow irid. A definite keeper!
232. Imperial 9" electric purple Pansy ruffled bowl. Super pretty!
233. Marigold on moonstone Dragon Tongues Lamp shades (2) on a nice ornate brass base. Student lamp style.
234. Crystal Cambridge Near Cut whiskey set w/ 7 shot glasses. Very scarce set
235. N-wood crystal Grape & Cable whiskey decanter. Rare
236. 2 Imperial marigold Octagon toothpicks. 1 vintage 1 contemporary.
237. N-wood electric purple Grape and Cable butter dish. WOW!
238. N-wood 8 1/2" IB Nippon PCE bowl. Beautiful pastel irid. A keeper!!
239. N-wood 8 1/2" amy. Nippon PCE bowl. Very sharp
240. N-wood set of 6 purple Acorn Burrs punch cups. 6 x money
241. N-wood set of 3 elec purple Acorn Burrs punch cups. WOW! 3 x money
242. N-wood crystal Oriental Poppy tumbler w/gold decoration.
243. N-wood purple Grape & Cable punch base
244. 6 N-wood electric blue Peacock @ Fountain tumblers. One has a chip on base. Selling 6 x money. All super!
245. Contemporary IB & smoke grape stopper.
246. 4 N-wood Corn husk vases, not carnival. Blue opal-goofus opal-vaseline opal-white opal. Choice.
247. M-burg mari Holly whirl Isaac Benesch card tray
248. Blue opal Beaded Cable rosebowl
249. N-wood BO Bushel Basket
250. N-wood BO Diamond Points 12" vase
251. N-wood BO Leaf & Beads rosebowl.
252. N-wood BO Peacocks ruffled bowl. Scarce.
253. N-wood 8 1/2" BO Rose Show ruffled bowl. Actually quite rare. Nice!
254. N-wood 8 1/2" BO Three Fruits stippled ruffled bowl. Very scarce.
255. N-wood 8 1/2" BO Three Fruits stippled spatula footed bowl. Not sure I've seen on of these before.
256. N-wood 12" green opal Tree Trunk vase. Scarce.
257. N-wood 12" BO Tree Trunk vase.

***Jim Wroda, Mike Baker, John, Jan,
And the JWAS crew would like to thank everyone
for participating in today's auction!!!***



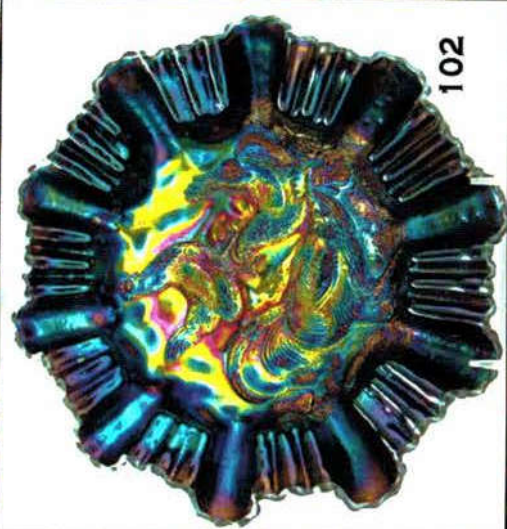


Jim Wroda Auction Services
P.O. Box 1111
Gettysburg, OH 45328
www.jimwrodaauction.com

PRESORTED
FIRST CLASS MAIL
U.S. POSTAGE
PAID
CELINA, OH
PERMIT NO. 99

FIRST CLASS DELIVERY

*The John Muehlbauer & Jan Lambert
Collection of Seaside, OR*



102

*HOACGA 2007 Convention Auction
April 28, 2007 9:30 a.m. Kansas City, MO*

Spring picture of Muehlbauer residen Seaside, OR