

# *HOACGA Carnival Glass Convention Auction*

*John & Jeanette Rogers Collection*

**Saturday, April 25, 2009**

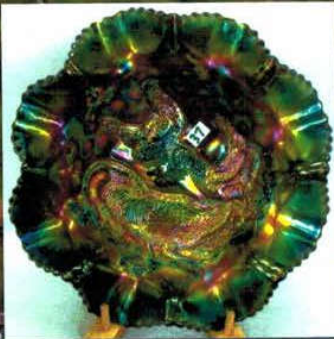
**Embassy Suites, Kansas City Airport**

**7640 N.W. Tiffany Springs Parkway Kansas City, MO 64153**

**Jim Wroda Auction Services, LTD**  
**5239 St Rt 49 S Greenville Ohio 45331**  
**937.548.7835**

PRESORTED  
FIRST CLASS MAIL  
U.S. POSTAGE  
**PAID**  
CELINA, OH  
PERMIT NO. 99

**FIRST CLASS POSTAGE PAID**



*White Lake, North Carolina*  
*Volume 6, Series 2009*



Why say anything.....

# HOACGA Carnival Glass Convention Auction

(This is a public auction. You do not need to be a member of HOACGA to participate in the auction.)

**Saturday, April 25, 2009 at 9:30 a.m.**

Preview Friday, April 24<sup>th</sup>, 2009 from 6:00–8:30 p.m. and Saturday from 8:00 a.m. until auction time

**Embassy Suites, Kansas City Airport**

7640 N.W. Tiffany Springs Parkway Kansas City, MO 64153 816-891-7788

Well it's time for HOACGA and we are very pleased to bring you yet another great auction. This year we have the John & Jeanette Rogers collection. A very diverse selection of glass for everyone! Featured this year will be 3 Ice Green Grape & Cable punch sets! Including the Ultra rare master punch set! We also have all 3 sizes of white Grape & Cable punch sets. There will definitely be something for everyone!

If you cannot make it, but see some glass in the brochure you would like a chance at... Give Laurie a call and she will help you out! You can also visit our websites at [www.jimwrodauction.com](http://www.jimwrodauction.com) or [www.auctionzip.com](http://www.auctionzip.com) (ID#11511) THANKS!!! Jim

\*\*\*\*\*Mail, E-mail, Phone, and Absentee Bids Policy:\*\*\*\*\*

1. Phone inquiries on items of interest are welcome! 937-548-7835 or email: [laurie@jimwrodauction.com](mailto:laurie@jimwrodauction.com)
  2. Bidders take full responsibility to honor any and all bids that are executed in your behalf.
  3. All items to be paid for within 7 days of notification unless other arrangements are made prior to auction. Successful absentee bidders must also pay estimated shipping costs. **NOTE:** There will be a \$5.00 fee added, per item, to the price of all successful absentee bids plus postage and insurance.
  4. All items bid competitively against the audience. **We do not start with your bid.**
  5. Items will be bid on in **perfect condition** with average to above average iridescence unless otherwise stated or noted on your order of sale list or absentee bid sheet. **We will describe each item as accurately as possible!! (see listing) Bids will not be carried out if a damage is found during auction.** If manufacture problems bother you such as air bubbles, pulled points, soda ash, tool marks, or any other manufacturing flaw, please be specific in your mail bids or email bids. *If there is a manufacture flaw on an item that we feel is truly distracting, we have noted that in the listing already. Auction Company has the right NOT to execute an absentee bid for any reason.*
  6. All bids can be called in to: (937) 548-7835, faxed to 937-548-3492, or sent to 5239 St. Rt. 49 South, Greenville, OH 45331. You can also e-mail bids directly from our website and ask questions (Please Ask!)
  7. **All mail, faxed, write-in, and email bids due by Wednesday, April 22, 2009 – 3:00 p.m. (due to traveling!)**
  8. **Anyone wishing to live phone bid, requests due by Monday, April 20, 2009 – 5:00 p.m.**
  9. If someone in the audience is bidding for you they must pay for the item(s) before leaving.
- NOTICE:** Laurie will get your items to you as fast as she can but, PLEASE allow 2 to 3 weeks for your items to arrive due to travel time. Thanks!

\*\*\*\*Visit our websites: [www.jimwrodauction.com](http://www.jimwrodauction.com) or [www.auctionzip.com](http://www.auctionzip.com) ID#11511\*\*\*\*

**Terms and Conditions of Auction:** Cash, Travelers checks, business or personal checks with proper I.D. We now have Visa and MC and Discover with a 3% clerk fee. All items being sold *AS IS WHERE IS*

\*\*\*\*Please use the preview times **WISELY!** Look over your items of interest.\*\*\*\*



*Jim Wroda Auction Services*

5239 St. Rt. 49 South, Greenville, OH 45331 Jim Wroda Auctioneer



Directions to the auction location at Embassy Suites, Kansas City Airport are listed below:

**COMING FROM THE SOUTH – U.S. HIGHWAY 71:**

EXIT (to the right) to I-435 North (Kansas City/Des Moines) – continue on I-435 North (exit to the right) for approximately 20 Miles, to EXIT 49A (Highway 152 West). Continue West for approximately 9 miles, EXIT to I-29, (Highway 71/ St. Joseph). Go North (about 1 mile) to EXIT 10 (Tiffany Springs Parkway). The Embassy Suites will be on your right.

**COMING FROM THE EAST – I-70:**

EXIT from I-70 at EXIT 8B (Des Moines) to I-435 North – continue on I-435 North for approximately 10 miles, to EXIT 49A (Highway 152 West). Continue West for approximately 9 miles, exit to I-29, Highway 71, St Joseph. Go North (about 1 mile) to EXIT 10 (Tiffany Springs Parkway). The Embassy Suites will be on your right.

**COMING FROM THE NORTH – I-35:**

EXIT from I-35 at EXIT 16 (Liberty – Highway 152), turn right (West), continue on Highway 152 for approximately 11 miles, EXIT to I-29, Highway 71, St. Joseph. Go North (about 1 mile) to EXIT 10 (Tiffany Springs Parkway). The Embassy Suites will be on your right.

**COMING FROM THE WEST – I-70:**

EXIT from I-70 at EXIT 411B to I-435 North, continue north on I-435 to EXIT 24 (Highway 152 & N.W. Barry Road), turn right, go about 4 miles to EXIT I-29 North (St Joseph), go north on I-29 (about 1 mile) to EXIT 10 (Tiffany Springs Parkway). The Embassy Suites will be on your right.

- 1 Camb. green Buzz Star cruet, small size
- 2 Camb. mari Buzz Star cruet, large size
- 3 Camb. green Inverted Strawberry Spittoon. small line around collar vase
- 4 CMB PURPLE INVERTED FEATHER CREAMER
- 5 Pair Camb. mari Inverted Strawberry candlesticks, very scarce. couple of typical nicks
- 6 Camb. mari Inverted Strawberry powder jar
- 7 Camb. green Inverted Strawberry powder jar
- 8 CMB. PURPLE INVERTED THISTLE WATER PITCHER, VERY HARD TO FIND. RARE
- 9 Camb. purple Inverted Thistle tumbler
- 10 West. mari Wild Rose syrup pitcher
- 11 Heisey Greek Key creamer w/ mari flash
- 12 Maize cruet w/ blue stained husk
- 13 mari Colonial cruet
- 14 mari miniature Jacobean powder jar
- 15 Ice green Novelty Frog
- 16 US Glass mari Cosmo & Cane spittoon shape compote, very scarce
- 17 US Glass mari Palm Beach rose bowl
- 18 Carnival Glass Beaded Belt
- 19 NWOOD 13" PURPLE TREE TRUNK ELEPHANT FOOT VASE. Very hard to find! Nice size
- 20 NWOOD ICE GREEN GRAPE & CABLE 14 pc. MASTER PUNCH SET. What can you say. Just look a the pictures.....
- 21 NWOOD WHITE GRAPE & CABLE 10 pc. MASTER PUNCH SET. WOW! Super frosty irid!
- 22 NWOOD ICE GREEN GRAPE & CABLE 8 pc. MID-SIZE PUNCH SET. RARE!
- 23 NWOOD WHITE GRAPE & CABLE 8 pc MID SIZEPUNCH SET. Very hard to find!
- 24 NWOOD ICE GREEN GRAPE & CABLE 8 PC. TABLE SIZE PUNCH SET. EXTREMELY RARE!
- 25 NWOOD WHITE GRAPE & CABLE 8 PC. TABLE SIZE PUNCH SET. Do you realize how rare this is?
- 26 NWOOD BLUE GRAPE & CABLE SWEETMEAT. Another top Northwood piece!
- 27 NWOOD DARK MARI GRAPE & CABLE SWEETMEAT. Just a shade short of pumpkin!
- 28 Nwood purple Grape & Cable Sweetmeat
- 29 Nwood 9" ice blue Poppy Show plate. SUPER!
- 30 Nwood 9" dark mari Poppy Show plate
- 31 Nwood 8.5" green Poppy Show bowl. Very scarce
- 32 Nwood 8.5" ice green Poppy Show bowl scarce
- 33 Nwood 8.5" ice blue Poppy Show bowl. scarce
- 34 Nwood elec. green Poppy pickle dish super color
- 35 Nwood 8.5" dark mari Rose Show bowl
- 36 Nwood elec. Peacock at Fountain Compote. WOW!
- 37 DUGAN 9.5" ELEC PURPLE FARMYARD 8 RUFFLE BOWL. BRILLIANT YELLOW IRID
- 38 Dugan purple Dahlia water pitcher. Scarce
- 39 Dugan mari Dahlia water pitcher.
- 40 Dugan 3.5" purple Twigs vase w/ CRE. Very scarce
- 41 Dugan purple Formal JIP vase. Very Nice
- 42 Dugan purple Stork & Rushes mug
- 43 Dugan white Beaded Shell mug
- 44 Dugan lavender Grape Delight rose bowl very scarce
- 45 Dugan mari Beaded Shell pitcher. RARE
- 46 Dugan 6" PO Panel JIP vase
- 47 Dugan PO Interior Swirl Tri-Corner Rose Bowl
- 48 Dugan mari Question Mark CRE compote
- 49 Dugan 7" PO Fish Scale & Beads 2 sides up bowl
- 50 Dugan 10" PO Four Flower chop plate
- 51 Dugan 8.5" PO Fanciful 3-1 Edge bowl
- 52 Dugan 7" PO Bells & Beads CRE bowl
- 53 Dugan 8" PO Flowers & Frames Tri-corner CRE bowl
54. Dugan 9" purple Wishbone & Spades 8 ruffle bowl has nice elec highlights
- 55 Dugan 9" purple Apple Blossom Twigs plate -scarce
- 56 Dugan 6" white Persain Garden plate
- 57 DUGAN MARI CHRISTMAS COMPOTE. HAS BRILLIANT BLUE IRID ON EXTERIOR AND PUMPKIN IRID ON INTERIOR -REALLY COOL
- 58 IMP MARI CHRYSANTHEMUM CHOP PLATE - SIGN NUART. HAS BLASTING YELLOW IRID
- 59 IMP 10" mari Hattie chop plate
- 60 IMP ELEC PURPLE POPPY SHOW VASE SUPER AND VERY HARD TO FIND
- 61 IMP amber Loganberry vase
- 62 IMP ELEC PURPLE LOGANBERRY VASE. A KNOCKOUT!
- 63 IMP elec purple Open Rose butter dish
- 64 IMP elec purple Open Rose creamer
- 65 IMP 9" elec purple Double Dutch footed bowl - very hardto find
- 66 IMP elec purple Flute cream & sugar
- 67 IMP smoke Corn bottle
- 68 IMP mari Corn bottle
- 69 IMP 9" It amy / lav Scroll Embossed Flat plate
- 70 IMP 9" elec purple Scroll Embossed flat plate
- 71 IMP 9" elec purple Grape ruffle bowl SUPER
- 72 IMP mari Acanthus milk pitcher
- 73 Nwood 9" ren. blue Peacocks stippled PCE bowl
- 74 Nwood 9" elec blue Three Fruits Stippled PCE bowl
- 75 Nwood 9" elec blue Good Luck PCE bowl
- 76 Nwood 10" elec blue Wishbone PCE bowl
- 77 Nwood 8.5" elec blue Peacocks ruffle bowl. What a great run of elec blue!
- 78 Nwood 10" elec purple Peacock & Urn MIC bowl
- 79 Nwood 10" ice green Peacocks & Urn MIC bowl
- 80 Nwood 10" ice blue Peacocks & Urn MIC bowl
- 81 NWOOD 6" AO PEACOCK & URN ICS BOWL
- 82 Nwood 9" ice blue Peacocks plate. Frosty
- 83 Nwood 9" green Peacocks plate. Very scarce!
- 84 Nwood 9" lime green Embroidered Mums plate
- 85 Nwood 9" purple Hearts & Flowers plate
- 86 Nwood 8.5" mari Hearts & Flowers bowl
- 87 Nwood 8.5" AO Three Fruits stippled bowl
- 88 Nwood 9" ice green Grape & Cable footed plate
- 89 Nwood 8.5" sapphire Good Luck ruffle bowl
- 90 Nwood 8.5" ice blue Three Fruits footed bowl
- 91 Nwood purple Butterfly Bon Bon w/ threaded back
- 92 Nwood mari Butterfly bon bon w/ threaded back
- 93 Nwood 11" irid custard Grape Frieze ft'd ICS bowl
- 94 Nwood 14" purple tree trunk mid size vase w/ plunger base
- 95 Nwood 12" lime green tree trunk mid size vase - VERY RARE
- 96 Nwood 12" white tree trunk mid size vase
- 97 Nwood 12" green tree trunk mid size vase
- 98 Nwood 12" blue tree trunk mid size vase
- 99 Nwood 12" purple tree trunk mid size vase

- 100 NWOOD 20" ELEC BLUE TREE TRUNK FUNERAL VASE. What a impressive piece of glass
- 101 MBURG ELEC PURPLE PIPE HUMIDOR EXTREMELY RARE -One of the most desirable pieces of Millersburg ever made. Does have a tiny flake on the lid. no harm, just want to be accurate
- 102 MBURG RADIUM PURPLE PERFECTION WATER PITCHER. SUPER!!!!
- 103 Mburg radium purple perfection tumbler
- 104 Mburg mari Marilyn water pitcher
- 105 MBURG MARI HOBNAIL WATER PITCHER
- 106 MBURG MARI HOBNAIL TUMBLER
- 107 MBURG RADIUM PURPLE ROSE COLUMNS VASE. What a GREAT mold!
- 108 MBURG AQUA TEAL ROSE COLUMNS VASE. Another great piece. Any RC vase is hard to find!
- 109 Mburg purple Ohio Star vase
- 110 Mburg elec green Hobstar & Feather giant rose bowl - hasepoxy on one toe, but one of the nicest around
- 111 Mburg green Sunflower pin tray
- 112 Mburg purple Sunflower pin tray
- 113 Rare Mburg 6" purple Peacock & Urn plate
- 114 Mburg mari Holly Spray 2 handled bonbon
- 115 Mburg 6" radium purple Holly Spray CRE bowl
- 116 Mburg 6" Grape Wreath Variant CRE bowl
- 117 Mburg 6" Grape Wreath Variant CRE bowl
- 118 Mburg 7" radium purple Blackberry Wreath CRE bowl
- 119 Mburg 8" mari Blackberry Wreath ruffle bowl
- 120 Mburg 10" radium green Strawberry Wreath ICS bowl
- 121 Mburg 10" radium purple Strawberry Wreath bowl
- 122 Mburg 10" aqua teal Hanging cherries ICS bowl - rarecolor
- 123 MBURG 9" GREEN TROUT & FLY PLATE SUPER RARE - NICE COLOR. EXTREMELY RARE PLATE!
- 124 Mburg 9" radium purple Trout & Fly ICS bowl
- 125 Mburg 8" green Trout & Fly square bowl
- 126 Mburg 8" purple Big Fish diamond shape bowl
- 127 Mburg 8" mari Big Fish square bowl
- 128 Mburg 8" radium mari Trout & Fly ruffle bowl
- 129 MBURG 9" MARI SEAWEED PLATE EDGE TURNS UP JUST SLIGHTLY AS MOST MBURG PLATES DO
- 130 Mburg 9" green Rosalind low ICS bowl
- 131 Mburg 10" radium purple Many Stars ruffled bowl
- 132 Mburg 10" aqua/teal Rosalind ruffled bowl. Scarce.
- 133 Mburg 10" radium purple Blackberry Wreath CRE bowl
- 134 Mburg 8" radium purple Grape Wreath Vt. CRE Bowl.
- 135 Mburg green Hobnail rosebowl
- 136 Mburg purple Hobnail Swirl rosebowl
- 137 Mburg 8" radium green Blackberry Wreath CRE bowl
- 138 Mburg 10" mari. Hanging Cherries ruffled bowl
- 139 Mburg 7" mari. Peacock Shotgun 3/1 edge bowl
- 140 Mburg 7 1/2" mari. Peacock Shotgun ruffled bowl
- 141 Mburg dark radium mari. Hobstar & Feather 14 pc. punchset w/ Fleur De Lys int. Super dark color!!!
- 142 Fenton 9" green Dragon & Strawberry ICS bowl. Very rare bowl!
- 143 Fenton 9" elec. blue Dragon & Strawberry ruffled bowl. Great color & detail!
- 144 Fenton 9" vaseline Waterlily footed bowl. Very rare color!
- 145 Fenton mari. Four Kittens cup/saucer.
- 146 Fenton powder blue Four Kittens 4-sided plate
- 147 Fenton mari. Four Kittens 4-sided plate
- 148 Fenton blue Four Kittens cereal bowl
- 149 Fenton mari. Four Kittens toothpick/ vase
- 150 Fenton blue Four Kittens toothpick/ vase
- 151 FENTON 8" CELESTE BLUE G & C FTD. BOWL. VERY SCARCE. GREAT COLOR.
- 152 Fenton 8" red Peacock & Grape ftd. bowl.
- 153 FENTON 7" CHERRY RED PEACOCK TAIL ICS BOWL. RARE!
- 154 Fenton cherry red Persian Medallion 2-handled bon bon
- 155 Fenton 7" cherry red Leaf Chain ruffled bowl. Small iridescent miss in ruffle.
- 156 Fenton red 5" Waterlily ftd. sauce.
- 157 Fenton 5" white Open Edge round bowl
- 158 Fenton 5" celeste blue Open Edge round bowl
- 159 Fenton 5" PINK Open Edge JIP hat/bowl
- 160 FENTON 6" ELEC. GREEN CHERRY CHAIN PLATE. VERY RARE!!!
- 161 Fenton 6" green Pinecone plate.
- 162 Fenton 6" mari. Pinecone plate.
- 163 Fenton 8" green Peacock Tail square CRE bowl
- 164 Fenton 9" purple Peacock Tail 3/1 edge bowl with tremendous multicolor iridescence.
- 165 Fenton purple Fluffy Peacock water pitcher
- 166 Fenton radium green Fluffy Peacock water pitcher
- 167 Fenton blue Fluffy Peacock water pitcher
- 168 Fenton frosty white Apple Tree water pitcher. Great pastel iridescence.
- 169 FENTON GREEN BLACKBERRY BLOCK WATER PITCHER. GREAT DETAIL!
- 170 Fenton green Blackberry Block tumbler FENTON RADIUM BLUE BUTTERFLY & BERRY HATPIN
- 171 HOLDER. OUTSTANDING! DEFINITELY THE BEST ONE WE HAVE SEEN.
- 172 Nwood green /emerald green Town Pump. Great color w/a really nice base glass.
- 173 Nwood IB Daisy & Plume footed rosebowl. Great pastel color. NWOOD DARK IB/SAPPHIRE G & C HATPIN HOLDER.
- 174 IF YOU DONT CLASSIFY THIS AS SAPPHIRE-IT'S ONE SHADE AWAY!!!
- 175 NWOOD IB CORN VASE W/STALK BOTTOM. RARE!
- 176 Nwood white Corn vase w/stalk bottom
- 177 NWOOD IG DANDELION TEMPLAR MUG. RARE!
- 178 Nwood green Peacock at Fountain water pitcher
- 179 Nwood green Peacock at Fountain tumbler
- 180 Nwood blue Peach water pitcher w/nice elec. highlights.
- 181 Nwood white Peach water pitcher w/gold trim. Very frosty.
- 182 Nwood blue Dandelion mug
- 183 Nwood elec. purple Dandelion mug
- 184 Nwood custard w/nutmeg Dandelion mug
- 185 NWOOD IB DAISY & DRAPE VASE W/TURNED IN TOP. Very hard to find
- 186 Nwood purple Daisy & Drape vase w/turned in top.
- 187 Nwood AO Daisy & Drape vase w/flared top
- 188 Nwood horehound Fine Cut & Roses rosebowl
- 189 Nwood IB Fine Cut & Roses rosebowl
- 190 Nwood light amy. Fine Cut & Roses rosebowl
- 191 NWOOD SAPPHIRE LEAF & BEADS ROSEBOWL RARE COLOR. HAS SUNFLOWER INTERIOR
- 192 Nwood AO Drapery rosebowl w/lots of opal
- 193 Fenton Green Orange Tree powder jar

- 194 Nwood Green Grape & Cable powder jar  
195 NWOOD WHITE GRAPE & CABLE POWDER JAR. RARE! NICE AND FROSTY  
196 Nwood IB Grape & Cable powder jar bottom only  
197 Nwood 5" white G&C ICS bowl  
198 RARE Nwood 8" mari Flute plate. (or Wide Panel)  
199 Nwood 6" green JIP Ribbed vase  
200 Nwood Custard w/ nutmeg Beaded cable rosebowl  
201 Nwood 9" Irid custard 3 Fruits ruffled bowl w/gold trim. Nice  
202 2 9" custard w/ NM Drapery variant vases. 2 x's  
203 Nwood custard w/ nutmeg G&C stippled center piece bowl. Points in. scarce  
204 Nwood white G&C low ruffled fruit bowl. Very scarce and pretty!  
205 RARE NWOOD FROSTY WHITE ACORN BURRS 8 PC PUNCH SET. A VERY HARD TO FIND SET, HAS GREAT PASTEL IRID.  
206 SUPER NWOOD ELEC GREEN 8PC ACORN BURRS PUNCH SET. REALLY GREAT COLOR! LOTS OF BLUE IRID!  
207 Nwood purple Dandelion tankard. Getting hard to find! Very nice!  
208 Nwood purple Dandelion tumbler  
209 Nwood green Raspberry water pitcher.  
210 Nwood 8.5" Lav Peacocks ruffled bowl. Scarce color  
211 NWOOD 8" ELEC BLUE SUNFLOWER BOWL. KILLER!  
212 Nwood 8" green Sunflower bowl. Another beauty!  
213 Nwood 8" purple Sunflower bowl.  
214 Nwood 8.5" mari Sunflower bowl.  
215 NWOOD WHITE G&C FERNER. VERY SCARCE NICE FROSTY IRID  
216 NWOOD WHITE PEACOCK AT FOUNTAIN COMPLETE TABLE SET VERY SHARP!  
217 Nwood 8" white Drapery vase  
218 Nwood Green Grape & Cable candle lamp. Very scarce and pretty!  
219 Nwood 8" mari Tree Trunk JIP vase. Quite scarce!  
220 NWOOD SAPPHIRE ROUND BUSHEL BASKET. VERY SCARCE AND ALWAYS DESIRABLE  
221 Nwood green Bushel Basket with SMOOTH handles. Very rare variation  
222 Nwood blue Peacock at Fountain creamer  
223 Nwood mari G&C Stippled Humidor. NICE!!!  
224 Nwood 8" radium purple Wild Strawberry HG plate. Nice  
225 Nwood 6" purple Strawberry HG plate  
226 NWOOD WHITE WIDE PANEL EPERGNE. VERY SHARP. HAS A SMALL BUFF SPOT WHERE 1 LILY INSETS. NO BIG DEAL.  
227 2 8" blue Butterfly & Berry Vases x2  
228 Fenton purple Forget Me Not tankard  
229 Fenton green Forget Me Not tankard  
230 Fenton green Paneled Dandelion tankard very scarce  
231 Fenton mari Leaf Tiers water pitcher  
232 Fenton mari Leaf Tiers tumbler  
233 RARE MARI JN LEDFORD COOLEEMEE PLATE. NICE DARK COLOR FOR THIS.. PUSHING PUMKIN. ALWAYS A DESIRABLE PLATE!  
234 FENTON 9" PURPLE BIRMINGHAM AGE HERALD PLATE. NICE DETAIL AND A NICE ADVERTISING PLATE!  
235 Fenton 9" blue Holly plate  
236 Fenton 9" black amy Holly plate. RARE  
237 Fenton 9" purple Holly plate  
238 Fenton 9" mari Dragon & Lotus plate. RARE  
239 Fenton 9" BLUE OPAL Holly ruffled bowl. Very hard to find!  
240 RARE Fenton 9" MMG Holly ruffled bowl. very tough color  
241 RARE FENTON PEACH OPAL 9" DRAGON & LOTUS FT'D PLATE. VERY RARE COLOR FOR THIS AND NICE IRID.  
242 Fenton 9" purple Dragon & Lotus ft'd plate RARE  
243 Fenton 9" AO Dragon & Lotus ruffled bowl. Very hard to find.  
244 Fenton 8.5" moonstone Peacock at Urn 8 ruffled bowl. Very nice, scarce!  
245 Fenton 9" white Leaf Chain plate  
246 Fenton 9" purple Captive Rose plate. Scarce color  
247 Fenton 9" Captive Rose blue plate. Nice!  
248 KILLER MARI 9" CONCORD PLATE. BRILLIANT IRID ON A RARE PLATE. NICE!  
249 Fenton 9" blue Lotus & Grape plate. Scarce  
250 Fenton 9" ELEC BLUE Holly plate. WOW! A super plate!  
251 Fenton 7" mari Illinois Soldiers and Sailors plate. Very sharp detail w/ great color!  
252 Fenton 9" AO Vintage 3-1 edge bowl. Lacks color  
253 Fenton mari Orange Tree creamer  
254 Fenton blue Orange Tree creamer  
255 West. purple 8 pc Orange Peel punch set. Scarce  
256 Fenton blue Persian Medallion hair receiver  
257 Fenton white Persian Medallion hair receiver. scarce  
258 Fenton Sapphire Orange Tree mug.  
259 Fenton elec blue Orange Tree Orchard rosebowl. Super!  
260 Fenton elec blue G&C low fruit bowl w/ PM interior Very sharp!  
261 Fenton 8" purple Concord 3-1 edge bowl. Nice color  
262 Fenton amber Vintage ferner. Scarce  
263 Nwood green Lovely footed nut bowl. What a great pattern. Great color!  
264 ULTA RARE BLUE CORN VASE W/ STALK BASE! ONLY A COUPLE OF THESE KNOWN..FIRST ONE TO SELL AT AUCTION THAT I CAN FIND IN RECENT YEARS.  
265 Nwood purple Raspberry milk pitcher.  
266 Marigold Jacob's Ladder rosebowl  
267 Imperial purple Field Flower pitcher w/ an odd amber irid. Really cool lookin'!  
268 RARE Imp. BLUE Grape stemmed wine. Very hard to find  
269 RARE Camb. green Inverted Thistle 12" round bowl. Not sure we have seen this before. Very nice  
270 Camb. mari Inverted Strawberry stemmed compote. Scarce  
271 RARE mari Wide Panel Cherry syrup. Not many of these known. Very rare item.  
272 Contemporary S repeat toothpick.

***Folks, We could have written more about each piece, but no need. A GREAT selection of glass. See you at HOACGA in April. Call us if you cannot make it.***

***Still booking for 2009 and early 2010. Call now to ensure you get the date or convention you want!***

***Next CG auction will be Keystone Convention in Harrisburg, PA. The Schmoker collection.***



