



**Heart of America
Carnival Glass
Association**



**THE MORGAN
COLLECTION
FROM TEXAS**

2011

**Convention Auction
OPEN TO THE PUBLIC**

AUCTION

**Saturday, April 30
9:30 A.M.**

**Embassy Suites Airport Hotel
7640 NW Tiffany Springs Parkway
Kansas City, Missouri**



Jim & Jan Seeck

Seeck Auctions 641-424-1116

SATURDAY, APRIL 30th, 2011 • 9:30 A.M.

Embassy Suites Hotel – Kansas City, MO

NO BUYER'S PREMIUM • OPEN TO THE PUBLIC

The Morgan Collection from Texas



Preview: Friday Evening

We are very excited to be auctioning the beautiful Carnival Glass from the Morgan Collection. Dorothy and Emmett have put together an exceptional selection of Carnival Glass over the years. Each piece has been carefully chosen for their collection and it will be a pleasure to auction such fantastic glass. Dorothy and Emmett are very active in the Carnival Glass Clubs including Texas in which Emmett is the President. We'd love to see you attend the HOACGA convention. It is a very fun filled and educational experience. See you in Kansas City!

For Online Auction Catalog, Check our Website:

www.seeckauction.com

Online absentee bidding closes, Friday, April 29th at 3 pm CST

Reservations can be made by calling the hotel directly at 816-891-7788. Ask for reservations and mention the HOACGA Convention. If you have a problem or questions about reservations at the hotel or questions about the convention, please call Bob Grissom at: 816-356-5320. Cut-off date for special rates is April 12th.

Visit the Heart of America Carnival Glass Association on the Internet at: WWW.HOACGA.ORG

Terms: Cash or Check, VISA and MasterCard accepted w/proper ID. 4 % Clerking Fee on all purchases except for payment of cash or check. Announcements made day of sale take precedence over any printed information.

We have 3 options for absentee bidding:

1) If you DO NOT have internet access or access to our website, you can: Call us by phone to enter your bids at (641) 424-1116 **OR** By sending the numbers of the item(s) desired and the amount bid on each to: Seeck Auctions, PO Box 377, Mason City, Iowa 50402. (The mail has not been very dependable. We would prefer you call us with your bids rather than send them in a letter.)

- All written and called in bids will be entered into the online catalog by us.
- Have all bids in by **Wed., April 27th.**

2) Enter your bids from our website into our online catalog through the Auctionflex system.

When you get to the online catalog, you will need to login as a bidder. For the first time you will need to **set up your account** by creating a username and password. This will include filling out a form with your name, address, etc. You will also need to **register for the auction** which will ask you to enter a valid credit card number. This card will be validated by a \$1 charge to your card. This will only happen once and you will now be able to enter bids through our online catalog by just logging in with your user name and password. You will use this user name and password for all our auctions. You are not required to pay by credit card if you are successful. This is just a safeguard for us if someone does not pay. We will let you know what you owe us through an email and you can decide how you would like to pay us.

An exciting advantage of entering your bids online yourself, is the option to be notified by email if you are outbid on an item. You will know when you are outbid on an item and you can increase your bid on that item or bid on something else.

There will be a cutoff date and time for entering your bids online. After this time has passed, you will not be able to enter your bids from our online catalog.

• Remember, that just because you are the high bidder in the online catalog, this does not mean you have won the item. Your bid will still need to beat the floor bidders and live phone bidders. This system will run our absentee bids just as we did before. You will still be able to buy the item lower than your online bid unless someone on the floor bids you higher.

3) Live phone bidding is available on pieces with an estimated sale price of \$500 or more. If you would like to participate in live phone bidding, contact us by **the Tuesday before the auction (April 26th)**. We will need to know the lot# and the phone number that you can be reached at on the day of the auction. We will also need your home phone number if different than the above number. Please call with questions: 641-424-1116.

There is a \$7 handling charge for each successful bid. Shipping and insurance charges are additional. Bidders will be notified by phone/email if their bid(s) are successful. This will be done 1 - 3 days after the auction. * If you do not receive an item that sold for less than your bid, assume we cancelled your bid because the item had a severe manufacture problem, damage or was not listed correctly.**

**BID INCREMENTS: \$1 - \$100/\$5 \$100 - \$200/\$10 \$200 - \$700/\$25 \$700 - \$1,500/\$50
\$1,500 - \$3,000/\$100 \$3,000+ Auctioneer's Discretion**

- ___ 1. N's #727 Twisted Swirl 9" vase - celeste blue
- ___ 2. N's #727 Twisted Swirl 7" vase - celeste blue
- ___ 3. Howard Furniture Co. Four Pillars 11" vase - green
- ___ 4. Brocaded Acorns 8 1/2" fan vase - lavender - rare shape in lavender
- ___ 5. Scroll Embossed large sized ruffled compote - violet blue - super pretty color
- ___ 6. N's Spindle pair of candlesticks - celeste blue
- ___ 7. Wishbone & Spades deep round sauce - purple - unusual proof shape, pretty
- ___ 8. Pinecone IC shaped sauce - blue - unusual shape, super pretty
- ___ 9. Peacock & Dahlia 7" ruffled bowl - vaseline - pretty
- ___ 10. M'BURG PIPE HUMIDOR - MARIGOLD - SUPER PRETTY
EXAMPLE OF A RARE M'BURG CLASSIC, OUTSTANDING!
- ___ 11. Daisy & Drape flared out vase - marigold - nice
- ___ 12. Shell & Sand 9" plate - purple - spectacular, a beautiful plate
- ___ 13. Shell & Sand 9" plate - smoke - super, super pretty
- ___ 14. Formal JIP vase - purple - maybe the best one I have seen, super
- ___ 15. PEACOCK AT THE FOUNTAIN 6 PC. PUNCH SET - LIME GREEN - SPECTACULAR IRID., HAS AN ICE GREEN BASE WHICH MOST OF THEM DO, A RARE OPPORTUNITY
- ___ 16. Peacock at the Fountain 8 pc. punch set - purple - absolutely incredible set
- ___ 17. Peacock at the Fountain 8 pc. punch set - marigold - dark, a super beautiful set
- ___ 18. Morning Glory 12 1/2" funeral vase, has 10" mouth - purple - super pretty inside & out, a stunning vase
- ___ 19. Morning Glory 11 1/2" funeral vase, has 9" mouth - marigold - fantastic
- ___ 20. S-REPEAT 14 PC. PUNCH SET - PURPLE - AN EXTREME RARITY, HIGHLY DESIRABLE & SUPER PRETTY, WHAT MORE DO YOU WANT!
- ___ 21. Cosmos & Cane ftd ruffled compote - honey amber - cute little piece & quite rare
- ___ 22. NUART HOMESTEAD CHOP PLATE - BLUE - SUPER PRETTY, EXTREMELY RARE, SO HARD TO FIND IN BLUE
- ___ 23. HOMESTEAD CHOP PLATE - EMERALD GREEN - SUPER PRETTY, EXTREMELY RARE, A DANDY!
- ___ 24. NUART Homestead chop plate - amber - fantastic, beautiful
- ___ 25. NUART HOMESTEAD CHOP PLATE - PURPLE - ABSOLUTELY THE BEST I HAVE SEEN, THIS LOOKS LIKE A BEAUTIFUL SUNNY DAY!
- ___ 26. Tornado small size vase - green - fantastic
- ___ 27. FARMYARD 8 RUFFLED BOWL - PURPLE - THIS IS A SPECTACULAR ONE, JUST FABULOUS!
- ___ 28. Six Sided candlesticks - marigold - super matching pair
- ___ 29. POPPY PICKLE DISH - MARIGOLD ON CUSTARD - FANTASTIC IRID. ON THIS RARE PIECE, NOT OFTEN SOLD
- ___ 30. Poppy pickle dish - ice blue opal - pastel & rare
- ___ 31. Poppy pickle dish - purple - super pretty
- ___ 32. PETER RABBIT 9" PLATE - GREEN - SUPER EXAMPLE, SUPER RARE
- ___ 33. N's Thin Rib 10" vase - sapphire - super pretty, rare
- ___ 34. Poinsettia & Lattice ftd ruffled bowl w/ribbed back - horehound - very pretty, rare color
- ___ 35. Poinsettia & Lattice ftd ruffled bowl w/ribbed back - blue - fantastic example, a beauty
- ___ 36. Poinsettia & Lattice ftd ruffled bowl - purple - unbelievable, the best I have seen
- ___ 37. Poinsettia & Lattice ftd ruffled bowl - marigold - dark, super
- ___ 38. ACORN BURRS 8 PC. PUNCH SET - WHITE - FROSTY, SUPER RARE SET THAT IS HIGHLY DESIRABLE, POLISHED CHIP ON BASE
- ___ 39. Acorn Burrs 9 pc. punch set - green - super pretty, lots of beautiful blue irid.
- ___ 40. Circle Scroll 7" vase - purple - fantastic electric irid.
- ___ 41. POPPY SHOW 9" PLATE - PURPLE - BEST PURPLE PLATE I'VE SEEN, THIS ONE IS FANTASTIC
- ___ 42. Poppy Show 9" plate - blue - another fabulous plate, electric!
- ___ 43. Poppy Show 9" plate - marigold - lots of pink irid., outstanding
- ___ 44. Coin Spot ruffled compote - celeste blue - highly desirable & super
- ___ 45. COSMOS & CANE 7 PC. TANKARD WATER SET - WHITE - VERY PRETTY & RARE SET
- ___ 46. N's Town Pump - purple - as nice as they get, a classic
- ___ 47. FANTAIL FTD CHOP PLATE - MARIGOLD - FANTASTIC IRID., EXTREMELY RARE WITH ONLY A FEW KNOWN
- ___ 48. Drapery 8" vase - lime green - tough color
- ___ 49. TREE TRUNK 20" FUNERAL VASE /PLUNGER BASE - BLUE - FANTASTIC ELECTRIC IRID., SUPER RARE, WHAT A VASE!
- ___ 50. Tree Trunk 18 1/2" funeral vase w/plunger base - purple - super example
- ___ 51. Covered Grand Piano candy dish - marigold - unusual novelty piece, pretty & only one I know of
- ___ 52. Rose Show ruffled bowl - lime green opal - super pretty, very rare & highly desirable
- ___ 53. Rose Show ruffled bowl - sapphire - fantastic irid. on this rare color
- ___ 54. Rose Show ruffled bowl - horehound - super irid. on this rare bowl, not many known
- ___ 55. Rose Show ruffled bowl - aqua opal - pastel example, just super!
- ___ 56. Rose Show ruffled bowl - aqua opal - butterscotch, fabulous
- ___ 57. Rose Show ruffled bowl - ice green - pretty
- ___ 58. Rose Show ruffled bowl - purple - electric, nice
- ___ 59. Rose Show ruffled bowl - pastel marigold - super
- ___ 60. FASHION 8 PC. PUNCH SET - SMOKE - EXTREMELY RARE SET & SUPER BEAUTIFUL, ONE OF JUST A FEW SETS KNOWN
- ___ 61. Horse Medallion 7" ftd IC shaped bowl - green - super pretty, pinpoint on point
- ___ 62. CHRISTMAS COMPOTE - PURPLE - FANTASTIC! A RARE PIECE THAT IS OUTSTANDING
- ___ 63. N's Eight Sided bushel basket - green - super pretty
- ___ 64. N'S THIN RIB 14" MID-SIZE FUNERAL VASE - AQUA OPAL - FANTASTIC OPAL, A SPECTACULAR VASE, WHO WOULDN'T WANT ONE OF THESE!
- ___ 65. N's Thin Rib 14" mid-size funeral vase - sapphire - SUPER pretty, a great one
- ___ 66. N's Thin Rib 13" mid-size funeral vase - lime green - rare color, highly desirable
- ___ 67. Grape & Cable powder jar - lavender
- ___ 68. HATTIE RUFFLED BOWL - BLUE - ELECTRIC IRID., THIS IS INCREDIBLE, RARE
- ___ 69. N's Corn vase w/stalk base - ice green w/marigold overlay - neat vase
- ___ 70. IMPERIAL FLUTE PUNCH BOWL, BASE & ONE CUP - PURPLE - SPECTACULAR, ONE OF MY FAVORITES IN THE SALE, EXTREMELY HARD TO FIND
- ___ 71. Imperial Flute 6 pc. water set - purple - super!
- ___ 72. Double Stemmed Rose dome ftd 3 in 1 edge bowl - purple - has lavender colors, electric irid., not the normal bowl
- ___ 73. IMPERIAL GRAPE WATER CARAFE - EMERALD GREEN - FANTASTIC IRID., SUPER PRETTY, RARE
- ___ 74. Imperial Grape water carafe - smoke - such a rare color plus beautiful
- ___ 75. Imperial Grape water carafe - purple - every inch is covered with fabulous irid.
- ___ 76. GARDEN PATH VARIANT CHOP PLATE - PURPLE - EXTREMELY RARE PLATE & BEAUTIFUL, WOW!!
- ___ 77. Strawberry ruffled bowl w/plain back - emerald green - fantastic
- ___ 78. Grape & Cable 14 pc. master punch bowl set - green - super rare color, very desirable, a great opportunity
- ___ 79. Grape & Cable 14 pc. master punch set - purple - as nice a set as we've ever sold, SUPER!
- ___ 80. Concave Diamond 7 pc. lidded water set - celeste blue - scarce & desirable
- ___ 81. Mikado ruffled compote - green - fantastic electric irid., minor manufacture split in ruffle & open bubble on base, hard to find color
- ___ 82. Mikado IC shaped compote - blue - electric & super

- ___ 83. Mikado IC shaped compote – electric marigold - yellow & pink pastel irid., gorgeous
- ___ 84. Tiger Lily 5 pc. water set - purple - fabulous set
- ___ 85. Stippled Rays IC shaped compote - celeste blue – rare
- ___ 86. Stippled Rays IC shaped compote - vaseline - just as neat
- ___ 87. Hattie chop plate - purple - electric, fantastic w/radium type irid., as nice as we've sold
- ___ 88. Hattie chop plate - amber - absolutely super, rare
- ___ 89. Hattie chop plate - marigold - super nice
- ___ 90. Zippered Loop 8" kerosene lamp, has 4 1/2" base - smoke - super
- ___ 91. Zippered Loop 8" kerosene lamp, has 4 3/4" base - marigold - nice
- ___ 92. Orange Tree 9" plate - green - super rare color, very nice
- ___ 93. Orange Tree w/trunk 9" plate - blue - fantastic!
- ___ 94. Orange Tree w/trunk 9" plate - marigold - super pretty
- ___ 95. Imperial Grape 7 pc. water set - purple - a super pretty set
- ___ 96. Imperial Grape water pitcher - amber - super beautiful, rare
- ___ 97. Imperial Grape tumbler - amber - super, great match to pitcher
- ___ 98. Imperial Grape water pitcher - smoke - very scarce, very nice
- ___ 99. FRUITS & FLOWERS 7" RUFFLED BOWL W/BW BACK - AQUA OPAL - PASTEL & FANTASTIC, ONLY A FEW KNOWN
- ___ 100. Peacocks 9" plate w/ribbed back - blue - electric, fantastic!
- ___ 101. Peacocks 9" plate w/ribbed back - green - super example, great!
- ___ 102. Peacocks 9" plate w/ribbed back - purple - beautiful
- ___ 103. Peacocks 9" plate w/ribbed back - white - nice
- ___ 104. Peacocks 9" plate w/ribbed back - marigold - lots of beautiful pink & yellow
- ___ 105. Butterfly & Tulip ftd ruffled square shaped bowl - purple - turned up more than most, minor nick on edge, haven't sold one of these in awhile
- ___ 106. Hearts & Flowers ruffled bowl w/ribbed back - aqua opal – rare, super nice
- ___ 107. Hearts & Flowers ruffled bowl w/BW back - green - super nice, very rare w/BW back
- ___ 108. Hearts & Flowers ruffled bowl w/BW back - purple - super
- ___ 109. Rustic 18" funeral vase - white - frosty, super, a beautiful vase
- ___ 110. Rustic 18" funeral vase - green - has outstanding emerald irid., WOWEE!!
- ___ 111. Rustic 19" funeral vase - blue - super
- ___ 112. Rose Show Variant ruffled bowl - blue - great example, a beauty
- ___ 113. Rose Show Variant ruffled bowl - marigold - lots of pink irid, another beauty
- ___ 114. Milady 5 pc. tankard water set - blue - maybe the prettiest pitcher I have ever seen
- ___ 115. Raindrops dome ftd ruffled bowl - purple - have to see this beautiful piece, electric!
- ___ 116. Memphis 8 pc. punch set - white - absolutely super, a great set
- ___ 117. Memphis 8 pc. punch set - green - incredible, rare
- ___ 118. Memphis 6 pc. punch set - marigold - dark as a pumpkin
- ___ 119. THISTLE 9" PLATE - GREEN - ONE OF THE BEST EXAMPLES I'VE SEEN, RARE
- ___ 120. Thistle 9" plate - amethyst - another super one, rare
- ___ 121. Hearts & Flowers ruffled compote - renninger blue - very pretty, rare color, minor base nicks
- ___ 122. Hearts & Flowers ruffled compote - green - super, super nice
- ___ 123. Hearts & Flowers ruffled compote - ice green - a super example
- ___ 124. Hearts & Flowers ruffled compote - ice blue- super pretty
- ___ 125. Hearts & Flowers ruffled compote – ice blue opal - fabulous golden irid., base chip
- ___ 126. Hearts & Flowers ruffled compote - lavender - super pretty irid.
- ___ 127. FOUR FLOWERS CHOP PLATE - PURPLE - SUPER, RARE
- ___ 128. Field Flower water pitcher - purple - super
- ___ 129. Field Flower tumbler - purple- super
- ___ 130. HEARTS & FLOWERS 9" PLATE W/RIBBED BACK - LIME GREEN - A SUPER NICE EXAMPLE
- ___ 131. Flowers & Frames dome ftd crimped edge, tri-cornered bowl - purple – electric, WOW!
- ___ 132. Stippled Grape & Cable PCE bowl w/ribbed back - aqua opal - pastel & beautiful
- ___ 133. Pansy dresser tray - purple – outstanding electric radium irid., from the Maxwell collection
- ___ 134. SCROLL & FLOWER PANEL VASE - SMOKE - EXTREMELY RARE, JUST A FEW KNOWN, UNBELIEVABLE!
- ___ 135. Floral & Optic ftd cake plate - red - super stretchy irid.
- ___ 136. M'BURG HOBSTAR & FEATHER GIANT ROSE BOWL - AMETHYST - BEAUTIFUL, HARDER TO FIND IN AMETHYST
- ___ 137. Blackberry ftd ruffled candy dish w/Daisy & Plume exterior - lime green - vary rare, nice
- ___ 138. Garden Path Variant 10" IC shaped bowl - purple - an outstanding bowl, a prize to own
- ___ 139. Garden Path Variant 10" IC shaped bowl - peach opal – rare in the IC shape, can't imagine a prettier one
- ___ 140. Grape Arbor tankard water pitcher - purple - incredible, just running out of words!!
- ___ 141. Grape Arbor tankard water pitcher - white - frosty, pretty
- ___ 142. Grape Arbor tumbler – white
- ___ 143. Poppy Show ruffled bowl - green - extremely rare, super pretty
- ___ 144. Poppy Show ruffled bowl - blue - electric, fantastic, as pretty as these can get
- ___ 145. Poppy Show ruffled bowl - purple - an absolute beauty
- ___ 146. Poppy Show ruffled bowl - ice green - very rare, nice
- ___ 147. Poppy Show ruffled bowl - ice blue - great color, pretty irid.
- ___ 148. Poppy Show ruffled bowl - marigold - super pastel irid.
- ___ 149. Fashion water pitcher - purple - very scarce, super pretty
- ___ 150. Persian Medallion 9" plate - marigold - super pretty pumpkin, as nice as this could get
- ___ 151. Persian Medallion 9" plate - blue - another super nice plate, WOW
- ___ 152. Persian Garden 2 pc. fruit bowl - purple - has 10 ruffles and super!
- ___ 153. Persian Garden 2 pc. fruit bowl - white - has 6 ruffles and nice
- ___ 154. M'BURG OHIO STAR VASE - GREEN - FABULOUS RADIUM IRID., A DANDY
- ___ 155. Wishbone & Spades chop plate - purple - incredibly super!
- ___ 156. Captive Rose 9" plate - amethyst - pretty!!!
- ___ 157. Captive Rose 9" plate - green - grrreat!
- ___ 158. Luster Rose round ftd fruit bowl - purple - incredible electric irid., just can't get much better!
- ___ 159. STIPPLED GRAPE & CABLE VARIANT 9" PLATE W/RIBBED BACK - SAPPHIRE - AS GOOD AS I'VE SOLD IN YEARS
- ___ 160. Enameled Iris w/diagonal band tankard water pitcher - blue - super
- ___ 161. Enameled Iris tumbler – blue
- ___ 162. STIPPLED PEACOCK AT URN MASTER IC BOWL - BLUE - YOU COULDN'T PAINT A PRETTIER ONE, THE BIRD IS FABULOUS, RARE
- ___ 163. Peacock at Urn master IC bowl - ice green - super nice example
- ___ 164. Peacock at Urn master IC bowl - purple - even the bird is super
- ___ 165. Luster Rose water pitcher - purple - incredible plus rare
- ___ 166. Luster Rose tumbler - purple - great
- ___ 167. Peacock & Grape 9" plate - blue - as pretty as these could get
- ___ 168. Peacock & Grape 9" plate - marigold - dark, super, scarce
- ___ 169. Luster Rose 4 pc. table set - purple - absolutely cvd w/blue irid., every pc is electric
- ___ 170. Vintage 3 in 1 edge 10" bowl - celeste blue - extremely rare, super, has couple nicks on edge
- ___ 171. Windmill milk pitcher - purple - WOW! WOW!
- ___ 172. DIAMOND RIB JARDINIÈRE - MARIGOLD - EXTREMELY RARE, NICE
- ___ 173. Four Flowers 10" ruffled bowl - purple – electric & spectacular
- ___ 174. Gothic Arches 10" vase – smoke - rare & super nice
- ___ 175. Gothic Arches 10 1/2" vase - marigold - dark, nice
- ___ 176. Chrysanthemum chop plate - purple - SUPER, RARE!
- ___ 177. Peacock at the Fountain ruffled compote - aqua opal - fabulous example, has chip on base, but find another
- ___ 178. Peacock at the Fountain ruffled compote - ice green - rare & highly desirable
- ___ 179. Peacock at the Fountain ruffled compote - blue - electric, fantastic



12



16



22



23



25



27



32



38



41



45



47



49



52



60



68



70



73



76



78



82



83



87



99



105



106



109



112



119



127



130



132



134



136



138



143



159



162



167



172



176



182



184



187



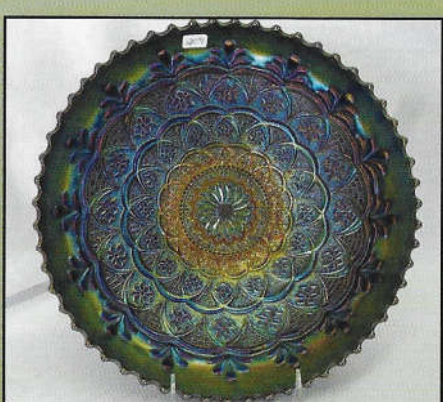
191



195



201



209



212



215



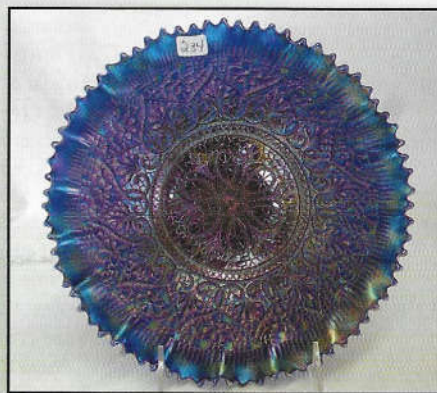
220



225



229



234



236



246



247



251



258



261



270

- ___ 180. Peacock at the Fountain ruffled compote - purple - the best purple I've seen
- ___ 181. Peacock at the Fountain ruffled compote - marigold - super dark & pretty
- ___ 182. STIPPLED GRAPE & CABLE 8 PC. SMALL SIZE PUNCH SET - BLUE - EXTREMELY RARE SET & NICE
- ___ 183. Three Row Basketweave Open Edge IC shaped bowl - ice blue -pretty
- ___ 184. Loganberry vase - purple - SPECTACULAR
- ___ 185. Loganberry vase - smoke - extremely rare color plus super
- ___ 186. Loganberry vase - teal - very nice example
- ___ 187. Peach water pitcher - blue - electric, super
- ___ 188. Diamond Points 11" vase - ice blue - scarce, nice
- ___ 189. Imperial Grape 9" plate - purple - fantastic!
- ___ 190. Imperial Grape 9" plate - amber - rare color, very nice, minor roughness on base
- ___ 191. COSMOS & CANE SPITTOON SHAPED COMPOTE - PURPLE - ONLY PURPLE ONE I HAVE SEEN, SPECTACULAR IRID.!
- ___ 192. Stippled Three Fruits spt ftd ruffled bowl - emerald green - fantastic irid. on this rare bowl
- ___ 193. Stippled Three Fruits spt ftd ruffled bowl w/smooth edge - aqua opal - pastel, super
- ___ 194. Daisy Web 2 sided up crimped edge hat shape - purple - electric, super, wow!
- ___ 195. Concord 9" plate - amethyst - a super example, pretty
- ___ 196. Heavy Grape chop plate - white - super stretchy irid. on this rare chop plate
- ___ 197. Heavy Grape chop plate - purple - WOW!!!!
- ___ 198. VINTAGE 9" RUFFLED BOWL - CELESTE BLUE - VERY RARE BOWL, SUPER
- ___ 199. Amaryllis ftd plate - purple - fantastic irid, electric
- ___ 200. Amaryllis ftd plate - marigold - another beauty w/pink irid., scarce
- ___ 201. M'BURG PEACOCK MASTER IC SHAPED BOWL - AMETHYST - RADIUM & FANTASTIC
- ___ 202. Imperial Grape 7 pc. wine set - purple - fabulous!
- ___ 203. Imperial Grape wine bottle w/stopper - smoke - rare
- ___ 204. Imperial Grape wine bottle w/stopper & 2 wines - green - nice
- ___ 205. Lotus & Grape 9" plate - amethyst - super beautiful irid., rare
- ___ 206. Lotus & Grape 9" plate - green - super example of this rare plate
- ___ 207. Lotus & Grape 9" plate - blue - very rare, nice, open bubble on point
- ___ 208. Persian Garden chop plate - lavender - fantastic irid., chip on back of point
- ___ 209. PERSIAN GARDEN 11" IC SHAPED BOWL - PURPLE - FANTASTIC BLUE IRID.
- ___ 210. Wishbone 9" ftd plate - marigold - pretty plate
- ___ 211. Wishbone 9" ftd plate - purple - super pretty
- ___ 212. N'S PEACOCK AT URN IC SAUCE - AQUA OPAL - SUPER PRETTY EVEN IRID., RARE
- ___ 213. Blossomtime ruffled compote - green - as nice as these get
- ___ 214. Blossomtime ruffled compote - purple - another super one, from the Tilberg collection
- ___ 215. Good Luck ruffled bowl w/ribbed back - aqua opal - super pretty w/light butterscotch irid., RARE
- ___ 216. Good Luck ruffled bowl w/ribbed back - aqua teal - super pretty, a beauty, from Mary Kesterson
- ___ 217. Dahlia water pitcher w/gold decoration - white - super irid., scarce
- ___ 218. Fenton's Peacock at Urn 9" plate - blue - electric, super
- ___ 219. Fenton's Peacock at Urn 9" plate - marigold - fabulous
- ___ 220. POPPY SHOW VASE - SMOKE - SUPER PRETTY IRID. ON THIS RARE VASE
- ___ 221. Poppy Show vase - marigold - dark from top to bottom, very nice
- ___ 222. Poppy Show vase - red - Fenton, contemporary
- ___ 223. Poppy Show vase - yellow - not iridized, old & extremely rare
- ___ 224. Grapevine Lattice 7" plate - purple - unbelievable electric & incredible
- ___ 225. CAMBRIDGE HOBSTAR PUNCH BOWL & BASE - GREEN - ONLY ONE I'VE HEARD OF, PRETTY, SUPER PIECE OF CAMBRIDGE
- ___ 226. Diamond & Sunburst 6 pc. wine set - purple - super pretty
- ___ 227. Holly ruffled bowl - blue opal - super pretty irid. on this rare piece, Emmett's favorite piece of Fenton
- ___ 228. Thin Rib & Drape 5 1/2" vase - purple - electric & fantastic, hard to find in purple
- ___ 229. Peacocks ruffled bowl w/ribbed back - aqua opal - super opa! pastel irid., a great bowl!
- ___ 230. Peacocks ruffled bowl w/ribbed back - green - super pretty
- ___ 231. Peacocks ruffled bowl w/ribbed back - blue - electric blue irid., beautiful
- ___ 232. Peacocks ruffled bowl w/ribbed back - purple - fantastic, birds are super
- ___ 233. Thin Panel 6" JIP vase - purple - super
- ___ 234. Hearts & Flowers PCE bowl w/ribbed back - blue - super pretty electric irid.
- ___ 235. COSMOS & CANE 8" RUFFLED BOWL W/HEADRESS INTERIOR - PURPLE - FEW PURPLE PIECES AROUND, ONLY ONE KNOWN, FROM THE POUCHER COLLECTION
- ___ 236. Wishbone PCE bowl w/BW back - blue - electric and yes, fantastic
- ___ 237. M'burg Seacoast pin tray - green - as nice as these get
- ___ 238. Grape & Cable 7 pc. water set - purple - unbelievably pretty, might be the best!
- ___ 239. Fruits & Flowers bonbon - ice green - pretty
- ___ 240. Fruits & Flowers bonbon - lavender - also pretty
- ___ 241. Stippled Fruits & Flowers bonbon - blue - electric & pretty
- ___ 242. Dragon & Lotus IC shaped bowl - red - has super red irid., a great piece
- ___ 243. Stippled & Banded Grape & Cable large size fruit bowl - blue - electric, FANTASTIC! THE BEST!
- ___ 244. Tree Trunk 7 1/2" squatty vase - ice blue - rare vase, nice
- ___ 245. Concord 3 in 1 edge bowl - amethyst - fabulous blue grapes, from the Tilberg collection
- ___ 246. FOUR SEVENTY FOUR 7 PC. PUNCH SET - EMERALD GREEN-FANTASTIC IRID. ON THIS RARE PUNCH SET, CHIP ON BOWL, WHO CARES WITH SUCH BEAUTY
- ___ 247. Wishbone & Spades 6" plate - purple - electric! WOW! This is the One!
- ___ 248. Tree Trunk 11" vase - aqua opal - super pretty, scarce
- ___ 249. Tree Trunk 9 1/2" vase - sapphire - rare, nice
- ___ 250. Tree Trunk 9 1/2" vase - ice blue - nice
- ___ 251. Broken Arches 10 pc. punch set - purple - super pretty set, hard to find
- ___ 252. Dandelion mug - aqua opal - pretty
- ___ 253. Vineyard water pitcher - purple - super pretty, much harder to find than people think
- ___ 254. Vineyard tumbler - purple - nice
- ___ 255. Nippon ruffled bowl w/ribbed back - ice green - scarce, nice
- ___ 256. Wishbone & Spades 10" ruffled bowl - purple - ooh!! Amazing!!
- ___ 257. Smooth Panels 12" vase, has 4 3/8" base - smoke - rare vase
- ___ 258. Stippled Peacocks 9" plate w/ribbed back - blue - electric! fantastic!
- ___ 259. Stippled Peacocks 9" plate w/ribbed back - marigold - lots of pretty yellow irid.
- ___ 260. Round Up ruffled bowl - purple - !!!fantastic!!! from the Tilberg collection
- ___ 261. Oriental Poppy tankard water pitcher - lime green - extremely rare pitcher & super, minor heat check where handle is applied
- ___ 262. Fishscale & Beads 7" plate - purple - WoW!
- ___ 263. RUSTIC 21" FUNERAL VASE W/PLUNGER BASE - BLUE - ELECTRIC, SUPER, RARE, NEAT VASE!
- ___ 264. Strawberry PCE bowl w/plain back - pastel marigold - super
- ___ 265. Open Rose 9" plate - purple - as nice as they get
- ___ 266. Grape & Cable 11" ruffled bowl w/BW back - blue - electric super, rare bowl
- ___ 267. Isaac Benesch & Sons ruffled advertising bowl - purple - nice
- ___ 268. Wishbone ftd ruffled bowl - ice green - super pretty example, many of these are not pretty
- ___ 269. Wishbone ftd deep ruffled bowl - blue - electric & super
- ___ 270. Imperial Glass Company paperweight - purple - extremely rare novelty, nice

- ___ 271. Stippled & Banded Grape & Cable banana boat - marigold - pretty
- ___ 272. Flowers & Frames dome ftd ruffled bowl - purple - electric, a super dooper!
- ___ 273. Stretch Glass punch bowl w/black glass base - red - rare
- ___ 274. Ski Star dome ftd handgrip plate - dark purple/black amethyst - I've run out of words!
- ___ 275. STIPPLED THREE FRUITS 9" PLATE W/RIBBED BACK - AQUA OPAL - LOTS OF BEAUTIFUL OPAL, RARE, PRETTY!
- ___ 276. Scroll Embossed miniature ruffled compote - purple - super
- ___ 277. Octagon small size water pitcher - purple - electric, super
- ___ 278. Singing Birds mug - aqua opal - a beauty
- ___ 279. Stippled Singing Birds mug - purple - super pretty example, never seen one as nice
- ___ 280. MANY FRUITS 7PC. PUNCH SET -PURPLE -ELECTRIC BLUE IRID., BEAUTIFUL
- ___ 281. Strawberry 9" plate w/BW back - green - radium type irid., nice
- ___ 282. Petal & Fan large size ruffled bowl - purple - outstanding!
- ___ 283. N's #651 candlesticks - jade blue - super pretty, super rare
- ___ 284. N's #651 candlesticks - celeste blue - also rare
- ___ 285. N's Peacock at Urn chop plate - purple - super pretty
- ___ 286. Persian Garden 6" plate - purple - yah, it's a nice one! Electric!
- ___ 287. Fine Cut & Roses candy dish - green - electric green irid., has typical rough feet
- ___ 288. Heart & Vine 9" plate - blue - super pretty
- ___ 289. Nippon 9" plate w/BW back - purple - super rare plate, chip on point
- ___ 290. M'burg Trout & Fly IC shaped bowl - lavender - very rare color, satin & super, the fish is beautiful
- ___ 291. Grape & Cable turned in center piece bowl - purple - pretty
- ___ 292. Whirling Star punch bowl & base - marigold - only one known, purchased at Strohm HOACGA auction
- ___ 293. Border Plants 3 in 1 edge dome ftd bowl - purple - spectacular does not do it justice
- ___ 294. Fenton's Peacock at Urn 8 ruffled bowl - green - electric irid., super!
- ___ 295. Fantail IC shaped ftd centerpiece bowl - blue - WOW, WOW, from the Tilberg collection
- ___ 296. Little Jessie Hen on Nest - marigold - cute miniature
- ___ 297. Fanciful 9" plate - blue - super pretty example
- ___ 298. Fanciful 9" plate - purple - super, super pretty example
- ___ 299. Embroidered Mums ruffled bowl w/ribbed back - aqua or sapphire - very pretty irid. for this piece
- ___ 300. Embroidered Mums ruffled bowl w/ribbed back - blue - electric, nice
- ___ 301. Ski Star large size ruffled bowl - purple - super
- ___ 302. Grape & Cable ball ftd round bowl - celeste blue - super pretty, rare
- ___ 303. Aurora Pearls ruffled bowl w/painted flowers - blue - pretty
- ___ 304. Lovely ftd nut bowl - purple - super irid., scarce pattern (a lovely piece of glass!)
- ___ 305. Big Basketweave 10" vase - purple - there isn't anything that isn't pretty!
- ___ 306. Stippled Grape & Cable fruit bowl - purple - nice
- ___ 307. TREE TRUNK MID-SIZE 12" VASE -ICE GREEN -RARE, NICE
- ___ 308. TREE TRUNK 13" MID-SIZE VASE -ICE BLUE -SUPER NICE
- ___ 309. Tree Trunk 11" mid-size vase - white - frosty, super
- ___ 310. Tree Trunk 12 1/2" mid-size vase - green - a beauty
- ___ 311. Tree Trunk 13" mid-size vase - marigold - pretty
- ___ 312. Tree Trunk 12 1/2" mid-size vase w/plunger base - purple - best one I have seen
- ___ 313. Blackberry Spray ruffled hat - red - nice
- ___ 314. Stippled Peacock ruffled bowl w/ribbed back - purple - super, unusual bowl
- ___ 315. Stippled Petals dome ftd ruffled bowl - purple - again, just super!
- ___ 316. Windmill dresser tray - purple - rare, pretty
- ___ 317. Ripple 7" vase, has 2 7/8" base - amber - pretty
- ___ 318. Twigs tri-cornered miniature vase - purple - scarce, nice
- ___ 319. Melon Rib 7" vase - red stretch
- ___ 320. PANTHER FTD CENTERPIECE BOWL - BLUE - ELECTRIC & BEAUTIFUL, FEW KNOWN
- ___ 321. PANTHER FTD CENTERPIECE BOWL - MARIGOLD - DARK PUMPKIN, SUPER PIECE
- ___ 322. Miniature Morning Glory 6" vase - smoke
- ___ 323. Lattice & Points 9" vase - purple - SUPER
- ___ 324. Heavy Iris tumblers (4) - purple - all beautiful, choice



275



280



285



307



290



320



321



308

Seeck Auctions
PO Box 377
Mason City, Iowa
50402

PRESORTED
FIRST CLASS MAIL
U.S. POSTAGE
PAID
MAIL EXPEDITED



**THE MORGAN
COLLECTION
FROM TEXAS**

AUCTION

2011 HOACGA Convention
Saturday, April 30, 2011
9:30 AM

