

Heart of America Carnival Glass Association Convention

Auction Open
to the Public

The Arnold &
Dorothy Snell
Collection



70

Carnival Glass 2012 AUCTION

Saturday, April 28, 9:30 a.m.

Kansas City, Mo.
Embassy Suites
International Airport
Hotel

30

40

10

18

Jim & Jan Seeck

Seeck Auctions

641-424-1116

- ___ 1. Diamond Spindle candlesticks - ice green
- ___ 2. Florentine 8 3/4" candlesticks - celeste blue
- ___ 3. Orange Tree powder jar - blue
- ___ 4. Basketweave Open Edge 2 sided up basket - lavender/blue - unusual, pretty color
- ___ 5. Basketweave Open Edge 2 sides up basket - blue
- ___ 6. **Fenton Panels 12 1/4" vase - celeste blue - scarce, nice**
- ___ 7. Fishnet epergne - peach opal
- ___ 8. Birds & Cherries card tray shaped bonbon - blue - nice
- ___ 9. Blackberry Spray crimped edge flattened out whimsy hat - vaseline w/marigold overlay - scarce
- ___ 10. **INDIANA STATE HOUSE 7 1/2" PLATE - BLUE EXTREMELY RARE, ONE OF TWO KNOWN, THIS ONE IS SUPER PRETTY, A RARE OPPORTUNITY TO OWN ONE**
- ___ 11. M'burg Peacocks berry sauce - amethyst - radium, nice
- ___ 12. **NUART Homestead chop plate - blue - extremely rare plate & as pretty as I've seen them, minor pinpoint on edge, should not hurt the value**
- ___ 13. **HOMESTEAD CHOP PLATE - EMERALD GREEN - VERY RARE PLATE, A BEAUTY!**
- ___ 14. **NUART Homestead chop plate - purple - fantastic! one of the best I've seen, cannot imagine putting any more irid. on this piece**
- ___ 15. Fine Cut & Roses candy dish - aqua opal - very minor roughness on feet, typical for these
- ___ 16. Fine Cut & Roses candy dish - blue - electric & super, again, minor roughness on feet
- ___ 17. Fine Cut & Roses candy dish - ice blue - super pretty irid., minor roughness on feet
- ___ 18. **M'BURG PERFECTION WATER PITCHER W/ CRIMPED TOP - MARIGOLD - RADIUM & SUPERB, THIS PITCHER IS A WONDERFUL, RARE PIECE OF MILLERSBURG!**
- ___ 19. **M'burg Perfection tumbler - marigold - rare tumbler, nice**
- ___ 20. **FARMYARD 6 RUFFLED BOWL - PURPLE - SUPER PRETTY W/FABULOUS IRID.!**
- ___ 21. M'burg Little Stars 7" ruffled bowl - green - satin, nice
- ___ 22. M'burg Little Stars 7" ruffled bowl - amethyst - satin & super beautiful
- ___ 23. M'burg Little Stars 7" ruffled bowl - marigold - satin & another beauty
- ___ 24. **ROSE SHOW 9" PLATE - LIME GREEN OPAL - SUPER PRETTY PLATE, VERY RARE & DESIRABLE**
- ___ 25. **ROSE SHOW 9" PLATE - EMERALD GREEN - FANTASTIC IRID. ON THIS RARE PLATE, WOW!!**
- ___ 26. **Rose Show 9" plate - green - super pretty example for a green one, chip on rose**
- ___ 27. **Rose Show 9" plate - ice green - very rare & highly desirable**
- ___ 28. **Rose Show 9" plate - marigold - pumpkin irid., fabulous!**
- ___ 29. Amaryllis tri-cornered compote - marigold - nice
- ___ 30. **HORSE MEDALLION FTD RUFFLED BOWL - CELESTE BLUE - ABSOLUTELY SUPER PRETTY! VERY RARE & HIGHLY DESIRABLE, A "KILLER" AS JIM WOULD SAY, VERY FEW AROUND**
- ___ 31. **Horse Medallion ftd ruffled bowl - green - super pretty, scarce color**
- ___ 32. **Horse Medallion ftd ruffled bowl - amethyst - also super pretty, another scarce color**
- ___ 33. **Gevurtz Bros. Furniture & Clothing 6" adv. Plate - amethyst - as pretty as I've seen, rare**
- ___ 34. **Ogden Furniture and Carpet Co. adv. ruffled bowl - amethyst - rare & nice**
- ___ 35. **The Great House of Isaac Benesch & Sons adv. ruffled bowl - amethyst - nice**
- ___ 36. **IMPERIAL GRAPE WATER CARAFE - EMERALD GREEN - FANTASTIC IRID., RARE**
- ___ 37. **Peacock & Grape 3 in 1 edge ruffled bowl - peach opal - lots of pink irid., pretty**
- ___ 38. **Peacock & Grape 3 in 1 edge ruffled bowl - lime green opal - very rare & nice**
- ___ 39. **Peacock & Grape 3 in 1 edge ruffled bowl - green - nice**
- ___ 40. **M'BURG ACORN ROUND COMPOTE - VASELINE - EXTREMELY RARE & SUPER, A TOP RARITY!**
- ___ 41. **Panther ftd ruffled sauce - red - very scarce, nice**
- ___ 42. **Panther ftd ruffled sauce - aqua - very rare color & nice, probably rarer than the red**
- ___ 43. **Panther ftd ruffled sauce - amethyst - scarce, might be the rarest color**
- ___ 44. **HEAVY IRIS TANKARD WATER PITCHER - WHITE - ABSOLUTELY SUPER, AS PRETTY AS YOU CAN IMAGINE, RARE COLOR**
- ___ 45. **Heavy Iris tumbler - white**
- ___ 46. **Heavy Iris tankard water pitcher - purple - very scarce pitcher, nice**
- ___ 47. **Heavy Iris tumbler - purple**
- ___ 48. **STIPPLED PEACOCK AT URN MASTER IC BOWL - SAPPHIRE - EXTREMELY RARE BOWL & NICE, ANOTHER OPPORTUNITY**
- ___ 49. **Peacock at Urn master IC bowl - marigold - very pretty**
- ___ 50. **Stag & Holly spt ftd ruffled bowl - red - very rare color, highly desired**
- ___ 51. **Stag & Holly spt ftd ruffled bowl - amethyst - scarce color**
- ___ 52. **STRAWBERRY SCROLL WATER PITCHER - MARIGOLD - A BEAUTY FOR THIS RARE PIECE!**
- ___ 53. **Strawberry Scroll tumbler - marigold - pretty**
- ___ 54. **STRAWBERRY SCROLL WATER PITCHER - BLUE - EXTREMELY RARE & HIGHLY DESIRABLE, TRY TO FIND ONE**
- ___ 55. **Strawberry Scroll tumbler - blue**
- ___ 56. **M'BURG ROSALIND 8 1/2" JELLY COMPOTE - AMETHYST - RADIUM & SUPER, BEAUTIFUL & TOP RARITY, ONE OF MY FAVORITES**
- ___ 57. **Holly CRE JIP hat - red - scarce**
- ___ 58. **Holly CRE JIP hat - green**
- ___ 59. **N's Town Pump - green - super pretty example, chip at bottom edge of handle, green is tough**
- ___ 60. **N's Town Pump - marigold - this fabulous, lots of pink, RARE**
- ___ 61. **N's Town Pump - purple - small nick on front of spout**
- ___ 62. **Fanciful low ruffled bowl - purple - has electric blue irid., beautiful**
- ___ 63. **Fanciful low ruffled bowl - blue - nice**
- ___ 64. **PETER RABBIT 9" PLATE - GREEN - VERY, VERY RARE PLATE & SUPER NICE, TOP QUALITY PIECE**
- ___ 65. **Grape & Cable pin tray - green - scarce, nice**
- ___ 66. **Grape & Cable pin tray - purple - nice**
- ___ 67. **COSMOS & CANE LADIES SPITTOON - HONEY AMBER - EXTREMELY RARE & SUPER**
- ___ 68. **Horse Medallion JIP ftd bowl - green - scarce, nice**
- ___ 69. **Horse Medallion JIP ftd bowl - vaseline w/marigold overlay - super**

- ___ 70. **M'BURG MULTI FRUITS & FLOWERS WATER PITCHER WITH FLAT BASE - AMETHYST-ONE OF JUST A FEW KNOWN, A GREAT MILLERSBURG PITCHER!**
- ___ 71. Open Rose ruffled sauce – blue - extremely rare color & pretty
- ___ 72. Christmas compote–purple -a collector's favorite, nice
- ___ 73. Holly 9" plate - green - scarce color, nice
- ___ 74. Fenton Holly 9" plate-amethyst-also scarce color & nice
- ___ 75. Holly 9" plate – blue - nice
- ___ 76. **GRAPE & CABLE HATPIN HOLDER - ICE GREEN - VERY RARE COLOR, TWO FEET HAVE MINOR NICKS**
- ___ 77. **GRAPE & CABLE HATPIN HOLDER - ICE BLUE - TEMPTED TO CALL THIS CELESTE BLUE BECAUSE IT IS SO DARK, FABULOUS IRID., ALL THREE FEET HAVE BEEN POLISHED**
- ___ 78. Grape & Cable hatpin holder – green - nice
- ___ 79. Grape & Cable hatpin holder - purple - nice
- ___ 80. Grape & Cable hatpin holder - marigold - nice
- ___ 81. **Thistle 9" plate - amethyst - super pretty & rare**
- ___ 82. **Thistle 9" plate - green - very rare & very nice**
- ___ 83. Stippled Three Fruits Medallion spt fld ruffled bowl - aqua opal - nice example
- ___ 84. **Imperial Grape water pitcher - purple - fantastic! super beautiful!**
- ___ 85. **Imperial Grape 7 pc. water set – smoke - super set, even the tumblers are nice**
- ___ 86. Peacock & Grape spt fld 9" plate - green - as pretty as these come, scarce
- ___ 87. Peacock & Grape spt fld 9" plate – amethyst - also a scarce color for these, nice
- ___ 88. Peacock & Grape spt fld 9" plate – blue - very pretty
- ___ 89. Peacock & Grape spt fld 9" plate - marigold - very pretty
- ___ 90. **ORIENTAL POPPY TANKARD WATER PITCHER - ICE GREEN - SUPER RARE & SUPER PRETTY, VERY FROSTY, HAS RIBBED INTERIOR, WOW**
- ___ 91. Oriental Poppy tumbler - lime green - has ribbed interior
- ___ 92. **ORIENTAL POPPY 7 PC. TANKARD WATER SET - ICE BLUE - VERY RARE SET & BEAUTIFUL, PITCHER & TUMBLERS HAVE RIBBED INTERIOR**
- ___ 93. Oriental Poppy tankard water pitcher - white - another pretty one, has restoration to spout, has ribbed interior
- ___ 94. Oriental Poppy tumbler – white
- ___ 95. **Oriental Poppy tankard water pitcher - green - super example, scarce**
- ___ 96. Oriental Poppy tumblers (2) - green - both to go
- ___ 97. **Oriental Poppy tankard water pitcher - purple - super example, a beauty, has ribbed interior**
- ___ 98. Oriental Poppy tumbler - purple
- ___ 99. **Oriental Poppy tankard water pitcher - marigold - dark, super! has ribbed interior**
- ___ 100. Oriental Poppy tumblers (2) - marigold - both to go
- ___ 101. Grape & Gothic Arches 4 pc table set – blue - very pretty set w/electric highlights
- ___ 102. **M'BURG DOLPHINS COMPOTE – GREEN - VERY RARE & NICE, HAVEN'T SOLD ONE OF THESE FOREVER!**
- ___ 103. **M'BURG DOLPHINS COMPOTE - AMETHYST - ALSO RARE & NICE, IT HAS BEEN A LONG TIME**
- ___ 104. Plaid ruffled bowl - green - scarce color & desired pattern
- ___ 105. Plaid ruffled bowl – blue - very nice
- ___ 106. **Horse Medallion ftd rose bowl – red - extremely rare rose bowl, 1 of just 3 known, great piece!**
- ___ 107. Horse Medallion ftd rose bowl - aqua - another very rare color for these and beautiful
- ___ 108. **1911 Birmingham Age Herald ruffled bowl - amethyst - very rare, much rarer than plates, the building sits perfect to the ruffle**
- ___ 109. **Utah Liquor Co. adv. 6" plate - amethyst - rare & very desirable, pretty**
- ___ 110. Seasons Greetings Eat Paradise Sodas 6" adv. plate - amethyst - super example w/great mold work
- ___ 111. **Zippered Loop finger lamp – smoke - 5" tall has 4 1/8" base, super pretty**
- ___ 112. **Zippered Loop finger lamp - marigold - 4 1/2" tall, has 3 1/2" base, dark & super**
- ___ 113. Nippon PCE bowl w/ribbed back - ice blue - scarce
- ___ 114. **M'burg Rose Columns vase - green - has a little bit of teal color in the glass, extremely rare w/super irid., a favorite**
- ___ 115. Lions 7 1/2" plate - marigold - scarce, nice
- ___ 116. **Cosmos & Cane jelly compote - white - neat piece with pretty irid.**
- ___ 117. **Poppy Show 9" plate - green - fantastic irid.! nick on poppy and minor nick on base, this beauty outweighs the damage**
- ___ 118. **Poppy Show 9" plate - ice green - it has been a long time since I've seen one this nice**
- ___ 119. **Poppy Show 9" plate - blue - electric, super!**
- ___ 120. Poppy Show 9" plate - marigold - WOW pretty much covers it!
- ___ 121. Poppy Show 9" plate - white - the end of a run of the prettiest Poppy Show plates we've sold in a long time
- ___ 122. **Blackberry Spray CRE JIP hat - aqua opal - very rare in this shape and color, and pretty too!**
- ___ 123. Blackberry Spray CRE JIP hat - reverse amberina- absolutely super
- ___ 124. Blackberry Spray CRE JIP hat – red - cherry color & pretty
- ___ 125. Blackberry Spray CRE JIP hat - amber/horehound- unusual color, nice
- ___ 126. **RUSTIC 19" FUNERAL VASE - GREEN - HAS PLUNGER BASE, HAS ELECTRIC IRID., IF IT WAS NORTHWOOD, I'D CALL IT EMERALD**
- ___ 127. **RUSTIC 23 7/8" FUNERAL VASE – AMETHYST HAS PLUNGER BASE, THIS HAS TO BE THE TALLEST VASE AROUND, THIS IS A BIG ONE!**
- ___ 128. **RUSTIC 23 1/2" FUNERAL VASE - BLUE - HAS PLUNGER BASE, SUPER PRETTY IRID., MAYBE THE 2ND TALLEST I'VE SEEN, ARNOLD'S FAVORITE VASE!**
- ___ 129. Good Luck 9" plate w/BW back - green - scarce, nice
- ___ 130. Good Luck 9" plate w/BW back – purple - pretty
- ___ 131. Good Luck 9" plate w/BW back - marigold – this is a Variant, scarce, nice
- ___ 132. **M'burg Hobstar & Feather giant rose bowl - amethyst - very pretty radium irid., as nice as these come, from the Stremming Collection**
- ___ 133. Stag & Holly large size fld ruffled bowl - green - very rare color, a dandy!
- ___ 134. Stag & Holly large size fld ruffled bowl – aqua - irid. is beautiful, even from one side to the other
- ___ 135. Stag & Holly large size fld ruffled bowl - amethyst - as nice as I've ever seen an amethyst one
- ___ 136. **POINSETTIA & LATTICE FTD RUFFLED BOWL- WHITE - HAS RIBBED BACK -**



203

201

216

349

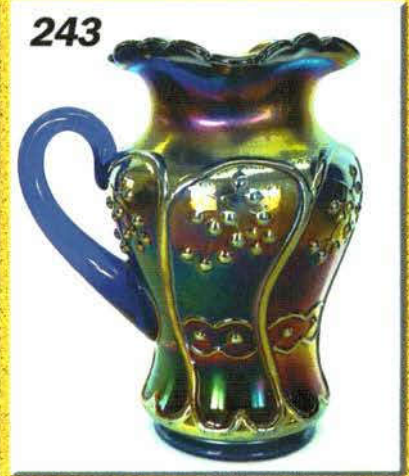
270



286



324



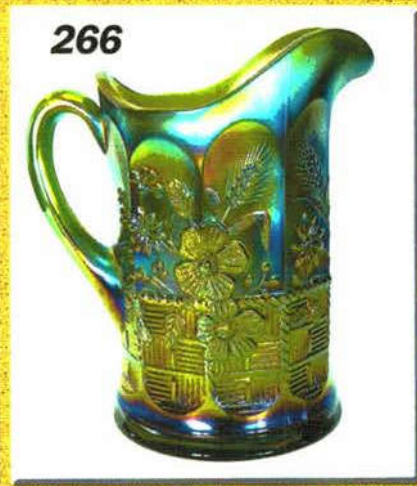
243



226



209



266



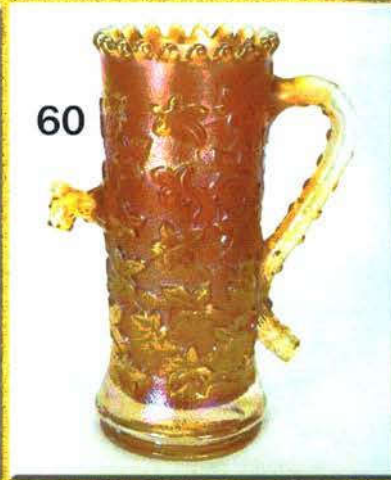
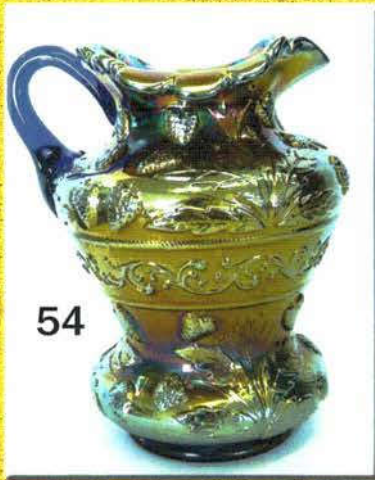
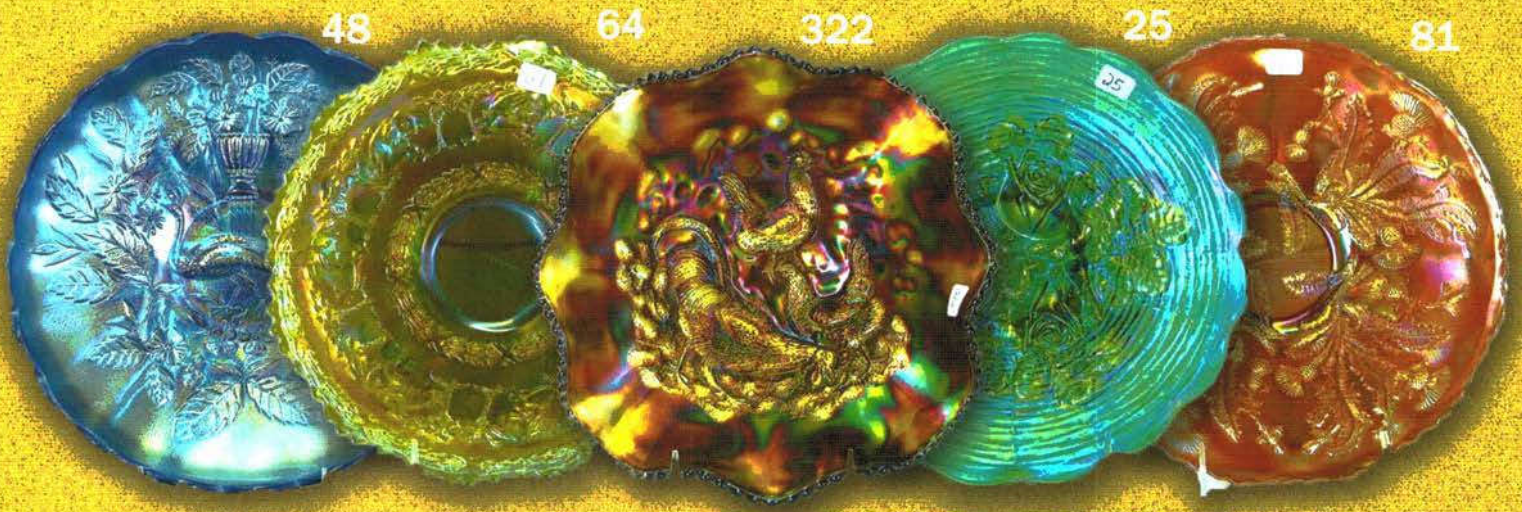
238

220

249

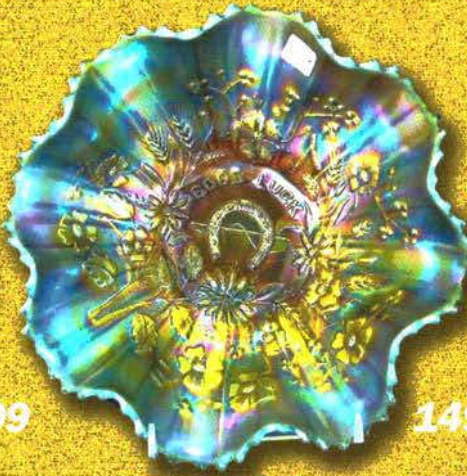
231

212





109



149



108



154



259



159



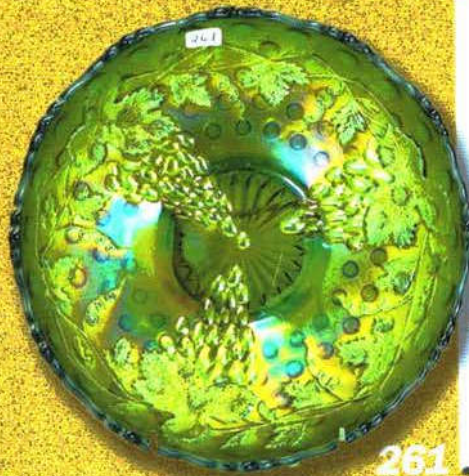
136



345



137



261



114



128



146



**EXTREMELY RARE COLOR, FROSTY W/
SUPER IRID.**

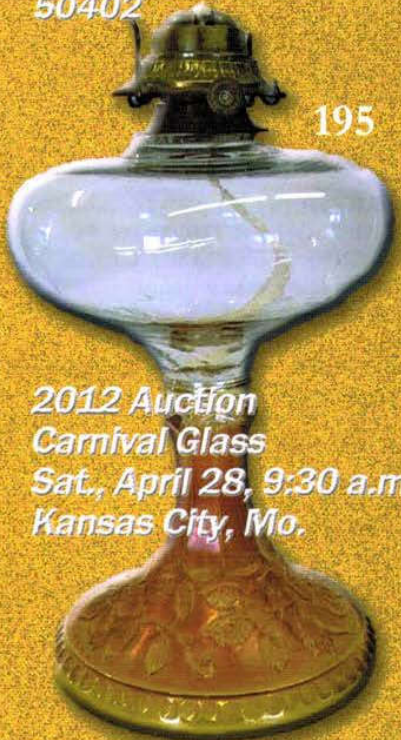
- ___ 137. **POINSETTIA & LATTICE FTD RUFFLED BOWL - ICE BLUE - HAS RIBBED BACK, FABULOUS IRID.**
- ___ 138. Poinsettia & Lattice ftd ruffled bowl - horehound - has ribbed back, can't imagine a prettier one in this color
- ___ 139. Poinsettia & Lattice ftd ruffled bowl - blue - ribbed back, electric & super, has tiny pinpoint between points
- ___ 140. Poinsettia & Lattice ftd ruffled bowl - purple - ribbed back, nice
- ___ 141. Poinsettia & Lattice ftd ruffled bowl - marigold - dark, pretty
- ___ 142. Horse Medallion 7" ruffled bowl - green - scarce color, pretty
- ___ 143. Horse Medallion 7" ruffled bowl - amethyst - another scarce color, pretty
- ___ 144. **Apple Tree 7 pc. water set - blue - super nice set with great irid.**
- ___ 145. Daisy & Plume ftd rose bowl - ice green - very scarce, epoxy on foot
- ___ 146. **M'BURG UNLETTERED RUFFLED COURT HOUSE BOWL - AMETHYST - EXTREMELY RARE VERSION OF THIS BOWL, SUPER NICE!**
- ___ 147. **M'burg IC shaped Court House bowl + 10 cents - amethyst - rare shape, Court House postcard included, the Snells bought this from a lady who said her mother paid 10 cents for it**
- ___ 148. Orange Tree shaving mug - red - scarce mug, nice
- ___ 149. **GOOD LUCK RUFFLED BOWL W/RIBBED BACK - AQUA OPAL - VERY RARE & NICE, HAS BEAUTIFUL BUTTERSCOTCH IRID.**
- ___ 150. **Good Luck ruffled bowl w/ribbed back - sapphire - super pretty**
- ___ 151. Good Luck ruffled bowl w/BW back - green - scarce
- ___ 152. Good Luck ruffled bowl w/BW back - purple - nice
- ___ 153. M'burg Nesting Swan ruffled bowl - green - satin, pretty
- ___ 154. **Concord 9" plate - green - dynamite irid. on this rare plate**
- ___ 155. **Concord 9" plate - amethyst - rare plate, nice**
- ___ 156. Grape & Cable perfume - purple - this has super electric irid.!
- ___ 157. **M'burg Big Fish 3 in 1 edge bowl - amethyst - radium, very scarce and hard to find in radium**
- ___ 158. **M'burg Big Fish 3 in 1 edge bowl - marigold - satin, nice**
- ___ 159. **Norse N. Smith Real Estate & Insurance Rome GA. 6" adv. plate - amethyst - very rare plate, nice**
- ___ 160. **Eagle Furniture Co. 6" adv. plate - amethyst - super pretty, scarce**
- ___ 161. **Fern Brand Chocolates 6" adv. plate - amethyst - super nice, scarce**
- ___ 162. **Hearts & Flowers 9" plate w/ribbed back - white - fabulous irid. on this plate, highly desirable, from the Joyce Seale Collection, SUPER!**
- ___ 163. **Lions 7" deep round bowl - blue - scarce**
- ___ 164. **Horse Medallion 7" plate - amethyst - rare color, 1 of 2 known, super**
- ___ 165. **Horse Medallion 7" plate - powder blue - super pretty, rare**
- ___ 166. **Horse Medallion 7" plate - blue - rare, nice**
- ___ 167. **Horse Medallion 7" plate - marigold - pretty**
- ___ 168. **N's Bushel Basket - green - pretty**
- ___ 169. **M'burg Peacock at Urn giant ruffled compote - green - satin, pretty, as nice as they get**
- ___ 170. **M'burg Peacock at Urn giant ruffled compote - amethyst - satin & super**
- ___ 171. **Cherry Circles card tray shaped bonbon - aqua - rare color, nice**
- ___ 172. **Peacock at the Fountain water pitcher - ice blue - super irid. w/dark color**
- ___ 173. **Peacock at the Fountain tumbler - ice blue - nice**
- ___ 174. **Illinois Soldiers and Sailors Home 7" plate - blue - super pretty example of this rare plate, great mold work**
- ___ 175. **Illinois Soldiers and Sailors Home 7" plate - marigold - dark, super, another goodie**
- ___ 176. **Daisy & Drape flared out vase - aqua opal - butterscotch, pretty**
- ___ 177. **M'burg Deep Grape square shaped compote - amethyst - super pretty example, very rare shape**
- ___ 178. **M'burg Deep Grape flared out compote - amethyst - a desirable piece**
- ___ 179. **Peacock & Grape 8 ruffled bowl - red - scarce, highly desirable**
- ___ 180. **Peacock & Grape 8 ruffled bowl - marigold opal - very pretty**
- ___ 181. **Peacock & Grape 8 ruffled bowl - white w/a tint of blue - very unusual coloring, unique**
- ___ 182. **Peacock & Grape 8 ruffled bowl - vaseline - scarce, nick on point**
- ___ 183. **Peacock & Grape 8 ruffled bowl - amethyst - super!**
- ___ 184. **Dandelion tankard water pitcher - ice blue - extremely rare & pretty, heat check in handle where handle applies, still a fabulous piece**
- ___ 185. **Dandelion tumbler - ice blue**
- ___ 186. **Dandelion tankard water pitcher - green - super pretty example, rare & desirable**
- ___ 187. **Dandelion tumbler - green**
- ___ 188. **Dandelion 6 pc. tankard water set - purple - super pretty pitcher, has manufacture burst bubble on base, one tumbler has ribbed interior**
- ___ 189. **M'burg Multi Fruits & Flowers sherbet - green - rare & highly desirable item**
- ___ 190. **Peacock & Grape 9" plate - blue - very scarce plate & nice, minor nick on point**
- ___ 191. **Peacock & Grape 9" plate - marigold - loaded with yellow & pink irid., fabulous!**
- ___ 192. **N's Grape Leaves 3 in 1 edge bowl - green**
- ___ 193. **N's Grape Leaves 3 in 1 edge bowl - amethyst - missing irid. in center**
- ___ 194. **N's Grape Leaves 3 in 1 edge bowl - marigold**
- ___ 195. **M'BURG WILD ROSE KEROSENE LAMP W/ LADY MEDALLION INTERIOR - MARIGOLD - 11" TALL, 6 1/2" BASE, SUPER PRETTY FOR EXTREMELY RARE & LARGE LAMP**
- ___ 196. **M'burg Wild Rose kerosene lamp - amethyst - 10" tall, 6" base, super nice**
- ___ 197. **Cherry Chain large IC shaped bowl - blue - has Orange Tree back, nice**
- ___ 198. **Stippled Three Fruits 9" plate w/ribbed back - aqua opal - loaded with opal, pretty plate**
- ___ 199. **Stippled Three Fruits 9" plate w/ribbed back - purple - has blue highlights**
- ___ 200. **Luster Rose 4 pc. table set - marigold**
- ___ 201. **Lotus & Grape 9" plate - green - rare plate, nice**
- ___ 202. **Lotus & Grape 9" plate - blue - very pretty for this rare plate**
- ___ 203. **Geo. W. Getts Pianos Grand Forks, N.Dak. 6" adv. plate - amethyst - very pretty for these**

- ___ 204. Brazier's Candies adv. handgrip plate – amethyst-scarce, pretty
- ___ 205. Dreibus Parfait Sweets adv. ruffled bowl -amethyst super pretty irid., almost lavender
- ___ 206. M'burg Bernheimer Brothers adv. Many Stars ruffled bowl – blue - very rare bowl & nice, minor chip on edge
- ___ 207. Panther fld round sauce - green - rare color
- ___ 208. Hearts & Flowers ruffled compote - renninger blue very pretty even irid., rare color, super piece
- ___ 209. Hearts & Flowers ruffled compote - green - rare color, pretty
- ___ 210. Hearts & Flowers ruffled compote - white - nice
- ___ 211. Princess Lamp w/cloth shade - purple - very pretty example, scarce
- ___ 212. 1910 Detroit BPOE Elks ruffled bowl – amethyst - scarce, nice, highly desirable
- ___ 213. 1910 Detroit BPOE Elks ruffled bowl – green - rare & desirable, nice
- ___ 214. 1910 Detroit BPOE Elks ruffled bowl - blue - pretty, another rare one
- ___ 215. Stippled Basket of Roses bonbon - purple - scarce bonbon
- ___ 216. M'burg Big Fish IC shaped bowl – green - satin, pretty, rare bowl
- ___ 217. Kittens 2 sides up dish - marigold
- ___ 218. Stippled Three Fruits ruffled bowl w/ribbed back aqua opal - fabulous butterscotch irid., beautiful!
- ___ 219. Palm Beach butter dish, cvd sugar & spooner - honey amber - scarce, nice
- ___ 220. Fenton's Good Luck Heart & Vine ruffled bowl - marigold - very rare bowl, nice
- ___ 221. Grape & Cable powder jar - green - nice
- ___ 222. M'burg Absentee Leaf Strawberry tri-cornered compote - green – has a blank leaf, radium & nice, very rare shape, has minor pinpoint on top edge, very, very minor
- ___ 223. M'burg Strawberry ruffled compote - amethyst - radium, nice
- ___ 224. M'burg Strawberry ruffled compote - marigold - radium, nice
- ___ 225. Chrysanthemum ruffled bowl – lavender - unusual base color & nice
- ___ 226. Acorn Burrs 8 pc. punch set – green - only punch set in auction, it's a nice one
- ___ 227. M'burg Leaf & Little Flowers sherbet shaped compote green - satin, nice
- ___ 228. Milady 7 pc. tankard water set - blue - rare set, pretty
- ___ 229. Dandelion mug - aqua opal
- ___ 230. Dandelion mug - amethyst
- ___ 231. M'burg Trout & Fly square shaped bowl - green - satin, very hard to find in this shape, nice
- ___ 232. Stag & Holly spt fld 9" plate - marigold - scarce, nice
- ___ 233. Rose Show Variant ruffled bowl w/ribbed back - renninger blue - super pretty irid., very rare
- ___ 234. Rose Show Variant ruffled bowl w/ribbed back - marigold - lots of yellow & pink irid.
- ___ 235. M'burg Peacock at Urn IC sauce - amethyst - satin
- ___ 236. Diamond Rib 21" funeral vase – green - has plunger base - great irid. from top to bottom, open bubble on top of one point
- ___ 237. Grape & Cable cologne bottle – green - nice
- ___ 238. M'burg Peacock master IC bowl - amethyst - radium, nice, rare bowl
- ___ 239. Knotted Beads 10" crimped edge vase - lime green w/ marigold overlay - unusual color for this vase
- ___ 240. N's Grape Leaves ruffled bowl - ice blue - very pretty irid., rare & desirable
- ___ 241. M'burg Leaf & Little Flowers ruffled compote - amethyst - radium, nice
- ___ 242. M'burg Leaf & Little Flowers ruffled compote - marigold - radium, nice
- ___ 243. Blueberry water pitcher - blue - super pretty irid., very scarce
- ___ 244. Blueberry tumbler - blue - nice
- ___ 245. Blueberry water pitcher - marigold - very pretty with pinks & yellows
- ___ 246. Blueberry tumbler - marigold
- ___ 247. Wishbone fld ruffled bowl – white - scarce, nice
- ___ 248. Wishbone fld ruffled bowl - purple
- ___ 249. M'burg Roses & Fruits bonbon - amethyst - radium, super, rare M'burg bonbon
- ___ 250. M'burg Roses & Fruits bonbon - green - radium, super, another goodie
- ___ 251. Basketweave Open Edge JIP basket - red
- ___ 252. Basketweave Open Edge JIP basket - green
- ___ 253. Basketweave Open Edge JIP basket - aqua
- ___ 254. Basketweave Open Edge JIP basket - powder blue
- ___ 255. Basketweave Open Edge JIP basket - vaseline
- ___ 256. Peacocks ruffled bowl w/ribbed back - aqua opal - pretty butterscotch irid. w/lots of opal
- ___ 257. Peacocks ruffled bowl w/ribbed back - green - very pretty, scarce
- ___ 258. Leaf Rays tri-cornered hdd nappy - blue - rare color, few known
- ___ 259. Coin Dot ruffled 7" bowl - red - cherry red color, beautiful red piece
- ___ 260. Good Luck PCE bowl w/BW back - marigold - super pretty
- ___ 261. M'burg Vintage 10" IC shaped bowl w/Hobnail back - green – very, very rare bowl & nice, satin
- ___ 262. Orange Tree hatpin holder - white - rare color & pretty, epoxy on foot
- ___ 263. Orange Tree hatpin holder - green - scarce color, chip on foot
- ___ 264. Orange Tree hatpin holder - blue - scarce
- ___ 265. Orange Tree hatpin holder – marigold - pretty
- ___ 266. Springtime water pitcher - green - super pretty example, a great one!
- ___ 267. Springtime tumbler - green - nice
- ___ 268. M'burg Campbell & Beesley Co. Spring Opening 1911 handgrip adv. plate - amethyst - very nice example for these
- ___ 269. Exchange Bank Glendive Mont. 6" adv. plate - amethyst - great example
- ___ 270. The Central Shoe Store Collinsville and St. Louis adv. handgrip plate - amethyst - rare advertising piece, nice
- ___ 271. Dragon & Lotus IC shaped bowl - red - cherry red color, nice
- ___ 272. Grape & Cable perfume lamp - purple - cute little miniature lamp, made from the perfume
- ___ 273. M'burg Trout & Fly IC shaped bowl - green - satin w/nice irid.
- ___ 274. Thistle 8 ruffled bowl - aqua - very rare color, pretty
- ___ 275. Stippled Good Luck 9" plate w/ribbed back - blue - very rare plate & nice, minor nick on cleat of horseshoe
- ___ 276. Orange Tree 9" plate - blue - super pretty plate w/ stretchy irid.
- ___ 277. Orange Tree w/trunk 9" plate - marigold - also a beauty, stretchy irid., dark & super

- ___ 278. Fine Cut & Roses rose bowl - dark ice blue or powder blue - neat rose bowl, the color is quite different than the usual ice blue
- ___ 279. Fine Cut & Roses rose bowl - ice blue - very minor pinpoints on feet like usual
- ___ 280. Fine Cut & Roses rose bowl - horehound - rare color, usual pinpoints on feet
- ___ 281. Fine Cut & Roses rose bowl - green - very pretty
- ___ 282. Fine Cut & Roses rose bowl - green - does not have collar base, very rare
- ___ **283. Pony ruffled bowl - ice green - very pretty example, scarce**
- ___ **284. Peacocks 9" plate w/ribbed back - green - pretty, scarce**
- ___ 285. Peacocks 9" plate w/ribbed back - ice green - always desirable
- ___ **286. Cosmos & Cane spittoon shaped compote - honey amber - neat piece, highly desired**
- ___ 287. Fenton's Peacock at Urn 9" plate - blue - super pretty, scarce
- ___ 288. Fenton's Peacock at Urn 9" plate - marigold - nice
- ___ **289. Grape & Cable candle lamp - green - scarce & desirable, nice**
- ___ **290. Grape & Cable candle lamp - green - scarce & desirable, nice**
- ___ **291. Orange Tree Orchard 6 pc. water set - blue - very scarce set**
- ___ **292. Embroidered Mums ruffled bowl w/ribbed back - aqua - pretty, hard color to find**
- ___ 293. Luster Rose 11" ruffled bowl - smoke - pretty
- ___ **294. M'burg Peacock 6" plate - amethyst - satin, rare**
- ___ **295. M'burg Peacock 6" plate - marigold - very rare to find a marigold one**
- ___ **296. Horse Medallion ftd nut bowl - red slag - pretty & rare**
- ___ 297. Horse Medallion ftd nut bowl - aqua - another rare color & nice
- ___ 298. Horse Medallion ftd nut bowl - smoke - has marigold overlay, rare color
- ___ **299. Wishbone epergne - green - pretty for these**
- ___ **300. Spector's Department Store Heart & Vine 9" plate - marigold - super, as nice as it gets**
- ___ **301. Rose Show ruffled bowl - aqua opal - very pretty w/ light butterscotch irid., the base of this has a light moonstone look to it**
- ___ 302. Fanciful 9" plate - peach opal - pretty
- ___ **303. Stag & Holly lg size ftd IC shaped bowl - amethyst - very scarce color**
- ___ 304. Stag & Holly lg size ftd IC shaped bowl - blue - electric & pretty
- ___ 305. Tree Trunk 11 1/2" mid-size vase- ice blue-very rare, nice
- ___ 306. Panther ftd ruffled master berry bowl - blue - super!
- ___ 307. Stippled Good Luck ruffled bowl w/ribbed back - blue - nice
- ___ 308. Stippled Good Luck ruffled bowl w/ribbed back - pastel marigold - very pretty, an unusual bowl, many would call this clambroth
- ___ 309. Flying Bat hatpin - purple
- ___ 310. Big Butterfly hatpin - purple
- ___ **311. M'burg Trout & Fly ruffled bowl - green - satin, fish is pretty, nice piece**
- ___ **312. M'burg Trout & Fly ruffled bowl - lavender/ amethyst - scarce**
- ___ 313. Captive Rose 9" plate - green - scarce color, a nice one
- ___ 314. Peacocks PCE bowl w/BW back - green - very pretty, rare with the BW back
- ___ 315. Chrysanthemum spt ftd ruffled bowl - powder blue - very rare pattern for a spt ftd bowl
- ___ 316. Grape & Cable banana boat - purple - pretty
- ___ 317. Round Up 9" plate - blue - pretty example
- ___ 318. Fenton's Grape & Cable ruffled ftd fruit bowl - green - Persian Medallion interior, 1/2" heat check in collar base
- ___ **319. Poppy Show ruffled bowl - ice blue - very scarce & highly desirable**
- ___ 320. Persian Medallion chop plate - blue - scarce
- ___ 321. Grape & Cable dresser tray - green - nice
- ___ **322. FARMYARD SQUARE RUFFLED BOWL - PURPLE - SUPER NICE, ONE OF THE MOST DEMANDED PATTERNS IN CARNIVAL GLASS**
- ___ 323. Basketweave Open Edge square basket - aqua
- ___ **324. M'burg Night Stars bonbon - marigold - radium, dark, just fantastic!**
- ___ **325. M'burg Night Stars bonbon - amethyst - radium, super**
- ___ **326. Horse Medallion round bowl - red - rare & desirable, nice**
- ___ 327. Stippled Good Luck PCE bowl w/ribbed back - renninger blue - rare color & nice
- ___ **328. Coral 9" plate - marigold - scarce, nice**
- ___ 329. Leaf & Beads rose bowl - aqua opal - nice
- ___ **330. Cvd Frog - white - rare color**
- ___ **331. Cvd Frog - ice green - rare, nice**
- ___ **332. Cvd Frog - marigold - rare, nice**
- ___ **333. Jockey Club ruffled adv. bowl - amethyst - maybe the prettiest one I've seen**
- ___ **334. Dorsey and Funkenstein Fine Furniture adv. ruffled bowl - amethyst - very rare piece, nice**
- ___ **335. E.A. Hudson Furniture Co. adv. 6" plate - amethyst super pretty!**
- ___ 336. Dragon & Lotus spt ftd ruffled bowl - lime green opal chip on cleat
- ___ **337. Tree Trunk 6" squatty vase - ice blue - rare, has super irid.!**
- ___ 338. Basketweave Open Edge ruffled basket - aqua
- ___ 339. Peacocks PCE bowl w/ribbed back - amethyst - pretty, has the right look, some would call this lavender
- ___ **340. M'burg Hobnail spittoon - marigold - super example**
- ___ 341. April Showers 10" vase - blue
- ___ **342. Acorn Burrs 7 pc. water set - green - pitcher is super, great set!**
- ___ **343. Rosalind Variant ruffled compote - green - very pretty**
- ___ 344. Blackberry ruffled ftd candy dish - ice green - has Daisy & Plume back, super
- ___ **345. NUART Chrysanthemum chop plate - amber - fantastic irid. on this rare plate**
- ___ **346. M'burg Big Fish ruffled bowl - amethyst - radium, rare, minor pinpoints on base**
- ___ 347. Plume Panels 12" vases (2) - green - sold as pair
- ___ **348. ROSE TREE IC SHAPED BOWL - BLUE - ELECTRIC & FANTASTIC, EXTREMELY RARE, NOT MANY PEOPLE EVEN KNOW THIS PATTERN, THESE ARE GREAT!**
- ___ **349. ROSE TREE IC SHAPED BOWL - MARIGOLD - IF YOU WANT A BEAUTIFUL MATCH, THIS BOWL HAS EVERYTHING YOU WANT!**
- ___ 350. Dolphin candlesticks - ice blue
- ___ 351. Dolphin fan vase - ice blue
- ___ 352. Dolphin candy dish - ice blue

Seeck Auctions
PO Box 377
Mason City, Iowa
50402

Presorted
First Class Mail
U.S. Postage
Paid
Mail Expeditors



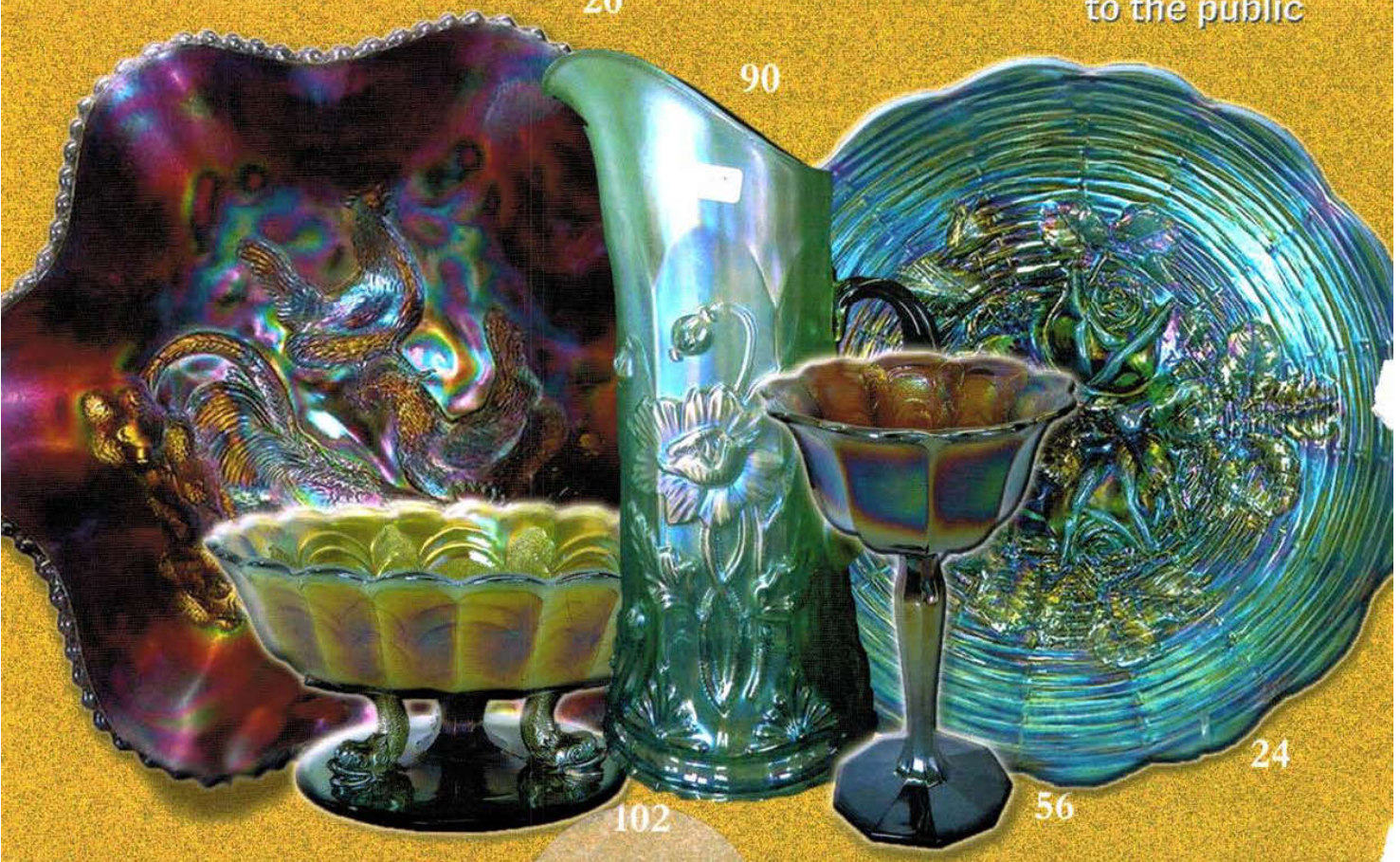
195

2012 Auction
Carnival Glass
Sat., April 28, 9:30 a.m.
Kansas City, Mo.

20

Open
to the public

90



102

56

24